

CONTENTS

HEADLINES
ECONOMIC INDICATORS
FEATURE ARTICLE

INFOGRAPHIC OF THE MONTH
PROVINCIAL SNAPSHOT
CONTACT US

Your monthly update on South Africa's economic indicators

Headlines

PGMs push mining higher
Page 1

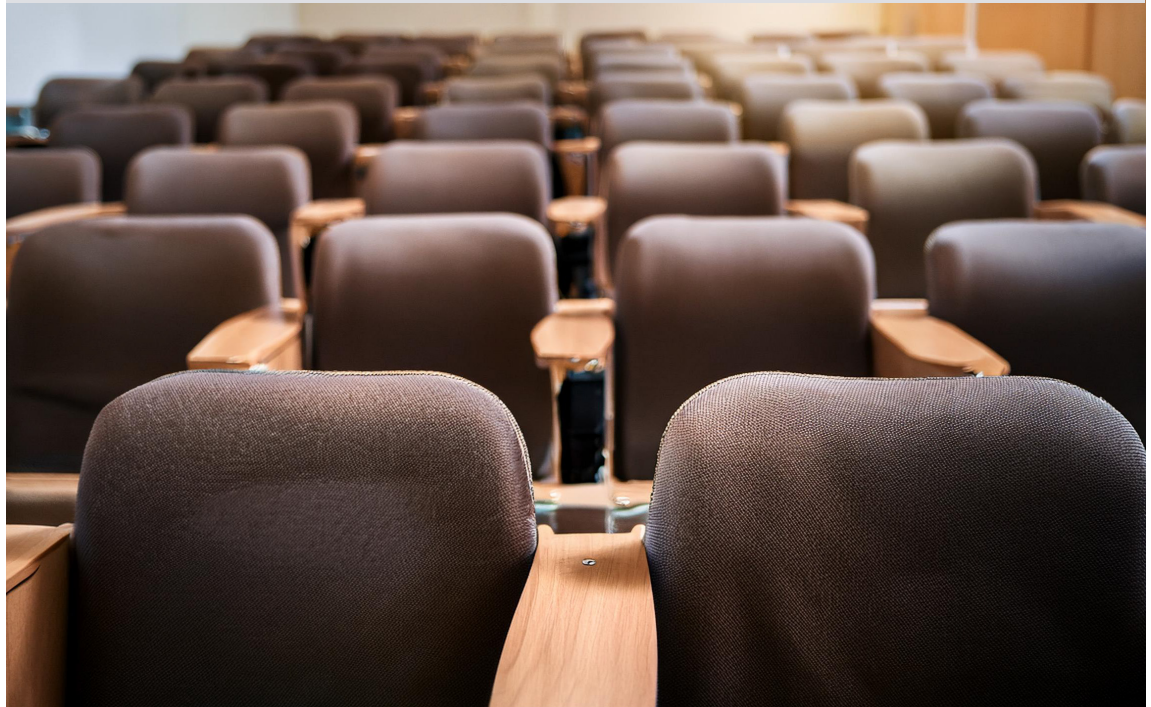
Infographics

Hotel occupancy rates rise
in February
Page 4

Provincial snapshot

Agricultural employment
across the country
Page 5

Education inflation up in 2026 Page 3



stats sa

Department:
Statistics South Africa
REPUBLIC OF SOUTH AFRICA

IMPROVING LIVES THROUGH DATA ECOSYSTEMS



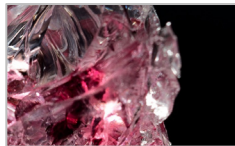
Economic headlines

Economic wrap-up for April 2026



Stats SA's publication schedule had a quieter month, with 20 statistical releases published (click [here](#) to read more).

PGMs push mining higher in February



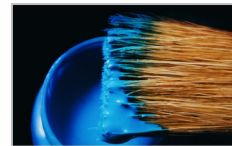
Nickel, chromium ore, manganese ore, diamonds and gold also supported growth. Listen [here](#) for more. 🎧

Manufacturing continues a downward trend



Seven of the ten manufacturing divisions were weaker in February. Listen [here](#) for more. 🎧
















Retail trade remains upbeat



Sales grew by 1,6% year-on-year in February. Listen to an overview of the results [here](#). 🎧

Click [here](#) to browse more headlines.

Monthly economic indicators

	y/y percentage change			m/m percentage change			3-month
	Dec-25	Jan-26	Feb-26	Dec-25	Jan-26	Feb-26	Dec-Feb
Mining production 	3,0	5,0	9,7	-2,1	3,7	2,3	-1,7
Manufacturing production 	-1,4	-0,1	-2,8	-1,4	1,9	-2,2	-2,0
Electricity generation 	-7,8	-6,1	-4,0	-1,4	1,5	-0,2	-1,5
Buildings completed (value) 	13,9	-33,1	19,0	7,1	-52,6	80,6	-7,7
Wholesale trade sales 	0,7	-4,2	-1,1	-1,1	-1,3	0,7	-0,6
Retail trade sales 	2,5	4,4	1,6	-0,5	0,9	-1,0	0,5
Motor trade sales 	6,5	2,7	5,5	0,4	-0,7	1,4	1,1
Income from tourist accommodation 	4,1	2,7	8,9	-4,4	1,7	2,9	-1,2
Restaurants, catering & fast-food income 	2,5	5,7	2,3	-1,6	1,8	-2,5	-1,0
Rail transport: Freight payload 	3,1	13,4	3,3	-1,3	9,5	-7,0	3,1
Road transport: Freight payload 	-0,1	-5,7	-4,2	1,0	-1,1	0,2	-1,4
Rail transport: Passenger journeys 	28,0	23,0	26,6	9,6	-0,7	-0,1	5,3
Road transport: Passenger journeys 	-1,9	-9,6	-3,9	3,1	-0,1	-1,1	-0,1
	Jan-26	Feb-26	Mar-26	Jan-26	Feb-26	Mar-26	
Consumer Price Index (CPI) 	3,5	3,0	3,1	0,2	0,4	0,6	
Producer Price Index (PPI) 	2,2	1,8	2,3	-0,2	0,0	1,1	

ABOUT

The indicators shown here provide an overview of how various sectors of South Africa's economy are performing

Click on an indicator name to access the complete report on Stats SA's website

y/y = year-on-year
 m/m = month-on-month
 3-month = percentage change between the previous 3 months (September–November) and the latest 3 months (December–February)

Keep up to date with our release schedule [here](#). A complete catalogue of Stats SA releases and reports is available [here](#).



stats sa

Department:
 Statistics South Africa
REPUBLIC OF SOUTH AFRICA

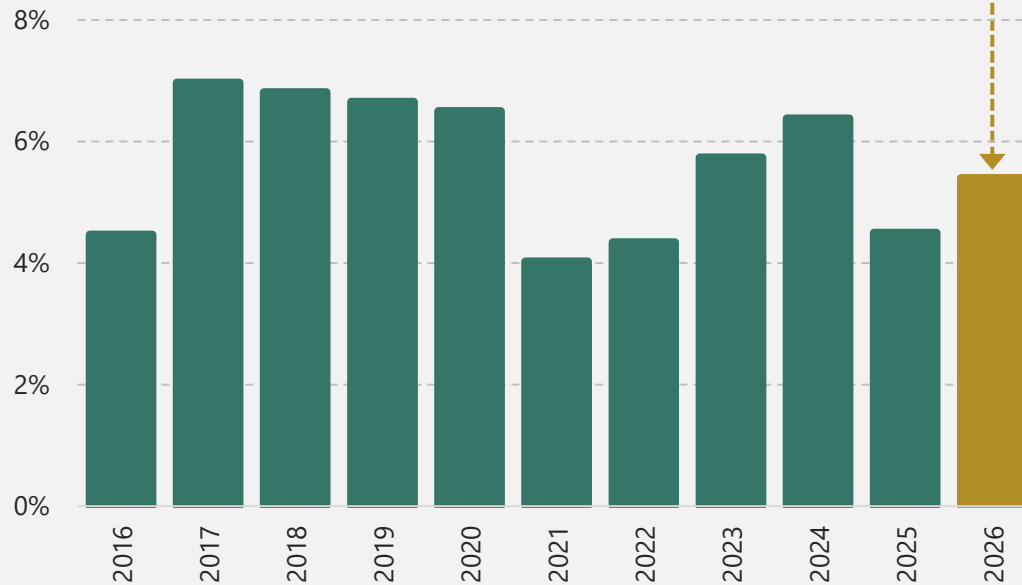
IMPROVING LIVES THROUGH DATA ECOSYSTEMS



Feature article

Education inflation was 5,4% in 2026

Annual percentage change in tuition fees



Source: Consumer Price Index (CPI), March 2026

Education inflation up in 2026

The cost of living rose by 3,1% in the 12 months to March, according to the latest consumer price index (CPI). This is slightly up from 3,0% recorded in February.

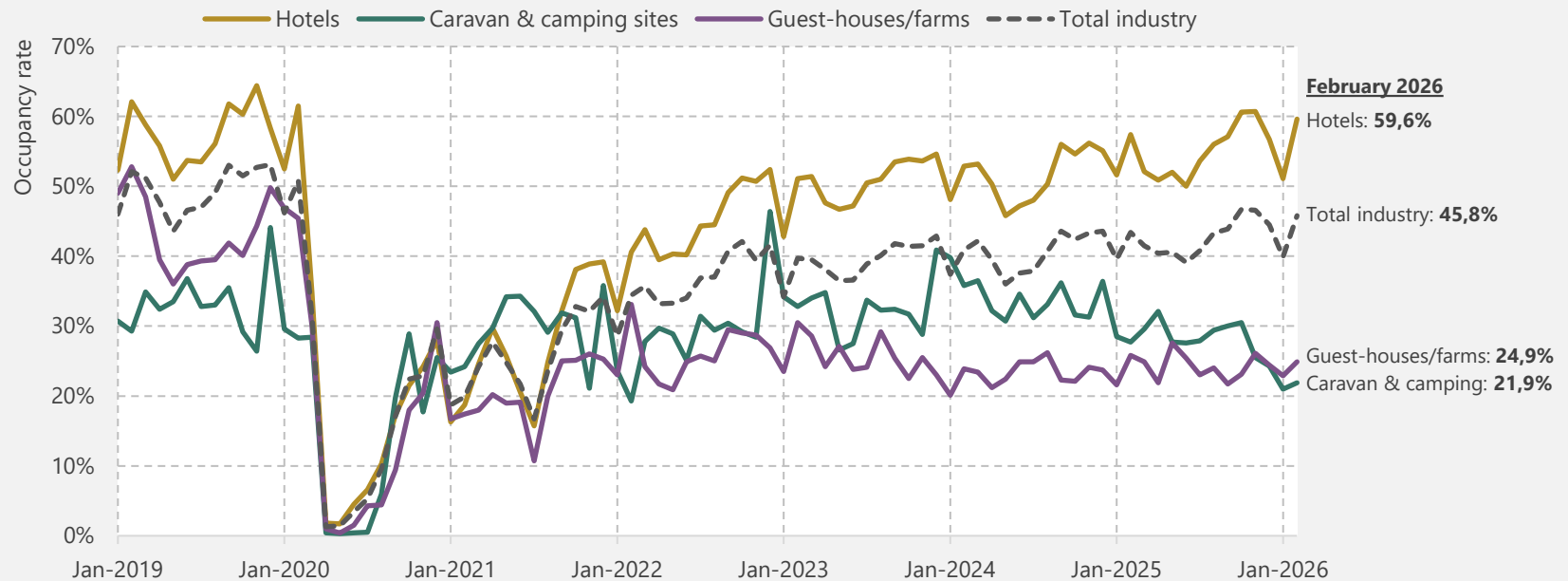
The annual rate for food & non-alcoholic beverages (NAB) slowed further to 3,6%. Four of the 11 food & NAB categories are in deflationary territory, including fruits & nuts; vegetables; cereal products; and milk, other dairy products & eggs.

The education component in the CPI is updated once a year in March. Tuition fees increased by 5,4% in 2026, higher than the 4,5% rise recorded in 2025. Primary & secondary education rose by 6,2% (from 5,0% in 2025), while tertiary education increased by 4,2% (from 3,7% in 2025). Private secondary schools recorded the sharpest rise in 2026, climbing by 7,5%.

Read more [here](#).

Infographic of the month

Hotels registered an occupancy rate of **59,6%** in February, up from 51,1% in January
January 2019 to February 2026



Monthly data The category 'other accommodation' is not included in the chart Source: *Tourist accommodation, February 2026* (Table 4) Download the release [here](#)



stats sa

Department:
Statistics South Africa
REPUBLIC OF SOUTH AFRICA

IMPROVING LIVES THROUGH DATA ECOSYSTEMS



Provincial snapshot

Western Cape accounts for 26,3% of the agricultural workforce

Provincial breakdown of employment in commercial agriculture (Total: 840 407 individuals)



Source: Agricultural survey, 2024 (Table B) Download the release [here](#)



Contact us

Head Office
ISlbalu House, Koch Street
Salvokop, Pretoria
0002

Private Bag X44
Pretoria 0001
South Africa

Main switchboard
Tel: +27 12 310 8911
User Information Services
Tel: +27 12 310 8600

Click [here](#) for contact details for provincial offices.



E-mail: info@statssa.gov.za
Website: www.statssa.gov.za



Stats SA



@StatsSA



Statistics South Africa



<https://soundcloud.com/statssa>

Read more editions of *Stats Biz* [here](#).