

CONTENTS

HEADLINES
ECONOMIC INDICATORS
FEATURE ARTICLE

INFOGRAPHIC OF THE MONTH
PROVINCIAL SNAPSHOT
CONTACT US

Your monthly update on South Africa's economic indicators

Headlines

Black Friday and shifts in
consumer behaviour
Page 1

Infographics

Carving up the government
spending pie
Page 4

Provincial snapshot

The latest provincial
unemployment rates
Page 5

South African GDP grows by 1,6% Page 3



stats sa

Department:
Statistics South Africa
REPUBLIC OF SOUTH AFRICA



Economic headlines

Government spending breaches R2 trillion



Large increases were recorded for social protection, health, and general public services (click [here](#) to read more).

Black Friday and shifts in consumer behaviour



Retail trade sales data show how Black Friday has shifted our shopping behavior (click [here](#) to read more).

Inflation inches higher in October



Consumer price inflation picked up slightly in October (click [here](#) to read more).

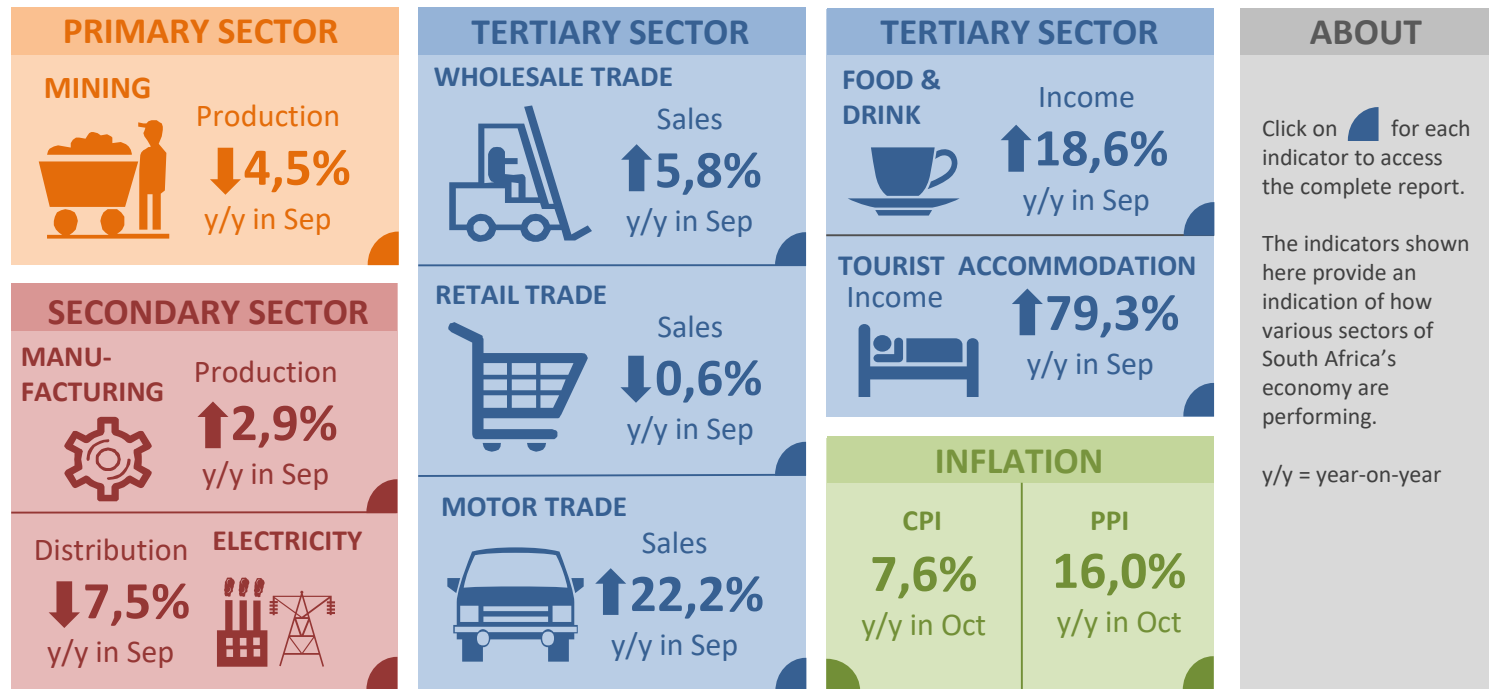
The world at 8 billion



Total population of the world was projected to reach 8 billion on 15th November (click [here](#) to read more).

Click [here](#) to browse more headlines.

Monthly economic indicators



Keep up to date with our release schedule [here](#).

Feature article

South African GDP grows by 1,6%

After contracting by 0,7% in Q2:2022, the economy rallied in Q3:2022, expanding by 1,6%. Agriculture, finance, transport and manufacturing were the main drivers of growth on the supply side of the economy.

The demand side of the economy was lifted by a rise in exports and government consumption.

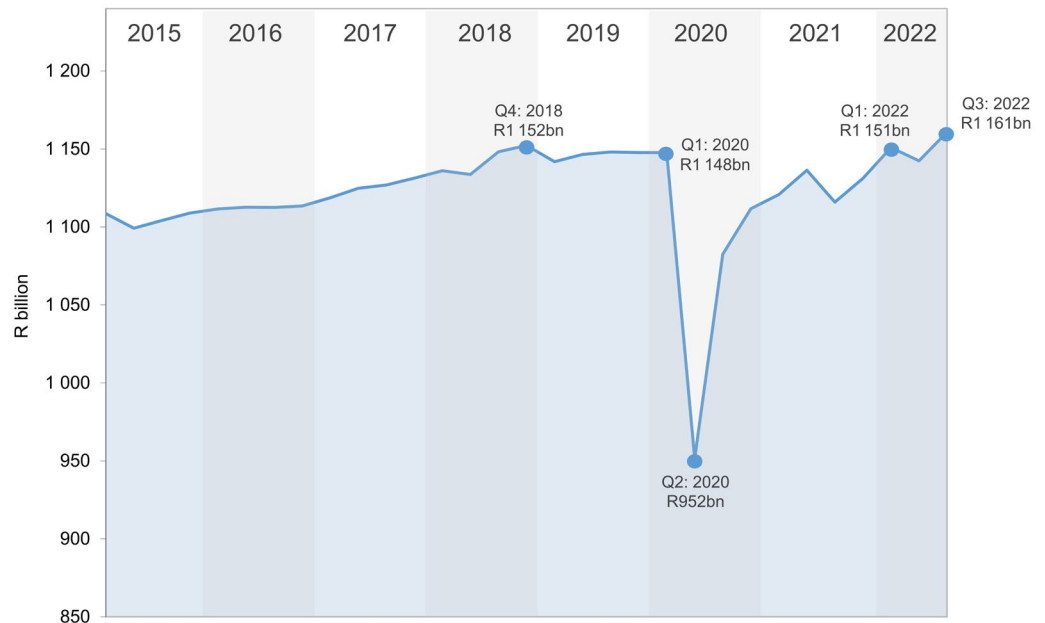
The pandemic hindered economic growth for about two years. GDP reached pre-pandemic levels in Q1:2022. The recovery was brief, with GDP contracting by 0,7% in Q2:2022, mainly as the result of widespread flooding in KwaZulu-Natal.

Not only does the 1,6% rise in Q3:2022 boost the economy back above pre-pandemic levels, but quarterly real GDP is now the highest it's ever been, exceeding the previous peak of R1 152 billion recorded in Q4:2018.

Click [here](#) to read more.

Gross domestic product (GDP) expanded by 1,6% in Q3: 2022

Rising above the previous peak of R1 152 billion in Q4: 2018. Real GDP (constant 2015 prices, seasonally adjusted)



Infographic of the month

Carving up the government spending pie

South African government spending broke the R2 trillion mark in the 2020/21 financial year. The graphic illustrates how government spread the money across various functions.

General public services accounted for almost a quarter (R507 billion) of total expenditure, followed by education, social protection and health.

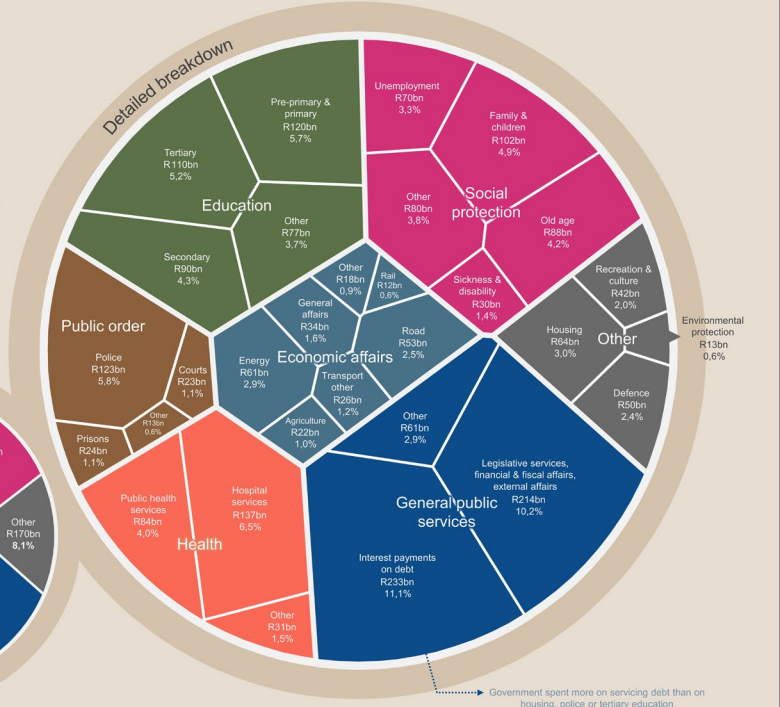
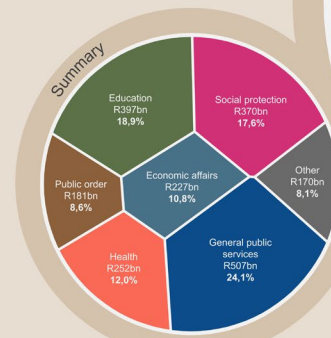
Breaking this down further, the biggest item in general public services was interest payments on debt. For every R100 of total expenditure, government used R11,10 to service its debt obligations.

The second biggest item in general public services was legislative services, financial & fiscal affairs, accounting for 10,2% of total spending.

Read more [here](#).

The South African government spent **R2,1 trillion** in the 2020/21 fiscal year

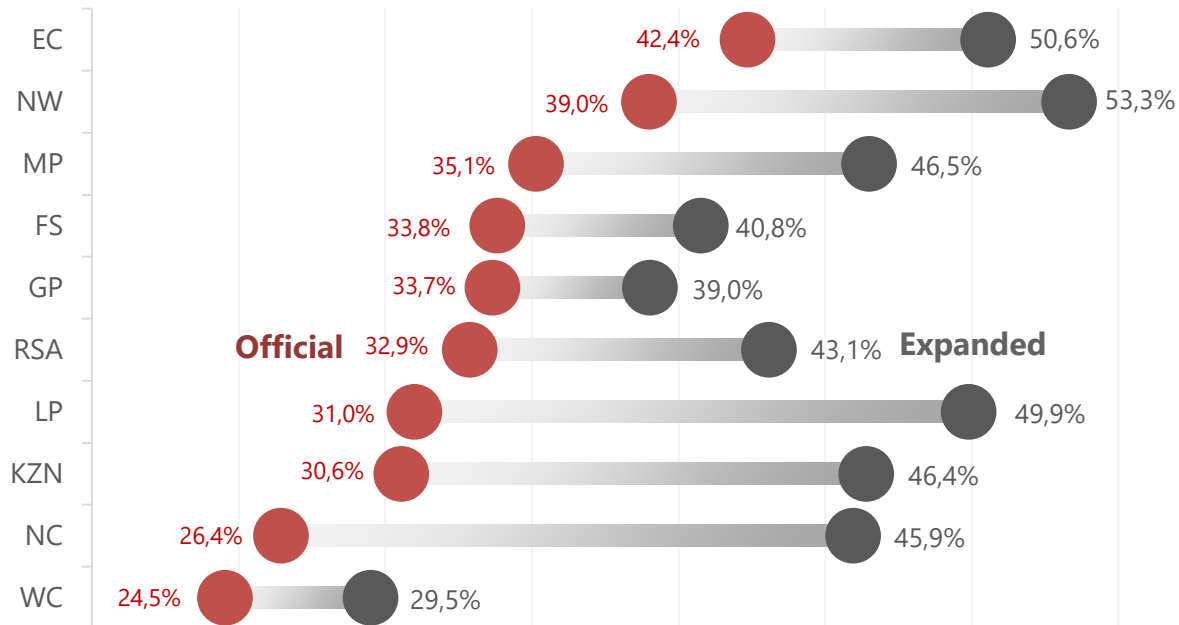
This is how the money pie was distributed



Percentages have been rounded and may not sum to 100%

Source: Financial statistics of consolidated general government, 2020/2021 (Table C)

Provincial snapshot



The labour force: Latest provincial unemployment rates

The national official unemployment rate decreased to 32,9% in Q3: 2022 from 33,9% in Q2: 2022. The official unemployment rate declined in six provinces.

The graphic shows official and expanded rates of unemployment in Q3: 2022 for the nine provinces.

North West recorded the highest expanded unemployment rate in Q3: 2022 (53,3%), followed by Eastern Cape (50,6%).

Northern Cape, Limpopo and KwaZulu-Natal recorded more than 15 percentage points difference between their expanded and official unemployment rates.

Provincial unemployment figures are available in the latest *Quarterly Labour Force Survey* statistical release (Table E), available [here](#).

Contact us

Head Office
ISlbalu House, Koch Street
Salvokop, Pretoria
0002

Private Bag X44
Pretoria 0001
South Africa

Main switchboard
Tel: +27 12 310 8911
User Information Services
Tel: +27 12 310 8600

Click [here](#) for contact details for provincial offices.



E-mail: info@statssa.gov.za
Website: www.statssa.gov.za

 Stats SA

 @StatsSA

 Statistics South Africa

 <https://soundcloud.com/statssa>

 <http://www.slideshare.net/StatsSA>

Read more editions of *Stats Biz* [here](#).