

CONTENTS

HEADLINES
ECONOMIC INDICATORS
FEATURE ARTICLE

INFOGRAPHIC OF THE MONTH
PROVINCIAL SNAPSHOT
CONTACT US

Your monthly update on South Africa's economic indicators

Headlines

The economy records a
positive Q4: 2021
Page 1

Infographics

Formal business sector
turnover rises in Q4: 2021
Page 4

Provincial snapshot

KZN dominates the forestry
and logging workforce
Page 5

Grain-based products record higher prices in February Page 3



Cesar Carlevarino Aragon, unsplash.com



stats sa

Department:
Statistics South Africa
REPUBLIC OF SOUTH AFRICA



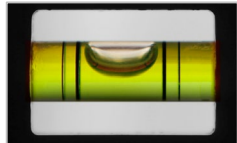
Economic headlines

The economy records a positive Q4: 2021



The quarter was upbeat, with personal services and trade the key drivers of GDP growth (click [here](#) to read more).

Tightening municipal statistics under mSCOA



Stats SA has implemented changes to its quarterly financial survey of municipalities (click [here](#) to read more).

Money CAN buy happiness!



Poverty is associated with being less happy (click [here](#) to read more).

The impact of COVID-19 on food security



Almost 15% of South Africans were affected by severe food insecurity in 2020 (click [here](#) to read more).

Formal sector job numbers edge higher



Jobs in the formal non-agricultural sector increased by 62 000 in Q4: 2021 (click [here](#) to read more).

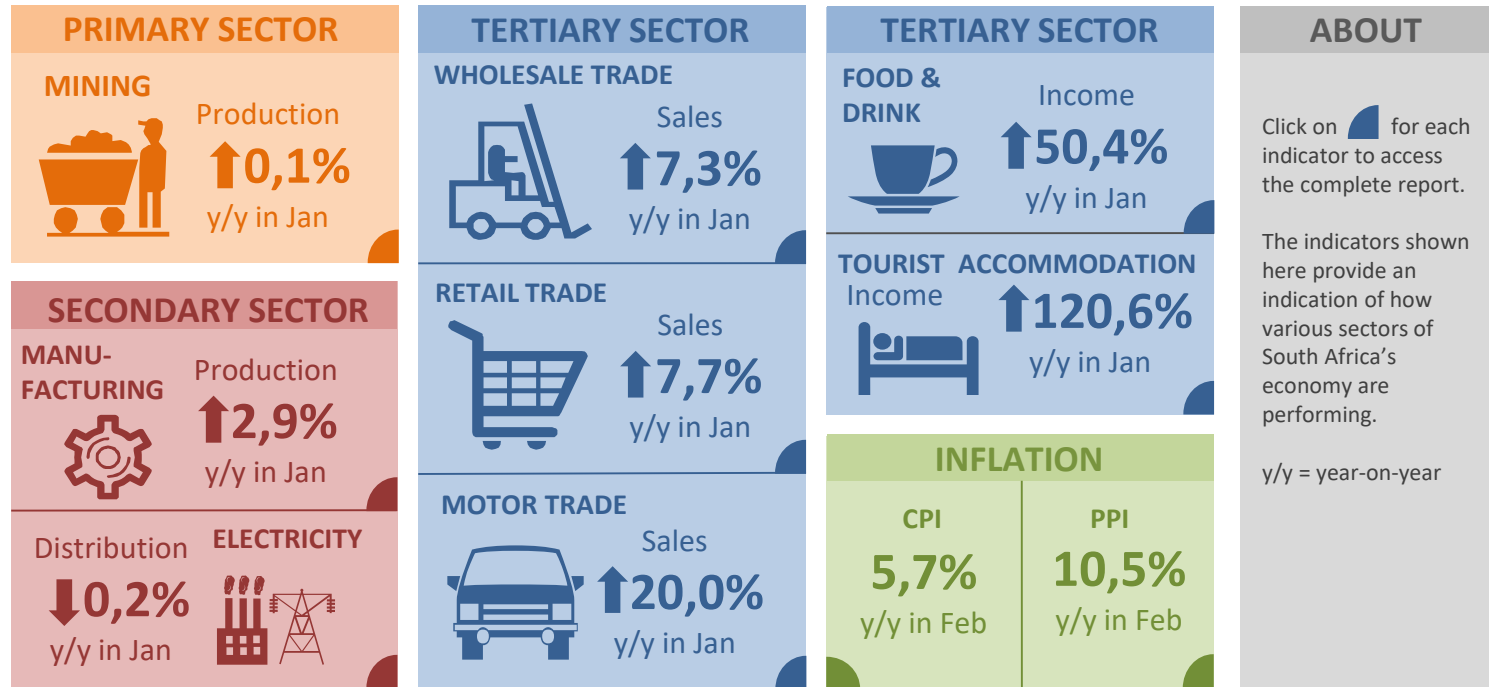
Stats SA kicks off Census 2022 mop-up phase



The mop-up phase will take place from 24 March until 14 April (click [here](#) to read more).

Click [here](#) to browse more headlines.

Monthly economic indicators



Keep up to date with our release schedule [here](#).

Feature article

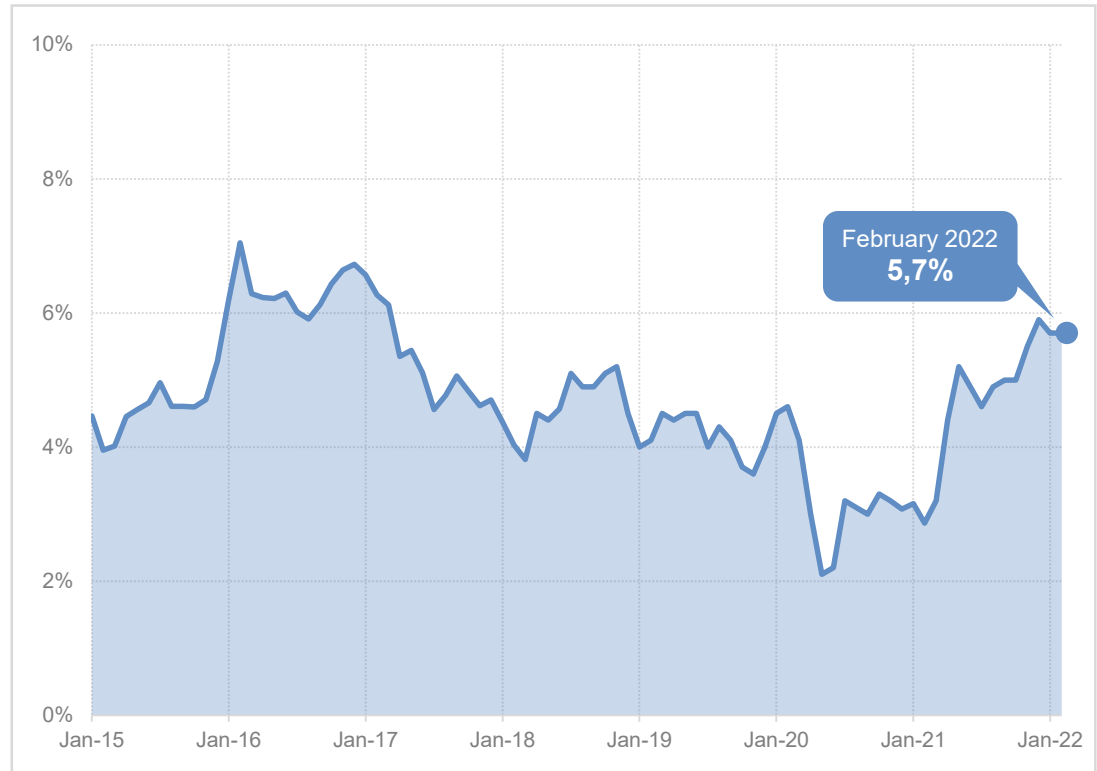
Grain-based products record higher prices in February

Annual consumer inflation held steady at 5,7% in February, unchanged from 5,7% in January. Rising food and transport prices put upward pressure on the monthly rate, with the consumer price index (CPI) increasing by 0,6% between January and February.

After decreasing steadily for eight months, annual bread and cereals inflation jumped to 3,7% in February from 1,5% in January. The monthly change was also significant: prices climbed by 2,4% between January and February, representing the biggest monthly increase for this category since the beginning of 2019.

A number of bread and cereal products registered large monthly price increases, most notably staples such as maize meal (up by 3,7%) and white bread (up by 3,2%).

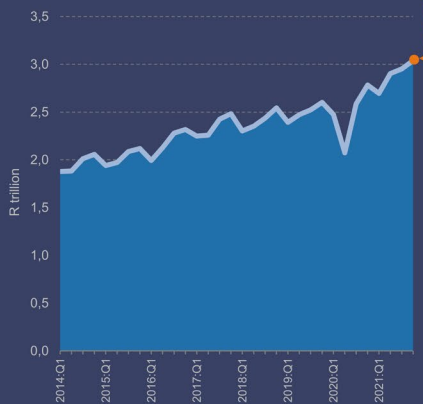
Click [here](#) to read more.



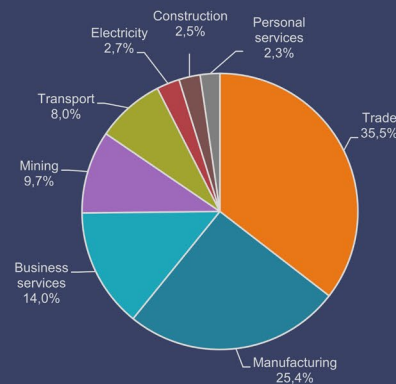
Infographic of the month

Turnover in the formal business sector: Q4: 2021 Selected results from the Quarterly financial statistics (QFS) survey

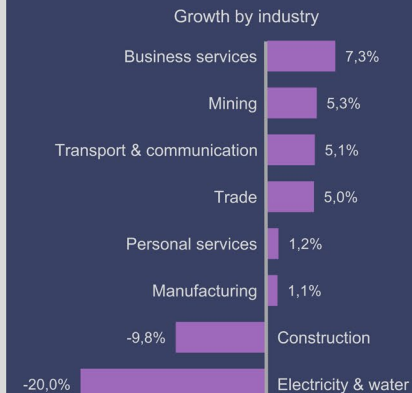
The South African formal business sector generated **R3,04 trillion** in turnover in Q4: 2021, a rise of 3,0% compared with Q3: 2021



Breakdown of turnover generated by the formal business sector in Q4: 2021 by industry. Total: R3,04 trillion



3,0% The rise in total turnover generated in the formal business sector in Q4: 2021 compared with Q3: 2021



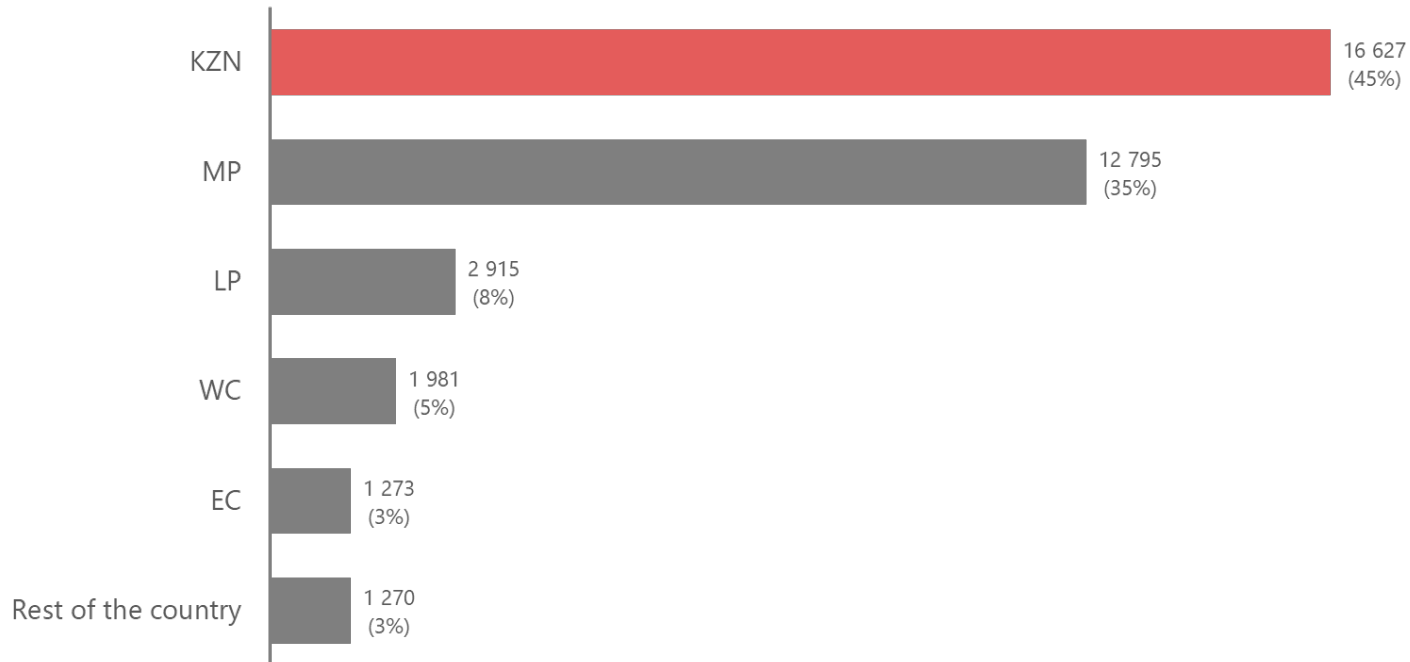
Source: Quarterly financial statistics (QFS), December 2021
Excludes agriculture, financial intermediation, insurance, government institutions and educational institutions

Click [here](#) to read more

Provincial snapshot

KwaZulu-Natal accounted for 45% of the forestry and logging workforce in 2020

Number of persons employed in the forestry, logging and related services industry by province (Total: 36 861)



Click [here](#) to read more



stats sa

Department:
Statistics South Africa
REPUBLIC OF SOUTH AFRICA



Contact us

Head Office
ISibalo House, Koch Street
Salvokop, Pretoria
0002

Private Bag X44
Pretoria 0001
South Africa

Main switchboard
Tel: +27 12 310 8911
User Information Services
Tel: +27 12 310 8600

Click [here](#) for contact details for provincial offices and subject experts.



E-mail: info@statssa.gov.za
Website: www.statssa.gov.za

 Stats SA

 @StatsSA

 Statistics South Africa

 <https://soundcloud.com/statssa>

 <http://www.slideshare.net/StatsSA>

Read more editions of *Stats Biz* [here](#).