

CONTENTS

HEADLINES
ECONOMIC INDICATORS
FEATURE ARTICLE

INFOGRAPHIC OF THE MONTH
PROVINCIAL SNAPSHOT
CONTACT US

Your monthly update on South Africa's economic indicators

Headlines

Tourism: a pre-COVID-19
benchmark
Page 1

Infographics

Government spending in
a nutshell
Page 4

Provincial snapshot

The latest unemployment
rates by province
Page 5

A deep dive into the price of petrol Page 3



stats sa

Department:
Statistics South Africa
REPUBLIC OF SOUTH AFRICA



Economic headlines

The bell-shaped curve of infrastructure spending



The rise and decline of public-sector capital expenditure (click [here](#) to read more).

Food inflation slows for a second month



Spaghetti and macaroni saw notable price decreases (click [here](#) to read more).

Public spending flirts with the R2 trillion mark



Eskom, social grants and interest payments were the biggest cost drivers in 2019/20 (click [here](#) to read more).

Tourism: a pre-COVID-19 benchmark



Exploring the sector's impact on economic activity and employment (click [here](#) to read more).

Economy loses more than half a million jobs



The unemployment rate increased to 34,9% in Q3: 2021 (click [here](#) to read more).

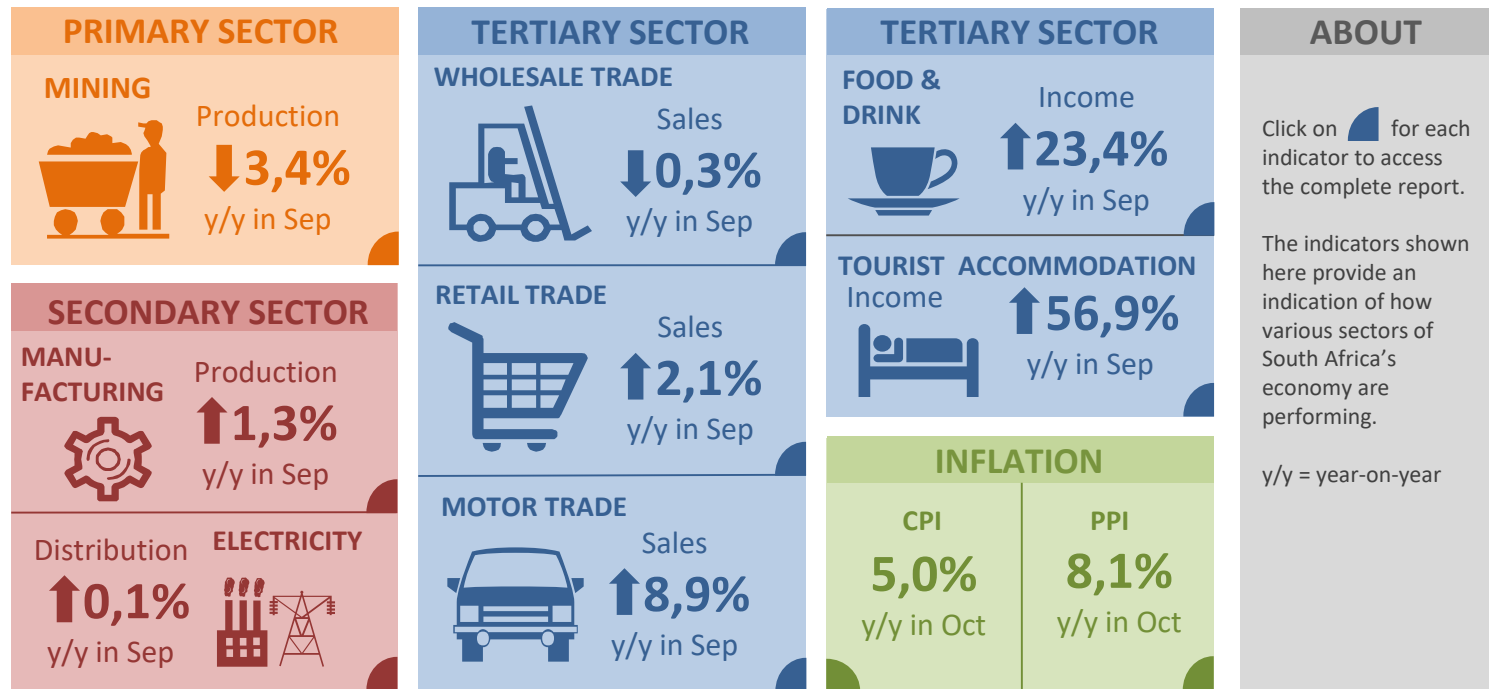
COVID-19: Children and the poor most affected



The pandemic has had an impact on many lives (click [here](#) to read more).

Click [here](#) to browse more headlines.

Monthly economic indicators



Keep up to date with our release schedule [here](#).

Feature article

A deep dive into the price of petrol

Trying to make sense of all the elements that make up the petrol price can be quite daunting. There are up to 13 different charges, depending on the type of fuel and where you happen to live.

Currently, the price for inland 95-octane petrol stands at R20,29 per litre (December 2021). According to the Department of Mineral Resources and Energy, this price consists of these four broad elements:

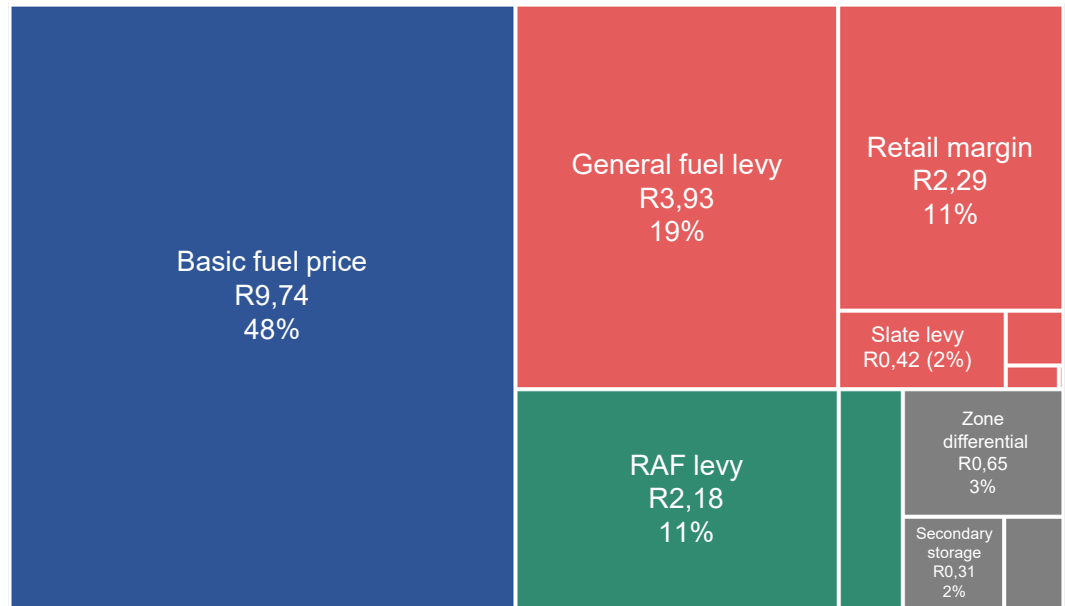
- Basic fuel price: R9,74 (48%)
- Taxes and levies: R6,67 (33%)
- Retail and wholesale margins: R2,74 (14%)
- Storage and distribution costs: R1,14 (6%).

The basic fuel price is related to the costs of purchasing petroleum products from international markets. All other elements making up the petrol price are local in nature. These include taxes, levies, margins, and storage and distribution costs.

Click [here](#) for a more detailed breakdown.

Breakdown of the per litre price for inland 95-octane petrol (Total: R20,29)

■ Basic fuel price ■ Taxes & levies ■ Margins ■ Distribution & storage



Infographic of the month

Government spending in a nutshell

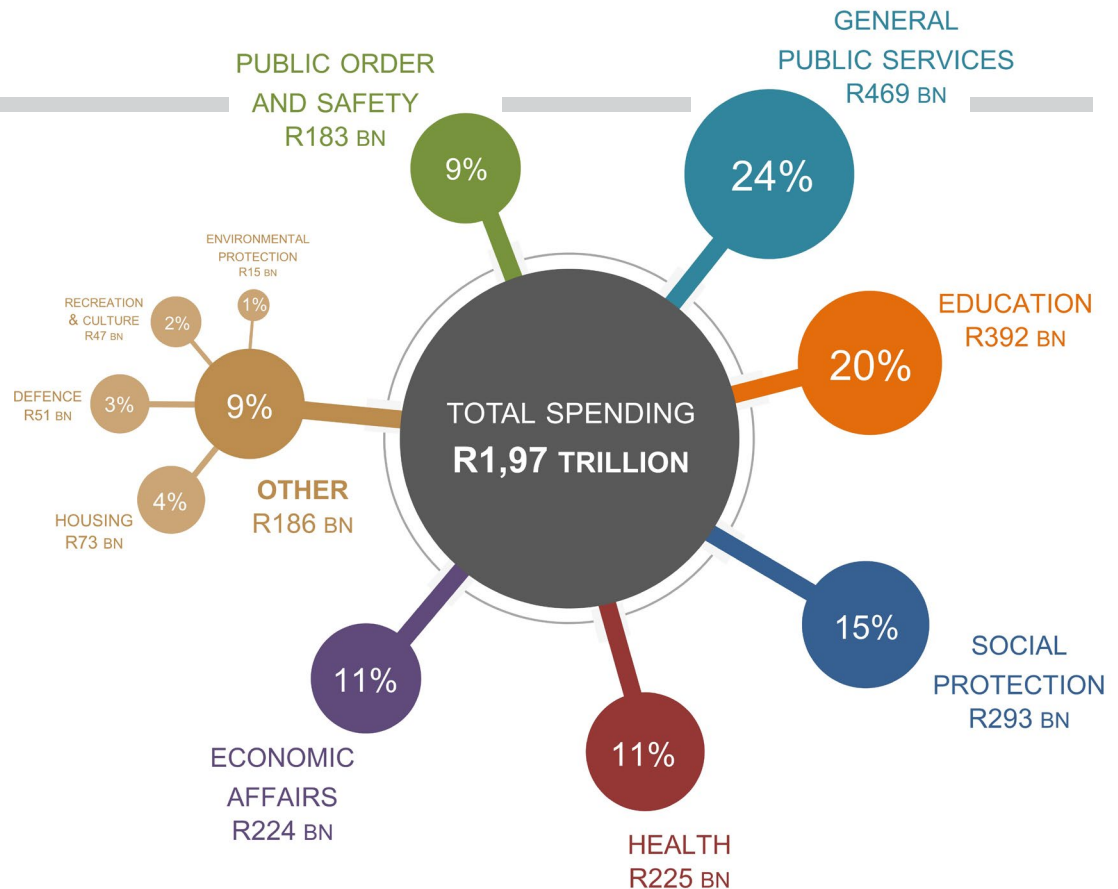
The South African government spent R1,97 trillion in 2019/20, representing a 10% rise from R1,79 trillion recorded in 2018/19, according to the *Financial statistics of consolidated general government* statistical release.

General government's biggest expenditure items in 2019/20 were general public services, education and social protection. Together, these three items accounted for almost 60% of total spending.

These figures include data from 707 institutions that include national and provincial government departments, municipalities, extra-budgetary accounts and funds, and higher education institutions.

The data cover the period before the COVID-19 pandemic, providing a benchmark for when comparable pandemic-era data become available.

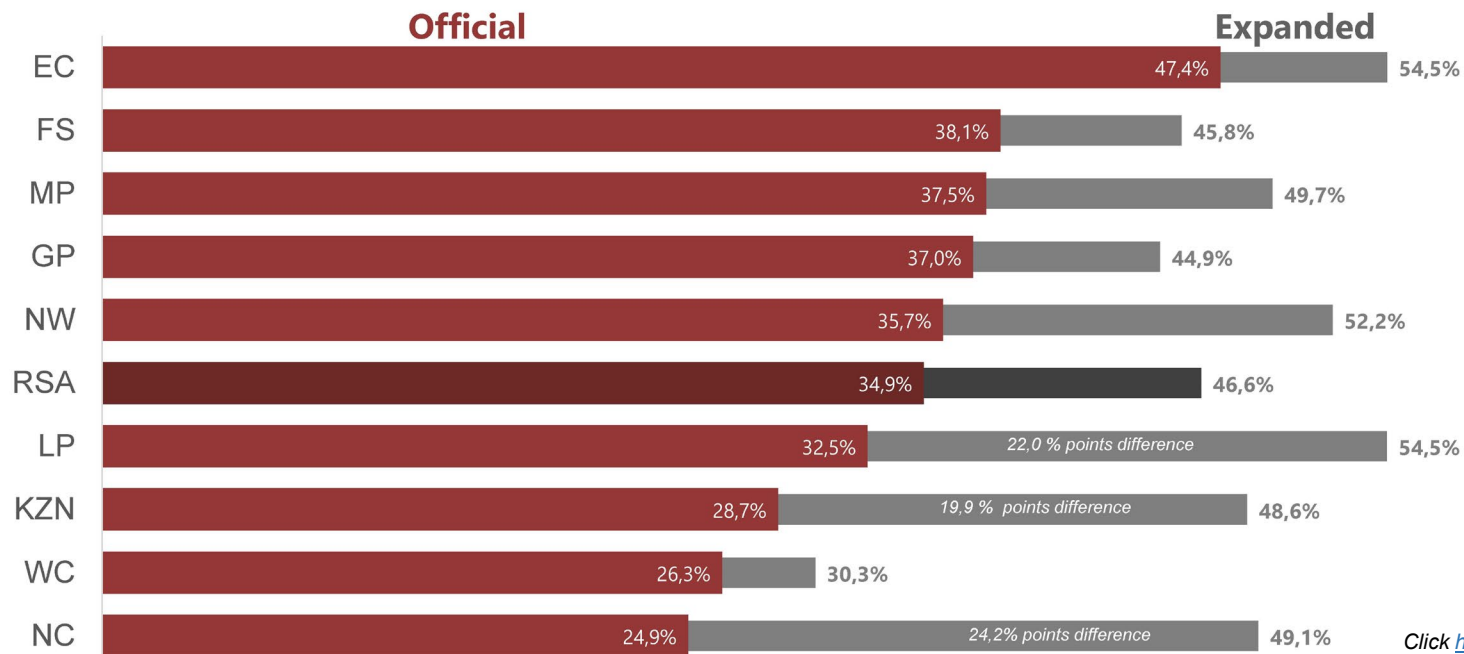
Take a look at a more detailed breakdown of the graphic [here](#).



Provincial snapshot

The latest unemployment rates by province

Provincial unemployment rate: Official vs Expanded Q3:2021



Click [here](#) to see more



stats sa

Department:
Statistics South Africa
REPUBLIC OF SOUTH AFRICA



Contact us

Head Office
ISibalo House, Koch Street
Salvokop, Pretoria
0002

Private Bag X44
Pretoria 0001
South Africa

Main switchboard
Tel: +27 12 310 8911
User Information Services
Tel: +27 12 310 8600

Click [here](#) for contact details for provincial offices and subject experts.



E-mail: info@statssa.gov.za
Website: www.statssa.gov.za

 Stats SA

 @StatsSA

 Statistics South Africa

 <https://soundcloud.com/statssa>

 <http://www.slideshare.net/StatsSA>

Read more editions of *Stats Biz* [here](#).