

## CONTENTS

HEADLINES  
ECONOMIC INDICATORS  
FEATURE ARTICLE

INFOGRAPHIC OF THE MONTH  
PROVINCIAL SNAPSHOT  
CONTACT US

Your monthly update on South Africa's economic indicators

### Headlines

Stats SA and the POPI Act  
Page 1

### Infographics

Exploring the flow of goods  
and services  
Page 4

### Provincial snapshot

The unemployment rate is up  
in all provinces  
Page 5

### A new and improved GDP is here! Page 3



## Economic headlines

### The role of EBAs in public healthcare spending



Extra-budgetary accounts and funds (EBAs) play a role in public healthcare (click [here](#) to read more).

### Inflation softens for a second month



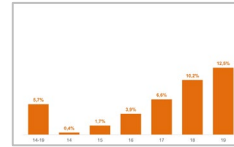
Annual consumer price inflation decreased slightly to 4,6% in July (click [here](#) to read more).

### The POPI Act is now in full force



Can Stats SA still collect personal information in its surveys? (click [here](#) to read more).

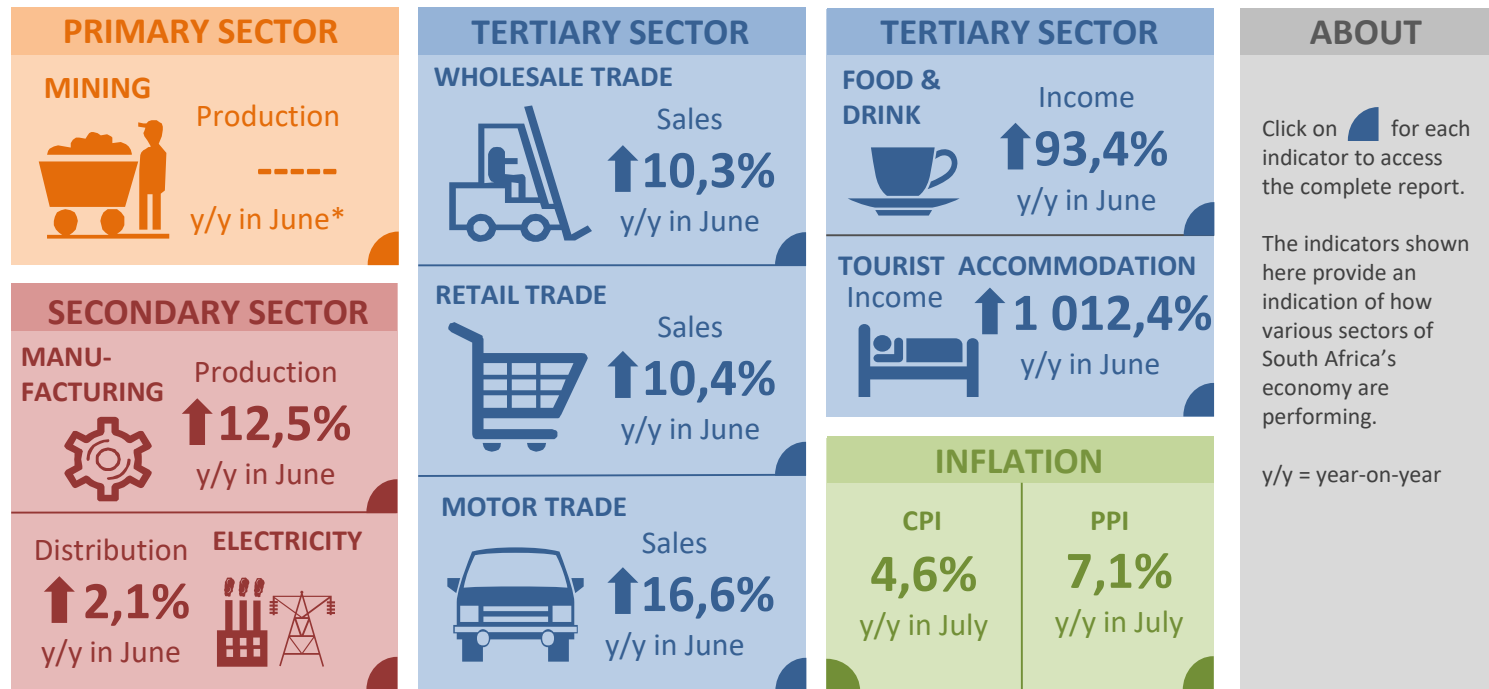
### Highlighting Women's Month



Stats SA covers the latest gender-related statistics on education, employment, and gender-based violence (click [here](#) to read more).

Click [here](#) to browse more headlines.

## Monthly economic indicators



\*There has been a delay in the release of the June 2021 mining statistics. A new publication date will be announced as soon as possible. Keep up to date with our release schedule [here](#).

## Feature article

### A new and improved GDP is here!

Any statistical agency worth its salt should periodically revisit the way in which it measures the economy. Stats SA has finalised a comprehensive overhaul of its national accounts, providing a far more relevant and reliable measure of GDP.

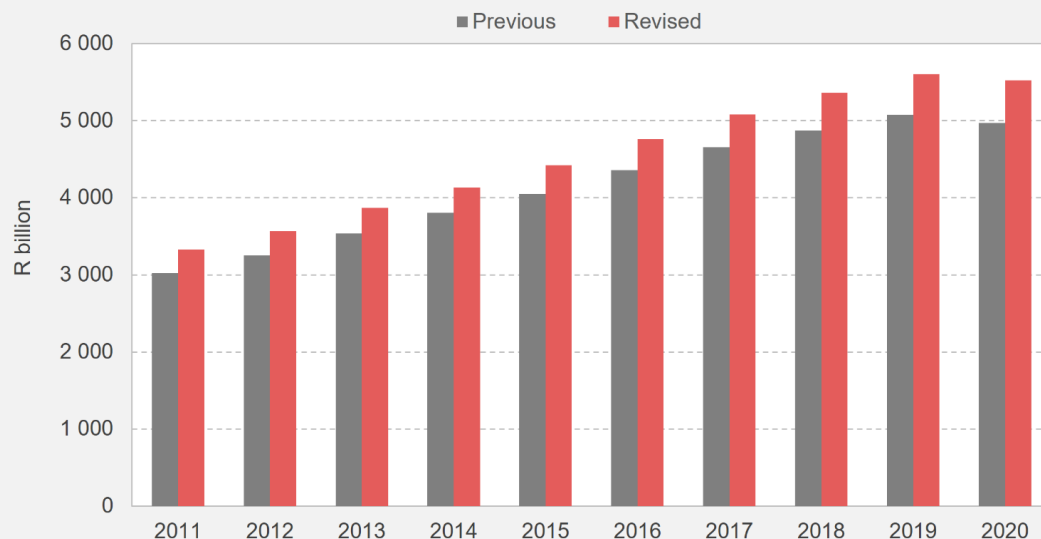
The rebasing and benchmarking exercise resulted in an upward revision in the size of the economy, as well as changes to the composition of the supply and demand sides of economic activity.

The revised GDP at current prices shows that the economy is 11,0% larger in 2020 than previously estimated. In the 10 years between 2011 and 2020, the percentage difference between the previous and revised levels averaged 9,6%, and ranged between 8,6% in 2014 and 11,0% in 2020.

Click [here](#) to read more.

### The size of the South African economy was revised upwards

Previous and revised levels of GDP from 2011 to 2020 (in current prices)



## Infographic of the month

### The flow of goods and services

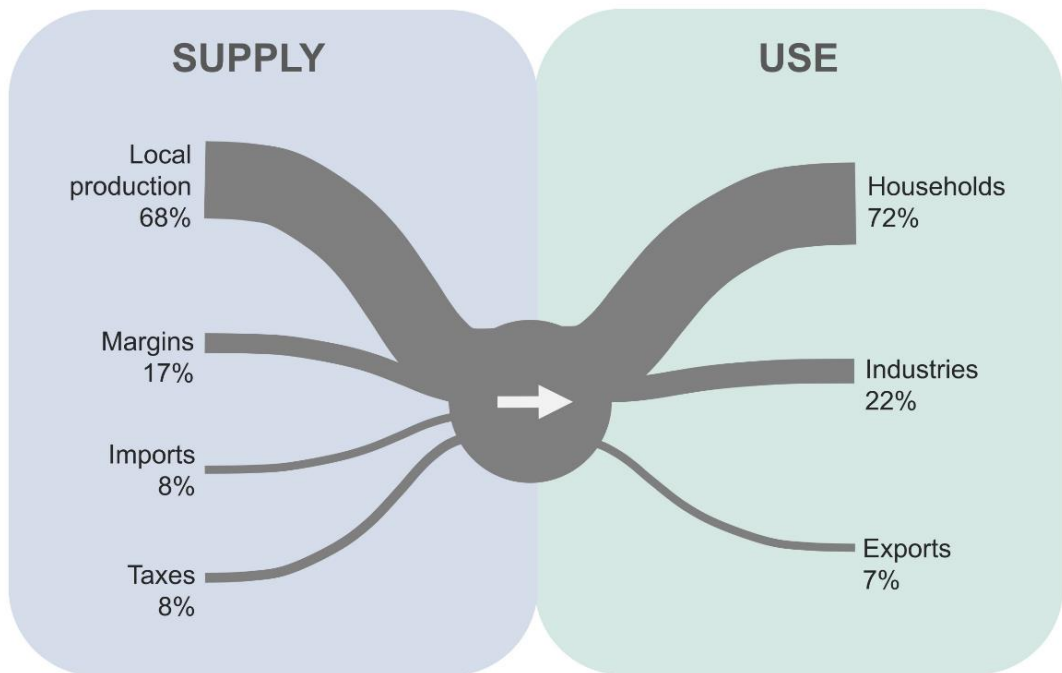
Stats SA's newly benchmarked supply and use tables (SUTs) provide a detailed breakdown of the flow of 118 products and services across 213 industries in the economy.

The supply (production) side describes the supply of goods and services that are either locally produced or imported. The use (consumption) side describes where and how these goods and services are used, either within the local economy or exported.

Meat products, for example, are mostly locally produced and consumed by households (see image). In other examples, crude petroleum is mostly imported and used by local industries, while jewellery products are mainly locally produced and exported.

See slides 31–42 in the GDP rebasing and benchmarking media presentation [here](#). The SUTs in Excel format can be downloaded [here](#).

Supply and use of **meat** products in 2015. Supply: R116,0 billion. Use: R116,0 billion\*



\*Excludes changes in inventories

## Provincial snapshot

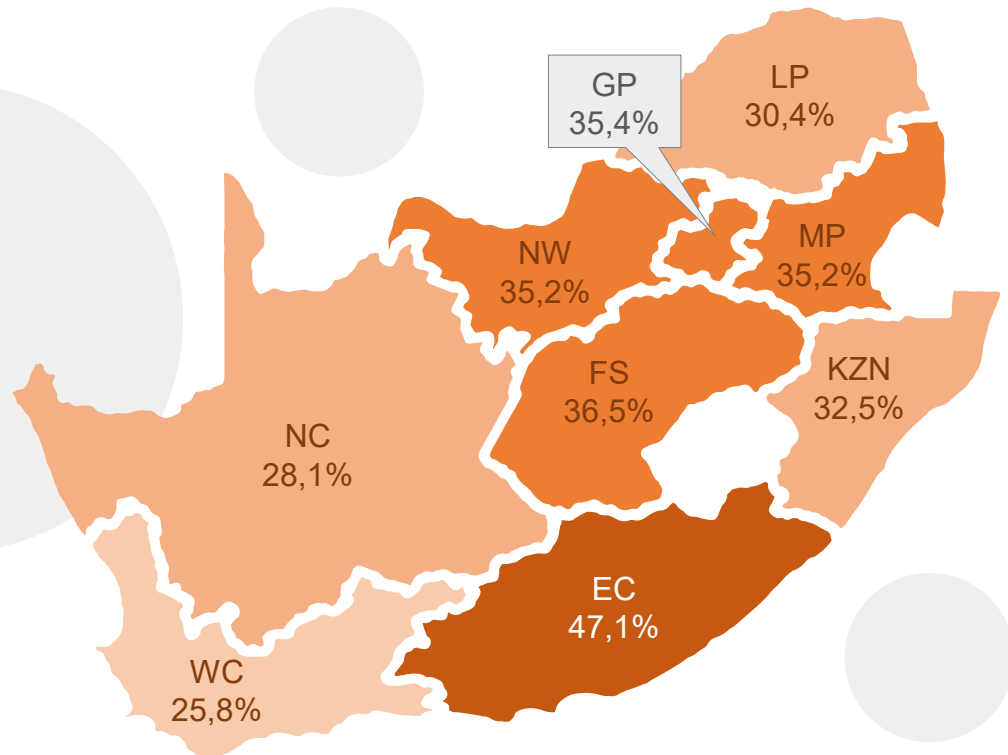
### The unemployment rate is up in all provinces

South Africa recorded its highest official unemployment rate on record since the beginning of the *Quarterly Labour Force Survey* series in 2008. The national unemployment rate increased to 34,4% in the second quarter of 2021 from 32,6% in the first quarter.

The rate increased in all provinces, with the largest increases recorded in Northern Cape, Eastern Cape and North West.

Eastern Cape had the highest unemployment rate in the second quarter, followed by Free State and Gauteng. Western Cape recorded the lowest unemployment rate.

The latest provincial unemployment figures are available in Table F [here](#).



## Contact us

Head Office  
ISibalo House, Koch Street  
Salvokop, Pretoria  
0002

Private Bag X44  
Pretoria 0001  
South Africa

Main switchboard  
Tel: +27 12 310 8911  
User Information Services  
Tel: +27 12 310 8600

Click [here](#) for contact details for provincial offices and subject experts.



E-mail: [info@statssa.gov.za](mailto:info@statssa.gov.za)  
Website: [www.statssa.gov.za](http://www.statssa.gov.za)

 Stats SA

 @StatsSA

 Statistics South Africa

 <https://soundcloud.com/statssa>

 <http://www.slideshare.net/StatsSA>

Read more editions of *Stats Biz* [here](#).