

## CONTENTS

HEADLINES  
ECONOMIC INDICATORS  
FEATURE ARTICLE

INFOGRAPHIC OF THE MONTH  
PROVINCIAL SNAPSHOT  
CONTACT US

Your monthly update on South Africa's economic indicators

### Headlines

SA's population is now  
58,8 million  
Page 1

### Infographics

Buildings completed:  
Cape Town leads  
Page 4

### Provincial snapshot

Winter warmer:  
Hot chocolate prices  
Page 5

### 728 million stories, waiting to be told Page 3



stats sa

Department:  
Statistics South Africa  
REPUBLIC OF SOUTH AFRICA



## Economic headlines

### Inflation holds steady



Consumer price inflation was 4,5% in June 2019, unchanged from May 2019 (click [here](#) to read more).

### Unemployment rate the highest since 2003



The rate climbed to 29,0% in Q2: 2019 from 27,6% in Q1: 2019 (click [here](#) to read more).

### Mzansi is home to 58,8 million



The latest population estimate makes South Africa the 24<sup>th</sup> most populous country in the world. Read more [here](#). Listen to the results [here](#).

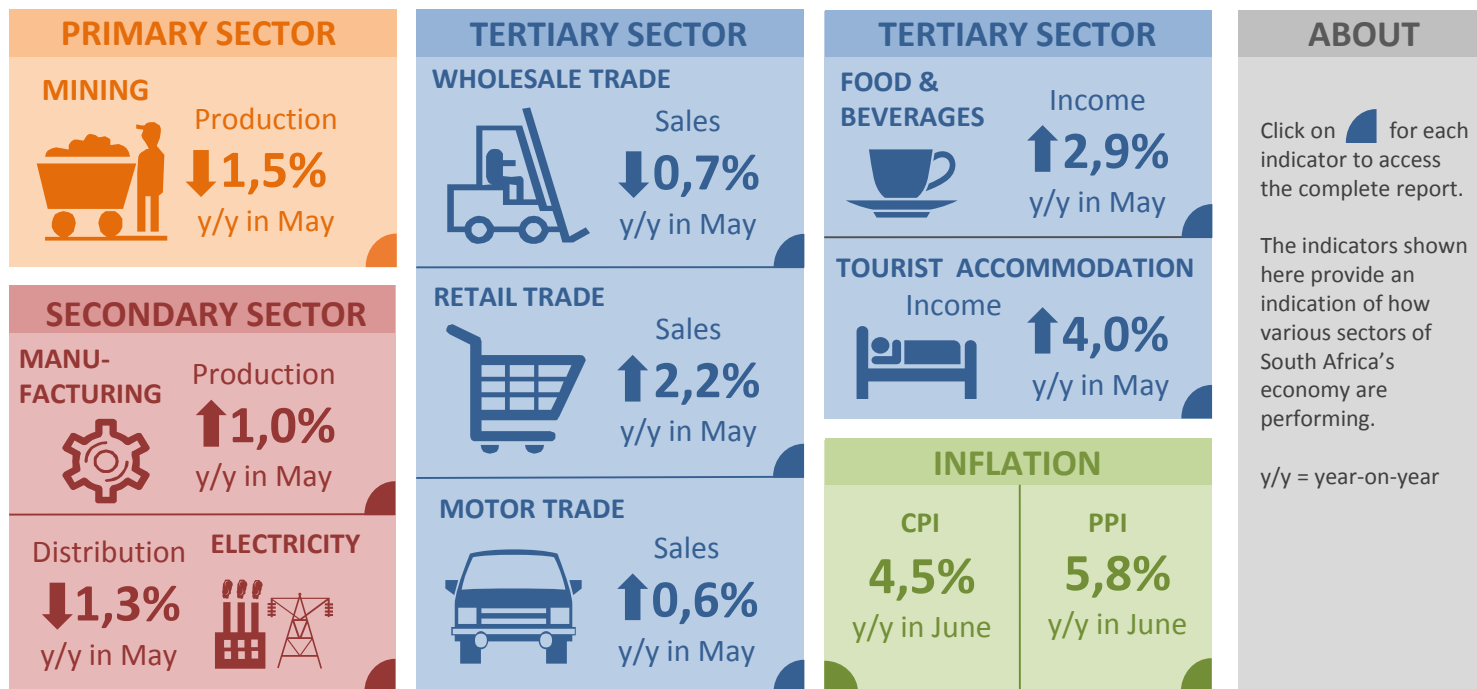
### World Population Day: How does SA compare?



South Africans are living longer, but life expectancy still lags behind the rest of the world (click [here](#) to read more).

Click [here](#) to browse more headlines.

## Monthly economic indicators



## Feature article

### 728 million stories, waiting to be told

Imagine living the entirety of your life in the map on the right. Where you choose to live, work, commute, shop, socialise and play – you influence the economic, social and environmental makeup of each grid cell you touch.

Moulded by millions of actions taken by people and institutions alike, each cell in the map can be seen as having a unique personality. The development of the Basic Spatial Unit (BSU) frame, the grid shown in the map, is a first step in shedding new light on the complexity of the South African landscape and seascape.

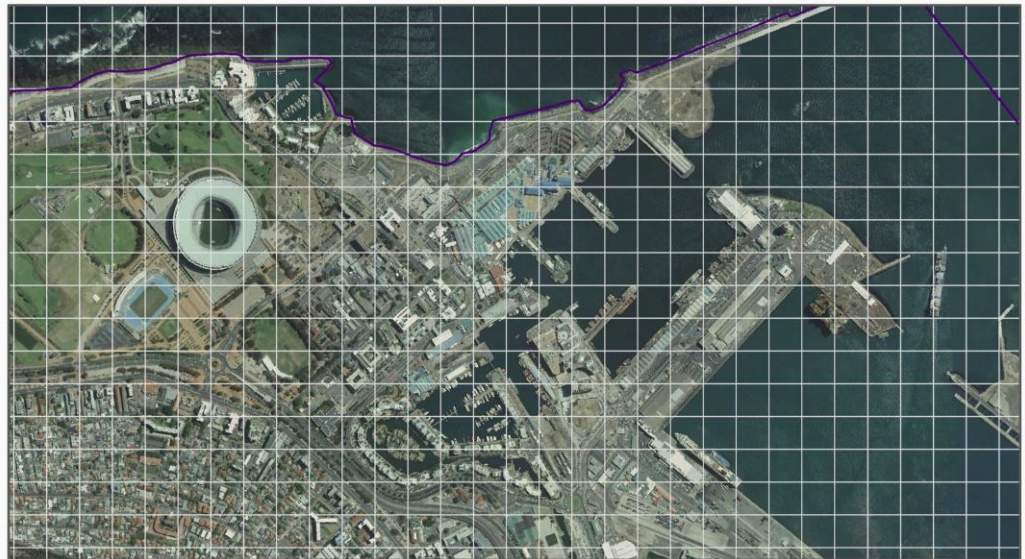
Spanning the entire country, the layer consists of a whopping 728 million cells. Every cell is about the size of a full-sized international rugby field. The grid forms the foundation on which large, location-rich data can be spatially harmonised, allowing analysts to make meaningful comparisons across datasets and over time.

Click [here](#) to read more.

### The South African Basic Spatial Unit (BSU) grid

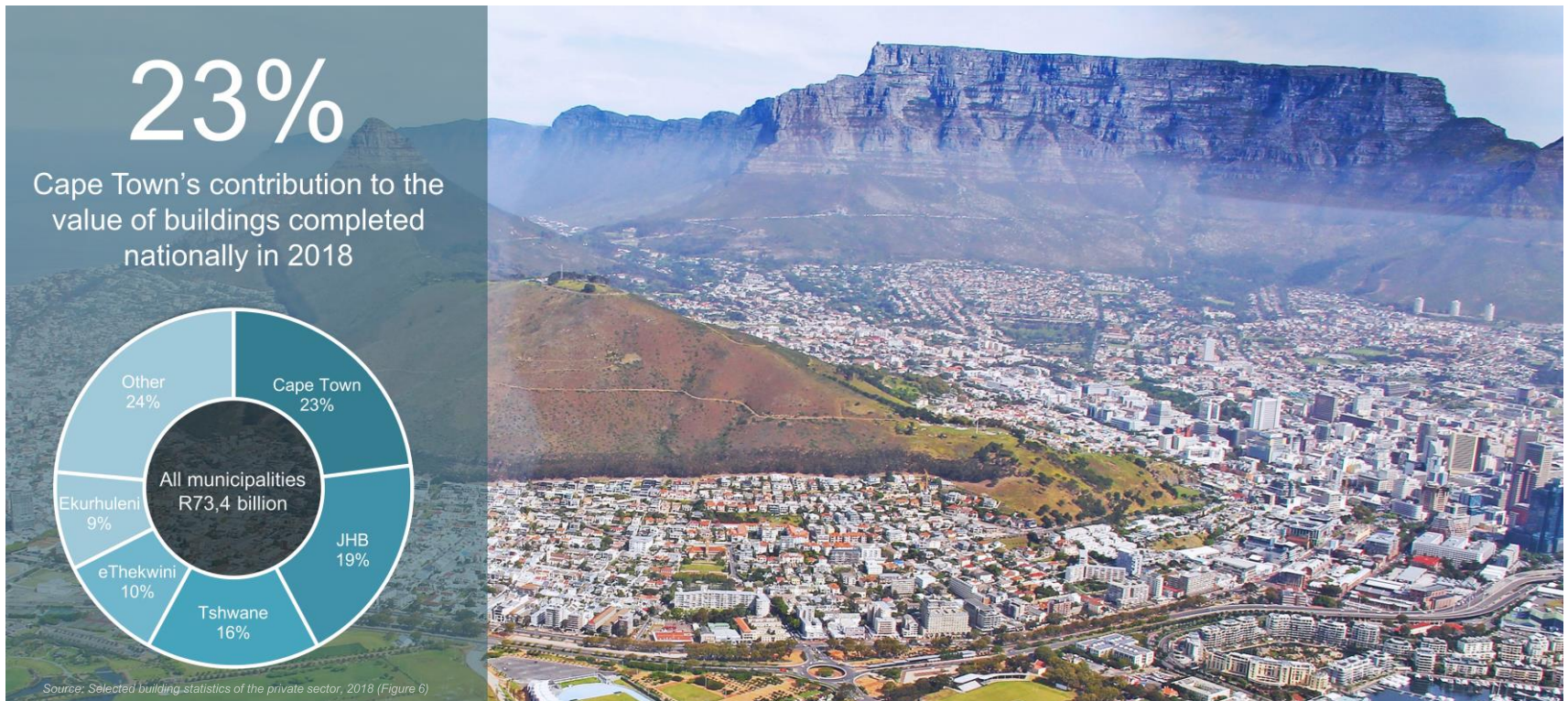
A snapshot of the grid over Cape Town harbour and surrounds

Each cell measures 100 m x 100 m





## Infographic of the month



## Provincial snapshot

### Hot chocolate prices across the country

If hot chocolate is your preferred beverage this winter, it might come as a surprise to learn that prices for drinking chocolate have climbed by only 1,5% over the 12 months to June, slightly faster than ground coffee (up 1,4%), but slower than other warm beverages such as black tea (up 4,2%) and rooibos tea (up 11,3%).

If we break this down by province, the average price of 500g of drinking chocolate in Free State was R52,74 in June 2019, cheaper than the R57,63 recorded for Western Cape.

For more on consumer prices, read up on the latest *Consumer Price Index (CPI)* release [here](#).



## Contact us

Head Office  
ISibalo House, Koch Street  
Salvokop, Pretoria  
0002

Private Bag X44  
Pretoria 0001  
South Africa

Main switchboard  
Tel: +27 12 310 8911  
User Information Services  
Tel: +27 12 310 8600

Click [here](#) for contact details for provincial offices and subject experts.



E-mail: [info@statssa.gov.za](mailto:info@statssa.gov.za)  
Website: [www.statssa.gov.za](http://www.statssa.gov.za)

 Stats SA

 @StatsSA

 Statistics South Africa

 <https://soundcloud.com/statssa>

 <http://www.slideshare.net/StatsSA>

Read more editions of Stats Biz [here](#).