

CONTENTS

HEADLINES
ECONOMIC INDICATORS
FEATURE ARTICLE

INFOGRAPHIC OF THE MONTH
PROVINCIAL SNAPSHOT
CONTACT US

Your monthly update on South Africa's economic indicators

Headlines

Looking for love in all the
wrong places?
Page 1

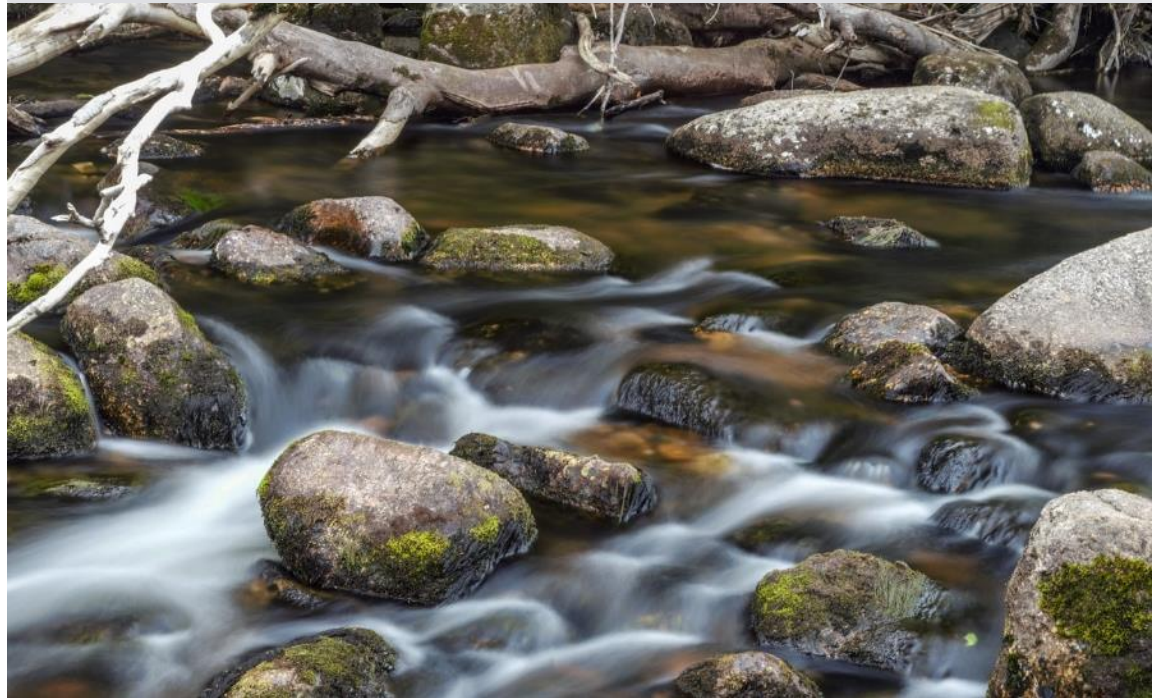
Infographics

GDP growth is measured in
different ways: a quick guide
Page 4

Provincial snapshot

Spending on alcohol
and tobacco
Page 5

Four facts about our rivers you probably didn't know? Page 3



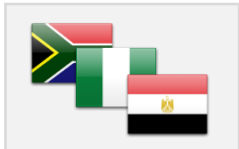
Economic headlines: February 2017

Looking for love in all the wrong places?



Don't despair. There is hope. We promise. Finding that special someone has just become a little bit easier. (Click [here](#) to read more.)

A tale of three economies in Africa



Nigeria, Egypt, South Africa. Who has the largest economy? The answer might be more nuanced than you think. (Click [here](#) to read more.)

CPI building blocks tap into our evolving lifestyles



Stats SA updated the CPI product basket and weights. This article explores what this means. (Click [here](#) to read more.)

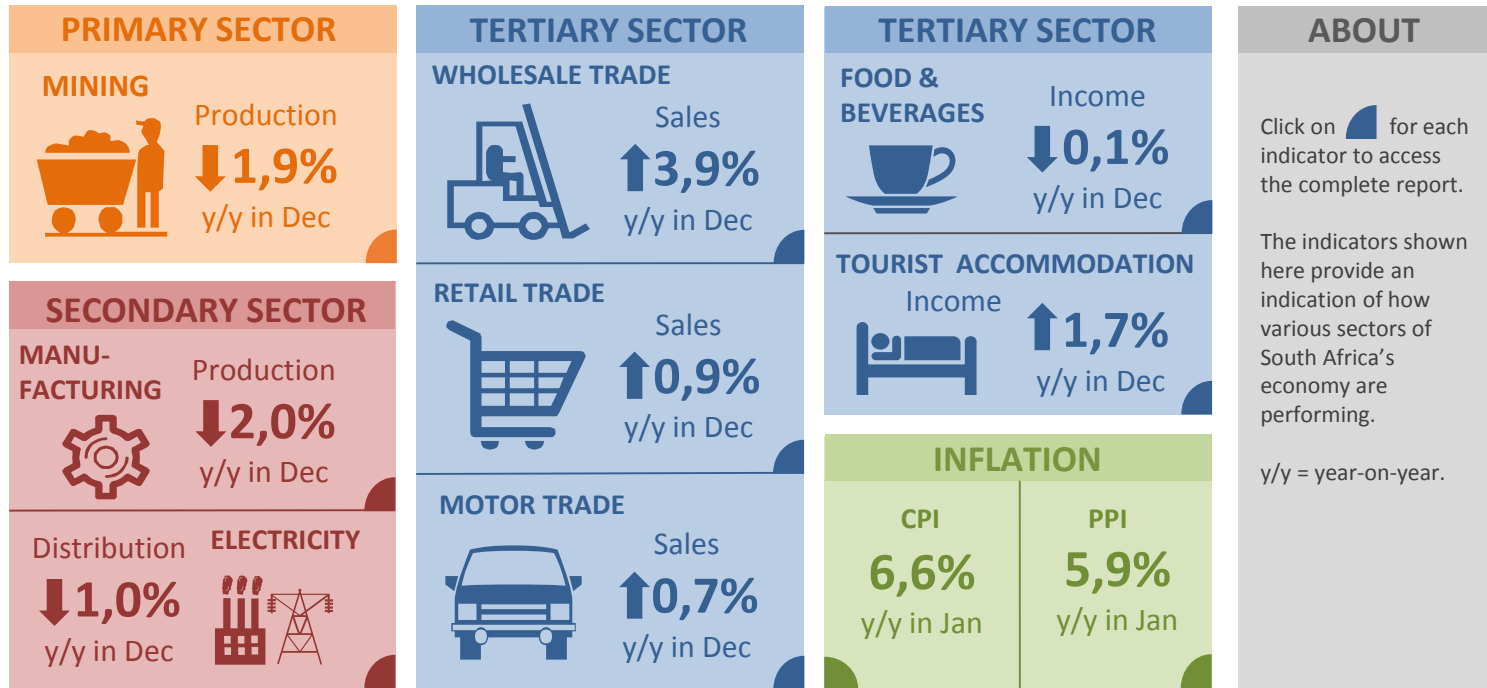
Business performance: a 15-year snapshot



These three graphs cover income, spending and profit trends (Click [here](#) to read more.)

Click [here](#) to browse more headlines.

Monthly economic indicators



Watch short YouTube clips covering the latest results for CPI ([here](#)), Retail trade sales ([here](#)) and manufacturing ([here](#)).

Feature article

Four facts about our rivers you probably didn't know

In honour of World Wetlands Day on 2 February, Stats SA revisited a set of indicators on river health in South Africa to remind all of us how important our water resources are.

Here are four interesting facts from the *National River Ecosystem Accounts for South Africa* report:

1. Placed end-to-end, South Africa's rivers would encircle the earth 4 times
2. 89% of our rivers are foothill streams
3. The health of South Africa's rivers worsened between 1999 and 2011
4. Limpopo experienced the largest fall in river health

Click [here](#) to read more.



Infographic of the month

Economic growth can be reported in a number of different ways. Annual growth, quarter-on-quarter and year-on-year are terms that are commonly used in the context of gross domestic product (GDP). What do these terms mean?

Annual growth for a full year

This is the percentage change in GDP from one year to the following year. For example, real GDP increased from R3 017bn in 2014 to R3 055,2bn in 2015, a growth rate of 1,3%.

Quarterly year-on-year growth

This is the percentage change between the latest quarter and the same quarter one year ago. For example, real GDP increased from R762,1bn in Q2: 2015 to R766,8bn in Q2: 2016, a growth rate of 0,6%.

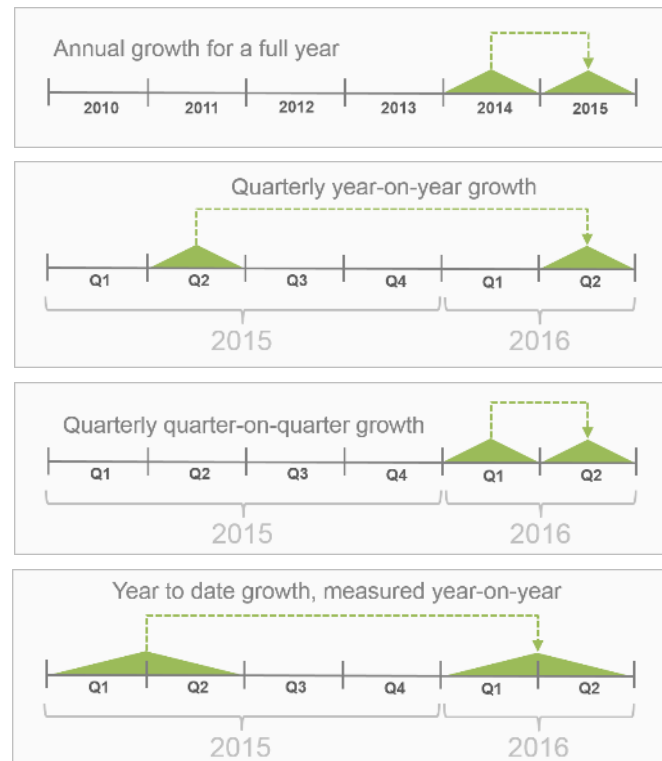
Quarterly quarter-on-quarter growth

This is the headline growth rate, the rate that Stats SA focuses on in presenting the GDP results. This is the percentage change between the latest quarter and the previous quarter, using seasonally adjusted GDP and annualised. For example, seasonally adjusted real GDP increased from R761,3bn in Q1: 2016 to R767,5bn in Q2: 2016, a growth rate of 3,3%.

Year to date growth, measured year-on-year

This is the percentage change between the latest six months and the same six months one year ago.

Click [here](#) to read more.



Provincial snapshot

Explore provincial household spending: alcohol and tobacco

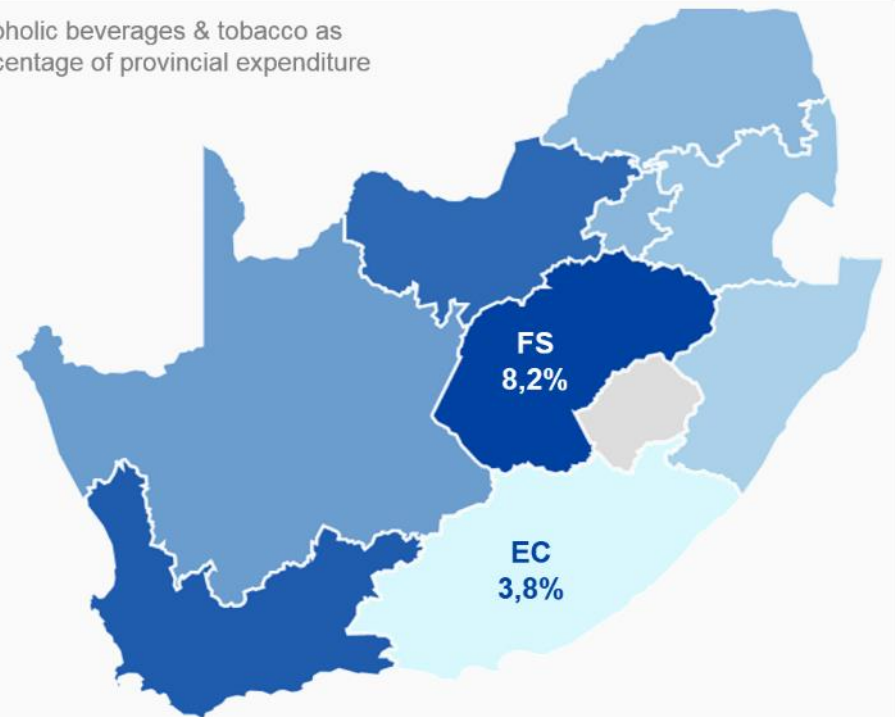
In last month's Stats Biz, we explored the extent of household spending on housing and utilities as percentage of total expenditure, according to the new consumer price index (CPI) weights.

The map here shows the extent of spending on alcoholic beverages and tobacco. Free State households spend just 8% of total expenditure on alcoholic beverages and tobacco. Contrast this to Eastern Cape households, who devote only 3,8%.

The 412 goods and services in the new CPI basket are classified into 12 broad groups. Examples include food and non-alcoholic beverages, clothing and footwear, health, transport, and education.

Explore and play with more expenditure maps [here](#).
Download the media release presentation [here](#).
Download the report on the new CPI weights [here](#).

Alcoholic beverages & tobacco as percentage of provincial expenditure



Contact us

Head Office
ISibalo House, Koch Street
Salvokop, Pretoria
0002

Private Bag X44
Pretoria 0001
South Africa

Main switchboard
Tel: +27 12 310 8911
User Information Services
+27 12 310 8600

Click [here](#) for contact details for provincial offices and subject experts.



Email: info@statssa.gov.za
Website: www.statssa.gov.za



Statistics South Africa app:



Read more editions of Stats Biz [here](#)