



stats sa

Department:
Statistics South Africa
REPUBLIC OF SOUTH AFRICA

Building statistics, 2023

Embargoed until:
28 August 2025
13:00

Statistics South Africa

Risenga Maluleke
Statistician-General

Report No. 50-11-01 (2023)



Dipalopalo tsa Aforikabora • Dipalopalo tsa Aforika Borwa • Ezezibalo zaseNingizimu Afrika • Tshitatistika Afrika Tshipembe • Tinhlayohlayo Afrika-Dzonga
Statistieke Suid-Afrika • Dipalopalo tsa Afrika Borwa • Telubalo zaseNingizimu Afrika • EzeeNkcukacha maNani zoMzantsi Afrika • Iimbalobalo zeSewula Afrika

IMPROVING LIVES THROUGH DATA ECOSYSTEMS



Building statistics, 2023 / Statistics South Africa

Published by Statistics South Africa, Private Bag X44, Pretoria, 0001

© Statistics South Africa, 2025

Users may apply or process this data, provided Statistics South Africa (Stats SA) is acknowledged as the original source of the data; that it is specified that the application and/or analysis is the result of the user's independent processing of the data; and that neither the basic data nor any reprocessed version or application thereof may be sold or offered for sale in any form whatsoever without prior permission from Stats SA.

Stats SA Library Cataloguing-in-Publication (CIP) Data

Building statistics, 2023 / Statistics South Africa. Pretoria: Statistics South Africa, 2025

Report No. 50-11-01 (2023)

60 pages

ISBN 978-1-83491-193-9

A complete set of Stats SA publications is available at the Stats SA Library and the following libraries:

National Library of South Africa, Pretoria Division
National Library of South Africa, Cape Town Division
Library of Parliament, Cape Town
Bloemfontein Public Library
Natal Society Library, Pietermaritzburg
Johannesburg Public Library

Eastern Cape Library Services, Qonce
Central Regional Library, Polokwane
Central Reference Library, Mbombela
Central Reference Collection, Kimberley
Central Reference Library, Mmabatho

This report is available on the Stats SA website: www.statssa.gov.za.

For technical enquiries, please contact:

Kurt Roach / Suzzie Mnguni / Joyce Essel-Mensah

Tel.: (012) 310 8211 / 066 314 3194 / 082 888 2374

Email: kurtr@statssa.gov.za / suzziemn@statssa.gov.za / joycee@statssa.gov.za

Contents

Introduction **iii**

Purpose of the surveys **iii**

Key findings for the monthly and annual surveys **iv**

List of detailed tables **vii**

List of municipalities covered in the monthly and annual surveysviii

Part 1 – Municipal reporting of buildings completed aggregated to provincial level: monthly survey

Table 1 to Table 6 1

Part 2 – Municipal reporting of buildings completed aggregated to provincial level: monthly and annual surveys

Table 7 to Table 12 15

Municipalities covered in the monthly and annual surveys by province

Table 13 to Table 21 29

Explanatory notes **44**

Glossary **47**

Introduction

Statistics South Africa (Stats SA) conducts a monthly survey of metropolitan municipalities and selected large local municipalities on building plans passed and buildings completed for the private sector. An annual survey of the remaining municipalities is conducted regarding buildings completed. The following information is presented in this report:

- In Part 1, Tables 1 to 6, information is published for the monthly survey on buildings completed by type of building at provincial level for 2021, 2022 and 2023.
- In Part 2, Tables 7 to 12, information is published for the monthly and annual surveys on buildings completed by type of building at provincial level for 2021, 2022 and 2023.

In addition, municipal reporting for buildings completed is available in an Excel format from 2014 to 2023. The Excel files are available from Stats SA's website on the publications page for Report-50-11-01 – Building statistics, under 'Additional downloads' (see the link below).

http://www.statssa.gov.za/?page_id=1854&PPN=Report-50-11-01.

Building plans passed and buildings reported as completed for 2024 (monthly survey only) were published in the annual statistical release P5041.3 – *Selected building statistics of the private sector as reported by local government institutions*, 2024 on 25 June 2025 and can be accessed on Stats SA's website, https://www.statssa.gov.za/?page_id=1854&PPN=P5041.3&SCH=74087

Purpose of the surveys

The results of these surveys are used in monitoring the state of the economy and the formulation of economic policy. The results are important inputs for estimating gross domestic product (GDP) and are extensively used by the private sector.

Table A – Value of buildings reported as completed to municipalities

Year	Monthly survey	Monthly and annual surveys	% contribution of monthly survey to total of monthly and annual surveys
	R million	R million	
2021	59 321,1	66 668,5	89,0
2022	67 838,6	78 414,5	86,5
2023	58 401,8	68 276,8	85,5

The percentage contribution of the total value of buildings completed as reported in the monthly survey compared with the value of monthly and annual surveys decreased by 1,0 percentage point from 86,5% in 2022 to 85,5% in 2023 – see Table A.

Key findings for the monthly and annual surveys

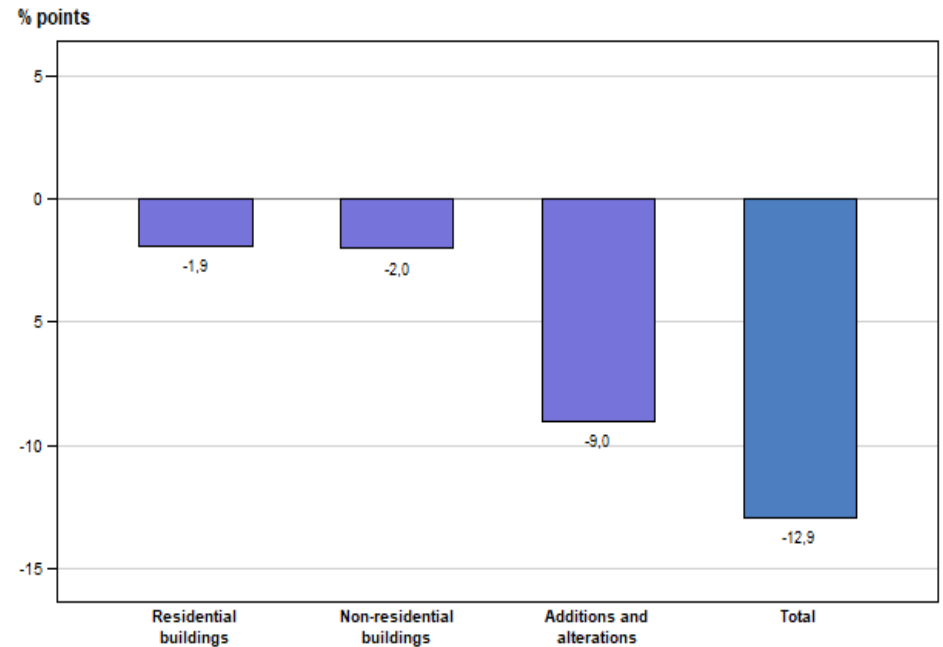
Table B – Buildings reported as completed at current prices by type of building: 2022 vs 2023

Type of building	2022	2023	% contribution to the total value of buildings completed during 2022	% change in the value of buildings completed between 2022 and 2023	Contribution (% points) ¹ to the % change in the value of buildings completed between 2022 and 2023	Difference in the value of buildings completed between 2022 and 2023
	R million	R million				
Residential buildings	43 568,7	42 032,8	55,6	-3,5	-1,9	-1 535,9
Dwelling-houses	29 503,8	28 152,5	37,6	-4,6	-1,7	-1 351,3
Flats and townhouses	13 119,3	13 003,4	16,7	-0,9	-0,2	-115,9
Other residential buildings	945,6	876,9	1,2	-7,3	-0,1	-68,7
Non-residential buildings	16 925,3	15 335,2	21,6	-9,4	-2,0	-1 590,2
Office and banking space	1 291,6	2 291,4	1,6	77,4	1,2	999,8
Shopping space	4 373,5	4 417,8	5,6	1,0	0,1	44,3
Industrial and warehouse space	8 717,8	7 343,1	11,1	-15,8	-1,8	-1 374,7
Other non-residential buildings	2 542,4	1 282,9	3,2	-49,5	-1,6	-1 259,5
Additions and alterations	17 920,4	10 908,9	22,9	-39,1	-9,0	-7 011,6
Total²	78 414,5	68 276,8	100,0	-12,9	-12,9	-10 137,6

¹ The contribution (percentage points) is calculated by multiplying the percentage change of the type of building between 2022 and 2023 by the percentage contribution of the corresponding type of building to the total value of buildings completed during 2022, divided by 100.
² Figures have been rounded off.

As indicated in Table B, the value of buildings reported as completed to municipalities in the monthly and annual surveys decreased by 12,9% from R78 414,5 million in 2022 to R68 276,8 million in 2023. Decreases were reported for additions and alterations (-39,1% or -R7 011,6 million), non-residential buildings (-9,4% or -R1 590,2 million) and residential buildings (-3,5% or -R1 535,9 million).

Figure 1 – Contribution (percentage points) of type of building to the percentage change in the total value of buildings reported as completed between 2022 and 2023



As indicated in Figure 1, all three types of buildings made negative contributions to the year-on-year growth rate of -12,9% in 2023: additions and alterations (contributing -9,0 percentage points), non-residential buildings (contributing -2,0 percentage points) and residential buildings (contributing -1,9 percentage points).

Table C – Buildings reported as completed at current prices by province: 2022 vs 2023

Province	2022	2023	% contribution to the total value of buildings completed during 2022	% change in the value of buildings completed between 2022 and 2023	Contribution (% points) ¹ to the % change in the value of buildings completed between 2022 and 2023	Difference in the value of buildings completed between 2022 and 2023
	R million	R million				
Western Cape	30 784,7	20 982,3	39,3	-31,8	-12,5	-9 802,5
Eastern Cape	4 390,8	4 451,4	5,6	1,4	0,1	60,6
Northern Cape	1 466,8	966,5	1,9	-34,1	-0,6	-500,3
Free State	825,6	960,5	1,1	16,4	0,2	135,0
KwaZulu-Natal	11 503,6	13 177,4	14,7	14,5	2,1	1 673,8
North West	2 323,1	2 306,0	3,0	-0,7	0,0	-17,1
Gauteng	22 174,2	20 379,7	28,3	-8,1	-2,3	-1 794,6
Mpumalanga	1 892,4	1 976,7	2,4	4,5	0,1	84,3
Limpopo	3 053,3	3 076,5	3,9	0,8	0,0	23,2
Total²	78 414,5	68 276,8	100,0	-12,9	-12,9	-10 137,6

¹ The contribution (percentage points) is calculated by multiplying the percentage change of each province between 2022 and 2023 by the percentage contribution of the corresponding province to the total value of buildings completed during 2022, divided by 100.

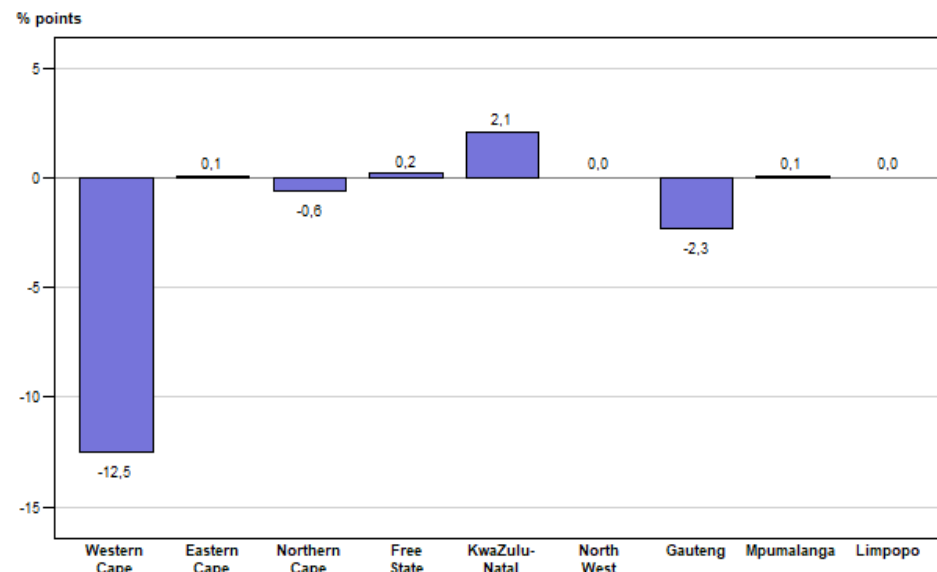
² Figures have been rounded off.

Table C and Figure 2 reflect that the largest negative provincial contributors to the decrease of 12,9% between 2022 and 2023 were Western Cape (contributing -12,5 percentage points or -R9 802,5 million) and Gauteng (contributing -2,3 percentage points or -R1 794,6 million). The largest positive contributor was KwaZulu-Natal (contributing 2,1 percentage points or R1 673,8 million).

During 2023, Western Cape experienced year-on-year decreases in additions and alterations (-59,2% or R6 419,8 million), non-residential buildings (-39,8% or -R1 825,5 million) and residential buildings (-10,1% or -R1 557,1 million).

Large decreases in non-residential buildings were reported for Northern Cape (-62,4% or -R190,8 million) and North West (-49,8% or -R312,6 million) – see Table 7.

Figure 2 – Provincial contribution (percentage points) to the percentage change in the total value of buildings reported as completed between 2022 and 2023



Buildings reported as completed in Western Cape were to a large extent dominated by data reported for City of Cape Town, contributing 50,7% or R10 641,9 million to the total of R20 982,3 million reported for this province – see Table D.

The largest contributor in all three major building categories reported as completed in Western Cape was City of Cape Town, with non-residential buildings contributing 59,9% (R1 652,9 million), additions and alterations contributing 59,4% (R2 626,5 million) and residential buildings contributing 46,1% (R6 362,5 million).

City of Tshwane was the largest contributor to non-residential buildings (contributing 51,8% or R2 755,2 million), additions and alterations (contributing 43,7% or R919,2 million) and residential buildings (contributing 41,4% or R5 361,7 million) in Gauteng.

Table D – The largest municipal contributors to the value of buildings reported as completed for 2023 by province

Province/Municipality	Value of buildings completed at provincial/municipal level R million	Municipal % contribution to the value of buildings completed at provincial level
Western Cape	20 982,3	
City of Cape Town	10 641,9	50,7
George	1 547,7	7,4
Mossel Bay	1 219,9	5,8
Drakenstein	1 015,3	4,8
Bergrivier	809,7	3,9
Gauteng	20 379,7	
City of Tshwane	9 036,1	44,3
Ekurhuleni	5 135,1	25,2
City of Johannesburg	4 921,5	24,1
Mogale City	438,9	2,2
Midvaal	316,4	1,6
KwaZulu-Natal	13 177,4	
eThekweni	7 840,3	59,5
KwaDukuza	1 739,6	13,2
uMngeni	336,7	2,6
Umzumbe	262,2	2,0
Okhahlamba	256,1	1,9
Eastern Cape	4 451,4	
Nelson Mandela Bay	1 512,6	34,0
Buffalo City	1 456,5	32,7
Kouga	403,5	9,1
Blue Crane Route	154,6	3,5
Great Kei	119,1	2,7
Limpopo	3 076,5	
Polokwane	969,3	31,5
Thulamela	490,8	16,0
Fetakgomo Tubatse	263,2	8,6
Greater Tzaneen	259,7	8,4
Ba-Phalaborwa	226,2	7,4

Table D – The largest municipal contributors to the value of buildings reported as completed for 2023 by province (concluded)

Province/Municipality	Value of buildings completed at provincial/municipal level R million	Municipal % contribution to the value of buildings completed at provincial level
North West	2 306,0	
City of Matlosana	684,1	29,7
Madibeng	563,3	24,4
Rustenburg	415,4	18,0
Tlokwe City Council	274,7	11,9
Mpumalanga	1 976,7	
City of Mbombela	593,7	30,0
Emalahleni	549,3	27,8
Govan Mbeki	163,3	8,3
Bushbuckridge	135,6	6,9
Northern Cape	966,5	
Dawid Kruiper	399,4	41,3
Gamagara	134,2	13,9
Nama Khoi	99,8	10,3
Khâi-Ma	73,4	7,6
Free State	960,5	
Dihlabeng	350,4	36,5
Tswelopele	92,7	9,7
Metsimaholo	83,1	8,7
Mangaung	69,7	7,3
Tokologo	60,9	6,3


Risenga Maluleke
 Statistician-General

LIST OF DETAILED TABLES

PART 1 – MUNICIPAL REPORTING OF BUILDINGS COMPLETED AGGREGATED TO PROVINCIAL LEVEL: MONTHLY SURVEY

Table 1	- Number, square metres and value of residential buildings, non-residential buildings and additions and alterations reported as completed to municipalities by province	1
Table 2	- Number, square metres and value of residential buildings reported as completed to municipalities: dwelling-houses, flats and townhouses and other residential buildings by province	3
Table 3	- Number, square metres and value of dwelling-houses reported as completed to municipalities by size of dwelling-house and province	5
Table 4	- Number, square metres and value of flats and townhouses reported as completed to municipalities by province	7
Table 5.1	- Number, square metres and value of non-residential buildings reported as completed to municipalities by province: office and banking space, shopping space and industrial and warehouse space	9
Table 5.2	- Number, square metres and value of non-residential buildings reported as completed to municipalities by province: schools, nursery schools, crèches, hospitals, churches, sport clubs, recreation clubs and all other space	11
Table 6	- Number, square metres and value of additions and alterations reported as completed to municipalities by province	13

PART 2 – MUNICIPAL REPORTING OF BUILDINGS COMPLETED AGGREGATED TO PROVINCIAL LEVEL: MONTHLY AND ANNUAL SURVEYS

Table 7	- Number, square metres and value of residential buildings, non-residential buildings and additions and alterations reported as completed to municipalities by province	15
Table 8	- Number, square metres and value of residential buildings reported as completed to municipalities: dwelling-houses, flats and townhouses and other residential buildings by province	17
Table 9	- Number, square metres and value of dwelling-houses reported as completed to municipalities by size of dwelling-house and province	19
Table 10	- Number, square metres and value of flats and townhouses reported as completed to municipalities by province	21
Table 11.1	- Number, square metres and value of non-residential buildings reported as completed to municipalities by province: office and banking space, shopping space and industrial and warehouse space	23
Table 11.2	- Number, square metres and value of non-residential buildings reported as completed to municipalities by province: schools, nursery schools, crèches, hospitals, churches, sport clubs, recreation clubs and all other space	25
Table 12	- Number, square metres and value of additions and alterations reported as completed to municipalities by province	27

MUNICIPALITIES COVERED IN THE MONTHLY AND ANNUAL SURVEYS BY PROVINCE

Table 13 - Municipalities covered in the monthly and annual surveys by province: Western Cape	29
Table 14 - Municipalities covered in the monthly and annual surveys by province: Eastern Cape	31
Table 15 - Municipalities covered in the monthly and annual surveys by province: Northern Cape	33
Table 16 - Municipalities covered in the monthly and annual surveys by province: Free State	35
Table 17 - Municipalities covered in the monthly and annual surveys by province: KwaZulu-Natal	36
Table 18 - Municipalities covered in the monthly and annual surveys by province: North West	39
Table 19 - Municipalities covered in the monthly and annual surveys by province: Gauteng	40
Table 20 - Municipalities covered in the monthly and annual surveys by province: Mpumalanga	41
Table 21 - Municipalities covered in the monthly and annual surveys by province: Limpopo	42

Part 1
Municipal reporting of buildings completed
aggregated to provincial level:
monthly survey

Table 1 – Number, square metres and value of residential buildings, non-residential buildings and additions and alterations reported as completed to municipalities by province

Municipal reporting aggregated to provincial level by year		Residential buildings		Non-residential buildings			Additions and alterations			Buildings reported as completed to municipalities	
		Total square metres	Total value R'000	Number of buildings	Total square metres	Total value R'000	Number of plans	Total square metres	Total value R'000	Total square metres	Total value R'000
Western Cape	2021	1 541 173	10 981 121	257	574 551	4 223 793	8 789	874 562	7 191 113	2 990 286	22 396 027
	2022	1 812 056	13 063 994	307	565 636	4 134 071	13 271	1 252 091	9 909 586	3 629 783	27 107 651
	2023	1 592 037	12 055 476	183	315 025	2 294 078	3 999	438 562	3 634 455	2 345 624	17 984 009
Eastern Cape	2021	163 710	1 213 225	33	150 939	1 083 229	1 399	120 033	918 108	434 682	3 214 562
	2022	169 408	1 343 392	34	80 781	630 293	1 082	125 670	1 013 039	375 859	2 986 724
	2023	249 186	2 025 562	36	59 469	446 834	1 159	134 814	1 133 093	443 469	3 605 489
Northern Cape	2021	34 272	288 503	12	6 867	57 201	333	36 729	310 727	77 868	656 431
	2022	22 350	194 245	12	24 776	205 927	433	41 627	367 168	88 753	767 340
	2023	14 767	138 646	6	5 979	56 130	212	22 076	213 747	42 822	408 523
Free State	2021	56 999	447 099	12	11 706	91 790	235	20 294	137 445	88 999	676 334
	2022	45 116	363 199	6	3 607	27 521	296	23 163	166 368	71 886	557 088
	2023	48 941	390 160	15	8 487	68 574	246	19 165	148 068	76 593	606 802
KwaZulu-Natal	2021	360 066	3 724 992	125	256 830	2 056 216	1 239	170 917	1 964 054	787 813	7 745 262
	2022	503 970	5 420 134	93	394 037	2 817 592	1 086	126 062	1 533 192	1 024 069	9 770 918
	2023	428 247	4 680 756	87	565 826	4 171 694	1 167	149 508	1 698 678	1 143 581	10 551 128
North West	2021	181 433	1 188 744	24	137 350	822 565	312	40 788	299 236	359 571	2 310 545
	2022	211 074	1 441 953	42	88 457	618 438	206	21 082	162 600	320 613	2 222 991
	2023	232 242	1 572 006	27	45 043	310 514	392	42 547	331 506	319 832	2 214 026
Gauteng	2021	1 539 522	13 578 793	110	602 787	4 400 870	1 948	295 502	2 434 415	2 437 811	20 414 078
	2022	1 485 659	13 756 499	114	799 143	5 900 973	1 847	283 429	2 516 764	2 568 231	22 174 236
	2023	1 326 922	12 950 749	109	572 534	5 323 600	1 680	218 177	2 105 304	2 117 633	20 379 653
Mpumalanga	2021	104 988	793 890	18	29 203	193 191	172	16 162	155 407	150 353	1 142 488
	2022	117 979	868 377	14	24 551	200 410	143	12 827	109 142	155 357	1 177 929
	2023	107 179	827 048	15	39 527	273 760	275	27 754	252 752	174 460	1 353 560

Table 1 – Number, square metres and value of residential buildings, non-residential buildings and additions and alterations reported as completed to municipalities by province (concluded)

Municipal reporting aggregated to provincial level by year		Residential buildings		Non-residential buildings			Additions and alterations			Buildings reported as completed to municipalities	
		Total square metres	Total value R'000	Number of buildings	Total square metres	Total value R'000	Number of plans	Total square metres	Total value R'000	Total square metres	Total value R'000
Limpopo	2021	103 916	642 534	14	8 660	51 762	86	8 627	71 047	121 203	765 343
	2022	112 156	746 359	21	34 501	226 607	85	13 708	100 731	160 365	1 073 697
	2023	106 424	731 014	17	71 848	499 572	58	6 540	68 035	184 812	1 298 621
South Africa	2021	4 086 079	32 858 901	605	1 778 893	12 980 617	14 513	1 583 614	13 481 552	7 448 586	59 321 070
	2022	4 479 768	37 198 152	643	2 015 489	14 761 832	18 449	1 899 659	15 878 590	8 394 916	67 838 574
	2023	4 105 945	35 371 417	495	1 683 738	13 444 756	9 188	1 059 143	9 585 638	6 848 826	58 401 811

Table 2 – Number, square metres and value of residential buildings reported as completed to municipalities: dwelling-houses, flats and townhouses and other residential buildings by province

Municipal reporting aggregated to provincial level by year		Residential buildings										
		Dwelling-houses			Flats and townhouses			Other residential buildings ¹			Residential buildings reported as completed to municipalities	
		Number of dwelling-houses	Total square metres	Total value R'000	Number of units	Total square metres	Total value R'000	Number of buildings	Total square metres	Total value R'000	Total square metres	Total value R'000
Western Cape	2021	6 610	866 004	5 732 065	7 890	649 352	5 046 123	22	25 817	202 933	1 541 173	10 981 121
	2022	7 432	1 120 035	7 600 612	6 804	646 901	5 135 608	30	45 120	327 774	1 812 056	13 063 994
	2023	5 909	895 124	6 382 093	5 646	653 383	5 321 466	32	43 530	351 917	1 592 037	12 055 476
Eastern Cape	2021	667	134 614	997 772	281	29 070	215 253	1	26	200	163 710	1 213 225
	2022	906	144 052	1 145 559	221	20 059	157 157	1	5 297	40 676	169 408	1 343 392
	2023	1 200	212 076	1 720 366	411	37 006	304 538	2	104	658	249 186	2 025 562
Northern Cape	2021	167	31 493	264 732	17	1 662	13 982	1	1 117	9 789	34 272	288 503
	2022	100	20 779	181 515	20	1 571	12 730	0	0	0	22 350	194 245
	2023	69	14 701	138 025	1	66	621	0	0	0	14 767	138 646
Free State	2021	446	52 382	408 764	35	4 012	33 393	5	605	4 942	56 999	447 099
	2022	318	43 124	351 396	2	355	2 044	5	1 637	9 759	45 116	363 199
	2023	208	32 704	257 213	113	15 912	130 517	2	325	2 430	48 941	390 160
KwaZulu-Natal	2021	701	194 968	2 034 877	1 108	141 030	1 430 466	3	24 068	259 649	360 066	3 724 992
	2022	771	248 703	2 609 025	2 315	234 754	2 585 736	2	20 513	225 373	503 970	5 420 134
	2023	906	271 685	2 972 304	1 168	150 867	1 652 902	5	5 695	55 550	428 247	4 680 756
North West	2021	871	156 329	1 023 179	217	25 104	165 565	0	0	0	181 433	1 188 744
	2022	1 117	188 962	1 302 413	194	20 069	126 036	10	2 043	13 504	211 074	1 441 953
	2023	1 308	196 925	1 340 720	267	30 062	198 031	8	5 255	33 255	232 242	1 572 006
Gauteng	2021	6 682	940 682	7 925 665	5 785	597 429	5 639 712	3	1 411	13 416	1 539 522	13 578 793
	2022	7 789	1 041 201	9 412 417	4 082	441 192	4 316 127	2	3 266	27 955	1 485 659	13 756 499
	2023	6 396	898 377	8 557 106	4 616	426 728	4 373 053	2	1 817	20 590	1 326 922	12 950 749
Mpumalanga	2021	526	94 125	708 280	34	2 858	18 952	1	8 005	66 658	104 988	793 890
	2022	706	117 470	865 411	4	509	2 966	0	0	0	117 979	868 377
	2023	522	90 628	701 983	164	16 551	125 065	0	0	0	107 179	827 048

¹ Other residential buildings include institutions for the disabled, boarding houses, hostels and tourism accommodation (e.g. hotels, motels, guest-houses, holiday chalets, bed-and-breakfast accommodation and casinos).

Table 2 – Number, square metres and value of residential buildings reported as completed to municipalities: dwelling-houses, flats and townhouses and other residential buildings by province (concluded)

Municipal reporting aggregated to provincial level by year		Residential buildings										
		Dwelling-houses			Flats and townhouses			Other residential buildings ¹			Residential buildings reported as completed to municipalities	
		Number of dwelling-houses	Total square metres	Total value R'000	Number of units	Total square metres	Total value R'000	Number of buildings	Total square metres	Total value R'000	Total square metres	Total value R'000
Limpopo	2021	406	88 631	546 868	154	15 145	94 766	1	140	900	103 916	642 534
	2022	399	98 663	655 260	118	13 278	89 630	1	215	1 469	112 156	746 359
	2023	300	80 027	548 399	330	25 580	176 621	3	817	5 994	106 424	731 014
South Africa	2021	17 076	2 559 228	19 642 202	15 521	1 465 662	12 658 212	37	61 189	558 487	4 086 079	32 858 901
	2022	19 538	3 022 989	24 123 608	13 760	1 378 688	12 428 034	51	78 091	646 510	4 479 768	37 198 152
	2023	16 818	2 692 247	22 618 209	12 716	1 356 155	12 282 814	54	57 543	470 394	4 105 945	35 371 417

¹ Other residential buildings include institutions for the disabled, boarding houses, hostels and tourism accommodation (e.g. hotels, motels, guest-houses, holiday chalets, bed-and-breakfast accommodation and casinos).

Table 3 – Number, square metres and value of dwelling-houses reported as completed to municipalities by size of dwelling-house and province

Municipal reporting aggregated to provincial level by year		Size of dwelling-house						Dwelling-houses reported as completed to municipalities		
		Smaller than 80 square metres			Equal to or larger than 80 square metres					
		Number of dwelling-houses	Total square metres	Total value R'000	Number of dwelling-houses	Total square metres	Total value R'000	Number of dwelling-houses	Total square metres	Total value R'000
Western Cape	2021	3 665	164 562	937 500	2 945	701 442	4 794 565	6 610	866 004	5 732 065
	2022	3 424	149 985	868 000	4 008	970 050	6 732 612	7 432	1 120 035	7 600 612
	2023	2 741	123 765	813 453	3 168	771 359	5 568 640	5 909	895 124	6 382 093
Eastern Cape	2021	167	9 312	62 422	500	125 302	935 350	667	134 614	997 772
	2022	339	20 124	147 007	567	123 928	998 552	906	144 052	1 145 559
	2023	547	27 153	203 483	653	184 923	1 516 883	1 200	212 076	1 720 366
Northern Cape	2021	37	2 449	21 265	130	29 044	243 467	167	31 493	264 732
	2022	16	1 059	9 310	84	19 720	172 205	100	20 779	181 515
	2023	9	519	4 577	60	14 182	133 448	69	14 701	138 025
Free State	2021	241	14 579	123 155	205	37 803	285 609	446	52 382	408 764
	2022	147	7 977	72 843	171	35 147	278 553	318	43 124	351 396
	2023	65	3 768	34 741	143	28 936	222 472	208	32 704	257 213
KwaZulu-Natal	2021	86	4 996	48 976	615	189 972	1 985 901	701	194 968	2 034 877
	2022	105	5 891	55 725	666	242 812	2 553 300	771	248 703	2 609 025
	2023	86	5 095	47 330	820	266 590	2 924 974	906	271 685	2 972 304
North West	2021	232	13 918	81 941	639	142 411	941 238	871	156 329	1 023 179
	2022	307	18 143	103 798	810	170 819	1 198 615	1 117	188 962	1 302 413
	2023	540	28 056	155 338	768	168 869	1 185 382	1 308	196 925	1 340 720
Gauteng	2021	3 946	215 865	1 511 149	2 736	724 817	6 414 516	6 682	940 682	7 925 665
	2022	4 915	277 088	2 096 208	2 874	764 113	7 316 209	7 789	1 041 201	9 412 417
	2023	3 756	199 517	1 531 272	2 640	698 860	7 025 834	6 396	898 377	8 557 106
Mpumalanga	2021	164	9 181	58 086	362	84 944	650 194	526	94 125	708 280
	2022	184	10 414	70 536	522	107 056	794 875	706	117 470	865 411
	2023	132	8 059	56 956	390	82 569	645 027	522	90 628	701 983

Table 3 – Number, square metres and value of dwelling-houses reported as completed to municipalities by size of dwelling-house and province (concluded)

Municipal reporting aggregated to provincial level by year		Size of dwelling-house						Dwelling-houses reported as completed to municipalities		
		Smaller than 80 square metres			Equal to or larger than 80 square metres					
		Number of dwelling-houses	Total square metres	Total value R'000	Number of dwelling-houses	Total square metres	Total value R'000	Number of dwelling-houses	Total square metres	Total value R'000
Limpopo	2021	123	7 514	47 129	283	81 117	499 739	406	88 631	546 868
	2022	100	6 488	42 949	299	92 175	612 311	399	98 663	655 260
	2023	36	2 341	16 033	264	77 686	532 366	300	80 027	548 399
South Africa	2021	8 661	442 376	2 891 623	8 415	2 116 852	16 750 579	17 076	2 559 228	19 642 202
	2022	9 537	497 169	3 466 376	10 001	2 525 820	20 657 232	19 538	3 022 989	24 123 608
	2023	7 912	398 273	2 863 183	8 906	2 293 974	19 755 026	16 818	2 692 247	22 618 209

Table 4 – Number, square metres and value of flats and townhouses reported as completed to municipalities by province

Municipal reporting aggregated to provincial level by year		Flats			Townhouses			Flats and townhouses reported as completed to municipalities		
		Number of units	Total square metres	Total value R'000	Number of units	Total square metres	Total value R'000	Number of units	Total square metres	Total value R'000
Western Cape	2021	6 519	450 085	3 499 947	1 371	199 267	1 546 176	7 890	649 352	5 046 123
	2022	5 389	424 429	3 356 842	1 415	222 472	1 778 766	6 804	646 901	5 135 608
	2023	4 726	442 888	3 585 129	920	210 495	1 736 337	5 646	653 383	5 321 466
Eastern Cape	2021	92	4 814	33 941	189	24 256	181 312	281	29 070	215 253
	2022	119	6 233	47 008	102	13 826	110 149	221	20 059	157 157
	2023	277	18 340	150 597	134	18 666	153 941	411	37 006	304 538
Northern Cape	2021	0	0	0	17	1 662	13 982	17	1 662	13 982
	2022	18	1 311	10 623	2	260	2 107	20	1 571	12 730
	2023	0	0	0	1	66	621	1	66	621
Free State	2021	33	3 640	30 703	2	372	2 690	35	4 012	33 393
	2022	0	0	0	2	355	2 044	2	355	2 044
	2023	43	2 587	20 626	70	13 325	109 891	113	15 912	130 517
KwaZulu-Natal	2021	715	82 450	929 006	393	58 580	501 460	1 108	141 030	1 430 466
	2022	1 992	181 561	2 100 896	323	53 193	484 840	2 315	234 754	2 585 736
	2023	859	92 924	1 087 878	309	57 943	565 024	1 168	150 867	1 652 902
North West	2021	145	13 012	83 812	72	12 092	81 753	217	25 104	165 565
	2022	118	9 242	55 926	76	10 827	70 110	194	20 069	126 036
	2023	189	21 381	141 293	78	8 681	56 738	267	30 062	198 031
Gauteng	2021	1 207	91 221	1 058 996	4 578	506 208	4 580 716	5 785	597 429	5 639 712
	2022	911	60 835	656 404	3 171	380 357	3 659 723	4 082	441 192	4 316 127
	2023	1 646	122 054	1 291 474	2 970	304 674	3 081 579	4 616	426 728	4 373 053
Mpumalanga	2021	8	317	2 640	26	2 541	16 312	34	2 858	18 952
	2022	0	0	0	4	509	2 966	4	509	2 966
	2023	138	14 240	104 697	26	2 311	20 368	164	16 551	125 065

Table 4 – Number, square metres and value of flats and townhouses reported as completed to municipalities by province (concluded)

Municipal reporting aggregated to provincial level by year		Flats			Townhouses			Flats and townhouses reported as completed to municipalities		
		Number of units	Total square metres	Total value R'000	Number of units	Total square metres	Total value R'000	Number of units	Total square metres	Total value R'000
Limpopo	2021	0	0	0	154	15 145	94 766	154	15 145	94 766
	2022	48	4 032	28 128	70	9 246	61 502	118	13 278	89 630
	2023	150	7 459	51 266	180	18 121	125 355	330	25 580	176 621
South Africa	2021	8 719	645 539	5 639 045	6 802	820 123	7 019 167	15 521	1 465 662	12 658 212
	2022	8 595	687 643	6 255 827	5 165	691 045	6 172 207	13 760	1 378 688	12 428 034
	2023	8 028	721 873	6 432 960	4 688	634 282	5 849 854	12 716	1 356 155	12 282 814

Table 5.1 – Number, square metres and value of non-residential buildings reported as completed to municipalities by province: office and banking space, shopping space and industrial and warehouse space

Municipal reporting aggregated to provincial level by year		Non-residential buildings								
		Office and banking space			Shopping space			Industrial and warehouse space		
		Number of buildings	Total square metres	Total value R'000	Number of buildings	Total square metres	Total value R'000	Number of buildings	Total square metres	Total value R'000
Western Cape	2021	25	101 600	824 807	42	109 695	895 455	98	305 719	2 111 329
	2022	43	68 472	545 622	38	95 637	780 994	96	253 945	1 712 265
	2023	16	19 883	156 909	31	43 564	346 941	71	201 505	1 439 871
Eastern Cape	2021	5	12 747	89 972	4	3 605	23 466	16	115 471	827 859
	2022	1	3 921	30 109	7	29 013	237 538	14	12 111	93 300
	2023	5	4 624	36 635	7	5 027	40 123	16	29 626	227 555
Northern Cape	2021	4	1 040	8 562	2	1 190	10 429	3	4 188	34 475
	2022	3	1 466	13 195	1	249	2 344	6	22 619	186 492
	2023	2	1 387	13 056	2	3 532	33 097	1	473	4 452
Free State	2021	1	147	1 091	2	538	3 640	6	6 315	46 469
	2022	1	261	2 081	1	207	1 992	2	2 786	21 319
	2023	3	696	5 074	2	1 421	11 635	10	6 370	51 865
KwaZulu-Natal	2021	11	27 611	286 860	46	111 176	1 028 371	60	111 282	692 660
	2022	6	10 858	116 522	19	58 740	621 833	53	301 253	1 845 370
	2023	6	21 232	219 776	20	116 415	1 253 485	38	401 873	2 408 937
North West	2021	3	7 339	42 368	13	119 727	709 928	7	9 764	66 276
	2022	3	1 309	7 688	14	49 168	366 820	15	19 617	133 706
	2023	3	5 534	44 080	12	23 415	144 651	9	14 847	114 070
Gauteng	2021	9	30 407	374 815	19	115 114	1 158 117	55	379 629	2 191 974
	2022	14	40 386	411 461	18	126 940	1 439 571	63	587 462	3 658 606
	2023	14	128 383	1 601 309	19	124 410	1 468 363	52	297 588	2 029 080
Mpumalanga	2021	7	6 989	55 890	3	7 840	51 456	7	10 410	62 457
	2022	2	1 455	8 570	0	0	0	10	14 497	120 236
	2023	3	6 233	55 592	5	10 121	66 134	6	22 918	149 752

Table 5.1 – Number, square metres and value of non-residential buildings reported as completed to municipalities by province: office and banking space, shopping space and industrial and warehouse space (concluded)

Municipal reporting aggregated to provincial level by year		Non-residential buildings								
		Office and banking space			Shopping space			Industrial and warehouse space		
		Number of buildings	Total square metres	Total value R'000	Number of buildings	Total square metres	Total value R'000	Number of buildings	Total square metres	Total value R'000
Limpopo	2021	3	1 029	6 223	2	2 580	14 078	5	2 181	13 734
	2022	0	0	0	6	10 971	72 254	11	19 349	125 963
	2023	3	1 212	8 434	4	25 054	172 009	10	45 582	319 129
South Africa	2021	68	188 909	1 690 588	133	471 465	3 894 940	257	944 959	6 047 233
	2022	73	128 128	1 135 248	104	370 925	3 523 346	270	1 233 639	7 897 257
	2023	55	189 184	2 140 865	102	352 959	3 536 438	213	1 020 782	6 744 711

Table 5.2 – Number, square metres and value of non-residential buildings reported as completed to municipalities by province: schools, nursery schools, crèches, hospitals, churches, sports club, recreation clubs and all other non-residential space

Municipal reporting aggregated to provincial level by year		Non-residential buildings											
		Schools, nursery schools, crèches and hospitals			Churches, sport and recreation clubs			All other non-residential space			Non-residential buildings reported as completed to municipalities ¹		
		Number of buildings	Total square metres	Total value R'000	Number of buildings	Total square metres	Total value R'000	Number of buildings	Total square metres	Total value R'000	Number of buildings	Total square metres	Total value R'000
Western Cape	2021	19	26 911	189 830	11	12 156	84 166	62	18 470	118 206	257	574 551	4 223 793
	2022	20	38 746	273 534	24	17 839	117 550	86	90 997	704 106	307	565 636	4 134 071
	2023	9	24 553	176 406	4	2 413	17 782	52	23 107	156 169	183	315 025	2 294 078
Eastern Cape	2021	4	17 160	127 844	3	1 921	13 843	1	35	245	33	150 939	1 083 229
	2022	7	33 513	253 091	3	1 195	7 968	2	1 028	8 287	34	80 781	630 293
	2023	3	15 355	103 489	1	158	1 260	4	4 679	37 772	36	59 469	446 834
Northern Cape	2021	0	0	0	3	449	3 735	0	0	0	12	6 867	57 201
	2022	0	0	0	1	202	1 637	1	240	2 259	12	24 776	205 927
	2023	0	0	0	1	587	5 525	0	0	0	6	5 979	56 130
Free State	2021	1	4 235	37 937	1	408	2 213	1	63	440	12	11 706	91 790
	2022	0	0	0	2	353	2 129	0	0	0	6	3 607	27 521
	2023	0	0	0	0	0	0	0	0	0	15	8 487	68 574
KwaZulu-Natal	2021	5	3 429	27 107	3	3 332	21 218	0	0	0	125	256 830	2 056 216
	2022	7	18 991	191 008	7	4 145	42 609	1	50	250	93	394 037	2 817 592
	2023	6	6 417	69 331	12	8 405	93 722	5	11 484	126 443	87	565 826	4 171 694
North West	2021	0	0	0	1	520	3 993	0	0	0	24	137 350	822 565
	2022	5	14 991	87 789	2	1 147	6 880	3	2 225	15 555	42	88 457	618 438
	2023	0	0	0	3	1 247	7 713	0	0	0	27	45 043	310 514
Gauteng	2021	14	53 158	505 112	7	16 418	101 889	6	8 061	68 963	110	602 787	4 400 870
	2022	10	39 874	354 049	3	1 282	12 432	6	3 199	24 854	114	799 143	5 900 973
	2023	18	12 331	113 078	3	8 158	99 305	3	1 664	12 465	109	572 534	5 323 600
Mpumalanga	2021	0	0	0	1	3 964	23 388	0	0	0	18	29 203	193 191
	2022	2	8 599	71 604	0	0	0	0	0	0	14	24 551	200 410
	2023	0	0	0	1	255	2 282	0	0	0	15	39 527	273 760

¹ Non-residential buildings include office and banking space, shopping space, industrial and warehouse space, schools, nursery schools, crèches, hospitals, churches, sport clubs, recreation clubs and all other non-residential space – see Table 5.1 and Table 5.2.

Table 5.2 – Number, square metres and value of non-residential buildings reported as completed to municipalities by province: schools, nursery schools, crèches, hospitals, churches, sports club, recreation clubs and all other non-residential space (concluded)

Municipal reporting aggregated to provincial level by year		Non-residential buildings											
		Schools, nursery schools, crèches and hospitals			Churches, sport and recreation clubs			All other non-residential space			Non-residential buildings reported as completed to municipalities ¹		
		Number of buildings	Total square metres	Total value R'000	Number of buildings	Total square metres	Total value R'000	Number of buildings	Total square metres	Total value R'000	Number of buildings	Total square metres	Total value R'000
Limpopo	2021	0	0	0	1	1 752	11 269	3	1 118	6 458	14	8 660	51 762
	2022	2	2 167	15 490	0	0	0	2	2 014	12 900	21	34 501	226 607
	2023	0	0	0	0	0	0	0	0	0	17	71 848	499 572
South Africa	2021	43	104 893	887 830	31	40 920	265 714	73	27 747	194 312	605	1 778 893	12 980 617
	2022	53	156 881	1 246 565	42	26 163	191 205	101	99 753	768 211	643	2 015 489	14 761 832
	2023	36	58 656	462 304	25	21 223	227 589	64	40 934	332 849	495	1 683 738	13 444 756

¹ Non-residential buildings include office and banking space, shopping space, industrial and warehouse space, schools, nursery schools, crèches, hospitals, churches, sport clubs, recreation clubs and all other non-residential space – see Table 5.1 and Table 5.2.

Table 6 – Number, square metres and value of additions and alterations reported as completed to municipalities by province

Municipal reporting aggregated to provincial level by year		Additions and alterations to residential buildings			Additions and alterations to non-residential buildings			Internal alterations	Additions and alterations reported as completed to municipalities		
		Number of plans	Total square metres	Total value R'000	Number of plans	Total square metres	Total value R'000	Total value R'000	Number of plans	Total square metres	Total value R'000
Western Cape	2021	8 106	588 764	3 935 943	683	285 798	2 040 232	1 214 938	8 789	874 562	7 191 113
	2022	12 577	972 486	6 638 980	694	279 605	2 237 601	1 033 005	13 271	1 252 091	9 909 586
	2023	3 721	299 935	2 210 646	278	138 627	1 085 944	337 865	3 999	438 562	3 634 455
Eastern Cape	2021	1 297	98 968	720 969	102	21 065	155 659	41 480	1 399	120 033	918 108
	2022	982	80 193	632 544	100	45 477	360 928	19 567	1 082	125 670	1 013 039
	2023	1 018	83 131	679 691	141	51 683	417 219	36 183	1 159	134 814	1 133 093
Northern Cape	2021	320	27 619	230 879	13	9 110	77 170	2 678	333	36 729	310 727
	2022	423	37 482	326 050	10	4 145	36 200	4 918	433	41 627	367 168
	2023	203	18 343	172 528	9	3 733	35 139	6 080	212	22 076	213 747
Free State	2021	229	19 663	131 176	6	631	4 174	2 095	235	20 294	137 445
	2022	281	19 067	131 348	15	4 096	31 462	3 558	296	23 163	166 368
	2023	239	17 459	132 509	7	1 706	14 070	1 489	246	19 165	148 068
KwaZulu-Natal	2021	1 139	116 428	1 313 999	100	54 489	581 616	68 439	1 239	170 917	1 964 054
	2022	992	90 720	1 025 441	94	35 342	384 686	123 065	1 086	126 062	1 533 192
	2023	1 086	93 232	1 044 786	81	56 276	614 291	39 601	1 167	149 508	1 698 678
North West	2021	297	24 613	150 926	15	16 175	100 948	47 362	312	40 788	299 236
	2022	191	16 591	101 587	15	4 491	30 231	30 782	206	21 082	162 600
	2023	374	36 758	231 209	18	5 789	37 937	62 360	392	42 547	331 506
Gauteng	2021	1 869	205 123	1 748 400	79	90 379	658 871	27 144	1 948	295 502	2 434 415
	2022	1 759	203 225	1 870 835	88	80 204	607 257	38 672	1 847	283 429	2 516 764
	2023	1 598	174 211	1 697 994	82	43 966	376 603	30 707	1 680	218 177	2 105 304
Mpumalanga	2021	166	13 901	97 265	6	2 261	13 067	45 075	172	16 162	155 407
	2022	142	11 021	78 818	1	1 806	10 634	19 690	143	12 827	109 142
	2023	266	23 941	181 286	9	3 813	28 996	42 470	275	27 754	252 752

Table 6 – Number, square metres and value of additions and alterations reported as completed to municipalities by province (concluded)

Municipal reporting aggregated to provincial level by year		Additions and alterations to residential buildings			Additions and alterations to non-residential buildings			Internal alterations	Additions and alterations reported as completed to municipalities		
		Number of plans	Total square metres	Total value R'000	Number of plans	Total square metres	Total value R'000	Total value R'000	Number of plans	Total square metres	Total value R'000
Limpopo	2021	82	7 958	47 763	4	669	4 283	19 001	86	8 627	71 047
	2022	79	10 230	66 641	6	3 478	23 403	10 687	85	13 708	100 731
	2023	56	5 351	36 241	2	1 189	8 172	23 622	58	6 540	68 035
South Africa	2021	13 505	1 103 037	8 377 320	1 008	480 577	3 636 020	1 468 212	14 513	1 583 614	13 481 552
	2022	17 426	1 441 015	10 872 244	1 023	458 644	3 722 402	1 283 944	18 449	1 899 659	15 878 590
	2023	8 561	752 361	6 386 890	627	306 782	2 618 371	580 377	9 188	1 059 143	9 585 638

Part 2

**Municipal reporting of buildings completed
aggregated to provincial level:
monthly and annual surveys**

Table 7 – Number, square metres and value of residential buildings, non-residential buildings and additions and alterations reported as completed to municipalities by province

Municipal reporting aggregated to provincial level by year		Residential buildings		Non-residential buildings			Additions and alterations			Buildings reported as completed to municipalities	
		Total square metres	Total value R'000	Number of buildings	Total square metres	Total value R'000	Number of plans	Total square metres	Total value R'000	Total square metres	Total value R'000
Western Cape	2021	1 778 698	12 911 667	330	640 141	4 693 354	9 838	951 880	7 855 681	3 370 719	25 460 702
	2022	2 072 474	15 360 865	402	619 569	4 585 585	14 824	1 365 624	10 838 264	4 057 667	30 784 714
	2023	1 793 750	13 803 730	300	369 337	2 760 080	4 987	524 469	4 418 449	2 687 556	20 982 259
Eastern Cape	2021	254 972	1 621 346	79	198 753	1 396 495	1 692	149 939	1 133 723	603 664	4 151 564
	2022	274 560	1 923 913	93	128 158	901 625	1 700	213 386	1 565 263	616 104	4 390 801
	2023	367 482	2 686 371	65	76 831	551 315	1 347	147 286	1 213 720	591 599	4 451 406
Northern Cape	2021	76 049	545 834	36	15 949	115 543	554	53 363	421 832	145 361	1 083 209
	2022	106 441	711 037	41	39 679	305 610	609	54 188	450 119	200 308	1 466 766
	2023	77 546	562 792	24	14 235	114 790	364	32 695	288 890	124 476	966 472
Free State	2021	88 533	593 076	20	15 926	113 123	348	27 303	176 650	131 762	882 849
	2022	87 966	589 319	13	6 636	43 901	359	27 897	192 330	122 499	825 550
	2023	94 952	606 652	29	24 930	174 556	312	24 573	179 332	144 455	960 540
KwaZulu-Natal	2021	542 962	4 444 960	159	313 779	2 406 255	1 417	183 035	2 037 636	1 039 776	8 888 851
	2022	792 654	6 666 587	174	455 619	3 192 669	1 259	143 533	1 644 378	1 391 806	11 503 634
	2023	808 101	6 576 948	163	660 744	4 829 435	1 287	160 753	1 771 004	1 629 598	13 177 387
North West	2021	200 612	1 284 004	31	147 557	881 801	352	44 642	319 017	392 811	2 484 822
	2022	217 706	1 475 005	48	90 184	627 531	282	31 233	220 535	339 123	2 323 071
	2023	246 493	1 641 737	28	45 559	314 910	445	45 311	349 316	337 363	2 305 963
Gauteng	2021	1 539 522	13 578 793	110	602 787	4 400 870	1 948	295 502	2 434 415	2 437 811	20 414 078
	2022	1 485 659	13 756 499	114	799 143	5 900 973	1 847	283 429	2 516 764	2 568 231	22 174 236
	2023	1 326 922	12 950 749	109	572 534	5 323 600	1 680	218 177	2 105 304	2 117 633	20 379 653
Mpumalanga	2021	169 943	1 109 136	36	44 425	287 482	323	29 099	285 396	243 467	1 682 014
	2022	186 995	1 256 111	56	57 036	401 237	303	30 702	235 077	274 733	1 892 425
	2023	176 998	1 191 625	31	58 879	400 655	433	46 674	384 395	282 551	1 976 675

Table 7 – Number, square metres and value of residential buildings, non-residential buildings and additions and alterations reported as completed to municipalities by province (concluded)

Municipal reporting aggregated to provincial level by year		Residential buildings		Non-residential buildings			Additions and alterations			Buildings reported as completed to municipalities	
		Total square metres	Total value R'000	Number of buildings	Total square metres	Total value R'000	Number of plans	Total square metres	Total value R'000	Total square metres	Total value R'000
Limpopo	2021	227 686	1 153 334	68	44 737	263 911	294	27 585	203 142	300 008	1 620 387
	2022	356 922	1 829 377	144	150 987	966 183	347	39 919	257 702	547 828	3 053 262
	2023	362 258	2 012 174	94	130 881	865 823	299	27 521	198 459	520 660	3 076 456
South Africa	2021	4 878 977	37 242 150	869	2 024 054	14 558 834	16 766	1 762 348	14 867 492	8 665 379	66 668 476
	2022	5 581 377	43 568 713	1 085	2 347 011	16 925 314	21 530	2 189 911	17 920 432	10 118 299	78 414 459
	2023	5 254 502	42 032 778	843	1 953 930	15 335 164	11 154	1 227 459	10 908 869	8 435 891	68 276 811

Table 8 – Number, square metres and value of residential buildings reported as completed to municipalities: dwelling-houses, flats and townhouses and other residential buildings by province

Municipal reporting aggregated to provincial level by year		Residential buildings										
		Dwelling-houses			Flats and townhouses			Other residential buildings ¹			Residential buildings reported as completed to municipalities	
		Number of dwelling-houses	Total square metres	Total value R'000	Number of units	Total square metres	Total value R'000	Number of buildings	Total square metres	Total value R'000	Total square metres	Total value R'000
Western Cape	2021	7 896	1 095 024	7 597 217	7 983	656 799	5 104 310	24	26 875	210 140	1 778 698	12 911 667
	2022	8 828	1 357 694	9 696 705	6 952	666 466	5 307 161	36	48 314	356 999	2 072 474	15 360 865
	2023	7 237	1 090 919	8 083 078	5 667	655 310	5 337 254	50	47 521	383 398	1 793 750	13 803 730
Eastern Cape	2021	1 930	206 775	1 299 455	390	46 205	311 224	3	1 992	10 667	254 972	1 621 346
	2022	2 026	210 472	1 479 225	540	53 649	371 048	40	10 439	73 640	274 560	1 923 913
	2023	2 755	295 127	2 142 597	672	68 881	521 383	14	3 474	22 391	367 482	2 686 371
Northern Cape	2021	404	70 596	508 018	32	3 782	24 459	3	1 671	13 357	76 049	545 834
	2022	555	99 632	665 010	42	6 129	41 527	1	680	4 500	106 441	711 037
	2023	438	63 529	467 207	69	8 486	57 836	13	5 531	37 749	77 546	562 792
Free State	2021	821	83 279	551 364	43	4 649	36 770	5	605	4 942	88 533	593 076
	2022	862	85 974	577 516	2	355	2 044	5	1 637	9 759	87 966	589 319
	2023	920	77 281	464 839	134	17 051	137 583	3	620	4 230	94 952	606 652
KwaZulu-Natal	2021	4 431	363 418	2 668 239	1 257	154 578	1 510 831	4	24 966	265 890	542 962	4 444 960
	2022	6 229	508 028	3 672 278	2 407	260 056	2 746 504	11	24 570	247 805	792 654	6 666 587
	2023	8 603	613 002	4 619 937	1 293	180 644	1 845 983	21	14 455	111 028	808 101	6 576 948
North West	2021	1 081	175 378	1 117 763	218	25 234	166 241	0	0	0	200 612	1 284 004
	2022	1 201	195 594	1 335 465	194	20 069	126 036	10	2 043	13 504	217 706	1 475 005
	2023	1 549	208 635	1 392 861	290	32 603	215 621	8	5 255	33 255	246 493	1 641 737
Gauteng	2021	6 682	940 682	7 925 665	5 785	597 429	5 639 712	3	1 411	13 416	1 539 522	13 578 793
	2022	7 789	1 041 201	9 412 417	4 082	441 192	4 316 127	2	3 266	27 955	1 485 659	13 756 499
	2023	6 396	898 377	8 557 106	4 616	426 728	4 373 053	2	1 817	20 590	1 326 922	12 950 749
Mpumalanga	2021	1 389	148 669	961 745	118	12 811	77 227	2	8 463	70 164	169 943	1 109 136
	2022	1 366	175 264	1 173 450	59	5 883	40 578	4	5 848	42 083	186 995	1 256 111
	2023	1 281	149 620	986 624	289	24 681	184 369	4	2 697	20 632	176 998	1 191 625

¹ Other residential buildings include institutions for the disabled, boarding houses, hostels and tourism accommodation (e.g. hotels, motels, guest-houses, holiday chalets, bed-and-breakfast accommodation and casinos).

Table 8 – Number, square metres and value of residential buildings reported as completed to municipalities: dwelling-houses, flats and townhouses and other residential buildings by province (concluded)

Municipal reporting aggregated to provincial level by year		Residential buildings										
		Dwelling-houses			Flats and townhouses			Other residential buildings ¹			Residential buildings reported as completed to municipalities	
		Number of dwelling-houses	Total square metres	Total value R'000	Number of units	Total square metres	Total value R'000	Number of buildings	Total square metres	Total value R'000	Total square metres	Total value R'000
Limpopo	2021	2 056	200 238	995 291	213	22 058	130 574	5	5 390	27 469	227 686	1 153 334
	2022	3 444	293 947	1 491 747	189	27 391	168 258	125	35 584	169 372	356 922	1 829 377
	2023	3 368	271 642	1 438 247	427	49 465	330 328	101	41 151	243 599	362 258	2 012 174
South Africa	2021	26 690	3 284 059	23 624 757	16 039	1 523 545	13 001 348	49	71 373	616 045	4 878 977	37 242 150
	2022	32 300	3 967 806	29 503 813	14 467	1 481 190	13 119 283	234	132 381	945 617	5 581 377	43 568 713
	2023	32 547	3 668 132	28 152 496	13 457	1 463 849	13 003 410	216	122 521	876 872	5 254 502	42 032 778

¹ Other residential buildings include institutions for the disabled, boarding houses, hostels and tourism accommodation (e.g. hotels, motels, guest-houses, holiday chalets, bed-and-breakfast accommodation and casinos).

Table 9 – Number, square metres and value of dwelling-houses reported as completed to municipalities by size of dwelling-house and province

Municipal reporting aggregated to provincial level by year		Size of dwelling-house						Dwelling-houses reported as completed to municipalities		
		Smaller than 80 square metres			Equal to or larger than 80 square metres					
		Number of dwelling-houses	Total square metres	Total value R'000	Number of dwelling-houses	Total square metres	Total value R'000	Number of dwelling-houses	Total square metres	Total value R'000
Western Cape	2021	4 024	180 920	1 056 893	3 872	914 104	6 540 324	7 896	1 095 024	7 597 217
	2022	3 843	170 695	1 024 425	4 985	1 186 999	8 672 280	8 828	1 357 694	9 696 705
	2023	3 336	148 698	979 062	3 901	942 221	7 104 016	7 237	1 090 919	8 083 078
Eastern Cape	2021	1 295	55 964	224 038	635	150 811	1 075 417	1 930	206 775	1 299 455
	2022	1 257	62 378	322 827	769	148 094	1 156 398	2 026	210 472	1 479 225
	2023	1 879	79 890	422 903	876	215 237	1 719 694	2 755	295 127	2 142 597
Northern Cape	2021	89	5 238	36 338	315	65 358	471 680	404	70 596	508 018
	2022	170	8 029	45 072	385	91 603	619 938	555	99 632	665 010
	2023	190	8 394	41 570	248	55 135	425 637	438	63 529	467 207
Free State	2021	502	27 024	165 435	319	56 255	385 929	821	83 279	551 364
	2022	517	24 993	146 620	345	60 981	430 896	862	85 974	577 516
	2023	683	32 210	139 264	237	45 071	325 575	920	77 281	464 839
KwaZulu-Natal	2021	3 707	152 629	549 682	724	210 789	2 118 557	4 431	363 418	2 668 239
	2022	5 400	233 819	916 746	829	274 209	2 755 532	6 229	508 028	3 672 278
	2023	7 643	317 136	1 494 594	960	295 866	3 125 343	8 603	613 002	4 619 937
North West	2021	363	19 460	99 107	718	155 918	1 018 656	1 081	175 378	1 117 763
	2022	368	20 687	113 292	833	174 907	1 222 173	1 201	195 594	1 335 465
	2023	772	37 678	194 105	777	170 957	1 198 756	1 549	208 635	1 392 861
Gauteng	2021	3 946	215 865	1 511 149	2 736	724 817	6 414 516	6 682	940 682	7 925 665
	2022	4 915	277 088	2 096 208	2 874	764 113	7 316 209	7 789	1 041 201	9 412 417
	2023	3 756	199 517	1 531 272	2 640	698 860	7 025 834	6 396	898 377	8 557 106
Mpumalanga	2021	904	42 454	180 736	485	106 215	781 009	1 389	148 669	961 745
	2022	715	35 824	162 465	651	139 440	1 010 985	1 366	175 264	1 173 450
	2023	759	36 153	158 426	522	113 467	828 198	1 281	149 620	986 624

Table 9 – Number, square metres and value of dwelling-houses reported as completed to municipalities by size of dwelling-house and province (concluded)

Municipal reporting aggregated to provincial level by year		Size of dwelling-house						Dwelling-houses reported as completed to municipalities		
		Smaller than 80 square metres			Equal to or larger than 80 square metres					
		Number of dwelling-houses	Total square metres	Total value R'000	Number of dwelling-houses	Total square metres	Total value R'000	Number of dwelling-houses	Total square metres	Total value R'000
Limpopo	2021	1 593	74 155	219 984	463	126 083	775 307	2 056	200 238	995 291
	2022	2 923	125 862	466 278	521	168 085	1 025 469	3 444	293 947	1 491 747
	2023	2 906	131 046	516 037	462	140 596	922 210	3 368	271 642	1 438 247
South Africa	2021	16 423	773 709	4 043 362	10 267	2 510 350	19 581 395	26 690	3 284 059	23 624 757
	2022	20 108	959 375	5 293 933	12 192	3 008 431	24 209 880	32 300	3 967 806	29 503 813
	2023	21 924	990 722	5 477 233	10 623	2 677 410	22 675 263	32 547	3 668 132	28 152 496

Table 10 – Number, square metres and value of flats and townhouses reported as completed to municipalities by province

Municipal reporting aggregated to provincial level by year		Flats			Townhouses			Flats and townhouses reported as completed to municipalities		
		Number of units	Total square metres	Total value R'000	Number of units	Total square metres	Total value R'000	Number of units	Total square metres	Total value R'000
Western Cape	2021	6 534	450 805	3 505 073	1 449	205 994	1 599 237	7 983	656 799	5 104 310
	2022	5 402	424 981	3 360 915	1 550	241 485	1 946 246	6 952	666 466	5 307 161
	2023	4 734	443 246	3 587 671	933	212 064	1 749 583	5 667	655 310	5 337 254
Eastern Cape	2021	140	11 375	73 656	250	34 830	237 568	390	46 205	311 224
	2022	369	19 154	123 967	171	34 495	247 081	540	53 649	371 048
	2023	452	26 703	202 501	220	42 178	318 882	672	68 881	521 383
Northern Cape	2021	0	0	0	32	3 782	24 459	32	3 782	24 459
	2022	18	1 311	10 623	24	4 818	30 904	42	6 129	41 527
	2023	8	858	6 006	61	7 628	51 830	69	8 486	57 836
Free State	2021	41	4 277	34 080	2	372	2 690	43	4 649	36 770
	2022	0	0	0	2	355	2 044	2	355	2 044
	2023	64	3 726	27 692	70	13 325	109 891	134	17 051	137 583
KwaZulu-Natal	2021	772	86 309	954 078	485	68 269	556 753	1 257	154 578	1 510 831
	2022	1 992	181 561	2 100 896	415	78 495	645 608	2 407	260 056	2 746 504
	2023	892	95 514	1 104 749	401	85 130	741 234	1 293	180 644	1 845 983
North West	2021	145	13 012	83 812	73	12 222	82 429	218	25 234	166 241
	2022	118	9 242	55 926	76	10 827	70 110	194	20 069	126 036
	2023	189	21 381	141 293	101	11 222	74 328	290	32 603	215 621
Gauteng	2021	1 207	91 221	1 058 996	4 578	506 208	4 580 716	5 785	597 429	5 639 712
	2022	911	60 835	656 404	3 171	380 357	3 659 723	4 082	441 192	4 316 127
	2023	1 646	122 054	1 291 474	2 970	304 674	3 081 579	4 616	426 728	4 373 053
Mpumalanga	2021	64	3 795	26 986	54	9 016	50 241	118	12 811	77 227
	2022	37	2 781	20 308	22	3 102	20 270	59	5 883	40 578
	2023	261	22 257	163 258	28	2 424	21 111	289	24 681	184 369

Table 10 – Number, square metres and value of flats and townhouses reported as completed to municipalities by province (concluded)

Municipal reporting aggregated to provincial level by year		Flats			Townhouses			Flats and townhouses reported as completed to municipalities		
		Number of units	Total square metres	Total value R'000	Number of units	Total square metres	Total value R'000	Number of units	Total square metres	Total value R'000
Limpopo	2021	18	1 339	8 074	195	20 719	122 500	213	22 058	130 574
	2022	60	4 330	30 110	129	23 061	138 148	189	27 391	168 258
	2023	185	9 266	62 292	242	40 199	268 036	427	49 465	330 328
South Africa	2021	8 921	662 133	5 744 755	7 118	861 412	7 256 593	16 039	1 523 545	13 001 348
	2022	8 907	704 195	6 359 149	5 560	776 995	6 760 134	14 467	1 481 190	13 119 283
	2023	8 431	745 005	6 586 936	5 026	718 844	6 416 474	13 457	1 463 849	13 003 410

Table 11.1 – Number, square metres and value of non-residential buildings reported as completed to municipalities by province: office and banking space, shopping space and industrial and warehouse space

Municipal reporting aggregated to provincial level by year		Non-residential buildings								
		Office and banking space			Shopping space			Industrial and warehouse space		
		Number of buildings	Total square metres	Total value R'000	Number of buildings	Total square metres	Total value R'000	Number of buildings	Total square metres	Total value R'000
Western Cape	2021	29	106 264	856 623	49	116 682	948 343	152	354 284	2 453 624
	2022	61	75 380	600 679	40	97 415	796 572	156	293 910	2 050 927
	2023	29	26 802	212 771	35	51 944	415 738	116	228 155	1 676 859
Eastern Cape	2021	15	16 297	109 584	19	22 657	135 742	28	137 417	991 777
	2022	16	11 320	74 278	16	40 985	319 393	31	33 183	197 502
	2023	14	8 907	62 878	16	11 954	80 234	22	34 147	255 563
Northern Cape	2021	7	2 558	18 410	13	3 632	26 677	5	4 570	36 261
	2022	8	2 827	22 276	11	5 249	37 644	19	31 041	241 194
	2023	6	2 924	25 954	9	7 914	63 731	4	1 569	12 124
Free State	2021	1	147	1 091	7	2 685	14 522	8	8 307	56 509
	2022	3	1 160	7 052	4	1 524	9 236	3	3 278	23 728
	2023	4	879	5 829	11	8 669	59 636	14	15 382	109 091
KwaZulu-Natal	2021	19	36 337	337 632	57	114 854	1 053 196	73	155 370	964 133
	2022	8	11 248	118 772	44	84 621	782 598	92	330 647	2 029 804
	2023	17	23 196	233 156	54	171 660	1 628 171	57	433 279	2 637 999
North West	2021	3	7 339	42 368	15	123 149	733 882	10	11 508	75 345
	2022	4	1 382	8 068	15	49 288	367 444	16	19 887	135 110
	2023	3	5 534	44 080	12	23 415	144 651	9	14 847	114 070
Gauteng	2021	9	30 407	374 815	19	115 114	1 158 117	55	379 629	2 191 974
	2022	14	40 386	411 461	18	126 940	1 439 571	63	587 462	3 658 606
	2023	14	128 383	1 601 309	19	124 410	1 468 363	52	297 588	2 029 080
Mpumalanga	2021	10	8 893	69 218	8	15 910	101 842	8	11 111	66 666
	2022	7	3 334	20 526	7	24 633	147 789	15	16 423	134 102
	2023	6	6 645	58 652	10	24 353	155 590	6	22 918	149 752

Table 11.1 – Number, square metres and value of non-residential buildings reported as completed to municipalities by province: office and banking space, shopping space and industrial and warehouse space (concluded)

Municipal reporting aggregated to provincial level by year		Non-residential buildings								
		Office and banking space			Shopping space			Industrial and warehouse space		
		Number of buildings	Total square metres	Total value R'000	Number of buildings	Total square metres	Total value R'000	Number of buildings	Total square metres	Total value R'000
Limpopo	2021	6	2 139	13 123	28	16 721	99 866	23	19 540	114 844
	2022	12	4 664	28 468	63	66 420	473 233	33	39 061	246 862
	2023	18	7 662	46 728	48	61 554	401 656	15	51 909	358 589
South Africa	2021	99	210 381	1 822 864	215	531 404	4 272 187	362	1 081 736	6 951 133
	2022	133	151 701	1 291 580	218	497 075	4 373 480	428	1 354 892	8 717 835
	2023	111	210 932	2 291 357	214	485 873	4 417 770	295	1 099 794	7 343 127

Table 11.2 – Number, square metres and value of non-residential buildings reported as completed to municipalities by province: schools, nursery schools, crèches, hospitals, churches, sports club, recreation clubs and all other non-residential space

Municipal reporting aggregated to provincial level by year		Non-residential buildings											
		Schools, nursery schools, crèches and hospitals			Churches, sport and recreation clubs			All other non-residential space			Non-residential buildings reported as completed to municipalities ¹		
		Number of buildings	Total square metres	Total value R'000	Number of buildings	Total square metres	Total value R'000	Number of buildings	Total square metres	Total value R'000	Number of buildings	Total square metres	Total value R'000
Western Cape	2021	24	31 311	225 216	13	12 890	90 142	63	18 710	119 406	330	640 141	4 693 354
	2022	24	39 245	278 150	33	20 849	139 749	88	92 770	719 508	402	619 569	4 585 585
	2023	12	24 984	179 540	17	5 857	48 123	91	31 595	227 049	300	369 337	2 760 080
Eastern Cape	2021	8	17 837	131 264	8	4 510	27 883	1	35	245	79	198 753	1 396 495
	2022	10	34 423	258 823	10	5 253	32 152	10	2 994	19 477	93	128 158	901 625
	2023	4	15 855	106 616	4	1 058	6 889	5	4 910	39 135	65	76 831	551 315
Northern Cape	2021	1	3 133	20 177	10	2 056	14 018	0	0	0	36	15 949	115 543
	2022	1	120	600	1	202	1 637	1	240	2 259	41	39 679	305 610
	2023	1	370	2 553	4	1 458	10 428	0	0	0	24	14 235	114 790
Free State	2021	1	4 235	37 937	2	489	2 624	1	63	440	20	15 926	113 123
	2022	0	0	0	3	674	3 885	0	0	0	13	6 636	43 901
	2023	0	0	0	0	0	0	0	0	0	29	24 930	174 556
KwaZulu-Natal	2021	6	3 778	29 374	4	3 440	21 920	0	0	0	159	313 779	2 406 255
	2022	12	21 234	202 463	13	6 222	54 630	5	1 647	4 402	174	455 619	3 192 669
	2023	9	7 085	73 437	20	12 180	118 065	6	13 344	138 607	163	660 744	4 829 435
North West	2021	0	0	0	3	5 561	30 206	0	0	0	31	147 557	881 801
	2022	6	15 375	89 898	4	2 027	11 456	3	2 225	15 555	48	90 184	627 531
	2023	1	516	4 396	3	1 247	7 713	0	0	0	28	45 559	314 910
Gauteng	2021	14	53 158	505 112	7	16 418	101 889	6	8 061	68 963	110	602 787	4 400 870
	2022	10	39 874	354 049	3	1 282	12 432	6	3 199	24 854	114	799 143	5 900 973
	2023	18	12 331	113 078	3	8 158	99 305	3	1 664	12 465	109	572 534	5 323 600
Mpumalanga	2021	6	2 960	16 407	4	5 551	33 349	0	0	0	36	44 425	287 482
	2022	5	9 399	77 363	6	1 647	11 857	16	1 600	9 600	56	57 036	401 237
	2023	6	4 126	30 141	3	837	6 520	0	0	0	31	58 879	400 655

¹ Non-residential buildings include office and banking space, shopping space, industrial and warehouse space, schools, nursery schools, crèches, hospitals, churches, sport clubs, recreation clubs and all other non-residential space – see Table 11.1 and Table 11.2.

Table 11.2 – Number, square metres and value of non-residential buildings reported as completed to municipalities by province: schools, nursery schools, crèches, hospitals, churches, sports club, recreation clubs and all other non-residential space (concluded)

Municipal reporting aggregated to provincial level by year		Non-residential buildings											
		Schools, nursery schools, crèches and hospitals			Churches, sport and recreation clubs			All other non-residential space			Non-residential buildings reported as completed to municipalities ¹		
		Number of buildings	Total square metres	Total value R'000	Number of buildings	Total square metres	Total value R'000	Number of buildings	Total square metres	Total value R'000	Number of buildings	Total square metres	Total value R'000
Limpopo	2021	3	1 345	6 725	5	3 874	22 895	3	1 118	6 458	68	44 737	263 911
	2022	12	19 103	106 187	8	4 090	20 358	16	17 649	91 075	144	150 987	966 183
	2023	7	5 934	37 040	3	1 511	8 753	3	2 311	13 057	94	130 881	865 823
South Africa	2021	63	117 757	972 212	56	54 789	344 926	74	27 987	195 512	869	2 024 054	14 558 834
	2022	80	178 773	1 367 533	81	42 246	288 156	145	122 324	886 730	1 085	2 347 011	16 925 314
	2023	58	71 201	546 801	57	32 306	305 796	108	53 824	430 313	843	1 953 930	15 335 164

¹ Non-residential buildings include office and banking space, shopping space, industrial and warehouse space, schools, nursery schools, crèches, hospitals, churches, sport clubs, recreation clubs and all other non-residential space – see Table 11.1 and Table 11.2.

Table 12 – Number, square metres and value of additions and alterations reported as completed to municipalities by province

Municipal reporting aggregated to provincial level by year		Additions and alterations to residential buildings			Additions and alterations to non-residential buildings			Internal alterations	Additions and alterations reported as completed to municipalities		
		Number of plans	Total square metres	Total value R'000	Number of plans	Total square metres	Total value R'000	Total value R'000	Number of plans	Total square metres	Total value R'000
Western Cape	2021	9 023	650 391	4 391 208	815	301 489	2 158 134	1 306 339	9 838	951 880	7 855 681
	2022	14 055	1 057 916	7 352 682	769	307 708	2 450 435	1 035 147	14 824	1 365 624	10 838 264
	2023	4 626	368 260	2 762 932	361	156 209	1 241 572	413 945	4 987	524 469	4 418 449
Eastern Cape	2021	1 580	124 672	864 844	112	25 267	181 537	87 342	1 692	149 939	1 133 723
	2022	1 393	132 700	953 529	307	80 686	574 591	37 143	1 700	213 386	1 565 263
	2023	1 193	93 776	747 452	154	53 510	429 710	36 558	1 347	147 286	1 213 720
Northern Cape	2021	523	42 867	331 593	31	10 496	85 393	4 846	554	53 363	421 832
	2022	586	48 112	396 295	23	6 076	48 603	5 221	609	54 188	450 119
	2023	351	28 559	243 470	13	4 136	38 226	7 194	364	32 695	288 890
Free State	2021	341	26 566	168 155	7	737	4 736	3 759	348	27 303	176 650
	2022	344	23 801	157 031	15	4 096	31 462	3 837	359	27 897	192 330
	2023	297	21 392	155 033	15	3 181	22 810	1 489	312	24 573	179 332
KwaZulu-Natal	2021	1 305	125 644	1 371 345	112	57 391	597 552	68 739	1 417	183 035	2 037 636
	2022	1 142	104 744	1 111 313	117	38 789	403 400	129 665	1 259	143 533	1 644 378
	2023	1 188	100 870	1 093 553	99	59 883	636 970	40 481	1 287	160 753	1 771 004
North West	2021	337	28 467	170 707	15	16 175	100 948	47 362	352	44 642	319 017
	2022	261	22 335	132 544	21	8 898	57 209	30 782	282	31 233	220 535
	2023	427	39 522	249 019	18	5 789	37 937	62 360	445	45 311	349 316
Gauteng	2021	1 869	205 123	1 748 400	79	90 379	658 871	27 144	1 948	295 502	2 434 415
	2022	1 759	203 225	1 870 835	88	80 204	607 257	38 672	1 847	283 429	2 516 764
	2023	1 598	174 211	1 697 994	82	43 966	376 603	30 707	1 680	218 177	2 105 304
Mpumalanga	2021	309	23 419	157 248	14	5 680	35 984	92 164	323	29 099	285 396
	2022	282	23 076	158 063	21	7 626	51 298	25 716	303	30 702	235 077
	2023	400	34 711	249 267	33	11 963	83 244	51 884	433	46 674	384 395

Table 12 – Number, square metres and value of additions and alterations reported as completed to municipalities by province (concluded)

Municipal reporting aggregated to provincial level by year		Additions and alterations to residential buildings			Additions and alterations to non-residential buildings			Internal alterations	Additions and alterations reported as completed to municipalities		
		Number of plans	Total square metres	Total value R'000	Number of plans	Total square metres	Total value R'000	Total value R'000	Number of plans	Total square metres	Total value R'000
Limpopo	2021	268	18 089	112 074	26	9 496	65 766	25 302	294	27 585	203 142
	2022	303	22 629	136 569	44	17 290	109 303	11 830	347	39 919	257 702
	2023	269	15 649	100 890	30	11 872	73 060	24 509	299	27 521	198 459
South Africa	2021	15 555	1 245 238	9 315 574	1 211	517 110	3 888 921	1 662 997	16 766	1 762 348	14 867 492
	2022	20 125	1 638 538	12 268 861	1 405	551 373	4 333 558	1 318 013	21 530	2 189 911	17 920 432
	2023	10 349	876 950	7 299 610	805	350 509	2 940 132	669 127	11 154	1 227 459	10 908 869

**Municipalities covered in the monthly and
annual surveys by province**

Table 13 – Municipalities covered in the monthly and annual surveys by province: Western Cape

Municipality	Main towns/areas within municipal boundaries	District municipality
Beaufort West ²	Beaufort West	Central Karoo
Bergrivier ²	Aurora, Piketberg, Porterville, Redelinghuys, Velddrif	West Coast
Bitou ¹	Plettenberg Bay	Eden
Breede Valley ¹	De Doorns, Rawsonville, Touws River, Worcester	Cape Winelands
Cape Agulhas ²	Bredasdorp, Napier, Struisbaai	Overberg
Cederberg ²	Cederberg, Citrusdal, Clanwilliam, Graafwater, Lamberts Bay, Leipoldtville	West Coast
City of Cape Town ¹	Bellville, Blue Downs, Brackenfell, Cape Town City Centre, Durbanville, Eersterivier, Fish Hoek, Goodwood, Gordon's Bay, Gugulethu, Khayelitsha, Kraaifontein, Kuilsrivier, Langa, Mfuleni, Milnerton, Mitchells Plain, Nyanga, Parow, Plumstead, Simon's Town, Somerset West, Strand	City of Cape Town
Drakenstein ¹	Blouvillei, Hermon, Paarl, Soetendal, Wellington	Cape Winelands
George ¹	George, Herolds Bay, Pacaltsdorp, Wilderness	Eden
Hessequa ²	Albertinia, Gouritsmond, Heidelberg, Riversdale, Slangrivier, Stilbaai	Eden
Kannaland ²	Calitzdorp, Ladismith, Van Wyksdorp, Zoar	Eden
Knysna ¹	Knysna, Sedgefield	Eden
Laingsburg ²	Laingsburg	Central Karoo
Langeberg ²	Ashton, Bonnievale, McGregor, Montagu, Robertson	Cape Winelands
Matzikama ²	Doringbaai, Klawer, Lutzville, Strandfontein, Van Rhynsdorp, Vredendal	West Coast
Mossel Bay ¹	Groot Brakrivier, Herbertsdale, Klein Brakrivier, Mossel Bay	Eden
Oudtshoorn ¹	De Rust, Dysselsdorp, Oudtshoorn	Eden

¹ Included in the monthly survey.

² Included in the annual survey.

Table 13 – Municipalities covered in the monthly and annual surveys by province: Western Cape (concluded)

Municipality	Main towns/areas within municipal boundaries	District municipality
Overstrand ¹	Betty's Bay, Fisherhaven, Gansbaai, Hangklip, Hawston, Hermanus, Kleinmond, Onrus, Rooiels Bay, Stanford, Vermont	Overberg
Prince Albert ²	Leeu-Gamka, Prince Albert	Central Karoo
Saldanha Bay ¹	Hopefield, Langebaan, Saldanha, Vredenburg	West Coast
Stellenbosch ¹	Franschhoek, Pniel, Stellenbosch	Cape Winelands
Swartland ¹	Darling, Koringberg, Malmesbury, Moorreesburg, Yzerfontein	West Coast
Swellendam ²	Barrydale, Buffeljagsrivier, Stormsvlei, Suurbraak, Swellendam	Overberg
Theewaterskloof ²	Caledon, Genadendal, Grabouw, Greyton, Riviersonderend, Villiersdorp	Overberg
Witzenberg ²	Ceres, Prince Alfred Hamlet, Tulbagh, Wolseley	Cape Winelands

¹ Included in the monthly survey.

² Included in the annual survey.

Table 14 – Municipalities covered in the monthly and annual surveys by province: Eastern Cape

Municipality	Main towns/areas within municipal boundaries	District municipality
Amahlathi ²	Cathcart, Kei Road, Keiskammahoek, Stutterheim	Amathole
Blue Crane Route ²	Cookhouse, Pearston, Somerset East	Sarah Baartman
Buffalo City ¹	Beacon Bay, Bisho, East London, Gonubie, Mdantsane, Qonce, Zwelitsha	Buffalo City
Dr. Beyers Naude ²	Aberdeen, Graaff-Reinet, Jansenville, Kendrew, Klipplaat, Nieu-Bethesda, Rietbron, Steytlerville, Waterford, Willowmore	Sarah Baartman
Elundini ²	Maclear, Mount Fletcher, Ugie	Joe Gqabi
Emalahleni ²	Dordrecht, Indwe, Lady Frere	Chris Hani
Engcobo ²	Coghlan, Langdon, Ngcobo, Whitmore	Chris Hani
Enoch Mgijima ¹	Hofmeyr, Molteno, Komani, Sterkstroom, Stormberg, Sada, Spring Valley, Tarkastad, Whittlesea	Chris Hani
Great Kei ²	Kei Mouth, Komga	Amathole
Ingquza Hill ²	Flagstaff, Lusikisiki	OR Tambo
Intsika Yethu ²	Cofimvaba, Qombolo, Tsomo	Chris Hani
Inxuba Yethemba ²	Cradock, Middelburg	Chris Hani
King Sabata Dalindyebo ¹	Mqanduli, Mthatha	OR Tambo
Kou-Kamma ²	Joubertina, Kareedouw	Sarah Baartman
Kouga ¹	Cape St Francis, Hankey, Humansdorp, Jeffreys Bay, Oyster Bay, Patensie, St Francis Bay	Sarah Baartman
Makana ¹	Alicedale, Makhanda, Riebeeck East	Sarah Baartman

¹ Included in the monthly survey.

² Included in the annual survey.

Table 14 – Municipalities covered in the monthly and annual surveys by province: Eastern Cape (concluded)

Municipality	Main towns/areas within municipal boundaries	District municipality
Matatiele ²	Cedarville, Matatiele	Alfred Nzo
Mbhashe ²	Elliotdale, Dutywa, Willowvale	Amathole
Mbizana ²	Bizana	OR Tambo
Mhlontlo ²	Qumbu, Sidwadweni, St Cuthberts, Tsolo	OR Tambo
Mnquma ²	Butterworth, Centane, Ngqamakhwe	Amathole
Ndlambe ¹	Alexandria, Bathurst, Kenton-on-Sea, Port Alfred	Sarah Baartman
Nelson Mandela Bay ¹	Despatch, Gqeberha, Uitenhage	Nelson Mandela Bay
Ngqushwa ²	Hamburg, Peddie	Amathole
Ntabankulu ²	Ntabankulu	OR Tambo
Nyandeni ²	Libode, Misty Mountain, Ngqeleni, Nobantu, Old Bunting, Stoneyridge, Tshani	OR Tambo
Port St Johns ²	Gemvale, Ntshilini, Port St Johns, Tombo	OR Tambo
Raymond Mhlaba ²	Adelaide, Alice, Bedford, Fort Beaufort, Hogsback, Middeldrift, Seymour	Amathole
Sakhisizwe ²	Cala, Elliot	Chris Hani
Senqu ²	Barkly East, Lady Grey, Rhodes, Rossouw, Sterkspruit	Joe Gqabi
Sundays River Valley ²	Kirkwood, Paterson	Sarah Baartman
Umzimvubu ²	Mount Ayliff, Mount Frere	Alfred Nzo
Walter Sisulu ¹	Aliwal North, Burgersdorp, Jamestown, Knapdaar, Oviston, Steynsburg, Venterstad	Joe Gqabi

¹ Included in the monthly survey.

² Included in the annual survey.

Table 15 – Municipalities covered in the monthly and annual surveys by province: Northern Cape

Municipality	Main towns/areas within municipal boundaries	District municipality
!Kheis ²	Boegoeberg, Groblershoop, Kleinbegin, Wegdraai	ZF Mgcawu
Dawid Kruiper ¹	Dagbreek, Gelukspruit, Karos, Louisvale, Sprigg, Upington	ZF Mgcawu
Dikgatlong ²	Barkly West, Delportshoop, Elandsdrift, Longlands, Mount Rupert, Windsorton	Frances Baard
Emthanjeni ²	Britstown, De Aar, Hanover	Pixley ka Seme
Ga-Segonyana ¹	Bekker, Ga-Mopedi, Gathlose, Kuruman, Mothibistad, Seoding	John Taolo Gaetsewe
Gamagara ²	Dibeng, Kathu, Sishen	John Taolo Gaetsewe
Hantam ²	Brandkop, Brandvlei, Calvinia, Hantam, Kanakies, Loeriesfontein, Niewoudtville	Namakwa
Joe Morolong ²	Bendell, Bothithong, Ditshipeng, Maswehatshe, Metsemantsi, Tsineng	John Taolo Gaetsewe
Kai !Garib ¹	Kakamas, Keimoes, Kenhardt	ZF Mgcawu
Kamiesberg ²	Garies, Hondeklipbaai, Kamieskroon, Leliefontein, Soebatsfontein	Namakwa
Kareeberg ²	Carnarvon, Vosburg, Vanwyksvlei	Pixley ka Seme
Karoo Hoogland ²	Fraserburg, Sutherland, Williston	Namakwa
Kgatelopele ²	Ariesfontein, Danielskuil, Lime Acres, Owendale, Papkuil, Silver Streams, Swartputs	ZF Mgcawu

¹ Included in the monthly survey.

² Included in the annual survey.

Table 15 – Municipalities covered in the monthly and annual surveys by province: Northern Cape (concluded)

Municipality	Main towns/areas within municipal boundaries	District municipality
Khâi-Ma ²	Namies, Pella, Pofadder	Namakwa
Magareng ²	Content, Warrenton, Windsorton Road	Frances Baard
Nama Khol ²	Concordia, Komaggas, Okiep, Springbok, Steinkopf	Namakwa
Phokwane ²	Ganspan, Hartswater, Jan Kempdorp, Pampierstad	Frances Baard
Renosterberg ²	Petrusville, Philipstown, Potfontein, Poupán, Vanderkloof	Pixley ka Seme
Richtersveld ²	Alexander Bay, Eksteenfontein, Kuboes, Lekkersing, Port Nolloth, Sendelingsdrif	Namakwa
SiyaThemba ²	Marydale, Niekerkshoop, Prieska	Pixley ka Seme
Siyancuma ²	Belmont, Campbell, Douglas, Griquatown, Salt Lake	Pixley ka Seme
Sol Plaatje ¹	Kenilworth, Kimberley, Modderrivier, Ritchie, Riverton, Spytfontein	Frances Baard
Thembelihle ²	Hopetown, Kraankuil, Orania, Oranjerivier, Strydenburg	Pixley ka Seme
Tsantsabane ²	Beeshoek, Glosam, Postmasburg	ZF Mgcau
Ubuntu ²	Loxton, Victoria West, Richmond	Pixley ka Seme
Umsobomvu ²	Agtertang, Colesberg, Norvalspont, Noupoot	Pixley ka Seme

¹ Included in the monthly survey.

² Included in the annual survey.

Table 16 – Municipalities covered in the monthly and annual surveys by province: Free State

Municipality	Main towns/areas within municipal boundaries	District municipality
Dihlabeng ¹	Bethlehem, Bohlokong, Clarens, Fouriesburg, Paul Roux, Rosendal	Thabo Mofutsanyana
Kopanong ²	Bethulie, Edenburg, Fauresmith, Gariep Dam, Jagersfontein, Philippolis, Reddersburg, Springfontein, Trompsburg	Xhariep
Letsemeng ²	Jacobsdal, Koffiefontein, Luckhoff, Oppermans, Petrusburg	Xhariep
Mafube ²	Cornelia, Frankfort, Namahadi, Roberts Drift, Tweeling, Villiers	Fezile Dabi
Maluti-a-Phofung ¹	Harrismith, Kestell, Phuthaditjhaba	Thabo Mofutsanyana
Mangaung ¹	Bloemfontein, Botshabelo, Thaba Nchu	Mangaung
Mantsopa ¹	Excelsior, Hobhouse, Ladybrand, Manyatseng, Thaba Phatshoa, Tweespruit	Thabo Mofutsanyana
Masilonyana ²	Brandfort, Soutpan, Theunissen, Verkeerdevlei, Winburg	Lejweleputswa
Matjhabeng ¹	Allanridge, Hennenman, Kutlwanong, Meloding, Odendaalsrus, Thabong, Ventersburg, Virginia, Welkom	Lejweleputswa
Metsimaholo ¹	Deneysville, Oranjeville, Sasolburg	Fezile Dabi
Mohokare ²	Rouxville, Smithfield, Zastron	Xhariep
Moqhaka ¹	Kroonstad, Maokeng, Steynsrus, Viljoenskroon	Fezile Dabi
Nala ²	Bothaville, Wesselsbron	Lejweleputswa
Ngwathe ¹	Edenville, Heilbron, Koppies, Parys, Vredefort	Fezile Dabi
Nketoana ²	Arlington, Lindley, Petrus Steyn, Reitz	Thabo Mofutsanyana
Phumelela ²	Memel, Vrede, Warden	Thabo Mofutsanyana
Setsoto ²	Clocolan, Ficksburg, Marquard, Senekal	Thabo Mofutsanyana
Tokologo ²	Boshof, Dealesville, Hertzogville, Wolwespruit	Lejweleputswa
Tswelopele ²	Bultfontein, Hoopstad	Lejweleputswa

¹ Included in the monthly survey.

² Included in the annual survey.

Table 17 – Municipalities covered in the monthly and annual surveys by province: KwaZulu-Natal

Municipality	Main towns/areas within municipal boundaries	District municipality
AbaQulusi ²	Alpha, Calvert, Gluckstadt, Hlobane, Louwsburg, Ngome, Swart Umfolozi, Vryheid	Zululand
Alfred Duma ¹	Colenso, Ekuvukeni, Etholeni, Ingwe, Kliprivier, Ladysmith, Limehill, Mabaso, Rockcliff, Sams Hoek	uThukela
Big 5 Hlabisa ²	Hlabisa	uMkhanyakude
City of uMhlatuze ¹	Empangeni, Richards Bay	King Cetshwayo
Dannhauser ²	Dannhauser, Hattingspruit	Amajuba
Dr Nkosazana Dlamini-Zuma ²	Amangwane, Bulwer, Coleford, Creighton, Deepdale, Donnybrook, Himeville, Ncwadi, Pevensey, Sizanenjana, Underberg	Harry Gwala
eDumbe ²	Bivane, Braunschweig, Grootspuit, Luneburg, Mpemvana, Paulpietersburg	Zululand
eMadlangeni ²	Blood River, Groenvlei, Kingsley, Utrecht	Amajuba
Endumeni ²	Dundee, Glencoe, Van Rooyen, Vant's Drift, Wasbank	Umzinyathi
eThekwini ¹	Amanzimtoti, Botha's Hill, Cato Ridge, Clermont, Drummond, Durban, Hillcrest, Inchanga, Kingsburgh, Kloof, KwaDabeka, KwaMakhutha, KwaMashu, Mount Edgecombe, Mpumalanga New Germany, Pinetown, Queensburgh, Tongaat, Umdloti, Umhlanga, Umlazi, Verulam, Westville	eThekwini
Greater Kokstad ¹	Bonny Ridge, Franklin, Kingscote, Kokstad, New Amalfi, Swartberg	Harry Gwala
Impendle ²	Boston, Impendle, Lower Loteni, Runnymede	uMgungundlovu
Inkosi Langalibalele ²	Bhoshi, Ennersdale, Estcourt, Frere, KwaDlamini, Khwezi, Loskop, Lowlands, Ndaba, Rosedale, South Downs, Webesi, Weenen	uThukela

¹ Included in the monthly survey.

² Included in the annual survey.

Table 17 – Municipalities covered in the monthly and annual surveys by province: KwaZulu-Natal (continued)

Municipality	Main towns/areas within municipal boundaries	District municipality
Jozini ²	Bayala, Ingwavuma, Jozini, Mkhuze, Ndumo, Ubombo	uMkhanyakude
KwaDukuza ¹	Ballito, Blythedale Beach, Shakaskraal, Stanger, Tinley Manor Beach, Zinkwazi Beach	Ilembe
Mandeni ²	Isithebe, Mandeni, Newark, Nyoni, Sundumbili, Tugela, Tugela Mouth	Ilembe
Maphumulo ²	Fort Mtombeni, Maphumulo, Ntunjambi, Otimati	Ilembe
Mkhambathini ²	Camperdown, Edinglassie, Eston, Manderston, Mid-Illovo, Umgeni Dam, Umlaas Road	uMgungundlovu
Mpofana ²	Hidcote, Middelrus, Mooi River, Redcliffe, Rietvlei, Rosetta, The Grove	uMgungundlovu
Msinga ²	Elandskraal, Helpmekaar, Keate's Drift, Ngubevu, Pomeroy, Rorke's Drift, Tugela Ferry	Umzinyathi
Msunduzi ¹	Edendale, Ashburton, Pietermaritzburg	uMgungundlovu
Mthonjaneni ²	Melmoth, Mthonjaneni, Mnanyando, Ndundulu	King Cetshwayo
Mtubatuba ²	Mtubatuba, River View, St Lucia	uMkhanyakude
Ndwedwe ²	Glendale, Ndwedwe, Nsuze	Ilembe
Newcastle ¹	Madadeni, Newcastle, Osizweni	Amajuba
Nkandla ²	Dlolwana, Nkandla, Osborn	King Cetshwayo
Nongoma ²	Nongoma, Thokazi	Zululand
Nquthu ²	Mangeni, Nomamba, Nquthu, Nondweni, Ntabebomvu, Silutshana	Umzinyathi
Okhahlamba ²	Bergville, Cathkin Park, Winterton	uThukela

¹ Included in the monthly survey.

² Included in the annual survey.

Table 17 – Municipalities covered in the monthly and annual surveys by province: KwaZulu-Natal (concluded)

Municipality	Main towns/areas within municipal boundaries	District municipality
Ray Nkonyeni ¹	Hibberdene, Margate, Marina Beach, Munster, Port Edward, Port Shepstone, Ramsgate, Shelly Beach, Southbroom, St Michael's-on-Sea, Trafalgar, Uvongo	Ugu
Richmond ²	Arnold's Hill, Byrne, Greenhill, Hella Hella, KwaMagoda, Ndaleni, Nelsrus, Richmond	uMgungundlovu
Ubuhlebezwe ²	Highflats, Hlutankungu, Ixopo, Nhlavini	Harry Gwala
Ulundi ²	Babanango, Ilgakazi, KwaCeza, Mahlabatini, Mpungamhlophe, Ulundi	Zululand
Umdoni ¹	Pennington, Scottburgh, Umzinto	Ugu
uMfolozi ²	KwaMbonambi, Mposa, Teza	King Cetshwayo
uMhlabuyalingana ²	Emanguzi, Mbazwana, Mseleni	uMkhanyakude
uMlalazi ²	Amatikulu, Blackburn, Eshowe, Gingindlovu, Middledrift, Mtunzini, Nkwalini, Ntambanana, Umunywana	King Cetshwayo
uMngeni ¹	Hilton, Howick, Nottingham Road	uMgungundlovu
Umshwathi ²	Albert Falls, Bruyns Hill, Dalton, Harburg, New Hanover, Wartburg	uMgungundlovu
Umsinga		Umzinyathi
Umuziwabantu ²	Harding, Weza	Ugu
Umvoti ²	Ahrens, Greytown, Jameson's Drift, Kranskop, Muden, Sevenoaks	Umzinyathi
Umzimkhulu ²	Bisi, Bontrand, Riverside, Sneezewood, Stafford's Post, Umzimkhulu	Harry Gwala
Umzumbe ²	Glen Echo, Hlokozi, Kwa-Dweshula, Mehломnyama, Msinsini, Nyavini, Turton	Ugu
uPhongolo ²	Candover, Golela, Kingholm, Magudu, Mahlangasi, Nkonkoni, Pongola	Zululand

¹ Included in the monthly survey.

² Included in the annual survey.

Table 18 – Municipalities covered in the monthly and annual surveys by province: North West

Municipality	Main towns/areas within municipal boundaries	District municipality
City of Matlosana ¹	Hartbeesfontein, Klerksdorp, Orkney, Stilfontein	Dr Kenneth Kaunda
Ditsobotla ¹	Coligny, Itsooseng, Lichtenburg	Ngaka Modiri Molema
Greater Taung ²	Lykso, Madipelesa, Pudimoe, Reivilo, Steekdorings, Taung	Dr Ruth Segomotsi Mompati
JB Marks ¹	Potchefstroom, Ventersdorp	Dr Kenneth Kaunda
Kagisano-Molopo ²	Alettasrus, Algiers, Coetzersdam, Craffhole, Geluk, Morokweng, Bray, Moloporivier, Pomfret, Vorstershoop, Vergeleë	Dr Ruth Segomotsi Mompati
Kgetlengrivier ²	Derby, Koster, Lindleypoot, Millvale, Rusverby, Swartruggens	Bojanala Platinum
Lekwa-Teemane ²	Bloemhof, Britten, Christiana	Dr Ruth Segomotsi Mompati
Madibeng ¹	Brits, De Wildt, Hartbeespoort, Letlhabile	Bojanala Platinum
Mahikeng ¹	Mahikeng, Ottoshoop	Ngaka Modiri Molema
Mamusa ²	Amalia, Glaudina, Koosfontein, Mamusa (Schweizer-Reneke), Migdol	Dr Ruth Segomotsi Mompati
Maquassi Hills ²	Leeudoringstad, Makwassie, Strydpoort, Witpoort, Wolmaransstad	Dr Kenneth Kaunda
Moretele ²	KwaRatsiepane, Makapanstad, Swartbooistad	Bojanala Platinum
Moses Kotane ²	Dwarsberg, Mabaalstad, Mabeskraal, Mogwase, Silkaatskop, Sun City	Bojanala Platinum
Naledi ¹	Stella, Vryburg	Dr Ruth Segomotsi Mompati
Ramotshere Moiloa ¹	Zeerust	Ngaka Modiri Molema
Ratlou ²	Kraaipan, Madibogo, Setlagole	Ngaka Modiri Molema
Rustenburg ¹	Marikana, Rustenburg	Bojanala Platinum
Tswaing ²	Delareyville, Gerdau, Ottosdal, Sannieshof	Ngaka Modiri Molema

¹ Included in the monthly survey.

² Included in the annual survey.

Table 19 – Municipalities covered in the monthly and annual surveys by province: Gauteng

Municipality	Main towns/areas within municipal boundaries	District municipality
City of Johannesburg ¹	Alexandra, Eikenhof, Eldorado Park, Ennerdale, Fourways, Florida, Grasmere, Halfway House, Honeydew, Johannesburg, Kyalami, Lawley Estate, Lenasia, Midrand, Modderfontein, Randburg, Randjiesfontein, Rivonia, Roodepoort, Sandton, Soweto, Van Wyksrust	City of Johannesburg
City of Tshwane ¹	Akasia, Atteridgeville, Babelegi, Bon Accord, Bronkhorstspuit, Centurion, Diloye, Doornrandjies, Ekangala, Erasmia, Ga-Mokone, Ga-Rankuwa, Garsfontein, Hammanskraal, Irene, Klippan, Mabopane, Mamelodi, Onderstepoort, Pinedene, Pretoria, Pretoria North, Soshanguve, Temba, Tierpoort, Tswaing, Valhalla, Welbekend, Winterveld	City of Tshwane
Ekurhuleni ¹	Alberton, Bedfordview, Benoni, Boksburg, Brakpan, Daveyton, Duduza, Edenvale, Germiston, Katsela, Kempton Park, KwaThema, Nigel, Springs, Tembisa, Thokoza, Tsakane, Vosloorus	Ekurhuleni
Emfuleni ¹	Evaton, Boipatong, Bophelong, Sebokeng, Sharpeville, Vanderbijlpark, Vereeniging	Sedibeng
Lesedi ¹	Heidelberg, Rensburgdorp, Ratanda	Sedibeng
Merafong City ¹	Carletonville, Fochville, Khutsong	West Rand
Midvaal ¹	Daleside, De Deur, Henly-on-Klip, Highbury, Meyerton, Randvaal, Walkerville	Sedibeng
Mogale City ¹	Battery, Elberta, Hekpoort, Krugersdorp, Luipaardsvlei, Magaliesburg, Muldersdrift, Nooitgedacht, Thorndale	West Rand
Randfontein ¹	Finsbury, Kocksoord, Mohlakeng, Randfontein	West Rand
Westonaria ¹	Bekkersdal, Venterspos, Westonaria	West Rand

¹Included in the monthly survey.

Table 20 – Municipalities covered in the monthly and annual surveys by province: Mpumalanga

Municipality	Main towns/areas within municipal boundaries	District municipality
Bushbuckridge ²	Acornhoek, Dwarsloop, Mkhuhlu, Thulamahashe	Ehlanzeni
Chief Albert Luthuli ²	Badplaas, Carolina, Hartbeeskop, Lochiel	Gert Sibande
City of Mbombela ¹	Hazyview, KaNyamazane, Nelspruit, White River	Ehlanzeni
Dipaleseng ²	Balfour, Dasville, Greylingstad, Grootvlei, Rietbult Estate	Gert Sibande
Dr J S Moroka ²	Siyabuswa	Nkangala
Dr Pixley Ka Isaka Seme ²	Amersfoort, Latemanek, Perdekop, Seme (Volksrust), Wakkerstroom	Gert Sibande
Emakhazeni ²	Belfast, Dullstroom, Machadodorp, Waterval-Boven, Waterval-Onder	Nkangala
Emalahleni ¹	KwaGuqa, Witbank	Nkangala
Govan Mbeki ¹	Bethal, Evander, Leandra, Secunda	Gert Sibande
Lekwa ²	Bettiesdam, Holmdene, Maizefield, Meyersville, Morgenzon, Platrand, Standerton	Gert Sibande
Mkhondo ²	Amsterdam, Anysspruit, Berbice, Comondale, Iswepe, Piet Retief, Wittenberg	Gert Sibande
Msukaligwa ¹	Breyton, Chrissiesmeer, Davel, Ermelo, Lothair, Sheepmoor, Warburton	Gert Sibande
Nkomazi ¹	Hectorspruit, Komatipoort, Malelane, Marloth Park	Ehlanzeni
Steve Tshwete ¹	Hendrina, Mhluzi, Middelburg	Nkangala
Thaba Chweu ²	Graskop, Lydenburg, Sabie	Ehlanzeni
Thembisile Hani ²	KwaMhlanga, Moloto, Sybrandskraal	Nkangala
Victor Khanye ¹	Argent, Delmas, Eloff, Sundra	Nkangala

¹ Included in the monthly survey.

² Included in the annual survey.

Table 21 – Municipalities covered in the monthly and annual surveys by province: Limpopo

Municipality	Main towns/areas within municipal boundaries	District municipality
Ba-Phalaborwa ²	Gravelotte, La Cotte, Phalaborwa	Mopani
Bela-Bela ²	Bela-Bela, Mabula, Pienaarsrivier, Rust de Winter, Settlers	Waterberg
Blouberg ²	Alldays, Blinkwater, Blouberg, Gregory, Senwabarwana	Capricorn
Elias Motsoaledi ²	Dennilton, Groblersdal, Hlogotlou, Laersdrif, Maleoskop, Mossiesdal, Motetema, Rooikraal, Roosenekal	Sekhukhune
Ephraim Mogale ²	Hereford, Marble Hall, Moganyaka, Tompi Seleka	Sekhukhune
Fetakgomo Tubatse ²	Burgersfort, Mogaba, Morone, Orighstad, Steelpoort, Zeekoegat	Sekhukhune
Greater Giyani ²	Dzumeri, Giyani, Nkomo, Phalakubeni	Mopani
Greater Letaba ²	Modjadjiskloof, Ga-Kgapane, Mamaila, Mooketsi	Mopani
Greater Tzaneen ¹	Haenertsburg, Letsitele, Politsi, Rubbervale, Nkowankowa, Tzaneen	Mopani
Lepelle-Nkumpi ²	Chuenespoort, Gompies, Lebowakgomo, Zebediela	Capricorn
Lephalale ²	Baltimore, Lephalale, Matlabas, Swartwater, Tolwe	Waterberg
Makhado ²	Carlow, Elim, Buysdorp, Levubu, Makhado, Mara	Vhembe
Makhuduthamaga ²	Glen Cowie, Jane Furse, Malaita, Nebo, Phokwane, Sekhukhune	Sekhukhune
Maruleng ²	Hoedspruit, Kampersrus, Lorraine, Mica, Olifantshoek, Trichardsdal	Mopani

¹ Included in the monthly survey.

² Included in the annual survey.

Table 21 – Municipalities covered in the monthly and annual surveys by province: Limpopo (concluded)

Municipality	Main towns/areas within municipal boundaries	District municipality
Modimolle ¹	Haakdoring, Mabaleng, Modimolle, Palala	Waterberg
Mogalakwena ¹	Drummondlea, Mahwelereng, Mokopane, Uitzicht	Waterberg
Molemole ²	Blouhaak, Botlokwa, Bylsteel, Groot Spelonke, Kalkbank, Mogwadi, Morebeng, Munnik, Rita, Thorndale	Capricorn
Mookgophong ¹	Crecy, Immerpan, Mookgophong, Thusang	Waterberg
Musina ¹	Beitbridge, Bridgewater, Brombeek, Evangelina, Huntleigh, Mopane, Musina, Tshipise	Vhembe
Mutale ²	Masisi, Mutale, Sagale Spa, Tshilamba	Vhembe
Polokwane ¹	Limburg, Mashashane, Matlala, Polokwane, Seshego	Capricorn
Thabazimbi ¹	Dwaalboom, Northam, Rooiberg, Thabazimbi	Waterberg
Thulamela ²	Malamulele, Mavambe, Mhinga, Muswane, Thohoyandou	Vhembe

¹ Included in the monthly survey.

² Included in the annual survey.

Explanatory notes

Introduction	1	Statistics South Africa (Stats SA) conducts a monthly survey of metropolitan municipalities and selected large local municipalities on building plans passed and buildings completed for the private sector. An annual survey of the remaining municipalities is conducted regarding buildings completed. This report contains buildings reported as completed to all municipalities, aggregated to provincial level for 2021, 2022 and 2023 – see Part 1 and Part 2. Municipal reporting for buildings completed are available in an Excel format from 2014 to 2023. The Excel files are available from Stats SA’s website on the publication page for Report-50-11-01 – Building statistics, under ‘Additional downloads’ on the following link: http://www.statssa.gov.za/?page_id=1854&PPN=Report-50-11-01 .
Scope of the survey	2	This survey covers municipalities conducting activities regarding: <ul style="list-style-type: none"> • final inspection of completed buildings and issuing of occupation certificates.
Statistical unit	3	The statistical units for the collection of information are metropolitan municipalities, local municipalities and district municipalities.
Classification	4	Building activities are classified in division five according to the 1993 edition of the <i>Standard Industrial Classification of All Economic Activities</i> (SIC), Fifth Edition, Report No. 09-90-02. The SIC is based on the 1990 <i>International Standard Industrial Classification of All Economic Activities</i> (ISIC) with suitable adaptations for local conditions.
Survey methodology and design	5	Stats SA conducts a monthly survey of metropolitan municipalities and large local municipalities on building plans passed and buildings completed. An annual survey of the remaining municipalities is conducted regarding buildings completed. Information regarding building plans passed and buildings completed for the private sector is collected by email, telephone and field visits.
Comparison between building plans passed and buildings completed	6	No direct comparison can be made between building plans passed and buildings completed for the following reasons: <ul style="list-style-type: none"> • an unknown number of building plans are passed and afterwards not executed; • if building operations have not commenced within the first year after approval, building plans are resubmitted; • the time-lag between the date of passing of a building plan and the date of completion of the building varies considerably; and • according to municipalities, final inspections of completed buildings are not always executed and therefore not recorded as completed.
Collection rate	7	The collection rate for the year 2023 was 80,2%. The revised collection rate for 2022 was 76,8%.
Revised figures	8	Revised figures are mainly due to late submission of data to Stats SA, or respondents reporting revisions or corrections to their figures. Figures for 2021, 2022 and 2023 are preliminary and subject to revision.
Number of dwelling-houses	9	The number of dwelling-houses is shown and not the number of plans passed or completed, since one plan may cover more than one dwelling-house.

Related publications**10** Users may also wish to refer to the following publications:

- P5041.1 *Selected building statistics of the private sector as reported by local government institutions* issued monthly.
- P5041.3 *Selected building statistics of the private sector as reported by local government institutions* issued annually.
- P9101 *Capital expenditure for the public sector* issued annually.

The following reports contain information of building plans passed (monthly survey) and buildings completed (monthly and annual surveys):

- Report No. 50-11-01 (1996) - with summaries from 1995.
- Report No. 50-11-01 (1997) - with summaries from 1995.
- Report No. 50-11-01 (1998) - with summaries from 1996.
- Report No. 50-11-01 (2001) - with summaries from 1999.
- Report No. 50-11-01 (2002) - with summaries from 2000.

The following reports contain information of buildings completed:

- Report No. 50-11-01 (2003) - with summaries from 2001.
- Report No. 50-11-01 (2004) - with summaries from 2002.
- Report No. 50-11-01 (2005) - with summaries from 2003.
- Report No. 50-11-01 (2006) - with summaries from 2004.
- Report No. 50-11-01 (2007) - with summaries from 2005.
- Report No. 50-11-01 (2008) - with summaries from 2006.
- Report No. 50-11-01 (2009) - with summaries from 2007.
- Report No. 50-11-01 (2010) - with summaries from 2008.
- Report No. 50-11-01 (2011) - with summaries from 2009.
- Report No. 50-11-01 (2012) - with summaries from 2010.
- Report No. 50-11-01 (2013) - with summaries from 2011.
- Report No. 50-11-01 (2014) - with summaries from 2012.
- Report No. 50-11-01 (2015) - with summaries from 2013.
- Report No. 50-11-01 (2016) - with summaries from 2014.
- Report No. 50-11-01 (2017) - with summaries from 2015.
- Report No. 50-11-01 (2018) - with summaries from 2016.
- Report No. 50-11-01 (2019) - with summaries from 2017.
- Report No. 50-11-01 (2020) - with summaries from 2018.
- Report No. 50-11-01 (2021) - with summaries from 2019.
- Report No. 50-11-01 (2022) - with summaries from 2020.

Reliability of estimates**11** Inaccuracies may occur because of imperfections in reporting by municipalities. Every effort is made to reduce errors to a minimum by carefully editing and evaluating data and querying of data.

Rounding-off of figures

- 12** The figures in the tables have, where necessary, been rounded off to the nearest digit shown. There may, therefore, be slight discrepancies between the sums of the constituent items and the totals shown.

Symbols and abbreviations

- 13**
- | | |
|----------|---|
| 0 | Nil or figure too small to publish |
| * | Revised figures |
| .. | No data reported |
| Stats SA | Statistics South Africa |
| SIC | Standard Industrial Classification of All Economic Activities |
| ISIC | International Standard Industrial Classification of All Economic Activities |
| GDP | Gross domestic product |
| DMA | District Management Area |

Glossary

Additions and alterations	Extensions to existing buildings as well as internal and external alterations of existing buildings.
Annual percentage change	Annual percentage change is the change in the value of buildings completed for a certain year compared with the value of buildings completed in a previous year expressed as a percentage.
Blocks of flats	High-density housing consisting of a number of self-contained dwelling-units with at least one living-room together with a kitchen and bathroom conjoined to similar units in one building.
Dwelling-house	A free-standing, complete structure on a separate stand or a self-contained dwelling-unit, e.g. granny flat, on the same premises as an existing residence. Out-buildings and garages are included.
District municipality	A municipality that has municipal executive and legislative authority in an area that includes more than one municipality, and which is described in Section 155(1) of the Constitution as a category C municipality (refer to Local Government: Municipal Structure Act, 1998 (Act No. 117 of 1998)).
District Management Area	<p>District municipalities are not in general responsible for passing of building plans or issuing of final occupation certificates. These functions are primarily the responsibility of the metropolitan municipalities and the local municipalities. However, district municipalities will execute these functions in the following cases:</p> <ul style="list-style-type: none">• For rural areas that do not fall under the jurisdiction of either a metropolitan or local municipality. These areas are referred to as District Management Areas (DMA) and are managed directly by district municipalities.• Where local municipalities have requested the district municipality to perform this function. In such cases an agreement known as a service level agreement is reached between the local municipality and the district municipality. The local municipality will pay a fee to the district municipality for the service rendered.
Local municipality	A municipality that shares municipal executive and legislative authority in its area with a district municipality within whose area it falls, and which is described in section 155(1) of the Constitution as a category B municipality (refer to Local Government: Municipal Structure Act, 1998 (Act No. 117 of 1998)).
Metropolitan municipality	A municipality that has municipal executive and legislative authority in an area that includes more than one municipality, and which is described in section 155(1) of the Constitution as a category A municipality (refer to Local Government: Municipal Structure Act, 1998 (Act No. 117 of 1998)).
Municipality	A generic term describing the unit of government in the third sphere responsible for local government in a geographically demarcated area. It includes district, metropolitan and local municipalities.

Non-residential buildings	Factories and commercial, financial and other office buildings, as well as other buildings used for non-residential purposes, such as churches, halls, clubs, schools and hospitals.
Other residential buildings	Institutions for the disabled, boarding houses, hostels and tourism accommodation e.g. hotels, motels, guest-houses, holiday chalets, bed-and-breakfast accommodation and casinos.
Reference period	Reference period is a calendar year.
Residential buildings	Dwelling-houses, flats, townhouses and other residential buildings.
Townhouses	Multiple, medium-density dwelling-units including cluster housing, group housing, simplexes, duplexes, triplexes and other similar dwelling-units which are usually grouped together, with one level of each unit on ground level. This category excludes blocks of flats.