



stats sa

Department:
Statistics South Africa
REPUBLIC OF SOUTH AFRICA

Building statistics, 2018

Embargoed until:
26 August 2020
14:30

Report No. 50-11-01 (2018)

Statistics South Africa

Risenga Maluleke
Statistician-General

Dipalopalo tsa Aforikaborwa • Dipalopalo tsa Aforika Borwa • Ezazibalo zaseNingizimu Afrika • Tshitatistika Afrika Tshipembe • Tinhlayo Afrika-Dzonga

Statistieke Suid-Afrika • Dipalopalo tsa Aforika Borwa • Telubalo zaseNingizimu Afrika • EzeeNkcukacha maNani zoMzantsi Afrika • Iimbalobalo zeSewula Afrika

IMPROVING LIVES THROUGH DATA ECOSYSTEMS



Building statistics, 2018 / Statistics South Africa

Published by Statistics South Africa, Private Bag X44, Pretoria 0001

© Statistics South Africa, 2020

Users may apply or process this data, provided Statistics South Africa (Stats SA) is acknowledged as the original source of the data; that it is specified that the application and/or analysis is the result of the user's independent processing of the data; and that neither the basic data nor any reprocessed version or application thereof may be sold or offered for sale in any form whatsoever without prior permission from Stats SA.

Stats SA Library Cataloguing-in-Publication (CIP) Data

Building statistics, 2018 / Statistics South Africa. Pretoria: Statistics South Africa, 2020

Report No. 50-11-01 (2018)

53 pp

ISBN 978-0-621-48700-8

A complete set of Stats SA publications is available at Stats SA Library and the following libraries:

National Library of South Africa, Pretoria Division
National Library of South Africa, Cape Town Division
Library of Parliament, Cape Town
Bloemfontein Public Library
Natal Society Library, Pietermaritzburg
Johannesburg Public Library

Eastern Cape Library Services, King William's Town
Central Regional Library, Polokwane
Central Reference Library, Mbombela
Central Reference Collection, Kimberley
Central Reference Library, Mmabatho

This report is available on the Stats SA website: www.statssa.gov.za

For technical enquiries, please contact:

Tsholofelo Ditinti / Nicolai Claassen

Tel.: 072 917 6444 / 064 500 3082

Email: tsholofelod@statssa.gov.za / nicolaic@statssa.gov.za

Contents

Introduction iii

Key findings for the monthly and annual surveys iv

List of detailed tables vii

List of municipalities covered in the monthly and annual surveys viii

Part 1 – Municipal reporting of buildings completed aggregated to provincial level: monthly survey

Table 1 to Table 6 1

Part 2 – Municipal reporting of buildings completed aggregated to provincial level: monthly and annual surveys

Table 7 to Table 12 15

Municipalities covered in the monthly and annual surveys by province

Table 13 to Table 21 29

Explanatory notes 49

Glossary 52

Introduction

Statistics South Africa (Stats SA) conducts a monthly survey of metropolitan municipalities and large local municipalities on building plans passed and buildings completed for the private sector. An annual survey of the remaining municipalities is conducted regarding buildings completed. The following information is presented in this report:

- In Part 1, Tables 1 to 6, information is published for the monthly survey on buildings completed by type of building at provincial level for 2016, 2017 and 2018.
- In Part 2, Tables 7 to 12, information is published for the monthly and annual surveys on buildings completed by type of building at provincial level for 2016, 2017 and 2018.
- Municipal reporting for buildings completed are available in Excel format from 2014 to 2018. The Excel files are available from Stats SA's website on the publication page for Report-50-11-01 – Building statistics, under 'Additional downloads' (see the link below).

http://www.statssa.gov.za/?page_id=1854&PPN=Report-50-11-01

Building plans passed and buildings reported as completed for 2019 (monthly survey only) were published in the annual statistical release P5041.3 – *Selected building statistics of the private sector as reported by local government institutions*, 2019 on 10 June 2020 and can be accessed on Stats SA's website, www.statssa.gov.za.

Purpose of the surveys

The results of these surveys are used in monitoring the state of the economy and the formulation of economic policy. The results are important inputs for estimating gross domestic product (GDP) and are extensively used by the private sector.

Table A – Value of buildings reported as completed to municipalities

Year	Monthly survey	Monthly and annual surveys	% contribution of monthly survey to total of monthly and annual surveys
	R million	R million	
2016	61 417,2	69 974,2	87,8
2017	73 370,4	83 385,2	88,0
2018	73 416,3	82 733,4	88,7

The percentage contribution of the total value of buildings completed as reported in the monthly survey compared with the value of monthly and annual surveys increased by 0,7 of a percentage point from 88,0% in 2017 to 88,7% in 2018 (see Table A).

Key findings for the monthly and annual surveys

Table B – Selected key figures regarding buildings reported as completed (at current prices) for 2017 and 2018 by type of building

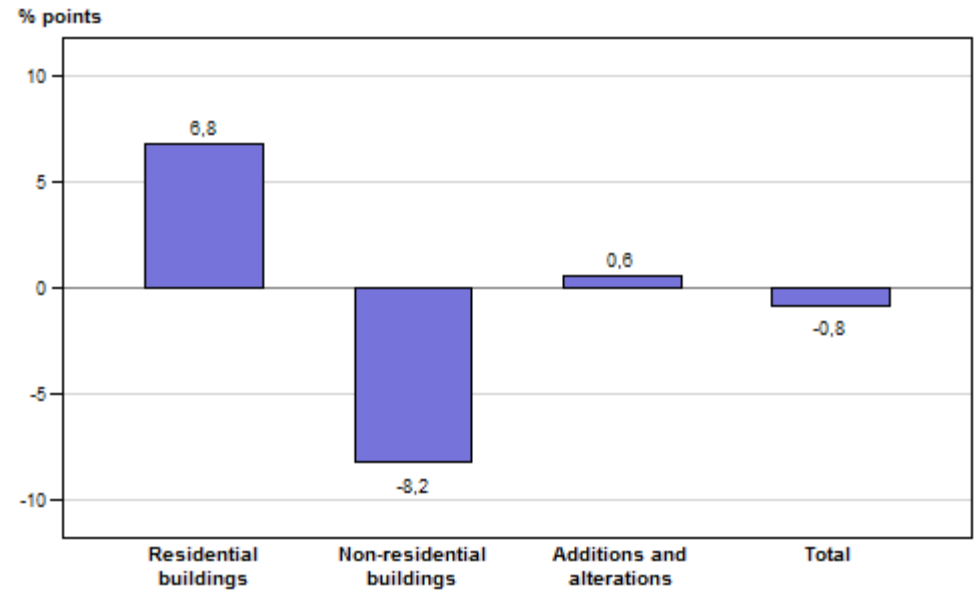
Estimates at current prices	2017	2018	% contribution to the total value of buildings completed during 2017	% change in the value of buildings completed between 2017 and 2018	Contribution (% points) ¹ to the % change between 2017 and 2018	Difference in the value of buildings completed between 2017 and 2018
	R million	R million				R million
Residential buildings	44 900,5	50 573,5	53,8	12,6	6,8	5 672,9
Dwelling-houses	29 328,9	28 552,3	35,2	-2,6	-0,9	-776,6
Flats and townhouses	13 057,6	21 022,2	15,7	61,0	9,6	7 964,6
Other residential buildings	2 514,1	999,0	3,0	-60,3	-1,8	-1 515,1
Non-residential buildings	25 060,0	18 193,1	30,1	-27,4	-8,2	-6 866,9
Office and banking space	5 893,6	5 924,1	7,1	0,5	0,0	30,5
Shopping space	9 460,2	3 339,1	11,3	-64,7	-7,3	-6 121,0
Industrial space	7 430,6	7 147,4	8,9	-3,8	-0,3	-283,1
Other non-residential	2 275,6	1 782,4	2,7	-21,7	-0,6	-493,3
Additions and alterations	13 424,6	13 966,9	16,1	4,0	0,6	542,2
Total²	83 385,2	82 733,4	100,0	-0,8	-0,8	-651,8

¹ The contribution (percentage points) is calculated by multiplying the percentage change of the type of building between 2017 and 2018 by the percentage contribution of the corresponding type of building to the total value of buildings completed during 2017, divided by 100.

² Figures have been rounded off.

As indicated in Table B, the value of buildings reported as completed to municipalities in the monthly and annual surveys decreased by 0,8% from R83 385,2 million in 2017 to R82 733,4 million in 2018. A decrease was reported for non-residential buildings (-27,4% or -R6 866,9 million). Increases were reported for residential buildings (12,6% or R5 672,9 million) and additions and alterations (4,0% or R542,2 million).

Figure 1 – Contribution (percentage points) of type of building to the percentage change in the total value of buildings completed between 2017 and 2018



As indicated in Figure 1, a negative contribution was made by non-residential buildings (contributing -8,2 percentage points) to the year-on-year growth rate of -0,8% in 2018. Positive contributions were made by residential buildings (contributing 6,8 percentage points) and additions and alterations (contributing 0,6 of a percentage point).

Table C – Total value of buildings reported as completed (at current prices) for 2017 and 2018 by province

Estimates at current prices	2017	2018	% contribution to the total value of buildings completed 2017	% change between 2017 and 2018	Contribution (% points) ¹ to the percentage change in the value of buildings completed between 2017 and 2018	Difference in the value of buildings completed between 2017 and 2018
	R million	R million				
Western Cape	24 141,2	23 926,3	29,0	-0,9	-0,3	-215,0
Eastern Cape	3 477,5	3 984,6	4,2	14,6	0,6	507,1
Northern Cape	965,2	861,5	1,2	-10,7	-0,1	-103,7
Free State	1 423,5	1 539,8	1,7	8,2	0,1	116,3
KwaZulu-Natal	14 939,4	10 599,0	17,9	-29,1	-5,2	-4 340,4
North West	2 086,3	2 521,5	2,5	20,9	0,5	435,2
Gauteng	30 636,3	33 701,9	36,7	10,0	3,7	3 065,6
Mpumalanga	2 828,9	2 887,2	3,4	2,1	0,1	58,3
Limpopo	2 886,8	2 711,5	3,5	-6,1	-0,2	-175,3
Total²	83 385,2	82 733,4	100,0	-0,8	-0,8	-651,8

¹ The contribution (percentage points) is calculated by multiplying the percentage change of each province between 2017 and 2018 by the percentage contribution of the corresponding province to the total value of buildings completed during 2017, divided by 100.

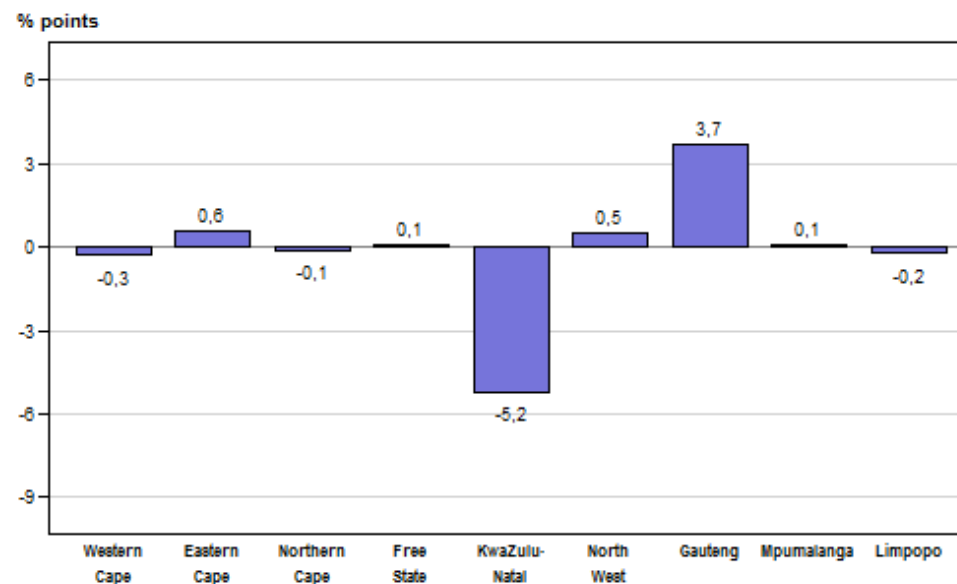
² Figures have been rounded off.

Table C and Figure 2 reflect that the largest provincial contributors to the decrease of 0,8% between 2017 and 2018 were KwaZulu-Natal (contributing -5,2 percentage points or -R4 340,4 million), Western Cape (contributing -0,3 of a percentage point or -R215,0 million) and Limpopo (contributing -0,2 of a percentage point or -R175,3 million).

During 2018, KwaZulu-Natal experienced year-on-year decreases in non-residential buildings (-61,7% or -R4 436,7 million) and residential buildings (-5,0% or -R279,1 million). An increase was reported for additions and alterations (17,4% or R375,3 million).

A large increase in residential buildings was reported for Gauteng (22,4% or R4 162,7 million) – see Table 7.

Figure 2 – Provincial contribution (percentage points) to the percentage change in the total value of buildings reported as completed between 2017 and 2018



Buildings reported as completed in KwaZulu-Natal were to a large extent dominated by data recorded for eThekweni, contributing 67,0% or R7 106,3 million to the total of R10 599,0 million reported for this province.

eThekweni was the largest contributor in all three major building categories reported as completed in KwaZulu-Natal, namely additions and alterations (contributing 85,5% or R2 168,2 million), non-residential buildings (contributing 77,1% or R2 121,1 million) and residential buildings (contributing 53,0% or R2 817,0 million).

City of Johannesburg was the largest contributor to residential buildings (43,0% or R9 769,7 million) and non-residential buildings (41,6% or R3 428,4 million) reported as completed in Gauteng, while City of Tshwane was the largest contributor to additions and alterations (37,8% or R1 025,0 million).

Table D – The largest municipal contributors to the value of buildings reported as completed for 2018 by province

Province/Municipality	Value of buildings completed at provincial/municipal level R million	Municipal % contribution to the value of buildings completed aggregated to provincial level
Gauteng	33 701,9	
City of Johannesburg	14 122,1	41,9
City of Tshwane	11 542,9	34,2
Ekurhuleni	6 499,0	19,3
Midvaal	629,2	1,9
Mogale City	297,1	0,9
Western Cape	23 926,3	
City of Cape Town	16 857,2	70,5
Overstrand	1 162,6	4,9
George	1 030,0	4,3
Stellenbosch	671,2	2,8
Mossel Bay	661,2	2,8
KwaZulu-Natal	10 599,0	
eThekweni	7 106,3	67,0
KwaDukuza	1 067,0	10,1
uMngeni	407,9	3,8
Okhahlamba	192,5	1,8
Newcastle	182,3	1,7
Eastern Cape	3 984,6	
Nelson Mandela Bay	996,4	25,0
Buffalo City	866,8	21,8
Kouga	356,0	8,9
Lukhanji	227,1	5,7
Senqu	139,1	3,5
Mpumalanga	2 887,2	
Steve Tshwete	951,5	33,0
City of Mbombela	494,2	17,1
Emalahleni	397,1	13,8
Govan Mbeki	241,9	8,4
Dr Pixley Ka Isaka Seme	211,5	7,3

Table D – The largest municipal contributors to the value of buildings reported as completed for 2018 by province (concluded)

Province/Municipality	Value of buildings completed at provincial/municipal level R million	Municipal % contribution to the value of buildings completed aggregated to provincial level
Limpopo	2 711,5	
Polokwane	715,1	26,4
Thulamela	511,7	18,9
Bela-Bela	183,9	6,8
Ba-Phalaborwa	176,9	6,5
Greater Giyani	164,6	6,1
North West	2 521,5	
Tlokwe City Council	878,7	34,8
Rustenburg	649,3	25,8
Madibeng	344,0	13,6
City of Matlosana	221,3	8,8
Tswaing	86,8	3,4
Free State	1 539,8	
Mangaung	884,7	57,5
Tswelopele	172,4	11,2
Matjhabeng	84,3	5,5
Dihlabeng	78,3	5,1
Ngwathe	49,2	3,2
Northern Cape	861,5	
Dawid Kruiper	293,9	34,1
Sol Plaatje	134,2	15,6
Nama Khoi	88,2	10,2
Gamagara	74,5	8,6
Emthanjeni	35,5	4,1

Risenga Maluleke
Statistician-General

LIST OF DETAILED TABLES

PART 1 – MUNICIPAL REPORTING OF BUILDINGS COMPLETED AGGREGATED TO PROVINCIAL LEVEL: MONTHLY SURVEY

Table 1	- Number, square metres and value of residential buildings, non-residential buildings and additions and alterations reported as completed to municipalities by province.....	1
Table 2	- Number, square metres and value of residential buildings reported as completed to municipalities: dwelling-houses, flats and townhouses and other residential buildings by province	3
Table 3	- Number, square metres and value of dwelling-houses reported as completed to municipalities by size of dwelling-house and province.....	5
Table 4	- Number, square metres and value of flats and townhouses reported as completed to municipalities by province.....	7
Table 5.1	- Number, square metres and value of non-residential buildings reported as completed to municipalities: office and banking space, shopping space and industrial and warehouse space by province	9
Table 5.2	- Number, square metres and value of non-residential buildings reported as completed to municipalities: schools, nursery schools, crèches, hospitals, churches, sport clubs, recreation clubs and all other space by province	11
Table 6	- Number, square metres and value of additions and alterations reported as completed to municipalities by province.....	13

PART 2 – MUNICIPAL REPORTING OF BUILDINGS COMPLETED AGGREGATED TO PROVINCIAL LEVEL: MONTHLY AND ANNUAL SURVEYS

Table 7	- Number, square metres and value of residential buildings, non-residential buildings and additions and alterations reported as completed to municipalities by province.....	15
Table 8	- Number, square metres and value of residential buildings reported as completed to municipalities: dwelling-houses, flats and townhouses and other residential buildings by province	17
Table 9	- Number, square metres and value of dwelling-houses reported as completed to municipalities by size of dwelling-house and province.....	19
Table 10	- Number, square metres and value of flats and townhouses reported as completed to municipalities by province.....	21
Table 11.1	- Number, square metres and value of non-residential buildings reported as completed to municipalities: office and banking space, shopping space and industrial and warehouse space by province	23
Table 11.2	- Number, square metres and value of non-residential buildings reported as completed to municipalities: schools, nursery schools, crèches, hospitals, churches, sport clubs, recreation clubs and all other space by province	25
Table 12	- Number, square metres and value of additions and alterations reported as completed to municipalities by province.....	27

LIST OF MUNICIPALITIES COVERED IN THE MONTHLY AND ANNUAL SURVEYS

Table 13	- Municipalities covered in the monthly and annual surveys by province: Western Cape	29
Table 14	- Municipalities covered in the monthly and annual surveys by province: Eastern Cape	31
Table 15	- Municipalities covered in the monthly and annual surveys by province: Northern Cape	34
Table 16	- Municipalities covered in the monthly and annual surveys by province: Free State	36
Table 17	- Municipalities covered in the monthly and annual surveys by province: KwaZulu-Natal	38
Table 18	- Municipalities covered in the monthly and annual surveys by province: North West	42
Table 19	- Municipalities covered in the monthly and annual surveys by province: Gauteng	44
Table 20	- Municipalities covered in the monthly and annual surveys by province: Mpumalanga	45
Table 21	- Municipalities covered in the monthly and annual surveys by province: Limpopo	47

Part 1
Municipal reporting of buildings completed
aggregated to provincial level:
monthly survey

Table 1 – Number, square metres and value of residential buildings, non-residential buildings and additions and alterations reported as completed to municipalities by province

Municipal reporting aggregated to provincial level by year		Residential buildings		Non-residential buildings			Additions and alterations			Buildings reported as completed to municipalities	
		Total square metres	Total value R'000	Number of buildings	Total square metres	Total value R'000	Number of plans	Total square metres	Total value R'000	Total square metres	Total value R'000
Western Cape	2016	1 466 364	9 478 713	252	618 026	4 031 032	8 916	698 114	4 303 243	2 782 504	17 812 988
	2017	1 687 457	11 553 753	287	752 963	5 588 281	9 812	747 259	5 148 513	3 187 679	22 290 547
	2018	1 725 832	12 084 905	277	610 601	4 382 445	7 523	645 127	4 732 200	2 981 560	21 199 550
Eastern Cape	2016	231 824	1 212 949	24	21 980	112 858	1 120	84 021	415 799	337 825	1 741 606
	2017	152 648	880 593	30	31 180	158 142	1 668	123 018	735 269	306 846	1 774 004
	2018	177 648	1 138 671	40	68 992	419 535	1 405	129 836	846 527	376 476	2 404 733
Northern Cape	2016	18 964	129 763	12	10 582	65 693	517	44 802	332 933	74 348	528 389
	2017	15 912	110 908	12	24 408	183 933	291	23 168	173 608	63 488	468 449
	2018	11 905	88 802	8	4 122	30 506	422	40 047	314 213	56 074	433 521
Free State	2016	160 985	865 919	26	66 379	388 458	525	41 886	214 316	269 250	1 468 693
	2017	93 640	578 862	14	15 127	108 084	628	39 848	297 757	148 615	984 703
	2018	92 961	633 935	21	35 330	263 706	343	32 206	234 659	160 497	1 132 300
KwaZulu-Natal	2016	393 264	3 475 226	123	519 783	3 903 957	2 096	208 911	1 828 061	1 121 958	9 207 244
	2017	474 942	4 596 642	112	798 999	6 772 652	1 760	192 869	2 016 475	1 466 810	13 385 769
	2018	412 680	4 299 551	109	299 042	2 480 034	2 279	225 634	2 454 440	937 356	9 234 025
North West	2016	265 206	1 248 801	54	48 363	243 508	1 136	77 925	339 882	391 494	1 832 191
	2017	213 820	1 113 950	38	56 251	295 107	502	58 250	317 396	328 321	1 726 453
	2018	268 660	1 498 043	42	45 673	233 554	846	72 269	429 924	386 602	2 161 521
Gauteng	2016	2 360 671	16 892 313	273	995 709	6 586 926	2 680	348 464	2 590 957	3 704 844	26 070 196
	2017	2 420 880	18 577 293	281	1 248 692	9 372 178	2 897	345 765	2 686 834	4 015 337	30 636 305
	2018	2 892 365	22 740 013	293	1 110 534	8 250 295	2 664	345 180	2 711 606	4 348 079	33 701 914
Mpumalanga	2016	261 264	1 151 954	61	71 809	360 319	1 020	90 331	414 988	423 404	1 927 261
	2017	168 663	883 406	33	41 043	215 522	382	33 916	187 926	243 622	1 286 854
	2018	236 347	1 335 109	37	50 356	266 171	561	60 363	542 614	347 066	2 143 894

Table 1 – Number, square metres and value of residential buildings, non-residential buildings and additions and alterations reported as completed to municipalities by province (concluded)

Municipal reporting aggregated to provincial level by year		Residential buildings		Non-residential buildings			Additions and alterations			Buildings reported as completed to municipalities	
		Total square metres	Total value R'000	Number of buildings	Total square metres	Total value R'000	Number of plans	Total square metres	Total value R'000	Total square metres	Total value R'000
Limpopo	2016	106 776	523 444	22	53 429	262 556	82	7 743	42 669	167 948	828 669
	2017	118 226	533 199	28	47 797	243 904	55	6 990	40 196	173 013	817 299
	2018	121 665	646 040	26	57 432	307 828	62	6 135	50 976	185 232	1 004 844
South Africa	2016	5 265 318	34 979 082	847	2 406 060	15 955 307	18 092	1 602 197	10 482 848	9 273 575	61 417 237
	2017	5 346 188	38 828 606	835	3 016 460	22 937 803	17 995	1 571 083	11 603 974	9 933 731	73 370 383
	2018	5 940 063	44 465 069	853	2 282 082	16 634 074	16 105	1 556 797	12 317 159	9 778 942	73 416 302

Table 2 – Number, square metres and value of residential buildings reported as completed to municipalities: dwelling-houses, flats and townhouses and other residential buildings by province

Municipal reporting aggregated to provincial level by year		Residential buildings										
		Dwelling-houses			Flats and townhouses			Other residential buildings ¹			Residential buildings reported as completed to municipalities	
		Number of dwelling-houses	Total square metres	Total value R'000	Number of units	Total square metres	Total value R'000	Number of buildings	Total square metres	Total value R'000	Total square metres	Total value R'000
Western Cape	2016	8 178	1 019 099	6 108 038	4 305	426 940	3 246 622	11	20 325	124 053	1 466 364	9 478 713
	2017	8 970	1 135 594	7 290 763	3 806	471 355	3 611 022	15	80 508	651 968	1 687 457	11 553 753
	2018	7 739	1 037 192	6 781 622	5 805	637 825	4 978 925	38	50 815	324 358	1 725 832	12 084 905
Eastern Cape	2016	1 910	190 754	988 874	373	35 205	197 513	11	5 865	26 562	231 824	1 212 949
	2017	987	140 214	807 965	83	8 378	49 608	3	4 056	23 020	152 648	880 593
	2018	1 121	150 212	957 621	231	27 436	181 050	0	0	0	177 648	1 138 671
Northern Cape	2016	97	18 045	123 809	5	761	5 006	1	158	948	18 964	129 763
	2017	57	13 049	91 947	17	1 928	13 449	2	935	5 512	15 912	110 908
	2018	69	11 684	87 065	2	221	1 737	0	0	0	11 905	88 802
Free State	2016	663	80 882	400 954	1 380	79 795	463 323	2	308	1 642	160 985	865 919
	2017	422	53 802	305 464	584	39 507	271 607	3	331	1 791	93 640	578 862
	2018	388	47 832	297 479	342	44 522	333 294	6	607	3 162	92 961	633 935
KwaZulu-Natal	2016	995	227 428	1 890 192	762	132 490	1 212 306	5	33 346	372 728	393 264	3 475 226
	2017	957	261 373	2 477 827	1 372	194 080	1 897 833	7	19 489	220 982	474 942	4 596 642
	2018	1 041	246 372	2 572 485	812	146 679	1 503 367	6	19 629	223 699	412 680	4 299 551
North West	2016	1 551	216 764	998 320	635	48 442	250 481	0	0	0	265 206	1 248 801
	2017	1 122	171 150	886 012	416	41 885	223 287	2	785	4 651	213 820	1 113 950
	2018	1 125	165 823	905 033	1 115	100 975	583 822	2	1 862	9 188	268 660	1 498 043
Gauteng	2016	12 091	1 739 659	11 851 752	5 833	612 111	4 967 183	6	8 901	73 378	2 360 671	16 892 313
	2017	10 488	1 562 122	10 987 300	7 206	730 097	6 230 901	11	128 661	1 359 092	2 420 880	18 577 293
	2018	8 975	1 313 329	9 922 956	9 231	1 576 194	12 799 717	3	2 842	17 340	2 892 365	22 740 013
Mpumalanga	2016	1 880	248 186	1 090 651	176	12 077	56 798	2	1 001	4 505	261 264	1 151 954
	2017	1 080	134 042	696 832	409	34 621	186 574	0	0	0	168 663	883 406
	2018	1 421	212 034	1 197 091	180	18 665	97 302	3	5 648	40 716	236 347	1 335 109

¹ Other residential buildings include institutions for the disabled, boarding houses, hostels and tourism accommodation e.g. hotels, motels, guest-houses, holiday chalets, bed-and-breakfast accommodation and casinos.

Table 2 – Number, square metres and value of residential buildings reported as completed to municipalities: dwelling-houses, flats and townhouses and other residential buildings by province (concluded)

Municipal reporting aggregated to provincial level by year		Residential buildings										
		Dwelling-houses			Flats and townhouses			Other residential buildings ¹			Residential buildings reported as completed to municipalities	
		Number of dwelling-houses	Total square metres	Total value R'000	Number of units	Total square metres	Total value R'000	Number of buildings	Total square metres	Total value R'000	Total square metres	Total value R'000
Limpopo	2016	431	79 721	387 486	262	26 711	134 238	2	344	1 720	106 776	523 444
	2017	883	93 402	410 617	155	18 021	89 348	2	6 803	33 234	118 226	533 199
	2018	498	101 208	534 150	107	10 211	55 515	8	10 246	56 375	121 665	646 040
South Africa	2016	27 796	3 820 538	23 840 076	13 731	1 374 532	10 533 470	40	70 248	605 536	5 265 318	34 979 082
	2017	24 966	3 564 748	23 954 727	14 048	1 539 872	12 573 629	45	241 568	2 300 250	5 346 188	38 828 606
	2018	22 377	3 285 686	23 255 502	17 825	2 562 728	20 534 729	66	91 649	674 838	5 940 063	44 465 069

¹ Other residential buildings include institutions for the disabled, boarding houses, hostels and tourism accommodation e.g. hotels, motels, guest-houses, holiday chalets, bed-and-breakfast accommodation and casinos.

Table 3 – Number, square metres and value of dwelling-houses reported as completed to municipalities by size of dwelling-house by province

Municipal reporting aggregated to provincial level by year		Size of dwelling-house						Dwelling-houses reported as completed to municipalities		
		Smaller than 80 square metres			Equal to or larger than 80 square metres					
		Number of dwelling-houses	Total square metres	Total value R'000	Number of dwelling-houses	Total square metres	Total value R'000	Number of dwelling-houses	Total square metres	Total value R'000
Western Cape	2016	4 679	208 163	1 018 978	3 499	810 936	5 089 060	8 178	1 019 099	6 108 038
	2017	5 074	234 573	1 310 041	3 896	901 021	5 980 722	8 970	1 135 594	7 290 763
	2018	4 095	188 678	1 100 876	3 644	848 514	5 680 746	7 739	1 037 192	6 781 622
Eastern Cape	2016	1 213	55 159	237 389	697	135 595	751 485	1 910	190 754	988 874
	2017	406	20 901	100 412	581	119 313	707 553	987	140 214	807 965
	2018	526	26 537	135 742	595	123 675	821 879	1 121	150 212	957 621
Northern Cape	2016	5	336	1 891	92	17 709	121 918	97	18 045	123 809
	2017	2	120	764	55	12 929	91 183	57	13 049	91 947
	2018	14	896	6 971	55	10 788	80 094	69	11 684	87 065
Free State	2016	347	19 627	71 507	316	61 255	329 447	663	80 882	400 954
	2017	228	12 993	50 889	194	40 809	254 575	422	53 802	305 464
	2018	210	11 761	66 642	178	36 071	230 837	388	47 832	297 479
KwaZulu-Natal	2016	225	13 025	108 716	770	214 403	1 781 476	995	227 428	1 890 192
	2017	129	7 251	67 696	828	254 122	2 410 131	957	261 373	2 477 827
	2018	206	11 969	122 715	835	234 403	2 449 770	1 041	246 372	2 572 485
North West	2016	441	26 890	101 637	1 110	189 874	896 683	1 551	216 764	998 320
	2017	352	20 465	92 763	770	150 685	793 249	1 122	171 150	886 012
	2018	305	17 892	88 346	820	147 931	816 687	1 125	165 823	905 033
Gauteng	2016	7 490	371 109	1 566 582	4 601	1 368 550	10 285 170	12 091	1 739 659	11 851 752
	2017	6 736	337 758	1 519 541	3 752	1 224 364	9 467 759	10 488	1 562 122	10 987 300
	2018	5 440	287 193	1 675 493	3 535	1 026 136	8 247 463	8 975	1 313 329	9 922 956
Mpumalanga	2016	1 008	50 251	191 237	872	197 935	899 414	1 880	248 186	1 090 651
	2017	593	29 454	130 515	487	104 588	566 317	1 080	134 042	696 832
	2018	709	37 296	177 776	712	174 738	1 019 315	1 421	212 034	1 197 091

Table 3 - Number, square metres and value of dwelling-houses reported as completed to municipalities by size of dwelling-house by province (concluded)

Municipal reporting aggregated to provincial level by year		Size of dwelling-house						Dwelling-houses reported as completed to municipalities		
		Smaller than 80 square metres			Equal to or larger than 80 square metres			Number of dwelling-houses	Total square metres	Total value R'000
		Number of dwelling-houses	Total square metres	Total value R'000	Number of dwelling-houses	Total square metres	Total value R'000			
Limpopo	2016	154	9 463	46 892	277	70 258	340 594	431	79 721	387 486
	2017	644	30 198	87 056	239	63 204	323 561	883	93 402	410 617
	2018	157	9 708	52 456	341	91 500	481 694	498	101 208	534 150
South Africa	2016	15 562	754 023	3 344 829	12 234	3 066 515	20 495 247	27 796	3 820 538	23 840 076
	2017	14 164	693 713	3 359 677	10 802	2 871 035	20 595 050	24 966	3 564 748	23 954 727
	2018	11 662	591 930	3 427 017	10 715	2 693 756	19 828 485	22 377	3 285 686	23 255 502

Table 4 – Number, square metres and value of flats and townhouses reported as completed to municipalities by province

Municipal reporting aggregated to provincial level by year		Flats			Townhouses			Flats and townhouses reported as completed to municipalities		
		Number of units	Total square metres	Total value R'000	Number of units	Total square metres	Total value R'000	Number of units	Total square metres	Total value R'000
Western Cape	2016	3 537	295 423	2 321 397	768	131 517	925 225	4 305	426 940	3 246 622
	2017	2 611	260 212	2 057 039	1 195	211 143	1 553 983	3 806	471 355	3 611 022
	2018	4 734	433 635	3 429 338	1 071	204 190	1 549 587	5 805	637 825	4 978 925
Eastern Cape	2016	176	13 813	82 530	197	21 392	114 983	373	35 205	197 513
	2017	28	2 008	12 660	55	6 370	36 948	83	8 378	49 608
	2018	98	5 817	39 632	133	21 619	141 418	231	27 436	181 050
Northern Cape	2016	0	0	0	5	761	5 006	5	761	5 006
	2017	0	0	0	17	1 928	13 449	17	1 928	13 449
	2018	0	0	0	2	221	1 737	2	221	1 737
Free State	2016	281	11 258	75 861	1 099	68 537	387 462	1 380	79 795	463 323
	2017	386	14 068	99 914	198	25 439	171 693	584	39 507	271 607
	2018	85	3 987	29 528	257	40 535	303 766	342	44 522	333 294
KwaZulu-Natal	2016	445	57 721	594 993	317	74 769	617 313	762	132 490	1 212 306
	2017	643	74 101	835 111	729	119 979	1 062 722	1 372	194 080	1 897 833
	2018	464	70 735	847 680	348	75 944	655 687	812	146 679	1 503 367
North West	2016	535	33 068	178 447	100	15 374	72 034	635	48 442	250 481
	2017	155	11 744	62 598	261	30 141	160 689	416	41 885	223 287
	2018	755	46 188	275 911	360	54 787	307 911	1 115	100 975	583 822
Gauteng	2016	2 022	143 361	1 408 597	3 811	468 750	3 558 586	5 833	612 111	4 967 183
	2017	3 254	229 163	2 327 277	3 952	500 934	3 903 624	7 206	730 097	6 230 901
	2018	2 641	177 428	1 997 033	6 590	1 398 766	10 802 684	9 231	1 576 194	12 799 717
Mpumalanga	2016	115	7 151	35 007	61	4 926	21 791	176	12 077	56 798
	2017	351	29 269	161 643	58	5 352	24 931	409	34 621	186 574
	2018	61	3 345	19 807	119	15 320	77 495	180	18 665	97 302

Table 4 – Number, square metres and value of flats and townhouses reported as completed to municipalities by province (concluded)

Municipal reporting aggregated to provincial level by year		Flats			Townhouses			Flats and townhouses reported as completed to municipalities		
		Number of units	Total square metres	Total value R'000	Number of units	Total square metres	Total value R'000	Number of units	Total square metres	Total value R'000
Limpopo	2016	1	127	571	261	26 584	133 667	262	26 711	134 238
	2017	0	0	0	155	18 021	89 348	155	18 021	89 348
	2018	30	3 506	19 828	77	6 705	35 687	107	10 211	55 515
South Africa	2016	7 112	561 922	4 697 403	6 619	812 610	5 836 067	13 731	1 374 532	10 533 470
	2017	7 428	620 565	5 556 242	6 620	919 307	7 017 387	14 048	1 539 872	12 573 629
	2018	8 868	744 641	6 658 757	8 957	1 818 087	13 875 972	17 825	2 562 728	20 534 729

Table 5.1 – Number, square metres and value of non-residential buildings reported as completed to municipalities: office and banking space, shopping space and industrial and warehouse space by province

Municipal reporting aggregated to provincial level by year		Non-residential buildings								
		Office and banking space			Shopping space			Industrial and warehouse space		
		Number of buildings	Total square metres	Total value R'000	Number of buildings	Total square metres	Total value R'000	Number of buildings	Total square metres	Total value R'000
Western Cape	2016	44	148 919	1 013 282	17	77 611	535 184	106	261 430	1 659 806
	2017	41	131 791	1 006 802	29	189 939	1 517 280	115	323 540	2 303 677
	2018	32	161 951	1 326 792	27	93 318	721 490	154	268 786	1 734 078
Eastern Cape	2016	6	4 836	27 800	5	6 470	32 182	9	10 228	50 678
	2017	2	3 361	15 173	2	1 892	9 025	19	20 734	107 236
	2018	3	1 840	11 822	4	2 124	12 023	19	53 642	324 650
Northern Cape	2016	1	325	1 463	3	860	4 351	4	8 200	53 301
	2017	7	3 704	20 419	2	1 426	11 222	2	2 830	20 034
	2018	3	1 760	13 051	0	0	0	5	2 362	17 455
Free State	2016	2	6 572	46 510	7	18 668	139 582	15	40 159	197 716
	2017	3	2 573	17 649	4	983	5 129	2	1 340	7 315
	2018	6	7 786	57 772	3	2 145	12 664	8	14 793	113 216
KwaZulu-Natal	2016	21	102 320	892 417	23	184 373	1 746 566	66	213 270	1 141 477
	2017	14	71 435	749 434	28	527 089	4 803 957	59	178 808	1 023 601
	2018	11	76 881	839 712	15	56 721	563 319	67	141 092	868 172
North West	2016	8	7 360	38 280	20	23 039	115 281	6	11 393	58 460
	2017	5	6 983	39 978	13	28 110	153 460	17	19 756	94 659
	2018	5	2 379	13 155	9	14 450	74 652	15	19 459	95 566
Gauteng	2016	47	221 439	2 055 013	61	154 475	1 214 619	122	487 918	2 476 829
	2017	70	400 529	3 922 003	63	197 137	1 704 470	114	553 011	2 852 188
	2018	62	349 086	3 424 024	83	120 036	1 106 812	119	578 113	3 232 919
Mpumalanga	2016	7	9 265	48 780	9	17 631	95 718	32	37 413	183 517
	2017	5	3 334	16 687	13	16 180	77 259	12	18 942	108 107
	2018	4	2 336	11 549	12	16 684	81 543	16	18 207	107 171

Table 5.1 – Number, square metres and value of non-residential buildings reported as completed to municipalities: office and banking space, shopping space and industrial and warehouse space by province (concluded)

Municipal reporting aggregated to provincial level by year		Non-residential buildings								
		Office and banking space			Shopping space			Industrial and warehouse space		
		Number of buildings	Total square metres	Total value R'000	Number of buildings	Total square metres	Total value R'000	Number of buildings	Total square metres	Total value R'000
Limpopo	2016	8	3 890	19 476	3	33 037	161 539	7	7 813	38 053
	2017	5	2 349	12 147	4	4 855	25 917	14	32 245	162 097
	2018	7	12 033	64 856	7	28 862	156 007	10	15 303	81 046
South Africa	2016	144	504 926	4 143 021	148	516 164	4 045 022	367	1 077 824	5 859 837
	2017	152	626 059	5 800 292	158	967 611	8 307 719	354	1 151 206	6 678 914
	2018	133	616 052	5 762 733	160	334 340	2 728 510	413	1 111 757	6 574 273

Table 5.2 – Number, square metres and value of non-residential buildings reported as completed to municipalities: schools, nursery schools, crèches, hospitals, churches, sports club, recreation clubs and all other space by province

Municipal reporting aggregated to provincial level by year		Non-residential buildings											
		Schools, nursery schools, crèches and hospitals			Churches, sport and recreation clubs			All other non-residential space			Non-residential buildings reported as completed to municipalities ¹		
		Number of buildings	Total square metres	Total value R'000	Number of buildings	Total square metres	Total value R'000	Number of buildings	Total square metres	Total value R'000	Number of buildings	Total square metres	Total value R'000
Western Cape	2016	24	88 563	602 593	14	8 252	41 139	47	33 251	179 028	252	618 026	4 031 032
	2017	27	34 768	231 811	18	11 124	69 300	57	61 801	459 411	287	752 963	5 588 281
	2018	20	50 219	349 032	18	12 797	87 098	26	23 530	163 955	277	610 601	4 382 445
Eastern Cape	2016	0	0	0	1	260	1 220	3	186	978	24	21 980	112 858
	2017	1	273	1 733	2	3 903	19 713	4	1 017	5 262	30	31 180	158 142
	2018	3	8 890	56 064	4	1 840	11 050	7	656	3 926	40	68 992	419 535
Northern Cape	2016	0	0	0	3	1 027	5 473	1	170	1 105	12	10 582	65 693
	2017	1	16 448	132 258	0	0	0	0	0	0	12	24 408	183 933
	2018	0	0	0	0	0	0	0	0	0	8	4 122	30 506
Free State	2016	1	500	2 250	1	480	2 400	0	0	0	26	66 379	388 458
	2017	0	0	0	5	10 231	77 991	0	0	0	14	15 127	108 084
	2018	3	10 280	78 054	1	326	2 000	0	0	0	21	35 330	263 706
KwaZulu-Natal	2016	5	16 788	102 179	6	2 950	20 949	2	82	369	123	519 783	3 903 957
	2017	5	9 907	78 332	6	11 760	117 328	0	0	0	112	798 999	6 772 652
	2018	5	14 910	119 001	10	9 089	87 003	1	349	2 827	109	299 042	2 480 034
North West	2016	6	2 736	13 511	14	3 835	17 976	0	0	0	54	48 363	243 508
	2017	1	211	1 055	2	1 191	5 955	0	0	0	38	56 251	295 107
	2018	4	3 863	19 314	8	5 378	29 953	1	144	914	42	45 673	233 554
Gauteng	2016	21	103 155	651 762	13	15 611	103 507	9	13 111	85 196	273	995 709	6 586 926
	2017	14	60 129	495 675	12	9 133	76 676	8	28 753	321 166	281	1 248 692	9 372 178
	2018	14	51 972	410 768	7	9 577	60 246	8	1 750	15 526	293	1 110 534	8 250 295
Mpumalanga	2016	3	3 404	14 252	4	2 747	11 809	6	1 349	6 243	61	71 809	360 319
	2017	2	2 214	11 604	0	0	0	1	373	1 865	33	41 043	215 522
	2018	2	6 124	31 164	1	214	1 020	2	6 791	33 724	37	50 356	266 171

¹ Non-residential buildings include office and banking space, shopping space, industrial and warehouse space, schools, nursery schools, crèches, hospitals, churches, sport clubs, recreation clubs and all other space (Tables 5.1 and 5.2).

Table 5.2 – Number, square metres and value of non-residential buildings reported as completed to municipalities: schools, nursery schools, crèches, hospitals, churches, sports club, recreation clubs and all other space by province (concluded)

Municipal reporting aggregated to provincial level by year		Non-residential buildings											
		Schools, nursery schools, crèches and hospitals			Churches, sport and recreation clubs			All other non-residential space			Non-residential buildings reported as completed to municipalities ¹		
		Number of buildings	Total square metres	Total value R'000	Number of buildings	Total square metres	Total value R'000	Number of buildings	Total square metres	Total value R'000	Number of buildings	Total square metres	Total value R'000
Limpopo	2016	2	8 661	43 345	0	0	0	2	28	143	22	53 429	262 556
	2017	3	2 844	14 627	0	0	0	2	5 504	29 116	28	47 797	243 904
	2018	1	645	3 412	1	589	2 507	0	0	0	26	57 432	307 828
South Africa	2016	62	223 807	1 429 892	56	35 162	204 473	70	48 177	273 062	847	2 406 060	15 955 307
	2017	54	126 794	967 095	45	47 342	366 963	72	97 448	816 820	835	3 016 460	22 937 803
	2018	52	146 903	1 066 809	50	39 810	280 877	45	33 220	220 872	853	2 282 082	16 634 074

¹ Non-residential buildings include office and banking space, shopping space, industrial and warehouse space, schools, nursery schools, crèches, hospitals, churches, sport clubs, recreation clubs and all other space (Tables 5.1 and 5.2).

Table 6 – Number, square metres and value of additions and alterations reported as completed to municipalities by province

Municipal reporting aggregated to provincial level by year		Additions and alterations to residential buildings			Additions and alterations to non-residential buildings			Internal alterations	Additions and alterations reported as completed to municipalities		
		Number of plans	Total square metres	Total value R'000	Number of plans	Total square metres	Total value R'000	Total value R'000	Number of plans	Total square metres	Total value R'000
Western Cape	2016	8 522	563 784	2 946 405	394	134 330	892 631	464 207	8 916	698 114	4 303 243
	2017	9 331	604 436	3 564 512	481	142 823	991 915	592 086	9 812	747 259	5 148 513
	2018	7 057	465 956	2 982 526	466	179 171	1 270 316	479 358	7 523	645 127	4 732 200
Eastern Cape	2016	1 052	64 876	321 253	68	19 145	87 687	6 859	1 120	84 021	415 799
	2017	1 580	94 230	511 983	88	28 788	170 825	52 461	1 668	123 018	735 269
	2018	1 325	93 414	588 121	80	36 422	233 815	24 591	1 405	129 836	846 527
Northern Cape	2016	498	38 947	281 041	19	5 855	34 588	17 304	517	44 802	332 933
	2017	269	19 001	138 640	22	4 167	26 085	8 883	291	23 168	173 608
	2018	402	30 010	225 440	20	10 037	72 496	16 277	422	40 047	314 213
Free State	2016	512	34 300	159 474	13	7 586	35 108	19 734	525	41 886	214 316
	2017	617	38 886	198 889	11	962	4 594	94 274	628	39 848	297 757
	2018	326	23 226	140 188	17	8 980	65 495	28 976	343	32 206	234 659
KwaZulu-Natal	2016	1 969	143 838	1 305 892	127	65 073	439 577	82 592	2 096	208 911	1 828 061
	2017	1 639	139 915	1 431 398	121	52 954	413 774	171 303	1 760	192 869	2 016 475
	2018	2 162	177 493	1 911 525	117	48 141	426 376	116 539	2 279	225 634	2 454 440
North West	2016	1 097	69 815	300 894	39	8 110	35 691	3 297	1 136	77 925	339 882
	2017	452	32 849	156 250	50	25 401	149 176	11 970	502	58 250	317 396
	2018	823	62 008	362 577	23	10 261	64 771	2 576	846	72 269	429 924
Gauteng	2016	2 551	261 919	1 850 036	129	86 545	620 609	120 312	2 680	348 464	2 590 957
	2017	2 764	259 834	1 926 352	133	85 931	650 418	110 064	2 897	345 765	2 686 834
	2018	2 521	244 941	1 891 204	143	100 239	753 790	66 612	2 664	345 180	2 711 606
Mpumalanga	2016	989	77 191	325 450	31	13 140	66 430	23 108	1 020	90 331	414 988
	2017	370	28 738	139 457	12	5 178	24 031	24 438	382	33 916	187 926
	2018	545	51 070	289 479	16	9 293	46 129	207 006	561	60 363	542 614

Table 6 – Number, square metres and value of additions and alterations reported as completed to municipalities by province (concluded)

Municipal reporting aggregated to provincial level by year		Additions and alterations to residential buildings			Additions and alterations to non-residential buildings			Internal alterations	Additions and alterations reported as completed to municipalities		
		Number of plans	Total square metres	Total value R'000	Number of plans	Total square metres	Total value R'000	Total value R'000	Number of plans	Total square metres	Total value R'000
Limpopo	2016	69	6 081	29 332	13	1 662	7 837	5 500	82	7 743	42 669
	2017	44	4 138	20 960	11	2 852	14 236	5 000	55	6 990	40 196
	2018	58	5 454	28 321	4	681	3 719	18 936	62	6 135	50 976
South Africa	2016	17 259	1 260 751	7 519 777	833	341 446	2 220 158	742 913	18 092	1 602 197	10 482 848
	2017	17 066	1 222 027	8 088 441	929	349 056	2 445 054	1 070 479	17 995	1 571 083	11 603 974
	2018	15 219	1 153 572	8 419 381	886	403 225	2 936 907	960 871	16 105	1 556 797	12 317 159

Part 2

**Municipal reporting of buildings completed
aggregated to provincial level:
monthly and annual surveys**

Table 7 – Number, square metres and value of residential buildings, non-residential buildings and additions and alterations reported as completed to municipalities by province

Municipal reporting aggregated to provincial level by year		Residential buildings		Non-residential buildings			Additions and alterations			Buildings reported as completed to municipalities	
		Total square metres	Total value R'000	Number of buildings	Total square metres	Total value R'000	Number of plans	Total square metres	Total value R'000	Total square metres	Total value R'000
Western Cape	2016	1 689 313	11 044 204	345	699 954	4 518 506	10 449	822 691	5 098 513	3 211 958	20 661 223
	2017	1 828 554	12 378 257	368	812 038	5 947 080	10 834	847 165	5 815 911	3 487 757	24 141 248
	2018	1 971 039	13 656 474	361	679 269	4 823 878	9 031	748 557	5 445 930	3 398 865	23 926 282
Eastern Cape	2016	410 452	1 919 472	99	64 220	326 729	1 847	149 273	773 933	623 945	3 020 134
	2017	390 562	1 922 572	105	93 677	500 083	2 555	180 101	1 054 818	664 340	3 477 473
	2018	416 010	2 118 860	106	127 079	748 708	2 096	176 888	1 117 002	719 977	3 984 570
Northern Cape	2016	92 823	463 661	42	21 895	123 063	877	70 915	463 369	185 633	1 050 093
	2017	70 448	353 821	48	37 789	263 765	666	57 086	347 612	165 323	965 198
	2018	65 197	345 618	32	18 340	99 439	681	59 137	416 481	142 674	861 538
Free State	2016	218 331	1 065 177	30	67 548	393 680	695	52 931	262 273	338 810	1 721 130
	2017	203 051	937 555	24	21 600	141 037	805	49 634	344 932	274 285	1 423 524
	2018	195 347	994 976	27	37 966	276 811	460	39 207	268 038	272 520	1 539 825
KwaZulu-Natal	2016	761 640	4 474 181	183	547 251	4 055 892	2 402	229 837	1 941 919	1 538 728	10 471 992
	2017	832 290	5 590 888	182	883 259	7 188 261	2 149	221 271	2 160 251	1 936 820	14 939 400
	2018	755 337	5 311 835	169	347 771	2 751 589	2 474	240 239	2 535 563	1 343 347	10 598 987
North West	2016	353 663	1 536 394	75	62 557	304 319	1 278	87 205	384 718	503 425	2 225 431
	2017	317 894	1 425 148	43	56 999	298 677	641	67 453	362 469	442 346	2 086 294
	2018	342 908	1 748 712	47	57 911	300 786	932	79 002	472 044	479 821	2 521 542
Gauteng	2016	2 360 671	16 892 313	273	995 709	6 586 926	2 680	348 464	2 590 957	3 704 844	26 070 196
	2017	2 420 880	18 577 293	281	1 248 692	9 372 178	2 897	345 765	2 686 834	4 015 337	30 636 305
	2018	2 892 365	22 740 013	293	1 110 534	8 250 295	2 664	345 180	2 711 606	4 348 079	33 701 914
Mpumalanga	2016	406 820	1 696 219	110	120 895	630 544	1 241	109 540	535 031	637 255	2 861 794
	2017	434 185	1 977 479	71	75 530	405 600	935	76 691	445 868	586 406	2 828 947
	2018	372 411	1 895 058	68	64 022	349 715	785	77 796	642 462	514 229	2 887 235

Table 7 – Number, square metres and value of residential buildings, non-residential buildings and additions and alterations reported as completed to municipalities by province (concluded)

Municipal reporting aggregated to provincial level by year		Residential buildings		Non-residential buildings			Additions and alterations			Buildings reported as completed to municipalities	
		Total square metres	Total value R'000	Number of buildings	Total square metres	Total value R'000	Number of plans	Total square metres	Total value R'000	Total square metres	Total value R'000
Limpopo	2016	349 855	1 254 598	51	79 855	395 709	464	42 440	241 923	472 150	1 892 230
	2017	452 588	1 737 503	82	171 440	943 322	329	31 705	205 945	655 733	2 886 770
	2018	451 919	1 761 912	76	110 541	591 841	341	50 589	357 762	613 049	2 711 515
South Africa	2016	6 643 568	40 346 219	1 208	2 659 884	17 335 368	21 933	1 913 296	12 292 636	11 216 748	69 974 223
	2017	6 950 452	44 900 516	1 204	3 401 024	25 060 003	21 811	1 876 871	13 424 640	12 228 347	83 385 159
	2018	7 462 533	50 573 458	1 179	2 553 433	18 193 062	19 464	1 816 595	13 966 888	11 832 561	82 733 408

Table 8 – Number, square metres and value of residential buildings reported as completed to municipalities: dwelling-houses, flats and townhouses and other residential buildings by province

Municipal reporting aggregated to provincial level by year		Residential buildings										
		Dwelling-houses			Flats and townhouses			Other residential buildings ¹			Residential buildings reported as completed to municipalities	
		Number of dwelling-houses	Total square metres	Total value R'000	Number of units	Total square metres	Total value R'000	Number of buildings	Total square metres	Total value R'000	Total square metres	Total value R'000
Western Cape	2016	9 466	1 195 698	7 291 484	4 605	473 290	3 628 667	11	20 325	124 053	1 689 313	11 044 204
	2017	10 335	1 272 182	8 082 685	3 830	475 671	3 641 965	16	80 701	653 607	1 828 554	12 378 257
	2018	9 625	1 249 394	8 128 324	6 061	663 530	5 143 572	50	58 115	384 578	1 971 039	13 656 474
Eastern Cape	2016	4 914	357 189	1 630 261	432	42 639	236 654	22	10 624	52 557	410 452	1 919 472
	2017	4 650	357 124	1 720 297	170	22 158	143 021	9	11 280	59 254	390 562	1 922 572
	2018	5 514	367 265	1 801 614	352	41 701	270 486	4	7 044	46 760	416 010	2 118 860
Northern Cape	2016	721	71 479	341 049	136	19 976	114 646	2	1 368	7 966	92 823	463 661
	2017	546	66 632	330 751	22	2 559	16 270	3	1 257	6 800	70 448	353 821
	2018	488	62 006	327 971	2	221	1 737	6	2 970	15 910	65 197	345 618
Free State	2016	1 548	133 382	575 429	1 428	84 285	486 511	3	664	3 237	218 331	1 065 177
	2017	2 179	157 030	634 321	638	45 225	299 176	4	796	4 058	203 051	937 555
	2018	2 304	147 876	646 078	348	44 882	335 202	8	2 589	13 696	195 347	994 976
KwaZulu-Natal	2016	8 825	584 295	2 822 438	840	142 897	1 272 891	7	34 448	378 852	761 640	4 474 181
	2017	8 891	613 276	3 443 944	1 405	198 025	1 917 112	8	20 989	229 832	832 290	5 590 888
	2018	8 141	580 422	3 533 815	845	150 212	1 521 706	16	24 703	256 314	755 337	5 311 835
North West	2016	3 060	298 146	1 246 571	695	54 947	287 372	1	570	2 451	353 663	1 536 394
	2017	3 263	271 619	1 176 793	431	45 264	242 529	3	1 011	5 826	317 894	1 425 148
	2018	2 398	229 148	1 093 875	1 205	110 972	641 019	3	2 788	13 818	342 908	1 748 712
Gauteng	2016	12 091	1 739 659	11 851 752	5 833	612 111	4 967 183	6	8 901	73 378	2 360 671	16 892 313
	2017	10 488	1 562 122	10 987 300	7 206	730 097	6 230 901	11	128 661	1 359 092	2 420 880	18 577 293
	2018	8 975	1 313 329	9 922 956	9 231	1 576 194	12 799 717	3	2 842	17 340	2 892 365	22 740 013
Mpumalanga	2016	4 068	380 725	1 553 617	264	24 869	136 772	3	1 226	5 830	406 820	1 696 219
	2017	4 738	346 403	1 465 341	633	69 728	401 352	9	18 054	110 786	434 185	1 977 479
	2018	3 361	325 239	1 619 280	436	38 242	215 182	5	8 930	60 596	372 411	1 895 058

¹ Other residential buildings include institutions for the disabled, boarding houses, hostels and tourism accommodation e.g. hotels, motels, guest-houses, holiday chalets, bed-and-breakfast accommodation and casinos.

Table 8 – Number, square metres and value of residential buildings reported as completed to municipalities: dwelling-houses, flats and townhouses and other residential buildings by province (concluded)

Municipal reporting aggregated to provincial level by year		Residential buildings										
		Dwelling-houses			Flats and townhouses			Other residential buildings ¹			Residential buildings reported as completed to municipalities	
		Number of dwelling-houses	Total square metres	Total value R'000	Number of units	Total square metres	Total value R'000	Number of buildings	Total square metres	Total value R'000	Total square metres	Total value R'000
Limpopo	2016	4 078	303 801	1 022 965	329	36 759	185 133	10	9 295	46 500	349 855	1 254 598
	2017	5 613	405 080	1 487 450	271	31 152	165 236	22	16 356	84 817	452 588	1 737 503
	2018	5 427	398 811	1 478 368	134	16 095	93 563	45	37 013	189 981	451 919	1 761 912
South Africa	2016	48 771	5 064 374	28 335 566	14 562	1 491 773	11 315 829	65	87 421	694 824	6 643 568	40 346 219
	2017	50 703	5 051 468	29 328 882	14 606	1 619 879	13 057 562	85	279 105	2 514 072	6 950 452	44 900 516
	2018	46 233	4 673 490	28 552 281	18 614	2 642 049	21 022 184	140	146 994	998 993	7 462 533	50 573 458

¹ Other residential buildings include institutions for the disabled, boarding houses, hostels and tourism accommodation e.g. hotels, motels, guest-houses, holiday chalets, bed-and-breakfast accommodation and casinos.

Table 9 – Number, square metres and value of dwelling-houses reported as completed to municipalities by size of dwelling-house by province

Municipal reporting aggregated to provincial level by year		Size of dwelling-house						Dwelling-houses reported as completed to municipalities		
		Smaller than 80 square metres			Equal to or larger than 80 square metres					
		Number of dwelling-houses	Total square metres	Total value R'000	Number of dwelling-houses	Total square metres	Total value R'000	Number of dwelling-houses	Total square metres	Total value R'000
Western Cape	2016	5 380	242 639	1 159 691	4 086	953 059	6 131 793	9 466	1 195 698	7 291 484
	2017	6 009	272 911	1 431 063	4 326	999 271	6 651 622	10 335	1 272 182	8 082 685
	2018	5 347	242 044	1 281 160	4 278	1 007 350	6 847 164	9 625	1 249 394	8 128 324
Eastern Cape	2016	3 896	162 181	544 012	1 018	195 008	1 086 249	4 914	357 189	1 630 261
	2017	3 709	158 654	522 135	941	198 470	1 198 162	4 650	357 124	1 720 297
	2018	4 680	195 011	668 080	834	172 254	1 133 534	5 514	367 265	1 801 614
Northern Cape	2016	471	20 496	56 989	250	50 983	284 060	721	71 479	341 049
	2017	296	14 412	40 960	250	52 220	289 791	546	66 632	330 751
	2018	216	10 894	38 004	272	51 112	289 967	488	62 006	327 971
Free State	2016	1 144	58 716	183 127	404	74 666	392 302	1 548	133 382	575 429
	2017	1 841	90 572	254 002	338	66 458	380 319	2 179	157 030	634 321
	2018	1 972	88 856	298 402	332	59 020	347 676	2 304	147 876	646 078
KwaZulu-Natal	2016	7 852	321 342	774 210	973	262 953	2 048 228	8 825	584 295	2 822 438
	2017	7 888	317 210	805 055	1 003	296 066	2 638 889	8 891	613 276	3 443 944
	2018	7 145	308 443	878 285	996	271 979	2 655 530	8 141	580 422	3 533 815
North West	2016	1 843	89 947	269 821	1 217	208 199	976 750	3 060	298 146	1 246 571
	2017	2 455	114 426	350 937	808	157 193	825 856	3 263	271 619	1 176 793
	2018	1 555	75 509	247 210	843	153 639	846 665	2 398	229 148	1 093 875
Gauteng	2016	7 490	371 109	1 566 582	4 601	1 368 550	10 285 170	12 091	1 739 659	11 851 752
	2017	6 736	337 758	1 519 541	3 752	1 224 364	9 467 759	10 488	1 562 122	10 987 300
	2018	5 440	287 193	1 675 493	3 535	1 026 136	8 247 463	8 975	1 313 329	9 922 956
Mpumalanga	2016	3 007	142 810	449 219	1 061	237 915	1 104 398	4 068	380 725	1 553 617
	2017	3 804	177 411	563 264	934	168 992	902 077	4 738	346 403	1 465 341
	2018	2 553	125 707	453 441	808	199 532	1 165 839	3 361	325 239	1 619 280

Table 9 – Number, square metres and value of dwelling-houses reported as completed to municipalities by size of dwelling-house by province (concluded)

Municipal reporting aggregated to provincial level by year		Size of dwelling-house						Dwelling-houses reported as completed to municipalities		
		Smaller than 80 square metres			Equal to or larger than 80 square metres					
		Number of dwelling-houses	Total square metres	Total value R'000	Number of dwelling-houses	Total square metres	Total value R'000	Number of dwelling-houses	Total square metres	Total value R'000
Limpopo	2016	3 587	173 684	401 759	491	130 117	621 206	4 078	303 801	1 022 965
	2017	4 944	228 158	553 356	669	176 922	934 094	5 613	405 080	1 487 450
	2018	4 736	222 953	583 272	691	175 858	895 096	5 427	398 811	1 478 368
South Africa	2016	34 670	1 582 924	5 405 410	14 101	3 481 450	22 930 156	48 771	5 064 374	28 335 566
	2017	37 682	1 711 512	6 040 313	13 021	3 339 956	23 288 569	50 703	5 051 468	29 328 882
	2018	33 644	1 556 610	6 123 347	12 589	3 116 880	22 428 934	46 233	4 673 490	28 552 281

Table 10 – Number, square metres and value of flats and townhouses reported as completed to municipalities by province

Municipal reporting aggregated to provincial level by year		Flats			Townhouses			Flats and townhouses reported as completed to municipalities		
		Number of units	Total square metres	Total value R'000	Number of units	Total square metres	Total value R'000	Number of units	Total square metres	Total value R'000
Western Cape	2016	3 537	295 423	2 321 397	1 068	177 867	1 307 270	4 605	473 290	3 628 667
	2017	2 621	261 037	2 063 639	1 209	214 634	1 578 326	3 830	475 671	3 641 965
	2018	4 918	448 306	3 521 139	1 143	215 224	1 622 433	6 061	663 530	5 143 572
Eastern Cape	2016	211	16 715	95 626	221	25 924	141 028	432	42 639	236 654
	2017	40	2 838	16 395	130	19 320	126 626	170	22 158	143 021
	2018	170	10 457	65 510	182	31 244	204 976	352	41 701	270 486
Northern Cape	2016	0	0	0	136	19 976	114 646	136	19 976	114 646
	2017	0	0	0	22	2 559	16 270	22	2 559	16 270
	2018	0	0	0	2	221	1 737	2	221	1 737
Free State	2016	306	12 708	83 281	1 122	71 577	403 230	1 428	84 285	486 511
	2017	386	14 068	99 914	252	31 157	199 262	638	45 225	299 176
	2018	85	3 987	29 528	263	40 895	305 674	348	44 882	335 202
KwaZulu-Natal	2016	482	60 120	609 665	358	82 777	663 226	840	142 897	1 272 891
	2017	661	75 725	842 744	744	122 300	1 074 368	1 405	198 025	1 917 112
	2018	486	72 002	854 293	359	78 210	667 413	845	150 212	1 521 706
North West	2016	535	33 068	178 447	160	21 879	108 925	695	54 947	287 372
	2017	155	11 744	62 598	276	33 520	179 931	431	45 264	242 529
	2018	755	46 188	275 911	450	64 784	365 108	1 205	110 972	641 019
Gauteng	2016	2 022	143 361	1 408 597	3 811	468 750	3 558 586	5 833	612 111	4 967 183
	2017	3 254	229 163	2 327 277	3 952	500 934	3 903 624	7 206	730 097	6 230 901
	2018	2 641	177 428	1 997 033	6 590	1 398 766	10 802 684	9 231	1 576 194	12 799 717
Mpumalanga	2016	137	8 617	42 852	127	16 252	93 920	264	24 869	136 772
	2017	371	30 769	170 913	262	38 959	230 439	633	69 728	401 352
	2018	259	16 345	95 597	177	21 897	119 585	436	38 242	215 182

Table 10 – Number, square metres and value of flats and townhouses reported as completed to municipalities by province (concluded)

Municipal reporting aggregated to provincial level by year		Flats			Townhouses			Flats and townhouses reported as completed to municipalities		
		Number of units	Total square metres	Total value R'000	Number of units	Total square metres	Total value R'000	Number of units	Total square metres	Total value R'000
Limpopo	2016	11	897	4 498	318	35 862	180 635	329	36 759	185 133
	2017	9	783	3 914	262	30 369	161 322	271	31 152	165 236
	2018	35	3 754	21 145	99	12 341	72 418	134	16 095	93 563
South Africa	2016	7 241	570 909	4 744 363	7 321	920 864	6 571 466	14 562	1 491 773	11 315 829
	2017	7 497	626 127	5 587 394	7 109	993 752	7 470 168	14 606	1 619 879	13 057 562
	2018	9 349	778 467	6 860 156	9 265	1 863 582	14 162 028	18 614	2 642 049	21 022 184

Table 11.1 – Number, square metres and value of non-residential buildings reported as completed to municipalities: office and banking space, shopping space and industrial and warehouse space by province

Municipal reporting aggregated to provincial level by year		Non-residential buildings								
		Office and banking space			Shopping space			Industrial and warehouse space		
		Number of buildings	Total square metres	Total value R'000	Number of buildings	Total square metres	Total value R'000	Number of buildings	Total square metres	Total value R'000
Western Cape	2016	52	151 011	1 025 875	30	85 989	596 366	172	330 800	2 061 984
	2017	44	133 208	1 016 507	50	205 962	1 609 786	167	364 105	2 555 049
	2018	39	165 581	1 351 049	35	100 341	772 550	210	321 864	2 072 009
Eastern Cape	2016	19	14 002	71 263	17	20 092	104 408	37	24 829	124 113
	2017	18	13 733	66 918	17	17 719	116 274	50	50 501	251 028
	2018	5	4 364	27 026	23	25 555	154 902	41	72 517	421 203
Northern Cape	2016	2	572	3 390	16	6 101	31 528	15	13 173	77 833
	2017	13	4 716	26 436	12	6 202	41 777	9	6 304	41 827
	2018	3	1 760	13 051	7	8 467	37 905	11	5 044	32 334
Free State	2016	2	6 572	46 510	8	18 806	140 270	17	41 014	201 655
	2017	3	2 573	17 649	10	6 391	32 833	3	1 621	8 989
	2018	6	7 786	57 772	7	4 240	23 322	8	14 793	113 216
KwaZulu-Natal	2016	29	105 751	912 931	44	196 819	1 815 642	74	216 428	1 158 192
	2017	17	72 838	756 699	62	556 500	4 964 495	84	230 438	1 262 726
	2018	21	95 218	951 790	42	79 250	684 211	80	147 211	897 656
North West	2016	13	11 289	54 847	22	23 326	116 515	12	19 055	91 772
	2017	5	6 983	39 978	14	28 480	155 310	17	19 756	94 659
	2018	5	2 379	13 155	12	15 534	80 616	17	30 613	156 834
Gauteng	2016	47	221 439	2 055 013	61	154 475	1 214 619	122	487 918	2 476 829
	2017	70	400 529	3 922 003	63	197 137	1 704 470	114	553 011	2 852 188
	2018	62	349 086	3 424 024	83	120 036	1 106 812	119	578 113	3 232 919
Mpumalanga	2016	9	9 655	50 847	30	55 603	304 218	44	44 565	225 230
	2017	6	4 488	23 034	25	37 101	195 892	22	25 668	144 175
	2018	6	3 251	17 191	30	22 828	117 749	17	19 090	114 679

Table 11.1 – Number, square metres and value of non-residential buildings reported as completed to municipalities: office and banking space, shopping space and industrial and warehouse space by province (concluded)

Municipal reporting aggregated to provincial level by year		Non-residential buildings								
		Office and banking space			Shopping space			Industrial and warehouse space		
		Number of buildings	Total square metres	Total value R'000	Number of buildings	Total square metres	Total value R'000	Number of buildings	Total square metres	Total value R'000
Limpopo	2016	15	13 906	73 013	11	37 741	184 429	11	14 347	68 310
	2017	8	4 862	24 416	39	113 124	639 327	18	42 023	219 916
	2018	9	12 805	69 033	36	65 710	361 078	15	20 047	106 591
South Africa	2016	188	534 197	4 293 689	239	598 952	4 507 995	504	1 192 129	6 485 918
	2017	184	643 930	5 893 640	292	1 168 616	9 460 164	484	1 293 427	7 430 557
	2018	156	642 230	5 924 091	275	441 961	3 339 145	518	1 209 292	7 147 441

Table 11.2 – Number, square metres and value of non-residential buildings reported as completed to municipalities: schools, nursery schools, crèches, hospitals, churches, sports club, recreation clubs and all other space by province

Municipal reporting aggregated to provincial level by year		Non-residential buildings											
		Schools, nursery schools, crèches and hospitals			Churches, sport and recreation clubs			All other non-residential space			Non-residential buildings reported as completed to municipalities ¹		
		Number of buildings	Total square metres	Total value R'000	Number of buildings	Total square metres	Total value R'000	Number of buildings	Total square metres	Total value R'000	Number of buildings	Total square metres	Total value R'000
Western Cape	2016	25	88 991	604 990	17	8 948	44 643	49	34 215	184 648	345	699 954	4 518 506
	2017	29	35 097	233 606	21	11 865	72 721	57	61 801	459 411	368	812 038	5 947 080
	2018	21	50 833	352 409	30	17 120	111 906	26	23 530	163 955	361	679 269	4 823 878
Eastern Cape	2016	4	1 414	7 798	12	2 827	13 384	10	1 056	5 763	99	64 220	326 729
	2017	6	4 145	25 915	10	6 562	34 686	4	1 017	5 262	105	93 677	500 083
	2018	12	16 247	102 420	15	7 125	36 102	10	1 271	7 055	106	127 079	748 708
Northern Cape	2016	1	309	1 236	5	1 409	7 336	3	331	1 740	42	21 895	123 063
	2017	7	18 852	144 246	6	1 618	8 766	1	97	713	48	37 789	263 765
	2018	7	1 259	6 051	4	1 810	10 098	0	0	0	32	18 340	99 439
Free State	2016	1	500	2 250	2	656	2 995	0	0	0	30	67 548	393 680
	2017	0	0	0	6	10 471	79 009	2	544	2 557	24	21 600	141 037
	2018	3	10 280	78 054	2	667	3 447	1	200	1 000	27	37 966	276 811
KwaZulu-Natal	2016	13	21 008	123 544	11	5 909	40 077	12	1 336	5 506	183	547 251	4 055 892
	2017	9	10 673	81 974	10	12 810	122 367	0	0	0	182	883 259	7 188 261
	2018	8	15 260	120 821	17	10 483	94 284	1	349	2 827	169	347 771	2 751 589
North West	2016	12	4 639	21 541	16	4 248	19 644	0	0	0	75	62 557	304 319
	2017	2	316	1 325	5	1 464	7 405	0	0	0	43	56 999	298 677
	2018	4	3 863	19 314	8	5 378	29 953	1	144	914	47	57 911	300 786
Gauteng	2016	21	103 155	651 762	13	15 611	103 507	9	13 111	85 196	273	995 709	6 586 926
	2017	14	60 129	495 675	12	9 133	76 676	8	28 753	321 166	281	1 248 692	9 372 178
	2018	14	51 972	410 768	7	9 577	60 246	8	1 750	15 526	293	1 110 534	8 250 295
Mpumalanga	2016	8	5 479	23 992	8	3 858	18 448	11	1 735	7 809	110	120 895	630 544
	2017	10	5 545	28 738	7	2 355	11 896	1	373	1 865	71	75 530	405 600
	2018	4	6 684	34 429	9	5 378	31 943	2	6 791	33 724	68	64 022	349 715

¹ Non-residential buildings include office and banking space, shopping space, industrial and warehouse space, schools, nursery schools, crèches, hospitals, churches, sport clubs, recreation clubs and all other space (Tables 11.1 and 11.2).

Table 11.2 – Number, square metres and value of non-residential buildings reported as completed to municipalities: schools, nursery schools, crèches, hospitals, churches, sports club, recreation clubs and all other space by province (concluded)

Municipal reporting aggregated to provincial level by year		Non-residential buildings											
		Schools, nursery schools, crèches and hospitals			Churches, sport and recreation clubs			All other non-residential space			Non-residential buildings reported as completed to municipalities ¹		
		Number of buildings	Total square metres	Total value R'000	Number of buildings	Total square metres	Total value R'000	Number of buildings	Total square metres	Total value R'000	Number of buildings	Total square metres	Total value R'000
Limpopo	2016	5	9 062	45 270	6	4 520	23 427	3	279	1 260	51	79 855	395 709
	2017	12	4 698	23 897	2	865	4 830	3	5 868	30 936	82	171 440	943 322
	2018	6	8 318	38 497	10	3 661	16 642	0	0	0	76	110 541	591 841
South Africa	2016	90	234 557	1 482 383	90	47 986	273 461	97	52 063	291 922	1 208	2 659 884	17 335 368
	2017	89	139 455	1 035 376	79	57 143	418 356	76	98 453	821 910	1 204	3 401 024	25 060 003
	2018	79	164 716	1 162 763	102	61 199	394 621	49	34 035	225 001	1 179	2 553 433	18 193 062

¹ Non-residential buildings include office and banking space, shopping space, industrial and warehouse space, schools, nursery schools, crèches, hospitals, churches, sport clubs, recreation clubs and all other space (Tables 11.1 and 11.2).

Table 12 – Number, square metres and value of additions and alterations reported as completed to municipalities by province

Municipal reporting aggregated to provincial level by year		Additions and alterations to residential buildings			Additions and alterations to non-residential buildings			Internal alterations	Additions and alterations reported as completed to municipalities		
		Number of plans	Total square metres	Total value R'000	Number of plans	Total square metres	Total value R'000	Total value R'000	Number of plans	Total square metres	Total value R'000
Western Cape	2016	9 940	649 699	3 509 630	509	172 992	1 097 709	491 174	10 449	822 691	5 098 513
	2017	10 254	685 403	4 105 179	580	161 762	1 101 257	609 475	10 834	847 165	5 815 911
	2018	8 442	551 218	3 567 152	589	197 339	1 374 969	503 809	9 031	748 557	5 445 930
Eastern Cape	2016	1 706	113 459	593 008	141	35 814	168 158	12 767	1 847	149 273	773 933
	2017	2 429	140 151	746 535	126	39 950	223 502	84 781	2 555	180 101	1 054 818
	2018	1 983	133 762	805 943	113	43 126	269 851	41 208	2 096	176 888	1 117 002
Northern Cape	2016	841	63 665	403 161	36	7 250	41 777	18 431	877	70 915	463 369
	2017	617	43 226	263 705	49	13 860	72 945	10 962	666	57 086	347 612
	2018	644	47 543	319 789	37	11 594	79 795	16 897	681	59 137	416 481
Free State	2016	677	45 085	206 175	18	7 846	36 364	19 734	695	52 931	262 273
	2017	785	48 051	241 939	20	1 583	7 589	95 404	805	49 634	344 932
	2018	440	29 999	172 367	20	9 208	66 695	28 976	460	39 207	268 038
KwaZulu-Natal	2016	2 273	164 673	1 418 157	129	65 164	440 048	83 714	2 402	229 837	1 941 919
	2017	2 012	165 746	1 560 384	137	55 525	426 673	173 194	2 149	221 271	2 160 251
	2018	2 328	190 644	1 980 979	146	49 595	433 669	120 915	2 474	240 239	2 535 563
North West	2016	1 238	79 052	344 452	40	8 153	35 889	4 377	1 278	87 205	384 718
	2017	587	41 642	199 354	54	25 811	151 045	12 070	641	67 453	362 469
	2018	909	68 741	397 117	23	10 261	64 771	10 156	932	79 002	472 044
Gauteng	2016	2 551	261 919	1 850 036	129	86 545	620 609	120 312	2 680	348 464	2 590 957
	2017	2 764	259 834	1 926 352	133	85 931	650 418	110 064	2 897	345 765	2 686 834
	2018	2 521	244 941	1 891 204	143	100 239	753 790	66 612	2 664	345 180	2 711 606
Mpumalanga	2016	1 202	95 203	424 953	39	14 337	72 378	37 700	1 241	109 540	535 031
	2017	917	70 141	379 909	18	6 550	30 746	35 213	935	76 691	445 868
	2018	761	66 433	377 337	24	11 363	57 876	207 249	785	77 796	642 462

Table 12 – Number, square metres and value of additions and alterations reported as completed to municipalities by province (concluded)

Municipal reporting aggregated to provincial level by year		Additions and alterations to residential buildings			Additions and alterations to non-residential buildings			Internal alterations	Additions and alterations reported as completed to municipalities		
		Number of plans	Total square metres	Total value R'000	Number of plans	Total square metres	Total value R'000	Total value R'000	Number of plans	Total square metres	Total value R'000
Limpopo	2016	412	32 648	160 574	52	9 792	50 651	30 698	464	42 440	241 923
	2017	289	20 552	101 655	40	11 153	54 250	50 040	329	31 705	205 945
	2018	310	38 506	196 357	31	12 083	65 356	96 049	341	50 589	357 762
South Africa	2016	20 840	1 505 403	8 910 146	1 093	407 893	2 563 583	818 907	21 933	1 913 296	12 292 636
	2017	20 654	1 474 746	9 525 012	1 157	402 125	2 718 425	1 181 203	21 811	1 876 871	13 424 640
	2018	18 338	1 371 787	9 708 245	1 126	444 808	3 166 772	1 091 871	19 464	1 816 595	13 966 888

Table 13 – Municipalities covered in the monthly and annual surveys by province: Western Cape

Municipality	Main towns/areas within municipal boundaries	District municipality
Beaufort West ²	Beaufort West	Central Karoo
Bergrivier ²	Aurora, Piketberg, Porterville, Redelinghuys, Velddrif	West Coast
Bitou ¹	Plettenberg Bay	Eden
Breede Valley ¹	De Doorns, Rawsonville, Touws River, Worcester	Cape Winelands
Cape Agulhas ²	Bredasdorp, Napier, Struisbaai	Overberg
Cederberg ²	Cederberg, Citrusdal, Clanwilliam, Graafwater, Lamberts Bay, Leipoldville	West Coast
City of Cape Town ¹	Bellville, Blue Downs, Brackenfell, Cape Town City Centre, Durbanville, Eersterivier, Fish Hoek, Goodwood, Gordon's Bay, Gugulethu, Khayelitsha, Kraaifontein, Kuilsrivier, Langa, Mfuleni, Milnerton, Mitchells Plain, Nyanga, Parow, Plumstead, Simon's Town, Somerset West, Strand	City of Cape Town
Drakenstein ¹	Blouville, Hermon, Paarl, Soetendal, Wellington	Cape Winelands
George ¹	George, Herolds Bay, Pacaltsdorp, Wilderness	Eden
Hessequa ²	Albertinia, Gouritsmond, Heidelberg, Riversdale, Slangrivier, Stilbaai	Eden
Kannaland ²	Calitzdorp, Ladismith, Van Wyksdorp, Zoar	Eden
Knysna ¹	Knysna, Sedgefield	Eden
Laingsburg ²	Laingsburg	Central Karoo
Langeberg ²	Ashton, Bonnievale, McGregor, Montagu, Robertson	Cape Winelands
Matzikama ²	Doringbaai, Klawer, Lutzville, Strandfontein, Van Rhynsdorp, Vredendal	West Coast
Mossel Bay ¹	Groot Brakrivier, Herbertsdale, Klein Brakrivier, Mossel Bay	Eden
Oudtshoorn ¹	De Rust, Dysseisdorp, Oudtshoorn	Eden

¹ Included in monthly survey.² Included in annual survey.

Table 13 – Municipalities covered in the monthly and annual surveys by province: Western Cape (concluded)

Municipality	Main towns/areas within municipal boundaries	District municipality
Overstrand ¹	Betty's Bay, Fisherhaven, Gansbaai, Hangklip, Hawston, Hermanus, Kleinmond, Onrus, Rooiels Bay, Stanford, Vermont	Overberg
Prince Albert ²	Leeu-Gamka, Prince Albert	Central Karoo
Saldanha Bay ¹	Hopefield, Langebaan, Saldanha, Vredenburg	West Coast
Stellenbosch ¹	Franschhoek, Pniel, Stellenbosch	Cape Winelands
Swartland ¹	Darling, Koringberg, Malmesbury, Moorreesburg, Yzerfontein	West Coast
Swellendam ²	Barrydale, Buffeljagsrivier, Stormsvlei, Suurbraak, Swellendam	Overberg
Theewaterskloof ²	Caledon, Genadendal, Grabouw, Greyton, Riviersonderend, Villiersdorp	Overberg
Witzenberg ²	Ceres, Prince Alfred Hamlet, Tulbagh, Wolseley	Cape Winelands

¹ Included in monthly survey.

² Included in annual survey.

Table 14 – Municipalities covered in the monthly and annual surveys by province: Eastern Cape

Municipality	Main towns/areas within municipal boundaries	District municipality
Amahlathi ²	Cathcart, Kei Road, Keiskammahoek, Stutterheim	Amathole
Baviaans ²	Steytlerville, Willowmore	Sarah Baartman
Blue Crane Route ²	Cookhouse, Pearston, Somerset East	Sarah Baartman
Buffalo City ¹	Beacon Bay, Bisho, East London, Gonubie, King William's Town, Mdantsane, Zwelitsha	Buffalo City
Camdeboo ²	Aberdeen, Graaff-Reinet, Nieu-Bethesda	Sarah Baartman
Elundini ²	Maclear, Mount Fletcher, Ugie	Joe Gqabi
Emalahleni ²	Dordrecht, Indwe, Lady Frere	Chris Hani
Engcobo ²	Coghlan, Langdon, Ngcobo, Whitmore	Chris Hani
Gariep ²	Burgersdorp, Knapdaar, Oviston, Steynsburg, Venterstad	Joe Gqabi
Great Kei ²	Kei Mouth, Komga	Amathole
Ikwezi ²	Jansenville, Klipplaat	Sarah Baartman
Ingquza Hill ²	Flagstaff, Lusikisiki	O R Tambo
Inkwanca ²	Molteno, Sterkstroom, Stormberg	Chris Hani
Intsika Yethu ²	Cofimvaba, Qombolo, Tsomo	Chris Hani
Inxuba Yethemba ²	Cradock, Middelburg	Chris Hani
King Sabata Dalindyebo ¹	Mqanduli, Mthatha	O R Tambo

¹ Included in monthly survey.

² Included in annual survey.

Table 14 – Municipalities covered in the monthly and annual surveys by province: Eastern Cape (continued)

Municipality	Main towns/areas within municipal boundaries	District municipality
Kou-Kamma ²	Joubertina, Kareedouw	Sarah Baartman
Kouga ¹	Cape St Francis, Hankey, Humansdorp, Jeffreys Bay, Oyster Bay, Patensie, St Francis Bay	Sarah Baartman
Lukhanji ²	Queenstown, Sada, Whittlesea	Chris Hani
Makana ¹	Alicedale, Makhanda, Riebeeck East	Sarah Baartman
Matatiele ²	Cedarville, Matatiele	Alfred Nzo
Mbhashe ²	Elliotdale, Dutywa, Willowvale	Amathole
Mbizana ²	Bizana	O R Tambo
Mhlonlo ²	Qumbu, Sidwadweni, St Cuthberts, Tsolo	O R Tambo
Mnquma ²	Butterworth, Centane, Ngqamakhwe	Amathole
Ndlambe ¹	Alexandria, Bathurst, Kenton-on-Sea, Port Alfred	Sarah Baartman
Nelson Mandela Bay ¹	Despatch, Port Elizabeth, Uitenhage	Nelson Mandela Bay
Ngqushwa ²	Hamburg, Peddie	Amathole
Nkonkobe ²	Alice, Fort Beaufort, Hogsback, Middeldrift, Seymour	Amathole
Ntabankulu ²	Ntabankulu	O R Tambo
Nxuba ²	Adelaide, Bedford	Amathole
Nyandeni ²	Libode, Misty Mountain, Ngqeleni, Nobantu, Old Bunting, Stoneyridge, Tshani	O R Tambo

¹ Included in monthly survey.² Included in annual survey.

Table 14 – Municipalities covered in the monthly and annual surveys by province: Eastern Cape (concluded)

Municipality	Main towns/areas within municipal boundaries	District municipality
Port St Johns ²	Gemvale, Ntshilini, Port St Johns, Tombo	O R Tambo
Sakhisizwe ²	Cala, Elliot	Chris Hani
Senqu ²	Barkly East, Lady Grey, Rhodes, Rossouw, Sterkspruit	Joe Gqabi
Sundays River Valley ²	Kirkwood, Paterson	Sarah Baartman
Tsolwana ²	Hofmeyr, Spring Valley, Tarkastad	Chris Hani
Umzimvubu ²	Mount Ayliff, Mount Frere	Alfred Nzo
Walter Sisulu ¹	Aliwal North, Jamestown	Joe Gqabi

¹ Included in monthly survey.

² Included in annual survey.

Table 15 – Municipalities covered in the monthly and annual surveys by province: Northern Cape

Municipality	Main towns/areas within municipal boundaries	District municipality
!Kheis ²	Boegoeberg, Groblershoop, Kleinbegin, Wegdraai	Z F Mgcawu
Dawid Kruiper ¹	Dagbreek, Gelukspruit, Karos, Louisvale, Sprigg, Upington	Z F Mgcawu
Dikgatlong ²	Barkly West, Delpportshoop, Elandsdrift, Longlands, Mount Rupert, Windsorton	Frances Baard
Emthanjeni ²	Britstown, De Aar, Hanover	Pixley ka Seme
Ga-Segonyana ¹	Bekker, Ga-Mopedi, Gathlose, Kuruman, Mothibistad, Seoding	John Taolo Gaetsewe
Gamagara ²	Dibeng, Kathu, Sishen	John Taolo Gaetsewe
Hantam ²	Brandkop, Brandvlei, Calvinia, Hantam, Kanakies, Loeriesfontein, Niewoudtville	Namakwa
Joe Morolong ²	Bendell, Bothithong, Ditshipeng, Maswehatshe, Metsemantsi, Tsineng	John Taolo Gaetsewe
Kai !Garib ¹	Kakamas, Keimoes, Kenhardt	Z F Mgcawu
Kamiesberg ²	Garies, Hondeklipbaai, Kamieskroon, Leliefontein, Soebatsfontein	Namakwa
Kareeberg ²	Carnarvon, Vosburg, Vanwyksvlei	Pixley ka Seme
Karoo Hoogland ²	Fraserburg, Sutherland, Williston	Namakwa
Kgatelopele ²	Ariesfontein, Danielskuil, Lime Acres, Owendale, Papkuil, Silver Streams, Swartputs	Z F Mgcawu

¹ Included in monthly survey.² Included in annual survey.

Table 15 – Municipalities covered in the monthly and annual surveys by province: Northern Cape (concluded)

Municipality	Main towns/areas within municipal boundaries	District municipality
Khâi-Ma ²	Namies, Pella, Pofadder	Namakwa
Magareng ²	Content, Warrenton, Windsorton Road	Frances Baard
Nama Khol ²	Concordia, Komaggas, Okiep, Springbok, Steinkopf	Namakwa
Phokwane ²	Ganspan, Hartswater, Jan Kempdorp, Pampierstad	Frances Baard
Renosterberg ²	Petrusville, Philipstown, Potfontein, Poupan, Vanderkloof	Pixley ka Seme
Richtersveld ²	Alexander Bay, Eksteenfontein, Kuboes, Lekkersing, Port Nolloth, Sendelingsdrif	Namakwa
SiyaThemba ²	Marydale, Niekerkshoop, Prieska	Pixley ka Seme
Siyancuma ²	Belmont, Campbell, Douglas, Griquatown, Salt Lake	Pixley ka Seme
Sol Plaatje ¹	Kenilworth, Kimberley, Modderrivier, Ritchie, Riverton, Spytfontein	Frances Baard
Thembelihle ²	Hopetown, Kraankuil, Orania, Oranjerivier, Strydenburg	Pixley ka Seme
Tsantsabane ²	Beeshoek, Glosam, Postmasburg	Z F Mgcawu
Ubuntu ²	Loxton, Victoria West, Richmond	Pixley ka Seme
Umsobomvu ²	Agtertang, Colesberg, Norvalspont, Noupoort	Pixley ka Seme

¹ Included in monthly survey.

² Included in annual survey.

Table 16 – Municipalities covered in the monthly and annual surveys by province: Free State

Municipality	Main towns/areas within municipal boundaries	District municipality
Dihlabeng ¹	Bethlehem, Bohlakong, Clarens, Fouriesburg, Paul Roux, Rosendal	Thabo Mofutsanyana
Kopanong ²	Bethulie, Edenburg, Fauresmith, Gariep Dam, Jagersfontein, Philippolis, Reddersburg, Springfontein, Trompsburg	Xhariep
Letsemeng ²	Jacobsdal, Koffiefontein, Luckhoff, Oppermans, Petrusburg	Xhariep
Mafube ²	Cornelia, Frankfort, Namahadi, Roberts Drift, Tweeling, Villiers	Fezile Dabi
Maluti-a-Phofung ¹	Harrismith, Kestell, Phuthaditjhaba	Thabo Mofutsanyana
Mangaung ¹	Bloemfontein, Botshabelo, Thaba Nchu	Mangaung
Mantsopa ¹	Excelsior, Hobhouse, Ladybrand, Manyatseng, Thaba Phatshoa, Tweespruit	Thabo Mofutsanyana
Masilonyana ²	Brandfort, Soutpan, Theunissen, Verkeerdevlei, Winburg	Lejweleputswa
Matjhabeng ¹	Allanridge, Hennenman, Kutlwanong, Meloding, Odendaalsrus, Thabong, Ventersburg, Virginia, Welkom	Lejweleputswa
Metsimaholo ¹	Deneysville, Oranjeville, Sasolburg	Fezile Dabi
Mohokare ²	Rouxville, Smithfield, Zastron	Xhariep

¹ Included in monthly survey.

² Included in annual survey.

Table 16 – Municipalities covered in the monthly and annual surveys by province: Free State (concluded)

Municipality	Main towns/areas within municipal boundaries	District municipality
Moqhaka ¹	Kroonstad, Maokeng, Steynsrus, Viljoenskroon	Fezile Dabi
Nala ²	Bothaville, Wesselsbron	Lejweleputswa
Ngwathe ¹	Edenville, Heilbron, Koppies, Parys, Vredefort	Fezile Dabi
Nketoana ²	Arlington, Lindley, Petrus Steyn, Reitz	Thabo Mofutsanyana
Phumelela ²	Memel, Vrede, Warden	Thabo Mofutsanyana
Setsoto ²	Clocolan, Ficksburg, Marquard, Senekal	Thabo Mofutsanyana
Tokologo ²	Boshof, Dealesville, Hertzogville, Wolwespruit	Lejweleputswa
Tswelopele ²	Bultfontein, Hoopstad	Lejweleputswa

¹ Included in monthly survey.

² Included in annual survey.

Table 17 – Municipalities covered in the monthly and annual surveys by province: KwaZulu-Natal

Municipality	Main towns/areas within municipal boundaries	District municipality
AbaQulusi ²	Alpha, Calvert, Gluckstadt, Hlobane, Louwsburg, Ngome, Swart Umfolozi, Vryheid	Zululand
Alfred Duma ¹	Colenso, Ekuvukeni, Etholeni, Ingwe, Kliprivier, Ladysmith, Limehill, Mabaso, Rockcliff, Sams Hoek	uThukela
Big 5 Hlabisa ²	Hlabisa	uMkhanyakude
City of uMhlatuze ¹	Empangeni, Richards Bay	King Cetshwayo
Dannhauser ²	Dannhauser, Hattingspruit	Amajuba
Dr Nkosazana Dlamini-Zuma ²	Amangwane, Bulwer, Coleford, Creighton, Deepdale, Donnybrook, Himeville, Ncwadi, Pevensey, Sizanenjana, Underberg	Harry Gwala
eDumbe ²	Bivane, Braunschweig, Grootspuit, Luneburg, Mpemvana, Paulpietersburg	Zululand
eMadlangeni ²	Blood River, Groenvlei, Kingsley, Utrecht	Amajuba
Endumeni ²	Dundee, Glencoe, Van Rooyen, Vant's Drift, Wasbank	Umzinyathi
eThekwini ¹	Amanzimtoti, Botha's Hill, Cato Ridge, Clermont, Drummond, Durban, Hillcrest, Inchanga, Kingsburgh, Kloof, KwaDabeka, KwaMakhutha, KwaMashu, Mount Edgecombe, Mpumalanga, New Germany, Pinetown, Queensburgh, Tongaat, Umdloti, Umhlanga, Umlazi, Verulam, Westville	eThekwini
Greater Kokstad ¹	Bonny Ridge, Franklin, Kingscote, Kokstad, New Amalfi, Swartberg	Harry Gwala
Imbabazane ²	Bhoshi, KwaDlamini, Loskop, Ndaba, Rosedale	uThukela
Impendle ²	Boston, Impendle, Lower Loteni, Runnymede	uMgungundlovu

¹ Included in monthly survey.² Included in annual survey.

Table 17 – Municipalities covered in the monthly and annual surveys by province: KwaZulu-Natal (continued)

Municipality	Main towns/areas within municipal boundaries	District municipality
Jozini ²	Bayala, Ingwavuma, Jozini, Mkhuze, Ndumo, Ubombo	uMkhanyakude
KwaDukuza ¹	Ballito, Blythedale Beach, Shakaskraal, Stanger, Tinley Manor Beach, Zinkwazi Beach	Ilembe
Mandeni ²	Isithebe, Mandeni, Newark, Nyoni, Sundumbili, Tugela, Tugela Mouth	Ilembe
Maphumulo ²	Fort Mtombeni, Maphumulo, Ntunjambi, Otimati	Ilembe
Mkhambathini ²	Camperdown, Edinglassie, Eston, Manderston, Mid-Illovo, Umgeni Dam, Umlaas Road	uMgungundlovu
Mpofana ²	Hidcote, Middelrus, Mooi River, Redcliffe, Rietvlei, Rosetta, The Grove	uMgungundlovu
Msinga ²	Elandskraal, Helpmekeer, Keate's Drift, Ngubevu, Pomeroy, Rorke's Drift, Tugela Ferry	Umzinyathi
Msunduzi ¹	Edendale, Ashburton, Pietermaritzburg	uMgungundlovu
Mthonjaneni ²	Melmoth, Mthonjaneni, Mnanyando, Ndundulu	King Cetshwayo
Mtubatuba ²	Mtubatuba, River View, St Lucia	uMkhanyakude
Ndwedwe ²	Glendale, Ndwedwe, Nsuze	Ilembe
Newcastle ¹	Madadeni, Newcastle, Osizweni	Amajuba
Nkandla ²	Dlolwana, Nkandla, Osborn	King Cetshwayo
Nongoma ²	Nongoma, Thokazi	Zululand

¹ Included in monthly survey.² Included in annual survey.

Table 17 – Municipalities covered in the monthly and annual surveys by province: KwaZulu-Natal (continued)

Municipality	Main towns/areas within municipal boundaries	District municipality
Nquthu ²	Mangeni, Nomamba, Nquthu, Nondweni, Ntabebomvu, Silutshana	Umzinyathi
Ntambanana ²	Ntambanana, Umunywana	King Cetshwayo
Okhahlamba ²	Bergville, Cathkin Park, Winterton	uThukela
Ray Nkonyeni ¹	Hibberdene, Margate, Marina Beach, Munster, Port Edward, Port Shepstone, Ramsgate, Shelly Beach, Southbroom, St Michael's-on-Sea, Trafalgar, Uvongo	Ugu
Richmond ²	Arnold's Hill, Byrne, Greenhill, Hella Hella, KwaMagoda, Ndaleni, Nelsrus, Richmond	uMgungundlovu
Ubuhlebezwe ²	Highflats, Hlutankungu, Ixopo, Nhlavini	Harry Gwala
Ulundi ²	Babanango, Ilangakazi, KwaCeza, Mahlabatini, Mpungamhlophe, Ulundi	Zululand
Umdoni ¹	Pennington, Scottburgh, Umzinto	Ugu
uMfolozi ²	KwaMbonambi, Mposa, Teza	King Cetshwayo
uMhlabuyalingana ²	Emanguzi, Mbazwana, Mseleni	uMkhanyakude
uMlalazi ²	Amatikulu, Blackburn, Eshowe, Gingindlovu, Middledrift, Mtunzini, Nkwalini	King Cetshwayo
uMngeni ¹	Hilton, Howick, Nottingham Road	uMgungundlovu
Umshwathi ²	Albert Falls, Bruyns Hill, Dalton, Harburg, New Hanover, Wartburg	uMgungundlovu
Umtshezi ²	Ennersdale, Estcourt, Frere, Khwezi, Lowlands, South Downs, Webesi, Weenen	uThukela
Umuziwabantu ²	Harding, Weza	Ugu
Umvoti ²	Ahrens, Greytown, Jameson's Drift, Kranskop, Muden, Sevenoaks	Umzinyathi

¹ Included in monthly survey.² Included in annual survey.

Table 17 – Municipalities covered in the monthly and annual surveys by province: KwaZulu-Natal (concluded)

Municipality	Main towns/areas within municipal boundaries	District municipality
Umzimkhulu ²	Bisi, Bontrand, Riverside, Sneezewood, Stafford's Post, Umzimkhulu	Harry Gwala
Umzumbe ²	Glen Echo, Hlokozi, Kwa-Dweshula, Mehломnyama, Msinsini, Nyavini, Turton	Ugu
uPhongolo ²	Candover, Golela, Kingholm, Magudu, Mahlangasi, Nkonkoni, Pongola	Zululand

¹ Included in monthly survey.

² Included in annual survey.

Table 18 – Municipalities covered in the monthly and annual surveys by province: North West

Municipality	Main towns/areas within municipal boundaries	District municipality
City of Matlosana ¹	Hartbeesfontein, Klerksdorp, Orkney, Stilfontein	Dr Kenneth Kaunda
Ditsobotla ¹	Coligny, Itsoseng, Lichtenburg	Ngaka Modiri Molema
Greater Taung ²	Lykso, Madipelesa, Pudimoe, Reivilo, Steekdorings, Taung	Dr Ruth Segomotsi Mompati
Kagisano-Molopo ²	Alettasrus, Algiers, Coetzersdam, Craffhole, Geluk, Morokweng, Bray, Moloporivier, Pomfret, Vorstershoop, Vergeleë	Dr Ruth Segomotsi Mompati
Kgetlengrivier ²	Derby, Koster, Lindleyspoort, Millvale, Rusverby, Swaruggens	Bojanala Platinum
Lekwa-Teemane ²	Bloemhof, Britten, Christiana	Dr Ruth Segomotsi Mompati
Madibeng ¹	Brits, De Wildt, Hartbeespoort, Letlhabile	Bojanala Platinum
Mahikeng ¹	Mahikeng, Ottoshoop	Ngaka Modiri Molema
Mamusa ²	Amalia, Glaudina, Koosfontein, Mamusa (Schweizer-Reneke), Migdol	Dr Ruth Segomotsi Mompati
Maquassi Hills ²	Leeudoringstad, Makwassie, Strydpoort, Witpoort, Wolmaransstad	Dr Kenneth Kaunda
Moretele ²	KwaRatsiepane, Makapanstad, Swartbooiestad	Bojanala Platinum

¹ Included in monthly survey.

² Included in annual survey.

Table 18 – Municipalities covered in the monthly and annual surveys by province: North West (concluded)

Municipality	Main towns/areas within municipal boundaries	District municipality
Moses Kotane ²	Dwarsberg, Mabaalstad, Mabskraal, Mogwase, Silkaatskop, Sun City	Bojanala Platinum
Naledi ¹	Stella, Vryburg	Dr Ruth Segomotsi Mompati
Ramotshere Moiloa ¹	Zeerust	Ngaka Modiri Molema
Ratlou ²	Kraaipan, Madibogo, Setlagole	Ngaka Modiri Molema
Rustenburg ¹	Marikana, Rustenburg	Bojanala Platinum
Tlokwe City Council ¹	Potchefstroom	Dr Kenneth Kaunda
Tswaing ²	Delareyville, Gerdau, Ottosdal, Sannieshof	Ngaka Modiri Molema
Ventersdorp ²	Dovesdale, Klerkskraal, Mesa, Swartplaas, Ventersdorp	Dr Kenneth Kaunda

¹ Included in monthly survey.

² Included in annual survey.

Table 19 – Municipalities covered in the monthly and annual surveys by province: Gauteng

Municipality	Main towns/areas within municipal boundaries	District municipality
City of Johannesburg ¹	Alexandra, Eikenhof, Eldorado Park, Ennerdale, Fourways, Florida, Grasmere, Halfway House, Honeydew, Johannesburg, Kyalami, Lawley Estate, Lenasia, Midrand, Modderfontein, Randburg, Randjiesfontein, Rivonia, Roodepoort, Sandton, Soweto, Van Wyksrust	City of Johannesburg
City of Tshwane ¹	Akasia, Atteridgeville, Babelegi, Bon Accord, Bronkhorstspruit, Centurion, Dilopye, Doornrandjies, Ekangala, Erasmia, Ga-Mokone, Ga-Rankuwa, Garsfontein, Hammanskraal, Irene, Klippan, Mabopane, Mamelodi, Onderstepoort, Pinedene, Pretoria, Pretoria North, Soshanguve, Temba, Tierpoort, Tswaing, Valhalla, Welbekend, Winterveld	City of Tshwane
Ekurhuleni ¹	Alberton, Bedfordview, Benoni, Boksburg, Brakpan, Daveyton, Duduza, Edenvale, Germiston, Katlehong, Kempton Park, KwaThema, Nigel, Springs, Tembisa, Thokoza, Tsakane, Vosloorus	Ekurhuleni
Emfuleni ¹	Evaton, Boipatong, Bophelong, Sebokeng, Sharpeville, Vanderbijlpark, Vereeniging	Sedibeng
Lesedi ¹	Heidelberg, Rensburgdorp, Ratanda	Sedibeng
Merafong City ¹	Carletonville, Fochville, Khutsong	West Rand
Midvaal ¹	Daleside, De Deur, Henly-on-Klip, Highbury, Meyerton, Randvaal, Walkerville	Sedibeng
Mogale City ¹	Battery, Elberta, Hekpoort, Krugersdorp, Luipaardsvlei, Magaliesburg, Muldersdrift, Nooitgedacht, Thorndale	West Rand
Randfontein ¹	Finsbury, Kocksoord, Mohlakeng, Randfontein	West Rand
Westonaria ¹	Bekkersdal, Venterspos, Westonaria	West Rand

¹ Included in monthly survey.

Table 20 – Municipalities covered in the monthly and annual surveys by province: Mpumalanga

Municipality	Main towns/areas within municipal boundaries	District municipality
Bushbuckridge ²	Acornhoek, Dwarsloop, Mkhuhlu, Thulamahashe	Ehlanzeni
Chief Albert Luthuli ²	Badplaas, Carolina, Hartbeeskop, Lochiel	Gert Sibande
City of Mbombela ¹	Hazyview, KaNyamazane, Nelspruit, White River	Ehlanzeni
Dipaleseng ²	Balfour, Dasville, Greylingstad, Grootvlei, Rietbult Estate	Gert Sibande
Dr J S Moroka ²	Siyabuswa	Nkangala
Dr Pixley Ka Isaka Seme ²	Amersfoort, Latemanek, Perdekop, Seme (Volksrust), Wakkerstroom	Gert Sibande
Emakhazeni ²	Belfast, Dullstroom, Machadodorp, Waterval-Boven, Waterval-Onder	Nkangala
Emalahleni ¹	KwaGuqa, Witbank ¹	Nkangala
Govan Mbeki ¹	Bethal, Evander, Leandra, Secunda	Gert Sibande
Lekwa ²	Bettiesdam, Holmdene, Maizefield, Meyersville, Morgenzon, Platrand, Standerton	Gert Sibande
Mkhondo ²	Amsterdam, Anysspruit, Berbice, Comondale, Iswepe, Piet Retief, Wittenberg	Gert Sibande
Msukaligwa ¹	Breyton, Chrissiesmeer, Davel, Ermelo, Lothair, Sheepmoor, Warburton	Gert Sibande

¹ Included in monthly survey.

² Included in annual survey.

Table 20 – Municipalities covered in the monthly and annual surveys by province: Mpumalanga (concluded)

Municipality	Main towns/areas within municipal boundaries	District municipality
Nkomazi ¹	Hectorspruit, Komatipoort, Malelane, Marloth Park	Ehlanzeni
Steve Tshwete ¹	Hendrina, Mhluzi, Middelburg	Nkangala
Thaba Chweu ²	Graskop, Lydenburg, Sabie	Ehlanzeni
Thembisile Hani ²	KwaMhlanga, Moloto, Sybrandskraal	Nkangala
Victor Khanye ¹	Argent, Delmas, Eloff, Sundra	Nkangala

¹ Included in monthly survey.

² Included in annual survey.

Table 21 – Municipalities covered in the monthly and annual surveys by province: Limpopo

Municipality	Main towns/areas within municipal boundaries	District municipality
Ba-Phalaborwa ²	Gravelotte, La Cotte, Phalaborwa	Mopani
Bela-Bela ²	Bela-Bela, Mabula, Pienaarsrivier, Rust de Winter, Settlers	Waterberg
Blouberg ²	Alldays, Blinkwater, Blouberg, Gregory, Senwabarwana	Capricorn
Elias Motsoaledi ²	Dennilton, Groblersdal, Hlogotlou, Laersdrif, Maleoskop, Mossiesdal, Motetema, Rooikraal, Roossenekal	Sekhukhune
Ephraim Mogale ²	Hereford, Marble Hall, Moganyaka, Tompi Seleka	Sekhukhune
Fetakgomo Tubatse ²	Burgersfort, Mogaba, Morone, Orighstad, Steelpoort, Zeekoegat	Sekhukhune
Greater Giyani ²	Dzumeri, Giyani, Nkomo, Phalakupeni	Mopani
Greater Letaba ²	Modjadjiskloof, Ga-Kgapane, Mamaila, Mooketsi	Mopani
Greater Tzaneen ¹	Haenertsburg, Letsitele, Politsi, Rubbervale, Nkowankowa, Tzaneen	Mopani
Lepelle-Nkumpi ²	Chuenespoort, Gompies, Lebowakgomo, Zebediela	Capricorn
Lephalale ²	Baltimore, Lephalale, Matlabas, Swartwater, Tolwe	Waterberg
Makhado ²	Carlow, Elim, Buysdorp, Levubu, Makhado, Mara	Vhembe
Makhuduthamaga ²	Glen Cowie, Jane Furse, Malaita, Nebo, Phokwane, Sekhukhune	Sekhukhune
Maruleng ²	Hoedspruit, Kampersrus, Lorraine, Mica, Olifantshoek, Trichardtsdal	Mopani

¹ Included in monthly survey.² Included in annual survey.

Table 21 – Municipalities covered in the monthly and annual surveys by province: Limpopo (concluded)

Municipality	Main towns/areas within municipal boundaries	District municipality
Modimolle ¹	Haakdong, Mabaleng, Modimolle, Palala	Waterberg
Mogalakwena ¹	Drummondlea, Mahwelereng, Mokopane, Uitzicht	Waterberg
Molemole ²	Blouhaak, Botlokwa, Bylsteel, Groot Spelonke, Kalkbank, Mogwadi, Morebeng, Munnik, Rita, Thorndale	Capricorn
Mookgophong ¹	Crecy, Immerpan, Mookgophong, Thusang	Waterberg
Musina ¹	Beitbridge, Bridgewater, Brombeek, Evangelina, Huntleigh, Mopane, Musina, Tshipise	Vhembe
Mutale ²	Masisi, Mutale, Sagale Spa, Tshilamba	Vhembe
Polokwane ¹	Limburg, Mashashane, Matlala, Polokwane, Seshego	Capricorn
Thabazimbi ¹	Dwaalboom, Northam, Rooiberg, Thabazimbi	Waterberg
Thulamela ²	Malamulele, Mavambe, Mhinga, Muswane, Thohoyandou	Vhembe

¹ Included in monthly survey.

² Included in annual survey.

Explanatory notes

- Introduction** 1 Statistics South Africa (Stats SA) conducts a monthly survey of metropolitan municipalities and large local municipalities on building plans passed and buildings completed for the private sector. An annual survey of the remaining municipalities is conducted regarding buildings completed. This report contains buildings reported as completed to all municipalities, aggregated to provincial level for 2016, 2017 and 2018 (see Part 1 and Part 2). Municipal reporting for buildings completed are available in Excel format from 2014 to 2018. The Excel files are available from Stats SA's website on the publication page for Report-50-11-01 – Building statistics, under 'Additional downloads' on the following link: http://www.statssa.gov.za/?page_id=1854&PPN=Report-50-11-01
- Scope of the survey** 2 This survey covers municipalities conducting activities regarding:
- final inspection of completed buildings and issuing of occupation certificates.
- Statistical unit** 3 The statistical units for the collection of information are metropolitan municipalities, local municipalities and district municipalities.
- Classification** 4 Building activities are classified in Division 5 according to the 1993 edition of the *Standard Industrial Classification of all Economic Activities, (SIC) Fifth Edition, Report No. 09-90-02*. The SIC is based on the 1990 *International Standard Industrial Classification of all Economic Activities (ISIC)* with suitable adaptations for local conditions.
- Survey methodology and design** 5 Stats SA conducts a monthly survey of metropolitan municipalities and large local municipalities on building plans passed and buildings completed. An annual survey of the remaining municipalities is conducted regarding buildings completed. Information regarding building plans passed and buildings completed for the private sector is collected by mail, email and telephone.
- Comparison between building plans passed and buildings completed** 6 No direct comparison can be made between building plans passed and buildings completed for the following reasons:
- An unknown number of building plans are passed and afterwards not executed;
 - if building operations have not commenced within the first year after approval, building plans are resubmitted;
 - the time-lag between the date of passing of a building plan and the date of completion of the building varies considerably; and
 - according to municipalities, final inspections of completed buildings are not always executed and therefore not recorded as completed.
- Number of dwelling-houses** 7 The number of dwelling-houses is shown and not the number of plans passed or completed, since one plan may cover more than one dwelling-house.

Related publications

8 Users may also wish to refer to the following publications:

- P5041.1 *Selected building statistics of the private sector as reported by local government institutions* issued monthly.
- P5041.3 *Selected building statistics of the private sector as reported by local government institutions* issued annually.
- P9101.2 *Actual and Expected Expenditure on Construction by the Public Sector per Region* issued annually.

The following reports contain information of building plans passed (monthly survey) and buildings completed (monthly and annual surveys):

- Report No. 50-11-01 (1996) - with summaries from 1995.
- Report No. 50-11-01 (1997) - with summaries from 1995.
- Report No. 50-11-01 (1998) - with summaries from 1996.
- Report No. 50-11-01 (2001) - with summaries from 1999.
- Report No. 50-11-01 (2002) - with summaries from 2000.

The following reports contain information of buildings completed:

- Report No. 50-11-01 (2003) - with summaries from 2001.
- Report No. 50-11-01 (2004) - with summaries from 2002.
- Report No. 50-11-01 (2005) - with summaries from 2003.
- Report No. 50-11-01 (2006) - with summaries from 2004.
- Report No. 50-11-01 (2007) - with summaries from 2005.
- Report No. 50-11-01 (2008) - with summaries from 2006.
- Report No. 50-11-01 (2009) - with summaries from 2007.
- Report No. 50-11-01 (2010) - with summaries from 2008.
- Report No. 50-11-01 (2011) - with summaries from 2009.
- Report No. 50-11-01 (2012) - with summaries from 2010.
- Report No. 50-11-01 (2013) - with summaries from 2011.
- Report No. 50-11-01 (2014) - with summaries from 2012.
- Report No. 50-11-01 (2015) - with summaries from 2013.
- Report No. 50-11-01 (2016) - with summaries from 2014.
- Report No. 50-11-01 (2017) - with summaries from 2015.

Reliability of estimates

9 Inaccuracies may occur because of imperfections in reporting by municipalities. Every effort is made to reduce errors to a minimum by carefully editing and evaluating data and querying of data.

Rounding-off of figures

10 The figures in the tables have, where necessary, been rounded off to the nearest digit shown. There may, therefore, be slight discrepancies between the sums of the constituent items and the totals shown.

Symbols and abbreviations

11	0	nil or figure too small to publish
	*	revised
	..	not available
	Stats SA	Statistics South Africa
	SIC	Standard Industrial Classification of all Economic Activities
	ISIC	International Standard Industrial Classification of all Economic Activities
	GDP	Gross domestic product
	DMA	District Management Area

Glossary

Additions and alterations	Extensions to existing buildings as well as internal and external alterations of existing buildings.
Annual percentage change	Annual percentage change is the change in the value of building plans passed or buildings completed for a certain year compared with the value of building plans passed and buildings completed in a previous year expressed as a percentage.
Blocks of flats	High-density housing consisting of a number of self-contained dwelling-units with at least one living-room together with a kitchen and bathroom conjoined to similar units in one building.
Dwelling-house	A free-standing, complete structure on a separate stand or a self-contained dwelling-unit, e.g. granny flat, on the same premises as an existing residence. Out-buildings and garages are included.
District municipality	A municipality that has municipal executive and legislative authority in an area that includes more than one municipality, and which is described in Section 155(1) of the Constitution as a category C municipality (refer to Local Government: Municipal Structure Act, 1998 (Act No. 117 of 1998)).
District Management Area	<p>District municipalities are not in general responsible for passing of building plans or issuing of final occupation certificates. These functions are primarily the responsibility of the metropolitan municipalities and the local municipalities. However, district municipalities will execute these functions in the following cases:</p> <ul style="list-style-type: none">• For rural areas that do not fall under the jurisdiction of either a metropolitan or local municipality. These areas are referred to as District Management Areas (DMA), and are managed directly by district municipalities.• Where local municipalities have requested the district municipality to perform this function. In such cases an agreement known as a service level agreement is reached between the local municipality and the district municipality. The local municipality will pay a fee to the district municipality for the service rendered.
Local municipality	A municipality that shares municipal executive and legislative authority in its area with a district municipality within whose area it falls, and which is described in section 155(1) of the Constitution as a category B municipality (refer to Local Government: Municipal Structure Act, 1998 (Act No. 117 of 1998)).
Metropolitan municipality	A municipality that has municipal executive and legislative authority in an area that includes more than one municipality, and which is described in section 155(1) of the Constitution as a category A municipality (refer to Local Government: Municipal Structure Act, 1998 (Act No. 117 of 1998)).
Municipality	A generic term describing the unit of government in the third sphere responsible for local government in a geographically demarcated area. It includes district, metropolitan and local municipalities.

Non-residential buildings	Factories and commercial, financial and other office buildings, as well as other buildings used for non-residential purposes, such as churches, halls, clubs, schools and hospitals.
Other residential buildings	Institutions for the disabled, boarding houses, hostels and tourism accommodation e.g. hotels, motels, guest-houses, holiday chalets, bed-and-breakfast accommodation and casinos.
Reference period	Reference period is a calendar year.
Residential buildings	Dwelling-houses, flats, townhouses and other residential buildings.
Townhouses	Multiple, medium-density dwelling-units including cluster housing, group housing, simplexes, duplexes, triplexes and other similar dwelling-units which are usually grouped together, with one level of each unit on ground level. This category excludes blocks of flats.