



stats sa

Department:
Statistics South Africa
REPUBLIC OF SOUTH AFRICA

TOURISM

2023

Embargoed until:
28 March 2024
11:00

Statistics South Africa

Report No. 03-51-02 (2023)

Risenga Maluleke
Statistician-General



Tourism, 2023 / Statistics South Africa

Published by Statistics South Africa, Private Bag X44, Pretoria 0001

© Statistics South Africa, 2023

Users may apply or process this data, provided Statistics South Africa (Stats SA) is acknowledged as the original source of the data; that it is specified that the application and/or analysis is the result of the user's independent processing of the data; and that neither the basic data nor any reprocessed version or application thereof may be sold or offered for sale in any form whatsoever without prior permission from Stats SA.

Stats SA Library Cataloguing-in-Publication (CIP) Data

Tourism, 2023 / Statistics South Africa. Pretoria: Statistics South Africa, 2023

[Report No. 03-51-02 (2023)]

64pp

ISBN: 978-0-621-51927-3

A complete set of Stats SA publications is available at Stats SA Library and the following libraries:

National Library of South Africa, Pretoria Division
National Library of South Africa, Cape Town Division
Library of Parliament, Cape Town
Bloemfontein Public Library
Natal Society Library, Pietermaritzburg
Johannesburg Public Library
Eastern Cape Library Services, Qonce
Central Regional Library, Polokwane
Central Reference Library, Mbombela
Central Reference Collection, Kimberley
Central Reference Library, Mmabatho

This report is available on the Stats SA website: www.statssa.gov.za

Copies are obtainable from: Printing and Distribution, Statistics South Africa.

Tel: (012) 310 8093 / 8251 / 8358 / 8161

Email: annelineb@statssa.gov.za

Technical enquiries:

Tel: (012) 310 8692/ 079 511 9917

Email: TshwaroG@statssa.gov.za

Preface

The report provides information on South African residents and foreign travellers who passed through all South African ports of entry/exit (air, land and sea ports) in 2023. It summarises data published in the monthly statistical releases on *Tourism and Migration* (Statistical release P0351) in 2023, highlighting annual numbers of travellers and tourists. Details on the mode of travel, seasonal travel patterns; purpose of visit; full duration of stay of visit; and demographic characteristics of tourists who visited South Africa in 2023 are provided.

Please note that starting in April 2024, the title of our monthly release will be changed from "Tourism and Migration" to "International Tourism", and our annual report will change from "Tourism" to "International Tourism". However, the content of the release will remain the same and comparable to previous monthly releases of "Tourism and Migration" P0351 and similar to our annual reports. This change is being made to ensure consistency in our naming conventions and to reflect the absence of migration data in both publications.



Risenga Maluleke
Statistician-General

Contents

List of tables.....iv

List of figuresiv

1. Introduction1

 1.1 Background.....1

 1.2 Objectives of this report2

 1.3 Scope of this report.....2

2. Data and methods2

 2.1 Data source.....2

 2.2 Data processing and analysis.....2

 2.3 Limitations of data.....3

3. All travellers.....3

 3.1 Number of travellers.....3

 3.1.1 South African residents4

 3.1.2 Foreign travellers.....6

4. Tourists10

 4.1 Sex and age distribution10

 4.2 Region of residence12

 4.3 Ten leading countries14

 4.4 Mode of travel15

 4.5 Purpose of visit17

 4.6 Duration of stay.....18

5. Summary20

6. Appendices21

7. Definition of terms60

8. Other Stats SA reports61

List of tables

Table 3.1–Number of arrivals, departures and travellers in transits of South African residents by mode of travel, 2023..... 4

Table 3.2–Percentage distribution of South African residents by mode of travel and place of arrival or departure, 2023 5

Table 3.3–Number of arrivals, departures and transits of foreign travellers by mode of travel and place of arrival or departure, 2023 7

Table 3.4–Percentage distribution of foreign arrivals, departures and transits by mode of travel and place of arrival or departure, 2023 7

Table 4.1–Distribution of tourists by mode of travel and place of arrival, 2023..... 16

Table 4.2–Average duration of stay of tourists by region, 2023 16

List of figures

Figure 3.1 – Number of arrivals, departures and travellers in transit by year of travel, 2014 – 2023 3

Figure 3.2 – Number of arrivals, departures and transits of South African residents by year of travel, 2014 – 2023..... 4

Figure 3.3 – Percentage distribution of arrivals and departures of South African residents by month of travel, 2023..... 6

Figure 3.4 – Number of arrivals, departures and transits of foreign travellers by year of travel, 2014 – 2023 6

Figure 3.5 – Percentage distribution of foreign arrivals and departures by month of travel, 2023..... 8

Figure 3.6 – Percentage distribution of foreign arrivals by purpose of visit, 2023..... 8

Figure 3.7 – Distribution of foreign arrivals by type of visitor, 2023..... 9

Figure 4.1 – Number of tourists by month and year of travel, 2022 and 2023 10

Figure 4.2 – Percentage distribution of tourists by region of residence and sex, 2023..... 11

Figure 4.3 – Percentage distribution of tourists by region of residence and age, 2023 12

Figure 4.4 – Percentage distribution of tourists by region of residence, 2023 12

Figure 4.5 – Percentage distribution of tourists by region of residence and month of arrival, 2023 13

Figure 4.6 – Regional changes of tourists’ arrivals, Quarter 4,2023 vs Quarter 4, 2022 and Quarter 4, 2019.. 13

Figure 4.7 – Number of tourists from ten leading overseas countries in 2023 compared to 2022..... 14

Figure 4.8 – Number of tourists from ten leading SADC countries in 2023 compared to 2022 15

Figure 4.9 – Number of tourists from ten leading ‘other’ African countries in 2023 compared to 2022 15

Figure 4.10 – Percentage distribution of tourists by region of residence and mode of travel, 2023 17

Figure 4.11 – Percentage distribution of tourists by region and purpose of visit, 2023..... 18

Figure 4.12 – Total number of days tourists spent by region, 2023 19

1. Introduction

1.1 Background

Administrative records regulating the flow of people across boundaries, specifically border statistics, are an important source of statistical data on temporary population movements in many countries. Generally, countries routinely collect data from both residents and non-residents who pass through the demarcated air, land and sea ports on arrival into and departing from the country. The method, the kind of collected data, the quality of data and the dissemination and availability of processed data differ widely among countries since there is no international standardised template for the recording of information on travellers. Besides the impact of the level of infrastructure development, the national differences are largely shaped by the immigration policies and regulations of individual countries.

Data collection methods may be electronic, manual or both. Travel documents could be scanned and/or travellers are expected to complete an arrival and departure form/card. The amount of documentation and the information collected from travellers are often influenced by the citizenship / nationality of the travel document and the purpose of entry.

Data obtained from foreigners or non-residents can be used to categorise them into visitors and non-visitors. Usually, the data given on the form/card regarding the purpose of visit and/or length of stay is further used to categorise travellers into visitors and migrants. In countries that do not use cards/forms, data on type of visa/permit can also be used for the categorisation. In addition, there are countries that issue special cards for registered immigrants that they could use to cross into and out of the country of residence. Thus the information from the visa, permit and the card/form are used to classify non-visitors into migratory categories such as short-term and long-term migrants; temporary migrants; permanent migrants; labour migrants, asylum seekers, students, etc., according to a country's specifications.

Because border statistics are derived from arrival data, they could be the most suitable data source for the direct measurement of the *flow* of immigrants. The data are available at any given time because they are routinely collected as travellers pass through the immigration check points at the ports of entry. It is crucial to note that unlike data from census or sample surveys that count individual persons, border statistics by their nature, measure events i.e. movements of persons rather than the physical persons. The reason is that the same person can cross the border a number of times during a specified time and his or her information is recorded every time he or she passes through the border.

The management of population movements across South African borders and immigration into South Africa fall under the jurisdiction of the Department of Home Affairs (DHA). The jurisdiction of this responsibility is enshrined in the various immigration acts, amendments, laws and regulations. Currently, with respect to the collection of data on population movements in and out of South Africa, the DHA operates under the Immigration Act 2002 (Act No. 13 of 2002), its amendments and associated regulations. The latest Immigration Regulations came into operation on 26 May 2014. Any changes and amendments in the legislation and regulations affect both the flow of travellers as well as the methods of collecting data and the kind of information collected on travellers.

At the ports of entry/exit (see Appendix I on page 20 for the distribution of all South African ports), the immigration officers of the DHA collect information on South African residents and foreign travellers arriving into or departing from South Africa. This information is used to produce statistical releases on all travellers, with emphasis on tourists, and an annual report aggregating the results of one calendar year.

1.2 Objectives of this report

The report forms part of a regular annual series of publications on tourism statistics. The main aim of the report is to present information on population movements into and out of South Africa in 2023. Specifically, the report provides:

- Information on arrivals, departures and transits of South African residents and foreign travellers.
- A detailed analysis of the movements of tourists and their demographic characteristics over the 12 - month period.

1.3 Scope of this report

This report is based on information on population movements across South Africa's ports of entry/exit covering the period 1 January 2023 to 31 December 2023. It covers data on arrivals and departures of South African residents and foreign travellers. A detailed analysis of the data on foreign tourists with respect to: mode of travel, purpose of visit, sex and age distribution is covered. The report also describes trends in the overall number of travellers and tourists from 2014 to 2023.

2. Data and methods

2.1 Data source

Data routinely collected by immigration officers at all ports of entry/exit (land, air and sea ports) (see Appendix I on page 20) on all travellers (South African residents and foreign travellers) arriving into or departing from South Africa are captured into the Department of Home Affairs's (DHA) population Movement Control System (MCS). The data provide the best national coverage (in terms of both space and time) on the population movements of South African residents and foreign travellers. Among other uses, the data can also be used to:

- estimate, monitor and understand salient characteristics of South African residents and foreign travellers travelling into and out of South Africa;
- provide information that can be used to assess the extent of the government's progress in strengthening bilateral and multilateral political and economic relations with other countries;
- estimate the number and some characteristics of same-day visitors and tourists that visit South Africa;
- provide information for marketing tourism by identifying niche, emerging and declining markets (both at country and regional levels); and
- provide information that can be used for monitoring the effects of major international and national events (positive or negative) on the arrival of visitors into the country.

Generally, the data are collected directly from travel documents either by scanning them or by capturing information from the travel documents onto the port's electronic database. Individual ports regularly transmit the data to the national database i.e. the MCS at the head office of the DHA.

2.2 Data processing and analysis

Statistics South Africa (Stats SA) downloads the data covering a particular calendar month from DHA. The Statistical Analysis System (SAS) is used for data processing and analysis. Descriptive analyses (frequencies, cross-tabulations, percentage distributions and median ages) are used to summarise the data. The results are presented in table and graph formats. These are undertaken every month to publish information on tourism in the monthly *Tourism and Migration* (statistical release P0351) to meet users' immediate needs. The cumulative data for 12 months are published in the *Tourism* report (Report No. 03-51-02) on an annual basis.

2.3 Limitations of data

The information on the total number of arrivals, departures and travellers in transit for South African residents is collected from the scanning of passports. However, data are not collected from passengers on country visited; country of final destination; intended duration of stay and purpose of visit. With this limitation, it is impossible to identify the number of tourists from the data on South African residents.

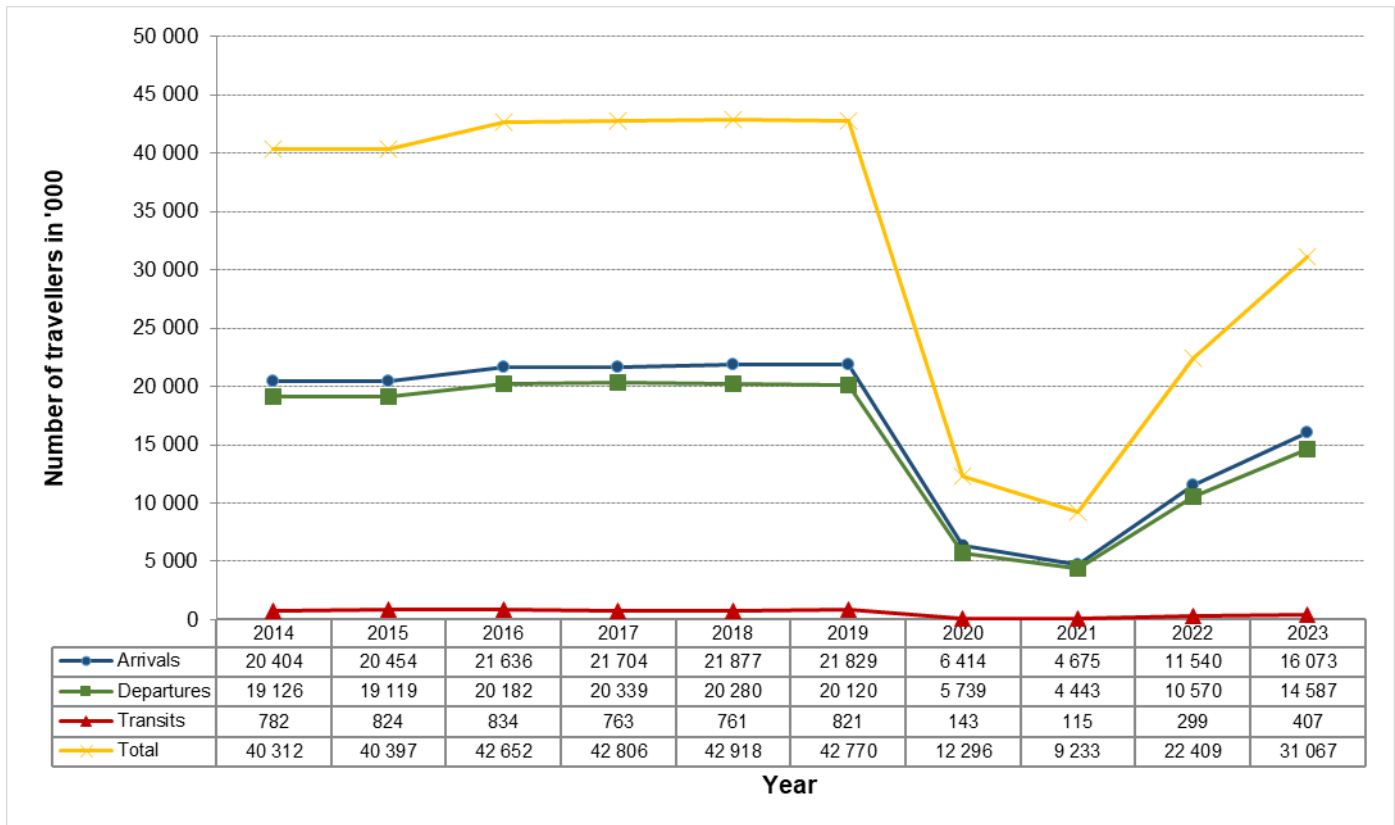
3. All travellers

3.1 Number of travellers

The results present detailed information derived from the data published monthly (January to December 2023) in the *Tourism and Migration* statistical release (P0351). In addition to the 2023 data, where relevant, data from 2022 and earlier are presented to provide some comparison in observed trends and patterns (see Appendix II on page 22).

Travellers are composed travellers in transit, arrivals into and departures from South Africa regardless of residency status. According to data presented in Figure 3.1 below, approximately 31 067 000 travellers were recorded in 2023 compared to 40 312 000 recorded in 2014, indicating that the overall number of travellers decreased by 22,9% over this ten-year period. Similarly, there were 16 073 000 arrivals, 14 587 000 departures and 407 000 transits in 2023 compared to 20 404 000 arrivals, 19 126 000 departures and 782 000 transits in 2014. Furthermore, the number of travellers had a steady increase from 2014 to 2018, followed by a slight decline in 2019 and two drastic declines in 2020 and 2021. An increase of 38,6% was observed between 2022 and 2023. Arrivals increased by 39,3% while departures increased by 38,0% and transits increased by 36,1% between 2022 and 2023.

Figure 3.1 – Number of arrivals, departures and travellers in transit by year of travel, 2014 – 2023

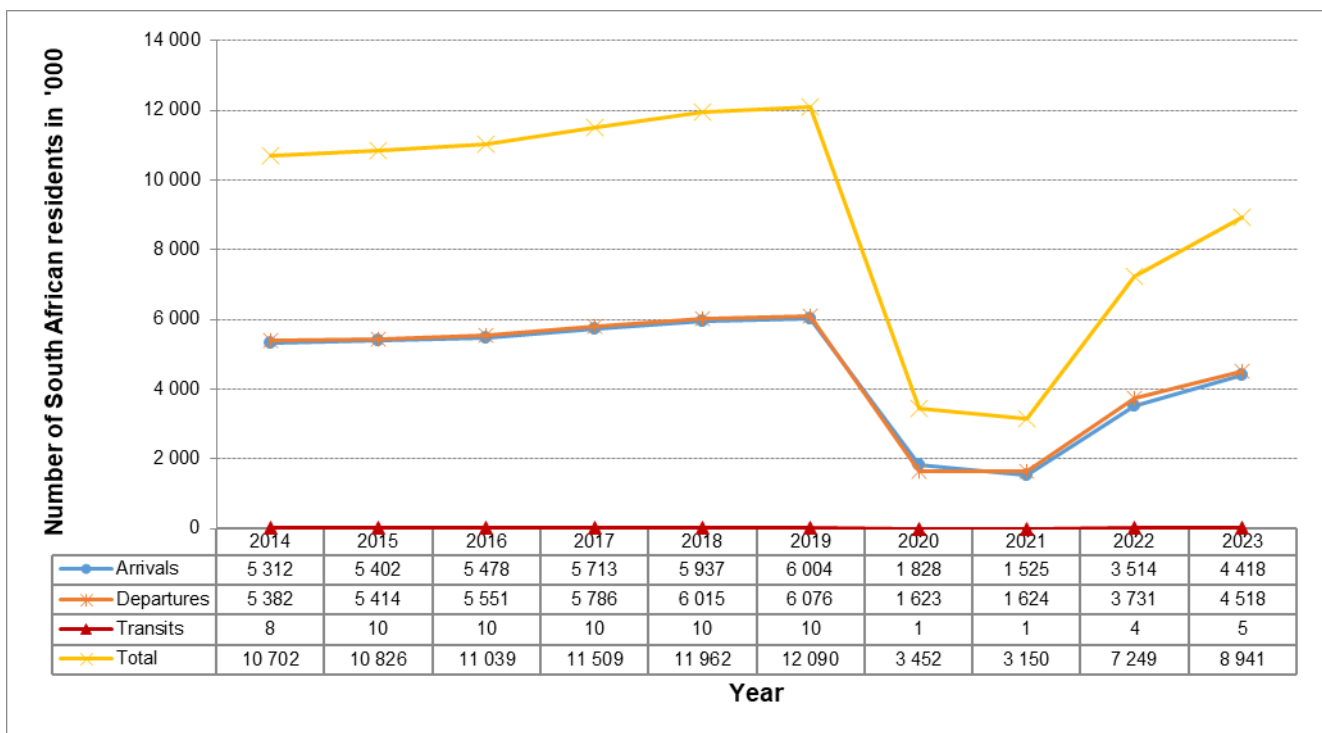


3.1.1 South African residents

In 2023, 8 940 475 South African resident travellers were recorded compared to 7 248 643 in 2022. As shown in Appendix II on page 22, the 2023 volume was made up of 4 417 526 arrivals, 4 517 834 departures and 5 115 transits.

The data in Figure 3.2 below, indicate that the annual volumes of arrivals, departures and transits for South African residents generally increased between 2014 and 2019. The figure shows a drastic drop which was observed in 2020 and a further slight drop in 2021. The figure further shows an increase from 2021 to 2023. There were nearly as many arrivals as departures over the years.

Figure 3.2 – Number of arrivals, departures and transits of South African residents by year of travel, 2014 – 2023



Mode of travel

Table 3.1 below shows that the mode of travel for South African residents entering the country in 2023 was largely the same as the mode of travel for leaving the country. Most South African residents (54,2%) arrived and (53,8%) departed the country using road transport. Air transport was the second most popular mode of travel used by 44,0% arrivals and 44,3% departures. Sea transport was used by 1,9% arrivals and departures, making it the least used mode of travel. All passengers in transit used air transport (5 115).

Table 3.1 – Number of arrivals, departures and travellers in transit of South African residents by mode of travel, 2023

Mode of travel	Arrivals		Departures		Transits	
	Number	%	Number	%	Number	%
Air	1 941 976	44,0%	2 000 705	44,3%	5 115	100,0%
Road	2 392 321	54,2%	2 429 947	53,8%	-	-
Sea	83 229	1,9%	87 182	1,9%	-	-
Total	4 417 526	100,0%	4 517 834	100,0%	5 115	100,0%

Detailed information on ports used by South African residents to leave, enter or transit the country by mode of travel is provided in Table 3.2 below (absolute numbers are provided in Appendix III on page 23). Due to the large number of land ports as shown in Appendix I (on page 21), border countries are used in the table instead of the specific land ports names. That is, data for all ports found on the border within a particular country are combined and the country name is used.

Amongst road users, 75% of South African residents used Lesotho, Mozambique and Eswatini ports of entry. For arrivals, 27,8% entered the country through Lesotho, 26,8% entered through Mozambique and 20,4% entered through Eswatini. Similarly, for departures, most road users left through Lesotho (27,8%), Mozambique (26,3%) and Eswatini (21,0%) ports. Out of the total number of residents using air as their mode of travel, the majority (73,8%) arrived and (73,3%) departed through OR Tambo International Airport while 20,8% arrived and 21,3% left through Cape Town International Airport. Less than 5,0% came (4,7%) or left (4,9%) the country using King Shaka International Airport and 0,6% arrived and left through other airports. Out of those who arrived by sea, most (72,8%) arrived or (75,7%) left through the Durban harbour.

Detailed information on the mode of travel by place and month of arrival and departure for South African residents for 2023 is presented in Appendix IV on page 24 and Appendix V on page 25.

Table 3.2 – Percentage distribution of South African residents by mode of travel and place of arrival or departure, 2023

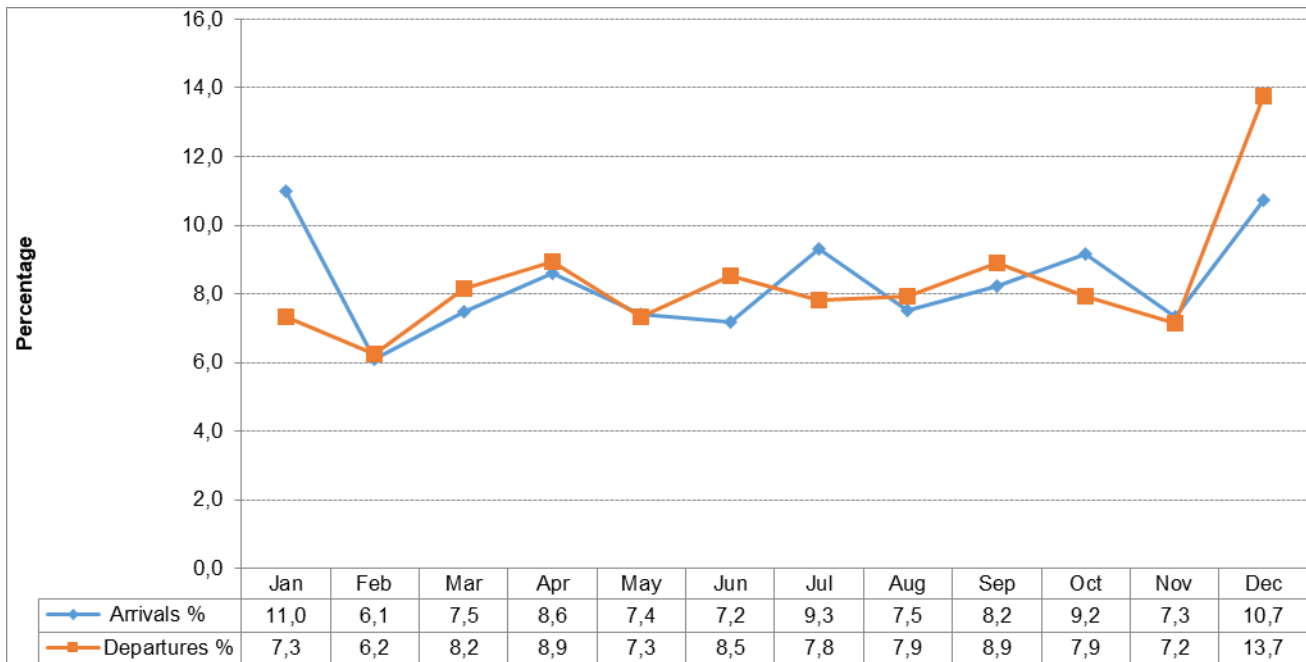
Mode of travel and place of arrival, departure or transit	% Arrivals	% Departures	% Transit
Air	100,0%	100,0%	100,0%
Cape Town International Airport	20,8%	21,3%	0,9%
King Shaka International Airport	4,7%	4,9%	-
O. R. Tambo International Airport	73,8%	73,3%	99,1%
Other Airports	0,6%	0,6%	-
Road	100,0%	100,0%	-
Botswana	14,6%	14,6%	-
Eswatini	20,4%	21,0%	-
Lesotho	27,8%	27,8%	-
Mozambique	26,8%	26,3%	-
Namibia	4,3%	4,3%	-
Zimbabwe	6,1%	6,0%	-
Sea	100,0%	100,0%	-
Cape Town Harbour	27,1%	24,2%	-
Durban Harbour	72,8%	75,7%	-
Port Elizabeth Harbour	0,1%	0,1%	-

* Percentages might not add up to 100 due to rounding off.

Month of travel

The distribution of South Africans arriving and departing the country classified by month of travel is provided in Figure 3.3 on page 6. The results show that of the 4 417 526 arrivals, the highest proportion was recorded in January (11,0%) followed by December (10,7%), while the lowest proportion was recorded in February (6,1%). Of the 4 517 834 departures, the highest percentage was recorded in December (13,7%) and the lowest in February (6,2%).

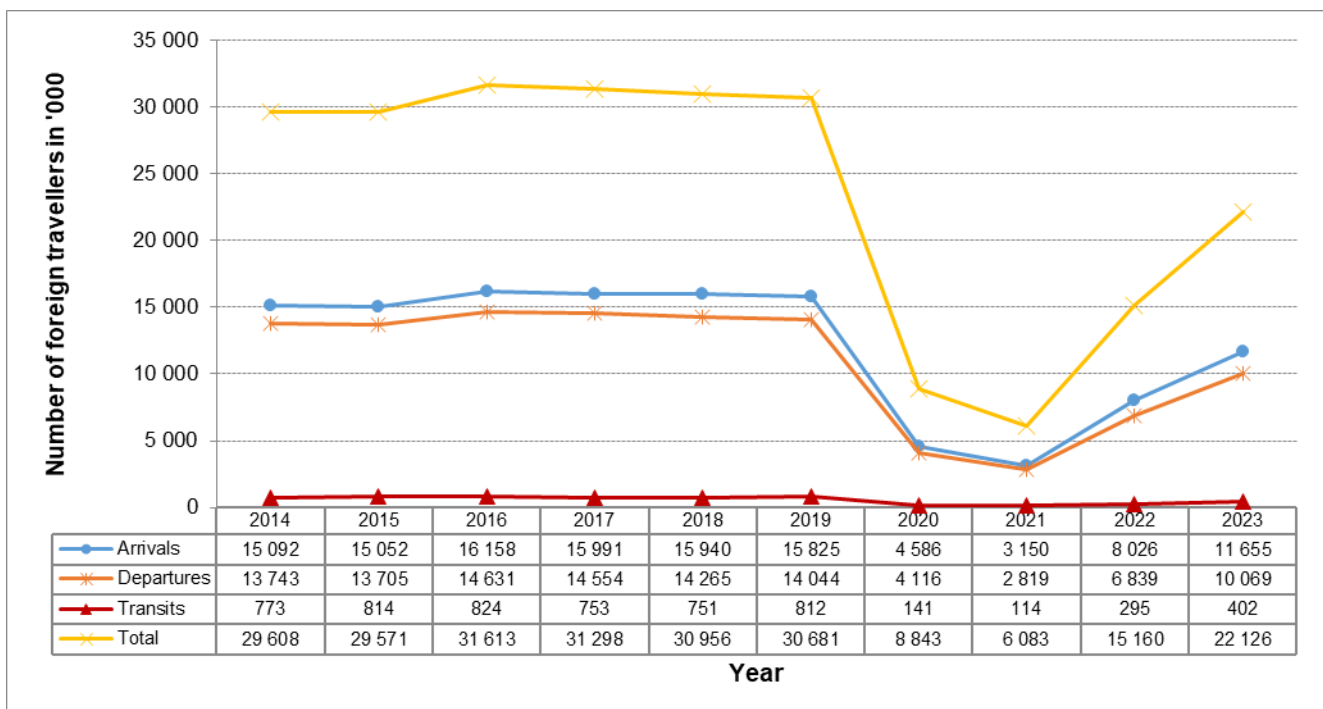
Figure 3.3 – Percentage distribution of arrivals and departures of South African residents by month of travel, 2023



3.1.2 Foreign travellers

In 2023, 22 126 777 foreign travellers were recorded compared to 15 160 825 in 2022. As shown in Appendix II on page 22, the 2023 volume was made up of 11 655 083 arrivals, 10 069 415 departures and 402 279 transits. It is observed from Figure 3.4 below (and Appendix II on page 22) that a slight decrease was observed between 2014 and 2015 considering the exclusion of travellers in transit from arrivals starting from 2014. An increase was observed between 2015 and 2016 and the volumes generally declined between 2016 and 2019. A drastic drop was observed in 2020 and a further slight drop in 2022. The figure further shows an increase from 2021 to 2023. Unlike in the case of South African travellers, the volume of departures of foreign travellers has been lower than that of arrivals throughout the ten-year period.

Figure 3.4 – Number of arrivals, departures and transits of foreign travellers by year of travel, 2014 – 2023



Mode of travel

Table 3.3 below indicates a marginal difference of mode of travel used by foreigners coming into South Africa or leaving the country in 2023. Most foreigners arrived (75,3%) and left (70,5%) the country by road. Air travel was used by 24,3% of foreign arrivals and 28,9% of foreign departures. Of the foreigners who came into the country, 0,5% arrived and 0,6% departed by sea transport.

Table 3.3 – Number of arrivals, departures and transits of foreign travellers by mode of travel and place of arrival or departure, 2023

Mode of travel	Arrivals		Departures		Transits	
	Number	%	Number	%	Number	%
Air	2 827 226	24,3%	2 911 600	28,9%	402 279	100,0%
Road	8 770 787	75,3%	7 095 295	70,5%	-	-
Sea	57 070	0,5%	62 520	0,6%	-	-
Total	11 655 083	100,0%	10 069 415	100,0%	402 279	100,0%

Most of the foreign travellers who arrived by road entered through Zimbabwe (26,4%), Lesotho (26,2%) and Mozambique (21,7%) ports of entry (see Table 3.4 below). For departures, most road users went through Lesotho (28,1%), Zimbabwe (22,6%) and Mozambique (20,5%) ports.

The majority of the foreigners who travelled by air arrived (64,3%) and left (64,7%) South Africa through OR Tambo International Airport (see Appendix VI on page 26 for absolute numbers). Almost all travellers in transit (99,2%) used OR Tambo international airport. Cape Town International Airport was used by 33,9% foreigners to arrive in the country and 33,0% to leave the country. Less than 2,0% came (1,5%) and left (1,6%) the country using King Shaka International Airport and 0,4% came and 0,7% left through other airports. Those who travelled by sea mainly used Cape Town harbour by 61,7% to arrive and 60,8% to depart South Africa.

Table 3.4 – Percentage distribution of foreign arrivals, departures and transits by mode of travel and place of arrival or departure, 2023

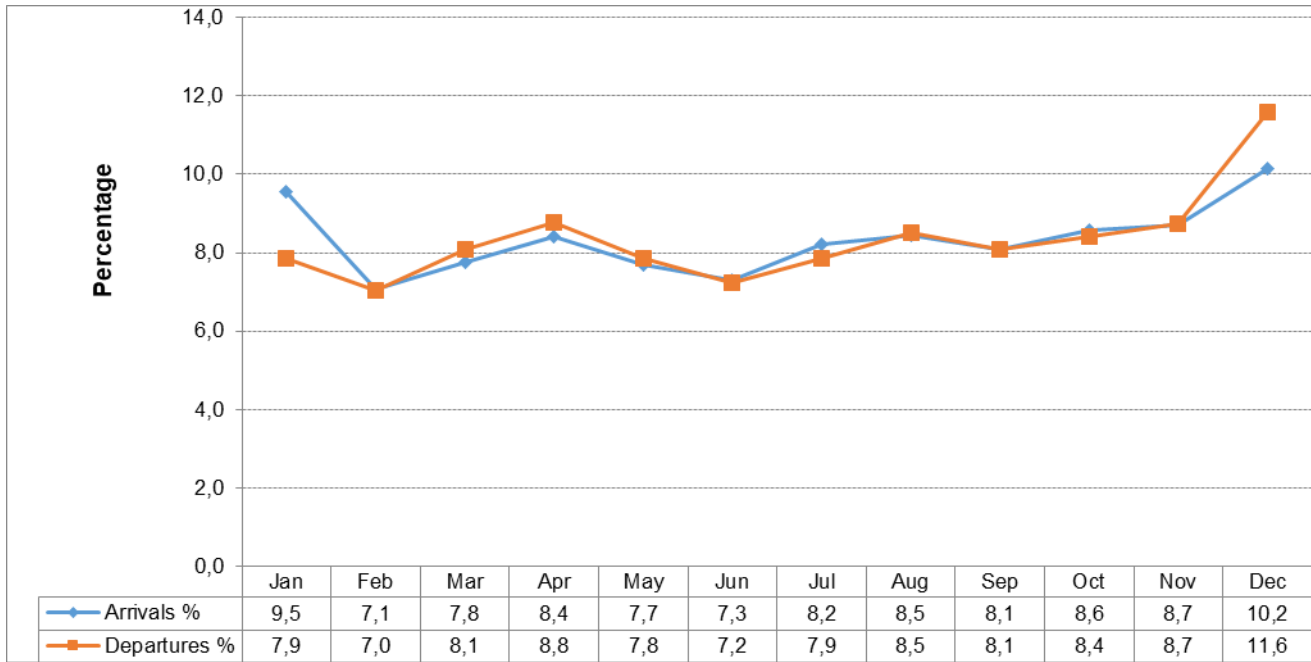
Mode of travel and place of arrival, departure or transit	% Arrivals	% Departures	% Transits
Air	100,0%	100,0%	100,0%
Cape Town International Airport	33,9%	33,0%	0,8%
King Shaka International Airport	1,5%	1,6%	0,0%
O. R. Tambo International Airport	64,3%	64,7%	99,2%
Other Airports	0,4%	0,7%	-
Road	100,0%	100,0%	-
Botswana	10,1%	12,2%	-
Eswatini	13,9%	14,6%	-
Lesotho	26,2%	28,1%	-
Mozambique	21,7%	20,5%	-
Namibia	1,5%	1,9%	-
Zimbabwe	26,4%	22,6%	-
Sea	100,0%	100,0%	-
Cape Town Harbour	61,7%	60,8%	-
Durban Harbour	29,2%	30,7%	-
Port Elizabeth Harbour	9,1%	8,5%	-

* Percentages might not add up to 100 due to rounding off.

Month of travel

The monthly distribution of foreign arrivals and departures by mode of travel and place of arrival and departure are provided in Appendices VII on page 27 and VIII on page 28 and summarised in Figure 3.5 below. The results indicate that most foreign arrivals were recorded in December (10,2%) and the least in February (7,1%) while most departures were recorded in December (11,6%) and the least in February (7,0%).

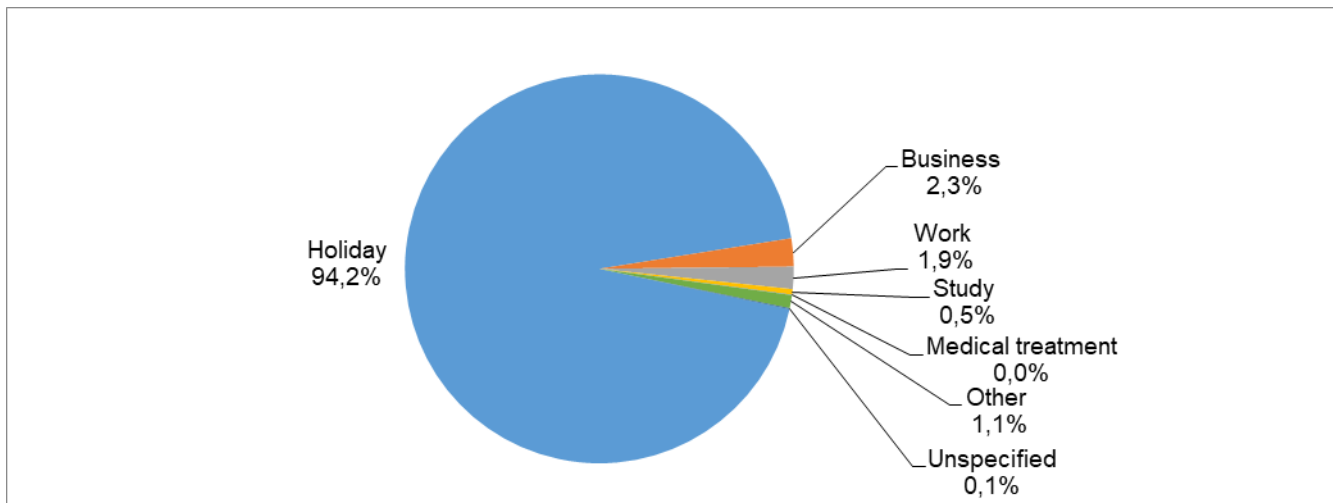
Figure 3.5 – Percentage distribution of foreign arrivals and departures by month of travel, 2023



Purpose of visit

Figure 3.6 below, shows that in 2023, the main purpose of visit for foreign arrivals was holidays (94,2%). Whereas 2,3% of the 2023 arrivals came for business; 1,9% came for work; 0,5% came to study and less than 0,1% came for medical treatment. A detailed distribution of the number of foreign arrivals by purpose of visit and month can be seen in Appendix IX on page 29. November (25 803) had the highest number of foreign arrivals who came for business; while most tourists who came for holiday came in December (1 139 592) and in January (1 036 438); students came in January (7 978), July (6 758) and in February (6 063); workers came in January (30 497) and those who came for medical treatment came in May (425).

Figure 3.6 – Percentage distribution of foreign arrivals by purpose of visit, 2023

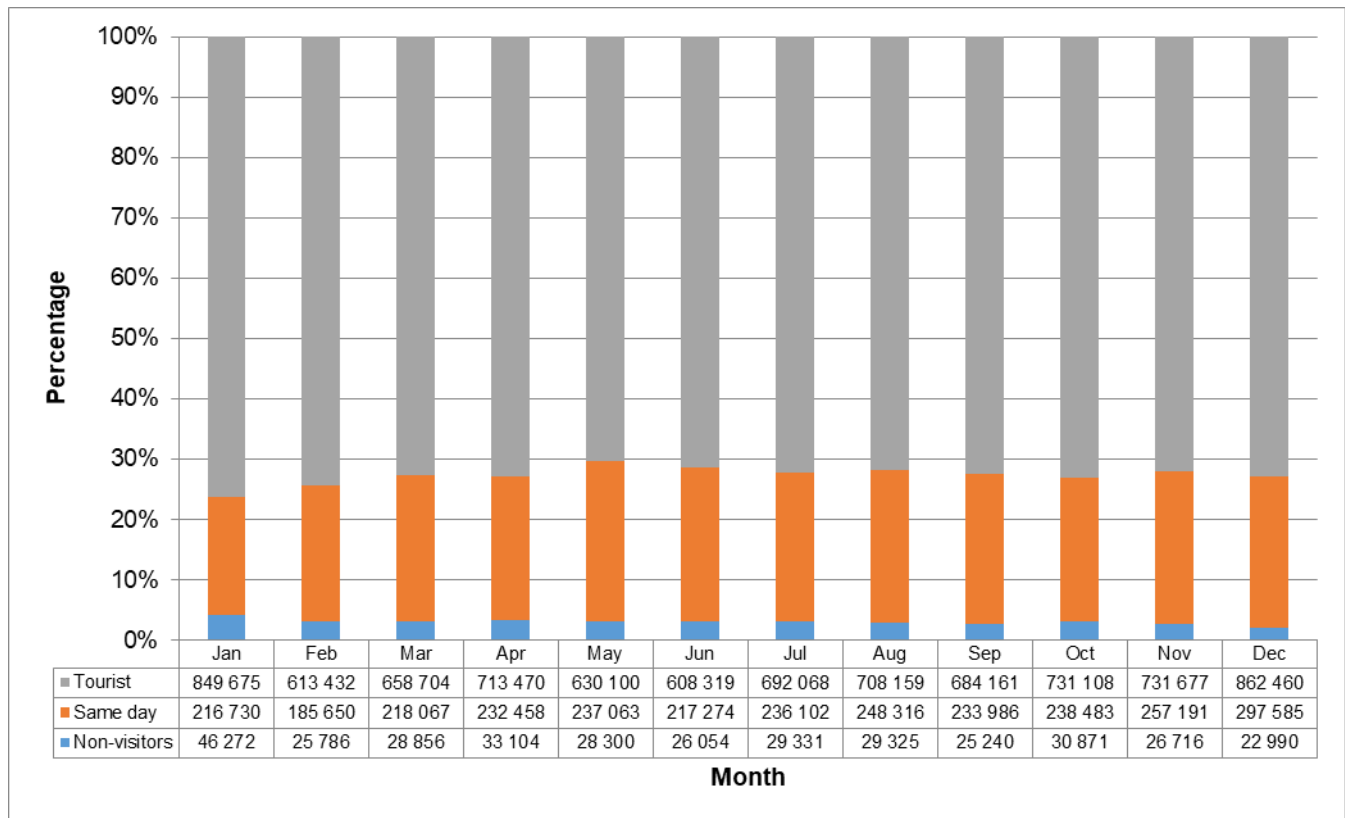


Type of visitors

Foreign arrivals can be classified as visitors and non-visitors depending on their purpose of visit. Furthermore, the visitors can be grouped as same-day visitors and tourists (overnight visitors). In 2023, there were 352 845 (3,0%) non-visitors and 11 302 238 (97,0%) visitors (see Appendix X on page 30). The visitors were made up of 2 818 905 (24,9%) same-day visitors and 8 483 333 (75,1%) overnight visitors or tourists.

It is observed from the monthly distribution of the data presented in Figure 3.7 below, that the volume of non-visitors was highest in January (46 272). In contrast, December recorded the lowest number of non-visitors (22 990). The monthly volume of same-day visitors ranged from 185 650 in February to 297 585 in December with a monthly average of 234 909 visitors.

Figure 3.7 – Distribution of foreign arrivals by type of visitor, 2023



Further analysis on same-day visitors (see Appendix XI on page 31) indicates that a great majority of the same-day visitors [2 595 403 (92,1%)] came into the country by road; most of whom were from Southern African Development Community (SADC) countries [2 560 839 (98,7%)]. Virtually all same-day visitors [2 791 589 (99,0%)] came for holiday. The rest came for business [20 774 (0,7%)]; for study purposes [6 019 (0,2%)] and for medical treatment [523 (less than 0,1%)].

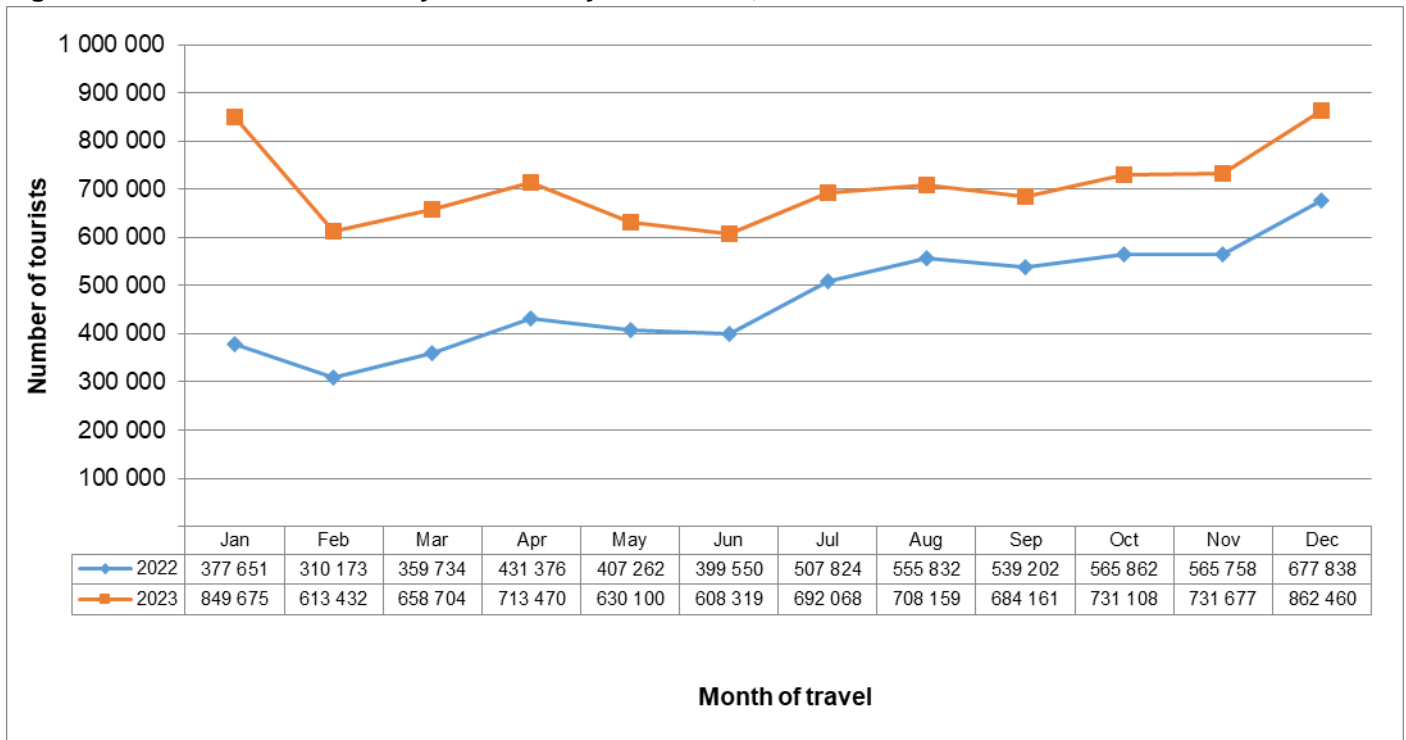
4. Tourists

This section presents the number of tourists that visited South Africa in 2023, as well as their demographic characteristics (age and sex), their regions of residence, mode of travel, purpose of visit and duration of stay. A total of 8 483 333 tourists came to South Africa in 2023, showing an increase of 48,9% from the 5 698 062 tourists recorded in 2022. In 2023 tourist arrivals were 17,1% below the pre-pandemic levels from 10 228 593 in 2019

Information presented in Figure 4.1 below indicates that the highest number of tourist arrivals [862 460 (10,2%)] was recorded in December 2023 followed by [849 675 (10,0%)] which was recorded in January. The least number of tourist arrivals was recorded in February 2023 [613 432 (7,2%)] and in June 2023 [608 319 (7,2%)]. Figure 4.1 further shows that the monthly tourist arrivals in 2023 were higher than the monthly arrivals observed in 2022.

Appendix XIV (on page 34) further indicates some diversity in the monthly arrival patterns regarding the types of tourists. The highest numbers of tourists were recorded in December [844 059 (10,3%)] and in January [822 470 (10,1%)] for holiday; in November for business persons [24 211 (9,6%)], that of students was recorded in January [7 220 (15,4%)], and that of medical treatment was recorded in February [356 (10,3%)]

Figure 4.1 – Number of tourists by month and year of travel, 2022 and 2023

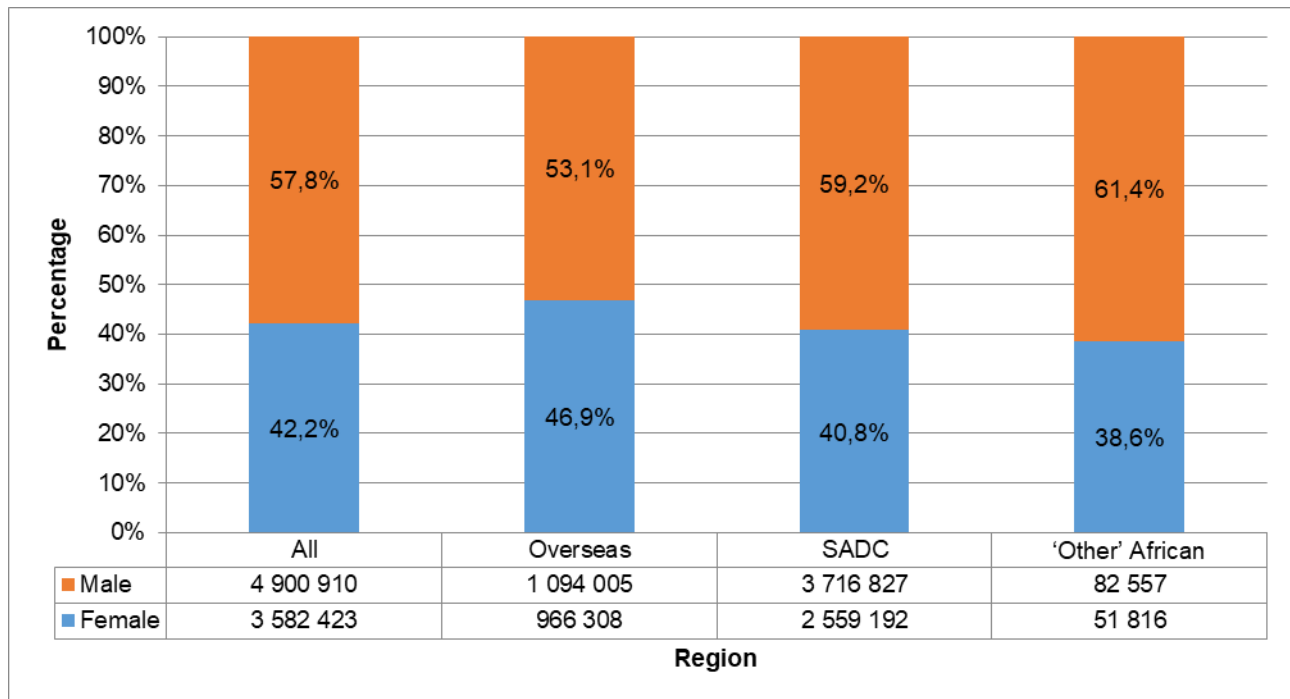


4.1 Sex and age distribution

Sex

In 2023, as shown in Figure 4.2 on page 11, there were more male [4 900 910 (57,8%)] than female [3 582 423 (42,2%)] tourists. Male tourists constituted the majority of tourists for all three regions, SADC [3 716 827 (59,2%)], overseas countries [1 094 005 (53,1%)] and ‘other’ Africa countries [82 557 (61,4%)]. Similarly, the largest portion of female tourists was from SADC countries [2 559 192 (40,8%)], followed by overseas countries [966 308 (46,9%)] and the lowest from ‘other’ African countries [51 816 (38,6%)]. Detailed information on the number of tourists by sex, age and region of residence are shown in Appendix XII on page 32 while the same distribution by month of arrival is shown in Appendix XIII on page 32.

Figure 4.2 – Percentage distribution of tourists by region of residence and sex, 2023

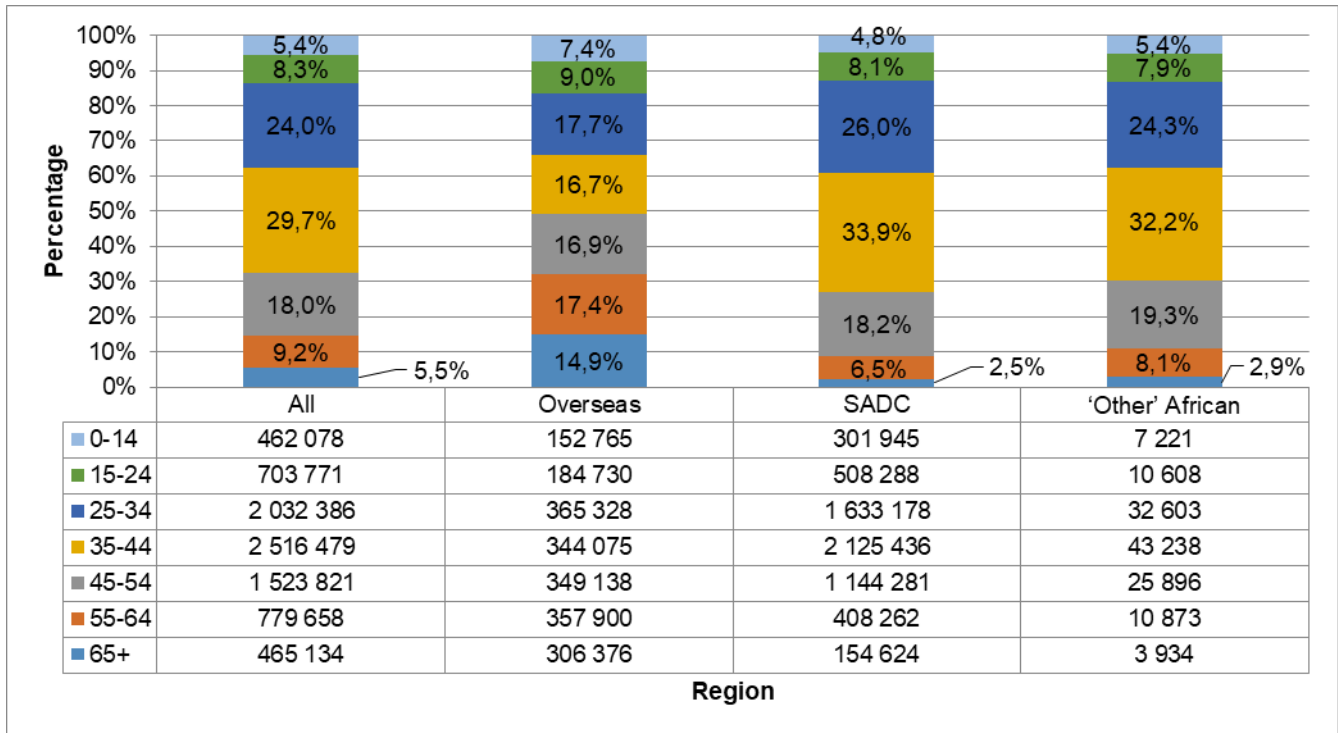


Age

The age distribution indicates that out of all tourists, [462 078 (5,4%)] were aged less than 15 years; [703 771 (8,3%)] were aged between 15 and 24 years; [2 032 386 (24,0%)] were aged between 25 and 34 years; [2 516 479 (29,7%)] were aged between 35 and 44 years; [1 523 821 (18,0%)] were aged between 45 and 54 years; [779 658 (9,2%)] were aged between 55 and 64 years and [465 134 (5,5%)] were aged 65 years and above. Tourists who had unspecified age were excluded from this figure. (see Figure 4.3 on page 12).

Taking the region of residence into consideration, the results show that the highest proportion of tourists from SADC countries [2 125 436 (33,9%)] and those from 'other' African countries [43 238 (32,2%)] were aged between 35 and 44 years, whereas overseas countries [365 328 (17,7%)] were aged between 25 and 34 years. The second highest proportion of tourists from SADC countries [1 633 178 (26,0%)] and those from 'other' African countries [32 603 (24,3%)] were aged between 25 and 34 years, whereas those from overseas countries [357 900 (17,4%)] were aged between 55 and 64 years. The median ages of tourists from overseas, SADC and 'other' African countries were 44, 38 and 38 years respectively. The proportion of tourists aged less than 15 years was higher among tourists from overseas countries, 7,4% (152 765) compared to those from 'other' African countries, 5,4% (7 221) and those from SADC countries, 4,8% (301 945). Detailed information on the number of tourists by sex, age and region of residence are shown in Appendix XII on page 32 while the same distribution by month of arrival is shown in Appendix XIII on page 33.

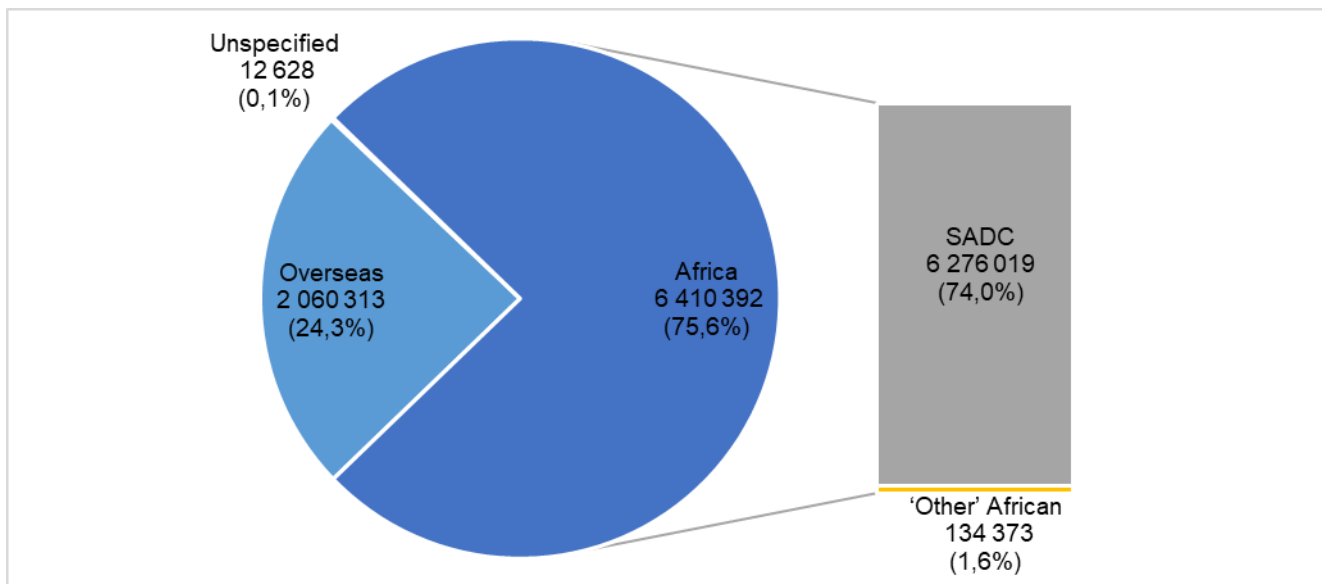
Figure 4.3 – Percentage distribution of tourists by region of residence and age, 2023



4.2 Region of residence

The breakdown of the number of tourists by region provided in Figure 4.4 below indicates that 74,0% of the tourists who arrived in South Africa in 2023 were residents of SADC countries and 1,6% were from 'other' African countries. These two sub-regions made up 75,6% of tourists from Africa in total. Residents of overseas countries made up 24,3% of the tourists.

Figure 4.4 – Percentage distribution of tourists by region of residence, 2023



Detailed information on the number of tourists by region and sub-region of residence and the month of arrival is provided in Appendix XV on page 35 and the percentage distribution at the regional level is shown in Figure 4.5 on page 13. It is observed that there are regional differences in the monthly arrivals of tourists. Thus in 2023, the highest proportion of overseas tourists was recorded in December (10,0%) and the lowest proportion in June (6,0%). The highest proportion of tourist arrivals from the SADC region was recorded in January (10,4%) and in

December (10,2%) and the lowest in February (6,5%). Furthermore, for tourists from the 'other' African region, the highest proportion of tourist arrivals was recorded in December (11,9%) and the lowest proportion in January (6,9%).

Figure 4.5 –Percentage distribution of tourists by region of residence and month of arrival, 2023

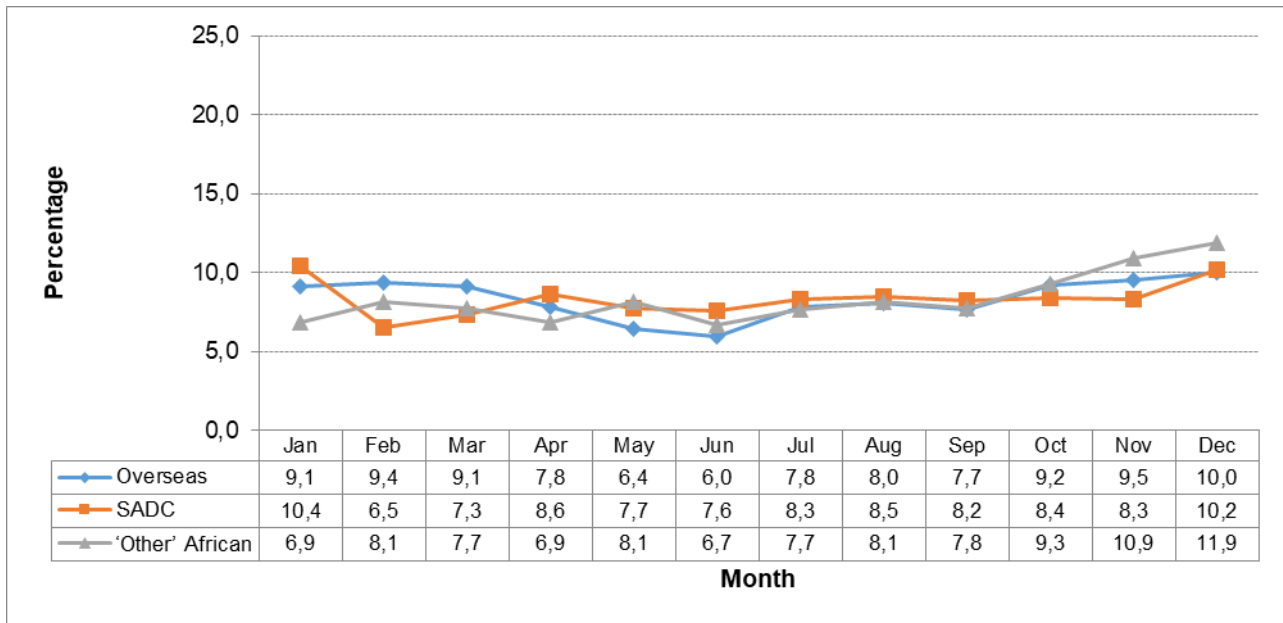
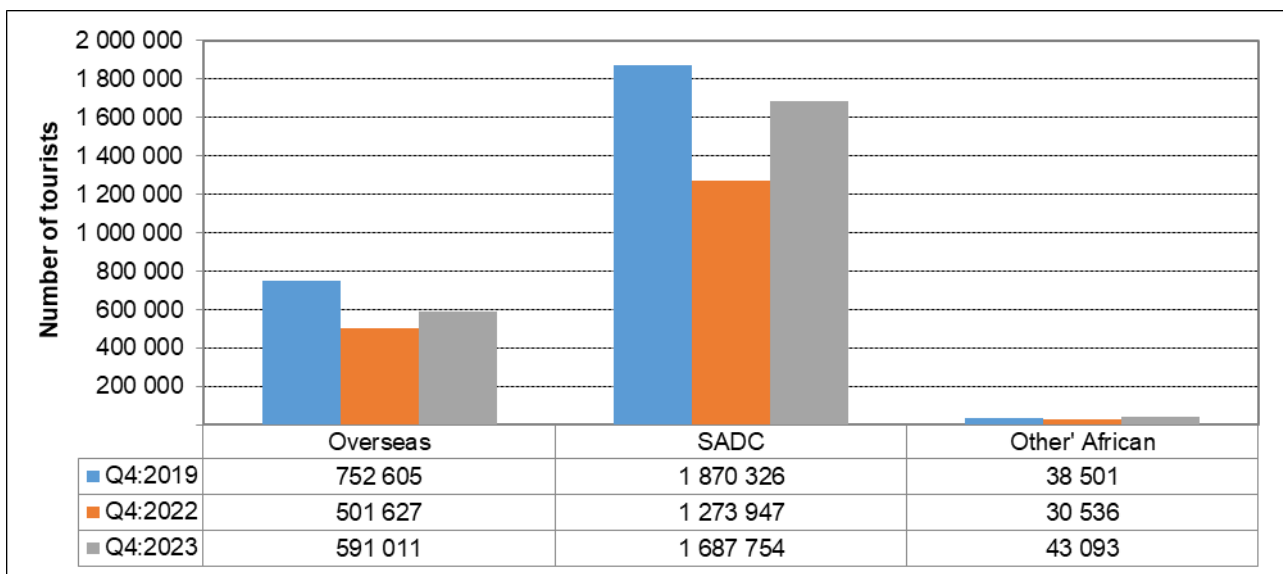


Figure 4.6 below indicates that “other” African countries has shown a remarkable recovery by exceeding the pre-pandemic levels by 11,9% from 38 501 tourists in Q4 of 2019 to 43 093 tourists in Q4 of 2023. There is a room for a complete recovery for the other two regions, as overseas has reached 78,5% of 2019 levels and SADC has reached 90,2%.

A year-on-year comparison between 2022 and 2023 for quarter four shows that the number of overseas tourists increased by 17,8% (from 501 627 in quarter four of 2022 to 591 011 in quarter four of 2023). Comparisons between the fourth quarters of 2022 and 2023 show that the number of SADC tourists increased by 32,5% (from 1 273 947 in quarter four of 2022 to 1 687 754 in quarter four of 2023)

Figure 4.6 –Regional changes of tourists’ arrivals, Quarter 4,2023 vs Quarter 4, 2022 and Quarter 4, 2019

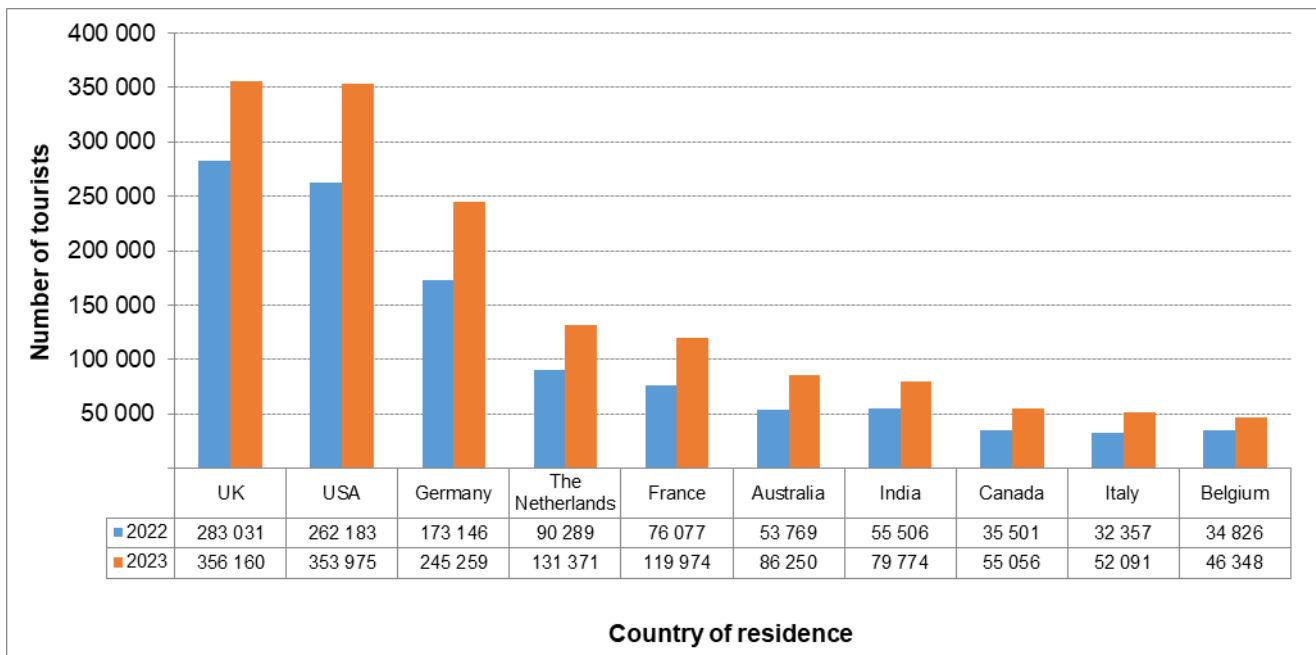


4.3 Ten leading countries

Overseas

As presented in Figure 4.7 below (and Appendix XVII on page 37 – 41), the ten leading countries for overseas tourists in 2023 were: The United Kingdom (UK), 356 160 (17,3%); United States of America (USA), 353 975 (17,2%); Germany, 245 259 (11,9%); The Netherlands, 131 371 (6,4%); France, 119 974 (5,8%); Australia, 86 250 (4,2%); India, 79 774 (3,9%); Canada, 55 056 (2,7%); Italy, 52 091 (2,5%) and Belgium, 46 348 (2,2%). A comparison of the 2022 and 2023 volumes indicates that the number of tourists increased in all 10 leading overseas countries. Italy had the largest increase of 61,0%.

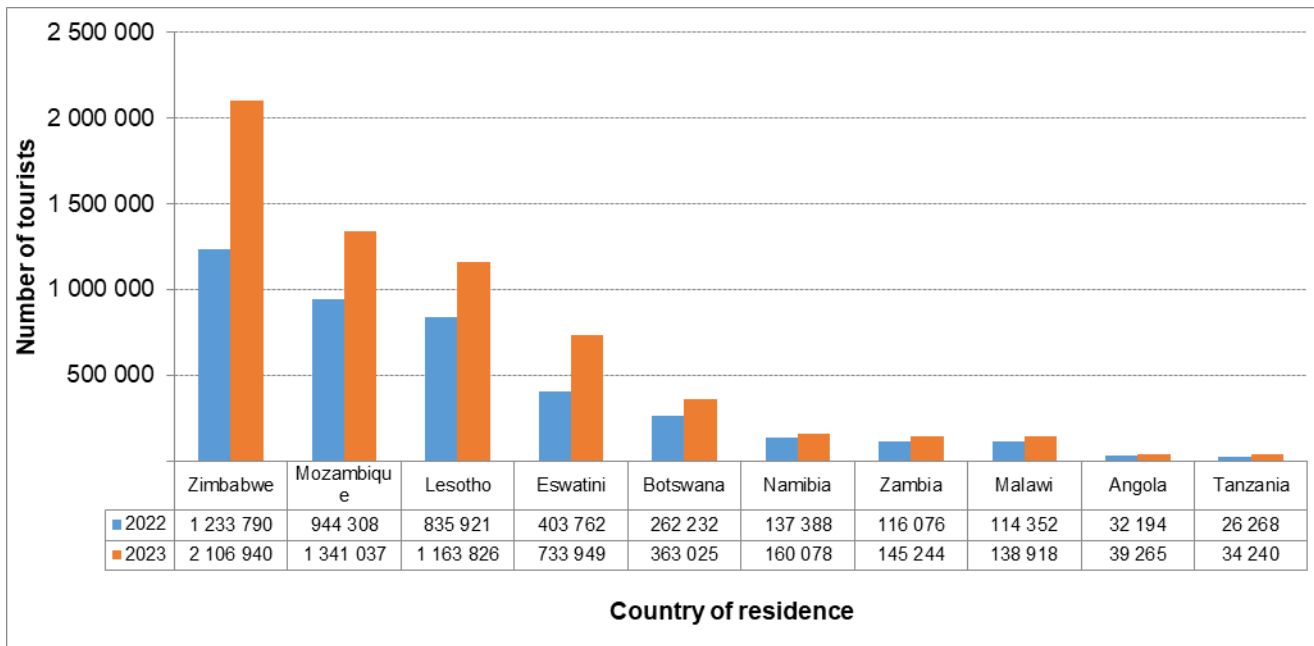
Figure 4.7 – Number of tourists from ten leading overseas countries in 2023 compared to 2022



SADC

Figure 4.8 on page 15 (and Appendix XVII on page 42) shows the ten leading countries for tourists from the SADC region in 2023. These were: Zimbabwe, 2 106 940 (33,6%); Mozambique, 1 341 037 (21,4%); Lesotho, 1 163 826 (18,5%); Eswatini, 733 949 (11,7%); Botswana, 363 025 (5,8%); Namibia, 160 078 (2,6%); Zambia, 145 244 (2,3%); Malawi, 138 918 (2,2%); Angola, 39 265 (0,6%) and Tanzania, 34 240 (0,5%). All 10 leading SADC countries showed an increase in the number of tourists from 2022 to 2023. Eswatini showed the largest increase of 81,8%.

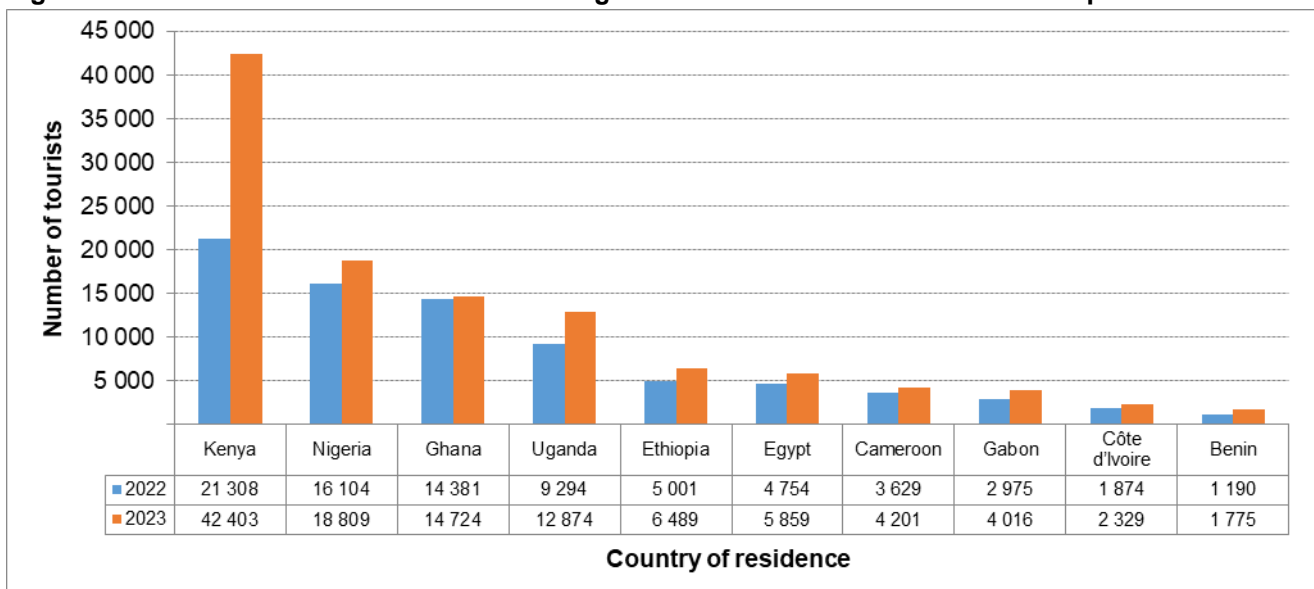
Figure 4.8 – Number of tourists from ten leading SADC countries in 2023 compared to 2022



‘Other’ African

As presented in Figure 4.9 below (and Appendix XVII on page 42– 43), the 10 leading countries for tourists from ‘other’ African countries in 2023 were: Kenya, 42 403 (31,6%); Nigeria, 18 809 (14,0%); Ghana, 14 724 (11,0%); Uganda, 12 874 (9,6%); Ethiopia, 6 489 (4,8%); Egypt, 5 859 (4,4%); Cameroon, 4 201 (3,1%); Gabon, 4 016 (3,0%); Côte d’Ivoire, 2 329 (1,7%) and Benin, 1 775 (1,3%). A comparison between the 2022 and 2023 volumes indicates that the number of tourists increased in all ten leading countries. Kenya had the largest increase of 99,0%.

Figure 4.9 – Number of tourists from ten leading ‘other’ African countries in 2023 compared to 2022



4.4 Mode of travel

Place of arrival

Table 4.1 on page 16 provides information on the number of tourists by mode of travel and place of arrival. A large number of tourists who came to South Africa in 2023 used road [5 958 727 (70,2%)] followed by those who came by air [2 508 578 (29,6%)] and those who arrived by sea [16 028 (0,2%)].

The results further show that the road users mainly came in through the Zimbabwe (29,5%) and Mozambique (24,5%) ports of entry. Namibia (1,9%) had the least number of the 2023 tourists using its ports of entry.

Out of the 2 508 578 tourists that arrived by air, the largest proportion (61,9%) used OR Tambo International Airport. Cape Town international airport was used by 36,5% of tourists. Most of the tourists that arrived by sea came in through the Cape Town harbour (76,4%).

The highest volume of tourists that passed through Zimbabwe port of entry were recorded in January (200 719) whereas the lowest volumes were recorded in February (107 654). Meanwhile, the highest volume of tourists that entered South Africa through the OR Tambo International Airport were recorded in December (150 443) whereas the lowest were recorded in June (109 238). A detailed table including month of travel is shown in Appendix XVI on page 36.

Table 4.1– Distribution of tourists by mode of travel and place of arrival, 2023

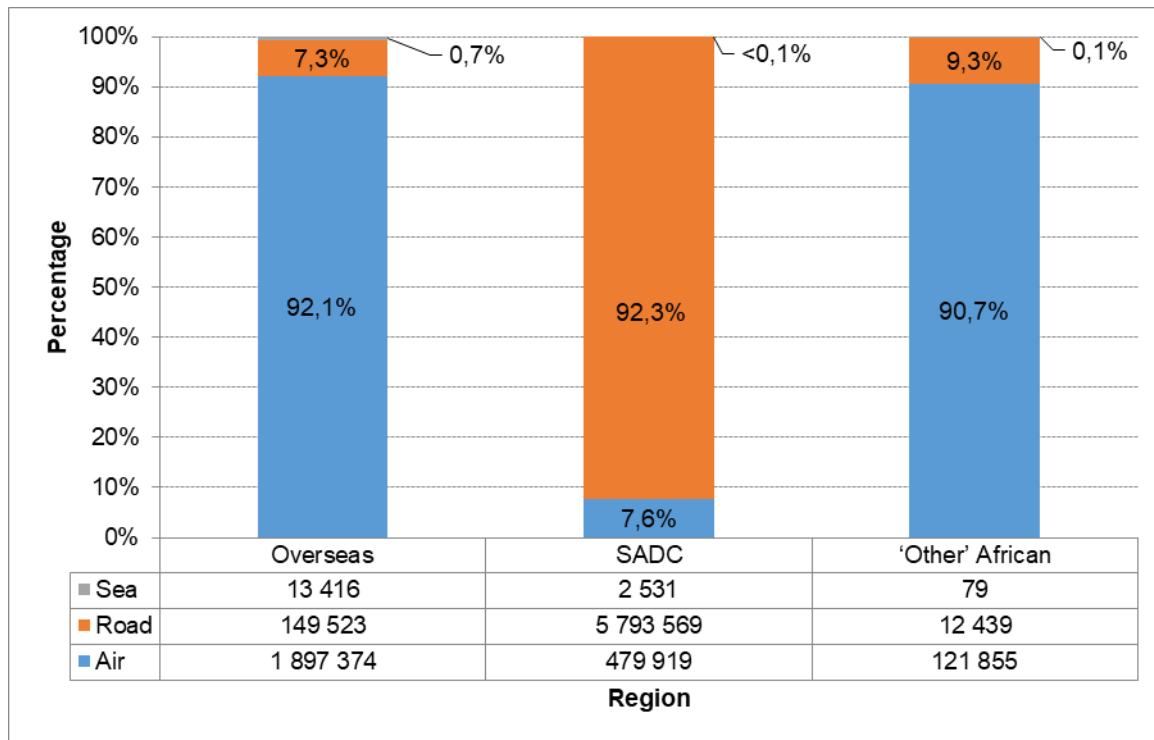
Mode of travel and place of arrival	Total	%
Total	8 483 333	100,0%
Air	2 508 578	100,0%
Cape Town International Airport	914 971	36,5%
King Shaka International Airport	33 557	1,3%
OR Tambo International Airport	1 551 804	61,9%
Other Airports	8 246	0,3%
Road	5 958 727	100,0%
Botswana	593 670	10,0%
Eswatini	860 963	14,4%
Lesotho	1 176 902	19,8%
Mozambique	1 457 920	24,5%
Namibia	112 823	1,9%
Zimbabwe	1 756 449	29,5%
Sea	16 028	100,0%
Cape Town Harbour	12 246	76,4%
Durban Harbour	3 205	20,0%
Port Elizabeth Harbour	577	3,6%

* Percentages might not add up to 100 due to rounding off.

Region of residence

As observed from Figure 4.10 on page 17, a large proportion of overseas tourists [92,1% (1 897 374)] came into South Africa by air compared to [7,3% (149 523)] who came in by road and [0,7% (13 416)] who came by sea. Similarly, tourists from 'other' African countries generally entered the country by air [90,7% (121 855)] compared to [9,3% (12 439)] who came by road or sea [0,1% (79)]. However, the mode of travel used by most tourists from SADC countries was road [92,3% (5 793 569)] compared to air [7,6% (479 919)] and sea [less than 0,1% (2 531)]. Additionally, most tourists who came by road came through Beit Bridge port (1 749 923) and Lebombo (1 391 389). The majority of tourists who came by air entered through OR Tambo International Airport (1 551 804) followed by Cape Town International Airport (914 971). Tourists who arrived by sea came through Cape Town Harbour (12 246) followed by Durban Harbour (3 205). (see Appendix XX on page 58– 59). Detailed data on sub-region and country of residence and mode of travel is presented in Appendix XVII on page 37.

Figure 4.10 – Percentage distribution of tourists by region of residence and mode of travel, 2023



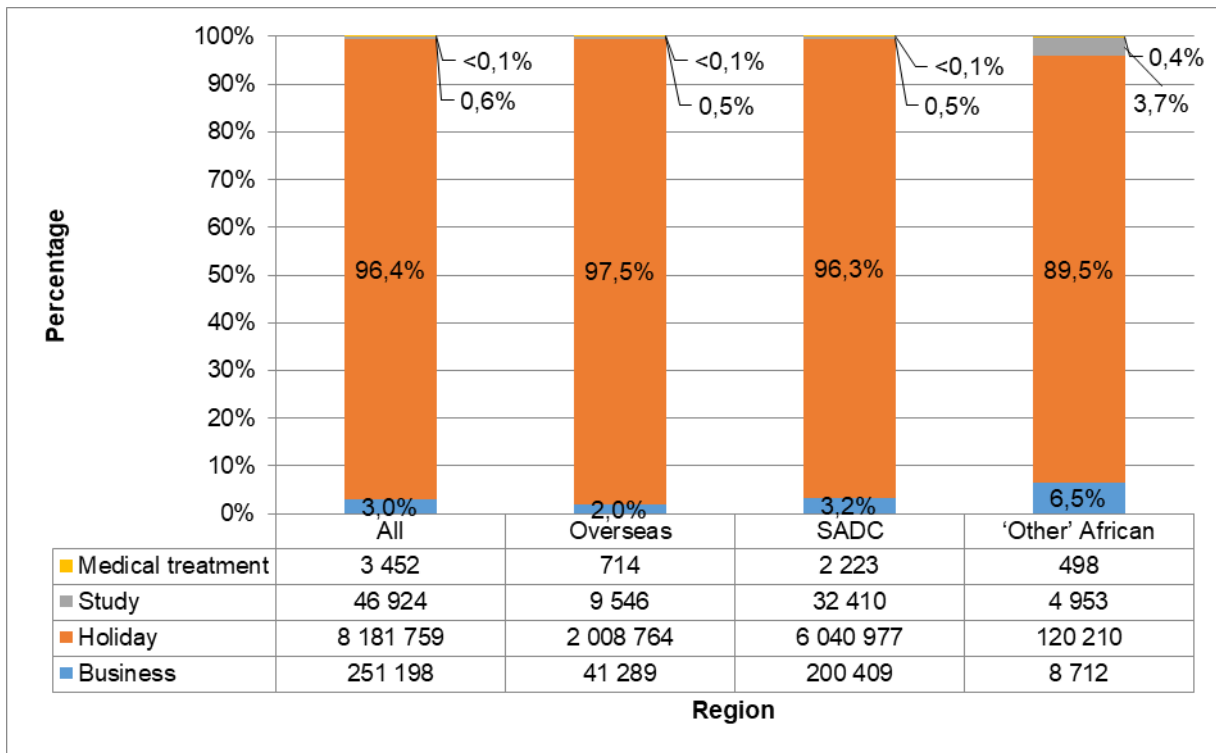
4.5 Purpose of visit

Region of residence

Besides the information in Figure 4.11 on page 18, reference has been made to data on the main types of tourists that visit South Africa (see Appendix XIX on page 51–57) – using the purpose of visit to identify them. In 2023, most tourists came to South Africa for holidays [8 181 759 (96,4%)]. The remaining tourists came for business [251 198 (3,0%)], for study purposes [46 924 (0,6%)] and for medical treatment [3 452 (less than 0,1%)].

The 2023 data reveals some regional and country differentials with respect to the purpose of visit. For example, [8 712 (6,5%)] tourists from 'other' African countries came for business compared to [200 409 (3,2%)] tourists from SADC countries and [41 289 (2,0%)] from overseas countries. In addition, students made up [4 953 (3,7%)] of tourists from 'other' African countries compared to [32 410 (0,5%)] of tourists from SADC countries and [9 546 (0,5%)] of overseas tourists. The Lowest numbers were observed for tourists who came for medical treatment, whereby SADC countries had [2 223 (less than 0,1%)] of tourists who came for medical treatment, followed by overseas countries [714 (less than 0,1%)] and 'other' African countries [498 (0,4%)]. Detailed data on the country of residence and purpose of visit is presented in Appendix XIX on page 51–57.

Figure 4.11 – Percentage distribution of tourists by region and purpose of visit, 2023



4.6 Duration of stay

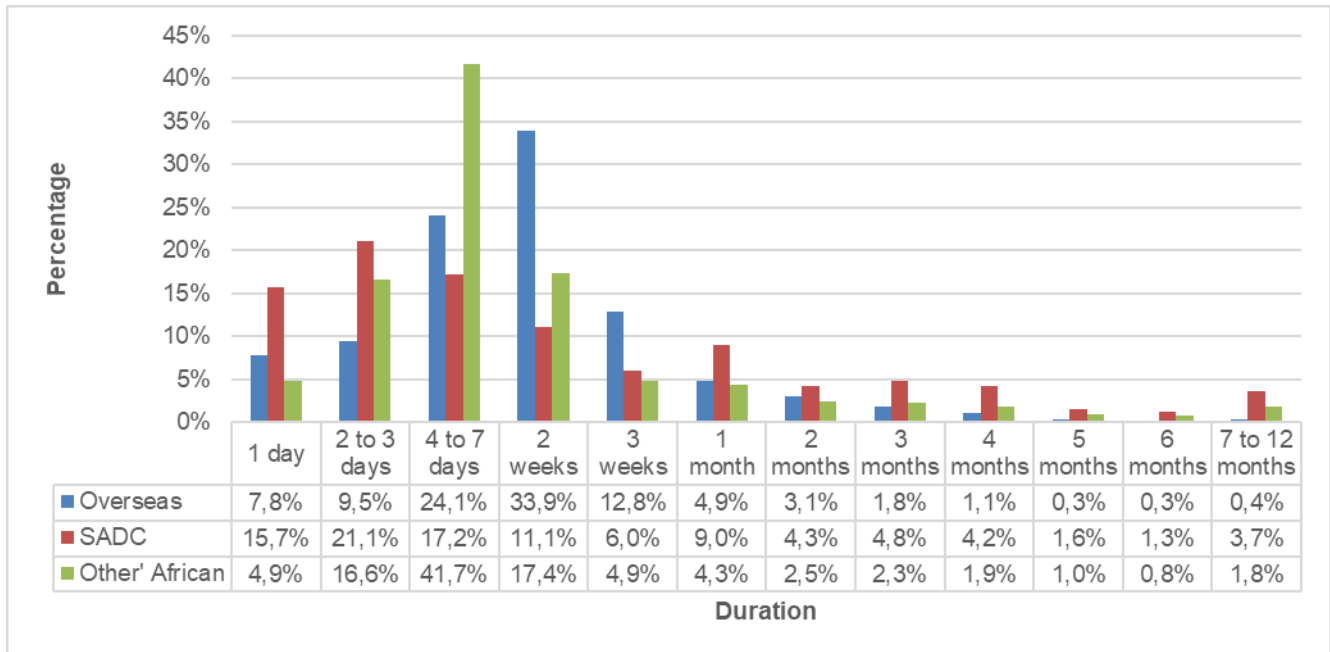
The number of tourists that came and left in 2023 was 5 309 692 which is 62,7% all tourists in 2023 as indicated in Table 4.2 below. The proportion of tourists from overseas who came and left in 2023 is the highest at 85,6%, followed by those from 'Other' African countries at 80,3%. Fewer tourists from SADC countries came and left in 2023 at 54,8% relative to other regions. Furthermore, the table indicates that on average tourists spent about 24 days in South Africa. Tourists from SADC, spent more days (29) in the country in 2023, compared to tourists from overseas and 'other' African countries who on average spent fewer days (about 14 and 19 days respectively in the year).

Table 4.2 – Average duration of stay of tourists by region, 2023

Region	Total tourists (excluding unspecified)	Tourists who came and left in 2023	Proportion of tourists who came and left in 2023 (%)	Average days spent by tourists
Total	8 470 705	5 309 692	62,7	24
Overseas	2 060 313	1 764 132	85,6	14
SADC	6 276 019	3 437 605	54,8	29
'Other' African	134 373	107 955	80,3	19

Figure 4.12 below shows that 33,9% of overseas tourists spent on average two weeks in the country, followed by 24,1% who spent four to seven days, 0,4% who spent about seven to twelve months and 0,3% who spent about six months. Most tourists from SADC (21,1%) spent two to three days and those from 'other' African countries (41,7%) spent four to seven days.

Figure 4.12 – Total number of days tourists spent by region, 2023



5. Summary

This report provides information collected by DHA immigration officers on South African residents and foreign travellers who passed through South African air, land and sea ports in 2023. The report also presents detailed information on the mode of travel, purpose of visit, length of stay and demographic characteristics of tourists (foreigners). About 31 067 000 travellers entered or departed South Africa in 2023 showing an increase of 38,6% from the 2022 volume of 22 409 000.

South African resident arrivals increased by 25,7% from 3 513 638 in 2022 to 4 417 526 in 2023 and departures increased by 21,1% from 3 730 874 in 2022 to 4 517 834 in 2023. Foreign arrivals increased by 45,2% from 8 026 409 in 2022 to 11 655 083 in 2023 and departures increased by 47,2% from 6 839 401 in 2022 to 10 069 415 in 2023. Due to limited data on South African residents, information on tourists is available only from foreign travellers. In 2023, foreign arrivals comprised 3,0% non-visitors and 97,0% visitors. The visitors were further categorised into same-day visitors (24,9%) and overnight visitors or tourists (75,1%).

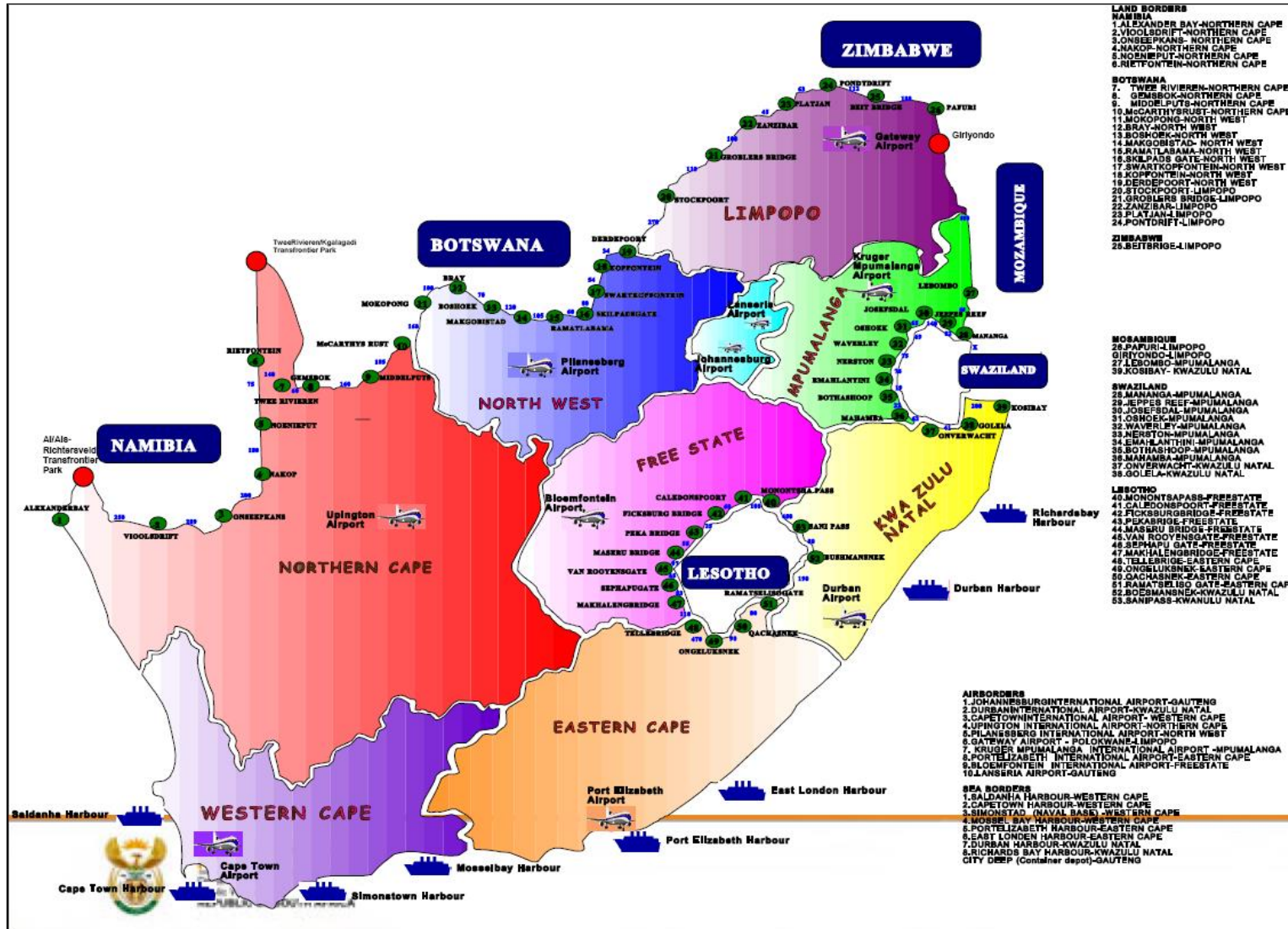
The volume of tourists increased by 48,9% from 5 698 062 in 2022 to 8 483 333 in 2023. The distribution of tourists by region of residence shows that 74,0% of the tourists who arrived in South Africa in 2023 were residents of SADC countries and 1,6% were from 'other' African countries. These two sub-regions made up 75,6% of tourists from Africa in total. Residents of overseas countries made up 24,3% of the tourists.

The 2023 patterns of mode of travel and purpose of visit did not differ greatly from what was observed in 2022 and earlier years. Generally, overseas and 'other' African tourists arrived by air whereas tourists from SADC countries came in by road. Holiday continued to be the main reason for visiting South Africa. A large majority (96,4%) of tourists came for holidays whilst business persons, students and medical treatment constituted 3,0%, 0,6% and less than 0,1% respectively of the 2023 tourists.

Tourists from SADC, on average, spent more days (29) in the country in 2023, compared to tourists from overseas and 'other' African countries who on average spent fewer days (about 14 to 19 days in the year). Tourists continued to be predominantly male (57,8%).

6. Appendices

Appendix I – Ports of entry/exit in South Africa



Source: National Department of Home Affairs

Appendix II– Number of foreign travellers and South African residents by year of travel, 2014 – 2023

Year	All travellers				South African residents				Foreign travellers			
	Arrivals	Departures	Transits	Total	Arrivals	Departures	Transits	Total	Arrivals	Departures	Transits	Total
2014	20 403 641	19 125 502	781 520	40 310 663	5 311 625	5 382 139	8 178	10 701 942	15 092 016	13 743 363	773 342	29 608 721
2015	20 453 522	19 119 232	823 597	40 396 351	5 401 696	5 414 362	9 760	10 825 818	15 051 826	13 704 870	813 837	29 570 533
2016	21 636 026	20 181 907	833 829	42 651 762	5 477 607	5 550 904	9 855	11 038 366	16 158 419	14 631 003	823 974	31 613 396
2017	21 703 731	20 339 239	763 050	42 806 020	5 713 133	5 785 699	9 617	11 508 449	15 990 598	14 553 540	753 433	31 297 571
2018	21 876 833	20 279 614	760 708	42 917 155	5 936 978	6 014 912	9 511	11 961 401	15 939 855	14 264 702	751 197	30 955 754
2019	21 828 864	20 119 863	821 440	42 770 167	6 003 568	6 076 274	9 777	12 089 619	15 825 296	14 043 589	811 663	30 680 548
2020	6 414 436	5 739 537	142 827	12 296 800	1 828 049	1 623 702	1 956	3 453 707	4 586 387	4 115 835	140 871	8 843 093
2021	4 675 004	4 442 805	115 104	9 232 913	1 524 997	1 624 136	1 392	3 150 525	3 150 007	2 818 669	113 712	6 082 388
2022	11 540 047	10 570 275	299 146	22 409 468	3 513 638	3 730 874	4 131	7 248 643	8 026 409	6 839 401	295 015	15 160 825
2023	16 072 609	14 587 249	407 394	31 067 252	4 417 526	4 517 834	5 115	8 940 475	11 655 083	10 069 415	402 279	22 126 777

Appendix III– Number of arrivals and departures of South African residents by mode of travel and place of arrival or departure, 2023

Mode of travel and place of arrival or departure	Arrivals	Departures	Transits	% Arrivals	% Departures	% Transits
Total	4 417 526	4 517 834	5 115	-	-	-
Air	1 941 976	2 000 705	5 115	100,0%	100,0%	100,0%
Cape Town International Airport	404 572	425 762	47	20,8%	21,3%	0,9%
King Shaka International Airport	92 154	97 442	-	4,7%	4,9%	-
O. R. Tambo International Airport	1 433 426	1 465 728	5 068	73,8%	73,3%	99,1%
Other Airports	11 824	11 773	-	0,6%	0,6%	-
Road	2 392 321	2 429 947	-	100,0%	100,0%	-
Botswana	349 299	354 919	-	14,6%	14,6%	-
Eswatini	487 497	510 841	-	20,4%	21,0%	-
Lesotho	664 378	675 224	-	27,8%	27,8%	-
Mozambique	641 889	639 255	-	26,8%	26,3%	-
Namibia	102 825	103 273	-	4,3%	4,3%	-
Zimbabwe	146 433	146 435	-	6,1%	6,0%	-
Sea	83 229	87 182	-	100,0%	100,0%	-
Cape Town Harbour	22 552	21 117	-	27,1%	24,2%	-
Durban Harbour	60 587	65 983	-	72,8%	75,7%	-
Port Elizabeth Harbour	90	82	-	0,1%	0,1%	-

Appendix IV– Number of South African residents by mode of travel, place and month of arrival, 2023

Mode of travel and place of arrival	Total	Month of arrival											
		Jan	Feb	Mar	Apr	May	Jun	Jul	Aug	Sep	Oct	Nov	Dec
Total	4 417 526	484 945	269 301	330 727	379 707	327 811	316 628	410 683	331 749	363 659	405 388	323 797	473 131
Air	1 941 976	196 397	109 233	136 551	155 152	145 375	149 620	199 032	141 788	167 469	193 368	147 179	200 812
Cape Town	404 572	39 783	22 491	27 622	28 785	26 775	31 463	48 824	28 704	34 462	40 233	30 825	44 605
King Shaka	92 154	11 125	5 350	6 401	7 286	7 109	7 013	9 699	5 959	7 355	9 576	6 566	8 715
O. R. Tambo	1 433 426	144 640	80 779	101 661	118 084	110 477	109 813	138 968	105 907	124 575	142 532	109 121	146 869
Other Airports	11 824	849	613	867	997	1 014	1 331	1 541	1 218	1 077	1 027	667	623
Road	2 392 321	270 957	146 284	172 265	216 771	182 227	166 932	211 476	189 842	196 153	211 811	176 236	251 367
Botswana	349 299	33 476	22 528	25 226	31 329	21 416	26 425	31 368	29 134	32 027	31 900	26 682	37 788
Eswatini	487 497	34 411	27 396	35 257	43 824	40 806	36 298	42 230	40 195	45 911	43 532	39 868	57 769
Lesotho	664 378	79 855	45 127	51 843	63 046	51 582	46 715	52 891	50 797	47 139	56 254	50 099	69 030
Mozambique	641 889	90 242	38 132	44 886	55 325	50 234	41 213	57 806	48 349	52 575	58 712	43 534	60 881
Namibia	102 825	11 904	5 041	5 831	8 370	7 642	7 577	13 188	7 985	7 730	8 801	7 287	11 469
Zimbabwe	146 433	21 069	8 060	9 222	14 877	10 547	8 704	13 993	13 382	10 771	12 612	8 766	14 430
Sea	83 229	17 591	13 784	21 911	7 784	209	76	175	119	37	209	382	20 952
Cape Town	22 552	7 504	4 358	2 248	7 612	181	38	142	87	29	174	89	90
Durban	60 587	10 077	9 426	19 659	169	16	18	17	19	4	30	291	20 861
Port Elizabeth	90	10	-	4	3	12	20	16	13	4	5	2	1

Appendix V— Number of South African residents by mode of travel, place and month of departure, 2023

Mode of travel and place of departure	Total	Month of departure											
		Jan	Feb	Mar	Apr	May	Jun	Jul	Aug	Sep	Oct	Nov	Dec
Total	4 517 834	331 830	282 063	368 211	403 131	331 346	384 972	353 458	357 882	402 641	358 439	323 263	620 598
Air	2 000 705	150 060	117 282	162 008	171 603	156 361	189 593	157 672	165 167	188 216	163 952	139 291	239 500
Cape Town	425 762	33 235	24 283	33 889	34 028	34 261	46 378	34 168	34 102	41 189	32 051	27 371	50 807
King Shaka	97 442	8 181	6 001	7 943	7 770	7 407	8 698	7 753	8 825	9 320	8 270	6 578	10 696
O. R. Tambo	1 465 728	107 876	86 323	119 413	128 736	113 672	132 728	114 480	120 889	136 790	122 672	104 749	177 400
Other Airports	11 773	768	675	763	1 069	1 021	1 789	1 271	1 351	917	959	593	597
Road	2 429 947	166 476	147 352	187 593	223 195	174 907	195 245	195 668	192 525	214 271	194 296	180 750	357 669
Botswana	354 919	22 741	22 803	28 060	32 376	21 889	30 495	28 028	28 583	35 286	28 682	26 889	49 087
Eswatini	510 841	28 704	28 309	37 606	45 228	40 498	42 907	42 349	41 182	49 070	41 314	41 366	72 308
Lesotho	675 224	52 648	45 331	55 505	64 906	50 029	51 757	51 935	52 647	50 822	53 376	52 780	93 488
Mozambique	639 255	46 920	37 751	49 269	57 686	45 703	47 557	51 915	48 337	57 950	52 978	43 846	99 343
Namibia	103 273	7 160	5 396	6 713	8 361	7 174	11 554	9 318	8 072	8 652	7 489	7 476	15 908
Zimbabwe	146 435	8 303	7 762	10 440	14 638	9 614	10 975	12 123	13 704	12 491	10 457	8 393	27 535
Sea	87 182	15 294	17 429	18 610	8 333	78	134	118	190	154	191	3 222	23 429
Cape Town	21 117	6 206	4 215	1 615	7 984	57	94	98	153	144	148	164	239
Durban	65 983	9 088	13 213	16 990	346	9	18	8	27	7	34	3 053	23 190
Port Elizabeth	82	-	1	5	3	12	22	12	10	3	9	5	-

Appendix VI– Number of foreign arrivals and departures by mode of travel and place of arrival or departure, 2023

Mode of travel and place of arrival or departure	Arrivals	Departures	Transits	% of arrivals	% of departures	% of transits
Total	11 655 083	10 069 415	402 279	-	-	-
Air	2 827 226	2 911 600	402 279	100,0%	100,0%	100,0%
Cape Town International Airport	957 144	961 190	3 172	33,9%	33,0%	0,8%
King Shaka International Airport	41 193	46 463		1,5%	1,6%	0,0%
O. R. Tambo International Airport	1 816 922	1 884 006	399 107	64,3%	64,7%	99,2%
Other Airports	11 967	19 941		0,4%	0,7%	-
Road	8 770 787	7 095 295	-	100,0%	100,0%	-
Botswana	888 491	867 487	-	10,1%	12,2%	-
Eswatini	1 222 943	1 034 229	-	13,9%	14,6%	-
Lesotho	2 297 875	1 997 042	-	26,2%	28,1%	-
Mozambique	1 907 450	1 458 023	-	21,7%	20,5%	-
Namibia	135 207	135 099	-	1,5%	1,9%	-
Zimbabwe	2 318 821	1 603 415	-	26,4%	22,6%	-
Sea	57 070	62 520	-	100,0%	100,0%	-
Cape Town Harbour	35 205	38 019	-	61,7%	60,8%	-
Durban Harbour	16 661	19 218	-	29,2%	30,7%	-
Port Elizabeth Harbour	5 204	5 283	-	9,1%	8,5%	-

Appendix VII– Number of foreign arrivals by mode of travel, place and month of arrival, 2023

Mode of travel and place of arrival	Total	Month of arrival											
		Jan	Feb	Mar	Apr	May	Jun	Jul	Aug	Sep	Oct	Nov	Dec
Total	11 655 083	1 112 677	824 868	905 627	979 032	895 463	851 647	957 501	985 800	943 387	1 000 462	1 015 584	1 183 035
Air	2 827 226	236 820	243 617	245 263	220 446	196 526	182 898	224 177	235 193	222 867	262 119	267 437	289 863
Cape Town	957 144	102 144	104 388	93 710	70 610	49 745	45 191	60 264	62 720	61 768	83 597	105 827	117 180
King Shaka	41 193	2 639	2 979	3 797	3 575	3 832	3 519	3 422	3 109	2 933	3 638	3 727	4 023
O. R. Tambo	1 816 922	131 116	135 541	147 079	145 358	141 890	132 807	159 116	167 534	157 030	173 900	157 310	168 241
Other Airports	11 967	921	709	677	903	1 059	1 381	1 375	1 830	1 136	984	573	419
Road	8 770 787	861 609	574 505	653 664	753 498	695 770	666 100	730 856	748 124	718 465	736 078	744 628	887 490
Botswana	888 491	70 367	56 791	65 656	79 221	62 068	69 169	70 600	66 944	78 609	76 856	78 302	113 908
Eswatini	1 222 943	79 711	77 495	96 886	108 667	88 057	91 320	102 768	114 589	112 381	111 964	111 626	127 479
Lesotho	2 297 875	262 233	157 098	177 183	206 603	190 779	176 825	193 391	178 314	166 572	180 351	182 690	225 836
Mozambique	1 907 450	194 749	129 485	142 138	147 772	156 992	151 383	152 892	164 754	154 988	156 184	171 993	184 120
Namibia	135 207	11 023	9 462	10 601	11 513	10 639	11 355	11 041	10 065	11 289	11 229	10 368	16 622
Zimbabwe	2 318 821	243 526	144 174	161 200	199 722	187 235	166 048	200 164	213 458	194 626	199 494	189 649	219 525
Sea	57 070	14 248	6 746	6 700	5 088	3 167	2 649	2 468	2 483	2 055	2 265	3 519	5 682
Cape Town	35 205	11 628	4 944	4 177	3 568	1 338	1 008	1 079	1 032	677	848	2 433	2 473
Durban	16 661	1 611	1 530	2 194	1 126	997	1 068	995	1 128	988	1 102	777	3 145
Port Elizabeth	5 204	1 009	272	329	394	832	573	394	323	390	315	309	64

Appendix VIII– Number of foreign departures by mode of travel, place and month of departure, 2023

Mode of travel and place of departure	Total	Month of arrival											
		Jan	Feb	Mar	Apr	May	Jun	Jul	Aug	Sep	Oct	Nov	Dec
Total	10 069 415	792 116	707 396	813 003	883 708	789 789	727 207	791 520	856 149	813 196	846 895	880 886	1 167 550
Air	2 911 600	259 820	237 805	270 861	248 045	214 122	190 591	208 887	256 486	219 572	256 387	281 581	267 443
Cape Town	961 190	104 793	99 374	108 263	80 968	59 188	44 354	53 584	70 057	57 279	78 065	105 208	100 057
King Shaka	46 463	4 518	3 485	4 084	4 339	4 210	3 463	3 401	4 020	2 899	3 930	4 673	3 441
O. R. Tambo	1 884 006	149 390	134 167	157 745	161 059	148 814	140 599	149 056	179 010	157 093	172 712	170 876	163 485
Other Airports	19 941	1 119	779	769	1 679	1 910	2 175	2 846	3 399	2 301	1 680	824	460
Road	7 095 295	524 318	462 680	533 098	625 949	571 928	533 975	580 339	597 277	591 499	588 074	592 562	893 596
Botswana	867 487	65 265	55 758	63 856	79 150	63 723	67 468	70 783	63 046	73 948	78 984	74 216	111 290
Eswatini	1 034 229	67 561	66 900	82 363	92 474	77 221	78 319	84 649	94 550	95 473	89 867	92 998	111 854
Lesotho	1 997 042	160 915	137 565	154 904	181 617	166 551	154 714	165 012	159 213	147 050	156 220	163 706	249 575
Mozambique	1 458 023	107 811	98 200	106 578	119 579	119 274	114 661	112 105	125 087	121 410	116 165	118 494	198 659
Namibia	135 099	13 667	9 582	10 386	11 468	11 248	10 915	11 981	10 014	10 963	11 526	9 994	13 355
Zimbabwe	1 603 415	109 099	94 675	115 011	141 661	133 911	107 898	135 809	145 367	142 655	135 312	133 154	208 863
Sea	62 520	7 978	6 911	9 044	9 714	3 739	2 641	2 294	2 386	2 125	2 434	6 743	6 511
Cape Town	38 019	6 254	4 265	6 001	6 864	2 062	985	920	923	679	1 047	4 350	3 669
Durban	19 218	1 499	1 864	2 195	2 453	967	1 104	1 009	1 097	1 012	1 115	2 112	2 791
Port Elizabeth	5 283	225	782	848	397	710	552	365	366	434	272	281	51

Appendix IX– Number of foreign arrivals by purpose of visit and month of arrival, 2023

Purpose of visit	Total	Month of arrival											
		Jan	Feb	Mar	Apr	May	Jun	Jul	Aug	Sep	Oct	Nov	Dec
Total	11 655 083	1 112 677	824 868	905 627	979 032	895 463	851 647	957 501	985 800	943 387	1 000 462	1 015 584	1 183 035
Business	271 972	21 603	23 604	24 632	21 079	24 571	21 654	22 881	22 557	20 961	24 480	25 803	18 147
Holiday	10 973 348	1 036 438	768 984	848 100	919 077	837 602	800 971	898 209	929 594	893 658	941 000	960 123	1 139 592
Study	52 943	7 978	6 063	3 675	5 413	4 565	2 682	6 758	4 014	3 258	3 791	2 654	2 092
Medical treatment	3 975	386	431	364	359	425	286	322	310	270	320	288	214
Work	216 239	30 497	16 226	18 018	20 184	17 393	15 265	17 098	17 604	15 545	17 802	16 415	14 192
Other	127 188	14 866	8 759	10 053	12 298	10 314	9 999	11 482	10 999	9 126	11 445	9 668	8 179
Unspecified	9 418	909	801	785	622	593	790	751	722	569	1 624	633	619

Appendix X— Number of foreign arrivals by type of visitor and month of arrival, 2023

Type of visitor	Total	Month of arrival											
		Jan	Feb	Mar	Apr	May	Jun	Jul	Aug	Sep	Oct	Nov	Dec
Total	11 655 083	1 112 677	824 868	905 627	979 032	895 463	851 647	957 501	985 800	943 387	1 000 462	1 015 584	1 183 035
Non-visitors	352 845	46 272	25 786	28 856	33 104	28 300	26 054	29 331	29 325	25 240	30 871	26 716	22 990
Visitors	11 302 238	1 066 405	799 082	876 771	945 928	867 163	825 593	928 170	956 475	918 147	969 591	988 868	1 160 045
Same-day	2 818 905	216 730	185 650	218 067	232 458	237 063	217 274	236 102	248 316	233 986	238 483	257 191	297 585
Tourist	8 483 333	849 675	613 432	658 704	713 470	630 100	608 319	692 068	708 159	684 161	731 108	731 677	862 460

Appendix XI– Number of same day visitors by mode of travel, region of residence and purpose of visit, 2023

Mode of travel and region of residence	Total	Purpose of visit			
		Business	Holiday	Study	Medical treatment
Total	2 818 905	20 774	2 791 589	6 019	523
Air	221 419	843	220 299	212	65
Overseas	138 064	363	137 651	42	8
SADC	77 461	377	76 889	143	52
'Other' African	4 648	68	4 549	27	4
Unspecified	1 246	35	1 210	-	1
Road	2 595 403	19 931	2 569 255	5 805	412
Overseas	29 883	50	29 722	106	5
SADC	2 560 839	19 866	2 534 888	5 678	407
'Other' African	3 510	14	3 475	21	-
Unspecified	1 171	1	1 170	-	-
Sea	2 083	-	2 035	2	46
Overseas	1 329	-	1 285	-	44
SADC	743	-	741	2	-
'Other' African	11	-	9	-	2

Appendix XII— Number of tourists by sex, age group and region of residence, 2023

Sex and age group	Total	Region of residence			
		Overseas	SADC	'Other' African	Unspecified
All	8 483 333	2 060 313	6 276 019	134 373	12 628
0-14	462 078	152 765	301 945	7 221	147
15-24	703 771	184 730	508 288	10 608	145
25-34	2 032 386	365 328	1 633 178	32 603	1 277
35-44	2 516 479	344 075	2 125 436	43 238	3 730
45-54	1 523 821	349 138	1 144 281	25 896	4 506
55-64	779 658	357 900	408 262	10 873	2 623
65+	465 134	306 376	154 624	3 934	200
Unspecified	6	1	5	-	-
Male	4 900 905	1 094 004	3 716 823	82 557	7 521
0-14	230 392	78 961	147 703	3 675	53
15-24	367 447	90 447	271 039	5 864	97
25-34	1 134 527	180 246	935 427	18 147	707
35-44	1 554 486	197 559	1 327 098	27 699	2 130
45-54	944 996	196 350	728 611	17 444	2 591
55-64	433 308	190 641	233 513	7 332	1 822
65+	235 749	159 800	73 432	2 396	121
Unspecified	5	1	4	-	-
Female	3 582 422	966 308	2 559 191	51 816	5 107
0-14	231 686	73 804	154 242	3 546	94
15-24	336 324	94 283	237 249	4 744	48
25-34	897 859	185 082	697 751	14 456	570
35-44	961 993	146 516	798 338	15 539	1 600
45-54	578 825	152 788	415 670	8 452	1 915
55-64	346 350	167 259	174 749	3 541	801
65+	229 385	146 576	81 192	1 538	79
Unspecified	1	-	1	-	-

Appendix XIII– Number of tourists by sex, age group and month of arrival, 2023

Sex and age group	Total	Month of arrival											
		Jan	Feb	Mar	Apr	May	Jun	Jul	Aug	Sep	Oct	Nov	Dec
All	8 483 333	849 675	613 432	658 704	713 470	630 100	608 319	692 068	708 159	684 161	731 108	731 677	862 460
0-14	462 078	43 430	26 100	29 079	47 041	23 644	27 564	43 379	49 394	25 614	34 468	30 671	81 694
15-24	703 771	65 471	46 004	46 272	55 535	46 348	52 296	76 749	65 712	50 749	51 701	53 601	93 333
25-34	2 032 386	202 490	143 871	157 012	165 925	153 438	147 573	160 288	165 305	171 220	177 100	181 017	207 147
35-44	2 516 479	255 138	176 888	194 998	213 317	198 417	188 911	204 489	209 270	204 800	216 572	215 650	238 029
45-54	1 523 821	153 006	111 390	121 338	130 881	118 244	113 136	127 802	127 732	121 635	131 823	128 839	137 995
55-64	779 658	76 960	65 111	67 330	63 928	57 457	51 759	54 677	59 663	67 054	73 245	75 657	66 817
65+	465 134	53 178	44 068	42 675	36 842	32 551	27 079	24 684	31 083	43 088	46 199	46 242	37 445
Unspecified	6	2	-	-	1	1	1	-	-	1	-	-	-
Male	4 900 910	490 865	360 672	387 396	405 001	376 004	358 328	398 437	409 358	396 367	422 086	423 593	472 803
0-14	230 392	21 619	13 232	14 718	23 653	11 806	13 768	21 399	24 753	12 663	17 075	15 191	40 515
15-24	367 447	35 487	24 491	24 462	29 028	24 553	27 328	39 989	34 090	26 453	27 018	27 995	46 553
25-34	1 134 527	113 401	81 030	88 373	90 788	87 936	83 904	90 024	93 491	95 800	99 041	100 781	109 958
35-44	1 554 486	153 914	111 610	123 343	128 636	125 921	118 280	125 466	129 571	127 994	135 109	134 368	140 274
45-54	944 996	95 162	70 621	76 571	79 400	75 998	71 330	77 995	78 750	75 765	81 259	80 606	81 539
55-64	433 308	43 753	36 851	38 069	35 201	33 044	29 619	31 149	33 142	36 162	39 590	41 074	35 654
65+	235 749	27 527	22 837	21 860	18 294	16 746	14 098	12 415	15 561	21 529	22 994	23 578	18 310
Unspecified	5	2	-	-	1	-	1	-	-	1	-	-	-
Female	3 582 422	358 810	252 760	271 308	308 469	254 095	249 991	293 631	298 801	287 794	309 022	308 084	389 657
0-14	231 686	21 811	12 868	14 361	23 388	11 838	13 796	21 980	24 641	12 951	17 393	15 480	41 179
15-24	336 324	29 984	21 513	21 810	26 507	21 795	24 968	36 760	31 622	24 296	24 683	25 606	46 780
25-34	897 859	89 089	62 841	68 639	75 137	65 502	63 669	70 264	71 814	75 420	78 059	80 236	97 189
35-44	961 993	101 224	65 278	71 655	84 681	72 496	70 631	79 023	79 699	76 806	81 463	81 282	97 755
45-54	578 825	57 844	40 769	44 767	51 481	42 246	41 806	49 807	48 982	45 870	50 564	48 233	56 456
55-64	346 350	33 207	28 260	29 261	28 727	24 413	22 140	23 528	26 521	30 892	33 655	34 583	31 163
65+	229 385	25 651	21 231	20 815	18 548	15 805	12 981	12 269	15 522	21 559	23 205	22 664	19 135
Unspecified	1	-	-	-	-	1	-	-	-	-	-	-	-

Appendix XIV– Number of tourist arrivals by purpose of visit and month of arrival, 2023

Purpose of visit	Total	Month of arrival											
		Jan	Feb	Mar	Apr	May	Jun	Jul	Aug	Sep	Oct	Nov	Dec
Total	8 483 333	849 675	613 432	658 704	713 470	630 100	608 319	692 068	708 159	684 161	731 108	731 677	862 460
Business	251 198	19 642	22 085	22 732	19 392	22 640	19 863	20 840	20 896	19 712	22 823	24 211	16 362
Holiday	8 181 759	822 470	585 791	632 385	689 308	603 219	585 871	664 593	683 381	661 197	704 575	704 910	844 059
Study	46 924	7 220	5 200	3 259	4 469	3 904	2 325	6 382	3 609	3 007	3 413	2 304	1 832
Medical treatment	3 452	343	356	328	301	337	260	253	273	245	297	252	207

Appendix XV– Number of tourists by region of residence and month of arrival, 2023

Region	Total	Month of arrival											
		Jan	Feb	Mar	Apr	May	Jun	Jul	Aug	Sep	Oct	Nov	Dec
Total	8 483 333	849 675	613 432	658 704	713 470	630 100	608 319	692 068	708 159	684 161	731 108	731 677	862 460
Overseas	2 060 313	187 189	192 835	187 631	160 647	132 443	123 069	161 376	165 705	158 407	189 778	195 549	205 684
Europe	1 244 877	128 898	138 394	120 004	97 243	60 955	48 894	88 440	93 602	86 228	122 599	129 036	130 584
North America	409 031	31 421	27 570	35 804	31 029	36 461	39 101	35 029	32 933	34 513	33 631	33 022	38 517
Central and South America	46 870	3 689	3 149	3 357	3 188	2 830	2 852	3 601	2 697	4 947	4 980	5 450	6 130
Australasia	105 888	7 452	7 210	9 961	9 959	7 878	8 422	8 140	8 702	10 437	8 446	8 199	11 082
Middle East	54 339	3 262	3 361	4 452	3 318	2 716	5 388	9 519	8 941	5 218	2 835	2 769	2 560
Asia	199 308	12 467	13 151	14 053	15 910	21 603	18 412	16 647	18 830	17 064	17 287	17 073	16 811
Africa	6 410 392	661 606	419 576	469 941	551 661	496 493	484 306	529 712	541 567	524 683	540 111	534 969	655 767
SADC	6 276 019	652 392	408 631	459 534	542 427	485 608	475 358	519 422	530 625	514 268	527 616	520 322	639 816
'Other' Africa	134 373	9 214	10 945	10 407	9 234	10 885	8 948	10 290	10 942	10 415	12 495	14 647	15 951
East and Central Africa	76 367	5 469	6 104	6 155	5 616	6 019	4 928	5 630	6 309	6 388	7 629	7 362	8 758
West Africa	45 300	2 869	3 462	3 278	2 824	3 664	3 057	3 700	3 686	3 074	3 695	5 931	6 060
North Africa	12 706	876	1 379	974	794	1 202	963	960	947	953	1 171	1 354	1 133
Unspecified	12 628	880	1 021	1 132	1 162	1 164	944	980	887	1 071	1 219	1 159	1 009

Appendix XVI– Number of tourists by mode of travel, place and month of arrival, 2023

Mode of travel and place of arrival	Total	Month of arrival											
		Jan	Feb	Mar	Apr	May	Jun	Jul	Aug	Sep	Oct	Nov	Dec
Total	8 483 333	849 675	613 432	658 704	713 470	630 100	608 319	692 068	708 159	684 161	731 108	731 677	862 460
Air	2 508 578	213 183	224 437	221 509	196 042	169 312	155 675	193 747	200 052	193 771	232 559	240 554	267 737
Cape Town	914 971	98 260	101 444	89 867	67 747	46 966	42 419	57 117	58 998	58 420	78 806	101 454	113 473
King Shaka	33 557	1 916	2 264	2 975	2 986	3 115	2 904	2 876	2 455	2 351	3 091	2 993	3 631
O. R. Tambo	1 551 804	112 419	120 359	128 307	124 671	118 422	109 238	132 750	137 503	132 092	149 879	135 721	150 443
Other Airports	8 246	588	370	360	638	809	1 114	1 004	1 096	908	783	386	190
Road	5 958 727	630 361	386 328	435 059	516 592	460 618	452 586	498 294	508 098	490 387	498 451	489 985	591 968
Botswana	593 670	49 157	37 672	42 938	55 264	42 391	45 683	45 225	45 532	53 082	48 961	50 422	77 343
Eswatini	860 963	54 619	53 874	68 312	78 018	61 232	64 010	73 961	81 892	78 624	80 714	77 470	88 237
Lesotho	1 176 902	157 200	78 918	88 183	108 727	94 855	88 224	101 410	87 081	87 703	90 484	85 153	108 964
Mozambique	1 457 920	159 885	100 701	107 121	112 346	117 395	114 472	118 287	123 565	116 502	118 896	131 515	137 235
Namibia	112 823	8 781	7 509	9 066	9 853	8 535	9 362	9 191	8 616	9 678	9 445	8 391	14 396
Zimbabwe	1 756 449	200 719	107 654	119 439	152 384	136 210	130 835	150 220	161 412	144 798	149 951	137 034	165 793
Sea	16 028	6 131	2 667	2 136	836	170	58	27	9	3	98	1 138	2 755
Cape Town	12 246	5 194	2 445	1 700	826	14	52	25	3	2	92	1 101	792
Durban	3 205	537	220	429	8	5	6	2	5	-	6	24	1 963
Port Elizabeth	577	400	2	7	2	151	-	-	1	1	-	13	-

Appendix XVII— Number of tourists by country of residence and month of arrival, 2023

Country of residence	Total	Month of arrival											
		Jan	Feb	Mar	Apr	May	Jun	Jul	Aug	Sep	Oct	Nov	Dec
Total	8 483 333	849 675	613 432	658 704	713 470	630 100	608 319	692 068	708 159	684 161	731 108	731 677	862 460
Overseas	2 060 313	187 189	192 835	187 631	160 647	132 443	123 069	161 376	165 705	158 407	189 778	195 549	205 684
Europe	1 244 877	128 898	138 394	120 004	97 243	60 955	48 894	88 440	93 602	86 228	122 599	129 036	130 584
Albania	137	9	13	12	20	8	11	8	7	6	5	19	19
Andorra	64	5	1	2	1	2	2	7	24		11	3	6
Austria	20 894	2 572	2 817	2 093	1 308	830	459	1 034	1 258	1 102	2 239	2 786	2 396
Belgium	46 348	3 418	4 844	3 485	3 811	2 048	1 481	5 796	3 691	3 787	5 017	4 646	4 324
Bosnia-Herzegovina	104	5	14	8	7	9	9	5	4	6	9	16	12
Bulgaria	1 994	281	243	220	152	183	59	90	95	111	140	202	218
Croatia	868	67	137	85	78	74	43	33	26	38	38	133	116
Cyprus	1 591	117	152	113	125	109	80	144	138	93	129	163	228
Czech Republic	6 729	602	835	799	488	334	270	455	443	417	526	949	611
Denmark	17 995	2 242	2 727	2 002	1 315	764	637	1 192	730	1 130	1 903	1 724	1 629
Estonia	1 232	244	186	146	72	47	18	60	48	44	57	219	91
Finland	6 580	808	898	600	450	371	305	261	245	271	690	924	757
France	119 974	9 016	11 545	10 862	11 792	7 748	5 450	10 587	10 498	7 579	12 940	11 642	10 315
Georgia	251	14	19	19	15	29	50	11	19	15	26	17	17
Germany	245 259	29 363	32 336	28 382	17 802	9 019	5 895	9 505	12 358	17 608	27 512	30 191	25 288
Greece	5 858	469	536	576	518	313	241	387	565	290	385	657	921
Hungary	3 773	422	327	444	248	295	273	190	249	199	388	495	243
Iceland	663	72	66	71	44	63	37	29	44	23	92	55	67
Ireland	27 282	2 667	2 536	2 877	2 488	2 031	1 643	1 836	1 635	1 679	2 137	2 643	3 110
Italy	52 091	3 677	3 269	2 900	3 253	2 625	2 956	4 915	11 933	3 988	4 246	3 690	4 639
Latvia	642	97	58	51	43	30	15	30	45	32	91	94	56
Liechtenstein	237	31	18	29	31	4	3	28	6	19	23	26	19
Lithuania	1 304	141	152	219	115	56	60	32	64	69	96	200	100
Luxembourg	1 598	116	160	163	194	57	28	111	165	164	100	135	205
Macedonia	133	8	11	21	10	9	3	13	9	4	19	12	14
Malta	1 083	67	90	90	50	69	73	38	192	169	64	68	113
Moldova	60	5	9	6	8	7	3	3	1	4	3	5	6
Monaco	74	5	13	11	4	3	1	5		10	9	3	10

Appendix XVII– Number of tourists by country of residence and month of arrival, 2023 (continued)

Country of residence	Total	Month of arrival											
		Jan	Feb	Mar	Apr	May	Jun	Jul	Aug	Sep	Oct	Nov	Dec
Montenegro	97	10	10	13	1	9	6	13	4	6	8	9	8
Norway	13 048	1 451	1 914	1 685	799	514	572	696	454	662	1 281	1 597	1 423
Poland	11 658	1 151	1 361	1 385	825	594	494	597	656	861	867	1 769	1 098
Portugal	19 285	1 771	1 799	1 766	2 130	1 390	1 334	1 214	1 475	1 362	1 475	1 796	1 773
Republic of Belarus	401	36	44	24	30	42	27	18	23	19	34	68	36
Romania	1 731	159	202	170	118	145	106	132	119	91	134	192	163
Russian Federation	28 357	2 947	2 786	2 780	2 103	1 721	1 469	1 373	1 878	1 671	2 949	3 439	3 241
San Marino	18	2	-	-	-	-	-	4	5	1	2	2	2
Serbia	1 033	104	100	75	77	87	60	60	70	58	60	103	179
Slovakia	1 999	172	258	247	144	122	53	145	111	94	166	305	182
Slovenia	1 116	107	73	90	106	78	42	51	79	78	166	135	111
Spain	32 020	1 804	1 770	2 126	2 123	1 882	2 093	3 446	5 711	3 005	2 944	2 696	2 420
Sweden	24 543	3 445	3 675	2 279	1 406	1 049	806	806	633	1 160	2 552	2 772	3 960
Switzerland	42 654	4 386	4 889	3 632	3 929	1 838	1 158	2 666	1 744	3 113	5 038	5 503	4 758
The Netherlands	131 371	12 930	11 992	9 247	10 707	5 176	4 031	14 338	11 455	10 763	14 417	12 892	13 423
Turkey	12 925	1 682	1 105	1 238	1 058	1 068	967	771	792	948	1 023	1 301	972
UK	356 160	40 044	42 263	36 811	27 125	17 989	15 461	25 192	23 804	23 380	30 424	32 561	41 106
Ukraine	1 633	157	134	150	120	114	109	112	96	99	164	179	199
Vatican	9	-	6	-	-	-	1	1	1	-	-	-	-
Yugoslavia	1	-	1	-	-	-	-	-	-	-	-	-	-
North America	409 031	31 421	27 570	35 804	31 029	36 461	39 101	35 029	32 933	34 513	33 631	33 022	38 517
Canada	55 056	5 243	4 895	5 608	4 179	3 989	3 069	3 417	3 633	4 417	5 620	5 496	5 490
USA	353 975	26 178	22 675	30 196	26 850	32 472	36 032	31 612	29 300	30 096	28 011	27 526	33 027
Central and South America	46 870	3 689	3 149	3 357	3 188	2 830	2 852	3 601	2 697	4 947	4 980	5 450	6 130
Antigua and Barbuda	281	8	18	35	29	20	11	21	32	17	38	28	24
Argentina	3 805	536	389	273	255	173	251	311	148	396	330	336	407
Bahamas	386	30	21	13	21	19	24	47	20	61	25	93	12
Barbados	261	26	27	27	18	19	11	40	5	22	7	23	36
Belize	75	5	8	4	4	6	4	5	7	4	8	14	6
Bermuda	6	-	-	-	4	2	-	-	-	-	-	-	-
Bolivia	251	15	11	10	15	4	14	22	29	38	18	12	63

Appendix XVII– Number of tourists by country of residence and month of arrival, 2023 (continued)

Country of residence	Total	Month of arrival											
		Jan	Feb	Mar	Apr	May	Jun	Jul	Aug	Sep	Oct	Nov	Dec
Brazil	25 672	1 847	1 515	1 581	1 487	1 255	1 433	1 759	1 423	2 828	2 878	3 408	4 258
Chile	2 173	175	232	137	118	111	130	81	86	239	370	296	198
Colombia	1 420	87	86	184	112	156	108	119	94	126	109	122	117
Costa Rica	681	51	71	56	42	62	58	51	47	62	42	86	53
Cuba	740	186	67	28	22	29	25	33	62	55	40	121	72
Dominica	99	7	9	13	4	5	10	12	7	9	8	6	9
Dominican Republic	86	6	5	22	6	7	6	6	4	15	3	3	3
Ecuador	496	22	27	42	48	45	21	38	29	62	72	48	42
El Salvador	74	8	7	7	8	4	11	7	4	5	8	1	4
Falkland Islands	1	-	-	-	-	-	-	-	1	-	-	-	-
Grenada	24	3	2	2	1		4		3	1	2	4	2
Guatemala	218	7	13	17	35	39	19	13	6	22	13	17	17
Guyana	188	22	13	14	13	20	18	8	11	12	34	14	9
Haiti	98	9	18	10	8	17	3	10	2	6	10	2	3
Honduras	93	5	7	3	12	5	3	7	10	10	19	3	9
Jamaica	808	52	56	63	66	64	55	107	56	58	96	75	60
Mexico	4 511	310	259	392	540	356	335	549	312	372	351	342	393
Nicaragua	49	6	4	3	4	4	3	5	6	6	1	2	5
Panama	378	21	22	25	36	62	38	33	21	37	22	32	29
Paraguay	236	11	36	25	22	18	11	8	5	17	38	31	14
Peru	1 563	88	109	181	112	143	111	112	118	174	169	137	109
Puerto Rico	4	1	1	-	1	1	-	-	-	-	-	-	-
Saint Lucia	27	3		3	2	1	3	5	2	2	2	2	2
St Vincent And Grenadines	32	2	5	1	2	1	4	6	3	2	1	4	1
Suriname	21	2	1	2		2	1	4	2		2	3	2
Trinidad and Tobago	635	51	35	72	47	71	17	59	30	67	64	75	47
Uruguay	691	32	24	58	39	47	47	54	20	169	112	40	49
Venezuela	696	50	46	46	47	53	59	61	78	48	80	60	68
West Indies	91	5	5	8	8	9	4	8	14	5	8	10	7

Appendix XVII– Number of tourists by country of residence and month of arrival, 2023 (continued)

Country of residence	Total	Month of arrival											
		Jan	Feb	Mar	Apr	May	Jun	Jul	Aug	Sep	Oct	Nov	Dec
Australasia	105 888	7 452	7 210	9 961	9 959	7 878	8 422	8 140	8 702	10 437	8 446	8 199	11 082
American Samoa	1	-	-	1	-	-	-	-	-	-	-	-	-
Australia	86 250	6 145	6 087	8 150	7 877	6 435	6 926	6 609	7 226	8 494	6 879	6 795	8 627
Cook Islands	1	-	-	-	-	1	-	-	-	-	-	-	-
Fiji	126	2	2	7	3	2	37	16	9	7	5	-	36
French Polynesia	3	-	-	-	-	2	-	-	-	-	-	-	1
Kiribati	2	-	1	-	-	-	-	-	1	-	-	-	-
Marshall Islands	1	-	-	-	-	-	1	-	-	-	-	-	-
Nauru	2	-	-	-	-	-	-	-	-	-	-	1	1
New Zealand	19 349	1 301	1 108	1 798	2 025	1 434	1 454	1 503	1 461	1 933	1 538	1 395	2 399
Palau	2	-	-	-	-	-	-	-	2	-	-	-	-
Papua New Guinea	72	2	7	2	35	-	-	-	2	3	16	4	1
Samoa	29	2	1	-	2	-	1	2	-	-	8	-	13
Solomon Islands	6	-	1	-	-	-	1	1	1	-	-	-	2
Tonga	35	-	2	2	16	-	1	9	-	-	-	3	2
Vanuatu	9	-	1	1	1	4	1	-	-	-	-	1	-
Middle East	54 339	3 262	3 361	4 452	3 318	2 716	5 388	9 519	8 941	5 218	2 835	2 769	2 560
Bahrain	187	9	21	15	15	3	32	24	14	14	5	27	8
Iran	2 488	105	173	720	65	115	116	89	148	405	158	211	183
Iraq	184	11	13	11	15	23	17	7	28	13	13	19	14
Israel	19 942	1 862	1 870	2 322	1 972	971	1 065	2 037	2 859	2 737	1 165	434	648
Jordan	2 190	168	176	191	137	168	162	195	220	195	157	163	258
Kuwait	1 275	86	44	27	74	80	154	242	415	48	40	27	38
Lebanon	2 222	124	200	217	190	238	204	144	128	155	173	226	223
Oman	353	10	61	21	17	28	27	70	55	31	17	2	14
Palestine	276	38	13	16	8	6	16	34	25	27	35	17	41
Qatar	1 298	21	34	41	51	36	214	433	292	59	42	25	50
Saudi Arabia	16 351	652	523	637	474	652	2 555	3 932	2 775	1 218	786	1 303	844
Syria	438	35	49	31	28	48	32	29	45	26	35	47	33
United Arab Emirates	6 511	96	137	161	249	316	733	2 231	1 879	219	143	196	151
Yemen	624	45	47	42	23	32	61	52	58	71	66	72	55
Asia	199 308	12 467	13 151	14 053	15 910	21 603	18 412	16 647	18 830	17 064	17 287	17 073	16 811
Afghanistan	182	27	32	11	4	10	8	12	8	5	18	14	33

Appendix XVII– Number of tourists by country of residence and month of arrival, 2023 (continued)

Country of residence	Total	Month of arrival											
		Jan	Feb	Mar	Apr	May	Jun	Jul	Aug	Sep	Oct	Nov	Dec
Armenia	81	5	5	8	6	5	7	8	6	3	11	13	4
Azerbaijan	186	34	31	14	18	6	5	6	15	4	16	22	15
Bangladesh	7 849	703	618	719	612	812	531	759	660	580	620	651	584
Bhutan	24	1	1	2	1	4	1	2	-	6	1	4	1
Brunei Darussalam	17	1	-	4	-	1	-	2	-	5	1	-	3
Cambodia	68	4	20	3	2	11	3	5	4	-	4	6	6
China	37 164	1 174	2 107	2 740	3 524	3 389	3 281	3 472	3 996	4 650	3 046	3 290	2 495
Hong Kong	170	18	3	10	11	23	10	4	17	11	14	21	28
India	79 774	5 565	5 488	5 302	5 942	10 876	8 495	6 237	6 962	5 529	5 601	7 040	6 737
Indonesia	2 665	152	136	287	322	139	207	196	337	274	161	175	279
Japan	13 176	653	800	846	964	1 060	1 033	955	1 597	1 136	1 870	985	1 277
Kazakhstan	736	46	106	81	38	59	29	43	34	40	82	86	92
Kyrgystan	95	11	11	2	5	23	3	4	4	5	15	6	6
Laos	20	4	-	1	-	6	-	1	2	1	3	1	1
Macau	7	-	-	-	1	1	2	-	1	1	-	1	-
Malaysia	5 659	259	289	301	490	579	541	460	681	647	601	355	456
Maldives	118	6	13	15	8	5	13	13	4	7	16	12	6
Mongolia	113	4	6	21	3	34	10	7	3	7	4	7	7
Myanmar	195	18	28	13	6	12	15	27	13	7	15	13	28
Nepal	825	36	46	59	44	120	58	98	44	65	62	53	140
North Korea	35	1	5	-	3	9	4	1	1	3	2	2	4
Northern Mariana Islands	4	1	-	1	-	1	1	-	-	-	-	-	-
Pakistan	12 718	1 024	1 007	1 077	898	1 351	955	1 192	1 144	1 094	997	1 018	961
Philippines	6 487	418	370	400	452	556	600	697	529	430	943	524	568
Singapore	7 292	275	288	517	570	797	969	559	666	585	514	758	794
South Korea	10 436	987	941	692	681	683	735	782	1 119	670	891	947	1 308
Sri Lanka	2 171	183	192	162	241	159	127	219	137	201	141	133	276
Taiwan	3 627	363	279	251	253	236	278	394	361	362	374	244	232
Tajikistan	34	3	5	-	4	1	5	3	7	-	-	3	3
Thailand	4 864	250	235	356	632	487	387	384	338	519	571	322	383
Timor-Leste	12	2	1	6	-	-	-	1	-	-	-	-	2
Turkmenistan	32	1	-	3	20	1	1	-	2	-	1	2	1
Uzbekistan	86	10	7	9	9	12	3	8	8	2	5	6	7
Vietnam	2 386	228	81	140	146	135	95	96	130	215	687	359	74

Appendix XVII– Number of tourists by country of residence and month of arrival, 2023 (continued)

Country of residence	Total	Month of arrival											
		Jan	Feb	Mar	Apr	May	Jun	Jul	Aug	Sep	Oct	Nov	Dec
Africa	6 410 392	661 606	419 576	469 941	551 661	496 493	484 306	529 712	541 567	524 683	540 111	534 969	655 767
SADC	6 276 019	652 392	408 631	459 534	542 427	485 608	475 358	519 422	530 625	514 268	527 616	520 322	639 816
Angola	39 265	3 151	3 604	3 898	3 651	2 842	2 454	3 399	3 616	2 947	3 124	3 125	3 454
Botswana	363 025	24 273	22 691	26 493	33 024	24 640	26 686	26 651	26 167	34 890	30 680	32 181	54 649
DRC	23 211	1 340	1 706	1 488	1 761	1 516	1 425	1 760	2 213	1 793	2 164	1 960	4 085
Eswatini	733 949	48 766	46 286	58 850	69 354	53 876	56 512	61 476	66 951	65 659	65 314	63 438	77 467
Lesotho	1 163 826	155 187	77 131	86 691	107 924	94 585	88 025	101 030	86 438	86 821	89 226	83 982	106 786
Madagascar	3 727	197	224	300	319	329	241	296	288	416	370	395	352
Malawi	138 918	11 671	8 953	9 297	8 101	9 717	10 502	12 635	13 780	13 186	13 144	14 250	13 682
Mauritius	17 879	1 108	1 194	1 368	1 631	1 410	1 088	1 527	1 351	1 267	1 790	2 299	1 846
Mozambique	1 341 037	153 476	93 095	98 025	101 922	107 160	104 152	107 318	113 161	107 496	107 426	119 328	128 478
Namibia	160 078	11 482	10 862	13 848	14 065	12 419	13 328	13 114	11 758	13 745	13 576	12 126	19 755
Seychelles	4 680	361	601	390	321	339	185	249	291	319	424	594	606
Tanzania	34 240	2 446	2 561	2 827	2 593	3 042	2 444	2 549	2 693	2 625	3 208	3 215	4 037
Zambia	145 244	10 300	9 697	10 699	11 624	11 821	11 616	11 833	12 990	12 024	13 478	13 347	15 815
Zimbabwe	2 106 940	228 634	130 026	145 360	186 137	161 912	156 700	175 585	188 928	171 080	183 692	170 082	208 804
'Other' African	134 373	9 214	10 945	10 407	9 234	10 885	8 948	10 290	10 942	10 415	12 495	14 647	15 951
East and Central Africa	76 367	5 469	6 104	6 155	5 616	6 019	4 928	5 630	6 309	6 388	7 629	7 362	8 758
Burundi	1 091	84	75	67	71	98	60	103	98	144	92	122	77
Cameroon	4 201	297	337	433	340	340	285	393	400	394	365	319	298
Central African Republic	191	16	18	18	12	30	10	3	30	10	26	14	4
Chad	442	24	30	40	32	42	21	36	52	43	45	50	27
Comoros	428	24	19	29	19	29	22	54	68	19	71	61	13
Congo	1 617	120	90	135	159	125	99	175	159	116	120	165	154
Djibouti	109	10	4	10	3	18	3	2	27	2	8	14	8
Equatorial Guinea	326	19	20	11	13	24	8	67	47	11	68	26	12
Eritrea	411	40	36	22	20	30	28	27	46	48	30	37	47
Ethiopia	6 489	417	504	505	406	554	442	434	509	661	724	651	682
Gabon	4 016	279	314	274	263	269	205	489	700	253	287	239	444
Kenya	42 403	2 943	3 308	3 377	3 277	3 346	2 844	2 756	3 151	3 552	4 464	4 396	4 989
Réunion	24	6	-	2	-	-	5	7	-	2	-	1	1
Rwanda	983	88	77	86	61	80	74	93	52	76	105	94	97
São Tomé and Príncipe	89	11	6	5	9	4	5	9	4	5	13	12	6
Somalia	673	59	39	61	24	76	62	48	49	49	56	76	74

Appendix XVII– Number of tourists by country of residence and month of arrival, 2023 (concluded)

Country of residence	Total	Month of arrival											
		Jan	Feb	Mar	Apr	May	Jun	Jul	Aug	Sep	Oct	Nov	Dec
Uganda	12 874	1 032	1 227	1 080	907	954	755	934	917	1 003	1 155	1 085	1 825
West Africa	45 300	2 869	3 462	3 278	2 824	3 664	3 057	3 700	3 686	3 074	3 695	5 931	6 060
Benin	1 775	122	120	133	126	151	115	166	168	139	156	221	158
Burkina Faso	730	41	92	80	35	67	33	72	48	59	68	63	72
Cape Verde Island	304	31	38	32	21	33	12	11	23	16	29	31	27
Côte d'Ivoire	2 329	117	226	223	104	217	132	210	251	173	209	247	220
Gambia	444	30	22	47	49	36	16	28	37	33	44	67	35
Ghana	14 724	691	802	769	772	1 063	954	1 110	834	577	772	2 987	3 393
Guinea	1 380	114	138	106	105	102	102	101	112	121	108	139	132
Guinea-Bissau	85	10	9	10	7	1	5	4	8	13	11	6	1
Liberia	602	24	39	89	38	70	37	63	71	24	41	65	41
Mali	1 069	45	202	69	56	108	68	94	71	67	70	91	128
Mauritania	209	7	30	21	12	18	13	13	9	5	30	43	8
Niger	294	17	34	44	23	36	16	21	3	14	28	35	23
Nigeria	18 809	1 473	1 492	1 385	1 322	1 539	1 380	1 548	1 827	1 652	1 875	1 679	1 637
Saint Helena	51	1	3	4	10	5	5	4	7	2	2	5	3
Senegal	1 493	89	149	153	76	149	74	175	124	104	159	152	89
Sierra Leone	537	35	43	50	44	42	33	45	38	38	52	53	64
Togo	465	22	23	63	24	27	62	35	55	37	41	47	29
North Africa	12 706	876	1 379	974	794	1 202	963	960	947	953	1 171	1 354	1 133
Algeria	1 113	61	90	127	107	88	56	53	179	83	79	116	74
Egypt	5 859	407	598	455	385	569	505	503	387	390	527	530	603
Libya	652	53	82	40	39	52	40	55	53	50	36	89	63
Morocco	1 662	87	141	121	57	202	171	112	98	141	150	267	115
South Sudan	1 020	55	91	40	58	89	60	72	87	133	133	119	83
The Sudan	1 012	129	233	109	56	57	46	94	48	57	48	79	56
Tunisia	1 375	84	142	82	91	141	85	70	93	98	197	154	138
Western Sahara	13	-	2	-	1	4	-	1	2	1	1	-	1
Unspecified	12 628	880	1 021	1 132	1 162	1 164	944	980	887	1 071	1 219	1 159	1 009

Appendix XVIII– Number of tourists by country of residence and mode of travel, 2023

Country of residence	Total	Mode of travel		
		Air	Road	Sea
Total	8 483 333	2 508 578	5 958 727	16 028
Overseas	2 060 313	1 897 374	149 523	13 416
Europe	1 244 877	1 139 374	97 279	8 224
Albania	137	116	21	-
Andorra	64	56	8	-
Austria	20 894	19 305	1 384	205
Belgium	46 348	40 597	5 673	78
Bosnia-Herzegovina	104	103	1	-
Bulgaria	1 994	1 840	130	24
Croatia	868	823	39	6
Cyprus	1 591	1 514	76	1
Czech Republic	6 729	5 963	758	8
Denmark	17 995	17 143	831	21
Estonia	1 232	1 092	140	-
Finland	6 580	6 165	388	27
France	119 974	105 560	14 248	166
Georgia	251	238	10	3
Germany	245 259	222 737	17 512	5 010
Greece	5 858	5 517	318	23
Hungary	3 773	3 554	198	21
Iceland	663	633	29	1
Ireland	27 282	26 124	1 111	47
Italy	52 091	48 337	3 686	68
Latvia	642	600	39	3
Liechtenstein	237	215	22	-
Lithuania	1 304	1 194	103	7
Luxembourg	1 598	1 504	90	4
Macedonia	133	122	11	-
Malta	1 083	987	90	6
Moldova	60	57	3	-
Monaco	74	66	8	-

Appendix XVIII– Number of tourists by country of residence and mode of travel, 2023 (continued)

Country of residence	Total	Mode of travel		
		Air	Road	Sea
Montenegro	97	78	19	-
Norway	13 048	12 367	664	17
Poland	11 658	10 795	815	48
Portugal	19 285	12 873	6 337	75
Republic of Belarus	401	371	27	3
Romania	1 731	1 654	48	29
Russian Federation	28 357	26 777	1 516	64
San Marino	18	18	-	-
Serbia	1 033	920	109	4
Slovakia	1 999	1 845	145	9
Slovenia	1 116	1 045	70	1
Spain	32 020	28 786	3 149	85
Sweden	24 543	23 347	1 113	83
Switzerland	42 654	39 306	3 243	105
The Netherlands	131 371	112 134	19 107	130
Turkey	12 925	11 872	958	95
UK	356 160	341 526	12 910	1 724
Ukraine	1 633	1 494	116	23
Vatican	9	3	6	-
Yugoslavia	1	1	-	-
North America	409 031	386 812	18 283	3 936
Canada	55 056	51 154	3 423	479
USA	353 975	335 658	14 860	3 457
Central and South America	46 870	43 233	3 417	220
Antigua and Barbuda	281	251	30	-
Argentina	3 805	3 624	165	16
Bahamas	386	345	36	5
Barbados	261	248	13	-
Belize	75	65	10	-
Bermuda	6	5	1	-
Bolivia	251	222	28	1
Brazil	25 672	23 410	2 190	72

Appendix XVIII– Number of tourists by country of residence and mode of travel, 2023 (continued)

Country of residence	Total	Mode of travel		
		Air	Road	Sea
Chile	2 173	2 061	94	18
Colombia	1 420	1 363	34	23
Costa Rica	681	666	14	1
Cuba	740	663	77	-
Dominica	99	69	29	1
Dominican Republic	86	84	2	-
Ecuador	496	463	33	-
El Salvador	74	68	4	2
Falkland Islands	1	1	-	-
Grenada	24	23	-	1
Guatemala	218	214	4	-
Guyana	188	159	29	-
Haiti	98	80	16	2
Honduras	93	84	7	2
Jamaica	808	752	54	2
Mexico	4 511	4 347	102	62
Nicaragua	49	43	6	-
Panama	378	374	2	2
Paraguay	236	213	23	-
Peru	1 563	1 388	171	4
Puerto Rico	4	-	4	-
Saint Lucia	27	27	-	-
St Vincent And Grenadines	32	32	-	-
Suriname	21	21	-	-
Trinidad and Tobago	635	612	19	4
Uruguay	691	662	29	-
Venezuela	696	503	191	2
West Indies	91	91	-	-

Appendix XVIII– Number of tourists by country of residence and mode of travel, 2023 (continued)

Country of residence	Total	Mode of travel		
		Air	Road	Sea
Australasia	105 888	101 527	3 983	378
American Samoa	1	1	-	-
Australia	86 250	82 753	3 201	296
Cook Islands	1	1	-	-
Fiji	126	124	2	-
French Polynesia	3	2	1	-
Kiribati	2	1	1	-
Marshall Islands	1	1	-	-
Nauru	2	1	1	-
New Zealand	19 349	18 495	772	82
Palau	2	2	-	-
Papua New Guinea	72	72	-	-
Samoa	29	27	2	-
Solomon Islands	6	3	3	-
Tonga	35	35	-	-
Vanuatu	9	9	-	-
Middle East	54 339	52 891	1 226	222
Bahrain	187	186	1	-
Iran	2 488	2 414	73	1
Iraq	184	172	12	-
Israel	19 942	19 137	682	123
Jordan	2 190	1 964	225	1
Kuwait	1 275	1 273	-	2
Lebanon	2 222	2 089	133	-
Oman	353	352	1	-
Palestine	276	250	12	14
Qatar	1 298	1 292	6	-
Saudi Arabia	16 351	16 325	21	5
Syria	438	430	8	-
United Arab Emirates	6 511	6 420	15	76
Yemen	624	587	37	-
Asia	199 308	173 537	25 335	436
Afghanistan	182	124	57	1

Appendix XVIII– Number of tourists by country of residence and mode of travel, 2023 (continued)

Country of residence	Total	Mode of travel		
		Air	Road	Sea
Armenia	81	79	2	-
Azerbaijan	186	170	11	5
Bangladesh	7 849	6 436	1 408	5
Bhutan	24	24	-	-
Brunei Darussalam	17	15	2	-
Cambodia	68	68	-	-
China	37 164	34 081	3 042	41
Hong Kong	170	169	1	-
India	79 774	68 825	10 781	168
Indonesia	2 665	2 508	131	26
Japan	13 176	12 530	627	19
Kazakhstan	736	693	43	-
Kyrgystan	95	95	-	-
Laos	20	17	3	-
Macau	7	3	4	-
Malaysia	5 659	5 400	251	8
Maldives	118	114	4	-
Mongolia	113	106	7	-
Myanmar	195	186	6	3
Nepal	825	779	41	5
North Korea	35	22	13	-
Northern Mariana Islands	4	-	4	-
Pakistan	12 718	8 239	4 472	7
Philippines	6 487	5 771	603	113
Singapore	7 292	7 143	142	7
South Korea	10 436	9 089	1 341	6
Sri Lanka	2 171	1 001	1 162	8
Taiwan	3 627	2 644	978	5
Tajikistan	34	30	4	-
Thailand	4 864	4 708	148	8
Timor-Leste	12	8	4	-
Turkmenistan	32	32	-	-
Uzbekistan	86	83	2	1
Vietnam	2 386	2 345	41	-

Appendix XVIII– Number of tourists by country of residence and mode of travel, 2023 (continued)

Country of residence	Total	Mode of travel		
		Air	Road	Sea
Africa	6 410 392	601 774	5 806 008	2 610
SADC	6 276 019	479 919	5 793 569	2 531
Angola	39 265	32 268	6 911	86
Botswana	363 025	29 845	332 639	541
DRC	23 211	20 214	2 997	-
Eswatini	733 949	9 842	724 021	86
Lesotho	1 163 826	6 573	1 156 980	273
Madagascar	3 727	3 511	213	3
Malawi	138 918	23 130	115 735	53
Mauritius	17 879	16 858	987	34
Mozambique	1 341 037	42 044	1 298 376	617
Namibia	160 078	44 810	114 970	298
Seychelles	4 680	4 346	327	7
Tanzania	34 240	20 423	13 760	57
Zambia	145 244	47 875	97 319	50
Zimbabwe	2 106 940	178 180	1 928 334	426
'Other' African	134 373	121 855	12 439	79
East and Central Africa	76 367	69 234	7 099	34
Burundi	1 091	1 034	57	-
Cameroon	4 201	3 932	268	1
Central African Republic	191	191	-	-
Chad	442	440	2	-
Comoros	428	427	1	-
Congo	1 617	1 550	67	-
Djibouti	109	108	1	-
Equatorial Guinea	326	312	14	-
Eritrea	411	366	44	1
Ethiopia	6 489	5 792	697	-
Gabon	4 016	3 950	66	-
Kenya	42 403	37 859	4 520	24
Réunion	24	24	-	-
Rwanda	983	828	155	-
São Tomé and Príncipe	89	79	9	1
Somalia	673	453	219	1

Appendix XVIII– Number of tourists by country of residence and mode of travel, 2023 (concluded)

Country of residence	Total	Mode of travel		
		Air	Road	Sea
Uganda	12 874	11 889	979	6
West Africa	45 300	40 434	4 830	36
Benin	1 775	1 680	95	-
Burkina Faso	730	708	21	1
Cape Verde Island	304	226	75	3
Côte d'Ivoire	2 329	2 278	50	1
Gambia	444	415	29	-
Ghana	14 724	13 686	1 027	11
Guinea	1 380	635	745	-
Guinea-Bissau	85	70	15	-
Liberia	602	586	16	-
Mali	1 069	784	285	-
Mauritania	209	207	2	-
Niger	294	291	3	-
Nigeria	18 809	16 439	2 351	19
Saint Helena	51	50	1	-
Senegal	1 493	1 458	35	-
Sierra Leone	537	462	75	-
Togo	465	459	5	1
North Africa	12 706	12 187	510	9
Algeria	1 113	1 043	70	-
Egypt	5 859	5 640	219	-
Libya	652	568	84	-
Morocco	1 662	1 626	31	5
South Sudan	1 020	1 009	11	-
The Sudan	1 012	935	76	1
Tunisia	1 375	1 353	19	3
Western Sahara	13	13	-	-
Unspecified	12 628	9 430	3 196	2

Appendix XIX– Number of tourists by country of residence and purpose of visit, 2023

Country of residence	Total	Purpose of visit			
		Business	Holiday	Study	Medical treatment
Total	8 483 333	251 198	8 181 759	46 924	3 452
Overseas	2 060 313	41 289	2 008 764	9 546	714
Europe	1 244 877	21 066	1 218 344	5 024	443
Albania	137	9	127	1	-
Andorra	64	-	64	-	-
Austria	20 894	260	20 579	54	1
Belgium	46 348	615	45 541	180	12
Bosnia-Herzegovina	104	7	97	-	-
Bulgaria	1 994	88	1 898	7	1
Croatia	868	56	807	5	-
Cyprus	1 591	31	1 557	3	-
Czech Republic	6 729	151	6 556	20	2
Denmark	17 995	354	17 588	47	6
Estonia	1 232	45	1 184	3	-
Finland	6 580	172	6 376	32	-
France	119 974	1 838	116 821	1 285	30
Georgia	251	12	232	5	2
Germany	245 259	3 079	240 961	1 205	14
Greece	5 858	205	5 621	31	1
Hungary	3 773	90	3 666	17	-
Iceland	663	22	639	1	1
Ireland	27 282	532	26 668	77	5
Italy	52 091	1 157	50 722	204	8
Latvia	642	22	615	4	1
Liechtenstein	237	3	234	-	-
Lithuania	1 304	32	1 267	4	1
Luxembourg	1 598	22	1 560	16	-
Macedonia	133	10	121	2	-
Malta	1 083	29	1 054	-	-
Moldova	60	2	56	2	-
Monaco	74	-	72	2	-

Appendix XIX– Number of tourists by country of residence and purpose of visit, 2023 (continued)

Country of residence	Total	Purpose of visit			
		Business	Holiday	Study	Medical treatment
Montenegro	97	1	95	1	-
Norway	13 048	283	12 642	120	3
Poland	11 658	358	11 278	21	1
Portugal	19 285	364	18 839	55	27
Republic of Belarus	401	19	377	5	-
Romania	1 731	124	1 594	10	3
Russian Federation	28 357	462	27 829	60	6
San Marino	18	-	18	-	-
Serbia	1 033	81	943	8	1
Slovakia	1 999	56	1 930	13	-
Slovenia	1 116	53	1 056	7	-
Spain	32 020	797	31 113	107	3
Sweden	24 543	541	23 896	102	4
Switzerland	42 654	421	42 046	177	10
The Netherlands	131 371	1 469	129 413	394	95
Turkey	12 925	579	12 234	107	5
UK	356 160	6 527	348 816	618	199
Ukraine	1 633	88	1 532	12	1
Vatican	9	-	9	-	-
Yugoslavia	1	-	1	-	-
North America	409 031	5 639	402 129	1 128	135
Canada	55 056	883	54 055	94	24
USA	353 975	4 756	348 074	1 034	111
Central and South America	46 870	1 254	45 254	347	15
Antigua and Barbuda	281	14	267	-	-
Argentina	3 805	105	3 669	31	-
Bahamas	386	12	371	3	-
Barbados	261	6	251	4	-
Belize	75	4	71	-	-
Bermuda	6	-	6	-	-
Bolivia	251	8	243	-	-

Appendix XIX– Number of tourists by country of residence and purpose of visit, 2023 (continued)

Country of residence	Total	Purpose of visit			
		Business	Holiday	Study	Medical treatment
Brazil	25 672	553	24 954	165	-
Chile	2 173	79	2 084	10	-
Colombia	1 420	94	1 291	35	-
Costa Rica	681	21	660	-	-
Cuba	740	18	701	18	3
Dominica	99	5	93	1	-
Dominican Republic	86	3	83	-	-
Ecuador	496	13	482	1	-
El Salvador	74	4	67	2	1
Falkland Islands	1	-	1	-	-
Grenada	24	1	23	-	-
Guatemala	218	14	204	-	-
Guyana	188	6	179	3	-
Haiti	98	9	87	2	-
Honduras	93	2	89	1	1
Jamaica	808	19	784	5	-
Mexico	4 511	144	4 326	35	6
Nicaragua	49	6	42	1	-
Panama	378	11	365	2	-
Paraguay	236	4	231	-	1
Peru	1 563	29	1 516	15	3
Puerto Rico	4	-	4	-	-
Saint Lucia	27	1	26	-	-
St Vincent And Grenadines	32	2	30	-	-
Suriname	21	-	21	-	-
Trinidad and Tobago	635	22	609	4	-
Uruguay	691	21	670	-	-
Venezuela	696	19	671	6	-
West Indies	91	5	83	3	-

Appendix XIX– Number of tourists by country of residence and purpose of visit, 2023 (continued)

Country of residence	Total	Purpose of visit			
		Business	Holiday	Study	Medical treatment
Australasia	105 888	896	104 880	95	17
American Samoa	1	-	1	-	-
Australia	86 250	760	85 394	80	16
Cook Islands	1	-	1	-	-
Fiji	126	-	125	1	-
French Polynesia	3	-	3	-	-
Kiribati	2	-	2	-	-
Marshall Islands	1	-	1	-	-
Nauru	2	-	2	-	-
New Zealand	19 349	129	19 207	12	1
Palau	2	-	2	-	-
Papua New Guinea	72	3	67	2	-
Samoa	29	-	29	-	-
Solomon Islands	6	-	6	-	-
Tonga	35	4	31	-	-
Vanuatu	9	-	9	-	-
Middle East	54 339	1 066	52 698	564	11
Bahrain	187	13	173	1	-
Iran	2 488	126	2 322	40	-
Iraq	184	18	149	17	-
Israel	19 942	175	19 717	49	1
Jordan	2 190	102	2 060	26	2
Kuwait	1 275	14	1 258	2	1
Lebanon	2 222	207	1 969	42	4
Oman	353	34	312	6	1
Palestine	276	18	243	15	-
Qatar	1 298	13	1 282	3	-
Saudi Arabia	16 351	169	16 034	147	1
Syria	438	37	382	19	-
United Arab Emirates	6 511	125	6 353	33	-
Yemen	624	15	444	164	1
Asia	199 308	11 368	185 459	2 388	93
Afghanistan	182	10	166	5	1
Armenia	81	5	74	2	-

Appendix XIX– Number of tourists by country of residence and purpose of visit, 2023 (continued)

Country of residence	Total	Purpose of visit			
		Business	Holiday	Study	Medical treatment
Azerbaijan	186	34	149	3	-
Bangladesh	7 849	175	7 609	64	1
Bhutan	24	6	18	-	-
Brunei Darussalam	17	2	15	-	-
Cambodia	68	8	56	4	-
China	37 164	3 591	33 267	285	21
Hong Kong	170	10	160	-	-
India	79 774	4 456	74 298	987	33
Indonesia	2 665	212	2 429	22	2
Japan	13 176	780	12 267	122	7
Kazakhstan	736	42	669	23	2
Kyrgystan	95	7	75	13	-
Laos	20	3	17	-	-
Macau	7	-	7	-	-
Malaysia	5 659	164	5 402	92	1
Maldives	118	12	90	16	-
Mongolia	113	23	88	1	1
Myanmar	195	27	166	1	1
Nepal	825	66	735	24	-
North Korea	35	-	34	1	-
Northern Mariana Islands	4	-	4	-	-
Pakistan	12 718	403	12 135	176	4
Philippines	6 487	264	6 141	70	12
Singapore	7 292	176	7 106	10	-
South Korea	10 436	337	9 922	176	1
Sri Lanka	2 171	100	2 031	36	4
Taiwan	3 627	206	3 299	122	-
Tajikistan	34	3	31	-	-
Thailand	4 864	106	4 657	99	2
Timor-Leste	12	1	11	-	-
Turkmenistan	32	2	28	2	-
Uzbekistan	86	9	74	3	-
Vietnam	2 386	128	2 229	29	-

Appendix XIX– Number of tourists by country of residence and purpose of visit, 2023 (continued)

Country of residence	Total	Purpose of visit			
		Business	Holiday	Study	Medical treatment
Africa	6 410 392	209 121	6 161 187	37 363	2 721
SADC	6 276 019	200 409	6 040 977	32 410	2 223
Angola	39 265	679	37 249	1 009	328
Botswana	363 025	10 110	349 385	3 106	424
DRC	23 211	640	21 231	1 011	329
Eswatini	733 949	25 371	706 057	2 427	94
Lesotho	1 163 826	7 227	1 144 188	12 279	132
Madagascar	3 727	101	3 546	73	7
Malawi	138 918	3 437	134 804	618	59
Mauritius	17 879	266	17 406	184	23
Mozambique	1 341 037	32 142	1 307 841	921	133
Namibia	160 078	41 631	114 922	3 365	160
Seychelles	4 680	52	4 605	18	5
Tanzania	34 240	1 267	32 326	583	64
Zambia	145 244	40 011	104 221	883	129
Zimbabwe	2 106 940	37 475	2 063 196	5 933	336
'Other' African	134 373	8 712	120 210	4 953	498
East and Central Africa	76 367	4 669	69 017	2 381	300
Burundi	1 091	97	934	55	5
Cameroon	4 201	363	3 531	227	80
Central African Republic	191	25	161	-	5
Chad	442	35	365	32	10
Comoros	428	40	368	18	2
Congo	1 617	80	1 371	138	28
Djibouti	109	17	91	1	-
Equatorial Guinea	326	49	248	28	1
Eritrea	411	15	387	9	-
Ethiopia	6 489	513	5 759	183	34
Gabon	4 016	66	3 733	205	12
Kenya	42 403	2 140	39 334	874	55
Réunion	24	-	24	-	-
Rwanda	983	84	860	32	7
São Tomé and Príncipe	89	8	81	-	-
Somalia	673	125	515	25	8

Appendix XIX– Number of tourists by country of residence and purpose of visit, 2023 (concluded)

Country of residence	Total	Purpose of visit			
		Business	Holiday	Study	Medical treatment
Uganda	12 874	1 012	11 255	554	53
West Africa	45 300	2 848	40 424	1 850	178
Benin	1 775	84	1 640	41	10
Burkina Faso	730	114	583	29	4
Cape Verde Island	304	13	289	1	1
Côte d'Ivoire	2 329	225	2 020	76	8
Gambia	444	56	379	9	-
Ghana	14 724	797	13 592	282	53
Guinea	1 380	74	1 254	44	8
Guinea-Bissau	85	6	78	1	-
Liberia	602	39	535	21	7
Mali	1 069	163	880	18	8
Mauritania	209	34	165	7	3
Niger	294	40	241	10	3
Nigeria	18 809	881	16 614	1 253	61
Saint Helena	51	-	48	-	3
Senegal	1 493	216	1 255	22	-
Sierra Leone	537	48	466	18	5
Togo	465	58	385	18	4
North Africa	12 706	1 195	10 769	722	20
Algeria	1 113	85	981	47	-
Egypt	5 859	610	5 050	196	3
Libya	652	23	509	119	1
Morocco	1 662	195	1 436	30	1
South Sudan	1 020	109	772	129	10
The Sudan	1 012	73	769	166	4
Tunisia	1 375	100	1 239	35	1
Western Sahara	13	-	13	-	-
Unspecified	12 628	788	11 808	15	17

Appendix XX— Number of tourists by port of entry, 2023

Port of entry	Province	Total
Total		8 483 333
Cape Town Harbour	Western Cape	12 246
Cape Town International Airport	Western Cape	914 971
Port Elizabeth Harbour	Eastern Cape	577
Port Elizabeth International Airport	Eastern Cape	40
Quachasnek	Eastern Cape	6 319
Telle Bridge	Eastern Cape	29 806
Alexander Bay	Northern Cape	6 124
Nakop	Northern Cape	54 696
Twee Rivieren	Northern Cape	1 662
Upington International Airport	Northern Cape	32
Violsdrift	Northern Cape	52 003
Caledonspoor	Free State	124 414
Ficksburg	Free State	487 012
Maseru Bridge	Free State	485 934
Peka Bridge	Free State	6 760
Van Rooyens Gate	Free State	36 657
Durban Habo	KwaZulu Natal	3 205
Durban International	KwaZulu Natal	33 557
Golela	KwaZulu Natal	147 182
Kosibay	KwaZulu Natal	66 531

Appendix XX– Number of tourists by port of entry, 2023 (concluded)

Port of entry	Province	Total
Kopfontein	North West	197 710
Ramathlabama	North West	71 100
Schilpad Gate	North West	89 798
Swartkopfontein Gate	North West	22 643
Lanseria International Airport	Gauteng	2 459
Oliver Tambo International Airport	Gauteng	1 551 804
Waterkloof Military Airbase	Gauteng	148
Emahlatini	Mpumalanga	36 817
Jeppes Reef	Mpumalanga	89 047
Josefsdal	Mpumalanga	822
Kruger Mpumalanga International Airport	Mpumalanga	5 251
Lebombo	Mpumalanga	1 391 389
Mahamba	Mpumalanga	75 662
Mananga	Mpumalanga	97 190
Nerston	Mpumalanga	5 017
Oshoek	Mpumalanga	409 226
Beit Bridge	Limpopo	1 749 923
Groblers Bridge	Limpopo	203 425
Pafuri	Limpopo	6 526
Platjan	Limpopo	469
Polokwane International Airport	Limpopo	316
Pontdrift	Limpopo	317
Stockpoort	Limpopo	6 546

7. Definition of terms

Definitions used by the United Nations World Tourism Organisation (UNWTO)

- **Traveller** is someone who moves between different geographical locations for any purpose and any duration. Note: in this publication, the geographical locations are countries. Hence in this report, the term traveller refers to an international traveller.
- **Visitor** refers to any person travelling to a place other than that of his/her usual environment for less than 12 months and whose main purpose of the trip is other than the exercise of an activity remunerated from within the place visited.
- **Same-day visitor** is a visitor who visits a place for less than one night.
- **Tourist (overnight visitor)** is a visitor who stays at least one night in collective or private accommodation in the place visited for less than twelve months.
- **Tourism** comprises the activities of persons travelling to, and staying in places outside their usual environment, for not more than one uninterrupted year, for leisure, business and other purposes. The usual environment of a person consists of a certain area around his/her place of residence, plus all other places he/she frequently visits.

Definitions used specifically in this report

- **South African resident** refers to either a South African citizen or a non-South African citizen with a South African permanent residence permit.
- **Foreign traveller** refers to a traveller who is not a South African citizen or permanent resident.
- **Country** refers to individual countries within a region. (Note: The country of residence is used here and not the country from which the visitor travelled).
- **Region** refers to the following country classification: Overseas, SADC and 'Other' African. Overseas consists of Europe, North America, Central and South America, Australasia, the Middle East and Asia.
- **Overseas:** refers to all countries outside Africa.
- **Africa** refers to all the countries in Africa (both mainland and island countries).
- **SADC** refers to the fourteen countries, excluding South Africa, which belong to the Southern African Development Community.
- **'Other' African** refers to all countries in Africa that are not members of the SADC. They are grouped as: East and Central Africa, West Africa and North Africa.

Symbol used

- = Nil

Limitations

- **Outbound tourists**

The information on the total number of arrivals and departures of South African residents is collected from the scanning of passports. However, data on the country visited are not collected from passengers; country of final destination, the duration of stay; intended duration of stay and purpose of visit. With this limitation, it is impossible to identify the number of tourists from the data on South African residents.

- **Purpose of visit**

The holiday category includes tourists who came for vacation, visiting friends and relatives, shopping and other personal reasons such as attending weddings. While it's possible to separate 'visiting friends and relatives' from the broad category of Holiday, shopping and other reasons for visiting South Africa are all combined with vacation in the DHA movement control system. Discussions are in progress with the Department of Home Affairs to capture vacation and shopping as separate categories for a clearer breakdown of tourists by purpose of visit.

Related publications

Tourism statistics are also published in the monthly Statistical Release P0351: *Tourism and Migration*.

8. Other Stats SA reports

- No. 03-51-02 (2000) - Tourism
- No. 03-51-02 (2001) - Tourism
- No. 03-51-02 (2002) -Tourism
- No. 03-51-02 (2003) -Tourism
- No. 03-51-02 (2004, 2005 and 2006) -Tourism
- No. 03-51-02 (2007) -Tourism
- No. 03-51-02 (2008) -Tourism
- No. 03-51-02 (2009) - Tourism
- No. 03-51-02 (2010) -Tourism
- No. 03-51-02 (2011) -Tourism
- No. 03-51-02 (2012) -Tourism
- No. 03-51-02 (2013) -Tourism
- No. 03-51-02 (2014) -Tourism
- No. 03-51-02 (2015) -Tourism
- No. 03-51-02 (2016) -Tourism
- No. 03-51-02 (2017) -Tourism
- No. 03-51-02 (2018) -Tourism
- No. 03-51-02 (2019) –Tourism
- No. 03-51-02 (2020) -Tourism
- No. 03-51-02 (2021) -Tourism
- No. 03-51-02 (2022) -Tourism