



stats sa

Department:
Statistics South Africa
REPUBLIC OF SOUTH AFRICA

TOURISM

2022

Embargoed until:
18 May 2023
12:00

Statistics South Africa

Report No. 03-51-02 (2022)

Risenga Maluleke
Statistician-General



Tourism, 2022 / Statistics South Africa

Published by Statistics South Africa, Private Bag X44, Pretoria 0001

© Statistics South Africa, 2022

Users may apply or process this data, provided Statistics South Africa (Stats SA) is acknowledged as the original source of the data; that it is specified that the application and/or analysis is the result of the user's independent processing of the data; and that neither the basic data nor any reprocessed version or application thereof may be sold or offered for sale in any form whatsoever without prior permission from Stats SA.

Stats SA Library Cataloguing-in-Publication (CIP) Data

Tourism, 2022 / Statistics South Africa. Pretoria: Statistics South Africa, 2022

[Report No. 03-51-02 (2022)]

64pp

ISBN: 978-0-621-51132-1

A complete set of Stats SA publications is available at Stats SA Library and the following libraries:

National Library of South Africa, Pretoria Division
National Library of South Africa, Cape Town Division
Library of Parliament, Cape Town
Bloemfontein Public Library
Natal Society Library, Pietermaritzburg
Johannesburg Public Library
Eastern Cape Library Services, Qonce
Central Regional Library, Polokwane
Central Reference Library, Mbombela
Central Reference Collection, Kimberley
Central Reference Library, Mmabatho

This report is available on the Stats SA website: www.statssa.gov.za

Copies are obtainable from: Printing and Distribution, Statistics South Africa.

Tel: (012) 310 8093 / 8251 / 8358 / 8161

Email: annelineb@statssa.gov.za

Technical enquiries:

Tel: (012) 310 8692/ 079 511 9917

Email: TshwaroG@statssa.gov.za

Preface

The report provides information on South African residents and foreign travellers who passed through all South African ports of entry/exit (air, land and sea ports) in 2022. It summarises data published in the monthly statistical releases on *Tourism and Migration* (Statistical release P0351) in 2022, highlighting annual numbers of travellers and tourists. Details on the mode of travel, seasonal travel patterns; purpose of visit; length of stay of visit; and demographic characteristics of tourists who visited South Africa in 2022 are provided.

Risenga Maluleke
Statistician-General

Contents

| | |
|--|-----------|
| List of tables | v |
| List of figures | v |
| 1. Introduction | 1 |
| 1.1 Background..... | 1 |
| 1.2 Objectives of this report | 2 |
| 1.3 Scope of this report..... | 2 |
| 2. Data and methods | 2 |
| 2.1 Data source..... | 2 |
| 2.2 Data processing and analysis..... | 2 |
| 2.3 Limitations of data..... | 3 |
| 3. All travellers | 3 |
| 3.1 Number of travellers..... | 3 |
| 3.1.1 South African residents | 4 |
| 3.1.2 Foreign travellers | 6 |
| 4. Tourists | 9 |
| 4.1 Sex and age distribution | 11 |
| 4.2 Region of residence..... | 12 |
| 4.3 Ten leading countries | 13 |
| 4.4 Mode of travel | 15 |
| 4.5 Purpose of visit | 16 |
| 4.6 Duration of stay..... | 17 |
| 5. Summary | 20 |
| 6. Appendices | 21 |
| 7. Definition of terms | 58 |
| 8. Other STATS SA reports | 59 |

List of tables

| | |
|---|----|
| Table 3.1–Number of arrivals, departures and travellers in transits of South African residents by mode of travel, 2022..... | 4 |
| Table 3.2–Percentage distribution of south african residents by mode of travel and place of arrival or departure, 2022 | 5 |
| Table 3.3–Number of arrivals, departures and transits of foreign travellers by mode of travel and place of arrival or departure, 2022..... | 7 |
| Table 3.4–Percentage distribution of foreign arrivals, departures and transits by mode of travel and place of arrival or departure, 2022..... | 7 |
| Table 4.1–Distribution of tourists by mode of travel and place of arrival, 2022 | 15 |

List of figures

| | |
|---|----|
| Figure 3.1 – Number of arrivals, departures and travellers in transit by year of travel, 2014 – 2022 | 3 |
| Figure 3.2 – Number of arrivals, departures and transits of South African residents by year of travel, 2014 – 2022..... | 4 |
| Figure 3.3 – Percentage distribution of arrivals and departures of South African residents by month of travel, 2022 | 6 |
| Figure 3.4 – Number of arrivals, departures and transits of foreign travellers by year of travel, 2014 – 2022 | 6 |
| Figure 3.5 – Percentage distribution of foreign arrivals and departures by month of travel, 2022 | 8 |
| Figure 3.6 – Percentage distribution of foreign arrivals by purpose of visit, 2022 | 8 |
| Figure 3.7 – Distribution of foreign arrivals by type of visitor, 2022..... | 9 |
| Figure 4.1 – Number of tourists by quarter and year of travel, 2018 – 2022..... | 10 |
| Figure 4.2 – Number of tourists by month and year of travel, 2021 and 2022 | 10 |
| Figure 4.3 – Percentage distribution of tourists by region of residence and sex, 2022 | 11 |
| Figure 4.4 – Percentage distribution of tourists by region of residence and age, 2022..... | 12 |
| Figure 4.5 – Percentage distribution of tourists by region of residence, 2022 | 12 |
| Figure 4.6 – Percentage distribution of tourists by region of residence and month of arrival, 2022..... | 13 |
| Figure 4.7 – Number of tourists from ten leading overseas countries in 2022 compared to 2021 | 13 |
| Figure 4.8 – Number of tourists from ten leading SADC countries in 2022 compared to 2021 | 14 |
| Figure 4.9 – Number of tourists from ten leading ‘other’ African countries in 2022 compared to 2021 | 14 |
| Figure 4.10 – Percentage distribution of tourists by region of residence and mode of travel, 2022 | 16 |
| Figure 4.11 – Percentage distribution of tourists by region and purpose of visit, 2022 | 17 |
| Figure 4.12 – Percentage distribution of tourists from overseas countries on holiday, 2022 | 18 |
| Figure 4.13 – Percentage distribution of tourists from overseas countries on business, 2022 | 18 |
| Figure 4.14 – Percentage distribution of tourists from overseas countries on study, 2022 | 18 |
| Figure 4.15 – Percentage distribution of tourists from overseas countries on medical, 2022 | 18 |
| Figure 4.16 – Percentage distribution of tourists from SADC countries on holiday, 2022..... | 18 |
| Figure 4.17 – Percentage distribution of tourists from SADC countries on business, 2022 | 18 |
| Figure 4.18 – Percentage distribution of tourists from SADC countries on study, 2022..... | 19 |
| Figure 4.21 – Percentage distribution of tourists from ‘other’ African countries on business, 2022 | 19 |
| Figure 4.19 – Percentage distribution of tourists from SADC countries on medical, 2022 | 19 |
| Figure 4.20 – Percentage distribution of tourists from ‘other’ African countries on holiday, 2022 | 19 |
| Figure 4.22 – Percentage distribution of tourists from ‘other’ African countries on study, 2022..... | 19 |
| Figure 4.23 – Percentage distribution of tourists from ‘other’ African countries on medical, 2022 | 19 |
| Figure 4.24 – Average (median) number of days tourists spent by month of arrival, 2022 | 20 |

1. Introduction

1.1 Background

Administrative records regulating the flow of people across boundaries, specifically border statistics, are an important source of statistical data on temporary population movements in many countries. Generally, countries routinely collect data from both residents and non-residents who pass through the demarcated air, land and sea ports on arrival into and departing from the country. The method, the kind of collected data, the quality of data and the dissemination and availability of processed data differ widely among countries since there is no international standardised template for the recording of information on travellers. Besides the impact of the level of infrastructure development, the national differences are largely shaped by the immigration policies and regulations of individual countries.

Data collection methods may be electronic, manual or both. Travel documents could be scanned and/or travellers are expected to complete an arrival and departure form/card. The amount of documentation and the information collected from travellers are often influenced by the citizenship / nationality of the travel document and the purpose of entry.

Data obtained from foreigners or non-residents can be used to categorise them into visitors and non-visitors. Usually, the data given on the form/card regarding the purpose of visit and/or length of stay is further used to categorise travellers into visitors and migrants. In countries that do not use cards/forms, data on type of visa/permit can also be used for the categorisation. In addition, there are countries that issue special cards for registered immigrants that they could use to cross into and out of the country of residence. Thus the information from the visa, permit and the card/form are used to classify non-visitors into migratory categories such as short-term and long-term migrants; temporary migrants; permanent migrants; labour migrants, asylum seekers, students, etc., according to a country's specifications.

Because border statistics are derived from arrival data, they could be the most suitable data source for the direct measurement of the *flow* of immigrants (UN, 2011). The data are available at any given time because they are routinely collected as travellers pass through the immigration check points at the ports of entry. It is crucial to note that unlike data from census or sample surveys that count individual persons, border statistics by their nature, measure events i.e. movements of persons rather than the physical persons. The reason is that the same person can cross the border a number of times during a specified time and his or her information is recorded every time he or she passes through the border.

The management of population movements across South African borders and immigration into South Africa fall under the jurisdiction of the Department of Home Affairs (DHA). The jurisdiction of this responsibility is enshrined in the various immigration acts, amendments, laws and regulations. Currently, with respect to the collection of data on population movements in and out of South Africa, the DHA operates under the Immigration Act 2002 (Act No. 13 of 2002), its amendments and associated regulations. The latest Immigration Regulations came into operation on 26 May 2014. Any changes and amendments in the legislation and regulations affect both the flow of travellers as well as the methods of collecting data and the kind of information collected on travellers.

At the ports of entry/exit (see Appendix I on page 21 for the distribution of all South African ports), the immigration officers of the DHA collect information on South African residents and foreign travellers arriving into or departing from South Africa. This information is used to produce statistical releases on all travellers, with emphasis on tourists, and an annual report aggregating the results of one calendar year.

1.2 Objectives of this report

The report forms part of a regular annual series of publications on tourism statistics. The main aim of the report is to present information on population movements into and out of South Africa in 2022. Specifically, the report provides:

- Information on arrivals, departures and transits of South African residents and foreign travellers.
- A detailed analysis of the movements of tourists and their demographic characteristics over the 12 - month period.

1.3 Scope of this report

This report is based on information on population movements across South Africa's ports of entry/exit covering the period 1 January 2022 to 31 December 2022. It covers data on arrivals and departures of South African residents and foreign travellers. A detailed analysis of the data on foreign tourists with respect to: mode of travel, purpose of visit, sex and age distribution is covered. The report also describes trends in the overall number of travellers and tourists from 2008 to 2022.

2. Data and methods

2.1 Data source

Data routinely collected by immigration officers at all ports of entry/exit (land, air and sea ports) (see Appendix I on page 21) on all travellers (South African residents and foreign travellers) arriving into or departing from South Africa are captured into the Department of Home Affairs' (DHA) population Movement Control System (MCS). The data provide the best national coverage (in terms of both space and time) on the population movements of South African residents and foreign travellers. Among other uses, the data can also be used to:

- estimate, monitor and understand salient characteristics of South African residents and foreign travellers travelling into and out of South Africa;
- provide information that can be used to assess the extent of government's progress in strengthening bilateral and multilateral political and economic relations with other countries;
- estimate the number and some characteristics of same-day visitors and tourists that visit South Africa;
- provide information for marketing tourism by identifying niche, emerging and declining markets (both at country and regional levels); and
- provide information that can be used for monitoring the effects of major international and national events (positive or negative) on the arrival of visitors into the country.

Generally, the data are collected directly from travel documents either by scanning them or by capturing information from the travel documents onto the port's electronic database. Individual ports regularly transmit the data to the national database i.e. the MCS at the head office of the DHA.

2.2 Data processing and analysis

Statistics South Africa (Stats SA), downloads the data covering a particular calendar month from DHA. The Statistical Analysis System (SAS) is used for data processing and analysis. Descriptive analyses (frequencies, cross-tabulations, percentage distributions and median ages) are used to summarise the data. The results are presented in table and graph formats. These are undertaken on a monthly basis to publish information on tourism in the monthly *Tourism and Migration* (statistical release P0351) in order to meet users' immediate needs. The cumulative data for 12 months are published in the *Tourism* report (Report No. 03-51-02) on an annual basis.

2.3 Limitations of data

The information on the total number of arrivals, departures and travellers in transit for South African residents is collected from the scanning of passports. However, data are not collected from passengers on country visited; country of final destination; intended duration of stay and purpose of visit. With this limitation, it is impossible to identify the number of tourists from the data on South African residents.

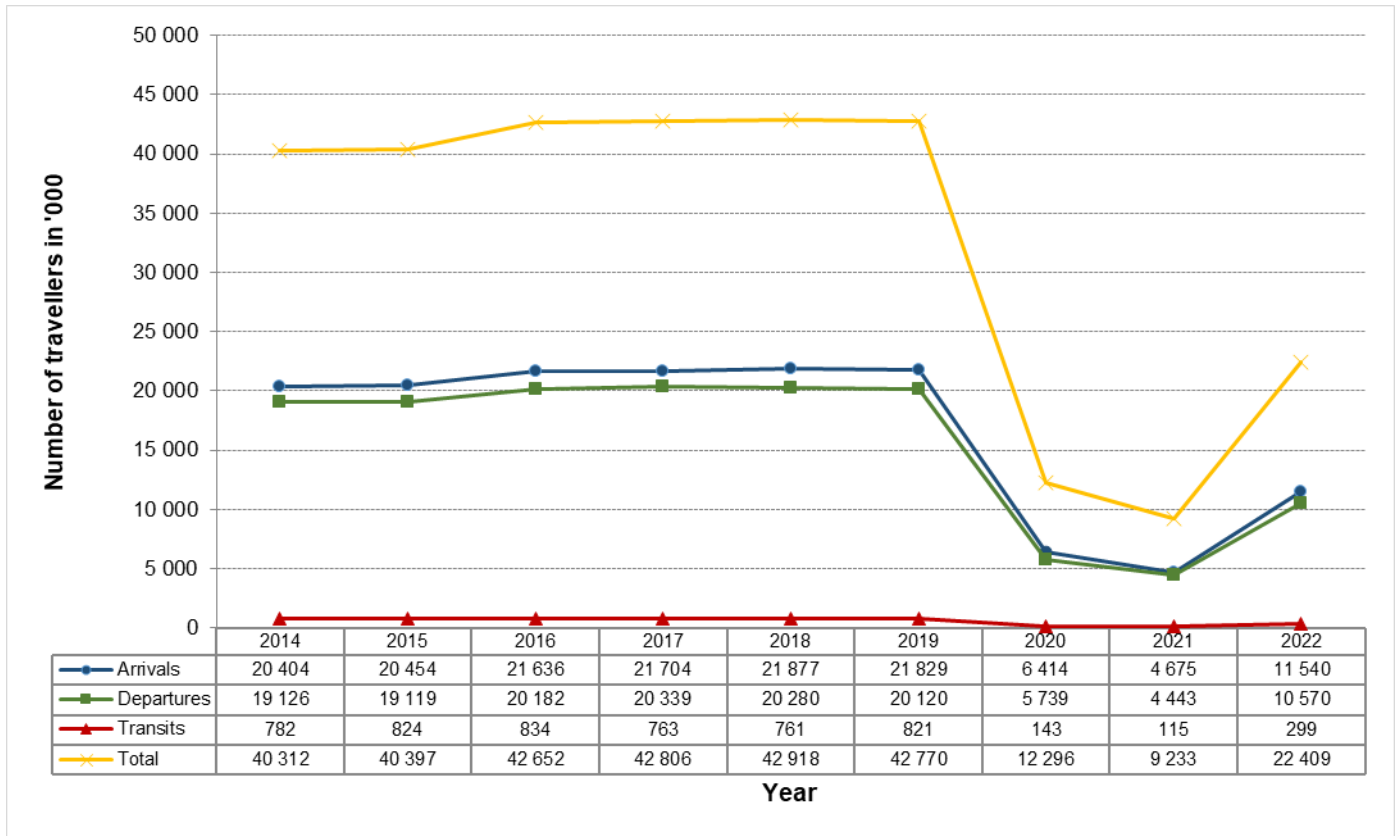
3. All travellers

3.1 Number of travellers

The results present detailed information derived from the data published monthly (January to December 2022) in the *Tourism and Migration* statistical release (P0351). In addition to the 2022 data, where relevant, data from 2021 and earlier are presented to provide some comparison in observed trends and patterns (see Appendix II on page 22).

Travellers are composed of passengers in transit, arrivals into and departures from South Africa regardless of residency status. According to data presented in Figure 3.1 below, approximately 22 409 000 travellers were recorded in 2022 compared to 40 312 000 recorded in 2014, indicating that the overall number of travellers decreased by 44,4% over this nine-year period. Similarly, there were 11 540 000 arrivals, 10 570 000 departures and 299 000 transits in 2022 compared to 20 404 000 arrivals, 19 126 000 departures and 782 000 transits in 2014. Furthermore, the number of travellers had a steady increase from 2014 till 2019, followed by two consecutive declines in 2020 and 2021. An increase of 142,7% was observed between 2021 and 2022. Arrivals increased by 146,8% while departures increased by 137,9% during the same period.

Figure 3.1 – Number of arrivals, departures and travellers in transit by year of travel, 2014 – 2022

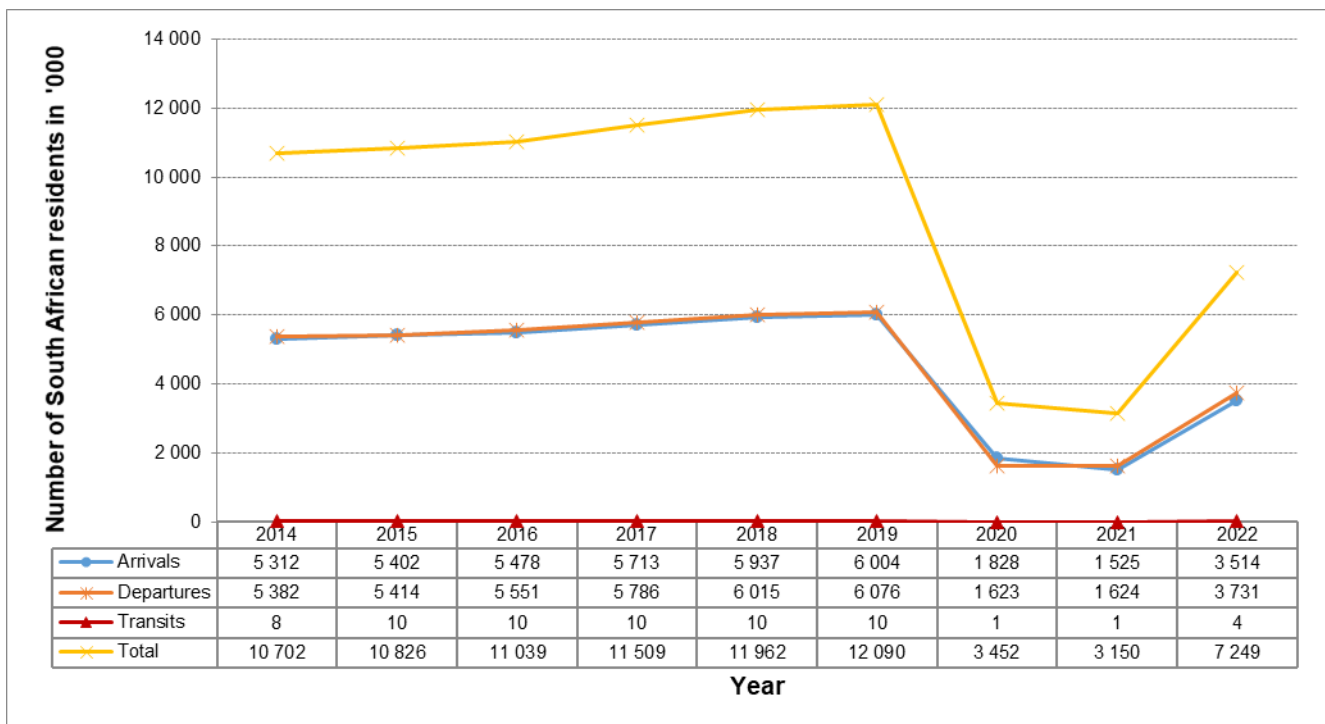


3.1.1 South African residents

In 2022, 7 248 643 South African resident travellers were recorded compared to 3 150 525 in 2021. As shown in Appendix II on page 22, the 2022 volume was made up of 3 513 638 arrivals, 3 730 874 departures and 4 131 travellers in transit.

The data in Figure 3.2 below, indicate that the annual volumes of arrivals, departures and transits for South African residents generally increased between 2014 and 2019. The figure shows a drastic drop which was observed in 2020 and a further slight drop in 2021. The figure further shows an increase in 2022 indicating that the recovery from the Covid-19 pandemic has begun. There were nearly as many departures as arrivals over the years.

Figure 3.2 – Number of arrivals, departures and transits of South African residents by year of travel, 2014 – 2022



Mode of travel

Table 3.1 below shows that the mode of travel for South African residents entering the country in 2022 was largely the same as the mode of travel for leaving the country. Most South African residents (53,6%) arrived and (52,1%) departed the country using road transport. Air transport was the second most popular mode of travel used by 44,8% arrivals and 46,3% departures. Sea transport was used by 1,6% arrivals and departures, making it the least used mode of travel. All passengers in transit used air transport (4 131).

Table 3.1 – Number of arrivals, departures and travellers in transit of South African residents by mode of travel, 2022

| Mode of travel | Arrivals | | Departures | | Transits | |
|----------------|------------------|---------------|------------------|---------------|--------------|---------------|
| | Number | % | Number | % | Number | % |
| Air | 1 573 275 | 44,8% | 1 729 194 | 46,3% | 4 131 | 100,0% |
| Road | 1 884 220 | 53,6% | 1 942 493 | 52,1% | - | - |
| Sea | 56 143 | 1,6% | 59 187 | 1,6% | - | - |
| Total | 3 513 638 | 100,0% | 3 730 874 | 100,0% | 4 131 | 100,0% |

Detailed information on ports used by South African residents to leave, enter or transit the country by mode of travel is provided in Table 3.2 below (absolute numbers are provided in Appendix III on page 23). Due to the large number of land ports as shown in Appendix I (on page 21), border countries are used in the table instead of the specific land ports names. That is, data for all ports found on the border within a particular country are combined and the country name is used.

Amongst road users, over half of South African residents used Mozambique and Lesotho ports of entry. For arrivals, 29,0% entered the country through Mozambique and 27,2% entered through Lesotho. Similarly, for departures, most road users went through Mozambique (28,9%) and Lesotho (26,1%) ports. Out of the total number of residents using air as their mode of travel, the majority (76,4%) arrived and (74,6%) departed through OR Tambo International Airport while 18,8% arrived and 20,2% left through Cape Town International Airport. Less than 5,0% came (3,9%) or left (4,2%) the country using King Shaka International Airport and 0,9% arrived and left through other airports. Out of those who arrived by sea, most (83,8%) arrived or (81,3%) left through the Durban harbour.

Detailed information on mode of travel by place and month of arrival and departure for South African residents for 2022 is presented in Appendix IV on page 24 and Appendix V on page 25.

Table 3.2 – Percentage distribution of South African residents by mode of travel and place of arrival or departure, 2022

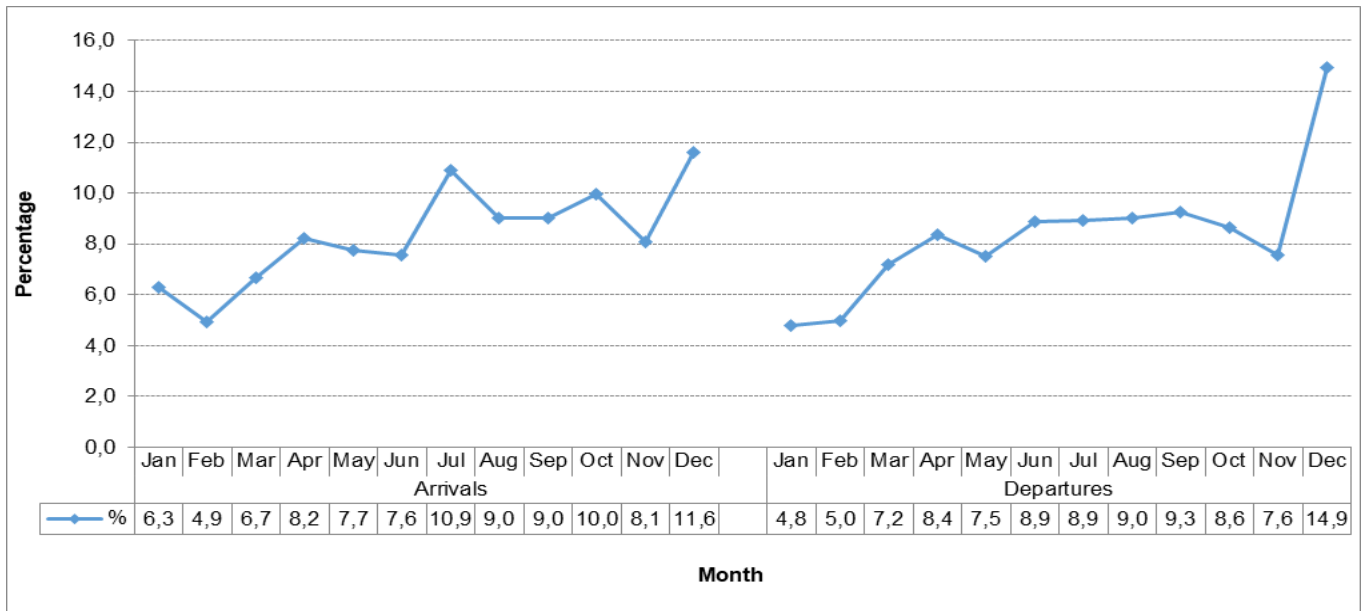
| Mode of travel and place of arrival, departure or transit | % Arrivals | % Departures | % Transit |
|---|---------------|---------------|---------------|
| Air | 100,0% | 100,0% | 100,0% |
| Cape Town International Airport | 18,8% | 20,2% | 0,9% |
| King Shaka International Airport | 3,9% | 4,2% | - |
| O. R. Tambo International Airport | 76,4% | 74,6% | 99,1% |
| Other Airports | 0,9% | 0,9% | - |
| Road | 100,0% | 100,0% | - |
| Botswana | 14,8% | 15,1% | - |
| Eswatini | 17,0% | 17,9% | - |
| Lesotho | 27,2% | 26,1% | - |
| Mozambique | 29,0% | 28,9% | - |
| Namibia | 5,5% | 5,5% | - |
| Zimbabwe | 6,5% | 6,6% | - |
| Sea | 100,0% | 100,0% | - |
| Cape Town Harbour | 16,0% | 18,5% | - |
| Durban Harbour | 83,8% | 81,3% | - |
| Port Elizabeth Harbour | 0,2% | 0,3% | - |

* Percentages might not add up to 100 due to rounding off.

Month of travel

The distribution of South Africans arriving and departing the country classified by month of travel is provided in Figure 3.3 on page 6. The results show that of the 3 513 638 arrivals, the highest proportion was recorded in December (11,6%) followed by July (10,9%), while the lowest proportion was recorded in February (4,9%). Of the 3 730 874 departures, the highest percentage was recorded in December (14,9%) and the lowest in January (4,8%).

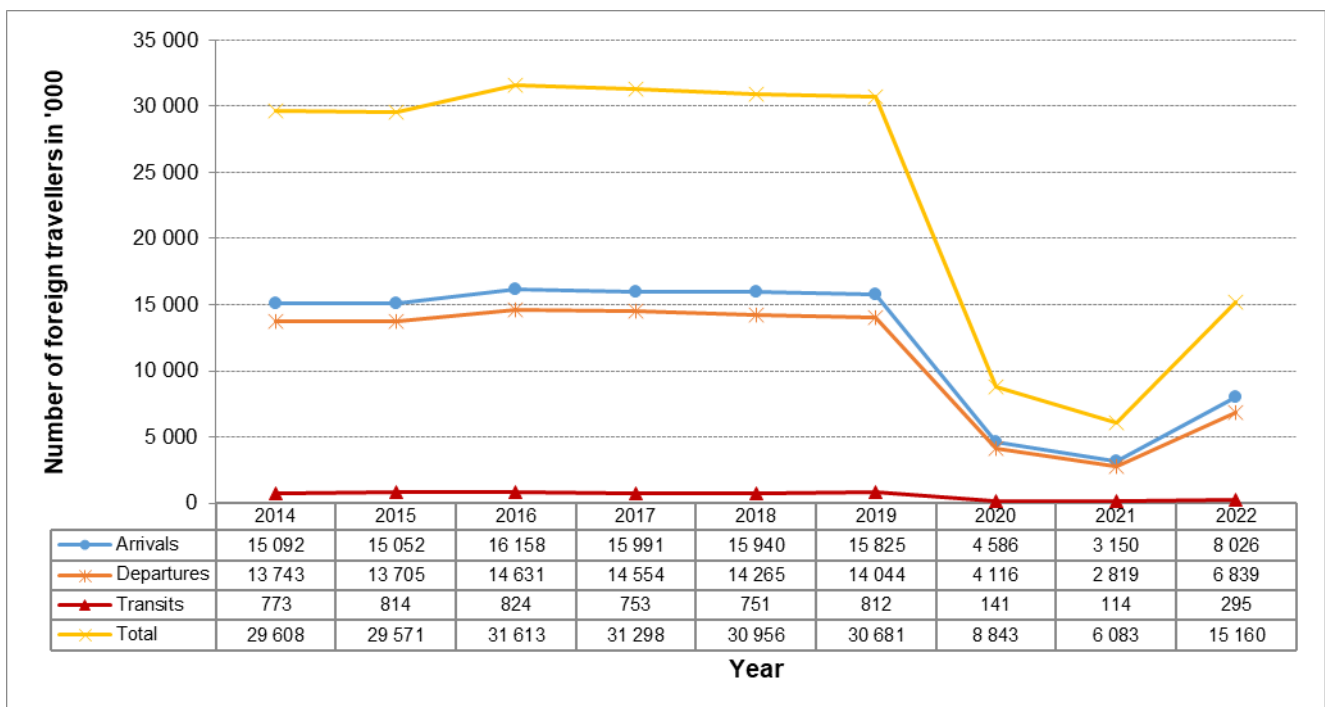
Figure 3.3 – Percentage distribution of arrivals and departures of South African residents by month of travel, 2022



3.1.2 Foreign travellers

In 2022, 15 160 825 foreign travellers were recorded compared to the 2021 volume of 6 082 388. As shown in Appendix II on page 22, the 2022 volume was made up of 8 026 409 arrivals, 6 839 401 departures and 295 015 transits. It is observed from Figure 3.4 below (and Appendix II on page 22) that a slight decrease was observed between 2014 and 2015 taking into account the exclusion of travellers in transit from arrivals starting from 2014. A drastic drop was observed in 2020 and a further slight drop in 2021. The figure further shows an increase in 2022 indicating that the recovery from the Covid-19 pandemic has begun. Unlike in the case of South African travellers, the volume of departures of foreign travellers has been lower than that of arrivals throughout the nine-year period.

Figure 3.4 – Number of arrivals, departures and transits of foreign travellers by year of travel, 2014 – 2022



Mode of travel

Table 3.3 below indicates a marginal difference of mode of travel used by foreigners coming into South Africa or leaving the country in 2022. Most foreigners arrived (73,1%) and left (68,6%) the country by road. Air travel was used by 26,4% of foreign arrivals and 30,8% of foreign departures. Of the foreigners who came into the country, 0,5% arrived and 0,6% departed by sea transport.

Table 3.3 – Number of arrivals, departures and transits of foreign travellers by mode of travel and place of arrival or departure, 2022

| Mode of travel | Arrivals | | Departures | | Transits | |
|----------------|------------------|---------------|------------------|---------------|----------------|---------------|
| | Number | % | Number | % | Number | % |
| Air | 2 121 232 | 26,4% | 2 109 440 | 30,8% | 295 015 | 100,0% |
| Road | 5 863 598 | 73,1% | 4 691 409 | 68,6% | - | - |
| Sea | 41 579 | 0,5% | 38 552 | 0,6% | - | - |
| Total | 8 026 409 | 100,0% | 6 839 401 | 100,0% | 295 015 | 100,0% |

Most of the foreign travellers who arrived by road entered through the Lesotho (27,9%), Mozambique (24,1%) and the Zimbabwe (23,2%) ports of entry (see Table 3.4 below). For departures, most road users went through Lesotho (27,7%) and Mozambique (23,4%) ports.

The majority of the foreigners who travelled by air arrived (68,2%) and left (68,8%) South Africa through OR Tambo International Airport (see Appendix VI on page 26 for absolute numbers). Almost all passengers (99,2%) in transit used OR Tambo international airport. Cape Town International Airport was used by 29,9% foreigners to arrive in the country and 28,9% to leave the country. Less than 2,0% came (1,5%) or left (1,5%) the country using King Shaka International Airport and 0,4% arrived and 0,7% left through other airports. Those who travelled by sea mainly used Cape Town harbour by 57,6% to arrive and 54,3% to depart South Africa.

Table 3.4 – Percentage distribution of foreign arrivals, departures and transits by mode of travel and place of arrival or departure, 2022

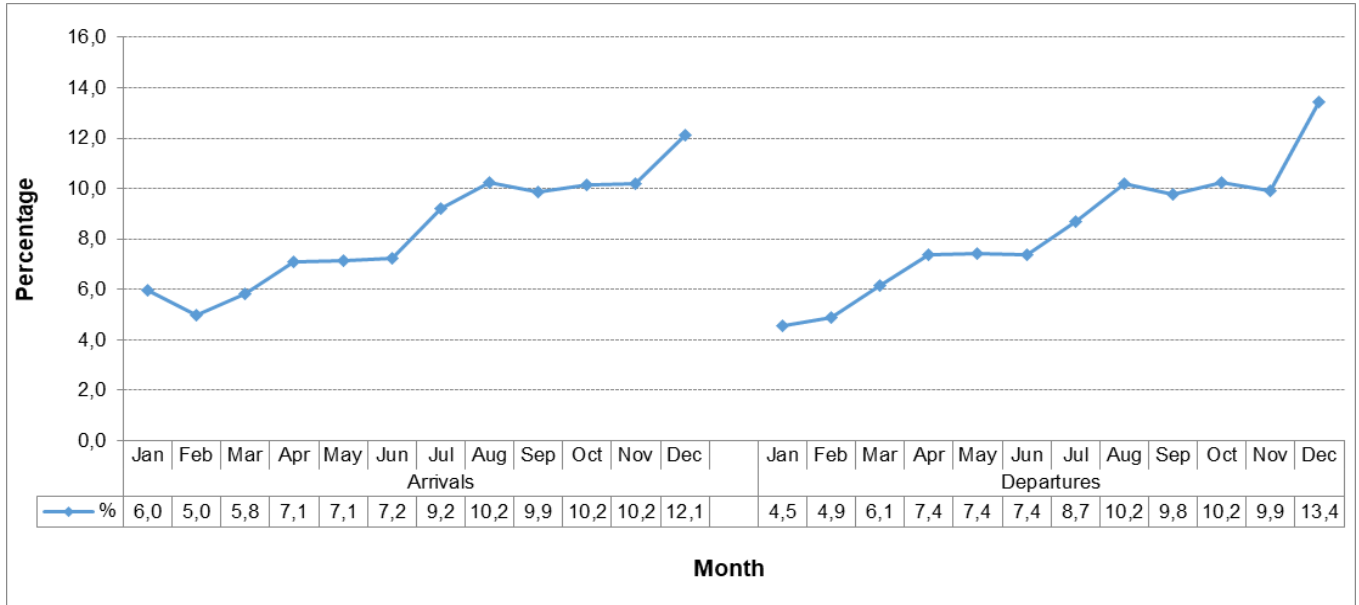
| Mode of travel and place of arrival, departure or transit | % Arrivals | % Departures | % Transits |
|---|---------------|---------------|---------------|
| Air | 100,0% | 100,0% | 100,0% |
| Cape Town International Airport | 29,9% | 28,9% | 0,7% |
| King Shaka International Airport | 1,5% | 1,5% | 0,0% |
| O. R. Tambo International Airport | 68,2% | 68,8% | 99,2% |
| Other Airports | 0,4% | 0,7% | - |
| Road | 100,0% | 100,0% | - |
| Botswana | 10,8% | 13,2% | - |
| Eswatini | 12,0% | 14,1% | - |
| Lesotho | 27,9% | 27,7% | - |
| Mozambique | 24,1% | 23,4% | - |
| Namibia | 1,9% | 2,4% | - |
| Zimbabwe | 23,2% | 19,3% | - |
| Sea | 100,0% | 100,0% | - |
| Cape Town Harbour | 57,6% | 54,3% | - |
| Durban Harbour | 30,2% | 36,1% | - |
| Port Elizabeth Harbour | 12,2% | 9,6% | - |

* Percentages might not add up to 100 due to rounding off.

Month of travel

The monthly distribution of foreign arrivals and departures by mode of travel and place of arrival and departure are provided in Appendices VII on page 27 and VIII on page 28 and summarised in Figure 3.5 below. The results indicate that most foreign arrivals were recorded in December (12,1%) and the least in February (5,0%) while most departures were recorded in December (13,4%) and the least in January (4,5%).

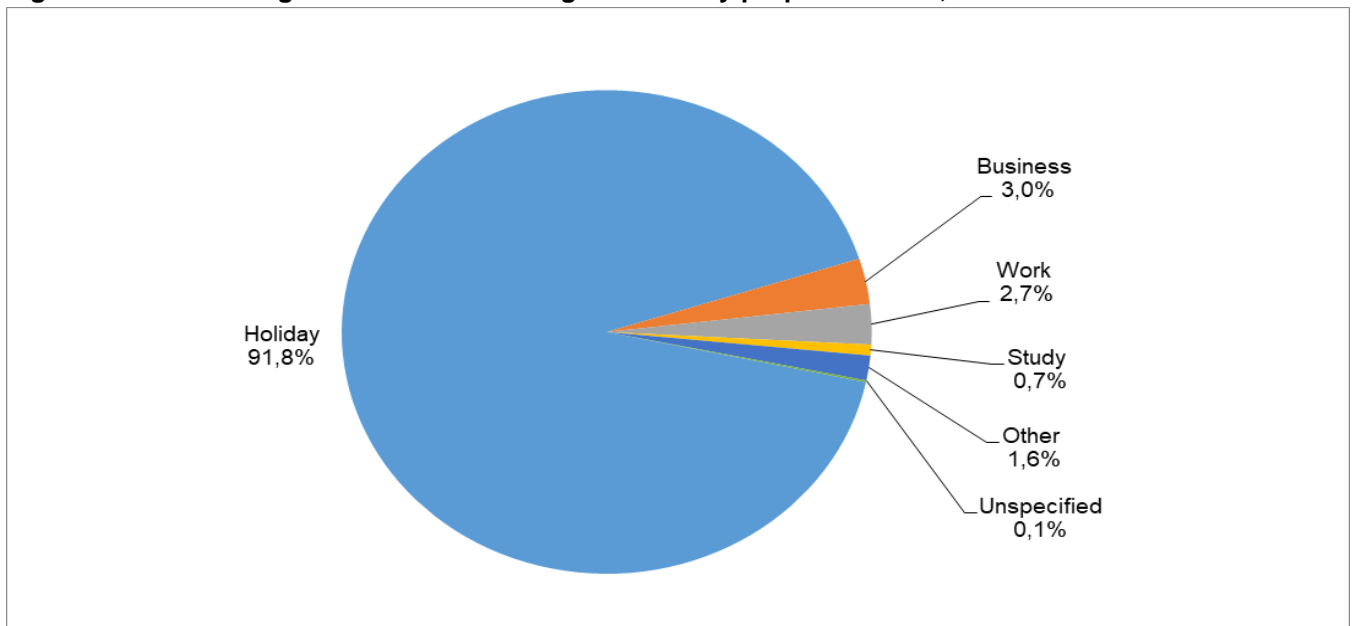
Figure 3.5 – Percentage distribution of foreign arrivals and departures by month of travel, 2022



Purpose of visit

Figure 3.6 below, shows that in 2022, the main purpose of visit for foreign arrivals was holidays (91,8%). Whereas 3,0% of the 2022 arrivals came for business; 2,7% came for work and 0,7% came to study. A detailed distribution of the number of foreign arrivals by purpose of visit and month can be seen in Appendix IX on page 29. November (24 382) had the highest number of foreign arrivals who came for business; while most tourists who came for holiday came in December (929 141); students came in July (7 470), January (7 345) and in February (7 336) and workers came in July (21 389) and in January (21 176).

Figure 3.6 – Percentage distribution of foreign arrivals by purpose of visit, 2022

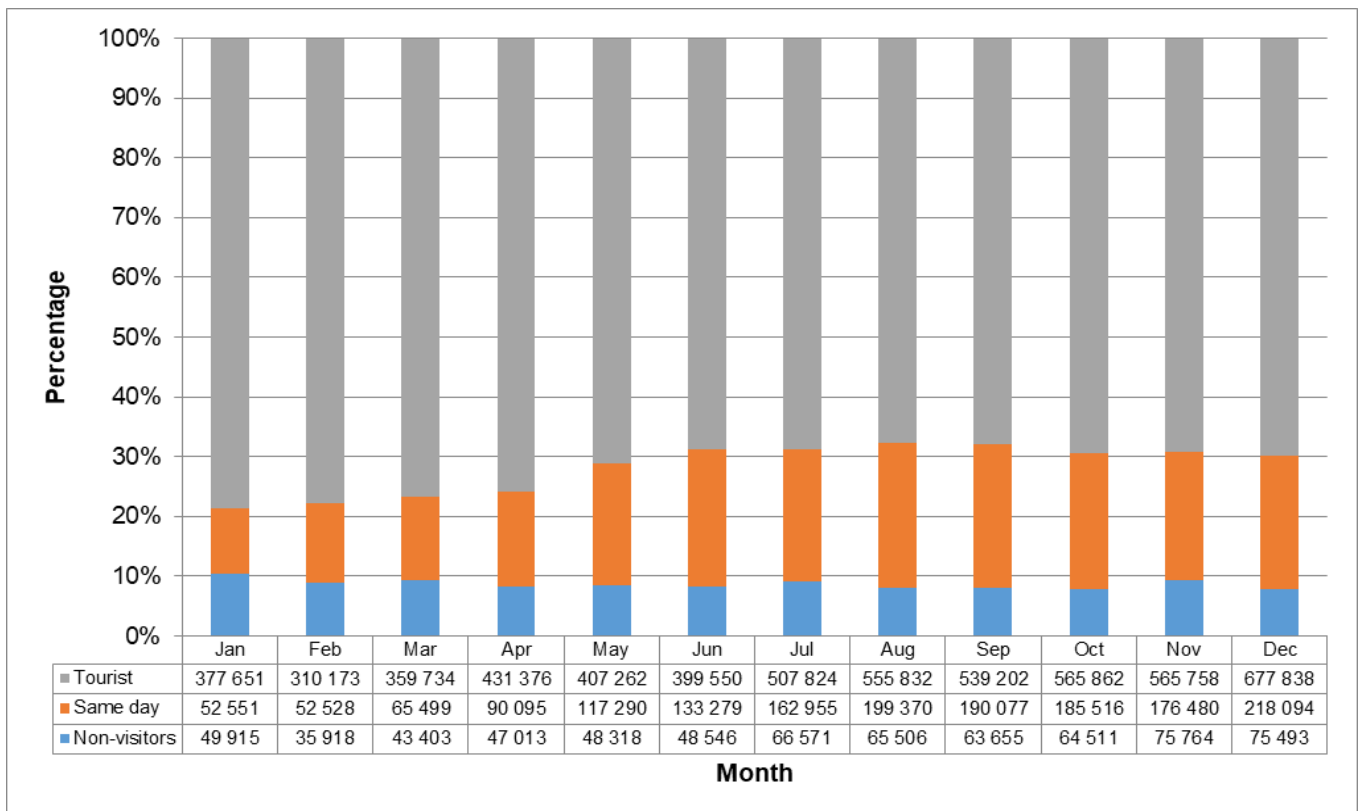


Type of visitors

Foreign arrivals can be classified as visitors and non-visitors depending on their purpose of visit. Furthermore, the visitors can be grouped as same-day visitors and tourists (overnight visitors). In 2022, there were 684 613 (8,5%) non-visitors and 7 341 796 (91,5%) visitors (see Appendix X on page 30). The visitors were made up of 1 643 734 (22,4%) same-day visitors and 5 698 062 (77,6%) overnight visitors or tourists.

It is observed from the monthly distribution of the data presented in Figure 3.7 below, that the volume of non-visitors was highest in November (75 764) whereby February recorded the lowest number of non-visitors (35 918). The monthly volume of same-day visitors ranged from 52 528 in February to 218 094 in December with a monthly average of 136 978 visitors.

Figure 3.7 – Distribution of foreign arrivals by type of visitor, 2022



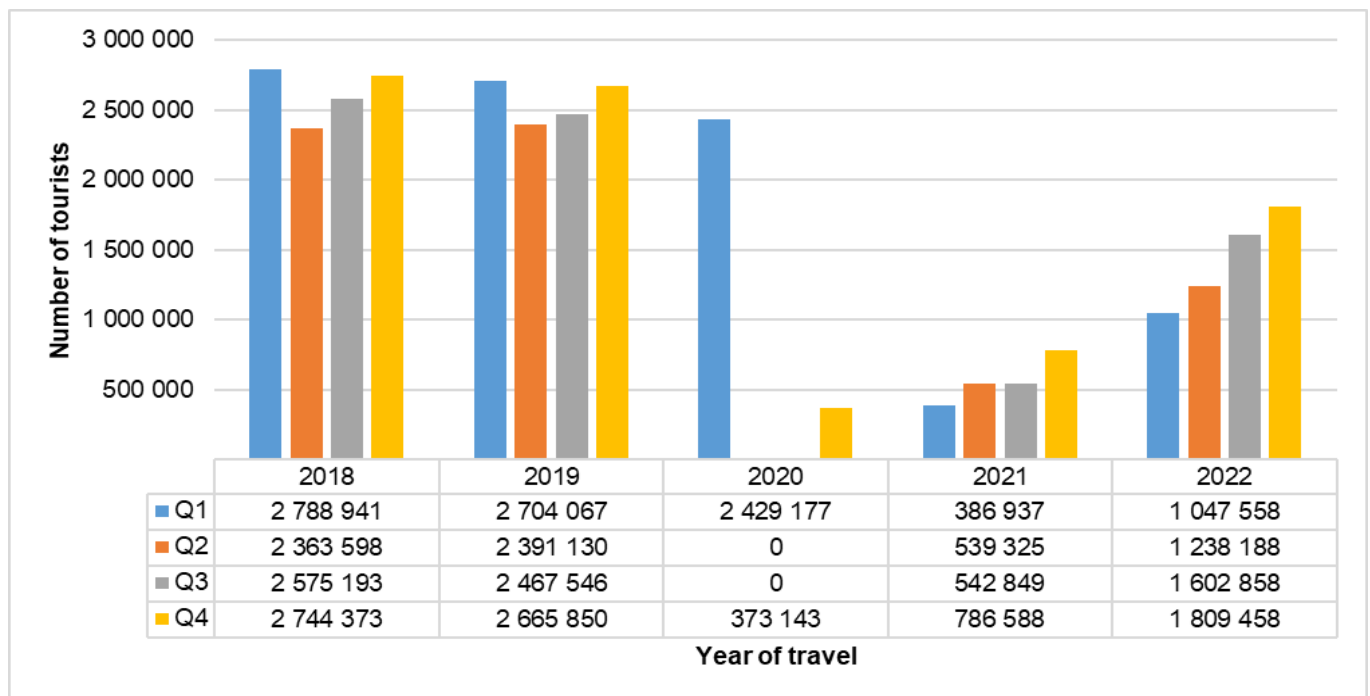
Further analysis on same-day visitors (see Appendix XI on page 31) indicates that a great majority of the same-day visitors [1 472 725 (89,6%)] came into the country by road; most of whom were from Southern African Development Community (SADC) countries [1 447 454 (98,3%)]. Virtually all same day visitors [1 614 895 (98,2%)] came for holiday. The rest came for business [16 505 (1,0%)]; for study purposes [11 505 (0,7%)] and for medical treatment [829 (0,1%)].

4. Tourists

This section presents the number of tourists that visited South Africa in 2022, as well as their demographic characteristics (age and sex), their regions of residence, mode of travel, purpose of visit and duration of stay. A total of 5 698 062 tourists came to South Africa in 2022, showing an increase of 152,6% from the 2 255 699 tourists recorded in 2021.

The impact of Covid-19 can be observed in Figure 4.1 on page 10, quarter 1 and 4 from 2018 to 2019 had the highest number of tourists while quarter 2 had the least number of tourists. In 2020 quarter 2 and 3 had no tourist arrivals due to hard-lockdown imposed by authorities. In 2021 and 2022 the number of tourists have gradually improved from quarter to quarter showing that the recovery from the pandemic has begun.

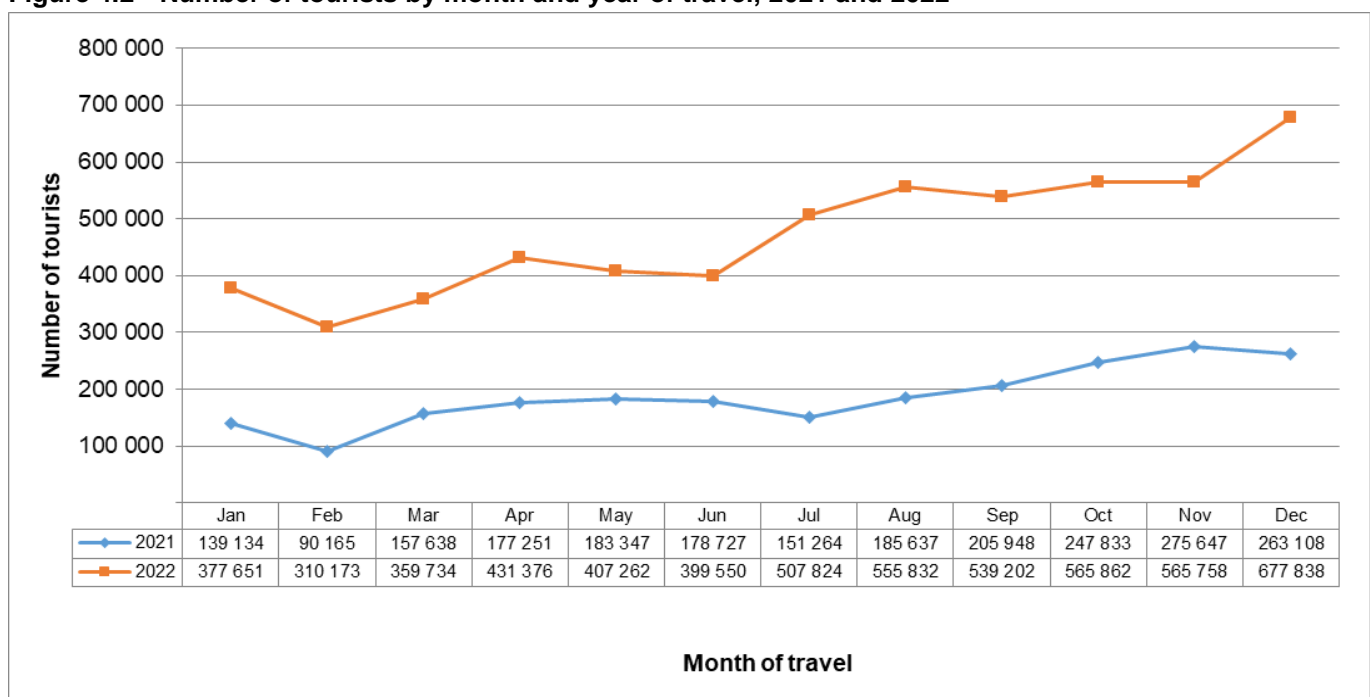
Figure 4.1 – Number of tourists by quarter and year of travel, 2018 – 2022



Information presented in Figure 4.2 below (and Appendix XII on page 32) indicate that the highest number of tourist arrivals [677 838 (11,9%)] was recorded in December 2022 whilst the least number was recorded in February 2022 [310 173 (5,4%)]. Figure 4.2 further shows that the monthly tourist arrivals in 2022 were higher than the monthly arrivals observed in 2021.

Appendix XIV (on page 34) further indicates some diversity in the monthly arrival patterns regarding the types of tourists. The highest numbers of tourists were recorded in December for holiday [661 601 (12,2%)]; in November for business persons [22 217 (10,0%)], that of students was recorded in January [5 561 (13,7%)], and that of medical treatment was recorded in November [471 (10,2%)]

Figure 4.2 – Number of tourists by month and year of travel, 2021 and 2022

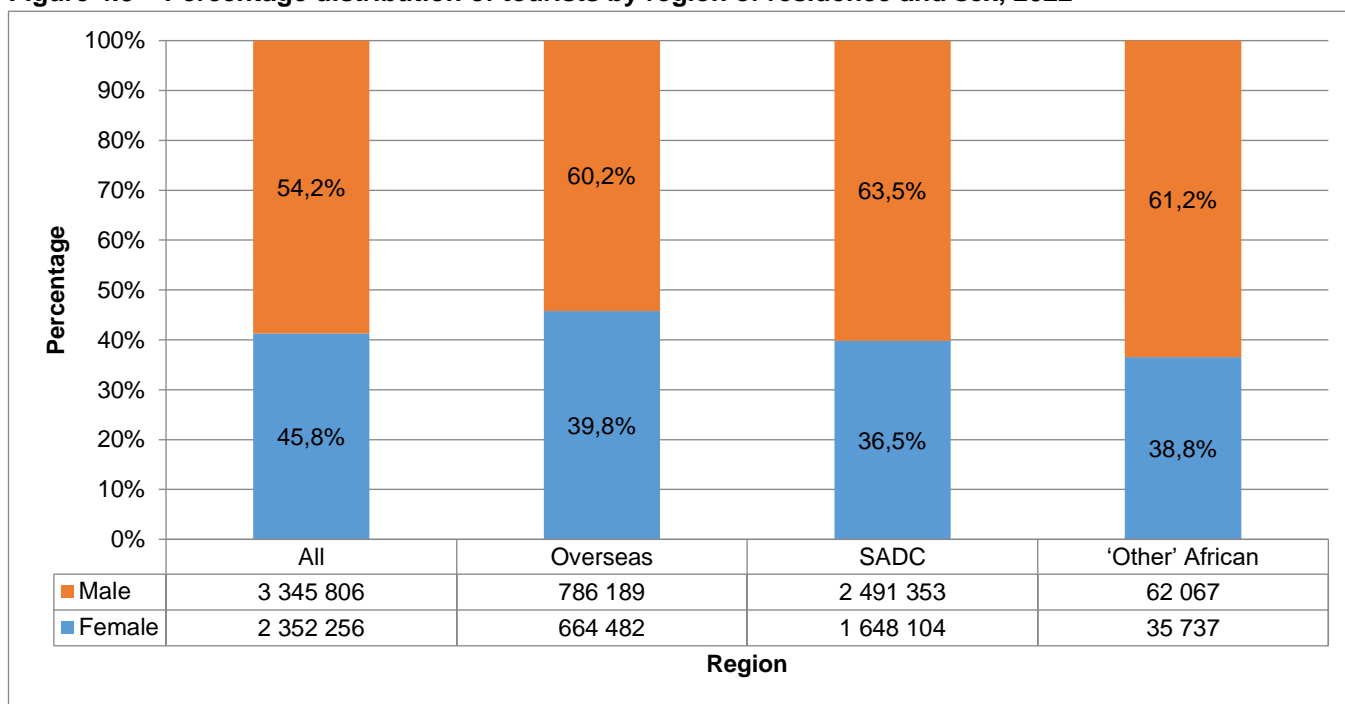


4.1 Sex and age distribution

Sex

In 2022, as shown in Figure 4.3 below, there were more male [3 345 806 (54,2%)] than female [2 352 256 (45,8%)] tourists. Male tourists constituted the majority of tourists for all three regions, SADC [2 491 353 (63,5%)], 'other' African countries [62 067 (61,2%)] and overseas countries [786 189 (60,2%)]. Whereas, the largest portion of female tourists was from overseas countries [664 482 (39,8%)], followed by 'other' African countries [35 737 (38,8%)] and the lowest from SADC countries [1 648 104 (36,5%)]. Detailed information on the number of tourists by sex, age and region of residence are shown in Appendix XII on page 32 while the same distribution by month of arrival is shown in Appendix XIII on page 33.

Figure 4.3 – Percentage distribution of tourists by region of residence and sex, 2022

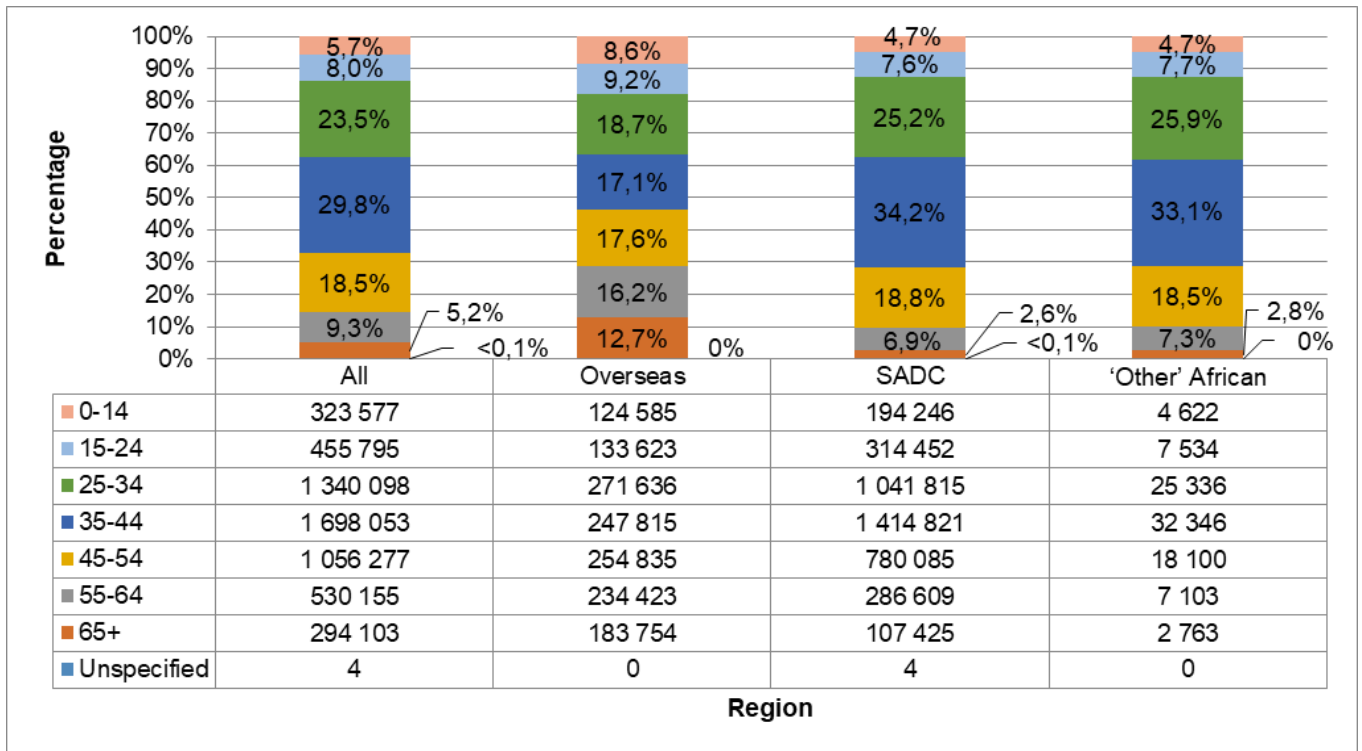


Age

The age distribution indicates that out of all tourists, [323 577 (5,7%)] were aged less than 15 years; [455 795 (8,0%)] were aged between 15 and 24 years; [1 340 098 (23,5%)] were aged between 25 and 34 years; [1 698 053 (29,8%)] were aged between 35 and 44 years; [1 056 277 (18,5%)] were aged between 45 and 54 years; [530 155 (9,3%)] were aged between 55 and 64 years and [294 103 (5,2%)] were aged 65 years and above. The age distribution further indicates that [4 (less than 0,1%)] did not indicate their age. (see Figure 4.4 below).

Taking the region of residence into consideration, the results show that the highest proportion of tourists from SADC countries [1 414 821 (34,2%)] and those from 'other' African countries [32 346 (33,1%)] were aged between 35 and 44 years, whereas overseas countries [271 636 (18,7%)] were aged between 25 and 34 years. The second highest proportion of tourists from SADC countries [1 041 815 (25,2%)] and those from 'other' African countries [25 336 (25,9%)] were aged between 25 and 34 years, whereas those from overseas countries [254 835 (17,6%)] were aged between 45 and 54 years. The median ages of tourists from overseas, SADC and 'other' African countries were 42, 38 and 38 years respectively. The proportion of tourists aged less than 15 years was higher among tourists from overseas countries, 8,6% (124 585) compared to those from SADC countries, 4,7% (194 246) and those from 'other' African countries, 4,7% (4 622). Detailed information on the number of tourists by sex, age and region of residence are shown in Appendix XII on page 32 while the same distribution by month of arrival is shown in Appendix XIII on page 33.

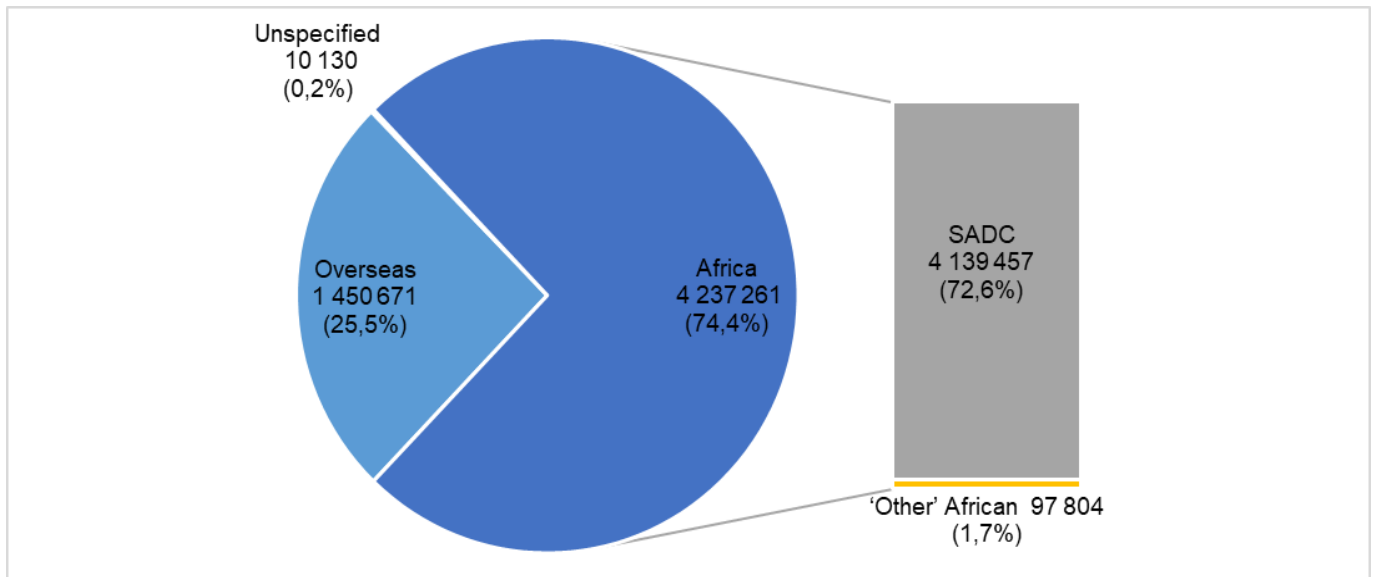
Figure 4.4 – Percentage distribution of tourists by region of residence and age, 2022



4.2 Region of residence

The breakdown of the number of tourists by region provided in Figure 4.5 below indicates that 72,6% of the tourists who arrived in South Africa in 2022 were residents of SADC countries and 1,7% were from 'other' African countries. These two sub-regions made up 74,4% of tourists from Africa in total. Residents of overseas countries made up 25,5% of the tourists.

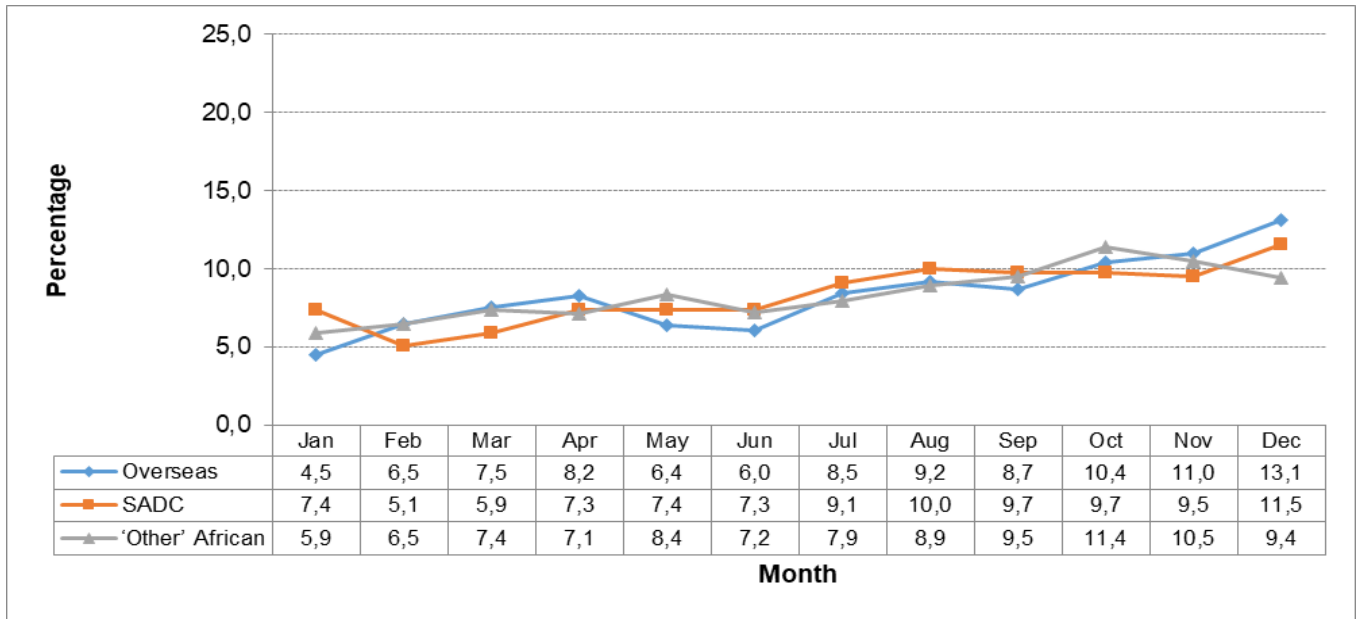
Figure 4.5 – Percentage distribution of tourists by region of residence, 2022



Detailed information on the number of tourists by region and sub-region of residence and the month of arrival is provided in Appendix XV on page 35 and the percentage distribution at regional level is shown in Figure 4.6 below. It is observed that there are regional differences in the monthly arrivals of tourists. Thus in 2022, the lowest proportion of overseas tourists was recorded in January (4,5%) and the highest proportion in December (13,1%). The highest proportion of tourist arrivals from the SADC region was recorded in December (11,5%), and the lowest in February

(5,1%). Furthermore, for tourists from the 'other' African region, the lowest proportion of tourist arrivals was recorded in January (5,9%) and the highest proportion in October (11,4%).

Figure 4.6 –Percentage distribution of tourists by region of residence and month of arrival, 2022

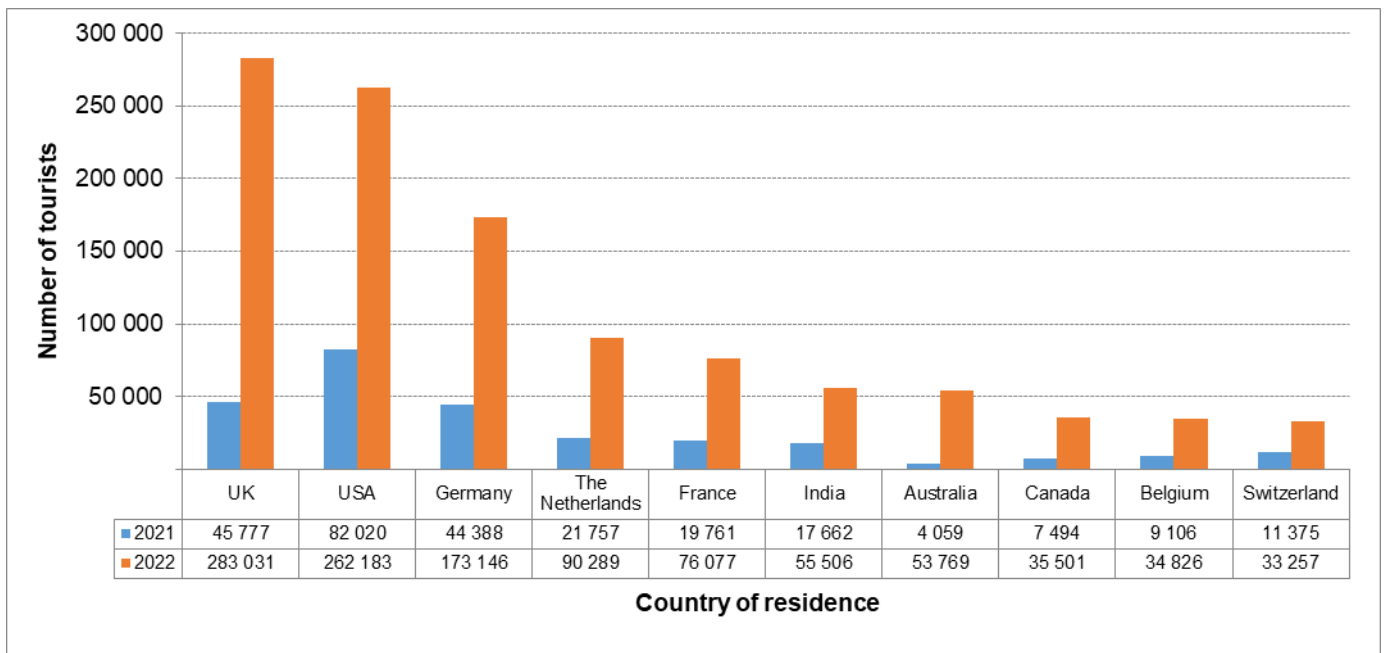


4.3 Ten leading countries

Overseas

As presented in Figure 4.7 below (and Appendix XVII on page 37 – 43), the ten leading countries for overseas tourists in 2022 were: The United Kingdom (UK), 283 031 (19,5%); United States of America (USA), 262 183 (18,1%); Germany, 173 146 (11,9%); The Netherlands, 90 289 (6,2%); France, 76 077 (5,2%); India, 55 506 (3,8%); Australia, 53 769 (3,7%); Canada, 35 501 (2,4%); Belgium, 34 826 (2,4%) and Switzerland, 33 257 (2,3%). A comparison of the 2021 and 2022 volumes indicates that the number of tourists increased in all ten leading overseas countries. Australia had the largest increase of 1 224,7%.

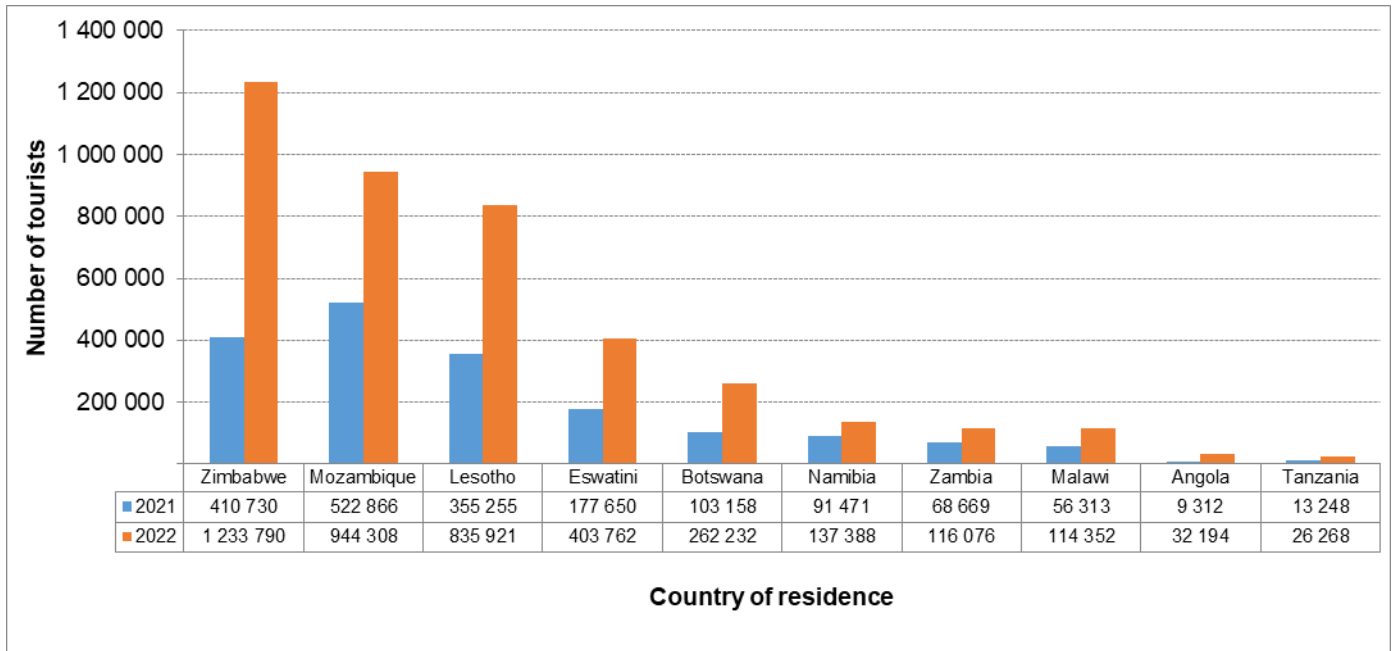
Figure 4.7 –Number of tourists from ten leading overseas countries in 2022 compared to 2021



SADC

Figure 4.8 below (and Appendix XVII on page 37-43) shows the ten leading countries for tourists from the SADC region in 2022. These were: Zimbabwe, 1 233 790 (29,8%); Mozambique, 944 308 (22,8%); Lesotho, 835 921 (20,2%); Eswatini, 403 762 (9,8%); Botswana, 262 232 (6,3%); Namibia, 137 388 (3,3%); Zambia, 116 076 (2,8%); Malawi, 114 352 (2,8%); Angola, 32 194 (0,8%) and Tanzania, 26 268 (0,6%). All ten leading SADC countries showed an increase in the number of tourists from 2021 to 2022. Angola showed the largest increase of 245,7%.

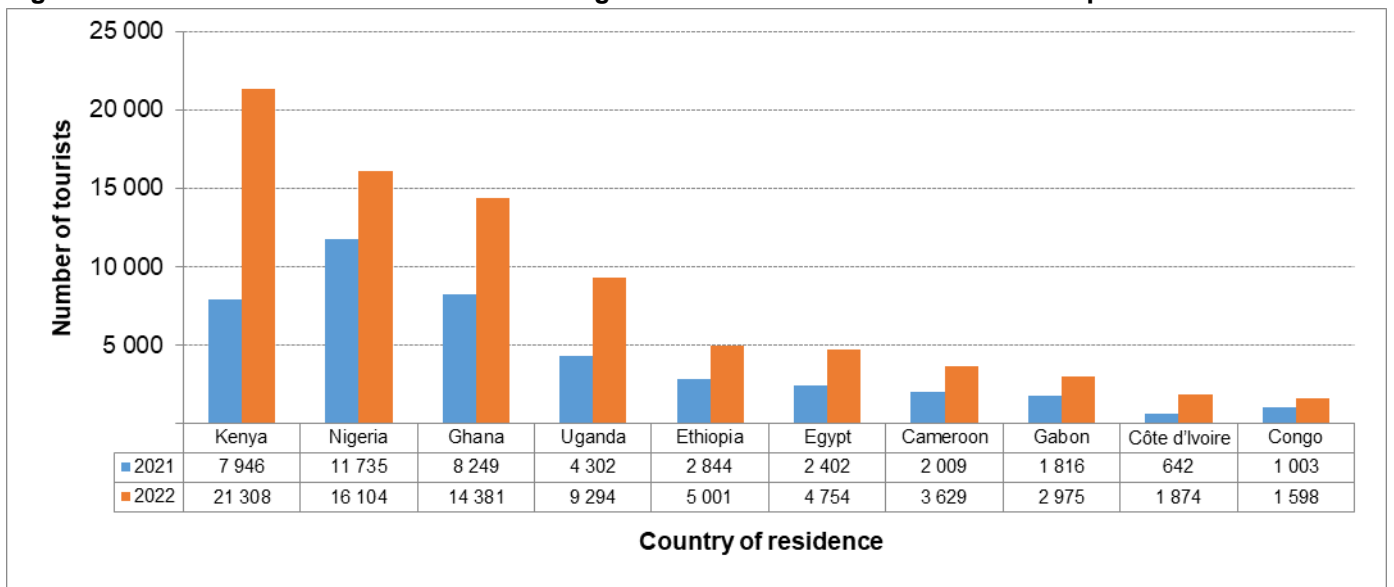
Figure 4.8 – Number of tourists from ten leading SADC countries in 2022 compared to 2021



‘Other’ African

As presented in Figure 4.9 below (and Appendix XVII on page 37–43), the ten leading countries for tourists from ‘other’ African countries in 2022 were: Kenya, 21 308 (21,8%); Nigeria, 16 104 (16,5%); Ghana, 14 381 (14,7%); Uganda, 9 294 (9,5%); Ethiopia, 5 001 (5,1%); Egypt, 4 754 (4,9%); Cameroon, 3 629 (3,7%); Gabon, 2 975 (3,0%); Côte d’Ivoire, 1 874 (1,9%) and Congo, 1 598 (1,6%). A comparison between the 2021 and 2022 volumes indicates that the number of tourists increased in all ten leading countries. Côte d’Ivoire had the largest increase of 191,9%.

Figure 4.9 – Number of tourists from ten leading ‘other’ African countries in 2022 compared to 2021



4.4 Mode of travel

Place of arrival

Table 4.1 below provides information on the number of tourists by mode of travel and place of arrival. A large number of tourists who came to South Africa in 2022 used road transport [3 854 806 (67,7%)]; followed by those who came by air [1 837 649 (32,3%)]; and those who arrived through sea ports [5 607 (0,1%)]. The results further shows that the road users mainly came in through the Mozambique (27,3%), Zimbabwe (25,7%) and Lesotho (21,9%) ports of entry. Namibia (2,4%) had the least number of the 2022 tourists using its ports of entry.

Out of the 1 837 649 tourists that flew into the country, the largest proportion (65,9%) used OR Tambo International Airport. Cape Town international airport was used by 32,5% tourists. Most of the tourists that used sea ports of entry came in through the Cape Town harbour (64,8%).

A detailed table including month of travel is shown in Appendix XVI on page 36. The highest volume of tourists that passed through the Mozambique port of entry were recorded in December (106 448) and in January (106 303) whereas the lowest volumes were recorded in February (69 223). Meanwhile, the highest volume of tourists that entered South Africa through the OR Tambo International Airport were recorded in December (132 073) whereas the lowest were recorded in January (57 271). Further details on the number of tourists by country of residence and month of arrival are provided in Appendix XVII on page 37.

Table 4.1– Distribution of tourists by mode of travel and place of arrival, 2022

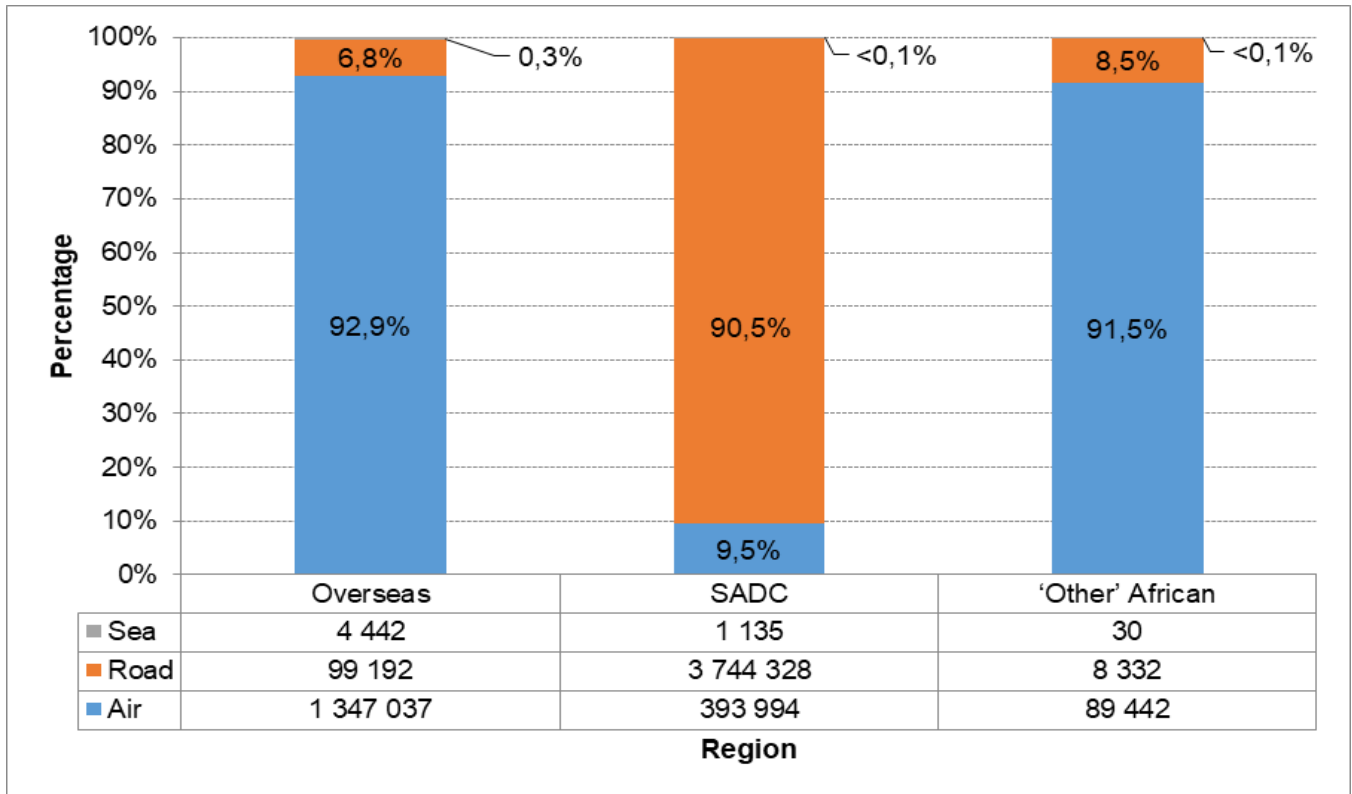
| Mode of travel and place of arrival | Total | % |
|-------------------------------------|------------------|---------------|
| Total | 5 698 062 | 100,0% |
| Air | 1 837 649 | 100,0% |
| Cape Town International Airport | 597 478 | 32,5% |
| King Shaka International Airport | 22 629 | 1,2% |
| OR Tambo International Airport | 1 211 251 | 65,9% |
| Other Airports | 6 291 | 0,3% |
| Road | 3 854 806 | 100,0% |
| Botswana | 428 686 | 11,1% |
| Eswatini | 443 080 | 11,5% |
| Lesotho | 844 438 | 21,9% |
| Mozambique | 1 052 550 | 27,3% |
| Namibia | 94 319 | 2,4% |
| Zimbabwe | 991 733 | 25,7% |
| Sea | 5 607 | 100,0% |
| Cape Town Harbour | 3 631 | 64,8% |
| Durban Harbour | 1 729 | 30,8% |
| Port Elizabeth Harbour | 247 | 4,4% |

* Percentages might not add up to 100 due to rounding off.

Region of residence

As observed from Figure 4.10 below, a large proportion of overseas tourists [92,9% (1 347 037)] came into South Africa by air compared to [6,8% (99 192)] who came in by road and [0,3% (4 442)] who came by sea. Similarly, tourists from ‘other’ African countries generally entered the country by air [91,5% (89 442)] rather than by road [8,5% (8 332)] or sea [less than 0,1% (30)]. However, the mode of travel used by most tourists from SADC countries was road [90,5% (3 744 328)] compared to air [9,5% (393 994)] and compared to sea [less than 0,1% (1 135)]. Detailed data on sub-region and country of residence and mode of travel is presented in Appendix XVII on page 44.

Figure 4.10 – Percentage distribution of tourists by region of residence and mode of travel, 2022



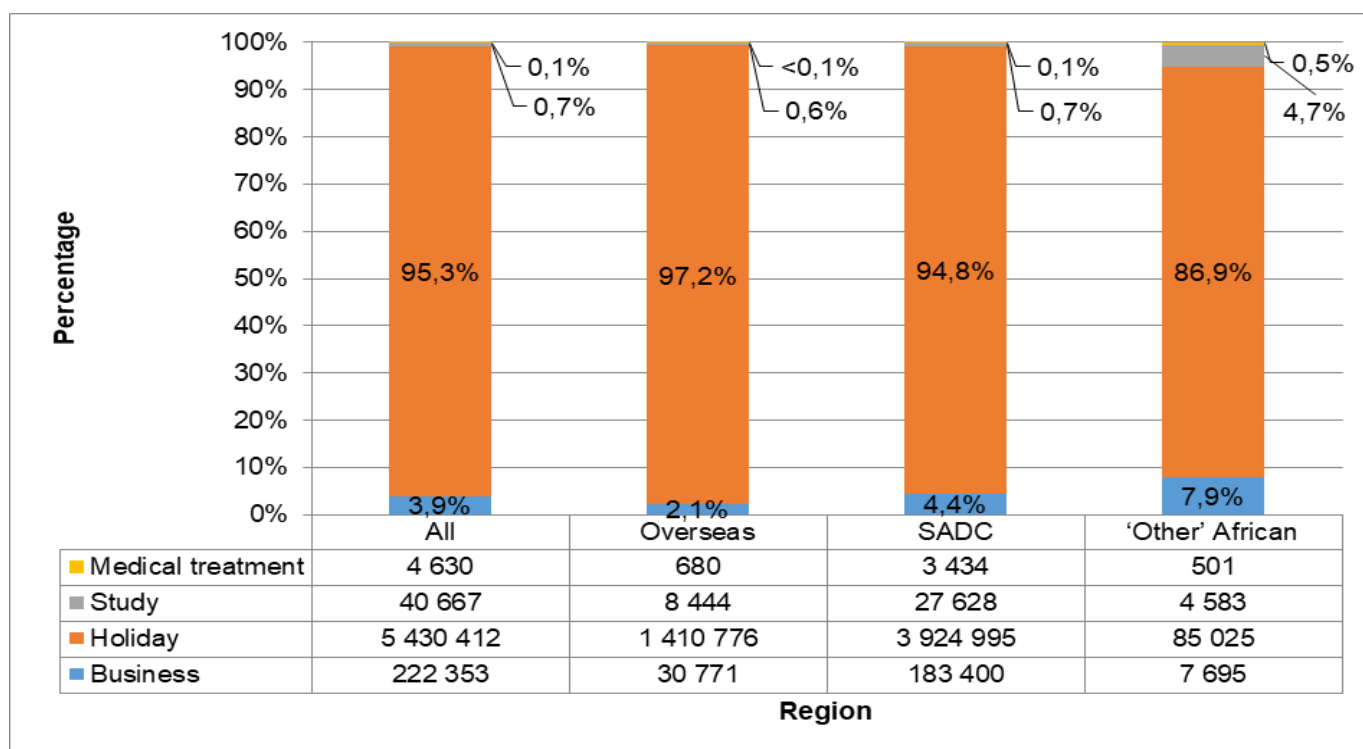
4.5 Purpose of visit

Region of residence

Besides information in Figure 4.11 below, reference has been made to data on the main types of tourists that visit South Africa (see Appendix XIX on page 51) – using the purpose of visit to identify them. In 2022, most tourists came to South Africa for holidays [5 430 412 (95,3%)]. The remaining tourists came for business [222 353 (3,9%)], for study purposes [40 667 (0,7%)] and for medical treatment [4 630 (0,1%)].

The 2022 data reveals some regional and country differentials with respect to the purpose of visit. For example, [7 695 (7,9%)] tourists from ‘other’ African countries came for business compared to [183 400 (4,4%)] tourists from SADC countries and [30 771 (2,1%)] from overseas countries. In addition, students made up [4 583 (4,7%)] of tourists from ‘other’ African countries compared to [27 628 (0,7%)] of tourists from SADC countries and [8 444 (0,6%)] of overseas tourists. Detailed data on country of residence and purpose of visit is presented in Appendix XIX on page 51.

Figure 4.11 – Percentage distribution of tourists by region and purpose of visit, 2022



Country of residence

Figures 4.12–4.15 on page 18 reveal that most overseas tourists on holiday (19,6%), business persons (18,1%) and medical treatment (31,0%) came from UK. Most students (13,0%) came from Germany.

As observed from Figure 4.16 and Figure 4.17 on page 18 and also Figure 4.18 and Figure 4.19 on page 19, the majority of SADC tourists on holiday (30,3%) and those who came for business (21,0%) were from Zimbabwe, students (30,6%) were from Lesotho and the highest proportion of SADC tourists on medical treatment came from Botswana (40,2%).

Regarding tourists from 'other' African countries, tourists on holiday (21,2%), business persons (30,4%) and medical treatment (16,0%) were mostly from Kenya. Most students (21,7%) came from Nigeria. (see Figures 4.20 – 4.23 on page 19). Detailed data on country of residence and purpose of visit is presented in Appendix XIX on page 51.

4.6 Duration of stay

The number of days tourists spent in South Africa is based on the tourists who arrived and left in the same month. Figure 4.24 on page 20 indicates that generally, tourists from overseas and 'other' African countries spent on average more days (about four to eight days per month) in the country compared to SADC residents who spent an average of two days in a month.

Figure 4.12 – Percentage distribution of tourists from overseas countries on holiday, 2022

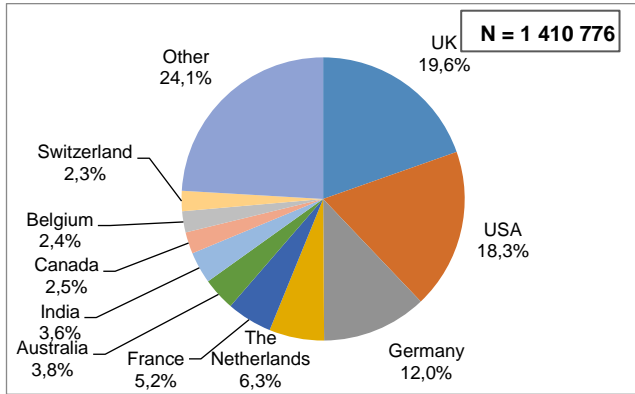


Figure 4.15 – Percentage distribution of tourists from overseas countries on medical, 2022

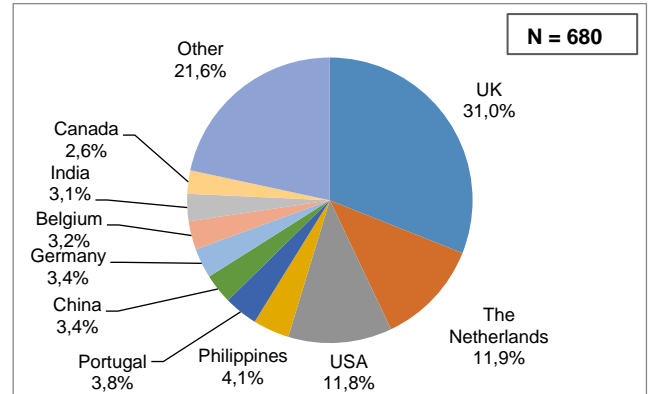


Figure 4.13 – Percentage distribution of tourists from overseas countries on business, 2022

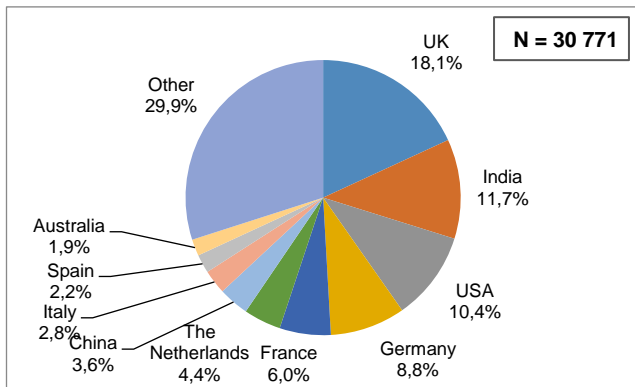


Figure 4.16 – Percentage distribution of tourists from SADC countries on holiday, 2022

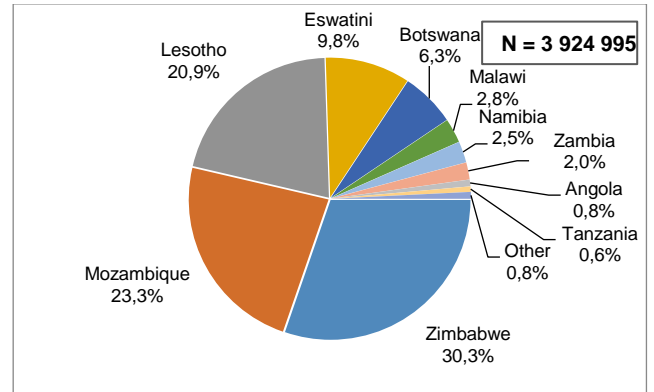


Figure 4.14 – Percentage distribution of tourists from overseas countries on study, 2022

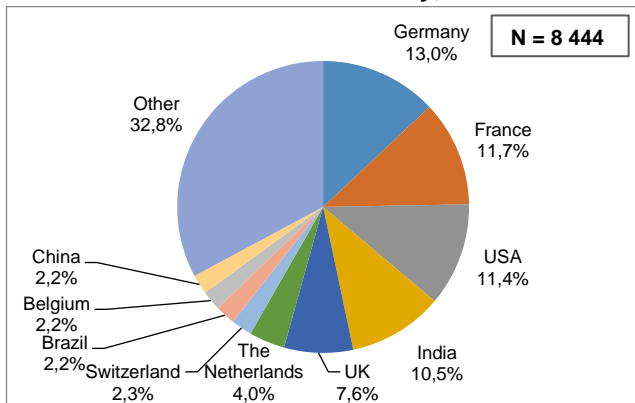


Figure 4.17 – Percentage distribution of tourists from SADC countries on business, 2022

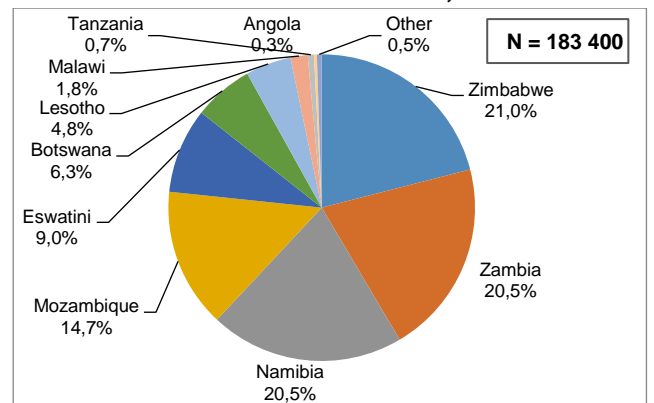


Figure 4.18 – Percentage distribution of tourists from SADC countries on study, 2022

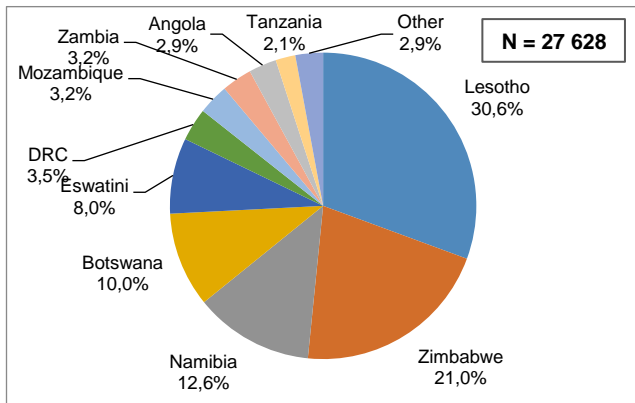


Figure 4.21 – Percentage distribution of tourists from 'other' African countries on business, 2022

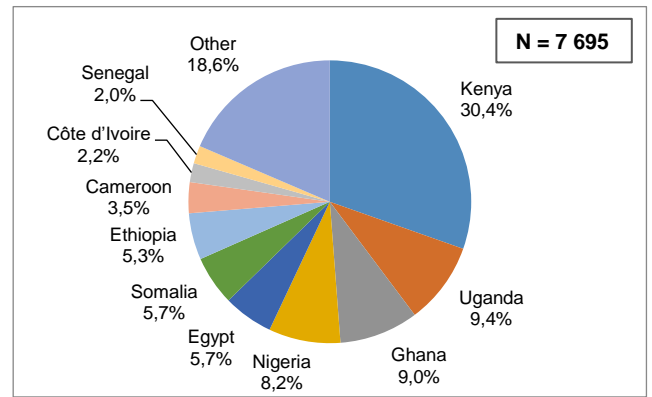


Figure 4.19 – Percentage distribution of tourists from SADC countries on medical, 2022

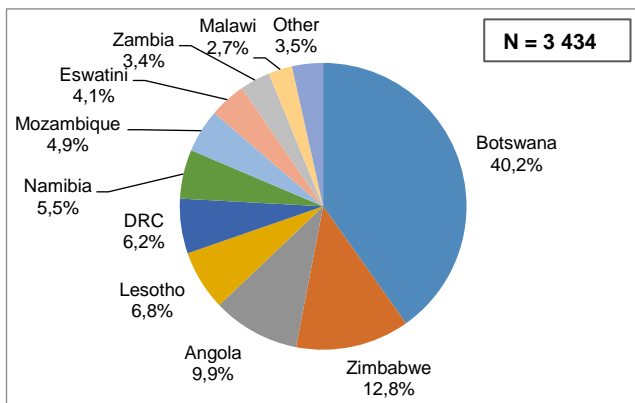


Figure 4.22 – Percentage distribution of tourists from 'other' African countries on study, 2022

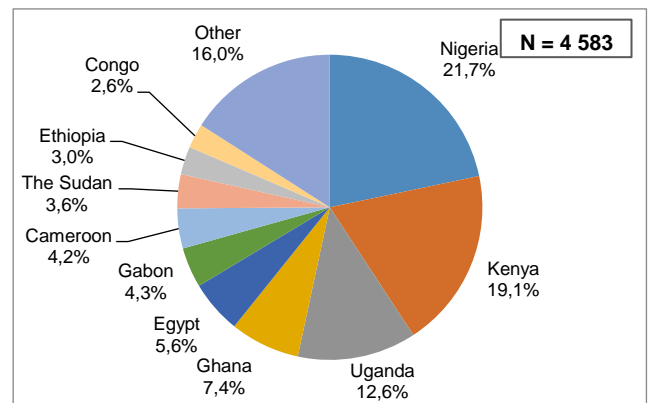


Figure 4.20 – Percentage distribution of tourists from 'other' African countries on holiday, 2022

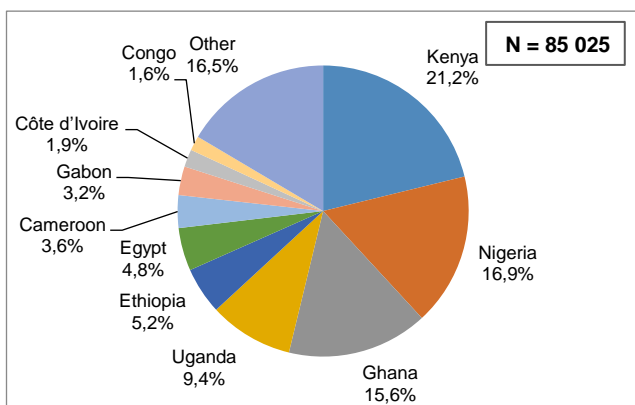


Figure 4.23 – Percentage distribution of tourists from 'other' African countries on medical, 2022

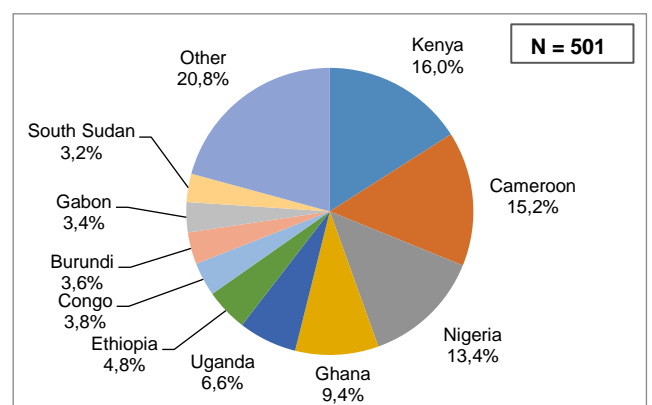
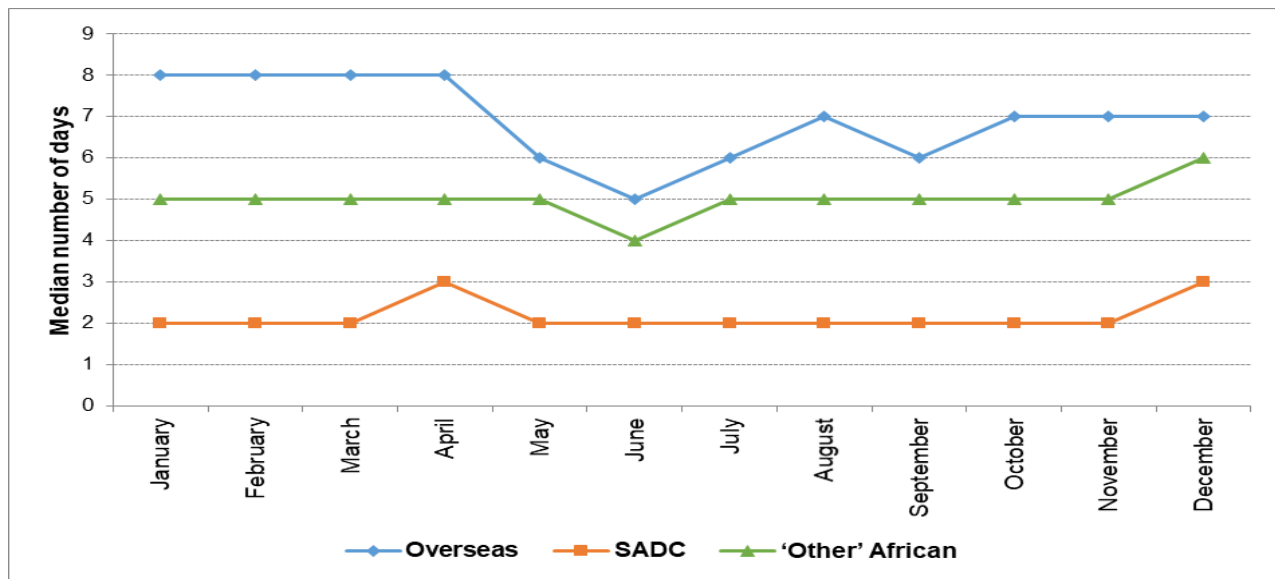


Figure 4.24 – Average (median) number of days tourists spent by month of arrival, 2022



5. Summary

This report provides information collected by DHA immigration officers on South African residents and foreign travellers that passed through South African air, land and sea ports of entry/exit in 2022. The report also presents detailed information on the mode of travel, purpose of visit, length of stay and demographic characteristics of tourists (foreigners). About 22 110 000 travellers (arrivals plus departures) entered or departed South Africa in 2022 showing an increase of 142,5% from the 2021 volume of 9 118 000.

South African resident arrivals increased by 130,4% from 1 524 997 in 2021 to 3 513 638 in 2022 and departures increased by 129,7% from 1 624 136 in 2021 to 3 730 874 in 2022. Foreign arrivals increased by 154,8% from 3 150 007 in 2021 to 8 026 409 in 2022 and departures increased by 142,6% from 2 818 669 in 2021 to 6 839 401 in 2022. Due to limited data on South African residents, information on tourists is available only from foreign travellers. In 2022, foreign arrivals were made up of 8,5% non-visitors and 91,5% visitors. The visitors were further categorised into same-day visitors (22,4%) and overnight visitors or tourists (77,6%).

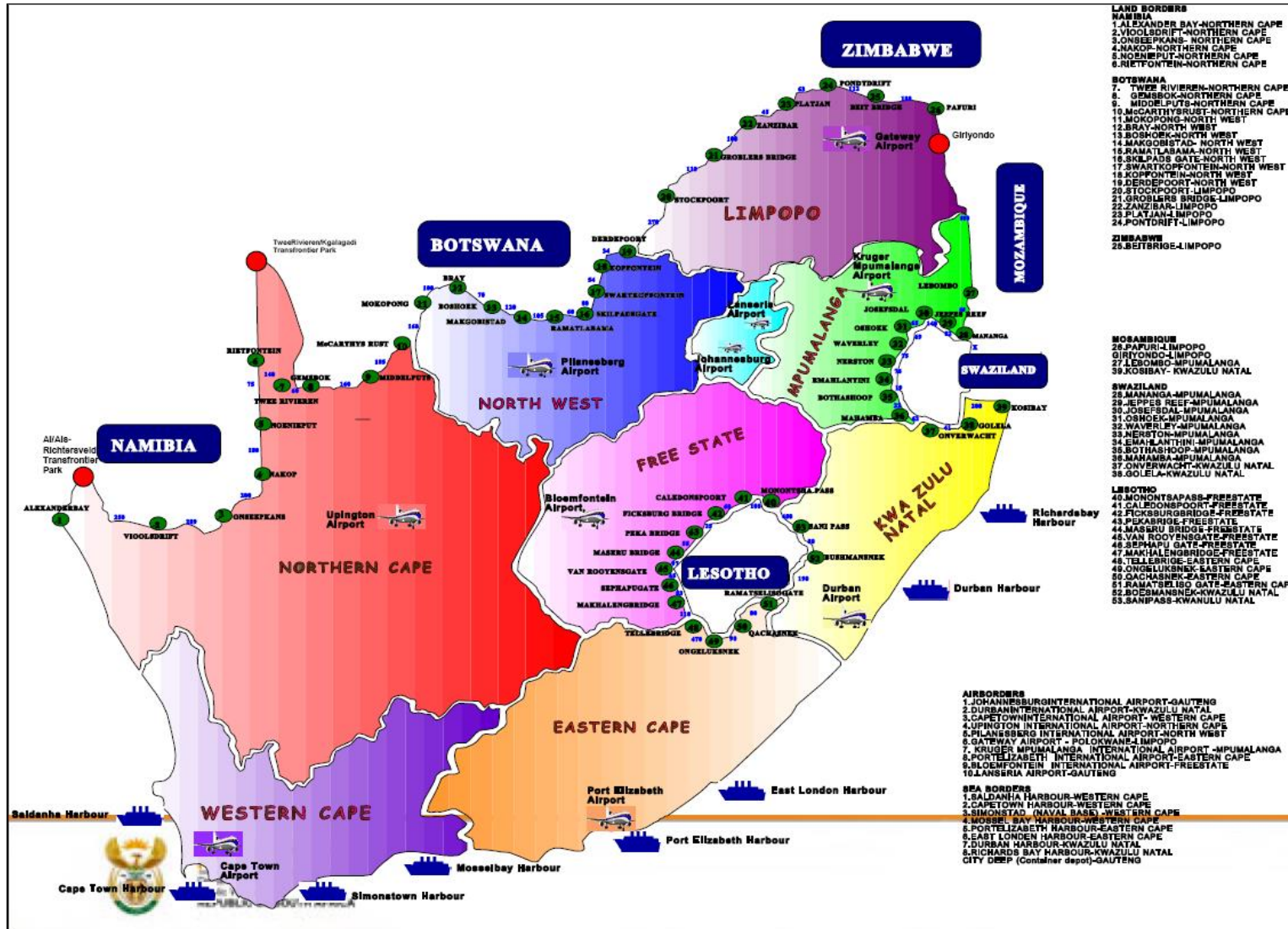
The volume of tourists increased by 152,6% from 2 255 699 in 2021 to 5 698 062 in 2022. The distribution of tourists by region of residence shows that 72,6% of the tourists who arrived in South Africa in 2022 were residents of SADC countries and 1,7% were from 'other' African countries. These two sub-regions made up 74,4% of tourists from Africa in total. Residents of overseas countries made up 25,5% of the tourists.

The 2022 patterns of mode of travel and purpose of visit did not differ greatly from what was observed in 2021 and earlier years. Generally, overseas and 'other' African tourists flew into the country whereas tourists from SADC countries came in by road. Holiday continued to be the main reason for visiting South Africa. A large majority (95,3%) of tourists came for holidays whilst business persons, students and medical treatment constituted 3,9%, 0,7% and 0,1% respectively of the 2022 tourists. Overseas tourists on holiday (19,6%), business persons (18,1%) and medical treatment (31,0%) came from UK. Most students (13,0%) came from Germany. The majority of SADC tourists on holiday (30,3%) and those who came for business (21,0%) were from Zimbabwe, students (30,6%) were from Lesotho and the highest proportion of SADC tourists on medical treatment came from Botswana (40,2%). With regard to 'other' African countries, tourists on holiday (21,2%), business persons (30,4%) and medical treatment (16,0%) were mostly from Kenya. Most students (21,7%) came from Nigeria..

Generally, tourists from overseas and 'other' African countries spent on average more days (about five to eight days per month) in the country compared to SADC residents who spent an average of two days in a month. Tourists continued to be predominantly male (54,2%).

6. Appendices

Appendix I – Ports of entry/exit in South Africa



Source: National Department of Home Affairs

Appendix II— Number of foreign travellers and South African residents by year of travel, 2014 – 2022

| Year | All travellers | | | | South African residents | | | | Foreign travellers | | | |
|------|----------------|------------|----------|------------|-------------------------|------------|----------|------------|--------------------|------------|----------|------------|
| | Arrivals | Departures | Transits | Total | Arrivals | Departures | Transits | Total | Arrivals | Departures | Transits | Total |
| 2014 | 20 403 641 | 19 125 502 | 781 520 | 40 310 663 | 5 311 625 | 5 382 139 | 8 178 | 10 701 942 | 15 092 016 | 13 743 363 | 773 342 | 29 608 721 |
| 2015 | 20 453 522 | 19 119 232 | 823 597 | 40 396 351 | 5 401 696 | 5 414 362 | 9 760 | 10 825 818 | 15 051 826 | 13 704 870 | 813 837 | 29 570 533 |
| 2016 | 21 636 026 | 20 181 907 | 833 829 | 42 651 762 | 5 477 607 | 5 550 904 | 9 855 | 11 038 366 | 16 158 419 | 14 631 003 | 823 974 | 31 613 396 |
| 2017 | 21 703 731 | 20 339 239 | 763 050 | 42 806 020 | 5 713 133 | 5 785 699 | 9 617 | 11 508 449 | 15 990 598 | 14 553 540 | 753 433 | 31 297 571 |
| 2018 | 21 876 833 | 20 279 614 | 760 708 | 42 917 155 | 5 936 978 | 6 014 912 | 9 511 | 11 961 401 | 15 939 855 | 14 264 702 | 751 197 | 30 955 754 |
| 2019 | 21 828 864 | 20 119 863 | 821 440 | 42 770 167 | 6 003 568 | 6 076 274 | 9 777 | 12 089 619 | 15 825 296 | 14 043 589 | 811 663 | 30 680 548 |
| 2020 | 6 414 436 | 5 739 537 | 142 827 | 12 296 800 | 1 828 049 | 1 623 702 | 1 956 | 3 453 707 | 4 586 387 | 4 115 835 | 140 871 | 8 843 093 |
| 2021 | 4 675 004 | 4 442 805 | 115 104 | 9 232 913 | 1 524 997 | 1 624 136 | 1 392 | 3 150 525 | 3 150 007 | 2 818 669 | 113 712 | 6 082 388 |
| 2022 | 11 540 047 | 10 570 275 | 299 146 | 22 409 468 | 3 513 638 | 3 730 874 | 4 131 | 7 248 643 | 8 026 409 | 6 839 401 | 295 015 | 15 160 825 |

Appendix III– Number of arrivals and departures of South African residents by mode of travel and place of arrival or departure, 2022

| Mode of travel and place of arrival or departure | Arrivals | Departures | Transits | % Arrivals | % Departures | % Transits |
|--|------------------|------------------|--------------|---------------|---------------|---------------|
| Total | 3 513 638 | 3 730 874 | 4 131 | - | - | - |
| Air | 1 573 275 | 1 729 194 | 4 131 | 100,0% | 100,0% | 100,0% |
| Cape Town International Airport | 295 518 | 349 631 | 36 | 18,8% | 20,2% | 0,9% |
| King Shaka International Airport | 61 293 | 72 994 | 1 | 3,9% | 4,2% | 0,0% |
| O. R. Tambo International Airport | 1 202 076 | 1 290 363 | 4 094 | 76,4% | 74,6% | 99,1% |
| Other Airports | 14 388 | 16 206 | - | 0,9% | 0,9% | - |
| Road | 1 884 220 | 1 942 493 | - | 100,0% | 100,0% | - |
| Botswana | 279 511 | 292 510 | - | 14,8% | 15,1% | - |
| Eswatini | 320 337 | 346 998 | - | 17,0% | 17,9% | - |
| Lesotho | 511 763 | 507 522 | - | 27,2% | 26,1% | - |
| Mozambique | 546 093 | 561 900 | - | 29,0% | 28,9% | - |
| Namibia | 103 723 | 106 086 | - | 5,5% | 5,5% | - |
| Zimbabwe | 122 793 | 127 477 | - | 6,5% | 6,6% | - |
| Sea | 56 143 | 59 187 | - | 100,0% | 100,0% | - |
| Cape Town Harbour | 8 997 | 10 922 | - | 16,0% | 18,5% | - |
| Durban Harbour | 47 038 | 48 116 | - | 83,8% | 81,3% | - |
| Port Elizabeth Harbour | 108 | 149 | - | 0,2% | 0,3% | - |

Appendix IV– Number of South African residents by mode of travel, place and month of arrival, 2022

| Mode of travel and place of arrival | Total | Month of arrival | | | | | | | | | | | |
|-------------------------------------|------------------|------------------|----------------|----------------|----------------|----------------|----------------|----------------|----------------|----------------|----------------|----------------|----------------|
| | | Jan | Feb | Mar | Apr | May | Jun | Jul | Aug | Sep | Oct | Nov | Dec |
| Total | 3 513 638 | 221 890 | 173 089 | 234 833 | 288 430 | 271 518 | 265 364 | 382 964 | 316 788 | 317 220 | 349 974 | 283 731 | 407 837 |
| Air | 1 573 275 | 66 047 | 71 852 | 110 471 | 131 354 | 120 907 | 122 244 | 187 894 | 135 526 | 146 858 | 164 317 | 134 435 | 181 370 |
| Cape Town | 295 518 | 11 143 | 13 451 | 20 165 | 22 273 | 18 462 | 22 508 | 40 798 | 26 219 | 26 289 | 29 213 | 26 759 | 38 238 |
| King Shaka | 61 293 | 445 | 2 419 | 3 988 | 4 206 | 4 233 | 4 767 | 8 655 | 4 719 | 5 832 | 7 739 | 5 588 | 8 702 |
| O. R. Tambo | 1 202 076 | 53 674 | 55 124 | 84 961 | 103 744 | 96 926 | 93 644 | 137 027 | 103 235 | 113 442 | 125 998 | 100 953 | 133 348 |
| Other Airports | 14 388 | 785 | 858 | 1 357 | 1 131 | 1 286 | 1 325 | 1 414 | 1 353 | 1 295 | 1 367 | 1 135 | 1 082 |
| Road | 1 884 220 | 155 670 | 93 079 | 114 860 | 144 065 | 147 166 | 142 926 | 194 758 | 181 186 | 170 140 | 185 480 | 147 035 | 207 855 |
| Botswana | 279 511 | 17 751 | 13 278 | 16 407 | 21 803 | 21 888 | 19 992 | 28 675 | 25 849 | 25 148 | 30 325 | 24 592 | 33 803 |
| Eswatini | 320 337 | 18 693 | 15 551 | 19 151 | 24 825 | 29 122 | 26 262 | 35 016 | 34 934 | 35 314 | 34 406 | 19 465 | 27 598 |
| Lesotho | 511 763 | 38 527 | 26 192 | 29 403 | 37 675 | 37 530 | 39 859 | 50 726 | 51 808 | 45 191 | 47 393 | 44 540 | 62 919 |
| Mozambique | 546 093 | 61 923 | 28 821 | 35 259 | 40 028 | 41 213 | 40 040 | 52 957 | 47 287 | 45 983 | 52 716 | 43 056 | 56 810 |
| Namibia | 103 723 | 9 783 | 4 936 | 7 398 | 8 715 | 7 794 | 7 705 | 14 512 | 7 319 | 7 858 | 8 558 | 7 132 | 12 013 |
| Zimbabwe | 122 793 | 8 993 | 4 301 | 7 242 | 11 019 | 9 619 | 9 068 | 12 872 | 13 989 | 10 646 | 12 082 | 8 250 | 14 712 |
| Sea | 56 143 | 173 | 8 158 | 9 502 | 13 011 | 3 445 | 194 | 312 | 76 | 222 | 177 | 2 261 | 18 612 |
| Cape Town | 8 997 | 140 | 95 | 140 | 1 657 | 2 161 | 167 | 288 | 56 | 200 | 171 | 139 | 3 783 |
| Durban | 47 038 | 24 | 8 063 | 9 358 | 11 352 | 1 275 | 17 | 10 | 11 | 11 | 4 | 2 119 | 14 794 |
| Port Elizabeth | 108 | 9 | - | 4 | 2 | 9 | 10 | 14 | 9 | 11 | 2 | 3 | 35 |

Appendix V— Number of South African residents by mode of travel, place and month of departure, 2022

| Mode of travel and place of departure | Total | Month of departure | | | | | | | | | | | |
|---------------------------------------|------------------|--------------------|----------------|----------------|----------------|----------------|----------------|----------------|----------------|----------------|----------------|----------------|----------------|
| | | Jan | Feb | Mar | Apr | May | Jun | Jul | Aug | Sep | Oct | Nov | Dec |
| Total | 3 730 874 | 177 890 | 186 410 | 268 358 | 312 662 | 279 966 | 330 327 | 332 409 | 335 982 | 345 786 | 321 857 | 281 862 | 557 365 |
| Air | 1 729 194 | 81 850 | 84 507 | 133 624 | 145 259 | 140 053 | 167 578 | 151 353 | 155 049 | 164 503 | 142 602 | 133 399 | 229 417 |
| Cape Town | 349 631 | 17 770 | 16 128 | 25 574 | 28 298 | 27 938 | 40 335 | 32 549 | 30 017 | 32 891 | 25 919 | 25 197 | 47 015 |
| King Shaka | 72 994 | 951 | 3 833 | 5 755 | 4 572 | 5 794 | 6 806 | 6 395 | 6 222 | 7 715 | 6 557 | 5 875 | 12 519 |
| O. R. Tambo | 1 290 363 | 62 199 | 63 609 | 101 013 | 110 954 | 104 837 | 118 994 | 110 847 | 117 266 | 122 416 | 108 689 | 100 900 | 168 639 |
| Other Airports | 16 206 | 930 | 937 | 1 282 | 1 435 | 1 484 | 1 443 | 1 562 | 1 544 | 1 481 | 1 437 | 1 427 | 1 244 |
| Road | 1 942 493 | 95 102 | 93 976 | 124 854 | 154 815 | 138 552 | 162 459 | 180 822 | 180 682 | 181 186 | 179 092 | 144 503 | 306 450 |
| Botswana | 292 510 | 14 019 | 13 637 | 17 870 | 23 316 | 20 937 | 23 434 | 26 604 | 26 180 | 28 598 | 27 727 | 24 869 | 45 319 |
| Eswatini | 346 998 | 15 433 | 15 691 | 20 259 | 27 625 | 27 917 | 28 454 | 35 754 | 35 865 | 39 142 | 37 213 | 26 731 | 36 914 |
| Lesotho | 507 522 | 25 422 | 26 419 | 31 402 | 41 070 | 35 844 | 42 934 | 47 462 | 52 164 | 46 606 | 44 359 | 34 742 | 79 098 |
| Mozambique | 561 900 | 30 745 | 28 918 | 38 870 | 43 400 | 37 890 | 45 573 | 48 658 | 45 480 | 47 428 | 51 369 | 42 970 | 100 599 |
| Namibia | 106 086 | 5 671 | 5 063 | 8 603 | 8 497 | 7 841 | 12 111 | 10 312 | 7 571 | 8 450 | 7 757 | 7 168 | 17 042 |
| Zimbabwe | 127 477 | 3 812 | 4 248 | 7 850 | 10 907 | 8 123 | 9 953 | 12 032 | 13 422 | 10 962 | 10 667 | 8 023 | 27 478 |
| Sea | 59 187 | 938 | 7 927 | 9 880 | 12 588 | 1 361 | 290 | 234 | 251 | 97 | 163 | 3 960 | 21 498 |
| Cape Town | 10 922 | 192 | 264 | 167 | 3 377 | 135 | 256 | 196 | 207 | 79 | 148 | 142 | 5 759 |
| Durban | 48 116 | 739 | 7 641 | 9 706 | 9 204 | 1 219 | 8 | 21 | 13 | 3 | 7 | 3 817 | 15 738 |
| Port Elizabeth | 149 | 7 | 22 | 7 | 7 | 7 | 26 | 17 | 31 | 15 | 8 | 1 | 1 |

Appendix VI– Number of foreign arrivals and departures by mode of travel and place of arrival or departure, 2022

| Mode of travel and place of arrival or departure | Arrivals | Departures | Transits | % of arrivals | % of departures | % of transits |
|--|------------------|------------------|----------------|---------------|-----------------|---------------|
| Total | 8 026 409 | 6 839 401 | 295 015 | - | - | - |
| Air | 2 121 232 | 2 109 440 | 295 015 | 100,0% | 100,0% | 100,0% |
| Cape Town International Airport | 633 547 | 610 257 | 2 167 | 29,9% | 28,9% | 0,7% |
| King Shaka International Airport | 30 797 | 32 203 | 52 | 1,5% | 1,5% | 0,0% |
| O. R. Tambo International Airport | 1 447 435 | 1 451 184 | 292 796 | 68,2% | 68,8% | 99,2% |
| Other Airports | 9 453 | 15 796 | - | 0,4% | 0,7% | - |
| Road | 5 863 598 | 4 691 409 | - | 100,0% | 100,0% | - |
| Botswana | 633 489 | 618 253 | - | 10,8% | 13,2% | - |
| Eswatini | 705 422 | 660 326 | - | 12,0% | 14,1% | - |
| Lesotho | 1 635 509 | 1 299 835 | - | 27,9% | 27,7% | - |
| Mozambique | 1 413 996 | 1 095 509 | - | 24,1% | 23,4% | - |
| Namibia | 113 669 | 113 624 | - | 1,9% | 2,4% | - |
| Zimbabwe | 1 361 513 | 903 862 | - | 23,2% | 19,3% | - |
| Sea | 41 579 | 38 552 | - | 100,0% | 100,0% | - |
| Cape Town Harbour | 23 937 | 20 927 | - | 57,6% | 54,3% | - |
| Durban Harbour | 12 557 | 13 932 | - | 30,2% | 36,1% | - |
| Port Elizabeth Harbour | 5 085 | 3 693 | - | 12,2% | 9,6% | - |

Appendix VII– Number of foreign arrivals by mode of travel, place and month of arrival, 2022

| Mode of travel and place of arrival | Total | Month of arrival | | | | | | | | | | | |
|-------------------------------------|------------------|------------------|----------------|----------------|----------------|----------------|----------------|----------------|----------------|----------------|----------------|----------------|----------------|
| | | Jan | Feb | Mar | Apr | May | Jun | Jul | Aug | Sep | Oct | Nov | Dec |
| Total | 8 026 409 | 480 117 | 398 619 | 468 636 | 568 484 | 572 870 | 581 375 | 737 350 | 820 708 | 792 934 | 815 889 | 818 002 | 971 425 |
| Air | 2 121 232 | 106 552 | 136 861 | 161 298 | 176 080 | 150 576 | 139 819 | 183 277 | 197 037 | 185 754 | 210 235 | 218 988 | 254 755 |
| Cape Town | 633 547 | 36 882 | 51 939 | 54 400 | 50 559 | 31 580 | 29 239 | 40 395 | 45 525 | 49 042 | 62 390 | 80 885 | 100 711 |
| King Shaka | 30 797 | 435 | 1 838 | 2 272 | 2 232 | 2 346 | 2 599 | 3 114 | 2 896 | 2 642 | 2 976 | 3 089 | 4 358 |
| O. R. Tambo | 1 447 435 | 68 964 | 82 652 | 104 048 | 122 502 | 115 863 | 107 116 | 138 755 | 147 521 | 132 965 | 143 880 | 134 224 | 148 945 |
| Other Airports | 9 453 | 271 | 432 | 578 | 787 | 787 | 865 | 1 013 | 1 095 | 1 105 | 989 | 790 | 741 |
| Road | 5 863 598 | 372 516 | 258 586 | 303 941 | 388 201 | 419 469 | 439 043 | 551 313 | 621 305 | 604 733 | 603 121 | 594 165 | 707 205 |
| Botswana | 633 489 | 33 774 | 29 919 | 37 134 | 47 043 | 49 132 | 48 774 | 55 781 | 60 509 | 62 647 | 62 585 | 63 554 | 82 637 |
| Eswatini | 705 422 | 37 162 | 34 876 | 41 311 | 51 627 | 53 747 | 54 879 | 72 178 | 85 552 | 85 418 | 77 896 | 53 111 | 57 665 |
| Lesotho | 1 635 509 | 123 920 | 73 317 | 81 985 | 110 712 | 122 985 | 127 674 | 162 720 | 164 543 | 155 210 | 153 053 | 162 797 | 196 593 |
| Mozambique | 1 413 996 | 123 730 | 83 463 | 88 545 | 88 111 | 94 385 | 100 062 | 121 308 | 138 021 | 136 736 | 135 194 | 148 156 | 156 285 |
| Namibia | 113 669 | 7 136 | 6 869 | 8 510 | 9 067 | 8 074 | 8 560 | 9 635 | 9 191 | 9 529 | 10 277 | 9 903 | 16 918 |
| Zimbabwe | 1 361 513 | 46 794 | 30 142 | 46 456 | 81 641 | 91 146 | 99 094 | 129 691 | 163 489 | 155 193 | 164 116 | 156 644 | 197 107 |
| Sea | 41 579 | 1 049 | 3 172 | 3 397 | 4 203 | 2 825 | 2 513 | 2 760 | 2 366 | 2 447 | 2 533 | 4 849 | 9 465 |
| Cape Town | 23 937 | 567 | 1 651 | 1 808 | 2 572 | 1 372 | 1 218 | 1 320 | 1 179 | 1 281 | 1 571 | 3 695 | 5 703 |
| Durban | 12 557 | 338 | 797 | 1 074 | 1 305 | 1 182 | 899 | 1 060 | 882 | 887 | 639 | 811 | 2 683 |
| Port Elizabeth | 5 085 | 144 | 724 | 515 | 326 | 271 | 396 | 380 | 305 | 279 | 323 | 343 | 1 079 |

Appendix VIII– Number of foreign departures by mode of travel, place and month of departure, 2022

| Mode of travel and place of departure | Total | Month of arrival | | | | | | | | | | | |
|---------------------------------------|------------------|------------------|----------------|----------------|----------------|----------------|----------------|----------------|----------------|----------------|----------------|----------------|----------------|
| | | Jan | Feb | Mar | Apr | May | Jun | Jul | Aug | Sep | Oct | Nov | Dec |
| Total | 6 839 401 | 310 131 | 333 057 | 419 270 | 504 392 | 507 739 | 503 997 | 595 703 | 698 587 | 668 318 | 700 953 | 678 982 | 918 272 |
| Air | 2 109 440 | 101 924 | 120 584 | 169 863 | 187 695 | 164 635 | 145 995 | 167 380 | 204 231 | 182 108 | 206 635 | 228 071 | 230 319 |
| Cape Town | 610 257 | 32 740 | 43 536 | 60 100 | 56 341 | 38 392 | 30 214 | 36 016 | 46 649 | 43 133 | 58 596 | 80 034 | 84 506 |
| King Shaka | 32 203 | 730 | 2 049 | 2 507 | 2 853 | 2 710 | 2 301 | 2 955 | 3 295 | 2 732 | 2 902 | 3 583 | 3 586 |
| O. R. Tambo | 1 451 184 | 68 104 | 74 535 | 106 477 | 127 126 | 122 095 | 111 925 | 126 520 | 152 372 | 134 369 | 143 477 | 143 228 | 140 956 |
| Other | 15 796 | 350 | 464 | 779 | 1 375 | 1 438 | 1 555 | 1 889 | 1 915 | 1 874 | 1 660 | 1 226 | 1 271 |
| Road | 4 691 409 | 206 932 | 209 300 | 245 840 | 312 411 | 340 274 | 355 638 | 425 800 | 492 159 | 483 817 | 492 097 | 446 597 | 680 544 |
| Botswana | 618 253 | 29 760 | 28 671 | 36 231 | 44 903 | 49 819 | 47 119 | 55 715 | 58 326 | 59 350 | 65 615 | 61 747 | 80 997 |
| Eswatini | 660 326 | 32 377 | 31 990 | 38 522 | 46 612 | 51 307 | 50 247 | 66 419 | 74 469 | 78 332 | 77 787 | 59 454 | 52 810 |
| Lesotho | 1 299 835 | 59 072 | 61 981 | 69 882 | 94 787 | 102 709 | 108 605 | 122 544 | 140 646 | 129 205 | 123 319 | 102 045 | 185 040 |
| Mozambique | 1 095 509 | 57 014 | 58 881 | 64 561 | 68 250 | 70 561 | 76 329 | 92 149 | 106 835 | 107 158 | 110 112 | 110 774 | 172 885 |
| Namibia | 113 624 | 8 570 | 6 594 | 8 382 | 8 966 | 9 028 | 7 939 | 10 691 | 9 394 | 9 625 | 10 726 | 10 046 | 13 663 |
| Zimbabwe | 903 862 | 20 139 | 21 183 | 28 262 | 48 893 | 56 850 | 65 399 | 78 282 | 102 489 | 100 147 | 104 538 | 102 531 | 175 149 |
| Sea | 38 552 | 1 275 | 3 173 | 3 567 | 4 286 | 2 830 | 2 364 | 2 523 | 2 197 | 2 393 | 2 221 | 4 314 | 7 409 |
| Cape Town | 20 927 | 767 | 2 100 | 1 530 | 2 366 | 1 199 | 1 070 | 1 071 | 1 045 | 1 269 | 1 280 | 3 086 | 4 144 |
| Durban | 13 932 | 363 | 784 | 1 523 | 1 574 | 1 344 | 898 | 1 027 | 930 | 865 | 691 | 923 | 3 010 |
| Port Elizabeth | 3 693 | 145 | 289 | 514 | 346 | 287 | 396 | 425 | 222 | 259 | 250 | 305 | 255 |

Appendix IX– Number of foreign arrivals by purpose of visit and month of arrival, 2022

| Purpose of visit | Total | Month of arrival | | | | | | | | | | | |
|------------------|------------------|------------------|----------------|----------------|----------------|----------------|----------------|----------------|----------------|----------------|----------------|----------------|----------------|
| | | Jan | Feb | Mar | Apr | May | Jun | Jul | Aug | Sep | Oct | Nov | Dec |
| Total | 8 026 409 | 480 117 | 398 619 | 468 636 | 568 484 | 572 870 | 581 375 | 737 350 | 820 708 | 792 934 | 815 889 | 818 002 | 971 425 |
| Business | 244 407 | 20 131 | 17 975 | 20 464 | 18 874 | 19 725 | 19 213 | 19 185 | 21 624 | 22 729 | 23 591 | 24 382 | 16 514 |
| Holiday | 7 365 571 | 415 930 | 348 424 | 414 385 | 512 142 | 519 237 | 530 056 | 675 324 | 760 320 | 737 431 | 759 199 | 763 982 | 929 141 |
| Study | 58 165 | 7 345 | 7 336 | 3 867 | 5 435 | 4 966 | 3 403 | 7 470 | 5 898 | 4 184 | 3 606 | 2 929 | 1 726 |
| Work | 215 558 | 21 176 | 14 974 | 18 696 | 18 912 | 17 278 | 17 033 | 21 389 | 19 530 | 16 949 | 17 994 | 15 672 | 15 955 |
| Other | 132 806 | 14 367 | 9 035 | 10 154 | 11 592 | 11 047 | 11 090 | 13 251 | 12 492 | 11 034 | 10 760 | 10 334 | 7 650 |
| Unspecified | 9 902 | 1 168 | 875 | 1 070 | 1 529 | 617 | 580 | 731 | 844 | 607 | 739 | 703 | 439 |

Appendix X— Number of foreign arrivals by type of visitor and month of arrival, 2022

| Type of visitor | Total | Month of arrival | | | | | | | | | | | |
|---------------------|------------------|------------------|----------------|----------------|----------------|----------------|----------------|----------------|----------------|----------------|----------------|----------------|----------------|
| | | Jan | Feb | Mar | Apr | May | Jun | Jul | Aug | Sep | Oct | Nov | Dec |
| Total | 8 026 409 | 480 117 | 398 619 | 468 636 | 568 484 | 572 870 | 581 375 | 737 350 | 820 708 | 792 934 | 815 889 | 818 002 | 971 425 |
| Non-visitors | 684 613 | 49 915 | 35 918 | 43 403 | 47 013 | 48 318 | 48 546 | 66 571 | 65 506 | 63 655 | 64 511 | 75 764 | 75 493 |
| Visitors | 7 341 796 | 430 202 | 362 701 | 425 233 | 521 471 | 524 552 | 532 829 | 670 779 | 755 202 | 729 279 | 751 378 | 742 238 | 895 932 |
| Same-day | 1 643 734 | 52 551 | 52 528 | 65 499 | 90 095 | 117 290 | 133 279 | 162 955 | 199 370 | 190 077 | 185 516 | 176 480 | 218 094 |
| Tourist | 5 698 062 | 377 651 | 310 173 | 359 734 | 431 376 | 407 262 | 399 550 | 507 824 | 555 832 | 539 202 | 565 862 | 565 758 | 677 838 |

Appendix XI– Number of same day visitors by mode of travel, region of residence and purpose of visit, 2022

| Mode of travel and region of residence | Total | Purpose of visit | | | |
|--|------------------|------------------|------------------|---------------|-------------------|
| | | Business | Holiday | Study | Medical treatment |
| Total | 1 643 734 | 16 505 | 1 614 895 | 11 505 | 829 |
| Air | 170 313 | 763 | 169 322 | 179 | 49 |
| Overseas | 107 889 | 340 | 107 515 | 27 | 7 |
| SADC | 59 390 | 336 | 58 884 | 129 | 41 |
| 'Other' Africa | 2 074 | 58 | 1 992 | 23 | 1 |
| Unspecified | 960 | 29 | 931 | - | - |
| Road | 1 472 725 | 15 742 | 1 444 971 | 11 325 | 687 |
| Overseas | 22 060 | 17 | 21 790 | 247 | 6 |
| SADC | 1 447 454 | 15 718 | 1 420 121 | 10 935 | 680 |
| 'Other' African | 2 342 | 4 | 2 194 | 143 | 1 |
| Unspecified | 869 | 3 | 866 | - | - |
| Sea | 696 | - | 602 | 1 | 93 |
| Overseas | 414 | - | 325 | - | 89 |
| SADC | 280 | - | 276 | 1 | 3 |
| 'Other' African | 2 | - | 1 | - | 1 |

Appendix XII— Number of tourists by sex, age group and region of residence, 2022

| Sex and age group | Total | Region of residence | | | |
|-------------------|------------------|---------------------|------------------|-----------------|---------------|
| | | Overseas | SADC | 'Other' African | Unspecified |
| All | 5 698 062 | 1 450 671 | 4 139 457 | 97 804 | 10 130 |
| 0-14 | 323 577 | 124 585 | 194 246 | 4 622 | 124 |
| 15-24 | 455 795 | 133 623 | 314 452 | 7 534 | 186 |
| 25-34 | 1 340 098 | 271 636 | 1 041 815 | 25 336 | 1 311 |
| 35-44 | 1 698 053 | 247 815 | 1 414 821 | 32 346 | 3 071 |
| 45-54 | 1 056 277 | 254 835 | 780 085 | 18 100 | 3 257 |
| 55-64 | 530 155 | 234 423 | 286 609 | 7 103 | 2 020 |
| 65+ | 294 103 | 183 754 | 107 425 | 2 763 | 161 |
| Unspecified | 4 | - | 4 | - | - |
| Male | 3 345 806 | 786 189 | 2 491 353 | 62 067 | 6 197 |
| 0-14 | 161 762 | 64 224 | 95 242 | 2 251 | 45 |
| 15-24 | 233 785 | 65 470 | 163 918 | 4 275 | 122 |
| 25-34 | 753 204 | 137 220 | 600 595 | 14 653 | 736 |
| 35-44 | 1 076 275 | 145 184 | 907 467 | 21 801 | 1 823 |
| 45-54 | 667 532 | 147 194 | 505 682 | 12 667 | 1 989 |
| 55-64 | 302 750 | 129 323 | 167 256 | 4 768 | 1 403 |
| 65+ | 150 494 | 97 574 | 51 189 | 1 652 | 79 |
| Unspecified | 4 | - | 4 | - | - |
| Female | 2 352 256 | 664 482 | 1 648 104 | 35 737 | 3 933 |
| 0-14 | 161 815 | 60 361 | 99 004 | 2 371 | 79 |
| 15-24 | 222 010 | 68 153 | 150 534 | 3 259 | 64 |
| 25-34 | 586 894 | 134 416 | 441 220 | 10 683 | 575 |
| 35-44 | 621 778 | 102 631 | 507 354 | 10 545 | 1 248 |
| 45-54 | 388 745 | 107 641 | 274 403 | 5 433 | 1 268 |
| 55-64 | 227 405 | 105 100 | 119 353 | 2 335 | 617 |
| 65+ | 143 609 | 86 180 | 56 236 | 1 111 | 82 |

Appendix XIII– Number of tourists by sex, age group and month of arrival, 2022

| Sex and age group | Total | Month of arrival | | | | | | | | | | | |
|-------------------|------------------|------------------|----------------|----------------|----------------|----------------|----------------|----------------|----------------|----------------|----------------|----------------|----------------|
| | | Jan | Feb | Mar | Apr | May | Jun | Jul | Aug | Sep | Oct | Nov | Dec |
| All | 5 698 062 | 377 651 | 310 173 | 359 734 | 431 376 | 407 262 | 399 550 | 507 824 | 555 832 | 539 202 | 565 862 | 565 758 | 677 838 |
| 0-14 | 323 577 | 17 609 | 14 948 | 16 117 | 32 167 | 15 192 | 17 623 | 33 515 | 38 521 | 20 300 | 27 153 | 22 734 | 67 698 |
| 15-24 | 455 795 | 28 555 | 23 908 | 22 837 | 31 611 | 26 282 | 30 864 | 52 455 | 48 737 | 38 432 | 39 695 | 39 899 | 72 520 |
| 25-34 | 1 340 098 | 86 125 | 68 686 | 81 139 | 93 260 | 94 615 | 92 906 | 115 039 | 130 665 | 136 258 | 139 007 | 142 322 | 160 076 |
| 35-44 | 1 698 053 | 120 304 | 90 816 | 108 616 | 127 633 | 129 224 | 125 888 | 150 139 | 165 954 | 162 656 | 168 221 | 166 537 | 182 065 |
| 45-54 | 1 056 277 | 75 557 | 60 795 | 71 136 | 83 669 | 81 114 | 78 365 | 95 118 | 100 886 | 97 290 | 102 620 | 100 606 | 109 121 |
| 55-64 | 530 155 | 33 347 | 32 578 | 38 484 | 41 705 | 39 739 | 35 855 | 41 758 | 46 754 | 52 216 | 55 446 | 58 033 | 54 240 |
| 65+ | 294 103 | 16 154 | 18 442 | 21 404 | 21 331 | 21 096 | 18 049 | 19 800 | 24 314 | 32 050 | 33 720 | 35 626 | 32 117 |
| Unspecified | 4 | - | - | 1 | - | - | - | - | 1 | - | - | 1 | 1 |
| Male | 3 345 806 | 234 472 | 192 667 | 220 455 | 249 315 | 245 453 | 240 104 | 292 635 | 322 512 | 317 077 | 330 188 | 329 048 | 371 880 |
| 0-14 | 161 762 | 8 745 | 7 642 | 8 064 | 16 138 | 7 400 | 8 742 | 16 888 | 19 387 | 10 117 | 13 644 | 11 234 | 33 761 |
| 15-24 | 233 785 | 15 814 | 12 197 | 11 580 | 15 753 | 13 087 | 15 673 | 26 855 | 24 888 | 19 964 | 21 098 | 20 912 | 35 964 |
| 25-34 | 753 204 | 50 291 | 40 114 | 46 549 | 50 686 | 53 436 | 53 134 | 64 442 | 73 695 | 77 347 | 78 378 | 79 138 | 85 994 |
| 35-44 | 1 076 275 | 78 739 | 61 770 | 72 440 | 79 604 | 83 891 | 81 626 | 92 579 | 103 775 | 103 881 | 105 773 | 104 476 | 107 721 |
| 45-54 | 667 532 | 51 339 | 41 287 | 47 421 | 52 375 | 52 997 | 50 674 | 58 015 | 62 292 | 60 991 | 63 877 | 62 642 | 63 622 |
| 55-64 | 302 750 | 20 829 | 19 771 | 23 093 | 23 958 | 23 599 | 20 931 | 23 809 | 26 382 | 28 726 | 30 304 | 32 220 | 29 128 |
| tr65+ | 150 494 | 8 715 | 9 886 | 11 307 | 10 801 | 11 043 | 9 324 | 10 047 | 12 092 | 16 051 | 17 114 | 18 425 | 15 689 |
| Unspecified | 4 | - | - | 1 | - | - | - | - | 1 | - | - | 1 | 1 |
| Female | 2 352 256 | 143 179 | 117 506 | 139 279 | 182 061 | 161 809 | 159 446 | 215 189 | 233 320 | 222 125 | 235 674 | 236 710 | 305 958 |
| 0-14 | 161 815 | 8 864 | 7 306 | 8 053 | 16 029 | 7 792 | 8 881 | 16 627 | 19 134 | 10 183 | 13 509 | 11 500 | 33 937 |
| 15-24 | 222 010 | 12 741 | 11 711 | 11 257 | 15 858 | 13 195 | 15 191 | 25 600 | 23 849 | 18 468 | 18 597 | 18 987 | 36 556 |
| 25-34 | 586 894 | 35 834 | 28 572 | 34 590 | 42 574 | 41 179 | 39 772 | 50 597 | 56 970 | 58 911 | 60 629 | 63 184 | 74 082 |
| 35-44 | 621 778 | 41 565 | 29 046 | 36 176 | 48 029 | 45 333 | 44 262 | 57 560 | 62 179 | 58 775 | 62 448 | 62 061 | 74 344 |
| 45-54 | 388 745 | 24 218 | 19 508 | 23 715 | 31 294 | 28 117 | 27 691 | 37 103 | 38 594 | 36 299 | 38 743 | 37 964 | 45 499 |
| 55-64 | 227 405 | 12 518 | 12 807 | 15 391 | 17 747 | 16 140 | 14 924 | 17 949 | 20 372 | 23 490 | 25 142 | 25 813 | 25 112 |
| 65+ | 143 609 | 7 439 | 8 556 | 10 097 | 10 530 | 10 053 | 8 725 | 9 753 | 12 222 | 15 999 | 16 606 | 17 201 | 16 428 |

Appendix XIV– Number of tourist arrivals by purpose of visit and month of arrival, 2022

| Purpose of visit | Total | Month of arrival | | | | | | | | | | | |
|-------------------|------------------|------------------|----------------|----------------|----------------|----------------|----------------|----------------|----------------|----------------|----------------|----------------|----------------|
| | | Jan | Feb | Mar | Apr | May | Jun | Jul | Aug | Sep | Oct | Nov | Dec |
| Total | 5 698 062 | 377 651 | 310 173 | 359 734 | 431 376 | 407 262 | 399 550 | 507 824 | 555 832 | 539 202 | 565 862 | 565 758 | 677 838 |
| Business | 222 353 | 18 338 | 16 650 | 18 967 | 17 100 | 17 978 | 17 377 | 17 311 | 19 541 | 20 756 | 21 609 | 22 217 | 14 509 |
| Holiday | 5 430 412 | 353 413 | 288 520 | 337 930 | 410 336 | 385 721 | 379 670 | 483 808 | 532 223 | 515 201 | 540 818 | 541 171 | 661 601 |
| Study | 40 667 | 5 561 | 4 633 | 2 403 | 3 559 | 3 128 | 2 087 | 6 318 | 3 707 | 2 825 | 3 012 | 1 899 | 1 535 |
| Medical treatment | 4 630 | 339 | 370 | 434 | 381 | 435 | 416 | 387 | 361 | 420 | 423 | 471 | 193 |

Appendix XV– Number of tourists by region of residence and month of arrival, 2022

| Region | Total | Month of arrival | | | | | | | | | | | |
|---------------------------|------------------|------------------|----------------|----------------|----------------|----------------|----------------|----------------|----------------|----------------|----------------|----------------|----------------|
| | | Jan | Feb | Mar | Apr | May | Jun | Jul | Aug | Sep | Oct | Nov | Dec |
| Total | 5 698 062 | 377 651 | 310 173 | 359 734 | 431 376 | 407 262 | 399 550 | 507 824 | 555 832 | 539 202 | 565 862 | 565 758 | 677 838 |
| Overseas | 1 450 671 | 64 714 | 93 899 | 108 974 | 119 518 | 92 368 | 87 685 | 122 720 | 132 757 | 126 409 | 151 189 | 159 771 | 190 667 |
| Europe | 900 703 | 47 528 | 71 574 | 73 847 | 80 965 | 45 131 | 37 307 | 66 322 | 77 988 | 70 874 | 99 207 | 107 479 | 122 481 |
| North America | 297 684 | 8 939 | 11 584 | 19 733 | 20 899 | 26 516 | 30 388 | 30 807 | 28 336 | 29 353 | 26 922 | 26 690 | 37 517 |
| Central and South America | 28 516 | 1 065 | 1 235 | 2 044 | 2 142 | 2 376 | 2 070 | 3 095 | 2 475 | 2 990 | 2 957 | 2 830 | 3 237 |
| Australasia | 65 288 | 1 621 | 2 046 | 3 485 | 5 135 | 4 369 | 4 452 | 4 914 | 5 883 | 7 288 | 6 456 | 7 284 | 12 355 |
| Middle East | 40 628 | 823 | 1 590 | 2 563 | 2 450 | 2 508 | 2 861 | 6 779 | 6 958 | 4 598 | 3 123 | 3 417 | 2 958 |
| Asia | 117 852 | 4 738 | 5 870 | 7 302 | 7 927 | 11 468 | 10 607 | 10 803 | 11 117 | 11 306 | 12 524 | 12 071 | 12 119 |
| Africa | 4 237 261 | 312 440 | 215 760 | 250 113 | 311 087 | 314 070 | 311 031 | 384 306 | 422 247 | 411 724 | 413 481 | 404 890 | 486 112 |
| SADC | 4 139 457 | 306 645 | 209 412 | 242 869 | 304 123 | 305 900 | 304 016 | 376 566 | 413 522 | 402 457 | 402 365 | 394 650 | 476 932 |
| 'Other' Africa | 97 804 | 5 795 | 6 348 | 7 244 | 6 964 | 8 170 | 7 015 | 7 740 | 8 725 | 9 267 | 11 116 | 10 240 | 9 180 |
| East and Central Africa | 47 897 | 2 601 | 2 940 | 3 271 | 3 528 | 3 873 | 3 288 | 3 848 | 4 163 | 4 681 | 5 625 | 5 012 | 5 067 |
| West Africa | 39 494 | 2 772 | 2 766 | 3 055 | 2 910 | 3 327 | 2 922 | 3 100 | 3 579 | 3 572 | 4 260 | 3 945 | 3 286 |
| North Africa | 10 413 | 422 | 642 | 918 | 526 | 970 | 805 | 792 | 983 | 1 014 | 1 231 | 1 283 | 827 |
| Unspecified | 10 130 | 497 | 514 | 647 | 771 | 824 | 834 | 798 | 828 | 1 069 | 1 192 | 1 097 | 1 059 |

Appendix XVI– Number of tourists by mode of travel, place and month of arrival, 2022

| Mode of travel and place of arrival | Total | Month of arrival | | | | | | | | | | | |
|-------------------------------------|------------------|------------------|----------------|----------------|----------------|----------------|----------------|----------------|----------------|----------------|----------------|----------------|----------------|
| | | Jan | Feb | Mar | Apr | May | Jun | Jul | Aug | Sep | Oct | Nov | Dec |
| Total | 5 698 062 | 377 651 | 310 173 | 359 734 | 431 376 | 407 262 | 399 550 | 507 824 | 555 832 | 539 202 | 565 862 | 565 758 | 677 838 |
| Air | 1 837 649 | 92 193 | 122 305 | 142 381 | 154 883 | 126 582 | 115 615 | 152 470 | 162 964 | 157 209 | 184 187 | 193 698 | 233 162 |
| Cape Town | 597 478 | 34 602 | 49 366 | 51 411 | 47 817 | 29 119 | 26 591 | 37 140 | 41 917 | 46 190 | 59 237 | 77 131 | 96 957 |
| King Shaka | 22 629 | 199 | 1 057 | 1 485 | 1 752 | 1 611 | 1 792 | 2 335 | 2 190 | 1 935 | 2 361 | 2 299 | 3 613 |
| O. R. Tambo | 1 211 251 | 57 271 | 71 645 | 89 117 | 104 778 | 95 298 | 86 668 | 112 300 | 118 061 | 108 358 | 121 990 | 113 692 | 132 073 |
| Other Airports | 6 291 | 121 | 237 | 368 | 536 | 554 | 564 | 695 | 796 | 726 | 599 | 576 | 519 |
| Road | 3 854 806 | 285 432 | 187 382 | 217 115 | 276 273 | 280 441 | 283 910 | 355 319 | 392 836 | 381 959 | 381 574 | 370 958 | 441 607 |
| Botswana | 428 686 | 23 376 | 20 878 | 25 290 | 33 569 | 33 282 | 32 483 | 36 945 | 40 407 | 42 887 | 40 671 | 41 185 | 57 713 |
| Eswatini | 443 080 | 23 192 | 22 329 | 25 914 | 33 532 | 33 690 | 34 367 | 44 292 | 53 843 | 53 831 | 49 713 | 32 621 | 35 756 |
| Lesotho | 844 438 | 85 956 | 42 633 | 47 038 | 63 582 | 62 745 | 64 247 | 85 040 | 75 385 | 72 445 | 74 140 | 81 059 | 90 168 |
| Mozambique | 1 052 550 | 106 303 | 69 223 | 71 593 | 71 261 | 74 334 | 75 104 | 87 851 | 97 529 | 95 852 | 93 471 | 103 581 | 106 448 |
| Namibia | 94 319 | 6 058 | 5 936 | 7 377 | 7 968 | 6 718 | 6 769 | 7 613 | 7 500 | 7 841 | 8 210 | 7 805 | 14 524 |
| Zimbabwe | 991 733 | 40 547 | 26 383 | 39 903 | 66 361 | 69 672 | 70 940 | 93 578 | 118 172 | 109 103 | 115 369 | 104 707 | 136 998 |
| Sea | 5 607 | 26 | 486 | 238 | 220 | 239 | 25 | 35 | 32 | 34 | 101 | 1 102 | 3 069 |
| Cape Town | 3 631 | 19 | 257 | 91 | 52 | 83 | 23 | 17 | 25 | 32 | 100 | 972 | 1 960 |
| Durban | 1 729 | 6 | 103 | 147 | 168 | 156 | 1 | 4 | 5 | 2 | 1 | 130 | 1 006 |
| Port Elizabeth | 247 | 1 | 126 | - | - | - | 1 | 14 | 2 | - | - | - | 103 |

Appendix XVII– Number of tourists by country of residence and month of arrival, 2022

| Country of residence | Total | Month of arrival | | | | | | | | | | | |
|----------------------|------------------|------------------|----------------|----------------|----------------|----------------|----------------|----------------|----------------|----------------|----------------|----------------|----------------|
| | | Jan | Feb | Mar | Apr | May | Jun | Jul | Aug | Sep | Oct | Nov | Dec |
| Total | 5 698 062 | 377 651 | 310 173 | 359 734 | 431 376 | 407 262 | 399 550 | 507 824 | 555 832 | 539 202 | 565 862 | 565 758 | 677 838 |
| Overseas | 1 450 671 | 64 714 | 93 899 | 108 974 | 119 518 | 92 368 | 87 685 | 122 720 | 132 757 | 126 409 | 151 189 | 159 771 | 190 667 |
| Europe | 900 703 | 47 528 | 71 574 | 73 847 | 80 965 | 45 131 | 37 307 | 66 322 | 77 988 | 70 874 | 99 207 | 107 479 | 122 481 |
| Albania | 106 | 7 | 7 | 9 | 5 | 10 | 9 | 3 | 12 | 11 | 10 | 10 | 13 |
| Andorra | 53 | 2 | - | 1 | 5 | 3 | 1 | 13 | 5 | 4 | 7 | 4 | 8 |
| Austria | 14 043 | 799 | 1 398 | 1 165 | 1 186 | 576 | 449 | 774 | 979 | 908 | 1 646 | 2 179 | 1 984 |
| Belgium | 34 826 | 1 393 | 2 378 | 2 127 | 3 404 | 1 417 | 1 177 | 4 667 | 2 948 | 3 176 | 4 454 | 3 393 | 4 292 |
| Bosnia-Herzegovina | 110 | 10 | 6 | 22 | 4 | 10 | 2 | 7 | 4 | 10 | 12 | 8 | 15 |
| Bulgaria | 1 302 | 69 | 72 | 91 | 115 | 68 | 57 | 63 | 114 | 74 | 129 | 155 | 295 |
| Croatia | 583 | 25 | 38 | 49 | 47 | 52 | 29 | 24 | 33 | 81 | 50 | 70 | 85 |
| Cyprus | 1 046 | 47 | 68 | 76 | 90 | 68 | 43 | 64 | 115 | 70 | 84 | 130 | 191 |
| Czech Republic | 4 418 | 228 | 379 | 498 | 338 | 223 | 153 | 318 | 292 | 274 | 537 | 665 | 513 |
| Denmark | 14 240 | 774 | 1 351 | 1 360 | 1 553 | 752 | 535 | 1 247 | 699 | 919 | 1 907 | 1 623 | 1 520 |
| Estonia | 756 | 63 | 105 | 66 | 42 | 41 | 28 | 12 | 25 | 35 | 46 | 158 | 135 |
| Finland | 4 424 | 223 | 310 | 400 | 315 | 212 | 238 | 136 | 205 | 258 | 487 | 856 | 784 |
| France | 76 077 | 2 314 | 5 499 | 5 679 | 6 950 | 5 459 | 3 603 | 6 605 | 8 479 | 5 291 | 9 435 | 8 234 | 8 529 |
| Georgia | 262 | 3 | 10 | 60 | 15 | 46 | 11 | 21 | 23 | 15 | 19 | 15 | 24 |
| Germany | 173 146 | 10 136 | 16 030 | 16 362 | 14 251 | 6 269 | 5 385 | 7 894 | 10 541 | 13 118 | 22 752 | 25 954 | 24 454 |
| Gibraltar | 1 | - | - | - | - | 1 | - | - | - | - | - | - | - |
| Greece | 4 063 | 177 | 250 | 316 | 388 | 276 | 209 | 244 | 414 | 316 | 348 | 438 | 687 |
| Hungary | 2 557 | 102 | 126 | 341 | 208 | 180 | 169 | 153 | 208 | 160 | 258 | 351 | 301 |
| Iceland | 501 | 32 | 17 | 37 | 56 | 22 | 25 | 15 | 17 | 48 | 45 | 101 | 86 |
| Ireland | 20 817 | 1 080 | 1 498 | 1 870 | 2 098 | 1 066 | 1 191 | 1 467 | 1 579 | 1 766 | 1 791 | 2 178 | 3 233 |
| Italy | 32 357 | 821 | 1 178 | 1 689 | 1 900 | 1 753 | 1 859 | 2 959 | 7 272 | 3 045 | 2 923 | 2 996 | 3 962 |
| Latvia | 601 | 30 | 37 | 47 | 42 | 25 | 13 | 13 | 19 | 56 | 66 | 183 | 70 |
| Liechtenstein | 188 | 10 | 22 | 10 | 27 | 8 | 6 | 7 | 5 | 6 | 27 | 28 | 32 |
| Lithuania | 1 031 | 84 | 77 | 105 | 74 | 38 | 38 | 34 | 67 | 76 | 173 | 140 | 125 |
| Luxembourg | 1 202 | 56 | 84 | 77 | 149 | 60 | 36 | 44 | 177 | 90 | 129 | 110 | 190 |
| Macedonia | 140 | 6 | 4 | 21 | 8 | 13 | 2 | 8 | 5 | 8 | 17 | 20 | 28 |
| Malta | 562 | 15 | 16 | 28 | 34 | 46 | 36 | 35 | 124 | 65 | 32 | 44 | 87 |
| Moldova | 47 | 7 | 1 | 1 | 3 | 1 | 5 | 3 | 5 | 1 | 7 | 11 | 2 |
| Monaco | 72 | 4 | 7 | 1 | 9 | 6 | 1 | 7 | 12 | 1 | 7 | 10 | 7 |

Appendix XVII– Number of tourists by country of residence and month of arrival, 2022 (continued)

| Country of residence | Total | Month of arrival | | | | | | | | | | | |
|----------------------------------|----------------|------------------|---------------|---------------|---------------|---------------|---------------|---------------|---------------|---------------|---------------|---------------|---------------|
| | | Jan | Feb | Mar | Apr | May | Jun | Jul | Aug | Sep | Oct | Nov | Dec |
| Montenegro | 75 | 5 | 3 | 4 | 9 | 7 | 2 | 1 | 2 | 7 | 7 | 7 | 21 |
| Norway | 9 149 | 382 | 802 | 908 | 832 | 323 | 398 | 598 | 344 | 707 | 1 013 | 1 431 | 1 411 |
| Poland | 7 389 | 428 | 633 | 643 | 590 | 367 | 402 | 364 | 556 | 644 | 760 | 1 062 | 940 |
| Portugal | 16 092 | 843 | 1 062 | 1 292 | 1 741 | 1 207 | 1 073 | 1 168 | 1 467 | 1 385 | 1 321 | 1 745 | 1 788 |
| Republic of Belarus | 328 | 21 | 34 | 27 | 10 | 20 | 17 | 20 | 28 | 31 | 34 | 48 | 38 |
| Romania | 1 560 | 46 | 83 | 144 | 144 | 94 | 58 | 83 | 172 | 159 | 180 | 156 | 241 |
| Russian Federation | 16 234 | 1 026 | 1 202 | 1 038 | 916 | 737 | 687 | 697 | 1 229 | 1 404 | 2 117 | 2 607 | 2 574 |
| San Marino | 14 | - | - | - | 1 | - | 2 | 1 | 1 | - | 1 | 6 | 2 |
| Serbia | 837 | 39 | 66 | 68 | 95 | 81 | 46 | 36 | 47 | 61 | 68 | 111 | 119 |
| Slovakia | 1 313 | 64 | 84 | 84 | 118 | 71 | 45 | 99 | 96 | 87 | 173 | 212 | 180 |
| Slovenia | 772 | 28 | 51 | 30 | 111 | 50 | 29 | 53 | 83 | 47 | 126 | 97 | 67 |
| Spain | 23 304 | 615 | 848 | 1 329 | 1 673 | 1 311 | 1 652 | 2 712 | 4 518 | 2 267 | 1 898 | 2 334 | 2 147 |
| Sweden | 17 381 | 968 | 1 492 | 1 401 | 1 311 | 865 | 648 | 608 | 655 | 985 | 2 116 | 2 566 | 3 766 |
| Switzerland | 33 257 | 2 289 | 2 988 | 2 455 | 3 433 | 1 409 | 1 043 | 2 229 | 1 527 | 2 481 | 4 514 | 4 613 | 4 276 |
| The Netherlands | 90 289 | 5 608 | 6 483 | 5 272 | 7 671 | 3 789 | 2 956 | 11 111 | 8 642 | 7 782 | 9 801 | 10 374 | 10 800 |
| Turkey | 8 840 | 338 | 572 | 780 | 639 | 924 | 586 | 650 | 775 | 904 | 625 | 1 183 | 864 |
| UK | 283 031 | 16 086 | 24 087 | 25 785 | 28 299 | 15 115 | 12 301 | 18 967 | 23 361 | 21 948 | 26 928 | 28 730 | 41 424 |
| Ukraine | 1 298 | 224 | 113 | 78 | 56 | 59 | 52 | 88 | 106 | 93 | 125 | 133 | 171 |
| Vatican | 8 | 1 | 3 | - | - | 1 | - | - | 1 | - | 2 | - | - |
| Yugoslavia | 1 | - | - | 1 | - | - | - | - | - | - | - | - | - |
| North America | 297 684 | 8 939 | 11 584 | 19 733 | 20 899 | 26 516 | 30 388 | 30 807 | 28 336 | 29 353 | 26 922 | 26 690 | 37 517 |
| Canada | 35 501 | 1 078 | 1 656 | 2 641 | 2 575 | 2 727 | 2 181 | 2 671 | 3 174 | 3 522 | 3 832 | 4 023 | 5 421 |
| USA | 262 183 | 7 861 | 9 928 | 17 092 | 18 324 | 23 789 | 28 207 | 28 136 | 25 162 | 25 831 | 23 090 | 22 667 | 32 096 |
| Central and South America | 28 516 | 1 065 | 1 235 | 2 044 | 2 142 | 2 376 | 2 070 | 3 095 | 2 475 | 2 990 | 2 957 | 2 830 | 3 237 |
| Antigua and Barbuda | 189 | 8 | 14 | 17 | 5 | 17 | 6 | 23 | 11 | 12 | 39 | 14 | 23 |
| Argentina | 2 381 | 100 | 110 | 191 | 198 | 184 | 133 | 201 | 185 | 421 | 191 | 233 | 234 |
| Bahamas | 150 | 2 | 5 | 13 | 2 | 9 | 11 | 12 | 13 | 9 | 16 | 15 | 43 |
| Barbados | 182 | 16 | 5 | 4 | 11 | 6 | 10 | 39 | 8 | 11 | 11 | 25 | 36 |
| Belize | 40 | 1 | - | 1 | 3 | - | 2 | 1 | 6 | 8 | 7 | 7 | 4 |
| Bolivia | 133 | 4 | 6 | 25 | 17 | 5 | 10 | 8 | 12 | 13 | 10 | 15 | 8 |
| Brazil | 14 727 | 584 | 689 | 939 | 1 096 | 1 278 | 1 102 | 1 630 | 1 396 | 1 368 | 1 484 | 1 452 | 1 709 |

Appendix XVII– Number of tourists by country of residence and month of arrival, 2022 (continued)

| Country of residence | Total | Month of arrival | | | | | | | | | | | |
|---------------------------|-------|------------------|-----|-----|-----|-----|-----|-----|-----|-----|-----|-----|-----|
| | | Jan | Feb | Mar | Apr | May | Jun | Jul | Aug | Sep | Oct | Nov | Dec |
| Chile | 1 128 | 57 | 40 | 86 | 72 | 89 | 70 | 66 | 118 | 164 | 141 | 110 | 115 |
| Colombia | 990 | 29 | 25 | 67 | 83 | 86 | 67 | 89 | 83 | 117 | 89 | 155 | 100 |
| Costa Rica | 465 | 15 | 13 | 37 | 26 | 24 | 44 | 103 | 53 | 22 | 46 | 42 | 40 |
| Cuba | 618 | 53 | 56 | 123 | 51 | 30 | 24 | 53 | 32 | 80 | 34 | 44 | 38 |
| Dominica | 49 | - | 5 | 5 | 2 | 2 | 5 | 5 | 2 | 7 | 5 | 2 | 9 |
| Dominican Republic | 76 | 4 | 4 | 2 | 8 | 1 | 12 | 4 | 6 | 8 | 11 | 11 | 5 |
| Ecuador | 380 | 8 | 15 | 65 | 34 | 33 | 29 | 24 | 38 | 36 | 32 | 33 | 33 |
| El Salvador | 36 | 1 | 2 | 2 | 3 | 2 | 2 | 5 | 1 | 1 | 5 | 10 | 4 |
| Grenada | 13 | 1 | - | - | 1 | 2 | 1 | 1 | - | 3 | - | 2 | 2 |
| Guatemala | 176 | 5 | 13 | 8 | 23 | 15 | 22 | 8 | 5 | 19 | 27 | 18 | 13 |
| Guyana | 107 | 8 | 4 | 6 | 4 | 9 | 6 | 11 | 10 | 9 | 15 | 12 | 13 |
| Haiti | 38 | 1 | 1 | 5 | 5 | 3 | 2 | 2 | 4 | - | 6 | 4 | 5 |
| Honduras | 62 | - | - | 4 | 3 | 3 | 9 | 3 | 11 | 4 | 5 | 14 | 6 |
| Jamaica | 459 | 17 | 22 | 31 | 31 | 39 | 26 | 35 | 40 | 45 | 67 | 64 | 42 |
| Mexico | 3 582 | 73 | 95 | 201 | 289 | 281 | 299 | 574 | 271 | 323 | 432 | 306 | 438 |
| Nicaragua | 22 | 1 | 3 | 3 | 1 | 3 | 2 | 2 | 1 | 2 | 2 | 1 | 1 |
| Panama | 179 | 7 | 13 | 12 | 18 | 16 | 10 | 19 | 15 | 16 | 17 | 21 | 15 |
| Paraguay | 185 | 8 | 11 | 8 | 12 | 16 | 22 | 6 | 16 | 21 | 22 | 22 | 21 |
| Peru | 870 | 23 | 33 | 46 | 51 | 120 | 71 | 79 | 69 | 92 | 126 | 77 | 83 |
| Saint Lucia | 20 | 1 | - | 5 | 2 | 1 | 1 | - | 2 | 1 | 1 | 5 | 1 |
| St Vincent And Grenadines | 20 | 1 | 3 | 2 | - | 3 | 2 | 2 | - | 4 | 1 | - | 2 |
| Suriname | 11 | - | - | 2 | 1 | 1 | - | 1 | - | 3 | 2 | - | 1 |
| Trinidad and Tobago | 333 | 16 | 8 | 23 | 27 | 20 | 20 | 19 | 20 | 37 | 40 | 40 | 63 |
| Uruguay | 388 | 2 | 6 | 46 | 28 | 40 | 19 | 22 | 19 | 84 | 38 | 24 | 60 |
| Venezuela | 465 | 18 | 33 | 64 | 34 | 30 | 30 | 39 | 26 | 45 | 33 | 49 | 64 |
| West Indies | 42 | 1 | 1 | 1 | 1 | 8 | 3 | 9 | 2 | 5 | 2 | 3 | 6 |

Appendix XVII– Number of tourists by country of residence and month of arrival, 2022 (continued)

| Country of residence | Total | Month of arrival | | | | | | | | | | | |
|--------------------------------|----------------|------------------|--------------|--------------|--------------|---------------|---------------|---------------|---------------|---------------|---------------|---------------|---------------|
| | | Jan | Feb | Mar | Apr | May | Jun | Jul | Aug | Sep | Oct | Nov | Dec |
| Australasia | 65 288 | 1 621 | 2 046 | 3 485 | 5 135 | 4 369 | 4 452 | 4 914 | 5 883 | 7 288 | 6 456 | 7 284 | 12 355 |
| American Samoa | 1 | | | | 1 | | | | | | | | |
| Australia | 53 769 | 1 459 | 1 814 | 3 020 | 4 369 | 3 741 | 3 791 | 3 965 | 4 716 | 5 857 | 5 202 | 6 042 | 9 793 |
| Federated States of Micronesia | 3 | - | - | 1 | - | - | - | - | - | 1 | 1 | - | - |
| Fiji | 135 | - | - | 3 | 1 | 3 | - | 4 | 5 | 77 | 6 | 1 | 35 |
| French Polynesia | 3 | - | 1 | - | - | - | - | 1 | - | - | 1 | - | - |
| Kiribati | 2 | - | - | - | - | - | - | - | 1 | - | 1 | - | - |
| Nauru | 1 | - | 1 | - | - | - | - | - | - | - | - | - | - |
| New Zealand | 11 290 | 161 | 229 | 454 | 761 | 620 | 659 | 941 | 1 161 | 1 325 | 1 240 | 1 228 | 2 511 |
| Papua New Guinea | 29 | - | 1 | 5 | - | 5 | - | - | - | 3 | 3 | 10 | 2 |
| Samoa | 30 | - | - | 1 | - | - | - | - | - | 13 | 2 | 1 | 13 |
| Solomon Islands | 2 | - | - | - | - | - | - | - | - | - | - | 2 | - |
| Tonga | 16 | - | - | - | 3 | - | - | 3 | - | 10 | - | - | - |
| Tuvalu | 1 | - | - | - | - | - | - | - | - | 1 | - | - | - |
| Vanuatu | 6 | 1 | - | 1 | - | - | 2 | - | - | 1 | - | - | 1 |
| Middle East | 40 628 | 823 | 1 590 | 2 563 | 2 450 | 2 508 | 2 861 | 6 779 | 6 958 | 4 598 | 3 123 | 3 417 | 2 958 |
| Bahrain | 160 | 1 | - | 2 | 2 | 20 | 18 | 28 | 27 | 17 | 17 | 15 | 13 |
| Iran | 1 618 | 54 | 53 | 349 | 75 | 77 | 85 | 78 | 84 | 280 | 86 | 214 | 183 |
| Iraq | 149 | 6 | 3 | 6 | 4 | 12 | 7 | 22 | 10 | 12 | 23 | 29 | 15 |
| Israel | 17 427 | 391 | 963 | 1 266 | 1 767 | 793 | 777 | 1 522 | 2 348 | 2 787 | 1 734 | 1 392 | 1 687 |
| Jordan | 1 672 | 44 | 101 | 124 | 105 | 159 | 130 | 145 | 168 | 194 | 165 | 190 | 147 |
| Kuwait | 948 | 8 | 22 | 17 | 36 | 52 | 124 | 207 | 327 | 67 | 19 | 42 | 27 |
| Lebanon | 1 822 | 80 | 97 | 165 | 142 | 165 | 141 | 151 | 172 | 171 | 153 | 223 | 162 |
| Oman | 198 | 2 | 5 | 7 | 2 | 15 | 18 | 56 | 28 | 17 | 24 | 19 | 5 |
| Palestine | 236 | 6 | 3 | 13 | 18 | 16 | 18 | 63 | 27 | 17 | 15 | 22 | 18 |
| Qatar | 1 030 | 20 | 55 | 50 | 33 | 77 | 203 | 350 | 140 | 32 | 17 | 18 | 35 |
| Saudi Arabia | 11 464 | 153 | 213 | 376 | 197 | 873 | 1 029 | 3 077 | 2 643 | 756 | 661 | 1 031 | 455 |
| Syria | 377 | 15 | 23 | 23 | 18 | 28 | 34 | 35 | 49 | 34 | 39 | 36 | 43 |
| United Arab Emirates | 3 100 | 27 | 32 | 133 | 42 | 183 | 219 | 1 001 | 875 | 180 | 130 | 147 | 131 |
| Yemen | 427 | 16 | 20 | 32 | 9 | 38 | 58 | 44 | 60 | 34 | 40 | 39 | 37 |
| Asia | 117 852 | 4 738 | 5 870 | 7 302 | 7 927 | 11 468 | 10 607 | 10 803 | 11 117 | 11 306 | 12 524 | 12 071 | 12 119 |
| Afghanistan | 123 | 9 | 2 | 4 | 22 | 12 | 12 | 7 | 5 | 15 | 10 | 16 | 9 |
| Armenia | 57 | 1 | 4 | 10 | 4 | 9 | | 4 | 2 | 6 | 4 | 8 | 5 |

Appendix XVII– Number of tourists by country of residence and month of arrival, 2022 (continued)

| Country of residence | Total | Month of arrival | | | | | | | | | | | |
|--------------------------|--------|------------------|-------|-------|-------|-------|-------|-------|-------|-------|-------|-------|-------|
| | | Jan | Feb | Mar | Apr | May | Jun | Jul | Aug | Sep | Oct | Nov | Dec |
| Azerbaijan | 81 | 1 | 3 | 6 | 8 | 3 | 5 | 11 | 6 | 5 | 5 | 15 | 13 |
| Bangladesh | 7 363 | 612 | 500 | 615 | 493 | 664 | 641 | 521 | 711 | 722 | 733 | 612 | 539 |
| Bhutan | 7 | - | - | 1 | - | - | - | 1 | 1 | - | 3 | 1 | - |
| Brunei Darussalam | 6 | - | - | - | - | 1 | - | - | - | 1 | 2 | 1 | 1 |
| Cambodia | 30 | - | 1 | 2 | 3 | 1 | 1 | 3 | 2 | 6 | 6 | 5 | 1 |
| China | 12 187 | 410 | 632 | 793 | 889 | 906 | 811 | 1 018 | 1 374 | 1 322 | 1 316 | 1 510 | 1 206 |
| Hong Kong | 32 | - | - | 2 | 4 | 2 | 2 | 1 | 4 | 11 | 2 | 2 | 6 |
| India | 55 506 | 1 863 | 2 790 | 3 108 | 3 513 | 5 993 | 5 568 | 5 249 | 5 114 | 5 221 | 6 120 | 5 370 | 5 597 |
| Indonesia | 1 198 | 64 | 35 | 43 | 57 | 116 | 108 | 106 | 179 | 96 | 125 | 138 | 131 |
| Japan | 5 513 | 144 | 130 | 268 | 413 | 516 | 490 | 474 | 522 | 580 | 532 | 617 | 827 |
| Kazakhstan | 410 | 20 | 27 | 21 | 44 | 24 | 37 | 30 | 25 | 16 | 46 | 75 | 45 |
| Kyrgystan | 77 | 2 | 2 | 4 | 2 | 8 | 8 | 6 | 4 | 4 | 4 | 12 | 21 |
| Laos | 16 | - | - | - | - | - | - | 2 | 2 | 2 | 3 | 5 | 2 |
| Macau | 5 | 2 | - | - | 1 | - | - | 1 | - | - | - | 1 | - |
| Malaysia | 2 764 | 51 | 88 | 157 | 125 | 348 | 257 | 273 | 236 | 304 | 297 | 323 | 305 |
| Maldives | 96 | 1 | 3 | 6 | 21 | 1 | 33 | 2 | 6 | 7 | 14 | 2 | - |
| Mongolia | 51 | 3 | - | 3 | 3 | 3 | 1 | 4 | 6 | 6 | 11 | 5 | 6 |
| Myanmar | 133 | 9 | - | 9 | 4 | 18 | 22 | 13 | 14 | 2 | 10 | 19 | 13 |
| Nepal | 491 | 76 | 37 | 32 | 15 | 38 | 24 | 43 | 25 | 43 | 48 | 53 | 57 |
| North Korea | 33 | 4 | - | 2 | 6 | 3 | - | 4 | 2 | - | - | 5 | 7 |
| Northern Mariana Islands | 6 | 1 | - | - | - | 1 | - | - | - | 1 | 1 | 2 | - |
| Pakistan | 12 470 | 769 | 831 | 1 055 | 892 | 1 427 | 1 071 | 1 011 | 1 253 | 1 035 | 1 050 | 1 153 | 923 |
| Philippines | 4 329 | 127 | 230 | 349 | 374 | 406 | 330 | 548 | 291 | 381 | 452 | 361 | 480 |
| Singapore | 2 821 | 21 | 44 | 70 | 138 | 236 | 322 | 196 | 246 | 296 | 335 | 467 | 450 |
| South Korea | 5 103 | 255 | 200 | 349 | 369 | 285 | 395 | 548 | 484 | 492 | 427 | 573 | 726 |
| Sri Lanka | 1 428 | 64 | 67 | 62 | 108 | 87 | 69 | 175 | 153 | 163 | 141 | 106 | 233 |
| Taiwan | 1 481 | 71 | 76 | 85 | 146 | 97 | 108 | 159 | 136 | 158 | 159 | 152 | 134 |
| Tajikistan | 52 | 2 | 5 | 15 | 3 | 7 | 7 | 9 | 4 | 1 | 4 | 1 | 1 |
| Thailand | 2 798 | 143 | 154 | 202 | 233 | 211 | 214 | 265 | 259 | 309 | 263 | 260 | 285 |
| Timor-Leste | 4 | - | - | - | 1 | - | - | 1 | - | - | 2 | - | - |
| Turkmenistan | 17 | 1 | - | - | - | 3 | 1 | - | 2 | 1 | 1 | 3 | 5 |
| Uzbekistan | 84 | 2 | 4 | 6 | 7 | 4 | 16 | 5 | 2 | 8 | 15 | 13 | 2 |
| Vietnam | 1 080 | 10 | 5 | 23 | 33 | 44 | 54 | 113 | 47 | 92 | 385 | 185 | 89 |

Appendix XVII– Number of tourists by country of residence and month of arrival, 2022 (continued)

| Country of residence | Total | Month of arrival | | | | | | | | | | | |
|--------------------------------|------------------|------------------|----------------|----------------|----------------|----------------|----------------|----------------|----------------|----------------|----------------|----------------|----------------|
| | | Jan | Feb | Mar | Apr | May | Jun | Jul | Aug | Sep | Oct | Nov | Dec |
| Africa | 4 237 261 | 312 440 | 215 760 | 250 113 | 311 087 | 314 070 | 311 031 | 384 306 | 422 247 | 411 724 | 413 481 | 404 890 | 486 112 |
| SADC | 4 139 457 | 306 645 | 209 412 | 242 869 | 304 123 | 305 900 | 304 016 | 376 566 | 413 522 | 402 457 | 402 365 | 394 650 | 476 932 |
| Angola | 32 194 | 1 315 | 1 760 | 2 615 | 2 840 | 2 833 | 2 074 | 2 774 | 3 442 | 3 062 | 3 002 | 3 138 | 3 339 |
| Botswana | 262 232 | 11 834 | 11 821 | 15 005 | 21 554 | 20 265 | 18 591 | 22 009 | 23 822 | 27 852 | 24 834 | 26 017 | 38 628 |
| DRC | 17 571 | 1 188 | 1 178 | 1 374 | 1 578 | 1 738 | 1 238 | 1 626 | 2 004 | 1 233 | 1 208 | 1 227 | 1 979 |
| Eswatini | 403 762 | 21 854 | 21 231 | 24 410 | 30 649 | 31 201 | 32 216 | 39 481 | 46 103 | 48 497 | 44 130 | 29 911 | 34 079 |
| Lesotho | 835 921 | 84 960 | 41 767 | 46 233 | 63 229 | 62 830 | 64 545 | 84 628 | 74 167 | 71 620 | 73 357 | 79 703 | 88 882 |
| Madagascar | 1 716 | 17 | 32 | 59 | 122 | 202 | 120 | 190 | 160 | 188 | 267 | 212 | 147 |
| Malawi | 114 352 | 8 216 | 6 373 | 7 115 | 7 329 | 8 383 | 8 609 | 9 657 | 10 028 | 11 333 | 13 920 | 12 504 | 10 885 |
| Mauritius | 11 094 | 335 | 655 | 778 | 792 | 946 | 683 | 901 | 1 078 | 980 | 1 071 | 1 534 | 1 341 |
| Mozambique | 944 308 | 96 511 | 60 393 | 62 983 | 62 650 | 66 391 | 66 371 | 78 273 | 87 591 | 87 193 | 84 072 | 92 796 | 99 084 |
| Namibia | 137 388 | 8 376 | 8 843 | 11 279 | 11 866 | 10 379 | 10 430 | 11 722 | 11 011 | 11 857 | 12 013 | 11 177 | 18 435 |
| Seychelles | 2 785 | 36 | 120 | 259 | 250 | 136 | 141 | 160 | 167 | 271 | 339 | 510 | 396 |
| Tanzania | 26 268 | 1 556 | 1 554 | 2 087 | 1 925 | 2 191 | 1 994 | 2 094 | 2 466 | 2 233 | 2 556 | 2 510 | 3 102 |
| Zambia | 116 076 | 7 638 | 7 315 | 8 820 | 8 764 | 9 574 | 9 248 | 10 020 | 10 848 | 10 381 | 10 714 | 10 657 | 12 097 |
| Zimbabwe | 1 233 790 | 62 809 | 46 370 | 59 852 | 90 575 | 88 831 | 87 756 | 113 031 | 140 635 | 125 757 | 130 882 | 122 754 | 164 538 |
| 'Other' African | 97 804 | 5 795 | 6 348 | 7 244 | 6 964 | 8 170 | 7 015 | 7 740 | 8 725 | 9 267 | 11 116 | 10 240 | 9 180 |
| East and Central Africa | 47 897 | 2 601 | 2 940 | 3 271 | 3 528 | 3 873 | 3 288 | 3 848 | 4 163 | 4 681 | 5 625 | 5 012 | 5 067 |
| Burundi | 818 | 45 | 36 | 40 | 50 | 52 | 90 | 47 | 75 | 56 | 89 | 126 | 112 |
| Cameroon | 3 629 | 226 | 279 | 239 | 249 | 246 | 274 | 266 | 268 | 402 | 389 | 340 | 451 |
| Central African Republic | 127 | 3 | 5 | 5 | 8 | 10 | 10 | 14 | 4 | 16 | 19 | 8 | 25 |
| Chad | 306 | 21 | 19 | 35 | 17 | 23 | 21 | 16 | 30 | 34 | 38 | 37 | 15 |
| Comoros | 316 | 9 | 6 | 27 | 6 | 21 | 24 | 56 | 73 | 25 | 21 | 35 | 13 |
| Congo | 1 598 | 102 | 96 | 100 | 120 | 116 | 88 | 130 | 176 | 157 | 168 | 160 | 185 |
| Djibouti | 73 | 3 | 9 | 1 | 3 | 8 | 7 | 4 | 8 | 7 | 19 | 4 | 4 |
| Equatorial Guinea | 250 | 8 | 7 | 21 | 13 | 19 | 18 | 19 | 19 | 23 | 75 | 9 | 19 |
| Eritrea | 419 | 14 | 51 | 26 | 31 | 34 | 40 | 66 | 21 | 32 | 37 | 30 | 37 |
| Ethiopia | 5 001 | 335 | 323 | 389 | 368 | 465 | 357 | 445 | 430 | 460 | 542 | 453 | 434 |
| Gabon | 2 975 | 102 | 181 | 171 | 177 | 175 | 167 | 347 | 415 | 222 | 302 | 273 | 443 |
| Kenya | 21 308 | 1 031 | 1 349 | 1 468 | 1 702 | 1 822 | 1 383 | 1 640 | 1 708 | 2 140 | 2 733 | 2 290 | 2 042 |
| Rwanda | 708 | 41 | 41 | 37 | 49 | 95 | 42 | 60 | 42 | 73 | 87 | 81 | 60 |
| São Tomé and Príncipe | 52 | 2 | 2 | 2 | 4 | 7 | 4 | 4 | 2 | 6 | 10 | 4 | 5 |
| Somalia | 1 023 | 38 | 32 | 87 | 55 | 81 | 96 | 114 | 136 | 140 | 133 | 44 | 67 |
| Uganda | 9 294 | 621 | 504 | 623 | 676 | 699 | 667 | 624 | 760 | 887 | 975 | 1 103 | 1 155 |

Appendix XVII– Number of tourists by country of residence and month of arrival, 2022 (concluded)

| Country of residence | Total | Month of arrival | | | | | | | | | | | |
|----------------------|---------------|------------------|--------------|--------------|--------------|--------------|--------------|--------------|--------------|--------------|--------------|--------------|--------------|
| | | Jan | Feb | Mar | Apr | May | Jun | Jul | Aug | Sep | Oct | Nov | Dec |
| West Africa | 39 494 | 2 772 | 2 766 | 3 055 | 2 910 | 3 327 | 2 922 | 3 100 | 3 579 | 3 572 | 4 260 | 3 945 | 3 286 |
| Benin | 1 190 | 55 | 74 | 104 | 64 | 82 | 113 | 98 | 114 | 85 | 136 | 129 | 136 |
| Burkina Faso | 568 | 16 | 15 | 37 | 23 | 66 | 80 | 43 | 45 | 56 | 82 | 66 | 39 |
| Cape Verde Island | 250 | 4 | 16 | 12 | 21 | 16 | 18 | 18 | 29 | 33 | 28 | 32 | 23 |
| Côte d'Ivoire | 1 874 | 51 | 76 | 117 | 77 | 174 | 207 | 239 | 181 | 161 | 221 | 230 | 140 |
| Gambia | 340 | 10 | 13 | 21 | 13 | 18 | 31 | 37 | 28 | 27 | 62 | 50 | 30 |
| Ghana | 14 381 | 886 | 807 | 974 | 1 206 | 1 377 | 1 203 | 1 345 | 1 528 | 1 421 | 1 438 | 1 229 | 967 |
| Guinea | 1 055 | 49 | 72 | 41 | 28 | 85 | 85 | 70 | 85 | 98 | 133 | 184 | 125 |
| Guinea-Bissau | 46 | 2 | 1 | 4 | 6 | 6 | 3 | 3 | 4 | 4 | 6 | 4 | 3 |
| Liberia | 463 | 24 | 13 | 29 | 25 | 31 | 33 | 21 | 28 | 44 | 102 | 42 | 71 |
| Mali | 748 | 32 | 34 | 42 | 40 | 100 | 51 | 56 | 73 | 65 | 86 | 106 | 63 |
| Mauritania | 124 | 1 | 2 | 35 | 3 | 9 | 11 | 1 | 10 | 12 | 22 | 15 | 3 |
| Niger | 218 | 10 | 4 | 12 | 5 | 19 | 16 | 15 | 17 | 24 | 43 | 35 | 18 |
| Nigeria | 16 104 | 1 548 | 1 568 | 1 456 | 1 276 | 1 164 | 926 | 990 | 1 235 | 1 296 | 1 585 | 1 559 | 1 501 |
| Saint Helena | 58 | - | 2 | 8 | 11 | 1 | 3 | 8 | 9 | 2 | 5 | 7 | 2 |
| Senegal | 1 281 | 46 | 51 | 112 | 73 | 98 | 87 | 102 | 130 | 133 | 190 | 169 | 90 |
| Sierra Leone | 462 | 31 | 11 | 30 | 33 | 48 | 19 | 31 | 47 | 65 | 54 | 50 | 43 |
| Togo | 332 | 7 | 7 | 21 | 6 | 33 | 36 | 23 | 16 | 46 | 67 | 38 | 32 |
| North Africa | 10 413 | 422 | 642 | 918 | 526 | 970 | 805 | 792 | 983 | 1 014 | 1 231 | 1 283 | 827 |
| Algeria | 942 | 30 | 121 | 65 | 65 | 76 | 69 | 47 | 73 | 92 | 138 | 126 | 40 |
| Egypt | 4 754 | 209 | 305 | 428 | 214 | 475 | 369 | 419 | 481 | 446 | 537 | 506 | 365 |
| Libya | 610 | 23 | 24 | 114 | 22 | 73 | 46 | 32 | 49 | 46 | 52 | 91 | 38 |
| Morocco | 1 202 | 17 | 52 | 116 | 43 | 116 | 123 | 80 | 116 | 116 | 133 | 196 | 94 |
| South Sudan | 696 | 25 | 34 | 33 | 73 | 44 | 48 | 44 | 51 | 65 | 102 | 72 | 105 |
| The Sudan | 1 339 | 67 | 54 | 81 | 69 | 95 | 103 | 121 | 152 | 156 | 180 | 151 | 110 |
| Tunisia | 862 | 51 | 52 | 81 | 40 | 91 | 45 | 48 | 60 | 92 | 88 | 140 | 74 |
| Western Sahara | 8 | - | - | - | - | - | 2 | 1 | 1 | 1 | 1 | 1 | 1 |
| Unspecified | 10 130 | 497 | 514 | 647 | 771 | 824 | 834 | 798 | 828 | 1 069 | 1 192 | 1 097 | 1 059 |

Appendix XVIII– Number of tourists by country of residence and mode of travel, 2022

| Country of residence | Total | Mode of travel | | |
|----------------------|------------------|------------------|------------------|--------------|
| | | Air | Road | Sea |
| Total | 5 698 062 | 1 837 649 | 3 854 806 | 5 607 |
| Overseas | 1 450 671 | 1 347 037 | 99 192 | 4 442 |
| Europe | 900 703 | 838 013 | 59 763 | 2 927 |
| Albania | 106 | 73 | 33 | - |
| Andorra | 53 | 53 | - | - |
| Austria | 14 043 | 13 228 | 757 | 58 |
| Belgium | 34 826 | 31 367 | 3 441 | 18 |
| Bosnia-Herzegovina | 110 | 107 | 3 | - |
| Bulgaria | 1 302 | 1 154 | 124 | 24 |
| Croatia | 583 | 550 | 30 | 3 |
| Cyprus | 1 046 | 964 | 82 | - |
| Czech Republic | 4 418 | 3 966 | 448 | 4 |
| Denmark | 14 240 | 13 693 | 539 | 8 |
| Estonia | 756 | 701 | 55 | - |
| Finland | 4 424 | 4 138 | 284 | 2 |
| France | 76 077 | 69 106 | 6 924 | 47 |
| Georgia | 262 | 243 | 19 | - |
| Germany | 173 146 | 161 627 | 9 629 | 1 890 |
| Gibraltar | 1 | 1 | - | - |
| Greece | 4 063 | 3 841 | 216 | 6 |
| Hungary | 2 557 | 2 433 | 123 | 1 |
| Iceland | 501 | 485 | 16 | - |
| Ireland | 20 817 | 19 925 | 876 | 16 |
| Italy | 32 357 | 29 982 | 2 322 | 53 |
| Latvia | 601 | 575 | 23 | 3 |
| Liechtenstein | 188 | 184 | 4 | - |
| Lithuania | 1 031 | 942 | 89 | - |
| Luxembourg | 1 202 | 1 128 | 74 | - |
| Macedonia | 140 | 133 | 6 | 1 |
| Malta | 562 | 504 | 58 | - |
| Moldova | 47 | 43 | 2 | 2 |
| Monaco | 72 | 61 | 11 | - |

Appendix XVIII– Number of tourists by country of residence and mode of travel, 2022 (continued)

| Country of residence | Total | Mode of travel | | |
|----------------------------------|----------------|----------------|---------------|--------------|
| | | Air | Road | Sea |
| Montenegro | 75 | 50 | 15 | 10 |
| Norway | 9 149 | 8 394 | 739 | 16 |
| Poland | 7 389 | 6 891 | 473 | 25 |
| Portugal | 16 092 | 9 990 | 6 093 | 9 |
| Republic of Belarus | 328 | 309 | 19 | - |
| Romania | 1 560 | 1 507 | 42 | 11 |
| Russian Federation | 16 234 | 15 316 | 904 | 14 |
| San Marino | 14 | 14 | - | - |
| Serbia | 837 | 730 | 92 | 15 |
| Slovakia | 1 313 | 1 246 | 65 | 2 |
| Slovenia | 772 | 737 | 33 | 2 |
| Spain | 23 304 | 21 149 | 2 115 | 40 |
| Sweden | 17 381 | 16 545 | 820 | 16 |
| Switzerland | 33 257 | 31 255 | 1 948 | 54 |
| The Netherlands | 90 289 | 81 042 | 9 202 | 45 |
| Turkey | 8 840 | 8 010 | 826 | 4 |
| UK | 283 031 | 272 427 | 10 091 | 513 |
| Ukraine | 1 298 | 1 190 | 93 | 15 |
| Vatican | 8 | 4 | 4 | - |
| Yugoslavia | 1 | - | 1 | - |
| North America | 297 684 | 283 443 | 13 121 | 1 120 |
| Canada | 35 501 | 33 424 | 1 964 | 113 |
| USA | 262 183 | 250 019 | 11 157 | 1 007 |
| Central and South America | 28 516 | 25 591 | 2 880 | 45 |
| Antigua and Barbuda | 189 | 173 | 16 | - |
| Argentina | 2 381 | 2 211 | 164 | 6 |
| Bahamas | 150 | 139 | 11 | - |
| Barbados | 182 | 169 | 13 | - |
| Belize | 40 | 34 | 6 | - |
| Bolivia | 133 | 109 | 21 | 3 |
| Brazil | 14 727 | 12 760 | 1 942 | 25 |

Appendix XVIII– Number of tourists by country of residence and mode of travel, 2022 (continued)

| Country of residence | Total | Mode of travel | | |
|---------------------------|-------|----------------|------|-----|
| | | Air | Road | Sea |
| Chile | 1 128 | 1 032 | 95 | 1 |
| Colombia | 990 | 958 | 29 | 3 |
| Costa Rica | 465 | 456 | 9 | - |
| Cuba | 618 | 528 | 87 | 3 |
| Dominica | 49 | 45 | 4 | - |
| Dominican Republic | 76 | 69 | 7 | - |
| Ecuador | 380 | 359 | 21 | - |
| El Salvador | 36 | 35 | 1 | - |
| Grenada | 13 | 13 | - | - |
| Guatemala | 176 | 176 | - | - |
| Guyana | 107 | 85 | 22 | - |
| Haiti | 38 | 29 | 9 | - |
| Honduras | 62 | 60 | 2 | - |
| Jamaica | 459 | 400 | 59 | - |
| Mexico | 3 582 | 3 513 | 68 | 1 |
| Nicaragua | 22 | 18 | 4 | - |
| Panama | 179 | 175 | 3 | 1 |
| Paraguay | 185 | 125 | 60 | - |
| Peru | 870 | 750 | 119 | 1 |
| Saint Lucia | 20 | 19 | 1 | - |
| St Vincent And Grenadines | 20 | 19 | 1 | - |
| Suriname | 11 | 11 | - | - |
| Trinidad and Tobago | 333 | 316 | 17 | - |
| Uruguay | 388 | 378 | 10 | - |
| Venezuela | 465 | 385 | 79 | 1 |
| West Indies | 42 | 42 | - | - |

Appendix XVIII– Number of tourists by country of residence and mode of travel, 2022 (continued)

| Country of residence | Total | Mode of travel | | |
|--------------------------------|----------------|----------------|---------------|------------|
| | | Air | Road | Sea |
| Australasia | 65 288 | 63 185 | 2 010 | 93 |
| American Samoa | 1 | - | 1 | - |
| Australia | 53 769 | 52 075 | 1 609 | 85 |
| Federated States of Micronesia | 3 | - | 3 | - |
| Fiji | 135 | 133 | 2 | - |
| French Polynesia | 3 | 3 | - | - |
| Kiribati | 2 | 1 | 1 | - |
| Nauru | 1 | 1 | - | - |
| New Zealand | 11 290 | 10 891 | 391 | 8 |
| Papua New Guinea | 29 | 29 | - | - |
| Samoa | 30 | 30 | - | - |
| Solomon Islands | 2 | 1 | 1 | - |
| Tonga | 16 | 16 | - | - |
| Tuvalu | 1 | - | 1 | - |
| Vanuatu | 6 | 5 | 1 | - |
| Middle East | 40 628 | 39 437 | 1 187 | 4 |
| Bahrain | 160 | 160 | - | - |
| Iran | 1 618 | 1 537 | 81 | - |
| Iraq | 149 | 148 | 1 | - |
| Israel | 17 427 | 16 793 | 630 | 4 |
| Jordan | 1 672 | 1 493 | 179 | - |
| Kuwait | 948 | 946 | 2 | - |
| Lebanon | 1 822 | 1 692 | 130 | - |
| Oman | 198 | 196 | 2 | - |
| Palestine | 236 | 216 | 20 | - |
| Qatar | 1 030 | 1 018 | 12 | - |
| Saudi Arabia | 11 464 | 11 399 | 65 | - |
| Syria | 377 | 364 | 13 | - |
| United Arab Emirates | 3 100 | 3 069 | 31 | - |
| Yemen | 427 | 406 | 21 | - |
| Asia | 117 852 | 97 368 | 20 231 | 253 |
| Afghanistan | 123 | 76 | 47 | - |
| Armenia | 57 | 57 | - | - |

Appendix XVIII– Number of tourists by country of residence and mode of travel, 2022 (continued)

| Country of residence | Total | Mode of travel | | |
|--------------------------|--------|----------------|-------|-----|
| | | Air | Road | Sea |
| Azerbaijan | 81 | 76 | 5 | - |
| Bangladesh | 7 363 | 6 347 | 1 013 | 3 |
| Bhutan | 7 | 7 | - | - |
| Brunei Darussalam | 6 | 5 | 1 | - |
| Cambodia | 30 | 26 | 4 | - |
| China | 12 187 | 9 152 | 3 028 | 7 |
| Hong Kong | 32 | 32 | - | - |
| India | 55 506 | 46 952 | 8 422 | 132 |
| Indonesia | 1 198 | 1 077 | 90 | 31 |
| Japan | 5 513 | 5 207 | 297 | 9 |
| Kazakhstan | 410 | 390 | 20 | - |
| Kyrgystan | 77 | 76 | 1 | - |
| Laos | 16 | 15 | 1 | - |
| Macau | 5 | - | 5 | - |
| Malaysia | 2 764 | 2 565 | 195 | 4 |
| Maldives | 96 | 95 | 1 | - |
| Mongolia | 51 | 50 | 1 | - |
| Myanmar | 133 | 130 | - | 3 |
| Nepal | 491 | 465 | 26 | - |
| North Korea | 33 | 27 | 6 | - |
| Northern Mariana Islands | 6 | 1 | 5 | - |
| Pakistan | 12 470 | 8 761 | 3 699 | 10 |
| Philippines | 4 329 | 3 643 | 647 | 39 |
| Singapore | 2 821 | 2 771 | 48 | 2 |
| South Korea | 5 103 | 4 213 | 881 | 9 |
| Sri Lanka | 1 428 | 570 | 855 | 3 |
| Taiwan | 1 481 | 792 | 689 | - |
| Tajikistan | 52 | 28 | 24 | - |
| Thailand | 2 798 | 2 627 | 170 | 1 |
| Timor-Leste | 4 | 3 | 1 | - |
| Turkmenistan | 17 | 15 | 2 | - |
| Uzbekistan | 84 | 83 | 1 | - |
| Vietnam | 1 080 | 1 034 | 46 | - |

Appendix XVIII– Number of tourists by country of residence and mode of travel, 2022 (continued)

| Country of residence | Total | Mode of travel | | |
|--------------------------------|------------------|----------------|------------------|--------------|
| | | Air | Road | Sea |
| Africa | 4 237 261 | 483 436 | 3 752 660 | 1 165 |
| SADC | 4 139 457 | 393 994 | 3 744 328 | 1 135 |
| Angola | 32 194 | 28 084 | 4 103 | 7 |
| Botswana | 262 232 | 25 156 | 236 866 | 210 |
| DRC | 17 571 | 15 252 | 2 307 | 12 |
| Eswatini | 403 762 | 5 796 | 397 911 | 55 |
| Lesotho | 835 921 | 4 709 | 830 919 | 293 |
| Madagascar | 1 716 | 1 613 | 103 | - |
| Malawi | 114 352 | 17 936 | 96 397 | 19 |
| Mauritius | 11 094 | 10 351 | 739 | 4 |
| Mozambique | 944 308 | 27 195 | 917 017 | 96 |
| Namibia | 137 388 | 39 739 | 97 495 | 154 |
| Seychelles | 2 785 | 2 639 | 145 | 1 |
| Tanzania | 26 268 | 16 166 | 10 070 | 32 |
| Zambia | 116 076 | 35 427 | 80 635 | 14 |
| Zimbabwe | 1 233 790 | 163 931 | 1 069 621 | 238 |
| 'Other' African | 97 804 | 89 442 | 8 332 | 30 |
| East and Central Africa | 47 897 | 43 746 | 4 138 | 13 |
| Burundi | 818 | 772 | 46 | - |
| Cameroon | 3 629 | 3 419 | 209 | 1 |
| Central African Republic | 127 | 126 | 1 | - |
| Chad | 306 | 302 | 4 | - |
| Comoros | 316 | 312 | 4 | - |
| Congo | 1 598 | 1 544 | 54 | - |
| Djibouti | 73 | 73 | - | - |
| Equatorial Guinea | 250 | 245 | 5 | - |
| Eritrea | 419 | 380 | 39 | - |
| Ethiopia | 5 001 | 4 300 | 701 | - |
| Gabon | 2 975 | 2 917 | 58 | - |
| Kenya | 21 308 | 19 757 | 1 546 | 5 |
| Rwanda | 708 | 581 | 127 | - |
| São Tomé and Príncipe | 52 | 47 | 5 | - |
| Somalia | 1 023 | 398 | 625 | - |
| Uganda | 9 294 | 8 573 | 714 | 7 |

Appendix XVIII– Number of tourists by country of residence and mode of travel, 2022 (concluded)

| Country of residence | Total | Mode of travel | | |
|----------------------|---------------|----------------|--------------|-----------|
| | | Air | Road | Sea |
| West Africa | 39 494 | 35 688 | 3 791 | 15 |
| Benin | 1 190 | 1 144 | 46 | - |
| Burkina Faso | 568 | 562 | 6 | - |
| Cape Verde Island | 250 | 193 | 57 | - |
| Côte d'Ivoire | 1 874 | 1 800 | 74 | - |
| Gambia | 340 | 307 | 33 | - |
| Ghana | 14 381 | 13 877 | 500 | 4 |
| Guinea | 1 055 | 453 | 602 | - |
| Guinea-Bissau | 46 | 37 | 9 | - |
| Liberia | 463 | 444 | 19 | - |
| Mali | 748 | 420 | 328 | - |
| Mauritania | 124 | 124 | - | - |
| Niger | 218 | 217 | 1 | - |
| Nigeria | 16 104 | 14 082 | 2 012 | 10 |
| Saint Helena | 58 | 58 | - | - |
| Senegal | 1 281 | 1 239 | 41 | 1 |
| Sierra Leone | 462 | 406 | 56 | - |
| Togo | 332 | 325 | 7 | - |
| North Africa | 10 413 | 10 008 | 403 | 2 |
| Algeria | 942 | 912 | 30 | - |
| Egypt | 4 754 | 4 579 | 175 | - |
| Libya | 610 | 517 | 93 | - |
| Morocco | 1 202 | 1 173 | 27 | 2 |
| South Sudan | 696 | 680 | 16 | - |
| The Sudan | 1 339 | 1 294 | 45 | - |
| Tunisia | 862 | 845 | 17 | - |
| Western Sahara | 8 | 8 | - | - |
| Unspecified | 10 130 | 7 176 | 2 954 | - |

Appendix XIX– Number of tourists by country of residence and purpose of visit, 2022

| Country of residence | Total | Purpose of visit | | | |
|----------------------|------------------|------------------|------------------|---------------|-------------------|
| | | Business | Holiday | Study | Medical treatment |
| Total | 5 698 062 | 222 353 | 5 430 412 | 40 667 | 4 630 |
| Overseas | 1 450 671 | 30 771 | 1 410 776 | 8 444 | 680 |
| Europe | 900 703 | 17 763 | 878 042 | 4 438 | 460 |
| Albania | 106 | 8 | 95 | 3 | - |
| Andorra | 53 | 1 | 52 | - | - |
| Austria | 14 043 | 225 | 13 756 | 59 | 3 |
| Belgium | 34 826 | 565 | 34 055 | 184 | 22 |
| Bosnia-Herzegovina | 110 | 5 | 105 | - | - |
| Bulgaria | 1 302 | 53 | 1 239 | 10 | - |
| Croatia | 583 | 31 | 548 | 3 | 1 |
| Cyprus | 1 046 | 18 | 1 024 | 3 | 1 |
| Czech Republic | 4 418 | 96 | 4 300 | 22 | - |
| Denmark | 14 240 | 278 | 13 924 | 37 | 1 |
| Estonia | 756 | 25 | 731 | - | - |
| Finland | 4 424 | 138 | 4 249 | 37 | - |
| France | 76 077 | 1 851 | 73 222 | 990 | 14 |
| Georgia | 262 | 15 | 237 | 6 | 4 |
| Germany | 173 146 | 2 719 | 169 307 | 1 097 | 23 |
| Gibraltar | 1 | - | 1 | - | - |
| Greece | 4 063 | 171 | 3 860 | 18 | 14 |
| Hungary | 2 557 | 70 | 2 483 | 3 | 1 |
| Iceland | 501 | 9 | 487 | 2 | 3 |
| Ireland | 20 817 | 413 | 20 342 | 51 | 11 |
| Italy | 32 357 | 874 | 31 317 | 154 | 12 |
| Latvia | 601 | 12 | 589 | - | - |
| Liechtenstein | 188 | 2 | 186 | - | - |
| Lithuania | 1 031 | 30 | 996 | 5 | - |
| Luxembourg | 1 202 | 12 | 1 180 | 10 | - |
| Macedonia | 140 | 12 | 120 | 8 | - |
| Malta | 562 | 12 | 550 | - | - |
| Moldova | 47 | 4 | 43 | - | - |
| Monaco | 72 | - | 72 | - | - |

Appendix XIX– Number of tourists by country of residence and purpose of visit, 2022 (continued)

| Country of residence | Total | Purpose of visit | | | |
|----------------------------------|----------------|------------------|----------------|--------------|-------------------|
| | | Business | Holiday | Study | Medical treatment |
| Montenegro | 75 | 2 | 73 | - | - |
| Norway | 9 149 | 255 | 8 788 | 103 | 3 |
| Poland | 7 389 | 241 | 7 126 | 22 | - |
| Portugal | 16 092 | 281 | 15 735 | 50 | 26 |
| Republic of Belarus | 328 | 23 | 302 | 3 | - |
| Romania | 1 560 | 79 | 1 464 | 12 | 5 |
| Russian Federation | 16 234 | 233 | 15 960 | 39 | 2 |
| San Marino | 14 | 1 | 13 | - | - |
| Serbia | 837 | 51 | 783 | 3 | - |
| Slovakia | 1 313 | 41 | 1 262 | 8 | 2 |
| Slovenia | 772 | 39 | 726 | 7 | - |
| Spain | 23 304 | 672 | 22 503 | 127 | 2 |
| Sweden | 17 381 | 461 | 16 850 | 67 | 3 |
| Switzerland | 33 257 | 380 | 32 676 | 195 | 6 |
| The Netherlands | 90 289 | 1 350 | 88 523 | 335 | 81 |
| Turkey | 8 840 | 362 | 8 367 | 111 | - |
| UK | 283 031 | 5 578 | 276 597 | 645 | 211 |
| Ukraine | 1 298 | 65 | 1 215 | 9 | 9 |
| Vatican | 8 | - | 8 | - | - |
| Yugoslavia | 1 | - | 1 | - | - |
| North America | 297 684 | 3 807 | 292 729 | 1 050 | 98 |
| Canada | 35 501 | 596 | 34 803 | 84 | 18 |
| USA | 262 183 | 3 211 | 257 926 | 966 | 80 |
| Central and South America | 28 516 | 782 | 27 373 | 355 | 6 |
| Antigua and Barbuda | 189 | 9 | 180 | - | - |
| Argentina | 2 381 | 81 | 2 265 | 34 | 1 |
| Bahamas | 150 | 3 | 147 | - | - |
| Barbados | 182 | 7 | 171 | 4 | - |
| Belize | 40 | 2 | 38 | - | - |
| Bolivia | 133 | 3 | 130 | - | - |
| Brazil | 14 727 | 337 | 14 201 | 188 | 1 |

Appendix XIX– Number of tourists by country of residence and purpose of visit, 2022 (continued)

| Country of residence | Total | Purpose of visit | | | |
|---------------------------|-------|------------------|---------|-------|-------------------|
| | | Business | Holiday | Study | Medical treatment |
| Chile | 1 128 | 58 | 1 054 | 16 | - |
| Colombia | 990 | 52 | 914 | 24 | - |
| Costa Rica | 465 | 12 | 444 | 9 | - |
| Cuba | 618 | 5 | 603 | 9 | 1 |
| Dominica | 49 | 3 | 45 | 1 | - |
| Dominican Republic | 76 | 3 | 73 | - | - |
| Ecuador | 380 | 9 | 369 | 2 | - |
| El Salvador | 36 | 3 | 33 | - | - |
| Grenada | 13 | 3 | 9 | 1 | - |
| Guatemala | 176 | 8 | 164 | 4 | - |
| Guyana | 107 | 5 | 102 | - | - |
| Haiti | 38 | - | 36 | 2 | - |
| Honduras | 62 | 4 | 57 | - | 1 |
| Jamaica | 459 | 10 | 446 | 3 | - |
| Mexico | 3 582 | 90 | 3 449 | 43 | - |
| Nicaragua | 22 | - | 22 | - | - |
| Panama | 179 | 5 | 174 | - | - |
| Paraguay | 185 | 3 | 181 | 1 | - |
| Peru | 870 | 27 | 836 | 5 | 2 |
| Saint Lucia | 20 | - | 19 | 1 | - |
| St Vincent And Grenadines | 20 | 3 | 17 | - | - |
| Suriname | 11 | 2 | 8 | 1 | - |
| Trinidad and Tobago | 333 | 9 | 324 | - | - |
| Uruguay | 388 | 10 | 378 | - | - |
| Venezuela | 465 | 11 | 447 | 7 | - |
| West Indies | 42 | 5 | 37 | - | - |

Appendix XIX– Number of tourists by country of residence and purpose of visit, 2022 (continued)

| Country of residence | Total | Purpose of visit | | | |
|--------------------------------|----------------|------------------|----------------|--------------|-------------------|
| | | Business | Holiday | Study | Medical treatment |
| Australasia | 65 288 | 704 | 64 482 | 89 | 13 |
| American Samoa | 1 | - | 1 | - | - |
| Australia | 53 769 | 600 | 53 085 | 73 | 11 |
| Federated States of Micronesia | 3 | - | 3 | - | - |
| Fiji | 135 | 5 | 130 | - | - |
| French Polynesia | 3 | - | 3 | - | - |
| Kiribati | 2 | - | 2 | - | - |
| Nauru | 1 | - | 1 | - | - |
| New Zealand | 11 290 | 93 | 11 179 | 16 | 2 |
| Papua New Guinea | 29 | 3 | 26 | - | - |
| Samoa | 30 | 2 | 28 | - | - |
| Solomon Islands | 2 | - | 2 | - | - |
| Tonga | 16 | - | 16 | - | - |
| Tuvalu | 1 | - | 1 | - | - |
| Vanuatu | 6 | 1 | 5 | - | - |
| Middle East | 40 628 | 899 | 39 144 | 576 | 9 |
| Bahrain | 160 | 7 | 148 | 5 | - |
| Iran | 1 618 | 48 | 1 531 | 39 | - |
| Iraq | 149 | 13 | 120 | 16 | - |
| Israel | 17 427 | 261 | 17 104 | 59 | 3 |
| Jordan | 1 672 | 84 | 1 573 | 14 | 1 |
| Kuwait | 948 | 14 | 925 | 9 | - |
| Lebanon | 1 822 | 187 | 1 610 | 22 | 3 |
| Oman | 198 | 10 | 187 | 1 | - |
| Palestine | 236 | 18 | 206 | 12 | - |
| Qatar | 1 030 | 13 | 930 | 87 | - |
| Saudi Arabia | 11 464 | 127 | 11 204 | 133 | - |
| Syria | 377 | 23 | 339 | 15 | - |
| United Arab Emirates | 3 100 | 86 | 2 991 | 23 | - |
| Yemen | 427 | 8 | 276 | 141 | 2 |
| Asia | 117 852 | 6 816 | 109 006 | 1 936 | 94 |
| Afghanistan | 123 | 5 | 111 | 7 | - |
| Armenia | 57 | 8 | 49 | - | - |

Appendix XIX– Number of tourists by country of residence and purpose of visit, 2022 (continued)

| Country of residence | Total | Purpose of visit | | | |
|--------------------------|--------|------------------|---------|-------|-------------------|
| | | Business | Holiday | Study | Medical treatment |
| Azerbaijan | 81 | 3 | 78 | - | - |
| Bangladesh | 7 363 | 163 | 7 129 | 70 | 1 |
| Bhutan | 7 | 3 | 4 | - | - |
| Brunei Darussalam | 6 | - | 6 | - | - |
| Cambodia | 30 | 8 | 22 | - | - |
| China | 12 187 | 1 100 | 10 881 | 183 | 23 |
| Hong Kong | 32 | 6 | 26 | - | - |
| India | 55 506 | 3 601 | 50 995 | 889 | 21 |
| Indonesia | 1 198 | 78 | 1 096 | 20 | 4 |
| Japan | 5 513 | 543 | 4 864 | 96 | 10 |
| Kazakhstan | 410 | 28 | 364 | 18 | - |
| Kyrgyzstan | 77 | 1 | 65 | 11 | - |
| Laos | 16 | - | 16 | - | - |
| Macau | 5 | - | 5 | - | - |
| Malaysia | 2 764 | 112 | 2 540 | 112 | - |
| Maldives | 96 | 19 | 65 | 12 | - |
| Mongolia | 51 | 3 | 47 | 1 | - |
| Myanmar | 133 | 3 | 129 | - | 1 |
| Nepal | 491 | 35 | 426 | 30 | - |
| North Korea | 33 | 2 | 31 | - | - |
| Northern Mariana Islands | 6 | - | 6 | - | - |
| Pakistan | 12 470 | 361 | 11 981 | 124 | 4 |
| Philippines | 4 329 | 136 | 4 110 | 55 | 28 |
| Singapore | 2 821 | 105 | 2 704 | 12 | - |
| South Korea | 5 103 | 225 | 4 738 | 138 | 2 |
| Sri Lanka | 1 428 | 46 | 1 334 | 48 | - |
| Taiwan | 1 481 | 86 | 1 368 | 27 | - |
| Tajikistan | 52 | 3 | 47 | 2 | - |
| Thailand | 2 798 | 49 | 2 677 | 72 | - |
| Timor-Leste | 4 | 2 | 2 | - | - |
| Turkmenistan | 17 | - | 15 | 2 | - |
| Uzbekistan | 84 | 9 | 75 | - | - |
| Vietnam | 1 080 | 73 | 1 000 | 7 | - |

Appendix XIX– Number of tourists by country of residence and purpose of visit, 2022 (continued)

| Country of residence | Total | Purpose of visit | | | |
|--------------------------------|------------------|------------------|------------------|---------------|-------------------|
| | | Business | Holiday | Study | Medical treatment |
| Africa | 4 237 261 | 191 095 | 4 010 020 | 32 211 | 3 935 |
| SADC | 4 139 457 | 183 400 | 3 924 995 | 27 628 | 3 434 |
| Angola | 32 194 | 560 | 30 484 | 811 | 339 |
| Botswana | 262 232 | 11 546 | 246 540 | 2 766 | 1 380 |
| DRC | 17 571 | 558 | 15 845 | 956 | 212 |
| Eswatini | 403 762 | 16 449 | 384 964 | 2 207 | 142 |
| Lesotho | 835 921 | 8 806 | 818 425 | 8 457 | 233 |
| Madagascar | 1 716 | 74 | 1 599 | 39 | 4 |
| Malawi | 114 352 | 3 329 | 110 367 | 564 | 92 |
| Mauritius | 11 094 | 255 | 10 629 | 185 | 25 |
| Mozambique | 944 308 | 26 947 | 916 300 | 893 | 168 |
| Namibia | 137 388 | 37 526 | 96 196 | 3 476 | 190 |
| Seychelles | 2 785 | 30 | 2 734 | 17 | 4 |
| Tanzania | 26 268 | 1 200 | 24 403 | 578 | 87 |
| Zambia | 116 076 | 37 622 | 77 455 | 882 | 117 |
| Zimbabwe | 1 233 790 | 38 498 | 1 189 054 | 5 797 | 441 |
| 'Other' African | 97 804 | 7 695 | 85 025 | 4 583 | 501 |
| East and Central Africa | 47 897 | 4 568 | 40 737 | 2 296 | 296 |
| Burundi | 818 | 74 | 689 | 37 | 18 |
| Cameroon | 3 629 | 272 | 3 087 | 194 | 76 |
| Central African Republic | 127 | 9 | 111 | 3 | 4 |
| Chad | 306 | 28 | 228 | 45 | 5 |
| Comoros | 316 | 24 | 255 | 34 | 3 |
| Congo | 1 598 | 80 | 1 380 | 119 | 19 |
| Djibouti | 73 | 9 | 62 | 2 | - |
| Equatorial Guinea | 250 | 49 | 172 | 26 | 3 |
| Eritrea | 419 | 7 | 401 | 10 | 1 |
| Ethiopia | 5 001 | 410 | 4 431 | 136 | 24 |
| Gabon | 2 975 | 50 | 2 713 | 195 | 17 |
| Kenya | 21 308 | 2 339 | 18 015 | 874 | 80 |
| Rwanda | 708 | 60 | 621 | 22 | 5 |
| São Tomé and Príncipe | 52 | 2 | 50 | - | - |
| Somalia | 1 023 | 435 | 558 | 22 | 8 |
| Uganda | 9 294 | 720 | 7 964 | 577 | 33 |

Appendix XIX– Number of tourists by country of residence and purpose of visit, 2022 (concluded)

| Country of residence | Total | Purpose of visit | | | |
|----------------------|---------------|------------------|---------------|--------------|-------------------|
| | | Business | Holiday | Study | Medical treatment |
| West Africa | 39 494 | 2 142 | 35 560 | 1 608 | 184 |
| Benin | 1 190 | 52 | 1 094 | 37 | 7 |
| Burkina Faso | 568 | 93 | 451 | 20 | 4 |
| Cape Verde Island | 250 | 20 | 225 | 2 | 3 |
| Côte d'Ivoire | 1 874 | 167 | 1 656 | 48 | 3 |
| Gambia | 340 | 45 | 285 | 9 | 1 |
| Ghana | 14 381 | 696 | 13 299 | 339 | 47 |
| Guinea | 1 055 | 36 | 966 | 46 | 7 |
| Guinea-Bissau | 46 | 6 | 39 | 1 | - |
| Liberia | 463 | 42 | 378 | 36 | 7 |
| Mali | 748 | 64 | 665 | 8 | 11 |
| Mauritania | 124 | 27 | 94 | 3 | - |
| Niger | 218 | 24 | 183 | 7 | 4 |
| Nigeria | 16 104 | 632 | 14 410 | 995 | 67 |
| Saint Helena | 58 | - | 48 | - | 10 |
| Senegal | 1 281 | 157 | 1 100 | 20 | 4 |
| Sierra Leone | 462 | 46 | 386 | 21 | 9 |
| Togo | 332 | 35 | 281 | 16 | - |
| North Africa | 10 413 | 985 | 8 728 | 679 | 21 |
| Algeria | 942 | 70 | 847 | 25 | - |
| Egypt | 4 754 | 439 | 4 055 | 258 | 2 |
| Libya | 610 | 21 | 480 | 109 | - |
| Morocco | 1 202 | 149 | 1 018 | 34 | 1 |
| South Sudan | 696 | 71 | 547 | 62 | 16 |
| The Sudan | 1 339 | 152 | 1 021 | 165 | 1 |
| Tunisia | 862 | 82 | 753 | 26 | 1 |
| Western Sahara | 8 | 1 | 7 | - | - |
| Unspecified | 10 130 | 487 | 9 616 | 12 | 15 |

7. Definition of terms

Definitions used by the United Nations World Tourism Organisation (UNWTO)

- **Traveller** is someone who moves between different geographical locations for any purpose and any duration. Note: in this publication, the geographical locations are countries. Hence in this report, the term traveller refers to an international traveller.
- **Visitor** refers to any person travelling to a place other than that of his/her usual environment for less than 12 months and whose main purpose of the trip is other than the exercise of an activity remunerated from within the place visited.
- **Same-day visitor** is a visitor who visits a place for less than one night.
- **Tourist (overnight visitor)** is a visitor who stays at least one night in collective or private accommodation in the place visited for less than twelve months.
- **Tourism** comprises the activities of persons travelling to, and staying in places outside their usual environment, for not more than one uninterrupted year, for leisure, business and other purposes. The usual environment of a person consists of a certain area around his/her place of residence, plus all other places he/she frequently visits.

Definitions used specifically in this report

- **South African resident** refers to either a South African citizen or a non-South African citizen with a South African permanent residence permit.
- **Foreign traveller** refers to a traveller who is not a South African citizen or permanent resident.
- **Country** refers to individual countries within a region. (Note: The country of residence is used here and not the country from which the visitor travelled).
- **Region** refers to the following country classification: Overseas, SADC and 'Other' African. Overseas consists of Europe, North America, Central and South America, Australasia, the Middle East and Asia.
- **Overseas:** refers to all countries outside Africa.
- **Africa** refers to all the countries in Africa (both mainland and island countries).
- **SADC** refers to the fourteen countries, excluding South Africa, which belong to the Southern African Development Community.
- **'Other' African** refers to all countries in Africa that are not members of the SADC. They are grouped as: East and Central Africa, West Africa and North Africa.

Symbol used

- = Nil

Limitations

▪ Outbound tourists

The information on the total number of arrivals and departures of South African residents is collected from the scanning of passports. However, data on the country visited are not collected from passengers; country of final destination, the duration of stay; intended duration of stay and purpose of visit. With this limitation, it is impossible to identify the number of tourists from the data on South African residents.

▪ Purpose of visit

The holiday category includes tourists who came for vacation, visiting friends and relatives, shopping and other personal reasons such as attending weddings. While it's possible to separate 'visiting friends and relatives' from the broad category of Holiday, shopping and other reasons for visiting South Africa are all combined with vacation in the DHA movement control system. Discussions are in progress with the Department of Home Affairs to capture vacation and shopping as separate categories for a clearer breakdown of tourists by purpose of visit.

Related publications

Tourism statistics are also published in the monthly Statistical Release P0351: *Tourism and Migration*.

8. Other STATS SA reports

No. 03-51-02 (2000) - Tourism
No. 03-51-02 (2001) - Tourism
No. 03-51-02 (2002) -Tourism
No. 03-51-02 (2003) -Tourism
No. 03-51-02 (2004, 2005 and 2006) -Tourism
No. 03-51-02 (2007) -Tourism
No. 03-51-02 (2008) -Tourism
No. 03-51-02 (2009) - Tourism
No. 03-51-02 (2010) -Tourism
No. 03-51-02 (2011) -Tourism
No. 03-51-02 (2012) -Tourism
No. 03-51-02 (2013) -Tourism
No. 03-51-02 (2014) -Tourism
No. 03-51-02 (2015) -Tourism
No. 03-51-02 (2016) -Tourism
No. 03-51-02 (2017) -Tourism
No. 03-51-02 (2018) -Tourism
No. 03-51-02 (2019) –Tourism
No. 03-51-02 (2020) -Tourism
No. 03-51-02 (2021) -Tourism