



**stats sa**

Department:  
Statistics South Africa  
**REPUBLIC OF SOUTH AFRICA**

Private Bag X44, Pretoria, 0001, South Africa, ISibalo House, Koch Street, Salvokop, Pretoria, 0002  
www.statssa.gov.za, info@statssa.gov.za, Tel +27 12 310 8911

## **STATISTICAL RELEASE**

### **P7162**

# Land transport (Preliminary)

November 2022

Embargoed until:  
23 January 2023  
11:30

ENQUIRIES:  
Keshnee Naidoo  
(072) 310 3798

FORTHCOMING ISSUE:  
December 2022

EXPECTED RELEASE DATE:  
20 February 2023



## Contents

<b>Freight transportation: results for November 2022 .....</b>	<b>2</b>
Table A – Year-on-year percentage change in freight transportation (income at current prices).....	2
Table B – Freight transportation income at current prices for the latest three months by type of commodity.....	2
Figure 1 – Freight transportation: year-on-year percentage change in payload.....	3
Table C – Seasonally adjusted payload for the latest three months by type of transport.....	3
<b>Passenger transportation: results for November 2022 .....</b>	<b>4</b>
Table D – Year-on-year percentage change in passenger transportation (income at current prices).....	4
Figure 2 – Passenger transportation: year-on-year percentage change in passenger journeys.....	4
Table E – Seasonally adjusted passenger journeys for the latest three months by type of transport.....	4
<b>Tables .....</b>	<b>5</b>
Table 1 – Freight transportation (income at current prices).....	5
Table 2 – Year-on-year percentage change in freight transportation (income at current prices) .....	5
Table 3 – Seasonally adjusted freight transportation (income at current prices).....	6
Table 4 – Month-on-month percentage change in seasonally adjusted freight transportation (income at current prices) .....	6
Table 5 – Freight transportation income at current prices by type of commodity (R million).....	7
Table 6 – Year-on-year percentage change in freight transportation income at current prices by type of commodity.....	7
Table 7 – Contribution of each type of commodity to the year-on-year percentage change in freight transportation income at current prices (percentage points) .....	7
Table 8 – Passenger transportation (income at current prices).....	8
Table 9 – Year-on-year percentage change in passenger transportation (income at current prices) .....	8
Table 10 – Seasonally adjusted passenger transportation (income at current prices).....	9
Table 11 – Month-on-month percentage change in seasonally adjusted passenger transportation (income at current prices) .....	9
<b>Survey information .....</b>	<b>10</b>
<b>Technical notes.....</b>	<b>11</b>
<b>Glossary .....</b>	<b>12</b>
<b>Technical enquiries .....</b>	<b>12</b>
<b>General information.....</b>	<b>13</b>

## Freight transportation: results for November 2022

**Table A – Year-on-year percentage change in freight transportation (income at current prices)**

	Jun-22	Jul-22	Aug-22	Sep-22	Oct-22	Nov-22
Freight payload	14,1	27,1	20,6	19,0	23,9	14,8
Freight income	19,4	33,7	24,2	22,1	19,7	17,7

The volume of goods transported (payload) increased by 14,8% in November 2022 compared with November 2021. The corresponding income increased by 17,7% over the same period.

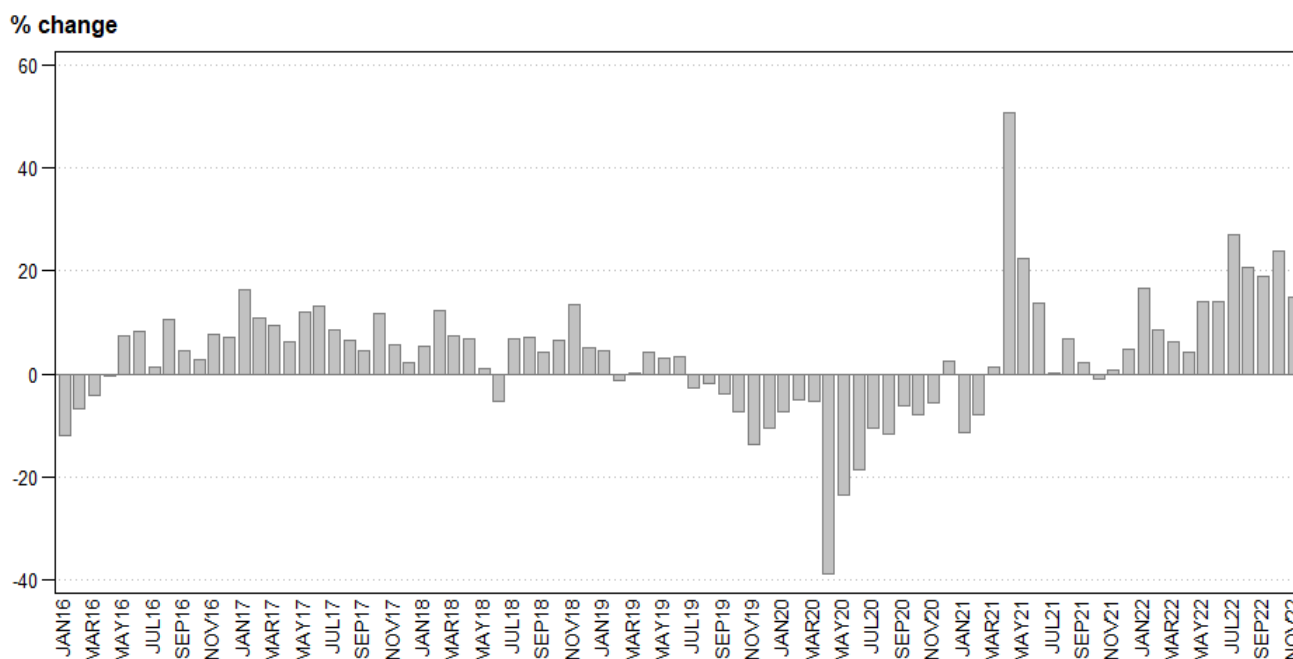
**Table B – Freight transportation income at current prices for the latest three months by type of commodity**

Type of commodity	Sep – Nov 2021 (R million)	Weight	Sep – Nov 2022 (R million)	% change between Sep – Nov 2021 and Sep – Nov 2022	Contribution (% points) to the total % change
Agriculture and forestry primary products	3 339	7,5	4 446	33,2	2,5
Primary mining and quarrying products	14 508	32,5	16 656	14,8	4,8
Manufactured food, beverages and tobacco products	5 291	11,8	6 616	25,0	3,0
Textiles, clothing and leather goods	1 167	2,6	1 413	21,1	0,5
Chemicals, coke, petroleum, rubber, plastic and other mineral products	3 672	8,2	4 209	14,6	1,2
Basic metals and fabricated metal products	756	1,7	685	-9,4	-0,2
Non-metallic products	450	1,0	536	19,1	0,2
Electrical machinery, transport machinery and equipment	596	1,3	651	9,2	0,1
Motor vehicles, parts and accessories	1 079	2,4	1 479	37,1	0,9
Paper and paper products	218	0,5	281	28,9	0,1
Commercial products	535	1,2	781	46,0	0,6
Used household and office products	1 107	2,5	1 687	52,4	1,3
Containers	1 870	4,2	1 852	-1,0	0,0
Parcels	1 354	3,0	1 479	9,2	0,3
Other freight	8 722	19,5	10 758	23,3	4,5
<b>Total income</b>	<b>44 664</b>	<b>100,0</b>	<b>53 529</b>	<b>19,8</b>	<b>19,8</b>

Income from freight transportation increased by 19,8% in the three months ended November 2022 compared with the three months ended November 2021. The main contributors to this increase were:

- primary mining and quarrying products (14,8% and contributing 4,8 percentage points);
- 'other' freight (23,3% and contributing 4,5 percentage points);
- manufactured food, beverages and tobacco products (25,0% and contributing 3,0 percentage points); and
- agriculture and forestry primary products (33,2% and contributing 2,5 percentage points) – see Table B.

**Figure 1 – Freight transportation: year-on-year percentage change in payload**



**Table C – Seasonally adjusted payload for the latest three months by type of transport**

Payload	Jun – Aug 2022 (000 tons)	Weight	Sep – Nov 2022 (000 tons)	% change between Jun – Aug 2022 and Sep – Nov 2022	Contribution (% points) to the total % change
Rail	39 870	15,5	32 979	-17,3	-2,7
Road	217 534	84,5	220 845	1,5	1,3
<b>Total</b>	<b>257 405</b>	<b>100,0</b>	<b>253 825</b>	<b>-1,4</b>	<b>-1,4</b>

Seasonally adjusted payload decreased by 1,4% in the three months ended November 2022 compared with the previous three months. Rail freight decreased by 17,3% (contributing -2,7 percentage points) while road freight increased by 1,5% (contributing 1,3 percentage points) – see Table C.

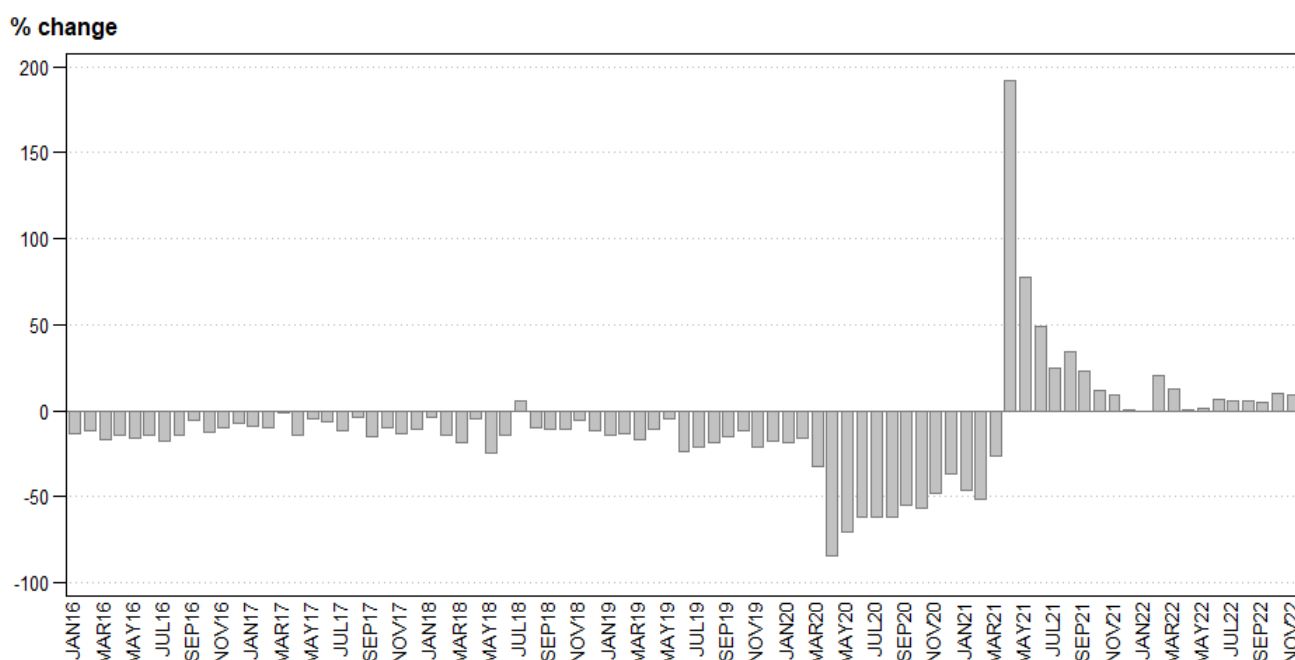
## Passenger transportation: results for November 2022

**Table D – Year-on-year percentage change in passenger transportation (income at current prices)**

	Jun-22	Jul-22	Aug-22	Sep-22	Oct-22	Nov-22
Passenger journeys	7,0	6,0	6,0	5,0	10,5	9,0
Passenger income	22,0	29,0	17,8	22,4	20,1	14,6

The number of passenger journeys increased by 9,0% in November 2022 compared with November 2021. The corresponding income increased by 14,6% over the same period.

**Figure 2 – Passenger transportation: year-on-year percentage change in passenger journeys**



**Table E – Seasonally adjusted passenger journeys for the latest three months by type of transport**

Passenger journeys	Jun – Aug 2022 (000)	Weight	Sep – Nov 2022 (000)	% change between Jun – Aug 2022 and Sep – Nov 2022	Contribution (% points) to the total % change
Rail	3 339	5,3	5 233	56,7	3,0
Road	60 054	94,7	63 711	6,1	5,8
<b>Total</b>	<b>63 394</b>	<b>100,0</b>	<b>68 944</b>	<b>8,8</b>	<b>8,8</b>

Seasonally adjusted passenger journeys increased by 8,8% in the three months ended November 2022 compared with the previous three months. Road passenger journeys increased by 6,1% (contributing 5,8 percentage points) and rail passenger journeys increased by 56,7% (contributing 3,0 percentage points) – see Table E.

**Risenga Maluleke**  
Statistician-General

## Tables

Table 1 – Freight transportation (income at current prices)

Year and month 1/		Rail		Road		Total	
		Payload (000 tons)	Income (R million)	Payload (000 tons)	Income (R million)	Payload (000 tons)	Income (R million)
2021	Jan	12 941	2 758	48 560	9 362	61 501	12 120
	Feb	14 856	3 124	51 469	10 145	66 325	13 269
	Mar	15 127	3 283	58 088	11 253	73 215	14 536
	Apr	15 469	3 331	56 231	10 882	71 700	14 213
	May	14 631	3 108	59 754	11 557	74 385	14 665
	Jun	16 088	3 392	57 582	11 076	73 670	14 468
	Jul	12 181	2 582	57 310	10 990	69 491	13 572
	Aug	16 238	3 431	61 644	11 996	77 882	15 427
	Sep	16 009	3 407	59 138	11 660	75 147	15 067
	Oct	12 866	2 836	59 017	11 680	71 883	14 516
	Nov	14 363	3 003	60 465	12 078	74 828	15 081
	Dec	14 987	3 086	56 012	11 183	70 999	14 269
	<b>Total</b>	<b>175 756</b>	<b>37 341</b>	<b>685 270</b>	<b>133 862</b>	<b>861 026</b>	<b>171 203</b>
2022	Jan	13 861	2 868	57 819	11 329	71 680	14 197
	Feb	14 638	3 028	57 303	11 419	71 941	14 447
	Mar	13 101	2 741	64 602	12 920	77 703	15 661
	Apr	14 292	3 100	60 374	12 229	74 665	15 329
	May	13 619	2 950	71 273	14 196	84 892	17 146
	Jun	13 134	3 034	70 961	14 247	84 094	17 282
	Jul	12 154	2 825	76 165	15 326	88 319	18 150
	Aug	14 370	3 274	79 548	15 894	93 918	19 168
	Sep	14 659	3 467	74 754	14 934	89 413	18 401
	Oct	9 901	2 058	79 188	15 316	89 088	17 374
	Nov	9 047	2 276	76 836	15 478	85 882	17 754

1/ Figures for the latest month are preliminary.

Table 2 – Year-on-year percentage change in freight transportation (income at current prices)

Year and month		Rail		Road		Total	
		Payload	Income	Payload	Income	Payload	Income
2021	Jan	-23,6	-21,4	-7,5	-6,7	-11,4	-10,5
	Feb	-14,0	-12,2	-5,9	-1,9	-7,9	-4,5
	Mar	-13,8	-7,8	6,0	7,5	1,2	3,6
	Apr	44,3	63,6	52,5	67,1	50,7	66,3
	May	5,1	7,7	27,7	33,5	22,5	27,0
	Jun	3,5	2,9	17,1	18,5	13,8	14,4
	Jul	-23,1	-22,7	7,0	8,3	0,1	0,6
	Aug	-6,6	-7,6	10,9	13,0	6,7	7,7
	Sep	-8,2	-4,7	5,6	9,2	2,3	5,7
	Oct	-11,2	-12,4	1,6	4,7	-0,9	0,8
	Nov	-12,7	-15,8	4,7	7,4	0,8	1,8
	Dec	-1,5	-0,1	6,7	10,3	4,9	7,9
	<b>Total</b>	<b>-6,9</b>	<b>-5,2</b>	<b>9,1</b>	<b>12,2</b>	<b>5,4</b>	<b>7,9</b>
2022	Jan	7,1	4,0	19,1	21,0	16,6	17,1
	Feb	-1,5	-3,1	11,3	12,6	8,5	8,9
	Mar	-13,4	-16,5	11,2	14,8	6,1	7,7
	Apr	-7,6	-6,9	7,4	12,4	4,1	7,9
	May	-6,9	-5,1	19,3	22,8	14,1	16,9
	Jun	-18,4	-10,6	23,2	28,6	14,1	19,4
	Jul	-0,2	9,4	32,9	39,5	27,1	33,7
	Aug	-11,5	-4,6	29,0	32,5	20,6	24,2
	Sep	-8,4	1,8	26,4	28,1	19,0	22,1
	Oct	-23,0	-27,4	34,2	31,1	23,9	19,7
	Nov	-37,0	-24,2	27,1	28,2	14,8	17,7

**Table 3 – Seasonally adjusted freight transportation (income at current prices)**

Year and month		Rail		Road		Total	
		Payload (000 tons)	Income (R million)	Payload (000 tons)	Income (R million)	Payload (000 tons)	Income (R million)
2021	Jan	13 372	2 903	54 608	10 462	67 980	13 365
	Feb	14 635	3 153	55 859	10 923	70 494	14 076
	Mar	15 445	3 509	57 760	11 245	73 205	14 754
	Apr	15 121	3 225	58 198	11 214	73 320	14 439
	May	14 595	3 142	58 810	11 407	73 405	14 549
	Jun	15 784	3 246	56 783	10 946	72 567	14 192
	Jul	13 882	2 834	55 060	10 550	68 942	13 384
	Aug	14 923	3 169	57 391	11 265	72 314	14 434
	Sep	14 559	3 081	57 381	11 369	71 939	14 451
	Oct	14 014	2 991	55 918	11 154	69 932	14 145
	Nov	13 973	2 839	57 415	11 316	71 388	14 154
	Dec	15 310	3 236	59 695	11 888	75 005	15 124
2022	Jan	14 309	3 030	65 688	12 797	79 997	15 827
	Feb	14 446	3 065	62 182	12 312	76 628	15 377
	Mar	13 359	2 924	63 974	12 861	77 333	15 785
	Apr	13 929	2 998	63 398	12 740	77 327	15 738
	May	13 607	2 996	68 518	13 715	82 125	16 710
	Jun	12 913	2 902	70 063	14 128	82 976	17 030
	Jul	13 781	3 084	74 293	14 953	88 074	18 037
	Aug	13 176	3 015	73 178	14 728	86 355	17 742
	Sep	13 317	3 129	72 032	14 404	85 349	17 533
	Oct	10 764	2 174	75 770	14 803	86 534	16 977
	Nov	8 898	2 159	73 043	14 582	81 942	16 741

**Table 4 – Month-on-month percentage change in seasonally adjusted freight transportation (income at current prices)**

Year and month		Rail		Road		Total	
		Payload	Income	Payload	Income	Payload	Income
2021	Jan	-14,1	-10,3	-2,3	-3,1	-4,9	-4,8
	Feb	9,4	8,6	2,3	4,4	3,7	5,3
	Mar	5,5	11,3	3,4	2,9	3,8	4,8
	Apr	-2,1	-8,1	0,8	-0,3	0,2	-2,1
	May	-3,5	-2,6	1,1	1,7	0,1	0,8
	Jun	8,1	3,3	-3,4	-4,0	-1,1	-2,5
	Jul	-12,1	-12,7	-3,0	-3,6	-5,0	-5,7
	Aug	7,5	11,8	4,2	6,8	4,9	7,8
	Sep	-2,4	-2,8	0,0	0,9	-0,5	0,1
	Oct	-3,7	-2,9	-2,5	-1,9	-2,8	-2,1
	Nov	-0,3	-5,1	2,7	1,5	2,1	0,1
	Dec	9,6	14,0	4,0	5,1	5,1	6,9
2022	Jan	-6,5	-6,4	10,0	7,6	6,7	4,6
	Feb	1,0	1,2	-5,3	-3,8	-4,2	-2,8
	Mar	-7,5	-4,6	2,9	4,5	0,9	2,7
	Apr	4,3	2,5	-0,9	-0,9	0,0	-0,3
	May	-2,3	-0,1	8,1	7,7	6,2	6,2
	Jun	-5,1	-3,1	2,3	3,0	1,0	1,9
	Jul	6,7	6,3	6,0	5,8	6,1	5,9
	Aug	-4,4	-2,2	-1,5	-1,5	-2,0	-1,6
	Sep	1,1	3,8	-1,6	-2,2	-1,2	-1,2
	Oct	-19,2	-30,5	5,2	2,8	1,4	-3,2
	Nov	-17,3	-0,7	-3,6	-1,5	-5,3	-1,4

**Table 5 – Freight transportation income at current prices by type of commodity (R million)**

Type of commodity	Jun-22	Jul-22	Aug-22	Sep-22	Oct-22	Nov-22 1/
Agriculture and forestry primary products	1 510	1 508	1 620	1 492	1 464	1 490
Primary mining and quarrying products	5 570	6 024	6 589	6 184	5 272	5 200
Manufactured food, beverages and tobacco products	2 019	2 143	2 219	2 208	2 149	2 259
Textiles, clothing and leather products	378	375	404	419	449	545
Chemicals, coke, petroleum, rubber, plastic and other mineral products	1 274	1 386	1 495	1 406	1 429	1 374
Basic metals and fabricated metal products	249	226	226	251	196	238
Non-metallic products	178	191	192	185	154	197
Electrical machinery, transport machinery and equipment	195	211	225	203	211	237
Motor vehicles, parts and accessories	434	457	473	468	468	543
Paper and paper products	81	94	99	88	93	100
Commercial products	223	254	256	260	255	266
Used household and office products	535	514	584	560	520	607
Containers	659	718	698	654	590	608
Parcels	446	451	476	450	443	586
Other freight	3 531	3 598	3 613	3 574	3 680	3 504
<b>Total</b>	<b>17 282</b>	<b>18 150</b>	<b>19 168</b>	<b>18 401</b>	<b>17 374</b>	<b>17 754</b>

1/ Figures are preliminary.

**Table 6 – Year-on-year percentage change in freight transportation income at current prices by type of commodity**

Type of commodity	Jun-22	Jul-22	Aug-22	Sep-22	Oct-22	Nov-22
Agriculture and forestry primary products	24,9	35,5	36,2	31,2	32,5	35,8
Primary mining and quarrying products	8,5	37,6	24,9	21,7	13,4	8,9
Manufactured food, beverages and tobacco products	22,9	27,5	23,3	24,5	24,2	26,4
Textiles, clothing and leather products	23,5	42,0	18,8	23,2	19,1	21,1
Chemicals, coke, petroleum, rubber, plastic and other mineral products	11,3	28,2	21,5	15,6	16,7	11,6
Basic metals and fabricated metal products	-5,3	-10,0	-25,4	-10,0	-18,7	0,8
Non-metallic products	13,4	35,5	13,6	7,6	17,6	34,0
Electrical machinery, transport machinery and equipment	12,7	35,3	29,3	9,7	13,4	5,3
Motor vehicles, parts and accessories	24,0	38,1	25,1	37,2	26,8	47,2
Paper and paper products	15,7	36,2	33,8	20,5	29,2	37,0
Commercial products	21,9	68,2	96,9	79,3	30,8	36,4
Used household and office products	60,7	53,4	65,9	64,2	42,1	51,8
Containers	10,8	34,2	20,1	4,8	-6,9	-0,7
Parcels	19,9	23,2	25,9	5,1	5,0	16,3
Other freight	39,4	32,3	18,2	22,0	30,8	17,6
<b>Total</b>	<b>19,4</b>	<b>33,7</b>	<b>24,2</b>	<b>22,1</b>	<b>19,7</b>	<b>17,7</b>

**Table 7 – Contribution of each type of commodity to the year-on-year percentage change in freight transportation income at current prices (percentage points)**

Type of commodity	Jun-22	Jul-22	Aug-22	Sep-22	Oct-22	Nov-22
Agriculture and forestry primary products	2,1	2,9	2,8	2,4	2,5	2,6
Primary mining and quarrying products	3,0	12,1	8,5	7,3	4,3	2,8
Manufactured food, beverages and tobacco products	2,6	3,4	2,7	2,9	2,9	3,1
Textiles, clothing and leather products	0,5	0,8	0,4	0,5	0,5	0,6
Chemicals, coke, petroleum, rubber, plastic and other mineral products	0,9	2,2	1,7	1,3	1,4	0,9
Basic metals and fabricated metal products	-0,1	-0,2	-0,5	-0,2	-0,3	0,0
Non-metallic products	0,1	0,4	0,1	0,1	0,2	0,3
Electrical machinery, transport machinery and equipment	0,2	0,4	0,3	0,1	0,2	0,1
Motor vehicles, parts and accessories	0,6	0,9	0,6	0,8	0,7	1,2
Paper and paper products	0,1	0,2	0,2	0,1	0,1	0,2
Commercial products	0,3	0,8	0,8	0,8	0,4	0,5
Used household and office products	1,4	1,3	1,5	1,5	1,1	1,4
Containers	0,4	1,3	0,8	0,2	-0,3	0,0
Parcels	0,5	0,6	0,6	0,1	0,1	0,5
Other freight	6,9	6,5	3,6	4,3	6,0	3,5
<b>Total</b>	<b>19,4</b>	<b>33,7</b>	<b>24,2</b>	<b>22,1</b>	<b>19,7</b>	<b>17,7</b>



**Table 8 – Passenger transportation (income at current prices)**

Year and month 1/		Rail		Road		Total	
		Passenger journeys (000)	Income (R million)	Passenger journeys (000)	Income (R million)	Passenger journeys (000)	Income (R million)
2021	Jan	1 128	24	16 881	632	18 009	656
	Feb	1 450	29	16 345	617	17 795	646
	Mar	1 772	41	19 973	776	21 745	817
	Apr	1 632	41	18 006	623	19 638	664
	May	1 752	43	19 012	688	20 764	731
	Jun	1 461	30	18 680	670	20 141	700
	Jul	1 430	19	17 991	656	19 421	675
	Aug	2 316	34	18 899	690	21 215	724
	Sep	2 552	47	20 735	740	23 287	787
	Oct	2 623	53	18 102	653	20 725	706
	Nov	2 288	50	19 554	690	21 842	740
	Dec	1 358	33	17 786	633	19 144	666
	<b>Total</b>	<b>21 762</b>	<b>444</b>	<b>221 964</b>	<b>8 068</b>	<b>243 726</b>	<b>8 512</b>
2022	Jan	1 367	35	16 634	663	18 001	698
	Feb	1 974	59	19 389	690	21 363	749
	Mar	2 218	68	22 372	831	24 590	899
	Apr	1 441	76	18 401	721	19 842	797
	May	1 285	77	19 814	716	21 099	793
	Jun	1 021	64	20 538	790	21 559	854
	Jul	1 056	91	19 528	780	20 584	871
	Aug	1 335	96	21 145	757	22 480	853
	Sep	1 400	104	23 049	859	24 449	963
	Oct	1 824	110	21 080	738	22 904	848
	Nov	2 311	104	21 500	744	23 811	848

1/ Figures for the latest month are preliminary.

**Table 9 – Year-on-year percentage change in passenger transportation (income at current prices)**

Year and month		Rail		Road		Total	
		Passenger journeys	Income	Passenger journeys	Income	Passenger journeys	Income
2021	Jan	-87,0	-86,4	-32,1	-26,6	-46,3	-36,8
	Feb	-86,5	-83,2	-36,1	-23,7	-51,0	-34,2
	Mar	-67,9	-60,2	-16,7	-2,0	-26,3	-8,7
	Apr	1/	1/	167,7	226,2	191,9	247,6
	May	2 725,8	975,0	63,5	106,6	77,6	116,9
	Jun	907,6	200,0	39,4	65,4	48,7	68,7
	Jul	421,9	58,3	17,7	43,9	24,8	44,2
	Aug	476,1	126,7	22,8	47,4	34,3	49,9
	Sep	554,4	147,4	11,5	19,0	22,7	22,8
	Oct	437,5	130,4	0,7	6,7	12,2	11,2
	Nov	41,7	42,9	6,1	10,8	9,0	12,5
	Dec	-5,6	-2,9	1,3	-4,2	0,8	-4,2
	<b>Total</b>	<b>-26,9</b>	<b>-26,6</b>	<b>6,0</b>	<b>18,1</b>	<b>1,9</b>	<b>14,4</b>
2022	Jan	21,2	45,8	-1,5	4,9	0,0	6,4
	Feb	36,1	103,4	18,6	11,8	20,1	15,9
	Mar	25,2	65,9	12,0	7,1	13,1	10,0
	Apr	-11,7	85,4	2,2	15,7	1,0	20,0
	May	-26,7	79,1	4,2	4,1	1,6	8,5
	Jun	-30,1	113,3	9,9	17,9	7,0	22,0
	Jul	-26,2	378,9	8,5	18,9	6,0	29,0
	Aug	-42,4	182,4	11,9	9,7	6,0	17,8
	Sep	-45,1	121,3	11,2	16,1	5,0	22,4
	Oct	-30,5	107,5	16,5	13,0	10,5	20,1
	Nov	1,0	108,0	10,0	7,8	9,0	14,6

1/ Changes from zero in the preceding period cannot be calculated as a percentage.

**Table 10 – Seasonally adjusted passenger transportation (income at current prices)**

Year and month		Rail		Road		Total	
		Passenger journeys (000)	Income (R million)	Passenger journeys (000)	Income (R million)	Passenger journeys (000)	Income (R million)
2021	Jan	1 280	23	18 420	618	19 700	641
	Feb	1 377	28	16 318	659	17 695	687
	Mar	1 645	38	18 011	768	19 656	806
	Apr	1 613	43	18 949	688	20 563	731
	May	1 739	44	18 531	701	20 270	744
	Jun	1 438	33	18 319	680	19 756	713
	Jul	1 431	19	17 849	635	19 280	654
	Aug	2 214	33	18 367	685	20 581	717
	Sep	2 458	44	19 584	719	22 042	763
	Oct	2 375	47	17 517	633	19 892	681
	Nov	2 216	50	19 614	681	21 830	731
	Dec	1 853	43	20 881	610	22 734	653
2022	Jan	1 554	34	18 151	647	19 705	680
	Feb	1 873	57	19 335	737	21 207	794
	Mar	1 997	64	20 205	827	22 202	890
	Apr	1 468	79	19 396	797	20 864	876
	May	1 278	78	19 313	730	20 590	808
	Jun	1 005	70	20 120	802	21 126	872
	Jul	1 058	91	19 394	754	20 452	845
	Aug	1 276	92	20 540	750	21 816	842
	Sep	1 345	98	21 740	835	23 085	933
	Oct	1 651	98	20 405	716	22 056	814
	Nov	2 237	104	21 566	735	23 803	839

**Table 11 – Month-on-month percentage change in seasonally adjusted passenger transportation (income at current prices)**

Year and month		Rail		Road		Total	
		Passenger journeys	Income	Passenger journeys	Income	Passenger journeys	Income
2021	Jan	-34,8	-47,7	-10,5	-3,3	-12,6	-6,1
	Feb	7,6	21,7	-11,4	6,6	-10,2	7,2
	Mar	19,5	35,7	10,4	16,5	11,1	17,3
	Apr	-1,9	13,2	5,2	-10,4	4,6	-9,3
	May	7,8	2,3	-2,2	1,9	-1,4	1,8
	Jun	-17,3	-25,0	-1,1	-3,0	-2,5	-4,2
	Jul	-0,5	-42,4	-2,6	-6,6	-2,4	-8,3
	Aug	54,7	73,7	2,9	7,9	6,7	9,6
	Sep	11,0	33,3	6,6	5,0	7,1	6,4
	Oct	-3,4	6,8	-10,6	-12,0	-9,8	-10,7
	Nov	-6,7	6,4	12,0	7,6	9,7	7,3
	Dec	-16,4	-14,0	6,5	-10,4	4,1	-10,7
2022	Jan	-16,1	-20,9	-13,1	6,1	-13,3	4,1
	Feb	20,5	67,6	6,5	13,9	7,6	16,8
	Mar	6,6	12,3	4,5	12,2	4,7	12,1
	Apr	-26,5	23,4	-4,0	-3,6	-6,0	-1,6
	May	-12,9	-1,3	-0,4	-8,4	-1,3	-7,8
	Jun	-21,4	-10,3	4,2	9,9	2,6	7,9
	Jul	5,3	30,0	-3,6	-6,0	-3,2	-3,1
	Aug	20,6	1,1	5,9	-0,5	6,7	-0,4
	Sep	5,4	6,5	5,8	11,3	5,8	10,8
	Oct	22,8	0,0	-6,1	-14,3	-4,5	-12,8
	Nov	35,5	6,1	5,7	2,7	7,9	3,1

## Survey information

<b>Introduction</b>	1	Statistics South Africa (Stats SA) conducts a monthly survey of the land transportation industry, covering passenger and freight transportation by rail and road (see paragraph 4 below). This survey is based on a sample drawn from the 2022 business sampling frame (BSF) that contains businesses registered for value-added tax (VAT) and income tax.
	2	In order to improve timeliness, some information for the latest month had to be estimated due to late response. These estimates will be revised in future statistical releases as soon as information becomes available. Published land transportation income estimates exclude VAT.
<b>Purpose of the survey</b>	3	The results of the monthly land transport survey are used to compile estimates of the gross domestic product (GDP) and its components, which are used in monitoring the state of the economy and formulation of economic policy. These statistics are also used in the analysis of comparative business and industry performance.
<b>Scope of the survey</b>	4	This survey covers enterprises involved in land transportation according to the following type of transportation: <ul style="list-style-type: none"> <li>• railway transport (including passenger and freight transportation);</li> <li>• 'other' scheduled passenger land transport – urban, suburban and inter-urban bus and coach passenger lines and school buses;</li> <li>• 'other' non-scheduled passenger land transport – safaris and sightseeing bus tours, metered taxis and 'other' passenger transport including renting of motor cars with drivers; and</li> <li>• freight transport by road.</li> </ul>
<b>Exclusions</b>	5	Passenger transportation excludes: <ul style="list-style-type: none"> <li>• minibus taxis;</li> <li>• metropolitan buses (including the Bus Rapid Transport system – BRT); and</li> <li>• rental of private cars/buses without drivers.</li> </ul> <p>Freight transportation excludes:</p> <ul style="list-style-type: none"> <li>• renting of trucks without drivers; and</li> <li>• in-house transportation.</li> </ul>
<b>Classification</b>	6	The 1993 edition of the <i>Standard Industrial Classification of All Economic Activities</i> (SIC), Fifth Edition, Report No. 09-90-02, was used to classify the statistical units in the survey. The SIC is based on the 1990 <i>International Standard Industrial Classification of All Economic Activities</i> (ISIC) with suitable adaptations for local conditions. Statistics in this publication are presented at SIC division (two-digit) level. Each enterprise is classified to the industry which reflects its predominant activity.
<b>Collection rate</b>	7	The preliminary collection rate for the survey on land transportation for November 2022 was 70,7%. The improved collection rate for October 2022 was 75,3%.
<b>Statistical unit</b>	8	The statistical unit for which information is compiled and published is an enterprise, defined as a legal unit or a combination of legal units that includes and directly controls all functions necessary to carry out its income activities. The statistical units are derived from and linked to the South African Revenue Service (SARS) administrative data.
<b>Revised figures</b>	9	Revised figures are mainly due to late submission of data to Stats SA, or respondents reporting revisions or corrections to their figures. Preliminary figures, as indicated in the relevant tables, are subject to change and when revised will not be indicated as such.

- Related publications** 10 Users may also wish to refer to the following publication available from Stats SA –
- *Stats in Brief* issued annually.
- Rounding-off of figures** 11 Where figures have been rounded off, discrepancies may occur between sums of the component items and the totals.
- Historical data** 12 Historical land transport data are available on the Stats SA website. To access the data electronically, use the following link:  
[Click to download historical data](#)
- Past publications** 13 Past land transport releases are available on the Stats SA website. To access the releases electronically, use the following link:  
[Click to download past releases](#)

## Technical notes

- Survey methodology and design** 1 The survey is conducted on a monthly basis. Questionnaires are sent to a sample of 769 enterprises from a population of 4 695 enterprises. Completed questionnaires are required to be returned to Stats SA within 10 days after the end of the reference month. Fax and telephone reminders are used to follow up on non-respondents.
- 2 A stratified random sample was drawn at the SIC four-digit level in April 2022 from Stats SA's business sampling frame (BSF). Strata were formed using a combination of SIC and the measure of size classes for enterprises (see paragraph 3 below).

The Neyman optimal allocation formula given below was used to allocate samples to each stratum:

$$n_h = n * ( N_h * S_h ) / [ \sum ( N_i * S_i ) ].$$

Neyman allocation formula not only allocates sample sizes to each stratum but also calculates the relative precision for each stratum as well as the relative precision for all strata. The relative precision for these strata was 0,8%.

- Sample design and class limits** 3 The land transportation industry is divided into four size groups. All large enterprises (size group one) are completely enumerated. Simple random sampling is applied to medium sized (size group two) and to small (size group three and four) enterprises. The total value of income of the large enterprises (size group one) is added to the weighted totals of size groups two, three and four to reflect the total value of income.

### Measure of size classes (Rand)

Enterprise size	Size group	Lower limit	Upper limit
Very small	4	1 192 270	9 000 000
Small	3	9 000 001	39 000 000
Medium	2	39 000 001	78 000 000
Large	1	78 000 001	

- Sample weighting** 4 For those strata not completely enumerated, the weights to produce estimates are the inverse ratio of the sampling fraction, modified to take account of non-response in the survey. Stratum estimates are calculated and then aggregated with the completely enumerated stratum to form division estimates. These procedures are in line with international best practice.
- Reliability of estimates** 5 Data presented in this publication are based on information obtained from a sample and are, therefore, subject to sampling variability; that is, they may differ from the figures that would have been produced if the data had been obtained from all enterprises in the land transport industry in South Africa. Estimates are subject to sampling and non-sampling errors.

- 6** Inaccuracies may occur because of imperfections in reporting by enterprises and errors made in the collection and processing of the data. Inaccuracies of this kind are referred to as non-sampling errors. Every effort is made to minimise non-sampling errors by careful design of questionnaires, testing them in pilot studies, editing reported data and implementing efficient operating procedures. Fluctuations may occur in consecutive months as a result of seasonal and economic factors.
- Year-on-year percentage change** **7** The year-on-year percentage change in a variable for any given period is the change between that period and the corresponding period of the previous year, expressed as a percentage of the latter.
- Contribution (percentage points)** **8** The contribution (percentage points) to the annual percentage change for any given period is calculated by multiplying the percentage change of each type of commodity/service by its corresponding weight, divided by 100. The weight is the percentage contribution of each type of commodity/service to total income in the corresponding period of the previous year.
- Seasonal adjustment** **9** Seasonally adjusted estimates are generated each month using the X-12-ARIMA Seasonal Adjustment Program developed by the United States Census Bureau. Seasonal adjustment is a means of removing the estimated effects of normal seasonal variation from the series so that the effects of other influences on the series can be recognised more clearly. Seasonal adjustment does not aim to remove irregular or non-seasonal influences which may be present in any particular month. Influences that are volatile or unsystematic can still make it difficult to interpret the movement of the series even after adjustment for seasonal variations. Therefore, the month-to-month movements of seasonally adjusted estimates may not be reliable indicators of trend behaviour. The X-12-ARIMA procedure for land transportation is described in more detail on the Stats SA website at:  
[Click to download seasonal adjustment land transport February 2022](#)
- Trend cycle** **10** The trend is the long-term pattern or movement of a time series. The X-12-ARIMA Seasonal Adjustment Program is used for smoothing seasonally adjusted estimates to estimates of the underlying trend cycle.

## Glossary

**Enterprise** An enterprise is a legal entity or a combination of legal units that includes and directly controls all functions necessary to carry out its activities.

**Industry** An industry is made up of enterprises engaged in the same or similar kinds of economic activity. Industries are defined in the *System of National Accounts (SNA)* in the same way as in the *Standard Industrial Classification of All Economic Activities (SIC)*, Fifth Edition, Report No. 09-90-02 of January 1993.

**Symbols and abbreviations**

BSF	Business sampling frame
GDP	Gross domestic product
ISIC	International Standard Industrial Classification
SIC	Standard Industrial Classification of All Economic Activities
SARS	South African Revenue Service
Stats SA	Statistics South Africa
VAT	Value-added tax

## Technical enquiries

**Kagisho Mathabatha** Telephone number: (012) 310 2153  
Email: kagishoma@statssa.gov.za

**Keshnee Naidoo** Telephone number: (072) 310 3798  
Email: keshneen@statssa.gov.za

## General information

Stats SA publishes approximately 300 different statistical releases each year. It is not economically viable to produce them in more than one of South Africa's eleven official languages. Since the releases are used extensively, not only locally but also by international economic and social-scientific communities, Stats SA releases are published in English only.

Stats SA has copyright on this publication. Users may apply the information as they wish, provided that they acknowledge Stats SA as the source of the basic data wherever they process, apply, utilise, publish or distribute the data: and also that they specify that the relevant application and analysis (where applicable) result from their own processing of the data.

## Advance release calendar

A release calendar is disseminated on [www.statssa.gov.za](http://www.statssa.gov.za)

## Stats SA products

A complete set of Stats SA publications is available at the Stats SA Library and the following libraries:

National Library of South Africa, Pretoria Division  
National Library of South Africa, Cape Town Division  
Natal Society Library, Pietermaritzburg  
Library of Parliament, Cape Town  
Bloemfontein Public Library  
Johannesburg Public Library  
Eastern Cape Library Services, Qonce  
Central Regional Library, Polokwane  
Central Reference Library, Mbombela  
Central Reference Collection, Kimberley  
Central Reference Library, Mmabatho

Stats SA also provides a subscription service.

## Electronic services

A large range of data is available via online services. For more detail about our electronic services, contact Stats SA's user information service at (012) 310 8600.

You can visit us on the internet at: [www.statssa.gov.za](http://www.statssa.gov.za)

## General enquiries

User information services	Telephone number: (012) 310 8600 Email: <a href="mailto:info@statssa.gov.za">info@statssa.gov.za</a>
Orders/subscription services	Telephone number: (012) 310 8619 Email: <a href="mailto:millies@statssa.gov.za">millies@statssa.gov.za</a>
Postal address	Private Bag X44, Pretoria, 0001

*Produced by Stats SA*