



stats sa

Department:
Statistics South Africa
REPUBLIC OF SOUTH AFRICA

Private Bag X44, Pretoria, 0001, South Africa, ISibalo House, Koch Street, Salvokop, Pretoria, 0002
www.statssa.gov.za, info@statssa.gov.za, Tel +27 12 310 8911

STATISTICAL RELEASE

P7162

Land transport (Preliminary)

November 2021

Embargoed until:
24 January 2022
11:30

ENQUIRIES:
Keshnee Naidoo
(072) 310 3798

FORTHCOMING ISSUE:
December 2021

EXPECTED RELEASE DATE:
21 February 2022



Contents

Freight transportation: results for November 2021	2
Table A – Year-on-year percentage change in freight transportation (income at current prices).....	2
Table B – Freight transportation income at current prices for the latest three months by type of commodity.....	2
Figure 1 – Freight transportation: year-on-year percentage change in payload.....	3
Table C – Seasonally adjusted payload for the latest three months by type of transport.....	3
Passenger transportation: results for November 2021	4
Table D – Year-on-year percentage change in passenger transportation (income at current prices).....	4
Figure 2 – Passenger transportation: year-on-year percentage change in passenger journeys.....	4
Table E – Seasonally adjusted passenger journeys for the latest three months by type of transport.....	4
Tables	5
Table 1 – Freight transportation (income at current prices).....	5
Table 2 – Year-on-year percentage change in freight transportation (income at current prices)	5
Table 3 – Seasonally adjusted freight transportation (income at current prices).....	6
Table 4 – Month-on-month percentage change in seasonally adjusted freight transportation (income at current prices)	6
Table 5 – Freight transportation income at current prices by type of commodity (R million).....	7
Table 6 – Year-on-year percentage change in freight transportation income at current prices by type of commodity	7
Table 7 – Contribution of each type of commodity to the year-on-year percentage change in freight transportation income at current prices (percentage points)	7
Table 8 – Passenger transportation (income at current prices).....	8
Table 9 – Year-on-year percentage change in passenger transportation (income at current prices)	8
Table 10 – Seasonally adjusted passenger transportation (income at current prices).....	9
Table 11 – Month-on-month percentage change in seasonally adjusted passenger transportation (income at current prices)	9
Survey information	10
Technical notes.....	11
Glossary	12
Technical enquiries	12
General information.....	13

Freight transportation: results for November 2021

Table A – Year-on-year percentage change in freight transportation (income at current prices)

	Jun-21	Jul-21	Aug-21	Sep-21	Oct-21	Nov-21
Freight payload	12,0	-0,7	4,1	5,9	3,8	4,1
Freight income	13,7	-1,6	5,3	8,3	3,0	3,1

The volume of goods transported (payload) increased by 4,1% in November 2021 compared with November 2020. The corresponding income increased by 3,1% over the same period.

Table B – Freight transportation income at current prices for the latest three months by type of commodity

Type of commodity	Sep – Nov 2020 (R million)	Weight	Sep – Nov 2021 (R million)	% change between Sep – Nov 2020 and Sep – Nov 2021	Contribution (% points) to the total % change
Agriculture and forestry primary products	3 293	7,9	3 540	7,5	0,6
Primary mining and quarrying products	15 637	37,3	14 782	-5,5	-2,1
Manufactured food, beverages and tobacco products	3 500	8,4	3 573	2,1	0,2
Textiles, clothing and leather goods	785	1,9	934	19,0	0,4
Chemicals, coke, petroleum, rubber, plastic and other mineral products	3 434	8,2	3 877	12,9	1,1
Basic metals and fabricated metal products	745	1,8	721	-3,2	-0,1
Non-metallic products	534	1,3	507	-5,1	-0,1
Electrical machinery, transport machinery and equipment	425	1,0	445	4,7	0,0
Motor vehicles, parts and accessories	858	2,0	900	4,9	0,1
Paper and paper products	179	0,4	211	17,9	0,1
Commercial products	723	1,7	622	-14,0	-0,2
Used household and office products	728	1,7	794	9,1	0,2
Containers	1 863	4,4	2 192	17,7	0,8
Parcels	785	1,9	824	5,0	0,1
Other freight	8 425	20,1	9 987	18,5	3,7
Total income	41 914	100,0	43 911	4,8	4,8

Income from freight transportation increased by 4,8% in the three months ended November 2021 compared with the three months ended November 2020. The main positive contributors to this increase were:

- 'other' freight (18,5% and contributing 3,7 percentage points); and
- chemicals, coke, petroleum, rubber, plastic and other mineral products (12,9% and contributing 1,1 percentage points) – see Table B.

Figure 1 – Freight transportation: year-on-year percentage change in payload

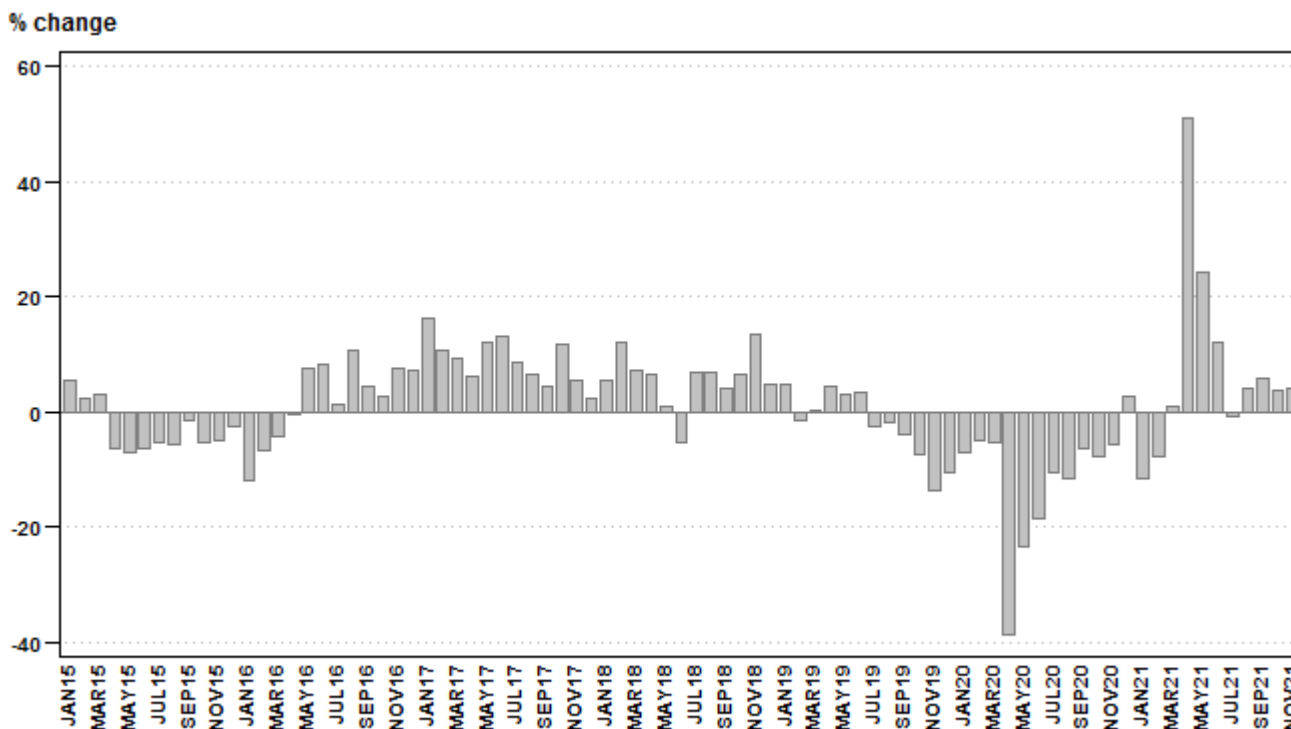


Table C – Seasonally adjusted payload for the latest three months by type of transport

Payload	Jun – Aug 2021 (000 tons)	Weight	Sep – Nov 2021 (000 tons)	% change between Jun – Aug 2021 and Sep – Nov 2021	Contribution (% points) to the total % change
Rail	45 131	21,3	43 043	-4,6	-1,0
Road	166 975	78,7	175 100	4,9	3,8
Total	212 107	100,0	218 141	2,8	2,8

Seasonally adjusted payload increased by 2,8% in the three months ended November 2021 compared with the previous three months. Road freight increased by 4,9% (contributing 3,8 percentage points) while rail freight decreased by 4,6% (contributing -1,0 percentage point) – see Table C.

Passenger transportation: results for November 2021

Table D – Year-on-year percentage change in passenger transportation (income at current prices)

	Jun-21	Jul-21	Aug-21	Sep-21	Oct-21	Nov-21
Passenger journeys	48,0	20,3	29,7	19,0	8,5	-2,3
Passenger income	68,4	40,0	45,0	18,9	7,3	1,7

The number of passenger journeys decreased by 2,3% in November 2021 compared with November 2020. The corresponding income increased by 1,7% over the same period.

Figure 2 – Passenger transportation: year-on-year percentage change in passenger journeys

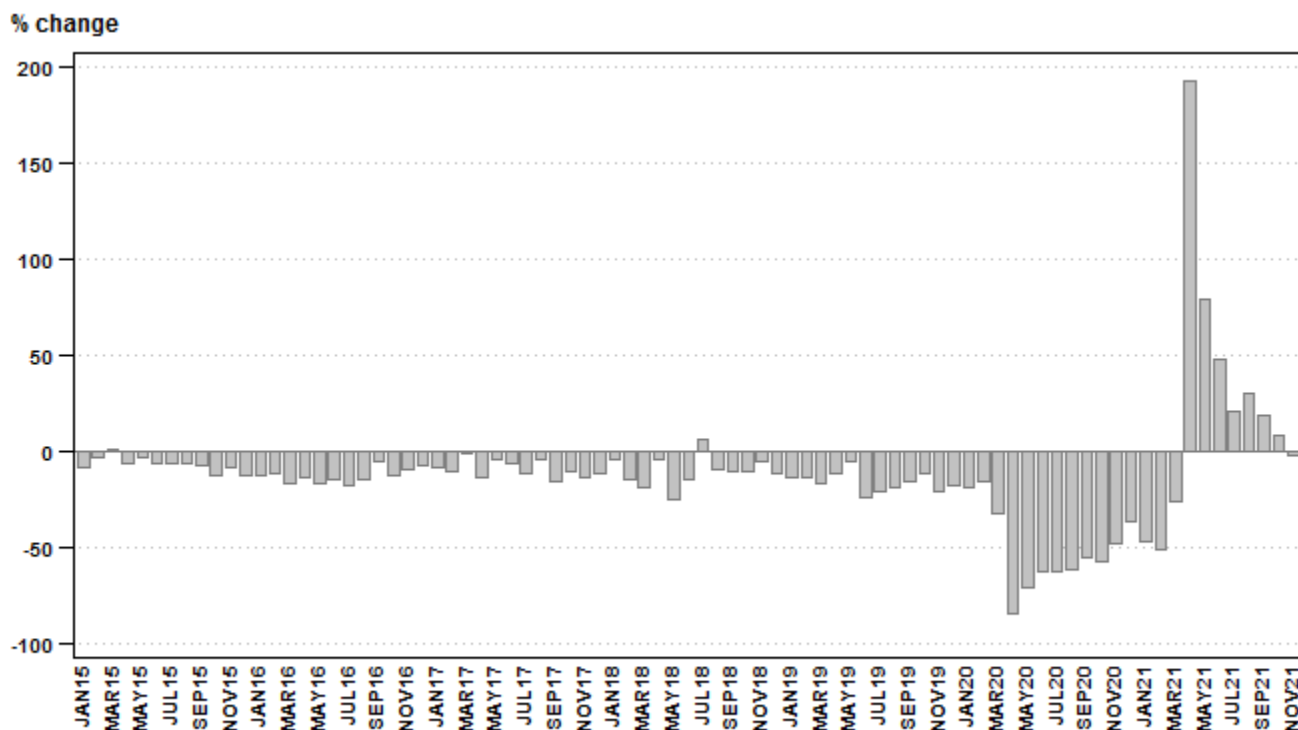


Table E – Seasonally adjusted passenger journeys for the latest three months by type of transport

Passenger journeys	Jun – Aug 2021 (000)	Weight	Sep – Nov 2021 (000)	% change between Jun – Aug 2021 and Sep – Nov 2021	Contribution (% points) to the total % change
Rail	4 956	8,8	6 936	40,0	3,5
Road	51 624	91,2	50 844	-1,5	-1,4
Total	56 581	100,0	57 781	2,1	2,1

Seasonally adjusted passenger journeys increased by 2,1% in the three months ended November 2021 compared with the previous three months. Rail passenger journeys increased by 40,0% (contributing 3,5 percentage points) while road passenger journeys decreased by 1,5% (contributing -1,4 percentage points) – see Table E.

Risenga Maluleke
Statistician-General

Tables

Table 1 – Freight transportation (income at current prices)

Year and month 1/		Rail		Road		Total	
		Payload (000 tons)	Income (R million)	Payload (000 tons)	Income (R million)	Payload (000 tons)	Income (R million)
2020	Jan	17 235	3 568	52 108	9 512	69 343	13 080
	Feb	17 567	3 618	54 293	9 802	71 860	13 420
	Mar	17 849	3 621	54 402	9 925	72 251	13 546
	Apr	10 901	2 070	36 584	6 173	47 485	8 243
	May	14 153	2 934	46 451	8 207	60 604	11 141
	Jun	15 808	3 350	48 813	8 862	64 621	12 212
	Jul	16 101	3 397	53 173	9 624	69 274	13 021
	Aug	17 682	3 774	55 180	10 061	72 862	13 835
	Sep	17 728	3 633	55 588	10 124	73 316	13 757
	Oct	14 738	3 292	57 643	10 575	72 381	13 867
	Nov	16 737	3 627	57 315	10 663	74 052	14 290
	Dec	15 469	3 141	52 104	9 610	67 573	12 751
	Total	191 968	40 025	623 654	113 138	815 622	153 163
2021	Jan	13 161	2 804	48 194	8 875	61 355	11 679
	Feb	15 109	3 176	51 082	9 617	66 191	12 793
	Mar	15 384	3 337	57 651	10 667	73 035	14 004
	Apr	15 731	3 385	55 921	10 342	71 651	13 727
	May	14 881	3 159	60 301	10 988	75 182	14 147
	Jun	16 359	3 448	56 039	10 441	72 398	13 889
	Jul	12 378	2 623	56 419	10 193	68 798	12 817
	Aug	16 515	3 487	59 340	11 081	75 854	14 567
	Sep	16 288	3 463	61 362	11 430	77 651	14 893
	Oct	13 089	2 883	62 020	11 396	75 110	14 279
	Nov	14 614	3 053	62 508	11 686	77 123	14 739

1/ Figures for the latest month are preliminary.

Table 2 – Year-on-year percentage change in freight transportation (income at current prices)

Year and month		Rail		Road		Total	
		Payload	Income	Payload	Income	Payload	Income
2020	Jan	-7,7	-2,7	-7,1	-3,7	-7,2	-3,4
	Feb	-5,3	-2,0	-4,8	-2,2	-4,9	-2,2
	Mar	4,8	8,5	-8,3	-3,0	-5,4	-0,2
	Apr	-42,7	-46,9	-37,4	-40,1	-38,7	-42,0
	May	-22,8	-22,9	-23,6	-22,8	-23,4	-22,8
	Jun	-16,8	-13,1	-19,2	-16,3	-18,6	-15,4
	Jul	5,4	5,3	-14,4	-11,0	-10,5	-7,2
	Aug	-7,8	-2,5	-12,8	-9,4	-11,7	-7,6
	Sep	-9,0	-9,6	-5,4	-2,7	-6,3	-4,6
	Oct	-8,6	-5,7	-7,8	-5,7	-7,9	-5,7
	Nov	-10,5	-6,7	-4,0	-1,8	-5,6	-3,1
	Dec	-6,6	-9,7	5,7	3,7	2,6	0,0
	Total	-11,1	-9,5	-11,9	-9,7	-11,7	-9,7
2021	Jan	-23,6	-21,4	-7,5	-6,7	-11,5	-10,7
	Feb	-14,0	-12,2	-5,9	-1,9	-7,9	-4,7
	Mar	-13,8	-7,8	6,0	7,5	1,1	3,4
	Apr	44,3	63,5	52,9	67,5	50,9	66,5
	May	5,1	7,7	29,8	33,9	24,1	27,0
	Jun	3,5	2,9	14,8	17,8	12,0	13,7
	Jul	-23,1	-22,8	6,1	5,9	-0,7	-1,6
	Aug	-6,6	-7,6	7,5	10,1	4,1	5,3
	Sep	-8,1	-4,7	10,4	12,9	5,9	8,3
	Oct	-11,2	-12,4	7,6	7,8	3,8	3,0
	Nov	-12,7	-15,8	9,1	9,6	4,1	3,1

Table 3 – Seasonally adjusted freight transportation (income at current prices)

Year and month		Rail		Road		Total	
		Payload (000 tons)	Income (R million)	Payload (000 tons)	Income (R million)	Payload (000 tons)	Income (R million)
2020	Jan	18 074	3 771	56 690	10 361	74 763	14 132
	Feb	17 400	3 687	58 859	10 496	76 259	14 183
	Mar	18 076	3 720	54 579	10 073	72 655	13 793
	Apr	10 543	1 997	38 119	6 425	48 661	8 422
	May	14 259	2 925	46 383	8 191	60 642	11 116
	Jun	15 085	3 121	48 591	8 794	63 676	11 914
	Jul	18 293	3 801	50 995	9 224	69 287	13 025
	Aug	16 221	3 563	53 324	9 803	69 545	13 366
	Sep	16 152	3 277	52 990	9 792	69 142	13 069
	Oct	16 031	3 448	53 433	9 805	69 464	13 253
	Nov	15 928	3 466	54 282	10 020	70 210	13 486
	Dec	16 045	3 309	55 592	10 157	71 637	13 466
2021	Jan	13 985	3 015	53 941	9 940	67 927	12 956
	Feb	15 048	3 215	54 777	10 187	69 825	13 403
	Mar	15 485	3 441	57 660	10 662	73 145	14 104
	Apr	15 336	3 237	57 058	10 622	72 393	13 859
	May	14 926	3 189	60 781	11 070	75 707	14 259
	Jun	15 555	3 256	55 574	10 376	71 130	13 632
	Jul	14 544	3 032	54 973	9 895	69 517	12 927
	Aug	15 032	3 143	56 428	10 607	71 460	13 751
	Sep	14 688	3 167	58 759	11 094	73 446	14 261
	Oct	14 470	3 054	58 329	10 774	72 799	13 828
	Nov	13 885	2 829	58 012	10 743	71 896	13 571

Table 4 – Month-on-month percentage change in seasonally adjusted freight transportation (income at current prices)

Year and month		Rail		Road		Total	
		Payload	Income	Payload	Income	Payload	Income
2020	Jan	6,3	5,1	6,0	4,0	6,1	4,3
	Feb	-3,7	-2,2	3,8	1,3	2,0	0,4
	Mar	3,9	0,9	-7,3	-4,0	-4,7	-2,7
	Apr	-41,7	-46,3	-30,2	-36,2	-33,0	-38,9
	May	35,2	46,5	21,7	27,5	24,6	32,0
	Jun	5,8	6,7	4,8	7,4	5,0	7,2
	Jul	21,3	21,8	4,9	4,9	8,8	9,3
	Aug	-11,3	-6,3	4,6	6,3	0,4	2,6
	Sep	-0,4	-8,0	-0,6	-0,1	-0,6	-2,2
	Oct	-0,7	5,2	0,8	0,1	0,5	1,4
	Nov	-0,6	0,5	1,6	2,2	1,1	1,8
	Dec	0,7	-4,5	2,4	1,4	2,0	-0,1
2021	Jan	-12,8	-8,9	-3,0	-2,1	-5,2	-3,8
	Feb	7,6	6,6	1,5	2,5	2,8	3,5
	Mar	2,9	7,0	5,3	4,7	4,8	5,2
	Apr	-1,0	-5,9	-1,0	-0,4	-1,0	-1,7
	May	-2,7	-1,5	6,5	4,2	4,6	2,9
	Jun	4,2	2,1	-8,6	-6,3	-6,0	-4,4
	Jul	-6,5	-6,9	-1,1	-4,6	-2,3	-5,2
	Aug	3,4	3,7	2,6	7,2	2,8	6,4
	Sep	-2,3	0,8	4,1	4,6	2,8	3,7
	Oct	-1,5	-3,6	-0,7	-2,9	-0,9	-3,0
	Nov	-4,0	-7,4	-0,5	-0,3	-1,2	-1,9

Table 5 – Freight transportation income at current prices by type of commodity (R million)

Type of commodity	Jun-21	Jul-21	Aug-21	Sep-21	Oct-21	Nov-21 1/
Agriculture and forestry primary products	1 130	1 037	1 152	1 185	1 208	1 147
Primary mining and quarrying products	5 211	4 454	5 338	5 286	4 685	4 811
Manufactured food, beverages and tobacco products	1 096	1 101	1 153	1 177	1 170	1 226
Textiles, clothing and leather products	242	210	249	274	312	348
Chemicals, coke, petroleum, rubber, plastic and other mineral products	1 168	1 123	1 195	1 286	1 295	1 296
Basic metals and fabricated metal products	254	242	290	272	230	219
Non-metallic products	166	150	177	170	161	176
Electrical machinery, transport machinery and equipment	150	136	142	143	141	161
Motor vehicles, parts and accessories	280	265	305	262	307	331
Paper and paper products	61	64	70	70	70	71
Commercial products	214	197	177	200	212	210
Used household and office products	239	225	242	247	274	273
Containers	625	556	607	726	717	749
Parcels	250	245	260	253	273	298
Other freight	2 802	2 812	3 210	3 342	3 223	3 422
Total	13 889	12 817	14 567	14 893	14 279	14 739

1/ Figures are preliminary.

Table 6 – Year-on-year percentage change in freight transportation income at current prices by type of commodity

Type of commodity	Jun-21	Jul-21	Aug-21	Sep-21	Oct-21	Nov-21
Agriculture and forestry primary products	11,8	-1,1	1,1	5,2	8,2	9,1
Primary mining and quarrying products	12,0	-12,9	-1,5	-1,8	-6,9	-7,9
Manufactured food, beverages and tobacco products	5,3	-1,6	1,3	2,1	1,2	2,9
Textiles, clothing and leather products	26,7	4,0	19,1	20,2	18,2	18,8
Chemicals, coke, petroleum, rubber, plastic and other mineral products	16,3	12,2	14,4	22,7	9,1	8,1
Basic metals and fabricated metal products	18,1	6,1	2,8	10,1	-7,6	-12,0
Non-metallic products	-3,5	-16,2	-13,7	-9,6	-8,5	3,5
Electrical machinery, transport machinery and equipment	22,0	-0,7	0,7	3,6	-2,8	13,4
Motor vehicles, parts and accessories	11,6	3,1	11,3	-6,1	8,1	12,2
Paper and paper products	17,3	4,9	20,7	22,8	18,6	12,7
Commercial products	11,5	-3,4	-18,4	-17,4	-10,5	-13,9
Used household and office products	18,3	9,2	13,6	13,3	13,7	1,5
Containers	17,9	3,2	2,9	20,0	12,2	21,0
Parcels	10,6	4,3	7,9	2,4	3,8	8,4
Other freight	19,3	12,8	20,6	28,7	14,3	13,8
Total	13,7	-1,6	5,3	8,3	3,0	3,1

Table 7 – Contribution of each type of commodity to the year-on-year percentage change in freight transportation income at current prices (percentage points)

Type of commodity	Jun-21	Jul-21	Aug-21	Sep-21	Oct-21	Nov-21
Agriculture and forestry primary products	1,0	-0,1	0,1	0,4	0,7	0,7
Primary mining and quarrying products	4,6	-5,0	-0,6	-0,7	-2,5	-2,9
Manufactured food, beverages and tobacco products	0,5	-0,1	0,1	0,2	0,1	0,2
Textiles, clothing and leather products	0,4	0,1	0,3	0,3	0,3	0,4
Chemicals, coke, petroleum, rubber, plastic and other mineral products	1,3	0,9	1,1	1,7	0,8	0,7
Basic metals and fabricated metal products	0,3	0,1	0,1	0,2	-0,1	-0,2
Non-metallic products	0,0	-0,2	-0,2	-0,1	-0,1	0,0
Electrical machinery, transport machinery and equipment	0,2	0,0	0,0	0,0	0,0	0,1
Motor vehicles, parts and accessories	0,2	0,1	0,2	-0,1	0,2	0,3
Paper and paper products	0,1	0,0	0,1	0,1	0,1	0,1
Commercial products	0,2	-0,1	-0,3	-0,3	-0,2	-0,2
Used household and office products	0,3	0,1	0,2	0,2	0,2	0,0
Containers	0,8	0,1	0,1	0,9	0,6	0,9
Parcels	0,2	0,1	0,1	0,0	0,1	0,2
Other freight	3,7	2,4	4,0	5,4	2,9	2,9
Total	13,7	-1,6	5,3	8,3	3,0	3,1

Table 8 – Passenger transportation (income at current prices)

Year and month 1/		Rail		Road		Total	
		Passenger journeys (000)	Income (R million)	Passenger journeys (000)	Income (R million)	Passenger journeys (000)	Income (R million)
2020	Jan	8 693	177	24 281	852	32 974	1 029
	Feb	10 717	173	25 003	801	35 720	974
	Mar	5 526	103	23 417	783	28 943	886
	Apr	0	0	6 573	190	6 573	190
	May	62	4	11 362	329	11 424	333
	Jun	145	10	13 097	401	13 242	411
	Jul	274	12	14 939	451	15 213	463
	Aug	402	15	15 040	463	15 442	478
	Sep	390	19	18 167	615	18 557	634
	Oct	488	23	17 570	605	18 058	628
	Nov	1 615	35	18 004	616	19 619	651
	Dec	1 438	34	17 149	654	18 587	688
	Total	29 750	605	204 602	6 760	234 352	7 365
2021	Jan	1 128	24	16 494	625	17 622	649
	Feb	1 450	29	15 972	610	17 422	639
	Mar	1 772	41	19 517	767	21 289	808
	Apr	1 632	41	17 615	615	19 247	656
	May	1 752	43	18 669	683	20 421	726
	Jun	1 461	30	18 140	662	19 601	692
	Jul	1 430	19	16 868	629	18 298	648
	Aug	2 316	34	17 717	659	20 033	693
	Sep	2 552	47	19 530	707	22 082	754
	Oct	2 623	53	16 970	621	19 593	674
	Nov	2 288	50	16 884	612	19 172	662

1/ Figures for the latest month are preliminary.

Table 9 – Year-on-year percentage change in passenger transportation (income at current prices)

Year and month		Rail		Road		Total	
		Passenger journeys	Income	Passenger journeys	Income	Passenger journeys	Income
2020	Jan	-46,0	-13,2	-1,2	0,8	-18,9	-1,9
	Feb	-42,6	-10,8	5,4	6,7	-15,7	3,1
	Mar	-69,6	-48,5	-5,5	-7,0	-32,6	-15,0
	Apr	-100,0	-100,0	-73,9	-77,8	-84,0	-81,6
	May	-99,6	-97,8	-54,6	-59,6	-71,0	-66,7
	Jun	-99,0	-93,9	-37,2	-50,6	-62,4	-57,9
	Jul	-98,1	-93,3	-42,9	-46,7	-62,4	-54,8
	Aug	-97,3	-92,2	-41,9	-44,4	-62,0	-53,3
	Sep	-97,2	-89,8	-33,8	-34,9	-55,0	-43,9
	Oct	-96,8	-88,4	-35,1	-33,4	-57,2	-43,3
	Nov	-87,3	-79,7	-28,9	-28,9	-48,4	-37,3
	Dec	-80,1	-69,4	-22,6	-25,5	-36,7	-30,4
	Total	-83,0	-72,0	-31,4	-33,7	-50,5	-40,4
2021	Jan	-87,0	-86,4	-32,1	-26,6	-46,6	-36,9
	Feb	-86,5	-83,2	-36,1	-23,8	-51,2	-34,4
	Mar	-67,9	-60,2	-16,7	-2,0	-26,4	-8,8
	Apr	1/	1/	168,0	223,7	192,8	245,3
	May	2 725,8	975,0	64,3	107,6	78,8	118,0
	Jun	907,6	200,0	38,5	65,1	48,0	68,4
	Jul	421,9	58,3	12,9	39,5	20,3	40,0
	Aug	476,1	126,7	17,8	42,3	29,7	45,0
	Sep	554,4	147,4	7,5	15,0	19,0	18,9
	Oct	437,5	130,4	-3,4	2,6	8,5	7,3
	Nov	41,7	42,9	-6,2	-0,6	-2,3	1,7

1/ Changes from zero in the preceding period cannot be calculated as a percentage.

Table 10 – Seasonally adjusted passenger transportation (income at current prices)

Year and month		Rail		Road		Total	
		Passenger journeys (000)	Income (R million)	Passenger journeys (000)	Income (R million)	Passenger journeys (000)	Income (R million)
2020	Jan	9 911	168	25 938	863	35 850	1 031
	Feb	10 051	166	25 262	850	35 313	1 015
	Mar	5 252	98	20 443	735	25 695	834
	Apr	0	0	8 030	254	8 030	254
	May	62	4	11 273	333	11 335	337
	Jun	140	11	12 511	408	12 652	418
	Jul	262	12	14 738	425	15 000	436
	Aug	391	15	14 877	459	15 268	473
	Sep	362	18	16 364	589	16 726	606
	Oct	424	20	17 187	586	17 611	606
	Nov	1 610	35	17 702	616	19 311	652
	Dec	1 943	44	20 295	642	22 238	686
2021	Jan	1 330	23	18 854	635	20 184	658
	Feb	1 399	28	15 572	661	16 971	689
	Mar	1 726	39	16 586	720	18 313	759
	Apr	1 631	41	18 692	679	20 323	721
	May	1 805	45	18 733	687	20 538	732
	Jun	1 403	33	17 779	668	19 182	701
	Jul	1 357	19	17 104	601	18 461	619
	Aug	2 196	33	16 741	654	18 938	687
	Sep	2 343	44	17 909	682	20 252	726
	Oct	2 367	47	16 670	602	19 038	649
	Nov	2 226	50	16 265	614	18 491	664

Table 11 – Month-on-month percentage change in seasonally adjusted passenger transportation (income at current prices)

Year and month		Rail		Road		Total	
		Passenger journeys	Income	Passenger journeys	Income	Passenger journeys	Income
2020	Jan	-2,6	17,5	2,6	-0,3	1,1	2,2
	Feb	1,4	-1,2	-2,6	-1,5	-1,5	-1,6
	Mar	-47,7	-41,0	-19,1	-13,5	-27,2	-17,8
	Apr	-100,0	-100,0	-60,7	-65,4	-68,7	-69,5
	May	1/	1/	40,4	31,1	41,2	32,7
	Jun	125,8	175,0	11,0	22,5	11,6	24,0
	Jul	87,1	9,1	17,8	4,2	18,6	4,3
	Aug	49,2	25,0	0,9	8,0	1,8	8,5
	Sep	-7,4	20,0	10,0	28,3	9,5	28,1
	Oct	17,1	11,1	5,0	-0,5	5,3	0,0
	Nov	279,7	75,0	3,0	5,1	9,7	7,6
	Dec	20,7	25,7	14,6	4,2	15,2	5,2
2021	Jan	-31,5	-47,7	-7,1	-1,1	-9,2	-4,1
	Feb	5,2	21,7	-17,4	4,1	-15,9	4,7
	Mar	23,4	39,3	6,5	8,9	7,9	10,2
	Apr	-5,5	5,1	12,7	-5,7	11,0	-5,0
	May	10,7	9,8	0,2	1,2	1,1	1,5
	Jun	-22,3	-26,7	-5,1	-2,8	-6,6	-4,2
	Jul	-3,3	-42,4	-3,8	-10,0	-3,8	-11,7
	Aug	61,8	73,7	-2,1	8,8	2,6	11,0
	Sep	6,7	33,3	7,0	4,3	6,9	5,7
	Oct	1,0	6,8	-6,9	-11,7	-6,0	-10,6
	Nov	-6,0	6,4	-2,4	2,0	-2,9	2,3

1/ Changes from zero in the preceding period cannot be calculated as a percentage.

Survey information

Introduction	<p>1 Statistics South Africa (Stats SA) conducts a monthly survey of the land transportation industry, covering passenger and freight transportation by rail and road (see paragraph 4 below). This survey is based on a sample drawn from the 2021 business sampling frame (BSF) that contains businesses registered for value added tax (VAT) and income tax.</p> <p>2 In order to improve timeliness, some information for the latest month had to be estimated due to late response. These estimates will be revised in future statistical releases as soon as information becomes available. Published land transportation income estimates exclude VAT.</p>
Purpose of the survey	<p>3 The results of the monthly land transport survey are used to compile estimates of the gross domestic product (GDP) and its components, which are used in monitoring the state of the economy and formulation of economic policy. These statistics are also used in the analysis of comparative business and industry performance.</p>
Scope of the survey	<p>4 This survey covers enterprises involved in land transportation according to the following type of transportation:</p> <ul style="list-style-type: none"> • railway transport (including passenger and freight transportation); • 'other' scheduled passenger land transport – urban, suburban and inter-urban bus and coach passenger lines and school buses; • 'other' non-scheduled passenger land transport – safaris and sightseeing bus tours, metered taxis and 'other' passenger transport including renting of motor cars with drivers; and • freight transport by road.
Exclusions	<p>5 Passenger transportation excludes:</p> <ul style="list-style-type: none"> • minibus taxis; • metropolitan buses (including the Bus Rapid Transport system – BRT); and • rental of private cars/buses without drivers. <p>Freight transportation excludes:</p> <ul style="list-style-type: none"> • renting of trucks without drivers; and • in-house transportation.
Classification	<p>6 The 1993 edition of the <i>Standard Industrial Classification of all Economic Activities</i> (SIC), Fifth Edition, Report No. 09-90-02, was used to classify the statistical units in the survey. The SIC is based on the 1990 <i>International Standard Industrial Classification of all Economic Activities</i> (ISIC) with suitable adaptations for local conditions. Statistics in this publication are presented at SIC division (two-digit) level. Each enterprise is classified to the industry which reflects its predominant activity.</p>
Collection rate	<p>7 The preliminary collection rate for the survey on land transportation for November 2021 was 63,2%. The improved collection rate for October 2021 was 68,5%.</p>
Statistical unit	<p>8 The statistical unit for which information is compiled and published is an enterprise, defined as a legal unit or a combination of legal units that includes and directly controls all functions necessary to carry out its income activities. The statistical units are derived from and linked to the South African Revenue Service (SARS) administrative data.</p>
Revised figures	<p>9 Revised figures are mainly due to late submission of data to Stats SA, or respondents reporting revisions or corrections to their figures. Preliminary figures, as indicated in the relevant tables, are subject to change and when revised will not be indicated as such.</p>

- Related publications** 10 Users may also wish to refer to the following publication available from Stats SA –
 - *Stats in Brief* issued annually.
- Rounding-off of figures** 11 Where figures have been rounded off, discrepancies may occur between sums of the component items and the totals.
- Historical data** 12 Historical land transport data are available on the Stats SA website. To access the data electronically, use the following link:
[Click to download historical data](#)
- Past publications** 13 Past land transport releases are available on the Stats SA website. To access the releases electronically, use the following link:
[Click to download past releases](#)

Technical notes

- Survey methodology and design** 1 The survey is conducted on a monthly basis. Questionnaires are sent to a sample of 711 enterprises from a population of 4 373 enterprises. Completed questionnaires are required to be returned to Stats SA within 10 days after the end of the reference month. Fax and telephone reminders are used to follow up on non-respondents.
- 2 A stratified random sample was drawn at the SIC four-digit level in April 2021 from Stats SA’s business sampling frame (BSF). Strata were formed using a combination of Standard Industrial Classification and the measure of size classes for enterprises (see paragraph 3 below).

The Neyman optimal allocation formula given below was used to allocate samples to each stratum:

$$n_h = n * (N_h * S_h) / [\sum (N_i * S_i)].$$

Neyman allocation formula not only allocates sample sizes to each stratum but also calculates the relative precision for each stratum as well as the relative precision for all strata. The relative precision for these strata was 0,8%.

- Sample design and class limits** 3 The land transportation industry is divided into four size groups. All large enterprises (size group one) are completely enumerated. Simple random sampling is applied to medium sized (size group two) and to small (size group three and four) enterprises. The total value of income of the large enterprises (size group one) is added to the weighted totals of size groups two, three and four to reflect the total value of income.

Measure of size classes (Rand)

Enterprise size	Size group	Lower limits	Upper limits
Very small	4	1 253 623	9 000 000
Small	3	9 000 001	39 000 000
Medium	2	39 000 001	78 000 000
Large	1	78 000 001	

- Sample weighting** 4 For those strata not completely enumerated, the weights to produce estimates are the inverse ratio of the sampling fraction, modified to take account of non-response in the survey. Stratum estimates are calculated and then aggregated with the completely enumerated stratum to form division estimates. These procedures are in line with international best practice.

- Reliability of estimates** 5 Data presented in this publication are based on information obtained from a sample and are, therefore, subject to sampling variability; that is, they may differ from the figures that would have been produced if the data had been obtained from all enterprises in the land transport industry in South Africa. Estimates are subject to sampling and non-sampling errors.

6 Inaccuracies may occur because of imperfections in reporting by enterprises and errors made in the collection and processing of the data. Inaccuracies of this kind are referred to as non-sampling errors. Every effort is made to minimise non-sampling errors by careful design of questionnaires, testing them in pilot studies, editing reported data and implementing efficient operating procedures. Fluctuations may occur in consecutive months as a result of seasonal and economic factors.

Year-on-year percentage change **7** The year-on-year percentage change in a variable for any given period is the change between that period and the corresponding period of the previous year, expressed as a percentage of the latter.

Contribution (percentage points) **8** The contribution (percentage points) to the annual percentage change for any given period is calculated by multiplying the percentage change of each type of commodity/service by its corresponding weight, divided by 100. The weight is the percentage contribution of each type of commodity/service to total income in the corresponding period of the previous year.

Seasonal adjustment **9** Seasonally adjusted estimates are generated each month using the X-12-ARIMA Seasonal Adjustment Program developed by the US Bureau of the Census. Seasonal adjustment is a means of removing the estimated effects of normal seasonal variation from the series so that the effects of other influences on the series can be recognised more clearly. Seasonal adjustment does not aim to remove irregular or non-seasonal influences which may be present in any particular month. Influences that are volatile or unsystematic can still make it difficult to interpret the movement of the series even after adjustment for seasonal variations. Therefore the month-to-month movements of seasonally adjusted estimates may not be reliable indicators of trend behaviour. The X-12-ARIMA procedure for land transportation is described in more detail on the Stats SA website at:

[Click to download seasonal adjustment land transport August 2017](#)

Note: Owing to the impact of the COVID-19 lockdown, additive outlier and transitory change adjustments were applied. Transitory (temporary) change describes a temporary effect on the level of a series after a certain point in time. The methodology will be reviewed as more data points are added to the time series.

Trend cycle **10** The trend is the long-term pattern or movement of a time series. The X-12-ARIMA Seasonal Adjustment Program is used for smoothing seasonally adjusted estimates to estimates of the underlying trend cycle.

Glossary

Enterprise An enterprise is a legal entity or a combination of legal units that includes and directly controls all functions necessary to carry out its activities.

Industry An industry is made up of enterprises engaged in the same or similar kinds of economic activity. Industries are defined in the *System of National Accounts (SNA)* in the same way as in the *Standard Industrial Classification of all Economic Activities (SIC)*, Fifth Edition, Report No. 09-90-02 of January 1993.

Symbols and abbreviations	BSF	Business sampling frame
	GDP	Gross domestic product
	ISIC	International Standard Industrial Classification
	SIC	Standard Industrial Classification of all Economic Activities
	SARS	South African Revenue Service
	Stats SA	Statistics South Africa
	VAT	Value added tax

Technical enquiries

Kagisho Mathabatha Telephone number: (082) 409 7077
Email: kagishoma@statssa.gov.za

Keshnee Naidoo Telephone number: (072) 310 3798
Email: keshneen@statssa.gov.za

General information

Stats SA publishes approximately 300 different statistical releases each year. It is not economically viable to produce them in more than one of South Africa's eleven official languages. Since the releases are used extensively, not only locally but also by international economic and social-scientific communities, Stats SA releases are published in English only.

Stats SA has copyright on this publication. Users may apply the information as they wish, provided that they acknowledge Stats SA as the source of the basic data wherever they process, apply, utilise, publish or distribute the data: and also that they specify that the relevant application and analysis (where applicable) result from their own processing of the data.

Advance release calendar

A release calendar is disseminated on www.statssa.gov.za

Stats SA products

A complete set of Stats SA publications is available at the Stats SA Library and the following libraries:

National Library of South Africa, Pretoria Division
National Library of South Africa, Cape Town Division
Natal Society Library, Pietermaritzburg
Library of Parliament, Cape Town
Bloemfontein Public Library
Johannesburg Public Library
Eastern Cape Library Services, Qonce
Central Regional Library, Polokwane
Central Reference Library, Mbombela
Central Reference Collection, Kimberley
Central Reference Library, Mmabatho

Stats SA also provides a subscription service.

Electronic services

A large range of data is available via online services. For more detail about our electronic services, contact Stats SA's user information service at (012) 310 8600.

You can visit us on the internet at: www.statssa.gov.za

General enquiries

User information services	Telephone number: (012) 310 8600 Email: info@statssa.gov.za
Orders/subscription services	Telephone number: (012) 310 8619 Email: millies@statssa.gov.za
Postal address	Private Bag X44, Pretoria, 0001

Produced by Stats SA