



The South Africa I know, the home I understand

---

# Statistical release

## P7162

# Land transport survey (Preliminary)

**March 2016**

**Embargoed until:  
23 May 2016  
11:30**

**Enquiries:**

---

Keshnee Govender  
(012) 310 8423

**Forthcoming issue:**

---

April 2016

**Expected release date:**

---

20 June 2016

**Contents**

**Freight transportation: results for March 2016 .....2**

    Table A – Year-on-year percentage change in freight transportation (income at current prices).....2

    Table B – Freight transportation income at current prices for the latest three months by type of commodity....2

    Figure 1 – Freight transportation: year-on-year percentage change in payload.....3

**Passenger transportation: results for March 2016 .....3**

    Table C – Year-on-year percentage change in passenger transportation (income at current prices).....3

    Figure 2 – Passenger transportation: year-on-year percentage change in passenger journeys.....3

**Tables .....4**

    Table 1 – Freight transportation (income at current prices) .....4

    Table 2 – Year-on-year percentage change in freight transportation (income at current prices) .....4

    Table 3 – Freight transportation income at current prices by type of commodity (R million) .....5

    Table 4 – Year-on-year percentage change in freight transportation income at current prices by type of commodity .....5

    Table 5 – Contribution of each type of commodity to the year-on-year percentage change in freight transportation income at current prices (percentage points) .....5

    Table 6 – Passenger transportation (income at current prices) .....6

    Table 7 – Year-on-year percentage change in passenger transportation (income at current prices) .....6

**Survey information .....7**

**Technical notes.....8**

**Glossary .....9**

**Technical enquiries .....9**

**General information.....10**

## Freight transportation: results for March 2016

**Table A – Year-on-year percentage change in freight transportation (income at current prices)**

	Oct-15	Nov-15	Dec-15	Jan-16	Feb-16	Mar-16
Freight payload	-6,2	-4,8	-2,2	-14,0	-6,7	-4,9
Freight income	-2,7	-4,4	-0,3	-9,5	-4,3	-2,0

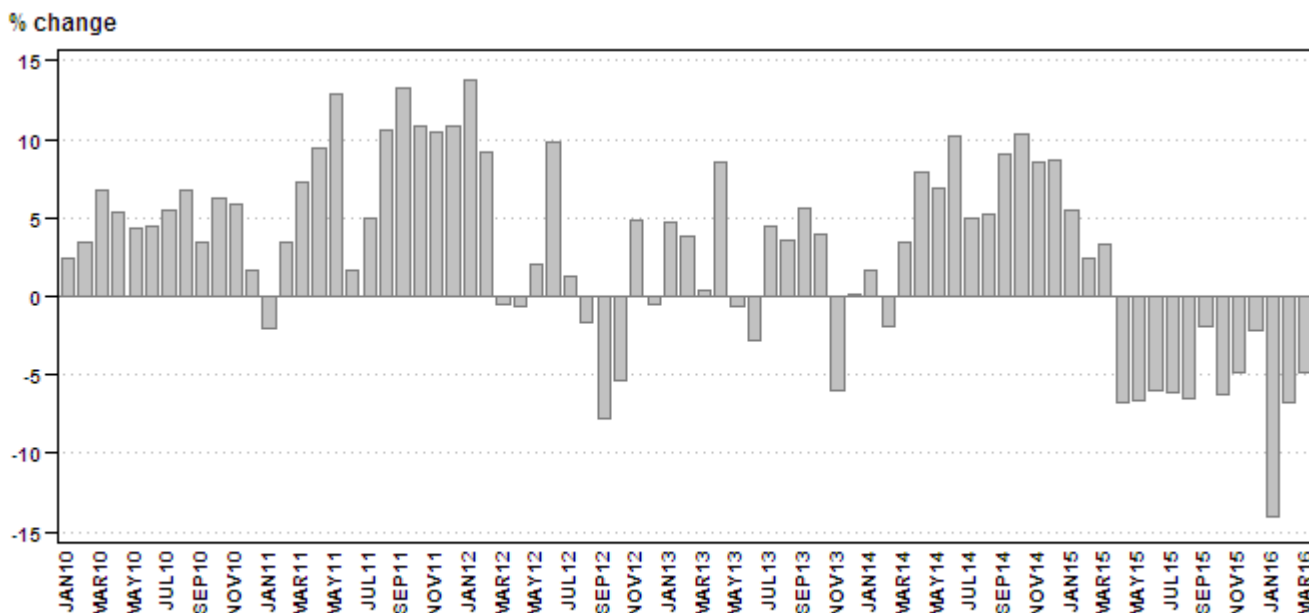
The volume of goods transported (payload) decreased by 4,9% in March 2016 compared with March 2015. The corresponding income decreased by 2,0% over the same period.

**Table B – Freight transportation income at current prices for the latest three months by type of commodity**

Type of commodity	Jan – Mar 2015 (R million)	Weight	Jan – Mar 2016 (R million)	% change between Jan – Mar 2015 and Jan – Mar 2016	Contribution (% points) to the total % change
Agriculture and forestry primary products	2 584	8,5	2 467	-4,5	-0,4
Primary mining and quarrying products	10 475	34,5	9 572	-8,6	-3,0
Manufactured food, beverages and tobacco products	3 356	11,1	3 640	8,5	0,9
Textiles, clothing and leather goods	522	1,7	449	-14,0	-0,2
Chemicals, coke, petroleum, rubber, plastic and other mineral products	2 072	6,8	2 005	-3,2	-0,2
Basic metals and fabricated metal products	1 447	4,8	1 232	-14,9	-0,7
Non-metallic products	740	2,4	867	17,2	0,4
Electrical machinery, transport machinery and equipment	622	2,0	639	2,7	0,1
Motor vehicles, parts and accessories	505	1,7	489	-3,2	-0,1
Paper and paper products	465	1,5	437	-6,0	-0,1
Commercial products	675	2,2	661	-2,1	0,0
Used household and office products	861	2,8	706	-18,0	-0,5
Containers	2 056	6,8	1 789	-13,0	-0,9
Parcels	510	1,7	598	17,3	0,3
Other freight	3 461	11,4	3 220	-7,0	-0,8
<b>Total income</b>	<b>30 352</b>	<b>100,0</b>	<b>28 768</b>	<b>-5,2</b>	<b>-5,2</b>

Income from freight transportation decreased by 5,2% in the first quarter of 2016 compared with the first quarter of 2015. The main contributor to this decrease was primary mining and quarrying products (-8,6% and contributing -3,0 percentage points) – see Table B.

**Figure 1 – Freight transportation: year-on-year percentage change in payload**



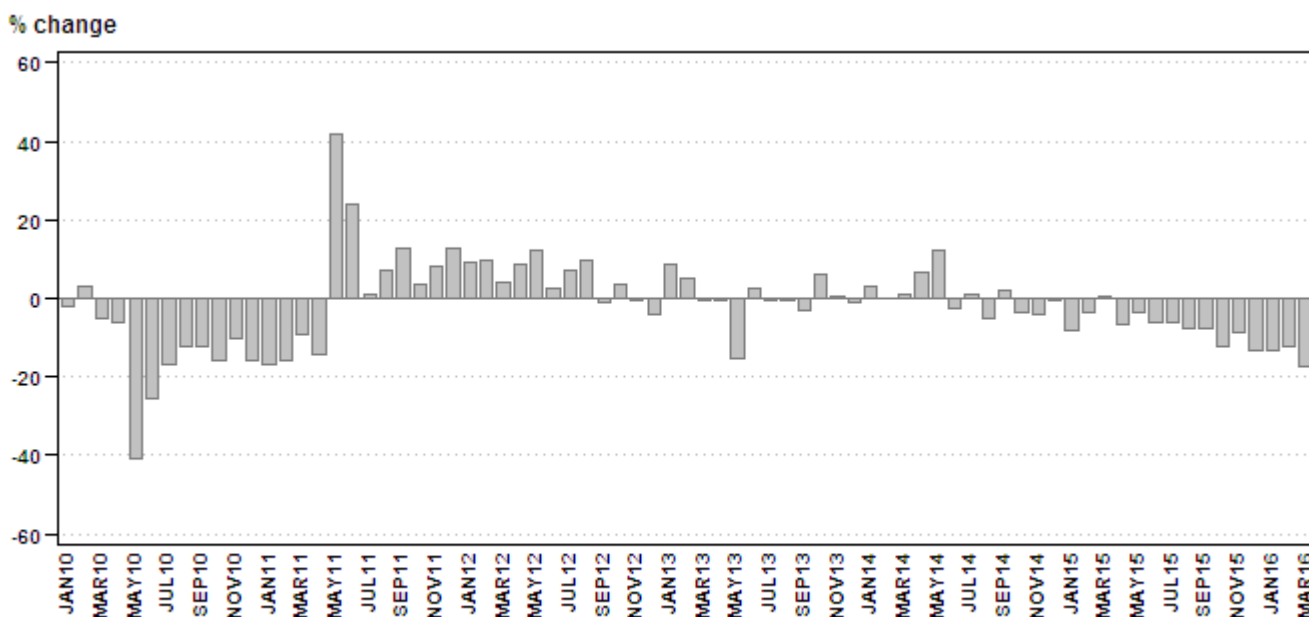
**Passenger transportation: results for March 2016**

**Table C – Year-on-year percentage change in passenger transportation (income at current prices)**

	Oct-15	Nov-15	Dec-15	Jan-16	Feb-16	Mar-16
Passenger journeys	-12,3	-8,6	-13,3	-13,5	-12,3	-17,4
Passenger income	-3,1	-0,4	0,6	0,5	3,2	2,9

The number of passenger journeys decreased by 17,4% in March 2016 compared with March 2015. The corresponding income increased by 2,9% over the same period.

**Figure 2 – Passenger transportation: year-on-year percentage change in passenger journeys**



**PJ Lehohla**  
**Statistician-General**

**Tables**

**Table 1 – Freight transportation (income at current prices)**

Year and month 1/		Rail		Road		Total	
		Payload (000 tons)	Income (R million)	Payload (000 tons)	Income (R million)	Payload (000 tons)	Income (R million)
<b>2015</b>	Jan	20 040	3 163	43 819	6 791	63 859	9 954
	Feb	19 380	3 172	44 265	7 010	63 645	10 182
	Mar	19 038	3 034	46 075	7 182	65 113	10 216
	Apr	18 876	3 113	44 340	6 978	63 216	10 092
	May	16 243	2 815	44 451	7 233	60 694	10 048
	Jun	18 708	3 254	45 016	7 238	63 724	10 492
	Jul	18 025	3 085	46 306	7 383	64 330	10 467
	Aug	18 276	3 094	45 299	7 163	63 575	10 256
	Sep	19 590	3 347	49 104	7 578	68 694	10 925
	Oct	16 305	2 893	49 828	7 810	66 134	10 703
	Nov	19 486	3 208	48 369	7 780	67 855	10 989
	Dec	18 262	2 929	43 500	7 062	61 762	9 991
	<b>Total</b>	<b>222 229</b>	<b>37 107</b>	<b>550 372</b>	<b>87 208</b>	<b>772 601</b>	<b>124 315</b>
<b>2016</b>	Jan	16 526	2 700	38 413	6 313	54 939	9 012
	Feb	18 299	3 101	41 099	6 642	59 398	9 743
	Mar	17 815	2 977	44 125	7 037	61 939	10 013

1/ Figures for latest month are preliminary.

**Table 2 – Year-on-year percentage change in freight transportation (income at current prices)**

Year and month		Rail		Road		Total	
		Payload	Income	Payload	Income	Payload	Income
<b>2015</b>	Jan	11,0	9,6	3,2	2,8	5,5	4,9
	Feb	12,9	16,3	-1,6	0,3	2,4	4,8
	Mar	12,7	15,8	-0,2	2,8	3,3	6,3
	Apr	-3,4	-4,0	-8,1	-4,6	-6,7	-4,4
	May	4,9	7,5	-10,2	-5,9	-6,6	-2,5
	Jun	-2,0	4,4	-7,5	-6,0	-6,0	-3,0
	Jul	-3,9	0,4	-6,9	-5,5	-6,1	-3,8
	Aug	-2,7	-4,4	-8,0	-6,5	-6,5	-5,8
	Sep	-3,5	-0,8	-1,2	-4,2	-1,9	-3,2
	Oct	-17,0	-5,6	-2,1	-1,6	-6,2	-2,7
	Nov	-3,8	-2,0	-5,2	-5,4	-4,8	-4,4
	Dec	-5,0	-4,6	-1,0	1,6	-2,2	-0,3
	<b>Total</b>	<b>-0,4</b>	<b>2,2</b>	<b>-4,2</b>	<b>-2,9</b>	<b>-3,2</b>	<b>-1,4</b>
<b>2016</b>	Jan	-17,5	-14,6	-12,3	-7,0	-14,0	-9,5
	Feb	-5,6	-2,2	-7,2	-5,2	-6,7	-4,3
	Mar	-6,4	-1,9	-4,2	-2,0	-4,9	-2,0

**Table 3 – Freight transportation income at current prices by type of commodity (R million)**

Type of commodity	Oct-15	Nov-15	Dec-15	Jan-16	Feb-16	Mar-16 1/
Agriculture and forestry primary products	854	931	846	796	837	834
Primary mining and quarrying products	3 377	3 476	3 087	2 851	3 326	3 395
Manufactured food, beverages and tobacco products	1 362	1 413	1 622	1 146	1 067	1 427
Textiles, clothing and leather products	207	226	144	154	138	157
Chemicals, coke, petroleum, rubber, plastic and other mineral products	812	780	740	681	662	662
Basic metals and fabricated metal products	422	430	374	413	430	389
Non-metallic products	308	345	315	290	301	276
Electrical machinery, transport machinery and equipment	228	258	192	182	226	231
Motor vehicles, parts and accessories	200	192	168	145	180	164
Paper and paper products	184	192	150	144	150	143
Commercial products	269	267	225	213	229	219
Used household and office products	199	186	195	235	258	213
Containers	763	775	586	554	615	620
Parcels	181	197	174	172	205	221
Other freight	1 334	1 320	1 171	1 038	1 119	1 063
<b>Total</b>	<b>10 703</b>	<b>10 989</b>	<b>9 991</b>	<b>9 012</b>	<b>9 743</b>	<b>10 013</b>

1/ Figures are preliminary.

**Table 4 – Year-on-year percentage change in freight transportation income at current prices by type of commodity**

Type of commodity	Oct-15	Nov-15	Dec-15	Jan-16	Feb-16	Mar-16
Agriculture and forestry primary products	-11,9	-0,2	8,7	-12,3	0,0	-0,6
Primary mining and quarrying products	-7,8	-8,4	-11,5	-20,8	-2,6	-1,9
Manufactured food, beverages and tobacco products	8,4	-13,6	42,4	9,4	-11,1	28,8
Textiles, clothing and leather products	25,5	20,2	-0,7	4,1	-23,3	-19,1
Chemicals, coke, petroleum, rubber, plastic and other mineral products	1,5	-3,8	5,9	-2,2	-2,2	-5,3
Basic metals and fabricated metal products	-3,4	-15,9	-11,0	-12,7	-17,3	-14,3
Non-metallic products	7,3	17,7	21,6	28,9	19,9	4,5
Electrical machinery, transport machinery and equipment	-22,4	2,4	-6,8	-2,7	5,6	4,5
Motor vehicles, parts and accessories	1,0	2,7	9,1	-8,2	4,7	-6,3
Paper and paper products	2,2	2,7	2,0	-7,7	0,0	-10,1
Commercial products	13,5	0,4	11,9	5,4	-0,4	-9,9
Used household and office products	13,7	-10,1	-41,1	2,2	-21,3	-29,7
Containers	7,5	11,5	-8,4	-17,1	-11,1	-10,9
Parcels	9,0	19,4	10,8	4,9	19,9	26,3
Other freight	-9,1	-3,8	-6,8	-4,5	-2,4	-13,4
<b>Total</b>	<b>-2,7</b>	<b>-4,4</b>	<b>-0,3</b>	<b>-9,5</b>	<b>-4,3</b>	<b>-2,0</b>

**Table 5 – Contribution of each type of commodity to the year-on-year percentage change in freight transportation income at current prices (percentage points)**

Type of commodity	Oct-15	Nov-15	Dec-15	Jan-16	Feb-16	Mar-16
Agriculture and forestry primary products	-1,0	0,0	0,7	-1,1	0,0	0,0
Primary mining and quarrying products	-2,6	-2,8	-4,0	-7,5	-0,9	-0,6
Manufactured food, beverages and tobacco products	1,0	-1,9	4,8	1,0	-1,3	3,1
Textiles, clothing and leather products	0,4	0,3	0,0	0,1	-0,4	-0,4
Chemicals, coke, petroleum, rubber, plastic and other mineral products	0,1	-0,3	0,4	-0,2	-0,1	-0,4
Basic metals and fabricated metal products	-0,1	-0,7	-0,5	-0,6	-0,9	-0,6
Non-metallic products	0,2	0,5	0,6	0,7	0,5	0,1
Electrical machinery, transport machinery and equipment	-0,6	0,1	-0,1	-0,1	0,1	0,1
Motor vehicles, parts and accessories	0,0	0,0	0,1	-0,1	0,1	-0,1
Paper and paper products	0,0	0,0	0,0	-0,1	0,0	-0,2
Commercial products	0,3	0,0	0,2	0,1	0,0	-0,2
Used household and office products	0,2	-0,2	-1,4	0,1	-0,7	-0,9
Containers	0,5	0,7	-0,5	-1,1	-0,8	-0,7
Parcels	0,1	0,3	0,2	0,1	0,3	0,5
Other freight	-1,2	-0,5	-0,9	-0,5	-0,3	-1,6
<b>Total</b>	<b>-2,7</b>	<b>-4,4</b>	<b>-0,3</b>	<b>-9,5</b>	<b>-4,3</b>	<b>-2,0</b>

**Table 6 – Passenger transportation (income at current prices)**

Year and month 1/		Rail		Road		Total	
		Passenger journeys (000)	Income (R million)	Passenger journeys (000)	Income (R million)	Passenger journeys (000)	Income (R million)
2015	Jan	38 245	246	23 473	680	61 718	926
	Feb	45 297	274	26 132	664	71 429	938
	Mar	46 756	288	29 339	762	76 095	1 050
	Apr	41 189	255	23 860	646	65 049	901
	May	42 844	256	25 379	683	68 223	939
	Jun	40 630	232	25 578	712	66 208	944
	Jul	41 565	282	24 353	715	65 918	997
	Aug	40 852	257	25 500	706	66 352	963
	Sep	41 238	277	26 095	750	67 333	1 027
	Oct	43 388	288	23 735	715	67 123	1 003
	Nov	39 887	266	24 665	698	64 552	964
	Dec	28 394	213	19 559	722	47 953	935
	<b>Total</b>	<b>490 285</b>	<b>3 134</b>	<b>297 668</b>	<b>8 453</b>	<b>787 953</b>	<b>11 587</b>
2016	Jan	31 492	245	21 881	686	53 373	931
	Feb	37 684	274	24 956	694	62 640	968
	Mar	35 334	262	27 537	818	62 871	1 080

1/ Figures for latest month are preliminary.

**Table 7 – Year-on-year percentage change in passenger transportation (income at current prices)**

Year and month		Rail		Road		Total	
		Passenger journeys	Income	Passenger journeys	Income	Passenger journeys	Income
2015	Jan	-13,0	-7,5	0,4	4,8	-8,4	1,2
	Feb	-8,0	0,0	5,8	6,9	-3,4	4,8
	Mar	-5,4	4,3	10,8	6,0	0,3	5,5
	Apr	-10,7	-0,4	0,9	-3,3	-6,8	-2,5
	May	-8,9	0,8	6,3	5,2	-3,8	4,0
	Jun	-8,9	-4,5	-1,2	4,4	-6,1	2,1
	Jul	-6,9	5,2	-4,7	1,1	-6,1	2,3
	Aug	-9,5	-2,3	-3,9	4,4	-7,4	2,6
	Sep	-10,8	-1,8	-2,7	0,7	-7,8	0,0
	Oct	-11,8	-5,6	-13,2	-2,1	-12,3	-3,1
	Nov	-12,1	-2,6	-2,2	0,4	-8,6	-0,4
	Dec	-14,3	-2,7	-11,9	1,7	-13,3	0,6
	<b>Total</b>	<b>-9,9</b>	<b>-1,4</b>	<b>-1,3</b>	<b>2,4</b>	<b>-6,8</b>	<b>1,4</b>
2016	Jan	-17,7	-0,4	-6,8	0,9	-13,5	0,5
	Feb	-16,8	0,0	-4,5	4,5	-12,3	3,2
	Mar	-24,4	-9,0	-6,1	7,3	-17,4	2,9

## Survey information

<b>Introduction</b>	<b>1</b>	<p>Statistics South Africa (Stats SA) conducts a monthly survey of the land transportation industry, covering passenger and freight transportation by rail and road (see paragraph 4 below). This survey is based on a sample drawn from the 2015 business sampling frame (BSF) that contains businesses registered for value added tax (VAT) and income tax.</p> <p>2 In order to improve timeliness, some information for the latest month had to be estimated due to late response. These estimates will be revised in future statistical releases as soon as information becomes available. Published land transportation income estimates exclude VAT.</p>
<b>Purpose of the survey</b>	<b>3</b>	<p>The results of the monthly land transport survey are used to compile estimates of the gross domestic product (GDP) and its components, which are used in monitoring the state of the economy and formulation of economic policy. These statistics are also used in the analysis of comparative business and industry performance.</p>
<b>Scope of the survey</b>	<b>4</b>	<p>This survey covers enterprises involved in land transportation according to the following type of transportation:</p> <ul style="list-style-type: none"> <li>• railway transport (including passenger and freight transportation);</li> <li>• 'other' scheduled passenger land transport – urban, suburban and inter-urban bus and coach passenger lines and school buses;</li> <li>• 'other' non-scheduled passenger land transport – safaris and sightseeing bus tours, metered taxis and 'other' passenger transport including renting of motor cars with drivers; and</li> <li>• freight transport by road.</li> </ul>
<b>Exclusions</b>	<b>5</b>	<p>Passenger transportation excludes:</p> <ul style="list-style-type: none"> <li>• minibus taxis;</li> <li>• metropolitan buses (including the Bus Rapid Transport system – BRT); and</li> <li>• rental of private cars/buses without drivers.</li> </ul> <p>Freight transportation excludes:</p> <ul style="list-style-type: none"> <li>• renting of trucks without drivers; and</li> <li>• in-house transportation.</li> </ul>
<b>Classification</b>	<b>6</b>	<p>The 1993 edition of the <i>Standard Industrial Classification of all Economic Activities</i> (SIC), Fifth Edition, Report No. 09-90-02, was used to classify the statistical units in the survey. The SIC is based on the 1990 <i>International Standard Industrial Classification of all Economic Activities</i> (ISIC) with suitable adaptations for local conditions. Statistics in this publication are presented at SIC division (two-digit) level. Each enterprise is classified to the industry which reflects its predominant activity.</p>
<b>Collection rate</b>	<b>7</b>	<p>The preliminary collection rate for the survey on land transportation for March 2016 was 92,6%. The improved collection rate for February 2016 was 96,0%.</p>
<b>Statistical unit</b>	<b>8</b>	<p>The statistical unit for which information is compiled and published is an enterprise, defined as a legal unit or a combination of legal units that includes and directly controls all functions necessary to carry out its income activities. The statistical units are derived from and linked to the South African Revenue Service (SARS) administrative data.</p>
<b>Revised figures</b>	<b>9</b>	<p>Revised figures are mainly due to late submission of data to Stats SA, or respondents reporting revisions or corrections to their figures. Preliminary figures, as indicated in the relevant tables, are subject to change and when revised will not be indicated as such.</p>





- Reliability of estimates**
- 5 Data presented in this publication are based on information obtained from a sample and are, therefore, subject to sampling variability; that is, they may differ from the figures that would have been produced if the data had been obtained from all enterprises in the land transport industry in South Africa. Estimates are subject to sampling and non-sampling errors.
  - 6 Inaccuracies may occur because of imperfections in reporting by enterprises and errors made in the collection and processing of the data. Inaccuracies of this kind are referred to as non-sampling errors. Every effort is made to minimise non-sampling errors by careful design of questionnaires, testing them in pilot studies, editing reported data and implementing efficient operating procedures. Fluctuations may occur in consecutive months as a result of seasonal and economic factors.
- Year-on-year percentage change**
- 7 The year-on-year percentage change in a variable for any given period is the change between that period and the corresponding period of the previous year, expressed as a percentage of the latter.
- Contribution (percentage points)**
- 8 The contribution (percentage points) to the annual percentage change for any given period is calculated by multiplying the percentage change of each type of commodity/service by its corresponding weight, divided by 100. The weight is the percentage contribution of each type of commodity/service to total income in the corresponding period of the previous year.

**Glossary**

**Enterprise** An enterprise is a legal entity or a combination of legal units that includes and directly controls all functions necessary to carry out its sales activities.

**Industry** An industry is made up of enterprises engaged in the same or similar kinds of economic activity. Industries are defined in the *System of National Accounts (SNA)* in the same way as in the *Standard Industrial Classification of all Economic Activities, Fifth Edition*, Report No. 09-90-02 of January 1993 (SIC).

<b>Symbols and abbreviations</b>	BSF	Business sampling frame
	GDP	Gross domestic product
	ISIC	International Standard Industrial Classification
	SIC	Standard Industrial Classification of all Economic Activities
	SARS	South African Revenue Service
	Stats SA	Statistics South Africa
	VAT	Value added tax

**Technical enquiries**

**Ho Chun Cheung** Telephone number: (012) 310 6360  
Email: hochunc@statssa.gov.za

**Keshnee Govender** Telephone number: (012) 310 8423  
Email: keshneeg@statssa.gov.za

## General information

Stats SA publishes approximately 300 different statistical releases each year. It is not economically viable to produce them in more than one of South Africa's eleven official languages. Since the releases are used extensively, not only locally but also by international economic and social-scientific communities, Stats SA releases are published in English only.

Stats SA has copyright on this publication. Users may apply the information as they wish, provided that they acknowledge Stats SA as the source of the basic data wherever they process, apply, utilise, publish or distribute the data: and also that they specify that the relevant application and analysis (where applicable) result from their own processing of the data.

## Advance release calendar

A release calendar is disseminated on [www.statssa.gov.za](http://www.statssa.gov.za)

## Stats SA products

A complete set of Stats SA publications is available at the Stats SA Library and the following libraries:

National Library of South Africa, Pretoria Division  
National Library of South Africa, Cape Town Division  
Natal Society Library, Pietermaritzburg  
Library of Parliament, Cape Town  
Bloemfontein Public Library  
Johannesburg Public Library  
Eastern Cape Library Services, King William's Town  
Central Regional Library, Polokwane  
Central Reference Library, Mbombela  
Central Reference Collection, Kimberley  
Central Reference Library, Mmabatho

Stats SA also provides a subscription service.

## Electronic services

A large range of data is available via online services. For more detail about our electronic services, contact Stats SA's user information service at (012) 310 8600.

You can visit us on the internet at: [www.statssa.gov.za](http://www.statssa.gov.za)

## General enquiries

User information services	Telephone number: (012) 310 8600 Email address: <a href="mailto:info@statssa.gov.za">info@statssa.gov.za</a>
Orders/subscription services	Telephone number: (012) 310 8044 Email address: <a href="mailto:magdaj@statssa.gov.za">magdaj@statssa.gov.za</a>
Postal address	Private Bag X44, Pretoria, 0001

*Produced by Stats SA*