



**stats sa**

Department:  
Statistics South Africa  
**REPUBLIC OF SOUTH AFRICA**

Private Bag X44, Pretoria, 0001, South Africa, ISibalo House, Koch Street, Salvokop, Pretoria, 0002  
www.statssa.gov.za, info@statssa.gov.za, Tel +27 12 310 8911

## **STATISTICAL RELEASE**

### **P7162**

# Land transport (Preliminary)

June 2021

The results published in the next publication (July 2021) will be based on a new sample. This is an annual procedure which typically affects the levels of payload, passenger journeys and income at current prices. To avoid breaks in time series and to minimise revisions to historical growth rates, historical levels will be revised (i.e. they will be linked to the estimates based on the new sample).

Embargoed until:  
23 August 2021  
11:30

ENQUIRIES:  
Keshnee Naidoo  
(072) 310 3798

FORTHCOMING ISSUE:  
July 2021

EXPECTED RELEASE DATE:  
20 September 2021



## Contents

<b>Freight transportation: results for June 2021</b> .....	<b>2</b>
Table A – Year-on-year percentage change in freight transportation (income at current prices) .....	2
Table B – Freight transportation income at current prices for the latest three months by type of commodity.	2
Figure 1 – Freight transportation: year-on-year percentage change in payload.....	3
Table C – Seasonally adjusted payload for the latest three months by type of transport.....	3
<b>Passenger transportation: results for June 2021</b> .....	<b>4</b>
Table D – Year-on-year percentage change in passenger transportation (income at current prices) .....	4
Figure 2 – Passenger transportation: year-on-year percentage change in passenger journeys .....	4
Table E – Seasonally adjusted passenger journeys for the latest three months by type of transport .....	4
<b>Tables</b> .....	<b>5</b>
Table 1 – Freight transportation (income at current prices) .....	5
Table 2 – Year-on-year percentage change in freight transportation (income at current prices) .....	5
Table 3 – Seasonally adjusted freight transportation (income at current prices).....	6
Table 4 – Month-on-month percentage change in seasonally adjusted freight transportation (income at current prices) .....	6
Table 5 – Freight transportation income at current prices by type of commodity (R million).....	7
Table 6 – Year-on-year percentage change in freight transportation income at current prices by type of commodity .....	7
Table 7 – Contribution of each type of commodity to the year-on-year percentage change in freight transportation income at current prices (percentage points) .....	7
Table 8 – Passenger transportation (income at current prices) .....	8
Table 9 – Year-on-year percentage change in passenger transportation (income at current prices) .....	8
Table 10 – Seasonally adjusted passenger transportation (income at current prices).....	8
Table 11 – Month-on-month percentage change in seasonally adjusted passenger transportation (income at current prices) .....	9
<b>Survey information</b> .....	<b>10</b>
<b>Technical notes</b> .....	<b>11</b>
<b>Glossary</b> .....	<b>12</b>
<b>Technical enquiries</b> .....	<b>12</b>
<b>General information</b> .....	<b>13</b>

## Freight transportation: results for June 2021

**Table A – Year-on-year percentage change in freight transportation (income at current prices)**

	Jan-21	Feb-21	Mar-21	Apr-21	May-21	Jun-21
Freight payload	-10,7	-8,3	0,6	55,1	20,8	11,6
Freight income	-11,1	-5,7	2,0	66,5	24,4	12,8

The volume of goods transported (payload) increased by 11,6% in June 2021 compared with June 2020. The corresponding income increased by 12,8% over the same period.

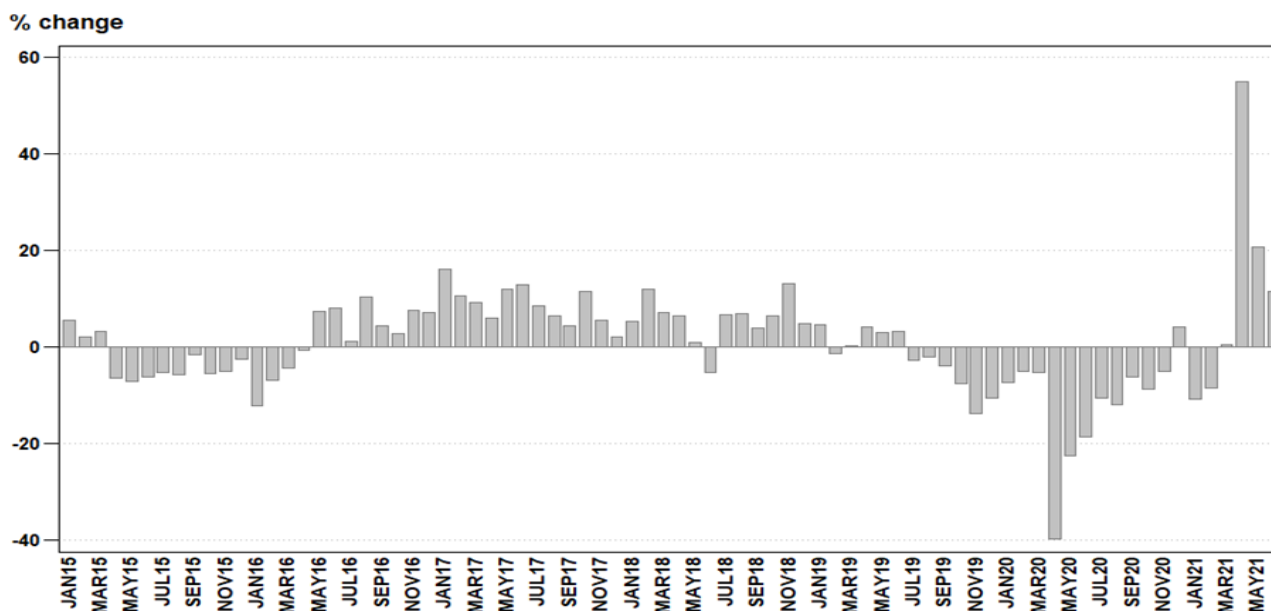
**Table B – Freight transportation income at current prices for the latest three months by type of commodity**

Type of commodity	Apr – Jun 2020 (R million)	Weight	Apr – Jun 2021 (R million)	% change between Apr – Jun 2020 and Apr – Jun 2021	Contribution (% points) to the total % change
Agriculture and forestry primary products	2 449	7,9	2 977	21,6	1,7
Primary mining and quarrying products	12 042	39,0	14 739	22,4	8,7
Manufactured food, beverages and tobacco products	3 451	11,2	3 972	15,1	1,7
Textiles, clothing and leather goods	416	1,3	748	79,8	1,0
Chemicals, coke, petroleum, rubber, plastic and other mineral products	2 251	7,3	2 807	24,7	1,8
Basic metals and fabricated metal products	425	1,4	835	96,5	1,4
Non-metallic products	492	1,6	646	31,3	0,5
Electrical machinery, transport machinery and equipment	389	1,3	558	43,4	0,6
Motor vehicles, parts and accessories	545	1,8	819	50,3	0,9
Paper and paper products	258	0,8	256	-0,8	0,0
Commercial products	495	1,6	732	47,9	0,8
Used household and office products	319	1,0	554	73,7	0,7
Containers	1 558	5,0	2 014	29,3	1,5
Parcels	579	1,9	967	67,0	1,3
Other freight	5 204	16,9	7 801	49,9	8,4
<b>Total income</b>	<b>30 877</b>	<b>100,0</b>	<b>40 427</b>	<b>30,9</b>	<b>30,9</b>

Income from freight transportation increased by 30,9% in the second quarter of 2021 compared with the second quarter of 2020. The main contributors to this increase were:

- primary mining and quarrying products (22,4% and contributing 8,7 percentage points); and
- 'other' freight (49,9% and contributing 8,4 percentage points) – see Table B.

**Figure 1 – Freight transportation: year-on-year percentage change in payload**



**Table C – Seasonally adjusted payload for the latest three months by type of transport**

Payload	Jan – Mar 2021 (000 tons)	Weight	Apr – Jun 2021 (000 tons)	% change between Jan – Mar 2021 and Apr – Jun 2021	Contribution (% points) to the total % change
Rail	44 623	21,4	46 114	3,3	0,7
Road	164 208	78,6	168 925	2,9	2,3
<b>Total</b>	<b>208 831</b>	<b>100,0</b>	<b>215 038</b>	<b>3,0</b>	<b>3,0</b>

Seasonally adjusted payload increased by 3,0% in the second quarter of 2021 compared with the first quarter of 2021. Road freight increased by 2,9% (contributing 2,3 percentage points) and rail freight increased by 3,3% (contributing 0,7 of a percentage point) – see Table C.

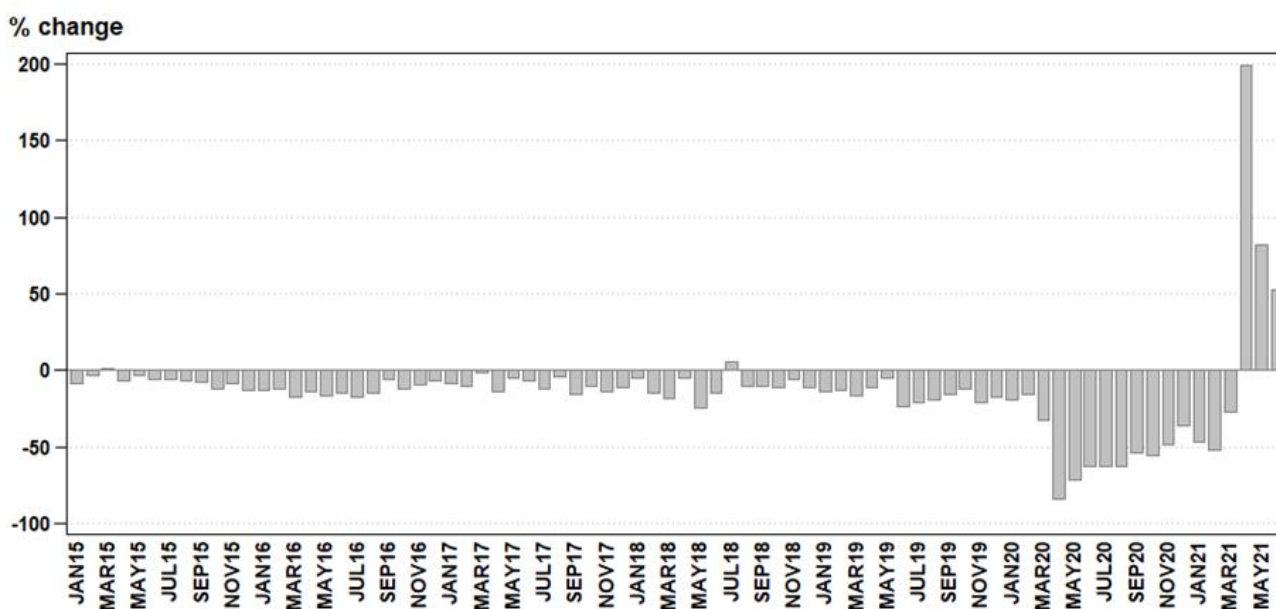
## Passenger transportation: results for June 2021

**Table D – Year-on-year percentage change in passenger transportation (income at current prices)**

	Jan-21	Feb-21	Mar-21	Apr-21	May-21	Jun-21
Passenger journeys	-46,3	-51,9	-27,0	199,0	81,7	52,6
Passenger income	-37,2	-35,7	-10,4	255,1	119,1	72,4

The number of passenger journeys increased by 52,6% in June 2021 compared with June 2020. The corresponding income increased by 72,4% over the same period.

**Figure 2 – Passenger transportation: year-on-year percentage change in passenger journeys**



**Table E – Seasonally adjusted passenger journeys for the latest three months by type of transport**

Passenger journeys	Jan – Mar 2021 (000)	Weight	Apr – Jun 2021 (000)	% change between Jan – Mar 2021 and Apr – Jun 2021	Contribution (% points) to the total % change
Rail	4 460	8,2	4 846	8,7	0,7
Road	49 986	91,8	55 606	11,2	10,3
<b>Total</b>	<b>54 445</b>	<b>100,0</b>	<b>60 450</b>	<b>11,0</b>	<b>11,0</b>

Seasonally adjusted passenger journeys increased by 11,0% in the second quarter of 2021 compared with the first quarter of 2021. Road passenger journeys increased by 11,2% (contributing 10,3 percentage points) and rail passenger journeys increased by 8,7% (contributing 0,7 of a percentage point) – see Table E.

**Risenga Maluleke**  
Statistician-General

## Tables

Table 1 – Freight transportation (income at current prices)

Year and month 1/		Rail		Road		Total	
		Payload (000 tons)	Income (R million)	Payload (000 tons)	Income (R million)	Payload (000 tons)	Income (R million)
2020	Jan	17 219	3 561	51 315	9 225	68 534	12 786
	Feb	17 550	3 611	53 467	9 505	71 017	13 116
	Mar	17 832	3 614	53 575	9 625	71 406	13 238
	Apr	10 887	2 062	35 326	5 979	46 212	8 041
	May	14 141	2 930	46 423	8 044	60 564	10 974
	Jun	15 795	3 345	48 093	8 517	63 888	11 862
	Jul	16 089	3 395	52 332	9 216	68 421	12 612
	Aug	17 666	3 772	54 105	9 547	71 771	13 319
	Sep	17 722	3 635	54 922	9 650	72 645	13 285
	Oct	14 737	3 295	56 139	9 936	70 875	13 231
	Nov	16 738	3 631	56 907	10 217	73 645	13 848
	Dec	15 471	3 145	52 341	9 285	67 812	12 430
		<b>Total</b>	<b>191 847</b>	<b>39 996</b>	<b>614 945</b>	<b>108 746</b>	<b>806 790</b>
2021	Jan	13 161	2 807	48 068	8 554	61 229	11 361
	Feb	15 097	3 174	50 026	9 191	65 123	12 365
	Mar	15 372	3 335	56 431	10 162	71 803	13 498
	Apr	15 725	3 384	55 931	10 005	71 657	13 389
	May	14 863	3 157	58 281	10 494	73 144	13 652
	Jun	16 347	3 446	54 960	9 941	71 307	13 386

1/ Figures for the latest month are preliminary.

Table 2 – Year-on-year percentage change in freight transportation (income at current prices)

Year and month		Rail		Road		Total	
		Payload	Income	Payload	Income	Payload	Income
2020	Jan	-7,7	-2,7	-7,1	-3,7	-7,2	-3,4
	Feb	-5,3	-2,0	-4,8	-2,2	-4,9	-2,2
	Mar	4,8	8,5	-8,3	-3,0	-5,3	-0,1
	Apr	-42,7	-47,0	-38,7	-40,2	-39,7	-42,1
	May	-22,8	-22,8	-22,4	-22,0	-22,5	-22,2
	Jun	-16,8	-13,0	-19,1	-17,0	-18,6	-15,9
	Jul	5,4	5,5	-14,4	-12,1	-10,5	-8,0
	Aug	-7,8	-2,3	-13,2	-11,3	-11,9	-8,9
	Sep	-8,9	-9,4	-5,1	-4,4	-6,0	-5,8
	Oct	-8,5	-5,4	-8,8	-8,7	-8,7	-7,9
	Nov	-10,4	-6,4	-3,2	-3,0	-4,9	-3,9
	Dec	-6,5	-9,4	7,8	3,3	4,2	-0,2
		<b>Total</b>	<b>-11,1</b>	<b>-9,4</b>	<b>-11,8</b>	<b>-10,5</b>	<b>-11,6</b>
2021	Jan	-23,6	-21,2	-6,3	-7,3	-10,7	-11,1
	Feb	-14,0	-12,1	-6,4	-3,3	-8,3	-5,7
	Mar	-13,8	-7,7	5,3	5,6	0,6	2,0
	Apr	44,4	64,1	58,3	67,3	55,1	66,5
	May	5,1	7,7	25,5	30,5	20,8	24,4
	Jun	3,5	3,0	14,3	16,7	11,6	12,8

**Table 3 – Seasonally adjusted freight transportation (income at current prices)**

Year and month		Rail		Road		Total	
		Payload (000 tons)	Income (R million)	Payload (000 tons)	Income (R million)	Payload (000 tons)	Income (R million)
2020	Jan	18 083	3 769	55 832	10 037	73 914	13 806
	Feb	17 414	3 675	58 156	10 175	75 570	13 849
	Mar	18 112	3 721	53 859	9 764	71 970	13 485
	Apr	10 625	2 016	36 678	6 216	47 303	8 231
	May	14 351	2 946	45 748	7 938	60 098	10 884
	Jun	15 173	3 133	47 669	8 446	62 842	11 579
	Jul	17 780	3 699	50 039	8 833	67 820	12 532
	Aug	16 385	3 597	52 528	9 364	68 913	12 961
	Sep	16 218	3 353	52 900	9 382	69 118	12 735
	Oct	16 004	3 428	52 607	9 264	68 611	12 692
	Nov	15 727	3 416	53 899	9 610	69 626	13 026
	Dec	16 069	3 303	55 509	9 789	71 578	13 092
2021	Jan	14 015	3 018	53 736	9 553	67 751	12 571
	Feb	15 075	3 216	53 826	9 745	68 901	12 961
	Mar	15 533	3 450	56 646	10 168	72 179	13 618
	Apr	15 440	3 259	56 668	10 232	72 107	13 491
	May	15 022	3 209	57 989	10 447	73 012	13 657
	Jun	15 652	3 287	54 268	9 898	69 919	13 186

**Table 4 – Month-on-month percentage change in seasonally adjusted freight transportation (income at current prices)**

Year and month		Rail		Road		Total	
		Payload	Income	Payload	Income	Payload	Income
2020	Jan	6,4	5,6	6,5	4,1	6,5	4,5
	Feb	-3,7	-2,5	4,2	1,4	2,2	0,3
	Mar	4,0	1,3	-7,4	-4,0	-4,8	-2,6
	Apr	-41,3	-45,8	-31,9	-36,3	-34,3	-39,0
	May	35,1	46,1	24,7	27,7	27,0	32,2
	Jun	5,7	6,3	4,2	6,4	4,6	6,4
	Jul	17,2	18,1	5,0	4,6	7,9	8,2
	Aug	-7,8	-2,8	5,0	6,0	1,6	3,4
	Sep	-1,0	-6,8	0,7	0,2	0,3	-1,7
	Oct	-1,3	2,2	-0,6	-1,3	-0,7	-0,3
	Nov	-1,7	-0,4	2,5	3,7	1,5	2,6
	Dec	2,2	-3,3	3,0	1,9	2,8	0,5
2021	Jan	-12,8	-8,6	-3,2	-2,4	-5,3	-4,0
	Feb	7,6	6,6	0,2	2,0	1,7	3,1
	Mar	3,0	7,3	5,2	4,3	4,8	5,1
	Apr	-0,6	-5,5	0,0	0,6	-0,1	-0,9
	May	-2,7	-1,5	2,3	2,1	1,3	1,2
	Jun	4,2	2,4	-6,4	-5,3	-4,2	-3,4

**Table 5 – Freight transportation income at current prices by type of commodity (R million)**

Type of commodity	Jan-21	Feb-21	Mar-21	Apr-21	May-21	Jun-21 1/
Agriculture and forestry primary products	748	832	927	966	1 022	989
Primary mining and quarrying products	4 164	4 380	4 926	4 920	4 831	4 988
Manufactured food, beverages and tobacco products	1 103	1 171	1 317	1 306	1 347	1 319
Textiles, clothing and leather products	206	221	255	262	258	228
Chemicals, coke, petroleum, rubber, plastic and other mineral products	880	937	1 026	954	956	897
Basic metals and fabricated metal products	211	278	283	281	293	261
Non-metallic products	167	193	200	217	212	217
Electrical machinery, transport machinery and equipment	156	177	181	187	184	187
Motor vehicles, parts and accessories	207	238	270	267	280	272
Paper and paper products	74	81	86	88	87	81
Commercial products	213	227	266	239	255	238
Used household and office products	165	172	186	184	192	178
Containers	589	636	707	661	673	680
Parcels	267	322	313	311	330	326
Other freight	2 213	2 499	2 553	2 545	2 733	2 523
<b>Total</b>	<b>11 361</b>	<b>12 365</b>	<b>13 498</b>	<b>13 389</b>	<b>13 652</b>	<b>13 386</b>

1/ Figures are preliminary.

**Table 6 – Year-on-year percentage change in freight transportation income at current prices by type of commodity**

Type of commodity	Jan-21	Feb-21	Mar-21	Apr-21	May-21	Jun-21
Agriculture and forestry primary products	-6,0	0,6	7,0	40,2	19,7	9,2
Primary mining and quarrying products	-10,5	-8,5	3,5	52,0	11,2	11,8
Manufactured food, beverages and tobacco products	-27,0	-20,4	-15,6	30,1	8,2	9,7
Textiles, clothing and leather products	7,3	7,3	19,7	249,3	63,3	24,6
Chemicals, coke, petroleum, rubber, plastic and other mineral products	1,5	1,8	10,9	44,3	23,8	9,7
Basic metals and fabricated metal products	-25,2	-13,4	-16,8	234,5	152,6	16,0
Non-metallic products	-32,4	-30,3	-30,6	171,3	15,2	-4,8
Electrical machinery, transport machinery and equipment	-6,0	-8,3	-6,7	98,9	31,4	20,6
Motor vehicles, parts and accessories	-20,4	-22,7	-5,9	206,9	28,4	13,3
Paper and paper products	-14,9	-20,6	-14,0	3,5	-2,2	-3,6
Commercial products	-0,9	0,4	6,8	174,7	34,2	9,2
Used household and office products	-1,8	-1,7	17,7	268,0	61,3	18,7
Containers	-13,6	-3,2	14,8	62,8	18,7	16,2
Parcels	9,4	9,5	1,6	144,9	112,9	9,8
Other freight	-8,5	6,4	7,5	99,8	50,0	19,7
<b>Total</b>	<b>-11,1</b>	<b>-5,7</b>	<b>2,0</b>	<b>66,5</b>	<b>24,4</b>	<b>12,8</b>

**Table 7 – Contribution of each type of commodity to the year-on-year percentage change in freight transportation income at current prices (percentage points)**

Type of commodity	Jan-21	Feb-21	Mar-21	Apr-21	May-21	Jun-21
Agriculture and forestry primary products	-0,4	0,0	0,5	3,4	1,5	0,7
Primary mining and quarrying products	-3,8	-3,1	1,3	20,9	4,4	4,5
Manufactured food, beverages and tobacco products	-3,2	-2,3	-1,8	3,8	0,9	1,0
Textiles, clothing and leather products	0,1	0,1	0,3	2,3	0,9	0,4
Chemicals, coke, petroleum, rubber, plastic and other mineral products	0,1	0,1	0,8	3,6	1,7	0,7
Basic metals and fabricated metal products	-0,6	-0,3	-0,4	2,4	1,6	0,3
Non-metallic products	-0,6	-0,6	-0,7	1,7	0,3	-0,1
Electrical machinery, transport machinery and equipment	-0,1	-0,1	-0,1	1,2	0,4	0,3
Motor vehicles, parts and accessories	-0,4	-0,5	-0,1	2,2	0,6	0,3
Paper and paper products	-0,1	-0,2	-0,1	0,0	0,0	0,0
Commercial products	0,0	0,0	0,1	1,9	0,6	0,2
Used household and office products	0,0	0,0	0,2	1,7	0,7	0,2
Containers	-0,7	-0,2	0,7	3,2	1,0	0,8
Parcels	0,2	0,2	0,0	2,3	1,6	0,2
Other freight	-1,6	1,1	1,3	15,8	8,3	3,5
<b>Total</b>	<b>-11,1</b>	<b>-5,7</b>	<b>2,0</b>	<b>66,5</b>	<b>24,4</b>	<b>12,8</b>



**Table 8 – Passenger transportation (income at current prices)**

Year and month 1/		Rail		Road		Total	
		Passenger journeys (000)	Income (R million)	Passenger journeys (000)	Income (R million)	Passenger journeys (000)	Income (R million)
2020	Jan	8 651	177	23 911	840	32 562	1 017
	Feb	10 665	173	24 621	789	35 286	962
	Mar	5 499	103	23 060	771	28 559	874
	Apr	0	0	6 457	185	6 457	185
	May	61	4	11 199	326	11 260	330
	Jun	145	10	12 903	396	13 048	406
	Jul	274	12	14 738	445	15 012	457
	Aug	402	15	14 833	457	15 235	472
	Sep	390	19	18 332	589	18 722	608
	Oct	488	23	18 046	573	18 534	596
	Nov	1 615	35	17 790	606	19 405	641
	Dec	1 438	34	17 054	642	18 492	676
	<b>Total</b>	<b>29 628</b>	<b>605</b>	<b>202 944</b>	<b>6 619</b>	<b>232 572</b>	<b>7 224</b>
2021	Jan	1 128	24	16 352	615	17 480	639
	Feb	1 450	29	15 520	590	16 970	619
	Mar	1 772	41	19 071	742	20 843	783
	Apr	1 632	41	17 673	616	19 305	657
	May	1 752	43	18 706	680	20 458	723
	Jun	1 461	30	18 446	670	19 907	700

1/ Figures for the latest month are preliminary.

**Table 9 – Year-on-year percentage change in passenger transportation (income at current prices)**

Year and month		Rail		Road		Total	
		Passenger journeys	Income	Passenger journeys	Income	Passenger journeys	Income
2020	Jan	-46,0	-13,2	-1,2	1,0	-19,0	-1,8
	Feb	-42,6	-10,8	5,4	6,8	-15,9	3,1
	Mar	-69,6	-48,5	-5,5	-7,0	-32,8	-15,1
	Apr	-100,0	-100,0	-73,9	-78,1	-84,2	-81,9
	May	-99,6	-97,8	-54,6	-59,3	-71,0	-66,6
	Jun	-99,0	-93,9	-37,1	-50,4	-62,5	-57,8
	Jul	-98,1	-93,3	-42,8	-46,6	-62,5	-54,8
	Aug	-97,3	-92,2	-41,8	-44,2	-62,1	-53,3
	Sep	-97,2	-89,8	-32,1	-36,5	-54,0	-45,5
	Oct	-96,7	-88,4	-32,4	-36,0	-55,5	-45,5
	Nov	-87,2	-79,7	-28,6	-29,0	-48,4	-37,5
	Dec	-80,0	-69,4	-21,8	-25,7	-36,2	-30,7
	<b>Total</b>	<b>-83,0</b>	<b>-72,0</b>	<b>-30,9</b>	<b>-34,0</b>	<b>-50,3</b>	<b>-40,8</b>
2021	Jan	-87,0	-86,4	-31,6	-26,8	-46,3	-37,2
	Feb	-86,4	-83,2	-37,0	-25,2	-51,9	-35,7
	Mar	-67,8	-60,2	-17,3	-3,8	-27,0	-10,4
	Apr	1/	1/	173,7	233,0	199,0	255,1
	May	2 772,1	975,0	67,0	108,6	81,7	119,1
	Jun	907,6	200,0	43,0	69,2	52,6	72,4

1/ Changes from zero in the preceding period cannot be calculated as a percentage.

**Table 10 – Seasonally adjusted passenger transportation (income at current prices)**

Year and month		Rail		Road		Total	
		Passenger journeys (000)	Income (R million)	Passenger journeys (000)	Income (R million)	Passenger journeys (000)	Income (R million)
2020	Jan	9 870	166	25 542	850	35 411	1 016
	Feb	10 011	164	24 875	836	34 886	1 000
	Mar	5 232	99	20 136	724	25 368	823
	Apr	0	0	7 894	249	7 894	249
	May	61	4	11 117	329	11 178	333
	Jun	141	11	12 331	402	12 472	413
	Jul	262	12	14 512	419	14 774	431
	Aug	390	15	14 678	453	15 068	468
	Sep	362	18	16 522	562	16 883	580
	Oct	423	20	17 703	554	18 126	574
	Nov	1 608	35	17 505	607	19 113	642
	Dec	1 944	47	20 147	632	22 091	679
2021	Jan	1 331	23	18 673	624	20 004	647
	Feb	1 400	28	15 124	640	16 524	669
	Mar	1 729	39	16 189	697	17 917	735
	Apr	1 633	42	18 736	680	20 369	722
	May	1 808	45	18 774	684	20 581	729
	Jun	1 405	33	18 096	676	19 500	709

**Table 11 – Month-on-month percentage change in seasonally adjusted passenger transportation (income at current prices)**

Year and month		Rail		Road		Total	
		Passenger journeys	Income	Passenger journeys	Income	Passenger journeys	Income
2020	Jan	-2,5	8,5	2,6	-0,4	1,1	1,0
	Feb	1,4	-1,2	-2,6	-1,6	-1,5	-1,6
	Mar	-47,7	-39,6	-19,1	-13,4	-27,3	-17,7
	Apr	-100,0	-100,0	-60,8	-65,6	-68,9	-69,7
	May	1/	1/	40,8	32,1	41,6	33,7
	Jun	131,1	175,0	10,9	22,2	11,6	24,0
	Jul	85,8	9,1	17,7	4,2	18,5	4,4
	Aug	48,9	25,0	1,1	8,1	2,0	8,6
	Sep	-7,2	20,0	12,6	24,1	12,0	23,9
	Oct	16,9	11,1	7,1	-1,4	7,4	-1,0
	Nov	280,1	75,0	-1,1	9,6	5,4	11,8
	Dec	20,9	34,3	15,1	4,1	15,6	5,8
2021	Jan	-31,5	-51,1	-7,3	-1,3	-9,4	-4,7
	Feb	5,2	21,7	-19,0	2,6	-17,4	3,4
	Mar	23,5	39,3	7,0	8,9	8,4	9,9
	Apr	-5,6	7,7	15,7	-2,4	13,7	-1,8
	May	10,7	7,1	0,2	0,6	1,0	1,0
	Jun	-22,3	-26,7	-3,6	-1,2	-5,3	-2,7

1/ Changes from zero in the preceding period cannot be calculated as a percentage.

## Survey information

<b>Introduction</b>	1	Statistics South Africa (Stats SA) conducts a monthly survey of the land transportation industry, covering passenger and freight transportation by rail and road (see paragraph 4 below). This survey is based on a sample drawn from the 2019 business sampling frame (BSF) that contains businesses registered for value added tax (VAT) and income tax.
	2	In order to improve timeliness, some information for the latest month had to be estimated due to late response. These estimates will be revised in future statistical releases as soon as information becomes available. Published land transportation income estimates exclude VAT.
<b>Purpose of the survey</b>	3	The results of the monthly land transport survey are used to compile estimates of the gross domestic product (GDP) and its components, which are used in monitoring the state of the economy and formulation of economic policy. These statistics are also used in the analysis of comparative business and industry performance.
<b>Scope of the survey</b>	4	This survey covers enterprises involved in land transportation according to the following type of transportation: <ul style="list-style-type: none"> <li>• railway transport (including passenger and freight transportation);</li> <li>• 'other' scheduled passenger land transport – urban, suburban and inter-urban bus and coach passenger lines and school buses;</li> <li>• 'other' non-scheduled passenger land transport – safaris and sightseeing bus tours, metered taxis and 'other' passenger transport including renting of motor cars with drivers; and</li> <li>• freight transport by road.</li> </ul>
<b>Exclusions</b>	5	Passenger transportation excludes: <ul style="list-style-type: none"> <li>• minibus taxis;</li> <li>• metropolitan buses (including the Bus Rapid Transport system – BRT); and</li> <li>• rental of private cars/buses without drivers.</li> </ul> <p>Freight transportation excludes:</p> <ul style="list-style-type: none"> <li>• renting of trucks without drivers; and</li> <li>• in-house transportation.</li> </ul>
<b>Classification</b>	6	The 1993 edition of the <i>Standard Industrial Classification of all Economic Activities</i> (SIC), Fifth Edition, Report No. 09-90-02, was used to classify the statistical units in the survey. The SIC is based on the 1990 <i>International Standard Industrial Classification of all Economic Activities</i> (ISIC) with suitable adaptations for local conditions. Statistics in this publication are presented at SIC division (two-digit) level. Each enterprise is classified to the industry which reflects its predominant activity.
<b>Collection rate</b>	7	The preliminary collection rate for the survey on land transportation for June 2021 was 85,4%. The improved collection rate for May 2021 was 88,3%.
<b>Statistical unit</b>	8	The statistical unit for which information is compiled and published is an enterprise, defined as a legal unit or a combination of legal units that includes and directly controls all functions necessary to carry out its income activities. The statistical units are derived from and linked to the South African Revenue Service (SARS) administrative data.
<b>Revised figures</b>	9	Revised figures are mainly due to late submission of data to Stats SA, or respondents reporting revisions or corrections to their figures. Preliminary figures, as indicated in the relevant tables, are subject to change and when revised will not be indicated as such.

- Related publications** 10 Users may also wish to refer to the following publication available from Stats SA –
- *Stats in Brief* issued annually.
- Rounding-off of figures** 11 Where figures have been rounded off, discrepancies may occur between sums of the component items and the totals.
- Historical data** 12 Historical land transport data are available on the Stats SA website. To access the data electronically, use the following link:  
[Click to download historical data](#)
- Past publications** 13 Past land transport releases are available on the Stats SA website. To access the releases electronically, use the following link:  
[Click to download past releases](#)

## Technical notes

- Survey methodology and design** 1 The survey is conducted on a monthly basis. Questionnaires are sent to a sample of 705 enterprises from a population of 4 329 enterprises. Completed questionnaires are required to be returned to Stats SA within 10 days after the end of the reference month. Fax and telephone reminders are used to follow up on non-respondents.
- 2 A stratified random sample was drawn at the SIC four-digit level in April 2019 from Stats SA's business sampling frame (BSF). Strata were formed using a combination of Standard Industrial Classification and the measure of size classes for enterprises (see paragraph 3 below).

The Neyman optimal allocation formula given below was used to allocate samples to each stratum:

$$n_h = n * ( N_h * S_h ) / [ \sum ( N_i * S_i ) ].$$

Neyman allocation formula not only allocates sample sizes to each stratum but also calculates the relative precision for each stratum as well as the relative precision for all strata. The relative precision for these strata was 0,8%.

- Sample design and class limits** 3 The land transportation industry is divided into four size groups. All large enterprises (size group one) are completely enumerated. Simple random sampling is applied to medium sized (size group two) and to small (size group three and four) enterprises. The total value of income of the large enterprises (size group one) is added to the weighted totals of size groups two, three and four to reflect the total value of income.

### Measure of size classes (Rand)

Enterprise size	Size group	Lower limits	Upper limits
Very small	4	1 141 401	9 000 000
Small	3	9 000 001	39 000 000
Medium	2	39 000 001	78 000 000
Large	1	78 000 001	

- Sample weighting** 4 For those strata not completely enumerated, the weights to produce estimates are the inverse ratio of the sampling fraction, modified to take account of non-response in the survey. Stratum estimates are calculated and then aggregated with the completely enumerated stratum to form division estimates. These procedures are in line with international best practice.

- Reliability of estimates** 5 Data presented in this publication are based on information obtained from a sample and are, therefore, subject to sampling variability; that is, they may differ from the figures that would have been produced if the data had been obtained from all enterprises in the land transport industry in South Africa. Estimates are subject to sampling and non-sampling errors.

**6** Inaccuracies may occur because of imperfections in reporting by enterprises and errors made in the collection and processing of the data. Inaccuracies of this kind are referred to as non-sampling errors. Every effort is made to minimise non-sampling errors by careful design of questionnaires, testing them in pilot studies, editing reported data and implementing efficient operating procedures. Fluctuations may occur in consecutive months as a result of seasonal and economic factors.

**Year-on-year percentage change** **7** The year-on-year percentage change in a variable for any given period is the change between that period and the corresponding period of the previous year, expressed as a percentage of the latter.

**Contribution (percentage points)** **8** The contribution (percentage points) to the annual percentage change for any given period is calculated by multiplying the percentage change of each type of commodity/service by its corresponding weight, divided by 100. The weight is the percentage contribution of each type of commodity/service to total income in the corresponding period of the previous year.

**Seasonal adjustment** **9** Seasonally adjusted estimates are generated each month using the X-12-ARIMA Seasonal Adjustment Program developed by the US Bureau of the Census. Seasonal adjustment is a means of removing the estimated effects of normal seasonal variation from the series so that the effects of other influences on the series can be recognised more clearly. Seasonal adjustment does not aim to remove irregular or non-seasonal influences which may be present in any particular month. Influences that are volatile or unsystematic can still make it difficult to interpret the movement of the series even after adjustment for seasonal variations. Therefore the month-to-month movements of seasonally adjusted estimates may not be reliable indicators of trend behaviour. The X-12-ARIMA procedure for land transportation is described in more detail on the Stats SA website at:

[Click to download seasonal adjustment land transport August 2017](#)

**Note:** Owing to the impact of the COVID-19 lockdown, additive outlier and transitory change adjustments were applied. Transitory (temporary) change describes a temporary effect on the level of a series after a certain point in time. The methodology will be reviewed as more data points are added to the time series.

**Trend cycle** **10** The trend is the long-term pattern or movement of a time series. The X-12-ARIMA Seasonal Adjustment Program is used for smoothing seasonally adjusted estimates to estimates of the underlying trend cycle.

## Glossary

**Enterprise** An enterprise is a legal entity or a combination of legal units that includes and directly controls all functions necessary to carry out its activities.

**Industry** An industry is made up of enterprises engaged in the same or similar kinds of economic activity. Industries are defined in the *System of National Accounts* (SNA) in the same way as in the *Standard Industrial Classification of all Economic Activities* (SIC), Fifth Edition, Report No. 09-90-02 of January 1993.

<b>Symbols and abbreviations</b>	BSF	Business sampling frame
	GDP	Gross domestic product
	ISIC	International Standard Industrial Classification
	SIC	Standard Industrial Classification of all Economic Activities
	SARS	South African Revenue Service
	Stats SA	Statistics South Africa
	VAT	Value added tax

## Technical enquiries

**Kagisho Mathabatha** Telephone number: (082) 409 7077  
Email: kagishoma@statssa.gov.za

**Keshnee Naidoo** Telephone number: (072) 310 3798  
Email: keshneen@statssa.gov.za

## General information

Stats SA publishes approximately 300 different statistical releases each year. It is not economically viable to produce them in more than one of South Africa's eleven official languages. Since the releases are used extensively, not only locally but also by international economic and social-scientific communities, Stats SA releases are published in English only.

Stats SA has copyright on this publication. Users may apply the information as they wish, provided that they acknowledge Stats SA as the source of the basic data wherever they process, apply, utilise, publish or distribute the data: and also that they specify that the relevant application and analysis (where applicable) result from their own processing of the data.

## Advance release calendar

A release calendar is disseminated on [www.statssa.gov.za](http://www.statssa.gov.za)

## Stats SA products

A complete set of Stats SA publications is available at the Stats SA Library and the following libraries:

National Library of South Africa, Pretoria Division  
National Library of South Africa, Cape Town Division  
Natal Society Library, Pietermaritzburg  
Library of Parliament, Cape Town  
Bloemfontein Public Library  
Johannesburg Public Library  
Eastern Cape Library Services, Qonce  
Central Regional Library, Polokwane  
Central Reference Library, Mbombela  
Central Reference Collection, Kimberley  
Central Reference Library, Mmabatho

Stats SA also provides a subscription service.

## Electronic services

A large range of data is available via online services. For more detail about our electronic services, contact Stats SA's user information service at (012) 310 8600.

You can visit us on the internet at: [www.statssa.gov.za](http://www.statssa.gov.za)

## General enquiries

User information services	Telephone number: (012) 310 8600 Email: <a href="mailto:info@statssa.gov.za">info@statssa.gov.za</a>
Orders/subscription services	Telephone number: (012) 310 8619 Email: <a href="mailto:millies@statssa.gov.za">millies@statssa.gov.za</a>
Postal address	Private Bag X44, Pretoria, 0001

*Produced by Stats SA*