



stats sa

Department:
Statistics South Africa
REPUBLIC OF SOUTH AFRICA

Private Bag X44, Pretoria, 0001, South Africa, ISibalo House, Koch Street, Salvokop, Pretoria, 0002
www.statssa.gov.za, info@statssa.gov.za, Tel +27 12 310 8911

STATISTICAL RELEASE

P6410

Tourist accommodation (Preliminary)

October 2022

Embargoed until:
12 December 2022
10:00

ENQUIRIES:
Juan-Pierre Terblanche
012 310 2965

FORTHCOMING ISSUE:
November 2022

EXPECTED RELEASE DATE:
23 January 2023



Contents

Results for October 2022	2
Table A – Year-on-year percentage change in tourist accommodation statistics (income at current prices).....	2
Table B – Year-on-year percentage change in income from accommodation at current prices by type of accommodation	2
Table C – Income from accommodation at current prices for the latest three months by type of accommodation	3
Figure 1 – Seasonally adjusted occupancy rate for the accommodation industry.....	3
Figure 2 – Income from accommodation at current prices.....	4
Tables	5
Table 1 – Income from accommodation at current prices (R million)	5
Table 2 – Year-on-year percentage change in income from accommodation at current prices	5
Table 3 – Seasonally adjusted income from accommodation at current prices.....	5
Table 4 – Tourist accommodation statistics by type of accommodation (income at current prices).....	6
Table 5 – Year-on-year percentage change in tourist accommodation statistics by type of accommodation (income at current prices)	7
Table 6 – Contribution of each type of accommodation to the year-on-year percentage change in income from accommodation at current prices (percentage points)	7
Table 7 – Seasonally adjusted tourist accommodation statistics by type of accommodation (income at current prices)	8
Survey information	9
Technical notes	10
Glossary	11
Technical enquiries	12
General information	13

Results for October 2022**Table A – Year-on-year percentage change in tourist accommodation statistics (income at current prices)**

	May-22	Jun-22	Jul-22	Aug-22	Sep-22	Oct-22
Stay units available	0,3	0,2	0,3	0,4	0,3	0,3
Stay unit nights sold	33,5	53,5	112,0	53,8	35,9	28,1
Average income per stay unit night sold	16,9	5,2	12,1	17,0	15,3	20,2
Income from accommodation	56,0	61,4	137,5	80,0	56,7	54,0
Total income 1/	44,5	95,8	189,3	55,2	79,3	35,0

1/ Includes restaurant and bar sales and 'other' income.

Measured in nominal terms (current prices), total income for the tourist accommodation industry increased by 35,0% in October 2022 compared with October 2021.

Income from accommodation increased by 54,0% year-on-year in October 2022, the result of a 28,1% increase in the number of stay unit nights sold and a 20,2% increase in the average income per stay unit night sold.

Table B – Year-on-year percentage change in income from accommodation at current prices by type of accommodation

Type of accommodation	May-22	Jun-22	Jul-22	Aug-22	Sep-22	Oct-22
Hotels	99,9	131,1	262,8	118,0	89,2	72,6
Caravan parks and camping sites	6,1	-30,9	-7,4	-24,2	-21,5	-18,2
Guest-houses and guest-farms	49,1	55,5	225,6	88,3	79,3	59,4
Other accommodation	27,1	26,2	77,6	58,5	31,7	40,5
Total income from accommodation 1/	56,0	61,4	137,5	80,0	56,7	54,0

1/ Excludes restaurant and bar sales and 'other' income.

In October 2022, the largest contributors to the 54,0% year-on-year increase in income from accommodation were:

- hotels (72,6% and contributing 33,0 percentage points); and
- 'other' accommodation (40,5% and contributing 18,5 percentage points) – see Tables B and 6.

Table C – Income from accommodation at current prices for the latest three months by type of accommodation

Type of accommodation	Aug – Oct 2021 (R million)	Weight	Aug – Oct 2022 (R million)	% change between Aug – Oct 2021 and Aug – Oct 2022	Contribution (% points) to the total % change
Hotels	1 632,2	42,4	3 098,1	89,8	38,1
Caravan parks and camping sites	145,1	3,8	114,4	-21,2	-0,8
Guest-houses and guest-farms	220,2	5,7	384,5	74,6	4,3
Other accommodation	1 849,1	48,1	2 639,1	42,7	20,5
Total income from accommodation 1/	3 846,6	100,0	6 236,1	62,1	62,1

1/ Excludes restaurant and bar sales and 'other' income.

Income from accommodation increased by 62,1% in the three months ended October 2022 compared with the three months ended October 2021. The main contributors to this increase were:

- hotels (89,8% and contributing 38,1 percentage points); and
- 'other' accommodation (42,7% and contributing 20,5 percentage points).

Figure 1 – Seasonally adjusted occupancy rate for the accommodation industry

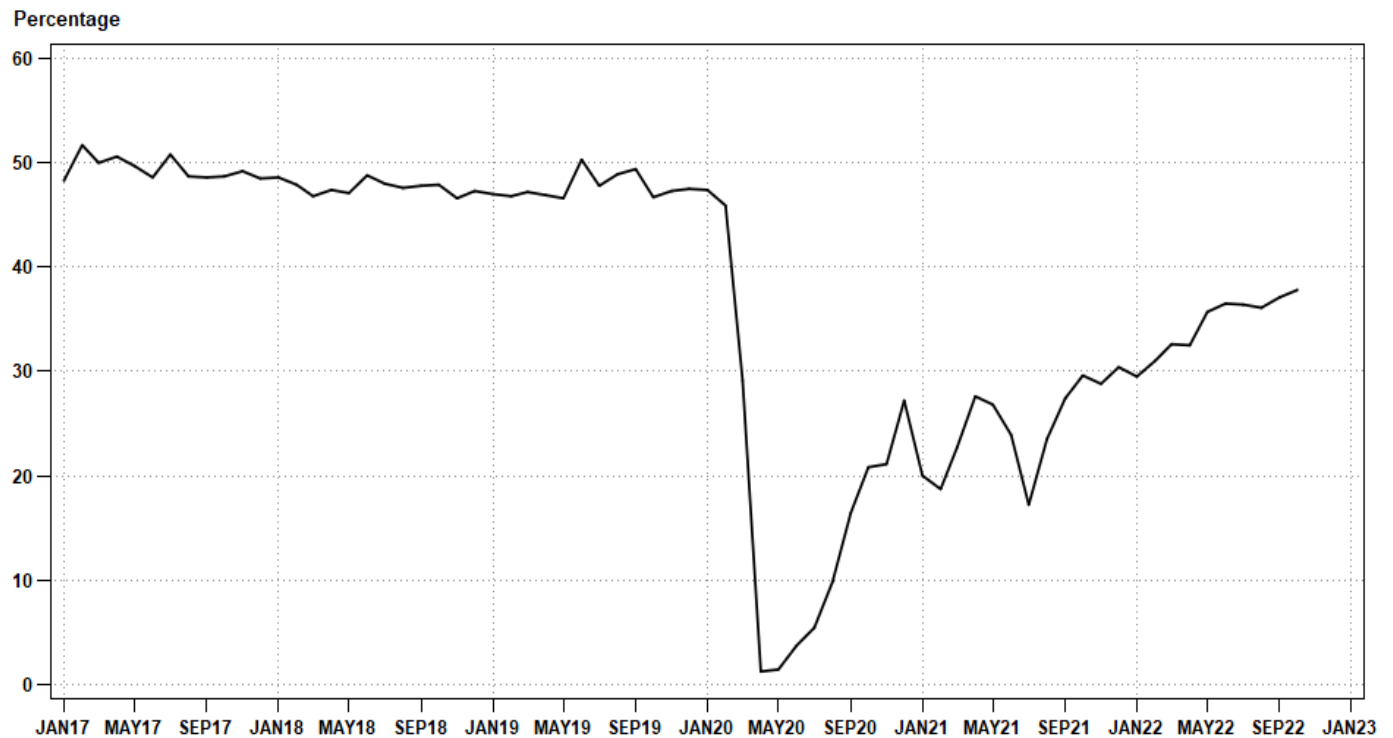
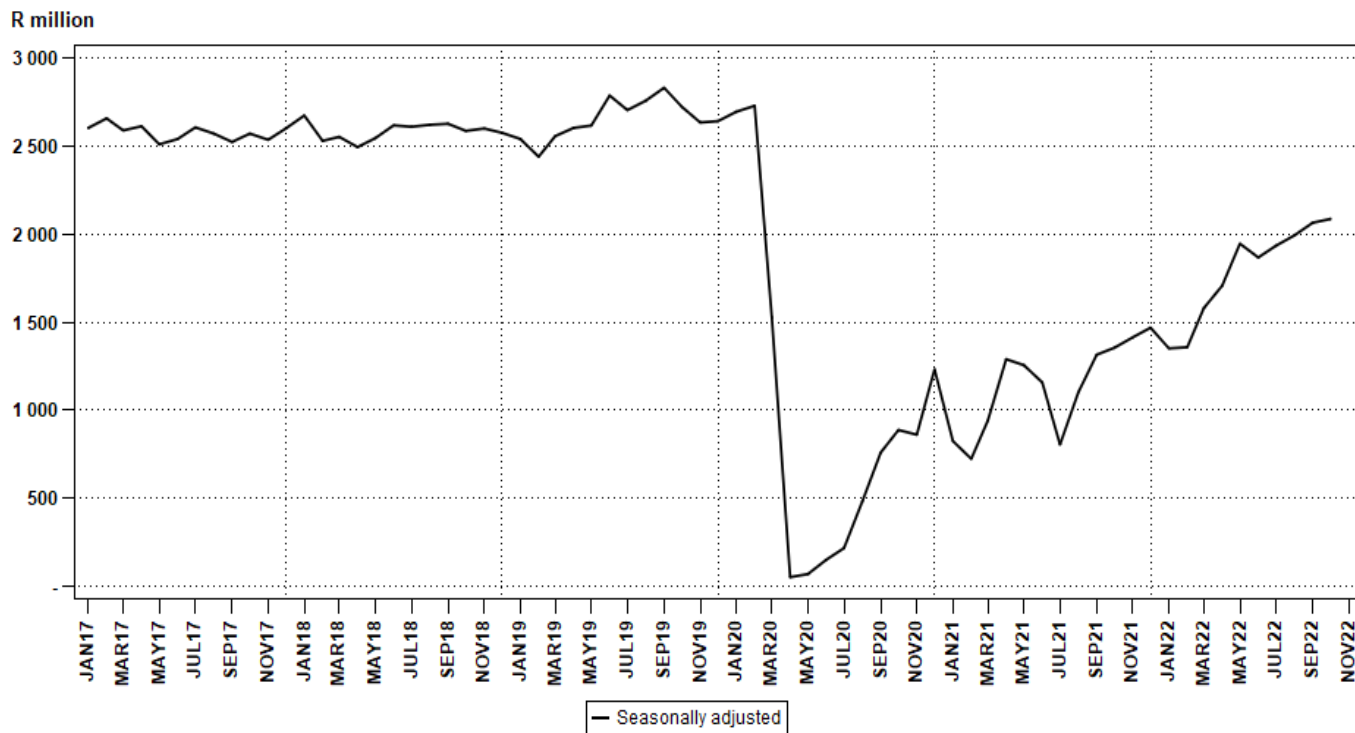


Figure 2 – Income from accommodation at current prices



Seasonally adjusted income from accommodation increased by 1,0% month-on-month in October 2022. The largest positive month-on-month growth rates were recorded for:

- caravan parks and camping sites (30,2%); and
- hotels (4,7%) – see Table 7.

Risenga Maluleke
Statistician-General

Tables

Note that income from accommodation excludes restaurant and bar sales and 'other' income.

Table 1 – Income from accommodation at current prices (R million)

Month	2017	2018	2019	2020	2021	2022 1/
Jan	2 673,9	2 747,0	2 614,3	2 769,1	848,2	1 391,0
Feb	2 753,6	2 615,1	2 515,8	2 783,1	721,8	1 388,7
Mar	2 830,7	2 778,5	2 773,8	1 649,0	1 006,1	1 706,9
Apr	2 554,3	2 432,6	2 536,6	49,7	1 258,8	1 653,0
May	2 105,2	2 120,0	2 171,7	56,6	1 038,9	1 620,6
Jun	2 027,2	2 107,3	2 258,7	122,2	943,2	1 522,7
Jul	2 411,9	2 430,5	2 525,5	201,2	754,3	1 791,8
Aug	2 447,7	2 520,4	2 666,0	470,6	1 064,0	1 915,3
Sep	2 453,0	2 577,2	2 801,1	757,4	1 308,2	2 050,0
Oct	2 828,0	2 840,0	2 988,8	966,8	1 474,4	2 270,8
Nov	2 705,7	2 769,6	2 795,4	899,5	1 496,5	
Dec	3 171,5	3 120,9	3 194,3	1 516,3	1 788,4	
Total	30 962,7	31 059,1	31 842,0	12 241,5	13 702,8	

1/ Figures for the latest month are preliminary.

Table 2 – Year-on-year percentage change in income from accommodation at current prices

Month	2018	2019	2020	2021	2022	2022 year-to-date
Jan	2,7	-4,8	5,9	-69,4	64,0	64,0
Feb	-5,0	-3,8	10,6	-74,1	92,4	77,1
Mar	-1,8	-0,2	-40,6	-39,0	69,7	74,2
Apr	-4,8	4,3	-98,0	2 432,8	31,3	60,1
May	0,7	2,4	-97,4	1 735,5	56,0	59,2
Jun	4,0	7,2	-94,6	671,8	61,4	59,6
Jul	0,8	3,9	-92,0	274,9	137,5	68,5
Aug	3,0	5,8	-82,3	126,1	80,0	70,1
Sep	5,1	8,7	-73,0	72,7	56,7	68,2
Oct	0,4	5,2	-67,7	52,5	54,0	66,2
Nov	2,4	0,9	-67,8	66,4		
Dec	-1,6	2,4	-52,5	17,9		
Total	0,3	2,5	-61,6	11,9		

Table 3 – Seasonally adjusted income from accommodation at current prices

Month	R million				Month-on-month % change			
	2019	2020	2021	2022	2019	2020	2021	2022
Jan	2 542,3	2 697,0	824,7	1 351,6	-1,4	2,0	-33,1	-8,0
Feb	2 441,3	2 730,6	723,4	1 358,0	-4,0	1,2	-12,3	0,5
Mar	2 558,2	1 528,1	940,8	1 580,5	4,8	-44,0	30,1	16,4
Apr	2 604,9	51,0	1 290,0	1 707,8	1,8	-96,7	37,1	8,1
May	2 618,5	68,3	1 255,9	1 946,9	0,5	33,9	-2,6	14,0
Jun	2 789,1	149,7	1 157,9	1 868,3	6,5	119,2	-7,8	-4,0
Jul	2 706,2	216,0	804,9	1 935,4	-3,0	44,3	-30,5	3,6
Aug	2 759,7	481,9	1 102,0	1 993,8	2,0	123,1	36,9	3,0
Sep	2 833,2	759,1	1 315,4	2 065,8	2,7	57,5	19,4	3,6
Oct	2 725,0	887,5	1 355,2	2 087,3	-3,8	16,9	3,0	1,0
Nov	2 635,9	860,7	1 414,4		-3,3	-3,0	4,4	
Dec	2 643,4	1 232,2	1 469,0		0,3	43,2	3,9	

Table 4 – Tourist accommodation statistics by type of accommodation (income at current prices)

		May-22	Jun-22	Jul-22	Aug-22	Sep-22	Oct-22 1/
Hotels	Stay units available (000)	72,2	72,2	72,2	72,2	72,2	72,2
	Stay unit nights sold (000)	736,7	712,6	776,9	791,4	842,0	911,7
	Occupancy rate (%)	32,9	32,9	34,7	35,4	38,9	40,7
	Average income per stay unit night sold (Rand)	1 109,7	1 064,1	1 127,2	1 154,0	1 222,7	1 267,2
	Total income (R million)	2 271,9	2 186,0	2 518,6	2 509,5	2 670,9	2 918,0
	Income from accommodation (R million)	817,5	758,3	875,7	913,3	1 029,5	1 155,3
	Income from restaurant and bar sales (R million)	389,9	376,2	447,6	446,7	501,1	546,1
	Other income (R million)	1 064,5	1 051,5	1 195,3	1 149,5	1 140,3	1 216,6
Caravan parks and camping sites	Stay units available (000)	4,5	4,4	4,4	4,4	4,4	4,4
	Stay unit nights sold (000)	56,1	44,5	54,9	49,5	49,3	50,8
	Occupancy rate (%)	40,2	33,7	40,2	36,3	37,3	37,2
	Average income per stay unit night sold (Rand)	862,7	755,1	794,2	709,1	732,3	850,4
	Total income (R million)	62,8	46,1	51,4	49,0	52,6	60,3
	Income from accommodation (R million)	48,4	33,6	43,6	35,1	36,1	43,2
	Income from restaurant and bar sales (R million)	8,3	7,1	3,5	8,6	11,9	5,7
	Other income (R million)	6,1	5,4	4,3	5,3	4,6	11,4
Guest-houses and guest-farms	Stay units available (000)	14,8	14,8	14,8	14,8	14,8	14,8
	Stay unit nights sold (000)	82,7	95,0	101,8	98,9	117,0	116,5
	Occupancy rate (%)	18,0	21,4	22,2	21,6	26,4	25,4
	Average income per stay unit night sold (Rand)	998,8	878,9	975,4	1 140,5	1 246,2	1 080,7
	Total income (R million)	96,6	101,0	117,8	131,7	169,8	151,1
	Income from accommodation (R million)	82,6	83,5	99,3	112,8	145,8	125,9
	Income from restaurant and bar sales (R million)	10,1	11,3	13,2	14,6	16,3	18,7
	Other income (R million)	3,9	6,2	5,3	4,3	7,7	6,5
Other accommodation	Stay units available (000)	46,2	46,2	46,2	46,2	46,3	46,3
	Stay unit nights sold (000)	495,2	498,3	546,6	556,7	578,4	637,5
	Occupancy rate (%)	34,6	36,0	38,2	38,9	41,6	44,4
	Average income per stay unit night sold (Rand)	1 357,2	1 299,0	1 414,6	1 534,2	1 449,9	1 484,5
	Total income (R million)	776,3	754,5	901,2	991,7	982,9	1 102,1
	Income from accommodation (R million)	672,1	647,3	773,2	854,1	838,6	946,4
	Income from restaurant and bar sales (R million)	73,2	73,0	91,3	98,0	102,4	112,7
	Other income (R million)	31,0	34,2	36,7	39,6	41,9	43,0
Total industry	Stay units available (000)	137,7	137,6	137,6	137,6	137,7	137,7
	Stay unit nights sold (000)	1 370,7	1 350,4	1 480,2	1 496,5	1 586,7	1 716,5
	Occupancy rate (%)	32,1	32,7	34,7	35,1	38,4	40,2
	Average income per stay unit night sold (Rand)	1 182,3	1 127,6	1 210,5	1 279,9	1 292,0	1 322,9
	Total income (R million)	3 207,6	3 087,6	3 589,0	3 681,9	3 876,2	4 231,5
	Income from accommodation (R million)	1 620,6	1 522,7	1 791,8	1 915,3	2 050,0	2 270,8
	Income from restaurant and bar sales (R million)	481,5	467,6	555,6	567,9	631,7	683,2
	Other income (R million)	1 105,5	1 097,3	1 241,6	1 198,7	1 194,5	1 277,5

1/ Figures are preliminary.

Table 5 – Year-on-year percentage change in tourist accommodation statistics by type of accommodation (income at current prices)

		May-22	Jun-22	Jul-22	Aug-22	Sep-22	Oct-22
Hotels	Stay units available	0,3	0,3	0,4	0,4	0,3	0,3
	Stay unit nights sold	57,0	96,2	171,3	74,9	48,2	31,1
	Average income per stay unit night sold	27,4	17,8	33,7	24,7	27,7	31,7
	Total income	53,2	151,0	304,4	58,5	117,4	36,3
	Income from accommodation	99,9	131,1	262,8	118,0	89,2	72,6
	Income from restaurant and bar sales	82,2	147,3	419,3	125,9	87,0	65,8
	Other income	23,8	169,1	304,9	18,9	174,0	6,5
Caravan parks and camping sites	Stay units available	0,0	-2,2	-2,2	-2,2	-2,2	-2,2
	Stay unit nights sold	-13,6	-29,0	-9,9	-10,5	-15,4	-14,2
	Average income per stay unit night sold	22,8	-2,6	2,7	-15,3	-7,2	-4,7
	Total income	11,0	-16,9	-5,2	-20,2	-18,1	-15,1
	Income from accommodation	6,1	-30,9	-7,4	-24,2	-21,5	-18,2
	Income from restaurant and bar sales	62,7	610,0	-14,6	-6,5	-3,3	-53,7
	Other income	3,4	-8,5	43,3	-10,2	-22,0	93,2
Guest-houses and guest-farms	Stay units available	0,0	0,0	0,0	0,0	0,0	0,0
	Stay unit nights sold	9,5	29,4	139,5	24,6	21,6	16,6
	Average income per stay unit night sold	36,1	20,1	35,9	51,2	47,5	36,7
	Total income	37,6	47,9	208,4	76,8	73,6	49,9
	Income from accommodation	49,1	55,5	225,6	88,3	79,3	59,4
	Income from restaurant and bar sales	20,2	31,4	169,4	69,8	49,5	28,1
	Other income	-39,1	3,3	89,3	-28,3	37,5	-9,7
Other accommodation	Stay units available	0,4	0,4	0,4	0,7	0,7	0,7
	Stay unit nights sold	18,7	31,0	77,2	44,3	29,9	31,4
	Average income per stay unit night sold	7,1	-3,6	0,2	9,8	1,4	7,0
	Total income	27,1	29,7	71,5	51,9	27,5	33,9
	Income from accommodation	27,1	26,2	77,6	58,5	31,7	40,5
	Income from restaurant and bar sales	23,4	52,1	26,6	9,7	-2,3	-3,8
	Other income	39,0	62,1	102,8	59,7	42,5	33,1
Total industry	Stay units available	0,3	0,2	0,3	0,4	0,3	0,3
	Stay unit nights sold	33,5	53,5	112,0	53,8	35,9	28,1
	Average income per stay unit night sold	16,9	5,2	12,1	17,0	15,3	20,2
	Total income	44,5	95,8	189,3	55,2	79,3	35,0
	Income from accommodation	56,0	61,4	137,5	80,0	56,7	54,0
	Income from restaurant and bar sales	67,9	123,0	232,1	86,3	59,5	44,3
	Other income	23,5	158,9	289,1	19,4	161,3	7,6

Table 6 – Contribution of each type of accommodation to the year-on-year percentage change in income from accommodation at current prices (percentage points)

Type of accommodation	May-22	Jun-22	Jul-22	Aug-22	Sep-22	Oct-22
Hotels	39,3	45,6	84,1	46,5	37,1	33,0
Caravan parks and camping sites	0,3	-1,6	-0,5	-1,1	-0,8	-0,7
Guest-houses and guest-farms	2,6	3,2	9,1	5,0	4,9	3,2
Other accommodation	13,8	14,3	44,8	29,6	15,4	18,5
Total income from accommodation 1/	56,0	61,4	137,5	80,0	56,7	54,0

1/ Excludes restaurant and bar sales and 'other' income.

Table 7 – Seasonally adjusted tourist accommodation statistics by type of accommodation (income at current prices)

		Jun-22	Jul-22	Aug-22	Sep-22	Oct-22	Month-on-month % change
Hotels	Stay unit nights sold (000)	786,8	804,4	800,9	812,3	831,4	2,4
	Occupancy rate (%)	35,9	36,6	36,6	37,0	37,7	
	Average income per stay unit night sold (Rand)	1 159,7	1 201,6	1 225,0	1 270,5	1 288,3	1,4
	Total income (R million)	2 470,5	2 661,1	2 581,2	2 661,4	2 785,4	4,7
	Income from accommodation (R million)	907,1	970,2	982,3	1 030,4	1 079,0	4,7
	Income from restaurant and bar sales (R million)	436,6	484,9	456,4	492,4	494,1	0,3
	Other income (R million)	1 126,7	1 206,0	1 142,5	1 138,6	1 212,3	6,5
Caravan parks and camping sites	Stay unit nights sold (000)	42,3	54,7	48,9	46,3	53,8	16,2
	Occupancy rate (%)	32,1	41,2	36,2	34,2	39,5	
	Average income per stay unit night sold (Rand)	835,0	870,3	796,2	762,1	854,6	12,1
	Total income (R million)	49,3	56,0	51,9	48,1	61,1	27,0
	Income from accommodation (R million)	34,0	47,8	38,9	34,8	45,3	30,2
	Income from restaurant and bar sales (R million)	9,9	3,8	7,7	8,8	4,4	-50,0
	Other income (R million)	5,4	4,3	5,3	4,6	11,4	147,8
Guest-houses and guest-farms	Stay unit nights sold (000)	117,9	108,3	103,0	117,2	108,9	-7,1
	Occupancy rate (%)	26,3	24,3	22,9	26,3	24,2	
	Average income per stay unit night sold (Rand)	980,4	1 073,5	1 240,7	1 316,7	1 040,8	-21,0
	Total income (R million)	143,5	142,8	146,9	184,8	138,3	-25,2
	Income from accommodation (R million)	119,4	119,5	126,8	161,0	115,6	-28,2
	Income from restaurant and bar sales (R million)	15,9	16,3	15,4	16,0	17,3	8,1
	Other income (R million)	8,2	7,0	4,7	7,8	5,4	-30,8
Other accommodation	Stay unit nights sold (000)	567,0	555,0	559,5	571,3	596,4	4,4
	Occupancy rate (%)	40,3	39,6	39,9	40,6	42,3	
	Average income per stay unit night sold (Rand)	1 413,7	1 441,2	1 540,1	1 472,4	1 433,0	-2,7
	Total income (R million)	942,3	938,7	987,9	982,9	989,7	0,7
	Income from accommodation (R million)	807,8	797,9	845,8	839,6	847,4	0,9
	Income from restaurant and bar sales (R million)	91,0	99,5	98,5	98,4	100,7	2,3
	Other income (R million)	43,5	41,3	43,5	44,9	41,7	-7,1
Total industry	Stay unit nights sold (000)	1 514,1	1 522,3	1 512,4	1 547,0	1 590,6	2,8
	Occupancy rate (%)	36,5	36,4	36,1	37,1	37,8	
	Average income per stay unit night sold (Rand)	1 231,6	1 258,3	1 312,0	1 324,8	1 292,6	-2,4
	Total income (R million)	3 605,6	3 798,6	3 767,8	3 877,2	3 974,5	2,5
	Income from accommodation (R million)	1 868,3	1 935,4	1 993,8	2 065,8	2 087,3	1,0
	Income from restaurant and bar sales (R million)	553,5	604,6	578,0	615,5	616,4	0,1
	Other income (R million)	1 183,8	1 258,6	1 196,0	1 196,0	1 270,7	6,2

Survey information

Introduction	1	The results presented in this publication are derived from the monthly survey of the tourist accommodation industry. This survey is based on a sample drawn from the 2022 business sampling frame (BSF) that contains businesses registered for value added tax (VAT).
	2	In order to improve timeliness, some information for the latest month had to be estimated due to late response. These estimates will be revised in future statistical releases as soon as information becomes available.
Purpose of the survey	3	The Tourist accommodation survey is a monthly survey covering a sample of public and private enterprises involved in the short-stay accommodation industry in South Africa. The results of the survey are used to compile estimates of the tourism satellite accounts (TSA) and the gross domestic product (GDP) and its components, which are used to develop and monitor government policy. These statistics are also used in the analysis of comparative business and industry performance.
Scope of the survey	4	This survey covers the following tax registered private and public enterprises that are mainly engaged in providing short-stay commercial accommodation: <ul style="list-style-type: none"> • hotels, motels, hotels and inns; • caravan parks and camping sites; • guest-houses and guest-farms; and • other accommodation.
Collection rate	5	The preliminary collection rate for the survey on tourist accommodation for October 2022 was 91,9%. The improved collection rate for September 2022 was 94,6%.
Classification by industry	6	The 1993 edition of the <i>Standard Industrial Classification of all Economic Activities</i> (SIC), Fifth Edition, Report No. 09-90-02 was used to classify the statistical units in the survey. The SIC is based on the 1990 <i>International Standard Industrial Classification of all Economic Activities</i> (ISIC) with suitable adaptations for local conditions. Each enterprise is classified to an industry, which reflects its predominant activity. Statistics in this publication are presented at 5-digit SIC level.
Statistical unit	7	The statistical units for the collection of the information are enterprises and establishments.
Revised figures	8	Revised figures are mainly due to late submission of data to Stats SA, or respondents reporting revisions or corrections to their figures. Preliminary figures, as indicated in the relevant tables, are subject to change and when revised will not be indicated as such. Data are edited at the enterprise level.
Rounding-off of figures	9	Where figures have been rounded off, discrepancies may occur between sums of the component items and the totals.
Historical data	10	Historical tourist accommodation data are available on the Stats SA website. To access the data electronically, use the following link: Click to download historical data
Past publications	11	Past tourist accommodation releases are available on the Stats SA website. To access the releases electronically, use the following link: Click to download past releases

Comparability with discontinued Hotels' Trading Statistics 12 The information in this statistical release and the discontinued monthly Hotels' Trading Statistics statistical release is not strictly comparable. The Hotels' Trading Statistics survey was conducted using a list of all hotels graded by the then South African Tourism Board (Satour) when the grading of hotels was still compulsory by law. This survey is conducted from a sample drawn from a business register of all enterprises registered for value added tax (VAT) and income tax.

The higher levels from this survey can be mainly attributed to the following:

- the coverage of all types of tourist accommodation enterprises including hotels; and
- the improved coverage of the business register, especially of small and micro enterprises.

Technical notes

Survey methodology and design 1 The survey was conducted by mail, email, fax and telephone. The 2022 sample of 1 088 enterprises was drawn from a population of 4 294 enterprises using stratified simple random sampling. The enterprises were first stratified at 5-digit level according to the SIC and then by size of enterprises. All large enterprises are completely enumerated. Turnover was used as the measure of size for stratification.

Size groups 2 The enterprises are divided into four size groups according to turnover. All large and medium enterprises (size group one and two) are completely enumerated. Simple random sampling is applied to size groups three and four (small and very small) enterprises. The total income of the large and medium enterprises (size group one and two) is added to the weighted totals of size groups three and four to reflect the total income.

Measure of size classes (Rand)

Enterprise size	Size group	Lower limits	Upper limits
Very small	4	412 055	5 100 000
Small	3	5 100 001	6 000 000
Medium	2	6 000 001	13 000 000
Large	1	13 000 001	

Sample weighting 3 For those strata not completely enumerated, the weights to produce estimates are the inverse ratio of the sampling fraction, modified to take account of non-response in the survey. Stratum estimates are calculated and then aggregated with the completely enumerated stratum to form subgroup estimates. These procedures are in line with international best practice.

Reliability of estimates 4 Data presented in this publication are based on information obtained from a sample and are, therefore, subject to sampling variability; that is, they may differ from the figures that would have been produced if the data had been obtained from all enterprises in the tourist accommodation industry in South Africa.

- Relative standard error** 5 One measure of the likely difference is given by the standard error (SE), which indicates the extent to which an estimate might have varied by chance because only a sample of enterprises was used. The relative standard error (RSE) provides an immediate indication of the percentage errors likely to have occurred due to sampling, and thus avoids the need to refer to the size of the estimate.

Estimates of total industry income by type of enterprise within 95% confidence limits – October 2022

	Lower limit (R million)	Estimate (R million)	Upper limit (R million)	Relative standard error (RSE) %
Total income	3 110,0	4 231,5	5 353,0	13,5

- Non-sampling errors** 6 Inaccuracies may occur because of imperfections in reporting by enterprises and errors made in the collection and processing of the data. Inaccuracies of this kind are referred to as non-sampling errors. Every effort is made to minimise non-sampling errors by careful design of questionnaires, testing them in pilot studies, editing reported data and implementing efficient operating procedures. Non-sampling errors occur in both sample surveys and censuses.
- Year-on-year percentage change** 7 The year-on-year percentage change in a variable for any given period is the change between that period and the corresponding period of the previous year, expressed as a percentage of the latter.
- Contribution (percentage points)** 8 The contribution (percentage points) to the year-on-year percentage change for any given period is calculated by multiplying the percentage change of each type of accommodation by its corresponding weight, divided by 100. The weight is the percentage contribution of each type accommodation to the total accommodation income in the corresponding period of the previous year. The same result is given by $\%T \times [\Delta C / \Delta T]$, where $\%T$ = % change in the total, ΔC = change in the component (in rands), and ΔT = change in the total (in rands).
- Seasonal adjustment** 9 Seasonally adjusted estimates are generated each month using the X-12-ARIMA Seasonal Adjustment Program developed by the United States Census Bureau. Seasonal adjustment is a means of removing the estimated effects of normal seasonal variation from the series so that the effects of other influences on the series can be recognised more clearly. Seasonal adjustment does not aim to remove irregular or non-seasonal influences which may be present in any particular month. Influences that are volatile or unsystematic can still make it difficult to interpret the movement of the series even after adjustment for seasonal variations. Therefore the month-to-month movements of seasonally adjusted estimates may not be reliable indicators of trend behaviour. The X-12-ARIMA procedure for tourist accommodation is described in more detail on the Stats SA website at:
[Click to download seasonal adjustment tourist accommodation March 2022](#)
- Trend cycle** 10 The trend is the long-term pattern or movement of a time series. The X-12-ARIMA Seasonal Adjustment Program is used for smoothing seasonally adjusted estimates to estimates of the underlying trend cycle.

Glossary

- Average income per stay unit night sold** Average rate per stay unit (i.e. rate per room in a hotel or powered site in a caravan park) is calculated by dividing the total income from accommodation by the number of stay unit nights sold in the survey period.
- Enterprise** An enterprise is a legal unit or combination of legal units that includes and directly controls all functions to carry out its activities.

Establishment	An enterprise or part of an enterprise that is situated in a single location and in which only a single (non-ancillary) productive activity is carried out or in which the principal productive activity accounts for most of the value added.																						
Income from accommodation	Income from amounts charged for stay units. 'Other' income is excluded (e.g. income from meals).																						
Income from restaurant and bar sales	Income from meals, banqueting and beverages and tobacco sales.																						
Other income	Income from casino gambling, laundry and telephone services, rentals and fees received for transport services, offices, shops, garages, etc.																						
Occupancy rate	The number of stay unit nights sold, divided by the product of the number of stay units available and the number of days in the survey period, expressed as a percentage.																						
Other accommodation	Includes lodges, bed-and-breakfast establishments, self-catering establishments and 'other' establishments not elsewhere classified.																						
Stay unit	The unit of accommodation available to be charged out to guests, for example, a powered site in a caravan park or a room in a hotel.																						
Stay unit nights sold	The total number of stay units occupied on each night during the survey period.																						
Symbols and abbreviations	<table> <tr> <td>BR</td> <td>Business register</td> </tr> <tr> <td>BSF</td> <td>Business sampling frame</td> </tr> <tr> <td>GDP</td> <td>Gross domestic product</td> </tr> <tr> <td>DTI</td> <td>Department of Trade and Industry</td> </tr> <tr> <td>RSE</td> <td>Relative standard error</td> </tr> <tr> <td>SARS</td> <td>South African Revenue Service</td> </tr> <tr> <td>SE</td> <td>Standard error</td> </tr> <tr> <td>SIC</td> <td>Standard Industrial Classification of all Economic Activities</td> </tr> <tr> <td>Stats SA</td> <td>Statistics South Africa</td> </tr> <tr> <td>VAT</td> <td>Value added tax</td> </tr> <tr> <td>TSA</td> <td>Tourism satellite accounts</td> </tr> </table>	BR	Business register	BSF	Business sampling frame	GDP	Gross domestic product	DTI	Department of Trade and Industry	RSE	Relative standard error	SARS	South African Revenue Service	SE	Standard error	SIC	Standard Industrial Classification of all Economic Activities	Stats SA	Statistics South Africa	VAT	Value added tax	TSA	Tourism satellite accounts
BR	Business register																						
BSF	Business sampling frame																						
GDP	Gross domestic product																						
DTI	Department of Trade and Industry																						
RSE	Relative standard error																						
SARS	South African Revenue Service																						
SE	Standard error																						
SIC	Standard Industrial Classification of all Economic Activities																						
Stats SA	Statistics South Africa																						
VAT	Value added tax																						
TSA	Tourism satellite accounts																						
Total income	Includes income from accommodation, income from restaurant and bar sales and 'other' income.																						
Tourist	A visitor who spends at least one night in the place visited.																						

Technical enquiries

JP Terblanche	Telephone number: 012 310 2965 Email: juan-pierret@statssa.gov.za
Vhonani Kwinda	Telephone number: (082) 954 0823 Email: vhonanik@statssa.gov.za

General information

Stats SA publishes approximately 300 different statistical releases each year. It is not economically viable to produce them in more than one of South Africa's eleven official languages. Since the releases are used extensively, not only locally but also by international economic and social-scientific communities, Stats SA releases are published in English only.

Stats SA has copyright on this publication. Users may apply the information as they wish, provided that they acknowledge Stats SA as the source of the basic data wherever they process, apply, utilise, publish or distribute the data; and also that they specify that the relevant application and analysis (where applicable) result from their own processing of the data.

Stats SA products

A complete set of Stats SA publications is available at the Stats SA Library and the following libraries:

National Library of South Africa, Pretoria Division
National Library of South Africa, Cape Town Division
Natal Society Library, Pietermaritzburg
Library of Parliament, Cape Town
Bloemfontein Public Library
Johannesburg Public Library
Eastern Cape Library Services, Qonce
Central Regional Library, Polokwane
Central Reference Library, Mbombela
Central Reference Collection, Kimberley
Central Reference Library, Mmabatho

Stats SA also provides a subscription service.

Electronic services

A large range of data are available via online services. For more details about our electronic data services, contact Stats SA's user information service at (012) 310 8600.

You can visit us on the internet at: www.statssa.gov.za

General enquiries

User information services	Telephone number: (012) 310 8600 Email: info@statssa.gov.za
Orders/subscription services	Telephone number: (012) 310 8619 Email: millies@statssa.gov.za
Postal address	Private Bag X44, Pretoria, 0001

Produced by Stats SA