



**stats sa**

Department:  
Statistics South Africa  
**REPUBLIC OF SOUTH AFRICA**

Private Bag X44, Pretoria, 0001, South Africa, ISibalo House, Koch Street, Salvokop, Pretoria, 0002  
www.statssa.gov.za, info@statssa.gov.za, Tel +27 12 310 8911

## **STATISTICAL RELEASE**

**P5041.3**

# Selected building statistics of the private sector as reported by local government institutions

2025

Embargoed until:  
23 June 2026  
13:00

ENQUIRIES:  
Joyce Essel-Mensah  
Tel: 082 888 2374

FORTHCOMING ISSUE:  
2026

EXPECTED RELEASE DATE:  
June 2027

Dipalopalo tsa Aforikaborwa • Dipalopalo tsa Aforika Borwa • Ezazibalo zaseNingizimu Afrika • Tshitatistika Afrika Tshipembe • Tinhlayo Afrika-Dzonga

Statistieke Suid-Afrika • Dipalopalo tsa Aforika Borwa • Telubalo zaseNingizimu Afrika • EzeeNkcukacha maNani zoMzantsi Afrika • Iimbalobalo zeSewula Afrika

**IMPROVING LIVES THROUGH DATA ECOSYSTEMS**



## Contents

<b>Introduction</b> .....	<b>ii</b>
Key findings: Comparison between 2024 and 2025 .....	ii
Key findings for 2025 .....	vi
List of detailed tables .....	xii
List of municipalities covered in the monthly survey.....	xiii
Municipal reporting of building plans passed aggregated to provincial level .....	1
Municipal reporting of buildings completed aggregated to provincial level .....	17
Municipalities covered in the monthly survey .....	33
<b>Explanatory notes</b> .....	<b>40</b>
<b>Glossary</b> .....	<b>42</b>
<b>General information</b> .....	<b>43</b>

## Introduction

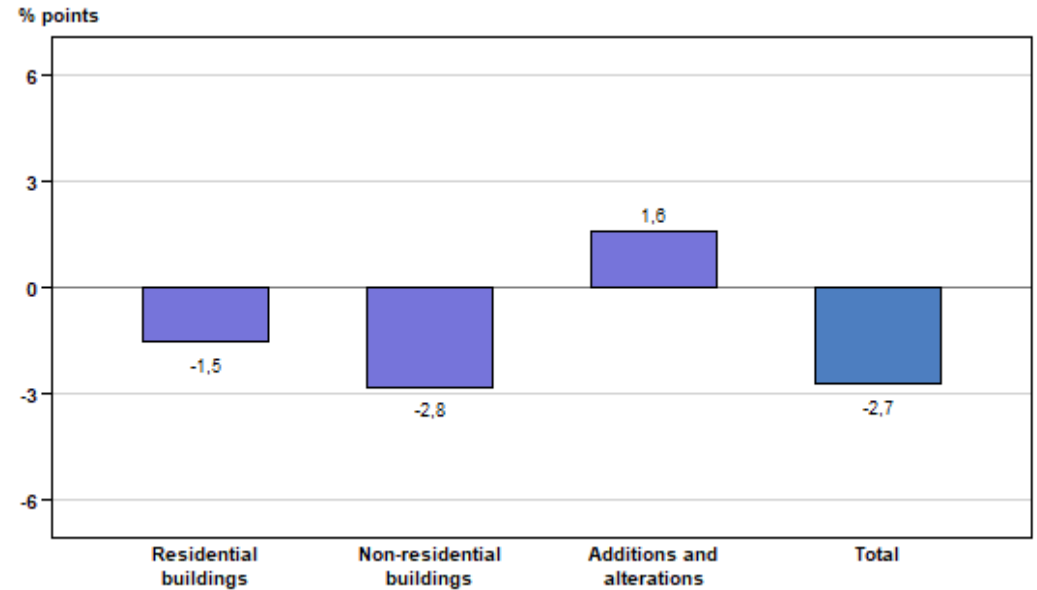
Data published in this statistical release are based on a monthly survey of metropolitan municipalities and large local municipalities on building plans passed and buildings completed for the private sector, released at national and provincial levels as P5041.1. This annual release contains aggregated data for the 12 months of 2025 by province, municipality and type of building.

### Key findings: Comparison between 2024 and 2025

**Table A.1 – Selected key figures regarding building plans passed at current prices**

Type of building	2024 (R'000)	2025 (R'000)	% change between 2024 and 2025	Contribution (% points) to the % change in the value of building plans passed between 2024 and 2025	Difference in value between 2024 and 2025 (R'000)
<b>Residential buildings</b>	<b>48 433 599</b>	<b>46 950 006</b>	<b>-3,1</b>	<b>-1,5</b>	<b>-1 483 593</b>
Dwelling-houses	30 472 972	32 323 178	6,1	1,8	1 850 206
Flats and townhouses	16 050 891	13 145 819	-18,1	-2,9	-2 905 072
Other residential buildings	1 909 736	1 481 009	-22,4	-0,4	-428 727
<b>Non-residential buildings</b>	<b>24 779 459</b>	<b>21 905 151</b>	<b>-11,6</b>	<b>-2,8</b>	<b>-2 874 308</b>
Office and banking space	1 991 083	3 057 731	53,6	1,0	1 066 648
Shopping space	7 132 989	3 998 549	-43,9	-3,1	-3 134 440
Industrial and warehouse space	12 377 367	11 652 203	-5,9	-0,7	-725 164
Other non-residential buildings	3 278 020	3 196 668	-2,5	-0,1	-81 352
<b>Additions and alterations</b>	<b>28 553 401</b>	<b>30 208 566</b>	<b>5,8</b>	<b>1,6</b>	<b>1 655 165</b>
<b>Total</b>	<b>101 766 459</b>	<b>99 063 723</b>	<b>-2,7</b>	<b>-2,7</b>	<b>-2 702 736</b>

**Figure A.1 – Contribution (percentage points) of type of building to the percentage change in the total value of building plans passed between 2024 and 2025**

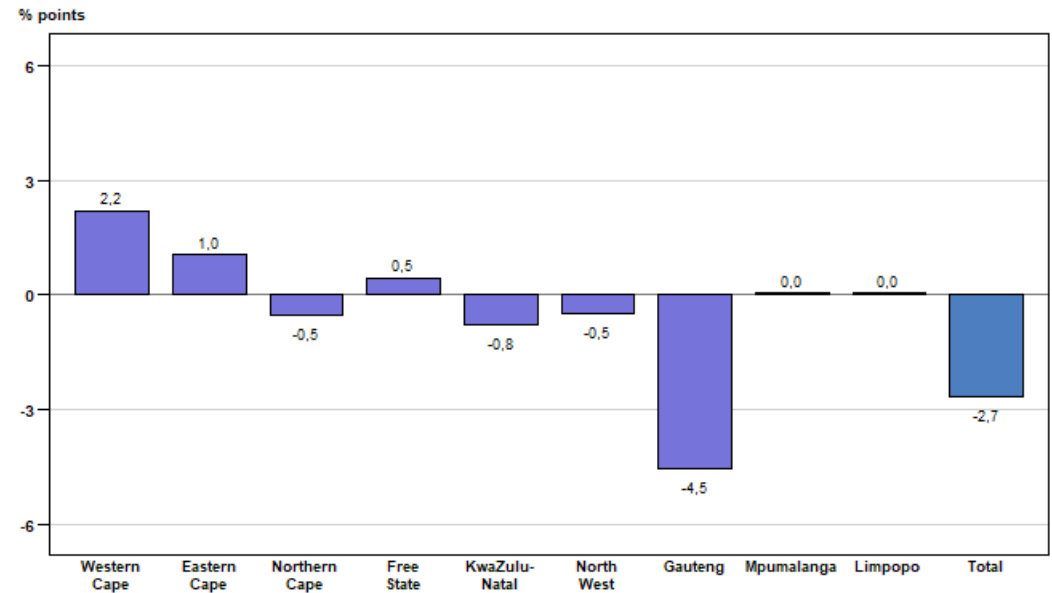


The value of building plans passed by larger municipalities (at current prices) decreased by 2,7% (-R2 702,7 million) in 2025 compared with 2024. Decreases were reported for non-residential buildings (-11,6% or -R2 874,3 million) and residential buildings (-3,1% or -R1 483,6 million). An increase was reported for additions and alterations (5,8% or R1 655,2 million) – see Table A.1.

**Table A.2 – Building plans passed by larger municipalities at current prices by province: 2024 vs 2025**

Province	2024 (R'000)	2025 (R'000)	% change between 2024 and 2025	Contribution (% points) to the % change in the value of building plans passed between 2024 and 2025	Difference in value between 2024 and 2025 (R'000)
Western Cape	32 736 926	34 952 317	6,8	2,2	2 215 391
Eastern Cape	5 642 660	6 704 944	18,8	1,0	1 062 284
Northern Cape	1 433 339	881 182	-38,5	-0,5	-552 157
Free State	2 467 382	2 927 408	18,6	0,5	460 026
KwaZulu-Natal	14 944 027	14 144 246	-5,4	-0,8	-799 781
North West	3 655 855	3 156 374	-13,7	-0,5	-499 481
Gauteng	32 878 102	28 268 898	-14,0	-4,5	-4 609 204
Mpumalanga	5 848 711	5 847 132	0,0	0,0	-1 579
Limpopo	2 159 457	2 181 222	1,0	0,0	21 765
<b>Total</b>	<b>101 766 459</b>	<b>99 063 723</b>	<b>-2,7</b>	<b>-2,7</b>	<b>-2 702 736</b>

**Figure A.2 – Provincial contribution (percentage points) to the percentage change in the total value of building plans passed between 2024 and 2025**

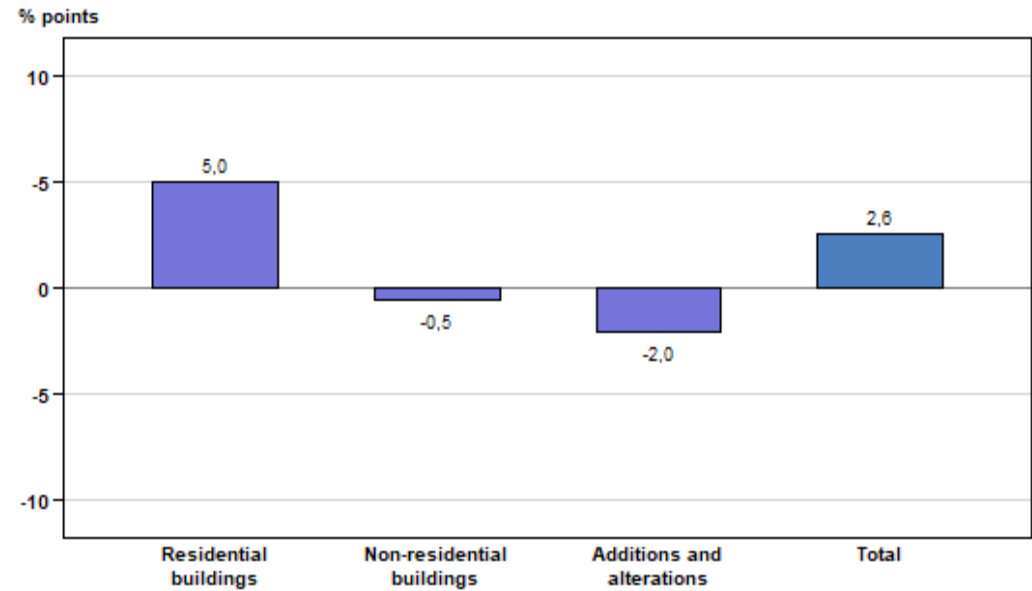


The year-on-year decrease of 2,7% in the total value of building plans passed in 2025 is mainly attributed to a negative contribution reported by Gauteng (contributing -4,5 percentage points or -R4 609,2 million). The highest positive contribution was reported by Western Cape (contributing 2,2 percentage points or R2 215,4 million) – see Table A.2 and Figure A.2.

**Table B.1 – Selected key figures regarding buildings reported as completed at current prices**

Type of building	2024 (R'000)	2025 (R'000)	% change between 2024 and 2025	Contribution (% points) to the % change in the value of buildings completed between 2024 and 2025	Difference in value between 2024 and 2025 (R'000)
<b>Residential buildings</b>	<b>29 362 518</b>	<b>32 012 423</b>	<b>9,0</b>	<b>5,0</b>	<b>2 649 905</b>
Dwelling-houses	18 898 629	18 240 675	-3,5	-1,3	-657 954
Flats and townhouses	10 166 993	12 918 272	27,1	5,3	2 751 279
Other residential buildings	296 896	853 476	187,5	1,1	556 580
<b>Non-residential buildings</b>	<b>12 502 891</b>	<b>12 226 175</b>	<b>-2,2</b>	<b>-0,5</b>	<b>-276 716</b>
Office and banking space	1 116 949	1 636 504	46,5	1,0	519 555
Shopping space	3 344 057	2 788 444	-16,6	-1,1	-555 613
Industrial and warehouse space	7 299 996	6 722 941	-7,9	-1,1	-577 055
Other non-residential buildings	741 889	1 078 286	45,3	0,6	336 397
<b>Additions and alterations</b>	<b>10 468 942</b>	<b>9 447 371</b>	<b>-9,8</b>	<b>-2,0</b>	<b>-1 021 571</b>
<b>Total</b>	<b>52 334 351</b>	<b>53 685 969</b>	<b>2,6</b>	<b>2,6</b>	<b>1 351 618</b>

**Figure B.1 – Contribution (percentage points) of type of building to the percentage change in the total value of buildings reported as completed between 2024 and 2025**

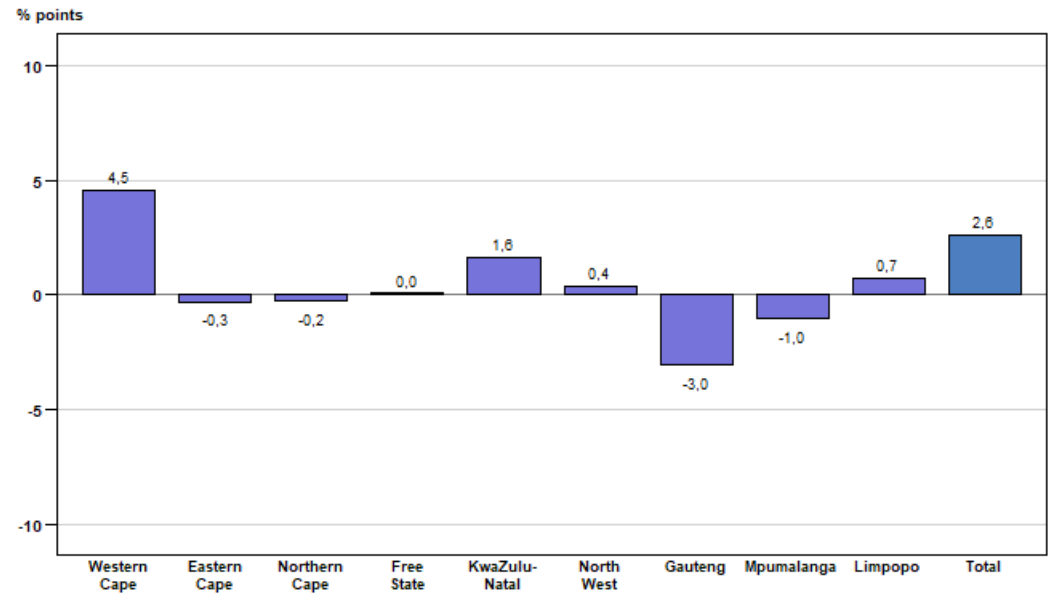


The value of buildings reported as completed (at current prices) increased by 2,6% (R1 351,6 million) in 2025 compared with 2024. Residential buildings rose by 9,0% (R2 649,9 million). Decreases were reported for additions and alterations (-9,8% or -R1 021,6 million) and non-residential buildings (-2,2% or -R276,7 million) – see Table B.1.

**Table B.2 – Buildings reported as completed by larger municipalities at current prices by province: 2024 vs 2025**

Province	2024 (R'000)	2025 (R'000)	% change between 2024 and 2025	Contribution (% points) to the % change in the value of buildings completed between 2024 and 2025	Difference in value between 2024 and 2025 (R'000)
Western Cape	15 404 088	17 776 886	15,4	4,5	2 372 798
Eastern Cape	3 302 895	3 147 041	-4,7	-0,3	-155 854
Northern Cape	373 098	246 693	-33,9	-0,2	-126 405
Free State	403 138	380 641	-5,6	0,0	-22 497
KwaZulu-Natal	7 863 173	8 703 686	10,7	1,6	840 513
North West	1 987 219	2 173 778	9,4	0,4	186 559
Gauteng	20 835 166	19 242 062	-7,6	-3,0	-1 593 104
Mpumalanga	1 458 888	918 990	-37,0	-1,0	-539 898
Limpopo	706 686	1 096 192	55,1	0,7	389 506
<b>Total</b>	<b>52 334 351</b>	<b>53 685 969</b>	<b>2,6</b>	<b>2,6</b>	<b>1 351 618</b>

**Figure B.2 – Provincial contribution (percentage points) to the percentage change in the total value of buildings reported as completed between 2024 and 2025**



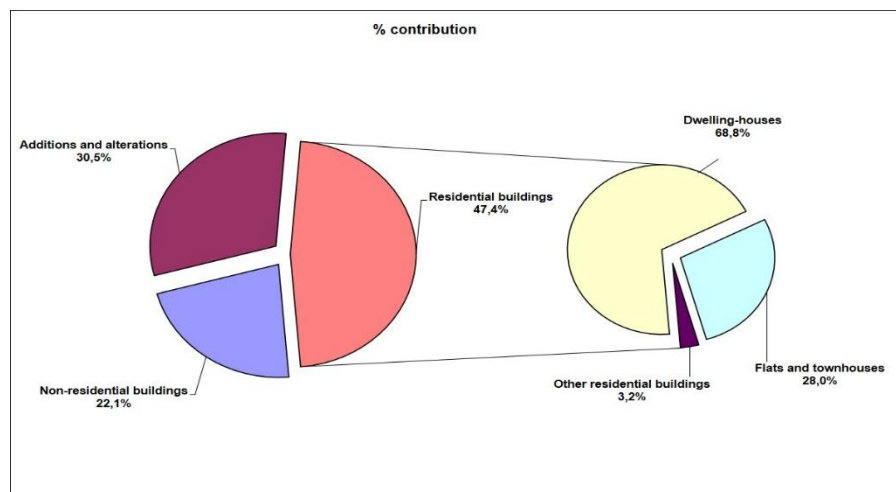
The largest positive contributors to the year-on-year increase of 2,6% in the value of buildings reported as completed were Western Cape (contributing 4,5 percentage points or R2 372,8 million) and KwaZulu-Natal (contributing 1,6 percentage points or R840,5 million). The largest negative contributors were Gauteng (contributing -3,0 percentage points or -R1 593,1 million) and Mpumalanga (contributing -1,0 percentage point or -R539,9 million) – see Table B.2 and Figure B.2.

## Key findings for 2025

### Value of building plans passed by larger municipalities for 2025 by type of building

The value of building plans passed for 2025 amounted to R99 063,7 million, showing a decrease of 2,7% compared with 2024. Residential buildings contributed the most to the total value of building plans passed (47,4% or R46 950,0 million), followed by additions and alterations (30,5% or R30 208,6 million) and non-residential buildings (22,1% or R21 905,2 million) – see Figure 1 and Table 1 on pages 1 and 2.

**Figure 1 – Percentage contribution of type of building to the total value of building plans passed for 2025**

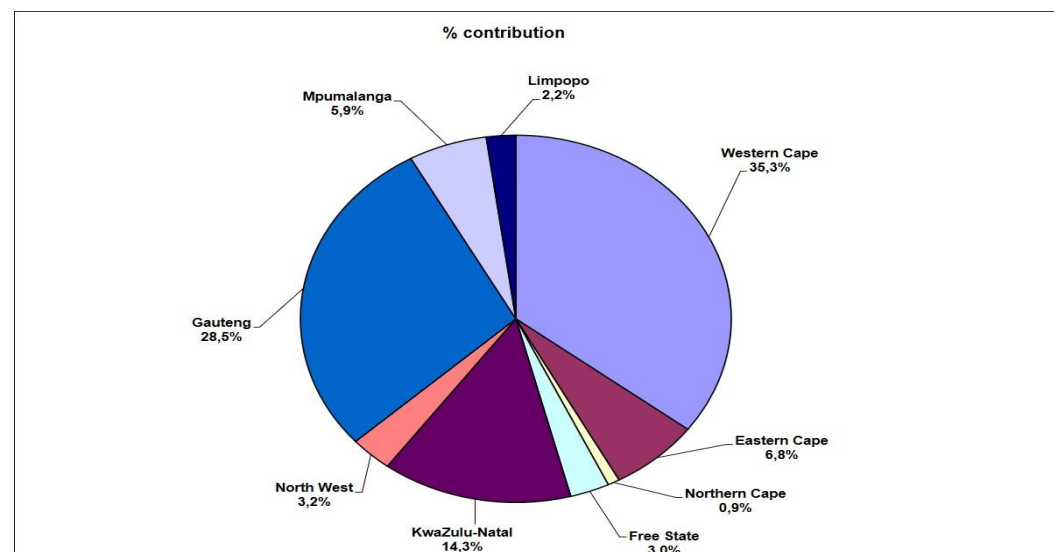


Regarding residential building plans passed, the largest contribution was reported for dwelling-houses (68,8% or R32 323,2 million), followed by flats and townhouses (28,0% or R13 145,8 million) and ‘other’ residential buildings (3,2% or R1 481,0 million) – see Table 2 on pages 3 and 4.

### Value of building plans passed by larger municipalities for 2025 by province

The highest provincial contributions to the total value of building plans passed (R99 063,7 million) for 2025 were reported for Western Cape (35,3% or R34 952,3 million), Gauteng (28,5% or R28 268,9 million) and KwaZulu-Natal (14,3% or R14 144,2 million) – see Figure 2 and Table 1 on pages 1 and 2. Table D (page viii) lists the largest municipal contributors to the value of building plans passed for 2025 by province.

**Figure 2 – Provincial percentage contribution to the total value of building plans passed for 2025**



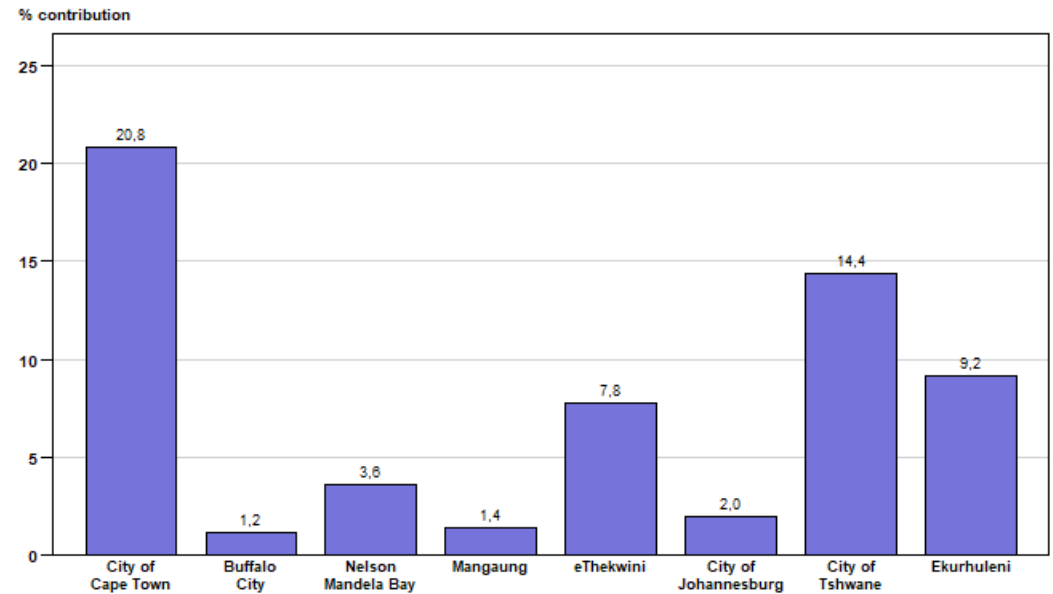
**Value of building plans passed by the eight metropolitan municipalities for 2025**

The combined value of building plans passed for the eight metropolitan municipalities contributed 60,5% or R59 972,4 million to the total value of building plans passed (R99 063,7 million) for 2025 – see Table C.

**Table C – Value of building plans passed by the eight metropolitan municipalities for 2025**

Metropolitan municipality	Value of building plans passed at metropolitan municipal level (R million)	Metropolitan municipal % contribution to the total value of building plans passed
City of Cape Town	20 649,9	20,8
Buffalo City	1 224,7	1,2
Nelson Mandela Bay	3 559,2	3,6
Mangaung	1 361,5	1,4
eThekwini	7 766,2	7,8
City of Johannesburg	1 999,9	2,0
City of Tshwane	14 255,9	14,4
Ekurhuleni	9 155,1	9,2
<b>Total metropolitan municipalities</b>	<b>59 972,4</b>	<b>60,5</b>

**Figure 3 – Metropolitan municipality percentage contribution to the total value of building plans passed for 2025**



The highest metropolitan municipality contribution to the total value of building plans passed for 2025 was reported by City of Cape Town (20,8% or R20 649,9 million), followed by City of Tshwane (14,4% or R14 255,9 million), Ekurhuleni (9,2% or R9 155,1 million) and eThekwini (7,8% or R7 766,2 million) – see Table C and Figure 3.

**Table D – The largest municipal contributors to the value of building plans passed for 2025 by province**

Province/municipality	Value of building plans passed at provincial/municipal level (R million)	Municipal % contribution to the value of building plans passed at provincial level
<b>Western Cape</b>	<b>34 952,3</b>	
City of Cape Town	20 649,9	59,1
Stellenbosch	2 336,8	6,7
Knysna	2 283,5	6,5
George	2 233,3	6,4
Mossel Bay	1 567,3	4,5
<b>Gauteng</b>	<b>28 268,9</b>	
City of Tshwane	14 255,9	50,4
Ekurhuleni	9 155,1	32,4
City of Johannesburg	1 999,9	7,1
Emfuleni	687,8	2,4
Midvaal	647,3	2,3
<b>KwaZulu-Natal</b>	<b>14 144,2</b>	
eThekweni	7 766,2	54,9
KwaDukuza	3 441,4	24,3
Umngeni	987,9	7,0
Msunduzi	636,7	4,5
Ray Nkonyeni	414,6	2,9
<b>Eastern Cape</b>	<b>6 704,9</b>	
Nelson Mandela Bay	3 559,2	53,1
Kouga	1 286,9	19,2
Buffalo City	1 224,7	18,3
Ndlambe	341,9	5,1
King Sabata Dalindyebo	140,8	2,1

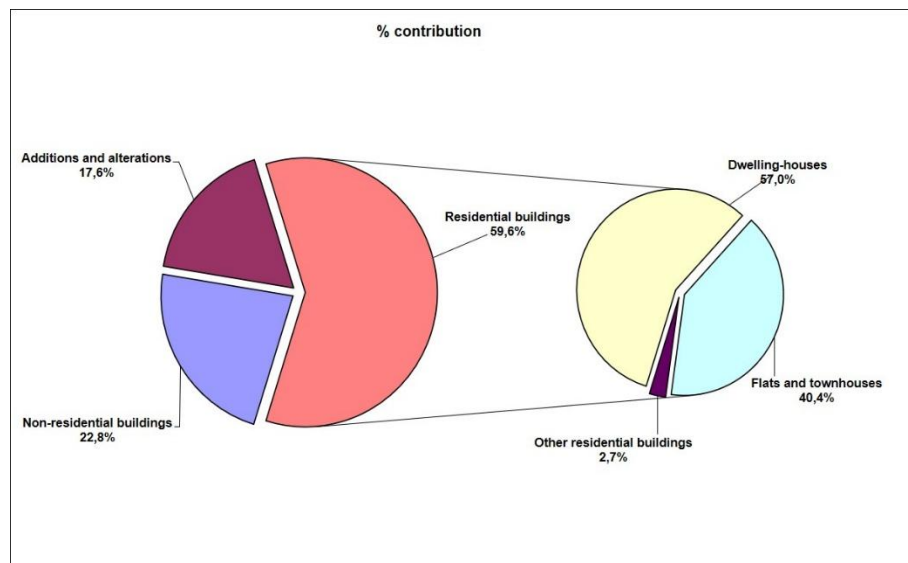
**Table D – The largest municipal contributors to the value of building plans passed for 2025 by province (concluded)**

Province/municipality	Value of building plans passed at provincial/municipal level (R million)	Municipal % contribution to the value of building plans passed at provincial level
<b>Mpumalanga</b>	<b>5 847,1</b>	
Steve Tshwete	1 679,3	28,7
City of Mbombela	1 534,4	26,2
Emalahleni	981,8	16,8
Govan Mbeki	860,2	14,7
Nkomazi	564,7	9,7
<b>North West</b>	<b>3 156,4</b>	
Madibeng	738,0	23,4
Rustenburg	690,9	21,9
JB Marks	643,1	20,4
Mahikeng	472,9	15,0
City of Matlosana	470,6	14,9
<b>Free State</b>	<b>2 927,4</b>	
Mangaung	1 361,5	46,5
Metsimaholo	500,5	17,1
Dihlabeng	340,1	11,6
Matjhabeng	256,5	8,8
Maluti-a-Phofung	158,0	5,4
<b>Limpopo</b>	<b>2 181,2</b>	
Polokwane	1 096,8	50,3
Greater Tzaneen	474,0	21,7
Modimolle	235,8	10,8
Mogalakwena	176,6	8,1
Thabazimbi	115,4	5,3
<b>Northern Cape</b>	<b>881,2</b>	
Dawid Kruiper	378,2	42,9
Sol Plaatje	304,3	34,5
Ga-Segonyana	151,5	17,2
Kai !Garib	47,2	5,4

**Value of buildings reported as completed to larger municipalities for 2025 by type of building**

The value of buildings reported as completed during 2025 amounted to R53 686,0 million, which is 2,6% higher compared with the R52 334,4 million reported for 2024. Residential buildings contributed the most to the total value of buildings reported as completed (59,6% or R32 012,4 million), followed by non-residential buildings (22,8% or R12 226,2 million) and additions and alterations (17,6% or R9 447,4 million) – see Figure 4 and Table 8 on pages 17 and 18.

**Figure 4 – Percentage contribution of type of building to the total value of buildings reported as completed during 2025**

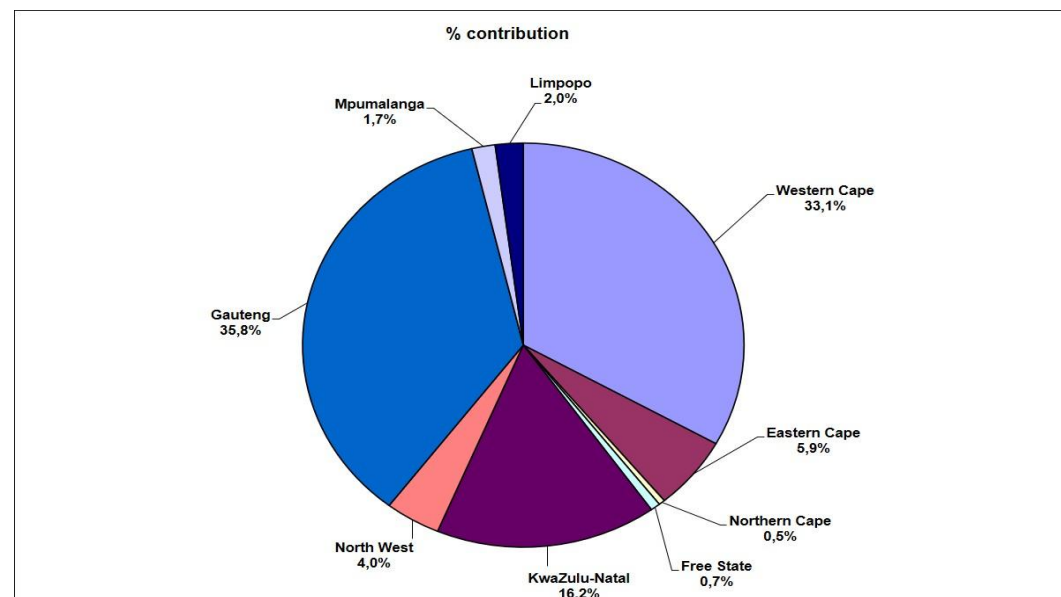


Regarding residential buildings reported as completed, the largest contributor was dwelling-houses (57,0% or R18 240,7 million), followed by flats and townhouses (40,4% or R12 918,3 million) and ‘other’ residential buildings (2,7% or R853,5 million) – see Table 9 on pages 19 and 20.

**Value of buildings reported as completed to larger municipalities for 2025 by province**

The largest provincial contributor to the total value of buildings reported as completed during 2025 was Gauteng (contributing 35,8% or R19 242,1 million to the total of R53 686,0 million for South Africa), followed by Western Cape (33,1% or R17 776,9 million) and KwaZulu-Natal (16,2% or R8 703,7 million) – see Figure 5 and Table 8 on pages 17 and 18. Table F (page xi) lists the largest municipal contributors to the value of buildings reported as completed for 2025 by province.

**Figure 5 – Provincial percentage contribution to the total value of buildings reported as completed during 2025**



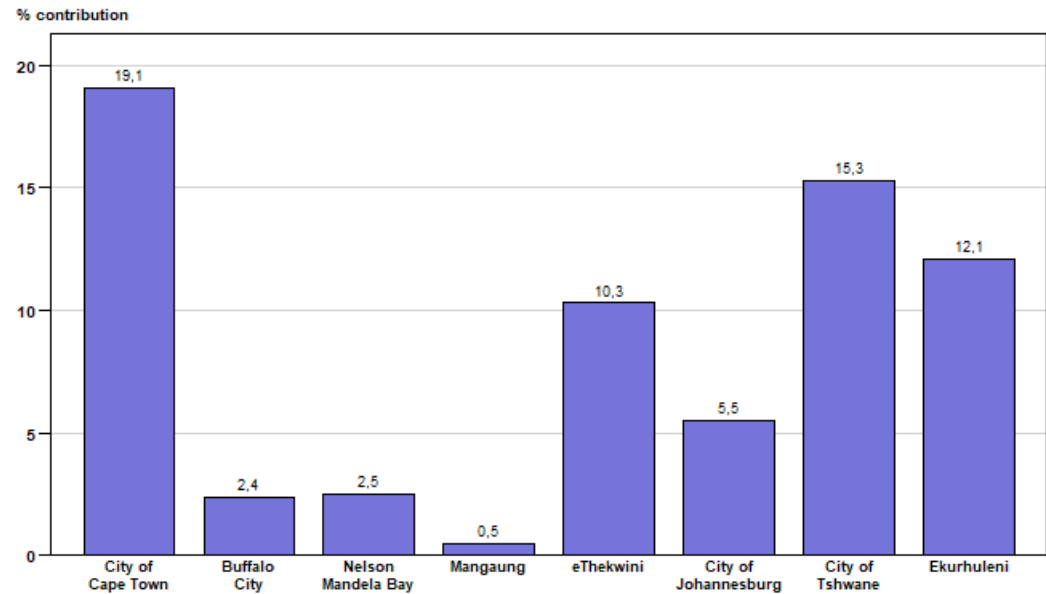
**Value of buildings reported as completed to the eight metropolitan municipalities for 2025**

The combined value of buildings reported as completed for the eight metropolitan municipalities contributed 67,7% or R36 323,7 million to the total value of buildings reported as completed (R53 686,0 million) during 2025 – see Table E.

**Table E – Value of buildings reported as completed to the eight metropolitan municipalities for 2025**

Metropolitan municipality	Value of buildings completed at metropolitan municipal level (R million)	Metropolitan municipal % contribution to the total value of buildings completed
City of Cape Town	10 235,8	19,1
Buffalo City	1 265,3	2,4
Nelson Mandela Bay	1 362,1	2,5
Mangaung	266,2	0,5
eThekwini	5 525,8	10,3
City of Johannesburg	2 973,8	5,5
City of Tshwane	8 218,8	15,3
Ekurhuleni	6 475,9	12,1
<b>Total metropolitan municipalities</b>	<b>36 323,7</b>	<b>67,7</b>

**Figure 6 – Metropolitan percentage contribution to the total value of buildings reported as completed for 2025**



The highest metropolitan contribution to the total value of buildings reported as completed during 2025 was City of Cape Town (19,1% or R10 235,8 million), followed by City of Tshwane (15,3% or R8 218,8 million), Ekurhuleni (12,1% or R6 475,9 million), eThekwini (10,3% or R5 525,8 million) and City of Johannesburg (5,5% or R2 973,8 million) – see Table E and Figure 6.

**Table F – The largest municipal contributors to the value of buildings reported as completed for 2025 by province**

Province/municipality	Value of buildings completed at provincial/municipal level (R million)	Municipal % contribution to the value of buildings completed at provincial level
<b>Gauteng</b>	<b>19 242,1</b>	
City of Tshwane	8 218,8	42,7
Ekurhuleni	6 475,9	33,7
City of Johannesburg	2 973,8	15,5
Midvaal	533,5	2,8
Mogale City	404,0	2,1
<b>Western Cape</b>	<b>17 776,9</b>	
City of Cape Town	10 235,8	57,6
George	1 929,2	10,9
Stellenbosch	1 314,8	7,4
Mossel Bay	1 226,6	6,9
Drakenstein	1 162,0	6,5
<b>KwaZulu-Natal</b>	<b>8 703,7</b>	
eThekweni	5 525,8	63,5
KwaDukuza	2 244,3	25,8
Umngeni	333,1	3,8
Newcastle	192,5	2,2
Ray Nkonyeni	176,8	2,0
<b>Eastern Cape</b>	<b>3 147,0</b>	
Nelson Mandela Bay	1 362,1	43,3
Buffalo City	1 265,3	40,2
Kouga	436,9	13,9
King Sabata Dalindyebo	49,3	1,6
Ndlambe	26,3	0,8

**Table F – The largest municipal contributors to the value of buildings reported as completed for 2025 by province (concluded)**

Province/municipality	Value of buildings completed at provincial/municipal level (R million)	Municipal % contribution to the value of buildings completed at provincial level
<b>North West</b>	<b>2 173,8</b>	
City of Matlosana	661,5	30,4
Rustenburg	630,1	29,0
Madibeng	499,6	23,0
Mahikeng	246,3	11,3
JB Marks	122,4	5,6
<b>Limpopo</b>	<b>1 096,2</b>	
Polokwane	838,7	76,5
Greater Tzaneen	192,9	17,6
Mogalakwena	46,0	4,2
Modimolle	18,6	1,7
<b>Mpumalanga</b>	<b>919,0</b>	
City of Mbombela	471,9	51,3
Emalahleni	217,0	23,6
Govan Mbeki	153,9	16,7
Nkomazi	76,3	8,3
<b>Free State</b>	<b>380,6</b>	
Mangaung	266,2	69,9
Metsimaholo	36,5	9,6
Dihlabeng	31,1	8,2
Ngwathe	29,2	7,7
<b>Northern Cape</b>	<b>246,7</b>	
Dawid Kruiper	223,9	90,8
Ga-Segonyana	18,1	7,3
Sol Plaatje	4,7	1,9



**Risenga Maluleke**  
**Statistician-General**

## LIST OF DETAILED TABLES

### PART 1 – MUNICIPAL REPORTING OF BUILDING PLANS PASSED AGGREGATED TO PROVINCIAL LEVEL

Table 1	– Number, square metres and value of building plans passed by municipalities for residential buildings, non-residential buildings and additions and alterations by province .....	1
Table 2	– Number, square metres and value of residential building plans passed by municipalities: dwelling-houses, flats and townhouses and other residential buildings by province .....	3
Table 3	– Number, square metres and value of building plans passed by municipalities for dwelling-houses by size of dwelling-house and province.....	5
Table 4	– Number, square metres and value of building plans passed by municipalities for flats and townhouses by province .....	7
Table 5	– Number, square metres and value of building plans passed by municipalities for other residential buildings by province .....	9
Table 6.1	– Number, square metres and value of non-residential building plans passed by municipalities by province: office and banking space, shopping space and industrial and warehouse space .....	11
Table 6.2	– Number, square metres and value of non-residential building plans passed by municipalities by province: schools, nursery schools, crèches, hospitals, churches, sport clubs, recreation clubs and all other non-residential space .....	13
Table 7	– Number, square metres and value of building plans passed by municipalities for additions and alterations by province .....	15

### PART 2 – MUNICIPAL REPORTING OF BUILDINGS COMPLETED AGGREGATED TO PROVINCIAL LEVEL

Table 8	– Number, square metres and value of residential buildings, non-residential buildings and additions and alterations reported as completed to municipalities by province .....	17
Table 9	– Number, square metres and value of residential buildings reported as completed to municipalities: dwelling-houses, flats and townhouses and other residential buildings by province.....	19
Table 10	– Number, square metres and value of dwelling-houses reported as completed to municipalities by size of dwelling-house and province .....	21
Table 11	– Number, square metres and value of flats and townhouses reported as completed to municipalities by province .....	23
Table 12	– Number, square metres and value of other residential buildings reported as completed to municipalities by province .....	25
Table 13.1	– Number, square metres and value of non-residential buildings reported as completed to municipalities by province: office and banking space, shopping space and industrial and warehouse space .....	27
Table 13.2	– Number, square metres and value of non-residential buildings reported as completed to municipalities by province: schools, nursery schools, crèches, hospitals, churches, sport clubs, recreation clubs and all other non-residential space .....	29
Table 14	– Number, square metres and value of additions and alterations reported as completed to municipalities by province .....	31

**LIST OF MUNICIPALITIES COVERED IN THE MONTHLY SURVEY**

Table 15	– Municipalities covered in the monthly survey: Western Cape .....	33
Table 16	– Municipalities covered in the monthly survey: Eastern Cape .....	34
Table 17	– Municipalities covered in the monthly survey: Northern Cape .....	34
Table 18	– Municipalities covered in the monthly survey: Free State .....	35
Table 19	– Municipalities covered in the monthly survey: KwaZulu-Natal .....	36
Table 20	– Municipalities covered in the monthly survey: North West .....	37
Table 21	– Municipalities covered in the monthly survey: Gauteng .....	38
Table 22	– Municipalities covered in the monthly survey: Mpumalanga .....	39
Table 23	– Municipalities covered in the monthly survey: Limpopo .....	39

**Part 1**  
**Municipal reporting of building plans passed  
aggregated to provincial level**

**Table 1 – Number, square metres and value of building plans passed by municipalities for residential buildings, non-residential buildings and additions and alterations by province**

Municipal reporting aggregated to provincial level by year		Residential buildings		Non-residential buildings			Additions and alterations			Building plans passed by municipalities	
		Total square metres	Total value R'000	Number of buildings	Total square metres	Total value R'000	Number of plans	Total square metres	Total value R'000	Total square metres	Total value R'000
Western Cape	2023	2 231 249	17 538 104	588	676 369	5 101 387	9 767	1 198 079	9 953 777	4 105 697	32 593 268
	2024	2 040 247	16 924 848	590	742 246	6 062 407	10 805	1 112 690	9 749 671	3 895 183	32 736 926
	2025	2 123 489	17 199 532	539	767 568	6 256 054	11 429	1 237 954	11 496 731	4 129 011	34 952 317
Eastern Cape	2023	322 678	2 645 905	76	169 985	1 361 216	3 033	351 026	2 874 066	843 689	6 881 187
	2024	242 070	2 038 996	103	160 178	1 323 107	2 692	271 039	2 280 557	673 287	5 642 660
	2025	289 107	2 490 223	117	191 801	1 654 728	3 048	284 379	2 559 993	765 287	6 704 944
Northern Cape	2023	52 771	470 150	22	21 567	202 889	418	37 748	348 400	112 086	1 021 439
	2024	59 770	535 036	30	70 050	618 753	302	28 773	279 550	158 593	1 433 339
	2025	40 227	354 381	14	23 099	182 608	337	31 927	344 193	95 253	881 182
Free State	2023	160 259	1 345 775	45	78 030	613 203	932	93 297	799 578	331 586	2 758 556
	2024	140 464	1 188 057	63	66 501	508 246	863	86 540	771 079	293 505	2 467 382
	2025	182 121	1 519 679	82	77 117	618 389	868	87 922	789 340	347 160	2 927 408
KwaZulu-Natal	2023	498 096	5 079 627	146	490 453	3 887 801	3 188	424 009	4 646 847	1 412 558	13 614 275
	2024	641 273	6 679 515	212	452 002	3 828 589	3 049	391 999	4 435 923	1 485 274	14 944 027
	2025	633 879	6 714 426	163	395 193	2 912 427	3 169	402 032	4 517 393	1 431 104	14 144 246
North West	2023	246 660	1 689 974	96	93 458	613 067	1 057	102 686	770 055	442 804	3 073 096
	2024	221 150	1 594 569	92	148 226	1 157 472	1 076	112 853	903 814	482 229	3 655 855
	2025	216 189	1 627 005	88	71 605	478 205	908	110 517	1 051 164	398 311	3 156 374
Gauteng	2023	1 808 402	17 717 309	215	882 822	7 587 983	6 989	919 748	8 613 091	3 610 972	33 918 383
	2024	1 570 305	15 654 875	248	1 105 542	9 060 617	6 769	842 880	8 162 610	3 518 727	32 878 102
	2025	1 292 649	13 082 062	263	879 490	7 808 513	6 027	730 959	7 378 323	2 903 098	28 268 898
Mpumalanga	2023	334 179	2 488 974	117	232 941	1 849 740	1 715	179 705	1 289 457	746 825	5 628 171
	2024	346 897	2 567 698	139	245 312	1 666 773	1 966	211 297	1 614 240	803 506	5 848 711
	2025	345 385	2 722 289	133	195 243	1 437 986	1 648	227 834	1 686 857	768 462	5 847 132

**Table 1 – Number, square metres and value of building plans passed by municipalities for residential buildings, non-residential buildings and additions and alterations by province (concluded)**

Municipal reporting aggregated to provincial level by year		Residential buildings		Non-residential buildings			Additions and alterations			Building plans passed by municipalities	
		Total square metres	Total value R'000	Number of buildings	Total square metres	Total value R'000	Number of plans	Total square metres	Total value R'000	Total square metres	Total value R'000
Limpopo	2023	200 274	1 388 623	40	70 591	480 706	420	51 466	392 461	322 331	2 261 790
	2024	175 090	1 250 005	42	78 526	553 495	368	47 037	355 957	300 653	2 159 457
	2025	169 232	1 240 409	53	76 926	556 241	293	50 872	384 572	297 030	2 181 222
South Africa	2023	<b>5 854 568</b>	<b>50 364 441</b>	<b>1 345</b>	<b>2 716 216</b>	<b>21 697 992</b>	<b>27 519</b>	<b>3 357 764</b>	<b>29 687 732</b>	<b>11 928 548</b>	<b>101 750 165</b>
	2024	<b>5 437 266</b>	<b>48 433 599</b>	<b>1 519</b>	<b>3 068 583</b>	<b>24 779 459</b>	<b>27 890</b>	<b>3 105 108</b>	<b>28 553 401</b>	<b>11 610 957</b>	<b>101 766 459</b>
	2025	<b>5 292 278</b>	<b>46 950 006</b>	<b>1 452</b>	<b>2 678 042</b>	<b>21 905 151</b>	<b>27 727</b>	<b>3 164 396</b>	<b>30 208 566</b>	<b>11 134 716</b>	<b>99 063 723</b>

**Table 2 – Number, square metres and value of residential building plans passed by municipalities: dwelling-houses, flats and townhouses and other residential buildings by province**

Municipal reporting aggregated to provincial level by year		Residential buildings										
		Dwelling-houses			Flats and townhouses			Other residential buildings and tourism accommodation <sup>1</sup>			Residential building plans passed by municipalities	
		Number of dwelling-houses	Total square metres	Total value R'000	Number of units	Total square metres	Total value R'000	Number of buildings	Total square metres	Total value R'000	Total square metres	Total value R'000
Western Cape	2023	7 535	1 525 682	11 503 543	6 117	684 893	5 879 488	33	20 674	155 073	2 231 249	17 538 104
	2024	6 532	1 304 638	10 034 250	7 117	684 219	6 460 280	50	51 390	430 318	2 040 247	16 924 848
	2025	8 351	1 512 001	11 687 850	5 778	541 646	4 894 702	74	69 842	616 980	2 123 489	17 199 532
Eastern Cape	2023	1 724	292 016	2 395 287	203	25 794	210 628	20	4 868	39 990	322 678	2 645 905
	2024	1 180	199 121	1 678 690	209	27 915	228 380	4	15 034	131 926	242 070	2 038 996
	2025	1 520	229 813	2 021 606	316	48 183	402 980	4	11 111	65 637	289 107	2 490 223
Northern Cape	2023	257	43 889	386 543	12	1 165	10 967	6	7 717	72 640	52 771	470 150
	2024	700	56 439	509 143	11	2 858	21 410	2	473	4 483	59 770	535 036
	2025	253	39 840	351 790	3	387	2 591	0	0	0	40 227	354 381
Free State	2023	549	113 267	919 530	176	39 996	370 059	6	6 996	56 186	160 259	1 345 775
	2024	716	119 150	994 507	144	15 503	151 744	8	5 811	41 806	140 464	1 188 057
	2025	1 282	158 712	1 302 208	119	13 189	125 818	57	10 220	91 653	182 121	1 519 679
KwaZulu-Natal	2023	1 111	330 134	3 329 418	1 174	155 284	1 617 316	10	12 678	132 893	498 096	5 079 627
	2024	1 156	318 764	3 357 148	2 202	261 514	2 618 408	30	60 995	703 959	641 273	6 679 515
	2025	1 106	362 377	3 815 956	1 750	231 500	2 456 955	99	40 002	441 515	633 879	6 714 426
North West	2023	1 064	212 896	1 472 761	266	28 989	182 959	6	4 775	34 254	246 660	1 689 974
	2024	643	169 597	1 226 826	250	21 870	156 201	6	29 683	211 542	221 150	1 594 569
	2025	594	158 711	1 188 666	465	56 069	429 058	3	1 409	9 281	216 189	1 627 005
Gauteng	2023	6 038	1 041 619	9 666 459	8 840	758 338	7 981 563	6	8 445	69 287	1 808 402	17 717 309
	2024	5 308	979 187	9 296 475	6 301	571 312	6 129 000	15	19 806	229 400	1 570 305	15 654 875
	2025	5 307	897 775	8 542 323	4 360	380 081	4 416 791	30	14 793	122 948	1 292 649	13 082 062
Mpumalanga	2023	993	297 995	2 221 555	201	15 848	103 698	7	20 336	163 721	334 179	2 488 974
	2024	991	310 617	2 314 294	230	20 412	140 880	12	15 868	112 524	346 897	2 567 698
	2025	1 013	300 146	2 385 483	226	30 070	216 446	14	15 169	120 360	345 385	2 722 289

<sup>1</sup> Institutions for the disabled, boarding houses, hostels and tourism accommodation (e.g. hotels, motels, guest-houses, holiday chalets, bed-and-breakfast accommodation and casinos).

**Table 2 – Number, square metres and value of residential building plans passed by municipalities: dwelling-houses, flats and townhouses and other residential buildings by province (concluded)**

Municipal reporting aggregated to provincial level by year		Residential buildings										
		Dwelling-houses			Flats and townhouses			Other residential buildings and tourism accommodation <sup>1</sup>			Residential building plans passed by municipalities	
		Number of dwelling-houses	Total square metres	Total value R'000	Number of units	Total square metres	Total value R'000	Number of buildings	Total square metres	Total value R'000	Total square metres	Total value R'000
Limpopo	2023	413	139 775	976 562	340	47 083	328 659	3	13 416	83 402	200 274	1 388 623
	2024	429	148 286	1 061 639	159	20 069	144 588	2	6 735	43 778	175 090	1 250 005
	2025	416	138 969	1 027 296	201	28 379	200 478	2	1 884	12 635	169 232	1 240 409
South Africa	2023	19 684	3 997 273	32 871 658	17 329	1 757 390	16 685 337	97	99 905	807 446	5 854 568	50 364 441
	2024	17 655	3 605 799	30 472 972	16 623	1 625 672	16 050 891	129	205 795	1 909 736	5 437 266	48 433 599
	2025	19 842	3 798 344	32 323 178	13 218	1 329 504	13 145 819	283	164 430	1 481 009	5 292 278	46 950 006

<sup>1</sup> Institutions for the disabled, boarding houses, hostels and tourism accommodation (e.g. hotels, motels, guest-houses, holiday chalets, bed-and-breakfast accommodation and casinos).

**Table 3 – Number, square metres and value of building plans passed by municipalities for dwelling-houses by size of dwelling-house and province**

Municipal reporting aggregated to provincial level by year		Size of dwelling-house									Dwelling-house plans passed by municipalities		
		Equal to or smaller than 30 square metres			Larger than 30 square metres and smaller than 80 square metres			Equal to or larger than 80 square metres					
		Number of dwelling-houses	Total square metres	Total value R'000	Number of dwelling-houses	Total square metres	Total value R'000	Number of dwelling-houses	Total square metres	Total value R'000	Number of dwelling-houses	Total square metres	Total value R'000
Western Cape	2023	8	185	1 342	2 536	115 296	786 276	4 991	1 410 201	10 715 925	7 535	1 525 682	11 503 543
	2024	22	503	3 366	2 026	93 434	709 539	4 484	1 210 701	9 321 345	6 532	1 304 638	10 034 250
	2025	7	189	1 276	2 977	133 741	990 881	5 367	1 378 071	10 695 693	8 351	1 512 001	11 687 850
Eastern Cape	2023	0	0	0	741	34 537	257 377	983	257 479	2 137 910	1 724	292 016	2 395 287
	2024	1	28	171	542	24 720	201 615	637	174 373	1 476 904	1 180	199 121	1 678 690
	2025	1	23	150	810	35 709	308 811	709	194 081	1 712 645	1 520	229 813	2 021 606
Northern Cape	2023	7	162	1 525	50	2 784	26 209	200	40 943	358 809	257	43 889	386 543
	2024	1	27	172	532	21 625	209 743	167	34 787	299 228	700	56 439	509 143
	2025	0	0	0	78	3 328	32 653	175	36 512	319 137	253	39 840	351 790
Free State	2023	1	30	239	112	6 427	51 189	436	106 810	868 102	549	113 267	919 530
	2024	1	26	263	302	13 914	84 348	413	105 210	909 896	716	119 150	994 507
	2025	0	0	0	799	34 915	227 487	483	123 797	1 074 721	1 282	158 712	1 302 208
KwaZulu-Natal	2023	3	79	545	146	7 468	58 298	962	322 587	3 270 575	1 111	330 134	3 329 418
	2024	0	0	0	200	9 498	77 712	956	309 266	3 279 436	1 156	318 764	3 357 148
	2025	0	0	0	145	8 174	67 990	961	354 203	3 747 966	1 106	362 377	3 815 956
North West	2023	1	30	247	363	16 210	83 507	700	196 656	1 389 007	1 064	212 896	1 472 761
	2024	1	27	163	66	3 657	25 346	576	165 913	1 201 317	643	169 597	1 226 826
	2025	1	27	187	52	2 994	20 437	541	155 690	1 168 042	594	158 711	1 188 666
Gauteng	2023	0	0	0	3 187	164 683	1 206 866	2 851	876 936	8 459 593	6 038	1 041 619	9 666 459
	2024	1	30	272	2 511	133 771	1 048 794	2 796	845 386	8 247 409	5 308	979 187	9 296 475
	2025	1	18	122	2 739	145 063	1 095 434	2 567	752 694	7 446 767	5 307	897 775	8 542 323
Mpumalanga	2023	0	0	0	190	11 721	90 498	803	286 274	2 131 057	993	297 995	2 221 555
	2024	1	20	188	122	7 534	58 593	868	303 063	2 255 513	991	310 617	2 314 294
	2025	0	0	0	159	9 402	79 050	854	290 744	2 306 433	1 013	300 146	2 385 483

**Table 3 – Number, square metres and value of building plans passed by municipalities for dwelling-houses by size of dwelling-house and province (concluded)**

Municipal reporting aggregated to provincial level by year		Size of dwelling-house									Dwelling-house plans passed by municipalities		
		Equal to or smaller than 30 square metres			Larger than 30 square metres and smaller than 80 square metres			Equal to or larger than 80 square metres					
		Number of dwelling-houses	Total square metres	Total value R'000	Number of dwelling-houses	Total square metres	Total value R'000	Number of dwelling-houses	Total square metres	Total value R'000	Number of dwelling-houses	Total square metres	Total value R'000
Limpopo	2023	0	0	0	32	1 937	12 995	381	137 838	963 567	413	139 775	976 562
	2024	0	0	0	30	1 903	13 048	399	146 383	1 048 591	429	148 286	1 061 639
	2025	0	0	0	33	2 114	15 482	383	136 855	1 011 814	416	138 969	1 027 296
South Africa	2023	20	486	3 898	7 357	361 063	2 573 215	12 307	3 635 724	30 294 545	19 684	3 997 273	32 871 658
	2024	28	661	4 595	6 331	310 056	2 428 738	11 296	3 295 082	28 039 639	17 655	3 605 799	30 472 972
	2025	10	257	1 735	7 792	375 440	2 838 225	12 040	3 422 647	29 483 218	19 842	3 798 344	32 323 178

**Table 4 – Number, square metres and value of building plans passed by municipalities for flats and townhouses by province**

Municipal reporting aggregated to provincial level by year		Flats			Townhouses			Building plans passed for flats and townhouses by municipalities		
		Number of units	Total square metres	Total value R'000	Number of units	Total square metres	Total value R'000	Number of units	Total square metres	Total value R'000
Western Cape	2023	4 242	362 026	3 180 300	1 875	322 867	2 699 188	6 117	684 893	5 879 488
	2024	6 196	488 277	4 760 492	921	195 942	1 699 788	7 117	684 219	6 460 280
	2025	4 963	362 337	3 284 267	815	179 309	1 610 435	5 778	541 646	4 894 702
Eastern Cape	2023	69	4 562	35 148	134	21 232	175 480	203	25 794	210 628
	2024	100	6 649	53 635	109	21 266	174 745	209	27 915	228 380
	2025	142	16 793	128 163	174	31 390	274 817	316	48 183	402 980
Northern Cape	2023	10	982	9 244	2	183	1 723	12	1 165	10 967
	2024	0	0	0	11	2 858	21 410	11	2 858	21 410
	2025	0	0	0	3	387	2 591	3	387	2 591
Free State	2023	55	3 549	27 784	121	36 447	342 275	176	39 996	370 059
	2024	46	3 139	30 200	98	12 364	121 544	144	15 503	151 744
	2025	0	0	0	119	13 189	125 818	119	13 189	125 818
KwaZulu-Natal	2023	715	70 190	839 677	459	85 094	777 639	1 174	155 284	1 617 316
	2024	1 254	109 525	1 273 417	948	151 989	1 344 991	2 202	261 514	2 618 408
	2025	1 061	122 823	1 456 086	689	108 677	1 000 869	1 750	231 500	2 456 955
North West	2023	138	12 586	75 445	128	16 403	107 514	266	28 989	182 959
	2024	217	17 883	129 733	33	3 987	26 468	250	21 870	156 201
	2025	330	32 125	245 127	135	23 944	183 931	465	56 069	429 058
Gauteng	2023	3 655	243 694	2 716 185	5 185	514 644	5 265 378	8 840	758 338	7 981 563
	2024	2 125	164 009	1 901 618	4 176	407 303	4 227 382	6 301	571 312	6 129 000
	2025	2 183	127 797	1 617 033	2 177	252 284	2 799 758	4 360	380 081	4 416 791
Mpumalanga	2023	165	13 180	83 209	36	2 668	20 489	201	15 848	103 698
	2024	157	11 141	77 411	73	9 271	63 469	230	20 412	140 880
	2025	154	13 226	103 332	72	16 844	113 114	226	30 070	216 446

**Table 4 – Number, square metres and value of building plans passed by municipalities for flats and townhouses by province (concluded)**

Municipal reporting aggregated to provincial level by year		Flats			Townhouses			Building plans passed for flats and townhouses by municipalities		
		Number of units	Total square metres	Total value R'000	Number of units	Total square metres	Total value R'000	Number of units	Total square metres	Total value R'000
Limpopo	2023	103	8 502	62 188	237	38 581	266 471	340	47 083	328 659
	2024	36	2 471	22 217	123	17 598	122 371	159	20 069	144 588
	2025	19	1 825	11 863	182	26 554	188 615	201	28 379	200 478
South Africa	2023	9 152	719 271	7 029 180	8 177	1 038 119	9 656 157	17 329	1 757 390	16 685 337
	2024	10 131	803 094	8 248 723	6 492	822 578	7 802 168	16 623	1 625 672	16 050 891
	2025	8 852	676 926	6 845 871	4 366	652 578	6 299 948	13 218	1 329 504	13 145 819

**Table 5 – Number, square metres and value of building plans passed by municipalities for other residential buildings by province**

Municipal reporting aggregated to provincial level by year		Other residential buildings								
		Tourism accommodation and casinos <sup>1</sup>			Other residential buildings excluding tourism accommodation <sup>2</sup>			Building plans passed by municipalities for other residential buildings		
		Number of buildings	Total square metres	Total value R'000	Number of buildings	Total square metres	Total value R'000	Number of buildings	Total square metres	Total value R'000
Western Cape	2023	9	9 697	72 468	24	10 977	82 605	33	20 674	155 073
	2024	4	628	3 713	46	50 762	426 605	50	51 390	430 318
	2025	13	7 506	50 169	61	62 336	566 811	74	69 842	616 980
Eastern Cape	2023	3	1 763	13 554	17	3 105	26 436	20	4 868	39 990
	2024	0	0	0	4	15 034	131 926	4	15 034	131 926
	2025	2	10 617	61 356	2	494	4 281	4	11 111	65 637
Northern Cape	2023	4	3 548	33 398	2	4 169	39 242	6	7 717	72 640
	2024	1	64	633	1	409	3 850	2	473	4 483
	2025	0	0	0	0	0	0	0	0	0
Free State	2023	0	0	0	6	6 996	56 186	6	6 996	56 186
	2024	2	4 249	27 619	6	1 562	14 187	8	5 811	41 806
	2025	3	2 505	16 283	54	7 715	75 370	57	10 220	91 653
KwaZulu-Natal	2023	8	7 050	70 985	2	5 628	61 908	10	12 678	132 893
	2024	8	29 061	310 157	22	31 934	393 802	30	60 995	703 959
	2025	12	16 557	182 045	87	23 445	259 470	99	40 002	441 515
North West	2023	4	4 581	32 976	2	194	1 278	6	4 775	34 254
	2024	4	2 235	14 068	2	27 448	197 474	6	29 683	211 542
	2025	1	364	2 366	2	1 045	6 915	3	1 409	9 281
Gauteng	2023	2	569	4 525	4	7 876	64 762	6	8 445	69 287
	2024	6	7 602	99 486	9	12 204	129 914	15	19 806	229 400
	2025	3	572	6 648	27	14 221	116 300	30	14 793	122 948
Mpumalanga	2023	4	3 753	28 869	3	16 583	134 852	7	20 336	163 721
	2024	11	15 620	110 788	1	248	1 736	12	15 868	112 524
	2025	12	13 127	101 167	2	2 042	19 193	14	15 169	120 360

<sup>1</sup> Hotels, motels, guest-houses, holiday chalets, bed-and-breakfast accommodation and casinos.

<sup>2</sup> Institutions for the disabled, boarding houses and hostels.

**Table 5 – Number, square metres and value of building plans passed by municipalities for other residential buildings by province (concluded)**

Municipal reporting aggregated to provincial level by year		Other residential buildings								
		Tourism accommodation and casinos <sup>1</sup>			Other residential buildings excluding tourism accommodation <sup>2</sup>			Building plans passed by municipalities for other residential buildings		
		Number of buildings	Total square metres	Total value R'000	Number of buildings	Total square metres	Total value R'000	Number of buildings	Total square metres	Total value R'000
Limpopo	2023	1	13 028	80 578	2	388	2 824	3	13 416	83 402
	2024	1	738	4 797	1	5 997	38 981	2	6 735	43 778
	2025	2	1 884	12 635	0	0	0	2	1 884	12 635
South Africa	2023	35	43 989	337 353	62	55 916	470 093	97	99 905	807 446
	2024	37	60 197	571 261	92	145 598	1 338 475	129	205 795	1 909 736
	2025	48	53 132	432 669	235	111 298	1 048 340	283	164 430	1 481 009

<sup>1</sup> Hotels, motels, guest-houses, holiday chalets, bed-and-breakfast accommodation and casinos.

<sup>2</sup> Institutions for the disabled, boarding houses and hostels.

**Table 6.1 – Number, square metres and value of non-residential building plans passed by municipalities: office and banking space, shopping space and industrial and warehouse space**

Municipal reporting aggregated to provincial level by year		Non-residential buildings								
		Office and banking space			Shopping space			Industrial and warehouse space		
		Number of buildings	Total square metres	Total value R'000	Number of buildings	Total square metres	Total value R'000	Number of buildings	Total square metres	Total value R'000
Western Cape	2023	39	72 264	619 285	59	82 967	664 889	160	389 620	2 797 556
	2024	42	57 110	503 346	57	158 790	1 544 614	174	399 730	2 962 827
	2025	42	106 573	1 011 661	74	181 795	1 538 127	133	303 417	2 313 501
Eastern Cape	2023	8	8 178	67 529	10	10 948	75 562	34	130 203	1 055 715
	2024	7	11 886	83 156	14	27 669	232 366	44	101 470	850 800
	2025	10	8 738	72 751	13	12 352	108 076	44	154 288	1 336 405
Northern Cape	2023	4	1 551	14 600	4	3 057	28 776	5	3 113	29 303
	2024	4	1 977	16 104	6	20 191	151 871	14	30 491	286 796
	2025	1	83	821	3	14 876	107 415	5	5 587	53 834
Free State	2023	3	2 404	20 788	13	32 815	208 406	25	40 659	367 118
	2024	10	4 231	39 084	17	24 449	156 920	20	15 361	125 591
	2025	6	1 725	15 782	17	10 175	85 084	41	53 959	408 875
KwaZulu-Natal	2023	15	21 781	205 846	28	161 867	1 665 932	79	286 311	1 863 483
	2024	19	25 991	256 272	35	168 448	1 707 973	126	208 766	1 346 490
	2025	11	18 545	181 890	38	28 639	264 419	85	303 580	2 001 145
North West	2023	7	22 789	143 731	36	28 281	190 569	38	30 117	190 355
	2024	6	2 275	15 923	55	95 205	759 036	20	35 067	262 318
	2025	11	5 407	35 948	43	21 068	142 520	20	37 013	246 053
Gauteng	2023	28	125 394	1 574 264	31	117 505	1 361 165	99	526 364	3 558 457
	2024	21	66 874	864 285	45	193 563	2 054 941	149	763 265	5 432 734
	2025	20	135 765	1 684 644	45	98 771	1 126 818	156	588 443	4 376 276
Mpumalanga	2023	16	18 112	146 714	22	103 033	877 256	52	77 757	553 043
	2024	10	21 501	143 564	41	63 741	436 626	71	139 678	950 746
	2025	7	5 410	37 855	36	72 590	491 877	69	94 597	711 732

**Table 6.1 – Number, square metres and value of non-residential building plans passed by municipalities: office and banking space, shopping space and industrial and warehouse space (concluded)**

Municipal reporting aggregated to provincial level by year		Non-residential buildings								
		Office and banking space			Shopping space			Industrial and warehouse space		
		Number of buildings	Total square metres	Total value R'000	Number of buildings	Total square metres	Total value R'000	Number of buildings	Total square metres	Total value R'000
Limpopo	2023	2	470	3 360	8	18 869	141 443	19	25 641	157 507
	2024	3	10 079	69 349	7	12 307	88 642	20	22 667	159 065
	2025	4	2 257	16 379	15	18 445	134 213	16	27 975	204 382
South Africa	2023	122	272 943	2 796 117	211	559 342	5 213 998	511	1 509 785	10 572 537
	2024	122	201 924	1 991 083	277	764 363	7 132 989	638	1 716 495	12 377 367
	2025	112	284 503	3 057 731	284	458 711	3 998 549	569	1 568 859	11 652 203

**Table 6.2 – Number, square metres and value of non-residential building plans passed by municipalities: schools, nursery schools, crèches, hospitals, churches, sport clubs, recreation clubs and all other non-residential space**

Municipal reporting aggregated to provincial level by year		Non-residential buildings											
		Schools, nursery schools, crèches and hospitals			Churches, sport and recreation clubs			All other non-residential space			Non-residential building plans passed by municipalities <sup>1</sup>		
		Number of buildings	Total square metres	Total value R'000	Number of buildings	Total square metres	Total value R'000	Number of buildings	Total square metres	Total value R'000	Number of buildings	Total square metres	Total value R'000
Western Cape	2023	26	50 853	443 860	20	20 550	170 884	284	60 115	404 913	588	676 369	5 101 387
	2024	38	57 808	499 608	25	15 399	127 529	254	53 409	424 483	590	742 246	6 062 407
	2025	26	29 394	249 189	28	19 841	155 111	236	126 548	988 465	539	767 568	6 256 054
Eastern Cape	2023	5	8 346	64 971	6	3 993	28 541	13	8 317	68 898	76	169 985	1 361 216
	2024	9	2 278	18 909	6	4 970	42 817	23	11 905	95 059	103	160 178	1 323 107
	2025	8	3 302	29 290	9	7 310	58 022	33	5 811	50 184	117	191 801	1 654 728
Northern Cape	2023	2	6 851	64 488	4	6 771	63 614	3	224	2 108	22	21 567	202 889
	2024	1	2 378	15 459	4	12 716	125 799	1	2 297	22 724	30	70 050	618 753
	2025	0	0	0	3	846	8 370	2	1 707	12 168	14	23 099	182 608
Free State	2023	3	1 461	11 382	1	691	5 509	0	0	0	45	78 030	613 203
	2024	8	18 413	153 069	5	2 858	21 807	3	1 189	11 775	63	66 501	508 246
	2025	1	3 933	39 770	6	2 103	17 258	11	5 222	51 620	82	77 117	618 389
KwaZulu-Natal	2023	5	4 146	31 693	16	15 067	106 141	3	1 281	14 706	146	490 453	3 887 801
	2024	7	12 060	130 236	20	34 576	367 579	5	2 161	20 039	212	452 002	3 828 589
	2025	6	10 384	120 663	22	33 617	339 602	1	428	4 708	163	395 193	2 912 427
North West	2023	2	2 345	14 816	6	8 189	62 846	7	1 737	10 750	96	93 458	613 067
	2024	4	2 976	18 644	5	3 402	23 545	2	9 301	78 006	92	148 226	1 157 472
	2025	2	277	1 715	7	7 655	50 900	5	185	1 069	88	71 605	478 205
Gauteng	2023	30	70 755	613 335	14	10 256	96 765	13	32 548	383 997	215	882 822	7 587 983
	2024	14	39 625	349 786	12	38 213	316 523	7	4 002	42 348	248	1 105 542	9 060 617
	2025	16	27 133	307 487	21	20 140	201 128	5	9 238	112 160	263	879 490	7 808 513
Mpumalanga	2023	9	20 616	178 167	12	10 661	76 800	6	2 762	17 760	117	232 941	1 849 740
	2024	9	11 066	74 555	8	9 326	61 282	0	0	0	139	245 312	1 666 773
	2025	7	4 083	30 941	14	18 563	165 581	0	0	0	133	195 243	1 437 986

<sup>1</sup> Office and banking space, shopping space, industrial and warehouse space, schools, nursery schools, crèches, hospitals, churches, sport clubs, recreation clubs and all other non-residential space (Tables 6.1 and 6.2).

**Table 6.2 – Number, square metres and value of non-residential building plans passed by municipalities: schools, nursery schools, crèches, hospitals, churches, sport clubs, recreation clubs and all other non-residential space (concluded)**

Municipal reporting aggregated to provincial level by year		Non-residential buildings											
		Schools, nursery schools, crèches and hospitals			Churches, sport and recreation clubs			All other non-residential space			Non-residential building plans passed by municipalities <sup>1</sup>		
		Number of buildings	Total square metres	Total value R'000	Number of buildings	Total square metres	Total value R'000	Number of buildings	Total square metres	Total value R'000	Number of buildings	Total square metres	Total value R'000
Limpopo	2023	2	9 069	61 840	1	490	3 031	8	16 052	113 525	40	70 591	480 706
	2024	2	20 598	148 735	3	948	6 670	7	11 927	81 034	42	78 526	553 495
	2025	3	7 234	54 199	2	2 948	17 137	13	18 067	129 931	53	76 926	556 241
South Africa	2023	84	174 442	1 484 552	80	76 668	614 131	337	123 036	1 016 657	1 345	2 716 216	21 697 992
	2024	92	167 202	1 409 001	88	122 408	1 093 551	302	96 191	775 468	1 519	3 068 583	24 779 459
	2025	69	85 740	833 254	112	113 023	1 013 109	306	167 206	1 350 305	1 452	2 678 042	21 905 151

<sup>1</sup> Office and banking space, shopping space, industrial and warehouse space, schools, nursery schools, crèches, hospitals, churches, sport clubs, recreation clubs and all other non-residential space (Tables 6.1 and 6.2).

**Table 7 – Number, square metres and value of building plans passed by municipalities for additions and alterations by province**

Municipal reporting aggregated to provincial level by year		Additions and alterations												
		Dwelling-houses			Other residential buildings			Non-residential buildings			Internal alterations	Building plans passed for additions and alterations by municipalities		
		Number of plans	Total square metres	Total value R'000	Number of plans	Total square metres	Total value R'000	Number of plans	Total square metres	Total value R'000	Total value R'000	Number of plans	Total square metres	Total value R'000
Western Cape	2023	8 477	886 767	6 712 450	797	110 972	922 387	493	200 340	1 662 642	656 298	9 767	1 198 079	9 953 777
	2024	9 420	835 332	6 280 055	851	68 740	554 539	534	208 618	1 792 343	1 122 734	10 805	1 112 690	9 749 671
	2025	10 016	925 207	7 266 193	727	52 222	435 674	686	260 525	2 242 249	1 552 615	11 429	1 237 954	11 496 731
Eastern Cape	2023	2 575	215 060	1 736 814	154	17 761	148 040	304	118 205	944 360	44 852	3 033	351 026	2 874 066
	2024	2 335	173 839	1 438 691	68	3 876	33 476	289	93 324	777 734	30 656	2 692	271 039	2 280 557
	2025	2 430	184 296	1 578 637	193	20 983	182 503	425	79 100	675 852	123 001	3 048	284 379	2 559 993
Northern Cape	2023	410	36 395	327 548	0	0	0	8	1 353	12 736	8 116	418	37 748	348 400
	2024	279	23 236	213 448	4	397	3 872	19	5 140	49 646	12 584	302	28 773	279 550
	2025	310	22 115	212 707	6	659	6 522	21	9 153	88 823	36 141	337	31 927	344 193
Free State	2023	863	78 869	651 879	11	1 358	12 499	58	13 070	110 411	24 789	932	93 297	799 578
	2024	811	66 795	576 325	10	1 210	11 512	42	18 535	143 793	39 449	863	86 540	771 079
	2025	770	64 852	570 675	39	4 064	35 827	59	19 006	149 854	32 984	868	87 922	789 340
KwaZulu-Natal	2023	2 679	266 001	2 710 467	197	23 458	260 917	312	134 550	1 383 579	291 884	3 188	424 009	4 646 847
	2024	2 633	274 719	2 959 450	141	12 532	144 781	275	104 748	1 033 255	298 437	3 049	391 999	4 435 923
	2025	2 670	270 930	2 911 831	177	18 950	201 886	322	112 152	1 175 554	228 122	3 169	402 032	4 517 393
North West	2023	1 014	88 768	602 815	4	2 215	15 908	39	11 703	81 304	70 028	1 057	102 686	770 055
	2024	1 020	91 804	631 270	3	471	2 996	53	20 578	143 694	125 854	1 076	112 853	903 814
	2025	824	73 242	497 999	5	760	5 088	79	36 515	264 385	283 692	908	110 517	1 051 164
Gauteng	2023	6 634	700 558	6 723 331	81	10 283	109 580	274	208 907	1 698 271	81 909	6 989	919 748	8 613 091
	2024	6 274	623 414	6 200 895	144	8 915	87 056	351	210 551	1 850 211	24 448	6 769	842 880	8 162 610
	2025	5 598	557 211	5 711 765	119	12 318	139 582	310	161 430	1 486 600	40 376	6 027	730 959	7 378 323
Mpumalanga	2023	1 622	152 696	1 047 325	21	1 562	11 277	72	25 447	170 864	59 991	1 715	179 705	1 289 457
	2024	1 863	154 505	1 108 740	12	6 236	43 776	91	50 556	363 760	97 964	1 966	211 297	1 614 240
	2025	1 459	150 891	1 084 341	16	605	3 933	173	76 338	518 253	80 330	1 648	227 834	1 686 857

**Table 7 – Number, square metres and value of building plans passed by municipalities for additions and alterations by province (concluded)**

Municipal reporting aggregated to provincial level by year		Additions and alterations												
		Dwelling-houses			Other residential buildings			Non-residential buildings			Internal alterations	Building plans passed for additions and alterations by municipalities		
		Number of plans	Total square metres	Total value R'000	Number of plans	Total square metres	Total value R'000	Number of plans	Total square metres	Total value R'000	Total value R'000	Number of plans	Total square metres	Total value R'000
Limpopo	2023	394	43 221	296 261	7	2 325	14 190	19	5 920	38 697	43 313	420	51 466	392 461
	2024	337	34 020	243 501	7	1 875	12 156	24	11 142	75 478	24 822	368	47 037	355 957
	2025	262	30 968	222 823	8	1 003	7 012	23	18 901	136 281	18 456	293	50 872	384 572
South Africa	2023	24 668	2 468 335	20 808 890	1 272	169 934	1 494 798	1 579	719 495	6 102 864	1 281 180	27 519	3 357 764	29 687 732
	2024	24 972	2 277 664	19 652 375	1 240	104 252	894 164	1 678	723 192	6 229 914	1 776 948	27 890	3 105 108	28 553 401
	2025	24 339	2 279 712	20 056 971	1 290	111 564	1 018 027	2 098	773 120	6 737 851	2 395 717	27 727	3 164 396	30 208 566

**Part 2**  
**Municipal reporting of buildings completed**  
**aggregated to provincial level**

**Table 8 – Number, square metres and value of residential buildings, non-residential buildings and additions and alterations reported as completed by province**

Municipal reporting aggregated to provincial level by year		Residential buildings		Non-residential buildings			Additions and alterations			Buildings reported as completed to municipalities	
		Total square metres	Total value R'000	Number of buildings	Total square metres	Total value R'000	Number of plans	Total square metres	Total value R'000	Total square metres	Total value R'000
Western Cape	2023	1 592 037	12 055 476	183	315 025	2 294 078	3 999	438 562	3 634 455	2 345 624	17 984 009
	2024	1 218 905	9 614 415	293	350 420	2 654 706	3 410	359 219	3 134 967	1 928 544	15 404 088
	2025	1 440 364	11 724 398	284	361 901	2 884 967	3 491	334 437	3 167 521	2 136 702	17 776 886
Eastern Cape	2023	249 186	2 025 562	36	59 469	446 834	1 159	134 814	1 133 093	443 469	3 605 489
	2024	140 134	1 167 113	44	50 892	411 710	2 269	199 675	1 724 072	390 701	3 302 895
	2025	112 322	972 850	46	57 699	497 228	1 446	190 459	1 676 963	360 480	3 147 041
Northern Cape	2023	14 767	138 646	6	5 979	56 130	212	22 076	213 747	42 822	408 523
	2024	13 752	124 546	8	5 044	46 920	200	20 657	201 632	39 453	373 098
	2025	7 515	66 555	7	3 995	39 524	139	13 885	140 614	25 395	246 693
Free State	2023	48 941	390 160	15	8 487	68 574	246	19 165	148 068	76 593	606 802
	2024	32 986	293 971	5	1 401	13 034	138	12 678	96 133	47 065	403 138
	2025	34 586	325 779	3	884	6 860	45	4 226	48 002	39 696	380 641
KwaZulu-Natal	2023	428 247	4 680 756	87	565 826	4 171 694	1 167	149 508	1 698 678	1 143 581	10 551 128
	2024	333 598	3 716 114	79	242 093	2 140 119	1 272	153 973	2 006 940	729 664	7 863 173
	2025	366 298	4 049 375	132	376 718	3 241 068	1 121	119 635	1 413 243	862 651	8 703 686
North West	2023	232 242	1 572 006	27	45 043	310 514	392	42 547	331 506	319 832	2 214 026
	2024	166 260	1 184 208	46	40 120	271 735	660	64 717	531 276	271 097	1 987 219
	2025	147 428	1 042 971	80	97 588	658 553	652	54 430	472 254	299 446	2 173 778
Gauteng	2023	1 326 922	12 950 749	109	572 534	5 323 600	1 680	218 177	2 105 304	2 117 633	20 379 653
	2024	1 190 657	11 943 861	129	780 321	6 448 491	1 666	248 158	2 442 814	2 219 136	20 835 166
	2025	1 205 802	12 434 541	122	585 732	4 538 208	1 275	218 535	2 269 313	2 010 069	19 242 062
Mpumalanga	2023	107 179	827 048	15	39 527	273 760	275	27 754	252 752	174 460	1 353 560
	2024	111 047	861 791	20	40 744	329 254	327	30 238	267 843	182 029	1 458 888
	2025	68 236	578 646	12	15 349	138 403	188	20 472	201 941	104 057	918 990

**Table 8 – Number, square metres and value of residential buildings, non-residential buildings and additions and alterations reported as completed by province (concluded)**

Municipal reporting aggregated to provincial level by year		Residential buildings		Non-residential buildings			Additions and alterations			Buildings reported as completed to municipalities	
		Total square metres	Total value R'000	Number of buildings	Total square metres	Total value R'000	Number of plans	Total square metres	Total value R'000	Total square metres	Total value R'000
Limpopo	2023	106 424	731 014	17	71 848	499 572	58	6 540	68 035	184 812	1 298 621
	2024	64 356	456 499	17	26 959	186 922	48	7 914	63 265	99 229	706 686
	2025	113 124	817 308	19	30 507	221 364	44	7 047	57 520	150 678	1 096 192
South Africa	2023	4 105 945	35 371 417	495	1 683 738	13 444 756	9 188	1 059 143	9 585 638	6 848 826	58 401 811
	2024	3 271 695	29 362 518	641	1 537 994	12 502 891	9 990	1 097 229	10 468 942	5 906 918	52 334 351
	2025	3 495 675	32 012 423	705	1 530 373	12 226 175	8 401	963 126	9 447 371	5 989 174	53 685 969

**Table 9 – Number, square metres and value of residential buildings reported as completed to municipalities: dwelling-houses, flats and townhouses and other residential buildings by province**

Municipal reporting aggregated to provincial level by year		Residential buildings										
		Dwelling-houses			Flats and townhouses			Other residential buildings and tourism accommodation <sup>1</sup>			Residential buildings reported as completed to municipalities	
		Number of dwelling-houses	Total square metres	Total value R'000	Number of units	Total square metres	Total value R'000	Number of buildings	Total square metres	Total value R'000	Total square metres	Total value R'000
Western Cape	2023	5 909	895 124	6 382 093	5 646	653 383	5 321 466	32	43 530	351 917	1 592 037	12 055 476
	2024	4 331	767 661	5 746 521	4 064	426 447	3 692 708	35	24 797	175 186	1 218 905	9 614 415
	2025	4 423	788 195	6 002 051	6 278	602 547	5 297 382	66	49 622	424 965	1 440 364	11 724 398
Eastern Cape	2023	1 200	212 076	1 720 366	411	37 006	304 538	2	104	658	249 186	2 025 562
	2024	646	114 441	959 073	392	25 632	207 511	2	61	529	140 134	1 167 113
	2025	604	89 587	772 357	157	17 467	154 013	13	5 268	46 480	112 322	972 850
Northern Cape	2023	69	14 701	138 025	1	66	621	0	0	0	14 767	138 646
	2024	59	10 767	98 339	6	815	5 298	2	2 170	20 909	13 752	124 546
	2025	62	7 515	66 555	0	0	0	0	0	0	7 515	66 555
Free State	2023	208	32 704	257 213	113	15 912	130 517	2	325	2 430	48 941	390 160
	2024	116	24 817	213 712	43	7 178	72 605	2	991	7 654	32 986	293 971
	2025	119	21 969	197 669	97	12 617	128 110	0	0	0	34 586	325 779
KwaZulu-Natal	2023	906	271 685	2 972 304	1 168	150 867	1 652 902	5	5 695	55 550	428 247	4 680 756
	2024	796	207 592	2 338 131	1 112	124 314	1 364 619	3	1 692	13 364	333 598	3 716 114
	2025	764	219 178	2 509 524	992	142 752	1 487 660	5	4 368	52 191	366 298	4 049 375
North West	2023	1 308	196 925	1 340 720	267	30 062	198 031	8	5 255	33 255	232 242	1 572 006
	2024	804	146 675	1 049 915	182	16 989	115 788	3	2 596	18 505	166 260	1 184 208
	2025	755	132 972	950 926	107	11 516	72 496	13	2 940	19 549	147 428	1 042 971
Gauteng	2023	6 396	898 377	8 557 106	4 616	426 728	4 373 053	2	1 817	20 590	1 326 922	12 950 749
	2024	4 686	773 642	7 363 561	4 762	412 060	4 519 551	7	4 955	60 749	1 190 657	11 943 861
	2025	5 251	713 919	6 722 338	5 644	466 472	5 421 849	23	25 411	290 354	1 205 802	12 434 541
Mpumalanga	2023	522	90 628	701 983	164	16 551	125 065	0	0	0	107 179	827 048
	2024	340	88 998	709 042	231	22 049	152 749	0	0	0	111 047	861 791
	2025	208	50 600	451 922	101	16 438	118 937	2	1 198	7 787	68 236	578 646

<sup>1</sup> Institutions for the disabled, boarding houses, hostels and tourism accommodation (e.g. hotels, motels, guest-houses, holiday chalets, bed-and-breakfast accommodation and casinos).

**Table 9 – Number, square metres and value of residential buildings reported as completed to municipalities: dwelling-houses, flats and townhouses and other residential buildings by province (concluded)**

Municipal reporting aggregated to provincial level by year		Residential buildings										
		Dwelling-houses			Flats and townhouses			Other residential buildings and tourism accommodation <sup>1</sup>			Residential buildings reported as completed to municipalities	
		Number of dwelling-houses	Total square metres	Total value R'000	Number of units	Total square metres	Total value R'000	Number of buildings	Total square metres	Total value R'000	Total square metres	Total value R'000
Limpopo	2023	300	80 027	548 399	330	25 580	176 621	3	817	5 994	106 424	731 014
	2024	239	59 218	420 335	51	5 138	36 164	0	0	0	64 356	456 499
	2025	227	78 572	567 333	599	32 919	237 825	1	1 633	12 150	113 124	817 308
South Africa	2023	16 818	2 692 247	22 618 209	12 716	1 356 155	12 282 814	54	57 543	470 394	4 105 945	35 371 417
	2024	12 017	2 193 811	18 898 629	10 843	1 040 622	10 166 993	54	37 262	296 896	3 271 695	29 362 518
	2025	12 413	2 102 507	18 240 675	13 975	1 302 728	12 918 272	123	90 440	853 476	3 495 675	32 012 423

<sup>1</sup> Institutions for the disabled, boarding houses, hostels and tourism accommodation (e.g. hotels, motels, guest-houses, holiday chalets, bed-and-breakfast accommodation and casinos).

**Table 10 – Number, square metres and value of dwelling-houses reported as completed to municipalities by size of dwelling-house by province**

Municipal reporting aggregated to provincial level by year		Size of dwelling-house									Dwelling-houses reported as completed to municipalities		
		Equal to or smaller than 30 square metres			Larger than 30 square metres and smaller than 80 square metres			Equal to or larger than 80 square metres					
		Number of dwelling-houses	Total square metres	Total value R'000	Number of dwelling-houses	Total square metres	Total value R'000	Number of dwelling-houses	Total square metres	Total value R'000	Number of dwelling-houses	Total square metres	Total value R'000
Western Cape	2023	5	129	922	2 736	123 636	812 531	3 168	771 359	5 568 640	5 909	895 124	6 382 093
	2024	7	185	1 231	1 587	73 712	485 953	2 737	693 764	5 259 337	4 331	767 661	5 746 521
	2025	2	52	370	1 715	76 178	559 358	2 706	711 965	5 442 323	4 423	788 195	6 002 051
Eastern Cape	2023	1	23	126	546	27 130	203 357	653	184 923	1 516 883	1 200	212 076	1 720 366
	2024	0	0	0	246	12 568	103 697	400	101 873	855 376	646	114 441	959 073
	2025	0	0	0	311	13 211	104 171	293	76 376	668 186	604	89 587	772 357
Northern Cape	2023	0	0	0	9	519	4 577	60	14 182	133 448	69	14 701	138 025
	2024	0	0	0	6	331	3 194	53	10 436	95 145	59	10 767	98 339
	2025	0	0	0	18	943	6 931	44	6 572	59 624	62	7 515	66 555
Free State	2023	0	0	0	65	3 768	34 741	143	28 936	222 472	208	32 704	257 213
	2024	1	24	231	11	723	7 242	104	24 070	206 239	116	24 817	213 712
	2025	0	0	0	28	1 656	15 982	91	20 313	181 687	119	21 969	197 669
KwaZulu-Natal	2023	0	0	0	86	5 095	47 330	820	266 590	2 924 974	906	271 685	2 972 304
	2024	0	0	0	152	8 779	95 466	644	198 813	2 242 665	796	207 592	2 338 131
	2025	0	0	0	126	6 817	70 993	638	212 361	2 438 531	764	219 178	2 509 524
North West	2023	2	50	348	538	28 006	154 990	768	168 869	1 185 382	1 308	196 925	1 340 720
	2024	0	0	0	229	12 590	83 877	575	134 085	966 038	804	146 675	1 049 915
	2025	1	22	152	202	11 431	66 148	552	121 519	884 626	755	132 972	950 926
Gauteng	2023	0	0	0	3 756	199 517	1 531 272	2 640	698 860	7 025 834	6 396	898 377	8 557 106
	2024	0	0	0	2 394	130 659	933 593	2 292	642 983	6 429 968	4 686	773 642	7 363 561
	2025	0	0	0	3 148	158 628	1 172 414	2 103	555 291	5 549 924	5 251	713 919	6 722 338
Mpumalanga	2023	0	0	0	132	8 059	56 956	390	82 569	645 027	522	90 628	701 983
	2024	0	0	0	20	1 303	10 150	320	87 695	698 892	340	88 998	709 042
	2025	0	0	0	29	1 935	15 453	179	48 665	436 469	208	50 600	451 922

**Table 10 – Number, square metres and value of dwelling-houses reported as completed to municipalities by size of dwelling-house by province (concluded)**

Municipal reporting aggregated to provincial level by year		Size of dwelling-house									Dwelling-houses reported as completed to municipalities		
		Equal to or smaller than 30 square metres			Larger than 30 square metres and smaller than 80 square metres			Equal to or larger than 80 square metres					
		Number of dwelling-houses	Total square metres	Total value R'000	Number of dwelling-houses	Total square metres	Total value R'000	Number of dwelling-houses	Total square metres	Total value R'000	Number of dwelling-houses	Total square metres	Total value R'000
Limpopo	2023	0	0	0	36	2 341	16 033	264	77 686	532 366	300	80 027	548 399
	2024	1	26	185	34	2 174	15 046	204	57 018	405 104	239	59 218	420 335
	2025	0	0	0	20	1 328	9 822	207	77 244	557 511	227	78 572	567 333
South Africa	2023	8	202	1 396	7 904	398 071	2 861 787	8 906	2 293 974	19 755 026	16 818	2 692 247	22 618 209
	2024	9	235	1 647	4 679	242 839	1 738 218	7 329	1 950 737	17 158 764	12 017	2 193 811	18 898 629
	2025	3	74	522	5 597	272 127	2 021 272	6 813	1 830 306	16 218 881	12 413	2 102 507	18 240 675

**Table 11 – Number, square metres and value of flats and townhouses reported as completed to municipalities by province**

Municipal reporting aggregated to provincial level by year		Flats			Townhouses			Flats and townhouses reported as completed to municipalities		
		Number of units	Total square metres	Total value R'000	Number of units	Total square metres	Total value R'000	Number of units	Total square metres	Total value R'000
Western Cape	2023	4 726	442 888	3 585 129	920	210 495	1 736 337	5 646	653 383	5 321 466
	2024	3 167	229 895	1 965 223	897	196 552	1 727 485	4 064	426 447	3 692 708
	2025	5 373	425 148	3 685 496	905	177 399	1 611 886	6 278	602 547	5 297 382
Eastern Cape	2023	277	18 340	150 597	134	18 666	153 941	411	37 006	304 538
	2024	347	17 848	141 824	45	7 784	65 687	392	25 632	207 511
	2025	106	9 681	85 260	51	7 786	68 753	157	17 467	154 013
Northern Cape	2023	0	0	0	1	66	621	1	66	621
	2024	0	0	0	6	815	5 298	6	815	5 298
	2025	0	0	0	0	0	0	0	0	0
Free State	2023	43	2 587	20 626	70	13 325	109 891	113	15 912	130 517
	2024	0	0	0	43	7 178	72 605	43	7 178	72 605
	2025	0	0	0	97	12 617	128 110	97	12 617	128 110
KwaZulu-Natal	2023	859	92 924	1 087 878	309	57 943	565 024	1 168	150 867	1 652 902
	2024	830	62 137	766 609	282	62 177	598 010	1 112	124 314	1 364 619
	2025	603	58 464	760 712	389	84 288	726 948	992	142 752	1 487 660
North West	2023	189	21 381	141 293	78	8 681	56 738	267	30 062	198 031
	2024	143	11 499	78 555	39	5 490	37 233	182	16 989	115 788
	2025	60	4 371	29 463	47	7 145	43 033	107	11 516	72 496
Gauteng	2023	1 646	122 054	1 291 474	2 970	304 674	3 081 579	4 616	426 728	4 373 053
	2024	1 713	102 076	1 204 741	3 049	309 984	3 314 810	4 762	412 060	4 519 551
	2025	3 391	206 847	2 649 323	2 253	259 625	2 772 526	5 644	466 472	5 421 849
Mpumalanga	2023	138	14 240	104 697	26	2 311	20 368	164	16 551	125 065
	2024	204	18 038	126 100	27	4 011	26 649	231	22 049	152 749
	2025	32	3 360	31 581	69	13 078	87 356	101	16 438	118 937

**Table 11 – Number, square metres and value of flats and townhouses reported as completed to municipalities by province (concluded)**

Municipal reporting aggregated to provincial level by year		Flats			Townhouses			Flats and townhouses reported as completed to municipalities		
		Number of units	Total square metres	Total value R'000	Number of units	Total square metres	Total value R'000	Number of units	Total square metres	Total value R'000
Limpopo	2023	150	7 459	51 266	180	18 121	125 355	330	25 580	176 621
	2024	0	0	0	51	5 138	36 164	51	5 138	36 164
	2025	0	0	0	599	32 919	237 825	599	32 919	237 825
South Africa	2023	8 028	721 873	6 432 960	4 688	634 282	5 849 854	12 716	1 356 155	12 282 814
	2024	6 404	441 493	4 283 052	4 439	599 129	5 883 941	10 843	1 040 622	10 166 993
	2025	9 565	707 871	7 241 835	4 410	594 857	5 676 437	13 975	1 302 728	12 918 272

**Table 12 – Number, square metres and value of other residential buildings reported as completed to municipalities by province**

Municipal reporting aggregated to provincial level by year		Other residential buildings								
		Tourism accommodation and casinos <sup>1</sup>			Other residential buildings excluding tourism accommodation <sup>2</sup>			Other residential buildings reported as completed to municipalities		
		Number of buildings	Total square metres	Total value R'000	Number of buildings	Total square metres	Total value R'000	Number of buildings	Total square metres	Total value R'000
Western Cape	2023	2	16 252	141 895	30	27 278	210 022	32	43 530	351 917
	2024	1	5 099	33 143	34	19 698	142 043	35	24 797	175 186
	2025	6	14 825	141 200	60	34 797	283 765	66	49 622	424 965
Eastern Cape	2023	0	0	0	2	104	658	2	104	658
	2024	0	0	0	2	61	529	2	61	529
	2025	0	0	0	13	5 268	46 480	13	5 268	46 480
Northern Cape	2023	0	0	0	0	0	0	0	0	0
	2024	2	2 170	20 909	0	0	0	2	2 170	20 909
	2025	0	0	0	0	0	0	0	0	0
Free State	2023	1	204	1 682	1	121	748	2	325	2 430
	2024	0	0	0	2	991	7 654	2	991	7 654
	2025	0	0	0	0	0	0	0	0	0
KwaZulu-Natal	2023	5	5 695	55 550	0	0	0	5	5 695	55 550
	2024	3	1 692	13 364	0	0	0	3	1 692	13 364
	2025	3	1 537	18 502	2	2 831	33 689	5	4 368	52 191
North West	2023	6	4 495	28 135	2	760	5 120	8	5 255	33 255
	2024	1	2 101	15 127	2	495	3 378	3	2 596	18 505
	2025	4	1 432	9 489	9	1 508	10 060	13	2 940	19 549
Gauteng	2023	2	1 817	20 590	0	0	0	2	1 817	20 590
	2024	2	1 029	10 859	5	3 926	49 890	7	4 955	60 749
	2025	3	8 229	95 299	20	17 182	195 055	23	25 411	290 354
Mpumalanga	2023	0	0	0	0	0	0	0	0	0
	2024	0	0	0	0	0	0	0	0	0
	2025	2	1 198	7 787	0	0	0	2	1 198	7 787

<sup>1</sup> Hotels, motels, guest-houses, chalets, bed-and-breakfast accommodation and casinos.<sup>2</sup> Institutions for the disabled, boarding houses and hostels.

**Table 12 – Number, square metres and value of other residential buildings reported as completed to municipalities by province (concluded)**

Municipal reporting aggregated to provincial level by year		Other residential buildings								
		Tourism accommodation and casinos <sup>1</sup>			Other residential buildings excluding tourism accommodation <sup>2</sup>			Other residential buildings reported as completed to municipalities		
		Number of buildings	Total square metres	Total value R'000	Number of buildings	Total square metres	Total value R'000	Number of buildings	Total square metres	Total value R'000
Limpopo	2023	1	267	1 958	2	550	4 036	3	817	5 994
	2024	0	0	0	0	0	0	0	0	0
	2025	0	0	0	1	1 633	12 150	1	1 633	12 150
South Africa	2023	17	28 730	249 810	37	28 813	220 584	54	57 543	470 394
	2024	9	12 091	93 402	45	25 171	203 494	54	37 262	296 896
	2025	18	27 221	272 277	105	63 219	581 199	123	90 440	853 476

<sup>1</sup> Hotels, motels, guest-houses, chalets, bed-and-breakfast accommodation and casinos.

<sup>2</sup> Institutions for the disabled, boarding houses and hostels.

**Table 13.1 – Number, square metres and value of non-residential buildings reported as completed to municipalities by province: office and banking space, shopping space and industrial and warehouse space**

Municipal reporting aggregated to provincial level by year		Non-residential buildings								
		Office and banking space			Shopping space			Industrial and warehouse space		
		Number of buildings	Total square metres	Total value R'000	Number of buildings	Total square metres	Total value R'000	Number of buildings	Total square metres	Total value R'000
Western Cape	2023	16	19 883	156 909	31	43 564	346 941	71	201 505	1 439 871
	2024	15	19 643	173 961	25	72 567	575 603	87	203 763	1 530 270
	2025	13	44 151	367 782	23	68 158	634 630	57	198 744	1 494 709
Eastern Cape	2023	5	4 624	36 635	7	5 027	40 123	16	29 626	227 555
	2024	4	4 438	36 978	12	19 704	148 735	15	23 705	201 476
	2025	11	2 236	19 314	7	16 942	144 147	23	34 065	295 623
Northern Cape	2023	2	1 387	13 056	2	3 532	33 097	1	473	4 452
	2024	3	1 266	11 357	0	0	0	4	3 585	33 746
	2025	2	584	5 778	0	0	0	4	3 352	33 162
Free State	2023	3	696	5 074	2	1 421	11 635	10	6 370	51 865
	2024	1	277	2 665	3	1 017	9 287	1	107	1 082
	2025	0	0	0	3	884	6 860	0	0	0
KwaZulu-Natal	2023	6	21 232	219 776	20	116 415	1 253 485	38	401 873	2 408 937
	2024	2	1 732	15 260	20	117 969	1 261 402	45	112 914	765 090
	2025	12	48 896	508 694	38	100 129	1 033 949	59	206 397	1 465 949
North West	2023	3	5 534	44 080	12	23 415	144 651	9	14 847	114 070
	2024	7	4 099	26 997	22	18 964	127 197	14	14 315	99 807
	2025	7	4 269	28 018	55	68 699	454 372	8	10 202	65 992
Gauteng	2023	14	128 383	1 601 309	19	124 410	1 468 363	52	297 588	2 029 080
	2024	16	55 496	698 100	26	103 752	1 149 134	78	604 106	4 416 911
	2025	17	56 834	692 133	14	51 604	432 444	69	445 692	3 126 149
Mpumalanga	2023	3	6 233	55 592	5	10 121	66 134	6	22 918	149 752
	2024	2	9 748	84 480	2	3 263	30 669	13	22 477	173 873
	2025	1	350	3 289	4	2 030	13 942	6	10 785	100 029

**Table 13.1 – Number, square metres and value of non-residential buildings reported as completed to municipalities by province: office and banking space, shopping space and industrial and warehouse space (concluded)**

Municipal reporting aggregated to provincial level by year		Non-residential buildings								
		Office and banking space			Shopping space			Industrial and warehouse space		
		Number of buildings	Total square metres	Total value R'000	Number of buildings	Total square metres	Total value R'000	Number of buildings	Total square metres	Total value R'000
Limpopo	2023	3	1 212	8 434	4	25 054	172 009	10	45 582	319 129
	2024	2	9 593	67 151	5	5 920	42 030	10	11 446	77 741
	2025	2	1 574	11 496	5	9 255	68 100	10	19 617	141 328
South Africa	2023	55	189 184	2 140 865	102	352 959	3 536 438	213	1 020 782	6 744 711
	2024	52	106 292	1 116 949	115	343 156	3 344 057	267	996 418	7 299 996
	2025	65	158 894	1 636 504	149	317 701	2 788 444	236	928 854	6 722 941

**Table 13.2 – Number, square metres and value of non-residential buildings reported as completed to municipalities by province: schools, nursery schools, crèches, hospitals, churches, sport clubs, recreation clubs and all other non-residential space**

Municipal reporting aggregated to provincial level by year		Non-residential buildings									Non-residential buildings reported as completed to municipalities <sup>1</sup>		
		Schools, nursery schools, crèches and hospitals			Churches, sport and recreation clubs			All other non-residential space					
		Number of buildings	Total square metres	Total value R'000	Number of buildings	Total square metres	Total value R'000	Number of buildings	Total square metres	Total value R'000	Number of buildings	Total square metres	Total value R'000
Western Cape	2023	9	24 553	176 406	4	2 413	17 782	52	23 107	156 169	183	315 025	2 294 078
	2024	9	30 263	194 690	2	856	6 450	155	23 328	173 732	293	350 420	2 654 706
	2025	11	14 361	111 365	11	11 066	84 592	169	25 421	191 889	284	361 901	2 884 967
Eastern Cape	2023	3	15 355	103 489	1	158	1 260	4	4 679	37 772	36	59 469	446 834
	2024	1	131	808	2	856	7 150	10	2 058	16 563	44	50 892	411 710
	2025	1	359	2 404	2	599	3 704	2	3 498	32 036	46	57 699	497 228
Northern Cape	2023	0	0	0	1	587	5 525	0	0	0	6	5 979	56 130
	2024	0	0	0	1	193	1 817	0	0	0	8	5 044	46 920
	2025	0	0	0	1	59	584	0	0	0	7	3 995	39 524
Free State	2023	0	0	0	0	0	0	0	0	0	15	8 487	68 574
	2024	0	0	0	0	0	0	0	0	0	5	1 401	13 034
	2025	0	0	0	0	0	0	0	0	0	3	884	6 860
KwaZulu-Natal	2023	6	6 417	69 331	12	8 405	93 722	5	11 484	126 443	87	565 826	4 171 694
	2024	6	7 152	75 092	4	1 734	16 179	2	592	7 096	79	242 093	2 140 119
	2025	3	7 756	94 839	16	13 216	133 991	4	324	3 646	132	376 718	3 241 068
North West	2023	0	0	0	3	1 247	7 713	0	0	0	27	45 043	310 514
	2024	2	2 458	15 977	1	284	1 757	0	0	0	46	40 120	271 735
	2025	2	10 091	82 005	8	4 327	28 166	0	0	0	80	97 588	658 553
Gauteng	2023	18	12 331	113 078	3	8 158	99 305	3	1 664	12 465	109	572 534	5 323 600
	2024	7	15 187	162 253	2	1 780	22 093	0	0	0	129	780 321	6 448 491
	2025	16	25 688	239 879	6	5 914	47 603	0	0	0	122	585 732	4 538 208
Mpumalanga	2023	0	0	0	1	255	2 282	0	0	0	15	39 527	273 760
	2024	1	2 231	20 969	2	3 025	19 263	0	0	0	20	40 744	329 254
	2025	1	2 184	21 143	0	0	0	0	0	0	12	15 349	138 403

<sup>1</sup> Office and banking space, shopping space, industrial and warehouse space, schools, nursery schools, crèches, hospitals, churches, sport clubs, recreation clubs and all other non-residential space (Tables 13.1 and 13.2).

**Table 13.2 – Number, square metres and value of non-residential buildings reported as completed to municipalities by province: schools, nursery schools, crèches, hospitals, churches, sport clubs, recreation clubs and all other non-residential space (concluded)**

Municipal reporting aggregated to provincial level by year		Non-residential buildings									Non-residential buildings reported as completed to municipalities <sup>1</sup>		
		Schools, nursery schools, crèches and hospitals			Churches, sport and recreation clubs			All other non-residential space					
		Number of buildings	Total square metres	Total value R'000	Number of buildings	Total square metres	Total value R'000	Number of buildings	Total square metres	Total value R'000	Number of buildings	Total square metres	Total value R'000
Limpopo	2023	0	0	0	0	0	0	0	0	0	17	71 848	499 572
	2024	0	0	0	0	0	0	0	0	0	17	26 959	186 922
	2025	0	0	0	0	0	0	2	61	440	19	30 507	221 364
South Africa	2023	36	58 656	462 304	25	21 223	227 589	64	40 934	332 849	495	1 683 738	13 444 756
	2024	26	57 422	469 789	14	8 728	74 709	167	25 978	197 391	641	1 537 994	12 502 891
	2025	34	60 439	551 635	44	35 181	298 640	177	29 304	228 011	705	1 530 373	12 226 175

<sup>1</sup> Office and banking space, shopping space, industrial and warehouse space, schools, nursery schools, crèches, hospitals, churches, sport clubs, recreation clubs and all other non-residential space (Tables 13.1 and 13.2).

**Table 14 – Number, square metres and value of additions and alterations reported as completed to municipalities by province**

Municipal reporting aggregated to provincial level by year		Additions and alterations												
		Dwelling-houses			Other residential buildings			Non-residential buildings			Internal alterations	Additions and alterations reported as completed to municipalities		
		Number of plans	Total square metres	Total value R'000	Number of plans	Total square metres	Total value R'000	Number of plans	Total square metres	Total value R'000	Total value R'000	Number of plans	Total square metres	Total value R'000
Western Cape	2023	3 405	259 136	1 870 630	316	40 799	340 016	278	138 627	1 085 944	337 865	3 999	438 562	3 634 455
	2024	2 837	202 103	1 501 161	386	43 327	380 063	187	113 789	918 571	335 172	3 410	359 219	3 134 967
	2025	2 867	208 581	1 576 755	341	43 465	385 210	283	82 391	689 609	515 947	3 491	334 437	3 167 521
Eastern Cape	2023	984	75 082	611 571	34	8 049	68 120	141	51 683	417 219	36 183	1 159	134 814	1 133 093
	2024	2 044	144 784	1 213 324	41	1 770	15 222	184	53 121	442 572	52 954	2 269	199 675	1 724 072
	2025	1 237	141 630	1 218 461	126	10 229	91 322	83	38 600	324 874	42 306	1 446	190 459	1 676 963
Northern Cape	2023	203	18 343	172 528	0	0	0	9	3 733	35 139	6 080	212	22 076	213 747
	2024	191	17 822	172 975	0	0	0	9	2 835	26 572	2 085	200	20 657	201 632
	2025	125	9 630	94 129	1	32	317	13	4 223	41 358	4 810	139	13 885	140 614
Free State	2023	239	17 459	132 509	0	0	0	7	1 706	14 070	1 489	246	19 165	148 068
	2024	137	12 402	88 048	1	276	2 655	0	0	0	5 430	138	12 678	96 133
	2025	41	3 418	25 738	0	0	0	4	808	7 264	15 000	45	4 226	48 002
KwaZulu-Natal	2023	1 036	86 559	973 808	50	6 673	70 978	81	56 276	614 291	39 601	1 167	149 508	1 698 678
	2024	1 129	97 671	1 109 691	60	7 339	79 587	83	48 963	513 215	304 447	1 272	153 973	2 006 940
	2025	963	84 050	946 597	56	3 790	39 727	102	31 795	333 671	93 248	1 121	119 635	1 413 243
North West	2023	371	36 209	227 579	3	549	3 630	18	5 789	37 937	62 360	392	42 547	331 506
	2024	624	47 605	307 473	7	1 164	7 961	29	15 948	113 411	102 431	660	64 717	531 276
	2025	603	43 232	282 754	1	159	1 101	48	11 039	74 005	114 394	652	54 430	472 254
Gauteng	2023	1 532	170 203	1 654 610	66	4 008	43 384	82	43 966	376 603	30 707	1 680	218 177	2 105 304
	2024	1 518	156 008	1 575 743	40	4 521	48 192	108	87 629	810 227	8 652	1 666	248 158	2 442 814
	2025	1 159	115 817	1 216 456	29	7 137	84 293	87	95 581	953 505	15 059	1 275	218 535	2 269 313
Mpumalanga	2023	265	20 548	150 749	1	3 393	30 537	9	3 813	28 996	42 470	275	27 754	252 752
	2024	317	27 377	200 997	0	0	0	10	2 861	24 365	42 481	327	30 238	267 843
	2025	179	16 234	129 186	0	0	0	9	4 238	31 526	41 229	188	20 472	201 941

**Table 14 – Number, square metres and value of additions and alterations reported as completed to municipalities by province (concluded)**

Municipal reporting aggregated to provincial level by year		Additions and alterations												
		Dwelling-houses			Other residential buildings			Non-residential buildings			Internal alterations	Additions and alterations reported as completed to municipalities		
		Number of plans	Total square metres	Total value R'000	Number of plans	Total square metres	Total value R'000	Number of plans	Total square metres	Total value R'000	Total value R'000	Number of plans	Total square metres	Total value R'000
Limpopo	2023	49	4 900	33 141	7	451	3 100	2	1 189	8 172	23 622	58	6 540	68 035
	2024	37	6 210	42 615	10	1 677	11 441	1	27	149	9 060	48	7 914	63 265
	2025	38	5 234	38 341	1	33	238	5	1 780	12 786	6 155	44	7 047	57 520
South Africa	2023	8 084	688 439	5 827 125	477	63 922	559 765	627	306 782	2 618 371	580 377	9 188	1 059 143	9 585 638
	2024	8 834	711 982	6 212 027	545	60 074	545 121	611	325 173	2 849 082	862 712	9 990	1 097 229	10 468 942
	2025	7 212	627 826	5 528 417	555	64 845	602 208	634	270 455	2 468 598	848 148	8 401	963 126	9 447 371

## Municipalities covered in the monthly survey

**Table 15 – Municipalities covered in the monthly survey: Western Cape**

Municipality	Main towns within municipal boundaries	District municipality
Bitou	Plettenberg Bay	Eden
Breede Valley	De Doorns, Rawsonville, Touws River, Worcester	Cape Winelands
City of Cape Town	Bellville, Blue Downs, Brackenfell, Cape Town City Centre, Durbanville, Eersterivier, Fish Hoek, Goodwood, Gordon's Bay, Gugulethu, Khayelitsha, Kraaifontein, Kuilsrivier, Langa, Mfuleni, Milnerton, Mitchells Plain, Nyanga, Parow, Plumstead, Simon's Town, Somerset West, Strand	City of Cape Town
Drakenstein	Blouvllei, Hermon, Paarl, Soetendal, Wellington	Cape Winelands
George	George, Herolds Bay, Pacaltsdorp, Wilderness	Eden
Knysna	Knysna, Sedgefield	Eden
Mossel Bay	Groot Brakrivier, Herbertsdale, Klein Brakrivier, Mossel Bay	Eden
Oudtshoorn	De Rust, Dysselsdorp, Oudtshoorn	Eden
Overstrand	Betty's Bay, Fisherhaven, Gansbaai, Hangklip, Hawston, Hermanus, Kleinmond, Onrus, Rooiels Bay, Stanford, Vermont	Overberg
Saldanha Bay	Hopefield, Langebaan, Saldanha, Vredenburg	West Coast
Stellenbosch	Franschhoek, Pniel, Stellenbosch	Cape Winelands
Swartland	Darling, Koringberg, Malmesbury, Moorreesburg, Yzerfontein	West Coast

**Table 16 – Municipalities covered in the monthly survey: Eastern Cape**

<b>Municipality</b>	<b>Main towns within municipal boundaries</b>	<b>District municipality</b>
Buffalo City	Beacon Bay, Bisho, East London <sup>1</sup> , Gonubie, Qonce, Mdantsane, Zwelitsha	Buffalo City
King Sabata Dalindyebo	Mqanduli, Mthatha	OR Tambo
Kouga	Cape St Francis, Hankey, Humansdorp, Jeffreys Bay, Oyster Bay, Patensie, St Francis Bay	Sarah Baartman
Makana	Alicedale, Makhanda, Riebeeck East	Sarah Baartman
Ndlambe	Alexandria, Bathurst, Kenton-on-Sea, Port Alfred	Sarah Baartman
Nelson Mandela Bay	Despatch, Gqeberha, Uitenhage	Nelson Mandela Bay
Walter Sisulu	Aliwal North, Jamestown	Joe Gqabi

<sup>1</sup> East London has been approved for renaming to KuGompo City in 2026. The name East London is retained in this publication for consistency with the reference period.

**Table 17 – Municipalities covered in the monthly survey: Northern Cape**

<b>Municipality</b>	<b>Main towns within municipal boundaries</b>	<b>District municipality</b>
Dawid Kruiper	Dagbreek, Gelukspruit, Karos, Louisvale, Sprigg, Upington	ZF Mgcawu
Ga-Segonyana	Bekker, Ga-Mopedi, Gathlose, Kuruman, Mothibistad, Seeding	John Taolo
Kai !Garib	Kakamas, Keimoes, Kenhardt	ZF Mgcawu
Sol Plaatje	Kenilworth, Kimberley, Modderrivier, Ritchie, Riverton, Spytfontein	Frances Baard

**Table 18 – Municipalities covered in the monthly survey: Free State**

<b>Municipality</b>	<b>Main towns within municipal boundaries</b>	<b>District municipality</b>
Dihlabeng	Bethlehem, Bohlokong, Clarens, Fouriesburg, Paul Roux, Rosendal	Thabo Mofutsanyana
Maluti-a-Phofung	Harrismith, Kestell, Phuthaditjhaba	Thabo Mofutsanyana
Mangaung	Bloemfontein, Botshabelo, Thaba Nchu	Mangaung
Mantsopa	Excelsior, Hobhouse, Ladybrand, Manyatseng, Thaba Phatshoa, Tweespruit	Thabo Mofutsanyana
Matjhabeng	Allanridge, Hennenman, Kutlwanong, Meloding, Odendaalsrus, Thabong, Ventersburg, Virginia, Welkom	Lejweleputswa
Metsimaholo	Deneysville, Oranjeville, Sasolburg	Fezile Dabi
Moqhaka	Kroonstad, Maokeng, Steynsrus, Viljoenskroon	Fezile Dabi
Ngwathe	Edenville, Heilbron, Koppies, Parys, Vredefort	Fezile Dabi

**Table 19 – Municipalities covered in the monthly survey: KwaZulu-Natal**

<b>Municipality</b>	<b>Main towns within municipal boundaries</b>	<b>District municipality</b>
Alfred Duma	Colenso, Ekuvukeni, Etholeni, Ingwe, Kliprivier, Ladysmith, Limehill, Mabaso, Rockcliff, Sams Hoek	uThukela
City of uMhlathuze	Empangeni, Richards Bay	King Cetshwayo
eThekweni	Amanzimtoti, Botha's Hill, Cato Ridge, Clermont, Drummond, Durban, Hillcrest, Inchanga, Kingsburgh, Kloof, KwaDabeka, KwaMakhutha, KwaMashu, Mount Edgecombe, Mpumalanga, New Germany, Pinetown, Queensburgh, Tongaat, Umdloti, Umhlanga, Umlazi, Verulam, Westville	eThekweni
Greater Kokstad	Bonny Ridge, Franklin, Kingscote, Kokstad, New Amalfi, Swartberg	Harry Gwala
KwaDukuza	Ballito, Blythedale Beach, Shakaskraal, Stanger, Tinley Manor Beach, Zinkwazi Beach	Ilembe
Msunduzi	Edendale, Pietermaritzburg	uMgungundlovu
Newcastle	Madadeni, Newcastle, Osizweni	Amajuba
Ray Nkonyeni	Hibberdene, Margate, Marina Beach, Munster, Port Edward, Port Shepstone, Ramsgate, Shelly Beach, Southbroom, St Michael's-on-Sea, Trafalgar, Uvongo	Ugu
Umdoni	Pennington, Scottburgh, Umzinto	Ugu
uMngeni	Hilton, Howick, Nottingham Road	uMgungundlovu

**Table 20 – Municipalities covered in the monthly survey: North West**

<b>Municipality</b>	<b>Main towns within municipal boundaries</b>	<b>District municipality</b>
City of Matlosana	Hartbeesfontein, Klerksdorp, Orkney, Stilfontein	Dr Kenneth Kaunda
Ditsobotla	Coligny, Itsoseng, Lichtenburg	Ngaka Modiri Molema
JB Marks	Potchefstroom, Ventersdorp	Dr Kenneth Kaunda
Madibeng	Brits, De Wildt, Hartbeespoort, Letlhabile	Bojanala Platinum
Mahikeng	Mafikeng, Ottoshoop	Ngaka Modiri Molema
Naledi	Stella, Vryburg	Dr Ruth Segomotsi Mompati
Ramotshere Moiloa	Zeerust	Ngaka Modiri Molema
Rustenburg	Marikana, Rustenburg	Bojanala Platinum

**Table 21 – Municipalities covered in the monthly survey: Gauteng**

<b>Municipality</b>	<b>Main towns within municipal boundaries</b>	<b>District municipality</b>
City of Johannesburg	Alexandra, Eikenhof, Eldorado Park, Ennerdale, Fourways, Florida, Grasmere, Halfway House, Honeydew, Johannesburg, Kyalami, Lawley Estate, Lenasia, Midrand, Modderfontein, Randburg, Randjiesfontein, Rivonia, Roodepoort, Sandton, Soweto, Van Wyksrust	City of Johannesburg
City of Tshwane	Akasia, Atteridgeville, Babelegi, Bon Accord, Bronkhorstspuit, Centurion, Diloppe, Doornrandjies, Ekangala, Erasmia, Ga-Mokone, Ga-Rankuwa, Garsfontein, Hammanskraal, Irene, Klippan, Mabopane, Mamelodi, Onderstepoort, Pinedene, Pretoria, Pretoria North, Soshanguve, Temba, Tierpoort, Tswaiing, Valhalla, Welbekend, Winterveld	City of Tshwane
Ekurhuleni	Alberton, Bedfordview, Benoni, Boksburg, Brakpan, Daveyton, Duduza, Edenvale, Germiston, Katlehong, Kempton Park, KwaThema, Nigel, Springs, Tembisa, Thokoza, Tsakane, Vosloorus	Ekurhuleni
Emfuleni	Boipatong, Bophelong, Evaton, Sebokeng, Sharpeville, Vanderbijlpark, Vereeniging	Sedibeng
Lesedi	Heidelberg, Rensburgdorp, Ratanda	Sedibeng
Merafong City	Carletonville, Fochville, Khutsong	West Rand
Midvaal	Daleside, De Deur, Henly-on-Klip, Highbury, Meyerton, Randvaal, Walkerville	Sedibeng
Mogale City	Battery, Elberta, Hekpoort, Krugersdorp, Luipaardsvlei, Magaliesburg, Muldersdrift, Nootgedacht, Thorndale	West Rand
Randfontein	Finsbury, Kocksoord, Mohlakeng, Randfontein	West Rand
Westonaria	Bekkersdal, Venterspos, Westonaria	West Rand

**Table 22 – Municipalities covered in the monthly survey: Mpumalanga**

<b>Municipality</b>	<b>Main towns within municipal boundaries</b>	<b>District municipality</b>
City of Mbombela	Hazyview, KaNyamazane, Nelspruit, White River	Ehlanzeni
Emalahleni	KwaGuqa, Witbank	Nkangala
Govan Mbeki	Bethal, Evander, Leandra, Secunda	Gert Sibande
Msukaligwa	Breyton, Chrissiesmeer, Davel, Ermelo, Lothair, Sheepmoor, Warbuton	Gert Sibande
Nkomazi	Hectorspruit, Komatipoort, Malelane, Marloth Park	Ehlanzeni
Steve Tshwete	Hendrina, Mhluzi, Middelburg	Nkangala
Victor Khanye	Argent, Delmas, Eloff, Sundra	Nkangala

**Table 23 – Municipalities covered in the monthly survey: Limpopo**

<b>Municipality</b>	<b>Main towns within municipal boundaries</b>	<b>District municipality</b>
Greater Tzaneen	Haenertsburg, Letsitele, Politsi, Rubbervale, Nkowankowa, Tzaneen	Mopani
Modimolle	Haakdong, Mabaleng, Modimolle, Palala	Waterberg
Mogalakwena	Drummondlea, Mahwelereng, Mokopane, Uitzicht	Waterberg
Mookgophong	Crecy, Immerpan, Mookgophong, Thusang	Waterberg
Musina	Beitbridge, Bridgewater, Brombeek, Evangelina, Huntleigh, Mopane, Musina, Tshipise	Vhembe
Polokwane	Polokwane, Seshego	Capricorn
Thabazimbi	Dwaalboom, Northam, Rooiberg, Thabazimbi	Waterberg

## Explanatory notes

### Introduction

- 1 Statistics South Africa (Stats SA) conducts a monthly survey of metropolitan municipalities and large local municipalities on building plans passed and buildings completed for the private sector. This publication contains aggregated data for the twelve months of the calendar year 2025. The survey collects detailed information of building plans passed and buildings completed reported for:
- residential buildings;
  - non-residential buildings; and
  - additions and alterations.

The figures obtained from municipalities do not include the bulk of low-cost dwelling-houses. According to some municipalities they are not always notified about subsidised low-cost housing projects being executed in their area of jurisdiction.

### Scope of the survey

- 2 This survey covers metropolitan municipalities and large local municipalities conducting activities for the private sector regarding:
- approval of building plans; and
  - final inspection of completed buildings and issuing of occupation certificates.

### Classification

- 3 Building activities are classified in division five according to the 1993 edition of the *Standard Industrial Classification of All Economic Activities* (SIC), Fifth Edition, Report No. 09-90-02. The SIC is based on the 1990 *International Standard Industrial Classification of All Economic Activities* (ISIC) with suitable adaptations for local conditions.

### Statistical unit

- 4 The statistical unit for the collection of information is a municipality.

### Survey methodology and design

- 5 Stats SA conducts a monthly survey of metropolitan municipalities and large local municipalities on building plans passed and buildings completed. An annual survey of the remaining municipalities is conducted regarding buildings completed. The monthly survey represents approximately 88% of the total value of buildings completed. Information is collected by email, fax and telephone.

### Comparison between building plans passed and buildings completed

- 6 No direct comparison can be made between building plans passed and buildings completed for the following reasons:
- an unknown number of building plans are passed and afterwards not executed;
  - if building operations have not commenced within the first year after approval, building plans are resubmitted;
  - the time-lag between the date of passing of a building plan and the date of completion of the building varies considerably; and
  - according to municipalities, final inspections of completed buildings are not always executed and therefore not recorded as completed.

### Reliability of estimates

- 7 Inaccuracies may occur because of imperfections in reporting by municipalities. Every effort is made to reduce errors to a minimum by carefully editing, evaluating and querying of data.

### Collection rate

- 8 The collection rate for the year 2025 was 89,6%.

- Revised figures**                    **9** Revised figures are mainly due to late submission of data to Stats SA, or respondents reporting revisions or corrections to their figures. Figures for 2023, 2024 and 2025 are preliminary and subject to revision.
- Number of dwelling-houses**        **10** The number of dwelling-houses is shown and not the number of plans passed, since one plan may cover more than one dwelling-house.
- Related publications**                **11** Users may also wish to refer to the following publications:
- P5041.1: *Selected building statistics of the private sector as reported by local government institutions* issued monthly;
  - P9101.2: *Actual and expected expenditure on construction by the public sector per region* issued annually; and
  - *Building Statistics* (Report No. 50-11-01) issued annually.
- Rounding-off of figures**            **12** The figures in the tables have, where necessary, been rounded off to the nearest digit shown. There may, therefore, be slight discrepancies between the sums of the constituent items and the totals shown.
- Symbols and abbreviations**        **13**
- |          |   |
|----------|---|
| 0        | Nil or figure too small to publish  |
| *        | Revised figures   |
| ..       | No data reported  |
| Stats SA | Statistics South Africa   |
| SIC      | Standard Industrial Classification of All Economic Activities               |
| ISIC     | International Standard Industrial Classification of All Economic Activities |

## Glossary

<b>Additions and alterations</b>	Extensions to existing buildings as well as internal and external alterations of existing buildings.
<b>Annual percentage change</b>	The annual percentage change is the change in the actual values of building activities (building plans passed or buildings completed) of the relevant year compared with the actual values of building activities (building plans passed or buildings completed) of the previous year expressed as a percentage.
<b>Block of flats</b>	High-density housing consisting of a number of self-contained dwelling-units with at least one living-room together with a kitchen and bathroom conjoined to similar units in one building.
<b>District municipality</b>	A municipality that has municipal executive and legislative authority in an area that includes more than one municipality, and which is described in section 155(1) of the Constitution as a category C municipality (refer to Local Government: Municipal Structure Act, 1998 (Act No. 117 of 1998)).
<b>Dwelling-house</b>	A free-standing, complete structure on a separate stand or a self-contained dwelling-unit, e.g. granny flat, on the same premises as an existing residence. Out-buildings and garages are included.
<b>Municipality</b>	A generic term describing the unit of government in the third sphere responsible for local government in a geographically demarcated area. It includes district, metropolitan and local municipalities.
<b>Local municipality</b>	A municipality that shares municipal executive and legislative authority in its area with a district municipality within whose area it falls, and which is described in section 155(1) of the Constitution as a category B municipality (refer to Local Government: Municipal Structure Act, 1998 (Act No. 117 of 1998)).
<b>Metropolitan municipality</b>	A municipality that has municipal executive and legislative authority in an area that includes more than one municipality, and which is described in section 155(1) of the Constitution as a category A municipality (refer to Local Government: Municipal Structure Act, 1998 (Act No. 117 of 1998)).
<b>Non-residential buildings</b>	Factories and commercial, financial and other office buildings, as well as other buildings not used for residential purposes, such as churches, halls, clubs, schools and hospitals.
<b>Other residential buildings</b>	Institutions for the disabled, boarding houses, hostels and tourism accommodation e.g. hotels, motels, guest-houses, holiday chalets, bed-and-breakfast accommodation, entertainment centres and casinos.
<b>Reference period</b>	Reference period for this statistical release refers to the calendar year 2025.
<b>Residential buildings</b>	Dwelling-houses, flats, townhouses and other residential buildings.
<b>Townhouses</b>	Multiple, medium-density dwelling-units including cluster housing, group housing, simplexes, duplexes, triplexes and other similar dwelling-units which are usually grouped together, with one level of each unit on ground level. This category excludes blocks of flats.

## General information

Stats SA publishes approximately 300 different statistical releases each year. It is not economically viable to produce them in more than one of South Africa's 12 official languages. Since the releases are used extensively locally and by international economic and social-scientific communities, Stats SA releases are only published in English.

Stats SA has copyright on this publication. Users may apply the information as they wish, provided that they acknowledge Stats SA as the source of the basic data wherever they process, apply, utilise, publish or distribute the data; and also that they specify that the relevant application and analysis (where applicable) result from their own processing of the data.

### Advance release calendar

An advance release calendar is disseminated on [www.statssa.gov.za](http://www.statssa.gov.za).

### Stats SA products

A complete set of Stats SA publications is available at the Stats SA Library and the following libraries:

National Library of South Africa, Pretoria Division  
National Library of South Africa, Cape Town Division  
Natal Society Library, Pietermaritzburg  
Library of Parliament, Cape Town  
Bloemfontein Public Library  
Johannesburg Public Library  
Eastern Cape Library Services, Qonce  
Central Regional Library, Polokwane  
Central Reference Library, Mbombela  
Central Reference Collection, Kimberley  
Central Reference Library, Mmabatho

Stats SA also provides a subscription service.

### Electronic services

A large range of data are available via online services. For more details about our electronic data services, contact Stats SA's user information services at (012) 310 8600. You can visit us on the internet at: [www.statssa.gov.za](http://www.statssa.gov.za).

### Enquiries

Telephone number: 082 888 2374 (technical enquiries)  
(012) 310 8600 (user information services)

Email: [joycee@statssa.gov.za](mailto:joycee@statssa.gov.za) (technical enquiries)  
[info@statssa.gov.za](mailto:info@statssa.gov.za) (user information services)

Postal address: Private Bag X44, Pretoria, 0001

*Produced by Stats SA*