



**Statistics
South Africa**

Preferred supplier of quality statistics



Statistical release

P5041.1

Selected building statistics of the private sector as reported by local government institutions

**September 2007
(Preliminary)**

**Embargoed until:
21 November 2007
13:00**

Enquiries:

User Information Services
Tel: (012) 310 8600 / 4892 / 8390

Forthcoming issue:

October 2007

Expected release date

12 December 2007

Statistics South Africa • Mbalo-mbalo dza Afrika Tshipembe • Tinhlayo-tiko ta Afrika-Dzonga • Dipalopalo tsa Aforika Borwa • Ezezibalo zaseNingizimu Afrika
Dipalopalo tša Afrika Borwa • Dipalopalo tsa Afrika Borwa • Ubalo lwaseMzantsi Afrika • Telubalo eNingizimu Afrika • iNanimbalo leSewula Afrika • Statistiek Suid-Afrika

Contents

	Page
SUMMARY OF FINDINGS	3
Tables	
Table 1 Values and percentage change of recorded building plans passed by larger municipalities at current prices by type of building	9
Table 2 Seasonally adjusted values and percentage change of recorded building plans passed by larger municipalities at current prices by type of building	10
Table 3 Values and percentage change of recorded building plans passed by larger municipalities at constant 2000 prices by type of building	11
Table 4 Seasonally adjusted values and percentage change of recorded building plans passed by larger municipalities at constant 2000 prices by type of building	12
Table 5 Values and percentage change of buildings reported as completed to larger municipalities at current prices by type of building	13
Table 6 Seasonally adjusted values and percentage change of buildings reported as completed to larger municipalities at current prices by type of building	14
Table 7 Values and percentage change of buildings reported as completed to larger municipalities at constant 2000 prices by type of building	15
Table 8 Seasonally adjusted values and percentage change of buildings reported as completed to larger municipalities at constant 2000 prices by type of building	16
Table 9 Recorded building plans passed by larger municipalities at current prices by type of building: South Africa	17
Table 10 Recorded building plans passed by larger municipalities at current prices by type of building: Western Cape	18
Table 11 Recorded building plans passed by larger municipalities at current prices by type of building: Eastern Cape	19
Table 12 Recorded building plans passed by larger municipalities at current prices by type of building: Northern Cape	20
Table 13 Recorded building plans passed by larger municipalities at current prices by type of building: Free State	21
Table 14 Recorded building plans passed by larger municipalities at current prices by type of building: KwaZulu-Natal	22
Table 15 Recorded building plans passed by larger municipalities at current prices by type of building: North West	23
Table 16 Recorded building plans passed by larger municipalities at current prices by type of building: Gauteng	24
Table 17 Recorded building plans passed by larger municipalities at current prices by type of building: Mpumalanga	25
Table 18 Recorded building plans passed by larger municipalities at current prices by type of building: Limpopo	26
Table 19 Buildings reported as completed to larger municipalities at current prices by type of building: South Africa	27
Table 20 Buildings reported as completed to larger municipalities at current prices by type of building: Western Cape	28
Table 21 Buildings reported as completed to larger municipalities at current prices by type of building: Eastern Cape	29
Table 22 Buildings reported as completed to larger municipalities at current prices by type of building: Northern Cape	30
Table 23 Buildings reported as completed to larger municipalities at current prices by type of building: Free State	31
Table 24 Buildings reported as completed to larger municipalities at current prices by type of building: KwaZulu-Natal	32

Table 25	Buildings reported as completed to larger municipalities at current prices by type of building: North West	33
Table 26	Buildings reported as completed to larger municipalities at current prices by type of building: Gauteng	34
Table 27	Buildings reported as completed to larger municipalities at current prices by type of building: Mpumalanga	35
Table 28	Buildings reported as completed to larger municipalities at current prices by type of building: Limpopo.....	36
Table 29	Subsidised low-cost dwelling-houses completed or under construction by province	37
Table 30	Subsidised low-cost dwelling-houses completed by province	37
Explanatory notes		38
Glossary		41
General information		43

SUMMARY OF FINDINGS

SELECTED BUILDING STATISTICS OF THE PRIVATE SECTOR REGARDING BUILDING PLANS PASSED AT CURRENT PRICES

Table A – Selected key figures regarding recorded building plans passed by larger municipalities at current prices: January to September 2006 versus January to September 2007

Estimates at current prices	January to September 2006	January to September 2007 1/	Difference in value between January to September 2006 and January to September 2007	Percentage change between January to September 2006 and January to September 2007
	R'000	R'000	R'000	
Residential buildings	30 653 297	33 754 401	3 101 104	10,1
-Dwelling-houses	20 006 142	22 742 037	2 735 895	13,7
-Flats and townhouses	9 958 653	10 493 896	535 243	5,4
-Other residential buildings	688 502	518 468	-170 034	-24,7
Non-residential buildings	10 528 988	11 857 580	1 328 592	12,6
Additions and alterations	14 278 149	16 141 738	1 863 589	13,1
Total	55 460 434	61 753 719	6 293 285	11,3

1/ Sep. 2007 figures should be regarded as preliminary because of possible backlogs and incomplete reporting by municipalities.

Total value of recorded building plans passed at current prices increased

As indicated in Table A, the value of recorded building plans passed by larger municipalities (at current prices) during the first nine months of 2007 rose by 11,3% (R6 293,3 million) compared with the first nine months of 2006.

All the main categories of buildings contributed positively to the 11,3% increase recorded year-on-year for the period January to September 2007, namely additions and alterations (13,1% or R1 863,6 million), non-residential buildings (12,6% or R1 328,6 million) and residential buildings (10,1% or R3 101,1 million). Regarding residential buildings, dwelling-houses took the lead, growing by 13,7% from R20 006,1 million to R22 742,0 million during the above-mentioned period (see Table A).

Table B – Recorded building plans passed by larger municipalities aggregated to provincial level: January to September 2006 versus January to September 2007

Estimates at current prices	January to September 2006	January to September 2007 1/	Percentage contribution to the total value of building plans passed during January to September 2006	Percentage change between January to September 2006 and January to September 2007	Contribution (percentage points) to the percentage change in the value of building plans passed between January to September 2006 and January to September 2007 2/	Difference in value between January to September 2006 and January to September 2007
	R'000	R'000				R'000
Western Cape	12 973 572	13 653 067	23,4	5,2	1,2	679 495
Eastern Cape	2 642 406	3 200 764	4,8	21,1	1,0	558 358
Northern Cape	366 380	548 954	0,6	49,8	0,3	182 574
Free State	1 374 004	1 760 622	2,5	28,1	0,7	386 618
KwaZulu-Natal	7 740 041	8 777 249	14,0	13,4	1,9	1 037 208
North West	2 181 118	2 128 740	3,9	-2,4	-0,1	-52 378
Gauteng	24 376 878	27 528 783	44,0	12,9	5,7	3 151 905
Mpumalanga	2 814 745	2 901 668	5,0	3,1	0,1	86 923
Limpopo	991 290	1 253 872	1,8	26,5	0,5	262 582
Total	55 460 434	61 753 719	100,0	11,3	11,3	6 293 285

1/ Sep. 2007 figures should be regarded as preliminary because of possible backlogs and incomplete reporting by municipalities.

2/ The contribution (percentage points) is calculated by multiplying the percentage change of each province between Jan. to Sep. 2006 and Jan. to Sep. 2007 with the percentage contribution of the corresponding province to the total value of building plans passed during Jan. to Sep. 2006, divided by 100.

Eight provinces reported increases in the value of building plans passed (see Table B). The largest contributor to the increase of 11,3% was Gauteng (contributing 5,7 percentage points or R3 151,9 million), followed by KwaZulu-Natal (1,9 percentage points or R1 037,2 million), Western Cape (1,2 percentage points or R679,5 million) and Eastern Cape (1,0 percentage point or R558,4 million).

SELECTED BUILDING STATISTICS OF THE PRIVATE SECTOR REGARDING BUILDING PLANS PASSED AT CONSTANT PRICES

Table C – Selected key figures regarding recorded building plans passed by larger municipalities at constant 2000 prices: January to September 2006 versus January to September 2007

Estimates at constant 2000 prices	January to September 2006	January to September 2007	Difference in value between January to September 2006 and January to September 2007	Percentage change between January to September 2006 and January to September 2007
	R'000	R'000 1/		
Residential buildings	19 730 631	19 603 174	-127 457	-0,6
Non-residential buildings	6 784 671	6 877 676	93 005	1,4
Additions and alterations	9 198 042	9 363 800	165 758	1,8
Total	35 713 344	35 844 650	131 306	0,4

1/ Sep. 2007 figures should be regarded as preliminary because of possible backlogs and incomplete reporting by municipalities.

Total real value of recorded building plans passed increased marginally

The real value of recorded building plans passed by larger municipalities (at constant 2000 prices) during the first nine months of 2007 increased by 0,4% (R131,3 million) compared with the first nine months of 2006. Increases were reported for additions and alterations (1,8% or R165,8 million) and non-residential buildings (1,4% or R93,0 million). A decrease was reported for residential buildings (-0,6% or -R127,5 million) for the same period (see Table C).

Table D – Seasonally adjusted key figures regarding recorded building plans passed by larger municipalities at constant 2000 prices: Current quarter versus previous quarter

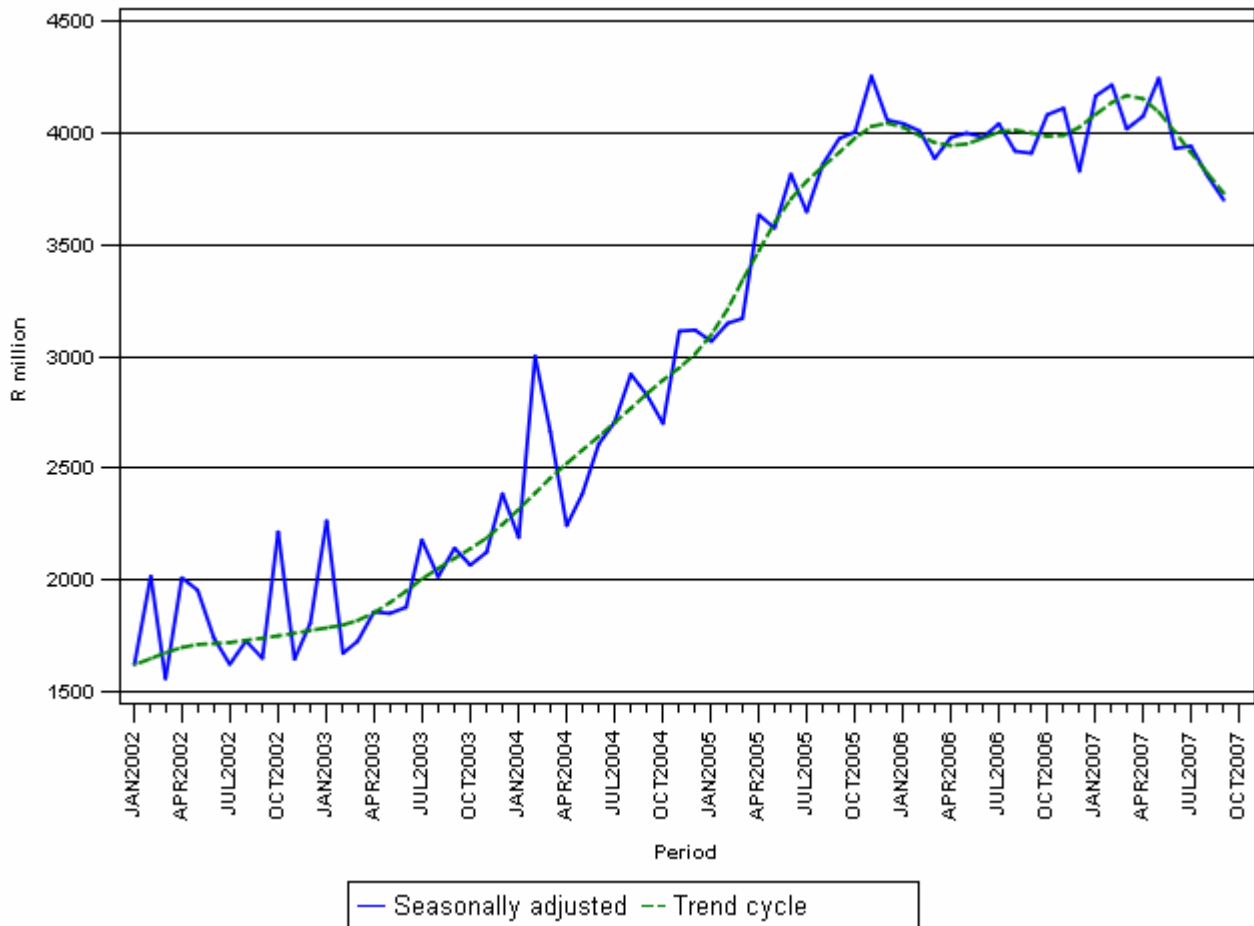
Seasonally adjusted estimates at constant 2000 prices	April to June 2007	July to September 2007	Percentage change between April to June 2007 and July to September 2007
	R'000	R'000	
Residential buildings	6 745 016	5 928 094	-12,1
Non-residential buildings	2 364 275	2 346 480	-0,8
Additions and alterations	3 142 969	3 178 375	1,1
Total	12 252 260	11 452 949	-6,5

Seasonally adjusted real value of recorded building plans passed decreased

The seasonally adjusted real value of recorded building plans passed by larger municipalities during the third quarter of 2007 decreased by 6,5% compared with the previous quarter, following -6,3% recorded for the three months ending August 2007. Decreases were reported for residential building plans passed (-12,1%) and non-residential building plans passed (-0,8%). An increase was reported for additions and alterations (1,1%) (see Table D).

Figure 1 shows both the seasonally adjusted and the trend series for recorded building plans passed at constant 2000 prices between January 2002 and September 2007. The trend series reflects a slight increase in 2002, followed by a steep increase from April 2003 up to the end of 2005. After a short period of downturn in 2006, the trend series started moving upwards from November 2006 up until March 2007. A sharp downward trend is evident from April 2007.

Figure 1 – Real value of recorded building plans passed by larger municipalities at constant 2000 prices



SELECTED BUILDING STATISTICS OF THE PRIVATE SECTOR REGARDING BUILDINGS COMPLETED AT CURRENT PRICES

Table E – Selected key figures regarding buildings reported as completed to larger municipalities at current prices: January to September 2006 versus January to September 2007

Estimates at current prices	January to September 2006	January to September 2007 1/	Difference in value between January to September 2006 and January to September 2007	Percentage change between January to September 2006 and January to September 2007
	R'000	R'000	R'000	
Residential buildings	18 378 128	21 131 499	2 753 371	15,0
-Dwelling-houses	11 229 560	12 895 796	1 666 236	14,8
-Flats and townhouses	6 999 615	7 657 920	658 305	9,4
-Other residential buildings	148 953	577 783	428 830	287,9
Non-residential buildings	3 877 088	6 540 684	2 663 596	68,7
Additions and alterations	4 921 245	5 822 853	901 608	18,3
Total	27 176 461	33 495 036	6 318 575	23,3

1/ Sep. 2007 figures should be regarded as preliminary because of possible backlogs and incomplete reporting by municipalities.

Total value of buildings reported as completed at current prices increased

As indicated in Table E, the value of buildings reported as completed to larger municipalities (at current prices) during the first nine months of 2007 increased by 23,3% (R6 318,6 million) compared with the first nine months of 2006.

All the main categories of buildings contributed positively to the 23,3% increase reported for buildings completed (see Table E). The value of non-residential buildings completed grew by 68,7% or R2 663,6 million, mainly due to the increase in the completion of more offices and banks (164,4% or R1 181,6 million) and industrial and warehouse buildings (91,0% or R1 342,3 million) during the first nine months of 2007 (see Table 19, page 27).

Table F – Buildings reported as completed to larger municipalities aggregated to provincial level: January to September 2006 versus January to September 2007

Estimates at current prices	January to September 2006	January to September 2007 1/	Percentage contribution to the total value of buildings completed during January to September 2006	Percentage change between January to September 2006 and January to September 2007	Contribution (percentage points) to the percentage change in the value of buildings completed between January to September 2006 and January to September 2007 2/	Difference in value between January to September 2006 and January to September 2007
	R'000	R'000				R'000
Western Cape	7 662 420	8 963 887	28,2	17,0	4,8	1 301 467
Eastern Cape	944 402	1 179 946	3,5	24,9	0,9	235 544
Northern Cape	162 829	274 008	0,6	68,3	0,4	111 179
Free State	495 518	858 621	1,8	73,3	1,3	363 103
KwaZulu-Natal	3 462 511	4 998 228	12,8	44,4	5,7	1 535 717
North West	920 070	1 289 801	3,4	40,2	1,4	369 731
Gauteng	12 394 593	14 466 353	45,6	16,7	7,6	2 071 760
Mpumalanga	773 921	1 096 074	2,8	41,6	1,2	322 153
Limpopo	360 197	368 118	1,3	2,2	0,0	7 921
Total	27 176 461	33 495 036	100,0	23,3	23,3	6 318 575

1/ Sep. 2007 figures should be regarded as preliminary because of possible backlogs and incomplete reporting by municipalities.

2/ The contribution (percentage points) is calculated by multiplying the percentage change of each province between Jan. to Sep. 2006 and Jan. to Sep. 2007 with the percentage contribution of the corresponding province to the total value of buildings completed during Jan. to Sep. 2006, divided by 100.

All the provinces reported increases in the value of buildings completed. The largest contributor to the increase of 23,3% was Gauteng (7,6 percentage points or R2 071,8 million), followed by KwaZulu-Natal (5,7 percentage points or R1 535,7 million) and Western Cape (4,8 percentage points or R1 301,5 million) (see Table F).

SELECTED BUILDING STATISTICS OF THE PRIVATE SECTOR REGARDING BUILDINGS COMPLETED AT CONSTANT PRICES

Table G – Selected key figures regarding buildings reported as completed to larger municipalities at constant 2000 prices: January to September 2006 versus January to September 2007

Estimates at constant 2000 prices	January to September 2006	January to September 2007 1/	Difference in value between January to September 2006 and January to September 2007	Percentage change between January to September 2006 and January to September 2007
	R'000	R'000	R'000	
Residential buildings	12 548 298	13 139 161	590 863	4,7
Non-residential buildings	2 789 112	4 422 544	1 633 432	58,6
Additions and alterations	3 420 359	3 758 028	337 669	9,9
Total	18 757 769	21 319 733	2 561 964	13,7

1/ Sep. 2007 figures should be regarded as preliminary because of possible backlogs and incomplete reporting by municipalities.

Total real value of buildings reported as completed increased

As indicated in Table G, the real value of buildings reported as completed to larger municipalities (at constant 2000 prices) during the first nine months of 2007 increased by 13,7% (R2 562,0 million) compared with the first nine months of 2006. The largest percentage increase in the real value of buildings completed was reported for non-residential buildings (58,6% or R1 633,4 million), followed by additions and alterations (9,9% or R337,7 million) and residential buildings (4,7% or R590,9 million).

Table H – Seasonally adjusted key figures regarding buildings reported as completed to larger municipalities at constant 2000 prices: Current quarter versus previous quarter

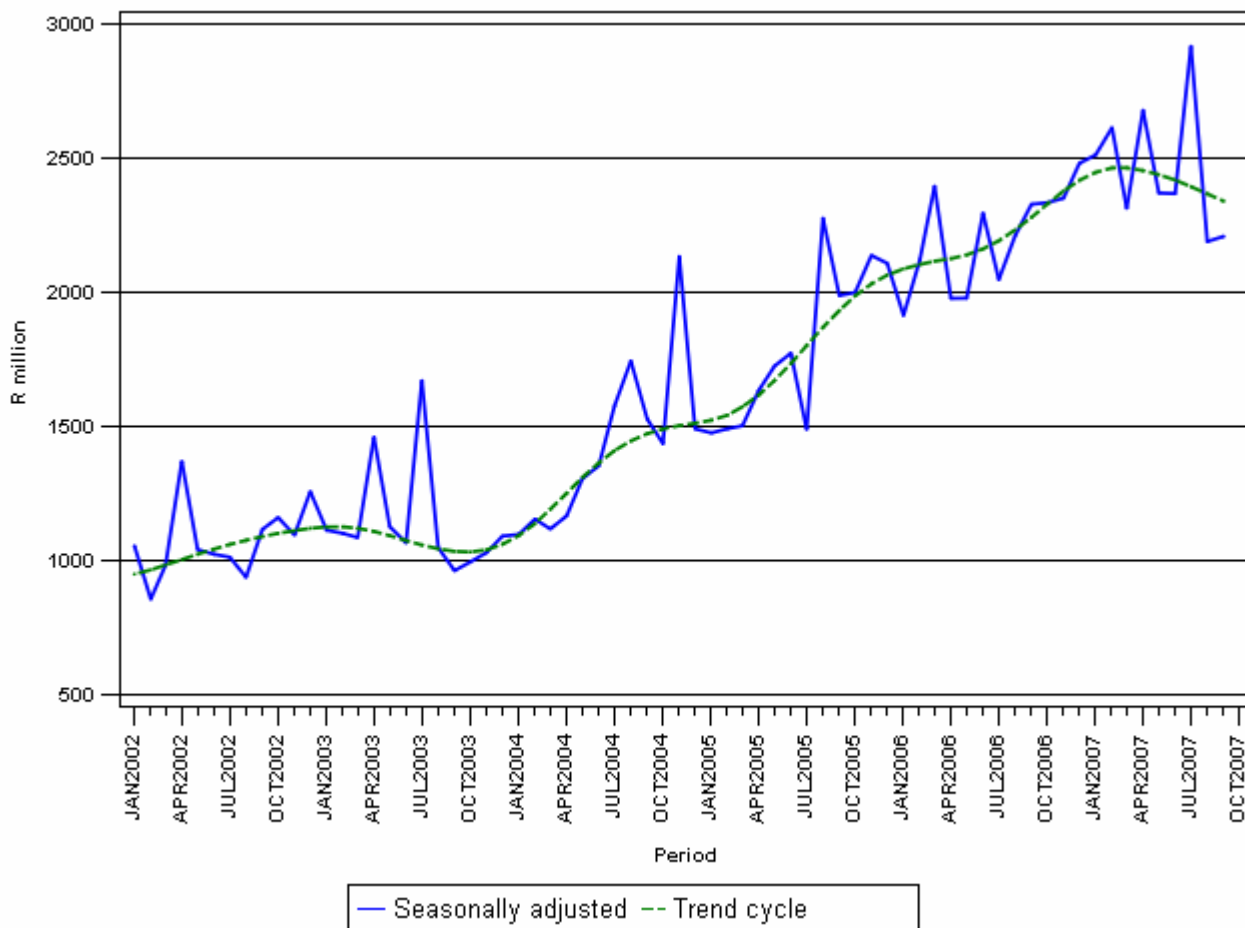
Seasonally adjusted estimates at constant 2000 prices	April to June 2007	July to September 2007	Percentage change between April to June 2007 and July to September 2007
	R'000	R'000	
Residential buildings	4 822 231	4 273 747	-11,4
Non-residential buildings	1 395 608	1 777 973	27,4
Additions and alterations	1 200 672	1 264 890	5,3
Total	7 418 511	7 316 610	-1,4

Seasonally adjusted real value of buildings reported as completed decreased

The seasonally adjusted real value of buildings reported as completed to larger municipalities during the third quarter of 2007 decreased by 1,4% compared with the previous quarter, mainly due to a decrease reported for residential buildings (-11,4%). This decrease was counteracted by increases reported for non-residential buildings (27,4%) and additions and alterations (5,3%) (see Table H).

Figure 2 shows both the seasonally adjusted and trend series for buildings reported as completed to municipalities at constant 2000 prices between January 2002 and September 2007. The trend series reflects a slight increase in 2002, slowing again until October 2003. The trend series increased from November 2003 till March 2007. The trend series has been declining since April 2007.

Figure 2 - Real value of buildings reported as completed to larger municipalities at constant 2000 prices



PJ Lehohla
Statistician-General

Table 1 - Values and percentage change of recorded building plans passed by larger municipalities at current prices by type of building

Year and month		Residential buildings		Non-residential buildings		Additions and alterations		Total	
		R'000	% change 1/	R'000	% change 1/	R'000	% change 1/	R'000	% change 1/
2006	January	2 558 041	45,9	778 449	44,6	1 090 691	21,0	4 427 181	38,6
	February	3 190 047	36,0	942 439	53,1	1 443 836	25,1	5 576 322	35,5
	March	2 999 970	28,1	1 241 790	28,9	1 558 522	26,4	5 800 282	27,8
	April	2 763 843	6,8	1 311 707	67,0	1 385 872	6,4	5 461 422	16,8
	May	3 617 721	3,9	1 253 706	59,0	1 845 824	36,6	6 717 251	19,5
	June	3 825 823	18,2	982 965	2,2	1 659 979	11,0	6 468 767	13,6
	July	3 918 713	11,6	1 443 525	42,7	1 845 449	26,1	7 207 687	20,4
	August	4 020 265	15,1	1 478 844	19,9	1 690 353	4,1	7 189 462	13,2
	September*	3 758 874	-2,8	1 095 563	58,4	1 757 623	11,5	6 612 060	7,8
	October	3 901 590	4,7	1 743 478	78,3	1 836 658	-4,1	7 481 726	13,1
	November	4 018 174	7,8	1 381 760	3,2	1 846 062	13,5	7 245 996	8,3
	December	2 691 780	-7,0	1 081 202	67,8	1 438 672	6,7	5 211 654	6,6
	Total	41 264 841	11,6	14 735 428	39,7	19 399 541	14,2	75 399 810	16,9
2007	January	2 741 376	7,2	990 949	27,3	1 387 668	27,2	5 119 993	15,6
	February	3 538 610	10,9	1 394 857	48,0	1 622 463	12,4	6 555 930	17,6
	March	3 976 504	32,6	995 325	-19,8	1 575 250	1,1	6 547 079	12,9
	April*	3 457 613	25,1	1 186 268	-9,6	1 635 039	18,0	6 278 920	15,0
	May*	4 440 979	22,8	1 484 021	18,4	2 120 566	14,9	8 045 566	19,8
	June*	3 988 718	4,3	1 411 705	43,6	1 733 966	4,5	7 134 389	10,3
	July*	4 144 134	5,8	1 356 629	-6,0	2 233 741	21,0	7 734 504	7,3
	August	3 945 072	-1,9	1 547 453	4,6	2 140 189	26,6	7 632 714	6,2
	September 2/	3 521 395	-6,3	1 490 373	36,0	1 692 856	-3,7	6 704 624	1,4

1/ The annual/monthly percentage change is the change in the values of recorded building plans passed by municipalities of the relevant year/month compared with the values of recorded building plans passed by municipalities of the comparable period of the previous year expressed as a percentage.

2/ Preliminary figures.

* Revised.

Table 2 - Seasonally adjusted values and percentage change of recorded building plans passed by larger municipalities at current prices by type of building

Year and month		Residential buildings		Non-residential buildings		Additions and alterations		Total	
		R'000	% change 1/	R'000	% change 1/	R'000	% change 1/	R'000	% change 1/
2006	January	3 540 338	-3,4	1 029 841	36,6	1 462 746	-8,8	6 032 925	0,1
	February	3 440 518	-2,8	1 041 701	1,2	1 561 407	6,7	6 043 626	0,2
	March	3 192 324	-7,2	1 067 982	2,5	1 618 170	3,6	5 878 476	-2,7
	April	3 166 491	-0,8	1 345 015	25,9	1 541 599	-4,7	6 053 105	3,0
	May	3 254 162	2,8	1 242 748	-7,6	1 652 507	7,2	6 149 417	1,6
	June	3 605 524	10,8	982 072	-21,0	1 629 053	-1,4	6 216 649	1,1
	July	3 450 968	-4,3	1 299 968	32,4	1 635 687	0,4	6 386 623	2,7
	August	3 588 531	4,0	1 206 220	-7,2	1 510 310	-7,7	6 305 061	-1,3
	September	3 427 924	-4,5	1 178 481	-2,3	1 730 809	14,6	6 337 214	0,5
	October	3 531 176	3,0	1 537 791	30,5	1 592 851	-8,0	6 661 818	5,1
	November	3 577 702	1,3	1 468 459	-4,5	1 733 078	8,8	6 779 239	1,8
	December	3 429 480	-4,1	1 268 276	-13,6	1 685 889	-2,7	6 383 645	-5,8
2007	January	3 788 694	10,5	1 319 581	4,0	1 868 706	10,8	6 976 981	9,3
	February	3 817 644	0,8	1 523 402	15,4	1 744 300	-6,7	7 085 346	1,6
	March	4 273 165	11,9	867 170	-43,1	1 640 268	-6,0	6 780 603	-4,3
	April	3 966 748	-7,2	1 198 951	38,3	1 811 207	10,4	6 976 906	2,9
	May	3 974 910	0,2	1 472 153	22,8	1 908 746	5,4	7 355 809	5,4
	June	3 731 813	-6,1	1 415 724	-3,8	1 702 419	-10,8	6 849 956	-6,9
	July	3 663 801	-1,8	1 231 646	-13,0	1 986 629	16,7	6 882 076	0,5
	August	3 517 566	-4,0	1 249 124	1,4	1 914 104	-3,7	6 680 794	-2,9
	September	3 213 838	-8,6	1 634 414	30,8	1 667 317	-12,9	6 515 569	-2,5
	Apr. - Jun.07	11 673 471		4 086 828		5 422 372		21 182 671	
	Jul. - Sep.07 2/	10 395 205	-11,0	4 115 184	0,7	5 568 050	2,7	20 078 439	-5,2

1/ The percentage change is the change in the seasonally adjusted values of recorded building plans passed by municipalities of the relevant month compared with the seasonally adjusted values of recorded building plans passed by municipalities of the previous month expressed as a percentage.

2/ The percentage change is the change in the seasonally adjusted values of recorded building plans passed by municipalities of the current quarter compared with the seasonally adjusted values of recorded building plans passed by municipalities of the previous quarter expressed as a percentage.

Table 3 - Values and percentage change of recorded building plans passed by larger municipalities at constant 2000 prices by type of building

Year and month		Residential buildings		Non-residential buildings		Additions and alterations		Total	
		R'000	% change 1/	R'000	% change 1/	R'000	% change 1/	R'000	% change 1/
2006	January	1 716 806	38,0	522 449	36,7	732 007	14,4	2 971 262	31,1
	February	2 129 537	28,2	629 132	44,3	963 842	17,9	3 722 511	27,7
	March	1 998 648	21,3	827 308	22,0	1 038 322	19,7	3 864 278	21,0
	April	1 824 319	1,0	865 813	57,9	914 767	0,6	3 604 899	10,5
	May	2 355 287	-2,9	816 215	48,6	1 201 708	27,6	4 373 210	11,6
	June	2 447 743	8,9	628 896	-5,9	1 062 047	2,2	4 138 686	4,7
	July	2 470 815	2,4	910 167	31,0	1 163 587	15,8	4 544 569	10,5
	August	2 478 585	3,9	911 741	8,2	1 042 141	-6,0	4 432 467	2,2
	September	2 308 891	-12,3	672 950	42,8	1 079 621	0,6	4 061 462	-2,8
	October	2 386 294	-5,8	1 066 347	60,4	1 123 338	-13,7	4 575 979	1,7
	November	2 432 309	-3,7	836 416	-7,8	1 117 471	1,4	4 386 196	-3,2
	December	1 620 578	-17,2	650 934	49,4	866 148	-5,0	3 137 660	-5,1
	Total	26 169 812	2,7	9 338 368	28,3	12 304 999	5,0	47 813 179	7,5
2007	January	1 639 579	-4,5	592 673	13,4	829 945	13,4	3 062 197	3,1
	February	2 120 198	-0,4	835 744	32,8	972 117	0,9	3 928 059	5,5
	March	2 374 032	18,8	594 224	-28,2	940 448	-9,4	3 908 704	1,1
	April*	2 029 116	11,2	696 167	-19,6	959 530	4,9	3 684 813	2,2
	May*	2 567 040	9,0	857 816	5,1	1 225 761	2,0	4 650 617	6,3
	June*	2 287 109	-6,6	809 464	28,7	994 247	-6,4	4 090 820	-1,2
	July*	2 365 373	-4,3	774 332	-14,9	1 274 966	9,6	4 414 671	-2,9
	August	2 230 114	-10,0	874 761	-4,1	1 209 830	16,1	4 314 705	-2,7
	September 2/	1 990 613	-13,8	842 495	25,2	956 956	-11,4	3 790 064	-6,7

1/ The annual/monthly percentage change is the change in the values of recorded building plans passed by municipalities of the relevant year/month compared with the values of recorded building plans passed by municipalities of the comparable period of the previous year expressed as a percentage.

2/ Preliminary figures.

* Revised.

Table 4 - Seasonally adjusted values and percentage change of recorded building plans passed by larger municipalities at constant 2000 prices by type of building

Year and month		Residential buildings		Non-residential buildings		Additions and alterations		Total	
		R'000	% change 1/	R'000	% change 1/	R'000	% change 1/	R'000	% change 1/
2006	January	2 372 274	-4,0	689 640	35,8	980 275	-9,3	4 042 189	-0,4
	February	2 285 963	-3,6	692 655	0,4	1 030 131	5,1	4 008 749	-0,8
	March	2 116 061	-7,4	702 598	1,4	1 067 715	3,6	3 886 374	-3,1
	April	2 079 691	-1,7	885 522	26,0	1 015 126	-4,9	3 980 339	2,4
	May	2 112 575	1,6	809 094	-8,6	1 078 288	6,2	3 999 957	0,5
	June	2 306 743	9,2	630 058	-22,1	1 044 484	-3,1	3 981 285	-0,5
	July	2 181 396	-5,4	823 558	30,7	1 036 707	-0,7	4 041 661	1,5
	August	2 229 540	2,2	750 197	-8,9	939 042	-9,4	3 918 779	-3,0
	September	2 115 377	-5,1	726 657	-3,1	1 067 694	13,7	3 909 728	-0,2
	October	2 163 104	2,3	942 315	29,7	976 742	-8,5	4 082 161	4,4
	November	2 172 561	0,4	889 466	-5,6	1 049 293	7,4	4 111 320	0,7
	December	2 057 668	-5,3	760 541	-14,5	1 011 100	-3,6	3 829 309	-6,9
2007	January	2 262 417	10,0	787 946	3,6	1 115 902	10,4	4 166 265	8,8
	February	2 274 929	0,6	907 924	15,2	1 033 514	-7,4	4 216 367	1,2
	March	2 536 219	11,5	513 093	-43,5	969 448	-6,2	4 018 760	-4,7
	April	2 314 761	-8,7	700 850	36,6	1 059 656	9,3	4 075 267	1,4
	May	2 291 075	-1,0	850 068	21,3	1 105 163	4,3	4 246 306	4,2
	June	2 139 180	-6,6	813 357	-4,3	978 150	-11,5	3 930 687	-7,4
	July	2 096 772	-2,0	706 172	-13,2	1 139 044	16,4	3 941 988	0,3
	August	2 005 243	-4,4	712 563	0,9	1 092 123	-4,1	3 809 929	-3,4
	September	1 826 079	-8,9	927 745	30,2	947 208	-13,3	3 701 032	-2,9
	Apr. - Jun.07	6 745 016		2 364 275		3 142 969		12 252 260	
	Jul. - Sep.07 2/	5 928 094	-12,1	2 346 480	-0,8	3 178 375	1,1	11 452 949	-6,5

1/ The percentage change is the change in the seasonally adjusted values of recorded building plans passed by municipalities of the relevant month compared with the seasonally adjusted values of recorded building plans passed by municipalities of the previous month expressed as a percentage.

2/ The percentage change is the change in the seasonally adjusted values of recorded building plans passed by municipalities of the current quarter compared with the seasonally adjusted values of recorded building plans passed by municipalities of the previous quarter expressed as a percentage.

Table 5 - Values and percentage change of buildings reported as completed to larger municipalities at current prices by type of building

Year and month		Residential buildings		Non-residential buildings		Additions and alterations		Total	
		R'000	% change 1/	R'000	% change 1/	R'000	% change 1/	R'000	% change 1/
2006	January	1 257 968	45,0	316 723	10,1	406 962	28,1	1 981 653	34,6
	February	1 772 939	39,7	408 861	125,2	553 237	72,2	2 735 037	54,3
	March	2 113 187	56,6	656 158	110,5	589 069	85,3	3 358 414	69,7
	April	1 748 227	24,6	268 422	36,6	450 681	35,3	2 467 330	27,6
	May	1 989 102	18,0	509 864	26,4	575 749	21,9	3 074 715	20,0
	June	2 309 739	52,7	485 834	24,9	567 380	11,0	3 362 953	39,4
	July	2 268 183	44,5	333 643	38,0	554 641	57,2	3 156 467	45,9
	August	2 379 053	4,4	492 632	-16,0	557 684	37,9	3 429 369	4,9
	September	2 539 730	21,0	404 951	10,8	665 842	48,6	3 610 523	24,0
	October	2 371 124	19,9	768 141	44,7	603 131	19,2	3 742 396	24,1
	November	2 648 334	-1,7	651 400	47,9	853 416	91,1	4 153 150	16,0
	December	2 675 164	15,3	542 151	115,6	545 663	23,4	3 762 978	24,8
	Total	26 072 750	24,0	5 838 780	39,5	6 923 455	42,1	38 834 985	29,1
2007	January	1 640 091	30,4	483 947	52,8	675 202	65,9	2 799 240	41,3
	February	2 198 764	24,0	883 085	116,0	578 317	4,5	3 660 166	33,8
	March	2 094 772	-0,9	778 599	18,7	668 881	13,5	3 542 252	5,5
	April*	2 342 044	34,0	630 036	134,7	555 370	23,2	3 527 450	43,0
	May*	2 665 216	34,0	713 577	40,0	588 024	2,1	3 966 817	29,0
	June*	2 575 887	11,5	579 957	19,4	657 975	16,0	3 813 819	13,4
	July*	2 786 031	22,8	1 123 723	236,8	721 990	30,2	4 631 744	46,7
	August	2 557 372	7,5	458 378	-7,0	749 365	34,4	3 765 115	9,8
	September 2/	2 271 322	-10,6	889 382	119,6	627 729	-5,7	3 788 433	4,9

1/ The annual/monthly percentage change is the change in the values of buildings reported as completed to municipalities of the relevant year/month compared with the values of buildings reported as completed to municipalities of the comparable period of the previous year expressed as a percentage.

2/ Preliminary figures.

* Revised.

Table 6 - Seasonally adjusted values and percentage change of buildings reported as completed to larger municipalities at current prices by type of building

Year and month		Residential buildings		Non-residential buildings		Additions and alterations		Total	
		R'000	% change 1/	R'000	% change 1/	R'000	% change 1/	R'000	% change 1/
2006	January	1 835 975	-15,3	378 570	34,2	440 824	-13,2	2 655 369	-10,2
	February	2 025 270	10,3	424 307	12,1	558 514	26,7	3 008 091	13,3
	March	2 285 885	12,9	553 004	30,3	590 205	5,7	3 429 094	14,0
	April	1 967 160	-13,9	369 329	-33,2	532 491	-9,8	2 868 980	-16,3
	May	1 919 963	-2,4	414 339	12,2	542 309	1,8	2 876 611	0,3
	June	2 313 905	20,5	500 092	20,7	551 760	1,7	3 365 757	17,0
	July	2 086 826	-9,8	393 720	-21,3	528 086	-4,3	3 008 632	-10,6
	August	2 185 497	4,7	549 420	39,5	533 430	1,0	3 268 347	8,6
	September	2 401 521	9,9	362 692	-34,0	651 519	22,1	3 415 732	4,5
	October	2 283 409	-4,9	600 741	65,6	564 205	-13,4	3 448 355	1,0
	November	2 118 791	-7,2	610 556	1,6	775 021	37,4	3 504 368	1,6
	December	2 468 391	16,5	624 240	2,2	625 790	-19,3	3 718 421	6,1
2007	January	2 432 622	-1,4	571 635	-8,4	730 766	16,8	3 735 023	0,4
	February	2 510 760	3,2	896 886	56,9	590 363	-19,2	3 998 009	7,0
	March	2 266 799	-9,7	649 621	-27,6	664 354	12,5	3 580 774	-10,4
	April	2 632 962	16,2	880 225	35,5	654 777	-1,4	4 167 964	16,4
	May	2 594 084	-1,5	608 758	-30,8	554 399	-15,3	3 757 241	-9,9
	June	2 568 344	-1,0	577 867	-5,1	640 805	15,6	3 787 016	0,8
	July	2 576 088	0,3	1 353 067	134,1	695 770	8,6	4 624 925	22,1
	August	2 351 171	-8,7	505 467	-62,6	719 897	3,5	3 576 535	-22,7
	September	2 131 234	-9,4	800 886	58,4	609 963	-15,3	3 542 083	-1,0
	Apr. - Jun.07	7 795 390		2 066 850		1 849 981		11 712 221	
	Jul. - Sep.07 2/	7 058 493	-9,5	2 659 420	28,7	2 025 630	9,5	11 743 543	0,3

1/ The percentage change is the change in the seasonally adjusted values of buildings reported as completed to municipalities of the relevant month compared with the seasonally adjusted values of buildings reported as completed to municipalities of the previous month expressed as a percentage.

2/ The percentage change is the change in the seasonally adjusted values of buildings reported as completed to municipalities of the current quarter compared with the seasonally adjusted values of buildings reported as completed to municipalities of the previous quarter expressed as a percentage.

Table 7 - Values and percentage change of buildings reported as completed to larger municipalities at constant 2000 prices by type of building

Year and month		Residential buildings		Non-residential buildings		Additions and alterations		Total	
		R'000	% change 1/	R'000	% change 1/	R'000	% change 1/	R'000	% change 1/
2006	January	875 518	36,0	232 372	4,6	288 830	18,4	1 396 720	25,8
	February	1 228 110	30,7	298 221	112,9	391 811	60,8	1 918 142	44,9
	March	1 458 509	46,8	477 553	98,4	414 545	73,2	2 350 607	59,5
	April	1 200 870	17,0	194 227	27,9	314 502	26,3	1 709 599	19,8
	May	1 360 922	11,1	366 809	17,5	401 219	14,4	2 128 950	12,7
	June	1 578 421	43,9	349 270	16,0	394 014	4,7	2 321 705	30,9
	July	1 534 451	36,1	236 794	27,5	380 935	47,1	2 152 180	36,9
	August	1 603 497	-1,8	348 890	-21,5	380 932	29,2	2 333 319	-1,7
	September	1 708 000	14,2	284 976	3,6	453 571	39,1	2 446 547	16,7
	October	1 582 226	13,3	536 037	35,1	410 014	12,0	2 528 277	17,1
	November	1 751 468	-8,0	453 937	38,9	578 195	80,0	2 783 600	9,1
	December	1 752 041	7,2	376 494	103,3	368 941	16,1	2 497 476	16,8
	Total	17 634 033	16,7	4 155 580	30,6	4 777 509	33,1	26 567 122	21,4
2007	January	1 058 853	20,9	332 381	43,0	453 156	56,9	1 844 390	32,1
	February	1 398 502	13,9	603 200	102,3	386 059	-1,5	2 387 761	24,5
	March	1 323 598	-9,2	530 381	11,1	445 624	7,5	2 299 603	-2,2
	April*	1 481 027	23,3	428 305	120,5	366 581	16,6	2 275 913	33,1
	May*	1 658 484	21,9	483 453	31,8	382 828	-4,6	2 524 765	18,6
	June*	1 597 177	1,2	392 128	12,3	420 969	6,8	2 410 274	3,8
	July*	1 703 863	11,0	754 177	218,5	455 227	19,5	2 913 267	35,4
	August	1 545 811	-3,6	305 993	-12,3	462 001	21,3	2 313 805	-0,8
	September 2/	1 371 846	-19,7	592 526	107,9	385 583	-15,0	2 349 955	-3,9

1/ The annual/monthly percentage change is the change in the values of buildings reported as completed to municipalities of the relevant year/month compared with the values of buildings reported as completed to municipalities of the comparable period of the previous year expressed as a percentage.

2/ Preliminary figures.

* Revised.

Table 8 - Seasonally adjusted values and percentage change of buildings reported as completed to larger municipalities at constant 2000 prices by type of building

Year and month		Residential buildings		Non-residential buildings		Additions and alterations		Total	
		R'000	%change 1/	R'000	% change 1/	R'000	% change 1/	R'000	% change 1/
2006	January	1 323 186	-13,9	278 494	33,9	312 770	-13,9	1 914 450	-9,2
	February	1 415 189	7,0	310 268	11,4	395 779	26,5	2 121 236	10,8
	March	1 580 053	11,6	402 124	29,6	413 854	4,6	2 396 031	13,0
	April	1 339 702	-15,2	266 708	-33,7	371 488	-10,2	1 977 898	-17,5
	May	1 303 474	-2,7	296 778	11,3	378 477	1,9	1 978 729	-0,0
	June	1 558 054	19,5	356 782	20,2	380 838	0,6	2 295 674	16,0
	July	1 404 930	-9,8	279 008	-21,8	363 956	-4,4	2 047 894	-10,8
	August	1 453 531	3,5	390 382	39,9	367 609	1,0	2 211 522	8,0
	September	1 628 133	12,0	255 203	-34,6	445 674	21,2	2 329 010	5,3
	October	1 530 411	-6,0	420 827	64,9	383 568	-13,9	2 334 806	0,2
	November	1 401 366	-8,4	426 511	1,4	523 852	36,6	2 351 729	0,7
	December	1 626 836	16,1	434 152	1,8	420 721	-19,7	2 481 709	5,5
2007	January	1 629 424	0,2	393 757	-9,3	490 169	16,5	2 513 350	1,3
	February	1 606 214	-1,4	614 326	56,0	394 026	-19,6	2 614 566	4,0
	March	1 431 285	-10,9	442 264	-28,0	440 833	11,9	2 314 382	-11,5
	April	1 649 620	15,3	597 213	35,0	432 051	-2,0	2 678 884	15,7
	May	1 598 707	-3,1	410 691	-31,2	361 417	-16,3	2 370 815	-11,5
	June	1 573 904	-1,6	387 704	-5,6	407 204	12,7	2 368 812	-0,1
	July	1 571 058	-0,2	906 211	133,7	440 314	8,1	2 917 583	23,2
	August	1 403 465	-10,7	338 321	-62,7	448 087	1,8	2 189 873	-24,9
	September	1 299 224	-7,4	533 441	57,7	376 489	-16,0	2 209 154	0,9
	Apr. - Jun.07	4 822 231		1 395 608		1 200 672		7 418 511	
	Jul. - Sep.07 2/	4 273 747	-11,4	1 777 973	27,4	1 264 890	5,3	7 316 610	-1,4

1/ The percentage change is the change in the seasonally adjusted values of buildings reported as completed to municipalities of the relevant month compared with the seasonally adjusted values of buildings reported as completed to municipalities of the previous month expressed as a percentage.

2/ The percentage change is the change in the seasonally adjusted values of buildings reported as completed to municipalities of the current quarter compared with the seasonally adjusted values of buildings reported as completed to municipalities of the previous quarter expressed as a percentage.

Table 9 - Recorded building plans passed by larger municipalities at current prices by type of building: South Africa

			Sep. 2006*	Aug. 2007	Sep. 2007	Jan. - Sep. 2006	Jan. - Sep. 2007	% Change 1/
Category of building	Type of building	Measuring unit						
1. Residential buildings	1. Dwelling-houses < 80 square metres	Number	3 275	3 336	1 837	27 959	27 815	-0,5
		square metres	149 880	154 479	85 871	1 249 444	1 234 074	-1,2
		R'000	277 958	317 248	182 256	2 186 925	2 409 652	10,2
	2. Dwelling-houses >= 80 square metres	Number	2 983	3 174	2 428	26 069	24 770	-5,0
		square metres	700 216	745 025	623 404	6 027 277	6 208 279	3,0
		R'000	2 207 245	2 465 228	2 121 585	17 819 217	20 332 385	14,1
	3. Flats and townhouses	Number	3 280	2 720	3 051	24 744	25 807	4,3
		square metres	377 382	317 352	298 659	3 146 653	3 033 676	-3,6
		R'000	1 235 703	1 057 427	1 132 510	9 958 653	10 493 896	5,4
	4. Other residential buildings 2/	square metres	12 019	15 838	25 850	169 703	135 781	-20,0
		R'000	37 968	105 169	85 044	688 502	518 468	-24,7
5. Total residential buildings	R'000	3 758 874	3 945 072	3 521 395	30 653 297	33 754 401	10,1	
2. Non-residential buildings	1. Office and banking space	square metres	101 624	92 473	53 886	737 225	703 618	-4,6
		R'000	441 388	313 686	220 239	2 812 347	2 834 125	0,8
	2. Shopping space	square metres	37 733	135 975	104 865	693 781	836 713	20,6
		R'000	100 860	601 842	400 468	2 431 807	3 171 805	30,4
	3. Industrial and warehouse space	square metres	174 752	197 393	262 316	1 615 803	1 734 685	7,4
		R'000	489 758	547 290	772 915	4 434 796	4 853 112	9,4
	4. Other non-residential buildings 3/	square metres	20 931	28 241	36 826	284 327	300 185	5,6
		R'000	63 557	84 635	96 751	850 038	998 538	17,5
	5. Total non-residential buildings	R'000	1 095 563	1 547 453	1 490 373	10 528 988	11 857 580	12,6
3. Additions and alterations	1. Dwelling-houses	square metres	457 869	484 512	417 946	3 964 036	3 923 290	-1,0
		R'000	1 310 986	1 519 693	1 341 601	10 881 567	12 014 470	10,4
	2. Other buildings 4/	square metres	135 264	166 079	93 006	1 057 560	1 078 300	2,0
		R'000	446 637	620 496	351 255	3 396 582	4 127 268	21,5
	3. Total additions and alterations	R'000	1 757 623	2 140 189	1 692 856	14 278 149	16 141 738	13,1
4. Recorded plans passed	1. Total at current prices	R'000	6 612 060	7 632 714	6 704 624	55 460 434	61 753 719	11,3

1/ The percentage change between cumulative figures for 2006 and 2007.

2/ Other residential buildings include institutions for the disabled, boarding houses, hostels and tourism accommodation e.g. hotels, motels, guesthouses, holiday chalets, bed-and-breakfast accommodation and casinos.

3/ Other non-residential space includes churches, sport and recreation clubs, schools, crèches, hospitals and all other non-residential space.

4/ Other buildings include other residential buildings, non-residential buildings and internal alterations.

* Revised.

Table 10 - Recorded building plans passed by larger municipalities at current prices by type of building: Western Cape

			Sep. 2006*	Aug. 2007	Sep. 2007	Jan. - Sep. 2006	Jan. - Sep. 2007	% Change 1/
Category of building	Type of building	Measuring unit						
1. Residential buildings	1. Dwelling-houses < 80 square metres	Number	614	426	135	5 385	2 842	-47,2
		square metres	27 078	20 626	7 236	235 100	131 276	-44,2
		R'000	47 512	46 993	17 120	394 576	310 163	-21,4
	2. Dwelling-houses >= 80 square metres	Number	628	747	481	5 592	5 426	-3,0
		square metres	146 959	172 890	120 902	1 270 625	1 329 583	4,6
		R'000	443 495	607 877	420 177	3 830 223	4 500 266	17,5
	3. Flats and townhouses	Number	434	697	347	4 785	4 679	-2,2
		square metres	41 208	63 037	33 701	521 589	468 199	-10,2
		R'000	126 915	217 330	106 292	1 651 625	1 615 578	-2,2
	4. Other residential buildings 2/	square metres	3 346	8 146	5 427	38 377	46 756	21,8
		R'000	9 638	56 525	18 078	142 148	190 212	33,8
	5. Total residential buildings	R'000	627 560	928 725	561 667	6 018 572	6 616 219	9,9
2. Non-residential buildings	1. Office and banking space	square metres	7 821	34 276	5 989	174 406	219 346	25,8
		R'000	18 467	91 672	19 426	510 721	713 963	39,8
	2. Shopping space	square metres	4 343	32 452	18 319	130 518	104 772	-19,7
		R'000	15 103	120 546	64 498	383 079	359 855	-6,1
	3. Industrial and warehouse space	square metres	52 445	37 518	40 687	477 937	404 547	-15,4
		R'000	153 901	118 208	122 200	1 419 253	1 165 897	-17,9
	4. Other non-residential buildings 3/	square metres	9 122	2 929	3 167	76 414	66 345	-13,2
		R'000	28 979	9 997	10 877	234 615	196 616	-16,2
	5. Total non-residential buildings	R'000	216 450	340 423	217 001	2 547 668	2 436 331	-4,4
3. Additions and alterations	1. Dwelling-houses	square metres	137 217	137 755	121 040	1 176 300	1 101 673	-6,3
		R'000	385 858	437 513	375 293	3 184 608	3 253 274	2,2
	2. Other buildings 4/	square metres	40 517	32 785	23 141	380 153	304 686	-19,9
		R'000	127 124	191 538	113 437	1 222 724	1 347 243	10,2
	3. Total additions and alterations	R'000	512 982	629 051	488 730	4 407 332	4 600 517	4,4
4. Recorded plans passed	1. Total at current prices	R'000	1 356 992	1 898 199	1 267 398	12 973 572	13 653 067	5,2

1/ The percentage change between cumulative figures for 2006 and 2007.

2/ Other residential buildings include institutions for the disabled, boarding houses, hostels and tourism accommodation e.g. hotels, motels, guesthouses, holiday chalets, bed-and-breakfast accommodation and casinos.

3/ Other non-residential space includes churches, sport and recreation clubs, schools, crèches, hospitals and all other non-residential space.

4/ Other buildings include other residential buildings, non-residential buildings and internal alterations.

* Revised.

Table 11 - Recorded building plans passed by larger municipalities at current prices by type of building: Eastern Cape

			Sep. 2006*	Aug. 2007	Sep. 2007	Jan. - Sep. 2006	Jan. - Sep. 2007	% Change 1/	
Category of building	Type of building	Measuring unit							
1. Residential buildings	1. Dwelling-houses < 80 square metres	Number	452	146	233	1 822	1 248	-31,5	
		square metres	18 237	6 521	9 793	79 355	55 220	-30,4	
		R'000	14 059	13 751	8 848	108 329	80 867	-25,4	
	2. Dwelling-houses >= 80 square metres	Number	234	250	122	2 093	1 622	-22,5	
		square metres	41 039	49 554	29 978	426 096	375 081	-12,0	
		R'000	105 581	136 936	101 957	1 009 318	1 084 516	7,5	
	3. Flats and townhouses	Number	147	295	178	1 011	1 200	18,7	
		square metres	17 909	19 182	12 747	139 119	123 917	-10,9	
		R'000	46 654	49 240	36 225	322 226	329 310	2,2	
	4. Other residential buildings 2/	square metres	1 123	0	0	6 357	5 696	-10,4	
		R'000	2 704	0	0	13 603	13 402	-1,5	
	5. Total residential buildings		R'000	168 998	199 927	147 030	1 453 476	1 508 095	3,8
	2. Non-residential buildings	1. Office and banking space	square metres	13 952	3 567	809	16 747	14 065	-16,0
			R'000	37 135	10 692	2 066	43 931	38 693	-11,9
2. Shopping space		square metres	898	1 200	0	19 626	98 914	404,0	
		R'000	2 394	2 831	0	47 393	251 336	430,3	
3. Industrial and warehouse space		square metres	18 890	22 042	13 983	71 146	108 842	53,0	
		R'000	41 275	45 082	31 315	145 570	240 361	65,1	
4. Other non-residential buildings 3/		square metres	2 940	15 270	7 346	14 306	28 331	98,0	
		R'000	6 704	39 359	16 426	32 660	70 683	116,4	
5. Total non-residential buildings		R'000	87 508	97 964	49 807	269 554	601 073	123,0	
3. Additions and alterations		1. Dwelling-houses	square metres	40 413	32 490	31 402	351 086	309 237	-11,9
	R'000		91 965	87 880	84 303	785 346	809 700	3,1	
	2. Other buildings 4/	square metres	4 039	20 990	8 755	50 824	109 974	116,4	
		R'000	11 109	54 168	23 094	134 030	281 896	110,3	
	3. Total additions and alterations		R'000	103 074	142 048	107 397	919 376	1 091 596	18,7
4. Recorded plans passed	1. Total at current prices	R'000	359 580	439 939	304 234	2 642 406	3 200 764	21,1	

1/ The percentage change between cumulative figures for 2006 and 2007.

2/ Other residential buildings include institutions for the disabled, boarding houses, hostels and tourism accommodation e.g. hotels, motels, guesthouses, holiday chalets, bed-and-breakfast accommodation and casinos.

3/ Other non-residential space includes churches, sport and recreation clubs, schools, crèches, hospitals and all other non-residential space.

4/ Other buildings include other residential buildings, non-residential buildings and internal alterations.

* Revised.

Table 12 - Recorded building plans passed by larger municipalities at current prices by type of building: Northern Cape

			Sep. 2006*	Aug. 2007	Sep. 2007	Jan. - Sep. 2006	Jan. - Sep. 2007	% Change 1/
Category of building	Type of building	Measuring unit						
1. Residential buildings	1. Dwelling-houses < 80 square metres	Number	2	7	0	238	42	-82,4
		square metres	135	367	0	11 263	2 177	-80,7
		R'000	269	1 023	0	17 037	6 929	-59,3
	2. Dwelling-houses >= 80 square metres	Number	20	35	29	271	331	22,1
		square metres	3 671	7 213	6 160	52 872	59 033	11,7
		R'000	8 532	23 197	18 597	113 009	168 946	49,5
	3. Flats and townhouses	Number	9	14	5	223	112	-49,8
		square metres	1 275	1 325	643	21 998	14 707	-33,1
		R'000	2 295	3 789	1 800	41 112	43 071	4,8
	4. Other residential buildings 2/	square metres	1 604	117	153	2 620	270	-89,7
		R'000	4 010	410	450	6 263	860	-86,3
	5. Total residential buildings	R'000	15 106	28 419	20 847	177 421	219 806	23,9
2. Non-residential buildings	1. Office and banking space	square metres	0	1 464	337	5 759	8 011	39,1
		R'000	0	5 124	950	14 161	23 472	65,8
	2. Shopping space	square metres	1 043	22 643	1 140	4 394	34 414	683,2
		R'000	2 783	79 251	2 883	10 581	106 616	907,6
	3. Industrial and warehouse space	square metres	2 624	0	295	11 752	6 826	-41,9
		R'000	5 864	0	649	32 281	15 887	-50,8
	4. Other non-residential buildings 3/	square metres	0	75	269	6 014	2 776	-53,8
		R'000	0	225	753	14 645	7 790	-46,8
	5. Total non-residential buildings	R'000	8 647	84 600	5 235	71 668	153 765	114,6
3. Additions and alterations	1. Dwelling-houses	square metres	4 406	6 490	1 621	43 101	42 433	-1,5
		R'000	9 136	18 245	5 160	87 964	113 677	29,2
	2. Other buildings 4/	square metres	1 772	603	824	10 308	22 304	116,4
		R'000	4 546	2 639	2 350	29 327	61 706	110,4
	3. Total additions and alterations	R'000	13 682	20 884	7 510	117 291	175 383	49,5
4. Recorded plans passed	1. Total at current prices	R'000	37 435	133 903	33 592	366 380	548 954	49,8

1/ The percentage change between cumulative figures for 2006 and 2007.

2/ Other residential buildings include institutions for the disabled, boarding houses, hostels and tourism accommodation e.g. hotels, motels, guesthouses, holiday chalets, bed-and-breakfast accommodation and casinos.

3/ Other non-residential space includes churches, sport and recreation clubs, schools, crèches, hospitals and all other non-residential space.

4/ Other buildings include other residential buildings, non-residential buildings and internal alterations.

* Revised.

Table 13 - Recorded building plans passed by larger municipalities at current prices by type of building: Free State

			Sep. 2006*	Aug. 2007	Sep. 2007	Jan. - Sep. 2006	Jan. - Sep. 2007	% Change 1/
Category of building	Type of building	Measuring unit						
1. Residential buildings	1. Dwelling-houses < 80 square metres	Number	201	122	97	2 242	1 807	-19,4
		square metres	9 058	5 811	4 374	94 533	78 490	-17,0
		R'000	10 454	6 384	6 778	86 974	79 803	-8,2
	2. Dwelling-houses >= 80 square metres	Number	103	102	94	850	1 006	18,4
		square metres	18 915	23 409	19 989	162 580	224 312	38,0
		R'000	42 881	57 586	55 826	368 166	568 032	54,3
	3. Flats and townhouses	Number	188	267	100	943	1 247	32,2
		square metres	19 408	41 606	7 662	107 812	130 565	21,1
		R'000	48 562	110 339	20 641	261 159	347 274	33,0
	4. Other residential buildings 2/	square metres	0	215	800	6 985	16 533	136,7
		R'000	0	860	3 216	84 837	58 359	-31,2
	5. Total residential buildings	R'000	101 897	175 169	86 461	801 136	1 053 468	31,5
2. Non-residential buildings	1. Office and banking space	square metres	2 164	0	0	16 583	7 232	-56,4
		R'000	7 792	0	0	47 547	24 138	-49,2
	2. Shopping space	square metres	0	0	16 963	20 346	46 218	127,2
		R'000	0	0	60 401	61 798	182 441	195,2
	3. Industrial and warehouse space	square metres	503	2 118	1 744	33 151	31 807	-4,1
		R'000	1 190	2 438	3 848	57 671	57 907	0,4
	4. Other non-residential buildings 3/	square metres	108	0	1 212	10 373	4 856	-53,2
		R'000	235	0	4 287	27 250	11 604	-57,4
	5. Total non-residential buildings	R'000	9 217	2 438	68 536	194 266	276 090	42,1
3. Additions and alterations	1. Dwelling-houses	square metres	13 224	19 527	13 213	133 760	141 899	6,1
		R'000	28 027	54 172	36 434	264 084	348 544	32,0
	2. Other buildings 4/	square metres	2 905	2 517	3 145	34 546	24 163	-30,1
		R'000	13 587	7 593	10 893	114 518	82 520	-27,9
	3. Total additions and alterations	R'000	41 614	61 765	47 327	378 602	431 064	13,9
4. Recorded plans passed	1. Total at current prices	R'000	152 728	239 372	202 324	1 374 004	1 760 622	28,1

1/ The percentage change between cumulative figures for 2006 and 2007.

2/ Other residential buildings include institutions for the disabled, boarding houses, hostels and tourism accommodation e.g. hotels, motels, guesthouses, holiday chalets, bed-and-breakfast accommodation and casinos.

3/ Other non-residential space includes churches, sport and recreation clubs, schools, crèches, hospitals and all other non-residential space.

4/ Other buildings include other residential buildings, non-residential buildings and internal alterations.

* Revised.

Table 14 - Recorded building plans passed by larger municipalities at current prices by type of building: KwaZulu-Natal

			Sep. 2006*	Aug. 2007	Sep. 2007	Jan. - Sep. 2006	Jan. - Sep. 2007	% Change 1/
Category of building	Type of building	Measuring unit						
1. Residential buildings	1. Dwelling-houses < 80 square metres	Number	146	97	71	964	858	-11,0
		square metres	7 461	5 631	4 368	50 160	47 848	-4,6
		R'000	17 987	14 903	12 766	117 096	141 563	20,9
	2. Dwelling-houses >= 80 square metres	Number	268	188	203	2 289	1 970	-13,9
		square metres	64 672	47 260	49 530	513 516	471 495	-8,2
		R'000	220 515	178 357	183 005	1 574 841	1 782 522	13,2
	3. Flats and townhouses	Number	318	441	317	3 153	4 694	48,9
		square metres	47 167	62 003	35 515	544 771	542 779	-0,4
		R'000	182 481	234 198	139 514	1 933 447	2 154 398	11,4
	4. Other residential buildings 2/	square metres	506	0	4 695	25 394	25 173	-0,9
		R'000	2 000	0	23 486	134 978	113 185	-16,1
	5. Total residential buildings	R'000	422 983	427 458	358 771	3 760 362	4 191 668	11,5
2. Non-residential buildings	1. Office and banking space	square metres	8 859	16 663	17 867	114 625	108 093	-5,7
		R'000	24 299	85 423	57 897	484 648	459 748	-5,1
	2. Shopping space	square metres	8 554	42 671	7 735	62 603	136 905	118,7
		R'000	21 695	232 033	27 204	202 877	580 911	186,3
	3. Industrial and warehouse space	square metres	19 342	56 222	25 779	356 665	282 662	-20,7
		R'000	59 003	138 727	67 632	866 455	735 805	-15,1
	4. Other non-residential buildings 3/	square metres	4 339	876	2 596	51 441	67 165	30,6
		R'000	11 979	2 285	12 090	155 994	289 442	85,5
	5. Total non-residential buildings	R'000	116 976	458 468	164 823	1 709 974	2 065 906	20,8
	3. Additions and alterations	1. Dwelling-houses	square metres	63 756	65 866	40 591	528 548	494 347
R'000			192 736	197 109	137 887	1 533 486	1 688 023	10,1
2. Other buildings 4/		square metres	42 442	45 003	13 313	229 761	224 449	-2,3
		R'000	128 331	126 716	35 406	736 219	831 652	13,0
3. Total additions and alterations		R'000	321 067	323 825	173 293	2 269 705	2 519 675	11,0
4. Recorded plans passed	1. Total at current prices	R'000	861 026	1 209 751	696 887	7 740 041	8 777 249	13,4

1/ The percentage change between cumulative figures for 2006 and 2007.

2/ Other residential buildings include institutions for the disabled, boarding houses, hostels and tourism accommodation e.g. hotels, motels, guesthouses, holiday chalets, bed-and-breakfast accommodation and casinos.

3/ Other non-residential space includes churches, sport and recreation clubs, schools, crèches, hospitals and all other non-residential space.

4/ Other buildings include other residential buildings, non-residential buildings and internal alterations.

* Revised.

Table 15 - Recorded building plans passed by larger municipalities at current prices by type of building: North West

			Sep. 2006*	Aug. 2007	Sep. 2007	Jan. - Sep. 2006	Jan. - Sep. 2007	% Change 1/
Category of building	Type of building	Measuring unit						
1. Residential buildings	1. Dwelling-houses < 80 square metres	Number	55	102	34	1 415	1 497	5,8
		square metres	3 471	6 053	2 034	66 634	71 221	6,9
		R'000	4 066	7 602	3 378	73 399	88 774	20,9
	2. Dwelling-houses >= 80 square metres	Number	197	187	174	1 815	1 766	-2,7
		square metres	40 090	44 133	34 949	372 415	392 443	5,4
		R'000	105 809	95 213	88 695	928 709	1 044 105	12,4
	3. Flats and townhouses	Number	177	23	58	1 116	1 096	-1,8
		square metres	22 740	1 951	8 178	122 375	140 171	14,5
		R'000	67 256	4 581	23 667	311 300	352 136	13,1
	4. Other residential buildings 2/	square metres	2 031	174	0	8 403	5 091	-39,4
		R'000	7 718	383	0	23 762	14 336	-39,7
	5. Total residential buildings	R'000	184 849	107 779	115 740	1 337 170	1 499 351	12,1
	2. Non-residential buildings	1. Office and banking space	square metres	3 439	1 994	1 864	12 126	27 100
R'000			8 155	5 589	4 712	28 878	65 938	128,3
2. Shopping space		square metres	14 800	157	9 477	140 193	50 383	-64,1
		R'000	31 773	314	19 221	434 148	138 019	-68,2
3. Industrial and warehouse space		square metres	789	1 614	6 812	33 046	41 474	25,5
		R'000	1 480	3 194	11 387	71 970	77 452	7,6
4. Other non-residential buildings 3/		square metres	231	195	3 706	10 370	14 954	44,2
		R'000	508	462	8 410	31 870	38 871	22,0
5. Total non-residential buildings		R'000	41 916	9 559	43 730	566 866	320 280	-43,5
3. Additions and alterations	1. Dwelling-houses	square metres	11 623	12 250	14 194	113 871	120 248	5,6
		R'000	24 408	26 904	35 564	231 408	270 544	16,9
	2. Other buildings 4/	square metres	895	1 103	184	15 836	12 636	-20,2
		R'000	2 804	3 286	534	45 674	38 565	-15,6
	3. Total additions and alterations	R'000	27 212	30 190	36 098	277 082	309 109	11,6
4. Recorded plans passed	1. Total at current prices	R'000	253 977	147 528	195 568	2 181 118	2 128 740	-2,4

1/ The percentage change between cumulative figures for 2006 and 2007.

2/ Other residential buildings include institutions for the disabled, boarding houses, hostels and tourism accommodation e.g. hotels, motels, guesthouses, holiday chalets, bed-and-breakfast accommodation and casinos.

3/ Other non-residential space includes churches, sport and recreation clubs, schools, crèches, hospitals and all other non-residential space.

4/ Other buildings include other residential buildings, non-residential buildings and internal alterations.

* Revised.

Table 16 - Recorded building plans passed by larger municipalities at current prices by type of building: Gauteng

			Sep. 2006*	Aug. 2007	Sep. 2007	Jan. - Sep. 2006	Jan. - Sep. 2007	% Change 1/
Category of building	Type of building	Measuring unit						
1. Residential buildings	1. Dwelling-houses < 80 square metres	Number	1 723	2 296	1 049	14 710	17 815	21,1
		square metres	79 409	102 099	46 688	648 917	762 899	17,6
		R'000	171 254	213 773	116 018	1 265 271	1 538 462	21,6
	2. Dwelling-houses >= 80 square metres	Number	1 282	1 348	1 059	10 542	9 851	-6,6
		square metres	334 983	332 408	299 620	2 656 291	2 710 883	2,1
		R'000	1 146 644	1 162 213	1 052 892	8 491 641	9 360 525	10,2
	3. Flats and townhouses	Number	1 715	799	1 594	11 494	10 699	-6,9
		square metres	196 885	105 909	172 248	1 467 776	1 405 974	-4,2
		R'000	673 980	382 352	725 154	4 879 265	5 090 525	4,3
	4. Other residential buildings 2/	square metres	2 447	7 186	14 280	71 281	24 223	-66,0
		R'000	9 715	46 991	38 576	252 929	98 418	-61,1
	5. Total residential buildings	R'000	2 001 593	1 805 329	1 932 640	14 889 106	16 087 930	8,1
	2. Non-residential buildings	1. Office and banking space	square metres	62 755	10 452	24 748	365 510	269 451
R'000			338 275	55 220	127 713	1 588 896	1 373 351	-13,6
2. Shopping space		square metres	4 443	34 241	42 787	216 936	311 384	43,5
		R'000	17 619	162 782	201 926	717 703	1 412 640	96,8
3. Industrial and warehouse space		square metres	71 175	68 447	165 568	565 657	732 500	29,5
		R'000	204 929	204 239	515 997	1 678 104	2 160 893	28,8
4. Other non-residential buildings 3/		square metres	3 794	6 399	3 510	82 227	88 253	7,3
		R'000	14 352	26 277	10 911	247 678	321 079	29,6
5. Total non-residential buildings	R'000	575 175	448 518	856 547	4 232 381	5 267 963	24,5	
3. Additions and alterations	1. Dwelling-houses	square metres	159 265	180 163	166 205	1 372 357	1 434 947	4,6
		R'000	517 590	615 848	586 043	4 258 499	4 822 206	13,2
	2. Other buildings 4/	square metres	40 416	55 726	40 182	292 041	336 472	15,2
		R'000	151 068	212 389	153 553	996 892	1 350 684	35,5
	3. Total additions and alterations	R'000	668 658	828 237	739 596	5 255 391	6 172 890	17,5
4. Recorded plans passed	1. Total at current prices	R'000	3 245 426	3 082 084	3 528 783	24 376 878	27 528 783	12,9

1/ The percentage change between cumulative figures for 2006 and 2007.

2/ Other residential buildings include institutions for the disabled, boarding houses, hostels and tourism accommodation e.g. hotels, motels, guesthouses, holiday chalets, bed-and-breakfast accommodation and casinos.

3/ Other non-residential space includes churches, sport and recreation clubs, schools, crèches, hospitals and all other non-residential space.

4/ Other buildings include other residential buildings, non-residential buildings and internal alterations.

* Revised.

Table 17 - Recorded building plans passed by larger municipalities at current prices by type of building: Mpumalanga

			Sep. 2006	Aug. 2007	Sep. 2007	Jan. - Sep. 2006	Jan. - Sep. 2007	% Change 1/
Category of building	Type of building	Measuring unit						
1. Residential buildings	1. Dwelling-houses < 80 square metres	Number	42	112	182	462	923	99,8
		square metres	2 555	5 634	9 068	27 588	42 422	53,8
		R'000	6 521	8 367	11 116	65 814	71 124	8,1
	2. Dwelling-houses >= 80 square metres	Number	150	220	190	1 652	2 035	23,2
		square metres	28 695	50 985	45 341	375 562	482 189	28,4
		R'000	77 181	160 181	155 092	1 020 600	1 385 776	35,8
	3. Flats and townhouses	Number	221	116	258	1 510	1 350	-10,6
		square metres	24 323	13 965	16 139	170 028	125 466	-26,2
		R'000	71 313	37 557	47 600	430 036	359 348	-16,4
	4. Other residential buildings 2/	square metres	216	0	0	8 593	3 889	-54,7
		R'000	542	0	0	23 841	10 918	-54,2
	5. Total residential buildings	R'000	155 557	206 105	213 808	1 540 291	1 827 166	18,6
2. Non-residential buildings	1. Office and banking space	square metres	489	224	2 272	23 494	18 952	-19,3
		R'000	1 460	627	7 475	74 708	56 729	-24,1
	2. Shopping space	square metres	3 652	1 588	2 750	74 752	23 445	-68,6
		R'000	9 493	2 040	9 777	525 088	72 632	-86,2
	3. Industrial and warehouse space	square metres	7 416	5 806	7 448	50 735	99 248	95,6
		R'000	19 608	26 382	19 887	127 679	332 462	160,4
	4. Other non-residential buildings 3/	square metres	397	1 784	0	31 928	8 402	-73,7
		R'000	800	4 461	0	103 444	19 843	-80,8
	5. Total non-residential buildings	R'000	31 361	33 510	37 139	830 919	481 666	-42,0
3. Additions and alterations	1. Dwelling-houses	square metres	18 404	20 602	20 437	168 103	186 034	10,7
		R'000	38 627	58 023	58 335	371 130	484 196	30,5
	2. Other buildings 4/	square metres	619	4 411	2 643	22 767	33 496	47,1
		R'000	4 393	15 121	10 332	72 405	108 640	50,0
	3. Total additions and alterations	R'000	43 020	73 144	68 667	443 535	592 836	33,7
4. Recorded plans passed	1. Total at current prices	R'000	229 938	312 759	319 614	2 814 745	2 901 668	3,1

1/ The percentage change between cumulative figures for 2006 and 2007.

2/ Other residential buildings include institutions for the disabled, boarding houses, hostels and tourism accommodation e.g. hotels, motels, guesthouses, holiday chalets, bed-and-breakfast accommodation and casinos.

3/ Other non-residential space includes churches, sport and recreation clubs, schools, crèches, hospitals and all other non-residential space.

4/ Other buildings include other residential buildings, non-residential buildings and internal alterations.

Table 18 - Recorded building plans passed by larger municipalities at current prices by type of building: Limpopo

			Sep. 2006	Aug. 2007	Sep. 2007	Jan. - Sep. 2006	Jan. - Sep. 2007	% Change 1/
Category of building	Type of building	Measuring unit						
1. Dwelling-houses < 80 square metres	1. Dwelling-houses < 80 square metres	Number	40	28	36	721	783	8,6
		square metres	2 476	1 737	2 310	35 894	42 521	18,5
		R'000	5 836	4 452	6 232	58 429	91 967	57,4
	2. Dwelling-houses >= 80 square metres	Number	101	97	76	965	763	-20,9
		square metres	21 192	17 173	16 935	197 320	163 260	-17,3
		R'000	56 607	43 668	45 344	482 710	437 697	-9,3
	3. Flats and townhouses	Number	71	68	194	509	730	43,4
		square metres	6 467	8 374	11 826	51 185	81 898	60,0
		R'000	16 247	18 041	31 617	128 483	202 256	57,4
	4. Other residential buildings 2/	square metres	746	0	495	1 693	8 150	381,4
		R'000	1 641	0	1 238	6 141	18 778	205,8
	5. Total residential buildings	R'000	80 331	66 161	84 431	675 763	750 698	11,1
2. Dwelling-houses >= 80 square metres	1. Office and banking space	square metres	2 145	23 833	0	7 975	31 368	293,3
		R'000	5 805	59 339	0	18 857	78 093	314,1
	2. Shopping space	square metres	0	1 023	5 694	24 413	30 278	24,0
		R'000	0	2 045	14 558	49 140	67 355	37,1
	3. Industrial and warehouse space	square metres	1 568	3 626	0	15 714	26 779	70,4
		R'000	2 508	9 020	0	35 813	66 448	85,5
	4. Other non-residential buildings 3/	square metres	0	713	15 020	1 254	19 103	1 423,4
		R'000	0	1 569	32 997	1 882	42 610	2 164,1
	5. Total non-residential buildings	R'000	8 313	71 973	47 555	105 692	254 506	140,8
3. Flats and townhouses	1. Dwelling-houses	square metres	9 561	9 369	9 243	76 910	92 472	20,2
		R'000	22 639	23 999	22 582	165 042	224 306	35,9
	2. Other buildings 4/	square metres	1 659	2 941	819	21 324	10 120	-52,5
		R'000	3 675	7 046	1 656	44 793	24 362	-45,6
	3. Total additions and alterations	R'000	26 314	31 045	24 238	209 835	248 668	18,5
4. Other residential buildings 2/	1. Total at current prices	R'000	114 958	169 179	156 224	991 290	1 253 872	26,5

1/ The percentage change between cumulative figures for 2006 and 2007.

2/ Other residential buildings include institutions for the disabled, boarding houses, hostels and tourism accommodation e.g. hotels, motels, guesthouses, holiday chalets, bed-and-breakfast accommodation and casinos.

3/ Other non-residential space includes churches, sport and recreation clubs, schools, crèches, hospitals and all other non-residential space.

4/ Other buildings include other residential buildings, non-residential buildings and internal alterations.

Table 19 - Buildings reported as completed to larger municipalities at current prices by type of building: South Africa

			Sep. 2006*	Aug. 2007	Sep. 2007	Jan. - Sep. 2006	Jan. - Sep. 2007	% Change 1/
Category of building	Type of building	Measuring unit						
1. Residential buildings	1. Dwelling-houses < 80 square metres	Number	1 283	3 340	1 718	14 872	20 119	35,3
		square metres	60 038	146 245	77 157	649 622	858 398	32,1
		R'000	117 651	246 097	142 450	1 181 960	1 518 036	28,4
	2. Dwelling-houses >= 80 square metres	Number	2 195	2 243	1 657	15 867	16 322	2,9
		square metres	452 965	491 553	387 279	3 561 507	3 689 117	3,6
		R'000	1 355 469	1 531 772	1 210 235	10 047 600	11 377 760	13,2
	3. Flats and townhouses	Number	2 203	1 888	2 296	16 918	20 163	19,2
		square metres	309 436	218 213	262 014	2 244 797	2 290 274	2,0
		R'000	1 027 009	720 751	903 782	6 999 615	7 657 920	9,4
	4. Other residential buildings 2/	square metres	11 571	17 341	6 594	43 609	133 876	207,0
		R'000	39 601	58 752	14 855	148 953	577 783	287,9
	5. Total residential buildings	R'000	2 539 730	2 557 372	2 271 322	18 378 128	21 131 499	15,0
2. Non-residential buildings	1. Office and banking space	square metres	27 573	22 252	89 856	222 155	531 576	139,3
		R'000	102 440	86 884	351 430	718 595	1 900 244	164,4
	2. Shopping space	square metres	31 152	24 754	68 624	451 524	423 627	-6,2
		R'000	100 352	72 794	287 000	1 426 926	1 483 496	4,0
	3. Industrial and warehouse space	square metres	72 600	89 600	86 494	589 449	1 011 462	71,6
		R'000	191 039	277 390	225 077	1 475 734	2 818 049	91,0
	4. Other non-residential buildings 3/	square metres	4 704	9 488	9 185	96 680	112 658	16,5
		R'000	11 120	21 310	25 875	255 833	338 895	32,5
	5. Total non-residential buildings	R'000	404 951	458 378	889 382	3 877 088	6 540 684	68,7
3. Additions and alterations	1. Dwelling-houses	square metres	180 379	183 772	146 130	1 484 326	1 522 148	2,5
		R'000	468 119	505 914	426 792	3 722 721	4 257 170	14,4
	2. Other buildings 4/	square metres	64 764	62 653	62 215	400 596	453 832	13,3
		R'000	197 723	243 451	200 937	1 198 524	1 565 683	30,6
	3. Total additions and alterations	R'000	665 842	749 365	627 729	4 921 245	5 822 853	18,3
4. Recorded buildings completed	1. Total at current prices	R'000	3 610 523	3 765 115	3 788 433	27 176 461	33 495 036	23,3

1/ The percentage change between cumulative figures for 2006 and 2007.

2/ Other residential buildings include institutions for the disabled, boarding houses, hostels and tourism accommodation e.g. hotels, motels, guesthouses, holiday chalets, bed-and-breakfast accommodation and casinos.

3/ Other non-residential space includes churches, sport and recreation clubs, schools, crèches, hospitals and all other non-residential space.

4/ Other buildings include other residential buildings, non-residential buildings and internal alterations.

* Revised.

Table 20 - Buildings reported as completed to larger municipalities at current prices by type of building: Western Cape

			Sep. 2006*	Aug. 2007	Sep. 2007	Jan. - Sep. 2006	Jan. - Sep. 2007	% Change 1/
Category of building	Type of building	Measuring unit						
1. Residential buildings	1. Dwelling-houses < 80 square metres	Number	217	726	594	3 296	6 328	92,0
		square metres	9 678	32 391	23 023	129 881	247 427	90,5
		R'000	15 583	62 440	34 944	201 346	380 297	88,9
	2. Dwelling-houses >= 80 square metres	Number	667	534	435	4 640	4 138	-10,8
		square metres	115 063	118 294	98 584	1 025 244	911 779	-11,1
		R'000	311 891	369 076	304 249	2 783 619	2 767 291	-0,6
	3. Flats and townhouses	Number	605	422	842	4 792	5 383	12,3
		square metres	74 054	39 097	105 421	575 564	571 380	-0,7
		R'000	207 182	121 290	341 422	1 697 130	1 806 835	6,5
	4. Other residential buildings 2/	square metres	0	2 344	126	12 424	21 633	74,1
		R'000	0	7 501	550	39 497	79 766	102,0
	5. Total residential buildings	R'000	534 656	560 307	681 165	4 721 592	5 034 189	6,6
2. Non-residential buildings	1. Office and banking space	square metres	228	7 758	34 631	44 197	203 469	360,4
		R'000	752	17 636	112 986	111 531	596 328	434,7
	2. Shopping space	square metres	6 769	1 768	4 910	109 586	44 369	-59,5
		R'000	13 652	6 170	15 855	241 037	142 385	-40,9
	3. Industrial and warehouse space	square metres	24 668	34 044	29 490	228 318	348 744	52,7
		R'000	69 371	103 237	87 488	584 219	984 783	68,6
	4. Other non-residential buildings 3/	square metres	3 930	5 980	3 696	37 554	39 622	5,5
		R'000	8 351	13 527	10 803	94 594	107 239	13,4
5. Total non-residential buildings	R'000	92 126	140 570	227 132	1 031 381	1 830 735	77,5	
3. Additions and alterations	1. Dwelling-houses	square metres	66 864	70 785	58 388	560 591	551 079	-1,7
		R'000	162 416	192 535	154 305	1 363 573	1 456 316	6,8
	2. Other buildings 4/	square metres	49 285	36 914	27 141	169 673	186 361	9,8
		R'000	155 227	125 613	89 012	545 874	642 647	17,7
	3. Total additions and alterations	R'000	317 643	318 148	243 317	1 909 447	2 098 963	9,9
4. Recorded buildings completed	1. Total at current prices	R'000	944 425	1 019 025	1 151 614	7 662 420	8 963 887	17,0

1/ The percentage change between cumulative figures for 2006 and 2007.

2/ Other residential buildings include institutions for the disabled, boarding houses, hostels and tourism accommodation e.g. hotels, motels, guesthouses, holiday chalets, bed-and-breakfast accommodation and casinos.

3/ Other non-residential space includes churches, sport and recreation clubs, schools, crèches, hospitals and all other non-residential space.

4/ Other buildings include other residential buildings, non-residential buildings and internal alterations.

* Revised.

Table 21 - Buildings reported as completed to larger municipalities at current prices by type of building: Eastern Cape

			Sep. 2006*	Aug. 2007	Sep. 2007	Jan. - Sep. 2006	Jan. - Sep. 2007	% Change 1/
Category of building								
1. Residential buildings	1. Dwelling-houses < 80 square metres	Number	193	317	160	1 483	1 386	-6,5
		square metres	7 996	12 171	6 904	63 065	57 816	-8,3
		R'000	10 481	20 548	10 126	90 974	84 932	-6,6
	2. Dwelling-houses >= 80 square metres	Number	122	140	80	954	899	-5,8
		square metres	20 855	22 289	19 158	169 099	160 029	-5,4
		R'000	46 196	61 408	48 662	363 844	406 612	11,8
	3. Flats and townhouses	Number	15	149	80	508	1 001	97,0
		square metres	1 976	25 984	6 854	51 681	103 584	100,4
		R'000	4 330	70 815	16 989	108 544	267 124	146,1
	4. Other residential buildings 2/	square metres	0	105	361	120	2 878	2 298,3
		R'000	0	284	867	264	7 251	2 646,6
	5. Total residential buildings	R'000	61 007	153 055	76 644	563 626	765 919	35,9
2. Non-residential buildings	1. Office and banking space	square metres	0	333	142	4 492	1 779	-60,4
		R'000	0	940	344	10 038	4 578	-54,4
	2. Shopping space	square metres	1 261	0	1 564	13 548	17 890	32,0
		R'000	2 915	0	3 356	31 315	43 097	37,6
	3. Industrial and warehouse space	square metres	1 200	921	499	28 958	23 455	-19,0
		R'000	2 400	1 465	1 098	55 263	55 520	0,5
	4. Other non-residential buildings 3/	square metres	54	459	168	5 598	3 441	-38,5
		R'000	99	1 000	454	12 333	7 554	-38,7
	5. Total non-residential buildings	R'000	5 414	3 405	5 252	108 949	110 749	1,7
3. Additions and alterations	1. Dwelling-houses	square metres	13 245	11 136	9 674	93 024	109 996	18,2
		R'000	24 622	22 763	22 433	177 854	226 187	27,2
	2. Other buildings 4/	square metres	2 972	2 208	5 830	48 463	33 720	-30,4
		R'000	6 991	6 076	14 944	93 973	77 091	-18,0
	3. Total additions and alterations	R'000	31 613	28 839	37 377	271 827	303 278	11,6
4. Recorded buildings completed	1. Total at current prices	R'000	98 034	185 299	119 273	944 402	1 179 946	24,9

1/ The percentage change between cumulative figures for 2006 and 2007.

2/ Other residential buildings include institutions for the disabled, boarding houses, hostels and tourism accommodation e.g. hotels, motels, guesthouses, holiday chalets, bed-and-breakfast accommodation and casinos.

3/ Other non-residential space includes churches, sport and recreation clubs, schools, crèches, hospitals and all other non-residential space.

4/ Other buildings include other residential buildings, non-residential buildings and internal alterations.

* Revised.

Table 22 - Buildings reported as completed to larger municipalities at current prices by type of building: Northern Cape

			Sep. 2006*	Aug. 2007	Sep. 2007	Jan. - Sep. 2006	Jan. - Sep. 2007	% Change 1/
Category of building	Type of building	Measuring unit						
1. Residential buildings	1. Dwelling-houses < 80 square metres	Number	2	4	59	21	107	409,5
		square metres	121	178	2 163	1 051	4 164	296,2
		R'000	200	555	2 298	1 761	5 134	191,5
	2. Dwelling-houses >= 80 square metres	Number	14	15	20	164	147	-10,4
		square metres	2 993	3 107	3 278	28 420	28 256	-0,6
		R'000	6 478	9 008	9 571	60 080	74 467	23,9
	3. Flats and townhouses	Number	8	9	12	89	156	75,3
		square metres	1 348	1 291	1 104	12 298	21 446	74,4
		R'000	2 744	3 615	3 091	23 554	54 759	132,5
	4. Other residential buildings 2/	square metres	0	0	3 339	712	3 513	393,4
		R'000	0	0	7 346	1 372	7 955	479,8
	5. Total residential buildings	R'000	9 422	13 178	22 306	86 767	142 315	64,0
	2. Non-residential buildings	1. Office and banking space	square metres	0	0	0	1 620	6 191
R'000			0	0	0	3 240	15 338	373,4
2. Shopping space		square metres	0	786	0	627	7 008	1 017,7
		R'000	0	2 201	0	1 556	16 341	950,2
3. Industrial and warehouse space		square metres	794	0	0	5 165	4 730	-8,4
		R'000	1 985	0	0	11 221	12 160	8,4
4. Other non-residential buildings 3/		square metres	0	0	0	749	498	-33,5
		R'000	0	0	0	1 455	1 195	-17,9
5. Total non-residential buildings		R'000	1 985	2 201	0	17 472	45 034	157,7
3. Additions and alterations	1. Dwelling-houses	square metres	2 735	2 411	2 060	16 942	25 382	49,8
		R'000	6 365	6 050	6 075	36 178	67 632	86,9
	2. Other buildings 4/	square metres	1 351	819	39	10 837	4 666	-56,9
		R'000	2 711	2 263	464	22 412	19 027	-15,1
	3. Total additions and alterations	R'000	9 076	8 313	6 539	58 590	86 659	47,9
4. Recorded buildings completed	1. Total at current prices	R'000	20 483	23 692	28 845	162 829	274 008	68,3

1/ The percentage change between cumulative figures for 2006 and 2007.

2/ Other residential buildings include institutions for the disabled, boarding houses, hostels and tourism accommodation e.g. hotels, motels, guesthouses, holiday chalets, bed-and-breakfast accommodation and casinos.

3/ Other non-residential space includes churches, sport and recreation clubs, schools, crèches, hospitals and all other non-residential space.

4/ Other buildings include other residential buildings, non-residential buildings and internal alterations.

* Revised.

Table 23 - Buildings reported as completed to larger municipalities at current prices by type of building: Free State

			Sep. 2006*	Aug. 2007	Sep. 2007	Jan. - Sep. 2006	Jan. - Sep. 2007	% Change 1/
Category of building	Type of building	Measuring unit						
1. Residential buildings	1. Dwelling-houses < 80 square metres	Number	113	204	80	430	536	24,7
		square metres	4 905	9 875	3 599	19 719	27 324	38,6
		R'000	5 335	12 009	4 466	22 665	37 903	67,2
	2. Dwelling-houses >= 80 square metres	Number	43	91	68	321	721	124,6
		square metres	6 262	15 288	12 158	57 783	130 651	126,1
		R'000	10 840	34 494	26 911	107 278	279 342	160,4
	3. Flats and townhouses	Number	120	91	310	430	734	70,7
		square metres	6 667	10 897	19 613	44 101	69 641	57,9
		R'000	14 965	26 863	38 984	90 846	169 747	86,9
	4. Other residential buildings 2/	square metres	0	0	2 363	8 310	7 830	-5,8
		R'000	0	0	5 199	35 872	85 155	137,4
	5. Total residential buildings	R'000	31 140	73 366	75 560	256 661	572 147	122,9
2. Non-residential buildings	1. Office and banking space	square metres	633	0	0	1 625	7 425	356,9
		R'000	1 550	0	0	4 004	23 358	483,4
	2. Shopping space	square metres	1 846	0	0	18 164	9 354	-48,5
		R'000	5 538	0	0	51 601	33 305	-35,5
	3. Industrial and warehouse space	square metres	0	0	0	14 447	11 253	-22,1
		R'000	0	0	0	42 879	17 605	-58,9
	4. Other non-residential buildings 3/	square metres	4	0	841	3 763	3 901	3,7
		R'000	10	0	2 943	7 819	10 951	40,1
	5. Total non-residential buildings	R'000	7 098	0	2 943	106 303	85 219	-19,8
3. Additions and alterations	1. Dwelling-houses	square metres	7 928	5 081	7 739	53 561	58 604	9,4
		R'000	13 477	13 956	14 400	89 533	115 544	29,1
	2. Other buildings 4/	square metres	1 124	1 007	3 062	14 239	18 569	30,4
		R'000	2 781	47 700	8 428	43 021	85 711	99,2
	3. Total additions and alterations	R'000	16 258	61 656	22 828	132 554	201 255	51,8
4. Recorded buildings completed	1. Total at current prices	R'000	54 496	135 022	101 331	495 518	858 621	73,3

1/ The percentage change between cumulative figures for 2006 and 2007.

2/ Other residential buildings include institutions for the disabled, boarding houses, hostels and tourism accommodation e.g. hotels, motels, guesthouses, holiday chalets, bed-and-breakfast accommodation and casinos.

3/ Other non-residential space includes churches, sport and recreation clubs, schools, crèches, hospitals and all other non-residential space.

4/ Other buildings include other residential buildings, non-residential buildings and internal alterations.

* Revised.

Table 24 - Buildings reported as completed to larger municipalities at current prices by type of building: KwaZulu-Natal

			Sep. 2006*	Aug. 2007	Sep. 2007	Jan. - Sep. 2006	Jan. - Sep. 2007	% Change 1/
Category of building	Type of building	Measuring unit						
1. Residential buildings	1. Dwelling-houses < 80 square metres	Number	86	216	47	876	1 019	16,3
		square metres	3 825	7 351	2 516	38 883	44 424	14,3
		R'000	9 857	12 082	7 429	99 548	113 426	13,9
	2. Dwelling-houses >= 80 square metres	Number	100	102	107	1 050	1 147	9,2
		square metres	23 108	24 039	28 542	222 587	262 545	18,0
		R'000	76 655	89 393	114 334	674 013	1 001 618	48,6
	3. Flats and townhouses	Number	372	206	152	2 129	2 017	-5,3
		square metres	79 215	37 227	29 430	395 123	373 317	-5,5
		R'000	290 605	130 551	98 337	1 289 673	1 373 674	6,5
	4. Other residential buildings 2/	square metres	0	0	0	4 103	20 824	407,5
		R'000	0	0	0	16 155	122 445	657,9
	5. Total residential buildings	R'000	377 117	232 026	220 100	2 079 389	2 611 163	25,6
2. Non-residential buildings	1. Office and banking space	square metres	2 353	89	2 855	48 720	32 700	-32,9
		R'000	10 100	150	9 040	145 863	92 460	-36,6
	2. Shopping space	square metres	2 021	10 125	12 333	37 667	102 762	172,8
		R'000	7 892	28 962	41 166	136 248	365 787	168,5
	3. Industrial and warehouse space	square metres	3 993	10 979	18 729	109 829	277 482	152,6
		R'000	10 473	28 256	48 818	256 395	756 275	195,0
	4. Other non-residential buildings 3/	square metres	0	249	476	27 109	19 031	-29,8
		R'000	0	623	2 285	75 805	63 500	-16,2
	5. Total non-residential buildings	R'000	28 465	57 991	101 309	614 311	1 278 022	108,0
3. Additions and alterations	1. Dwelling-houses	square metres	19 931	30 247	21 280	190 637	225 206	18,1
		R'000	56 062	93 751	95 866	544 996	813 879	49,3
	2. Other buildings 4/	square metres	5 729	11 576	7 598	66 632	80 039	20,1
		R'000	15 892	32 298	23 248	223 815	295 164	31,9
	3. Total additions and alterations	R'000	71 954	126 049	119 114	768 811	1 109 043	44,3
4. Recorded buildings completed	1. Total at current prices	R'000	477 536	416 066	440 523	3 462 511	4 998 228	44,4

1/ The percentage change between cumulative figures for 2006 and 2007.

2/ Other residential buildings include institutions for the disabled, boarding houses, hostels and tourism accommodation e.g. hotels, motels, guesthouses, holiday chalets, bed-and-breakfast accommodation and casinos.

3/ Other non-residential space includes churches, sport and recreation clubs, schools, crèches, hospitals and all other non-residential space.

4/ Other buildings include other residential buildings, non-residential buildings and internal alterations.

* Revised.

Table 25 - Buildings reported as completed to larger municipalities at current prices by type of building: North West

			Sep. 2006*	Aug. 2007	Sep. 2007	Jan. - Sep. 2006	Jan. - Sep. 2007	% Change 1/
Category of building	Type of building	Measuring unit						
1. Residential buildings	1. Dwelling-houses < 80 square metres	Number	69	136	183	428	2 015	370,8
		square metres	4 016	6 310	8 095	23 998	78 991	229,2
		R'000	3 947	9 069	10 913	25 355	75 572	198,1
	2. Dwelling-houses >= 80 square metres	Number	114	124	123	993	1 178	18,6
		square metres	21 568	30 275	24 366	191 181	254 306	33,0
		R'000	59 097	93 171	71 186	468 088	729 163	55,8
	3. Flats and townhouses	Number	71	97	116	592	963	62,7
		square metres	7 699	7 509	12 139	71 704	78 951	10,1
		R'000	23 490	31 433	67 351	182 300	252 247	38,4
	4. Other residential buildings 2/	square metres	0	0	0	0	0	
		R'000	0	0	0	0	0	
	5. Total residential buildings	R'000	86 534	133 673	149 450	675 743	1 056 982	56,4
2. Non-residential buildings	1. Office and banking space	square metres	708	332	64	3 195	3 297	3,2
		R'000	1 321	730	151	6 641	7 329	10,4
	2. Shopping space	square metres	1 677	1 947	238	30 981	35 323	14,0
		R'000	2 680	5 257	196	124 244	102 955	-17,1
	3. Industrial and warehouse space	square metres	0	0	431	5 058	9 889	95,5
		R'000	0	0	431	11 109	19 399	74,6
	4. Other non-residential buildings 3/	square metres	0	2 800	440	4 424	4 863	9,9
		R'000	0	6 160	660	9 954	10 558	6,1
	5. Total non-residential buildings	R'000	4 001	12 147	1 438	151 948	140 241	-7,7
3. Additions and alterations	1. Dwelling-houses	square metres	1 182	1 701	3 792	35 971	34 225	-4,9
		R'000	2 347	4 279	7 648	66 597	70 623	6,0
	2. Other buildings 4/	square metres	814	0	259	11 827	10 420	-11,9
		R'000	1 565	0	304	25 782	21 955	-14,8
	3. Total additions and alterations	R'000	3 912	4 279	7 952	92 379	92 578	0,2
4. Recorded buildings completed	1. Total at current prices	R'000	94 447	150 099	158 840	920 070	1 289 801	40,2

1/ The percentage change between cumulative figures for 2006 and 2007.

2/ Other residential buildings include institutions for the disabled, boarding houses, hostels and tourism accommodation e.g. hotels, motels, guesthouses, holiday chalets, bed-and-breakfast accommodation and casinos.

3/ Other non-residential space includes churches, sport and recreation clubs, schools, crèches, hospitals and all other non-residential space.

4/ Other buildings include other residential buildings, non-residential buildings and internal alterations.

* Revised.

Table 26 - Buildings reported as completed to larger municipalities at current prices by type of building: Gauteng

			Sep. 2006*	Aug. 2007	Sep. 2007	Jan. - Sep. 2006	Jan. - Sep. 2007	% Change 1/
Category of building	Type of building	Measuring unit						
1. Residential buildings	1. Dwelling-houses < 80 square metres	Number	548	1 712	556	7 606	8 342	9,7
		square metres	26 371	76 267	28 275	336 753	373 641	11,0
		R'000	64 363	124 984	65 577	666 888	755 558	13,3
	2. Dwelling-houses >= 80 square metres	Number	1 011	925	583	6 497	6 337	-2,5
		square metres	239 556	225 785	150 692	1 636 956	1 626 281	-0,7
		R'000	780 250	742 987	504 121	5 016 536	5 296 655	5,6
	3. Flats and townhouses	Number	924	842	777	7 781	9 424	21,1
		square metres	130 644	88 599	86 395	1 041 054	1 014 243	-2,6
		R'000	468 408	311 795	332 946	3 481 426	3 570 937	2,6
	4. Other residential buildings 2/	square metres	11 571	14 892	0	16 923	76 103	349,7
		R'000	39 601	50 967	0	52 982	272 158	413,7
	5. Total residential buildings	R'000	1 352 622	1 230 733	902 644	9 217 832	9 895 308	7,3
2. Non-residential buildings	1. Office and banking space	square metres	20 738	9 464	51 674	103 829	253 450	144,1
		R'000	81 571	54 654	227 831	401 360	1 080 519	169,2
	2. Shopping space	square metres	17 131	9 339	48 834	208 407	182 480	-12,4
		R'000	66 595	28 468	224 913	749 637	711 969	-5,0
	3. Industrial and warehouse space	square metres	26 422	39 650	30 383	156 964	305 115	94,4
		R'000	68 002	135 619	76 142	424 044	909 328	114,4
	4. Other non-residential buildings 3/	square metres	716	0	3 564	14 763	36 579	147,8
		R'000	2 660	0	8 730	47 554	129 668	172,7
	5. Total non-residential buildings	R'000	218 828	218 741	537 616	1 622 595	2 831 484	74,5
3. Additions and alterations	1. Dwelling-houses	square metres	60 620	50 594	31 455	476 870	454 726	-4,6
		R'000	185 233	146 378	93 981	1 338 755	1 358 648	1,5
	2. Other buildings 4/	square metres	2 692	8 116	14 846	67 360	107 187	59,1
		R'000	10 478	23 576	51 521	215 411	380 913	76,8
	3. Total additions and alterations	R'000	195 711	169 954	145 502	1 554 166	1 739 561	11,9
4. Recorded buildings completed	1. Total at current prices	R'000	1 767 161	1 619 428	1 585 762	12 394 593	14 466 353	16,7

1/ The percentage change between cumulative figures for 2006 and 2007.

2/ Other residential buildings include institutions for the disabled, boarding houses, hostels and tourism accommodation e.g. hotels, motels, guesthouses, holiday chalets, bed-and-breakfast accommodation and casinos.

3/ Other non-residential space includes churches, sport and recreation clubs, schools, crèches, hospitals and all other non-residential space.

4/ Other buildings include other residential buildings, non-residential buildings and internal alterations.

* Revised.

Table 27 - Buildings reported as completed to larger municipalities at current prices by type of building: Mpumalanga

			Sep. 2006*	Aug. 2007	Sep. 2007	Jan. - Sep. 2006	Jan. - Sep. 2007	% Change 1/
Category of building	Type of building	Measuring unit						
1. Residential buildings	1. Dwelling-houses < 80 square metres	Number	34	9	18	538	144	-73,2
		square metres	1 924	598	1 248	24 322	9 187	-62,2
		R'000	4 696	1 543	3 422	43 621	25 889	-40,7
	2. Dwelling-houses >= 80 square metres	Number	85	272	211	854	1 344	57,4
		square metres	16 453	44 652	43 479	154 314	236 959	53,6
		R'000	42 705	111 037	107 018	372 035	597 905	60,7
	3. Flats and townhouses	Number	78	50	7	410	340	-17,1
		square metres	6 685	5 890	1 058	31 145	42 374	36,1
		R'000	12 004	19 717	4 662	71 066	121 081	70,4
	4. Other residential buildings 2/	square metres	0	0	405	817	1 095	34,0
		R'000	0	0	893	2 211	3 053	38,1
	5. Total residential buildings	R'000	59 405	132 297	115 995	488 933	747 928	53,0
2. Non-residential buildings	1. Office and banking space	square metres	1 288	3 924	0	10 427	21 247	103,8
		R'000	3 571	12 000	0	27 040	74 954	177,2
	2. Shopping space	square metres	447	0	745	18 443	19 479	5,6
		R'000	1 080	0	1 514	65 183	55 467	-14,9
	3. Industrial and warehouse space	square metres	14 224	0	6 962	37 698	24 289	-35,6
		R'000	35 950	0	11 100	82 749	48 985	-40,8
	4. Other non-residential buildings 3/	square metres	0	0	0	1 415	3 550	150,9
		R'000	0	0	0	2 665	5 828	118,7
5. Total non-residential buildings	R'000	40 601	12 000	12 614	177 637	185 234	4,3	
3. Additions and alterations	1. Dwelling-houses	square metres	6 687	10 194	10 452	48 332	52 358	8,3
		R'000	14 455	22 386	28 498	84 851	122 835	44,8
	2. Other buildings 4/	square metres	797	2 013	3 440	9 560	11 364	18,9
		R'000	2 078	5 925	13 016	22 500	40 077	78,1
	3. Total additions and alterations	R'000	16 533	28 311	41 514	107 351	162 912	51,8
4. Recorded buildings completed	1. Total at current prices	R'000	116 539	172 608	170 123	773 921	1 096 074	41,6

1/ The percentage change between cumulative figures for 2006 and 2007.

2/ Other residential buildings include institutions for the disabled, boarding houses, hostels and tourism accommodation e.g. hotels, motels, guesthouses, holiday chalets, bed-and-breakfast accommodation and casinos.

3/ Other non-residential space includes churches, sport and recreation clubs, schools, crèches, hospitals and all other non-residential space.

4/ Other buildings include other residential buildings, non-residential buildings and internal alterations.

* Revised.

Table 28 - Buildings reported as completed to larger municipalities at current prices by type of building: Limpopo

			Sep. 2006	Aug. 2007	Sep. 2007	Jan. - Sep. 2006	Jan. - Sep. 2007	% Change 1/
Category of building	Type of building	Measuring unit						
1. Residential buildings	1. Dwelling-houses < 80 square metres	Number	21	16	21	194	242	24,7
		square metres	1 202	1 104	1 334	11 950	15 424	29,1
		R'000	3 189	2 867	3 275	29 802	39 325	32,0
	2. Dwelling-houses >= 80 square metres	Number	39	40	30	394	411	4,3
		square metres	7 107	7 824	7 022	75 923	78 311	3,1
		R'000	21 357	21 198	24 183	202 107	224 707	11,2
	3. Flats and townhouses	Number	10	22	0	187	145	-22,5
		square metres	1 148	1 719	0	22 127	15 338	-30,7
		R'000	3 281	4 672	0	55 076	41 516	-24,6
	4. Other residential buildings 2/	square metres	0	0	0	200	0	-100,0
		R'000	0	0	0	600	0	-100,0
	5. Total residential buildings	R'000	27 827	28 737	27 458	287 585	305 548	6,2
2. Non-residential buildings	1. Office and banking space	square metres	1 625	352	490	4 050	2 018	-50,2
		R'000	3 575	774	1 078	8 878	5 380	-39,4
	2. Shopping space	square metres	0	789	0	14 101	4 962	-64,8
		R'000	0	1 736	0	26 105	12 190	-53,3
	3. Industrial and warehouse space	square metres	1 299	4 006	0	3 012	6 505	116,0
		R'000	2 858	8 813	0	7 855	13 994	78,2
	4. Other non-residential buildings 3/	square metres	0	0	0	1 305	1 173	-10,1
		R'000	0	0	0	3 654	2 402	-34,3
	5. Total non-residential buildings	R'000	6 433	11 323	1 078	46 492	33 966	-26,9
3. Additions and alterations	1. Dwelling-houses	square metres	1 187	1 623	1 290	8 398	10 572	25,9
		R'000	3 142	3 816	3 586	20 384	25 506	25,1
	2. Other buildings 4/	square metres	0	0	0	2 005	1 506	-24,9
		R'000	0	0	0	5 736	3 098	-46,0
	3. Total additions and alterations	R'000	3 142	3 816	3 586	26 120	28 604	9,5
4. Recorded buildings completed	1. Total at current prices	R'000	37 402	43 876	32 122	360 197	368 118	2,2

1/ The percentage change between cumulative figures for 2006 and 2007.

2/ Other residential buildings include institutions for the disabled, boarding houses, hostels and tourism accommodation e.g. hotels, motels, guesthouses, holiday chalets, bed-and-breakfast accommodation and casinos.

3/ Other non-residential space includes churches, sport and recreation clubs, schools, crèches, hospitals and all other non-residential space.

4/ Other buildings include other residential buildings, non-residential buildings and internal alterations.

Table 29 - Subsidised low-cost dwelling-houses completed and in process of completion 1/

Province	Year	Number	Square metres 2/	Value R'000 2/
Western Cape	2002	19 534	531 116	168 852
	2003	16 926	507 780	247 187
	2004	12 751	382 530	211 424
Eastern Cape	2002	46 700	1 575 675	473 806
	2003	35 005	1 050 150	511 213
	2004	34 923	1 047 690	579 058
Northern Cape	2002	5 189	164 906	68 078
	2003	4 354	130 620	63 586
	2004	3 645	109 350	60 438
Free State	2002	8 617	348 492	154 121
	2003	14 848	445 440	216 840
	2004	16 522	495 660	273 951
KwaZulu-Natal	2002	21 958	831 349	234 041
	2003	31 372	941 160	458 157
	2004	35 968	1 079 040	596 385
North West	2002	21 309	630 115	210 439
	2003	13 809	414 270	201 667
	2004	10 149	304 470	168 281
Gauteng	2002	29 939	991 571	321 943
	2003	42 862	1 285 860	625 957
	2004	33 260	997 800	551 484
Mpumalanga	2002	19 883	660 505	253 931
	2003	21 336	640 080	246 079
	2004	18 808	564 240	311 855
Limpopo	2002	15 382	605 877	183 769
	2003	15 596	467 880	227 764
	2004	16 338	490 140	270 900
South Africa	2002	188 511	6 339 606	2 068 980
	2003	196 108	5 883 240	2 798 450
	2004	182 364	5 470 920	3 023 777

Table 30 - Subsidised low-cost dwelling-houses completed: 1 April 2005 to 31 March 2006

Province	Number	Square metres 2/	Value R'000 2/
Western Cape	2 040	61 200	52 877
Eastern Cape	16 874	506 220	437 374
Northern Cape	5 293	158 790	137 195
Free State	17 635	529 050	457 099
KwaZulu-Natal	21 601	648 030	559 898
North West	14 445	433 350	374 414
Gauteng	23 409	702 270	606 761
Mpumalanga	14 389	431 670	372 963
Limpopo	21 973	659 190	569 540
South Africa	137 659	4 129 770	3 568 121

Table 31 - Subsidised low-cost dwelling-houses completed and in process of completion 1/: 1 April 2006 to 31 March 2007

Province	Number	Square metres 2/	R'000 2/
Western Cape	34 585	1 037 550	768 200
Eastern Cape	16 526	495 780	637 700
Northern Cape	3 880	116 400	104 800
Free State	19 662	589 860	528 400
KwaZulu-Natal	38 290	1 148 700	1 074 500
North West	46 972	1 409 160	696 500
Gauteng	77 044	2 311 320	1 748 300
Mpumalanga	10 651	319 530	329 900
Limpopo	23 609	708 270	646 700
South Africa	271 219	8 136 570	6 535 000

Source: Housing Subsidy System and Provincial Housing Departments co-ordinated by the National Department of Housing

1/ Includes all top structures completed and sites serviced in respect of the reporting period.

2/ Estimates by the National Department of Housing.

Explanatory notes

Introduction	1	Statistics South Africa (Stats SA) conducts a monthly building statistics survey collecting information regarding building plans passed and buildings completed, financed by the private sector, from the largest local government institutions in South Africa. According to these institutions, they are not always notified about low-cost housing projects and therefore do not include the bulk of low-cost dwelling-houses. Data regarding subsidised low-cost dwelling-houses, supplied by the Housing Subsidy System and Provincial Housing Departments and co-ordinated by the National Department of Housing, are shown in table 29 to table 31 (page 37).
	2	In order to improve timeliness of the publication, some information for the current month has been estimated due to late submission by respondents. These estimates will be revised in the next statistical release(s) as soon as actual information is available.
Purpose of the survey	3	The monthly survey data are used in monitoring the state of economy and formulation of economic policy. Furthermore, the results are important inputs to estimate the Gross Domestic Product (GDP) and to calculate the Composite Leading Business Cycle Indicator. The data are extensively used by the private sector.
Scope of the survey	4	This survey covers local government institutions conducting activities for the private sector regarding - <ul style="list-style-type: none"> • passing of building plans; and • final inspection of completed buildings.
Classification	5	Building activities are classified in division 5 according to the 1993 edition of the <i>Standard Industrial Classification of all Economic Activities, (SIC) Fifth Edition, Report No. 09-90-02</i> . The SIC is based on the 1990 <i>International Standard Industrial Classification of all Economic Activities (ISIC)</i> with suitable adaptations for local conditions.
Response rate	6	The preliminary response rate for the survey on building statistics for September 2007 was 95,6%. Improved response rate for August 2007 was 94,7%.
Statistical unit	7	The statistical unit for the collection of information is a local government institution. Local government institutions include district municipalities, metropolitan municipalities and local municipalities.
Survey methodology and design	8	Stats SA conducts a monthly survey of metropolitan municipalities and large local municipalities on building plans passed and buildings completed. An annual survey of the remaining municipalities is conducted regarding buildings completed. The monthly survey represents approximately 90 percent of the total value of buildings completed. Information regarding building plans passed and buildings completed for the private sector is collected by mail, fax and telephone. According to the municipalities, they are not always notified about low-cost housing projects. Data regarding subsidised low-cost dwelling-houses, supplied by the provincial governments and co-ordinated by the National Department of Housing, are shown in table 29 and table 30 (page 37).
Constant prices	9	The value of building plans passed and buildings completed at constant prices measures building activities in terms of ruling prices in a specific base year, which is currently 2000. The value of building plans passed at constant prices for each month is obtained by deflating the values at current prices with a price index known as the 'lump sum domestic buildings' as published in statistical release P0151: <i>JBCC Contract Price Adjustment Provisions Work Group Indices</i> . In order to be applicable, these indices (base February 1991=100) are converted to the base year 2000=100.

- 10** The value of buildings completed at constant prices is obtained by deflating the values at current prices with the price index which is used to calculate building plans passed at constant prices (see paragraph 8). Since the completion of buildings may extend over a few months to a few years, the current value of buildings completed is deflated by price indices which prevailed at the time the plans were passed. Therefore, the duration of the completion of different types of buildings are taken into account in ascertaining the deflators e.g. the value of dwelling-houses completed at constant prices at January 2007 is obtained by deflating the current value of dwelling-houses completed for January 2007 with the price index of a month six months prior to January 2007. Furthermore, the value of other residential buildings, non-residential buildings and additions and alterations at constant prices is obtained by deflating the current values with price indices of 12 months, 18 months and 12 months prior to the relevant month, respectively.
- Seasonal adjustment**
- 11** Seasonally adjusted estimates of building plans passed and buildings completed are generated each month, using the X-11 Seasonal Adjustment Program developed by US Bureau of the Census Economic Research and Analyses Division, 1968.
- 12** Seasonal adjustment is a means of removing the estimated effects of normal seasonal variation from the series so that the effects of other influences on the series can be more clearly recognised. Seasonal adjustment does not aim to remove irregular or non-seasonal influences which may be present in any particular month. Influences that are volatile or unsystematic can still make it difficult to interpret the movement of the series even after adjustment for seasonal variations. Therefore, the month-to-month movements of seasonally adjusted estimates may not be reliable indicators of trend behaviour.
- Trend cycle**
- 13** The trend is a long-term pattern or movement of a time series. The X-11 Seasonal Adjustment Program is used for smoothing seasonally adjusted data.
- Revised figures**
- 14** Revised figures are due to late submission of data to Stats SA, or to respondents reporting revisions or corrections to their figures. Figures for the latest month are therefore preliminary. Data are edited at municipal level.
- 15** Once a year the annual statistical release P5041.3 is published with the revised and updated information at provincial and municipal level for the previous calendar year. Due to this comprehensive revision, the monthly statistical release P5041.1 reflects provincial revision for 2006 where applicable.
- Related publications**
- 16** Users may also wish to refer to the following publications:
- P5041.3: Selected building statistics of the private sector as reported by local government institutions issued annually.
 - P9101.2: Actual and expected expenditure on construction by the public sector per statistical region issued annually.
 - Bulletin of Statistics issued quarterly.
 - South African Statistics issued annually.
 - Report 50-11-01 issued annually.
- Rounding-off of figures**
- 17** The figures in the tables have, where necessary, been rounded off to the nearest digit shown.
- Pre-release policy**
- 18** Stats SA's pre-release policy may be inspected at its website, www.statssa.gov.za

Symbols and abbreviations

19	..	no meaningful percentage change between two specified periods available since either one or both of the totals are nil
	0	nil or figure too small to publish
	*	revised
	Stats SA	Statistics South Africa
	SIC	Standard Industrial Classification of all Economic Activities
	ISIC	International Standard Industrial Classification of all Economic Activities
	JBCC	Joint Building Contracts Committee
	CD	Compact Disc
	US	United States
	SARB	South African Reserve Bank
	DTI	Department of Trade and Industry

2010 World Cup note

- 20** Information relating to the 2010 Soccer World Cup new stadia and renovations, as well as other public sector infrastructure spending e.g. Eskom expansions and the Gautrain project, will not be included in the private sector building data series, as these are partially public sector funded.

Glossary

Additions and alterations	They include extensions to existing buildings as well as internal and external alterations of existing buildings.
Blocks of flats	High-density housing consisting of a number of self-contained dwelling-units, each with at least one living-room together with a kitchen and bathroom, conjoined to similar units in one building.
Dwelling-house	A free-standing, complete structure on a separate stand or a self-contained dwelling-unit, e.g. granny flat, on the same premises as an existing residence. Out-buildings and garages are included.
Local government institutions	Include – <ul style="list-style-type: none"> • District municipalities; • Metropolitan municipalities; and • Local municipalities.
Municipality	A generic term describing the “unit” of government in the local spheres responsible for local government in a geographically demarcated area and including district, metropolitan and local municipalities. It is an institution consisting of a municipal council (elected political representatives) and municipal administration (appointed officials).
District municipality	Municipality that has municipal executive and legislative authority in an area that includes more than one municipality, and which is described in section 155(1) of the Constitution as a category C municipality (Refer to Local Government: Municipal Structure Act, 1998 (Act No. 117 of 1998)).
Metropolitan municipality	Municipality that has municipal executive and legislative authority in an area that includes more than one municipality, and which is described in section 155(1) of the Constitution as a category A municipality (Refer to Local Government: Municipal Structure Act, 1998 (Act No. 117 of 1998)).
Local municipality	Municipality that shares municipal executive and legislative authority in its area with a district municipality within whose area it falls, that is described in section 155(1) of the constitution as a category B municipality.
Non-residential buildings	Comprise factories, commercial, financial and other office buildings, as well as other buildings not used for residential purposes, such as churches, halls, clubs, schools and hospitals.
Other residential buildings	Institutions for the disabled, boarding houses, old people’s homes, hostels, hotels, motels, guesthouses, holiday chalets, bed-and-breakfast accommodation, entertainment centres and casinos.
Percentage change	<p>When using monthly actual values, the percentage change is the change in actual values of building activities (building plans passed or buildings completed) of the relevant month compared with the actual values of building activities (building plans passed or buildings completed) of the same month in the previous year expressed as a percentage.</p> <p>When using annual actual values, the percentage change is the change in the actual values of building activities (building plans passed or buildings completed) of the relevant year compared with the actual values of building activities (building plans passed or buildings completed) of the previous year expressed as a percentage.</p> <p>When using seasonally adjusted values, the percentage change is the change in the seasonally adjusted values of building activities (building plans passed or buildings completed) of the relevant month compared with the seasonally adjusted values of building activities (building plans passed or buildings completed) of the previous month expressed as a percentage.</p>

Reference period	One calendar month.
Residential buildings	Comprise dwelling-houses, flats, townhouses and other residential buildings.
Townhouses	Multiple, medium-density dwelling-units and include cluster housing, group housing, simplexes, duplexes, triplexes and other similar dwelling-units which are usually grouped together, with one level of each unit on ground level. This excludes blocks of flats.

General information

Stats SA publishes approximately 300 different statistical releases each year. It is not economically viable to produce them in more than one of South Africa's eleven official languages. Since the releases are used extensively, not only locally but also by international economic and social-scientific communities, Stats SA releases are published in English.

Stats SA has copyright on this publication. Users may apply the information as they wish, provided that they acknowledge Stats SA as the source of the basic data wherever they process, apply, utilise, publish or distribute the data and also that they specify that the relevant application and analysis (where applicable) result from their own processing of the data.

An advance release calendar is disseminated on www.statssa.gov.za

Stats SA products

A complete set of Stats SA publications is available at the Stats SA Library and the following libraries:

National Library of South Africa, Pretoria Division
National Library of South Africa, Cape Town Division
Natal Society Library, Pietermaritzburg
Library of Parliament, Cape Town
Bloemfontein Public Library
Johannesburg Public Library
Eastern Cape Library Services, King William's Town
Central Regional Library, Polokwane
Central Reference Library, Nelspruit
Central Reference Collection, Kimberley
Central Reference Library, Mmabatho

Stats SA also provides a subscription service.

Electronic services

A large range of data are available via on-line services, diskette, CD and computer printouts. For more details about our electronic data services, contact (012) 310 8600/8390/8351/4892/8496/8095.

You can visit us on the Internet at: www.statssa.gov.za

Enquiries

Telephone number: (012) 310 8600/8390/8351/4892/8496/8095 (user information services)
(012) 310 8228/310 8007 (technical enquiries)
(012) 310 8161 (orders)
(012) 310 4883/4885/8018 (library)

Fax number: (012) 310 8664 (technical enquiries)

Email: Gretaz@statssa.gov.za (technical enquiries)
info@statssa.gov.za (user information services)
distribution@statssa.gov.za (orders)

Postal address: Private Bag X44, Pretoria, 0001

Produced by Stats SA