

**Statistics
South Africa**

**Statistical release
P5041.1**

Dipalopalo tsa Aforika Borwa • Statistieke Suid-Afrika • Tistatistiki ta Afrika-Dzonga • Ukuqokelelwa kwamanani eNingizimu Afrika

Selected building statistics of the private sector as reported by local government institutions

September 2004

**Embargoed until:
25 November 2004
9:30**



Table A - Selected key figures regarding recorded building plans passed by municipalities as at the end of September 2004

Estimates at constant 2000 prices	September 2003	September 2004 ¹	Percentage change between September 2003 and September 2004	January to September 2003	January to September 2004	Percentage change between January to September 2003 and January to September 2004	Difference in real value between January to September 2003 and January to September 2004
	R million	R million		R million	R million		R million
Residential buildings							
Dwelling-houses	985,7	1 162,6	+ 17,9	7 093,7	9 301,2	+ 31,1	+ 2 207,5
Flats and townhouses	349,1	555,4	+ 59,1	2 708,9	4 009,1	+ 48,0	+ 1 300,2
Other residential buildings	13,0	26,1	+ 100,8	134,7	227,5	+ 68,9	+ 92,8
Total	1 347,8	1 744,1	+ 29,4	9 937,3	13 537,8	+ 36,2	+ 3 600,5
Non-residential buildings	366,1	427,4	+ 16,7	2 801,7	3 209,8	+ 14,6	+ 408,1
Additions and alterations	538,4	771,1	+ 43,2	4 768,1	5 926,7	+ 24,3	+ 1 158,6
Total	2 252,3	2 942,6	+ 30,6	17 507,1	22 674,3	+ 29,5	+ 5 167,2

¹ September 2004 figures should be regarded as preliminary because of possible backlogs and incomplete reporting by municipalities.

Key findings regarding recorded building plans passed by municipalities for the first nine months of 2004

Real value of recorded building plans passed by municipalities increases

As indicated in Table A, the real value of recorded building plans passed by municipalities (at constant 2000 prices) during the first nine months of 2004 increased by 29,5% (+R5 167,2 million) from R17 507,1 million to R22 674,3 million compared with the first nine months of 2003. The largest increase in the value of recorded building plans passed was reported for residential buildings (+R3 600,5 million), followed by additions and alterations (+R1 158,6 million) and non-residential buildings (+R408,1 million). Recorded building plans passed for dwelling-houses increased by 31,1% (+R2 207,5 million) and for flats and townhouses by 48,0% (+R1 300,2 million).

Table B - Municipal reporting of recorded building plans passed aggregated to provincial level

Municipal reporting aggregated to provincial level	January to September 2003	January to September 2004 ¹	Difference in real value between January to September 2003 and January to September 2004	Percentage change between January to September 2003 and January to September 2004
	R million	R million	R million	
Western Cape	4 518,6	6 952,2	+ 2 433,6	+ 53,9
Gauteng	7 755,4	9 219,1	+ 1 463,7	+ 18,9
Eastern Cape	833,9	1 225,3	+ 391,4	+ 46,9
KwaZulu-Natal	2 540,1	2 797,2	+ 257,1	+ 10,1
North West	530,0	732,0	+ 202,0	+ 38,1
Limpopo	270,8	411,9	+ 141,1	+ 52,1
Free State	431,5	554,3	+ 122,8	+ 28,5
Mpumalanga	536,4	620,3	+ 83,9	+ 15,6
Northern Cape	90,4	162,0	+ 71,6	+ 79,2
Total	17 507,1	22 674,3	+ 5 167,2	+ 29,5

¹ September 2004 figures should be regarded as preliminary because of possible backlogs and incomplete reporting by municipalities.

The municipalities in all nine provinces reported increases in the real value of recorded building plans passed

The preliminary figures shown in Table B indicate that the largest municipal contributors to the increase within provinces of 29,5% (+R5 167,2 million) in the real value of recorded building plans passed were Western Cape (+R2 433,6 million) and Gauteng (+R1 463,7 million).

Table C - Seasonally adjusted preliminary figures regarding recorded building plans passed by municipalities as at the end of September 2004

Seasonally adjusted estimates at constant 2000 prices	April to June 2004	July to September 2004 ¹	Percentage change between April to June 2004 and July to September 2004
	R million	R million	
Residential buildings	4 460,3	5 001,3	+ 12,1
Non-residential buildings	855,4	1 216,6	+ 42,2
Additions and alterations	1 837,3	2 200,2	+ 19,8
Total	7 153,0	8 418,1	+ 17,7

¹ September 2004 figures should be regarded as preliminary because of possible backlogs and incomplete reporting by municipalities.

Key findings regarding seasonally adjusted real value of recorded building plans passed by municipalities for the third quarter of 2004

As indicated in Table C, the seasonally adjusted real value of recorded building plans passed by municipalities (at constant 2000 prices) during the third quarter of 2004 increased by 17,7% compared with the second quarter of 2004. The increase of 17,7% was due to increases in the seasonally adjusted real value of all recorded building plans passed, i.e. non-residential buildings (+42,2%), additions and alterations (+19,8%) and residential buildings (+12,1%).

Figure 1 shows both the seasonally adjusted and the trend series for recorded building plans passed at constant 2000 prices between January 2000 and September 2004. The trend series has been rising since July 2001, and reached its highest peak in September 2004.

Figure 1 – Real value of recorded building plans passed

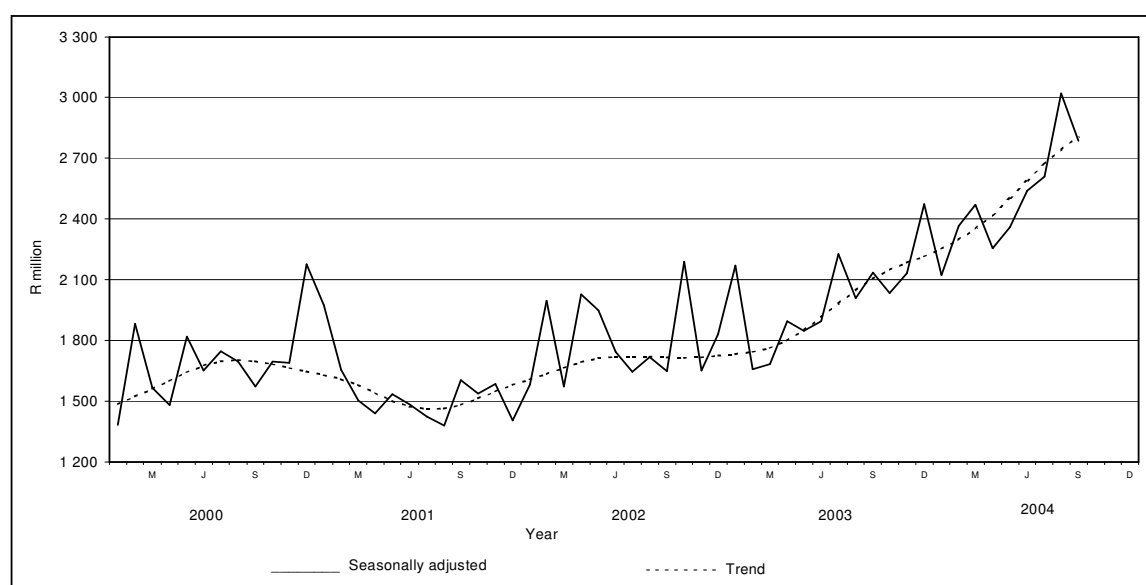


Table D – Selected key figures regarding buildings reported as completed to municipalities as at the end of September 2004

Estimates at constant 2000 prices	September 2003	September 2004 ¹	Percentage change between September 2003 and September 2004	January to September 2003	January to September 2004 ¹	Percentage change between January to September 2003 and January to September 2004	Difference in real value between January to September 2003 and January to September 2004
	R million	R million		R million	R million		R million
Residential buildings							
Dwelling-houses	446,1	629,3	+ 41,1	3 931,0	4 927,7	+ 25,4	+ 996,7
Flats and townhouses	180,6	237,0	+ 31,2	1 494,7	2 252,7	+ 50,7	+ 758,0
Other residential buildings	7,1	23,5	+ 231,0	673,7	92,8	- 86,2	- 580,9
Total	633,8	889,8	+ 40,4	6 099,4	7 273,2	+ 19,2	+ 1 173,8
Non-residential buildings	156,4	416,3	+ 166,2	2 251,3	2 163,7	- 3,9	- 87,6
Additions and alterations	221,1	254,2	+ 15,0	2 151,6	2 141,4	- 0,5	- 10,2
Total	1 011,3	1 560,3	+ 54,3	10 502,3	11 578,3	+ 10,2	+ 1 076,0

¹ September 2004 figures should be regarded as preliminary because of possible backlogs and incomplete reporting by municipalities.

Key findings regarding buildings reported as completed to municipalities for the first nine months of 2004

Real value of buildings reported as completed to municipalities increases

Table D indicates the real value of buildings reported as completed (at constant 2000 prices) to municipalities during the first nine months of 2004 increased by 10,2% (+R1 076,0 million) from R10 502,3 million to R11 578,3 million compared with the first nine months of 2003. A large increase was reported for residential buildings (+R1 173,8 million), due to increases reported for dwelling-houses (+R996,7 million) and flats and townhouses (+R758,0 million).

Table E - Municipal reporting of buildings completed aggregated to provincial level

Municipal reporting aggregated to provincial level	January to September 2003	January to September 2004 ¹	Difference in real value between January to September 2003 and January to September 2004	Percentage change between January to September 2003 and January to September 2004
	R million	R million	R million	
Gauteng	4 643,1	5 315,2	+ 672,1	+ 14,5
KwaZulu-Natal	1 515,8	1 898,8	+ 383,0	+ 25,3
Eastern Cape	422,3	501,4	+ 79,1	+ 18,7
North West	342,1	406,1	+ 64,0	+ 18,7
Limpopo	94,0	119,6	+ 25,6	+ 27,2
Northern Cape	63,9	75,8	+ 11,9	+ 18,6
Free State	283,8	252,1	- 31,7	-11,2
Mpumalanga	276,1	223,5	- 52,6	-19,1
Western Cape	2 861,2	2 785,8	- 75,5	-2,6
Total	10 502,3	11 578,3	+ 1 076,0	+ 10,2

¹ September 2004 figures should be regarded as preliminary because of possible backlogs and incomplete reporting by municipalities.

The municipalities in six of the nine provinces reported increases in the real value of buildings completed

The preliminary figures shown in Table E indicate that the largest municipal contributors to the increase within provinces of 10,2% (+R1 076,0 million) in the real value of buildings reported as completed were Gauteng (+R672,1 million) and KwaZulu-Natal (+R383,0 million).

Table F - Seasonally adjusted preliminary figures regarding buildings reported as completed to municipalities as at the end of September 2004

Seasonally adjusted estimates at constant 2000 prices	April to June 2004	July to September 2004 ¹	Percentage change between April to June 2004 and July to September 2004
	R million	R million	
Residential buildings	2 528,9	2 899,7	+ 14,7
Non-residential buildings	484,5	1 126,8	+ 132,6
Additions and alterations	639,1	798,3	+ 24,9
Total	3 652,5	4 824,8	+ 32,1

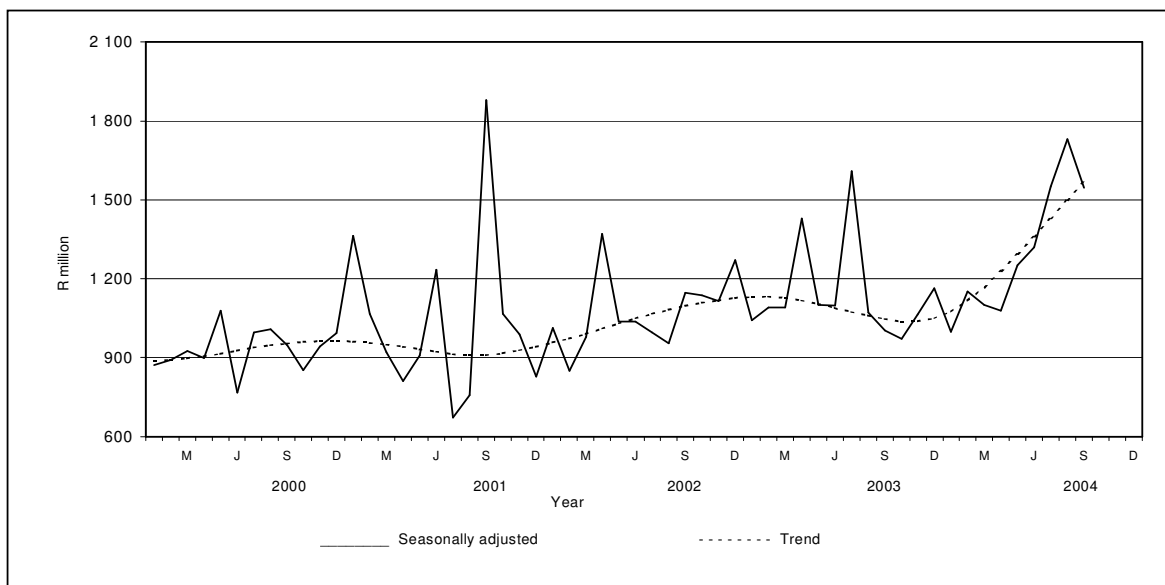
¹ September 2004 figures should be regarded as preliminary because of possible backlogs and incomplete reporting by municipalities.

Key findings regarding seasonally adjusted real value of buildings reported as completed to municipalities for the third quarter of 2004

As indicated in Table F, the seasonally adjusted real value of buildings reported as completed to municipalities (at constant 2000 prices) for the third quarter of 2004 increased by 32,1% compared with the second quarter of 2004. The increase of 32,1% was due to increases in the seasonally adjusted real value of all buildings reported as completed, i.e. non-residential buildings (+132,6%), additions and alterations (+24,9%) and residential buildings (+14,7%).

Figure 2 shows both the seasonally adjusted and the trend series for buildings reported as completed to municipalities at constant 2000 prices between January 2000 and September 2004. The trend series has been rising since October 2003.

Figure 2 – Real value of buildings reported as completed



PP
PJ Lehohla
Statistician-General

Contents	Page
Notes	8
Tables	
Table 1 Values and percentage change of recorded building plans passed by municipalities at current prices by type of building	9
Table 2 Seasonally adjusted values and percentage change of recorded building plans passed by municipalities at current prices by type of building	10
Table 3 Values and percentage change of recorded building plans passed by municipalities at constant 2000 prices by type of building	11
Table 4 Seasonally adjusted values and percentage change of recorded building plans passed at constant 2000 prices by type of building	12
Table 5 Values and percentage change of buildings reported as completed to municipalities at current prices by type of building	13
Table 6 Seasonally adjusted values and percentage change of buildings reported as completed to municipalities at current prices by type of building	14
Table 7 Values and percentage change of buildings reported as completed to municipalities at constant 2000 prices by type of building	15
Table 8 Seasonally adjusted values and percentage change of buildings reported as completed to municipalities at constant 2000 prices by type of building	16
Table 9 Recorded building plans passed by municipalities by type of building: South Africa.....	17
Table 10 Recorded building plans passed by municipalities by type of building and province: Western Cape	18
Table 11 Recorded building plans passed by municipalities by type of building and province: Eastern Cape	19
Table 12 Recorded building plans passed by municipalities by type of building and province: Northern Cape	20
Table 13 Recorded building plans passed by municipalities by type of building and province: Free State	21
Table 14 Recorded building plans passed by municipalities by type of building and province: KwaZulu-Natal	22
Table 15 Recorded building plans passed by municipalities by type of building and province: North West	23
Table 16 Recorded building plans passed by municipalities by type of building and province: Gauteng	24
Table 17 Recorded building plans passed by municipalities by type of building and province: Mpumalanga	25
Table 18 Recorded building plans passed by municipalities by type of building and province: Limpopo.....	26
Table 19 Buildings reported as completed to municipalities by type of building: South Africa.....	27
Table 20 Buildings reported as completed to municipalities by type of building and province: Western Cape	28
Table 21 Buildings reported as completed to municipalities by type of building and province: Eastern Cape	29
Table 22 Buildings reported as completed to municipalities by type of building and province: Northern Cape	30
Table 23 Buildings reported as completed to municipalities by type of building and province: Free State	31
Table 24 Buildings reported as completed to municipalities by type of building and province: KwaZulu-Natal	32
Table 25 Buildings reported as completed to municipalities by type of building and province: North West	33
Table 26 Buildings reported as completed to municipalities by type of building and province: Gauteng	34
Table 27 Buildings reported as completed to municipalities by type of building and province: Mpumalanga	35
Table 28 Buildings reported as completed to municipalities by type of building and province: Limpopo.....	36
Table 29 Subsidised low-cost dwelling-houses completed or under construction by province	37
Explanatory notes	38
Glossary	40
General information	42

Notes

Forthcoming issue	Issue	Expected release date
	October 2004	15 December 2004
Subsidised low-cost dwelling-houses	The figures obtained from local government institutions do not include the bulk of low-cost dwelling-houses. Data regarding subsidised low-cost dwelling-houses completed or under construction, supplied by the provincial governments and co-ordinated by the National Department of Housing, are shown in table 29 (page 37).	
Response rate	The response rate for September 2004 was 100%.	

Table 1 - Values and percentage change of recorded building plans passed by municipalities at current prices by type of building

Year ¹ and month ²	Residential buildings		Non-residential buildings		Additions and alterations		Total	
	R'000	Percentage change	R'000	Percentage change	R'000	Percentage change	R'000	Percentage change
2002 Jan.	801 712	+ 10,5	172 295	- 65,2	418 217	+ 18,3	1 392 224	- 11,5
Feb.	1 024 424	+ 22,4	622 559	+ 102,5	459 378	- 3,5	2 106 361	+ 30,0
Mar.	965 121	+ 3,4	495 333	+ 63,0	432 948	- 1,3	1 893 402	+ 13,0
Apr.	1 152 506	+ 55,1	350 647	+ 67,7	533 421	+ 40,5	2 036 574	+ 52,9
May	1 184 437	+ 17,7	438 078	+ 49,3	936 496	+ 86,5	2 559 011	+ 42,0
Jun.	1 100 299	+ 21,6	497 829	+ 65,7	552 535	+ 23,3	2 150 663	+ 30,0
Jul.	1 251 404	+ 40,0	255 959	- 30,2	674 478	+ 54,8	2 181 841	+ 28,6
Aug.	1 164 715	+ 45,7	391 026	+ 58,0	698 946	+ 44,0	2 254 687	+ 43,4
Sep.	1 222 745	+ 26,3	287 969	- 6,0	617 044	+ 16,4	2 127 758	+ 17,9
Oct.	2 030 451	+ 69,7	335 491	+ 79,5	757 380	+ 40,1	3 123 322	+ 62,4
Nov.	1 226 825	+ 24,8	309 532	- 2,9	715 756	+ 19,7	2 252 113	+ 18,6
Dec.	1 103 944	+ 67,8	230 232	+ 63,9	420 030	+ 17,0	1 754 206	+ 51,5
Total	14 228 583	+ 33,1	4 386 950	+ 26,2	7 216 629	+ 30,1	25 832 162	+ 31,1
2003 Jan.	954 012	+ 19,0	685 795	+ 298,0	524 194	+ 25,3	2 164 001	+ 55,4
Feb.	1 216 120	+ 18,7	239 795	- 61,5	531 253	+ 15,6	1 987 168	- 5,7
Mar.	1 405 792	+ 45,7	225 827	- 54,4	604 632	+ 39,7	2 236 251	+ 18,1
Apr.	1 226 932	+ 6,5	284 104	- 19,0	601 549	+ 12,8	2 112 585	+ 3,7
May	1 328 400	+ 12,2	408 130	- 6,8	903 951	- 3,5	2 640 481	+ 3,2
Jun.	1 452 398	+ 32,0	386 847	- 22,3	673 001	+ 21,8	2 512 246	+ 16,8
Jul.	1 788 778	+ 42,9	489 467	+ 91,2	885 159	+ 31,2	3 163 404	+ 45,0
Aug.	1 694 233	+ 45,5	412 947	+ 5,6	725 583	+ 3,8	2 832 763	+ 25,6
Sep.	1 745 376	+ 42,7	474 167	+ 64,7	697 206	+ 13,0	2 916 749	+ 37,1
Oct.	1 788 657	- 11,9	460 222	+ 37,2	775 961	+ 2,5	3 024 840	- 3,2
Nov.	1 859 149	+ 51,5	392 685	+ 26,9	730 309	+ 2,0	2 982 143	+ 32,4
Dec.	1 368 171	+ 23,9	471 920	+ 105,0	615 813	+ 46,6	2 455 904	+ 40,0
Total	17 828 018	+ 25,3	4 931 906	+ 12,4	8 268 611	+ 14,6	31 028 535	+ 20,1
2004 Jan.	1 322 714	+ 38,6	331 977	- 51,6	524 139	+ 0,0	2 178 830	+ 0,7
Feb.	1 692 010	+ 39,1	392 385	+ 63,6	812 817	+ 53,0	2 897 212	+ 45,8
Mar.	1 965 458	+ 39,8	556 522	+ 146,4	884 720	+ 46,3	3 406 700	+ 52,3
Apr.	1 578 145	+ 28,6	362 254	+ 27,5	679 167	+ 12,9	2 619 566	+ 24,0
May	2 188 975	+ 64,8	380 858	- 6,7	896 367	- 0,8	3 466 200	+ 31,3
Jun.	2 132 851	+ 46,9	429 121	+ 10,9	946 218	+ 40,6	3 508 190	+ 39,6
Jul.	2 375 554	+ 32,8	489 082	- 0,1	1 035 806	+ 17,0	3 900 442	+ 23,3
Aug.	2 600 768	+ 53,5	798 669	+ 93,4	1 152 700	+ 58,9	4 552 137	+ 60,7
Sep. ³	2 396 326	+ 37,3	587 295	+ 23,9	1 059 501	+ 52,0	4 043 122	+ 38,6

¹ The annual percentage change is the change in the values of recorded building plans passed by municipalities of the relevant year compared with the values of recorded building plans passed by municipalities of the previous year expressed as a percentage.

² The monthly percentage change is the change in the recorded values of building plans passed by municipalities of the relevant month compared with the recorded values of building plans passed by municipalities of the same month in the previous year expressed as a percentage.

³ Preliminary figures.

Table 2 - Seasonally adjusted values and percentage change of recorded building plans passed by municipalities at current prices by type of building

Year and month ¹	Residential buildings		Non-residential buildings		Additions and alterations		Total	
	R'000	Percentage change	R'000	Percentage change	R'000	Percentage change	R'000	Percentage change
2002 Jan.	1 016 686	+ 17,9	230 162	+ 26,0	523 104	+ 3,8	1 769 952	+ 14,3
Feb.	1 038 041	+ 2,1	716 015	+ 211,1	517 889	- 1,0	2 271 945	+ 28,4
Mar.	929 037	- 10,5	455 338	- 36,4	418 401	- 19,2	1 802 776	- 20,7
Apr.	1 332 235	+ 43,4	414 473	- 9,0	606 186	+ 44,9	2 352 894	+ 30,5
May	1 099 410	- 17,5	378 740	- 8,6	824 726	+ 36,1	2 302 876	- 2,1
Jun.	1 076 500	- 2,1	446 545	+ 17,9	540 353	- 34,5	2 063 398	- 10,4
Jul.	1 134 679	+ 5,4	222 331	- 50,2	620 052	+ 14,7	1 977 062	- 4,2
Aug.	1 103 370	- 2,8	349 727	+ 57,3	636 244	+ 2,6	2 089 341	+ 5,7
Sep.	1 161 079	+ 5,2	275 180	- 21,3	585 660	- 8,0	2 021 919	- 3,2
Oct.	1 720 180	+ 48,2	336 558	+ 22,3	659 084	+ 12,5	2 715 822	+ 34,3
Nov.	1 147 145	- 33,3	286 833	- 14,8	633 397	- 3,9	2 067 375	- 23,9
Dec.	1 421 340	+ 23,9	294 595	+ 2,7	590 363	- 6,8	2 306 298	+ 11,6
2003 Jan.	1 212 243	- 14,7	900 398	+ 205,6	651 450	+ 10,3	2 764 091	+ 19,8
Feb.	1 241 685	+ 2,4	278 351	- 69,1	593 843	- 8,8	2 113 879	- 23,5
Mar.	1 361 723	+ 9,7	204 753	- 26,4	591 039	- 0,5	2 157 515	+ 2,1
Apr.	1 423 884	+ 4,6	333 606	+ 62,9	682 106	+ 15,4	2 439 596	+ 13,1
May	1 241 449	- 12,8	364 672	+ 9,3	786 846	+ 15,4	2 392 967	- 1,9
Jun.	1 433 085	+ 15,4	346 546	- 5,0	664 459	- 15,6	2 444 090	+ 2,1
Jul.	1 615 799	+ 12,7	443 509	+ 28,0	812 341	+ 22,3	2 871 649	+ 17,5
Aug.	1 594 592	- 1,3	348 795	- 21,4	650 660	- 19,9	2 594 047	- 9,7
Sep.	1 649 610	+ 3,5	444 548	+ 27,5	669 497	+ 2,9	2 763 655	+ 6,5
Oct.	1 500 884	- 9,0	467 147	+ 5,1	672 078	+ 0,4	2 640 109	- 4,5
Nov.	1 747 727	+ 16,4	370 577	- 20,7	651 568	- 3,1	2 769 872	+ 4,9
Dec.	1 750 408	+ 0,2	602 205	+ 62,5	866 749	+ 33,0	3 219 362	+ 16,2
2004 Jan.	1 677 935	- 4,1	434 787	- 27,8	652 319	- 24,7	2 765 041	- 14,1
Feb.	1 744 100	+ 3,9	457 324	+ 5,2	907 280	+ 39,1	3 108 704	+ 12,4
Mar.	1 906 351	+ 9,3	499 290	+ 9,2	869 767	- 4,1	3 275 408	+ 5,4
Apr.	1 824 437	- 4,3	417 780	- 16,3	765 609	- 12,0	3 007 826	- 8,2
May	2 061 988	+ 13,0	351 735	- 15,8	773 359	+ 1,0	3 187 082	+ 6,0
Jun.	2 114 139	+ 2,5	379 451	+ 7,9	943 521	+ 22,0	3 437 111	+ 7,8
Jul.	2 135 164	+ 1,0	455 928	+ 20,2	951 373	+ 0,8	3 542 465	+ 3,1
Aug.	2 442 655	+ 14,4	656 759	+ 44,0	1 028 161	+ 8,1	4 127 575	+ 16,5
Sep.	2 257 845	- 7,6	548 393	- 16,5	1 021 782	- 0,6	3 828 020	- 7,3

¹ The percentage change is the change in the seasonally adjusted values of recorded building plans passed by municipalities of the relevant month compared with the seasonally adjusted values of recorded building plans passed by municipalities of the previous month expressed as a percentage.

Table 3 - Values and percentage change of recorded building plans passed by municipalities at constant 2000 prices by type of building

Year ¹ and month ²	Residential buildings		Non-residential buildings		Additions and alterations		Total	
	R'000	Percentage change	R'000	Percentage change	R'000	Percentage change	R'000	Percentage change
2002 Jan.	717 095	+ 3,0	154 110	- 67,5	374 076	+ 10,3	1 245 281	- 17,5
Feb.	898 618	+ 12,4	546 104	+ 86,0	402 963	- 11,4	1 847 685	+ 19,4
Mar.	842 900	- 5,0	432 605	+ 49,8	378 121	- 9,3	1 653 626	+ 3,8
Apr.	990 977	+ 41,4	301 502	+ 52,8	458 660	+ 28,1	1 751 139	+ 39,4
May	1 004 612	+ 6,4	371 567	+ 35,0	794 314	+ 68,7	2 170 493	+ 28,4
Jun.	927 739	+ 9,5	419 755	+ 49,2	465 881	+ 11,0	1 813 375	+ 17,1
Jul.	1 037 648	+ 24,7	212 238	- 37,9	559 269	+ 37,9	1 809 155	+ 14,5
Aug.	954 684	+ 22,5	320 513	+ 39,5	572 907	+ 27,2	1 848 104	+ 26,6
Sep.	997 345	+ 11,1	234 885	- 17,2	503 299	+ 2,5	1 735 529	+ 3,8
Oct.	1 638 782	+ 48,1	270 776	+ 56,6	611 283	+ 22,3	2 520 841	+ 41,6
Nov.	984 611	+ 8,9	248 421	- 15,3	574 443	+ 4,4	1 807 475	+ 3,4
Dec.	882 449	+ 47,1	184 038	+ 43,7	335 755	+ 2,6	1 402 242	+ 32,9
Total	11 877 460	+ 18,8	3 696 514	+ 13,4	6 030 971	+ 16,3	21 604 945	+ 17,2
2003 Jan.	751 191	+ 4,8	539 996	+ 250,4	412 751	+ 10,3	1 703 938	+ 36,8
Feb.	951 581	+ 5,9	187 633	- 65,6	415 691	+ 3,2	1 554 905	- 15,8
Mar.	1 095 707	+ 30,0	176 015	- 59,3	471 264	+ 24,6	1 742 986	+ 5,4
Apr.	951 110	- 4,0	220 236	- 27,0	466 317	+ 1,7	1 637 663	- 6,5
May	1 028 970	+ 2,4	316 135	- 14,9	700 194	- 11,8	2 045 299	- 5,8
Jun.	1 122 410	+ 21,0	298 954	- 28,8	520 094	+ 11,6	1 941 458	+ 7,1
Jul.	1 381 296	+ 33,1	377 967	+ 78,1	683 520	+ 22,2	2 442 783	+ 35,0
Aug.	1 307 279	+ 36,9	318 632	- 0,6	559 863	- 2,3	2 185 774	+ 18,3
Sep.	1 347 781	+ 35,1	366 152	+ 55,9	538 383	+ 7,0	2 252 316	+ 29,8
Oct.	1 382 270	- 15,7	355 658	+ 31,3	599 661	- 1,9	2 337 589	- 7,3
Nov.	1 438 970	+ 46,1	303 936	+ 22,3	565 255	- 1,6	2 308 161	+ 27,7
Dec.	1 058 956	+ 20,0	365 263	+ 98,5	476 635	+ 42,0	1 900 854	+ 35,6
Total	13 817 521	+ 16,3	3 826 577	+ 3,5	6 409 628	+ 6,3	24 053 726	+ 11,3
2004 Jan.	1 015 909	+ 35,2	254 975	- 52,8	402 565	- 2,5	1 673 449	- 1,8
Feb.	1 282 798	+ 34,8	297 487	+ 58,5	616 237	+ 48,2	2 196 522	+ 41,3
Mar.	1 480 014	+ 35,1	419 068	+ 138,1	666 205	+ 41,4	2 565 287	+ 47,2
Apr.	1 179 481	+ 24,0	270 743	+ 22,9	507 599	+ 8,9	1 957 823	+ 19,5
May	1 625 074	+ 57,9	282 745	- 10,6	665 454	- 5,0	2 573 273	+ 25,8
Jun.	1 570 582	+ 39,9	315 995	+ 5,7	696 773	+ 34,0	2 583 350	+ 33,1
Jul.	1 742 886	+ 26,2	358 828	- 5,1	759 946	+ 11,2	2 861 660	+ 17,1
Aug.	1 896 986	+ 45,1	582 545	+ 82,8	840 773	+ 50,2	3 320 304	+ 51,9
Sep.	1 744 051	+ 29,4	427 434	+ 16,7	771 107	+ 43,2	2 942 592	+ 30,6

¹ The annual percentage change is the change in the values of recorded building plans passed by municipalities of the relevant year compared with the values of recorded building plans passed by municipalities of the previous year expressed as a percentage.

² The monthly percentage change is the change in the recorded values of building plans passed by municipalities of the relevant month compared with the recorded values of building plans passed by municipalities of the same month in the previous year expressed as a percentage.

Table 4 - Seasonally adjusted values and percentage change of recorded building plans passed by municipalities at constant 2000 prices by type of building

Year and month ¹	Residential buildings		Non-residential buildings		Additions and alterations		Total	
	R'000	Percentage change	R'000	Percentage change	R'000	Percentage change	R'000	Percentage change
2002 Jan.	907 706	+ 16,2	204 520	+ 23,5	468 460	+ 8,2	1 580 686	+ 12,5
Feb.	912 134	+ 0,5	628 311	+ 207,2	456 337	- 2,6	1 996 782	+ 26,3
Mar.	810 906	- 11,1	397 152	- 36,8	365 672	- 19,9	1 573 730	- 21,2
Apr.	1 146 804	+ 41,4	356 953	- 10,1	523 012	+ 43,0	2 026 769	+ 28,8
May	935 536	- 18,4	322 878	- 9,5	690 318	+ 32,0	1 948 732	- 3,9
Jun.	908 552	- 2,9	377 422	+ 16,9	457 956	- 33,7	1 743 930	- 10,5
Jul.	943 432	+ 3,8	185 066	- 51,0	516 656	+ 12,8	1 645 154	- 5,7
Aug.	907 018	- 3,9	287 800	+ 55,5	523 543	+ 1,3	1 718 361	+ 4,4
Sep.	946 935	+ 4,4	224 429	- 22,0	477 846	- 8,7	1 649 210	- 4,0
Oct.	1 385 607	+ 46,3	271 265	+ 20,9	530 824	+ 11,1	2 187 696	+ 32,7
Nov.	916 412	- 33,9	228 727	- 15,7	505 948	- 4,7	1 651 087	- 24,5
Dec.	1 128 717	+ 23,2	233 886	+ 2,3	469 842	- 7,1	1 832 445	+ 11,0
2003 Jan.	952 616	- 15,6	704 714	+ 201,3	514 635	+ 9,5	2 171 965	+ 18,5
Feb.	973 823	+ 2,2	217 918	- 69,1	467 541	- 9,2	1 659 282	- 23,6
Mar.	1 061 733	+ 9,0	159 396	- 26,9	461 448	- 1,3	1 682 577	+ 1,4
Apr.	1 105 765	+ 4,1	259 179	+ 62,6	530 968	+ 15,1	1 895 912	+ 12,7
May	964 162	- 12,8	283 693	+ 9,5	598 933	+ 12,8	1 846 788	- 2,6
Jun.	1 109 069	+ 15,0	268 597	- 5,3	516 724	- 13,7	1 894 390	+ 2,6
Jul.	1 251 239	+ 12,8	343 946	+ 28,1	630 727	+ 22,1	2 225 912	+ 17,5
Aug.	1 234 233	- 1,4	270 342	- 21,4	504 396	- 20,0	2 008 971	- 9,7
Sep.	1 273 874	+ 3,2	343 377	+ 27,0	517 481	+ 2,6	2 134 732	+ 6,3
Oct.	1 157 188	- 9,2	360 343	+ 4,9	518 073	+ 0,1	2 035 604	- 4,6
Nov.	1 345 491	+ 16,3	284 851	- 21,0	501 447	- 3,2	2 131 789	+ 4,7
Dec.	1 344 869	+ 0,0	462 476	+ 62,4	667 409	+ 33,1	2 474 754	+ 16,1
2004 Jan.	1 286 660	- 4,3	332 061	- 28,2	503 184	- 24,6	2 121 905	- 14,3
Feb.	1 325 650	+ 3,0	346 892	+ 4,5	692 863	+ 37,7	2 365 405	+ 11,5
Mar.	1 436 623	+ 8,4	375 567	+ 8,3	656 512	- 5,2	2 468 702	+ 4,4
Apr.	1 366 367	- 4,9	313 008	- 16,7	574 931	- 12,4	2 254 306	- 8,7
May	1 534 869	+ 12,3	262 130	- 16,3	562 802	- 2,1	2 359 801	+ 4,7
Jun.	1 559 035	+ 1,6	280 268	+ 6,9	699 582	+ 24,3	2 538 885	+ 7,6
Jul.	1 570 828	+ 0,8	336 000	+ 19,9	701 959	+ 0,3	2 608 787	+ 2,8
Aug.	1 787 101	+ 13,8	481 290	+ 43,2	753 601	+ 7,4	3 021 992	+ 15,8
Sep.	1 643 356	- 8,0	399 363	- 17,0	744 633	- 1,2	2 787 352	- 7,8

¹ The percentage change is the change in the seasonally adjusted values of recorded building plans passed by municipalities of the relevant month compared with the seasonally adjusted values of recorded building plans passed by municipalities of the previous month expressed as a percentage.

Table 5 - Values and percentage change of buildings reported as completed to municipalities at current prices by type of building

Year ¹ and month ²	Residential buildings		Non-residential buildings		Additions and alterations		Total	
	R'000	Percentage change	R'000	Percentage change	R'000	Percentage change	R'000	Percentage change
2002 Jan.	583 954	- 9,8	136 570	- 47,4	176 643	- 12,7	897 167	- 19,1
Feb.	473 568	+ 9,9	137 817	- 51,8	202 239	- 17,9	813 624	- 15,5
Mar.	708 471	+ 44,3	171 227	+ 3,1	176 053	- 38,7	1 055 751	+ 11,8
Apr.	653 414	+ 77,8	245 773	+ 44,4	390 160	+ 110,0	1 289 347	+ 78,2
May	690 242	+ 53,3	300 836	- 5,5	305 996	+ 3,3	1 297 074	+ 21,8
Jun.	585 723	+ 8,4	207 030	- 38,9	251 004	- 14,5	1 043 757	- 11,0
Jul.	681 657	+ 71,7	273 139	+ 124,6	242 028	+ 3,7	1 196 824	+ 59,1
Aug.	740 221	+ 71,1	96 328	- 18,0	226 414	+ 4,9	1 062 963	+ 38,8
Sep.	820 510	+ 78,7	228 610	- 83,9	248 379	+ 47,0	1 297 499	- 36,6
Oct.	938 075	+ 41,8	178 099	- 36,8	293 977	+ 25,5	1 410 151	+ 19,7
Nov.	847 433	+ 38,8	294 710	+ 39,6	237 143	- 17,2	1 379 286	+ 24,5
Dec.	702 892	+ 51,2	366 760	+ 111,3	221 292	+ 76,9	1 290 944	+ 69,1
Total	8 426 160	+ 41,6	2 636 899	- 31,7	2 971 328	+ 7,1	14 034 387	+ 11,5
2003 Jan.	623 401	+ 6,8	154 538	+ 13,2	237 996	+ 34,7	1 015 935	+ 13,2
Feb.	696 496	+ 47,1	158 143	+ 14,7	288 062	+ 42,4	1 142 701	+ 40,4
Mar.	713 231	+ 0,7	316 020	+ 84,6	242 725	+ 37,9	1 271 976	+ 20,5
Apr.	688 059	+ 5,3	534 865	+ 117,6	248 988	- 36,2	1 471 912	+ 14,2
May	688 470	- 0,3	605 218	+ 101,2	310 203	+ 1,4	1 603 891	+ 23,7
Jun.	763 026	+ 30,3	170 636	- 17,6	303 112	+ 20,8	1 236 774	+ 18,5
Jul.	1 621 012	+ 137,8	191 080	- 30,0	335 931	+ 38,8	2 148 023	+ 79,5
Aug.	883 426	+ 19,3	151 866	+ 57,7	294 759	+ 30,2	1 330 051	+ 25,1
Sep.	802 515	- 2,2	179 081	- 21,7	271 100	+ 9,1	1 252 696	- 3,5
Oct.	866 838	- 7,6	189 368	+ 6,3	299 330	+ 1,8	1 355 536	- 3,9
Nov.	978 031	+ 15,4	222 723	- 24,4	287 138	+ 21,1	1 487 892	+ 7,9
Dec.	873 835	+ 24,3	182 358	- 50,3	243 158	+ 9,9	1 299 351	+ 0,7
Total	10 198 340	+ 21,0	3 055 896	+ 15,9	3 362 502	+ 13,2	16 616 738	+ 18,4
2004 Jan.	614 622	- 1,4	201 839	+ 30,6	262 328	+ 10,2	1 078 789	+ 6,2
Feb.	766 356	+ 10,0	231 958	+ 46,7	307 001	+ 6,6	1 305 315	+ 14,2
Mar.	922 238	+ 29,3	215 230	- 31,9	281 273	+ 15,9	1 418 741	+ 11,5
Apr.	851 281	+ 23,7	160 270	- 70,0	221 997	- 10,8	1 233 548	- 16,2
May	1 216 229	+ 76,7	320 550	- 47,0	309 243	- 0,3	1 846 022	+ 15,1
Jun.	1 075 320	+ 40,9	200 916	+ 17,7	319 287	+ 5,3	1 595 523	+ 29,0
Jul.	1 518 084	- 6,3	335 914	+ 75,8	357 166	+ 6,3	2 211 164	+ 2,9
Aug.	1 308 654	+ 48,1	514 650	+ 238,9	371 944	+ 26,2	2 195 248	+ 65,0
Sep. ³	1 173 026	+ 46,2	534 093	+ 198,2	329 172	+ 21,4	2 036 291	+ 62,6

¹ The annual percentage change is the change in the values of buildings reported as completed to municipalities of the relevant year compared with the values of buildings reported as completed to municipalities of the previous year expressed as a percentage.

² The monthly percentage change is the change in the values of buildings reported as completed to municipalities of the relevant month compared with the values of buildings reported as completed to municipalities of the same month in the previous year expressed as a percentage.

³ Preliminary figures.

Table 6 - Seasonally adjusted values and percentage change of buildings reported as completed to municipalities at current prices by type of building

Year and month ¹	Residential buildings		Non-residential buildings		Additions and alterations		Total	
	R'000	Percentage change	R'000	Percentage change	R'000	Percentage change	R'000	Percentage change
2002 Jan.	691 905	+ 32,4	172 379	+ 2,2	199 152	+ 15,7	1 063 436	+ 23,2
Feb.	538 839	- 22,1	162 306	- 5,8	192 378	- 3,4	893 523	- 16,0
Mar.	685 713	+ 27,3	187 582	+ 15,6	161 109	- 16,3	1 034 404	+ 15,8
Apr.	731 148	+ 6,6	273 507	+ 45,8	448 310	+ 178,3	1 452 965	+ 40,5
May	654 451	- 10,5	198 374	- 27,5	254 870	- 43,1	1 107 695	- 23,8
Jun.	638 039	- 2,5	228 853	+ 15,4	250 764	- 1,6	1 117 656	+ 0,9
Jul.	641 697	+ 0,6	221 847	- 3,1	220 151	- 12,2	1 083 695	- 3,0
Aug.	712 216	+ 11,0	114 769	- 48,3	221 066	+ 0,4	1 048 051	- 3,3
Sep.	785 631	+ 10,3	212 005	+ 84,7	265 971	+ 20,3	1 263 607	+ 20,6
Oct.	804 795	+ 2,4	195 029	- 8,0	266 099	+ 0,0	1 265 923	+ 0,2
Nov.	718 384	- 10,7	295 169	+ 51,3	234 131	- 12,0	1 247 684	- 1,4
Dec.	786 993	+ 9,6	346 534	+ 17,4	296 578	+ 26,7	1 430 105	+ 14,6
2003 Jan.	730 451	- 7,2	193 192	- 44,3	267 999	- 9,6	1 191 642	- 16,7
Feb.	805 682	+ 10,3	185 130	- 4,2	276 031	+ 3,0	1 266 843	+ 6,3
Mar.	699 247	- 13,2	338 792	+ 83,0	229 370	- 16,9	1 267 409	+ 0,0
Apr.	773 074	+ 10,6	590 026	+ 74,2	290 478	+ 26,6	1 653 578	+ 30,5
May	648 827	- 16,1	388 376	- 34,2	259 021	- 10,8	1 296 224	- 21,6
Jun.	832 888	+ 28,4	195 696	- 49,6	293 461	+ 13,3	1 322 045	+ 2,0
Jul.	1 490 233	+ 78,9	166 778	- 14,8	306 192	+ 4,3	1 963 203	+ 48,5
Aug.	849 258	- 43,0	180 256	+ 8,1	287 333	- 6,2	1 316 847	- 32,9
Sep.	790 207	- 7,0	166 057	- 7,9	288 494	+ 0,4	1 244 758	- 5,5
Oct.	733 576	- 7,2	205 745	+ 23,9	269 813	- 6,5	1 209 134	- 2,9
Nov.	830 351	+ 13,2	217 818	+ 5,9	284 823	+ 5,6	1 332 992	+ 10,2
Dec.	975 247	+ 17,4	169 900	- 22,0	321 709	+ 13,0	1 466 856	+ 10,0
2004 Jan.	715 104	- 26,7	256 839	+ 51,2	294 494	- 8,5	1 266 437	- 13,7
Feb.	894 478	+ 25,1	276 435	+ 7,6	294 636	+ 0,0	1 465 549	+ 15,7
Mar.	912 099	+ 2,0	224 703	- 18,7	272 912	- 7,4	1 409 714	- 3,8
Apr.	956 264	+ 4,8	172 956	- 23,0	259 325	- 5,0	1 388 545	- 1,5
May	1 153 673	+ 20,6	201 694	+ 16,6	260 587	+ 0,5	1 615 954	+ 16,4
Jun.	1 171 952	+ 1,6	231 319	+ 14,7	303 656	+ 16,5	1 706 927	+ 5,6
Jul.	1 374 487	+ 17,3	308 932	+ 33,6	324 140	+ 6,7	2 007 559	+ 17,6
Aug.	1 253 234	- 8,8	619 752	+ 100,6	361 607	+ 11,6	2 234 593	+ 11,3
Sep.	1 167 235	- 6,9	501 510	- 19,1	347 725	- 3,8	2 016 470	- 9,8

¹ The percentage change is the change in the seasonally adjusted values of buildings reported as completed to municipalities of the relevant month compared with the seasonally adjusted values of buildings reported as completed to municipalities of the previous month expressed as a percentage.

Table 7 - Values and percentage change of buildings reported as completed to municipalities at constant 2000 prices by type of building

Year ¹ and month ²	Residential buildings		Non-residential buildings		Additions and alterations		Total	
	R'000	Percentage change	R'000	Percentage change	R'000	Percentage change	R'000	Percentage change
2002 Jan.	549 418	- 16,6	136 026	- 49,0	169 523	- 18,8	854 967	- 24,6
Feb.	443 590	+ 27,8	136 318	- 53,7	193 160	- 32,9	773 068	- 12,5
Mar.	663 989	+ 12,2	169 030	- 20,2	167 351	- 42,2	1 000 370	- 10,3
Apr.	607 293	+ 51,3	240 718	- 21,9	368 075	- 10,1	1 216 086	+ 17,8
May	639 076	+ 24,7	293 499	- 58,1	287 051	- 43,2	1 219 626	- 19,6
Jun.	536 531	+ 3,9	201 195	- 60,6	235 022	- 42,5	972 748	- 26,8
Jul.	616 022	+ 3,9	262 130	+ 8,4	225 352	- 27,1	1 103 504	+ 15,4
Aug.	662 349	+ 43,4	92 004	+ 12,7	210 227	- 20,6	964 580	+ 14,0
Sep.	732 084	+ 32,1	217 310	- 90,6	230 194	+ 1,7	1 179 588	- 58,4
Oct.	820 069	+ 24,9	168 018	- 52,5	271 949	- 26,1	1 260 036	- 25,5
Nov.	734 664	- 13,0	276 463	- 36,0	218 163	- 39,3	1 229 290	- 20,2
Dec.	603 604	- 5,3	343 408	- 21,9	201 725	+ 39,5	1 148 737	+ 16,5
Total	7 608 689	+ 31,2	2 536 119	- 35,7	2 777 792	- 0,1	12 922 600	+ 3,2
2003 Jan.	531 864	- 3,2	143 890	+ 5,8	212 877	+ 25,6	888 631	+ 3,9
Feb.	583 100	+ 31,5	146 837	+ 7,7	252 686	+ 30,8	982 623	+ 27,1
Mar.	590 702	- 11,0	292 882	+ 73,3	211 987	+ 26,7	1 095 571	+ 9,5
Apr.	563 927	- 7,1	494 787	+ 105,5	214 091	- 41,8	1 272 805	+ 4,7
May	558 827	- 12,6	556 778	+ 89,7	263 107	- 8,3	1 378 712	+ 13,0
Jun.	620 508	+ 15,7	155 548	- 22,7	255 575	+ 8,7	1 031 631	+ 6,1
Jul.	1 315 349	+ 113,5	170 912	- 34,8	278 550	+ 23,6	1 764 811	+ 59,9
Aug.	701 270	+ 5,9	133 216	+ 44,8	241 606	+ 14,9	1 076 092	+ 11,6
Sep.	633 840	- 13,4	156 403	- 28,0	221 126	- 3,9	1 011 369	- 14,3
Oct.	677 693	- 17,4	162 827	- 3,1	241 590	- 11,2	1 082 110	- 14,1
Nov.	766 799	+ 4,4	188 908	- 31,7	230 448	+ 5,6	1 186 155	- 3,5
Dec.	683 334	+ 13,2	153 759	- 55,2	194 371	- 3,6	1 031 464	- 10,2
Total	8 227 213	+ 8,1	2 756 747	+ 8,7	2 818 014	+ 1,4	13 801 974	+ 6,8
2004 Jan.	476 960	- 10,3	167 362	+ 16,3	206 557	- 3,0	850 879	- 4,2
Feb.	593 329	+ 1,8	190 130	+ 29,5	240 220	- 4,9	1 023 679	+ 4,2
Mar.	713 782	+ 20,8	175 555	- 40,1	219 231	+ 3,4	1 108 568	+ 1,2
Apr.	658 428	+ 16,8	129 354	- 73,9	172 091	- 19,6	959 873	- 24,6
May	941 614	+ 68,5	257 263	- 53,8	239 538	- 9,0	1 438 415	+ 4,3
Jun.	831 926	+ 34,1	160 604	+ 3,3	246 744	- 3,5	1 239 274	+ 20,1
Jul.	1 168 742	- 11,1	264 499	+ 54,8	275 804	- 1,0	1 709 045	- 3,2
Aug.	998 650	+ 42,4	402 700	+ 202,3	286 994	+ 18,8	1 688 344	+ 56,9
Sep.	889 776	+ 40,4	416 284	+ 166,2	254 187	+ 15,0	1 560 247	+ 54,3

¹ The annual percentage change is the change in the values of buildings reported as completed to municipalities of the relevant year compared with the values of buildings reported as completed to municipalities of the previous year expressed as a percentage.

² The monthly percentage change is the change in the values of buildings reported as completed to municipalities of the relevant month compared with the values of buildings reported as completed to municipalities of the same month in the previous year expressed as a percentage.

Table 8 - Seasonally adjusted values and percentage change of buildings reported as completed to municipalities at constant 2000 prices by type of building

Year and month ¹	Residential buildings		Non-residential buildings		Additions and alterations		Total	
	R'000	Percentage change	R'000	Percentage change	R'000	Percentage change	R'000	Percentage change
2002 Jan.	650 096	+ 31,6	171 751	+ 1,7	190 521	+ 14,5	1 012 368	+ 22,1
Feb.	505 987	- 22,2	160 545	- 6,5	183 766	- 3,5	850 298	- 16,0
Mar.	642 083	+ 26,9	184 664	+ 15,0	152 788	- 16,9	979 535	+ 15,2
Apr.	679 353	+ 5,8	267 990	+ 45,1	423 311	+ 177,1	1 370 654	+ 39,9
May	604 065	- 11,1	192 809	- 28,1	240 308	- 43,2	1 037 182	- 24,3
Jun.	581 657	- 3,7	221 157	+ 14,7	235 506	- 2,0	1 038 320	+ 0,1
Jul.	577 524	- 0,7	214 540	- 3,0	205 372	- 12,8	997 436	- 3,9
Aug.	638 233	+ 10,5	110 939	- 48,3	205 620	+ 0,1	954 792	- 4,3
Sep.	700 797	+ 9,8	200 966	+ 81,2	246 138	+ 19,7	1 147 901	+ 20,2
Oct.	707 764	+ 1,0	183 822	- 8,5	245 738	- 0,2	1 137 324	- 0,9
Nov.	623 827	- 11,9	276 628	+ 50,5	214 735	- 12,6	1 115 190	- 1,9
Dec.	678 627	+ 8,8	323 946	+ 17,1	268 851	+ 25,2	1 271 424	+ 14,0
2003 Jan.	622 062	- 8,3	180 098	- 44,4	239 264	- 11,0	1 041 424	- 18,1
Feb.	676 020	+ 8,7	172 032	- 4,5	242 426	+ 1,3	1 090 478	+ 4,7
Mar.	578 287	- 14,5	313 061	+ 82,0	200 042	- 17,5	1 091 390	+ 0,1
Apr.	633 209	+ 9,5	546 007	+ 74,4	250 275	+ 25,1	1 429 491	+ 31,0
May	524 362	- 17,2	355 740	- 34,8	220 593	- 11,9	1 100 695	- 23,0
Jun.	673 664	+ 28,5	177 246	- 50,2	247 901	+ 12,4	1 098 811	- 0,2
Jul.	1 204 829	+ 78,8	150 081	- 15,3	254 474	+ 2,7	1 609 384	+ 46,5
Aug.	675 415	- 43,9	160 185	+ 6,7	235 893	- 7,3	1 071 493	- 33,4
Sep.	624 475	- 7,5	144 796	- 9,6	234 844	- 0,4	1 004 115	- 6,3
Oct.	577 306	- 7,6	176 663	+ 22,0	217 344	- 7,5	971 313	- 3,3
Nov.	651 995	+ 12,9	184 955	+ 4,7	227 805	+ 4,8	1 064 755	+ 9,6
Dec.	766 049	+ 17,5	143 035	- 22,7	255 637	+ 12,2	1 164 721	+ 9,4
2004 Jan.	553 739	- 27,7	213 280	+ 49,1	231 650	- 9,4	998 669	- 14,3
Feb.	694 058	+ 25,3	226 777	+ 6,3	230 962	- 0,3	1 151 797	+ 15,3
Mar.	704 844	+ 1,6	182 667	- 19,5	212 491	- 8,0	1 100 002	- 4,5
Apr.	739 044	+ 4,9	139 653	- 23,5	201 522	- 5,2	1 080 219	- 1,8
May	888 573	+ 20,2	161 137	+ 15,4	202 551	+ 0,5	1 252 261	+ 15,9
Jun.	901 247	+ 1,4	183 703	+ 14,0	235 043	+ 16,0	1 319 993	+ 5,4
Jul.	1 054 817	+ 17,0	244 329	+ 33,0	250 873	+ 6,7	1 550 019	+ 17,4
Aug.	958 692	- 9,1	491 861	+ 101,3	279 465	+ 11,4	1 730 018	+ 11,6
Sep.	886 189	- 7,6	390 665	- 20,6	267 928	- 4,1	1 544 782	- 10,7

¹ The percentage change is the change in the seasonally adjusted values of buildings reported as completed to municipalities of the relevant month compared with the seasonally adjusted values of buildings reported as completed to municipalities of the previous month expressed as a percentage.

Table 9 - Recorded building plans passed by municipalities by type of building: South Africa

Type of building	September 2003 *	August 2004	September 2004	January 2003 to September 2003	January 2004 to September 2004	Percentage change between January 2003 to September 2003 and January 2004 to September 2004
Residential buildings						
Dwelling-houses smaller than 80 square metres						
Number of dwelling-houses	3 072	3 371	2 420	33 637	25 795	- 23,3
Total square metres	124 474	137 303	106 434	1 281 759	1 075 612	- 16,1
Total value at current prices (R'000)	122 347	129 125	111 879	1 099 828	1 066 490	- 3,0
Dwelling-houses equal to or larger than 80 square metres						
Number of dwelling-houses	2 413	3 006	3 051	18 418	23 547	+ 27,8
Total square metres	564 762	758 748	697 169	4 363 554	5 537 977	+ 26,9
Total value at current prices (R'000)	1 154 128	1 635 419	1 485 570	8 045 113	11 473 553	+ 42,6
Flats and townhouses						
Number of flats and townhouses	1 558	2 371	2 365	11 722	17 041	+ 45,4
Total square metres	240 896	349 519	347 760	1 773 937	2 499 665	+ 40,9
Total value at current prices (R'000)	452 084	816 329	763 060	3 493 893	5 407 286	+ 54,8
Other residential buildings ¹						
Total square metres	6 373	9 429	17 250	93 619	108 444	+ 15,8
Total value at current prices (R'000)	16 817	19 895	35 817	173 207	305 472	+ 76,4
Total value of residential buildings at current prices (R'000)	1 745 376	2 600 768	2 396 326	12 812 041	18 252 801	+ 42,5
Non-residential buildings						
Office and banking space						
Total square metres	27 047	81 547	38 225	322 675	353 470	+ 9,5
Total value at current prices (R'000)	53 914	175 304	73 896	648 243	739 053	+ 14,0
Shopping space						
Total square metres	110 939	118 390	84 361	532 612	591 269	+ 11,0
Total value at current prices (R'000)	242 677	287 737	217 903	1 323 460	1 390 987	+ 5,1
Industrial and warehouse space						
Total square metres	76 918	141 816	109 957	728 680	926 513	+ 27,1
Total value at current prices (R'000)	131 399	259 462	204 567	1 184 673	1 626 223	+ 37,3
Other non-residential space ²						
Total square metres	24 408	35 769	37 827	251 490	290 105	+ 15,4
Total value at current prices (R'000)	46 177	76 166	90 929	450 703	571 900	+ 26,9
Total value of non-residential buildings at current prices (R'000)	474 167	798 669	587 295	3 607 079	4 328 163	+ 20,0
Additions and alterations						
Dwelling-houses						
Total square metres	302 008	383 056	402 430	2 566 717	3 101 656	+ 20,8
Total value at current prices (R'000)	528 217	746 193	837 180	4 119 282	5 749 453	+ 39,6
Other buildings ³						
Total square metres	74 016	118 948	135 984	963 320	942 853	- 2,1
Total value at current prices (R'000)	168 989	406 507	222 321	2 027 246	2 241 982	+ 10,6
Total value of additions and alterations at current prices (R'000)	697 206	1 152 700	1 059 501	6 146 528	7 991 435	+ 30,0
Total value of recorded building plans passed at current prices (R'000)	2 916 749	4 552 137	4 043 122	22 565 648	30 572 399	+ 35,5

¹ Other residential buildings include institutions for the disabled, boarding houses, old people's homes, hostels, hotels, motels, guest houses, holiday chalets, entertainment centres, bed-and-breakfast accommodation and casinos.

² Other non-residential space includes churches, sport and recreation clubs, schools, crèches, hospitals and all other non-residential space.

³ Other buildings include additions and alterations to other residential buildings, non-residential buildings and internal alterations.

* Revised.

Table 10 - Recorded building plans passed by municipalities by type of building and province: Western Cape

Type of building	September 2003 *	August 2004	September 2004	January 2003 to September 2003	January 2004 to September 2004	Percentage change between January 2003 to September 2003 and January 2004 to September 2004
Residential buildings						
Dwelling-houses smaller than 80 square metres						
Number of dwelling-houses	650	634	832	4 276	4 437	+ 3,8
Total square metres	26 583	27 780	34 685	178 978	197 987	+ 10,6
Total value at current prices (R'000)	30 600	24 664	30 341	214 134	232 448	+ 8,6
Dwelling-houses equal to or larger than 80 square metres						
Number of dwelling-houses	672	895	771	5 723	7 292	+ 27,4
Total square metres	162 014	222 702	182 126	1 307 838	1 709 586	+ 30,7
Total value at current prices (R'000)	320 698	492 355	386 991	2 401 725	3 728 519	+ 55,2
Flats and townhouses						
Number of flats and townhouses	345	804	358	3 133	5 774	+ 84,3
Total square metres	38 915	88 546	48 233	366 106	688 945	+ 88,2
Total value at current prices (R'000)	83 099	183 660	98 410	703 976	1 514 946	+ 115,2
Other residential buildings ¹						
Total square metres	4 195	5 486	3 883	15 420	47 219	+ 206,2
Total value at current prices (R'000)	12 585	11 734	8 954	30 335	167 519	+452,2
Total value of residential buildings at current prices (R'000)	446 982	712 413	524 696	3 350 170	5 643 432	+ 68,5
Non-residential buildings						
Office and banking space						
Total square metres	4 780	2 185	25 563	85 276	115 382	+ 35,3
Total value at current prices (R'000)	9 309	5 813	45 183	177 448	230 431	+ 29,9
Shopping space						
Total square metres	13 766	59 494	3 098	86 237	207 570	+ 140,7
Total value at current prices (R'000)	52 015	156 641	6 497	144 744	472 582	+ 226,5
Industrial and warehouse space						
Total square metres	22 814	61 464	31 992	196 370	303 071	+ 54,3
Total value at current prices (R'000)	35 469	100 447	51 471	278 900	461 415	+ 65,4
Other non-residential space ²						
Total square metres	2 649	6 036	4 358	54 757	51 596	- 5,8
Total value at current prices (R'000)	5 717	12 781	8 636	84 967	110 153	+ 29,6
Total value of non-residential buildings at current prices (R'000)	102 510	275 682	111 787	686 059	1 274 581	+ 85,8
Additions and alterations						
Dwelling-houses						
Total square metres	86 430	112 024	131 324	746 462	929 194	+ 24,5
Total value at current prices (R'000)	149 375	210 636	251 040	1 168 360	1 739 941	+ 48,9
Other buildings ³						
Total square metres	22 002	28 724	53 651	298 262	312 542	+ 4,8
Total value at current prices (R'000)	58 900	99 765	81 157	619 578	708 549	+ 14,4
Total value of additions and alterations at current prices (R'000)	208 275	310 401	332 197	1 787 938	2 448 490	+ 36,9
Total value of recorded building plans passed at current prices (R'000)	757 767	1 298 496	968 680	5 824 167	9 366 503	+ 60,8

¹ Other residential buildings include institutions for the disabled, boarding houses, old people's homes, hostels, hotels, motels, guest houses, holiday chalets, entertainment centres, bed-and-breakfast accommodation and casinos.

² Other non-residential space includes churches, sport and recreation clubs, schools, crèches, hospitals and all other non-residential space.

³ Other buildings include additions and alterations to other residential buildings, non-residential buildings and internal alterations.

* Revised.

Table 11 - Recorded building plans passed by municipalities by type of building and province: Eastern Cape

Type of building	September 2003*	August 2004	September 2004	January 2003 to September 2003	January 2004 to September 2004	Percentage change between January 2003 to September 2003 and January 2004 to September 2004
Residential buildings						
Dwelling-houses smaller than 80 square metres						
Number of dwelling-houses	963	349	362	4 522	3 889	-14,0
Total square metres	39 168	14 886	16 095	189 205	162 556	-14,1
Total value at current prices (R'000)	25 771	18 369	11 718	166 260	149 630	-10,0
Dwelling-houses equal to or larger than 80 square metres						
Number of dwelling-houses	142	171	188	1 004	1 383	+ 37,7
Total square metres	30 474	35 625	31 543	194 701	266 644	+ 37,0
Total value at current prices (R'000)	54 424	65 766	68 122	333 580	485 187	+ 45,4
Flats and townhouses						
Number of flats and townhouses	8	18	42	112	366	+ 226,8
Total square metres	1 533	5 068	5 138	20 333	75 310	+ 270,4
Total value at current prices (R'000)	2 427	12 844	12 283	35 184	146 619	+ 316,7
Other residential buildings ¹						
Total square metres	815	62	417	5 344	2 198	-58,9
Total value at current prices (R'000)	1 660	144	874	9 230	4 339	-53,0
Total value of residential buildings at current prices (R'000)	84 282	97 123	92 997	544 254	785 775	+ 44,4
Non-residential buildings						
Office and banking space						
Total square metres	2 410	6 043	0	12 185	8 678	-28,8
Total value at current prices (R'000)	4 584	6 150	0	23 339	11 554	-50,5
Shopping space						
Total square metres	0	757	18 813	7 825	31 311	+ 300,1
Total value at current prices (R'000)	0	1 670	40 881	11 351	64 622	+ 469,3
Industrial and warehouse space						
Total square metres	2 841	10 277	3 625	21 385	61 450	+ 187,4
Total value at current prices (R'000)	5 831	21 554	6 018	35 809	76 341	+ 113,2
Other non-residential space ²						
Total square metres	2 989	6 053	4 932	11 873	19 701	+ 65,9
Total value at current prices (R'000)	5 239	12 145	11 382	21 692	42 040	+ 93,8
Total value of non-residential buildings at current prices (R'000)	15 654	41 519	58 281	92 191	194 557	+ 111,0
Additions and alterations						
Dwelling-houses						
Total square metres	15 221	35 982	30 213	193 302	283 439	+ 46,6
Total value at current prices (R'000)	26 405	79 665	74 125	308 403	524 896	+ 70,2
Other buildings ³						
Total square metres	1 992	2 446	8 284	55 446	62 719	+ 13,1
Total value at current prices (R'000)	4 459	14 563	16 290	130 147	145 884	+ 12,1
Total value of additions and alterations at current prices (R'000)	30 864	94 228	90 415	438 550	670 780	+ 53,0
Total value of recorded building plans passed at current prices (R'000)	130 800	232 870	241 693	1 074 995	1 651 112	+ 53,6

¹ Other residential buildings include institutions for the disabled, boarding houses, old people's homes, hostels, hotels, motels, guest houses, holiday chalets, entertainment centres, bed-and-breakfast accommodation and casinos.

² Other non-residential space includes churches, sport and recreation clubs, schools, crèches, hospitals and all other non-residential space.

³ Other buildings include additions and alterations to other residential buildings, non-residential buildings and internal alterations.

* Revised.

Table 12 - Recorded building plans passed by municipalities by type of building and province: Northern Cape

Type of building	September 2003	August 2004	September 2004	January 2003 to September 2003	January 2004 to September 2004	Percentage change between January 2003 to September 2003 and January 2004 to September 2004
Residential buildings						
Dwelling-houses smaller than 80 square metres						
Number of dwelling-houses	3	237	4	18	342	+ 1800,0
Total square metres	149	9 765	233	748	14 365	+ 1820,5
Total value at current prices (R'000)	186	6 084	452	1 110	12 432	+ 1020,0
Dwelling-houses equal to or larger than 80 square metres						
Number of dwelling-houses	12	26	31	87	188	+ 116,1
Total square metres	2 153	5 470	6 598	15 674	37 730	+ 140,7
Total value at current prices (R'000)	3 462	9 687	11 637	24 371	66 418	+ 172,5
Flats and townhouses						
Number of flats and townhouses	0	14	7	49	139	+ 183,7
Total square metres	0	2 125	1 272	6 280	20 892	+ 232,7
Total value at current prices (R'000)	0	3 825	2 289	10 702	37 531	+ 250,7
Other residential buildings ¹						
Total square metres	0	0	0	0	1 299	..
Total value at current prices (R'000)	0	0	0	0	2 338	..
Total value of residential buildings at current prices (R'000)	3 648	19 596	14 378	36 183	118 719	+ 228,1
Non-residential buildings						
Office and banking space						
Total square metres	36	0	0	3 159	403	- 87,2
Total value at current prices (R'000)	54	0	0	4 739	605	- 87,2
Shopping space						
Total square metres	0	880	0	3 397	8 630	+ 154,0
Total value at current prices (R'000)	0	1 320	0	6 965	16 881	+ 142,4
Industrial and warehouse space						
Total square metres	4 879	29	0	7 851	2 483	- 68,4
Total value at current prices (R'000)	5 419	64	0	10 744	4 729	- 56,0
Other non-residential space ²						
Total square metres	623	1 882	100	1 134	2 798	+ 146,7
Total value at current prices (R'000)	1 371	3 955	180	2 242	5 603	+ 149,9
Total value of non-residential buildings at current prices (R'000)	6 844	5 339	180	24 690	27 818	+ 12,7
Additions and alterations						
Dwelling-houses						
Total square metres	3 427	2 033	4 221	24 557	33 377	+ 35,9
Total value at current prices (R'000)	6 573	3 724	7 253	44 309	58 560	+ 32,2
Other buildings ³						
Total square metres	1 152	35	1 683	4 113	4 995	+ 21,4
Total value at current prices (R'000)	2 794	213	3 864	11 491	13 138	+ 14,3
Total value of additions and alterations at current prices (R'000)	9 367	3 937	11 117	55 800	71 698	+ 28,5
Total value of recorded building plans passed at current prices (R'000)	19 859	28 872	25 675	116 673	218 235	+ 87,0

¹ Other residential buildings include institutions for the disabled, boarding houses, old people's homes, hostels, hotels, motels, guest houses, holiday chalets, entertainment centres, bed-and-breakfast accommodation and casinos.

² Other non-residential space includes churches, sport and recreation clubs, schools, crèches, hospitals and all other non-residential space.

³ Other buildings include additions and alterations to other residential buildings, non-residential buildings and internal alterations.

Table 13 - Recorded building plans passed by municipalities by type of building and province: Free State

Type of building	September 2003	August 2004	September 2004	January 2003 to September 2003	January 2004 to September 2004	Percentage change between January 2003 to September 2003 and January 2004 to September 2004
Residential buildings						
Dwelling-houses smaller than 80 square metres						
Number of dwelling-houses	159	764	53	2 754	3 475	+ 26,2
Total square metres	7 035	32 443	2 717	108 845	145 250	+ 33,4
Total value at current prices (R'000)	4 829	18 191	3 020	64 384	88 385	+ 37,3
Dwelling-houses equal to or larger than 80 square metres						
Number of dwelling-houses	64	104	94	658	774	+ 17,6
Total square metres	11 592	19 010	16 416	110 393	129 686	+ 17,5
Total value at current prices (R'000)	16 365	35 418	25 665	156 965	219 575	+ 39,9
Flats and townhouses						
Number of flats and townhouses	222	30	192	421	837	+ 98,8
Total square metres	19 101	3 291	16 378	41 786	91 202	+ 118,3
Total value at current prices (R'000)	29 686	6 501	30 159	62 522	161 292	+ 158,0
Other residential buildings ¹						
Total square metres	73	2 322	1 549	1 027	9 057	+ 781,9
Total value at current prices (R'000)	90	4 279	3 100	1 200	17 229	+ 1 335,8
Total value of residential buildings at current prices (R'000)	50 970	64 389	61 944	285 071	486 481	+ 70,7
Non-residential buildings						
Office and banking space						
Total square metres	1 261	1 603	0	8 438	9 263	+ 9,8
Total value at current prices (R'000)	2 522	1 980	0	13 836	16 439	+ 18,8
Shopping space						
Total square metres	279	1 985	126	21 895	4 610	-78,9
Total value at current prices (R'000)	546	3 840	203	36 725	8 587	-76,6
Industrial and warehouse space						
Total square metres	119	3 101	3 273	14 967	11 529	-23,0
Total value at current prices (R'000)	72	2 663	3 682	9 463	12 353	+ 30,5
Other non-residential space ²						
Total square metres	1 468	150	1 109	12 802	4 305	-66,4
Total value at current prices (R'000)	2 395	150	1 543	19 407	6 475	-66,6
Total value of non-residential buildings at current prices (R'000)	5 535	8 633	5 428	79 431	43 854	-44,8
Additions and alterations						
Dwelling-houses						
Total square metres	9 280	14 156	15 005	81 290	106 624	+ 31,2
Total value at current prices (R'000)	11 497	21 835	21 823	100 239	149 489	+ 49,1
Other buildings ³						
Total square metres	1 421	5 983	2 790	28 805	29 611	+ 2,8
Total value at current prices (R'000)	5 563	13 575	5 334	91 069	67 777	-25,6
Total value of additions and alterations at current prices (R'000)	17 060	35 410	27 157	191 308	217 266	+ 13,6
Total value of recorded building plans passed at current prices (R'000)	73 565	108 432	94 529	555 810	747 601	+ 34,5

¹ Other residential buildings include institutions for the disabled, boarding houses, old people's homes, hostels, hotels, motels, guest houses, holiday chalets, entertainment centres, bed-and-breakfast accommodation and casinos.

² Other non-residential space includes churches, sport and recreation clubs, schools, crèches, hospitals and all other non-residential space.

³ Other buildings include additions and alterations to other residential buildings, non-residential buildings and internal alterations.

Table 14 - Recorded building plans passed by municipalities by type of building and province: KwaZulu-Natal

Type of building	September 2003	August 2004	September 2004	January 2003 to September 2003	January 2004 to September 2004	Percentage change between January 2003 to September 2003 and January 2004 to September 2004
Residential buildings						
Dwelling-houses smaller than 80 square metres						
Number of dwelling-houses	794	388	305	9 354	3 726	- 60,2
Total square metres	26 284	12 165	11 424	324 930	129 116	- 60,3
Total value at current prices (R'000)	19 443	11 204	12 341	192 835	117 328	- 39,2
Dwelling-houses equal to or larger than 80 square metres						
Number of dwelling-houses	200	213	204	1 652	1 976	+ 19,6
Total square metres	43 534	51 545	45 096	391 446	453 247	+ 15,8
Total value at current prices (R'000)	79 119	105 953	84 682	724 904	902 269	+ 24,5
Flats and townhouses						
Number of flats and townhouses	130	450	224	1 579	1 988	+ 25,9
Total square metres	36 357	64 595	56 364	259 325	367 082	+ 41,6
Total value at current prices (R'000)	68 854	172 794	143 082	623 860	883 170	+ 41,6
Other residential buildings ¹						
Total square metres	800	43	104	17 595	16 003	- 9,0
Total value at current prices (R'000)	1 600	65	156	41 767	41 161	- 1,5
Total value of residential buildings at current prices (R'000)	169 016	290 016	240 261	1 583 366	1 943 928	+ 22,8
Non-residential buildings						
Office and banking space						
Total square metres	754	26 852	562	22 578	54 004	+ 139,2
Total value at current prices (R'000)	1 474	59 880	1 026	53 622	121 426	+ 126,4
Shopping space						
Total square metres	7 559	3 251	11 112	103 913	45 881	- 55,8
Total value at current prices (R'000)	16 345	7 198	37 600	579 605	190 467	- 67,1
Industrial and warehouse space						
Total square metres	5 022	28 812	15 481	101 185	143 992	+ 42,3
Total value at current prices (R'000)	5 589	41 661	24 455	120 159	267 557	+ 122,7
Other non-residential space ²						
Total square metres	2 084	7 326	6 947	27 312	32 341	+ 18,4
Total value at current prices (R'000)	3 409	15 991	24 322	49 146	73 057	+ 48,7
Total value of non-residential buildings at current prices (R'000)	26 817	124 730	87 403	802 532	652 507	- 18,7
Additions and alterations						
Dwelling-houses						
Total square metres	43 717	53 976	48 939	385 732	445 843	+ 15,6
Total value at current prices (R'000)	69 139	91 910	119 015	550 469	787 298	+ 43,0
Other buildings ³						
Total square metres	21 292	40 228	9 260	162 075	138 704	- 14,4
Total value at current prices (R'000)	44 317	179 159	23 636	330 384	392 767	+ 18,9
Total value of additions and alterations at current prices (R'000)	113 456	271 069	142 651	880 853	1 180 065	+ 34,0
Total value of recorded building plans passed at current prices (R'000)	309 289	685 815	470 315	3 266 751	3 776 500	+ 15,6

¹ Other residential buildings include institutions for the disabled, boarding houses, old people's homes, hostels, hotels, motels, guest houses, holiday chalets, entertainment centres, bed-and-breakfast accommodation and casinos.

² Other non-residential space includes churches, sport and recreation clubs, schools, crèches, hospitals and all other non-residential space.

³ Other buildings include additions and alterations to other residential buildings, non-residential buildings and internal alterations.

Table 15 - Recorded building plans passed by municipalities by type of building and province: North West

Type of building	September 2003	August 2004	September 2004	January 2003 to September 2003	January 2004 to September 2004	Percentage change between January 2003 to September 2003 and January 2004 to September 2004
Residential buildings						
Dwelling-houses smaller than 80 square metres						
Number of dwelling-houses	57	26	49	3 631	533	- 85,3
Total square metres	3 093	1 411	2 928	117 709	26 911	- 77,1
Total value at current prices (R'000)	3 574	1 716	3 604	71 869	32 412	- 54,9
Dwelling-houses equal to or larger than 80 square metres						
Number of dwelling-houses	117	144	167	863	1 303	+ 51,0
Total square metres	22 582	26 628	29 370	171 550	243 136	+ 41,7
Total value at current prices (R'000)	35 358	49 216	54 465	271 555	427 077	+ 57,3
Flats and townhouses						
Number of flats and townhouses	45	13	126	587	550	- 6,3
Total square metres	4 237	1 626	12 807	50 326	58 449	+ 16,1
Total value at current prices (R'000)	7 142	2 716	29 034	86 332	112 991	+ 30,9
Other residential buildings ¹						
Total square metres	0	0	517	9 676	6 133	- 36,6
Total value at current prices (R'000)	0	0	556	15 033	15 877	+ 5,6
Total value of residential buildings at current prices (R'000)	46 074	53 648	87 659	444 789	588 357	+ 32,3
Non-residential buildings						
Office and banking space						
Total square metres	1 558	1 855	0	7 195	6 919	-3,8
Total value at current prices (R'000)	3 003	3 710	0	14 549	14 864	+ 2,2
Shopping space						
Total square metres	1 111	6 841	22 369	11 403	55 012	+ 382,4
Total value at current prices (R'000)	991	14 034	73 838	22 006	146 221	+ 564,5
Industrial and warehouse space						
Total square metres	1 992	2 008	4 468	22 803	21 755	- 4,6
Total value at current prices (R'000)	2 009	9 880	9 027	29 172	35 634	+ 22,2
Other non-residential space ²						
Total square metres	310	180	266	20 751	8 689	- 58,1
Total value at current prices (R'000)	466	360	500	38 985	18 396	- 52,8
Total value of non-residential buildings at current prices (R'000)	6 469	27 984	83 365	104 712	215 115	+ 105,4
Additions and alterations						
Dwelling-houses						
Total square metres	8 805	8 691	13 004	75 781	90 553	+ 19,5
Total value at current prices (R'000)	12 048	12 411	21 869	105 199	137 271	+ 30,5
Other buildings ³						
Total square metres	3 224	1 691	1 224	17 885	26 936	+ 50,6
Total value at current prices (R'000)	6 340	3 813	2 765	28 905	46 394	+ 60,5
Total value of additions and alterations at current prices (R'000)	18 388	16 224	24 634	134 104	183 665	+ 37,0
Total value of recorded building plans passed at current prices (R'000)	70 931	97 856	195 658	683 605	987 137	+ 44,4

¹ Other residential buildings include institutions for the disabled, boarding houses, old people's homes, hostels, hotels, motels, guest houses, holiday chalets, entertainment centres, bed-and-breakfast accommodation and casinos.

² Other non-residential space includes churches, sport and recreation clubs, schools, crèches, hospitals and all other non-residential space.

³ Other buildings include additions and alterations to other residential buildings, non-residential buildings and internal alterations.

Table 16 - Recorded building plans passed by municipalities by type of building and province: Gauteng

Type of building	September 2003 *	August 2004	September 2004	January 2003 to September 2003	January 2004 to September 2004	Percentage change between January 2003 to September 2003 and January 2004 to September 2004
Residential buildings						
Dwelling-houses smaller than 80 square metres						
Number of dwelling-houses	381	866	724	7 903	7 578	- 4,1
Total square metres	18 681	33 102	33 364	306 204	314 236	+ 2,6
Total value at current prices (R'000)	33 133	41 410	42 051	337 936	361 749	+ 7,0
Dwelling-houses equal to or larger than 80 square metres						
Number of dwelling-houses	1 042	1 213	1 327	6 854	8 862	+ 29,3
Total square metres	257 551	344 205	326 119	1 849 620	2 329 526	+ 25,9
Total value at current prices (R'000)	595 335	783 747	751 502	3 681 806	5 047 945	+ 37,1
Flats and townhouses						
Number of flats and townhouses	775	951	1 331	5 608	6 567	+ 17,1
Total square metres	135 711	170 770	194 538	1 001 552	1 095 554	+ 9,4
Total value at current prices (R'000)	254 739	415 819	429 635	1 932 893	2 413 656	+ 24,9
Other residential buildings ¹						
Total square metres	490	1 279	10 780	42 280	21 817	- 48,4
Total value at current prices (R'000)	882	3 198	22 177	71 692	44 682	- 37,7
Total value of residential buildings at current prices (R'000)	884 089	1 244 174	1 245 365	6 024 327	7 868 032	+ 30,6
Non-residential buildings						
Office and banking space						
Total square metres	15 124	36 812	10 932	163 564	138 461	- 15,3
Total value at current prices (R'000)	30 883	84 374	26 140	321 492	303 936	- 5,5
Shopping space						
Total square metres	83 554	28 398	20 455	227 111	151 396	- 33,3
Total value at current prices (R'000)	165 482	71 625	42 582	393 760	338 254	- 14,1
Industrial and warehouse space						
Total square metres	38 405	34 868	47 906	321 242	351 530	+ 9,4
Total value at current prices (R'000)	75 741	80 428	104 998	645 095	723 971	+ 12,2
Other non-residential space ²						
Total square metres	9 847	13 668	17 661	109 165	154 031	+ 41,1
Total value at current prices (R'000)	18 860	30 070	41 919	211 446	288 969	+ 36,7
Total value of non-residential buildings at current prices (R'000)	290 966	266 497	215 639	1 571 793	1 655 130	+ 5,3
Additions and alterations						
Dwelling-houses						
Total square metres	116 893	133 088	140 637	908 907	1 029 662	+ 13,3
Total value at current prices (R'000)	231 797	301 788	316 045	1 652 830	2 122 887	+ 28,4
Other buildings ³						
Total square metres	17 594	35 523	52 750	358 985	319 507	- 11,0
Total value at current prices (R'000)	37 115	88 924	78 957	754 586	789 410	+ 4,6
Total value of additions and alterations at current prices (R'000)	268 912	390 712	395 002	2 407 416	2 912 297	+ 21,0
Total value of recorded building plans passed at current prices (R'000)	1 443 967	1 901 383	1 856 006	10 003 536	12 435 459	+ 24,3

¹ Other residential buildings include institutions for the disabled, boarding houses, old people's homes, hostels, hotels, motels, guest houses, holiday chalets, entertainment centres, bed-and-breakfast accommodation and casinos.

² Other non-residential space includes churches, sport and recreation clubs, schools, crèches, hospitals and all other non-residential space.

³ Other buildings include additions and alterations to other residential buildings, non-residential buildings and internal alterations.

* Revised.

Table 17 - Recorded building plans passed by municipalities by type of building and province: Mpumalanga

Type of building	September 2003	August 2004	September 2004	January 2003 to September 2003	January 2004 to September 2004	Percentage change between January 2003 to September 2003 and January 2004 to September 2004
Residential buildings						
Dwelling-houses smaller than 80 square metres						
Number of dwelling-houses	38	72	69	655	774	+ 18,2
Total square metres	1 862	3 563	3 645	29 562	37 618	+ 27,3
Total value at current prices (R'000)	2 385	2 981	5 483	26 205	31 919	+ 21,8
Dwelling-houses equal to or larger than 80 square metres						
Number of dwelling-houses	115	159	207	1 076	1 183	+ 9,9
Total square metres	25 783	33 211	43 973	229 695	245 299	+ 6,8
Total value at current prices (R'000)	36 067	50 958	70 035	318 743	371 371	+ 16,5
Flats and townhouses						
Number of flats and townhouses	13	75	75	118	503	+ 326,3
Total square metres	2 795	11 459	11 784	15 273	69 071	+ 352,2
Total value at current prices (R'000)	2 991	15 316	16 174	19 986	89 529	+348,0
Other residential buildings ¹						
Total square metres	0	237	0	2 277	4 386	+ 92,6
Total value at current prices (R'000)	0	475	0	3 950	11 729	+ 196,9
Total value of residential buildings at current prices (R'000)	41 443	69 730	91 692	368 884	504 548	+ 36,8
Non-residential buildings						
Office and banking space						
Total square metres	1 124	225	1 168	8 656	5 383	- 37,8
Total value at current prices (R'000)	2 085	259	1 547	14 506	7 815	- 46,1
Shopping space						
Total square metres	3 498	4 748	8 168	49 054	61 081	+24,5
Total value at current prices (R'000)	4 720	6 069	15 950	76 233	101 626	+33,3
Industrial and warehouse space						
Total square metres	96	0	2 596	38 313	20 265	- 47,1
Total value at current prices (R'000)	144	0	3 500	46 989	24 614	- 47,6
Other non-residential space ²						
Total square metres	362	179	2 273	6 682	8 596	+ 28,6
Total value at current prices (R'000)	500	360	2 247	8 604	10 720	+ 24,6
Total value of non-residential buildings at current prices (R'000)	7 449	6 688	23 244	146 332	144 775	- 1,1
Additions and alterations						
Dwelling-houses						
Total square metres	13 169	16 104	12 742	110 127	125 190	+ 13,7
Total value at current prices (R'000)	14 823	14 781	13 135	134 852	144 602	+ 7,2
Other buildings ³						
Total square metres	3 949	2 334	4 325	29 749	26 554	- 10,7
Total value at current prices (R'000)	5 737	2 439	7 123	40 842	40 850	+ 0,0
Total value of additions and alterations at current prices (R'000)	20 560	17 220	20 258	175 694	185 452	+ 5,6
Total value of recorded building plans passed at current prices (R'000)	69 452	93 638	135 194	690 910	834 775	+ 20,8

¹ Other residential buildings include institutions for the disabled, boarding houses, old people's homes, hostels, hotels, motels, guest houses, holiday chalets, entertainment centres, bed-and-breakfast accommodation and casinos.

² Other non-residential space includes churches, sport and recreation clubs, schools, crèches, hospitals and all other non-residential space.

³ Other buildings include additions and alterations to other residential buildings, non-residential buildings and internal alterations.

Table 18 - Recorded building plans passed by municipalities by type of building and province: Limpopo

Type of building	September 2003	August 2004	September 2004	January 2003 to September 2003	January 2004 to September 2004	Percentage change between January 2003 to September 2003 and January 2004 to September 2004
Residential buildings						
Dwelling-houses smaller than 80 square metres						
Number of dwelling-houses	27	35	22	524	1 041	+ 98,7
Total square metres	1 619	2 188	1 343	25 578	47 573	+ 86,0
Total value at current prices (R'000)	2 426	4 506	2 869	25 095	40 187	+ 60,1
Dwelling-houses equal to or larger than 80 square metres						
Number of dwelling-houses	49	81	62	501	586	+ 17,0
Total square metres	9 079	20 352	15 928	92 637	123 123	+ 32,9
Total value at current prices (R'000)	13 300	42 319	32 471	131 464	225 192	+ 71,3
Flats and townhouses						
Number of flats and townhouses	20	16	10	115	317	+ 175,7
Total square metres	2 247	2 039	1 246	12 956	33 160	+ 155,9
Total value at current prices (R'000)	3 146	2 854	1 994	18 438	47 552	+ 157,9
Other residential buildings ¹						
Total square metres	0	0	0	0	332	..
Total value at current prices (R'000)	0	0	0	0	598	..
Total value of residential buildings at current prices (R'000)	18 872	49 679	37 334	174 997	313 529	+ 79,2
Non-residential buildings						
Office and banking space						
Total square metres	0	5 972	0	11 624	14 977	+ 28,8
Total value at current prices (R'000)	0	13 138	0	24 712	31 983	+ 29,4
Shopping space						
Total square metres	1 172	12 036	220	21 777	25 778	+ 18,4
Total value at current prices (R'000)	2 578	25 340	352	52 071	51 747	-0,6
Industrial and warehouse space						
Total square metres	750	1 257	616	4 564	10 438	+ 128,7
Total value at current prices (R'000)	1 125	2 765	1 416	8 342	19 609	+ 135,1
Other non-residential space ²						
Total square metres	4 076	295	181	7 014	8 048	+ 14,7
Total value at current prices (R'000)	8 220	354	200	14 214	16 487	+ 16,0
Total value of non-residential buildings at current prices (R'000)	11 923	41 597	1 968	99 339	119 826	+ 20,6
Additions and alterations						
Dwelling-houses						
Total square metres	5 066	7 002	6 345	40 559	57 774	+ 42,4
Total value at current prices (R'000)	6 560	9 443	12 875	54 621	84 509	+ 54,7
Other buildings ³						
Total square metres	1 249	1 984	2 017	8 000	21 285	+ 166,1
Total value at current prices (R'000)	3 764	4 056	3 195	20 244	37 213	+ 83,8
Total value of additions and alterations at current prices (R'000)	10 324	13 499	16 070	74 865	121 722	+ 62,6
Total value of recorded building plans passed at current prices (R'000)	41 119	104 775	55 372	349 201	555 077	+ 59,0

¹ Other residential buildings include institutions for the disabled, boarding houses, old people's homes, hostels, hotels, motels, guest houses, holiday chalets, entertainment centres, bed-and-breakfast accommodation and casinos.

² Other non-residential space includes churches, sport and recreation clubs, schools, crèches, hospitals and all other non-residential space.

³ Other buildings include additions and alterations to other residential buildings, non-residential buildings and internal alterations.

Table 19 - Buildings reported as completed to municipalities by type of building: South Africa

Type of building	September 2003 *	August 2004	September 2004	January 2003 to September 2003	January 2004 to September 2004	Percentage change between January 2003 to September 2003 and January 2004 to September 2004
Residential buildings						
Dwelling-houses smaller than 80 square metres						
Number of dwelling-houses	1 961	4 357	2 667	20 950	30 698	+ 46,5
Total square metres	81 853	173 830	105 091	795 471	1 188 541	+ 49,4
Total value at current prices (R'000)	76 860	164 571	95 664	672 857	995 561	+ 48,0
Dwelling-houses equal to or larger than 80 square metres						
Number of dwelling-houses	1 179	1 577	1 623	11 377	12 086	+ 6,2
Total square metres	276 660	328 345	359 001	2 472 833	2 700 800	+ 9,2
Total value at current prices (R'000)	495 448	661 336	740 034	4 236 688	5 422 486	+ 28,0
Flats and townhouses						
Number of flats and townhouses	845	1 068	1 062	8 248	9 800	+ 18,8
Total square metres	121 214	212 101	150 452	991 845	1 380 970	+ 39,2
Total value at current prices (R'000)	221 447	480 792	306 907	1 762 305	2 908 177	+ 65,0
Other residential buildings ¹						
Total square metres	6 556	870	17 208	153 000	52 632	- 65,6
Total value at current prices (R'000)	8 760	1 955	30 421	807 786	119 586	- 85,2
Total value of residential buildings at current prices (R'000)	802 515	1 308 654	1 173 026	7 479 636	9 445 810	+ 26,3
Non-residential buildings						
Office and banking space						
Total square metres	27 247	170 921	16 719	410 467	415 413	+ 1,2
Total value at current prices (R'000)	49 483	376 223	30 816	819 451	874 821	+ 6,8
Shopping space						
Total square metres	15 626	13 402	37 438	234 618	224 924	- 4,1
Total value at current prices (R'000)	23 303	28 238	379 464	409 163	761 519	+ 86,1
Industrial and warehouse space						
Total square metres	39 832	48 405	69 260	390 676	482 053	+ 23,4
Total value at current prices (R'000)	63 507	90 913	115 184	546 672	887 286	+ 62,3
Other non-residential space ²						
Total square metres	22 009	12 082	3 986	352 746	105 160	- 70,2
Total value at current prices (R'000)	42 788	19 276	8 629	686 161	191 794	- 72,0
Total value of non-residential buildings at current prices (R'000)	179 081	514 650	534 093	2 461 447	2 715 420	+ 10,3
Additions and alterations						
Dwelling-houses						
Total square metres	113 533	145 929	149 407	1 114 163	1 084 896	- 2,6
Total value at current prices (R'000)	157 648	256 203	260 330	1 528 481	1 849 399	+ 21,0
Other buildings ³						
Total square metres	40 970	57 375	32 939	441 704	374 623	- 15,2
Total value at current prices (R'000)	113 452	115 741	68 842	1 004 395	910 012	- 9,4
Total value of additions and alterations at current prices (R'000)	271 100	371 944	329 172	2 532 876	2 759 411	+ 8,9
Total value of buildings reported as completed at current prices (R'000)	1 252 696	2 195 248	2 036 291	12 473 959	14 920 641	+ 19,6

¹ Other residential buildings include institutions for the disabled, boarding houses, old people's homes, hostels, hotels, motels, guest houses, holiday chalets, entertainment centres, bed-and-breakfast accommodation and casinos.

² Other non-residential space includes churches, sport and recreation clubs, schools, crèches, hospitals and all other non-residential space.

³ Other buildings include additions and alterations to other residential buildings, non-residential buildings and internal alterations.

* Revised.

Table 20 - Buildings reported as completed to municipalities by type of building and province: Western Cape

Type of building	September 2003*	August 2004	September 2004	January 2003 to September 2003	January 2004 to September 2004	Percentage change between January 2003 to September 2003 and January 2004 to September 2004
Residential buildings						
Dwelling-houses smaller than 80 square metres						
Number of dwelling-houses	431	725	669	2 692	6 473	+ 140,5
Total square metres	16 365	26 141	24 292	106 009	249 224	+ 135,1
Total value at current prices (R'000)	18 626	24 376	23 976	120 545	215 630	+ 78,9
Dwelling-houses equal to or larger than 80 square metres						
Number of dwelling-houses	438	414	491	4 136	3 739	- 9,6
Total square metres	102 524	88 494	101 365	839 518	813 040	- 3,2
Total value at current prices (R'000)	182 971	172 762	191 734	1 407 600	1 535 110	+ 9,1
Flats and townhouses						
Number of flats and townhouses	162	189	386	1 565	2 176	+ 39,0
Total square metres	19 063	25 712	39 394	180 746	238 185	+ 31,8
Total value at current prices (R'000)	30 306	53 067	68 539	334 273	482 812	+ 44,4
Other residential buildings ¹						
Total square metres	4 941	427	610	77 260	23 530	- 69,5
Total value at current prices (R'000)	6 800	900	1 392	275 113	55 824	- 79,7
Total value of residential buildings at current prices (R'000)	238 703	251 105	285 641	2 137 531	2 289 376	+ 7,1
Non-residential buildings						
Office and banking space						
Total square metres	682	219	3 081	101 976	33 483	- 67,2
Total value at current prices (R'000)	1 900	494	6 788	186 323	72 056	- 61,3
Shopping space						
Total square metres	1 726	1 805	3 854	25 484	97 042	+ 280,8
Total value at current prices (R'000)	1 364	2 568	8 083	37 759	195 799	+ 418,5
Industrial and warehouse space						
Total square metres	13 670	7 285	25 295	134 937	104 499	- 22,6
Total value at current prices (R'000)	12 931	9 322	30 881	168 656	137 461	- 18,5
Other non-residential space ²						
Total square metres	1 181	381	763	41 409	13 185	- 68,2
Total value at current prices (R'000)	1 902	800	1 514	57 154	23 395	- 59,1
Total value of non-residential buildings at current prices (R'000)	18 097	13 184	47 266	449 892	428 711	- 4,7
Additions and alterations						
Dwelling-houses						
Total square metres	39 725	52 357	61 612	386 687	383 345	- 0,9
Total value at current prices (R'000)	55 986	81 973	94 682	521 655	604 153	+ 15,8
Other buildings ³						
Total square metres	5 898	19 534	21 866	141 201	118 694	- 15,9
Total value at current prices (R'000)	11 027	26 815	38 857	315 056	271 582	- 13,8
Total value of additions and alterations at current prices (R'000)	67 013	108 788	133 539	836 711	875 735	+ 4,7
Total value of buildings reported as completed at current prices (R'000)	323 813	373 077	466 446	3 424 134	3 593 822	+ 5,0

¹ Other residential buildings include institutions for the disabled, boarding houses, old people's homes, hostels, hotels, motels, guest houses, holiday chalets, entertainment centres, bed-and-breakfast accommodation and casinos.

² Other non-residential space includes churches, sport and recreation clubs, schools, crèches, hospitals and all other non-residential space.

³ Other buildings include additions and alterations to other residential buildings, non-residential buildings and internal alterations.

* Revised.

Table 21 - Buildings reported as completed to municipalities by type of building and province: Eastern Cape

Type of building	September 2003*	August 2004	September 2004	January 2003 to September 2003	January 2004 to September 2004	Percentage change between January 2003 to September 2003 and January 2004 to September 2004
Residential buildings						
Dwelling-houses smaller than 80 square metres						
Number of dwelling-houses	112	1 909	110	1 207	4 107	+ 240,3
Total square metres	6 063	80 766	4 764	53 829	176 887	+ 228,6
Total value at current prices (R'000)	7 197	76 075	3 787	50 865	162 853	+ 220,2
Dwelling-houses equal to or larger than 80 square metres						
Number of dwelling-houses	49	73	89	565	722	+ 27,8
Total square metres	9 296	16 077	15 558	106 155	131 696	+ 24,1
Total value at current prices (R'000)	15 304	28 127	35 921	162 600	231 506	+ 42,4
Flats and townhouses						
Number of flats and townhouses	20	10	25	239	102	-57,3
Total square metres	5 383	1 785	3 399	22 667	19 328	- 14,7
Total value at current prices (R'000)	8 424	3 218	5 647	36 585	33 119	- 9,5
Other residential buildings ¹						
Total square metres	93	443	0	6 400	443	- 93,1
Total value at current prices (R'000)	182	1 055	0	10 689	1 055	- 90,1
Total value of residential buildings at current prices (R'000)	31 107	108 475	45 355	260 739	428 533	+ 64,4
Non-residential buildings						
Office and banking space						
Total square metres	3 266	0	0	3 426	9 504	+ 177,4
Total value at current prices (R'000)	1 982	0	0	2 249	13 110	+ 482,9
Shopping space						
Total square metres	399	0	0	16 605	2 847	- 82,9
Total value at current prices (R'000)	509	0	0	22 903	5 929	- 74,1
Industrial and warehouse space						
Total square metres	973	1 615	1 059	14 176	9 351	- 34,0
Total value at current prices (R'000)	1 679	2 865	1 334	21 364	14 725	- 31,1
Other non-residential space ²						
Total square metres	672	3 415	924	7 201	6 692	-7,1
Total value at current prices (R'000)	811	5 826	1 619	11 015	11 967	+ 8,6
Total value of non-residential buildings at current prices (R'000)	4 981	8 691	2 953	57 531	45 731	- 20,5
Additions and alterations						
Dwelling-houses						
Total square metres	9 126	7 754	9 084	78 239	76 369	- 2,4
Total value at current prices (R'000)	13 465	12 307	14 856	110 668	122 715	+ 10,9
Other buildings ³						
Total square metres	5 857	1 303	134	45 018	41 289	- 8,3
Total value at current prices (R'000)	12 286	2 984	499	76 291	52 493	- 31,2
Total value of additions and alterations at current prices (R'000)	25 751	15 291	15 355	186 959	175 208	- 6,3
Total value of buildings reported as completed at current prices (R'000)	61 839	132 457	63 663	505 229	649 472	+ 28,6

¹ Other residential buildings include institutions for the disabled, boarding houses, old people's homes, hostels, hotels, motels, guest houses, holiday chalets, entertainment centres, bed-and-breakfast accommodation and casinos.

² Other non-residential space includes churches, sport and recreation clubs, schools, crèches, hospitals and all other non-residential space.

³ Other buildings include additions and alterations to other residential buildings, non-residential buildings and internal alterations.

* Revised.

Table 22 - Buildings reported as completed to municipalities by type of building and province: Northern Cape

Type of building	September 2003	August 2004	September 2004	January 2003 to September 2003	January 2004 to September 2004	Percentage change between January 2003 to September 2003 and January 2004 to September 2004
Residential buildings						
Dwelling-houses smaller than 80 square metres						
Number of dwelling-houses	3	2	1	58	39	- 32,8
Total square metres	210	74	45	2 354	1 821	- 22,6
Total value at current prices (R'000)	215	56	90	2 222	2 391	+ 7,6
Dwelling-houses equal to or larger than 80 square metres						
Number of dwelling-houses	3	9	10	48	69	+ 43,8
Total square metres	759	1 870	2 023	8 745	12 573	+ 43,8
Total value at current prices (R'000)	1 188	3 315	3 641	13 864	21 759	+ 56,9
Flats and townhouses						
Number of flats and townhouses	1	17	5	23	53	+ 130,4
Total square metres	158	3 094	858	2 625	9 313	+ 254,8
Total value at current prices (R'000)	284	5 790	1 646	4 288	17 048	+ 297,6
Other residential buildings ¹						
Total square metres	0	0	0	0	0	..
Total value at current prices (R'000)	0	0	0	0	0	..
Total value of residential buildings at current prices (R'000)	1 687	9 161	5 377	20 374	41 198	+ 102,2
Non-residential buildings						
Office and banking space						
Total square metres	16	0	0	16	95	+ 493,8
Total value at current prices (R'000)	24	0	0	24	171	+ 612,5
Shopping space						
Total square metres	409	360	0	4 507	2 299	-49,0
Total value at current prices (R'000)	614	792	0	9 630	4 402	- 54,3
Industrial and warehouse space						
Total square metres	0	116	819	1 463	1 511	+ 3,3
Total value at current prices (R'000)	0	234	1 474	3 038	2 682	- 11,7
Other non-residential space ²						
Total square metres	0	1 054	0	125	2 070	+ 1556,0
Total value at current prices (R'000)	0	2 169	0	188	4 292	+ 2183,0
Total value of non-residential buildings at current prices (R'000)	638	3 195	1 474	12 880	11 547	- 10,3
Additions and alterations						
Dwelling-houses						
Total square metres	3 280	2 144	3 472	19 592	19 415	- 0,9
Total value at current prices (R'000)	5 884	3 842	6 184	32 481	33 286	+ 2,5
Other buildings ³						
Total square metres	260	0	2 395	4 762	4 355	- 8,5
Total value at current prices (R'000)	480	317	5 854	9 359	11 614	+ 24,1
Total value of additions and alterations at current prices (R'000)	6 364	4 159	12 038	41 840	44 900	+ 7,3
Total value of buildings reported as completed at current prices (R'000)	8 689	16 515	18 889	75 094	97 645	30,0

¹ Other residential buildings include institutions for the disabled, boarding houses, old people's homes, hostels, hotels, motels, guest houses, holiday chalets, entertainment centres, bed-and-breakfast accommodation and casinos.

² Other non-residential space includes churches, sport and recreation clubs, schools, crèches, hospitals and all other non-residential space.

³ Other buildings include additions and alterations to other residential buildings, non-residential buildings and internal alterations.

Table 23 - Buildings reported as completed to municipalities by type of building and province: Free State

Type of building	September 2003*	August 2004	September 2004	January 2003 to September 2003	January 2004 to September 2004	Percentage change between January 2003 to September 2003 and January 2004 to September 2004
Residential buildings						
Dwelling-houses smaller than 80 square metres						
Number of dwelling-houses	532	431	480	2 454	2 949	+ 20,2
Total square metres	22 136	17 712	21 065	103 253	123 105	+ 19,2
Total value at current prices (R'000)	10 761	10 819	9 458	58 009	66 500	+ 14,6
Dwelling-houses equal to or larger than 80 square metres						
Number of dwelling-houses	22	28	19	268	171	-36,2
Total square metres	4 339	4 998	3 752	43 690	31 504	-27,9
Total value at current prices (R'000)	6 369	7 653	6 541	57 451	47 733	-16,9
Flats and townhouses						
Number of flats and townhouses	20	5	29	368	325	-11,7
Total square metres	2 547	555	5 074	39 511	33 307	-15,7
Total value at current prices (R'000)	4 397	950	7 874	61 129	50 552	-17,3
Other residential buildings ¹						
Total square metres	253	0	0	2 996	900	-70,0
Total value at current prices (R'000)	260	0	0	7 314	1 000	-86,3
Total value of residential buildings at current prices (R'000)	21 787	19 422	23 873	183 903	165 785	-9,9
Non-residential buildings						
Office and banking space						
Total square metres	0	0	0	7 756	6 918	-10,8
Total value at current prices (R'000)	0	0	0	9 647	25 781	+ 167,2
Shopping space						
Total square metres	2 020	3 948	246	14 847	6 825	-54,0
Total value at current prices (R'000)	5 400	8 316	480	25 696	12 279	-52,2
Industrial and warehouse space						
Total square metres	0	1 570	1 940	10 590	7 945	-25,0
Total value at current prices (R'000)	0	942	1 713	12 678	5 764	-54,5
Other non-residential space ²						
Total square metres	5 280	2 500	45	8 520	5 953	-30,1
Total value at current prices (R'000)	13 200	1 400	45	17 758	7 314	-58,8
Total value of non-residential buildings at current prices (R'000)	18 600	10 658	2 238	65 779	51 138	-22,3
Additions and alterations						
Dwelling-houses						
Total square metres	4 766	4 443	3 758	45 768	38 016	-16,9
Total value at current prices (R'000)	5 067	5 874	4 821	51 145	50 811	-0,7
Other buildings ³						
Total square metres	180	1 517	1 250	10 457	11 834	+ 13,2
Total value at current prices (R'000)	2 035	3 547	3 137	36 221	56 293	+ 55,4
Total value of additions and alterations at current prices (R'000)	7 102	9 421	7 958	87 366	107 104	+ 22,6
Total value of buildings reported as completed at current prices (R'000)	47 489	39 501	34 069	337 048	324 027	-3,9

¹ Other residential buildings include institutions for the disabled, boarding houses, old people's homes, hostels, hotels, motels, guest houses, holiday chalets, entertainment centres, bed-and-breakfast accommodation and casinos.

² Other non-residential space includes churches, sport and recreation clubs, schools, crèches, hospitals and all other non-residential space.

³ Other buildings include additions and alterations to other residential buildings, non-residential buildings and internal alterations.

* Revised.

Table 24 - Buildings reported as completed to municipalities by type of building and province: KwaZulu-Natal

Type of building	September 2003*	August 2004	September 2004	January 2003 to September 2003	January 2004 to September 2004	Percentage change between January 2003 to September 2003 and January 2004 to September 2004
Residential buildings						
Dwelling-houses smaller than 80 square metres						
Number of dwelling-houses	584	278	267	5 469	4 145	-24,2
Total square metres	22 639	10 074	10 097	197 847	143 687	-27,4
Total value at current prices (R'000)	17 206	10 693	13 309	128 579	132 083	+ 2,7
Dwelling-houses equal to or larger than 80 square metres						
Number of dwelling-houses	154	127	135	1 011	1 117	+ 10,5
Total square metres	26 009	26 986	29 523	205 397	241 431	+ 17,5
Total value at current prices (R'000)	37 219	55 101	60 027	309 974	471 066	+ 52,0
Flats and townhouses						
Number of flats and townhouses	61	95	110	526	977	+ 85,7
Total square metres	8 781	21 350	30 348	81 486	197 563	+ 142,5
Total value at current prices (R'000)	18 625	52 594	75 284	146 817	483 642	+ 229,4
Other residential buildings ¹						
Total square metres	774	0	2 018	39 892	5 730	-85,6
Total value at current prices (R'000)	1 018	0	5 045	467 734	17 315	-96,3
Total value of residential buildings at current prices (R'000)	74 068	118 388	153 665	1 053 104	1 104 106	+ 4,8
Non-residential buildings						
Office and banking space						
Total square metres	2 401	379	2 519	33 530	32 242	-3,8
Total value at current prices (R'000)	5 590	569	4 274	84 047	61 324	-27,0
Shopping space						
Total square metres	2 200	1 908	32 379	37 381	58 562	+ 56,7
Total value at current prices (R'000)	3 000	2 661	368 679	70 778	422 485	+ 496,9
Industrial and warehouse space						
Total square metres	895	9 019	7 222	67 608	123 681	+ 82,9
Total value at current prices (R'000)	950	14 653	9 320	74 103	223 826	+ 202,0
Other non-residential space ²						
Total square metres	2 811	151	1 513	23 087	12 858	-44,3
Total value at current prices (R'000)	4 918	181	3 780	47 551	31 055	-34,7
Total value of non-residential buildings at current prices (R'000)	14 458	18 064	386 053	276 479	738 690	+ 167,2
Additions and alterations						
Dwelling-houses						
Total square metres	25 215	27 932	28 986	223 525	232 275	+ 3,9
Total value at current prices (R'000)	27 087	55 005	55 029	262 095	412 310	+ 57,3
Other buildings ³						
Total square metres	7 827	7 040	1 819	71 122	74 361	+ 4,6
Total value at current prices (R'000)	49 323	22 404	6 478	209 105	186 339	-10,9
Total value of additions and alterations at current prices (R'000)	76 410	77 409	61 507	471 200	598 649	+ 27,0
Total value of buildings reported as completed at current prices (R'000)	164 936	213 861	601 225	1 800 783	2 441 445	+ 35,6

¹ Other residential buildings include institutions for the disabled, boarding houses, old people's homes, hostels, hotels, motels, guest houses, holiday chalets, entertainment centres, bed-and-breakfast accommodation and casinos.

² Other non-residential space includes churches, sport and recreation clubs, schools, crèches, hospitals and all other non-residential space.

³ Other buildings include additions and alterations to other residential buildings, non-residential buildings and internal alterations.

* Revised.

Table 25 - Buildings reported as completed to municipalities by type of building and province: North West

Type of building	September 2003	August 2004	September 2004	January 2003 to September 2003	January 2004 to September 2004	Percentage change between January 2003 to September 2003 and January 2004 to September 2004
Residential buildings						
Dwelling-houses smaller than 80 square metres						
Number of dwelling-houses	22	379	416	213	4 909	+ 2 204,7
Total square metres	1 153	11 677	13 813	12 163	153 368	+ 1 160,9
Total value at current prices (R'000)	1 307	6 224	8 873	13 895	84 858	+ 510,7
Dwelling-houses equal to or larger than 80 square metres						
Number of dwelling-houses	39	79	103	615	603	- 2,0
Total square metres	8 723	13 327	19 745	119 716	117 823	- 1,6
Total value at current prices (R'000)	17 263	24 459	40 697	186 442	210 798	+ 13,1
Flats and townhouses						
Number of flats and townhouses	43	20	11	544	620	+ 14,0
Total square metres	5 739	2 118	2 045	50 759	48 070	- 5,3
Total value at current prices (R'000)	11 825	4 178	3 390	85 783	83 741	- 2,4
Other residential buildings ¹						
Total square metres	0	0	0	732	2 649	+ 261,9
Total value at current prices (R'000)	0	0	0	1 140	8 250	+ 623,7
Total value of residential buildings at current prices (R'000)	30 395	34 861	52 960	287 260	387 647	+ 34,9
Non-residential buildings						
Office and banking space						
Total square metres	202	0	0	7 894	8 007	+ 1,4
Total value at current prices (R'000)	223	0	0	11 717	18 470	+ 57,6
Shopping space						
Total square metres	3 092	0	343	9 749	15 844	+ 62,5
Total value at current prices (R'000)	3 289	0	497	17 027	31 683	+ 86,1
Industrial and warehouse space						
Total square metres	0	808	384	5 679	8 865	+ 56,1
Total value at current prices (R'000)	0	646	300	7 208	11 978	+ 66,2
Other non-residential space ²						
Total square metres	1 745	0	246	9 087	2 325	- 74,4
Total value at current prices (R'000)	3 490	0	369	31 390	3 666	- 88,3
Total value of non-residential buildings at current prices (R'000)	7 002	646	1 166	67 342	65 797	- 2,3
Additions and alterations						
Dwelling-houses						
Total square metres	1 164	1 692	2 005	30 752	31 056	+ 1,0
Total value at current prices (R'000)	1 439	2 364	2 768	31 427	38 517	+ 22,6
Other buildings ³						
Total square metres	202	694	799	15 035	14 579	- 3,0
Total value at current prices (R'000)	535	971	1 942	20 828	32 118	+ 54,2
Total value of additions and alterations at current prices (R'000)	1 974	3 335	4 710	52 255	70 635	+ 35,2
Total value of buildings reported as completed at current prices (R'000)	39 371	38 842	58 836	406 857	524 079	+ 28,8

¹ Other residential buildings include institutions for the disabled, boarding houses, old people's homes, hostels, hotels, motels, guest houses, holiday chalets, entertainment centres, bed-and-breakfast accommodation and casinos.

² Other non-residential space includes churches, sport and recreation clubs, schools, crèches, hospitals and all other non-residential space.

³ Other buildings include additions and alterations to other residential buildings, non-residential buildings and internal alterations.

Table 26 - Buildings reported as completed to municipalities by type of building and province: Gauteng

Type of building	September 2003*	August 2004	September 2004	January 2003 to September 2003	January 2004 to September 2004	Percentage change between January 2003 to September 2003 and January 2004 to September 2004
Residential buildings						
Dwelling-houses smaller than 80 square metres						
Number of dwelling-houses	233	499	543	7 799	5 794	-25,7
Total square metres	10 914	20 659	21 465	273 941	233 250	-14,9
Total value at current prices (R'000)	18 444	30 122	28 287	260 418	262 134	+ 0,7
Dwelling-houses equal to or larger than 80 square metres						
Number of dwelling-houses	421	763	700	4 128	4 928	+ 19,4
Total square metres	113 886	161 186	173 574	1 024 671	1 217 825	+ 18,9
Total value at current prices (R'000)	219 167	345 444	377 517	1 926 495	2 684 516	+ 39,3
Flats and townhouses						
Number of flats and townhouses	536	690	472	4 349	5 352	+ 23,1
Total square metres	79 147	147 544	66 714	569 613	800 903	+ 40,6
Total value at current prices (R'000)	147 031	344 853	140 769	1 035 739	1 704 825	+ 64,6
Other residential buildings ¹						
Total square metres	0	0	14 580	22 792	18 395	-19,3
Total value at current prices (R'000)	0	0	23 984	39 268	32 212	-18,0
Total value of residential buildings at current prices (R'000)	384 642	720 419	570 557	3 261 920	4 683 687	+ 43,6
Non-residential buildings						
Office and banking space						
Total square metres	17 171	169 005	10 799	245 402	319 550	+ 30,2
Total value at current prices (R'000)	34 149	373 090	19 178	510 063	676 269	+ 32,6
Shopping space						
Total square metres	2 078	4 632	616	77 062	32 959	-57,2
Total value at current prices (R'000)	3 127	12 601	1 725	152 672	73 893	-51,6
Industrial and warehouse space						
Total square metres	22 957	25 524	28 771	135 502	215 012	+ 58,7
Total value at current prices (R'000)	46 741	56 821	64 332	240 426	473 612	+ 97,0
Other non-residential space ²						
Total square metres	10 320	4 581	495	261 793	60 481	-76,9
Total value at current prices (R'000)	18 467	8 900	1 302	518 730	107 390	-79,3
Total value of non-residential buildings at current prices (R'000)	102 484	451 412	86 537	1 421 891	1 331 164	-6,4
Additions and alterations						
Dwelling-houses						
Total square metres	26 121	43 972	37 545	298 789	276 034	-7,6
Total value at current prices (R'000)	44 127	85 529	77 735	479 887	546 968	+ 14,0
Other buildings ³						
Total square metres	17 591	26 389	3 824	144 164	99 783	-30,8
Total value at current prices (R'000)	34 701	57 387	10 798	321 804	284 220	-11,7
Total value of additions and alterations at current prices (R'000)	78 828	142 916	88 533	801 691	831 188	+ 3,7
Total value of buildings reported as completed at current prices (R'000)	565 954	1 314 747	745 627	5 485 502	6 846 039	+ 24,8

¹ Other residential buildings include institutions for the disabled, boarding houses, old people's homes, hostels, hotels, motels, guest houses, holiday chalets, entertainment centres, bed-and-breakfast accommodation and casinos.

² Other non-residential space includes churches, sport and recreation clubs, schools, crèches, hospitals and all other non-residential space.

³ Other buildings include additions and alterations to other residential buildings, non-residential buildings and internal alterations.

* Revised.

Table 27 - Buildings reported as completed to municipalities by type of building and province: Mpumalanga

Type of building	September 2003	August 2004	September 2004	January 2003 to September 2003	January 2004 to September 2004	Percentage change between January 2003 to September 2003 and January 2004 to September 2004
Residential buildings						
Dwelling-houses smaller than 80 square metres						
Number of dwelling-houses	16	116	157	602	1 687	+ 180,2
Total square metres	670	5 584	8 040	24 094	80 284	+ 233,2
Total value at current prices (R'000)	613	4 019	4 716	19 020	48 784	+ 156,5
Dwelling-houses equal to or larger than 80 square metres						
Number of dwelling-houses	36	56	52	394	494	+ 25,4
Total square metres	8 321	10 182	9 504	86 795	89 496	+ 3,1
Total value at current prices (R'000)	11 608	16 133	16 245	115 975	138 782	+ 19,7
Flats and townhouses						
Number of flats and townhouses	0	42	1	590	127	-78,5
Total square metres	0	9 943	189	39 331	24 045	-38,9
Total value at current prices (R'000)	0	16 142	284	50 778	38 021	-25,1
Other residential buildings ¹						
Total square metres	495	0	0	2 696	453	-83,2
Total value at current prices (R'000)	500	0	0	6 250	2 450	-60,8
Total value of residential buildings at current prices (R'000)	12 721	36 294	21 245	192 023	228 037	+ 18,8
Non-residential buildings						
Office and banking space						
Total square metres	0	696	0	5 841	3 734	-36,1
Total value at current prices (R'000)	0	609	0	7 984	4 199	-47,4
Shopping space						
Total square metres	3 702	0	0	45 974	3 319	-92,8
Total value at current prices (R'000)	6 000	0	0	67 722	5 381	-92,1
Industrial and warehouse space						
Total square metres	1 337	0	3 770	18 832	8 721	-53,7
Total value at current prices (R'000)	1 206	0	5 830	16 360	11 808	-27,8
Other non-residential space ²						
Total square metres	0	0	0	371	802	+ 116,2
Total value at current prices (R'000)	0	0	0	400	1 604	+ 301,0
Total value of non-residential buildings at current prices (R'000)	7 206	609	5 830	92 466	22 992	-75,1
Additions and alterations						
Dwelling-houses						
Total square metres	2 977	4 715	1 755	22 076	19 119	-13,4
Total value at current prices (R'000)	2 820	7 890	2 138	26 574	26 338	-0,9
Other buildings ³						
Total square metres	3 155	621	0	8 886	7 579	-14,7
Total value at current prices (R'000)	3 065	872	85	13 719	12 132	-11,6
Total value of additions and alterations at current prices (R'000)	5 885	8 762	2 223	40 293	38 470	-4,5
Total value of buildings reported as completed at current prices (R'000)	25 812	45 665	29 298	324 782	289 499	-10,9

¹ Other residential buildings include institutions for the disabled, boarding houses, old people's homes, hostels, hotels, motels, guest houses, holiday chalets, entertainment centres, bed-and-breakfast accommodation and casinos.

² Other non-residential space includes churches, sport and recreation clubs, schools, crèches, hospitals and all other non-residential space.

³ Other buildings include additions and alterations to other residential buildings, non-residential buildings and internal alterations.

Table 28 - Buildings reported as completed to municipalities by type of building and province: Limpopo

Type of building	September 2003	August 2004	September 2004	January 2003 to September 2003	January 2004 to September 2004	Percentage change between January 2003 to September 2003 and January 2004 to September 2004
Residential buildings						
Dwelling-houses smaller than 80 square metres						
Number of dwelling-houses	28	18	24	456	595	+ 30,5
Total square metres	1 703	1 143	1 510	21 981	26 915	+ 22,4
Total value at current prices (R'000)	2 491	2 187	3 168	19 304	20 328	+ 5,3
Dwelling-houses equal to or larger than 80 square metres						
Number of dwelling-houses	17	28	24	212	243	+ 14,6
Total square metres	2 803	5 225	3 957	38 146	45 412	+ 19,0
Total value at current prices (R'000)	4 359	8 342	7 711	56 287	81 216	+ 44,3
Flats and townhouses						
Number of flats and townhouses	2	0	23	44	68	+ 54,5
Total square metres	396	0	2 431	5 107	10 256	+ 100,8
Total value at current prices (R'000)	555	0	3 474	6 913	14 417	+ 108,5
Other residential buildings ¹						
Total square metres	0	0	0	232	532	+ 129,3
Total value at current prices (R'000)	0	0	0	278	1 480	+ 432,4
Total value of residential buildings at current prices (R'000)	7 405	10 529	14 353	82 782	117 441	+ 41,9
Non-residential buildings						
Office and banking space						
Total square metres	3 509	622	320	4 626	1 880	-59,4
Total value at current prices (R'000)	5 615	1 461	576	7 397	3 441	-53,5
Shopping space						
Total square metres	0	749	0	3 009	5 227	+ 73,7
Total value at current prices (R'000)	0	1 300	0	4 976	9 668	+ 94,3
Industrial and warehouse space						
Total square metres	0	2 468	0	1 889	2 468	+ 30,7
Total value at current prices (R'000)	0	5 430	0	2 839	5 430	+ 91,3
Other non-residential space ²						
Total square metres	0	0	0	1 153	794	-31,1
Total value at current prices (R'000)	0	0	0	1 975	1 111	-43,7
Total value of non-residential buildings at current prices (R'000)	5 615	8 191	576	17 187	19 650	+ 14,3
Additions and alterations						
Dwelling-houses						
Total square metres	1 159	920	1 190	8 735	9 267	+ 6,1
Total value at current prices (R'000)	1 773	1 419	2 117	12 549	14 301	+ 14,0
Other buildings ³						
Total square metres	0	277	852	1 059	2 149	+ 102,9
Total value at current prices (R'000)	0	444	1 192	2 012	3 221	+ 60,1
Total value of additions and alterations at current prices (R'000)	1 773	1 863	3 309	14 561	17 522	+ 20,3
Total value of buildings reported as completed at current prices (R'000)	14 793	20 583	18 238	114 530	154 613	+ 35,0

¹ Other residential buildings include institutions for the disabled, boarding houses, old people's homes, hostels, hotels, motels, guest houses, holiday chalets, entertainment centres, bed-and-breakfast accommodation and casinos.

² Other non-residential space includes churches, sport and recreation clubs, schools, crèches, hospitals and all other non-residential space.

³ Other buildings include additions and alterations to other residential buildings, non-residential buildings and internal alterations.

Table 29 - Subsidised low-cost dwelling-houses completed or under construction² by province¹

Province	Year	Number of subsidised dwelling-houses completed or under construction ¹	Square metres ³	Value of low-cost dwelling-houses R'000 ³
Western Cape	2002	19 534	531 116	168 852
	2003	16 926	507 780	247 187
Eastern Cape	2002	46 701	1 575 675	473 805
	2003	35 005	1 050 150	511 213
Northern Cape	2002	5 189	164 906	68 078
	2003	4 354	130 620	63 586
Free State	2002	8 618	348 492	154 120
	2003	14 848	445 440	216 840
KwaZulu-Natal	2002	21 959	831 349	234 041
	2003	31 372	941 160	458 157
North West	2002	21 309	630 115	210 439
	2003	13 809	414 270	201 667
Gauteng	2002	29 939	991 571	321 943
	2003	42 862	1 285 860	625 957
Mpumalanga	2002	19 883	660 505	253 931
	2003	21 336	640 080	246 079
Limpopo	2002	15 382	605 877	183 769
	2003	15 596	467 880	227 764
South Africa	2002	188 511	6 339 606	2 068 980
	2003	196 108	5 883 240	2 798 450

¹ Source: Provincial Governments co-ordinated by the National Department of Housing.

² As soon as building commences, dwelling-houses are recorded as completed or under construction.

³ Estimates.

Explanatory notes

Introduction	<p>1 Statistics South Africa (Stats SA) conducts a monthly building statistics survey collecting information regarding recorded building plans passed and buildings reported as completed to municipalities, financed by the private sector, from a sample of 124 local government institutions in South Africa. According to these institutions, they are not always notified about low-cost housing projects. Data regarding subsidised low-cost dwelling-houses completed or under construction, supplied by the provincial governments and co-ordinated by the National Department of Housing, are shown in table 29 (page 37).</p> <p>2 In order to improve timeliness of the publication, some information for the current month has been estimated due to late submission by respondents. These estimates will be revised in the next statistical release(s) as soon as actual information is available.</p>
Purpose of the survey	<p>3 The building statistics survey is a monthly survey covering a sample of local government institutions involved in the approval of building plans and in the final inspection of buildings completed for the private sector. The monthly survey data are used in monitoring the state of economy and formulation of economic policy. They are also important inputs to estimation of the Gross Domestic Product (GDP).</p>
Scope of the survey	<p>4 This survey covers local government institutions conducting activities for the private sector regarding -</p> <ul style="list-style-type: none"> • approval of building plans; and • final inspection of completed buildings.
Classification	<p>5 The 1993 edition of the <i>Standard Industrial Classification of all Economic Activities</i>, (SIC) Fifth Edition, Report No. 09-90-02, was used to classify the statistical units. The SIC is based on the 1990 <i>International Standard Industrial Classification of all Economic Activities</i> (ISIC) with suitable adaptations for local conditions.</p> <p>6 The twelfth and last published edition of the <i>Standard Code List of Areas</i>, Report No. 09-09-03 (1994) was used to classify the statistical units according to province. However, due to the Local Government: Municipal Structures Act, 1998 (Act No. 117 of 1998) and the Local Government Municipal Demarcation Bill (B36B-98), exceptions occur in respect of new cross-border municipalities.</p>
Statistical unit	<p>7 The statistical unit for the collection of information is a local government institution. Local government institutions include district municipalities, metropolitan municipalities and local municipalities.</p>
Survey methodology and design	<p>8 The sample of the monthly building statistics survey consists of the largest local government institutions in South Africa. The survey is collected by mail each month from a sample of 124 local government institutions.</p>
Constant prices	<p>9 The value of building plans passed and buildings completed at constant prices measures building activities in terms of ruling prices in a specific base year, which is 2000 as from May 2002.</p> <p>10 The value of building plans passed at constant prices for each month is obtained by deflating the values at current prices with a price index known as the 'lump sum domestic buildings' as published in statistical release P0151: <i>JBCC Contract Price Adjustment Provisions Work Group Indices</i>. In order to be applicable, these indices (base February 1991=100) are converted to the base year 2000=100.</p> <p>11 The value of buildings completed at constant prices is obtained by deflating the values at current prices with the price index which is used to calculate building plans passed at constant prices (see paragraph 10). Since the completion of buildings may extend over a few months to a few years, the current value of buildings completed is deflated by price indices which prevailed at the time the plans were passed. Therefore, the duration of the completion of different types of buildings are taken into account in ascertaining the deflators e.g. the value of dwelling-houses completed at constant prices at January</p>

2000 is obtained by deflating the current value of dwelling-houses completed for January 2000 with the price index of a month six months prior to January 2000. Furthermore, the value of other residential buildings, non-residential buildings and additions and alterations at constant prices is obtained by deflating the current values with price indices of 12 months, 18 months and 12 months prior to the relevant month, respectively.

Seasonal adjustment	12	Seasonally adjusted estimates of building plans passed and buildings completed are generated each month, using the X-11 Seasonal Adjustment Program developed by US Bureau of the Census Economic Research and Analyses Division, 1968.
	13	Seasonal adjustment is a means of removing the estimated effects of normal seasonal variation from the series so that the effects of other influences on the series can be more clearly recognised. Seasonal adjustment does not aim to remove irregular or non-seasonal influences which may be present in any particular month. Influences that are volatile or unsystematic can still make it difficult to interpret the movement of the series even after adjustment for seasonal variations. Therefore, the month-to-month movements of seasonally adjusted estimates may not be reliable indicators of trend behaviour.
Trend cycle	14	The trend is a long-term pattern or movement of a time series. The X-11 Seasonal Adjustment Program is used for smoothing seasonally adjusted data.
Related publications	15	Users may also wish to refer to the following publications: <ul style="list-style-type: none"> • P5041.3: <i>Building Statistics</i> issued annually. • P9101.2: <i>Actual and expected expenditure on construction by the public sector per statistical region</i> issued annually. • <i>Bulletin of Statistics</i> issued quarterly. • <i>South African Statistics</i> issued annually.
Unpublished statistics	16	In some cases Stats SA can also make available statistics which are not published. The statistics can be made available in one or more of the following ways: computer printouts, CD and diskette. Generally a charge is made for providing unpublished statistics.
Rounding-off of figures	17	The figures in the tables have, where necessary, been rounded off to the nearest digit shown. There may, therefore, be slight discrepancies between the sums of the constituent items and the totals shown.
Pre-release policy	18	Stats SA's pre-release policy may be inspected at its website, www.statssa.gov.za
Symbols and abbreviations	..	no meaningful percentage change between two specified periods available since either one or both of the totals are nil
	0	nil or figure too small to publish
	*	revised
	Stats SA	Statistics South Africa
	SIC	Standard Industrial Classification of all Economic Activities
	ISIC	International Standard Industrial Classification of all Economic Activities
	JBCC	Joint Building Contracts Committee
	CD	Compact Disc
	US	United States
	SARB	South African Reserve Bank
	DTI	Department of Trade and Industry

Glossary

Additions and alterations	Additions and alterations include extensions to existing buildings as well as internal and external alterations of existing buildings.
Blocks of flats	Blocks of flats are regarded as high-density housing consisting of a number of self-contained dwelling-units, each with at least one living-room together with a kitchen and bathroom, conjoined to similar units in one building.
Dwelling-house	A dwelling-house refers to a free-standing, complete structure on a separate stand or a self-contained dwelling-unit, granny flat, on the same premises as an existing residence. Out-buildings and garages are included.
Local government institutions	Local government institutions include – <ul style="list-style-type: none"> • District municipalities; • Metropolitan municipalities; and • Local municipalities.
Municipality	Municipality is a generic term describing the “unit” of government in the local spheres responsible for local government in a geographically demarcated area and including district, metropolitan and local municipalities. A municipality is an institution consisting of a municipal council (elected political representatives) and municipal administration (appointed officials).
District municipality	District municipality means municipality that has municipal executive and legislative authority in an area that includes more than one municipality, and which is described in section 155(1) of the Constitution as a category C municipality (Refer to Local Government: Municipal Structure Act, 1998 (Act No. 117 of 1998)).
Metropolitan municipality	Metropolitan municipality means municipality that has municipal executive and legislative authority in an area that includes more than one municipality, and which is described in section 155(1) of the Constitution as a category A municipality (Refer to Local Government: Municipal Structure Act, 1998 (Act No. 117 of 1998)).
Local municipality	Local municipality means municipalities that share municipal executive and legislative authority in its areas with a district municipality within whose area it falls, that is described in section 155(1) of the constitution as a category B municipality.
Non-residential buildings	Non-residential buildings comprise factories, commercial, financial and other office buildings, as well as other buildings not used for residential purposes, such as churches, halls, clubs, schools and hospitals.
Other residential buildings	Other residential buildings include institutions for the disabled, boarding houses, old people’s homes, hostels, hotels, motels, guest houses, holiday chalets, bed-and-breakfast accommodation, entertainment centres and casinos.
Percentage change	<p>When using monthly actual values, the percentage change is the change in actual values of building activities (building plans passed or buildings completed) of the relevant month compared with the actual values of building activities (building plans passed or buildings completed) of the same month in the previous year expressed as a percentage.</p> <p>When using annual actual values, the percentage change is the change in the actual values of building activities (building plans passed or buildings completed) of the relevant year compared with the actual values of building activities (building plans passed or buildings completed) of the previous year expressed as a percentage.</p> <p>When using seasonally adjusted values, the percentage change is the change in the seasonally adjusted values of building activities (building plans passed or buildings completed) of the relevant month compared with the seasonally adjusted values of building activities (building plans passed or buildings completed) of the previous month expressed as a percentage.</p>
Reference period	Reference period is one calendar month.

Residential buildings

Residential buildings comprise dwelling-houses, flats, townhouses and other residential buildings.

Townhouses

Townhouses are multiple, medium-density dwelling-units and include cluster housing, group housing, simplexes, duplexes, triplexes and other similar dwelling-units which are usually grouped together, with one level of each unit on ground level. This excludes blocks of flats.

General information

Stats SA publishes approximately 300 different statistical releases each year. It is not economically viable to produce them in more than one of South Africa's eleven official languages. Since the releases are used extensively, not only locally but also by international economic and social-scientific communities, Stats SA releases are published in English only.

Stats SA has copyright on this publication. Users may apply the information as they wish, provided that they acknowledge Stats SA as the source of the basic data wherever they process, apply, utilise, publish or distribute the data and also that they specify that the relevant application and analysis (where applicable) result from their own processing of the data.

Advance release calendar

An advance release calendar is disseminated on www.statssa.gov.za

Stats SA products

A complete set of Stats SA publications is available at the Stats SA Library and the following libraries:

National Library of South Africa, Pretoria Division
National Library of South Africa, Cape Town Division
Natal Society Library, Pietermaritzburg
Library of Parliament, Cape Town
Bloemfontein Public Library
Johannesburg Public Library
Eastern Cape Library Services, King William's Town
Central Regional Library, Polokwane
Central Reference Library, Nelspruit
Central Reference Collection, Kimberley
Central Reference Library, Mmabatho

Stats SA also provides a subscription service.

Electronic services

A large range of data are available via on-line services, diskette, CD and computer printouts. For more details about our electronic data services, contact (012) 310 8600/8390/8351/4892/8496/8095.

You can visit us on the Internet at: www.statssa.gov.za

Enquiries

Telephone number: (012) 310 8600/8390/8351/4892/8496/8095 (user information services)
(012) 310 8228/310 8007 (technical enquiries)
(012) 310 8161 (orders)
(012) 310 8490 (library)

Fax number: (012) 310 8664 (technical enquiries)

Email: Gretaz@statssa.gov.za (technical enquiries)
info@statssa.gov.za (user information services)
distribution@statssa.gov.za (orders)

Postal address: Private Bag X44, Pretoria, 0001

Produced by Stats SA