

Building statistics

September 2002

Co-operation between Statistics South Africa (Stats SA), the citizens of the country, the private sector and government institutions is essential for a successful statistical system. Without continued co-operation and goodwill, the timely release of relevant and reliable official statistics will not be possible.

Embargo: 13:00
Date: 20 November 2002

Stats SA publishes approximately three hundred different releases each year. It is not economically viable to produce them in more than one of South Africa's eleven official languages. Since the releases are used extensively, not only locally, but also by international economic and social-scientific communities, Stats SA releases are published in English only.

Key figures regarding building plans passed for the month ended September 2002

Actual estimates at constant 2000 prices

	September 2002	January 2002 to September 2002	Percentage change between September 2001 and September 2002	Percentage change between July 2001 to September 2001 and July 2002 to September 2002	Percentage change between January 2001 to September 2001 and January 2002 to September 2002
	R million	R million			
Residential buildings					
Dwelling-houses	721,1	6 263,5	+ 15,1	+ 18,9	+ 9,5
Flats and townhouses	189,1	1 638,9	+ 0,1	+ 13,0	+ 18,7
Other residential buildings	38,6	226,2	- 50,5	- 41,8	- 10,2
Total	948,8	8 128,6	+ 6,2	+ 15,3	+ 10,5
Non-residential buildings	226,3	2 606,5	- 19,7	- 11,4	- 1,1
Additions and alterations	488,2	4 401,3	- 0,1	+ 19,9	+ 16,1
Total	1 663,3	15 136,4	- 0,0	+ 11,8	+ 9,8

Seasonally adjusted estimates at constant 2000 prices

	September 2002	Percentage change between August 2002 and September 2002	Percentage change between April 2002 to June 2002 and July 2002 to September 2002
	R million		
Residential buildings	925,0	+ 3,4	- 3,0
Non-residential buildings	239,7	- 24,2	- 29,5
Additions and alterations	459,4	- 13,1	- 10,5
Total	1 624,1	- 6,6	- 10,2

Key findings regarding building plans passed for the third quarter of 2002

Seasonally adjusted real value of building plans passed decreases

The seasonally adjusted real value of building plans passed (at constant 2000 prices) for the third quarter of 2002 decreased by 10,2% compared with the second quarter of 2002.

The decrease of 10,2% in the seasonally adjusted real value of building plans passed was due to decreases reported for non-residential buildings (-29,5%), additions and alterations (-10,5%) and residential buildings (-3,0%) during the third quarter of 2002 compared with the second quarter of 2002.

Key findings regarding building plans passed for the first nine months of 2002

Total real value of building plans passed increases

The total real value of building plans passed (at constant 2000 prices) during the first nine months of 2002 increased by 9,8% (+R1 354,0 million) to R15 136,4 million compared with the first nine months of 2001. Large increases in the real value of building plans passed were reported for additions and alterations (+R609,5 million), dwelling-houses (+R541,5 million) and flats and townhouses (+R257,9 million). Large real increases for additions and alterations were reported by Gauteng (+R196,1 million), KwaZulu-Natal (+R195,4 million) and Western Cape (+R178,2 million). The largest real increases for dwelling-houses was reported by Western Cape (+R424,0 million, whereas Gauteng reported the largest real increase for flats and townhouses (+R211,0 million) during the above-mentioned period.

Eight of the nine provinces reported increases in the total real value of building plans passed

The largest provincial contributors to the increase of 9,8% (+R1 354,0 million) in the total real value of building plans passed were Western Cape (+2,7 percentage points or R376,2 million), KwaZulu-Natal (+1,9 percentage points or R255,4 million), Gauteng (+1,6 percentage points or R214,1 million) and Limpopo (+1,5 percentage points or R199,4 million) (cf. table A). The largest real increase in Western Cape was reported for dwelling-houses (+R424,0 million, mainly due to increases reported by the selected urban areas of Cape Town (+R152,3 million), Knysna Municipality (+R77,1 million), Overstrand Municipality (+R60,8 million), George Municipality (+R39,8 million) and Helderberg Municipality (+R27,1 million)). Large real increases in KwaZulu-Natal were reported for additions and alterations (+R195,4 million, mainly due to the real increase reported by Umhlathuze Municipality – Richards Bay Area for additions and alterations to non-residential buildings (+R232,8 million)) and shopping space (+R160,8 million, mainly due to the real increase reported for shopping space by North Local Council – Umhlanga Rocks (+R163,8 million)).

Table A - Contribution of provinces to the total real value of building plans passed

Province	Percentage contribution to the total real value of plans passed during January 2001 to September 2001	Percentage change between January 2001 to September 2001 and January 2002 to September 2002	Contribution (percentage points) ^{1/} to the percentage change in the real value of plans passed between January 2001 to September 2001 and January 2002 to September 2002	Difference in total real value of plans passed between January 2001 to September 2001 and January 2002 to September 2002 R million
Western Cape	29,3	+ 9,3	+ 2,7	+ 376,2
KwaZulu-Natal	13,0	+ 14,3	+ 1,9	+ 255,4
Gauteng	41,0	+ 3,8	+ 1,6	+ 214,1
Limpopo	1,5	+ 96,7	+ 1,5	+ 199,4
Mpumalanga	3,5	+ 18,6	+ 0,6	+ 89,4
North West	2,6	+ 24,8	+ 0,6	+ 90,7
Free State	2,4	+ 23,4	+ 0,6	+ 79,0
Eastern Cape	6,0	+ 7,3	+ 0,4	+ 59,7
Northern Cape	0,7	- 10,2	- 0,1	- 9,9
Total	100,0	+ 9,8	+ 9,8	+1 354,0

1/ The contribution (percentage points) is calculated by multiplying the percentage change of each province between January 2001 to September 2001 and January 2002 to September 2002 (cf. column 3) with the percentage contribution of the corresponding province to the total real value of plans passed during January 2001 to September 2001 (cf. column 2) divided by 100.

Key figures regarding buildings completed for the month ended September 2002

Actual estimates at constant 2000 prices	September 2002	January 2002 to September 2002	Percentage change between September 2001 and September 2002	Percentage change between July 2001 to September 2001 and July 2002 to September 2002	Percentage change between January 2001 to September 2001 and January 2002 to September 2002
	R million	R million			
Residential buildings					
Dwelling-houses	453,7	3 662,6	+ 30,0	+ 31,0	+ 21,9
Flats and townhouses and other residential buildings	261,6	1 720,6	+180,9	+ 181,7	+ 51,7
Total	715,3	5 383,2	+ 61,8	+ 59,0	+ 30,1
Non-residential buildings	214,4	1 714,1	- 85,2	- 67,9	- 47,0
Additions and alterations	228,7	2 056,0	+ 36,8	+ 7,8	- 4,2
Total	1 158,4	9 153,3	- 43,8	- 10,5	- 3,8

Seasonally adjusted estimates at constant 2000 prices

	September 2002	Percentage change between August 2002 and September 2002	Percentage change between April 2002 to June 2002 and July 2002 to September 2002
	R million		
Residential buildings	645,7	+ 1,3	+ 4,5
Non-residential buildings	167,7	+ 57,9	- 39,1
Additions and alterations	242,2	+ 15,0	- 24,8
Total	1 055,6	+ 10,7	- 12,1

Key findings regarding buildings completed for the third quarter of 2002

Seasonally adjusted real value of buildings completed decreases

The seasonally adjusted real value of buildings completed (at constant 2000 prices) for the third quarter of 2002 decreased by 12,1% compared with the second quarter of 2002.

The decrease of 12,1% in the seasonally adjusted real value of buildings completed during the third quarter of 2002 compared with the second quarter of 2002 was mainly due to decreases in the seasonally adjusted real value of non-residential buildings (-39,1%) and additions and alterations (-24,8%). However, these decreases were partially counteracted by an increase in the seasonally adjusted real value of residential buildings completed (+4,5%) during the above-mentioned period.

Key findings regarding buildings completed for the first nine months of 2002

Total real value of buildings completed decreases

The total real value of buildings completed (at constant 2000 prices) during the first nine months of 2002 decreased by 3,8% (-R363,4 million) to R9 153,3 million compared with the first nine months of 2001. Large decreases in the real value of buildings completed were reported for non-residential buildings (-R1 517,7 million, mainly due to decreases reported by KwaZulu-Natal (-R982,0 million), Gauteng (-R309,0 million) and Eastern Cape (-R166,4 million)). However, these decreases were partially counteracted by real increases reported for dwelling-houses (+R657,7 million, mainly due to increases reported by Gauteng (+R395,6 million) and Western Cape (+R351,2 million)) and flats and townhouses (+R555,5 million, mainly due to increases reported by Gauteng (+R390,9 million)) during the above-mentioned period.

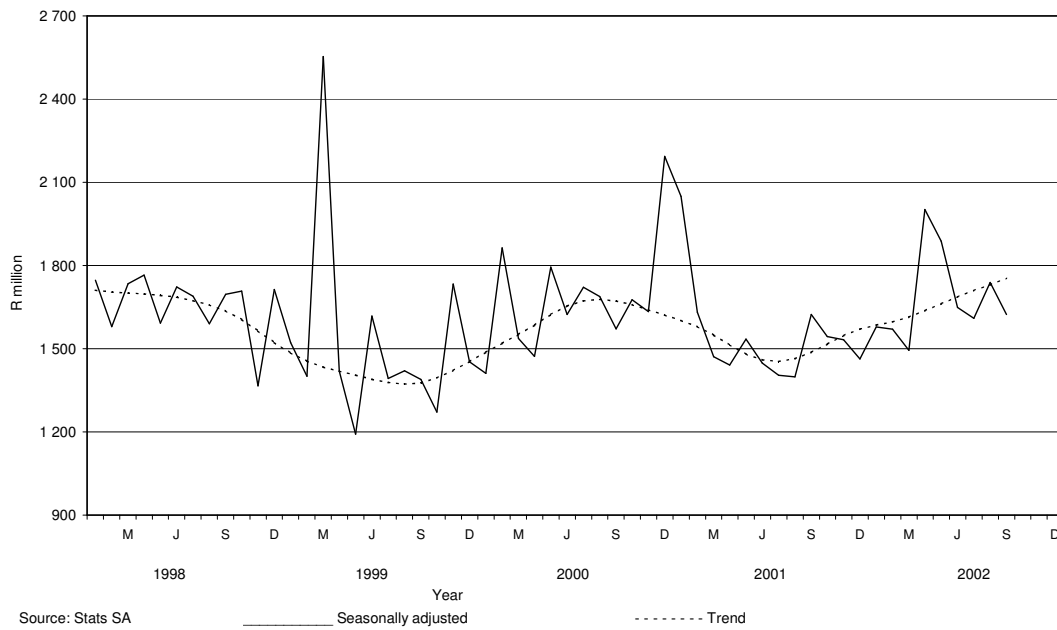
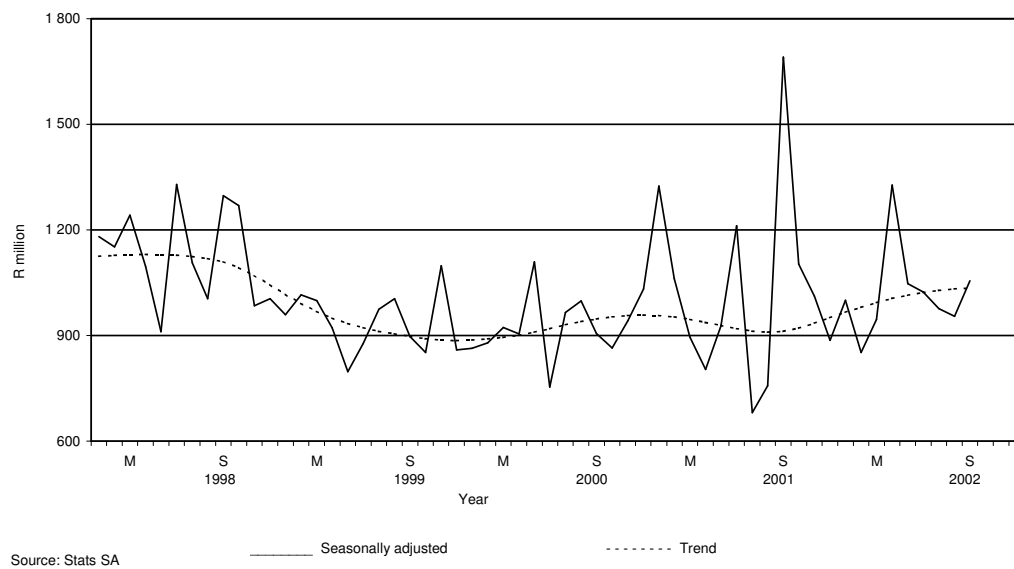
Four of the nine provinces reported decreases in the total real value of buildings completed

The largest provincial contributor to the decrease of 3,8% (-R363,4 million) in the total real value of buildings completed was KwaZulu-Natal (-11,2 percentage points or R1 070,7 million). KwaZulu-Natal reported a large real decrease regarding shopping space completed (-R1 113,5 million, mainly due to the real decrease reported by North Local Council - Umhlanga Rocks (-R1 123,5 million)). However, these decreases were counteracted by large real increases reported by Gauteng (+3,8 percentage points or R357,9 million), Western Cape (+3,4 percentage points or R321,6 million) and Limpopo (+1,9 percentage points or R179,9 million) (cf. table B). Large real increases in Gauteng were reported for dwelling-houses (+R395,6 million, mainly due to increases reported by the selected urban areas of Witwatersrand (+R177,1 million), Pretoria (+R136,9 million) and Kungwini Local Municipality –Bronkhorstspuit Area (+R76,1 million)) and flats and townhouses (+R390,9 million, mainly due to the large increases reported by the selected urban areas of Witwatersrand (+R199,8 million) and Pretoria (+R198,1 million)). The largest real increase in Western Cape was reported for dwelling-houses (+R351,2 million, mainly due to the large increase reported by the selected urban areas of Cape Town (+R240,7 million)).

Table B - Contribution of provinces to the total real value of buildings completed

Province	Percentage contribution to the total real value of buildings completed during January 2001 to September 2001	Percentage change between January 2001 to September 2001 and January 2002 to September 2002	Contribution (percentage points) ^{1/} to the percentage change in the real value of buildings completed between January 2001 to September 2001 and January 2002 to September 2002	Difference in total real value of buildings completed between January 2001 to September 2001 and January 2002 to September 2002 R million
KwaZulu-Natal	26,8	- 41,9	- 11,2	-1 070,7
Eastern Cape	6,5	- 24,4	- 1,6	- 150,2
Northern Cape	1,2	- 43,8	- 0,5	- 48,1
Free State	3,4	- 12,4	- 0,4	- 40,6
Mpumalanga	2,1	+ 21,3	+ 0,4	+ 43,1
North West	2,6	+ 17,6	+ 0,4	+ 43,7
Limpopo	0,9	+ 215,7	+ 1,9	+ 179,9
Western Cape	26,5	+ 12,8	+ 3,4	+ 321,6
Gauteng	30,0	+ 12,5	+ 3,8	+ 357,9
Total	100,0	- 3,8	- 3,8	- 363,4

1/ The contribution (percentage points) is calculated by multiplying the percentage change of each province between January 2001 to September 2001 and January 2002 to September 2002 (cf. column 3) with the percentage contribution of the corresponding province to the total real value of buildings completed during January 2001 to September 2001 (cf. column 2) divided by 100.

Figure 1 – Total real value of building plans passed**Figure 2 – Total real value of buildings completed**

Contents

Page

Notes	7
Tables		
Table 1	Actual values and percentage change of building plans passed at current prices according to type of building	8
Table 2	Seasonally adjusted values and percentage change of building plans passed at current prices according to type of building	9
Table 3	Actual values and percentage change of building plans passed at constant 2000 prices according to type of building	10
Table 4	Seasonally adjusted values and percentage change of building plans passed at constant 2000 prices according to type of building	11
Table 5	Actual values and percentage change of buildings completed at current prices according to type of building	12
Table 6	Seasonally adjusted values and percentage change of buildings completed at current prices according to type of building	13
Table 7	Actual values and percentage change of buildings completed at constant 2000 prices according to type of building	14
Table 8	Seasonally adjusted values and percentage change of buildings completed at constant 2000 prices according to type of building	15
Table 9	Building plans passed according to type of building: Total RSA	16
Table 10	Building plans passed according to type of building and province: Western Cape	17
Table 11	Building plans passed according to type of building and province: Eastern Cape	18
Table 12	Building plans passed according to type of building and province: Northern Cape	19
Table 13	Building plans passed according to type of building and province: Free State	20
Table 14	Building plans passed according to type of building and province: KwaZulu-Natal	21
Table 15	Building plans passed according to type of building and province: North West	22
Table 16	Building plans passed according to type of building and province: Gauteng	23
Table 17	Building plans passed according to type of building and province: Mpumalanga	24
Table 18	Building plans passed according to type of building and province: Limpopo.....	25
Table 19	Buildings completed according to type of building: Total RSA	26
Table 20	Buildings completed according to type of building and province: Western Cape	27
Table 21	Buildings completed according to type of building and province: Eastern Cape	28
Table 22	Buildings completed according to type of building and province: Northern Cape.....	29
Table 23	Buildings completed according to type of building and province: Free State	30
Table 24	Buildings completed according to type of building and province: KwaZulu-Natal	31
Table 25	Buildings completed according to type of building and province: North West	32
Table 26	Buildings completed according to type of building and province: Gauteng	33
Table 27	Buildings completed according to type of building and province: Mpumalanga	34
Table 28	Buildings completed according to type of building and province: Limpopo.....	35
Table 29	Building plans passed according to type of building and selected urban area: Cape Town	36
Table 30	Building plans passed according to type of building and selected urban area: Port Elizabeth	37
Table 31	Building plans passed according to type of building and selected urban area: Durban	38
Table 32	Building plans passed according to type of building and selected urban area: Witwatersrand	39
Table 33	Building plans passed according to type of building and selected urban area: Pretoria	40
Table 34	Building plans passed according to type of building and selected urban area: Bloemfontein	41
Table 35	Buildings completed according to type of building and selected urban area: Cape Town	42
Table 36	Buildings completed according to type of building and selected urban area: Port Elizabeth	43
Table 37	Buildings completed according to type of building and selected urban area: Durban	44
Table 38	Buildings completed according to type of building and selected urban area: Witwatersrand	45
Table 39	Buildings completed according to type of building and selected urban area: Pretoria	46
Table 40	Buildings completed according to type of building and selected urban area: Bloemfontein	47
Additional information		
Explanatory notes		48
Technical notes		50
Local government institutions covered in the sample survey		
Table C – Classification of towns and cities according to new municipalities and previous local government institutions by province		51
Table D – Classification of selected urban areas according to new municipalities and previous local government institutions		63
Glossary		66
For more information		67

Notes

Forthcoming issues	Issue	Expected release date
	October 2002	18 December 2002
	November 2002	15 January 2003
	December 2002	19 February 2003
Purpose of the survey	<p>The Building Statistics Survey is a countrywide survey covering a sample of municipalities in South Africa. The information received is used to estimate key economic statistics used by the private and public sectors. The information is also used to compile estimates of the Gross Domestic Product (GDP). These statistics are also used by government to monitor the Reconstruction and Development Program (RDP) in South Africa.</p>	
Change in base year of constant prices from 1995 to 2000	<p>Following international practice, the base year of the price index ("lump sum domestic buildings" as published in statistical release P0151 –JBCC Contract Price Adjustment Provision Work Group Indices), which is used to deflate the current prices of building plans passed and buildings completed to constant prices, has been converted to 2000=100 with effect from May 2002. Previously the value of building plans passed and buildings completed was published at constant 1995 prices. It should be borne in mind that the change does not in any way affect the trends.</p>	

Table 1 - Actual values and percentage change of building plans passed at current prices according to type of building

Year ^{1/} and month ^{2/}	Residential buildings		Non-residential buildings		Additions and alterations		Total	
	R'000	Percentage change	R'000	Percentage change	R'000	Percentage change	R'000	Percentage change
2000 Jan	490 776	- 11,3	163 926	- 31,0	365 596	+ 31,8	1 020 298	- 4,5
Feb	784 023	+ 48,3	521 389	+ 32,1	399 280	+ 12,3	1 704 692	+ 33,3
Mar	747 421	+ 12,0	359 267	- 75,3	515 668	+ 8,2	1 622 356	- 37,6
Apr	627 642	+ 18,3	271 151	- 27,6	382 300	+ 15,8	1 281 093	+ 3,7
May	874 847	+ 65,8	573 853	+ 109,3	473 062	+ 17,3	1 921 762	+ 59,5
Jun	853 154	+ 1,8	336 324	- 19,6	532 278	+ 31,8	1 721 756	+ 3,7
Jul	908 061	+ 42,5	484 669	+ 5,2	549 932	+ 30,8	1 942 662	+ 27,9
Aug	929 836	+ 31,1	353 488	- 9,0	492 627	+ 18,5	1 775 951	+ 23,8
Sep	826 851	+ 37,8	354 456	+ 16,0	465 836	- 3,8	1 647 143	+ 18,5
Oct	916 410	+ 37,9	492 884	+ 49,8	539 561	+ 23,5	1 948 855	+ 36,2
Nov	914 346	+ 28,6	493 166	- 29,7	503 659	- 6,2	1 911 171	- 2,0
Dec	606 148	+ 22,7	704 410	+ 212,8	317 835	+ 0,9	1 628 393	+ 57,5
Total	9 479 515	+ 28,4	5 108 983	- 8,2	5 537 634	+ 14,1	20 126 132	+ 13,1
2001 Jan	721 003	+ 46,9	477 489	+ 191,3	352 193	- 3,7	1 550 685	+ 52,0
Feb	826 607	+ 5,4	300 417	- 42,4	474 953	+ 19,0	1 601 977	- 6,0
Mar	929 196	+ 24,3	301 148	- 16,2	436 645	- 15,3	1 666 989	+ 2,8
Apr	738 858	+ 17,7	207 874	- 23,3	377 373	- 1,3	1 324 105	+ 3,4
May	999 426	+ 14,2	289 330	- 49,6	499 673	+ 5,6	1 788 429	- 6,9
Jun	901 450	+ 5,7	299 913	- 10,8	447 228	- 16,0	1 648 591	- 4,2
Jul	891 483	- 1,8	366 953	- 24,3	427 464	- 22,3	1 685 900	- 13,2
Aug	836 033	- 10,1	245 865	- 30,4	482 883	- 2,0	1 564 781	- 11,9
Sep	960 995	+ 16,2	303 367	- 14,4	526 113	+ 12,9	1 790 475	+ 8,7
Oct	1 196 455	+ 30,6	185 828	- 62,3	542 954	+ 0,6	1 925 237	- 1,2
Nov	974 628	+ 6,6	317 506	- 35,6	595 512	+ 18,2	1 887 646	- 1,2
Dec	649 614	+ 7,2	140 365	- 80,1	357 449	+ 12,5	1 147 428	- 29,5
Total	10 625 748	+ 12,1	3 436 055	- 32,7	5 520 440	- 0,3	19 582 243	- 2,7
2002 Jan*	777 744	+ 7,9	167 598	- 64,9	399 729	+ 13,5	1 345 071	- 13,3
Feb	1 013 916	+ 22,7	247 016	- 17,8	447 620	- 5,8	1 708 552	+ 6,7
Mar	962 925	+ 3,6	465 942	+ 54,7	421 614	- 3,4	1 850 481	+ 11,0
Apr	1 138 926	+ 54,1	347 885	+ 67,4	519 452	+ 37,6	2 006 263	+ 51,5
May	1 105 380	+ 10,6	437 175	+ 51,1	926 607	+ 85,4	2 469 162	+ 38,1
Jun	1 080 086	+ 19,8	489 168	+ 63,1	538 147	+ 20,3	2 107 401	+ 27,8
Jul	1 218 655	+ 36,7	254 211	- 30,7	662 885	+ 55,1	2 135 751	+ 26,7
Aug*	1 127 329	+ 34,8	387 234	+ 57,5	686 825	+ 42,2	2 201 388	+ 40,7
Sep	1 162 249	+ 20,9	277 218	- 8,6	598 102	+ 13,7	2 037 569	+ 13,8

^{1/} The annual percentage change is the change in the actual values of building plans passed of the relevant year compared with the actual values of building plans passed of the previous year expressed as a percentage.

^{2/} The monthly percentage change is the change in the actual values of building plans passed of the relevant month compared with the actual values of building plans passed of the same month in the previous year expressed as a percentage.

Table 2 - Seasonally adjusted values and percentage change of building plans passed at current prices according to type of building

Year and month ^{1/}	Residential buildings		Non-residential buildings		Additions and alterations		Total	
	R'000	Percentage change	R'000	Percentage change	R'000	Percentage change	R'000	Percentage change
2000 Jan	630 641	- 10,1	249 747	- 18,0	485 987	+ 15,2	1 366 376	- 4,3
Feb	777 360	+ 23,3	580 646	+ 132,5	446 831	- 8,1	1 804 837	+ 32,1
Mar	699 799	- 10,0	332 287	- 42,8	472 956	+ 5,8	1 505 041	- 16,6
Apr	703 456	+ 0,5	307 067	- 7,6	441 823	- 6,6	1 452 345	- 3,5
May	806 822	+ 14,7	517 884	+ 68,7	451 138	+ 2,1	1 775 844	+ 22,3
Jun	814 561	+ 1,0	297 599	- 42,5	506 517	+ 12,3	1 618 677	- 8,9
Jul	829 411	+ 1,8	396 982	+ 33,4	501 984	- 0,9	1 728 376	+ 6,8
Aug	895 412	+ 8,0	348 437	- 12,2	461 039	- 8,2	1 704 889	- 1,4
Sep	804 861	- 10,1	359 351	+ 3,1	430 872	- 6,5	1 595 085	- 6,4
Oct	770 892	- 4,2	466 274	+ 29,8	473 921	+ 10,0	1 711 087	+ 7,3
Nov	857 120	+ 11,2	398 307	- 14,6	426 062	- 10,1	1 681 488	- 1,7
Dec	858 137	+ 0,1	976 906	+ 145,3	434 141	+ 1,9	2 269 185	+ 35,0
2001 Jan	917 408	+ 6,9	764 532	- 21,7	459 517	+ 5,8	2 141 457	- 5,6
Feb	814 679	- 11,2	345 606	- 54,8	542 211	+ 18,0	1 702 496	- 20,5
Mar	880 793	+ 8,1	267 512	- 22,6	401 782	- 25,9	1 550 087	- 9,0
Apr	844 860	- 4,1	241 284	- 9,8	437 237	+ 8,8	1 523 381	- 1,7
May	908 578	+ 7,5	248 316	+ 2,9	470 152	+ 7,5	1 627 046	+ 6,8
Jun	858 507	- 5,5	263 083	+ 5,9	420 398	- 10,6	1 541 988	- 5,2
Jul	814 170	- 5,2	295 639	+ 12,4	394 070	- 6,3	1 503 880	- 2,5
Aug	805 196	- 1,1	241 785	- 18,2	450 380	+ 14,3	1 497 362	- 0,4
Sep	935 972	+ 16,2	316 387	+ 30,9	492 838	+ 9,4	1 745 196	+ 16,6
Oct	1 012 936	+ 8,2	179 411	- 43,3	477 779	- 3,1	1 670 126	- 4,3
Nov	914 606	- 9,7	255 659	+ 42,5	500 345	+ 4,7	1 670 609	+ 0,0
Dec	914 029	- 0,1	196 975	- 23,0	495 314	- 1,0	1 606 318	- 3,8
2002 Jan	983 566	+ 7,6	275 279	+ 39,8	512 935	+ 3,6	1 771 781	+ 10,3
Feb	989 523	+ 0,6	284 163	+ 3,2	514 043	+ 0,2	1 787 729	+ 0,9
Mar	922 976	- 6,7	407 648	+ 43,5	389 960	- 24,1	1 720 584	- 3,8
Apr	1 318 544	+ 42,9	410 627	+ 0,7	603 150	+ 54,7	2 332 321	+ 35,6
May	993 080	- 24,7	365 958	- 10,9	862 904	+ 43,1	2 221 942	- 4,7
Jun	1 028 313	+ 3,5	432 595	+ 18,2	501 929	- 41,8	1 962 837	- 11,7
Jul	1 117 849	+ 8,7	203 031	- 53,1	616 491	+ 22,8	1 937 371	- 1,3
Aug	1 086 532	- 2,8	382 844	+ 88,6	640 108	+ 3,8	2 109 484	+ 8,9
Sep	1 132 085	+ 4,2	291 792	- 23,8	564 537	- 11,8	1 988 414	- 5,7

^{1/} The percentage change is the change in the seasonally adjusted values of building plans passed of the relevant month compared with the seasonally adjusted values of building plans passed of the previous month expressed as a percentage.

Table 3 - Actual values and percentage change of building plans passed at constant 2000 prices according to type of building

Year ^{1/} and month ^{2/}	Residential buildings		Non-residential buildings		Additions and alterations		Total	
	R'000	Percentage change	R'000	Percentage change	R'000	Percentage change	R'000	Percentage change
2000 Jan	508 050	- 13,2	169 696	- 32,5	378 464	+ 28,9	1 056 210	- 6,6
Feb	808 271	+ 46,0	537 514	+ 30,1	411 629	+ 10,6	1 757 414	+ 31,2
Mar	765 016	+ 9,7	367 725	- 75,8	527 808	+ 6,0	1 660 549	- 38,8
Apr	636 554	+ 15,4	275 001	- 29,4	387 728	+ 13,0	1 299 283	+ 1,2
May	881 014	+ 60,8	577 898	+ 103,0	476 397	+ 13,8	1 935 309	+ 54,7
Jun	855 721	- 1,2	337 336	- 22,0	533 880	+ 27,8	1 726 937	+ 0,6
Jul	903 543	+ 37,5	482 258	+ 1,5	547 196	+ 26,3	1 932 997	+ 23,5
Aug	917 903	+ 41,0	348 952	- 13,0	486 305	+ 13,4	1 753 160	+ 18,4
Sep	813 029	+ 31,7	348 531	+ 10,9	458 049	- 8,0	1 619 609	+ 13,3
Oct	897 561	+ 31,5	482 746	+ 42,9	528 463	+ 17,9	1 908 770	+ 29,9
Nov	891 175	+ 22,3	480 669	- 33,1	490 896	- 10,8	1 862 740	- 6,7
Dec	589 065	+ 16,7	684 558	+ 197,3	308 878	- 4,1	1 582 501	+ 49,7
Total	9 466 902	+ 23,9	5 092 884	- 11,7	5 535 693	+ 10,2	20 095 479	+ 9,0
2001 Jan	692 606	+ 36,3	458 683	+ 170,3	338 322	- 10,6	1 489 611	+ 41,0
Feb	791 011	- 2,1	287 480	- 46,5	454 500	+ 10,4	1 532 991	- 12,8
Mar	884 107	+ 15,6	286 535	- 22,1	415 457	- 21,3	1 586 099	- 4,5
Apr	699 014	+ 9,8	196 664	- 28,5	357 023	- 7,9	1 252 701	- 3,6
May	939 310	+ 6,6	271 927	- 52,9	469 617	- 1,4	1 680 854	- 13,1
Jun	845 638	- 1,2	281 344	- 16,6	419 538	- 21,4	1 546 520	- 10,4
Jul	831 607	- 8,0	342 307	- 29,0	398 754	- 27,1	1 572 668	- 18,6
Aug	778 429	- 15,2	228 925	- 34,4	449 612	- 7,5	1 456 966	- 16,9
Sep	893 118	+ 9,9	281 940	- 19,1	488 953	+ 6,7	1 664 011	+ 2,7
Oct	1 106 804	+ 23,3	171 904	- 64,4	502 270	- 5,0	1 780 978	- 6,7
Nov	896 622	+ 0,6	292 094	- 39,2	547 849	+ 11,6	1 736 565	- 6,8
Dec	594 885	+ 1,0	128 539	- 81,2	327 334	+ 6,0	1 050 758	- 33,6
Total	9 953 151	+ 5,1	3 228 342	- 36,6	5 169 229	- 6,6	18 350 722	- 8,7
2002 Jan*	695 035	+ 0,4	149 775	- 67,3	357 220	+ 5,6	1 202 030	- 19,3
Feb	889 400	+ 12,4	216 681	- 24,6	392 649	- 13,6	1 498 730	- 2,2
Mar	838 055	- 5,2	405 520	+ 41,5	366 940	- 11,7	1 610 515	+ 1,5
Apr	977 619	+ 39,9	298 614	+ 51,8	445 882	+ 24,9	1 722 115	+ 37,5
May	935 178	- 0,4	369 860	+ 36,0	783 931	+ 66,9	2 088 969	+ 24,3
Jun	906 112	+ 7,2	410 376	+ 45,9	451 466	+ 7,6	1 767 954	+ 14,3
Jul	1 012 172	+ 21,7	211 139	- 38,3	550 569	+ 38,1	1 773 880	+ 12,8
Aug*	926 318	+ 19,0	318 187	+ 39,0	564 359	+ 25,5	1 808 864	+ 24,2
Sep	948 775	+ 6,2	226 300	- 19,7	488 247	- 0,1	1 663 322	+ 0,0

^{1/} The annual percentage change is the change in the actual values of building plans passed of the relevant year compared with the actual values of building plans passed of the previous year expressed as a percentage.

^{2/} The monthly percentage change is the change in the actual values of building plans passed of the relevant month compared with the actual values of building plans passed of the same month in the previous year expressed as a percentage.

Table 4 - Seasonally adjusted values and percentage change of building plans passed at constant 2000 prices according to type of building

Year and month ^{1/}	Residential buildings		Non-residential buildings		Additions and alterations		Total	
	R'000	Percentage change	R'000	Percentage change	R'000	Percentage change	R'000	Percentage change
2000 Jan	652 635	- 8,7	256 603	- 17,2	501 396	+ 25,5	1 410 634	- 2,9
Feb	804 509	+ 23,3	598 782	+ 133,3	460 429	- 8,2	1 863 721	+ 32,1
Mar	713 443	- 11,3	339 228	- 43,3	484 766	+ 5,3	1 537 437	- 17,5
Apr	712 953	- 0,1	311 478	- 8,2	448 440	- 7,5	1 472 871	- 4,2
May	814 914	+ 14,3	523 473	+ 68,1	456 385	+ 1,8	1 794 771	+ 21,9
Jun	815 922	+ 0,1	298 949	- 42,9	508 830	+ 11,5	1 623 700	- 9,5
Jul	826 403	+ 1,3	395 750	+ 32,4	498 957	- 1,9	1 721 111	+ 6,0
Aug	885 524	+ 7,2	345 334	- 12,7	456 831	- 8,4	1 687 688	- 1,9
Sep	792 358	- 10,5	355 281	+ 2,9	423 507	- 7,3	1 571 146	- 6,9
Oct	754 919	- 4,7	456 873	+ 28,6	464 376	+ 9,7	1 676 168	+ 6,7
Nov	833 901	+ 10,5	385 984	- 15,5	414 007	- 10,8	1 633 891	- 2,5
Dec	829 810	- 0,5	944 560	+ 144,7	418 968	+ 1,2	2 193 338	+ 34,2
2001 Jan	880 778	+ 6,1	728 106	- 22,9	439 628	+ 4,9	2 048 511	- 6,6
Feb	782 329	- 11,2	330 619	- 54,6	518 564	+ 18,0	1 631 512	- 20,4
Mar	835 189	+ 6,8	253 751	- 23,2	382 791	- 26,2	1 471 731	- 9,8
Apr	798 539	- 4,4	228 349	- 10,0	414 240	+ 8,2	1 441 129	- 2,1
May	856 600	+ 7,3	234 455	+ 2,7	443 932	+ 7,2	1 534 987	+ 6,5
Jun	804 757	- 6,1	247 444	+ 5,5	395 435	- 10,9	1 447 636	- 5,7
Jul	760 640	- 5,5	276 143	+ 11,6	367 294	- 7,1	1 404 077	- 3,0
Aug	751 283	- 1,2	226 237	- 18,1	421 207	+ 14,7	1 398 727	- 0,4
Sep	870 910	+ 15,9	295 865	+ 30,8	457 014	+ 8,5	1 623 789	+ 16,1
Oct	936 536	+ 7,5	165 955	- 43,9	441 943	- 3,3	1 544 433	- 4,9
Nov	839 789	- 10,3	233 670	+ 40,8	458 883	+ 3,8	1 532 342	- 0,8
Dec	832 812	- 0,8	179 410	- 23,2	450 779	- 1,8	1 463 000	- 4,5
2002 Jan	877 943	+ 5,4	243 635	+ 35,8	456 454	+ 1,3	1 578 032	+ 7,9
Feb	870 655	- 0,8	249 146	+ 2,3	450 622	- 1,3	1 570 422	- 0,5
Mar	800 852	- 8,0	353 644	+ 41,9	339 757	- 24,6	1 494 253	- 4,9
Apr	1 130 857	+ 41,2	352 608	- 0,3	518 595	+ 52,6	2 002 061	+ 34,0
May	842 836	- 25,5	311 232	- 11,7	733 308	+ 41,4	1 887 377	- 5,7
Jun	862 417	+ 2,3	364 099	+ 17,0	422 553	- 42,4	1 649 069	- 12,6
Jul	929 964	+ 7,8	168 817	- 53,6	511 547	+ 21,1	1 610 328	- 2,3
Aug	894 659	- 3,8	316 161	+ 87,3	528 470	+ 3,3	1 739 290	+ 8,0
Sep	925 025	+ 3,4	239 681	- 24,2	459 437	- 13,1	1 624 143	- 6,6

^{1/} The percentage change is the change in the seasonally adjusted values of building plans passed of the relevant month compared with the seasonally adjusted values of building plans passed of the previous month expressed as a percentage.

Table 5 - Actual values and percentage change of buildings completed at current prices according to type of building

Year ^{1/} and month ^{2/}	Residential buildings		Non-residential buildings		Additions and alterations		Total	
	R'000	Percentage change	R'000	Percentage change	R'000	Percentage change	R'000	Percentage change
2000 Jan	299 212	- 4,7	195 988	- 0,6	183 959	- 4,7	679 159	- 3,5
Feb	353 141	- 11,0	205 549	- 4,3	221 978	- 9,3	780 668	- 8,8
Mar	419 416	- 3,0	212 379	- 13,7	268 745	+ 16,5	900 540	- 1,0
Apr	364 713	- 3,5	224 048	+ 23,4	188 808	- 5,8	777 569	+ 2,3
May	473 124	+ 21,0	390 533	+ 99,6	293 343	+ 64,1	1 157 000	+ 51,2
Jun	362 558	- 13,7	174 728	- 16,2	170 986	+ 11,2	708 272	- 9,5
Jul	407 406	- 15,3	472 668	+ 79,0	220 828	- 18,9	1 100 902	+ 8,2
Aug	449 691	- 2,4	285 994	+ 39,6	211 008	- 17,5	946 693	+ 2,7
Sep	510 979	+ 3,6	270 539	+ 37,2	199 622	- 10,6	981 140	+ 7,4
Oct	462 270	+ 10,2	195 491	- 4,0	238 257	+ 3,8	896 018	+ 5,1
Nov	555 802	+ 20,5	186 442	- 54,5	255 900	+ 21,7	998 144	- 7,7
Dec	383 114	+ 9,6	316 801	+ 74,5	149 622	+ 2,2	849 537	+ 25,4
Total	5 041 426	+ 0,9	3 131 160	+ 15,7	2 603 056	+ 2,5	10 775 642	+ 5,2
2001 Jan	643 047	+ 114,9	238 434	+ 21,7	201 057	+ 9,3	1 082 538	+ 59,4
Feb	428 803	+ 21,4	285 619	+ 39,0	244 636	+ 10,2	959 058	+ 22,9
Mar	489 687	+ 16,8	159 637	- 24,8	286 396	+ 6,6	935 720	+ 3,9
Apr	366 061	+ 0,4	169 796	- 24,2	185 541	- 1,7	721 398	- 7,2
May	447 895	- 5,3	300 533	- 23,0	295 847	+ 0,9	1 044 275	- 9,7
Jun	539 545	+ 48,8	338 853	+ 93,9	294 854	+ 72,4	1 173 252	+ 65,6
Jul	396 717	- 2,6	121 617	- 74,3	232 836	+ 5,4	751 170	- 31,8
Aug	431 845	- 4,0	117 368	- 59,0	214 644	+ 1,7	763 857	- 19,3
Sep	461 515	- 9,7	1 417 979	+ 424,1	169 974	- 14,9	2 049 468	+ 108,9
Oct	667 250	+ 44,3	285 644	+ 46,1	237 138	- 0,5	1 190 032	+ 32,8
Nov	616 443	+ 10,9	211 109	+ 13,2	288 778	+ 12,8	1 116 330	+ 11,8
Dec	469 410	+ 22,5	173 587	- 45,2	124 610	- 16,7	767 607	- 9,6
Total	5 958 218	+ 18,2	3 820 176	+ 22,0	2 776 311	+ 6,7	12 554 705	+ 16,5
2002 Jan	579 544	- 9,9	137 089	- 42,5	174 833	- 13,0	891 466	- 17,7
Feb	487 783	+ 13,8	138 037	- 51,7	198 195	- 19,0	824 015	- 14,1
Mar	699 202	+ 42,8	169 849	+ 6,4	174 052	- 39,2	1 043 103	+ 11,5
Apr	641 454	+ 75,2	248 263	+ 46,2	381 482	+ 105,6	1 271 199	+ 76,2
May	671 871	+ 50,0	293 306	- 2,4	298 168	+ 0,8	1 263 345	+ 21,0
Jun	576 813	+ 6,9	206 136	- 39,2	248 350	- 15,8	1 031 299	- 12,1
Jul	665 914	+ 67,9	250 131	+ 105,7	236 281	+ 1,5	1 152 326	+ 53,4
Aug*	732 614	+ 69,6	94 396	- 19,6	225 042	+ 4,8	1 052 052	+ 37,7
Sep	802 761	+ 73,9	225 349	- 84,1	246 064	+ 44,8	1 274 174	- 37,8

^{1/} The annual percentage change is the change in the actual values of buildings completed of the relevant year compared with the actual values of buildings completed of the previous year expressed as a percentage.

^{2/} The monthly percentage change is the change in the actual values of buildings completed of the relevant month compared with the actual values of buildings completed of the same month in the previous year expressed as a percentage.

Table 6 - Seasonally adjusted values and percentage change of buildings completed at current prices according to type of building

Year and month ^{1/}	Residential buildings		Non-residential buildings		Additions and alterations		Total	
	R'000	Percentage change	R'000	Percentage change	R'000	Percentage change	R'000	Percentage change
2000 Jan	361 515	- 9,1	245 042	+ 30,5	208 975	- 6,6	815 532	+ 0,8
Feb	393 283	+ 8,8	233 631	- 4,7	207 443	- 0,7	834 357	+ 2,3
Mar	394 203	+ 0,2	261 842	+ 12,1	223 628	+ 7,8	879 673	+ 5,4
Apr	400 118	+ 1,5	257 575	- 1,6	207 831	- 7,1	865 524	- 1,6
May	450 844	+ 12,7	350 944	+ 36,2	260 582	+ 25,4	1 062 369	+ 22,7
Jun	382 193	- 15,2	173 859	- 50,5	181 559	- 30,3	737 612	- 30,6
Jul	395 374	+ 3,4	332 905	+ 91,5	198 945	+ 9,6	927 223	+ 25,7
Aug	438 933	+ 11,0	311 981	- 6,3	210 633	+ 5,9	961 547	+ 3,7
Sep	460 590	+ 4,9	212 293	- 32,0	204 613	- 2,9	877 496	- 8,7
Oct	442 208	- 4,0	179 987	- 15,2	220 421	+ 7,7	842 616	- 4,0
Nov	467 762	+ 5,8	207 810	+ 15,5	243 517	+ 10,5	919 090	+ 9,1
Dec	435 857	- 6,8	347 152	+ 67,1	229 782	- 5,6	1 012 791	+ 10,2
2001 Jan	753 799	+ 72,9	308 308	- 11,2	230 878	+ 0,5	1 292 985	+ 27,7
Feb	477 104	- 36,7	332 672	+ 7,9	234 359	+ 1,5	1 044 135	- 19,2
Mar	450 050	- 5,7	203 929	- 38,7	231 971	- 1,0	885 951	- 15,1
Apr	398 764	- 11,4	195 123	- 4,3	204 839	- 11,7	798 726	- 9,8
May	427 448	+ 7,2	247 146	+ 26,7	253 154	+ 23,6	927 749	+ 16,2
Jun	581 611	+ 36,1	336 068	+ 36,0	313 682	+ 23,9	1 231 360	+ 32,7
Jul	396 194	- 31,9	81 052	- 75,9	215 093	- 31,4	692 340	- 43,8
Aug	421 321	+ 6,3	134 191	+ 65,6	215 268	+ 0,1	770 780	+ 11,3
Sep	413 743	- 1,8	1 095 176	+ 716,1	176 137	- 18,2	1 685 056	+ 118,6
Oct	636 920	+ 53,9	274 223	- 75,0	218 059	+ 23,8	1 129 201	- 33,0
Nov	520 331	- 18,3	242 439	- 11,6	275 727	+ 26,4	1 038 497	- 8,0
Dec	534 841	+ 2,8	196 400	- 19,0	190 798	- 30,8	922 039	- 11,2
2002 Jan	668 667	+ 25,0	177 391	- 9,7	201 566	+ 5,6	1 047 624	+ 13,6
Feb	539 851	- 19,3	163 974	- 7,6	191 441	- 5,0	895 265	- 14,5
Mar	637 895	+ 18,2	217 526	+ 32,7	139 481	- 27,1	994 902	+ 11,1
Apr	696 340	+ 9,2	283 855	+ 30,5	420 453	+ 201,4	1 400 648	+ 40,8
May	634 766	- 8,8	230 070	- 18,9	249 999	- 40,5	1 114 834	- 20,4
Jun	633 912	- 0,1	208 432	- 9,4	266 190	+ 6,5	1 108 533	- 0,6
Jul	680 159	+ 7,3	161 877	- 22,3	221 393	- 16,8	1 063 429	- 4,1
Aug	710 862	+ 4,5	110 568	- 31,7	226 024	+ 2,1	1 047 454	- 1,5
Sep	724 036	+ 1,9	176 636	+ 59,8	257 744	+ 14,0	1 158 416	+ 10,6

^{1/} The percentage change is the change in the seasonally adjusted values of buildings completed of the relevant month compared with the seasonally adjusted values of buildings completed of the previous month expressed as a percentage.

Table 7 - Actual values and percentage change of buildings completed at constant 2000 prices according to type of building

Year ^{1/} and month ^{2/}	Residential buildings		Non-residential buildings		Additions and alterations		Total	
	R'000	Percentage change	R'000	Percentage change	R'000	Percentage change	R'000	Percentage change
2000 Jan	310 456	- 10,1	214 195	- 5,7	194 666	- 10,8	719 317	- 9,0
Feb	365 724	- 28,3	222 215	- 13,2	232 438	- 29,2	820 377	- 24,7
Mar	433 235	- 33,7	227 874	- 23,9	280 820	- 24,7	941 929	- 28,7
Apr	375 641	- 24,1	239 112	+ 3,6	196 266	- 12,8	811 019	- 14,3
May	486 811	- 26,2	415 461	- 3,9	304 614	- 1,9	1 206 886	- 14,6
Jun	371 504	- 31,4	185 683	- 9,6	176 821	+ 14,5	734 008	- 16,3
Jul	421 432	- 31,4	500 178	- 28,2	227 658	- 34,6	1 149 268	- 35,2
Aug	463 689	- 39,6	299 470	- 7,0	217 759	- 29,6	980 918	- 27,6
Sep	523 538	- 36,2	282 695	- 3,1	205 372	- 18,7	1 011 605	- 26,7
Oct	470 304	- 40,4	203 213	- 5,6	244 617	- 20,5	918 134	- 21,1
Nov	561 785	- 29,4	193 605	- 52,9	262 193	- 13,0	1 017 583	- 38,0
Dec	386 117	- 35,5	327 612	+ 6,6	152 988	+ 25,2	866 717	- 0,2
Total	5 170 236	- 3,1	3 311 313	+ 8,4	2 696 212	- 3,1	11 177 761	+ 0,0
2001 Jan	654 850	+ 110,9	245 808	+ 14,8	208 134	+ 6,9	1 108 792	+ 54,1
Feb	427 706	+ 16,9	294 756	+ 32,6	252 202	+ 8,5	974 664	+ 18,8
Mar	487 529	+ 12,5	164 236	- 27,9	293 138	+ 4,4	944 903	+ 0,3
Apr	361 669	- 3,7	174 329	- 27,1	188 175	- 4,1	724 173	- 10,7
May	438 090	- 10,0	307 923	- 25,9	297 933	- 2,2	1 043 946	- 13,5
Jun	528 083	+ 42,1	346 475	+ 86,6	295 741	+ 67,3	1 170 299	+ 59,4
Jul	383 132	- 9,1	125 898	- 74,8	231 678	+ 1,8	740 708	- 35,5
Aug	415 640	- 10,4	120 998	- 59,6	211 889	- 2,7	748 527	- 23,7
Sep	442 133	- 15,5	1 451 360	+ 413,4	167 133	- 18,6	2 060 626	+ 103,7
Oct	638 358	+ 35,7	289 700	+ 42,6	232 261	- 5,1	1 160 319	+ 26,4
Nov	586 177	+ 4,3	212 597	+ 9,8	281 460	+ 7,3	1 080 234	+ 6,2
Dec	443 262	+ 14,8	174 109	- 46,9	121 098	- 20,8	738 469	- 14,8
Total	5 806 629	+ 12,3	3 908 189	+ 18,0	2 780 842	+ 3,1	12 495 660	+ 11,8
2002 Jan	545 960	- 16,6	136 407	- 44,5	167 947	- 19,3	850 314	- 23,3
Feb	458 165	+ 7,1	136 266	- 53,8	189 660	- 24,8	784 091	- 19,6
Mar	656 718	+ 34,7	167 010	+ 1,7	165 606	- 43,5	989 334	+ 4,7
Apr	596 575	+ 65,0	243 157	+ 39,5	360 910	+ 91,8	1 200 642	+ 65,8
May	622 362	+ 42,1	285 873	- 7,2	280 233	- 5,9	1 188 468	+ 13,8
Jun	530 538	+ 0,5	200 327	- 42,2	232 974	- 21,2	963 839	- 17,6
Jul	601 678	+ 57,0	240 280	+ 90,9	220 411	- 4,9	1 062 369	+ 43,4
Aug*	655 975	+ 57,8	90 331	- 25,3	209 536	- 1,1	955 842	+ 27,7
Sep	715 283	+ 61,8	214 414	- 85,2	228 684	+ 36,8	1 158 381	- 43,8

^{1/} The annual percentage change is the change in the actual values of buildings completed of the relevant year compared with the actual values of buildings completed of the previous year expressed as a percentage.

^{2/} The monthly percentage change is the change in the actual values of buildings completed of the relevant month compared with the actual values of buildings completed of the same month in the previous year expressed as a percentage.

Table 8 - Seasonally adjusted values and percentage change of buildings completed at constant 2000 prices according to type of building

Year and month ^{1/}	Residential buildings		Non-residential buildings		Additions and alterations		Total	
	R'000	Percentage change	R'000	Percentage change	R'000	Percentage change	R'000	Percentage change
2000 Jan	375 425	- 9,5	268 196	+ 29,3	220 366	- 7,2	863 987	+ 0,5
Feb	408 344	+ 8,8	253 217	- 5,6	217 146	- 1,5	878 707	+ 1,7
Mar	407 297	- 0,3	281 438	+ 11,1	234 029	+ 7,8	922 764	+ 5,0
Apr	411 891	+ 1,1	275 129	- 2,2	217 622	- 7,0	904 642	- 2,0
May	464 228	+ 12,7	373 314	+ 35,7	271 452	+ 24,7	1 108 994	+ 22,6
Jun	388 487	- 16,3	184 310	- 50,6	181 175	- 33,3	753 972	- 32,0
Jul	408 345	+ 5,1	351 523	+ 90,7	205 782	+ 13,6	965 650	+ 28,1
Aug	453 331	+ 11,0	327 784	- 6,8	217 337	+ 5,6	998 452	+ 3,4
Sep	471 994	+ 4,1	221 422	- 32,4	212 540	- 2,2	905 956	- 9,3
Oct	450 827	- 4,5	186 864	- 15,6	227 160	+ 6,9	864 851	- 4,5
Nov	473 685	+ 5,1	216 234	+ 15,7	252 199	+ 11,0	942 118	+ 8,9
Dec	439 305	- 7,3	358 214	+ 65,7	234 639	- 7,0	1 032 158	+ 9,6
2001 Jan	768 396	+ 74,9	318 275	- 11,1	238 036	+ 1,4	1 324 707	+ 28,3
Feb	476 614	- 38,0	344 097	+ 8,1	241 229	+ 1,3	1 061 940	- 19,8
Mar	447 601	- 6,1	210 278	- 38,9	237 646	- 1,5	895 525	- 15,7
Apr	393 684	- 12,0	200 620	- 4,6	209 896	- 11,7	804 199	- 10,2
May	418 113	+ 6,2	253 264	+ 26,2	255 462	+ 21,7	926 839	+ 15,2
Jun	565 943	+ 35,4	342 909	+ 35,4	303 095	+ 18,6	1 211 946	+ 30,8
Jul	382 311	- 32,4	83 769	- 75,6	214 706	- 29,2	680 786	- 43,8
Aug	406 166	+ 6,2	138 836	+ 65,7	212 462	- 1,0	757 464	+ 11,3
Sep	396 663	- 2,3	1 118 723	+ 705,8	174 937	- 17,7	1 690 323	+ 123,2
Oct	610 518	+ 53,9	277 800	- 75,2	214 560	+ 22,6	1 102 878	- 34,8
Nov	495 522	- 18,8	244 532	- 12,0	271 723	+ 26,6	1 011 777	- 8,3
Dec	505 124	+ 1,9	196 456	- 19,7	185 267	- 31,8	886 847	- 12,3
2002 Jan	630 418	+ 24,8	176 691	- 10,1	192 807	+ 4,1	999 917	+ 12,7
Feb	507 580	- 19,5	162 129	- 8,2	182 779	- 5,2	852 488	- 14,7
Mar	598 086	+ 17,8	214 368	+ 32,2	132 829	- 27,3	945 282	+ 10,9
Apr	647 037	+ 8,2	278 488	+ 29,9	402 394	+ 202,9	1 327 919	+ 40,5
May	587 630	- 9,2	224 338	- 19,4	235 310	- 41,5	1 047 277	- 21,1
Jun	581 113	- 1,1	202 230	- 9,9	240 204	+ 2,1	1 023 546	- 2,3
Jul	614 083	+ 5,7	155 282	- 23,2	207 185	- 13,7	976 549	- 4,6
Aug	637 223	+ 3,8	106 206	- 31,6	210 535	+ 1,6	953 963	- 2,3
Sep	645 724	+ 1,3	167 681	+ 57,9	242 166	+ 15,0	1 055 570	+ 10,7

^{1/} The percentage change is the change in the seasonally adjusted values of buildings completed of the relevant month compared with the seasonally adjusted values of buildings completed of the previous month expressed as a percentage.

Table 9 - Building plans passed according to type of building: Total RSA

Type of building	September 2001 *	August 2002 *	September 2002	January 2001 to September 2001	January 2002 to September 2002	Percentage change between January 2001 to September 2001 and January 2002 to September 2002
Residential buildings						
Dwelling-houses smaller than 80 square metres						
Number of dwelling-houses	2 498	4 026	4 068	30 275	30 480	+ 0,7
Total square metres	95 415	143 808	160 790	1 190 887	1 165 173	- 2,2
Total value at current prices (R'000)	94 213	155 794	133 084	1 131 070	1 167 900	+ 3,3
Dwelling-houses equal to or larger than 80 square metres						
Number of dwelling-houses	1 791	2 337	2 087	16 030	18 268	+ 14,0
Total square metres	394 439	516 691	487 942	3 459 379	4 127 211	+ 19,3
Total value at current prices (R'000)	579 636	780 386	750 296	4 940 260	6 224 272	+ 26,0
Flats and townhouses						
Number of flats and townhouses	829	820	1 217	8 995	10 178	+ 13,2
Total square metres	134 005	118 255	148 136	972 034	1 213 427	+ 24,8
Total value at current prices (R'000)	203 268	182 944	231 616	1 466 239	1 929 921	+ 31,6
Other residential buildings ^{1/}						
Total square metres	20 644	4 968	5 309	103 308	109 082	+ 5,6
Total value at current prices (R'000)	83 878	8 205	47 253	267 482	265 117	- 0,9
Total value of residential buildings at current prices (R'000)	960 995	1 127 329	1 162 249	7 805 051	9 587 210	+ 22,8
Non-residential buildings						
Office and banking space						
Total square metres	57 707	18 684	24 435	622 633	304 285	- 51,1
Total value at current prices (R'000)	98 142	28 693	41 861	1 062 118	573 544	- 46,0
Shopping space						
Total square metres	15 109	112 311	44 163	336 876	369 665	+ 9,7
Total value at current prices (R'000)	22 857	225 266	91 533	485 483	663 623	+ 36,7
Industrial and warehouse space						
Total square metres	68 215	75 837	65 802	624 933	815 196	+ 30,4
Total value at current prices (R'000)	134 330	99 844	93 919	841 749	1 319 127	+ 56,7
Other non-residential space ^{2/}						
Total square metres	31 050	22 307	30 335	300 207	340 440	+ 13,4
Total value at current prices (R'000)	48 038	33 431	49 905	403 006	517 153	+ 28,3
Total value of non-residential buildings at current prices (R'000)	303 367	387 234	277 218	2 792 356	3 073 447	+ 10,1
Additions and alterations						
Dwelling-houses						
Total square metres	265 549	300 202	288 483	2 204 230	2 450 525	+ 11,2
Total value at current prices (R'000)	343 229	429 651	420 744	2 764 095	3 365 172	+ 21,7
Other buildings ^{3/}						
Total square metres	94 696	121 740	92 972	719 578	894 039	+ 24,2
Total value at current prices (R'000)	182 884	257 174	177 358	1 260 430	1 835 809	+ 45,6
Total value of additions and alterations at current prices (R'000)	526 113	686 825	598 102	4 024 525	5 200 981	+ 29,2
Total value of building plans passed at current prices (R'000)	1 790 475	2 201 388	2 037 569	14 621 932	17 861 638	+ 22,2

1/ Other residential buildings include institutions for the disabled, boarding houses, old people's homes, hostels, hotels, motels, guest houses, holiday chalets, entertainment centres, bed-and-breakfast accommodation and casinos.

2/ Other non-residential space includes churches, sport and recreation clubs, schools, crèches, hospitals and all other non-residential space.

3/ Other buildings include additions and alterations to other residential buildings, non-residential buildings and internal alterations.

Table 10 - Building plans passed according to type of building and province: Western Cape

Type of building	September 2001	August 2002 *	September 2002	January 2001 to September 2001	January 2002 to September 2002	Percentage change between January 2001 to September 2001 and January 2002 to September 2002
Residential buildings						
Dwelling-houses smaller than 80 square metres						
Number of dwelling-houses	594	2 466	1 013	6 000	11 947	+ 99,1
Total square metres	22 111	80 332	35 012	246 176	401 928	+ 63,3
Total value at current prices (R'000)	21 818	88 231	41 628	292 640	456 884	+ 56,1
Dwelling-houses equal to or larger than 80 square metres						
Number of dwelling-houses	549	837	709	5 297	6 575	+ 24,1
Total square metres	114 410	159 732	151 646	1 098 027	1 389 534	+ 26,5
Total value at current prices (R'000)	172 848	252 876	241 987	1 648 718	2 203 370	+ 33,6
Flats and townhouses						
Number of flats and townhouses	175	206	105	2 111	2 313	+ 9,6
Total square metres	18 592	23 902	11 867	202 464	234 776	+ 16,0
Total value at current prices (R'000)	27 047	38 050	20 076	306 995	385 219	+ 25,5
Other residential buildings ^{1/}						
Total square metres	0	1 783	4 979	37 183	51 754	+ 39,2
Total value at current prices (R'000)	0	3 115	46 833	83 962	128 786	+ 53,4
Total value of residential buildings at current prices (R'000)	221 713	382 272	350 524	2 332 315	3 174 259	+ 36,1
Non-residential buildings						
Office and banking space						
Total square metres	5 204	5 787	5 701	181 248	69 174	- 61,8
Total value at current prices (R'000)	9 167	9 515	14 475	260 067	116 244	- 55,3
Shopping space						
Total square metres	1 216	6 623	750	141 265	41 954	- 70,3
Total value at current prices (R'000)	1 596	10 356	1 173	191 695	57 434	- 70,0
Industrial and warehouse space						
Total square metres	14 489	15 875	23 015	181 271	173 866	- 4,1
Total value at current prices (R'000)	15 416	19 140	26 441	179 945	215 800	+ 19,9
Other non-residential space ^{2/}						
Total square metres	6 760	5 985	6 394	92 408	56 033	- 39,4
Total value at current prices (R'000)	9 129	8 829	10 552	105 014	86 675	- 17,5
Total value of non-residential buildings at current prices (R'000)	35 308	47 840	52 641	736 721	476 153	- 35,4
Additions and alterations						
Dwelling-houses						
Total square metres	69 746	85 593	85 924	674 834	777 488	+ 15,2
Total value at current prices (R'000)	91 185	120 974	127 043	859 332	1 054 525	+ 22,7
Other buildings ^{3/}						
Total square metres	28 340	40 706	27 153	194 325	255 486	+ 31,5
Total value at current prices (R'000)	62 533	75 160	49 967	349 557	501 450	+ 43,5
Total value of additions and alterations at current prices (R'000)	153 718	196 134	177 010	1 208 889	1 555 975	+ 28,7
Total value of building plans passed at current prices (R'000)	410 739	626 246	580 175	4 277 925	5 206 387	+ 21,7

1/ Other residential buildings include institutions for the disabled, boarding houses, old people's homes, hostels, hotels, motels, guest houses, holiday chalets, entertainment centres, bed-and-breakfast accommodation and casinos.

2/ Other non-residential space includes churches, sport and recreation clubs, schools, crèches, hospitals and all other non-residential space.

3/ Other buildings include additions and alterations to other residential buildings, non-residential buildings and internal alterations.

Table 11 - Building plans passed according to type of building and province: Eastern Cape

Type of building	September 2001*	August 2002	September 2002	January 2001 to September 2001	January 2002 to September 2002	Percentage change between January 2001 to September 2001 and January 2002 to September 2002
Residential buildings						
Dwelling-houses smaller than 80 square metres						
Number of dwelling-houses	155	527	253	2 081	4 105	+ 97,3
Total square metres	6 737	21 866	10 821	92 872	175 130	+ 88,6
Total value at current prices (R'000)	8 287	25 934	8 896	114 401	211 493	+ 84,9
Dwelling-houses equal to or larger than 80 square metres						
Number of dwelling-houses	83	103	99	1 006	983	-2,3
Total square metres	13 645	20 732	20 392	158 440	196 575	+ 24,1
Total value at current prices (R'000)	18 159	33 064	34 595	208 631	283 230	+ 35,8
Flats and townhouses						
Number of flats and townhouses	27	26	38	715	412	-42,4
Total square metres	2 408	4 084	2 087	39 139	36 145	-7,6
Total value at current prices (R'000)	2 888	7 125	1 806	47 053	59 347	+ 26,1
Other residential buildings ^{1/}						
Total square metres	0	0	0	26 085	1 135	-95,6
Total value at current prices (R'000)	0	0	0	77 305	1 654	-97,9
Total value of residential buildings at current prices (R'000)	29 334	66 123	45 297	447 390	555 724	+ 24,2
Non-residential buildings						
Office and banking space						
Total square metres	8 749	0	59	13 652	6 342	-53,5
Total value at current prices (R'000)	12 912	0	86	22 163	9 609	-56,6
Shopping space						
Total square metres	596	3 689	453	11 778	20 058	+ 70,3
Total value at current prices (R'000)	764	4 594	350	18 107	36 461	+ 101,4
Industrial and warehouse space						
Total square metres	3 181	2 129	382	34 864	41 921	+ 20,2
Total value at current prices (R'000)	4 823	3 855	669	38 800	73 982	+ 90,7
Other non-residential space ^{2/}						
Total square metres	6 001	2 486	579	13 271	24 308	+ 83,2
Total value at current prices (R'000)	11 628	3 840	1 351	23 390	39 908	+ 70,6
Total value of non-residential buildings at current prices (R'000)	30 127	12 289	2 456	102 460	159 960	+ 56,1
Additions and alterations						
Dwelling-houses						
Total square metres	17 266	17 729	17 082	166 821	171 614	+ 2,9
Total value at current prices (R'000)	23 941	27 111	33 676	217 490	246 785	+ 13,5
Other buildings ^{3/}						
Total square metres	5 586	2 507	3 960	84 926	42 814	-49,6
Total value at current prices (R'000)	8 602	3 352	8 144	104 336	75 554	-27,6
Total value of additions and alterations at current prices (R'000)	32 543	30 463	41 820	321 826	322 339	+ 0,2
Total value of building plans passed at current prices (R'000)	92 004	108 875	89 573	871 676	1 038 023	+ 19,1

1/ Other residential buildings include institutions for the disabled, boarding houses, old people's homes, hostels, hotels, motels, guest houses, holiday chalets, entertainment centres, bed-and-breakfast accommodation and casinos.

2/ Other non-residential space includes churches, sport and recreation clubs, schools, crèches, hospitals and all other non-residential space.

3/ Other buildings include additions and alterations to other residential buildings, non-residential buildings and internal alterations.

Table 12 - Building plans passed according to type of building and province: Northern Cape

Type of building	September 2001	August 2002	September 2002	January 2001 to September 2001	January 2002 to September 2002	Percentage change between January 2001 to September 2001 and January 2002 to September 2002
Residential buildings						
Dwelling-houses smaller than 80 square metres						
Number of dwelling-houses	8	6	9	58	58	+ 0,0
Total square metres	369	161	341	3 252	2 639	- 18,8
Total value at current prices (R'000)	571	251	564	4 913	4 357	- 11,3
Dwelling-houses equal to or larger than 80 square metres						
Number of dwelling-houses	8	6	10	137	77	- 43,8
Total square metres	1 395	1 069	1 934	23 767	15 562	- 34,5
Total value at current prices (R'000)	2 323	1 808	3 099	32 624	24 313	- 25,5
Flats and townhouses						
Number of flats and townhouses	0	8	3	12	23	+ 91,7
Total square metres	0	1 102	524	2 085	3 433	+ 64,7
Total value at current prices (R'000)	0	1 851	943	2 834	6 047	+ 113,4
Other residential buildings ^{1/}						
Total square metres	0	0	0	0	0	..
Total value at current prices (R'000)	0	0	0	0	0	..
Total value of residential buildings at current prices (R'000)	2 894	3 910	4 606	40 371	34 717	- 14,0
Non-residential buildings						
Office and banking space						
Total square metres	0	128	0	191	574	+ 200,5
Total value at current prices (R'000)	0	192	0	124	820	+ 561,3
Shopping space						
Total square metres	0	1 015	0	470	1 207	+ 156,8
Total value at current prices (R'000)	0	2 099	0	807	2 387	+ 195,8
Industrial and warehouse space						
Total square metres	0	0	500	2 336	2 915	+ 24,8
Total value at current prices (R'000)	0	0	889	2 744	4 358	+ 58,8
Other non-residential space ^{2/}						
Total square metres	586	0	128	2 218	2 256	+ 1,7
Total value at current prices (R'000)	1 189	0	282	3 501	4 863	+ 38,9
Total value of non-residential buildings at current prices (R'000)	1 189	2 291	1 171	7 176	12 428	+ 73,2
Additions and alterations						
Dwelling-houses						
Total square metres	2 992	3 188	3 629	22 369	25 461	+ 13,8
Total value at current prices (R'000)	5 179	5 412	6 081	36 869	43 210	+ 17,2
Other buildings ^{3/}						
Total square metres	1 236	687	174	8 113	4 154	- 48,8
Total value at current prices (R'000)	3 455	3 267	415	18 223	12 313	- 32,4
Total value of additions and alterations at current prices (R'000)	8 634	8 679	6 496	55 092	55 523	+ 0,8
Total value of building plans passed at current prices (R'000)	12 717	14 880	12 273	102 639	102 668	+ 0,0

1/ Other residential buildings include institutions for the disabled, boarding houses, old people's homes, hostels, hotels, motels, guest houses, holiday chalets, entertainment centres, bed-and-breakfast accommodation and casinos.

2/ Other non-residential space includes churches, sport and recreation clubs, schools, crèches, hospitals and all other non-residential space.

3/ Other buildings include additions and alterations to other residential buildings, non-residential buildings and internal alterations.

Table 13 - Building plans passed according to type of building and province: Free State

Type of building	September 2001*	August 2002	September 2002	January 2001 to September 2001	January 2002 to September 2002	Percentage change between January 2001 to September 2001 and January 2002 to September 2002
Residential buildings						
Dwelling-houses smaller than 80 square metres						
Number of dwelling-houses	78	101	373	1 845	2 037	+ 10,4
Total square metres	3 777	4 526	15 768	84 391	87 172	+ 3,3
Total value at current prices (R'000)	6 105	3 911	9 152	53 820	52 347	-2,7
Dwelling-houses equal to or larger than 80 square metres						
Number of dwelling-houses	63	105	83	548	705	+ 28,6
Total square metres	8 980	21 141	13 894	83 861	115 983	+ 38,3
Total value at current prices (R'000)	9 894	22 424	18 582	92 324	138 579	+ 50,1
Flats and townhouses						
Number of flats and townhouses	80	2	1	317	463	+ 46,1
Total square metres	6 503	334	266	37 498	48 926	+ 30,5
Total value at current prices (R'000)	8 080	358	195	54 769	69 646	+ 27,2
Other residential buildings ^{1/}						
Total square metres	2 187	1 433	0	6 593	4 458	-32,4
Total value at current prices (R'000)	3 280	1 999	0	8 192	9 362	+ 14,3
Total value of residential buildings at current prices (R'000)	27 359	28 692	27 929	209 105	269 934	+ 29,1
Non-residential buildings						
Office and banking space						
Total square metres	0	0	626	14 248	13 540	-5,0
Total value at current prices (R'000)	0	0	900	27 425	22 702	-17,2
Shopping space						
Total square metres	85	0	3 767	7 201	17 693	+ 145,7
Total value at current prices (R'000)	82	0	4 100	8 394	31 908	+ 280,1
Industrial and warehouse space						
Total square metres	0	1 515	278	4 750	14 940	+ 214,5
Total value at current prices (R'000)	0	2 070	556	3 655	14 929	+ 308,5
Other non-residential space ^{2/}						
Total square metres	853	3 562	111	9 557	12 113	+ 26,7
Total value at current prices (R'000)	1 021	5 244	145	13 607	15 425	+ 13,4
Total value of non-residential buildings at current prices (R'000)	1 103	7 314	5 701	53 081	84 964	+ 60,1
Additions and alterations						
Dwelling-houses						
Total square metres	4 525	10 345	10 202	67 813	79 697	+ 17,5
Total value at current prices (R'000)	4 198	12 875	12 131	70 827	90 047	+ 27,1
Other buildings ^{3/}						
Total square metres	563	1 902	838	13 365	21 148	+ 58,2
Total value at current prices (R'000)	1 130	4 882	1 325	25 617	46 089	+ 79,9
Total value of additions and alterations at current prices (R'000)	5 328	17 757	13 456	96 444	136 136	+ 41,2
Total value of building plans passed at current prices (R'000)	33 790	53 763	47 086	358 630	491 034	+ 36,9

1/ Other residential buildings include institutions for the disabled, boarding houses, old people's homes, hostels, hotels, motels, guest houses, holiday chalets, entertainment centres, bed-and-breakfast accommodation and casinos.

2/ Other non-residential space includes churches, sport and recreation clubs, schools, crèches, hospitals and all other non-residential space.

3/ Other buildings include additions and alterations to other residential buildings, non-residential buildings and internal alterations.

Table 14 - Building plans passed according to type of building and province: KwaZulu-Natal

Type of building	September 2001	August 2002*	September 2002	January 2001 to September 2001	January 2002 to September 2002	Percentage change between January 2001 to September 2001 and January 2002 to September 2002
Residential buildings						
Dwelling-houses smaller than 80 square metres						
Number of dwelling-houses	194	252	148	1 915	1 843	- 3,8
Total square metres	6 854	10 022	7 394	83 638	74 963	- 10,4
Total value at current prices (R'000)	6 933	9 283	8 434	80 279	72 572	- 9,6
Dwelling-houses equal to or larger than 80 square metres						
Number of dwelling-houses	148	183	176	1 257	1 382	+ 9,9
Total square metres	28 687	42 148	41 787	271 138	312 880	+ 15,4
Total value at current prices (R'000)	40 945	66 874	66 777	397 217	490 045	+ 23,4
Flats and townhouses						
Number of flats and townhouses	88	81	114	726	695	- 4,3
Total square metres	12 341	18 975	20 627	100 045	118 427	+ 18,4
Total value at current prices (R'000)	20 063	33 611	38 564	165 044	204 543	+ 23,9
Other residential buildings ^{1/}						
Total square metres	17 825	0	330	20 202	32 170	+ 59,2
Total value at current prices (R'000)	80 000	0	420	82 431	34 435	- 58,2
Total value of residential buildings at current prices (R'000)	147 941	109 768	114 195	724 971	801 595	+ 10,6
Non-residential buildings						
Office and banking space						
Total square metres	4 327	7 697	298	126 391	33 288	- 73,7
Total value at current prices (R'000)	12 506	11 678	300	267 351	77 950	- 70,8
Shopping space						
Total square metres	901	39 800	23 624	29 781	93 981	+ 215,6
Total value at current prices (R'000)	1 140	120 200	61 756	39 858	239 275	+ 500,3
Industrial and warehouse space						
Total square metres	26 740	9 447	2 439	110 757	123 526	+ 11,5
Total value at current prices (R'000)	79 259	12 730	5 638	172 528	251 364	+ 45,7
Other non-residential space ^{2/}						
Total square metres	3 034	1 626	5 361	37 989	77 596	+ 104,3
Total value at current prices (R'000)	3 976	2 268	10 228	47 848	96 666	+ 102,0
Total value of non-residential buildings at current prices (R'000)	96 881	146 876	77 922	527 585	665 255	+ 26,1
Additions and alterations						
Dwelling-houses						
Total square metres	32 859	41 633	44 476	300 153	330 351	+ 10,1
Total value at current prices (R'000)	42 357	56 106	53 749	367 530	429 198	+ 16,8
Other buildings ^{3/}						
Total square metres	27 745	27 325	16 505	136 854	182 514	+ 33,4
Total value at current prices (R'000)	51 705	92 158	31 032	275 751	520 366	+ 88,7
Total value of additions and alterations at current prices (R'000)	94 062	148 264	84 781	643 281	949 564	+ 47,6
Total value of building plans passed at current prices (R'000)	338 884	404 908	276 898	1 895 837	2 416 414	+ 27,5

1/ Other residential buildings include institutions for the disabled, boarding houses, old people's homes, hostels, hotels, motels, guest houses, holiday chalets, entertainment centres, bed-and-breakfast accommodation and casinos.

2/ Other non-residential space includes churches, sport and recreation clubs, schools, crèches, hospitals and all other non-residential space.

3/ Other buildings include additions and alterations to other residential buildings, non-residential buildings and internal alterations.

Table 15 - Building plans passed according to type of building and province: North West

Type of building	September 2001*	August 2002	September 2002	January 2001 to September 2001	January 2002 to September 2002	Percentage change between January 2001 to September 2001 and January 2002 to September 2002
Residential buildings						
Dwelling-houses smaller than 80 square metres						
Number of dwelling-houses	204	36	112	4 163	736	- 82,3
Total square metres	7 437	2 158	4 158	145 418	33 797	- 76,8
Total value at current prices (R'000)	5 291	2 581	3 357	82 189	36 698	- 55,3
Dwelling-houses equal to or larger than 80 square metres						
Number of dwelling-houses	87	108	90	633	945	+ 49,3
Total square metres	16 999	21 433	15 931	111 928	174 039	+ 55,5
Total value at current prices (R'000)	26 793	27 071	20 854	141 197	219 395	+ 55,4
Flats and townhouses						
Number of flats and townhouses	19	19	11	245	611	+ 149,4
Total square metres	676	2 376	1 098	26 560	41 123	+ 54,8
Total value at current prices (R'000)	784	5 491	1 499	34 840	63 952	+ 83,6
Other residential buildings ^{1/}						
Total square metres	0	0	0	1 989	768	- 61,4
Total value at current prices (R'000)	0	0	0	1 664	781	- 53,1
Total value of residential buildings at current prices (R'000)	32 868	35 143	25 710	259 890	320 826	+ 23,4
Non-residential buildings						
Office and banking space						
Total square metres	118	0	836	3 762	6 710	+ 78,4
Total value at current prices (R'000)	62	0	836	6 061	9 984	+ 64,7
Shopping space						
Total square metres	208	202	1 263	17 186	16 373	- 4,7
Total value at current prices (R'000)	234	242	2 754	23 799	25 953	+ 9,1
Industrial and warehouse space						
Total square metres	496	0	283	8 298	8 955	+ 7,9
Total value at current prices (R'000)	70	0	300	7 946	12 398	+ 56,0
Other non-residential space ^{2/}						
Total square metres	305	239	103	6 813	16 201	+ 137,8
Total value at current prices (R'000)	900	347	80	6 712	39 864	+ 493,9
Total value of non-residential buildings at current prices (R'000)	1 266	589	3 970	44 518	88 199	+ 98,1
Additions and alterations						
Dwelling-houses						
Total square metres	5 668	10 444	7 918	52 358	81 408	+ 55,5
Total value at current prices (R'000)	6 683	14 302	9 720	57 133	100 060	+ 75,1
Other buildings ^{3/}						
Total square metres	1 078	1 763	1 751	16 586	17 035	+ 2,7
Total value at current prices (R'000)	2 872	3 632	2 377	27 136	28 905	+ 6,5
Total value of additions and alterations at current prices (R'000)	9 555	17 934	12 097	84 269	128 965	+ 53,0
Total value of building plans passed at current prices (R'000)	43 689	53 666	41 777	388 677	537 990	+ 38,4

1/ Other residential buildings include institutions for the disabled, boarding houses, old people's homes, hostels, hotels, motels, guest houses, holiday chalets, entertainment centres, bed-and-breakfast accommodation and casinos.

2/ Other non-residential space includes churches, sport and recreation clubs, schools, crèches, hospitals and all other non-residential space.

3/ Other buildings include additions and alterations to other residential buildings, non-residential buildings and internal alterations.

Table 16 - Building plans passed according to type of building and province: Gauteng

Type of building	September 2001 *	August 2002	September 2002	January 2001 to September 2001	January 2002 to September 2002	Percentage change between January 2001 to September 2001 and January 2002 to September 2002
Residential buildings						
Dwelling-houses smaller than 80 square metres						
Number of dwelling-houses	1 159	489	2 110	9 474	7 918	- 16,4
Total square metres	43 310	17 457	84 318	360 956	308 082	- 14,6
Total value at current prices (R'000)	40 310	19 374	56 975	390 545	273 491	- 30,0
Dwelling-houses equal to or larger than 80 square metres						
Number of dwelling-houses	733	815	795	6 154	6 171	+ 0,3
Total square metres	185 566	215 235	216 779	1 528 037	1 653 223	+ 8,2
Total value at current prices (R'000)	276 222	328 486	329 242	2 180 779	2 503 143	+ 14,8
Flats and townhouses						
Number of flats and townhouses	428	463	915	3 957	5 325	+ 34,6
Total square metres	83 749	64 684	107 815	484 837	687 340	+ 41,8
Total value at current prices (R'000)	126 629	93 519	164 098	749 323	1 081 338	+ 44,3
Other residential buildings ^{1/}						
Total square metres	632	0	0	9 469	3 968	- 58,1
Total value at current prices (R'000)	598	0	0	11 727	6 253	- 46,7
Total value of residential buildings at current prices (R'000)	443 759	441 379	550 315	3 332 374	3 864 225	+ 16,0
Non-residential buildings						
Office and banking space						
Total square metres	39 309	5 072	15 857	278 565	167 938	- 39,7
Total value at current prices (R'000)	63 495	7 308	23 869	471 889	325 389	- 31,0
Shopping space						
Total square metres	10 840	49 335	10 040	113 320	133 651	+ 17,9
Total value at current prices (R'000)	17 610	75 935	15 577	180 184	212 530	+ 18,0
Industrial and warehouse space						
Total square metres	22 526	35 723	37 632	251 733	321 973	+ 27,9
Total value at current prices (R'000)	34 223	49 269	57 551	408 531	496 600	+ 21,6
Other non-residential space ^{2/}						
Total square metres	12 263	7 548	16 564	120 033	131 490	+ 9,5
Total value at current prices (R'000)	18 784	11 637	25 919	181 626	205 513	+ 13,2
Total value of non-residential buildings at current prices (R'000)	134 112	144 149	122 916	1 242 230	1 240 032	- 0,2
Additions and alterations						
Dwelling-houses						
Total square metres	116 972	107 408	105 939	791 592	832 491	+ 5,2
Total value at current prices (R'000)	152 974	162 075	162 213	1 015 652	1 217 022	+ 19,8
Other buildings ^{3/}						
Total square metres	27 892	42 863	41 853	239 328	342 735	+ 43,2
Total value at current prices (R'000)	44 484	66 159	82 688	407 881	599 449	+ 47,0
Total value of additions and alterations at current prices (R'000)	197 458	228 234	244 901	1 423 533	1 816 471	+ 27,6
Total value of building plans passed at current prices (R'000)	775 329	813 762	918 132	5 998 137	6 920 728	+ 15,4

1/ Other residential buildings include institutions for the disabled, boarding houses, old people's homes, hostels, hotels, motels, guest houses, holiday chalets, entertainment centres, bed-and-breakfast accommodation and casinos.

2/ Other non-residential space includes churches, sport and recreation clubs, schools, crèches, hospitals and all other non-residential space.

3/ Other buildings include additions and alterations to other residential buildings, non-residential buildings and internal alterations.

Table 17 - Building plans passed according to type of building and province: Mpumalanga

Type of building	September 2001	August 2002	September 2002	January 2001 to September 2001	January 2002 to September 2002	Percentage change between January 2001 to September 2001 and January 2002 to September 2002
Residential buildings						
Dwelling-houses smaller than 80 square metres						
Number of dwelling-houses	84	116	22	4 399	1 602	- 63,6
Total square metres	3 568	5 265	1 149	154 181	67 110	- 56,5
Total value at current prices (R'000)	3 153	3 354	1 487	86 121	39 437	- 54,2
Dwelling-houses equal to or larger than 80 square metres						
Number of dwelling-houses	76	120	71	627	997	+ 59,0
Total square metres	16 527	23 582	15 224	119 532	184 954	+ 54,7
Total value at current prices (R'000)	23 419	32 059	20 488	154 064	244 215	+ 58,5
Flats and townhouses						
Number of flats and townhouses	11	15	17	862	243	- 71,8
Total square metres	9 639	2 798	2 285	72 830	31 834	- 56,3
Total value at current prices (R'000)	17 641	2 939	2 280	97 104	41 594	- 57,2
Other residential buildings ^{1/}						
Total square metres	0	949	0	1 595	13 505	+ 746,7
Total value at current prices (R'000)	0	1 806	0	2 105	81 631	+ 3778,0
Total value of residential buildings at current prices (R'000)	44 213	40 158	24 255	339 394	406 877	+ 19,9
Non-residential buildings						
Office and banking space						
Total square metres	0	0	215	3 671	3 325	- 9,4
Total value at current prices (R'000)	0	0	215	5 750	4 494	- 21,8
Shopping space						
Total square metres	1 017	11 647	2 463	2 968	37 291	+1 156,4
Total value at current prices (R'000)	890	11 840	3 460	3 485	45 801	+1 214,2
Industrial and warehouse space						
Total square metres	783	11 148	930	29 219	29 022	- 0,7
Total value at current prices (R'000)	539	12 780	1 395	25 671	35 495	+ 38,3
Other non-residential space ^{2/}						
Total square metres	1 033	733	1 095	14 784	17 204	+ 16,4
Total value at current prices (R'000)	1 100	1 113	1 348	16 487	22 081	+ 33,9
Total value of non-residential buildings at current prices (R'000)	2 529	25 733	6 418	51 393	107 871	+ 109,9
Additions and alterations						
Dwelling-houses						
Total square metres	11 587	17 999	10 232	92 971	112 687	+ 21,2
Total value at current prices (R'000)	11 497	22 899	11 784	93 329	130 500	+ 39,8
Other buildings ^{3/}						
Total square metres	457	1 221	316	16 601	11 911	- 28,3
Total value at current prices (R'000)	1 022	2 575	468	25 718	22 824	- 11,3
Total value of additions and alterations at current prices (R'000)	12 519	25 474	12 252	119 047	153 324	+ 28,8
Total value of building plans passed at current prices (R'000)	59 261	91 365	42 925	509 834	668 072	+ 31,0

1/ Other residential buildings include institutions for the disabled, boarding houses, old people's homes, hostels, hotels, motels, guest houses, holiday chalets, entertainment centres, bed-and-breakfast accommodation and casinos.

2/ Other non-residential space includes churches, sport and recreation clubs, schools, crèches, hospitals and all other non-residential space.

3/ Other buildings include additions and alterations to other residential buildings, non-residential buildings and internal alterations.

Table 18 - Building plans passed according to type of building and province: Limpopo

Type of building	September 2001	August 2002	September 2002	January 2001 to September 2001	January 2002 to September 2002	Percentage change between January 2001 to September 2001 and January 2002 to September 2002
Residential buildings						
Dwelling-houses smaller than 80 square metres						
Number of dwelling-houses	22	33	28	340	234	-31,2
Total square metres	1 252	2 021	1 829	20 003	14 352	-28,3
Total value at current prices (R'000)	1 745	2 875	2 591	26 162	20 621	-21,2
Dwelling-houses equal to or larger than 80 square metres						
Number of dwelling-houses	44	60	54	371	433	+ 16,7
Total square metres	8 230	11 619	10 355	64 649	84 461	+ 30,6
Total value at current prices (R'000)	9 033	15 724	14 672	84 706	117 982	+ 39,3
Flats and townhouses						
Number of flats and townhouses	1	0	13	50	93	+ 86,0
Total square metres	97	0	1 567	6 576	11 423	+ 73,7
Total value at current prices (R'000)	136	0	2 155	8 277	18 235	+ 120,3
Other residential buildings ^{1/}						
Total square metres	0	803	0	192	1 324	+ 589,6
Total value at current prices (R'000)	0	1 285	0	96	2 215	+ 2 207,3
Total value of residential buildings at current prices (R'000)	10 914	19 884	19 418	119 241	159 053	+ 33,4
Non-residential buildings						
Office and banking space						
Total square metres	0	0	843	905	3 394	+ 275,0
Total value at current prices (R'000)	0	0	1 180	1 288	6 352	+ 393,2
Shopping space						
Total square metres	246	0	1 803	12 907	7 457	-42,2
Total value at current prices (R'000)	541	0	2 363	19 154	11 874	-38,0
Industrial and warehouse space						
Total square metres	0	0	343	1 705	98 078	+ 5 652,4
Total value at current prices (R'000)	0	0	480	1 929	214 201	+ 11 004,3
Other non-residential space ^{2/}						
Total square metres	215	128	0	3 134	3 239	+ 3,4
Total value at current prices (R'000)	311	153	0	4 821	6 158	+ 27,7
Total value of non-residential buildings at current prices (R'000)	852	153	4 023	27 192	238 585	+ 777,4
Additions and alterations						
Dwelling-houses						
Total square metres	3 934	5 863	3 081	35 319	39 328	+ 11,4
Total value at current prices (R'000)	5 215	7 897	4 347	45 933	53 825	+ 17,2
Other buildings ^{3/}						
Total square metres	1 483	2 766	422	9 480	16 242	+ 71,3
Total value at current prices (R'000)	7 081	5 989	942	26 211	28 859	+ 10,1
Total value of additions and alterations at current prices (R'000)	12 296	13 886	5 289	72 144	82 684	+ 14,6
Total value of building plans passed at current prices (R'000)	24 062	33 923	28 730	218 577	480 322	+ 119,7

1/ Other residential buildings include institutions for the disabled, boarding houses, old people's homes, hostels, hotels, motels, guest houses, holiday chalets, entertainment centres, bed-and-breakfast accommodation and casinos.

2/ Other non-residential space includes churches, sport and recreation clubs, schools, crèches, hospitals and all other non-residential space.

3/ Other buildings include additions and alterations to other residential buildings, non-residential buildings and internal alterations.

Table 19 - Buildings completed according to type of building: Total RSA

Type of building	September 2001 *	August 2002*	September 2002	January 2001 to September 2001	January 2002 to September 2002	Percentage change between January 2001 to September 2001 and January 2002 to September 2002
Residential buildings						
Dwelling-houses smaller than 80 square metres						
Number of dwelling-houses	3 461	2 497	3 344	21 570	23 315	+ 8,1
Total square metres	119 621	97 500	132 536	849 694	902 802	+ 6,3
Total value at current prices (R'000)	91 504	97 462	105 701	746 563	806 179	+ 8,0
Dwelling-houses equal to or larger than 80 square metres						
Number of dwelling-houses	915	1 154	1 228	8 482	10 183	+ 20,1
Total square metres	187 093	250 609	267 158	1 705 012	2 144 699	+ 25,8
Total value at current prices (R'000)	275 285	387 834	415 548	2 343 535	3 226 058	+ 37,7
Flats and townhouses						
Number of flats and townhouses	464	978	700	4 889	7 646	+ 56,4
Total square metres	60 880	133 605	94 653	529 920	904 185	+ 70,6
Total value at current prices (R'000)	94 227	242 833	131 236	755 787	1 399 181	+ 85,1
Other residential buildings ^{1/}						
Total square metres	361	4 981	23 522	92 185	85 708	- 7,0
Total value at current prices (R'000)	499	4 485	150 276	359 230	426 538	+ 18,7
Total value of residential buildings at current prices (R'000)	461 515	732 614	802 761	4 205 115	5 857 956	+ 39,3
Non-residential buildings						
Office and banking space						
Total square metres	16 176	13 805	22 440	451 530	392 117	- 13,2
Total value at current prices (R'000)	21 932	28 425	34 876	686 303	652 437	- 4,9
Shopping space						
Total square metres	379 887	9 548	37 651	582 504	213 467	- 63,4
Total value at current prices (R'000)	1 308 257	16 330	104 887	1 626 816	390 907	- 76,0
Industrial and warehouse space						
Total square metres	74 273	30 964	44 684	555 712	399 246	- 28,2
Total value at current prices (R'000)	79 893	35 935	64 735	670 132	497 454	- 25,8
Other non-residential space ^{2/}						
Total square metres	9 997	10 350	16 340	142 863	154 927	+ 8,4
Total value at current prices (R'000)	7 897	13 706	20 851	166 585	221 758	+ 33,1
Total value of non-residential buildings at current prices (R'000)	1 417 979	94 396	225 349	3 149 836	1 762 556	- 44,0
Additions and alterations						
Dwelling-houses						
Total square metres	99 557	118 155	118 141	1 081 353	1 150 366	+ 6,4
Total value at current prices (R'000)	121 261	155 325	171 453	1 276 442	1 477 633	+ 15,8
Other buildings ^{3/}						
Total square metres	29 663	43 213	37 645	419 354	410 755	- 2,1
Total value at current prices (R'000)	48 713	69 717	74 611	849 343	704 834	- 17,0
Total value of additions and alterations at current prices (R'000)	169 974	225 042	246 064	2 125 785	2 182 467	+ 2,7
Total value of buildings completed at current prices (R'000)	2 049 468	1 052 052	1 274 174	9 480 736	9 802 979	+ 3,4

1/ Other residential buildings include institutions for the disabled, boarding houses, old people's homes, hostels, hotels, motels, guest houses, holiday chalets, entertainment centres, bed-and-breakfast accommodation and casinos.

2/ Other non-residential space includes churches, sport and recreation clubs, schools, crèches, hospitals and all other non-residential space.

3/ Other buildings include additions and alterations to other residential buildings, non-residential buildings and internal alterations.

Table 20 - Buildings completed according to type of building and province: Western Cape

Type of building	September 2001	August 2002*	September 2002	January 2001 to September 2001	January 2002 to September 2002	Percentage change between January 2001 to September 2001 and January 2002 to September 2002
Residential buildings						
Dwelling-houses smaller than 80 square metres						
Number of dwelling-houses	438	535	347	4 128	5 169	+ 25,2
Total square metres	17 973	19 944	14 770	170 658	189 610	+ 11,1
Total value at current prices (R'000)	20 258	24 606	19 137	194 039	221 244	+ 14,0
Dwelling-houses equal to or larger than 80 square metres						
Number of dwelling-houses	435	463	465	2 990	4 043	+ 35,2
Total square metres	82 652	89 874	88 254	579 986	805 463	+ 38,9
Total value at current prices (R'000)	127 434	137 659	139 426	825 616	1 253 049	+ 51,8
Flats and townhouses						
Number of flats and townhouses	199	291	95	1 457	1 584	+ 8,7
Total square metres	20 716	23 179	10 897	160 472	184 421	+ 14,9
Total value at current prices (R'000)	33 206	31 413	15 967	215 691	287 455	+ 33,3
Other residential buildings ^{1/}						
Total square metres	153	156	136	33 278	6 223	- 81,3
Total value at current prices (R'000)	228	312	203	45 220	10 005	- 77,9
Total value of residential buildings at current prices (R'000)	181 126	193 990	174 733	1 280 566	1 771 753	+ 38,4
Non-residential buildings						
Office and banking space						
Total square metres	9 476	691	7 109	103 925	82 518	- 20,6
Total value at current prices (R'000)	12 536	1 142	10 284	166 443	123 374	- 25,9
Shopping space						
Total square metres	8 160	256	900	42 341	69 498	+ 64,1
Total value at current prices (R'000)	10 212	640	1 620	52 492	96 343	+ 83,5
Industrial and warehouse space						
Total square metres	34 194	12 666	10 615	130 727	124 253	- 5,0
Total value at current prices (R'000)	29 687	11 819	11 894	142 093	134 773	- 5,2
Other non-residential space ^{2/}						
Total square metres	4 768	6 761	4 298	59 133	64 009	+ 8,2
Total value at current prices (R'000)	2 484	7 125	4 598	54 252	86 971	+ 60,3
Total value of non-residential buildings at current prices (R'000)	54 919	20 726	28 396	415 280	441 461	+ 6,3
Additions and alterations						
Dwelling-houses						
Total square metres	39 998	44 680	51 649	421 212	415 114	- 1,4
Total value at current prices (R'000)	48 988	58 034	69 701	526 826	549 949	+ 4,4
Other buildings ^{3/}						
Total square metres	10 164	13 041	21 896	129 180	166 776	+ 29,1
Total value at current prices (R'000)	18 628	23 464	45 543	305 552	288 323	- 5,6
Total value of additions and alterations at current prices (R'000)	67 616	81 498	115 244	832 378	838 272	+ 0,7
Total value of buildings completed at current prices (R'000)	303 661	296 214	318 373	2 528 224	3 051 486	+ 20,7

1/ Other residential buildings include institutions for the disabled, boarding houses, old people's homes, hostels, hotels, motels, guest houses, holiday chalets, entertainment centres, bed-and-breakfast accommodation and casinos.

2/ Other non-residential space includes churches, sport and recreation clubs, schools, crèches, hospitals and all other non-residential space.

3/ Other buildings include additions and alterations to other residential buildings, non-residential buildings and internal alterations.

Table 21 - Buildings completed according to type of building and province: Eastern Cape

Type of building	September 2001*	August 2002	September 2002	January 2001 to September 2001	January 2002 to September 2002	Percentage change between January 2001 to September 2001 and January 2002 to September 2002
Residential buildings						
Dwelling-houses smaller than 80 square metres						
Number of dwelling-houses	148	232	194	2 455	2 206	- 10,1
Total square metres	6 285	11 794	8 078	105 556	95 056	- 9,9
Total value at current prices (R'000)	8 136	16 068	9 298	100 364	120 952	+ 20,5
Dwelling-houses equal to or larger than 80 square metres						
Number of dwelling-houses	54	21	55	743	555	- 25,3
Total square metres	7 997	4 252	11 740	101 095	92 438	- 8,6
Total value at current prices (R'000)	10 375	6 242	19 104	127 353	128 647	+ 1,0
Flats and townhouses						
Number of flats and townhouses	1	2	23	170	345	+ 102,9
Total square metres	60	213	2 403	17 164	20 244	+ 17,9
Total value at current prices (R'000)	72	298	3 468	19 342	29 228	+ 51,1
Other residential buildings ^{1/}						
Total square metres	0	0	0	6 993	15 865	+ 126,9
Total value at current prices (R'000)	0	0	0	10 955	26 589	+ 142,7
Total value of residential buildings at current prices (R'000)	18 583	22 608	31 870	258 014	305 416	+ 18,4
Non-residential buildings						
Office and banking space						
Total square metres	0	868	0	27 344	1 444	-94,7
Total value at current prices (R'000)	0	1 701	0	30 766	2 886	-90,6
Shopping space						
Total square metres	0	0	665	27 870	3 444	- 87,6
Total value at current prices (R'000)	0	0	1 383	35 685	4 903	- 86,3
Industrial and warehouse space						
Total square metres	4 815	0	15 855	108 889	27 094	- 75,1
Total value at current prices (R'000)	7 148	0	23 437	112 531	33 919	- 69,9
Other non-residential space ^{2/}						
Total square metres	185	0	0	19 699	2 870	-85,4
Total value at current prices (R'000)	222	0	0	25 160	3 460	-86,2
Total value of non-residential buildings at current prices (R'000)	7 370	1 701	24 820	204 142	45 168	- 77,9
Additions and alterations						
Dwelling-houses						
Total square metres	7 556	7 234	4 323	79 498	77 438	- 2,6
Total value at current prices (R'000)	8 154	11 131	5 848	93 057	96 991	+ 4,2
Other buildings ^{3/}						
Total square metres	4 198	4 531	2 849	42 890	39 987	- 6,8
Total value at current prices (R'000)	6 334	5 929	5 158	57 989	52 670	- 9,2
Total value of additions and alterations at current prices (R'000)	14 488	17 060	11 006	151 046	149 661	- 0,9
Total value of buildings completed at current prices (R'000)	40 441	41 369	67 696	613 202	500 245	- 18,4

1/ Other residential buildings include institutions for the disabled, boarding houses, old people's homes, hostels, hotels, motels, guest houses, holiday chalets, entertainment centres, bed-and-breakfast accommodation and casinos.

2/ Other non-residential space includes churches, sport and recreation clubs, schools, crèches, hospitals and all other non-residential space.

3/ Other buildings include additions and alterations to other residential buildings, non-residential buildings and internal alterations.

Table 22 - Buildings completed according to type of building and province: Northern Cape

Type of building	September 2001	August 2002	September 2002	January 2001 to September 2001	January 2002 to September 2002	Percentage change between January 2001 to September 2001 and January 2002 to September 2002
Residential buildings						
Dwelling-houses smaller than 80 square metres						
Number of dwelling-houses	6	1	7	107	70	- 34,6
Total square metres	295	60	274	5 417	3 244	- 40,1
Total value at current prices (R'000)	414	120	237	8 014	4 067	- 49,3
Dwelling-houses equal to or larger than 80 square metres						
Number of dwelling-houses	0	2	8	151	45	- 70,2
Total square metres	0	749	1 055	22 899	7 149	- 68,8
Total value at current prices (R'000)	0	1 295	1 402	31 905	10 145	- 68,2
Flats and townhouses						
Number of flats and townhouses	17	4	4	38	32	- 15,8
Total square metres	1 912	602	828	3 964	5 189	+ 30,9
Total value at current prices (R'000)	2 677	985	1 372	5 696	8 757	+ 53,7
Other residential buildings ^{1/}						
Total square metres	0	0	0	346	0	..
Total value at current prices (R'000)	0	0	0	277	0	..
Total value of residential buildings at current prices (R'000)	3 091	2 400	3 011	45 892	22 969	- 49,9
Non-residential buildings						
Office and banking space						
Total square metres	0	0	0	7 105	0	..
Total value at current prices (R'000)	0	0	0	15 631	0	..
Shopping space						
Total square metres	0	0	0	4 883	784	-83,9
Total value at current prices (R'000)	0	0	0	7 331	1 098	- 85,0
Industrial and warehouse space						
Total square metres	0	0	549	854	1 572	+ 84,1
Total value at current prices (R'000)	0	0	1 098	691	2 327	+ 236,8
Other non-residential space ^{2/}						
Total square metres	0	0	0	956	1 001	+ 4,7
Total value at current prices (R'000)	0	0	0	1 725	1 309	- 24,1
Total value of non-residential buildings at current prices (R'000)	0	0	1 098	25 378	4 734	- 81,3
Additions and alterations						
Dwelling-houses						
Total square metres	2 072	1 807	2 685	15 866	20 679	+ 30,3
Total value at current prices (R'000)	3 715	2 573	3 968	26 055	29 381	+ 12,8
Other buildings ^{3/}						
Total square metres	1 198	1 129	92	5 235	3 149	- 39,8
Total value at current prices (R'000)	2 587	2 938	308	12 669	8 840	- 30,2
Total value of additions and alterations at current prices (R'000)	6 302	5 511	4 276	38 724	38 221	- 1,3
Total value of buildings completed at current prices (R'000)	9 393	7 911	8 385	109 994	65 924	-40,1

1/ Other residential buildings include institutions for the disabled, boarding houses, old people's homes, hostels, hotels, motels, guest houses, holiday chalets, entertainment centres, bed-and-breakfast accommodation and casinos.

2/ Other non-residential space includes churches, sport and recreation clubs, schools, crèches, hospitals and all other non-residential space.

3/ Other buildings include additions and alterations to other residential buildings, non-residential buildings and internal alterations.

Table 23 - Buildings completed according to type of building and province: Free State

Type of building	September 2001*	August 2002	September 2002	January 2001 to September 2001	January 2002 to September 2002	Percentage change between January 2001 to September 2001 and January 2002 to September 2002
Residential buildings						
Dwelling-houses smaller than 80 square metres						
Number of dwelling-houses	53	286	164	1 376	2 426	+ 76,3
Total square metres	2 240	11 855	7 315	58 394	105 281	+ 80,3
Total value at current prices (R'000)	1 419	7 000	3 174	33 174	57 353	+ 72,9
Dwelling-houses equal to or larger than 80 square metres						
Number of dwelling-houses	9	28	34	261	262	+ 0,4
Total square metres	1 413	4 775	5 959	46 434	44 728	-3,7
Total value at current prices (R'000)	1 405	5 134	7 333	54 652	54 389	-0,5
Flats and townhouses						
Number of flats and townhouses	2	143	2	147	299	+ 103,4
Total square metres	356	16 193	295	13 351	34 856	+ 161,1
Total value at current prices (R'000)	320	23 163	500	17 781	49 991	+ 181,1
Other residential buildings ^{1/}						
Total square metres	0	1 963	0	464	3 466	+ 647,0
Total value at current prices (R'000)	0	1 949	0	581	3 474	+ 497,9
Total value of residential buildings at current prices (R'000)	3 144	37 246	11 007	106 188	165 207	+ 55,6
Non-residential buildings						
Office and banking space						
Total square metres	0	0	0	17 195	5 104	-70,3
Total value at current prices (R'000)	0	0	0	32 203	8 728	-72,9
Shopping space						
Total square metres	0	0	1 815	5 702	3 756	-34,1
Total value at current prices (R'000)	0	0	1 698	7 058	4 918	-30,3
Industrial and warehouse space						
Total square metres	0	0	0	13 622	5 233	-61,6
Total value at current prices (R'000)	0	0	0	12 860	3 904	-69,6
Other non-residential space ^{2/}						
Total square metres	0	132	3 333	12 009	13 536	+ 12,7
Total value at current prices (R'000)	0	142	4 285	20 187	30 606	+ 51,6
Total value of non-residential buildings at current prices (R'000)	0	142	5 983	72 308	48 156	-33,4
Additions and alterations						
Dwelling-houses						
Total square metres	1 537	5 751	5 810	41 218	59 779	+ 45,0
Total value at current prices (R'000)	1 870	5 950	5 667	42 764	64 777	+ 51,5
Other buildings ^{3/}						
Total square metres	731	3 176	2 253	25 362	13 881	-45,3
Total value at current prices (R'000)	603	5 072	2 593	103 843	28 105	-72,9
Total value of additions and alterations at current prices (R'000)	2 473	11 022	8 260	146 607	92 882	-36,6
Total value of buildings completed at current prices (R'000)	5 617	48 410	25 250	325 103	306 245	-5,8

1/ Other residential buildings include institutions for the disabled, boarding houses, old people's homes, hostels, hotels, motels, guest houses, holiday chalets, entertainment centres, bed-and-breakfast accommodation and casinos.

2/ Other non-residential space includes churches, sport and recreation clubs, schools, crèches, hospitals and all other non-residential space.

3/ Other buildings include additions and alterations to other residential buildings, non-residential buildings and internal alterations.

Table 24 - Buildings completed according to type of building and province: KwaZulu-Natal

Type of building	September 2001	August 2002*	September 2002	January 2001 to September 2001	January 2002 to September 2002	Percentage change between January 2001 to September 2001 and January 2002 to September 2002
Residential buildings						
Dwelling-houses smaller than 80 square metres						
Number of dwelling-houses	139	344	139	1 855	1 771	-4,5
Total square metres	6 007	12 217	6 384	82 257	72 975	-11,3
Total value at current prices (R'000)	6 380	12 557	6 839	82 287	72 804	-11,5
Dwelling-houses equal to or larger than 80 square metres						
Number of dwelling-houses	122	124	111	1 212	1 030	-15,0
Total square metres	26 736	23 879	23 377	256 370	206 605	-19,4
Total value at current prices (R'000)	37 796	35 802	34 102	353 974	294 945	-16,7
Flats and townhouses						
Number of flats and townhouses	28	37	41	587	564	-3,9
Total square metres	5 767	4 823	6 777	73 483	77 082	+ 4,9
Total value at current prices (R'000)	7 146	8 479	12 993	103 734	136 795	+ 31,9
Other residential buildings ^{1/}						
Total square metres	0	2 862	17 825	8 730	25 090	+ 187,4
Total value at current prices (R'000)	0	2 224	80 000	40 540	86 995	+ 114,6
Total value of residential buildings at current prices (R'000)	51 322	59 062	133 934	580 535	591 539	+ 1,9
Non-residential buildings						
Office and banking space						
Total square metres	274	4 773	1 401	47 066	80 963	+ 72,0
Total value at current prices (R'000)	500	12 602	2 790	74 312	183 400	+ 146,8
Shopping space						
Total square metres	327 332	1 730	28 042	350 449	69 986	-80,0
Total value at current prices (R'000)	1 211 031	1 950	87 860	1 249 616	172 221	-86,2
Industrial and warehouse space						
Total square metres	22 838	12 657	10 696	129 244	138 211	+ 6,9
Total value at current prices (R'000)	21 493	17 193	18 441	145 114	171 356	+ 18,1
Other non-residential space ^{2/}						
Total square metres	3 231	1 182	2 342	18 779	23 104	+ 23,0
Total value at current prices (R'000)	3 231	3 300	2 643	21 761	34 208	+ 57,2
Total value of non-residential buildings at current prices (R'000)	1 236 255	35 045	111 734	1 490 803	561 185	-62,4
Additions and alterations						
Dwelling-houses						
Total square metres	24 349	23 723	27 193	260 425	223 664	-14,1
Total value at current prices (R'000)	27 312	27 223	48 470	289 579	269 960	-6,8
Other buildings ^{3/}						
Total square metres	11 949	3 512	3 183	87 337	75 441	-13,6
Total value at current prices (R'000)	18 130	4 717	10 674	161 372	147 238	-8,8
Total value of additions and alterations at current prices (R'000)	45 442	31 940	59 144	450 951	417 198	-7,5
Total value of buildings completed at current prices (R'000)	1 333 019	126 047	304 812	2 522 289	1 569 922	-37,8

1/ Other residential buildings include institutions for the disabled, boarding houses, old people's homes, hostels, hotels, motels, guest houses, holiday chalets, entertainment centres, bed-and-breakfast accommodation and casinos.

2/ Other non-residential space includes churches, sport and recreation clubs, schools, crèches, hospitals and all other non-residential space.

3/ Other buildings include additions and alterations to other residential buildings, non-residential buildings and internal alterations.

Table 25 - Buildings completed according to type of building and province: North West

Type of building	September 2001*	August 2002	September 2002	January 2001 to September 2001	January 2002 to September 2002	Percentage change between January 2001 to September 2001 and January 2002 to September 2002
Residential buildings						
Dwelling-houses smaller than 80 square metres						
Number of dwelling-houses	540	70	47	2 139	1 683	- 21,3
Total square metres	20 354	2 437	1 839	80 897	57 251	- 29,2
Total value at current prices (R'000)	8 801	1 907	1 501	51 340	29 858	- 41,8
Dwelling-houses equal to or larger than 80 square metres						
Number of dwelling-houses	40	103	75	386	573	+ 48,4
Total square metres	8 502	21 995	12 875	73 971	103 101	+ 39,4
Total value at current prices (R'000)	11 386	36 007	16 642	94 423	150 292	+ 59,2
Flats and townhouses						
Number of flats and townhouses	20	44	32	104	402	+ 286,5
Total square metres	1 632	4 570	3 750	10 282	33 336	+ 224,2
Total value at current prices (R'000)	2 393	9 317	3 000	12 029	57 602	+ 378,9
Other residential buildings ^{1/}						
Total square metres	0	0	0	3 684	2 090	- 43,3
Total value at current prices (R'000)	0	0	0	4 162	2 483	- 40,3
Total value of residential buildings at current prices (R'000)	22 580	47 231	21 143	161 954	240 235	+ 48,3
Non-residential buildings						
Office and banking space						
Total square metres	955	3 020	1 020	1 852	4 763	+ 157,2
Total value at current prices (R'000)	1 382	7 000	2 000	2 932	10 140	+ 245,8
Shopping space						
Total square metres	2 107	767	0	7 202	5 184	- 28,0
Total value at current prices (R'000)	3 176	862	0	10 897	5 853	- 46,3
Industrial and warehouse space						
Total square metres	456	0	42	7 261	5 253	- 27,7
Total value at current prices (R'000)	365	0	32	7 364	5 489	- 25,5
Other non-residential space ^{2/}						
Total square metres	0	429	304	7 136	4 295	- 39,8
Total value at current prices (R'000)	0	489	368	8 532	6 567	- 23,0
Total value of non-residential buildings at current prices (R'000)	4 923	8 351	2 400	29 725	28 049	- 5,6
Additions and alterations						
Dwelling-houses						
Total square metres	2 888	3 480	2 062	34 497	31 478	- 8,8
Total value at current prices (R'000)	3 479	3 936	2 220	32 383	32 010	- 1,2
Other buildings ^{3/}						
Total square metres	0	444	157	17 156	9 099	- 47,0
Total value at current prices (R'000)	395	784	310	26 683	15 195	- 43,1
Total value of additions and alterations at current prices (R'000)	3 874	4 720	2 530	59 066	47 205	- 20,1
Total value of buildings completed at current prices (R'000)	31 377	60 302	26 073	250 745	315 489	+ 25,8

1/ Other residential buildings include institutions for the disabled, boarding houses, old people's homes, hostels, hotels, motels, guest houses, holiday chalets, entertainment centres, bed-and-breakfast accommodation and casinos.

2/ Other non-residential space includes churches, sport and recreation clubs, schools, crèches, hospitals and all other non-residential space.

3/ Other buildings include additions and alterations to other residential buildings, non-residential buildings and internal alterations.

Table 26 - Buildings completed according to type of building and province: Gauteng

Type of building	September 2001*	August 2002*	September 2002	January 2001 to September 2001	January 2002 to September 2002	Percentage change between January 2001 to September 2001 and January 2002 to September 2002
Residential buildings						
Dwelling-houses smaller than 80 square metres						
Number of dwelling-houses	1 919	975	2 286	6 565	8 086	+ 23,2
Total square metres	57 648	36 727	86 762	239 672	302 215	+ 26,1
Total value at current prices (R'000)	36 551	32 353	61 366	206 257	251 596	+ 22,0
Dwelling-houses equal to or larger than 80 square metres						
Number of dwelling-houses	226	358	433	2 333	3 264	+ 39,9
Total square metres	54 340	94 220	114 417	552 877	812 005	+ 46,9
Total value at current prices (R'000)	80 944	152 077	185 552	777 389	1 241 030	+ 59,6
Flats and townhouses						
Number of flats and townhouses	193	442	477	2 240	4 233	+ 89,0
Total square metres	29 945	82 396	66 565	232 765	529 468	+ 127,5
Total value at current prices (R'000)	47 725	167 038	90 643	363 197	805 333	+ 121,7
Other residential buildings ^{1/}						
Total square metres	208	0	72	35 690	12 050	-66,2
Total value at current prices (R'000)	271	0	73	253 895	17 406	-93,1
Total value of residential buildings at current prices (R'000)	165 491	351 468	337 634	1 600 738	2 315 365	+ 44,6
Non-residential buildings						
Office and banking space						
Total square metres	3 856	4 453	10 401	237 196	213 940	-9,8
Total value at current prices (R'000)	5 944	5 980	15 602	343 449	318 514	-7,3
Shopping space						
Total square metres	42 288	6 379	6 229	112 021	46 112	-58,8
Total value at current prices (R'000)	83 838	12 378	12 326	236 390	81 749	-65,4
Industrial and warehouse space						
Total square metres	11 676	4 864	5 839	161 539	93 212	-42,3
Total value at current prices (R'000)	20 936	6 223	8 373	246 021	141 036	-42,7
Other non-residential space ^{2/}						
Total square metres	1 813	1 846	5 599	21 882	31 242	+ 42,8
Total value at current prices (R'000)	1 960	2 650	8 400	31 081	45 209	+ 45,5
Total value of non-residential buildings at current prices (R'000)	112 678	27 231	44 701	856 941	586 508	-31,6
Additions and alterations						
Dwelling-houses						
Total square metres	18 591	27 973	21 442	190 299	286 981	+ 50,8
Total value at current prices (R'000)	25 164	41 810	32 049	230 716	397 503	+ 72,3
Other buildings ^{3/}						
Total square metres	1 354	12 770	6 710	94 464	94 120	-0,4
Total value at current prices (R'000)	1 889	19 863	9 458	155 685	151 601	-2,6
Total value of additions and alterations at current prices (R'000)	27 053	61 673	41 507	386 401	549 104	+ 42,1
Total value of buildings completed at current prices (R'000)	305 222	440 372	423 842	2 844 080	3 450 977	+ 21,3

1/ Other residential buildings include institutions for the disabled, boarding houses, old people's homes, hostels, hotels, motels, guest houses, holiday chalets, entertainment centres, bed-and-breakfast accommodation and casinos.

2/ Other non-residential space includes churches, sport and recreation clubs, schools, crèches, hospitals and all other non-residential space.

3/ Other buildings include additions and alterations to other residential buildings, non-residential buildings and internal alterations.

Table 27 - Buildings completed according to type of building and province: Mpumalanga

Type of building	September 2001	August 2002	September 2002	January 2001 to September 2001	January 2002 to September 2002	Percentage change between January 2001 to September 2001 and January 2002 to September 2002
Residential buildings						
Dwelling-houses smaller than 80 square metres						
Number of dwelling-houses	178	47	145	2 555	1 756	-31,3
Total square metres	6 389	2 024	6 180	87 072	68 387	-21,5
Total value at current prices (R'000)	6 252	2 085	2 794	51 204	35 101	-31,4
Dwelling-houses equal to or larger than 80 square metres						
Number of dwelling-houses	22	42	34	268	284	+ 6,0
Total square metres	4 104	8 206	6 743	49 184	51 032	+ 3,8
Total value at current prices (R'000)	4 072	10 429	7 971	49 522	61 556	+ 24,3
Flats and townhouses						
Number of flats and townhouses	0	11	25	115	169	+ 47,0
Total square metres	0	1 138	2 883	13 191	17 547	+ 33,0
Total value at current prices (R'000)	0	1 452	2 936	12 251	21 029	+ 71,7
Other residential buildings ^{1/}						
Total square metres	0	0	5 489	0	6 965	..
Total value at current prices (R'000)	0	0	70 000	0	72 080	..
Total value of residential buildings at current prices (R'000)	10 324	13 966	83 701	112 977	189 766	+ 68,0
Non-residential buildings						
Office and banking space						
Total square metres	1 615	0	2 509	8 878	2 969	-66,6
Total value at current prices (R'000)	1 570	0	4 200	19 470	4 763	-75,5
Shopping space						
Total square metres	0	416	0	26 588	6 172	-76,8
Total value at current prices (R'000)	0	500	0	19 170	11 842	-38,2
Industrial and warehouse space						
Total square metres	294	777	539	2 808	3 367	+ 19,9
Total value at current prices (R'000)	264	700	700	2 382	3 271	+ 37,3
Other non-residential space ^{2/}						
Total square metres	0	0	464	2 845	14 323	+ 403,4
Total value at current prices (R'000)	0	0	557	3 161	12 714	+ 302,2
Total value of non-residential buildings at current prices (R'000)	1 834	1 200	5 457	44 183	32 590	-26,2
Additions and alterations						
Dwelling-houses						
Total square metres	1 617	2 889	2 465	31 084	31 282	+ 0,6
Total value at current prices (R'000)	1 358	3 556	2 825	26 256	31 038	+ 18,2
Other buildings ^{3/}						
Total square metres	0	4 610	505	14 703	6 873	-53,3
Total value at current prices (R'000)	78	6 950	567	19 681	10 721	-45,5
Total value of additions and alterations at current prices (R'000)	1 436	10 506	3 392	45 937	41 759	-9,1
Total value of buildings completed at current prices (R'000)	13 594	25 672	92 550	203 097	264 115	+ 30,0

1/ Other residential buildings include institutions for the disabled, boarding houses, old people's homes, hostels, hotels, motels, guest houses, holiday chalets, entertainment centres, bed-and-breakfast accommodation and casinos.

2/ Other non-residential space includes churches, sport and recreation clubs, schools, crèches, hospitals and all other non-residential space.

3/ Other buildings include additions and alterations to other residential buildings, non-residential buildings and internal alterations.

Table 28 - Buildings completed according to type of building and province: Limpopo

Type of building	September 2001	August 2002	September 2002	January 2001 to September 2001	January 2002 to September 2002	Percentage change between January 2001 to September 2001 and January 2002 to September 2002
Residential buildings						
Dwelling-houses smaller than 80 square metres						
Number of dwelling-houses	40	7	15	390	148	-62,1
Total square metres	2 430	442	934	19 771	8 783	-55,6
Total value at current prices (R'000)	3 293	766	1 355	19 884	13 204	-33,6
Dwelling-houses equal to or larger than 80 square metres						
Number of dwelling-houses	7	13	13	138	127	-8,0
Total square metres	1 349	2 659	2 738	22 196	22 178	-0,1
Total value at current prices (R'000)	1 873	3 189	4 016	28 701	32 005	+ 11,5
Flats and townhouses						
Number of flats and townhouses	4	4	1	31	18	-41,9
Total square metres	492	491	255	5 248	2 042	-61,1
Total value at current prices (R'000)	688	688	357	6 066	2 991	-50,7
Other residential buildings ^{1/}						
Total square metres	0	0	0	3 000	13 959	+ 365,3
Total value at current prices (R'000)	0	0	0	3 600	207 506	+ 5 664,1
Total value of residential buildings at current prices (R'000)	5 854	4 643	5 728	58 251	255 706	+ 339,0
Non-residential buildings						
Office and banking space						
Total square metres	0	0	0	969	416	-57,1
Total value at current prices (R'000)	0	0	0	1 097	632	-42,4
Shopping space						
Total square metres	0	0	0	5 448	8 531	+ 56,6
Total value at current prices (R'000)	0	0	0	8 177	11 980	+ 46,5
Industrial and warehouse space						
Total square metres	0	0	549	768	1 051	+ 36,8
Total value at current prices (R'000)	0	0	760	1 076	1 379	+ 28,2
Other non-residential space ^{2/}						
Total square metres	0	0	0	424	547	+ 29,0
Total value at current prices (R'000)	0	0	0	726	714	-1,7
Total value of non-residential buildings at current prices (R'000)	0	0	760	11 076	14 705	+ 32,8
Additions and alterations						
Dwelling-houses						
Total square metres	949	618	512	7 254	3 951	-45,5
Total value at current prices (R'000)	1 221	1 112	705	8 806	6 024	-31,6
Other buildings ^{3/}						
Total square metres	69	0	0	3 027	1 429	-52,8
Total value at current prices (R'000)	69	0	0	5 869	2 141	-63,5
Total value of additions and alterations at current prices (R'000)	1 290	1 112	705	14 675	8 165	-44,4
Total value of buildings completed at current prices (R'000)	7 144	5 755	7 193	84 002	278 576	+ 231,6

1/ Other residential buildings include institutions for the disabled, boarding houses, old people's homes, hostels, hotels, motels, guest houses, holiday chalets, entertainment centres, bed-and-breakfast accommodation and casinos.

2/ Other non-residential space includes churches, sport and recreation clubs, schools, crèches, hospitals and all other non-residential space.

3/ Other buildings include additions and alterations to other residential buildings, non-residential buildings and internal alterations.

Table 29 - Building plans passed according to type of building and selected urban area: Cape Town

Type of building	September 2001	August 2002	September 2002	January 2001 to September 2001	January 2002 to September 2002	Percentage change between January 2001 to September 2001 and January 2002 to September 2002
Residential buildings						
Dwelling-houses smaller than 80 square metres						
Number of dwelling-houses	350	1 893	940	4 645	9 071	+ 95,3
Total square metres	14 348	63 525	31 163	197 329	310 924	+ 57,6
Total value at current prices (R'000)	15 719	75 517	34 840	243 902	368 917	+ 51,3
Dwelling-houses equal to or larger than 80 square metres						
Number of dwelling-houses	283	482	390	2 821	3 513	+ 24,5
Total square metres	55 836	82 142	81 909	581 581	700 973	+ 20,5
Total value at current prices (R'000)	76 552	115 149	115 327	803 359	975 646	+ 21,4
Flats and townhouses						
Number of flats and townhouses	109	154	33	1 166	1 416	+ 21,4
Total square metres	11 292	15 298	4 783	117 337	140 894	+ 20,1
Total value at current prices (R'000)	16 474	22 961	8 172	181 989	229 683	+ 26,2
Other residential buildings ^{1/}						
Total square metres	0	1 448	0	32 993	17 064	- 48,3
Total value at current prices (R'000)	0	2 277	0	77 942	23 505	- 69,8
Total value of residential buildings at current prices (R'000)	108 745	215 904	158 339	1 307 192	1 597 751	+ 22,2
Non-residential buildings						
Office and banking space						
Total square metres	1 951	4 634	4 881	161 592	53 637	- 66,8
Total value at current prices (R'000)	3 785	7 803	12 999	230 683	90 785	- 60,6
Shopping space						
Total square metres	1 166	6 472	0	97 521	20 995	- 78,5
Total value at current prices (R'000)	1 581	10 098	0	122 489	29 225	- 76,1
Industrial and warehouse space						
Total square metres	3 833	7 236	6 821	110 153	94 858	- 13,9
Total value at current prices (R'000)	4 102	7 643	7 992	117 523	105 452	- 10,3
Other non-residential space ^{2/}						
Total square metres	3 066	4 171	3 307	50 064	33 495	- 33,1
Total value at current prices (R'000)	4 202	4 920	5 244	67 545	47 239	- 30,1
Total value of non-residential buildings at current prices (R'000)	13 670	30 464	26 235	538 240	272 701	- 49,3
Additions and alterations						
Dwelling-houses						
Total square metres	43 666	53 215	53 340	440 679	493 485	+ 12,0
Total value at current prices (R'000)	54 869	70 069	73 817	532 002	630 162	+ 18,5
Other buildings ^{3/}						
Total square metres	18 907	34 010	23 507	134 896	190 936	+ 41,5
Total value at current prices (R'000)	45 547	62 836	43 722	260 230	380 514	+ 46,2
Total value of additions and alterations at current prices (R'000)	100 416	132 905	117 539	792 232	1 010 676	+ 27,6
Total value of building plans passed at current prices (R'000)	222 831	379 273	302 113	2 637 664	2 881 128	+ 9,2

1/ Other residential buildings include institutions for the disabled, boarding houses, old people's homes, hostels, hotels, motels, guest houses, holiday chalets, entertainment centres, bed-and-breakfast accommodation and casinos.

2/ Other non-residential space includes churches, sport and recreation clubs, schools, crèches, hospitals and all other non-residential space.

3/ Other buildings include additions and alterations to other residential buildings, non-residential buildings and internal alterations.

Table 30 - Building plans passed according to type of building and selected urban area: Port Elizabeth

Type of building	September 2001	August 2002	September 2002	January 2001 to September 2001	January 2002 to September 2002	Percentage change between January 2001 to September 2001 and January 2002 to September 2002
Residential buildings						
Dwelling-houses smaller than 80 square metres						
Number of dwelling-houses	70	313	143	1 245	2 245	+ 80,3
Total square metres	3 079	12 973	5 801	56 007	94 437	+ 68,6
Total value at current prices (R'000)	4 241	17 941	2 574	74 418	127 696	+ 71,6
Dwelling-houses equal to or larger than 80 square metres						
Number of dwelling-houses	47	44	44	555	495	- 10,8
Total square metres	8 668	8 768	9 230	74 807	95 883	+ 28,2
Total value at current prices (R'000)	11 785	13 055	14 135	101 433	137 075	+ 35,1
Flats and townhouses						
Number of flats and townhouses	27	26	26	140	200	+ 42,9
Total square metres	2 408	4 084	1 547	12 413	22 530	+ 81,5
Total value at current prices (R'000)	2 888	7 125	1 156	17 085	35 556	+ 108,1
Other residential buildings ^{1/}						
Total square metres	0	0	0	2 744	323	- 88,2
Total value at current prices (R'000)	0	0	0	3 312	550	- 83,4
Total value of residential buildings at current prices (R'000)	18 914	38 121	17 865	196 248	300 877	+ 53,3
Non-residential buildings						
Office and banking space						
Total square metres	4 134	0	0	5 293	5 855	+ 10,6
Total value at current prices (R'000)	3 683	0	0	5 907	8 946	+ 51,4
Shopping space						
Total square metres	322	2 867	453	4 192	16 314	+ 289,2
Total value at current prices (R'000)	334	3 369	350	6 443	29 684	+ 360,7
Industrial and warehouse space						
Total square metres	2 184	805	0	22 684	26 101	+ 15,1
Total value at current prices (R'000)	3 486	1 578	0	21 858	40 761	+ 86,5
Other non-residential space ^{2/}						
Total square metres	4 620	2 322	140	9 527	20 435	+ 114,5
Total value at current prices (R'000)	9 444	3 569	230	17 272	33 065	+ 91,4
Total value of non-residential buildings at current prices (R'000)	16 947	8 516	580	51 480	112 456	+ 118,4
Additions and alterations						
Dwelling-houses						
Total square metres	10 063	8 715	9 753	89 809	101 647	+ 13,2
Total value at current prices (R'000)	13 653	12 628	21 153	118 148	141 659	+ 19,9
Other buildings ^{3/}						
Total square metres	3 952	2 392	2 776	67 005	28 529	- 57,4
Total value at current prices (R'000)	6 075	2 791	5 909	75 390	45 612	- 39,5
Total value of additions and alterations at current prices (R'000)	19 728	15 419	27 062	193 538	187 271	- 3,2
Total value of building plans passed at current prices (R'000)	55 589	62 056	45 507	441 266	600 604	+ 36,1

1/ Other residential buildings include institutions for the disabled, boarding houses, old people's homes, hostels, hotels, motels, guest houses, holiday chalets, entertainment centres, bed-and-breakfast accommodation and casinos.

2/ Other non-residential space includes churches, sport and recreation clubs, schools, crèches, hospitals and all other non-residential space.

3/ Other buildings include additions and alterations to other residential buildings, non-residential buildings and internal alterations.

Table 31 - Building plans passed according to type of building and selected urban area: Durban

Type of building	September 2001	August 2002	September 2002	January 2001 to September 2001	January 2002 to September 2002	Percentage change between January 2001 to September 2001 and January 2002 to September 2002
Residential buildings						
Dwelling-houses smaller than 80 square metres						
Number of dwelling-houses	57	61	54	627	558	-11,0
Total square metres	2 795	3 286	2 882	32 526	26 159	-19,6
Total value at current prices (R'000)	3 434	3 688	3 540	37 474	29 820	-20,4
Dwelling-houses equal to or larger than 80 square metres						
Number of dwelling-houses	82	70	76	584	564	-3,4
Total square metres	13 264	13 405	15 157	109 405	111 883	+ 2,3
Total value at current prices (R'000)	15 340	18 918	21 249	138 953	150 629	+ 8,4
Flats and townhouses						
Number of flats and townhouses	14	47	36	147	287	+ 95,2
Total square metres	2 030	11 270	8 793	19 302	52 073	+ 169,8
Total value at current prices (R'000)	2 955	21 446	17 460	21 000	80 889	+ 285,2
Other residential buildings ^{1/}						
Total square metres	0	0	80	2 377	29 686	+ 1 148,9
Total value at current prices (R'000)	0	0	120	2 431	31 120	+ 1 180,1
Total value of residential buildings at current prices (R'000)	21 729	44 052	42 369	199 858	292 458	+ 46,3
Non-residential buildings						
Office and banking space						
Total square metres	1 767	2 179	298	21 925	7 342	-66,5
Total value at current prices (R'000)	3 506	3 000	300	35 145	9 750	-72,3
Shopping space						
Total square metres	901	180	1 152	10 392	5 514	-46,9
Total value at current prices (R'000)	1 140	200	3 911	12 465	9 808	-21,3
Industrial and warehouse space						
Total square metres	20 150	5 906	1 009	75 265	52 049	-30,8
Total value at current prices (R'000)	72 700	9 700	4 000	135 112	62 759	-53,6
Other non-residential space ^{2/}						
Total square metres	796	884	3 071	24 422	66 809	+ 173,6
Total value at current prices (R'000)	890	1 050	6 296	31 363	80 737	+ 157,4
Total value of non-residential buildings at current prices (R'000)	78 236	13 950	14 507	214 085	163 054	-23,8
Additions and alterations						
Dwelling-houses						
Total square metres	22 151	24 508	28 662	199 723	197 403	-1,2
Total value at current prices (R'000)	26 529	31 431	32 536	236 244	247 775	+ 4,9
Other buildings ^{3/}						
Total square metres	13 289	9 785	6 225	82 207	57 382	-30,2
Total value at current prices (R'000)	20 904	11 870	14 634	176 416	109 066	-38,2
Total value of additions and alterations at current prices (R'000)	47 433	43 301	47 170	412 660	356 841	-13,5
Total value of building plans passed at current prices (R'000)	147 398	101 303	104 046	826 603	812 353	-1,7

1/ Other residential buildings include institutions for the disabled, boarding houses, old people's homes, hostels, hotels, motels, guest houses, holiday chalets, entertainment centres, bed-and-breakfast accommodation and casinos.

2/ Other non-residential space includes churches, sport and recreation clubs, schools, crèches, hospitals and all other non-residential space.

3/ Other buildings include additions and alterations to other residential buildings, non-residential buildings and internal alterations.

Table 32 - Building plans passed according to type of building and selected urban area: Witwatersrand

Type of building	September 2001	August 2002	September 2002	January 2001 to September 2001	January 2002 to September 2002	Percentage change between January 2001 to September 2001 and January 2002 to September 2002
Residential buildings						
Dwelling-houses smaller than 80 square metres						
Number of dwelling-houses	1 045	430	625	6 421	5 872	- 8,6
Total square metres	37 296	14 231	23 626	251 889	217 609	- 13,6
Total value at current prices (R'000)	30 767	14 740	21 811	266 388	195 848	- 26,5
Dwelling-houses equal to or larger than 80 square metres						
Number of dwelling-houses	446	439	512	3 679	3 506	- 4,7
Total square metres	103 022	123 030	141 905	840 410	911 542	+ 8,5
Total value at current prices (R'000)	150 883	191 403	211 515	1 229 974	1 414 960	+ 15,0
Flats and townhouses						
Number of flats and townhouses	269	339	714	2 245	2 749	+ 22,4
Total square metres	42 271	41 999	78 961	254 814	348 442	+ 36,7
Total value at current prices (R'000)	60 761	58 720	111 888	408 211	542 102	+ 32,8
Other residential buildings ^{1/}						
Total square metres	589	0	0	2 936	3 968	+ 35,1
Total value at current prices (R'000)	589	0	0	3 340	6 253	+ 87,2
Total value of residential buildings at current prices (R'000)	243 000	264 863	345 214	1 907 913	2 159 163	+ 13,2
Non-residential buildings						
Office and banking space						
Total square metres	24 031	4 638	12 686	186 534	93 424	- 49,9
Total value at current prices (R'000)	38 105	6 958	18 884	322 508	209 045	- 35,2
Shopping space						
Total square metres	7 497	4 483	6 785	67 564	65 242	- 3,4
Total value at current prices (R'000)	11 911	6 725	11 179	110 786	112 647	+ 1,7
Industrial and warehouse space						
Total square metres	19 761	8 315	18 098	197 199	201 261	+ 2,1
Total value at current prices (R'000)	30 192	13 417	27 800	330 786	326 182	- 1,4
Other non-residential space ^{2/}						
Total square metres	3 086	217	6 568	75 094	94 670	+ 26,1
Total value at current prices (R'000)	4 836	326	10 080	115 010	150 175	+ 30,6
Total value of non-residential buildings at current prices (R'000)	85 044	27 426	67 943	879 090	798 049	- 9,2
Additions and alterations						
Dwelling-houses						
Total square metres	92 305	74 353	72 278	584 559	567 660	- 2,9
Total value at current prices (R'000)	119 560	114 785	112 091	749 563	838 571	+ 11,9
Other buildings ^{3/}						
Total square metres	17 564	34 482	12 754	173 673	260 265	+ 49,9
Total value at current prices (R'000)	28 012	53 886	31 332	306 409	463 597	+ 51,3
Total value of additions and alterations at current prices (R'000)	147 572	168 671	143 423	1 055 972	1 302 168	+ 23,3
Total value of building plans passed at current prices (R'000)	475 616	460 960	556 580	3 842 975	4 259 380	+ 10,8

1/ Other residential buildings include institutions for the disabled, boarding houses, old people's homes, hostels, hotels, motels, guest houses, holiday chalets, entertainment centres, bed-and-breakfast accommodation and casinos.

2/ Other non-residential space includes churches, sport and recreation clubs, schools, crèches, hospitals and all other non-residential space.

3/ Other buildings include additions and alterations to other residential buildings, non-residential buildings and internal alterations.

Table 33 - Building plans passed according to type of building and selected urban area: Pretoria

Type of building	September 2001	August 2002	September 2002	January 2001 to September 2001	January 2002 to September 2002	Percentage change between January 2001 to September 2001 and January 2002 to September 2002
Residential buildings						
Dwelling-houses smaller than 80 square metres						
Number of dwelling-houses	97	58	1 475	1 174	1 934	+ 64,7
Total square metres	5 144	3 148	60 157	47 423	85 438	+ 80,2
Total value at current prices (R'000)	8 584	4 555	34 491	55 836	71 163	+ 27,5
Dwelling-houses equal to or larger than 80 square metres						
Number of dwelling-houses	249	264	186	2 115	1 930	- 8,7
Total square metres	73 181	60 952	49 003	613 154	505 237	- 17,6
Total value at current prices (R'000)	114 728	91 683	76 700	859 661	730 421	- 15,0
Flats and townhouses						
Number of flats and townhouses	153	119	201	1 650	2 024	+ 22,7
Total square metres	40 832	21 623	28 854	222 662	290 979	+ 30,7
Total value at current prices (R'000)	65 168	33 286	52 210	332 165	436 927	+ 31,5
Other residential buildings ^{1/}						
Total square metres	43	0	0	1 989	0	..
Total value at current prices (R'000)	9	0	0	2 928	0	..
Total value of residential buildings at current prices (R'000)	188 489	129 524	163 401	1 250 590	1 238 511	- 1,0
Non-residential buildings						
Office and banking space						
Total square metres	15 278	0	3 171	91 986	74 080	- 19,5
Total value at current prices (R'000)	25 390	0	4 985	149 306	115 994	- 22,3
Shopping space						
Total square metres	0	39 598	1 518	33 009	56 093	+ 69,9
Total value at current prices (R'000)	0	60 033	1 518	48 891	81 536	+ 66,8
Industrial and warehouse space						
Total square metres	2 765	20 507	19 392	49 920	103 648	+ 107,6
Total value at current prices (R'000)	4 031	27 757	29 609	71 773	150 442	+ 109,6
Other non-residential space ^{2/}						
Total square metres	8 179	7 015	9 046	42 312	27 491	- 35,0
Total value at current prices (R'000)	12 328	10 911	14 829	63 153	42 633	- 32,5
Total value of non-residential buildings at current prices (R'000)	41 749	98 701	50 941	333 123	390 605	+ 17,3
Additions and alterations						
Dwelling-houses						
Total square metres	21 442	26 513	25 796	169 452	220 233	+ 30,0
Total value at current prices (R'000)	30 276	39 044	40 180	225 314	323 462	+ 43,6
Other buildings ^{3/}						
Total square metres	9 849	8 291	28 483	51 144	76 813	+ 50,2
Total value at current prices (R'000)	15 872	12 183	50 581	86 164	128 808	+ 49,5
Total value of additions and alterations at current prices (R'000)	46 148	51 227	90 761	311 478	452 270	+ 45,2
Total value of building plans passed at current prices (R'000)	276 386	279 452	305 103	1 895 191	2 081 386	+ 9,8

1/ Other residential buildings include institutions for the disabled, boarding houses, old people's homes, hostels, hotels, motels, guest houses, holiday chalets, entertainment centres, bed-and-breakfast accommodation and casinos.

2/ Other non-residential space includes churches, sport and recreation clubs, schools, crèches, hospitals and all other non-residential space.

3/ Other buildings include additions and alterations to other residential buildings, non-residential buildings and internal alterations.

Table 34 - Building plans passed according to type of building and selected urban area: Bloemfontein

Type of building	September 2001	August 2002	September 2002	January 2001 to September 2001	January 2002 to September 2002	Percentage change between January 2001 to September 2001 and January 2002 to September 2002
Residential buildings						
Dwelling-houses smaller than 80 square metres						
Number of dwelling-houses	41	51	361	1 256	1 817	+ 44,7
Total square metres	2 001	2 254	15 205	55 522	76 110	+ 37,1
Total value at current prices (R'000)	4 770	2 058	8 465	32 679	42 910	+ 31,3
Dwelling-houses equal to or larger than 80 square metres						
Number of dwelling-houses	28	16	28	189	259	+ 37,0
Total square metres	4 281	3 529	4 488	32 259	41 800	+ 29,6
Total value at current prices (R'000)	5 164	5 603	7 029	41 438	59 480	+ 43,5
Flats and townhouses						
Number of flats and townhouses	71	0	0	279	419	+ 50,2
Total square metres	5 076	0	0	32 736	44 257	+ 35,2
Total value at current prices (R'000)	6 770	0	0	49 314	63 919	+ 29,6
Other residential buildings ^{1/}						
Total square metres	2 187	1 017	0	3 675	3 700	+ 0,7
Total value at current prices (R'000)	3 280	1 600	0	4 741	8 600	+ 81,4
Total value of residential buildings at current prices (R'000)	19 984	9 261	15 494	128 172	174 909	+ 36,5
Non-residential buildings						
Office and banking space						
Total square metres	0	0	626	13 256	13 423	+ 1,3
Total value at current prices (R'000)	0	0	900	26 025	22 600	-13,2
Shopping space						
Total square metres	0	0	3 767	3 615	15 351	+ 324,6
Total value at current prices (R'000)	0	0	4 100	4 000	29 464	+ 636,6
Industrial and warehouse space						
Total square metres	0	356	278	1 961	11 719	+ 497,6
Total value at current prices (R'000)	0	320	556	1 626	10 999	+ 576,4
Other non-residential space ^{2/}						
Total square metres	0	0	0	3 199	1 483	-53,6
Total value at current prices (R'000)	0	0	0	6 208	1 310	-78,9
Total value of non-residential buildings at current prices (R'000)	0	320	5 556	37 859	64 373	+ 70,0
Additions and alterations						
Dwelling-houses						
Total square metres	0	5 025	4 316	24 408	40 748	+ 66,9
Total value at current prices (R'000)	0	7 239	6 101	30 397	51 049	+ 67,9
Other buildings ^{3/}						
Total square metres	0	871	83	8 032	12 657	+ 57,6
Total value at current prices (R'000)	0	3 863	554	17 718	32 637	+ 84,2
Total value of additions and alterations at current prices (R'000)	0	11 102	6 655	48 115	83 686	+ 73,9
Total value of building plans passed at current prices (R'000)	19 984	20 683	27 705	214 146	322 968	+ 50,8

1/ Other residential buildings include institutions for the disabled, boarding houses, old people's homes, hostels, hotels, motels, guest houses, holiday chalets, entertainment centres, bed-and-breakfast accommodation and casinos.

2/ Other non-residential space includes churches, sport and recreation clubs, schools, crèches, hospitals and all other non-residential space.

3/ Other buildings include additions and alterations to other residential buildings, non-residential buildings and internal alterations.

Table 35 - Buildings completed according to type of building and selected urban area: Cape Town

Type of building	September 2001	August 2002	September 2002	January 2001 to September 2001	January 2002 to September 2002	Percentage change between January 2001 to September 2001 and January 2002 to September 2002
Residential buildings						
Dwelling-houses smaller than 80 square metres						
Number of dwelling-houses	365	472	276	3 144	4 251	+ 35,2
Total square metres	14 824	17 415	11 850	134 314	155 599	+ 15,8
Total value at current prices (R'000)	16 329	21 404	15 940	157 985	185 818	+ 17,6
Dwelling-houses equal to or larger than 80 square metres						
Number of dwelling-houses	228	285	233	1 343	2 234	+ 66,3
Total square metres	40 180	51 561	41 165	254 373	432 965	+ 70,2
Total value at current prices (R'000)	57 037	72 531	58 992	350 951	624 059	+ 77,8
Flats and townhouses						
Number of flats and townhouses	118	156	56	1 124	942	- 16,2
Total square metres	14 081	12 563	4 940	124 425	121 053	- 2,7
Total value at current prices (R'000)	22 446	16 878	5 948	165 069	190 614	+ 15,5
Other residential buildings ^{1/}						
Total square metres	153	0	136	22 302	4 279	- 80,8
Total value at current prices (R'000)	228	0	203	26 243	5 925	- 77,4
Total value of residential buildings at current prices (R'000)	96 040	110 813	81 083	700 248	1 006 416	+ 43,7
Non-residential buildings						
Office and banking space						
Total square metres	5 640	0	6 995	69 582	74 467	+ 7,0
Total value at current prices (R'000)	7 820	0	10 174	126 090	109 688	- 13,0
Shopping space						
Total square metres	4 547	0	0	28 764	36 373	+ 26,5
Total value at current prices (R'000)	7 333	0	0	35 514	42 563	+ 19,8
Industrial and warehouse space						
Total square metres	18 470	8 774	5 928	65 055	80 654	+ 24,0
Total value at current prices (R'000)	17 820	6 641	7 980	70 704	86 251	+ 22,0
Other non-residential space ^{2/}						
Total square metres	511	2 356	2 214	15 577	23 783	+ 52,7
Total value at current prices (R'000)	483	3 153	2 316	20 485	25 212	+ 23,1
Total value of non-residential buildings at current prices (R'000)	33 456	9 794	20 470	252 793	263 714	+ 4,3
Additions and alterations						
Dwelling-houses						
Total square metres	22 452	31 939	27 800	257 888	266 135	+ 3,2
Total value at current prices (R'000)	24 877	37 206	33 567	287 992	326 799	+ 13,5
Other buildings ^{3/}						
Total square metres	3 483	9 186	18 205	88 798	131 699	+ 48,3
Total value at current prices (R'000)	9 692	18 674	40 224	252 677	225 650	- 10,7
Total value of additions and alterations at current prices (R'000)	34 569	55 880	73 791	540 669	552 449	+ 2,2
Total value of buildings completed at current prices (R'000)	164 065	176 487	175 344	1 493 710	1 822 579	+ 22,0

1/ Other residential buildings include institutions for the disabled, boarding houses, old people's homes, hostels, hotels, motels, guest houses, holiday chalets, entertainment centres, bed-and-breakfast accommodation and casinos.

2/ Other non-residential space includes churches, sport and recreation clubs, schools, crèches, hospitals and all other non-residential space.

3/ Other buildings include additions and alterations to other residential buildings, non-residential buildings and internal alterations.

Table 36 - Buildings completed according to type of building and selected urban area: Port Elizabeth

Type of building	September 2001*	August 2002	September 2002	January 2001 to September 2001	January 2002 to September 2002	Percentage change between January 2001 to September 2001 and January 2002 to September 2002
Residential buildings						
Dwelling-houses smaller than 80 square metres						
Number of dwelling-houses	125	192	112	1 170	1 513	+ 29,3
Total square metres	4 939	9 926	4 479	49 645	64 407	+ 29,7
Total value at current prices (R'000)	6 207	13 908	6 159	63 671	87 621	+ 37,6
Dwelling-houses equal to or larger than 80 square metres						
Number of dwelling-houses	19	1	36	421	279	- 33,7
Total square metres	1 931	152	6 806	45 248	40 826	- 9,8
Total value at current prices (R'000)	2 304	161	11 318	58 686	55 692	- 5,1
Flats and townhouses						
Number of flats and townhouses	1	0	21	105	46	- 56,2
Total square metres	60	0	2 183	9 790	5 311	- 45,8
Total value at current prices (R'000)	72	0	3 165	10 875	7 603	- 30,1
Other residential buildings ^{1/}						
Total square metres	0	0	0	4 347	2 744	- 36,9
Total value at current prices (R'000)	0	0	0	7 000	3 312	- 52,7
Total value of residential buildings at current prices (R'000)	8 583	14 069	20 642	140 232	154 228	+ 10,0
Non-residential buildings						
Office and banking space						
Total square metres	0	868	0	22 600	868	- 96,2
Total value at current prices (R'000)	0	1 701	0	23 340	1 701	- 92,7
Shopping space						
Total square metres	0	0	665	19 754	2 609	- 86,8
Total value at current prices (R'000)	0	0	1 383	23 317	3 381	- 85,5
Industrial and warehouse space						
Total square metres	1 927	0	15 855	35 543	25 085	- 29,4
Total value at current prices (R'000)	2 725	0	23 437	42 823	31 356	-26,8
Other non-residential space ^{2/}						
Total square metres	0	0	0	4 396	2 300	- 47,7
Total value at current prices (R'000)	0	0	0	3 561	2 664	- 25,2
Total value of non-residential buildings at current prices (R'000)	2 725	1 701	24 820	93 041	39 102	- 58,0
Additions and alterations						
Dwelling-houses						
Total square metres	5 477	3 372	1 107	44 277	37 197	- 16,0
Total value at current prices (R'000)	5 383	4 005	1 602	49 078	42 483	- 13,4
Other buildings ^{3/}						
Total square metres	910	315	1 687	22 293	25 581	+ 14,7
Total value at current prices (R'000)	1 122	299	3 172	26 567	29 139	+ 9,7
Total value of additions and alterations at current prices (R'000)	6 505	4 304	4 774	75 645	71 622	- 5,3
Total value of buildings completed at current prices (R'000)	17 813	20 074	50 236	308 918	264 952	- 14,2

1/ Other residential buildings include institutions for the disabled, boarding houses, old people's homes, hostels, hotels, motels, guest houses, holiday chalets, entertainment centres, bed-and-breakfast accommodation and casinos.

2/ Other non-residential space includes churches, sport and recreation clubs, schools, crèches, hospitals and all other non-residential space.

3/ Other buildings include additions and alterations to other residential buildings, non-residential buildings and internal alterations.

Table 37 - Buildings completed according to type of building and selected urban area: Durban

Type of building	September 2001	August 2002	September 2002	January 2001 to September 2001	January 2002 to September 2002	Percentage change between January 2001 to September 2001 and January 2002 to September 2002
Residential buildings						
Dwelling-houses smaller than 80 square metres						
Number of dwelling-houses	60	41	58	616	613	- 0,5
Total square metres	3 175	2 475	3 105	32 517	30 750	- 5,4
Total value at current prices (R'000)	3 475	2 755	3 614	38 163	35 616	- 6,7
Dwelling-houses equal to or larger than 80 square metres						
Number of dwelling-houses	59	67	56	748	613	- 18,0
Total square metres	10 974	11 685	8 796	143 089	110 199	- 23,0
Total value at current prices (R'000)	12 939	15 148	11 215	181 494	140 267	- 22,7
Flats and townhouses						
Number of flats and townhouses	2	9	18	428	202	- 52,8
Total square metres	221	432	2 586	42 919	27 368	- 36,2
Total value at current prices (R'000)	340	778	4 250	55 567	43 521	- 21,7
Other residential buildings ^{1/}						
Total square metres	0	0	0	0	0	..
Total value at current prices (R'000)	0	0	0	0	0	..
Total value of residential buildings at current prices (R'000)	16 754	18 681	19 079	275 224	219 404	- 20,3
Non-residential buildings						
Office and banking space						
Total square metres	274	220	321	34 413	36 919	+ 7,3
Total value at current prices (R'000)	500	332	420	53 349	55 440	+ 3,9
Shopping space						
Total square metres	1 332	1 730	1 859	19 316	25 566	+ 32,4
Total value at current prices (R'000)	3 527	1 950	5 960	34 216	43 583	+ 27,4
Industrial and warehouse space						
Total square metres	9 679	10 997	8 946	87 825	120 095	+ 36,7
Total value at current prices (R'000)	9 956	13 470	14 441	109 413	142 723	+ 30,4
Other non-residential space ^{2/}						
Total square metres	3 231	1 182	1 201	13 880	17 502	+ 26,1
Total value at current prices (R'000)	3 231	3 300	1 386	16 829	26 255	+ 56,0
Total value of non-residential buildings at current prices (R'000)	17 214	19 052	22 207	213 807	268 001	+ 25,3
Additions and alterations						
Dwelling-houses						
Total square metres	22 511	18 813	22 038	226 485	184 854	- 18,4
Total value at current prices (R'000)	25 349	20 470	41 440	248 672	219 335	- 11,8
Other buildings ^{3/}						
Total square metres	8 108	1 787	868	72 590	58 205	- 19,8
Total value at current prices (R'000)	13 978	2 619	5 570	137 803	119 616	- 13,2
Total value of additions and alterations at current prices (R'000)	39 327	23 089	47 010	386 475	338 951	- 12,3
Total value of buildings completed at current prices (R'000)	73 295	60 822	88 296	875 506	826 356	- 5,6

1/ Other residential buildings include institutions for the disabled, boarding houses, old people's homes, hostels, hotels, motels, guest houses, holiday chalets, entertainment centres, bed-and-breakfast accommodation and casinos.

2/ Other non-residential space includes churches, sport and recreation clubs, schools, crèches, hospitals and all other non-residential space.

3/ Other buildings include additions and alterations to other residential buildings, non-residential buildings and internal alterations.

Table 38 - Buildings completed according to type of building and selected urban area: Witwatersrand

Type of building	September 2001*	August 2002 *	September 2002	January 2001 to September 2001	January 2002 to September 2002	Percentage change between January 2001 to September 2001 and January 2002 to September 2002
Residential buildings						
Dwelling-houses smaller than 80 square metres						
Number of dwelling-houses	1 899	899	874	5 798	6 006	+ 3,6
Total square metres	56 628	33 007	29 438	209 485	216 553	+ 3,4
Total value at current prices (R'000)	35 196	25 951	29 235	178 407	187 496	+ 5,1
Dwelling-houses equal to or larger than 80 square metres						
Number of dwelling-houses	146	195	236	1 509	2 112	+ 40,0
Total square metres	33 587	47 831	57 390	331 241	473 099	+ 42,8
Total value at current prices (R'000)	52 811	73 028	85 038	476 444	708 582	+ 48,7
Flats and townhouses						
Number of flats and townhouses	54	281	318	1 367	2 175	+ 59,1
Total square metres	6 818	35 715	41 657	134 625	306 883	+ 128,0
Total value at current prices (R'000)	10 723	52 368	57 789	224 636	452 680	+ 101,5
Other residential buildings ^{1/}						
Total square metres	0	0	0	33 870	11 978	-64,6
Total value at current prices (R'000)	0	0	0	251 528	17 333	-93,1
Total value of residential buildings at current prices (R'000)	98 730	151 347	172 062	1 131 015	1 366 091	+ 20,8
Non-residential buildings						
Office and banking space						
Total square metres	0	4 132	10 401	226 016	180 022	-20,3
Total value at current prices (R'000)	0	5 498	15 602	327 458	272 452	-16,8
Shopping space						
Total square metres	42 288	5 779	6 229	102 880	33 366	-67,6
Total value at current prices (R'000)	83 838	11 298	12 326	223 933	59 834	-73,3
Industrial and warehouse space						
Total square metres	11 248	3 597	5 839	145 819	76 886	-47,3
Total value at current prices (R'000)	20 487	4 513	8 373	230 466	117 466	-49,0
Other non-residential space ^{2/}						
Total square metres	1 813	1 606	4 794	14 787	28 193	+ 90,7
Total value at current prices (R'000)	1 960	2 410	7 192	21 855	40 711	+ 86,3
Total value of non-residential buildings at current prices (R'000)	106 285	23 719	43 493	803 712	490 463	-39,0
Additions and alterations						
Dwelling-houses						
Total square metres	16 239	20 363	18 135	169 939	251 848	+ 48,2
Total value at current prices (R'000)	22 463	29 975	26 551	206 625	346 796	+ 67,8
Other buildings ^{3/}						
Total square metres	947	7 418	6 338	86 097	75 537	-12,3
Total value at current prices (R'000)	1 354	11 214	8 678	143 877	122 332	-15,0
Total value of additions and alterations at current prices (R'000)	23 817	41 189	35 229	350 502	469 128	+ 33,8
Total value of buildings completed at current prices (R'000)	228 832	216 255	250 784	2 285 229	2 325 682	+ 1,8

1/ Other residential buildings include institutions for the disabled, boarding houses, old people's homes, hostels, hotels, motels, guest houses, holiday chalets, entertainment centres, bed-and-breakfast accommodation and casinos.

2/ Other non-residential space includes churches, sport and recreation clubs, schools, crèches, hospitals and all other non-residential space.

3/ Other buildings include additions and alterations to other residential buildings, non-residential buildings and internal alterations.

Table 39 - Buildings completed according to type of building and selected urban area: Pretoria

Type of building	September 2001	August 2002	September 2002	January 2001 to September 2001	January 2002 to September 2002	Percentage change between January 2001 to September 2001 and January 2002 to September 2002
Residential buildings						
Dwelling-houses smaller than 80 square metres						
Number of dwelling-houses	18	76	1 410	297	2 021	+ 580,5
Total square metres	943	3 720	57 230	14 253	83 080	+ 482,9
Total value at current prices (R'000)	1 266	6 402	32 004	16 823	61 071	+ 263,0
Dwelling-houses equal to or larger than 80 square metres						
Number of dwelling-houses	74	131	166	777	908	+ 16,9
Total square metres	19 297	36 012	47 488	210 908	255 620	+ 21,2
Total value at current prices (R'000)	26 385	64 993	85 819	288 436	416 433	+ 44,4
Flats and townhouses						
Number of flats and townhouses	135	160	154	823	2 040	+ 147,9
Total square metres	22 175	46 171	23 325	91 150	219 281	+ 140,6
Total value at current prices (R'000)	35 963	114 005	31 387	130 090	349 638	+ 168,8
Other residential buildings ^{1/}						
Total square metres	50	0	72	50	72	+ 44,0
Total value at current prices (R'000)	81	0	73	81	73	- 9,9
Total value of residential buildings at current prices (R'000)	63 695	185 400	149 283	435 430	827 215	+ 90,0
Non-residential buildings						
Office and banking space						
Total square metres	3 856	321	0	11 180	33 627	+ 200,8
Total value at current prices (R'000)	5 944	482	0	15 991	45 702	+ 185,8
Shopping space						
Total square metres	0	0	0	2 740	8 463	+ 208,9
Total value at current prices (R'000)	0	0	0	4 225	14 664	+ 247,1
Industrial and warehouse space						
Total square metres	0	1 267	0	8 604	15 063	+ 75,1
Total value at current prices (R'000)	0	1 710	0	8 062	21 853	+ 171,1
Other non-residential space ^{2/}						
Total square metres	0	0	805	5 568	2 809	- 49,6
Total value at current prices (R'000)	0	0	1 208	7 966	4 258	- 46,5
Total value of non-residential buildings at current prices (R'000)	5 944	2 192	1 208	36 244	86 477	+ 138,6
Additions and alterations						
Dwelling-houses						
Total square metres	565	5 744	2 799	11 183	26 490	+ 136,9
Total value at current prices (R'000)	830	9 506	4 797	14 180	40 289	+ 184,1
Other buildings ^{3/}						
Total square metres	94	5 290	346	4 868	14 409	+ 196,0
Total value at current prices (R'000)	141	8 587	738	7 140	23 021	+ 222,4
Total value of additions and alterations at current prices (R'000)	971	18 093	5 535	21 320	63 310	+ 197,0
Total value of buildings completed at current prices (R'000)	70 610	205 685	156 026	492 994	977 002	+ 98,2

1/ Other residential buildings include institutions for the disabled, boarding houses, old people's homes, hostels, hotels, motels, guest houses, holiday chalets, entertainment centres, bed-and-breakfast accommodation and casinos.

2/ Other non-residential space includes churches, sport and recreation clubs, schools, crèches, hospitals and all other non-residential space.

3/ Other buildings include additions and alterations to other residential buildings, non-residential buildings and internal alterations.

Table 40 - Buildings completed according to type of building and selected urban area: Bloemfontein

Type of building	September 2001	August 2002	September 2002	January 2001 to September 2001	January 2002 to September 2002	Percentage change between January 2001 to September 2001 and January 2002 to September 2002
Residential buildings						
Dwelling-houses smaller than 80 square metres						
Number of dwelling-houses	0	226	150	506	1 875	+ 270,6
Total square metres	0	9 413	6 667	21 114	79 975	+ 278,8
Total value at current prices (R'000)	0	5 329	2 672	12 560	39 359	+ 213,4
Dwelling-houses equal to or larger than 80 square metres						
Number of dwelling-houses	0	20	14	129	180	+ 39,5
Total square metres	0	3 529	2 313	26 021	30 859	+ 18,6
Total value at current prices (R'000)	0	3 703	3 251	32 832	38 037	+ 15,9
Flats and townhouses						
Number of flats and townhouses	0	140	1	114	281	+ 146,5
Total square metres	0	15 771	200	9 728	32 185	+ 230,8
Total value at current prices (R'000)	0	22 533	300	13 589	46 734	+ 243,9
Other residential buildings ^{1/}						
Total square metres	0	0	0	151	1 428	+ 845,7
Total value at current prices (R'000)	0	0	0	211	1 461	+ 592,4
Total value of residential buildings at current prices (R'000)	0	31 565	6 223	59 192	125 591	+ 112,2
Non-residential buildings						
Office and banking space						
Total square metres	0	0	0	11 103	4 244	- 61,8
Total value at current prices (R'000)	0	0	0	21 883	7 800	- 64,4
Shopping space						
Total square metres	0	0	1 190	2 812	2 530	- 10,0
Total value at current prices (R'000)	0	0	950	3 006	3 450	+ 14,8
Industrial and warehouse space						
Total square metres	0	0	0	4 810	4 188	- 12,9
Total value at current prices (R'000)	0	0	0	3 823	3 190	- 16,6
Other non-residential space ^{2/}						
Total square metres	0	0	2 469	5 753	8 233	+ 43,1
Total value at current prices (R'000)	0	0	3 240	10 451	23 240	+ 122,4
Total value of non-residential buildings at current prices (R'000)	0	0	4 190	39 163	37 680	- 3,8
Additions and alterations						
Dwelling-houses						
Total square metres	0	3 367	2 787	24 386	42 904	+ 75,9
Total value at current prices (R'000)	0	3 794	2 956	26 599	48 168	+ 81,1
Other buildings ^{3/}						
Total square metres	0	2 903	1 719	18 247	10 571	- 42,1
Total value at current prices (R'000)	0	4 727	2 133	89 868	23 589	- 73,8
Total value of additions and alterations at current prices (R'000)	0	8 521	5 089	116 467	71 757	- 38,4
Total value of buildings completed at current prices (R'000)	0	40 086	15 502	214 822	235 028	+ 9,4

1/ Other residential buildings include institutions for the disabled, boarding houses, old people's homes, hostels, hotels, motels, guest houses, holiday chalets, entertainment centres, bed-and-breakfast accommodation and casinos.

2/ Other non-residential space includes churches, sport and recreation clubs, schools, crèches, hospitals and all other non-residential space.

3/ Other buildings include additions and alterations to other residential buildings, non-residential buildings and internal alterations.

Additional information

Explanatory Notes

Introduction	<p>1 Statistics South Africa (Stats SA) conducts a monthly Building Statistics Survey collecting information regarding building plans approved and buildings completed, financed by the private sector, from a sample of local government institutions in South Africa. This statistical release contains information of building plans passed and buildings completed in respect of residential buildings, non-residential buildings and additions and alterations according to province and selected urban areas.</p> <p>2 In order to improve timeliness of the publication, some information for the current month have been estimated due to late submission by respondents. These estimates will be revised in the next statistical release(s) as soon as actual information is available.</p> <p>3 The actual and seasonally adjusted values (at current and at constant 2000 prices) and the percentage change of building plans passed and buildings completed according to type of building are reflected monthly from January 2000 in this statistical release (cf. tables 1 to 8).</p>
Scope of the survey	<p>4 This survey covers local government institutions conducting activities for the private sector regarding -</p> <ul style="list-style-type: none"> • approval of building plans; and • final inspection of completed buildings.
Classification	<p>5 The 1993 edition of the Standard Industrial Classification of all Economic Activities, (SIC) Fifth Edition, Report No. 09-90-02, was used to classify the statistical units. The SIC is based on the 1990 International Standard Industrial Classification of all Economic Activities (ISIC) with suitable adaptations for local conditions.</p> <p>6 The twelfth and last published edition of the Standard Code List of Areas, Report No. 09-09-03 (1994) was used to classify the statistical units according to province. The cities, towns and non-urban areas listed in this report are codified within magisterial district and province. The code list was compiled by Stats SA in collaboration with other interested bodies and the first edition was distributed in June 1977.</p>
Statistical unit	<p>7 The statistical unit for the collection of information is a local government institution. Local government institutions include district municipalities, metropolitan municipalities and local municipalities.</p>
Survey methodology and design	<p>8 The sample for the monthly Building Statistics Survey consists of the largest local government institutions in South Africa, i.e. those that account for approximately 85% of the total rand value of buildings completed by the private sector.</p> <p>9 The survey is collected by mail each month from a sample of 128 local government institutions.</p>
Constant prices	<p>10 The value of building plans passed and buildings completed at constant prices measures building activities in terms of ruling prices in a specific base year, which is 2000 as from May 2002.</p> <p>11 The value of building plans passed at constant prices for each month is obtained by deflating the values at current prices with a price index known as the “lump sum domestic buildings” as published in statistical release P0151 – JBCC Contract Price Adjustment Provisions Work Group Indices. In order to be applicable, these indices (base February 1991=100) are converted to the base year 2000=100.</p>

- 12 The value of buildings completed at constant prices is obtained by deflating the values at current prices with the same price index which is used to calculate building plans passed at constant prices (cf. paragraph 11). The value of buildings completed is reported as at the time the plans were passed. Since the completion of buildings may extend over a few months to a few years, the current value of buildings completed is deflated by price indices as at the time the plans were passed in order to calculate the value of buildings completed at the time the plans were passed. Therefore, the duration of the completion of different types of buildings are taken into account in ascertaining the deflators e.g. the value of dwelling-houses completed at constant prices at January 2000 is obtained by deflating the current value of dwelling-houses completed for January 2000 with the price index of a month six months prior to January 2000. Furthermore, the value of other residential buildings, non-residential buildings and additions and alterations at constant prices is obtained by deflating the current values with price indices of 12 months, 18 months and 12 months prior to the relevant month, respectively.

Seasonal adjustment

- 13 Seasonally adjusted estimates of building plans passed and buildings completed are generated each month, using the X-11 Seasonal Adjustment Program developed by US Bureau of the Census Economic Research and Analyses Division, 1968.
- 14 Seasonal adjustment is a means of removing the estimated effects of normal seasonal variation from the series so that the effects of other influences on the series can be more clearly recognised. Seasonal adjustment does not aim to remove irregular or non-seasonal influences which may be present in any particular month. Influences that are volatile or unsystematic can still make it difficult to interpret the movement of the series even after adjustment for seasonal variations. Therefore, the month-to-month movements of seasonally adjusted estimates may not be reliable indicators of trend behaviour.

Trend cycle

- 15 The trend is a long-term pattern or movement of a time series. The X-11 Seasonal Adjustment Program is used for smoothing seasonally adjusted data.

Related publications

- 16 Users may also wish to refer to the following publications:
- P5041.3 – Building statistics issued annually.
 - P9101.2 – Actual and expected expenditure on construction by the public sector per statistical region issued annually.
 - Bulletin of Statistics issued quarterly.
 - South African Statistics issued annually.

Unpublished statistics

- 17 In some cases Stats SA can also make available statistics which are not published. The statistics can be made available in one or more of the following ways: computer printouts, CD and diskette. Generally a charge is made for providing unpublished statistics.

Rounding-off of figures

- 18 The figures in the tables have, where necessary, been rounded off to the nearest digit shown. There may, therefore, be slight discrepancies between the sums of the constituent items and the totals shown.

Pre-release policy

- 19 Stats SA has adopted the confidential pre-release policy in respect of selected economic indicators and specific government departments. The policy accords with practice among leading statistical agencies. The statistical integrity of the information and strict observance of the release time has been assured by the following procedure:
- 20 In respect of this statistical release, an official representative from the Office of the President, the Department of Trade and Industry (DTI), National Treasury and the South African Reserve Bank (SARB) will receive a copy of the release on a strictly confidential basis two hours in advance of the public issue.
- 21 Stats SA pre-release policy may be inspected at its Website, www.statssa.gov.za

Symbols and abbreviations

..	no meaningful percentage change between two specified periods available since either one or both of the totals are nil
0	nil or figure too small to publish
*	revised
Stats SA	Statistics South Africa
SIC	Standard Industrial Classification of all Economic Activities
ISIC	International Standard Industrial Classification of all Economic Activities
JBCC	Joint Building Contracts Committee
CD	Compact Disc
US	United States
SARB	South African Reserve Bank
DTI	Department of Trade and Industry

Technical notes**Response rate**

The response rate for September 2002 is 100,0%.

Local government institutions covered in the sample survey

Table C - Classification of towns and cities according to new municipalities and previous local government institution by province

Western Cape			
Sample survey as from January 2002		Sample survey up to December 2001	
Name of municipality	Cities and towns	Name of previously published local government institution	Cities and towns
Breede Valley Municipality	Worcester Rawsonville De Doorns Touws River	Worcester	Worcester
		Breede River District Council	Rural areas - Dissolved as from July 2001. Activities were taken over by various local government institutions.
City of Cape Town - Blaauwberg Administration	Milnerton	Blaauwberg Municipality	Milnerton
Cape Town Administration	Cape Town	City of Cape Town	Cape Town
Helderberg Administration	Gordon's Bay, Somerset West and Strand	Helderberg Municipality	Gordon's Bay, Somerset West and Strand
Ikapa Administration	Guguletu, Langa, Khayelitsha and Nyanga	Ikapa	Guguletu, Langa, Khayelitsha and Nyanga
Oostenberg Administration -	Brackenfell Kraaifontein Kuils River Melton Rose - Blue Downs	Oostenberg Municipality -	Brackenfell Kraaifontein Kuils River Melton Rose - Blue Downs
South Peninsula Administration -	Fish Hoek Simon's Town Plumstead	Fish Hoek Simon's Town South Peninsula Municipality	Fish Hoek Simon's Town Plumstead
Tygerberg Administration - Bellville Administration Durbanville Administration Goodwood Administration Lingeletu West Administration Parow Administration South Administration	City of Tygerberg - Bellville Durbanville Goodwood Lingeletu West Parow Belhar, Delft, Driftsands and Efuleni	City of Tygerberg - Bellville Administration Durbanville Administration Goodwood Administration Lingeletu West Administration Parow Administration South Administration	Bellville Durbanville Goodwood Lingeletu West Parow Belhar, Delft, Driftsands and Efuleni
Drakenstein Municipality	Paarl Wellington Saron ^{1/}	Paarl Wellington	Paarl Wellington
George Municipality	George, Herolds Bay, Pacaltsdorp and Thembaletu Wilderness ^{1/}	George	George, Herolds Bay, Pacaltsdorp and Thembaletu

^{1/} Included in sample survey as from January 2001

Table C - Classification of towns and cities according to new municipalities and previous local government institution by province (continued)

Western Cape (concluded)			
Sample survey as from January 2002		Sample survey up to December 2001	
Name of municipality	Cities and towns	Name of previously published local government institution	Cities and towns
Knysna Municipality	Knysna and Khayaletu Sedgefield	Knysna Sedgefield	Knysna and Khayaletu Sedgefield
Mossel Bay Municipality	Mossel Bay, Boggom's Bay, Kleinbrak, Rheeboek and Tergniet Friemersheim, Herbertsdale and Great Brak River ^{1/}	Mossel Bay	Mossel Bay, Boggom's Bay, Kleinbrak, Rheeboek and Tergniet
Oudtshoorn Municipality	Oudtshoorn De Rust/Blomnek Dysselsdorp	Oudtshoorn	Oudtshoorn
Overberg District Council	Rural areas - Dissolved as from July 2001. Activities were taken over by various local government institutions.	Overberg District Council	Rural areas
Overstrand Municipality	Hermanus, Fisher Haven, Hawston, Onrus River, Sandbaai, Vermont and Zwelihle Hangklip - Kleinmond, Betty's Bay and Rooi-Els Gansbaai and Stanford ^{1/}	Hermanus Hangklip - Kleinmond	Hermanus, Fisher Haven, Hawston, Onrus River, Sandbaai, Vermont and Zwelihle Hangklip - Kleinmond, Betty's Bay and Rooi-Els
Plettenberg Bay Municipality	Plettenberg Bay Knoetzie ^{1/}	Plettenberg Bay	Plettenberg Bay
Saldanha Bay Municipality	Vredenburg and Saldanha Hopefield and Langebaan ^{1/}	Western Coast Peninsula	Vredenburg and Saldanha
Stellenbosch Municipality	Stellenbosch Franschhoek and Pniel	Stellenbosch	Stellenbosch
Swartland Municipality	Malmesbury Darling, Koringberg, Moorreesburg and Yzerfontein ^{1/}	Malmesbury	Malmesbury
		West Coast District Council	Rural areas - Dissolved as from July 2001. Activities were taken over by various local government institutions.
		Winelands District Council	Rural areas - Dissolved as from July 2001. Activities were taken over by various local government institutions.

^{1/} Included in sample survey as from January 2001

Table C - Classification of towns and cities according to new municipalities and previous local government institution by province (continued)

Eastern Cape			
Sample survey as from January 2002		Sample survey up to December 2001	
Name of municipality	Cities and towns	Name of previously published local government institution	Cities and towns
Buffalo City Municipality - East London Area	East London, Beacon Bay, Gompo Town, Gonubie and Mdantsane	East London	East London, Beacon Bay, Gompo Town, Gonubie and Mdantsane
King William's Town Area	King William's Town, Bisho and Zwelitsha	King William's Town	King William's Town, Bisho and Zwelitsha
King Sabata Dalindyebo Municipality - Umtata Area	Umtata	Umtata	Umtata
Kouga Municipality - Jeffreys Bay Area	Jeffreys Bay	Jeffreys Bay	Jeffreys Bay
Makana Municipality - Grahamstown Area	Grahamstown and Rhini Township	Grahamstown	Grahamstown and Rhini Township
Maletswai Municipality - Aliwal North Area	Aliwal North and Dukathole	Aliwal - Maletswai	Aliwal North and Dukathole
Ndlambe Municipality	Port Alfred Alexandria Bathurst Boesmansriviermond Kenton-on-Sea	Port Alfred	Port Alfred
Nelson Mandela Metropolitan Municipality - Despatch Area	Despatch	Despatch	Despatch
Port Elizabeth Area	Port Elizabeth, Ibhayi and Motherwell	Port Elizabeth	Port Elizabeth, Ibhayi and Motherwell
Uitenhage Area	Uitenhage and KwaNobuhle	Uitenhage	Uitenhage and KwaNobuhle
		Western District Council	Rural areas - Dissolved as from July 2001. Activities were taken over by various local government institutions.

Table C - Classification of towns and cities according to new municipalities and previous local government institution by province (continued)

Northern Cape			
Sample survey as from January 2002		Sample survey up to December 2001	
Name of municipality	Cities and towns	Name of previously published local government institution	Cities and towns
//Khara Hais Municipality	Upington, Mothibistad and Paballelo	Upington	Upington, Mothibistad and Paballelo
		Benede-Oranje District Council	Rural areas - Dissolved as from July 2001. Activities were taken over by various local government institutions.
Ga-Segonyana Municipality	Kuruman	Kuruman	Kuruman
Kai! Garib Municipality - Keimoes Area	Keimoes Eksteenskuil ^{1/} Kenhardt ^{1/}	Keimoes	Keimoes
		Namaqualand District Council	Rural areas - Dissolved as from July 2001. Activities were taken over by various local government institutions.
Solplaatjie Municipality	Kimberley and Galeshewe Ritchie ^{1/}	Kimberley	Kimberley and Galeshewe

^{1/} Included in sample survey as from January 2001

Table C - Classification of towns and cities according to new municipalities and previous local government institution by province (continued)

Free State			
Sample survey as from January 2002		Sample survey up to December 2001	
Name of municipality	Cities and towns	Name of previously published local government institution	Cities and towns
Dihlabeng Municipality	Bethlehem and Bohlokong Clarens Mashae-Fourie Paul Roux	Bethlehem	Bethlehem and Bohlokong
Maluti a Phofung Municipality Harrismith Area Phuthaditjhaba Area	Harrismith and Tsiamé Phuthaditjhaba	Harrismith Phuthaditjhaba	Harrismith and Tsiamé Phuthaditjhaba
Mangaung Municipality - Bloemfontein Area Botshabelo Area	Bloemfontein, Bainsvlei, Bloemspuit and Mangaung Botshabelo	Bloemfontein Botshabelo	Bloemfontein, Bainsvlei, Bloemspuit and Mangaung Botshabelo
Mantsopa Municipality	Ladybrand and Manyatseng Excelsior Hobhouse Thaba Patchoa Tweespruit/Kopano	Ladybrand	Ladybrand and Manyatseng
Matjhabeng Municipality - Odendaalsrus Area Virginia Area Welkom Area	Odendaalsrus, Allanridge and Kutlwanong Virginia and Meloding Welkom and Thabong	Odendaalsrus Virginia Welkom	Odendaalsrus, Allanridge and Kutlwanong Virginia and Meloding Welkom and Thabong
Metsimaholo Municipality - Deneysville Area Sasolburg Area	Deneysville and Refengkgotso Sasolburg and Zamdela	Deneysville/Refengkgotso Sasolburg/Zamdela	Deneysville and Refengkgotso Sasolburg and Zamdela
Moqhaka Municipality - Kroonstad Area	Kroonstad and Maokeng	Kroonstad	Kroonstad and Maokeng
Nqwathe Municipality	Parys Edenville Heibron Koppies Vredefort	Parys	Parys

Table C - Classification of towns and cities according to new municipalities and previous local government institution by province (continued)

KwaZulu-Natal			
Sample survey as from January 2002		Sample survey up to December 2001	
Name of municipality	Cities and towns	Name of previously published local government institution	Cities and towns
Emnambithi Municipality	Ladysmith Colenso	Ladysmith	Ladysmith
eThekweni Municipality - Inner West Operational Entity	Clermont, KwaDabeka, KwaNdengezi, New Germany, Pinetown, Queensburgh, Reservoir Hills, Shallcross and Westville	Inner West City Council	Clermont, KwaDabeka, KwaNdengezi, New Germany, Pinetown, Queensburgh, Reservoir Hills, Shallcross and Westville
Outer West Operational Entity	Assagay, Botha's Hill, Cato Ridge, Drummond, Everton, Gillitts, Hillcrest, Inchanga, Kloof, Mpumalanga and Waterfall	Outer West Local Council	Assagay, Botha's Hill, Cato Ridge, Drummond, Everton, Gillitts, Hillcrest, Inchanga, Kloof, Mpumalanga and Waterfall
KwaMashu	KwaMashu	KwaMashu	KwaMashu
Durban- North, South and Central	Durban	Durban	Durban
North Operational Entity - Tonga	Tonga, Canelands and Hambanati	North Local Council - Tonga	Tonga, Canelands and Hambanati
Umlazi	Umlazi	Umlazi	Umlazi
Verulam	Verulam	Verulam	Verulam
South Operational Entity	Amanzimtoti, Isipingo, Kingsburgh, KwaMakuta and Umbogintwini	South Local Council	Amanzimtoti, Isipingo, Kingsburgh, KwaMakuta and Umbogintwini
Umlazi	Umlazi	Umlazi	Umlazi
Greater Kokstad Municipality	Kokstad	Kokstad	Kokstad
Hibiscus Coast Municipality	Margate and Uvongo Marina Beach, San Lameer, Southbroom and Trafalgar Port Shepstone Hibberdene Munster, Port Edward and Palm Beach	Margate Mpenjati/Southbroom Port Shepstone Umtamvuna/Port Edward	Margate and Uvongo Marina Beach, San Lameer, Southbroom and Trafalgar Port Shepstone Munster, Port Edward and Palm Beach

Table C - Classification of towns and cities according to new municipalities and previous local government institution by province (continued)

KwaZulu-Natal (concluded)			
Sample survey as from January 2002		Sample survey up to December 2001	
Name of municipality	Cities and towns	Name of previously published local government institution	Cities and towns
KwaDukuza Municipality - Dolphin Coast Administrative Entity	Ballito, Etete, Shakaskraal, Tinley Manor Beach and Umhlali Beach	Dolphin Coast Borough	Ballito, Etete, Shakaskraal, Tinley Manor Beach and Umhlali Beach
Stanger Administrative Entity	Blythedale Beach, Shakaville and Stanger Nkwazi/Stanger	KwaDukuza/Stanger	Blythedale Beach, Shakaville and Stanger
Msunduzi Municipality	Edendale Ashburton ^{1/} , Pietermaritzburg and Msundini	Edendale Pietermaritzburg/Msundini	Edendale Pietermaritzburg and Msundini
Newcastle Municipality	Blaauwboschlaagte, Madadeni, Osizweni and Newcastle	Newcastle	Blaauwboschlaagte, Madadeni, Osizweni and Newcastle
Umdoni Municipality	Pennington Scottburgh/Umzinto	Pennington	Pennington
Umdlathuze Municipality	Empangeni and Ngwelezana Richards Bay	Empangeni-Ngwelezana Richards Bay	Empangeni and Ngwelezana Richards Bay
Umnjeni Municipality	Hilton Howick	Hilton Howick	Hilton Howick
Uthungulu District Council ^{1/}	Kwambonati, Nkandla and Ntambanana Municipalities	Development and Services Board - North Coast	Kwambonati, Nkandla, Tugela Mouth, Umlalazi, Mahlabathini, Ukuza, Umbambo, Egwavuma and Hluhlumi

^{1/} Included in sample survey as from January 2001

Table C - Classification of towns and cities according to new municipalities and previous local government institution by province (continued)

North West			
Sample survey as from January 2002		Sample survey up to December 2001	
Name of municipality	Cities and towns	Name of previously published local government institution	Cities and towns
		Bophirima District Council	Rural areas - Dissolved as from July 2001. Activities were taken over by various local government institutions.
Ditsobotla Local Municipality	Lichtenburg and Itsoseng Biesiesvlei ^{1/} Coligny ^{1/}	Lichtenburg	Lichtenburg and Itsoseng
Klerksdorp Local Municipality	Klerksdorp Orkney and Kanana Hartbeesfontein ^{1/} Stillfontein ^{1/}	Klerksdorp Orkney	Klerksdorp Orkney and Kanana
GaRankuwa	As from January 2002 included in City of Tshwane - Northern Metropolitan Substructure (Gauteng)	GaRankuwa	GaRankuwa
Madibeng Local Municipality	Brits and Lethabile Hartbeespoort	Brits	Brits and Lethabile
Mafikeng Local Municipality	Mmabatho and Mafikeng	Mmabatho	Mmabatho and Mafikeng
Naledi Municipality	Vryburg	Vryburg	Vryburg
Potchefstroom Municipality	Potchefstroom	Potchefstroom	Potchefstroom
Rustenburg Local Municipality - Rustenburg Area	Rustenburg	Rustenburg	Rustenburg
Zeerust Local Municipality	Zeerust	Zeerust	Zeerust

^{1/} Included in sample survey as from January 2001

Table C - Classification of towns and cities according to new municipalities and previous local government institution by province (continued)

Gauteng			
Sample survey as from January 2002		Sample survey up to December 2001	
Name of municipality	Cities and towns	Name of previously published local government institution	Cities and towns
City of Johannesburg Metropolitan Municipality	Alexandra and Sandton Midrand, Rabie Ridge and Ivory Park Randburg Ennerdale, Lenasia and Johannesburg Diepmeadow, Dobsonville and Roodepoort Soweto	Greater Johannesburg - Eastern Metropolitan Local Council Midrand Metropolitan Local Council Northern Metropolitan Local Council Southern Metropolitan Local Council Western Metropolitan Local Council Soweto	Alexandra and Sandton Midrand, Rabie Ridge and Ivory Park Randburg Ennerdale, Lenasia and Johannesburg Diepmeadow, Dobsonville and Roodepoort Soweto
City of Tshwane Metropolitan Municipality - Centurion Town Council City Council of Pretoria Northern Pretoria Metropolitan Substructure	Centurion Pretoria, Atteridgeville and Mamelodi Akasia, Elandsdoorn, Klipfontein, Kruisfontein and Soshanguve Hammanskraal GaRankuwa ^{2/} Temba Winterveld ^{2/}	Centurion Pretoria Akasia	Centurion Pretoria, Atteridgeville and Mamelodi Akasia, Elandsdoorn, Klipfontein, Kruisfontein and Soshanguve
		Eastern Services Council - Pretoria Area	Rural areas - Dissolved as from July 2001. Activities were taken over by various local government institutions.
Ekurheleni Metropolitan Municipality - Service Delivery Centre of: Edenvale - Modderfontein Alberton Benoni Boksburg Brakpan Duduza Germiston Kempton Park Nigel Springs	Edenvale - Modderfontein Alberton and Tokoza Benoni, Daveyton and Wattville Boksburg and Vosloorus Brakpan and Tsakane Duduza Germiston, Bedfordview and Katlehong Kempton Park and Tembisa Nigel Springs and KwaThema	Edenvale - Modderfontein Alberton Benoni Boksburg Brakpan Duduza Germiston Kempton Park Nigel Springs	Edenvale - Modderfontein Alberton and Tokoza Benoni, Daveyton and Wattville Boksburg and Vosloorus Brakpan and Tsakane Duduza Germiston, Bedfordview and Katlehong Kempton Park and Tembisa Nigel Springs and KwaThema

^{2/} Was previously included under North West

Table C - Classification of towns and cities according to new municipalities and previous local government institution by province (continued)

Gauteng (concluded)			
Sample survey as from January 2002		Sample survey up to December 2001	
Name of municipality	Cities and towns	Name of previously published local government institution	Cities and towns
Emfuleni Local Municipality	Vanderbijlpark Vereeniging and Evaton Sebokeng (Boipatong, Bophelong and Sharpville)	Vanderbijlpark Vereeniging Sebokeng	Vanderbijlpark Vereeniging and Evaton Sebokeng (Boipatong, Bophelong and Sharpville)
Kungwini Local Municipality – Bronkhorstspuit Area	Bronkhorstspuit	Bronkhorstspuit	Bronkhorstspuit
Lesedi Local Municipality	Heidelberg and Ratanda	Heidelberg	Heidelberg and Ratanda
Merafong City Local Municipality	Carletonville, Wedela, Khutsong and Welverdiend	Carletonville	Carletonville, Wedela, Khutsong and Welverdiend
Midvaal Local Municipality	Meyerton	Meyerton	Meyerton
Mogale City Municipality	Krugersdorp, Kagiso and Munsieville	Krugersdorp	Krugersdorp, Kagiso and Munsieville
Randfontein Local Municipality	Randfontein and Mohlakeng	Randfontein	Randfontein and Mohlakeng
Westonaria Local Municipality	Westonaria and Bekkersdal	Westonaria	Westonaria and Bekkersdal

Table C - Classification of towns and cities according to new municipalities and previous local government institution by province (continued)

Mpumalanga			
Sample survey as from January 2002		Sample survey up to December 2001	
Name of municipality	Cities and towns	Name of previously published local government institution	Cities and towns
Delmas Municipality	Delmas and Botleng	Delmas	Delmas and Botleng
Emalahleni Local Municipal Council- KwaGuqa Area Witbank Area	KwaGuqa Witbank	KwaGuqa Witbank	KwaGuqa Witbank
Govan Mbeki Municipality - Secunda Area	Evander, Embalenhle and Secunda	Highveldridge Transitional Council	Evander, Embalenhle and Secunda
Mbombela Local Municipality	Nelspruit and Kanyamazane White River Hazyview ^{1/}	Nelspruit White River	Nelspruit White River
Middelburg Municipality	Middelburg and Mhluzi Hendrina ^{1/}	Middelburg	Middelburg and Mhluzi
Msukaligwa Municipality	Ermelo, Cassim Park and Wesselton	Ermelo	Ermelo, Cassim Park and Wesselton
Nkomazi Municipality - Komatipoort Area Malelane Area	Komatipoort and Kamaqhekeza Malelane, Hectorspruit and Kamhlushwa	Komatipoort Malelane	Komatipoort and Kamaqhekeza Malelane, Hectorspruit and Kamhlushwa

^{1/} Included in sample survey as from January 2001

Table C - Classification of towns and cities according to new municipalities and previous local government institution by province (concluded)

Limpopo			
Sample survey as from January 2002		Sample survey up to December 2001	
Name of municipality	Cities and towns	Name of previously published local government institution	Cities and towns
		Bosveld District Council	Rural areas - Dissolved as from July 2001. Activities were taken over by various local government institutions.
Greater Tzaneen Municipality	Tzaneen and Nkowakowa	Letaba	Tzaneen and Nkowakowa
Musina Municipality	Musina (previously Messina)	Messina	Messina
Modimolle Municipality	Modimolle (previously Nylstroom)	Nylstroom	Nylstroom
Mogolakwena Municipality	Mokopane (previously Potgietersrus)	Potgietersrus	Potgietersrus
Mookgopong Municipality	Naboomspruit and Mookgopong	Naboomspruit	Naboomspruit and Mookgopong
Polokwane Municipality	Polokwane (previously Pietersburg) and Seshego	Pietersburg - Polokwane	Pietersburg and Seshego
Thabazimbi Municipality	Thabazimbi	Thabazimbi	Thabazimbi

Table D - Classification of selected urban areas according to new municipalities and previous local government institution

Sample survey as from January 2002		Sample survey up to December 2001	
Name of selected urban area and municipality	Cities and towns	Name of selected urban area and previously published local government institution	Cities and towns
Cape Town City of Cape Town - Blaauwberg Administration	Milnerton	Cape Town Blaauwberg Municipality	Milnerton
Cape Town Administration	Cape Town	City of Cape Town	Cape Town
Ikapa Administration	Guguletu, Langa, Khayelitsha and Nyanga	Ikapa	Guguletu, Langa, Khayelitsha and Nyanga
Oostenberg Administration -	Kraaifontein Melton Rose - Blue Downs	Oostenberg Municipality -	Kraaifontein Melton Rose - Blue Downs
South Peninsula Administration -	Fish Hoek Simon's Town Plumstead	Fish Hoek Simon's Town South Peninsula Municipality	Fish Hoek Simon's Town Plumstead
Tygerberg Administration - Bellville Administration Durbanville Administration Goodwood Administration Lingeletu West Administration	City of Tygerberg - Bellville Durbanville Goodwood Lingeletu West	City of Tygerberg - Bellville Administration Durbanville Administration Goodwood Administration Lingeletu West Administration	Bellville Durbanville Goodwood Lingeletu West
Parow Administration South Administration	Parow Belhar, Delft, Driftsands and Efuleni	Parow Administration South Administration	Parow Belhar, Delft, Driftsands and Efuleni
Port Elizabeth Nelson Mandela Metropolitan Municipality - Despatch Area	Despatch	Port Elizabeth Despatch	Despatch
Port Elizabeth Area	Port Elizabeth, Ibhayi and Motherwell	Port Elizabeth	Port Elizabeth, Ibhayi and Motherwell
Uitenhage Area	Uitenhage and KwaNobuhle	Uitenhage	Uitenhage and KwaNobuhle

Table D - Classification of selected urban areas according to new municipalities and previous local government institution (continued)

Sample survey as from January 2002		Sample survey up to December 2001	
Name of selected urban area and municipality	Cities and towns	Name of selected urban area and previously published local government institution	Cities and towns
Durban eThekweni Municipality - Inner West Operational Entity	Clermont, KwaDabeka, KwaNdengezi, New Germany, Pinetown, Queensburgh, Reservoir Hills, Shallcross and Westville	Durban Inner West City Council	Clermont, KwaDabeka, KwaNdengezi, New Germany, Pinetown, Queensburgh, Reservoir Hills, Shallcross and Westville
Outer West Operational Entity	Assagay, Botha's Hill, Cato Ridge, Drummond, Everton, Gillitts, Hillcrest, Inchanga, Kloof, Mpumalanga and Waterfall	Outer West Local Council	Assagay, Botha's Hill, Cato Ridge, Drummond, Everton, Gillitts, Hillcrest, Inchanga, Kloof, Mpumalanga and Waterfall
Durban- North, South and Central	Durban	Durban	Durban
North Operational Entity - Verulam	Verulam	North Local Council - Verulam	Verulam
South Operational Entity	Amanzimtoti, Isipingo, Kingsburgh, KwaMakuta and Umbogintwini	South Local Council	Amanzimtoti, Isipingo, Kingsburgh, KwaMakuta and Umbogintwini
Pretoria City of Tshwane Metropolitan Municipality - Centurion Town Council City Council of Pretoria	Centurion Pretoria, Atteridgeville and Mamelodi	Pretoria Centurion Pretoria	Centurion Pretoria, Atteridgeville and Mamelodi
Northern Pretoria Metropolitan Substructure	Akasia, Elandsdoorn, Klipfontein, Kruisfontein and Soshanguve Hammanskraal GaRankuwa Temba Winterveld	Akasia	Akasia, Elandsdoorn, Klipfontein, Kruisfontein and Soshanguve

Table D - Classification of selected urban areas according to new municipalities and previous local government institution (concluded)

Sample survey as from January 2002		Sample survey up to December 2001	
Name of selected urban area and municipality	Cities and towns	Name of selected urban area and previously published local government institution	Cities and towns
Witwatersrand City of Johannesburg Metropolitan Municipality	Alexandra and Sandton Midrand, Rabie Ridge and Ivory Park Randburg Ennerdale, Lenasia and Johannesburg Diepmeadow, Dobsonville and Roodepoort Soweto	Witwatersrand Greater Johannesburg - Eastern Metropolitan Local Council Midrand Metropolitan Local Council Northern Metropolitan Local Council Southern Metropolitan Local Council Western Metropolitan Local Council Soweto	Alexandra and Sandton Midrand, Rabie Ridge and Ivory Park Randburg Ennerdale, Lenasia and Johannesburg Diepmeadow, Dobsonville and Roodepoort Soweto
Ekurheleni Metropolitan Municipality - Service Delivery Centre of: Edenvale - Modderfontein Alberton Benoni Boksburg Brakpan Duduza Germiston Kempton Park Nigel Springs	Edenvale - Modderfontein Alberton and Tokoza Benoni, Daveyton and Wattville Boksburg and Vosloorus Brakpan and Tsakane Duduza Germiston, Bedfordview and Katlehong Kempton Park and Tembisa Nigel Springs and KwaThema	Edenvale - Modderfontein Alberton Benoni Boksburg Brakpan Duduza Germiston Kempton Park Nigel Springs	Edenvale - Modderfontein Alberton and Tokoza Benoni, Daveyton and Wattville Boksburg and Vosloorus Brakpan and Tsakane Duduza Germiston, Bedfordview and Katlehong Kempton Park and Tembisa Nigel Springs and KwaThema
Mogale City Municipality	Krugersdorp, Kagiso and Munsieville	Krugersdorp	Krugersdorp, Kagiso and Munsieville
Randfontein Local Municipality	Randfontein and Mohlakeng	Randfontein	Randfontein and Mohlakeng
Westonaria Local Municipality	Westonaria and Bekkersdal	Westonaria	Westonaria and Bekkersdal
Merafong City Local Municipality	Carletonville, Wedela, Khutsong and Welverdiend	Carletonville	Carletonville, Wedela, Khutsong and Welverdiend
Bloemfontein Mangaung Municipality - Bloemfontein Area Botshabelo Area	 Bloemfontein, Bainsvlei, Bloemspruit and Mangaung Botshabelo	Bloemfontein Bloemfontein Botshabelo	 Bloemfontein, Bainsvlei, Bloemspruit and Mangaung Botshabelo

Glossary

Additions and alterations	Additions and alterations include extensions to existing buildings as well as internal and external alterations of existing buildings.
Blocks of flats	Blocks of flats are regarded as high-density housing consisting of a number of self-contained dwelling-units with at least one living-room together with a kitchen and bathroom conjoined to similar units in one building.
Dwelling-house	A dwelling-house refers to a free-standing, complete structure on a separate stand or a self-contained dwelling-unit, granny flat, on the same premises as an existing residence. Out-buildings and garages are included.
Local government institution	A local government institution is a generic term referring to any number of institutions involved in the local sphere of government. Local government institutions in the past consisted of municipalities, city councils, metropolitan councils, district councils, transitional local councils and development and services boards.
Non-residential buildings	Non-residential buildings comprise factories, commercial, financial and other office buildings, as well as other buildings not used for residential purposes, such as churches, halls, clubs, schools and hospitals.
Other residential buildings	Other residential buildings include institutions for the disabled, boarding houses, old people's homes, hostels, hotels, motels, guest houses, holiday chalets, bed-and-breakfast accommodation, entertainment centres and casinos.
Percentage change	<p>When using monthly actual values, the percentage change is the change in actual values of building activities (building plans passed or buildings completed) of the relevant month compared with the actual values of building activities (building plans passed or buildings completed) of the same month in the previous year expressed as a percentage.</p> <p>When using annual actual values, the percentage change is the change in the actual values of building activities (building plans passed or buildings completed) of the relevant year compared with the actual values of building activities (building plans passed or buildings completed) of the previous year expressed as a percentage.</p> <p>When using seasonally adjusted values, the percentage change is the change in the seasonally adjusted values of building activities (building plans passed or buildings completed) of the relevant month compared with the seasonally adjusted values of building activities (building plans passed or buildings completed) of the previous month expressed as a percentage.</p>
Reference period	Reference period is one calendar month.
Residential buildings	Residential buildings comprise dwelling-houses, flats, townhouses and other residential buildings.
Townhouses	Townhouses are multiple, medium-density dwelling-units and include cluster housing, group housing, simplexes, duplexes, triplexes and other similar dwelling-units which are usually grouped together, with one level of each unit on ground level. This excludes blocks of flats.

For more information

Stats SA publishes approximately 300 different statistical releases each year. It is not economically viable to produce them in more than one of South Africa's eleven official languages. Since the releases are used extensively, not only locally but also by international economic and social-scientific communities, Stats SA releases are published in English only.

Stats SA has copyright on this publication. Users may apply the information as they wish, provided that they acknowledge Stats SA as the source of the basic data wherever they process, apply, utilise, publish or distribute the data and also that they specify that the relevant application and analysis (where applicable) result from their own processing of the data.

Stats SA products

A complete set of Stats SA publications is available at the Stats SA Library and the following libraries:

National Library of South Africa, Pretoria Division
 National Library of South Africa, Cape Town Division
 Natal Society Library, Pietermaritzburg
 Library of Parliament, Cape Town
 Bloemfontein Public Library
 Johannesburg Public Library
 Eastern Cape Library Services, King William's Town
 Central Regional Library, Polokwane
 Central Reference Library, Nelspruit
 Central Reference Collection, Kimberley
 Central Reference Library, Mmabatho

Stats SA also provides a subscription service.

Electronic services

A large range of data are available via on-line services, diskette, CD and computer printouts. For more details about our electronic data services, contact (012) 310 8600/8390/8351/4892/8496/8095.

You can visit us on the Internet at: <http://www.statssa.gov.za>

Enquiries

Telephone number: (012) 310 8600/8390/8351/4892/8496/8095 (user enquiries)
 (012) 310 8228/310 8007 (technical enquiries)
 (012) 310 8161 (publications)
 (012) 310 8490 (library)

Fax number: (012) 310 8182

e-mail: Corrieb@statssa.pwv.gov.za
 Gretaz@statssa.pwv.gov.za

Postal address: Private Bag X44, Pretoria, 0001