

# Building statistics

August 2001

Co-operation between Statistics South Africa (Stats SA), the citizens of the country, the private sector and government institutions is essential for a successful statistical system. Without continued co-operation and goodwill, the timely release of relevant and reliable official statistics will not be possible.

**Embargo: 13:00**  
**Date: 17 October 2001**

Stats SA publishes approximately three hundred different releases each year. It is not economically viable to produce them in more than one of South Africa's eleven official languages. Since the releases are used extensively, not only locally, but also by international economic and social-scientific communities, Stats SA releases are published in English only.

## Key figures regarding building plans passed for the month ended August 2001

### Actual estimates at constant 1995 prices

	August 2001	January 2001 to August 2001	Percentage change between August 2000 and August 2001	Percentage change between June 2000 to August 2000 and June 2001 to August 2001	Percentage change between January 2000 to August 2000 and January 2001 to August 2001
	R million	R million			
Residential buildings					
Dwelling-houses	479,2	3 789,6	- 3,7	- 1,8	+ 5,1
Flats and townhouses	90,4	887,2	- 41,6	- 19,7	- 4,6
Other residential buildings	9,5	130,7	- 68,3	- 64,0	- 4,5
<b>Total</b>	<b>579,1</b>	<b>4 807,5</b>	<b>- 15,2</b>	<b>- 7,7</b>	<b>+ 2,9</b>
Non-residential buildings	185,6	1 789,0	- 28,5	- 22,7	- 21,2
Additions and alterations	330,9	2 454,7	- 8,5	- 19,4	- 12,1
<b>Total</b>	<b>1 095,6</b>	<b>9 051,2</b>	<b>- 16,0</b>	<b>- 14,3</b>	<b>- 7,0</b>

### Seasonally adjusted estimates at constant 1995 prices

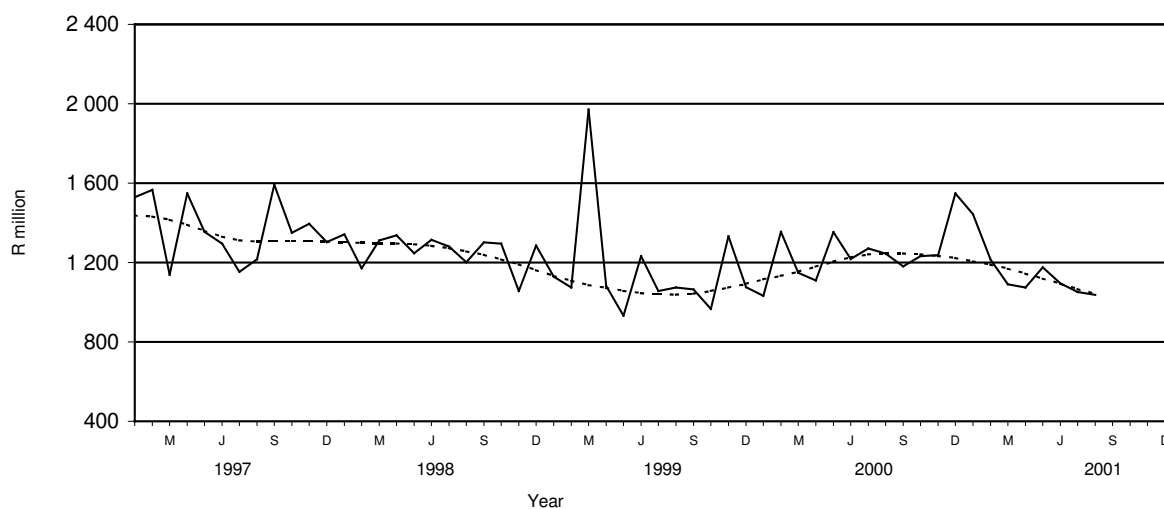
	August 2001	Percentage change between July 2001 and August 2001	Percentage change between March 2001 to May 2001 and June 2001 to August 2001
	R million		
Residential buildings	542,7	- 4,6	- 7,4
Non-residential buildings	185,1	- 12,3	+ 5,5
Additions and alterations	310,5	+ 14,0	- 5,3
<b>Total</b>	<b>1 038,3</b>	<b>- 1,3</b>	<b>- 4,6</b>

## Key findings regarding building plans passed for the three months ended August 2001

### Seasonally adjusted real value of building plans passed decreases

*The seasonally adjusted real value of building plans passed (at constant 1995 prices) for the three months ended August 2001 decreased by 4,6% compared with the previous three months.*

The decrease of 4,6% in the seasonally adjusted real value of building plans passed was due to decreases in the seasonally adjusted real value of building plans passed for residential buildings (-7,4%) and additions and alterations (-5,3%) during the three months ended August 2001 compared with the previous three months. However, these decreases were partially counteracted by an increase in the seasonally adjusted real value of building plans passed for non-residential buildings (+5,5%) during the above-mentioned period.

**Figure 1 - Total real value of building plans passed**

Source: Stats SA

———— Seasonally adjusted

----- Trend

**Key findings regarding building plans passed for the first eight months of 2001*****Total real value of building plans passed decreases***

*The total real value of building plans passed (at constant 1995 prices) during the first eight months of 2001 decreased by 7,0% (-R683,0 million) to R9 051,2 million compared with the first eight months of 2000. Large real decreases were reported for non-residential buildings (-21,2% or R480,7 million, mainly due to decreases reported by Gauteng for office and banking space (-R220,8 million), industrial and warehouse space (-R104,1 million) and shopping space (-R52,0 million)); and additions and alterations (-12,1% or R337,0 million, mainly due to decreases reported by KwaZulu-Natal (-R104,7 million), Western Cape (-R81,2 million), Free State (-R66,1 million) and Gauteng (-R53,6 million)) during the above-mentioned period. However, the real value of building plans passed for dwelling-houses increased by 5,1% (+R183,2 million), mainly due to increases reported by Western Cape (+R217,8 million) during this period.*

**Eight of the nine provinces reported decreases in the total real value of building plans passed**

The largest provincial contributor to the decrease of 7,0% (-R683,0 million) in the total real value of building plans passed during the eight months of 2001 compared with the first eight months of 2000 was Gauteng (-4,9 percentage points or R476,0 million), followed by Free State (-0,9 of a percentage point or R86,6 million) and KwaZulu-Natal (-0,5 of a percentage point or R48,3 million) (cf. table A). The largest decrease in the real value of building plans passed in Gauteng was reported for non-residential buildings (-R351,5 million), followed by residential buildings (-R70,8 million) and additions and alterations (-R53,6 million).

**Table A - Contribution of provinces to the total real value of building plans passed**

Province	Percentage contribution to the total real value of plans passed during January 2000 to August 2000	Percentage change between January 2000 to August 2000 and January 2001 to August 2001	Contribution (percentage points) <sup>1/</sup> to the percentage change in the real value of plans passed between January 2000 to August 2000 and January 2001 to August 2001	Difference in total real value of plans passed between January 2000 to August 2000 and January 2001 to August 2001  R million
Gauteng	43,2	- 11,3	- 4,9	- 476,0
Free State	3,2	- 27,5	- 0,9	- 86,6
KwaZulu-Natal	11,8	- 4,2	- 0,5	- 48,3
Eastern Cape	5,9	- 4,3	- 0,3	- 24,6
Northern Cape	0,9	- 30,1	- 0,3	- 27,2
Northern Province	1,7	- 19,2	- 0,3	- 32,5
Western Cape	27,8	- 0,2	- 0,0	- 5,9
North West	2,4	- 0,2	- 0,0	- 0,5
Mpumalanga	3,1	+ 6,2	+ 0,2	+ 18,6
<b>Total</b>	<b>100,0</b>	<b>- 7,0</b>	<b>- 7,0</b>	<b>- 683,0</b>

1/ The contribution (percentage points) is calculated by multiplying the percentage change of each province between January 2000 to August 2000 and January 2001 to August 2001 (cf. column 3) with the percentage contribution of the corresponding province to the total real value of plans passed during January 2000 to August 2000 (cf. column 2) divided by 100.

### **Total real value of residential building plans passed increases**

The total real value of residential building plans passed during the first eight months of 2001 increased by 2,9% (+R134,6 million) to R4 807,5 million compared with the first eight months of 2000. Increases were reported by five of the nine provinces. Large increases in the total real value of residential building plans passed were reported by Western Cape (+R171,9 million, due to the increase in the real value of dwelling-house plans passed (+R217,8 million)); and Mpumalanga (+R71,1 million, mainly due to increases in the real value of plans passed for flats and townhouses (+R45,9 million) and dwelling-houses (+R24,8 million)).

### **Total real value of dwelling-house plans passed increases**

The total real value of dwelling-house plans passed during the first eight months of 2001 increased by 5,1% (+R183,2 million) to R3 789,5 million compared with the first eight months of 2000. The largest increase in the real value of dwelling-house plans passed was reported by Western Cape (+R217,8 million), followed by Gauteng (+R26,5 million) and Mpumalanga (+R24,8 million). Large real increases were reported by the selected urban areas of Cape Town (+R133,5 million), Helderberg Municipality (+R43,4 million), Pretoria (+R32,5 million) and Vaal Triangle (+R24,9 million).

The increase of 5,1% in the total real value of dwelling-house plans passed during the above-mentioned period can mainly be attributed to the increase in the real value of plans passed for dwelling-houses equal to or larger than 80 square metres (+6,5% or R187,2 million).

### **Total real value of plans passed for flats and townhouses decreases**

The total real value of plans passed for flats and townhouses during the first eight months of 2001 decreased by 4,6 (-R42,4 million) to R887,2 million compared with the first eight months of 2000. The largest decreases in the real value of plans passed for flats and townhouses were reported by Gauteng (-R55,6 million) and Western Cape (-R43,5 million). Large real decreases were reported by the selected urban areas of Cape Town (-R57,3 million), Pretoria (-R33,5 million) and Witwatersrand (-R26,1 million). However, large increases in the real value of plans passed for flats and townhouses were reported by Mpumalanga (+R45,9 million, mainly due to real increases reported by Middelburg (+R24,5 million) and Highveldridge Transitional Council (+R20,3 million)) and Free State (+R11,2 million, mainly due to a real increase reported by Bloemfontein (+R14,2 million)) during the above-mentioned period.

### **Total real value of 'other' residential building plans passed decreases**

The total real value of 'other' residential building plans passed during the first eight months of 2001 decreased by 4,5% (-R6,2 million) to R130,7 million compared with the first eight months of 2000. The largest real decrease was reported by Gauteng (-R41,7 million). However, this decrease was partially counteracted by a large real increase reported by Eastern Cape (+R47,5 million), mainly due to the approval of building plans passed for a casino, to the real value of R35,8 million, by the local government institution of East London during January 2001.

### **Total real value of non-residential building plans passed decreases**

The total real value of non-residential building plans passed during the first eight months of 2001 decreased by 21,2% (-R480,7 million) to R1 789,0 million compared with the first eight months of 2000. Large decreases in the total real value of non-residential building plans passed were reported by Gauteng (-R351,5 million), Western Cape (-R96,8 million), Eastern Cape (-R62,8 million) and Mpumalanga (-R52,2 million). Large real decreases were reported by the selected urban areas of Witwatersrand (-R410,1 million), Cape Town (-R85,6 million), East London (-R37,2 million), Nelspruit (-R32,3 million) and Port Elizabeth (-R20,1 million). However, KwaZulu-Natal reported a large increase in the total real value of non-residential building plans passed (+R88,8 million). This increase was mainly due to the increase in the total real value of non-residential building plans passed as reported by North Local Council – Umhlanga Rocks (+R111,0 million) during the above-mentioned period.

### **Total real value of building plans passed for additions and alterations decreases**

The total real value of building plans passed for additions and alterations during the first eight months of 2001 decreased by 12,1% (-R337,0 million) to R2 454,7 million compared with the first eight months of 2000. Real decreases were reported by eight of the nine provinces. Large decreases in the real value of building plans passed for additions and alterations were reported by KwaZulu-Natal (-R104,7 million), Western Cape (-R81,2 million), Free State (-R66,1 million) and Gauteng (-R53,6 million). Large real decreases were reported by the selected urban areas of Durban (-R98,7 million), Bloemfontein (-R68,5 million), Cape Town (-R57,0 million) and Witwatersrand (-R42,5 million).

### Key figures regarding buildings completed for the month ended August 2001

#### Actual estimates at constant 1995 prices

	August 2001	January 2001 to August 2001	Percentage change between August 2000 and August 2001	Percentage change between June 2000 to August 2000 and June 2001 to August 2001	Percentage change between January 2000 to August 2000 and January 2001 to August 2001
	R million	R million			
Residential buildings					
Dwelling-houses	247,0	2 012,1	- 11,6	+ 6,1	+ 8,0
Flats and townhouses	46,9	515,6	- 23,4	+ 8,8	- 3,3
Other residential buildings	11,3	275,7	+ 82,2	+ 16,1	+ 471,7
<b>Total</b>	<b>305,2</b>	<b>2 803,4</b>	<b>- 12,0</b>	<b>+ 6,7</b>	<b>+ 14,7</b>
Non-residential buildings	79,5	1 380,7	- 65,1	- 35,6	- 21,2
Additions and alterations	152,0	1 452,4	- 8,2	+ 12,2	+ 4,3
<b>Total</b>	<b>536,7</b>	<b>5 636,5</b>	<b>- 27,5</b>	<b>- 6,7</b>	<b>+ 0,9</b>

#### Seasonally adjusted estimates at constant 1995 prices

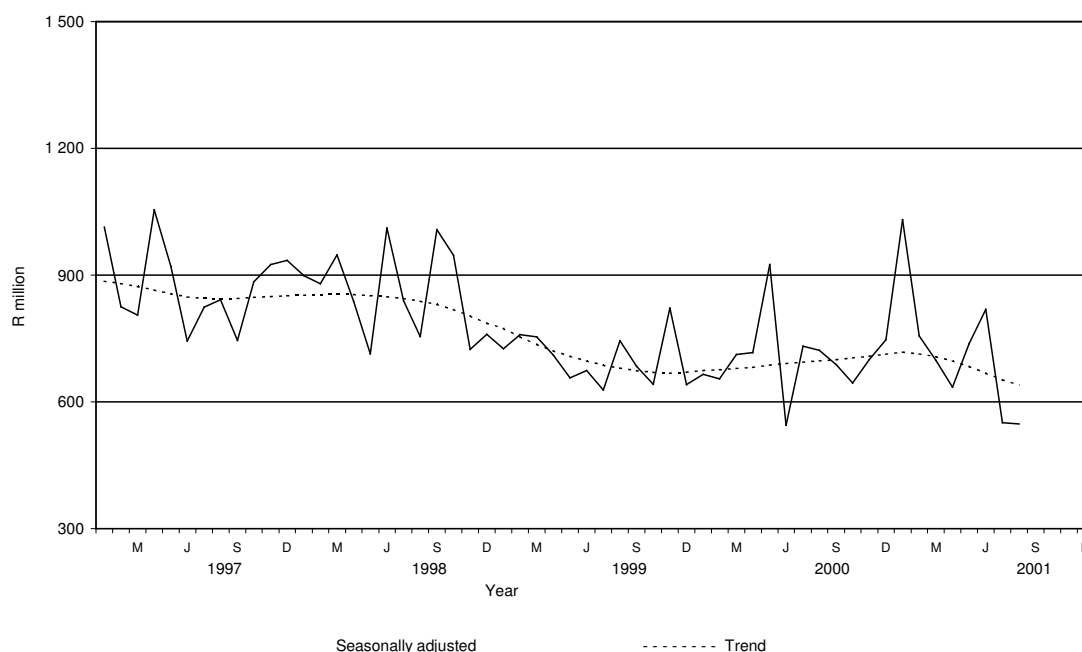
	August 2001	Percentage change between July 2001 and August 2001	Percentage change between March 2001 to May 2001 and June 2001 to August 2001
	R million		
Residential buildings	297,2	+ 3,7	- 4,2
Non-residential buildings	87,3	- 19,2	- 12,5
Additions and alterations	163,2	+ 4,8	- 8,2
<b>Total</b>	<b>547,7</b>	<b>- 0,5</b>	<b>- 7,3</b>

### Key findings regarding buildings completed for the three months ended August 2001

#### Seasonally adjusted real value of buildings completed decreases

*The seasonally adjusted real value of buildings completed (at constant 1995 prices) for the three months ended August 2001 decreased by 7,3% compared with the previous three months.*

The decrease of 7,3% in the seasonally adjusted real value of buildings completed was due to decreases in the seasonally adjusted real value of non-residential buildings completed (-12,5%), additions and alterations (-8,2%) and residential buildings completed (-4,2%) during the three months ended August 2001 compared with the previous three months.

**Figure 2 - Total real value of buildings completed**

## Key findings regarding buildings completed for the first eight months of 2001

### *Total real value of buildings completed increases slightly*

*The total real value of buildings completed (at constant 1995 prices) during the first eight months of 2001 increased slightly by 0,9% (+R48,0 million) to R5 636,5 million compared with the first eight months of 2000. Increases in the real value of buildings completed were reported for 'other' residential buildings (+R227,5 million, mainly due to the completion of a hotel and casino, to the real value R192,6 million, as reported by the Southern Metropolitan Local Council of Greater Johannesburg during January 2001); dwelling-houses (+R149,5 million, mainly due to increases in the real value of dwelling-houses completed as reported by Western Cape (+R133,7 million), KwaZulu-Natal (+R55,6 million) and Eastern Cape (+R43,6 million)); and additions and alterations (+R59,9 million). However, the total real value of non-residential buildings completed decreased by R371,5 million, due to the decrease in the real value of shopping space completed (-R436,4 million) during the above-mentioned period.*

### **Four of the nine provinces reported increases in the total real value of buildings completed**

The largest provincial contributors to the increase of 0,9% (+R48,0 million) in the total real value of buildings completed during the first eight months of 2001 compared with the first eight months of 2000 were reported by Western Cape (+3,1 percentage points or R170,5 million), Eastern Cape (+2,3 percentage points or R131,0 million) and Free State (+1,2 percentage points or R67,9 million). However, these increases were to a certain extent counteracted by a large decrease reported by Gauteng (-4,5 percentage points or R252,9 million) (cf. table B). Large real increases in Western Cape were reported for dwelling-houses (+R133,7 million) and additions and alterations (+R94,9 million), while in Eastern Cape large real increases were reported for industrial and warehouse space (+R62,3 million) and dwelling-houses (+R43,6 million).

**Table B - Contribution of provinces to the total real value of buildings completed**

Province	Percentage contribution to the total real value of buildings completed during January 2000 to August 2000	Percentage change between January 2000 to August 2000 and January 2001 to August 2001	Contribution (percentage points) <sup>1/</sup> to the percentage change in the real value of buildings completed between January 2000 to August 2000 and January 2001 to August 2001	Difference in total real value of buildings completed between January 2000 to August 2000 and January 2001 to August 2001 R million
Western Cape	26,8	+ 11,4	+ 3,1	+ 170,5
Eastern Cape	5,4	+ 43,7	+ 2,3	+ 131,0
Free State	3,1	+ 39,7	+ 1,2	+ 67,9
Northern Cape	1,1	+ 15,9	+ 0,2	+ 9,5
North West	2,9	- 3,7	- 0,1	- 6,1
Mpumalanga	2,5	- 9,0	- 0,2	- 12,7
KwaZulu-Natal	16,6	- 2,9	- 0,5	- 27,4
Northern Province	1,6	- 36,1	- 0,6	- 31,8
Gauteng	40,0	- 11,3	- 4,5	- 252,9
<b>Total</b>	<b>100,0</b>	<b>+ 0,9</b>	<b>+ 0,9</b>	<b>+ 48,0</b>

1/ The contribution (percentage points) is calculated by multiplying the percentage change of each province between January 2000 to August 2000 and January 2001 and August 2001 (cf. column 3) with the percentage contribution of the corresponding province to the total real value of buildings completed during January 2000 to August 2000 (cf. column 2) divided by 100.

### **Total real value of residential buildings completed increases**

The total real value of residential buildings completed during the first eight months of 2001 increased by 14,7% (+R359,7 million) to R2 803,4 million compared with the first eight months of 2000. Large increases in the real value of residential buildings completed were reported for 'other' residential buildings (+R227,5 million, mainly due to the completion of a hotel and casino in Gauteng to the real value of R192,6 million as reported during January 2001) and dwelling-houses (+R149,5 million), mainly due to real increases reported by Western Cape (+R133,7 million).

The largest provincial increase in the total real value of residential buildings completed was reported by Gauteng (+R135,9 million, mainly due to a real increase reported for 'other' residential buildings (+R185,1 million)); followed by Western Cape (+R117,0 million), KwaZulu-Natal (+R81,0 million) and Eastern Cape (+R41,5 million).

### **Total real value of dwelling-houses completed increases**

The total real value of dwelling-houses completed during the first eight months of 2001 increased by 8,0% (+R149,5 million) to R2 012,1 million compared with the first eight months of 2000. Large real increases were reported by Western Cape (+R133,7 million), KwaZulu-Natal (+R55,6 million) and Eastern Cape (+R43,6 million). Large increases in the real value of dwelling-houses completed were reported by the selected urban areas of Cape Town (+R53,6 million), Mossel Bay (+R37,2 million), Port Elizabeth (+R35,9 million), Helderberg Municipality (+R27,1 million) and North Local Council – Umhlanga Rocks (+R20,5 million).

The increase of 8,0% in the total real value of dwelling-houses completed during the first eight months of 2001 compared with the first eight months of 2000 can be attributed to an increase in the completion of dwelling-houses equal to or larger than 80 square metres (+17,2% or R226,7 million).



**Total real value of flats and townhouses completed decreases**

The total real value of flats and townhouses completed during the first eight months of 2001 decreased by 3,3% (-R17,4 million) to R515,6 million compared with the first eight months of 2000. Five of the nine provinces reported decreases in the real value of flats and townhouses completed. Large provincial decreases in the real value of flats and townhouses completed were reported by Western Cape (-R24,7 million), Eastern Cape (-R9,3 million) and North West (-R5,0 million). However, a large real increase was reported by Gauteng (+R18,4 million) during the above-mentioned period.

**Total real value of 'other' residential buildings completed increases**

The total real value of 'other' residential buildings completed during the first eight months of 2001 increased by R227,5 million to R275,7 million compared with the first eight months of 2000. Large real increases were reported by Gauteng (+R185,1 million, mainly due to the completion of a hotel and casino to the real value of R192,6 million, as reported by Southern Metropolitan Local Council of Greater Johannesburg during January 2001) and KwaZulu-Natal (+R26,8 million, due to the completion of a casino to the real value of R30,8 million, as reported by the North Local Council – Umhlanga Rocks during January 2001).

**Total real value of non-residential buildings completed decreases**

The total real value of non-residential buildings completed during the first eight months of 2001 decreased by 21,2% (-R371,5 million) to R1 380,7 million compared with the first eight months of 2000. Six of the nine provinces reported decreases in the total real value of non-residential buildings completed. The largest real decrease was reported by Gauteng (-R318,1 million), due to a decrease in the real value of shopping space completed (-R346,8 million). Large real decreases in shopping space completed in Gauteng was reported by the selected urban areas of Witwatersrand (-R249,9 million) and Pretoria (-R96,7 million) during the above-mentioned period.

**Total real value of additions and alterations completed increases**

The total real value of additions and alterations completed during the first eight months of 2001 increased by 4,3% (+R59,9 million) to R1 452,4 million compared with the first eight months of 2000. The largest real increases were reported by Western Cape (+R94,9 million, mainly due to real increases reported by the selected urban areas of Cape Town (+R89,1 million)) and Free State (+R65,6 million, mainly due to increases reported by the selected urban areas of Bloemfontein (+R61,2 million)). However, large real decreases in the total real value of additions and alterations completed were reported by Gauteng (-R70,7 million) and KwaZulu-Natal (-R70,5 million).

pp

**PJ Lehohla****Statistician-General: Statistics South Africa**

# Contents

## Page

<b>Notes</b>	.....	10
<b>Tables</b>		
Table 1	Actual values and percentage change of building plans passed at current prices according to type of building .....	14
Table 2	Seasonally adjusted values and percentage change of building plans passed at current prices according to type of building .....	15
Table 3	Actual values and percentage change of building plans passed at constant 1995 prices according to type of building .....	16
Table 4	Seasonally adjusted values and percentage change of building plans passed at constant 1995 prices according to type of building .....	17
Table 5	Actual values and percentage change of buildings completed at current prices according to type of building .....	18
Table 6	Seasonally adjusted values and percentage change of buildings completed at current prices according to type of building .....	19
Table 7	Actual values and percentage change of buildings completed at constant 1995 prices according to type of building .....	20
Table 8	Seasonally adjusted values and percentage change of buildings completed at constant 1995 prices according to type of building .....	21
Table 9	Building plans passed according to type of building: Total RSA .....	22
Table 10	Building plans passed according to type of building and province: Western Cape .....	23
Table 11	Building plans passed according to type of building and province: Eastern Cape .....	24
Table 12	Building plans passed according to type of building and province: Northern Cape .....	25
Table 13	Building plans passed according to type of building and province: Free State .....	26
Table 14	Building plans passed according to type of building and province: KwaZulu-Natal .....	27
Table 15	Building plans passed according to type of building and province: North West .....	28
Table 16	Building plans passed according to type of building and province: Gauteng .....	29
Table 17	Building plans passed according to type of building and province: Mpumalanga .....	30
Table 18	Building plans passed according to type of building and province: Northern Province .....	31
Table 19	Buildings completed according to type of building: Total RSA .....	32
Table 20	Buildings completed according to type of building and province: Western Cape .....	33
Table 21	Buildings completed according to type of building and province: Eastern Cape .....	34
Table 22	Buildings completed according to type of building and province: Northern Cape .....	35
Table 23	Buildings completed according to type of building and province: Free State .....	36
Table 24	Buildings completed according to type of building and province: KwaZulu-Natal .....	37
Table 25	Buildings completed according to type of building and province: North West .....	38
Table 26	Buildings completed according to type of building and province: Gauteng .....	39
Table 27	Buildings completed according to type of building and province: Mpumalanga .....	40
Table 28	Buildings completed according to type of building and province: Northern Province .....	41
Table 29	Building plans passed according to type of building and selected urban area: Cape Town .....	42
Table 30	Building plans passed according to type of building and selected urban area: Port Elizabeth .....	43
Table 31	Building plans passed according to type of building and selected urban area: Durban .....	44
Table 32	Building plans passed according to type of building and selected urban area: Witwatersrand .....	45
Table 33	Building plans passed according to type of building and selected urban area: Pretoria .....	46
Table 34	Building plans passed according to type of building and selected urban area: Bloemfontein .....	47
Table 35	Buildings completed according to type of building and selected urban area: Cape Town .....	48
Table 36	Buildings completed according to type of building and selected urban area: Port Elizabeth .....	49
Table 37	Buildings completed according to type of building and selected urban area: Durban .....	50
Table 38	Buildings completed according to type of building and selected urban area: Witwatersrand .....	51
Table 39	Buildings completed according to type of building and selected urban area: Pretoria .....	52
Table 40	Buildings completed according to type of building and selected urban area: Bloemfontein .....	53
<b>Additional information</b>		
	Explanatory notes .....	54
	Technical notes .....	56
	Local government institutions covered in the sample survey .....	57
	Glossary .....	58
<b>For more information</b>	.....	61

## Notes

<b>Forthcoming issues</b>	<b>Issue</b>	<b>Expected release date</b>
	September 2001	14 November 2001
	October 2001	19 December 2001
	November 2001	16 January 2002
	December 2001	20 February 2002
<b>Purpose of the survey</b>	<p>The Building Statistics Survey is a countrywide survey covering a sample of local government institutions in South Africa. The information received is used to estimate key economic statistics used by the private and public sectors. The information is also used to compile estimates of the Gross Domestic Product (GDP). These statistics are also used by government to monitor the Reconstruction and Development Program (RDP) in South Africa.</p>	
<b>New questionnaire</b>	<p>In order to lessen the respondent burden and improve reliability, Stats SA has overhauled and redesigned its Building Statistics Survey questionnaire. This resulted in the change of some data items on the old questionnaire. As from November 1999 information regarding dwelling-houses was collected according to size of dwelling-house.</p> <p>The Building Statistics Survey questionnaire collects the numbers, square metres and value of building plans passed and buildings completed for the private sector regarding –</p> <ul style="list-style-type: none"> <li>• residential buildings;</li> <li>• non-residential buildings; and</li> <li>• additions and alterations.</li> </ul>	
<b>Re-engineered building statistics statistical release</b>	<p>Prior to March 2001, Stats SA published selected information per province namely, the value of building plans passed and buildings completed regarding residential buildings, non-residential buildings and additions and alterations. Due to users' needs, specifically compilers of National Accounts, Stats SA has overhauled and re-designed the statistical release. In order to provide users with more provincial information Stats SA extended the information per province to include more detailed information regarding residential buildings (e.g. dwelling-houses equal to or larger than 80 square metre; flats and townhouses; and other residential buildings), non-residential buildings (e.g. office and banking space; shopping space; industrial and warehouse space; and other non-residential space) and additions and alterations (e.g. additions to dwelling-houses and other buildings).</p> <p>Furthermore, to monitor the RDP housing program Stats SA publishes information regarding dwelling-houses smaller than 80 square metres and equal to or larger than 80 square metres according to province.</p>	
<b>Changes in the numbering of tables</b>	<p>It should be noted that the numbering of tables has changed as from March 2001 as indicated in table C, pages 11 to 13.</p>	

**Table C – Title of table according to new and old numbers**

<b>New number (as from March 2001)</b>	<b>Title of table</b>	<b>Old number (prior to March 2001)</b>
Table 1	Actual values and percentage change of building plans passed at current prices according to type of building	Table 3
Table 2	Seasonally adjusted values and percentage change of building plans passed at current prices according to type of building	Table 7
Table 3	Actual values and percentage change of building plans passed at constant 1995 prices according to type of building	Table 4
Table 4	Seasonally adjusted values and percentage change of building plans passed at constant 1995 prices according to type of building	Table 7
Table 5	Actual values and percentage change of buildings completed at current prices according to type of building	Table 5
Table 6	Seasonally adjusted values and percentage change of buildings completed at current prices according to type of building	Table 8
Table 7	Actual values and percentage change of buildings completed at constant 1995 prices according to type of building	Table 6
Table 8	Seasonally adjusted values and percentage change of buildings completed at constant 1995 prices according to type of building	Table 8
Table 9	Building plans passed according to type of building: Total RSA	Tables 1 and 9
Table 10	Building plans passed according to type of building and province: Western Cape	Table 1
Table 11	Building plans passed according to type of building and province: Eastern Cape	Table 1
Table 12	Building plans passed according to type of building and province: Northern Cape	Table 1
Table 13	Building plans passed according to type of building and province: Free State	Table 1
Table 14	Building plans passed according to type of building and province: KwaZulu-Natal	Table 1
Table 15	Building plans passed according to type of building and province: North West	Table 1
Table 16	Building plans passed according to type of building and province: Gauteng	Table 1
Table 17	Building plans passed according to type of building and province: Mpumalanga	Table 1

**Table C – Title of table according to new and old numbers (continued)**

<b>New number (as from March 2001)</b>	<b>Title of table</b>	<b>Old number (prior to March 2001)</b>
Table 18	Building plans passed according to type of building and province: Northern Province	Table 1
Table 19	Buildings completed according to type of building: Total RSA	Tables 2 and 11
Table 20	Buildings completed according to type of building and province: Western Cape	Table 2
Table 21	Buildings completed according to type of building and province: Eastern Cape	Table 2
Table 22	Buildings completed according to type of building and province: Northern Cape	Table 2
Table 23	Buildings completed according to type of building and province: Free State	Table 2
Table 24	Buildings completed according to type of building and province: KwaZulu-Natal	Table 2
Table 25	Buildings completed according to type of building and province: North West	Table 2
Table 26	Buildings completed according to type of building and province: Gauteng	Table 2
Table 27	Buildings completed according to type of building and province: Mpumalanga	Table 2
Table 28	Buildings completed according to type of building and province: Northern Province	Table 2
Table 29	Building plans passed according to type of building and selected urban area: Cape Town	Table 10
Table 30	Building plans passed according to type of building and selected urban area: Port Elizabeth	New
Table 31	Building plans passed according to type of building and selected urban area: Durban	Table 10
Table 32	Building plans passed according to type of building and selected urban area: Witwatersrand	Table 10
Table 33	Building plans passed according to type of building and selected urban area: Pretoria	Table 10
Table 34	Building plans passed according to type of building and selected urban area: Bloemfontein	Table 10
Table 35	Buildings completed according to type of building and selected urban area: Cape Town	Table 12
Table 36	Buildings completed according to type of building and selected urban area: Port Elizabeth	New

**Table C – Title of table according to new and old numbers (concluded)**

<b>New number (as from March 2001)</b>	<b>Title of table</b>	<b>Old number (prior to March 2001)</b>
Table 37	Buildings completed according to type of building and selected urban area: Durban	Table 12
Table 38	Buildings completed according to type of building and selected urban area: Witwatersrand	Table 12
Table 39	Buildings completed according to type of building and selected urban area: Pretoria	Table 12
Table 40	Buildings completed according to type of building and selected urban area: Bloemfontein	Table 12

**Table 1 - Actual values and percentage change of building plans passed at current prices according to type of building**

Year <sup>1/</sup> and month <sup>2/</sup>	Residential buildings		Non-residential buildings		Additions and alterations		Total	
	R'000	Percentage change	R'000	Percentage change	R'000	Percentage change	R'000	Percentage change
1999 Jan	553 051	+ 9,8	237 671	- 45,6	277 444	+ 9,9	1 068 166	- 7,0
Feb	528 673	- 18,9	394 629	- 4,6	355 506	- 2,0	1 278 809	- 7,0
Mar	667 232	- 17,0	1 454 021	+ 219,5	476 726	+ 10,2	2 597 979	+ 59,3
Apr	530 570	- 22,1	374 625	- 23,8	330 044	- 6,9	1 235 239	- 16,0
May	527 616	- 19,3	274 148	- 46,9	403 206	+ 14,2	1 204 970	- 17,9
Jun	837 779	+ 18,8	418 343	- 32,5	403 838	+ 2,5	1 659 959	+ 0,4
Jul	637 414	- 19,6	460 734	- 7,1	420 306	- 15,4	1 518 454	- 12,2
Aug	630 628	- 14,1	388 580	- 14,5	415 686	- 6,2	1 434 895	- 7,7
Sep	599 986	- 14,7	305 439	- 38,8	484 091	+ 9,7	1 389 516	- 13,4
Oct	664 785	- 22,6	329 137	- 38,8	436 746	- 11,1	1 430 668	- 22,7
Nov	710 950	+ 14,0	701 437	+ 44,0	536 870	+ 39,6	1 949 257	+ 33,3
Dec	493 844	+ 16,1	225 184	- 40,9	314 898	- 23,4	1 033 926	- 12,9
<b>Total</b>	<b>7 382 530</b>	<b>- 8,9</b>	<b>5 563 948</b>	<b>- 3,8</b>	<b>4 855 360</b>	<b>+ 0,8</b>	<b>17 801 839</b>	<b>- 1,8</b>
2000 Jan	490 776	- 11,3	163 926	- 31,0	365 596	+ 31,8	1 020 298	- 4,5
Feb	784 023	+ 48,3	474 732	+ 20,3	399 280	+ 12,3	1 658 035	+ 29,7
Mar	747 421	+ 12,0	359 267	- 75,3	515 668	+ 8,2	1 622 356	- 37,6
Apr	627 642	+ 18,3	271 151	- 27,6	382 300	+ 15,8	1 281 093	+ 3,7
May	874 847	+ 65,8	573 853	+ 109,3	473 062	+ 17,3	1 921 762	+ 59,5
Jun	853 154	+ 1,8	336 324	- 19,6	532 278	+ 31,8	1 721 756	+ 3,7
Jul	908 061	+ 42,5	484 669	+ 5,2	549 932	+ 30,8	1 942 662	+ 27,9
Aug	929 836	+ 47,4	353 488	- 9,0	492 627	+ 18,5	1 775 951	+ 23,8
Sep	826 851	+ 37,8	354 456	+ 16,0	465 836	- 3,8	1 647 143	+ 18,5
Oct	916 410	+ 37,9	492 884	+ 49,8	539 561	+ 23,5	1 948 855	+ 36,2
Nov	914 346	+ 28,6	493 166	- 29,7	503 659	- 6,2	1 911 171	- 2,0
Dec	606 148	+ 22,7	704 410	+ 212,8	317 835	+ 0,9	1 628 393	+ 57,5
<b>Total</b>	<b>9 479 515</b>	<b>+ 28,4</b>	<b>5 062 326</b>	<b>- 9,0</b>	<b>5 537 634</b>	<b>+ 14,1</b>	<b>20 079 475</b>	<b>+ 12,8</b>
2001 Jan	720 680	+ 46,8	475 089	+ 189,8	352 501	- 3,6	1 548 270	+ 51,7
Feb	817 853	+ 4,3	299 417	- 36,9	473 166	+ 18,5	1 590 436	- 4,1
Mar	923 272	+ 23,5	305 034	- 15,1	439 249	- 14,8	1 667 555	+ 2,8
Apr	732 653	+ 16,7	206 520	- 23,8	375 509	- 1,8	1 314 682	+ 2,6
May*	999 878	+ 14,3	288 515	- 49,7	499 355	+ 5,6	1 787 748	- 7,0
Jun*	901 520	+ 5,7	315 982	- 6,0	446 862	- 16,0	1 664 364	- 3,3
Jul	909 661	+ 0,2	383 440	- 20,9	428 912	- 22,0	1 722 013	- 11,4
Aug	836 251	- 10,1	268 043	- 24,2	477 835	- 3,0	1 582 129	- 10,9

<sup>1/</sup> The annual percentage change is the change in the actual values of building plans passed of the relevant year compared with the actual values of building plans passed of the previous year expressed as a percentage.

<sup>2/</sup> The monthly percentage change is the change in the actual values of building plans passed of the relevant month compared with the actual values of building plans passed of the same month in the previous year expressed as a percentage.

**Table 2 - Seasonally adjusted values and percentage change of building plans passed at current prices according to type of building**

Year and month <sup>1/</sup>	Residential buildings		Non-residential buildings		Additions and alterations		Total	
	R'000	Percentage change	R'000	Percentage change	R'000	Percentage change	R'000	Percentage change
1999 Jan	717 646	+ 18,9	309 945	- 34,7	380 607	- 25,6	1 408 198	- 11,4
Feb	533 091	- 25,7	422 643	+ 36,4	384 170	+ 0,9	1 339 904	- 4,8
Mar	621 391	+ 16,6	1 414 175	+ 234,6	437 978	+ 14,0	2 473 544	+ 84,6
Apr	578 926	- 6,8	415 330	- 70,6	380 076	- 13,2	1 374 332	- 44,4
May	504 573	- 12,8	257 565	- 38,0	392 980	+ 3,4	1 155 118	- 16,0
Jun	794 844	+ 57,5	389 749	+ 51,3	386 224	- 1,7	1 570 817	+ 36,0
Jul	570 606	- 28,2	399 453	+ 2,5	373 539	- 3,3	1 343 598	- 14,5
Aug	595 211	+ 4,3	383 519	- 4,0	389 388	+ 4,2	1 368 118	+ 1,8
Sep	590 327	- 0,8	322 901	- 15,8	449 269	+ 15,4	1 362 497	- 0,4
Oct	564 367	- 4,4	285 502	- 11,6	386 490	- 14,0	1 236 359	- 9,3
Nov	664 129	+ 17,7	583 184	+ 104,3	469 344	+ 21,4	1 716 657	+ 38,8
Dec	699 355	+ 5,3	282 752	- 51,5	411 819	- 12,3	1 393 926	- 18,8
2000 Jan	631 090	- 9,8	213 100	- 24,6	490 988	+ 19,2	1 335 177	- 4,2
Feb	801 783	+ 27,0	526 670	+ 147,1	433 669	- 11,7	1 762 122	+ 32,0
Mar	688 851	- 14,1	352 238	- 33,1	468 433	+ 8,0	1 509 522	- 14,3
Apr	700 998	+ 1,8	318 513	- 9,6	447 298	- 4,5	1 466 808	- 2,8
May	822 692	+ 17,4	532 062	+ 67,0	456 602	+ 2,1	1 811 357	+ 23,5
Jun	807 320	- 1,9	311 583	- 41,4	510 396	+ 11,8	1 629 299	- 10,1
Jul	816 560	+ 1,1	395 927	+ 27,1	498 897	- 2,3	1 711 385	+ 5,0
Aug	873 277	+ 6,9	354 540	- 10,5	461 131	- 7,6	1 688 948	- 1,3
Sep	810 357	- 7,2	371 270	+ 4,7	430 969	- 6,5	1 612 595	- 4,5
Oct	784 967	- 3,1	431 155	+ 16,1	475 310	+ 10,3	1 691 432	+ 4,9
Nov	852 154	+ 8,6	415 581	- 3,6	436 525	- 8,2	1 704 260	+ 0,8
Dec	855 686	+ 0,4	869 599	+ 109,2	418 566	- 4,1	2 143 851	+ 25,8
2001 Jan	921 926	+ 7,7	625 796	- 28,0	468 868	+ 12,0	2 016 589	- 5,9
Feb	842 934	- 8,6	339 286	- 45,8	517 523	+ 10,4	1 699 742	- 15,7
Mar	849 109	+ 0,7	296 682	- 12,6	397 414	- 23,2	1 543 205	- 9,2
Apr	830 271	- 2,2	251 249	- 15,3	443 271	+ 11,5	1 524 791	- 1,2
May	934 855	+ 12,6	262 794	+ 4,6	480 085	+ 8,3	1 677 734	+ 10,0
Jun	849 194	- 9,2	295 644	+ 12,5	426 878	- 11,1	1 571 716	- 6,3
Jul	817 890	- 3,7	303 818	+ 2,8	392 098	- 8,1	1 513 805	- 3,7
Aug	781 560	- 4,4	267 311	- 12,0	448 143	+ 14,3	1 497 014	- 1,1

<sup>1/</sup> The percentage change is the change in the seasonally adjusted values of building plans passed of the relevant month compared with the seasonally adjusted values of building plans passed of the previous month expressed as a percentage.



Table 3 - Actual values and percentage change of building plans passed at constant 1995 prices according to type of building

Year <sup>1/</sup> and month <sup>2/</sup>	Residential buildings		Non-residential buildings		Additions and alterations		Total	
	R'000	Percentage change	R'000	Percentage change	R'000	Percentage change	R'000	Percentage change
1999 Jan	444 933	+ 2,8	191 208	- 45,6	223 205	+ 9,9	859 346	- 13,0
Feb	420 918	- 24,5	314 195	- 4,6	283 046	- 2,0	1 018 159	- 13,4
Mar	530 391	- 22,6	1 155 820	+ 219,5	378 955	+ 10,2	2 065 166	+ 48,5
Apr	419 423	- 27,3	296 146	- 23,8	260 904	- 6,9	976 473	- 21,6
May	416 759	- 24,5	216 546	- 46,9	318 488	+ 14,2	951 793	- 23,2
Jun	659 150	+ 11,2	329 145	- 32,5	317 732	+ 2,5	1 306 027	- 6,1
Jul	499 933	- 24,1	361 360	- 7,1	329 651	- 15,4	1 190 944	- 17,2
Aug	494 610	- 13,8	304 769	- 14,5	326 028	- 6,2	1 125 407	- 11,9
Sep	469 473	- 18,3	238 998	- 38,8	378 788	+ 9,7	1 087 259	- 17,0
Oct	519 363	- 25,5	257 138	- 38,8	341 208	- 11,1	1 117 709	- 25,6
Nov	553 699	+ 9,8	546 290	+ 44,0	418 123	+ 39,6	1 518 112	+ 28,3
Dec	384 016	+ 11,7	175 104	- 40,9	244 866	- 23,4	803 986	- 16,3
<b>Total</b>	<b>5 812 668</b>	<b>- 8,9</b>	<b>4 386 719</b>	<b>- 3,8</b>	<b>3 820 994</b>	<b>+ 0,8</b>	<b>14 020 381</b>	<b>- 7,1</b>
2000 Jan	378 102	- 15,0	126 291	- 34,0	281 661	+ 26,2	786 054	- 8,5
Feb	602 168	+ 43,1	364 618	+ 16,0	306 667	+ 8,3	1 273 453	+ 25,1
Mar	570 115	+ 7,5	274 040	- 76,3	393 339	+ 3,8	1 237 494	- 40,1
Apr	473 692	+ 12,9	204 642	- 30,9	288 528	+ 10,6	966 862	- 1,0
May	655 807	+ 57,4	430 175	+ 98,7	354 619	+ 11,3	1 440 601	+ 51,4
Jun	637 634	- 3,3	251 363	- 23,6	397 816	+ 25,2	1 286 813	- 1,5
Jul	672 638	+ 34,5	359 014	- 0,6	407 357	+ 23,6	1 439 009	+ 20,8
Aug	682 699	+ 38,0	259 536	- 14,8	361 694	+ 10,9	1 303 929	+ 15,9
Sep	606 196	+ 29,1	259 865	+ 8,7	341 522	- 9,8	1 207 583	+ 11,1
Oct	668 425	+ 28,7	359 507	+ 39,8	393 553	+ 15,3	1 421 485	+ 27,2
Nov	664 013	+ 19,9	358 145	- 34,4	365 765	- 12,5	1 387 923	- 8,6
Dec	438 602	+ 14,2	509 703	+ 191,1	229 982	- 6,1	1 178 287	+ 46,6
<b>Total</b>	<b>7 050 091</b>	<b>+ 21,3</b>	<b>3 756 899</b>	<b>- 14,4</b>	<b>4 122 503</b>	<b>+ 7,9</b>	<b>14 929 493</b>	<b>+ 6,5</b>
2001 Jan	515 877	+ 36,4	340 078	+ 169,3	252 327	- 10,4	1 108 282	+ 41,0
Feb	582 516	- 3,3	213 260	- 41,5	337 013	+ 9,9	1 132 789	- 11,0
Mar	653 413	+ 14,6	215 877	- 21,2	310 863	- 21,0	1 180 153	- 4,6
Apr	515 590	+ 8,8	145 334	- 29,0	264 257	- 8,4	925 181	- 4,3
May*	699 705	+ 6,7	201 900	- 53,1	349 444	- 1,5	1 251 049	- 13,2
Jun*	629 553	- 1,3	220 658	- 12,2	312 054	- 21,6	1 162 265	- 9,7
Jul	631 709	- 6,1	266 278	- 25,8	297 856	- 26,9	1 195 843	- 16,9
Aug	579 121	- 15,2	185 625	- 28,5	330 911	- 8,5	1 095 657	- 16,0

<sup>1/</sup> The annual percentage change is the change in the actual values of building plans passed of the relevant year compared with the actual values of building plans passed of the previous year expressed as a percentage.

<sup>2/</sup> The monthly percentage change is the change in the actual values of building plans passed of the relevant month compared with the actual values of building plans passed of the same month in the previous year expressed as a percentage.

**Table 4 - Seasonally adjusted values and percentage change of building plans passed at constant 1995 prices according to type of building**

Year and month <sup>1/</sup>	Residential buildings		Non-residential buildings		Additions and alterations		Total	
	R'000	Percentage change	R'000	Percentage change	R'000	Percentage change	R'000	Percentage change
1999 Jan	577 752	+ 18,9	249 013	- 34,8	305 819	+ 7,5	1 132 584	- 11,5
Feb	424 455	- 26,5	337 174	+ 35,4	307 609	+ 0,6	1 069 238	- 5,6
Mar	492 886	+ 16,1	1 123 381	+ 233,2	348 562	+ 13,3	1 964 829	+ 83,8
Apr	457 816	- 7,1	328 464	- 70,8	300 674	- 13,7	1 086 954	- 44,7
May	399 528	- 12,7	203 664	- 38,0	309 761	+ 3,0	912 953	- 16,0
Jun	624 107	+ 56,2	306 231	+ 50,4	303 457	- 2,0	1 233 795	+ 35,1
Jul	448 117	- 28,2	313 506	+ 2,4	292 885	- 3,5	1 054 508	- 14,5
Aug	467 603	+ 4,3	301 072	- 4,0	306 044	+ 4,5	1 074 719	+ 1,9
Sep	462 644	- 1,1	253 187	- 15,9	351 865	+ 15,0	1 067 697	- 0,7
Oct	441 226	- 4,6	223 252	- 11,8	301 913	- 14,2	966 391	- 9,5
Nov	516 553	+ 17,1	453 586	+ 103,2	364 712	+ 20,8	1 334 851	+ 38,1
Dec	541 408	+ 4,8	219 050	- 51,7	318 637	- 12,6	1 079 096	- 19,2
2000 Jan	486 817	- 10,1	163 923	- 25,2	377 509	+ 18,5	1 028 249	- 4,7
Feb	615 411	+ 26,4	405 264	+ 147,2	336 017	- 11,0	1 356 692	+ 31,9
Mar	524 217	- 14,8	268 563	- 33,7	357 745	+ 6,5	1 150 524	- 15,2
Apr	529 113	+ 0,9	240 607	- 10,4	337 599	- 5,6	1 107 320	- 3,8
May	618 301	+ 16,9	399 270	+ 65,9	341 665	+ 1,2	1 359 236	+ 22,8
Jun	602 140	- 2,6	232 527	- 41,8	380 749	+ 11,4	1 215 415	- 10,6
Jul	605 621	+ 0,6	293 354	+ 26,2	369 481	- 3,0	1 268 455	+ 4,4
Aug	642 887	+ 6,2	260 313	- 11,3	338 892	- 8,3	1 242 091	- 2,1
Sep	594 883	- 7,5	272 771	+ 4,8	316 255	- 6,7	1 183 909	- 4,7
Oct	572 921	- 3,7	314 870	+ 15,4	346 692	+ 9,6	1 234 483	+ 4,3
Nov	618 003	+ 7,9	301 519	- 4,2	316 348	- 8,8	1 235 870	+ 0,1
Dec	616 251	- 0,3	626 962	+ 107,9	301 364	- 4,7	1 544 577	+ 25,0
2001 Jan	661 110	+ 7,3	447 415	- 28,6	334 775	+ 11,1	1 443 299	- 6,6
Feb	599 736	- 9,3	242 056	- 45,9	372 180	+ 11,2	1 213 972	- 15,9
Mar	599 444	+ 0,0	209 854	- 13,3	281 656	- 24,3	1 090 954	- 10,1
Apr	584 144	- 2,6	176 999	- 15,7	311 950	+ 10,8	1 073 093	- 1,6
May	656 105	+ 12,3	184 093	+ 4,0	335 424	+ 7,5	1 175 621	+ 9,6
Jun	591 837	- 9,8	206 148	+ 12,0	297 457	- 11,3	1 095 442	- 6,8
Jul	568 748	- 3,9	211 013	+ 2,4	272 297	- 8,5	1 052 058	- 4,0
Aug	542 737	- 4,6	185 054	- 12,3	310 465	+ 14,0	1 038 256	- 1,3

<sup>1/</sup> The percentage change is the change in the seasonally adjusted values of building plans passed of the relevant month compared with the seasonally adjusted values of building plans passed of the previous month expressed as a percentage.

**Table 5 - Actual values and percentage change of buildings completed at current prices according to type of building**

Year <sup>1/</sup> and month <sup>2/</sup>	Residential buildings		Non-residential buildings		Additions and alterations		Total	
	R'000	Percentage change	R'000	Percentage change	R'000	Percentage change	R'000	Percentage change
1999 Jan	313 975	- 17,7	197 076	- 12,3	193 050	- 3,3	704 102	- 12,6
Feb	396 737	- 2,1	214 816	- 29,4	244 641	+ 26,9	856 194	- 5,1
Mar	432 499	- 38,0	246 125	+ 39,7	230 685	+ 8,8	909 309	- 16,2
Apr	377 800	- 17,0	181 550	- 25,2	200 507	+ 28,2	759 858	- 11,1
May	390 986	- 11,7	195 652	+ 10,4	178 758	- 2,4	765 395	- 4,7
Jun	420 016	- 30,4	208 557	- 38,5	153 702	- 21,1	782 276	- 31,2
Jul	480 991	- 18,3	264 068	+ 0,3	272 372	+ 26,1	1 017 432	- 4,7
Aug	460 657	+ 7,6	204 898	- 24,8	255 878	+ 47,4	921 432	+ 5,4
Sep	493 450	- 11,4	197 152	- 58,4	223 191	+ 10,3	913 793	- 25,9
Oct	419 578	- 15,9	203 652	- 58,9	229 463	+ 12,4	852 693	- 28,8
Nov	461 147	- 8,9	409 997	+ 45,4	210 237	+ 20,2	1 081 381	+ 12,3
Dec	349 510	- 15,3	181 596	- 13,0	146 343	+ 3,3	677 449	- 11,3
<b>Total</b>	<b>4 997 346</b>	<b>- 16,4</b>	<b>2 705 139</b>	<b>- 21,8</b>	<b>2 538 827</b>	<b>+ 12,8</b>	<b>10 241 312</b>	<b>- 12,4</b>
2000 Jan	299 212	- 4,7	195 988	- 0,6	183 959	- 4,7	679 159	- 3,5
Feb	353 141	- 11,0	205 549	- 4,3	221 978	- 9,3	780 668	- 8,8
Mar	419 416	- 3,0	212 379	- 13,7	268 745	+ 16,5	900 540	- 1,0
Apr	364 713	- 3,5	224 048	+ 23,4	188 808	- 5,8	777 569	+ 2,3
May	473 124	+ 21,0	390 533	+ 99,6	293 343	+ 64,1	1 157 000	+ 51,2
Jun	362 558	- 13,7	174 728	- 16,2	170 986	+ 11,2	708 272	- 9,5
Jul	407 406	- 15,3	472 668	+ 79,0	220 828	- 18,9	1 100 902	+ 8,2
Aug	449 691	- 2,4	285 994	+ 39,6	211 008	- 17,5	946 693	+ 2,7
Sep	510 979	+ 3,6	270 539	+ 37,2	199 622	- 10,6	981 140	+ 7,4
Oct	462 270	+ 10,2	195 491	- 4,0	238 257	+ 3,8	896 018	+ 5,1
Nov	555 802	+ 20,5	186 442	- 54,5	255 900	+ 21,7	998 144	- 7,7
Dec	383 114	+ 9,6	316 801	+ 74,5	149 622	+ 2,2	849 537	+ 25,4
<b>Total</b>	<b>5 041 426</b>	<b>+ 0,9</b>	<b>3 131 160</b>	<b>+ 15,7</b>	<b>2 603 056</b>	<b>+ 2,5</b>	<b>10 775 642</b>	<b>+ 5,2</b>
2001 Jan	643 047	+ 114,9	238 434	+ 21,7	200 985	+ 9,3	1 082 466	+ 59,4
Feb	428 803	+ 21,4	285 620	+ 39,0	243 214	+ 9,6	957 637	+ 22,7
Mar	532 191	+ 26,9	150 947	- 28,9	286 984	+ 6,8	970 122	+ 7,7
Apr	370 082	+ 1,5	172 607	- 23,0	184 423	- 2,3	727 112	- 6,5
May	442 719	- 6,4	300 533	- 23,0	295 505	+ 0,7	1 038 757	- 10,2
Jun*	550 296	+ 51,8	368 352	+ 110,8	277 233	+ 62,1	1 195 881	+ 68,8
Jul	419 164	+ 2,9	151 496	- 67,9	232 217	+ 5,2	802 877	- 27,1
Aug	426 034	- 5,3	103 536	- 63,8	206 973	- 1,9	736 543	- 22,2

<sup>1/</sup> The annual percentage change is the change in the actual values of buildings completed of the relevant year compared with the actual values of buildings completed of the previous year expressed as a percentage.

<sup>2/</sup> The monthly percentage change is the change in the actual values of buildings completed of the relevant month compared with the actual values of buildings completed of the same month in the previous year expressed as a percentage.

**Table 6 - Seasonally adjusted values and percentage change of buildings completed at current prices according to type of building**

Year and month <sup>1/</sup>	Residential buildings		Non-residential buildings		Additions and alterations		Total	
	R'000	Percentage change	R'000	Percentage change	R'000	Percentage change	R'000	Percentage change
1999 Jan	408 884	- 12,4	232 078	+ 15,0	218 232	+ 2,2	859 193	- 2,6
Feb	444 344	+ 8,7	228 010	- 1,8	223 475	+ 2,4	895 829	+ 4,3
Mar	416 586	- 6,2	278 544	+ 22,2	199 278	- 10,8	894 408	- 0,2
Apr	419 591	+ 0,7	206 246	- 26,0	222 616	+ 11,7	848 453	- 5,1
May	381 341	- 9,1	184 229	- 10,7	174 843	- 21,5	740 413	- 12,7
Jun	407 955	+ 7,0	193 915	+ 5,3	144 583	- 17,3	746 453	+ 0,8
Jul	448 836	+ 10,0	244 363	+ 26,0	240 242	+ 66,2	933 441	+ 25,1
Aug	448 684	+ 0,0	221 024	- 9,6	270 338	+ 12,5	940 045	+ 0,7
Sep	438 147	- 2,3	177 498	- 19,7	223 205	- 17,4	838 850	- 10,8
Oct	398 070	- 9,1	175 569	- 1,1	218 442	- 2,1	792 081	- 5,6
Nov	386 477	- 2,9	423 132	+ 141,0	196 082	- 10,2	1 005 692	+ 27,0
Dec	400 133	+ 3,5	175 343	- 58,6	220 521	+ 12,5	795 997	- 20,9
2000 Jan	388 659	- 2,9	227 937	+ 30,0	207 087	- 6,1	823 683	+ 3,5
Feb	395 732	+ 1,8	210 839	- 7,5	203 837	- 1,6	810 408	- 1,6
Mar	397 786	+ 0,5	254 922	+ 20,9	227 868	+ 11,8	880 576	+ 8,7
Apr	413 217	+ 3,9	265 053	+ 4,0	214 227	- 6,0	892 497	+ 1,4
May	469 256	+ 13,6	348 557	+ 31,5	280 617	+ 31,0	1 098 430	+ 23,1
Jun	344 583	- 26,6	155 702	- 55,3	158 616	- 43,5	658 901	- 40,0
Jul	384 244	+ 11,5	443 180	+ 184,6	198 362	+ 25,1	1 025 786	+ 55,7
Aug	436 967	+ 13,7	311 341	- 29,7	225 356	+ 13,6	973 665	- 5,1
Sep	446 978	+ 2,3	238 803	- 23,3	199 662	- 11,4	885 444	- 9,1
Oct	442 004	- 1,1	168 708	- 29,4	225 290	+ 12,8	836 003	- 5,6
Nov	470 487	+ 6,4	198 468	+ 17,6	241 492	+ 7,2	910 447	+ 8,9
Dec	436 560	- 7,2	312 737	+ 57,6	223 638	- 7,4	972 935	+ 6,9
2001 Jan	840 528	+ 92,5	279 182	- 10,7	225 947	+ 1,0	1 345 657	+ 38,3
Feb	477 755	- 43,2	289 241	+ 3,6	224 367	- 0,7	991 363	- 26,3
Mar	498 210	+ 4,3	185 129	- 36,0	240 776	+ 7,3	924 115	- 6,8
Apr	422 130	- 15,3	209 754	+ 13,3	211 876	- 12,0	843 760	- 8,7
May	442 090	+ 4,7	258 063	+ 23,0	281 510	+ 32,9	981 662	+ 16,3
Jun	521 100	+ 17,9	324 108	+ 25,6	255 359	- 9,3	1 100 567	+ 12,1
Jul	398 619	- 23,5	140 381	- 56,7	210 010	- 17,8	749 010	- 31,9
Aug	414 001	+ 3,9	113 526	- 19,1	221 478	+ 5,5	749 006	+ 0,0

<sup>1/</sup> The percentage change is the change in the seasonally adjusted values of buildings completed of the relevant month compared with the seasonally adjusted values of buildings completed of the previous month expressed as a percentage.

**Table 7 - Actual values and percentage change of buildings completed at constant 1995 prices according to type of building**

Year <sup>1/</sup> and month <sup>2/</sup>	Residential buildings		Non-residential buildings		Additions and alterations		Total	
	R'000	Percentage change	R'000	Percentage change	R'000	Percentage change	R'000	Percentage change
1999 Jan	262 682	- 22,6	172 571	- 18,3	165 993	- 9,2	601 246	- 18,0
Feb	329 271	- 26,3	187 449	- 39,0	209 095	- 4,5	725 815	- 26,1
Mar	356 192	- 57,5	214 208	+ 5,4	196 662	- 12,9	767 062	- 38,1
Apr	311 031	- 34,2	157 322	- 23,5	169 922	+ 18,7	638 275	- 21,4
May	319 828	- 31,9	169 395	+ 5,1	150 851	+ 2,4	640 074	- 15,6
Jun	344 231	- 50,0	180 257	- 44,7	129 270	- 3,4	653 758	- 40,4
Jul	391 124	- 50,0	227 058	- 28,4	226 411	- 12,3	844 593	- 36,0
Aug	369 731	- 48,5	175 126	- 29,7	210 253	+ 9,6	755 110	- 21,4
Sep	396 579	- 28,6	168 075	- 59,5	182 196	- 5,7	746 850	- 44,4
Oct	334 635	- 45,1	172 586	- 61,0	186 252	- 6,2	693 473	- 42,4
Nov	366 364	- 38,2	345 989	- 30,9	170 095	+ 9,6	882 448	- 27,6
Dec	277 236	- 38,9	152 730	- 6,3	118 305	+ 35,6	548 271	- 8,6
<b>Total</b>	<b>4 058 904</b>	<b>- 21,7</b>	<b>2 322 766</b>	<b>- 26,2</b>	<b>2 115 305</b>	<b>+ 6,4</b>	<b>8 496 975</b>	<b>- 17,7</b>
2000 Jan	236 149	- 10,1	162 916	- 5,6	147 996	- 10,8	547 061	- 9,0
Feb	277 982	- 15,6	168 898	- 9,9	176 734	- 15,5	623 614	- 14,1
Mar	329 523	- 7,5	173 371	- 19,1	213 629	+ 8,6	716 523	- 6,6
Apr	285 795	- 8,1	181 857	+ 15,6	149 255	- 12,2	616 907	- 3,3
May	370 120	+ 15,7	315 965	+ 86,5	231 709	+ 53,6	917 794	+ 43,4
Jun	282 549	- 17,9	141 251	- 21,6	134 529	+ 4,1	558 329	- 14,6
Jul	314 890	- 19,5	380 264	+ 67,5	173 198	- 23,5	868 352	+ 2,8
Aug	346 783	- 6,2	227 702	+ 30,0	165 496	- 21,3	739 981	- 2,0
Sep	391 744	- 1,2	215 055	+ 28,0	156 199	- 14,3	762 998	+ 2,2
Oct	352 005	+ 5,2	154 538	- 10,5	186 138	- 0,1	692 681	- 0,1
Nov	420 080	+ 14,7	147 269	- 57,4	199 299	+ 17,2	766 648	- 13,1
Dec	289 205	+ 4,3	249 253	+ 63,2	116 347	- 1,7	654 805	+ 19,4
<b>Total</b>	<b>3 896 825</b>	<b>- 4,0</b>	<b>2 518 339</b>	<b>+ 8,4</b>	<b>2 050 529</b>	<b>- 3,1</b>	<b>8 465 693</b>	<b>- 0,4</b>
2001 Jan	487 413	+ 106,4	187 007	+ 14,8	154 842	+ 4,6	829 262	+ 51,6
Feb	318 240	+ 14,5	224 016	+ 32,6	186 800	+ 5,7	729 056	+ 16,9
Ma	394 856	+ 19,8	118 112	- 31,9	218 905	+ 2,5	731 873	+ 2,1
Apr	272 450	- 4,7	134 849	- 25,8	139 187	- 6,7	546 486	- 11,4
May	322 627	- 12,8	234 060	- 25,9	221 518	- 4,4	778 205	- 15,2
Jun*	401 062	+ 41,9	286 432	+ 102,8	207 200	+ 54,0	894 694	+ 60,2
Jul	301 609	- 4,2	116 715	- 69,3	172 013	- 0,7	590 337	- 32,0
Aug	305 184	- 12,0	79 521	- 65,1	151 963	- 8,2	536 668	- 27,5

<sup>1/</sup> The annual percentage change is the change in the actual values of buildings completed of the relevant year compared with the actual values of buildings completed of the previous year expressed as a percentage.

<sup>2/</sup> The monthly percentage change is the change in the actual values of buildings completed of the relevant month compared with the actual values of buildings completed of the same month in the previous year expressed as a percentage.

**Table 8 - Seasonally adjusted values and percentage change of buildings completed at constant 1995 prices according to type of building**

Year and month <sup>1/</sup>	Residential buildings		Non-residential buildings		Additions and alterations		Total	
	R'000	Percentage change	R'000	Percentage change	R'000	Percentage change	R'000	Percentage change
1999 Jan	342 041	- 13,8	203 421	+ 14,3	187 087	+ 1,8	732 550	- 3,4
Feb	370 228	+ 8,2	199 593	- 1,9	191 134	+ 2,2	760 954	+ 3,9
Mar	343 461	- 7,2	242 639	+ 21,6	169 732	- 11,2	755 833	- 0,7
Apr	344 586	+ 0,3	178 735	- 26,3	188 540	+ 11,1	711 861	- 5,8
May	312 744	- 9,2	159 330	- 10,9	148 140	- 21,4	620 213	- 12,9
Jun	332 220	+ 6,2	166 607	+ 4,6	121 653	- 17,9	620 481	+ 0,0
Jul	364 575	+ 9,7	209 583	+ 25,8	199 908	+ 64,3	774 066	+ 24,8
Aug	361 114	- 0,9	189 246	- 9,7	222 823	+ 11,5	773 183	- 0,1
Sep	351 672	- 2,6	151 379	- 20,0	182 422	- 18,1	685 473	- 11,3
Oct	317 795	- 9,6	148 767	- 1,7	177 265	- 2,8	643 827	- 6,1
Nov	307 461	- 3,3	358 075	+ 140,7	158 381	- 10,7	823 918	+ 28,0
Dec	316 751	+ 3,0	147 454	- 58,8	177 400	+ 12,0	641 604	- 22,1
2000 Jan	306 807	- 3,1	189 739	+ 28,7	166 082	- 6,4	662 628	+ 3,3
Feb	312 606	+ 1,9	173 754	- 8,4	162 201	- 2,3	648 561	- 2,1
Mar	312 836	+ 0,1	208 367	+ 19,9	180 839	+ 11,5	702 042	+ 8,2
Apr	323 498	+ 3,4	215 230	+ 3,3	169 326	- 6,4	708 054	+ 0,9
May	368 043	+ 13,8	281 802	+ 30,9	222 579	+ 31,4	872 424	+ 23,2
Jun	266 782	- 27,5	125 190	- 55,6	124 866	- 43,9	516 838	- 40,8
Jul	296 779	+ 11,2	356 112	+ 184,5	155 753	+ 24,7	808 644	+ 56,5
Aug	337 772	+ 13,8	248 121	- 30,3	177 396	+ 13,9	763 289	- 5,6
Sep	342 122	+ 1,3	189 818	- 23,5	156 448	- 11,8	688 388	- 9,8
Oct	336 935	- 1,5	133 308	- 29,8	176 011	+ 12,5	646 254	- 6,1
Nov	356 085	+ 5,7	157 155	+ 17,9	187 775	+ 6,7	701 015	+ 8,5
Dec	328 718	- 7,7	245 942	+ 56,5	173 011	- 7,9	747 671	+ 6,7
2001 Jan	637 741	+ 94,0	219 296	- 10,8	173 511	+ 0,3	1 030 548	+ 37,8
Feb	355 736	- 44,2	227 505	+ 3,7	172 179	- 0,8	755 420	- 26,7
Mar	370 017	+ 4,0	145 111	- 36,2	183 295	+ 6,5	698 423	- 7,5
Apr	310 542	- 16,1	163 974	+ 13,0	159 919	- 12,8	634 435	- 9,2
May	322 949	+ 4,0	200 863	+ 22,5	211 956	+ 32,5	735 768	+ 16,0
Jun	377 234	+ 16,8	250 636	+ 24,8	190 962	- 9,9	818 832	+ 11,3
Jul	286 712	- 24,0	108 063	- 56,9	155 734	- 18,4	550 509	- 32,8
Aug	297 243	+ 3,7	87 273	- 19,2	163 186	+ 4,8	547 702	- 0,5

<sup>1/</sup> The percentage change is the change in the seasonally adjusted values of buildings completed of the relevant month compared with the seasonally adjusted values of buildings completed of the previous month expressed as a percentage.

**Table 9 - Building plans passed according to type of building: Total RSA**

Type of building	August 2000 *	July 2001 *	August 2001	January 2000 to August 2000	January 2001 to August 2001	Percentage change between January 2000 to August 2000 and January 2001 to August 2001
<b>Residential buildings</b>						
Dwelling-houses smaller than 80 square metres						
Number of dwelling-houses	3 129	3 069	2 892	32 705	26 932	- 17,7
Total square metres	134 888	123 546	127 234	1 278 371	1 061 348	- 17,0
Total value at current prices (R'000)	118 281	120 206	143 757	952 661	1 014 885	+ 6,5
Dwelling-houses equal to or larger than 80 square metres						
Number of dwelling-houses	1 845	1 872	1 780	13 974	14 302	+ 2,3
Total square metres	403 130	407 304	379 091	2 848 064	3 087 937	+ 8,4
Total value at current prices (R'000)	559 656	603 260	548 139	3 842 822	4 378 607	+ 13,9
Flats and townhouses						
Number of flats and townhouses	1 132	1 348	762	7 614	8 138	+ 6,9
Total square metres	135 922	127 760	85 451	838 106	837 138	- 0,1
Total value at current prices (R'000)	211 004	176 828	130 591	1 238 382	1 262 846	+ 2,0
Other residential buildings <sup>1/</sup>						
Total square metres	29 666	8 188	6 797	131 770	83 684	- 36,5
Total value at current prices (R'000)	40 895	9 367	13 764	181 895	185 430	+ 1,9
<b>Total value of residential buildings at current prices (R'000)</b>	<b>929 836</b>	<b>909 661</b>	<b>836 251</b>	<b>6 215 760</b>	<b>6 841 768</b>	<b>+ 10,1</b>
<b>Non-residential buildings</b>						
Office and banking space						
Total square metres	87 306	103 294	72 947	726 563	581 228	- 20,0
Total value at current prices (R'000)	138 113	131 164	124 834	1 120 187	984 731	- 12,1
Shopping space						
Total square metres	45 405	42 348	32 336	366 889	328 635	- 10,4
Total value at current prices (R'000)	66 390	69 832	52 991	509 276	477 075	- 6,3
Industrial and warehouse space						
Total square metres	80 492	100 671	58 392	831 551	571 888	- 31,2
Total value at current prices (R'000)	98 660	129 307	59 114	1 030 934	716 186	- 30,5
Other non-residential space <sup>2/</sup>						
Total square metres	33 161	43 904	24 190	302 941	276 412	- 8,8
Total value at current prices (R'000)	50 325	53 137	31 104	357 013	364 048	+ 2,0
<b>Total value of non-residential buildings at current prices (R'000)</b>	<b>353 488</b>	<b>383 440</b>	<b>268 043</b>	<b>3 017 410</b>	<b>2 542 040</b>	<b>- 15,8</b>
<b>Additions and alterations</b>						
Dwelling-houses						
Total square metres	307 064	248 264	272 737	2 041 203	1 939 246	- 5,0
Total value at current prices (R'000)	364 902	304 393	354 985	2 430 550	2 424 845	- 0,2
Other buildings <sup>3/</sup>						
Total square metres	85 502	73 303	91 221	697 956	619 059	- 11,3
Total value at current prices (R'000)	127 725	124 519	122 850	1 280 193	1 068 544	- 16,5
<b>Total value of additions and alterations at current prices (R'000)</b>	<b>492 627</b>	<b>428 912</b>	<b>477 835</b>	<b>3 710 743</b>	<b>3 493 389</b>	<b>- 5,9</b>
<b>Total value of building plans passed at current prices (R'000)</b>	<b>1 775 951</b>	<b>1 722 013</b>	<b>1 582 129</b>	<b>12 943 913</b>	<b>12 877 197</b>	<b>- 0,5</b>

1/ Other residential buildings include institutions for the disabled, boarding houses, old people's homes, hostels, hotels, motels, guest houses, holiday chalets, entertainment centres, bed-and-breakfast accommodation and casinos.

2/ Other non-residential space includes churches, sport and recreation clubs, schools, crèches, hospitals and all other non-residential space.

3/ Other buildings include additions and alterations to other residential buildings, non-residential buildings and internal alterations.

**Table 10 - Building plans passed according to type of building and province: Western Cape**

Type of building	August 2000 *	July 2001 *	August 2001	January 2000 to August 2000	January 2001 to August 2001	Percentage change between January 2000 to August 2000 and January 2001 to August 2001
<b>Residential buildings</b>						
Dwelling-houses smaller than 80 square metres						
Number of dwelling-houses	403	506	767	5 721	5 399	- 5,6
Total square metres	18 704	24 181	35 767	218 831	223 703	+ 2,2
Total value at current prices (R'000)	24 598	29 143	45 867	170 039	270 253	+ 58,9
Dwelling-houses equal to or larger than 80 square metres						
Number of dwelling-houses	576	659	669	4 156	4 655	+ 12,0
Total square metres	112 400	131 610	133 354	805 329	968 891	+ 20,3
Total value at current prices (R'000)	163 862	217 093	201 535	1 148 153	1 452 141	+ 26,5
Flats and townhouses						
Number of flats and townhouses	315	220	232	1 776	1 936	+ 9,0
Total square metres	37 583	24 447	21 526	199 571	183 872	- 7,9
Total value at current prices (R'000)	55 634	37 252	33 025	318 945	279 948	- 12,2
Other residential buildings <sup>1/</sup>						
Total square metres	3 076	48	5 564	58 015	36 889	- 36,4
Total value at current prices (R'000)	5 235	88	12 287	80 279	83 748	+ 4,3
<b>Total value of residential buildings at current prices (R'000)</b>	<b>249 329</b>	<b>283 576</b>	<b>292 714</b>	<b>1 717 416</b>	<b>2 086 090</b>	<b>+ 21,5</b>
<b>Non-residential buildings</b>						
Office and banking space						
Total square metres	18 612	66 800	12 510	133 185	176 044	+ 32,2
Total value at current prices (R'000)	24 142	67 658	22 033	246 804	250 900	+ 1,7
Shopping space						
Total square metres	8 814	15 441	12 378	125 343	140 607	+ 12,2
Total value at current prices (R'000)	12 617	27 459	19 734	172 384	191 215	+ 10,9
Industrial and warehouse space						
Total square metres	30 082	35 574	17 002	251 724	166 658	- 33,8
Total value at current prices (R'000)	36 861	38 738	16 645	264 035	164 436	- 37,7
Other non-residential space <sup>2/</sup>						
Total square metres	9 821	9 715	5 876	118 638	85 013	- 28,3
Total value at current prices (R'000)	11 504	7 497	5 025	101 482	94 833	- 6,6
<b>Total value of non-residential buildings at current prices (R'000)</b>	<b>85 124</b>	<b>141 352</b>	<b>63 437</b>	<b>784 705</b>	<b>701 384</b>	<b>- 10,6</b>
<b>Additions and alterations</b>						
Dwelling-houses						
Total square metres	94 208	76 746	84 596	623 012	600 457	- 3,6
Total value at current prices (R'000)	106 888	93 066	114 439	743 395	762 263	+ 2,5
Other buildings <sup>3/</sup>						
Total square metres	37 949	19 935	16 706	165 657	165 984	+ 0,2
Total value at current prices (R'000)	46 147	31 109	32 166	343 553	286 952	- 16,5
<b>Total value of additions and alterations at current prices (R'000)</b>	<b>153 035</b>	<b>124 175</b>	<b>146 605</b>	<b>1 086 948</b>	<b>1 049 215</b>	<b>- 3,5</b>
<b>Total value of building plans passed at current prices (R'000)</b>	<b>487 488</b>	<b>549 103</b>	<b>502 756</b>	<b>3 589 069</b>	<b>3 836 689</b>	<b>+ 6,9</b>

1/ Other residential buildings include institutions for the disabled, boarding houses, old people's homes, hostels, hotels, motels, guest houses, holiday chalets, entertainment centres, bed-and-breakfast accommodation and casinos.

2/ Other non-residential space includes churches, sport and recreation clubs, schools, crèches, hospitals and all other non-residential space.

3/ Other buildings include additions and alterations to other residential buildings, non-residential buildings and internal alterations.



**Table 11 - Building plans passed according to type of building and province: Eastern Cape**

Type of building	August 2000	July 2001	August 2001	January 2000 to August 2000	January 2001 to August 2001	Percentage change between January 2000 to August 2000 and January 2001 to August 2001
<b>Residential buildings</b>						
Dwelling-houses smaller than 80 square metres						
Number of dwelling-houses	443	408	163	3 541	1 926	-45,6
Total square metres	19 635	16 546	8 010	150 923	86 135	-42,9
Total value at current prices (R'000)	18 324	17 336	10 377	117 378	106 114	-9,6
Dwelling-houses equal to or larger than 80 square metres						
Number of dwelling-houses	70	96	143	898	923	+ 2,8
Total square metres	12 358	20 200	27 543	146 139	144 795	-0,9
Total value at current prices (R'000)	15 677	24 244	38 273	185 277	190 472	+ 2,8
Flats and townhouses						
Number of flats and townhouses	12	17	0	451	688	+ 52,5
Total square metres	2 741	1 117	0	34 333	36 731	+ 7,0
Total value at current prices (R'000)	2 779	1 597	0	45 671	44 165	-3,3
Other residential buildings <sup>1/</sup>						
Total square metres	0	0	129	7 482	26 085	+ 248,6
Total value at current prices (R'000)	0	0	277	9 946	77 305	+ 677,2
<b>Total value of residential buildings at current prices (R'000)</b>	<b>36 780</b>	<b>43 177</b>	<b>48 927</b>	<b>358 272</b>	<b>418 056</b>	<b>+ 16,7</b>
<b>Non-residential buildings</b>						
Office and banking space						
Total square metres	171	196	1 159	4 933	4 903	-0,6
Total value at current prices (R'000)	257	376	2 224	7 362	9 251	+ 25,7
Shopping space						
Total square metres	1 667	830	2 496	13 820	8 513	-38,4
Total value at current prices (R'000)	2 395	1 293	4 499	20 792	13 343	-35,8
Industrial and warehouse space						
Total square metres	0	10 107	3 791	88 036	32 278	-63,3
Total value at current prices (R'000)	0	8 789	5 496	85 920	35 577	-58,6
Other non-residential space <sup>2/</sup>						
Total square metres	2 024	502	353	25 167	7 270	-71,1
Total value at current prices (R'000)	2 883	816	668	34 012	11 762	-65,4
<b>Total value of non-residential buildings at current prices (R'000)</b>	<b>5 535</b>	<b>11 274</b>	<b>12 887</b>	<b>148 086</b>	<b>69 933</b>	<b>-52,8</b>
<b>Additions and alterations</b>						
Dwelling-houses						
Total square metres	18 034	21 064	20 875	145 099	150 187	+ 3,5
Total value at current prices (R'000)	22 449	25 670	28 260	180 349	194 257	+ 7,7
Other buildings <sup>3/</sup>						
Total square metres	5 439	3 428	24 156	52 426	79 666	+ 52,0
Total value at current prices (R'000)	7 677	4 940	16 286	74 189	97 723	+ 31,7
<b>Total value of additions and alterations at current prices (R'000)</b>	<b>30 126</b>	<b>30 610</b>	<b>44 546</b>	<b>254 538</b>	<b>291 980</b>	<b>+ 14,7</b>
<b>Total value of building plans passed at current prices (R'000)</b>	<b>72 441</b>	<b>85 061</b>	<b>106 360</b>	<b>760 896</b>	<b>779 969</b>	<b>+ 2,5</b>

1/ Other residential buildings include institutions for the disabled, boarding houses, old people's homes, hostels, hotels, motels, guest houses, holiday chalets, entertainment centres, bed-and-breakfast accommodation and casinos.

2/ Other non-residential space includes churches, sport and recreation clubs, schools, crèches, hospitals and all other non-residential space.

3/ Other buildings include additions and alterations to other residential buildings, non-residential buildings and internal alterations.

**Table 12 - Building plans passed according to type of building and province: Northern Cape**

Type of building	August 2000	July 2001	August 2001	January 2000 to August 2000	January 2001 to August 2001	Percentage change between January 2000 to August 2000 and January 2001 to August 2001
<b>Residential buildings</b>						
Dwelling-houses smaller than 80 square metres						
Number of dwelling-houses	12	8	5	57	50	- 12,3
Total square metres	659	484	288	3 295	2 883	- 12,5
Total value at current prices (R'000)	986	754	366	4 780	4 342	- 9,2
Dwelling-houses equal to or larger than 80 square metres						
Number of dwelling-houses	11	23	10	75	129	+ 72,0
Total square metres	2 109	4 365	1 777	12 385	22 372	+ 80,6
Total value at current prices (R'000)	2 947	6 747	2 677	17 280	30 301	+ 75,4
Flats and townhouses						
Number of flats and townhouses	0	1	0	32	12	- 62,5
Total square metres	0	200	0	4 570	2 085	- 54,4
Total value at current prices (R'000)	0	278	0	7 193	2 834	- 60,6
Other residential buildings <sup>1/</sup>						
Total square metres	0	0	0	327	0	..
Total value at current prices (R'000)	0	0	0	266	0	..
<b>Total value of residential buildings at current prices (R'000)</b>	<b>3 933</b>	<b>7 779</b>	<b>3 043</b>	<b>29 519</b>	<b>37 477</b>	<b>+ 27,0</b>
<b>Non-residential buildings</b>						
Office and banking space						
Total square metres	0	0	0	7 715	191	- 97,5
Total value at current prices (R'000)	0	0	0	16 363	124	- 99,2
Shopping space						
Total square metres	0	0	264	911	470	- 48,4
Total value at current prices (R'000)	0	0	581	1 411	807	- 42,8
Industrial and warehouse space						
Total square metres	602	1 244	0	2 383	2 336	- 2,0
Total value at current prices (R'000)	843	1 742	0	3 475	2 744	- 21,0
Other non-residential space <sup>2/</sup>						
Total square metres	147	0	0	4 370	1 632	- 62,7
Total value at current prices (R'000)	235	0	0	6 560	2 312	- 64,8
<b>Total value of non-residential buildings at current prices (R'000)</b>	<b>1 078</b>	<b>1 742</b>	<b>581</b>	<b>27 809</b>	<b>5 987</b>	<b>- 78,5</b>
<b>Additions and alterations</b>						
Dwelling-houses						
Total square metres	2 989	3 058	2 444	23 930	19 377	- 19,0
Total value at current prices (R'000)	5 328	5 110	4 398	38 008	31 690	- 16,6
Other buildings <sup>3/</sup>						
Total square metres	305	1 751	1 506	10 813	6 877	- 36,4
Total value at current prices (R'000)	783	3 166	3 626	24 164	14 768	- 38,9
<b>Total value of additions and alterations at current prices (R'000)</b>	<b>6 111</b>	<b>8 276</b>	<b>8 024</b>	<b>62 172</b>	<b>46 458</b>	<b>- 25,3</b>
<b>Total value of building plans passed at current prices (R'000)</b>	<b>11 122</b>	<b>17 797</b>	<b>11 648</b>	<b>119 500</b>	<b>89 922</b>	<b>- 24,8</b>

1/ Other residential buildings include institutions for the disabled, boarding houses, old people's homes, hostels, hotels, motels, guest houses, holiday chalets, entertainment centres, bed-and-breakfast accommodation and casinos.

2/ Other non-residential space includes churches, sport and recreation clubs, schools, crèches, hospitals and all other non-residential space.

3/ Other buildings include additions and alterations to other residential buildings, non-residential buildings and internal alterations.

**Table 13 - Building plans passed according to type of building and province: Free State**

Type of building	August 2000	July 2001	August 2001	January 2000 to August 2000	January 2001 to August 2001	Percentage change between January 2000 to August 2000 and January 2001 to August 2001
<b>Residential buildings</b>						
Dwelling-houses smaller than 80 square metres						
Number of dwelling-houses	217	248	161	3 406	1 767	-48,1
Total square metres	9 734	12 140	7 584	139 870	80 614	-42,4
Total value at current prices (R'000)	5 051	8 848	5 732	73 158	47 715	-34,8
Dwelling-houses equal to or larger than 80 square metres						
Number of dwelling-houses	72	56	57	530	485	-8,5
Total square metres	11 512	8 253	10 383	82 394	74 881	-9,1
Total value at current prices (R'000)	13 134	10 033	13 102	93 273	82 430	-11,6
Flats and townhouses						
Number of flats and townhouses	10	44	4	278	237	-14,7
Total square metres	1 306	6 282	920	21 687	30 995	+ 42,9
Total value at current prices (R'000)	1 300	8 030	1 380	28 781	46 689	+ 62,2
Other residential buildings <sup>1/</sup>						
Total square metres	0	3 154	0	1 423	4 406	+ 209,6
Total value at current prices (R'000)	0	3 061	0	2 460	4 912	+ 99,7
<b>Total value of residential buildings at current prices (R'000)</b>	<b>19 485</b>	<b>29 972</b>	<b>20 214</b>	<b>197 672</b>	<b>181 746</b>	<b>-8,1</b>
<b>Non-residential buildings</b>						
Office and banking space						
Total square metres	2 197	0	447	6 519	14 248	+ 118,6
Total value at current prices (R'000)	2 075	0	825	8 553	27 425	+ 220,6
Shopping space						
Total square metres	0	505	3 615	13 440	7 116	-47,1
Total value at current prices (R'000)	0	541	4 000	17 632	8 312	-52,9
Industrial and warehouse space						
Total square metres	4 072	1 000	365	11 596	4 750	-59,0
Total value at current prices (R'000)	3 747	800	329	9 473	3 655	-61,4
Other non-residential space <sup>2/</sup>						
Total square metres	4 986	1 071	1 665	7 814	8 704	+ 11,4
Total value at current prices (R'000)	9 421	1 600	3 340	12 502	12 586	+ 0,7
<b>Total value of non-residential buildings at current prices (R'000)</b>	<b>15 243</b>	<b>2 941</b>	<b>8 494</b>	<b>48 160</b>	<b>51 978</b>	<b>+ 7,9</b>
<b>Additions and alterations</b>						
Dwelling-houses						
Total square metres	7 410	7 493	10 715	64 462	63 288	-1,8
Total value at current prices (R'000)	7 821	7 846	11 566	66 841	66 629	-0,3
Other buildings <sup>3/</sup>						
Total square metres	5 451	3 486	1 516	36 591	12 802	-65,0
Total value at current prices (R'000)	8 812	5 200	2 341	107 218	24 487	-77,2
<b>Total value of additions and alterations at current prices (R'000)</b>	<b>16 633</b>	<b>13 046</b>	<b>13 907</b>	<b>174 059</b>	<b>91 116</b>	<b>-47,7</b>
<b>Total value of building plans passed at current prices (R'000)</b>	<b>51 361</b>	<b>45 959</b>	<b>42 615</b>	<b>419 891</b>	<b>324 840</b>	<b>-22,6</b>

1/ Other residential buildings include institutions for the disabled, boarding houses, old people's homes, hostels, hotels, motels, guest houses, holiday chalets, entertainment centres, bed-and-breakfast accommodation and casinos.

2/ Other non-residential space includes churches, sport and recreation clubs, schools, crèches, hospitals and all other non-residential space.

3/ Other buildings include additions and alterations to other residential buildings, non-residential buildings and internal alterations.

**Table 14 - Building plans passed according to type of building and province: KwaZulu-Natal**

Type of building	August 2000*	July 2001	August 2001	January 2000 to August 2000	January 2001 to August 2001	Percentage change between January 2000 to August 2000 and January 2001 to August 2001
<b>Residential buildings</b>						
Dwelling-houses smaller than 80 square metres						
Number of dwelling-houses	171	119	107	1 263	1 724	+ 36,5
Total square metres	8 436	6 043	5 294	60 933	76 934	+ 26,3
Total value at current prices (R'000)	9 722	7 058	6 213	66 970	73 450	+ 9,7
Dwelling-houses equal to or larger than 80 square metres						
Number of dwelling-houses	143	159	169	1 232	1 105	- 10,3
Total square metres	34 327	35 796	35 077	252 482	244 640	- 3,1
Total value at current prices (R'000)	53 242	51 589	54 705	363 935	352 421	- 3,2
Flats and townhouses						
Number of flats and townhouses	153	86	88	586	650	+ 10,9
Total square metres	17 549	12 060	11 574	86 474	89 238	+ 3,2
Total value at current prices (R'000)	28 637	19 794	21 125	141 667	147 978	+ 4,5
Other residential buildings <sup>1/</sup>						
Total square metres	0	1 135	1 104	3 869	2 377	- 38,6
Total value at current prices (R'000)	0	901	1 200	9 785	2 431	- 75,2
<b>Total value of residential buildings at current prices (R'000)</b>	<b>91 601</b>	<b>79 342</b>	<b>83 243</b>	<b>582 357</b>	<b>576 280</b>	<b>- 1,0</b>
<b>Non-residential buildings</b>						
Office and banking space						
Total square metres	18 945	5 711	34 311	45 999	121 756	+ 164,7
Total value at current prices (R'000)	38 385	11 355	57 469	91 054	254 006	+ 179,0
Shopping space						
Total square metres	1 386	12 806	3 259	16 511	31 720	+ 92,1
Total value at current prices (R'000)	3 367	17 723	5 169	20 374	41 218	+ 102,3
Industrial and warehouse space						
Total square metres	18 585	15 006	3 233	98 385	85 499	- 13,1
Total value at current prices (R'000)	20 832	20 332	3 446	130 163	95 494	- 26,6
Other non-residential space <sup>2/</sup>						
Total square metres	1 577	2 501	2 683	37 085	34 955	- 5,7
Total value at current prices (R'000)	2 715	3 325	5 124	47 495	43 872	- 7,6
<b>Total value of non-residential buildings at current prices (R'000)</b>	<b>65 299</b>	<b>52 735</b>	<b>71 208</b>	<b>289 086</b>	<b>434 590</b>	<b>+ 50,3</b>
<b>Additions and alterations</b>						
Dwelling-houses						
Total square metres	41 073	37 700	38 521	281 296	267 282	- 5,0
Total value at current prices (R'000)	49 908	44 208	52 220	332 528	326 122	- 1,9
Other buildings <sup>3/</sup>						
Total square metres	7 603	19 659	12 372	176 951	109 361	- 38,2
Total value at current prices (R'000)	17 613	40 390	19 230	320 800	224 369	- 30,1
<b>Total value of additions and alterations at current prices (R'000)</b>	<b>67 521</b>	<b>84 598</b>	<b>71 450</b>	<b>653 328</b>	<b>550 491</b>	<b>- 15,7</b>
<b>Total value of building plans passed at current prices (R'000)</b>	<b>224 421</b>	<b>216 675</b>	<b>225 901</b>	<b>1 524 771</b>	<b>1 561 361</b>	<b>+ 2,4</b>

1/ Other residential buildings include institutions for the disabled, boarding houses, old people's homes, hostels, hotels, motels, guest houses, holiday chalets, entertainment centres, bed-and-breakfast accommodation and casinos.

2/ Other non-residential space includes churches, sport and recreation clubs, schools, crèches, hospitals and all other non-residential space.

3/ Other buildings include additions and alterations to other residential buildings, non-residential buildings and internal alterations.

**Table 15 - Building plans passed according to type of building and province: North West**

Type of building	August 2000*	July 2001	August 2001	January 2000 to August 2000	January 2001 to August 2001	Percentage change between January 2000 to August 2000 and January 2001 to August 2001
<b>Residential buildings</b>						
Dwelling-houses smaller than 80 square metres						
Number of dwelling-houses	78	904	134	1 913	3 261	+ 70,5
Total square metres	4 170	28 955	6 749	65 235	113 876	+ 74,6
Total value at current prices (R'000)	4 823	12 623	6 331	45 482	68 193	+ 49,9
Dwelling-houses equal to or larger than 80 square metres						
Number of dwelling-houses	96	77	54	693	544	- 21,5
Total square metres	16 046	14 396	8 966	104 773	96 371	- 8,0
Total value at current prices (R'000)	19 552	19 517	12 549	117 391	113 976	- 2,9
Flats and townhouses						
Number of flats and townhouses	0	58	26	133	226	+ 69,9
Total square metres	0	5 412	2 673	12 431	25 884	+ 108,2
Total value at current prices (R'000)	0	7 341	3 426	14 624	34 056	+ 132,9
Other residential buildings <sup>1/</sup>						
Total square metres	0	0	0	4 449	1 989	- 55,3
Total value at current prices (R'000)	0	0	0	5 380	1 664	- 69,1
<b>Total value of residential buildings at current prices (R'000)</b>	<b>24 375</b>	<b>39 481</b>	<b>22 306</b>	<b>182 877</b>	<b>217 889</b>	<b>+ 19,1</b>
<b>Non-residential buildings</b>						
Office and banking space						
Total square metres	0	0	0	1 083	3 644	+ 236,5
Total value at current prices (R'000)	0	0	0	1 065	5 999	+ 463,3
Shopping space						
Total square metres	4 113	3 415	270	11 656	16 978	+ 45,7
Total value at current prices (R'000)	6 210	7 132	432	16 847	23 565	+ 39,9
Industrial and warehouse space						
Total square metres	197	0	480	4 183	7 802	+ 86,5
Total value at current prices (R'000)	126	0	413	3 991	7 876	+ 97,3
Other non-residential space <sup>2/</sup>						
Total square metres	245	3 226	588	13 520	6 508	- 51,9
Total value at current prices (R'000)	466	2 367	511	16 662	5 812	- 65,1
<b>Total value of non-residential buildings at current prices (R'000)</b>	<b>6 802</b>	<b>9 499</b>	<b>1 356</b>	<b>38 565</b>	<b>43 252</b>	<b>+ 12,2</b>
<b>Additions and alterations</b>						
Dwelling-houses						
Total square metres	7 583	5 103	6 595	52 866	46 690	- 11,7
Total value at current prices (R'000)	7 286	5 393	7 862	52 136	50 450	- 3,2
Other buildings <sup>3/</sup>						
Total square metres	3 891	1 859	1 887	20 583	15 192	- 26,2
Total value at current prices (R'000)	6 055	2 563	2 686	40 638	24 264	- 40,3
<b>Total value of additions and alterations at current prices (R'000)</b>	<b>13 341</b>	<b>7 956</b>	<b>10 548</b>	<b>92 774</b>	<b>74 714</b>	<b>- 19,5</b>
<b>Total value of building plans passed at current prices (R'000)</b>	<b>44 518</b>	<b>56 936</b>	<b>34 210</b>	<b>314 216</b>	<b>335 855</b>	<b>+ 6,9</b>

1/ Other residential buildings include institutions for the disabled, boarding houses, old people's homes, hostels, hotels, motels, guest houses, holiday chalets, entertainment centres, bed-and-breakfast accommodation and casinos.

2/ Other non-residential space includes churches, sport and recreation clubs, schools, crèches, hospitals and all other non-residential space.

3/ Other buildings include additions and alterations to other residential buildings, non-residential buildings and internal alterations.

**Table 16 - Building plans passed according to type of building and province: Gauteng**

Type of building	August 2000 *	July 2001	August 2001	January 2000 to August 2000	January 2001 to August 2001	Percentage change between January 2000 to August 2000 and January 2001 to August 2001
<b>Residential buildings</b>						
Dwelling-houses smaller than 80 square metres						
Number of dwelling-houses	1 369	730	1 175	13 771	8 180	- 40,6
Total square metres	55 276	28 933	48 513	519 078	308 338	- 40,6
Total value at current prices (R'000)	44 591	39 382	57 924	389 019	338 133	- 13,1
Dwelling-houses equal to or larger than 80 square metres						
Number of dwelling-houses	736	663	573	5 381	5 583	+ 3,8
Total square metres	191 730	166 239	142 989	1 275 489	1 375 615	+ 7,9
Total value at current prices (R'000)	263 816	239 164	200 761	1 713 962	1 948 527	+ 13,7
Flats and townhouses						
Number of flats and townhouses	612	346	371	4 154	3 487	- 16,1
Total square metres	72 239	39 980	44 836	456 982	398 438	- 12,8
Total value at current prices (R'000)	116 793	54 380	66 593	655 176	619 265	- 5,5
Other residential buildings <sup>1/</sup>						
Total square metres	26 590	2 697	0	52 342	10 151	- 80,6
Total value at current prices (R'000)	35 660	3 812	0	68 817	13 169	- 80,9
<b>Total value of residential buildings at current prices (R'000)</b>	<b>460 860</b>	<b>336 738</b>	<b>325 278</b>	<b>2 826 974</b>	<b>2 919 094</b>	<b>+ 3,3</b>
<b>Non-residential buildings</b>						
Office and banking space						
Total square metres	21 243	30 587	24 491	491 150	255 866	- 47,9
Total value at current prices (R'000)	33 221	51 775	42 254	695 370	429 988	- 38,2
Shopping space						
Total square metres	24 591	9 202	8 424	163 600	107 853	- 34,1
Total value at current prices (R'000)	36 458	15 526	16 741	234 508	176 007	- 24,9
Industrial and warehouse space						
Total square metres	26 261	34 158	32 060	342 609	242 424	- 29,2
Total value at current prices (R'000)	35 490	55 754	31 064	492 780	379 343	- 23,0
Other non-residential space <sup>2/</sup>						
Total square metres	13 509	20 959	10 939	86 874	115 673	+ 33,2
Total value at current prices (R'000)	22 331	31 580	14 601	127 846	172 994	+ 35,3
<b>Total value of non-residential buildings at current prices (R'000)</b>	<b>127 500</b>	<b>154 635</b>	<b>104 660</b>	<b>1 550 504</b>	<b>1 158 332</b>	<b>- 25,3</b>
<b>Additions and alterations</b>						
Dwelling-houses						
Total square metres	119 910	80 149	92 923	728 550	678 810	- 6,8
Total value at current prices (R'000)	147 850	104 704	118 199	892 619	870 687	- 2,5
Other buildings <sup>3/</sup>						
Total square metres	20 783	20 560	26 116	205 767	205 036	- 0,4
Total value at current prices (R'000)	34 321	32 431	36 709	321 390	352 275	+ 9,6
<b>Total value of additions and alterations at current prices (R'000)</b>	<b>182 171</b>	<b>137 135</b>	<b>154 908</b>	<b>1 214 009</b>	<b>1 222 962</b>	<b>+ 0,7</b>
<b>Total value of building plans passed at current prices (R'000)</b>	<b>770 531</b>	<b>628 508</b>	<b>584 846</b>	<b>5 591 487</b>	<b>5 300 388</b>	<b>- 5,2</b>

1/ Other residential buildings include institutions for the disabled, boarding houses, old people's homes, hostels, hotels, motels, guest houses, holiday chalets, entertainment centres, bed-and-breakfast accommodation and casinos.

2/ Other non-residential space includes churches, sport and recreation clubs, schools, crèches, hospitals and all other non-residential space.

3/ Other buildings include additions and alterations to other residential buildings, non-residential buildings and internal alterations.

**Table 17 - Building plans passed according to type of building and province: Mpumalanga**

Type of building	August 2000	July 2001	August 2001	January 2000 to August 2000	January 2001 to August 2001	Percentage change between January 2000 to August 2000 and January 2001 to August 2001
<b>Residential buildings</b>						
Dwelling-houses smaller than 80 square metres						
Number of dwelling-houses	179	118	345	1 605	4 307	+ 168,3
Total square metres	6 997	4 520	12 975	57 658	150 114	+ 160,4
Total value at current prices (R'000)	2 860	2 713	8 072	41 247	82 268	+ 99,5
Dwelling-houses equal to or larger than 80 square metres						
Number of dwelling-houses	82	92	54	672	551	- 18,0
Total square metres	11 336	18 292	10 491	111 248	103 953	- 6,6
Total value at current prices (R'000)	13 332	24 866	13 466	126 560	132 666	+ 4,8
Flats and townhouses						
Number of flats and townhouses	9	575	32	129	853	+ 561,2
Total square metres	1 493	38 174	2 730	11 590	63 416	+ 447,2
Total value at current prices (R'000)	1 673	48 032	3 746	12 987	79 770	+ 514,2
Other residential buildings <sup>1/</sup>						
Total square metres	0	1 154	0	863	1 595	+ 84,8
Total value at current prices (R'000)	0	1 505	0	1 362	2 105	+ 54,6
<b>Total value of residential buildings at current prices (R'000)</b>	<b>17 865</b>	<b>77 116</b>	<b>25 284</b>	<b>182 156</b>	<b>296 809</b>	<b>+ 62,9</b>
<b>Non-residential buildings</b>						
Office and banking space						
Total square metres	26 138	0	0	34 333	3 671	- 89,3
Total value at current prices (R'000)	40 033	0	0	51 382	5 750	- 88,8
Shopping space						
Total square metres	3 782	149	422	16 325	2 717	- 83,4
Total value at current prices (R'000)	4 290	158	335	19 384	3 995	- 79,4
Industrial and warehouse space						
Total square metres	470	2 819	1 461	29 656	28 436	- 4,1
Total value at current prices (R'000)	500	2 542	1 721	37 866	25 132	- 33,6
Other non-residential space <sup>2/</sup>						
Total square metres	852	5 930	2 086	7 920	13 738	+ 73,5
Total value at current prices (R'000)	770	5 952	1 835	8 680	15 367	+ 77,0
<b>Total value of non-residential buildings at current prices (R'000)</b>	<b>45 593</b>	<b>8 652</b>	<b>3 891</b>	<b>117 312</b>	<b>50 244</b>	<b>- 57,2</b>
<b>Additions and alterations</b>						
Dwelling-houses						
Total square metres	11 222	12 855	12 337	89 419	81 770	- 8,6
Total value at current prices (R'000)	11 107	13 141	13 154	81 869	82 029	+ 0,2
Other buildings <sup>3/</sup>						
Total square metres	757	1 177	6 840	12 745	16 144	+ 26,7
Total value at current prices (R'000)	758	2 704	8 538	17 885	24 576	+ 37,4
<b>Total value of additions and alterations at current prices (R'000)</b>	<b>11 865</b>	<b>15 845</b>	<b>21 692</b>	<b>99 754</b>	<b>106 605</b>	<b>+ 6,9</b>
<b>Total value of building plans passed at current prices (R'000)</b>	<b>75 323</b>	<b>101 613</b>	<b>50 867</b>	<b>399 222</b>	<b>453 658</b>	<b>+ 13,6</b>

1/ Other residential buildings include institutions for the disabled, boarding houses, old people's homes, hostels, hotels, motels, guest houses, holiday chalets, entertainment centres, bed-and-breakfast accommodation and casinos.

2/ Other non-residential space includes churches, sport and recreation clubs, schools, crèches, hospitals and all other non-residential space.

3/ Other buildings include additions and alterations to other residential buildings, non-residential buildings and internal alterations.

**Table 18 - Building plans passed according to type of building and province: Northern Province**

Type of building	August 2000*	July 2001	August 2001	January 2000 to August 2000	January 2001 to August 2001	Percentage change between January 2000 to August 2000 and January 2001 to August 2001
<b>Residential buildings</b>						
Dwelling-houses smaller than 80 square metres						
Number of dwelling-houses	257	28	35	1 428	318	-77,7
Total square metres	11 277	1 744	2 054	62 548	18 751	-70,0
Total value at current prices (R'000)	7 326	2 349	2 875	44 588	24 417	-45,2
Dwelling-houses equal to or larger than 80 square metres						
Number of dwelling-houses	59	47	51	337	327	-3,0
Total square metres	11 312	8 153	8 511	57 825	56 419	-2,4
Total value at current prices (R'000)	14 094	10 007	11 071	76 991	75 673	-1,7
Flats and townhouses						
Number of flats and townhouses	21	1	9	75	49	-34,7
Total square metres	3 011	88	1 192	10 468	6 479	-38,1
Total value at current prices (R'000)	4 188	124	1 296	13 338	8 141	-39,0
Other residential buildings <sup>1/</sup>						
Total square metres	0	0	0	3 000	192	-93,6
Total value at current prices (R'000)	0	0	0	3 600	96	-97,3
<b>Total value of residential buildings at current prices (R'000)</b>	<b>25 608</b>	<b>12 480</b>	<b>15 242</b>	<b>138 517</b>	<b>108 327</b>	<b>-21,8</b>
<b>Non-residential buildings</b>						
Office and banking space						
Total square metres	0	0	29	1 646	905	-45,0
Total value at current prices (R'000)	0	0	29	2 234	1 288	-42,3
Shopping space						
Total square metres	1 052	0	1 208	5 283	12 661	+ 139,7
Total value at current prices (R'000)	1 053	0	1 500	5 944	18 613	+ 213,1
Industrial and warehouse space						
Total square metres	223	763	0	2 979	1 705	-42,8
Total value at current prices (R'000)	261	610	0	3 231	1 929	-40,3
Other non-residential space <sup>2/</sup>						
Total square metres	0	0	0	1 553	2 919	+ 88,0
Total value at current prices (R'000)	0	0	0	1 774	4 510	+ 154,2
<b>Total value of non-residential buildings at current prices (R'000)</b>	<b>1 314</b>	<b>610</b>	<b>1 529</b>	<b>13 183</b>	<b>26 340</b>	<b>+ 99,8</b>
<b>Additions and alterations</b>						
Dwelling-houses						
Total square metres	4 635	4 096	3 731	32 569	31 385	-3,6
Total value at current prices (R'000)	6 265	5 255	4 887	42 805	40 718	-4,9
Other buildings <sup>3/</sup>						
Total square metres	3 324	1 448	122	16 423	7 997	-51,3
Total value at current prices (R'000)	5 559	2 016	1 268	30 356	19 130	-37,0
<b>Total value of additions and alterations at current prices (R'000)</b>	<b>11 824</b>	<b>7 271</b>	<b>6 155</b>	<b>73 161</b>	<b>59 848</b>	<b>-18,2</b>
<b>Total value of building plans passed at current prices (R'000)</b>	<b>38 746</b>	<b>20 361</b>	<b>22 926</b>	<b>224 861</b>	<b>194 515</b>	<b>-13,5</b>

1/ Other residential buildings include institutions for the disabled, boarding houses, old people's homes, hostels, hotels, motels, guest houses, holiday chalets, entertainment centres, bed-and-breakfast accommodation and casinos.

2/ Other non-residential space includes churches, sport and recreation clubs, schools, crèches, hospitals and all other non-residential space.

3/ Other buildings include additions and alterations to other residential buildings, non-residential buildings and internal alterations.



**Table 19 - Buildings completed according to type of building: Total RSA**

Type of building	August 2000 *	July 2001 *	August 2001	January 2000 to August 2000	January 2001 to August 2001	Percentage change between January 2000 to August 2000 and January 2001 to August 2001
<b>Residential buildings</b>						
Dwelling-houses smaller than 80 square metres						
Number of dwelling-houses	4 459	2 189	2 353	25 725	17 371	- 32,5
Total square metres	173 715	82 203	101 817	945 569	708 769	- 25,0
Total value at current prices (R'000)	130 544	85 051	109 214	703 731	647 705	- 8,0
Dwelling-houses equal to or larger than 80 square metres						
Number of dwelling-houses	946	1 060	805	6 792	7 717	+ 13,6
Total square metres	187 436	196 919	168 978	1 319 929	1 529 138	+ 15,9
Total value at current prices (R'000)	233 153	271 398	237 524	1 691 111	2 122 526	+ 25,5
Flats and townhouses						
Number of flats and townhouses	577	318	458	4 847	4 547	- 6,2
Total square metres	62 443	43 302	47 239	498 987	483 050	- 3,2
Total value at current prices (R'000)	78 076	61 356	63 886	673 773	683 026	+ 1,4
Other residential buildings <sup>1/</sup>						
Total square metres	6 315	942	6 960	41 655	92 016	+ 120,9
Total value at current prices (R'000)	7 918	1 359	15 410	60 646	359 079	+ 492,1
<b>Total value of residential buildings at current prices (R'000)</b>	<b>449 691</b>	<b>419 164</b>	<b>426 034</b>	<b>3 129 261</b>	<b>3 812 336</b>	<b>+ 21,8</b>
<b>Non-residential buildings</b>						
Office and banking space						
Total square metres	31 161	23 080	21 608	389 027	454 665	+ 16,9
Total value at current prices (R'000)	37 839	33 374	31 165	623 591	681 094	+ 9,2
Shopping space						
Total square metres	70 534	16 609	13 461	411 947	200 902	- 51,2
Total value at current prices (R'000)	173 385	18 141	20 470	847 041	316 590	- 62,6
Industrial and warehouse space						
Total square metres	52 116	55 920	41 571	508 682	495 145	- 2,7
Total value at current prices (R'000)	56 698	71 624	42 149	564 277	594 007	+ 5,3
Other non-residential space <sup>2/</sup>						
Total square metres	17 401	24 260	8 473	130 731	148 888	+ 13,9
Total value at current prices (R'000)	18 072	28 357	9 752	126 978	179 834	+ 41,6
<b>Total value of non-residential buildings at current prices (R'000)</b>	<b>285 994</b>	<b>151 496</b>	<b>103 536</b>	<b>2 161 887</b>	<b>1 771 525</b>	<b>- 18,1</b>
<b>Additions and alterations</b>						
Dwelling-houses						
Total square metres	138 980	121 431	120 099	928 880	971 868	+ 4,6
Total value at current prices (R'000)	160 588	141 440	144 571	1 055 692	1 137 449	+ 7,7
Other buildings <sup>3/</sup>						
Total square metres	37 103	49 871	33 897	381 344	382 875	+ 0,4
Total value at current prices (R'000)	50 420	90 777	62 402	703 963	790 085	+ 12,2
<b>Total value of additions and alterations at current prices (R'000)</b>	<b>211 008</b>	<b>232 217</b>	<b>206 973</b>	<b>1 759 655</b>	<b>1 927 534</b>	<b>+ 9,5</b>
<b>Total value of buildings completed at current prices (R'000)</b>	<b>946 693</b>	<b>802 877</b>	<b>736 543</b>	<b>7 050 803</b>	<b>7 511 395</b>	<b>+ 6,5</b>

1/ Other residential buildings include institutions for the disabled, boarding houses, old people's homes, hostels, hotels, motels, guest houses, holiday chalets, entertainment centres, bed-and-breakfast accommodation and casinos.

2/ Other non-residential space includes churches, sport and recreation clubs, schools, crèches, hospitals and all other non-residential space.

3/ Other buildings include additions and alterations to other residential buildings, non-residential buildings and internal alterations.

**Table 20 - Buildings completed according to type of building and province: Western Cape**

Type of building	August 2000 *	July 2001	August 2001	January 2000 to August 2000	January 2001 to August 2001	Percentage change between January 2000 to August 2000 and January 2001 to August 2001
<b>Residential buildings</b>						
Dwelling-houses smaller than 80 square metres						
Number of dwelling-houses	987	540	560	5 979	3 690	- 38,3
Total square metres	34 033	18 926	25 364	190 467	152 692	- 19,8
Total value at current prices (R'000)	19 129	19 039	35 073	113 798	173 830	+ 52,8
Dwelling-houses equal to or larger than 80 square metres						
Number of dwelling-houses	238	362	279	2 291	2 505	+ 9,3
Total square metres	48 691	66 590	56 047	413 609	489 100	+ 18,3
Total value at current prices (R'000)	64 865	95 395	82 444	554 708	726 690	+ 31,0
Flats and townhouses						
Number of flats and townhouses	279	132	263	1 520	1 258	- 17,2
Total square metres	26 486	17 531	24 957	153 290	139 756	- 8,8
Total value at current prices (R'000)	31 089	25 006	34 523	204 211	182 485	- 10,6
Other residential buildings <sup>1/</sup>						
Total square metres	2 383	942	5 410	22 090	33 317	+ 50,8
Total value at current prices (R'000)	2 398	1 359	13 342	32 968	45 340	+ 37,5
<b>Total value of residential buildings at current prices (R'000)</b>	<b>117 481</b>	<b>140 799</b>	<b>165 382</b>	<b>905 685</b>	<b>1 128 345</b>	<b>+ 24,6</b>
<b>Non-residential buildings</b>						
Office and banking space						
Total square metres	7 153	1 007	2 249	77 023	94 449	+ 22,6
Total value at current prices (R'000)	7 949	1 234	3 422	133 403	153 907	+ 15,4
Shopping space						
Total square metres	21 330	1 367	5 071	55 511	34 181	- 38,4
Total value at current prices (R'000)	28 600	1 149	6 136	75 236	42 280	- 43,8
Industrial and warehouse space						
Total square metres	18 814	7 780	9 343	159 265	96 533	- 39,4
Total value at current prices (R'000)	18 604	6 054	11 452	139 241	112 406	- 19,3
Other non-residential space <sup>2/</sup>						
Total square metres	9 455	10 497	5 189	68 515	55 085	- 19,6
Total value at current prices (R'000)	6 612	10 363	4 772	50 475	52 920	+ 4,8
<b>Total value of non-residential buildings at current prices (R'000)</b>	<b>61 765</b>	<b>18 800</b>	<b>25 782</b>	<b>398 355</b>	<b>361 513</b>	<b>- 9,2</b>
<b>Additions and alterations</b>						
Dwelling-houses						
Total square metres	45 453	51 491	41 299	352 446	370 263	+ 5,1
Total value at current prices (R'000)	54 382	62 779	53 107	415 681	459 251	+ 10,5
Other buildings <sup>3/</sup>						
Total square metres	8 582	19 317	9 420	110 127	118 969	+ 8,0
Total value at current prices (R'000)	11 799	30 815	17 715	175 331	286 837	+ 63,6
<b>Total value of additions and alterations at current prices (R'000)</b>	<b>66 181</b>	<b>93 594</b>	<b>70 822</b>	<b>591 012</b>	<b>746 088</b>	<b>+ 26,2</b>
<b>Total value of buildings completed at current prices (R'000)</b>	<b>245 427</b>	<b>253 193</b>	<b>261 986</b>	<b>1 895 052</b>	<b>2 235 946</b>	<b>18,0</b>

1/ Other residential buildings include institutions for the disabled, boarding houses, old people's homes, hostels, hotels, motels, guest houses, holiday chalets, entertainment centres, bed-and-breakfast accommodation and casinos.

2/ Other non-residential space includes churches, sport and recreation clubs, schools, crèches, hospitals and all other non-residential space.

3/ Other buildings include additions and alterations to other residential buildings, non-residential buildings and internal alterations.

**Table 21 - Buildings completed according to type of building and province: Eastern Cape**

Type of building	August 2000*	July 2001	August 2001	January 2000 to August 2000	January 2001 to August 2001	Percentage change between January 2000 to August 2000 and January 2001 to August 2001
<b>Residential buildings</b>						
Dwelling-houses smaller than 80 square metres						
Number of dwelling-houses	135	194	190	1 242	2 307	+ 85,7
Total square metres	6 054	8 461	7 748	53 704	99 271	+ 84,8
Total value at current prices (R'000)	6 793	9 669	10 008	60 439	92 228	+ 52,6
Dwelling-houses equal to or larger than 80 square metres						
Number of dwelling-houses	39	68	55	402	689	+ 71,4
Total square metres	8 585	9 805	12 134	69 043	93 098	+ 34,8
Total value at current prices (R'000)	9 884	12 384	13 253	78 627	116 978	+ 48,8
Flats and townhouses						
Number of flats and townhouses	2	30	4	298	169	- 43,3
Total square metres	205	3 915	628	25 096	17 104	- 31,8
Total value at current prices (R'000)	240	5 178	855	29 863	19 270	- 35,5
Other residential buildings <sup>1/</sup>						
Total square metres	920	0	0	1 287	6 993	+ 443,4
Total value at current prices (R'000)	1 000	0	0	1 440	10 955	+ 660,8
<b>Total value of residential buildings at current prices (R'000)</b>	<b>17 917</b>	<b>27 231</b>	<b>24 116</b>	<b>170 369</b>	<b>239 431</b>	<b>+ 40,5</b>
<b>Non-residential buildings</b>						
Office and banking space						
Total square metres	0	2 244	1 561	632	27 344	+ 4 226,6
Total value at current prices (R'000)	0	3 358	2 174	916	30 766	+ 3 258,7
Shopping space						
Total square metres	5 234	5 359	0	57 134	27 870	- 51,2
Total value at current prices (R'000)	9 481	6 297	0	79 600	35 685	- 55,2
Industrial and warehouse space						
Total square metres	1 184	2 311	0	29 941	104 074	+ 247,6
Total value at current prices (R'000)	1 229	2 027	0	24 884	105 383	+ 323,5
Other non-residential space <sup>2/</sup>						
Total square metres	1 020	1 377	0	5 131	19 514	+ 280,3
Total value at current prices (R'000)	961	1 627	0	5 771	24 938	+ 332,1
<b>Total value of non-residential buildings at current prices (R'000)</b>	<b>11 671</b>	<b>13 309</b>	<b>2 174</b>	<b>111 171</b>	<b>196 772</b>	<b>+ 77,0</b>
<b>Additions and alterations</b>						
Dwelling-houses						
Total square metres	8 391	13 494	11 820	64 690	71 942	+ 11,2
Total value at current prices (R'000)	9 267	14 581	13 894	65 661	84 903	+ 29,3
Other buildings <sup>3/</sup>						
Total square metres	2 143	5 348	896	25 184	38 692	+ 53,6
Total value at current prices (R'000)	4 147	5 488	1 492	31 593	51 655	+ 63,5
<b>Total value of additions and alterations at current prices (R'000)</b>	<b>13 414</b>	<b>20 069</b>	<b>15 386</b>	<b>97 254</b>	<b>136 558</b>	<b>+ 40,4</b>
<b>Total value of buildings completed at current prices (R'000)</b>	<b>43 002</b>	<b>60 609</b>	<b>41 676</b>	<b>378 794</b>	<b>572 761</b>	<b>+ 51,2</b>

1/ Other residential buildings include institutions for the disabled, boarding houses, old people's homes, hostels, hotels, motels, guest houses, holiday chalets, entertainment centres, bed-and-breakfast accommodation and casinos.

2/ Other non-residential space includes churches, sport and recreation clubs, schools, crèches, hospitals and all other non-residential space.

3/ Other buildings include additions and alterations to other residential buildings, non-residential buildings and internal alterations.

Table 22 - Buildings completed according to type of building and province: Northern Cape

Type of building	August 2000*	July 2001	August 2001	January 2000 to August 2000	January 2001 to August 2001	Percentage change between January 2000 to August 2000 and January 2001 to August 2001
<b>Residential buildings</b>						
Dwelling-houses smaller than 80 square metres						
Number of dwelling-houses	13	10	16	225	95	- 57,8
Total square metres	515	630	877	8 813	4 752	- 46,1
Total value at current prices (R'000)	795	1 009	1 394	8 323	7 045	- 15,4
Dwelling-houses equal to or larger than 80 square metres						
Number of dwelling-houses	6	35	19	69	114	+ 65,2
Total square metres	786	4 360	2 890	10 567	16 618	+ 57,3
Total value at current prices (R'000)	1 096	7 022	4 377	12 177	24 494	+ 101,1
Flats and townhouses						
Number of flats and townhouses	0	2	2	13	21	+ 61,5
Total square metres	0	264	151	1 715	2 052	+ 19,7
Total value at current prices (R'000)	0	442	211	2 305	3 019	+ 31,0
Other residential buildings <sup>1/</sup>						
Total square metres	0	0	0	2 758	346	- 87,5
Total value at current prices (R'000)	0	0	0	3 193	277	- 91,3
<b>Total value of residential buildings at current prices (R'000)</b>	<b>1 891</b>	<b>8 473</b>	<b>5 982</b>	<b>25 998</b>	<b>34 835</b>	<b>+ 34,0</b>
<b>Non-residential buildings</b>						
Office and banking space						
Total square metres	0	0	0	0	7 105	..
Total value at current prices (R'000)	0	0	0	0	15 631	..
Shopping space						
Total square metres	0	0	0	8 933	4 775	-46,5
Total value at current prices (R'000)	0	0	0	10 959	7 261	- 33,7
Industrial and warehouse space						
Total square metres	3 244	0	0	6 256	772	- 87,7
Total value at current prices (R'000)	6 114	0	0	9 324	618	- 93,4
Other non-residential space <sup>2/</sup>						
Total square metres	130	113	0	899	956	+ 6,3
Total value at current prices (R'000)	0	181	0	1 299	1 725	+ 32,8
<b>Total value of non-residential buildings at current prices (R'000)</b>	<b>6 322</b>	<b>181</b>	<b>0</b>	<b>21 582</b>	<b>25 235</b>	<b>+ 16,9</b>
<b>Additions and alterations</b>						
Dwelling-houses						
Total square metres	1 532	2 145	1 810	12 331	13 667	+ 10,8
Total value at current prices (R'000)	2 096	3 770	3 209	16 489	22 257	+ 35,0
Other buildings <sup>3/</sup>						
Total square metres	781	781	1 361	4 607	4 006	- 13,0
Total value at current prices (R'000)	1 761	1 819	3 488	11 359	10 062	- 11,4
<b>Total value of additions and alterations at current prices (R'000)</b>	<b>3 857</b>	<b>5 589</b>	<b>6 697</b>	<b>27 848</b>	<b>32 319</b>	<b>+ 16,1</b>
<b>Total value of buildings completed at current prices (R'000)</b>	<b>12 070</b>	<b>14 243</b>	<b>12 679</b>	<b>75 428</b>	<b>92 389</b>	<b>22,5</b>

1/ Other residential buildings include institutions for the disabled, boarding houses, old people's homes, hostels, hotels, motels, guest houses, holiday chalets, entertainment centres, bed-and-breakfast accommodation and casinos.

2/ Other non-residential space includes churches, sport and recreation clubs, schools, crèches, hospitals and all other non-residential space.

3/ Other buildings include additions and alterations to other residential buildings, non-residential buildings and internal alterations.

**Table 23 - Buildings completed according to type of building and province: Free State**

Type of building	August 2000*	July 2001	August 2001	January 2000 to August 2000	January 2001 to August 2001	Percentage change between January 2000 to August 2000 and January 2001 to August 2001
<b>Residential buildings</b>						
Dwelling-houses smaller than 80 square metres						
Number of dwelling-houses	1 424	48	230	2 792	1 323	-52,6
Total square metres	52 271	2 274	9 997	109 084	56 154	-48,5
Total value at current prices (R'000)	29 438	1 958	5 486	61 016	31 755	-48,0
Dwelling-houses equal to or larger than 80 square metres						
Number of dwelling-houses	21	26	20	199	240	+ 20,6
Total square metres	2 445	4 230	4 779	32 417	43 522	+ 34,3
Total value at current prices (R'000)	2 912	4 901	6 832	37 587	51 917	+ 38,1
Flats and townhouses						
Number of flats and townhouses	23	6	17	145	145	+ 0,0
Total square metres	2 039	987	2 167	15 943	12 995	-18,5
Total value at current prices (R'000)	2 535	1 444	2 645	20 241	17 461	-13,7
Other residential buildings <sup>1/</sup>						
Total square metres	0	0	0	560	464	-17,1
Total value at current prices (R'000)	0	0	0	648	581	-10,3
<b>Total value of residential buildings at current prices (R'000)</b>	<b>34 885</b>	<b>8 303</b>	<b>14 963</b>	<b>119 492</b>	<b>101 714</b>	<b>-14,9</b>
<b>Non-residential buildings</b>						
Office and banking space						
Total square metres	0	2 745	2 876	5 324	17 195	+ 223,0
Total value at current prices (R'000)	0	3 300	7 000	9 921	32 203	+ 224,6
Shopping space						
Total square metres	0	1 165	0	13 628	5 702	-58,2
Total value at current prices (R'000)	0	1 900	0	17 329	7 058	-59,3
Industrial and warehouse space						
Total square metres	4 191	0	872	13 819	13 622	-1,4
Total value at current prices (R'000)	3 778	0	1 212	11 069	12 860	+ 16,2
Other non-residential space <sup>2/</sup>						
Total square metres	0	1 367	969	4 352	12 009	+ 175,9
Total value at current prices (R'000)	0	2 052	1 586	5 324	20 187	+ 279,2
<b>Total value of non-residential buildings at current prices (R'000)</b>	<b>3 778</b>	<b>7 252</b>	<b>9 798</b>	<b>43 643</b>	<b>72 308</b>	<b>+ 65,7</b>
<b>Additions and alterations</b>						
Dwelling-houses						
Total square metres	3 172	4 646	2 888	33 561	39 681	+ 18,2
Total value at current prices (R'000)	6 480	5 310	2 621	35 441	40 894	+ 15,4
Other buildings <sup>3/</sup>						
Total square metres	733	1 661	309	10 314	24 631	+ 138,8
Total value at current prices (R'000)	1 007	4 533	5 394	18 412	103 240	+ 460,7
<b>Total value of additions and alterations at current prices (R'000)</b>	<b>7 487</b>	<b>9 843</b>	<b>8 015</b>	<b>53 853</b>	<b>144 134</b>	<b>+ 167,6</b>
<b>Total value of buildings completed at current prices (R'000)</b>	<b>46 150</b>	<b>25 398</b>	<b>32 776</b>	<b>216 988</b>	<b>318 156</b>	<b>+ 46,6</b>

1/ Other residential buildings include institutions for the disabled, boarding houses, old people's homes, hostels, hotels, motels, guest houses, holiday chalets, entertainment centres, bed-and-breakfast accommodation and casinos.

2/ Other non-residential space includes churches, sport and recreation clubs, schools, crèches, hospitals and all other non-residential space.

3/ Other buildings include additions and alterations to other residential buildings, non-residential buildings and internal alterations.

**Table 24 - Buildings completed according to type of building and province: KwaZulu-Natal**

Type of building	August 2000*	July 2001	August 2001	January 2000 to August 2000	January 2001 to August 2001	Percentage change between January 2000 to August 2000 and January 2001 to August 2001
<b>Residential buildings</b>						
Dwelling-houses smaller than 80 square metres						
Number of dwelling-houses	278	186	261	2 005	1 706	-14,9
Total square metres	14 309	7 976	10 625	79 231	75 583	-4,6
Total value at current prices (R'000)	14 844	9 643	11 086	75 095	75 254	+ 0,2
Dwelling-houses equal to or larger than 80 square metres						
Number of dwelling-houses	295	155	152	1 060	1 095	+ 3,3
Total square metres	44 942	31 217	33 274	187 993	232 070	+ 23,4
Total value at current prices (R'000)	49 571	39 019	47 326	220 828	318 264	+ 44,1
Flats and townhouses						
Number of flats and townhouses	68	15	43	481	588	+ 22,2
Total square metres	14 298	2 767	7 682	71 842	71 689	-0,2
Total value at current prices (R'000)	16 084	4 066	10 927	102 447	105 005	+ 2,5
Other residential buildings <sup>1/</sup>						
Total square metres	3 012	0	280	4 033	8 730	+ 116,5
Total value at current prices (R'000)	4 520	0	540	5 666	40 540	+ 615,5
<b>Total value of residential buildings at current prices (R'000)</b>	<b>85 019</b>	<b>52 728</b>	<b>69 879</b>	<b>404 036</b>	<b>539 063</b>	<b>+ 33,4</b>
<b>Non-residential buildings</b>						
Office and banking space						
Total square metres	3 889	87	9 480	49 946	46 792	-6,3
Total value at current prices (R'000)	5 209	87	13 169	111 162	73 812	-33,6
Shopping space						
Total square metres	1 340	2 747	1 714	18 420	23 117	+ 25,5
Total value at current prices (R'000)	4 050	2 647	1 885	24 830	38 585	+ 55,4
Industrial and warehouse space						
Total square metres	14 710	19 942	8 035	127 539	108 726	-14,8
Total value at current prices (R'000)	15 015	21 352	7 033	133 379	126 381	-5,2
Other non-residential space <sup>2/</sup>						
Total square metres	2 874	2 132	1 664	17 926	15 735	-12,2
Total value at current prices (R'000)	5 639	2 342	2 735	22 853	18 830	-17,6
<b>Total value of non-residential buildings at current prices (R'000)</b>	<b>29 913</b>	<b>26 428</b>	<b>24 822</b>	<b>292 224</b>	<b>257 608</b>	<b>-11,8</b>
<b>Additions and alterations</b>						
Dwelling-houses						
Total square metres	42 715	30 289	27 219	192 538	236 424	+ 22,8
Total value at current prices (R'000)	43 765	32 799	32 484	210 857	262 768	+ 24,6
Other buildings <sup>3/</sup>						
Total square metres	15 653	6 597	14 434	136 934	75 725	-44,7
Total value at current prices (R'000)	18 361	19 731	23 139	264 515	143 494	-45,8
<b>Total value of additions and alterations at current prices (R'000)</b>	<b>62 126</b>	<b>52 530</b>	<b>55 623</b>	<b>475 372</b>	<b>406 262</b>	<b>-14,5</b>
<b>Total value of buildings completed at current prices (R'000)</b>	<b>177 058</b>	<b>131 686</b>	<b>150 324</b>	<b>1 171 632</b>	<b>1 202 933</b>	<b>+ 2,7</b>

1/ Other residential buildings include institutions for the disabled, boarding houses, old people's homes, hostels, hotels, motels, guest houses, holiday chalets, entertainment centres, bed-and-breakfast accommodation and casinos.

2/ Other non-residential space includes churches, sport and recreation clubs, schools, crèches, hospitals and all other non-residential space.

3/ Other buildings include additions and alterations to other residential buildings, non-residential buildings and internal alterations.

Table 25 - Buildings completed according to type of building and province: North West

Type of building	August 2000*	July 2001	August 2001	January 2000 to August 2000	January 2001 to August 2001	Percentage change between January 2000 to August 2000 and January 2001 to August 2001
<b>Residential buildings</b>						
Dwelling-houses smaller than 80 square metres						
Number of dwelling-houses	183	366	211	808	1 033	+ 27,8
Total square metres	9 166	12 356	8 672	38 164	43 563	+ 14,1
Total value at current prices (R'000)	10 805	6 399	6 050	37 651	37 227	- 1,1
Dwelling-houses equal to or larger than 80 square metres						
Number of dwelling-houses	23	31	51	259	346	+ 33,6
Total square metres	2 572	6 078	8 796	43 476	65 469	+ 50,6
Total value at current prices (R'000)	2 824	8 170	13 960	48 142	83 037	+ 72,5
Flats and townhouses						
Number of flats and townhouses	22	14	0	124	84	- 32,3
Total square metres	1 615	1 061	0	14 560	8 650	- 40,6
Total value at current prices (R'000)	1 928	2 027	0	15 499	9 636	- 37,8
Other residential buildings <sup>1/</sup>						
Total square metres	0	0	0	748	3 684	+ 392,5
Total value at current prices (R'000)	0	0	0	765	4 162	+ 444,1
<b>Total value of residential buildings at current prices (R'000)</b>	<b>15 557</b>	<b>16 596</b>	<b>20 010</b>	<b>102 057</b>	<b>134 062</b>	<b>+ 31,4</b>
<b>Non-residential buildings</b>						
Office and banking space						
Total square metres	608	147	0	10 050	897	- 91,1
Total value at current prices (R'000)	814	150	0	11 951	1 550	- 87,0
Shopping space						
Total square metres	1 450	1 627	723	25 104	5 095	- 79,7
Total value at current prices (R'000)	963	1 750	2 400	29 938	7 721	- 74,2
Industrial and warehouse space						
Total square metres	720	0	540	2 866	6 805	+ 137,4
Total value at current prices (R'000)	250	0	594	1 965	6 999	+ 256,2
Other non-residential space <sup>2/</sup>						
Total square metres	0	1 000	500	8 877	7 136	- 19,6
Total value at current prices (R'000)	0	1 500	500	11 845	8 532	- 28,0
<b>Total value of non-residential buildings at current prices (R'000)</b>	<b>2 027</b>	<b>3 400</b>	<b>3 494</b>	<b>55 699</b>	<b>24 802</b>	<b>- 55,5</b>
<b>Additions and alterations</b>						
Dwelling-houses						
Total square metres	2 141	1 499	8 649	38 196	31 609	- 17,2
Total value at current prices (R'000)	1 886	1 874	8 034	37 066	28 904	- 22,0
Other buildings <sup>3/</sup>						
Total square metres	1 049	1 181	1 786	14 833	17 156	+ 15,7
Total value at current prices (R'000)	1 006	7 644	1 582	13 397	26 288	+ 96,2
<b>Total value of additions and alterations at current prices (R'000)</b>	<b>2 892</b>	<b>9 518</b>	<b>9 616</b>	<b>50 463</b>	<b>55 192</b>	<b>+ 9,4</b>
<b>Total value of buildings completed at current prices (R'000)</b>	<b>20 476</b>	<b>29 514</b>	<b>33 120</b>	<b>208 219</b>	<b>214 056</b>	<b>+ 2,8</b>

1/ Other residential buildings include institutions for the disabled, boarding houses, old people's homes, hostels, hotels, motels, guest houses, holiday chalets, entertainment centres, bed-and-breakfast accommodation and casinos.

2/ Other non-residential space includes churches, sport and recreation clubs, schools, crèches, hospitals and all other non-residential space.

3/ Other buildings include additions and alterations to other residential buildings, non-residential buildings and internal alterations.

**Table 26 - Buildings completed according to type of building and province: Gauteng**

Type of building	August 2000*	July 2001*	August 2001	January 2000 to August 2000	January 2001 to August 2001	Percentage change between January 2000 to August 2000 and January 2001 to August 2001
<b>Residential buildings</b>						
Dwelling-houses smaller than 80 square metres						
Number of dwelling-houses	1 122	481	674	10 671	4 503	-57,8
Total square metres	45 133	18 806	30 889	390 967	179 521	-54,1
Total value at current prices (R'000)	38 936	25 667	33 814	283 562	169 799	-40,1
Dwelling-houses equal to or larger than 80 square metres						
Number of dwelling-houses	285	349	195	2 037	2 368	+ 16,2
Total square metres	73 084	67 948	43 807	487 048	526 226	+ 8,0
Total value at current prices (R'000)	94 496	97 284	61 064	646 708	732 617	+ 13,3
Flats and townhouses						
Number of flats and townhouses	176	98	114	2 211	2 140	-3,2
Total square metres	16 526	12 744	10 328	209 482	212 857	+ 1,6
Total value at current prices (R'000)	24 877	19 944	13 296	291 295	328 521	+ 12,8
Other residential buildings <sup>1/</sup>						
Total square metres	0	0	1 270	8 211	35 482	+ 332,1
Total value at current prices (R'000)	0	0	1 528	12 851	253 624	+ 1 873,6
<b>Total value of residential buildings at current prices (R'000)</b>	<b>158 309</b>	<b>142 895</b>	<b>109 702</b>	<b>1 234 416</b>	<b>1 484 561</b>	<b>+ 20,3</b>
<b>Non-residential buildings</b>						
Office and banking space						
Total square metres	19 511	16 379	5 442	234 320	255 243	+ 8,9
Total value at current prices (R'000)	23 867	24 945	5 400	336 255	365 978	+ 8,8
Shopping space						
Total square metres	36 060	502	3 265	217 293	69 733	-67,9
Total value at current prices (R'000)	123 078	898	5 321	578 129	152 553	-73,6
Industrial and warehouse space						
Total square metres	7 007	23 885	22 781	146 508	161 478	+ 10,2
Total value at current prices (R'000)	9 462	40 429	21 858	221 505	226 362	+ 2,2
Other non-residential space <sup>2/</sup>						
Total square metres	2 455	7 761	151	17 864	34 165	+ 91,3
Total value at current prices (R'000)	3 172	10 283	159	20 964	47 445	+ 126,3
<b>Total value of non-residential buildings at current prices (R'000)</b>	<b>159 579</b>	<b>76 555</b>	<b>32 738</b>	<b>1 156 853</b>	<b>792 338</b>	<b>-31,5</b>
<b>Additions and alterations</b>						
Dwelling-houses						
Total square metres	31 359	16 205	23 444	202 280	172 920	-14,5
Total value at current prices (R'000)	38 736	18 616	28 132	245 342	206 338	-15,9
Other buildings <sup>3/</sup>						
Total square metres	5 463	14 016	4 883	71 330	86 051	+ 20,6
Total value at current prices (R'000)	7 142	19 607	8 821	177 279	143 271	-19,2
<b>Total value of additions and alterations at current prices (R'000)</b>	<b>45 878</b>	<b>38 223</b>	<b>36 953</b>	<b>422 621</b>	<b>349 609</b>	<b>-17,3</b>
<b>Total value of buildings completed at current prices (R'000)</b>	<b>363 766</b>	<b>257 673</b>	<b>179 393</b>	<b>2 813 890</b>	<b>2 626 508</b>	<b>-6,7</b>

1/ Other residential buildings include institutions for the disabled, boarding houses, old people's homes, hostels, hotels, motels, guest houses, holiday chalets, entertainment centres, bed-and-breakfast accommodation and casinos.

2/ Other non-residential space includes churches, sport and recreation clubs, schools, crèches, hospitals and all other non-residential space.

3/ Other buildings include additions and alterations to other residential buildings, non-residential buildings and internal alterations.



Table 27 - Buildings completed according to type of building and province: Mpumalanga

Type of building	August 2000	July 2001	August 2001	January 2000 to August 2000	January 2001 to August 2001	Percentage change between January 2000 to August 2000 and January 2001 to August 2001
<b>Residential buildings</b>						
Dwelling-houses smaller than 80 square metres						
Number of dwelling-houses	260	337	191	1 596	2 365	+ 48,2
Total square metres	9 116	11 254	6 502	54 274	79 969	+ 47,3
Total value at current prices (R'000)	6 071	9 497	4 758	43 012	44 038	+ 2,4
Dwelling-houses equal to or larger than 80 square metres						
Number of dwelling-houses	12	24	25	302	231	-23,5
Total square metres	2 460	4 686	5 483	51 485	42 488	-17,5
Total value at current prices (R'000)	2 355	4 646	6 072	61 237	42 044	-31,3
Flats and townhouses						
Number of flats and townhouses	4	21	14	31	115	+ 271,0
Total square metres	867	4 033	1 188	3 259	13 191	+ 304,8
Total value at current prices (R'000)	741	3 249	1 263	2 860	12 251	+ 328,4
Other residential buildings <sup>1/</sup>						
Total square metres	0	0	0	1 243	0	..
Total value at current prices (R'000)	0	0	0	2 100	0	..
<b>Total value of residential buildings at current prices (R'000)</b>	<b>9 167</b>	<b>17 392</b>	<b>12 093</b>	<b>109 209</b>	<b>98 333</b>	<b>-10,0</b>
<b>Non-residential buildings</b>						
Office and banking space						
Total square metres	0	0	0	8 461	4 671	-44,8
Total value at current prices (R'000)	0	0	0	14 916	6 150	-58,8
Shopping space						
Total square metres	4 223	3 842	1 518	6 573	25 569	+ 289,0
Total value at current prices (R'000)	5 600	3 500	3 000	7 853	17 800	+ 126,7
Industrial and warehouse space						
Total square metres	0	2 002	0	16 589	2 367	-85,7
Total value at current prices (R'000)	0	1 762	0	16 383	1 922	-88,3
Other non-residential space <sup>2/</sup>						
Total square metres	990	13	0	6 311	3 864	-38,8
Total value at current prices (R'000)	1 080	9	0	7 761	4 531	-41,6
<b>Total value of non-residential buildings at current prices (R'000)</b>	<b>6 680</b>	<b>5 271</b>	<b>3 000</b>	<b>46 913</b>	<b>30 403</b>	<b>-35,2</b>
<b>Additions and alterations</b>						
Dwelling-houses						
Total square metres	2 122	1 431	1 727	22 622	29 299	+ 29,5
Total value at current prices (R'000)	1 487	1 402	1 676	17 197	24 757	+ 44,0
Other buildings <sup>3/</sup>						
Total square metres	593	970	808	5 119	14 687	+ 186,9
Total value at current prices (R'000)	626	1 140	707	6 020	19 438	+ 222,9
<b>Total value of additions and alterations at current prices (R'000)</b>	<b>2 113</b>	<b>2 542</b>	<b>2 383</b>	<b>23 217</b>	<b>44 195</b>	<b>+ 90,4</b>
<b>Total value of buildings completed at current prices (R'000)</b>	<b>17 960</b>	<b>25 205</b>	<b>17 476</b>	<b>179 339</b>	<b>172 931</b>	<b>-3,6</b>

1/ Other residential buildings include institutions for the disabled, boarding houses, old people's homes, hostels, hotels, motels, guest houses, holiday chalets, entertainment centres, bed-and-breakfast accommodation and casinos.

2/ Other non-residential space includes churches, sport and recreation clubs, schools, crèches, hospitals and all other non-residential space.

3/ Other buildings include additions and alterations to other residential buildings, non-residential buildings and internal alterations.

**Table 28 - Buildings completed according to type of building and province: Northern Province**

Type of building	August 2000	July 2001	August 2001	January 2000 to August 2000	January 2001 to August 2001	Percentage change between January 2000 to August 2000 and January 2001 to August 2001
<b>Residential buildings</b>						
Dwelling-houses smaller than 80 square metres						
Number of dwelling-houses	57	27	20	407	349	-14,3
Total square metres	3 118	1 520	1 143	20 865	17 264	-17,3
Total value at current prices (R'000)	3 733	2 170	1 545	20 835	16 529	-20,7
Dwelling-houses equal to or larger than 80 square metres						
Number of dwelling-houses	27	10	9	173	129	-25,4
Total square metres	3 871	2 005	1 768	24 291	20 547	-15,4
Total value at current prices (R'000)	5 150	2 577	2 196	31 097	26 485	-14,8
Flats and townhouses						
Number of flats and townhouses	3	0	1	24	27	+ 12,5
Total square metres	407	0	138	3 800	4 756	+ 25,2
Total value at current prices (R'000)	582	0	166	5 052	5 378	+ 6,5
Other residential buildings <sup>1/</sup>						
Total square metres	0	0	0	725	3 000	+ 313,8
Total value at current prices (R'000)	0	0	0	1 015	3 600	+ 254,7
<b>Total value of residential buildings at current prices (R'000)</b>	<b>9 465</b>	<b>4 747</b>	<b>3 907</b>	<b>57 999</b>	<b>51 992</b>	<b>-10,4</b>
<b>Non-residential buildings</b>						
Office and banking space						
Total square metres	0	471	0	3 271	969	-70,4
Total value at current prices (R'000)	0	300	0	5 067	1 097	-78,4
Shopping space						
Total square metres	897	0	1 170	9 351	4 860	-48,0
Total value at current prices (R'000)	1 613	0	1 728	23 167	7 647	-67,0
Industrial and warehouse space						
Total square metres	2 246	0	0	5 899	768	-87,0
Total value at current prices (R'000)	2 246	0	0	6 527	1 076	-83,5
Other non-residential space <sup>2/</sup>						
Total square metres	477	0	0	856	424	-50,5
Total value at current prices (R'000)	400	0	0	686	726	+ 5,8
<b>Total value of non-residential buildings at current prices (R'000)</b>	<b>4 259</b>	<b>300</b>	<b>1 728</b>	<b>35 447</b>	<b>10 546</b>	<b>-70,2</b>
<b>Additions and alterations</b>						
Dwelling-houses						
Total square metres	2 095	231	1 243	10 216	6 063	-40,7
Total value at current prices (R'000)	2 489	309	1 414	11 958	7 377	-38,3
Other buildings <sup>3/</sup>						
Total square metres	2 106	0	0	2 896	2 958	+ 2,1
Total value at current prices (R'000)	4 571	0	64	6 057	5 800	-4,2
<b>Total value of additions and alterations at current prices (R'000)</b>	<b>7 060</b>	<b>309</b>	<b>1 478</b>	<b>18 015</b>	<b>13 177</b>	<b>-26,9</b>
<b>Total value of buildings completed at current prices (R'000)</b>	<b>20 784</b>	<b>5 356</b>	<b>7 113</b>	<b>111 461</b>	<b>75 715</b>	<b>-32,1</b>

1/ Other residential buildings include institutions for the disabled, boarding houses, old people's homes, hostels, hotels, motels, guest houses, holiday chalets, entertainment centres, bed-and-breakfast accommodation and casinos.

2/ Other non-residential space includes churches, sport and recreation clubs, schools, crèches, hospitals and all other non-residential space.

3/ Other buildings include additions and alterations to other residential buildings, non-residential buildings and internal alterations.

**Table 29 - Building plans passed according to type of building and selected urban area: Cape Town**

Type of building	August 2000 *	July 2001*	August 2001	January 2000 to August 2000	January 2001 to August 2001	Percentage change between January 2000 to August 2000 and January 2001 to August 2001
<b>Residential buildings</b>						
Dwelling-houses smaller than 80 square metres						
Number of dwelling-houses	320	420	527	4 109	4 295	+ 4,5
Total square metres	15 681	19 216	27 814	165 945	182 981	+ 10,3
Total value at current prices (R'000)	20 720	23 101	38 325	122 933	228 183	+ 85,6
Dwelling-houses equal to or larger than 80 square metres						
Number of dwelling-houses	291	343	357	2 258	2 538	+ 12,4
Total square metres	54 207	67 253	69 033	413 845	525 745	+ 27,0
Total value at current prices (R'000)	79 408	97 573	97 661	591 732	726 807	+ 22,8
Flats and townhouses						
Number of flats and townhouses	234	104	133	1 226	1 057	- 13,8
Total square metres	28 600	11 703	14 621	135 361	106 045	- 21,7
Total value at current prices (R'000)	42 090	17 754	21 633	231 176	165 515	- 28,4
Other residential buildings <sup>1/</sup>						
Total square metres	676	0	5 516	48 031	32 993	- 31,3
Total value at current prices (R'000)	1 063	0	12 199	65 683	77 942	+ 18,7
<b>Total value of residential buildings at current prices (R'000)</b>	<b>143 281</b>	<b>138 428</b>	<b>169 818</b>	<b>1 011 524</b>	<b>1 198 447</b>	<b>+ 18,5</b>
<b>Non-residential buildings</b>						
Office and banking space						
Total square metres	16 089	66 640	9 284	122 087	159 641	+ 30,8
Total value at current prices (R'000)	18 270	67 370	16 868	228 789	226 898	- 0,8
Shopping space						
Total square metres	8 654	233	8 283	107 681	96 355	- 10,5
Total value at current prices (R'000)	12 448	240	12 880	137 570	120 908	- 12,1
Industrial and warehouse space						
Total square metres	5 357	32 392	13 999	160 341	106 320	- 33,7
Total value at current prices (R'000)	5 166	35 602	13 364	179 713	113 421	- 36,9
Other non-residential space <sup>2/</sup>						
Total square metres	5 468	2 361	4 777	50 763	46 998	- 7,4
Total value at current prices (R'000)	8 123	2 505	3 573	58 578	63 343	+ 8,1
<b>Total value of non-residential buildings at current prices (R'000)</b>	<b>44 007</b>	<b>105 717</b>	<b>46 685</b>	<b>604 650</b>	<b>524 570</b>	<b>- 13,2</b>
<b>Additions and alterations</b>						
Dwelling-houses						
Total square metres	66 276	53 180	54 789	400 611	397 013	- 0,9
Total value at current prices (R'000)	68 757	61 637	70 145	455 718	477 133	+ 4,7
Other buildings <sup>3/</sup>						
Total square metres	23 963	12 612	10 262	109 097	115 989	+ 6,3
Total value at current prices (R'000)	29 683	21 790	22 963	266 167	214 683	- 19,3
<b>Total value of additions and alterations at current prices (R'000)</b>	<b>98 440</b>	<b>83 427</b>	<b>93 108</b>	<b>721 885</b>	<b>691 816</b>	<b>- 4,2</b>
<b>Total value of building plans passed at current prices (R'000)</b>	<b>285 728</b>	<b>327 572</b>	<b>309 611</b>	<b>2 338 059</b>	<b>2 414 833</b>	<b>+ 3,3</b>

1/ Other residential buildings include institutions for the disabled, boarding houses, old people's homes, hostels, hotels, motels, guest houses, holiday chalets, entertainment centres, bed-and-breakfast accommodation and casinos.

2/ Other non-residential space includes churches, sport and recreation clubs, schools, crèches, hospitals and all other non-residential space.

3/ Other buildings include additions and alterations to other residential buildings, non-residential buildings and internal alterations.

**Table 30 - Building plans passed according to type of building and selected urban area: Port Elizabeth**

Type of building	August 2000	July 2001	August 2001	January 2000 to August 2000	January 2001 to August 2001	Percentage change between January 2000 to August 2000 and January 2001 to August 2001
<b>Residential buildings</b>						
Dwelling-houses smaller than 80 square metres						
Number of dwelling-houses	192	133	60	1 238	1 175	- 5,1
Total square metres	8 155	5 596	3 119	52 183	52 928	+ 1,4
Total value at current prices (R'000)	10 532	7 513	4 051	62 494	70 177	+ 12,3
Dwelling-houses equal to or larger than 80 square metres						
Number of dwelling-houses	3	41	68	391	508	+ 29,9
Total square metres	317	7 246	12 822	51 709	66 139	+ 27,9
Total value at current prices (R'000)	373	9 878	17 820	65 624	89 648	+ 36,6
Flats and townhouses						
Number of flats and townhouses	9	17	0	138	113	- 18,1
Total square metres	2 298	1 117	0	18 808	10 005	- 46,8
Total value at current prices (R'000)	2 298	1 597	0	23 355	14 197	- 39,2
Other residential buildings <sup>1/</sup>						
Total square metres	0	0	0	7 209	2 744	- 61,9
Total value at current prices (R'000)	0	0	0	9 640	3 312	- 65,6
<b>Total value of residential buildings at current prices (R'000)</b>	<b>13 203</b>	<b>18 988</b>	<b>21 871</b>	<b>161 113</b>	<b>177 334</b>	<b>+ 10,1</b>
<b>Non-residential buildings</b>						
Office and banking space						
Total square metres	0	0	1 159	0	1 159	..
Total value at current prices (R'000)	0	0	2 224	0	2 224	..
Shopping space						
Total square metres	873	338	2 170	7 834	3 870	- 50,6
Total value at current prices (R'000)	1 005	373	3 879	11 647	6 109	- 47,5
Industrial and warehouse space						
Total square metres	0	10 107	2 607	22 859	20 500	- 10,3
Total value at current prices (R'000)	0	8 789	3 512	25 874	18 372	- 29,0
Other non-residential space <sup>2/</sup>						
Total square metres	180	502	180	15 516	4 907	- 68,4
Total value at current prices (R'000)	139	816	333	21 573	7 828	- 63,7
<b>Total value of non-residential buildings at current prices (R'000)</b>	<b>1 144</b>	<b>9 978</b>	<b>9 948</b>	<b>59 094</b>	<b>34 533</b>	<b>- 41,6</b>
<b>Additions and alterations</b>						
Dwelling-houses						
Total square metres	10 092	11 824	11 325	80 667	79 746	- 1,1
Total value at current prices (R'000)	12 489	14 742	15 235	100 294	104 495	+ 4,2
Other buildings <sup>3/</sup>						
Total square metres	3 338	1 155	22 795	25 587	63 053	+ 146,4
Total value at current prices (R'000)	3 818	1 450	13 426	33 513	69 315	+ 106,8
<b>Total value of additions and alterations at current prices (R'000)</b>	<b>16 307</b>	<b>16 192</b>	<b>28 661</b>	<b>133 807</b>	<b>173 810</b>	<b>+ 29,9</b>
<b>Total value of building plans passed at current prices (R'000)</b>	<b>30 654</b>	<b>45 158</b>	<b>60 480</b>	<b>354 014</b>	<b>385 677</b>	<b>+ 8,9</b>

1/ Other residential buildings include institutions for the disabled, boarding houses, old people's homes, hostels, hotels, motels, guest houses, holiday chalets, entertainment centres, bed-and-breakfast accommodation and casinos.

2/ Other non-residential space includes churches, sport and recreation clubs, schools, crèches, hospitals and all other non-residential space.

3/ Other buildings include additions and alterations to other residential buildings, non-residential buildings and internal alterations.

**Table 31 - Building plans passed according to type of building and selected urban area: Durban**

Type of building	August 2000	July 2001	August 2001	January 2000 to August 2000	January 2001 to August 2001	Percentage change between January 2000 to August 2000 and January 2001 to August 2001
<b>Residential buildings</b>						
Dwelling-houses smaller than 80 square metres						
Number of dwelling-houses	105	66	56	795	573	-27,9
Total square metres	5 586	3 272	2 994	40 734	29 881	-26,6
Total value at current prices (R'000)	6 359	3 940	3 283	43 673	34 144	-21,8
Dwelling-houses equal to or larger than 80 square metres						
Number of dwelling-houses	51	69	89	581	498	-14,3
Total square metres	9 677	13 423	17 433	95 421	98 330	+ 3,0
Total value at current prices (R'000)	11 773	17 179	24 897	119 265	119 762	+ 0,4
Flats and townhouses						
Number of flats and townhouses	44	3	7	159	145	-8,8
Total square metres	5 114	503	1 122	23 196	18 816	-18,9
Total value at current prices (R'000)	7 074	900	1 632	31 482	21 042	-33,2
Other residential buildings <sup>1/</sup>						
Total square metres	0	1 135	1 104	0	2 377	..
Total value at current prices (R'000)	0	901	1 200	0	2 431	..
<b>Total value of residential buildings at current prices (R'000)</b>	<b>25 206</b>	<b>22 920</b>	<b>31 012</b>	<b>194 420</b>	<b>177 379</b>	<b>-8,8</b>
<b>Non-residential buildings</b>						
Office and banking space						
Total square metres	484	2 679	7 039	9 562	19 850	+ 107,6
Total value at current prices (R'000)	725	6 000	5 600	20 193	30 800	+ 52,5
Shopping space						
Total square metres	776	400	869	10 310	12 331	+ 19,6
Total value at current prices (R'000)	2 604	500	869	13 539	13 825	+ 2,1
Industrial and warehouse space						
Total square metres	12 861	12 267	0	62 756	56 597	-9,8
Total value at current prices (R'000)	14 982	15 453	0	72 355	64 637	-10,7
Other non-residential space <sup>2/</sup>						
Total square metres	412	1 206	2 037	14 659	23 626	+ 61,2
Total value at current prices (R'000)	845	1 900	4 350	20 506	30 473	+ 48,6
<b>Total value of non-residential buildings at current prices (R'000)</b>	<b>19 156</b>	<b>23 853</b>	<b>10 819</b>	<b>126 593</b>	<b>139 735</b>	<b>+ 10,4</b>
<b>Additions and alterations</b>						
Dwelling-houses						
Total square metres	26 478	26 766	23 792	187 736	177 560	-5,4
Total value at current prices (R'000)	31 101	31 173	32 603	213 693	210 664	-1,4
Other buildings <sup>3/</sup>						
Total square metres	5 408	4 545	5 643	124 570	69 170	-44,5
Total value at current prices (R'000)	14 341	11 178	10 720	259 774	155 835	-40,0
<b>Total value of additions and alterations at current prices (R'000)</b>	<b>45 442</b>	<b>42 351</b>	<b>43 323</b>	<b>473 467</b>	<b>366 499</b>	<b>-22,6</b>
<b>Total value of building plans passed at current prices (R'000)</b>	<b>89 804</b>	<b>89 124</b>	<b>85 154</b>	<b>794 480</b>	<b>683 613</b>	<b>-14,0</b>

1/ Other residential buildings include institutions for the disabled, boarding houses, old people's homes, hostels, hotels, motels, guest houses, holiday chalets, entertainment centres, bed-and-breakfast accommodation and casinos.

2/ Other non-residential space includes churches, sport and recreation clubs, schools, crèches, hospitals and all other non-residential space.

3/ Other buildings include additions and alterations to other residential buildings, non-residential buildings and internal alterations.

**Table 32 - Building plans passed according to type of building and selected urban area: Witwatersrand**

Type of building	August 2000	July 2001	August 2001	January 2000 to August 2000	January 2001 to August 2001	Percentage change between January 2000 to August 2000 and January 2001 to August 2001
<b>Residential buildings</b>						
Dwelling-houses smaller than 80 square metres						
Number of dwelling-houses	1 133	569	524	10 215	5 241	- 48,7
Total square metres	44 276	21 578	26 932	393 795	205 285	- 47,9
Total value at current prices (R'000)	34 748	29 448	28 758	297 053	223 519	- 24,8
Dwelling-houses equal to or larger than 80 square metres						
Number of dwelling-houses	378	416	282	3 007	3 395	+ 12,9
Total square metres	103 733	95 547	63 687	705 121	770 532	+ 9,3
Total value at current prices (R'000)	147 224	138 071	86 496	986 175	1 123 061	+ 13,9
Flats and townhouses						
Number of flats and townhouses	409	240	11	2 325	1 934	- 16,8
Total square metres	42 210	26 763	2 021	229 415	209 893	- 8,5
Total value at current prices (R'000)	74 489	38 189	3 518	356 769	344 021	- 3,6
Other residential buildings <sup>1/</sup>						
Total square metres	0	1 169	0	5 122	3 661	- 28,5
Total value at current prices (R'000)	0	1 520	0	7 201	4 791	- 33,5
<b>Total value of residential buildings at current prices (R'000)</b>	<b>256 461</b>	<b>207 228</b>	<b>118 772</b>	<b>1 647 198</b>	<b>1 695 392</b>	<b>+ 2,9</b>
<b>Non-residential buildings</b>						
Office and banking space						
Total square metres	20 954	12 894	7 497	433 265	179 113	- 58,7
Total value at current prices (R'000)	32 848	20 916	16 320	618 632	305 997	- 50,5
Shopping space						
Total square metres	7 804	3 718	2 946	117 239	60 067	- 48,8
Total value at current prices (R'000)	12 977	5 711	3 145	178 470	98 875	- 44,6
Industrial and warehouse space						
Total square metres	20 205	17 819	25 688	289 783	190 655	- 34,2
Total value at current prices (R'000)	30 606	31 825	21 976	434 878	305 629	- 29,7
Other non-residential space <sup>2/</sup>						
Total square metres	12 209	7 755	8 420	56 467	79 911	+ 41,5
Total value at current prices (R'000)	21 079	11 516	11 904	90 547	120 326	+ 32,9
<b>Total value of non-residential buildings at current prices (R'000)</b>	<b>97 510</b>	<b>69 968</b>	<b>53 345</b>	<b>1 322 527</b>	<b>830 827</b>	<b>- 37,2</b>
<b>Additions and alterations</b>						
Dwelling-houses						
Total square metres	91 138	58 887	60 717	522 887	496 444	- 5,1
Total value at current prices (R'000)	113 640	75 724	74 930	653 161	638 012	- 2,3
Other buildings <sup>3/</sup>						
Total square metres	18 395	10 169	20 854	159 466	149 287	- 6,4
Total value at current prices (R'000)	30 627	13 372	30 231	248 214	266 664	+ 7,4
<b>Total value of additions and alterations at current prices (R'000)</b>	<b>144 267</b>	<b>89 096</b>	<b>105 161</b>	<b>901 375</b>	<b>904 676</b>	<b>+ 0,4</b>
<b>Total value of building plans passed at current prices (R'000)</b>	<b>498 238</b>	<b>366 292</b>	<b>277 278</b>	<b>3 871 100</b>	<b>3 430 895</b>	<b>- 11,4</b>

1/ Other residential buildings include institutions for the disabled, boarding houses, old people's homes, hostels, hotels, motels, guest houses, holiday chalets, entertainment centres, bed-and-breakfast accommodation and casinos.

2/ Other non-residential space includes churches, sport and recreation clubs, schools, crèches, hospitals and all other non-residential space.

3/ Other buildings include additions and alterations to other residential buildings, non-residential buildings and internal alterations.

**Table 33 - Building plans passed according to type of building and selected urban area: Pretoria**

Type of building	August 2000*	July 2001	August 2001	January 2000 to August 2000	January 2001 to August 2001	Percentage change between January 2000 to August 2000 and January 2001 to August 2001
<b>Residential buildings</b>						
Dwelling-houses smaller than 80 square metres						
Number of dwelling-houses	106	69	75	2 635	1 077	- 59,1
Total square metres	5 869	3 450	3 968	92 445	42 279	- 54,3
Total value at current prices (R'000)	6 637	4 785	5 676	71 656	47 252	- 34,1
Dwelling-houses equal to or larger than 80 square metres						
Number of dwelling-houses	286	224	249	1 912	1 866	- 2,4
Total square metres	74 080	64 348	71 189	483 623	539 973	+ 11,7
Total value at current prices (R'000)	99 804	92 408	103 437	625 266	744 933	+ 19,1
Flats and townhouses						
Number of flats and townhouses	199	95	349	1 802	1 497	- 16,9
Total square metres	29 649	11 988	41 502	224 301	181 830	- 18,9
Total value at current prices (R'000)	41 848	14 549	61 762	294 528	266 997	- 9,3
Other residential buildings <sup>1/</sup>						
Total square metres	2 427	1 528	0	17 668	1 946	- 89,0
Total value at current prices (R'000)	2 796	2 292	0	21 886	2 919	- 86,7
<b>Total value of residential buildings at current prices (R'000)</b>	<b>151 085</b>	<b>114 034</b>	<b>170 875</b>	<b>1 013 336</b>	<b>1 062 101</b>	<b>+ 4,8</b>
<b>Non-residential buildings</b>						
Office and banking space						
Total square metres	223	17 693	16 994	56 036	76 708	+ 36,9
Total value at current prices (R'000)	290	30 859	25 934	74 231	123 916	+ 66,9
Shopping space						
Total square metres	15 978	111	105	36 505	33 009	- 9,6
Total value at current prices (R'000)	22 106	144	163	44 590	48 891	+ 9,6
Industrial and warehouse space						
Total square metres	567	16 339	5 817	40 911	47 155	+ 15,3
Total value at current prices (R'000)	582	23 929	8 538	47 384	67 742	+ 43,0
Other non-residential space <sup>2/</sup>						
Total square metres	805	13 016	1 665	20 407	34 133	+ 67,3
Total value at current prices (R'000)	900	19 876	1 750	25 721	50 825	+ 97,6
<b>Total value of non-residential buildings at current prices (R'000)</b>	<b>23 878</b>	<b>74 808</b>	<b>36 385</b>	<b>191 926</b>	<b>291 374</b>	<b>+ 51,8</b>
<b>Additions and alterations</b>						
Dwelling-houses						
Total square metres	22 295	19 555	26 216	158 431	148 010	- 6,6
Total value at current prices (R'000)	26 846	27 187	37 185	188 853	195 038	+ 3,3
Other buildings <sup>3/</sup>						
Total square metres	1 964	9 105	3 415	39 245	41 295	+ 5,2
Total value at current prices (R'000)	3 105	17 348	4 600	64 282	70 292	+ 9,3
<b>Total value of additions and alterations at current prices (R'000)</b>	<b>29 951</b>	<b>44 535</b>	<b>41 785</b>	<b>253 135</b>	<b>265 330</b>	<b>+ 4,8</b>
<b>Total value of building plans passed at current prices (R'000)</b>	<b>204 914</b>	<b>233 377</b>	<b>249 045</b>	<b>1 458 397</b>	<b>1 618 805</b>	<b>+ 11,0</b>

1/ Other residential buildings include institutions for the disabled, boarding houses, old people's homes, hostels, hotels, motels, guest houses, holiday chalets, entertainment centres, bed-and-breakfast accommodation and casinos.

2/ Other non-residential space includes churches, sport and recreation clubs, schools, crèches, hospitals and all other non-residential space.

3/ Other buildings include additions and alterations to other residential buildings, non-residential buildings and internal alterations.

**Table 34 - Building plans passed according to type of building and selected urban area: Bloemfontein**

Type of building	August 2000	July 2001	August 2001	January 2000 to August 2000	January 2001 to August 2001	Percentage change between January 2000 to August 2000 and January 2001 to August 2001
<b>Residential buildings</b>						
Dwelling-houses smaller than 80 square metres						
Number of dwelling-houses	191	60	68	1 535	1 215	-20,8
Total square metres	8 498	2 637	3 488	68 979	53 521	-22,4
Total value at current prices (R'000)	3 995	1 653	2 923	32 741	27 909	-14,8
Dwelling-houses equal to or larger than 80 square metres						
Number of dwelling-houses	34	28	25	199	161	-19,1
Total square metres	6 012	4 170	5 242	35 277	27 978	-20,7
Total value at current prices (R'000)	7 462	5 201	7 479	45 732	36 274	-20,7
Flats and townhouses						
Number of flats and townhouses	0	41	4	204	208	+ 2,0
Total square metres	0	5 850	920	14 962	27 660	+ 84,9
Total value at current prices (R'000)	0	7 550	1 380	20 927	42 544	+ 103,3
Other residential buildings <sup>1/</sup>						
Total square metres	0	1 488	0	600	1 488	+ 148,0
Total value at current prices (R'000)	0	1 461	0	1 500	1 461	-2,6
<b>Total value of residential buildings at current prices (R'000)</b>	<b>11 457</b>	<b>15 865</b>	<b>11 782</b>	<b>100 900</b>	<b>108 188</b>	<b>+ 7,2</b>
<b>Non-residential buildings</b>						
Office and banking space						
Total square metres	0	0	447	3 623	13 256	+ 265,9
Total value at current prices (R'000)	0	0	825	5 613	26 025	+ 363,7
Shopping space						
Total square metres	0	0	3 615	672	3 615	+ 437,9
Total value at current prices (R'000)	0	0	4 000	1 242	4 000	+ 222,1
Industrial and warehouse space						
Total square metres	1 930	1 000	157	5 737	1 961	-65,8
Total value at current prices (R'000)	2 147	800	188	4 495	1 626	-63,8
Other non-residential space <sup>2/</sup>						
Total square metres	4 539	0	1 665	4 539	3 199	-29,5
Total value at current prices (R'000)	9 000	0	3 340	9 000	6 208	-31,0
<b>Total value of non-residential buildings at current prices (R'000)</b>	<b>11 147</b>	<b>800</b>	<b>8 353</b>	<b>20 350</b>	<b>37 859</b>	<b>+ 86,0</b>
<b>Additions and alterations</b>						
Dwelling-houses						
Total square metres	3 916	3 510	3 888	32 138	24 408	-24,1
Total value at current prices (R'000)	4 911	3 866	4 503	39 298	30 397	-22,7
Other buildings <sup>3/</sup>						
Total square metres	4 461	2 316	682	27 189	8 032	-70,5
Total value at current prices (R'000)	7 865	3 763	856	96 661	17 718	-81,7
<b>Total value of additions and alterations at current prices (R'000)</b>	<b>12 776</b>	<b>7 629</b>	<b>5 359</b>	<b>135 959</b>	<b>48 115</b>	<b>-64,6</b>
<b>Total value of building plans passed at current prices (R'000)</b>	<b>35 380</b>	<b>24 294</b>	<b>25 494</b>	<b>257 209</b>	<b>194 162</b>	<b>-24,5</b>

1/ Other residential buildings include institutions for the disabled, boarding houses, old people's homes, hostels, hotels, motels, guest houses, holiday chalets, entertainment centres, bed-and-breakfast accommodation and casinos.

2/ Other non-residential space includes churches, sport and recreation clubs, schools, crèches, hospitals and all other non-residential space.

3/ Other buildings include additions and alterations to other residential buildings, non-residential buildings and internal alterations.



**Table 35 - Buildings completed according to type of building and selected urban area: Cape Town**

Type of building	August 2000 *	July 2001	August 2001	January 2000 to August 2000	January 2001 to August 2001	Percentage change between January 2000 to August 2000 and January 2001 to August 2001
<b>Residential buildings</b>						
Dwelling-houses smaller than 80 square metres						
Number of dwelling-houses	673	166	506	3 842	2 779	- 27,7
Total square metres	24 703	7 197	22 505	133 239	119 490	- 10,3
Total value at current prices (R'000)	13 964	8 180	31 569	75 867	141 656	+ 86,7
Dwelling-houses equal to or larger than 80 square metres						
Number of dwelling-houses	111	174	129	1 150	1 115	- 3,0
Total square metres	23 060	28 716	24 040	201 211	214 193	+ 6,5
Total value at current prices (R'000)	29 796	38 118	34 921	262 050	293 914	+ 12,2
Flats and townhouses						
Number of flats and townhouses	126	86	190	651	1 006	+ 54,5
Total square metres	9 226	12 406	18 318	54 874	110 344	+ 101,1
Total value at current prices (R'000)	9 242	17 565	26 469	70 735	142 623	+ 101,6
Other residential buildings <sup>1/</sup>						
Total square metres	2 383	217	5 314	16 669	22 149	+ 32,9
Total value at current prices (R'000)	2 398	323	13 168	26 230	26 015	- 0,8
<b>Total value of residential buildings at current prices (R'000)</b>	<b>55 400</b>	<b>64 186</b>	<b>106 127</b>	<b>434 882</b>	<b>604 208</b>	<b>+ 38,9</b>
<b>Non-residential buildings</b>						
Office and banking space						
Total square metres	7 029	1 007	409	60 225	63 942	+ 6,2
Total value at current prices (R'000)	7 811	1 234	588	104 817	118 270	+ 12,8
Shopping space						
Total square metres	9 047	795	3 135	33 426	24 217	- 27,6
Total value at current prices (R'000)	13 642	411	3 136	49 781	28 181	- 43,4
Industrial and warehouse space						
Total square metres	9 757	2 262	3 174	105 493	46 585	- 55,8
Total value at current prices (R'000)	6 185	2 472	4 705	85 089	52 884	- 37,8
Other non-residential space <sup>2/</sup>						
Total square metres	2 227	133	2 914	14 412	15 066	+ 4,5
Total value at current prices (R'000)	2 714	92	2 579	16 792	20 002	+ 19,1
<b>Total value of non-residential buildings at current prices (R'000)</b>	<b>30 352</b>	<b>4 209</b>	<b>11 008</b>	<b>256 479</b>	<b>219 337</b>	<b>- 14,5</b>
<b>Additions and alterations</b>						
Dwelling-houses						
Total square metres	28 425	29 300	22 526	215 461	235 436	+ 9,3
Total value at current prices (R'000)	31 591	31 867	26 306	237 595	263 115	+ 10,7
Other buildings <sup>3/</sup>						
Total square metres	6 877	12 309	3 048	74 407	85 315	+ 14,7
Total value at current prices (R'000)	9 335	21 419	10 247	131 709	242 985	+ 84,5
<b>Total value of additions and alterations at current prices (R'000)</b>	<b>40 926</b>	<b>53 286</b>	<b>36 553</b>	<b>369 304</b>	<b>506 100</b>	<b>+ 37,0</b>
<b>Total value of buildings completed at current prices (R'000)</b>	<b>126 678</b>	<b>121 681</b>	<b>153 688</b>	<b>1 060 665</b>	<b>1 329 645</b>	<b>+ 25,4</b>

1/ Other residential buildings include institutions for the disabled, boarding houses, old people's homes, hostels, hotels, motels, guest houses, holiday chalets, entertainment centres, bed-and-breakfast accommodation and casinos.

2/ Other non-residential space includes churches, sport and recreation clubs, schools, crèches, hospitals and all other non-residential space.

3/ Other buildings include additions and alterations to other residential buildings, non-residential buildings and internal alterations.

**Table 36 - Buildings completed according to type of building and selected urban area: Port Elizabeth**

Type of building	August 2000	July 2001	August 2001	January 2000 to August 2000	January 2001 to August 2001	Percentage change between January 2000 to August 2000 and January 2001 to August 2001
<b>Residential buildings</b>						
Dwelling-houses smaller than 80 square metres						
Number of dwelling-houses	59	138	149	666	1 045	+ 56,9
Total square metres	2 574	5 788	6 032	29 770	44 706	+ 50,2
Total value at current prices (R'000)	2 788	7 434	7 741	34 517	57 464	+ 66,5
Dwelling-houses equal to or larger than 80 square metres						
Number of dwelling-houses	6	31	23	170	402	+ 136,5
Total square metres	593	4 532	2 993	22 917	43 317	+ 89,0
Total value at current prices (R'000)	570	5 756	3 931	25 651	56 382	+ 119,8
Flats and townhouses						
Number of flats and townhouses	0	28	1	138	104	- 24,6
Total square metres	0	3 583	326	15 333	9 730	- 36,5
Total value at current prices (R'000)	0	4 732	326	17 202	10 803	- 37,2
Other residential buildings <sup>1/</sup>						
Total square metres	0	0	0	367	4 347	+ 1084,5
Total value at current prices (R'000)	0	0	0	440	7 000	+ 1490,9
<b>Total value of residential buildings at current prices (R'000)</b>	<b>3 358</b>	<b>17 922</b>	<b>11 998</b>	<b>77 810</b>	<b>131 649</b>	<b>+ 69,2</b>
<b>Non-residential buildings</b>						
Office and banking space						
Total square metres	0	1 682	106	0	22 600	..
Total value at current prices (R'000)	0	2 020	150	0	23 340	..
Shopping space						
Total square metres	1 214	4 463	0	27 679	19 754	- 28,6
Total value at current prices (R'000)	1 293	4 875	0	39 451	23 317	- 40,9
Industrial and warehouse space						
Total square metres	0	1 823	0	14 728	33 616	+ 128,2
Total value at current prices (R'000)	0	1 295	0	10 789	40 098	+ 271,7
Other non-residential space <sup>2/</sup>						
Total square metres	144	588	0	4 255	4 396	+ 3,3
Total value at current prices (R'000)	68	514	0	4 878	3 561	- 27,0
<b>Total value of non-residential buildings at current prices (R'000)</b>	<b>1 361</b>	<b>8 704</b>	<b>150</b>	<b>55 118</b>	<b>90 316</b>	<b>+ 63,9</b>
<b>Additions and alterations</b>						
Dwelling-houses						
Total square metres	3 778	9 961	5 954	38 198	38 800	+ 1,6
Total value at current prices (R'000)	4 193	10 034	6 267	36 402	43 695	+ 20,0
Other buildings <sup>3/</sup>						
Total square metres	588	5 055	268	11 396	21 383	+ 87,6
Total value at current prices (R'000)	1 022	4 735	490	12 702	25 445	+ 100,3
<b>Total value of additions and alterations at current prices (R'000)</b>	<b>5 215</b>	<b>14 769</b>	<b>6 757</b>	<b>49 104</b>	<b>69 140</b>	<b>+ 40,8</b>
<b>Total value of buildings completed at current prices (R'000)</b>	<b>9 934</b>	<b>41 395</b>	<b>18 905</b>	<b>182 032</b>	<b>291 105</b>	<b>+ 59,9</b>

1/ Other residential buildings include institutions for the disabled, boarding houses, old people's homes, hostels, hotels, motels, guest houses, holiday chalets, entertainment centres, bed-and-breakfast accommodation and casinos.

2/ Other non-residential space includes churches, sport and recreation clubs, schools, crèches, hospitals and all other non-residential space.

3/ Other buildings include additions and alterations to other residential buildings, non-residential buildings and internal alterations.

**Table 37 - Buildings completed according to type of building and selected urban area: Durban**

Type of building	August 2000	July 2001	August 2001	January 2000 to August 2000	January 2001 to August 2001	Percentage change between January 2000 to August 2000 and January 2001 to August 2001
<b>Residential buildings</b>						
Dwelling-houses smaller than 80 square metres						
Number of dwelling-houses	232	66	81	761	555	- 27,1
Total square metres	11 872	3 589	4 650	38 459	29 276	- 23,9
Total value at current prices (R'000)	11 947	4 084	5 419	40 569	34 636	- 14,6
Dwelling-houses equal to or larger than 80 square metres						
Number of dwelling-houses	246	89	100	761	685	- 10,0
Total square metres	36 084	16 358	19 923	126 605	131 250	+ 3,7
Total value at current prices (R'000)	37 428	19 571	22 323	135 835	167 340	+ 23,2
Flats and townhouses						
Number of flats and townhouses	54	4	37	273	455	+ 66,7
Total square metres	11 955	1 080	6 152	43 670	46 671	+ 6,9
Total value at current prices (R'000)	12 424	1 130	8 627	58 882	63 644	+ 8,1
Other residential buildings <sup>1/</sup>						
Total square metres	0	0	0	0	0	..
Total value at current prices (R'000)	0	0	0	0	0	..
<b>Total value of residential buildings at current prices (R'000)</b>	<b>61 799</b>	<b>24 785</b>	<b>36 369</b>	<b>235 286</b>	<b>265 620</b>	<b>+ 12,9</b>
<b>Non-residential buildings</b>						
Office and banking space						
Total square metres	1 359	87	8 080	23 802	34 139	+ 43,4
Total value at current prices (R'000)	1 700	87	11 069	67 857	52 849	- 22,1
Shopping space						
Total square metres	1 340	2 747	0	13 433	17 984	+ 33,9
Total value at current prices (R'000)	4 050	2 647	0	18 410	30 689	+ 66,7
Industrial and warehouse space						
Total square metres	10 275	15 742	1 399	94 632	80 466	- 15,0
Total value at current prices (R'000)	9 795	17 781	1 392	106 558	102 217	- 4,1
Other non-residential space <sup>2/</sup>						
Total square metres	2 340	2 117	1 576	13 065	10 836	- 17,1
Total value at current prices (R'000)	4 893	2 302	2 658	17 085	13 898	- 18,7
<b>Total value of non-residential buildings at current prices (R'000)</b>	<b>20 438</b>	<b>22 817</b>	<b>15 119</b>	<b>209 910</b>	<b>199 653</b>	<b>- 4,9</b>
<b>Additions and alterations</b>						
Dwelling-houses						
Total square metres	38 843	27 450	23 328	166 742	204 322	+ 22,5
Total value at current prices (R'000)	38 801	29 584	27 252	179 991	223 824	+ 24,4
Other buildings <sup>3/</sup>						
Total square metres	14 904	6 456	10 675	128 507	64 819	- 49,6
Total value at current prices (R'000)	16 617	19 419	16 495	248 191	124 077	- 50,0
<b>Total value of additions and alterations at current prices (R'000)</b>	<b>55 418</b>	<b>49 003</b>	<b>43 747</b>	<b>428 182</b>	<b>347 901</b>	<b>- 18,7</b>
<b>Total value of buildings completed at current prices (R'000)</b>	<b>137 655</b>	<b>96 605</b>	<b>95 235</b>	<b>873 378</b>	<b>813 174</b>	<b>- 6,9</b>

1/ Other residential buildings include institutions for the disabled, boarding houses, old people's homes, hostels, hotels, motels, guest houses, holiday chalets, entertainment centres, bed-and-breakfast accommodation and casinos.

2/ Other non-residential space includes churches, sport and recreation clubs, schools, crèches, hospitals and all other non-residential space.

3/ Other buildings include additions and alterations to other residential buildings, non-residential buildings and internal alterations.

**Table 38 - Buildings completed according to type of building and selected urban area: Witwatersrand**

Type of building	August 2000*	July 2001	August 2001	January 2000 to August 2000	January 2001 to August 2001	Percentage change between January 2000 to August 2000 and January 2001 to August 2001
<b>Residential buildings</b>						
Dwelling-houses smaller than 80 square metres						
Number of dwelling-houses	888	461	528	7 643	3 756	-50,9
Total square metres	35 093	17 864	25 340	288 146	150 354	-47,8
Total value at current prices (R'000)	30 028	24 495	26 828	211 516	143 304	-32,2
Dwelling-houses equal to or larger than 80 square metres						
Number of dwelling-houses	169	260	98	1 342	1 624	+ 21,0
Total square metres	42 202	46 020	21 624	305 426	325 443	+ 6,6
Total value at current prices (R'000)	57 195	67 391	30 488	432 434	459 805	+ 6,3
Flats and townhouses						
Number of flats and townhouses	128	82	73	1 399	1 406	+ 0,5
Total square metres	11 405	9 809	6 446	101 221	137 844	+ 36,2
Total value at current prices (R'000)	18 677	15 734	7 893	160 767	226 962	+ 41,2
Other residential buildings <sup>1/</sup>						
Total square metres	0	0	1 270	5 954	33 870	+ 468,9
Total value at current prices (R'000)	0	0	1 528	10 340	251 528	+ 2 332,6
<b>Total value of residential buildings at current prices (R'000)</b>	<b>105 900</b>	<b>107 620</b>	<b>66 737</b>	<b>815 057</b>	<b>1 081 599</b>	<b>+ 32,7</b>
<b>Non-residential buildings</b>						
Office and banking space						
Total square metres	5 491	14 198	5 442	212 878	247 919	+ 16,5
Total value at current prices (R'000)	8 295	21 673	5 400	311 719	355 931	+ 14,2
Shopping space						
Total square metres	0	350	477	175 115	60 592	-65,4
Total value at current prices (R'000)	0	700	954	445 282	140 095	-68,5
Industrial and warehouse space						
Total square metres	4 672	23 122	21 795	133 342	146 186	+ 9,6
Total value at current prices (R'000)	6 387	39 399	20 330	207 344	211 256	+ 1,9
Other non-residential space <sup>2/</sup>						
Total square metres	1 872	7 761	151	11 787	26 648	+ 126,1
Total value at current prices (R'000)	2 636	10 283	159	15 356	37 586	+ 144,8
<b>Total value of non-residential buildings at current prices (R'000)</b>	<b>17 318</b>	<b>72 055</b>	<b>26 843</b>	<b>979 701</b>	<b>744 868</b>	<b>-24,0</b>
<b>Additions and alterations</b>						
Dwelling-houses						
Total square metres	22 267	13 863	19 842	165 213	154 912	-6,2
Total value at current prices (R'000)	27 171	15 756	23 823	203 801	184 948	-9,3
Other buildings <sup>3/</sup>						
Total square metres	2 319	12 627	4 680	51 734	78 091	+ 50,9
Total value at current prices (R'000)	3 948	18 019	8 542	156 406	131 997	-15,6
<b>Total value of additions and alterations at current prices (R'000)</b>	<b>31 119</b>	<b>33 775</b>	<b>32 365</b>	<b>360 207</b>	<b>316 945</b>	<b>-12,0</b>
<b>Total value of buildings completed at current prices (R'000)</b>	<b>154 337</b>	<b>213 450</b>	<b>125 945</b>	<b>2 154 965</b>	<b>2 143 412</b>	<b>-0,5</b>

1/ Other residential buildings include institutions for the disabled, boarding houses, old people's homes, hostels, hotels, motels, guest houses, holiday chalets, entertainment centres, bed-and-breakfast accommodation and casinos.

2/ Other non-residential space includes churches, sport and recreation clubs, schools, crèches, hospitals and all other non-residential space.

3/ Other buildings include additions and alterations to other residential buildings, non-residential buildings and internal alterations.

**Table 39 - Buildings completed according to type of building and selected urban area: Pretoria**

Type of building	August 2000	July 2001*	August 2001	January 2000 to August 2000	January 2001 to August 2001	Percentage change between January 2000 to August 2000 and January 2001 to August 2001
<b>Residential buildings</b>						
Dwelling-houses smaller than 80 square metres						
Number of dwelling-houses	110	17	47	2 425	279	- 88,5
Total square metres	5 374	822	2 388	81 273	13 310	- 83,6
Total value at current prices (R'000)	6 390	1 028	3 293	59 092	15 557	- 73,7
Dwelling-houses equal to or larger than 80 square metres						
Number of dwelling-houses	110	88	93	631	703	+ 11,4
Total square metres	29 936	21 702	21 585	168 613	191 611	+ 13,6
Total value at current prices (R'000)	36 162	29 622	29 770	199 309	262 051	+ 31,5
Flats and townhouses						
Number of flats and townhouses	48	12	40	789	688	- 12,8
Total square metres	5 121	2 294	3 722	104 843	68 975	- 34,2
Total value at current prices (R'000)	6 200	3 441	5 211	126 329	94 127	- 25,5
Other residential buildings <sup>1/</sup>						
Total square metres	0	0	0	1 851	0	..
Total value at current prices (R'000)	0	0	0	2 024	0	..
<b>Total value of residential buildings at current prices (R'000)</b>	<b>48 752</b>	<b>34 091</b>	<b>38 274</b>	<b>386 754</b>	<b>371 735</b>	<b>- 3,9</b>
<b>Non-residential buildings</b>						
Office and banking space						
Total square metres	14 020	2 181	0	21 406	7 324	- 65,8
Total value at current prices (R'000)	15 572	3 272	0	24 526	10 047	- 59,0
Shopping space						
Total square metres	35 000	152	2 588	36 492	2 740	- 92,5
Total value at current prices (R'000)	121 875	198	4 027	123 961	4 225	- 96,6
Industrial and warehouse space						
Total square metres	2 335	763	986	12 300	8 604	- 30,0
Total value at current prices (R'000)	3 075	1 030	1 528	13 611	8 062	- 40,8
Other non-residential space <sup>2/</sup>						
Total square metres	123	0	0	5 617	5 568	- 0,9
Total value at current prices (R'000)	162	0	0	5 234	7 966	+ 52,2
<b>Total value of non-residential buildings at current prices (R'000)</b>	<b>140 684</b>	<b>4 500</b>	<b>5 555</b>	<b>167 332</b>	<b>30 300</b>	<b>- 81,9</b>
<b>Additions and alterations</b>						
Dwelling-houses						
Total square metres	7 648	1 561	2 526	24 609	10 618	- 56,9
Total value at current prices (R'000)	10 012	2 068	3 171	28 923	13 350	- 53,8
Other buildings <sup>3/</sup>						
Total square metres	2 717	1 299	153	16 276	4 774	- 70,7
Total value at current prices (R'000)	2 780	1 492	214	17 027	6 999	- 58,9
<b>Total value of additions and alterations at current prices (R'000)</b>	<b>12 792</b>	<b>3 560</b>	<b>3 385</b>	<b>45 950</b>	<b>20 349</b>	<b>- 55,7</b>
<b>Total value of buildings completed at current prices (R'000)</b>	<b>202 228</b>	<b>42 151</b>	<b>47 214</b>	<b>600 036</b>	<b>422 384</b>	<b>- 29,6</b>

1/ Other residential buildings include institutions for the disabled, boarding houses, old people's homes, hostels, hotels, motels, guest houses, holiday chalets, entertainment centres, bed-and-breakfast accommodation and casinos.

2/ Other non-residential space includes churches, sport and recreation clubs, schools, crèches, hospitals and all other non-residential space.

3/ Other buildings include additions and alterations to other residential buildings, non-residential buildings and internal alterations.

**Table 40 - Buildings completed according to type of building and selected urban area: Bloemfontein**

Type of building	August 2000	July 2001	August 2001	January 2000 to August 2000	January 2001 to August 2001	Percentage change between January 2000 to August 2000 and January 2001 to August 2001
<b>Residential buildings</b>						
Dwelling-houses smaller than 80 square metres						
Number of dwelling-houses	13	14	130	425	506	+ 19,1
Total square metres	652	741	5 575	17 492	21 114	+ 20,7
Total value at current prices (R'000)	788	850	2 622	10 013	12 560	+ 25,4
Dwelling-houses equal to or larger than 80 square metres						
Number of dwelling-houses	3	15	10	65	129	+ 98,5
Total square metres	301	2 792	2 941	13 356	26 021	+ 94,8
Total value at current prices (R'000)	340	3 490	4 763	18 169	32 832	+ 80,7
Flats and townhouses						
Number of flats and townhouses	15	3	15	111	114	+ 2,7
Total square metres	1 306	718	1 996	11 426	9 728	- 14,9
Total value at current prices (R'000)	1 568	1 149	2 395	14 779	13 589	- 8,1
Other residential buildings <sup>1/</sup>						
Total square metres	0	0	0	0	151	..
Total value at current prices (R'000)	0	0	0	0	211	..
<b>Total value of residential buildings at current prices (R'000)</b>	<b>2 696</b>	<b>5 489</b>	<b>9 780</b>	<b>42 961</b>	<b>59 192</b>	<b>+ 37,8</b>
<b>Non-residential buildings</b>						
Office and banking space						
Total square metres	0	321	0	5 025	11 103	+ 121,0
Total value at current prices (R'000)	0	400	0	9 573	21 883	+ 128,6
Shopping space						
Total square metres	0	0	0	558	2 812	+ 403,9
Total value at current prices (R'000)	0	0	0	670	3 006	+ 348,7
Industrial and warehouse space						
Total square metres	4 191	0	0	11 866	4 810	- 59,5
Total value at current prices (R'000)	3 778	0	0	9 206	3 823	- 58,5
Other non-residential space <sup>2/</sup>						
Total square metres	0	0	234	3 097	5 753	+ 85,8
Total value at current prices (R'000)	0	0	281	4 336	10 451	+ 141,0
<b>Total value of non-residential buildings at current prices (R'000)</b>	<b>3 778</b>	<b>400</b>	<b>281</b>	<b>23 785</b>	<b>39 163</b>	<b>+ 64,7</b>
<b>Additions and alterations</b>						
Dwelling-houses						
Total square metres	1 435	3 337	1 383	17 329	24 386	+ 40,7
Total value at current prices (R'000)	5 053	4 153	1 439	21 107	26 599	+ 26,0
Other buildings <sup>3/</sup>						
Total square metres	537	843	45	4 461	18 247	+ 309,0
Total value at current prices (R'000)	582	3 605	111	12 411	89 868	+ 624,1
<b>Total value of additions and alterations at current prices (R'000)</b>	<b>5 635</b>	<b>7 758</b>	<b>1 550</b>	<b>33 518</b>	<b>116 467</b>	<b>+ 247,5</b>
<b>Total value of buildings completed at current prices (R'000)</b>	<b>12 109</b>	<b>13 647</b>	<b>11 611</b>	<b>100 264</b>	<b>214 822</b>	<b>+ 114,3</b>

1/ Other residential buildings include institutions for the disabled, boarding houses, old people's homes, hostels, hotels, motels, guest houses, holiday chalets, entertainment centres, bed-and-breakfast accommodation and casinos.

2/ Other non-residential space includes churches, sport and recreation clubs, schools, crèches, hospitals and all other non-residential space.

3/ Other buildings include additions and alterations to other residential buildings, non-residential buildings and internal alterations.

## Additional information

### Explanatory Notes

<b>Introduction</b>	<ol style="list-style-type: none"> <li>1 Statistics South Africa (Stats SA) conducts a monthly Building Statistics Survey collecting information regarding building plans approved and buildings completed, financed by the private sector, from a sample of local government institutions in South Africa. This statistical release contains information of building plans passed and buildings completed in respect of residential buildings, non-residential buildings and additions and alterations according to province and selected urban areas.</li> <li>2 In order to improve timeliness of the publication, some information for the current month have been estimated due to late submission by respondents. These estimates will be revised in the next statistical release(s) as soon as actual information is available.</li> <li>3 The actual and seasonally adjusted values (at current and at constant 1995 prices) and the percentage change of building plans passed and buildings completed according to type of building are reflected monthly from January 1999 in this statistical release (cf. tables 1 to 8).</li> </ol>
<b>Scope of the survey</b>	<ol style="list-style-type: none"> <li>4 This survey covers local government institutions conducting activities for the private sector regarding - <ul style="list-style-type: none"> <li>• approval of building plans; and</li> <li>• final inspection of completed buildings.</li> </ul> </li> </ol>
<b>Classification</b>	<ol style="list-style-type: none"> <li>5 The 1993 edition of the Standard Industrial Classification of all Economic Activities, (SIC) Fifth Edition, Report No. 09-90-02, was used to classify the statistical units. The SIC is based on the 1990 International Standard Industrial Classification of all Economic Activities (ISIC) with suitable adaptations for local conditions.</li> <li>6 The twelfth and last published edition of the Standard Code List of Areas, Report No. 09-09-03 (1994) was used to classify the statistical units according to province. The cities, towns and non-urban areas listed in this report are codified within magisterial district and province. The code list was compiled by Stats SA in collaboration with other interested bodies and the first edition was distributed in June 1977.</li> </ol>
<b>Statistical unit</b>	<ol style="list-style-type: none"> <li>7 The statistical unit for the collection of information is a local government institution. Local government institutions include municipalities, city councils, metropolitan councils, district councils, transitional councils and development and services boards.</li> </ol>
<b>Survey methodology and design</b>	<ol style="list-style-type: none"> <li>8 The sample for the monthly Building Statistics Survey consists of the largest local government institutions in South Africa, i.e. those that account for approximately 85% of the total rand value of buildings completed by the private sector.</li> <li>9 The survey is collected by mail each month from a sample of 158 local government institutions.</li> </ol>
<b>Constant prices</b>	<ol style="list-style-type: none"> <li>10 The value of building plans passed and buildings completed at constant prices measure the building activities in terms of ruling prices in a specific base year which is currently 1995.</li> <li>11 The value of building plans passed at constant prices for each month is obtained by deflating the values at current prices with a price index known as the “lump sum domestic buildings” as published in statistical release P0151 – JBCC Contract Price Adjustment Provisions Work Group Indices. In order to be applicable, these indices (base February 1991=100) are converted to the base year 1995=100.</li> </ol>

- 12** The value of buildings completed at constant prices is obtained by deflating the values at current prices with the same price index which is used to calculate building plans passed at constant prices (cf. paragraph 11). The value of buildings completed is reported as at the time the plans were passed. Since the completion of buildings may extend over a few months to a few years, the current value of buildings completed is deflated by price indices as at the time the plans were passed in order to calculate the value of buildings completed at the time the plans were passed. Therefore, the duration of the completion of different types of buildings are taken into account in ascertaining the deflators e.g. the value of dwelling-houses completed at constant prices at January 2000 is obtained by deflating the current value of dwelling-houses completed for January 2000 with the price index of a month six months prior to January 2000. Furthermore, the value of other residential buildings, non-residential buildings and additions and alterations at constant prices is obtained by deflating the current values with price indices of 12 months, 18 months and 12 months prior to the relevant month, respectively.
- Seasonal adjustment**
- 13** Seasonally adjusted estimates of building plans passed and buildings completed are generated each month, using the X-11 Seasonal Adjustment Program developed by US Bureau of the Census Economic Research and Analyses Division, 1968.
- 14** Seasonal adjustment is a means of removing the estimated effects of normal seasonal variation from the series so that the effects of other influences on the series can be more clearly recognised. Seasonal adjustment does not aim to remove irregular or non-seasonal influences which may be present in any particular month. Influences that are volatile or unsystematic can still make it difficult to interpret the movement of the series even after adjustment for seasonal variations. Therefore, the month-to-month movements of seasonally adjusted estimates may not be reliable indicators of trend behaviour.
- Trend cycle**
- 15** The trend is a long-term pattern or movement of a time series. The X-11 Seasonal Adjustment Program is used for smoothing seasonally adjusted data.
- Related publications**
- 16** Users may also wish to refer to the following publications:
- P5041.3 – Building statistics issued annually.
  - P9101.2 – Actual and expected expenditure on construction by the public sector per statistical region issued annually.
  - Bulletin of Statistics issued quarterly.
  - South African Statistics issued annually.
- Unpublished statistics**
- 17** In some cases Stats SA can also make available statistics which are not published. The statistics can be made available in one or more of the following ways: computer printouts, CD and diskette. Generally a charge is made for providing unpublished statistics.
- Rounding-off of figures**
- 18** The figures in the tables have, where necessary, been rounded off to the nearest digit shown. There may, therefore, be slight discrepancies between the sums of the constituent items and the totals shown.
- Pre-release policy**
- 19** Stats SA has adopted the confidential pre-release policy in respect of selected economic indicators and specific government departments. The policy accords with practice among leading statistical agencies. The statistical integrity of the information and strict observance of the release time has been assured by the following procedure:
- 20** In respect of this statistical release, an official representative from the Office of the President, the Department of Trade and Industry (DTI), National Treasury and the South African Reserve Bank (SARB) will receive a copy of the release on a strictly confidential basis two hours in advance of the public issue.
- 21** Stats SA pre-release policy may be inspected at its Website, [www.statssa.gov.za](http://www.statssa.gov.za)



**Symbols and abbreviations**

..	no meaningful percentage change between two specified periods available since either one or both of the totals are nil
0	nil or figure too small to publish
*	revised
Stats SA	Statistics South Africa
SIC	Standard Industrial Classification of all Economic Activities
ISIC	International Standard Industrial Classification of all Economic Activities
JBCC	Joint Building Contracts Committee
CD	Compact Disc
US	United States
SARB	South African Reserve Bank
DTI	Department of Trade and Industry

**Technical notes****Response rate**

The response rate for August 2001 is 99,3%.

## Local government institutions covered in the sample survey

### Local government institutions according to province

<b>Western Cape</b>	Blaauwberg (includes Milnerton), Brackenfell, Breede River District Council, Cape Town, City of Tygerberg (Bellville, Durbanville, Goodwood, Lingeletu West, Parow and South Administration), Fish Hoek, George (includes Pacaltsdorp, Thembaletu and Herolds Bay), Gordon's Bay, Hangklip-Kleinmond (includes Kleinmond, Betty's Bay and Rooi-Els), Hermanus (includes Onrus River, Zwelihle, Sandbaai, Vermont, Hawston and Fisher Haven), Ikapa, Klein-Karoo District Council, Knysna (includes Khayaletu), Kuils River, Malmesbury, Mossel Bay (includes Boggom's Bay, Kleinbrak, Rheeboek and Tergniet), Oostenberg (Kraaifontein and Melton Rose - Blue Downs), Oudtshoorn, Overberg District Council, Paarl, Plettenberg Bay, Sedgefield, Simon's Town, Somerset West, South Peninsula, Stellenbosch, Strand, Wellington, West Coast District Council, Western Coast Peninsula (previously Vredenburg-Saldanha), Winelands District Council and Worcester.
<b>Eastern Cape</b>	Aliwal-Maletswai (includes Dukathole), Despatch, East London (includes Beacon Bay, Gomo Town, Gonubie and Mdantsane), Grahamstown (includes Rhini Township), Jeffrey's Bay, King William's Town (includes Bisho and Zwelitsha), Port Alfred, Port Elizabeth (includes Ibhayi and Motherwell), Uitenhage (includes KwaNobuhle), Umtata and Western District Council.
<b>Northern Cape</b>	Benede-Oranje District Council, Keimoes, Kimberley (including Galeshewe), Kuruman, Namaqualand District Council and Upington (includes Paballelo).
<b>Free State</b>	Allanridge, Bethlehem (includes Bohlokong), Bloemfontein (includes Bainsvlei, Bloemspruit and Mangaung), Botshabelo, Deneysville (includes Refengkgotso), Harrismith (includes Tsiamé), Kroonstad (includes Maokeng), Ladybrand (includes Manyatseng), Odendaalsrus (includes Kutlwanong), Parys, Phuthaditjhaba, Sasolburg (includes Zamdela), Virginia (includes Meloding) and Welkom (includes Thabong).
<b>KwaZulu-Natal</b>	Development and Services Board - Inland, Development and Services Board – North Coast, Dolphin Coast Borough (includes Ballito, Etete, Shakaskraal, Tinley Manor Beach and Umhlali Beach), Durban, Edendale, Empangeni (includes Ngwelezana), Hilton, Howick, Inner West City Council (includes Clermont, KwaDabeka, KwaNdengezi, New Germany, Pinetown, Queensburgh, Reservoir Hills, Shallcross and Westville), Kokstad, Kwa-Dukuza/Stanger (includes Blythedale Beach, Shakaville and Stanger), KwaMashu, Ladysmith (includes Emnambithi), Margate (includes Uvongo), Mpenjati/Southbroom (includes Southbroom, Marina Beach, San Lameer and Trafalgar), Newcastle (includes Madadeni, Osizweni and Blaauwboschlaagte), North Local Council - Tongaat (includes Canelands and Hambanati), North Local Council - Umhlanga Rocks (includes Mount Edgecombe and Umdloti Beach), North Local Council - Verulam, Outer West Local Council (includes Assagay, Botha's Hill, Cato Ridge, Drummond, Everton, Gillitts, Hillcrest, Inchanga, Kloof, Mpumalanga and Waterfall), Pennington, Pietermaritzburg/Msundini, Port Shepstone, Richards Bay, South Local Council (includes Amanzimtoti, Isipingo, Kingsburgh, KwaMakuta and Umbogintwini), Umlazi and Umtamvuna/Port Edward (includes Munster, Port Edward and Palm Beach).
<b>North West</b>	Bophirima District Council, Brits (includes Lethabile), Ga-Rankuwa, Klerksdorp, Lichtenburg, Mmabatho, Orkney (includes Kanana), Potchefstroom, Rustenburg, Vryburg and Zeerust.

**Gauteng**

Akasia (includes Elandsdoorn, Klipfontein, Kruisfontein and Soshanguve), Alberton (includes Tokoza), Benoni (includes Daveyton and Wattville), Boksburg (includes Vosloorus), Brakpan (includes Tsakane), Bronkhorst-spruit, Carletonville (includes Khutsong), Centurion, Duduza, Eastern Services Council - Pretoria Area, Edenvale-Modderfontein, Germiston (includes Bedfordview and Katlehong), Greater Johannesburg - Eastern Metropolitan Local Council (includes Alexandra and Sandton), Greater Johannesburg - Northern Metropolitan Local Council (includes Randburg), Greater Johannesburg - Southern Metropolitan Local Council (includes Ennerdale, Lenasia and Johannesburg), Greater Johannesburg - Western Metropolitan Local Council (includes Diepmeadow, Dobsonville and Roodepoort), Heidelberg (includes Ratanda), Kempton Park (includes Tembisa), Krugersdorp (includes Kagiso and Munsieville), Meyerton, Midrand (includes Rabie Ridge and Ivory Park), Nigel, Pretoria (includes Atteridgeville and Mamelodi), Randfontein (includes Mohlakeng), Sebokeng (includes Boipatong, Bophelong and Sharpeville), Soweto, Springs (includes KwaThema), Vanderbijlpark, Vereeniging (includes Evaton), Western Services Council and Westonaria (includes Bekkersdal).

**Mpumalanga**

Delmas (includes Botleng), Eastvaal District Council, Ermelo (includes Wesselton and Cassim Park), Highveld District Council, Highveldridge Transitional Council (includes Evander, Embalenhle and Secunda), Komatipoort (includes Kamaqhekeza), KwaGuqa, KwaMhlanga, Malelane (includes Hectorspruit and Kamhlushwa), Middelburg (includes Mhluzi), Nelspruit (includes Kanyamazane and Lowveld Escarpment District Council as from January 2001), White River and Witbank.

**Northern Province**

Bosveld District Council, Giyani, Letaba (includes Nkowakowa and Tzaneen), Messina, Naboomspruit (includes Mookgophong), Nylstroom, Pietersburg-Polokwane (includes Seshego), Potgietersrus and Thabazimbi.

**Local government institutions according to selected urban areas****Cape Town**

Blaauwberg (includes Milnerton), Cape Town, City of Tygerberg (Bellville, Durbanville, Goodwood, Lingeletu West, Parow and South Administration), Fish Hoek, Ikapa, Oostenberg (Kraaifontein and Melton Rose - Blue Downs), Simon's Town and South Peninsula.

**Port Elizabeth**

Despatch, Port Elizabeth (including Ibhayi and Motherwell) and Uitenhage (including KwaNobuhle)

**Durban**

Durban, Inner West City Council (includes Clermont, KwaDabeka, KwaNdengezi, New Germany, Pinetown, Queenstown, Reservoir Hills, Shallcross and Westville), North Local Council - Verulam, Outer West Local Council (includes Assagay, Botha's Hill, Cato Ridge, Drummond, Everton, Gillitts, Hillcrest, Inchanga, Kloof, Mpumalanga and Waterfall) and South Local Council (includes Amanzimtoti, Isipingo, Kingsburgh, KwaMakuta and Umbogintwini).

**Witwatersrand**

Alberton (includes Thokoza), Benoni (includes Daveyton and Wattville), Boksburg (includes Vosloorus), Brakpan (includes Tsakane), Carletonville (includes Khutsong), Duduza, Edenvale-Modderfontein, Germiston (includes Bedfordview and Katlehong), Greater Johannesburg - Eastern Metropolitan Local Council (includes Alexandra and Sandton), Greater Johannesburg - Northern Metropolitan Local Council (includes Randburg), Greater Johannesburg - Southern Metropolitan Local Council (includes Ennerdale, Lenasia and Johannesburg), Greater Johannesburg - Western Metropolitan Local Council (includes Diepmeadow, Dobsonville and Roodepoort), Kempton Park (includes Tembisa), Krugersdorp (includes Kagiso and Munsieville), Midrand (includes Rabie Ridge and Ivory Park), Nigel, Randfontein (includes Mohlakeng), Soweto, Springs (includes KwaThema) and Westonaria (includes Bekkersdal).

**Pretoria**

Akasia (includes Elandsdoorn, Klipfontein and Soshanguve), Centurion, Eastern Services Council - Pretoria area and Pretoria (includes Atteridgeville and Mamelodi).

**Bloemfontein**

Bloemfontein (includes Bainsvlei, Bloemspruit and Mangaung).

## Glossary

<b>Additions and alterations</b>	Additions and alterations include extensions to existing buildings as well as internal and external alterations of existing buildings.
<b>Blocks of flats</b>	Blocks of flats are regarded as high-density housing consisting of a number of self-contained dwelling-units with at least one living-room together with a kitchen and bathroom conjoined to similar units in one building.
<b>Dwelling-house</b>	A dwelling-house refers to a free-standing, complete structure on a separate stand or a self-contained dwelling-unit, granny flat, on the same premises as an existing residence. Out-buildings and garages are included.
<b>Local government institutions</b>	A local government institution is a generic term referring to any number of institutions involved in the local sphere of government. Local government institutions consist of municipalities, city councils, metropolitan councils, district councils, transitional local councils and development and services boards.
<b>Non-residential buildings</b>	Non-residential buildings comprise factories, commercial, financial and other office buildings, as well as other buildings not used for residential purposes, such as churches, halls, clubs, schools and hospitals.
<b>Other residential buildings</b>	Other residential buildings include institutions for the disabled, boarding houses, old people's homes, hostels, hotels, motels, guest houses, holiday chalets, bed-and-breakfast accommodation, entertainment centres and casinos.
<b>Percentage change</b>	<p>When using monthly actual values, the percentage change is the change in actual values of building activities (building plans passed or buildings completed) of the relevant month compared with the actual values of building activities (building plans passed or buildings completed) of the same month in the previous year expressed as a percentage.</p> <p>When using annual actual values, the percentage change is the change in the actual values of building activities (building plans passed or buildings completed) of the relevant year compared with the actual values of building activities (building plans passed or buildings completed) of the previous year expressed as a percentage.</p> <p>When using seasonally adjusted values, the percentage change is the change in the seasonally adjusted values of building activities (building plans passed or buildings completed) of the relevant month compared with the seasonally adjusted values of building activities (building plans passed or buildings completed) of the previous month expressed as a percentage.</p>
<b>Reference period</b>	Reference period is one calendar month.
<b>Residential buildings</b>	Residential buildings comprise dwelling-houses, flats, townhouses and other residential buildings.
<b>Townhouses</b>	Townhouses are multiple, medium-density dwelling-units and include cluster housing, group housing, simplexes, duplexes, triplexes and other similar dwelling-units which are usually grouped together, with one level of each unit on ground level. This excludes blocks of flats.

## For more information

Stats SA publishes approximately 300 different statistical releases each year. It is not economically viable to produce them in more than one of South Africa's eleven official languages. Since the releases are used extensively, not only locally but also by international economic and social-scientific communities, Stats SA releases are published in English only.

Stats SA has copyright on this publication. Users may apply the information as they wish, provided that they acknowledge Stats SA as the source of the basic data wherever they process, apply, utilise, publish or distribute the data and also that they specify that the relevant application and analysis (where applicable) result from their own processing of the data.

### Stats SA products

A complete set of Stats SA publications is available at the Stats SA Library and the following libraries:

National Library of South Africa, Pretoria Division  
 National Library of South Africa, Cape Town Division  
 Natal Society Library, Pietermaritzburg  
 Library of Parliament, Cape Town  
 Bloemfontein Public Library  
 Johannesburg Public Library  
 Eastern Cape Library Services, King William's Town  
 Central Regional Library, Pietersburg  
 Central Reference Library, Nelspruit  
 Central Reference Collection, Kimberley  
 Central Reference Library, Mmabatho

Stats SA also provides a subscription service.

### Electronic services

A large range of data are available via on-line services, diskette, CD and computer printouts. For more details about our electronic data services, contact (012) 310 8600.

You can visit us on the Internet at: <http://www.statssa.gov.za>

### Enquiries

Telephone number: (012) 310 8095/8390/8351 (user enquiries)  
 (012) 310 8228/310 8007 (technical enquiries)  
 (012) 310 8161 (publications)  
 (012) 310 8490 (library)

Fax number: (012) 310 8182

e-mail: Corrieb@statssa.pwv.gov.za  
 Gretaz@statssa.pwv.gov.za

Postal address: Private Bag X44, Pretoria, 0001