



**Statistics
South Africa**

Preferred supplier of quality statistics



Statistical release

P5041.1

Selected building statistics of the private sector as reported by local government institutions

**October 2007
(Preliminary)**

**Embargoed until:
12 December 2007
13:00**

Enquiries:

User Information Services
Tel: (012) 310 8600 / 4892 / 8390

Forthcoming issue:

November 2007

Expected release date

16 January 2008

Statistics South Africa • Mbalo-mbalo dza Afrika Tshipembe • Tinhlayo-tiko ta Afrika-Dzonga • Dipalopalo tsa Aforika Borwa • Ezezibalo zaseNingizimu Afrika
Dipalopalo tša Afrika Borwa • Dipalopalo tsa Afrika Borwa • Ubalo lwaseMzantsi Afrika • Telubalo eNingizimu Afrika • iNanimbalo leSewula Afrika • Statistiek Suid-Afrika

email: info@statssa.gov.za
www.statssa.gov.za

170 Andries Street • Private Bag X44, 0001 Pretoria, South Africa
Tel: +27(12) 310 8911, Fax: +27(12) 321 7381

Contents

	Page
SUMMARY OF FINDINGS	3
Tables	
Table 1 Values and percentage change of recorded building plans passed by larger municipalities at current prices by type of building	9
Table 2 Seasonally adjusted values and percentage change of recorded building plans passed by larger municipalities at current prices by type of building	10
Table 3 Values and percentage change of recorded building plans passed by larger municipalities at constant 2000 prices by type of building	11
Table 4 Seasonally adjusted values and percentage change of recorded building plans passed by larger municipalities at constant 2000 prices by type of building	12
Table 5 Values and percentage change of buildings reported as completed to larger municipalities at current prices by type of building	13
Table 6 Seasonally adjusted values and percentage change of buildings reported as completed to larger municipalities at current prices by type of building	14
Table 7 Values and percentage change of buildings reported as completed to larger municipalities at constant 2000 prices by type of building	15
Table 8 Seasonally adjusted values and percentage change of buildings reported as completed to larger municipalities at constant 2000 prices by type of building	16
Table 9 Recorded building plans passed by larger municipalities at current prices by type of building: South Africa	17
Table 10 Recorded building plans passed by larger municipalities at current prices by type of building: Western Cape	18
Table 11 Recorded building plans passed by larger municipalities at current prices by type of building: Eastern Cape	19
Table 12 Recorded building plans passed by larger municipalities at current prices by type of building: Northern Cape	20
Table 13 Recorded building plans passed by larger municipalities at current prices by type of building: Free State	21
Table 14 Recorded building plans passed by larger municipalities at current prices by type of building: KwaZulu-Natal	22
Table 15 Recorded building plans passed by larger municipalities at current prices by type of building: North West	23
Table 16 Recorded building plans passed by larger municipalities at current prices by type of building: Gauteng	24
Table 17 Recorded building plans passed by larger municipalities at current prices by type of building: Mpumalanga	25
Table 18 Recorded building plans passed by larger municipalities at current prices by type of building: Limpopo	26
Table 19 Buildings reported as completed to larger municipalities at current prices by type of building: South Africa	27
Table 20 Buildings reported as completed to larger municipalities at current prices by type of building: Western Cape	28
Table 21 Buildings reported as completed to larger municipalities at current prices by type of building: Eastern Cape	29
Table 22 Buildings reported as completed to larger municipalities at current prices by type of building: Northern Cape	30
Table 23 Buildings reported as completed to larger municipalities at current prices by type of building: Free State	31
Table 24 Buildings reported as completed to larger municipalities at current prices by type of building: KwaZulu-Natal	32

Table 25	Buildings reported as completed to larger municipalities at current prices by type of building: North West	33
Table 26	Buildings reported as completed to larger municipalities at current prices by type of building: Gauteng	34
Table 27	Buildings reported as completed to larger municipalities at current prices by type of building: Mpumalanga	35
Table 28	Buildings reported as completed to larger municipalities at current prices by type of building: Limpopo.....	36
Table 29	Subsidised low-cost dwelling-houses completed or under construction by province	37
Table 30	Subsidised low-cost dwelling-houses completed by province	37
Explanatory notes		38
Glossary		41
General information		43

SUMMARY OF FINDINGS

SELECTED BUILDING STATISTICS OF THE PRIVATE SECTOR REGARDING BUILDING PLANS PASSED AT CURRENT PRICES

Table A – Selected key figures regarding recorded building plans passed by larger municipalities at current prices: January to October 2006 versus January to October 2007

Estimates at current prices	January to October 2006	January to October 2007 1/	Difference in value between January to October 2006 and January to October 2007	Percentage change between January to October 2006 and January to October 2007
	R'000	R'000	R'000	
Residential buildings	34 554 887	37 411 773	2 856 886	8,3
-Dwelling-houses	22 632 395	25 529 428	2 897 033	12,8
-Flats and townhouses	11 180 930	11 277 823	96 893	0,9
-Other residential buildings	741 562	604 522	-137 040	-18,5
Non-residential buildings	12 455 781	13 287 460	831 679	6,7
Additions and alterations	16 114 807	18 280 306	2 165 499	13,4
Total	63 125 475	68 979 539	5 854 064	9,3

1/ Oct. 2007 figures should be regarded as preliminary because of possible backlogs and incomplete reporting by municipalities.

Total value of recorded building plans passed at current prices increased

As indicated in Table A, the value of recorded building plans passed by larger municipalities (at current prices) during the first ten months of 2007 rose by 9,3% (R5 854,1 million) to R68 979,5 million compared with the first ten months of 2006.

All the main categories of buildings contributed positively to the 9,3% increase recorded year-on-year for the period January to October 2007, namely additions and alterations (13,4% or R2 165,5 million), residential buildings (8,3% or R2 856,9 million) and non-residential buildings (6,7% or R831,7 million). Regarding residential buildings, dwelling-houses took the lead, recording a growth of 12,8% from R22 632,4 million to R25 529,4 million during the above-mentioned period (see Table A).

Table B – Recorded building plans passed by larger municipalities aggregated to provincial level: January to October 2006 versus January to October 2007

Estimates at current prices	January to October 2006	January to October 2007 1/	Percentage contribution to the total value of building plans passed during January to October 2006	Percentage change between January to October 2006 and January to October 2007	Contribution (percentage points) to the percentage change in the value of building plans passed between January to October 2006 and January to October 2007 2/	Difference in value between January to October 2006 and January to October 2007
	R'000	R'000				R'000
Western Cape	14 636 495	15 535 089	23,2	6,1	1,4	898 594
Eastern Cape	3 087 455	3 580 761	4,9	16,0	0,8	493 306
Northern Cape	435 817	593 156	0,7	36,1	0,3	157 339
Free State	1 577 441	1 926 179	2,5	22,1	0,6	348 738
KwaZulu-Natal	8 682 504	9 542 818	13,8	9,9	1,4	860 314
North West	2 360 684	2 387 083	3,7	1,1	0,0	26 399
Gauteng	27 925 892	30 825 711	44,2	10,4	4,6	2 899 819
Mpumalanga	3 238 697	3 202 057	5,1	-1,1	-0,1	-36 640
Limpopo	1 180 490	1 386 685	1,9	17,5	0,3	206 195
Total	63 125 475	68 979 539	100,0	9,3	9,3	5 854 064

1/ Oct. 2007 figures should be regarded as preliminary because of possible backlogs and incomplete reporting by municipalities.

2/ The contribution (percentage points) is calculated by multiplying the percentage change of each province between Jan. to Oct. 2006 and Jan. to Oct. 2007 with the percentage contribution of the corresponding province to the total value of building plans passed during Jan. to Oct. 2006, divided by 100.

Eight provinces reported increases in the value of building plans passed (see Table B). The largest contributor to the increase of 9,3% was Gauteng (contributing 4,6 percentage points or R2 899,8 million), followed by Western Cape (1,4 percentage points or R898,6 million) and KwaZulu-Natal (1,4 percentage points or R860,3 million).

SELECTED BUILDING STATISTICS OF THE PRIVATE SECTOR REGARDING BUILDING PLANS PASSED AT CONSTANT PRICES

Table C – Selected key figures regarding recorded building plans passed by larger municipalities at constant 2000 prices: January to October 2006 versus January to October 2007

Estimates at constant 2000 prices	January to October 2006	January to October 2007	Difference in value between January to October 2006 and January to October 2007	Percentage change between January to October 2006 and January to October 2007
	R'000	R'000 1/		
Residential buildings	22 116 925	21 656 724	-460 201	-2,1
Non-residential buildings	7 972 018	7 680 459	-291 559	-3,7
Additions and alterations	10 321 380	10 564 589	243 209	2,4
Total	40 410 323	39 901 772	-508 551	-1,3

1/ Oct. 2007 figures should be regarded as preliminary because of possible backlogs and incomplete reporting by municipalities.

Total real value of recorded building plans passed decreased

The real value of recorded building plans passed by larger municipalities (at constant 2000 prices) during the first ten months of 2007 decreased by 1,3% (-R508,6 million) compared with the first ten months of 2006. Decreases were reported for non-residential buildings (-3,7% or -R291,6 million) and residential buildings (-2,1% or -R460,2 million). An increase was reported for additions and alterations (2,4% or R243,2 million) for the same period (see Table C).

Table D – Seasonally adjusted key figures regarding recorded building plans passed by larger municipalities at constant 2000 prices: Current quarter versus previous quarter

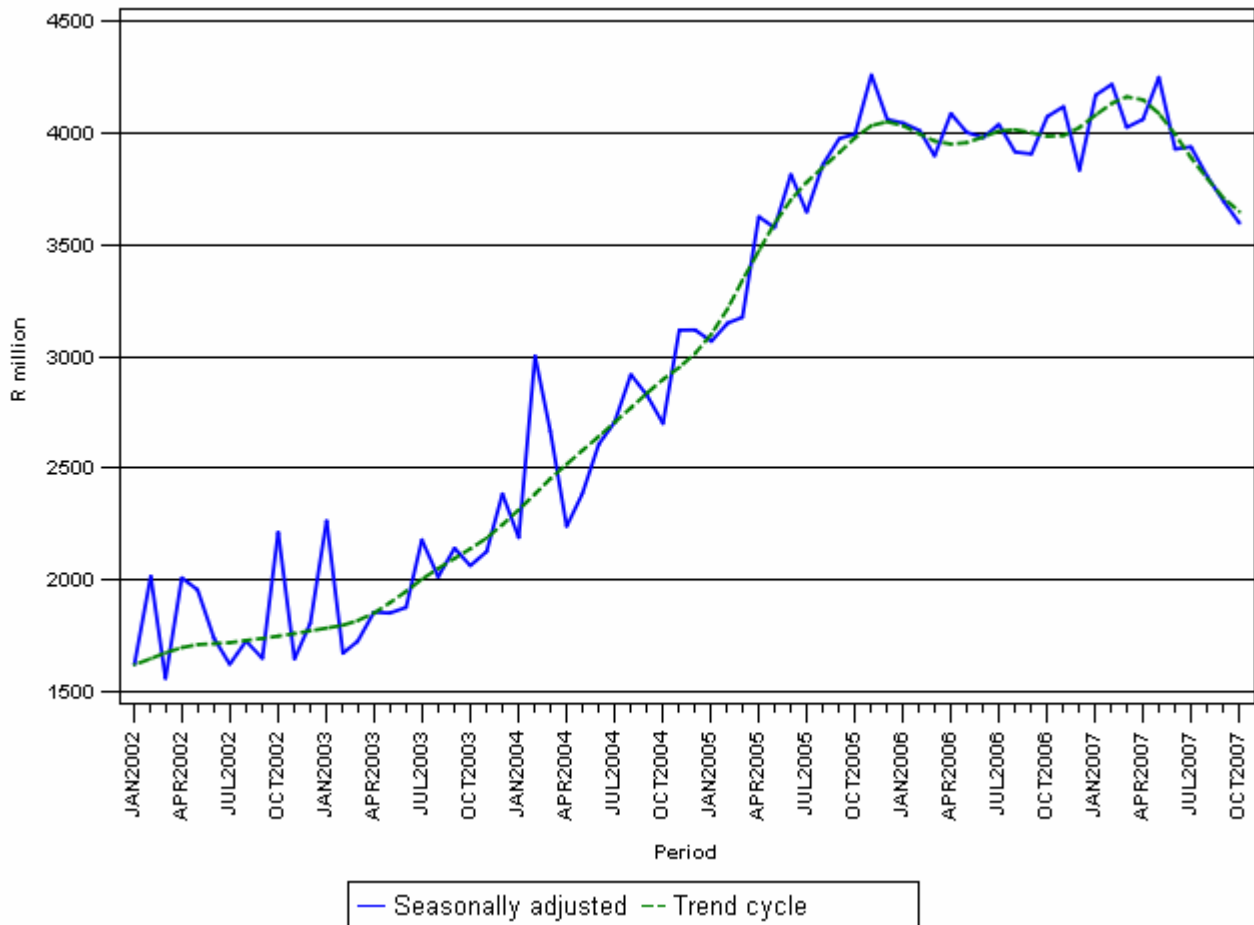
Seasonally adjusted estimates at constant 2000 prices	May to July 2007	August to October 2007	Percentage change between May to July 2007 and August to October 2007
	R'000	R'000	
Residential buildings	6 523 338	5 695 287	-12,7
Non-residential buildings	2 364 203	2 337 714	-1,1
Additions and alterations	3 228 756	3 064 854	-5,1
Total	12 116 297	11 097 855	-8,4

Seasonally adjusted real value of recorded building plans passed decreased

The seasonally adjusted real value of recorded building plans passed by larger municipalities during the three months ending October 2007 decreased by 8,4% compared with the previous three months, following a 6,5% decrease recorded for the three months ending September 2007. Decreases were reported for residential building plans passed (-12,7%), additions and alterations (-5,1%) and non-residential building plans passed (-1,1%) (see Table D).

Figure 1 shows both the seasonally adjusted and the trend series for recorded building plans passed at constant 2000 prices between January 2002 and October 2007. The trend series reflects a slight increase in 2002, followed by a steep increase from April 2003 up to the end of 2005. The trend mainly leveled off in 2006 and peaked in March 2007, then started to decline.

Figure 1 – Real value of recorded building plans passed by larger municipalities at constant 2000 prices



SELECTED BUILDING STATISTICS OF THE PRIVATE SECTOR REGARDING BUILDINGS COMPLETED AT CURRENT PRICES

Table E – Selected key figures regarding buildings reported as completed to larger municipalities at current prices: January to October 2006 versus January to October 2007

Estimates at current prices	January to October 2006	January to October 2007 1/	Difference in value between January to October 2006 and January to October 2007	Percentage change between January to October 2006 and January to October 2007
	R'000	R'000	R'000	
Residential buildings	20 749 252	23 822 747	3 073 495	14,8
-Dwelling-houses	12 733 194	14 510 967	1 777 773	14,0
-Flats and townhouses	7 816 149	8 643 418	827 269	10,6
-Other residential buildings	199 909	668 362	468 453	234,3
Non-residential buildings	4 645 229	7 511 268	2 866 039	61,7
Additions and alterations	5 524 376	6 499 607	975 231	17,7
Total	30 918 857	37 833 622	6 914 765	22,4

1/ Oct. 2007 figures should be regarded as preliminary because of possible backlogs and incomplete reporting by municipalities.

Total value of buildings reported as completed at current prices increased

As indicated in Table E, the value of buildings reported as completed to larger municipalities (at current prices) during the first ten months of 2007 increased by 22,4% (R6 914,8 million) compared with the first ten months of 2006.

All the main categories of buildings contributed positively to the 22,4% increase reported for buildings completed (see Table E). The value of non-residential buildings completed grew by 61,7% or R2 866,0 million, mainly due to the increase in the completion of more offices and banks (154,1% or R1 205,0 million) and industrial and warehouse buildings (95,8% or R1 612,4 million) during the first ten months of 2007 (see Table 19, page 27).

Table F – Buildings reported as completed to larger municipalities aggregated to provincial level: January to October 2006 versus January to October 2007

Estimates at current prices	January to October 2006	January to October 2007 1/	Percentage contribution to the total value of buildings completed during January to October 2006	Percentage change between January to October 2006 and January to October 2007	Contribution (percentage points) to the percentage change in the value of buildings completed between January to October 2006 and January to October 2007 2/	Difference in value between January to October 2006 and January to October 2007
	R'000	R'000				R'000
Western Cape	8 513 770	9 985 490	27,5	17,3	4,8	1 471 720
Eastern Cape	1 093 673	1 347 698	3,5	23,2	0,8	254 025
Northern Cape	203 530	305 232	0,7	50,0	0,4	101 702
Free State	550 791	914 836	1,8	66,1	1,2	364 045
KwaZulu-Natal	4 318 304	5 342 276	14,0	23,7	3,3	1 023 972
North West	1 054 420	1 397 975	3,4	32,6	1,1	343 555
Gauteng	13 916 589	16 739 981	45,0	20,3	9,1	2 823 392
Mpumalanga	863 918	1 329 756	2,8	53,9	1,5	465 838
Limpopo	403 862	470 378	1,3	16,5	0,2	66 516
Total	30 918 857	37 833 622	100,0	22,4	22,4	6 914 765

1/ Oct. 2007 figures should be regarded as preliminary because of possible backlogs and incomplete reporting by municipalities.

2/ The contribution (percentage points) is calculated by multiplying the percentage change of each province between Jan. to Oct. 2006 and Jan. to Oct. 2007 with the percentage contribution of the corresponding province to the total value of buildings completed during Jan. to Oct. 2006, divided by 100.

All the provinces reported increases in the value of buildings completed. The largest contributor to the increase of 22,4% was Gauteng (9,1 percentage points or R2 823,4 million), followed by Western Cape (4,8 percentage points or R1 471,7 million) and KwaZulu-Natal (3,3 percentage points or R1 024,0 million) (see Table F).

SELECTED BUILDING STATISTICS OF THE PRIVATE SECTOR REGARDING BUILDINGS COMPLETED AT CONSTANT PRICES

Table G – Selected key figures regarding buildings reported as completed to larger municipalities at constant 2000 prices: January to October 2006 versus January to October 2007

Estimates at constant 2000 prices	January to October 2006	January to October 2007 1/	Difference in value between January to October 2006 and January to October 2007	Percentage change between January to October 2006 and January to October 2007
	R'000	R'000	R'000	
Residential buildings	14 130 524	14 745 182	614 658	4,3
Non-residential buildings	3 325 149	5 063 647	1 738 498	52,3
Additions and alterations	3 830 373	4 171 648	341 275	8,9
Total	21 286 046	23 980 477	2 694 431	12,7

1/ Oct. 2007 figures should be regarded as preliminary because of possible backlogs and incomplete reporting by municipalities.

Total real value of buildings reported as completed increased

As indicated in Table G, the real value of buildings reported as completed to larger municipalities (at constant 2000 prices) during the first ten months of 2007 increased by 12,7% (R2 694,4 million) compared with the first ten months of 2006. The largest percentage increase in the real value of buildings completed was reported for non-residential buildings (52,3% or R1 738,5 million), followed by additions and alterations (8,9% or R341,3 million) and residential buildings (4,3% or R614,7 million).

Table H – Seasonally adjusted key figures regarding buildings reported as completed to larger municipalities at constant 2000 prices: Current quarter versus previous quarter

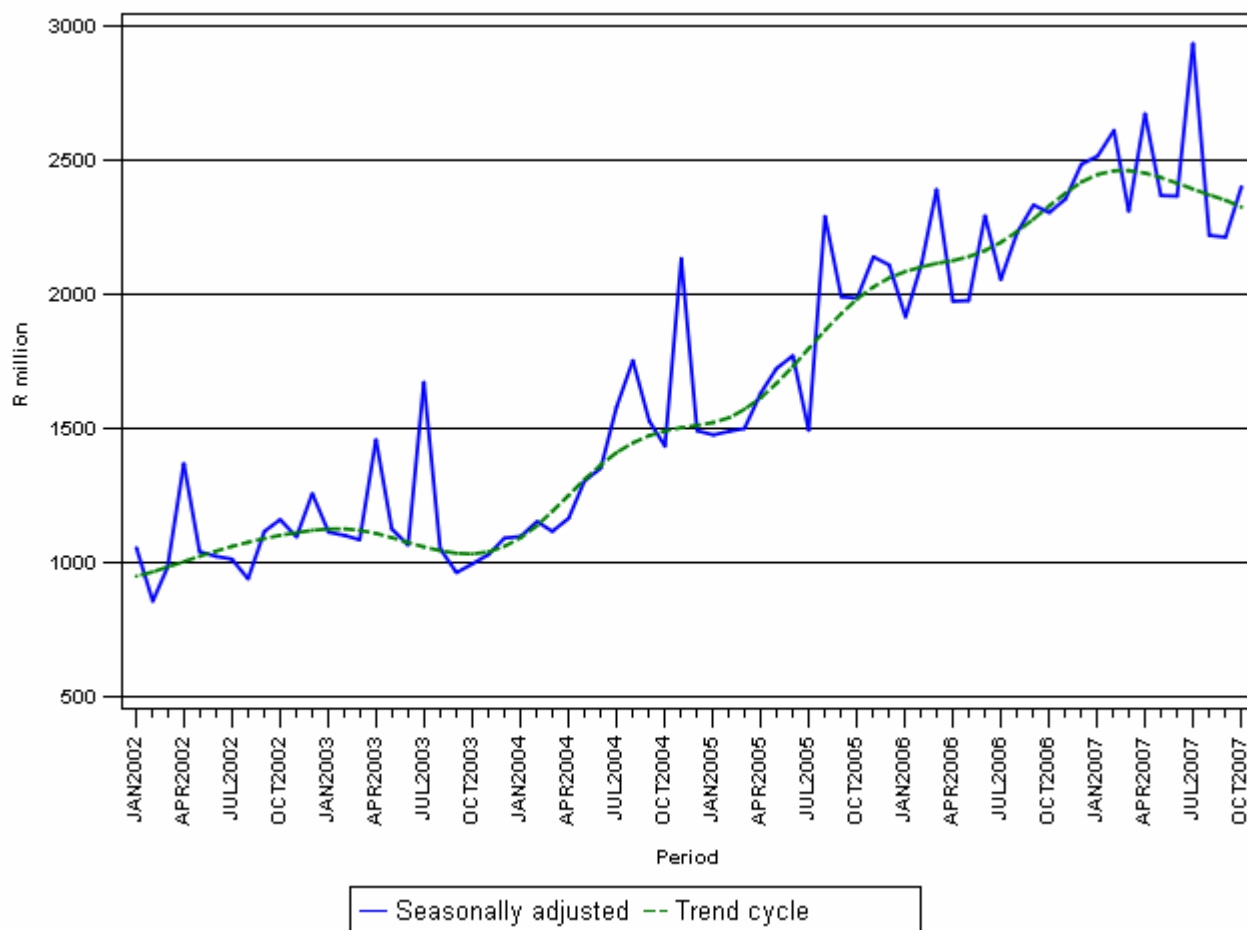
Seasonally adjusted estimates at constant 2000 prices	May to July 2007	August to October 2007	Percentage change between May to July 2007 and August to October 2007
	R'000	R'000	
Residential buildings	4 750 625	4 251 420	-10,5
Non-residential buildings	1 718 296	1 367 575	-20,4
Additions and alterations	1 203 028	1 216 020	1,1
Total	7 671 949	6 835 015	-10,9

Seasonally adjusted real value of buildings reported as completed decreased

The seasonally adjusted real value of buildings reported as completed to larger municipalities during the three months ending October 2007 decreased by 10,9% compared with the previous three months, mainly due to decreases reported for non-residential buildings (-20,4%) and residential buildings (-10,5%). An increase was reported for additions and alterations (1,1%) (see Table H).

Figure 2 shows both the seasonally adjusted and trend series for buildings reported as completed to municipalities at constant 2000 prices between January 2002 and October 2007. The trend series reflects a slight increase in 2002, slowing again until October 2003. The trend series increased from November 2003 till March 2007. The trend series has been declining since April 2007.

Figure 2 - Real value of buildings reported as completed to larger municipalities at constant 2000 prices



PJ Lehohla
Statistician-General

Table 1 - Values and percentage change of recorded building plans passed by larger municipalities at current prices by type of building

Year and month		Residential buildings		Non-residential buildings		Additions and alterations		Total	
		R'000	% change 1/	R'000	% change 1/	R'000	% change 1/	R'000	% change 1/
2006	January	2 558 041	45,9	778 449	44,6	1 090 691	21,0	4 427 181	38,6
	February	3 190 047	36,0	942 439	53,1	1 443 836	25,1	5 576 322	35,5
	March	2 999 970	28,1	1 241 790	28,9	1 558 522	26,4	5 800 282	27,8
	April *	2 763 843	6,8	1 495 022	90,3	1 385 872	6,4	5 644 737	20,7
	May	3 617 721	3,9	1 253 706	59,0	1 845 824	36,6	6 717 251	19,5
	June	3 825 823	18,2	982 965	2,2	1 659 979	11,0	6 468 767	13,6
	July	3 918 713	11,6	1 443 525	42,7	1 845 449	26,1	7 207 687	20,4
	August	4 020 265	15,1	1 478 844	19,9	1 690 353	4,1	7 189 462	13,2
	September	3 758 874	-2,8	1 095 563	58,4	1 757 623	11,5	6 612 060	7,8
	October	3 901 590	4,7	1 743 478	78,3	1 836 658	-4,1	7 481 726	13,1
	November	4 018 174	7,8	1 381 760	3,2	1 846 062	13,5	7 245 996	8,3
	December	2 691 780	-7,0	1 081 202	67,8	1 438 672	6,7	5 211 654	6,6
	Total *	41 264 841	11,6	14 918 743	41,4	19 399 541	14,2	75 583 125	17,2
2007	January	2 741 376	7,2	990 949	27,3	1 387 668	27,2	5 119 993	15,6
	February *	3 538 610	10,9	1 393 007	47,8	1 623 017	12,4	6 554 634	17,5
	March	3 976 504	32,6	995 325	-19,8	1 575 250	1,1	6 547 079	12,9
	April	3 457 613	25,1	1 186 268	-20,7	1 635 039	18,0	6 278 920	11,2
	May	4 440 979	22,8	1 484 021	18,4	2 120 566	14,9	8 045 566	19,8
	June	3 988 718	4,3	1 411 705	43,6	1 733 966	4,5	7 134 389	10,3
	July	4 144 134	5,8	1 356 629	-6,0	2 233 741	21,0	7 734 504	7,3
	August	3 945 072	-1,9	1 547 453	4,6	2 140 189	26,6	7 632 714	6,2
	September	3 521 395	-6,3	1 490 373	36,0	1 692 856	-3,7	6 704 624	1,4
	October 2/	3 657 372	-6,3	1 431 730	-17,9	2 138 014	16,4	7 227 116	-3,4

1/ The annual/monthly percentage change is the change in the values of recorded building plans passed by municipalities of the relevant year/month compared with the values of recorded building plans passed by municipalities of the comparable period of the previous year expressed as a percentage.

2/ Preliminary figures.

* Revised.

Table 2 - Seasonally adjusted values and percentage change of recorded building plans passed by larger municipalities at current prices by type of building

Year and month		Residential buildings		Non-residential buildings		Additions and alterations		Total	
		R'000	% change 1/	R'000	% change 1/	R'000	% change 1/	R'000	% change 1/
2006	January	3 541 998	-3,5	1 031 115	36,8	1 464 314	-8,9	6 037 427	0,1
	February	3 439 149	-2,9	1 043 537	1,2	1 564 078	6,8	6 046 764	0,2
	March	3 189 595	-7,3	1 094 097	4,8	1 620 457	3,6	5 904 149	-2,4
	April	3 162 886	-0,8	1 503 613	37,4	1 543 560	-4,7	6 210 059	5,2
	May	3 252 907	2,8	1 242 499	-17,4	1 658 859	7,5	6 154 265	-0,9
	June	3 605 661	10,8	979 664	-21,2	1 630 480	-1,7	6 215 805	1,0
	July	3 450 901	-4,3	1 295 671	32,3	1 636 566	0,4	6 383 138	2,7
	August	3 590 668	4,1	1 200 163	-7,4	1 510 258	-7,7	6 301 089	-1,3
	September	3 435 528	-4,3	1 168 685	-2,6	1 730 277	14,6	6 334 490	0,5
	October	3 518 415	2,4	1 550 143	32,6	1 572 565	-9,1	6 641 123	4,8
	November	3 583 995	1,9	1 466 394	-5,4	1 735 983	10,4	6 786 372	2,2
	December	3 433 818	-4,2	1 269 330	-13,4	1 689 020	-2,7	6 392 168	-5,8
2007	January	3 791 037	10,4	1 322 466	4,2	1 872 022	10,8	6 985 525	9,3
	February	3 816 347	0,7	1 525 583	15,4	1 748 695	-6,6	7 090 625	1,5
	March	4 269 285	11,9	889 223	-41,7	1 643 337	-6,0	6 801 845	-4,1
	April	3 961 860	-7,2	1 173 489	32,0	1 814 213	10,4	6 949 562	2,2
	May	3 972 968	0,3	1 471 945	25,4	1 916 313	5,6	7 361 226	5,9
	June	3 731 534	-6,1	1 411 851	-4,1	1 704 001	-11,1	6 847 386	-7,0
	July	3 663 300	-1,8	1 227 007	-13,1	1 987 117	16,6	6 877 424	0,4
	August	3 519 529	-3,9	1 242 085	1,2	1 913 787	-3,7	6 675 401	-2,9
	September	3 221 488	-8,5	1 618 723	30,3	1 666 573	-12,9	6 506 784	-2,5
	October	3 301 602	2,5	1 261 833	-22,0	1 821 919	9,3	6 385 354	-1,9
	May - Jul.07	11 367 802		4 110 803		5 607 431		21 086 036	
	Aug. - Oct.07 2/	10 042 619	-11,7	4 122 641	0,3	5 402 279	-3,7	19 567 539	-7,2

1/ The percentage change is the change in the seasonally adjusted values of recorded building plans passed by municipalities of the relevant month compared with the seasonally adjusted values of recorded building plans passed by municipalities of the previous month expressed as a percentage.

2/ The percentage change is the change in the seasonally adjusted values of recorded building plans passed by municipalities of the current quarter compared with the seasonally adjusted values of recorded building plans passed by municipalities of the previous quarter expressed as a percentage.

Table 3 - Values and percentage change of recorded building plans passed by larger municipalities at constant 2000 prices by type of building

Year and month		Residential buildings		Non-residential buildings		Additions and alterations		Total	
		R'000	% change 1/	R'000	% change 1/	R'000	% change 1/	R'000	% change 1/
2006	January	1 716 806	38,0	522 449	36,7	732 007	14,4	2 971 262	31,1
	February	2 129 537	28,2	629 132	44,3	963 842	17,9	3 722 511	27,7
	March	1 998 648	21,3	827 308	22,0	1 038 322	19,7	3 864 278	21,0
	April *	1 824 319	1,0	986 813	80,0	914 767	0,6	3 725 899	14,2
	May	2 355 287	-2,9	816 215	48,6	1 201 708	27,6	4 373 210	11,6
	June	2 447 743	8,9	628 896	-5,9	1 062 047	2,2	4 138 686	4,7
	July	2 470 815	2,4	910 167	31,0	1 163 587	15,8	4 544 569	10,5
	August	2 478 585	3,9	911 741	8,2	1 042 141	-6,0	4 432 467	2,2
	September	2 308 891	-12,3	672 950	42,8	1 079 621	0,6	4 061 462	-2,8
	October	2 386 294	-5,8	1 066 347	60,4	1 123 338	-13,7	4 575 979	1,7
	November	2 432 309	-3,7	836 416	-7,8	1 117 471	1,4	4 386 196	-3,2
	December	1 620 578	-17,2	650 934	49,4	866 148	-5,0	3 137 660	-5,1
	Total *	26 169 812	2,7	9 459 368	30,0	12 304 999	5,0	47 934 179	7,8
2007	January	1 639 579	-4,5	592 673	13,4	829 945	13,4	3 062 197	3,1
	February *	2 120 198	-0,4	834 636	32,7	972 449	0,9	3 927 283	5,5
	March	2 374 032	18,8	594 224	-28,2	940 448	-9,4	3 908 704	1,1
	April	2 029 116	11,2	696 167	-29,5	959 530	4,9	3 684 813	-1,1
	May	2 567 040	9,0	857 816	5,1	1 225 761	2,0	4 650 617	6,3
	June	2 287 109	-6,6	809 464	28,7	994 247	-6,4	4 090 820	-1,2
	July	2 365 373	-4,3	774 332	-14,9	1 274 966	9,6	4 414 671	-2,9
	August	2 230 114	-10,0	874 761	-4,1	1 209 830	16,1	4 314 705	-2,7
	September	1 990 613	-13,8	842 495	25,2	956 956	-11,4	3 790 064	-6,7
	October 2/	2 053 550	-13,9	803 891	-24,6	1 200 457	6,9	4 057 898	-11,3

1/ The annual/monthly percentage change is the change in the values of recorded building plans passed by municipalities of the relevant year/month compared with the values of recorded building plans passed by municipalities of the comparable period of the previous year expressed as a percentage.

2/ Preliminary figures.

* Revised.

Table 4 - Seasonally adjusted values and percentage change of recorded building plans passed by larger municipalities at constant 2000 prices by type of building

Year and month		Residential buildings		Non-residential buildings		Additions and alterations		Total	
		R'000	% change 1/	R'000	% change 1/	R'000	% change 1/	R'000	% change 1/
2006	January	2 372 993	-4,0	690 168	35,9	981 090	-9,3	4 044 251	-0,4
	February	2 285 824	-3,7	693 564	0,5	1 031 367	5,1	4 010 755	-0,8
	March	2 111 265	-7,6	717 948	3,5	1 068 901	3,6	3 898 114	-2,8
	April	2 078 054	-1,6	993 118	38,3	1 016 294	-4,9	4 087 466	4,9
	May	2 110 854	1,6	808 774	-18,6	1 083 717	6,6	4 003 345	-2,1
	June	2 306 206	9,3	628 541	-22,3	1 045 244	-3,6	3 979 991	-0,6
	July	2 180 731	-5,4	820 826	30,6	1 037 071	-0,8	4 038 628	1,5
	August	2 230 272	2,3	746 505	-9,1	938 599	-9,5	3 915 376	-3,1
	September	2 118 957	-5,0	720 647	-3,5	1 067 147	13,7	3 906 751	-0,2
	October	2 158 548	1,9	950 175	31,9	965 227	-9,6	4 073 950	4,3
	November	2 179 525	1,0	887 998	-6,5	1 050 965	8,9	4 118 488	1,1
	December	2 059 821	-5,5	761 073	-14,3	1 012 675	-3,6	3 833 569	-6,9
2007	January	2 263 360	9,9	789 153	3,7	1 117 554	10,4	4 170 067	8,8
	February	2 274 653	0,5	908 651	15,1	1 035 604	-7,3	4 218 908	1,2
	March	2 529 831	11,2	525 025	-42,2	970 956	-6,2	4 025 812	-4,6
	April	2 312 353	-8,6	688 356	31,1	1 061 241	9,3	4 061 950	0,9
	May	2 289 122	-1,0	849 672	23,4	1 110 765	4,7	4 249 559	4,6
	June	2 138 389	-6,6	811 094	-4,5	978 885	-11,9	3 928 368	-7,6
	July	2 095 827	-2,0	703 437	-13,3	1 139 106	16,4	3 938 370	0,3
	August	2 005 772	-4,3	708 565	0,7	1 091 494	-4,2	3 805 831	-3,4
	September	1 829 354	-8,8	918 823	29,7	946 554	-13,3	3 694 731	-2,9
	October	1 860 161	1,7	710 326	-22,7	1 026 806	8,5	3 597 293	-2,6
	May - Jul.07	6 523 338		2 364 203		3 228 756		12 116 297	
	Aug. - Oct.07 2/	5 695 287	-12,7	2 337 714	-1,1	3 064 854	-5,1	11 097 855	-8,4

1/ The percentage change is the change in the seasonally adjusted values of recorded building plans passed by municipalities of the relevant month compared with the seasonally adjusted values of recorded building plans passed by municipalities of the previous month expressed as a percentage.

2/ The percentage change is the change in the seasonally adjusted values of recorded building plans passed by municipalities of the current quarter compared with the seasonally adjusted values of recorded building plans passed by municipalities of the previous quarter expressed as a percentage.

Table 5 - Values and percentage change of buildings reported as completed to larger municipalities at current prices by type of building

Year and month		Residential buildings		Non-residential buildings		Additions and alterations		Total	
		R'000	% change 1/	R'000	% change 1/	R'000	% change 1/	R'000	% change 1/
2006	January	1 257 968	45,0	316 723	10,1	406 962	28,1	1 981 653	34,6
	February	1 772 939	39,7	408 861	125,2	553 237	72,2	2 735 037	54,3
	March	2 113 187	56,6	656 158	110,5	589 069	85,3	3 358 414	69,7
	April	1 748 227	24,6	268 422	36,6	450 681	35,3	2 467 330	27,6
	May	1 989 102	18,0	509 864	26,4	575 749	21,9	3 074 715	20,0
	June	2 309 739	52,7	485 834	24,9	567 380	11,0	3 362 953	39,4
	July	2 268 183	44,5	333 643	38,0	554 641	57,2	3 156 467	45,9
	August	2 379 053	4,4	492 632	-16,0	557 684	37,9	3 429 369	4,9
	September	2 539 730	21,0	404 951	10,8	665 842	48,6	3 610 523	24,0
	October	2 371 124	19,9	768 141	44,7	603 131	19,2	3 742 396	24,1
	November	2 648 334	-1,7	651 400	47,9	853 416	91,1	4 153 150	16,0
	December	2 675 164	15,3	542 151	115,6	545 663	23,4	3 762 978	24,8
	Total	26 072 750	24,0	5 838 780	39,5	6 923 455	42,1	38 834 985	29,1
2007	January	1 640 091	30,4	483 947	52,8	675 202	65,9	2 799 240	41,3
	February	2 198 764	24,0	883 085	116,0	578 317	4,5	3 660 166	33,8
	March	2 094 772	-0,9	778 599	18,7	668 881	13,5	3 542 252	5,5
	April	2 342 044	34,0	630 036	134,7	555 370	23,2	3 527 450	43,0
	May	2 665 216	34,0	713 577	40,0	588 024	2,1	3 966 817	29,0
	June	2 575 887	11,5	579 957	19,4	657 975	16,0	3 813 819	13,4
	July	2 786 031	22,8	1 123 723	236,8	721 990	30,2	4 631 744	46,7
	August	2 557 372	7,5	518 873	5,3	688 871	23,5	3 765 116	9,8
	September	2 271 322	-10,6	889 382	119,6	627 729	-5,7	3 788 433	4,9
	October 2/	2 691 248	13,5	910 089	18,5	737 248	22,2	4 338 585	15,9

1/ The annual/monthly percentage change is the change in the values of buildings reported as completed to municipalities of the relevant year/month compared with the values of buildings reported as completed to municipalities of the comparable period of the previous year expressed as a percentage.

2/ Preliminary figures.

Table 6 - Seasonally adjusted values and percentage change of buildings reported as completed to larger municipalities at current prices by type of building

Year and month		Residential buildings		Non-residential buildings		Additions and alterations		Total	
		R'000	% change 1/	R'000	% change 1/	R'000	% change 1/	R'000	% change 1/
2006	January	1 852 498	-14,6	378 983	33,8	441 411	-13,3	2 672 892	-9,7
	February	2 020 440	9,1	422 928	11,6	558 491	26,5	3 001 859	12,3
	March	2 278 257	12,8	550 900	30,3	589 020	5,5	3 418 177	13,9
	April	1 959 253	-14,0	367 614	-33,3	531 714	-9,7	2 858 581	-16,4
	May	1 913 524	-2,3	413 714	12,5	541 675	1,9	2 868 913	0,4
	June	2 309 856	20,7	499 901	20,8	548 399	1,2	3 358 156	17,1
	July	2 100 997	-9,0	398 997	-20,2	525 282	-4,2	3 025 276	-9,9
	August	2 204 856	4,9	550 278	37,9	545 963	3,9	3 301 097	9,1
	September	2 423 311	9,9	362 931	-34,0	651 045	19,2	3 437 287	4,1
	October	2 232 009	-7,9	590 949	62,8	558 791	-14,2	3 381 749	-1,6
	November	2 124 712	-4,8	615 745	4,2	775 488	38,8	3 515 945	4,0
	December	2 469 967	16,2	628 485	2,1	626 878	-19,2	3 725 330	6,0
2007	January	2 458 161	-0,5	573 620	-8,7	731 723	16,7	3 763 504	1,0
	February	2 504 692	1,9	895 593	56,1	590 362	-19,3	3 990 647	6,0
	March	2 259 418	-9,8	647 975	-27,6	663 071	12,3	3 570 464	-10,5
	April	2 622 255	16,1	876 748	35,3	653 977	-1,4	4 152 980	16,3
	May	2 584 434	-1,4	607 920	-30,7	553 786	-15,3	3 746 140	-9,8
	June	2 563 339	-0,8	578 041	-4,9	636 524	14,9	3 777 904	0,8
	July	2 595 409	1,3	1 374 242	137,7	691 701	8,7	4 661 352	23,4
	August	2 374 885	-8,5	573 076	-58,3	679 206	-1,8	3 627 167	-22,2
	September	2 153 124	-9,3	801 823	39,9	609 591	-10,2	3 564 538	-1,7
	October	2 533 280	17,7	680 172	-15,2	681 547	11,8	3 894 999	9,3
	May - Jul.07	7 743 182		2 560 203		1 882 011		12 185 396	
	Aug. - Oct.07 2/	7 061 289	-8,8	2 055 071	-19,7	1 970 344	4,7	11 086 704	-9,0

1/ The percentage change is the change in the seasonally adjusted values of buildings reported as completed to municipalities of the relevant month compared with the seasonally adjusted values of buildings reported as completed to municipalities of the previous month expressed as a percentage.

2/ The percentage change is the change in the seasonally adjusted values of buildings reported as completed to municipalities of the current quarter compared with the seasonally adjusted values of buildings reported as completed to municipalities of the previous quarter expressed as a percentage.

Table 7 - Values and percentage change of buildings reported as completed to larger municipalities at constant 2000 prices by type of building

Year and month		Residential buildings		Non-residential buildings		Additions and alterations		Total	
		R'000	% change 1/	R'000	% change 1/	R'000	% change 1/	R'000	% change 1/
2006	January	875 518	36,0	232 372	4,6	288 830	18,4	1 396 720	25,8
	February	1 228 110	30,7	298 221	112,9	391 811	60,8	1 918 142	44,9
	March	1 458 509	46,8	477 553	98,4	414 545	73,2	2 350 607	59,5
	April	1 200 870	17,0	194 227	27,9	314 502	26,3	1 709 599	19,8
	May	1 360 922	11,1	366 809	17,5	401 219	14,4	2 128 950	12,7
	June	1 578 421	43,9	349 270	16,0	394 014	4,7	2 321 705	30,9
	July	1 534 451	36,1	236 794	27,5	380 935	47,1	2 152 180	36,9
	August	1 603 497	-1,8	348 890	-21,5	380 932	29,2	2 333 319	-1,7
	September	1 708 000	14,2	284 976	3,6	453 571	39,1	2 446 547	16,7
	October	1 582 226	13,3	536 037	35,1	410 014	12,0	2 528 277	17,1
	November	1 751 468	-8,0	453 937	38,9	578 195	80,0	2 783 600	9,1
	December	1 752 041	7,2	376 494	103,3	368 941	16,1	2 497 476	16,8
	Total	17 634 033	16,7	4 155 580	30,6	4 777 509	33,1	26 567 122	21,4
2007	January	1 058 853	20,9	332 381	43,0	453 156	56,9	1 844 390	32,1
	February	1 398 502	13,9	603 200	102,3	386 059	-1,5	2 387 761	24,5
	March	1 323 598	-9,2	530 381	11,1	445 624	7,5	2 299 603	-2,2
	April	1 481 027	23,3	428 305	120,5	366 581	16,6	2 275 913	33,1
	May	1 658 484	21,9	483 453	31,8	382 828	-4,6	2 524 765	18,6
	June	1 597 177	1,2	392 128	12,3	420 969	6,8	2 410 274	3,8
	July	1 703 863	11,0	754 177	218,5	455 227	19,5	2 913 267	35,4
	August	1 545 811	-3,6	346 377	-0,7	424 705	11,5	2 316 893	-0,7
	September	1 371 846	-19,7	592 526	107,9	385 583	-15,0	2 349 955	-3,9
	October 2/	1 606 021	1,5	600 719	12,1	450 916	10,0	2 657 656	5,1

1/ The annual/monthly percentage change is the change in the values of buildings reported as completed to municipalities of the relevant year/month compared with the values of buildings reported as completed to municipalities of the comparable period of the previous year expressed as a percentage.

2/ Preliminary figures.

Table 8 - Seasonally adjusted values and percentage change of buildings reported as completed to larger municipalities at constant 2000 prices by type of building

Year and month		Residential buildings		Non-residential buildings		Additions and alterations		Total	
		R'000	%change 1/	R'000	% change 1/	R'000	% change 1/	R'000	% change 1/
2006	January	1 323 473	-13,9	278 861	33,5	313 198	-13,9	1 915 532	-9,2
	February	1 413 250	6,8	309 365	10,9	395 815	26,4	2 118 430	10,6
	March	1 577 458	11,6	400 718	29,5	413 096	4,4	2 391 272	12,9
	April	1 337 916	-15,2	265 532	-33,7	370 873	-10,2	1 974 321	-17,4
	May	1 302 724	-2,6	296 367	11,6	377 964	1,9	1 977 055	0,1
	June	1 558 434	19,6	356 630	20,3	378 619	0,2	2 293 683	16,0
	July	1 410 941	-9,5	282 722	-20,7	361 863	-4,4	2 055 526	-10,4
	August	1 464 042	3,8	390 525	38,1	376 023	3,9	2 230 590	8,5
	September	1 632 964	11,5	255 332	-34,6	445 181	18,4	2 333 477	4,6
	October	1 511 314	-7,4	413 848	62,1	380 317	-14,6	2 305 479	-1,2
	November	1 401 998	-7,2	430 223	4,0	524 251	37,8	2 356 472	2,2
	December	1 626 987	16,0	437 180	1,6	421 509	-19,6	2 485 676	5,5
2007	January	1 630 236	0,2	395 237	-9,6	490 830	16,4	2 516 303	1,2
	February	1 604 218	-1,6	613 685	55,3	394 077	-19,7	2 611 980	3,8
	March	1 429 141	-10,9	441 302	-28,1	440 050	11,7	2 310 493	-11,5
	April	1 647 607	15,3	595 023	34,8	431 409	-2,0	2 674 039	15,7
	May	1 597 734	-3,0	410 186	-31,1	360 930	-16,3	2 368 850	-11,4
	June	1 574 309	-1,5	387 808	-5,5	404 595	12,1	2 366 712	-0,1
	July	1 578 582	0,3	920 302	137,3	437 503	8,1	2 936 387	24,1
	August	1 414 922	-10,4	383 074	-58,4	422 473	-3,4	2 220 469	-24,4
	September	1 303 499	-7,9	533 990	39,4	376 089	-11,0	2 213 578	-0,3
	October	1 532 999	17,6	450 511	-15,6	417 458	11,0	2 400 968	8,5
	May - Jul.07	4 750 625		1 718 296		1 203 028		7 671 949	
	Aug. - Oct.07 2/	4 251 420	-10,5	1 367 575	-20,4	1 216 020	1,1	6 835 015	-10,9

1/ The percentage change is the change in the seasonally adjusted values of buildings reported as completed to municipalities of the relevant month compared with the seasonally adjusted values of buildings reported as completed to municipalities of the previous month expressed as a percentage.

2/ The percentage change is the change in the seasonally adjusted values of buildings reported as completed to municipalities of the current quarter compared with the seasonally adjusted values of buildings reported as completed to municipalities of the previous quarter expressed as a percentage.

Table 9 - Recorded building plans passed by larger municipalities at current prices by type of building: South Africa

			Oct. 2006*	Sep. 2007	Oct. 2007	Jan. - Oct. 2006	Jan. - Oct. 2007	% Change 1/
Category of building	Type of building	Measuring unit						
1. Residential buildings	1. Dwelling-houses < 80 square metres	Number	3 909	1 837	2 816	31 868	30 631	-3,9
		square metres	169 041	85 871	129 730	1 418 485	1 363 804	-3,9
		R'000	289 146	182 256	295 805	2 476 071	2 705 457	9,3
	2. Dwelling-houses >= 80 square metres	Number	3 292	2 428	2 838	29 361	27 608	-6,0
		square metres	765 703	623 404	742 110	6 792 980	6 950 389	2,3
		R'000	2 337 107	2 121 585	2 491 586	20 156 324	22 823 971	13,2
	3. Flats and townhouses	Number	2 672	3 051	2 078	27 416	27 885	1,7
		square metres	371 783	298 659	225 145	3 518 436	3 258 821	-7,4
		R'000	1 222 277	1 132 510	783 927	11 180 930	11 277 823	0,9
	4. Other residential buildings 2/	square metres	14 759	25 850	22 571	184 462	158 352	-14,2
		R'000	53 060	85 044	86 054	741 562	604 522	-18,5
	5. Total residential buildings	R'000	3 901 590	3 521 395	3 657 372	34 554 887	37 411 773	8,3
2. Non-residential buildings	1. Office and banking space	square metres	93 010	53 886	93 764	830 235	797 382	-4,0
		R'000	294 951	220 239	575 808	3 107 298	3 409 933	9,7
	2. Shopping space	square metres	212 808	104 865	93 143	971 589	929 856	-4,3
		R'000	791 945	400 468	344 318	3 407 067	3 516 123	3,2
	3. Industrial and warehouse space	square metres	212 288	262 316	133 943	1 828 091	1 868 628	2,2
		R'000	575 787	772 915	385 676	5 010 583	5 238 788	4,6
	4. Other non-residential buildings 3/	square metres	24 771	36 826	28 424	309 098	328 429	6,3
		R'000	80 795	96 751	125 928	930 833	1 122 616	20,6
	5. Total non-residential buildings	R'000	1 743 478	1 490 373	1 431 730	12 455 781	13 287 460	6,7
	3. Additions and alterations	1. Dwelling-houses	square metres	506 727	417 946	505 154	4 470 763	4 428 444
R'000			1 481 983	1 341 601	1 601 811	12 363 550	13 616 281	10,1
2. Other buildings 4/		square metres	108 267	93 006	118 800	1 165 827	1 197 280	2,7
		R'000	354 675	351 255	536 203	3 751 257	4 664 025	24,3
3. Total additions and alterations		R'000	1 836 658	1 692 856	2 138 014	16 114 807	18 280 306	13,4
4. Recorded plans passed	1. Total at current prices	R'000	7 481 726	6 704 624	7 227 116	63 125 475	68 979 539	9,3

1/ The percentage change between cumulative figures for 2006 and 2007.

2/ Other residential buildings include institutions for the disabled, boarding houses, hostels and tourism accommodation e.g. hotels, motels, guesthouses, holiday chalets, bed-and-breakfast accommodation and casinos.

3/ Other non-residential space includes churches, sport and recreation clubs, schools, crèches, hospitals and all other non-residential space.

4/ Other buildings include other residential buildings, non-residential buildings and internal alterations.

* Revised.

Table 10 - Recorded building plans passed by larger municipalities at current prices by type of building: Western Cape

			Oct. 2006*	Sep. 2007	Oct. 2007	Jan. - Oct. 2006	Jan. - Oct. 2007	% Change 1/
Category of building	Type of building	Measuring unit						
1. Residential buildings	1. Dwelling-houses < 80 square metres	Number	523	135	343	5 908	3 185	-46,1
		square metres	22 723	7 236	15 773	257 823	147 049	-43,0
		R'000	35 000	17 120	38 018	429 576	348 181	-18,9
	2. Dwelling-houses >= 80 square metres	Number	722	481	598	6 314	6 024	-4,6
		square metres	157 084	120 902	139 921	1 427 709	1 469 504	2,9
		R'000	488 368	420 177	484 589	4 318 591	4 984 855	15,4
	3. Flats and townhouses	Number	745	347	423	5 530	5 102	-7,7
		square metres	85 066	33 701	37 501	606 655	505 700	-16,6
		R'000	279 084	106 292	126 997	1 930 709	1 742 575	-9,7
	4. Other residential buildings 2/	square metres	0	5 427	12 636	38 377	59 392	54,8
		R'000	0	18 078	52 009	142 148	242 221	70,4
	5. Total residential buildings	R'000	802 452	561 667	701 613	6 821 024	7 317 832	7,3
2. Non-residential buildings	1. Office and banking space	square metres	28 410	5 989	6 393	202 816	225 739	11,3
		R'000	95 574	19 426	23 846	606 295	737 809	21,7
	2. Shopping space	square metres	11 025	18 319	70 399	141 543	175 171	23,8
		R'000	36 378	64 498	272 394	419 457	632 249	50,7
	3. Industrial and warehouse space	square metres	50 784	40 687	50 294	528 721	454 841	-14,0
		R'000	151 816	122 200	159 143	1 571 069	1 325 040	-15,7
	4. Other non-residential buildings 3/	square metres	2 902	3 167	6 548	79 316	72 713	-8,3
		R'000	7 877	10 877	21 013	242 492	215 779	-11,0
	5. Total non-residential buildings	R'000	291 645	217 001	476 396	2 839 313	2 910 877	2,5
3. Additions and alterations	1. Dwelling-houses	square metres	154 901	121 040	142 436	1 331 201	1 244 109	-6,5
		R'000	447 874	375 293	439 701	3 632 482	3 692 975	1,7
	2. Other buildings 4/	square metres	32 939	23 141	43 916	413 092	348 782	-15,6
		R'000	120 952	113 437	265 608	1 343 676	1 613 405	20,1
	3. Total additions and alterations	R'000	568 826	488 730	705 309	4 976 158	5 306 380	6,6
4. Recorded plans passed	1. Total at current prices	R'000	1 662 923	1 267 398	1 883 318	14 636 495	15 535 089	6,1

1/ The percentage change between cumulative figures for 2006 and 2007.

2/ Other residential buildings include institutions for the disabled, boarding houses, hostels and tourism accommodation e.g. hotels, motels, guesthouses, holiday chalets, bed-and-breakfast accommodation and casinos.

3/ Other non-residential space includes churches, sport and recreation clubs, schools, crèches, hospitals and all other non-residential space.

4/ Other buildings include other residential buildings, non-residential buildings and internal alterations.

* Revised.

Table 11 - Recorded building plans passed by larger municipalities at current prices by type of building: Eastern Cape

			Oct. 2006*	Sep. 2007	Oct. 2007	Jan. - Oct. 2006	Jan. - Oct. 2007	% Change 1/
Category of building	Type of building	Measuring unit						
1. Residential buildings	1. Dwelling-houses < 80 square metres	Number	397	233	51	2 219	1 299	-41,5
		square metres	16 179	9 793	2 635	95 534	57 855	-39,4
		R'000	11 603	8 848	6 171	119 932	87 038	-27,4
	2. Dwelling-houses >= 80 square metres	Number	190	122	203	2 283	1 825	-20,1
		square metres	40 257	29 978	52 142	466 353	427 223	-8,4
		R'000	110 991	101 957	153 721	1 120 309	1 238 237	10,5
	3. Flats and townhouses	Number	190	178	87	1 201	1 287	7,2
		square metres	15 363	12 747	12 877	154 482	136 794	-11,4
		R'000	39 910	36 225	36 107	362 136	365 417	0,9
	4. Other residential buildings 2/	square metres	3 760	0	4 630	10 117	10 326	2,1
		R'000	8 500	0	12 760	22 103	26 162	18,4
	5. Total residential buildings	R'000	171 004	147 030	208 759	1 624 480	1 716 854	5,7
2. Non-residential buildings	1. Office and banking space	square metres	2 438	809	1 644	19 185	15 709	-18,1
		R'000	8 505	2 066	6 281	52 436	44 974	-14,2
	2. Shopping space	square metres	39 843	0	4 690	59 469	103 604	74,2
		R'000	105 566	0	12 092	152 959	263 428	72,2
	3. Industrial and warehouse space	square metres	11 523	13 983	11 633	82 669	120 475	45,7
		R'000	23 968	31 315	29 192	169 538	269 553	59,0
	4. Other non-residential buildings 3/	square metres	1 701	7 346	3 821	16 007	32 152	100,9
		R'000	3 791	16 426	9 880	36 451	80 563	121,0
	5. Total non-residential buildings	R'000	141 830	49 807	57 445	411 384	658 518	60,1
3. Additions and alterations	1. Dwelling-houses	square metres	37 174	31 402	36 340	388 260	345 577	-11,0
		R'000	95 919	84 303	93 481	881 265	903 181	2,5
	2. Other buildings 4/	square metres	14 865	8 755	7 593	65 689	117 567	79,0
		R'000	36 296	23 094	20 312	170 326	302 208	77,4
	3. Total additions and alterations	R'000	132 215	107 397	113 793	1 051 591	1 205 389	14,6
4. Recorded plans passed	1. Total at current prices	R'000	445 049	304 234	379 997	3 087 455	3 580 761	16,0

1/ The percentage change between cumulative figures for 2006 and 2007.

2/ Other residential buildings include institutions for the disabled, boarding houses, hostels and tourism accommodation e.g. hotels, motels, guesthouses, holiday chalets, bed-and-breakfast accommodation and casinos.

3/ Other non-residential space includes churches, sport and recreation clubs, schools, crèches, hospitals and all other non-residential space.

4/ Other buildings include other residential buildings, non-residential buildings and internal alterations.

* Revised.

Table 12 - Recorded building plans passed by larger municipalities at current prices by type of building: Northern Cape

			Oct. 2006*	Sep. 2007	Oct. 2007	Jan. - Oct. 2006	Jan. - Oct. 2007	% Change 1/	
Category of building	Type of building	Measuring unit							
1. Residential buildings	1. Dwelling-houses < 80 square metres	Number	10	0	1	248	43	-82,7	
		square metres	457	0	78	11 720	2 255	-80,8	
		R'000	795	0	218	17 832	7 147	-59,9	
	2. Dwelling-houses >= 80 square metres	Number	40	29	28	311	359	15,4	
		square metres	7 161	6 160	5 489	60 033	64 522	7,5	
		R'000	16 764	18 597	17 468	129 773	186 414	43,6	
	3. Flats and townhouses	Number	2	5	7	225	119	-47,1	
		square metres	602	643	800	22 600	15 507	-31,4	
		R'000	1 150	1 800	2 100	42 262	45 171	6,9	
	4. Other residential buildings 2/	square metres	5 414	153	0	8 034	270	-96,6	
		R'000	23 083	450	0	29 346	860	-97,1	
	5. Total residential buildings		R'000	41 792	20 847	19 786	219 213	239 592	9,3
2. Non-residential buildings	1. Office and banking space	square metres	0	337	90	5 759	8 101	40,7	
		R'000	0	950	198	14 161	23 670	67,1	
	2. Shopping space	square metres	1 536	1 140	3 900	5 930	38 314	546,1	
		R'000	3 959	2 883	11 002	14 540	117 618	708,9	
	3. Industrial and warehouse space	square metres	205	295	2 155	11 957	8 981	-24,9	
		R'000	492	649	6 034	32 773	21 921	-33,1	
	4. Other non-residential buildings 3/	square metres	1 377	269	434	7 391	3 210	-56,6	
		R'000	3 287	753	1 038	17 932	8 828	-50,8	
	5. Total non-residential buildings		R'000	7 738	5 235	18 272	79 406	172 037	116,7
	3. Additions and alterations	1. Dwelling-houses	square metres	7 310	1 621	1 542	50 411	43 975	-12,8
R'000			14 750	5 160	4 394	102 714	118 071	15,0	
2. Other buildings 4/		square metres	1 931	824	120	12 239	22 424	83,2	
		R'000	5 157	2 350	1 750	34 484	63 456	84,0	
3. Total additions and alterations		R'000	19 907	7 510	6 144	137 198	181 527	32,3	
4. Recorded plans passed	1. Total at current prices	R'000	69 437	33 592	44 202	435 817	593 156	36,1	

1/ The percentage change between cumulative figures for 2006 and 2007.

2/ Other residential buildings include institutions for the disabled, boarding houses, hostels and tourism accommodation e.g. hotels, motels, guesthouses, holiday chalets, bed-and-breakfast accommodation and casinos.

3/ Other non-residential space includes churches, sport and recreation clubs, schools, crèches, hospitals and all other non-residential space.

4/ Other buildings include other residential buildings, non-residential buildings and internal alterations.

* Revised.

Table 13 - Recorded building plans passed by larger municipalities at current prices by type of building: Free State

			Oct. 2006*	Sep. 2007	Oct. 2007	Jan. - Oct. 2006	Jan. - Oct. 2007	% Change 1/
Category of building	Type of building	Measuring unit						
1. Residential buildings	1. Dwelling-houses < 80 square metres	Number	171	97	137	2 413	1 944	-19,4
		square metres	7 577	4 374	5 892	102 110	84 382	-17,4
		R'000	7 176	6 778	8 688	94 150	88 491	-6,0
	2. Dwelling-houses >= 80 square metres	Number	148	94	126	998	1 132	13,4
		square metres	26 776	19 989	40 234	189 356	264 546	39,7
		R'000	63 254	55 826	84 317	431 420	652 349	51,2
	3. Flats and townhouses	Number	136	100	21	1 079	1 268	17,5
		square metres	15 344	7 662	2 061	123 156	132 626	7,7
		R'000	42 032	20 641	5 492	303 191	352 766	16,4
	4. Other residential buildings 2/	square metres	662	800	0	7 647	16 533	116,2
		R'000	1 956	3 216	0	86 793	58 359	-32,8
	5. Total residential buildings	R'000	114 418	86 461	98 497	915 554	1 151 965	25,8
2. Non-residential buildings	1. Office and banking space	square metres	0	0	0	16 583	7 232	-56,4
		R'000	0	0	0	47 547	24 138	-49,2
	2. Shopping space	square metres	4 345	16 963	0	24 691	46 218	87,2
		R'000	16 901	60 401	0	78 699	182 441	131,8
	3. Industrial and warehouse space	square metres	17 580	1 744	4 813	50 731	36 620	-27,8
		R'000	19 853	3 848	6 348	77 524	64 255	-17,1
	4. Other non-residential buildings 3/	square metres	1 329	1 212	0	11 702	4 856	-58,5
		R'000	3 289	4 287	0	30 539	11 604	-62,0
	5. Total non-residential buildings	R'000	40 043	68 536	6 348	234 309	282 438	20,5
	3. Additions and alterations	1. Dwelling-houses	square metres	17 685	13 213	19 953	151 445	161 852
R'000			38 273	36 434	50 296	302 357	398 840	31,9
2. Other buildings 4/		square metres	2 764	3 145	1 843	37 310	26 006	-30,3
		R'000	10 703	10 893	10 416	125 221	92 936	-25,8
3. Total additions and alterations		R'000	48 976	47 327	60 712	427 578	491 776	15,0
4. Recorded plans passed	1. Total at current prices	R'000	203 437	202 324	165 557	1 577 441	1 926 179	22,1

1/ The percentage change between cumulative figures for 2006 and 2007.

2/ Other residential buildings include institutions for the disabled, boarding houses, hostels and tourism accommodation e.g. hotels, motels, guesthouses, holiday chalets, bed-and-breakfast accommodation and casinos.

3/ Other non-residential space includes churches, sport and recreation clubs, schools, crèches, hospitals and all other non-residential space.

4/ Other buildings include other residential buildings, non-residential buildings and internal alterations.

* Revised.

Table 14 - Recorded building plans passed by larger municipalities at current prices by type of building: KwaZulu-Natal

			Oct. 2006*	Sep. 2007	Oct. 2007	Jan. - Oct. 2006	Jan. - Oct. 2007	% Change 1/
Category of building	Type of building	Measuring unit						
1. Residential buildings	1. Dwelling-houses < 80 square metres	Number	125	71	70	1 089	928	-14,8
		square metres	6 938	4 368	4 411	57 098	52 259	-8,5
		R'000	20 241	12 766	13 479	137 337	155 042	12,9
	2. Dwelling-houses >= 80 square metres	Number	280	203	183	2 569	2 153	-16,2
		square metres	65 316	49 530	42 649	578 832	514 144	-11,2
		R'000	213 988	183 005	159 907	1 788 829	1 942 429	8,6
	3. Flats and townhouses	Number	484	317	335	3 637	5 029	38,3
		square metres	81 261	35 515	55 402	626 032	598 181	-4,4
		R'000	307 913	139 514	198 090	2 241 360	2 352 488	5,0
	4. Other residential buildings 2/	square metres	3 888	4 695	1 279	29 282	26 452	-9,7
		R'000	16 880	23 486	3 520	151 858	116 705	-23,1
	5. Total residential buildings	R'000	559 022	358 771	374 996	4 319 384	4 566 664	5,7
2. Non-residential buildings	1. Office and banking space	square metres	6 708	17 867	1 921	121 333	110 014	-9,3
		R'000	18 221	57 897	6 217	502 869	465 965	-7,3
	2. Shopping space	square metres	11 009	7 735	4 836	73 612	141 741	92,6
		R'000	37 695	27 204	16 073	240 572	596 984	148,2
	3. Industrial and warehouse space	square metres	28 289	25 779	27 351	384 954	310 013	-19,5
		R'000	59 729	67 632	79 234	926 184	815 039	-12,0
	4. Other non-residential buildings 3/	square metres	5 601	2 596	2 957	57 042	70 122	22,9
		R'000	20 475	12 090	14 400	176 469	303 842	72,2
	5. Total non-residential buildings	R'000	136 120	164 823	115 924	1 846 094	2 181 830	18,2
3. Additions and alterations	1. Dwelling-houses	square metres	64 127	40 591	43 023	592 675	537 370	-9,3
		R'000	199 954	137 887	149 484	1 733 440	1 837 507	6,0
	2. Other buildings 4/	square metres	13 359	13 313	33 964	243 120	258 413	6,3
		R'000	47 367	35 406	125 165	783 586	956 817	22,1
	3. Total additions and alterations	R'000	247 321	173 293	274 649	2 517 026	2 794 324	11,0
4. Recorded plans passed	1. Total at current prices	R'000	942 463	696 887	765 569	8 682 504	9 542 818	9,9

1/ The percentage change between cumulative figures for 2006 and 2007.

2/ Other residential buildings include institutions for the disabled, boarding houses, hostels and tourism accommodation e.g. hotels, motels, guesthouses, holiday chalets, bed-and-breakfast accommodation and casinos.

3/ Other non-residential space includes churches, sport and recreation clubs, schools, crèches, hospitals and all other non-residential space.

4/ Other buildings include other residential buildings, non-residential buildings and internal alterations.

* Revised.

Table 15 - Recorded building plans passed by larger municipalities at current prices by type of building: North West

			Oct. 2006*	Sep. 2007	Oct. 2007	Jan. - Oct. 2006	Jan. - Oct. 2007	% Change 1/	
Category of building	Type of building	Measuring unit							
1. Residential buildings	1. Dwelling-houses < 80 square metres	Number	51	34	120	1 466	1 617	10,3	
		square metres	3 058	2 034	6 696	69 692	77 917	11,8	
		R'000	4 016	3 378	7 967	77 415	96 741	25,0	
	2. Dwelling-houses >= 80 square metres	Number	166	174	295	1 981	2 061	4,0	
		square metres	30 537	34 949	65 798	402 952	458 241	13,7	
		R'000	74 253	88 695	187 852	1 002 962	1 231 957	22,8	
	3. Flats and townhouses	Number	245	58	52	1 361	1 148	-15,7	
		square metres	22 957	8 178	4 909	145 332	145 080	-0,2	
		R'000	57 215	23 667	16 947	368 515	369 083	0,2	
	4. Other residential buildings 2/	square metres	0	0	575	8 403	5 666	-32,6	
		R'000	0	0	1 265	23 762	15 601	-34,3	
	5. Total residential buildings		R'000	135 484	115 740	214 031	1 472 654	1 713 382	16,3
	2. Non-residential buildings	1. Office and banking space	square metres	2 604	1 864	890	14 730	27 990	90,0
R'000			6 703	4 712	2 140	35 581	68 078	91,3	
2. Shopping space		square metres	117	9 477	1 528	140 310	51 911	-63,0	
		R'000	257	19 221	3 362	434 405	141 381	-67,5	
3. Industrial and warehouse space		square metres	456	6 812	1 851	33 502	43 325	29,3	
		R'000	1 004	11 387	4 713	72 974	82 165	12,6	
4. Other non-residential buildings 3/		square metres	1 783	3 706	590	12 153	15 544	27,9	
		R'000	3 693	8 410	1 656	35 563	40 527	14,0	
5. Total non-residential buildings		R'000	11 657	43 730	11 871	578 523	332 151	-42,6	
3. Additions and alterations	1. Dwelling-houses	square metres	12 175	14 194	11 610	126 046	131 858	4,6	
		R'000	29 575	35 564	30 644	260 983	301 188	15,4	
	2. Other buildings 4/	square metres	1 461	184	515	17 297	13 151	-24,0	
		R'000	2 850	534	1 797	48 524	40 362	-16,8	
	3. Total additions and alterations		R'000	32 425	36 098	32 441	309 507	341 550	10,4
4. Recorded plans passed	1. Total at current prices	R'000	179 566	195 568	258 343	2 360 684	2 387 083	1,1	

1/ The percentage change between cumulative figures for 2006 and 2007.

2/ Other residential buildings include institutions for the disabled, boarding houses, hostels and tourism accommodation e.g. hotels, motels, guesthouses, holiday chalets, bed-and-breakfast accommodation and casinos.

3/ Other non-residential space includes churches, sport and recreation clubs, schools, crèches, hospitals and all other non-residential space.

4/ Other buildings include other residential buildings, non-residential buildings and internal alterations.

* Revised.

Table 16 - Recorded building plans passed by larger municipalities at current prices by type of building: Gauteng

			Oct. 2006*	Sep. 2007	Oct. 2007	Jan. - Oct. 2006	Jan. - Oct. 2007	% Change 1/
Category of building	Type of building	Measuring unit						
1. Residential buildings	1. Dwelling-houses < 80 square metres	Number	2 473	1 049	1 771	17 183	19 586	14,0
		square metres	103 125	46 688	78 740	752 042	841 639	11,9
		R'000	188 036	116 018	201 373	1 453 307	1 739 835	19,7
	2. Dwelling-houses >= 80 square metres	Number	1 351	1 059	1 067	11 893	10 918	-8,2
		square metres	356 625	299 620	321 522	3 012 916	3 032 405	0,6
		R'000	1 149 242	1 052 892	1 178 019	9 640 883	10 538 544	9,3
	3. Flats and townhouses	Number	564	1 594	751	12 058	11 450	-5,0
		square metres	122 974	172 248	80 638	1 590 750	1 486 612	-6,5
		R'000	412 324	725 154	312 785	5 291 589	5 403 310	2,1
	4. Other residential buildings 2/	square metres	707	14 280	3 373	71 988	27 596	-61,7
		R'000	1 661	38 576	16 308	254 590	114 726	-54,9
	5. Total residential buildings	R'000	1 751 263	1 932 640	1 708 485	16 640 369	17 796 415	6,9
2. Non-residential buildings	1. Office and banking space	square metres	31 512	24 748	82 506	397 022	351 957	-11,4
		R'000	110 456	127 713	536 326	1 699 352	1 909 677	12,4
	2. Shopping space	square metres	125 229	42 787	6 495	407 165	317 879	-21,9
		R'000	541 886	201 926	26 295	1 442 904	1 438 935	-0,3
	3. Industrial and warehouse space	square metres	84 566	165 568	32 942	650 223	765 442	17,7
		R'000	261 295	515 997	93 739	1 939 399	2 254 632	16,3
	4. Other non-residential buildings 3/	square metres	6 285	3 510	13 354	88 512	101 607	14,8
		R'000	23 246	10 911	75 847	270 924	396 926	46,5
	5. Total non-residential buildings	R'000	936 883	856 547	732 207	5 352 579	6 000 170	12,1
3. Additions and alterations	1. Dwelling-houses	square metres	173 923	166 205	221 130	1 546 280	1 656 077	7,1
		R'000	553 624	586 043	754 519	4 812 123	5 576 725	15,9
	2. Other buildings 4/	square metres	38 586	40 182	27 702	330 627	364 174	10,1
		R'000	123 929	153 553	101 717	1 120 821	1 452 401	29,6
	3. Total additions and alterations	R'000	677 553	739 596	856 236	5 932 944	7 029 126	18,5
4. Recorded plans passed	1. Total at current prices	R'000	3 365 699	3 528 783	3 296 928	27 925 892	30 825 711	10,4

1/ The percentage change between cumulative figures for 2006 and 2007.

2/ Other residential buildings include institutions for the disabled, boarding houses, hostels and tourism accommodation e.g. hotels, motels, guesthouses, holiday chalets, bed-and-breakfast accommodation and casinos.

3/ Other non-residential space includes churches, sport and recreation clubs, schools, crèches, hospitals and all other non-residential space.

4/ Other buildings include other residential buildings, non-residential buildings and internal alterations.

* Revised.

Table 17 - Recorded building plans passed by larger municipalities at current prices by type of building: Mpumalanga

			Oct. 2006*	Sep. 2007	Oct. 2007	Jan. - Oct. 2006	Jan. - Oct. 2007	% Change 1/
Category of building	Type of building	Measuring unit						
1. Residential buildings	1. Dwelling-houses < 80 square metres	Number	63	182	299	525	1 222	132,8
		square metres	3 029	9 068	13 930	30 617	56 352	84,1
		R'000	7 195	11 116	15 405	73 009	86 529	18,5
	2. Dwelling-houses >= 80 square metres	Number	245	190	205	1 897	2 240	18,1
		square metres	52 340	45 341	50 520	427 902	532 709	24,5
		R'000	141 816	155 092	157 925	1 162 416	1 543 701	32,8
	3. Flats and townhouses	Number	89	258	314	1 599	1 664	4,1
		square metres	13 388	16 139	19 796	183 416	145 262	-20,8
		R'000	44 494	47 600	59 211	474 530	418 559	-11,8
	4. Other residential buildings 2/	square metres	0	0	0	8 593	3 889	-54,7
		R'000	0	0	0	23 841	10 918	-54,2
	5. Total residential buildings	R'000	193 505	213 808	232 541	1 733 796	2 059 707	18,8
2. Non-residential buildings	1. Office and banking space	square metres	21 242	2 272	0	44 736	18 952	-57,6
		R'000	55 319	7 475	0	130 027	56 729	-56,4
	2. Shopping space	square metres	19 343	2 750	0	94 095	23 445	-75,1
		R'000	48 536	9 777	0	573 624	72 632	-87,3
	3. Industrial and warehouse space	square metres	12 794	7 448	2 224	63 529	101 472	59,7
		R'000	43 018	19 887	5 723	170 697	338 185	98,1
	4. Other non-residential buildings 3/	square metres	3 767	0	327	35 695	8 729	-75,5
		R'000	15 068	0	1 308	118 512	21 151	-82,2
	5. Total non-residential buildings	R'000	161 941	37 139	7 031	992 860	488 697	-50,8
3. Additions and alterations	1. Dwelling-houses	square metres	24 201	20 437	19 250	192 304	205 284	6,7
		R'000	63 653	58 335	55 323	434 783	539 519	24,1
	2. Other buildings 4/	square metres	1 503	2 643	1 269	24 270	34 765	43,2
		R'000	4 853	10 332	5 494	77 258	114 134	47,7
	3. Total additions and alterations	R'000	68 506	68 667	60 817	512 041	653 653	27,7
4. Recorded plans passed	1. Total at current prices	R'000	423 952	319 614	300 389	3 238 697	3 202 057	-1,1

1/ The percentage change between cumulative figures for 2006 and 2007.

2/ Other residential buildings include institutions for the disabled, boarding houses, hostels and tourism accommodation e.g. hotels, motels, guesthouses, holiday chalets, bed-and-breakfast accommodation and casinos.

3/ Other non-residential space includes churches, sport and recreation clubs, schools, crèches, hospitals and all other non-residential space.

4/ Other buildings include other residential buildings, non-residential buildings and internal alterations.

* Revised.

Table 18 - Recorded building plans passed by larger municipalities at current prices by type of building: Limpopo

			Oct. 2006	Sep. 2007	Oct. 2007	Jan. - Oct. 2006	Jan. - Oct. 2007	% Change 1/
Category of building	Type of building	Measuring unit						
1. Dwelling-houses < 80 square metres	1. Dwelling-houses < 80 square metres	Number	96	36	24	817	807	-1,2
		square metres	5 955	2 310	1 575	41 849	44 096	5,4
		R'000	15 084	6 232	4 486	73 513	96 453	31,2
	2. Dwelling-houses >= 80 square metres	Number	150	76	133	1 115	896	-19,6
		square metres	29 607	16 935	23 835	226 927	187 095	-17,6
		R'000	78 431	45 344	67 788	561 141	505 485	-9,9
	3. Flats and townhouses	Number	217	194	88	726	818	12,7
		square metres	14 828	11 826	11 161	66 013	93 059	41,0
		R'000	38 155	31 617	26 198	166 638	228 454	37,1
	4. Other residential buildings 2/	square metres	328	495	78	2 021	8 228	307,1
		R'000	980	1 238	192	7 121	18 970	166,4
	5. Total residential buildings	R'000	132 650	84 431	98 664	808 413	849 362	5,1
2. Dwelling-houses >= 80 square metres	1. Office and banking space	square metres	96	0	320	8 071	31 688	292,6
		R'000	173	0	800	19 030	78 893	314,6
	2. Shopping space	square metres	361	5 694	1 295	24 774	31 573	27,4
		R'000	767	14 558	3 100	49 907	70 455	41,2
	3. Industrial and warehouse space	square metres	6 091	0	680	21 805	27 459	25,9
		R'000	14 612	0	1 550	50 425	67 998	34,8
	4. Other non-residential buildings 3/	square metres	26	15 020	393	1 280	19 496	1 423,1
		R'000	69	32 997	786	1 951	43 396	2 124,3
	5. Total non-residential buildings	R'000	15 621	47 555	6 236	121 313	260 742	114,9
	3. Flats and townhouses	1. Dwelling-houses	square metres	15 231	9 243	9 870	92 141	102 342
R'000			38 361	22 582	23 969	203 403	248 275	22,1
2. Other buildings 4/		square metres	859	819	1 878	22 183	11 998	-45,9
		R'000	2 568	1 656	3 944	47 361	28 306	-40,2
3. Total additions and alterations		R'000	40 929	24 238	27 913	250 764	276 581	10,3
4. Other residential buildings 2/	1. Total at current prices	R'000	189 200	156 224	132 813	1 180 490	1 386 685	17,5

1/ The percentage change between cumulative figures for 2006 and 2007.

2/ Other residential buildings include institutions for the disabled, boarding houses, hostels and tourism accommodation e.g. hotels, motels, guesthouses, holiday chalets, bed-and-breakfast accommodation and casinos.

3/ Other non-residential space includes churches, sport and recreation clubs, schools, crèches, hospitals and all other non-residential space.

4/ Other buildings include other residential buildings, non-residential buildings and internal alterations.

Table 19 - Buildings reported as completed to larger municipalities at current prices by type of building: South Africa

			Oct. 2006*	Sep. 2007	Oct. 2007	Jan. - Oct. 2006	Jan. - Oct. 2007	% Change 1/
Category of building	Type of building	Measuring unit						
1. Residential buildings	1. Dwelling-houses < 80 square metres	Number	2 963	1 718	1 953	17 835	22 072	23,8
		square metres	127 252	77 157	92 241	776 874	950 639	22,4
		R'000	235 639	142 450	212 038	1 417 599	1 730 074	22,0
	2. Dwelling-houses >= 80 square metres	Number	2 068	1 657	1 910	17 935	18 232	1,7
		square metres	459 113	387 279	442 181	4 020 620	4 131 298	2,8
		R'000	1 267 995	1 210 235	1 403 133	11 315 595	12 780 893	12,9
	3. Flats and townhouses	Number	2 187	2 296	2 274	19 105	22 437	17,4
		square metres	271 358	262 014	274 642	2 516 155	2 564 916	1,9
		R'000	816 534	903 782	985 498	7 816 149	8 643 418	10,6
	4. Other residential buildings 2/	square metres	15 325	6 594	26 473	58 934	160 349	172,1
		R'000	50 956	14 855	90 579	199 909	668 362	234,3
	5. Total residential buildings	R'000	2 371 124	2 271 322	2 691 248	20 749 252	23 822 747	14,8
2. Non-residential buildings	1. Office and banking space	square metres	19 013	89 856	18 675	241 168	550 251	128,2
		R'000	63 479	351 430	86 783	782 074	1 987 027	154,1
	2. Shopping space	square metres	114 924	68 624	99 567	566 448	523 194	-7,6
		R'000	482 511	287 000	310 827	1 909 437	1 794 323	-6,0
	3. Industrial and warehouse space	square metres	92 700	86 494	156 459	682 149	1 167 921	71,2
		R'000	206 571	225 077	476 651	1 682 305	3 294 700	95,8
	4. Other non-residential buildings 3/	square metres	6 603	9 185	10 368	103 283	142 509	38,0
		R'000	15 580	25 875	35 828	271 413	435 218	60,4
	5. Total non-residential buildings	R'000	768 141	889 382	910 089	4 645 229	7 511 268	61,7
3. Additions and alterations	1. Dwelling-houses	square metres	174 293	146 130	200 114	1 658 619	1 722 262	3,8
		R'000	463 131	426 792	555 066	4 185 852	4 812 236	15,0
	2. Other buildings 4/	square metres	61 970	62 215	58 046	462 566	492 395	6,4
		R'000	140 000	200 937	182 182	1 338 524	1 687 371	26,1
	3. Total additions and alterations	R'000	603 131	627 729	737 248	5 524 376	6 499 607	17,7
4. Recorded buildings completed	1. Total at current prices	R'000	3 742 396	3 788 433	4 338 585	30 918 857	37 833 622	22,4

1/ The percentage change between cumulative figures for 2006 and 2007.

2/ Other residential buildings include institutions for the disabled, boarding houses, hostels and tourism accommodation e.g. hotels, motels, guesthouses, holiday chalets, bed-and-breakfast accommodation and casinos.

3/ Other non-residential space includes churches, sport and recreation clubs, schools, crèches, hospitals and all other non-residential space.

4/ Other buildings include other residential buildings, non-residential buildings and internal alterations.

* Revised.

Table 20 - Buildings reported as completed to larger municipalities at current prices by type of building: Western Cape

			Oct. 2006*	Sep. 2007	Oct. 2007	Jan. - Oct. 2006	Jan. - Oct. 2007	% Change 1/
Category of building	Type of building	Measuring unit						
1. Residential buildings	1. Dwelling-houses < 80 square metres	Number	388	594	254	3 684	6 582	78,7
		square metres	17 771	23 023	13 411	147 652	260 838	76,7
		R'000	36 554	34 944	34 472	237 900	414 769	74,3
	2. Dwelling-houses >= 80 square metres	Number	439	435	501	5 079	4 639	-8,7
		square metres	103 833	98 584	113 757	1 129 077	1 025 536	-9,2
		R'000	297 216	304 249	352 936	3 080 835	3 120 227	1,3
	3. Flats and townhouses	Number	387	842	339	5 179	5 722	10,5
		square metres	47 781	105 421	48 127	623 345	619 507	-0,6
		R'000	141 996	341 422	116 820	1 839 126	1 923 655	4,6
	4. Other residential buildings 2/	square metres	912	126	22 770	13 336	44 403	233,0
		R'000	2 918	550	78 394	42 415	158 160	272,9
	5. Total residential buildings	R'000	478 684	681 165	582 622	5 200 276	5 616 811	8,0
2. Non-residential buildings	1. Office and banking space	square metres	6 841	34 631	2 867	51 038	206 336	304,3
		R'000	22 728	112 986	9 010	134 259	605 338	350,9
	2. Shopping space	square metres	6 218	4 910	9 754	115 804	54 123	-53,3
		R'000	19 925	15 855	31 405	260 962	173 790	-33,4
	3. Industrial and warehouse space	square metres	46 536	29 490	35 849	274 854	384 593	39,9
		R'000	114 962	87 488	110 270	699 181	1 095 053	56,6
	4. Other non-residential buildings 3/	square metres	809	3 696	3 370	38 363	62 475	62,9
		R'000	2 261	10 803	7 687	96 855	175 421	81,1
	5. Total non-residential buildings	R'000	159 876	227 132	158 372	1 191 257	2 049 602	72,1
	3. Additions and alterations	1. Dwelling-houses	square metres	63 385	58 388	79 176	623 976	630 255
R'000			168 044	154 305	204 678	1 531 617	1 660 994	8,4
2. Other buildings 4/		square metres	13 867	27 141	29 122	183 540	196 000	6,8
		R'000	44 746	89 012	75 930	590 620	658 083	11,4
3. Total additions and alterations		R'000	212 790	243 317	280 608	2 122 237	2 319 077	9,3
4. Recorded buildings completed	1. Total at current prices	R'000	851 350	1 151 614	1 021 602	8 513 770	9 985 490	17,3

1/ The percentage change between cumulative figures for 2006 and 2007.

2/ Other residential buildings include institutions for the disabled, boarding houses, hostels and tourism accommodation e.g. hotels, motels, guesthouses, holiday chalets, bed-and-breakfast accommodation and casinos.

3/ Other non-residential space includes churches, sport and recreation clubs, schools, crèches, hospitals and all other non-residential space.

4/ Other buildings include other residential buildings, non-residential buildings and internal alterations.

* Revised.

Table 21 - Buildings reported as completed to larger municipalities at current prices by type of building: Eastern Cape

			Oct. 2006*	Sep. 2007	Oct. 2007	Jan. - Oct. 2006	Jan. - Oct. 2007	% Change 1/
Category of building								
1. Residential buildings	1. Dwelling-houses < 80 square metres	Number	144	160	225	1 627	1 611	-1,0
		square metres	5 837	6 904	9 203	68 902	67 019	-2,7
		R'000	6 862	10 126	15 409	97 836	100 341	2,6
	2. Dwelling-houses >= 80 square metres	Number	164	80	157	1 118	1 056	-5,5
		square metres	22 954	19 158	28 714	192 053	188 743	-1,7
		R'000	51 988	48 662	71 043	415 832	477 655	14,9
	3. Flats and townhouses	Number	79	80	91	587	1 092	86,0
		square metres	10 503	6 854	11 002	62 184	114 586	84,3
		R'000	24 373	16 989	26 754	132 917	293 878	121,1
	4. Other residential buildings 2/	square metres	0	361	145	120	3 023	2 419,2
		R'000	0	867	392	264	7 643	2 795,1
	5. Total residential buildings	R'000	83 223	76 644	113 598	646 849	879 517	36,0
	2. Non-residential buildings	1. Office and banking space	square metres	50	142	155	4 542	1 934
R'000			121	344	323	10 159	4 901	-51,8
2. Shopping space		square metres	760	1 564	366	14 308	18 256	27,6
		R'000	2 660	3 356	930	33 975	44 027	29,6
3. Industrial and warehouse space		square metres	3 571	499	5 415	32 529	28 870	-11,2
		R'000	5 523	1 098	12 752	60 786	68 272	12,3
4. Other non-residential buildings 3/		square metres	45	168	452	5 643	3 893	-31,0
		R'000	80	454	904	12 413	8 458	-31,9
5. Total non-residential buildings		R'000	8 384	5 252	14 909	117 333	125 658	7,1
3. Additions and alterations		1. Dwelling-houses	square metres	12 164	9 674	15 652	105 188	125 648
	R'000		24 723	22 433	31 284	202 577	257 471	27,1
	2. Other buildings 4/	square metres	7 655	5 830	3 700	56 118	37 420	-33,3
		R'000	32 941	14 944	7 961	126 914	85 052	-33,0
	3. Total additions and alterations	R'000	57 664	37 377	39 245	329 491	342 523	4,0
4. Recorded buildings completed	1. Total at current prices	R'000	149 271	119 273	167 752	1 093 673	1 347 698	23,2

1/ The percentage change between cumulative figures for 2006 and 2007.

2/ Other residential buildings include institutions for the disabled, boarding houses, hostels and tourism accommodation e.g. hotels, motels, guesthouses, holiday chalets, bed-and-breakfast accommodation and casinos.

3/ Other non-residential space includes churches, sport and recreation clubs, schools, crèches, hospitals and all other non-residential space.

4/ Other buildings include other residential buildings, non-residential buildings and internal alterations.

* Revised.

Table 22 - Buildings reported as completed to larger municipalities at current prices by type of building: Northern Cape

			Oct. 2006	Sep. 2007	Oct. 2007	Jan. - Oct. 2006	Jan. - Oct. 2007	% Change 1/
Category of building	Type of building	Measuring unit						
1. Residential buildings	1. Dwelling-houses < 80 square metres	Number	2	59	32	23	139	504,3
		square metres	143	2 163	808	1 194	4 972	316,4
		R'000	257	2 298	935	2 018	6 069	200,7
	2. Dwelling-houses >= 80 square metres	Number	31	20	17	195	164	-15,9
		square metres	6 416	3 278	3 599	34 836	31 855	-8,6
		R'000	13 640	9 571	9 044	73 720	83 511	13,3
	3. Flats and townhouses	Number	11	12	16	100	172	72,0
		square metres	1 236	1 104	1 595	13 534	23 041	70,2
		R'000	2 472	3 091	3 902	26 026	58 661	125,4
	4. Other residential buildings 2/	square metres	0	3 339	3 102	712	6 615	829,1
		R'000	0	7 346	8 993	1 372	16 948	1 135,3
	5. Total residential buildings	R'000	16 369	22 306	22 874	103 136	165 189	60,2
2. Non-residential buildings	1. Office and banking space	square metres	868	0	294	2 488	6 485	160,7
		R'000	1 909	0	823	5 149	16 161	213,9
	2. Shopping space	square metres	4 658	0	0	5 285	7 008	32,6
		R'000	11 179	0	0	12 735	16 341	28,3
	3. Industrial and warehouse space	square metres	0	0	0	5 165	4 730	-8,4
		R'000	0	0	0	11 221	12 160	8,4
	4. Other non-residential buildings 3/	square metres	0	0	0	749	498	-33,5
		R'000	0	0	0	1 455	1 195	-17,9
	5. Total non-residential buildings	R'000	13 088	0	823	30 560	45 857	50,1
3. Additions and alterations	1. Dwelling-houses	square metres	3 281	2 060	2 240	20 223	27 622	36,6
		R'000	6 685	6 075	6 977	42 863	74 609	74,1
	2. Other buildings 4/	square metres	1 406	39	0	12 243	4 666	-61,9
		R'000	4 559	464	550	26 971	19 577	-27,4
	3. Total additions and alterations	R'000	11 244	6 539	7 527	69 834	94 186	34,9
4. Recorded buildings completed	1. Total at current prices	R'000	40 701	28 845	31 224	203 530	305 232	50,0

1/ The percentage change between cumulative figures for 2006 and 2007.

2/ Other residential buildings include institutions for the disabled, boarding houses, hostels and tourism accommodation e.g. hotels, motels, guesthouses, holiday chalets, bed-and-breakfast accommodation and casinos.

3/ Other non-residential space includes churches, sport and recreation clubs, schools, crèches, hospitals and all other non-residential space.

4/ Other buildings include other residential buildings, non-residential buildings and internal alterations.

Table 23 - Buildings reported as completed to larger municipalities at current prices by type of building: Free State

			Oct. 2006*	Sep. 2007	Oct. 2007	Jan. - Oct. 2006	Jan. - Oct. 2007	% Change 1/
Category of building	Type of building	Measuring unit						
1. Residential buildings	1. Dwelling-houses < 80 square metres	Number	19	80	60	449	596	32,7
		square metres	1 204	3 599	3 164	20 923	30 488	45,7
		R'000	2 076	4 466	4 946	24 741	42 849	73,2
	2. Dwelling-houses >= 80 square metres	Number	57	68	52	378	773	104,5
		square metres	9 300	12 158	9 819	67 083	140 470	109,4
		R'000	16 733	26 911	21 561	124 011	300 903	142,6
	3. Flats and townhouses	Number	45	310	3	475	737	55,2
		square metres	4 249	19 613	363	48 350	70 004	44,8
		R'000	11 367	38 984	1 089	102 213	170 836	67,1
	4. Other residential buildings 2/	square metres	662	2 363	0	8 972	7 830	-12,7
		R'000	1 956	5 199	0	37 828	85 155	125,1
	5. Total residential buildings	R'000	32 132	75 560	27 596	288 793	599 743	107,7
2. Non-residential buildings	1. Office and banking space	square metres	0	0	0	1 625	7 425	356,9
		R'000	0	0	0	4 004	23 358	483,4
	2. Shopping space	square metres	2 321	0	658	20 485	10 012	-51,1
		R'000	7 290	0	1 973	58 891	35 278	-40,1
	3. Industrial and warehouse space	square metres	2 991	0	0	17 438	11 253	-35,5
		R'000	4 084	0	0	46 963	17 605	-62,5
	4. Other non-residential buildings 3/	square metres	0	841	1 093	3 763	4 994	32,7
		R'000	0	2 943	8 744	7 819	19 695	151,9
	5. Total non-residential buildings	R'000	11 374	2 943	10 717	117 677	95 936	-18,5
3. Additions and alterations	1. Dwelling-houses	square metres	6 201	7 739	8 298	59 762	66 902	11,9
		R'000	10 232	14 400	16 197	99 765	131 741	32,1
	2. Other buildings 4/	square metres	304	3 062	183	14 543	18 752	28,9
		R'000	1 535	8 428	1 705	44 556	87 416	96,2
	3. Total additions and alterations	R'000	11 767	22 828	17 902	144 321	219 157	51,9
4. Recorded buildings completed	1. Total at current prices	R'000	55 273	101 331	56 215	550 791	914 836	66,1

1/ The percentage change between cumulative figures for 2006 and 2007.

2/ Other residential buildings include institutions for the disabled, boarding houses, hostels and tourism accommodation e.g. hotels, motels, guesthouses, holiday chalets, bed-and-breakfast accommodation and casinos.

3/ Other non-residential space includes churches, sport and recreation clubs, schools, crèches, hospitals and all other non-residential space.

4/ Other buildings include other residential buildings, non-residential buildings and internal alterations.

* Revised.

Table 24 - Buildings reported as completed to larger municipalities at current prices by type of building: KwaZulu-Natal

			Oct. 2006*	Sep. 2007	Oct. 2007	Jan. - Oct. 2006	Jan. - Oct. 2007	% Change 1/
Category of building	Type of building	Measuring unit						
1. Residential buildings	1. Dwelling-houses < 80 square metres	Number	117	47	65	993	1 084	9,2
		square metres	5 142	2 516	3 152	44 025	47 576	8,1
		R'000	13 158	7 429	8 237	112 706	121 663	7,9
	2. Dwelling-houses >= 80 square metres	Number	132	107	107	1 182	1 254	6,1
		square metres	29 338	28 542	25 927	251 925	288 472	14,5
		R'000	97 287	114 334	82 814	771 300	1 084 432	40,6
	3. Flats and townhouses	Number	286	152	129	2 415	2 146	-11,1
		square metres	65 386	29 430	27 060	460 509	400 377	-13,1
		R'000	250 487	98 337	119 277	1 540 160	1 492 951	-3,1
	4. Other residential buildings 2/	square metres	6 069	0	0	10 172	20 824	104,7
		R'000	26 348	0	0	42 503	122 445	188,1
	5. Total residential buildings	R'000	387 280	220 100	210 328	2 466 669	2 821 491	14,4
2. Non-residential buildings	1. Office and banking space	square metres	3 612	2 855	1 612	52 332	34 312	-34,4
		R'000	11 377	9 040	4 075	157 240	96 535	-38,6
	2. Shopping space	square metres	48 671	12 333	2 786	86 338	105 548	22,2
		R'000	275 286	41 166	5 383	411 534	371 170	-9,8
	3. Industrial and warehouse space	square metres	4 858	18 729	11 239	114 687	288 721	151,7
		R'000	11 637	48 818	29 040	268 032	785 315	193,0
	4. Other non-residential buildings 3/	square metres	0	476	2 231	27 109	21 262	-21,6
		R'000	0	2 285	8 035	75 805	71 535	-5,6
	5. Total non-residential buildings	R'000	298 300	101 309	46 533	912 611	1 324 555	45,1
	3. Additions and alterations	1. Dwelling-houses	square metres	34 928	21 280	18 375	225 565	243 581
R'000			125 117	95 866	78 765	670 113	892 644	33,2
2. Other buildings 4/		square metres	34 040	7 598	2 661	100 672	82 700	-17,9
		R'000	45 096	23 248	8 422	268 911	303 586	12,9
3. Total additions and alterations		R'000	170 213	119 114	87 187	939 024	1 196 230	27,4
4. Recorded buildings completed	1. Total at current prices	R'000	855 793	440 523	344 048	4 318 304	5 342 276	23,7

1/ The percentage change between cumulative figures for 2006 and 2007.

2/ Other residential buildings include institutions for the disabled, boarding houses, hostels and tourism accommodation e.g. hotels, motels, guesthouses, holiday chalets, bed-and-breakfast accommodation and casinos.

3/ Other non-residential space includes churches, sport and recreation clubs, schools, crèches, hospitals and all other non-residential space.

4/ Other buildings include other residential buildings, non-residential buildings and internal alterations.

* Revised.

Table 25 - Buildings reported as completed to larger municipalities at current prices by type of building: North West

			Oct. 2006*	Sep. 2007	Oct. 2007	Jan. - Oct. 2006	Jan. - Oct. 2007	% Change 1/
Category of building	Type of building	Measuring unit						
1. Residential buildings	1. Dwelling-houses < 80 square metres	Number	55	183	112	483	2 127	340,4
		square metres	3 388	8 095	4 841	27 386	83 832	206,1
		R'000	4 668	10 913	5 693	30 023	81 265	170,7
	2. Dwelling-houses >= 80 square metres	Number	133	123	98	1 126	1 276	13,3
		square metres	24 329	24 366	17 411	215 510	271 717	26,1
		R'000	58 781	71 186	44 010	526 869	773 173	46,7
	3. Flats and townhouses	Number	114	116	54	706	1 017	44,1
		square metres	17 549	12 139	7 254	89 253	86 205	-3,4
		R'000	44 158	67 351	29 808	226 458	282 055	24,6
	4. Other residential buildings 2/	square metres	0	0	0	0	0	
		R'000	0	0	0	0	0	
	5. Total residential buildings	R'000	107 607	149 450	79 511	783 350	1 136 493	45,1
2. Non-residential buildings	1. Office and banking space	square metres	0	64	0	3 195	3 297	3,2
		R'000	0	151	0	6 641	7 329	10,4
	2. Shopping space	square metres	6 046	238	5 424	37 027	40 747	10,0
		R'000	10 940	196	17 357	135 184	120 312	-11,0
	3. Industrial and warehouse space	square metres	1 783	431	0	6 841	9 889	44,6
		R'000	2 910	431	0	14 019	19 399	38,4
	4. Other non-residential buildings 3/	square metres	21	440	224	4 445	5 087	14,4
		R'000	62	660	717	10 016	11 275	12,6
	5. Total non-residential buildings	R'000	13 912	1 438	18 074	165 860	158 315	-4,5
	3. Additions and alterations	1. Dwelling-houses	square metres	4 563	3 792	7 996	40 534	42 221
R'000			7 613	7 648	9 979	74 210	80 602	8,6
2. Other buildings 4/		square metres	2 620	259	406	14 447	10 826	-25,1
		R'000	5 218	304	610	31 000	22 565	-27,2
3. Total additions and alterations		R'000	12 831	7 952	10 589	105 210	103 167	-1,9
4. Recorded buildings completed	1. Total at current prices	R'000	134 350	158 840	108 174	1 054 420	1 397 975	32,6

1/ The percentage change between cumulative figures for 2006 and 2007.

2/ Other residential buildings include institutions for the disabled, boarding houses, hostels and tourism accommodation e.g. hotels, motels, guesthouses, holiday chalets, bed-and-breakfast accommodation and casinos.

3/ Other non-residential space includes churches, sport and recreation clubs, schools, crèches, hospitals and all other non-residential space.

4/ Other buildings include other residential buildings, non-residential buildings and internal alterations.

* Revised.

Table 26 - Buildings reported as completed to larger municipalities at current prices by type of building: Gauteng

			Oct. 2006*	Sep. 2007	Oct. 2007	Jan. - Oct. 2006	Jan. - Oct. 2007	% Change 1/
Category of building	Type of building	Measuring unit						
1. Residential buildings	1. Dwelling-houses < 80 square metres	Number	2 181	556	1 111	9 787	9 453	-3,4
		square metres	90 259	28 275	51 548	427 012	425 189	-0,4
		R'000	163 230	65 577	127 842	830 118	883 400	6,4
	2. Dwelling-houses >= 80 square metres	Number	965	583	814	7 462	7 151	-4,2
		square metres	233 569	150 692	208 280	1 870 525	1 834 561	-1,9
		R'000	659 768	504 121	723 024	5 676 304	6 019 679	6,0
	3. Flats and townhouses	Number	1 238	777	1 496	9 019	10 920	21,1
		square metres	121 407	86 395	161 050	1 162 461	1 175 293	1,1
		R'000	335 189	332 946	640 962	3 816 615	4 211 899	10,4
	4. Other residential buildings 2/	square metres	7 145	0	0	24 068	76 103	216,2
		R'000	18 768	0	0	71 750	272 158	279,3
	5. Total residential buildings	R'000	1 176 955	902 644	1 491 828	10 394 787	11 387 136	9,5
2. Non-residential buildings	1. Office and banking space	square metres	7 642	51 674	13 747	111 471	267 197	139,7
		R'000	27 344	227 831	72 552	428 704	1 153 071	169,0
	2. Shopping space	square metres	37 876	48 834	78 076	246 283	260 556	5,8
		R'000	133 593	224 913	244 871	883 230	956 840	8,3
	3. Industrial and warehouse space	square metres	24 099	30 383	67 530	181 063	372 645	105,8
		R'000	61 838	76 142	174 129	485 882	1 083 457	123,0
	4. Other non-residential buildings 3/	square metres	5 177	3 564	2 998	19 940	39 577	98,5
		R'000	12 417	8 730	9 741	59 971	139 409	132,5
	5. Total non-residential buildings	R'000	235 192	537 616	501 293	1 857 787	3 332 777	79,4
3. Additions and alterations	1. Dwelling-houses	square metres	42 949	31 455	65 504	519 819	520 230	0,1
		R'000	104 451	93 981	200 134	1 443 206	1 558 782	8,0
	2. Other buildings 4/	square metres	1 719	14 846	19 166	69 079	126 353	82,9
		R'000	5 398	51 521	80 373	220 809	461 286	108,9
	3. Total additions and alterations	R'000	109 849	145 502	280 507	1 664 015	2 020 068	21,4
4. Recorded buildings completed	1. Total at current prices	R'000	1 521 996	1 585 762	2 273 628	13 916 589	16 739 981	20,3

1/ The percentage change between cumulative figures for 2006 and 2007.

2/ Other residential buildings include institutions for the disabled, boarding houses, hostels and tourism accommodation e.g. hotels, motels, guesthouses, holiday chalets, bed-and-breakfast accommodation and casinos.

3/ Other non-residential space includes churches, sport and recreation clubs, schools, crèches, hospitals and all other non-residential space.

4/ Other buildings include other residential buildings, non-residential buildings and internal alterations.

* Revised.

Table 27 - Buildings reported as completed to larger municipalities at current prices by type of building: Mpumalanga

			Oct. 2006	Sep. 2007	Oct. 2007	Jan. - Oct. 2006	Jan. - Oct. 2007	% Change 1/
Category of building	Type of building	Measuring unit						
1. Residential buildings	1. Dwelling-houses < 80 square metres	Number	21	18	87	559	231	-58,7
		square metres	1 243	1 248	5 613	25 565	14 800	-42,1
		R'000	2 990	3 422	13 126	46 611	39 015	-16,3
	2. Dwelling-houses >= 80 square metres	Number	97	211	88	951	1 432	50,6
		square metres	19 499	43 479	18 652	173 813	255 611	47,1
		R'000	49 030	107 018	50 002	421 065	647 907	53,9
	3. Flats and townhouses	Number	18	7	20	428	360	-15,9
		square metres	1 786	1 058	1 630	32 931	44 004	33,6
		R'000	3 541	4 662	6 117	74 607	127 198	70,5
	4. Other residential buildings 2/	square metres	0	405	0	817	1 095	34,0
		R'000	0	893	0	2 211	3 053	38,1
	5. Total residential buildings	R'000	55 561	115 995	69 245	544 494	817 173	50,1
2. Non-residential buildings	1. Office and banking space	square metres	0	0	0	10 427	21 247	103,8
		R'000	0	0	0	27 040	74 954	177,2
	2. Shopping space	square metres	6 331	745	2 376	24 774	21 855	-11,8
		R'000	15 638	1 514	8 654	80 821	64 121	-20,7
	3. Industrial and warehouse space	square metres	8 862	6 962	34 026	46 560	58 315	25,2
		R'000	5 617	11 100	145 180	88 366	194 165	119,7
	4. Other non-residential buildings 3/	square metres	551	0	0	1 966	3 550	80,6
		R'000	760	0	0	3 425	5 828	70,2
	5. Total non-residential buildings	R'000	22 015	12 614	153 834	199 652	339 068	69,8
3. Additions and alterations	1. Dwelling-houses	square metres	5 065	10 452	1 779	53 397	54 137	1,4
		R'000	12 131	28 498	3 999	96 982	126 834	30,8
	2. Other buildings 4/	square metres	178	3 440	2 794	9 738	14 158	45,4
		R'000	290	13 016	6 604	22 790	46 681	104,8
	3. Total additions and alterations	R'000	12 421	41 514	10 603	119 772	173 515	44,9
4. Recorded buildings completed	1. Total at current prices	R'000	89 997	170 123	233 682	863 918	1 329 756	53,9

1/ The percentage change between cumulative figures for 2006 and 2007.

2/ Other residential buildings include institutions for the disabled, boarding houses, hostels and tourism accommodation e.g. hotels, motels, guesthouses, holiday chalets, bed-and-breakfast accommodation and casinos.

3/ Other non-residential space includes churches, sport and recreation clubs, schools, crèches, hospitals and all other non-residential space.

4/ Other buildings include other residential buildings, non-residential buildings and internal alterations.

Table 28 - Buildings reported as completed to larger municipalities at current prices by type of building: Limpopo

			Oct. 2006*	Sep. 2007	Oct. 2007	Jan. - Oct. 2006	Jan. - Oct. 2007	% Change 1/
Category of building	Type of building	Measuring unit						
1. Residential buildings	1. Dwelling-houses < 80 square metres	Number	36	21	7	230	249	8,3
		square metres	2 265	1 334	501	14 215	15 925	12,0
		R'000	5 844	3 275	1 378	35 646	40 703	14,2
	2. Dwelling-houses >= 80 square metres	Number	50	30	76	444	487	9,7
		square metres	9 875	7 022	16 022	85 798	94 333	9,9
		R'000	23 552	24 183	48 699	225 659	273 406	21,2
	3. Flats and townhouses	Number	9	0	126	196	271	38,3
		square metres	1 461	0	16 561	23 588	31 899	35,2
		R'000	2 951	0	40 769	58 027	82 285	41,8
	4. Other residential buildings 2/	square metres	537	0	456	737	456	-38,1
		R'000	966	0	2 800	1 566	2 800	78,8
	5. Total residential buildings	R'000	33 313	27 458	93 646	320 898	399 194	24,4
	2. Non-residential buildings	1. Office and banking space	square metres	0	490	0	4 050	2 018
R'000			0	1 078	0	8 878	5 380	-39,4
2. Shopping space		square metres	2 043	0	127	16 144	5 089	-68,5
		R'000	6 000	0	254	32 105	12 444	-61,2
3. Industrial and warehouse space		square metres	0	0	2 400	3 012	8 905	195,7
		R'000	0	0	5 280	7 855	19 274	145,4
4. Other non-residential buildings 3/		square metres	0	0	0	1 305	1 173	-10,1
		R'000	0	0	0	3 654	2 402	-34,3
5. Total non-residential buildings		R'000	6 000	1 078	5 534	52 492	39 500	-24,8
3. Additions and alterations	1. Dwelling-houses	square metres	1 757	1 290	1 094	10 155	11 666	14,9
		R'000	4 135	3 586	3 053	24 519	28 559	16,5
	2. Other buildings 4/	square metres	181	0	14	2 186	1 520	-30,5
		R'000	217	0	27	5 953	3 125	-47,5
	3. Total additions and alterations	R'000	4 352	3 586	3 080	30 472	31 684	4,0
4. Recorded buildings completed	1. Total at current prices	R'000	43 665	32 122	102 260	403 862	470 378	16,5

1/ The percentage change between cumulative figures for 2006 and 2007.

2/ Other residential buildings include institutions for the disabled, boarding houses, hostels and tourism accommodation e.g. hotels, motels, guesthouses, holiday chalets, bed-and-breakfast accommodation and casinos.

3/ Other non-residential space includes churches, sport and recreation clubs, schools, crèches, hospitals and all other non-residential space.

4/ Other buildings include other residential buildings, non-residential buildings and internal alterations.

* Revised.

Table 29 - Subsidised low-cost dwelling-houses completed and in process of completion 1/

Province	Year	Number	Square metres 2/	Value R'000 2/
Western Cape	2002	19 534	531 116	168 852
	2003	16 926	507 780	247 187
	2004	12 751	382 530	211 424
Eastern Cape	2002	46 700	1 575 675	473 806
	2003	35 005	1 050 150	511 213
	2004	34 923	1 047 690	579 058
Northern Cape	2002	5 189	164 906	68 078
	2003	4 354	130 620	63 586
	2004	3 645	109 350	60 438
Free State	2002	8 617	348 492	154 121
	2003	14 848	445 440	216 840
	2004	16 522	495 660	273 951
KwaZulu-Natal	2002	21 958	831 349	234 041
	2003	31 372	941 160	458 157
	2004	35 968	1 079 040	596 385
North West	2002	21 309	630 115	210 439
	2003	13 809	414 270	201 667
	2004	10 149	304 470	168 281
Gauteng	2002	29 939	991 571	321 943
	2003	42 862	1 285 860	625 957
	2004	33 260	997 800	551 484
Mpumalanga	2002	19 883	660 505	253 931
	2003	21 336	640 080	246 079
	2004	18 808	564 240	311 855
Limpopo	2002	15 382	605 877	183 769
	2003	15 596	467 880	227 764
	2004	16 338	490 140	270 900
South Africa	2002	188 511	6 339 606	2 068 980
	2003	196 108	5 883 240	2 798 450
	2004	182 364	5 470 920	3 023 777

Table 30 - Subsidised low-cost dwelling-houses completed: 1 April 2005 to 31 March 2006

Province	Number	Square metres 2/	Value R'000 2/
Western Cape	2 040	61 200	52 877
Eastern Cape	16 874	506 220	437 374
Northern Cape	5 293	158 790	137 195
Free State	17 635	529 050	457 099
KwaZulu-Natal	21 601	648 030	559 898
North West	14 445	433 350	374 414
Gauteng	23 409	702 270	606 761
Mpumalanga	14 389	431 670	372 963
Limpopo	21 973	659 190	569 540
South Africa	137 659	4 129 770	3 568 121

Table 31 - Subsidised low-cost dwelling-houses completed and in process of completion 1/: 1 April 2006 to 31 March 2007

Province	Number	Square metres 2/	R'000 2/
Western Cape	34 585	1 037 550	768 200
Eastern Cape	16 526	495 780	637 700
Northern Cape	3 880	116 400	104 800
Free State	19 662	589 860	528 400
KwaZulu-Natal	38 290	1 148 700	1 074 500
North West	46 972	1 409 160	696 500
Gauteng	77 044	2 311 320	1 748 300
Mpumalanga	10 651	319 530	329 900
Limpopo	23 609	708 270	646 700
South Africa	271 219	8 136 570	6 535 000

Source: Housing Subsidy System and Provincial Housing Departments co-ordinated by the National Department of Housing

1/ Includes all top structures completed and sites serviced in respect of the reporting period.

2/ Estimates by the National Department of Housing.

Explanatory notes

Introduction	1	Statistics South Africa (Stats SA) conducts a monthly building statistics survey collecting information regarding building plans passed and buildings completed, financed by the private sector, from the largest local government institutions in South Africa. According to these institutions, they are not always notified about low-cost housing projects and therefore do not include the bulk of low-cost dwelling-houses. Data regarding subsidised low-cost dwelling-houses, supplied by the Housing Subsidy System and Provincial Housing Departments and co-ordinated by the National Department of Housing, are shown in table 29 to table 31 (page 37).
	2	In order to improve timeliness of the publication, some information for the current month has been estimated due to late submission by respondents. These estimates will be revised in the next statistical release(s) as soon as actual information is available.
Purpose of the survey	3	The monthly survey data are used in monitoring the state of economy and formulation of economic policy. Furthermore, the results are important inputs to estimate the Gross Domestic Product (GDP) and to calculate the Composite Leading Business Cycle Indicator. The data are extensively used by the private sector.
Scope of the survey	4	This survey covers local government institutions conducting activities for the private sector regarding - <ul style="list-style-type: none"> • passing of building plans; and • final inspection of completed buildings.
Classification	5	Building activities are classified in division 5 according to the 1993 edition of the <i>Standard Industrial Classification of all Economic Activities, (SIC) Fifth Edition, Report No. 09-90-02</i> . The SIC is based on the 1990 <i>International Standard Industrial Classification of all Economic Activities (ISIC)</i> with suitable adaptations for local conditions.
Response rate	6	The preliminary response rate for the survey on building statistics for October 2007 was 91,2%.
Statistical unit	7	The statistical unit for the collection of information is a local government institution. Local government institutions include district municipalities, metropolitan municipalities and local municipalities.
Survey methodology and design	8	<p>Stats SA conducts a monthly survey of metropolitan municipalities and large local municipalities on building plans passed and buildings completed. An annual survey of the remaining municipalities is conducted regarding buildings completed. The monthly survey represents approximately 90 percent of the total value of buildings completed. Information regarding building plans passed and buildings completed for the private sector is collected by mail, fax and telephone.</p> <p>According to the municipalities, they are not always notified about low-cost housing projects. Data regarding subsidised low-cost dwelling-houses, supplied by the provincial governments and co-ordinated by the National Department of Housing, are shown in table 29 and table 30 (page 37).</p>
Constant prices	9	The value of building plans passed and buildings completed at constant prices measures building activities in terms of ruling prices in a specific base year, which is currently 2000. The value of building plans passed at constant prices for each month is obtained by deflating the values at current prices with a price index known as the 'lump sum domestic buildings' as published in statistical release P0151: <i>JBCC Contract Price Adjustment Provisions Work Group Indices</i> . In order to be applicable, these indices (base February 1991=100) are converted to the base year 2000=100.

- 10** The value of buildings completed at constant prices is obtained by deflating the values at current prices with the price index which is used to calculate building plans passed at constant prices (see paragraph 8). Since the completion of buildings may extend over a few months to a few years, the current value of buildings completed is deflated by price indices which prevailed at the time the plans were passed. Therefore, the duration of the completion of different types of buildings are taken into account in ascertaining the deflators e.g. the value of dwelling-houses completed at constant prices at January 2007 is obtained by deflating the current value of dwelling-houses completed for January 2007 with the price index of a month six months prior to January 2007. Furthermore, the value of other residential buildings, non-residential buildings and additions and alterations at constant prices is obtained by deflating the current values with price indices of 12 months, 18 months and 12 months prior to the relevant month, respectively.
- Seasonal adjustment**
- 11** Seasonally adjusted estimates of building plans passed and buildings completed are generated each month, using the X-11 Seasonal Adjustment Program developed by US Bureau of the Census Economic Research and Analyses Division, 1968.
- 12** Seasonal adjustment is a means of removing the estimated effects of normal seasonal variation from the series so that the effects of other influences on the series can be more clearly recognised. Seasonal adjustment does not aim to remove irregular or non-seasonal influences which may be present in any particular month. Influences that are volatile or unsystematic can still make it difficult to interpret the movement of the series even after adjustment for seasonal variations. Therefore, the month-to-month movements of seasonally adjusted estimates may not be reliable indicators of trend behaviour.
- Trend cycle**
- 13** The trend is a long-term pattern or movement of a time series. The X-11 Seasonal Adjustment Program is used for smoothing seasonally adjusted data.
- Revised figures**
- 14** Revised figures are due to late submission of data to Stats SA, or to respondents reporting revisions or corrections to their figures. Figures for the latest month are therefore preliminary. Data are edited at municipal level.
- 15** Once a year the annual statistical release P5041.3 is published with the revised and updated information at provincial and municipal level for the previous calendar year. Due to this comprehensive revision, the monthly statistical release P5041.1 reflects provincial revision for 2006 where applicable.
- Related publications**
- 16** Users may also wish to refer to the following publications:
- P5041.3: Selected building statistics of the private sector as reported by local government institutions issued annually.
 - P9101.2: Actual and expected expenditure on construction by the public sector per statistical region issued annually.
 - Bulletin of Statistics issued quarterly.
 - South African Statistics issued annually.
 - Report 50-11-01 issued annually.
- Rounding-off of figures**
- 17** The figures in the tables have, where necessary, been rounded off to the nearest digit shown.
- Pre-release policy**
- 18** Stats SA's pre-release policy may be inspected at its website, www.statssa.gov.za

Symbols and abbreviations

19	..	no meaningful percentage change between two specified periods available since either one or both of the totals are nil
	0	nil or figure too small to publish
	*	revised
	Stats SA	Statistics South Africa
	SIC	Standard Industrial Classification of all Economic Activities
	ISIC	International Standard Industrial Classification of all Economic Activities
	JBCC	Joint Building Contracts Committee
	CD	Compact Disc
	US	United States
	SARB	South African Reserve Bank
	DTI	Department of Trade and Industry

2010 World Cup note

- 20** Information relating to the 2010 Soccer World Cup new stadia and renovations, as well as other public sector infrastructure spending e.g. Eskom expansions and the Gautrain project, will not be included in the private sector building data series, as these are partially public sector funded.

Glossary

Additions and alterations	They include extensions to existing buildings as well as internal and external alterations of existing buildings.
Blocks of flats	High-density housing consisting of a number of self-contained dwelling-units, each with at least one living-room together with a kitchen and bathroom, conjoined to similar units in one building.
Dwelling-house	A free-standing, complete structure on a separate stand or a self-contained dwelling-unit, e.g. granny flat, on the same premises as an existing residence. Out-buildings and garages are included.
Local government institutions	Include – <ul style="list-style-type: none"> • District municipalities; • Metropolitan municipalities; and • Local municipalities.
Municipality	A generic term describing the “unit” of government in the local spheres responsible for local government in a geographically demarcated area and including district, metropolitan and local municipalities. It is an institution consisting of a municipal council (elected political representatives) and municipal administration (appointed officials).
District municipality	Municipality that has municipal executive and legislative authority in an area that includes more than one municipality, and which is described in section 155(1) of the Constitution as a category C municipality (Refer to Local Government: Municipal Structure Act, 1998 (Act No. 117 of 1998)).
Metropolitan municipality	Municipality that has municipal executive and legislative authority in an area that includes more than one municipality, and which is described in section 155(1) of the Constitution as a category A municipality (Refer to Local Government: Municipal Structure Act, 1998 (Act No. 117 of 1998)).
Local municipality	Municipality that shares municipal executive and legislative authority in its area with a district municipality within whose area it falls, that is described in section 155(1) of the constitution as a category B municipality.
Non-residential buildings	Comprise factories, commercial, financial and other office buildings, as well as other buildings not used for residential purposes, such as churches, halls, clubs, schools and hospitals.
Other residential buildings	Institutions for the disabled, boarding houses, old people’s homes, hostels, hotels, motels, guesthouses, holiday chalets, bed-and-breakfast accommodation, entertainment centres and casinos.
Percentage change	<p>When using monthly actual values, the percentage change is the change in actual values of building activities (building plans passed or buildings completed) of the relevant month compared with the actual values of building activities (building plans passed or buildings completed) of the same month in the previous year expressed as a percentage.</p> <p>When using annual actual values, the percentage change is the change in the actual values of building activities (building plans passed or buildings completed) of the relevant year compared with the actual values of building activities (building plans passed or buildings completed) of the previous year expressed as a percentage.</p> <p>When using seasonally adjusted values, the percentage change is the change in the seasonally adjusted values of building activities (building plans passed or buildings completed) of the relevant month compared with the seasonally adjusted values of building activities (building plans passed or buildings completed) of the previous month expressed as a percentage.</p>

Reference period	One calendar month.
Residential buildings	Comprise dwelling-houses, flats, townhouses and other residential buildings.
Townhouses	Multiple, medium-density dwelling-units and include cluster housing, group housing, simplexes, duplexes, triplexes and other similar dwelling-units which are usually grouped together, with one level of each unit on ground level. This excludes blocks of flats.

General information

Stats SA publishes approximately 300 different statistical releases each year. It is not economically viable to produce them in more than one of South Africa's eleven official languages. Since the releases are used extensively, not only locally but also by international economic and social-scientific communities, Stats SA releases are published in English.

Stats SA has copyright on this publication. Users may apply the information as they wish, provided that they acknowledge Stats SA as the source of the basic data wherever they process, apply, utilise, publish or distribute the data and also that they specify that the relevant application and analysis (where applicable) result from their own processing of the data.

An advance release calendar is disseminated on www.statssa.gov.za

Stats SA products

A complete set of Stats SA publications is available at the Stats SA Library and the following libraries:

National Library of South Africa, Pretoria Division
National Library of South Africa, Cape Town Division
Natal Society Library, Pietermaritzburg
Library of Parliament, Cape Town
Bloemfontein Public Library
Johannesburg Public Library
Eastern Cape Library Services, King William's Town
Central Regional Library, Polokwane
Central Reference Library, Nelspruit
Central Reference Collection, Kimberley
Central Reference Library, Mmabatho

Stats SA also provides a subscription service.

Electronic services

A large range of data are available via on-line services, diskette, CD and computer printouts. For more details about our electronic data services, contact (012) 310 8600/8390/8351/4892/8496/8095.

You can visit us on the Internet at: www.statssa.gov.za

Enquiries

Telephone number: (012) 310 8600/8390/8351/4892/8496/8095 (user information services)
(012) 310 8228/310 8007 (technical enquiries)
(012) 310 8161 (orders)
(012) 310 4883/4885/8018 (library)

Fax number: (012) 310 8664 (technical enquiries)

Email: Gretaz@statssa.gov.za (technical enquiries)
info@statssa.gov.za (user information services)
distribution@statssa.gov.za (orders)

Postal address: Private Bag X44, Pretoria, 0001

Produced by Stats SA