

**Statistics
South Africa**

**Statistical release
P5041.1**

Dipalopalo tsa Aforika Borwa • Statistieke Suid-Afrika • Tistatistiki ta Afrika-Dzonga • Ukuqokelelwa kwamanani eNingizimu Afrika

Selected building statistics of the private sector as reported by local government institutions

October 2004

**Embargoed until:
15 December 2004
13:00**



Table A - Selected key figures regarding recorded building plans passed by municipalities as at the end of October 2004

Estimates at constant 2000 prices	October 2003	October 2004 ¹	Percentage change between October 2003 and October 2004	January to October 2003	January to October 2004	Percentage change between January to October 2003 and January to October 2004	Difference in real value between January to October 2003 and January to October 2004
	R million	R million		R million	R million		R million
Residential buildings							
Dwelling-houses	978,3	1 244,1	+ 27,2	8 072,1	10 545,2	+ 30,6	+ 2 473,1
Flats and townhouses	384,7	545,1	+ 41,7	3 093,6	4 554,2	+ 47,2	+ 1 460,6
Other residential buildings	19,2	5,2	- 72,9	153,9	232,8	+ 51,3	+ 78,9
Total	1 382,2	1 794,4	+ 29,8	11 319,6	15 332,2	+ 35,4	+ 4 012,6
Non-residential buildings	355,7	420,0	+ 18,1	3 157,4	3 629,8	+ 15,0	+ 472,4
Additions and alterations	599,7	712,0	+ 18,7	5 367,7	6 638,7	+ 23,7	+ 1 271,0
Total	2 337,6	2 926,4	+ 25,2	19 844,7	25 600,7	+ 29,0	+ 5 756,0

¹ October 2004 figures should be regarded as preliminary because of possible backlogs and incomplete reporting by municipalities.

Key findings regarding recorded building plans passed by municipalities for the first ten months of 2004

Real value of recorded building plans passed by municipalities increases

As indicated in Table A, the real value of recorded building plans passed by municipalities (at constant 2000 prices) during the first ten months of 2004 increased by 29,0% (+R5 756,0 million) from R19 844,7 million to R25 600,7 million compared with the first ten months of 2003. The largest increase in the value of recorded building plans passed was reported for residential buildings (+R4 012,6 million), followed by additions and alterations (+R1 271,0 million) and non-residential buildings (+R472,4 million). Recorded building plans passed for dwelling-houses increased by 30,6% (+R2 473,1 million) and for flats and townhouses by 47,2% (+R1 460,6 million).

Table B – Recorded building plans passed by municipalities aggregated to provincial level

Municipal reporting aggregated to provincial level	January to October 2003	January to October 2004 ¹	Difference in real value between January to October 2003 and January to October 2004	Percentage change between January to October 2003 and January to October 2004
	R million	R million	R million	
Western Cape	5 151,3	7 764,2	+ 2 612,9	+ 50,7
Gauteng	8 765,1	10 462,6	+ 1 697,5	+ 19,4
Eastern Cape	982,3	1 361,2	+ 378,9	+ 38,6
KwaZulu-Natal	2 835,2	3 183,4	+ 348,2	+ 12,3
North West	591,9	850,2	+ 258,3	+ 43,6
Free State	482,0	654,5	+ 172,5	+ 35,8
Limpopo	319,1	460,1	+ 141,0	+ 44,2
Mpumalanga	599,2	682,6	+ 83,4	+ 13,9
Northern Cape	118,6	181,9	+ 63,3	+ 53,4
Total	19 844,7	25 600,7	+ 5 756,0	+ 29,0

¹ October 2004 figures should be regarded as preliminary because of possible backlogs and incomplete reporting by municipalities.

The municipalities in all nine provinces reported increases in the real value of recorded building plans passed

As shown in Table B, recorded building plans passed, as reported by municipalities and aggregated to provincial level, increased in all nine provinces. The preliminary figures indicate that the largest contributors to the increase of 29,0% (+R5 756,0 million) in the real value of recorded building plans passed were Western Cape (+R2 612,9 million) and Gauteng (+R1 697,5 million).

Table C - Seasonally adjusted preliminary figures regarding recorded building plans passed by municipalities as at the end of October 2004

Seasonally adjusted estimates at constant 2000 prices	May to July 2004	August to October 2004 ¹	Percentage change between May to July 2004 and August to October 2004
	R million	R million	
Residential buildings	4 666,4	4 933,5	+ 5,7
Non-residential buildings	880,5	1 302,2	+ 47,9
Additions and alterations	1 949,4	2 124,1	+ 9,0
Total	7 496,3	8 359,8	+ 11,5

¹ October 2004 figures should be regarded as preliminary because of possible backlogs and incomplete reporting by municipalities.

Key findings regarding seasonally adjusted real value of recorded building plans passed by municipalities for the three months ended October 2004

As indicated in Table C, the seasonally adjusted real value of recorded building plans passed by municipalities (at constant 2000 prices) during the three months ended October 2004 increased by 11,5% compared with the previous three months. The increase of 11,5% was due to increases in the seasonally adjusted real value of all recorded building plans passed, i.e. non-residential buildings (+47,9%), additions and alterations (+9,0%) and residential buildings (+5,7%).

Figure 1 shows both the seasonally adjusted and the trend series for recorded building plans passed at constant 2000 prices between January 2000 and October 2004. The trend series has been rising since July 2001.

Figure 1 – Real value of recorded building plans passed at constant 2000 prices

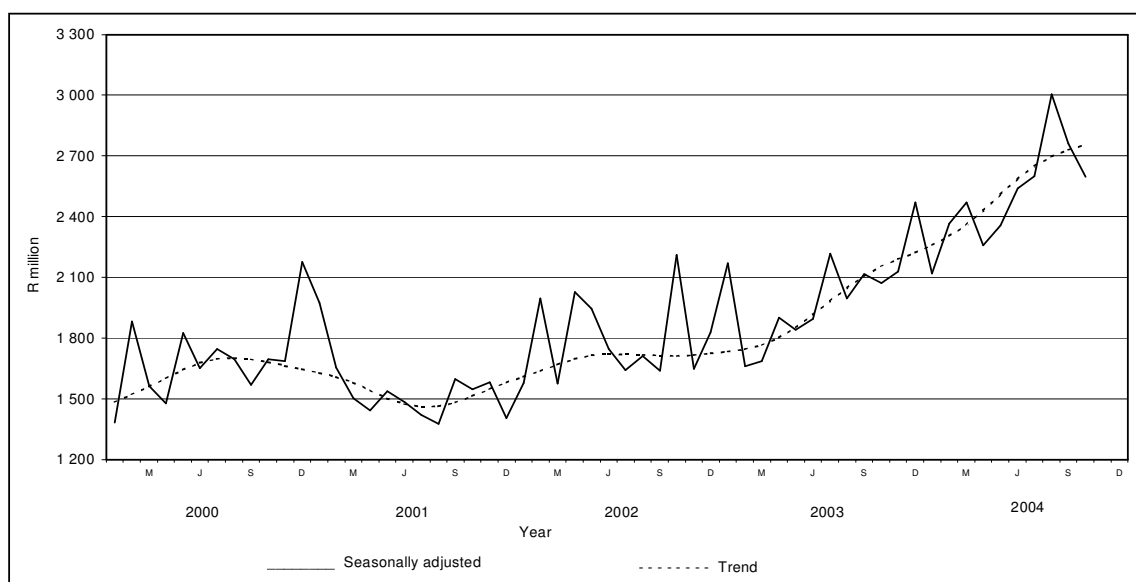


Table D – Selected key figures regarding buildings reported as completed to municipalities as at the end of October 2004

Estimates at constant 2000 prices	October 2003	October 2004 ¹	Percentage change between October 2003 and October 2004	January to October 2003	January to October 2004	Percentage change between January to October 2003 and January to October 2004	Difference in real value between January to October 2003 and January to October 2004
	R million	R million		R million	R million		R million
Residential buildings							
Dwelling-houses	532,9	644,9	+ 21,0	4 463,9	5 572,6	+ 24,8	+ 1 108,7
Flats and townhouses	143,1	258,7	+ 80,8	1 637,8	2 511,5	+ 53,3	+ 873,7
Other residential buildings	1,7	3,6	+ 111,8	675,4	96,4	- 85,7	- 579,0
Total	677,7	907,2	+ 33,9	6 777,1	8 180,5	+ 20,7	+ 1 403,4
Non-residential buildings	162,8	276,8	+ 70,0	2 414,1	2 440,5	+ 1,1	+ 26,4
Additions and alterations	241,6	284,1	+ 17,6	2 393,2	2 425,5	+ 1,3	+ 32,3
Total	1 082,1	1 468,1	+ 35,7	11 584,4	13 046,5	+ 12,6	+ 1 462,1

¹ October 2004 figures should be regarded as preliminary because of possible backlogs and incomplete reporting by municipalities.

Key findings regarding buildings reported as completed to municipalities for the first ten months of 2004

Real value of buildings reported as completed to municipalities increases

Table D indicates the real value of buildings reported as completed (at constant 2000 prices) to municipalities during the first ten months of 2004 increased by 12,6% (+R1 462,1 million) from R11 584,4 million to R13 046,5 million compared with the first ten months of 2003. A large increase was reported for residential buildings (+R1 403,4 million), due to increases reported for dwelling-houses (+R1 108,7 million) and flats and townhouses (+R873,7 million).

Table E - Buildings reported as completed to municipalities aggregated to provincial level

Municipal reporting aggregated to provincial level	January to October 2003	January to October 2004 ¹	Difference in real value between January to October 2003 and January to October 2004	Percentage change between January to October 2003 and January to October 2004
	R million	R million	R million	
Gauteng	5 078,6	5 982,8	+ 904,2	+ 17,8
KwaZulu-Natal	1 663,8	2 055,2	+ 391,4	+ 23,5
North West	382,1	466,1	+ 84,0	+ 22,0
Western Cape	3 153,7	3 237,5	+ 83,8	+ 2,7
Eastern Cape	485,8	543,1	+ 57,3	+ 11,8
Limpopo	107,0	131,9	+ 24,9	+ 23,3
Northern Cape	73,8	88,7	+ 14,9	+ 20,2
Free State	326,1	287,5	- 38,6	-11,8
Mpumalanga	313,5	253,7	- 59,8	-19,1
Total	11 584,4	13 046,5	+ 1 462,1	+ 12,6

¹ October 2004 figures should be regarded as preliminary because of possible backlogs and incomplete reporting by municipalities.

The municipalities in seven of the nine provinces reported increases in the real value of buildings completed

As shown in Table E, the value of buildings completed, as reported to municipalities and aggregated to provincial level, increased in seven provinces. The preliminary figures indicate that the largest contributors to the increase within provinces of 12,6% (+R1 462,1 million) in the real value of buildings completed were Gauteng (+R904,2 million) and KwaZulu-Natal (+R391,4 million).

Table F - Seasonally adjusted preliminary figures regarding buildings reported as completed to municipalities as at the end of October 2004

Seasonally adjusted estimates at constant 2000 prices	May to July 2004	August to October 2004 ¹	Percentage change between May to July 2004 and August to October 2004
	R million	R million	
Residential buildings	2 825,9	2 626,1	- 7,1
Non-residential buildings	581,3	1 196,3	+ 105,8
Additions and alterations	689,1	803,8	+ 16,6
Total	4 096,3	4 626,2	+ 12,9

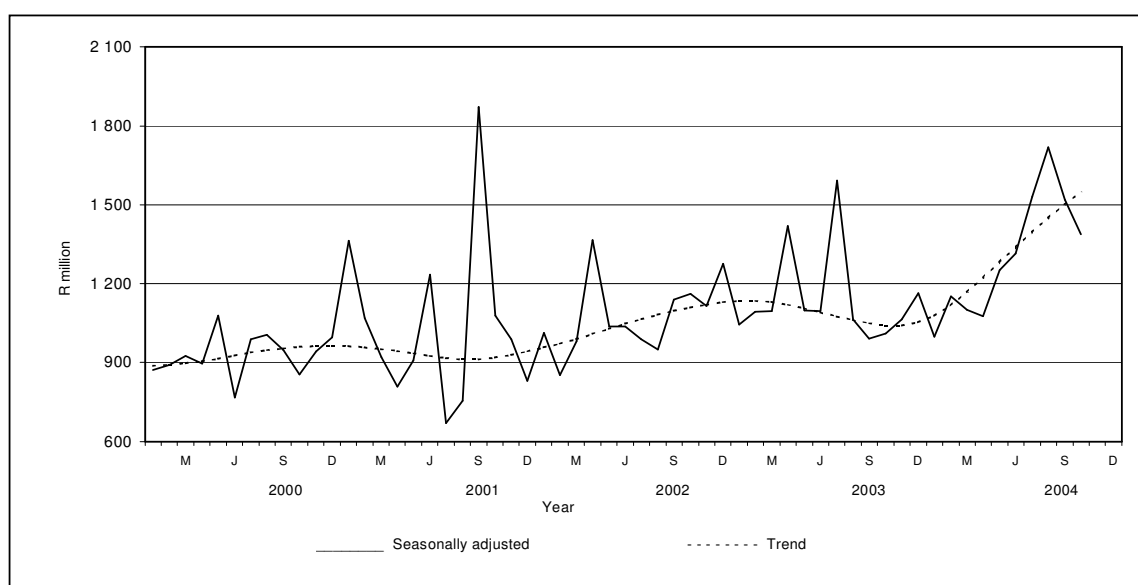
¹ October 2004 figures should be regarded as preliminary because of possible backlogs and incomplete reporting by municipalities.

Key findings regarding seasonally adjusted real value of buildings reported as completed to municipalities for the three months ended October 2004

As indicated in Table F (page 5), the seasonally adjusted real value of buildings reported as completed to municipalities (at constant 2000 prices) for the three months ended October 2004 increased by 12,9% compared with the previous three months. The increase of 12,9% was due to increases in the seasonally adjusted real value of non-residential buildings (+105,8%) and additions and alterations (+16,6%). A decrease of 7,1% was reported for residential buildings.

Figure 2 shows both the seasonally adjusted and the trend series for buildings reported as completed to municipalities at constant 2000 prices between January 2000 and October 2004. The trend series has been rising since October 2003.

Figure 2 – Real value of buildings reported as completed at constant 2000 prices



PP
PJ Lehohla
Statistician-General

Contents	Page
Notes	8
Tables	
Table 1 Values and percentage change of recorded building plans passed by municipalities at current prices by type of building	9
Table 2 Seasonally adjusted values and percentage change of recorded building plans passed by municipalities at current prices by type of building	10
Table 3 Values and percentage change of recorded building plans passed by municipalities at constant 2000 prices by type of building	11
Table 4 Seasonally adjusted values and percentage change of recorded building plans passed at constant 2000 prices by type of building	12
Table 5 Values and percentage change of buildings reported as completed to municipalities at current prices by type of building	13
Table 6 Seasonally adjusted values and percentage change of buildings reported as completed to municipalities at current prices by type of building	14
Table 7 Values and percentage change of buildings reported as completed to municipalities at constant 2000 prices by type of building	15
Table 8 Seasonally adjusted values and percentage change of buildings reported as completed to municipalities at constant 2000 prices by type of building	16
Table 9 Recorded building plans passed by municipalities by type of building: South Africa.....	17
Table 10 Recorded building plans passed by municipalities by type of building and province: Western Cape	18
Table 11 Recorded building plans passed by municipalities by type of building and province: Eastern Cape	19
Table 12 Recorded building plans passed by municipalities by type of building and province: Northern Cape	20
Table 13 Recorded building plans passed by municipalities by type of building and province: Free State	21
Table 14 Recorded building plans passed by municipalities by type of building and province: KwaZulu-Natal	22
Table 15 Recorded building plans passed by municipalities by type of building and province: North West	23
Table 16 Recorded building plans passed by municipalities by type of building and province: Gauteng	24
Table 17 Recorded building plans passed by municipalities by type of building and province: Mpumalanga	25
Table 18 Recorded building plans passed by municipalities by type of building and province: Limpopo.....	26
Table 19 Buildings reported as completed to municipalities by type of building: South Africa.....	27
Table 20 Buildings reported as completed to municipalities by type of building and province: Western Cape	28
Table 21 Buildings reported as completed to municipalities by type of building and province: Eastern Cape	29
Table 22 Buildings reported as completed to municipalities by type of building and province: Northern Cape	30
Table 23 Buildings reported as completed to municipalities by type of building and province: Free State	31
Table 24 Buildings reported as completed to municipalities by type of building and province: KwaZulu-Natal	32
Table 25 Buildings reported as completed to municipalities by type of building and province: North West	33
Table 26 Buildings reported as completed to municipalities by type of building and province: Gauteng	34
Table 27 Buildings reported as completed to municipalities by type of building and province: Mpumalanga	35
Table 28 Buildings reported as completed to municipalities by type of building and province: Limpopo.....	36
Table 29 Subsidised low-cost dwelling-houses completed or under construction by province	37
Explanatory notes	38
Glossary	40
General information	42

Notes**Forthcoming issue****Issue****Expected release date**

November 2004

12 January 2005

Subsidised low-cost dwelling-houses

The figures obtained from local government institutions do not include the bulk of low-cost dwelling-houses. Data regarding subsidised low-cost dwelling-houses completed or under construction, supplied by the provincial governments and co-ordinated by the National Department of Housing, are shown in table 29 (page 37).

Response rate

The response rate for October 2004 was 97,5%.

Table 1 - Values and percentage change of recorded building plans passed by municipalities at current prices by type of building

Year ¹ and month ²	Residential buildings		Non-residential buildings		Additions and alterations		Total	
	R'000	Percentage change	R'000	Percentage change	R'000	Percentage change	R'000	Percentage change
2002 Jan.	801 712	+ 10,5	172 295	- 65,2	418 217	+ 18,3	1 392 224	- 11,5
Feb.	1 024 424	+ 22,4	622 559	+ 102,5	459 378	- 3,5	2 106 361	+ 30,0
Mar.	965 121	+ 3,4	495 333	+ 63,0	432 948	- 1,3	1 893 402	+ 13,0
Apr.	1 152 506	+ 55,1	350 647	+ 67,7	533 421	+ 40,5	2 036 574	+ 52,9
May	1 184 437	+ 17,7	438 078	+ 49,3	936 496	+ 86,5	2 559 011	+ 42,0
Jun.	1 100 299	+ 21,6	497 829	+ 65,7	552 535	+ 23,3	2 150 663	+ 30,0
Jul.	1 251 404	+ 40,0	255 959	- 30,2	674 478	+ 54,8	2 181 841	+ 28,6
Aug.	1 164 715	+ 45,7	391 026	+ 58,0	698 946	+ 44,0	2 254 687	+ 43,4
Sep.	1 222 745	+ 26,3	287 969	- 6,0	617 044	+ 16,4	2 127 758	+ 17,9
Oct.	2 030 451	+ 69,7	335 491	+ 79,5	757 380	+ 40,1	3 123 322	+ 62,4
Nov.	1 226 825	+ 24,8	309 532	- 2,9	715 756	+ 19,7	2 252 113	+ 18,6
Dec.	1 103 944	+ 67,8	230 232	+ 63,9	420 030	+ 17,0	1 754 206	+ 51,5
Total	14 228 583	+ 33,1	4 386 950	+ 26,2	7 216 629	+ 30,1	25 832 162	+ 31,1
2003 Jan.	954 012	+ 19,0	685 795	+ 298,0	524 194	+ 25,3	2 164 001	+ 55,4
Feb.	1 216 120	+ 18,7	239 795	- 61,5	531 253	+ 15,6	1 987 168	- 5,7
Mar.	1 405 792	+ 45,7	225 827	- 54,4	604 632	+ 39,7	2 236 251	+ 18,1
Apr.	1 226 932	+ 6,5	284 104	- 19,0	601 549	+ 12,8	2 112 585	+ 3,7
May	1 328 400	+ 12,2	408 130	- 6,8	903 951	- 3,5	2 640 481	+ 3,2
Jun.	1 452 398	+ 32,0	386 847	- 22,3	673 001	+ 21,8	2 512 246	+ 16,8
Jul.	1 788 778	+ 42,9	489 467	+ 91,2	885 159	+ 31,2	3 163 404	+ 45,0
Aug.	1 694 233	+ 45,5	412 947	+ 5,6	725 583	+ 3,8	2 832 763	+ 25,6
Sep.	1 745 376	+ 42,7	474 167	+ 64,7	697 206	+ 13,0	2 916 749	+ 37,1
Oct.	1 788 657	- 11,9	460 222	+ 37,2	775 961	+ 2,5	3 024 840	- 3,2
Nov.	1 859 149	+ 51,5	392 685	+ 26,9	730 309	+ 2,0	2 982 143	+ 32,4
Dec.	1 368 171	+ 23,9	471 920	+ 105,0	615 813	+ 46,6	2 455 904	+ 40,0
Total	17 828 018	+ 25,3	4 931 906	+ 12,4	8 268 611	+ 14,6	31 028 535	+ 20,1
2004 Jan.	1 322 714	+ 38,6	331 977	- 51,6	524 139	+ 0,0	2 178 830	+ 0,7
Feb.	1 692 010	+ 39,1	392 385	+ 63,6	812 817	+ 53,0	2 897 212	+ 45,8
Mar.	1 965 458	+ 39,8	556 522	+ 146,4	884 720	+ 46,3	3 406 700	+ 52,3
Apr.	1 578 145	+ 28,6	362 254	+ 27,5	679 167	+ 12,9	2 619 566	+ 24,0
May	2 188 975	+ 64,8	380 858	- 6,7	896 367	- 0,8	3 466 200	+ 31,3
Jun.	2 132 851	+ 46,9	429 121	+ 10,9	946 218	+ 40,6	3 508 190	+ 39,6
Jul.	2 375 554	+ 32,8	489 082	- 0,1	1 035 806	+ 17,0	3 900 442	+ 23,3
Aug.	2 600 768	+ 53,5	798 669	+ 93,4	1 152 700	+ 58,9	4 552 137	+ 60,7
Sep.	2 396 326	+ 37,3	587 295	+ 23,9	1 059 501	+ 52,0	4 043 122	+ 38,6
Oct. ³	2 479 853	+ 38,6	580 405	+ 26,1	984 020	+ 26,8	4 044 278	+ 33,7

¹ The annual percentage change is the change in the values of recorded building plans passed by municipalities of the relevant year compared with the values of recorded building plans passed by municipalities of the previous year expressed as a percentage.

² The monthly percentage change is the change in the recorded values of building plans passed by municipalities of the relevant month compared with the recorded values of building plans passed by municipalities of the same month in the previous year expressed as a percentage.

³ Preliminary figures.

Table 2 - Seasonally adjusted values and percentage change of recorded building plans passed by municipalities at current prices by type of building

Year and month ¹	Residential buildings		Non-residential buildings		Additions and alterations		Total	
	R'000	Percentage change	R'000	Percentage change	R'000	Percentage change	R'000	Percentage change
2002 Jan.	1 015 892	+ 18,0	230 083	+ 26,1	522 955	+ 3,7	1 768 930	+ 14,3
Feb.	1 038 890	+ 2,3	715 826	+ 211,1	519 121	- 0,7	2 273 837	+ 28,5
Mar.	928 247	- 10,7	455 492	- 36,4	420 031	- 19,1	1 803 770	- 20,7
Apr.	1 333 270	+ 43,6	414 787	- 8,9	608 101	+ 44,8	2 356 158	+ 30,6
May	1 104 634	- 17,1	378 959	- 8,6	815 341	+ 34,1	2 298 934	- 2,4
Jun.	1 077 653	- 2,4	446 906	+ 17,9	539 828	- 33,8	2 064 387	- 10,2
Jul.	1 133 093	+ 5,1	222 496	- 50,2	616 238	+ 14,2	1 971 827	- 4,5
Aug.	1 098 557	- 3,0	350 734	+ 57,6	633 558	+ 2,8	2 082 849	+ 5,6
Sep.	1 153 456	+ 5,0	275 744	- 21,4	582 298	- 8,1	2 011 498	- 3,4
Oct.	1 733 889	+ 50,3	334 652	+ 21,4	673 260	+ 15,6	2 741 801	+ 36,3
Nov.	1 144 900	- 34,0	286 361	- 14,4	633 934	- 5,8	2 065 195	- 24,7
Dec.	1 419 603	+ 24,0	294 106	+ 2,7	590 528	- 6,8	2 304 237	+ 11,6
2003 Jan.	1 211 914	- 14,6	899 646	+ 205,9	650 635	+ 10,2	2 762 195	+ 19,9
Feb.	1 243 268	+ 2,6	278 153	- 69,1	595 366	- 8,5	2 116 787	- 23,4
Mar.	1 361 722	+ 9,5	204 796	- 26,4	594 132	- 0,2	2 160 650	+ 2,1
Apr.	1 426 438	+ 4,8	334 042	+ 63,1	684 848	+ 15,3	2 445 328	+ 13,2
May	1 244 420	- 12,8	365 257	+ 9,3	775 139	+ 13,2	2 384 816	- 2,5
Jun.	1 434 271	+ 15,3	347 364	- 4,9	663 227	- 14,4	2 444 862	+ 2,5
Jul.	1 612 159	+ 12,4	444 692	+ 28,0	805 701	+ 21,5	2 862 552	+ 17,1
Aug.	1 583 403	- 1,8	350 869	- 21,1	645 874	- 19,8	2 580 146	- 9,9
Sep.	1 632 071	+ 3,1	446 744	+ 27,3	662 799	+ 2,6	2 741 614	+ 6,3
Oct.	1 529 791	- 6,3	457 243	+ 2,4	695 535	+ 4,9	2 682 569	- 2,2
Nov.	1 742 879	+ 13,9	370 162	- 19,0	652 034	- 6,3	2 765 075	+ 3,1
Dec.	1 746 969	+ 0,2	601 579	+ 62,5	866 700	+ 32,9	3 215 248	+ 16,3
2004 Jan.	1 676 455	- 4,0	434 724	- 27,7	651 098	- 24,9	2 762 277	- 14,1
Feb.	1 745 299	+ 4,1	457 421	+ 5,2	909 246	+ 39,6	3 111 966	+ 12,7
Mar.	1 904 542	+ 9,1	500 011	+ 9,3	874 202	- 3,9	3 278 755	+ 5,4
Apr.	1 827 131	- 4,1	418 699	- 16,3	768 489	- 12,1	3 014 319	- 8,1
May	2 067 766	+ 13,2	352 370	- 15,8	760 429	- 1,0	3 180 565	+ 5,5
Jun.	2 116 284	+ 2,3	380 447	+ 8,0	941 527	+ 23,8	3 438 258	+ 8,1
Jul.	2 130 008	+ 0,6	457 346	+ 20,2	942 895	+ 0,1	3 530 249	+ 2,7
Aug.	2 423 800	+ 13,8	661 051	+ 44,5	1 019 633	+ 8,1	4 104 484	+ 16,3
Sep.	2 231 385	- 7,9	551 446	- 16,6	1 010 200	- 0,9	3 793 031	- 7,6
Oct.	2 127 158	- 4,7	575 795	+ 4,4	887 948	- 12,1	3 590 901	- 5,3

¹ The percentage change is the change in the seasonally adjusted values of recorded building plans passed by municipalities of the relevant month compared with the seasonally adjusted values of recorded building plans passed by municipalities of the previous month expressed as a percentage.

Table 3 - Values and percentage change of recorded building plans passed by municipalities at constant 2000 prices by type of building

Year ¹ and month ²	Residential buildings		Non-residential buildings		Additions and alterations		Total	
	R'000	Percentage change	R'000	Percentage change	R'000	Percentage change	R'000	Percentage change
2002 Jan.	717 095	+ 3,0	154 110	- 67,5	374 076	+ 10,3	1 245 281	- 17,5
Feb.	898 618	+ 12,4	546 104	+ 86,0	402 963	- 11,4	1 847 685	+ 19,4
Mar.	842 900	- 5,0	432 605	+ 49,8	378 121	- 9,3	1 653 626	+ 3,8
Apr.	990 977	+ 41,4	301 502	+ 52,8	458 660	+ 28,1	1 751 139	+ 39,4
May	1 004 612	+ 6,4	371 567	+ 35,0	794 314	+ 68,7	2 170 493	+ 28,4
Jun.	927 739	+ 9,5	419 755	+ 49,2	465 881	+ 11,0	1 813 375	+ 17,1
Jul.	1 037 648	+ 24,7	212 238	- 37,9	559 269	+ 37,9	1 809 155	+ 14,5
Aug.	954 684	+ 22,5	320 513	+ 39,5	572 907	+ 27,2	1 848 104	+ 26,6
Sep.	997 345	+ 11,1	234 885	- 17,2	503 299	+ 2,5	1 735 529	+ 3,8
Oct.	1 638 782	+ 48,1	270 776	+ 56,6	611 283	+ 22,3	2 520 841	+ 41,6
Nov.	984 611	+ 8,9	248 421	- 15,3	574 443	+ 4,4	1 807 475	+ 3,4
Dec.	882 449	+ 47,1	184 038	+ 43,7	335 755	+ 2,6	1 402 242	+ 32,9
Total	11 877 460	+ 18,8	3 696 514	+ 13,4	6 030 971	+ 16,3	21 604 945	+ 17,2
2003 Jan.	751 191	+ 4,8	539 996	+ 250,4	412 751	+ 10,3	1 703 938	+ 36,8
Feb.	951 581	+ 5,9	187 633	- 65,6	415 691	+ 3,2	1 554 905	- 15,8
Mar.	1 095 707	+ 30,0	176 015	- 59,3	471 264	+ 24,6	1 742 986	+ 5,4
Apr.	951 110	- 4,0	220 236	- 27,0	466 317	+ 1,7	1 637 663	- 6,5
May	1 028 970	+ 2,4	316 135	- 14,9	700 194	- 11,8	2 045 299	- 5,8
Jun.	1 122 410	+ 21,0	298 954	- 28,8	520 094	+ 11,6	1 941 458	+ 7,1
Jul.	1 381 296	+ 33,1	377 967	+ 78,1	683 520	+ 22,2	2 442 783	+ 35,0
Aug.	1 307 279	+ 36,9	318 632	- 0,6	559 863	- 2,3	2 185 774	+ 18,3
Sep.	1 347 781	+ 35,1	366 152	+ 55,9	538 383	+ 7,0	2 252 316	+ 29,8
Oct.	1 382 270	- 15,7	355 658	+ 31,3	599 661	- 1,9	2 337 589	- 7,3
Nov.	1 438 970	+ 46,1	303 936	+ 22,3	565 255	- 1,6	2 308 161	+ 27,7
Dec.	1 058 956	+ 20,0	365 263	+ 98,5	476 635	+ 42,0	1 900 854	+ 35,6
Total	13 817 521	+ 16,3	3 826 577	+ 3,5	6 409 628	+ 6,3	24 053 726	+ 11,3
2004 Jan.	1 015 909	+ 35,2	254 975	- 52,8	402 565	- 2,5	1 673 449	- 1,8
Feb.	1 282 798	+ 34,8	297 487	+ 58,5	616 237	+ 48,2	2 196 522	+ 41,3
Mar.	1 480 014	+ 35,1	419 068	+ 138,1	666 205	+ 41,4	2 565 287	+ 47,2
Apr.	1 179 481	+ 24,0	270 743	+ 22,9	507 599	+ 8,9	1 957 823	+ 19,5
May	1 625 074	+ 57,9	282 745	- 10,6	665 454	- 5,0	2 573 273	+ 25,8
Jun.	1 570 582	+ 39,9	315 995	+ 5,7	696 773	+ 34,0	2 583 350	+ 33,1
Jul.	1 742 886	+ 26,2	358 828	- 5,1	759 946	+ 11,2	2 861 660	+ 17,1
Aug.	1 896 986	+ 45,1	582 545	+ 82,8	840 773	+ 50,2	3 320 304	+ 51,9
Sep.	1 744 051	+ 29,4	427 434	+ 16,7	771 107	+ 43,2	2 942 592	+ 30,6
Oct.	1 794 394	+ 29,8	419 975	+ 18,1	712 026	+ 18,7	2 926 395	+ 25,2

¹ The annual percentage change is the change in the values of recorded building plans passed by municipalities of the relevant year compared with the values of recorded building plans passed by municipalities of the previous year expressed as a percentage.

² The monthly percentage change is the change in the recorded values of building plans passed by municipalities of the relevant month compared with the recorded values of building plans passed by municipalities of the same month in the previous year expressed as a percentage.

Table 4 - Seasonally adjusted values and percentage change of recorded building plans passed by municipalities at constant 2000 prices by type of building

Year and month ¹	Residential buildings		Non-residential buildings		Additions and alterations		Total	
	R'000	Percentage change	R'000	Percentage change	R'000	Percentage change	R'000	Percentage change
2002 Jan.	906 907	+ 16,2	204 479	+ 23,6	468 140	+ 8,1	1 579 526	+ 12,5
Feb.	912 797	+ 0,6	628 170	+ 207,2	457 059	- 2,4	1 998 026	+ 26,5
Mar.	810 316	- 11,2	397 285	- 36,8	366 950	- 19,7	1 574 551	- 21,2
Apr.	1 147 675	+ 41,6	357 200	- 10,1	524 413	+ 42,9	2 029 288	+ 28,9
May	939 758	- 18,1	323 043	- 9,6	684 325	+ 30,5	1 947 126	- 4,0
Jun.	909 517	- 3,2	377 694	+ 16,9	457 674	- 33,1	1 744 885	- 10,4
Jul.	942 063	+ 3,6	185 181	- 51,0	513 487	+ 12,2	1 640 731	- 6,0
Aug.	902 931	- 4,2	288 575	+ 55,8	521 053	+ 1,5	1 712 559	+ 4,4
Sep.	940 440	+ 4,2	224 847	- 22,1	474 824	- 8,9	1 640 111	- 4,2
Oct.	1 397 770	+ 48,6	269 858	+ 20,0	542 569	+ 14,3	2 210 197	+ 34,8
Nov.	914 614	- 34,6	228 345	- 15,4	506 203	- 6,7	1 649 162	- 25,4
Dec.	1 127 270	+ 23,3	233 577	+ 2,3	469 532	- 7,2	1 830 379	+ 11,0
2003 Jan.	952 264	- 15,5	704 246	+ 201,5	513 771	+ 9,4	2 170 281	+ 18,6
Feb.	974 935	+ 2,4	217 780	- 69,1	468 251	- 8,9	1 660 966	- 23,5
Mar.	1 061 828	+ 8,9	159 432	- 26,8	463 670	- 1,0	1 684 930	+ 1,4
Apr.	1 107 671	+ 4,3	259 491	+ 62,8	532 803	+ 14,9	1 899 965	+ 12,8
May	966 384	- 12,8	284 111	+ 9,5	591 908	+ 11,1	1 842 403	- 3,0
Jun.	1 109 949	+ 14,9	269 186	- 5,3	515 937	- 12,8	1 895 072	+ 2,9
Jul.	1 248 254	+ 12,5	344 783	+ 28,1	625 513	+ 21,2	2 218 550	+ 17,1
Aug.	1 225 229	- 1,8	271 863	- 21,1	500 298	- 20,0	1 997 390	- 10,0
Sep.	1 259 670	+ 2,8	344 967	+ 26,9	511 852	+ 2,3	2 116 489	+ 6,0
Oct.	1 180 962	- 6,2	353 123	+ 2,4	536 895	+ 4,9	2 070 980	- 2,2
Nov.	1 341 712	+ 13,6	284 519	- 19,4	501 589	- 6,6	2 127 820	+ 2,7
Dec.	1 342 106	+ 0,0	462 156	+ 62,4	666 638	+ 32,9	2 470 900	+ 16,1
2004 Jan.	1 285 356	- 4,2	332 060	- 28,1	501 978	- 24,7	2 119 394	- 14,2
Feb.	1 326 331	+ 3,2	346 981	+ 4,5	693 518	+ 38,2	2 366 830	+ 11,7
Mar.	1 435 367	+ 8,2	376 097	+ 8,4	659 503	- 4,9	2 470 967	+ 4,4
Apr.	1 368 263	- 4,7	313 646	- 16,6	576 696	- 12,6	2 258 605	- 8,6
May	1 539 044	+ 12,5	262 560	- 16,3	555 382	- 3,7	2 356 986	+ 4,4
Jun.	1 560 582	+ 1,4	280 948	+ 7,0	698 352	+ 25,7	2 539 882	+ 7,8
Jul.	1 566 814	+ 0,4	336 952	+ 19,9	695 618	- 0,4	2 599 384	+ 2,3
Aug.	1 772 752	+ 13,1	484 264	+ 43,7	746 680	+ 7,3	3 003 696	+ 15,6
Sep.	1 623 139	- 8,4	401 447	- 17,1	735 437	- 1,5	2 760 023	- 8,1
Oct.	1 537 642	- 5,3	416 463	+ 3,7	641 953	- 12,7	2 596 058	- 5,9

¹ The percentage change is the change in the seasonally adjusted values of recorded building plans passed by municipalities of the relevant month compared with the seasonally adjusted values of recorded building plans passed by municipalities of the previous month expressed as a percentage.

Table 5 - Values and percentage change of buildings reported as completed to municipalities at current prices by type of building

Year ¹ and month ²	Residential buildings		Non-residential buildings		Additions and alterations		Total	
	R'000	Percentage change	R'000	Percentage change	R'000	Percentage change	R'000	Percentage change
2002 Jan.	583 954	- 9,8	136 570	- 47,4	176 643	- 12,7	897 167	- 19,1
Feb.	473 568	+ 9,9	137 817	- 51,8	202 239	- 17,9	813 624	- 15,5
Mar.	708 471	+ 44,3	171 227	+ 3,1	176 053	- 38,7	1 055 751	+ 11,8
Apr.	653 414	+ 77,8	245 773	+ 44,4	390 160	+ 110,0	1 289 347	+ 78,2
May	690 242	+ 53,3	300 836	- 5,5	305 996	+ 3,3	1 297 074	+ 21,8
Jun.	585 723	+ 8,4	207 030	- 38,9	251 004	- 14,5	1 043 757	- 11,0
Jul.	681 657	+ 71,7	273 139	+ 124,6	242 028	+ 3,7	1 196 824	+ 59,1
Aug.	740 221	+ 71,1	96 328	- 18,0	226 414	+ 4,9	1 062 963	+ 38,8
Sep.	820 510	+ 78,7	228 610	- 83,9	248 379	+ 47,0	1 297 499	- 36,6
Oct.	938 075	+ 41,8	178 099	- 36,8	293 977	+ 25,5	1 410 151	+ 19,7
Nov.	847 433	+ 38,8	294 710	+ 39,6	237 143	- 17,2	1 379 286	+ 24,5
Dec.	702 892	+ 51,2	366 760	+ 111,3	221 292	+ 76,9	1 290 944	+ 69,1
Total	8 426 160	+ 41,6	2 636 899	- 31,7	2 971 328	+ 7,1	14 034 387	+ 11,5
2003 Jan.	623 401	+ 6,8	154 538	+ 13,2	237 996	+ 34,7	1 015 935	+ 13,2
Feb.	696 496	+ 47,1	158 143	+ 14,7	288 062	+ 42,4	1 142 701	+ 40,4
Mar.	713 231	+ 0,7	316 020	+ 84,6	242 725	+ 37,9	1 271 976	+ 20,5
Apr.	688 059	+ 5,3	534 865	+ 117,6	248 988	- 36,2	1 471 912	+ 14,2
May	688 470	- 0,3	605 218	+ 101,2	310 203	+ 1,4	1 603 891	+ 23,7
Jun.	763 026	+ 30,3	170 636	- 17,6	303 112	+ 20,8	1 236 774	+ 18,5
Jul.	1 621 012	+ 137,8	191 080	- 30,0	335 931	+ 38,8	2 148 023	+ 79,5
Aug.	883 426	+ 19,3	151 866	+ 57,7	294 759	+ 30,2	1 330 051	+ 25,1
Sep.	802 515	- 2,2	179 081	- 21,7	271 100	+ 9,1	1 252 696	- 3,5
Oct.	866 838	- 7,6	189 368	+ 6,3	299 330	+ 1,8	1 355 536	- 3,9
Nov.	978 031	+ 15,4	222 723	- 24,4	287 138	+ 21,1	1 487 892	+ 7,9
Dec.	873 835	+ 24,3	182 358	- 50,3	243 158	+ 9,9	1 299 351	+ 0,7
Total	10 198 340	+ 21,0	3 055 896	+ 15,9	3 362 502	+ 13,2	16 616 738	+ 18,4
2004 Jan.	614 622	- 1,4	201 839	+ 30,6	262 328	+ 10,2	1 078 789	+ 6,2
Feb.	766 356	+ 10,0	231 958	+ 46,7	307 001	+ 6,6	1 305 315	+ 14,2
Mar.	922 238	+ 29,3	215 230	- 31,9	281 273	+ 15,9	1 418 741	+ 11,5
Apr.	851 281	+ 23,7	160 270	- 70,0	221 997	- 10,8	1 233 548	- 16,2
May	1 216 229	+ 76,7	320 550	- 47,0	309 243	- 0,3	1 846 022	+ 15,1
Jun.	1 075 320	+ 40,9	200 916	+ 17,7	319 287	+ 5,3	1 595 523	+ 29,0
Jul.	1 518 084	- 6,3	335 914	+ 75,8	357 166	+ 6,3	2 211 164	+ 2,9
Aug.	1 308 654	+ 48,1	514 650	+ 238,9	371 944	+ 26,2	2 195 248	+ 65,0
Sep.	1 173 026	+ 46,2	534 093	+ 198,2	329 172	+ 21,4	2 036 291	+ 62,6
Oct. ³	1 202 376	+ 38,7	357 020	+ 88,5	367 648	+ 22,8	1 927 044	+ 42,2

¹ The annual percentage change is the change in the values of buildings reported as completed to municipalities of the relevant year compared with the values of buildings reported as completed to municipalities of the previous year expressed as a percentage.

² The monthly percentage change is the change in the values of buildings reported as completed to municipalities of the relevant month compared with the values of buildings reported as completed to municipalities of the same month in the previous year expressed as a percentage.

³ Preliminary figures.

Table 6 - Seasonally adjusted values and percentage change of buildings reported as completed to municipalities at current prices by type of building

Year and month ¹	Residential buildings		Non-residential buildings		Additions and alterations		Total	
	R'000	Percentage change	R'000	Percentage change	R'000	Percentage change	R'000	Percentage change
2002 Jan.	692 654	+ 32,6	173 303	+ 1,8	199 156	+ 15,8	1 065 113	+ 23,2
Feb.	539 164	- 22,2	163 249	- 5,8	192 470	- 3,4	894 883	- 16,0
Mar.	686 225	+ 27,3	189 394	+ 16,0	160 998	- 16,4	1 036 617	+ 15,8
Apr.	731 403	+ 6,6	269 067	+ 42,1	448 709	+ 178,7	1 449 179	+ 39,8
May	655 148	- 10,4	197 196	- 26,7	255 384	- 43,1	1 107 728	- 23,6
Jun.	635 800	- 3,0	229 768	+ 16,5	251 035	- 1,7	1 116 603	+ 0,8
Jul.	636 218	+ 0,1	217 885	- 5,2	220 138	- 12,3	1 074 241	- 3,8
Aug.	706 203	+ 11,0	114 389	- 47,5	220 859	+ 0,3	1 041 451	- 3,1
Sep.	778 083	+ 10,2	210 347	+ 83,9	265 503	+ 20,2	1 253 933	+ 20,4
Oct.	826 826	+ 6,3	200 390	- 4,7	266 193	+ 0,3	1 293 409	+ 3,1
Nov.	716 667	- 13,3	296 482	+ 48,0	233 660	- 12,2	1 246 809	- 3,6
Dec.	787 626	+ 9,9	350 011	+ 18,1	296 341	+ 26,8	1 433 978	+ 15,0
2003 Jan.	731 867	- 7,1	194 246	- 44,5	268 029	- 9,6	1 194 142	- 16,7
Feb.	806 556	+ 10,2	186 159	- 4,2	276 237	+ 3,1	1 268 952	+ 6,3
Mar.	700 040	- 13,2	342 318	+ 83,9	229 264	- 17,0	1 271 622	+ 0,2
Apr.	773 309	+ 10,5	578 065	+ 68,9	290 821	+ 26,8	1 642 195	+ 29,1
May	648 995	- 16,1	384 572	- 33,5	259 380	- 10,8	1 292 947	- 21,3
Jun.	828 187	+ 27,6	195 831	- 49,1	293 729	+ 13,2	1 317 747	+ 1,9
Jul.	1 472 098	+ 77,7	163 443	- 16,5	306 135	+ 4,2	1 941 676	+ 47,3
Aug.	837 964	- 43,1	180 001	+ 10,1	286 934	- 6,3	1 304 899	- 32,8
Sep.	777 948	- 7,2	163 365	- 9,2	287 745	+ 0,3	1 229 058	- 5,8
Oct.	767 095	- 1,4	217 851	+ 33,4	271 039	- 5,8	1 255 985	+ 2,2
Nov.	827 671	+ 7,9	218 541	+ 0,3	284 049	+ 4,8	1 330 261	+ 5,9
Dec.	975 557	+ 17,9	171 485	- 21,5	321 281	+ 13,1	1 468 323	+ 10,4
2004 Jan.	716 101	- 26,6	257 874	+ 50,4	294 413	- 8,4	1 268 388	- 13,6
Feb.	894 692	+ 24,9	277 530	+ 7,6	294 776	+ 0,1	1 466 998	+ 15,7
Mar.	912 088	+ 1,9	226 736	- 18,3	272 673	- 7,5	1 411 497	- 3,8
Apr.	955 713	+ 4,8	168 640	- 25,6	259 682	- 4,8	1 384 035	- 1,9
May	1 154 147	+ 20,8	199 236	+ 18,1	260 956	+ 0,5	1 614 339	+ 16,6
Jun.	1 164 686	+ 0,9	231 089	+ 16,0	304 026	+ 16,5	1 699 801	+ 5,3
Jul.	1 356 267	+ 16,4	302 973	+ 31,1	324 160	+ 6,6	1 983 400	+ 16,7
Aug.	1 234 730	- 9,0	619 659	+ 104,5	361 142	+ 11,4	2 215 531	+ 11,7
Sep.	1 146 863	- 7,1	491 650	- 20,7	346 806	- 4,0	1 985 319	- 10,4
Oct.	1 065 922	- 7,1	412 111	- 16,2	334 221	- 3,6	1 812 254	- 8,7

¹ The percentage change is the change in the seasonally adjusted values of buildings reported as completed to municipalities of the relevant month compared with the seasonally adjusted values of buildings reported as completed to municipalities of the previous month expressed as a percentage.

Table 7 - Values and percentage change of buildings reported as completed to municipalities at constant 2000 prices by type of building

Year ¹ and month ²	Residential buildings		Non-residential buildings		Additions and alterations		Total	
	R'000	Percentage change	R'000	Percentage change	R'000	Percentage change	R'000	Percentage change
2002 Jan.	549 418	- 16,6	136 026	- 49,0	169 523	- 18,8	854 967	- 24,6
Feb.	443 590	+ 27,8	136 318	- 53,7	193 160	- 32,9	773 068	- 12,5
Mar.	663 989	+ 12,2	169 030	- 20,2	167 351	- 42,2	1 000 370	- 10,3
Apr.	607 293	+ 51,3	240 718	- 21,9	368 075	- 10,1	1 216 086	+ 17,8
May	639 076	+ 24,7	293 499	- 58,1	287 051	- 43,2	1 219 626	- 19,6
Jun.	536 531	+ 3,9	201 195	- 60,6	235 022	- 42,5	972 748	- 26,8
Jul.	616 022	+ 3,9	262 130	+ 8,4	225 352	- 27,1	1 103 504	+ 15,4
Aug.	662 349	+ 43,4	92 004	+ 12,7	210 227	- 20,6	964 580	+ 14,0
Sep.	732 084	+ 32,1	217 310	- 90,6	230 194	+ 1,7	1 179 588	- 58,4
Oct.	820 069	+ 24,9	168 018	- 52,5	271 949	- 26,1	1 260 036	- 25,5
Nov.	734 664	- 13,0	276 463	- 36,0	218 163	- 39,3	1 229 290	- 20,2
Dec.	603 604	- 5,3	343 408	- 21,9	201 725	+ 39,5	1 148 737	+ 16,5
Total	7 608 689	+ 31,2	2 536 119	- 35,7	2 777 792	- 0,1	12 922 600	+ 3,2
2003 Jan.	531 864	- 3,2	143 890	+ 5,8	212 877	+ 25,6	888 631	+ 3,9
Feb.	583 100	+ 31,5	146 837	+ 7,7	252 686	+ 30,8	982 623	+ 27,1
Mar.	590 702	- 11,0	292 882	+ 73,3	211 987	+ 26,7	1 095 571	+ 9,5
Apr.	563 927	- 7,1	494 787	+ 105,5	214 091	- 41,8	1 272 805	+ 4,7
May	558 827	- 12,6	556 778	+ 89,7	263 107	- 8,3	1 378 712	+ 13,0
Jun.	620 508	+ 15,7	155 548	- 22,7	255 575	+ 8,7	1 031 631	+ 6,1
Jul.	1 315 349	+ 113,5	170 912	- 34,8	278 550	+ 23,6	1 764 811	+ 59,9
Aug.	701 270	+ 5,9	133 216	+ 44,8	241 606	+ 14,9	1 076 092	+ 11,6
Sep.	633 840	- 13,4	156 403	- 28,0	221 126	- 3,9	1 011 369	- 14,3
Oct.	677 693	- 17,4	162 827	- 3,1	241 590	- 11,2	1 082 110	- 14,1
Nov.	766 799	+ 4,4	188 908	- 31,7	230 448	+ 5,6	1 186 155	- 3,5
Dec.	683 334	+ 13,2	153 759	- 55,2	194 371	- 3,6	1 031 464	- 10,2
Total	8 227 213	+ 8,1	2 756 747	+ 8,7	2 818 014	+ 1,4	13 801 974	+ 6,8
2004 Jan.	476 960	- 10,3	167 362	+ 16,3	206 557	- 3,0	850 879	- 4,2
Feb.	593 329	+ 1,8	190 130	+ 29,5	240 220	- 4,9	1 023 679	+ 4,2
Mar.	713 782	+ 20,8	175 555	- 40,1	219 231	+ 3,4	1 108 568	+ 1,2
Apr.	658 428	+ 16,8	129 354	- 73,9	172 091	- 19,6	959 873	- 24,6
May	941 614	+ 68,5	257 263	- 53,8	239 538	- 9,0	1 438 415	+ 4,3
Jun.	831 926	+ 34,1	160 604	+ 3,3	246 744	- 3,5	1 239 274	+ 20,1
Jul.	1 168 742	- 11,1	264 499	+ 54,8	275 804	- 1,0	1 709 045	- 3,2
Aug.	998 650	+ 42,4	402 700	+ 202,3	286 994	+ 18,8	1 688 344	+ 56,9
Sep.	889 776	+ 40,4	416 284	+ 166,2	254 187	+ 15,0	1 560 247	+ 54,3
Oct.	907 264	+ 33,9	276 760	+ 70,0	284 117	+ 17,6	1 468 141	+ 35,7

¹ The annual percentage change is the change in the values of buildings reported as completed to municipalities of the relevant year compared with the values of buildings reported as completed to municipalities of the previous year expressed as a percentage.

² The monthly percentage change is the change in the values of buildings reported as completed to municipalities of the relevant month compared with the values of buildings reported as completed to municipalities of the same month in the previous year expressed as a percentage.

Table 8 - Seasonally adjusted values and percentage change of buildings reported as completed to municipalities at constant 2000 prices by type of building

Year and month ¹	Residential buildings		Non-residential buildings		Additions and alterations		Total	
	R'000	Percentage change	R'000	Percentage change	R'000	Percentage change	R'000	Percentage change
2002 Jan.	650 680	+ 31,9	172 577	+ 0,9	190 438	+ 14,5	1 013 695	+ 22,0
Feb.	506 292	- 22,2	161 379	- 6,5	183 782	- 3,5	851 453	- 16,0
Mar.	642 577	+ 26,9	186 230	+ 15,4	152 750	- 16,9	981 557	+ 15,3
Apr.	679 592	+ 5,8	263 925	+ 41,7	423 414	+ 177,2	1 366 931	+ 39,3
May	604 942	- 11,0	191 532	- 27,4	240 833	- 43,1	1 037 307	- 24,1
Jun.	579 651	- 4,2	221 799	+ 15,8	235 814	- 2,1	1 037 264	+ 0,0
Jul.	572 491	- 1,2	210 329	- 5,2	205 353	- 12,9	988 173	- 4,7
Aug.	632 914	+ 10,6	111 059	- 47,2	205 420	+ 0,0	949 393	- 3,9
Sep.	694 141	+ 9,7	199 059	+ 79,2	245 677	+ 19,6	1 138 877	+ 20,0
Oct.	727 750	+ 4,8	188 899	- 5,1	245 609	+ 0,0	1 162 258	+ 2,1
Nov.	622 429	- 14,5	277 638	+ 47,0	214 702	- 12,6	1 114 769	- 4,1
Dec.	678 111	+ 8,9	328 606	+ 18,4	268 509	+ 25,1	1 275 226	+ 14,4
2003 Jan.	623 096	- 8,1	180 962	- 44,9	239 178	- 10,9	1 043 236	- 18,2
Feb.	676 772	+ 8,6	172 857	- 4,5	242 515	+ 1,4	1 092 144	+ 4,7
Mar.	578 973	- 14,5	315 876	+ 82,7	200 074	- 17,5	1 094 923	+ 0,3
Apr.	633 424	+ 9,4	535 533	+ 69,5	250 411	+ 25,2	1 419 368	+ 29,6
May	524 762	- 17,2	351 926	- 34,3	220 899	- 11,8	1 097 587	- 22,7
Jun.	669 939	+ 27,7	177 103	- 49,7	248 164	+ 12,3	1 095 206	- 0,2
Jul.	1 190 003	+ 77,6	146 760	- 17,1	254 464	+ 2,5	1 591 227	+ 45,3
Aug.	666 501	- 44,0	160 887	+ 9,6	235 602	- 7,4	1 062 990	- 33,2
Sep.	614 853	- 7,7	142 095	- 11,7	234 244	- 0,6	991 192	- 6,8
Oct.	604 284	- 1,7	187 242	+ 31,8	218 034	- 6,9	1 009 560	+ 1,9
Nov.	650 000	+ 7,6	185 414	- 1,0	227 669	+ 4,4	1 063 083	+ 5,3
Dec.	764 940	+ 17,7	145 059	- 21,8	255 159	+ 12,1	1 165 158	+ 9,6
2004 Jan.	554 337	- 27,5	213 954	+ 47,5	231 460	- 9,3	999 751	- 14,2
Feb.	694 244	+ 25,2	227 460	+ 6,3	230 974	- 0,2	1 152 678	+ 15,3
Mar.	704 878	+ 1,5	184 025	- 19,1	212 463	- 8,0	1 101 366	- 4,5
Apr.	738 629	+ 4,8	136 324	- 25,9	201 661	- 5,1	1 076 614	- 2,2
May	889 424	+ 20,4	159 000	+ 16,6	202 835	+ 0,6	1 251 259	+ 16,2
Jun.	895 755	+ 0,7	183 209	+ 15,2	235 377	+ 16,0	1 314 341	+ 5,0
Jul.	1 040 686	+ 16,2	239 074	+ 30,5	250 945	+ 6,6	1 530 705	+ 16,5
Aug.	944 599	- 9,2	494 888	+ 107,0	279 172	+ 11,2	1 718 659	+ 12,3
Sep.	870 792	- 7,8	381 883	- 22,8	267 250	- 4,3	1 519 925	- 11,6
Oct.	810 719	- 6,9	319 541	- 16,3	257 336	- 3,7	1 387 596	- 8,7

¹ The percentage change is the change in the seasonally adjusted values of buildings reported as completed to municipalities of the relevant month compared with the seasonally adjusted values of buildings reported as completed to municipalities of the previous month expressed as a percentage.

Table 9 - Recorded building plans passed by municipalities by type of building: South Africa

Type of building	October 2003 *	September 2004	October 2004	January 2003 to October 2003	January 2004 to October 2004	Percentage change between January 2003 to October 2003 and January 2004 to October 2004
Residential buildings						
Dwelling-houses smaller than 80 square metres						
Number of dwelling-houses	3 685	2 420	2 745	37 322	28 540	- 23,5
Total square metres	166 974	106 434	114 424	1 448 733	1 190 036	- 17,9
Total value at current prices (R'000)	189 034	111 879	126 646	1 288 862	1 193 136	- 7,4
Dwelling-houses equal to or larger than 80 square metres						
Number of dwelling-houses	2 393	3 051	2 937	20 811	26 484	+ 27,3
Total square metres	558 785	697 169	694 994	4 922 339	6 232 971	+ 26,6
Total value at current prices (R'000)	1 076 991	1 485 570	1 592 629	9 122 104	13 066 182	+ 43,2
Flats and townhouses						
Number of flats and townhouses	1 855	2 365	2 292	13 577	19 333	+ 42,4
Total square metres	250 720	347 760	338 524	2 024 657	2 838 189	+ 40,2
Total value at current prices (R'000)	497 807	763 060	753 336	3 991 700	6 160 622	+ 54,3
Other residential buildings ¹						
Total square metres	5 099	17 250	3 805	98 718	112 249	+ 13,7
Total value at current prices (R'000)	24 825	35 817	7 242	198 032	312 714	+ 57,9
Total value of residential buildings at current prices (R'000)	1 788 657	2 396 326	2 479 853	14 600 698	20 732 654	+ 42,0
Non-residential buildings						
Office and banking space						
Total square metres	37 556	38 225	51 472	360 231	404 942	+ 12,4
Total value at current prices (R'000)	68 631	73 896	102 362	716 874	841 415	+ 17,4
Shopping space						
Total square metres	65 430	84 361	119 452	598 042	710 721	+ 18,8
Total value at current prices (R'000)	173 395	217 903	231 027	1 496 855	1 622 014	+ 8,4
Industrial and warehouse space						
Total square metres	117 577	109 957	98 254	846 257	1 024 767	+ 21,1
Total value at current prices (R'000)	194 436	204 567	177 015	1 379 109	1 803 238	+ 30,8
Other non-residential space ²						
Total square metres	11 464	37 827	43 575	262 954	333 680	+ 26,9
Total value at current prices (R'000)	23 760	90 929	70 001	474 463	641 901	+ 35,3
Total value of non-residential buildings at current prices (R'000)	460 222	587 295	580 405	4 067 301	4 908 568	+ 20,7
Additions and alterations						
Dwelling-houses						
Total square metres	349 125	402 430	393 430	2 915 842	3 495 086	+ 19,9
Total value at current prices (R'000)	572 479	837 180	757 288	4 691 761	6 506 741	+ 38,7
Other buildings ³						
Total square metres	96 618	135 984	105 662	1 059 938	1 048 515	- 1,1
Total value at current prices (R'000)	203 482	222 321	226 732	2 230 728	2 468 714	+ 10,7
Total value of additions and alterations at current prices (R'000)	775 961	1 059 501	984 020	6 922 489	8 975 455	+ 29,7
Total value of recorded building plans passed at current prices (R'000)	3 024 840	4 043 122	4 044 278	25 590 488	34 616 677	+ 35,3

¹ Other residential buildings include institutions for the disabled, boarding houses, old people's homes, hostels, hotels, motels, guest-houses, holiday chalets, entertainment centres, bed-and-breakfast accommodation and casinos.

² Other non-residential space includes churches, sport and recreation clubs, schools, crèches, hospitals and all other non-residential space.

³ Other buildings include additions and alterations to other residential buildings, non-residential buildings and internal alterations.

* Revised.

Table 10 - Recorded building plans passed by municipalities by type of building and province: Western Cape

Type of building	October 2003 *	September 2004	October 2004	January 2003 to October 2003	January 2004 to October 2004	Percentage change between January 2003 to October 2003 and January 2004 to October 2004
Residential buildings						
Dwelling-houses smaller than 80 square metres						
Number of dwelling-houses	1 113	832	687	5 389	5 124	- 4,9
Total square metres	54 969	34 685	30 691	233 947	228 678	- 2,3
Total value at current prices (R'000)	54 952	30 341	29 294	269 086	261 742	- 2,7
Dwelling-houses equal to or larger than 80 square metres						
Number of dwelling-houses	750	771	746	6 473	8 038	+ 24,2
Total square metres	167 377	182 126	170 545	1 475 215	1 880 131	+ 27,4
Total value at current prices (R'000)	339 083	386 991	385 997	2 740 808	4 114 516	+ 50,1
Flats and townhouses						
Number of flats and townhouses	445	358	912	3 578	6 686	+ 86,9
Total square metres	59 987	48 233	95 407	426 093	784 352	+ 84,1
Total value at current prices (R'000)	108 499	98 410	212 450	812 475	1 727 396	+ 112,6
Other residential buildings ¹						
Total square metres	0	3 883	0	15 420	47 219	+ 206,2
Total value at current prices (R'000)	0	8 954	0	30 335	167 519	+452,2
Total value of residential buildings at current prices (R'000)	502 534	524 696	627 741	3 852 704	6 271 173	+ 62,8
Non-residential buildings						
Office and banking space						
Total square metres	13 586	25 563	14 167	98 862	129 549	+ 31,0
Total value at current prices (R'000)	28 390	45 183	21 525	205 838	251 956	+ 22,4
Shopping space						
Total square metres	2 090	3 098	50 402	88 327	257 972	+ 192,1
Total value at current prices (R'000)	3 368	6 497	70 925	148 112	543 507	+ 267,0
Industrial and warehouse space						
Total square metres	33 779	31 992	49 229	230 149	352 300	+ 53,1
Total value at current prices (R'000)	46 202	51 471	86 972	325 102	548 387	+ 68,7
Other non-residential space ²						
Total square metres	5 548	4 358	22 131	60 305	73 727	+ 22,3
Total value at current prices (R'000)	13 255	8 636	18 986	98 222	129 139	+ 31,5
Total value of non-residential buildings at current prices (R'000)	91 215	111 787	198 408	777 274	1 472 989	+ 89,5
Additions and alterations						
Dwelling-houses						
Total square metres	100 158	131 324	121 592	846 620	1 050 786	+ 24,1
Total value at current prices (R'000)	174 622	251 040	229 545	1 342 982	1 969 486	+ 46,7
Other buildings ³						
Total square metres	17 107	53 651	32 373	315 369	344 915	+ 9,4
Total value at current prices (R'000)	50 377	81 157	66 536	669 955	775 085	+ 15,7
Total value of additions and alterations at current prices (R'000)	224 999	332 197	296 081	2 012 937	2 744 571	+ 36,3
Total value of recorded building plans passed at current prices (R'000)	818 748	968 680	1 122 230	6 642 915	10 488 733	+ 57,9

¹ Other residential buildings include institutions for the disabled, boarding houses, old people's homes, hostels, hotels, motels, guest-houses, holiday chalets, entertainment centres, bed-and-breakfast accommodation and casinos.

² Other non-residential space includes churches, sport and recreation clubs, schools, crèches, hospitals and all other non-residential space.

³ Other buildings include additions and alterations to other residential buildings, non-residential buildings and internal alterations.

* Revised.

Table 11 - Recorded building plans passed by municipalities by type of building and province: Eastern Cape

Type of building	October 2003*	September 2004	October 2004	January 2003 to October 2003	January 2004 to October 2004	Percentage change between January 2003 to October 2003 and January 2004 to October 2004
Residential buildings						
Dwelling-houses smaller than 80 square metres						
Number of dwelling-houses	920	362	292	5 442	4 181	-23,2
Total square metres	37 324	16 095	12 928	226 529	175 484	-22,5
Total value at current prices (R'000)	52 904	11 718	12 787	219 164	162 417	-25,9
Dwelling-houses equal to or larger than 80 square metres						
Number of dwelling-houses	157	188	132	1 161	1 515	+ 30,5
Total square metres	28 795	31 543	30 436	223 496	297 080	+ 32,9
Total value at current prices (R'000)	47 606	68 122	65 398	381 186	550 585	+ 44,4
Flats and townhouses						
Number of flats and townhouses	35	42	60	147	426	+ 189,8
Total square metres	7 186	5 138	7 558	27 519	82 868	+ 201,1
Total value at current prices (R'000)	14 041	12 283	19 068	49 225	165 687	+ 236,6
Other residential buildings ¹						
Total square metres	0	417	524	5 344	2 722	-49,1
Total value at current prices (R'000)	0	874	699	9 230	5 038	-45,4
Total value of residential buildings at current prices (R'000)	114 551	92 997	97 952	658 805	883 727	+ 34,1
Non-residential buildings						
Office and banking space						
Total square metres	0	0	0	12 185	8 678	-28,8
Total value at current prices (R'000)	0	0	0	23 339	11 554	-50,5
Shopping space						
Total square metres	5 637	18 813	546	13 462	31 857	+ 136,6
Total value at current prices (R'000)	11 593	40 881	1 244	22 944	65 866	+ 187,1
Industrial and warehouse space						
Total square metres	1 809	3 625	4 567	23 194	66 017	+ 184,6
Total value at current prices (R'000)	3 119	6 018	8 859	38 928	85 200	+ 118,9
Other non-residential space ²						
Total square metres	1 454	4 932	987	13 327	20 688	+ 55,2
Total value at current prices (R'000)	2 554	11 382	2 353	24 246	44 393	+ 83,1
Total value of non-residential buildings at current prices (R'000)	17 266	58 281	12 456	109 457	207 013	+ 89,1
Additions and alterations						
Dwelling-houses						
Total square metres	27 710	30 213	35 808	221 012	319 247	+ 44,4
Total value at current prices (R'000)	49 609	74 125	68 951	358 012	593 847	+ 65,9
Other buildings ³						
Total square metres	6 872	8 284	4 607	62 318	67 326	+ 8,0
Total value at current prices (R'000)	10 535	16 290	8 306	140 682	154 190	+ 9,6
Total value of additions and alterations at current prices (R'000)	60 144	90 415	77 257	498 694	748 037	+ 50,0
Total value of recorded building plans passed at current prices (R'000)	191 961	241 693	187 665	1 266 956	1 838 777	+ 45,1

¹ Other residential buildings include institutions for the disabled, boarding houses, old people's homes, hostels, hotels, motels, guest-houses, holiday chalets, entertainment centres, bed-and-breakfast accommodation and casinos.

² Other non-residential space includes churches, sport and recreation clubs, schools, crèches, hospitals and all other non-residential space.

³ Other buildings include additions and alterations to other residential buildings, non-residential buildings and internal alterations.

* Revised.

Table 12 - Recorded building plans passed by municipalities by type of building and province: Northern Cape

Type of building	October 2003*	September 2004	October 2004	January 2003 to October 2003	January 2004 to October 2004	Percentage change between January 2003 to October 2003 and January 2004 to October 2004
Residential buildings						
Dwelling-houses smaller than 80 square metres						
Number of dwelling-houses	7	4	1	25	343	+ 1272,0
Total square metres	370	233	79	1 118	14 444	+ 1191,9
Total value at current prices (R'000)	509	452	158	1 619	12 590	+ 677,6
Dwelling-houses equal to or larger than 80 square metres						
Number of dwelling-houses	10	31	19	97	207	+ 113,4
Total square metres	1 991	6 598	3 395	17 665	41 125	+ 132,8
Total value at current prices (R'000)	3 146	11 637	5 778	27 517	72 196	+ 162,4
Flats and townhouses						
Number of flats and townhouses	2	7	33	51	172	+ 237,3
Total square metres	249	1 272	5 969	6 529	26 861	+ 311,4
Total value at current prices (R'000)	374	2 289	10 744	11 076	48 275	+ 335,9
Other residential buildings ¹						
Total square metres	4 396	0	0	4 396	1 299	- 70,5
Total value at current prices (R'000)	22 000	0	0	22 000	2 338	- 89,4
Total value of residential buildings at current prices (R'000)	26 029	14 378	16 680	62 212	135 399	+ 117,6
Non-residential buildings						
Office and banking space						
Total square metres	0	0	82	3 159	485	- 84,6
Total value at current prices (R'000)	0	0	180	4 739	785	- 83,4
Shopping space						
Total square metres	0	0	0	3 397	8 630	+ 154,0
Total value at current prices (R'000)	0	0	0	6 965	16 881	+ 142,4
Industrial and warehouse space						
Total square metres	0	0	283	7 851	2 766	- 64,8
Total value at current prices (R'000)	0	0	312	10 744	5 041	- 53,1
Other non-residential space ²						
Total square metres	0	100	466	1 134	3 264	+ 187,8
Total value at current prices (R'000)	0	180	1 025	2 242	6 628	+ 195,6
Total value of non-residential buildings at current prices (R'000)	0	180	1 517	24 690	29 335	+ 18,8
Additions and alterations						
Dwelling-houses						
Total square metres	3 935	4 221	3 228	28 492	36 605	+ 28,5
Total value at current prices (R'000)	6 775	7 253	6 015	51 084	64 575	+ 26,4
Other buildings ³						
Total square metres	1 548	1 683	1 281	5 661	6 276	+ 10,9
Total value at current prices (R'000)	3 574	3 864	3 288	15 065	16 426	+ 9,0
Total value of additions and alterations at current prices (R'000)	10 349	11 117	9 303	66 149	81 001	+ 22,5
Total value of recorded building plans passed at current prices (R'000)	36 378	25 675	27 500	153 051	245 735	+ 60,6

¹ Other residential buildings include institutions for the disabled, boarding houses, old people's homes, hostels, hotels, motels, guest-houses, holiday chalets, entertainment centres, bed-and-breakfast accommodation and casinos.

² Other non-residential space includes churches, sport and recreation clubs, schools, crèches, hospitals and all other non-residential space.

³ Other buildings include additions and alterations to other residential buildings, non-residential buildings and internal alterations.

* Revised.

Table 13 - Recorded building plans passed by municipalities by type of building and province: Free State

Type of building	October 2003*	September 2004	October 2004	January 2003 to October 2003	January 2004 to October 2004	Percentage change between January 2003 to October 2003 and January 2004 to October 2004
Residential buildings						
Dwelling-houses smaller than 80 square metres						
Number of dwelling-houses	108	53	456	2 862	3 931	+ 37,4
Total square metres	4 917	2 717	18 595	113 762	163 845	+ 44,0
Total value at current prices (R'000)	4 132	3 020	12 533	68 516	100 918	+ 47,3
Dwelling-houses equal to or larger than 80 square metres						
Number of dwelling-houses	89	94	101	747	875	+ 17,1
Total square metres	13 800	16 416	19 777	124 193	149 463	+ 20,3
Total value at current prices (R'000)	21 651	25 665	37 188	178 616	256 763	+ 43,8
Flats and townhouses						
Number of flats and townhouses	28	192	86	449	923	+ 105,6
Total square metres	2 661	16 378	10 649	44 447	101 851	+ 129,2
Total value at current prices (R'000)	4 218	30 159	21 198	66 740	182 490	+ 173,4
Other residential buildings ¹						
Total square metres	0	1 549	1 430	1 027	10 487	+ 921,1
Total value at current prices (R'000)	0	3 100	2 574	1 200	19 803	+ 1 550,3
Total value of residential buildings at current prices (R'000)	30 001	61 944	73 493	315 072	559 974	+ 77,7
Non-residential buildings						
Office and banking space						
Total square metres	911	0	0	9 349	9 263	-0,9
Total value at current prices (R'000)	1 113	0	0	14 949	16 439	+ 10,0
Shopping space						
Total square metres	942	126	10 317	22 837	14 927	-34,6
Total value at current prices (R'000)	2 355	203	18 624	39 080	27 211	-30,4
Industrial and warehouse space						
Total square metres	728	3 273	6 106	15 695	17 635	+ 12,4
Total value at current prices (R'000)	437	3 682	10 522	9 900	22 875	+ 131,1
Other non-residential space ²						
Total square metres	1 068	1 109	2 041	13 870	6 346	-54,2
Total value at current prices (R'000)	2 527	1 543	2 766	21 934	9 241	-57,9
Total value of non-residential buildings at current prices (R'000)	6 432	5 428	31 912	85 863	75 766	-11,8
Additions and alterations						
Dwelling-houses						
Total square metres	11 490	15 005	16 095	92 780	122 719	+ 32,3
Total value at current prices (R'000)	14 255	21 823	24 232	114 494	173 721	+ 51,7
Other buildings ³						
Total square metres	2 530	2 790	4 766	31 335	34 377	+ 9,7
Total value at current prices (R'000)	14 678	5 334	8 829	105 747	76 606	-27,6
Total value of additions and alterations at current prices (R'000)	28 933	27 157	33 061	220 241	250 327	+ 13,7
Total value of recorded building plans passed at current prices (R'000)	65 366	94 529	138 466	621 176	886 067	+ 42,6

¹ Other residential buildings include institutions for the disabled, boarding houses, old people's homes, hostels, hotels, motels, guest-houses, holiday chalets, entertainment centres, bed-and-breakfast accommodation and casinos.

² Other non-residential space includes churches, sport and recreation clubs, schools, crèches, hospitals and all other non-residential space.

³ Other buildings include additions and alterations to other residential buildings, non-residential buildings and internal alterations.

* Revised.

Table 14 - Recorded building plans passed by municipalities by type of building and province: KwaZulu-Natal

Type of building	October 2003*	September 2004	October 2004	January 2003 to October 2003	January 2004 to October 2004	Percentage change between January 2003 to October 2003 and January 2004 to October 2004
Residential buildings						
Dwelling-houses smaller than 80 square metres						
Number of dwelling-houses	777	305	416	10 131	4 142	- 59,1
Total square metres	25 528	11 424	11 954	350 458	141 070	- 59,7
Total value at current prices (R'000)	18 731	12 341	12 415	211 566	129 743	- 38,7
Dwelling-houses equal to or larger than 80 square metres						
Number of dwelling-houses	213	204	249	1 865	2 225	+ 19,3
Total square metres	50 697	45 096	54 971	442 143	508 218	+ 14,9
Total value at current prices (R'000)	93 742	84 682	107 507	818 646	1 009 776	+ 23,3
Flats and townhouses						
Number of flats and townhouses	131	224	392	1 710	2 380	+ 39,2
Total square metres	21 083	56 364	72 518	280 408	439 600	+ 56,8
Total value at current prices (R'000)	47 402	143 082	188 454	671 262	1 071 624	+ 59,6
Other residential buildings ¹						
Total square metres	250	104	300	17 845	16 303	- 8,6
Total value at current prices (R'000)	375	156	540	42 142	41 701	- 1,0
Total value of residential buildings at current prices (R'000)	160 250	240 261	308 916	1 743 616	2 252 844	+ 29,2
Non-residential buildings						
Office and banking space						
Total square metres	5 241	562	8 341	27 819	62 345	+ 124,1
Total value at current prices (R'000)	4 550	1 026	14 980	58 172	136 406	+ 134,5
Shopping space						
Total square metres	15 505	11 112	12 661	119 418	58 542	- 51,0
Total value at current prices (R'000)	70 262	37 600	25 860	649 867	216 327	- 66,7
Industrial and warehouse space						
Total square metres	9 321	15 481	7 790	110 506	151 782	+ 37,4
Total value at current prices (R'000)	16 299	24 455	8 995	136 458	276 552	+ 102,7
Other non-residential space ²						
Total square metres	0	6 947	4 191	27 312	36 532	+ 33,8
Total value at current prices (R'000)	0	24 322	13 426	49 146	86 483	+ 76,0
Total value of non-residential buildings at current prices (R'000)	91 111	87 403	63 261	893 643	715 768	- 19,9
Additions and alterations						
Dwelling-houses						
Total square metres	49 639	48 939	59 560	435 371	505 403	+ 16,1
Total value at current prices (R'000)	68 701	119 015	105 359	619 170	892 657	+ 44,2
Other buildings ³						
Total square metres	26 832	9 260	25 557	188 907	164 261	- 13,0
Total value at current prices (R'000)	61 836	23 636	56 277	392 220	449 044	+ 14,5
Total value of additions and alterations at current prices (R'000)	130 537	142 651	161 636	1 011 390	1 341 701	+ 32,7
Total value of recorded building plans passed at current prices (R'000)	381 898	470 315	533 813	3 648 649	4 310 313	+ 18,1

¹ Other residential buildings include institutions for the disabled, boarding houses, old people's homes, hostels, hotels, motels, guest-houses, holiday chalets, entertainment centres, bed-and-breakfast accommodation and casinos.

² Other non-residential space includes churches, sport and recreation clubs, schools, crèches, hospitals and all other non-residential space.

³ Other buildings include additions and alterations to other residential buildings, non-residential buildings and internal alterations.

* Revised.

Table 15 - Recorded building plans passed by municipalities by type of building and province: North West

Type of building	October 2003	September 2004	October 2004	January 2003 to October 2003	January 2004 to October 2004	Percentage change between January 2003 to October 2003 and January 2004 to October 2004
Residential buildings						
Dwelling-houses smaller than 80 square metres						
Number of dwelling-houses	39	49	21	3 670	554	- 84,9
Total square metres	2 364	2 928	1 130	120 073	28 041	- 76,6
Total value at current prices (R'000)	3 402	3 604	1 508	75 271	33 920	- 54,9
Dwelling-houses equal to or larger than 80 square metres						
Number of dwelling-houses	87	167	168	950	1 471	+ 54,8
Total square metres	17 883	29 370	31 407	189 433	274 543	+ 44,9
Total value at current prices (R'000)	37 177	54 465	54 910	308 732	481 987	+ 56,1
Flats and townhouses						
Number of flats and townhouses	93	126	54	680	604	- 11,2
Total square metres	10 791	12 807	7 878	61 117	66 327	+ 8,5
Total value at current prices (R'000)	22 707	29 034	15 840	109 039	128 831	+ 18,2
Other residential buildings ¹						
Total square metres	0	517	0	9 676	6 133	- 36,6
Total value at current prices (R'000)	0	556	0	15 033	15 877	+ 5,6
Total value of residential buildings at current prices (R'000)	63 286	87 659	72 258	508 075	660 615	+ 30,0
Non-residential buildings						
Office and banking space						
Total square metres	634	0	1 417	7 829	8 336	+ 6,5
Total value at current prices (R'000)	1 426	0	3 150	15 975	18 014	+ 12,8
Shopping space						
Total square metres	424	22 369	20 104	11 827	75 116	+ 535,1
Total value at current prices (R'000)	290	73 838	53 039	22 296	199 260	+ 793,7
Industrial and warehouse space						
Total square metres	0	4 468	3 459	22 803	25 214	+ 10,6
Total value at current prices (R'000)	0	9 027	6 097	29 172	41 731	+ 43,1
Other non-residential space ²						
Total square metres	0	266	2 980	20 751	11 669	- 43,8
Total value at current prices (R'000)	0	500	8 207	38 985	26 603	- 31,8
Total value of non-residential buildings at current prices (R'000)	1 716	83 365	70 493	106 428	285 608	+ 168,4
Additions and alterations						
Dwelling-houses						
Total square metres	8 794	13 004	11 168	84 575	101 721	+ 20,3
Total value at current prices (R'000)	12 084	21 869	15 993	117 283	153 264	+ 30,7
Other buildings ³						
Total square metres	2 104	1 224	2 185	19 989	29 121	+ 45,7
Total value at current prices (R'000)	2 934	2 765	4 532	31 839	50 926	+ 59,9
Total value of additions and alterations at current prices (R'000)	15 018	24 634	20 525	149 122	204 190	+ 36,9
Total value of recorded building plans passed at current prices (R'000)	80 020	195 658	163 276	763 625	1 150 413	+ 50,7

¹ Other residential buildings include institutions for the disabled, boarding houses, old people's homes, hostels, hotels, motels, guest-houses, holiday chalets, entertainment centres, bed-and-breakfast accommodation and casinos.

² Other non-residential space includes churches, sport and recreation clubs, schools, crèches, hospitals and all other non-residential space.

³ Other buildings include additions and alterations to other residential buildings, non-residential buildings and internal alterations.

Table 16 - Recorded building plans passed by municipalities by type of building and province: Gauteng

Type of building	October 2003 *	September 2004	October 2004	January 2003 to October 2003	January 2004 to October 2004	Percentage change between January 2003 to October 2003 and January 2004 to October 2004
Residential buildings						
Dwelling-houses smaller than 80 square metres						
Number of dwelling-houses	591	724	721	8 494	8 299	- 2,3
Total square metres	34 998	33 364	31 179	341 202	345 415	+ 1,2
Total value at current prices (R'000)	48 509	42 051	47 906	386 445	409 655	+ 6,0
Dwelling-houses equal to or larger than 80 square metres						
Number of dwelling-houses	919	1 327	1 355	7 773	10 217	+ 31,4
Total square metres	243 794	326 119	350 610	2 093 414	2 680 136	+ 28,0
Total value at current prices (R'000)	485 526	751 502	885 263	4 167 332	5 933 208	+ 42,4
Flats and townhouses						
Number of flats and townhouses	1 058	1 331	616	6 666	7 183	+ 7,8
Total square metres	141 007	194 538	120 297	1 142 559	1 215 851	+ 6,4
Total value at current prices (R'000)	291 021	429 635	257 963	2 223 914	2 671 619	+ 20,1
Other residential buildings ¹						
Total square metres	0	10 780	0	42 280	21 817	- 48,4
Total value at current prices (R'000)	0	22 177	0	71 692	44 682	- 37,7
Total value of residential buildings at current prices (R'000)	825 056	1 245 365	1 191 132	6 849 383	9 059 164	+ 32,3
Non-residential buildings						
Office and banking space						
Total square metres	14 001	10 932	27 218	177 565	165 679	- 6,7
Total value at current prices (R'000)	28 852	26 140	62 181	350 344	366 117	+ 4,5
Shopping space						
Total square metres	26 033	20 455	22 041	253 144	173 437	- 31,5
Total value at current prices (R'000)	55 855	42 582	54 332	449 615	392 586	- 12,7
Industrial and warehouse space						
Total square metres	65 014	47 906	18 631	386 256	370 161	- 4,2
Total value at current prices (R'000)	118 175	104 998	36 883	763 270	760 854	- 0,3
Other non-residential space ²						
Total square metres	2 685	17 661	6 984	111 850	161 015	+ 44,0
Total value at current prices (R'000)	4 516	41 919	17 461	215 962	306 430	+ 41,9
Total value of non-residential buildings at current prices (R'000)	207 398	215 639	170 857	1 779 191	1 825 987	+ 2,6
Additions and alterations						
Dwelling-houses						
Total square metres	125 723	140 637	128 391	1 034 630	1 158 053	+ 11,9
Total value at current prices (R'000)	220 036	316 045	282 549	1 872 866	2 405 436	+ 28,4
Other buildings ³						
Total square metres	36 910	52 750	30 570	395 895	350 077	- 11,6
Total value at current prices (R'000)	54 107	78 957	73 960	808 693	863 370	+ 6,8
Total value of additions and alterations at current prices (R'000)	274 143	395 002	356 509	2 681 559	3 268 806	+ 21,9
Total value of recorded building plans passed at current prices (R'000)	1 306 597	1 856 006	1 718 498	11 310 133	14 153 957	+ 25,1

¹ Other residential buildings include institutions for the disabled, boarding houses, old people's homes, hostels, hotels, motels, guest-houses, holiday chalets, entertainment centres, bed-and-breakfast accommodation and casinos.

² Other non-residential space includes churches, sport and recreation clubs, schools, crèches, hospitals and all other non-residential space.

³ Other buildings include additions and alterations to other residential buildings, non-residential buildings and internal alterations.

* Revised.

Table 17 - Recorded building plans passed by municipalities by type of building and province: Mpumalanga

Type of building	October 2003	September 2004	October 2004	January 2003 to October 2003	January 2004 to October 2004	Percentage change between January 2003 to October 2003 and January 2004 to October 2004
Residential buildings						
Dwelling-houses smaller than 80 square metres						
Number of dwelling-houses	102	69	122	757	896	+ 18,4
Total square metres	5 001	3 645	6 136	34 563	43 754	+ 26,6
Total value at current prices (R'000)	3 779	5 483	6 317	29 984	38 236	+ 27,5
Dwelling-houses equal to or larger than 80 square metres						
Number of dwelling-houses	111	207	96	1 187	1 279	+ 7,8
Total square metres	22 884	43 973	19 615	252 579	264 914	+ 4,9
Total value at current prices (R'000)	31 131	70 035	24 454	349 874	395 825	+ 13,1
Flats and townhouses						
Number of flats and townhouses	44	75	81	162	584	+ 260,5
Total square metres	4 825	11 784	12 443	20 098	81 514	+ 305,6
Total value at current prices (R'000)	5 442	16 174	15 930	25 428	105 459	+314,7
Other residential buildings ¹						
Total square metres	453	0	852	2 730	5 238	+ 91,9
Total value at current prices (R'000)	2 450	0	2 450	6 400	14 179	+ 121,5
Total value of residential buildings at current prices (R'000)	42 802	91 692	49 151	411 686	553 699	+ 34,5
Non-residential buildings						
Office and banking space						
Total square metres	2 690	1 168	0	11 346	5 383	- 52,6
Total value at current prices (R'000)	3 215	1 547	0	17 721	7 815	- 55,9
Shopping space						
Total square metres	928	8 168	248	49 982	61 329	+22,7
Total value at current prices (R'000)	1 670	15 950	480	77 903	102 106	+31,1
Industrial and warehouse space						
Total square metres	6 426	2 596	8 189	44 739	28 454	- 36,4
Total value at current prices (R'000)	9 104	3 500	18 375	56 093	42 989	- 23,4
Other non-residential space ²						
Total square metres	709	2 273	2 590	7 391	11 186	+ 51,3
Total value at current prices (R'000)	908	2 247	3 487	9 512	14 207	+ 49,4
Total value of non-residential buildings at current prices (R'000)	14 897	23 244	22 342	161 229	167 117	+ 3,7
Additions and alterations						
Dwelling-houses						
Total square metres	17 164	12 742	10 457	127 291	135 647	+ 6,6
Total value at current prices (R'000)	20 189	13 135	11 273	155 041	155 875	+ 0,5
Other buildings ³						
Total square metres	2 262	4 325	3 453	32 011	30 007	- 6,3
Total value at current prices (R'000)	3 467	7 123	3 457	44 309	44 307	+ 0,0
Total value of additions and alterations at current prices (R'000)	23 656	20 258	14 730	199 350	200 182	+ 0,4
Total value of recorded building plans passed at current prices (R'000)	81 355	135 194	86 223	772 265	920 998	+ 19,3

¹ Other residential buildings include institutions for the disabled, boarding houses, old people's homes, hostels, hotels, motels, guest-houses, holiday chalets, entertainment centres, bed-and-breakfast accommodation and casinos.

² Other non-residential space includes churches, sport and recreation clubs, schools, crèches, hospitals and all other non-residential space.

³ Other buildings include additions and alterations to other residential buildings, non-residential buildings and internal alterations.

Table 18 - Recorded building plans passed by municipalities by type of building and province: Limpopo

Type of building	October 2003	September 2004	October 2004	January 2003 to October 2003	January 2004 to October 2004	Percentage change between January 2003 to October 2003 and January 2004 to October 2004
Residential buildings						
Dwelling-houses smaller than 80 square metres						
Number of dwelling-houses	28	22	29	552	1 070	+ 93,8
Total square metres	1 503	1 343	1 732	27 081	49 305	+ 82,1
Total value at current prices (R'000)	2 116	2 869	3 728	27 211	43 915	+ 61,4
Dwelling-houses equal to or larger than 80 square metres						
Number of dwelling-houses	57	62	71	558	657	+ 17,7
Total square metres	11 564	15 928	14 238	104 201	137 361	+ 31,8
Total value at current prices (R'000)	17 929	32 471	26 134	149 393	251 326	+ 68,2
Flats and townhouses						
Number of flats and townhouses	19	10	58	134	375	+ 179,9
Total square metres	2 931	1 246	5 805	15 887	38 965	+ 145,3
Total value at current prices (R'000)	4 103	1 994	11 689	22 541	59 241	+ 162,8
Other residential buildings ¹						
Total square metres	0	0	699	0	1 031	..
Total value at current prices (R'000)	0	0	979	0	1 577	..
Total value of residential buildings at current prices (R'000)	24 148	37 334	42 530	199 145	356 059	+ 78,8
Non-residential buildings						
Office and banking space						
Total square metres	493	0	247	12 117	15 224	+ 25,6
Total value at current prices (R'000)	1 085	0	346	25 797	32 329	+ 25,3
Shopping space						
Total square metres	13 871	220	3 133	35 648	28 911	-18,9
Total value at current prices (R'000)	28 002	352	6 523	80 073	58 270	-27,2
Industrial and warehouse space						
Total square metres	500	616	0	5 064	10 438	+ 106,1
Total value at current prices (R'000)	1 100	1 416	0	9 442	19 609	+ 107,7
Other non-residential space ²						
Total square metres	0	181	1 205	7 014	9 253	+ 31,9
Total value at current prices (R'000)	0	200	2 290	14 214	18 777	+ 32,1
Total value of non-residential buildings at current prices (R'000)	30 187	1 968	9 159	129 526	128 985	-0,4
Additions and alterations						
Dwelling-houses						
Total square metres	4 512	6 345	7 131	45 071	64 905	+ 44,0
Total value at current prices (R'000)	6 208	12 875	13 371	60 829	97 880	+ 60,9
Other buildings ³						
Total square metres	453	2 017	870	8 453	22 155	+ 162,1
Total value at current prices (R'000)	1 974	3 195	1 547	22 218	38 760	+ 74,5
Total value of additions and alterations at current prices (R'000)	8 182	16 070	14 918	83 047	136 640	+ 64,5
Total value of recorded building plans passed at current prices (R'000)	62 517	55 372	66 607	411 718	621 684	+ 51,0

¹ Other residential buildings include institutions for the disabled, boarding houses, old people's homes, hostels, hotels, motels, guest-houses, holiday chalets, entertainment centres, bed-and-breakfast accommodation and casinos.

² Other non-residential space includes churches, sport and recreation clubs, schools, crèches, hospitals and all other non-residential space.

³ Other buildings include additions and alterations to other residential buildings, non-residential buildings and internal alterations.

Table 19 - Buildings reported as completed to municipalities by type of building: South Africa

Type of building	October 2003 *	September 2004	October 2004	January 2003 to October 2003	January 2004 to October 2004	Percentage change between January 2003 to October 2003 and January 2004 to October 2004
Residential buildings						
Dwelling-houses smaller than 80 square metres						
Number of dwelling-houses	5 463	2 667	2 584	26 413	33 282	+ 26,0
Total square metres	208 928	105 091	97 892	1 004 399	1 286 433	+ 28,1
Total value at current prices (R'000)	166 209	95 664	90 987	839 066	1 086 548	+ 29,5
Dwelling-houses equal to or larger than 80 square metres						
Number of dwelling-houses	1 363	1 623	1 666	12 740	13 752	+ 7,9
Total square metres	300 778	359 001	373 411	2 773 611	3 074 211	+ 10,8
Total value at current prices (R'000)	521 203	740 034	771 948	4 757 891	6 194 434	+ 30,2
Flats and townhouses						
Number of flats and townhouses	947	1 062	1 373	9 195	11 173	+ 21,5
Total square metres	102 436	150 452	171 526	1 094 281	1 552 496	+ 41,9
Total value at current prices (R'000)	177 265	306 907	334 766	1 939 570	3 242 943	+ 67,2
Other residential buildings ¹						
Total square metres	1 165	17 208	3 167	154 165	55 799	- 63,8
Total value at current prices (R'000)	2 161	30 421	4 675	809 947	124 261	- 84,7
Total value of residential buildings at current prices (R'000)	866 838	1 173 026	1 202 376	8 346 474	10 648 186	+ 27,6
Non-residential buildings						
Office and banking space						
Total square metres	26 971	16 719	70 659	437 438	486 072	+ 11,1
Total value at current prices (R'000)	53 461	30 816	139 007	872 912	1 013 828	+ 16,1
Shopping space						
Total square metres	20 605	37 438	24 297	255 223	249 221	- 2,4
Total value at current prices (R'000)	40 122	379 464	47 722	449 285	809 241	+ 80,1
Industrial and warehouse space						
Total square metres	33 829	69 260	105 502	424 505	587 555	+ 38,4
Total value at current prices (R'000)	57 578	115 184	157 705	604 250	1 044 991	+ 72,9
Other non-residential space ²						
Total square metres	18 742	3 986	6 250	371 488	111 410	- 70,0
Total value at current prices (R'000)	38 207	8 629	12 586	724 368	204 380	- 71,8
Total value of non-residential buildings at current prices (R'000)	189 368	534 093	357 020	2 650 815	3 072 440	+ 15,9
Additions and alterations						
Dwelling-houses						
Total square metres	141 363	149 407	142 130	1 255 526	1 227 026	- 2,3
Total value at current prices (R'000)	205 425	260 330	243 947	1 733 906	2 093 346	+ 20,7
Other buildings ³						
Total square metres	47 172	32 939	65 497	488 876	440 120	- 10,0
Total value at current prices (R'000)	93 905	68 842	123 701	1 098 300	1 033 713	- 5,9
Total value of additions and alterations at current prices (R'000)	299 330	329 172	367 648	2 832 206	3 127 059	+ 10,4
Total value of buildings reported as completed at current prices (R'000)	1 355 536	2 036 291	1 927 044	13 829 495	16 847 685	+ 21,8

¹ Other residential buildings include institutions for the disabled, boarding houses, old people's homes, hostels, hotels, motels, guest-houses, holiday chalets, entertainment centres, bed-and-breakfast accommodation and casinos.

² Other non-residential space includes churches, sport and recreation clubs, schools, crèches, hospitals and all other non-residential space.

³ Other buildings include additions and alterations to other residential buildings, non-residential buildings and internal alterations.

* Revised.

Table 20 - Buildings reported as completed to municipalities by type of building and province: Western Cape

Type of building	October 2003*	September 2004	October 2004	January 2003 to October 2003	January 2004 to October 2004	Percentage change between January 2003 to October 2003 and January 2004 to October 2004
Residential buildings						
Dwelling-houses smaller than 80 square metres						
Number of dwelling-houses	724	669	499	3 416	6 972	+ 104,1
Total square metres	27 383	24 292	18 840	133 392	268 064	+ 101,0
Total value at current prices (R'000)	27 416	23 976	17 953	147 961	233 583	+ 57,9
Dwelling-houses equal to or larger than 80 square metres						
Number of dwelling-houses	554	491	613	4 690	4 352	- 7,2
Total square metres	112 985	101 365	131 436	952 503	944 476	- 0,8
Total value at current prices (R'000)	190 148	191 734	256 229	1 597 748	1 791 339	+ 12,1
Flats and townhouses						
Number of flats and townhouses	185	386	351	1 750	2 527	+ 44,4
Total square metres	16 267	39 394	35 909	197 013	274 094	+ 39,1
Total value at current prices (R'000)	25 534	68 539	65 443	359 807	548 255	+ 52,4
Other residential buildings ¹						
Total square metres	98	610	2 015	77 358	25 545	- 67,0
Total value at current prices (R'000)	131	1 392	3 000	275 244	58 824	- 78,6
Total value of residential buildings at current prices (R'000)	243 229	285 641	342 625	2 380 760	2 632 001	+ 10,6
Non-residential buildings						
Office and banking space						
Total square metres	4 275	3 081	11 378	106 251	44 861	- 57,8
Total value at current prices (R'000)	6 594	6 788	20 405	192 917	92 461	- 52,1
Shopping space						
Total square metres	495	3 854	15 266	25 979	112 308	+ 332,3
Total value at current prices (R'000)	1 485	8 083	27 321	39 244	223 120	+ 468,5
Industrial and warehouse space						
Total square metres	7 919	25 295	48 639	142 856	153 138	+ 7,2
Total value at current prices (R'000)	18 549	30 881	49 096	187 205	186 557	- 0,3
Other non-residential space ²						
Total square metres	2 379	763	1 324	43 788	14 509	- 66,9
Total value at current prices (R'000)	3 901	1 514	2 525	61 055	25 920	- 57,5
Total value of non-residential buildings at current prices (R'000)	30 529	47 266	99 347	480 421	528 058	+ 9,9
Additions and alterations						
Dwelling-houses						
Total square metres	50 662	61 612	63 806	437 349	447 151	+ 2,2
Total value at current prices (R'000)	70 834	94 682	97 867	592 489	702 020	+ 18,5
Other buildings ³						
Total square metres	12 274	21 866	33 878	153 475	152 572	- 0,6
Total value at current prices (R'000)	24 397	38 857	53 394	339 453	324 976	- 4,3
Total value of additions and alterations at current prices (R'000)	95 231	133 539	151 261	931 942	1 026 996	+ 10,2
Total value of buildings reported as completed at current prices (R'000)	368 989	466 446	593 233	3 793 123	4 187 055	+ 10,4

¹ Other residential buildings include institutions for the disabled, boarding houses, old people's homes, hostels, hotels, motels, guest-houses, holiday chalets, entertainment centres, bed-and-breakfast accommodation and casinos.

² Other non-residential space includes churches, sport and recreation clubs, schools, crèches, hospitals and all other non-residential space.

³ Other buildings include additions and alterations to other residential buildings, non-residential buildings and internal alterations.

* Revised.

Table 21 - Buildings reported as completed to municipalities by type of building and province: Eastern Cape

Type of building	October 2003*	September 2004	October 2004	January 2003 to October 2003	January 2004 to October 2004	Percentage change between January 2003 to October 2003 and January 2004 to October 2004
Residential buildings						
Dwelling-houses smaller than 80 square metres						
Number of dwelling-houses	444	110	141	1 651	4 248	+ 157,3
Total square metres	22 913	4 764	6 001	76 742	182 888	+ 138,3
Total value at current prices (R'000)	34 445	3 787	4 674	85 310	167 527	+ 96,4
Dwelling-houses equal to or larger than 80 square metres						
Number of dwelling-houses	39	89	38	604	760	+ 25,8
Total square metres	6 628	15 558	7 151	112 783	138 847	+ 23,1
Total value at current prices (R'000)	11 452	35 921	13 783	174 052	245 289	+ 40,9
Flats and townhouses						
Number of flats and townhouses	7	25	36	246	138	-43,9
Total square metres	1 434	3 399	4 833	24 101	24 161	+ 0,2
Total value at current prices (R'000)	2 402	5 647	7 744	38 987	40 863	+ 4,8
Other residential buildings ¹						
Total square metres	0	0	0	6 400	443	- 93,1
Total value at current prices (R'000)	0	0	0	10 689	1 055	- 90,1
Total value of residential buildings at current prices (R'000)	48 299	45 355	26 201	309 038	454 734	+ 47,1
Non-residential buildings						
Office and banking space						
Total square metres	0	0	0	3 426	9 504	+ 177,4
Total value at current prices (R'000)	0	0	0	2 249	13 110	+ 482,9
Shopping space						
Total square metres	1 039	0	0	17 644	2 847	- 83,9
Total value at current prices (R'000)	1 100	0	0	24 003	5 929	- 75,3
Industrial and warehouse space						
Total square metres	2 059	1 059	0	16 235	9 351	- 42,4
Total value at current prices (R'000)	2 837	1 334	0	24 201	14 725	- 39,2
Other non-residential space ²						
Total square metres	3 085	924	2 093	10 286	8 785	-14,6
Total value at current prices (R'000)	5 975	1 619	3 686	16 990	15 653	-7,9
Total value of non-residential buildings at current prices (R'000)	9 912	2 953	3 686	67 443	49 417	- 26,7
Additions and alterations						
Dwelling-houses						
Total square metres	8 843	9 084	10 455	87 082	86 824	- 0,3
Total value at current prices (R'000)	13 155	14 856	19 533	123 823	142 248	+ 14,9
Other buildings ³						
Total square metres	7 901	134	2 212	52 919	43 501	- 17,8
Total value at current prices (R'000)	8 413	499	5 135	84 704	57 628	- 32,0
Total value of additions and alterations at current prices (R'000)	21 568	15 355	24 668	208 527	199 876	- 4,1
Total value of buildings reported as completed at current prices (R'000)	79 779	63 663	54 555	585 008	704 027	+ 20,3

¹ Other residential buildings include institutions for the disabled, boarding houses, old people's homes, hostels, hotels, motels, guest-houses, holiday chalets, entertainment centres, bed-and-breakfast accommodation and casinos.

² Other non-residential space includes churches, sport and recreation clubs, schools, crèches, hospitals and all other non-residential space.

³ Other buildings include additions and alterations to other residential buildings, non-residential buildings and internal alterations.

* Revised.

Table 22 - Buildings reported as completed to municipalities by type of building and province: Northern Cape

Type of building	October 2003	September 2004	October 2004	January 2003 to October 2003	January 2004 to October 2004	Percentage change between January 2003 to October 2003 and January 2004 to October 2004
Residential buildings						
Dwelling-houses smaller than 80 square metres						
Number of dwelling-houses	6	1	120	64	159	+ 148,4
Total square metres	235	45	4 611	2 589	6 432	+ 148,4
Total value at current prices (R'000)	229	90	2 797	2 451	5 188	+ 111,7
Dwelling-houses equal to or larger than 80 square metres						
Number of dwelling-houses	8	10	14	56	83	+ 48,2
Total square metres	1 624	2 023	2 298	10 369	14 871	+ 43,4
Total value at current prices (R'000)	2 454	3 641	3 716	16 318	25 475	+ 56,1
Flats and townhouses						
Number of flats and townhouses	0	5	5	23	58	+ 152,2
Total square metres	0	858	792	2 625	10 105	+ 285,0
Total value at current prices (R'000)	0	1 646	1 465	4 288	18 513	+ 331,7
Other residential buildings ¹						
Total square metres	0	0	0	0	0	..
Total value at current prices (R'000)	0	0	0	0	0	..
Total value of residential buildings at current prices (R'000)	2 683	5 377	7 978	23 057	49 176	+ 113,3
Non-residential buildings						
Office and banking space						
Total square metres	118	0	1 472	134	1 567	+ 1069,4
Total value at current prices (R'000)	177	0	3 238	201	3 409	+ 1596,0
Shopping space						
Total square metres	1 368	0	0	5 875	2 299	-60,9
Total value at current prices (R'000)	3 010	0	0	12 640	4 402	- 65,2
Industrial and warehouse space						
Total square metres	1 222	819	285	2 685	1 796	- 33,1
Total value at current prices (R'000)	1 834	1 474	627	4 872	3 309	- 32,1
Other non-residential space ²						
Total square metres	0	0	308	125	2 378	+ 1802,4
Total value at current prices (R'000)	0	0	554	188	4 846	+ 2477,7
Total value of non-residential buildings at current prices (R'000)	5 021	1 474	4 419	17 901	15 966	- 10,8
Additions and alterations						
Dwelling-houses						
Total square metres	2 463	3 472	2 366	22 055	21 781	- 1,2
Total value at current prices (R'000)	3 755	6 184	4 287	36 236	37 573	+ 3,7
Other buildings ³						
Total square metres	400	2 395	0	5 162	4 355	- 15,6
Total value at current prices (R'000)	673	5 854	257	10 032	11 871	+ 18,3
Total value of additions and alterations at current prices (R'000)	4 428	12 038	4 544	46 268	49 444	+ 6,9
Total value of buildings reported as completed at current prices (R'000)	12 132	18 889	16 941	87 226	114 586	31,4

¹ Other residential buildings include institutions for the disabled, boarding houses, old people's homes, hostels, hotels, motels, guest-houses, holiday chalets, entertainment centres, bed-and-breakfast accommodation and casinos.

² Other non-residential space includes churches, sport and recreation clubs, schools, crèches, hospitals and all other non-residential space.

³ Other buildings include additions and alterations to other residential buildings, non-residential buildings and internal alterations.

Table 23 - Buildings reported as completed to municipalities by type of building and province: Free State

Type of building	October 2003*	September 2004	October 2004	January 2003 to October 2003	January 2004 to October 2004	Percentage change between January 2003 to October 2003 and January 2004 to October 2004
Residential buildings						
Dwelling-houses smaller than 80 square metres						
Number of dwelling-houses	716	480	264	3 170	3 213	+ 1,4
Total square metres	32 180	21 065	10 897	135 433	134 002	-1,1
Total value at current prices (R'000)	18 477	9 458	5 051	76 486	71 551	-6,5
Dwelling-houses equal to or larger than 80 square metres						
Number of dwelling-houses	21	19	28	289	199	-31,1
Total square metres	3 636	3 752	6 152	47 326	37 656	-20,4
Total value at current prices (R'000)	5 220	6 541	11 212	62 671	58 945	-5,9
Flats and townhouses						
Number of flats and townhouses	122	29	61	490	386	-21,2
Total square metres	8 208	5 074	7 683	47 719	40 990	-14,1
Total value at current prices (R'000)	12 735	7 874	12 906	73 864	63 458	-14,1
Other residential buildings ¹						
Total square metres	186	0	675	3 182	1 575	-50,5
Total value at current prices (R'000)	370	0	675	7 684	1 675	-78,2
Total value of residential buildings at current prices (R'000)	36 802	23 873	29 844	220 705	195 629	-11,4
Non-residential buildings						
Office and banking space						
Total square metres	0	0	2 110	7 756	9 028	+ 16,4
Total value at current prices (R'000)	0	0	4 220	9 647	30 001	+ 211,0
Shopping space						
Total square metres	2 023	246	0	16 870	6 825	-59,5
Total value at current prices (R'000)	4 046	480	0	29 742	12 279	-58,7
Industrial and warehouse space						
Total square metres	384	1 940	1 784	10 974	9 729	-11,3
Total value at current prices (R'000)	230	1 713	1 505	12 908	7 269	-43,7
Other non-residential space ²						
Total square metres	0	45	204	8 605	6 157	-28,4
Total value at current prices (R'000)	128	45	204	17 886	7 518	-58,0
Total value of non-residential buildings at current prices (R'000)	4 404	2 238	5 929	70 183	57 067	-18,7
Additions and alterations						
Dwelling-houses						
Total square metres	5 821	3 758	2 543	51 589	40 559	-21,4
Total value at current prices (R'000)	7 151	4 821	3 437	58 296	54 248	-6,9
Other buildings ³						
Total square metres	1 232	1 250	2 318	11 689	14 152	+ 21,1
Total value at current prices (R'000)	4 598	3 137	6 987	40 819	63 280	+ 55,0
Total value of additions and alterations at current prices (R'000)	11 749	7 958	10 424	99 115	117 528	+ 18,6
Total value of buildings reported as completed at current prices (R'000)	52 955	34 069	46 197	390 003	370 224	-5,1

¹ Other residential buildings include institutions for the disabled, boarding houses, old people's homes, hostels, hotels, motels, guest-houses, holiday chalets, entertainment centres, bed-and-breakfast accommodation and casinos.

² Other non-residential space includes churches, sport and recreation clubs, schools, crèches, hospitals and all other non-residential space.

³ Other buildings include additions and alterations to other residential buildings, non-residential buildings and internal alterations.

* Revised.

Table 24 - Buildings reported as completed to municipalities by type of building and province: KwaZulu-Natal

Type of building	October 2003*	September 2004	October 2004	January 2003 to October 2003	January 2004 to October 2004	Percentage change between January 2003 to October 2003 and January 2004 to October 2004
Residential buildings						
Dwelling-houses smaller than 80 square metres						
Number of dwelling-houses	2 656	267	412	8 125	4 557	-43,9
Total square metres	92 087	10 097	11 986	289 934	155 673	-46,3
Total value at current prices (R'000)	45 609	13 309	14 697	174 188	146 780	-15,7
Dwelling-houses equal to or larger than 80 square metres						
Number of dwelling-houses	104	135	123	1 115	1 240	+ 11,2
Total square metres	23 861	29 523	25 069	229 258	266 500	+ 16,2
Total value at current prices (R'000)	34 962	60 027	55 324	344 936	526 390	+ 52,6
Flats and townhouses						
Number of flats and townhouses	73	110	94	599	1 071	+ 78,8
Total square metres	10 642	30 348	15 529	92 128	213 092	+ 131,3
Total value at current prices (R'000)	21 881	75 284	30 633	168 698	514 275	+ 204,8
Other residential buildings ¹						
Total square metres	0	2 018	0	39 892	5 730	-85,6
Total value at current prices (R'000)	0	5 045	0	467 734	17 315	-96,3
Total value of residential buildings at current prices (R'000)	102 452	153 665	100 654	1 155 556	1 204 760	+ 4,3
Non-residential buildings						
Office and banking space						
Total square metres	2 835	2 519	9 537	36 365	41 779	+ 14,9
Total value at current prices (R'000)	4 530	4 274	23 798	88 577	85 122	-3,9
Shopping space						
Total square metres	2 985	32 379	1 298	40 366	59 860	+ 48,3
Total value at current prices (R'000)	4 000	368 679	5 535	74 778	428 020	+ 472,4
Industrial and warehouse space						
Total square metres	7 420	7 222	4 816	75 028	128 497	+ 71,3
Total value at current prices (R'000)	9 502	9 320	12 235	83 605	236 061	+ 182,4
Other non-residential space ²						
Total square metres	1 855	1 513	527	24 942	13 385	-46,3
Total value at current prices (R'000)	1 842	3 780	1 920	49 393	32 975	-33,2
Total value of non-residential buildings at current prices (R'000)	19 874	386 053	43 488	296 353	782 178	+ 163,9
Additions and alterations						
Dwelling-houses						
Total square metres	28 609	28 986	24 098	252 134	256 373	+ 1,7
Total value at current prices (R'000)	31 171	55 029	47 137	293 266	459 447	+ 56,7
Other buildings ³						
Total square metres	17 037	1 819	4 714	88 159	79 075	-10,3
Total value at current prices (R'000)	31 824	6 478	13 355	240 929	199 694	-17,1
Total value of additions and alterations at current prices (R'000)	62 995	61 507	60 492	534 195	659 141	+ 23,4
Total value of buildings reported as completed at current prices (R'000)	185 321	601 225	204 634	1 986 104	2 646 079	+ 33,2

¹ Other residential buildings include institutions for the disabled, boarding houses, old people's homes, hostels, hotels, motels, guest-houses, holiday chalets, entertainment centres, bed-and-breakfast accommodation and casinos.

² Other non-residential space includes churches, sport and recreation clubs, schools, crèches, hospitals and all other non-residential space.

³ Other buildings include additions and alterations to other residential buildings, non-residential buildings and internal alterations.

* Revised.

Table 25 - Buildings reported as completed to municipalities by type of building and province: North West

Type of building	October 2003	September 2004	October 2004	January 2003 to October 2003	January 2004 to October 2004	Percentage change between January 2003 to October 2003 and January 2004 to October 2004
Residential buildings						
Dwelling-houses smaller than 80 square metres						
Number of dwelling-houses	22	416	412	235	5 321	+ 2 164,3
Total square metres	1 264	13 813	13 352	13 427	166 720	+ 1 141,7
Total value at current prices (R'000)	1 505	8 873	8 057	15 400	92 915	+ 503,3
Dwelling-houses equal to or larger than 80 square metres						
Number of dwelling-houses	56	103	116	671	719	+ 7,2
Total square metres	9 342	19 745	21 945	129 058	139 768	+ 8,3
Total value at current prices (R'000)	17 016	40 697	46 623	203 458	257 421	+ 26,5
Flats and townhouses						
Number of flats and townhouses	59	11	21	603	641	+ 6,3
Total square metres	4 929	2 045	2 889	55 688	50 959	- 8,5
Total value at current prices (R'000)	8 608	3 390	4 069	94 391	87 810	- 7,0
Other residential buildings ¹						
Total square metres	0	0	0	732	2 649	+ 261,9
Total value at current prices (R'000)	0	0	0	1 140	8 250	+ 623,7
Total value of residential buildings at current prices (R'000)	27 129	52 960	58 749	314 389	446 396	+ 42,0
Non-residential buildings						
Office and banking space						
Total square metres	335	0	126	8 229	8 133	- 1,2
Total value at current prices (R'000)	393	0	51	12 110	18 521	+ 52,9
Shopping space						
Total square metres	969	343	3 916	10 718	19 760	+ 84,4
Total value at current prices (R'000)	1 454	497	7 467	18 481	39 150	+ 111,8
Industrial and warehouse space						
Total square metres	961	384	2 155	6 640	11 020	+ 66,0
Total value at current prices (R'000)	1 057	300	2 800	8 265	14 778	+ 78,8
Other non-residential space ²						
Total square metres	3 954	246	0	13 041	2 325	- 82,2
Total value at current prices (R'000)	11 863	369	0	43 253	3 666	- 91,5
Total value of non-residential buildings at current prices (R'000)	14 767	1 166	10 318	82 109	76 115	- 7,3
Additions and alterations						
Dwelling-houses						
Total square metres	3 129	2 005	2 933	33 881	33 989	+ 0,3
Total value at current prices (R'000)	3 889	2 768	3 501	35 316	42 018	+ 19,0
Other buildings ³						
Total square metres	1 611	799	4 275	16 646	18 854	+ 13,3
Total value at current prices (R'000)	3 610	1 942	6 843	24 438	38 961	+ 59,4
Total value of additions and alterations at current prices (R'000)	7 499	4 710	10 344	59 754	80 979	+ 35,5
Total value of buildings reported as completed at current prices (R'000)	49 395	58 836	79 411	456 252	603 490	+ 32,3

¹ Other residential buildings include institutions for the disabled, boarding houses, old people's homes, hostels, hotels, motels, guest-houses, holiday chalets, entertainment centres, bed-and-breakfast accommodation and casinos.

² Other non-residential space includes churches, sport and recreation clubs, schools, crèches, hospitals and all other non-residential space.

³ Other buildings include additions and alterations to other residential buildings, non-residential buildings and internal alterations.

Table 26 - Buildings reported as completed to municipalities by type of building and province: Gauteng

Type of building	October 2003*	September 2004	October 2004	January 2003 to October 2003	January 2004 to October 2004	Percentage change between January 2003 to October 2003 and January 2004 to October 2004
Residential buildings						
Dwelling-houses smaller than 80 square metres						
Number of dwelling-houses	671	543	587	8 470	6 381	-24,7
Total square metres	23 378	21 465	24 356	297 319	257 606	-13,4
Total value at current prices (R'000)	29 173	28 287	30 465	289 591	292 599	+ 1,0
Dwelling-houses equal to or larger than 80 square metres						
Number of dwelling-houses	479	700	642	4 607	5 570	+ 20,9
Total square metres	124 836	173 574	164 479	1 149 507	1 382 304	+ 20,3
Total value at current prices (R'000)	235 714	377 517	357 921	2 162 209	3 042 437	+ 40,7
Flats and townhouses						
Number of flats and townhouses	495	472	765	4 844	6 117	+ 26,3
Total square metres	60 232	66 714	99 851	629 845	900 754	+ 43,0
Total value at current prices (R'000)	104 795	140 769	200 418	1 140 534	1 905 243	+ 67,0
Other residential buildings ¹						
Total square metres	0	14 580	0	22 792	18 395	-19,3
Total value at current prices (R'000)	0	23 984	0	39 268	32 212	-18,0
Total value of residential buildings at current prices (R'000)	369 682	570 557	588 804	3 631 602	5 272 491	+ 45,2
Non-residential buildings						
Office and banking space						
Total square metres	18 548	10 799	46 036	263 950	365 586	+ 38,5
Total value at current prices (R'000)	40 467	19 178	87 295	550 530	763 564	+ 38,7
Shopping space						
Total square metres	7 124	616	1 093	84 186	34 052	-59,6
Total value at current prices (R'000)	13 827	1 725	3 279	166 499	77 172	-53,7
Industrial and warehouse space						
Total square metres	13 864	28 771	47 823	149 366	262 835	+ 76,0
Total value at current prices (R'000)	23 569	64 332	91 442	263 995	565 054	+ 114,0
Other non-residential space ²						
Total square metres	7 384	495	589	269 177	61 070	-77,3
Total value at current prices (R'000)	14 498	1 302	1 407	533 228	108 797	-79,6
Total value of non-residential buildings at current prices (R'000)	92 361	86 537	183 423	1 514 252	1 514 587	+ 0,0
Additions and alterations						
Dwelling-houses						
Total square metres	35 824	37 545	34 349	334 613	310 383	-7,2
Total value at current prices (R'000)	67 916	77 735	66 323	547 803	613 291	+ 12,0
Other buildings ³						
Total square metres	5 405	3 824	17 816	149 569	117 599	-21,4
Total value at current prices (R'000)	14 084	10 798	37 470	335 888	321 690	-4,2
Total value of additions and alterations at current prices (R'000)	82 000	88 533	103 793	883 691	934 981	+ 5,8
Total value of buildings reported as completed at current prices (R'000)	544 043	745 627	876 020	6 029 545	7 722 059	+ 28,1

¹ Other residential buildings include institutions for the disabled, boarding houses, old people's homes, hostels, hotels, motels, guest-houses, holiday chalets, entertainment centres, bed-and-breakfast accommodation and casinos.

² Other non-residential space includes churches, sport and recreation clubs, schools, crèches, hospitals and all other non-residential space.

³ Other buildings include additions and alterations to other residential buildings, non-residential buildings and internal alterations.

* Revised.

Table 27 - Buildings reported as completed to municipalities by type of building and province: Mpumalanga

Type of building	October 2003	September 2004	October 2004	January 2003 to October 2003	January 2004 to October 2004	Percentage change between January 2003 to October 2003 and January 2004 to October 2004
Residential buildings						
Dwelling-houses smaller than 80 square metres						
Number of dwelling-houses	204	157	129	806	1 816	+ 125,3
Total square metres	8 234	8 040	6 621	32 328	86 905	+ 168,8
Total value at current prices (R'000)	7 482	4 716	4 666	26 502	53 450	+ 101,7
Dwelling-houses equal to or larger than 80 square metres						
Number of dwelling-houses	67	52	65	461	559	+ 21,3
Total square metres	12 887	9 504	11 158	99 682	100 654	+ 1,0
Total value at current prices (R'000)	16 842	16 245	19 223	132 817	158 005	+ 19,0
Flats and townhouses						
Number of flats and townhouses	5	1	39	595	166	-72,1
Total square metres	574	189	3 998	39 905	28 043	-29,7
Total value at current prices (R'000)	1 100	284	11 992	51 878	50 013	-3,6
Other residential buildings ¹						
Total square metres	370	0	477	3 066	930	-69,7
Total value at current prices (R'000)	800	0	1 000	7 050	3 450	-51,1
Total value of residential buildings at current prices (R'000)	26 224	21 245	36 881	218 247	264 918	+ 21,4
Non-residential buildings						
Office and banking space						
Total square metres	860	0	0	6 701	3 734	-44,3
Total value at current prices (R'000)	1 300	0	0	9 284	4 199	-54,8
Shopping space						
Total square metres	4 602	0	1 260	50 576	4 579	-90,9
Total value at current prices (R'000)	11 200	0	1 320	78 922	6 701	-91,5
Industrial and warehouse space						
Total square metres	0	3 770	0	18 832	8 721	-53,7
Total value at current prices (R'000)	0	5 830	0	16 360	11 808	-27,8
Other non-residential space ²						
Total square metres	0	0	0	371	802	+ 116,2
Total value at current prices (R'000)	0	0	0	400	1 604	+ 301,0
Total value of non-residential buildings at current prices (R'000)	12 500	5 830	1 320	104 966	24 312	-76,8
Additions and alterations						
Dwelling-houses						
Total square metres	4 845	1 755	1 253	26 921	20 372	-24,3
Total value at current prices (R'000)	5 951	2 138	1 332	32 525	27 670	-14,9
Other buildings ³						
Total square metres	829	0	284	9 715	7 863	-19,1
Total value at current prices (R'000)	1 814	85	260	15 533	12 392	-20,2
Total value of additions and alterations at current prices (R'000)	7 765	2 223	1 592	48 058	40 062	-16,6
Total value of buildings reported as completed at current prices (R'000)	46 489	29 298	39 793	371 271	329 292	-11,3

¹ Other residential buildings include institutions for the disabled, boarding houses, old people's homes, hostels, hotels, motels, guest-houses, holiday chalets, entertainment centres, bed-and-breakfast accommodation and casinos.

² Other non-residential space includes churches, sport and recreation clubs, schools, crèches, hospitals and all other non-residential space.

³ Other buildings include additions and alterations to other residential buildings, non-residential buildings and internal alterations.

Table 28 - Buildings reported as completed to municipalities by type of building and province: Limpopo

Type of building	October 2003	September 2004	October 2004	January 2003 to October 2003	January 2004 to October 2004	Percentage change between January 2003 to October 2003 and January 2004 to October 2004
Residential buildings						
Dwelling-houses smaller than 80 square metres						
Number of dwelling-houses	20	24	20	476	615	+ 29,2
Total square metres	1 254	1 510	1 228	23 235	28 143	+ 21,1
Total value at current prices (R'000)	1 873	3 168	2 627	21 177	22 955	+ 8,4
Dwelling-houses equal to or larger than 80 square metres						
Number of dwelling-houses	35	24	27	247	270	+ 9,3
Total square metres	4 979	3 957	3 723	43 125	49 135	+ 13,9
Total value at current prices (R'000)	7 395	7 711	7 917	63 682	89 133	+ 40,0
Flats and townhouses						
Number of flats and townhouses	1	23	1	45	69	+ 53,3
Total square metres	150	2 431	42	5 257	10 298	+ 95,9
Total value at current prices (R'000)	210	3 474	96	7 123	14 513	+ 103,7
Other residential buildings ¹						
Total square metres	511	0	0	743	532	-28,4
Total value at current prices (R'000)	860	0	0	1 138	1 480	+ 30,1
Total value of residential buildings at current prices (R'000)	10 338	14 353	10 640	93 120	128 081	+ 37,5
Non-residential buildings						
Office and banking space						
Total square metres	0	320	0	4 626	1 880	-59,4
Total value at current prices (R'000)	0	576	0	7 397	3 441	-53,5
Shopping space						
Total square metres	0	0	1 464	3 009	6 691	+ 122,4
Total value at current prices (R'000)	0	0	2 800	4 976	12 468	+ 150,6
Industrial and warehouse space						
Total square metres	0	0	0	1 889	2 468	+ 30,7
Total value at current prices (R'000)	0	0	0	2 839	5 430	+ 91,3
Other non-residential space ²						
Total square metres	0	0	1 205	1 153	1 999	+ 73,4
Total value at current prices (R'000)	0	0	2 290	1 975	3 401	+ 72,2
Total value of non-residential buildings at current prices (R'000)	0	576	5 090	17 187	24 740	+ 43,9
Additions and alterations						
Dwelling-houses						
Total square metres	1 167	1 190	327	9 902	9 594	-3,1
Total value at current prices (R'000)	1 603	2 117	530	14 152	14 831	+ 4,8
Other buildings ³						
Total square metres	483	852	0	1 542	2 149	+ 39,4
Total value at current prices (R'000)	4 492	1 192	0	6 504	3 221	-50,5
Total value of additions and alterations at current prices (R'000)	6 095	3 309	530	20 656	18 052	-12,6
Total value of buildings reported as completed at current prices (R'000)	16 433	18 238	16 260	130 963	170 873	+ 30,5

¹ Other residential buildings include institutions for the disabled, boarding houses, old people's homes, hostels, hotels, motels, guest-houses, holiday chalets, entertainment centres, bed-and-breakfast accommodation and casinos.

² Other non-residential space includes churches, sport and recreation clubs, schools, crèches, hospitals and all other non-residential space.

³ Other buildings include additions and alterations to other residential buildings, non-residential buildings and internal alterations.

Table 29 - Subsidised low-cost dwelling-houses completed or under construction² by province¹

Province	Year	Number of subsidised dwelling-houses completed or under construction ¹	Square metres ³	Value of low-cost dwelling-houses R'000 ³
Western Cape	2002	19 534	531 116	168 852
	2003	16 926	507 780	247 187
Eastern Cape	2002	46 700	1 575 675	473 806
	2003	35 005	1 050 150	511 213
Northern Cape	2002	5 189	164 906	68 078
	2003	4 354	130 620	63 586
Free State	2002	8 617	348 492	154 121
	2003	14 848	445 440	216 840
KwaZulu-Natal	2002	21 958	831 349	234 041
	2003	31 372	941 160	458 157
North West	2002	21 309	630 115	210 439
	2003	13 809	414 270	201 667
Gauteng	2002	29 939	991 571	321 943
	2003	42 862	1 285 860	625 957
Mpumalanga	2002	19 883	660 505	253 931
	2003	21 336	640 080	246 079
Limpopo	2002	15 382	605 877	183 769
	2003	15 596	467 880	227 764
South Africa	2002	188 511	6 339 606	2 068 980
	2003	196 108	5 883 240	2 798 450

¹ Source: Provincial Governments co-ordinated by the National Department of Housing.

² As soon as building commences, dwelling-houses are recorded as completed or under construction.

³ Estimates.

Explanatory notes

Introduction	1	Statistics South Africa (Stats SA) conducts a monthly building statistics survey collecting information regarding building plans passed and buildings completed, financed by the private sector, from the largest local government institutions in South Africa. According to these institutions, they are not always notified about low-cost housing projects. Data regarding subsidised low-cost dwelling-houses completed or under construction, supplied by the provincial governments and co-ordinated by the National Department of Housing, are shown in table 29 (page 37).
	2	In order to improve timeliness of the publication, some information for the current month has been estimated due to late submission by respondents. These estimates will be revised in the next statistical release(s) as soon as actual information is available.
Purpose of the survey	3	The monthly survey data are used in monitoring the state of economy and formulation of economic policy. Furthermore, the results are important inputs to estimation of the Gross Domestic Product (GDP) and are extensively used by the private sector.
Scope of the survey	4	This survey covers local government institutions conducting activities for the private sector regarding - <ul style="list-style-type: none"> • passing of building plans; and • final inspection of completed buildings.
	5	The 1993 edition of the <i>Standard Industrial Classification of all Economic Activities</i> , (SIC) Fifth Edition, Report No. 09-90-02, was used to classify the statistical units. The SIC is based on the 1990 <i>International Standard Industrial Classification of all Economic Activities</i> (ISIC) with suitable adaptations for local conditions.
Classification	6	The twelfth and last published edition of the <i>Standard Code List of Areas</i> , Report No. 09-09-03 (1994) was used to classify the statistical units according to province. However, due to the Local Government: Municipal Structures Act, 1998 (Act No. 117 of 1998) and the Local Government Municipal Demarcation Bill (B36B-98), exceptions occur in respect of new cross-border municipalities.
	7	The statistical unit for the collection of information is a local government institution. Local government institutions include district municipalities, metropolitan municipalities and local municipalities.
Survey methodology and design	8	The sample of the monthly building statistics survey consists of the largest local government institutions in South Africa. The survey is collected by mail each month from a sample of 124 local government institutions.
Constant prices	9	The value of building plans passed and buildings completed at constant prices measures building activities in terms of ruling prices in a specific base year, which is 2000 as from May 2002.
	10	The value of building plans passed at constant prices for each month is obtained by deflating the values at current prices with a price index known as the 'lump sum domestic buildings' as published in statistical release P0151: <i>JBCC Contract Price Adjustment Provisions Work Group Indices</i> . In order to be applicable, these indices (base February 1991=100) are converted to the base year 2000=100.
	11	The value of buildings completed at constant prices is obtained by deflating the values at current prices with the price index which is used to calculate building plans passed at constant prices (see paragraph 10). Since the completion of buildings may extend over a few months to a few years, the current value of buildings completed is deflated by price indices which prevailed at the time the plans were passed. Therefore, the duration of the completion of different types of buildings are taken into account in ascertaining the deflators e.g. the value of dwelling-houses completed at constant prices at January

2000 is obtained by deflating the current value of dwelling-houses completed for January 2000 with the price index of a month six months prior to January 2000. Furthermore, the value of other residential buildings, non-residential buildings and additions and alterations at constant prices is obtained by deflating the current values with price indices of 12 months, 18 months and 12 months prior to the relevant month, respectively.

Seasonal adjustment	12	Seasonally adjusted estimates of building plans passed and buildings completed are generated each month, using the X-11 Seasonal Adjustment Program developed by US Bureau of the Census Economic Research and Analyses Division, 1968.
	13	Seasonal adjustment is a means of removing the estimated effects of normal seasonal variation from the series so that the effects of other influences on the series can be more clearly recognised. Seasonal adjustment does not aim to remove irregular or non-seasonal influences which may be present in any particular month. Influences that are volatile or unsystematic can still make it difficult to interpret the movement of the series even after adjustment for seasonal variations. Therefore, the month-to-month movements of seasonally adjusted estimates may not be reliable indicators of trend behaviour.
Trend cycle	14	The trend is a long-term pattern or movement of a time series. The X-11 Seasonal Adjustment Program is used for smoothing seasonally adjusted data.
Related publications	15	Users may also wish to refer to the following publications: <ul style="list-style-type: none"> • P5041.3: <i>Building Statistics</i> issued annually. • P9101.2: <i>Actual and expected expenditure on construction by the public sector per statistical region</i> issued annually. • <i>Bulletin of Statistics</i> issued quarterly. • <i>South African Statistics</i> issued annually.
Unpublished statistics	16	In some cases Stats SA can also make available statistics which are not published. The statistics can be made available in one or more of the following ways: computer printouts, CD and diskette. Generally a charge is made for providing unpublished statistics.
Rounding-off of figures	17	The figures in the tables have, where necessary, been rounded off to the nearest digit shown. There may, therefore, be slight discrepancies between the sums of the constituent items and the totals shown.
Pre-release policy	18	Stats SA's pre-release policy may be inspected at its website, www.statssa.gov.za
Symbols and abbreviations	19	.. no meaningful percentage change between two specified periods available since either one or both of the totals are nil
	0	nil or figure too small to publish
	*	revised
	Stats SA	Statistics South Africa
	SIC	Standard Industrial Classification of all Economic Activities
	ISIC	International Standard Industrial Classification of all Economic Activities
	JBCC	Joint Building Contracts Committee
	CD	Compact Disc
	US	United States
	SARB	South African Reserve Bank
	DTI	Department of Trade and Industry

Glossary

Additions and alterations	Additions and alterations include extensions to existing buildings as well as internal and external alterations of existing buildings.
Blocks of flats	Blocks of flats are regarded as high-density housing consisting of a number of self-contained dwelling-units, each with at least one living-room together with a kitchen and bathroom, conjoined to similar units in one building.
Dwelling-house	A dwelling-house refers to a free-standing, complete structure on a separate stand or a self-contained dwelling-unit, granny flat, on the same premises as an existing residence. Out-buildings and garages are included.
Local government institutions	Local government institutions include – <ul style="list-style-type: none"> • District municipalities; • Metropolitan municipalities; and • Local municipalities.
Municipality	Municipality is a generic term describing the “unit” of government in the local spheres responsible for local government in a geographically demarcated area and including district, metropolitan and local municipalities. A municipality is an institution consisting of a municipal council (elected political representatives) and municipal administration (appointed officials).
District municipality	District municipality means municipality that has municipal executive and legislative authority in an area that includes more than one municipality, and which is described in section 155(1) of the Constitution as a category C municipality (Refer to Local Government: Municipal Structure Act, 1998 (Act No. 117 of 1998)).
Metropolitan municipality	Metropolitan municipality means municipality that has municipal executive and legislative authority in an area that includes more than one municipality, and which is described in section 155(1) of the Constitution as a category A municipality (Refer to Local Government: Municipal Structure Act, 1998 (Act No. 117 of 1998)).
Local municipality	Local municipality means municipalities that share municipal executive and legislative authority in its areas with a district municipality within whose area it falls, that is described in section 155(1) of the constitution as a category B municipality.
Non-residential buildings	Non-residential buildings comprise factories, commercial, financial and other office buildings, as well as other buildings not used for residential purposes, such as churches, halls, clubs, schools and hospitals.
Other residential buildings	Other residential buildings include institutions for the disabled, boarding houses, old people’s homes, hostels, hotels, motels, guest-houses, holiday chalets, bed-and-breakfast accommodation, entertainment centres and casinos.
Percentage change	<p>When using monthly actual values, the percentage change is the change in actual values of building activities (building plans passed or buildings completed) of the relevant month compared with the actual values of building activities (building plans passed or buildings completed) of the same month in the previous year expressed as a percentage.</p> <p>When using annual actual values, the percentage change is the change in the actual values of building activities (building plans passed or buildings completed) of the relevant year compared with the actual values of building activities (building plans passed or buildings completed) of the previous year expressed as a percentage.</p> <p>When using seasonally adjusted values, the percentage change is the change in the seasonally adjusted values of building activities (building plans passed or buildings completed) of the relevant month compared with the seasonally adjusted values of building activities (building plans passed or buildings completed) of the previous month expressed as a percentage.</p>
Reference period	Reference period is one calendar month.

Residential buildings

Residential buildings comprise dwelling-houses, flats, townhouses and other residential buildings.

Townhouses

Townhouses are multiple, medium-density dwelling-units and include cluster housing, group housing, simplexes, duplexes, triplexes and other similar dwelling-units which are usually grouped together, with one level of each unit on ground level. This excludes blocks of flats.

General information

Stats SA publishes approximately 300 different statistical releases each year. It is not economically viable to produce them in more than one of South Africa's eleven official languages. Since the releases are used extensively, not only locally but also by international economic and social-scientific communities, Stats SA releases are published in English only.

Stats SA has copyright on this publication. Users may apply the information as they wish, provided that they acknowledge Stats SA as the source of the basic data wherever they process, apply, utilise, publish or distribute the data and also that they specify that the relevant application and analysis (where applicable) result from their own processing of the data.

Advance release calendar

An advance release calendar is disseminated on www.statssa.gov.za

Stats SA products

A complete set of Stats SA publications is available at the Stats SA Library and the following libraries:

National Library of South Africa, Pretoria Division
National Library of South Africa, Cape Town Division
Natal Society Library, Pietermaritzburg
Library of Parliament, Cape Town
Bloemfontein Public Library
Johannesburg Public Library
Eastern Cape Library Services, King William's Town
Central Regional Library, Polokwane
Central Reference Library, Nelspruit
Central Reference Collection, Kimberley
Central Reference Library, Mmabatho

Stats SA also provides a subscription service.

Electronic services

A large range of data are available via on-line services, diskette, CD and computer printouts. For more details about our electronic data services, contact (012) 310 8600/8390/8351/4892/8496/8095.

You can visit us on the Internet at: www.statssa.gov.za

Enquiries

Telephone number: (012) 310 8600/8390/8351/4892/8496/8095 (user information services)
(012) 310 8228/310 8007 (technical enquiries)
(012) 310 8161 (orders)
(012) 310 8490 (library)

Fax number: (012) 310 8664 (technical enquiries)

Email: Gretaz@statssa.gov.za (technical enquiries)
info@statssa.gov.za (user information services)
distribution@statssa.gov.za (orders)

Postal address: Private Bag X44, Pretoria, 0001

Produced by Stats SA