

Building statistics

October 2002

Co-operation between Statistics South Africa (Stats SA), the citizens of the country, the private sector and government institutions is essential for a successful statistical system. Without continued co-operation and goodwill, the timely release of relevant and reliable official statistics will not be possible.

**Embargo: 13:00
Date: 18 December 2002**

Stats SA publishes approximately three hundred different releases each year. It is not economically viable to produce them in more than one of South Africa's eleven official languages. Since the releases are used extensively, not only locally, but also by international economic and social-scientific communities, Stats SA releases are published in English only.

Key figures regarding building plans passed for the month ended October 2002

Actual estimates at constant 2000 prices	October 2002	January 2002 to October 2002	Percentage change between October 2001 and October 2002	Percentage change between August 2001 to October 2001 and August 2002 to October 2002	Percentage change between January 2001 to October 2001 and January 2002 to October 2002
	R million	R million			
Residential buildings					
Dwelling-houses	855,8	7 122,5	+ 18,2	+ 17,8	+ 10,5
Flats and townhouses	299,5	1 939,1	+ 58,9	+ 28,2	+ 23,5
Other residential buildings	3,7	229,9	- 98,1	- 82,8	- 48,4
Total	1 159,0	9 291,5	+ 4,7	+ 9,3	+ 9,8
Non-residential buildings	258,1	2 866,0	+ 50,1	+ 17,8	+ 2,1
Additions and alterations	598,5	5 006,3	+ 19,2	+ 15,1	+ 16,6
Total	2 015,6	17 163,8	+ 13,2	+ 12,2	+ 10,3

Seasonally adjusted estimates at constant 2000 prices

	October 2002	Percentage change between September 2002 and October 2002	Percentage change between May 2002 to July 2002 and August 2002 to October 2002
	R million		
Residential buildings	976,1	+ 4,8	+ 6,4
Non-residential buildings	265,5	+ 12,4	- 2,9
Additions and alterations	522,1	+ 11,7	- 9,1
Total	1 763,7	+ 7,8	- 0,1

Key findings regarding building plans passed for the three months ended October 2002

Seasonally adjusted real value of building plans passed decreases slightly

The seasonally adjusted real value of building plans passed (at constant 2000 prices) for the three months ended October 2002 decreased by 0,1% compared with the previous three months.

The decrease of 0,1% in the seasonally adjusted real value of building plans passed was due to decreases reported for additions and alterations (-9,1%) and non-residential buildings (-2,9%) during the three months ended October 2002 compared with the previous three months. However, these decreases were partially counteracted by an increase in the seasonally adjusted real value of residential building plans passed (+6,4%) during the above-mentioned period.

Key findings regarding building plans passed for the first ten months of 2002

Total real value of building plans passed increases

The total real value of building plans passed (at constant 2000 prices) during the first ten months of 2002 increased by 10,3% (+R1 600,4 million) to R17 163,8 million compared with the first ten months of 2001. Large increases in the real value of building plans passed were reported for additions and alterations (+R712,3 million), dwelling-houses (+R676,2 million) and flats and townhouses (+R369,5 million). Large real increases for additions and alterations were reported by Gauteng (+R246,2 million), KwaZulu-Natal (+R220,7 million) and Western Cape (+R211,2 million). The largest real increase for dwelling-houses was reported by Western Cape (+R446,5 million), followed by Eastern Cape (+R118,6 million), Free State (+R65,9 million) and KwaZulu-Natal (+R58,0 million). Gauteng reported the largest real increase for flats and townhouses (+R272,2 million) during the above-mentioned period.

Eight of the nine provinces reported increases in the total real value of building plans passed

The largest provincial contributors to the increase of 10,3% (+R1 600,4 million) in the total real value of building plans passed were Gauteng (+2,8 percentage points or R426,1 million), Western Cape (+2,7 percentage points or R421,1 million) and KwaZulu-Natal (+2,3 percentage points or R356,0 million) (cf. table A). Large real increases in Gauteng were reported for flats and townhouses (+R272,2 million) and additions and alterations (+R246,2 million). The real increase for flats and townhouses in Gauteng was mainly due to increases reported by Kungwini Local Municipality – Bronkhorstspuit Area (+R113,2 million), the selected urban areas of Pretoria (+R86,2 million) and Witwatersrand (+R80,2 million). The largest real increase in Western Cape was reported for dwelling-houses (+R446,5 million, mainly due to increases reported by the selected urban areas of Cape Town (+R136,0 million), Knysna Municipality (+R85,6 million), Overstrand Municipality (+R71,0 million), George Municipality (+R47,2 million) and Helderberg Municipality (+R32,1 million)). Large real increases in KwaZulu-Natal were reported for additions and alterations (+R220,7 million, mainly due to the real increase reported by Umhlathuze Municipality – Richards Bay Area for additions and alterations to non-residential buildings (+R231,3 million)).

Table A - Contribution of provinces to the total real value of building plans passed

Province	Percentage contribution to the total real value of plans passed during January 2001 to October 2001	Percentage change between January 2001 to October 2001 and January 2002 to October 2002	Contribution (percentage points) ^{1/} to the percentage change in the real value of plans passed between January 2001 to October 2001 and January 2002 to October 2002	Difference in total real value of plans passed between January 2001 to October 2001 and January 2002 to October 2002 R million
Gauteng	40,6	+ 6,7	+ 2,8	+ 426,1
Western Cape	29,1	+ 9,3	+ 2,7	+ 421,1
KwaZulu-Natal	12,5	+ 18,3	+ 2,3	+ 356,0
Free State	2,4	+ 33,2	+ 0,8	+ 126,2
Mpumalanga	3,5	+ 20,5	+ 0,7	+ 110,3
North West	2,6	+ 27,1	+ 0,7	+ 110,7
Eastern Cape	5,9	+ 6,4	+ 0,4	+ 58,9
Limpopo	2,7	+ 0,4	+ 0,0	+ 1,5
Northern Cape	0,7	- 9,7	- 0,1	- 10,4
Total	100,0	+ 10,3	+ 10,3	+1 600,4

1/ The contribution (percentage points) is calculated by multiplying the percentage change of each province between January 2001 to October 2001 and January 2002 to October 2002 (cf. column 3) with the percentage contribution of the corresponding province to the total real value of plans passed during January 2001 to October 2001 (cf. column 2) divided by 100.

Key figures regarding buildings completed for the month ended October 2002

Actual estimates at constant 2000 prices

	October 2002	January 2002 to October 2002	Percentage change between October 2001 and October 2002	Percentage change between August 2001 to October 2001 and August 2002 to October 2002	Percentage change between January 2001 to October 2001 and January 2002 to October 2002
	R million	R million			
Residential buildings					
Dwelling-houses	609,7	4 273,4	+ 41,7	+ 33,4	+ 24,4
Flats and townhouses	175,6	1 495,2	+ 28,9	+ 79,7	+ 66,2
Other residential buildings	4,9	406,8	- 93,2	+ 69,9	- 8,1
Total	790,2	6 175,4	+ 23,8	+ 44,6	+ 29,3
Non-residential buildings	171,3	1 886,4	- 40,8	- 74,4	- 46,4
Additions and alterations	269,3	2 325,2	+ 15,9	+ 15,7	- 2,2
Total	1 230,8	10 387,0	+ 6,1	- 15,7	- 2,7

Seasonally adjusted estimates at constant 2000 prices

	October 2002	Percentage change between September 2002 and October 2002	Percentage change between May 2002 to July 2002 and August 2002 to October 2002
	R million		
Residential buildings	704,2	+ 7,5	+ 11,7
Non-residential buildings	173,0	+ 0,8	- 21,7
Additions and alterations	243,2	- 0,7	+ 2,5
Total	1 120,4	+ 4,6	+ 3,3

Key findings regarding buildings completed for the three months ended October 2002

Seasonally adjusted real value of buildings completed increases

The seasonally adjusted real value of buildings completed (at constant 2000 prices) for the three months ended October 2002 increased by 3,3% compared with the previous three months.

The increase of 3,3% in the seasonally adjusted real value of buildings completed during the three months ended October 2002 compared with the previous three months was mainly due to increases in the seasonally adjusted real value of residential buildings (+11,7%) and additions and alterations (+2,5%). However, these increases were partially counteracted by a decrease in the seasonally adjusted real value of non-residential buildings completed (-21,7%) during the above-mentioned period.

Key findings regarding buildings completed for the first ten months of 2002

Total real value of buildings completed decreases

The total real value of buildings completed (at constant 2000 prices) during the first ten months of 2002 decreased by 2,7% (-R289,9 million) to R10 387,0 million compared with the first ten months of 2001. Large decreases in the real value of buildings completed were reported for non-residential buildings (-R1 635,1 million, mainly due to decreases reported by KwaZulu-Natal (-R1 058,4 million), Gauteng (-R347,1 million) and Eastern Cape (-R170,3 million)). However, these decreases were partially counteracted by real increases reported for dwelling-houses (+R838,3 million, mainly due to increases reported by Gauteng (+R514,3 million) and Western Cape (+R402,7 million)) and flats and townhouses (+R595,7 million, mainly due to increases reported by Gauteng (+R448,7 million)) during the above-mentioned period.

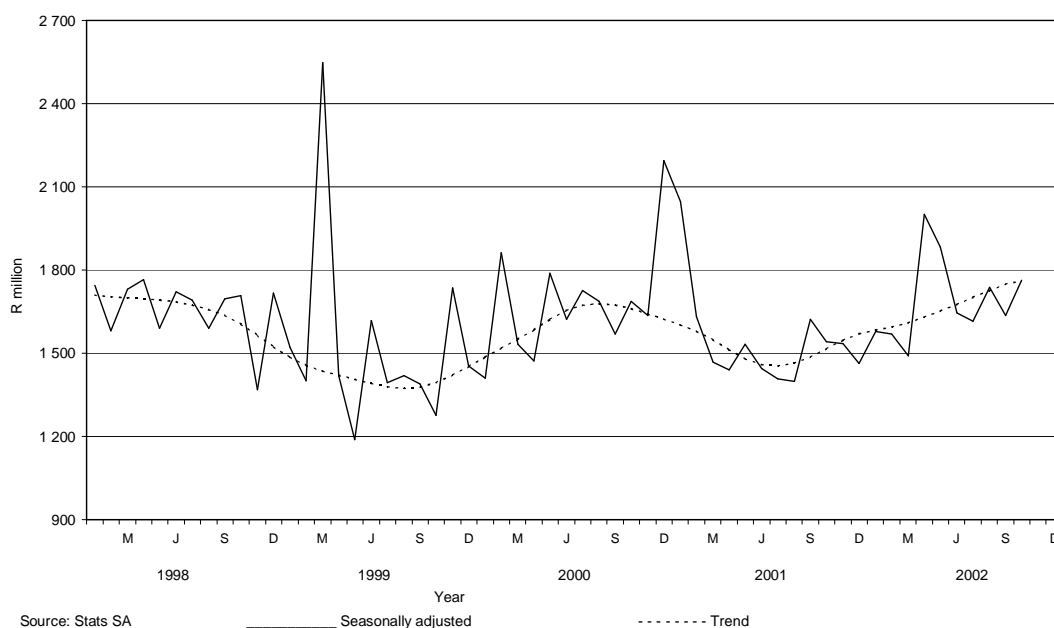
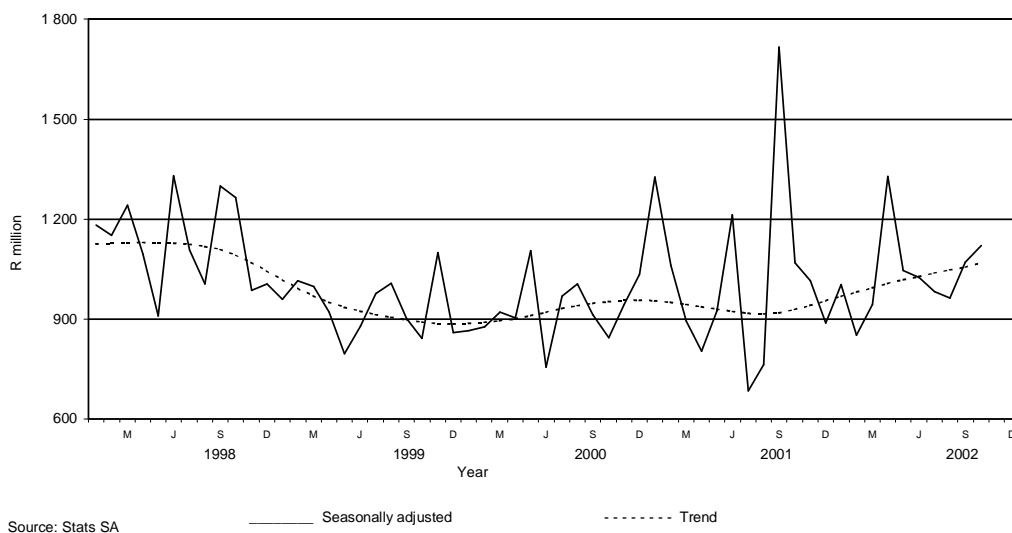
Four of the nine provinces reported decreases in the total real value of buildings completed

The largest provincial contributor to the decrease of 2,7% (-R289,9 million) in the total real value of buildings completed was KwaZulu-Natal (-10,8 percentage points or R1 149,7 million). KwaZulu-Natal reported a large real decrease for shopping space completed (-R1 129,7 million, mainly due to the real decrease reported by North Local Council - Umhlanga Rocks (-R1 139,7 million)). However, these decreases were partially counteracted by large real increases reported by Gauteng (+4,6 percentage points or R486,0 million), Western Cape (+3,2 percentage points or R346,1 million) and Limpopo (+1,7 percentage points or R183,7 million) (cf. table B). Large real increases in Gauteng were reported for dwelling-houses (+R514,3 million, mainly due to increases reported by the selected urban areas of Pretoria (+R221,1 million), Witwatersrand (+R204,0 million) and Kungwini Local Municipality – Bronkhorstspuit Area (+R88,1 million)) and flats and townhouses (+R448,7 million, mainly due to the large increases reported by the selected urban areas of Pretoria (+R223,3 million) and Witwatersrand (+R215,3 million)). The largest real increase in Western Cape was reported for dwelling-houses (+R402,7 million, mainly due to the large increase reported by the selected urban areas of Cape Town (+R270,3 million)).

Table B - Contribution of provinces to the total real value of buildings completed

Province	Percentage contribution to the total real value of buildings completed during January 2001 to October 2001	Percentage change between January 2001 to October 2001 and January 2002 to October 2002	Contribution (percentage points) ^{1/} to the percentage change in the real value of buildings completed between January 2001 to October 2001 and January 2002 to October 2002	Difference in total real value of buildings completed between January 2001 to October 2001 and January 2002 to October 2002 R million
KwaZulu-Natal	26,0	- 41,5	- 10,8	-1 149,7
Eastern Cape	6,8	- 24,7	- 1,7	- 180,0
Northern Cape	1,2	- 43,6	- 0,5	- 54,2
Free State	3,3	- 10,6	- 0,3	- 37,7
Mpumalanga	2,0	+ 25,8	+ 0,5	+ 55,7
North West	2,6	+ 22,0	+ 0,6	+ 60,2
Limpopo	0,8	+ 208,1	+ 1,7	+ 183,7
Western Cape	26,3	+ 12,3	+ 3,2	+ 346,1
Gauteng	31,0	+ 14,7	+ 4,6	+ 486,0
Total	100,0	- 2,7	- 2,7	- 289,9

1/ The contribution (percentage points) is calculated by multiplying the percentage change of each province between January 2001 to October 2001 and January 2002 to October 2002 (cf. column 3) with the percentage contribution of the corresponding province to the total real value of buildings completed during January 2001 to October 2001 (cf. column 2) divided by 100.

Figure 1 – Total real value of building plans passed**Figure 2 – Total real value of buildings completed**

As from the November 2002 publication, which is due to be published on 15 January 2003, the name of the monthly statistical release P5041.1, *Building statistics* will change to *Selected building statistics of the private sector derived from data reported by local government institutions*.

Contents

Page

Notes	7
Tables		
Table 1	Actual values and percentage change of building plans passed at current prices according to type of building	8
Table 2	Seasonally adjusted values and percentage change of building plans passed at current prices according to type of building	9
Table 3	Actual values and percentage change of building plans passed at constant 2000 prices according to type of building	10
Table 4	Seasonally adjusted values and percentage change of building plans passed at constant 2000 prices according to type of building	11
Table 5	Actual values and percentage change of buildings completed at current prices according to type of building	12
Table 6	Seasonally adjusted values and percentage change of buildings completed at current prices according to type of building	13
Table 7	Actual values and percentage change of buildings completed at constant 2000 prices according to type of building	14
Table 8	Seasonally adjusted values and percentage change of buildings completed at constant 2000 prices according to type of building	15
Table 9	Building plans passed according to type of building: Total RSA	16
Table 10	Building plans passed according to type of building and province: Western Cape	17
Table 11	Building plans passed according to type of building and province: Eastern Cape	18
Table 12	Building plans passed according to type of building and province: Northern Cape	19
Table 13	Building plans passed according to type of building and province: Free State	20
Table 14	Building plans passed according to type of building and province: KwaZulu-Natal	21
Table 15	Building plans passed according to type of building and province: North West	22
Table 16	Building plans passed according to type of building and province: Gauteng	23
Table 17	Building plans passed according to type of building and province: Mpumalanga	24
Table 18	Building plans passed according to type of building and province: Limpopo.....	25
Table 19	Buildings completed according to type of building: Total RSA	26
Table 20	Buildings completed according to type of building and province: Western Cape	27
Table 21	Buildings completed according to type of building and province: Eastern Cape	28
Table 22	Buildings completed according to type of building and province: Northern Cape.....	29
Table 23	Buildings completed according to type of building and province: Free State	30
Table 24	Buildings completed according to type of building and province: KwaZulu-Natal	31
Table 25	Buildings completed according to type of building and province: North West	32
Table 26	Buildings completed according to type of building and province: Gauteng	33
Table 27	Buildings completed according to type of building and province: Mpumalanga	34
Table 28	Buildings completed according to type of building and province: Limpopo.....	35
Table 29	Building plans passed according to type of building and selected urban area: Cape Town	36
Table 30	Building plans passed according to type of building and selected urban area: Port Elizabeth	37
Table 31	Building plans passed according to type of building and selected urban area: Durban	38
Table 32	Building plans passed according to type of building and selected urban area: Witwatersrand	39
Table 33	Building plans passed according to type of building and selected urban area: Pretoria	40
Table 34	Building plans passed according to type of building and selected urban area: Bloemfontein	41
Table 35	Buildings completed according to type of building and selected urban area: Cape Town	42
Table 36	Buildings completed according to type of building and selected urban area: Port Elizabeth	43
Table 37	Buildings completed according to type of building and selected urban area: Durban	44
Table 38	Buildings completed according to type of building and selected urban area: Witwatersrand	45
Table 39	Buildings completed according to type of building and selected urban area: Pretoria	46
Table 40	Buildings completed according to type of building and selected urban area: Bloemfontein	47
Additional information		
	Explanatory notes	48
	Technical notes	50
	Local government institutions covered in the sample survey	
	Table C – Classification of towns and cities according to new municipalities and previous local government institutions by province	51
	Table D – Classification of selected urban areas according to new municipalities and previous local government institutions	63
	Glossary	66
For more information	67

Notes

Forthcoming issues	Issue	Expected release date
	November 2002	15 January 2003
	December 2002	19 February 2003
Purpose of the survey	The Building Statistics Survey is a countrywide survey covering a sample of municipalities in South Africa. The information received is used to estimate key economic statistics used by the private and public sectors. The information is also used to compile estimates of the Gross Domestic Product (GDP). These statistics are also used by government to monitor the Reconstruction and Development Programme (RDP) in South Africa.	
Name change of statistical release	As from the November 2002 publication, which is due to be published on 15 January 2003, the name of the monthly statistical release P5041.1, <i>Building statistics</i> will change to <i>Selected building statistics of the private sector derived from data reported by local government institutions</i> .	
Change in base year of constant prices from 1995 to 2000	Following international practice, the base year of the price index ("lump sum domestic buildings" as published in statistical release P0151 –JBCC Contract Price Adjustment Provision Work Group Indices), which is used to deflate the current prices of building plans passed and buildings completed to constant prices, has been converted to 2000=100 with effect from May 2002. Previously the value of building plans passed and buildings completed was published at constant 1995 prices. It should be borne in mind that the change does not in any way affect the trends.	

Table 1 - Actual values and percentage change of building plans passed at current prices according to type of building

Year ^{1/} and month ^{2/}	Residential buildings		Non-residential buildings		Additions and alterations		Total	
	R'000	Percentage change	R'000	Percentage change	R'000	Percentage change	R'000	Percentage change
2000 Jan	490,776	- 11.3	163,926	- 31.0	365,596	+ 31.8	1,020,298	- 4.5
Feb	784,023	+ 48.3	521,389	+ 32.1	399,280	+ 12.3	1,704,692	+ 33.3
Mar	747,421	+ 12.0	359,267	- 75.3	515,668	+ 8.2	1,622,356	- 37.6
Apr	627,642	+ 18.3	271,151	- 27.6	382,300	+ 15.8	1,281,093	+ 3.7
May	874,847	+ 65.8	573,853	+ 109.3	473,062	+ 17.3	1,921,762	+ 59.5
Jun	853,154	+ 1.8	336,324	- 19.6	532,278	+ 31.8	1,721,756	+ 3.7
Jul	908,061	+ 42.5	484,669	+ 5.2	549,932	+ 30.8	1,942,662	+ 27.9
Aug	929,836	+ 31.1	353,488	- 9.0	492,627	+ 18.5	1,775,951	+ 23.8
Sep	826,851	+ 37.8	354,456	+ 16.0	465,836	- 3.8	1,647,143	+ 18.5
Oct	916,410	+ 37.9	492,884	+ 49.8	539,561	+ 23.5	1,948,855	+ 36.2
Nov	914,346	+ 28.6	493,166	- 29.7	503,659	- 6.2	1,911,171	- 2.0
Dec	606,148	+ 22.7	704,410	+ 212.8	317,835	+ 0.9	1,628,393	+ 57.5
Total	9,479,515	+ 28.4	5,108,983	- 8.2	5,537,634	+ 14.1	20,126,132	+ 13.1
2001 Jan	721,003	+ 46.9	477,489	+ 191.3	352,193	- 3.7	1,550,685	+ 52.0
Feb	826,607	+ 5.4	300,417	- 42.4	474,953	+ 19.0	1,601,977	- 6.0
Mar	929,196	+ 24.3	301,148	- 16.2	436,645	- 15.3	1,666,989	+ 2.8
Apr	738,858	+ 17.7	207,874	- 23.3	377,373	- 1.3	1,324,105	+ 3.4
May	999,426	+ 14.2	289,330	- 49.6	499,673	+ 5.6	1,788,429	- 6.9
Jun	901,450	+ 5.7	299,913	- 10.8	447,228	- 16.0	1,648,591	- 4.2
Jul	891,483	- 1.8	366,953	- 24.3	427,464	- 22.3	1,685,900	- 13.2
Aug	836,033	- 10.1	245,865	- 30.4	482,883	- 2.0	1,564,781	- 11.9
Sep	960,995	+ 16.2	303,367	- 14.4	526,113	+ 12.9	1,790,475	+ 8.7
Oct	1,196,455	+ 30.6	185,828	- 62.3	542,954	+ 0.6	1,925,237	- 1.2
Nov	974,628	+ 6.6	317,506	- 35.6	595,512	+ 18.2	1,887,646	- 1.2
Dec	649,614	+ 7.2	140,365	- 80.1	357,449	+ 12.5	1,147,428	- 29.5
Total	10,625,748	+ 12.1	3,436,055	- 32.7	5,520,440	- 0.3	19,582,243	- 2.7
2002 Jan	777,744	+ 7.9	167,598	- 64.9	399,729	+ 13.5	1,345,071	- 13.3
Feb	1,013,916	+ 22.7	247,016	- 17.8	447,620	- 5.8	1,708,552	+ 6.7
Mar	962,925	+ 3.6	465,942	+ 54.7	421,614	- 3.4	1,850,481	+ 11.0
Apr	1,138,926	+ 54.1	347,885	+ 67.4	519,452	+ 37.6	2,006,263	+ 51.5
May	1,105,380	+ 10.6	437,175	+ 51.1	926,607	+ 85.4	2,469,162	+ 38.1
Jun	1,080,086	+ 19.8	489,168	+ 63.1	538,147	+ 20.3	2,107,401	+ 27.8
Jul	1,218,655	+ 36.7	254,211	- 30.7	662,885	+ 55.1	2,135,751	+ 26.7
Aug	1,127,329	+ 34.8	387,234	+ 57.5	686,825	+ 42.2	2,201,388	+ 40.7
Sep*	1,166,862	+ 21.4	279,042	- 8.0	606,232	+ 15.2	2,052,136	+ 14.6
Oct	1,438,356	+ 20.2	320,271	+ 72.3	742,699	+ 36.8	2,501,326	+ 29.9

^{1/} The annual percentage change is the change in the actual values of building plans passed of the relevant year compared with the actual values of building plans passed of the previous year expressed as a percentage.

^{2/} The monthly percentage change is the change in the actual values of building plans passed of the relevant month compared with the actual values of building plans passed of the same month in the previous year expressed as a percentage.

Table 2 - Seasonally adjusted values and percentage change of building plans passed at current prices according to type of building

Year and month ^{1/}	Residential buildings		Non-residential buildings		Additions and alterations		Total	
	R'000	Percentage change	R'000	Percentage change	R'000	Percentage change	R'000	Percentage change
2000 Jan	632,657	- 9.8	249,412	- 18.1	485,614	+ 15.1	1,367,683	- 4.2
Feb	781,183	+ 23.5	580,797	+ 132.9	446,534	- 8.0	1,808,513	+ 32.2
Mar	698,097	- 10.6	331,076	- 43.0	472,684	+ 5.9	1,501,857	- 17.0
Apr	702,642	+ 0.7	306,184	- 7.5	441,350	- 6.6	1,450,176	- 3.4
May	805,371	+ 14.6	513,438	+ 67.7	451,287	+ 2.3	1,770,095	+ 22.1
Jun	813,661	+ 1.0	296,266	- 42.3	506,979	+ 12.3	1,616,906	- 8.7
Jul	829,632	+ 2.0	399,357	+ 34.8	502,415	- 0.9	1,731,404	+ 7.1
Aug	896,724	+ 8.1	346,902	- 13.1	461,580	- 8.1	1,705,206	- 1.5
Sep	806,616	- 10.0	355,773	+ 2.6	431,149	- 6.6	1,593,538	- 6.5
Oct	768,492	- 4.7	478,314	+ 34.4	472,916	+ 9.7	1,719,723	+ 7.9
Nov	856,701	+ 11.5	400,274	- 16.3	426,176	- 9.9	1,683,151	- 2.1
Dec	857,553	+ 0.1	977,811	+ 144.3	434,194	+ 1.9	2,269,558	+ 34.8
2001 Jan	919,763	+ 7.3	763,069	- 22.0	459,110	+ 5.7	2,141,941	- 5.6
Feb	817,960	- 11.1	345,546	- 54.7	541,718	+ 18.0	1,705,223	- 20.4
Mar	879,160	+ 7.5	266,234	- 23.0	401,768	- 25.8	1,547,162	- 9.3
Apr	844,574	- 3.9	240,069	- 9.8	436,701	+ 8.7	1,521,344	- 1.7
May	906,916	+ 7.4	245,674	+ 2.3	470,734	+ 7.8	1,623,324	+ 6.7
Jun	857,575	- 5.4	261,022	+ 6.2	421,186	- 10.5	1,539,783	- 5.1
Jul	814,966	- 5.0	298,211	+ 14.2	394,647	- 6.3	1,507,824	- 2.1
Aug	807,582	- 0.9	239,651	- 19.6	451,261	+ 14.3	1,498,493	- 0.6
Sep	939,882	+ 16.4	311,383	+ 29.9	493,348	+ 9.3	1,744,613	+ 16.4
Oct	1,004,694	+ 6.9	187,420	- 39.8	474,058	- 3.9	1,666,172	- 4.5
Nov	914,489	- 9.0	256,954	+ 37.1	500,789	+ 5.6	1,672,232	+ 0.4
Dec	913,780	- 0.1	197,031	- 23.3	495,644	- 1.0	1,606,455	- 3.9
2002 Jan	985,890	+ 7.9	274,446	+ 39.3	512,743	+ 3.4	1,773,078	+ 10.4
Feb	993,160	+ 0.7	283,867	+ 3.4	513,809	+ 0.2	1,790,836	+ 1.0
Mar	922,085	- 7.2	405,157	+ 42.7	390,220	- 24.1	1,717,461	- 4.1
Apr	1,318,262	+ 43.0	407,619	+ 0.6	602,257	+ 54.3	2,328,138	+ 35.6
May	990,996	- 24.8	361,638	- 11.3	863,790	+ 43.4	2,216,423	- 4.8
Jun	1,026,854	+ 3.6	428,476	+ 18.5	502,763	- 41.8	1,958,092	- 11.7
Jul	1,118,773	+ 9.0	204,887	- 52.2	617,219	+ 22.8	1,940,879	- 0.9
Aug	1,089,814	- 2.6	378,771	+ 84.9	641,208	+ 3.9	2,109,792	+ 8.7
Sep	1,141,598	+ 4.8	288,239	- 23.9	572,590	- 10.7	2,002,428	- 5.1
Oct	1,211,068	+ 6.1	328,917	+ 14.1	647,861	+ 13.1	2,187,847	+ 9.3

^{1/} The percentage change is the change in the seasonally adjusted values of building plans passed of the relevant month compared with the seasonally adjusted values of building plans passed of the previous month expressed as a percentage.

Table 3 - Actual values and percentage change of building plans passed at constant 2000 prices according to type of building

Year ^{1/} and month ^{2/}	Residential buildings		Non-residential buildings		Additions and alterations		Total	
	R'000	Percentage change	R'000	Percentage change	R'000	Percentage change	R'000	Percentage change
2000 Jan	508,050	- 13.2	169,696	- 32.5	378,464	+ 28.9	1,056,210	- 6.6
Feb	808,271	+ 46.0	537,514	+ 30.1	411,629	+ 10.6	1,757,414	+ 31.2
Mar	765,016	+ 9.7	367,725	- 75.8	527,808	+ 6.0	1,660,549	- 38.8
Apr	636,554	+ 15.4	275,001	- 29.4	387,728	+ 13.0	1,299,283	+ 1.2
May	881,014	+ 60.8	577,898	+ 103.0	476,397	+ 13.8	1,935,309	+ 54.7
Jun	855,721	- 1.2	337,336	- 22.0	533,880	+ 27.8	1,726,937	+ 0.6
Jul	903,543	+ 37.5	482,258	+ 1.5	547,196	+ 26.3	1,932,997	+ 23.5
Aug	917,903	+ 41.0	348,952	- 13.0	486,305	+ 13.4	1,753,160	+ 18.4
Sep	813,029	+ 31.7	348,531	+ 10.9	458,049	- 8.0	1,619,609	+ 13.3
Oct	897,561	+ 31.5	482,746	+ 42.9	528,463	+ 17.9	1,908,770	+ 29.9
Nov	891,175	+ 22.3	480,669	- 33.1	490,896	- 10.8	1,862,740	- 6.7
Dec	589,065	+ 16.7	684,558	+ 197.3	308,878	- 4.1	1,582,501	+ 49.7
Total	9,466,902	+ 23.9	5,092,884	- 11.7	5,535,693	+ 10.2	20,095,479	+ 9.0
2001 Jan	692,606	+ 36.3	458,683	+ 170.3	338,322	- 10.6	1,489,611	+ 41.0
Feb	791,011	- 2.1	287,480	- 46.5	454,500	+ 10.4	1,532,991	- 12.8
Mar	884,107	+ 15.6	286,535	- 22.1	415,457	- 21.3	1,586,099	- 4.5
Apr	699,014	+ 9.8	196,664	- 28.5	357,023	- 7.9	1,252,701	- 3.6
May	939,310	+ 6.6	271,927	- 52.9	469,617	- 1.4	1,680,854	- 13.1
Jun	845,638	- 1.2	281,344	- 16.6	419,538	- 21.4	1,546,520	- 10.4
Jul	831,607	- 8.0	342,307	- 29.0	398,754	- 27.1	1,572,668	- 18.6
Aug	778,429	- 15.2	228,925	- 34.4	449,612	- 7.5	1,456,966	- 16.9
Sep	893,118	+ 9.9	281,940	- 19.1	488,953	+ 6.7	1,664,011	+ 2.7
Oct	1,106,804	+ 23.3	171,904	- 64.4	502,270	- 5.0	1,780,978	- 6.7
Nov	896,622	+ 0.6	292,094	- 39.2	547,849	+ 11.6	1,736,565	- 6.8
Dec	594,885	+ 1.0	128,539	- 81.2	327,334	+ 6.0	1,050,758	- 33.6
Total	9,953,151	+ 5.1	3,228,342	- 36.6	5,169,229	- 6.6	18,350,722	- 8.7
2002 Jan	695,035	+ 0.4	149,775	- 67.3	357,220	+ 5.6	1,202,030	- 19.3
Feb	889,400	+ 12.4	216,681	- 24.6	392,649	- 13.6	1,498,730	- 2.2
Mar	838,055	- 5.2	405,520	+ 41.5	366,940	- 11.7	1,610,515	+ 1.5
Apr	977,619	+ 39.9	298,614	+ 51.8	445,882	+ 24.9	1,722,115	+ 37.5
May	935,178	- 0.4	369,860	+ 36.0	783,931	+ 66.9	2,088,969	+ 24.3
Jun	906,112	+ 7.2	410,376	+ 45.9	451,466	+ 7.6	1,767,954	+ 14.3
Jul	1,012,172	+ 21.7	211,139	- 38.3	550,569	+ 38.1	1,773,880	+ 12.8
Aug	926,318	+ 19.0	318,187	+ 39.0	564,359	+ 25.5	1,808,864	+ 24.2
Sep*	952,540	+ 6.7	227,789	- 19.2	494,883	+ 1.2	1,675,212	+ 0.7
Oct	1,159,030	+ 4.7	258,075	+ 50.1	598,468	+ 19.2	2,015,573	+ 13.2

^{1/} The annual percentage change is the change in the actual values of building plans passed of the relevant year compared with the actual values of building plans passed of the previous year expressed as a percentage.

^{2/} The monthly percentage change is the change in the actual values of building plans passed of the relevant month compared with the actual values of building plans passed of the same month in the previous year expressed as a percentage.

Table 4 - Seasonally adjusted values and percentage change of building plans passed at constant 2000 prices according to type of building

Year and month ^{1/}	Residential buildings		Non-residential buildings		Additions and alterations		Total	
	R'000	Percentage change	R'000	Percentage change	R'000	Percentage change	R'000	Percentage change
2000 Jan	652,613	- 8.6	256,302	- 17.4	500,888	+ 25.5	1,409,803	- 3.1
Feb	804,338	+ 23.2	599,053	+ 133.7	459,786	- 8.2	1,863,177	+ 32.2
Mar	713,021	- 11.4	338,048	- 43.6	482,118	+ 4.9	1,533,187	- 17.7
Apr	713,098	+ 0.0	310,571	- 8.1	447,865	- 7.1	1,471,534	- 4.0
May	814,444	+ 14.2	518,815	+ 67.1	456,136	+ 1.8	1,789,395	+ 21.6
Jun	815,803	+ 0.2	297,511	- 42.7	508,951	+ 11.6	1,622,265	- 9.3
Jul	826,932	+ 1.4	398,209	+ 33.8	500,740	- 1.6	1,725,881	+ 6.4
Aug	886,862	+ 7.2	343,593	- 13.7	456,914	- 8.8	1,687,369	- 2.2
Sep	793,749	- 10.5	351,289	+ 2.2	424,518	- 7.1	1,569,556	- 7.0
Oct	753,243	- 5.1	469,354	+ 33.6	463,601	+ 9.2	1,686,198	+ 7.4
Nov	833,717	+ 10.7	388,013	- 17.3	414,505	- 10.6	1,636,235	- 3.0
Dec	829,587	- 0.5	945,498	+ 143.7	420,188	+ 1.4	2,195,273	+ 34.2
2001 Jan	880,665	+ 6.2	726,909	- 23.1	439,341	+ 4.6	2,046,915	- 6.8
Feb	782,097	- 11.2	330,650	- 54.5	517,670	+ 17.8	1,630,417	- 20.3
Mar	834,789	+ 6.7	252,590	- 23.6	381,102	- 26.4	1,468,481	- 9.9
Apr	799,327	- 4.2	227,175	- 10.1	413,591	+ 8.5	1,440,093	- 1.9
May	856,162	+ 7.1	231,867	+ 2.1	443,977	+ 7.3	1,532,006	+ 6.4
Jun	804,749	- 6.0	245,377	+ 5.8	395,732	- 10.9	1,445,858	- 5.6
Jul	761,639	- 5.4	278,663	+ 13.6	368,912	- 6.8	1,409,215	- 2.5
Aug	753,371	- 1.1	224,012	- 19.6	421,376	+ 14.2	1,398,760	- 0.7
Sep	873,712	+ 16.0	290,650	+ 29.7	458,896	+ 8.9	1,623,257	+ 16.0
Oct	929,911	+ 6.4	173,741	- 40.2	438,807	- 4.4	1,542,459	- 5.0
Nov	839,836	- 9.7	234,940	+ 35.2	459,678	+ 4.8	1,534,455	- 0.5
Dec	832,812	- 0.8	179,475	- 23.6	451,729	- 1.7	1,464,016	- 4.6
2002 Jan	878,047	+ 5.4	242,976	+ 35.4	456,397	+ 1.0	1,577,419	+ 7.7
Feb	870,682	- 0.8	248,962	+ 2.5	449,983	- 1.4	1,569,627	- 0.5
Mar	800,857	- 8.0	351,551	+ 41.2	338,673	- 24.7	1,491,080	- 5.0
Apr	1,132,145	+ 41.4	349,983	- 0.4	517,654	+ 52.8	1,999,782	+ 34.1
May	842,157	- 25.6	307,434	- 12.2	733,256	+ 41.6	1,882,847	- 5.8
Jun	862,139	+ 2.4	360,428	+ 17.2	422,713	- 42.4	1,645,280	- 12.6
Jul	931,054	+ 8.0	170,448	- 52.7	513,843	+ 21.6	1,615,345	- 1.8
Aug	897,186	- 3.6	312,449	+ 83.3	528,419	+ 2.8	1,738,054	+ 7.6
Sep	931,779	+ 3.9	236,278	- 24.4	467,614	- 11.5	1,635,671	- 5.9
Oct	976,088	+ 4.8	265,474	+ 12.4	522,134	+ 11.7	1,763,696	+ 7.8

^{1/} The percentage change is the change in the seasonally adjusted values of building plans passed of the relevant month compared with the seasonally adjusted values of building plans passed of the previous month expressed as a percentage.

Table 5 - Actual values and percentage change of buildings completed at current prices according to type of building

Year ^{1/} and month ^{2/}	Residential buildings		Non-residential buildings		Additions and alterations		Total	
	R'000	Percentage change	R'000	Percentage change	R'000	Percentage change	R'000	Percentage change
2000 Jan	299,212	- 4.7	195,988	- 0.6	183,959	- 4.7	679,159	- 3.5
Feb	353,141	- 11.0	205,549	- 4.3	221,978	- 9.3	780,668	- 8.8
Mar	419,416	- 3.0	212,379	- 13.7	268,745	+ 16.5	900,540	- 1.0
Apr	364,713	- 3.5	224,048	+ 23.4	188,808	- 5.8	777,569	+ 2.3
May	473,124	+ 21.0	390,533	+ 99.6	293,343	+ 64.1	1,157,000	+ 51.2
Jun	362,558	- 13.7	174,728	- 16.2	170,986	+ 11.2	708,272	- 9.5
Jul	407,406	- 15.3	472,668	+ 79.0	220,828	- 18.9	1,100,902	+ 8.2
Aug	449,691	- 2.4	285,994	+ 39.6	211,008	- 17.5	946,693	+ 2.7
Sep	510,979	+ 3.6	270,539	+ 37.2	199,622	- 10.6	981,140	+ 7.4
Oct	462,270	+ 10.2	195,491	- 4.0	238,257	+ 3.8	896,018	+ 5.1
Nov	555,802	+ 20.5	186,442	- 54.5	255,900	+ 21.7	998,144	- 7.7
Dec	383,114	+ 9.6	316,801	+ 74.5	149,622	+ 2.2	849,537	+ 25.4
Total	5,041,426	+ 0.9	3,131,160	+ 15.7	2,603,056	+ 2.5	10,775,642	+ 5.2
2001 Jan	643,047	+ 114.9	238,434	+ 21.7	201,057	+ 9.3	1,082,538	+ 59.4
Feb	428,803	+ 21.4	285,619	+ 39.0	244,636	+ 10.2	959,058	+ 22.9
Mar	489,687	+ 16.8	159,637	- 24.8	286,396	+ 6.6	935,720	+ 3.9
Apr	366,061	+ 0.4	169,796	- 24.2	185,541	- 1.7	721,398	- 7.2
May	447,895	- 5.3	300,533	- 23.0	295,847	+ 0.9	1,044,275	- 9.7
Jun	539,545	+ 48.8	338,853	+ 93.9	294,854	+ 72.4	1,173,252	+ 65.6
Jul	396,717	- 2.6	121,617	- 74.3	232,836	+ 5.4	751,170	- 31.8
Aug	431,845	- 4.0	117,368	- 59.0	214,644	+ 1.7	763,857	- 19.3
Sep	461,515	- 9.7	1,417,979	+ 424.1	169,974	- 14.9	2,049,468	+ 108.9
Oct	667,250	+ 44.3	285,644	+ 46.1	237,138	- 0.5	1,190,032	+ 32.8
Nov	616,443	+ 10.9	211,109	+ 13.2	288,778	+ 12.8	1,116,330	+ 11.8
Dec	469,410	+ 22.5	173,587	- 45.2	124,610	- 16.7	767,607	- 9.6
Total	5,958,218	+ 18.2	3,820,176	+ 22.0	2,776,311	+ 6.7	12,554,705	+ 16.5
2002 Jan	579,544	- 9.9	137,089	- 42.5	174,833	- 13.0	891,466	- 17.7
Feb	487,783	+ 13.8	138,037	- 51.7	198,195	- 19.0	824,015	- 14.1
Mar	699,202	+ 42.8	169,849	+ 6.4	174,052	- 39.2	1,043,103	+ 11.5
Apr	641,454	+ 75.2	248,263	+ 46.2	381,482	+ 105.6	1,271,199	+ 76.2
May	671,871	+ 50.0	293,306	- 2.4	298,168	+ 0.8	1,263,345	+ 21.0
Jun	576,813	+ 6.9	206,136	- 39.2	248,350	- 15.8	1,031,299	- 12.1
Jul	665,914	+ 67.9	250,131	+ 105.7	236,281	+ 1.5	1,152,326	+ 53.4
Aug	732,614	+ 69.6	94,396	- 19.6	225,042	+ 4.8	1,052,052	+ 37.7
Sep*	804,955	+ 74.4	226,372	- 84.0	246,064	+ 44.8	1,277,391	- 37.7
Oct	905,380	+ 35.7	181,127	- 36.6	291,109	+ 22.8	1,377,616	+ 15.8

^{1/} The annual percentage change is the change in the actual values of buildings completed of the relevant year compared with the actual values of buildings completed of the previous year expressed as a percentage.

^{2/} The monthly percentage change is the change in the actual values of buildings completed of the relevant month compared with the actual values of buildings completed of the same month in the previous year expressed as a percentage.

Table 6 - Seasonally adjusted values and percentage change of buildings completed at current prices according to type of building

Year and month ^{1/}	Residential buildings		Non-residential buildings		Additions and alterations		Total	
	R'000	Percentage change	R'000	Percentage change	R'000	Percentage change	R'000	Percentage change
2000 Jan	362,301	- 9.1	244,617	+ 30.3	208,932	- 6.6	815,850	+ 0.7
Feb	393,364	+ 8.6	232,816	- 4.8	207,419	- 0.7	833,598	+ 2.2
Mar	394,260	+ 0.2	260,249	+ 11.8	224,271	+ 8.1	878,780	+ 5.4
Apr	400,923	+ 1.7	255,220	- 1.9	209,514	- 6.6	865,657	- 1.5
May	453,166	+ 13.0	348,392	+ 36.5	258,382	+ 23.3	1,059,940	+ 22.4
Jun	384,093	- 15.2	173,186	- 50.3	180,013	- 30.3	737,292	- 30.4
Jul	397,840	+ 3.6	333,401	+ 92.5	199,299	+ 10.7	930,540	+ 26.2
Aug	442,822	+ 11.3	314,526	- 5.7	210,760	+ 5.8	968,107	+ 4.0
Sep	464,415	+ 4.9	215,264	- 31.6	206,245	- 2.1	885,925	- 8.5
Oct	420,968	- 9.4	181,237	- 15.8	218,869	+ 6.1	821,075	- 7.3
Nov	469,856	+ 11.6	208,211	+ 14.9	244,279	+ 11.6	922,346	+ 12.3
Dec	437,617	- 6.9	346,763	+ 66.5	229,683	- 6.0	1,014,063	+ 9.9
2001 Jan	757,108	+ 73.0	307,351	- 11.4	230,594	+ 0.4	1,295,054	+ 27.7
Feb	477,813	- 36.9	330,903	+ 7.7	234,168	+ 1.5	1,042,885	- 19.5
Mar	450,689	- 5.7	202,014	- 39.0	232,836	- 0.6	885,539	- 15.1
Apr	400,083	- 11.2	192,500	- 4.7	207,180	- 11.0	799,762	- 9.7
May	429,934	+ 7.5	244,758	+ 27.1	251,221	+ 21.3	925,913	+ 15.8
Jun	585,369	+ 36.2	334,127	+ 36.5	311,268	+ 23.9	1,230,764	+ 32.9
Jul	399,701	- 31.7	81,163	- 75.7	215,548	- 30.8	696,413	- 43.4
Aug	426,174	+ 6.6	135,626	+ 67.1	215,572	+ 0.0	777,373	+ 11.6
Sep	418,682	- 1.8	1,115,050	+ 722.2	177,884	- 17.5	1,711,616	+ 120.2
Oct	596,542	+ 42.5	278,119	- 75.1	214,987	+ 20.9	1,089,649	- 36.3
Nov	523,375	- 12.3	242,819	- 12.7	276,692	+ 28.7	1,042,886	- 4.3
Dec	537,647	+ 2.7	195,975	- 19.3	190,771	- 31.1	924,392	- 11.4
2002 Jan	672,427	+ 25.1	176,614	- 9.9	201,296	+ 5.5	1,050,337	+ 13.6
Feb	541,193	- 19.5	162,824	- 7.8	191,290	- 5.0	895,307	- 14.8
Mar	639,558	+ 18.2	215,069	+ 32.1	140,097	- 26.8	994,724	+ 11.1
Apr	699,027	+ 9.3	279,004	+ 29.7	425,730	+ 203.9	1,403,761	+ 41.1
May	638,051	- 8.7	227,305	- 18.5	248,143	- 41.7	1,113,499	- 20.7
Jun	638,023	+ 0.0	206,687	- 9.1	264,176	+ 6.5	1,108,887	- 0.4
Jul	686,751	+ 7.6	161,832	- 21.7	221,737	- 16.1	1,070,320	- 3.5
Aug	719,322	+ 4.7	111,715	- 31.0	226,291	+ 2.1	1,057,327	- 1.2
Sep	735,559	+ 2.3	180,767	+ 61.8	260,466	+ 15.1	1,176,792	+ 11.3
Oct	801,154	+ 8.9	183,039	+ 1.3	262,012	+ 0.6	1,246,205	+ 5.9

^{1/} The percentage change is the change in the seasonally adjusted values of buildings completed of the relevant month compared with the seasonally adjusted values of buildings completed of the previous month expressed as a percentage.

Table 7 - Actual values and percentage change of buildings completed at constant 2000 prices according to type of building

Year ^{1/} and month ^{2/}	Residential buildings		Non-residential buildings		Additions and alterations		Total	
	R'000	Percentage change	R'000	Percentage change	R'000	Percentage change	R'000	Percentage change
2000 Jan	310,456	- 10.1	214,195	- 5.7	194,666	- 10.8	719,317	- 9.0
Feb	365,724	- 28.3	222,215	- 13.2	232,438	- 29.2	820,377	- 24.7
Mar	433,235	- 33.7	227,874	- 23.9	280,820	- 24.7	941,929	- 28.7
Apr	375,641	- 24.1	239,112	+ 3.6	196,266	- 12.8	811,019	- 14.3
May	486,811	- 26.2	415,461	- 3.9	304,614	- 1.9	1,206,886	- 14.6
Jun	371,504	- 31.4	185,683	- 9.6	176,821	+ 14.5	734,008	- 16.3
Jul	421,432	- 31.4	500,178	- 28.2	227,658	- 34.6	1,149,268	- 35.2
Aug	463,689	- 39.6	299,470	- 7.0	217,759	- 29.6	980,918	- 27.6
Sep	523,538	- 36.2	282,695	- 3.1	205,372	- 18.7	1,011,605	- 26.7
Oct	470,304	- 40.4	203,213	- 5.6	244,617	- 20.5	918,134	- 21.1
Nov	561,785	- 29.4	193,605	- 52.9	262,193	- 13.0	1,017,583	- 38.0
Dec	386,117	- 35.5	327,612	+ 6.6	152,988	+ 25.2	866,717	- 0.2
Total	5,170,236	- 3.1	3,311,313	+ 8.4	2,696,212	- 3.1	11,177,761	+ 0.0
2001 Jan	654,850	+ 110.9	245,808	+ 14.8	208,134	+ 6.9	1,108,792	+ 54.1
Feb	427,706	+ 16.9	294,756	+ 32.6	252,202	+ 8.5	974,664	+ 18.8
Mar	487,529	+ 12.5	164,236	- 27.9	293,138	+ 4.4	944,903	+ 0.3
Apr	361,669	- 3.7	174,329	- 27.1	188,175	- 4.1	724,173	- 10.7
May	438,090	- 10.0	307,923	- 25.9	297,933	- 2.2	1,043,946	- 13.5
Jun	528,083	+ 42.1	346,475	+ 86.6	295,741	+ 67.3	1,170,299	+ 59.4
Jul	383,132	- 9.1	125,898	- 74.8	231,678	+ 1.8	740,708	- 35.5
Aug	415,640	- 10.4	120,998	- 59.6	211,889	- 2.7	748,527	- 23.7
Sep	442,133	- 15.5	1,451,360	+ 413.4	167,133	- 18.6	2,060,626	+ 103.7
Oct	638,358	+ 35.7	289,700	+ 42.6	232,261	- 5.1	1,160,319	+ 26.4
Nov	586,177	+ 4.3	212,597	+ 9.8	281,460	+ 7.3	1,080,234	+ 6.2
Dec	443,262	+ 14.8	174,109	- 46.9	121,098	- 20.8	738,469	- 14.8
Total	5,806,629	+ 12.3	3,908,189	+ 18.0	2,780,842	+ 3.1	12,495,660	+ 11.8
2002 Jan	545,960	- 16.6	136,407	- 44.5	167,947	- 19.3	850,314	- 23.3
Feb	458,165	+ 7.1	136,266	- 53.8	189,660	- 24.8	784,091	- 19.6
Mar	656,718	+ 34.7	167,010	+ 1.7	165,606	- 43.5	989,334	+ 4.7
Apr	596,575	+ 65.0	243,157	+ 39.5	360,910	+ 91.8	1,200,642	+ 65.8
May	622,362	+ 42.1	285,873	- 7.2	280,233	- 5.9	1,188,468	+ 13.8
Jun	530,538	+ 0.5	200,327	- 42.2	232,974	- 21.2	963,839	- 17.6
Jul	601,678	+ 57.0	240,280	+ 90.9	220,411	- 4.9	1,062,369	+ 43.4
Aug	655,975	+ 57.8	90,331	- 25.3	209,536	- 1.1	955,842	+ 27.7
Sep	717,245	+ 62.2	215,387	- 85.2	228,684	+ 36.8	1,161,316	- 43.6
Oct	790,164	+ 23.8	171,360	- 40.8	269,296	+ 15.9	1,230,820	+ 6.1

^{1/} The annual percentage change is the change in the actual values of buildings completed of the relevant year compared with the actual values of buildings completed of the previous year expressed as a percentage.

^{2/} The monthly percentage change is the change in the actual values of buildings completed of the relevant month compared with the actual values of buildings completed of the same month in the previous year expressed as a percentage.

Table 8 - Seasonally adjusted values and percentage change of buildings completed at constant 2000 prices according to type of building

Year and month ^{1/}	Residential buildings		Non-residential buildings		Additions and alterations		Total	
	R'000	Percentage change	R'000	Percentage change	R'000	Percentage change	R'000	Percentage change
2000 Jan	376,411	- 9.4	267,745	+ 29.1	220,231	- 7.2	864,386	+ 0.5
Feb	408,499	+ 8.5	252,333	- 5.8	216,969	- 1.5	877,801	+ 1.6
Mar	407,365	- 0.3	279,716	+ 10.9	234,391	+ 8.0	921,472	+ 5.0
Apr	412,667	+ 1.3	272,566	- 2.6	218,303	- 6.9	903,536	- 1.9
May	465,997	+ 12.9	370,514	+ 35.9	269,462	+ 23.4	1,105,973	+ 22.4
Jun	390,126	- 16.3	183,534	- 50.5	181,326	- 32.7	754,986	- 31.7
Jul	410,657	+ 5.3	351,999	+ 91.8	206,032	+ 13.6	968,687	+ 28.3
Aug	456,837	+ 11.2	330,795	- 6.0	217,671	+ 5.6	1,005,303	+ 3.8
Sep	475,529	+ 4.1	224,532	- 32.1	214,287	- 1.6	914,348	- 9.0
Oct	430,687	- 9.4	188,151	- 16.2	225,372	+ 5.2	844,210	- 7.7
Nov	475,988	+ 10.5	216,649	+ 15.1	252,471	+ 12.0	945,109	+ 12.0
Dec	441,150	- 7.3	357,825	+ 65.2	234,420	- 7.1	1,033,395	+ 9.3
2001 Jan	772,030	+ 75.0	317,306	- 11.3	237,677	+ 1.4	1,327,012	+ 28.4
Feb	477,409	- 38.2	342,271	+ 7.9	240,877	+ 1.3	1,060,556	- 20.1
Mar	448,245	- 6.1	208,296	- 39.1	238,208	- 1.1	894,749	- 15.6
Apr	394,875	- 11.9	197,873	- 5.0	211,033	- 11.4	803,781	- 10.2
May	420,096	+ 6.4	250,748	+ 26.7	253,832	+ 20.3	924,675	+ 15.0
Jun	569,112	+ 35.5	340,779	+ 35.9	303,589	+ 19.6	1,213,480	+ 31.2
Jul	385,278	- 32.3	83,869	- 75.4	215,121	- 29.1	684,268	- 43.6
Aug	410,215	+ 6.5	140,497	+ 67.5	213,000	- 1.0	763,713	+ 11.6
Sep	400,807	- 2.3	1,139,085	+ 710.8	176,809	- 17.0	1,716,701	+ 124.8
Oct	574,689	+ 43.4	281,766	- 75.3	211,260	+ 19.5	1,067,716	- 37.8
Nov	498,562	- 13.2	244,913	- 13.1	272,122	+ 28.8	1,015,596	- 4.9
Dec	507,843	+ 1.9	196,037	- 20.0	185,142	- 32.0	889,022	- 12.5
2002 Jan	634,162	+ 24.9	175,927	- 10.3	192,508	+ 4.0	1,002,597	+ 12.8
Feb	508,893	- 19.8	160,993	- 8.5	182,539	- 5.2	852,425	- 15.0
Mar	599,592	+ 17.8	211,936	+ 31.6	133,242	- 27.0	944,769	+ 10.8
Apr	649,231	+ 8.3	273,650	+ 29.1	404,804	+ 203.8	1,327,685	+ 40.5
May	590,250	- 9.1	221,576	- 19.0	233,842	- 42.2	1,045,668	- 21.2
Jun	584,405	- 1.0	200,435	- 9.5	240,579	+ 2.9	1,025,419	- 1.9
Jul	619,177	+ 5.9	155,208	- 22.6	207,512	- 13.7	981,897	- 4.2
Aug	643,758	+ 4.0	107,463	- 30.8	211,011	+ 1.7	962,232	- 2.0
Sep	654,838	+ 1.7	171,611	+ 59.7	244,980	+ 16.1	1,071,429	+ 11.3
Oct	704,246	+ 7.5	172,985	+ 0.8	243,196	- 0.7	1,120,427	+ 4.6

^{1/} The percentage change is the change in the seasonally adjusted values of buildings completed of the relevant month compared with the seasonally adjusted values of buildings completed of the previous month expressed as a percentage.

Table 9 - Building plans passed according to type of building: Total RSA

Type of building	October 2001 *	September 2002 *	October 2002	January 2001 to October 2001	January 2002 to October 2002	Percentage change between January 2001 to October 2001 and January 2002 to October 2002
Residential buildings						
Dwelling-houses smaller than 80 square metres						
Number of dwelling-houses	2,688	4,069	8,403	32,963	38,884	+ 18.0
Total square metres	111,909	160,850	316,044	1,302,796	1,481,277	+ 13.7
Total value at current prices (R'000)	112,638	133,174	215,411	1,243,708	1,383,401	+ 11.2
Dwelling-houses equal to or larger than 80 square metres						
Number of dwelling-houses	2,076	2,098	2,325	18,106	20,604	+ 13.8
Total square metres	456,504	490,278	536,381	3,915,883	4,665,928	+ 19.2
Total value at current prices (R'000)	670,357	754,092	846,678	5,610,617	7,074,746	+ 26.1
Flats and townhouses						
Number of flats and townhouses	1,149	1,223	1,956	10,144	12,140	+ 19.7
Total square metres	137,165	148,546	250,202	1,109,199	1,464,039	+ 32.0
Total value at current prices (R'000)	203,771	232,343	371,702	1,670,010	2,302,350	+ 37.9
Other residential buildings ^{1/}						
Total square metres	15,614	5,309	3,120	118,922	112,202	- 5.7
Total value at current prices (R'000)	209,689	47,253	4,565	477,171	269,682	- 43.5
Total value of residential buildings at current prices (R'000)	1,196,455	1,166,862	1,438,356	9,001,506	11,030,179	+ 22.5
Non-residential buildings						
Office and banking space						
Total square metres	38,449	24,435	37,314	661,082	341,599	- 48.3
Total value at current prices (R'000)	57,290	41,861	72,789	1,119,408	646,333	- 42.3
Shopping space						
Total square metres	17,331	44,163	49,902	354,207	419,567	+ 18.5
Total value at current prices (R'000)	30,350	91,533	70,124	515,833	733,747	+ 42.2
Industrial and warehouse space						
Total square metres	63,128	65,802	92,699	688,061	907,895	+ 31.9
Total value at current prices (R'000)	77,370	93,919	133,616	919,119	1,452,743	+ 58.1
Other non-residential space ^{2/}						
Total square metres	12,583	31,396	28,905	312,790	370,406	+ 18.4
Total value at current prices (R'000)	20,818	51,729	43,742	423,824	562,719	+ 32.8
Total value of non-residential buildings at current prices (R'000)	185,828	279,042	320,271	2,978,184	3,395,542	+ 14.0
Additions and alterations						
Dwelling-houses						
Total square metres	283,134	294,028	325,323	2,487,364	2,781,393	+ 11.8
Total value at current prices (R'000)	372,179	428,439	472,254	3,136,274	3,845,121	+ 22.6
Other buildings ^{3/}						
Total square metres	96,266	92,972	155,748	815,844	1,049,787	+ 28.7
Total value at current prices (R'000)	170,775	177,793	270,445	1,431,205	2,106,689	+ 47.2
Total value of additions and alterations at current prices (R'000)	542,954	606,232	742,699	4,567,479	5,951,810	+ 30.3
Total value of building plans passed at current prices (R'000)	1,925,237	2,052,136	2,501,326	16,547,169	20,377,531	+ 23.1

1/ Other residential buildings include institutions for the disabled, boarding houses, old people's homes, hostels, hotels, motels, guest houses, holiday chalets, entertainment centres, bed-and-breakfast accommodation and casinos.

2/ Other non-residential space includes churches, sport and recreation clubs, schools, crèches, hospitals and all other non-residential space.

3/ Other buildings include additions and alterations to other residential buildings, non-residential buildings and internal alterations.

Table 10 - Building plans passed according to type of building and province: Western Cape

Type of building	October 2001	September 2002	October 2002	January 2001 to October 2001	January 2002 to October 2002	Percentage change between January 2001 to October 2001 and January 2002 to October 2002
Residential buildings						
Dwelling-houses smaller than 80 square metres						
Number of dwelling-houses	654	1,013	1,357	6,654	13,304	+ 99.9
Total square metres	26,472	35,012	43,147	272,648	445,075	+ 63.2
Total value at current prices (R'000)	29,028	41,628	41,199	321,668	498,083	+ 54.8
Dwelling-houses equal to or larger than 80 square metres						
Number of dwelling-houses	695	709	726	5,992	7,301	+ 21.8
Total square metres	140,866	151,646	158,662	1,238,893	1,548,196	+ 25.0
Total value at current prices (R'000)	211,428	241,987	262,793	1,860,146	2,466,163	+ 32.6
Flats and townhouses						
Number of flats and townhouses	494	105	293	2,605	2,606	+ 0.0
Total square metres	41,338	11,867	24,244	243,802	259,020	+ 6.2
Total value at current prices (R'000)	58,072	20,076	41,737	365,067	426,956	+ 17.0
Other residential buildings ^{1/}						
Total square metres	538	4,979	77	37,721	51,831	+ 37.4
Total value at current prices (R'000)	711	46,833	108	84,673	128,894	+ 52.2
Total value of residential buildings at current prices (R'000)	299,239	350,524	345,837	2,631,554	3,520,096	+ 33.8
Non-residential buildings						
Office and banking space						
Total square metres	24,274	5,701	3,395	205,522	72,569	- 64.7
Total value at current prices (R'000)	32,297	14,475	8,558	292,364	124,802	- 57.3
Shopping space						
Total square metres	3,217	750	6,144	144,482	48,098	- 66.7
Total value at current prices (R'000)	6,452	1,173	7,766	198,147	65,200	- 67.1
Industrial and warehouse space						
Total square metres	19,088	23,015	39,155	200,359	213,021	+ 6.3
Total value at current prices (R'000)	20,706	26,441	52,036	200,651	267,836	+ 33.5
Other non-residential space ^{2/}						
Total square metres	3,261	6,394	11,247	95,669	67,280	- 29.7
Total value at current prices (R'000)	4,380	10,552	17,381	109,394	104,056	- 4.9
Total value of non-residential buildings at current prices (R'000)	63,835	52,641	85,741	800,556	561,894	- 29.8
Additions and alterations						
Dwelling-houses						
Total square metres	90,416	85,924	89,993	765,250	867,481	+ 13.4
Total value at current prices (R'000)	116,949	127,043	134,939	976,281	1,189,464	+ 21.8
Other buildings ^{3/}						
Total square metres	24,659	27,153	52,767	218,984	308,253	+ 40.8
Total value at current prices (R'000)	49,758	49,967	97,405	399,315	598,855	+ 50.0
Total value of additions and alterations at current prices (R'000)	166,707	177,010	232,344	1,375,596	1,788,319	+ 30.0
Total value of building plans passed at current prices (R'000)	529,781	580,175	663,922	4,807,706	5,870,309	+ 22.1

1/ Other residential buildings include institutions for the disabled, boarding houses, old people's homes, hostels, hotels, motels, guest houses, holiday chalets, entertainment centres, bed-and-breakfast accommodation and casinos.

2/ Other non-residential space includes churches, sport and recreation clubs, schools, crèches, hospitals and all other non-residential space.

3/ Other buildings include additions and alterations to other residential buildings, non-residential buildings and internal alterations.

Table 11 - Building plans passed according to type of building and province: Eastern Cape

Type of building	October 2001*	September 2002	October 2002	January 2001 to October 2001	January 2002 to October 2002	Percentage change between January 2001 to October 2001 and January 2002 to October 2002
Residential buildings						
Dwelling-houses smaller than 80 square metres						
Number of dwelling-houses	171	253	410	2,252	4,515	+ 100.5
Total square metres	8,170	10,821	17,037	101,042	192,167	+ 90.2
Total value at current prices (R'000)	11,338	8,896	12,699	125,739	224,192	+ 78.3
Dwelling-houses equal to or larger than 80 square metres						
Number of dwelling-houses	106	99	123	1,112	1,106	-0.5
Total square metres	18,242	20,392	22,154	176,682	218,729	+ 23.8
Total value at current prices (R'000)	24,957	34,595	33,267	233,588	316,497	+ 35.5
Flats and townhouses						
Number of flats and townhouses	8	38	31	723	443	-38.7
Total square metres	771	2,087	4,021	39,910	40,166	+ 0.6
Total value at current prices (R'000)	1,039	1,806	6,462	48,092	65,809	+ 36.8
Other residential buildings ^{1/}						
Total square metres	308	0	0	26,393	1,135	-95.7
Total value at current prices (R'000)	317	0	0	77,622	1,654	-97.9
Total value of residential buildings at current prices (R'000)	37,651	45,297	52,428	485,041	608,152	+ 25.4
Non-residential buildings						
Office and banking space						
Total square metres	0	59	2,518	13,652	8,860	-35.1
Total value at current prices (R'000)	0	86	4,295	22,163	13,904	-37.3
Shopping space						
Total square metres	1,219	453	6,739	12,997	26,797	+ 106.2
Total value at current prices (R'000)	2,369	350	9,779	20,476	46,240	+ 125.8
Industrial and warehouse space						
Total square metres	1,488	382	2,626	36,352	44,547	+ 22.5
Total value at current prices (R'000)	1,532	669	4,115	40,332	78,097	+ 93.6
Other non-residential space ^{2/}						
Total square metres	1,085	579	2,731	14,356	27,039	+ 88.3
Total value at current prices (R'000)	1,659	1,351	3,823	25,049	43,731	+ 74.6
Total value of non-residential buildings at current prices (R'000)	5,560	2,456	22,012	108,020	181,972	+ 68.5
Additions and alterations						
Dwelling-houses						
Total square metres	23,465	17,082	21,845	190,286	193,459	+ 1.7
Total value at current prices (R'000)	31,228	33,676	33,879	248,718	280,664	+ 12.8
Other buildings ^{3/}						
Total square metres	22,098	3,960	7,338	107,024	50,152	-53.1
Total value at current prices (R'000)	30,508	8,144	11,143	134,844	86,697	-35.7
Total value of additions and alterations at current prices (R'000)	61,736	41,820	45,022	383,562	367,361	-4.2
Total value of building plans passed at current prices (R'000)	104,947	89,573	119,462	976,623	1,157,485	+ 18.5

1/ Other residential buildings include institutions for the disabled, boarding houses, old people's homes, hostels, hotels, motels, guest houses, holiday chalets, entertainment centres, bed-and-breakfast accommodation and casinos.

2/ Other non-residential space includes churches, sport and recreation clubs, schools, crèches, hospitals and all other non-residential space.

3/ Other buildings include additions and alterations to other residential buildings, non-residential buildings and internal alterations.

Table 12 - Building plans passed according to type of building and province: Northern Cape

Type of building	October 2001	September 2002	October 2002	January 2001 to October 2001	January 2002 to October 2002	Percentage change between January 2001 to October 2001 and January 2002 to October 2002
Residential buildings						
Dwelling-houses smaller than 80 square metres						
Number of dwelling-houses	16	9	3	74	61	- 17.6
Total square metres	871	341	139	4,123	2,778	- 32.6
Total value at current prices (R'000)	1,450	564	227	6,363	4,584	- 28.0
Dwelling-houses equal to or larger than 80 square metres						
Number of dwelling-houses	8	10	7	145	84	- 42.1
Total square metres	1,569	1,934	1,165	25,336	16,727	- 34.0
Total value at current prices (R'000)	2,526	3,099	1,821	35,150	26,134	- 25.7
Flats and townhouses						
Number of flats and townhouses	0	3	1	12	24	+ 100.0
Total square metres	0	524	266	2,085	3,699	+ 77.4
Total value at current prices (R'000)	0	943	479	2,834	6,526	+ 130.3
Other residential buildings ^{1/}						
Total square metres	0	0	0	0	0	..
Total value at current prices (R'000)	0	0	0	0	0	..
Total value of residential buildings at current prices (R'000)	3,976	4,606	2,527	44,347	37,244	- 16.0
Non-residential buildings						
Office and banking space						
Total square metres	0	0	633	191	1,207	+ 531.9
Total value at current prices (R'000)	0	0	1,393	124	2,213	+ 1684.7
Shopping space						
Total square metres	0	0	0	470	1,207	+ 156.8
Total value at current prices (R'000)	0	0	0	807	2,387	+ 195.8
Industrial and warehouse space						
Total square metres	0	500	54	2,336	2,969	+ 27.1
Total value at current prices (R'000)	0	889	27	2,744	4,385	+ 59.8
Other non-residential space ^{2/}						
Total square metres	157	128	851	2,375	3,107	+ 30.8
Total value at current prices (R'000)	345	282	1,872	3,846	6,735	+ 75.1
Total value of non-residential buildings at current prices (R'000)	345	1,171	3,292	7,521	15,720	+ 109.0
Additions and alterations						
Dwelling-houses						
Total square metres	2,821	3,629	3,359	25,190	28,820	+ 14.4
Total value at current prices (R'000)	4,799	6,081	5,108	41,668	48,318	+ 16.0
Other buildings ^{3/}						
Total square metres	589	174	795	8,702	4,949	- 43.1
Total value at current prices (R'000)	2,503	415	1,799	20,726	14,112	- 31.9
Total value of additions and alterations at current prices (R'000)	7,302	6,496	6,907	62,394	62,430	+ 0.1
Total value of building plans passed at current prices (R'000)	11,623	12,273	12,726	114,262	115,394	+ 1.0

1/ Other residential buildings include institutions for the disabled, boarding houses, old people's homes, hostels, hotels, motels, guest houses, holiday chalets, entertainment centres, bed-and-breakfast accommodation and casinos.

2/ Other non-residential space includes churches, sport and recreation clubs, schools, crèches, hospitals and all other non-residential space.

3/ Other buildings include additions and alterations to other residential buildings, non-residential buildings and internal alterations.

Table 13 - Building plans passed according to type of building and province: Free State

Type of building	October 2001*	September 2002	October 2002	January 2001 to October 2001	January 2002 to October 2002	Percentage change between January 2001 to October 2001 and January 2002 to October 2002
Residential buildings						
Dwelling-houses smaller than 80 square metres						
Number of dwelling-houses	484	373	3,073	2,329	5,110	+ 119.4
Total square metres	18,670	15,768	109,002	103,061	196,174	+ 90.3
Total value at current prices (R'000)	9,737	9,152	61,287	63,557	113,634	+ 78.8
Dwelling-houses equal to or larger than 80 square metres						
Number of dwelling-houses	64	83	85	612	790	+ 29.1
Total square metres	12,737	13,894	13,138	96,598	129,121	+ 33.7
Total value at current prices (R'000)	13,111	18,582	17,202	105,435	155,781	+ 47.8
Flats and townhouses						
Number of flats and townhouses	32	1	122	349	585	+ 67.6
Total square metres	3,367	266	8,457	40,865	57,383	+ 40.4
Total value at current prices (R'000)	4,996	195	12,654	59,765	82,300	+ 37.7
Other residential buildings ^{1/}						
Total square metres	192	0	769	6,785	5,227	-23.0
Total value at current prices (R'000)	229	0	1,067	8,421	10,429	+ 23.8
Total value of residential buildings at current prices (R'000)	28,073	27,929	92,210	237,178	362,144	+ 52.7
Non-residential buildings						
Office and banking space						
Total square metres	47	626	420	14,295	13,960	-2.3
Total value at current prices (R'000)	58	900	485	27,483	23,187	-15.6
Shopping space						
Total square metres	1,966	3,767	683	9,167	18,376	+ 100.5
Total value at current prices (R'000)	1,718	4,100	936	10,112	32,844	+ 224.8
Industrial and warehouse space						
Total square metres	1,060	278	1,215	5,810	16,155	+ 178.1
Total value at current prices (R'000)	912	556	1,144	4,567	16,073	+ 251.9
Other non-residential space ^{2/}						
Total square metres	1,075	111	1,618	10,632	13,731	+ 29.1
Total value at current prices (R'000)	754	145	2,028	14,361	17,453	+ 21.5
Total value of non-residential buildings at current prices (R'000)	3,442	5,701	4,593	56,523	89,557	+ 58.4
Additions and alterations						
Dwelling-houses						
Total square metres	8,393	10,202	8,581	76,206	88,278	+ 15.8
Total value at current prices (R'000)	9,101	12,131	10,715	79,928	100,762	+ 26.1
Other buildings ^{3/}						
Total square metres	1,809	838	2,337	15,174	23,485	+ 54.8
Total value at current prices (R'000)	4,288	1,325	2,676	29,905	48,765	+ 63.1
Total value of additions and alterations at current prices (R'000)	13,389	13,456	13,391	109,833	149,527	+ 36.1
Total value of building plans passed at current prices (R'000)	44,904	47,086	110,194	403,534	601,228	+ 49.0

1/ Other residential buildings include institutions for the disabled, boarding houses, old people's homes, hostels, hotels, motels, guest houses, holiday chalets, entertainment centres, bed-and-breakfast accommodation and casinos.

2/ Other non-residential space includes churches, sport and recreation clubs, schools, crèches, hospitals and all other non-residential space.

3/ Other buildings include additions and alterations to other residential buildings, non-residential buildings and internal alterations.

Table 14 - Building plans passed according to type of building and province: KwaZulu-Natal

Type of building	October 2001	September 2002	October 2002	January 2001 to October 2001	January 2002 to October 2002	Percentage change between January 2001 to October 2001 and January 2002 to October 2002
Residential buildings						
Dwelling-houses smaller than 80 square metres						
Number of dwelling-houses	172	148	195	2,087	2,038	- 2.3
Total square metres	6,763	7,394	8,575	90,401	83,538	- 7.6
Total value at current prices (R'000)	7,797	8,434	8,653	88,076	81,225	- 7.8
Dwelling-houses equal to or larger than 80 square metres						
Number of dwelling-houses	160	176	238	1,417	1,620	+ 14.3
Total square metres	31,583	41,787	55,990	302,721	368,870	+ 21.9
Total value at current prices (R'000)	47,102	66,777	94,104	444,319	584,149	+ 31.5
Flats and townhouses						
Number of flats and townhouses	62	114	216	788	911	+ 15.6
Total square metres	6,034	20,627	33,706	106,079	152,133	+ 43.4
Total value at current prices (R'000)	9,647	38,564	64,741	174,691	269,284	+ 54.1
Other residential buildings ^{1/}						
Total square metres	0	330	44	20,202	32,214	+ 59.5
Total value at current prices (R'000)	0	420	44	82,431	34,479	- 58.2
Total value of residential buildings at current prices (R'000)	64,546	114,195	167,542	789,517	969,137	+ 22.8
Non-residential buildings						
Office and banking space						
Total square metres	1,848	298	15,708	128,239	48,996	- 61.8
Total value at current prices (R'000)	4,150	300	33,204	271,501	111,154	- 59.1
Shopping space						
Total square metres	5,416	23,624	4,690	35,197	98,671	+ 180.3
Total value at current prices (R'000)	11,320	61,756	5,813	51,178	245,088	+ 378.9
Industrial and warehouse space						
Total square metres	18,243	2,439	3,309	129,000	126,835	- 1.7
Total value at current prices (R'000)	16,259	5,638	3,262	188,787	254,626	+ 34.9
Other non-residential space ^{2/}						
Total square metres	4,144	5,361	3,118	42,133	80,714	+ 91.6
Total value at current prices (R'000)	9,303	10,228	4,725	57,151	101,391	+ 77.4
Total value of non-residential buildings at current prices (R'000)	41,032	77,922	47,004	568,617	712,259	+ 25.3
Additions and alterations						
Dwelling-houses						
Total square metres	35,358	44,476	49,490	335,511	379,841	+ 13.2
Total value at current prices (R'000)	43,947	53,749	68,311	411,477	497,509	+ 20.9
Other buildings ^{3/}						
Total square metres	13,173	16,505	20,881	150,027	203,395	+ 35.6
Total value at current prices (R'000)	23,551	31,032	40,630	299,302	560,996	+ 87.4
Total value of additions and alterations at current prices (R'000)	67,498	84,781	108,941	710,779	1,058,505	+ 48.9
Total value of building plans passed at current prices (R'000)	173,076	276,898	323,487	2,068,913	2,739,901	+ 32.4

1/ Other residential buildings include institutions for the disabled, boarding houses, old people's homes, hostels, hotels, motels, guest houses, holiday chalets, entertainment centres, bed-and-breakfast accommodation and casinos.

2/ Other non-residential space includes churches, sport and recreation clubs, schools, crèches, hospitals and all other non-residential space.

3/ Other buildings include additions and alterations to other residential buildings, non-residential buildings and internal alterations.

Table 15 - Building plans passed according to type of building and province: North West

Type of building	October 2001*	September 2002	October 2002	January 2001 to October 2001	January 2002 to October 2002	Percentage change between January 2001 to October 2001 and January 2002 to October 2002
Residential buildings						
Dwelling-houses smaller than 80 square metres						
Number of dwelling-houses	102	112	42	4,265	778	- 81.8
Total square metres	5,355	4,158	2,365	150,773	36,162	- 76.0
Total value at current prices (R'000)	4,267	3,357	3,111	86,456	39,809	- 54.0
Dwelling-houses equal to or larger than 80 square metres						
Number of dwelling-houses	99	90	126	732	1,071	+ 46.3
Total square metres	17,745	15,931	24,816	129,673	198,855	+ 53.4
Total value at current prices (R'000)	25,840	20,854	30,264	167,037	249,659	+ 49.5
Flats and townhouses						
Number of flats and townhouses	0	11	133	245	744	+ 203.7
Total square metres	0	1,098	16,601	26,560	57,724	+ 117.3
Total value at current prices (R'000)	0	1,499	24,814	34,840	88,766	+ 154.8
Other residential buildings ^{1/}						
Total square metres	617	0	0	2,606	768	- 70.5
Total value at current prices (R'000)	926	0	0	2,590	781	- 69.8
Total value of residential buildings at current prices (R'000)	31,033	25,710	58,189	290,923	379,015	+ 30.3
Non-residential buildings						
Office and banking space						
Total square metres	0	836	0	3,762	6,710	+ 78.4
Total value at current prices (R'000)	0	836	0	6,061	9,984	+ 64.7
Shopping space						
Total square metres	208	1,263	547	17,394	16,920	- 2.7
Total value at current prices (R'000)	234	2,754	1,250	24,033	27,203	+ 13.2
Industrial and warehouse space						
Total square metres	652	283	0	8,950	8,955	+ 0.1
Total value at current prices (R'000)	1,304	300	0	9,250	12,398	+ 34.0
Other non-residential space ^{2/}						
Total square metres	513	103	227	7,326	16,428	+ 124.2
Total value at current prices (R'000)	794	80	430	7,506	40,294	+ 436.8
Total value of non-residential buildings at current prices (R'000)	2,332	3,970	1,680	46,850	89,879	+ 91.8
Additions and alterations						
Dwelling-houses						
Total square metres	9,982	7,918	12,002	62,340	93,410	+ 49.8
Total value at current prices (R'000)	10,342	9,720	13,768	67,475	113,828	+ 68.7
Other buildings ^{3/}						
Total square metres	1,827	1,751	2,394	18,942	19,429	+ 2.6
Total value at current prices (R'000)	2,001	2,377	3,705	29,137	32,610	+ 11.9
Total value of additions and alterations at current prices (R'000)	12,343	12,097	17,473	96,612	146,438	+ 51.6
Total value of building plans passed at current prices (R'000)	45,708	41,777	77,342	434,385	615,332	+ 41.7

1/ Other residential buildings include institutions for the disabled, boarding houses, old people's homes, hostels, hotels, motels, guest houses, holiday chalets, entertainment centres, bed-and-breakfast accommodation and casinos.

2/ Other non-residential space includes churches, sport and recreation clubs, schools, crèches, hospitals and all other non-residential space.

3/ Other buildings include additions and alterations to other residential buildings, non-residential buildings and internal alterations.

Table 16 - Building plans passed according to type of building and province: Gauteng

Type of building	October 2001 *	September 2002	October 2002	January 2001 to October 2001	January 2002 to October 2002	Percentage change between January 2001 to October 2001 and January 2002 to October 2002
Residential buildings						
Dwelling-houses smaller than 80 square metres						
Number of dwelling-houses	672	2,110	3,144	10,146	11,062	+ 9.0
Total square metres	30,021	84,318	127,424	390,977	435,506	+ 11.4
Total value at current prices (R'000)	38,754	56,975	82,429	429,299	355,920	- 17.1
Dwelling-houses equal to or larger than 80 square metres						
Number of dwelling-houses	784	795	882	6,938	7,053	+ 1.7
Total square metres	199,138	216,779	230,133	1,727,175	1,883,356	+ 9.0
Total value at current prices (R'000)	303,114	329,242	366,344	2,483,893	2,869,487	+ 15.5
Flats and townhouses						
Number of flats and townhouses	506	915	1,135	4,463	6,460	+ 44.7
Total square metres	80,286	107,815	159,554	565,123	846,894	+ 49.9
Total value at current prices (R'000)	122,637	164,098	216,696	871,960	1,298,034	+ 48.9
Other residential buildings ^{1/}						
Total square metres	0	0	0	9,469	3,968	- 58.1
Total value at current prices (R'000)	0	0	0	11,727	6,253	- 46.7
Total value of residential buildings at current prices (R'000)	464,505	550,315	665,469	3,796,879	4,529,694	+ 19.3
Non-residential buildings						
Office and banking space						
Total square metres	12,186	15,857	14,640	290,751	182,578	- 37.2
Total value at current prices (R'000)	20,653	23,869	24,854	492,542	350,243	- 28.9
Shopping space						
Total square metres	2,869	10,040	19,683	116,189	153,334	+ 32.0
Total value at current prices (R'000)	3,975	15,577	34,131	184,159	246,661	+ 33.9
Industrial and warehouse space						
Total square metres	21,693	37,632	43,902	273,426	365,875	+ 33.8
Total value at current prices (R'000)	35,134	57,551	70,615	443,665	567,215	+ 27.8
Other non-residential space ^{2/}						
Total square metres	1,861	16,564	6,961	121,894	138,451	+ 13.6
Total value at current prices (R'000)	2,910	25,919	11,136	184,536	216,649	+ 17.4
Total value of non-residential buildings at current prices (R'000)	62,672	122,916	140,736	1,304,902	1,380,768	+ 5.8
Additions and alterations						
Dwelling-houses						
Total square metres	93,643	105,939	119,530	885,235	952,021	+ 7.5
Total value at current prices (R'000)	133,256	162,213	181,331	1,148,908	1,398,353	+ 21.7
Other buildings ^{3/}						
Total square metres	29,089	41,853	57,767	268,417	400,502	+ 49.2
Total value at current prices (R'000)	53,479	82,688	95,186	461,360	694,635	+ 50.6
Total value of additions and alterations at current prices (R'000)	186,735	244,901	276,517	1,610,268	2,092,988	+ 30.0
Total value of building plans passed at current prices (R'000)	713,912	918,132	1,082,722	6,712,049	8,003,450	+ 19.2

1/ Other residential buildings include institutions for the disabled, boarding houses, old people's homes, hostels, hotels, motels, guest houses, holiday chalets, entertainment centres, bed-and-breakfast accommodation and casinos.

2/ Other non-residential space includes churches, sport and recreation clubs, schools, crèches, hospitals and all other non-residential space.

3/ Other buildings include additions and alterations to other residential buildings, non-residential buildings and internal alterations.

Table 17 - Building plans passed according to type of building and province: Mpumalanga

Type of building	October 2001	September 2002*	October 2002	January 2001 to October 2001	January 2002 to October 2002	Percentage change between January 2001 to October 2001 and January 2002 to October 2002
Residential buildings						
Dwelling-houses smaller than 80 square metres						
Number of dwelling-houses	379	23	157	4,778	1,760	- 63.2
Total square metres	13,317	1,209	6,964	167,498	74,134	- 55.7
Total value at current prices (R'000)	7,089	1,577	3,929	93,210	43,456	- 53.4
Dwelling-houses equal to or larger than 80 square metres						
Number of dwelling-houses	98	82	94	725	1,102	+ 52.0
Total square metres	19,903	17,560	21,271	139,435	208,561	+ 49.6
Total value at current prices (R'000)	23,588	24,284	29,676	177,652	277,687	+ 56.3
Flats and townhouses						
Number of flats and townhouses	43	23	20	905	269	- 70.3
Total square metres	4,843	2,695	2,465	77,673	34,709	- 55.3
Total value at current prices (R'000)	6,644	3,007	2,876	103,748	45,197	- 56.4
Other residential buildings ^{1/}						
Total square metres	0	0	566	1,595	14,071	+ 782.2
Total value at current prices (R'000)	0	0	850	2,105	82,481	+ 3818.3
Total value of residential buildings at current prices (R'000)	37,321	28,868	37,331	376,715	448,821	+ 19.1
Non-residential buildings						
Office and banking space						
Total square metres	0	215	0	3,671	3,325	- 9.4
Total value at current prices (R'000)	0	215	0	5,750	4,494	- 21.8
Shopping space						
Total square metres	1,828	2,463	11,416	4,796	48,707	+915.6
Total value at current prices (R'000)	3,309	3,460	10,449	6,794	56,250	+727.9
Industrial and warehouse space						
Total square metres	604	930	1,831	29,823	30,853	+ 3.5
Total value at current prices (R'000)	1,023	1,395	1,810	26,694	37,305	+ 39.8
Other non-residential space ^{2/}						
Total square metres	450	2,156	2,152	15,234	20,417	+ 34.0
Total value at current prices (R'000)	621	3,172	2,347	17,108	26,252	+ 53.4
Total value of non-residential buildings at current prices (R'000)	4,953	8,242	14,606	56,346	124,301	+ 120.6
Additions and alterations						
Dwelling-houses						
Total square metres	15,177	15,777	15,286	108,148	133,518	+ 23.5
Total value at current prices (R'000)	17,575	19,479	17,386	110,904	155,581	+ 40.3
Other buildings ^{3/}						
Total square metres	1,088	316	8,762	17,689	20,673	+ 16.9
Total value at current prices (R'000)	2,163	903	13,016	27,881	36,275	+ 30.1
Total value of additions and alterations at current prices (R'000)	19,738	20,382	30,402	138,785	191,856	+ 38.2
Total value of building plans passed at current prices (R'000)	62,012	57,492	82,339	571,846	764,978	+ 33.8

1/ Other residential buildings include institutions for the disabled, boarding houses, old people's homes, hostels, hotels, motels, guest houses, holiday chalets, entertainment centres, bed-and-breakfast accommodation and casinos.

2/ Other non-residential space includes churches, sport and recreation clubs, schools, crèches, hospitals and all other non-residential space.

3/ Other buildings include additions and alterations to other residential buildings, non-residential buildings and internal alterations.

Table 18 - Building plans passed according to type of building and province: Limpopo

Type of building	October 2001*	September 2002	October 2002	January 2001 to October 2001	January 2002 to October 2002	Percentage change between January 2001 to October 2001 and January 2002 to October 2002
Residential buildings						
Dwelling-houses smaller than 80 square metres						
Number of dwelling-houses	38	28	22	378	256	-32.3
Total square metres	2,270	1,829	1,391	22,273	15,743	-29.3
Total value at current prices (R'000)	3,178	2,591	1,877	29,340	22,498	-23.3
Dwelling-houses equal to or larger than 80 square metres						
Number of dwelling-houses	62	54	44	433	477	+ 10.2
Total square metres	14,721	10,355	9,052	79,370	93,513	+ 17.8
Total value at current prices (R'000)	18,691	14,672	11,207	103,397	129,189	+ 24.9
Flats and townhouses						
Number of flats and townhouses	4	13	5	54	98	+ 81.5
Total square metres	526	1,567	888	7,102	12,311	+ 73.3
Total value at current prices (R'000)	736	2,155	1,243	9,013	19,478	+ 116.1
Other residential buildings ^{1/}						
Total square metres	13,959	0	1,664	14,151	2,988	-78.9
Total value at current prices (R'000)	207,506	0	2,496	207,602	4,711	-97.7
Total value of residential buildings at current prices (R'000)	230,111	19,418	16,823	349,352	175,876	-49.7
Non-residential buildings						
Office and banking space						
Total square metres	94	843	0	999	3,394	+ 239.7
Total value at current prices (R'000)	132	1,180	0	1,420	6,352	+ 347.3
Shopping space						
Total square metres	608	1,803	0	13,515	7,457	-44.8
Total value at current prices (R'000)	973	2,363	0	20,127	11,874	-41.0
Industrial and warehouse space						
Total square metres	300	343	607	2,005	98,685	+ 4,821.9
Total value at current prices (R'000)	500	480	607	2,429	214,808	+ 8,743.5
Other non-residential space ^{2/}						
Total square metres	37	0	0	3,171	3,239	+ 2.1
Total value at current prices (R'000)	52	0	0	4,873	6,158	+ 26.4
Total value of non-residential buildings at current prices (R'000)	1,657	4,023	607	28,849	239,192	+ 729.1
Additions and alterations						
Dwelling-houses						
Total square metres	3,879	3,081	5,237	39,198	44,565	+ 13.7
Total value at current prices (R'000)	4,982	4,347	6,817	50,915	60,642	+ 19.1
Other buildings ^{3/}						
Total square metres	1,405	422	2,707	10,885	18,949	+ 74.1
Total value at current prices (R'000)	2,524	942	4,885	28,735	33,744	+ 17.4
Total value of additions and alterations at current prices (R'000)	7,506	5,289	11,702	79,650	94,386	+ 18.5
Total value of building plans passed at current prices (R'000)	239,274	28,730	29,132	457,851	509,454	+ 11.3

1/ Other residential buildings include institutions for the disabled, boarding houses, old people's homes, hostels, hotels, motels, guest houses, holiday chalets, entertainment centres, bed-and-breakfast accommodation and casinos.

2/ Other non-residential space includes churches, sport and recreation clubs, schools, crèches, hospitals and all other non-residential space.

3/ Other buildings include additions and alterations to other residential buildings, non-residential buildings and internal alterations.

Table 19 - Buildings completed according to type of building: Total RSA

Type of building	October 2001 *	September 2002*	October 2002	January 2001 to October 2001	January 2002 to October 2002	Percentage change between January 2001 to October 2001 and January 2002 to October 2002
Residential buildings						
Dwelling-houses smaller than 80 square metres						
Number of dwelling-houses	1,884	3,344	5,768	23,454	29,083	+ 24.0
Total square metres	80,596	132,536	236,641	930,290	1,139,443	+ 22.5
Total value at current prices (R'000)	85,051	105,701	190,141	831,614	996,320	+ 19.8
Dwelling-houses equal to or larger than 80 square metres						
Number of dwelling-houses	1,153	1,233	1,568	9,635	11,756	+ 22.0
Total square metres	259,707	267,875	347,382	1,964,719	2,492,798	+ 26.9
Total value at current prices (R'000)	369,637	416,860	520,145	2,713,172	3,747,515	+ 38.1
Flats and townhouses						
Number of flats and townhouses	638	706	1,171	5,527	8,823	+ 59.6
Total square metres	90,418	95,216	127,077	620,338	1,031,825	+ 66.3
Total value at current prices (R'000)	139,048	132,118	189,821	894,835	1,589,884	+ 77.7
Other residential buildings ^{1/}						
Total square metres	19,522	23,522	3,697	111,707	89,405	- 20.0
Total value at current prices (R'000)	73,514	150,276	5,273	432,744	431,811	- 0.2
Total value of residential buildings at current prices (R'000)	667,250	804,955	905,380	4,872,365	6,765,530	+ 38.9
Non-residential buildings						
Office and banking space						
Total square metres	77,933	22,440	31,432	529,463	423,549	- 20.0
Total value at current prices (R'000)	130,385	34,876	55,828	816,688	708,265	- 13.3
Shopping space						
Total square metres	33,778	37,651	23,818	616,282	237,285	- 61.5
Total value at current prices (R'000)	54,414	104,887	33,307	1,681,230	424,214	- 74.8
Industrial and warehouse space						
Total square metres	56,696	45,288	43,138	612,408	442,988	- 27.7
Total value at current prices (R'000)	73,530	65,758	69,544	743,662	568,021	- 23.6
Other non-residential space ^{2/}						
Total square metres	19,093	16,340	14,808	161,956	169,735	+ 4.8
Total value at current prices (R'000)	27,315	20,851	22,448	193,900	244,206	+ 25.9
Total value of non-residential buildings at current prices (R'000)	285,644	226,372	181,127	3,435,480	1,944,706	- 43.4
Additions and alterations						
Dwelling-houses						
Total square metres	141,405	118,141	153,787	1,222,758	1,304,153	+ 6.7
Total value at current prices (R'000)	173,592	171,453	205,703	1,450,034	1,683,336	+ 16.1
Other buildings ^{3/}						
Total square metres	35,970	37,645	44,236	455,324	454,991	- 0.1
Total value at current prices (R'000)	63,546	74,611	85,406	912,889	790,240	- 13.4
Total value of additions and alterations at current prices (R'000)	237,138	246,064	291,109	2,362,923	2,473,576	+ 4.7
Total value of buildings completed at current prices (R'000)	1,190,032	1,277,391	1,377,616	10,670,768	11,183,812	+ 4.8

1/ Other residential buildings include institutions for the disabled, boarding houses, old people's homes, hostels, hotels, motels, guest houses, holiday chalets, entertainment centres, bed-and-breakfast accommodation and casinos.

2/ Other non-residential space includes churches, sport and recreation clubs, schools, crèches, hospitals and all other non-residential space.

3/ Other buildings include additions and alterations to other residential buildings, non-residential buildings and internal alterations.

Table 20 - Buildings completed according to type of building and province: Western Cape

Type of building	October 2001	September 2002	October 2002	January 2001 to October 2001	January 2002 to October 2002	Percentage change between January 2001 to October 2001 and January 2002 to October 2002
Residential buildings						
Dwelling-houses smaller than 80 square metres						
Number of dwelling-houses	323	347	996	4,451	6,165	+ 38.5
Total square metres	13,282	14,770	33,413	183,940	223,023	+ 21.2
Total value at current prices (R'000)	12,488	19,137	32,957	206,527	254,201	+ 23.1
Dwelling-houses equal to or larger than 80 square metres						
Number of dwelling-houses	405	465	563	3,395	4,606	+ 35.7
Total square metres	79,583	88,254	112,933	659,569	918,396	+ 39.2
Total value at current prices (R'000)	126,428	139,426	180,219	952,044	1,433,268	+ 50.5
Flats and townhouses						
Number of flats and townhouses	135	95	193	1,592	1,777	+ 11.6
Total square metres	30,069	10,897	16,948	190,541	201,369	+ 5.7
Total value at current prices (R'000)	48,105	15,967	25,564	263,796	313,019	+ 18.7
Other residential buildings ^{1/}						
Total square metres	4,436	136	2,451	37,714	8,674	- 77.0
Total value at current prices (R'000)	5,375	203	4,010	50,595	14,015	- 72.3
Total value of residential buildings at current prices (R'000)	192,396	174,733	242,750	1,472,962	2,014,503	+ 36.8
Non-residential buildings						
Office and banking space						
Total square metres	14,739	7,109	4,757	118,664	87,275	- 26.5
Total value at current prices (R'000)	25,470	10,284	10,031	191,913	133,405	- 30.5
Shopping space						
Total square metres	975	900	8,139	43,316	77,637	+ 79.2
Total value at current prices (R'000)	1,651	1,620	12,080	54,143	108,423	+ 100.3
Industrial and warehouse space						
Total square metres	6,145	10,615	8,224	136,872	132,477	- 3.2
Total value at current prices (R'000)	7,115	11,894	9,559	149,208	144,332	- 3.3
Other non-residential space ^{2/}						
Total square metres	1,211	4,298	4,885	60,344	68,894	+ 14.2
Total value at current prices (R'000)	1,308	4,598	6,594	55,560	93,565	+ 68.4
Total value of non-residential buildings at current prices (R'000)	35,544	28,396	38,264	450,824	479,725	+ 6.4
Additions and alterations						
Dwelling-houses						
Total square metres	41,202	51,649	41,569	462,414	456,683	- 1.2
Total value at current prices (R'000)	50,833	69,701	54,559	577,659	604,508	+ 4.6
Other buildings ^{3/}						
Total square metres	8,026	21,896	10,396	137,206	177,172	+ 29.1
Total value at current prices (R'000)	19,542	45,543	17,572	325,094	305,895	- 5.9
Total value of additions and alterations at current prices (R'000)	70,375	115,244	72,131	902,753	910,403	+ 0.8
Total value of buildings completed at current prices (R'000)	298,315	318,373	353,145	2,826,539	3,404,631	+ 20.5

1/ Other residential buildings include institutions for the disabled, boarding houses, old people's homes, hostels, hotels, motels, guest houses, holiday chalets, entertainment centres, bed-and-breakfast accommodation and casinos.

2/ Other non-residential space includes churches, sport and recreation clubs, schools, crèches, hospitals and all other non-residential space.

3/ Other buildings include additions and alterations to other residential buildings, non-residential buildings and internal alterations.

Table 21 - Buildings completed according to type of building and province: Eastern Cape

Type of building	October 2001	September 2002	October 2002	January 2001 to October 2001	January 2002 to October 2002	Percentage change between January 2001 to October 2001 and January 2002 to October 2002
Residential buildings						
Dwelling-houses smaller than 80 square metres						
Number of dwelling-houses	182	194	732	2,637	2,938	+ 11.4
Total square metres	7,830	8,078	38,881	113,386	133,937	+ 18.1
Total value at current prices (R'000)	9,742	9,298	45,053	110,106	166,005	+ 50.8
Dwelling-houses equal to or larger than 80 square metres						
Number of dwelling-houses	80	55	26	823	581	- 29.4
Total square metres	18,153	11,740	4,052	119,248	96,490	- 19.1
Total value at current prices (R'000)	19,518	19,104	5,159	146,871	133,806	- 8.9
Flats and townhouses						
Number of flats and townhouses	34	23	6	204	351	+ 72.1
Total square metres	6,349	2,403	1,802	23,513	22,046	- 6.2
Total value at current prices (R'000)	7,175	3,468	2,952	26,517	32,180	+ 21.4
Other residential buildings ^{1/}						
Total square metres	5,820	0	0	12,813	15,865	+ 23.8
Total value at current prices (R'000)	50,000	0	0	60,955	26,589	- 56.4
Total value of residential buildings at current prices (R'000)	86,435	31,870	53,164	344,449	358,580	+ 4.1
Non-residential buildings						
Office and banking space						
Total square metres	857	0	316	28,201	1,760	-93.8
Total value at current prices (R'000)	2,130	0	348	32,896	3,234	-90.2
Shopping space						
Total square metres	5,580	665	1,203	33,450	4,647	- 86.1
Total value at current prices (R'000)	7,246	1,383	2,041	42,931	6,944	- 83.8
Industrial and warehouse space						
Total square metres	245	15,855	4,092	109,134	31,186	- 71.4
Total value at current prices (R'000)	159	23,437	6,492	112,690	40,411	- 64.1
Other non-residential space ^{2/}						
Total square metres	2,197	0	724	21,896	3,594	-83.6
Total value at current prices (R'000)	3,504	0	960	28,664	4,420	-84.6
Total value of non-residential buildings at current prices (R'000)	13,039	24,820	9,841	217,181	55,009	- 74.7
Additions and alterations						
Dwelling-houses						
Total square metres	10,454	4,323	11,575	89,952	89,013	- 1.0
Total value at current prices (R'000)	13,244	5,848	15,254	106,301	112,245	+ 5.6
Other buildings ^{3/}						
Total square metres	2,038	2,849	10,909	44,928	50,896	+ 13.3
Total value at current prices (R'000)	4,300	5,158	16,327	62,289	68,997	+ 10.8
Total value of additions and alterations at current prices (R'000)	17,544	11,006	31,581	168,590	181,242	+ 7.5
Total value of buildings completed at current prices (R'000)	117,018	67,696	94,586	730,220	594,831	- 18.5

1/ Other residential buildings include institutions for the disabled, boarding houses, old people's homes, hostels, hotels, motels, guest houses, holiday chalets, entertainment centres, bed-and-breakfast accommodation and casinos.

2/ Other non-residential space includes churches, sport and recreation clubs, schools, crèches, hospitals and all other non-residential space.

3/ Other buildings include additions and alterations to other residential buildings, non-residential buildings and internal alterations.

Table 22 - Buildings completed according to type of building and province: Northern Cape

Type of building	October 2001*	September 2002	October 2002	January 2001 to October 2001	January 2002 to October 2002	Percentage change between January 2001 to October 2001 and January 2002 to October 2002
Residential buildings						
Dwelling-houses smaller than 80 square metres						
Number of dwelling-houses	17	7	25	124	95	- 23.4
Total square metres	620	274	871	6,037	4,115	- 31.8
Total value at current prices (R'000)	856	237	526	8,870	4,593	- 48.2
Dwelling-houses equal to or larger than 80 square metres						
Number of dwelling-houses	3	8	1	154	46	- 70.1
Total square metres	402	1,055	333	23,301	7,482	- 67.9
Total value at current prices (R'000)	724	1,402	599	32,629	10,744	- 67.1
Flats and townhouses						
Number of flats and townhouses	41	4	2	79	34	- 57.0
Total square metres	1,979	828	310	5,943	5,499	- 7.5
Total value at current prices (R'000)	2,974	1,372	558	8,670	9,315	+ 7.4
Other residential buildings ^{1/}						
Total square metres	0	0	0	346	0	..
Total value at current prices (R'000)	0	0	0	277	0	..
Total value of residential buildings at current prices (R'000)	4,554	3,011	1,683	50,446	24,652	- 51.1
Non-residential buildings						
Office and banking space						
Total square metres	0	0	0	7,105	0	..
Total value at current prices (R'000)	0	0	0	15,631	0	..
Shopping space						
Total square metres	3,483	0	0	8,366	784	-90.6
Total value at current prices (R'000)	5,225	0	0	12,556	1,098	- 91.3
Industrial and warehouse space						
Total square metres	0	549	0	854	1,572	+ 84.1
Total value at current prices (R'000)	0	1,098	0	691	2,327	+ 236.8
Other non-residential space ^{2/}						
Total square metres	866	0	0	1,822	1,001	- 45.1
Total value at current prices (R'000)	0	0	0	3,198	1,309	- 59.1
Total value of non-residential buildings at current prices (R'000)	6,698	1,098	0	32,076	4,734	- 85.2
Additions and alterations						
Dwelling-houses						
Total square metres	1,774	2,685	2,922	17,640	23,601	+ 33.8
Total value at current prices (R'000)	3,184	3,968	5,193	29,239	34,574	+ 18.2
Other buildings ^{3/}						
Total square metres	153	92	1,121	5,388	4,270	- 20.7
Total value at current prices (R'000)	252	308	2,333	12,921	11,173	- 13.5
Total value of additions and alterations at current prices (R'000)	3,436	4,276	7,526	42,160	45,747	+ 8.5
Total value of buildings completed at current prices (R'000)	14,688	8,385	9,209	124,682	75,133	-39.7

1/ Other residential buildings include institutions for the disabled, boarding houses, old people's homes, hostels, hotels, motels, guest houses, holiday chalets, entertainment centres, bed-and-breakfast accommodation and casinos.

2/ Other non-residential space includes churches, sport and recreation clubs, schools, crèches, hospitals and all other non-residential space.

3/ Other buildings include additions and alterations to other residential buildings, non-residential buildings and internal alterations.

Table 23 - Buildings completed according to type of building and province: Free State

Type of building	October 2001	September 2002	October 2002	January 2001 to October 2001	January 2002 to October 2002	Percentage change between January 2001 to October 2001 and January 2002 to October 2002
Residential buildings						
Dwelling-houses smaller than 80 square metres						
Number of dwelling-houses	451	164	228	1,827	2,654	+ 45.3
Total square metres	17,264	7,315	10,341	75,658	115,622	+ 52.8
Total value at current prices (R'000)	8,515	3,174	6,455	41,689	63,808	+ 53.1
Dwelling-houses equal to or larger than 80 square metres						
Number of dwelling-houses	25	34	59	286	321	+ 12.2
Total square metres	4,244	5,959	8,285	50,678	53,013	+ 4.6
Total value at current prices (R'000)	5,222	7,333	9,494	59,874	63,883	+ 6.7
Flats and townhouses						
Number of flats and townhouses	10	2	23	157	322	+ 105.1
Total square metres	1,430	295	1,696	14,781	36,552	+ 147.3
Total value at current prices (R'000)	2,145	500	2,280	19,926	52,271	+ 162.3
Other residential buildings ^{1/}						
Total square metres	0	0	0	464	3,466	+ 647.0
Total value at current prices (R'000)	0	0	0	581	3,474	+ 497.9
Total value of residential buildings at current prices (R'000)	15,882	11,007	18,229	122,070	183,436	+ 50.3
Non-residential buildings						
Office and banking space						
Total square metres	0	0	0	17,195	5,104	-70.3
Total value at current prices (R'000)	0	0	0	32,203	8,728	-72.9
Shopping space						
Total square metres	0	1,815	182	5,702	3,938	-30.9
Total value at current prices (R'000)	0	1,698	235	7,058	5,153	-27.0
Industrial and warehouse space						
Total square metres	1,041	0	0	14,663	5,233	-64.3
Total value at current prices (R'000)	543	0	0	13,403	3,904	-70.9
Other non-residential space ^{2/}						
Total square metres	413	3,333	1,273	12,422	14,809	+ 19.2
Total value at current prices (R'000)	434	4,285	2,033	20,621	32,639	+ 58.3
Total value of non-residential buildings at current prices (R'000)	977	5,983	2,268	73,285	50,424	-31.2
Additions and alterations						
Dwelling-houses						
Total square metres	5,424	5,810	5,510	46,642	65,289	+ 40.0
Total value at current prices (R'000)	5,880	5,667	5,816	48,644	70,593	+ 45.1
Other buildings ^{3/}						
Total square metres	3,175	2,253	3,029	28,537	16,910	-40.7
Total value at current prices (R'000)	6,859	2,593	8,842	110,702	36,947	-66.6
Total value of additions and alterations at current prices (R'000)	12,739	8,260	14,658	159,346	107,540	-32.5
Total value of buildings completed at current prices (R'000)	29,598	25,250	35,155	354,701	341,400	-3.7

1/ Other residential buildings include institutions for the disabled, boarding houses, old people's homes, hostels, hotels, motels, guest houses, holiday chalets, entertainment centres, bed-and-breakfast accommodation and casinos.

2/ Other non-residential space includes churches, sport and recreation clubs, schools, crèches, hospitals and all other non-residential space.

3/ Other buildings include additions and alterations to other residential buildings, non-residential buildings and internal alterations.

Table 24 - Buildings completed according to type of building and province: KwaZulu-Natal

Type of building	October 2001	September 2002	October 2002	January 2001 to October 2001	January 2002 to October 2002	Percentage change between January 2001 to October 2001 and January 2002 to October 2002
Residential buildings						
Dwelling-houses smaller than 80 square metres						
Number of dwelling-houses	209	139	188	2,064	1,959	-5.1
Total square metres	8,207	6,384	7,949	90,464	80,924	-10.5
Total value at current prices (R'000)	8,660	6,839	7,761	90,947	80,565	-11.4
Dwelling-houses equal to or larger than 80 square metres						
Number of dwelling-houses	153	111	128	1,365	1,158	-15.2
Total square metres	39,589	23,377	27,878	295,959	234,483	-20.8
Total value at current prices (R'000)	45,764	34,102	40,246	399,738	335,191	-16.1
Flats and townhouses						
Number of flats and townhouses	95	41	37	682	601	-11.9
Total square metres	13,603	6,777	8,147	87,086	85,229	-2.1
Total value at current prices (R'000)	19,240	12,993	15,151	122,974	151,946	+ 23.6
Other residential buildings ^{1/}						
Total square metres	422	17,825	1,246	9,152	26,336	+ 187.8
Total value at current prices (R'000)	450	80,000	1,263	40,990	88,258	+ 115.3
Total value of residential buildings at current prices (R'000)	74,114	133,934	64,421	654,649	655,960	+ 0.2
Non-residential buildings						
Office and banking space						
Total square metres	26,045	1,401	1,022	73,111	81,985	+ 12.1
Total value at current prices (R'000)	52,779	2,790	1,107	127,091	184,507	+ 45.2
Shopping space						
Total square metres	10,576	28,042	5,851	361,025	75,837	-79.0
Total value at current prices (R'000)	20,721	87,860	5,167	1,270,337	177,388	-86.0
Industrial and warehouse space						
Total square metres	20,837	10,696	8,900	150,081	147,111	-2.0
Total value at current prices (R'000)	17,926	18,441	17,227	163,040	188,583	+ 15.7
Other non-residential space ^{2/}						
Total square metres	7,447	2,342	2,692	26,226	25,796	-1.6
Total value at current prices (R'000)	9,609	2,643	4,017	31,370	38,225	+ 21.9
Total value of non-residential buildings at current prices (R'000)	101,035	111,734	27,518	1,591,838	588,703	-63.0
Additions and alterations						
Dwelling-houses						
Total square metres	26,070	27,193	38,020	286,495	261,684	-8.7
Total value at current prices (R'000)	30,696	48,470	46,706	320,275	316,666	-1.1
Other buildings ^{3/}						
Total square metres	9,667	3,183	6,014	97,004	81,455	-16.0
Total value at current prices (R'000)	15,597	10,674	15,038	176,969	162,276	-8.3
Total value of additions and alterations at current prices (R'000)	46,293	59,144	61,744	497,244	478,942	-3.7
Total value of buildings completed at current prices (R'000)	221,442	304,812	153,683	2,743,731	1,723,605	-37.2

1/ Other residential buildings include institutions for the disabled, boarding houses, old people's homes, hostels, hotels, motels, guest houses, holiday chalets, entertainment centres, bed-and-breakfast accommodation and casinos.

2/ Other non-residential space includes churches, sport and recreation clubs, schools, crèches, hospitals and all other non-residential space.

3/ Other buildings include additions and alterations to other residential buildings, non-residential buildings and internal alterations.

Table 25 - Buildings completed according to type of building and province: North West

Type of building	October 2001	September 2002	October 2002	January 2001 to October 2001	January 2002 to October 2002	Percentage change between January 2001 to October 2001 and January 2002 to October 2002
Residential buildings						
Dwelling-houses smaller than 80 square metres						
Number of dwelling-houses	53	47	40	2,192	1,723	- 21.4
Total square metres	2,508	1,839	1,628	83,405	58,879	- 29.4
Total value at current prices (R'000)	3,246	1,501	1,492	54,586	31,350	- 42.6
Dwelling-houses equal to or larger than 80 square metres						
Number of dwelling-houses	58	75	82	444	655	+ 47.5
Total square metres	10,549	12,875	14,859	84,520	117,960	+ 39.6
Total value at current prices (R'000)	13,973	16,642	17,931	108,396	168,223	+ 55.2
Flats and townhouses						
Number of flats and townhouses	55	32	134	159	536	+ 237.1
Total square metres	2,825	3,750	13,419	13,107	46,755	+ 256.7
Total value at current prices (R'000)	3,520	3,000	17,881	15,549	75,483	+ 385.5
Other residential buildings ^{1/}						
Total square metres	0	0	0	3,684	2,090	- 43.3
Total value at current prices (R'000)	0	0	0	4,162	2,483	- 40.3
Total value of residential buildings at current prices (R'000)	20,739	21,143	37,304	182,693	277,539	+ 51.9
Non-residential buildings						
Office and banking space						
Total square metres	0	1,020	118	1,852	4,881	+ 163.6
Total value at current prices (R'000)	0	2,000	142	2,932	10,282	+ 250.7
Shopping space						
Total square metres	0	0	733	7,202	5,917	- 17.8
Total value at current prices (R'000)	0	0	733	10,897	6,586	- 39.6
Industrial and warehouse space						
Total square metres	937	42	542	8,198	5,795	- 29.3
Total value at current prices (R'000)	600	32	600	7,964	6,089	- 23.5
Other non-residential space ^{2/}						
Total square metres	0	304	684	7,136	4,979	- 30.2
Total value at current prices (R'000)	0	368	1,000	8,532	7,567	- 11.3
Total value of non-residential buildings at current prices (R'000)	600	2,400	2,475	30,325	30,524	+ 0.7
Additions and alterations						
Dwelling-houses						
Total square metres	5,498	2,062	3,635	39,995	35,113	- 12.2
Total value at current prices (R'000)	5,049	2,220	4,358	37,432	36,368	- 2.8
Other buildings ^{3/}						
Total square metres	280	157	959	17,436	10,058	- 42.3
Total value at current prices (R'000)	214	310	2,579	26,897	17,774	- 33.9
Total value of additions and alterations at current prices (R'000)	5,263	2,530	6,937	64,329	54,142	- 15.8
Total value of buildings completed at current prices (R'000)	26,602	26,073	46,716	277,347	362,205	+ 30.6

1/ Other residential buildings include institutions for the disabled, boarding houses, old people's homes, hostels, hotels, motels, guest houses, holiday chalets, entertainment centres, bed-and-breakfast accommodation and casinos.

2/ Other non-residential space includes churches, sport and recreation clubs, schools, crèches, hospitals and all other non-residential space.

3/ Other buildings include additions and alterations to other residential buildings, non-residential buildings and internal alterations.

Table 26 - Buildings completed according to type of building and province: Gauteng

Type of building	October 2001*	September 2002*	October 2002	January 2001 to October 2001	January 2002 to October 2002	Percentage change between January 2001 to October 2001 and January 2002 to October 2002
Residential buildings						
Dwelling-houses smaller than 80 square metres						
Number of dwelling-houses	475	2,286	3,334	7,040	11,420	+ 62.2
Total square metres	24,031	86,762	134,015	263,703	436,230	+ 65.4
Total value at current prices (R'000)	37,165	61,366	89,994	243,422	341,590	+ 40.3
Dwelling-houses equal to or larger than 80 square metres						
Number of dwelling-houses	391	433	667	2,724	3,931	+ 44.3
Total square metres	101,085	114,417	170,738	653,962	982,743	+ 50.3
Total value at current prices (R'000)	151,333	185,552	256,044	928,722	1,497,074	+ 61.2
Flats and townhouses						
Number of flats and townhouses	267	477	750	2,507	4,983	+ 98.8
Total square metres	34,040	66,565	81,372	266,805	610,840	+ 128.9
Total value at current prices (R'000)	55,717	90,643	121,495	418,914	926,828	+ 121.2
Other residential buildings ^{1/}						
Total square metres	8,844	72	0	44,534	12,050	-72.9
Total value at current prices (R'000)	17,689	73	0	271,584	17,406	-93.6
Total value of residential buildings at current prices (R'000)	261,904	337,634	467,533	1,862,642	2,782,898	+ 49.4
Non-residential buildings						
Office and banking space						
Total square metres	36,263	10,401	25,219	273,459	239,159	-12.5
Total value at current prices (R'000)	49,977	15,602	44,200	393,426	362,714	-7.8
Shopping space						
Total square metres	12,233	6,229	5,877	124,254	51,989	-58.2
Total value at current prices (R'000)	17,771	12,326	10,251	254,161	92,000	-63.8
Industrial and warehouse space						
Total square metres	27,491	5,839	19,197	189,030	112,409	-40.5
Total value at current prices (R'000)	47,187	8,373	32,766	293,208	173,802	-40.7
Other non-residential space ^{2/}						
Total square metres	6,959	5,599	4,019	28,841	35,261	+ 22.3
Total value at current prices (R'000)	10,987	8,400	7,457	42,068	52,666	+ 25.2
Total value of non-residential buildings at current prices (R'000)	125,922	44,701	94,674	982,863	681,182	-30.7
Additions and alterations						
Dwelling-houses						
Total square metres	46,266	21,442	43,868	236,565	330,849	+ 39.9
Total value at current prices (R'000)	59,896	32,049	66,642	290,612	464,145	+ 59.7
Other buildings ^{3/}						
Total square metres	11,267	6,710	10,659	105,731	104,779	-0.9
Total value at current prices (R'000)	15,392	9,458	20,654	171,077	172,255	+ 0.7
Total value of additions and alterations at current prices (R'000)	75,288	41,507	87,296	461,689	636,400	+ 37.8
Total value of buildings completed at current prices (R'000)	463,114	423,842	649,503	3,307,194	4,100,480	+ 24.0

1/ Other residential buildings include institutions for the disabled, boarding houses, old people's homes, hostels, hotels, motels, guest houses, holiday chalets, entertainment centres, bed-and-breakfast accommodation and casinos.

2/ Other non-residential space includes churches, sport and recreation clubs, schools, crèches, hospitals and all other non-residential space.

3/ Other buildings include additions and alterations to other residential buildings, non-residential buildings and internal alterations.

Table 27 - Buildings completed according to type of building and province: Mpumalanga

Type of building	October 2001	September 2002	October 2002	January 2001 to October 2001	January 2002 to October 2002	Percentage change between January 2001 to October 2001 and January 2002 to October 2002
Residential buildings						
Dwelling-houses smaller than 80 square metres						
Number of dwelling-houses	160	145	200	2,715	1,956	-28.0
Total square metres	6,091	6,180	7,923	93,163	76,310	-18.1
Total value at current prices (R'000)	3,311	2,794	3,651	54,515	38,752	-28.9
Dwelling-houses equal to or larger than 80 square metres						
Number of dwelling-houses	25	39	28	293	317	+ 8.2
Total square metres	4,327	7,460	5,871	53,511	57,620	+ 7.7
Total value at current prices (R'000)	4,349	9,283	7,164	53,871	70,032	+ 30.0
Flats and townhouses						
Number of flats and townhouses	0	31	20	115	195	+ 69.6
Total square metres	0	3,446	2,835	13,191	20,945	+ 58.8
Total value at current prices (R'000)	0	3,818	3,166	12,251	25,077	+ 104.7
Other residential buildings ^{1/}						
Total square metres	0	5,489	0	0	6,965	..
Total value at current prices (R'000)	0	70,000	0	0	72,080	..
Total value of residential buildings at current prices (R'000)	7,660	85,895	13,981	120,637	205,941	+ 70.7
Non-residential buildings						
Office and banking space						
Total square metres	0	2,509	0	8,878	2,969	-66.6
Total value at current prices (R'000)	0	4,200	0	19,470	4,763	-75.5
Shopping space						
Total square metres	931	0	1,833	27,519	8,005	-70.9
Total value at current prices (R'000)	1,800	0	2,800	20,970	14,642	-30.2
Industrial and warehouse space						
Total square metres	0	1,143	2,183	2,808	6,154	+ 119.2
Total value at current prices (R'000)	0	1,723	2,900	2,382	7,194	+ 202.0
Other non-residential space ^{2/}						
Total square metres	0	464	531	2,845	14,854	+ 422.1
Total value at current prices (R'000)	0	557	387	3,161	13,101	+ 314.5
Total value of non-residential buildings at current prices (R'000)	1,800	6,480	6,087	45,983	39,700	-13.7
Additions and alterations						
Dwelling-houses						
Total square metres	3,844	2,465	5,617	34,928	36,899	+ 5.6
Total value at current prices (R'000)	3,721	2,825	5,853	29,977	36,891	+ 23.1
Other buildings ^{3/}						
Total square metres	1,074	505	0	15,777	6,873	-56.4
Total value at current prices (R'000)	1,016	567	46	20,697	10,767	-48.0
Total value of additions and alterations at current prices (R'000)	4,737	3,392	5,899	50,674	47,658	-6.0
Total value of buildings completed at current prices (R'000)	14,197	95,767	25,967	217,294	293,299	+ 35.0

1/ Other residential buildings include institutions for the disabled, boarding houses, old people's homes, hostels, hotels, motels, guest houses, holiday chalets, entertainment centres, bed-and-breakfast accommodation and casinos.

2/ Other non-residential space includes churches, sport and recreation clubs, schools, crèches, hospitals and all other non-residential space.

3/ Other buildings include additions and alterations to other residential buildings, non-residential buildings and internal alterations.

Table 28 - Buildings completed according to type of building and province: Limpopo

Type of building	October 2001	September 2002	October 2002	January 2001 to October 2001	January 2002 to October 2002	Percentage change between January 2001 to October 2001 and January 2002 to October 2002
Residential buildings						
Dwelling-houses smaller than 80 square metres						
Number of dwelling-houses	14	15	25	404	173	-57.2
Total square metres	763	934	1,620	20,534	10,403	-49.3
Total value at current prices (R'000)	1,068	1,355	2,252	20,952	15,456	-26.2
Dwelling-houses equal to or larger than 80 square metres						
Number of dwelling-houses	13	13	14	151	141	-6.6
Total square metres	1,775	2,738	2,433	23,971	24,611	+ 2.7
Total value at current prices (R'000)	2,326	4,016	3,289	31,027	35,294	+ 13.8
Flats and townhouses						
Number of flats and townhouses	1	1	6	32	24	-25.0
Total square metres	123	255	548	5,371	2,590	-51.8
Total value at current prices (R'000)	172	357	774	6,238	3,765	-39.6
Other residential buildings ^{1/}						
Total square metres	0	0	0	3,000	13,959	+ 365.3
Total value at current prices (R'000)	0	0	0	3,600	207,506	+ 5,664.1
Total value of residential buildings at current prices (R'000)	3,566	5,728	6,315	61,817	262,021	+ 323.9
Non-residential buildings						
Office and banking space						
Total square metres	29	0	0	998	416	-58.3
Total value at current prices (R'000)	29	0	0	1,126	632	-43.9
Shopping space						
Total square metres	0	0	0	5,448	8,531	+ 56.6
Total value at current prices (R'000)	0	0	0	8,177	11,980	+ 46.5
Industrial and warehouse space						
Total square metres	0	549	0	768	1,051	+ 36.8
Total value at current prices (R'000)	0	760	0	1,076	1,379	+ 28.2
Other non-residential space ^{2/}						
Total square metres	0	0	0	424	547	+ 29.0
Total value at current prices (R'000)	0	0	0	726	714	-1.7
Total value of non-residential buildings at current prices (R'000)	29	760	0	11,105	14,705	+ 32.4
Additions and alterations						
Dwelling-houses						
Total square metres	873	512	1,071	8,127	5,022	-38.2
Total value at current prices (R'000)	1,089	705	1,322	9,895	7,346	-25.8
Other buildings ^{3/}						
Total square metres	290	0	1,149	3,317	2,578	-22.3
Total value at current prices (R'000)	374	0	2,015	6,243	4,156	-33.4
Total value of additions and alterations at current prices (R'000)	1,463	705	3,337	16,138	11,502	-28.7
Total value of buildings completed at current prices (R'000)	5,058	7,193	9,652	89,060	288,228	+ 223.6

1/ Other residential buildings include institutions for the disabled, boarding houses, old people's homes, hostels, hotels, motels, guest houses, holiday chalets, entertainment centres, bed-and-breakfast accommodation and casinos.

2/ Other non-residential space includes churches, sport and recreation clubs, schools, crèches, hospitals and all other non-residential space.

3/ Other buildings include additions and alterations to other residential buildings, non-residential buildings and internal alterations.

Table 29 - Building plans passed according to type of building and selected urban area: Cape Town

Type of building	October 2001	September 2002	October 2002	January 2001 to October 2001	January 2002 to October 2002	Percentage change between January 2001 to October 2001 and January 2002 to October 2002
Residential buildings						
Dwelling-houses smaller than 80 square metres						
Number of dwelling-houses	352	940	424	4,997	9,495	+ 90.0
Total square metres	16,771	31,163	17,213	214,100	328,137	+ 53.3
Total value at current prices (R'000)	20,758	34,840	21,870	264,660	390,787	+ 47.7
Dwelling-houses equal to or larger than 80 square metres						
Number of dwelling-houses	359	390	337	3,180	3,850	+ 21.1
Total square metres	75,712	81,909	75,261	657,293	776,234	+ 18.1
Total value at current prices (R'000)	108,280	115,327	108,799	911,639	1,084,445	+ 19.0
Flats and townhouses						
Number of flats and townhouses	462	33	161	1,628	1,577	- 3.1
Total square metres	37,442	4,783	11,121	154,779	152,015	- 1.8
Total value at current prices (R'000)	52,538	8,172	17,097	234,527	246,780	+ 5.2
Other residential buildings ^{1/}						
Total square metres	138	0	0	33,131	17,064	- 48.5
Total value at current prices (R'000)	151	0	0	78,093	23,505	- 69.9
Total value of residential buildings at current prices (R'000)	181,727	158,339	147,766	1,488,919	1,745,517	+ 17.2
Non-residential buildings						
Office and banking space						
Total square metres	24,040	4,881	404	185,632	54,041	- 70.9
Total value at current prices (R'000)	31,996	12,999	608	262,679	91,393	- 65.2
Shopping space						
Total square metres	326	0	5,120	97,847	26,115	- 73.3
Total value at current prices (R'000)	488	0	4,982	122,977	34,207	- 72.2
Industrial and warehouse space						
Total square metres	9,256	6,821	16,404	119,409	111,262	- 6.8
Total value at current prices (R'000)	10,296	7,992	15,958	127,819	121,410	- 5.0
Other non-residential space ^{2/}						
Total square metres	1,644	3,307	5,418	51,708	38,913	- 24.7
Total value at current prices (R'000)	2,273	5,244	8,107	69,818	55,346	- 20.7
Total value of non-residential buildings at current prices (R'000)	45,053	26,235	29,655	583,293	302,356	- 48.2
Additions and alterations						
Dwelling-houses						
Total square metres	59,747	53,340	55,103	500,426	548,588	+ 9.6
Total value at current prices (R'000)	74,232	73,817	78,219	606,234	708,381	+ 16.8
Other buildings ^{3/}						
Total square metres	14,982	23,507	38,110	149,878	229,046	+ 52.8
Total value at current prices (R'000)	31,766	43,722	72,675	291,996	453,189	+ 55.2
Total value of additions and alterations at current prices (R'000)	105,998	117,539	150,894	898,230	1,161,570	+ 29.3
Total value of building plans passed at current prices (R'000)	332,778	302,113	328,315	2,970,442	3,209,443	+ 8.0

1/ Other residential buildings include institutions for the disabled, boarding houses, old people's homes, hostels, hotels, motels, guest houses, holiday chalets, entertainment centres, bed-and-breakfast accommodation and casinos.

2/ Other non-residential space includes churches, sport and recreation clubs, schools, crèches, hospitals and all other non-residential space.

3/ Other buildings include additions and alterations to other residential buildings, non-residential buildings and internal alterations.

Table 30 - Building plans passed according to type of building and selected urban area: Port Elizabeth

Type of building	October 2001	September 2002	October 2002	January 2001 to October 2001	January 2002 to October 2002	Percentage change between January 2001 to October 2001 and January 2002 to October 2002
Residential buildings						
Dwelling-houses smaller than 80 square metres						
Number of dwelling-houses	65	143	254	1,310	2,499	+ 90.8
Total square metres	2,781	5,801	10,324	58,788	104,761	+ 78.2
Total value at current prices (R'000)	3,838	2,574	6,839	78,256	134,535	+ 71.9
Dwelling-houses equal to or larger than 80 square metres						
Number of dwelling-houses	53	44	61	608	556	- 8.6
Total square metres	8,668	9,230	10,987	83,475	106,870	+ 28.0
Total value at current prices (R'000)	11,745	14,135	15,640	113,178	152,715	+ 34.9
Flats and townhouses						
Number of flats and townhouses	8	26	27	148	227	+ 53.4
Total square metres	771	1,547	3,410	13,184	25,940	+ 96.8
Total value at current prices (R'000)	1,039	1,156	5,217	18,124	40,773	+ 125.0
Other residential buildings ^{1/}						
Total square metres	308	0	0	3,052	323	- 89.4
Total value at current prices (R'000)	317	0	0	3,629	550	- 84.8
Total value of residential buildings at current prices (R'000)	16,939	17,865	27,696	213,187	328,573	+ 54.1
Non-residential buildings						
Office and banking space						
Total square metres	0	0	2,518	5,293	8,373	+ 58.2
Total value at current prices (R'000)	0	0	4,295	5,907	13,241	+ 124.2
Shopping space						
Total square metres	876	453	3,928	5,068	20,242	+ 299.4
Total value at current prices (R'000)	1,717	350	7,699	8,160	37,383	+ 358.1
Industrial and warehouse space						
Total square metres	905	0	2,626	23,589	28,727	+ 21.8
Total value at current prices (R'000)	548	0	4,115	22,406	44,876	+ 100.3
Other non-residential space ^{2/}						
Total square metres	736	140	1,955	10,263	22,390	+ 118.2
Total value at current prices (R'000)	1,032	230	2,211	18,304	35,276	+ 92.7
Total value of non-residential buildings at current prices (R'000)	3,297	580	18,320	54,777	130,776	+ 138.7
Additions and alterations						
Dwelling-houses						
Total square metres	13,380	9,753	13,075	103,189	114,722	+ 11.2
Total value at current prices (R'000)	17,240	21,153	19,338	135,388	160,997	+ 18.9
Other buildings ^{3/}						
Total square metres	4,060	2,776	3,774	71,065	32,303	- 54.5
Total value at current prices (R'000)	2,986	5,909	4,684	78,376	50,296	- 35.8
Total value of additions and alterations at current prices (R'000)	20,226	27,062	24,022	213,764	211,293	- 1.2
Total value of building plans passed at current prices (R'000)	40,462	45,507	70,038	481,728	670,642	+ 39.2

1/ Other residential buildings include institutions for the disabled, boarding houses, old people's homes, hostels, hotels, motels, guest houses, holiday chalets, entertainment centres, bed-and-breakfast accommodation and casinos.

2/ Other non-residential space includes churches, sport and recreation clubs, schools, crèches, hospitals and all other non-residential space.

3/ Other buildings include additions and alterations to other residential buildings, non-residential buildings and internal alterations.

Table 31 - Building plans passed according to type of building and selected urban area: Durban

Type of building	October 2001	September 2002	October 2002	January 2001 to October 2001	January 2002 to October 2002	Percentage change between January 2001 to October 2001 and January 2002 to October 2002
Residential buildings						
Dwelling-houses smaller than 80 square metres						
Number of dwelling-houses	139	54	57	766	615	-19.7
Total square metres	4,958	2,882	3,120	37,484	29,279	-21.9
Total value at current prices (R'000)	5,619	3,540	3,526	43,093	33,346	-22.6
Dwelling-houses equal to or larger than 80 square metres						
Number of dwelling-houses	86	76	106	670	670	+ 0.0
Total square metres	16,531	15,157	23,488	125,936	135,371	+ 7.5
Total value at current prices (R'000)	23,019	21,249	40,384	161,972	191,013	+ 17.9
Flats and townhouses						
Number of flats and townhouses	5	36	19	152	306	+ 101.3
Total square metres	785	8,793	3,257	20,087	55,330	+ 175.5
Total value at current prices (R'000)	1,698	17,460	4,645	22,698	85,534	+ 276.8
Other residential buildings ^{1/}						
Total square metres	0	80	44	2,377	29,730	+ 1,150.7
Total value at current prices (R'000)	0	120	44	2,431	31,164	+ 1,181.9
Total value of residential buildings at current prices (R'000)	30,336	42,369	48,599	230,194	341,057	+ 48.2
Non-residential buildings						
Office and banking space						
Total square metres	918	298	3,615	22,843	10,957	-52.0
Total value at current prices (R'000)	2,150	300	9,100	37,295	18,850	-49.5
Shopping space						
Total square metres	612	1,152	3,737	11,004	9,251	-15.9
Total value at current prices (R'000)	620	3,911	3,140	13,085	12,948	-1.0
Industrial and warehouse space						
Total square metres	10,809	1,009	2,784	86,074	54,833	-36.3
Total value at current prices (R'000)	7,896	4,000	2,579	143,008	65,338	-54.3
Other non-residential space ^{2/}						
Total square metres	2,105	3,071	1,569	26,527	68,378	+ 157.8
Total value at current prices (R'000)	5,233	6,296	2,275	36,596	83,012	+ 126.8
Total value of non-residential buildings at current prices (R'000)	15,899	14,507	17,094	229,984	180,148	-21.7
Additions and alterations						
Dwelling-houses						
Total square metres	24,451	28,662	31,814	224,174	229,217	+ 2.2
Total value at current prices (R'000)	30,319	32,536	43,849	266,563	291,624	+ 9.4
Other buildings ^{3/}						
Total square metres	8,146	6,225	14,630	90,353	72,012	-20.3
Total value at current prices (R'000)	15,582	14,634	29,623	191,998	138,689	-27.8
Total value of additions and alterations at current prices (R'000)	45,901	47,170	73,472	458,561	430,313	-6.2
Total value of building plans passed at current prices (R'000)	92,136	104,046	139,165	918,739	951,518	+ 3.6

1/ Other residential buildings include institutions for the disabled, boarding houses, old people's homes, hostels, hotels, motels, guest houses, holiday chalets, entertainment centres, bed-and-breakfast accommodation and casinos.

2/ Other non-residential space includes churches, sport and recreation clubs, schools, crèches, hospitals and all other non-residential space.

3/ Other buildings include additions and alterations to other residential buildings, non-residential buildings and internal alterations.

Table 32 - Building plans passed according to type of building and selected urban area: Witwatersrand

Type of building	October 2001*	September 2002	October 2002	January 2001 to October 2001	January 2002 to October 2002	Percentage change between January 2001 to October 2001 and January 2002 to October 2002
Residential buildings						
Dwelling-houses smaller than 80 square metres						
Number of dwelling-houses	591	625	532	7,012	6,404	- 8.7
Total square metres	25,539	23,626	21,688	277,428	239,297	- 13.7
Total value at current prices (R'000)	32,468	21,811	23,348	298,856	219,196	- 26.7
Dwelling-houses equal to or larger than 80 square metres						
Number of dwelling-houses	460	512	497	4,139	4,003	- 3.3
Total square metres	117,094	141,905	127,327	957,504	1,038,869	+ 8.5
Total value at current prices (R'000)	185,684	211,515	190,317	1,415,658	1,605,277	+ 13.4
Flats and townhouses						
Number of flats and townhouses	136	714	218	2,381	2,967	+ 24.6
Total square metres	19,050	78,961	30,305	273,864	378,747	+ 38.3
Total value at current prices (R'000)	28,441	111,888	40,327	436,652	582,429	+ 33.4
Other residential buildings ^{1/}						
Total square metres	0	0	0	2,936	3,968	+ 35.1
Total value at current prices (R'000)	0	0	0	3,340	6,253	+ 87.2
Total value of residential buildings at current prices (R'000)	246,593	345,214	253,992	2,154,506	2,413,155	+ 12.0
Non-residential buildings						
Office and banking space						
Total square metres	3,601	12,686	11,001	190,135	104,425	- 45.1
Total value at current prices (R'000)	6,634	18,884	18,005	329,142	227,050	- 31.0
Shopping space						
Total square metres	2,769	6,785	9,211	70,333	74,453	+ 5.9
Total value at current prices (R'000)	3,687	11,179	17,899	114,473	130,546	+ 14.0
Industrial and warehouse space						
Total square metres	17,620	18,098	37,123	214,819	238,384	+ 11.0
Total value at current prices (R'000)	30,085	27,800	60,248	360,871	386,430	+ 7.1
Other non-residential space ^{2/}						
Total square metres	1,640	6,568	2,602	76,734	97,272	+ 26.8
Total value at current prices (R'000)	2,411	10,080	4,161	117,421	154,336	+ 31.4
Total value of non-residential buildings at current prices (R'000)	42,817	67,943	100,313	921,907	898,362	- 2.6
Additions and alterations						
Dwelling-houses						
Total square metres	60,172	72,278	74,879	644,731	642,539	- 0.3
Total value at current prices (R'000)	86,237	112,091	111,928	835,800	950,499	+ 13.7
Other buildings ^{3/}						
Total square metres	11,140	12,754	17,096	184,813	277,361	+ 50.1
Total value at current prices (R'000)	23,387	31,332	32,715	329,796	496,312	+ 50.5
Total value of additions and alterations at current prices (R'000)	109,624	143,423	144,643	1,165,596	1,446,811	+ 24.1
Total value of building plans passed at current prices (R'000)	399,034	556,580	498,948	4,242,009	4,758,328	+ 12.2

1/ Other residential buildings include institutions for the disabled, boarding houses, old people's homes, hostels, hotels, motels, guest houses, holiday chalets, entertainment centres, bed-and-breakfast accommodation and casinos.

2/ Other non-residential space includes churches, sport and recreation clubs, schools, crèches, hospitals and all other non-residential space.

3/ Other buildings include additions and alterations to other residential buildings, non-residential buildings and internal alterations.

Table 33 - Building plans passed according to type of building and selected urban area: Pretoria

Type of building	October 2001	September 2002	October 2002	January 2001 to October 2001	January 2002 to October 2002	Percentage change between January 2001 to October 2001 and January 2002 to October 2002
Residential buildings						
Dwelling-houses smaller than 80 square metres						
Number of dwelling-houses	77	1,475	2,606	1,251	4,540	+ 262.9
Total square metres	4,239	60,157	105,425	51,662	190,863	+ 269.4
Total value at current prices (R'000)	6,016	34,491	58,655	61,852	129,818	+ 109.9
Dwelling-houses equal to or larger than 80 square metres						
Number of dwelling-houses	293	186	289	2,408	2,219	- 7.8
Total square metres	75,419	49,003	76,671	688,573	581,908	- 15.5
Total value at current prices (R'000)	109,605	76,700	134,844	969,266	865,265	- 10.7
Flats and townhouses						
Number of flats and townhouses	346	201	701	1,996	2,725	+ 36.5
Total square metres	56,914	28,854	107,294	279,576	398,273	+ 42.5
Total value at current prices (R'000)	89,868	52,210	136,369	422,033	573,296	+ 35.8
Other residential buildings ^{1/}						
Total square metres	0	0	0	1,989	0	..
Total value at current prices (R'000)	0	0	0	2,928	0	..
Total value of residential buildings at current prices (R'000)	205,489	163,401	329,868	1,456,079	1,568,379	+ 7.7
Non-residential buildings						
Office and banking space						
Total square metres	8,585	3,171	3,210	100,571	77,290	- 23.1
Total value at current prices (R'000)	14,019	4,985	6,420	163,325	122,414	- 25.0
Shopping space						
Total square metres	100	1,518	10,472	33,109	66,565	+ 101.0
Total value at current prices (R'000)	288	1,518	16,232	49,179	97,768	+ 98.8
Industrial and warehouse space						
Total square metres	4,073	19,392	5,967	53,993	109,615	+ 103.0
Total value at current prices (R'000)	5,049	29,609	9,149	76,822	159,591	+ 107.7
Other non-residential space ^{2/}						
Total square metres	221	9,046	1,635	42,533	29,126	- 31.5
Total value at current prices (R'000)	499	14,829	2,906	63,652	45,539	- 28.5
Total value of non-residential buildings at current prices (R'000)	19,855	50,941	34,707	352,978	425,312	+ 20.5
Additions and alterations						
Dwelling-houses						
Total square metres	28,609	25,796	37,298	198,061	257,531	+ 30.0
Total value at current prices (R'000)	41,533	40,180	59,517	266,847	382,979	+ 43.5
Other buildings ^{3/}						
Total square metres	17,520	28,483	37,010	68,664	113,823	+ 65.8
Total value at current prices (R'000)	29,524	50,581	58,546	115,688	187,354	+ 61.9
Total value of additions and alterations at current prices (R'000)	71,057	90,761	118,063	382,535	570,333	+ 49.1
Total value of building plans passed at current prices (R'000)	296,401	305,103	482,638	2,191,592	2,564,024	+ 17.0

1/ Other residential buildings include institutions for the disabled, boarding houses, old people's homes, hostels, hotels, motels, guest houses, holiday chalets, entertainment centres, bed-and-breakfast accommodation and casinos.

2/ Other non-residential space includes churches, sport and recreation clubs, schools, crèches, hospitals and all other non-residential space.

3/ Other buildings include additions and alterations to other residential buildings, non-residential buildings and internal alterations.

Table 34 - Building plans passed according to type of building and selected urban area: Bloemfontein

Type of building	October 2001	September 2002	October 2002	January 2001 to October 2001	January 2002 to October 2002	Percentage change between January 2001 to October 2001 and January 2002 to October 2002
Residential buildings						
Dwelling-houses smaller than 80 square metres						
Number of dwelling-houses	36	361	34	1,292	1,851	+ 43.3
Total square metres	1,819	15,205	1,961	57,341	78,071	+ 36.2
Total value at current prices (R'000)	1,616	8,465	2,680	34,295	45,590	+ 32.9
Dwelling-houses equal to or larger than 80 square metres						
Number of dwelling-houses	24	28	28	213	287	+ 34.7
Total square metres	4,143	4,488	4,403	36,402	46,203	+ 26.9
Total value at current prices (R'000)	5,421	7,029	6,648	46,859	66,128	+ 41.1
Flats and townhouses						
Number of flats and townhouses	31	0	115	310	534	+ 72.3
Total square metres	3,217	0	7,627	35,953	51,884	+ 44.3
Total value at current prices (R'000)	4,826	0	11,441	54,140	75,360	+ 39.2
Other residential buildings ^{1/}						
Total square metres	192	0	387	3,867	4,087	+ 5.7
Total value at current prices (R'000)	229	0	700	4,970	9,300	+ 87.1
Total value of residential buildings at current prices (R'000)	12,092	15,494	21,469	140,264	196,378	+ 40.0
Non-residential buildings						
Office and banking space						
Total square metres	0	626	0	13,256	13,423	+ 1.3
Total value at current prices (R'000)	0	900	0	26,025	22,600	-13.2
Shopping space						
Total square metres	1,308	3,767	0	4,923	15,351	+ 211.8
Total value at current prices (R'000)	1,000	4,100	0	5,000	29,464	+ 489.3
Industrial and warehouse space						
Total square metres	0	278	0	1,961	11,719	+ 497.6
Total value at current prices (R'000)	0	556	0	1,626	10,999	+ 576.4
Other non-residential space ^{2/}						
Total square metres	0	0	480	3,199	1,963	-38.6
Total value at current prices (R'000)	0	0	720	6,208	2,030	-67.3
Total value of non-residential buildings at current prices (R'000)	1,000	5,556	720	38,859	65,093	+ 67.5
Additions and alterations						
Dwelling-houses						
Total square metres	3,274	4,316	3,698	27,682	44,446	+ 60.6
Total value at current prices (R'000)	3,911	6,101	5,271	34,308	56,320	+ 64.2
Other buildings ^{3/}						
Total square metres	143	83	1,473	8,175	14,130	+ 72.8
Total value at current prices (R'000)	1,050	554	1,406	18,768	34,043	+ 81.4
Total value of additions and alterations at current prices (R'000)	4,961	6,655	6,677	53,076	90,363	+ 70.3
Total value of building plans passed at current prices (R'000)	18,053	27,705	28,866	232,199	351,834	+ 51.5

1/ Other residential buildings include institutions for the disabled, boarding houses, old people's homes, hostels, hotels, motels, guest houses, holiday chalets, entertainment centres, bed-and-breakfast accommodation and casinos.

2/ Other non-residential space includes churches, sport and recreation clubs, schools, crèches, hospitals and all other non-residential space.

3/ Other buildings include additions and alterations to other residential buildings, non-residential buildings and internal alterations.

Table 35 - Buildings completed according to type of building and selected urban area: Cape Town

Type of building	October 2001	September 2002	October 2002	January 2001 to October 2001	January 2002 to October 2002	Percentage change between January 2001 to October 2001 and January 2002 to October 2002
Residential buildings						
Dwelling-houses smaller than 80 square metres						
Number of dwelling-houses	249	276	445	3,393	4,696	+ 38.4
Total square metres	10,144	11,850	16,885	144,458	172,484	+ 19.4
Total value at current prices (R'000)	8,876	15,940	20,300	166,861	206,118	+ 23.5
Dwelling-houses equal to or larger than 80 square metres						
Number of dwelling-houses	188	233	301	1,531	2,535	+ 65.6
Total square metres	35,233	41,165	57,778	289,606	490,743	+ 69.5
Total value at current prices (R'000)	52,063	58,992	82,894	403,014	706,953	+ 75.4
Flats and townhouses						
Number of flats and townhouses	48	56	159	1,172	1,101	- 6.1
Total square metres	5,144	4,940	12,508	129,569	133,561	+ 3.1
Total value at current prices (R'000)	8,012	5,948	17,480	173,081	208,094	+ 20.2
Other residential buildings ^{1/}						
Total square metres	107	136	2,451	22,409	6,730	- 70.0
Total value at current prices (R'000)	159	203	4,010	26,402	9,935	- 62.4
Total value of residential buildings at current prices (R'000)	69,110	81,083	124,684	769,358	1,131,100	+ 47.0
Non-residential buildings						
Office and banking space						
Total square metres	6,825	6,995	2,567	76,407	77,034	+ 0.8
Total value at current prices (R'000)	9,576	10,174	4,033	135,666	113,721	- 16.2
Shopping space						
Total square metres	0	0	6,031	28,764	42,404	+ 47.4
Total value at current prices (R'000)	0	0	6,810	35,514	49,373	+ 39.0
Industrial and warehouse space						
Total square metres	4,927	5,928	6,285	69,982	86,939	+ 24.2
Total value at current prices (R'000)	5,516	7,980	7,774	76,220	94,025	+ 23.4
Other non-residential space ^{2/}						
Total square metres	701	2,214	718	16,278	24,501	+ 50.5
Total value at current prices (R'000)	899	2,316	1,700	21,384	26,912	+ 25.9
Total value of non-residential buildings at current prices (R'000)	15,991	20,470	20,317	268,784	284,031	+ 5.7
Additions and alterations						
Dwelling-houses						
Total square metres	27,092	27,800	27,408	284,980	293,543	+ 3.0
Total value at current prices (R'000)	32,109	33,567	33,873	320,101	360,672	+ 12.7
Other buildings ^{3/}						
Total square metres	4,220	18,205	8,361	93,018	140,060	+ 50.6
Total value at current prices (R'000)	14,411	40,224	12,692	267,088	238,342	- 10.8
Total value of additions and alterations at current prices (R'000)	46,520	73,791	46,565	587,189	599,014	+ 2.0
Total value of buildings completed at current prices (R'000)	131,621	175,344	191,566	1,625,331	2,014,145	+ 23.9

1/ Other residential buildings include institutions for the disabled, boarding houses, old people's homes, hostels, hotels, motels, guest houses, holiday chalets, entertainment centres, bed-and-breakfast accommodation and casinos.

2/ Other non-residential space includes churches, sport and recreation clubs, schools, crèches, hospitals and all other non-residential space.

3/ Other buildings include additions and alterations to other residential buildings, non-residential buildings and internal alterations.

Table 36 - Buildings completed according to type of building and selected urban area: Port Elizabeth

Type of building	October 2001	September 2002	October 2002	January 2001 to October 2001	January 2002 to October 2002	Percentage change between January 2001 to October 2001 and January 2002 to October 2002
Residential buildings						
Dwelling-houses smaller than 80 square metres						
Number of dwelling-houses	95	112	613	1,265	2,126	+ 68.1
Total square metres	4,107	4,479	33,454	53,752	97,861	+ 82.1
Total value at current prices (R'000)	5,574	6,159	39,493	69,245	127,114	+ 83.6
Dwelling-houses equal to or larger than 80 square metres						
Number of dwelling-houses	51	36	4	472	283	- 40.0
Total square metres	10,611	6,806	925	55,859	41,751	- 25.3
Total value at current prices (R'000)	10,662	11,318	620	69,348	56,312	- 18.8
Flats and townhouses						
Number of flats and townhouses	34	21	2	139	48	- 65.5
Total square metres	6,349	2,183	1,110	16,139	6,421	- 60.2
Total value at current prices (R'000)	7,175	3,165	1,958	18,050	9,561	- 47.0
Other residential buildings ^{1/}						
Total square metres	0	0	0	4,347	2,744	- 36.9
Total value at current prices (R'000)	0	0	0	7,000	3,312	- 52.7
Total value of residential buildings at current prices (R'000)	23,411	20,642	42,071	163,643	196,299	+ 20.0
Non-residential buildings						
Office and banking space						
Total square metres	0	0	316	22,600	1,184	- 94.8
Total value at current prices (R'000)	0	0	348	23,340	2,049	- 91.2
Shopping space						
Total square metres	4,625	665	843	24,379	3,452	- 85.8
Total value at current prices (R'000)	5,527	1,383	1,357	28,844	4,738	- 83.6
Industrial and warehouse space						
Total square metres	245	15,855	4,092	35,788	29,177	- 18.5
Total value at current prices (R'000)	159	23,437	6,492	42,982	37,848	-11.9
Other non-residential space ^{2/}						
Total square metres	2,197	0	724	6,593	3,024	- 54.1
Total value at current prices (R'000)	3,504	0	960	7,065	3,624	- 48.7
Total value of non-residential buildings at current prices (R'000)	9,190	24,820	9,157	102,231	48,259	- 52.8
Additions and alterations						
Dwelling-houses						
Total square metres	7,206	1,107	7,034	51,483	44,231	- 14.1
Total value at current prices (R'000)	8,153	1,602	8,972	57,231	51,455	- 10.1
Other buildings ^{3/}						
Total square metres	1,033	1,687	9,141	23,326	34,722	+ 48.9
Total value at current prices (R'000)	1,479	3,172	13,038	28,046	42,177	+ 50.4
Total value of additions and alterations at current prices (R'000)	9,632	4,774	22,010	85,277	93,632	+ 9.8
Total value of buildings completed at current prices (R'000)	42,233	50,236	73,238	351,151	338,190	- 3.7

1/ Other residential buildings include institutions for the disabled, boarding houses, old people's homes, hostels, hotels, motels, guest houses, holiday chalets, entertainment centres, bed-and-breakfast accommodation and casinos.

2/ Other non-residential space includes churches, sport and recreation clubs, schools, crèches, hospitals and all other non-residential space.

3/ Other buildings include additions and alterations to other residential buildings, non-residential buildings and internal alterations.

Table 37 - Buildings completed according to type of building and selected urban area: Durban

Type of building	October 2001	September 2002	October 2002	January 2001 to October 2001	January 2002 to October 2002	Percentage change between January 2001 to October 2001 and January 2002 to October 2002
Residential buildings						
Dwelling-houses smaller than 80 square metres						
Number of dwelling-houses	98	58	50	714	663	- 7.1
Total square metres	4,696	3,105	2,605	37,213	33,355	- 10.4
Total value at current prices (R'000)	5,540	3,614	2,956	43,703	38,572	- 11.7
Dwelling-houses equal to or larger than 80 square metres						
Number of dwelling-houses	87	56	78	835	691	- 17.2
Total square metres	24,045	8,796	16,677	167,134	126,876	- 24.1
Total value at current prices (R'000)	19,776	11,215	20,794	201,270	161,061	- 20.0
Flats and townhouses						
Number of flats and townhouses	58	18	4	486	206	- 57.6
Total square metres	4,636	2,586	1,557	47,555	28,925	- 39.2
Total value at current prices (R'000)	6,787	4,250	1,883	62,354	45,404	- 27.2
Other residential buildings ^{1/}						
Total square metres	0	0	1,246	0	1,246	..
Total value at current prices (R'000)	0	0	1,263	0	1,263	..
Total value of residential buildings at current prices (R'000)	32,103	19,079	26,896	307,327	246,300	- 19.9
Non-residential buildings						
Office and banking space						
Total square metres	642	321	1,022	35,055	37,941	+ 8.2
Total value at current prices (R'000)	2,000	420	1,107	55,349	56,547	+ 2.2
Shopping space						
Total square metres	1,865	1,859	5,529	21,181	31,095	+ 46.8
Total value at current prices (R'000)	3,122	5,960	4,781	37,338	48,364	+ 29.5
Industrial and warehouse space						
Total square metres	18,221	8,946	5,537	106,046	125,632	+ 18.5
Total value at current prices (R'000)	15,702	14,441	12,127	125,115	154,850	+ 23.8
Other non-residential space ^{2/}						
Total square metres	6,228	1,201	2,485	20,108	19,987	- 0.6
Total value at current prices (R'000)	6,670	1,386	3,807	23,499	30,062	+ 27.9
Total value of non-residential buildings at current prices (R'000)	27,494	22,207	21,822	241,301	289,823	+ 20.1
Additions and alterations						
Dwelling-houses						
Total square metres	21,183	22,038	32,981	247,668	217,835	- 12.0
Total value at current prices (R'000)	24,468	41,440	40,135	273,140	259,470	- 5.0
Other buildings ^{3/}						
Total square metres	6,791	868	1,869	79,381	60,074	- 24.3
Total value at current prices (R'000)	12,633	5,570	9,978	150,436	129,594	- 13.9
Total value of additions and alterations at current prices (R'000)	37,101	47,010	50,113	423,576	389,064	- 8.1
Total value of buildings completed at current prices (R'000)	96,698	88,296	98,831	972,204	925,187	- 4.8

1/ Other residential buildings include institutions for the disabled, boarding houses, old people's homes, hostels, hotels, motels, guest houses, holiday chalets, entertainment centres, bed-and-breakfast accommodation and casinos.

2/ Other non-residential space includes churches, sport and recreation clubs, schools, crèches, hospitals and all other non-residential space.

3/ Other buildings include additions and alterations to other residential buildings, non-residential buildings and internal alterations.

Table 38 - Buildings completed according to type of building and selected urban area: Witwatersrand

Type of building	October 2001*	September 2002	October 2002	January 2001 to October 2001	January 2002 to October 2002	Percentage change between January 2001 to October 2001 and January 2002 to October 2002
Residential buildings						
Dwelling-houses smaller than 80 square metres						
Number of dwelling-houses	432	874	698	6,230	6,704	+ 7.6
Total square metres	21,703	29,438	27,646	231,188	244,199	+ 5.6
Total value at current prices (R'000)	33,785	29,235	29,852	212,192	217,348	+ 2.4
Dwelling-houses equal to or larger than 80 square metres						
Number of dwelling-houses	249	236	460	1,758	2,572	+ 46.3
Total square metres	63,965	57,390	108,406	395,206	581,505	+ 47.1
Total value at current prices (R'000)	102,340	85,038	151,369	578,784	859,951	+ 48.6
Flats and townhouses						
Number of flats and townhouses	260	318	475	1,627	2,650	+ 62.9
Total square metres	32,814	41,657	55,786	167,439	362,669	+ 116.6
Total value at current prices (R'000)	53,878	57,789	74,014	278,514	526,694	+ 89.1
Other residential buildings ^{1/}						
Total square metres	8,844	0	0	42,714	11,978	-72.0
Total value at current prices (R'000)	17,689	0	0	269,217	17,333	-93.6
Total value of residential buildings at current prices (R'000)	207,692	172,062	255,235	1,338,707	1,621,326	+ 21.1
Non-residential buildings						
Office and banking space						
Total square metres	34,219	10,401	21,578	260,235	201,600	-22.5
Total value at current prices (R'000)	46,763	15,602	36,918	374,221	309,370	-17.3
Shopping space						
Total square metres	10,911	6,229	5,877	113,791	39,243	-65.5
Total value at current prices (R'000)	17,204	12,326	10,251	241,137	70,085	-70.9
Industrial and warehouse space						
Total square metres	23,244	5,839	16,964	169,063	93,850	-44.5
Total value at current prices (R'000)	42,873	8,373	28,723	273,339	146,189	-46.5
Other non-residential space ^{2/}						
Total square metres	5,909	4,794	2,162	20,696	30,355	+ 46.7
Total value at current prices (R'000)	9,787	7,192	3,481	31,642	44,192	+ 39.7
Total value of non-residential buildings at current prices (R'000)	116,627	43,493	79,373	920,339	569,836	-38.1
Additions and alterations						
Dwelling-houses						
Total square metres	36,675	18,135	34,250	206,614	286,098	+ 38.5
Total value at current prices (R'000)	49,916	26,551	52,145	256,541	398,941	+ 55.5
Other buildings ^{3/}						
Total square metres	8,942	6,338	8,711	95,039	84,248	-11.4
Total value at current prices (R'000)	12,953	8,678	16,732	156,830	139,064	-11.3
Total value of additions and alterations at current prices (R'000)	62,869	35,229	68,877	413,371	538,005	+ 30.2
Total value of buildings completed at current prices (R'000)	387,188	250,784	403,485	2,672,417	2,729,167	+ 2.1

1/ Other residential buildings include institutions for the disabled, boarding houses, old people's homes, hostels, hotels, motels, guest houses, holiday chalets, entertainment centres, bed-and-breakfast accommodation and casinos.

2/ Other non-residential space includes churches, sport and recreation clubs, schools, crèches, hospitals and all other non-residential space.

3/ Other buildings include additions and alterations to other residential buildings, non-residential buildings and internal alterations.

Table 39 - Buildings completed according to type of building and selected urban area: Pretoria

Type of building	October 2001	September 2002	October 2002	January 2001 to October 2001	January 2002 to October 2002	Percentage change between January 2001 to October 2001 and January 2002 to October 2002
Residential buildings						
Dwelling-houses smaller than 80 square metres						
Number of dwelling-houses	42	1,410	2,599	339	4,620	+ 1262.8
Total square metres	2,268	57,230	105,267	16,521	188,347	+ 1040.0
Total value at current prices (R'000)	3,320	32,004	58,906	20,143	119,977	+ 495.6
Dwelling-houses equal to or larger than 80 square metres						
Number of dwelling-houses	116	166	173	893	1,081	+ 21.1
Total square metres	30,667	47,488	49,785	241,575	305,405	+ 26.4
Total value at current prices (R'000)	42,976	85,819	87,160	331,412	503,593	+ 52.0
Flats and townhouses						
Number of flats and townhouses	7	154	89	830	2,129	+ 156.5
Total square metres	1,226	23,325	14,629	92,376	233,910	+ 153.2
Total value at current prices (R'000)	1,839	31,387	28,781	131,929	378,419	+ 186.8
Other residential buildings ^{1/}						
Total square metres	0	72	0	50	72	+ 44.0
Total value at current prices (R'000)	0	73	0	81	73	- 9.9
Total value of residential buildings at current prices (R'000)	48,135	149,283	174,847	483,565	1,002,062	+ 107.2
Non-residential buildings						
Office and banking space						
Total square metres	2,044	0	3,641	13,224	37,268	+ 181.8
Total value at current prices (R'000)	3,214	0	7,282	19,205	52,984	+ 175.9
Shopping space						
Total square metres	0	0	0	2,740	8,463	+ 208.9
Total value at current prices (R'000)	0	0	0	4,225	14,664	+ 247.1
Industrial and warehouse space						
Total square metres	3,445	0	2,233	12,049	17,296	+ 43.5
Total value at current prices (R'000)	3,914	0	4,043	11,976	25,896	+ 116.2
Other non-residential space ^{2/}						
Total square metres	0	805	1,563	5,568	4,372	- 21.5
Total value at current prices (R'000)	0	1,208	3,126	7,966	7,384	- 7.3
Total value of non-residential buildings at current prices (R'000)	7,128	1,208	14,451	43,372	100,928	+ 132.7
Additions and alterations						
Dwelling-houses						
Total square metres	4,605	2,799	7,841	15,788	34,331	+ 117.4
Total value at current prices (R'000)	5,754	4,797	12,445	19,934	52,734	+ 164.5
Other buildings ^{3/}						
Total square metres	1,378	346	1,814	6,246	16,223	+ 159.7
Total value at current prices (R'000)	1,710	738	3,778	8,850	26,799	+ 202.8
Total value of additions and alterations at current prices (R'000)	7,464	5,535	16,223	28,784	79,533	+ 176.3
Total value of buildings completed at current prices (R'000)	62,727	156,026	205,521	555,721	1,182,523	+ 112.8

1/ Other residential buildings include institutions for the disabled, boarding houses, old people's homes, hostels, hotels, motels, guest houses, holiday chalets, entertainment centres, bed-and-breakfast accommodation and casinos.

2/ Other non-residential space includes churches, sport and recreation clubs, schools, crèches, hospitals and all other non-residential space.

3/ Other buildings include additions and alterations to other residential buildings, non-residential buildings and internal alterations.

Table 40 - Buildings completed according to type of building and selected urban area: Bloemfontein

Type of building	October 2001	September 2002	October 2002	January 2001 to October 2001	January 2002 to October 2002	Percentage change between January 2001 to October 2001 and January 2002 to October 2002
Residential buildings						
Dwelling-houses smaller than 80 square metres						
Number of dwelling-houses	75	150	161	581	2,036	+ 250.4
Total square metres	3,383	6,667	7,311	24,497	87,286	+ 256.3
Total value at current prices (R'000)	2,430	2,672	4,504	14,990	43,863	+ 192.6
Dwelling-houses equal to or larger than 80 square metres						
Number of dwelling-houses	19	14	31	148	211	+ 42.6
Total square metres	3,087	2,313	3,968	29,108	34,827	+ 19.6
Total value at current prices (R'000)	3,813	3,251	4,977	36,645	43,014	+ 17.4
Flats and townhouses						
Number of flats and townhouses	10	1	18	124	299	+ 141.1
Total square metres	1,430	200	954	11,158	33,139	+ 197.0
Total value at current prices (R'000)	2,145	300	1,400	15,734	48,134	+ 205.9
Other residential buildings ^{1/}						
Total square metres	0	0	0	151	1,428	+ 845.7
Total value at current prices (R'000)	0	0	0	211	1,461	+ 592.4
Total value of residential buildings at current prices (R'000)	8,388	6,223	10,881	67,580	136,472	+ 101.9
Non-residential buildings						
Office and banking space						
Total square metres	0	0	0	11,103	4,244	- 61.8
Total value at current prices (R'000)	0	0	0	21,883	7,800	- 64.4
Shopping space						
Total square metres	0	1,190	0	2,812	2,530	- 10.0
Total value at current prices (R'000)	0	950	0	3,006	3,450	+ 14.8
Industrial and warehouse space						
Total square metres	1,041	0	0	5,851	4,188	- 28.4
Total value at current prices (R'000)	543	0	0	4,366	3,190	- 26.9
Other non-residential space ^{2/}						
Total square metres	0	2,469	0	5,753	8,233	+ 43.1
Total value at current prices (R'000)	0	3,240	0	10,451	23,240	+ 122.4
Total value of non-residential buildings at current prices (R'000)	543	4,190	0	39,706	37,680	- 5.1
Additions and alterations						
Dwelling-houses						
Total square metres	3,548	2,787	3,020	27,934	45,924	+ 64.4
Total value at current prices (R'000)	4,078	2,956	3,442	30,677	51,610	+ 68.2
Other buildings ^{3/}						
Total square metres	2,374	1,719	1,532	20,621	12,103	- 41.3
Total value at current prices (R'000)	5,790	2,133	2,926	95,658	26,515	- 72.3
Total value of additions and alterations at current prices (R'000)	9,868	5,089	6,368	126,335	78,125	- 38.2
Total value of buildings completed at current prices (R'000)	18,799	15,502	17,249	233,621	252,277	+ 8.0

1/ Other residential buildings include institutions for the disabled, boarding houses, old people's homes, hostels, hotels, motels, guest houses, holiday chalets, entertainment centres, bed-and-breakfast accommodation and casinos.

2/ Other non-residential space includes churches, sport and recreation clubs, schools, crèches, hospitals and all other non-residential space.

3/ Other buildings include additions and alterations to other residential buildings, non-residential buildings and internal alterations.

Additional information

Explanatory Notes

Introduction	<p>1 Statistics South Africa (Stats SA) conducts a monthly Building Statistics Survey collecting information regarding building plans approved and buildings completed, financed by the private sector, from a sample of local government institutions in South Africa. According to these institutions, they are not always notified about low-cost housing projects. This statistical release contains information of building plans passed and buildings completed in respect of residential buildings, non-residential buildings and additions and alterations according to province and selected urban areas.</p> <p>2 In order to improve timeliness of the publication, some information for the current month have been estimated due to late submission by respondents. These estimates will be revised in the next statistical release(s) as soon as actual information is available.</p> <p>3 The actual and seasonally adjusted values (at current and at constant 2000 prices) and the percentage change of building plans passed and buildings completed according to type of building are reflected monthly from January 2000 in this statistical release (cf. tables 1 to 8).</p>
Scope of the survey	<p>4 This survey covers local government institutions conducting activities for the private sector regarding -</p> <ul style="list-style-type: none"> • approval of building plans; and • final inspection of completed buildings.
Classification	<p>5 The 1993 edition of the Standard Industrial Classification of all Economic Activities, (SIC) Fifth Edition, Report No. 09-90-02, was used to classify the statistical units. The SIC is based on the 1990 International Standard Industrial Classification of all Economic Activities (ISIC) with suitable adaptations for local conditions.</p> <p>6 The twelfth and last published edition of the Standard Code List of Areas, Report No. 09-09-03 (1994) was used to classify the statistical units according to province. The cities, towns and non-urban areas listed in this report are codified within magisterial district and province. The code list was compiled by Stats SA in collaboration with other interested bodies and the first edition was distributed in June 1977.</p>
Statistical unit	<p>7 The statistical unit for the collection of information is a local government institution. Local government institutions include district municipalities, metropolitan municipalities and local municipalities.</p>
Survey methodology and design	<p>8 The sample for the monthly Building Statistics Survey consists of the largest local government institutions in South Africa, i.e. those that account for approximately 85% of the total rand value of buildings completed by the private sector.</p> <p>9 The survey is collected by mail each month from a sample of 128 local government institutions.</p>
Constant prices	<p>10 The value of building plans passed and buildings completed at constant prices measures building activities in terms of ruling prices in a specific base year, which is 2000 as from May 2002.</p> <p>11 The value of building plans passed at constant prices for each month is obtained by deflating the values at current prices with a price index known as the “lump sum domestic buildings” as published in statistical release P0151 – JBCC Contract Price Adjustment Provisions Work Group Indices. In order to be applicable, these indices (base February 1991=100) are converted to the base year 2000=100.</p>

- 12 The value of buildings completed at constant prices is obtained by deflating the values at current prices with the same price index which is used to calculate building plans passed at constant prices (cf. paragraph 11). The value of buildings completed is reported as at the time the plans were passed. Since the completion of buildings may extend over a few months to a few years, the current value of buildings completed is deflated by price indices as at the time the plans were passed in order to calculate the value of buildings completed at the time the plans were passed. Therefore, the duration of the completion of different types of buildings are taken into account in ascertaining the deflators e.g. the value of dwelling-houses completed at constant prices at January 2000 is obtained by deflating the current value of dwelling-houses completed for January 2000 with the price index of a month six months prior to January 2000. Furthermore, the value of other residential buildings, non-residential buildings and additions and alterations at constant prices is obtained by deflating the current values with price indices of 12 months, 18 months and 12 months prior to the relevant month, respectively.
- Seasonal adjustment**
- 13 Seasonally adjusted estimates of building plans passed and buildings completed are generated each month, using the X-11 Seasonal Adjustment Program developed by US Bureau of the Census Economic Research and Analyses Division, 1968.
- 14 Seasonal adjustment is a means of removing the estimated effects of normal seasonal variation from the series so that the effects of other influences on the series can be more clearly recognised. Seasonal adjustment does not aim to remove irregular or non-seasonal influences which may be present in any particular month. Influences that are volatile or unsystematic can still make it difficult to interpret the movement of the series even after adjustment for seasonal variations. Therefore, the month-to-month movements of seasonally adjusted estimates may not be reliable indicators of trend behaviour.
- Trend cycle**
- 15 The trend is a long-term pattern or movement of a time series. The X-11 Seasonal Adjustment Program is used for smoothing seasonally adjusted data.
- Related publications**
- 16 Users may also wish to refer to the following publications:
- P5041.3 – Building statistics issued annually.
 - P9101.2 – Actual and expected expenditure on construction by the public sector per statistical region issued annually.
 - Bulletin of Statistics issued quarterly.
 - South African Statistics issued annually.
- Unpublished statistics**
- 17 In some cases Stats SA can also make available statistics which are not published. The statistics can be made available in one or more of the following ways: computer printouts, CD and diskette. Generally a charge is made for providing unpublished statistics.
- Rounding-off of figures**
- 18 The figures in the tables have, where necessary, been rounded off to the nearest digit shown. There may, therefore, be slight discrepancies between the sums of the constituent items and the totals shown.
- Pre-release policy**
- 19 Stats SA has adopted the confidential pre-release policy in respect of selected economic indicators and specific government departments. The policy accords with practice among leading statistical agencies. The statistical integrity of the information and strict observance of the release time has been assured by the following procedure:
- 20 In respect of this statistical release, an official representative from the Office of the President, the Department of Trade and Industry (DTI), National Treasury and the South African Reserve Bank (SARB) will receive a copy of the release on a strictly confidential basis two hours in advance of the public issue.
- 21 Stats SA pre-release policy may be inspected at its Website, www.statssa.gov.za

Symbols and abbreviations

..	no meaningful percentage change between two specified periods available since either one or both of the totals are nil
0	nil or figure too small to publish
*	revised
Stats SA	Statistics South Africa
SIC	Standard Industrial Classification of all Economic Activities
ISIC	International Standard Industrial Classification of all Economic Activities
JBCC	Joint Building Contracts Committee
CD	Compact Disc
US	United States
SARB	South African Reserve Bank
DTI	Department of Trade and Industry

Technical notes**Response rate**

The response rate for October 2002 is 99,2%.

Local government institutions covered in the sample survey

Table C - Classification of towns and cities according to new municipalities and previous local government institution by province

Western Cape			
Sample survey as from January 2002		Sample survey up to December 2001	
Name of municipality	Cities and towns	Name of previously published local government institution	Cities and towns
Breede Valley Municipality	Worcester Rawsonville De Doorns Touws River	Worcester	Worcester
		Breede River District Council	Rural areas - Dissolved as from July 2001. Activities were taken over by various local government institutions.
City of Cape Town - Blaauwberg Administration	Milnerton	Blaauwberg Municipality	Milnerton
Cape Town Administration	Cape Town	City of Cape Town	Cape Town
Helderberg Administration	Gordon's Bay, Somerset West and Strand	Helderberg Municipality	Gordon's Bay, Somerset West and Strand
Ikapa Administration	Guguletu, Langa, Khayelitsha and Nyanga	Ikapa	Guguletu, Langa, Khayelitsha and Nyanga
Oostenberg Administration -	Brackenfell Kraaifontein Kuils River Melton Rose - Blue Downs	Oostenberg Municipality -	Brackenfell Kraaifontein Kuils River Melton Rose - Blue Downs
South Peninsula Administration -	Fish Hoek Simon's Town Plumstead	Fish Hoek Simon's Town South Peninsula Municipality	Fish Hoek Simon's Town Plumstead
Tygerberg Administration - Bellville Administration Durbanville Administration Goodwood Administration Lingeletu West Administration Parow Administration South Administration	City of Tygerberg - Bellville Durbanville Goodwood Lingeletu West Parow Belhar, Delft, Driftsands and Efuleni	City of Tygerberg - Bellville Administration Durbanville Administration Goodwood Administration Lingeletu West Administration Parow Administration South Administration	Bellville Durbanville Goodwood Lingeletu West Parow Belhar, Delft, Driftsands and Efuleni
Drakenstein Municipality	Paarl Wellington Saron ^{1/}	Paarl Wellington	Paarl Wellington
George Municipality	George, Herolds Bay, Pacaltsdorp and Thembaletu Wilderness ^{1/}	George	George, Herolds Bay, Pacaltsdorp and Thembaletu

^{1/} Included in sample survey as from January 2001

Table C - Classification of towns and cities according to new municipalities and previous local government institution by province (continued)

Western Cape (concluded)			
Sample survey as from January 2002		Sample survey up to December 2001	
Name of municipality	Cities and towns	Name of previously published local government institution	Cities and towns
Knysna Municipality	Knysna and Khayaletu Sedgfield	Knysna Sedgfield	Knysna and Khayaletu Sedgfield
Mossel Bay Municipality	Mossel Bay, Boggom's Bay, Kleinbrak, Rheeboek and Tergniet Friemersheim, Herbertsdale and Great Brak River ^{1/}	Mossel Bay	Mossel Bay, Boggom's Bay, Kleinbrak, Rheeboek and Tergniet
Oudtshoorn Municipality	Oudtshoorn De Rust/Blomnek Dysselsdorp	Oudtshoorn	Oudtshoorn
Overberg District Council	Rural areas - Dissolved as from July 2001. Activities were taken over by various local government institutions.	Overberg District Council	Rural areas
Overstrand Municipality	Hermanus, Fisher Haven, Hawston, Onrus River, Sandbaai, Vermont and Zwelihle Hangklip - Kleinmond, Betty's Bay and Rooi-Els Gansbaai and Stanford ^{1/}	Hermanus Hangklip - Kleinmond	Hermanus, Fisher Haven, Hawston, Onrus River, Sandbaai, Vermont and Zwelihle Hangklip - Kleinmond, Betty's Bay and Rooi-Els
Plettenberg Bay Municipality	Plettenberg Bay Knoetzie ^{1/}	Plettenberg Bay	Plettenberg Bay
Saldanha Bay Municipality	Vredenburg and Saldanha Hopefield and Langebaan ^{1/}	Western Coast Peninsula	Vredenburg and Saldanha
Stellenbosch Municipality	Stellenbosch Franschhoek and Pniel	Stellenbosch	Stellenbosch
Swartland Municipality	Malmesbury Darling, Koringberg, Moorreesburg and Yzerfontein ^{1/}	Malmesbury	Malmesbury
		West Coast District Council	Rural areas - Dissolved as from July 2001. Activities were taken over by various local government institutions.
		Winelands District Council	Rural areas - Dissolved as from July 2001. Activities were taken over by various local government institutions.

^{1/} Included in sample survey as from January 2001

Table C - Classification of towns and cities according to new municipalities and previous local government institution by province (continued)

Eastern Cape			
Sample survey as from January 2002		Sample survey up to December 2001	
Name of municipality	Cities and towns	Name of previously published local government institution	Cities and towns
Buffalo City Municipality - East London Area	East London, Beacon Bay, Gompo Town, Gonubie and Mdantsane	East London	East London, Beacon Bay, Gompo Town, Gonubie and Mdantsane
King William's Town Area	King William's Town, Bisho and Zwelitsha	King William's Town	King William's Town, Bisho and Zwelitsha
King Sabata Dalindyebo Municipality - Umtata Area	Umtata	Umtata	Umtata
Kouga Municipality - Jeffreys Bay Area	Jeffreys Bay	Jeffreys Bay	Jeffreys Bay
Makana Municipality - Grahamstown Area	Grahamstown and Rhini Township	Grahamstown	Grahamstown and Rhini Township
Maletswai Municipality - Aliwal North Area	Aliwal North and Dukathole	Aliwal - Maletswai	Aliwal North and Dukathole
Ndlambe Municipality	Port Alfred Alexandria Bathurst Boesmansriviermond Kenton-on-Sea	Port Alfred	Port Alfred
Nelson Mandela Metropolitan Municipality - Despatch Area	Despatch	Despatch	Despatch
Port Elizabeth Area	Port Elizabeth, Ibhayi and Motherwell	Port Elizabeth	Port Elizabeth, Ibhayi and Motherwell
Uitenhage Area	Uitenhage and KwaNobuhle	Uitenhage	Uitenhage and KwaNobuhle
		Western District Council	Rural areas - Dissolved as from July 2001. Activities were taken over by various local government institutions.

Table C - Classification of towns and cities according to new municipalities and previous local government institution by province (continued)

Northern Cape			
Sample survey as from January 2002		Sample survey up to December 2001	
Name of municipality	Cities and towns	Name of previously published local government institution	Cities and towns
//Khara Hais Municipality	Upington, Mothibistad and Paballelo	Upington	Upington, Mothibistad and Paballelo
		Benede-Oranje District Council	Rural areas - Dissolved as from July 2001. Activities were taken over by various local government institutions.
Ga-Segonyana Municipality	Kuruman	Kuruman	Kuruman
Kai! Garib Municipality - Keimoes Area	Keimoes Eksteenskuil ^{1/} Kenhardt ^{1/}	Keimoes	Keimoes
		Namaqualand District Council	Rural areas - Dissolved as from July 2001. Activities were taken over by various local government institutions.
Solplaatjie Municipality	Kimberley and Galeshewe Ritchie ^{1/}	Kimberley	Kimberley and Galeshewe

^{1/} Included in sample survey as from January 2001

Table C - Classification of towns and cities according to new municipalities and previous local government institution by province (continued)

Free State			
Sample survey as from January 2002		Sample survey up to December 2001	
Name of municipality	Cities and towns	Name of previously published local government institution	Cities and towns
Dihlabeng Municipality	Bethlehem and Bohlokong Clarens Mashae-Fourie Paul Roux	Bethlehem	Bethlehem and Bohlokong
Maluti a Phofung Municipality Harrismith Area Phuthaditjhaba Area	Harrismith and Tsiamé Phuthaditjhaba	Harrismith Phuthaditjhaba	Harrismith and Tsiamé Phuthaditjhaba
Mangaung Municipality - Bloemfontein Area Botshabelo Area	Bloemfontein, Bainsvlei, Bloemspuit and Mangaung Botshabelo	Bloemfontein Botshabelo	Bloemfontein, Bainsvlei, Bloemspuit and Mangaung Botshabelo
Mantsopa Municipality	Ladybrand and Manyatseng Excelsior Hobhouse Thaba Patchoa Tweespruit/Kopano	Ladybrand	Ladybrand and Manyatseng
Matjhabeng Municipality - Odendaalsrus Area Virginia Area Welkom Area	Odendaalsrus, Allanridge and Kutlwanong Virginia and Meloding Welkom and Thabong	Odendaalsrus Virginia Welkom	Odendaalsrus, Allanridge and Kutlwanong Virginia and Meloding Welkom and Thabong
Metsimaholo Municipality - Deneysville Area Sasolburg Area	Deneysville and Refengkgotso Sasolburg and Zamdela	Deneysville/Refengkgotso Sasolburg/Zamdela	Deneysville and Refengkgotso Sasolburg and Zamdela
Moqhaka Municipality - Kroonstad Area	Kroonstad and Maokeng	Kroonstad	Kroonstad and Maokeng
Nqwathe Municipality	Parys Edenville Heibron Koppies Vredefort	Parys	Parys

Table C - Classification of towns and cities according to new municipalities and previous local government institution by province (continued)

KwaZulu-Natal			
Sample survey as from January 2002		Sample survey up to December 2001	
Name of municipality	Cities and towns	Name of previously published local government institution	Cities and towns
Emnambithi Municipality	Ladysmith Colenso	Ladysmith	Ladysmith
eThekweni Municipality - Inner West Operational Entity	Clermont, KwaDabeka, KwaNdengezi, New Germany, Pinetown, Queensburgh, Reservoir Hills, Shallcross and Westville	Inner West City Council	Clermont, KwaDabeka, KwaNdengezi, New Germany, Pinetown, Queensburgh, Reservoir Hills, Shallcross and Westville
Outer West Operational Entity	Assagay, Botha's Hill, Cato Ridge, Drummond, Everton, Gillitts, Hillcrest, Inchanga, Kloof, Mpumalanga and Waterfall	Outer West Local Council	Assagay, Botha's Hill, Cato Ridge, Drummond, Everton, Gillitts, Hillcrest, Inchanga, Kloof, Mpumalanga and Waterfall
KwaMashu	KwaMashu	KwaMashu	KwaMashu
Durban- North, South and Central	Durban	Durban	Durban
North Operational Entity - Tonga	Tonga	North Local Council - Tonga	Tonga
Umhlanga Rocks	Umhlanga Rocks, Mount Edgecombe and Umdloti Beach	North Local Council - Umhlanga	Umhlanga Rocks, Mount Edgecombe and Umdloti Beach
Verulam	Verulam	North Local Council - Verulam	Verulam
South Operational Entity	Amanzimtoti, Isipingo, Kingsburgh, KwaMakuta and Umbogintwini	South Local Council	Amanzimtoti, Isipingo, Kingsburgh, KwaMakuta and Umbogintwini
Umlazi	Umlazi	Umlazi	Umlazi
Greater Kokstad Municipality	Kokstad	Kokstad	Kokstad
Hibiscus Coast Municipality	Margate and Uvongo Marina Beach, San Lameer, Southbroom and Trafalgar Port Shepstone Hibberdene Munster, Port Edward and Palm Beach	Margate Mpenjati/Southbroom Port Shepstone Umtamvuna/Port Edward	Margate and Uvongo Marina Beach, San Lameer, Southbroom and Trafalgar Port Shepstone Munster, Port Edward and Palm Beach

Table C - Classification of towns and cities according to new municipalities and previous local government institution by province (continued)

KwaZulu-Natal (concluded)			
Sample survey as from January 2002		Sample survey up to December 2001	
Name of municipality	Cities and towns	Name of previously published local government institution	Cities and towns
KwaDukuza Municipality - Dolphin Coast Administrative Entity	Ballito, Etete, Shakaskraal, Tinley Manor Beach and Umhlali Beach	Dolphin Coast Borough	Ballito, Etete, Shakaskraal, Tinley Manor Beach and Umhlali Beach
Stanger Administrative Entity	Blythedale Beach, Shakaville and Stanger Nkwazi/Stanger	KwaDukuza/Stanger	Blythedale Beach, Shakaville and Stanger
Msunduzi Municipality	Edendale Ashburton ^{1/} , Pietermaritzburg and Msundini	Edendale Pietermaritzburg/Msundini	Edendale Pietermaritzburg and Msundini
Newcastle Municipality	Blaauwboschlaagte, Madadeni, Osizweni and Newcastle	Newcastle	Blaauwboschlaagte, Madadeni, Osizweni and Newcastle
Umdoni Municipality	Pennington Scottburgh/Umzinto	Pennington	Pennington
Umhlathuze Municipality	Empangeni and Ngwelezana Richards Bay	Empangeni-Ngwelezana Richards Bay	Empangeni and Ngwelezana Richards Bay
Umnjeni Municipality	Hilton Howick	Hilton Howick	Hilton Howick
Uthungulu District Council ^{1/}	Kwambonati, Nkandla and Ntambanana Municipalities	Development and Services Board - North Coast	Kwambonati, Nkandla, Tugela Mouth, Umlalazi, Mahlabathini, Ukuza, Umbambo, Egwavuma and Hluhlumi

^{1/} Included in sample survey as from January 2001

Table C - Classification of towns and cities according to new municipalities and previous local government institution by province (continued)

North West			
Sample survey as from January 2002		Sample survey up to December 2001	
Name of municipality	Cities and towns	Name of previously published local government institution	Cities and towns
		Bophirima District Council	Rural areas - Dissolved as from July 2001. Activities were taken over by various local government institutions.
Ditsobotla Local Municipality	Lichtenburg and Itsoseng Biesiesvlei ^{1/} Coligny ^{1/}	Lichtenburg	Lichtenburg and Itsoseng
Klerksdorp Local Municipality	Klerksdorp Orkney and Kanana Hartbeesfontein ^{1/} Stillfontein ^{1/}	Klerksdorp Orkney	Klerksdorp Orkney and Kanana
GaRankuwa	As from January 2002 included in City of Tshwane - Northern Metropolitan Substructure (Gauteng)	GaRankuwa	GaRankuwa
Madibeng Local Municipality	Brits and Lethabile Hartbeespoort	Brits	Brits and Lethabile
Mafikeng Local Municipality	Mmabatho and Mafikeng	Mmabatho	Mmabatho and Mafikeng
Naledi Municipality	Vryburg	Vryburg	Vryburg
Potchefstroom Municipality	Potchefstroom	Potchefstroom	Potchefstroom
Rustenburg Local Municipality - Rustenburg Area	Rustenburg	Rustenburg	Rustenburg
Zeerust Local Municipality	Zeerust	Zeerust	Zeerust

^{1/} Included in sample survey as from January 2001

Table C - Classification of towns and cities according to new municipalities and previous local government institution by province (continued)

Gauteng			
Sample survey as from January 2002		Sample survey up to December 2001	
Name of municipality	Cities and towns	Name of previously published local government institution	Cities and towns
City of Johannesburg Metropolitan Municipality	Alexandra and Sandton Midrand, Rabie Ridge and Ivory Park Randburg Ennerdale, Lenasia and Johannesburg Diepmeadow, Dobsonville and Roodepoort Soweto	Greater Johannesburg - Eastern Metropolitan Local Council Midrand Metropolitan Local Council Northern Metropolitan Local Council Southern Metropolitan Local Council Western Metropolitan Local Council Soweto	Alexandra and Sandton Midrand, Rabie Ridge and Ivory Park Randburg Ennerdale, Lenasia and Johannesburg Diepmeadow, Dobsonville and Roodepoort Soweto
City of Tshwane Metropolitan Municipality - Centurion Town Council City Council of Pretoria Northern Pretoria Metropolitan Substructure	Centurion Pretoria, Atteridgeville and Mamelodi Akasia, Elandsdoorn, Klipfontein, Kruisfontein and Soshanguve Hammanskraal GaRankuwa ^{2/} Temba Winterveld ^{2/}	Centurion Pretoria Akasia	Centurion Pretoria, Atteridgeville and Mamelodi Akasia, Elandsdoorn, Klipfontein, Kruisfontein and Soshanguve
		Eastern Services Council - Pretoria Area	Rural areas - Dissolved as from July 2001. Activities were taken over by various local government institutions.
Ekurheleni Metropolitan Municipality - Service Delivery Centre of: Edenvale - Modderfontein Alberton Benoni Boksburg Brakpan Duduza Germiston Kempton Park Nigel Springs	Edenvale - Modderfontein Alberton and Tokoza Benoni, Daveyton and Wattville Boksburg and Vosloorus Brakpan and Tsakane Duduza Germiston, Bedfordview and Katlehong Kempton Park and Tembisa Nigel Springs and KwaThema	Edenvale - Modderfontein Alberton Benoni Boksburg Brakpan Duduza Germiston Kempton Park Nigel Springs	Edenvale - Modderfontein Alberton and Tokoza Benoni, Daveyton and Wattville Boksburg and Vosloorus Brakpan and Tsakane Duduza Germiston, Bedfordview and Katlehong Kempton Park and Tembisa Nigel Springs and KwaThema

^{2/} Was previously included under North West

Table C - Classification of towns and cities according to new municipalities and previous local government institution by province (continued)

Gauteng (concluded)			
Sample survey as from January 2002		Sample survey up to December 2001	
Name of municipality	Cities and towns	Name of previously published local government institution	Cities and towns
Emfuleni Local Municipality	Vanderbijlpark Vereeniging and Evaton Sebokeng (Boipatong, Bophelong and Sharpville)	Vanderbijlpark Vereeniging Sebokeng	Vanderbijlpark Vereeniging and Evaton Sebokeng (Boipatong, Bophelong and Sharpville)
Kungwini Local Municipality – Bronkhorstspuit Area	Bronkhorstspuit	Bronkhorstspuit	Bronkhorstspuit
Lesedi Local Municipality	Heidelberg and Ratanda	Heidelberg	Heidelberg and Ratanda
Merafong City Local Municipality	Carletonville, Wedela, Khutsong and Wilverdient	Carletonville	Carletonville, Wedela, Khutsong and Wilverdient
Midvaal Local Municipality	Meyerton	Meyerton	Meyerton
Mogale City Municipality	Krugersdorp, Kagiso and Munsieville	Krugersdorp	Krugersdorp, Kagiso and Munsieville
Randfontein Local Municipality	Randfontein and Mohlakeng	Randfontein	Randfontein and Mohlakeng
Westonaria Local Municipality	Westonaria and Bekkersdal	Westonaria	Westonaria and Bekkersdal

Table C - Classification of towns and cities according to new municipalities and previous local government institution by province (continued)

Mpumalanga			
Sample survey as from January 2002		Sample survey up to December 2001	
Name of municipality	Cities and towns	Name of previously published local government institution	Cities and towns
Delmas Municipality	Delmas and Botleng	Delmas	Delmas and Botleng
Emalahleni Local Municipal Council- KwaGuqa Area Witbank Area	KwaGuqa Witbank	KwaGuqa Witbank	KwaGuqa Witbank
Govan Mbeki Municipality - Secunda Area	Evander, Embalenhle and Secunda	Highveldridge Transitional Council	Evander, Embalenhle and Secunda
Mbombela Local Municipality	Nelspruit and Kanyamazane White River Hazyview ^{1/}	Nelspruit White River	Nelspruit White River
Middelburg Municipality	Middelburg and Mhluzi Hendrina ^{1/}	Middelburg	Middelburg and Mhluzi
Msukaligwa Municipality	Ermelo, Cassim Park and Wesselton	Ermelo	Ermelo, Cassim Park and Wesselton
Nkomazi Municipality - Komatipoort Area Malelane Area	Komatipoort and Kamaqhekeza Malelane, Hectorspruit and Kamhlushwa	Komatipoort Malelane	Komatipoort and Kamaqhekeza Malelane, Hectorspruit and Kamhlushwa

^{1/} Included in sample survey as from January 2001

Table C - Classification of towns and cities according to new municipalities and previous local government institution by province (concluded)

Limpopo			
Sample survey as from January 2002		Sample survey up to December 2001	
Name of municipality	Cities and towns	Name of previously published local government institution	Cities and towns
		Bosveld District Council	Rural areas - Dissolved as from July 2001. Activities were taken over by various local government institutions.
Greater Tzaneen Municipality	Tzaneen and Nkowakowa	Letaba	Tzaneen and Nkowakowa
Musina Municipality	Musina (previously Messina)	Messina	Messina
Modimolle Municipality	Modimolle (previously Nylstroom)	Nylstroom	Nylstroom
Mogolakwena Municipality	Mokopane (previously Potgietersrus)	Potgietersrus	Potgietersrus
Mookgopong Municipality	Naboomspruit and Mookgopong	Naboomspruit	Naboomspruit and Mookgopong
Polokwane Municipality	Polokwane (previously Pietersburg) and Seshego	Pietersburg - Polokwane	Pietersburg and Seshego
Thabazimbi Municipality	Thabazimbi	Thabazimbi	Thabazimbi

Table D - Classification of selected urban areas according to new municipalities and previous local government institution (continued)

Sample survey as from January 2002		Sample survey up to December 2001	
Name of selected urban area and municipality	Cities and towns	Name of selected urban area and previously published local government institution	Cities and towns
Durban eThekweni Municipality - Inner West Operational Entity	Clermont, KwaDabeka, KwaNdengezi, New Germany, Pinetown, Queensburgh, Reservoir Hills, Shallcross and Westville	Durban Inner West City Council	Clermont, KwaDabeka, KwaNdengezi, New Germany, Pinetown, Queensburgh, Reservoir Hills, Shallcross and Westville
Outer West Operational Entity	Assagay, Botha's Hill, Cato Ridge, Drummond, Everton, Gillitts, Hillcrest, Inchanga, Kloof, Mpumalanga and Waterfall	Outer West Local Council	Assagay, Botha's Hill, Cato Ridge, Drummond, Everton, Gillitts, Hillcrest, Inchanga, Kloof, Mpumalanga and Waterfall
Durban- North, South and Central	Durban	Durban	Durban
North Operational Entity - Verulam	Verulam	North Local Council - Verulam	Verulam
South Operational Entity	Amanzimtoti, Isipingo, Kingsburgh, KwaMakuta and Umbogintwini	South Local Council	Amanzimtoti, Isipingo, Kingsburgh, KwaMakuta and Umbogintwini
Pretoria City of Tshwane Metropolitan Municipality - Centurion Town Council City Council of Pretoria	Centurion Pretoria, Atteridgeville and Mamelodi	Pretoria Centurion Pretoria	Centurion Pretoria, Atteridgeville and Mamelodi
Northern Pretoria Metropolitan Substructure	Akasia, Elandsdoorn, Klipfontein, Kruisfontein and Soshanguve Hammanskraal GaRankuwa Temba Winterveld	Akasia	Akasia, Elandsdoorn, Klipfontein, Kruisfontein and Soshanguve

Table D - Classification of selected urban areas according to new municipalities and previous local government institution (concluded)

Sample survey as from January 2002		Sample survey up to December 2001	
Name of selected urban area and municipality	Cities and towns	Name of selected urban area and previously published local government institution	Cities and towns
Witwatersrand City of Johannesburg Metropolitan Municipality	Alexandra and Sandton Midrand, Rabie Ridge and Ivory Park Randburg Ennerdale, Lenasia and Johannesburg Diepmeadow, Dobsonville and Roodepoort Soweto	Witwatersrand Greater Johannesburg - Eastern Metropolitan Local Council Midrand Metropolitan Local Council Northern Metropolitan Local Council Southern Metropolitan Local Council Western Metropolitan Local Council Soweto	Alexandra and Sandton Midrand, Rabie Ridge and Ivory Park Randburg Ennerdale, Lenasia and Johannesburg Diepmeadow, Dobsonville and Roodepoort Soweto
Ekurheleni Metropolitan Municipality - Service Delivery Centre of: Edenvale - Modderfontein Alberton Benoni Boksburg Brakpan Duduza Germiston Kempton Park Nigel Springs	Edenvale - Modderfontein Alberton and Tokoza Benoni, Daveyton and Wattville Boksburg and Vosloorus Brakpan and Tsakane Duduza Germiston, Bedfordview and Katlehong Kempton Park and Tembisa Nigel Springs and KwaThema	Edenvale - Modderfontein Alberton Benoni Boksburg Brakpan Duduza Germiston Kempton Park Nigel Springs	Edenvale - Modderfontein Alberton and Tokoza Benoni, Daveyton and Wattville Boksburg and Vosloorus Brakpan and Tsakane Duduza Germiston, Bedfordview and Katlehong Kempton Park and Tembisa Nigel Springs and KwaThema
Mogale City Municipality	Krugersdorp, Kagiso and Munsieville	Krugersdorp	Krugersdorp, Kagiso and Munsieville
Randfontein Local Municipality	Randfontein and Mohlakeng	Randfontein	Randfontein and Mohlakeng
Westonaria Local Municipality	Westonaria and Bekkersdal	Westonaria	Westonaria and Bekkersdal
Merafong City Local Municipality	Carletonville, Wedela, Khutsong and Welverdiend	Carletonville	Carletonville, Wedela, Khutsong and Welverdiend
Bloemfontein Mangaung Municipality - Bloemfontein Area Botshabelo Area	Bloemfontein, Bainsvlei, Bloemspruit and Mangaung Botshabelo	Bloemfontein Bloemfontein Botshabelo	Bloemfontein, Bainsvlei, Bloemspruit and Mangaung Botshabelo

Glossary

Additions and alterations	Additions and alterations include extensions to existing buildings as well as internal and external alterations of existing buildings.
Blocks of flats	Blocks of flats are regarded as high-density housing consisting of a number of self-contained dwelling-units with at least one living-room together with a kitchen and bathroom conjoined to similar units in one building.
Dwelling-house	A dwelling-house refers to a free-standing, complete structure on a separate stand or a self-contained dwelling-unit, granny flat, on the same premises as an existing residence. Out-buildings and garages are included.
Local government institution	A local government institution is a generic term referring to any number of institutions involved in the local sphere of government. Local government institutions in the past consisted of municipalities, city councils, metropolitan councils, district councils, transitional local councils and development and services boards.
Non-residential buildings	Non-residential buildings comprise factories, commercial, financial and other office buildings, as well as other buildings not used for residential purposes, such as churches, halls, clubs, schools and hospitals.
Other residential buildings	Other residential buildings include institutions for the disabled, boarding houses, old people's homes, hostels, hotels, motels, guest houses, holiday chalets, bed-and-breakfast accommodation, entertainment centres and casinos.
Percentage change	<p>When using monthly actual values, the percentage change is the change in actual values of building activities (building plans passed or buildings completed) of the relevant month compared with the actual values of building activities (building plans passed or buildings completed) of the same month in the previous year expressed as a percentage.</p> <p>When using annual actual values, the percentage change is the change in the actual values of building activities (building plans passed or buildings completed) of the relevant year compared with the actual values of building activities (building plans passed or buildings completed) of the previous year expressed as a percentage.</p> <p>When using seasonally adjusted values, the percentage change is the change in the seasonally adjusted values of building activities (building plans passed or buildings completed) of the relevant month compared with the seasonally adjusted values of building activities (building plans passed or buildings completed) of the previous month expressed as a percentage.</p>
Reference period	Reference period is one calendar month.
Residential buildings	Residential buildings comprise dwelling-houses, flats, townhouses and other residential buildings.
Townhouses	Townhouses are multiple, medium-density dwelling-units and include cluster housing, group housing, simplexes, duplexes, triplexes and other similar dwelling-units which are usually grouped together, with one level of each unit on ground level. This excludes blocks of flats.

Table D - Classification of selected urban areas according to new municipalities and previous local government institution

Sample survey as from January 2002		Sample survey up to December 2001	
Name of selected urban area and municipality	Cities and towns	Name of selected urban area and previously published local government institution	Cities and towns
Cape Town City of Cape Town - Blaauwberg Administration Cape Town Administration Ikapa Administration Oostenberg Administration - South Peninsula Administration - Tygerberg Administration - Bellville Administration Durbanville Administration Goodwood Administration Lingeletu West Administration Parow Administration South Administration	Milnerton Cape Town Guguletu, Langa, Khayelitsha and Nyanga Kraaifontein Melton Rose - Blue Downs Fish Hoek Simon's Town Plumstead City of Tygerberg - Bellville Durbanville Goodwood Lingeletu West Parow Belhar, Delft, Driftsands and Efuleni	Cape Town Blaauwberg Municipality City of Cape Town Ikapa Oostenberg Municipality - Fish Hoek Simon's Town South Peninsula Municipality City of Tygerberg - Bellville Administration Durbanville Administration Goodwood Administration Lingeletu West Administration Parow Administration South Administration	Milnerton Cape Town Guguletu, Langa, Khayelitsha and Nyanga Kraaifontein Melton Rose - Blue Downs Fish Hoek Simon's Town Plumstead Bellville Durbanville Goodwood Lingeletu West Parow Belhar, Delft, Driftsands and Efuleni
Port Elizabeth Nelson Mandela Metropolitan Municipality - Despatch Area Port Elizabeth Area Uitenhage Area	Despatch Port Elizabeth, Ibhayi and Motherwell Uitenhage and KwaNobuhle	Port Elizabeth Despatch Port Elizabeth Uitenhage	Despatch Port Elizabeth, Ibhayi and Motherwell Uitenhage and KwaNobuhle

For more information

Stats SA publishes approximately 300 different statistical releases each year. It is not economically viable to produce them in more than one of South Africa's eleven official languages. Since the releases are used extensively, not only locally but also by international economic and social-scientific communities, Stats SA releases are published in English only.

Stats SA has copyright on this publication. Users may apply the information as they wish, provided that they acknowledge Stats SA as the source of the basic data wherever they process, apply, utilise, publish or distribute the data and also that they specify that the relevant application and analysis (where applicable) result from their own processing of the data.

Stats SA products

A complete set of Stats SA publications is available at the Stats SA Library and the following libraries:

National Library of South Africa, Pretoria Division
 National Library of South Africa, Cape Town Division
 Natal Society Library, Pietermaritzburg
 Library of Parliament, Cape Town
 Bloemfontein Public Library
 Johannesburg Public Library
 Eastern Cape Library Services, King William's Town
 Central Regional Library, Polokwane
 Central Reference Library, Nelspruit
 Central Reference Collection, Kimberley
 Central Reference Library, Mmabatho

Stats SA also provides a subscription service.

Electronic services

A large range of data are available via on-line services, diskette, CD and computer printouts. For more details about our electronic data services, contact (012) 310 8600/8390/8351/4892/8496/8095.

You can visit us on the Internet at: <http://www.statssa.gov.za>

Enquiries

Telephone number: (012) 310 8600/8390/8351/4892/8496/8095 (user enquiries)
 (012) 310 8228/310 8007 (technical enquiries)
 (012) 310 8161 (publications)
 (012) 310 8490 (library)

Fax number: (012) 310 8182

e-mail: Corrieb@statssa.pwv.gov.za
 Gretaz@statssa.pwv.gov.za

Postal address: Private Bag X44, Pretoria, 0001