

Building statistics

October 2001

Co-operation between Statistics South Africa (Stats SA), the citizens of the country, the private sector and government institutions is essential for a successful statistical system. Without continued co-operation and goodwill, the timely release of relevant and reliable official statistics will not be possible.

Embargo: 13:00
Date: 19 December 2001

Stats SA publishes approximately three hundred different releases each year. It is not economically viable to produce them in more than one of South Africa's eleven official languages. Since the releases are used extensively, not only locally, but also by international economic and social-scientific communities, Stats SA releases are published in English only.

Key figures regarding building plans passed for the month ended October 2001

Actual estimates at constant 1995 prices

| | October 2001 R million | January 2001 to October 2001 R million | Percentage change between October 2000 and October 2001 | Percentage change between August 2000 to October 2000 and August 2001 to October 2001 | Percentage change between January 2000 to October 2000 and January 2001 to October 2001 |
|-----------------------------|---------------------------|---|---|---|---|
| Residential buildings | | | | | |
| Dwelling-houses | 538,9 | 4 792,3 | - 0,9 | - 3,5 | + 3,2 |
| Flats and townhouses | 140,6 | 1 168,1 | + 43,9 | + 2,6 | + 2,8 |
| Other residential buildings | 1,5 | 190,9 | - 94,4 | + 19,0 | + 15,4 |
| Total | 681,0 | 6 151,3 | + 1,9 | - 1,7 | + 3,4 |
| Non-residential buildings | 146,6 | 2 139,4 | - 59,2 | - 39,0 | - 26,9 |
| Additions and alterations | 373,4 | 3 194,5 | - 5,1 | - 2,4 | - 9,4 |
| Total | 1 201,0 | 11 485,2 | - 15,5 | - 10,2 | - 7,4 |

Seasonally adjusted estimates at constant 1995 prices

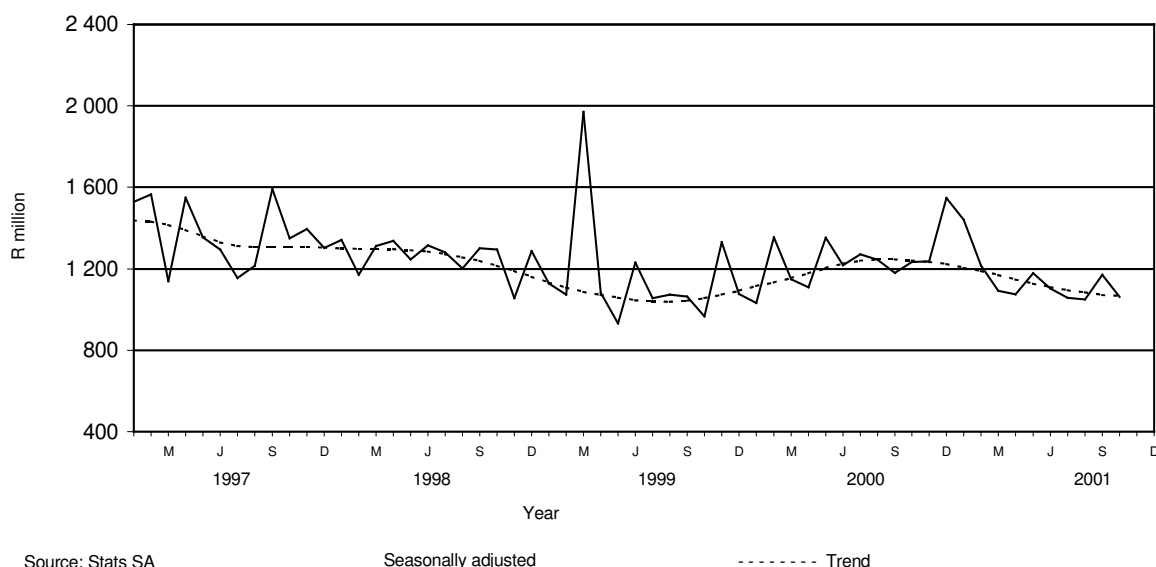
| | October 2001 R million | Percentage change between September 2001 and October 2001 | Percentage change between May 2001 to July 2001 and August 2001 to October 2001 |
|---------------------------|---------------------------|---|---|
| Residential buildings | 597,3 | - 5,9 | - 2,2 |
| Non-residential buildings | 139,2 | - 33,4 | - 12,6 |
| Additions and alterations | 326,6 | - 0,2 | + 6,4 |
| Total | 1 063,1 | - 9,2 | - 1,7 |

Key findings regarding building plans passed for the three months ended October 2001

Seasonally adjusted real value of building plans passed decreases

The seasonally adjusted real value of building plans passed (at constant 1995 prices) for the three months ended October 2001 decreased by 1,7% compared with the previous three months.

The decrease of 1,7% in the seasonally adjusted real value of building plans passed was due to decreases in the seasonally adjusted real value of building plans passed for non-residential buildings (-12,6%) and residential buildings (-2,2%) during the three months ended October 2001 compared with the three previous three months. However, these decreases were partially counteracted by an increase in the seasonally adjusted real value of building plans passed for additions and alterations (+6,4%) during the above-mentioned period.

Figure 1 - Total real value of building plans passed

Key findings regarding building plans passed for the first ten months of 2001

Total real value of building plans passed decreases

The total real value of building plans passed (at constant 1995 prices) during the first ten months of 2001 decreased by 7,4% (-R913,9 million) to R11 485,2 million compared with the first ten months of 2000. Large real decreases were reported for non-residential buildings (-26,9% or R785,5 million, mainly due to decreases reported by Gauteng (-R527,3 million) and Western Cape (-R209,3 million)); and additions and alterations (-9,4% or R332,2 million, mainly due to decreases reported by KwaZulu-Natal (-R105,7 million), Free State (-R74,4 million), Western Cape (-R70,1 million) and Gauteng (-R69,4 million)) during the above-mentioned period. However, the real value of building plans passed for residential buildings increased by 3,4% or R203,8 million, mainly due to large increases in the real value of dwelling-house plans passed (+R147,0 million) during this period.

Seven of the nine provinces reported decreases in the total real value of building plans passed

The largest provincial contributor to the decrease of 7,4% (-R913,9 million) in the total real value of building plans passed during the first ten months of 2001 compared with the first ten months of 2000 was Gauteng (-4,9 percentage points or R611,3 million), mainly due to real decreases reported for non-residential buildings (-R527,3 million), followed by Free State (-1,0 percentage point or R116,8 million) and Western Cape (-0,9 of a percentage point or R116,1 million) (cf. table A).

Table A - Contribution of provinces to the total real value of building plans passed

| Province | Percentage contribution to the total real value of plans passed during January 2000 to October 2000 | Percentage change between January 2000 to October 2000 and January 2001 to October 2001 | Contribution (percentage points) ^{1/} to the percentage change in the real value of plans passed between January 2000 to October 2000 and January 2001 to October 2001 | Difference in total real value of plans passed between January 2000 to October 2000 and January 2001 to October 2001 R million |
|-------------------|--|--|--|--|
| Gauteng | 43,4 | - 11,4 | - 4,9 | - 611,3 |
| Free State | 3,2 | - 29,2 | - 1,0 | - 116,8 |
| Western Cape | 27,9 | - 3,4 | - 0,9 | - 116,1 |
| Northern Province | 1,7 | - 17,4 | - 0,3 | - 36,8 |
| Northern Cape | 0,9 | - 30,3 | - 0,3 | - 34,7 |
| Eastern Cape | 5,7 | - 3,4 | - 0,2 | - 24,3 |
| KwaZulu-Natal | 11,7 | -0,1 | - 0,0 | -1,8 |
| North West | 2,4 | +0,8 | + 0,0 | +2,4 |
| Mpumalanga | 3,1 | + 6,8 | + 0,2 | + 25,5 |
| Total | 100,0 | - 7,4 | - 7,4 | - 913,9 |

1/ The contribution (percentage points) is calculated by multiplying the percentage change of each province between January 2000 to October 2000 and January 2001 to October 2001 (cf. column 3) with the percentage contribution of the corresponding province to the total real value of plans passed during January 2000 to October 2000 (cf. column 2) divided by 100.

Total real value of residential building plans passed increases

The total real value of residential building plans passed during the first ten months of 2001 increased by 3,4% (+R203,8 million) to R6 151,3 million compared with the first ten months of 2000. Increases were reported by five of the nine provinces. Large increases in the total real value of residential building plans passed were reported by Western Cape (+R163,3 million, due to the increase in the real value of dwelling-house plans passed (+R206,4 million)); and Mpumalanga (+R80,5 million, mainly due to increases in the real value of plans passed for flats and townhouses (+R58,8 million) and dwelling-houses (+R21,5 million)).

Total real value of dwelling-house plans passed increases

The total real value of dwelling-house plans passed during the first ten months of 2001 increased by 3,2% (+R147,0 million) to R4 792,3 million compared with the first ten months of 2000. The largest increase in the real value of dwelling-house plans passed was reported by Western Cape (+R206,4 million), followed by Gauteng (+R47,1 million), Mpumalanga (+R21,5 million) and North West (+R17,1 million). Large real increases were reported by the selected urban areas of Cape Town (+R108,5 million), Pretoria (+R56,8 million), Helderberg Municipality (+R34,4 million), Vaal Triangle (+R21,4 million), Mossel Bay Municipality (+R21,3 million), Port Elizabeth (+R19,9 million), Highveldridge Transitional Council (+R18,5 million) and Vryburg (+R15,8 million).

The increase of 3,2% in the total real value of dwelling-house plans passed during the above-mentioned period can mainly be attributed to the increase in the real value of plans passed for dwelling-houses equal to or larger than 80 square metres (+6,0% or R224,5 million).

Total real value of plans passed for flats and townhouses increases

The total real value of plans passed for flats and townhouses during the first ten months of 2001 increased by 2,8% (+R31,4 million) to R1 168,1 million compared with the first ten months of 2000. The largest increase in the real value of plans passed for flats and townhouses was reported by Mpumalanga (+R58,8 million, mainly due to real increases reported by Highveldridge Transitional Council (+R27,5 million) and Middelburg (+R24,4 million)), followed by Free State (+R15,1 million, mainly due to a real increase reported by Bloemfontein (+R17,7 million)) and North West (+R9,1 million, due to a real increase reported by Rustenburg (+R15,1 million)). However, a large decrease in the real value of plans passed for flats and townhouses was reported by Western Cape (-R39,9 million) during the above-mentioned period.

Total real value of 'other' residential building plans passed increases

The total real value of 'other' residential building plans passed during the first ten months of 2001 increased by 15,4% (+R25,4 million) to R190,9 million compared with the first ten months of 2000. Large real increases were reported by KwaZulu-Natal (+R49,4 million, due to the approval of building plans for a casino, to the real value of R55,3 million, by the local government institution of Pietermaritzburg during September 2001) and Eastern Cape (+R47,7 million, mainly due to the approval of building plans for a casino, to the real value of R35,8 million, by the local government institution of East London during January 2001). However, a large decrease in the real value of plans passed for 'other' residential buildings was reported by Gauteng (-R66,4 million) during the above-mentioned period.

Total real value of non-residential building plans passed decreases

The total real value of non-residential building plans passed during the first ten months of 2001 decreased by 26,9% (-R785,5 million) to R2 139,4 million compared with the first ten months of 2000. Large decreases in the real value of non-residential building plans passed were reported for industrial and warehouse space (-R305,4 million), office and banking space (-R281,2 million) and shopping space (-R139,1 million).

Large decreases in the total real value of non-residential building plans passed were reported by Gauteng (-R527,3 million, mainly due to decreases in the real value of plans passed for office and banking space (-R310,4 million), industrial and warehouse space (-R125,8 million) and shopping space (-R88,5 million)); and Western Cape (-R209,3 million, mainly due to decreases reported for industrial and warehouse space (-R96,3 million), office and banking space (-R54,0 million) and shopping space (-R44,0 million)). Large decreases in the total real value of non-residential building plans passed were reported by the selected urban areas of Witwatersrand (-R605,8 million) and Cape Town (-R191,2 million). However, KwaZulu-Natal reported an increase in the total real value of non-residential building plans passed (+R122,5 million). This increase was mainly due to the increase in the total real value of non-residential building plans passed as reported by North Local Council – Umhlanga Rocks (+R125,9 million) during the above-mentioned period.

Total real value of building plans passed for additions and alterations decreases

The total real value of building plans passed for additions and alterations during the first ten months of 2001 decreased by 9,4% (-R332,2 million) to R3 194,5 million compared with the first ten months of 2000. Real decreases were reported by eight of the nine provinces. Large decreases in the real value of building plans passed for additions and alterations were reported by KwaZulu-Natal (-R105,7 million), Free State (-R74,4 million), Western Cape (-R70,1 million) and Gauteng (-R69,4 million). Large real decreases were reported by the selected urban areas of Durban (-R109,0 million), Bloemfontein (-R76,6 million), Witwatersrand (-R76,1 million) and Cape Town (-R52,3 million).

Key figures regarding buildings completed for the month ended October 2001

Actual estimates at constant 1995 prices

| | October 2001 R million | January 2001 to October 2001 R million | Percentage change between October 2000 and October 2001 | Percentage change between August 2000 to October 2000 and August 2001 to October 2001 | Percentage change between January 2000 to October 2000 and January 2001 to October 2001 |
|-----------------------------|---------------------------|---|---|---|---|
| Residential buildings | | | | | |
| Dwelling-houses | 320,0 | 2 590,5 | + 23,0 | -3,1 | + 6,4 |
| Flats and townhouses | 99,6 | 677,9 | + 40,1 | + 5,0 | + 0,1 |
| Other residential buildings | 53,6 | 329,7 | +157,0 | +101,2 | +342,8 |
| Total | 473,2 | 3 598,1 | + 34,4 | +1,5 | + 12,9 |
| Non-residential buildings | 211,4 | 2 691,4 | + 36,8 | + 131,6 | + 26,8 |
| Additions and alterations | 173,4 | 1 755,4 | -6,8 | -10,5 | + 1,2 |
| Total | 858,0 | 8 044,9 | + 23,9 | + 34,1 | + 14,2 |

Seasonally adjusted estimates at constant 1995 prices

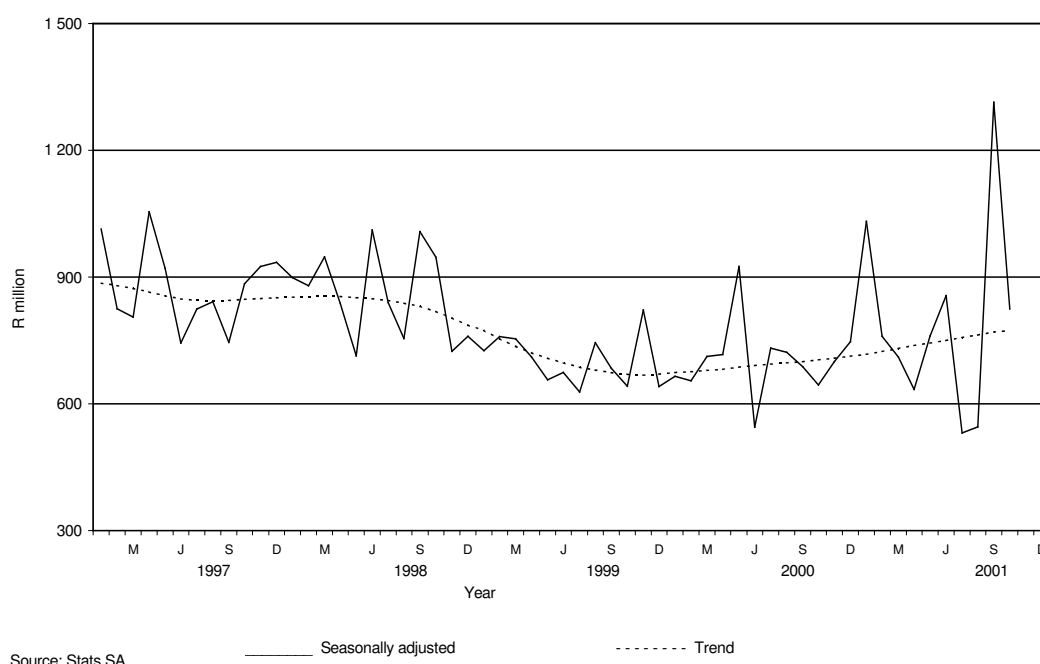
| | October 2001 R million | Percentage change between September 2001 and October 2001 | Percentage change between May 2001 to July 2001 and August 2001 to October 2001 |
|---------------------------|---------------------------|---|---|
| Residential buildings | 447,0 | + 58,2 | + 4,4 |
| Non-residential buildings | 214,7 | - 76,2 | + 98,6 |
| Additions and alterations | 162,5 | + 26,1 | - 18,6 |
| Total | 824,2 | - 37,3 | + 24,9 |

Key findings regarding buildings completed for the three months ended October 2001

Seasonally adjusted real value of buildings completed increases

The seasonally adjusted real value of buildings completed (at constant 1995 prices) for the three months ended October 2001 increased by 24,9% compared with the previous three months.

The increase of 24,9% in the seasonally adjusted real value of buildings completed between the three months ended October 2001 and the previous three months was due to the increase in the seasonally adjusted real value of non-residential buildings completed (+98,6%, mainly due to the completion of a large shopping centre as reported by North Local Council – Umhlanga Rocks during September 2001) and residential buildings completed (+4,4%). However, these increases were partially counteracted by a decrease in the seasonally adjusted real value of additions and alterations completed (-18,6%) during the above-mentioned period.

Figure 2 - Total real value of buildings completed

Key findings regarding buildings completed for the first ten months of 2001

Total real value of buildings completed increases

The total real value of buildings completed (at constant 1995 prices) during the first ten months of 2001 increased by 14,2% (+R1 000,6 million) to R8 044,9 million compared with the first ten months of 2000. Large increases in the real value of buildings completed were reported for non-residential buildings (+R569,6 million, due to real increases reported by KwaZulu-Natal (+R924,3 million)); 'other' residential buildings (+R255,3 million, mainly due to real increases reported for tourism accommodation and casinos (+R254,6 million)); and dwelling-houses (+R154,8 million, mainly due to real increases reported by Western Cape (+R151,5 million)).

Five of the nine provinces reported increases in the total real value of buildings completed

The largest provincial contributors to the increase of 14,2% (+R1 000,6 million) in the total real value of buildings completed during the first ten months of 2001 compared with the first ten months of 2000 was KwaZulu-Natal (+12,9 percentage points or R909,2 million, mainly due to the completion of a large shopping centre, to the real value of R795,0 million, as reported by North Local Council - Umhlanga Rocks during September 2001), followed by Eastern Cape (+2,4 percentage points or R168,4 million) and Western Cape (+2,3 percentage points or R158,8 million). However, these increases were partially counteracted by the large decrease reported by Gauteng (-3,4 percentage points or R241,5 million) during the above-mentioned period (cf. table B).

Table B - Contribution of provinces to the total real value of buildings completed

| Province | Percentage contribution to the total real value of buildings completed during January 2000 to October 2000 | Percentage change between January 2000 to October 2000 and January 2001 to October 2001 | Contribution (percentage points) ^{1/} to the percentage change in the real value of buildings completed between January 2000 to October 2000 and January 2001 to October 2001 | Difference in total real value of buildings completed between January 2000 to October 2000 and January 2001 to October 2001 R million |
|-------------------|---|--|---|---|
| KwaZulu-Natal | 16,6 | + 77,8 | + 12,9 | + 909,2 |
| Eastern Cape | 5,4 | + 44,6 | + 2,4 | + 168,4 |
| Western Cape | 27,6 | + 8,2 | + 2,3 | + 158,8 |
| Free State | 3,0 | + 27,0 | + 0,8 | + 56,2 |
| Northern Cape | 1,0 | + 11,4 | + 0,1 | + 8,2 |
| North West | 2,8 | - 2,2 | - 0,1 | - 4,3 |
| Mpumalanga | 2,5 | - 6,3 | - 0,2 | - 10,9 |
| Northern Province | 1,5 | - 40,1 | - 0,6 | - 43,5 |
| Gauteng | 39,6 | - 8,7 | - 3,4 | - 241,5 |
| Total | 100,0 | + 14,2 | + 14,2 | + 1 000,6 |

1/ The contribution (percentage points) is calculated by multiplying the percentage change of each province between January 2000 to October 2000 and January 2001 to October 2001 (cf. column 3) with the percentage contribution of the corresponding province to the total real value of buildings completed during January 2000 to October 2000 (cf. column 2) divided by 100.

Total real value of residential buildings completed increases

The total real value of residential buildings completed during the first ten months of 2001 increased by 12,9% (+R410,5 million) to R3 598,0 million compared with the first ten months of 2000. Large provincial increases in the total real value of residential buildings completed were reported by Western Cape (+R151,7 million), Gauteng (+R125,6 million), Eastern Cape (+R87,2 million) and KwaZulu-Natal (+R75,3 million).

Large increases in the real value of residential buildings completed were reported for 'other' residential buildings (+R255,3 million, mainly due to real increases reported for tourism accommodation and casinos (+R254,6 million)); and dwelling-houses (+R154,8 million, mainly due to real increases reported by Western Cape (+R151,5 million)).

Total real value of dwelling-houses completed increases

The total real value of dwelling-houses completed during the first ten months of 2001 increased by 6,4% (+R154,8 million) to R2 590,5 million compared with the first ten months of 2000. The largest real increase was reported by Western Cape (+R151,5 million), followed by Eastern Cape (+R49,9 million) and KwaZulu-Natal (+R48,4 million). Large increases in the real value of dwelling-houses completed were reported by Mossel Bay Municipality (+R49,1 million), the selected urban areas of Port Elizabeth (+R47,7 million) and Cape Town (+R38,7 million), Helderberg Municipality (+R37,6 million) and North Local Council – Umhlanga Rocks (+R32,1 million).

The increase of 6,4% in the total real value of dwelling-houses completed during the first ten months of 2001 compared with the first ten months of 2000 can be attributed to an increase in the completion of dwelling-houses equal to or larger than 80 square metres (+15,5% or R268,1 million).

Total real value of flats and townhouses completed increases slightly

The total real value of flats and townhouses completed during the first ten months of 2001 increased by only 0,1% (+R0,5 million) to R677,9 million compared with the first ten months of 2000. Four of the nine provinces reported increases in the real value of flats and townhouses completed. Provincial increases in the real value of flats and townhouses completed were reported by Western Cape (+R9,0 million), Mpumalanga (+R5,4 million), Gauteng (+R4,2 million) and Northern Cape (+R2,6 million) during the above-mentioned period.

Total real value of 'other' residential buildings completed increases

The total real value of 'other' residential buildings completed during the first ten months of 2001 increased by R255,3 million to R329,7 million compared with the first ten months of 2000. The largest real increase was reported by Gauteng (+R193,2 million, mainly due to the completion of a hotel and casino to the real value of R192,6 million, as reported by Southern Metropolitan Local Council of Greater Johannesburg during January 2001), followed by Eastern Cape (+R43,7 million, mainly due to the completion of a casino to the real value of R35,8 million, as reported by East London during October 2001) and KwaZulu-Natal (+R27,1 million, due to the completion of a casino to the real value of R30,8 million, as reported by the North Local Council – Umhlanga Rocks during January 2001).

Total real value of non-residential buildings completed increases

The total real value of non-residential buildings completed during the first ten months of 2001 increased by 26,8% (+R569,6 million) to R2 691,4 million compared with the first ten months of 2000. Four of the nine provinces reported increases in the total real value of non-residential buildings completed. The largest real increase was reported by KwaZulu-Natal (+R924,3 million), due to an increase in the real value of shopping space completed (+R943,1 million). Large increases in the real value of shopping space completed in KwaZulu-Natal was reported by North Local Council – Umhlanga Rocks (+R939,5 million) during the above-mentioned period.

Total real value of additions and alterations completed increases

The total real value of additions and alterations completed during the first ten months of 2001 increased by 1,2% (+R20,5 million) to R1 755,4 million compared with the first ten months of 2000. The largest real increases were reported by Western Cape (+R82,1 million, mainly due to real increases reported by the selected urban areas of Cape Town (+R77,0 million)) and Free State (+R66,1 million, mainly due to increases reported by the selected urban areas of Bloemfontein (+R61,9 million)). However, these increases were partially counteracted by large decreases in the real value of additions and alterations completed as reported by KwaZulu-Natal (-R90,4 million) and Gauteng (-R65,5 million).

pp

PJ Lehohla**Statistician-General: Statistics South Africa**

Contents

Page

| | | |
|-------------------------------|---|----|
| Notes | | 10 |
| Tables | | |
| Table 1 | Actual values and percentage change of building plans passed at current prices according to type of building | 14 |
| Table 2 | Seasonally adjusted values and percentage change of building plans passed at current prices according to type of building | 15 |
| Table 3 | Actual values and percentage change of building plans passed at constant 1995 prices according to type of building | 16 |
| Table 4 | Seasonally adjusted values and percentage change of building plans passed at constant 1995 prices according to type of building | 17 |
| Table 5 | Actual values and percentage change of buildings completed at current prices according to type of building | 18 |
| Table 6 | Seasonally adjusted values and percentage change of buildings completed at current prices according to type of building | 19 |
| Table 7 | Actual values and percentage change of buildings completed at constant 1995 prices according to type of building | 20 |
| Table 8 | Seasonally adjusted values and percentage change of buildings completed at constant 1995 prices according to type of building | 21 |
| Table 9 | Building plans passed according to type of building: Total RSA | 22 |
| Table 10 | Building plans passed according to type of building and province: Western Cape | 23 |
| Table 11 | Building plans passed according to type of building and province: Eastern Cape | 24 |
| Table 12 | Building plans passed according to type of building and province: Northern Cape | 25 |
| Table 13 | Building plans passed according to type of building and province: Free State | 26 |
| Table 14 | Building plans passed according to type of building and province: KwaZulu-Natal | 27 |
| Table 15 | Building plans passed according to type of building and province: North West | 28 |
| Table 16 | Building plans passed according to type of building and province: Gauteng | 29 |
| Table 17 | Building plans passed according to type of building and province: Mpumalanga | 30 |
| Table 18 | Building plans passed according to type of building and province: Northern Province | 31 |
| Table 19 | Buildings completed according to type of building: Total RSA | 32 |
| Table 20 | Buildings completed according to type of building and province: Western Cape | 33 |
| Table 21 | Buildings completed according to type of building and province: Eastern Cape | 34 |
| Table 22 | Buildings completed according to type of building and province: Northern Cape | 35 |
| Table 23 | Buildings completed according to type of building and province: Free State | 36 |
| Table 24 | Buildings completed according to type of building and province: KwaZulu-Natal | 37 |
| Table 25 | Buildings completed according to type of building and province: North West | 38 |
| Table 26 | Buildings completed according to type of building and province: Gauteng | 39 |
| Table 27 | Buildings completed according to type of building and province: Mpumalanga | 40 |
| Table 28 | Buildings completed according to type of building and province: Northern Province | 41 |
| Table 29 | Building plans passed according to type of building and selected urban area: Cape Town | 42 |
| Table 30 | Building plans passed according to type of building and selected urban area: Port Elizabeth | 43 |
| Table 31 | Building plans passed according to type of building and selected urban area: Durban | 44 |
| Table 32 | Building plans passed according to type of building and selected urban area: Witwatersrand | 45 |
| Table 33 | Building plans passed according to type of building and selected urban area: Pretoria | 46 |
| Table 34 | Building plans passed according to type of building and selected urban area: Bloemfontein | 47 |
| Table 35 | Buildings completed according to type of building and selected urban area: Cape Town | 48 |
| Table 36 | Buildings completed according to type of building and selected urban area: Port Elizabeth | 49 |
| Table 37 | Buildings completed according to type of building and selected urban area: Durban | 50 |
| Table 38 | Buildings completed according to type of building and selected urban area: Witwatersrand | 51 |
| Table 39 | Buildings completed according to type of building and selected urban area: Pretoria | 52 |
| Table 40 | Buildings completed according to type of building and selected urban area: Bloemfontein | 53 |
| Additional information | | |
| | Explanatory notes | 54 |
| | Technical notes | 56 |
| | Local government institutions covered in the sample survey | 57 |
| | Glossary | 58 |
| For more information | | 61 |

Notes

| Forthcoming issues | Issue | Expected release date |
|--|--|------------------------------|
| | November 2001 | 16 January 2002 |
| | December 2001 | 20 February 2002 |
| | January 2002 | 20 March 2002 |
| Purpose of the survey | <p>The Building Statistics Survey is a countrywide survey covering a sample of local government institutions in South Africa. The information received is used to estimate key economic statistics used by the private and public sectors. The information is also used to compile estimates of the Gross Domestic Product (GDP). These statistics are also used by government to monitor the Reconstruction and Development Program (RDP) in South Africa.</p> | |
| New questionnaire | <p>In order to lessen the respondent burden and improve reliability, Stats SA has overhauled and redesigned its Building Statistics Survey questionnaire. This resulted in the change of some data items on the old questionnaire. As from November 1999 information regarding dwelling-houses was collected according to size of dwelling-house.</p> <p>The Building Statistics Survey questionnaire collects the numbers, square metres and value of building plans passed and buildings completed for the private sector regarding –</p> <ul style="list-style-type: none"> • residential buildings; • non-residential buildings; and • additions and alterations. | |
| Re-engineered building statistics statistical release | <p>Prior to March 2001, Stats SA published selected information per province namely, the value of building plans passed and buildings completed regarding residential buildings, non-residential buildings and additions and alterations. Due to users' needs, specifically compilers of National Accounts, Stats SA has overhauled and re-designed the statistical release. In order to provide users with more provincial information Stats SA extended the information per province to include more detailed information regarding residential buildings (e.g. dwelling-houses equal to or larger than 80 square metre; flats and townhouses; and other residential buildings), non-residential buildings (e.g. office and banking space; shopping space; industrial and warehouse space; and other non-residential space) and additions and alterations (e.g. additions to dwelling-houses and other buildings).</p> <p>Furthermore, to monitor the RDP housing program Stats SA publishes information regarding dwelling-houses smaller than 80 square metres and equal to or larger than 80 square metres according to province.</p> | |
| Changes in the numbering of tables | <p>It should be noted that the numbering of tables has changed as from March 2001 as indicated in table C, pages 11 to 13.</p> | |

Table C – Title of table according to new and old numbers

| New number (as from March 2001) | Title of table | Old number (prior to March 2001) |
|--|---|---|
| Table 1 | Actual values and percentage change of building plans passed at current prices according to type of building | Table 3 |
| Table 2 | Seasonally adjusted values and percentage change of building plans passed at current prices according to type of building | Table 7 |
| Table 3 | Actual values and percentage change of building plans passed at constant 1995 prices according to type of building | Table 4 |
| Table 4 | Seasonally adjusted values and percentage change of building plans passed at constant 1995 prices according to type of building | Table 7 |
| Table 5 | Actual values and percentage change of buildings completed at current prices according to type of building | Table 5 |
| Table 6 | Seasonally adjusted values and percentage change of buildings completed at current prices according to type of building | Table 8 |
| Table 7 | Actual values and percentage change of buildings completed at constant 1995 prices according to type of building | Table 6 |
| Table 8 | Seasonally adjusted values and percentage change of buildings completed at constant 1995 prices according to type of building | Table 8 |
| Table 9 | Building plans passed according to type of building: Total RSA | Tables 1 and 9 |
| Table 10 | Building plans passed according to type of building and province: Western Cape | Table 1 |
| Table 11 | Building plans passed according to type of building and province: Eastern Cape | Table 1 |
| Table 12 | Building plans passed according to type of building and province: Northern Cape | Table 1 |
| Table 13 | Building plans passed according to type of building and province: Free State | Table 1 |
| Table 14 | Building plans passed according to type of building and province: KwaZulu-Natal | Table 1 |
| Table 15 | Building plans passed according to type of building and province: North West | Table 1 |
| Table 16 | Building plans passed according to type of building and province: Gauteng | Table 1 |
| Table 17 | Building plans passed according to type of building and province: Mpumalanga | Table 1 |

Table C – Title of table according to new and old numbers (continued)

| New number (as from March 2001) | Title of table | Old number (prior to March 2001) |
|--|---|---|
| Table 18 | Building plans passed according to type of building and province: Northern Province | Table 1 |
| Table 19 | Buildings completed according to type of building: Total RSA | Tables 2 and 11 |
| Table 20 | Buildings completed according to type of building and province: Western Cape | Table 2 |
| Table 21 | Buildings completed according to type of building and province: Eastern Cape | Table 2 |
| Table 22 | Buildings completed according to type of building and province: Northern Cape | Table 2 |
| Table 23 | Buildings completed according to type of building and province: Free State | Table 2 |
| Table 24 | Buildings completed according to type of building and province: KwaZulu-Natal | Table 2 |
| Table 25 | Buildings completed according to type of building and province: North West | Table 2 |
| Table 26 | Buildings completed according to type of building and province: Gauteng | Table 2 |
| Table 27 | Buildings completed according to type of building and province: Mpumalanga | Table 2 |
| Table 28 | Buildings completed according to type of building and province: Northern Province | Table 2 |
| Table 29 | Building plans passed according to type of building and selected urban area: Cape Town | Table 10 |
| Table 30 | Building plans passed according to type of building and selected urban area: Port Elizabeth | New |
| Table 31 | Building plans passed according to type of building and selected urban area: Durban | Table 10 |
| Table 32 | Building plans passed according to type of building and selected urban area: Witwatersrand | Table 10 |
| Table 33 | Building plans passed according to type of building and selected urban area: Pretoria | Table 10 |
| Table 34 | Building plans passed according to type of building and selected urban area: Bloemfontein | Table 10 |
| Table 35 | Buildings completed according to type of building and selected urban area: Cape Town | Table 12 |
| Table 36 | Buildings completed according to type of building and selected urban area: Port Elizabeth | New |

Table C – Title of table according to new and old numbers (concluded)

| New number (as from March 2001) | Title of table | Old number (prior to March 2001) |
|--|--|---|
| Table 37 | Buildings completed according to type of building and selected urban area: Durban | Table 12 |
| Table 38 | Buildings completed according to type of building and selected urban area: Witwatersrand | Table 12 |
| Table 39 | Buildings completed according to type of building and selected urban area: Pretoria | Table 12 |
| Table 40 | Buildings completed according to type of building and selected urban area: Bloemfontein | Table 12 |

Table 1 - Actual values and percentage change of building plans passed at current prices according to type of building

| Year ^{1/} and month ^{2/} | Residential buildings | | Non-residential buildings | | Additions and alterations | | Total | |
|--|-----------------------|----------------------|------------------------------|----------------------|------------------------------|----------------------|-------------------|----------------------|
| | R'000 | Percentage change | R'000 | Percentage change | R'000 | Percentage change | R'000 | Percentage change |
| 1999 Jan | 553 051 | + 9,8 | 237 671 | - 45,6 | 277 444 | + 9,9 | 1 068 166 | - 7,0 |
| Feb | 528 673 | - 18,9 | 394 629 | - 4,6 | 355 506 | - 2,0 | 1 278 809 | - 7,0 |
| Mar | 667 232 | - 17,0 | 1 454 021 | + 219,5 | 476 726 | + 10,2 | 2 597 979 | + 59,3 |
| Apr | 530 570 | - 22,1 | 374 625 | - 23,8 | 330 044 | - 6,9 | 1 235 239 | - 16,0 |
| May | 527 616 | - 19,3 | 274 148 | - 46,9 | 403 206 | + 14,2 | 1 204 970 | - 17,9 |
| Jun | 837 779 | + 18,8 | 418 343 | - 32,5 | 403 838 | + 2,5 | 1 659 959 | + 0,4 |
| Jul | 637 414 | - 19,6 | 460 734 | - 7,1 | 420 306 | - 15,4 | 1 518 454 | - 12,2 |
| Aug | 630 628 | - 14,1 | 388 580 | - 14,5 | 415 686 | - 6,2 | 1 434 895 | - 7,7 |
| Sep | 599 986 | - 14,7 | 305 439 | - 38,8 | 484 091 | + 9,7 | 1 389 516 | - 13,4 |
| Oct | 664 785 | - 22,6 | 329 137 | - 38,8 | 436 746 | - 11,1 | 1 430 668 | - 22,7 |
| Nov | 710 950 | + 14,0 | 701 437 | + 44,0 | 536 870 | + 39,6 | 1 949 257 | + 33,3 |
| Dec | 493 844 | + 16,1 | 225 184 | - 40,9 | 314 898 | - 23,4 | 1 033 926 | - 12,9 |
| Total | 7 382 530 | - 8,9 | 5 563 948 | - 3,8 | 4 855 360 | + 0,8 | 17 801 839 | - 1,8 |
| 2000 Jan | 490 776 | - 11,3 | 163 926 | - 31,0 | 365 596 | + 31,8 | 1 020 298 | - 4,5 |
| Feb | 784 023 | + 48,3 | 521 389 | + 32,1 | 399 280 | + 12,3 | 1 704 692 | + 33,3 |
| Mar | 747 421 | + 12,0 | 359 267 | - 75,3 | 515 668 | + 8,2 | 1 622 356 | - 37,6 |
| Apr | 627 642 | + 18,3 | 271 151 | - 27,6 | 382 300 | + 15,8 | 1 281 093 | + 3,7 |
| May | 874 847 | + 65,8 | 573 853 | + 109,3 | 473 062 | + 17,3 | 1 921 762 | + 59,5 |
| Jun | 853 154 | + 1,8 | 336 324 | - 19,6 | 532 278 | + 31,8 | 1 721 756 | + 3,7 |
| Jul | 908 061 | + 42,5 | 484 669 | + 5,2 | 549 932 | + 30,8 | 1 942 662 | + 27,9 |
| Aug | 929 836 | + 47,4 | 353 488 | - 9,0 | 492 627 | + 18,5 | 1 775 951 | + 23,8 |
| Sep | 826 851 | + 37,8 | 354 456 | + 16,0 | 465 836 | - 3,8 | 1 647 143 | + 18,5 |
| Oct | 916 410 | + 37,9 | 492 884 | + 49,8 | 539 561 | + 23,5 | 1 948 855 | + 36,2 |
| Nov | 914 346 | + 28,6 | 493 166 | - 29,7 | 503 659 | - 6,2 | 1 911 171 | - 2,0 |
| Dec | 606 148 | + 22,7 | 704 410 | + 212,8 | 317 835 | + 0,9 | 1 628 393 | + 57,5 |
| Total | 9 479 515 | + 28,4 | 5 108 983 | - 8,2 | 5 537 634 | + 14,1 | 20 126 132 | + 13,1 |
| 2001 Jan | 720 680 | + 46,8 | 475 089 | + 189,8 | 352 501 | - 3,6 | 1 548 270 | + 51,7 |
| Feb | 817 853 | + 4,3 | 299 417 | - 42,6 | 473 166 | + 18,5 | 1 590 436 | - 6,7 |
| Mar | 923 148 | + 23,5 | 305 034 | - 15,1 | 438 069 | - 15,0 | 1 666 251 | + 2,7 |
| Apr | 732 653 | + 16,7 | 206 520 | - 23,8 | 375 509 | - 1,8 | 1 314 682 | + 2,6 |
| May | 998 520 | + 14,1 | 289 330 | - 49,6 | 499 431 | + 5,6 | 1 787 281 | - 7,0 |
| Jun | 902 916 | + 5,8 | 314 602 | - 6,5 | 447 975 | - 15,8 | 1 665 493 | - 3,3 |
| Jul | 908 280 | + 0,0 | 383 440 | - 20,9 | 428 902 | - 22,0 | 1 720 622 | - 11,4 |
| Aug | 837 251 | - 10,0 | 260 144 | - 26,4 | 483 666 | - 1,8 | 1 581 061 | - 11,0 |
| Sep* | 959 583 | + 16,1 | 303 367 | - 14,4 | 524 349 | + 12,6 | 1 787 299 | + 8,5 |
| Oct | 990 133 | + 8,0 | 213 122 | - 56,8 | 542 974 | + 0,6 | 1 746 229 | - 10,4 |

^{1/} The annual percentage change is the change in the actual values of building plans passed of the relevant year compared with the actual values of building plans passed of the previous year expressed as a percentage.

^{2/} The monthly percentage change is the change in the actual values of building plans passed of the relevant month compared with the actual values of building plans passed of the same month in the previous year expressed as a percentage.

Table 2 - Seasonally adjusted values and percentage change of building plans passed at current prices according to type of building

| Year and month ^{1/} | Residential buildings | | Non-residential buildings | | Additions and alterations | | Total | |
|------------------------------|-----------------------|-------------------|---------------------------|-------------------|---------------------------|-------------------|-----------|-------------------|
| | R'000 | Percentage change | R'000 | Percentage change | R'000 | Percentage change | R'000 | Percentage change |
| 1999 Jan | 716 612 | + 18,9 | 282 163 | - 41,1 | 380 965 | - 25,7 | 1 379 740 | - 13,5 |
| Feb | 533 020 | - 25,6 | 423 504 | + 50,1 | 379 558 | - 0,4 | 1 336 082 | - 3,2 |
| Mar | 621 908 | + 16,7 | 1 430 932 | + 237,9 | 438 782 | + 15,6 | 2 491 622 | + 86,5 |
| Apr | 579 605 | - 6,8 | 419 066 | - 70,7 | 380 975 | - 13,2 | 1 379 646 | - 44,6 |
| May | 505 701 | - 12,8 | 260 471 | - 37,8 | 395 213 | + 3,7 | 1 161 385 | - 15,8 |
| Jun | 796 426 | + 57,5 | 392 708 | + 50,8 | 387 662 | - 1,9 | 1 576 796 | + 35,8 |
| Jul | 572 830 | - 28,1 | 402 830 | + 2,6 | 373 994 | - 3,5 | 1 349 654 | - 14,4 |
| Aug | 598 435 | + 4,5 | 389 105 | - 3,4 | 391 312 | + 4,6 | 1 378 852 | + 2,2 |
| Sep | 581 115 | - 2,9 | 311 933 | - 19,8 | 444 220 | + 13,5 | 1 337 268 | - 3,0 |
| Oct | 565 197 | - 2,7 | 296 810 | - 4,8 | 384 006 | - 13,6 | 1 246 013 | - 6,8 |
| Nov | 662 846 | + 17,3 | 584 133 | + 96,8 | 471 937 | + 22,9 | 1 718 916 | + 38,0 |
| Dec | 698 353 | + 5,4 | 286 902 | - 50,9 | 413 197 | - 12,4 | 1 398 452 | - 18,6 |
| 2000 Jan | 630 207 | - 9,8 | 187 740 | - 34,6 | 491 926 | + 19,1 | 1 309 872 | - 6,3 |
| Feb | 802 083 | + 27,3 | 580 980 | + 209,5 | 425 483 | - 13,5 | 1 808 547 | + 38,1 |
| Mar | 689 777 | - 14,0 | 357 641 | - 38,4 | 470 158 | + 10,5 | 1 517 576 | - 16,1 |
| Apr | 701 630 | + 1,7 | 322 233 | - 9,9 | 449 222 | - 4,5 | 1 473 084 | - 2,9 |
| May | 824 162 | + 17,5 | 539 035 | + 67,3 | 460 267 | + 2,5 | 1 823 465 | + 23,8 |
| Jun | 808 724 | - 1,9 | 314 676 | - 41,6 | 513 756 | + 11,6 | 1 637 156 | - 10,2 |
| Jul | 821 015 | + 1,5 | 399 708 | + 27,0 | 500 509 | - 2,6 | 1 721 232 | + 5,1 |
| Aug | 880 372 | + 7,2 | 361 443 | - 9,6 | 464 980 | - 7,1 | 1 706 795 | - 0,8 |
| Sep | 790 980 | - 10,2 | 352 023 | - 2,6 | 422 863 | - 9,1 | 1 565 866 | - 8,3 |
| Oct | 793 654 | + 0,3 | 459 788 | + 30,6 | 471 911 | + 11,6 | 1 725 353 | + 10,2 |
| Nov | 849 317 | + 7,0 | 415 627 | - 9,6 | 439 169 | - 6,9 | 1 704 114 | - 1,2 |
| Dec | 853 380 | + 0,5 | 882 377 | + 112,3 | 420 045 | - 4,4 | 2 155 802 | + 26,5 |
| 2001 Jan | 919 612 | + 7,8 | 541 146 | - 38,7 | 469 820 | + 11,8 | 1 930 579 | - 10,4 |
| Feb | 842 729 | - 8,4 | 340 722 | - 37,0 | 506 624 | + 7,8 | 1 690 076 | - 12,5 |
| Mar | 849 663 | + 0,8 | 301 349 | - 11,6 | 398 057 | - 21,4 | 1 549 068 | - 8,3 |
| Apr | 830 122 | - 2,3 | 254 241 | - 15,6 | 445 371 | + 11,9 | 1 529 734 | - 1,2 |
| May | 934 883 | + 12,6 | 267 200 | + 5,1 | 484 202 | + 8,7 | 1 686 285 | + 10,2 |
| Jun | 851 633 | - 8,9 | 297 529 | + 11,4 | 431 079 | - 11,0 | 1 580 241 | - 6,3 |
| Jul | 821 177 | - 3,6 | 306 616 | + 3,1 | 393 632 | - 8,7 | 1 521 425 | - 3,7 |
| Aug | 789 175 | - 3,9 | 264 646 | - 13,7 | 457 833 | + 16,3 | 1 511 654 | - 0,6 |
| Sep | 918 281 | + 16,4 | 302 678 | + 14,4 | 473 811 | + 3,5 | 1 694 770 | + 12,1 |
| Oct | 867 951 | - 5,5 | 202 641 | - 33,1 | 475 541 | + 0,4 | 1 546 133 | - 8,8 |

^{1/} The percentage change is the change in the seasonally adjusted values of building plans passed of the relevant month compared with the seasonally adjusted values of building plans passed of the previous month expressed as a percentage.

Table 3 - Actual values and percentage change of building plans passed at constant 1995 prices according to type of building

| Year ^{1/} and month ^{2/} | Residential buildings | | Non-residential buildings | | Additions and alterations | | Total | |
|--|-----------------------|----------------------|------------------------------|----------------------|------------------------------|----------------------|-------------------|----------------------|
| | R'000 | Percentage change | R'000 | Percentage change | R'000 | Percentage change | R'000 | Percentage change |
| 1999 Jan | 444 933 | + 2,8 | 191 208 | - 45,6 | 223 205 | + 9,9 | 859 346 | - 13,0 |
| Feb | 420 918 | - 24,5 | 314 195 | - 4,6 | 283 046 | - 2,0 | 1 018 159 | - 13,4 |
| Mar | 530 391 | - 22,6 | 1 155 820 | + 219,5 | 378 955 | + 10,2 | 2 065 166 | + 48,5 |
| Apr | 419 423 | - 27,3 | 296 146 | - 23,8 | 260 904 | - 6,9 | 976 473 | - 21,6 |
| May | 416 759 | - 24,5 | 216 546 | - 46,9 | 318 488 | + 14,2 | 951 793 | - 23,2 |
| Jun | 659 150 | + 11,2 | 329 145 | - 32,5 | 317 732 | + 2,5 | 1 306 027 | - 6,1 |
| Jul | 499 933 | - 24,1 | 361 360 | - 7,1 | 329 651 | - 15,4 | 1 190 944 | - 17,2 |
| Aug | 494 610 | - 13,8 | 304 769 | - 14,5 | 326 028 | - 6,2 | 1 125 407 | - 11,9 |
| Sep | 469 473 | - 18,3 | 238 998 | - 38,8 | 378 788 | + 9,7 | 1 087 259 | - 17,0 |
| Oct | 519 363 | - 25,5 | 257 138 | - 38,8 | 341 208 | - 11,1 | 1 117 709 | - 25,6 |
| Nov | 553 699 | + 9,8 | 546 290 | + 44,0 | 418 123 | + 39,6 | 1 518 112 | + 28,3 |
| Dec | 384 016 | + 11,7 | 175 104 | - 40,9 | 244 866 | - 23,4 | 803 986 | - 16,3 |
| Total | 5 812 668 | - 8,9 | 4 386 719 | - 3,8 | 3 820 994 | + 0,8 | 14 020 381 | - 7,1 |
| 2000 Jan | 378 102 | - 15,0 | 126 291 | - 34,0 | 281 661 | + 26,2 | 786 054 | - 8,5 |
| Feb* | 602 168 | + 43,1 | 400 452 | + 27,5 | 306 667 | + 8,3 | 1 309 287 | + 28,6 |
| Mar | 570 115 | + 7,5 | 274 040 | - 76,3 | 393 339 | + 3,8 | 1 237 494 | - 40,1 |
| Apr | 473 692 | + 12,9 | 204 642 | - 30,9 | 288 528 | + 10,6 | 966 862 | - 1,0 |
| May | 655 807 | + 57,4 | 430 175 | + 98,7 | 354 619 | + 11,3 | 1 440 601 | + 51,4 |
| Jun | 637 634 | - 3,3 | 251 363 | - 23,6 | 397 816 | + 25,2 | 1 286 813 | - 1,5 |
| Jul | 672 638 | + 34,5 | 359 014 | - 0,6 | 407 357 | + 23,6 | 1 439 009 | + 20,8 |
| Aug | 682 699 | + 38,0 | 259 536 | - 14,8 | 361 694 | + 10,9 | 1 303 929 | + 15,9 |
| Sep | 606 196 | + 29,1 | 259 865 | + 8,7 | 341 522 | - 9,8 | 1 207 583 | + 11,1 |
| Oct | 668 425 | + 28,7 | 359 507 | + 39,8 | 393 553 | + 15,3 | 1 421 485 | + 27,2 |
| Nov | 664 013 | + 19,9 | 358 145 | - 34,4 | 365 765 | - 12,5 | 1 387 923 | - 8,6 |
| Dec | 438 602 | + 14,2 | 509 703 | + 191,1 | 229 982 | - 6,1 | 1 178 287 | + 46,6 |
| Total | 7 050 091 | + 21,3 | 3 792 733 | - 13,5 | 4 122 503 | + 7,9 | 14 965 327 | + 6,7 |
| 2001 Jan | 515 877 | + 36,4 | 340 078 | + 169,3 | 252 327 | - 10,4 | 1 108 282 | + 41,0 |
| Feb | 582 516 | - 3,3 | 213 260 | - 46,7 | 337 013 | + 9,9 | 1 132 789 | - 13,5 |
| Mar | 653 325 | + 14,6 | 215 877 | - 21,2 | 310 028 | - 21,2 | 1 179 230 | - 4,7 |
| Apr | 515 590 | + 8,8 | 145 334 | - 29,0 | 264 257 | - 8,4 | 925 181 | - 4,3 |
| May | 698 754 | + 6,5 | 202 470 | - 52,9 | 349 497 | - 1,4 | 1 250 721 | - 13,2 |
| Jun | 630 528 | - 1,1 | 219 694 | - 12,6 | 312 832 | - 21,4 | 1 163 054 | - 9,6 |
| Jul | 630 750 | - 6,2 | 266 278 | - 25,8 | 297 849 | - 26,9 | 1 194 877 | - 17,0 |
| Aug | 579 814 | - 15,1 | 180 155 | - 30,6 | 334 949 | - 7,4 | 1 094 918 | - 16,0 |
| Sep* | 663 153 | + 9,4 | 209 652 | - 19,3 | 362 370 | + 6,1 | 1 235 175 | + 2,3 |
| Oct | 680 972 | + 1,9 | 146 576 | - 59,2 | 373 435 | - 5,1 | 1 200 983 | - 15,5 |

^{1/} The annual percentage change is the change in the actual values of building plans passed of the relevant year compared with the actual values of building plans passed of the previous year expressed as a percentage.

^{2/} The monthly percentage change is the change in the actual values of building plans passed of the relevant month compared with the actual values of building plans passed of the same month in the previous year expressed as a percentage.

Table 4 - Seasonally adjusted values and percentage change of building plans passed at constant 1995 prices according to type of building

| Year and month ^{1/} | Residential buildings | | Non-residential buildings | | Additions and alterations | | Total | |
|------------------------------|-----------------------|-------------------|---------------------------|-------------------|---------------------------|-------------------|-----------|-------------------|
| | R'000 | Percentage change | R'000 | Percentage change | R'000 | Percentage change | R'000 | Percentage change |
| 1999 Jan | 576 883 | + 18,8 | 226 816 | - 41,2 | 305 513 | + 7,5 | 1 109 212 | - 13,5 |
| Feb | 424 438 | - 26,4 | 337 752 | + 48,9 | 307 462 | + 0,6 | 1 069 652 | - 3,6 |
| Mar | 493 409 | + 16,2 | 1 136 685 | + 236,5 | 348 705 | + 13,4 | 1 978 799 | + 85,0 |
| Apr | 458 432 | - 7,1 | 331 459 | - 70,8 | 301 317 | - 13,6 | 1 091 208 | - 44,9 |
| May | 400 467 | - 12,6 | 206 043 | - 37,8 | 313 263 | + 4,0 | 919 773 | - 15,7 |
| Jun | 625 389 | + 56,2 | 308 700 | + 49,8 | 304 774 | - 2,7 | 1 238 863 | + 34,7 |
| Jul | 449 831 | - 28,1 | 316 388 | + 2,5 | 292 750 | - 3,9 | 1 058 969 | - 14,5 |
| Aug | 470 001 | + 4,5 | 305 739 | - 3,4 | 307 599 | + 5,1 | 1 083 338 | + 2,3 |
| Sep | 455 303 | - 3,1 | 244 200 | - 20,1 | 347 491 | + 13,0 | 1 046 993 | - 3,4 |
| Oct | 441 918 | - 2,9 | 231 832 | - 5,1 | 299 690 | - 13,8 | 973 439 | - 7,0 |
| Nov | 515 499 | + 16,7 | 454 192 | + 95,9 | 363 297 | + 21,2 | 1 332 988 | + 36,9 |
| Dec | 540 600 | + 4,9 | 222 212 | - 51,1 | 318 643 | - 12,3 | 1 081 456 | - 18,9 |
| 2000 Jan | 486 106 | - 10,1 | 144 551 | - 34,9 | 377 401 | + 18,4 | 1 008 059 | - 6,8 |
| Feb | 615 726 | + 26,7 | 446 849 | + 209,1 | 336 035 | - 11,0 | 1 398 610 | + 38,7 |
| Mar | 525 066 | - 14,7 | 272 671 | - 39,0 | 358 414 | + 6,7 | 1 156 151 | - 17,3 |
| Apr | 529 717 | + 0,9 | 243 463 | - 10,7 | 338 934 | - 5,4 | 1 112 114 | - 3,8 |
| May | 619 525 | + 17,0 | 404 728 | + 66,2 | 345 847 | + 2,0 | 1 370 099 | + 23,2 |
| Jun | 603 253 | - 2,6 | 235 010 | - 41,9 | 383 504 | + 10,9 | 1 221 767 | - 10,8 |
| Jul | 608 868 | + 0,9 | 296 502 | + 26,2 | 369 452 | - 3,7 | 1 274 822 | + 4,3 |
| Aug | 647 837 | + 6,4 | 265 820 | - 10,3 | 341 881 | - 7,5 | 1 255 537 | - 1,5 |
| Sep | 580 384 | - 10,4 | 257 947 | - 3,0 | 309 807 | - 9,4 | 1 148 137 | - 8,6 |
| Oct | 579 354 | - 0,2 | 335 113 | + 29,9 | 343 840 | + 11,0 | 1 258 307 | + 9,6 |
| Nov | 615 886 | + 6,3 | 301 464 | - 10,0 | 315 002 | - 8,4 | 1 232 352 | - 2,1 |
| Dec | 614 567 | - 0,2 | 636 041 | + 111,0 | 301 410 | - 4,3 | 1 552 018 | + 25,9 |
| 2001 Jan | 659 426 | + 7,3 | 387 324 | - 39,1 | 334 905 | + 11,1 | 1 381 655 | - 11,0 |
| Feb | 599 700 | - 9,1 | 242 981 | - 37,3 | 372 434 | + 11,2 | 1 215 114 | - 12,1 |
| Mar | 600 014 | + 0,1 | 213 172 | - 12,3 | 281 613 | - 24,4 | 1 094 798 | - 9,9 |
| Apr | 584 196 | - 2,6 | 179 160 | - 16,0 | 313 377 | + 11,3 | 1 076 733 | - 1,7 |
| May | 656 273 | + 12,3 | 187 300 | + 4,5 | 339 428 | + 8,3 | 1 183 000 | + 9,9 |
| Jun | 593 614 | - 9,5 | 207 644 | + 10,9 | 300 615 | - 11,4 | 1 101 872 | - 6,9 |
| Jul | 570 977 | - 3,8 | 213 235 | + 2,7 | 272 313 | - 9,4 | 1 056 525 | - 4,1 |
| Aug | 547 768 | - 4,1 | 183 553 | - 13,9 | 317 382 | + 16,6 | 1 048 703 | - 0,7 |
| Sep | 635 096 | + 15,9 | 208 976 | + 13,9 | 327 091 | + 3,1 | 1 171 163 | + 11,7 |
| Oct | 597 344 | - 5,9 | 139 211 | - 33,4 | 326 547 | - 0,2 | 1 063 103 | - 9,2 |

^{1/} The percentage change is the change in the seasonally adjusted values of building plans passed of the relevant month compared with the seasonally adjusted values of building plans passed of the previous month expressed as a percentage.

Table 5 - Actual values and percentage change of buildings completed at current prices according to type of building

| Year ^{1/} and month ^{2/} | Residential buildings | | Non-residential buildings | | Additions and alterations | | Total | |
|--|-----------------------|----------------------|------------------------------|----------------------|------------------------------|----------------------|-------------------|----------------------|
| | R'000 | Percentage change | R'000 | Percentage change | R'000 | Percentage change | R'000 | Percentage change |
| 1999 Jan | 313 975 | - 17,7 | 197 076 | - 12,3 | 193 050 | - 3,3 | 704 102 | - 12,6 |
| Feb | 396 737 | - 2,1 | 214 816 | - 29,4 | 244 641 | + 26,9 | 856 194 | - 5,1 |
| Mar | 432 499 | - 38,0 | 246 125 | + 39,7 | 230 685 | + 8,8 | 909 309 | - 16,2 |
| Apr | 377 800 | - 17,0 | 181 550 | - 25,2 | 200 507 | + 28,2 | 759 858 | - 11,1 |
| May | 390 986 | - 11,7 | 195 652 | + 10,4 | 178 758 | - 2,4 | 765 395 | - 4,7 |
| Jun | 420 016 | - 30,4 | 208 557 | - 38,5 | 153 702 | - 21,1 | 782 276 | - 31,2 |
| Jul | 480 991 | - 18,3 | 264 068 | + 0,3 | 272 372 | + 26,1 | 1 017 432 | - 4,7 |
| Aug | 460 657 | + 7,6 | 204 898 | - 24,8 | 255 878 | + 47,4 | 921 432 | + 5,4 |
| Sep | 493 450 | - 11,4 | 197 152 | - 58,4 | 223 191 | + 10,3 | 913 793 | - 25,9 |
| Oct | 419 578 | - 15,9 | 203 652 | - 58,9 | 229 463 | + 12,4 | 852 693 | - 28,8 |
| Nov | 461 147 | - 8,9 | 409 997 | + 45,4 | 210 237 | + 20,2 | 1 081 381 | + 12,3 |
| Dec | 349 510 | - 15,3 | 181 596 | - 13,0 | 146 343 | + 3,3 | 677 449 | - 11,3 |
| Total | 4 997 346 | - 16,4 | 2 705 139 | - 21,8 | 2 538 827 | + 12,8 | 10 241 312 | - 12,4 |
| 2000 Jan | 299 212 | - 4,7 | 195 988 | - 0,6 | 183 959 | - 4,7 | 679 159 | - 3,5 |
| Feb | 353 141 | - 11,0 | 205 549 | - 4,3 | 221 978 | - 9,3 | 780 668 | - 8,8 |
| Mar | 419 416 | - 3,0 | 212 379 | - 13,7 | 268 745 | + 16,5 | 900 540 | - 1,0 |
| Apr | 364 713 | - 3,5 | 224 048 | + 23,4 | 188 808 | - 5,8 | 777 569 | + 2,3 |
| May | 473 124 | + 21,0 | 390 533 | + 99,6 | 293 343 | + 64,1 | 1 157 000 | + 51,2 |
| Jun | 362 558 | - 13,7 | 174 728 | - 16,2 | 170 986 | + 11,2 | 708 272 | - 9,5 |
| Jul | 407 406 | - 15,3 | 472 668 | + 79,0 | 220 828 | - 18,9 | 1 100 902 | + 8,2 |
| Aug | 449 691 | - 2,4 | 285 994 | + 39,6 | 211 008 | - 17,5 | 946 693 | + 2,7 |
| Sep | 510 979 | + 3,6 | 270 539 | + 37,2 | 199 622 | - 10,6 | 981 140 | + 7,4 |
| Oct | 462 270 | + 10,2 | 195 491 | - 4,0 | 238 257 | + 3,8 | 896 018 | + 5,1 |
| Nov | 555 802 | + 20,5 | 186 442 | - 54,5 | 255 900 | + 21,7 | 998 144 | - 7,7 |
| Dec | 383 114 | + 9,6 | 316 801 | + 74,5 | 149 622 | + 2,2 | 849 537 | + 25,4 |
| Total | 5 041 426 | + 0,9 | 3 131 160 | + 15,7 | 2 603 056 | + 2,5 | 10 775 642 | + 5,2 |
| 2001 Jan | 643 047 | + 114,9 | 238 434 | + 21,7 | 200 985 | + 9,3 | 1 082 466 | + 59,4 |
| Feb | 428 803 | + 21,4 | 285 620 | + 39,0 | 243 214 | + 9,6 | 957 637 | + 22,7 |
| Mar | 532 191 | + 26,9 | 162 697 | - 23,4 | 287 149 | + 6,8 | 982 037 | + 9,0 |
| Apr | 361 022 | - 1,0 | 169 123 | - 24,5 | 184 423 | - 2,3 | 714 568 | - 8,1 |
| May | 437 971 | - 7,4 | 300 533 | - 23,0 | 295 708 | + 0,8 | 1 034 212 | - 10,6 |
| Jun | 553 850 | + 52,8 | 368 352 | + 110,8 | 277 374 | + 62,2 | 1 199 576 | + 69,4 |
| Jul | 419 930 | + 3,1 | 151 692 | - 67,9 | 232 217 | + 5,2 | 803 839 | - 27,0 |
| Aug* | 430 279 | - 4,3 | 117 944 | - 58,8 | 214 732 | + 1,8 | 762 955 | - 19,4 |
| Sep* | 456 622 | - 10,6 | 1 417 979 | + 424,1 | 168 410 | - 15,6 | 2 043 011 | + 108,2 |
| Oct | 664 707 | + 43,8 | 280 091 | + 43,3 | 237 808 | - 0,2 | 1 182 606 | + 32,0 |

^{1/} The annual percentage change is the change in the actual values of buildings completed of the relevant year compared with the actual values of buildings completed of the previous year expressed as a percentage.

^{2/} The monthly percentage change is the change in the actual values of buildings completed of the relevant month compared with the actual values of buildings completed of the same month in the previous year expressed as a percentage.

Table 6 - Seasonally adjusted values and percentage change of buildings completed at current prices according to type of building

| Year and month ^{1/} | Residential buildings | | Non-residential buildings | | Additions and alterations | | Total | |
|------------------------------|-----------------------|-------------------|---------------------------|-------------------|---------------------------|-------------------|-----------|-------------------|
| | R'000 | Percentage change | R'000 | Percentage change | R'000 | Percentage change | R'000 | Percentage change |
| 1999 Jan | 408 508 | - 12,5 | 231 178 | + 16,6 | 218 728 | + 2,3 | 858 413 | - 2,3 |
| Feb | 443 957 | + 8,7 | 230 857 | - 0,1 | 223 916 | + 2,4 | 898 730 | + 4,7 |
| Mar | 416 014 | - 6,3 | 282 229 | + 22,3 | 199 486 | - 10,9 | 897 729 | - 0,1 |
| Apr | 420 685 | + 1,1 | 212 968 | - 24,5 | 223 032 | + 11,8 | 856 685 | - 4,6 |
| May | 379 581 | - 9,8 | 202 014 | - 5,1 | 175 156 | - 21,5 | 756 751 | - 11,7 |
| Jun | 410 383 | + 8,1 | 209 831 | + 3,9 | 143 752 | - 17,9 | 763 966 | + 1,0 |
| Jul | 448 064 | + 9,2 | 216 206 | + 3,0 | 240 314 | + 67,2 | 904 585 | + 18,4 |
| Aug | 450 609 | + 0,6 | 201 093 | - 7,0 | 264 080 | + 9,9 | 915 782 | + 1,2 |
| Sep | 439 579 | - 2,4 | 169 273 | - 15,8 | 227 238 | - 14,0 | 836 090 | - 8,7 |
| Oct | 394 298 | - 10,3 | 187 822 | + 11,0 | 217 852 | - 4,1 | 799 972 | - 4,3 |
| Nov | 386 460 | - 2,0 | 415 854 | + 121,4 | 196 447 | - 9,8 | 998 761 | + 24,8 |
| Dec | 400 481 | + 3,6 | 171 902 | - 58,7 | 221 142 | + 12,6 | 793 525 | - 20,5 |
| 2000 Jan | 388 742 | - 2,9 | 227 266 | + 32,2 | 207 726 | - 6,1 | 823 734 | + 3,8 |
| Feb | 395 632 | + 1,8 | 215 097 | - 5,4 | 204 387 | - 1,6 | 815 116 | - 1,0 |
| Mar | 397 361 | + 0,4 | 259 476 | + 20,6 | 228 179 | + 11,6 | 885 016 | + 8,6 |
| Apr | 415 182 | + 4,5 | 279 758 | + 7,8 | 214 493 | - 6,0 | 909 433 | + 2,8 |
| May | 467 325 | + 12,6 | 396 152 | + 41,6 | 281 824 | + 31,4 | 1 145 301 | + 25,9 |
| Jun | 347 591 | - 25,6 | 174 916 | - 55,8 | 157 240 | - 44,2 | 679 748 | - 40,6 |
| Jul | 383 032 | + 10,2 | 372 079 | + 112,7 | 198 171 | + 26,0 | 953 281 | + 40,2 |
| Aug | 436 957 | + 14,1 | 266 935 | - 28,3 | 218 070 | + 10,0 | 921 961 | - 3,3 |
| Sep | 449 229 | + 2,8 | 225 459 | - 15,5 | 206 292 | - 5,4 | 880 980 | - 4,4 |
| Oct | 435 830 | - 3,0 | 189 233 | - 16,1 | 223 796 | + 8,5 | 848 859 | - 3,6 |
| Nov | 470 995 | + 8,1 | 194 255 | + 2,7 | 242 018 | + 8,1 | 907 268 | + 6,9 |
| Dec | 437 290 | - 7,2 | 306 686 | + 57,9 | 224 353 | - 7,3 | 968 329 | + 6,7 |
| 2001 Jan | 841 515 | + 92,4 | 278 649 | - 9,1 | 226 681 | + 1,0 | 1 346 845 | + 39,1 |
| Feb | 477 835 | - 43,2 | 295 160 | + 5,9 | 224 949 | - 0,8 | 997 945 | - 25,9 |
| Mar | 498 081 | + 4,2 | 202 822 | - 31,3 | 241 227 | + 7,2 | 942 130 | - 5,6 |
| Apr | 414 512 | - 16,8 | 218 346 | + 7,7 | 212 085 | - 12,1 | 844 943 | - 10,3 |
| May | 436 209 | + 5,2 | 296 545 | + 35,8 | 282 991 | + 33,4 | 1 015 745 | + 20,2 |
| Jun | 529 961 | + 21,5 | 369 089 | + 24,5 | 252 943 | - 10,6 | 1 151 992 | + 13,4 |
| Jul | 398 284 | - 24,8 | 115 777 | - 68,6 | 209 741 | - 17,1 | 723 802 | - 37,2 |
| Aug | 417 804 | + 4,9 | 108 706 | - 6,1 | 221 353 | + 5,5 | 747 863 | + 3,3 |
| Sep | 396 570 | - 5,1 | 1 179 771 | + 985,3 | 175 334 | - 20,8 | 1 751 675 | + 134,2 |
| Oct | 626 586 | + 58,0 | 284 982 | - 75,8 | 222 625 | + 27,0 | 1 134 193 | - 35,3 |

^{1/} The percentage change is the change in the seasonally adjusted values of buildings completed of the relevant month compared with the seasonally adjusted values of buildings completed of the previous month expressed as a percentage.

Table 7 - Actual values and percentage change of buildings completed at constant 1995 prices according to type of building

| Year ^{1/} and month ^{2/} | Residential buildings | | Non-residential buildings | | Additions and alterations | | Total | |
|--|-----------------------|----------------------|------------------------------|----------------------|------------------------------|----------------------|------------------|----------------------|
| | R'000 | Percentage change | R'000 | Percentage change | R'000 | Percentage change | R'000 | Percentage change |
| 1999 Jan | 262 682 | - 22,6 | 172 571 | - 18,3 | 165 993 | - 9,2 | 601 246 | - 18,0 |
| Feb | 329 271 | - 26,3 | 187 449 | - 39,0 | 209 095 | - 4,5 | 725 815 | - 26,1 |
| Mar | 356 192 | - 57,5 | 214 208 | + 5,4 | 196 662 | - 12,9 | 767 062 | - 38,1 |
| Apr | 311 031 | - 34,2 | 157 322 | - 23,5 | 169 922 | + 18,7 | 638 275 | - 21,4 |
| May | 319 828 | - 31,9 | 169 395 | + 5,1 | 150 851 | + 2,4 | 640 074 | - 15,6 |
| Jun | 344 231 | - 50,0 | 180 257 | - 44,7 | 129 270 | - 3,4 | 653 758 | - 40,4 |
| Jul | 391 124 | - 50,0 | 227 058 | - 28,4 | 226 411 | - 12,3 | 844 593 | - 36,0 |
| Aug | 369 731 | - 48,5 | 175 126 | - 29,7 | 210 253 | + 9,6 | 755 110 | - 21,4 |
| Sep | 396 579 | - 28,6 | 168 075 | - 59,5 | 182 196 | - 5,7 | 746 850 | - 44,4 |
| Oct | 334 635 | - 45,1 | 172 586 | - 61,0 | 186 252 | - 6,2 | 693 473 | - 42,4 |
| Nov | 366 364 | - 38,2 | 345 989 | - 30,9 | 170 095 | + 9,6 | 882 448 | - 27,6 |
| Dec | 277 236 | - 38,9 | 152 730 | - 6,3 | 118 305 | + 35,6 | 548 271 | - 8,6 |
| Total | 4 058 904 | - 21,7 | 2 322 766 | - 26,2 | 2 115 305 | + 6,4 | 8 496 975 | - 17,7 |
| 2000 Jan | 236 149 | - 10,1 | 162 916 | - 5,6 | 147 996 | - 10,8 | 547 061 | - 9,0 |
| Feb | 277 982 | - 15,6 | 168 898 | - 9,9 | 176 734 | - 15,5 | 623 614 | - 14,1 |
| Mar | 329 523 | - 7,5 | 173 371 | - 19,1 | 213 629 | + 8,6 | 716 523 | - 6,6 |
| Apr | 285 795 | - 8,1 | 181 857 | + 15,6 | 149 255 | - 12,2 | 616 907 | - 3,3 |
| May | 370 120 | + 15,7 | 315 965 | + 86,5 | 231 709 | + 53,6 | 917 794 | + 43,4 |
| Jun | 282 549 | - 17,9 | 141 251 | - 21,6 | 134 529 | + 4,1 | 558 329 | - 14,6 |
| Jul | 314 890 | - 19,5 | 380 264 | + 67,5 | 173 198 | - 23,5 | 868 352 | + 2,8 |
| Aug | 346 783 | - 6,2 | 227 702 | + 30,0 | 165 496 | - 21,3 | 739 981 | - 2,0 |
| Sep | 391 744 | - 1,2 | 215 055 | + 28,0 | 156 199 | - 14,3 | 762 998 | + 2,2 |
| Oct | 352 005 | + 5,2 | 154 538 | - 10,5 | 186 138 | - 0,1 | 692 681 | - 0,1 |
| Nov | 420 080 | + 14,7 | 147 269 | - 57,4 | 199 299 | + 17,2 | 766 648 | - 13,1 |
| Dec | 289 205 | + 4,3 | 249 253 | + 63,2 | 116 347 | - 1,7 | 654 805 | + 19,4 |
| Total | 3 896 825 | - 4,0 | 2 518 339 | + 8,4 | 2 050 529 | - 3,1 | 8 465 693 | - 0,4 |
| 2001 Jan | 487 413 | + 106,4 | 187 007 | + 14,8 | 154 842 | + 4,6 | 829 262 | + 51,6 |
| Feb | 318 240 | + 14,5 | 224 016 | + 32,6 | 186 800 | + 5,7 | 729 056 | + 16,9 |
| Ma | 394 856 | + 19,8 | 127 306 | - 26,6 | 219 031 | + 2,5 | 741 193 | + 3,4 |
| Apr | 265 613 | - 7,1 | 132 127 | - 27,3 | 139 187 | - 6,7 | 536 927 | - 13,0 |
| May | 319 179 | - 13,8 | 234 060 | - 25,9 | 221 670 | - 4,3 | 774 909 | - 15,6 |
| Jun | 403 634 | + 42,9 | 286 432 | + 102,8 | 207 305 | + 54,1 | 897 371 | + 60,7 |
| Jul | 302 158 | - 4,0 | 116 866 | - 69,3 | 172 013 | - 0,7 | 591 037 | - 31,9 |
| Aug* | 308 208 | - 11,1 | 90 587 | - 60,2 | 157 659 | - 4,7 | 556 454 | - 24,8 |
| Sep* | 325 581 | - 16,9 | 1 081 601 | + 402,9 | 123 468 | - 21,0 | 1 530 650 | + 100,6 |
| Oct | 473 164 | + 34,4 | 211 389 | + 36,8 | 173 456 | - 6,8 | 858 009 | + 23,9 |

^{1/} The annual percentage change is the change in the actual values of buildings completed of the relevant year compared with the actual values of buildings completed of the previous year expressed as a percentage.

^{2/} The monthly percentage change is the change in the actual values of buildings completed of the relevant month compared with the actual values of buildings completed of the same month in the previous year expressed as a percentage.

Table 8 - Seasonally adjusted values and percentage change of buildings completed at constant 1995 prices according to type of building

| Year and month ^{1/} | Residential buildings | | Non-residential buildings | | Additions and alterations | | Total | |
|------------------------------|-----------------------|-------------------|---------------------------|-------------------|---------------------------|-------------------|-----------|-------------------|
| | R'000 | Percentage change | R'000 | Percentage change | R'000 | Percentage change | R'000 | Percentage change |
| 1999 Jan | 341 830 | - 13,8 | 202 629 | + 15,9 | 187 564 | + 1,9 | 732 023 | - 3,1 |
| Feb | 370 133 | + 8,3 | 202 037 | - 0,3 | 191 560 | + 2,1 | 763 729 | + 4,3 |
| Mar | 343 243 | - 7,3 | 245 785 | + 21,7 | 169 951 | - 11,3 | 758 978 | - 0,6 |
| Apr | 345 715 | + 0,7 | 184 493 | - 24,9 | 188 890 | + 11,1 | 719 098 | - 5,3 |
| May | 311 183 | - 10,0 | 174 284 | - 5,5 | 148 342 | - 21,5 | 633 809 | - 11,9 |
| Jun | 332 871 | + 7,0 | 180 204 | + 3,4 | 120 919 | - 18,5 | 633 994 | + 0,0 |
| Jul | 364 086 | + 9,4 | 185 392 | + 2,9 | 200 049 | + 65,4 | 749 526 | + 18,2 |
| Aug | 362 617 | - 0,4 | 172 451 | - 7,0 | 217 243 | + 8,6 | 752 310 | + 0,4 |
| Sep | 353 071 | - 2,6 | 144 631 | - 16,1 | 185 818 | - 14,5 | 683 520 | - 9,1 |
| Oct | 314 970 | - 10,8 | 159 075 | + 10,0 | 176 854 | - 4,8 | 650 899 | - 4,8 |
| Nov | 307 524 | - 2,4 | 352 060 | + 121,3 | 158 712 | - 10,3 | 818 296 | + 25,7 |
| Dec | 317 169 | + 3,1 | 144 611 | - 58,9 | 177 949 | + 12,1 | 639 728 | - 21,8 |
| 2000 Jan | 307 081 | - 3,2 | 189 171 | + 30,8 | 166 653 | - 6,3 | 662 905 | + 3,6 |
| Feb | 312 756 | + 1,8 | 177 193 | - 6,3 | 162 694 | - 2,4 | 652 643 | - 1,5 |
| Mar | 312 759 | + 0,0 | 211 978 | + 19,6 | 181 135 | + 11,3 | 705 872 | + 8,2 |
| Apr | 325 292 | + 4,0 | 227 039 | + 7,1 | 169 522 | - 6,4 | 721 853 | + 2,3 |
| May | 366 305 | + 12,6 | 319 288 | + 40,6 | 223 385 | + 31,8 | 908 978 | + 25,9 |
| Jun | 267 674 | - 26,9 | 140 598 | - 56,0 | 123 725 | - 44,6 | 531 998 | - 41,5 |
| Jul | 295 973 | + 10,6 | 298 771 | + 112,5 | 155 701 | + 25,8 | 750 445 | + 41,1 |
| Aug | 337 806 | + 14,1 | 213 251 | - 28,6 | 171 236 | + 10,0 | 722 293 | - 3,8 |
| Sep | 344 201 | + 1,9 | 179 646 | - 15,8 | 161 797 | - 5,5 | 685 644 | - 5,1 |
| Oct | 332 529 | - 3,4 | 149 340 | - 16,9 | 174 938 | + 8,1 | 656 807 | - 4,2 |
| Nov | 356 582 | + 7,2 | 153 892 | + 3,0 | 188 234 | + 7,6 | 698 708 | + 6,4 |
| Dec | 329 419 | - 7,6 | 241 273 | + 56,8 | 173 615 | - 7,8 | 744 307 | + 6,5 |
| 2001 Jan | 639 066 | + 94,0 | 218 861 | - 9,3 | 174 139 | + 0,3 | 1 032 067 | + 38,7 |
| Feb | 356 063 | - 44,3 | 232 055 | + 6,0 | 172 688 | - 0,8 | 760 806 | - 26,3 |
| Mar | 370 234 | + 4,0 | 158 891 | - 31,5 | 183 686 | + 6,4 | 712 811 | - 6,3 |
| Apr | 305 016 | - 17,6 | 170 590 | + 7,4 | 160 061 | - 12,9 | 635 667 | - 10,8 |
| May | 318 395 | + 4,4 | 230 031 | + 34,8 | 212 910 | + 33,0 | 761 337 | + 19,8 |
| Jun | 381 374 | + 19,8 | 285 327 | + 24,0 | 189 058 | - 11,2 | 855 759 | + 12,4 |
| Jul | 286 621 | - 24,8 | 89 049 | - 68,8 | 155 649 | - 17,7 | 531 319 | - 37,9 |
| Aug | 300 026 | + 4,7 | 83 795 | - 5,9 | 162 643 | + 4,5 | 546 464 | + 2,9 |
| Sep | 282 617 | - 5,8 | 902 148 | + 976,6 | 128 870 | - 20,8 | 1 313 635 | + 140,4 |
| Oct | 447 009 | + 58,2 | 214 674 | - 76,2 | 162 511 | + 26,1 | 824 194 | - 37,3 |

^{1/} The percentage change is the change in the seasonally adjusted values of buildings completed of the relevant month compared with the seasonally adjusted values of buildings completed of the previous month expressed as a percentage.

Table 9 - Building plans passed according to type of building: Total RSA

| Type of building | October 2000 * | September 2001 * | October 2001 | January 2000 to October 2000 | January 2001 to October 2001 | Percentage change between January 2000 to October 2000 and January 2001 to October 2001 |
|---|------------------|------------------|------------------|------------------------------|------------------------------|---|
| Residential buildings | | | | | | |
| Dwelling-houses smaller than 80 square metres | | | | | | |
| Number of dwelling-houses | 5 059 | 2 497 | 2 684 | 42 243 | 32 122 | - 24,0 |
| Total square metres | 197 841 | 95 338 | 111 560 | 1 652 019 | 1 268 797 | - 23,2 |
| Total value at current prices (R'000) | 144 686 | 94 136 | 112 332 | 1 248 470 | 1 222 147 | - 2,1 |
| Dwelling-houses equal to or larger than 80 square metres | | | | | | |
| Number of dwelling-houses | 2 055 | 1 784 | 2 084 | 17 768 | 18 153 | + 2,2 |
| Total square metres | 432 007 | 393 117 | 457 464 | 3 646 521 | 3 937 317 | + 8,0 |
| Total value at current prices (R'000) | 601 044 | 578 301 | 671 202 | 4 968 004 | 5 626 156 | + 13,2 |
| Flats and townhouses | | | | | | |
| Number of flats and townhouses | 953 | 829 | 1 149 | 9 368 | 10 114 | + 8,0 |
| Total square metres | 97 114 | 134 005 | 137 165 | 1 034 585 | 1 108 083 | + 7,1 |
| Total value at current prices (R'000) | 133 940 | 203 268 | 204 416 | 1 521 521 | 1 670 223 | + 9,8 |
| Other residential buildings ^{1/} | | | | | | |
| Total square metres | 24 616 | 20 644 | 1 655 | 158 137 | 107 007 | - 32,3 |
| Total value at current prices (R'000) | 36 740 | 83 878 | 2 183 | 221 026 | 272 491 | + 23,3 |
| Total value of residential buildings at current prices (R'000) | 916 410 | 959 583 | 990 133 | 7 959 021 | 8 791 017 | + 10,5 |
| Non-residential buildings | | | | | | |
| Office and banking space | | | | | | |
| Total square metres | 118 923 | 57 707 | 38 449 | 935 402 | 677 384 | - 27,6 |
| Total value at current prices (R'000) | 192 458 | 98 142 | 57 467 | 1 448 332 | 1 140 340 | - 21,3 |
| Shopping space | | | | | | |
| Total square metres | 38 832 | 15 109 | 17 331 | 479 445 | 360 309 | - 24,8 |
| Total value at current prices (R'000) | 47 052 | 22 857 | 30 350 | 682 158 | 528 882 | - 22,5 |
| Industrial and warehouse space | | | | | | |
| Total square metres | 122 874 | 165 118 | 84 001 | 1 026 886 | 806 997 | - 21,4 |
| Total value at current prices (R'000) | 167 280 | 134 330 | 104 507 | 1 295 959 | 949 338 | - 26,7 |
| Other non-residential space ^{2/} | | | | | | |
| Total square metres | 57 792 | 31 050 | 12 571 | 391 907 | 319 022 | - 18,6 |
| Total value at current prices (R'000) | 86 094 | 48 038 | 20 798 | 484 958 | 431 505 | - 11,0 |
| Total value of non-residential buildings at current prices (R'000) | 492 884 | 303 367 | 213 122 | 3 911 407 | 3 050 065 | - 22,0 |
| Additions and alterations | | | | | | |
| Dwelling-houses | | | | | | |
| Total square metres | 286 684 | 264 655 | 282 974 | 2 582 943 | 2 486 489 | - 3,7 |
| Total value at current prices (R'000) | 358 488 | 342 174 | 371 974 | 3 114 167 | 3 138 796 | + 0,8 |
| Other buildings ^{3/} | | | | | | |
| Total square metres | 98 550 | 93 978 | 96 254 | 900 250 | 809 340 | - 10,1 |
| Total value at current prices (R'000) | 181 073 | 182 175 | 171 000 | 1 601 973 | 1 427 746 | - 10,9 |
| Total value of additions and alterations at current prices (R'000) | 539 561 | 524 349 | 542 974 | 4 716 140 | 4 566 542 | - 3,2 |
| Total value of building plans passed at current prices (R'000) | 1 948 855 | 1 787 299 | 1 746 229 | 16 586 568 | 16 407 624 | - 1,1 |

1/ Other residential buildings include institutions for the disabled, boarding houses, old people's homes, hostels, hotels, motels, guest houses, holiday chalets, entertainment centres, bed-and-breakfast accommodation and casinos.

2/ Other non-residential space includes churches, sport and recreation clubs, schools, crèches, hospitals and all other non-residential space.

3/ Other buildings include additions and alterations to other residential buildings, non-residential buildings and internal alterations.

Table 10 - Building plans passed according to type of building and province: Western Cape

| Type of building | October 2000 * | September 2001 | October 2001 | January 2000 to October 2000 | January 2001 to October 2001 | Percentage change between January 2000 to October 2000 and January 2001 to October 2001 |
|---|----------------|----------------|----------------|------------------------------|------------------------------|---|
| Residential buildings | | | | | | |
| Dwelling-houses smaller than 80 square metres | | | | | | |
| Number of dwelling-houses | 717 | 594 | 654 | 7 660 | 6 647 | - 13,2 |
| Total square metres | 31 116 | 22 111 | 26 472 | 296 197 | 272 286 | - 8,1 |
| Total value at current prices (R'000) | 26 219 | 21 818 | 29 028 | 233 471 | 321 099 | + 37,5 |
| Dwelling-houses equal to or larger than 80 square metres | | | | | | |
| Number of dwelling-houses | 689 | 549 | 695 | 5 359 | 5 899 | + 10,1 |
| Total square metres | 138 571 | 114 410 | 140 866 | 1 042 184 | 1 224 167 | + 17,5 |
| Total value at current prices (R'000) | 213 336 | 172 848 | 211 428 | 1 510 614 | 1 836 417 | + 21,6 |
| Flats and townhouses | | | | | | |
| Number of flats and townhouses | 390 | 175 | 494 | 2 299 | 2 605 | + 13,3 |
| Total square metres | 39 307 | 18 592 | 41 338 | 254 097 | 243 802 | - 4,1 |
| Total value at current prices (R'000) | 52 811 | 27 047 | 58 072 | 394 293 | 365 067 | - 7,4 |
| Other residential buildings ^{1/} | | | | | | |
| Total square metres | 1 253 | 0 | 538 | 59 514 | 37 427 | - 37,1 |
| Total value at current prices (R'000) | 1 456 | 0 | 711 | 82 107 | 84 459 | + 2,9 |
| Total value of residential buildings at current prices (R'000) | 293 822 | 221 713 | 299 239 | 2 220 485 | 2 607 042 | + 17,4 |
| Non-residential buildings | | | | | | |
| Office and banking space | | | | | | |
| Total square metres | 18 480 | 5 204 | 24 274 | 196 020 | 205 522 | + 4,8 |
| Total value at current prices (R'000) | 22 700 | 9 167 | 32 297 | 347 092 | 292 364 | - 15,8 |
| Shopping space | | | | | | |
| Total square metres | 22 176 | 1 216 | 3 217 | 188 392 | 145 040 | - 23,0 |
| Total value at current prices (R'000) | 25 467 | 1 596 | 6 452 | 247 099 | 199 263 | - 19,4 |
| Industrial and warehouse space | | | | | | |
| Total square metres | 29 217 | 111 392 | 19 088 | 300 554 | 297 138 | - 1,1 |
| Total value at current prices (R'000) | 28 203 | 15 416 | 20 706 | 316 267 | 200 558 | - 36,6 |
| Other non-residential space ^{2/} | | | | | | |
| Total square metres | 13 481 | 6 760 | 3 261 | 138 458 | 95 034 | - 31,4 |
| Total value at current prices (R'000) | 14 561 | 9 129 | 4 380 | 121 318 | 108 342 | - 10,7 |
| Total value of non-residential buildings at current prices (R'000) | 90 931 | 35 308 | 63 835 | 1 031 776 | 800 527 | - 22,4 |
| Additions and alterations | | | | | | |
| Dwelling-houses | | | | | | |
| Total square metres | 92 683 | 69 746 | 90 416 | 787 939 | 760 619 | - 3,5 |
| Total value at current prices (R'000) | 121 862 | 91 185 | 116 949 | 956 205 | 970 397 | + 1,5 |
| Other buildings ^{3/} | | | | | | |
| Total square metres | 33 410 | 28 340 | 24 659 | 219 092 | 218 983 | + 0,0 |
| Total value at current prices (R'000) | 47 239 | 62 533 | 49 758 | 417 790 | 399 243 | - 4,4 |
| Total value of additions and alterations at current prices (R'000) | 169 101 | 153 718 | 166 707 | 1 373 995 | 1 369 640 | - 0,3 |
| Total value of building plans passed at current prices (R'000) | 553 854 | 410 739 | 529 781 | 4 626 256 | 4 777 209 | + 3,3 |

1/ Other residential buildings include institutions for the disabled, boarding houses, old people's homes, hostels, hotels, motels, guest houses, holiday chalets, entertainment centres, bed-and-breakfast accommodation and casinos.

2/ Other non-residential space includes churches, sport and recreation clubs, schools, crèches, hospitals and all other non-residential space.

3/ Other buildings include additions and alterations to other residential buildings, non-residential buildings and internal alterations.

Table 11 - Building plans passed according to type of building and province: Eastern Cape

| Type of building | October 2000 | September 2001 | October 2001 | January 2000 to October 2000 | January 2001 to October 2001 | Percentage change between January 2000 to October 2000 and January 2001 to October 2001 |
|---|----------------|----------------|----------------|------------------------------|------------------------------|---|
| Residential buildings | | | | | | |
| Dwelling-houses smaller than 80 square metres | | | | | | |
| Number of dwelling-houses | 429 | 155 | 171 | 4 539 | 2 252 | -50,4 |
| Total square metres | 18 019 | 6 737 | 8 170 | 192 593 | 101 042 | -47,5 |
| Total value at current prices (R'000) | 20 722 | 8 287 | 11 338 | 157 950 | 125 739 | -20,4 |
| Dwelling-houses equal to or larger than 80 square metres | | | | | | |
| Number of dwelling-houses | 82 | 83 | 106 | 1 037 | 1 112 | + 7,2 |
| Total square metres | 13 250 | 13 645 | 18 242 | 168 825 | 176 682 | + 4,7 |
| Total value at current prices (R'000) | 17 009 | 18 159 | 24 957 | 214 336 | 233 588 | + 9,0 |
| Flats and townhouses | | | | | | |
| Number of flats and townhouses | 17 | 27 | 8 | 472 | 723 | + 53,2 |
| Total square metres | 2 335 | 2 408 | 771 | 37 456 | 39 910 | + 6,6 |
| Total value at current prices (R'000) | 3 176 | 2 888 | 1 039 | 49 921 | 48 092 | -3,7 |
| Other residential buildings ^{1/} | | | | | | |
| Total square metres | 0 | 0 | 308 | 7 482 | 26 393 | + 252,8 |
| Total value at current prices (R'000) | 0 | 0 | 317 | 9 946 | 77 622 | + 680,4 |
| Total value of residential buildings at current prices (R'000) | 40 907 | 29 334 | 37 651 | 432 153 | 485 041 | + 12,2 |
| Non-residential buildings | | | | | | |
| Office and banking space | | | | | | |
| Total square metres | 0 | 8 749 | 0 | 5 332 | 13 652 | + 156,0 |
| Total value at current prices (R'000) | 0 | 12 912 | 0 | 7 837 | 22 163 | + 182,8 |
| Shopping space | | | | | | |
| Total square metres | 547 | 596 | 1 219 | 15 873 | 10 328 | -34,9 |
| Total value at current prices (R'000) | 643 | 764 | 2 369 | 23 306 | 16 476 | -29,3 |
| Industrial and warehouse space | | | | | | |
| Total square metres | 25 633 | 3 181 | 1 488 | 119 549 | 36 947 | -69,1 |
| Total value at current prices (R'000) | 33 104 | 4 823 | 1 532 | 123 993 | 41 932 | -66,2 |
| Other non-residential space ^{2/} | | | | | | |
| Total square metres | 6 215 | 6 001 | 1 073 | 33 587 | 14 344 | -57,3 |
| Total value at current prices (R'000) | 9 309 | 11 628 | 1 639 | 46 501 | 25 029 | -46,2 |
| Total value of non-residential buildings at current prices (R'000) | 43 056 | 30 127 | 5 540 | 201 637 | 105 600 | -47,6 |
| Additions and alterations | | | | | | |
| Dwelling-houses | | | | | | |
| Total square metres | 17 842 | 17 233 | 23 305 | 176 405 | 190 725 | + 8,1 |
| Total value at current prices (R'000) | 22 612 | 23 911 | 31 023 | 219 782 | 249 191 | + 13,4 |
| Other buildings ^{3/} | | | | | | |
| Total square metres | 6 321 | 5 586 | 22 086 | 65 141 | 107 338 | + 64,8 |
| Total value at current prices (R'000) | 10 704 | 8 657 | 30 733 | 92 621 | 137 113 | + 48,0 |
| Total value of additions and alterations at current prices (R'000) | 33 316 | 32 568 | 61 756 | 312 403 | 386 304 | + 23,7 |
| Total value of building plans passed at current prices (R'000) | 117 279 | 92 029 | 104 947 | 946 193 | 976 945 | + 3,3 |

1/ Other residential buildings include institutions for the disabled, boarding houses, old people's homes, hostels, hotels, motels, guest houses, holiday chalets, entertainment centres, bed-and-breakfast accommodation and casinos.

2/ Other non-residential space includes churches, sport and recreation clubs, schools, crèches, hospitals and all other non-residential space.

3/ Other buildings include additions and alterations to other residential buildings, non-residential buildings and internal alterations.

Table 12 - Building plans passed according to type of building and province: Northern Cape

| Type of building | October 2000 | September 2001 | October 2001 | January 2000 to October 2000 | January 2001 to October 2001 | Percentage change between January 2000 to October 2000 and January 2001 to October 2001 |
|---|---------------|----------------|---------------|------------------------------|------------------------------|---|
| Residential buildings | | | | | | |
| Dwelling-houses smaller than 80 square metres | | | | | | |
| Number of dwelling-houses | 7 | 8 | 16 | 69 | 74 | + 7,2 |
| Total square metres | 382 | 369 | 871 | 3 925 | 4 123 | + 5,0 |
| Total value at current prices (R'000) | 505 | 571 | 1 450 | 5 679 | 6 363 | + 12,0 |
| Dwelling-houses equal to or larger than 80 square metres | | | | | | |
| Number of dwelling-houses | 35 | 8 | 8 | 119 | 145 | + 21,8 |
| Total square metres | 5 544 | 1 395 | 1 569 | 19 258 | 25 336 | + 31,6 |
| Total value at current prices (R'000) | 5 978 | 2 323 | 2 526 | 25 247 | 35 150 | + 39,2 |
| Flats and townhouses | | | | | | |
| Number of flats and townhouses | 9 | 0 | 0 | 41 | 12 | - 70,7 |
| Total square metres | 536 | 0 | 0 | 5 106 | 2 085 | - 59,2 |
| Total value at current prices (R'000) | 859 | 0 | 0 | 8 052 | 2 834 | - 64,8 |
| Other residential buildings ^{1/} | | | | | | |
| Total square metres | 0 | 0 | 0 | 327 | 0 | .. |
| Total value at current prices (R'000) | 0 | 0 | 0 | 266 | 0 | .. |
| Total value of residential buildings at current prices (R'000) | 7 342 | 2 894 | 3 976 | 39 244 | 44 347 | + 13,0 |
| Non-residential buildings | | | | | | |
| Office and banking space | | | | | | |
| Total square metres | 0 | 0 | 0 | 7 715 | 191 | - 97,5 |
| Total value at current prices (R'000) | 0 | 0 | 0 | 16 363 | 124 | - 99,2 |
| Shopping space | | | | | | |
| Total square metres | 2 960 | 0 | 0 | 5 334 | 470 | - 91,2 |
| Total value at current prices (R'000) | 3 552 | 0 | 0 | 7 011 | 807 | - 88,5 |
| Industrial and warehouse space | | | | | | |
| Total square metres | 1 010 | 0 | 0 | 3 609 | 2 336 | - 35,3 |
| Total value at current prices (R'000) | 1 766 | 0 | 0 | 5 414 | 2 744 | - 49,3 |
| Other non-residential space ^{2/} | | | | | | |
| Total square metres | 431 | 586 | 157 | 5 231 | 2 375 | - 54,6 |
| Total value at current prices (R'000) | 905 | 1 189 | 345 | 8 411 | 3 846 | - 54,3 |
| Total value of non-residential buildings at current prices (R'000) | 6 223 | 1 189 | 345 | 37 199 | 7 521 | - 79,8 |
| Additions and alterations | | | | | | |
| Dwelling-houses | | | | | | |
| Total square metres | 3 867 | 2 992 | 2 821 | 30 126 | 25 190 | - 16,4 |
| Total value at current prices (R'000) | 5 851 | 5 179 | 4 799 | 47 681 | 41 668 | - 12,6 |
| Other buildings ^{3/} | | | | | | |
| Total square metres | 399 | 1 236 | 589 | 12 288 | 8 702 | - 29,2 |
| Total value at current prices (R'000) | 1 547 | 3 455 | 2 503 | 28 566 | 20 726 | - 27,4 |
| Total value of additions and alterations at current prices (R'000) | 7 398 | 8 634 | 7 302 | 76 247 | 62 394 | - 18,2 |
| Total value of building plans passed at current prices (R'000) | 20 963 | 12 717 | 11 623 | 152 690 | 114 262 | - 25,2 |

1/ Other residential buildings include institutions for the disabled, boarding houses, old people's homes, hostels, hotels, motels, guest houses, holiday chalets, entertainment centres, bed-and-breakfast accommodation and casinos.

2/ Other non-residential space includes churches, sport and recreation clubs, schools, crèches, hospitals and all other non-residential space.

3/ Other buildings include additions and alterations to other residential buildings, non-residential buildings and internal alterations.

Table 13 - Building plans passed according to type of building and province: Free State

| Type of building | October 2000 | September 2001* | October 2001 | January 2000 to October 2000 | January 2001 to October 2001 | Percentage change between January 2000 to October 2000 and January 2001 to October 2001 |
|---|---------------|-----------------|---------------|------------------------------|------------------------------|---|
| Residential buildings | | | | | | |
| Dwelling-houses smaller than 80 square metres | | | | | | |
| Number of dwelling-houses | 596 | 78 | 480 | 4 536 | 2 325 | -48,7 |
| Total square metres | 25 544 | 3 777 | 18 321 | 187 977 | 102 712 | -45,4 |
| Total value at current prices (R'000) | 12 677 | 6 105 | 9 431 | 101 409 | 63 251 | -37,6 |
| Dwelling-houses equal to or larger than 80 square metres | | | | | | |
| Number of dwelling-houses | 65 | 63 | 72 | 650 | 620 | -4,6 |
| Total square metres | 9 272 | 8 980 | 13 697 | 100 280 | 97 558 | -2,7 |
| Total value at current prices (R'000) | 10 189 | 9 894 | 13 956 | 113 941 | 106 280 | -6,7 |
| Flats and townhouses | | | | | | |
| Number of flats and townhouses | 13 | 80 | 32 | 328 | 349 | + 6,4 |
| Total square metres | 1 125 | 6 503 | 3 367 | 26 609 | 40 865 | + 53,6 |
| Total value at current prices (R'000) | 1 370 | 8 080 | 4 996 | 35 759 | 59 765 | + 67,1 |
| Other residential buildings ^{1/} | | | | | | |
| Total square metres | 669 | 2 187 | 192 | 2 092 | 6 785 | + 224,3 |
| Total value at current prices (R'000) | 820 | 3 280 | 229 | 3 280 | 8 421 | + 156,7 |
| Total value of residential buildings at current prices (R'000) | 25 056 | 27 359 | 28 612 | 254 389 | 237 717 | -6,6 |
| Non-residential buildings | | | | | | |
| Office and banking space | | | | | | |
| Total square metres | 0 | 0 | 47 | 14 543 | 14 295 | -1,7 |
| Total value at current prices (R'000) | 0 | 0 | 58 | 20 411 | 27 483 | + 34,6 |
| Shopping space | | | | | | |
| Total square metres | 1 124 | 85 | 1 966 | 21 611 | 9 167 | -57,6 |
| Total value at current prices (R'000) | 1 083 | 82 | 1 718 | 25 061 | 10 112 | -59,7 |
| Industrial and warehouse space | | | | | | |
| Total square metres | 5 348 | 0 | 1 060 | 17 752 | 5 810 | -67,3 |
| Total value at current prices (R'000) | 5 749 | 0 | 912 | 16 838 | 4 567 | -72,9 |
| Other non-residential space ^{2/} | | | | | | |
| Total square metres | 1 873 | 853 | 1 075 | 10 906 | 10 632 | -2,5 |
| Total value at current prices (R'000) | 2 349 | 1 021 | 754 | 16 098 | 14 361 | -10,8 |
| Total value of non-residential buildings at current prices (R'000) | 9 181 | 1 103 | 3 442 | 78 408 | 56 523 | -27,9 |
| Additions and alterations | | | | | | |
| Dwelling-houses | | | | | | |
| Total square metres | 8 869 | 4 525 | 8 393 | 82 659 | 76 206 | -7,8 |
| Total value at current prices (R'000) | 9 269 | 4 198 | 9 101 | 85 752 | 79 928 | -6,8 |
| Other buildings ^{3/} | | | | | | |
| Total square metres | 1 569 | 563 | 1 809 | 41 028 | 15 174 | -63,0 |
| Total value at current prices (R'000) | 2 446 | 1 130 | 4 288 | 117 317 | 29 905 | -74,5 |
| Total value of additions and alterations at current prices (R'000) | 11 715 | 5 328 | 13 389 | 203 069 | 109 833 | -45,9 |
| Total value of building plans passed at current prices (R'000) | 45 952 | 33 790 | 45 443 | 535 866 | 404 073 | -24,6 |

1/ Other residential buildings include institutions for the disabled, boarding houses, old people's homes, hostels, hotels, motels, guest houses, holiday chalets, entertainment centres, bed-and-breakfast accommodation and casinos.

2/ Other non-residential space includes churches, sport and recreation clubs, schools, crèches, hospitals and all other non-residential space.

3/ Other buildings include additions and alterations to other residential buildings, non-residential buildings and internal alterations.

Table 14 - Building plans passed according to type of building and province: KwaZulu-Natal

| Type of building | October 2000* | September 2001 | October 2001 | January 2000 to October 2000 | January 2001 to October 2001 | Percentage change between January 2000 to October 2000 and January 2001 to October 2001 |
|---|----------------|----------------|----------------|------------------------------|------------------------------|---|
| Residential buildings | | | | | | |
| Dwelling-houses smaller than 80 square metres | | | | | | |
| Number of dwelling-houses | 315 | 194 | 172 | 2 077 | 2 090 | + 0,6 |
| Total square metres | 12 505 | 6 854 | 6 763 | 92 201 | 90 551 | - 1,8 |
| Total value at current prices (R'000) | 11 263 | 6 933 | 7 797 | 96 830 | 88 180 | - 8,9 |
| Dwelling-houses equal to or larger than 80 square metres | | | | | | |
| Number of dwelling-houses | 189 | 148 | 160 | 1 634 | 1 413 | - 13,5 |
| Total square metres | 36 773 | 28 687 | 31 583 | 334 578 | 304 910 | - 8,9 |
| Total value at current prices (R'000) | 50 304 | 40 945 | 47 102 | 486 194 | 440 468 | - 9,4 |
| Flats and townhouses | | | | | | |
| Number of flats and townhouses | 39 | 88 | 62 | 696 | 800 | + 14,9 |
| Total square metres | 7 362 | 12 341 | 6 034 | 104 615 | 107 613 | + 2,9 |
| Total value at current prices (R'000) | 12 674 | 20 063 | 9 647 | 171 005 | 177 688 | + 3,9 |
| Other residential buildings ^{1/} | | | | | | |
| Total square metres | 158 | 17 825 | 0 | 4 027 | 20 202 | + 401,7 |
| Total value at current prices (R'000) | 240 | 80 000 | 0 | 10 025 | 82 431 | + 722,3 |
| Total value of residential buildings at current prices (R'000) | 74 481 | 147 941 | 64 546 | 764 054 | 788 767 | + 3,2 |
| Non-residential buildings | | | | | | |
| Office and banking space | | | | | | |
| Total square metres | 1 516 | 4 327 | 1 848 | 54 226 | 127 931 | + 135,9 |
| Total value at current prices (R'000) | 2 033 | 12 506 | 4 150 | 99 470 | 270 662 | + 172,1 |
| Shopping space | | | | | | |
| Total square metres | 6 856 | 901 | 5 416 | 24 110 | 38 037 | + 57,8 |
| Total value at current prices (R'000) | 9 512 | 1 140 | 11 320 | 31 242 | 53 678 | + 71,8 |
| Industrial and warehouse space | | | | | | |
| Total square metres | 13 807 | 26 740 | 18 243 | 135 257 | 130 482 | - 3,5 |
| Total value at current prices (R'000) | 16 459 | 79 259 | 16 259 | 178 144 | 191 012 | + 7,2 |
| Other non-residential space ^{2/} | | | | | | |
| Total square metres | 6 579 | 3 034 | 4 144 | 46 822 | 42 133 | - 10,0 |
| Total value at current prices (R'000) | 11 709 | 3 976 | 9 303 | 64 237 | 57 151 | - 11,0 |
| Total value of non-residential buildings at current prices (R'000) | 39 713 | 96 881 | 41 032 | 373 093 | 572 503 | + 53,4 |
| Additions and alterations | | | | | | |
| Dwelling-houses | | | | | | |
| Total square metres | 33 926 | 32 859 | 35 358 | 353 303 | 335 499 | - 5,0 |
| Total value at current prices (R'000) | 40 525 | 42 357 | 43 947 | 431 290 | 412 426 | - 4,4 |
| Other buildings ^{3/} | | | | | | |
| Total square metres | 10 874 | 27 745 | 13 173 | 219 412 | 150 279 | - 31,5 |
| Total value at current prices (R'000) | 19 497 | 51 705 | 23 551 | 375 686 | 299 625 | - 20,2 |
| Total value of additions and alterations at current prices (R'000) | 60 022 | 94 062 | 67 498 | 806 976 | 712 051 | - 11,8 |
| Total value of building plans passed at current prices (R'000) | 174 216 | 338 884 | 173 076 | 1 944 123 | 2 073 321 | + 6,6 |

1/ Other residential buildings include institutions for the disabled, boarding houses, old people's homes, hostels, hotels, motels, guest houses, holiday chalets, entertainment centres, bed-and-breakfast accommodation and casinos.

2/ Other non-residential space includes churches, sport and recreation clubs, schools, crèches, hospitals and all other non-residential space.

3/ Other buildings include additions and alterations to other residential buildings, non-residential buildings and internal alterations.

Table 15 - Building plans passed according to type of building and province: North West

| Type of building | October 2000 | September 2001 | October 2001 | January 2000 to October 2000 | January 2001 to October 2001 | Percentage change between January 2000 to October 2000 and January 2001 to October 2001 |
|---|---------------|----------------|---------------|------------------------------|------------------------------|---|
| Residential buildings | | | | | | |
| Dwelling-houses smaller than 80 square metres | | | | | | |
| Number of dwelling-houses | 62 | 203 | 102 | 2 025 | 3 566 | + 76,1 |
| Total square metres | 3 203 | 7 360 | 5 355 | 70 989 | 126 591 | + 78,3 |
| Total value at current prices (R'000) | 4 122 | 5 214 | 4 267 | 52 281 | 77 674 | + 48,6 |
| Dwelling-houses equal to or larger than 80 square metres | | | | | | |
| Number of dwelling-houses | 89 | 80 | 99 | 862 | 723 | - 16,1 |
| Total square metres | 13 861 | 15 677 | 17 745 | 132 781 | 129 793 | - 2,3 |
| Total value at current prices (R'000) | 18 224 | 25 458 | 25 840 | 152 095 | 165 274 | + 8,7 |
| Flats and townhouses | | | | | | |
| Number of flats and townhouses | 18 | 19 | 0 | 184 | 245 | + 33,2 |
| Total square metres | 1 915 | 676 | 0 | 17 546 | 26 560 | + 51,4 |
| Total value at current prices (R'000) | 2 036 | 784 | 0 | 20 586 | 34 840 | + 69,2 |
| Other residential buildings ^{1/} | | | | | | |
| Total square metres | 0 | 0 | 617 | 4 779 | 2 606 | - 45,5 |
| Total value at current prices (R'000) | 0 | 0 | 926 | 5 619 | 2 590 | - 53,9 |
| Total value of residential buildings at current prices (R'000) | 24 382 | 31 456 | 31 033 | 230 581 | 280 378 | + 21,6 |
| Non-residential buildings | | | | | | |
| Office and banking space | | | | | | |
| Total square metres | 901 | 118 | 0 | 2 128 | 3 762 | + 76,8 |
| Total value at current prices (R'000) | 1 164 | 62 | 0 | 2 329 | 6 061 | + 160,2 |
| Shopping space | | | | | | |
| Total square metres | 534 | 208 | 208 | 13 065 | 17 394 | + 33,1 |
| Total value at current prices (R'000) | 564 | 234 | 234 | 18 105 | 24 033 | + 32,7 |
| Industrial and warehouse space | | | | | | |
| Total square metres | 442 | 496 | 652 | 4 625 | 8 950 | + 93,5 |
| Total value at current prices (R'000) | 550 | 70 | 1 304 | 4 541 | 9 250 | + 103,7 |
| Other non-residential space ^{2/} | | | | | | |
| Total square metres | 3 204 | 305 | 513 | 17 428 | 7 326 | - 58,0 |
| Total value at current prices (R'000) | 4 641 | 900 | 794 | 21 861 | 7 506 | - 65,7 |
| Total value of non-residential buildings at current prices (R'000) | 6 919 | 1 266 | 2 332 | 46 836 | 46 850 | + 0,0 |
| Additions and alterations | | | | | | |
| Dwelling-houses | | | | | | |
| Total square metres | 8 135 | 4 807 | 9 982 | 66 418 | 61 479 | - 7,4 |
| Total value at current prices (R'000) | 8 250 | 5 659 | 10 342 | 66 096 | 66 451 | + 0,5 |
| Other buildings ^{3/} | | | | | | |
| Total square metres | 758 | 676 | 2 356 | 26 288 | 18 224 | - 30,7 |
| Total value at current prices (R'000) | 1 387 | 2 108 | 2 001 | 48 042 | 28 373 | - 40,9 |
| Total value of additions and alterations at current prices (R'000) | 9 637 | 7 767 | 12 343 | 114 138 | 94 824 | - 16,9 |
| Total value of building plans passed at current prices (R'000) | 40 938 | 40 489 | 45 708 | 391 555 | 422 052 | + 7,8 |

1/ Other residential buildings include institutions for the disabled, boarding houses, old people's homes, hostels, hotels, motels, guest houses, holiday chalets, entertainment centres, bed-and-breakfast accommodation and casinos.

2/ Other non-residential space includes churches, sport and recreation clubs, schools, crèches, hospitals and all other non-residential space.

3/ Other buildings include additions and alterations to other residential buildings, non-residential buildings and internal alterations.

Table 16 - Building plans passed according to type of building and province: Gauteng

| Type of building | October 2000 * | September 2001 | October 2001 | January 2000 to October 2000 | January 2001 to October 2001 | Percentage change between January 2000 to October 2000 and January 2001 to October 2001 |
|---|----------------|----------------|----------------|------------------------------|------------------------------|---|
| Residential buildings | | | | | | |
| Dwelling-houses smaller than 80 square metres | | | | | | |
| Number of dwelling-houses | 1 298 | 1 159 | 672 | 16 391 | 10 011 | - 38,9 |
| Total square metres | 49 965 | 43 310 | 30 021 | 620 054 | 381 669 | - 38,4 |
| Total value at current prices (R'000) | 42 838 | 40 310 | 38 754 | 480 417 | 417 197 | - 13,2 |
| Dwelling-houses equal to or larger than 80 square metres | | | | | | |
| Number of dwelling-houses | 798 | 733 | 784 | 6 869 | 7 080 | + 3,1 |
| Total square metres | 196 084 | 185 566 | 199 138 | 1 639 993 | 1 759 274 | + 7,3 |
| Total value at current prices (R'000) | 264 762 | 276 222 | 303 114 | 2 213 785 | 2 526 505 | + 14,1 |
| Flats and townhouses | | | | | | |
| Number of flats and townhouses | 453 | 428 | 506 | 5 098 | 4 421 | - 13,3 |
| Total square metres | 42 308 | 83 749 | 80 286 | 561 160 | 562 473 | + 0,2 |
| Total value at current prices (R'000) | 58 748 | 126 629 | 123 282 | 808 335 | 869 176 | + 7,5 |
| Other residential buildings ^{1/} | | | | | | |
| Total square metres | 22 036 | 632 | 0 | 75 553 | 11 807 | - 84,4 |
| Total value at current prices (R'000) | 33 564 | 598 | 0 | 104 161 | 14 767 | - 85,8 |
| Total value of residential buildings at current prices (R'000) | 399 912 | 443 759 | 465 150 | 3 606 698 | 3 827 645 | + 6,1 |
| Non-residential buildings | | | | | | |
| Office and banking space | | | | | | |
| Total square metres | 97 957 | 39 309 | 12 186 | 614 871 | 307 361 | - 50,0 |
| Total value at current prices (R'000) | 166 491 | 63 495 | 20 830 | 897 824 | 514 313 | - 42,7 |
| Shopping space | | | | | | |
| Total square metres | 3 851 | 10 840 | 2 869 | 186 925 | 121 562 | - 35,0 |
| Total value at current prices (R'000) | 5 503 | 17 610 | 3 975 | 302 402 | 197 592 | - 34,7 |
| Industrial and warehouse space | | | | | | |
| Total square metres | 47 417 | 22 526 | 42 566 | 411 831 | 293 506 | - 28,7 |
| Total value at current prices (R'000) | 81 449 | 34 223 | 62 271 | 608 183 | 470 152 | - 22,7 |
| Other non-residential space ^{2/} | | | | | | |
| Total square metres | 19 737 | 12 263 | 1 861 | 122 793 | 128 773 | + 4,9 |
| Total value at current prices (R'000) | 33 001 | 18 784 | 2 910 | 185 209 | 193 289 | + 4,4 |
| Total value of non-residential buildings at current prices (R'000) | 286 444 | 134 112 | 89 986 | 1 993 618 | 1 375 346 | - 31,0 |
| Additions and alterations | | | | | | |
| Dwelling-houses | | | | | | |
| Total square metres | 103 554 | 116 972 | 93 643 | 928 664 | 889 425 | - 4,2 |
| Total value at current prices (R'000) | 131 164 | 152 973 | 133 256 | 1 145 572 | 1 156 916 | + 1,0 |
| Other buildings ^{3/} | | | | | | |
| Total square metres | 41 609 | 27 892 | 29 089 | 278 890 | 262 066 | - 6,0 |
| Total value at current prices (R'000) | 91 808 | 44 484 | 53 479 | 457 992 | 456 145 | - 0,4 |
| Total value of additions and alterations at current prices (R'000) | 222 972 | 197 457 | 186 735 | 1 603 564 | 1 613 061 | + 0,6 |
| Total value of building plans passed at current prices (R'000) | 909 328 | 775 328 | 741 871 | 7 203 880 | 6 816 052 | - 5,4 |

1/ Other residential buildings include institutions for the disabled, boarding houses, old people's homes, hostels, hotels, motels, guest houses, holiday chalets, entertainment centres, bed-and-breakfast accommodation and casinos.

2/ Other non-residential space includes churches, sport and recreation clubs, schools, crèches, hospitals and all other non-residential space.

3/ Other buildings include additions and alterations to other residential buildings, non-residential buildings and internal alterations.

Table 17 - Building plans passed according to type of building and province: Mpumalanga

| Type of building | October 2000* | September 2001 | October 2001 | January 2000 to October 2000 | January 2001 to October 2001 | Percentage change between January 2000 to October 2000 and January 2001 to October 2001 |
|---|---------------|----------------|---------------|------------------------------|------------------------------|---|
| Residential buildings | | | | | | |
| Dwelling-houses smaller than 80 square metres | | | | | | |
| Number of dwelling-houses | 1 537 | 84 | 379 | 3 375 | 4 779 | + 41,6 |
| Total square metres | 52 105 | 3 568 | 13 317 | 117 958 | 167 550 | + 42,0 |
| Total value at current prices (R'000) | 21 127 | 3 153 | 7 089 | 67 410 | 93 304 | + 38,4 |
| Dwelling-houses equal to or larger than 80 square metres | | | | | | |
| Number of dwelling-houses | 67 | 76 | 98 | 825 | 728 | - 11,8 |
| Total square metres | 12 768 | 16 527 | 19 903 | 139 545 | 140 227 | + 0,5 |
| Total value at current prices (R'000) | 13 474 | 23 419 | 23 588 | 159 105 | 179 077 | + 12,6 |
| Flats and townhouses | | | | | | |
| Number of flats and townhouses | 8 | 11 | 43 | 163 | 905 | + 455,2 |
| Total square metres | 982 | 9 639 | 4 843 | 15 486 | 77 673 | + 401,6 |
| Total value at current prices (R'000) | 876 | 17 641 | 6 644 | 17 918 | 103 748 | + 479,0 |
| Other residential buildings ^{1/} | | | | | | |
| Total square metres | 277 | 0 | 0 | 1 140 | 1 595 | + 39,9 |
| Total value at current prices (R'000) | 280 | 0 | 0 | 1 642 | 2 105 | + 28,2 |
| Total value of residential buildings at current prices (R'000) | 35 757 | 44 213 | 37 321 | 246 075 | 378 234 | + 53,7 |
| Non-residential buildings | | | | | | |
| Office and banking space | | | | | | |
| Total square metres | 69 | 0 | 0 | 34 767 | 3 671 | - 89,4 |
| Total value at current prices (R'000) | 70 | 0 | 0 | 51 772 | 5 750 | - 88,9 |
| Shopping space | | | | | | |
| Total square metres | 0 | 1 017 | 1 828 | 17 891 | 4 796 | - 73,2 |
| Total value at current prices (R'000) | 0 | 890 | 3 309 | 21 060 | 6 794 | - 67,7 |
| Industrial and warehouse space | | | | | | |
| Total square metres | 0 | 783 | 604 | 30 730 | 29 823 | - 3,0 |
| Total value at current prices (R'000) | 0 | 539 | 1 023 | 39 348 | 26 694 | - 32,2 |
| Other non-residential space ^{2/} | | | | | | |
| Total square metres | 3 498 | 1 033 | 450 | 12 078 | 15 234 | + 26,1 |
| Total value at current prices (R'000) | 3 516 | 1 100 | 621 | 12 837 | 17 108 | + 33,3 |
| Total value of non-residential buildings at current prices (R'000) | 3 586 | 2 529 | 4 953 | 125 017 | 56 346 | - 54,9 |
| Additions and alterations | | | | | | |
| Dwelling-houses | | | | | | |
| Total square metres | 11 967 | 11 587 | 15 177 | 114 067 | 108 148 | - 5,2 |
| Total value at current prices (R'000) | 11 490 | 11 497 | 17 575 | 104 902 | 110 904 | + 5,7 |
| Other buildings ^{3/} | | | | | | |
| Total square metres | 1 397 | 457 | 1 088 | 18 075 | 17 689 | - 2,1 |
| Total value at current prices (R'000) | 2 570 | 1 022 | 2 163 | 26 588 | 27 881 | + 4,9 |
| Total value of additions and alterations at current prices (R'000) | 14 060 | 12 519 | 19 738 | 131 490 | 138 785 | + 5,5 |
| Total value of building plans passed at current prices (R'000) | 53 403 | 59 261 | 62 012 | 502 582 | 573 365 | + 14,1 |

1/ Other residential buildings include institutions for the disabled, boarding houses, old people's homes, hostels, hotels, motels, guest houses, holiday chalets, entertainment centres, bed-and-breakfast accommodation and casinos.

2/ Other non-residential space includes churches, sport and recreation clubs, schools, crèches, hospitals and all other non-residential space.

3/ Other buildings include additions and alterations to other residential buildings, non-residential buildings and internal alterations.

Table 18 - Building plans passed according to type of building and province: Northern Province

| Type of building | October 2000 | September 2001 | October 2001 | January 2000 to October 2000 | January 2001 to October 2001 | Percentage change between January 2000 to October 2000 and January 2001 to October 2001 |
|---|---------------|----------------|---------------|------------------------------|------------------------------|---|
| Residential buildings | | | | | | |
| Dwelling-houses smaller than 80 square metres | | | | | | |
| Number of dwelling-houses | 98 | 22 | 38 | 1 571 | 378 | -75,9 |
| Total square metres | 5 002 | 1 252 | 2 270 | 70 125 | 22 273 | -68,2 |
| Total value at current prices (R'000) | 5 213 | 1 745 | 3 178 | 53 023 | 29 340 | -44,7 |
| Dwelling-houses equal to or larger than 80 square metres | | | | | | |
| Number of dwelling-houses | 41 | 44 | 62 | 413 | 433 | + 4,8 |
| Total square metres | 5 884 | 8 230 | 14 721 | 69 077 | 79 370 | + 14,9 |
| Total value at current prices (R'000) | 7 768 | 9 033 | 18 691 | 92 687 | 103 397 | + 11,6 |
| Flats and townhouses | | | | | | |
| Number of flats and townhouses | 6 | 1 | 4 | 87 | 54 | -37,9 |
| Total square metres | 1 244 | 97 | 526 | 12 510 | 7 102 | -43,2 |
| Total value at current prices (R'000) | 1 390 | 136 | 736 | 15 652 | 9 013 | -42,4 |
| Other residential buildings ^{1/} | | | | | | |
| Total square metres | 223 | 0 | 0 | 3 223 | 192 | -94,0 |
| Total value at current prices (R'000) | 380 | 0 | 0 | 3 980 | 96 | -97,6 |
| Total value of residential buildings at current prices (R'000) | 14 751 | 10 914 | 22 605 | 165 342 | 141 846 | -14,2 |
| Non-residential buildings | | | | | | |
| Office and banking space | | | | | | |
| Total square metres | 0 | 0 | 94 | 5 800 | 999 | -82,8 |
| Total value at current prices (R'000) | 0 | 0 | 132 | 5 234 | 1 420 | -72,9 |
| Shopping space | | | | | | |
| Total square metres | 784 | 246 | 608 | 6 244 | 13 515 | + 116,4 |
| Total value at current prices (R'000) | 728 | 541 | 973 | 6 872 | 20 127 | + 192,9 |
| Industrial and warehouse space | | | | | | |
| Total square metres | 0 | 0 | 300 | 2 979 | 2 005 | -32,7 |
| Total value at current prices (R'000) | 0 | 0 | 500 | 3 231 | 2 429 | -24,8 |
| Other non-residential space ^{2/} | | | | | | |
| Total square metres | 2 774 | 215 | 37 | 4 604 | 3 171 | -31,1 |
| Total value at current prices (R'000) | 6 103 | 311 | 52 | 8 486 | 4 873 | -42,6 |
| Total value of non-residential buildings at current prices (R'000) | 6 831 | 852 | 1 657 | 23 823 | 28 849 | + 21,1 |
| Additions and alterations | | | | | | |
| Dwelling-houses | | | | | | |
| Total square metres | 5 841 | 3 934 | 3 879 | 43 362 | 39 198 | -9,6 |
| Total value at current prices (R'000) | 7 465 | 5 215 | 4 982 | 56 887 | 50 915 | -10,5 |
| Other buildings ^{3/} | | | | | | |
| Total square metres | 2 213 | 1 483 | 1 405 | 20 036 | 10 885 | -45,7 |
| Total value at current prices (R'000) | 3 875 | 7 081 | 2 524 | 37 371 | 28 735 | -23,1 |
| Total value of additions and alterations at current prices (R'000) | 11 340 | 12 296 | 7 506 | 94 258 | 79 650 | -15,5 |
| Total value of building plans passed at current prices (R'000) | 32 922 | 24 062 | 31 768 | 283 423 | 250 345 | -11,7 |

1/ Other residential buildings include institutions for the disabled, boarding houses, old people's homes, hostels, hotels, motels, guest houses, holiday chalets, entertainment centres, bed-and-breakfast accommodation and casinos.

2/ Other non-residential space includes churches, sport and recreation clubs, schools, crèches, hospitals and all other non-residential space.

3/ Other buildings include additions and alterations to other residential buildings, non-residential buildings and internal alterations.

Table 19 - Buildings completed according to type of building: Total RSA

| Type of building | October 2000 * | September 2001 * | October 2001 | January 2000 to October 2000 | January 2001 to October 2001 | Percentage change between January 2000 to October 2000 and January 2001 to October 2001 |
|---|----------------|------------------|------------------|------------------------------|------------------------------|---|
| Residential buildings | | | | | | |
| Dwelling-houses smaller than 80 square metres | | | | | | |
| Number of dwelling-houses | 2 640 | 3 119 | 1 884 | 32 381 | 22 457 | - 30,6 |
| Total square metres | 109 328 | 105 941 | 80 596 | 1 213 668 | 898 607 | - 26,0 |
| Total value at current prices (R'000) | 89 830 | 86 374 | 85 051 | 915 284 | 824 101 | - 10,0 |
| Dwelling-houses equal to or larger than 80 square metres | | | | | | |
| Number of dwelling-houses | 955 | 914 | 1 153 | 8 812 | 9 714 | + 10,2 |
| Total square metres | 189 989 | 186 740 | 259 707 | 1 725 239 | 1 974 619 | + 14,5 |
| Total value at current prices (R'000) | 254 780 | 274 935 | 369 637 | 2 234 574 | 2 765 944 | + 23,8 |
| Flats and townhouses | | | | | | |
| Number of flats and townhouses | 698 | 489 | 598 | 6 449 | 5 562 | - 13,8 |
| Total square metres | 65 006 | 61 606 | 88 595 | 636 979 | 626 282 | - 1,7 |
| Total value at current prices (R'000) | 90 949 | 94 814 | 136 505 | 858 432 | 905 285 | + 5,5 |
| Other residential buildings ^{1/} | | | | | | |
| Total square metres | 13 874 | 1 087 | 19 522 | 59 560 | 112 625 | + 89,1 |
| Total value at current prices (R'000) | 26 711 | 499 | 73 514 | 94 220 | 433 092 | + 359,7 |
| Total value of residential buildings at current prices (R'000) | 462 270 | 456 622 | 664 707 | 4 102 510 | 4 928 422 | + 20,1 |
| Non-residential buildings | | | | | | |
| Office and banking space | | | | | | |
| Total square metres | 45 382 | 16 176 | 77 933 | 477 839 | 552 499 | + 15,6 |
| Total value at current prices (R'000) | 63 587 | 21 932 | 130 385 | 742 265 | 846 634 | + 14,1 |
| Shopping space | | | | | | |
| Total square metres | 26 445 | 379 887 | 30 295 | 445 273 | 612 103 | + 37,5 |
| Total value at current prices (R'000) | 39 704 | 1 308 257 | 49 189 | 895 243 | 1 675 406 | + 87,1 |
| Industrial and warehouse space | | | | | | |
| Total square metres | 76 350 | 74 273 | 56 696 | 652 926 | 623 890 | - 4,4 |
| Total value at current prices (R'000) | 77 213 | 79 893 | 73 530 | 727 975 | 758 367 | + 4,2 |
| Other non-residential space ^{2/} | | | | | | |
| Total square metres | 27 565 | 9 997 | 18 874 | 248 750 | 175 748 | - 29,3 |
| Total value at current prices (R'000) | 14 987 | 7 897 | 26 987 | 262 434 | 212 058 | - 19,2 |
| Total value of non-residential buildings at current prices (R'000) | 195 491 | 1 417 979 | 280 091 | 2 627 917 | 3 492 465 | + 32,9 |
| Additions and alterations | | | | | | |
| Dwelling-houses | | | | | | |
| Total square metres | 123 062 | 98 503 | 141 405 | 1 171 611 | 1 212 466 | + 3,5 |
| Total value at current prices (R'000) | 142 762 | 119 715 | 173 631 | 1 333 744 | 1 431 979 | + 7,4 |
| Other buildings ^{3/} | | | | | | |
| Total square metres | 62 890 | 29 663 | 35 970 | 478 825 | 453 341 | - 5,3 |
| Total value at current prices (R'000) | 95 495 | 48 695 | 64 177 | 863 790 | 910 041 | + 5,4 |
| Total value of additions and alterations at current prices (R'000) | 238 257 | 168 410 | 237 808 | 2 197 534 | 2 342 020 | + 6,6 |
| Total value of buildings completed at current prices (R'000) | 896 018 | 2 043 011 | 1 182 606 | 8 927 961 | 10 762 907 | + 20,6 |

1/ Other residential buildings include institutions for the disabled, boarding houses, old people's homes, hostels, hotels, motels, guest houses, holiday chalets, entertainment centres, bed-and-breakfast accommodation and casinos.

2/ Other non-residential space includes churches, sport and recreation clubs, schools, crèches, hospitals and all other non-residential space.

3/ Other buildings include additions and alterations to other residential buildings, non-residential buildings and internal alterations.

Table 20 - Buildings completed according to type of building and province: Western Cape

| Type of building | October 2000 * | September 2001 | October 2001 | January 2000 to October 2000 | January 2001 to October 2001 | Percentage change between January 2000 to October 2000 and January 2001 to October 2001 |
|---|----------------|----------------|----------------|------------------------------|------------------------------|---|
| Residential buildings | | | | | | |
| Dwelling-houses smaller than 80 square metres | | | | | | |
| Number of dwelling-houses | 650 | 438 | 323 | 7 600 | 4 451 | - 41,4 |
| Total square metres | 27 320 | 17 973 | 13 282 | 253 531 | 183 947 | - 27,4 |
| Total value at current prices (R'000) | 17 177 | 20 258 | 12 488 | 154 914 | 206 576 | + 33,3 |
| Dwelling-houses equal to or larger than 80 square metres | | | | | | |
| Number of dwelling-houses | 361 | 435 | 405 | 3 052 | 3 345 | + 9,6 |
| Total square metres | 66 770 | 82 652 | 79 583 | 554 846 | 651 335 | + 17,4 |
| Total value at current prices (R'000) | 95 464 | 127 434 | 126 428 | 756 627 | 980 552 | + 29,6 |
| Flats and townhouses | | | | | | |
| Number of flats and townhouses | 101 | 199 | 135 | 1 787 | 1 592 | - 10,9 |
| Total square metres | 8 319 | 20 716 | 30 069 | 180 556 | 190 541 | + 5,5 |
| Total value at current prices (R'000) | 11 654 | 33 206 | 48 105 | 237 075 | 263 796 | + 11,3 |
| Other residential buildings ^{1/} | | | | | | |
| Total square metres | 13 874 | 153 | 4 436 | 36 012 | 37 906 | + 5,3 |
| Total value at current prices (R'000) | 26 711 | 228 | 5 375 | 59 751 | 50 943 | - 14,7 |
| Total value of residential buildings at current prices (R'000) | 151 006 | 181 126 | 192 396 | 1 208 367 | 1 501 867 | + 24,3 |
| Non-residential buildings | | | | | | |
| Office and banking space | | | | | | |
| Total square metres | 2 882 | 9 476 | 14 739 | 102 975 | 118 664 | + 15,2 |
| Total value at current prices (R'000) | 3 804 | 12 536 | 25 470 | 160 489 | 191 913 | + 19,6 |
| Shopping space | | | | | | |
| Total square metres | 12 265 | 8 160 | 975 | 68 357 | 43 316 | - 36,6 |
| Total value at current prices (R'000) | 22 048 | 10 212 | 1 651 | 97 724 | 54 143 | - 44,6 |
| Industrial and warehouse space | | | | | | |
| Total square metres | 19 769 | 34 194 | 6 145 | 201 111 | 136 872 | - 31,9 |
| Total value at current prices (R'000) | 16 705 | 29 687 | 7 115 | 182 913 | 149 208 | - 18,4 |
| Other non-residential space ^{2/} | | | | | | |
| Total square metres | 20 967 | 4 768 | 1 211 | 109 978 | 61 064 | - 44,5 |
| Total value at current prices (R'000) | 7 337 | 2 484 | 1 308 | 86 261 | 56 712 | - 34,3 |
| Total value of non-residential buildings at current prices (R'000) | 49 894 | 54 919 | 35 544 | 527 387 | 451 976 | - 14,3 |
| Additions and alterations | | | | | | |
| Dwelling-houses | | | | | | |
| Total square metres | 50 042 | 39 998 | 41 202 | 449 694 | 451 463 | + 0,4 |
| Total value at current prices (R'000) | 60 942 | 48 988 | 50 833 | 530 126 | 559 072 | + 5,5 |
| Other buildings ^{3/} | | | | | | |
| Total square metres | 12 102 | 10 164 | 8 026 | 129 722 | 137 159 | + 5,7 |
| Total value at current prices (R'000) | 17 161 | 18 628 | 19 542 | 206 291 | 325 007 | + 57,5 |
| Total value of additions and alterations at current prices (R'000) | 78 103 | 67 616 | 70 375 | 736 417 | 884 079 | + 20,1 |
| Total value of buildings completed at current prices (R'000) | 279 003 | 303 661 | 298 315 | 2 472 171 | 2 837 922 | 14,8 |

1/ Other residential buildings include institutions for the disabled, boarding houses, old people's homes, hostels, hotels, motels, guest houses, holiday chalets, entertainment centres, bed-and-breakfast accommodation and casinos.

2/ Other non-residential space includes churches, sport and recreation clubs, schools, crèches, hospitals and all other non-residential space.

3/ Other buildings include additions and alterations to other residential buildings, non-residential buildings and internal alterations.

Table 21 - Buildings completed according to type of building and province: Eastern Cape

| Type of building | October 2000 | September 2001 | October 2001 | January 2000 to October 2000 | January 2001 to October 2001 | Percentage change between January 2000 to October 2000 and January 2001 to October 2001 |
|---|---------------|----------------|----------------|------------------------------|------------------------------|---|
| Residential buildings | | | | | | |
| Dwelling-houses smaller than 80 square metres | | | | | | |
| Number of dwelling-houses | 381 | 148 | 182 | 1 806 | 2 637 | + 46,0 |
| Total square metres | 16 049 | 6 285 | 7 830 | 77 639 | 113 386 | + 46,0 |
| Total value at current prices (R'000) | 11 020 | 8 136 | 9 742 | 79 143 | 110 106 | + 39,1 |
| Dwelling-houses equal to or larger than 80 square metres | | | | | | |
| Number of dwelling-houses | 45 | 54 | 80 | 480 | 823 | + 71,5 |
| Total square metres | 7 519 | 7 997 | 18 153 | 82 677 | 119 248 | + 44,2 |
| Total value at current prices (R'000) | 9 789 | 10 375 | 19 518 | 96 017 | 146 871 | + 53,0 |
| Flats and townhouses | | | | | | |
| Number of flats and townhouses | 5 | 26 | 34 | 333 | 229 | - 31,2 |
| Total square metres | 1 455 | 786 | 6 349 | 27 717 | 24 239 | - 12,5 |
| Total value at current prices (R'000) | 1 746 | 659 | 7 175 | 33 484 | 27 104 | - 19,1 |
| Other residential buildings ^{1/} | | | | | | |
| Total square metres | 0 | 726 | 5 820 | 1 287 | 13 539 | + 952,0 |
| Total value at current prices (R'000) | 0 | 0 | 50 000 | 1 440 | 60 955 | + 4133,0 |
| Total value of residential buildings at current prices (R'000) | 22 555 | 19 170 | 86 435 | 210 084 | 345 036 | + 64,2 |
| Non-residential buildings | | | | | | |
| Office and banking space | | | | | | |
| Total square metres | 569 | 0 | 857 | 1 201 | 28 201 | + 2 248,1 |
| Total value at current prices (R'000) | 943 | 0 | 2 130 | 1 859 | 32 896 | + 1 669,6 |
| Shopping space | | | | | | |
| Total square metres | 1 725 | 0 | 5 580 | 62 040 | 33 450 | - 46,1 |
| Total value at current prices (R'000) | 1 929 | 0 | 7 246 | 84 509 | 42 931 | - 49,2 |
| Industrial and warehouse space | | | | | | |
| Total square metres | 1 992 | 4 815 | 245 | 33 401 | 109 134 | + 226,7 |
| Total value at current prices (R'000) | 2 704 | 7 148 | 159 | 29 062 | 112 690 | + 287,8 |
| Other non-residential space ^{2/} | | | | | | |
| Total square metres | 441 | 185 | 2 197 | 6 581 | 21 896 | + 232,7 |
| Total value at current prices (R'000) | 710 | 222 | 3 504 | 7 748 | 28 664 | + 270,0 |
| Total value of non-residential buildings at current prices (R'000) | 6 286 | 7 370 | 13 039 | 123 178 | 217 181 | + 76,3 |
| Additions and alterations | | | | | | |
| Dwelling-houses | | | | | | |
| Total square metres | 8 907 | 7 556 | 10 454 | 85 005 | 89 952 | + 5,8 |
| Total value at current prices (R'000) | 9 755 | 8 154 | 13 244 | 87 774 | 106 301 | + 21,1 |
| Other buildings ^{3/} | | | | | | |
| Total square metres | 13 858 | 4 198 | 2 038 | 41 786 | 44 928 | + 7,5 |
| Total value at current prices (R'000) | 21 279 | 6 334 | 4 300 | 57 681 | 62 289 | + 8,0 |
| Total value of additions and alterations at current prices (R'000) | 31 034 | 14 488 | 17 544 | 145 455 | 168 590 | + 15,9 |
| Total value of buildings completed at current prices (R'000) | 59 875 | 41 028 | 117 018 | 478 717 | 730 807 | + 52,7 |

1/ Other residential buildings include institutions for the disabled, boarding houses, old people's homes, hostels, hotels, motels, guest houses, holiday chalets, entertainment centres, bed-and-breakfast accommodation and casinos.

2/ Other non-residential space includes churches, sport and recreation clubs, schools, crèches, hospitals and all other non-residential space.

3/ Other buildings include additions and alterations to other residential buildings, non-residential buildings and internal alterations.

Table 22 - Buildings completed according to type of building and province: Northern Cape

| Type of building | October 2000* | September 2001 | October 2001 | January 2000 to October 2000 | January 2001 to October 2001 | Percentage change between January 2000 to October 2000 and January 2001 to October 2001 |
|---|---------------|----------------|--------------|------------------------------|------------------------------|---|
| Residential buildings | | | | | | |
| Dwelling-houses smaller than 80 square metres | | | | | | |
| Number of dwelling-houses | 12 | 6 | 17 | 243 | 118 | - 51,4 |
| Total square metres | 568 | 295 | 620 | 9 726 | 5 667 | - 41,7 |
| Total value at current prices (R'000) | 818 | 414 | 856 | 9 708 | 8 315 | - 14,3 |
| Dwelling-houses equal to or larger than 80 square metres | | | | | | |
| Number of dwelling-houses | 15 | 0 | 3 | 95 | 117 | + 23,2 |
| Total square metres | 2 593 | 0 | 402 | 14 823 | 17 020 | + 14,8 |
| Total value at current prices (R'000) | 3 896 | 0 | 724 | 18 411 | 25 218 | + 37,0 |
| Flats and townhouses | | | | | | |
| Number of flats and townhouses | 0 | 17 | 1 | 13 | 39 | + 200,0 |
| Total square metres | 0 | 1 912 | 156 | 1 715 | 4 120 | + 140,2 |
| Total value at current prices (R'000) | 0 | 2 677 | 239 | 2 305 | 5 935 | + 157,5 |
| Other residential buildings ^{1/} | | | | | | |
| Total square metres | 0 | 0 | 0 | 2 758 | 346 | - 87,5 |
| Total value at current prices (R'000) | 0 | 0 | 0 | 3 193 | 277 | - 91,3 |
| Total value of residential buildings at current prices (R'000) | 4 714 | 3 091 | 1 819 | 33 617 | 39 745 | + 18,2 |
| Non-residential buildings | | | | | | |
| Office and banking space | | | | | | |
| Total square metres | 0 | 0 | 0 | 0 | 7 105 | .. |
| Total value at current prices (R'000) | 0 | 0 | 0 | 0 | 15 631 | .. |
| Shopping space | | | | | | |
| Total square metres | 610 | 0 | 0 | 9 543 | 4 775 | -50,0 |
| Total value at current prices (R'000) | 854 | 0 | 0 | 11 813 | 7 261 | - 38,5 |
| Industrial and warehouse space | | | | | | |
| Total square metres | 556 | 0 | 0 | 7 462 | 772 | - 89,7 |
| Total value at current prices (R'000) | 1 221 | 0 | 0 | 11 145 | 618 | - 94,5 |
| Other non-residential space ^{2/} | | | | | | |
| Total square metres | 0 | 0 | 647 | 1 046 | 1 603 | + 53,3 |
| Total value at current prices (R'000) | 235 | 0 | 1 145 | 1 534 | 2 870 | + 87,1 |
| Total value of non-residential buildings at current prices (R'000) | 2 075 | 0 | 1 145 | 24 492 | 26 380 | + 7,7 |
| Additions and alterations | | | | | | |
| Dwelling-houses | | | | | | |
| Total square metres | 2 356 | 2 072 | 1 774 | 15 658 | 17 513 | + 11,8 |
| Total value at current prices (R'000) | 3 495 | 3 715 | 3 184 | 21 388 | 29 156 | + 36,3 |
| Other buildings ^{3/} | | | | | | |
| Total square metres | 618 | 1 198 | 153 | 5 257 | 5 357 | + 1,9 |
| Total value at current prices (R'000) | 1 002 | 2 587 | 252 | 12 501 | 12 901 | + 3,2 |
| Total value of additions and alterations at current prices (R'000) | 4 497 | 6 302 | 3 436 | 33 889 | 42 057 | + 24,1 |
| Total value of buildings completed at current prices (R'000) | 11 286 | 9 393 | 6 400 | 91 998 | 108 182 | 17,6 |

1/ Other residential buildings include institutions for the disabled, boarding houses, old people's homes, hostels, hotels, motels, guest houses, holiday chalets, entertainment centres, bed-and-breakfast accommodation and casinos.

2/ Other non-residential space includes churches, sport and recreation clubs, schools, crèches, hospitals and all other non-residential space.

3/ Other buildings include additions and alterations to other residential buildings, non-residential buildings and internal alterations.

Table 23 - Buildings completed according to type of building and province: Free State

| Type of building | October 2000* | September 2001* | October 2001 | January 2000 to October 2000 | January 2001 to October 2001 | Percentage change between January 2000 to October 2000 and January 2001 to October 2001 |
|---|---------------|-----------------|---------------|------------------------------|------------------------------|---|
| Residential buildings | | | | | | |
| Dwelling-houses smaller than 80 square metres | | | | | | |
| Number of dwelling-houses | 160 | 53 | 451 | 3 085 | 1 827 | -40,8 |
| Total square metres | 6 230 | 2 240 | 17 264 | 122 114 | 75 658 | -38,0 |
| Total value at current prices (R'000) | 3 234 | 1 419 | 8 515 | 68 376 | 41 689 | -39,0 |
| Dwelling-houses equal to or larger than 80 square metres | | | | | | |
| Number of dwelling-houses | 39 | 9 | 25 | 250 | 274 | + 9,6 |
| Total square metres | 5 656 | 1 413 | 4 244 | 39 866 | 49 179 | + 23,4 |
| Total value at current prices (R'000) | 6 839 | 1 405 | 5 222 | 46 447 | 58 544 | + 26,0 |
| Flats and townhouses | | | | | | |
| Number of flats and townhouses | 116 | 2 | 10 | 264 | 157 | -40,5 |
| Total square metres | 6 247 | 356 | 1 430 | 22 472 | 14 781 | -34,2 |
| Total value at current prices (R'000) | 8 066 | 320 | 2 145 | 28 620 | 19 926 | -30,4 |
| Other residential buildings ^{1/} | | | | | | |
| Total square metres | 0 | 0 | 0 | 560 | 464 | -17,1 |
| Total value at current prices (R'000) | 0 | 0 | 0 | 648 | 581 | -10,3 |
| Total value of residential buildings at current prices (R'000) | 18 139 | 3 144 | 15 882 | 144 091 | 120 740 | -16,2 |
| Non-residential buildings | | | | | | |
| Office and banking space | | | | | | |
| Total square metres | 1 185 | 0 | 0 | 6 509 | 17 195 | + 164,2 |
| Total value at current prices (R'000) | 2 166 | 0 | 0 | 12 087 | 32 203 | + 166,4 |
| Shopping space | | | | | | |
| Total square metres | 1 619 | 0 | 0 | 15 247 | 5 702 | -62,6 |
| Total value at current prices (R'000) | 2 788 | 0 | 0 | 20 117 | 7 058 | -64,9 |
| Industrial and warehouse space | | | | | | |
| Total square metres | 20 | 0 | 1 041 | 17 619 | 14 663 | -16,8 |
| Total value at current prices (R'000) | 26 | 0 | 543 | 14 170 | 13 403 | -5,4 |
| Other non-residential space ^{2/} | | | | | | |
| Total square metres | 862 | 0 | 413 | 5 521 | 12 422 | + 125,0 |
| Total value at current prices (R'000) | 1 450 | 0 | 434 | 6 774 | 20 621 | + 204,4 |
| Total value of non-residential buildings at current prices (R'000) | 6 430 | 0 | 977 | 53 148 | 73 285 | + 37,9 |
| Additions and alterations | | | | | | |
| Dwelling-houses | | | | | | |
| Total square metres | 3 784 | 1 537 | 5 424 | 40 836 | 46 642 | + 14,2 |
| Total value at current prices (R'000) | 3 806 | 1 870 | 5 880 | 42 821 | 48 644 | + 13,6 |
| Other buildings ^{3/} | | | | | | |
| Total square metres | 1 465 | 731 | 3 175 | 14 277 | 28 537 | + 99,9 |
| Total value at current prices (R'000) | 2 178 | 603 | 6 859 | 24 678 | 110 702 | + 348,6 |
| Total value of additions and alterations at current prices (R'000) | 5 984 | 2 473 | 12 739 | 67 499 | 159 346 | + 136,1 |
| Total value of buildings completed at current prices (R'000) | 30 553 | 5 617 | 29 598 | 264 738 | 353 371 | + 33,5 |

1/ Other residential buildings include institutions for the disabled, boarding houses, old people's homes, hostels, hotels, motels, guest houses, holiday chalets, entertainment centres, bed-and-breakfast accommodation and casinos.

2/ Other non-residential space includes churches, sport and recreation clubs, schools, crèches, hospitals and all other non-residential space.

3/ Other buildings include additions and alterations to other residential buildings, non-residential buildings and internal alterations.

Table 24 - Buildings completed according to type of building and province: KwaZulu-Natal

| Type of building | October 2000* | September 2001 | October 2001 | January 2000 to October 2000 | January 2001 to October 2001 | Percentage change between January 2000 to October 2000 and January 2001 to October 2001 |
|---|----------------|------------------|----------------|------------------------------|------------------------------|---|
| Residential buildings | | | | | | |
| Dwelling-houses smaller than 80 square metres | | | | | | |
| Number of dwelling-houses | 393 | 139 | 209 | 2 658 | 2 054 | -22,7 |
| Total square metres | 15 648 | 6 007 | 8 207 | 109 507 | 89 797 | -18,0 |
| Total value at current prices (R'000) | 18 155 | 6 380 | 8 660 | 107 882 | 90 294 | -16,3 |
| Dwelling-houses equal to or larger than 80 square metres | | | | | | |
| Number of dwelling-houses | 131 | 122 | 153 | 1 377 | 1 370 | -0,5 |
| Total square metres | 23 228 | 26 736 | 39 589 | 244 385 | 298 395 | + 22,1 |
| Total value at current prices (R'000) | 28 319 | 37 796 | 45 764 | 289 243 | 401 824 | + 38,9 |
| Flats and townhouses | | | | | | |
| Number of flats and townhouses | 59 | 28 | 95 | 562 | 711 | + 26,5 |
| Total square metres | 10 947 | 5 767 | 13 603 | 87 541 | 91 059 | + 4,0 |
| Total value at current prices (R'000) | 17 696 | 7 146 | 19 240 | 125 467 | 131 391 | + 4,7 |
| Other residential buildings ^{1/} | | | | | | |
| Total square metres | 0 | 0 | 422 | 4 033 | 9 152 | + 126,9 |
| Total value at current prices (R'000) | 0 | 0 | 450 | 5 666 | 40 990 | + 623,4 |
| Total value of residential buildings at current prices (R'000) | 64 170 | 51 322 | 74 114 | 528 258 | 664 499 | + 25,8 |
| Non-residential buildings | | | | | | |
| Office and banking space | | | | | | |
| Total square metres | 527 | 274 | 26 045 | 51 691 | 73 111 | + 41,4 |
| Total value at current prices (R'000) | 840 | 500 | 52 779 | 113 866 | 127 091 | + 11,6 |
| Shopping space | | | | | | |
| Total square metres | 4 002 | 327 332 | 10 576 | 24 612 | 361 025 | + 1 366,9 |
| Total value at current prices (R'000) | 3 967 | 1 211 031 | 20 721 | 32 675 | 1 270 337 | + 3 787,8 |
| Industrial and warehouse space | | | | | | |
| Total square metres | 30 973 | 22 838 | 20 837 | 180 035 | 152 401 | -15,3 |
| Total value at current prices (R'000) | 29 678 | 21 493 | 17 926 | 191 457 | 165 800 | -13,4 |
| Other non-residential space ^{2/} | | | | | | |
| Total square metres | 928 | 3 231 | 7 447 | 20 734 | 26 413 | + 27,4 |
| Total value at current prices (R'000) | 1 100 | 3 231 | 9 609 | 26 331 | 31 670 | + 20,3 |
| Total value of non-residential buildings at current prices (R'000) | 35 585 | 1 236 255 | 101 035 | 364 329 | 1 594 898 | + 337,8 |
| Additions and alterations | | | | | | |
| Dwelling-houses | | | | | | |
| Total square metres | 28 609 | 24 349 | 26 070 | 246 272 | 286 843 | + 16,5 |
| Total value at current prices (R'000) | 31 595 | 27 312 | 30 696 | 269 711 | 320 776 | + 18,9 |
| Other buildings ^{3/} | | | | | | |
| Total square metres | 19 614 | 11 949 | 9 667 | 167 156 | 97 341 | -41,8 |
| Total value at current prices (R'000) | 30 321 | 18 130 | 15 597 | 316 887 | 177 221 | -44,1 |
| Total value of additions and alterations at current prices (R'000) | 61 916 | 45 442 | 46 293 | 586 598 | 497 997 | -15,1 |
| Total value of buildings completed at current prices (R'000) | 161 671 | 1 333 019 | 221 442 | 1 479 185 | 2 757 394 | + 86,4 |

1/ Other residential buildings include institutions for the disabled, boarding houses, old people's homes, hostels, hotels, motels, guest houses, holiday chalets, entertainment centres, bed-and-breakfast accommodation and casinos.

2/ Other non-residential space includes churches, sport and recreation clubs, schools, crèches, hospitals and all other non-residential space.

3/ Other buildings include additions and alterations to other residential buildings, non-residential buildings and internal alterations.

Table 25 - Buildings completed according to type of building and province: North West

| Type of building | October 2000 | September 2001 | October 2001 | January 2000 to October 2000 | January 2001 to October 2001 | Percentage change between January 2000 to October 2000 and January 2001 to October 2001 |
|---|---------------|----------------|---------------|------------------------------|------------------------------|---|
| Residential buildings | | | | | | |
| Dwelling-houses smaller than 80 square metres | | | | | | |
| Number of dwelling-houses | 88 | 198 | 53 | 1 124 | 1 284 | + 14,2 |
| Total square metres | 4 843 | 6 674 | 2 508 | 54 166 | 52 745 | - 2,6 |
| Total value at current prices (R'000) | 6 025 | 3 671 | 3 246 | 47 575 | 44 144 | - 7,2 |
| Dwelling-houses equal to or larger than 80 square metres | | | | | | |
| Number of dwelling-houses | 37 | 39 | 58 | 320 | 443 | + 38,4 |
| Total square metres | 7 190 | 8 149 | 10 549 | 55 109 | 84 167 | + 52,7 |
| Total value at current prices (R'000) | 7 908 | 11 036 | 13 973 | 61 145 | 108 046 | + 76,7 |
| Flats and townhouses | | | | | | |
| Number of flats and townhouses | 18 | 20 | 55 | 154 | 159 | + 3,2 |
| Total square metres | 1 482 | 1 632 | 2 825 | 17 425 | 13 107 | - 24,8 |
| Total value at current prices (R'000) | 1 734 | 2 393 | 3 520 | 18 893 | 15 549 | - 17,7 |
| Other residential buildings ^{1/} | | | | | | |
| Total square metres | 0 | 0 | 0 | 748 | 3 684 | + 392,5 |
| Total value at current prices (R'000) | 0 | 0 | 0 | 765 | 4 162 | + 444,1 |
| Total value of residential buildings at current prices (R'000) | 15 667 | 17 100 | 20 739 | 128 378 | 171 901 | + 33,9 |
| Non-residential buildings | | | | | | |
| Office and banking space | | | | | | |
| Total square metres | 2 153 | 955 | 0 | 12 203 | 1 852 | - 84,8 |
| Total value at current prices (R'000) | 1 335 | 1 382 | 0 | 13 286 | 2 932 | - 77,9 |
| Shopping space | | | | | | |
| Total square metres | 0 | 2 107 | 0 | 25 104 | 7 202 | - 71,3 |
| Total value at current prices (R'000) | 0 | 3 176 | 0 | 29 938 | 10 897 | - 63,6 |
| Industrial and warehouse space | | | | | | |
| Total square metres | 11 932 | 456 | 937 | 14 969 | 8 198 | - 45,2 |
| Total value at current prices (R'000) | 10 011 | 365 | 600 | 12 123 | 7 964 | - 34,3 |
| Other non-residential space ^{2/} | | | | | | |
| Total square metres | 1 394 | 0 | 0 | 10 457 | 7 136 | - 31,8 |
| Total value at current prices (R'000) | 1 281 | 0 | 0 | 13 311 | 8 532 | - 35,9 |
| Total value of non-residential buildings at current prices (R'000) | 12 627 | 4 923 | 600 | 68 658 | 30 325 | - 55,8 |
| Additions and alterations | | | | | | |
| Dwelling-houses | | | | | | |
| Total square metres | 3 100 | 1 834 | 5 498 | 42 546 | 38 941 | - 8,5 |
| Total value at current prices (R'000) | 2 164 | 1 933 | 5 049 | 40 383 | 35 886 | - 11,1 |
| Other buildings ^{3/} | | | | | | |
| Total square metres | 3 209 | 0 | 280 | 18 804 | 17 436 | - 7,3 |
| Total value at current prices (R'000) | 1 951 | 395 | 214 | 15 907 | 26 897 | + 69,1 |
| Total value of additions and alterations at current prices (R'000) | 4 115 | 2 328 | 5 263 | 56 290 | 62 783 | + 11,5 |
| Total value of buildings completed at current prices (R'000) | 32 409 | 24 351 | 26 602 | 253 326 | 265 009 | + 4,6 |

1/ Other residential buildings include institutions for the disabled, boarding houses, old people's homes, hostels, hotels, motels, guest houses, holiday chalets, entertainment centres, bed-and-breakfast accommodation and casinos.

2/ Other non-residential space includes churches, sport and recreation clubs, schools, crèches, hospitals and all other non-residential space.

3/ Other buildings include additions and alterations to other residential buildings, non-residential buildings and internal alterations.

Table 26 - Buildings completed according to type of building and province: Gauteng

| Type of building | October 2000* | September 2001* | October 2001 | January 2000 to October 2000 | January 2001 to October 2001 | Percentage change between January 2000 to October 2000 and January 2001 to October 2001 |
|---|----------------|-----------------|----------------|------------------------------|------------------------------|---|
| Residential buildings | | | | | | |
| Dwelling-houses smaller than 80 square metres | | | | | | |
| Number of dwelling-houses | 725 | 1 919 | 475 | 13 304 | 6 968 | -47,6 |
| Total square metres | 29 402 | 57 648 | 24 031 | 489 692 | 263 787 | -46,1 |
| Total value at current prices (R'000) | 26 271 | 36 551 | 37 165 | 366 622 | 247 572 | -32,5 |
| Dwelling-houses equal to or larger than 80 square metres | | | | | | |
| Number of dwelling-houses | 290 | 226 | 391 | 2 639 | 2 900 | + 9,9 |
| Total square metres | 71 437 | 54 340 | 101 085 | 639 426 | 678 093 | + 6,0 |
| Total value at current prices (R'000) | 95 946 | 80 944 | 151 333 | 852 737 | 960 334 | + 12,6 |
| Flats and townhouses | | | | | | |
| Number of flats and townhouses | 390 | 193 | 267 | 3 229 | 2 528 | -21,7 |
| Total square metres | 35 482 | 29 945 | 34 040 | 286 793 | 269 873 | -5,9 |
| Total value at current prices (R'000) | 49 044 | 47 725 | 55 909 | 397 626 | 423 095 | + 6,4 |
| Other residential buildings ^{1/} | | | | | | |
| Total square metres | 0 | 208 | 8 844 | 11 993 | 44 534 | + 271,3 |
| Total value at current prices (R'000) | 0 | 271 | 17 689 | 19 280 | 271 584 | + 1 308,6 |
| Total value of residential buildings at current prices (R'000) | 171 261 | 165 491 | 262 096 | 1 636 265 | 1 902 585 | + 16,3 |
| Non-residential buildings | | | | | | |
| Office and banking space | | | | | | |
| Total square metres | 38 066 | 3 856 | 36 263 | 291 528 | 296 495 | + 1,7 |
| Total value at current prices (R'000) | 54 499 | 5 944 | 49 977 | 420 695 | 423 372 | + 0,6 |
| Shopping space | | | | | | |
| Total square metres | 3 939 | 42 288 | 12 233 | 221 232 | 124 254 | -43,8 |
| Total value at current prices (R'000) | 5 425 | 83 838 | 17 771 | 583 554 | 254 162 | -56,4 |
| Industrial and warehouse space | | | | | | |
| Total square metres | 8 228 | 11 676 | 27 491 | 172 824 | 198 274 | + 14,7 |
| Total value at current prices (R'000) | 13 568 | 20 936 | 47 187 | 260 576 | 305 226 | + 17,1 |
| Other non-residential space ^{2/} | | | | | | |
| Total square metres | 2 654 | 1 813 | 6 959 | 86 012 | 41 945 | -51,2 |
| Total value at current prices (R'000) | 3 101 | 1 960 | 10 987 | 109 752 | 59 102 | -46,1 |
| Total value of non-residential buildings at current prices (R'000) | 76 593 | 112 678 | 125 922 | 1 374 577 | 1 041 862 | -24,2 |
| Additions and alterations | | | | | | |
| Dwelling-houses | | | | | | |
| Total square metres | 22 423 | 18 591 | 46 266 | 251 590 | 238 299 | -5,3 |
| Total value at current prices (R'000) | 27 176 | 25 164 | 59 935 | 304 687 | 292 480 | -4,0 |
| Other buildings ^{3/} | | | | | | |
| Total square metres | 11 323 | 1 354 | 11 267 | 92 586 | 103 489 | + 11,8 |
| Total value at current prices (R'000) | 20 121 | 1 871 | 16 023 | 215 054 | 168 084 | -21,8 |
| Total value of additions and alterations at current prices (R'000) | 47 297 | 27 035 | 75 958 | 519 741 | 460 564 | -11,4 |
| Total value of buildings completed at current prices (R'000) | 295 151 | 305 204 | 463 976 | 3 530 583 | 3 405 011 | -3,6 |

1/ Other residential buildings include institutions for the disabled, boarding houses, old people's homes, hostels, hotels, motels, guest houses, holiday chalets, entertainment centres, bed-and-breakfast accommodation and casinos.

2/ Other non-residential space includes churches, sport and recreation clubs, schools, crèches, hospitals and all other non-residential space.

3/ Other buildings include additions and alterations to other residential buildings, non-residential buildings and internal alterations.

Table 27 - Buildings completed according to type of building and province: Mpumalanga

| Type of building | October 2000* | September 2001 | October 2001 | January 2000 to October 2000 | January 2001 to October 2001 | Percentage change between January 2000 to October 2000 and January 2001 to October 2001 |
|---|---------------|----------------|---------------|------------------------------|------------------------------|---|
| Residential buildings | | | | | | |
| Dwelling-houses smaller than 80 square metres | | | | | | |
| Number of dwelling-houses | 165 | 178 | 160 | 2 020 | 2 715 | + 34,4 |
| Total square metres | 5 641 | 6 389 | 6 091 | 69 597 | 93 163 | + 33,9 |
| Total value at current prices (R'000) | 3 031 | 6 252 | 3 311 | 52 451 | 54 515 | + 3,9 |
| Dwelling-houses equal to or larger than 80 square metres | | | | | | |
| Number of dwelling-houses | 23 | 22 | 25 | 392 | 293 | -25,3 |
| Total square metres | 3 725 | 4 104 | 4 327 | 64 836 | 53 511 | -17,5 |
| Total value at current prices (R'000) | 4 287 | 4 072 | 4 349 | 76 512 | 53 871 | -29,6 |
| Flats and townhouses | | | | | | |
| Number of flats and townhouses | 7 | 0 | 0 | 45 | 115 | + 155,6 |
| Total square metres | 818 | 0 | 0 | 4 828 | 13 191 | + 173,2 |
| Total value at current prices (R'000) | 651 | 0 | 0 | 4 734 | 12 251 | + 158,8 |
| Other residential buildings ^{1/} | | | | | | |
| Total square metres | 0 | 0 | 0 | 1 444 | 0 | .. |
| Total value at current prices (R'000) | 0 | 0 | 0 | 2 462 | 0 | .. |
| Total value of residential buildings at current prices (R'000) | 7 969 | 10 324 | 7 660 | 136 159 | 120 637 | -11,4 |
| Non-residential buildings | | | | | | |
| Office and banking space | | | | | | |
| Total square metres | 0 | 1 615 | 0 | 8 461 | 8 878 | + 4,9 |
| Total value at current prices (R'000) | 0 | 1 570 | 0 | 14 916 | 19 470 | + 30,5 |
| Shopping space | | | | | | |
| Total square metres | 1 024 | 0 | 931 | 8 526 | 27 519 | + 222,8 |
| Total value at current prices (R'000) | 1 000 | 0 | 1 800 | 10 053 | 20 970 | + 108,6 |
| Industrial and warehouse space | | | | | | |
| Total square metres | 2 880 | 294 | 0 | 19 606 | 2 808 | -85,7 |
| Total value at current prices (R'000) | 3 300 | 264 | 0 | 20 002 | 2 382 | -88,1 |
| Other non-residential space ^{2/} | | | | | | |
| Total square metres | 12 | 0 | 0 | 7 145 | 2 845 | -60,2 |
| Total value at current prices (R'000) | 8 | 0 | 0 | 9 113 | 3 161 | -65,3 |
| Total value of non-residential buildings at current prices (R'000) | 4 308 | 1 834 | 1 800 | 54 084 | 45 983 | -15,0 |
| Additions and alterations | | | | | | |
| Dwelling-houses | | | | | | |
| Total square metres | 2 341 | 1 617 | 3 844 | 26 824 | 34 928 | + 30,2 |
| Total value at current prices (R'000) | 2 140 | 1 358 | 3 721 | 21 338 | 29 977 | + 40,5 |
| Other buildings ^{3/} | | | | | | |
| Total square metres | 166 | 0 | 1 074 | 5 725 | 15 777 | + 175,6 |
| Total value at current prices (R'000) | 564 | 78 | 1 016 | 7 751 | 20 697 | + 167,0 |
| Total value of additions and alterations at current prices (R'000) | 2 704 | 1 436 | 4 737 | 29 089 | 50 674 | + 74,2 |
| Total value of buildings completed at current prices (R'000) | 14 981 | 13 594 | 14 197 | 219 332 | 217 294 | -0,9 |

1/ Other residential buildings include institutions for the disabled, boarding houses, old people's homes, hostels, hotels, motels, guest houses, holiday chalets, entertainment centres, bed-and-breakfast accommodation and casinos.

2/ Other non-residential space includes churches, sport and recreation clubs, schools, crèches, hospitals and all other non-residential space.

3/ Other buildings include additions and alterations to other residential buildings, non-residential buildings and internal alterations.

Table 28 - Buildings completed according to type of building and province: Northern Province

| Type of building | October 2000 | September 2001 | October 2001 | January 2000 to October 2000 | January 2001 to October 2001 | Percentage change between January 2000 to October 2000 and January 2001 to October 2001 |
|---|---------------|----------------|--------------|------------------------------|------------------------------|---|
| Residential buildings | | | | | | |
| Dwelling-houses smaller than 80 square metres | | | | | | |
| Number of dwelling-houses | 66 | 40 | 14 | 541 | 403 | -25,5 |
| Total square metres | 3 627 | 2 430 | 763 | 27 696 | 20 457 | -26,1 |
| Total value at current prices (R'000) | 4 099 | 3 293 | 1 068 | 28 613 | 20 890 | -27,0 |
| Dwelling-houses equal to or larger than 80 square metres | | | | | | |
| Number of dwelling-houses | 14 | 7 | 13 | 207 | 149 | -28,0 |
| Total square metres | 1 871 | 1 349 | 1 775 | 29 271 | 23 671 | -19,1 |
| Total value at current prices (R'000) | 2 332 | 1 873 | 2 326 | 37 435 | 30 684 | -18,0 |
| Flats and townhouses | | | | | | |
| Number of flats and townhouses | 2 | 4 | 1 | 62 | 32 | -48,4 |
| Total square metres | 256 | 492 | 123 | 7 932 | 5 371 | -32,3 |
| Total value at current prices (R'000) | 358 | 688 | 172 | 10 228 | 6 238 | -39,0 |
| Other residential buildings ^{1/} | | | | | | |
| Total square metres | 0 | 0 | 0 | 725 | 3 000 | + 313,8 |
| Total value at current prices (R'000) | 0 | 0 | 0 | 1 015 | 3 600 | + 254,7 |
| Total value of residential buildings at current prices (R'000) | 6 789 | 5 854 | 3 566 | 77 291 | 61 412 | -20,5 |
| Non-residential buildings | | | | | | |
| Office and banking space | | | | | | |
| Total square metres | 0 | 0 | 29 | 3 271 | 998 | -69,5 |
| Total value at current prices (R'000) | 0 | 0 | 29 | 5 067 | 1 126 | -77,8 |
| Shopping space | | | | | | |
| Total square metres | 1 261 | 0 | 0 | 10 612 | 4 860 | -54,2 |
| Total value at current prices (R'000) | 1 693 | 0 | 0 | 24 860 | 7 647 | -69,2 |
| Industrial and warehouse space | | | | | | |
| Total square metres | 0 | 0 | 0 | 5 899 | 768 | -87,0 |
| Total value at current prices (R'000) | 0 | 0 | 0 | 6 527 | 1 076 | -83,5 |
| Other non-residential space ^{2/} | | | | | | |
| Total square metres | 0 | 0 | 0 | 1 276 | 424 | -66,8 |
| Total value at current prices (R'000) | 0 | 0 | 0 | 1 610 | 726 | -54,9 |
| Total value of non-residential buildings at current prices (R'000) | 1 693 | 0 | 29 | 38 064 | 10 575 | -72,2 |
| Additions and alterations | | | | | | |
| Dwelling-houses | | | | | | |
| Total square metres | 1 500 | 949 | 873 | 13 186 | 7 885 | -40,2 |
| Total value at current prices (R'000) | 1 689 | 1 221 | 1 089 | 15 516 | 9 687 | -37,6 |
| Other buildings ^{3/} | | | | | | |
| Total square metres | 535 | 69 | 290 | 3 512 | 3 317 | -5,6 |
| Total value at current prices (R'000) | 918 | 69 | 374 | 7 040 | 6 243 | -11,3 |
| Total value of additions and alterations at current prices (R'000) | 2 607 | 1 290 | 1 463 | 22 556 | 15 930 | -29,4 |
| Total value of buildings completed at current prices (R'000) | 11 089 | 7 144 | 5 058 | 137 911 | 87 917 | -36,3 |

1/ Other residential buildings include institutions for the disabled, boarding houses, old people's homes, hostels, hotels, motels, guest houses, holiday chalets, entertainment centres, bed-and-breakfast accommodation and casinos.

2/ Other non-residential space includes churches, sport and recreation clubs, schools, crèches, hospitals and all other non-residential space.

3/ Other buildings include additions and alterations to other residential buildings, non-residential buildings and internal alterations.

Table 29 - Building plans passed according to type of building and selected urban area: Cape Town

| Type of building | October 2000 * | September 2001 | October 2001 | January 2000 to October 2000 | January 2001 to October 2001 | Percentage change between January 2000 to October 2000 and January 2001 to October 2001 |
|---|----------------|----------------|----------------|------------------------------|------------------------------|---|
| Residential buildings | | | | | | |
| Dwelling-houses smaller than 80 square metres | | | | | | |
| Number of dwelling-houses | 638 | 350 | 352 | 5 067 | 4 997 | - 1,4 |
| Total square metres | 27 477 | 14 348 | 16 771 | 209 278 | 214 100 | + 2,3 |
| Total value at current prices (R'000) | 22 027 | 15 719 | 20 758 | 163 917 | 264 660 | + 61,5 |
| Dwelling-houses equal to or larger than 80 square metres | | | | | | |
| Number of dwelling-houses | 408 | 283 | 359 | 2 940 | 3 180 | + 8,2 |
| Total square metres | 84 069 | 55 836 | 75 712 | 551 092 | 657 293 | + 19,3 |
| Total value at current prices (R'000) | 121 320 | 76 552 | 108 280 | 792 382 | 911 639 | + 15,1 |
| Flats and townhouses | | | | | | |
| Number of flats and townhouses | 164 | 109 | 462 | 1 504 | 1 628 | + 8,2 |
| Total square metres | 23 621 | 11 292 | 37 442 | 172 701 | 154 779 | - 10,4 |
| Total value at current prices (R'000) | 29 659 | 16 474 | 52 538 | 281 228 | 234 527 | - 16,6 |
| Other residential buildings ^{1/} | | | | | | |
| Total square metres | 364 | 0 | 138 | 48 395 | 33 131 | - 31,5 |
| Total value at current prices (R'000) | 523 | 0 | 151 | 66 206 | 78 093 | + 18,0 |
| Total value of residential buildings at current prices (R'000) | 173 529 | 108 745 | 181 727 | 1 303 733 | 1 488 919 | + 14,2 |
| Non-residential buildings | | | | | | |
| Office and banking space | | | | | | |
| Total square metres | 18 001 | 1 951 | 24 040 | 181 492 | 185 632 | + 2,3 |
| Total value at current prices (R'000) | 21 788 | 3 785 | 31 996 | 322 982 | 262 679 | - 18,7 |
| Shopping space | | | | | | |
| Total square metres | 18 573 | 1 166 | 326 | 162 995 | 97 847 | - 40,0 |
| Total value at current prices (R'000) | 19 829 | 1 581 | 488 | 199 176 | 122 977 | - 38,3 |
| Industrial and warehouse space | | | | | | |
| Total square metres | 19 114 | 3 833 | 9 256 | 186 738 | 119 409 | - 36,1 |
| Total value at current prices (R'000) | 20 316 | 4 102 | 10 296 | 209 916 | 127 819 | - 39,1 |
| Other non-residential space ^{2/} | | | | | | |
| Total square metres | 8 003 | 3 066 | 1 644 | 60 020 | 51 708 | - 13,8 |
| Total value at current prices (R'000) | 10 496 | 4 202 | 2 273 | 70 695 | 69 818 | - 1,2 |
| Total value of non-residential buildings at current prices (R'000) | 72 429 | 13 670 | 45 053 | 802 769 | 583 293 | - 27,3 |
| Additions and alterations | | | | | | |
| Dwelling-houses | | | | | | |
| Total square metres | 62 826 | 43 666 | 59 747 | 510 629 | 500 426 | - 2,0 |
| Total value at current prices (R'000) | 75 678 | 54 869 | 74 232 | 588 093 | 606 234 | + 3,1 |
| Other buildings ^{3/} | | | | | | |
| Total square metres | 25 661 | 18 907 | 14 982 | 147 198 | 149 878 | + 1,8 |
| Total value at current prices (R'000) | 37 175 | 45 547 | 31 766 | 322 136 | 291 996 | - 9,4 |
| Total value of additions and alterations at current prices (R'000) | 112 853 | 100 416 | 105 998 | 910 229 | 898 230 | - 1,3 |
| Total value of building plans passed at current prices (R'000) | 358 811 | 222 831 | 332 778 | 3 016 731 | 2 970 442 | - 1,5 |

1/ Other residential buildings include institutions for the disabled, boarding houses, old people's homes, hostels, hotels, motels, guest houses, holiday chalets, entertainment centres, bed-and-breakfast accommodation and casinos.

2/ Other non-residential space includes churches, sport and recreation clubs, schools, crèches, hospitals and all other non-residential space.

3/ Other buildings include additions and alterations to other residential buildings, non-residential buildings and internal alterations.

Table 30 - Building plans passed according to type of building and selected urban area: Port Elizabeth

| Type of building | October 2000 | September 2001 | October 2001 | January 2000 to October 2000 | January 2001 to October 2001 | Percentage change between January 2000 to October 2000 and January 2001 to October 2001 |
|---|---------------|----------------|---------------|------------------------------|------------------------------|---|
| Residential buildings | | | | | | |
| Dwelling-houses smaller than 80 square metres | | | | | | |
| Number of dwelling-houses | 210 | 70 | 65 | 1 695 | 1 310 | - 22,7 |
| Total square metres | 8 337 | 3 079 | 2 781 | 70 808 | 58 788 | - 17,0 |
| Total value at current prices (R'000) | 11 428 | 4 241 | 3 838 | 84 636 | 78 256 | - 7,5 |
| Dwelling-houses equal to or larger than 80 square metres | | | | | | |
| Number of dwelling-houses | 10 | 47 | 53 | 406 | 608 | + 49,8 |
| Total square metres | 1 373 | 8 668 | 8 668 | 53 562 | 83 475 | + 55,8 |
| Total value at current prices (R'000) | 1 724 | 11 785 | 11 745 | 67 977 | 113 178 | + 66,5 |
| Flats and townhouses | | | | | | |
| Number of flats and townhouses | 11 | 27 | 8 | 153 | 148 | - 3,3 |
| Total square metres | 1 629 | 2 408 | 771 | 21 225 | 13 184 | - 37,9 |
| Total value at current prices (R'000) | 1 949 | 2 888 | 1 039 | 26 378 | 18 124 | - 31,3 |
| Other residential buildings ^{1/} | | | | | | |
| Total square metres | 0 | 0 | 308 | 7 209 | 3 052 | - 57,7 |
| Total value at current prices (R'000) | 0 | 0 | 317 | 9 640 | 3 629 | - 62,4 |
| Total value of residential buildings at current prices (R'000) | 15 101 | 18 914 | 16 939 | 188 631 | 213 187 | + 13,0 |
| Non-residential buildings | | | | | | |
| Office and banking space | | | | | | |
| Total square metres | 0 | 4 134 | 0 | 0 | 5 293 | .. |
| Total value at current prices (R'000) | 0 | 3 683 | 0 | 0 | 5 907 | .. |
| Shopping space | | | | | | |
| Total square metres | 376 | 322 | 876 | 8 710 | 5 068 | - 41,8 |
| Total value at current prices (R'000) | 387 | 334 | 1 717 | 12 559 | 8 160 | - 35,0 |
| Industrial and warehouse space | | | | | | |
| Total square metres | 24 865 | 2 184 | 905 | 47 724 | 23 589 | - 50,6 |
| Total value at current prices (R'000) | 32 044 | 3 486 | 548 | 57 918 | 22 406 | - 61,3 |
| Other non-residential space ^{2/} | | | | | | |
| Total square metres | 1 196 | 4 620 | 736 | 17 759 | 10 263 | - 42,2 |
| Total value at current prices (R'000) | 1 916 | 9 444 | 1 032 | 25 130 | 18 304 | - 27,2 |
| Total value of non-residential buildings at current prices (R'000) | 34 347 | 16 947 | 3 297 | 95 607 | 54 777 | - 42,7 |
| Additions and alterations | | | | | | |
| Dwelling-houses | | | | | | |
| Total square metres | 8 041 | 10 063 | 13 380 | 94 544 | 103 189 | + 9,1 |
| Total value at current prices (R'000) | 9 969 | 13 653 | 17 240 | 117 177 | 135 388 | + 15,5 |
| Other buildings ^{3/} | | | | | | |
| Total square metres | 384 | 3 952 | 4 060 | 27 715 | 71 065 | + 156,4 |
| Total value at current prices (R'000) | 544 | 6 075 | 2 986 | 36 836 | 78 376 | + 112,8 |
| Total value of additions and alterations at current prices (R'000) | 10 513 | 19 728 | 20 226 | 154 013 | 213 764 | + 38,8 |
| Total value of building plans passed at current prices (R'000) | 59 961 | 55 589 | 40 462 | 438 251 | 481 728 | + 9,9 |

1/ Other residential buildings include institutions for the disabled, boarding houses, old people's homes, hostels, hotels, motels, guest houses, holiday chalets, entertainment centres, bed-and-breakfast accommodation and casinos.

2/ Other non-residential space includes churches, sport and recreation clubs, schools, crèches, hospitals and all other non-residential space.

3/ Other buildings include additions and alterations to other residential buildings, non-residential buildings and internal alterations.

Table 31 - Building plans passed according to type of building and selected urban area: Durban

| Type of building | October 2000 | September 2001 | October 2001 | January 2000 to October 2000 | January 2001 to October 2001 | Percentage change between January 2000 to October 2000 and January 2001 to October 2001 |
|---|---------------|----------------|---------------|------------------------------|------------------------------|---|
| Residential buildings | | | | | | |
| Dwelling-houses smaller than 80 square metres | | | | | | |
| Number of dwelling-houses | 89 | 57 | 139 | 1 160 | 769 | -33,7 |
| Total square metres | 4 585 | 2 795 | 4 958 | 57 898 | 37 634 | -35,0 |
| Total value at current prices (R'000) | 4 533 | 3 434 | 5 619 | 61 726 | 43 197 | -30,0 |
| Dwelling-houses equal to or larger than 80 square metres | | | | | | |
| Number of dwelling-houses | 80 | 82 | 86 | 792 | 666 | -15,9 |
| Total square metres | 15 781 | 13 264 | 16 531 | 132 876 | 128 125 | -3,6 |
| Total value at current prices (R'000) | 21 329 | 15 340 | 23 019 | 172 155 | 158 121 | -8,2 |
| Flats and townhouses | | | | | | |
| Number of flats and townhouses | 21 | 14 | 5 | 207 | 164 | -20,8 |
| Total square metres | 4 036 | 2 030 | 785 | 32 787 | 21 631 | -34,0 |
| Total value at current prices (R'000) | 6 700 | 2 955 | 1 698 | 46 202 | 25 695 | -44,4 |
| Other residential buildings ^{1/} | | | | | | |
| Total square metres | 0 | 0 | 0 | 0 | 2 377 | .. |
| Total value at current prices (R'000) | 0 | 0 | 0 | 0 | 2 431 | .. |
| Total value of residential buildings at current prices (R'000) | 32 562 | 21 729 | 30 336 | 280 083 | 229 444 | -18,1 |
| Non-residential buildings | | | | | | |
| Office and banking space | | | | | | |
| Total square metres | 0 | 1 767 | 918 | 10 027 | 22 535 | + 124,7 |
| Total value at current prices (R'000) | 0 | 3 506 | 2 150 | 20 668 | 36 456 | + 76,4 |
| Shopping space | | | | | | |
| Total square metres | 6 056 | 901 | 612 | 16 612 | 13 844 | -16,7 |
| Total value at current prices (R'000) | 8 562 | 1 140 | 620 | 22 957 | 15 585 | -32,1 |
| Industrial and warehouse space | | | | | | |
| Total square metres | 9 222 | 20 150 | 10 809 | 90 868 | 87 556 | -3,6 |
| Total value at current prices (R'000) | 11 606 | 72 700 | 7 896 | 111 921 | 145 233 | + 29,8 |
| Other non-residential space ^{2/} | | | | | | |
| Total square metres | 4 169 | 796 | 2 105 | 21 544 | 26 527 | + 23,1 |
| Total value at current prices (R'000) | 8 909 | 890 | 5 233 | 33 785 | 36 596 | + 8,3 |
| Total value of non-residential buildings at current prices (R'000) | 29 077 | 78 236 | 15 899 | 189 331 | 233 870 | + 23,5 |
| Additions and alterations | | | | | | |
| Dwelling-houses | | | | | | |
| Total square metres | 22 244 | 22 151 | 24 451 | 232 582 | 224 162 | -3,6 |
| Total value at current prices (R'000) | 25 050 | 26 529 | 30 319 | 277 613 | 267 512 | -3,6 |
| Other buildings ^{3/} | | | | | | |
| Total square metres | 6 438 | 13 289 | 8 146 | 156 515 | 90 605 | -42,1 |
| Total value at current prices (R'000) | 12 243 | 20 904 | 15 582 | 298 275 | 192 321 | -35,5 |
| Total value of additions and alterations at current prices (R'000) | 37 293 | 47 433 | 45 901 | 575 888 | 459 833 | -20,2 |
| Total value of building plans passed at current prices (R'000) | 98 932 | 147 398 | 92 136 | 1 045 302 | 923 147 | -11,7 |

1/ Other residential buildings include institutions for the disabled, boarding houses, old people's homes, hostels, hotels, motels, guest houses, holiday chalets, entertainment centres, bed-and-breakfast accommodation and casinos.

2/ Other non-residential space includes churches, sport and recreation clubs, schools, crèches, hospitals and all other non-residential space.

3/ Other buildings include additions and alterations to other residential buildings, non-residential buildings and internal alterations.

Table 32 - Building plans passed according to type of building and selected urban area: Witwatersrand

| Type of building | October 2000 | September 2001 | October 2001 | January 2000 to October 2000 | January 2001 to October 2001 | Percentage change between January 2000 to October 2000 and January 2001 to October 2001 |
|---|----------------|----------------|----------------|------------------------------|------------------------------|---|
| Residential buildings | | | | | | |
| Dwelling-houses smaller than 80 square metres | | | | | | |
| Number of dwelling-houses | 1 166 | 1 045 | 591 | 12 535 | 6 877 | - 45,1 |
| Total square metres | 44 025 | 37 296 | 25 539 | 482 092 | 268 120 | - 44,4 |
| Total value at current prices (R'000) | 36 450 | 30 767 | 32 468 | 376 505 | 286 754 | - 23,8 |
| Dwelling-houses equal to or larger than 80 square metres | | | | | | |
| Number of dwelling-houses | 480 | 446 | 460 | 3 865 | 4 281 | + 10,8 |
| Total square metres | 113 392 | 103 022 | 117 094 | 913 427 | 989 603 | + 8,3 |
| Total value at current prices (R'000) | 155 672 | 150 883 | 185 684 | 1 279 593 | 1 458 270 | + 14,0 |
| Flats and townhouses | | | | | | |
| Number of flats and townhouses | 282 | 269 | 136 | 2 852 | 2 339 | - 18,0 |
| Total square metres | 20 949 | 42 271 | 19 050 | 286 728 | 271 214 | - 5,4 |
| Total value at current prices (R'000) | 29 486 | 60 761 | 29 086 | 447 368 | 433 868 | - 3,0 |
| Other residential buildings ^{1/} | | | | | | |
| Total square metres | 3 782 | 589 | 0 | 10 079 | 5 274 | - 47,7 |
| Total value at current prices (R'000) | 6 808 | 589 | 0 | 15 789 | 6 380 | - 59,6 |
| Total value of residential buildings at current prices (R'000) | 228 416 | 243 000 | 247 238 | 2 119 255 | 2 185 272 | + 3,1 |
| Non-residential buildings | | | | | | |
| Office and banking space | | | | | | |
| Total square metres | 96 527 | 24 031 | 3 601 | 554 893 | 206 745 | - 62,7 |
| Total value at current prices (R'000) | 164 430 | 38 105 | 6 811 | 818 196 | 350 913 | - 57,1 |
| Shopping space | | | | | | |
| Total square metres | 3 697 | 7 497 | 2 769 | 139 715 | 70 333 | - 49,7 |
| Total value at current prices (R'000) | 5 310 | 11 911 | 3 687 | 245 331 | 114 473 | - 53,3 |
| Industrial and warehouse space | | | | | | |
| Total square metres | 37 018 | 19 761 | 38 493 | 342 237 | 234 899 | - 31,4 |
| Total value at current prices (R'000) | 68 487 | 30 192 | 57 222 | 529 734 | 387 358 | - 26,9 |
| Other non-residential space ^{2/} | | | | | | |
| Total square metres | 12 876 | 3 086 | 1 640 | 82 527 | 83 613 | + 1,3 |
| Total value at current prices (R'000) | 23 852 | 4 836 | 2 411 | 135 083 | 126 174 | - 6,6 |
| Total value of non-residential buildings at current prices (R'000) | 262 079 | 85 044 | 70 131 | 1 728 344 | 978 918 | - 43,4 |
| Additions and alterations | | | | | | |
| Dwelling-houses | | | | | | |
| Total square metres | 73 489 | 92 305 | 60 172 | 664 202 | 648 921 | - 2,3 |
| Total value at current prices (R'000) | 95 266 | 119 560 | 86 237 | 835 090 | 843 809 | + 1,0 |
| Other buildings ^{3/} | | | | | | |
| Total square metres | 34 638 | 17 564 | 11 140 | 212 889 | 178 040 | - 16,4 |
| Total value at current prices (R'000) | 83 151 | 28 012 | 23 387 | 359 142 | 323 970 | - 9,8 |
| Total value of additions and alterations at current prices (R'000) | 178 417 | 147 572 | 109 624 | 1 194 232 | 1 167 779 | - 2,2 |
| Total value of building plans passed at current prices (R'000) | 668 912 | 475 616 | 426 993 | 5 041 831 | 4 331 969 | - 14,1 |

1/ Other residential buildings include institutions for the disabled, boarding houses, old people's homes, hostels, hotels, motels, guest houses, holiday chalets, entertainment centres, bed-and-breakfast accommodation and casinos.

2/ Other non-residential space includes churches, sport and recreation clubs, schools, crèches, hospitals and all other non-residential space.

3/ Other buildings include additions and alterations to other residential buildings, non-residential buildings and internal alterations.

Table 33 - Building plans passed according to type of building and selected urban area: Pretoria

| Type of building | October 2000 | September 2001 | October 2001 | January 2000 to October 2000 | January 2001 to October 2001 | Percentage change between January 2000 to October 2000 and January 2001 to October 2001 |
|---|----------------|----------------|----------------|------------------------------|------------------------------|---|
| Residential buildings | | | | | | |
| Dwelling-houses smaller than 80 square metres | | | | | | |
| Number of dwelling-houses | 87 | 97 | 77 | 2 771 | 1 251 | - 54,9 |
| Total square metres | 4 103 | 5 144 | 4 239 | 99 009 | 51 662 | - 47,8 |
| Total value at current prices (R'000) | 4 700 | 8 584 | 6 016 | 79 074 | 61 852 | - 21,8 |
| Dwelling-houses equal to or larger than 80 square metres | | | | | | |
| Number of dwelling-houses | 273 | 249 | 293 | 2 436 | 2 408 | - 1,1 |
| Total square metres | 74 669 | 73 181 | 75 419 | 621 587 | 688 573 | + 10,8 |
| Total value at current prices (R'000) | 99 587 | 114 728 | 109 605 | 810 466 | 969 266 | + 19,6 |
| Flats and townhouses | | | | | | |
| Number of flats and townhouses | 171 | 153 | 346 | 2 139 | 1 996 | - 6,7 |
| Total square metres | 21 359 | 40 832 | 56 914 | 265 040 | 279 576 | + 5,5 |
| Total value at current prices (R'000) | 29 262 | 65 168 | 89 868 | 352 053 | 422 033 | + 19,9 |
| Other residential buildings ^{1/} | | | | | | |
| Total square metres | 18 254 | 43 | 0 | 35 922 | 1 989 | - 94,5 |
| Total value at current prices (R'000) | 26 756 | 9 | 0 | 48 642 | 2 928 | - 94,0 |
| Total value of residential buildings at current prices (R'000) | 160 305 | 188 489 | 205 489 | 1 290 235 | 1 456 079 | + 12,9 |
| Non-residential buildings | | | | | | |
| Office and banking space | | | | | | |
| Total square metres | 1 430 | 15 278 | 8 585 | 58 129 | 100 571 | + 73,0 |
| Total value at current prices (R'000) | 2 061 | 25 390 | 14 019 | 77 121 | 163 325 | + 111,8 |
| Shopping space | | | | | | |
| Total square metres | 154 | 0 | 100 | 36 913 | 33 109 | - 10,3 |
| Total value at current prices (R'000) | 193 | 0 | 288 | 45 094 | 49 179 | + 9,1 |
| Industrial and warehouse space | | | | | | |
| Total square metres | 6 253 | 2 765 | 4 073 | 51 419 | 53 993 | + 5,0 |
| Total value at current prices (R'000) | 8 421 | 4 031 | 5 049 | 61 073 | 76 822 | + 25,8 |
| Other non-residential space ^{2/} | | | | | | |
| Total square metres | 6 861 | 8 179 | 221 | 30 067 | 42 533 | + 41,5 |
| Total value at current prices (R'000) | 9 149 | 12 328 | 499 | 38 339 | 63 652 | + 66,0 |
| Total value of non-residential buildings at current prices (R'000) | 19 824 | 41 749 | 19 855 | 221 627 | 352 978 | + 59,3 |
| Additions and alterations | | | | | | |
| Dwelling-houses | | | | | | |
| Total square metres | 24 571 | 21 442 | 28 609 | 204 292 | 198 061 | - 3,1 |
| Total value at current prices (R'000) | 29 925 | 30 276 | 41 533 | 245 121 | 266 847 | + 8,9 |
| Other buildings ^{3/} | | | | | | |
| Total square metres | 6 043 | 9 849 | 17 520 | 56 096 | 68 664 | + 22,4 |
| Total value at current prices (R'000) | 7 551 | 15 872 | 29 524 | 85 604 | 115 688 | + 35,1 |
| Total value of additions and alterations at current prices (R'000) | 37 476 | 46 148 | 71 057 | 330 725 | 382 535 | + 15,7 |
| Total value of building plans passed at current prices (R'000) | 217 605 | 276 386 | 296 401 | 1 842 587 | 2 191 592 | + 18,9 |

1/ Other residential buildings include institutions for the disabled, boarding houses, old people's homes, hostels, hotels, motels, guest houses, holiday chalets, entertainment centres, bed-and-breakfast accommodation and casinos.

2/ Other non-residential space includes churches, sport and recreation clubs, schools, crèches, hospitals and all other non-residential space.

3/ Other buildings include additions and alterations to other residential buildings, non-residential buildings and internal alterations.

Table 34 - Building plans passed according to type of building and selected urban area: Bloemfontein

| Type of building | October 2000 | September 2001 | October 2001 | January 2000 to October 2000 | January 2001 to October 2001 | Percentage change between January 2000 to October 2000 and January 2001 to October 2001 |
|---|---------------|----------------|---------------|------------------------------|------------------------------|---|
| Residential buildings | | | | | | |
| Dwelling-houses smaller than 80 square metres | | | | | | |
| Number of dwelling-houses | 540 | 41 | 36 | 2 244 | 1 292 | -42,4 |
| Total square metres | 23 009 | 2 001 | 1 819 | 99 529 | 57 341 | -42,4 |
| Total value at current prices (R'000) | 11 130 | 4 770 | 1 616 | 47 506 | 34 295 | -27,8 |
| Dwelling-houses equal to or larger than 80 square metres | | | | | | |
| Number of dwelling-houses | 24 | 28 | 24 | 246 | 213 | -13,4 |
| Total square metres | 4 526 | 4 281 | 4 143 | 44 321 | 36 402 | -17,9 |
| Total value at current prices (R'000) | 5 820 | 5 164 | 5 421 | 57 421 | 46 859 | -18,4 |
| Flats and townhouses | | | | | | |
| Number of flats and townhouses | 6 | 71 | 31 | 246 | 310 | + 26,0 |
| Total square metres | 456 | 5 076 | 3 217 | 19 065 | 35 953 | + 88,6 |
| Total value at current prices (R'000) | 550 | 6 770 | 4 826 | 26 935 | 54 140 | + 101,0 |
| Other residential buildings ^{1/} | | | | | | |
| Total square metres | 0 | 2 187 | 192 | 600 | 3 867 | + 544,5 |
| Total value at current prices (R'000) | 0 | 3 280 | 229 | 1 500 | 4 970 | + 231,3 |
| Total value of residential buildings at current prices (R'000) | 17 500 | 19 984 | 12 092 | 133 362 | 140 264 | + 5,2 |
| Non-residential buildings | | | | | | |
| Office and banking space | | | | | | |
| Total square metres | 0 | 0 | 0 | 9 222 | 13 256 | + 43,7 |
| Total value at current prices (R'000) | 0 | 0 | 0 | 14 571 | 26 025 | + 78,6 |
| Shopping space | | | | | | |
| Total square metres | 0 | 0 | 1 308 | 6 992 | 4 923 | -29,6 |
| Total value at current prices (R'000) | 0 | 0 | 1 000 | 6 614 | 5 000 | -24,4 |
| Industrial and warehouse space | | | | | | |
| Total square metres | 3 748 | 0 | 0 | 10 293 | 1 961 | -80,9 |
| Total value at current prices (R'000) | 4 149 | 0 | 0 | 10 260 | 1 626 | -84,2 |
| Other non-residential space ^{2/} | | | | | | |
| Total square metres | 0 | 0 | 0 | 5 240 | 3 199 | -39,0 |
| Total value at current prices (R'000) | 0 | 0 | 0 | 9 841 | 6 208 | -36,9 |
| Total value of non-residential buildings at current prices (R'000) | 4 149 | 0 | 1 000 | 41 286 | 38 859 | -5,9 |
| Additions and alterations | | | | | | |
| Dwelling-houses | | | | | | |
| Total square metres | 4 175 | 0 | 3 274 | 40 038 | 27 682 | -30,9 |
| Total value at current prices (R'000) | 5 228 | 0 | 3 911 | 49 179 | 34 308 | -30,2 |
| Other buildings ^{3/} | | | | | | |
| Total square metres | 919 | 0 | 143 | 28 833 | 8 175 | -71,6 |
| Total value at current prices (R'000) | 1 636 | 0 | 1 050 | 102 903 | 18 768 | -81,8 |
| Total value of additions and alterations at current prices (R'000) | 6 864 | 0 | 4 961 | 152 082 | 53 076 | -65,1 |
| Total value of building plans passed at current prices (R'000) | 28 513 | 19 984 | 18 053 | 326 730 | 232 199 | -28,9 |

1/ Other residential buildings include institutions for the disabled, boarding houses, old people's homes, hostels, hotels, motels, guest houses, holiday chalets, entertainment centres, bed-and-breakfast accommodation and casinos.

2/ Other non-residential space includes churches, sport and recreation clubs, schools, crèches, hospitals and all other non-residential space.

3/ Other buildings include additions and alterations to other residential buildings, non-residential buildings and internal alterations.

Table 35 - Buildings completed according to type of building and selected urban area: Cape Town

| Type of building | October 2000 * | September 2001 | October 2001 | January 2000 to October 2000 | January 2001 to October 2001 | Percentage change between January 2000 to October 2000 and January 2001 to October 2001 |
|---|----------------|----------------|----------------|------------------------------|------------------------------|---|
| Residential buildings | | | | | | |
| Dwelling-houses smaller than 80 square metres | | | | | | |
| Number of dwelling-houses | 526 | 365 | 249 | 5 093 | 3 393 | - 33,4 |
| Total square metres | 21 613 | 14 824 | 10 144 | 182 944 | 144 458 | - 21,0 |
| Total value at current prices (R'000) | 13 757 | 16 329 | 8 876 | 108 914 | 166 861 | + 53,2 |
| Dwelling-houses equal to or larger than 80 square metres | | | | | | |
| Number of dwelling-houses | 183 | 228 | 188 | 1 585 | 1 531 | - 3,4 |
| Total square metres | 32 204 | 40 180 | 35 233 | 278 145 | 289 606 | + 4,1 |
| Total value at current prices (R'000) | 45 682 | 57 037 | 52 063 | 372 773 | 403 014 | + 8,1 |
| Flats and townhouses | | | | | | |
| Number of flats and townhouses | 79 | 118 | 48 | 891 | 1 172 | + 31,5 |
| Total square metres | 6 817 | 14 081 | 5 144 | 80 036 | 129 569 | + 61,9 |
| Total value at current prices (R'000) | 10 105 | 22 446 | 8 012 | 101 166 | 173 081 | + 71,1 |
| Other residential buildings ^{1/} | | | | | | |
| Total square metres | 448 | 153 | 107 | 17 117 | 22 409 | + 30,9 |
| Total value at current prices (R'000) | 706 | 228 | 159 | 26 936 | 26 402 | - 2,0 |
| Total value of residential buildings at current prices (R'000) | 70 250 | 96 040 | 69 110 | 609 789 | 769 358 | + 26,2 |
| Non-residential buildings | | | | | | |
| Office and banking space | | | | | | |
| Total square metres | 1 952 | 5 640 | 6 825 | 85 004 | 76 407 | - 10,1 |
| Total value at current prices (R'000) | 2 791 | 7 820 | 9 576 | 130 357 | 135 666 | + 4,1 |
| Shopping space | | | | | | |
| Total square metres | 4 630 | 4 547 | 0 | 38 056 | 28 764 | - 24,4 |
| Total value at current prices (R'000) | 9 832 | 7 333 | 0 | 59 613 | 35 514 | - 40,4 |
| Industrial and warehouse space | | | | | | |
| Total square metres | 14 505 | 18 470 | 4 927 | 138 373 | 69 982 | - 49,4 |
| Total value at current prices (R'000) | 10 753 | 17 820 | 5 516 | 117 123 | 76 220 | - 34,9 |
| Other non-residential space ^{2/} | | | | | | |
| Total square metres | 689 | 511 | 701 | 21 279 | 16 278 | - 23,5 |
| Total value at current prices (R'000) | 639 | 483 | 899 | 28 633 | 21 384 | - 25,3 |
| Total value of non-residential buildings at current prices (R'000) | 24 015 | 33 456 | 15 991 | 335 726 | 268 784 | - 19,9 |
| Additions and alterations | | | | | | |
| Dwelling-houses | | | | | | |
| Total square metres | 31 534 | 22 452 | 27 092 | 280 895 | 284 980 | + 1,5 |
| Total value at current prices (R'000) | 36 529 | 24 877 | 32 109 | 311 282 | 320 101 | + 2,8 |
| Other buildings ^{3/} | | | | | | |
| Total square metres | 6 209 | 3 483 | 4 220 | 84 660 | 93 018 | + 9,9 |
| Total value at current prices (R'000) | 9 534 | 9 692 | 14 411 | 148 702 | 267 088 | + 79,6 |
| Total value of additions and alterations at current prices (R'000) | 46 063 | 34 569 | 46 520 | 459 984 | 587 189 | + 27,7 |
| Total value of buildings completed at current prices (R'000) | 140 328 | 164 065 | 131 621 | 1 405 499 | 1 625 331 | + 15,6 |

1/ Other residential buildings include institutions for the disabled, boarding houses, old people's homes, hostels, hotels, motels, guest houses, holiday chalets, entertainment centres, bed-and-breakfast accommodation and casinos.

2/ Other non-residential space includes churches, sport and recreation clubs, schools, crèches, hospitals and all other non-residential space.

3/ Other buildings include additions and alterations to other residential buildings, non-residential buildings and internal alterations.

Table 36 - Buildings completed according to type of building and selected urban area: Port Elizabeth

| Type of building | October 2000 | September 2001 | October 2001 | January 2000 to October 2000 | January 2001 to October 2001 | Percentage change between January 2000 to October 2000 and January 2001 to October 2001 |
|---|---------------|----------------|---------------|------------------------------|------------------------------|---|
| Residential buildings | | | | | | |
| Dwelling-houses smaller than 80 square metres | | | | | | |
| Number of dwelling-houses | 77 | 125 | 95 | 799 | 1 265 | + 58,3 |
| Total square metres | 3 358 | 4 939 | 4 107 | 35 751 | 53 752 | + 50,4 |
| Total value at current prices (R'000) | 3 989 | 6 207 | 5 574 | 41 646 | 69 245 | + 66,3 |
| Dwelling-houses equal to or larger than 80 square metres | | | | | | |
| Number of dwelling-houses | 1 | 19 | 51 | 172 | 472 | + 174,4 |
| Total square metres | 126 | 1 931 | 10 611 | 23 253 | 55 859 | + 140,2 |
| Total value at current prices (R'000) | 175 | 2 304 | 10 662 | 25 963 | 69 348 | + 167,1 |
| Flats and townhouses | | | | | | |
| Number of flats and townhouses | 5 | 26 | 34 | 149 | 164 | + 10,1 |
| Total square metres | 1 455 | 786 | 6 349 | 17 214 | 16 865 | - 2,0 |
| Total value at current prices (R'000) | 1 746 | 659 | 7 175 | 19 523 | 18 637 | - 4,5 |
| Other residential buildings ^{1/} | | | | | | |
| Total square metres | 0 | 726 | 0 | 367 | 5 073 | + 1282,3 |
| Total value at current prices (R'000) | 0 | 0 | 0 | 440 | 7 000 | + 1490,9 |
| Total value of residential buildings at current prices (R'000) | 5 910 | 9 170 | 23 411 | 87 572 | 164 230 | + 87,5 |
| Non-residential buildings | | | | | | |
| Office and banking space | | | | | | |
| Total square metres | 0 | 0 | 0 | 0 | 22 600 | .. |
| Total value at current prices (R'000) | 0 | 0 | 0 | 0 | 23 340 | .. |
| Shopping space | | | | | | |
| Total square metres | 1 040 | 0 | 4 625 | 31 404 | 24 379 | - 22,4 |
| Total value at current prices (R'000) | 936 | 0 | 5 527 | 42 838 | 28 844 | - 32,7 |
| Industrial and warehouse space | | | | | | |
| Total square metres | 1 722 | 1 927 | 245 | 16 691 | 35 788 | + 114,4 |
| Total value at current prices (R'000) | 2 353 | 2 725 | 159 | 13 340 | 42 982 | + 222,2 |
| Other non-residential space ^{2/} | | | | | | |
| Total square metres | 441 | 0 | 2 197 | 4 696 | 6 593 | + 40,4 |
| Total value at current prices (R'000) | 710 | 0 | 3 504 | 5 588 | 7 065 | + 26,4 |
| Total value of non-residential buildings at current prices (R'000) | 3 999 | 2 725 | 9 190 | 61 766 | 102 231 | + 65,5 |
| Additions and alterations | | | | | | |
| Dwelling-houses | | | | | | |
| Total square metres | 4 243 | 5 477 | 7 206 | 47 105 | 51 483 | + 9,3 |
| Total value at current prices (R'000) | 4 361 | 5 383 | 8 153 | 45 786 | 57 231 | + 25,0 |
| Other buildings ^{3/} | | | | | | |
| Total square metres | 11 194 | 910 | 1 033 | 24 382 | 23 326 | - 4,3 |
| Total value at current prices (R'000) | 18 234 | 1 122 | 1 479 | 34 402 | 28 046 | - 18,5 |
| Total value of additions and alterations at current prices (R'000) | 22 595 | 6 505 | 9 632 | 80 188 | 85 277 | + 6,3 |
| Total value of buildings completed at current prices (R'000) | 32 504 | 18 400 | 42 233 | 229 526 | 351 738 | + 53,2 |

1/ Other residential buildings include institutions for the disabled, boarding houses, old people's homes, hostels, hotels, motels, guest houses, holiday chalets, entertainment centres, bed-and-breakfast accommodation and casinos.

2/ Other non-residential space includes churches, sport and recreation clubs, schools, crèches, hospitals and all other non-residential space.

3/ Other buildings include additions and alterations to other residential buildings, non-residential buildings and internal alterations.

Table 37 - Buildings completed according to type of building and selected urban area: Durban

| Type of building | October 2000 | September 2001 | October 2001 | January 2000 to October 2000 | January 2001 to October 2001 | Percentage change between January 2000 to October 2000 and January 2001 to October 2001 |
|---|----------------|----------------|---------------|------------------------------|------------------------------|---|
| Residential buildings | | | | | | |
| Dwelling-houses smaller than 80 square metres | | | | | | |
| Number of dwelling-houses | 127 | 60 | 98 | 1 106 | 713 | - 35,5 |
| Total square metres | 6 259 | 3 175 | 4 696 | 57 884 | 37 147 | - 35,8 |
| Total value at current prices (R'000) | 7 083 | 3 475 | 5 540 | 60 783 | 43 651 | - 28,2 |
| Dwelling-houses equal to or larger than 80 square metres | | | | | | |
| Number of dwelling-houses | 81 | 59 | 87 | 984 | 831 | - 15,5 |
| Total square metres | 13 520 | 10 974 | 24 045 | 162 307 | 166 269 | + 2,4 |
| Total value at current prices (R'000) | 14 337 | 12 939 | 19 776 | 173 905 | 200 055 | + 15,0 |
| Flats and townhouses | | | | | | |
| Number of flats and townhouses | 8 | 2 | 58 | 296 | 515 | + 74,0 |
| Total square metres | 1 345 | 221 | 4 636 | 48 726 | 51 528 | + 5,8 |
| Total value at current prices (R'000) | 1 660 | 340 | 6 787 | 64 347 | 70 771 | + 10,0 |
| Other residential buildings ^{1/} | | | | | | |
| Total square metres | 0 | 0 | 0 | 0 | 0 | .. |
| Total value at current prices (R'000) | 0 | 0 | 0 | 0 | 0 | .. |
| Total value of residential buildings at current prices (R'000) | 23 080 | 16 754 | 32 103 | 299 035 | 314 477 | + 5,2 |
| Non-residential buildings | | | | | | |
| Office and banking space | | | | | | |
| Total square metres | 527 | 274 | 642 | 24 557 | 35 055 | + 42,7 |
| Total value at current prices (R'000) | 840 | 500 | 2 000 | 68 997 | 55 349 | - 19,8 |
| Shopping space | | | | | | |
| Total square metres | 1 224 | 1 332 | 1 865 | 16 847 | 21 181 | + 25,7 |
| Total value at current prices (R'000) | 1 520 | 3 527 | 3 122 | 23 808 | 37 338 | + 56,8 |
| Industrial and warehouse space | | | | | | |
| Total square metres | 17 073 | 9 679 | 18 221 | 127 290 | 108 366 | - 14,9 |
| Total value at current prices (R'000) | 23 056 | 9 956 | 15 702 | 151 170 | 127 875 | - 15,4 |
| Other non-residential space ^{2/} | | | | | | |
| Total square metres | 641 | 3 231 | 6 228 | 14 262 | 20 295 | + 42,3 |
| Total value at current prices (R'000) | 700 | 3 231 | 6 670 | 18 465 | 23 799 | + 28,9 |
| Total value of non-residential buildings at current prices (R'000) | 26 116 | 17 214 | 27 494 | 262 440 | 244 361 | - 6,9 |
| Additions and alterations | | | | | | |
| Dwelling-houses | | | | | | |
| Total square metres | 23 394 | 22 511 | 21 183 | 210 431 | 248 016 | + 17,9 |
| Total value at current prices (R'000) | 25 450 | 25 349 | 24 468 | 227 435 | 273 641 | + 20,3 |
| Other buildings ^{3/} | | | | | | |
| Total square metres | 15 802 | 8 108 | 6 791 | 152 734 | 79 718 | - 47,8 |
| Total value at current prices (R'000) | 27 821 | 13 978 | 12 633 | 295 480 | 150 688 | - 49,0 |
| Total value of additions and alterations at current prices (R'000) | 53 271 | 39 327 | 37 101 | 522 915 | 424 329 | - 18,9 |
| Total value of buildings completed at current prices (R'000) | 102 467 | 73 295 | 96 698 | 1 084 390 | 983 167 | - 9,3 |

1/ Other residential buildings include institutions for the disabled, boarding houses, old people's homes, hostels, hotels, motels, guest houses, holiday chalets, entertainment centres, bed-and-breakfast accommodation and casinos.

2/ Other non-residential space includes churches, sport and recreation clubs, schools, crèches, hospitals and all other non-residential space.

3/ Other buildings include additions and alterations to other residential buildings, non-residential buildings and internal alterations.

Table 38 - Buildings completed according to type of building and selected urban area: Witwatersrand

| Type of building | October 2000 | September 2001* | October 2001 | January 2000 to October 2000 | January 2001 to October 2001 | Percentage change between January 2000 to October 2000 and January 2001 to October 2001 |
|---|----------------|-----------------|----------------|------------------------------|------------------------------|---|
| Residential buildings | | | | | | |
| Dwelling-houses smaller than 80 square metres | | | | | | |
| Number of dwelling-houses | 638 | 1 899 | 432 | 9 955 | 6 158 | -38,1 |
| Total square metres | 26 408 | 56 628 | 21 703 | 374 725 | 231 272 | -38,3 |
| Total value at current prices (R'000) | 22 568 | 35 196 | 33 785 | 281 965 | 216 342 | -23,3 |
| Dwelling-houses equal to or larger than 80 square metres | | | | | | |
| Number of dwelling-houses | 171 | 146 | 249 | 1 736 | 1 934 | + 11,4 |
| Total square metres | 42 864 | 33 587 | 63 965 | 403 127 | 419 437 | + 4,0 |
| Total value at current prices (R'000) | 60 537 | 52 811 | 102 340 | 572 151 | 610 396 | + 6,7 |
| Flats and townhouses | | | | | | |
| Number of flats and townhouses | 304 | 54 | 260 | 2 205 | 1 648 | -25,3 |
| Total square metres | 25 577 | 6 818 | 32 814 | 157 911 | 170 507 | + 8,0 |
| Total value at current prices (R'000) | 36 324 | 10 723 | 54 070 | 240 983 | 282 695 | + 17,3 |
| Other residential buildings ^{1/} | | | | | | |
| Total square metres | 0 | 0 | 8 844 | 9 736 | 42 714 | + 338,7 |
| Total value at current prices (R'000) | 0 | 0 | 17 689 | 16 769 | 269 217 | + 1 505,4 |
| Total value of residential buildings at current prices (R'000) | 119 429 | 98 730 | 207 884 | 1 111 868 | 1 378 650 | + 24,0 |
| Non-residential buildings | | | | | | |
| Office and banking space | | | | | | |
| Total square metres | 38 066 | 0 | 34 219 | 269 814 | 283 271 | + 5,0 |
| Total value at current prices (R'000) | 54 499 | 0 | 46 763 | 395 859 | 404 167 | + 2,1 |
| Shopping space | | | | | | |
| Total square metres | 2 789 | 42 288 | 10 911 | 177 904 | 113 791 | -36,0 |
| Total value at current prices (R'000) | 3 675 | 83 838 | 17 204 | 448 957 | 241 137 | -46,3 |
| Industrial and warehouse space | | | | | | |
| Total square metres | 7 791 | 11 248 | 23 244 | 155 968 | 178 307 | + 14,3 |
| Total value at current prices (R'000) | 13 131 | 20 487 | 42 873 | 242 985 | 285 357 | + 17,4 |
| Other non-residential space ^{2/} | | | | | | |
| Total square metres | 1 906 | 1 813 | 5 909 | 73 963 | 33 378 | -54,9 |
| Total value at current prices (R'000) | 2 193 | 1 960 | 9 787 | 96 959 | 48 043 | -50,5 |
| Total value of non-residential buildings at current prices (R'000) | 73 498 | 106 285 | 116 627 | 1 184 760 | 978 704 | -17,4 |
| Additions and alterations | | | | | | |
| Dwelling-houses | | | | | | |
| Total square metres | 18 713 | 16 239 | 36 675 | 202 783 | 208 348 | + 2,7 |
| Total value at current prices (R'000) | 22 749 | 22 463 | 49 955 | 249 771 | 258 409 | + 3,5 |
| Other buildings ^{3/} | | | | | | |
| Total square metres | 11 081 | 947 | 8 942 | 71 136 | 92 797 | + 30,5 |
| Total value at current prices (R'000) | 19 806 | 1 354 | 13 584 | 191 676 | 153 854 | -19,7 |
| Total value of additions and alterations at current prices (R'000) | 42 555 | 23 817 | 63 539 | 441 447 | 412 263 | -6,6 |
| Total value of buildings completed at current prices (R'000) | 235 482 | 228 832 | 388 050 | 2 738 075 | 2 769 617 | + 1,2 |

1/ Other residential buildings include institutions for the disabled, boarding houses, old people's homes, hostels, hotels, motels, guest houses, holiday chalets, entertainment centres, bed-and-breakfast accommodation and casinos.

2/ Other non-residential space includes churches, sport and recreation clubs, schools, crèches, hospitals and all other non-residential space.

3/ Other buildings include additions and alterations to other residential buildings, non-residential buildings and internal alterations.

Table 39 - Buildings completed according to type of building and selected urban area: Pretoria

| Type of building | October 2000 | September 2001 | October 2001 | January 2000 to October 2000 | January 2001 to October 2001 | Percentage change between January 2000 to October 2000 and January 2001 to October 2001 |
|---|---------------|----------------|---------------|------------------------------|------------------------------|---|
| Residential buildings | | | | | | |
| Dwelling-houses smaller than 80 square metres | | | | | | |
| Number of dwelling-houses | 67 | 18 | 42 | 2 614 | 339 | - 87,0 |
| Total square metres | 2 272 | 943 | 2 268 | 88 879 | 16 521 | - 81,4 |
| Total value at current prices (R'000) | 3 393 | 1 266 | 3 320 | 69 181 | 20 143 | - 70,9 |
| Dwelling-houses equal to or larger than 80 square metres | | | | | | |
| Number of dwelling-houses | 105 | 74 | 116 | 820 | 893 | + 8,9 |
| Total square metres | 25 734 | 19 297 | 30 667 | 219 264 | 241 575 | + 10,2 |
| Total value at current prices (R'000) | 31 969 | 26 385 | 42 976 | 260 961 | 331 412 | + 27,0 |
| Flats and townhouses | | | | | | |
| Number of flats and townhouses | 85 | 135 | 7 | 997 | 830 | - 16,8 |
| Total square metres | 9 731 | 22 175 | 1 226 | 125 050 | 92 376 | - 26,1 |
| Total value at current prices (R'000) | 12 511 | 35 963 | 1 839 | 151 955 | 131 929 | - 13,2 |
| Other residential buildings ^{1/} | | | | | | |
| Total square metres | 0 | 50 | 0 | 1 851 | 50 | - 97,3 |
| Total value at current prices (R'000) | 0 | 81 | 0 | 2 024 | 81 | - 96,0 |
| Total value of residential buildings at current prices (R'000) | 47 873 | 63 695 | 48 135 | 484 121 | 483 565 | - 0,1 |
| Non-residential buildings | | | | | | |
| Office and banking space | | | | | | |
| Total square metres | 0 | 3 856 | 2 044 | 21 678 | 13 224 | - 39,0 |
| Total value at current prices (R'000) | 0 | 5 944 | 3 214 | 24 826 | 19 205 | - 22,6 |
| Shopping space | | | | | | |
| Total square metres | 0 | 0 | 0 | 36 492 | 2 740 | - 92,5 |
| Total value at current prices (R'000) | 0 | 0 | 0 | 123 961 | 4 225 | - 96,6 |
| Industrial and warehouse space | | | | | | |
| Total square metres | 0 | 0 | 3 445 | 14 529 | 12 049 | - 17,1 |
| Total value at current prices (R'000) | 0 | 0 | 3 914 | 15 840 | 11 976 | - 24,4 |
| Other non-residential space ^{2/} | | | | | | |
| Total square metres | 748 | 0 | 0 | 11 589 | 5 568 | - 52,0 |
| Total value at current prices (R'000) | 908 | 0 | 0 | 12 419 | 7 966 | - 35,9 |
| Total value of non-residential buildings at current prices (R'000) | 908 | 5 944 | 7 128 | 177 046 | 43 372 | - 75,5 |
| Additions and alterations | | | | | | |
| Dwelling-houses | | | | | | |
| Total square metres | 2 139 | 565 | 4 605 | 34 304 | 15 788 | - 54,0 |
| Total value at current prices (R'000) | 2 658 | 830 | 5 754 | 39 999 | 19 934 | - 50,2 |
| Other buildings ^{3/} | | | | | | |
| Total square metres | 20 | 94 | 1 378 | 17 298 | 6 246 | - 63,9 |
| Total value at current prices (R'000) | 69 | 141 | 1 710 | 18 352 | 8 850 | - 51,8 |
| Total value of additions and alterations at current prices (R'000) | 2 727 | 971 | 7 464 | 58 351 | 28 784 | - 50,7 |
| Total value of buildings completed at current prices (R'000) | 51 508 | 70 610 | 62 727 | 719 518 | 555 721 | - 22,8 |

1/ Other residential buildings include institutions for the disabled, boarding houses, old people's homes, hostels, hotels, motels, guest houses, holiday chalets, entertainment centres, bed-and-breakfast accommodation and casinos.

2/ Other non-residential space includes churches, sport and recreation clubs, schools, crèches, hospitals and all other non-residential space.

3/ Other buildings include additions and alterations to other residential buildings, non-residential buildings and internal alterations.

Table 40 - Buildings completed according to type of building and selected urban area: Bloemfontein

| Type of building | October 2000 | September 2001 | October 2001 | January 2000 to October 2000 | January 2001 to October 2001 | Percentage change between January 2000 to October 2000 and January 2001 to October 2001 |
|---|---------------|----------------|---------------|------------------------------|------------------------------|---|
| Residential buildings | | | | | | |
| Dwelling-houses smaller than 80 square metres | | | | | | |
| Number of dwelling-houses | 7 | 0 | 75 | 434 | 581 | + 33,9 |
| Total square metres | 321 | 0 | 3 383 | 17 916 | 24 497 | + 36,7 |
| Total value at current prices (R'000) | 257 | 0 | 2 430 | 10 381 | 14 990 | + 44,4 |
| Dwelling-houses equal to or larger than 80 square metres | | | | | | |
| Number of dwelling-houses | 9 | 0 | 19 | 77 | 148 | + 92,2 |
| Total square metres | 1 758 | 0 | 3 087 | 15 604 | 29 108 | + 86,5 |
| Total value at current prices (R'000) | 2 232 | 0 | 3 813 | 21 047 | 36 645 | + 74,1 |
| Flats and townhouses | | | | | | |
| Number of flats and townhouses | 114 | 0 | 10 | 225 | 124 | - 44,9 |
| Total square metres | 5 924 | 0 | 1 430 | 17 350 | 11 158 | - 35,7 |
| Total value at current prices (R'000) | 7 716 | 0 | 2 145 | 22 495 | 15 734 | - 30,1 |
| Other residential buildings ^{1/} | | | | | | |
| Total square metres | 0 | 0 | 0 | 0 | 151 | .. |
| Total value at current prices (R'000) | 0 | 0 | 0 | 0 | 211 | .. |
| Total value of residential buildings at current prices (R'000) | 10 205 | 0 | 8 388 | 53 923 | 67 580 | + 25,3 |
| Non-residential buildings | | | | | | |
| Office and banking space | | | | | | |
| Total square metres | 1 185 | 0 | 0 | 6 210 | 11 103 | + 78,8 |
| Total value at current prices (R'000) | 2 166 | 0 | 0 | 11 739 | 21 883 | + 86,4 |
| Shopping space | | | | | | |
| Total square metres | 334 | 0 | 0 | 892 | 2 812 | + 215,2 |
| Total value at current prices (R'000) | 735 | 0 | 0 | 1 405 | 3 006 | + 114,0 |
| Industrial and warehouse space | | | | | | |
| Total square metres | 0 | 0 | 1 041 | 15 646 | 5 851 | - 62,6 |
| Total value at current prices (R'000) | 0 | 0 | 543 | 12 281 | 4 366 | - 64,4 |
| Other non-residential space ^{2/} | | | | | | |
| Total square metres | 806 | 0 | 0 | 3 903 | 5 753 | + 47,4 |
| Total value at current prices (R'000) | 1 209 | 0 | 0 | 5 545 | 10 451 | + 88,5 |
| Total value of non-residential buildings at current prices (R'000) | 4 110 | 0 | 543 | 30 970 | 39 706 | + 28,2 |
| Additions and alterations | | | | | | |
| Dwelling-houses | | | | | | |
| Total square metres | 1 627 | 0 | 3 548 | 20 729 | 27 934 | + 34,8 |
| Total value at current prices (R'000) | 1 611 | 0 | 4 078 | 24 777 | 30 677 | + 23,8 |
| Other buildings ^{3/} | | | | | | |
| Total square metres | 671 | 0 | 2 374 | 6 614 | 20 621 | + 211,8 |
| Total value at current prices (R'000) | 1 428 | 0 | 5 790 | 16 801 | 95 658 | + 469,4 |
| Total value of additions and alterations at current prices (R'000) | 3 039 | 0 | 9 868 | 41 578 | 126 335 | + 203,9 |
| Total value of buildings completed at current prices (R'000) | 17 354 | 0 | 18 799 | 126 471 | 233 621 | + 84,7 |

1/ Other residential buildings include institutions for the disabled, boarding houses, old people's homes, hostels, hotels, motels, guest houses, holiday chalets, entertainment centres, bed-and-breakfast accommodation and casinos.

2/ Other non-residential space includes churches, sport and recreation clubs, schools, crèches, hospitals and all other non-residential space.

3/ Other buildings include additions and alterations to other residential buildings, non-residential buildings and internal alterations.

Additional information

Explanatory Notes

| | |
|--------------------------------------|---|
| Introduction | <ol style="list-style-type: none"> 1 Statistics South Africa (Stats SA) conducts a monthly Building Statistics Survey collecting information regarding building plans approved and buildings completed, financed by the private sector, from a sample of local government institutions in South Africa. This statistical release contains information of building plans passed and buildings completed in respect of residential buildings, non-residential buildings and additions and alterations according to province and selected urban areas. 2 In order to improve timeliness of the publication, some information for the current month have been estimated due to late submission by respondents. These estimates will be revised in the next statistical release(s) as soon as actual information is available. 3 The actual and seasonally adjusted values (at current and at constant 1995 prices) and the percentage change of building plans passed and buildings completed according to type of building are reflected monthly from January 1999 in this statistical release (cf. tables 1 to 8). |
| Scope of the survey | <ol style="list-style-type: none"> 4 This survey covers local government institutions conducting activities for the private sector regarding - <ul style="list-style-type: none"> • approval of building plans; and • final inspection of completed buildings. |
| Classification | <ol style="list-style-type: none"> 5 The 1993 edition of the Standard Industrial Classification of all Economic Activities, (SIC) Fifth Edition, Report No. 09-90-02, was used to classify the statistical units. The SIC is based on the 1990 International Standard Industrial Classification of all Economic Activities (ISIC) with suitable adaptations for local conditions. 6 The twelfth and last published edition of the Standard Code List of Areas, Report No. 09-09-03 (1994) was used to classify the statistical units according to province. The cities, towns and non-urban areas listed in this report are codified within magisterial district and province. The code list was compiled by Stats SA in collaboration with other interested bodies and the first edition was distributed in June 1977. |
| Statistical unit | <ol style="list-style-type: none"> 7 The statistical unit for the collection of information is a local government institution. Local government institutions include municipalities, city councils, metropolitan councils, district councils, transitional councils and development and services boards. |
| Survey methodology and design | <ol style="list-style-type: none"> 8 The sample for the monthly Building Statistics Survey consists of the largest local government institutions in South Africa, i.e. those that account for approximately 85% of the total rand value of buildings completed by the private sector. 9 The survey is collected by mail each month from a sample of 158 local government institutions. |
| Constant prices | <ol style="list-style-type: none"> 10 The value of building plans passed and buildings completed at constant prices measure the building activities in terms of ruling prices in a specific base year which is currently 1995. 11 The value of building plans passed at constant prices for each month is obtained by deflating the values at current prices with a price index known as the “lump sum domestic buildings” as published in statistical release P0151 – JBCC Contract Price Adjustment Provisions Work Group Indices. In order to be applicable, these indices (base February 1991=100) are converted to the base year 1995=100. |

- 12** The value of buildings completed at constant prices is obtained by deflating the values at current prices with the same price index which is used to calculate building plans passed at constant prices (cf. paragraph 11). The value of buildings completed is reported as at the time the plans were passed. Since the completion of buildings may extend over a few months to a few years, the current value of buildings completed is deflated by price indices as at the time the plans were passed in order to calculate the value of buildings completed at the time the plans were passed. Therefore, the duration of the completion of different types of buildings are taken into account in ascertaining the deflators e.g. the value of dwelling-houses completed at constant prices at January 2000 is obtained by deflating the current value of dwelling-houses completed for January 2000 with the price index of a month six months prior to January 2000. Furthermore, the value of other residential buildings, non-residential buildings and additions and alterations at constant prices is obtained by deflating the current values with price indices of 12 months, 18 months and 12 months prior to the relevant month, respectively.
- Seasonal adjustment**
- 13** Seasonally adjusted estimates of building plans passed and buildings completed are generated each month, using the X-11 Seasonal Adjustment Program developed by US Bureau of the Census Economic Research and Analyses Division, 1968.
- 14** Seasonal adjustment is a means of removing the estimated effects of normal seasonal variation from the series so that the effects of other influences on the series can be more clearly recognised. Seasonal adjustment does not aim to remove irregular or non-seasonal influences which may be present in any particular month. Influences that are volatile or unsystematic can still make it difficult to interpret the movement of the series even after adjustment for seasonal variations. Therefore, the month-to-month movements of seasonally adjusted estimates may not be reliable indicators of trend behaviour.
- Trend cycle**
- 15** The trend is a long-term pattern or movement of a time series. The X-11 Seasonal Adjustment Program is used for smoothing seasonally adjusted data.
- Related publications**
- 16** Users may also wish to refer to the following publications:
- P5041.3 – Building statistics issued annually.
 - P9101.2 – Actual and expected expenditure on construction by the public sector per statistical region issued annually.
 - Bulletin of Statistics issued quarterly.
 - South African Statistics issued annually.
- Unpublished statistics**
- 17** In some cases Stats SA can also make available statistics which are not published. The statistics can be made available in one or more of the following ways: computer printouts, CD and diskette. Generally a charge is made for providing unpublished statistics.
- Rounding-off of figures**
- 18** The figures in the tables have, where necessary, been rounded off to the nearest digit shown. There may, therefore, be slight discrepancies between the sums of the constituent items and the totals shown.
- Pre-release policy**
- 19** Stats SA has adopted the confidential pre-release policy in respect of selected economic indicators and specific government departments. The policy accords with practice among leading statistical agencies. The statistical integrity of the information and strict observance of the release time has been assured by the following procedure:
- 20** In respect of this statistical release, an official representative from the Office of the President, the Department of Trade and Industry (DTI), National Treasury and the South African Reserve Bank (SARB) will receive a copy of the release on a strictly confidential basis two hours in advance of the public issue.
- 21** Stats SA pre-release policy may be inspected at its Website, www.statssa.gov.za

Symbols and abbreviations

| | |
|----------|--|
| .. | no meaningful percentage change between two specified periods available since either one or both of the totals are nil |
| 0 | nil or figure too small to publish |
| * | revised |
| Stats SA | Statistics South Africa |
| SIC | Standard Industrial Classification of all Economic Activities |
| ISIC | International Standard Industrial Classification of all Economic Activities |
| JBCC | Joint Building Contracts Committee |
| CD | Compact Disc |
| US | United States |
| SARB | South African Reserve Bank |
| DTI | Department of Trade and Industry |

Technical notes**Response rate**

The response rate for October is 98,7%.

Local government institutions covered in the sample survey

Local government institutions according to province

| | |
|----------------------|--|
| Western Cape | Blaauwberg (includes Milnerton), Brackenfell, Breede River District Council, Cape Town, City of Tygerberg (Bellville, Durbanville, Goodwood, Lingeletu West, Parow and South Administration), Fish Hoek, George (includes Pacaltsdorp, Thembaletu and Herolds Bay), Gordon's Bay, Hangklip-Kleinmond (includes Kleinmond, Betty's Bay and Rooi-Els), Hermanus (includes Onrus River, Zwelihle, Sandbaai, Vermont, Hawston and Fisher Haven), Ikapa, Klein-Karoo District Council, Knysna (includes Khayaletu), Kuils River, Malmesbury, Mossel Bay (includes Boggom's Bay, Kleinbrak, Rheeboek and Tergniet), Oostenberg (Kraaifontein and Melton Rose - Blue Downs), Oudtshoorn, Overberg District Council, Paarl, Plettenberg Bay, Sedgefield, Simon's Town, Somerset West, South Peninsula, Stellenbosch, Strand, Wellington, West Coast District Council, Western Coast Peninsula (previously Vredenburg-Saldanha), Winelands District Council and Worcester. |
| Eastern Cape | Aliwal-Maletswai (includes Dukathole), Despatch, East London (includes Beacon Bay, Gomo Town, Gonubie and Mdantsane), Grahamstown (includes Rhini Township), Jeffrey's Bay, King William's Town (includes Bisho and Zwelitsha), Port Alfred, Port Elizabeth (includes Ibhayi and Motherwell), Uitenhage (includes KwaNobuhle), Umtata and Western District Council. |
| Northern Cape | Benede-Oranje District Council, Keimoes, Kimberley (including Galeshewe), Kuruman, Namaqualand District Council and Upington (includes Paballelo). |
| Free State | Allanridge, Bethlehem (includes Bohlokong), Bloemfontein (includes Bainsvlei, Bloemspruit and Mangaung), Botshabelo, Deneysville (includes Refengkgotso), Harrismith (includes Tsiamé), Kroonstad (includes Maokeng), Ladybrand (includes Manyatseng), Odendaalsrus (includes Kutlwanong), Parys, Phuthaditjhaba, Sasolburg (includes Zamdela), Virginia (includes Meloding) and Welkom (includes Thabong). |
| KwaZulu-Natal | Development and Services Board - Inland, Development and Services Board – North Coast, Dolphin Coast Borough (includes Ballito, Etete, Shakaskraal, Tinley Manor Beach and Umhlali Beach), Durban, Edendale, Empangeni (includes Ngwelezana), Hilton, Howick, Inner West City Council (includes Clermont, KwaDabeka, KwaNdengezi, New Germany, Pinetown, Queensburgh, Reservoir Hills, Shallcross and Westville), Kokstad, Kwa-Dukuza/Stanger (includes Blythedale Beach, Shakaville and Stanger), KwaMashu, Ladysmith (includes Emnambithi), Margate (includes Uvongo), Mpenjati/Southbroom (includes Southbroom, Marina Beach, San Lameer and Trafalgar), Newcastle (includes Madadeni, Osizweni and Blaauwboschlaagte), North Local Council - Tongaat (includes Canelands and Hambanati), North Local Council - Umhlanga Rocks (includes Mount Edgecombe and Umdloti Beach), North Local Council - Verulam, Outer West Local Council (includes Assagay, Botha's Hill, Cato Ridge, Drummond, Everton, Gillitts, Hillcrest, Inchanga, Kloof, Mpumalanga and Waterfall), Pennington, Pietermaritzburg/Msundini, Port Shepstone, Richards Bay, South Local Council (includes Amanzimtoti, Isipingo, Kingsburgh, KwaMakuta and Umbogintwini), Umlazi and Umtamvuna/Port Edward (includes Munster, Port Edward and Palm Beach). |
| North West | Bophirima District Council, Brits (includes Lethabile), Ga-Rankuwa, Klerksdorp, Lichtenburg, Mmabatho, Orkney (includes Kanana), Potchefstroom, Rustenburg, Vryburg and Zeerust. |

Gauteng

Akasia (includes Elandsdoorn, Klipfontein, Kruisfontein and Soshanguve), Alberton (includes Tokoza), Benoni (includes Daveyton and Wattville), Boksburg (includes Vosloorus), Brakpan (includes Tsakane), Bronkhorst-spruit, Carletonville (includes Khutsong), Centurion, Duduza, Eastern Services Council - Pretoria Area, Edenvale-Modderfontein, Germiston (includes Bedfordview and Katlehong), Greater Johannesburg - Eastern Metropolitan Local Council (includes Alexandra and Sandton), Greater Johannesburg - Northern Metropolitan Local Council (includes Randburg), Greater Johannesburg - Southern Metropolitan Local Council (includes Ennerdale, Lenasia and Johannesburg), Greater Johannesburg - Western Metropolitan Local Council (includes Diepmeadow, Dobsonville and Roodepoort), Heidelberg (includes Ratanda), Kempton Park (includes Tembisa), Krugersdorp (includes Kagiso and Munsieville), Meyerton, Midrand (includes Rabie Ridge and Ivory Park), Nigel, Pretoria (includes Atteridgeville and Mamelodi), Randfontein (includes Mohlakeng), Sebokeng (includes Boipatong, Bophelong and Sharpeville), Soweto, Springs (includes KwaThema), Vanderbijlpark, Vereeniging (includes Evaton), Western Services Council and Westonaria (includes Bekkersdal).

Mpumalanga

Delmas (includes Botleng), Eastvaal District Council, Ermelo (includes Wesselton and Cassim Park), Highveld District Council, Highveldridge Transitional Council (includes Evander, Embalenhle and Secunda), Komatipoort (includes Kamaqhekeza), KwaGuqa, KwaMhlanga, Malelane (includes Hectorspruit and Kamhlushwa), Middelburg (includes Mhluzi), Nelspruit (includes Kanyamazane and Lowveld Escarpment District Council as from January 2001), White River and Witbank.

Northern Province

Bosveld District Council, Giyani, Letaba (includes Nkowakowa and Tzaneen), Messina, Naboomspruit (includes Mookgophong), Nylstroom, Pietersburg-Polokwane (includes Seshego), Potgietersrus and Thabazimbi.

Local government institutions according to selected urban areas**Cape Town**

Blaauwberg (includes Milnerton), Cape Town, City of Tygerberg (Bellville, Durbanville, Goodwood, Lingeletu West, Parow and South Administration), Fish Hoek, Ikapa, Oostenberg (Kraaifontein and Melton Rose - Blue Downs), Simon's Town and South Peninsula.

Port Elizabeth

Despatch, Port Elizabeth (including Ibhayi and Motherwell) and Uitenhage (including KwaNobuhle)

Durban

Durban, Inner West City Council (includes Clermont, KwaDabeka, KwaNdengezi, New Germany, Pinetown, Queenstown, Reservoir Hills, Shallcross and Westville), North Local Council - Verulam, Outer West Local Council (includes Assagay, Botha's Hill, Cato Ridge, Drummond, Everton, Gillitts, Hillcrest, Inchanga, Kloof, Mpumalanga and Waterfall) and South Local Council (includes Amanzimtoti, Isipingo, Kingsburgh, KwaMakuta and Umbogintwini).

Witwatersrand

Alberton (includes Thokoza), Benoni (includes Daveyton and Wattville), Boksburg (includes Vosloorus), Brakpan (includes Tsakane), Carletonville (includes Khutsong), Duduza, Edenvale-Modderfontein, Germiston (includes Bedfordview and Katlehong), Greater Johannesburg - Eastern Metropolitan Local Council (includes Alexandra and Sandton), Greater Johannesburg - Northern Metropolitan Local Council (includes Randburg), Greater Johannesburg - Southern Metropolitan Local Council (includes Ennerdale, Lenasia and Johannesburg), Greater Johannesburg - Western Metropolitan Local Council (includes Diepmeadow, Dobsonville and Roodepoort), Kempton Park (includes Tembisa), Krugersdorp (includes Kagiso and Munsieville), Midrand (includes Rabie Ridge and Ivory Park), Nigel, Randfontein (includes Mohlakeng), Soweto, Springs (includes KwaThema) and Westonaria (includes Bekkersdal).

Pretoria

Akasia (includes Elandsdoorn, Klipfontein and Soshanguve), Centurion, Eastern Services Council - Pretoria area and Pretoria (includes Atteridgeville and Mamelodi).

Bloemfontein

Bloemfontein (includes Bainsvlei, Bloemspruit and Mangaung).

Glossary

| | |
|--------------------------------------|---|
| Additions and alterations | Additions and alterations include extensions to existing buildings as well as internal and external alterations of existing buildings. |
| Blocks of flats | Blocks of flats are regarded as high-density housing consisting of a number of self-contained dwelling-units with at least one living-room together with a kitchen and bathroom conjoined to similar units in one building. |
| Dwelling-house | A dwelling-house refers to a free-standing, complete structure on a separate stand or a self-contained dwelling-unit, granny flat, on the same premises as an existing residence. Out-buildings and garages are included. |
| Local government institutions | A local government institution is a generic term referring to any number of institutions involved in the local sphere of government. Local government institutions consist of municipalities, city councils, metropolitan councils, district councils, transitional local councils and development and services boards. |
| Non-residential buildings | Non-residential buildings comprise factories, commercial, financial and other office buildings, as well as other buildings not used for residential purposes, such as churches, halls, clubs, schools and hospitals. |
| Other residential buildings | Other residential buildings include institutions for the disabled, boarding houses, old people's homes, hostels, hotels, motels, guest houses, holiday chalets, bed-and-breakfast accommodation, entertainment centres and casinos. |
| Percentage change | <p>When using monthly actual values, the percentage change is the change in actual values of building activities (building plans passed or buildings completed) of the relevant month compared with the actual values of building activities (building plans passed or buildings completed) of the same month in the previous year expressed as a percentage.</p> <p>When using annual actual values, the percentage change is the change in the actual values of building activities (building plans passed or buildings completed) of the relevant year compared with the actual values of building activities (building plans passed or buildings completed) of the previous year expressed as a percentage.</p> <p>When using seasonally adjusted values, the percentage change is the change in the seasonally adjusted values of building activities (building plans passed or buildings completed) of the relevant month compared with the seasonally adjusted values of building activities (building plans passed or buildings completed) of the previous month expressed as a percentage.</p> |
| Reference period | Reference period is one calendar month. |
| Residential buildings | Residential buildings comprise dwelling-houses, flats, townhouses and other residential buildings. |
| Townhouses | Townhouses are multiple, medium-density dwelling-units and include cluster housing, group housing, simplexes, duplexes, triplexes and other similar dwelling-units which are usually grouped together, with one level of each unit on ground level. This excludes blocks of flats. |

For more information

Stats SA publishes approximately 300 different statistical releases each year. It is not economically viable to produce them in more than one of South Africa's eleven official languages. Since the releases are used extensively, not only locally but also by international economic and social-scientific communities, Stats SA releases are published in English only.

Stats SA has copyright on this publication. Users may apply the information as they wish, provided that they acknowledge Stats SA as the source of the basic data wherever they process, apply, utilise, publish or distribute the data and also that they specify that the relevant application and analysis (where applicable) result from their own processing of the data.

Stats SA products

A complete set of Stats SA publications is available at the Stats SA Library and the following libraries:

National Library of South Africa, Pretoria Division
 National Library of South Africa, Cape Town Division
 Natal Society Library, Pietermaritzburg
 Library of Parliament, Cape Town
 Bloemfontein Public Library
 Johannesburg Public Library
 Eastern Cape Library Services, King William's Town
 Central Regional Library, Pietersburg
 Central Reference Library, Nelspruit
 Central Reference Collection, Kimberley
 Central Reference Library, Mmabatho

Stats SA also provides a subscription service.

Electronic services

A large range of data are available via on-line services, diskette, CD and computer printouts. For more details about our electronic data services, contact (012) 310 8600.

You can visit us on the Internet at: <http://www.statssa.gov.za>

Enquiries

Telephone number: (012) 310 8095/8390/8351 (user enquiries)
 (012) 310 8228/310 8007 (technical enquiries)
 (012) 310 8161 (publications)
 (012) 310 8490 (library)

Fax number: (012) 310 8182

e-mail: Corrieb@statssa.pwv.gov.za
 Gretaz@statssa.pwv.gov.za

Postal address: Private Bag X44, Pretoria, 0001