



**Statistics  
South Africa**

Preferred supplier of quality statistics



# Statistical release

## P5041.1

### Selected building statistics of the private sector as reported by local government institutions

**November 2007  
(Preliminary)**

**Embargoed until:  
16 January 2008  
13:00**

**Enquiries:**

User Information Services  
Tel: (012) 310 8600 / 4892 / 8390

**Forthcoming issue:**

December 2007

**Expected release date**

20 February 2008

Statistics South Africa • Mbalo-mbalo dza Afrika Tshipembe • Tinhlayo-tiko ta Afrika-Dzonga • Dipalopalo tsa Aforika Borwa • Ezezibalo zaseNingizimu Afrika  
Dipalopalo tša Afrika Borwa • Dipalopalo tsa Afrika Borwa • Ubalo lwaseMzantsi Afrika • Telubalo eNingizimu Afrika • iNanimbalo leSewula Afrika • Statistiek Suid-Afrika

email: [info@statssa.gov.za](mailto:info@statssa.gov.za)  
[www.statssa.gov.za](http://www.statssa.gov.za)

170 Andries Street • Private Bag X44, 0001 Pretoria, South Africa  
Tel: +27(12) 310 8911, Fax: +27(12) 321 7381

## Contents

## Page

### SUMMARY OF FINDINGS

3

### Tables

Table 1	Values and percentage change of recorded building plans passed by larger municipalities at current prices by type of building .....	9
Table 2	Seasonally adjusted values and percentage change of recorded building plans passed by larger municipalities at current prices by type of building .....	10
Table 3	Values and percentage change of recorded building plans passed by larger municipalities at constant 2000 prices by type of building .....	11
Table 4	Seasonally adjusted values and percentage change of recorded building plans passed by larger municipalities at constant 2000 prices by type of building .....	12
Table 5	Values and percentage change of buildings reported as completed to larger municipalities at current prices by type of building .....	13
Table 6	Seasonally adjusted values and percentage change of buildings reported as completed to larger municipalities at current prices by type of building .....	14
Table 7	Values and percentage change of buildings reported as completed to larger municipalities at constant 2000 prices by type of building .....	15
Table 8	Seasonally adjusted values and percentage change of buildings reported as completed to larger municipalities at constant 2000 prices by type of building .....	16
Table 9	Recorded building plans passed by larger municipalities at current prices by type of building: South Africa .....	17
Table 10	Recorded building plans passed by larger municipalities at current prices by type of building: Western Cape .....	18
Table 11	Recorded building plans passed by larger municipalities at current prices by type of building: Eastern Cape .....	19
Table 12	Recorded building plans passed by larger municipalities at current prices by type of building: Northern Cape .....	20
Table 13	Recorded building plans passed by larger municipalities at current prices by type of building: Free State .....	21
Table 14	Recorded building plans passed by larger municipalities at current prices by type of building: KwaZulu-Natal .....	22
Table 15	Recorded building plans passed by larger municipalities at current prices by type of building: North West .....	23
Table 16	Recorded building plans passed by larger municipalities at current prices by type of building: Gauteng .....	24
Table 17	Recorded building plans passed by larger municipalities at current prices by type of building: Mpumalanga .....	25
Table 18	Recorded building plans passed by larger municipalities at current prices by type of building: Limpopo .....	26
Table 19	Buildings reported as completed to larger municipalities at current prices by type of building: South Africa .....	27
Table 20	Buildings reported as completed to larger municipalities at current prices by type of building: Western Cape .....	28
Table 21	Buildings reported as completed to larger municipalities at current prices by type of building: Eastern Cape .....	29
Table 22	Buildings reported as completed to larger municipalities at current prices by type of building: Northern Cape .....	30
Table 23	Buildings reported as completed to larger municipalities at current prices by type of building: Free State .....	31
Table 24	Buildings reported as completed to larger municipalities at current prices by type of building: KwaZulu-Natal .....	32

Table 25	Buildings reported as completed to larger municipalities at current prices by type of building: North West .....	33
Table 26	Buildings reported as completed to larger municipalities at current prices by type of building: Gauteng .....	34
Table 27	Buildings reported as completed to larger municipalities at current prices by type of building: Mpumalanga .....	35
Table 28	Buildings reported as completed to larger municipalities at current prices by type of building: Limpopo.....	36
Table 29	Subsidised low-cost dwelling-houses completed or under construction by province .....	37
Table 30	Subsidised low-cost dwelling-houses completed by province .....	37
<b>Explanatory notes</b> .....		38
<b>Glossary</b> .....		41
<b>General information</b> .....		43

## SUMMARY OF FINDINGS

### SELECTED BUILDING STATISTICS OF THE PRIVATE SECTOR REGARDING BUILDING PLANS PASSED AT CURRENT PRICES

**Table A – Selected key figures regarding recorded building plans passed by larger municipalities at current prices: January to November 2006 versus January to November 2007**

Estimates at current prices	January to November 2006	January to November 2007 1/	Difference in value between January to November 2006 and January to November 2007	Percentage change between January to November 2006 and January to November 2007
	R'000	R'000	R'000	
<b>Residential buildings</b>	38 573 061	41 122 608	2 549 547	6,6
-Dwelling-houses	25 356 767	28 020 118	2 663 351	10,5
-Flats and townhouses	12 415 345	12 396 087	-19 258	-0,2
-Other residential buildings	800 949	706 403	-94 546	-11,8
<b>Non-residential buildings</b>	14 024 226	14 280 279	256 053	1,8
<b>Additions and alterations</b>	17 960 869	20 405 313	2 444 444	13,6
<b>Total</b>	70 558 156	75 808 200	5 250 044	7,4

1/ Nov. 2007 figures should be regarded as preliminary because of possible backlogs and incomplete reporting by municipalities.

### Total value of recorded building plans passed at current prices increased

*As indicated in Table A, the value of recorded building plans passed by larger municipalities (at current prices) during the first eleven months of 2007 rose by 7,4% (R5 250,0 million) to R75 808,2 million compared with the first eleven months of 2006.*

All the main categories of buildings contributed positively to the 7,4% year-on-year increase recorded for the period January to November 2007, namely additions and alterations (13,6% or R2 444,4 million), residential buildings (6,6% or R2 549,5 million) and non-residential buildings (1,8% or R256,1 million). Regarding residential buildings, dwelling-houses is the only category showing positive growth, recording an increase of 10,5% from R25 356,8 million to R28 020,1 million during the above-mentioned period (see Table A).

**Table B – Recorded building plans passed by larger municipalities aggregated to provincial level: January to November 2006 versus January to November 2007**

Estimates at current prices	January to November 2006	January to November 2007 1/	Percentage contribution to the total value of building plans passed during January to November 2006	Percentage change between January to November 2006 and January to November 2007	Contribution (percentage points) to the percentage change in the value of building plans passed between January to November 2006 and January to November 2007 2/	Difference in value between January to November 2006 and January to November 2007
	R'000	R'000				R'000
<b>Western Cape</b>	16 258 808	17 253 055	23,0	6,1	1,4	994 247
<b>Eastern Cape</b>	3 402 206	3 892 634	4,8	14,4	0,7	490 428
<b>Northern Cape</b>	479 724	663 697	0,7	38,3	0,3	183 973
<b>Free State</b>	1 737 183	2 201 458	2,4	26,7	0,6	464 275
<b>KwaZulu-Natal</b>	9 805 612	10 620 998	13,9	8,3	1,1	815 386
<b>North West</b>	2 584 976	2 575 805	3,7	-0,4	-0,0	-9 171
<b>Gauteng</b>	31 340 483	33 465 879	44,4	6,8	3,0	2 125 396
<b>Mpumalanga</b>	3 639 905	3 551 293	5,2	-2,4	-0,1	-88 612
<b>Limpopo</b>	1 309 259	1 583 381	1,9	20,9	0,4	274 122
<b>Total</b>	70 558 156	75 808 200	100,0	7,4	7,4	5 250 044

1/ Nov. 2007 figures should be regarded as preliminary because of possible backlogs and incomplete reporting by municipalities.

2/ The contribution (percentage points) is calculated by multiplying the percentage change of each province between Jan. to Nov. 2006 and Jan. to Nov. 2007 with the percentage contribution of the corresponding province to the total value of building plans passed during Jan. to Nov. 2006, divided by 100.

Seven provinces reported increases in the value of building plans passed (see Table B). The largest contributor to the increase of 7,4% was Gauteng (contributing 3,0 percentage points or R2 125,4 million), followed by Western Cape (1,4 percentage points or R994,2 million) and KwaZulu-Natal (1,1 percentage points or R815,4 million).

### SELECTED BUILDING STATISTICS OF THE PRIVATE SECTOR REGARDING BUILDING PLANS PASSED AT CONSTANT PRICES

**Table C – Selected key figures regarding recorded building plans passed by larger municipalities at constant 2000 prices: January to November 2006 versus January to November 2007**

Estimates at constant 2000 prices	January to November 2006	January to November 2007 1/	Difference in value between January to November 2006 and January to November 2007	Percentage change between January to November 2006 and January to November 2007
	R'000	R'000	R'000	
<b>Residential buildings</b>	24 549 234	23 735 399	-813 835	-3,3
<b>Non-residential buildings</b>	8 931 659	8 236 413	-695 246	-7,8
<b>Additions and alterations</b>	11 438 851	11 755 046	316 195	2,8
<b>Total</b>	44 919 744	43 726 858	-1 192 886	-2,7

1/ Nov. 2007 figures should be regarded as preliminary because of possible backlogs and incomplete reporting by municipalities.

#### Total real value of recorded building plans passed decreased

The real value of recorded building plans passed by larger municipalities (at constant 2000 prices) during the first eleven months of 2007 decreased by 2,7% (-R1 192,9 million) compared with the first eleven months of 2006. Decreases were reported for non-residential buildings (-7,8% or -R695,2 million) and residential buildings (-3,3% or -R813,8 million). An increase was reported for additions and alterations (2,8% or R316,2 million) for the same period (see Table C).

**Table D – Seasonally adjusted key figures regarding recorded building plans passed by larger municipalities at constant 2000 prices: Current quarter versus previous quarter**

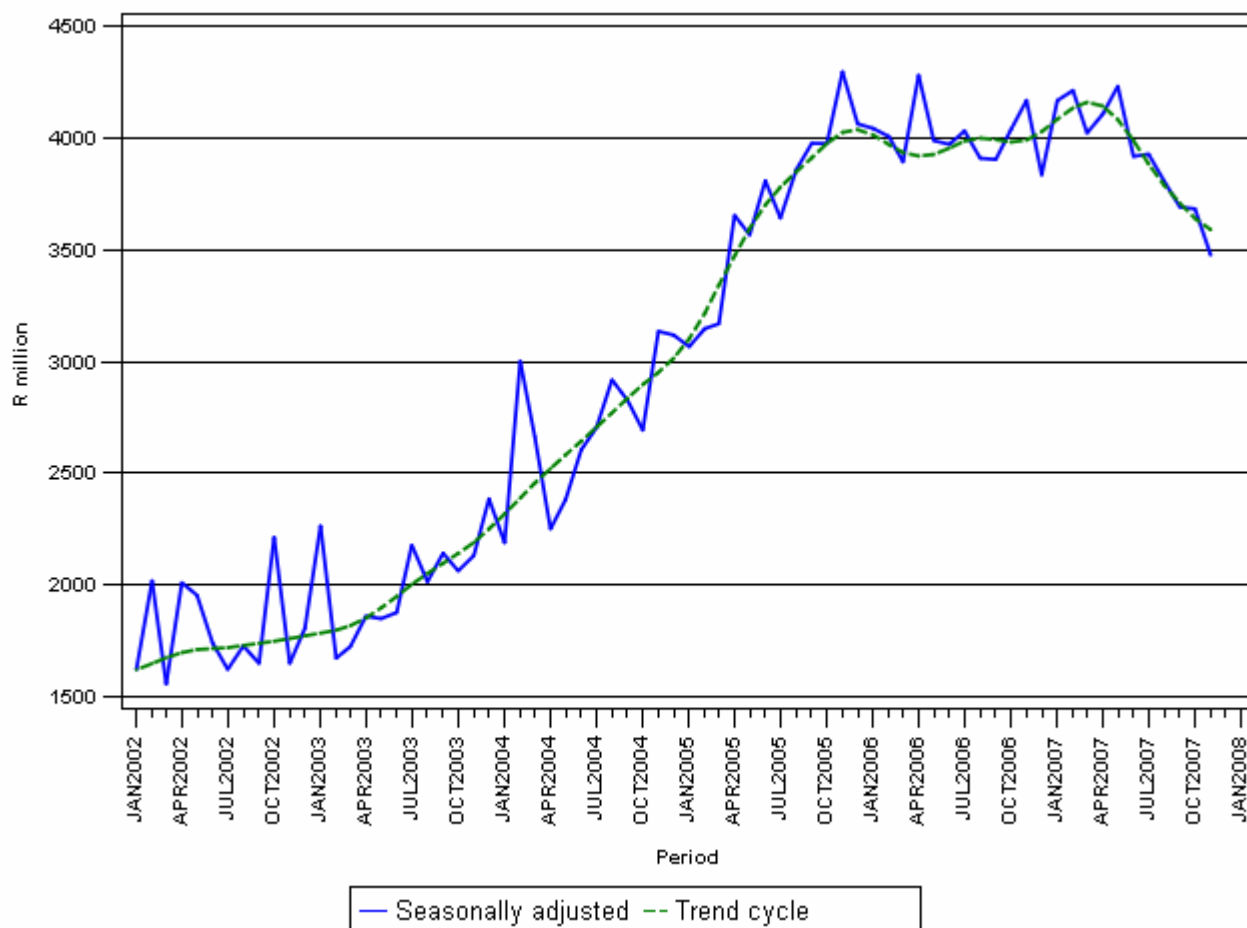
Seasonally adjusted estimates at constant 2000 prices	June to August 2007	September to November 2007	Percentage change between June to August 2007 and September to November 2007
	R'000	R'000	
<b>Residential buildings</b>	6 235 367	5 568 005	-10,7
<b>Non-residential buildings</b>	2 200 323	2 209 215	0,4
<b>Additions and alterations</b>	3 217 445	3 074 916	-4,4
<b>Total</b>	11 653 135	10 852 136	-6,9

#### Seasonally adjusted real value of recorded building plans passed decreased

The seasonally adjusted real value of recorded building plans passed by larger municipalities during the three months ending November 2007 decreased by 6,9% compared with the previous three months. Decreases were reported for residential building plans passed (-10,7%) and additions and alterations (-4,4%). An increase of 0,4% was reported for non-residential building plans passed (see Table D).

Figure 1 shows both the seasonally adjusted and the trend series for recorded building plans passed at constant 2000 prices between January 2002 and November 2007. The trend series reflects a slight increase in 2002, followed by a steep increase from April 2003 up to the end of 2005. The trend mainly levelled off in 2006 and peaked in March 2007, then started to decline.

**Figure 1 – Real value of recorded building plans passed by larger municipalities at constant 2000 prices**



## SELECTED BUILDING STATISTICS OF THE PRIVATE SECTOR REGARDING BUILDINGS COMPLETED AT CURRENT PRICES

**Table E – Selected key figures regarding buildings reported as completed to larger municipalities at current prices: January to November 2006 versus January to November 2007**

Estimates at current prices	January to November 2006	January to November 2007 1/	Difference in value between January to November 2006 and January to November 2007	Percentage change between January to November 2006 and January to November 2007
	R'000	R'000	R'000	
<b>Residential buildings</b>	23 397 586	26 381 610	2 984 024	12,8
-Dwelling-houses	14 350 271	16 113 924	1 763 653	12,3
-Flats and townhouses	8 769 433	9 583 290	813 857	9,3
-Other residential buildings	277 882	684 396	406 514	146,3
<b>Non-residential buildings</b>	5 296 629	8 321 702	3 025 073	57,1
<b>Additions and alterations</b>	6 377 792	7 317 202	939 410	14,7
<b>Total</b>	35 072 007	42 020 514	6 948 507	19,8

1/ Nov. 2007 figures should be regarded as preliminary because of possible backlogs and incomplete reporting by municipalities.

### Total value of buildings reported as completed at current prices increased

*As indicated in Table E, the value of buildings reported as completed to larger municipalities (at current prices) during the first eleven months of 2007 increased by 19,8% (R6 948,5 million) compared with the first eleven months of 2006.*

All the main categories of buildings contributed positively to the 19,8% increase reported for buildings completed (see Table E). The value of non-residential buildings completed grew by 57,1% or R3 025,1 million, mainly due to the increase in the completion of more office and banking space (113,7% or R1 109,1 million) and industrial and warehouse buildings (83,7% or R1 609,9 million) during the first eleven months of 2007 (see Table 19, page 27).

**Table F – Buildings reported as completed to larger municipalities aggregated to provincial level: January to November 2006 versus January to November 2007**

Estimates at current prices	January to November 2006	January to November 2007 1/	Percentage contribution to the total value of buildings completed during January to November 2006	Percentage change between January to November 2006 and January to November 2007	Contribution (percentage points) to the percentage change in the value of buildings completed between January to November 2006 and January to November 2007 2/	Difference in value between January to November 2006 and January to November 2007
	R'000	R'000				R'000
<b>Western Cape</b>	9 643 789	11 244 230	27,5	16,6	4,6	1 600 441
<b>Eastern Cape</b>	1 298 453	1 521 554	3,7	17,2	0,6	223 101
<b>Northern Cape</b>	240 019	360 739	0,7	50,3	0,4	120 720
<b>Free State</b>	590 100	1 000 345	1,7	69,5	1,2	410 245
<b>KwaZulu-Natal</b>	4 864 546	5 714 447	13,9	17,5	2,4	849 901
<b>North West</b>	1 156 552	1 518 376	3,3	31,3	1,0	361 824
<b>Gauteng</b>	15 854 611	18 614 731	45,2	17,4	7,9	2 760 120
<b>Mpumalanga</b>	966 630	1 507 857	2,7	56,0	1,5	541 227
<b>Limpopo</b>	457 307	538 235	1,3	17,7	0,2	80 928
<b>Total</b>	35 072 007	42 020 514	100,0	19,8	19,8	6 948 507

1/ Nov. 2007 figures should be regarded as preliminary because of possible backlogs and incomplete reporting by municipalities.

2/ The contribution (percentage points) is calculated by multiplying the percentage change of each province between Jan. to Nov. 2006 and Jan. to Nov. 2007 with the percentage contribution of the corresponding province to the total value of buildings completed during Jan. to Nov. 2006, divided by 100.

All the provinces reported increases in the value of buildings completed. The largest contributor to the increase of 19,8% was Gauteng (7,9 percentage points or R2 760,1 million), followed by Western Cape (4,6 percentage points or R1 600,4 million) and KwaZulu-Natal (2,4 percentage points or R849,9 million) (see Table F).

## SELECTED BUILDING STATISTICS OF THE PRIVATE SECTOR REGARDING BUILDINGS COMPLETED AT CONSTANT PRICES

**Table G – Selected key figures regarding buildings reported as completed to larger municipalities at constant 2000 prices: January to November 2006 versus January to November 2007**

Estimates at constant 2000 prices	January to November 2006	January to November 2007	Difference in value between January to November 2006 and January to November 2007	Percentage change between January to November 2006 and January to November 2007
	R'000	R'000	R'000	
<b>Residential buildings</b>	15 881 992	16 250 501	368 509	2,3
<b>Non-residential buildings</b>	3 779 086	5 593 091	1 814 005	48,0
<b>Additions and alterations</b>	4 408 568	4 666 473	257 905	5,9
<b>Total</b>	24 069 646	26 510 065	2 440 419	10,1

1/ Nov. 2007 figures should be regarded as preliminary because of possible backlogs and incomplete reporting by municipalities.

### Total real value of buildings reported as completed increased

As indicated in Table G, the real value of buildings reported as completed to larger municipalities (at constant 2000 prices) during the first eleven months of 2007 increased by 10,1% (R2 440,4 million) compared with the first eleven months of 2006. The largest percentage increase in the real value of buildings completed was reported for non-residential buildings (48,0% or R1 814,0 million), followed by additions and alterations (5,9% or R257,9 million) and residential buildings (2,3% or R368,5 million).

**Table H – Seasonally adjusted key figures regarding buildings reported as completed to larger municipalities at constant 2000 prices: Current quarter versus previous quarter**

Seasonally adjusted estimates at constant 2000 prices	June to August 2007	September to November 2007	Percentage change between June to August 2007 and September to November 2007
	R'000	R'000	
<b>Residential buildings</b>	4 533 549	4 050 584	-10,7
<b>Non-residential buildings</b>	1 698 980	1 454 911	-14,4
<b>Additions and alterations</b>	1 283 418	1 207 771	-5,9
<b>Total</b>	7 515 947	6 713 266	-10,7

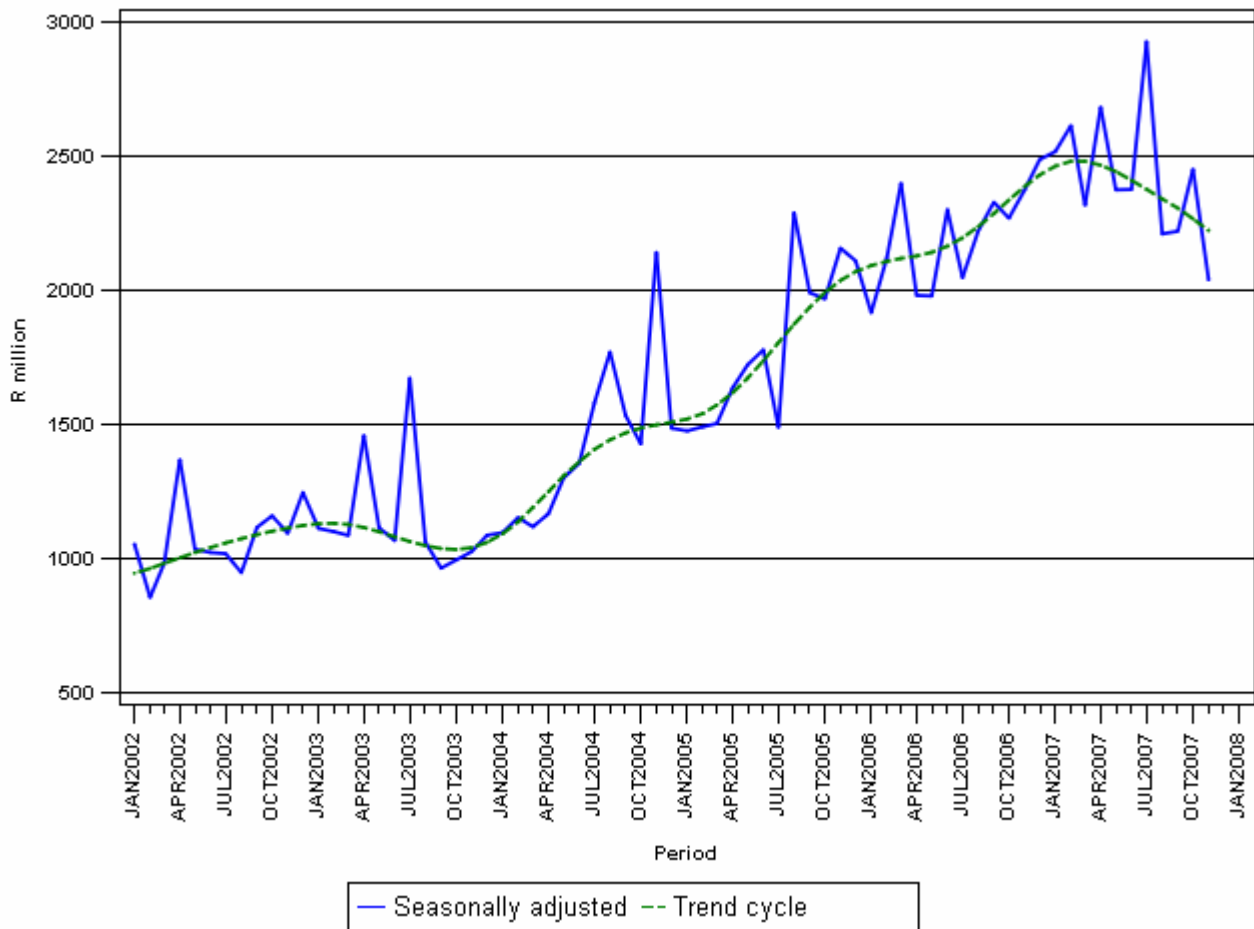
### Seasonally adjusted real value of buildings reported as completed decreased

The seasonally adjusted real value of buildings reported as completed to larger municipalities during the three months ending November 2007 decreased by 10,7% compared with the previous three months. The biggest decrease was reported for non-residential buildings (-14,4%), followed by residential buildings (-10,7%) and additions and alterations (-5,9%) (see Table H).



Figure 2 shows both the seasonally adjusted and trend series for buildings reported as completed to municipalities at constant 2000 prices between January 2002 and November 2007. The trend series reflects a slight increase in 2002, slowing again until October 2003. The trend series increased from November 2003 till March 2007, but has been declining since April 2007.

**Figure 2 - Real value of buildings reported as completed to larger municipalities at constant 2000 prices**



**PJ Lehohla**  
**Statistician-General**

**Table 1 - Values and percentage change of recorded building plans passed by larger municipalities at current prices by type of building**

Year and month		Residential buildings		Non-residential buildings		Additions and alterations		Total	
		R'000	% change 1/	R'000	% change 1/	R'000	% change 1/	R'000	% change 1/
2006	January	2 558 041	45,9	778 449	44,6	1 090 691	21,0	4 427 181	38,6
	February	3 190 047	36,0	942 439	53,1	1 443 836	25,1	5 576 322	35,5
	March	2 999 970	28,1	1 241 790	28,9	1 558 522	26,4	5 800 282	27,8
	April	2 763 843	6,8	1 681 707	114,1	1 385 872	6,4	5 831 422	24,7
	May	3 617 721	3,9	1 253 706	59,0	1 845 824	36,6	6 717 251	19,5
	June	3 825 823	18,2	982 965	2,2	1 659 979	11,0	6 468 767	13,6
	July	3 918 713	11,6	1 443 525	42,7	1 845 449	26,1	7 207 687	20,4
	August	4 020 265	15,1	1 478 844	19,9	1 690 353	4,1	7 189 462	13,2
	September	3 758 874	-2,8	1 095 563	58,4	1 757 623	11,5	6 612 060	7,8
	October	3 901 590	4,7	1 743 478	78,3	1 836 658	-4,1	7 481 726	13,1
	November	4 018 174	7,8	1 381 760	3,2	1 846 062	13,5	7 245 996	8,3
	December	2 691 780	-7,0	1 081 202	67,8	1 438 672	6,7	5 211 654	6,6
	<b>Total</b>	<b>41 264 841</b>	<b>11,6</b>	<b>15 105 428</b>	<b>43,2</b>	<b>19 399 541</b>	<b>14,2</b>	<b>75 769 810</b>	<b>17,5</b>
2007	January	2 741 376	7,2	990 949	27,3	1 387 668	27,2	5 119 993	15,6
	February	3 538 610	10,9	1 393 007	47,8	1 623 017	12,4	6 554 634	17,5
	March	3 976 504	32,6	995 325	-19,8	1 575 250	1,1	6 547 079	12,9
	April	3 457 613	25,1	1 186 268	-29,5	1 635 039	18,0	6 278 920	7,7
	May	4 440 979	22,8	1 484 021	18,4	2 120 566	14,9	8 045 566	19,8
	June	3 988 718	4,3	1 411 705	43,6	1 733 966	4,5	7 134 389	10,3
	July	4 144 134	5,8	1 356 629	-6,0	2 233 741	21,0	7 734 504	7,3
	August	3 950 744	-1,7	1 551 833	4,9	2 142 193	26,7	7 644 770	6,3
	September	3 530 601	-6,1	1 489 460	36,0	1 693 199	-3,7	6 713 260	1,5
	October	3 776 654	-3,2	1 425 378	-18,2	2 270 721	23,6	7 472 753	-0,1
	November 2/	3 576 675	-11,0	995 704	-27,9	1 989 953	7,8	6 562 332	-9,4

1/ The annual/monthly percentage change is the change in the values of recorded building plans passed by municipalities of the relevant year/month compared with the values of recorded building plans passed by municipalities of the comparable period of the previous year expressed as a percentage.

2/ Preliminary figures.

**Table 2 - Seasonally adjusted values and percentage change of recorded building plans passed by larger municipalities at current prices by type of building**

Year and month		Residential buildings		Non-residential buildings		Additions and alterations		Total	
		R'000	% change 1/	R'000	% change 1/	R'000	% change 1/	R'000	% change 1/
2006	January	3 546 222	-3,5	1 024 499	36,5	1 466 007	-8,9	6 036 728	-0,0
	February	3 440 246	-3,0	1 036 535	1,2	1 564 757	6,7	6 041 538	0,1
	March	3 186 755	-7,4	1 093 616	5,5	1 619 956	3,5	5 900 327	-2,3
	April	3 155 739	-1,0	1 797 206	64,3	1 543 202	-4,7	6 496 147	10,1
	May	3 245 465	2,8	1 231 053	-31,5	1 657 648	7,4	6 134 166	-5,6
	June	3 599 394	10,9	971 552	-21,1	1 632 359	-1,5	6 203 305	1,1
	July	3 448 975	-4,2	1 282 402	32,0	1 639 787	0,5	6 371 164	2,7
	August	3 592 286	4,2	1 185 846	-7,5	1 514 753	-7,6	6 292 885	-1,2
	September	3 444 050	-4,1	1 149 697	-3,0	1 737 178	14,7	6 330 925	0,6
	October	3 504 976	1,8	1 522 812	32,5	1 555 665	-10,4	6 583 453	4,0
	November	3 609 221	3,0	1 522 558	-0,0	1 733 255	11,4	6 865 034	4,3
	December	3 438 610	-4,7	1 264 406	-17,0	1 692 716	-2,3	6 395 732	-6,8
2007	January	3 795 182	10,4	1 313 396	3,9	1 875 296	10,8	6 983 874	9,2
	February	3 816 729	0,6	1 514 391	15,3	1 750 347	-6,7	7 081 467	1,4
	March	4 264 015	11,7	889 974	-41,2	1 643 696	-6,1	6 797 685	-4,0
	April	3 951 143	-7,3	1 255 103	41,0	1 814 267	10,4	7 020 513	3,3
	May	3 961 844	0,3	1 457 053	16,1	1 915 827	5,6	7 334 724	4,5
	June	3 723 797	-6,0	1 399 634	-3,9	1 706 498	-10,9	6 829 929	-6,9
	July	3 660 632	-1,7	1 213 630	-13,3	1 991 772	16,7	6 866 034	0,5
	August	3 526 101	-3,7	1 229 852	1,3	1 922 295	-3,5	6 678 248	-2,7
	September	3 238 718	-8,2	1 588 483	29,2	1 674 651	-12,9	6 501 852	-2,6
	October	3 394 186	4,8	1 232 637	-22,4	1 912 625	14,2	6 539 448	0,6
	November	3 224 012	-5,0	1 093 100	-11,3	1 862 634	-2,6	6 179 746	-5,5
	Jun. - Aug.07	10 910 530		3 843 116		5 620 565		20 374 211	
	Sep. - Nov.07 2/	9 856 916	-9,7	3 914 220	1,9	5 449 910	-3,0	19 221 046	-5,7

1/ The percentage change is the change in the seasonally adjusted values of recorded building plans passed by municipalities of the relevant month compared with the seasonally adjusted values of recorded building plans passed by municipalities of the previous month expressed as a percentage.

2/ The percentage change is the change in the seasonally adjusted values of recorded building plans passed by municipalities of the current quarter compared with the seasonally adjusted values of recorded building plans passed by municipalities of the previous quarter expressed as a percentage.

**Table 3 - Values and percentage change of recorded building plans passed by larger municipalities at constant 2000 prices by type of building**

Year and month		Residential buildings		Non-residential buildings		Additions and alterations		Total	
		R'000	% change 1/	R'000	% change 1/	R'000	% change 1/	R'000	% change 1/
2006	January	1 716 806	38,0	522 449	36,7	732 007	14,4	2 971 262	31,1
	February	2 129 537	28,2	629 132	44,3	963 842	17,9	3 722 511	27,7
	March	1 998 648	21,3	827 308	22,0	1 038 322	19,7	3 864 278	21,0
	April	1 824 319	1,0	1 110 038	102,5	914 767	0,6	3 849 124	18,0
	May	2 355 287	-2,9	816 215	48,6	1 201 708	27,6	4 373 210	11,6
	June	2 447 743	8,9	628 896	-5,9	1 062 047	2,2	4 138 686	4,7
	July	2 470 815	2,4	910 167	31,0	1 163 587	15,8	4 544 569	10,5
	August	2 478 585	3,9	911 741	8,2	1 042 141	-6,0	4 432 467	2,2
	September	2 308 891	-12,3	672 950	42,8	1 079 621	0,6	4 061 462	-2,8
	October	2 386 294	-5,8	1 066 347	60,4	1 123 338	-13,7	4 575 979	1,7
	November	2 432 309	-3,7	836 416	-7,8	1 117 471	1,4	4 386 196	-3,2
	December	1 620 578	-17,2	650 934	49,4	866 148	-5,0	3 137 660	-5,1
	<b>Total</b>	<b>26 169 812</b>	<b>2,7</b>	<b>9 582 593</b>	<b>31,7</b>	<b>12 304 999</b>	<b>5,0</b>	<b>48 057 404</b>	<b>8,1</b>
2007	January	1 639 579	-4,5	592 673	13,4	829 945	13,4	3 062 197	3,1
	February	2 120 198	-0,4	834 636	32,7	972 449	0,9	3 927 283	5,5
	March	2 374 032	18,8	594 224	-28,2	940 448	-9,4	3 908 704	1,1
	April	2 029 116	11,2	696 167	-37,3	959 530	4,9	3 684 813	-4,3
	May	2 567 040	9,0	857 816	5,1	1 225 761	2,0	4 650 617	6,3
	June	2 287 109	-6,6	809 464	28,7	994 247	-6,4	4 090 820	-1,2
	July	2 362 676	-4,4	773 449	-15,0	1 273 513	9,4	4 409 638	-3,0
	August	2 233 321	-9,9	877 237	-3,8	1 210 963	16,2	4 321 521	-2,5
	September	1 995 817	-13,6	841 979	25,1	957 150	-11,3	3 794 946	-6,6
	October	2 120 524	-11,1	800 325	-24,9	1 274 970	13,5	4 195 819	-8,3
	November 2/	2 005 987	-17,5	558 443	-33,2	1 116 070	-0,1	3 680 500	-16,1

1/ The annual/monthly percentage change is the change in the values of recorded building plans passed by municipalities of the relevant year/month compared with the values of recorded building plans passed by municipalities of the comparable period of the previous year expressed as a percentage.

2/ Preliminary figures.

**Table 4 - Seasonally adjusted values and percentage change of recorded building plans passed by larger municipalities at constant 2000 prices by type of building**

Year and month		Residential buildings		Non-residential buildings		Additions and alterations		Total	
		R'000	% change 1/	R'000	% change 1/	R'000	% change 1/	R'000	% change 1/
2006	January	2 375 245	-4,0	685 692	35,6	982 254	-9,3	4 043 191	-0,5
	February	2 286 258	-3,7	688 847	0,5	1 032 002	5,1	4 007 107	-0,9
	March	2 109 721	-7,7	715 189	3,8	1 069 032	3,6	3 893 942	-2,8
	April	2 073 620	-1,7	1 191 814	66,6	1 015 979	-5,0	4 281 413	10,0
	May	2 106 241	1,6	801 097	-32,8	1 081 460	6,4	3 988 798	-6,8
	June	2 302 111	9,3	623 358	-22,2	1 046 474	-3,2	3 971 943	-0,4
	July	2 179 968	-5,3	812 518	30,3	1 039 402	-0,7	4 031 888	1,5
	August	2 230 909	2,3	737 567	-9,2	941 412	-9,4	3 909 888	-3,0
	September	2 123 808	-4,8	708 969	-3,9	1 071 372	13,8	3 904 149	-0,1
	October	2 149 782	1,2	933 186	31,6	954 790	-10,9	4 037 758	3,4
	November	2 195 996	2,1	922 604	-1,1	1 050 069	10,0	4 168 669	3,2
	December	2 062 045	-6,1	757 862	-17,9	1 015 075	-3,3	3 834 982	-8,0
2007	January	2 265 274	9,9	783 500	3,4	1 119 480	10,3	4 168 254	8,7
	February	2 274 632	0,4	901 709	15,1	1 036 696	-7,4	4 213 037	1,1
	March	2 527 277	11,1	524 137	-41,9	971 478	-6,3	4 022 892	-4,5
	April	2 306 495	-8,7	739 344	41,1	1 061 117	9,2	4 106 956	2,1
	May	2 282 864	-1,0	840 632	13,7	1 108 988	4,5	4 232 484	3,1
	June	2 133 848	-6,5	803 951	-4,4	980 307	-11,6	3 918 106	-7,4
	July	2 092 391	-1,9	694 940	-13,6	1 140 807	16,4	3 928 138	0,3
	August	2 009 128	-4,0	701 432	0,9	1 096 331	-3,9	3 806 891	-3,1
	September	1 838 738	-8,5	901 583	28,5	951 074	-13,2	3 691 395	-3,0
	October	1 911 800	4,0	693 669	-23,1	1 077 858	13,3	3 683 327	-0,2
	November	1 817 467	-4,9	613 963	-11,5	1 045 984	-3,0	3 477 414	-5,6
	Jun. - Aug.07	6 235 367		2 200 323		3 217 445		11 653 135	
	Sep. - Nov.07 2/	5 568 005	-10,7	2 209 215	0,4	3 074 916	-4,4	10 852 136	-6,9

1/ The percentage change is the change in the seasonally adjusted values of recorded building plans passed by municipalities of the relevant month compared with the seasonally adjusted values of recorded building plans passed by municipalities of the previous month expressed as a percentage.

2/ The percentage change is the change in the seasonally adjusted values of recorded building plans passed by municipalities of the current quarter compared with the seasonally adjusted values of recorded building plans passed by municipalities of the previous quarter expressed as a percentage.

Table 5 - Values and percentage change of buildings reported as completed to larger municipalities at current prices by type of building

Year and month		Residential buildings		Non-residential buildings		Additions and alterations		Total	
		R'000	% change 1/	R'000	% change 1/	R'000	% change 1/	R'000	% change 1/
2006	January	1 257 968	45,0	316 723	10,1	406 962	28,1	1 981 653	34,6
	February	1 772 939	39,7	408 861	125,2	553 237	72,2	2 735 037	54,3
	March	2 113 187	56,6	656 158	110,5	589 069	85,3	3 358 414	69,7
	April	1 748 227	24,6	268 422	36,6	450 681	35,3	2 467 330	27,6
	May	1 989 102	18,0	509 864	26,4	575 749	21,9	3 074 715	20,0
	June	2 309 739	52,7	485 834	24,9	567 380	11,0	3 362 953	39,4
	July	2 268 183	44,5	333 643	38,0	554 641	57,2	3 156 467	45,9
	August	2 379 053	4,4	492 632	-16,0	557 684	37,9	3 429 369	4,9
	September	2 539 730	21,0	404 951	10,8	665 842	48,6	3 610 523	24,0
	October	2 371 124	19,9	768 141	44,7	603 131	19,2	3 742 396	24,1
	November	2 648 334	-1,7	651 400	47,9	853 416	91,1	4 153 150	16,0
	December	2 675 164	15,3	542 151	115,6	545 663	23,4	3 762 978	24,8
	<b>Total</b>	<b>26 072 750</b>	<b>24,0</b>	<b>5 838 780</b>	<b>39,5</b>	<b>6 923 455</b>	<b>42,1</b>	<b>38 834 985</b>	<b>29,1</b>
2007	January	1 640 091	30,4	483 947	52,8	675 202	65,9	2 799 240	41,3
	February	2 198 764	24,0	883 085	116,0	578 317	4,5	3 660 166	33,8
	March	2 094 772	-0,9	778 599	18,7	668 881	13,5	3 542 252	5,5
	April	2 342 044	34,0	630 036	134,7	555 370	23,2	3 527 450	43,0
	May	2 665 216	34,0	713 577	40,0	588 024	2,1	3 966 817	29,0
	June	2 575 887	11,5	579 957	19,4	657 975	16,0	3 813 819	13,4
	July	2 786 031	22,8	1 123 723	236,8	721 990	30,2	4 631 744	46,7
	August	2 556 786	7,5	520 073	5,6	688 838	23,5	3 765 697	9,8
	September	2 281 121	-10,2	890 882	120,0	627 624	-5,7	3 799 627	5,2
	October	2 703 186	14,0	1 106 733	44,1	723 869	20,0	4 533 788	21,1
	November 2/	2 537 712	-4,2	611 090	-6,2	831 112	-2,6	3 979 914	-4,2

1/ The annual/monthly percentage change is the change in the values of buildings reported as completed to municipalities of the relevant year/month compared with the values of buildings reported as completed to municipalities of the comparable period of the previous year expressed as a percentage.

2/ Preliminary figures.

**Table 6 - Seasonally adjusted values and percentage change of buildings reported as completed to larger municipalities at current prices by type of building**

Year and month		Residential buildings		Non-residential buildings		Additions and alterations		Total	
		R'000	% change 1/	R'000	% change 1/	R'000	% change 1/	R'000	% change 1/
2006	January	1 836 660	-15,5	378 291	35,3	442 960	-13,3	2 657 911	-10,3
	February	2 023 665	10,2	420 803	11,2	561 625	26,8	3 006 093	13,1
	March	2 282 647	12,8	552 565	31,3	593 860	5,7	3 429 072	14,1
	April	1 961 580	-14,1	370 060	-33,0	535 173	-9,9	2 866 813	-16,4
	May	1 916 603	-2,3	411 684	11,2	545 817	2,0	2 874 104	0,3
	June	2 313 136	20,7	502 704	22,1	557 229	2,1	3 373 069	17,4
	July	2 090 169	-9,6	399 246	-20,6	531 713	-4,6	3 021 128	-10,4
	August	2 188 587	4,7	555 311	39,1	551 436	3,7	3 295 334	9,1
	September	2 394 747	9,4	369 052	-33,5	656 130	19,0	3 419 929	3,8
	October	2 266 240	-5,4	561 942	52,3	565 526	-13,8	3 393 708	-0,8
	November	2 138 091	-5,7	639 444	13,8	711 087	25,7	3 488 622	2,8
	December	2 475 856	15,8	626 601	-2,0	629 998	-11,4	3 732 455	7,0
2007	January	2 433 922	-1,7	572 739	-8,6	734 644	16,6	3 741 305	0,2
	February	2 508 808	3,1	890 861	55,5	594 201	-19,1	3 993 870	6,8
	March	2 263 245	-9,8	649 527	-27,1	669 169	12,6	3 581 941	-10,3
	April	2 624 417	16,0	881 572	35,7	659 080	-1,5	4 165 069	16,3
	May	2 588 702	-1,4	611 892	-30,6	558 638	-15,2	3 759 232	-9,7
	June	2 567 388	-0,8	581 707	-4,9	647 768	16,0	3 796 863	1,0
	July	2 580 926	0,5	1 375 528	136,5	701 068	8,2	4 657 522	22,7
	August	2 354 416	-8,8	579 954	-57,8	686 341	-2,1	3 620 711	-22,3
	September	2 133 658	-9,4	815 720	40,7	614 747	-10,4	3 564 125	-1,6
	October	2 588 516	21,3	783 471	-4,0	678 320	10,3	4 050 307	13,6
	November	2 048 609	-20,9	601 703	-23,2	684 446	0,9	3 334 758	-17,7
	Jun. - Aug.07	7 502 730		2 537 189		2 035 177		12 075 096	
	Sep. - Nov.07 2/	6 770 783	-9,8	2 200 894	-13,3	1 977 513	-2,8	10 949 190	-9,3

1/ The percentage change is the change in the seasonally adjusted values of buildings reported as completed to municipalities of the relevant month compared with the seasonally adjusted values of buildings reported as completed to municipalities of the previous month expressed as a percentage.

2/ The percentage change is the change in the seasonally adjusted values of buildings reported as completed to municipalities of the current quarter compared with the seasonally adjusted values of buildings reported as completed to municipalities of the previous quarter expressed as a percentage.

Table 7 - Values and percentage change of buildings reported as completed to larger municipalities at constant 2000 prices by type of building

Year and month		Residential buildings		Non-residential buildings		Additions and alterations		Total	
		R'000	% change 1/	R'000	% change 1/	R'000	% change 1/	R'000	% change 1/
2006	January	875 518	36,0	232 372	4,6	288 830	18,4	1 396 720	25,8
	February	1 228 110	30,7	298 221	112,9	391 811	60,8	1 918 142	44,9
	March	1 458 509	46,8	477 553	98,4	414 545	73,2	2 350 607	59,5
	April	1 200 870	17,0	194 227	27,9	314 502	26,3	1 709 599	19,8
	May	1 360 922	11,1	366 809	17,5	401 219	14,4	2 128 950	12,7
	June	1 578 421	43,9	349 270	16,0	394 014	4,7	2 321 705	30,9
	July	1 534 451	36,1	236 794	27,5	380 935	47,1	2 152 180	36,9
	August	1 603 497	-1,8	348 890	-21,5	380 932	29,2	2 333 319	-1,7
	September	1 708 000	14,2	284 976	3,6	453 571	39,1	2 446 547	16,7
	October	1 582 226	13,3	536 037	35,1	410 014	12,0	2 528 277	17,1
	November	1 751 468	-8,0	453 937	38,9	578 195	80,0	2 783 600	9,1
	December	1 752 041	7,2	376 494	103,3	368 941	16,1	2 497 476	16,8
	<b>Total</b>	<b>17 634 033</b>	<b>16,7</b>	<b>4 155 580</b>	<b>30,6</b>	<b>4 777 509</b>	<b>33,1</b>	<b>26 567 122</b>	<b>21,4</b>
2007	January	1 058 853	20,9	332 381	43,0	453 156	56,9	1 844 390	32,1
	February	1 398 502	13,9	603 200	102,3	386 059	-1,5	2 387 761	24,5
	March	1 323 598	-9,2	530 381	11,1	445 624	7,5	2 299 603	-2,2
	April	1 481 027	23,3	428 305	120,5	366 581	16,6	2 275 913	33,1
	May	1 658 484	21,9	483 453	31,8	382 828	-4,6	2 524 765	18,6
	June	1 597 177	1,2	392 128	12,3	420 969	6,8	2 410 274	3,8
	July	1 703 863	11,0	754 177	218,5	455 227	19,5	2 913 267	35,4
	August	1 545 460	-3,6	347 178	-0,5	424 684	11,5	2 317 322	-0,7
	September	1 377 884	-19,3	593 526	108,3	385 518	-15,0	2 356 928	-3,7
	October	1 613 541	2,0	730 517	36,3	442 733	8,0	2 786 791	10,2
	November 2/	1 492 112	-14,8	397 845	-12,4	503 094	-13,0	2 393 051	-14,0

1/ The annual/monthly percentage change is the change in the values of buildings reported as completed to municipalities of the relevant year/month compared with the values of buildings reported as completed to municipalities of the comparable period of the previous year expressed as a percentage.

2/ Preliminary figures.



**Table 8 - Seasonally adjusted values and percentage change of buildings reported as completed to larger municipalities at constant 2000 prices by type of building**

Year and month		Residential buildings		Non-residential buildings		Additions and alterations		Total	
		R'000	%change 1/	R'000	% change 1/	R'000	% change 1/	R'000	% change 1/
2006	January	1 324 294	-14,0	278 322	35,1	314 147	-14,0	1 916 763	-9,2
	February	1 416 448	7,0	307 870	10,6	397 898	26,7	2 122 216	10,7
	March	1 581 075	11,6	401 911	30,5	416 339	4,6	2 399 325	13,1
	April	1 340 917	-15,2	267 299	-33,5	373 202	-10,4	1 981 418	-17,4
	May	1 303 815	-2,8	294 876	10,3	380 742	2,0	1 979 433	-0,1
	June	1 556 379	19,4	358 604	21,6	386 614	1,5	2 301 597	16,3
	July	1 399 126	-10,1	282 897	-21,1	365 896	-5,4	2 047 919	-11,0
	August	1 447 402	3,5	394 033	39,3	379 535	3,7	2 220 970	8,5
	September	1 621 334	12,0	259 516	-34,1	448 252	18,1	2 329 102	4,9
	October	1 491 893	-8,0	393 306	51,6	384 553	-14,2	2 269 752	-2,5
	November	1 445 996	-3,1	447 427	13,8	481 109	25,1	2 374 532	4,6
	December	1 628 934	12,7	435 887	-2,6	423 441	-12,0	2 488 262	4,8
2007	January	1 631 008	0,1	394 585	-9,5	492 545	16,3	2 518 138	1,2
	February	1 607 726	-1,4	610 580	54,7	396 491	-19,5	2 614 797	3,8
	March	1 432 074	-10,9	442 337	-27,6	443 899	12,0	2 318 310	-11,3
	April	1 650 444	15,2	598 284	35,3	434 628	-2,1	2 683 356	15,7
	May	1 598 711	-3,1	412 834	-31,0	363 949	-16,3	2 375 494	-11,5
	June	1 572 478	-1,6	390 239	-5,5	414 033	13,8	2 376 750	0,1
	July	1 564 192	-0,5	921 147	136,0	442 850	7,0	2 928 189	23,2
	August	1 396 879	-10,7	387 594	-57,9	426 535	-3,7	2 211 008	-24,5
	September	1 299 228	-7,0	542 959	40,1	378 861	-11,2	2 221 048	0,5
	October	1 518 378	16,9	518 604	-4,5	415 034	9,5	2 452 016	10,4
	November	1 232 978	-18,8	393 348	-24,2	413 876	-0,3	2 040 202	-16,8
	Jun. - Aug.07	4 533 549		1 698 980		1 283 418		7 515 947	
	Sep. - Nov.07 2/	4 050 584	-10,7	1 454 911	-14,4	1 207 771	-5,9	6 713 266	-10,7

1/ The percentage change is the change in the seasonally adjusted values of buildings reported as completed to municipalities of the relevant month compared with the seasonally adjusted values of buildings reported as completed to municipalities of the previous month expressed as a percentage.

2/ The percentage change is the change in the seasonally adjusted values of buildings reported as completed to municipalities of the current quarter compared with the seasonally adjusted values of buildings reported as completed to municipalities of the previous quarter expressed as a percentage.

Table 9 - Recorded building plans passed by larger municipalities at current prices by type of building: South Africa

			Nov. 2006*	Oct. 2007	Nov. 2007	Jan. - Nov. 2006	Jan. - Nov. 2007	% Change 1/	
Category of building	Type of building	Measuring unit							
1. Residential buildings	1. Dwelling-houses < 80 square metres	Number	2 951	2 803	2 489	34 819	33 107	-4,9	
		square metres	135 215	129 143	115 923	1 553 700	1 479 140	-4,8	
		R'000	305 868	280 930	240 532	2 781 939	2 931 114	5,4	
	2. Dwelling-houses >= 80 square metres	Number	3 237	2 906	2 507	32 598	30 196	-7,4	
		square metres	772 880	760 965	630 384	7 565 860	7 605 520	0,5	
		R'000	2 418 504	2 578 904	2 162 837	22 574 828	25 089 004	11,1	
	3. Flats and townhouses	Number	2 357	2 123	2 608	29 773	30 538	2,6	
		square metres	371 230	232 718	293 462	3 889 666	3 559 856	-8,5	
		R'000	1 234 415	812 726	1 089 465	12 415 345	12 396 087	-0,2	
	4. Other residential buildings 2/	square metres	18 684	24 807	27 476	203 146	188 064	-7,4	
		R'000	59 387	104 094	83 841	800 949	706 403	-11,8	
	5. Total residential buildings		R'000	4 018 174	3 776 654	3 576 675	38 573 061	41 122 608	6,6
	2. Non-residential buildings	1. Office and banking space	square metres	74 606	93 725	27 944	904 841	825 287	-8,8
R'000			249 009	575 440	105 383	3 356 307	3 514 948	4,7	
2. Shopping space		square metres	137 861	92 784	56 626	1 109 450	988 307	-10,9	
		R'000	412 314	342 486	265 580	4 006 066	3 785 851	-5,5	
3. Industrial and warehouse space		square metres	203 211	137 026	212 766	2 031 302	2 083 430	2,6	
		R'000	551 124	390 266	548 687	5 561 707	5 789 552	4,1	
4. Other non-residential buildings 3/		square metres	55 649	26 950	23 374	364 747	350 329	-4,0	
		R'000	169 313	117 186	76 054	1 100 146	1 189 928	8,2	
5. Total non-residential buildings		R'000	1 381 760	1 425 378	995 704	14 024 226	14 280 279	1,8	
3. Additions and alterations	1. Dwelling-houses	square metres	473 787	526 356	413 286	4 944 550	4 864 661	-1,6	
		R'000	1 369 788	1 676 487	1 353 234	13 733 338	15 047 573	9,6	
	2. Other buildings 4/	square metres	153 805	134 709	155 977	1 319 632	1 368 757	3,7	
		R'000	476 274	594 234	636 719	4 227 531	5 357 740	26,7	
	3. Total additions and alterations		R'000	1 846 062	2 270 721	1 989 953	17 960 869	20 405 313	13,6
4. Recorded plans passed	1. Total at current prices	R'000	7 245 996	7 472 753	6 562 332	70 558 156	75 808 200	7,4	

1/ The percentage change between cumulative figures for 2006 and 2007.

2/ Other residential buildings include institutions for the disabled, boarding houses, hostels and tourism accommodation e.g. hotels, motels, guesthouses, holiday chalets, bed-and-breakfast accommodation and casinos.

3/ Other non-residential space includes churches, sport and recreation clubs, schools, crèches, hospitals and all other non-residential space.

4/ Other buildings include other residential buildings, non-residential buildings and internal alterations.

\* Revised.

Table 10 - Recorded building plans passed by larger municipalities at current prices by type of building: Western Cape

			Nov. 2006*	Oct. 2007	Nov. 2007	Jan. - Nov. 2006	Jan. - Nov. 2007	% Change 1/
Category of building	Type of building	Measuring unit						
1. Residential buildings	1. Dwelling-houses < 80 square metres	Number	407	319	581	6 315	3 742	-40,7
		square metres	18 276	14 403	31 014	276 099	176 693	-36,0
		R'000	31 804	33 627	65 964	461 380	409 754	-11,2
	2. Dwelling-houses >= 80 square metres	Number	733	609	558	7 047	6 593	-6,4
		square metres	159 057	141 720	136 759	1 586 766	1 608 062	1,3
		R'000	508 819	488 020	458 993	4 827 410	5 447 279	12,8
	3. Flats and townhouses	Number	366	452	629	5 896	5 760	-2,3
		square metres	49 249	40 680	60 845	655 904	569 724	-13,1
		R'000	144 975	137 116	202 745	2 075 684	1 955 439	-5,8
	4. Other residential buildings 2/	square metres	14 409	12 636	23 695	52 786	83 087	57,4
		R'000	48 697	52 009	68 188	190 845	310 409	62,6
	5. Total residential buildings	R'000	734 295	710 772	795 890	7 555 319	8 122 881	7,5
2. Non-residential buildings	1. Office and banking space	square metres	9 055	6 529	6 678	211 871	232 553	9,8
		R'000	23 541	24 353	24 430	629 836	762 746	21,1
	2. Shopping space	square metres	10 584	70 688	2 512	152 127	177 972	17,0
		R'000	20 574	273 472	7 773	440 031	641 100	45,7
	3. Industrial and warehouse space	square metres	64 786	55 467	48 537	593 507	508 551	-14,3
		R'000	185 049	176 589	152 329	1 756 118	1 494 815	-14,9
	4. Other non-residential buildings 3/	square metres	24 788	6 548	5 319	104 104	78 032	-25,0
		R'000	72 372	21 013	16 386	314 864	232 165	-26,3
	5. Total non-residential buildings	R'000	301 536	495 427	200 918	3 140 849	3 130 826	-0,3
3. Additions and alterations	1. Dwelling-houses	square metres	127 060	149 974	148 248	1 458 261	1 399 895	-4,0
		R'000	361 464	457 088	462 753	3 993 946	4 173 115	4,5
	2. Other buildings 4/	square metres	81 047	44 244	49 344	494 139	398 454	-19,4
		R'000	225 018	266 841	211 595	1 568 694	1 826 233	16,4
	3. Total additions and alterations	R'000	586 482	723 929	674 348	5 562 640	5 999 348	7,9
4. Recorded plans passed	1. Total at current prices	R'000	1 622 313	1 930 128	1 671 156	16 258 808	17 253 055	6,1

1/ The percentage change between cumulative figures for 2006 and 2007.

2/ Other residential buildings include institutions for the disabled, boarding houses, hostels and tourism accommodation e.g. hotels, motels, guesthouses, holiday chalets, bed-and-breakfast accommodation and casinos.

3/ Other non-residential space includes churches, sport and recreation clubs, schools, crèches, hospitals and all other non-residential space.

4/ Other buildings include other residential buildings, non-residential buildings and internal alterations.

\* Revised.

Table 11 - Recorded building plans passed by larger municipalities at current prices by type of building: Eastern Cape

			*Nov. 2006	Oct. 2007	Nov. 2007	Jan. - Nov. 2006	Jan. - Nov. 2007	% Change 1/	
Category of building	Type of building	Measuring unit							
1. Residential buildings	1. Dwelling-houses < 80 square metres	Number	100	51	37	2 319	1 336	-42,4	
		square metres	4 512	2 635	1 959	100 046	59 814	-40,2	
		R'000	5 913	6 171	4 460	125 845	91 498	-27,3	
	2. Dwelling-houses >= 80 square metres	Number	226	203	147	2 509	1 972	-21,4	
		square metres	43 924	52 142	23 957	510 277	451 180	-11,6	
		R'000	112 946	153 721	79 021	1 233 255	1 317 258	6,8	
	3. Flats and townhouses	Number	76	87	25	1 277	1 312	2,7	
		square metres	8 533	12 877	3 025	163 015	139 819	-14,2	
		R'000	21 193	36 108	7 386	383 329	372 804	-2,7	
	4. Other residential buildings 2/	square metres	1 740	4 630	0	11 857	10 326	-12,9	
		R'000	4 104	12 760	0	26 207	26 162	-0,2	
	5. Total residential buildings	R'000	144 156	208 760	90 867	1 768 636	1 807 722	2,2	
	2. Non-residential buildings	1. Office and banking space	square metres	2 403	1 644	973	21 588	16 682	-22,7
			R'000	6 749	6 281	2 924	59 185	47 898	-19,1
2. Shopping space		square metres	15 346	4 690	0	74 815	103 604	38,5	
		R'000	41 373	12 092	0	194 332	263 428	35,6	
3. Industrial and warehouse space		square metres	2 868	11 633	54 489	85 537	174 964	104,5	
		R'000	5 706	29 192	102 608	175 244	372 161	112,4	
4. Other non-residential buildings 3/		square metres	2 011	3 821	10 250	18 018	42 402	135,3	
		R'000	5 069	9 880	25 834	41 520	106 397	156,3	
5. Total non-residential buildings		R'000	58 897	57 445	131 366	470 281	789 884	68,0	
3. Additions and alterations		1. Dwelling-houses	square metres	40 043	36 340	23 992	428 303	369 569	-13,7
	R'000		96 368	93 481	60 611	977 633	963 792	-1,4	
	2. Other buildings 4/	square metres	6 169	7 593	10 739	71 858	128 306	78,6	
		R'000	15 330	20 312	29 028	185 656	331 236	78,4	
	3. Total additions and alterations	R'000	111 698	113 793	89 639	1 163 289	1 295 028	11,3	
4. Recorded plans passed	1. Total at current prices	R'000	314 751	379 998	311 872	3 402 206	3 892 634	14,4	

1/ The percentage change between cumulative figures for 2006 and 2007.

2/ Other residential buildings include institutions for the disabled, boarding houses, hostels and tourism accommodation e.g. hotels, motels, guesthouses, holiday chalets, bed-and-breakfast accommodation and casinos.

3/ Other non-residential space includes churches, sport and recreation clubs, schools, crèches, hospitals and all other non-residential space.

4/ Other buildings include other residential buildings, non-residential buildings and internal alterations.

\* Revised.

**Table 12 - Recorded building plans passed by larger municipalities at current prices by type of building: Northern Cape**

			Nov. 2006*	Oct. 2007	Nov. 2007	Jan. - Nov. 2006	Jan. - Nov. 2007	% Change 1/
Category of building	Type of building	Measuring unit						
1. Residential buildings	1. Dwelling-houses < 80 square metres	Number	6	1	1	254	44	-82,7
		square metres	270	78	74	11 990	2 329	-80,6
		R'000	486	218	207	18 318	7 354	-59,9
	2. Dwelling-houses >= 80 square metres	Number	39	28	28	350	387	10,6
		square metres	7 297	5 489	5 833	67 330	70 355	4,5
		R'000	17 644	17 468	18 351	147 417	204 765	38,9
	3. Flats and townhouses	Number	36	7	14	261	133	-49,0
		square metres	3 407	800	1 627	26 007	17 134	-34,1
		R'000	8 580	2 100	4 881	50 842	50 052	-1,6
	4. Other residential buildings 2/	square metres	0	0	0	8 034	270	-96,6
		R'000	0	0	0	29 346	860	-97,1
	5. Total residential buildings	R'000	26 710	19 786	23 439	245 923	263 031	7,0
2. Non-residential buildings	1. Office and banking space	square metres	0	90	122	5 759	8 223	42,8
		R'000	0	198	342	14 161	24 012	69,6
	2. Shopping space	square metres	0	3 900	2 134	5 930	40 448	582,1
		R'000	0	11 002	7 684	14 540	125 302	761,8
	3. Industrial and warehouse space	square metres	129	2 155	1 020	12 086	10 001	-17,3
		R'000	361	6 034	2 436	33 134	24 357	-26,5
	4. Other non-residential buildings 3/	square metres	505	434	1 938	7 896	5 148	-34,8
		R'000	1 010	1 038	7 364	18 942	16 192	-14,5
	5. Total non-residential buildings	R'000	1 371	18 272	17 826	80 777	189 863	135,0
	3. Additions and alterations	1. Dwelling-houses	square metres	6 211	1 542	6 438	56 622	50 413
R'000			12 504	4 394	19 336	115 218	137 407	19,3
2. Other buildings 4/		square metres	1 722	120	3 538	13 961	25 962	86,0
		R'000	3 322	1 750	9 940	37 806	73 396	94,1
3. Total additions and alterations		R'000	15 826	6 144	29 276	153 024	210 803	37,8
4. Recorded plans passed	1. Total at current prices	R'000	43 907	44 202	70 541	479 724	663 697	38,3

1/ The percentage change between cumulative figures for 2006 and 2007.

2/ Other residential buildings include institutions for the disabled, boarding houses, hostels and tourism accommodation e.g. hotels, motels, guesthouses, holiday chalets, bed-and-breakfast accommodation and casinos.

3/ Other non-residential space includes churches, sport and recreation clubs, schools, crèches, hospitals and all other non-residential space.

4/ Other buildings include other residential buildings, non-residential buildings and internal alterations.

\* Revised.

Table 13 - Recorded building plans passed by larger municipalities at current prices by type of building: Free State

			Nov. 2006*	Oct. 2007	Nov. 2007	Jan. - Nov. 2006	Jan. - Nov. 2007	% Change 1/	
Category of building	Type of building	Measuring unit							
1. Residential buildings	1. Dwelling-houses < 80 square metres	Number	131	132	93	2 544	2 032	-20,1	
		square metres	5 699	5 753	4 151	107 809	88 394	-18,0	
		R'000	5 267	9 401	7 069	99 417	96 273	-3,2	
	2. Dwelling-houses >= 80 square metres	Number	128	144	128	1 126	1 291	14,7	
		square metres	26 400	46 686	31 727	215 756	308 617	43,0	
		R'000	62 891	105 182	89 779	494 311	777 871	57,4	
	3. Flats and townhouses	Number	58	31	44	1 137	1 322	16,3	
		square metres	9 738	4 400	6 362	132 894	141 327	6,3	
		R'000	25 154	14 328	17 367	328 345	378 969	15,4	
	4. Other residential buildings 2/	square metres	88	133	997	7 735	17 663	128,4	
		R'000	264	532	3 645	87 057	62 536	-28,2	
	5. Total residential buildings		R'000	93 576	129 443	117 860	1 009 130	1 315 649	30,4
	2. Non-residential buildings	1. Office and banking space	square metres	0	0	2 848	16 583	10 080	-39,2
R'000			0	0	9 769	47 547	33 907	-28,7	
2. Shopping space		square metres	0	80	701	24 691	49 183	99,2	
		R'000	0	240	2 276	78 699	190 937	142,6	
3. Industrial and warehouse space		square metres	160	6 375	5 914	50 891	43 049	-15,4	
		R'000	288	10 748	12 272	77 812	78 414	0,8	
4. Other non-residential buildings 3/		square metres	2 136	0	0	13 838	4 856	-64,9	
		R'000	9 895	0	0	40 434	11 604	-71,3	
5. Total non-residential buildings		R'000	10 183	10 988	24 317	244 492	314 862	28,8	
3. Additions and alterations	1. Dwelling-houses	square metres	19 986	20 488	14 805	171 431	178 921	4,4	
		R'000	40 733	52 141	37 713	343 090	441 780	28,8	
	2. Other buildings 4/	square metres	1 986	3 441	9 198	39 296	36 393	-7,4	
		R'000	15 250	19 593	28 089	140 471	129 167	-8,0	
	3. Total additions and alterations		R'000	55 983	71 734	65 802	483 561	570 947	18,1
4. Recorded plans passed	1. Total at current prices	R'000	159 742	212 165	207 979	1 737 183	2 201 458	26,7	

1/ The percentage change between cumulative figures for 2006 and 2007.

2/ Other residential buildings include institutions for the disabled, boarding houses, hostels and tourism accommodation e.g. hotels, motels, guesthouses, holiday chalets, bed-and-breakfast accommodation and casinos.

3/ Other non-residential space includes churches, sport and recreation clubs, schools, crèches, hospitals and all other non-residential space.

4/ Other buildings include other residential buildings, non-residential buildings and internal alterations.

\* Revised.

Table 14 - Recorded building plans passed by larger municipalities at current prices by type of building: KwaZulu-Natal

			Nov. 2006*	Oct. 2007	Nov. 2007	Jan. - Nov. 2006	Jan. - Nov. 2007	% Change 1/
Category of building	Type of building	Measuring unit						
1. Residential buildings	1. Dwelling-houses < 80 square metres	Number	78	85	91	1 167	1 034	-11,4
		square metres	4 320	5 265	5 500	61 418	58 613	-4,6
		R'000	14 473	17 746	20 204	151 810	179 513	18,2
	2. Dwelling-houses >= 80 square metres	Number	239	219	226	2 808	2 415	-14,0
		square metres	55 393	52 583	51 441	634 225	575 519	-9,3
		R'000	196 206	221 412	228 552	1 985 035	2 232 486	12,5
	3. Flats and townhouses	Number	483	341	415	4 120	5 450	32,3
		square metres	76 764	57 457	61 025	702 796	661 261	-5,9
		R'000	274 983	207 933	307 065	2 516 343	2 669 396	6,1
	4. Other residential buildings 2/	square metres	935	2 795	882	30 217	28 850	-4,5
		R'000	3 111	18 680	4 412	154 969	136 277	-12,1
	5. Total residential buildings	R'000	488 773	465 771	560 233	4 808 157	5 217 672	8,5
2. Non-residential buildings	1. Office and banking space	square metres	35 249	1 746	2 553	156 582	112 392	-28,2
		R'000	111 044	5 342	11 489	613 913	476 579	-22,4
	2. Shopping space	square metres	39 741	4 108	660	113 353	141 673	25,0
		R'000	133 027	12 923	3 630	373 599	597 464	59,9
	3. Industrial and warehouse space	square metres	48 130	23 699	18 338	433 084	324 699	-25,0
		R'000	108 462	61 978	45 146	1 034 646	842 929	-18,5
	4. Other non-residential buildings 3/	square metres	1 108	1 097	1 692	58 150	69 954	20,3
		R'000	3 591	4 496	8 200	180 060	302 138	67,8
	5. Total non-residential buildings	R'000	356 124	84 739	68 465	2 202 218	2 219 110	0,8
3. Additions and alterations	1. Dwelling-houses	square metres	71 772	55 295	59 970	664 447	609 612	-8,3
		R'000	235 348	202 832	237 890	1 968 788	2 128 745	8,1
	2. Other buildings 4/	square metres	16 085	47 699	7 742	259 205	279 890	8,0
		R'000	42 863	172 042	51 777	826 449	1 055 471	27,7
	3. Total additions and alterations	R'000	278 211	374 874	289 667	2 795 237	3 184 216	13,9
4. Recorded plans passed	1. Total at current prices	R'000	1 123 108	925 384	918 365	9 805 612	10 620 998	8,3

1/ The percentage change between cumulative figures for 2006 and 2007.

2/ Other residential buildings include institutions for the disabled, boarding houses, hostels and tourism accommodation e.g. hotels, motels, guesthouses, holiday chalets, bed-and-breakfast accommodation and casinos.

3/ Other non-residential space includes churches, sport and recreation clubs, schools, crèches, hospitals and all other non-residential space.

4/ Other buildings include other residential buildings, non-residential buildings and internal alterations.

\* Revised.

Table 15 - Recorded building plans passed by larger municipalities at current prices by type of building: North West

			Nov. 2006*	Oct. 2007	Nov. 2007	Jan. - Nov. 2006	Jan. - Nov. 2007	% Change 1/
Category of building	Type of building	Measuring unit						
1. Residential buildings	1. Dwelling-houses < 80 square metres	Number	72	120	35	1 538	1 652	7,4
		square metres	4 257	6 696	2 064	73 949	79 981	8,2
		R'000	4 987	7 967	3 670	82 402	100 411	21,9
	2. Dwelling-houses >= 80 square metres	Number	186	295	215	2 167	2 276	5,0
		square metres	31 563	65 798	53 809	434 515	512 050	17,8
		R'000	78 089	187 852	151 748	1 081 051	1 383 705	28,0
	3. Flats and townhouses	Number	90	52	62	1 451	1 210	-16,6
		square metres	13 797	4 909	4 530	159 129	149 610	-6,0
		R'000	34 621	16 947	10 960	403 136	380 043	-5,7
	4. Other residential buildings 2/	square metres	412	575	0	8 815	5 666	-35,7
		R'000	906	1 265	0	24 668	15 601	-36,8
	5. Total residential buildings	R'000	118 603	214 031	166 378	1 591 257	1 879 760	18,1
2. Non-residential buildings	1. Office and banking space	square metres	1 407	890	941	16 137	28 931	79,3
		R'000	3 096	2 140	1 305	38 677	69 383	79,4
	2. Shopping space	square metres	24 343	1 528	115	164 653	52 026	-68,4
		R'000	60 766	3 362	173	495 171	141 554	-71,4
	3. Industrial and warehouse space	square metres	4 034	1 851	450	37 536	43 775	16,6
		R'000	9 120	4 713	900	82 094	83 065	1,2
	4. Other non-residential buildings 3/	square metres	1 894	590	277	14 047	15 821	12,6
		R'000	5 753	1 656	886	41 316	41 413	0,2
	5. Total non-residential buildings	R'000	78 735	11 871	3 264	657 258	335 415	-49,0
	3. Additions and alterations	1. Dwelling-houses	square metres	12 094	11 610	8 341	138 140	140 199
R'000			26 096	30 644	17 964	287 079	319 152	11,2
2. Other buildings 4/		square metres	128	515	344	17 425	13 495	-22,6
		R'000	858	1 797	1 116	49 382	41 478	-16,0
3. Total additions and alterations		R'000	26 954	32 441	19 080	336 461	360 630	7,2
4. Recorded plans passed	1. Total at current prices	R'000	224 292	258 343	188 722	2 584 976	2 575 805	-0,4

1/ The percentage change between cumulative figures for 2006 and 2007.

2/ Other residential buildings include institutions for the disabled, boarding houses, hostels and tourism accommodation e.g. hotels, motels, guesthouses, holiday chalets, bed-and-breakfast accommodation and casinos.

3/ Other non-residential space includes churches, sport and recreation clubs, schools, crèches, hospitals and all other non-residential space.

4/ Other buildings include other residential buildings, non-residential buildings and internal alterations.

\* Revised.



Table 16 - Recorded building plans passed by larger municipalities at current prices by type of building: Gauteng

			Nov. 2006*	Oct. 2007	Nov. 2007	Jan. - Nov. 2006	Jan. - Nov. 2007	% Change 1/
Category of building	Type of building	Measuring unit						
1. Residential buildings	1. Dwelling-houses < 80 square metres	Number	1 974	1 772	1 480	19 157	21 067	10,0
		square metres	86 708	78 808	62 272	838 750	903 979	7,8
		R'000	215 088	185 909	124 220	1 668 395	1 848 591	10,8
	2. Dwelling-houses >= 80 square metres	Number	1 253	1 067	853	13 146	11 771	-10,5
		square metres	356 076	321 522	240 662	3 368 992	3 273 067	-2,8
		R'000	1 201 926	1 178 019	871 461	10 842 809	11 410 005	5,2
	3. Flats and townhouses	Number	1 164	751	1 247	13 222	12 697	-4,0
		square metres	199 593	80 638	138 323	1 790 343	1 624 935	-9,2
		R'000	699 438	312 785	494 196	5 991 027	5 897 506	-1,6
	4. Other residential buildings 2/	square metres	30	3 373	1 334	72 018	28 930	-59,8
		R'000	126	16 308	6 003	254 716	120 729	-52,6
	5. Total residential buildings	R'000	2 116 578	1 693 021	1 495 880	18 756 947	19 276 831	2,8
2. Non-residential buildings	1. Office and banking space	square metres	21 894	82 506	8 902	418 916	360 859	-13,9
		R'000	90 286	536 326	40 854	1 789 638	1 950 531	9,0
	2. Shopping space	square metres	25 274	6 495	40 635	432 439	358 514	-17,1
		R'000	74 459	26 295	214 619	1 704 048	1 653 554	-3,0
	3. Industrial and warehouse space	square metres	65 975	32 942	65 374	716 198	830 816	16,0
		R'000	200 621	93 739	176 111	2 140 020	2 430 743	13,6
	4. Other non-residential buildings 3/	square metres	20 660	13 354	2 384	109 172	103 991	-4,7
		R'000	66 605	75 847	13 282	337 529	410 208	21,5
	5. Total non-residential buildings	R'000	431 971	732 207	444 866	5 971 235	6 445 036	7,9
3. Additions and alterations	1. Dwelling-houses	square metres	156 795	221 130	120 485	1 703 075	1 776 562	4,3
		R'000	514 427	754 519	434 195	5 326 550	6 010 920	12,8
	2. Other buildings 4/	square metres	43 779	27 702	66 806	374 406	430 980	15,1
		R'000	164 930	101 717	280 691	1 285 751	1 733 092	34,8
	3. Total additions and alterations	R'000	679 357	856 236	714 886	6 612 301	7 744 012	17,1
4. Recorded plans passed	1. Total at current prices	R'000	3 227 906	3 281 464	2 655 632	31 340 483	33 465 879	6,8

1/ The percentage change between cumulative figures for 2006 and 2007.

2/ Other residential buildings include institutions for the disabled, boarding houses, hostels and tourism accommodation e.g. hotels, motels, guesthouses, holiday chalets, bed-and-breakfast accommodation and casinos.

3/ Other non-residential space includes churches, sport and recreation clubs, schools, crèches, hospitals and all other non-residential space.

4/ Other buildings include other residential buildings, non-residential buildings and internal alterations.

\* Revised.

**Table 17 - Recorded building plans passed by larger municipalities at current prices by type of building: Mpumalanga**

			Nov. 2006	Oct. 2007	Nov. 2007	Jan. - Nov. 2006	Jan. - Nov. 2007	% Change 1/
Category of building	Type of building	Measuring unit						
1. Residential buildings	1. Dwelling-houses < 80 square metres	Number	107	299	152	632	1 374	117,4
		square metres	6 436	13 930	7 681	37 053	64 033	72,8
		R'000	15 996	15 405	11 479	89 005	98 008	10,1
	2. Dwelling-houses >= 80 square metres	Number	317	208	225	2 214	2 468	11,5
		square metres	71 811	51 190	59 001	499 713	592 380	18,5
		R'000	181 697	159 442	171 543	1 344 113	1 716 761	27,7
	3. Flats and townhouses	Number	49	314	72	1 648	1 736	5,3
		square metres	5 078	19 796	5 102	188 494	150 364	-20,2
		R'000	13 612	59 211	14 904	488 142	433 463	-11,2
	4. Other residential buildings 2/	square metres	70	587	408	8 663	4 884	-43,6
		R'000	170	2 348	1 200	24 011	14 466	-39,8
	5. Total residential buildings	R'000	211 475	236 406	199 126	1 945 271	2 262 698	16,3
2. Non-residential buildings	1. Office and banking space	square metres	1 550	0	1 493	46 286	20 445	-55,8
		R'000	6 865	0	5 975	136 892	62 704	-54,2
	2. Shopping space	square metres	19 226	0	4 666	113 321	28 111	-75,2
		R'000	76 061	0	18 132	649 685	90 764	-86,0
	3. Industrial and warehouse space	square metres	13 718	2 224	11 270	77 247	112 742	46,0
		R'000	34 212	5 723	38 450	204 909	376 635	83,8
	4. Other non-residential buildings 3/	square metres	2 547	713	0	38 242	9 115	-76,2
		R'000	5 018	2 470	0	123 530	22 313	-81,9
	5. Total non-residential buildings	R'000	122 156	8 193	62 557	1 115 016	552 416	-50,5
	3. Additions and alterations	1. Dwelling-houses	square metres	31 104	20 107	23 612	223 408	229 753
R'000			62 353	57 419	64 068	497 136	605 683	21,8
2. Other buildings 4/		square metres	1 609	1 517	4 136	25 879	39 149	51,3
		R'000	5 224	6 238	15 618	82 482	130 496	58,2
3. Total additions and alterations		R'000	67 577	63 657	79 686	579 618	736 179	27,0
4. Recorded plans passed	1. Total at current prices	R'000	401 208	308 256	341 369	3 639 905	3 551 293	-2,4

1/ The percentage change between cumulative figures for 2006 and 2007.

2/ Other residential buildings include institutions for the disabled, boarding houses, hostels and tourism accommodation e.g. hotels, motels, guesthouses, holiday chalets, bed-and-breakfast accommodation and casinos.

3/ Other non-residential space includes churches, sport and recreation clubs, schools, crèches, hospitals and all other non-residential space.

4/ Other buildings include other residential buildings, non-residential buildings and internal alterations.

Table 18 - Recorded building plans passed by larger municipalities at current prices by type of building: Limpopo

			Nov. 2006	Oct. 2007	Nov. 2007	Jan. - Nov. 2006	Jan. - Nov. 2007	% Change 1/
Category of building	Type of building	Measuring unit						
1. Dwelling-houses < 80 square metres	1. Dwelling-houses < 80 square metres	Number	76	24	19	893	826	-7,5
		square metres	4 737	1 575	1 208	46 586	45 304	-2,8
		R'000	11 854	4 486	3 259	85 367	99 712	16,8
	2. Dwelling-houses >= 80 square metres	Number	116	133	127	1 231	1 023	-16,9
		square metres	21 359	23 835	27 195	248 286	214 290	-13,7
		R'000	58 286	67 788	93 389	619 427	598 874	-3,3
	3. Flats and townhouses	Number	35	88	100	761	918	20,6
		square metres	5 071	11 161	12 623	71 084	105 682	48,7
		R'000	11 859	26 198	29 961	178 497	258 415	44,8
	4. Other residential buildings 2/	square metres	1 000	78	160	3 021	8 388	177,7
		R'000	2 009	192	393	9 130	19 363	112,1
	5. Total residential buildings	R'000	84 008	98 664	127 002	892 421	976 364	9,4
2. Dwelling-houses >= 80 square metres	1. Office and banking space	square metres	3 048	320	3 734	11 119	35 422	218,6
		R'000	7 428	800	8 295	26 458	87 188	229,5
	2. Shopping space	square metres	3 347	1 295	5 203	28 121	36 776	30,8
		R'000	6 054	3 100	11 293	55 961	81 748	46,1
	3. Industrial and warehouse space	square metres	3 411	680	7 374	25 216	34 833	38,1
		R'000	7 305	1 550	18 435	57 730	86 433	49,7
	4. Other non-residential buildings 3/	square metres	0	393	1 514	1 280	21 010	1 541,4
		R'000	0	786	4 102	1 951	47 498	2 334,5
	5. Total non-residential buildings	R'000	20 787	6 236	42 125	142 100	302 867	113,1
	3. Flats and townhouses	1. Dwelling-houses	square metres	8 722	9 870	7 395	100 863	109 737
R'000			20 495	23 969	18 704	223 898	266 979	19,2
2. Other buildings 4/		square metres	1 280	1 878	4 130	23 463	16 128	-31,3
		R'000	3 479	3 944	8 865	50 840	37 171	-26,9
3. Total additions and alterations		R'000	23 974	27 913	27 569	274 738	304 150	10,7
4. Other residential buildings 2/	1. Total at current prices	R'000	128 769	132 813	196 696	1 309 259	1 583 381	20,9

1/ The percentage change between cumulative figures for 2006 and 2007.

2/ Other residential buildings include institutions for the disabled, boarding houses, hostels and tourism accommodation e.g. hotels, motels, guesthouses, holiday chalets, bed-and-breakfast accommodation and casinos.

3/ Other non-residential space includes churches, sport and recreation clubs, schools, crèches, hospitals and all other non-residential space.

4/ Other buildings include other residential buildings, non-residential buildings and internal alterations.

Table 19 - Buildings reported as completed to larger municipalities at current prices by type of building: South Africa

			Nov. 2006*	Oct. 2007	Nov. 2007	Jan. - Nov. 2006	Jan. - Nov. 2007	% Change 1/
Category of building	Type of building	Measuring unit						
1. Residential buildings	1. Dwelling-houses < 80 square metres	Number	4 521	1 917	1 835	22 356	23 871	6,8
		square metres	179 956	90 682	80 810	956 830	1 029 890	7,6
		R'000	269 248	210 954	169 674	1 686 847	1 898 664	12,6
	2. Dwelling-houses >= 80 square metres	Number	2 133	1 901	2 061	20 068	20 281	1,1
		square metres	471 727	439 849	451 095	4 492 347	4 579 600	1,9
		R'000	1 347 829	1 395 427	1 443 714	12 663 424	14 215 260	12,3
	3. Flats and townhouses	Number	2 296	2 329	2 306	21 401	24 830	16,0
		square metres	289 446	280 402	267 614	2 805 601	2 842 004	1,3
		R'000	953 284	1 006 226	908 290	8 769 433	9 583 290	9,3
	4. Other residential buildings 2/	square metres	16 062	26 473	4 581	74 996	164 930	119,9
		R'000	77 973	90 579	16 034	277 882	684 396	146,3
	5. Total residential buildings	R'000	2 648 334	2 703 186	2 537 712	23 397 586	26 381 610	12,8
2. Non-residential buildings	1. Office and banking space	square metres	57 424	18 675	20 963	298 592	571 214	91,3
		R'000	193 288	86 783	97 411	975 362	2 084 438	113,7
	2. Shopping space	square metres	74 059	99 567	55 104	640 507	578 298	-9,7
		R'000	202 882	497 512	255 910	2 112 319	2 236 918	5,9
	3. Industrial and warehouse space	square metres	96 407	158 917	90 624	778 556	1 262 092	62,1
		R'000	240 913	486 610	225 781	1 923 218	3 533 140	83,7
	4. Other non-residential buildings 3/	square metres	5 464	10 368	10 013	108 747	152 522	40,3
		R'000	14 317	35 828	31 988	285 730	467 206	63,5
	5. Total non-residential buildings	R'000	651 400	1 106 733	611 090	5 296 629	8 321 702	57,1
3. Additions and alterations	1. Dwelling-houses	square metres	199 980	194 250	197 549	1 858 599	1 913 899	3,0
		R'000	503 614	541 881	527 518	4 689 466	5 326 431	13,6
	2. Other buildings 4/	square metres	138 093	57 541	84 739	600 659	576 629	-4,0
		R'000	349 802	181 988	303 594	1 688 326	1 990 771	17,9
	3. Total additions and alterations	R'000	853 416	723 869	831 112	6 377 792	7 317 202	14,7
4. Recorded buildings completed	1. Total at current prices	R'000	4 153 150	4 533 788	3 979 914	35 072 007	42 020 514	19,8

1/ The percentage change between cumulative figures for 2006 and 2007.

2/ Other residential buildings include institutions for the disabled, boarding houses, hostels and tourism accommodation e.g. hotels, motels, guesthouses, holiday chalets, bed-and-breakfast accommodation and casinos.

3/ Other non-residential space includes churches, sport and recreation clubs, schools, crèches, hospitals and all other non-residential space.

4/ Other buildings include other residential buildings, non-residential buildings and internal alterations.

\* Revised.

**Table 20 - Buildings reported as completed to larger municipalities at current prices by type of building: Western Cape**

			Nov. 2006*	Oct. 2007	Nov. 2007	Jan. - Nov. 2006	Jan. - Nov. 2007	% Change 1/
Category of building	Type of building	Measuring unit						
<b>1. Residential buildings</b>	<b>1. Dwelling-houses &lt; 80 square metres</b>	<b>Number</b>	465	251	288	4 149	6 867	65,5
		<b>square metres</b>	19 845	13 100	14 029	167 497	274 556	63,9
		<b>R'000</b>	37 487	33 057	31 321	275 387	444 675	61,5
	<b>2. Dwelling-houses &gt;= 80 square metres</b>	<b>Number</b>	578	501	643	5 657	5 282	-6,6
		<b>square metres</b>	122 733	116 066	140 358	1 251 810	1 168 203	-6,7
		<b>R'000</b>	368 161	351 914	436 956	3 448 996	3 556 161	3,1
	<b>3. Flats and townhouses</b>	<b>Number</b>	579	388	475	5 758	6 246	8,5
		<b>square metres</b>	59 308	53 125	57 750	682 653	682 255	-0,1
		<b>R'000</b>	169 910	137 987	184 651	2 009 036	2 129 473	6,0
	<b>4. Other residential buildings 2/</b>	<b>square metres</b>	11 446	22 770	0	24 782	44 403	79,2
		<b>R'000</b>	64 818	78 394	0	107 233	158 160	47,5
	<b>5. Total residential buildings</b>	<b>R'000</b>	<b>640 376</b>	<b>601 352</b>	<b>652 928</b>	<b>5 840 652</b>	<b>6 288 469</b>	<b>7,7</b>
<b>2. Non-residential buildings</b>	<b>1. Office and banking space</b>	<b>square metres</b>	10 857	2 867	1 325	61 895	207 661	235,5
		<b>R'000</b>	31 181	9 010	5 196	165 440	610 534	269,0
	<b>2. Shopping space</b>	<b>square metres</b>	3 567	9 754	11 136	119 371	65 259	-45,3
		<b>R'000</b>	10 930	31 405	36 703	271 892	210 493	-22,6
	<b>3. Industrial and warehouse space</b>	<b>square metres</b>	22 500	41 674	30 287	297 354	420 705	41,5
		<b>R'000</b>	64 861	128 629	85 154	764 042	1 198 566	56,9
	<b>4. Other non-residential buildings 3/</b>	<b>square metres</b>	2 625	3 370	8 246	40 988	70 721	72,5
		<b>R'000</b>	7 382	7 687	27 384	104 237	202 805	94,6
	<b>5. Total non-residential buildings</b>	<b>R'000</b>	<b>114 354</b>	<b>176 731</b>	<b>154 437</b>	<b>1 305 611</b>	<b>2 222 398</b>	<b>70,2</b>
<b>3. Additions and alterations</b>	<b>1. Dwelling-houses</b>	<b>square metres</b>	73 461	73 185	85 733	697 437	709 997	1,8
		<b>R'000</b>	196 012	188 246	215 663	1 727 629	1 860 225	7,7
	<b>2. Other buildings 4/</b>	<b>square metres</b>	76 320	28 657	58 537	259 860	254 072	-2,2
		<b>R'000</b>	179 277	75 930	215 055	769 897	873 138	13,4
	<b>3. Total additions and alterations</b>	<b>R'000</b>	<b>375 289</b>	<b>264 176</b>	<b>430 718</b>	<b>2 497 526</b>	<b>2 733 363</b>	<b>9,4</b>
<b>4. Recorded buildings completed</b>	<b>1. Total at current prices</b>	<b>R'000</b>	<b>1 130 019</b>	<b>1 042 259</b>	<b>1 238 083</b>	<b>9 643 789</b>	<b>11 244 230</b>	<b>16,6</b>

1/ The percentage change between cumulative figures for 2006 and 2007.

2/ Other residential buildings include institutions for the disabled, boarding houses, hostels and tourism accommodation e.g. hotels, motels, guesthouses, holiday chalets, bed-and-breakfast accommodation and casinos.

3/ Other non-residential space includes churches, sport and recreation clubs, schools, crèches, hospitals and all other non-residential space.

4/ Other buildings include other residential buildings, non-residential buildings and internal alterations.

\* Revised.

Table 21 - Buildings reported as completed to larger municipalities at current prices by type of building: Eastern Cape

			Nov. 2006*	Oct. 2007	Nov. 2007	Jan. - Nov. 2006	Jan. - Nov. 2007	% Change 1/
Category of building								
<b>1. Residential buildings</b>	<b>1. Dwelling-houses &lt; 80 square metres</b>	<b>Number</b>	558	225	255	2 185	1 866	-14,6
		<b>square metres</b>	23 465	9 203	10 296	92 367	77 315	-16,3
		<b>R'000</b>	24 049	15 409	17 978	121 885	118 319	-2,9
	<b>2. Dwelling-houses &gt;= 80 square metres</b>	<b>Number</b>	130	157	106	1 248	1 162	-6,9
		<b>square metres</b>	23 549	28 714	22 008	215 602	210 751	-2,2
		<b>R'000</b>	59 761	71 043	62 256	475 593	539 911	13,5
	<b>3. Flats and townhouses</b>	<b>Number</b>	37	91	39	624	1 131	81,3
		<b>square metres</b>	5 661	11 002	5 526	67 845	120 112	77,0
		<b>R'000</b>	12 257	26 754	14 022	145 174	307 900	112,1
	<b>4. Other residential buildings 2/</b>	<b>square metres</b>	915	145	0	1 035	3 023	192,1
		<b>R'000</b>	2 038	392	0	2 302	7 643	232,0
	<b>5. Total residential buildings</b>	<b>R'000</b>	<b>98 105</b>	<b>113 598</b>	<b>94 256</b>	<b>744 954</b>	<b>973 773</b>	<b>30,7</b>
<b>2. Non-residential buildings</b>	<b>1. Office and banking space</b>	<b>square metres</b>	6 680	155	1 508	11 222	3 442	-69,3
		<b>R'000</b>	18 009	323	5 893	28 168	10 794	-61,7
	<b>2. Shopping space</b>	<b>square metres</b>	0	366	1 142	14 308	19 398	35,6
		<b>R'000</b>	0	930	2 552	33 975	46 579	37,1
	<b>3. Industrial and warehouse space</b>	<b>square metres</b>	4 991	5 415	17 777	37 520	46 647	24,3
		<b>R'000</b>	9 968	12 752	35 803	70 754	104 075	47,1
	<b>4. Other non-residential buildings 3/</b>	<b>square metres</b>	752	452	173	6 395	4 066	-36,4
		<b>R'000</b>	1 692	904	477	14 105	8 935	-36,7
	<b>5. Total non-residential buildings</b>	<b>R'000</b>	<b>29 669</b>	<b>14 909</b>	<b>44 725</b>	<b>147 002</b>	<b>170 383</b>	<b>15,9</b>
<b>3. Additions and alterations</b>	<b>1. Dwelling-houses</b>	<b>square metres</b>	16 192	15 652	12 291	121 380	137 939	13,6
		<b>R'000</b>	31 428	31 284	29 065	234 005	286 536	22,4
	<b>2. Other buildings 4/</b>	<b>square metres</b>	19 729	3 700	2 592	75 847	40 012	-47,2
		<b>R'000</b>	45 578	7 961	5 810	172 492	90 862	-47,3
	<b>3. Total additions and alterations</b>	<b>R'000</b>	<b>77 006</b>	<b>39 245</b>	<b>34 875</b>	<b>406 497</b>	<b>377 398</b>	<b>-7,2</b>
<b>4. Recorded buildings completed</b>	<b>1. Total at current prices</b>	<b>R'000</b>	<b>204 780</b>	<b>167 752</b>	<b>173 856</b>	<b>1 298 453</b>	<b>1 521 554</b>	<b>17,2</b>

1/ The percentage change between cumulative figures for 2006 and 2007.

2/ Other residential buildings include institutions for the disabled, boarding houses, hostels and tourism accommodation e.g. hotels, motels, guesthouses, holiday chalets, bed-and-breakfast accommodation and casinos.

3/ Other non-residential space includes churches, sport and recreation clubs, schools, crèches, hospitals and all other non-residential space.

4/ Other buildings include other residential buildings, non-residential buildings and internal alterations.

\* Revised.

Table 22 - Buildings reported as completed to larger municipalities at current prices by type of building: Northern Cape

			Nov. 2006	Oct. 2007	Nov. 2007	Jan. - Nov. 2006	Jan. - Nov. 2007	% Change 1/
Category of building	Type of building	Measuring unit						
1. Residential buildings	1. Dwelling-houses < 80 square metres	Number	6	32	53	29	192	562,1
		square metres	270	808	2 008	1 464	6 980	376,8
		R'000	486	935	2 203	2 504	8 272	230,4
	2. Dwelling-houses >= 80 square metres	Number	26	17	16	221	180	-18,6
		square metres	5 334	3 599	3 639	40 170	35 494	-11,6
		R'000	11 150	9 044	10 783	84 870	94 294	11,1
	3. Flats and townhouses	Number	12	16	34	112	206	83,9
		square metres	2 100	1 595	4 276	15 634	27 317	74,7
		R'000	3 780	3 902	11 973	29 806	70 634	137,0
	4. Other residential buildings 2/	square metres	552	3 102	4 581	1 264	11 196	785,8
		R'000	850	8 993	16 034	2 222	32 982	1 384,3
	5. Total residential buildings	R'000	16 266	22 874	40 993	119 402	206 182	72,7
2. Non-residential buildings	1. Office and banking space	square metres	0	294	0	2 488	6 485	160,7
		R'000	0	823	0	5 149	16 161	213,9
	2. Shopping space	square metres	0	0	0	5 285	7 008	32,6
		R'000	0	0	0	12 735	16 341	28,3
	3. Industrial and warehouse space	square metres	3 157	0	1 458	8 322	6 188	-25,6
		R'000	7 879	0	3 208	19 100	15 368	-19,5
	4. Other non-residential buildings 3/	square metres	475	0	0	1 224	498	-59,3
		R'000	1 220	0	0	2 675	1 195	-55,3
	5. Total non-residential buildings	R'000	9 099	823	3 208	39 659	49 065	23,7
3. Additions and alterations	1. Dwelling-houses	square metres	4 549	2 240	2 528	24 772	30 150	21,7
		R'000	9 374	6 977	7 940	52 237	82 549	58,0
	2. Other buildings 4/	square metres	822	0	1 202	13 065	5 868	-55,1
		R'000	1 750	550	3 366	28 721	22 943	-20,1
	3. Total additions and alterations	R'000	11 124	7 527	11 306	80 958	105 492	30,3
4. Recorded buildings completed	1. Total at current prices	R'000	36 489	31 224	55 507	240 019	360 739	50,3

1/ The percentage change between cumulative figures for 2006 and 2007.

2/ Other residential buildings include institutions for the disabled, boarding houses, hostels and tourism accommodation e.g. hotels, motels, guesthouses, holiday chalets, bed-and-breakfast accommodation and casinos.

3/ Other non-residential space includes churches, sport and recreation clubs, schools, crèches, hospitals and all other non-residential space.

4/ Other buildings include other residential buildings, non-residential buildings and internal alterations.

Table 23 - Buildings reported as completed to larger municipalities at current prices by type of building: Free State

			Nov. 2006*	Oct. 2007	Nov. 2007	Jan. - Nov. 2006	Jan. - Nov. 2007	% Change 1/
Category of building	Type of building	Measuring unit						
1. Residential buildings	1. Dwelling-houses < 80 square metres	Number	19	22	102	468	660	41,0
		square metres	1 089	1 454	3 978	22 012	32 756	48,8
		R'000	1 860	3 236	6 818	26 601	47 957	80,3
	2. Dwelling-houses >= 80 square metres	Number	56	48	59	434	825	90,1
		square metres	9 391	9 210	9 911	76 474	149 311	95,2
		R'000	18 030	20 345	26 815	142 041	324 861	128,7
	3. Flats and townhouses	Number	3	19	39	478	824	72,4
		square metres	424	2 036	4 805	48 774	80 196	64,4
		R'000	1 271	5 171	14 978	103 484	200 750	94,0
	4. Other residential buildings 2/	square metres	0	0	0	8 972	7 830	-12,7
		R'000	0	0	0	37 828	85 155	125,1
5. Total residential buildings	R'000	21 161	28 752	48 611	309 954	658 723	112,5	
2. Non-residential buildings	1. Office and banking space	square metres	0	0	0	1 625	7 425	356,9
		R'000	0	0	0	4 004	23 358	483,4
	2. Shopping space	square metres	1 724	658	818	22 209	10 830	-51,2
		R'000	3 400	1 973	2 500	62 291	37 778	-39,4
	3. Industrial and warehouse space	square metres	689	0	2 468	18 127	14 810	-18,3
		R'000	1 400	0	5 000	48 363	25 305	-47,7
	4. Other non-residential buildings 3/	square metres	673	1 093	0	4 436	4 994	12,6
		R'000	1 173	8 744	0	8 992	19 695	119,0
	5. Total non-residential buildings	R'000	5 973	10 717	7 500	123 650	106 136	-14,2
3. Additions and alterations	1. Dwelling-houses	square metres	4 859	7 156	7 014	64 621	72 726	12,5
		R'000	8 513	14 614	14 998	108 278	145 018	33,9
	2. Other buildings 4/	square metres	1 447	183	839	15 990	19 591	22,5
		R'000	3 662	1 711	3 046	48 218	90 468	87,6
	3. Total additions and alterations	R'000	12 175	16 325	18 044	156 496	235 486	50,5
4. Recorded buildings completed	1. Total at current prices	R'000	39 309	55 794	74 155	590 100	1 000 345	69,5

1/ The percentage change between cumulative figures for 2006 and 2007.

2/ Other residential buildings include institutions for the disabled, boarding houses, hostels and tourism accommodation e.g. hotels, motels, guesthouses, holiday chalets, bed-and-breakfast accommodation and casinos.

3/ Other non-residential space includes churches, sport and recreation clubs, schools, crèches, hospitals and all other non-residential space.

4/ Other buildings include other residential buildings, non-residential buildings and internal alterations.

\* Revised.



**Table 24 - Buildings reported as completed to larger municipalities at current prices by type of building: KwaZulu-Natal**

			Nov. 2006*	Oct. 2007	Nov. 2007	Jan. - Nov. 2006	Jan. - Nov. 2007	% Change 1/
Category of building	Type of building	Measuring unit						
<b>1. Residential buildings</b>	<b>1. Dwelling-houses &lt; 80 square metres</b>	<b>Number</b>	127	70	165	1 120	1 254	12,0
		<b>square metres</b>	6 095	3 614	6 850	50 120	54 888	9,5
		<b>R'000</b>	15 809	10 278	12 122	128 515	135 826	5,7
	<b>2. Dwelling-houses &gt;= 80 square metres</b>	<b>Number</b>	146	105	114	1 328	1 366	2,9
		<b>square metres</b>	25 477	22 331	28 767	277 402	313 643	13,1
		<b>R'000</b>	81 837	79 009	107 754	853 137	1 188 381	39,3
	<b>3. Flats and townhouses</b>	<b>Number</b>	493	119	149	2 908	2 285	-21,4
		<b>square metres</b>	73 489	26 149	31 065	533 998	430 531	-19,4
		<b>R'000</b>	282 287	114 756	96 050	1 822 447	1 584 480	-13,1
	<b>4. Other residential buildings 2/</b>	<b>square metres</b>	3 080	0	0	13 252	20 824	57,1
		<b>R'000</b>	10 060	0	0	52 563	122 445	132,9
	<b>5. Total residential buildings</b>	<b>R'000</b>	<b>389 993</b>	<b>204 043</b>	<b>215 926</b>	<b>2 856 662</b>	<b>3 031 132</b>	<b>6,1</b>
<b>2. Non-residential buildings</b>	<b>1. Office and banking space</b>	<b>square metres</b>	1 690	1 612	5 714	54 022	40 026	-25,9
		<b>R'000</b>	4 300	4 075	23 529	161 540	120 064	-25,7
	<b>2. Shopping space</b>	<b>square metres</b>	0	2 786	2 589	86 338	108 137	25,2
		<b>R'000</b>	0	5 383	8 673	411 534	379 843	-7,7
	<b>3. Industrial and warehouse space</b>	<b>square metres</b>	26 006	7 872	6 412	140 693	291 766	107,4
		<b>R'000</b>	62 065	20 640	15 237	330 097	792 152	140,0
	<b>4. Other non-residential buildings 3/</b>	<b>square metres</b>	154	2 231	1 138	27 263	22 400	-17,8
		<b>R'000</b>	310	8 035	3 238	76 115	74 773	-1,8
	<b>5. Total non-residential buildings</b>	<b>R'000</b>	<b>66 675</b>	<b>38 133</b>	<b>50 677</b>	<b>979 286</b>	<b>1 366 832</b>	<b>39,6</b>
<b>3. Additions and alterations</b>	<b>1. Dwelling-houses</b>	<b>square metres</b>	18 102	18 833	23 354	243 667	267 393	9,7
		<b>R'000</b>	64 739	80 728	92 959	734 852	987 566	34,4
	<b>2. Other buildings 4/</b>	<b>square metres</b>	7 498	2 621	6 739	108 170	89 399	-17,4
		<b>R'000</b>	24 835	8 222	25 531	293 746	328 917	12,0
	<b>3. Total additions and alterations</b>	<b>R'000</b>	<b>89 574</b>	<b>88 950</b>	<b>118 490</b>	<b>1 028 598</b>	<b>1 316 483</b>	<b>28,0</b>
<b>4. Recorded buildings completed</b>	<b>1. Total at current prices</b>	<b>R'000</b>	<b>546 242</b>	<b>331 126</b>	<b>385 093</b>	<b>4 864 546</b>	<b>5 714 447</b>	<b>17,5</b>

1/ The percentage change between cumulative figures for 2006 and 2007.

2/ Other residential buildings include institutions for the disabled, boarding houses, hostels and tourism accommodation e.g. hotels, motels, guesthouses, holiday chalets, bed-and-breakfast accommodation and casinos.

3/ Other non-residential space includes churches, sport and recreation clubs, schools, crèches, hospitals and all other non-residential space.

4/ Other buildings include other residential buildings, non-residential buildings and internal alterations.

\* Revised.

**Table 25 - Buildings reported as completed to larger municipalities at current prices by type of building: North West**

			Nov. 2006*	Oct. 2007	Nov. 2007	Jan. - Nov. 2006	Jan. - Nov. 2007	% Change 1/
Category of building	Type of building	Measuring unit						
<b>1. Residential buildings</b>	<b>1. Dwelling-houses &lt; 80 square metres</b>	<b>Number</b>	352	112	43	835	2 170	159,9
		<b>square metres</b>	12 124	4 841	2 518	39 510	86 350	118,6
		<b>R'000</b>	11 130	5 693	5 828	41 153	87 093	111,6
	<b>2. Dwelling-houses &gt;= 80 square metres</b>	<b>Number</b>	126	98	90	1 252	1 366	9,1
		<b>square metres</b>	20 628	17 411	17 869	236 138	289 586	22,6
		<b>R'000</b>	46 972	44 010	44 606	573 841	817 779	42,5
	<b>3. Flats and townhouses</b>	<b>Number</b>	193	54	87	899	1 104	22,8
		<b>square metres</b>	14 235	7 254	10 363	103 488	96 568	-6,7
		<b>R'000</b>	34 241	29 808	35 607	260 699	317 662	21,9
	<b>4. Other residential buildings 2/</b>	<b>square metres</b>	0	0	0	0	0	
		<b>R'000</b>	0	0	0	0	0	
	<b>5. Total residential buildings</b>	<b>R'000</b>	<b>92 343</b>	<b>79 511</b>	<b>86 041</b>	<b>875 693</b>	<b>1 222 534</b>	<b>39,6</b>
<b>2. Non-residential buildings</b>	<b>1. Office and banking space</b>	<b>square metres</b>	0	0	5 379	3 195	8 676	171,5
		<b>R'000</b>	0	0	18 827	6 641	26 156	293,9
	<b>2. Shopping space</b>	<b>square metres</b>	1 394	5 424	866	38 421	41 613	8,3
		<b>R'000</b>	3 200	17 357	1 875	138 384	122 187	-11,7
	<b>3. Industrial and warehouse space</b>	<b>square metres</b>	0	0	2 071	6 841	11 960	74,8
		<b>R'000</b>	0	0	3 728	14 019	23 127	65,0
	<b>4. Other non-residential buildings 3/</b>	<b>square metres</b>	0	224	0	4 445	5 087	14,4
		<b>R'000</b>	0	717	0	10 016	11 275	12,6
	<b>5. Total non-residential buildings</b>	<b>R'000</b>	<b>3 200</b>	<b>18 074</b>	<b>24 430</b>	<b>169 060</b>	<b>182 745</b>	<b>8,1</b>
<b>3. Additions and alterations</b>	<b>1. Dwelling-houses</b>	<b>square metres</b>	2 569	7 996	6 960	43 103	49 181	14,1
		<b>R'000</b>	5 947	9 979	9 330	80 157	89 932	12,2
	<b>2. Other buildings 4/</b>	<b>square metres</b>	292	406	288	14 739	11 114	-24,6
		<b>R'000</b>	642	610	600	31 642	23 165	-26,8
	<b>3. Total additions and alterations</b>	<b>R'000</b>	<b>6 589</b>	<b>10 589</b>	<b>9 930</b>	<b>111 799</b>	<b>113 097</b>	<b>1,2</b>
<b>4. Recorded buildings completed</b>	<b>1. Total at current prices</b>	<b>R'000</b>	<b>102 132</b>	<b>108 174</b>	<b>120 401</b>	<b>1 156 552</b>	<b>1 518 376</b>	<b>31,3</b>

1/ The percentage change between cumulative figures for 2006 and 2007.

2/ Other residential buildings include institutions for the disabled, boarding houses, hostels and tourism accommodation e.g. hotels, motels, guesthouses, holiday chalets, bed-and-breakfast accommodation and casinos.

3/ Other non-residential space includes churches, sport and recreation clubs, schools, crèches, hospitals and all other non-residential space.

4/ Other buildings include other residential buildings, non-residential buildings and internal alterations.

\* Revised.

Table 26 - Buildings reported as completed to larger municipalities at current prices by type of building: Gauteng

			Nov. 2006*	Oct. 2007	Nov. 2007	Jan. - Nov. 2006	Jan. - Nov. 2007	% Change 1/	
Category of building	Type of building	Measuring unit							
1. Residential buildings	1. Dwelling-houses < 80 square metres	Number	2 948	1 111	882	12 735	10 335	-18,8	
		square metres	114 175	51 548	38 553	541 187	463 742	-14,3	
		R'000	171 018	127 842	84 752	1 001 136	968 152	-3,3	
	2. Dwelling-houses >= 80 square metres	Number	857	814	768	8 319	7 919	-4,8	
		square metres	230 674	208 280	179 659	2 101 199	2 014 220	-4,1	
		R'000	674 422	723 024	619 545	6 350 726	6 639 224	4,5	
	3. Flats and townhouses	Number	875	1 496	1 270	9 894	12 190	23,2	
		square metres	126 037	161 050	141 317	1 288 498	1 316 610	2,2	
		R'000	427 651	640 962	516 174	4 244 266	4 728 073	11,4	
	4. Other residential buildings 2/	square metres	0	0	0	24 068	76 103	216,2	
		R'000	0	0	0	71 750	272 158	279,3	
		5. Total residential buildings	R'000	1 273 091	1 491 828	1 220 471	11 667 878	12 607 607	8,1
	2. Non-residential buildings	1. Office and banking space	square metres	37 954	13 747	7 037	149 425	274 234	83,5
			R'000	139 118	72 552	43 966	567 822	1 197 037	110,8
2. Shopping space		square metres	61 701	78 076	38 553	307 984	299 109	-2,9	
		R'000	165 583	431 556	203 607	1 048 813	1 347 132	28,4	
3. Industrial and warehouse space		square metres	38 506	67 530	24 102	219 569	396 747	80,7	
		R'000	93 565	174 129	59 973	579 447	1 143 430	97,3	
4. Other non-residential buildings 3/		square metres	595	2 998	0	20 535	39 577	92,7	
		R'000	2 200	9 741	0	62 171	139 409	124,2	
		5. Total non-residential buildings	R'000	400 466	687 978	307 546	2 258 253	3 827 008	69,5
3. Additions and alterations		1. Dwelling-houses	square metres	74 072	65 504	42 223	593 891	562 453	-5,3
	R'000		175 513	200 134	119 236	1 618 719	1 678 018	3,7	
	2. Other buildings 4/	square metres	29 319	19 166	10 991	98 398	137 344	39,6	
		R'000	88 952	80 373	40 812	309 761	502 098	62,1	
		3. Total additions and alterations	R'000	264 465	280 507	160 048	1 928 480	2 180 116	13,0
4. Recorded buildings completed	1. Total at current prices	R'000	1 938 022	2 460 313	1 688 065	15 854 611	18 614 731	17,4	

1/ The percentage change between cumulative figures for 2006 and 2007.

2/ Other residential buildings include institutions for the disabled, boarding houses, hostels and tourism accommodation e.g. hotels, motels, guesthouses, holiday chalets, bed-and-breakfast accommodation and casinos.

3/ Other non-residential space includes churches, sport and recreation clubs, schools, crèches, hospitals and all other non-residential space.

4/ Other buildings include other residential buildings, non-residential buildings and internal alterations.

\* Revised.

Table 27 - Buildings reported as completed to larger municipalities at current prices by type of building: Mpumalanga

			Nov. 2006*	Oct. 2007	Nov. 2007	Jan. - Nov. 2006	Jan. - Nov. 2007	% Change 1/
Category of building	Type of building	Measuring unit						
1. Residential buildings	1. Dwelling-houses < 80 square metres	Number	6	87	26	565	257	-54,5
		square metres	340	5 613	1 183	25 905	15 983	-38,3
		R'000	772	13 126	4 427	47 383	43 442	-8,3
	2. Dwelling-houses >= 80 square metres	Number	160	85	214	1 111	1 643	47,9
		square metres	24 155	18 216	39 436	197 968	294 611	48,8
		R'000	59 109	48 339	103 204	480 174	749 448	56,1
	3. Flats and townhouses	Number	55	20	39	483	399	-17,4
		square metres	4 306	1 630	2 419	37 237	46 423	24,7
		R'000	12 019	6 117	7 483	86 626	134 681	55,5
	4. Other residential buildings 2/	square metres	69	0	0	886	1 095	23,6
		R'000	207	0	0	2 418	3 053	26,3
	5. Total residential buildings	R'000	72 107	67 582	115 114	616 601	930 624	50,9
2. Non-residential buildings	1. Office and banking space	square metres	0	0	0	10 427	21 247	103,8
		R'000	0	0	0	27 040	74 954	177,2
	2. Shopping space	square metres	5 270	2 376	0	30 044	21 855	-27,3
		R'000	19 124	8 654	0	99 945	64 121	-35,8
	3. Industrial and warehouse space	square metres	117	34 026	5 235	46 677	63 550	36,1
		R'000	75	145 180	16 049	88 441	210 214	137,7
	4. Other non-residential buildings 3/	square metres	0	0	456	1 966	4 006	103,8
		R'000	0	0	889	3 425	6 717	96,1
	5. Total non-residential buildings	R'000	19 199	153 834	16 938	218 851	356 006	62,7
3. Additions and alterations	1. Dwelling-houses	square metres	4 696	2 590	16 835	58 093	71 783	23,6
		R'000	9 622	6 866	36 671	106 604	166 372	56,1
	2. Other buildings 4/	square metres	713	2 794	2 951	10 451	17 109	63,7
		R'000	1 784	6 604	8 174	24 574	54 855	123,2
	3. Total additions and alterations	R'000	11 406	13 470	44 845	131 178	221 227	68,6
4. Recorded buildings completed	1. Total at current prices	R'000	102 712	234 886	176 897	966 630	1 507 857	56,0

1/ The percentage change between cumulative figures for 2006 and 2007.

2/ Other residential buildings include institutions for the disabled, boarding houses, hostels and tourism accommodation e.g. hotels, motels, guesthouses, holiday chalets, bed-and-breakfast accommodation and casinos.

3/ Other non-residential space includes churches, sport and recreation clubs, schools, crèches, hospitals and all other non-residential space.

4/ Other buildings include other residential buildings, non-residential buildings and internal alterations.

\* Revised.

**Table 28 - Buildings reported as completed to larger municipalities at current prices by type of building: Limpopo**

			Nov. 2006	Oct. 2007	Nov. 2007	Jan. - Nov. 2006	Jan. - Nov. 2007	% Change 1/
Category of building	Type of building	Measuring unit						
1. Residential buildings	1. Dwelling-houses < 80 square metres	Number	40	7	21	270	270	-0,0
		square metres	2 553	501	1 395	16 768	17 320	3,3
		R'000	6 637	1 378	4 225	42 283	44 928	6,3
	2. Dwelling-houses >= 80 square metres	Number	54	76	51	498	538	8,0
		square metres	9 786	16 022	9 448	95 584	103 781	8,6
		R'000	28 387	48 699	31 795	254 046	305 201	20,1
	3. Flats and townhouses	Number	49	126	174	245	445	81,6
		square metres	3 886	16 561	10 093	27 474	41 992	52,8
		R'000	9 868	40 769	27 352	67 895	109 637	61,5
	4. Other residential buildings 2/	square metres	0	456	0	737	456	-38,1
		R'000	0	2 800	0	1 566	2 800	78,8
	5. Total residential buildings	R'000	44 892	93 646	63 372	365 790	462 566	26,5
2. Non-residential buildings	1. Office and banking space	square metres	243	0	0	4 293	2 018	-53,0
		R'000	680	0	0	9 558	5 380	-43,7
	2. Shopping space	square metres	403	127	0	16 547	5 089	-69,2
		R'000	645	254	0	32 750	12 444	-62,0
	3. Industrial and warehouse space	square metres	441	2 400	814	3 453	9 719	181,5
		R'000	1 100	5 280	1 629	8 955	20 903	133,4
	4. Other non-residential buildings 3/	square metres	190	0	0	1 495	1 173	-21,5
		R'000	340	0	0	3 994	2 402	-39,9
	5. Total non-residential buildings	R'000	2 765	5 534	1 629	55 257	41 129	-25,6
3. Additions and alterations	1. Dwelling-houses	square metres	1 480	1 094	611	11 635	12 277	5,5
		R'000	2 466	3 053	1 656	26 985	30 215	12,0
	2. Other buildings 4/	square metres	1 953	14	600	4 139	2 120	-48,8
		R'000	3 322	27	1 200	9 275	4 325	-53,4
	3. Total additions and alterations	R'000	5 788	3 080	2 856	36 260	34 540	-4,7
4. Recorded buildings completed	1. Total at current prices	R'000	53 445	102 260	67 857	457 307	538 235	17,7

1/ The percentage change between cumulative figures for 2006 and 2007.

2/ Other residential buildings include institutions for the disabled, boarding houses, hostels and tourism accommodation e.g. hotels, motels, guesthouses, holiday chalets, bed-and-breakfast accommodation and casinos.

3/ Other non-residential space includes churches, sport and recreation clubs, schools, crèches, hospitals and all other non-residential space.

4/ Other buildings include other residential buildings, non-residential buildings and internal alterations.

**Table 29 - Subsidised low-cost dwelling-houses completed and in process of completion 1/**

Province	Year	Number	Square metres 2/	Value R'000 2/
Western Cape	2002	19 534	531 116	168 852
	2003	16 926	507 780	247 187
	2004	12 751	382 530	211 424
Eastern Cape	2002	46 700	1 575 675	473 806
	2003	35 005	1 050 150	511 213
	2004	34 923	1 047 690	579 058
Northern Cape	2002	5 189	164 906	68 078
	2003	4 354	130 620	63 586
	2004	3 645	109 350	60 438
Free State	2002	8 617	348 492	154 121
	2003	14 848	445 440	216 840
	2004	16 522	495 660	273 951
KwaZulu-Natal	2002	21 958	831 349	234 041
	2003	31 372	941 160	458 157
	2004	35 968	1 079 040	596 385
North West	2002	21 309	630 115	210 439
	2003	13 809	414 270	201 667
	2004	10 149	304 470	168 281
Gauteng	2002	29 939	991 571	321 943
	2003	42 862	1 285 860	625 957
	2004	33 260	997 800	551 484
Mpumalanga	2002	19 883	660 505	253 931
	2003	21 336	640 080	246 079
	2004	18 808	564 240	311 855
Limpopo	2002	15 382	605 877	183 769
	2003	15 596	467 880	227 764
	2004	16 338	490 140	270 900
<b>South Africa</b>	<b>2002</b>	<b>188 511</b>	<b>6 339 606</b>	<b>2 068 980</b>
	<b>2003</b>	<b>196 108</b>	<b>5 883 240</b>	<b>2 798 450</b>
	<b>2004</b>	<b>182 364</b>	<b>5 470 920</b>	<b>3 023 777</b>

**Table 30 - Subsidised low-cost dwelling-houses completed: 1 April 2005 to 31 March 2006**

Province	Number	Square metres 2/	Value R'000 2/
Western Cape	2 040	61 200	52 877
Eastern Cape	16 874	506 220	437 374
Northern Cape	5 293	158 790	137 195
Free State	17 635	529 050	457 099
KwaZulu-Natal	21 601	648 030	559 898
North West	14 445	433 350	374 414
Gauteng	23 409	702 270	606 761
Mpumalanga	14 389	431 670	372 963
Limpopo	21 973	659 190	569 540
<b>South Africa</b>	<b>137 659</b>	<b>4 129 770</b>	<b>3 568 121</b>

**Table 31 - Subsidised low-cost dwelling-houses completed and in process of completion 1/: 1 April 2006 to 31 March 2007**

Province	Number	Square metres 2/	R'000 2/
Western Cape	34 585	1 037 550	768 200
Eastern Cape	16 526	495 780	637 700
Northern Cape	3 880	116 400	104 800
Free State	19 662	589 860	528 400
KwaZulu-Natal	38 290	1 148 700	1 074 500
North West	46 972	1 409 160	696 500
Gauteng	77 044	2 311 320	1 748 300
Mpumalanga	10 651	319 530	329 900
Limpopo	23 609	708 270	646 700
<b>South Africa</b>	<b>271 219</b>	<b>8 136 570</b>	<b>6 535 000</b>

Source: Housing Subsidy System and Provincial Housing Departments co-ordinated by the National Department of Housing

1/ Includes all top structures completed and sites serviced in respect of the reporting period.

2/ Estimates by the National Department of Housing.

## Explanatory notes

<b>Introduction</b>	1	Statistics South Africa (Stats SA) conducts a monthly building statistics survey collecting information regarding building plans passed and buildings completed, financed by the private sector, from the largest local government institutions in South Africa. According to these institutions, they are not always notified about low-cost housing projects and therefore do not include the bulk of low-cost dwelling-houses. Data regarding subsidised low-cost dwelling-houses, supplied by the Housing Subsidy System and Provincial Housing Departments and co-ordinated by the National Department of Housing, are shown in table 29 to table 31 (page 37).
	2	In order to improve timeliness of the publication, some information for the current month has been estimated due to late submission by respondents. These estimates will be revised in the next statistical release(s) as soon as actual information is available.
<b>Purpose of the survey</b>	3	The monthly survey data are used in monitoring the state of economy and formulation of economic policy. Furthermore, the results are important inputs to estimate the Gross Domestic Product (GDP) and to calculate the Composite Leading Business Cycle Indicator. The data are extensively used by the private sector.
<b>Scope of the survey</b>	4	This survey covers local government institutions conducting activities for the private sector regarding - <ul style="list-style-type: none"> <li>• passing of building plans; and</li> <li>• final inspection of completed buildings.</li> </ul>
<b>Classification</b>	5	Building activities are classified in division 5 according to the 1993 edition of the <i>Standard Industrial Classification of all Economic Activities, (SIC) Fifth Edition, Report No. 09-90-02</i> . The SIC is based on the 1990 <i>International Standard Industrial Classification of all Economic Activities (ISIC)</i> with suitable adaptations for local conditions.
<b>Response rate</b>	6	The preliminary response rate for the survey on building statistics for November 2007 was 91,2%. Improved response rate for October 2007 was 98,2%.
<b>Statistical unit</b>	7	The statistical unit for the collection of information is a local government institution. Local government institutions include district municipalities, metropolitan municipalities and local municipalities.
<b>Survey methodology and design</b>	8	<p>Stats SA conducts a monthly survey of metropolitan municipalities and large local municipalities on building plans passed and buildings completed. An annual survey of the remaining municipalities is conducted regarding buildings completed. The monthly survey represents approximately 90 percent of the total value of buildings completed. Information regarding building plans passed and buildings completed for the private sector is collected by mail, fax and telephone.</p> <p>According to the municipalities, they are not always notified about low-cost housing projects. Data regarding subsidised low-cost dwelling-houses, supplied by the provincial governments and co-ordinated by the National Department of Housing, are shown in table 29 and table 30 (page 37).</p>
<b>Constant prices</b>	9	The value of building plans passed and buildings completed at constant prices measures building activities in terms of ruling prices in a specific base year, which is currently 2000. The value of building plans passed at constant prices for each month is obtained by deflating the values at current prices with a price index known as the 'lump sum domestic buildings' as published in statistical release P0151: <i>JBCC Contract Price Adjustment Provisions Work Group Indices</i> . In order to be applicable, these indices (base February 1991=100) are converted to the base year 2000=100.



- 10** The value of buildings completed at constant prices is obtained by deflating the values at current prices with the price index which is used to calculate building plans passed at constant prices (see paragraph 8). Since the completion of buildings may extend over a few months to a few years, the current value of buildings completed is deflated by price indices which prevailed at the time the plans were passed. Therefore, the duration of the completion of different types of buildings are taken into account in ascertaining the deflators e.g. the value of dwelling-houses completed at constant prices at January 2007 is obtained by deflating the current value of dwelling-houses completed for January 2007 with the price index of a month six months prior to January 2007. Furthermore, the value of other residential buildings, non-residential buildings and additions and alterations at constant prices is obtained by deflating the current values with price indices of 12 months, 18 months and 12 months prior to the relevant month, respectively.
- Seasonal adjustment**
- 11** Seasonally adjusted estimates of building plans passed and buildings completed are generated each month, using the X-11 Seasonal Adjustment Program developed by US Bureau of the Census Economic Research and Analyses Division, 1968.
- 12** Seasonal adjustment is a means of removing the estimated effects of normal seasonal variation from the series so that the effects of other influences on the series can be more clearly recognised. Seasonal adjustment does not aim to remove irregular or non-seasonal influences which may be present in any particular month. Influences that are volatile or unsystematic can still make it difficult to interpret the movement of the series even after adjustment for seasonal variations. Therefore, the month-to-month movements of seasonally adjusted estimates may not be reliable indicators of trend behaviour.
- Trend cycle**
- 13** The trend is a long-term pattern or movement of a time series. The X-11 Seasonal Adjustment Program is used for smoothing seasonally adjusted data.
- Revised figures**
- 14** Revised figures are due to late submission of data to Stats SA, or to respondents reporting revisions or corrections to their figures. Figures for the latest month are therefore preliminary. Data are edited at municipal level.
- 15** Once a year the annual statistical release P5041.3 is published with the revised and updated information at provincial and municipal level for the previous calendar year. Due to this comprehensive revision, the monthly statistical release P5041.1 reflects provincial revision for 2006 where applicable.
- Related publications**
- 16** Users may also wish to refer to the following publications:
- P5041.3: Selected building statistics of the private sector as reported by local government institutions issued annually.
  - P9101.2: Actual and expected expenditure on construction by the public sector per statistical region issued annually.
  - Bulletin of Statistics issued quarterly.
  - South African Statistics issued annually.
  - Report 50-11-01 issued annually.
- Rounding-off of figures**
- 17** The figures in the tables have, where necessary, been rounded off to the nearest digit shown.
- Pre-release policy**
- 18** Stats SA's pre-release policy may be inspected at its website, [www.statssa.gov.za](http://www.statssa.gov.za)



**Symbols and abbreviations**

<b>19</b>	..	no meaningful percentage change between two specified periods available since either one or both of the totals are nil
	0	nil or figure too small to publish
	*	revised
	Stats SA	Statistics South Africa
	SIC	Standard Industrial Classification of all Economic Activities
	ISIC	International Standard Industrial Classification of all Economic Activities
	JBCC	Joint Building Contracts Committee
	CD	Compact Disc
	US	United States
	SARB	South African Reserve Bank
	DTI	Department of Trade and Industry

**2010 World Cup note**

- 20** Information relating to the 2010 Soccer World Cup new stadia and renovations, as well as other public sector infrastructure spending e.g. Eskom expansions and the Gautrain project, will not be included in the private sector building data series, as these are partially public sector funded.

## Glossary

<b>Additions and alterations</b>	They include extensions to existing buildings as well as internal and external alterations of existing buildings.
<b>Blocks of flats</b>	High-density housing consisting of a number of self-contained dwelling-units, each with at least one living-room together with a kitchen and bathroom, conjoined to similar units in one building.
<b>Dwelling-house</b>	A free-standing, complete structure on a separate stand or a self-contained dwelling-unit, e.g. granny flat, on the same premises as an existing residence. Out-buildings and garages are included.
<b>Local government institutions</b>	Include – <ul style="list-style-type: none"> <li>• District municipalities;</li> <li>• Metropolitan municipalities; and</li> <li>• Local municipalities.</li> </ul>
<b>Municipality</b>	A generic term describing the “unit” of government in the local spheres responsible for local government in a geographically demarcated area and including district, metropolitan and local municipalities. It is an institution consisting of a municipal council (elected political representatives) and municipal administration (appointed officials).
<b>District municipality</b>	Municipality that has municipal executive and legislative authority in an area that includes more than one municipality, and which is described in section 155(1) of the Constitution as a category C municipality (Refer to Local Government: Municipal Structure Act, 1998 (Act No. 117 of 1998)).
<b>Metropolitan municipality</b>	Municipality that has municipal executive and legislative authority in an area that includes more than one municipality, and which is described in section 155(1) of the Constitution as a category A municipality (Refer to Local Government: Municipal Structure Act, 1998 (Act No. 117 of 1998)).
<b>Local municipality</b>	Municipality that shares municipal executive and legislative authority in its area with a district municipality within whose area it falls, that is described in section 155(1) of the constitution as a category B municipality.
<b>Non-residential buildings</b>	Comprise factories, commercial, financial and other office buildings, as well as other buildings not used for residential purposes, such as churches, halls, clubs, schools and hospitals.
<b>Other residential buildings</b>	Institutions for the disabled, boarding houses, old people’s homes, hostels, hotels, motels, guesthouses, holiday chalets, bed-and-breakfast accommodation, entertainment centres and casinos.
<b>Percentage change</b>	<p>When using monthly actual values, the percentage change is the change in actual values of building activities (building plans passed or buildings completed) of the relevant month compared with the actual values of building activities (building plans passed or buildings completed) of the same month in the previous year expressed as a percentage.</p> <p>When using annual actual values, the percentage change is the change in the actual values of building activities (building plans passed or buildings completed) of the relevant year compared with the actual values of building activities (building plans passed or buildings completed) of the previous year expressed as a percentage.</p> <p>When using seasonally adjusted values, the percentage change is the change in the seasonally adjusted values of building activities (building plans passed or buildings completed) of the relevant month compared with the seasonally adjusted values of building activities (building plans passed or buildings completed) of the previous month expressed as a percentage.</p>

---

<b>Reference period</b>	One calendar month.
<b>Residential buildings</b>	Comprise dwelling-houses, flats, townhouses and other residential buildings.
<b>Townhouses</b>	Multiple, medium-density dwelling-units and include cluster housing, group housing, simplexes, duplexes, triplexes and other similar dwelling-units which are usually grouped together, with one level of each unit on ground level. This excludes blocks of flats.

## General information

Stats SA publishes approximately 300 different statistical releases each year. It is not economically viable to produce them in more than one of South Africa's eleven official languages. Since the releases are used extensively, not only locally but also by international economic and social-scientific communities, Stats SA releases are published in English.

Stats SA has copyright on this publication. Users may apply the information as they wish, provided that they acknowledge Stats SA as the source of the basic data wherever they process, apply, utilise, publish or distribute the data and also that they specify that the relevant application and analysis (where applicable) result from their own processing of the data.

An advance release calendar is disseminated on [www.statssa.gov.za](http://www.statssa.gov.za)

## Stats SA products

A complete set of Stats SA publications is available at the Stats SA Library and the following libraries:

National Library of South Africa, Pretoria Division  
National Library of South Africa, Cape Town Division  
Natal Society Library, Pietermaritzburg  
Library of Parliament, Cape Town  
Bloemfontein Public Library  
Johannesburg Public Library  
Eastern Cape Library Services, King William's Town  
Central Regional Library, Polokwane  
Central Reference Library, Nelspruit  
Central Reference Collection, Kimberley  
Central Reference Library, Mmabatho

Stats SA also provides a subscription service.

## Electronic services

A large range of data are available via on-line services, diskette, CD and computer printouts. For more details about our electronic data services, contact (012) 310 8600/8390/8351/4892/8496/8095.

You can visit us on the Internet at: [www.statssa.gov.za](http://www.statssa.gov.za)

## Enquiries

Telephone number: (012) 310 8600/8390/8351/4892/8496/8095 (user information services)  
(012) 310 8228/310 8007 (technical enquiries)  
(012) 310 8161 (orders)  
(012) 310 4883/4885/8018 (library)

Fax number: (012) 310 8664 (technical enquiries)

Email: Gretaz@statssa.gov.za (technical enquiries)  
info@statssa.gov.za (user information services)  
distribution@statssa.gov.za (orders)

Postal address: Private Bag X44, Pretoria, 0001

*Produced by Stats SA*