



**Statistics  
South Africa**

Preferred supplier of quality statistics



# Statistical release

## P5041.1

### Selected building statistics of the private sector as reported by local government institutions

**November 2006**

**Embargoed until:  
17 January 2007  
13:00**

#### **Enquiries:**

User Information Services  
Tel: (012) 310 8600 / 4892 / 8390

#### **Forthcoming issue:**

December 2006

#### **Expected release date**

21 February 2007

Statistics South Africa • Mbalo-mbalo ya Afrika Tshipembe • Tinhlayo-tiko ta Afrika-Dzonga • Dipalopalo tsa Aforika Borwa • Ezezibalo zaseNingizimu Afrika  
Dipalopalo tša Afrika Borwa • Dipalopalo tsa Afrika Borwa • Ubalo lwaseMzantsi Afrika • Telubalo eNingizimu Afrika • iNanimbalo leSewula Afrika • Statistiek Suid-Afrika

email: [info@statssa.gov.za](mailto:info@statssa.gov.za)  
[www.statssa.gov.za](http://www.statssa.gov.za)

170 Andries Street • Private Bag X44, 0001 Pretoria, South Africa  
Tel: +27(12) 310 8911, Fax: +27(12) 321 7381

## Contents

### Page

### SUMMARY OF FINDINGS: SELECTED BUILDING STATISTICS OF THE PRIVATE SECTOR

3

#### Tables

Table 1	Values and percentage change of recorded building plans passed by larger municipalities at current prices by type of building .....	9
Table 2	Seasonally adjusted values and percentage change of recorded building plans passed by larger municipalities at current prices by type of building .....	10
Table 3	Values and percentage change of recorded building plans passed by larger municipalities at constant 2000 prices by type of building .....	11
Table 4	Seasonally adjusted values and percentage change of recorded building plans passed by larger municipalities at constant 2000 prices by type of building .....	12
Table 5	Values and percentage change of buildings reported as completed to larger municipalities at current prices by type of building .....	13
Table 6	Seasonally adjusted values and percentage change of buildings reported as completed to larger municipalities at current prices by type of building .....	14
Table 7	Values and percentage change of buildings reported as completed to larger municipalities at constant 2000 prices by type of building .....	15
Table 8	Seasonally adjusted values and percentage change of buildings reported as completed to larger municipalities at constant 2000 prices by type of building .....	16
Table 9	Recorded building plans passed by larger municipalities at current prices by type of building: South Africa .....	17
Table 10	Recorded building plans passed by larger municipalities at current prices by type of building: Western Cape .....	18
Table 11	Recorded building plans passed by larger municipalities at current prices by type of building: Eastern Cape .....	19
Table 12	Recorded building plans passed by larger municipalities at current prices by type of building: Northern Cape .....	20
Table 13	Recorded building plans passed by larger municipalities at current prices by type of building: Free State .....	21
Table 14	Recorded building plans passed by larger municipalities at current prices by type of building: KwaZulu-Natal .....	22
Table 15	Recorded building plans passed by larger municipalities at current prices by type of building: North West .....	23
Table 16	Recorded building plans passed by larger municipalities at current prices by type of building: Gauteng .....	24
Table 17	Recorded building plans passed by larger municipalities at current prices by type of building: Mpumalanga .....	25
Table 18	Recorded building plans passed by larger municipalities at current prices by type of building: Limpopo .....	26
Table 19	Buildings reported as completed to larger municipalities at current prices by type of building: South Africa .....	27
Table 20	Buildings reported as completed to larger municipalities at current prices by type of building: Western Cape .....	28
Table 21	Buildings reported as completed to larger municipalities at current prices by type of building: Eastern Cape .....	29
Table 22	Buildings reported as completed to larger municipalities at current prices by type of building: Northern Cape .....	30
Table 23	Buildings reported as completed to larger municipalities at current prices by type of building: Free State .....	31
Table 24	Buildings reported as completed to larger municipalities at current prices by type of building: KwaZulu-Natal .....	32

Table 25	Buildings reported as completed to larger municipalities at current prices by type of building: North West .....	33
Table 26	Buildings reported as completed to larger municipalities at current prices by type of building: Gauteng .....	34
Table 27	Buildings reported as completed to larger municipalities at current prices by type of building: Mpumalanga .....	35
Table 28	Buildings reported as completed to larger municipalities at current prices by type of building: Limpopo.....	36
Table 29	Subsidised low-cost dwelling-houses completed or under construction by province .....	37
Table 30	Subsidised low-cost dwelling-houses completed by province .....	37
<b>Explanatory notes</b> .....		38
<b>Glossary</b> .....		41
<b>General information</b> .....		43

## SUMMARY OF FINDINGS: SELECTED BUILDING STATISTICS OF THE PRIVATE SECTOR

**Table A – Selected key figures regarding recorded building plans passed by larger municipalities at current prices for November 2006**

Estimates at current prices	January to November 2005 R'000	January to November 2006 1/ R'000	Difference in value between January to November 2005 and January to November 2006 R'000	Percentage change between January to November 2005 and January to November 2006
Residential buildings	34 069 505	36 728 080	+2 658 575	+ 7,8
Dwelling-houses	22 277 364	24 483 998	+2 206 634	+ 9,9
Flats and townhouses	11 248 539	11 699 050	+450 511	+ 4,0
Other residential buildings	543 602	545 032	+1 430	+ 0,3
Non-residential buildings	9 882 359	12 654 476	+2 772 117	+ 28,1
Additions and alterations	15 640 882	17 123 686	+1 482 804	+ 9,5
Total	59 592 746	66 506 242	+6 913 496	+ 11,6

1/ November 2006 figures should be regarded as preliminary because of possible backlogs and incomplete reporting by municipalities.

### Increase in total value of recorded building plans passed slows down

*As indicated in Table A, the value of recorded building plans passed by larger municipalities (at current prices) during the first eleven months of 2006 increased by 11,6% (+R6 913,5 million) compared with the first eleven months of 2005, decreasing from 13,2% for the first ten months of 2006 compared with the first ten months of 2005.*

The largest percentage increase was reported for non-residential buildings (+28,1% or R2 772,1 million), followed by additions and alterations (+9,5% or R1 482,8 million) and residential buildings (+7,8% or R2 658,6 million).

**Table B – Recorded building plans passed by larger municipalities aggregated to provincial level for November 2006**

Estimates at current prices	January to November 2005 R'000	January to November 2006 1/ R'000	Percentage contribution to the total value of building plans passed during January to November 2005	Percentage change between January to November 2005 and January to November 2006	Contribution (percentage points) to the percentage change in the value of buildings plans passed between January to November 2005 and January to November 2006 2/	Difference in value between January to November 2005 and January to November 2006 R'000
Western Cape	17 149 516	16 245 712	28,7	-5,3	-1,4	-903 804
Eastern Cape	2 829 691	3 192 225	4,7	+ 12,8	+ 0,6	+ 362 534
Northern Cape	464 323	449 512	0,7	-3,2	0,0	-14 811
Free State	1 727 723	1 633 587	3,3	-5,4	-0,2	-94 136
KwaZulu-Natal	7 819 460	8 502 388	13,1	+ 8,7	+ 1,1	+ 682 928
North West	1 967 604	2 349 089	3,3	+ 19,4	+ 0,6	+ 381 485
Gauteng	23 927 462	29 162 800	40,1	+ 21,9	+ 8,8	+ 5 235 338
Mpumalanga	2 604 382	3 661 670	4,3	+ 40,6	+ 1,7	+ 1 057 288
Limpopo	1 102 585	1 309 259	1,8	+ 18,7	+ 0,3	+ 206 674
Total	59 592 746	66 506 242	100,0	+ 11,6	+ 11,6	+ 6 913 496

1/ November 2006 figures should be regarded as preliminary because of possible backlogs and incomplete reporting by municipalities.

2/ The contribution (percentage points) is calculated by multiplying the percentage change of each province between January to November 2005 and January to November 2006 with the percentage contribution of the corresponding province to the total value of building plans passed during January to November 2005, divided by 100.

Six provinces reported increases in the value of recorded building plans passed (see Table B). The largest contributor to the increase of 11,6% was Gauteng (+8,8 percentage points or R5 235,3 million), followed by Mpumalanga (+1,7 percentage points or R1 057,3 million) and KwaZulu-Natal (+1,1 percentage points or R682,9 million).

**Table C – Selected key figures regarding recorded building plans passed by larger municipalities at constant 2000 prices for November 2006**

Estimates at constant 2000 prices	January to November 2005 R'000	January to November 2006 1/ R'000	Difference in value between January to November 2005 and January to November 2006 R'000	Percentage change between January to November 2005 and January to November 2006
Residential buildings	23 522 016	23 378 936	-143 080	- 0,6
Non-residential buildings	6 824 747	8 063 301	+1 238 554	+ 18,1
Additions and alterations	10 804 449	10 910 487	+106 038	+ 1,0
Total	41 151 212	42 352 724	+1 201 512	+ 2,9

1/ November 2006 figures should be regarded as preliminary because of possible backlogs and incomplete reporting by municipalities.

Seasonally adjusted estimates at constant 2000 prices	June to August 2006 R'000	September to November 2006 R'000	Percentage change between June to August 2006 and September to November 2006
Residential buildings	6 421 766	6 015 636	-6,3
Non-residential buildings	2 073 672	2 258 284	+ 8,9
Additions and alterations	2 882 075	2 851 752	-1,1
Total	11 377 513	11 125 672	-2,2

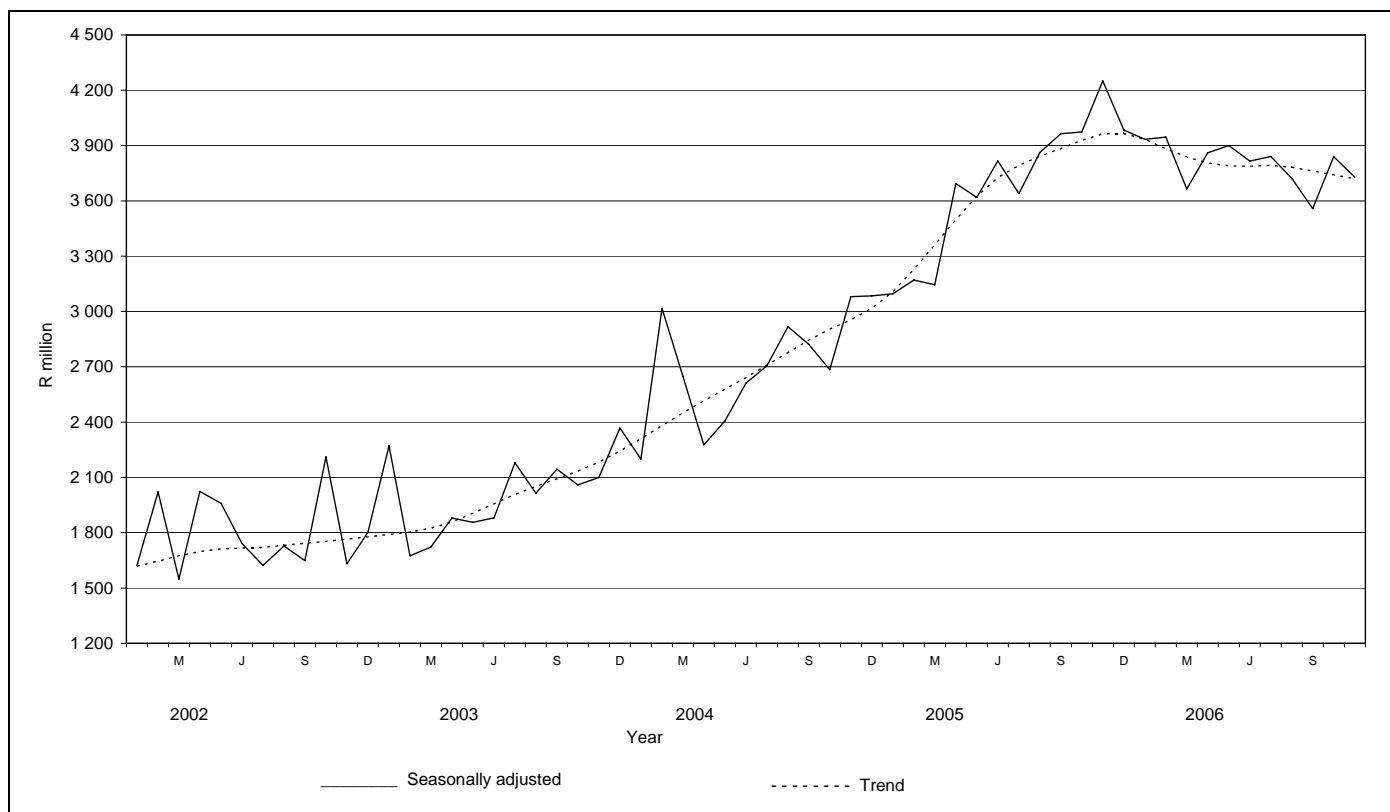
### **Increase in total real value of recorded building plans passed slows down**

*As indicated in Table C, the value of recorded building plans passed by larger municipalities (at constant 2000 prices) during the first eleven months of 2006 increased by 2,9% (+R1 201,5 million) compared with the first eleven months of 2005, decreasing from 4,7% for the first ten months of 2006 compared with the first ten months of 2005. The largest percentage increase was reported for non-residential buildings (+18,1% or R1 238,6 million), whereas additions and alterations increased by 1,0% (+R106,0 million). Residential buildings showed a decrease of 0,6% or R143,1 million. The real value of building plans passed during November 2006 prices decreased by 11,6% (-R526,1 million) compared with November 2005 (see table 3, page 11).*

The seasonally adjusted real value of recorded building plans passed by larger municipalities during the three months ended November 2006 decreased by 2,2% compared with the previous three months, mainly due to decreases reported in residential building plans passed (-6,3%) and additions and alterations (-1,1%). These decreases were partially counteracted by an increase reported in non-residential buildings of 8,9% (see table C).

Figure 1 shows both the seasonally adjusted and the trend series for recorded building plans passed at constant 2000 prices between January 2002 and November 2006. The trend series reflects a slight increase in 2002, showing a steep increase from May 2003, followed by a downturn from December 2005 up to the present period.

**Figure 1 – Real value of recorded building plans passed by larger municipalities at constant 2000 prices**



**Table D – Selected key figures regarding buildings reported as completed to larger municipalities at current prices for November 2006**

Estimates at current prices	January to November 2005 R'000	January to November 2006 1/ R'000	Difference in value between January to November 2005 and January to November 2006 R'000	Percentage change between January to November 2005 and January to November 2006
Residential buildings	18 706 578	22 238 540	+3 531 962	+ 18,9
Dwelling-houses	11 995 247	13 782 986	+1 787 739	+ 14,9
Flats and townhouses	6 571 818	8 192 189	+1 620 371	+ 24,7
Other residential buildings	139 513	263 365	+123 852	+ 88,8
Non-residential buildings	3 957 567	4 963 997	+1 006 430	+ 25,4
Additions and alterations	4 431 438	6 087 791	+1 656 353	+ 37,4
Total	27 095 583	33 290 328	+6 194 745	+ 22,9

1/ November 2006 figures should be regarded as preliminary because of possible backlogs and incomplete reporting by municipalities.

### Total value of buildings reported as completed increased

*As indicated in Table D, the value of buildings reported as completed to larger municipalities (at current prices) during the first eleven months of 2006 increased by 22,9% (+R6 194,7 million) compared with the first eleven months of 2005.*

The largest percentage increase in the value of buildings completed was reported for additions and alterations (+37,4% or R1 656,4 million), followed by non-residential buildings (+25,4% or R1 006,4 million) and residential buildings (+18,9% or R3 532,0 million).

**Table E – Buildings reported as completed to larger municipalities aggregated to provincial level for November 2006**

Estimates at current prices	January to November 2005 R'000	January to November 2006 1/ R'000	Percentage contribution to the total value of buildings completed during January to November 2005	Percentage change between January to November 2005 and January to November 2006	Contribution (percentage points)2/ to the percentage change in the value of buildings completed between January to November 2005 and January to November 2006	Difference in value between January to November 2005 and January to November 2006
Western Cape	7 301 978	9 513 225	26,9	+ 30,3	+ 8,2	+ 2 211 247
Eastern Cape	1 127 417	1 247 208	4,2	+ 10,6	+ 0,4	+ 119 791
Northern Cape	191 366	236 387	0,7	+ 23,5	+ 0,2	+ 45 021
Free State	621 504	567 009	2,3	-8,8	-0,2	-54 495
KwaZulu-Natal	3 848 379	4 131 603	14,2	+ 7,4	+ 1,0	+ 283 224
North West	1 022 471	1 172 006	3,8	+ 14,6	+ 0,6	+ 149 535
Gauteng	12 126 194	15 009 800	44,8	+ 23,8	+ 10,6	+ 2 883 606
Mpumalanga	494 594	955 828	1,8	+ 93,3	+ 1,7	+ 461 234
Limpopo	361 680	457 262	1,3	+ 26,4	+ 0,4	+ 95 582
Total	27 095 583	33 290 328	100,0	+ 22,9	+ 22,9	+ 6 194 745

1/ November 2006 figures should be regarded as preliminary because of possible backlogs and incomplete reporting by municipalities.

2/ The contribution (percentage points) is calculated by multiplying the percentage change of each province between January to November 2005 and January to November 2006 with the percentage contribution of the corresponding province to the total value of buildings completed during January to November 2005, divided by 100.

Eight provinces reported increases in the value of buildings completed. The largest contributors to the increase of 22,9% were Gauteng (+10,6 percentage points or R2 883,6 million) and Western Cape (+8,2 percentage points or R2 211,2 million) (see Table E).

**Table F – Selected key figures regarding buildings reported as completed to larger municipalities at constant 2000 prices for November 2006**

Estimates at constant 2000 prices	January to November 2005 R'000	January to November 2006 1/ R'000	Difference in value between January to November 2005 and January to November 2006 R'000	Percentage change between January to November 2005 and January to November 2006
Residential buildings	13 481 257	15 096 944	+1 615 687	+ 12,0
Non-residential buildings	3 014 899	3 541 074	+526 175	+ 17,5
Additions and alterations	3 270 405	4 209 533	+939 128	+ 28,7
Total	19 766 561	22 847 551	+3 080 990	+ 15,6

1/ November 2006 figures should be regarded as preliminary because of possible backlogs and incomplete reporting by municipalities.

Seasonally adjusted estimates at constant 2000 prices	June to August 2006 R'000	September to November 2006 R'000	Percentage change between June to August 2006 and September to November 2006
Residential buildings	4 172 554	4 202 229	+ 0,7
Non-residential buildings	828 694	1 073 608	+ 29,6
Additions and alterations	1 081 868	1 221 589	+ 12,9
Total	6 083 116	6 497 426	+ 6,8

### Total real value of buildings reported as completed increased

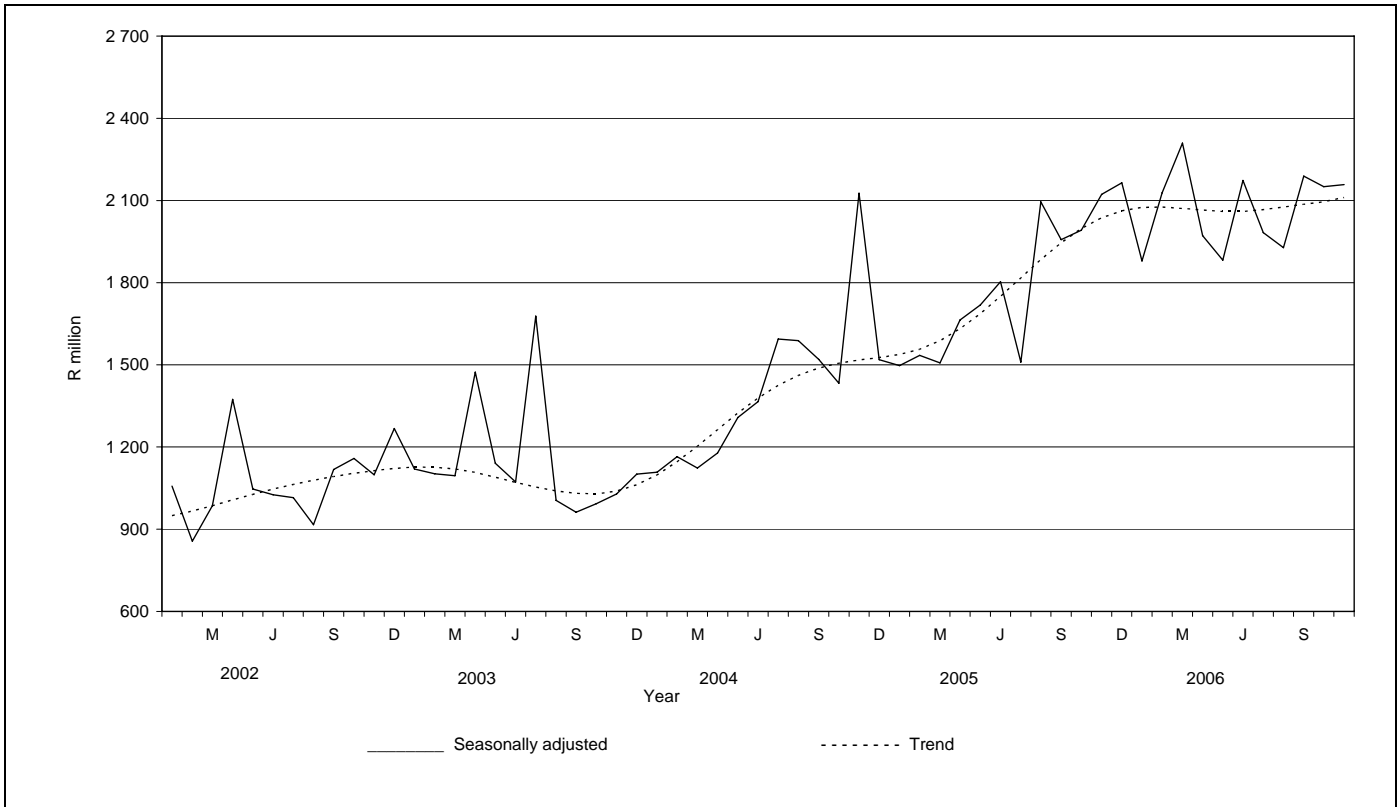
*As indicated in Table F, the value of buildings reported as completed to larger municipalities (at constant 2000 prices) during the first eleven months of 2006 increased by 15,6% (+R3 081,0 million) compared with the first eleven months of 2005. The largest percentage increase in the value of buildings completed was reported for additions and alterations (+28,7% or R939,1 million), followed by non-residential buildings (+17,5% or R526,2 million) and residential buildings (+12,0% or R1 615,7 million).*

Furthermore, the seasonally adjusted real value of buildings reported as completed to larger municipalities during the three months ended November 2006 increased by 6,8% compared with the previous three months. Increases in the seasonally adjusted real value of buildings completed were reported for non-residential buildings (+29,6%), additions and alterations (+12,9%) and residential buildings (+0,7%) during the above-mentioned period.



Figure 2 shows both the seasonally adjusted and trend series for buildings reported as completed to municipalities at constant 2000 prices between January 2002 and November 2006. The trend series reflects a slight increase in 2002, slowing again until November 2003. A steep increase is evident from November 2003 to end of 2005, followed by a slight downturn from January 2006. The trend series levelled out from May 2006.

**Figure 2 - Real value of buildings reported as completed to larger municipalities at constant 2000 prices**



**PJ Lehohla**  
**Statistician-General**

Table 1 - Values and percentage change of recorded building plans passed by larger municipalities at current prices by type of building

Year and month		Residential buildings		Non-residential buildings		Additions and alterations		Total	
		R'000	% change 1/	R'000	% change 1/	R'000	% change 1/	R'000	% change 1/
2005	January	1 753 163	+36,9	538 523	+64,8	901 583	+71,2	3 193 269	+49,6
	February	2 346 104	-4,4	592 460	+47,7	1 154 142	+42,2	4 092 706	+11,6
	March	2 341 680	+18,5	963 528	+31,9	1 232 716	+38,9	4 537 924	+26,2
	April	2 588 285	+63,0	784 202	+89,5	1 302 488	+92,9	4 674 975	+74,6
	May	3 482 417	+54,8	788 456	+101,6	1 351 073	+49,5	5 621 946	+58,6
	June	3 235 897	+45,2	962 252	+95,1	1 496 107	+59,0	5 694 256	+55,5
	July	3 511 577	+38,5	1 011 449	+85,0	1 463 012	+37,4	5 986 038	+44,3
	August	3 492 507	+38,2	1 233 520	+78,2	1 623 527	+35,7	6 349 554	+43,8
	September	3 865 708	+56,8	691 600	+21,9	1 576 154	+49,2	6 133 462	+50,0
	October	3 725 395	+46,0	977 859	+53,8	1 914 222	+88,7	6 617 476	+57,5
	November	3 726 772	+27,0	1 338 510	+136,0	1 625 858	+37,7	6 691 140	+42,9
	December	2 895 144	+55,3	644 374	-3,8	1 348 453	+36,7	4 887 971	+38,8
	<b>Total</b>	<b>36 964 649</b>	<b>+38,7</b>	<b>10 526 733</b>	<b>+63,6</b>	<b>16 989 335</b>	<b>+51,1</b>	<b>64 480 717</b>	<b>+45,4</b>
2006	January	2 477 400	+41,3	743 879	+38,1	1 034 019	+14,7	4 255 298	+33,3
	February*	3 114 088	+32,7	874 034	+47,5	1 408 647	+22,1	5 396 769	+31,9
	March	2 906 768	+24,1	1 153 382	+19,7	1 493 783	+21,2	5 553 933	+22,4
	April	2 549 416	-1,5	1 311 954	+67,3	1 354 980	+4,0	5 216 350	+11,6
	May	3 401 618	-2,3	1 224 893	+55,4	1 787 849	+32,3	6 414 360	+14,1
	June	3 626 992	+12,1	970 765	+0,9	1 592 187	+6,4	6 189 944	+8,7
	July	3 764 006	+7,2	1 365 159	+35,0	1 749 837	+19,6	6 879 002	+14,9
	August	3 805 509	+9,0	1 418 691	+15,0	1 609 868	-0,8	6 834 068	+7,6
	September	3 534 304	-8,6	884 098	+27,8	1 640 303	+4,1	6 058 705	-1,2
	October	3 743 458	+0,5	1 618 920	+65,6	1 725 605	-9,9	7 087 983	+7,1
	November 2/	3 804 521	+2,1	1 088 701	-18,7	1 726 608	+6,2	6 619 830	-1,1

1/ The annual/monthly percentage change is the change in the values of recorded building plans passed by municipalities of the relevant year/month compared with the values of recorded building plans passed by municipalities of the comparable period of the previous year expressed as a percentage.

2/ Preliminary figures.

\* Revised.

**Table 2 - Seasonally adjusted values and percentage change of recorded building plans passed by larger municipalities at current prices by type of building**

Year and month		Residential buildings		Non-residential buildings		Additions and alterations		Total	
		R'000	% change 1/	R'000	% change 1/	R'000	% change 1/	R'000	% change 1/
2005	January	2 416 893	+4,8	723 022	-8,8	1 229 765	+1,5	4 369 680	+1,4
	February	2 504 253	+3,6	718 805	-0,6	1 254 626	+2,0	4 477 684	+2,5
	March	2 500 776	-0,1	742 852	+3,3	1 241 856	-1,0	4 485 484	+0,2
	April	3 051 969	+22,0	793 742	+6,9	1 453 108	+17,0	5 298 819	+18,1
	May	3 201 727	+4,9	780 837	-1,6	1 217 354	-16,2	5 199 918	-1,9
	June	3 104 157	-3,0	935 687	+19,8	1 450 739	+19,2	5 490 583	+5,6
	July	3 081 141	-0,7	881 765	-5,8	1 317 426	-9,2	5 280 332	-3,8
	August	3 153 702	+2,4	1 004 615	+13,9	1 458 111	+10,7	5 616 428	+6,4
	September	3 501 726	+11,0	784 467	-21,9	1 516 611	+4,0	5 802 804	+3,3
	October	3 319 992	-5,2	877 275	+11,8	1 658 353	+9,3	5 855 620	+0,9
	November	3 241 802	-2,4	1 523 159	+73,6	1 513 797	-8,7	6 278 758	+7,2
	December	3 557 010	+9,7	742 217	-51,3	1 624 023	+7,3	5 923 250	-5,7
2006	January	3 454 451	-2,9	990 498	+33,5	1 429 039	-12,0	5 873 988	-0,8
	February	3 344 114	-3,2	1 058 361	+6,9	1 512 481	+5,8	5 914 956	+0,7
	March	3 123 402	-6,6	895 011	-15,4	1 502 600	-0,7	5 521 013	-6,7
	April	3 021 065	-3,3	1 316 904	+47,1	1 518 757	+1,1	5 856 726	+6,1
	May	3 129 151	+3,6	1 240 604	-5,8	1 627 811	+7,2	5 997 566	+2,4
	June	3 457 917	+10,5	968 184	-22,0	1 531 503	-5,9	5 957 604	-0,7
	July	3 304 087	-4,4	1 182 757	+22,2	1 582 267	+3,3	6 069 111	+1,9
	August	3 413 228	+3,3	1 133 467	-4,2	1 445 660	-8,6	5 992 355	-1,3
	September	3 189 158	-6,6	1 012 676	-10,7	1 571 040	+8,7	5 772 874	-3,7
	October	3 355 773	+5,2	1 435 375	+41,7	1 497 760	-4,7	6 288 908	+8,9
	November	3 304 314	-1,5	1 246 757	-13,1	1 612 237	+7,6	6 163 308	-2,0
	Jun-Aug. 06	10 175 232		3 284 408		4 559 430		18 019 070	
	Sep.-Nov. 06 2/	9 849 245	-3,2	3 694 808	+12,5	4 681 037	+2,7	18 225 090	+1,1

1/ The percentage change is the change in the seasonally adjusted values of recorded building plans passed by municipalities of the relevant month compared with the seasonally adjusted values of recorded building plans passed by municipalities of the previous month expressed as a percentage.

2/ The percentage change is the change in the seasonally adjusted values of recorded building plans passed by municipalities of the current quarter compared with the seasonally adjusted values of recorded building plans passed by municipalities of the previous quarter expressed as a percentage.

Table 3 - Values and percentage change of recorded building plans passed by larger municipalities at constant 2000 prices by type of building

Year and month		Residential buildings		Non-residential buildings		Additions and alterations		Total	
		R'000	% change 1/	R'000	% change 1/	R'000	% change 1/	R'000	% change 1/
2005	January	1 244 260	+26,5	382 202	+52,2	639 874	+58,2	2 266 336	+38,3
	February	1 661 547	-10,7	419 589	+38,0	817 381	+32,8	2 898 517	+4,3
	March	1 647 910	+10,7	678 063	+23,2	867 499	+29,8	3 193 472	+18,0
	April	1 806 200	+52,2	547 245	+77,0	908 924	+80,1	3 262 369	+63,1
	May	2 426 771	+45,3	549 447	+89,2	941 514	+40,3	3 917 732	+48,9
	June	2 247 151	+37,0	668 231	+84,0	1 038 963	+49,9	3 954 345	+46,6
	July	2 411 797	+29,6	694 677	+73,2	1 004 816	+28,6	4 111 290	+35,1
	August	2 385 592	+29,4	842 568	+66,9	1 108 967	+27,1	4 337 127	+34,7
	September	2 633 316	+46,7	471 117	+14,1	1 073 674	+39,7	4 178 107	+40,4
	October	2 532 559	+37,2	664 758	+44,5	1 301 307	+77,3	4 498 624	+48,0
	November	2 524 913	+19,6	906 850	+122,2	1 101 530	+29,6	4 533 293	+34,6
	December	1 957 501	+46,0	435 682	-9,5	911 733	+28,5	3 304 916	+30,6
	<b>Total</b>	<b>25 479 517</b>	<b>+29,8</b>	<b>726 429</b>	<b>+53,3</b>	<b>11 716 182</b>	<b>41,6</b>	<b>44 456 128</b>	<b>+36,2</b>
2006	January	1 662 685	+33,6	499 248	+30,6	693 972	+8,5	2 855 905	+26,0
	February*	2 078 830	+25,1	583 467	+39,1	940 352	+15,0	3 602 649	+24,3
	March	1 936 554	+17,5	768 409	+13,3	995 192	+14,7	3 700 155	+15,9
	April	1 682 783	-6,8	865 976	+58,2	894 376	-1,6	3 443 135	+5,5
	May	2 214 595	-8,7	797 456	+45,1	1 163 964	+23,6	4 176 015	+6,6
	June	2 320 532	+3,3	621 091	-7,1	1 018 674	-2,0	3 960 297	+0,2
	July	2 373 270	-1,6	860 756	+23,9	1 103 302	+9,8	4 337 328	+5,5
	August	2 346 183	-1,7	874 655	+3,8	992 520	-10,5	4 213 358	-2,9
	September	2 170 948	-17,6	543 058	+15,3	1 007 557	-6,2	3 721 563	-10,9
	October	2 289 577	-9,6	990 165	+49,0	1 055 416	-18,9	4 335 158	-3,6
	November 2/	2 302 979	-8,8	659 020	-27,3	1 045 162	-5,1	4 007 161	-11,6

1/ The annual/monthly percentage change is the change in the values of recorded building plans passed by municipalities of the relevant year/month compared with the values of recorded building plans passed by municipalities of the comparable period of the previous year expressed as a percentage.

2/ Preliminary figures.

\* Revised.

**Table 4 - Seasonally adjusted values and percentage change of recorded building plans passed by larger municipalities at constant 2000 prices by type of building**

Year and month		Residential buildings		Non-residential buildings		Additions and alterations		Total	
		R'000	% change 1/	R'000	% change 1/	R'000	% change 1/	R'000	% change 1/
2005	January	1 712 805	+4,0	511 764	-10,2	871 234	+0,3	3 095 803	+0,3
	February	1 773 888	+3,6	508 925	-0,6	887 930	+1,9	3 170 743	+2,4
	March	1 756 090	-1,0	517 423	+1,7	871 526	-1,8	3 145 039	-0,8
	April	2 127 506	+21,2	553 090	+6,9	1 013 693	+16,3	3 694 289	+17,5
	May	2 224 239	+4,5	543 908	-1,7	850 282	-16,1	3 618 429	-2,1
	June	2 157 052	-3,0	650 941	+19,7	1 009 167	+18,7	3 817 160	+5,5
	July	2 122 489	-1,6	608 046	-6,6	909 026	-9,9	3 639 561	-4,7
	August	2 167 651	+2,1	691 653	+13,8	1 002 788	+10,3	3 862 092	+6,1
	September	2 391 553	+10,3	536 284	-22,5	1 036 328	+3,3	3 964 165	+2,6
	October	2 258 293	-5,6	597 393	+11,4	1 117 941	+7,9	3 973 627	+0,2
	November	2 193 300	-2,9	1 032 654	+72,9	1 024 379	-8,4	4 250 333	+7,0
	December	2 391 010	+9,0	498 819	-51,7	1 094 196	+6,8	3 984 025	-6,3
2006	January	2 314 452	-3,2	662 482	+32,8	957 210	-12,5	3 934 144	-1,3
	February	2 231 362	-3,6	706 020	+6,6	1 008 302	+5,3	3 945 684	+0,3
	March	2 075 860	-7,0	591 337	-16,2	997 682	-1,1	3 664 879	-7,1
	April	1 991 046	-4,1	867 918	+46,8	1 001 790	+0,4	3 860 754	+5,3
	May	2 030 599	+2,0	807 155	-7,0	1 061 677	+6,0	3 899 431	+1,0
	June	2 213 933	+9,0	620 655	-23,1	981 633	-7,5	3 816 221	-2,1
	July	2 089 510	-5,6	748 887	+20,7	1 002 459	+2,1	3 840 856	+0,6
	August	2 118 323	+1,4	704 130	-6,0	897 983	-10,4	3 720 436	-3,1
	September	1 964 834	-7,2	624 069	-11,4	968 654	+7,9	3 557 557	-4,4
	October	2 053 305	+4,5	879 082	+40,9	907 689	-6,3	3 840 076	+7,9
	November	1 997 497	-2,7	755 133	-14,1	975 409	+7,5	3 728 039	-2,9
	Jun-Aug. 06	6 421 766		2 073 672		2 882 075		11 377 513	
	Sep.-Nov. 06 2/	6 015 636	-6,3	2 258 284	+8,9	2 851 752	-1,1	11 125 672	-2,2

1/ The percentage change is the change in the seasonally adjusted values of recorded building plans passed by municipalities of the relevant month compared with the seasonally adjusted values of recorded building plans passed by municipalities of the previous month expressed as a percentage.

2/ The percentage change is the change in the seasonally adjusted values of recorded building plans passed by municipalities of the current quarter compared with the seasonally adjusted values of recorded building plans passed by municipalities of the previous quarter expressed as a percentage.

Table 5 - Values and percentage change of buildings reported as completed to larger municipalities at current prices by type of building

Year and month		Residential buildings		Non-residential buildings		Additions and alterations		Total	
		R'000	% change 1/	R'000	% change 1/	R'000	% change 1/	R'000	% change 1/
2005	January	867 330	+41,0	287 719	+42,0	317 720	+19,7	1 472 769	+36,0
	February	1 269 158	+65,9	204 546	-11,8	321 363	+3,5	1 795 067	+37,3
	March	1 349 746	+46,4	311 687	+44,8	317 894	+12,3	1 979 327	+39,4
	April	1 403 416	+49,9	196 564	+21,6	333 048	+49,1	1 933 028	+46,3
	May	1 685 377	+36,2	403 475	+25,4	472 494	+49,4	2 561 346	+36,6
	June	1 512 977	+28,4	388 942	+79,9	511 032	+58,4	2 412 951	+40,5
	July	1 569 236	+9,0	241 768	-28,9	352 856	-3,3	2 163 860	+0,9
	August	2 278 192	+68,0	586 230	+7,6	404 375	+3,3	3 268 797	+42,6
	September	2 098 387	+70,4	365 443	-32,1	448 070	+31,1	2 911 900	+37,9
	October	1 977 971	+52,8	530 888	+39,9	506 074	+33,8	3 014 933	+46,9
	November	2 694 788	+3,1	440 305	+54,2	446 512	+4,1	3 581 605	+7,6
	December	2 321 033	+78,7	251 479	-24,8	442 037	+50,5	3 014 549	+56,5
	<b>Total</b>	<b>21 027 611</b>	<b>+41,3</b>	<b>4 209 046</b>	<b>+11,6</b>	<b>4 873 475</b>	<b>+24,3</b>	<b>30 110 132</b>	<b>+33,4</b>
2006	January	1 215 572	+40,2	314 128	+9,2	397 047	+25,0	1 926 747	+30,8
	February	1 728 454	+36,2	399 432	+95,3	540 680	+68,2	2 668 566	+48,7
	March	2 042 286	+51,3	599 555	+92,4	569 071	+79,0	3 210 912	+62,2
	April	1 684 803	+20,1	256 817	+30,7	445 112	+33,6	2 386 732	+23,5
	May	1 921 188	+14,0	476 600	+18,1	565 071	+19,6	2 962 859	+15,7
	June	2 218 897	+46,7	374 804	-3,6	538 648	+5,4	3 132 349	+29,8
	July	2 161 280	+37,7	323 492	+33,8	539 489	+52,9	3 024 261	+39,8
	August	2 218 752	-2,6	464 305	-20,8	541 903	+34,0	3 224 960	-1,3
	September	2 425 487	+15,6	397 862	+8,9	643 575	+43,6	3 466 924	+19,1
	October	2 224 328	+12,5	716 444	+35,0	512 364	+1,2	3 453 136	+14,5
	November	2 398 183	-11,0	640 558	+45,5	794 141	+77,9	3 832 882	+7,0

1/ The annual/monthly percentage change is the change in the values of buildings reported as completed to municipalities of the relevant year/month compared with the values of buildings reported as completed to municipalities of the comparable period of the previous year expressed as a percentage.

2/ Preliminary figures.

**Table 6 - Seasonally adjusted values and percentage change of buildings reported as completed to larger municipalities at current prices by type of building**

Year and month		Residential buildings		Non-residential buildings		Additions and alterations		Total	
		R'000	% change 1/	R'000	% change 1/	R'000	% change 1/	R'000	% change 1/
2005	January	1 224 827	-3,9	360 048	-5,6	361 919	+4,5	1 946 794	-2,8
	February	1 469 723	+20,0	252 437	-29,9	314 524	-13,1	2 036 684	+4,6
	March	1 408 241	-4,2	282 261	+11,8	326 627	+3,8	2 017 129	-1,0
	April	1 579 804	+12,2	275 198	-2,5	390 616	+19,6	2 245 618	+11,3
	May	1 604 258	+1,5	304 109	+10,5	418 781	+7,2	2 327 148	+3,6
	June	1 539 862	-4,0	437 899	+44,0	493 653	+17,9	2 471 414	+6,2
	July	1 470 874	-4,5	277 901	-36,5	339 402	-31,2	2 088 177	-15,5
	August	2 079 981	+41,4	469 355	+68,9	396 033	+16,7	2 945 369	+41,0
	September	1 952 736	-6,1	339 633	-27,6	435 327	+9,9	2 727 696	-7,4
	October	1 866 985	-4,4	437 623	+28,9	473 226	+8,7	2 777 834	+1,8
	November	2 176 604	+16,6	403 206	-7,9	400 878	-15,3	2 980 688	+7,3
	December	2 241 904	+3,0	287 733	-28,6	511 564	+27,6	3 041 201	+2,0
2006	January	1 761 787	-21,4	382 470	+32,9	453 083	-11,4	2 597 340	-14,6
	February	1 998 466	+13,4	481 846	+26,0	529 649	+16,9	3 009 961	+15,9
	March	2 153 458	+7,8	540 706	+12,2	590 847	+11,6	3 285 011	+9,1
	April	1 913 348	-11,1	390 551	-27,8	527 570	-10,7	2 831 469	-13,8
	May	1 832 174	-4,2	374 686	-4,1	508 200	-3,7	2 715 060	-4,1
	June	2 230 911	+21,8	424 459	+13,3	522 182	+2,8	3 177 552	+17,0
	July	2 014 854	-9,7	388 221	-8,5	520 789	-0,3	2 923 864	-8,0
	August	2 016 185	+0,1	353 575	-8,9	526 262	+1,1	2 896 022	-1,0
	September	2 253 935	+11,8	364 639	+3,1	619 981	+17,8	3 238 555	+11,8
	October	2 130 129	-5,5	568 766	+56,0	481 287	-22,4	3 180 182	-1,8
	November	1 921 223	-9,8	596 942	+5,0	700 313	+45,5	3 218 478	+1,2
	Jun-Aug. 06	6 261 950		1 166 255		1 569 233		8 997 438	
	Sep.-Nov. 06 2/	6 305 287	+0,7	1 530 347	+31,2	1 801 581	+14,8	9 637 215	+7,1

1/ The percentage change is the change in the seasonally adjusted values of buildings reported as completed to municipalities of the relevant month compared with the seasonally adjusted values of buildings reported as completed to municipalities of the previous month expressed as a percentage.

2/ The percentage change is the change in the seasonally adjusted values of buildings reported as completed to municipalities of the current quarter compared with the seasonally adjusted values of buildings reported as completed to municipalities of the previous quarter expressed as a percentage.

Table 7 - Values and percentage change of buildings reported as completed to larger municipalities at constant 2000 prices by type of building

Year and month		Residential buildings		Non-residential buildings		Additions and alterations		Total	
		R'000	% change 1/	R'000	% change 1/	R'000	% change 1/	R'000	% change 1/
2005	January	643 867	+34,9	222 177	+32,2	244 025	+16,8	1 110 069	+29,9
	February	939 989	+58,7	157 829	-17,0	243 641	+0,3	1 341 459	+30,8
	March	993 768	+39,3	240 685	+37,1	239 378	+8,5	1 473 831	+32,8
	April	1 026 653	+41,8	151 904	+16,5	248 915	+43,8	1 427 472	+38,9
	May	1 225 236	+27,9	312 287	+20,9	350 775	+43,1	1 888 298	+29,2
	June	1 096 624	+20,3	301 039	+74,2	376 312	+50,9	1 773 975	+33,0
	July	1 127 094	+1,7	185 690	-30,7	258 882	-8,1	1 571 666	-5,2
	August	1 633 115	+57,9	444 450	+4,3	294 949	-2,4	2 372 514	+34,6
	September	1 495 076	+60,1	275 183	-34,4	326 106	+23,6	2 096 365	+29,6
	October	1 396 194	+43,0	396 777	+34,9	366 190	+25,3	2 159 161	+38,2
	November	1 903 641	-4,3	326 878	+47,8	321 232	-3,3	2 551 751	+0,3
	December	1 634 400	+68,2	185 183	-28,3	317 784	+39,8	2 137 367	+46,6
	<b>Total</b>	<b>15 115 657</b>	<b>+32,7</b>	<b>3 200 082</b>	<b>+7,3</b>	<b>3 588 189</b>	<b>+18,1</b>	<b>21 903 928</b>	<b>+25,8</b>
2006	January	845 982	+31,4	230 468	+3,7	281 793	+15,5	1 358 243	+22,4
	February	1 197 343	+27,4	291 344	+84,6	382 918	+57,2	1 871 605	+39,5
	March	1 409 562	+41,8	436 357	+81,3	400 472	+67,3	2 246 391	+52,4
	April	1 157 477	+12,7	185 830	+22,3	310 615	+24,8	1 653 922	+15,9
	May	1 314 228	+7,3	342 878	+9,8	393 778	+12,3	2 050 884	+8,6
	June	1 516 199	+38,3	269 449	-10,5	374 061	-0,6	2 159 709	+21,7
	July	1 462 064	+29,7	229 590	+23,6	370 528	+43,1	2 062 182	+31,2
	August	1 494 866	-8,5	328 828	-26,0	370 152	+25,5	2 193 846	-7,5
	September	1 630 716	+9,1	279 987	+1,7	438 403	+34,4	2 349 106	+12,1
	October	1 483 527	+6,3	499 961	+26,0	348 310	-4,9	2 331 798	+8,0
	November	1 585 430	-16,7	446 382	+36,6	538 036	+67,5	2 569 848	+0,7

1/ The annual/monthly percentage change is the change in the values of buildings reported as completed to municipalities of the relevant year/month compared with the values of buildings reported as completed to municipalities of the comparable period of the previous year expressed as a percentage.

2/ Preliminary figures.



**Table 8 - Seasonally adjusted values and percentage change of buildings reported as completed to larger municipalities at constant 2000 prices by type of building**

Year and month		Residential buildings		Non-residential buildings		Additions and alterations		Total	
		R'000	% change 1/	R'000	% change 1/	R'000	% change 1/	R'000	% change 1/
2005	January	940 718	-1,8	278 609	-5,7	277 639	+4,4	1 496 966	-1,4
	February	1 100 962	+17,0	195 072	-30,0	238 811	-14,0	1 534 845	+2,5
	March	1 043 319	-5,2	217 486	+11,5	246 357	+3,2	1 507 162	-1,8
	April	1 158 759	+11,1	212 098	-2,5	292 862	+18,9	1 663 719	+10,4
	May	1 172 718	+1,2	234 112	+10,4	311 878	+6,5	1 718 708	+3,3
	June	1 104 362	-5,8	336 088	+43,6	363 261	+16,5	1 803 711	+4,9
	July	1 047 262	-5,2	213 371	-36,5	249 746	-31,2	1 510 379	-16,3
	August	1 448 073	+38,3	356 685	+67,2	289 992	+16,1	2 094 750	+38,7
	September	1 383 900	-4,4	256 286	-28,1	316 808	+9,2	1 956 994	-6,6
	October	1 321 458	-4,5	328 561	+28,2	341 813	+7,9	1 991 832	+1,8
	November	1 535 119	+16,2	300 488	-8,5	286 945	-16,1	2 122 552	+6,6
	December	1 587 475	+3,4	212 322	-29,3	364 846	+27,1	2 164 643	+2,0
2006	January	1 277 225	-19,5	281 198	+32,4	321 156	-12,0	1 879 579	-13,2
	February	1 400 449	+9,6	351 957	+25,2	375 601	+17,0	2 128 007	+13,2
	March	1 499 554	+7,1	392 646	+11,6	416 697	+10,9	2 308 897	+8,5
	April	1 320 035	-12,0	281 776	-28,2	369 401	-11,4	1 971 212	-14,6
	May	1 258 910	-4,6	268 084	-4,9	355 159	-3,9	1 882 153	-4,5
	June	1 508 133	+19,8	302 489	+12,8	362 266	+2,0	2 172 888	+15,4
	July	1 348 826	-10,6	275 340	-9,0	358 664	-1,0	1 982 830	-8,7
	August	1 315 635	-2,5	250 865	-8,9	360 881	+0,6	1 927 381	-2,8
	September	1 508 950	+14,7	257 193	+2,5	422 358	+17,0	2 188 501	+13,5
	October	1 425 177	-5,6	398 776	+55,0	326 712	-22,6	2 150 665	-1,7
	November	1 268 431	-11,0	417 639	+4,7	472 164	+44,5	2 158 234	+0,4
	Jun-Aug. 06	4 172 594		828 694		1 081 811		6 083 099	
	Sep.-Nov. 06 2/	4 202 558	+0,7	1 073 608	+29,6	1 221 234	+12,9	6 497 400	+6,8

1/ The percentage change is the change in the seasonally adjusted values of buildings reported as completed to municipalities of the relevant month compared with the seasonally adjusted values of buildings reported as completed to municipalities of the previous month expressed as a percentage.

2/ The percentage change is the change in the seasonally adjusted values of buildings reported as completed to municipalities of the current quarter compared with the seasonally adjusted values of buildings reported as completed to municipalities of the previous quarter expressed as a percentage.

**Table 9 - Recorded building plans passed by larger municipalities at current prices by type of building: South Africa**

Category of building	Type of building	Measuring unit	Nov. 2005*	Oct. 2006	Nov. 2006	Jan. - Nov. 2005	Jan. - Nov. 2006	% Change 1/	
1. Residential buildings	1. Dwelling-houses < 80 square metres	Number	3 558	4 038	2 956	35 465	35 037	-1,2	
		square metres	160 370	174 074	136 097	1 526 760	1 563 186	+2,4	
		R'000	302 011	280 049	274 491	2 236 748	2 647 434	+18,4	
	2. Dwelling-houses >= 80 square metres	Number	3 221	3 299	3 188	31 776	32 443	+2,1	
		square metres	759 067	764 921	772 031	7 549 043	7 540 141	-0,1	
		R'000	2 113 749	2 259 947	2 348 661	20 040 616	21 836 564	+9,0	
	3. Flats and townhouses	Number	3 513	2 532	2 311	27 441	29 213	+6,5	
		square metres	424 549	366 381	364 206	3 990 622	3 846 156	-3,6	
		R'000	1 253 116	1 160 551	1 124 931	11 248 539	11 699 050	+4,0	
	4. Other residential buildings 2/	square metres	16 916	11 097	17 778	179 939	152 195	-15,4	
R'000		57 896	42 911	56 438	543 602	545 032	+0,3		
	5. Total residential buildings	R'000	3 726 772	3 743 458	3 804 521	34 069 505	36 728 080	+7,8	
2. Non-residential buildings	1. Office and banking space	square metres	36 069	91 437	49 839	580 390	867 087	+49,4	
		R'000	119 393	286 070	154 147	1 704 575	2 880 223	+69,0	
	2. Shopping space	square metres	190 800	217 701	81 789	1 170 884	926 780	-20,8	
		R'000	541 391	684 908	235 986	3 381 502	3 168 641	-6,3	
	3. Industrial and warehouse space	square metres	216 088	210 170	194 313	1 635 174	2 111 399	+29,1	
		R'000	599 531	565 894	533 206	3 960 450	5 610 323	+41,7	
	4. Other non-residential buildings 3/	square metres	30 426	25 092	55 177	307 399	346 509	+12,7	
		R'000	78 195	82 048	165 362	835 832	995 289	+19,1	
		5. Total non-residential buildings	R'000	1 338 510	1 618 920	1 088 701	9 882 359	12 654 476	+28,1
	3. Additions and alterations	1. Dwelling-houses	square metres	503 998	505 494	462 213	4 785 745	4 921 530	+2,8
R'000			1 234 295	1 399 683	1 257 740	11 639 256	13 023 739	+11,9	
2. Other buildings 4/		square metres	142 688	98 277	153 658	1 316 910	1 318 638	+0,1	
		R'000	391 563	325 922	468 868	4 001 626	4 099 947	+2,5	
		3. Total additions and alterations	R'000	1 625 858	1 725 605	1 726 608	15 640 882	17 123 686	+9,5
4. Recorded plans passed		1. Total at current prices	R'000	6 691 140	7 087 983	6 619 830	59 592 746	66 506 242	+11,6

1/ The percentage change between cumulative figures for 2005 and 2006.

2/ Other residential buildings include institutions for the disabled, boarding houses, hostels and tourism accommodation e.g. hotels, motels, guesthouses, holiday chalets, bed-and-breakfast accommodation and casinos.

3/ Other non-residential space includes churches, sport and recreation clubs, schools, crèches, hospitals and all other non-residential space.

4/ Other buildings include other residential buildings, non-residential buildings and internal alterations.

\* Revised.

**Table 10 - Recorded building plans passed by larger municipalities at current prices by type of building: Western Cape**

Category of building	Type of building	Measuring unit	Nov. 2005*	Oct. 2006	Nov. 2006	Jan. - Nov. 2005	Jan. - Nov. 2006	% Change 1/	
1. Residential buildings	1. Dwelling-houses < 80 square metres	Number	639	523	417	5 033	6 325	+25,7	
		square metres	25 612	22 723	19 062	235 937	276 885	+17,4	
		R'000	47 390	34 915	33 341	358 953	462 417	+28,8	
	2. Dwelling-houses >= 80 square metres	Number	701	722	697	7 759	7 011	-9,6	
		square metres	167 607	157 084	154 953	1 858 228	1 582 662	-14,8	
		R'000	496 196	484 506	494 640	5 366 679	4 780 772	-10,9	
	3. Flats and townhouses	Number	983	745	380	7 667	5 910	-22,9	
		square metres	128 278	85 066	52 661	965 718	659 316	-31,7	
		R'000	379 006	271 557	148 928	2 810 752	2 066 547	-26,5	
	4. Other residential buildings 2/	square metres	10 070	0	14 409	87 770	52 786	-39,9	
		R'000	30 456	0	48 647	266 273	189 517	-28,8	
		<b>5. Total residential buildings</b>	<b>R'000</b>	<b>953 048</b>	<b>790 978</b>	<b>725 556</b>	<b>8 802 657</b>	<b>7 499 253</b>	<b>-14,8</b>
	2. Non-residential buildings	1. Office and banking space	square metres	6 021	28 410	6 817	112 131	209 904	+87,2
R'000			18 464	95 574	18 902	340 204	625 956	+84,0	
2. Shopping space		square metres	65 624	11 025	10 584	338 983	101 163	-70,2	
		R'000	207 053	36 343	20 446	959 871	339 015	-64,7	
3. Industrial and warehouse space		square metres	104 843	50 784	57 681	595 904	688 433	+15,5	
		R'000	326 349	151 336	172 639	1 577 713	1 920 644	+21,7	
4. Other non-residential buildings 3/		square metres	3 388	2 902	24 406	85 745	103 722	+21,0	
		R'000	10 228	7 877	71 352	281 270	310 114	+10,3	
		<b>5. Total non-residential buildings</b>	<b>R'000</b>	<b>562 094</b>	<b>291 130</b>	<b>283 339</b>	<b>3 159 058</b>	<b>3 195 729</b>	<b>+1,2</b>
3. Additions and alterations		1. Dwelling-houses	square metres	150 433	154 901	132 289	1 481 233	1 463 489	-1,2
	R'000		399 303	445 615	371 416	3 898 918	3 979 598	+2,1	
	2. Other buildings 4/	square metres	37 092	32 939	84 219	410 451	497 041	+21,1	
		R'000	113 250	120 914	230 985	1 288 883	1 571 132	+21,9	
		<b>3. Total additions and alterations</b>	<b>R'000</b>	<b>512 553</b>	<b>566 529</b>	<b>602 401</b>	<b>5 187 801</b>	<b>5 550 730</b>	<b>+7,0</b>
4. Recorded plans passed	<b>1. Total at current prices</b>	<b>R'000</b>	<b>2 027 695</b>	<b>1 648 637</b>	<b>1 611 296</b>	<b>17 149 516</b>	<b>16 245 712</b>	<b>-5,3</b>	

1/ The percentage change between cumulative figures for 2005 and 2006.

2/ Other residential buildings include institutions for the disabled, boarding houses, hostels and tourism accommodation e.g. hotels, motels, guesthouses, holiday chalets, bed-and-breakfast accommodation and casinos.

3/ Other non-residential space includes churches, sport and recreation clubs, schools, crèches, hospitals and all other non-residential space.

4/ Other buildings include other residential buildings, non-residential buildings and internal alterations.

\* Revised.

**Table 11 - Recorded building plans passed by larger municipalities at current prices by type of building: Eastern Cape**

Category of building	Type of building	Measuring unit	Nov. 2005	Oct. 2006	Nov. 2006	Jan. - Nov. 2005	Jan. - Nov. 2006	% Change 1/
1. Residential buildings	1. Dwelling-houses < 80 square metres	Number	446	524	97	2 940	2 500	-15,0
		square metres	19 666	21 163	4 567	127 449	107 552	-15,6
		R'000	22 620	15 179	6 050	133 699	111 459	-16,6
	2. Dwelling-houses >= 80 square metres	Number	171	208	198	2 220	2 456	+10,6
		square metres	33 945	42 069	42 957	467 564	503 585	+7,7
		R'000	87 321	110 793	115 382	1 138 981	1 207 140	+6,0
	3. Flats and townhouses	Number	114	76	87	665	1 056	+58,8
		square metres	15 969	14 467	9 490	107 924	152 587	+41,4
		R'000	36 619	38 672	23 148	237 650	358 919	+51,0
	4. Other residential buildings 2/	square metres	184	98	2 196	9 517	7 893	-17,1
		R'000	455	231	5 302	20 675	17 139	-17,1
	<b>5. Total residential buildings</b>	<b>R'000</b>	<b>147 015</b>	<b>164 875</b>	<b>149 882</b>	<b>1 531 005</b>	<b>1 694 657</b>	<b>+10,7</b>
2. Non-residential buildings	1. Office and banking space	square metres	0	865	2 475	4 645	10 557	+127,3
		R'000	0	1 991	6 938	11 190	27 284	+143,8
	2. Shopping space	square metres	377	41 021	15 346	18 359	75 615	+311,9
		R'000	415	108 511	41 373	34 367	195 042	+467,5
	3. Industrial and warehouse space	square metres	1 051	9 405	2 030	82 571	71 584	-13,3
		R'000	2 094	21 276	4 390	151 298	148 277	-2,0
	4. Other non-residential buildings 3/	square metres	2 339	2 022	1 987	13 867	15 752	+13,6
		R'000	3 925	4 590	5 041	27 701	36 416	+31,5
	<b>5. Total non-residential buildings</b>	<b>R'000</b>	<b>6 434</b>	<b>136 368</b>	<b>57 742</b>	<b>224 556</b>	<b>407 019</b>	<b>+81,3</b>
3. Additions and alterations	1. Dwelling-houses	square metres	57 469	38 300	26 997	420 072	415 017	-1,2
		R'000	103 575	89 288	69 037	839 185	927 697	+10,5
	2. Other buildings 4/	square metres	18 111	5 923	5 054	99 131	60 062	-39,4
		R'000	52 832	16 093	17 949	234 945	162 852	-30,7
	<b>3. Total additions and alterations</b>	<b>R'000</b>	<b>156 407</b>	<b>105 381</b>	<b>86 986</b>	<b>1 074 130</b>	<b>1 090 549</b>	<b>+1,5</b>
4. Recorded plans passed	<b>1. Total at current prices</b>	<b>R'000</b>	<b>309 856</b>	<b>406 624</b>	<b>294 610</b>	<b>2 829 691</b>	<b>3 192 225</b>	<b>+12,8</b>

1/ The percentage change between cumulative figures for 2005 and 2006.

2/ Other residential buildings include institutions for the disabled, boarding houses, hostels and tourism accommodation e.g. hotels, motels, guesthouses, holiday chalets, bed-and-breakfast accommodation and casinos.

3/ Other non-residential space includes churches, sport and recreation clubs, schools, crèches, hospitals and all other non-residential space.

4/ Other buildings include other residential buildings, non-residential buildings and internal alterations.

**Table 12 - Recorded building plans passed by larger municipalities at current prices by type of building: Northern Cape**

Category of building	Type of building	Measuring unit	Nov. 2005	Oct. 2006	Nov. 2006	Jan. - Nov. 2005	Jan. - Nov. 2006	% Change 1/
1. Residential buildings	1. Dwelling-houses < 80 square metres	Number	1	10	0	917	248	-73,0
		square metres	50	457	0	33 033	11 720	-64,5
		R'000	100	795	0	22 594	14 655	-35,1
	2. Dwelling-houses >= 80 square metres	Number	35	40	39	328	350	+6,7
		square metres	8 114	7 161	7 297	61 929	67 330	+8,7
		R'000	15 746	15 987	14 335	114 419	133 610	+16,8
	3. Flats and townhouses	Number	6	2	42	140	276	+97,1
		square metres	967	602	3 677	20 571	26 621	+29,4
		R'000	1 764	1 150	5 885	37 500	49 147	+31,1
	4. Other residential buildings 2/	square metres	0	5 414	0	2 813	7 690	+173,4
		R'000	0	23 083	0	6 752	28 346	+319,8
	5. Total residential buildings	R'000	17 610	41 015	20 220	181 265	225 758	+24,5
2. Non-residential buildings	1. Office and banking space	square metres	0	0	0	2 655	5 759	+116,9
		R'000	0	0	0	5 974	14 161	+137,0
	2. Shopping space	square metres	1 040	1 536	0	43 495	5 930	-86,4
		R'000	1 673	2 948	0	126 723	10 581	-91,7
	3. Industrial and warehouse space	square metres	67	205	129	8 621	12 086	+40,2
		R'000	134	492	194	16 982	32 967	+94,1
	4. Other non-residential buildings 3/	square metres	642	1 377	505	4 779	7 896	+65,2
		R'000	1 284	2 729	1 010	10 554	13 035	+23,5
		5. Total non-residential buildings	R'000	3 091	6 169	1 204	160 233	70 744
3. Additions and alterations	1. Dwelling-houses	square metres	5 945	7 310	6 211	50 688	56 622	+11,7
		R'000	11 665	14 750	12 504	96 938	115 204	+18,8
	2. Other buildings 4/	square metres	1 670	1 931	1 722	10 144	13 961	+37,6
		R'000	3 112	5 157	3 322	25 887	37 806	+46,0
		3. Total additions and alterations	R'000	14 777	19 907	15 826	122 825	153 010
4. Recorded plans passed	1. Total at current prices	R'000	35 478	67 091	37 250	464 323	449 512	-3,2

1/ The percentage change between cumulative figures for 2005 and 2006.

2/ Other residential buildings include institutions for the disabled, boarding houses, hostels and tourism accommodation e.g. hotels, motels, guesthouses, holiday chalets, bed-and-breakfast accommodation and casinos.

3/ Other non-residential space includes churches, sport and recreation clubs, schools, crèches, hospitals and all other non-residential space.

4/ Other buildings include other residential buildings, non-residential buildings and internal alterations.

Table 13 - Recorded building plans passed by larger municipalities at current prices by type of building: Free State

Category of building	Type of building	Measuring unit	Nov. 2005	Oct. 2006	Nov. 2006	Jan. - Nov. 2005	Jan. - Nov. 2006	% Change 1/
1. Residential buildings	1. Dwelling-houses < 80 square metres	Number	103	171	131	3 195	2 543	-20,4
		square metres	4 832	7 577	5 699	135 702	107 684	-20,6
		R'000	4 915	7 176	5 267	103 015	99 090	-3,8
	2. Dwelling-houses >= 80 square metres	Number	94	147	127	1 170	1 122	-4,1
		square metres	16 826	26 528	26 081	212 110	214 914	+1,3
		R'000	33 052	62 554	61 773	407 964	486 347	+19,2
	3. Flats and townhouses	Number	144	136	58	1 286	1 137	-11,6
		square metres	8 404	15 344	9 738	139 235	132 774	-4,6
		R'000	17 403	41 603	25 154	297 643	323 306	+8,6
	4. Other residential buildings 2/	square metres	178	662	88	10 764	4 322	-59,8
		R'000	320	1 956	264	41 070	12 057	-70,6
	5. Total residential buildings	R'000	55 690	113 289	92 458	849 692	920 800	+8,4
2. Non-residential buildings	1. Office and banking space	square metres	0	0	0	4 006	16 583	+314,0
		R'000	0	0	0	11 664	47 547	+307,6
	2. Shopping space	square metres	19 031	4 345	0	83 847	24 586	-70,7
		R'000	33 128	16 901	0	397 824	78 549	-80,3
	3. Industrial and warehouse space	square metres	355	17 580	160	19 160	50 891	+165,6
		R'000	313	19 853	480	29 477	77 855	+164,1
	4. Other non-residential buildings 3/	square metres	40	1 329	2 136	26 904	13 838	-48,6
		R'000	48	3 289	9 895	91 377	37 550	-58,9
		5. Total non-residential buildings	R'000	33 489	40 043	10 375	530 342	241 501
3. Additions and alterations	1. Dwelling-houses	square metres	15 982	17 685	19 949	167 654	171 075	+2,0
		R'000	27 551	38 272	40 528	271 547	333 825	+22,9
	2. Other buildings 4/	square metres	4 546	2 764	1 986	29 661	39 541	+33,3
		R'000	10 721	10 658	15 250	76 142	137 461	+80,5
		3. Total additions and alterations	R'000	38 272	48 930	55 778	347 689	471 286
4. Recorded plans passed	1. Total at current prices	R'000	127 451	202 262	158 611	1 727 723	1 633 587	-5,4

1/ The percentage change between cumulative figures for 2005 and 2006.

2/ Other residential buildings include institutions for the disabled, boarding houses, hostels and tourism accommodation e.g. hotels, motels, guesthouses, holiday chalets, bed-and-breakfast accommodation and casinos.

3/ Other non-residential space includes churches, sport and recreation clubs, schools, crèches, hospitals and all other non-residential space.

4/ Other buildings include other residential buildings, non-residential buildings and internal alterations.

**Table 14 - Recorded building plans passed by larger municipalities at current prices by type of building: KwaZulu-Natal**

Category of building	Type of building	Measuring unit	Nov. 2005	Oct. 2006	Nov. 2006	Jan. - Nov. 2005	Jan. - Nov. 2006	% Change 1/	
1. Residential buildings	1. Dwelling-houses < 80 square metres	Number	173	125	81	2 552	1 170	-54,2	
		square metres	8 452	6 938	4 554	105 644	61 652	-41,6	
		R'000	14 652	15 612	10 773	131 902	117 863	-10,6	
	2. Dwelling-houses >= 80 square metres	Number	257	280	266	2 522	2 835	+12,4	
		square metres	59 511	65 316	61 664	572 503	640 496	+11,9	
		R'000	154 413	188 791	193 390	1 436 503	1 784 051	+24,2	
	3. Flats and townhouses	Number	522	484	443	5 377	4 079	-24,1	
		square metres	77 432	81 261	67 192	990 644	696 782	-29,7	
		R'000	231 710	302 408	181 559	2 966 389	2 219 309	-25,2	
	4. Other residential buildings 2/	square metres	5 276	3 888	55	8 173	29 601	+262,2	
		R'000	23 766	15 000	111	29 400	144 899	+392,9	
	5. Total residential buildings	R'000	424 541	521 811	385 833	4 564 194	4 266 122	-6,5	
2. Non-residential buildings	1. Office and banking space	square metres	1 494	6 708	12 648	61 056	133 981	+119,4	
		R'000	4 000	17 048	29 149	136 800	505 637	+269,6	
	2. Shopping space	square metres	14 048	11 009	4 235	148 239	77 847	-47,5	
		R'000	33 483	37 695	11 357	441 506	241 302	-45,3	
	3. Industrial and warehouse space	square metres	34 161	28 289	47 212	320 291	432 816	+35,1	
		R'000	40 140	53 008	104 338	576 063	946 083	+64,2	
	4. Other non-residential buildings 3/	square metres	2 955	5 601	1 088	33 509	58 130	+73,5	
		R'000	6 919	23 738	3 273	77 024	170 476	+121,3	
		5. Total non-residential buildings	R'000	84 542	131 489	148 117	1 231 393	1 863 498	+51,3
	3. Additions and alterations	1. Dwelling-houses	square metres	66 160	64 127	70 763	601 145	663 438	+10,4
			R'000	127 642	156 733	168 445	1 256 495	1 569 934	+24,9
2. Other buildings 4/		square metres	20 550	13 359	14 250	224 839	257 370	+14,5	
		R'000	39 679	44 838	39 583	767 378	802 834	+4,6	
		3. Total additions and alterations	R'000	167 321	201 571	208 028	2 023 873	2 372 768	+17,2
4. Recorded plans passed	1. Total at current prices	R'000	676 404	854 871	741 978	7 819 460	8 502 388	+8,7	

1/ The percentage change between cumulative figures for 2005 and 2006.

2/ Other residential buildings include institutions for the disabled, boarding houses, hostels and tourism accommodation e.g. hotels, motels, guesthouses, holiday chalets, bed-and-breakfast accommodation and casinos.

3/ Other non-residential space includes churches, sport and recreation clubs, schools, crèches, hospitals and all other non-residential space.

4/ Other buildings include other residential buildings, non-residential buildings and internal alterations.

Table 15 - Recorded building plans passed by larger municipalities at current prices by type of building: North West

Category of building	Type of building	Measuring unit	Nov. 2005*	Oct. 2006	Nov. 2006	Jan. - Nov. 2005	Jan. - Nov. 2006	% Change 1/	
1. Residential buildings	1. Dwelling-houses < 80 square metres	Number	67	53	71	616	1 556	+152,6	
		square metres	4 004	3 107	4 223	33 736	74 980	+122,3	
		R'000	8 011	4 114	4 932	53 633	84 430	+57,4	
	2. Dwelling-houses >= 80 square metres	Number	196	156	178	2 139	2 079	-2,8	
		square metres	36 412	28 191	30 258	421 694	414 114	-1,8	
		R'000	85 563	68 429	74 688	977 677	1 030 898	+5,4	
	3. Flats and townhouses	Number	56	219	89	1 432	1 294	-9,6	
		square metres	4 786	18 451	13 640	142 883	137 758	-3,6	
		R'000	10 383	46 900	34 321	357 913	351 976	-1,7	
	4. Other residential buildings 2/	square metres	0	0	0	8 553	8 403	-1,8	
		R'000	0	0	0	39 183	23 762	-39,4	
	5. Total residential buildings	R'000	103 957	119 443	113 941	1 428 406	1 491 066	+4,4	
2. Non-residential buildings	1. Office and banking space	square metres	81	2 604	1 407	6 683	13 982	+109,2	
		R'000	270	6 703	3 096	14 269	32 938	+130,8	
	2. Shopping space	square metres	1 232	117	166	26 271	121 681	+363,2	
		R'000	2 136	257	323	59 250	395 974	+568,3	
	3. Industrial and warehouse space	square metres	608	456	4 034	30 759	36 965	+20,2	
		R'000	910	1 004	9 120	55 940	80 883	+44,6	
	4. Other non-residential buildings 3/	square metres	0	1 783	1 894	14 989	14 047	-6,3	
		R'000	0	3 693	5 301	33 588	38 116	+13,5	
		5. Total non-residential buildings	R'000	3 316	11 657	17 840	163 047	547 911	+236,0
	3. Additions and alterations	1. Dwelling-houses	square metres	11 067	9 816	10 091	132 272	123 765	-6,4
R'000			22 385	24 388	21 915	266 114	255 089	-4,1	
2. Other buildings 4/		square metres	1 361	1 461	128	40 037	20 377	-49,1	
		R'000	3 241	2 850	858	110 037	55 023	-50,0	
		3. Total additions and alterations	R'000	25 626	27 238	22 773	376 151	310 112	-17,6
4. Recorded plans passed	1. Total at current prices	R'000	132 899	158 338	154 554	1 967 604	2 349 089	+19,4	

1/ The percentage change between cumulative figures for 2005 and 2006.

2/ Other residential buildings include institutions for the disabled, boarding houses, hostels and tourism accommodation e.g. hotels, motels, guesthouses, holiday chalets, bed-and-breakfast accommodation and casinos.

3/ Other non-residential space includes churches, sport and recreation clubs, schools, crèches, hospitals and all other non-residential space.

4/ Other buildings include other residential buildings, non-residential buildings and internal alterations.

\* Revised.



**Table 16 - Recorded building plans passed by larger municipalities at current prices by type of building: Gauteng**

Category of building	Type of building	Measuring unit	Nov. 2005*	Oct. 2006	Nov. 2006	Jan. - Nov. 2005	Jan. - Nov. 2006	% Change 1/	
1. Residential buildings	1. Dwelling-houses < 80 square metres	Number	2 045	2 473	1 976	18 300	19 162	+4,7	
		square metres	92 955	103 125	86 746	760 645	838 841	+10,3	
		R'000	193 612	179 979	186 060	1 292 059	1 582 619	+22,5	
	2. Dwelling-houses >= 80 square metres	Number	1 413	1 351	1 253	12 207	13 149	+7,7	
		square metres	367 595	356 625	356 076	3 285 764	3 369 553	+2,6	
		R'000	1 081 515	1 108 640	1 154 744	9 036 345	10 450 613	+15,7	
	3. Flats and townhouses	Number	1 384	564	1 164	9 326	13 177	+41,3	
		square metres	157 519	122 974	199 593	1 442 240	1 787 114	+23,9	
		R'000	508 497	375 612	686 268	4 133 618	5 682 331	+37,5	
	4. Other residential buildings 2/	square metres	803	707	30	31 063	30 120	-3,0	
R'000		2 008	1 661	105	81 679	97 116	+18,9		
	5. Total residential buildings	R'000	1 785 632	1 665 892	2 027 177	14 543 701	17 812 679	+22,5	
2. Non-residential buildings	1. Office and banking space	square metres	27 273	31 512	21 894	357 434	418 916	+17,2	
		R'000	94 019	109 262	81 769	1 095 379	1 463 350	+33,6	
	2. Shopping space	square metres	66 033	125 229	25 170	331 583	367 278	+10,8	
		R'000	204 230	421 805	69 227	952 117	1 168 586	+22,7	
	3. Industrial and warehouse space	square metres	70 627	84 566	65 938	503 236	716 161	+42,3	
		R'000	219 643	261 295	200 528	1 383 528	2 140 975	+54,7	
	4. Other non-residential buildings 3/	square metres	16 822	6 285	20 614	92 456	93 485	+1,1	
		R'000	48 307	20 995	64 472	241 011	263 981	+9,5	
		5. Total non-residential buildings	R'000	566 199	813 357	415 996	3 672 035	5 036 892	+37,2
	3. Additions and alterations	1. Dwelling-houses	square metres	170 123	173 923	156 795	1 608 359	1 704 627	+6,0
R'000			488 276	528 623	493 171	4 364 298	5 123 631	+17,4	
2. Other buildings 4/		square metres	52 820	38 586	43 779	444 785	377 638	-15,1	
		R'000	154 567	121 135	153 325	1 347 428	1 189 598	-11,7	
		3. Total additions and alterations	R'000	642 843	649 758	646 496	5 711 726	6 313 229	+10,5
4. Recorded plans passed		1. Total at current prices	R'000	2 994 674	3 129 007	3 089 669	23 927 462	29 162 800	+21,9

1/ The percentage change between cumulative figures for 2005 and 2006.

2/ Other residential buildings include institutions for the disabled, boarding houses, hostels and tourism accommodation e.g. hotels, motels, guesthouses, holiday chalets, bed-and-breakfast accommodation and casinos.

3/ Other non-residential space includes churches, sport and recreation clubs, schools, crèches, hospitals and all other non-residential space.

4/ Other buildings include other residential buildings, non-residential buildings and internal alterations.

\* Revised.

**Table 17 - Recorded building plans passed by larger municipalities at current prices by type of building: Mpumalanga**

Category of building	Type of building	Measuring unit	Nov. 2005	Oct. 2006	Nov. 2006	Jan. - Nov. 2005	Jan. - Nov. 2006	% Change 1/	
1. Residential buildings	1. Dwelling-houses < 80 square metres	Number	63	63	107	904	639	-29,3	
		square metres	3 554	3 029	6 509	47 930	37 249	-22,3	
		R'000	7 794	7 195	16 214	78 129	89 475	+14,5	
	2. Dwelling-houses >= 80 square metres	Number	224	245	314	2 478	2 211	-10,8	
		square metres	43 140	52 340	71 386	484 532	499 288	+3,0	
		R'000	102 741	141 816	181 423	1 152 115	1 343 839	+16,6	
	3. Flats and townhouses	Number	265	89	13	967	1 523	+57,5	
		square metres	27 218	13 388	3 144	117 349	182 120	+55,2	
		R'000	59 253	44 494	7 809	245 115	469 018	+91,3	
	4. Other residential buildings 2/	square metres	405	0	0	15 966	8 310	-48,0	
		R'000	891	0	0	46 434	22 992	-50,5	
	5. Total residential buildings	R'000	170 679	193 505	205 446	1 521 793	1 925 324	+26,5	
2. Non-residential buildings	1. Office and banking space	square metres	0	21 242	1 550	6 767	46 286	+584,0	
		R'000	0	55 319	6 865	16 176	136 892	+746,3	
	2. Shopping space	square metres	23 052	23 058	22 941	138 052	124 559	-9,8	
		R'000	58 272	59 681	87 206	321 199	683 631	+112,8	
	3. Industrial and warehouse space	square metres	2 003	12 794	13 718	52 023	77 247	+48,5	
		R'000	5 371	43 018	34 212	120 552	204 909	+70,0	
	4. Other non-residential buildings 3/	square metres	521	3 767	2 547	27 892	38 359	+37,5	
		R'000	1 105	15 068	5 018	59 625	123 650	+107,4	
		5. Total non-residential buildings	R'000	64 748	173 086	133 301	517 552	1 149 082	+122,0
	3. Additions and alterations	1. Dwelling-houses	square metres	17 185	24 201	30 396	219 248	222 634	+1,5
R'000			35 587	63 653	60 229	448 907	494 863	+10,2	
2. Other buildings 4/		square metres	4 774	455	1 240	39 857	29 185	-26,8	
		R'000	11 334	1 709	4 117	116 130	92 401	-20,4	
		3. Total additions and alterations	R'000	46 921	65 362	64 346	565 037	587 264	+3,9
4. Recorded plans passed	1. Total at current prices	R'000	282 348	431 953	403 093	2 604 382	3 661 670	+40,6	

1/ The percentage change between cumulative figures for 2005 and 2006.

2/ Other residential buildings include institutions for the disabled, boarding houses, hostels and tourism accommodation e.g. hotels, motels, guesthouses, holiday chalets, bed-and-breakfast accommodation and casinos.

3/ Other non-residential space includes churches, sport and recreation clubs, schools, crèches, hospitals and all other non-residential space.

4/ Other buildings include other residential buildings, non-residential buildings and internal alterations.

**Table 18 - Recorded building plans passed by larger municipalities at current prices by type of building: Limpopo**

Category of building	Type of building	Measuring unit	Nov. 2005*	Oct. 2006	Nov. 2006	Jan. - Nov. 2005	Jan. - Nov. 2006	% Change 1/	
1. Residential buildings	1. Dwelling-houses < 80 square metres	Number	21	96	76	1 008	894	-11,3	
		square metres	1 245	5 955	4 737	46 684	46 623	-0,1	
		R'000	2 917	15 084	11 854	62 764	85 426	+36,1	
	2. Dwelling-houses >= 80 square metres	Number	130	150	116	953	1 230	+29,1	
		square metres	25 917	29 607	21 359	184 719	248 199	+34,4	
		R'000	57 202	78 431	58 286	409 933	619 294	+51,1	
	3. Flats and townhouses	Number	39	217	35	581	761	+31,0	
		square metres	3 976	14 828	5 071	64 058	71 084	+11,0	
		R'000	8 481	38 155	11 859	161 959	178 497	+10,2	
	4. Other residential buildings 2/	square metres	0	328	1 000	5 320	3 070	-42,3	
		R'000	0	980	2 009	12 136	9 204	-24,2	
	5. Total residential buildings	R'000	68 600	132 650	84 008	646 792	892 421	+38,0	
2. Non-residential buildings	1. Office and banking space	square metres	1 200	96	3 048	25 013	11 119	-55,5	
		R'000	2 640	173	7 428	72 919	26 458	-63,7	
	2. Shopping space	square metres	363	361	3 347	42 055	28 121	-33,1	
		R'000	1 001	767	6 054	88 645	55 961	-36,9	
	3. Industrial and warehouse space	square metres	2 373	6 091	3 411	22 609	25 216	+11,5	
		R'000	4 577	14 612	7 305	48 897	57 730	+18,1	
	4. Other non-residential buildings 3/	square metres	3 719	26	0	7 258	1 280	-82,4	
		R'000	6 379	69	0	13 682	1 951	-85,7	
		5. Total non-residential buildings	R'000	14 597	15 621	20 787	224 143	142 100	-36,6
	3. Additions and alterations	1. Dwelling-houses	square metres	9 634	15 231	8 722	105 074	100 863	-4,0
			R'000	18 311	38 361	20 495	196 854	223 898	+13,7
2. Other buildings 4/		square metres	1 764	859	1 280	18 005	23 463	+30,3	
		R'000	2 827	2 568	3 479	34 796	50 840	+46,1	
		3. Total additions and alterations	R'000	21 138	40 929	23 974	231 650	274 738	+18,6
4. Recorded plans passed	1. Total at current prices	R'000	104 335	189 200	128 769	1 102 585	1 309 259	+18,7	

1/ The percentage change between cumulative figures for 2005 and 2006.

2/ Other residential buildings include institutions for the disabled, boarding houses, hostels and tourism accommodation e.g. hotels, motels, guesthouses, holiday chalets, bed-and-breakfast accommodation and casinos.

3/ Other non-residential space includes churches, sport and recreation clubs, schools, crèches, hospitals and all other non-residential space.

4/ Other buildings include other residential buildings, non-residential buildings and internal alterations.

\* Revised.

Table 19 - Buildings reported as completed to larger municipalities at current prices by type of building: South Africa

Category of building	Type of building	Measuring unit	Nov. 2005*	Oct. 2006	Nov. 2006	Jan. - Nov. 2005	Jan. - Nov. 2006	% Change 1/
1. Residential buildings	1. Dwelling-houses < 80 square metres	Number	2 853	3 012	4 546	24 235	22 518	-7,1
		square metres	111 764	129 854	180 292	955 217	964 550	+1,0
		R'000	148 223	221 954	254 147	1 209 647	1 563 306	+29,2
	2. Dwelling-houses >= 80 square metres	Number	2 302	2 062	2 067	20 253	20 015	-1,2
		square metres	532 888	462 461	454 109	4 452 099	4 481 392	+0,7
		R'000	1 405 600	1 226 292	1 232 914	10 785 600	12 220 370	+13,3
	3. Flats and townhouses	Number	2 879	2 177	2 199	19 861	21 156	+6,5
		square metres	385 356	272 596	278 569	2 501 003	2 785 877	+11,4
		R'000	1 137 465	735 474	832 542	6 571 818	8 192 189	+24,7
	4. Other residential buildings 2/	square metres	2 740	15 325	16 539	59 115	75 944	+28,5
		R'000	3 500	40 608	78 580	139 513	263 365	+88,8
	5. Total residential buildings	R'000	2 694 788	2 224 328	2 398 183	18 706 578	22 239 230	+18,9
2. Non-residential buildings	1. Office and banking space	square metres	43 273	19 256	56 238	477 951	296 092	-38,0
		R'000	128 293	57 145	183 088	1 258 162	876 813	-30,3
	2. Shopping space	square metres	23 595	113 089	80 076	365 076	601 851	+64,9
		R'000	69 823	437 675	200 915	871 579	1 901 109	+118,1
	3. Industrial and warehouse space	square metres	91 457	91 651	96 219	708 761	783 468	+10,5
		R'000	228 889	206 124	243 742	1 499 996	1 920 250	+28,0
	4. Other non-residential buildings 3/	square metres	6 246	6 558	5 137	164 414	108 017	-34,3
		R'000	13 300	15 500	12 813	327 830	265 825	-18,9
		5. Total non-residential buildings	R'000	440 305	716 444	640 558	3 957 567	4 963 997
3. Additions and alterations	1. Dwelling-houses	square metres	139 705	166 901	197 057	1 538 847	1 836 850	+19,4
		R'000	310 911	404 130	471 092	3 185 312	4 421 319	+38,8
	2. Other buildings 4/	square metres	51 454	55 516	141 299	505 849	620 226	+22,6
		R'000	135 601	108 234	323 049	1 246 126	1 665 782	+33,7
		3. Total additions and alterations	R'000	446 512	512 364	794 141	4 431 438	6 087 101
4. Recorded buildings completed	1. Total at current prices	R'000	3 581 605	3 453 136	3 832 882	27 095 583	33 290 328	+22,9

1/ The percentage change between cumulative figures for 2005 and 2006.

2/ Other residential buildings include institutions for the disabled, boarding houses, hostels and tourism accommodation e.g. hotels, motels, guesthouses, holiday chalets, bed-and-breakfast accommodation and casinos.

3/ Other non-residential space includes churches, sport and recreation clubs, schools, crèches, hospitals and all other non-residential space.

4/ Other buildings include other residential buildings, non-residential buildings and internal alterations.

\* Revised.

**Table 20 - Buildings reported as completed to larger municipalities at current prices by type of building: Western Cape**

Category of building	Type of building	Measuring unit	Nov. 2005	Oct. 2006	Nov. 2006	Jan. - Nov. 2005	Jan. - Nov. 2006	% Change 1/	
1. Residential buildings	1. Dwelling-houses < 80 square metres	Number	804	388	469	6 560	4 153	-36,7	
		square metres	31 976	17 771	20 149	235 180	167 801	-28,6	
		R'000	37 325	36 554	38 174	266 326	275 790	+3,6	
	2. Dwelling-houses >= 80 square metres	Number	643	439	611	6 592	5 690	-13,7	
		square metres	147 369	104 603	129 828	1 405 315	1 259 675	-10,4	
		R'000	375 673	297 654	380 748	3 233 118	3 422 619	+5,9	
	3. Flats and townhouses	Number	516	387	583	4 507	5 762	+27,8	
		square metres	58 930	47 003	59 960	513 556	682 527	+32,9	
		R'000	155 662	136 499	170 165	1 180 387	1 990 010	+68,6	
	4. Other residential buildings 2/	square metres	0	912	11 446	28 175	24 782	-12,0	
		R'000	0	2 918	64 818	71 616	107 233	+49,7	
	5. Total residential buildings	R'000	568 660	473 625	653 905	4 751 447	5 795 652	+22,0	
2. Non-residential buildings	1. Office and banking space	square metres	4 160	6 841	11 119	101 007	62 157	-38,5	
		R'000	13 413	22 728	31 742	221 245	166 001	-25,0	
	2. Shopping space	square metres	7 676	6 218	3 567	102 187	75 241	-26,4	
		R'000	24 611	19 925	10 930	208 285	189 527	-9,0	
	3. Industrial and warehouse space	square metres	31 302	46 536	31 130	232 571	305 984	+31,6	
		R'000	66 397	114 720	85 154	428 880	783 337	+82,6	
	4. Other non-residential buildings 3/	square metres	659	809	2 625	70 077	40 988	-41,5	
		R'000	1 105	2 261	7 382	95 480	103 084	+8,0	
		5. Total non-residential buildings	R'000	105 526	159 634	135 208	953 890	1 241 949	+30,2
	3. Additions and alterations	1. Dwelling-houses	square metres	50 936	63 385	72 262	576 833	696 238	+20,7
R'000			107 251	166 525	188 070	1 136 437	1 705 156	+50,0	
2. Other buildings 4/		square metres	25 246	13 867	92 915	191 638	276 455	+44,3	
		R'000	59 504	44 746	180 121	460 204	770 468	+67,4	
		3. Total additions and alterations	R'000	166 755	211 271	368 191	1 596 641	2 475 624	+55,1
4. Recorded buildings completed	1. Total at current prices	R'000	840 941	844 530	1 157 304	7 301 978	9 513 225	+30,3	

1/ The percentage change between cumulative figures for 2005 and 2006.

2/ Other residential buildings include institutions for the disabled, boarding houses, hostels and tourism accommodation e.g. hotels, motels, guesthouses, holiday chalets, bed-and-breakfast accommodation and casinos.

3/ Other non-residential space includes churches, sport and recreation clubs, schools, crèches, hospitals and all other non-residential space.

4/ Other buildings include other residential buildings, non-residential buildings and internal alterations.

**Table 21 - Buildings reported as completed to larger municipalities at current prices by type of building: Eastern Cape**

Category of building	Type of building	Measuring unit	Nov. 2005	Oct. 2006	Nov. 2006	Jan. - Nov. 2005	Jan. - Nov. 2006	% Change 1/
1. Residential buildings	1. Dwelling-houses < 80 square metres	Number	265	193	517	2 503	2 299	-8,2
		square metres	10 916	8 439	21 872	104 772	98 910	-5,6
		R'000	10 856	9 336	19 715	113 109	107 644	-4,8
	2. Dwelling-houses >= 80 square metres	Number	88	152	129	1 304	1 268	-2,8
		square metres	14 152	24 632	23 374	234 587	224 983	-4,1
		R'000	28 787	53 494	64 681	502 226	497 244	-1,0
	3. Flats and townhouses	Number	48	59	50	441	632	+43,3
		square metres	4 310	11 439	10 168	53 812	77 869	+44,7
		R'000	9 890	23 891	22 289	102 727	163 506	+59,2
	4. Other residential buildings 2/	square metres	0	0	1 049	868	1 169	+34,7
		R'000	0	0	1 946	1 515	2 210	+45,9
	5. Total residential buildings	R'000	49 533	86 721	108 631	719 577	770 604	+7,1
2. Non-residential buildings	1. Office and banking space	square metres	1 231	293	6 922	2 356	11 842	+402,6
		R'000	2 993	692	18 486	4 804	29 588	+515,9
	2. Shopping space	square metres	0	760	6 298	12 542	20 606	+64,3
		R'000	0	2 660	13 264	22 806	47 239	+107,1
	3. Industrial and warehouse space	square metres	5 814	3 130	3 281	24 640	37 014	+50,2
		R'000	10 599	6 652	6 599	44 073	74 545	+69,1
	4. Other non-residential buildings 3/	square metres	0	0	656	2 786	6 254	+124,5
		R'000	0	0	1 312	5 793	13 276	+129,2
		5. Total non-residential buildings	R'000	13 592	10 004	39 661	77 476	164 648
3. Additions and alterations	1. Dwelling-houses	square metres	11 058	4 544	11 912	135 988	103 446	-23,9
		R'000	22 545	10 498	24 389	240 867	201 892	-16,2
	2. Other buildings 4/	square metres	2 443	1 154	3 549	36 188	52 496	+45,1
		R'000	10 986	2 483	15 074	89 497	110 064	+23,0
		3. Total additions and alterations	R'000	33 531	12 981	39 463	330 364	311 956
4. Recorded buildings completed	1. Total at current prices	R'000	96 656	109 706	187 755	1 127 417	1 247 208	+10,6

1/ The percentage change between cumulative figures for 2005 and 2006.

2/ Other residential buildings include institutions for the disabled, boarding houses, hostels and tourism accommodation e.g. hotels, motels, guesthouses, holiday chalets, bed-and-breakfast accommodation and casinos.

3/ Other non-residential space includes churches, sport and recreation clubs, schools, crèches, hospitals and all other non-residential space.

4/ Other buildings include other residential buildings, non-residential buildings and internal alterations.

Table 22 - Buildings reported as completed to larger municipalities at current prices by type of building: Northern Cape

Category of building	Type of building	Measuring unit	Nov. 2005	Oct. 2006	Nov. 2006	Jan. - Nov. 2005	Jan. - Nov. 2006	% Change 1/	
1. Residential buildings	1. Dwelling-houses < 80 square metres	Number	0	2	0	18	20	+11,1	
		square metres	0	143	0	1 015	996	-1,9	
		R'000	0	257	0	1 519	1 662	+9,4	
	2. Dwelling-houses >= 80 square metres	Number	14	31	26	203	221	+8,9	
		square metres	2 579	6 416	5 334	38 596	40 170	+4,1	
		R'000	4 893	13 640	11 150	70 306	82 902	+17,9	
	3. Flats and townhouses	Number	0	11	18	174	135	-22,4	
		square metres	0	1 236	2 370	22 864	16 959	-25,8	
		R'000	0	2 472	4 266	42 176	32 185	-23,7	
	4. Other residential buildings 2/	square metres	0	0	552	4 471	707	-84,2	
		R'000	0	0	850	8 980	1 222	-86,4	
<b>5. Total residential buildings</b>		<b>R'000</b>	<b>4 893</b>	<b>16 369</b>	<b>16 266</b>	<b>122 981</b>	<b>117 971</b>	<b>-4,1</b>	
2. Non-residential buildings	1. Office and banking space	square metres	186	868	0	268	2 488	+828,4	
		R'000	372	1 909	0	536	5 149	+860,6	
	2. Shopping space	square metres	0	4 658	0	2 068	5 285	+155,6	
		R'000	0	11 179	0	4 165	12 120	+191,0	
	3. Industrial and warehouse space	square metres	0	0	3 157	1 616	8 322	+415,0	
		R'000	0	0	7 879	3 796	19 100	+403,2	
	4. Other non-residential buildings 3/	square metres	0	0	475	482	1 224	+153,9	
		R'000	0	0	1 220	901	2 675	+196,9	
	<b>5. Total non-residential buildings</b>	<b>R'000</b>	<b>372</b>	<b>13 088</b>	<b>9 099</b>	<b>9 398</b>	<b>39 044</b>	<b>+315,5</b>	
	3. Additions and alterations	1. Dwelling-houses	square metres	1 467	3 281	4 549	24 294	24 772	+2,0
			R'000	3 730	6 685	9 374	46 091	52 090	+13,0
2. Other buildings 4/		square metres	2 032	1 406	822	5 427	12 765	+135,2	
		R'000	4 804	4 559	1 750	12 896	27 282	+111,6	
<b>3. Total additions and alterations</b>		<b>R'000</b>	<b>8 534</b>	<b>11 244</b>	<b>11 124</b>	<b>58 987</b>	<b>79 372</b>	<b>+34,6</b>	
4. Recorded buildings completed	<b>1. Total at current prices</b>	<b>R'000</b>	<b>13 799</b>	<b>40 701</b>	<b>36 489</b>	<b>191 366</b>	<b>236 387</b>	<b>+23,5</b>	

1/ The percentage change between cumulative figures for 2005 and 2006.

2/ Other residential buildings include institutions for the disabled, boarding houses, hostels and tourism accommodation e.g. hotels, motels, guesthouses, holiday chalets, bed-and-breakfast accommodation and casinos.

3/ Other non-residential space includes churches, sport and recreation clubs, schools, crèches, hospitals and all other non-residential space.

4/ Other buildings include other residential buildings, non-residential buildings and internal alterations.

**Table 23 - Buildings reported as completed to larger municipalities at current prices by type of building: Free State**

Category of building	Type of building	Measuring unit	Nov. 2005	Oct. 2006	Nov. 2006	Jan. - Nov. 2005	Jan. - Nov. 2006	% Change 1/
1. Residential buildings	1. Dwelling-houses < 80 square metres	Number	68	19	19	1 979	449	-77,3
		square metres	2 988	1 204	1 089	82 954	21 069	-74,6
		R'000	2 922	2 076	1 860	60 187	25 562	-57,5
	2. Dwelling-houses >= 80 square metres	Number	39	55	53	429	413	-3,7
		square metres	8 524	9 010	8 832	79 971	73 021	-8,7
		R'000	18 628	15 988	16 519	151 173	134 310	-11,2
	3. Flats and townhouses	Number	31	45	0	977	469	-52,0
		square metres	3 187	4 249	0	99 630	47 683	-52,1
		R'000	6 256	11 367	0	178 395	100 523	-43,7
	4. Other residential buildings 2/	square metres	0	662	0	4 697	8 972	+91,0
		R'000	0	1 956	0	8 185	37 828	+362,2
	5. Total residential buildings	R'000	27 806	31 387	18 379	397 940	298 223	-25,1
2. Non-residential buildings	1. Office and banking space	square metres	0	0	0	4 658	1 625	-65,1
		R'000	0	0	0	10 752	4 004	-62,8
	2. Shopping space	square metres	232	1 871	1 724	10 149	21 759	+114,4
		R'000	412	6 300	3 400	19 013	61 172	+221,7
	3. Industrial and warehouse space	square metres	0	2 991	689	10 944	17 537	+60,2
		R'000	0	4 084	1 400	14 178	47 478	+234,9
	4. Other non-residential buildings 3/	square metres	461	0	596	2 354	4 359	+85,2
		R'000	553	0	817	4 035	8 436	+109,1
		5. Total non-residential buildings	R'000	965	10 384	5 617	47 978	121 090
3. Additions and alterations	1. Dwelling-houses	square metres	4 770	5 607	4 859	63 178	60 909	-3,6
		R'000	7 733	8 766	8 513	94 106	99 999	+6,3
	2. Other buildings 4/	square metres	1 032	304	1 447	46 899	15 990	-65,9
		R'000	2 318	1 535	3 662	81 480	47 697	-41,5
		3. Total additions and alterations	R'000	10 051	10 301	12 175	175 586	147 696
4. Recorded buildings completed	1. Total at current prices	R'000	38 822	52 072	36 171	621 504	567 009	-8,8

1/ The percentage change between cumulative figures for 2005 and 2006.

2/ Other residential buildings include institutions for the disabled, boarding houses, hostels and tourism accommodation e.g. hotels, motels, guesthouses, holiday chalets, bed-and-breakfast accommodation and casinos.

3/ Other non-residential space includes churches, sport and recreation clubs, schools, crèches, hospitals and all other non-residential space.

4/ Other buildings include other residential buildings, non-residential buildings and internal alterations.



**Table 24 - Buildings reported as completed to larger municipalities at current prices by type of building: KwaZulu-Natal**

Category of building	Type of building	Measuring unit	Nov. 2005*	Oct. 2006	Nov. 2006	Jan. - Nov. 2005	Jan. - Nov. 2006	% Change 1/	
1. Residential buildings	1. Dwelling-houses < 80 square metres	Number	237	117	119	3 173	1 112	-65,0	
		square metres	8 974	5 142	5 652	113 445	49 677	-56,2	
		R'000	12 113	10 015	11 614	131 263	94 557	-28,0	
	2. Dwelling-houses >= 80 square metres	Number	151	132	129	1 779	1 311	-26,3	
		square metres	32 064	29 338	22 585	361 404	274 510	-24,0	
		R'000	74 083	82 190	61 393	887 545	729 269	-17,8	
	3. Flats and townhouses	Number	440	286	439	2 464	2 854	+15,8	
		square metres	74 014	65 386	63 161	371 411	523 216	+40,9	
		R'000	252 920	190 996	204 077	1 101 557	1 555 426	+41,2	
	4. Other residential buildings 2/	square metres	2 740	6 069	3 080	10 972	13 252	+20,8	
		R'000	3 500	16 000	10 060	22 069	36 239	+64,2	
	<b>5. Total residential buildings</b>	<b>R'000</b>	<b>342 616</b>	<b>299 201</b>	<b>287 144</b>	<b>2 142 434</b>	<b>2 415 491</b>	<b>+12,7</b>	
2. Non-residential buildings	1. Office and banking space	square metres	1 210	3 612	0	68 194	52 332	-23,3	
		R'000	2 400	8 011	0	176 327	125 249	-29,0	
	2. Shopping space	square metres	4 599	48 671	0	39 982	86 338	+115,9	
		R'000	11 427	256 078	0	93 506	385 785	+312,6	
	3. Industrial and warehouse space	square metres	38 487	4 858	18 898	186 392	134 235	-28,0	
		R'000	106 043	11 213	47 970	363 366	300 315	-17,4	
	4. Other non-residential buildings 3/	square metres	3 309	0	0	69 995	27 176	-61,2	
		R'000	7 175	0	0	178 452	62 475	-65,0	
		<b>5. Total non-residential buildings</b>	<b>R'000</b>	<b>127 045</b>	<b>275 302</b>	<b>47 970</b>	<b>811 651</b>	<b>873 824</b>	<b>+7,7</b>
	3. Additions and alterations	1. Dwelling-houses	square metres	27 207	34 928	19 008	300 619	244 573	-18,6
R'000			61 168	85 555	47 400	648 664	561 977	-13,4	
2. Other buildings 4/		square metres	10 196	34 040	6 047	86 929	109 747	+26,2	
		R'000	28 488	43 826	19 573	245 630	280 311	+14,1	
		<b>3. Total additions and alterations</b>	<b>R'000</b>	<b>89 656</b>	<b>129 381</b>	<b>66 973</b>	<b>894 294</b>	<b>842 288</b>	<b>-5,8</b>
4. Recorded buildings completed	<b>1. Total at current prices</b>	<b>R'000</b>	<b>559 317</b>	<b>703 884</b>	<b>402 087</b>	<b>3 848 379</b>	<b>4 131 603</b>	<b>+7,4</b>	

1/ The percentage change between cumulative figures for 2005 and 2006.

2/ Other residential buildings include institutions for the disabled, boarding houses, hostels and tourism accommodation e.g. hotels, motels, guesthouses, holiday chalets, bed-and-breakfast accommodation and casinos.

3/ Other non-residential space includes churches, sport and recreation clubs, schools, crèches, hospitals and all other non-residential space.

4/ Other buildings include other residential buildings, non-residential buildings and internal alterations.

\* Revised.

**Table 25 - Buildings reported as completed to larger municipalities at current prices by type of building: North West**

Category of building	Type of building	Measuring unit	Nov. 2005*	Oct. 2006	Nov. 2006	Jan. - Nov. 2005	Jan. - Nov. 2006	% Change 1/	
1. Residential buildings	1. Dwelling-houses < 80 square metres	Number	38	55	354	2 099	841	-59,9	
		square metres	2 083	3 388	12 216	71 126	39 991	-43,8	
		R'000	4 107	4 668	11 354	57 754	42 438	-26,5	
	2. Dwelling-houses >= 80 square metres	Number	139	141	129	1 202	1 263	+5,1	
		square metres	25 750	25 519	21 260	220 999	234 983	+6,3	
		R'000	59 198	61 588	48 567	509 771	574 709	+12,7	
	3. Flats and townhouses	Number	46	124	186	541	768	+42,0	
		square metres	5 501	18 629	13 052	62 357	89 632	+43,7	
		R'000	14 076	46 858	32 032	157 330	221 102	+40,5	
	4. Other residential buildings 2/	square metres	0	0	412	4 412	1 540	-65,1	
		R'000	0	0	906	12 811	3 106	-75,8	
	5. Total residential buildings	R'000	77 381	113 114	92 859	737 666	841 355	+14,1	
2. Non-residential buildings	1. Office and banking space	square metres	0	0	0	2 833	1 503	-46,9	
		R'000	0	0	0	11 814	3 307	-72,0	
	2. Shopping space	square metres	1 187	4 661	1 069	44 620	37 408	-16,2	
		R'000	1 790	8 355	1 740	107 129	135 239	+26,2	
	3. Industrial and warehouse space	square metres	0	1 175	0	10 440	11 181	+7,1	
		R'000	0	2 000	0	17 979	19 288	+7,3	
	4. Other non-residential buildings 3/	square metres	862	21	0	4 062	4 020	-1,0	
		R'000	1 724	62	0	8 602	9 116	+6,0	
		5. Total non-residential buildings	R'000	3 514	10 417	1 740	145 524	166 950	+14,7
	3. Additions and alterations	1. Dwelling-houses	square metres	3 837	5 385	3 974	47 986	42 386	-11,7
R'000			6 438	9 379	8 961	86 502	79 850	-7,7	
2. Other buildings 4/		square metres	1 971	2 667	1 157	23 135	34 168	+47,7	
		R'000	4 812	5 245	1 741	52 779	83 851	+58,9	
		3. Total additions and alterations	R'000	11 250	14 624	10 702	139 281	163 701	+17,5
4. Recorded buildings completed	1. Total at current prices	R'000	92 145	138 155	105 301	1 022 471	1 172 006	+14,6	

1/ The percentage change between cumulative figures for 2005 and 2006.

2/ Other residential buildings include institutions for the disabled, boarding houses, hostels and tourism accommodation e.g. hotels, motels, guesthouses, holiday chalets, bed-and-breakfast accommodation and casinos.

3/ Other non-residential space includes churches, sport and recreation clubs, schools, crèches, hospitals and all other non-residential space.

4/ Other buildings include other residential buildings, non-residential buildings and internal alterations.

\* Revised.

**Table 26 - Buildings reported as completed to larger municipalities at current prices by type of building: Gauteng**

Category of building	Type of building	Measuring unit	Nov. 2005*	Oct. 2006	Nov. 2006	Jan. - Nov. 2005	Jan. - Nov. 2006	% Change 1/	
1. Residential buildings	1. Dwelling-houses < 80 square metres	Number	1 363	2 181	3 019	6 944	12 806	+84,4	
		square metres	50 322	90 259	116 208	295 833	543 220	+83,6	
		R'000	71 257	150 214	163 382	508 177	925 237	+82,1	
	2. Dwelling-houses >= 80 square metres	Number	1 043	965	786	7 434	8 253	+11,0	
		square metres	270 422	233 569	209 946	1 868 066	2 081 893	+11,4	
		R'000	766 886	629 156	565 333	4 922 188	6 049 030	+22,9	
	3. Flats and townhouses	Number	1 727	1 238	835	10 425	9 862	-5,4	
		square metres	231 218	121 407	122 744	1 336 149	1 286 194	-3,7	
		R'000	681 098	316 899	381 060	3 726 739	3 983 915	+6,9	
	4. Other residential buildings 2/	square metres	0	7 145	0	2 570	24 068	+836,5	
		R'000	0	18 768	0	7 105	71 750	+909,9	
<b>5. Total residential buildings</b>		<b>R'000</b>	<b>1 519 241</b>	<b>1 115 037</b>	<b>1 109 775</b>	<b>9 164 209</b>	<b>11 029 932</b>	<b>+20,4</b>	
2. Non-residential buildings	1. Office and banking space	square metres	35 877	7 642	37 954	290 028	149 425	-48,5	
		R'000	107 643	23 805	132 180	815 551	506 917	-37,8	
	2. Shopping space	square metres	7 422	37 876	63 701	132 252	310 579	+134,8	
		R'000	25 977	111 540	157 680	382 784	943 200	+146,4	
	3. Industrial and warehouse space	square metres	15 854	24 099	38 506	225 432	219 065	-2,8	
		R'000	45 850	61 838	93 565	598 721	578 791	-3,3	
	4. Other non-residential buildings 3/	square metres	955	5 177	595	10 930	20 535	+87,9	
		R'000	2 743	12 417	1 742	26 005	59 344	+128,2	
	<b>5. Total non-residential buildings</b>		<b>R'000</b>	<b>182 213</b>	<b>209 600</b>	<b>385 167</b>	<b>1 823 061</b>	<b>2 088 252</b>	<b>+14,5</b>
	3. Additions and alterations	1. Dwelling-houses	square metres	34 142	42 949	74 072	345 786	594 218	+71,8
R'000			90 249	100 456	171 562	853 846	1 585 764	+85,7	
2. Other buildings 4/		square metres	8 320	1 719	32 696	108 941	101 775	-6,6	
		R'000	24 288	5 378	96 022	285 078	305 852	+7,3	
<b>3. Total additions and alterations</b>		<b>R'000</b>	<b>114 537</b>	<b>105 834</b>	<b>267 584</b>	<b>1 138 924</b>	<b>1 891 616</b>	<b>+66,1</b>	
4. Recorded buildings completed	<b>1. Total at current prices</b>	<b>R'000</b>	<b>1 815 991</b>	<b>1 430 471</b>	<b>1 762 526</b>	<b>12 126 194</b>	<b>15 009 800</b>	<b>+23,8</b>	

1/ The percentage change between cumulative figures for 2005 and 2006.

2/ Other residential buildings include institutions for the disabled, boarding houses, hostels and tourism accommodation e.g. hotels, motels, guesthouses, holiday chalets, bed-and-breakfast accommodation and casinos.

3/ Other non-residential space includes churches, sport and recreation clubs, schools, crèches, hospitals and all other non-residential space.

4/ Other buildings include other residential buildings, non-residential buildings and internal alterations.

\* Revised.

**Table 27 - Buildings reported as completed to larger municipalities at current prices by type of building: Mpumalanga**

Category of building	Type of building	Measuring unit	Nov. 2005	Oct. 2006	Nov. 2006	Jan. - Nov. 2005	Jan. - Nov. 2006	% Change 1/	
1. Residential buildings	1. Dwelling-houses < 80 square metres	Number	54	21	9	723	568	-21,4	
		square metres	3 036	1 243	553	36 141	26 118	-27,7	
		R'000	6 705	2 990	1 411	41 889	48 133	+14,9	
	2. Dwelling-houses >= 80 square metres	Number	107	97	150	816	1 098	+34,6	
		square metres	18 512	19 499	23 164	151 542	196 573	+29,7	
		R'000	47 260	49 030	56 136	304 618	476 241	+56,3	
	3. Flats and townhouses	Number	71	18	39	195	429	+120,0	
		square metres	8 196	1 786	3 228	22 673	34 323	+51,4	
		R'000	17 563	3 541	8 785	45 258	77 627	+71,5	
	4. Other residential buildings 2/	square metres	0	0	0	1 150	717	-37,7	
		R'000	0	0	0	1 832	2 211	+20,7	
		<b>5. Total residential buildings</b>	<b>R'000</b>	<b>71 528</b>	<b>55 561</b>	<b>66 332</b>	<b>393 597</b>	<b>604 212</b>	<b>+53,5</b>
	2. Non-residential buildings	1. Office and banking space	square metres	609	0	0	3 167	10 427	+229,2
			R'000	1 472	0	0	6 253	27 040	+332,4
2. Shopping space		square metres	0	6 331	3 314	14 112	28 088	+99,0	
		R'000	0	15 638	13 256	18 318	94 077	+413,6	
3. Industrial and warehouse space		square metres	0	8 862	117	10 739	46 677	+334,6	
		R'000	0	5 617	75	21 019	88 441	+320,8	
4. Other non-residential buildings 3/		square metres	0	551	0	2 004	1 966	-1,9	
		R'000	0	760	0	4 874	3 425	-29,7	
<b>5. Total non-residential buildings</b>		<b>R'000</b>	<b>1 472</b>	<b>22 015</b>	<b>13 331</b>	<b>50 464</b>	<b>212 983</b>	<b>+322,0</b>	
3. Additions and alterations		1. Dwelling-houses	square metres	4 013	5 065	4 941	26 003	58 338	+124,4
	R'000		7 221	12 131	10 357	43 450	107 339	+147,0	
	2. Other buildings 4/	square metres	214	178	713	1 545	12 691	+721,4	
		R'000	401	290	1 784	7 083	31 294	+341,8	
	<b>3. Total additions and alterations</b>		<b>R'000</b>	<b>7 622</b>	<b>12 421</b>	<b>12 141</b>	<b>50 533</b>	<b>138 633</b>	<b>+174,3</b>
4. Recorded buildings completed	<b>1. Total at current prices</b>	<b>R'000</b>	<b>80 622</b>	<b>89 997</b>	<b>91 804</b>	<b>494 594</b>	<b>955 828</b>	<b>+93,3</b>	

1/ The percentage change between cumulative figures for 2005 and 2006.

2/ Other residential buildings include institutions for the disabled, boarding houses, hostels and tourism accommodation e.g. hotels, motels, guesthouses, holiday chalets, bed-and-breakfast accommodation and casinos.

3/ Other non-residential space includes churches, sport and recreation clubs, schools, crèches, hospitals and all other non-residential space.

4/ Other buildings include other residential buildings, non-residential buildings and internal alterations.

**Table 28 - Buildings reported as completed to larger municipalities at current prices by type of building: Limpopo**

Category of building	Type of building	Measuring unit	Nov. 2005*	Oct. 2006	Nov. 2006	Jan. - Nov. 2005	Jan. - Nov. 2006	% Change 1/
1. Residential buildings	1. Dwelling-houses < 80 square metres	Number	24	36	40	236	270	+14,4
		square metres	1 469	2 265	2 553	14 751	16 768	+13,7
		R'000	2 938	5 844	6 637	29 423	42 283	+43,7
	2. Dwelling-houses >= 80 square metres	Number	78	50	54	494	498	+0,8
		square metres	13 516	9 875	9 786	91 619	95 584	+4,3
		R'000	30 192	23 552	28 387	204 655	254 046	+24,1
	3. Flats and townhouses	Number	0	9	49	137	245	+78,8
		square metres	0	1 461	3 886	18 551	27 474	+48,1
		R'000	0	2 951	9 868	37 249	67 895	+82,3
	4. Other residential buildings 2/	square metres	0	537	0	1 800	737	-59,1
		R'000	0	966	0	5 400	1 566	-71,0
<b>5. Total residential buildings</b>		<b>R'000</b>	<b>33 130</b>	<b>33 313</b>	<b>44 892</b>	<b>276 727</b>	<b>365 790</b>	<b>+32,2</b>
2. Non-residential buildings	1. Office and banking space	square metres	0	0	243	5 440	4 293	-21,1
		R'000	0	0	680	10 880	9 558	-12,2
	2. Shopping space	square metres	2 479	2 043	403	7 164	16 547	+131,0
		R'000	5 606	6 000	645	15 573	32 750	+110,3
	3. Industrial and warehouse space	square metres	0	0	441	5 987	3 453	-42,3
		R'000	0	0	1 100	7 984	8 955	+12,2
	4. Other non-residential buildings 3/	square metres	0	0	190	1 724	1 495	-13,3
		R'000	0	0	340	3 688	3 994	+8,3
	<b>5. Total non-residential buildings</b>	<b>R'000</b>	<b>5 606</b>	<b>6 000</b>	<b>2 765</b>	<b>38 125</b>	<b>55 257</b>	<b>+44,9</b>
	3. Additions and alterations	1. Dwelling-houses	square metres	2 275	1 757	1 480	18 160	11 970
R'000			4 576	4 135	2 466	35 349	27 252	-22,9
2. Other buildings 4/		square metres	0	181	1 953	5 147	4 139	-19,6
		R'000	0	172	3 322	11 479	8 963	-21,9
<b>3. Total additions and alterations</b>		<b>R'000</b>	<b>4 576</b>	<b>4 307</b>	<b>5 788</b>	<b>46 828</b>	<b>36 215</b>	<b>-22,7</b>
4. Recorded buildings completed	<b>1. Total at current prices</b>	<b>R'000</b>	<b>43 312</b>	<b>43 620</b>	<b>53 445</b>	<b>361 680</b>	<b>457 262</b>	<b>+26,4</b>

1/ The percentage change between cumulative figures for 2005 and 2006.

2/ Other residential buildings include institutions for the disabled, boarding houses, hostels and tourism accommodation e.g. hotels, motels, guesthouses, holiday chalets, bed-and-breakfast accommodation and casinos.

3/ Other non-residential space includes churches, sport and recreation clubs, schools, crèches, hospitals and all other non-residential space.

4/ Other buildings include other residential buildings, non-residential buildings and internal alterations.

\* Revised.

**Table 29 - Subsidised low-cost dwelling-houses completed or under construction by province**

Province	Year	Number 1/	Square metres 2/	Value R'000 2/
Western Cape	2002	19 534	531 116	168 852
	2003	16 926	507 780	247 187
	2004	12 751	382 530	211 424
Eastern Cape	2002	46 700	1 575 675	473 806
	2003	35 005	1 050 150	511 213
	2004	34 923	1 047 690	579 058
Northern Cape	2002	5 189	164 906	68 078
	2003	4 354	130 620	63 586
	2004	3 645	109 350	60 438
Free State	2002	8 617	348 492	154 121
	2003	14 848	445 440	216 840
	2004	16 522	495 660	273 951
KwaZulu-Natal	2002	21 958	831 349	234 041
	2003	31 372	941 160	458 157
	2004	35 968	1 079 040	596 385
North West	2002	21 309	630 115	210 439
	2003	13 809	414 270	201 667
	2004	10 149	304 470	168 281
Gauteng	2002	29 939	991 571	321 943
	2003	42 862	1 285 860	625 957
	2004	33 260	997 800	551 484
Mpumalanga	2002	19 883	660 505	253 931
	2003	21 336	640 080	246 079
	2004	18 808	564 240	311 855
Limpopo	2002	15 382	605 877	183 769
	2003	15 596	467 880	227 764
	2004	16 338	490 140	270 900
<b>South Africa</b>	<b>2002</b>	<b>188 511</b>	<b>6 339 606</b>	<b>2 068 980</b>
	<b>2003</b>	<b>196 108</b>	<b>5 883 240</b>	<b>2 798 450</b>
	<b>2004</b>	<b>182 364</b>	<b>5 470 920</b>	<b>3 023 777</b>

Source: Provincial Governments co-ordinated by the National Department of Housing  
 1/ As soon as building commences, dwelling-houses are recorded as completed or under construction.  
 2/ Estimates by the National Department of Housing.

**Table 30 - Subsidised low-cost dwelling-houses completed by province**

Completions during financial year: 1 April 2005 to 31 March 2006			
Province	Number	Square metres 1/	Value R'000 1/
Western Cape	2 040	61 200	52 877
Eastern Cape	16 874	506 220	437 374
Northern Cape	5 293	158 790	137 195
Free State	17 635	529 050	457 099
KwaZulu-Natal	21 601	648 030	559 898
North West	14 445	433 350	374 414
Gauteng	23 409	702 270	606 761
Mpumalanga	14 389	431 670	372 963
Limpopo	21 973	659 190	569 540
<b>South Africa</b>	<b>137 659</b>	<b>4 129 770</b>	<b>3 568 121</b>

Source: Provincial Governments co-ordinated by the National Department of Housing  
 1/ Estimates by the National Department of Housing.

## Explanatory notes

<b>Introduction</b>	1	Statistics South Africa (Stats SA) conducts a monthly building statistics survey collecting information regarding building plans passed and buildings completed, financed by the private sector, from the largest local government institutions in South Africa. According to these institutions, they are not always notified about low-cost housing projects and therefore do not include the bulk of low-cost dwelling-houses. Data regarding subsidised low-cost dwelling-houses, supplied by the provincial governments and co-ordinated by the National Department of Housing, are shown in table 29 and table 30 (page 37).
	2	In order to improve timeliness of the publication, some information for the current month has been estimated due to late submission by respondents. These estimates will be revised in the next statistical release(s) as soon as actual information is available.
<b>Purpose of the survey</b>	3	The monthly survey data are used in monitoring the state of economy and formulation of economic policy. Furthermore, the results are important inputs to estimate the Gross Domestic Product (GDP) and to calculate the Composite Leading Business Cycle Indicator. The data are extensively used by the private sector.
<b>Scope of the survey</b>	4	This survey covers local government institutions conducting activities for the private sector regarding - <ul style="list-style-type: none"> <li>• passing of building plans; and</li> <li>• final inspection of completed buildings.</li> </ul>
<b>Classification</b>	5	Building activities is classified in division 5 according to the 1993 edition of the <i>Standard Industrial Classification of all Economic Activities, (SIC) Fifth Edition, Report No. 09-90-02</i> . The SIC is based on the 1990 <i>International Standard Industrial Classification of all Economic Activities (ISIC)</i> with suitable adaptations for local conditions.
<b>Response rate</b>	6	The preliminary response rate for the survey on building statistics for November 2006 was 93,9%. Improved response rate for October 2006 was 97,4%.
<b>Statistical unit</b>	7	The statistical unit for the collection of information is a local government institution. Local government institutions include district municipalities, metropolitan municipalities and local municipalities.
<b>Survey methodology and design</b>	8	<p>Stats SA conducts a monthly survey of metropolitan municipalities and large local municipalities on building plans passed and buildings completed. An annual survey of the remaining municipalities is conducted regarding buildings completed. The monthly survey represents approximately 90 percent of the total value of buildings completed. Information regarding building plans passed and buildings completed for the private sector is collected by mail, fax and telephone.</p> <p>According to the municipalities, they are not always notified about low-cost housing projects. Data regarding subsidised low-cost dwelling-houses, supplied by the provincial governments and co-ordinated by the National Department of Housing, are shown in table 29 and table 30 (page 37).</p>
<b>Constant prices</b>	9	The value of building plans passed and buildings completed at constant prices measures building activities in terms of ruling prices in a specific base year, which is currently 2000. The value of building plans passed at constant prices for each month is obtained by deflating the values at current prices with a price index known as the 'lump sum domestic buildings' as published in statistical release P0151: <i>JBCC Contract Price Adjustment Provisions Work Group Indices</i> . In order to be applicable, these indices (base February 1991=100) are converted to the base year 2000=100.



- 10** The value of buildings completed at constant prices is obtained by deflating the values at current prices with the price index which is used to calculate building plans passed at constant prices (see paragraph 8). Since the completion of buildings may extend over a few months to a few years, the current value of buildings completed is deflated by price indices which prevailed at the time the plans were passed. Therefore, the duration of the completion of different types of buildings are taken into account in ascertaining the deflators e.g. the value of dwelling-houses completed at constant prices at January 2006 is obtained by deflating the current value of dwelling-houses completed for January 2006 with the price index of a month six months prior to January 2006. Furthermore, the value of other residential buildings, non-residential buildings and additions and alterations at constant prices is obtained by deflating the current values with price indices of 12 months, 18 months and 12 months prior to the relevant month, respectively.
- Seasonal adjustment**
- 11** Seasonally adjusted estimates of building plans passed and buildings completed are generated each month, using the X-11 Seasonal Adjustment Program developed by US Bureau of the Census Economic Research and Analyses Division, 1968.
- 12** Seasonal adjustment is a means of removing the estimated effects of normal seasonal variation from the series so that the effects of other influences on the series can be more clearly recognised. Seasonal adjustment does not aim to remove irregular or non-seasonal influences which may be present in any particular month. Influences that are volatile or unsystematic can still make it difficult to interpret the movement of the series even after adjustment for seasonal variations. Therefore, the month-to-month movements of seasonally adjusted estimates may not be reliable indicators of trend behaviour.
- Trend cycle**
- 13** The trend is a long-term pattern or movement of a time series. The X-11 Seasonal Adjustment Program is used for smoothing seasonally adjusted data.
- Revised figures**
- 14** Revised figures are due to late submission of data to Stats SA, or to respondents reporting revisions or corrections to their figures. Figures for the latest month are therefore preliminary. Data are edited at municipal level.
- 15** Once a year the annual statistical release P5041.3 is published with the revised and updated information at provincial and municipal level for the previous calendar year. Due to this comprehensive revision, the monthly statistical release P5041.1 reflects provincial revision for 2005 where applicable.
- Related publications**
- 16** Users may also wish to refer to the following publications:
- P5041.3: Selected building statistics of the private sector as reported by local government institutions issued annually.
  - P9101.2: Actual and expected expenditure on construction by the public sector per statistical region issued annually.
  - Bulletin of Statistics issued quarterly.
  - South African Statistics issued annually.
  - Report 50-11-01 issued annually.
- Rounding-off of figures**
- 17** The figures in the tables have, where necessary, been rounded off to the nearest digit shown.
- Pre-release policy**
- 18** Stats SA's pre-release policy may be inspected at its website, [www.statssa.gov.za](http://www.statssa.gov.za)



**Symbols and abbreviations**

<b>19</b>	..	no meaningful percentage change between two specified periods available since either one or both of the totals are nil
	0	nil or figure too small to publish
	*	revised
	Stats SA	Statistics South Africa
	SIC	Standard Industrial Classification of all Economic Activities
	ISIC	International Standard Industrial Classification of all Economic Activities
	JBCC	Joint Building Contracts Committee
	CD	Compact Disc
	US	United States
	SARB	South African Reserve Bank
	DTI	Department of Trade and Industry

**2010 World Cup note**

<b>20</b>	Please note that a plan worth R1,3 billion was approved for a new soccer stadium in the eThekweni (Durban) Municipality for the 2010 Soccer World Cup. 2010 Soccer World Cup new stadia and renovations will not be included in the private sector building data series, as these are partially public sector funded, but Statistics South Africa will include them in the news release	
-----------	---	--

## Glossary

<b>Additions and alterations</b>	They include extensions to existing buildings as well as internal and external alterations of existing buildings.
<b>Blocks of flats</b>	High-density housing consisting of a number of self-contained dwelling-units, each with at least one living-room together with a kitchen and bathroom, conjoined to similar units in one building.
<b>Dwelling-house</b>	A free-standing, complete structure on a separate stand or a self-contained dwelling-unit, granny flat, on the same premises as an existing residence. Out-buildings and garages are included.
<b>Local government institutions</b>	Include – <ul style="list-style-type: none"> <li>• District municipalities;</li> <li>• Metropolitan municipalities; and</li> <li>• Local municipalities.</li> </ul>
<b>Municipality</b>	A generic term describing the “unit” of government in the local spheres responsible for local government in a geographically demarcated area and including district, metropolitan and local municipalities. It is an institution consisting of a municipal council (elected political representatives) and municipal administration (appointed officials).
<b>District municipality</b>	Municipality that has municipal executive and legislative authority in an area that includes more than one municipality, and which is described in section 155(1) of the Constitution as a category C municipality (Refer to Local Government: Municipal Structure Act, 1998 (Act No. 117 of 1998)).
<b>Metropolitan municipality</b>	Municipality that has municipal executive and legislative authority in an area that includes more than one municipality, and which is described in section 155(1) of the Constitution as a category A municipality (Refer to Local Government: Municipal Structure Act, 1998 (Act No. 117 of 1998)).
<b>Local municipality</b>	Municipality that shares municipal executive and legislative authority in its area with a district municipality within whose area it falls, that is described in section 155(1) of the constitution as a category B municipality.
<b>Non-residential buildings</b>	Comprise factories, commercial, financial and other office buildings, as well as other buildings not used for residential purposes, such as churches, halls, clubs, schools and hospitals.
<b>Other residential buildings</b>	Institutions for the disabled, boarding houses, old people’s homes, hostels, hotels, motels, guesthouses, holiday chalets, bed-and-breakfast accommodation, entertainment centres and casinos.
<b>Percentage change</b>	<p>When using monthly actual values, the percentage change is the change in actual values of building activities (building plans passed or buildings completed) of the relevant month compared with the actual values of building activities (building plans passed or buildings completed) of the same month in the previous year expressed as a percentage.</p> <p>When using annual actual values, the percentage change is the change in the actual values of building activities (building plans passed or buildings completed) of the relevant year compared with the actual values of building activities (building plans passed or buildings completed) of the previous year expressed as a percentage.</p> <p>When using seasonally adjusted values, the percentage change is the change in the seasonally adjusted values of building activities (building plans passed or buildings completed) of the relevant month compared with the seasonally adjusted values of building activities (building plans passed or buildings completed) of the previous month expressed as a percentage.</p>

<b>Reference period</b>	One calendar month.
<b>Residential buildings</b>	Comprise dwelling-houses, flats, townhouses and other residential buildings.
<b>Townhouses</b>	Multiple, medium-density dwelling-units and include cluster housing, group housing, simplexes, duplexes, triplexes and other similar dwelling-units which are usually grouped together, with one level of each unit on ground level. This excludes blocks of flats.

## General information

Stats SA publishes approximately 300 different statistical releases each year. It is not economically viable to produce them in more than one of South Africa's eleven official languages. Since the releases are used extensively, not only locally but also by international economic and social-scientific communities, Stats SA releases are published in English.

Stats SA has copyright on this publication. Users may apply the information as they wish, provided that they acknowledge Stats SA as the source of the basic data wherever they process, apply, utilise, publish or distribute the data and also that they specify that the relevant application and analysis (where applicable) result from their own processing of the data.

An advance release calendar is disseminated on [www.statssa.gov.za](http://www.statssa.gov.za)

## Stats SA products

A complete set of Stats SA publications is available at the Stats SA Library and the following libraries:

National Library of South Africa, Pretoria Division  
National Library of South Africa, Cape Town Division  
Natal Society Library, Pietermaritzburg  
Library of Parliament, Cape Town  
Bloemfontein Public Library  
Johannesburg Public Library  
Eastern Cape Library Services, King William's Town  
Central Regional Library, Polokwane  
Central Reference Library, Nelspruit  
Central Reference Collection, Kimberley  
Central Reference Library, Mmabatho

Stats SA also provides a subscription service.

## Electronic services

A large range of data are available via on-line services, diskette, CD and computer printouts. For more details about our electronic data services, contact (012) 310 8600/8390/8351/4892/8496/8095.

You can visit us on the Internet at: [www.statssa.gov.za](http://www.statssa.gov.za)

## Enquiries

Telephone number: (012) 310 8600/8390/8351/4892/8496/8095 (user information services)  
(012) 310 8228/310 8007 (technical enquiries)  
(012) 310 8161 (orders)  
(012) 310 4883/4885/8018 (library)

Fax number: (012) 310 8664 (technical enquiries)

Email: [Gretaz@statssa.gov.za](mailto:Gretaz@statssa.gov.za) (technical enquiries)  
[info@statssa.gov.za](mailto:info@statssa.gov.za) (user information services)  
[distribution@statssa.gov.za](mailto:distribution@statssa.gov.za) (orders)

Postal address: Private Bag X44, Pretoria, 0001

*Produced by Stats SA*