

# **Selected building statistics of the private sector derived from data reported by local government institutions**

November 2002

Co-operation between Statistics South Africa (Stats SA), the citizens of the country, the private sector and government institutions is essential for a successful statistical system. Without continued co-operation and goodwill, the timely release of relevant and reliable official statistics will not be possible.

**Embargo: 13:00**  
**Date: 15 January 2003**

Stats SA publishes approximately three hundred different releases each year. It is not economically viable to produce them in more than one of South Africa's eleven official languages. Since the releases are used extensively, not only locally, but also by international economic and social-scientific communities, Stats SA releases are published in English only.

### Key figures regarding building plans passed for the month ended November 2002

Actual estimates at constant 2000 prices	November 2002	January 2002 to November 2002	Percentage change between November 2001 and November 2002	Percentage change between September 2001 to November 2001 and September 2002 to November 2002	Percentage change between January 2001 to November 2001 and January 2002 to November 2002
	R million	R million			
Residential buildings					
Dwelling-houses	713,3	7 835,8	+ 14,6	+ 16,2	+ 10,9
Flats and townhouses	213,7	2 152,7	- 19,8	+ 9,2	+ 17,3
Other residential buildings	1,7	231,6	- 78,7	- 84,3	- 49,0
<b>Total</b>	<b>928,7</b>	<b>10 220,1</b>	<b>+ 3,6</b>	<b>+ 5,0</b>	<b>+ 9,2</b>
Non-residential buildings	236,3	3 102,3	- 19,1	- 3,2	+ 0,1
Additions and alterations	541,9	5 548,4	- 1,1	+ 6,3	+ 14,6
<b>Total</b>	<b>1 706,9</b>	<b>18 870,8</b>	<b>- 1,7</b>	<b>+ 4,2</b>	<b>+ 9,1</b>

### Seasonally adjusted estimates at constant 2000 prices

	November 2002	Percentage change between October 2002 and November 2002	Percentage change between June 2002 to August 2002 and September 2002 to November 2002
	R million		
Residential buildings	877,1	- 9,3	+ 2,9
Non-residential buildings	202,7	- 21,6	- 17,2
Additions and alterations	467,3	- 9,8	- 0,4
<b>Total</b>	<b>1 547,1</b>	<b>- 11,2</b>	<b>- 1,4</b>

### Key findings regarding building plans passed for the three months ended November 2002

#### Seasonally adjusted real value of building plans passed decreases

*The seasonally adjusted real value of building plans passed (at constant 2000 prices) for the three months ended November 2002 decreased by 1,4% compared with the previous three months.*

The decrease of 1,4% in the seasonally adjusted real value of building plans passed was due to decreases reported for non-residential buildings (-17,2%) and additions and alterations (-0,4%) during the three months ended November 2002 compared with the previous three months. However, these decreases were partially counteracted by an increase in the seasonally adjusted real value of residential building plans passed (+2,9%) during the above-mentioned period.

## Key findings regarding building plans passed for the first eleven months of 2002

### Total real value of building plans passed increases

*The total real value of building plans passed (at constant 2000 prices) during the first eleven months of 2002 increased by 9,1% (+R1 570,9 million) to R18 870,8 million compared with the first eleven months of 2001. Large increases in the real value of building plans passed were reported for residential buildings (+R861,8 million, mainly due to real increases reported for dwelling-houses (+R767,0 million) and flats and townhouses (+R316,9 million)) and additions and alterations (+R706,5 million).*

### Seven of the nine provinces reported increases in the total real value of building plans passed

The largest provincial contributors to the increase of 9,1% (+R1 570,9 million) in the total real value of building plans passed were Western Cape (+2,5 percentage points or R438,0 million), KwaZulu-Natal (+2,4 percentage points or R412,3 million) and Gauteng (+1,7 percentage points or R297,6 million) (cf. table A). The largest real increase in Western Cape was reported for dwelling-houses (+R491,0 million, mainly due to increases reported by the selected urban areas of Cape Town (+R157,3 million), Knysna Municipality (+R84,9 million), Overstrand Municipality (+R70,4 million), George Municipality (+R46,8 million) and Helderberg Municipality (+R31,4 million)). Large real increases in KwaZulu-Natal were reported for additions and alterations (+R222,8 million, mainly due to the real increase reported by Umhlathuze Municipality – Richards Bay Area for additions and alterations to non-residential buildings (+R230,0 million)), shopping space (+R168,1 million), flats and townhouses (+R74,9 million) and dwelling-houses (+R72,3 million). Large real increases in Gauteng were reported for flats and townhouses (+R175,7 million) and additions and alterations (+R261,7 million). The real increase for flats and townhouses in Gauteng was mainly due to increases reported by Kungwini Local Municipality – Bronkhorstspuit Area (+R112,6 million) and the selected urban areas of Pretoria (+R76,9 million).

**Table A - Contribution of provinces to the total real value of building plans passed**

Province	Percentage contribution to the total real value of plans passed during January 2001 to November 2001	Percentage change between January 2001 to November 2001 and January 2002 to November 2002	Contribution (percentage points) <sup>1/</sup> to the percentage change in the real value of plans passed between January 2001 to November 2001 and January 2002 to November 2002	Difference in total real value of plans passed between January 2001 to November 2001 and January 2002 to November 2002  R million
Western Cape	28,8	+ 8,8	+ 2,5	+ 438,0
KwaZulu-Natal	12,2	+ 19,5	+ 2,4	+ 412,3
Gauteng	41,2	+ 4,2	+ 1,7	+ 297,6
Mpumalanga	3,3	+ 24,3	+ 0,8	+ 140,1
Free State	2,5	+ 28,7	+ 0,7	+ 121,9
Eastern Cape	5,7	+ 9,8	+ 0,6	+ 97,0
North West	2,9	+ 17,7	+ 0,5	+ 87,8
Limpopo	2,7	- 1,8	- 0,0	- 8,1
Northern Cape	0,7	- 12,3	- 0,1	- 15,7
<b>Total</b>	<b>100,0</b>	<b>+ 9,1</b>	<b>+ 9,1</b>	<b>+1 570,9</b>

1/ The contribution (percentage points) is calculated by multiplying the percentage change of each province between January 2001 to November 2001 and January 2002 to November 2002 (cf. column 3) with the percentage contribution of the corresponding province to the total real value of plans passed during January 2001 to November 2001 (cf. column 2) divided by 100.

### Key figures regarding buildings completed for the month ended November 2002

#### Actual estimates at constant 2000 prices

	November 2002 R million	January 2002 to November 2002 R million	Percentage change between November 2001 and November 2002	Percentage change between September 2001 to November 2001 and September 2002 to November 2002	Percentage change between January 2001 to November 2001 and January 2002 to November 2002
Residential buildings					
Dwelling-houses	521,7	4 795,2	+ 31,9	+ 35,0	+ 25,2
Flats and townhouses	180,7	1 675,8	- 2,7	+ 15,6	+ 54,4
Other residential buildings	19,8	426,6	+ 289,8	+ 111,9	- 4,7
<b>Total</b>	<b>722,2</b>	<b>6 897,6</b>	<b>+ 23,2</b>	<b>+ 33,8</b>	<b>+ 28,6</b>
Non-residential buildings	265,9	2 152,3	+ 25,1	- 66,6	- 42,4
Additions and alterations	212,1	2 537,4	- 24,6	+ 4,3	- 4,6
<b>Total</b>	<b>1 200,2</b>	<b>11 587,3</b>	<b>+ 11,1</b>	<b>- 16,5</b>	<b>- 1,4</b>

#### Seasonally adjusted estimates at constant 2000 prices

	November 2002 R million	Percentage change between October 2002 and November 2002	Percentage change between June 2002 to August 2002 and September 2002 to November 2002
Residential buildings	619,7	- 8,8	+ 5,6
Non-residential buildings	276,2	+ 49,8	+ 39,2
Additions and alterations	207,9	- 13,7	+ 3,2
<b>Total</b>	<b>1 103,8</b>	<b>- 0,1</b>	<b>+ 10,3</b>

### Key findings regarding buildings completed for the three months ended November 2002

#### Seasonally adjusted real value of buildings completed increases

*The seasonally adjusted real value of buildings completed (at constant 2000 prices) for the three months ended November 2002 increased by 10,3% compared with the previous three months.*

The increase of 10,3% in the seasonally adjusted real value of buildings completed during the three months ended November 2002 compared with the previous three months was due to increases in the seasonally adjusted real value of non-residential buildings (+39,2%), residential buildings (+5,6%) and additions and alterations (+3,2%).

## Key findings regarding buildings completed for the first eleven months of 2002

### Total real value of buildings completed decreases

*The total real value of buildings completed (at constant 2000 prices) during the first eleven months of 2002 decreased by 1,4% (-R169,9 million) to R11 587,3 million compared with the first eleven months of 2001. A large real decrease was reported for non-residential buildings (-R1 581,8 million, mainly due to the decrease in the real value of shopping space completed (-R1 304,4 million)). However, these decreases were partially counteracted by a large real increase reported for residential buildings (+R1 534,2 million, mainly due to real increases reported for dwelling-houses (+R964,7 million) and flats and townhouses (+R590,7 million)) during the above-mentioned period.*

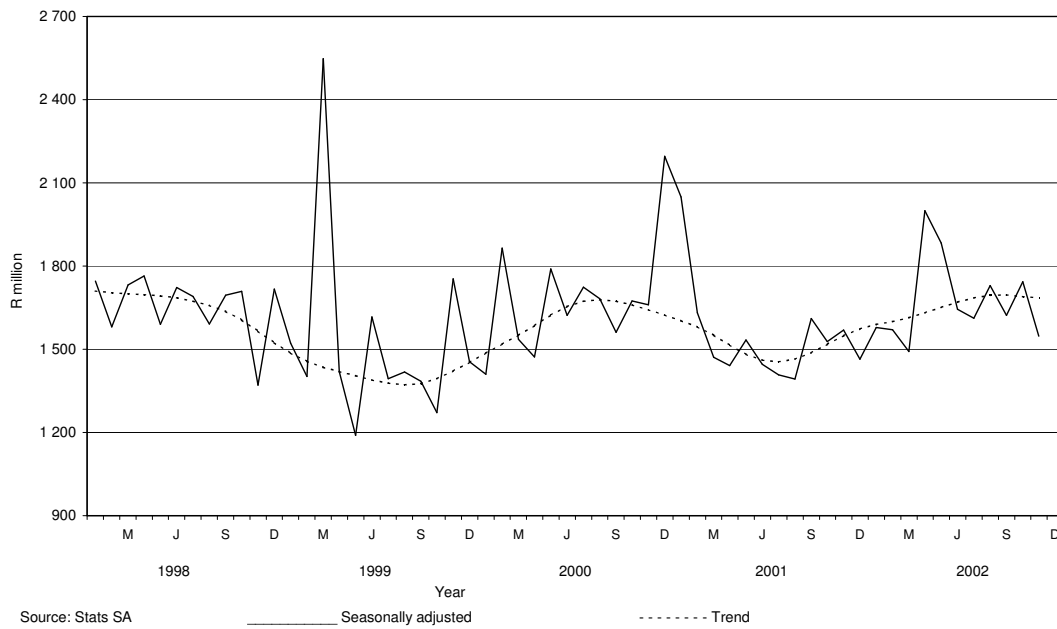
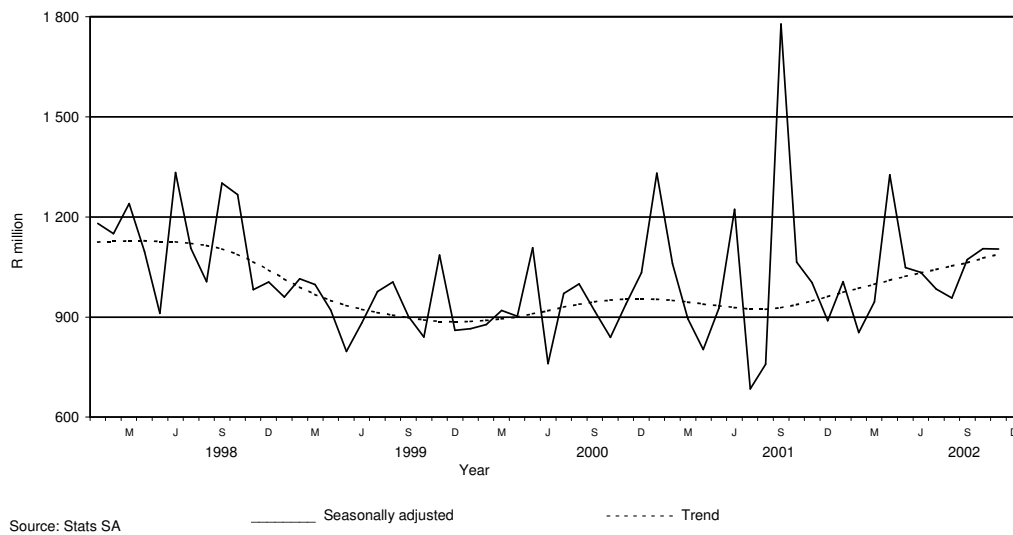
### Four of the nine provinces reported decreases in the total real value of buildings completed

The largest decrease in the total real value of buildings completed was reported by KwaZulu-Natal (-9,5 percentage points or R1 109,8 million, mainly due to the decrease in real value of shopping space completed as reported by North Local Council - Umhlanga Rocks (-R1 139,6 million)), followed by Eastern Cape (-1,7 percentage points or R204,5 million), Northern Cape (-0,5 of a percentage point or R53,4 million) and Free State (-0,2 of a percentage point or R26,2 million). However, large increases in the real value of buildings completed were reported by Gauteng (+4,1 percentage points or R476,0 million) and Western Cape (+4,0 percentage points or R468,5 million) (cf. table B). Large real increases in Gauteng were reported for dwelling-houses (+R590,7 million, mainly due to increases reported by the selected urban areas of Pretoria (+R292,6 million), Witwatersrand (+R189,5 million) and Kungwini Local Municipality – Bronkhorstspuit Area (+R87,4 million)) and flats and townhouses (+R323,3 million, mainly due to the large increases reported by the selected urban areas of Witwatersrand (+R203,3 million) and Pretoria (+R173,5 million)). The largest real increase in Western Cape was reported for dwelling-houses (+R447,3 million, mainly due to the large increase reported by the selected urban areas of Cape Town (+R303,3 million)).

**Table B - Contribution of provinces to the total real value of buildings completed**

Province	Percentage contribution to the total real value of buildings completed during January 2001 to November 2001	Percentage change between January 2001 to November 2001 and January 2002 to November 2002	Contribution (percentage points) <sup>1/</sup> to the percentage change in the real value of buildings completed between January 2001 to November 2001 and January 2002 to November 2002	Difference in total real value of buildings completed between January 2001 to November 2001 and January 2002 to November 2002  R million
KwaZulu-Natal	24,5	- 38,6	- 9,5	-1 109,8
Eastern Cape	6,8	- 25,6	- 1,7	- 204,5
Northern Cape	1,1	- 41,3	- 0,5	- 53,4
Free State	3,3	- 6,7	- 0,2	- 26,2
North West	2,8	+ 10,4	+ 0,3	+ 34,8
Mpumalanga	2,0	+ 25,6	+ 0,5	+ 59,8
Limpopo	0,8	+ 193,5	+ 1,6	+ 184,9
Western Cape	26,0	+ 15,3	+ 4,0	+ 468,5
Gauteng	32,7	+ 12,4	+ 4,1	+ 476,0
<b>Total</b>	<b>100,0</b>	<b>- 1,4</b>	<b>- 1,4</b>	<b>- 169,9</b>

1/ The contribution (percentage points) is calculated by multiplying the percentage change of each province between January 2001 to November 2001 and January 2002 to November 2002 (cf. column 3) with the percentage contribution of the corresponding province to the total real value of buildings completed during January 2001 to November 2001 (cf. column 2) divided by 100.

**Figure 1 – Total real value of building plans passed****Figure 2 – Total real value of buildings completed**

As from this publication the name of the monthly statistical release P5041.1, *Building statistics*, changed to *Selected building statistics of the private sector derived from data reported by local government institutions*.

# Contents

## Page

<b>Notes</b>	.....	7
<b>Tables</b>		
Table 1	Actual values and percentage change of building plans passed at current prices according to type of building .....	8
Table 2	Seasonally adjusted values and percentage change of building plans passed at current prices according to type of building .....	9
Table 3	Actual values and percentage change of building plans passed at constant 2000 prices according to type of building .....	10
Table 4	Seasonally adjusted values and percentage change of building plans passed at constant 2000 prices according to type of building .....	11
Table 5	Actual values and percentage change of buildings completed at current prices according to type of building .....	12
Table 6	Seasonally adjusted values and percentage change of buildings completed at current prices according to type of building .....	13
Table 7	Actual values and percentage change of buildings completed at constant 2000 prices according to type of building .....	14
Table 8	Seasonally adjusted values and percentage change of buildings completed at constant 2000 prices according to type of building .....	15
Table 9	Building plans passed according to type of building: Total RSA .....	16
Table 10	Building plans passed according to type of building and province: Western Cape .....	17
Table 11	Building plans passed according to type of building and province: Eastern Cape .....	18
Table 12	Building plans passed according to type of building and province: Northern Cape .....	19
Table 13	Building plans passed according to type of building and province: Free State .....	20
Table 14	Building plans passed according to type of building and province: KwaZulu-Natal .....	21
Table 15	Building plans passed according to type of building and province: North West .....	22
Table 16	Building plans passed according to type of building and province: Gauteng .....	23
Table 17	Building plans passed according to type of building and province: Mpumalanga .....	24
Table 18	Building plans passed according to type of building and province: Limpopo.....	25
Table 19	Buildings completed according to type of building: Total RSA .....	26
Table 20	Buildings completed according to type of building and province: Western Cape .....	27
Table 21	Buildings completed according to type of building and province: Eastern Cape .....	28
Table 22	Buildings completed according to type of building and province: Northern Cape.....	29
Table 23	Buildings completed according to type of building and province: Free State .....	30
Table 24	Buildings completed according to type of building and province: KwaZulu-Natal .....	31
Table 25	Buildings completed according to type of building and province: North West .....	32
Table 26	Buildings completed according to type of building and province: Gauteng .....	33
Table 27	Buildings completed according to type of building and province: Mpumalanga .....	34
Table 28	Buildings completed according to type of building and province: Limpopo.....	35
Table 29	Building plans passed according to type of building and selected urban area: Cape Town .....	36
Table 30	Building plans passed according to type of building and selected urban area: Port Elizabeth ....	37
Table 31	Building plans passed according to type of building and selected urban area: Durban .....	38
Table 32	Building plans passed according to type of building and selected urban area: Witwatersrand .....	39
Table 33	Building plans passed according to type of building and selected urban area: Pretoria .....	40
Table 34	Building plans passed according to type of building and selected urban area: Bloemfontein .....	41
Table 35	Buildings completed according to type of building and selected urban area: Cape Town .....	42
Table 36	Buildings completed according to type of building and selected urban area: Port Elizabeth .....	43
Table 37	Buildings completed according to type of building and selected urban area: Durban .....	44
Table 38	Buildings completed according to type of building and selected urban area: Witwatersrand .....	45
Table 39	Buildings completed according to type of building and selected urban area: Pretoria .....	46
Table 40	Buildings completed according to type of building and selected urban area: Bloemfontein .....	47
<b>Additional information</b>		
	Explanatory notes .....	48
	Technical notes .....	50
	Local government institutions covered in the sample survey	
	Table C – Classification of towns and cities according to new municipalities and previous local government institutions by province .....	51
	Table D – Classification of selected urban areas according to new municipalities and previous local government institutions .....	63
	Glossary .....	66
<b>For more information</b>	.....	68

## Notes

Forthcoming issues	Issue	Expected release date
	December 2002	19 February 2003
	January 2003	19 March 2003
	February 2003	16 April 2003
<b>Purpose of the survey</b>	The Building Statistics Survey is a countrywide survey covering a sample of municipalities in South Africa. The information received is used to estimate key economic statistics used by the private and public sectors. The information is also used to compile estimates of the Gross Domestic Product (GDP). These statistics are also used by government to monitor the Reconstruction and Development Programme (RDP) in South Africa.	
<b>Name change of statistical release</b>	As from this publication the name of the monthly statistical release P5041.1, <i>Building statistics</i> , changed to <i>Selected building statistics of the private sector derived from data reported by local government institutions</i> .	
<b>Change in base year of constant prices from 1995 to 2000</b>	Following international practice, the base year of the price index ("lump sum domestic buildings" as published in statistical release P0151 –JBCC Contract Price Adjustment Provision Work Group Indices), which is used to deflate the current prices of building plans passed and buildings completed to constant prices, has been converted to 2000=100 with effect from May 2002. Previously the value of building plans passed and buildings completed was published at constant 1995 prices. It should be borne in mind that the change does not in any way affect the trends.	



**Table 1 - Actual values and percentage change of building plans passed at current prices according to type of building**

Year <sup>1/</sup> and month <sup>2/</sup>	Residential buildings		Non-residential buildings		Additions and alterations		Total	
	R'000	Percentage change	R'000	Percentage change	R'000	Percentage change	R'000	Percentage change
2000 Jan	490 776	- 11,3	163 926	- 31,0	365 596	+ 31,8	1 020 298	- 4,5
Feb	784 023	+ 48,3	521 389	+ 32,1	399 280	+ 12,3	1 704 692	+ 33,3
Mar	747 421	+ 12,0	359 267	- 75,3	515 668	+ 8,2	1 622 356	- 37,6
Apr	627 642	+ 18,3	271 151	- 27,6	382 300	+ 15,8	1 281 093	+ 3,7
May	874 847	+ 65,8	573 853	+ 109,3	473 062	+ 17,3	1 921 762	+ 59,5
Jun	853 154	+ 1,8	336 324	- 19,6	532 278	+ 31,8	1 721 756	+ 3,7
Jul	908 061	+ 42,5	484 669	+ 5,2	549 932	+ 30,8	1 942 662	+ 27,9
Aug	929 836	+ 31,1	353 488	- 9,0	492 627	+ 18,5	1 775 951	+ 23,8
Sep	826 851	+ 37,8	354 456	+ 16,0	465 836	- 3,8	1 647 143	+ 18,5
Oct	916 410	+ 37,9	492 884	+ 49,8	539 561	+ 23,5	1 948 855	+ 36,2
Nov	914 346	+ 28,6	493 166	- 29,7	503 659	- 6,2	1 911 171	- 2,0
Dec	606 148	+ 22,7	704 410	+ 212,8	317 835	+ 0,9	1 628 393	+ 57,5
<b>Total</b>	<b>9 479 515</b>	<b>+ 28,4</b>	<b>5 108 983</b>	<b>- 8,2</b>	<b>5 537 634</b>	<b>+ 14,1</b>	<b>20 126 132</b>	<b>+ 13,1</b>
2001 Jan	721 003	+ 46,9	477 489	+ 191,3	352 193	- 3,7	1 550 685	+ 52,0
Feb	826 607	+ 5,4	300 417	- 42,4	474 953	+ 19,0	1 601 977	- 6,0
Mar	929 196	+ 24,3	301 148	- 16,2	436 645	- 15,3	1 666 989	+ 2,8
Apr	738 858	+ 17,7	207 874	- 23,3	377 373	- 1,3	1 324 105	+ 3,4
May	999 426	+ 14,2	289 330	- 49,6	499 673	+ 5,6	1 788 429	- 6,9
Jun	901 450	+ 5,7	299 913	- 10,8	447 228	- 16,0	1 648 591	- 4,2
Jul	891 483	- 1,8	366 953	- 24,3	427 464	- 22,3	1 685 900	- 13,2
Aug	836 033	- 10,1	245 865	- 30,4	482 883	- 2,0	1 564 781	- 11,9
Sep	960 995	+ 16,2	303 367	- 14,4	526 113	+ 12,9	1 790 475	+ 8,7
Oct	1 196 455	+ 30,6	185 828	- 62,3	542 954	+ 0,6	1 925 237	- 1,2
Nov	974 628	+ 6,6	317 506	- 35,6	595 512	+ 18,2	1 887 646	- 1,2
Dec	649 614	+ 7,2	140 365	- 80,1	357 449	+ 12,5	1 147 428	- 29,5
<b>Total</b>	<b>10 625 748</b>	<b>+ 12,1</b>	<b>3 436 055</b>	<b>- 32,7</b>	<b>5 520 440</b>	<b>- 0,3</b>	<b>19 582 243</b>	<b>- 2,7</b>
2002 Jan	777 744	+ 7,9	167 598	- 64,9	399 729	+ 13,5	1 345 071	- 13,3
Feb	1 013 916	+ 22,7	247 016	- 17,8	447 620	- 5,8	1 708 552	+ 6,7
Mar	962 925	+ 3,6	465 942	+ 54,7	421 614	- 3,4	1 850 481	+ 11,0
Apr	1 138 926	+ 54,1	347 885	+ 67,4	519 452	+ 37,6	2 006 263	+ 51,5
May	1 105 380	+ 10,6	437 175	+ 51,1	926 607	+ 85,4	2 469 162	+ 38,1
Jun	1 080 086	+ 19,8	489 168	+ 63,1	538 147	+ 20,3	2 107 401	+ 27,8
Jul	1 218 655	+ 36,7	254 211	- 30,7	662 885	+ 55,1	2 135 751	+ 26,7
Aug	1 127 329	+ 34,8	387 234	+ 57,5	686 825	+ 42,2	2 201 388	+ 40,7
Sep	1 166 862	+ 21,4	279 042	- 8,0	606 232	+ 15,2	2 052 136	+ 14,6
Oct*	1 438 286	+ 20,2	320 271	+ 72,3	742 878	+ 36,8	2 501 435	+ 29,9
Nov	1 162 727	+ 19,3	295 828	- 6,8	678 475	+ 13,9	2 137 030	+ 13,2

<sup>1/</sup> The annual percentage change is the change in the actual values of building plans passed of the relevant year compared with the actual values of building plans passed of the previous year expressed as a percentage.

<sup>2/</sup> The monthly percentage change is the change in the actual values of building plans passed of the relevant month compared with the actual values of building plans passed of the same month in the previous year expressed as a percentage.

**Table 2 - Seasonally adjusted values and percentage change of building plans passed at current prices according to type of building**

Year and month <sup>1/</sup>	Residential buildings		Non-residential buildings		Additions and alterations		Total	
	R'000	Percentage change	R'000	Percentage change	R'000	Percentage change	R'000	Percentage change
2000 Jan	632 064	- 9,8	245 622	- 19,1	485 625	+ 15,1	1 363 311	- 4,4
Feb	780 747	+ 23,5	582 797	+ 137,3	446 602	- 8,0	1 810 147	+ 32,8
Mar	698 195	- 10,6	331 015	- 43,2	472 586	+ 5,8	1 501 796	- 17,0
Apr	702 920	+ 0,7	306 453	- 7,4	441 128	- 6,7	1 450 500	- 3,4
May	807 333	+ 14,9	511 583	+ 66,9	451 053	+ 2,2	1 769 969	+ 22,0
Jun	814 976	+ 0,9	295 482	- 42,2	507 561	+ 12,5	1 618 019	- 8,6
Jul	830 122	+ 1,9	399 509	+ 35,2	500 957	- 1,3	1 730 587	+ 7,0
Aug	896 164	+ 8,0	344 336	- 13,8	460 432	- 8,1	1 700 931	- 1,7
Sep	804 439	- 10,2	352 400	+ 2,3	429 996	- 6,6	1 586 835	- 6,7
Oct	764 836	- 4,9	473 053	+ 34,2	471 068	+ 9,6	1 708 956	+ 7,7
Nov	860 091	+ 12,5	416 775	- 11,9	431 184	- 8,5	1 708 051	- 0,1
Dec	856 965	- 0,4	973 447	+ 133,6	434 217	+ 0,7	2 264 629	+ 32,6
2001 Jan	919 066	+ 7,2	749 167	- 23,0	459 283	+ 5,8	2 127 515	- 6,1
Feb	817 754	- 11,0	347 006	- 53,7	541 913	+ 18,0	1 706 673	- 19,8
Mar	879 680	+ 7,6	266 328	- 23,2	401 715	- 25,9	1 547 723	- 9,3
Apr	845 268	- 3,9	240 280	- 9,8	436 412	+ 8,6	1 521 959	- 1,7
May	909 507	+ 7,6	244 716	+ 1,8	470 348	+ 7,8	1 624 572	+ 6,7
Jun	859 332	- 5,5	259 739	+ 6,1	421 870	- 10,3	1 540 941	- 5,1
Jul	815 532	- 5,1	298 183	+ 14,8	392 767	- 6,9	1 506 481	- 2,2
Aug	806 599	- 1,1	236 593	- 20,7	449 163	+ 14,4	1 492 355	- 0,9
Sep	935 593	+ 16,0	306 333	+ 29,5	490 806	+ 9,3	1 732 732	+ 16,1
Oct	996 753	+ 6,5	183 756	- 40,0	470 672	- 4,1	1 651 180	- 4,7
Nov	923 430	- 7,4	274 103	+ 49,2	512 154	+ 8,8	1 709 687	+ 3,5
Dec	912 956	- 1,1	195 887	- 28,5	495 514	- 3,2	1 604 357	- 6,2
2002 Jan	985 012	+ 7,9	268 444	+ 37,0	512 769	+ 3,5	1 766 225	+ 10,1
Feb	992 836	+ 0,8	284 958	+ 6,2	513 770	+ 0,2	1 791 564	+ 1,4
Mar	922 574	- 7,1	404 908	+ 42,1	389 914	- 24,1	1 717 396	- 4,1
Apr	1 319 080	+ 43,0	407 292	+ 0,6	601 305	+ 54,2	2 327 677	+ 35,5
May	993 635	- 24,7	359 789	- 11,7	862 586	+ 43,5	2 216 010	- 4,8
Jun	1 029 211	+ 3,6	426 040	+ 18,4	503 738	- 41,6	1 958 989	- 11,6
Jul	1 119 702	+ 8,8	204 832	- 51,9	613 936	+ 21,9	1 938 470	- 1,0
Aug	1 088 343	- 2,8	373 247	+ 82,2	637 911	+ 3,9	2 099 500	+ 8,3
Sep	1 135 721	+ 4,4	282 923	- 24,2	569 292	- 10,8	1 987 936	- 5,3
Oct	1 200 185	+ 5,7	321 563	+ 13,7	642 855	+ 12,9	2 164 602	+ 8,9
Nov	1 099 722	- 8,4	255 777	- 20,5	585 936	- 8,9	1 941 434	- 10,3

<sup>1/</sup> The percentage change is the change in the seasonally adjusted values of building plans passed of the relevant month compared with the seasonally adjusted values of building plans passed of the previous month expressed as a percentage.

**Table 3 - Actual values and percentage change of building plans passed at constant 2000 prices according to type of building**

Year <sup>1/</sup> and month <sup>2/</sup>	Residential buildings		Non-residential buildings		Additions and alterations		Total	
	R'000	Percentage change	R'000	Percentage change	R'000	Percentage change	R'000	Percentage change
2000 Jan	508 050	- 13,2	169 696	- 32,5	378 464	+ 28,9	1 056 210	- 6,6
Feb	808 271	+ 46,0	537 514	+ 30,1	411 629	+ 10,6	1 757 414	+ 31,2
Mar	765 016	+ 9,7	367 725	- 75,8	527 808	+ 6,0	1 660 549	- 38,8
Apr	636 554	+ 15,4	275 001	- 29,4	387 728	+ 13,0	1 299 283	+ 1,2
May	881 014	+ 60,8	577 898	+ 103,0	476 397	+ 13,8	1 935 309	+ 54,7
Jun	855 721	- 1,2	337 336	- 22,0	533 880	+ 27,8	1 726 937	+ 0,6
Jul	903 543	+ 37,5	482 258	+ 1,5	547 196	+ 26,3	1 932 997	+ 23,5
Aug	917 903	+ 41,0	348 952	- 13,0	486 305	+ 13,4	1 753 160	+ 18,4
Sep	813 029	+ 31,7	348 531	+ 10,9	458 049	- 8,0	1 619 609	+ 13,3
Oct	897 561	+ 31,5	482 746	+ 42,9	528 463	+ 17,9	1 908 770	+ 29,9
Nov	891 175	+ 22,3	480 669	- 33,1	490 896	- 10,8	1 862 740	- 6,7
Dec	589 065	+ 16,7	684 558	+ 197,3	308 878	- 4,1	1 582 501	+ 49,7
<b>Total</b>	<b>9 466 902</b>	<b>+ 23,9</b>	<b>5 092 884</b>	<b>- 11,7</b>	<b>5 535 693</b>	<b>+ 10,2</b>	<b>20 095 479</b>	<b>+ 9,0</b>
2001 Jan	692 606	+ 36,3	458 683	+ 170,3	338 322	- 10,6	1 489 611	+ 41,0
Feb	791 011	- 2,1	287 480	- 46,5	454 500	+ 10,4	1 532 991	- 12,8
Mar	884 107	+ 15,6	286 535	- 22,1	415 457	- 21,3	1 586 099	- 4,5
Apr	699 014	+ 9,8	196 664	- 28,5	357 023	- 7,9	1 252 701	- 3,6
May	939 310	+ 6,6	271 927	- 52,9	469 617	- 1,4	1 680 854	- 13,1
Jun	845 638	- 1,2	281 344	- 16,6	419 538	- 21,4	1 546 520	- 10,4
Jul	831 607	- 8,0	342 307	- 29,0	398 754	- 27,1	1 572 668	- 18,6
Aug	778 429	- 15,2	228 925	- 34,4	449 612	- 7,5	1 456 966	- 16,9
Sep	893 118	+ 9,9	281 940	- 19,1	488 953	+ 6,7	1 664 011	+ 2,7
Oct	1 106 804	+ 23,3	171 904	- 64,4	502 270	- 5,0	1 780 978	- 6,7
Nov	896 622	+ 0,6	292 094	- 39,2	547 849	+ 11,6	1 736 565	- 6,8
Dec	594 885	+ 1,0	128 539	- 81,2	327 334	+ 6,0	1 050 758	- 33,6
<b>Total</b>	<b>9 953 151</b>	<b>+ 5,1</b>	<b>3 228 342</b>	<b>- 36,6</b>	<b>5 169 229</b>	<b>- 6,6</b>	<b>18 350 722</b>	<b>- 8,7</b>
2002 Jan	695 035	+ 0,4	149 775	- 67,3	357 220	+ 5,6	1 202 030	- 19,3
Feb	889 400	+ 12,4	216 681	- 24,6	392 649	- 13,6	1 498 730	- 2,2
Mar	838 055	- 5,2	405 520	+ 41,5	366 940	- 11,7	1 610 515	+ 1,5
Apr	977 619	+ 39,9	298 614	+ 51,8	445 882	+ 24,9	1 722 115	+ 37,5
May	935 178	- 0,4	369 860	+ 36,0	783 931	+ 66,9	2 088 969	+ 24,3
Jun	906 112	+ 7,2	410 376	+ 45,9	451 466	+ 7,6	1 767 954	+ 14,3
Jul	1 012 172	+ 21,7	211 139	- 38,3	550 569	+ 38,1	1 773 880	+ 12,8
Aug	926 318	+ 19,0	318 187	+ 39,0	564 359	+ 25,5	1 808 864	+ 24,2
Sep	952 540	+ 6,7	227 789	- 19,2	494 883	+ 1,2	1 675 212	+ 0,7
Oct*	1 158 973	+ 4,7	258 075	+ 50,1	598 612	+ 19,2	2 015 660	+ 13,2
Nov	928 696	+ 3,6	236 284	- 19,1	541 913	- 1,1	1 706 893	- 1,7

<sup>1/</sup> The annual percentage change is the change in the actual values of building plans passed of the relevant year compared with the actual values of building plans passed of the previous year expressed as a percentage.

<sup>2/</sup> The monthly percentage change is the change in the actual values of building plans passed of the relevant month compared with the actual values of building plans passed of the same month in the previous year expressed as a percentage.

**Table 4 - Seasonally adjusted values and percentage change of building plans passed at constant 2000 prices according to type of building**

Year and month <sup>1/</sup>	Residential buildings		Non-residential buildings		Additions and alterations		Total	
	R'000	Percentage change	R'000	Percentage change	R'000	Percentage change	R'000	Percentage change
2000 Jan	652 022	- 8,7	256 907	- 17,2	500 956	+ 25,5	1 409 885	- 3,1
Feb	803 865	+ 23,3	599 731	+ 133,4	460 192	- 8,1	1 863 788	+ 32,2
Mar	713 114	- 11,3	337 480	- 43,7	484 425	+ 5,3	1 535 020	- 17,6
Apr	713 377	+ 0,0	310 543	- 8,0	447 746	- 7,6	1 471 666	- 4,1
May	816 449	+ 14,4	516 500	+ 66,3	456 134	+ 1,9	1 789 083	+ 21,6
Jun	817 134	+ 0,1	296 216	- 42,6	508 576	+ 11,5	1 621 925	- 9,3
Jul	827 480	+ 1,3	398 837	+ 34,6	497 378	- 2,2	1 723 695	+ 6,3
Aug	886 270	+ 7,1	340 493	- 14,6	455 698	- 8,4	1 682 461	- 2,4
Sep	791 465	- 10,7	346 538	+ 1,8	423 279	- 7,1	1 561 282	- 7,2
Oct	749 325	- 5,3	463 147	+ 33,6	461 623	+ 9,1	1 674 095	+ 7,2
Nov	837 478	+ 11,8	403 355	- 12,9	419 433	- 9,1	1 660 267	- 0,8
Dec	829 093	- 1,0	945 794	+ 134,5	420 325	+ 0,2	2 195 212	+ 32,2
2001 Jan	880 054	+ 6,1	729 187	- 22,9	439 614	+ 4,6	2 048 854	- 6,7
Feb	781 894	- 11,2	331 165	- 54,6	518 442	+ 17,9	1 631 501	- 20,4
Mar	835 280	+ 6,8	252 322	- 23,8	382 812	- 26,2	1 470 414	- 9,9
Apr	799 990	- 4,2	227 100	- 10,0	413 555	+ 8,0	1 440 645	- 2,0
May	858 638	+ 7,3	230 522	+ 1,5	443 935	+ 7,3	1 533 094	+ 6,4
Jun	806 436	- 6,1	243 629	+ 5,7	395 246	- 11,0	1 445 311	- 5,7
Jul	762 284	- 5,5	279 357	+ 14,7	365 561	- 7,5	1 407 201	- 2,6
Aug	752 421	- 1,3	220 633	- 21,0	419 400	+ 14,7	1 392 453	- 1,0
Sep	869 485	+ 15,6	284 619	+ 29,0	456 456	+ 8,8	1 610 559	+ 15,7
Oct	921 890	+ 6,0	169 739	- 40,4	435 511	- 4,6	1 527 140	- 5,2
Nov	848 586	- 8,0	250 276	+ 47,4	470 424	+ 8,0	1 569 285	+ 2,8
Dec	832 180	- 1,9	179 401	- 28,3	451 736	- 4,0	1 463 317	- 6,8
2002 Jan	877 368	+ 5,4	243 674	+ 35,8	456 601	+ 1,1	1 577 643	+ 7,8
Feb	870 435	- 0,8	249 178	+ 2,3	450 596	- 1,3	1 570 209	- 0,5
Mar	801 306	- 7,9	350 866	+ 40,8	339 821	- 24,6	1 491 993	- 5,0
Apr	1 132 875	+ 41,4	349 244	- 0,5	517 251	+ 52,2	1 999 370	+ 34,0
May	844 457	- 25,5	305 042	- 12,7	732 840	+ 41,7	1 882 339	- 5,9
Jun	864 192	+ 2,3	357 536	+ 17,2	422 250	- 42,4	1 643 979	- 12,7
Jul	932 024	+ 7,8	170 943	- 52,2	508 656	+ 20,5	1 611 624	- 2,0
Aug	895 963	- 3,9	307 160	+ 79,7	525 759	+ 3,4	1 728 882	+ 7,3
Sep	926 728	+ 3,4	230 753	- 24,9	464 899	- 11,6	1 622 380	- 6,2
Oct	966 555	+ 4,3	258 509	+ 12,0	517 941	+ 11,4	1 743 005	+ 7,4
Nov	877 121	- 9,3	202 707	- 21,6	467 297	- 9,8	1 547 125	- 11,2

<sup>1/</sup> The percentage change is the change in the seasonally adjusted values of building plans passed of the relevant month compared with the seasonally adjusted values of building plans passed of the previous month expressed as a percentage.

Table 5 - Actual values and percentage change of buildings completed at current prices according to type of building

Year <sup>1/</sup> and month <sup>2/</sup>	Residential buildings		Non-residential buildings		Additions and alterations		Total	
	R'000	Percentage change	R'000	Percentage change	R'000	Percentage change	R'000	Percentage change
2000 Jan	299 212	- 4,7	195 988	- 0,6	183 959	- 4,7	679 159	- 3,5
Feb	353 141	- 11,0	205 549	- 4,3	221 978	- 9,3	780 668	- 8,8
Mar	419 416	- 3,0	212 379	- 13,7	268 745	+ 16,5	900 540	- 1,0
Apr	364 713	- 3,5	224 048	+ 23,4	188 808	- 5,8	777 569	+ 2,3
May	473 124	+ 21,0	390 533	+ 99,6	293 343	+ 64,1	1 157 000	+ 51,2
Jun	362 558	- 13,7	174 728	- 16,2	170 986	+ 11,2	708 272	- 9,5
Jul	407 406	- 15,3	472 668	+ 79,0	220 828	- 18,9	1 100 902	+ 8,2
Aug	449 691	- 2,4	285 994	+ 39,6	211 008	- 17,5	946 693	+ 2,7
Sep	510 979	+ 3,6	270 539	+ 37,2	199 622	- 10,6	981 140	+ 7,4
Oct	462 270	+ 10,2	195 491	- 4,0	238 257	+ 3,8	896 018	+ 5,1
Nov	555 802	+ 20,5	186 442	- 54,5	255 900	+ 21,7	998 144	- 7,7
Dec	383 114	+ 9,6	316 801	+ 74,5	149 622	+ 2,2	849 537	+ 25,4
<b>Total</b>	<b>5 041 426</b>	<b>+ 0,9</b>	<b>3 131 160</b>	<b>+ 15,7</b>	<b>2 603 056</b>	<b>+ 2,5</b>	<b>10 775 642</b>	<b>+ 5,2</b>
2001 Jan	643 047	+ 114,9	238 434	+ 21,7	201 057	+ 9,3	1 082 538	+ 59,4
Feb	428 803	+ 21,4	285 619	+ 39,0	244 636	+ 10,2	959 058	+ 22,9
Mar	489 687	+ 16,8	159 637	- 24,8	286 396	+ 6,6	935 720	+ 3,9
Apr	366 061	+ 0,4	169 796	- 24,2	185 541	- 1,7	721 398	- 7,2
May	447 895	- 5,3	300 533	- 23,0	295 847	+ 0,9	1 044 275	- 9,7
Jun	539 545	+ 48,8	338 853	+ 93,9	294 854	+ 72,4	1 173 252	+ 65,6
Jul	396 717	- 2,6	121 617	- 74,3	232 836	+ 5,4	751 170	- 31,8
Aug	431 845	- 4,0	117 368	- 59,0	214 644	+ 1,7	763 857	- 19,3
Sep	461 515	- 9,7	1 417 979	+ 424,1	169 974	- 14,9	2 049 468	+ 108,9
Oct	667 250	+ 44,3	285 644	+ 46,1	237 138	- 0,5	1 190 032	+ 32,8
Nov	616 443	+ 10,9	211 109	+ 13,2	288 778	+ 12,8	1 116 330	+ 11,8
Dec	469 410	+ 22,5	173 587	- 45,2	124 610	- 16,7	767 607	- 9,6
<b>Total</b>	<b>5 958 218</b>	<b>+ 18,2</b>	<b>3 820 176</b>	<b>+ 22,0</b>	<b>2 776 311</b>	<b>+ 6,7</b>	<b>12 554 705</b>	<b>+ 16,5</b>
2002 Jan	579 544	- 9,9	137 089	- 42,5	174 833	- 13,0	891 466	- 17,7
Feb	487 783	+ 13,8	138 037	- 51,7	198 195	- 19,0	824 015	- 14,1
Mar	699 202	+ 42,8	169 849	+ 6,4	174 052	- 39,2	1 043 103	+ 11,5
Apr	641 454	+ 75,2	248 263	+ 46,2	381 482	+ 105,6	1 271 199	+ 76,2
May	671 871	+ 50,0	293 306	- 2,4	298 168	+ 0,8	1 263 345	+ 21,0
Jun	576 813	+ 6,9	206 136	- 39,2	248 350	- 15,8	1 031 299	- 12,1
Jul	665 914	+ 67,9	250 131	+ 105,7	236 281	+ 1,5	1 152 326	+ 53,4
Aug	732 614	+ 69,6	94 396	- 19,6	225 042	+ 4,8	1 052 052	+ 37,7
Sep	804 955	+ 74,4	226 372	- 84,0	246 064	+ 44,8	1 277 391	- 37,7
Oct	905 380	+ 35,7	181 127	- 36,6	291 109	+ 22,8	1 377 616	+ 15,8
Nov	834 600	+ 35,4	282 906	+ 34,0	230 581	- 20,2	1 348 087	+ 20,8

<sup>1/</sup> The annual percentage change is the change in the actual values of buildings completed of the relevant year compared with the actual values of buildings completed of the previous year expressed as a percentage.

<sup>2/</sup> The monthly percentage change is the change in the actual values of buildings completed of the relevant month compared with the actual values of buildings completed of the same month in the previous year expressed as a percentage.

**Table 6 - Seasonally adjusted values and percentage change of buildings completed at current prices according to type of building**

Year and month <sup>1/</sup>	Residential buildings		Non-residential buildings		Additions and alterations		Total	
	R'000	Percentage change	R'000	Percentage change	R'000	Percentage change	R'000	Percentage change
2000 Jan	363 433	- 8,9	243 753	+ 29,9	209 033	- 6,6	816 220	+ 0,7
Feb	393 930	+ 8,4	231 682	- 5,0	207 427	- 0,8	833 039	+ 2,1
Mar	395 122	+ 0,3	258 387	+ 11,5	224 344	+ 8,2	877 853	+ 5,4
Apr	401 967	+ 1,7	253 378	- 1,9	209 678	- 6,5	865 023	- 1,5
May	454 873	+ 13,2	346 748	+ 36,9	258 416	+ 23,2	1 060 037	+ 22,5
Jun	384 645	- 15,4	173 457	- 50,0	179 607	- 30,5	737 709	- 30,4
Jul	398 164	+ 3,5	336 329	+ 93,9	198 956	+ 10,8	933 449	+ 26,5
Aug	442 775	+ 11,2	311 006	- 7,5	209 952	+ 5,5	963 733	+ 3,2
Sep	463 581	+ 4,7	224 400	- 27,8	203 721	- 3,0	891 702	- 7,5
Oct	410 548	- 11,4	188 571	- 16,0	217 749	+ 6,9	816 869	- 8,4
Nov	473 942	+ 15,4	192 846	+ 2,3	249 843	+ 14,7	916 631	+ 12,2
Dec	438 405	- 7,5	345 879	+ 79,4	230 017	- 7,9	1 014 300	+ 10,7
2001 Jan	761 005	+ 73,6	305 773	- 11,6	230 892	+ 0,4	1 297 669	+ 27,9
Feb	479 240	- 37,0	328 610	+ 7,5	234 298	+ 1,5	1 042 149	- 19,7
Mar	452 400	- 5,6	200 033	- 39,1	233 103	- 0,5	885 536	- 15,0
Apr	401 674	- 11,2	190 459	- 4,8	207 476	- 11,0	799 609	- 9,7
May	431 803	+ 7,5	243 336	+ 27,8	251 172	+ 21,1	926 311	+ 15,8
Jun	586 324	+ 35,8	335 366	+ 37,8	310 399	+ 23,6	1 232 088	+ 33,0
Jul	399 937	- 31,8	82 261	- 75,5	215 015	- 30,7	697 213	- 43,4
Aug	425 645	+ 6,4	133 131	+ 61,8	214 508	- 0,2	773 284	+ 10,9
Sep	417 256	- 2,0	1 183 674	+ 789,1	175 030	- 18,4	1 775 960	+ 129,7
Oct	578 656	+ 38,7	295 033	- 75,1	213 164	+ 21,8	1 086 852	- 38,8
Nov	529 707	- 8,5	217 648	- 26,2	284 407	+ 33,4	1 031 761	- 5,1
Dec	539 023	+ 1,8	194 903	- 10,5	191 252	- 32,8	925 177	- 10,3
2002 Jan	676 616	+ 25,5	175 441	- 10,0	201 741	+ 5,5	1 053 798	+ 13,9
Feb	543 228	- 19,7	161 431	- 8,0	191 524	- 5,1	896 183	- 15,0
Mar	642 418	+ 18,3	212 679	+ 31,7	140 331	- 26,7	995 428	+ 11,1
Apr	702 200	+ 9,3	276 059	+ 29,8	426 452	+ 203,9	1 404 712	+ 41,1
May	641 239	- 8,7	225 601	- 18,3	248 199	- 41,8	1 115 039	- 20,6
Jun	639 643	- 0,2	207 160	- 8,2	263 568	+ 6,2	1 110 371	- 0,4
Jul	687 768	+ 7,5	163 816	- 20,9	221 297	- 16,0	1 072 881	- 3,4
Aug	718 794	+ 4,5	109 113	- 33,4	225 317	+ 1,8	1 053 224	- 1,8
Sep	733 348	+ 2,0	192 992	+ 76,9	255 917	+ 13,6	1 182 257	+ 12,3
Oct	774 963	+ 5,7	194 700	+ 0,9	259 750	+ 1,5	1 229 413	+ 4,0
Nov	712 690	- 8,0	293 410	+ 50,7	225 321	- 13,3	1 231 421	+ 0,2

<sup>1/</sup> The percentage change is the change in the seasonally adjusted values of buildings completed of the relevant month compared with the seasonally adjusted values of buildings completed of the previous month expressed as a percentage.

Table 7 - Actual values and percentage change of buildings completed at constant 2000 prices according to type of building

Year <sup>1/</sup> and month <sup>2/</sup>	Residential buildings		Non-residential buildings		Additions and alterations		Total	
	R'000	Percentage change	R'000	Percentage change	R'000	Percentage change	R'000	Percentage change
2000 Jan	310 456	- 10,1	214 195	- 5,7	194 666	- 10,8	719 317	- 9,0
Feb	365 724	- 28,3	222 215	- 13,2	232 438	- 29,2	820 377	- 24,7
Mar	433 235	- 33,7	227 874	- 23,9	280 820	- 24,7	941 929	- 28,7
Apr	375 641	- 24,1	239 112	+ 3,6	196 266	- 12,8	811 019	- 14,3
May	486 811	- 26,2	415 461	- 3,9	304 614	- 1,9	1 206 886	- 14,6
Jun	371 504	- 31,4	185 683	- 9,6	176 821	+ 14,5	734 008	- 16,3
Jul	421 432	- 31,4	500 178	- 28,2	227 658	- 34,6	1 149 268	- 35,2
Aug	463 689	- 39,6	299 470	- 7,0	217 759	- 29,6	980 918	- 27,6
Sep	523 538	- 36,2	282 695	- 3,1	205 372	- 18,7	1 011 605	- 26,7
Oct	470 304	- 40,4	203 213	- 5,6	244 617	- 20,5	918 134	- 21,1
Nov	561 785	- 29,4	193 605	- 52,9	262 193	- 13,0	1 017 583	- 38,0
Dec	386 117	- 35,5	327 612	+ 6,6	152 988	+ 25,2	866 717	- 0,2
<b>Total</b>	<b>5 170 236</b>	<b>- 3,1</b>	<b>3 311 313</b>	<b>+ 8,4</b>	<b>2 696 212</b>	<b>- 3,1</b>	<b>11 177 761</b>	<b>+ 0,0</b>
2001 Jan	654 850	+ 110,9	245 808	+ 14,8	208 134	+ 6,9	1 108 792	+ 54,1
Feb	427 706	+ 16,9	294 756	+ 32,6	252 202	+ 8,5	974 664	+ 18,8
Mar	487 529	+ 12,5	164 236	- 27,9	293 138	+ 4,4	944 903	+ 0,3
Apr	361 669	- 3,7	174 329	- 27,1	188 175	- 4,1	724 173	- 10,7
May	438 090	- 10,0	307 923	- 25,9	297 933	- 2,2	1 043 946	- 13,5
Jun	528 083	+ 42,1	346 475	+ 86,6	295 741	+ 67,3	1 170 299	+ 59,4
Jul	383 132	- 9,1	125 898	- 74,8	231 678	+ 1,8	740 708	- 35,5
Aug	415 640	- 10,4	120 998	- 59,6	211 889	- 2,7	748 527	- 23,7
Sep	442 133	- 15,5	1 451 360	+ 413,4	167 133	- 18,6	2 060 626	+ 103,7
Oct	638 358	+ 35,7	289 700	+ 42,6	232 261	- 5,1	1 160 319	+ 26,4
Nov	586 177	+ 4,3	212 597	+ 9,8	281 460	+ 7,3	1 080 234	+ 6,2
Dec	443 262	+ 14,8	174 109	- 46,9	121 098	- 20,8	738 469	- 14,8
<b>Total</b>	<b>5 806 629</b>	<b>+ 12,3</b>	<b>3 908 189</b>	<b>+ 18,0</b>	<b>2 780 842</b>	<b>+ 3,1</b>	<b>12 495 660</b>	<b>+ 11,8</b>
2002 Jan	545 960	- 16,6	136 407	- 44,5	167 947	- 19,3	850 314	- 23,3
Feb	458 165	+ 7,1	136 266	- 53,8	189 660	- 24,8	784 091	- 19,6
Mar	656 718	+ 34,7	167 010	+ 1,7	165 606	- 43,5	989 334	+ 4,7
Apr	596 575	+ 65,0	243 157	+ 39,5	360 910	+ 91,8	1 200 642	+ 65,8
May	622 362	+ 42,1	285 873	- 7,2	280 233	- 5,9	1 188 468	+ 13,8
Jun	530 538	+ 0,5	200 327	- 42,2	232 974	- 21,2	963 839	- 17,6
Jul	601 678	+ 57,0	240 280	+ 90,9	220 411	- 4,9	1 062 369	+ 43,4
Aug	655 975	+ 57,8	90 331	- 25,3	209 536	- 1,1	955 842	+ 27,7
Sep	717 245	+ 62,2	215 387	- 85,2	228 684	+ 36,8	1 161 316	- 43,6
Oct	790 164	+ 23,8	171 360	- 40,8	269 296	+ 15,9	1 230 820	+ 6,1
Nov	722 204	+ 23,2	265 889	+ 25,1	212 126	- 24,6	1 200 219	+ 11,1

<sup>1/</sup> The annual percentage change is the change in the actual values of buildings completed of the relevant year compared with the actual values of buildings completed of the previous year expressed as a percentage.

<sup>2/</sup> The monthly percentage change is the change in the actual values of buildings completed of the relevant month compared with the actual values of buildings completed of the same month in the previous year expressed as a percentage.

**Table 8 - Seasonally adjusted values and percentage change of buildings completed at constant 2000 prices according to type of building**

Year and month <sup>1/</sup>	Residential buildings		Non-residential buildings		Additions and alterations		Total	
	R'000	Percentage change	R'000	Percentage change	R'000	Percentage change	R'000	Percentage change
2000 Jan	377 640	- 9,2	267 103	+ 29,1	220 232	- 7,2	864 975	+ 0,6
Feb	409 106	+ 8,3	251 461	- 5,9	216 762	- 1,6	877 329	+ 1,4
Mar	408 271	- 0,2	278 077	+ 10,6	233 838	+ 7,9	920 187	+ 4,9
Apr	413 760	+ 1,3	270 927	- 2,6	217 621	- 6,9	902 308	- 1,9
May	467 871	+ 13,1	369 290	+ 36,3	270 395	+ 24,3	1 107 557	+ 22,7
Jun	390 680	- 16,5	184 156	- 50,1	185 346	- 31,5	760 182	- 31,4
Jul	410 884	+ 5,2	354 435	+ 92,5	205 503	+ 10,9	970 822	+ 27,7
Aug	456 770	+ 11,2	325 523	- 8,2	217 100	+ 5,6	999 393	+ 2,9
Sep	474 463	+ 3,9	233 739	- 28,2	208 968	- 3,7	917 170	- 8,2
Oct	419 366	- 11,6	196 059	- 16,1	224 037	+ 7,2	839 462	- 8,5
Nov	480 904	+ 14,7	200 655	+ 2,3	256 590	+ 14,5	938 149	+ 11,8
Dec	442 026	- 8,1	356 358	+ 77,6	234 700	- 8,5	1 033 085	+ 10,1
2001 Jan	776 264	+ 75,6	316 174	- 11,3	237 973	+ 1,4	1 330 411	+ 28,8
Feb	478 896	- 38,3	340 501	+ 7,7	240 924	+ 1,2	1 060 321	- 20,3
Mar	450 010	- 6,0	206 578	- 39,3	237 884	- 1,3	894 473	- 15,6
Apr	396 490	- 11,9	196 067	- 5,1	210 136	- 11,7	802 694	- 10,3
May	421 954	+ 6,4	249 645	+ 27,3	254 776	+ 21,2	926 374	+ 15,4
Jun	569 867	+ 35,1	342 719	+ 37,3	310 728	+ 22,0	1 223 314	+ 32,1
Jul	385 364	- 32,4	84 819	- 75,3	214 454	- 31,0	684 637	- 44,0
Aug	409 550	+ 6,3	137 061	+ 61,6	212 167	- 1,1	758 778	+ 10,8
Sep	399 158	- 2,5	1 207 385	+ 780,9	171 429	- 19,2	1 777 972	+ 134,3
Oct	556 294	+ 39,4	299 450	- 75,2	209 277	+ 22,1	1 065 020	- 40,1
Nov	506 004	- 9,0	219 584	- 26,7	278 007	+ 32,8	1 003 595	- 5,8
Dec	509 270	+ 0,6	194 643	- 11,4	185 563	- 33,3	889 476	- 11,4
2002 Jan	638 367	+ 25,3	175 069	- 10,1	192 910	+ 4,0	1 006 346	+ 13,1
Feb	510 886	- 20,0	159 937	- 8,6	182 728	- 5,3	853 550	- 15,2
Mar	602 374	+ 17,9	209 945	+ 31,3	133 116	- 27,2	945 435	+ 10,8
Apr	652 248	+ 8,3	271 199	+ 29,2	402 976	+ 202,7	1 326 424	+ 40,3
May	593 132	- 9,1	220 243	- 18,8	234 889	- 41,7	1 048 264	- 21,0
Jun	585 580	- 1,3	201 343	- 8,6	246 805	+ 5,1	1 033 728	- 1,4
Jul	619 884	+ 5,9	156 734	- 22,2	206 996	- 16,1	983 614	- 4,8
Aug	642 949	+ 3,7	104 210	- 33,5	210 269	+ 1,6	957 429	- 2,7
Sep	652 392	+ 1,5	182 929	+ 75,5	236 713	+ 12,6	1 072 034	+ 12,0
Oct	679 668	+ 4,2	184 411	+ 0,8	240 878	+ 1,8	1 104 958	+ 3,1
Nov	619 684	- 8,8	276 244	+ 49,8	207 882	- 13,7	1 103 810	- 0,1

<sup>1/</sup> The percentage change is the change in the seasonally adjusted values of buildings completed of the relevant month compared with the seasonally adjusted values of buildings completed of the previous month expressed as a percentage.



**Table 9 - Building plans passed according to type of building: Total RSA**

Type of building	November 2001 *	October 2002 *	November 2002	January 2001 to November 2001	January 2002 to November 2002	Percentage change between January 2001 to November 2001 and January 2002 to November 2002
<b>Residential buildings</b>						
Dwelling-houses smaller than 80 square metres						
Number of dwelling-houses	2 160	8 401	4 460	35 123	43 342	+ 23,4
Total square metres	90 674	315 972	183 461	1 393 470	1 664 666	+ 19,5
Total value at current prices (R'000)	97 051	215 341	146 891	1 340 759	1 530 222	+ 14,1
Dwelling-houses equal to or larger than 80 square metres						
Number of dwelling-houses	1 804	2 325	2 096	19 910	22 700	+ 14,0
Total square metres	395 778	536 381	464 425	4 311 661	5 130 353	+ 19,0
Total value at current prices (R'000)	579 579	846 678	746 206	6 190 196	7 820 952	+ 26,3
Flats and townhouses						
Number of flats and townhouses	1 131	1 956	1 573	11 275	13 713	+ 21,6
Total square metres	182 387	250 202	163 159	1 291 586	1 627 198	+ 26,0
Total value at current prices (R'000)	289 443	371 702	267 536	1 959 453	2 569 886	+ 31,2
Other residential buildings <sup>1/</sup>						
Total square metres	5 827	3 120	1 423	124 749	113 625	- 8,9
Total value at current prices (R'000)	8 555	4 565	2 094	485 726	271 776	- 44,0
<b>Total value of residential buildings at current prices (R'000)</b>	<b>974 628</b>	<b>1 438 286</b>	<b>1 162 727</b>	<b>9 976 134</b>	<b>12 192 836</b>	<b>+ 22,2</b>
<b>Non-residential buildings</b>						
Office and banking space						
Total square metres	51 609	37 314	33 617	712 691	375 216	- 47,4
Total value at current prices (R'000)	84 604	72 789	57 503	1 204 012	703 836	- 41,5
Shopping space						
Total square metres	62 179	49 902	50 991	416 386	470 558	+ 13,0
Total value at current prices (R'000)	94 258	70 124	81 600	610 091	815 347	+ 33,6
Industrial and warehouse space						
Total square metres	55 535	92 699	91 218	743 596	999 113	+ 34,4
Total value at current prices (R'000)	66 350	133 616	127 156	985 469	1 579 899	+ 60,3
Other non-residential space <sup>2/</sup>						
Total square metres	53 753	28 905	18 965	366 543	389 371	+ 6,2
Total value at current prices (R'000)	72 294	43 742	29 569	496 118	592 288	+ 19,4
<b>Total value of non-residential buildings at current prices (R'000)</b>	<b>317 506</b>	<b>320 271</b>	<b>295 828</b>	<b>3 295 690</b>	<b>3 691 370</b>	<b>+ 12,0</b>
<b>Additions and alterations</b>						
Dwelling-houses						
Total square metres	294 048	325 503	302 312	2 781 412	3 083 885	+ 10,9
Total value at current prices (R'000)	366 692	472 433	425 756	3 502 966	4 271 056	+ 21,9
Other buildings <sup>3/</sup>						
Total square metres	154 781	155 748	140 901	970 625	1 190 688	+ 22,7
Total value at current prices (R'000)	228 820	270 445	252 719	1 660 025	2 359 408	+ 42,1
<b>Total value of additions and alterations at current prices (R'000)</b>	<b>595 512</b>	<b>742 878</b>	<b>678 475</b>	<b>5 162 991</b>	<b>6 630 464</b>	<b>+ 28,4</b>
<b>Total value of building plans passed at current prices (R'000)</b>	<b>1 887 646</b>	<b>2 501 435</b>	<b>2 137 030</b>	<b>18 434 815</b>	<b>22 514 670</b>	<b>+ 22,1</b>

1/ Other residential buildings include institutions for the disabled, boarding houses, old people's homes, hostels, hotels, motels, guest houses, holiday chalets, entertainment centres, bed-and-breakfast accommodation and casinos.

2/ Other non-residential space includes churches, sport and recreation clubs, schools, crèches, hospitals and all other non-residential space.

3/ Other buildings include additions and alterations to other residential buildings, non-residential buildings and internal alterations.

**Table 10 - Building plans passed according to type of building and province: Western Cape**

Type of building	November 2001	October 2002	November 2002	January 2001 to November 2001	January 2002 to November 2002	Percentage change between January 2001 to November 2001 and January 2002 to November 2002
<b>Residential buildings</b>						
Dwelling-houses smaller than 80 square metres						
Number of dwelling-houses	689	1 357	500	7 343	13 804	+ 88,0
Total square metres	27 515	43 147	19 669	300 163	464 744	+ 54,8
Total value at current prices (R'000)	30 553	41 199	23 010	352 221	521 093	+ 47,9
Dwelling-houses equal to or larger than 80 square metres						
Number of dwelling-houses	538	726	675	6 530	7 976	+ 22,1
Total square metres	114 709	158 662	154 504	1 353 602	1 702 700	+ 25,8
Total value at current prices (R'000)	172 242	262 793	266 274	2 032 388	2 732 437	+ 34,4
Flats and townhouses						
Number of flats and townhouses	175	293	839	2 780	3 445	+ 23,9
Total square metres	21 865	24 244	53 200	265 667	312 220	+ 17,5
Total value at current prices (R'000)	32 019	41 737	86 639	397 086	513 595	+ 29,3
Other residential buildings <sup>1/</sup>						
Total square metres	185	77	0	37 906	51 831	+ 36,7
Total value at current prices (R'000)	276	108	0	84 949	128 894	+ 51,7
<b>Total value of residential buildings at current prices (R'000)</b>	<b>235 090</b>	<b>345 837</b>	<b>375 923</b>	<b>2 866 644</b>	<b>3 896 019</b>	<b>+ 35,9</b>
<b>Non-residential buildings</b>						
Office and banking space						
Total square metres	19 771	3 395	3 388	225 293	75 957	- 66,3
Total value at current prices (R'000)	31 789	8 558	4 855	324 153	129 657	- 60,0
Shopping space						
Total square metres	11 012	6 144	3 396	155 494	51 494	- 66,9
Total value at current prices (R'000)	15 593	7 766	5 884	213 740	71 084	- 66,7
Industrial and warehouse space						
Total square metres	36 339	39 155	22 889	236 698	235 910	- 0,3
Total value at current prices (R'000)	40 956	52 036	26 094	241 607	293 930	+ 21,7
Other non-residential space <sup>2/</sup>						
Total square metres	3 087	11 247	7 326	98 756	74 606	- 24,5
Total value at current prices (R'000)	4 271	17 381	11 871	113 665	115 927	+ 2,0
<b>Total value of non-residential buildings at current prices (R'000)</b>	<b>92 609</b>	<b>85 741</b>	<b>48 704</b>	<b>893 165</b>	<b>610 598</b>	<b>- 31,6</b>
<b>Additions and alterations</b>						
Dwelling-houses						
Total square metres	98 136	89 993	91 267	863 386	958 748	+ 11,0
Total value at current prices (R'000)	114 888	134 939	126 336	1 091 169	1 315 800	+ 20,6
Other buildings <sup>3/</sup>						
Total square metres	35 139	52 767	26 468	254 123	334 721	+ 31,7
Total value at current prices (R'000)	62 387	97 405	51 792	461 702	650 647	+ 40,9
<b>Total value of additions and alterations at current prices (R'000)</b>	<b>177 275</b>	<b>232 344</b>	<b>178 128</b>	<b>1 552 871</b>	<b>1 966 447</b>	<b>+ 26,6</b>
<b>Total value of building plans passed at current prices (R'000)</b>	<b>504 974</b>	<b>663 922</b>	<b>602 755</b>	<b>5 312 680</b>	<b>6 473 064</b>	<b>+ 21,8</b>

1/ Other residential buildings include institutions for the disabled, boarding houses, old people's homes, hostels, hotels, motels, guest houses, holiday chalets, entertainment centres, bed-and-breakfast accommodation and casinos.

2/ Other non-residential space includes churches, sport and recreation clubs, schools, crèches, hospitals and all other non-residential space.

3/ Other buildings include additions and alterations to other residential buildings, non-residential buildings and internal alterations.

**Table 11 - Building plans passed according to type of building and province: Eastern Cape**

Type of building	November 2001	October 2002	November 2002	January 2001 to November 2001	January 2002 to November 2002	Percentage change between January 2001 to November 2001 and January 2002 to November 2002
<b>Residential buildings</b>						
Dwelling-houses smaller than 80 square metres						
Number of dwelling-houses	131	410	335	2 383	4 850	+ 103,5
Total square metres	5 876	17 037	14 065	106 918	206 232	+ 92,9
Total value at current prices (R'000)	8 867	12 699	19 688	134 606	243 880	+ 81,2
Dwelling-houses equal to or larger than 80 square metres						
Number of dwelling-houses	84	123	183	1 196	1 289	+ 7,8
Total square metres	15 102	22 154	27 106	191 784	245 835	+ 28,2
Total value at current prices (R'000)	21 500	33 267	44 334	255 088	360 831	+ 41,5
Flats and townhouses						
Number of flats and townhouses	10	31	12	733	455	-37,9
Total square metres	1 030	4 021	1 938	40 940	42 104	+ 2,8
Total value at current prices (R'000)	1 494	6 462	2 785	49 586	68 594	+ 38,3
Other residential buildings <sup>1/</sup>						
Total square metres	0	0	0	26 393	1 135	-95,7
Total value at current prices (R'000)	0	0	0	77 622	1 654	-97,9
<b>Total value of residential buildings at current prices (R'000)</b>	<b>31 861</b>	<b>52 428</b>	<b>66 807</b>	<b>516 902</b>	<b>674 959</b>	<b>+ 30,6</b>
<b>Non-residential buildings</b>						
Office and banking space						
Total square metres	0	2 518	0	13 652	8 860	-35,1
Total value at current prices (R'000)	0	4 295	0	22 163	13 904	-37,3
Shopping space						
Total square metres	461	6 739	2 148	13 458	28 945	+ 115,1
Total value at current prices (R'000)	509	9 779	3 880	20 985	50 120	+ 138,8
Industrial and warehouse space						
Total square metres	918	2 626	4 055	37 270	48 602	+ 30,4
Total value at current prices (R'000)	566	4 115	6 669	40 898	84 766	+ 107,3
Other non-residential space <sup>2/</sup>						
Total square metres	2 933	2 731	3 181	17 289	30 220	+ 74,8
Total value at current prices (R'000)	5 749	3 823	6 131	30 798	49 862	+ 61,9
<b>Total value of non-residential buildings at current prices (R'000)</b>	<b>6 824</b>	<b>22 012</b>	<b>16 680</b>	<b>114 844</b>	<b>198 652</b>	<b>+ 73,0</b>
<b>Additions and alterations</b>						
Dwelling-houses						
Total square metres	21 963	21 845	26 552	212 249	220 011	+ 3,7
Total value at current prices (R'000)	30 240	33 879	41 071	278 958	321 735	+ 15,3
Other buildings <sup>3/</sup>						
Total square metres	4 796	7 338	4 663	111 820	54 815	-51,0
Total value at current prices (R'000)	6 897	11 143	10 442	141 741	97 139	-31,5
<b>Total value of additions and alterations at current prices (R'000)</b>	<b>37 137</b>	<b>45 022</b>	<b>51 513</b>	<b>420 699</b>	<b>418 874</b>	<b>-0,4</b>
<b>Total value of building plans passed at current prices (R'000)</b>	<b>75 822</b>	<b>119 462</b>	<b>135 000</b>	<b>1 052 445</b>	<b>1 292 485</b>	<b>+ 22,8</b>

1/ Other residential buildings include institutions for the disabled, boarding houses, old people's homes, hostels, hotels, motels, guest houses, holiday chalets, entertainment centres, bed-and-breakfast accommodation and casinos.

2/ Other non-residential space includes churches, sport and recreation clubs, schools, crèches, hospitals and all other non-residential space.

3/ Other buildings include additions and alterations to other residential buildings, non-residential buildings and internal alterations.

**Table 12 - Building plans passed according to type of building and province: Northern Cape**

Type of building	November 2001*	October 2002	November 2002	January 2001 to November 2001	January 2002 to November 2002	Percentage change between January 2001 to November 2001 and January 2002 to November 2002
<b>Residential buildings</b>						
Dwelling-houses smaller than 80 square metres						
Number of dwelling-houses	14	3	4	88	65	- 26,1
Total square metres	620	139	132	4 743	2 910	- 38,6
Total value at current prices (R'000)	871	227	199	7 234	4 783	- 33,9
Dwelling-houses equal to or larger than 80 square metres						
Number of dwelling-houses	16	7	7	161	91	- 43,5
Total square metres	2 312	1 165	1 641	27 648	18 368	- 33,6
Total value at current prices (R'000)	3 597	1 821	2 670	38 747	28 804	- 25,7
Flats and townhouses						
Number of flats and townhouses	2	1	3	14	27	+ 92,9
Total square metres	496	266	492	2 581	4 191	+ 62,4
Total value at current prices (R'000)	893	479	886	3 727	7 412	+ 98,9
Other residential buildings <sup>1/</sup>						
Total square metres	0	0	0	0	0	..
Total value at current prices (R'000)	0	0	0	0	0	..
<b>Total value of residential buildings at current prices (R'000)</b>	<b>5 361</b>	<b>2 527</b>	<b>3 755</b>	<b>49 708</b>	<b>40 999</b>	<b>- 17,5</b>
<b>Non-residential buildings</b>						
Office and banking space						
Total square metres	66	633	0	257	1 207	+ 369,6
Total value at current prices (R'000)	92	1 393	0	216	2 213	+ 924,5
Shopping space						
Total square metres	3 673	0	2 997	4 143	4 204	+ 1,5
Total value at current prices (R'000)	8 081	0	6 593	8 888	8 980	+ 1,0
Industrial and warehouse space						
Total square metres	0	54	0	2 336	2 969	+ 27,1
Total value at current prices (R'000)	0	27	0	2 744	4 385	+ 59,8
Other non-residential space <sup>2/</sup>						
Total square metres	219	851	0	2 594	3 107	+ 19,8
Total value at current prices (R'000)	328	1 872	0	4 174	6 735	+ 61,4
<b>Total value of non-residential buildings at current prices (R'000)</b>	<b>8 501</b>	<b>3 292</b>	<b>6 593</b>	<b>16 022</b>	<b>22 313</b>	<b>+ 39,3</b>
<b>Additions and alterations</b>						
Dwelling-houses						
Total square metres	3 551	3 359	2 311	28 741	31 131	+ 8,3
Total value at current prices (R'000)	6 109	5 108	3 924	47 777	52 242	+ 9,3
Other buildings <sup>3/</sup>						
Total square metres	599	795	2 730	9 301	7 679	- 17,4
Total value at current prices (R'000)	2 302	1 799	4 715	23 028	18 827	- 18,2
<b>Total value of additions and alterations at current prices (R'000)</b>	<b>8 411</b>	<b>6 907</b>	<b>8 639</b>	<b>70 805</b>	<b>71 069</b>	<b>+ 0,4</b>
<b>Total value of building plans passed at current prices (R'000)</b>	<b>22 273</b>	<b>12 726</b>	<b>18 987</b>	<b>136 535</b>	<b>134 381</b>	<b>- 1,6</b>

1/ Other residential buildings include institutions for the disabled, boarding houses, old people's homes, hostels, hotels, motels, guest houses, holiday chalets, entertainment centres, bed-and-breakfast accommodation and casinos.

2/ Other non-residential space includes churches, sport and recreation clubs, schools, crèches, hospitals and all other non-residential space.

3/ Other buildings include additions and alterations to other residential buildings, non-residential buildings and internal alterations.

**Table 13 - Building plans passed according to type of building and province: Free State**

Type of building	November 2001	October 2002	November 2002	January 2001 to November 2001	January 2002 to November 2002	Percentage change between January 2001 to November 2001 and January 2002 to November 2002
<b>Residential buildings</b>						
Dwelling-houses smaller than 80 square metres						
Number of dwelling-houses	77	3 073	190	2 406	5 300	+ 120,3
Total square metres	3 556	109 002	8 440	106 617	204 614	+ 91,9
Total value at current prices (R'000)	3 197	61 287	5 420	66 754	119 054	+ 78,3
Dwelling-houses equal to or larger than 80 square metres						
Number of dwelling-houses	81	85	68	693	858	+ 23,8
Total square metres	13 793	13 138	9 678	110 391	138 799	+ 25,7
Total value at current prices (R'000)	16 040	17 202	12 729	121 475	168 510	+ 38,7
Flats and townhouses						
Number of flats and townhouses	39	122	81	388	666	+ 71,6
Total square metres	4 596	8 457	5 301	45 461	62 684	+ 37,9
Total value at current prices (R'000)	6 391	12 654	7 806	66 156	90 106	+ 36,2
Other residential buildings <sup>1/</sup>						
Total square metres	1 811	769	20	8 596	5 247	-39,0
Total value at current prices (R'000)	2 443	1 067	19	10 864	10 448	-3,8
<b>Total value of residential buildings at current prices (R'000)</b>	<b>28 071</b>	<b>92 210</b>	<b>25 974</b>	<b>265 249</b>	<b>388 118</b>	<b>+ 46,3</b>
<b>Non-residential buildings</b>						
Office and banking space						
Total square metres	0	420	849	14 295	14 809	+ 3,6
Total value at current prices (R'000)	0	485	1 698	27 483	24 885	-9,5
Shopping space						
Total square metres	0	683	1 144	9 167	19 520	+ 112,9
Total value at current prices (R'000)	0	936	1 832	10 112	34 676	+ 242,9
Industrial and warehouse space						
Total square metres	2 700	1 215	1 178	8 510	17 333	+ 103,7
Total value at current prices (R'000)	2 000	1 144	2 312	6 567	18 385	+ 180,0
Other non-residential space <sup>2/</sup>						
Total square metres	128	1 618	398	10 760	14 129	+ 31,3
Total value at current prices (R'000)	139	2 028	398	14 500	17 851	+ 23,1
<b>Total value of non-residential buildings at current prices (R'000)</b>	<b>2 139</b>	<b>4 593</b>	<b>6 240</b>	<b>58 662</b>	<b>95 797</b>	<b>+ 63,3</b>
<b>Additions and alterations</b>						
Dwelling-houses						
Total square metres	11 283	8 581	10 982	87 489	99 260	+ 13,5
Total value at current prices (R'000)	12 776	10 715	13 697	92 704	114 459	+ 23,5
Other buildings <sup>3/</sup>						
Total square metres	3 534	2 337	1 411	18 708	24 896	+ 33,1
Total value at current prices (R'000)	5 062	2 676	3 982	34 967	52 747	+ 50,8
<b>Total value of additions and alterations at current prices (R'000)</b>	<b>17 838</b>	<b>13 391</b>	<b>17 679</b>	<b>127 671</b>	<b>167 206</b>	<b>+ 31,0</b>
<b>Total value of building plans passed at current prices (R'000)</b>	<b>48 048</b>	<b>110 194</b>	<b>49 893</b>	<b>451 582</b>	<b>651 121</b>	<b>+ 44,2</b>

1/ Other residential buildings include institutions for the disabled, boarding houses, old people's homes, hostels, hotels, motels, guest houses, holiday chalets, entertainment centres, bed-and-breakfast accommodation and casinos.

2/ Other non-residential space includes churches, sport and recreation clubs, schools, crèches, hospitals and all other non-residential space.

3/ Other buildings include additions and alterations to other residential buildings, non-residential buildings and internal alterations.

**Table 14 - Building plans passed according to type of building and province: KwaZulu-Natal**

Type of building	November 2001	October 2002*	November 2002	January 2001 to November 2001	January 2002 to November 2002	Percentage change between January 2001 to November 2001 and January 2002 to November 2002
<b>Residential buildings</b>						
Dwelling-houses smaller than 80 square metres						
Number of dwelling-houses	160	193	147	2 247	2 183	- 2,8
Total square metres	7 250	8 503	6 811	97 651	90 277	- 7,6
Total value at current prices (R'000)	8 688	8 583	7 420	96 764	88 575	- 8,5
Dwelling-houses equal to or larger than 80 square metres						
Number of dwelling-houses	155	238	174	1 572	1 794	+ 14,1
Total square metres	30 812	55 990	38 866	333 533	407 736	+ 22,2
Total value at current prices (R'000)	44 380	94 104	71 648	488 699	655 797	+ 34,2
Flats and townhouses						
Number of flats and townhouses	50	216	107	838	1 018	+ 21,5
Total square metres	9 929	33 706	23 080	116 008	175 213	+ 51,0
Total value at current prices (R'000)	20 524	64 741	40 907	195 215	310 191	+ 58,9
Other residential buildings <sup>1/</sup>						
Total square metres	0	44	226	20 202	32 440	+ 60,6
Total value at current prices (R'000)	0	44	285	82 431	34 764	- 57,8
<b>Total value of residential buildings at current prices (R'000)</b>	<b>73 592</b>	<b>167 472</b>	<b>120 260</b>	<b>863 109</b>	<b>1 089 327</b>	<b>+ 26,2</b>
<b>Non-residential buildings</b>						
Office and banking space						
Total square metres	2 036	15 708	2 572	130 275	51 568	- 60,4
Total value at current prices (R'000)	3 800	33 204	8 732	275 301	119 886	- 56,5
Shopping space						
Total square metres	1 305	4 690	10 728	36 502	109 399	+ 199,7
Total value at current prices (R'000)	1 950	5 813	18 669	53 128	263 757	+ 396,5
Industrial and warehouse space						
Total square metres	1 338	3 309	29 813	130 338	156 648	+ 20,2
Total value at current prices (R'000)	1 371	3 262	43 464	190 158	298 090	+ 56,8
Other non-residential space <sup>2/</sup>						
Total square metres	18 108	3 118	3 862	60 241	84 576	+ 40,4
Total value at current prices (R'000)	30 259	4 725	4 666	87 410	106 057	+ 21,3
<b>Total value of non-residential buildings at current prices (R'000)</b>	<b>37 380</b>	<b>47 004</b>	<b>75 531</b>	<b>605 997</b>	<b>787 790</b>	<b>+ 30,0</b>
<b>Additions and alterations</b>						
Dwelling-houses						
Total square metres	36 047	49 670	47 328	371 558	427 349	+ 15,0
Total value at current prices (R'000)	42 581	68 490	64 071	454 058	561 759	+ 23,7
Other buildings <sup>3/</sup>						
Total square metres	13 878	20 881	10 670	163 905	214 065	+ 30,6
Total value at current prices (R'000)	30 472	40 630	22 468	329 774	583 464	+ 76,9
<b>Total value of additions and alterations at current prices (R'000)</b>	<b>73 053</b>	<b>109 120</b>	<b>86 539</b>	<b>783 832</b>	<b>1 145 223</b>	<b>+ 46,1</b>
<b>Total value of building plans passed at current prices (R'000)</b>	<b>184 025</b>	<b>323 596</b>	<b>282 330</b>	<b>2 252 938</b>	<b>3 022 340</b>	<b>+ 34,2</b>

1/ Other residential buildings include institutions for the disabled, boarding houses, old people's homes, hostels, hotels, motels, guest houses, holiday chalets, entertainment centres, bed-and-breakfast accommodation and casinos.

2/ Other non-residential space includes churches, sport and recreation clubs, schools, crèches, hospitals and all other non-residential space.

3/ Other buildings include additions and alterations to other residential buildings, non-residential buildings and internal alterations.

**Table 15 - Building plans passed according to type of building and province: North West**

Type of building	November 2001	October 2002	November 2002	January 2001 to November 2001	January 2002 to November 2002	Percentage change between January 2001 to November 2001 and January 2002 to November 2002
<b>Residential buildings</b>						
Dwelling-houses smaller than 80 square metres						
Number of dwelling-houses	71	42	34	4 336	812	- 81,3
Total square metres	3 925	2 365	1 954	154 698	38 116	- 75,4
Total value at current prices (R'000)	4 974	3 111	2 339	91 430	42 148	- 53,9
Dwelling-houses equal to or larger than 80 square metres						
Number of dwelling-houses	106	126	153	838	1 224	+ 46,1
Total square metres	19 116	24 816	29 697	148 789	228 552	+ 53,6
Total value at current prices (R'000)	30 130	30 264	41 628	197 167	291 287	+ 47,7
Flats and townhouses						
Number of flats and townhouses	96	133	46	341	790	+ 131,7
Total square metres	11 090	16 601	6 601	37 650	64 325	+ 70,8
Total value at current prices (R'000)	22 181	24 814	13 716	57 021	102 482	+ 79,7
Other residential buildings <sup>1/</sup>						
Total square metres	0	0	0	2 606	768	- 70,5
Total value at current prices (R'000)	0	0	0	2 590	781	- 69,8
<b>Total value of residential buildings at current prices (R'000)</b>	<b>57 285</b>	<b>58 189</b>	<b>57 683</b>	<b>348 208</b>	<b>436 698</b>	<b>+ 25,4</b>
<b>Non-residential buildings</b>						
Office and banking space						
Total square metres	0	0	164	3 762	6 874	+ 82,7
Total value at current prices (R'000)	0	0	328	6 061	10 312	+ 70,1
Shopping space						
Total square metres	8 127	547	5 708	25 521	22 628	- 11,3
Total value at current prices (R'000)	8 242	1 250	8 397	32 275	35 600	+ 10,3
Industrial and warehouse space						
Total square metres	2 512	0	0	11 462	8 955	- 21,9
Total value at current prices (R'000)	5 024	0	0	14 274	12 398	- 13,1
Other non-residential space <sup>2/</sup>						
Total square metres	3 071	227	1 456	10 397	17 884	+ 72,0
Total value at current prices (R'000)	4 162	430	2 503	11 668	42 797	+ 266,8
<b>Total value of non-residential buildings at current prices (R'000)</b>	<b>17 428</b>	<b>1 680</b>	<b>11 228</b>	<b>64 278</b>	<b>101 107</b>	<b>+ 57,3</b>
<b>Additions and alterations</b>						
Dwelling-houses						
Total square metres	8 750	12 002	8 311	71 090	101 721	+ 43,1
Total value at current prices (R'000)	11 867	13 768	9 833	79 342	123 661	+ 55,9
Other buildings <sup>3/</sup>						
Total square metres	3 763	2 394	785	22 859	20 214	- 11,6
Total value at current prices (R'000)	7 461	3 705	877	36 598	33 487	- 8,5
<b>Total value of additions and alterations at current prices (R'000)</b>	<b>19 328</b>	<b>17 473</b>	<b>10 710</b>	<b>115 940</b>	<b>157 148</b>	<b>+ 35,5</b>
<b>Total value of building plans passed at current prices (R'000)</b>	<b>94 041</b>	<b>77 342</b>	<b>79 621</b>	<b>528 426</b>	<b>694 953</b>	<b>+ 31,5</b>

1/ Other residential buildings include institutions for the disabled, boarding houses, old people's homes, hostels, hotels, motels, guest houses, holiday chalets, entertainment centres, bed-and-breakfast accommodation and casinos.

2/ Other non-residential space includes churches, sport and recreation clubs, schools, crèches, hospitals and all other non-residential space.

3/ Other buildings include additions and alterations to other residential buildings, non-residential buildings and internal alterations.

**Table 16 - Building plans passed according to type of building and province: Gauteng**

Type of building	November 2001 *	October 2002	November 2002	January 2001 to November 2001	January 2002 to November 2002	Percentage change between January 2001 to November 2001 and January 2002 to November 2002
<b>Residential buildings</b>						
Dwelling-houses smaller than 80 square metres						
Number of dwelling-houses	667	3 144	3 172	10 813	14 234	+ 31,6
Total square metres	29 185	127 424	128 135	420 162	563 641	+ 34,1
Total value at current prices (R'000)	32 169	82 429	83 034	461 468	438 954	- 4,9
Dwelling-houses equal to or larger than 80 square metres						
Number of dwelling-houses	745	882	691	7 683	7 744	+ 0,8
Total square metres	182 474	230 133	173 744	1 909 649	2 057 100	+ 7,7
Total value at current prices (R'000)	269 080	366 344	266 738	2 752 973	3 136 225	+ 13,9
Flats and townhouses						
Number of flats and townhouses	716	1 135	458	5 179	6 918	+ 33,6
Total square metres	129 425	159 554	69 044	694 548	915 938	+ 31,9
Total value at current prices (R'000)	201 125	216 696	110 871	1 073 085	1 408 905	+ 31,3
Other residential buildings <sup>1/</sup>						
Total square metres	1 924	0	259	11 393	4 227	- 62,9
Total value at current prices (R'000)	2 982	0	447	14 709	6 700	- 54,4
<b>Total value of residential buildings at current prices (R'000)</b>	<b>505 356</b>	<b>665 469</b>	<b>461 090</b>	<b>4 302 235</b>	<b>4 990 784</b>	<b>+ 16,0</b>
<b>Non-residential buildings</b>						
Office and banking space						
Total square metres	29 736	14 640	26 644	320 487	209 222	- 34,7
Total value at current prices (R'000)	48 923	24 854	41 890	541 465	392 133	- 27,6
Shopping space						
Total square metres	35 164	19 683	16 578	151 353	169 912	+ 12,3
Total value at current prices (R'000)	57 193	34 131	24 173	241 352	270 834	+ 12,2
Industrial and warehouse space						
Total square metres	9 600	43 902	24 418	283 026	390 293	+ 37,9
Total value at current prices (R'000)	13 893	70 615	41 029	457 558	608 244	+ 32,9
Other non-residential space <sup>2/</sup>						
Total square metres	23 717	6 961	1 368	145 611	139 819	- 4,0
Total value at current prices (R'000)	26 100	11 136	1 900	210 636	218 549	+ 3,8
<b>Total value of non-residential buildings at current prices (R'000)</b>	<b>146 109</b>	<b>140 736</b>	<b>108 992</b>	<b>1 451 011</b>	<b>1 489 760</b>	<b>+ 2,7</b>
<b>Additions and alterations</b>						
Dwelling-houses						
Total square metres	97 176	119 530	89 114	982 411	1 041 135	+ 6,0
Total value at current prices (R'000)	129 919	181 331	138 022	1 278 827	1 536 375	+ 20,1
Other buildings <sup>3/</sup>						
Total square metres	86 822	57 767	88 449	355 239	488 951	+ 37,6
Total value at current prices (R'000)	101 984	95 186	148 492	563 344	843 127	+ 49,7
<b>Total value of additions and alterations at current prices (R'000)</b>	<b>231 903</b>	<b>276 517</b>	<b>286 514</b>	<b>1 842 171</b>	<b>2 379 502</b>	<b>+ 29,2</b>
<b>Total value of building plans passed at current prices (R'000)</b>	<b>883 368</b>	<b>1 082 722</b>	<b>856 596</b>	<b>7 595 417</b>	<b>8 860 046</b>	<b>+ 16,6</b>

1/ Other residential buildings include institutions for the disabled, boarding houses, old people's homes, hostels, hotels, motels, guest houses, holiday chalets, entertainment centres, bed-and-breakfast accommodation and casinos.

2/ Other non-residential space includes churches, sport and recreation clubs, schools, crèches, hospitals and all other non-residential space.

3/ Other buildings include additions and alterations to other residential buildings, non-residential buildings and internal alterations.



**Table 17 - Building plans passed according to type of building and province: Mpumalanga**

Type of building	November 2001	October 2002	November 2002	January 2001 to November 2001	January 2002 to November 2002	Percentage change between January 2001 to November 2001 and January 2002 to November 2002
<b>Residential buildings</b>						
Dwelling-houses smaller than 80 square metres						
Number of dwelling-houses	321	157	47	5 099	1 807	- 64,6
Total square metres	10 979	6 964	2 474	178 477	76 608	- 57,1
Total value at current prices (R'000)	5 227	3 929	3 263	98 437	46 719	- 52,5
Dwelling-houses equal to or larger than 80 square metres						
Number of dwelling-houses	42	94	103	767	1 205	+ 57,1
Total square metres	8 068	21 271	22 084	147 503	230 645	+ 56,4
Total value at current prices (R'000)	10 681	29 676	30 305	188 333	307 992	+ 63,5
Flats and townhouses						
Number of flats and townhouses	42	20	24	947	293	- 69,1
Total square metres	3 807	2 465	3 075	81 480	37 784	- 53,6
Total value at current prices (R'000)	4 613	2 876	3 327	108 361	48 524	- 55,2
Other residential buildings <sup>1/</sup>						
Total square metres	1 907	566	566	3 502	14 637	+ 318,0
Total value at current prices (R'000)	2 854	850	850	4 959	83 331	+ 1580,4
<b>Total value of residential buildings at current prices (R'000)</b>	<b>23 375</b>	<b>37 331</b>	<b>37 745</b>	<b>400 090</b>	<b>486 566</b>	<b>+ 21,6</b>
<b>Non-residential buildings</b>						
Office and banking space						
Total square metres	0	0	0	3 671	3 325	- 9,4
Total value at current prices (R'000)	0	0	0	5 750	4 494	- 21,8
Shopping space						
Total square metres	2 437	11 416	7 851	7 233	56 558	+681,9
Total value at current prices (R'000)	2 690	10 449	11 467	9 484	67 717	+614,0
Industrial and warehouse space						
Total square metres	924	1 831	8 609	30 747	39 462	+ 28,3
Total value at current prices (R'000)	1 562	1 810	7 025	28 256	44 330	+ 56,9
Other non-residential space <sup>2/</sup>						
Total square metres	2 150	2 152	1 374	17 384	21 791	+ 25,4
Total value at current prices (R'000)	538	2 347	2 100	17 646	28 352	+ 60,7
<b>Total value of non-residential buildings at current prices (R'000)</b>	<b>4 790</b>	<b>14 606</b>	<b>20 592</b>	<b>61 136</b>	<b>144 893</b>	<b>+ 137,0</b>
<b>Additions and alterations</b>						
Dwelling-houses						
Total square metres	11 901	15 286	21 135	120 049	154 653	+ 28,8
Total value at current prices (R'000)	11 205	17 386	21 518	122 109	177 099	+ 45,0
Other buildings <sup>3/</sup>						
Total square metres	1 803	8 762	4 554	19 492	25 227	+ 29,4
Total value at current prices (R'000)	3 626	13 016	7 071	31 507	43 346	+ 37,6
<b>Total value of additions and alterations at current prices (R'000)</b>	<b>14 831</b>	<b>30 402</b>	<b>28 589</b>	<b>153 616</b>	<b>220 445</b>	<b>+ 43,5</b>
<b>Total value of building plans passed at current prices (R'000)</b>	<b>42 996</b>	<b>82 339</b>	<b>86 926</b>	<b>614 842</b>	<b>851 904</b>	<b>+ 38,6</b>

1/ Other residential buildings include institutions for the disabled, boarding houses, old people's homes, hostels, hotels, motels, guest houses, holiday chalets, entertainment centres, bed-and-breakfast accommodation and casinos.

2/ Other non-residential space includes churches, sport and recreation clubs, schools, crèches, hospitals and all other non-residential space.

3/ Other buildings include additions and alterations to other residential buildings, non-residential buildings and internal alterations.

**Table 18 - Building plans passed according to type of building and province: Limpopo**

Type of building	November 2001	October 2002	November 2002	January 2001 to November 2001	January 2002 to November 2002	Percentage change between January 2001 to November 2001 and January 2002 to November 2002
<b>Residential buildings</b>						
Dwelling-houses smaller than 80 square metres						
Number of dwelling-houses	30	22	31	408	287	-29,7
Total square metres	1 768	1 391	1 781	24 041	17 524	-27,1
Total value at current prices (R'000)	2 505	1 877	2 518	31 845	25 016	-21,4
Dwelling-houses equal to or larger than 80 square metres						
Number of dwelling-houses	37	44	42	470	519	+ 10,4
Total square metres	9 392	9 052	7 105	88 762	100 618	+ 13,4
Total value at current prices (R'000)	11 929	11 207	9 880	115 326	139 069	+ 20,6
Flats and townhouses						
Number of flats and townhouses	1	5	3	55	101	+ 83,6
Total square metres	149	888	428	7 251	12 739	+ 75,7
Total value at current prices (R'000)	203	1 243	599	9 216	20 077	+ 117,8
Other residential buildings <sup>1/</sup>						
Total square metres	0	1 664	352	14 151	3 340	-76,4
Total value at current prices (R'000)	0	2 496	493	207 602	5 204	-97,5
<b>Total value of residential buildings at current prices (R'000)</b>	<b>14 637</b>	<b>16 823</b>	<b>13 490</b>	<b>363 989</b>	<b>189 366</b>	<b>-48,0</b>
<b>Non-residential buildings</b>						
Office and banking space						
Total square metres	0	0	0	999	3 394	+ 239,7
Total value at current prices (R'000)	0	0	0	1 420	6 352	+ 347,3
Shopping space						
Total square metres	0	0	441	13 515	7 898	-41,6
Total value at current prices (R'000)	0	0	705	20 127	12 579	-37,5
Industrial and warehouse space						
Total square metres	1 204	607	256	3 209	98 941	+ 2 983,2
Total value at current prices (R'000)	978	607	563	3 407	215 371	+ 6 221,4
Other non-residential space <sup>2/</sup>						
Total square metres	340	0	0	3 511	3 239	-7,7
Total value at current prices (R'000)	748	0	0	5 621	6 158	+ 9,6
<b>Total value of non-residential buildings at current prices (R'000)</b>	<b>1 726</b>	<b>607</b>	<b>1 268</b>	<b>30 575</b>	<b>240 460</b>	<b>+ 686,5</b>
<b>Additions and alterations</b>						
Dwelling-houses						
Total square metres	5 241	5 237	5 312	44 439	49 877	+ 12,2
Total value at current prices (R'000)	7 107	6 817	7 284	58 022	67 926	+ 17,1
Other buildings <sup>3/</sup>						
Total square metres	4 293	2 707	1 171	15 178	20 120	+ 32,6
Total value at current prices (R'000)	8 629	4 885	2 880	37 364	36 624	-2,0
<b>Total value of additions and alterations at current prices (R'000)</b>	<b>15 736</b>	<b>11 702</b>	<b>10 164</b>	<b>95 386</b>	<b>104 550</b>	<b>+ 9,6</b>
<b>Total value of building plans passed at current prices (R'000)</b>	<b>32 099</b>	<b>29 132</b>	<b>24 922</b>	<b>489 950</b>	<b>534 376</b>	<b>+ 9,1</b>

1/ Other residential buildings include institutions for the disabled, boarding houses, old people's homes, hostels, hotels, motels, guest houses, holiday chalets, entertainment centres, bed-and-breakfast accommodation and casinos.

2/ Other non-residential space includes churches, sport and recreation clubs, schools, crèches, hospitals and all other non-residential space.

3/ Other buildings include additions and alterations to other residential buildings, non-residential buildings and internal alterations.

**Table 19 - Buildings completed according to type of building: Total RSA**

Type of building	November 2001 *	October 2002	November 2002	January 2001 to November 2001	January 2002 to November 2002	Percentage change between January 2001 to November 2001 and January 2002 to November 2002
<b>Residential buildings</b>						
Dwelling-houses smaller than 80 square metres						
Number of dwelling-houses	1 908	5 768	4 409	25 362	33 492	+ 32,1
Total square metres	78 884	236 641	175 145	1 009 174	1 314 588	+ 30,3
Total value at current prices (R'000)	79 076	190 141	129 271	910 690	1 125 591	+ 23,6
Dwelling-houses equal to or larger than 80 square metres						
Number of dwelling-houses	1 155	1 568	1 460	10 790	13 216	+ 22,5
Total square metres	241 362	347 382	315 141	2 206 081	2 807 939	+ 27,3
Total value at current prices (R'000)	341 636	520 145	487 415	3 054 808	4 234 930	+ 38,6
Flats and townhouses						
Number of flats and townhouses	1 110	1 171	1 104	6 637	9 927	+ 49,6
Total square metres	129 323	127 077	127 616	749 661	1 159 441	+ 54,7
Total value at current prices (R'000)	190 515	189 821	196 371	1 085 350	1 786 255	+ 64,6
Other residential buildings <sup>1/</sup>						
Total square metres	4 631	3 697	12 063	116 338	101 468	- 12,8
Total value at current prices (R'000)	5 216	5 273	21 543	437 960	453 354	+ 3,5
<b>Total value of residential buildings at current prices (R'000)</b>	<b>616 443</b>	<b>905 380</b>	<b>834 600</b>	<b>5 488 808</b>	<b>7 600 130</b>	<b>+ 38,5</b>
<b>Non-residential buildings</b>						
Office and banking space						
Total square metres	35 972	31 432	109 638	565 435	533 187	- 5,7
Total value at current prices (R'000)	108 706	55 828	176 927	925 394	885 192	- 4,3
Shopping space						
Total square metres	17 908	23 818	16 776	634 190	254 061	- 59,9
Total value at current prices (R'000)	22 663	33 307	31 478	1 703 893	455 692	- 73,3
Industrial and warehouse space						
Total square metres	35 607	43 138	36 517	648 015	479 505	- 26,0
Total value at current prices (R'000)	36 391	69 544	48 947	780 053	616 968	- 20,9
Other non-residential space <sup>2/</sup>						
Total square metres	32 495	14 808	15 817	194 451	185 552	- 4,6
Total value at current prices (R'000)	43 349	22 448	25 554	237 249	269 760	+ 13,7
<b>Total value of non-residential buildings at current prices (R'000)</b>	<b>211 109</b>	<b>181 127</b>	<b>282 906</b>	<b>3 646 589</b>	<b>2 227 612</b>	<b>- 38,9</b>
<b>Additions and alterations</b>						
Dwelling-houses						
Total square metres	135 947	153 787	120 709	1 358 705	1 424 862	+ 4,9
Total value at current prices (R'000)	168 414	205 703	157 907	1 618 448	1 841 243	+ 13,8
Other buildings <sup>3/</sup>						
Total square metres	61 793	44 236	32 184	517 117	487 175	- 5,8
Total value at current prices (R'000)	120 364	85 406	72 674	1 033 253	862 914	- 16,5
<b>Total value of additions and alterations at current prices (R'000)</b>	<b>288 778</b>	<b>291 109</b>	<b>230 581</b>	<b>2 651 701</b>	<b>2 704 157</b>	<b>+ 2,0</b>
<b>Total value of buildings completed at current prices (R'000)</b>	<b>1 116 330</b>	<b>1 377 616</b>	<b>1 348 087</b>	<b>11 787 098</b>	<b>12 531 899</b>	<b>+ 6,3</b>

1/ Other residential buildings include institutions for the disabled, boarding houses, old people's homes, hostels, hotels, motels, guest houses, holiday chalets, entertainment centres, bed-and-breakfast accommodation and casinos.

2/ Other non-residential space includes churches, sport and recreation clubs, schools, crèches, hospitals and all other non-residential space.

3/ Other buildings include additions and alterations to other residential buildings, non-residential buildings and internal alterations.

**Table 20 - Buildings completed according to type of building and province: Western Cape**

Type of building	November 2001	October 2002	November 2002	January 2001 to November 2001	January 2002 to November 2002	Percentage change between January 2001 to November 2001 and January 2002 to November 2002
<b>Residential buildings</b>						
Dwelling-houses smaller than 80 square metres						
Number of dwelling-houses	477	996	615	4 928	6 780	+ 37,6
Total square metres	17 862	33 413	23 185	201 802	246 208	+ 22,0
Total value at current prices (R'000)	15 628	32 957	24 529	222 155	278 730	+ 25,5
Dwelling-houses equal to or larger than 80 square metres						
Number of dwelling-houses	394	563	587	3 789	5 193	+ 37,1
Total square metres	78 110	112 933	109 685	737 679	1 028 081	+ 39,4
Total value at current prices (R'000)	117 276	180 219	175 802	1 069 320	1 609 070	+ 50,5
Flats and townhouses						
Number of flats and townhouses	141	193	450	1 733	2 227	+ 28,5
Total square metres	15 591	16 948	38 661	206 132	240 030	+ 16,4
Total value at current prices (R'000)	21 098	25 564	68 317	284 894	381 336	+ 33,9
Other residential buildings <sup>1/</sup>						
Total square metres	1 469	2 451	4 439	39 183	13 113	- 66,5
Total value at current prices (R'000)	2 135	4 010	8 022	52 730	22 037	- 58,2
<b>Total value of residential buildings at current prices (R'000)</b>	<b>156 137</b>	<b>242 750</b>	<b>276 670</b>	<b>1 629 099</b>	<b>2 291 173</b>	<b>+ 40,6</b>
<b>Non-residential buildings</b>						
Office and banking space						
Total square metres	2 746	4 757	9 187	121 410	96 462	- 20,5
Total value at current prices (R'000)	3 884	10 031	19 356	195 797	152 761	- 22,0
Shopping space						
Total square metres	3 555	8 139	4 111	46 871	81 748	+ 74,4
Total value at current prices (R'000)	6 345	12 080	8 656	60 488	117 079	+ 93,6
Industrial and warehouse space						
Total square metres	4 483	8 224	8 378	141 355	140 855	- 0,4
Total value at current prices (R'000)	6 503	9 559	8 896	155 711	153 228	- 1,6
Other non-residential space <sup>2/</sup>						
Total square metres	10 257	4 885	2 429	70 601	71 323	+ 1,0
Total value at current prices (R'000)	8 922	6 594	4 411	64 482	97 976	+ 51,9
<b>Total value of non-residential buildings at current prices (R'000)</b>	<b>25 654</b>	<b>38 264</b>	<b>41 319</b>	<b>476 478</b>	<b>521 044</b>	<b>+ 9,4</b>
<b>Additions and alterations</b>						
Dwelling-houses						
Total square metres	37 596	41 569	44 933	500 010	501 616	+ 0,3
Total value at current prices (R'000)	52 078	54 559	61 456	629 737	665 964	+ 5,8
Other buildings <sup>3/</sup>						
Total square metres	9 339	10 396	17 420	146 545	194 592	+ 32,8
Total value at current prices (R'000)	20 704	17 572	34 384	345 798	340 279	- 1,6
<b>Total value of additions and alterations at current prices (R'000)</b>	<b>72 782</b>	<b>72 131</b>	<b>95 840</b>	<b>975 535</b>	<b>1 006 243</b>	<b>+ 3,1</b>
<b>Total value of buildings completed at current prices (R'000)</b>	<b>254 573</b>	<b>353 145</b>	<b>413 829</b>	<b>3 081 112</b>	<b>3 818 460</b>	<b>+ 23,9</b>

1/ Other residential buildings include institutions for the disabled, boarding houses, old people's homes, hostels, hotels, motels, guest houses, holiday chalets, entertainment centres, bed-and-breakfast accommodation and casinos.

2/ Other non-residential space includes churches, sport and recreation clubs, schools, crèches, hospitals and all other non-residential space.

3/ Other buildings include additions and alterations to other residential buildings, non-residential buildings and internal alterations.

**Table 21 - Buildings completed according to type of building and province: Eastern Cape**

Type of building	November 2001	October 2002	November 2002	January 2001 to November 2001	January 2002 to November 2002	Percentage change between January 2001 to November 2001 and January 2002 to November 2002
<b>Residential buildings</b>						
Dwelling-houses smaller than 80 square metres						
Number of dwelling-houses	96	732	205	2 733	3 143	+ 15,0
Total square metres	4 734	38 881	8 912	118 120	142 849	+ 20,9
Total value at current prices (R'000)	6 775	45 053	11 602	116 881	177 607	+ 52,0
Dwelling-houses equal to or larger than 80 square metres						
Number of dwelling-houses	65	26	39	888	620	- 30,2
Total square metres	11 489	4 052	9 727	130 737	106 217	- 18,8
Total value at current prices (R'000)	14 675	5 159	13 933	161 546	147 739	- 8,5
Flats and townhouses						
Number of flats and townhouses	30	6	13	234	364	+ 55,6
Total square metres	3 474	1 802	2 306	26 987	24 352	- 9,8
Total value at current prices (R'000)	3 509	2 952	3 331	30 026	35 511	+ 18,3
Other residential buildings <sup>1/</sup>						
Total square metres	0	0	0	12 813	15 865	+ 23,8
Total value at current prices (R'000)	0	0	0	60 955	26 589	- 56,4
<b>Total value of residential buildings at current prices (R'000)</b>	<b>24 959</b>	<b>53 164</b>	<b>28 866</b>	<b>369 408</b>	<b>387 446</b>	<b>+ 4,9</b>
<b>Non-residential buildings</b>						
Office and banking space						
Total square metres	27	316	3 934	28 228	5 694	-79,8
Total value at current prices (R'000)	34	348	7 868	32 930	11 102	-66,3
Shopping space						
Total square metres	0	1 203	496	33 450	5 143	- 84,6
Total value at current prices (R'000)	0	2 041	836	42 931	7 780	- 81,9
Industrial and warehouse space						
Total square metres	10 061	4 092	5 006	119 195	36 192	- 69,6
Total value at current prices (R'000)	1 192	6 492	2 805	113 882	43 216	- 62,1
Other non-residential space <sup>2/</sup>						
Total square metres	959	724	1 238	22 855	4 832	-78,9
Total value at current prices (R'000)	1 272	960	1 277	29 936	5 697	-81,0
<b>Total value of non-residential buildings at current prices (R'000)</b>	<b>2 498</b>	<b>9 841</b>	<b>12 786</b>	<b>219 679</b>	<b>67 795</b>	<b>- 69,1</b>
<b>Additions and alterations</b>						
Dwelling-houses						
Total square metres	12 088	11 575	5 220	102 040	94 233	- 7,7
Total value at current prices (R'000)	14 881	15 254	5 833	121 182	118 078	- 2,6
Other buildings <sup>3/</sup>						
Total square metres	18 641	10 909	1 454	63 569	52 350	- 17,6
Total value at current prices (R'000)	29 342	16 327	2 812	91 631	71 809	- 21,6
<b>Total value of additions and alterations at current prices (R'000)</b>	<b>44 223</b>	<b>31 581</b>	<b>8 645</b>	<b>212 813</b>	<b>189 887</b>	<b>- 10,8</b>
<b>Total value of buildings completed at current prices (R'000)</b>	<b>71 680</b>	<b>94 586</b>	<b>50 297</b>	<b>801 900</b>	<b>645 128</b>	<b>- 19,6</b>

1/ Other residential buildings include institutions for the disabled, boarding houses, old people's homes, hostels, hotels, motels, guest houses, holiday chalets, entertainment centres, bed-and-breakfast accommodation and casinos.

2/ Other non-residential space includes churches, sport and recreation clubs, schools, crèches, hospitals and all other non-residential space.

3/ Other buildings include additions and alterations to other residential buildings, non-residential buildings and internal alterations.

Table 22 - Buildings completed according to type of building and province: Northern Cape

Type of building	November 2001*	October 2002	November 2002	January 2001 to November 2001	January 2002 to November 2002	Percentage change between January 2001 to November 2001 and January 2002 to November 2002
<b>Residential buildings</b>						
Dwelling-houses smaller than 80 square metres						
Number of dwelling-houses	1	25	0	125	95	- 24,0
Total square metres	75	871	0	6 112	4 115	- 32,7
Total value at current prices (R'000)	150	526	0	9 020	4 593	- 49,1
Dwelling-houses equal to or larger than 80 square metres						
Number of dwelling-houses	5	1	3	159	49	- 69,2
Total square metres	883	333	619	24 184	8 101	- 66,5
Total value at current prices (R'000)	1 334	599	1 114	33 963	11 858	- 65,1
Flats and townhouses						
Number of flats and townhouses	0	2	4	79	38	- 51,9
Total square metres	0	310	543	5 943	6 042	+ 1,7
Total value at current prices (R'000)	0	558	907	8 670	10 222	+ 17,9
Other residential buildings <sup>1/</sup>						
Total square metres	0	0	0	346	0	..
Total value at current prices (R'000)	0	0	0	277	0	..
<b>Total value of residential buildings at current prices (R'000)</b>	<b>1 484</b>	<b>1 683</b>	<b>2 021</b>	<b>51 930</b>	<b>26 673</b>	<b>- 48,6</b>
<b>Non-residential buildings</b>						
Office and banking space						
Total square metres	0	0	0	7 105	0	..
Total value at current prices (R'000)	0	0	0	15 631	0	..
Shopping space						
Total square metres	0	0	0	8 366	784	-90,6
Total value at current prices (R'000)	0	0	0	12 556	1 098	- 91,3
Industrial and warehouse space						
Total square metres	0	0	0	854	1 572	+ 84,1
Total value at current prices (R'000)	0	0	0	691	2 327	+ 236,8
Other non-residential space <sup>2/</sup>						
Total square metres	0	0	0	1 822	1 001	- 45,1
Total value at current prices (R'000)	1 473	0	0	3 198	1 309	- 59,1
<b>Total value of non-residential buildings at current prices (R'000)</b>	<b>0</b>	<b>0</b>	<b>0</b>	<b>32 076</b>	<b>4 734</b>	<b>- 85,2</b>
<b>Additions and alterations</b>						
Dwelling-houses						
Total square metres	1 583	2 922	2 005	19 223	25 606	+ 33,2
Total value at current prices (R'000)	2 394	5 193	2 904	31 633	37 478	+ 18,5
Other buildings <sup>3/</sup>						
Total square metres	557	1 121	391	5 945	4 661	- 21,6
Total value at current prices (R'000)	1 189	2 333	1 411	14 110	12 584	- 10,8
<b>Total value of additions and alterations at current prices (R'000)</b>	<b>3 583</b>	<b>7 526</b>	<b>4 315</b>	<b>45 743</b>	<b>50 062</b>	<b>+ 9,4</b>
<b>Total value of buildings completed at current prices (R'000)</b>	<b>5 067</b>	<b>9 209</b>	<b>6 336</b>	<b>129 749</b>	<b>81 469</b>	<b>-37,2</b>

1/ Other residential buildings include institutions for the disabled, boarding houses, old people's homes, hostels, hotels, motels, guest houses, holiday chalets, entertainment centres, bed-and-breakfast accommodation and casinos.

2/ Other non-residential space includes churches, sport and recreation clubs, schools, crèches, hospitals and all other non-residential space.

3/ Other buildings include additions and alterations to other residential buildings, non-residential buildings and internal alterations.

**Table 23 - Buildings completed according to type of building and province: Free State**

Type of building	November 2001*	October 2002	November 2002	January 2001 to November 2001	January 2002 to November 2002	Percentage change between January 2001 to November 2001 and January 2002 to November 2002
<b>Residential buildings</b>						
Dwelling-houses smaller than 80 square metres						
Number of dwelling-houses	300	228	220	2 127	2 874	+ 35,1
Total square metres	13 290	10 341	9 167	88 948	124 789	+ 40,3
Total value at current prices (R'000)	7 163	6 455	5 288	48 852	69 096	+ 41,4
Dwelling-houses equal to or larger than 80 square metres						
Number of dwelling-houses	18	59	37	304	358	+ 17,8
Total square metres	2 761	8 285	6 569	53 439	59 582	+ 11,5
Total value at current prices (R'000)	3 386	9 494	8 090	63 260	71 973	+ 13,8
Flats and townhouses						
Number of flats and townhouses	24	23	27	181	349	+ 92,8
Total square metres	2 723	1 696	3 540	17 504	40 092	+ 129,0
Total value at current prices (R'000)	4 730	2 280	6 228	24 656	58 499	+ 137,3
Other residential buildings <sup>1/</sup>						
Total square metres	389	0	0	853	3 466	+ 306,3
Total value at current prices (R'000)	467	0	0	1 048	3 474	+ 231,5
<b>Total value of residential buildings at current prices (R'000)</b>	<b>15 746</b>	<b>18 229</b>	<b>19 606</b>	<b>137 816</b>	<b>203 042</b>	<b>+ 47,3</b>
<b>Non-residential buildings</b>						
Office and banking space						
Total square metres	1 255	0	5 031	18 450	10 135	-45,1
Total value at current prices (R'000)	1 500	0	10 000	33 703	18 728	-44,4
Shopping space						
Total square metres	6 564	182	7 429	12 266	11 367	-7,3
Total value at current prices (R'000)	5 592	235	16 000	12 650	21 153	+ 67,2
Industrial and warehouse space						
Total square metres	327	0	2 479	14 990	7 712	-48,6
Total value at current prices (R'000)	327	0	2 061	13 730	5 965	-56,6
Other non-residential space <sup>2/</sup>						
Total square metres	1 661	1 273	0	14 083	14 809	+ 5,2
Total value at current prices (R'000)	3 018	2 033	0	23 639	32 639	+ 38,1
<b>Total value of non-residential buildings at current prices (R'000)</b>	<b>10 437</b>	<b>2 268</b>	<b>28 061</b>	<b>83 722</b>	<b>78 485</b>	<b>-6,3</b>
<b>Additions and alterations</b>						
Dwelling-houses						
Total square metres	10 407	5 510	6 378	57 049	71 667	+ 25,6
Total value at current prices (R'000)	10 958	5 816	5 565	59 602	76 158	+ 27,8
Other buildings <sup>3/</sup>						
Total square metres	1 324	3 029	1 525	29 861	18 435	-38,3
Total value at current prices (R'000)	2 633	8 842	1 764	113 335	38 711	-65,8
<b>Total value of additions and alterations at current prices (R'000)</b>	<b>13 591</b>	<b>14 658</b>	<b>7 329</b>	<b>172 937</b>	<b>114 869</b>	<b>-33,6</b>
<b>Total value of buildings completed at current prices (R'000)</b>	<b>39 774</b>	<b>35 155</b>	<b>54 996</b>	<b>394 475</b>	<b>396 396</b>	<b>+ 0,5</b>

1/ Other residential buildings include institutions for the disabled, boarding houses, old people's homes, hostels, hotels, motels, guest houses, holiday chalets, entertainment centres, bed-and-breakfast accommodation and casinos.

2/ Other non-residential space includes churches, sport and recreation clubs, schools, crèches, hospitals and all other non-residential space.

3/ Other buildings include additions and alterations to other residential buildings, non-residential buildings and internal alterations.

**Table 24 - Buildings completed according to type of building and province: KwaZulu-Natal**

Type of building	November 2001	October 2002	November 2002	January 2001 to November 2001	January 2002 to November 2002	Percentage change between January 2001 to November 2001 and January 2002 to November 2002
<b>Residential buildings</b>						
Dwelling-houses smaller than 80 square metres						
Number of dwelling-houses	158	188	227	2 222	2 186	-1,6
Total square metres	5 845	7 949	7 437	96 309	88 361	-8,3
Total value at current prices (R'000)	6 947	7 761	8 154	97 894	88 719	-9,4
Dwelling-houses equal to or larger than 80 square metres						
Number of dwelling-houses	159	128	124	1 524	1 282	-15,9
Total square metres	31 997	27 878	29 238	327 956	263 721	-19,6
Total value at current prices (R'000)	43 906	40 246	45 637	443 644	380 828	-14,2
Flats and townhouses						
Number of flats and townhouses	48	37	80	730	681	-6,7
Total square metres	6 587	8 147	11 705	93 673	96 934	+ 3,5
Total value at current prices (R'000)	9 560	15 151	19 876	132 534	171 822	+ 29,6
Other residential buildings <sup>1/</sup>						
Total square metres	871	1 246	7 517	10 023	33 853	+ 237,8
Total value at current prices (R'000)	1 300	1 263	13 351	42 290	101 609	+ 140,3
<b>Total value of residential buildings at current prices (R'000)</b>	<b>61 713</b>	<b>64 421</b>	<b>87 018</b>	<b>716 362</b>	<b>742 978</b>	<b>+ 3,7</b>
<b>Non-residential buildings</b>						
Office and banking space						
Total square metres	718	1 022	7 587	73 829	89 572	+ 21,3
Total value at current prices (R'000)	1 400	1 107	12 574	128 491	197 081	+ 53,4
Shopping space						
Total square metres	2 960	5 851	1 960	363 985	77 797	-78,6
Total value at current prices (R'000)	2 960	5 167	2 224	1 273 297	179 612	-85,9
Industrial and warehouse space						
Total square metres	2 705	8 900	978	152 786	148 089	-3,1
Total value at current prices (R'000)	3 025	17 227	1 586	166 065	190 169	+ 14,5
Other non-residential space <sup>2/</sup>						
Total square metres	1 146	2 692	5 569	27 372	31 365	+ 14,6
Total value at current prices (R'000)	1 242	4 017	9 575	32 612	47 800	+ 46,6
<b>Total value of non-residential buildings at current prices (R'000)</b>	<b>8 627</b>	<b>27 518</b>	<b>25 959</b>	<b>1 600 465</b>	<b>614 662</b>	<b>-61,6</b>
<b>Additions and alterations</b>						
Dwelling-houses						
Total square metres	26 809	38 020	20 636	313 304	282 320	-9,9
Total value at current prices (R'000)	29 744	46 706	27 057	350 019	343 723	-1,8
Other buildings <sup>3/</sup>						
Total square metres	6 838	6 014	7 724	103 842	89 179	-14,1
Total value at current prices (R'000)	10 682	15 038	22 837	187 651	185 113	-1,4
<b>Total value of additions and alterations at current prices (R'000)</b>	<b>40 426</b>	<b>61 744</b>	<b>49 894</b>	<b>537 670</b>	<b>528 836</b>	<b>-1,6</b>
<b>Total value of buildings completed at current prices (R'000)</b>	<b>110 766</b>	<b>153 683</b>	<b>162 871</b>	<b>2 854 497</b>	<b>1 886 476</b>	<b>-33,9</b>

1/ Other residential buildings include institutions for the disabled, boarding houses, old people's homes, hostels, hotels, motels, guest houses, holiday chalets, entertainment centres, bed-and-breakfast accommodation and casinos.

2/ Other non-residential space includes churches, sport and recreation clubs, schools, crèches, hospitals and all other non-residential space.

3/ Other buildings include additions and alterations to other residential buildings, non-residential buildings and internal alterations.



**Table 25 - Buildings completed according to type of building and province: North West**

Type of building	November 2001	October 2002	November 2002	January 2001 to November 2001	January 2002 to November 2002	Percentage change between January 2001 to November 2001 and January 2002 to November 2002
<b>Residential buildings</b>						
Dwelling-houses smaller than 80 square metres						
Number of dwelling-houses	211	40	87	2 403	1 810	- 24,7
Total square metres	7 736	1 628	3 453	91 141	62 332	- 31,6
Total value at current prices (R'000)	5 191	1 492	3 009	59 777	34 359	- 42,5
Dwelling-houses equal to or larger than 80 square metres						
Number of dwelling-houses	70	82	84	514	739	+ 43,8
Total square metres	13 933	14 859	17 468	98 453	135 428	+ 37,6
Total value at current prices (R'000)	18 463	17 931	20 706	126 859	188 929	+ 48,9
Flats and townhouses						
Number of flats and townhouses	10	134	47	169	583	+ 245,0
Total square metres	1 085	13 419	4 017	14 192	50 772	+ 257,8
Total value at current prices (R'000)	1 051	17 881	8 234	16 600	83 717	+ 404,3
Other residential buildings <sup>1/</sup>						
Total square metres	1 902	0	0	5 586	2 090	- 62,6
Total value at current prices (R'000)	1 314	0	0	5 476	2 483	- 54,7
<b>Total value of residential buildings at current prices (R'000)</b>	<b>26 019</b>	<b>37 304</b>	<b>31 949</b>	<b>208 712</b>	<b>309 488</b>	<b>+ 48,3</b>
<b>Non-residential buildings</b>						
Office and banking space						
Total square metres	156	118	118	2 008	4 999	+ 149,0
Total value at current prices (R'000)	180	142	142	3 112	10 424	+ 235,0
Shopping space						
Total square metres	1 301	733	2 267	8 503	8 184	- 3,8
Total value at current prices (R'000)	1 730	733	3 210	12 627	9 796	- 22,4
Industrial and warehouse space						
Total square metres	1 957	542	0	10 155	5 795	- 42,9
Total value at current prices (R'000)	1 905	600	0	9 869	6 089	- 38,3
Other non-residential space <sup>2/</sup>						
Total square metres	13 098	684	0	20 234	4 979	- 75,4
Total value at current prices (R'000)	19 759	1 000	0	28 291	7 567	- 73,3
<b>Total value of non-residential buildings at current prices (R'000)</b>	<b>23 574</b>	<b>2 475</b>	<b>3 352</b>	<b>53 899</b>	<b>33 876</b>	<b>- 37,1</b>
<b>Additions and alterations</b>						
Dwelling-houses						
Total square metres	9 494	3 635	4 659	49 489	39 772	- 19,6
Total value at current prices (R'000)	9 282	4 358	5 185	46 714	41 553	- 11,0
Other buildings <sup>3/</sup>						
Total square metres	2 370	959	154	19 806	10 212	- 48,4
Total value at current prices (R'000)	4 386	2 579	704	31 283	18 478	- 40,9
<b>Total value of additions and alterations at current prices (R'000)</b>	<b>13 668</b>	<b>6 937</b>	<b>5 889</b>	<b>77 997</b>	<b>60 031</b>	<b>- 23,0</b>
<b>Total value of buildings completed at current prices (R'000)</b>	<b>63 261</b>	<b>46 716</b>	<b>41 190</b>	<b>340 608</b>	<b>403 395</b>	<b>+ 18,4</b>

1/ Other residential buildings include institutions for the disabled, boarding houses, old people's homes, hostels, hotels, motels, guest houses, holiday chalets, entertainment centres, bed-and-breakfast accommodation and casinos.

2/ Other non-residential space includes churches, sport and recreation clubs, schools, crèches, hospitals and all other non-residential space.

3/ Other buildings include additions and alterations to other residential buildings, non-residential buildings and internal alterations.

Table 26 - Buildings completed according to type of building and province: Gauteng

Type of building	November 2001*	October 2002	November 2002	January 2001 to November 2001	January 2002 to November 2002	Percentage change between January 2001 to November 2001 and January 2002 to November 2002
<b>Residential buildings</b>						
Dwelling-houses smaller than 80 square metres						
Number of dwelling-houses	513	3 334	2 978	7 553	14 398	+ 90,6
Total square metres	24 272	134 015	118 918	287 975	555 148	+ 92,8
Total value at current prices (R'000)	33 237	89 994	71 726	276 659	413 316	+ 49,4
Dwelling-houses equal to or larger than 80 square metres						
Number of dwelling-houses	397	667	501	3 121	4 432	+ 42,0
Total square metres	92 930	170 738	127 030	746 892	1 109 773	+ 48,6
Total value at current prices (R'000)	132 397	256 044	202 531	1 061 119	1 699 605	+ 60,2
Flats and townhouses						
Number of flats and townhouses	829	750	475	3 336	5 458	+ 63,6
Total square metres	96 100	81 372	65 920	362 905	676 760	+ 86,5
Total value at current prices (R'000)	147 387	121 495	88 579	566 301	1 015 407	+ 79,3
Other residential buildings <sup>1/</sup>						
Total square metres	0	0	0	44 534	12 050	-72,9
Total value at current prices (R'000)	0	0	0	271 584	17 406	-93,6
<b>Total value of residential buildings at current prices (R'000)</b>	<b>313 021</b>	<b>467 533</b>	<b>362 836</b>	<b>2 175 663</b>	<b>3 145 734</b>	<b>+ 44,6</b>
<b>Non-residential buildings</b>						
Office and banking space						
Total square metres	31 011	25 219	83 781	304 470	322 940	+ 6,1
Total value at current prices (R'000)	101 531	44 200	126 987	494 957	489 701	-1,1
Shopping space						
Total square metres	3 528	5 877	513	127 782	52 502	-58,9
Total value at current prices (R'000)	6 036	10 251	552	260 197	92 552	-64,4
Industrial and warehouse space						
Total square metres	14 985	19 197	17 916	204 015	130 325	-36,1
Total value at current prices (R'000)	21 805	32 766	30 769	315 013	204 571	-35,1
Other non-residential space <sup>2/</sup>						
Total square metres	5 374	4 019	6 581	34 215	41 842	+ 22,3
Total value at current prices (R'000)	9 136	7 457	10 291	51 204	62 957	+ 23,0
<b>Total value of non-residential buildings at current prices (R'000)</b>	<b>138 508</b>	<b>94 674</b>	<b>168 599</b>	<b>1 121 371</b>	<b>849 781</b>	<b>-24,2</b>
<b>Additions and alterations</b>						
Dwelling-houses						
Total square metres	30 975	43 868	32 782	267 540	363 631	+ 35,9
Total value at current prices (R'000)	42 993	66 642	45 699	333 605	509 844	+ 52,8
Other buildings <sup>3/</sup>						
Total square metres	22 515	10 659	2 872	128 246	107 651	-16,1
Total value at current prices (R'000)	50 908	20 654	6 851	221 985	179 106	-19,3
<b>Total value of additions and alterations at current prices (R'000)</b>	<b>93 901</b>	<b>87 296</b>	<b>52 550</b>	<b>555 590</b>	<b>688 950</b>	<b>+ 24,0</b>
<b>Total value of buildings completed at current prices (R'000)</b>	<b>545 430</b>	<b>649 503</b>	<b>583 985</b>	<b>3 852 624</b>	<b>4 684 465</b>	<b>+ 21,6</b>

1/ Other residential buildings include institutions for the disabled, boarding houses, old people's homes, hostels, hotels, motels, guest houses, holiday chalets, entertainment centres, bed-and-breakfast accommodation and casinos.

2/ Other non-residential space includes churches, sport and recreation clubs, schools, crèches, hospitals and all other non-residential space.

3/ Other buildings include additions and alterations to other residential buildings, non-residential buildings and internal alterations.

**Table 27 - Buildings completed according to type of building and province: Mpumalanga**

Type of building	November 2001	October 2002	November 2002	January 2001 to November 2001	January 2002 to November 2002	Percentage change between January 2001 to November 2001 and January 2002 to November 2002
<b>Residential buildings</b>						
Dwelling-houses smaller than 80 square metres						
Number of dwelling-houses	136	200	46	2 851	2 002	-29,8
Total square metres	4 221	7 923	2 295	97 384	78 605	-19,3
Total value at current prices (R'000)	2 942	3 651	2 700	57 457	41 452	-27,9
Dwelling-houses equal to or larger than 80 square metres						
Number of dwelling-houses	40	28	61	333	378	+ 13,5
Total square metres	6 964	5 871	10 786	60 475	68 406	+ 13,1
Total value at current prices (R'000)	6 670	7 164	13 746	60 541	83 778	+ 38,4
Flats and townhouses						
Number of flats and townhouses	21	20	7	136	202	+ 48,5
Total square metres	2 830	2 835	786	16 021	21 731	+ 35,6
Total value at current prices (R'000)	2 247	3 166	706	14 498	25 783	+ 77,8
Other residential buildings <sup>1/</sup>						
Total square metres	0	0	107	0	7 072	..
Total value at current prices (R'000)	0	0	170	0	72 250	..
<b>Total value of residential buildings at current prices (R'000)</b>	<b>11 859</b>	<b>13 981</b>	<b>17 322</b>	<b>132 496</b>	<b>223 263</b>	<b>+ 68,5</b>
<b>Non-residential buildings</b>						
Office and banking space						
Total square metres	59	0	0	8 937	2 969	-66,8
Total value at current prices (R'000)	177	0	0	19 647	4 763	-75,8
Shopping space						
Total square metres	0	1 833	0	27 519	8 005	-70,9
Total value at current prices (R'000)	0	2 800	0	20 970	14 642	-30,2
Industrial and warehouse space						
Total square metres	0	2 183	1 488	2 808	7 642	+ 172,2
Total value at current prices (R'000)	0	2 900	2 232	2 382	9 426	+ 295,7
Other non-residential space <sup>2/</sup>						
Total square metres	0	531	0	2 845	14 854	+ 422,1
Total value at current prices (R'000)	0	387	0	3 161	13 101	+ 314,5
<b>Total value of non-residential buildings at current prices (R'000)</b>	<b>177</b>	<b>6 087</b>	<b>2 232</b>	<b>46 160</b>	<b>41 932</b>	<b>-9,2</b>
<b>Additions and alterations</b>						
Dwelling-houses						
Total square metres	6 950	5 617	3 610	41 878	40 509	-3,3
Total value at current prices (R'000)	6 021	5 853	3 461	35 998	40 352	+ 12,1
Other buildings <sup>3/</sup>						
Total square metres	0	0	520	15 777	7 393	-53,1
Total value at current prices (R'000)	120	46	1 638	20 817	12 405	-40,4
<b>Total value of additions and alterations at current prices (R'000)</b>	<b>6 141</b>	<b>5 899</b>	<b>5 099</b>	<b>56 815</b>	<b>52 757</b>	<b>-7,1</b>
<b>Total value of buildings completed at current prices (R'000)</b>	<b>18 177</b>	<b>25 967</b>	<b>24 653</b>	<b>235 471</b>	<b>317 952</b>	<b>+ 35,0</b>

1/ Other residential buildings include institutions for the disabled, boarding houses, old people's homes, hostels, hotels, motels, guest houses, holiday chalets, entertainment centres, bed-and-breakfast accommodation and casinos.

2/ Other non-residential space includes churches, sport and recreation clubs, schools, crèches, hospitals and all other non-residential space.

3/ Other buildings include additions and alterations to other residential buildings, non-residential buildings and internal alterations.

**Table 28 - Buildings completed according to type of building and province: Limpopo**

Type of building	November 2001*	October 2002	November 2002	January 2001 to November 2001	January 2002 to November 2002	Percentage change between January 2001 to November 2001 and January 2002 to November 2002
<b>Residential buildings</b>						
Dwelling-houses smaller than 80 square metres						
Number of dwelling-houses	16	25	31	420	204	-51,4
Total square metres	849	1 620	1 778	21 383	12 181	-43,0
Total value at current prices (R'000)	1 043	2 252	2 263	21 995	17 719	-19,4
Dwelling-houses equal to or larger than 80 square metres						
Number of dwelling-houses	7	14	24	158	165	+ 4,4
Total square metres	2 295	2 433	4 019	26 266	28 630	+ 9,0
Total value at current prices (R'000)	3 529	3 289	5 856	34 556	41 150	+ 19,1
Flats and townhouses						
Number of flats and townhouses	7	6	1	39	25	-35,9
Total square metres	933	548	138	6 304	2 728	-56,7
Total value at current prices (R'000)	933	774	193	7 171	3 958	-44,8
Other residential buildings <sup>1/</sup>						
Total square metres	0	0	0	3 000	13 959	+ 365,3
Total value at current prices (R'000)	0	0	0	3 600	207 506	+ 5 664,1
<b>Total value of residential buildings at current prices (R'000)</b>	<b>5 505</b>	<b>6 315</b>	<b>8 312</b>	<b>67 322</b>	<b>270 333</b>	<b>+ 301,6</b>
<b>Non-residential buildings</b>						
Office and banking space						
Total square metres	0	0	0	998	416	-58,3
Total value at current prices (R'000)	0	0	0	1 126	632	-43,9
Shopping space						
Total square metres	0	0	0	5 448	8 531	+ 56,6
Total value at current prices (R'000)	0	0	0	8 177	11 980	+ 46,5
Industrial and warehouse space						
Total square metres	1 089	0	272	1 857	1 323	-28,8
Total value at current prices (R'000)	1 634	0	598	2 710	1 977	-27,0
Other non-residential space <sup>2/</sup>						
Total square metres	0	0	0	424	547	+ 29,0
Total value at current prices (R'000)	0	0	0	726	714	-1,7
<b>Total value of non-residential buildings at current prices (R'000)</b>	<b>1 634</b>	<b>0</b>	<b>598</b>	<b>12 739</b>	<b>15 303</b>	<b>+ 20,1</b>
<b>Additions and alterations</b>						
Dwelling-houses						
Total square metres	45	1 071	486	8 172	5 508	-32,6
Total value at current prices (R'000)	63	1 322	747	9 958	8 093	-18,7
Other buildings <sup>3/</sup>						
Total square metres	209	1 149	124	3 526	2 702	-23,4
Total value at current prices (R'000)	400	2 015	273	6 643	4 429	-33,3
<b>Total value of additions and alterations at current prices (R'000)</b>	<b>463</b>	<b>3 337</b>	<b>1 020</b>	<b>16 601</b>	<b>12 522</b>	<b>-24,6</b>
<b>Total value of buildings completed at current prices (R'000)</b>	<b>7 602</b>	<b>9 652</b>	<b>9 930</b>	<b>96 662</b>	<b>298 158</b>	<b>+ 208,5</b>

1/ Other residential buildings include institutions for the disabled, boarding houses, old people's homes, hostels, hotels, motels, guest houses, holiday chalets, entertainment centres, bed-and-breakfast accommodation and casinos.

2/ Other non-residential space includes churches, sport and recreation clubs, schools, crèches, hospitals and all other non-residential space.

3/ Other buildings include additions and alterations to other residential buildings, non-residential buildings and internal alterations.

**Table 29 - Building plans passed according to type of building and selected urban area: Cape Town**

Type of building	November 2001	October 2002	November 2002	January 2001 to November 2001	January 2002 to November 2002	Percentage change between January 2001 to November 2001 and January 2002 to November 2002
<b>Residential buildings</b>						
Dwelling-houses smaller than 80 square metres						
Number of dwelling-houses	455	424	450	5 452	9 945	+ 82,4
Total square metres	19 430	17 213	17 126	233 530	345 263	+ 47,8
Total value at current prices (R'000)	23 720	21 870	19 056	288 380	409 843	+ 42,1
Dwelling-houses equal to or larger than 80 square metres						
Number of dwelling-houses	290	337	374	3 470	4 224	+ 21,7
Total square metres	59 689	75 261	85 017	716 982	861 251	+ 20,1
Total value at current prices (R'000)	83 269	108 799	130 904	994 908	1 215 349	+ 22,2
Flats and townhouses						
Number of flats and townhouses	159	161	200	1 787	1 777	- 0,6
Total square metres	18 360	11 121	27 627	173 139	179 642	+ 3,8
Total value at current prices (R'000)	27 112	17 097	41 978	261 639	288 758	+ 10,4
Other residential buildings <sup>1/</sup>						
Total square metres	185	0	0	33 316	17 064	- 48,8
Total value at current prices (R'000)	276	0	0	78 369	23 505	- 70,0
<b>Total value of residential buildings at current prices (R'000)</b>	<b>134 377</b>	<b>147 766</b>	<b>191 938</b>	<b>1 623 296</b>	<b>1 937 455</b>	<b>+ 19,4</b>
<b>Non-residential buildings</b>						
Office and banking space						
Total square metres	9 505	404	0	195 137	54 041	- 72,3
Total value at current prices (R'000)	18 728	608	0	281 407	91 393	- 67,5
Shopping space						
Total square metres	1 078	5 120	714	98 925	26 829	- 72,9
Total value at current prices (R'000)	2 538	4 982	1 141	125 515	35 348	- 71,8
Industrial and warehouse space						
Total square metres	17 392	16 404	11 812	136 801	123 074	- 10,0
Total value at current prices (R'000)	19 400	15 958	13 439	147 219	134 849	- 8,4
Other non-residential space <sup>2/</sup>						
Total square metres	1 872	5 418	1 613	53 580	40 526	- 24,4
Total value at current prices (R'000)	2 541	8 107	2 133	72 359	57 479	- 20,6
<b>Total value of non-residential buildings at current prices (R'000)</b>	<b>43 207</b>	<b>29 655</b>	<b>16 713</b>	<b>626 500</b>	<b>319 069</b>	<b>- 49,1</b>
<b>Additions and alterations</b>						
Dwelling-houses						
Total square metres	69 725	55 103	59 054	570 151	607 642	+ 6,6
Total value at current prices (R'000)	73 881	78 219	77 829	680 115	786 210	+ 15,6
Other buildings <sup>3/</sup>						
Total square metres	29 863	38 110	14 435	179 741	243 481	+ 35,5
Total value at current prices (R'000)	50 924	72 675	31 154	342 920	484 343	+ 41,2
<b>Total value of additions and alterations at current prices (R'000)</b>	<b>124 805</b>	<b>150 894</b>	<b>108 983</b>	<b>1 023 035</b>	<b>1 270 553</b>	<b>+ 24,2</b>
<b>Total value of building plans passed at current prices (R'000)</b>	<b>302 389</b>	<b>328 315</b>	<b>317 634</b>	<b>3 272 831</b>	<b>3 527 077</b>	<b>+ 7,8</b>

1/ Other residential buildings include institutions for the disabled, boarding houses, old people's homes, hostels, hotels, motels, guest houses, holiday chalets, entertainment centres, bed-and-breakfast accommodation and casinos.

2/ Other non-residential space includes churches, sport and recreation clubs, schools, crèches, hospitals and all other non-residential space.

3/ Other buildings include additions and alterations to other residential buildings, non-residential buildings and internal alterations.

**Table 30 - Building plans passed according to type of building and selected urban area: Port Elizabeth**

Type of building	November 2001	October 2002	November 2002	January 2001 to November 2001	January 2002 to November 2002	Percentage change between January 2001 to November 2001 and January 2002 to November 2002
<b>Residential buildings</b>						
Dwelling-houses smaller than 80 square metres						
Number of dwelling-houses	68	254	212	1 378	2 711	+ 96,7
Total square metres	3 070	10 324	8 542	61 858	113 303	+ 83,2
Total value at current prices (R'000)	4 269	6 839	12 390	82 525	146 925	+ 78,0
Dwelling-houses equal to or larger than 80 square metres						
Number of dwelling-houses	48	61	121	656	677	+ 3,2
Total square metres	9 049	10 987	14 963	92 524	121 833	+ 31,7
Total value at current prices (R'000)	12 835	15 640	22 465	126 013	175 180	+ 39,0
Flats and townhouses						
Number of flats and townhouses	10	27	10	158	237	+ 50,0
Total square metres	1 030	3 410	1 713	14 214	27 653	+ 94,5
Total value at current prices (R'000)	1 494	5 217	2 290	19 618	43 063	+ 119,5
Other residential buildings <sup>1/</sup>						
Total square metres	0	0	0	3 052	323	- 89,4
Total value at current prices (R'000)	0	0	0	3 629	550	- 84,8
<b>Total value of residential buildings at current prices (R'000)</b>	<b>18 598</b>	<b>27 696</b>	<b>37 145</b>	<b>231 785</b>	<b>365 718</b>	<b>+ 57,8</b>
<b>Non-residential buildings</b>						
Office and banking space						
Total square metres	0	2 518	0	5 293	8 373	+ 58,2
Total value at current prices (R'000)	0	4 295	0	5 907	13 241	+ 124,2
Shopping space						
Total square metres	461	3 928	332	5 529	20 574	+ 272,1
Total value at current prices (R'000)	509	7 699	515	8 669	37 898	+ 337,2
Industrial and warehouse space						
Total square metres	918	2 626	4 055	24 507	32 782	+ 33,8
Total value at current prices (R'000)	566	4 115	6 669	22 972	51 545	+ 124,4
Other non-residential space <sup>2/</sup>						
Total square metres	2 933	1 955	1 895	13 196	24 285	+ 84,0
Total value at current prices (R'000)	5 749	2 211	3 759	24 053	39 035	+ 62,3
<b>Total value of non-residential buildings at current prices (R'000)</b>	<b>6 824</b>	<b>18 320</b>	<b>10 943</b>	<b>61 601</b>	<b>141 719</b>	<b>+ 130,1</b>
<b>Additions and alterations</b>						
Dwelling-houses						
Total square metres	13 852	13 075	14 244	117 041	128 966	+ 10,2
Total value at current prices (R'000)	18 130	19 338	22 239	153 518	183 236	+ 19,4
Other buildings <sup>3/</sup>						
Total square metres	1 700	3 774	3 334	72 765	35 637	- 51,0
Total value at current prices (R'000)	2 544	4 684	7 322	80 920	57 618	- 28,8
<b>Total value of additions and alterations at current prices (R'000)</b>	<b>20 674</b>	<b>24 022</b>	<b>29 561</b>	<b>234 438</b>	<b>240 854</b>	<b>+ 2,7</b>
<b>Total value of building plans passed at current prices (R'000)</b>	<b>46 096</b>	<b>70 038</b>	<b>77 649</b>	<b>527 824</b>	<b>748 291</b>	<b>+ 41,8</b>

1/ Other residential buildings include institutions for the disabled, boarding houses, old people's homes, hostels, hotels, motels, guest houses, holiday chalets, entertainment centres, bed-and-breakfast accommodation and casinos.

2/ Other non-residential space includes churches, sport and recreation clubs, schools, crèches, hospitals and all other non-residential space.

3/ Other buildings include additions and alterations to other residential buildings, non-residential buildings and internal alterations.

**Table 31 - Building plans passed according to type of building and selected urban area: Durban**

Type of building	November 2001	October 2002	November 2002	January 2001 to November 2001	January 2002 to November 2002	Percentage change between January 2001 to November 2001 and January 2002 to November 2002
<b>Residential buildings</b>						
Dwelling-houses smaller than 80 square metres						
Number of dwelling-houses	115	57	46	881	661	-25,0
Total square metres	5 115	3 120	2 301	42 599	31 580	-25,9
Total value at current prices (R'000)	5 911	3 526	2 865	49 004	36 211	-26,1
Dwelling-houses equal to or larger than 80 square metres						
Number of dwelling-houses	78	106	67	748	737	-1,5
Total square metres	14 346	23 488	12 628	140 282	147 999	+ 5,5
Total value at current prices (R'000)	19 924	40 384	22 740	181 896	213 753	+ 17,5
Flats and townhouses						
Number of flats and townhouses	2	19	24	154	330	+ 114,3
Total square metres	480	3 257	7 390	20 567	62 720	+ 205,0
Total value at current prices (R'000)	600	4 645	12 651	23 298	98 185	+ 321,4
Other residential buildings <sup>1/</sup>						
Total square metres	0	44	226	2 377	29 956	+ 1 160,2
Total value at current prices (R'000)	0	44	285	2 431	31 449	+ 1 193,7
<b>Total value of residential buildings at current prices (R'000)</b>	<b>26 435</b>	<b>48 599</b>	<b>38 541</b>	<b>256 629</b>	<b>379 598</b>	<b>+ 47,9</b>
<b>Non-residential buildings</b>						
Office and banking space						
Total square metres	0	3 615	0	22 843	10 957	-52,0
Total value at current prices (R'000)	0	9 100	0	37 295	18 850	-49,5
Shopping space						
Total square metres	1 163	3 737	2 954	12 167	12 205	+ 0,3
Total value at current prices (R'000)	1 700	3 140	3 466	14 785	16 414	+ 11,0
Industrial and warehouse space						
Total square metres	0	2 784	24 980	86 074	79 813	-7,3
Total value at current prices (R'000)	0	2 579	37 700	143 008	103 038	-27,9
Other non-residential space <sup>2/</sup>						
Total square metres	6 575	1 569	2 124	33 102	70 502	+ 113,0
Total value at current prices (R'000)	8 072	2 275	2 963	44 668	85 975	+ 92,5
<b>Total value of non-residential buildings at current prices (R'000)</b>	<b>9 772</b>	<b>17 094</b>	<b>44 129</b>	<b>239 756</b>	<b>224 277</b>	<b>-6,5</b>
<b>Additions and alterations</b>						
Dwelling-houses						
Total square metres	21 470	31 814	28 797	245 644	258 014	+ 5,0
Total value at current prices (R'000)	24 922	43 849	37 094	291 485	328 718	+ 12,8
Other buildings <sup>3/</sup>						
Total square metres	6 537	14 630	6 824	96 890	78 836	-18,6
Total value at current prices (R'000)	8 433	29 623	16 001	200 431	154 690	-22,8
<b>Total value of additions and alterations at current prices (R'000)</b>	<b>33 355</b>	<b>73 472</b>	<b>53 095</b>	<b>491 916</b>	<b>483 408</b>	<b>-1,7</b>
<b>Total value of building plans passed at current prices (R'000)</b>	<b>69 562</b>	<b>139 165</b>	<b>135 765</b>	<b>988 301</b>	<b>1 087 283</b>	<b>+ 10,0</b>

1/ Other residential buildings include institutions for the disabled, boarding houses, old people's homes, hostels, hotels, motels, guest houses, holiday chalets, entertainment centres, bed-and-breakfast accommodation and casinos.

2/ Other non-residential space includes churches, sport and recreation clubs, schools, crèches, hospitals and all other non-residential space.

3/ Other buildings include additions and alterations to other residential buildings, non-residential buildings and internal alterations.

**Table 32 - Building plans passed according to type of building and selected urban area: Witwatersrand**

Type of building	November 2001*	October 2002	November 2002	January 2001 to November 2001	January 2002 to November 2002	Percentage change between January 2001 to November 2001 and January 2002 to November 2002
<b>Residential buildings</b>						
Dwelling-houses smaller than 80 square metres						
Number of dwelling-houses	583	532	577	7 595	6 981	- 8,1
Total square metres	24 644	21 688	23 151	302 072	262 448	- 13,1
Total value at current prices (R'000)	25 499	23 348	25 347	324 355	244 543	- 24,6
Dwelling-houses equal to or larger than 80 square metres						
Number of dwelling-houses	461	497	445	4 600	4 448	- 3,3
Total square metres	109 182	127 327	109 388	1 066 686	1 148 257	+ 7,6
Total value at current prices (R'000)	166 912	190 317	167 105	1 582 570	1 772 382	+ 12,0
Flats and townhouses						
Number of flats and townhouses	439	218	113	2 820	3 080	+ 9,2
Total square metres	72 372	30 305	17 378	346 236	396 125	+ 14,4
Total value at current prices (R'000)	114 206	40 327	24 443	550 858	606 872	+ 10,2
Other residential buildings <sup>1/</sup>						
Total square metres	0	0	259	2 936	4 227	+ 44,0
Total value at current prices (R'000)	0	0	447	3 340	6 700	+ 100,6
<b>Total value of residential buildings at current prices (R'000)</b>	<b>306 617</b>	<b>253 992</b>	<b>217 342</b>	<b>2 461 123</b>	<b>2 630 497</b>	<b>+ 6,9</b>
<b>Non-residential buildings</b>						
Office and banking space						
Total square metres	14 807	11 001	25 517	204 942	129 942	- 36,6
Total value at current prices (R'000)	25 330	18 005	39 971	354 472	267 021	- 24,7
Shopping space						
Total square metres	5 966	9 211	10 600	76 299	85 053	+ 11,5
Total value at current prices (R'000)	11 804	17 899	15 900	126 277	146 446	+ 16,0
Industrial and warehouse space						
Total square metres	5 482	37 123	19 035	220 301	257 419	+ 16,8
Total value at current prices (R'000)	8 506	60 248	31 764	369 377	418 194	+ 13,2
Other non-residential space <sup>2/</sup>						
Total square metres	7 313	2 602	681	84 047	97 953	+ 16,5
Total value at current prices (R'000)	8 980	4 161	869	126 401	155 205	+ 22,8
<b>Total value of non-residential buildings at current prices (R'000)</b>	<b>54 620</b>	<b>100 313</b>	<b>88 504</b>	<b>976 527</b>	<b>986 866</b>	<b>+ 1,1</b>
<b>Additions and alterations</b>						
Dwelling-houses						
Total square metres	66 542	74 879	61 216	711 273	703 755	- 1,1
Total value at current prices (R'000)	88 232	111 928	97 255	924 032	1 047 754	+ 13,4
Other buildings <sup>3/</sup>						
Total square metres	18 078	17 096	60 106	202 891	337 467	+ 66,3
Total value at current prices (R'000)	30 279	32 715	99 990	360 075	596 302	+ 65,6
<b>Total value of additions and alterations at current prices (R'000)</b>	<b>118 511</b>	<b>144 643</b>	<b>197 245</b>	<b>1 284 107</b>	<b>1 644 056</b>	<b>+ 28,0</b>
<b>Total value of building plans passed at current prices (R'000)</b>	<b>479 748</b>	<b>498 948</b>	<b>503 091</b>	<b>4 721 757</b>	<b>5 261 419</b>	<b>+ 11,4</b>

1/ Other residential buildings include institutions for the disabled, boarding houses, old people's homes, hostels, hotels, motels, guest houses, holiday chalets, entertainment centres, bed-and-breakfast accommodation and casinos.

2/ Other non-residential space includes churches, sport and recreation clubs, schools, crèches, hospitals and all other non-residential space.

3/ Other buildings include additions and alterations to other residential buildings, non-residential buildings and internal alterations.



**Table 33 - Building plans passed according to type of building and selected urban area: Pretoria**

Type of building	November 2001	October 2002	November 2002	January 2001 to November 2001	January 2002 to November 2002	Percentage change between January 2001 to November 2001 and January 2002 to November 2002
<b>Residential buildings</b>						
Dwelling-houses smaller than 80 square metres						
Number of dwelling-houses	69	2 606	2 587	1 320	7 127	+ 439,9
Total square metres	3 783	105 425	104 513	55 445	295 376	+ 432,7
Total value at current prices (R'000)	5 689	58 655	57 037	67 541	186 855	+ 176,7
Dwelling-houses equal to or larger than 80 square metres						
Number of dwelling-houses	233	289	200	2 641	2 419	- 8,4
Total square metres	61 268	76 671	50 021	749 841	631 929	- 15,7
Total value at current prices (R'000)	85 653	134 844	76 977	1 054 919	942 242	- 10,7
Flats and townhouses						
Number of flats and townhouses	268	701	345	2 264	3 070	+ 35,6
Total square metres	56 177	107 294	51 666	335 753	449 939	+ 34,0
Total value at current prices (R'000)	85 778	136 369	86 428	507 811	659 724	+ 29,9
Other residential buildings <sup>1/</sup>						
Total square metres	1 924	0	0	3 913	0	..
Total value at current prices (R'000)	2 982	0	0	5 910	0	..
<b>Total value of residential buildings at current prices (R'000)</b>	<b>180 102</b>	<b>329 868</b>	<b>220 442</b>	<b>1 636 181</b>	<b>1 788 821</b>	<b>+ 9,3</b>
<b>Non-residential buildings</b>						
Office and banking space						
Total square metres	14 929	3 210	1 127	115 500	78 417	- 32,1
Total value at current prices (R'000)	23 593	6 420	1 919	186 918	124 333	- 33,5
Shopping space						
Total square metres	29 198	10 472	2 416	62 307	68 981	+ 10,7
Total value at current prices (R'000)	45 389	16 232	2 865	94 568	100 633	+ 6,4
Industrial and warehouse space						
Total square metres	4 118	5 967	5 383	58 111	114 998	+ 97,9
Total value at current prices (R'000)	5 387	9 149	9 265	82 209	168 856	+ 105,4
Other non-residential space <sup>2/</sup>						
Total square metres	16 404	1 635	161	58 937	29 287	- 50,3
Total value at current prices (R'000)	17 120	2 906	242	80 772	45 781	- 43,3
<b>Total value of non-residential buildings at current prices (R'000)</b>	<b>91 489</b>	<b>34 707</b>	<b>14 291</b>	<b>444 467</b>	<b>439 603</b>	<b>- 1,1</b>
<b>Additions and alterations</b>						
Dwelling-houses						
Total square metres	25 737	37 298	23 067	223 798	280 598	+ 25,4
Total value at current prices (R'000)	35 463	59 517	34 175	302 310	417 154	+ 38,0
Other buildings <sup>3/</sup>						
Total square metres	68 321	37 010	4 135	136 985	117 958	- 13,9
Total value at current prices (R'000)	71 142	58 546	6 827	186 830	194 181	+ 3,9
<b>Total value of additions and alterations at current prices (R'000)</b>	<b>106 605</b>	<b>118 063</b>	<b>41 002</b>	<b>489 140</b>	<b>611 335</b>	<b>+ 25,0</b>
<b>Total value of building plans passed at current prices (R'000)</b>	<b>378 196</b>	<b>482 638</b>	<b>275 735</b>	<b>2 569 788</b>	<b>2 839 759</b>	<b>+ 10,5</b>

1/ Other residential buildings include institutions for the disabled, boarding houses, old people's homes, hostels, hotels, motels, guest houses, holiday chalets, entertainment centres, bed-and-breakfast accommodation and casinos.

2/ Other non-residential space includes churches, sport and recreation clubs, schools, crèches, hospitals and all other non-residential space.

3/ Other buildings include additions and alterations to other residential buildings, non-residential buildings and internal alterations.

**Table 34 - Building plans passed according to type of building and selected urban area: Bloemfontein**

Type of building	November 2001	October 2002	November 2002	January 2001 to November 2001	January 2002 to November 2002	Percentage change between January 2001 to November 2001 and January 2002 to November 2002
<b>Residential buildings</b>						
Dwelling-houses smaller than 80 square metres						
Number of dwelling-houses	60	34	179	1 352	2 030	+ 50,1
Total square metres	2 809	1 961	7 800	60 150	85 871	+ 42,8
Total value at current prices (R'000)	2 522	2 680	4 722	36 817	50 312	+ 36,7
Dwelling-houses equal to or larger than 80 square metres						
Number of dwelling-houses	36	28	32	249	319	+ 28,1
Total square metres	6 435	4 403	4 525	42 837	50 728	+ 18,4
Total value at current prices (R'000)	8 421	6 648	6 879	55 280	73 007	+ 32,1
Flats and townhouses						
Number of flats and townhouses	37	115	74	347	608	+ 75,2
Total square metres	4 213	7 627	4 484	40 166	56 368	+ 40,3
Total value at current prices (R'000)	6 011	11 441	6 724	60 151	82 084	+ 36,5
Other residential buildings <sup>1/</sup>						
Total square metres	0	387	0	3 867	4 087	+ 5,7
Total value at current prices (R'000)	0	700	0	4 970	9 300	+ 87,1
<b>Total value of residential buildings at current prices (R'000)</b>	<b>16 954</b>	<b>21 469</b>	<b>18 325</b>	<b>157 218</b>	<b>214 703</b>	<b>+ 36,6</b>
<b>Non-residential buildings</b>						
Office and banking space						
Total square metres	0	0	849	13 256	14 272	+ 7,7
Total value at current prices (R'000)	0	0	1 698	26 025	24 298	-6,6
Shopping space						
Total square metres	0	0	375	4 923	15 726	+ 219,4
Total value at current prices (R'000)	0	0	938	5 000	30 402	+ 508,0
Industrial and warehouse space						
Total square metres	2 700	0	1 178	4 661	12 897	+ 176,7
Total value at current prices (R'000)	2 000	0	2 312	3 626	13 311	+ 267,1
Other non-residential space <sup>2/</sup>						
Total square metres	0	480	0	3 199	1 963	-38,6
Total value at current prices (R'000)	0	720	0	6 208	2 030	-67,3
<b>Total value of non-residential buildings at current prices (R'000)</b>	<b>2 000</b>	<b>720</b>	<b>4 948</b>	<b>40 859</b>	<b>70 041</b>	<b>+ 71,4</b>
<b>Additions and alterations</b>						
Dwelling-houses						
Total square metres	7 214	3 698	5 277	34 896	49 723	+ 42,5
Total value at current prices (R'000)	8 551	5 271	7 339	42 859	63 659	+ 48,5
Other buildings <sup>3/</sup>						
Total square metres	3 232	1 473	1 109	11 407	15 239	+ 33,6
Total value at current prices (R'000)	4 592	1 406	2 775	23 360	36 818	+ 57,6
<b>Total value of additions and alterations at current prices (R'000)</b>	<b>13 143</b>	<b>6 677</b>	<b>10 114</b>	<b>66 219</b>	<b>100 477</b>	<b>+ 51,7</b>
<b>Total value of building plans passed at current prices (R'000)</b>	<b>32 097</b>	<b>28 866</b>	<b>33 387</b>	<b>264 296</b>	<b>385 221</b>	<b>+ 45,8</b>

1/ Other residential buildings include institutions for the disabled, boarding houses, old people's homes, hostels, hotels, motels, guest houses, holiday chalets, entertainment centres, bed-and-breakfast accommodation and casinos.

2/ Other non-residential space includes churches, sport and recreation clubs, schools, crèches, hospitals and all other non-residential space.

3/ Other buildings include additions and alterations to other residential buildings, non-residential buildings and internal alterations.

Table 35 - Buildings completed according to type of building and selected urban area: Cape Town

Type of building	November 2001	October 2002	November 2002	January 2001 to November 2001	January 2002 to November 2002	Percentage change between January 2001 to November 2001 and January 2002 to November 2002
<b>Residential buildings</b>						
Dwelling-houses smaller than 80 square metres						
Number of dwelling-houses	347	445	530	3 740	5 226	+ 39,7
Total square metres	13 029	16 885	20 077	157 487	192 561	+ 22,3
Total value at current prices (R'000)	11 293	20 300	20 808	178 154	226 926	+ 27,4
Dwelling-houses equal to or larger than 80 square metres						
Number of dwelling-houses	185	301	349	1 716	2 884	+ 68,1
Total square metres	37 139	57 778	61 707	326 745	552 450	+ 69,1
Total value at current prices (R'000)	51 978	82 894	88 920	454 992	795 873	+ 74,9
Flats and townhouses						
Number of flats and townhouses	98	159	284	1 270	1 385	+ 9,1
Total square metres	10 793	12 508	21 729	140 362	155 290	+ 10,6
Total value at current prices (R'000)	15 066	17 480	37 362	188 147	245 456	+ 30,5
Other residential buildings <sup>1/</sup>						
Total square metres	865	2 451	0	23 274	6 730	- 71,1
Total value at current prices (R'000)	1 290	4 010	0	27 692	9 935	- 64,1
<b>Total value of residential buildings at current prices (R'000)</b>	<b>79 627</b>	<b>124 684</b>	<b>147 090</b>	<b>848 985</b>	<b>1 278 190</b>	<b>+ 50,6</b>
<b>Non-residential buildings</b>						
Office and banking space						
Total square metres	2 642	2 567	8 767	79 049	85 801	+ 8,5
Total value at current prices (R'000)	3 726	4 033	18 600	139 392	132 321	- 5,1
Shopping space						
Total square metres	907	6 031	2 477	29 671	44 881	+ 51,3
Total value at current prices (R'000)	1 899	6 810	5 020	37 413	54 393	+ 45,4
Industrial and warehouse space						
Total square metres	77	6 285	6 893	70 059	93 832	+ 33,9
Total value at current prices (R'000)	94	7 774	6 794	76 314	100 819	+ 32,1
Other non-residential space <sup>2/</sup>						
Total square metres	925	718	105	17 203	24 606	+ 43,0
Total value at current prices (R'000)	842	1 700	123	22 226	27 035	+ 21,6
<b>Total value of non-residential buildings at current prices (R'000)</b>	<b>6 561</b>	<b>20 317</b>	<b>30 537</b>	<b>275 345</b>	<b>314 568</b>	<b>+ 14,2</b>
<b>Additions and alterations</b>						
Dwelling-houses						
Total square metres	25 534	27 408	29 102	310 514	322 645	+ 3,9
Total value at current prices (R'000)	32 590	33 873	34 777	352 691	395 449	+ 12,1
Other buildings <sup>3/</sup>						
Total square metres	6 195	8 361	8 419	99 213	148 479	+ 49,7
Total value at current prices (R'000)	14 747	12 692	18 943	281 835	257 285	- 8,7
<b>Total value of additions and alterations at current prices (R'000)</b>	<b>47 337</b>	<b>46 565</b>	<b>53 720</b>	<b>634 526</b>	<b>652 734</b>	<b>+ 2,9</b>
<b>Total value of buildings completed at current prices (R'000)</b>	<b>133 525</b>	<b>191 566</b>	<b>231 347</b>	<b>1 758 856</b>	<b>2 245 492</b>	<b>+ 27,7</b>

1/ Other residential buildings include institutions for the disabled, boarding houses, old people's homes, hostels, hotels, motels, guest houses, holiday chalets, entertainment centres, bed-and-breakfast accommodation and casinos.

2/ Other non-residential space includes churches, sport and recreation clubs, schools, crèches, hospitals and all other non-residential space.

3/ Other buildings include additions and alterations to other residential buildings, non-residential buildings and internal alterations.

**Table 36 - Buildings completed according to type of building and selected urban area: Port Elizabeth**

Type of building	November 2001	October 2002	November 2002	January 2001 to November 2001	January 2002 to November 2002	Percentage change between January 2001 to November 2001 and January 2002 to November 2002
<b>Residential buildings</b>						
Dwelling-houses smaller than 80 square metres						
Number of dwelling-houses	56	613	143	1 321	2 269	+ 71,8
Total square metres	2 378	33 454	6 033	56 130	103 894	+ 85,1
Total value at current prices (R'000)	3 254	39 493	8 419	72 499	135 533	+ 86,9
Dwelling-houses equal to or larger than 80 square metres						
Number of dwelling-houses	35	4	15	507	298	- 41,2
Total square metres	5 888	925	3 585	61 747	45 336	- 26,6
Total value at current prices (R'000)	7 768	620	5 243	77 116	61 555	- 20,2
Flats and townhouses						
Number of flats and townhouses	30	2	11	169	59	- 65,1
Total square metres	3 474	1 110	2 090	19 613	8 511	- 56,6
Total value at current prices (R'000)	3 509	1 958	2 912	21 559	12 473	- 42,1
Other residential buildings <sup>1/</sup>						
Total square metres	0	0	0	4 347	2 744	- 36,9
Total value at current prices (R'000)	0	0	0	7 000	3 312	- 52,7
<b>Total value of residential buildings at current prices (R'000)</b>	<b>14 531</b>	<b>42 071</b>	<b>16 574</b>	<b>178 174</b>	<b>212 873</b>	<b>+ 19,5</b>
<b>Non-residential buildings</b>						
Office and banking space						
Total square metres	27	316	0	22 627	1 184	- 94,8
Total value at current prices (R'000)	34	348	0	23 374	2 049	- 91,2
Shopping space						
Total square metres	0	843	496	24 379	3 948	- 83,8
Total value at current prices (R'000)	0	1 357	836	28 844	5 574	- 80,7
Industrial and warehouse space						
Total square metres	10 061	4 092	4 961	45 849	34 138	- 25,5
Total value at current prices (R'000)	1 192	6 492	2 706	44 174	40 554	- 8,2
Other non-residential space <sup>2/</sup>						
Total square metres	959	724	536	7 552	3 560	- 52,9
Total value at current prices (R'000)	1 272	960	303	8 337	3 927	- 52,9
<b>Total value of non-residential buildings at current prices (R'000)</b>	<b>2 498</b>	<b>9 157</b>	<b>3 845</b>	<b>104 729</b>	<b>52 104</b>	<b>- 50,2</b>
<b>Additions and alterations</b>						
Dwelling-houses						
Total square metres	9 039	7 034	1 220	60 522	45 451	- 24,9
Total value at current prices (R'000)	10 887	8 972	1 189	68 118	52 644	- 22,7
Other buildings <sup>3/</sup>						
Total square metres	18 460	9 141	510	41 786	35 232	- 15,7
Total value at current prices (R'000)	29 096	13 038	814	57 142	42 991	- 24,8
<b>Total value of additions and alterations at current prices (R'000)</b>	<b>39 983</b>	<b>22 010</b>	<b>2 003</b>	<b>125 260</b>	<b>95 635</b>	<b>- 23,7</b>
<b>Total value of buildings completed at current prices (R'000)</b>	<b>57 012</b>	<b>73 238</b>	<b>22 422</b>	<b>408 163</b>	<b>360 612</b>	<b>- 11,7</b>

1/ Other residential buildings include institutions for the disabled, boarding houses, old people's homes, hostels, hotels, motels, guest houses, holiday chalets, entertainment centres, bed-and-breakfast accommodation and casinos.

2/ Other non-residential space includes churches, sport and recreation clubs, schools, crèches, hospitals and all other non-residential space.

3/ Other buildings include additions and alterations to other residential buildings, non-residential buildings and internal alterations.

Table 37 - Buildings completed according to type of building and selected urban area: Durban

Type of building	November 2001	October 2002	November 2002	January 2001 to November 2001	January 2002 to November 2002	Percentage change between January 2001 to November 2001 and January 2002 to November 2002
<b>Residential buildings</b>						
Dwelling-houses smaller than 80 square metres						
Number of dwelling-houses	19	50	52	733	715	- 2,5
Total square metres	1 382	2 605	2 940	38 595	36 295	- 6,0
Total value at current prices (R'000)	1 426	2 956	3 442	45 129	42 014	- 6,9
Dwelling-houses equal to or larger than 80 square metres						
Number of dwelling-houses	114	78	64	949	755	- 20,4
Total square metres	18 798	16 677	12 174	185 932	139 050	- 25,2
Total value at current prices (R'000)	21 958	20 794	16 138	223 228	177 199	- 20,6
Flats and townhouses						
Number of flats and townhouses	21	4	31	507	237	- 53,3
Total square metres	3 273	1 557	4 614	50 828	33 539	- 34,0
Total value at current prices (R'000)	6 120	1 883	6 581	68 474	51 985	- 24,1
Other residential buildings <sup>1/</sup>						
Total square metres	0	1 246	0	0	1 246	..
Total value at current prices (R'000)	0	1 263	0	0	1 263	..
<b>Total value of residential buildings at current prices (R'000)</b>	<b>29 504</b>	<b>26 896</b>	<b>26 161</b>	<b>336 831</b>	<b>272 461</b>	<b>- 19,1</b>
<b>Non-residential buildings</b>						
Office and banking space						
Total square metres	718	1 022	1 019	35 773	38 960	+ 8,9
Total value at current prices (R'000)	1 400	1 107	1 224	56 749	57 771	+ 1,8
Shopping space						
Total square metres	2 960	5 529	1 304	24 141	32 399	+ 34,2
Total value at current prices (R'000)	2 960	4 781	1 404	40 298	49 768	+ 23,5
Industrial and warehouse space						
Total square metres	1 482	5 537	978	107 528	126 610	+ 17,7
Total value at current prices (R'000)	2 225	12 127	1 586	127 340	156 436	+ 22,8
Other non-residential space <sup>2/</sup>						
Total square metres	1 146	2 485	264	21 254	20 251	- 4,7
Total value at current prices (R'000)	1 242	3 807	200	24 741	30 262	+ 22,3
<b>Total value of non-residential buildings at current prices (R'000)</b>	<b>7 827</b>	<b>21 822</b>	<b>4 414</b>	<b>249 128</b>	<b>294 237</b>	<b>+ 18,1</b>
<b>Additions and alterations</b>						
Dwelling-houses						
Total square metres	23 335	32 981	15 536	271 003	233 371	- 13,9
Total value at current prices (R'000)	25 593	40 135	19 428	298 733	278 898	- 6,6
Other buildings <sup>3/</sup>						
Total square metres	6 260	1 869	5 957	85 641	66 031	- 22,9
Total value at current prices (R'000)	10 407	9 978	20 141	160 843	149 735	- 6,9
<b>Total value of additions and alterations at current prices (R'000)</b>	<b>36 000</b>	<b>50 113</b>	<b>39 569</b>	<b>459 576</b>	<b>428 633</b>	<b>- 6,7</b>
<b>Total value of buildings completed at current prices (R'000)</b>	<b>73 331</b>	<b>98 831</b>	<b>70 144</b>	<b>1 045 535</b>	<b>995 331</b>	<b>- 4,8</b>

1/ Other residential buildings include institutions for the disabled, boarding houses, old people's homes, hostels, hotels, motels, guest houses, holiday chalets, entertainment centres, bed-and-breakfast accommodation and casinos.

2/ Other non-residential space includes churches, sport and recreation clubs, schools, crèches, hospitals and all other non-residential space.

3/ Other buildings include additions and alterations to other residential buildings, non-residential buildings and internal alterations.

**Table 38 - Buildings completed according to type of building and selected urban area: Witwatersrand**

Type of building	November 2001*	October 2002	November 2002	January 2001 to November 2001	January 2002 to November 2002	Percentage change between January 2001 to November 2001 and January 2002 to November 2002
<b>Residential buildings</b>						
Dwelling-houses smaller than 80 square metres						
Number of dwelling-houses	452	698	376	6 682	7 080	+ 6,0
Total square metres	20 973	27 646	13 534	252 161	257 733	+ 2,2
Total value at current prices (R'000)	28 610	29 852	13 298	240 802	230 646	-4,2
Dwelling-houses equal to or larger than 80 square metres						
Number of dwelling-houses	253	460	298	2 011	2 870	+ 42,7
Total square metres	54 986	108 406	62 921	450 192	644 426	+ 43,1
Total value at current prices (R'000)	80 605	151 369	93 321	659 389	953 272	+ 44,6
Flats and townhouses						
Number of flats and townhouses	312	475	283	1 939	2 933	+ 51,3
Total square metres	37 037	55 786	38 259	204 476	400 928	+ 96,1
Total value at current prices (R'000)	59 935	74 014	50 688	338 449	577 382	+ 70,6
Other residential buildings <sup>1/</sup>						
Total square metres	0	0	0	42 714	11 978	-72,0
Total value at current prices (R'000)	0	0	0	269 217	17 333	-93,6
<b>Total value of residential buildings at current prices (R'000)</b>	<b>169 150</b>	<b>255 235</b>	<b>157 307</b>	<b>1 507 857</b>	<b>1 778 633</b>	<b>+ 18,0</b>
<b>Non-residential buildings</b>						
Office and banking space						
Total square metres	31 011	21 578	71 788	291 246	273 388	-6,1
Total value at current prices (R'000)	101 531	36 918	107 798	475 752	417 168	-12,3
Shopping space						
Total square metres	1 764	5 877	412	115 555	39 655	-65,7
Total value at current prices (R'000)	3 302	10 251	350	244 439	70 435	-71,2
Industrial and warehouse space						
Total square metres	12 602	16 964	17 916	181 665	111 766	-38,5
Total value at current prices (R'000)	19 364	28 723	30 769	292 703	176 958	-39,5
Other non-residential space <sup>2/</sup>						
Total square metres	0	2 162	6 049	20 696	36 404	+ 75,9
Total value at current prices (R'000)	0	3 481	9 227	31 642	53 419	+ 68,8
<b>Total value of non-residential buildings at current prices (R'000)</b>	<b>124 197</b>	<b>79 373</b>	<b>148 144</b>	<b>1 044 536</b>	<b>717 980</b>	<b>-31,3</b>
<b>Additions and alterations</b>						
Dwelling-houses						
Total square metres	26 767	34 250	22 549	233 381	308 647	+ 32,3
Total value at current prices (R'000)	37 441	52 145	29 672	293 982	428 613	+ 45,8
Other buildings <sup>3/</sup>						
Total square metres	22 056	8 711	2 519	117 095	86 767	-25,9
Total value at current prices (R'000)	50 221	16 732	5 403	207 051	144 467	-30,2
<b>Total value of additions and alterations at current prices (R'000)</b>	<b>87 662</b>	<b>68 877</b>	<b>35 075</b>	<b>501 033</b>	<b>573 080</b>	<b>+ 14,4</b>
<b>Total value of buildings completed at current prices (R'000)</b>	<b>381 009</b>	<b>403 485</b>	<b>340 526</b>	<b>3 053 426</b>	<b>3 069 693</b>	<b>+ 0,5</b>

1/ Other residential buildings include institutions for the disabled, boarding houses, old people's homes, hostels, hotels, motels, guest houses, holiday chalets, entertainment centres, bed-and-breakfast accommodation and casinos.

2/ Other non-residential space includes churches, sport and recreation clubs, schools, crèches, hospitals and all other non-residential space.

3/ Other buildings include additions and alterations to other residential buildings, non-residential buildings and internal alterations.

**Table 39 - Buildings completed according to type of building and selected urban area: Pretoria**

Type of building	November 2001	October 2002	November 2002	January 2001 to November 2001	January 2002 to November 2002	Percentage change between January 2001 to November 2001 and January 2002 to November 2002
<b>Residential buildings</b>						
Dwelling-houses smaller than 80 square metres						
Number of dwelling-houses	60	2 599	2 597	399	7 217	+ 1708,8
Total square metres	3 241	105 267	105 138	19 762	293 485	+ 1385,1
Total value at current prices (R'000)	4 569	58 906	58 096	24 712	178 073	+ 620,6
Dwelling-houses equal to or larger than 80 square metres						
Number of dwelling-houses	144	173	169	1 037	1 250	+ 20,5
Total square metres	37 944	49 785	47 945	279 519	353 350	+ 26,4
Total value at current prices (R'000)	51 792	87 160	85 949	383 204	589 542	+ 53,8
Flats and townhouses						
Number of flats and townhouses	498	89	192	1 328	2 321	+ 74,8
Total square metres	57 278	14 629	27 661	149 654	261 571	+ 74,8
Total value at current prices (R'000)	85 188	28 781	37 891	217 117	416 310	+ 91,7
Other residential buildings <sup>1/</sup>						
Total square metres	0	0	0	50	72	+ 44,0
Total value at current prices (R'000)	0	0	0	81	73	- 9,9
<b>Total value of residential buildings at current prices (R'000)</b>	<b>141 549</b>	<b>174 847</b>	<b>181 936</b>	<b>625 114</b>	<b>1 183 998</b>	<b>+ 89,4</b>
<b>Non-residential buildings</b>						
Office and banking space						
Total square metres	0	3 641	11 993	13 224	49 261	+ 272,5
Total value at current prices (R'000)	0	7 282	19 189	19 205	72 173	+ 275,8
Shopping space						
Total square metres	1 764	0	101	4 504	8 564	+ 90,1
Total value at current prices (R'000)	2 734	0	202	6 959	14 866	+ 113,6
Industrial and warehouse space						
Total square metres	2 383	2 233	0	14 432	17 296	+ 19,8
Total value at current prices (R'000)	2 441	4 043	0	14 417	25 896	+ 79,6
Other non-residential space <sup>2/</sup>						
Total square metres	5 374	1 563	532	10 942	4 904	- 55,2
Total value at current prices (R'000)	9 136	3 126	1 064	17 102	8 448	- 50,6
<b>Total value of non-residential buildings at current prices (R'000)</b>	<b>14 311</b>	<b>14 451</b>	<b>20 455</b>	<b>57 683</b>	<b>121 383</b>	<b>+ 110,4</b>
<b>Additions and alterations</b>						
Dwelling-houses						
Total square metres	3 802	7 841	9 766	19 590	44 097	+ 125,1
Total value at current prices (R'000)	5 119	12 445	15 262	25 053	67 996	+ 171,4
Other buildings <sup>3/</sup>						
Total square metres	459	1 814	353	6 705	16 576	+ 147,2
Total value at current prices (R'000)	687	3 778	1 448	9 537	28 247	+ 196,2
<b>Total value of additions and alterations at current prices (R'000)</b>	<b>5 806</b>	<b>16 223</b>	<b>16 710</b>	<b>34 590</b>	<b>96 243</b>	<b>+ 178,2</b>
<b>Total value of buildings completed at current prices (R'000)</b>	<b>161 666</b>	<b>205 521</b>	<b>219 101</b>	<b>717 387</b>	<b>1 401 624</b>	<b>+ 95,4</b>

1/ Other residential buildings include institutions for the disabled, boarding houses, old people's homes, hostels, hotels, motels, guest houses, holiday chalets, entertainment centres, bed-and-breakfast accommodation and casinos.

2/ Other non-residential space includes churches, sport and recreation clubs, schools, crèches, hospitals and all other non-residential space.

3/ Other buildings include additions and alterations to other residential buildings, non-residential buildings and internal alterations.

**Table 40 - Buildings completed according to type of building and selected urban area: Bloemfontein**

Type of building	November 2001	October 2002	November 2002	January 2001 to November 2001	January 2002 to November 2002	Percentage change between January 2001 to November 2001 and January 2002 to November 2002
<b>Residential buildings</b>						
Dwelling-houses smaller than 80 square metres						
Number of dwelling-houses	223	161	218	804	2 254	+ 180,3
Total square metres	9 618	7 311	9 050	34 115	96 336	+ 182,4
Total value at current prices (R'000)	5 026	4 504	5 212	20 016	49 075	+ 145,2
Dwelling-houses equal to or larger than 80 square metres						
Number of dwelling-houses	15	31	24	163	235	+ 44,2
Total square metres	2 354	3 968	4 142	31 462	38 969	+ 23,9
Total value at current prices (R'000)	2 962	4 977	5 096	39 607	48 110	+ 21,5
Flats and townhouses						
Number of flats and townhouses	19	18	24	143	323	+ 125,9
Total square metres	1 888	954	3 188	13 046	36 327	+ 178,5
Total value at current prices (R'000)	3 700	1 400	5 700	19 434	53 834	+ 177,0
Other residential buildings <sup>1/</sup>						
Total square metres	389	0	0	540	1 428	+ 164,4
Total value at current prices (R'000)	467	0	0	678	1 461	+ 115,5
<b>Total value of residential buildings at current prices (R'000)</b>	<b>12 155</b>	<b>10 881</b>	<b>16 008</b>	<b>79 735</b>	<b>152 480</b>	<b>+ 91,2</b>
<b>Non-residential buildings</b>						
Office and banking space						
Total square metres	1 255	0	5 031	12 358	9 275	- 24,9
Total value at current prices (R'000)	1 500	0	10 000	23 383	17 800	- 23,9
Shopping space						
Total square metres	6 320	0	7 429	9 132	9 959	+ 9,1
Total value at current prices (R'000)	5 372	0	16 000	8 378	19 450	+ 132,2
Industrial and warehouse space						
Total square metres	327	0	1 584	6 178	5 772	- 6,6
Total value at current prices (R'000)	327	0	1 311	4 693	4 501	- 4,1
Other non-residential space <sup>2/</sup>						
Total square metres	1 534	0	0	7 287	8 233	+ 13,0
Total value at current prices (R'000)	2 868	0	0	13 319	23 240	+ 74,5
<b>Total value of non-residential buildings at current prices (R'000)</b>	<b>10 067</b>	<b>0</b>	<b>27 311</b>	<b>49 773</b>	<b>64 991</b>	<b>+ 30,6</b>
<b>Additions and alterations</b>						
Dwelling-houses						
Total square metres	6 372	3 020	5 127	34 306	51 051	+ 48,8
Total value at current prices (R'000)	7 578	3 442	4 330	38 255	55 940	+ 46,2
Other buildings <sup>3/</sup>						
Total square metres	506	1 532	1 310	21 127	13 413	- 36,5
Total value at current prices (R'000)	1 691	2 926	1 365	97 349	27 880	- 71,4
<b>Total value of additions and alterations at current prices (R'000)</b>	<b>9 269</b>	<b>6 368</b>	<b>5 695</b>	<b>135 604</b>	<b>83 820</b>	<b>- 38,2</b>
<b>Total value of buildings completed at current prices (R'000)</b>	<b>31 491</b>	<b>17 249</b>	<b>49 014</b>	<b>265 112</b>	<b>301 291</b>	<b>+ 13,6</b>

1/ Other residential buildings include institutions for the disabled, boarding houses, old people's homes, hostels, hotels, motels, guest houses, holiday chalets, entertainment centres, bed-and-breakfast accommodation and casinos.

2/ Other non-residential space includes churches, sport and recreation clubs, schools, crèches, hospitals and all other non-residential space.

3/ Other buildings include additions and alterations to other residential buildings, non-residential buildings and internal alterations.



## Additional information

### Explanatory Notes

<b>Introduction</b>	<ol style="list-style-type: none"> <li>1 Statistics South Africa (Stats SA) conducts a monthly Building Statistics Survey collecting information regarding building plans approved and buildings completed, financed by the private sector, from a sample of local government institutions in South Africa. According to these institutions, they are not always notified about low-cost housing projects. This statistical release contains information of building plans passed and buildings completed in respect of residential buildings, non-residential buildings and additions and alterations according to province and selected urban areas.</li> <li>2 In order to improve timeliness of the publication, some information for the current month have been estimated due to late submission by respondents. These estimates will be revised in the next statistical release(s) as soon as actual information is available.</li> <li>3 The actual and seasonally adjusted values (at current and at constant 2000 prices) and the percentage change of building plans passed and buildings completed according to type of building are reflected monthly from January 2000 in this statistical release (cf. tables 1 to 8).</li> </ol>
<b>Scope of the survey</b>	<ol style="list-style-type: none"> <li>4 This survey covers local government institutions conducting activities for the private sector regarding - <ul style="list-style-type: none"> <li>• approval of building plans; and</li> <li>• final inspection of completed buildings.</li> </ul> </li> </ol>
<b>Classification</b>	<ol style="list-style-type: none"> <li>5 The 1993 edition of the Standard Industrial Classification of all Economic Activities, (SIC) Fifth Edition, Report No. 09-90-02, was used to classify the statistical units. The SIC is based on the 1990 International Standard Industrial Classification of all Economic Activities (ISIC) with suitable adaptations for local conditions.</li> <li>6 The twelfth and last published edition of the Standard Code List of Areas, Report No. 09-09-03 (1994) was used to classify the statistical units according to province. The cities, towns and non-urban areas listed in this report are codified within magisterial district and province. The code list was compiled by Stats SA in collaboration with other interested bodies and the first edition was distributed in June 1977.</li> </ol>
<b>Statistical unit</b>	<ol style="list-style-type: none"> <li>7 The statistical unit for the collection of information is a local government institution. Local government institutions include district municipalities, metropolitan municipalities and local municipalities.</li> </ol>
<b>Survey methodology and design</b>	<ol style="list-style-type: none"> <li>8 The sample for the monthly Building Statistics Survey consists of the largest local government institutions in South Africa, i.e. those that account for approximately 85% of the total rand value of buildings completed by the private sector.</li> <li>9 The survey is collected by mail each month from a sample of 128 local government institutions.</li> </ol>
<b>Constant prices</b>	<ol style="list-style-type: none"> <li>10 The value of building plans passed and buildings completed at constant prices measures building activities in terms of ruling prices in a specific base year, which is 2000 as from May 2002.</li> <li>11 The value of building plans passed at constant prices for each month is obtained by deflating the values at current prices with a price index known as the “lump sum domestic buildings” as published in statistical release P0151 – JBCC Contract Price Adjustment Provisions Work Group Indices. In order to be applicable, these indices (base February 1991=100) are converted to the base year 2000=100.</li> </ol>

- 12 The value of buildings completed at constant prices is obtained by deflating the values at current prices with the same price index which is used to calculate building plans passed at constant prices (cf. paragraph 11). The value of buildings completed is reported as at the time the plans were passed. Since the completion of buildings may extend over a few months to a few years, the current value of buildings completed is deflated by price indices as at the time the plans were passed in order to calculate the value of buildings completed at the time the plans were passed. Therefore, the duration of the completion of different types of buildings are taken into account in ascertaining the deflators e.g. the value of dwelling-houses completed at constant prices at January 2000 is obtained by deflating the current value of dwelling-houses completed for January 2000 with the price index of a month six months prior to January 2000. Furthermore, the value of other residential buildings, non-residential buildings and additions and alterations at constant prices is obtained by deflating the current values with price indices of 12 months, 18 months and 12 months prior to the relevant month, respectively.

#### Seasonal adjustment

- 13 Seasonally adjusted estimates of building plans passed and buildings completed are generated each month, using the X-11 Seasonal Adjustment Program developed by US Bureau of the Census Economic Research and Analyses Division, 1968.
- 14 Seasonal adjustment is a means of removing the estimated effects of normal seasonal variation from the series so that the effects of other influences on the series can be more clearly recognised. Seasonal adjustment does not aim to remove irregular or non-seasonal influences which may be present in any particular month. Influences that are volatile or unsystematic can still make it difficult to interpret the movement of the series even after adjustment for seasonal variations. Therefore, the month-to-month movements of seasonally adjusted estimates may not be reliable indicators of trend behaviour.

#### Trend cycle

- 15 The trend is a long-term pattern or movement of a time series. The X-11 Seasonal Adjustment Program is used for smoothing seasonally adjusted data.

#### Related publications

- 16 Users may also wish to refer to the following publications:
- P5041.3 – Building statistics issued annually.
  - P9101.2 – Actual and expected expenditure on construction by the public sector per statistical region issued annually.
  - Bulletin of Statistics issued quarterly.
  - South African Statistics issued annually.

#### Unpublished statistics

- 17 In some cases Stats SA can also make available statistics which are not published. The statistics can be made available in one or more of the following ways: computer printouts, CD and diskette. Generally a charge is made for providing unpublished statistics.

#### Rounding-off of figures

- 18 The figures in the tables have, where necessary, been rounded off to the nearest digit shown. There may, therefore, be slight discrepancies between the sums of the constituent items and the totals shown.

#### Pre-release policy

- 19 Stats SA has adopted the confidential pre-release policy in respect of selected economic indicators and specific government departments. The policy accords with practice among leading statistical agencies. The statistical integrity of the information and strict observance of the release time has been assured by the following procedure:
- 20 In respect of this statistical release, an official representative from the Office of the President, the Department of Trade and Industry (DTI), National Treasury and the South African Reserve Bank (SARB) will receive a copy of the release on a strictly confidential basis two hours in advance of the public issue.
- 21 Stats SA pre-release policy may be inspected at its Website, [www.statssa.gov.za](http://www.statssa.gov.za)

**Symbols and abbreviations**

..	no meaningful percentage change between two specified periods available since either one or both of the totals are nil
0	nil or figure too small to publish
*	revised
Stats SA	Statistics South Africa
SIC	Standard Industrial Classification of all Economic Activities
ISIC	International Standard Industrial Classification of all Economic Activities
JBCC	Joint Building Contracts Committee
CD	Compact Disc
US	United States
SARB	South African Reserve Bank
DTI	Department of Trade and Industry

**Technical notes****Response rate**

The response rate for November 2002 is 98,4%.

## Local government institutions covered in the sample survey

**Table C - Classification of towns and cities according to new municipalities and previous local government institution by province**

<b>Western Cape</b>			
<b>Sample survey as from January 2002</b>		<b>Sample survey up to December 2001</b>	
<b>Name of municipality</b>	<b>Cities and towns</b>	<b>Name of previously published local government institution</b>	<b>Cities and towns</b>
Breede Valley Municipality	Worcester Rawsonville De Doorns Touws River	Worcester	Worcester
		Breede River District Council	Rural areas - Dissolved as from July 2001. Activities were taken over by various local government institutions.
<b>City of Cape Town -</b> Blaauwberg Administration	Milnerton	Blaauwberg Municipality	Milnerton
Cape Town Administration	Cape Town	City of Cape Town	Cape Town
Helderberg Administration	Gordon's Bay, Somerset West and Strand	Helderberg Municipality	Gordon's Bay, Somerset West and Strand
Ikapa Administration	Guguletu, Langa, Khayelitsha and Nyanga	Ikapa	Guguletu, Langa, Khayelitsha and Nyanga
Oostenberg Administration -	Brackenfell Kraaifontein Kuils River Melton Rose - Blue Downs	Oostenberg Municipality -	Brackenfell Kraaifontein Kuils River Melton Rose - Blue Downs
South Peninsula Administration -	Fish Hoek Simon's Town Plumstead	Fish Hoek Simon's Town South Peninsula Municipality	Fish Hoek Simon's Town Plumstead
Tygerberg Administration - Bellville Administration Durbanville Administration Goodwood Administration Lingeletu West Administration Parow Administration South Administration	City of Tygerberg - Bellville Durbanville Goodwood Lingeletu West Parow Belhar, Delft, Driftsands and Efuleni	City of Tygerberg - Bellville Administration Durbanville Administration Goodwood Administration Lingeletu West Administration Parow Administration South Administration	Bellville Durbanville Goodwood Lingeletu West Parow Belhar, Delft, Driftsands and Efuleni
Drakenstein Municipality	Paarl Wellington Saron <sup>1/</sup>	Paarl Wellington	Paarl Wellington
George Municipality	George, Herolds Bay, Pacaltsdorp and Thembaletu  Wilderness <sup>1/</sup>	George	George, Herolds Bay, Pacaltsdorp and Thembaletu

<sup>1/</sup> Included in sample survey as from January 2001

**Table C - Classification of towns and cities according to new municipalities and previous local government institution by province (continued)**

<b>Western Cape (concluded)</b>			
<b>Sample survey as from January 2002</b>		<b>Sample survey up to December 2001</b>	
<b>Name of municipality</b>	<b>Cities and towns</b>	<b>Name of previously published local government institution</b>	<b>Cities and towns</b>
Knysna Municipality	Knysna and Khayaletu Sedgefield	Knysna Sedgefield	Knysna and Khayaletu Sedgefield
Mossel Bay Municipality	Mossel Bay, Boggom's Bay, Kleinbrak, Rheebok and Tergniet Friemersheim, Herbertsdale and Great Brak River <sup>1/</sup>	Mossel Bay	Mossel Bay, Boggom's Bay, Kleinbrak, Rheebok and Tergniet
Oudtshoorn Municipality	Oudtshoorn De Rust/Blomnek Dysselsdorp	Oudtshoorn	Oudtshoorn
Overberg District Council	Rural areas - Dissolved as from July 2001. Activities were taken over by various local government institutions.	Overberg District Council	Rural areas
Overstrand Municipality	Hermanus, Fisher Haven, Hawston, Onrus River, Sandbaai, Vermont and Zwelihle Hangklip - Kleinmond, Betty's Bay and Rooi-Els Gansbaai and Stanford <sup>1/</sup>	Hermanus  Hangklip - Kleinmond	Hermanus, Fisher Haven, Hawston, Onrus River, Sandbaai, Vermont and Zwelihle Hangklip - Kleinmond, Betty's Bay and Rooi-Els
Plettenberg Bay Municipality	Plettenberg Bay Knoetzie <sup>1/</sup>	Plettenberg Bay	Plettenberg Bay
Saldanha Bay Municipality	Vredenburg and Saldanha Hopefield and Langebaan <sup>1/</sup>	Western Coast Peninsula	Vredenburg and Saldanha
Stellenbosch Municipality	Stellenbosch Franschhoek and Pniel	Stellenbosch	Stellenbosch
Swartland Municipality	Malmesbury Darling, Koringberg, Moorreesburg and Yzerfontein <sup>1/</sup>	Malmesbury	Malmesbury
		West Coast District Council	Rural areas - Dissolved as from July 2001. Activities were taken over by various local government institutions.
		Winelands District Council	Rural areas - Dissolved as from July 2001. Activities were taken over by various local government institutions.

<sup>1/</sup> Included in sample survey as from January 2001

**Table C - Classification of towns and cities according to new municipalities and previous local government institution by province (continued)**

<b>Eastern Cape</b>			
<b>Sample survey as from January 2002</b>		<b>Sample survey up to December 2001</b>	
<b>Name of municipality</b>	<b>Cities and towns</b>	<b>Name of previously published local government institution</b>	<b>Cities and towns</b>
Buffalo City Municipality - East London Area	East London, Beacon Bay, Gompo Town, Gonubie and Mdantsane	East London	East London, Beacon Bay, Gompo Town, Gonubie and Mdantsane
King William's Town Area	King William's Town, Bisho and Zwelitsha	King William's Town	King William's Town, Bisho and Zwelitsha
King Sabata Dalindyebo Municipality - Umtata Area	Umtata	Umtata	Umtata
Kouga Municipality - Jeffreys Bay Area	Jeffreys Bay	Jeffreys Bay	Jeffreys Bay
Makana Municipality - Grahamstown Area	Grahamstown and Rhini Township	Grahamstown	Grahamstown and Rhini Township
Maletswai Municipality - Aliwal North Area	Aliwal North and Dukathole	Aliwal - Maletswai	Aliwal North and Dukathole
Ndlambe Municipality	Port Alfred Alexandria Bathurst Boesmansriviermond Kenton-on-Sea	Port Alfred	Port Alfred
Nelson Mandela Metropolitan Municipality - Despatch Area	Despatch	Despatch	Despatch
Port Elizabeth Area	Port Elizabeth, Ibhayi and Motherwell	Port Elizabeth	Port Elizabeth, Ibhayi and Motherwell
Uitenhage Area	Uitenhage and KwaNobuhle	Uitenhage	Uitenhage and KwaNobuhle
		Western District Council	Rural areas - Dissolved as from July 2001. Activities were taken over by various local government institutions.

**Table C - Classification of towns and cities according to new municipalities and previous local government institution by province (continued)**

<b>Northern Cape</b>			
<b>Sample survey as from January 2002</b>		<b>Sample survey up to December 2001</b>	
<b>Name of municipality</b>	<b>Cities and towns</b>	<b>Name of previously published local government institution</b>	<b>Cities and towns</b>
//Khara Hais Municipality	Upington, Mothibistad and Paballelo	Upington	Upington, Mothibistad and Paballelo
		Benede-Oranje District Council	Rural areas - Dissolved as from July 2001. Activities were taken over by various local government institutions.
Ga-Segonyana Municipality	Kuruman	Kuruman	Kuruman
Kai! Garib Municipality - Keimoes Area	Keimoes Eksteenskuil <sup>1/</sup> Kenhardt <sup>1/</sup>	Keimoes	Keimoes
		Namaqualand District Council	Rural areas - Dissolved as from July 2001. Activities were taken over by various local government institutions.
Solplaatjie Municipality	Kimberley and Galeshewe Ritchie <sup>1/</sup>	Kimberley	Kimberley and Galeshewe

<sup>1/</sup> Included in sample survey as from January 2001

**Table C - Classification of towns and cities according to new municipalities and previous local government institution by province (continued)**

<b>Free State</b>			
<b>Sample survey as from January 2002</b>		<b>Sample survey up to December 2001</b>	
<b>Name of municipality</b>	<b>Cities and towns</b>	<b>Name of previously published local government institution</b>	<b>Cities and towns</b>
Dihlabeng Municipality	Bethlehem and Bohlokong Clarens Mashae-Fourie Paul Roux	Bethlehem	Bethlehem and Bohlokong
Maluti a Phofung Municipality Harrismith Area Phuthaditjhaba Area	Harrismith and Tsiamé Phuthaditjhaba	Harrismith Phuthaditjhaba	Harrismith and Tsiamé Phuthaditjhaba
Mangaung Municipality - Bloemfontein Area  Botshabelo Area	Bloemfontein, Bainsvlei, Bloemspuit and Mangaung Botshabelo	Bloemfontein  Botshabelo	Bloemfontein, Bainsvlei, Bloemspuit and Mangaung Botshabelo
Mantsopa Municipality	Ladybrand and Manyatseng Excelsior Hobhouse Thaba Patchoa Tweespruit/Kopano	Ladybrand	Ladybrand and Manyatseng
Matjhabeng Municipality - Odendaalsrus Area  Virginia Area Welkom Area	Odendaalsrus, Allanridge and Kutlwanong Virginia and Meloding Welkom and Thabong	Odendaalsrus  Virginia Welkom	Odendaalsrus, Allanridge and Kutlwanong Virginia and Meloding Welkom and Thabong
Metsimaholo Municipality - Deneysville Area  Sasolburg Area	Deneysville and Refengkgotso  Sasolburg and Zamdela	Deneysville/Refengkgotso  Sasolburg/Zamdela	Deneysville and Refengkgotso Sasolburg and Zamdela
Moqhaka Municipality - Kroonstad Area	Kroonstad and Maokeng	Kroonstad	Kroonstad and Maokeng
Nqwathe Municipality	Parys Edenville Heibron Koppies Vredefort	Parys	Parys



**Table C - Classification of towns and cities according to new municipalities and previous local government institution by province (continued)**

<b>KwaZulu-Natal</b>			
<b>Sample survey as from January 2002</b>		<b>Sample survey up to December 2001</b>	
<b>Name of municipality</b>	<b>Cities and towns</b>	<b>Name of previously published local government institution</b>	<b>Cities and towns</b>
Emnambithi Municipality	Ladysmith Colenso	Ladysmith	Ladysmith
eThekweni Municipality - Inner West Operational Entity	Clermont, KwaDabeka, KwaNdengezi, New Germany, Pinetown, Queensburgh, Reservoir Hills, Shallcross and Westville	Inner West City Council	Clermont, KwaDabeka, KwaNdengezi, New Germany, Pinetown, Queensburgh, Reservoir Hills, Shallcross and Westville
Outer West Operational Entity	Assagay, Botha's Hill, Cato Ridge, Drummond, Everton, Gillitts, Hillcrest, Inchanga, Kloof, Mpumalanga and Waterfall	Outer West Local Council	Assagay, Botha's Hill, Cato Ridge, Drummond, Everton, Gillitts, Hillcrest, Inchanga, Kloof, Mpumalanga and Waterfall
KwaMashu	KwaMashu	KwaMashu	KwaMashu
Durban- North, South and Central	Durban	Durban	Durban
North Operational Entity - Tonga	Tonga, Canelands and Hambanati	North Local Council - Tonga	Tonga, Canelands and Hambanati
Umlazi	Umlazi	Umlazi	Umlazi
Verulam	Verulam	Verulam	Verulam
South Operational Entity	Amanzimtoti, Isipingo, Kingsburgh, KwaMakuta and Umbogintwini	South Local Council	Amanzimtoti, Isipingo, Kingsburgh, KwaMakuta and Umbogintwini
Umlazi	Umlazi	Umlazi	Umlazi
Greater Kokstad Municipality	Kokstad	Kokstad	Kokstad
Hibiscus Coast Municipality	Margate and Uvongo Marina Beach, San Lameer, Southbroom and Trafalgar Port Shepstone Hibberdene Munster, Port Edward and Palm Beach	Margate Mpenjati/Southbroom  Port Shepstone  Umtamvuna/Port Edward	Margate and Uvongo Marina Beach, San Lameer, Southbroom and Trafalgar Port Shepstone  Munster, Port Edward and Palm Beach

**Table C - Classification of towns and cities according to new municipalities and previous local government institution by province (continued)**

<b>KwaZulu-Natal (concluded)</b>			
<b>Sample survey as from January 2002</b>		<b>Sample survey up to December 2001</b>	
<b>Name of municipality</b>	<b>Cities and towns</b>	<b>Name of previously published local government institution</b>	<b>Cities and towns</b>
KwaDukuza Municipality - Dolphin Coast Administrative Entity	Ballito, Etete, Shakaskraal, Tinley Manor Beach and Umhlali Beach	Dolphin Coast Borough	Ballito, Etete, Shakaskraal, Tinley Manor Beach and Umhlali Beach
Stanger Administrative Entity	Blythedale Beach, Shakaville and Stanger Nkwazi/Stanger	KwaDukuza/Stanger	Blythedale Beach, Shakaville and Stanger
Msunduzi Municipality	Edendale Ashburton <sup>1/</sup> , Pietermaritzburg and Msundini	Edendale Pietermaritzburg/Msundini	Edendale Pietermaritzburg and Msundini
Newcastle Municipality	Blaauwboschlaagte, Madadeni, Osizweni and Newcastle	Newcastle	Blaauwboschlaagte, Madadeni, Osizweni and Newcastle
Umdoni Municipality	Pennington Scottburgh/Umzinto	Pennington	Pennington
Umdlathuze Municipality	Empangeni and Ngwelezana Richards Bay	Empangeni-Ngwelezana Richards Bay	Empangeni and Ngwelezana Richards Bay
Umnjeni Municipality	Hilton Howick	Hilton Howick	Hilton Howick
Uthungulu District Council <sup>1/</sup>	Kwambonati, Nkandla and Ntambanana Municipalities	Development and Services Board - North Coast	Kwambonati, Nkandla, Tugela Mouth, Umlalazi, Mahlabathini, Ukuza, Umbambo, Egwavuma and Hluhlumi

<sup>1/</sup> Included in sample survey as from January 2001

**Table C - Classification of towns and cities according to new municipalities and previous local government institution by province (continued)**

<b>North West</b>			
<b>Sample survey as from January 2002</b>		<b>Sample survey up to December 2001</b>	
<b>Name of municipality</b>	<b>Cities and towns</b>	<b>Name of previously published local government institution</b>	<b>Cities and towns</b>
		Bophirima District Council	Rural areas - Dissolved as from July 2001. Activities were taken over by various local government institutions.
Ditsobotla Local Municipality	Lichtenburg and Itsoseng Biesiesvlei <sup>1/</sup> Coligny <sup>1/</sup>	Lichtenburg	Lichtenburg and Itsoseng
Klerksdorp Local Municipality	Klerksdorp Orkney and Kanana Hartbeesfontein <sup>1/</sup> Stillfontein <sup>1/</sup>	Klerksdorp Orkney	Klerksdorp Orkney and Kanana
GaRankuwa	As from January 2002 included in City of Tshwane - Northern Metropolitan Substructure (Gauteng)	GaRankuwa	GaRankuwa
Madibeng Local Municipality	Brits and Lethabile Hartbeespoort	Brits	Brits and Lethabile
Mafikeng Local Municipality	Mmabatho and Mafikeng	Mmabatho	Mmabatho and Mafikeng
Naledi Municipality	Vryburg	Vryburg	Vryburg
Potchefstroom Municipality	Potchefstroom	Potchefstroom	Potchefstroom
Rustenburg Local Municipality - Rustenburg Area	Rustenburg	Rustenburg	Rustenburg
Zeerust Local Municipality	Zeerust	Zeerust	Zeerust

<sup>1/</sup> Included in sample survey as from January 2001

**Table C - Classification of towns and cities according to new municipalities and previous local government institution by province (continued)**

<b>Gauteng</b>			
<b>Sample survey as from January 2002</b>		<b>Sample survey up to December 2001</b>	
<b>Name of municipality</b>	<b>Cities and towns</b>	<b>Name of previously published local government institution</b>	<b>Cities and towns</b>
<b>City of Johannesburg Metropolitan Municipality</b>	Alexandra and Sandton  Midrand, Rabie Ridge and Ivory Park Randburg  Ennerdale, Lenasia and Johannesburg Diepmeadow, Dobsonville and Roodepoort Soweto	<b>Greater Johannesburg -</b> Eastern Metropolitan Local Council Midrand Metropolitan Local Council Northern Metropolitan Local Council Southern Metropolitan Local Council Western Metropolitan Local Council Soweto	Alexandra and Sandton  Midrand, Rabie Ridge and Ivory Park Randburg  Ennerdale, Lenasia and Johannesburg Diepmeadow, Dobsonville and Roodepoort Soweto
<b>City of Tshwane Metropolitan Municipality -</b> Centurion Town Council City Council of Pretoria  Northern Pretoria Metropolitan Substructure	Centurion Pretoria, Atteridgeville and Mamelodi Akasia, Elandsdoorn, Klipfontein, Kruisfontein and Soshanguve Hammanskraal GaRankuwa <sup>2/</sup> Temba Winterveld <sup>2/</sup>	Centurion Pretoria  Akasia	Centurion Pretoria, Atteridgeville and Mamelodi Akasia, Elandsdoorn, Klipfontein, Kruisfontein and Soshanguve
		Eastern Services Council - Pretoria Area	Rural areas - Dissolved as from July 2001. Activities were taken over by various local government institutions.
<b>Ekurheleni Metropolitan Municipality -</b> Service Delivery Centre of: Edenvale - Modderfontein Alberton Benoni  Boksburg Brakpan Duduza Germiston  Kempton Park Nigel Springs	Edenvale - Modderfontein Alberton and Tokoza Benoni, Daveyton and Wattville Boksburg and Vosloorus Brakpan and Tsakane Duduza Germiston, Bedfordview and Katlehong Kempton Park and Tembisa Nigel Springs and KwaThema	Edenvale - Modderfontein Alberton Benoni  Boksburg Brakpan Duduza Germiston  Kempton Park Nigel Springs	Edenvale - Modderfontein Alberton and Tokoza Benoni, Daveyton and Wattville Boksburg and Vosloorus Brakpan and Tsakane Duduza Germiston, Bedfordview and Katlehong Kempton Park and Tembisa Nigel Springs and KwaThema

<sup>2/</sup> Was previously included under North West

**Table C - Classification of towns and cities according to new municipalities and previous local government institution by province (continued)**

<b>Gauteng (concluded)</b>			
<b>Sample survey as from January 2002</b>		<b>Sample survey up to December 2001</b>	
<b>Name of municipality</b>	<b>Cities and towns</b>	<b>Name of previously published local government institution</b>	<b>Cities and towns</b>
Emfuleni Local Municipality	Vanderbijlpark Vereeniging and Evaton Sebokeng (Boipatong, Bophelong and Sharpville)	Vanderbijlpark Vereeniging Sebokeng	Vanderbijlpark Vereeniging and Evaton Sebokeng (Boipatong, Bophelong and Sharpville)
Kungwini Local Municipality – Bronkhorstspuit Area	Bronkhorstspuit	Bronkhorstspuit	Bronkhorstspuit
Lesedi Local Municipality	Heidelberg and Ratanda	Heidelberg	Heidelberg and Ratanda
Merafong City Local Municipality	Carletonville, Wedela, Khutsong and Welverdiend	Carletonville	Carletonville, Wedela, Khutsong and Welverdiend
Midvaal Local Municipality	Meyerton	Meyerton	Meyerton
Mogale City Municipality	Krugersdorp, Kagiso and Munsieville	Krugersdorp	Krugersdorp, Kagiso and Munsieville
Randfontein Local Municipality	Randfontein and Mohlakeng	Randfontein	Randfontein and Mohlakeng
Westonaria Local Municipality	Westonaria and Bekkersdal	Westonaria	Westonaria and Bekkersdal

**Table C - Classification of towns and cities according to new municipalities and previous local government institution by province (continued)**

<b>Mpumalanga</b>			
<b>Sample survey as from January 2002</b>		<b>Sample survey up to December 2001</b>	
<b>Name of municipality</b>	<b>Cities and towns</b>	<b>Name of previously published local government institution</b>	<b>Cities and towns</b>
Delmas Municipality	Delmas and Botleng	Delmas	Delmas and Botleng
Emalahleni Local Municipal Council- KwaGuqa Area Witbank Area	KwaGuqa Witbank	KwaGuqa Witbank	KwaGuqa Witbank
Govan Mbeki Municipality - Secunda Area	Evander, Embalenhle and Secunda	Highveldridge Transitional Council	Evander, Embalenhle and Secunda
Mbombela Local Municipality	Nelspruit and Kanyamazane White River Hazyview <sup>1/</sup>	Nelspruit White River	Nelspruit White River
Middelburg Municipality	Middelburg and Mhluzi Hendrina <sup>1/</sup>	Middelburg	Middelburg and Mhluzi
Msukaligwa Municipality	Ermelo, Cassim Park and Wesselton	Ermelo	Ermelo, Cassim Park and Wesselton
Nkomazi Municipality - Komatipoort Area  Malelane Area	Komatipoort and Kamaqhekeza Malelane, Hectorspruit and Kamhlushwa	Komatipoort  Malelane	Komatipoort and Kamaqhekeza Malelane, Hectorspruit and Kamhlushwa

<sup>1/</sup> Included in sample survey as from January 2001

**Table C - Classification of towns and cities according to new municipalities and previous local government institution by province (concluded)**

<b>Limpopo</b>			
<b>Sample survey as from January 2002</b>		<b>Sample survey up to December 2001</b>	
<b>Name of municipality</b>	<b>Cities and towns</b>	<b>Name of previously published local government institution</b>	<b>Cities and towns</b>
		Bosveld District Council	Rural areas - Dissolved as from July 2001. Activities were taken over by various local government institutions.
Greater Tzaneen Municipality	Tzaneen and Nkowakowa	Letaba	Tzaneen and Nkowakowa
Musina Municipality	Musina (previously Messina)	Messina	Messina
Modimolle Municipality	Modimolle (previously Nylstroom)	Nylstroom	Nylstroom
Mogolakwena Municipality	Mokopane (previously Potgietersrus)	Potgietersrus	Potgietersrus
Mookgopong Municipality	Naboomspruit and Mookgopong	Naboomspruit	Naboomspruit and Mookgopong
Polokwane Municipality	Polokwane (previously Pietersburg) and Seshego	Pietersburg - Polokwane	Pietersburg and Seshego
Thabazimbi Municipality	Thabazimbi	Thabazimbi	Thabazimbi

**Table D - Classification of selected urban areas according to new municipalities and previous local government institution**

Sample survey as from January 2002		Sample survey up to December 2001	
Name of selected urban area and municipality	Cities and towns	Name of selected urban area and previously published local government institution	Cities and towns
<b>Cape Town</b>		<b>Cape Town</b>	
City of Cape Town - Blaauwberg Administration	Milnerton	Blaauwberg Municipality	Milnerton
Cape Town Administration	Cape Town	City of Cape Town	Cape Town
Ikapa Administration	Guguletu, Langa, Khayelitsha and Nyanga	Ikapa	Guguletu, Langa, Khayelitsha and Nyanga
Oostenberg Administration -	Kraaifontein Melton Rose - Blue Downs	Oostenberg Municipality -	Kraaifontein Melton Rose - Blue Downs
South Peninsula Administration -	Fish Hoek Simon's Town Plumstead	Fish Hoek Simon's Town South Peninsula Municipality	Fish Hoek Simon's Town Plumstead
Tygerberg Administration - Bellville Administration Durbanville Administration Goodwood Administration Lingeletu West Administration	City of Tygerberg - Bellville Durbanville Goodwood Lingeletu West	City of Tygerberg - Bellville Administration Durbanville Administration Goodwood Administration Lingeletu West Administration	Bellville Durbanville Goodwood Lingeletu West
Parow Administration South Administration	Parow Belhar, Delft, Driftsands and Efuleni	Parow Administration South Administration	Parow Belhar, Delft, Driftsands and Efuleni
<b>Port Elizabeth</b>		<b>Port Elizabeth</b>	
Nelson Mandela Metropolitan Municipality - Despatch Area	Despatch	Despatch	Despatch
Port Elizabeth Area	Port Elizabeth, Ibhayi and Motherwell	Port Elizabeth	Port Elizabeth, Ibhayi and Motherwell
Uitenhage Area	Uitenhage and KwaNobuhle	Uitenhage	Uitenhage and KwaNobuhle



**Table D - Classification of selected urban areas according to new municipalities and previous local government institution (continued)**

Sample survey as from January 2002		Sample survey up to December 2001	
Name of selected urban area and municipality	Cities and towns	Name of selected urban area and previously published local government institution	Cities and towns
<b>Durban</b> <b>eThekweni Municipality -</b> Inner West Operational Entity	Clermont, KwaDabeka, KwaNdengezi, New Germany, Pinetown, Queensburgh, Reservoir Hills, Shallcross and Westville	<b>Durban</b> Inner West City Council	Clermont, KwaDabeka, KwaNdengezi, New Germany, Pinetown, Queensburgh, Reservoir Hills, Shallcross and Westville
Outer West Operational Entity	Assagay, Botha's Hill, Cato Ridge, Drummond, Everton, Gillitts, Hillcrest, Inchanga, Kloof, Mpumalanga and Waterfall	Outer West Local Council	Assagay, Botha's Hill, Cato Ridge, Drummond, Everton, Gillitts, Hillcrest, Inchanga, Kloof, Mpumalanga and Waterfall
Durban- North, South and Central	Durban	Durban	Durban
North Operational Entity - Verulam	Verulam	North Local Council - Verulam	Verulam
South Operational Entity	Amanzimtoti, Isipingo, Kingsburgh, KwaMakuta and Umbogintwini	South Local Council	Amanzimtoti, Isipingo, Kingsburgh, KwaMakuta and Umbogintwini
<b>Pretoria</b> City of Tshwane Metropolitan Municipality - Centurion Town Council City Council of Pretoria	Centurion Pretoria, Atteridgeville and Mamelodi	<b>Pretoria</b> Centurion Pretoria	Centurion Pretoria, Atteridgeville and Mamelodi
Northern Pretoria Metropolitan Substructure	Akasia, Elandsdoorn, Klipfontein, Kruisfontein and Soshanguve Hammanskraal GaRankuwa Temba Winterveld	Akasia	Akasia, Elandsdoorn, Klipfontein, Kruisfontein and Soshanguve

**Table D - Classification of selected urban areas according to new municipalities and previous local government institution (concluded)**

Sample survey as from January 2002		Sample survey up to December 2001	
Name of selected urban area and municipality	Cities and towns	Name of selected urban area and previously published local government institution	Cities and towns
<b>Witwatersrand</b> City of Johannesburg Metropolitan Municipality	Alexandra and Sandton  Midrand, Rabie Ridge and Ivory Park Randburg  Ennerdale, Lenasia and Johannesburg Diepmeadow, Dobsonville and Roodepoort Soweto	<b>Witwatersrand</b> Greater Johannesburg - Eastern Metropolitan Local Council Midrand Metropolitan Local Council Northern Metropolitan Local Council Southern Metropolitan Local Council Western Metropolitan Local Council Soweto	Alexandra and Sandton  Midrand, Rabie Ridge and Ivory Park Randburg  Ennerdale, Lenasia and Johannesburg Diepmeadow, Dobsonville and Roodepoort Soweto
Ekurheleni Metropolitan Municipality - Service Delivery Centre of: Edenvale - Modderfontein Alberton Benoni  Boksburg Brakpan Duduza Germiston  Kempton Park Nigel Springs	Edenvale - Modderfontein Alberton and Tokoza Benoni, Daveyton and Wattville Boksburg and Vosloorus Brakpan and Tsakane Duduza Germiston, Bedfordview and Katlehong Kempton Park and Tembisa Nigel Springs and KwaThema	Edenvale - Modderfontein Alberton Benoni  Boksburg Brakpan Duduza Germiston  Kempton Park Nigel Springs	Edenvale - Modderfontein Alberton and Tokoza Benoni, Daveyton and Wattville Boksburg and Vosloorus Brakpan and Tsakane Duduza Germiston, Bedfordview and Katlehong Kempton Park and Tembisa Nigel Springs and KwaThema
Mogale City Municipality	Krugersdorp, Kagiso and Munsieville	Krugersdorp	Krugersdorp, Kagiso and Munsieville
Randfontein Local Municipality	Randfontein and Mohlakeng	Randfontein	Randfontein and Mohlakeng
Westonaria Local Municipality	Westonaria and Bekkersdal	Westonaria	Westonaria and Bekkersdal
Merafong City Local Municipality	Carletonville, Wedela, Khutsong and Welverdiend	Carletonville	Carletonville, Wedela, Khutsong and Welverdiend
<b>Bloemfontein</b> Mangaung Municipality - Bloemfontein Area  Botshabelo Area	  Bloemfontein, Bainsvlei, Bloemspruit and Mangaung Botshabelo	<b>Bloemfontein</b>  Bloemfontein  Botshabelo	  Bloemfontein, Bainsvlei, Bloemspruit and Mangaung Botshabelo

# Glossary

<b>Additions and alterations</b>	Additions and alterations include extensions to existing buildings as well as internal and external alterations of existing buildings.
<b>Blocks of flats</b>	Blocks of flats are regarded as high-density housing consisting of a number of self-contained dwelling-units with at least one living-room together with a kitchen and bathroom conjoined to similar units in one building.
<b>Dwelling-house</b>	A dwelling-house refers to a free-standing, complete structure on a separate stand or a self-contained dwelling-unit, granny flat, on the same premises as an existing residence. Out-buildings and garages are included.
<b>Local government</b>	A local government is a distinct and constitutionally defined sphere of government, pertaining to government that is not national or provincial in nature and is manifested in the form of municipalities. It is a generic term referring to municipalities and local authorities of varied nature and type involved in activities of a governmental nature in the local sphere.
<b>Local government institutions</b>	<p>Up to December 2001 local government institutions included:</p> <ul style="list-style-type: none"> <li>• City councils;</li> <li>• district councils;</li> <li>• development and services boards;</li> <li>• metropolitan councils;</li> <li>• municipalities; and</li> <li>• transitional local councils.</li> </ul> <p>As from January 2002 local government institutions includes:</p> <ul style="list-style-type: none"> <li>• District and metropolitan municipalities; and</li> <li>• local municipalities.</li> </ul>
<b>Metropolitan and district municipalities</b>	Metropolitan and district municipalities means municipalities that has the exclusive executive and legislative authority in its area, and which is described in section 155(1) of the Constitution as category A (metropolitan municipality) and category C (district municipality) (Refer to local government: Municipal Structure Act, Act No. 117.1998).
<b>Non-residential buildings</b>	Non-residential buildings comprise factories, commercial, financial and other office buildings, as well as other buildings not used for residential purposes, such as churches, halls, clubs, schools and hospitals.
<b>Other residential buildings</b>	Other residential buildings include institutions for the disabled, boarding houses, old people's homes, hostels, hotels, motels, guest houses, holiday chalets, bed-and-breakfast accommodation, entertainment centres and casinos.
<b>Percentage change</b>	<p>When using monthly actual values, the percentage change is the change in actual values of building activities (building plans passed or buildings completed) of the relevant month compared with the actual values of building activities (building plans passed or buildings completed) of the same month in the previous year expressed as a percentage.</p> <p>When using annual actual values, the percentage change is the change in the actual values of building activities (building plans passed or buildings completed) of the relevant year compared with the actual values of building activities (building plans passed or buildings completed) of the previous year expressed as a percentage.</p> <p>When using seasonally adjusted values, the percentage change is the change in the seasonally adjusted values of building activities (building plans passed or buildings completed) of the relevant month compared with the seasonally adjusted values of building activities (building plans passed or buildings completed) of the previous month expressed as a percentage.</p>

<b>Reference period</b>	Reference period is one calendar month.
<b>Residential buildings</b>	Residential buildings comprise dwelling-houses, flats, townhouses and other residential buildings.
<b>Townhouses</b>	Townhouses are multiple, medium-density dwelling-units and include cluster housing, group housing, simplexes, duplexes, triplexes and other similar dwelling-units which are usually grouped together, with one level of each unit on ground level. This excludes blocks of flats.

## For more information

Stats SA publishes approximately 300 different statistical releases each year. It is not economically viable to produce them in more than one of South Africa's eleven official languages. Since the releases are used extensively, not only locally but also by international economic and social-scientific communities, Stats SA releases are published in English only.

Stats SA has copyright on this publication. Users may apply the information as they wish, provided that they acknowledge Stats SA as the source of the basic data wherever they process, apply, utilise, publish or distribute the data and also that they specify that the relevant application and analysis (where applicable) result from their own processing of the data.

### Stats SA products

A complete set of Stats SA publications is available at the Stats SA Library and the following libraries:

National Library of South Africa, Pretoria Division  
 National Library of South Africa, Cape Town Division  
 Natal Society Library, Pietermaritzburg  
 Library of Parliament, Cape Town  
 Bloemfontein Public Library  
 Johannesburg Public Library  
 Eastern Cape Library Services, King William's Town  
 Central Regional Library, Polokwane  
 Central Reference Library, Nelspruit  
 Central Reference Collection, Kimberley  
 Central Reference Library, Mmabatho

Stats SA also provides a subscription service.

### Electronic services

A large range of data are available via on-line services, diskette, CD and computer printouts. For more details about our electronic data services, contact (012) 310 8600/8390/8351/4892/8496/8095.

You can visit us on the Internet at: <http://www.statssa.gov.za>

### Enquiries

Telephone number: (012) 310 8600/8390/8351/4892/8496/8095 (user enquiries)  
 (012) 310 8228/310 8007 (technical enquiries)  
 (012) 310 8161 (publications)  
 (012) 310 8490 (library)

Fax number: (012) 310 8182

e-mail: Corrieb@statssa.gov.za  
 Gretaz@statssa.gov.za

Postal address: Private Bag X44, Pretoria, 0001