

# Building statistics

November 2001

Co-operation between Statistics South Africa (Stats SA), the citizens of the country, the private sector and government institutions is essential for a successful statistical system. Without continued co-operation and goodwill, the timely release of relevant and reliable official statistics will not be possible.

**Embargo: 13:00**  
**Date: 16 January 2002**

Stats SA publishes approximately three hundred different releases each year. It is not economically viable to produce them in more than one of South Africa's eleven official languages. Since the releases are used extensively, not only locally, but also by international economic and social-scientific communities, Stats SA releases are published in English only.

### Key figures regarding building plans passed for the month ended November 2001

#### Actual estimates at constant 1995 prices

	November 2001 R million	January 2001 to November 2001 R million	Percentage change between November 2000 and November 2001	Percentage change between September 2000 to November 2000 and September 2001 to November 2001	Percentage change between January 2000 to November 2000 and January 2001 to November 2001
Residential buildings					
Dwelling-houses	462,4	5 254,4	- 11,8	- 6,3	+ 1,6
Flats and townhouses	198,0	1 366,1	+ 58,3	+ 44,2	+ 8,3
Other residential buildings	9,3	200,1	- 35,7	+ 60,0	+ 11,3
<b>Total</b>	<b>669,7</b>	<b>6 820,6</b>	<b>+ 0,9</b>	<b>+ 3,9</b>	<b>+ 3,2</b>
Non-residential buildings	218,9	2 358,3	- 38,9	- 41,2	- 28,2
Additions and alterations	407,8	3 602,4	+ 11,5	+ 3,9	- 7,5
<b>Total</b>	<b>1 296,4</b>	<b>12 781,3</b>	<b>- 6,6</b>	<b>- 7,1</b>	<b>- 7,3</b>

#### Seasonally adjusted estimates at constant 1995 prices

	November 2001 R million	Percentage change between October 2001 and November 2001	Percentage change between June 2001 to August 2001 and September 2001 to November 2001
Residential buildings	620,4	+ 3,1	+ 9,0
Non-residential buildings	176,3	+ 25,3	- 12,9
Additions and alterations	340,9	+ 3,5	+ 12,0
<b>Total</b>	<b>1 137,6</b>	<b>+ 6,1</b>	<b>+ 5,7</b>

### Key findings regarding building plans passed for the three months ended November 2001

#### Seasonally adjusted real value of building plans passed increases

*The seasonally adjusted real value of building plans passed (at constant 1995 prices) for the three months ended November 2001 increased by 5,7% compared with the previous three months.*

The increase of 5,7% in the seasonally adjusted real value of building plans passed was due to increases in the seasonally adjusted real value of building plans passed for additions and alterations (+12,0%) and residential buildings (+9,0%) during the three months ended November 2001 compared with the previous three months. However, these increases were partially counteracted by a decrease in the seasonally adjusted real value of non-residential building plans passed (-12,9%) during the above-mentioned period.

## Key findings regarding building plans passed for the first eleven months of 2001

### Total real value of building plans passed decreases

*The total real value of building plans passed (at constant 1995 prices) during the first eleven months of 2001 decreased by 7,3% (-R1 005,8 million) to R12 781,3 million compared with the first eleven months of 2000. Large decreases in the real value of building plans passed were reported for non-residential buildings (-28,2% or R924,8 million, mainly due to decreases reported for office and banking space (-R379,5 million), industrial and warehouse space (-R371,6 million) and shopping space (-R113,1 million)) and additions and alterations (-7,5% or R290,1 million) during the above-mentioned period. However, the real value of residential building plans passed increased by 3,2% or R209,1 million, mainly due to large increases in the real value of building plans passed for flats and townhouses (+R104,3 million) and dwelling-houses (+R84,5 million) during this period.*

### Seven of the nine provinces reported decreases in the total real value of building plans passed

The largest provincial contributor to the decrease of 7,3% (-R1 005,8 million) in the total real value of building plans passed during the first eleven months of 2001 compared with the first eleven months of 2000 was Gauteng (-4,8 percentage points or R666,1 million), followed by Free State (-0,9 of a percentage point or R121,9 million) and Western Cape (-0,8 of a percentage point or R107,0 million) (cf. table A). Large real decreases in Gauteng were reported for non-residential buildings (-R641,2 million), mainly due to decreases reported by the selected urban areas of Witwatersrand (-R739,9 million).

**Table A - Contribution of provinces to the total real value of building plans passed**

Province	Percentage contribution to the total real value of plans passed during January 2000 to November 2000	Percentage change between January 2000 to November 2000 and January 2001 to November 2001	Contribution (percentage points) <sup>1/</sup> to the percentage change in the real value of plans passed between January 2000 to November 2000 and January 2001 to November 2001	Difference in total real value of plans passed between January 2000 to November 2000 and January 2001 to November 2001  R million
Gauteng	43,9	- 11,0	- 4,8	- 666,1
Free State	3,2	- 27,9	- 0,9	- 121,9
Western Cape	27,5	- 2,8	- 0,8	- 107,0
Eastern Cape	5,7	- 7,0	- 0,4	- 55,8
Northern Cape	1,0	- 28,6	- 0,3	- 37,5
Northern Province	1,7	- 14,7	- 0,2	- 33,9
KwaZulu-Natal	11,6	- 1,2	- 0,1	- 19,4
Mpumalanga	3,1	+ 0,0	+ 0,0	+ 0,1
North West	2,3	+ 11,0	+ 0,2	+ 35,7
<b>Total</b>	<b>100,0</b>	<b>- 7,3</b>	<b>- 7,3</b>	<b>- 1 005,8</b>

1/ The contribution (percentage points) is calculated by multiplying the percentage change of each province between January 2000 to November 2000 and January 2001 to November 2001 (cf. column 3) with the percentage contribution of the corresponding province to the total real value of plans passed during January 2000 to November 2000 (cf. column 2) divided by 100.

### Key figures regarding buildings completed for the month ended November 2001

<b>Actual estimates at constant 1995 prices</b>	<b>November 2001</b>	<b>January 2001 to November 2001</b>	<b>Percentage change between November 2000 and November 2001</b>	<b>Percentage change between September 2000 to November 2000 and September 2001 to November 2001</b>	<b>Percentage change between January 2000 to November 2000 and January 2001 to November 2001</b>
	<b>R million</b>	<b>R million</b>			
Residential buildings					
Dwelling-houses	297,1	2 887,6	- 9,5	- 3,2	+ 4,5
Flats and townhouses	137,6	815,5	+ 61,0	+ 33,4	+ 6,9
Other residential buildings	3,8	333,5	- 38,8	+ 78,2	+ 313,5
<b>Total</b>	<b>438,5</b>	<b>4 036,6</b>	<b>+ 4,4</b>	<b>+ 6,3</b>	<b>+ 11,9</b>
Non-residential buildings	148,9	2 840,3	+ 1,1	+ 179,0	+ 25,2
Additions and alterations	207,6	1 963,0	+ 4,2	- 6,9	+ 1,5
<b>Total</b>	<b>795,0</b>	<b>8 839,9</b>	<b>+ 3,7</b>	<b>+ 43,3</b>	<b>+ 13,2</b>

<b>Seasonally adjusted estimates at constant 1995 prices</b>	<b>November 2001</b>	<b>Percentage change between October 2001 and November 2001</b>	<b>Percentage change between June 2001 to August 2001 and September 2001 to November 2001</b>
	<b>R million</b>		
Residential buildings	358,8	- 20,4	+ 12,5
Non-residential buildings	163,1	- 28,5	+ 188,4
Additions and alterations	196,4	+ 19,7	- 4,3
<b>Total</b>	<b>718,3</b>	<b>- 14,8</b>	<b>+ 48,9</b>

### Key findings regarding buildings completed for the three months ended November 2001

#### Seasonally adjusted real value of buildings completed increases

*The seasonally adjusted real value of buildings completed (at constant 1995 prices) for the three months ended November 2001 increased by 48,9% compared with the previous three months.*

The increase of 48,9% in the seasonally adjusted real value of buildings completed was due to increases in the seasonally adjusted real value of non-residential buildings (+188,4%, mainly due to the completion of a large shopping centre as reported by North Local Council – Umhlanga Rocks during September 2001) and residential buildings (+12,5%) during the three months ended November 2001 compared with the previous three months. However, these increases were partially counteracted by a decrease in the seasonally adjusted real value of additions and alterations completed (-4,3%) during the above-mentioned period.

## Key findings regarding buildings completed for the first eleven months of 2001

### Total real value of buildings completed increases

*The total real value of buildings completed (at constant 1995 prices) during the first eleven months of 2001 increased by 13,2% (+R1 029,0 million) to R8 839,9 million compared with the first eleven months of 2000. Large increases in the real value of buildings completed were reported for non-residential buildings (+R571,2 million, due to real increases reported for shopping space completed (+R568,2 million)) and residential buildings (+R429,0 million, due to real increases reported for 'other' residential buildings (+R252,9 million) and dwelling-houses (+R123,4 million)).*

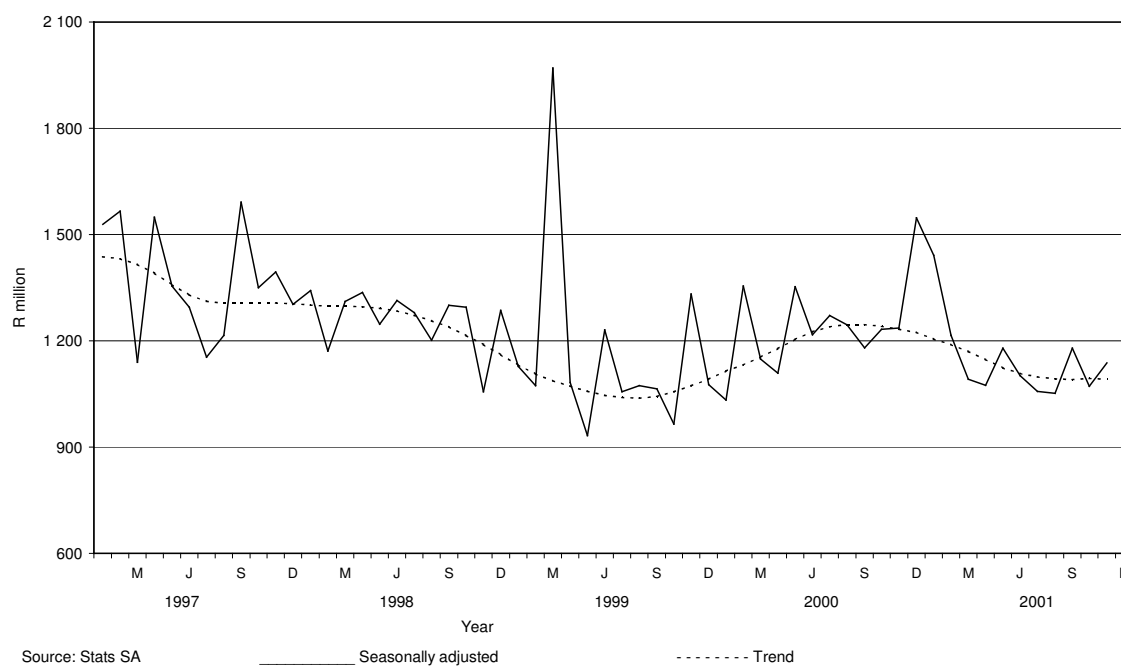
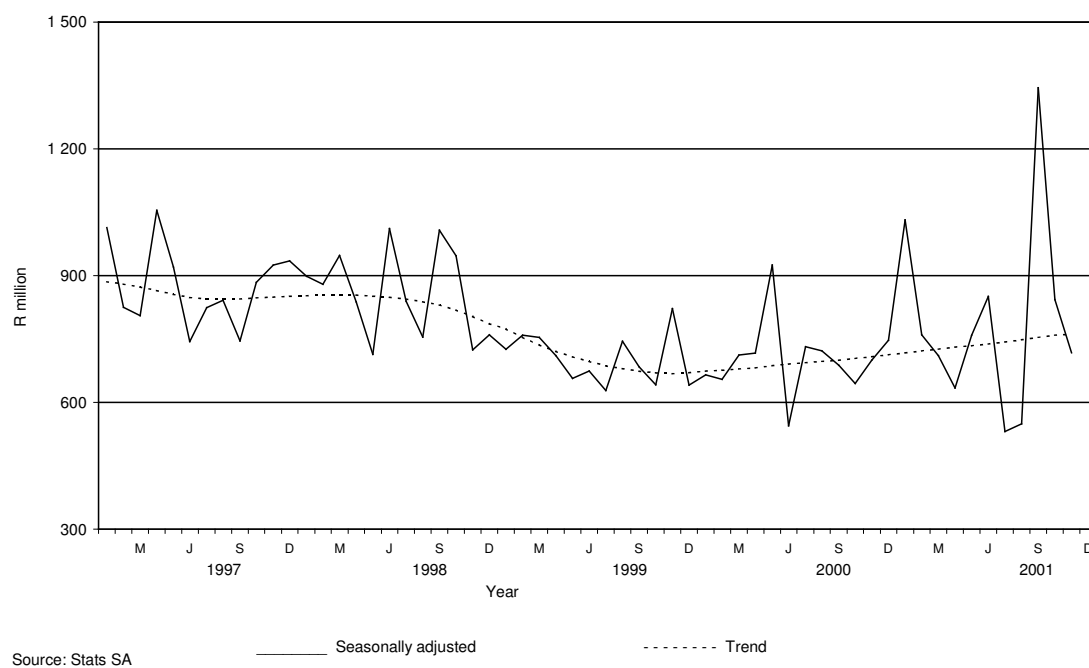
### Five of the nine provinces reported increases in the total real value of buildings completed

The largest provincial contributor to the increase of 13,2% (+R1 029,0 million) in the total real value of buildings completed during the first eleven months of 2001 compared with the first eleven months of 2000 was KwaZulu-Natal (+11,1 percentage points or R864,4 million, mainly due to the completion of a large shopping centre, to the real value of R795,0 million, as reported by North Local Council - Umhlanga Rocks during September 2001), followed by Eastern Cape (+2,2 percentage points or R169,8 million) and Western Cape (+1,3 percentage points or R102,5 million). However, these increases were partially counteracted by a large decrease reported by Gauteng (-1,4 percentage points or R112,1 million) during the above-mentioned period (cf. table B).

**Table B - Contribution of provinces to the total real value of buildings completed**

Province	Percentage contribution to the total real value of buildings completed during January 2000 to November 2000	Percentage change between January 2000 to November 2000 and January 2001 to November 2001	Contribution (percentage points) <sup>1/</sup> to the percentage change in the real value of buildings completed between January 2000 to November 2000 and January 2001 to November 2001	Difference in total real value of buildings completed between January 2000 to November 2000 and January 2001 to November 2001  R million
KwaZulu-Natal	16,6	+ 66,9	+ 11,1	+ 864,4
Eastern Cape	5,5	+ 39,7	+ 2,2	+ 169,8
Western Cape	28,0	+ 4,7	+ 1,3	+ 102,5
Free State	3,0	+ 21,6	+ 0,6	+ 51,8
North West	2,8	+ 9,3	+ 0,3	+ 20,6
Northern Cape	1,1	- 1,1	- 0,0	- 1,0
Mpumalanga	2,4	- 6,2	- 0,2	- 11,5
Northern Province	1,6	- 44,3	- 0,7	- 55,5
Gauteng	39,0	- 3,7	- 1,4	- 112,1
<b>Total</b>	<b>100,0</b>	<b>+ 13,2</b>	<b>+ 13,2</b>	<b>+ 1 029,0</b>

1/ The contribution (percentage points) is calculated by multiplying the percentage change of each province between January 2000 to November 2000 and January 2001 to November 2001 (cf. column 3) with the percentage contribution of the corresponding province to the total real value of buildings completed during January 2000 to November 2000 (cf. column 2) divided by 100.

**Figure 1 – Total real value of building plans passed****Figure 2 – Total real value of buildings completed**

# Contents

## Page

<b>Notes</b>	.....	7
<b>Tables</b>		
Table 1	Actual values and percentage change of building plans passed at current prices according to type of building .....	11
Table 2	Seasonally adjusted values and percentage change of building plans passed at current prices according to type of building .....	12
Table 3	Actual values and percentage change of building plans passed at constant 1995 prices according to type of building .....	13
Table 4	Seasonally adjusted values and percentage change of building plans passed at constant 1995 prices according to type of building .....	14
Table 5	Actual values and percentage change of buildings completed at current prices according to type of building .....	15
Table 6	Seasonally adjusted values and percentage change of buildings completed at current prices according to type of building .....	16
Table 7	Actual values and percentage change of buildings completed at constant 1995 prices according to type of building .....	17
Table 8	Seasonally adjusted values and percentage change of buildings completed at constant 1995 prices according to type of building .....	18
Table 9	Building plans passed according to type of building: Total RSA .....	19
Table 10	Building plans passed according to type of building and province: Western Cape .....	20
Table 11	Building plans passed according to type of building and province: Eastern Cape .....	21
Table 12	Building plans passed according to type of building and province: Northern Cape .....	22
Table 13	Building plans passed according to type of building and province: Free State .....	23
Table 14	Building plans passed according to type of building and province: KwaZulu-Natal .....	24
Table 15	Building plans passed according to type of building and province: North West .....	25
Table 16	Building plans passed according to type of building and province: Gauteng .....	26
Table 17	Building plans passed according to type of building and province: Mpumalanga .....	27
Table 18	Building plans passed according to type of building and province: Northern Province .....	28
Table 19	Buildings completed according to type of building: Total RSA .....	29
Table 20	Buildings completed according to type of building and province: Western Cape .....	30
Table 21	Buildings completed according to type of building and province: Eastern Cape .....	31
Table 22	Buildings completed according to type of building and province: Northern Cape.....	32
Table 23	Buildings completed according to type of building and province: Free State .....	33
Table 24	Buildings completed according to type of building and province: KwaZulu-Natal .....	34
Table 25	Buildings completed according to type of building and province: North West .....	35
Table 26	Buildings completed according to type of building and province: Gauteng .....	36
Table 27	Buildings completed according to type of building and province: Mpumalanga .....	37
Table 28	Buildings completed according to type of building and province: Northern Province .....	38
Table 29	Building plans passed according to type of building and selected urban area: Cape Town .....	39
Table 30	Building plans passed according to type of building and selected urban area: Port Elizabeth .....	40
Table 31	Building plans passed according to type of building and selected urban area: Durban .....	41
Table 32	Building plans passed according to type of building and selected urban area: Witwatersrand .....	42
Table 33	Building plans passed according to type of building and selected urban area: Pretoria .....	43
Table 34	Building plans passed according to type of building and selected urban area: Bloemfontein .....	44
Table 35	Buildings completed according to type of building and selected urban area: Cape Town .....	45
Table 36	Buildings completed according to type of building and selected urban area: Port Elizabeth .....	46
Table 37	Buildings completed according to type of building and selected urban area: Durban .....	47
Table 38	Buildings completed according to type of building and selected urban area: Witwatersrand .....	48
Table 39	Buildings completed according to type of building and selected urban area: Pretoria .....	49
Table 40	Buildings completed according to type of building and selected urban area: Bloemfontein .....	50
<b>Additional information</b>		
	Explanatory notes .....	51
	Technical notes .....	53
	Local government institutions covered in the sample survey .....	54
	Glossary .....	57
<b>For more information</b>	.....	58

## Notes

<b>Forthcoming issues</b>	<b>Issue</b>	<b>Expected release date</b>
	December 2001	20 February 2002
	January 2002	20 March 2002
	February 2002	17 April 2002
<b>Purpose of the survey</b>	<p>The Building Statistics Survey is a countrywide survey covering a sample of local government institutions in South Africa. The information received is used to estimate key economic statistics used by the private and public sectors. The information is also used to compile estimates of the Gross Domestic Product (GDP). These statistics are also used by government to monitor the Reconstruction and Development Program (RDP) in South Africa.</p>	
<b>New questionnaire</b>	<p>In order to lessen the respondent burden and improve reliability, Stats SA has overhauled and redesigned its Building Statistics Survey questionnaire. This resulted in the change of some data items on the old questionnaire. As from November 1999 information regarding dwelling-houses was collected according to size of dwelling-house.</p> <p>The Building Statistics Survey questionnaire collects the numbers, square metres and value of building plans passed and buildings completed for the private sector regarding –</p> <ul style="list-style-type: none"> <li>• residential buildings;</li> <li>• non-residential buildings; and</li> <li>• additions and alterations.</li> </ul>	
<b>Re-engineered building statistics statistical release</b>	<p>Prior to March 2001, Stats SA published selected information per province namely, the value of building plans passed and buildings completed regarding residential buildings, non-residential buildings and additions and alterations. Due to users' needs, specifically compilers of National Accounts, Stats SA has overhauled and re-designed the statistical release. In order to provide users with more provincial information Stats SA extended the information per province to include more detailed information regarding residential buildings (e.g. dwelling-houses equal to or larger than 80 square metre; flats and townhouses; and other residential buildings), non-residential buildings (e.g. office and banking space; shopping space; industrial and warehouse space; and other non-residential space) and additions and alterations (e.g. additions to dwelling-houses and other buildings).</p> <p>Furthermore, to monitor the RDP housing program Stats SA publishes information regarding dwelling-houses smaller than 80 square metres and equal to or larger than 80 square metres according to province.</p>	
<b>Changes in the numbering of tables</b>	<p>It should be noted that the numbering of tables has changed as from March 2001 as indicated in table C, pages 8 to 10.</p>	



**Table C – Title of table according to new and old numbers**

<b>New number (as from March 2001)</b>	<b>Title of table</b>	<b>Old number (prior to March 2001)</b>
Table 1	Actual values and percentage change of building plans passed at current prices according to type of building	Table 3
Table 2	Seasonally adjusted values and percentage change of building plans passed at current prices according to type of building	Table 7
Table 3	Actual values and percentage change of building plans passed at constant 1995 prices according to type of building	Table 4
Table 4	Seasonally adjusted values and percentage change of building plans passed at constant 1995 prices according to type of building	Table 7
Table 5	Actual values and percentage change of buildings completed at current prices according to type of building	Table 5
Table 6	Seasonally adjusted values and percentage change of buildings completed at current prices according to type of building	Table 8
Table 7	Actual values and percentage change of buildings completed at constant 1995 prices according to type of building	Table 6
Table 8	Seasonally adjusted values and percentage change of buildings completed at constant 1995 prices according to type of building	Table 8
Table 9	Building plans passed according to type of building: Total RSA	Tables 1 and 9
Table 10	Building plans passed according to type of building and province: Western Cape	Table 1
Table 11	Building plans passed according to type of building and province: Eastern Cape	Table 1
Table 12	Building plans passed according to type of building and province: Northern Cape	Table 1
Table 13	Building plans passed according to type of building and province: Free State	Table 1
Table 14	Building plans passed according to type of building and province: KwaZulu-Natal	Table 1
Table 15	Building plans passed according to type of building and province: North West	Table 1
Table 16	Building plans passed according to type of building and province: Gauteng	Table 1
Table 17	Building plans passed according to type of building and province: Mpumalanga	Table 1

**Table C – Title of table according to new and old numbers (continued)**

<b>New number (as from March 2001)</b>	<b>Title of table</b>	<b>Old number (prior to March 2001)</b>
Table 18	Building plans passed according to type of building and province: Northern Province	Table 1
Table 19	Buildings completed according to type of building: Total RSA	Tables 2 and 11
Table 20	Buildings completed according to type of building and province: Western Cape	Table 2
Table 21	Buildings completed according to type of building and province: Eastern Cape	Table 2
Table 22	Buildings completed according to type of building and province: Northern Cape	Table 2
Table 23	Buildings completed according to type of building and province: Free State	Table 2
Table 24	Buildings completed according to type of building and province: KwaZulu-Natal	Table 2
Table 25	Buildings completed according to type of building and province: North West	Table 2
Table 26	Buildings completed according to type of building and province: Gauteng	Table 2
Table 27	Buildings completed according to type of building and province: Mpumalanga	Table 2
Table 28	Buildings completed according to type of building and province: Northern Province	Table 2
Table 29	Building plans passed according to type of building and selected urban area: Cape Town	Table 10
Table 30	Building plans passed according to type of building and selected urban area: Port Elizabeth	New
Table 31	Building plans passed according to type of building and selected urban area: Durban	Table 10
Table 32	Building plans passed according to type of building and selected urban area: Witwatersrand	Table 10
Table 33	Building plans passed according to type of building and selected urban area: Pretoria	Table 10
Table 34	Building plans passed according to type of building and selected urban area: Bloemfontein	Table 10
Table 35	Buildings completed according to type of building and selected urban area: Cape Town	Table 12
Table 36	Buildings completed according to type of building and selected urban area: Port Elizabeth	New

**Table C – Title of table according to new and old numbers (concluded)**

<b>New number (as from March 2001)</b>	<b>Title of table</b>	<b>Old number (prior to March 2001)</b>
Table 37	Buildings completed according to type of building and selected urban area: Durban	Table 12
Table 38	Buildings completed according to type of building and selected urban area: Witwatersrand	Table 12
Table 39	Buildings completed according to type of building and selected urban area: Pretoria	Table 12
Table 40	Buildings completed according to type of building and selected urban area: Bloemfontein	Table 12

Table 1 - Actual values and percentage change of building plans passed at current prices according to type of building

Year <sup>1/</sup> and month <sup>2/</sup>	Residential buildings		Non-residential buildings		Additions and alterations		Total	
	R'000	Percentage change	R'000	Percentage change	R'000	Percentage change	R'000	Percentage change
1999 Jan	553 051	+ 9,8	237 671	- 45,6	277 444	+ 9,9	1 068 166	- 7,0
Feb	528 673	- 18,9	394 629	- 4,6	355 506	- 2,0	1 278 809	- 7,0
Mar	667 232	- 17,0	1 454 021	+ 219,5	476 726	+ 10,2	2 597 979	+ 59,3
Apr	530 570	- 22,1	374 625	- 23,8	330 044	- 6,9	1 235 239	- 16,0
May	527 616	- 19,3	274 148	- 46,9	403 206	+ 14,2	1 204 970	- 17,9
Jun	837 779	+ 18,8	418 343	- 32,5	403 838	+ 2,5	1 659 959	+ 0,4
Jul	637 414	- 19,6	460 734	- 7,1	420 306	- 15,4	1 518 454	- 12,2
Aug	630 628	- 14,1	388 580	- 14,5	415 686	- 6,2	1 434 895	- 7,7
Sep	599 986	- 14,7	305 439	- 38,8	484 091	+ 9,7	1 389 516	- 13,4
Oct	664 785	- 22,6	329 137	- 38,8	436 746	- 11,1	1 430 668	- 22,7
Nov	710 950	+ 14,0	701 437	+ 44,0	536 870	+ 39,6	1 949 257	+ 33,3
Dec	493 844	+ 16,1	225 184	- 40,9	314 898	- 23,4	1 033 926	- 12,9
<b>Total</b>	<b>7 382 530</b>	<b>- 8,9</b>	<b>5 563 948</b>	<b>- 3,8</b>	<b>4 855 360</b>	<b>+ 0,8</b>	<b>17 801 839</b>	<b>- 1,8</b>
2000 Jan	490 776	- 11,3	163 926	- 31,0	365 596	+ 31,8	1 020 298	- 4,5
Feb	784 023	+ 48,3	521 389	+ 32,1	399 280	+ 12,3	1 704 692	+ 33,3
Mar	747 421	+ 12,0	359 267	- 75,3	515 668	+ 8,2	1 622 356	- 37,6
Apr	627 642	+ 18,3	271 151	- 27,6	382 300	+ 15,8	1 281 093	+ 3,7
May	874 847	+ 65,8	573 853	+ 109,3	473 062	+ 17,3	1 921 762	+ 59,5
Jun	853 154	+ 1,8	336 324	- 19,6	532 278	+ 31,8	1 721 756	+ 3,7
Jul	908 061	+ 42,5	484 669	+ 5,2	549 932	+ 30,8	1 942 662	+ 27,9
Aug	929 836	+ 47,4	353 488	- 9,0	492 627	+ 18,5	1 775 951	+ 23,8
Sep	826 851	+ 37,8	354 456	+ 16,0	465 836	- 3,8	1 647 143	+ 18,5
Oct	916 410	+ 37,9	492 884	+ 49,8	539 561	+ 23,5	1 948 855	+ 36,2
Nov	914 346	+ 28,6	493 166	- 29,7	503 659	- 6,2	1 911 171	- 2,0
Dec	606 148	+ 22,7	704 410	+ 212,8	317 835	+ 0,9	1 628 393	+ 57,5
<b>Total</b>	<b>9 479 515</b>	<b>+ 28,4</b>	<b>5 108 983</b>	<b>- 8,2</b>	<b>5 537 634</b>	<b>+ 14,1</b>	<b>20 126 132</b>	<b>+ 13,1</b>
2001 Jan	720 680	+ 46,8	475 089	+ 189,8	352 501	- 3,6	1 548 270	+ 51,7
Feb	817 853	+ 4,3	299 417	- 42,6	473 166	+ 18,5	1 590 436	- 6,7
Mar	923 148	+ 23,5	305 034	- 15,1	438 069	- 15,0	1 666 251	+ 2,7
Apr	732 653	+ 16,7	206 520	- 23,8	375 509	- 1,8	1 314 682	+ 2,6
May	998 520	+ 14,1	289 330	- 49,6	499 431	+ 5,6	1 787 281	- 7,0
Jun	902 916	+ 5,8	314 602	- 6,5	447 975	- 15,8	1 665 493	- 3,3
Jul	908 280	+ 0,0	383 440	- 20,9	428 902	- 22,0	1 720 622	- 11,4
Aug	837 251	- 10,0	260 144	- 26,4	483 666	- 1,8	1 581 061	- 11,0
Sep	959 583	+ 16,1	303 367	- 14,4	524 349	+ 12,6	1 787 299	+ 8,5
Oct*	989 594	+ 8,0	213 122	- 56,8	542 974	+ 0,6	1 745 690	- 10,4
Nov	979 051	+ 7,1	320 034	- 35,1	596 263	+ 18,4	1 895 348	- 0,8

<sup>1/</sup> The annual percentage change is the change in the actual values of building plans passed of the relevant year compared with the actual values of building plans passed of the previous year expressed as a percentage.

<sup>2/</sup> The monthly percentage change is the change in the actual values of building plans passed of the relevant month compared with the actual values of building plans passed of the same month in the previous year expressed as a percentage.

**Table 2 - Seasonally adjusted values and percentage change of building plans passed at current prices according to type of building**

Year and month <sup>1/</sup>	Residential buildings		Non-residential buildings		Additions and alterations		Total	
	R'000	Percentage change	R'000	Percentage change	R'000	Percentage change	R'000	Percentage change
1999 Jan	719 165	+ 18,9	281 441	- 41,4	380 843	- 25,6	1 381 448	- 13,5
Feb	533 576	- 25,8	423 501	+ 50,5	385 953	+ 1,3	1 343 030	- 2,8
Mar	620 951	+ 16,4	1 433 389	+ 238,5	439 615	+ 13,9	2 493 956	+ 85,7
Apr	577 669	- 7,0	419 462	- 70,7	380 275	- 13,5	1 377 406	- 44,8
May	502 111	- 13,1	260 833	- 37,8	393 310	+ 3,4	1 156 254	- 16,1
Jun	792 894	+ 57,9	393 587	+ 50,9	387 853	- 1,4	1 574 333	+ 36,2
Jul	571 951	- 27,9	403 995	+ 2,6	374 471	- 3,5	1 350 417	- 14,2
Aug	598 905	+ 4,7	390 475	- 3,3	392 170	+ 4,7	1 381 549	+ 2,3
Sep	583 137	- 2,6	314 177	- 19,5	445 620	+ 13,6	1 342 933	- 2,8
Oct	568 303	- 2,5	298 349	- 5,0	385 426	- 13,5	1 252 079	- 6,8
Nov	664 349	+ 16,9	569 939	+ 91,0	460 793	+ 19,6	1 695 080	+ 35,4
Dec	701 246	+ 5,6	287 796	- 49,5	412 347	- 10,5	1 401 389	- 17,3
2000 Jan	633 082	- 9,7	187 606	- 34,8	491 291	+ 19,1	1 311 979	- 6,4
Feb	803 076	+ 26,9	580 893	+ 209,6	437 436	- 11,0	1 821 405	+ 38,8
Mar	688 411	- 14,3	358 309	- 38,3	470 718	+ 7,6	1 517 438	- 16,7
Apr	698 625	+ 1,5	322 611	- 10,0	448 043	- 4,8	1 469 279	- 3,2
May	816 722	+ 16,9	540 033	+ 67,4	457 904	+ 2,2	1 814 658	+ 23,5
Jun	804 293	- 1,5	315 730	- 41,5	513 883	+ 12,2	1 633 907	- 10,0
Jul	819 494	+ 1,9	401 561	+ 27,2	500 832	- 2,5	1 721 887	+ 5,4
Aug	881 809	+ 7,6	363 807	- 9,4	466 561	- 6,8	1 712 177	- 0,6
Sep	795 310	- 9,8	356 060	- 2,1	425 177	- 8,9	1 576 547	- 7,9
Oct	800 375	+ 0,6	464 337	+ 30,4	474 937	+ 11,7	1 739 649	+ 10,3
Nov	847 320	+ 5,9	398 669	- 14,1	424 402	- 10,6	1 670 390	- 4,0
Dec	857 614	+ 1,2	886 184	+ 122,3	419 414	- 1,2	2 163 212	+ 29,5
2001 Jan	924 503	+ 7,8	541 176	- 38,9	469 336	+ 11,9	1 935 015	- 10,5
Feb	844 016	- 8,7	340 977	- 37,0	523 185	+ 11,5	1 708 177	- 11,7
Mar	848 085	+ 0,5	302 317	- 11,3	398 766	- 23,8	1 549 168	- 9,3
Apr	826 658	- 2,5	254 937	- 15,7	444 356	+ 11,4	1 525 951	- 1,5
May	925 001	+ 11,9	267 704	+ 5,0	482 037	+ 8,5	1 674 742	+ 9,8
Jun	845 834	- 8,6	298 309	+ 11,4	431 064	- 10,6	1 575 207	- 5,9
Jul	818 949	- 3,2	307 835	+ 3,2	393 615	- 8,7	1 520 398	- 3,5
Aug	790 135	- 3,5	266 293	- 13,5	459 460	+ 16,7	1 515 887	- 0,3
Sep	923 356	+ 16,9	306 147	+ 15,0	476 658	+ 3,7	1 706 161	+ 12,6
Oct	875 247	- 5,2	204 723	- 33,1	478 882	+ 0,5	1 558 852	- 8,6
Nov	907 565	+ 3,7	258 351	+ 26,2	498 916	+ 4,2	1 664 831	+ 6,8

<sup>1/</sup> The percentage change is the change in the seasonally adjusted values of building plans passed of the relevant month compared with the seasonally adjusted values of building plans passed of the previous month expressed as a percentage.

**Table 3 - Actual values and percentage change of building plans passed at constant 1995 prices according to type of building**

Year <sup>1/</sup> and month <sup>2/</sup>	Residential buildings		Non-residential buildings		Additions and alterations		Total	
	R'000	Percentage change	R'000	Percentage change	R'000	Percentage change	R'000	Percentage change
1999 Jan	444 933	+ 2,8	191 208	- 45,6	223 205	+ 9,9	859 346	- 13,0
Feb	420 918	- 24,5	314 195	- 4,6	283 046	- 2,0	1 018 159	- 13,4
Mar	530 391	- 22,6	1 155 820	+ 219,5	378 955	+ 10,2	2 065 166	+ 48,5
Apr	419 423	- 27,3	296 146	- 23,8	260 904	- 6,9	976 473	- 21,6
May	416 759	- 24,5	216 546	- 46,9	318 488	+ 14,2	951 793	- 23,2
Jun	659 150	+ 11,2	329 145	- 32,5	317 732	+ 2,5	1 306 027	- 6,1
Jul	499 933	- 24,1	361 360	- 7,1	329 651	- 15,4	1 190 944	- 17,2
Aug	494 610	- 13,8	304 769	- 14,5	326 028	- 6,2	1 125 407	- 11,9
Sep	469 473	- 18,3	238 998	- 38,8	378 788	+ 9,7	1 087 259	- 17,0
Oct	519 363	- 25,5	257 138	- 38,8	341 208	- 11,1	1 117 709	- 25,6
Nov	553 699	+ 9,8	546 290	+ 44,0	418 123	+ 39,6	1 518 112	+ 28,3
Dec	384 016	+ 11,7	175 104	- 40,9	244 866	- 23,4	803 986	- 16,3
<b>Total</b>	<b>5 812 668</b>	<b>- 8,9</b>	<b>4 386 719</b>	<b>- 3,8</b>	<b>3 820 994</b>	<b>+ 0,8</b>	<b>14 020 381</b>	<b>- 7,1</b>
2000 Jan	378 102	- 15,0	126 291	- 34,0	281 661	+ 26,2	786 054	- 8,5
Feb	602 168	+ 43,1	400 452	+ 27,5	306 667	+ 8,3	1 309 287	+ 28,6
Mar	570 115	+ 7,5	274 040	- 76,3	393 339	+ 3,8	1 237 494	- 40,1
Apr	473 692	+ 12,9	204 642	- 30,9	288 528	+ 10,6	966 862	- 1,0
May	655 807	+ 57,4	430 175	+ 98,7	354 619	+ 11,3	1 440 601	+ 51,4
Jun	637 634	- 3,3	251 363	- 23,6	397 816	+ 25,2	1 286 813	- 1,5
Jul	672 638	+ 34,5	359 014	- 0,6	407 357	+ 23,6	1 439 009	+ 20,8
Aug	682 699	+ 38,0	259 536	- 14,8	361 694	+ 10,9	1 303 929	+ 15,9
Sep	606 196	+ 29,1	259 865	+ 8,7	341 522	- 9,8	1 207 583	+ 11,1
Oct	668 425	+ 28,7	359 507	+ 39,8	393 553	+ 15,3	1 421 485	+ 27,2
Nov	664 013	+ 19,9	358 145	- 34,4	365 765	- 12,5	1 387 923	- 8,6
Dec	438 602	+ 14,2	509 703	+ 191,1	229 982	- 6,1	1 178 287	+ 46,6
<b>Total</b>	<b>7 050 091</b>	<b>+ 21,3</b>	<b>3 792 733</b>	<b>- 13,5</b>	<b>4 122 503</b>	<b>+ 7,9</b>	<b>14 965 327</b>	<b>+ 6,7</b>
2001 Jan	515 877	+ 36,4	340 078	+ 169,3	252 327	- 10,4	1 108 282	+ 41,0
Feb	582 516	- 3,3	213 260	- 46,7	337 013	+ 9,9	1 132 789	- 13,5
Mar	653 325	+ 14,6	215 877	- 21,2	310 028	- 21,2	1 179 230	- 4,7
Apr	515 590	+ 8,8	145 334	- 29,0	264 257	- 8,4	925 181	- 4,3
May	698 754	+ 6,5	202 470	- 52,9	349 497	- 1,4	1 250 721	- 13,2
Jun	630 528	- 1,1	219 694	- 12,6	312 832	- 21,4	1 163 054	- 9,6
Jul	630 750	- 6,2	266 278	- 25,8	297 849	- 26,9	1 194 877	- 17,0
Aug	579 814	- 15,1	180 155	- 30,6	334 949	- 7,4	1 094 918	- 16,0
Sep	663 153	+ 9,4	209 652	- 19,3	362 370	+ 6,1	1 235 175	+ 2,3
Oct*	680 601	+ 1,8	146 576	- 59,2	373 435	- 5,1	1 200 612	- 15,5
Nov	669 666	+ 0,9	218 902	- 38,9	407 841	+ 11,5	1 296 409	- 6,6

<sup>1/</sup> The annual percentage change is the change in the actual values of building plans passed of the relevant year compared with the actual values of building plans passed of the previous year expressed as a percentage.

<sup>2/</sup> The monthly percentage change is the change in the actual values of building plans passed of the relevant month compared with the actual values of building plans passed of the same month in the previous year expressed as a percentage.

**Table 4 - Seasonally adjusted values and percentage change of building plans passed at constant 1995 prices according to type of building**

Year and month <sup>1/</sup>	Residential buildings		Non-residential buildings		Additions and alterations		Total	
	R'000	Percentage change	R'000	Percentage change	R'000	Percentage change	R'000	Percentage change
1999 Jan	578 950	+ 18,9	226 301	- 41,4	305 900	+ 7,5	1 111 151	- 13,5
Feb	424 884	- 26,6	337 719	+ 49,2	307 877	+ 0,6	1 070 479	- 3,7
Mar	492 593	+ 15,9	1 138 573	+ 237,1	349 587	+ 13,5	1 980 753	+ 85,0
Apr	456 908	- 7,2	331 754	- 70,9	300 994	- 13,9	1 089 656	- 45,0
May	397 725	- 13,0	206 351	- 37,8	310 810	+ 3,3	914 886	- 16,0
Jun	622 618	+ 56,5	309 398	+ 49,9	304 975	- 1,9	1 236 991	+ 35,2
Jul	449 132	- 27,9	317 325	+ 2,6	293 350	- 3,8	1 059 807	- 14,3
Aug	470 319	+ 4,7	306 853	- 3,3	308 507	+ 5,2	1 085 679	+ 2,4
Sep	456 799	- 2,9	246 019	- 19,8	349 020	+ 13,1	1 051 837	- 3,1
Oct	444 202	- 2,8	233 080	- 5,3	301 196	- 13,7	978 477	- 7,0
Nov	516 944	+ 16,4	442 866	+ 90,0	358 317	+ 19,0	1 318 127	+ 34,7
Dec	542 812	+ 5,0	222 887	- 49,7	319 104	- 10,9	1 084 803	- 17,7
2000 Jan	488 336	- 10,0	144 494	- 35,2	377 858	+ 18,4	1 010 688	- 6,8
Feb	616 492	+ 26,2	446 720	+ 209,2	336 846	- 10,9	1 400 058	+ 38,5
Mar	523 981	- 15,0	273 157	- 38,9	359 351	+ 6,7	1 156 489	- 17,4
Apr	527 455	+ 0,7	243 732	- 10,8	338 534	- 5,8	1 109 721	- 4,0
May	614 104	+ 16,4	405 519	+ 66,4	343 483	+ 1,5	1 363 106	+ 22,8
Jun	599 947	- 2,3	235 810	- 41,8	383 894	+ 11,8	1 219 651	- 10,5
Jul	607 725	+ 1,3	297 915	+ 26,3	370 403	- 3,5	1 276 044	+ 4,6
Aug	648 800	+ 6,8	267 616	- 10,2	343 387	- 7,3	1 259 803	- 1,3
Sep	583 376	- 10,1	261 032	- 2,5	311 866	- 9,2	1 156 273	- 8,2
Oct	583 937	+ 0,1	338 557	+ 29,7	346 450	+ 11,1	1 268 943	+ 9,7
Nov	614 992	+ 5,3	288 829	- 14,7	307 884	- 11,1	1 211 706	- 4,5
Dec	617 582	+ 0,4	638 728	+ 121,1	302 067	- 1,9	1 558 377	+ 28,6
2001 Jan	662 952	+ 7,3	387 485	- 39,3	335 364	+ 11,0	1 385 801	- 11,1
Feb	600 618	- 9,4	243 126	- 37,3	373 621	+ 11,4	1 217 364	- 12,2
Mar	598 855	- 0,3	213 841	- 12,0	282 517	- 24,4	1 095 212	- 10,0
Apr	581 751	- 2,9	179 642	- 16,0	313 138	+ 10,8	1 074 531	- 1,9
May	649 528	+ 11,7	187 683	+ 4,5	337 565	+ 7,8	1 174 775	+ 9,3
Jun	589 573	- 9,2	208 203	+ 10,9	300 904	- 10,9	1 098 680	- 6,5
Jul	569 416	- 3,4	214 116	+ 2,8	272 977	- 9,3	1 056 508	- 3,8
Aug	548 350	- 3,7	184 742	- 13,7	318 890	+ 16,8	1 051 983	- 0,4
Sep	638 384	+ 16,4	211 495	+ 14,5	329 469	+ 3,3	1 179 348	+ 12,1
Oct	601 992	- 5,7	140 704	- 33,5	329 269	- 0,1	1 071 966	- 9,1
Nov	620 469	+ 3,1	176 271	+ 25,3	340 904	+ 3,5	1 137 643	+ 6,1

<sup>1/</sup> The percentage change is the change in the seasonally adjusted values of building plans passed of the relevant month compared with the seasonally adjusted values of building plans passed of the previous month expressed as a percentage.

Table 5 - Actual values and percentage change of buildings completed at current prices according to type of building

Year <sup>1/</sup> and month <sup>2/</sup>	Residential buildings		Non-residential buildings		Additions and alterations		Total	
	R'000	Percentage change	R'000	Percentage change	R'000	Percentage change	R'000	Percentage change
1999 Jan	313 975	- 17,7	197 076	- 12,3	193 050	- 3,3	704 102	- 12,6
Feb	396 737	- 2,1	214 816	- 29,4	244 641	+ 26,9	856 194	- 5,1
Mar	432 499	- 38,0	246 125	+ 39,7	230 685	+ 8,8	909 309	- 16,2
Apr	377 800	- 17,0	181 550	- 25,2	200 507	+ 28,2	759 858	- 11,1
May	390 986	- 11,7	195 652	+ 10,4	178 758	- 2,4	765 395	- 4,7
Jun	420 016	- 30,4	208 557	- 38,5	153 702	- 21,1	782 276	- 31,2
Jul	480 991	- 18,3	264 068	+ 0,3	272 372	+ 26,1	1 017 432	- 4,7
Aug	460 657	+ 7,6	204 898	- 24,8	255 878	+ 47,4	921 432	+ 5,4
Sep	493 450	- 11,4	197 152	- 58,4	223 191	+ 10,3	913 793	- 25,9
Oct	419 578	- 15,9	203 652	- 58,9	229 463	+ 12,4	852 693	- 28,8
Nov	461 147	- 8,9	409 997	+ 45,4	210 237	+ 20,2	1 081 381	+ 12,3
Dec	349 510	- 15,3	181 596	- 13,0	146 343	+ 3,3	677 449	- 11,3
<b>Total</b>	<b>4 997 346</b>	<b>- 16,4</b>	<b>2 705 139</b>	<b>- 21,8</b>	<b>2 538 827</b>	<b>+ 12,8</b>	<b>10 241 312</b>	<b>- 12,4</b>
2000 Jan	299 212	- 4,7	195 988	- 0,6	183 959	- 4,7	679 159	- 3,5
Feb	353 141	- 11,0	205 549	- 4,3	221 978	- 9,3	780 668	- 8,8
Mar	419 416	- 3,0	212 379	- 13,7	268 745	+ 16,5	900 540	- 1,0
Apr	364 713	- 3,5	224 048	+ 23,4	188 808	- 5,8	777 569	+ 2,3
May	473 124	+ 21,0	390 533	+ 99,6	293 343	+ 64,1	1 157 000	+ 51,2
Jun	362 558	- 13,7	174 728	- 16,2	170 986	+ 11,2	708 272	- 9,5
Jul	407 406	- 15,3	472 668	+ 79,0	220 828	- 18,9	1 100 902	+ 8,2
Aug	449 691	- 2,4	285 994	+ 39,6	211 008	- 17,5	946 693	+ 2,7
Sep	510 979	+ 3,6	270 539	+ 37,2	199 622	- 10,6	981 140	+ 7,4
Oct	462 270	+ 10,2	195 491	- 4,0	238 257	+ 3,8	896 018	+ 5,1
Nov	555 802	+ 20,5	186 442	- 54,5	255 900	+ 21,7	998 144	- 7,7
Dec	383 114	+ 9,6	316 801	+ 74,5	149 622	+ 2,2	849 537	+ 25,4
<b>Total</b>	<b>5 041 426</b>	<b>+ 0,9</b>	<b>3 131 160</b>	<b>+ 15,7</b>	<b>2 603 056</b>	<b>+ 2,5</b>	<b>10 775 642</b>	<b>+ 5,2</b>
2001 Jan	643 047	+ 114,9	238 434	+ 21,7	200 985	+ 9,3	1 082 466	+ 59,4
Feb	428 803	+ 21,4	285 620	+ 39,0	243 214	+ 9,6	957 637	+ 22,7
Mar	532 191	+ 26,9	162 697	- 23,4	287 149	+ 6,8	982 037	+ 9,0
Apr	361 022	- 1,0	169 123	- 24,5	184 423	- 2,3	714 568	- 8,1
May	437 971	- 7,4	300 533	- 23,0	295 708	+ 0,8	1 034 212	- 10,6
Jun	553 850	+ 52,8	368 352	+ 110,8	277 374	+ 62,2	1 199 576	+ 69,4
Jul	419 930	+ 3,1	151 692	- 67,9	232 217	+ 5,2	803 839	- 27,0
Aug	430 279	- 4,3	117 944	- 58,8	214 732	+ 1,8	762 955	- 19,4
Sep	456 622	- 10,6	1 417 979	+ 424,1	168 410	- 15,6	2 043 011	+ 108,2
Oct	664 707	+ 43,8	280 091	+ 43,3	237 808	- 0,2	1 182 606	+ 32,0
Nov	619 314	+ 11,4	198 571	+ 6,5	285 877	+ 11,7	1 103 762	+ 10,6

<sup>1/</sup> The annual percentage change is the change in the actual values of buildings completed of the relevant year compared with the actual values of buildings completed of the previous year expressed as a percentage.

<sup>2/</sup> The monthly percentage change is the change in the actual values of buildings completed of the relevant month compared with the actual values of buildings completed of the same month in the previous year expressed as a percentage.



**Table 6 - Seasonally adjusted values and percentage change of buildings completed at current prices according to type of building**

Year and month <sup>1/</sup>	Residential buildings		Non-residential buildings		Additions and alterations		Total	
	R'000	Percentage change	R'000	Percentage change	R'000	Percentage change	R'000	Percentage change
1999 Jan	408 172	- 12,5	231 271	+ 16,6	218 776	+ 2,3	858 220	- 2,4
Feb	443 751	+ 8,7	230 582	- 0,3	223 709	+ 2,3	898 041	+ 4,6
Mar	415 550	- 6,4	281 723	+ 22,2	199 018	- 11,0	896 291	- 0,2
Apr	420 922	+ 1,3	211 834	- 24,8	222 597	+ 11,8	855 354	- 4,6
May	378 255	- 10,1	199 955	- 5,6	175 731	- 21,1	753 940	- 11,9
Jun	412 690	+ 9,1	206 926	+ 3,5	144 225	- 17,9	763 840	+ 1,3
Jul	449 507	+ 8,9	213 673	+ 3,3	240 479	+ 66,7	903 659	+ 18,3
Aug	453 104	+ 0,8	200 463	- 6,2	264 025	+ 9,8	917 593	+ 1,5
Sep	442 885	- 2,3	169 429	- 15,5	224 937	- 14,8	837 250	- 8,8
Oct	396 280	- 10,5	195 641	+ 15,5	218 841	- 2,7	810 761	- 3,2
Nov	377 920	- 4,6	420 185	+ 114,8	196 991	- 10,0	995 097	+ 22,7
Dec	400 652	+ 6,0	172 243	- 59,0	221 185	+ 12,3	794 079	- 20,2
2000 Jan	389 104	- 2,9	227 405	+ 32,0	207 707	- 6,1	824 217	+ 3,8
Feb	395 528	+ 1,7	214 655	- 5,6	204 101	- 1,7	814 284	- 1,2
Mar	396 979	+ 0,4	258 378	+ 20,4	227 621	+ 11,5	882 978	+ 8,4
Apr	415 057	+ 4,6	277 682	+ 7,5	214 057	- 6,0	906 795	+ 2,7
May	466 193	+ 12,3	390 235	+ 40,5	283 602	+ 32,5	1 140 029	+ 25,7
Jun	348 959	- 25,1	171 097	- 56,2	157 815	- 44,4	677 871	- 40,5
Jul	385 294	+ 10,4	366 731	+ 114,3	198 368	+ 25,7	950 394	+ 40,2
Aug	440 940	+ 14,4	265 676	- 27,6	218 125	+ 10,0	924 741	- 2,7
Sep	455 084	+ 3,2	225 877	- 15,0	202 628	- 7,1	883 589	- 4,5
Oct	439 564	- 3,4	199 570	- 11,6	225 309	+ 11,2	864 443	- 2,2
Nov	453 537	+ 3,2	199 254	- 0,2	242 873	+ 7,8	895 664	+ 3,6
Dec	437 712	- 3,5	306 929	+ 54,0	224 471	- 7,6	969 111	+ 8,2
2001 Jan	843 550	+ 92,7	278 340	- 9,3	226 687	+ 1,0	1 348 578	+ 39,2
Feb	477 947	- 43,3	293 939	+ 5,6	224 653	- 0,9	996 538	- 26,1
Mar	497 982	+ 4,2	201 469	- 31,5	240 706	+ 7,1	940 156	- 5,7
Apr	414 796	- 16,7	216 348	+ 7,4	211 647	- 12,1	842 790	- 10,4
May	435 359	+ 5,0	290 838	+ 34,4	284 937	+ 34,6	1 011 133	+ 20,0
Jun	531 508	+ 22,1	359 339	+ 23,6	253 924	- 10,9	1 144 771	+ 13,2
Jul	400 689	- 24,6	113 727	- 68,4	209 923	- 17,3	724 339	- 36,7
Aug	421 860	+ 5,3	107 932	- 5,1	221 356	+ 5,4	751 148	+ 3,7
Sep	402 123	- 4,7	1 180 096	+ 993,4	171 740	- 22,4	1 753 959	+ 133,5
Oct	632 278	+ 57,2	301 121	- 74,5	224 269	+ 30,6	1 157 668	- 34,0
Nov	506 202	- 19,9	217 709	- 27,7	273 105	+ 21,8	997 015	- 13,9

<sup>1/</sup> The percentage change is the change in the seasonally adjusted values of buildings completed of the relevant month compared with the seasonally adjusted values of buildings completed of the previous month expressed as a percentage.

Table 7 - Actual values and percentage change of buildings completed at constant 1995 prices according to type of building

Year <sup>1/</sup> and month <sup>2/</sup>	Residential buildings		Non-residential buildings		Additions and alterations		Total	
	R'000	Percentage change	R'000	Percentage change	R'000	Percentage change	R'000	Percentage change
1999 Jan	262 682	- 22,6	172 571	- 18,3	165 993	- 9,2	601 246	- 18,0
Feb	329 271	- 26,3	187 449	- 39,0	209 095	- 4,5	725 815	- 26,1
Mar	356 192	- 57,5	214 208	+ 5,4	196 662	- 12,9	767 062	- 38,1
Apr	311 031	- 34,2	157 322	- 23,5	169 922	+ 18,7	638 275	- 21,4
May	319 828	- 31,9	169 395	+ 5,1	150 851	+ 2,4	640 074	- 15,6
Jun	344 231	- 50,0	180 257	- 44,7	129 270	- 3,4	653 758	- 40,4
Jul	391 124	- 50,0	227 058	- 28,4	226 411	- 12,3	844 593	- 36,0
Aug	369 731	- 48,5	175 126	- 29,7	210 253	+ 9,6	755 110	- 21,4
Sep	396 579	- 28,6	168 075	- 59,5	182 196	- 5,7	746 850	- 44,4
Oct	334 635	- 45,1	172 586	- 61,0	186 252	- 6,2	693 473	- 42,4
Nov	366 364	- 38,2	345 989	- 30,9	170 095	+ 9,6	882 448	- 27,6
Dec	277 236	- 38,9	152 730	- 6,3	118 305	+ 35,6	548 271	- 8,6
<b>Total</b>	<b>4 058 904</b>	<b>- 21,7</b>	<b>2 322 766</b>	<b>- 26,2</b>	<b>2 115 305</b>	<b>+ 6,4</b>	<b>8 496 975</b>	<b>- 17,7</b>
2000 Jan	236 149	- 10,1	162 916	- 5,6	147 996	- 10,8	547 061	- 9,0
Feb	277 982	- 15,6	168 898	- 9,9	176 734	- 15,5	623 614	- 14,1
Mar	329 523	- 7,5	173 371	- 19,1	213 629	+ 8,6	716 523	- 6,6
Apr	285 795	- 8,1	181 857	+ 15,6	149 255	- 12,2	616 907	- 3,3
May	370 120	+ 15,7	315 965	+ 86,5	231 709	+ 53,6	917 794	+ 43,4
Jun	282 549	- 17,9	141 251	- 21,6	134 529	+ 4,1	558 329	- 14,6
Jul	314 890	- 19,5	380 264	+ 67,5	173 198	- 23,5	868 352	+ 2,8
Aug	346 783	- 6,2	227 702	+ 30,0	165 496	- 21,3	739 981	- 2,0
Sep	391 744	- 1,2	215 055	+ 28,0	156 199	- 14,3	762 998	+ 2,2
Oct	352 005	+ 5,2	154 538	- 10,5	186 138	- 0,1	692 681	- 0,1
Nov	420 080	+ 14,7	147 269	- 57,4	199 299	+ 17,2	766 648	- 13,1
Dec	289 205	+ 4,3	249 253	+ 63,2	116 347	- 1,7	654 805	+ 19,4
<b>Total</b>	<b>3 896 825</b>	<b>- 4,0</b>	<b>2 518 339</b>	<b>+ 8,4</b>	<b>2 050 529</b>	<b>- 3,1</b>	<b>8 465 693</b>	<b>- 0,4</b>
2001 Jan	487 413	+ 106,4	187 007	+ 14,8	154 842	+ 4,6	829 262	+ 51,6
Feb	318 240	+ 14,5	224 016	+ 32,6	186 800	+ 5,7	729 056	+ 16,9
Ma	394 856	+ 19,8	127 306	- 26,6	219 031	+ 2,5	741 193	+ 3,4
Apr	265 613	- 7,1	132 127	- 27,3	139 187	- 6,7	536 927	- 13,0
May	319 179	- 13,8	234 060	- 25,9	221 670	- 4,3	774 909	- 15,6
Jun	403 634	+ 42,9	286 432	+ 102,8	207 305	+ 54,1	897 371	+ 60,7
Jul	302 158	- 4,0	116 866	- 69,3	172 013	- 0,7	591 037	- 31,9
Aug	308 208	- 11,1	90 587	- 60,2	157 659	- 4,7	556 454	- 24,8
Sep	325 581	- 16,9	1 081 601	+ 402,9	123 468	- 21,0	1 530 650	+ 100,6
Oct	473 164	+ 34,4	211 389	+ 36,8	173 456	- 6,8	858 009	+ 23,9
Nov	438 537	+ 4,4	148 854	+ 1,1	207 609	+ 4,2	795 000	+ 3,7

<sup>1/</sup> The annual percentage change is the change in the actual values of buildings completed of the relevant year compared with the actual values of buildings completed of the previous year expressed as a percentage.

<sup>2/</sup> The monthly percentage change is the change in the actual values of buildings completed of the relevant month compared with the actual values of buildings completed of the same month in the previous year expressed as a percentage.

**Table 8 - Seasonally adjusted values and percentage change of buildings completed at constant 1995 prices according to type of building**

Year and month <sup>1/</sup>	Residential buildings		Non-residential buildings		Additions and alterations		Total	
	R'000	Percentage change	R'000	Percentage change	R'000	Percentage change	R'000	Percentage change
1999 Jan	341 831	- 13,8	202 708	+ 15,8	187 589	+ 1,9	732 128	- 3,1
Feb	369 877	+ 8,2	201 791	- 0,5	191 342	+ 2,0	763 010	+ 4,2
Mar	342 852	- 7,3	245 331	+ 21,6	169 502	- 11,4	757 684	- 0,7
Apr	345 384	+ 0,7	183 472	- 25,2	188 468	+ 11,2	717 324	- 5,3
May	311 010	- 10,0	172 489	- 6,0	148 989	- 20,9	632 488	- 11,8
Jun	333 999	+ 7,4	177 686	+ 3,0	121 407	- 18,5	633 092	+ 0,1
Jul	365 180	+ 9,3	183 255	+ 3,1	200 248	+ 64,9	748 683	+ 18,3
Aug	364 777	- 0,1	171 843	- 6,2	217 416	+ 8,6	754 036	+ 0,7
Sep	355 767	- 2,5	144 687	- 15,8	184 022	- 15,4	684 476	- 9,2
Oct	316 429	- 11,1	166 165	+ 14,8	177 933	- 3,3	660 527	- 3,5
Nov	300 784	- 4,9	355 173	+ 113,7	158 421	- 11,0	814 378	+ 23,3
Dec	317 271	+ 5,5	144 908	- 59,2	177 987	+ 12,4	640 166	- 21,4
2000 Jan	307 362	- 3,1	189 287	+ 30,6	166 619	- 6,4	663 268	+ 3,6
Feb	312 515	+ 1,7	176 829	- 6,6	162 425	- 2,5	651 768	- 1,7
Mar	312 337	- 0,1	211 068	+ 19,4	180 627	+ 11,2	704 032	+ 8,0
Apr	324 955	+ 4,0	225 299	+ 6,7	169 141	- 6,4	719 395	+ 2,2
May	366 187	+ 12,7	314 461	+ 39,6	225 123	+ 33,1	905 771	+ 25,9
Jun	268 949	- 26,6	137 490	- 56,3	124 294	- 44,8	530 733	- 41,4
Jul	297 547	+ 10,6	294 517	+ 114,2	155 943	+ 25,5	748 007	+ 40,9
Aug	341 008	+ 14,6	212 125	- 28,0	171 540	+ 10,0	724 673	- 3,1
Sep	348 629	+ 2,2	179 853	- 15,2	159 045	- 7,3	687 526	- 5,1
Oct	335 199	- 3,9	158 267	- 12,0	176 575	+ 11,0	670 041	- 2,5
Nov	343 177	+ 2,4	157 404	- 0,5	187 499	+ 6,2	688 080	+ 2,7
Dec	329 695	- 3,9	241 486	+ 53,4	173 724	- 7,3	744 905	+ 8,3
2001 Jan	640 283	+ 94,2	218 617	- 9,5	174 134	+ 0,2	1 033 034	+ 38,7
Feb	356 012	- 44,4	231 091	+ 5,7	172 427	- 1,0	759 531	- 26,5
Mar	370 049	+ 3,9	157 811	- 31,7	183 238	+ 6,3	711 099	- 6,4
Apr	305 046	- 17,6	168 987	+ 7,1	159 726	- 12,8	633 760	- 10,9
May	318 342	+ 4,4	225 569	+ 33,5	214 741	+ 34,4	758 652	+ 19,7
Jun	383 130	+ 20,4	277 700	+ 23,1	189 976	- 11,5	850 806	+ 12,1
Jul	288 192	- 24,8	87 484	- 68,5	155 868	- 18,0	531 544	- 37,5
Aug	303 007	+ 5,1	83 145	- 5,0	162 910	+ 4,5	549 062	+ 3,3
Sep	286 524	- 5,4	901 708	+ 984,5	126 326	- 22,5	1 314 559	+ 139,4
Oct	450 799	+ 57,3	228 136	- 74,7	164 174	+ 30,0	843 109	- 35,9
Nov	358 766	- 20,4	163 108	- 28,5	196 457	+ 19,7	718 331	- 14,8

<sup>1/</sup> The percentage change is the change in the seasonally adjusted values of buildings completed of the relevant month compared with the seasonally adjusted values of buildings completed of the previous month expressed as a percentage.

**Table 9 - Building plans passed according to type of building: Total RSA**

Type of building	November 2000 *	October 2001 *	November 2001	January 2000 to November 2000	January 2001 to November 2001	Percentage change between January 2000 to November 2000 and January 2001 to November 2001
<b>Residential buildings</b>						
Dwelling-houses smaller than 80 square metres						
Number of dwelling-houses	4 493	2 688	2 221	46 736	34 347	- 26,5
Total square metres	175 222	111 909	93 877	1 827 241	1 363 023	- 25,4
Total value at current prices (R'000)	174 035	112 638	101 708	1 422 505	1 324 161	- 6,9
Dwelling-houses equal to or larger than 80 square metres						
Number of dwelling-houses	1 825	2 076	1 732	19 593	19 877	+ 1,4
Total square metres	395 459	456 504	396 482	4 041 980	4 332 839	+ 7,2
Total value at current prices (R'000)	548 251	670 357	574 345	5 516 255	6 199 656	+ 12,4
Flats and townhouses						
Number of flats and townhouses	953	1 149	1 131	10 321	11 245	+ 9,0
Total square metres	111 631	137 165	182 387	1 146 216	1 290 470	+ 12,6
Total value at current prices (R'000)	172 204	204 416	289 443	1 693 725	1 959 666	+ 15,7
Other residential buildings <sup>1/</sup>						
Total square metres	12 532	1 655	10 827	170 669	117 834	- 31,0
Total value at current prices (R'000)	19 856	2 183	13 555	240 882	286 046	+ 18,7
<b>Total value of residential buildings at current prices (R'000)</b>	<b>914 346</b>	<b>989 594</b>	<b>979 051</b>	<b>8 873 367</b>	<b>9 769 529</b>	<b>+ 10,1</b>
<b>Non-residential buildings</b>						
Office and banking space						
Total square metres	141 194	38 449	52 854	1 076 596	730 238	- 32,2
Total value at current prices (R'000)	217 486	57 467	87 252	1 665 818	1 227 592	- 26,3
Shopping space						
Total square metres	39 772	17 331	62 179	519 217	422 488	- 18,6
Total value at current prices (R'000)	52 957	30 350	94 258	735 115	623 140	- 15,2
Industrial and warehouse space						
Total square metres	113 619	84 001	55 535	1 140 505	862 532	- 24,4
Total value at current prices (R'000)	153 655	104 507	66 350	1 449 614	1 015 688	- 29,9
Other non-residential space <sup>2/</sup>						
Total square metres	43 442	12 571	53 653	435 349	372 675	- 14,4
Total value at current prices (R'000)	69 068	20 798	72 174	554 026	503 679	- 9,1
<b>Total value of non-residential buildings at current prices (R'000)</b>	<b>493 166</b>	<b>213 122</b>	<b>320 034</b>	<b>4 404 573</b>	<b>3 370 099</b>	<b>- 23,5</b>
<b>Additions and alterations</b>						
Dwelling-houses						
Total square metres	278 774	282 974	292 678	2 861 717	2 779 167	- 2,9
Total value at current prices (R'000)	348 223	371 974	364 611	3 462 390	3 503 407	+ 1,2
Other buildings <sup>3/</sup>						
Total square metres	77 196	96 254	156 704	977 446	966 044	- 1,2
Total value at current prices (R'000)	155 436	171 000	231 652	1 757 409	1 659 398	- 5,6
<b>Total value of additions and alterations at current prices (R'000)</b>	<b>503 659</b>	<b>542 974</b>	<b>596 263</b>	<b>5 219 799</b>	<b>5 162 805</b>	<b>- 1,1</b>
<b>Total value of building plans passed at current prices (R'000)</b>	<b>1 911 171</b>	<b>1 745 690</b>	<b>1 895 348</b>	<b>18 497 739</b>	<b>18 302 433</b>	<b>- 1,1</b>

1/ Other residential buildings include institutions for the disabled, boarding houses, old people's homes, hostels, hotels, motels, guest houses, holiday chalets, entertainment centres, bed-and-breakfast accommodation and casinos.

2/ Other non-residential space includes churches, sport and recreation clubs, schools, crèches, hospitals and all other non-residential space.

3/ Other buildings include additions and alterations to other residential buildings, non-residential buildings and internal alterations.

**Table 10 - Building plans passed according to type of building and province: Western Cape**

Type of building	November 2000 *	October 2001	November 2001	January 2000 to November 2000	January 2001 to November 2001	Percentage change between January 2000 to November 2000 and January 2001 to November 2001
<b>Residential buildings</b>						
Dwelling-houses smaller than 80 square metres						
Number of dwelling-houses	1 057	654	689	8 717	7 336	- 15,8
Total square metres	40 301	26 472	27 515	336 498	299 801	- 10,9
Total value at current prices (R'000)	48 565	29 028	30 553	282 036	351 652	+ 24,7
Dwelling-houses equal to or larger than 80 square metres						
Number of dwelling-houses	517	695	538	5 876	6 437	+ 9,5
Total square metres	99 551	140 866	114 709	1 141 735	1 338 876	+ 17,3
Total value at current prices (R'000)	144 025	211 428	172 242	1 654 639	2 008 659	+ 21,4
Flats and townhouses						
Number of flats and townhouses	234	494	175	2 533	2 780	+ 9,8
Total square metres	26 845	41 338	21 865	280 942	265 667	- 5,4
Total value at current prices (R'000)	38 047	58 072	32 019	432 340	397 086	- 8,2
Other residential buildings <sup>1/</sup>						
Total square metres	884	538	185	60 398	37 612	- 37,7
Total value at current prices (R'000)	1 193	711	276	83 300	84 735	+ 1,7
<b>Total value of residential buildings at current prices (R'000)</b>	<b>231 830</b>	<b>299 239</b>	<b>235 090</b>	<b>2 452 315</b>	<b>2 842 132</b>	<b>+ 15,9</b>
<b>Non-residential buildings</b>						
Office and banking space						
Total square metres	29 616	24 274	19 771	225 636	225 293	- 0,2
Total value at current prices (R'000)	48 927	32 297	31 789	396 019	324 153	- 18,1
Shopping space						
Total square metres	7 437	3 217	11 012	195 829	156 052	- 20,3
Total value at current prices (R'000)	8 599	6 452	15 593	255 698	214 856	- 16,0
Industrial and warehouse space						
Total square metres	23 839	19 088	36 339	324 393	333 477	+ 2,8
Total value at current prices (R'000)	26 897	20 706	40 956	343 164	241 514	- 29,6
Other non-residential space <sup>2/</sup>						
Total square metres	6 466	3 261	3 087	144 924	98 121	- 32,3
Total value at current prices (R'000)	8 996	4 380	4 271	130 314	112 613	- 13,6
<b>Total value of non-residential buildings at current prices (R'000)</b>	<b>93 419</b>	<b>63 835</b>	<b>92 609</b>	<b>1 125 195</b>	<b>893 136</b>	<b>- 20,6</b>
<b>Additions and alterations</b>						
Dwelling-houses						
Total square metres	76 796	90 416	98 136	864 735	858 755	- 0,7
Total value at current prices (R'000)	94 527	116 949	114 888	1 050 732	1 085 285	+ 3,3
Other buildings <sup>3/</sup>						
Total square metres	18 864	24 659	35 139	237 956	254 122	+ 6,8
Total value at current prices (R'000)	43 407	49 758	62 387	461 197	461 630	+ 0,1
<b>Total value of additions and alterations at current prices (R'000)</b>	<b>137 934</b>	<b>166 707</b>	<b>177 275</b>	<b>1 511 929</b>	<b>1 546 915</b>	<b>+ 2,3</b>
<b>Total value of building plans passed at current prices (R'000)</b>	<b>463 183</b>	<b>529 781</b>	<b>504 974</b>	<b>5 089 439</b>	<b>5 282 183</b>	<b>+ 3,8</b>

1/ Other residential buildings include institutions for the disabled, boarding houses, old people's homes, hostels, hotels, motels, guest houses, holiday chalets, entertainment centres, bed-and-breakfast accommodation and casinos.

2/ Other non-residential space includes churches, sport and recreation clubs, schools, crèches, hospitals and all other non-residential space.

3/ Other buildings include additions and alterations to other residential buildings, non-residential buildings and internal alterations.

**Table 11 - Building plans passed according to type of building and province: Eastern Cape**

Type of building	November 2000	October 2001	November 2001	January 2000 to November 2000	January 2001 to November 2001	Percentage change between January 2000 to November 2000 and January 2001 to November 2001
<b>Residential buildings</b>						
Dwelling-houses smaller than 80 square metres						
Number of dwelling-houses	276	171	131	4 815	2 383	-50,5
Total square metres	12 780	8 170	5 876	205 373	106 918	-47,9
Total value at current prices (R'000)	15 611	11 338	8 867	173 561	134 606	-22,4
Dwelling-houses equal to or larger than 80 square metres						
Number of dwelling-houses	54	106	84	1 091	1 196	+ 9,6
Total square metres	9 979	18 242	15 102	178 804	191 784	+ 7,3
Total value at current prices (R'000)	13 026	24 957	21 500	227 362	255 088	+ 12,2
Flats and townhouses						
Number of flats and townhouses	4	8	10	476	733	+ 54,0
Total square metres	1 007	771	1 030	38 463	40 940	+ 6,4
Total value at current prices (R'000)	1 159	1 039	1 494	51 080	49 586	-2,9
Other residential buildings <sup>1/</sup>						
Total square metres	0	308	0	7 482	26 393	+ 252,8
Total value at current prices (R'000)	0	317	0	9 946	77 622	+ 680,4
<b>Total value of residential buildings at current prices (R'000)</b>	<b>29 796</b>	<b>37 651</b>	<b>31 861</b>	<b>461 949</b>	<b>516 902</b>	<b>+ 11,9</b>
<b>Non-residential buildings</b>						
Office and banking space						
Total square metres	104	0	0	5 436	13 652	+ 151,1
Total value at current prices (R'000)	155	0	0	7 992	22 163	+ 177,3
Shopping space						
Total square metres	8 292	1 219	461	24 165	10 789	-55,4
Total value at current prices (R'000)	13 411	2 369	509	36 717	16 985	-53,7
Industrial and warehouse space						
Total square metres	15 442	1 488	918	134 991	37 865	-71,9
Total value at current prices (R'000)	18 806	1 532	566	142 799	42 498	-70,2
Other non-residential space <sup>2/</sup>						
Total square metres	6 626	1 073	2 933	40 213	17 277	-57,0
Total value at current prices (R'000)	11 701	1 639	5 749	58 202	30 778	-47,1
<b>Total value of non-residential buildings at current prices (R'000)</b>	<b>44 073</b>	<b>5 540</b>	<b>6 824</b>	<b>245 710</b>	<b>112 424</b>	<b>-54,2</b>
<b>Additions and alterations</b>						
Dwelling-houses						
Total square metres	21 076	23 305	21 963	197 481	212 688	+ 7,7
Total value at current prices (R'000)	30 380	31 023	30 240	250 162	279 431	+ 11,7
Other buildings <sup>3/</sup>						
Total square metres	5 521	22 086	4 796	70 662	112 134	+ 58,7
Total value at current prices (R'000)	10 489	30 733	6 897	103 110	144 010	+ 39,7
<b>Total value of additions and alterations at current prices (R'000)</b>	<b>40 869</b>	<b>61 756</b>	<b>37 137</b>	<b>353 272</b>	<b>423 441</b>	<b>+ 19,9</b>
<b>Total value of building plans passed at current prices (R'000)</b>	<b>114 738</b>	<b>104 947</b>	<b>75 822</b>	<b>1 060 931</b>	<b>1 052 767</b>	<b>-0,8</b>

1/ Other residential buildings include institutions for the disabled, boarding houses, old people's homes, hostels, hotels, motels, guest houses, holiday chalets, entertainment centres, bed-and-breakfast accommodation and casinos.

2/ Other non-residential space includes churches, sport and recreation clubs, schools, crèches, hospitals and all other non-residential space.

3/ Other buildings include additions and alterations to other residential buildings, non-residential buildings and internal alterations.

**Table 12 - Building plans passed according to type of building and province: Northern Cape**

Type of building	November 2000	October 2001	November 2001	January 2000 to November 2000	January 2001 to November 2001	Percentage change between January 2000 to November 2000 and January 2001 to November 2001
<b>Residential buildings</b>						
Dwelling-houses smaller than 80 square metres						
Number of dwelling-houses	10	16	9	79	83	+ 5,1
Total square metres	531	871	400	4 456	4 523	+ 1,5
Total value at current prices (R'000)	899	1 450	537	6 578	6 900	+ 4,9
Dwelling-houses equal to or larger than 80 square metres						
Number of dwelling-houses	10	8	9	129	154	+ 19,4
Total square metres	1 555	1 569	1 262	20 813	26 598	+ 27,8
Total value at current prices (R'000)	1 548	2 526	2 038	26 795	37 188	+ 38,8
Flats and townhouses						
Number of flats and townhouses	2	0	2	43	14	- 67,4
Total square metres	443	0	496	5 549	2 581	- 53,5
Total value at current prices (R'000)	398	0	893	8 450	3 727	- 55,9
Other residential buildings <sup>1/</sup>						
Total square metres	0	0	0	327	0	..
Total value at current prices (R'000)	0	0	0	266	0	..
<b>Total value of residential buildings at current prices (R'000)</b>	<b>2 845</b>	<b>3 976</b>	<b>3 468</b>	<b>42 089</b>	<b>47 815</b>	<b>+ 13,6</b>
<b>Non-residential buildings</b>						
Office and banking space						
Total square metres	0	0	66	7 715	257	- 96,7
Total value at current prices (R'000)	0	0	92	16 363	216	- 98,7
Shopping space						
Total square metres	2 146	0	3 673	7 480	4 143	- 44,6
Total value at current prices (R'000)	4 082	0	8 081	11 093	8 888	- 19,9
Industrial and warehouse space						
Total square metres	0	0	0	3 609	2 336	- 35,3
Total value at current prices (R'000)	0	0	0	5 414	2 744	- 49,3
Other non-residential space <sup>2/</sup>						
Total square metres	442	157	219	5 673	2 594	- 54,3
Total value at current prices (R'000)	972	345	328	9 383	4 174	- 55,5
<b>Total value of non-residential buildings at current prices (R'000)</b>	<b>5 054</b>	<b>345</b>	<b>8 501</b>	<b>42 253</b>	<b>16 022</b>	<b>- 62,1</b>
<b>Additions and alterations</b>						
Dwelling-houses						
Total square metres	3 021	2 821	3 564	33 147	28 754	- 13,3
Total value at current prices (R'000)	4 720	4 799	6 141	52 401	47 809	- 8,8
Other buildings <sup>3/</sup>						
Total square metres	4 111	589	599	16 399	9 301	- 43,3
Total value at current prices (R'000)	10 491	2 503	2 302	39 057	23 028	- 41,0
<b>Total value of additions and alterations at current prices (R'000)</b>	<b>15 211</b>	<b>7 302</b>	<b>8 443</b>	<b>91 458</b>	<b>70 837</b>	<b>- 22,5</b>
<b>Total value of building plans passed at current prices (R'000)</b>	<b>23 110</b>	<b>11 623</b>	<b>20 412</b>	<b>175 800</b>	<b>134 674</b>	<b>- 23,4</b>

1/ Other residential buildings include institutions for the disabled, boarding houses, old people's homes, hostels, hotels, motels, guest houses, holiday chalets, entertainment centres, bed-and-breakfast accommodation and casinos.

2/ Other non-residential space includes churches, sport and recreation clubs, schools, crèches, hospitals and all other non-residential space.

3/ Other buildings include additions and alterations to other residential buildings, non-residential buildings and internal alterations.

**Table 13 - Building plans passed according to type of building and province: Free State**

Type of building	November 2000	October 2001*	November 2001	January 2000 to November 2000	January 2001 to November 2001	Percentage change between January 2000 to November 2000 and January 2001 to November 2001
<b>Residential buildings</b>						
Dwelling-houses smaller than 80 square metres						
Number of dwelling-houses	444	484	77	4 980	2 406	-51,7
Total square metres	19 292	18 670	3 556	207 269	106 617	-48,6
Total value at current prices (R'000)	9 322	9 737	3 197	110 731	66 754	-39,7
Dwelling-houses equal to or larger than 80 square metres						
Number of dwelling-houses	71	64	81	721	693	-3,9
Total square metres	10 564	12 737	13 793	110 844	110 391	-0,4
Total value at current prices (R'000)	11 324	13 111	16 040	125 265	121 475	-3,0
Flats and townhouses						
Number of flats and townhouses	43	32	39	371	388	+ 4,6
Total square metres	5 209	3 367	4 596	31 818	45 461	+ 42,9
Total value at current prices (R'000)	10 110	4 996	6 391	45 869	66 156	+ 44,2
Other residential buildings <sup>1/</sup>						
Total square metres	505	192	1 811	2 597	8 596	+ 231,0
Total value at current prices (R'000)	562	229	2 443	3 842	10 864	+ 182,8
<b>Total value of residential buildings at current prices (R'000)</b>	<b>31 318</b>	<b>28 073</b>	<b>28 071</b>	<b>285 707</b>	<b>265 249</b>	<b>-7,2</b>
<b>Non-residential buildings</b>						
Office and banking space						
Total square metres	16	47	0	14 559	14 295	-1,8
Total value at current prices (R'000)	13	58	0	20 424	27 483	+ 34,6
Shopping space						
Total square metres	0	1 966	0	21 611	9 167	-57,6
Total value at current prices (R'000)	0	1 718	0	25 061	10 112	-59,7
Industrial and warehouse space						
Total square metres	1 014	1 060	2 700	18 766	8 510	-54,7
Total value at current prices (R'000)	699	912	2 000	17 537	6 567	-62,6
Other non-residential space <sup>2/</sup>						
Total square metres	1 720	1 075	128	12 626	10 760	-14,8
Total value at current prices (R'000)	3 092	754	139	19 190	14 500	-24,4
<b>Total value of non-residential buildings at current prices (R'000)</b>	<b>3 804</b>	<b>3 442</b>	<b>2 139</b>	<b>82 212</b>	<b>58 662</b>	<b>-28,6</b>
<b>Additions and alterations</b>						
Dwelling-houses						
Total square metres	6 967	8 393	11 283	89 626	87 489	-2,4
Total value at current prices (R'000)	7 431	9 101	12 776	93 183	92 704	-0,5
Other buildings <sup>3/</sup>						
Total square metres	1 093	1 809	3 534	42 121	18 708	-55,6
Total value at current prices (R'000)	9 160	4 288	5 062	126 477	34 967	-72,4
<b>Total value of additions and alterations at current prices (R'000)</b>	<b>16 591</b>	<b>13 389</b>	<b>17 838</b>	<b>219 660</b>	<b>127 671</b>	<b>-41,9</b>
<b>Total value of building plans passed at current prices (R'000)</b>	<b>51 713</b>	<b>44 904</b>	<b>48 048</b>	<b>587 579</b>	<b>451 582</b>	<b>-23,1</b>

1/ Other residential buildings include institutions for the disabled, boarding houses, old people's homes, hostels, hotels, motels, guest houses, holiday chalets, entertainment centres, bed-and-breakfast accommodation and casinos.

2/ Other non-residential space includes churches, sport and recreation clubs, schools, crèches, hospitals and all other non-residential space.

3/ Other buildings include additions and alterations to other residential buildings, non-residential buildings and internal alterations.



**Table 14 - Building plans passed according to type of building and province: KwaZulu-Natal**

Type of building	November 2000*	October 2001	November 2001	January 2000 to November 2000	January 2001 to November 2001	Percentage change between January 2000 to November 2000 and January 2001 to November 2001
<b>Residential buildings</b>						
Dwelling-houses smaller than 80 square metres						
Number of dwelling-houses	174	172	160	2 251	2 250	+ 0,0
Total square metres	8 599	6 763	7 250	100 800	97 801	- 3,0
Total value at current prices (R'000)	8 705	7 797	8 688	105 535	96 868	- 8,2
Dwelling-houses equal to or larger than 80 square metres						
Number of dwelling-houses	165	160	155	1 799	1 568	- 12,8
Total square metres	36 340	31 583	30 812	370 918	335 722	- 9,5
Total value at current prices (R'000)	57 749	47 102	44 380	543 943	484 848	- 10,9
Flats and townhouses						
Number of flats and townhouses	56	62	50	752	850	+ 13,0
Total square metres	6 848	6 034	9 929	111 463	117 542	+ 5,5
Total value at current prices (R'000)	10 746	9 647	20 524	181 751	198 212	+ 9,1
Other residential buildings <sup>1/</sup>						
Total square metres	8 056	0	0	12 083	20 202	+ 67,2
Total value at current prices (R'000)	14 500	0	0	24 525	82 431	+ 236,1
<b>Total value of residential buildings at current prices (R'000)</b>	<b>91 700</b>	<b>64 546</b>	<b>73 592</b>	<b>855 754</b>	<b>862 359</b>	<b>+ 0,8</b>
<b>Non-residential buildings</b>						
Office and banking space						
Total square metres	117	1 848	2 036	54 343	129 967	+ 139,2
Total value at current prices (R'000)	450	4 150	3 800	99 920	274 462	+ 174,7
Shopping space						
Total square metres	4 752	5 416	1 305	28 862	39 342	+ 36,3
Total value at current prices (R'000)	4 796	11 320	1 950	36 038	55 628	+ 54,4
Industrial and warehouse space						
Total square metres	20 509	18 243	1 338	155 766	131 820	- 15,4
Total value at current prices (R'000)	21 376	16 259	1 371	199 520	192 383	- 3,6
Other non-residential space <sup>2/</sup>						
Total square metres	2 252	4 144	18 108	49 074	60 241	+ 22,8
Total value at current prices (R'000)	2 867	9 303	30 259	67 104	87 410	+ 30,3
<b>Total value of non-residential buildings at current prices (R'000)</b>	<b>29 489</b>	<b>41 032</b>	<b>37 380</b>	<b>402 582</b>	<b>609 883</b>	<b>+ 51,5</b>
<b>Additions and alterations</b>						
Dwelling-houses						
Total square metres	40 457	35 358	36 047	393 760	371 546	- 5,6
Total value at current prices (R'000)	49 130	43 947	42 581	480 420	455 007	- 5,3
Other buildings <sup>3/</sup>						
Total square metres	14 901	13 173	13 878	234 313	164 157	- 29,9
Total value at current prices (R'000)	27 150	23 551	30 472	402 836	330 097	- 18,1
<b>Total value of additions and alterations at current prices (R'000)</b>	<b>76 280</b>	<b>67 498</b>	<b>73 053</b>	<b>883 256</b>	<b>785 104</b>	<b>- 11,1</b>
<b>Total value of building plans passed at current prices (R'000)</b>	<b>197 469</b>	<b>173 076</b>	<b>184 025</b>	<b>2 141 592</b>	<b>2 257 346</b>	<b>+ 5,4</b>

1/ Other residential buildings include institutions for the disabled, boarding houses, old people's homes, hostels, hotels, motels, guest houses, holiday chalets, entertainment centres, bed-and-breakfast accommodation and casinos.

2/ Other non-residential space includes churches, sport and recreation clubs, schools, crèches, hospitals and all other non-residential space.

3/ Other buildings include additions and alterations to other residential buildings, non-residential buildings and internal alterations.

**Table 15 - Building plans passed according to type of building and province: North West**

Type of building	November 2000*	October 2001	November 2001	January 2000 to November 2000	January 2001 to November 2001	Percentage change between January 2000 to November 2000 and January 2001 to November 2001
<b>Residential buildings</b>						
Dwelling-houses smaller than 80 square metres						
Number of dwelling-houses	97	102	71	2 122	3 637	+ 71,4
Total square metres	4 821	5 355	3 925	75 810	130 516	+ 72,2
Total value at current prices (R'000)	5 636	4 267	4 974	57 917	82 648	+ 42,7
Dwelling-houses equal to or larger than 80 square metres						
Number of dwelling-houses	71	99	106	933	829	- 11,1
Total square metres	13 740	17 745	19 116	146 521	148 909	+ 1,6
Total value at current prices (R'000)	14 153	25 840	30 130	166 248	195 404	+ 17,5
Flats and townhouses						
Number of flats and townhouses	30	0	96	214	341	+ 59,3
Total square metres	4 211	0	11 090	21 757	37 650	+ 73,0
Total value at current prices (R'000)	4 135	0	22 181	24 721	57 021	+ 130,7
Other residential buildings <sup>1/</sup>						
Total square metres	0	617	0	4 779	2 606	- 45,5
Total value at current prices (R'000)	0	926	0	5 619	2 590	- 53,9
<b>Total value of residential buildings at current prices (R'000)</b>	<b>23 924</b>	<b>31 033</b>	<b>57 285</b>	<b>254 505</b>	<b>337 663</b>	<b>+ 32,7</b>
<b>Non-residential buildings</b>						
Office and banking space						
Total square metres	100	0	0	2 228	3 762	+ 68,9
Total value at current prices (R'000)	113	0	0	2 442	6 061	+ 148,2
Shopping space						
Total square metres	2 372	208	8 127	15 437	25 521	+ 65,3
Total value at current prices (R'000)	2 846	234	8 242	20 951	32 275	+ 54,0
Industrial and warehouse space						
Total square metres	1 102	652	2 512	5 727	11 462	+ 100,1
Total value at current prices (R'000)	1 542	1 304	5 024	6 083	14 274	+ 134,7
Other non-residential space <sup>2/</sup>						
Total square metres	834	513	3 071	18 262	10 397	- 43,1
Total value at current prices (R'000)	1 262	794	4 162	23 123	11 668	- 49,5
<b>Total value of non-residential buildings at current prices (R'000)</b>	<b>5 763</b>	<b>2 332</b>	<b>17 428</b>	<b>52 599</b>	<b>64 278</b>	<b>+ 22,2</b>
<b>Additions and alterations</b>						
Dwelling-houses						
Total square metres	6 678	9 982	8 750	73 096	70 229	- 3,9
Total value at current prices (R'000)	7 129	10 342	11 867	73 225	78 318	+ 7,0
Other buildings <sup>3/</sup>						
Total square metres	3 728	2 356	3 917	30 016	22 141	- 26,2
Total value at current prices (R'000)	5 902	2 001	7 461	53 944	35 834	- 33,6
<b>Total value of additions and alterations at current prices (R'000)</b>	<b>13 031</b>	<b>12 343</b>	<b>19 328</b>	<b>127 169</b>	<b>114 152</b>	<b>- 10,2</b>
<b>Total value of building plans passed at current prices (R'000)</b>	<b>42 718</b>	<b>45 708</b>	<b>94 041</b>	<b>434 273</b>	<b>516 093</b>	<b>+ 18,8</b>

1/ Other residential buildings include institutions for the disabled, boarding houses, old people's homes, hostels, hotels, motels, guest houses, holiday chalets, entertainment centres, bed-and-breakfast accommodation and casinos.

2/ Other non-residential space includes churches, sport and recreation clubs, schools, crèches, hospitals and all other non-residential space.

3/ Other buildings include additions and alterations to other residential buildings, non-residential buildings and internal alterations.

**Table 16 - Building plans passed according to type of building and province: Gauteng**

Type of building	November 2000 *	October 2001	November 2001	January 2000 to November 2000	January 2001 to November 2001	Percentage change between January 2000 to November 2000 and January 2001 to November 2001
<b>Residential buildings</b>						
Dwelling-houses smaller than 80 square metres						
Number of dwelling-houses	1 150	672	733	17 541	10 744	- 38,7
Total square metres	45 708	30 021	32 608	665 762	414 277	- 37,8
Total value at current prices (R'000)	53 972	38 754	37 160	534 389	454 357	- 15,0
Dwelling-houses equal to or larger than 80 square metres						
Number of dwelling-houses	811	784	680	7 680	7 760	+ 1,0
Total square metres	204 285	199 138	184 228	1 844 278	1 943 502	+ 5,4
Total value at current prices (R'000)	284 202	303 114	265 405	2 497 987	2 791 910	+ 11,8
Flats and townhouses						
Number of flats and townhouses	531	506	716	5 629	5 137	- 8,7
Total square metres	61 388	80 286	129 425	622 548	691 898	+ 11,1
Total value at current prices (R'000)	100 730	123 282	201 125	909 065	1 070 301	+ 17,7
Other residential buildings <sup>1/</sup>						
Total square metres	2 674	0	6 924	78 227	18 731	- 76,1
Total value at current prices (R'000)	2 992	0	7 982	107 153	22 749	- 78,8
<b>Total value of residential buildings at current prices (R'000)</b>	<b>441 896</b>	<b>465 150</b>	<b>511 672</b>	<b>4 048 594</b>	<b>4 339 317</b>	<b>+ 7,2</b>
<b>Non-residential buildings</b>						
Office and banking space						
Total square metres	109 078	12 186	30 981	723 949	338 342	- 53,3
Total value at current prices (R'000)	165 937	20 830	51 571	1 063 761	565 884	- 46,8
Shopping space						
Total square metres	9 050	2 869	35 164	195 975	156 726	- 20,0
Total value at current prices (R'000)	13 422	3 975	57 193	315 824	254 785	- 19,3
Industrial and warehouse space						
Total square metres	47 471	42 566	9 600	459 302	303 106	- 34,0
Total value at current prices (R'000)	79 424	62 271	13 893	687 607	484 045	- 29,6
Other non-residential space <sup>2/</sup>						
Total square metres	23 257	1 861	23 617	146 050	152 390	+ 4,3
Total value at current prices (R'000)	38 085	2 910	25 980	223 294	219 269	- 1,8
<b>Total value of non-residential buildings at current prices (R'000)</b>	<b>296 868</b>	<b>89 986</b>	<b>148 637</b>	<b>2 290 486</b>	<b>1 523 983</b>	<b>- 33,5</b>
<b>Additions and alterations</b>						
Dwelling-houses						
Total square metres	104 920	93 643	95 793	1 033 584	985 218	- 4,7
Total value at current prices (R'000)	135 032	133 256	127 806	1 280 604	1 284 722	+ 0,3
Other buildings <sup>3/</sup>						
Total square metres	25 548	29 089	88 745	304 438	350 811	+ 15,2
Total value at current prices (R'000)	42 636	53 479	104 816	500 628	560 961	+ 12,1
<b>Total value of additions and alterations at current prices (R'000)</b>	<b>177 668</b>	<b>186 735</b>	<b>232 622</b>	<b>1 781 232</b>	<b>1 845 683</b>	<b>+ 3,6</b>
<b>Total value of building plans passed at current prices (R'000)</b>	<b>916 432</b>	<b>741 871</b>	<b>892 931</b>	<b>8 120 312</b>	<b>7 708 983</b>	<b>- 5,1</b>

1/ Other residential buildings include institutions for the disabled, boarding houses, old people's homes, hostels, hotels, motels, guest houses, holiday chalets, entertainment centres, bed-and-breakfast accommodation and casinos.

2/ Other non-residential space includes churches, sport and recreation clubs, schools, crèches, hospitals and all other non-residential space.

3/ Other buildings include additions and alterations to other residential buildings, non-residential buildings and internal alterations.

**Table 17 - Building plans passed according to type of building and province: Mpumalanga**

Type of building	November 2000*	October 2001	November 2001	January 2000 to November 2000	January 2001 to November 2001	Percentage change between January 2000 to November 2000 and January 2001 to November 2001
<b>Residential buildings</b>						
Dwelling-houses smaller than 80 square metres						
Number of dwelling-houses	1 243	379	321	4 618	5 100	+ 10,4
Total square metres	40 474	13 317	10 979	158 432	178 529	+ 12,7
Total value at current prices (R'000)	27 588	7 089	5 227	94 998	98 531	+ 3,7
Dwelling-houses equal to or larger than 80 square metres						
Number of dwelling-houses	93	98	42	918	770	- 16,1
Total square metres	14 370	19 903	8 068	153 915	148 295	- 3,7
Total value at current prices (R'000)	15 079	23 588	10 681	174 184	189 758	+ 8,9
Flats and townhouses						
Number of flats and townhouses	41	43	42	204	947	+ 364,2
Total square metres	3 840	4 843	3 807	19 326	81 480	+ 321,6
Total value at current prices (R'000)	4 759	6 644	4 613	22 677	108 361	+ 377,8
Other residential buildings <sup>1/</sup>						
Total square metres	413	0	1 907	1 553	3 502	+ 125,5
Total value at current prices (R'000)	609	0	2 854	2 251	4 959	+ 120,3
<b>Total value of residential buildings at current prices (R'000)</b>	<b>48 035</b>	<b>37 321</b>	<b>23 375</b>	<b>294 110</b>	<b>401 609</b>	<b>+ 36,6</b>
<b>Non-residential buildings</b>						
Office and banking space						
Total square metres	2 163	0	0	36 930	3 671	- 90,1
Total value at current prices (R'000)	1 891	0	0	53 663	5 750	- 89,3
Shopping space						
Total square metres	4 681	1 828	2 437	22 572	7 233	- 68,0
Total value at current prices (R'000)	4 500	3 309	2 690	25 560	9 484	- 62,9
Industrial and warehouse space						
Total square metres	3 168	604	924	33 898	30 747	- 9,3
Total value at current prices (R'000)	3 648	1 023	1 562	42 996	28 256	- 34,3
Other non-residential space <sup>2/</sup>						
Total square metres	1 228	450	2 150	13 306	17 384	+ 30,6
Total value at current prices (R'000)	1 194	621	538	14 031	17 646	+ 25,8
<b>Total value of non-residential buildings at current prices (R'000)</b>	<b>11 233</b>	<b>4 953</b>	<b>4 790</b>	<b>136 250</b>	<b>61 136</b>	<b>- 55,1</b>
<b>Additions and alterations</b>						
Dwelling-houses						
Total square metres	14 727	15 177	11 901	128 794	120 049	- 6,8
Total value at current prices (R'000)	14 359	17 575	11 205	119 261	122 109	+ 2,4
Other buildings <sup>3/</sup>						
Total square metres	646	1 088	1 803	18 721	19 492	+ 4,1
Total value at current prices (R'000)	1 939	2 163	3 626	28 527	31 507	+ 10,4
<b>Total value of additions and alterations at current prices (R'000)</b>	<b>16 298</b>	<b>19 738</b>	<b>14 831</b>	<b>147 788</b>	<b>153 616</b>	<b>+ 3,9</b>
<b>Total value of building plans passed at current prices (R'000)</b>	<b>75 566</b>	<b>62 012</b>	<b>42 996</b>	<b>578 148</b>	<b>616 361</b>	<b>+ 6,6</b>

1/ Other residential buildings include institutions for the disabled, boarding houses, old people's homes, hostels, hotels, motels, guest houses, holiday chalets, entertainment centres, bed-and-breakfast accommodation and casinos.

2/ Other non-residential space includes churches, sport and recreation clubs, schools, crèches, hospitals and all other non-residential space.

3/ Other buildings include additions and alterations to other residential buildings, non-residential buildings and internal alterations.

**Table 18 - Building plans passed according to type of building and province: Northern Province**

Type of building	November 2000	October 2001	November 2001	January 2000 to November 2000	January 2001 to November 2001	Percentage change between January 2000 to November 2000 and January 2001 to November 2001
<b>Residential buildings</b>						
Dwelling-houses smaller than 80 square metres						
Number of dwelling-houses	42	38	30	1 613	408	-74,7
Total square metres	2 716	2 270	1 768	72 841	24 041	-67,0
Total value at current prices (R'000)	3 737	3 178	2 505	56 760	31 845	-43,9
Dwelling-houses equal to or larger than 80 square metres						
Number of dwelling-houses	33	62	37	446	470	+ 5,4
Total square metres	5 075	14 721	9 392	74 152	88 762	+ 19,7
Total value at current prices (R'000)	7 145	18 691	11 929	99 832	115 326	+ 15,5
Flats and townhouses						
Number of flats and townhouses	12	4	1	99	55	-44,4
Total square metres	1 840	526	149	14 350	7 251	-49,5
Total value at current prices (R'000)	2 120	736	203	17 772	9 216	-48,1
Other residential buildings <sup>1/</sup>						
Total square metres	0	0	0	3 223	192	-94,0
Total value at current prices (R'000)	0	0	0	3 980	96	-97,6
<b>Total value of residential buildings at current prices (R'000)</b>	<b>13 002</b>	<b>22 605</b>	<b>14 637</b>	<b>178 344</b>	<b>156 483</b>	<b>-12,3</b>
<b>Non-residential buildings</b>						
Office and banking space						
Total square metres	0	94	0	5 800	999	-82,8
Total value at current prices (R'000)	0	132	0	5 234	1 420	-72,9
Shopping space						
Total square metres	1 042	608	0	7 286	13 515	+ 85,5
Total value at current prices (R'000)	1 301	973	0	8 173	20 127	+ 146,3
Industrial and warehouse space						
Total square metres	1 074	300	1 204	4 053	3 209	-20,8
Total value at current prices (R'000)	1 263	500	978	4 494	3 407	-24,2
Other non-residential space <sup>2/</sup>						
Total square metres	617	37	340	5 221	3 511	-32,8
Total value at current prices (R'000)	899	52	748	9 385	5 621	-40,1
<b>Total value of non-residential buildings at current prices (R'000)</b>	<b>3 463</b>	<b>1 657</b>	<b>1 726</b>	<b>27 286</b>	<b>30 575</b>	<b>+ 12,1</b>
<b>Additions and alterations</b>						
Dwelling-houses						
Total square metres	4 132	3 879	5 241	47 494	44 439	-6,4
Total value at current prices (R'000)	5 515	4 982	7 107	62 402	58 022	-7,0
Other buildings <sup>3/</sup>						
Total square metres	2 784	1 405	4 293	22 820	15 178	-33,5
Total value at current prices (R'000)	4 262	2 524	8 629	41 633	37 364	-10,3
<b>Total value of additions and alterations at current prices (R'000)</b>	<b>9 777</b>	<b>7 506</b>	<b>15 736</b>	<b>104 035</b>	<b>95 386</b>	<b>-8,3</b>
<b>Total value of building plans passed at current prices (R'000)</b>	<b>26 242</b>	<b>31 768</b>	<b>32 099</b>	<b>309 665</b>	<b>282 444</b>	<b>-8,8</b>

1/ Other residential buildings include institutions for the disabled, boarding houses, old people's homes, hostels, hotels, motels, guest houses, holiday chalets, entertainment centres, bed-and-breakfast accommodation and casinos.

2/ Other non-residential space includes churches, sport and recreation clubs, schools, crèches, hospitals and all other non-residential space.

3/ Other buildings include additions and alterations to other residential buildings, non-residential buildings and internal alterations.

**Table 19 - Buildings completed according to type of building: Total RSA**

Type of building	November 2000 *	October 2001 *	November 2001	January 2000 to November 2000	January 2001 to November 2001	Percentage change between January 2000 to November 2000 and January 2001 to November 2001
<b>Residential buildings</b>						
Dwelling-houses smaller than 80 square metres						
Number of dwelling-houses	3 393	1 884	1 870	35 774	24 327	- 32,0
Total square metres	121 341	80 596	76 822	1 335 009	975 429	- 26,9
Total value at current prices (R'000)	115 538	85 051	76 598	1 030 822	900 699	- 12,6
Dwelling-houses equal to or larger than 80 square metres						
Number of dwelling-houses	1 141	1 153	1 167	9 953	10 881	+ 9,3
Total square metres	233 335	259 707	241 468	1 958 574	2 216 087	+ 13,1
Total value at current prices (R'000)	322 535	369 637	347 918	2 557 109	3 113 862	+ 21,8
Flats and townhouses						
Number of flats and townhouses	650	598	1 103	7 099	6 665	- 6,1
Total square metres	70 289	88 595	128 390	707 268	754 672	+ 6,7
Total value at current prices (R'000)	109 788	136 505	189 582	968 220	1 094 867	+ 13,1
Other residential buildings <sup>1/</sup>						
Total square metres	5 684	19 522	4 631	65 244	117 256	+ 79,7
Total value at current prices (R'000)	7 941	73 514	5 216	102 161	438 308	+ 329,0
<b>Total value of residential buildings at current prices (R'000)</b>	<b>555 802</b>	<b>664 707</b>	<b>619 314</b>	<b>4 658 312</b>	<b>5 547 736</b>	<b>+ 19,1</b>
<b>Non-residential buildings</b>						
Office and banking space						
Total square metres	64 276	77 933	35 972	542 115	588 471	+ 8,6
Total value at current prices (R'000)	101 627	130 385	108 706	843 892	955 340	+ 13,2
Shopping space						
Total square metres	11 490	30 295	17 664	456 763	629 767	+ 37,9
Total value at current prices (R'000)	12 839	49 189	22 443	908 082	1 697 849	+ 87,0
Industrial and warehouse space						
Total square metres	33 118	56 696	27 395	686 044	651 285	- 5,1
Total value at current prices (R'000)	42 554	73 530	24 073	770 529	782 440	+ 1,5
Other non-residential space <sup>2/</sup>						
Total square metres	25 682	18 874	32 495	274 432	208 243	- 24,1
Total value at current prices (R'000)	29 422	26 987	43 349	291 856	255 407	- 12,5
<b>Total value of non-residential buildings at current prices (R'000)</b>	<b>186 442</b>	<b>280 091</b>	<b>198 571</b>	<b>2 814 359</b>	<b>3 691 036</b>	<b>+ 31,2</b>
<b>Additions and alterations</b>						
Dwelling-houses						
Total square metres	133 832	141 405	133 106	1 305 443	1 345 572	+ 3,1
Total value at current prices (R'000)	141 567	173 631	166 046	1 475 311	1 598 025	+ 8,3
Other buildings <sup>3/</sup>						
Total square metres	66 256	35 970	61 112	545 081	514 453	- 5,6
Total value at current prices (R'000)	114 333	64 177	119 831	978 123	1 029 872	+ 5,3
<b>Total value of additions and alterations at current prices (R'000)</b>	<b>255 900</b>	<b>237 808</b>	<b>285 877</b>	<b>2 453 434</b>	<b>2 627 897</b>	<b>+ 7,1</b>
<b>Total value of buildings completed at current prices (R'000)</b>	<b>998 144</b>	<b>1 182 606</b>	<b>1 103 762</b>	<b>9 926 105</b>	<b>11 866 669</b>	<b>+ 19,6</b>

1/ Other residential buildings include institutions for the disabled, boarding houses, old people's homes, hostels, hotels, motels, guest houses, holiday chalets, entertainment centres, bed-and-breakfast accommodation and casinos.

2/ Other non-residential space includes churches, sport and recreation clubs, schools, crèches, hospitals and all other non-residential space.

3/ Other buildings include additions and alterations to other residential buildings, non-residential buildings and internal alterations.

**Table 20 - Buildings completed according to type of building and province: Western Cape**

Type of building	November 2000 *	October 2001	November 2001	January 2000 to November 2000	January 2001 to November 2001	Percentage change between January 2000 to November 2000 and January 2001 to November 2001
<b>Residential buildings</b>						
Dwelling-houses smaller than 80 square metres						
Number of dwelling-houses	707	323	477	8 307	4 928	- 40,7
Total square metres	25 405	13 282	17 862	278 936	201 809	- 27,7
Total value at current prices (R'000)	30 535	12 488	15 628	185 449	222 204	+ 19,8
Dwelling-houses equal to or larger than 80 square metres						
Number of dwelling-houses	455	405	394	3 507	3 739	+ 6,6
Total square metres	85 925	79 583	78 110	640 771	729 445	+ 13,8
Total value at current prices (R'000)	122 077	126 428	117 276	878 704	1 097 828	+ 24,9
Flats and townhouses						
Number of flats and townhouses	103	135	141	1 890	1 733	- 8,3
Total square metres	8 818	30 069	15 591	189 374	206 132	+ 8,8
Total value at current prices (R'000)	13 695	48 105	21 098	250 770	284 894	+ 13,6
Other residential buildings <sup>1/</sup>						
Total square metres	2 033	4 436	1 469	38 045	39 375	+ 3,5
Total value at current prices (R'000)	3 188	5 375	2 135	62 939	53 078	- 15,7
<b>Total value of residential buildings at current prices (R'000)</b>	<b>169 495</b>	<b>192 396</b>	<b>156 137</b>	<b>1 377 862</b>	<b>1 658 004</b>	<b>+ 20,3</b>
<b>Non-residential buildings</b>						
Office and banking space						
Total square metres	27 091	14 739	2 746	130 066	121 410	- 6,7
Total value at current prices (R'000)	43 165	25 470	3 884	203 654	195 797	- 3,9
Shopping space						
Total square metres	891	975	3 555	69 248	46 871	- 32,3
Total value at current prices (R'000)	1 134	1 651	6 345	98 858	60 488	- 38,8
Industrial and warehouse space						
Total square metres	12 000	6 145	4 483	213 111	141 355	- 33,7
Total value at current prices (R'000)	13 796	7 115	6 503	196 709	155 711	- 20,8
Other non-residential space <sup>2/</sup>						
Total square metres	14 402	1 211	10 257	124 380	71 321	- 42,7
Total value at current prices (R'000)	12 455	1 308	8 922	98 716	65 634	- 33,5
<b>Total value of non-residential buildings at current prices (R'000)</b>	<b>70 550</b>	<b>35 544</b>	<b>25 654</b>	<b>597 937</b>	<b>477 630</b>	<b>- 20,1</b>
<b>Additions and alterations</b>						
Dwelling-houses						
Total square metres	54 836	41 202	37 596	504 530	489 059	- 3,1
Total value at current prices (R'000)	47 497	50 833	52 078	577 623	611 150	+ 5,8
Other buildings <sup>3/</sup>						
Total square metres	18 189	8 026	9 339	147 911	146 498	- 1,0
Total value at current prices (R'000)	23 088	19 542	20 704	229 379	345 711	+ 50,7
<b>Total value of additions and alterations at current prices (R'000)</b>	<b>70 585</b>	<b>70 375</b>	<b>72 782</b>	<b>807 002</b>	<b>956 861</b>	<b>+ 18,6</b>
<b>Total value of buildings completed at current prices (R'000)</b>	<b>310 630</b>	<b>298 315</b>	<b>254 573</b>	<b>2 782 801</b>	<b>3 092 495</b>	<b>11,1</b>

1/ Other residential buildings include institutions for the disabled, boarding houses, old people's homes, hostels, hotels, motels, guest houses, holiday chalets, entertainment centres, bed-and-breakfast accommodation and casinos.

2/ Other non-residential space includes churches, sport and recreation clubs, schools, crèches, hospitals and all other non-residential space.

3/ Other buildings include additions and alterations to other residential buildings, non-residential buildings and internal alterations.

**Table 21 - Buildings completed according to type of building and province: Eastern Cape**

Type of building	November 2000	October 2001	November 2001	January 2000 to November 2000	January 2001 to November 2001	Percentage change between January 2000 to November 2000 and January 2001 to November 2001
<b>Residential buildings</b>						
Dwelling-houses smaller than 80 square metres						
Number of dwelling-houses	400	182	96	2 206	2 733	+ 23,9
Total square metres	17 488	7 830	4 734	95 127	118 120	+ 24,2
Total value at current prices (R'000)	14 281	9 742	6 775	93 424	116 881	+ 25,1
Dwelling-houses equal to or larger than 80 square metres						
Number of dwelling-houses	83	80	65	563	888	+ 57,7
Total square metres	13 855	18 153	11 489	96 532	130 737	+ 35,4
Total value at current prices (R'000)	20 397	19 518	14 675	116 414	161 546	+ 38,8
Flats and townhouses						
Number of flats and townhouses	15	34	30	348	259	- 25,6
Total square metres	2 668	6 349	3 474	30 385	27 713	- 8,8
Total value at current prices (R'000)	4 235	7 175	3 509	37 719	30 613	- 18,8
Other residential buildings <sup>1/</sup>						
Total square metres	0	5 820	0	1 287	13 539	+ 952,0
Total value at current prices (R'000)	0	50 000	0	1 440	60 955	+ 4133,0
<b>Total value of residential buildings at current prices (R'000)</b>	<b>38 913</b>	<b>86 435</b>	<b>24 959</b>	<b>248 997</b>	<b>369 995</b>	<b>+ 48,6</b>
<b>Non-residential buildings</b>						
Office and banking space						
Total square metres	55	857	27	1 256	28 228	+ 2 147,5
Total value at current prices (R'000)	89	2 130	34	1 948	32 930	+ 1 590,5
Shopping space						
Total square metres	1 040	5 580	0	63 080	33 450	- 47,0
Total value at current prices (R'000)	1 120	7 246	0	85 629	42 931	- 49,9
Industrial and warehouse space						
Total square metres	4 030	245	10 061	37 431	119 195	+ 218,4
Total value at current prices (R'000)	5 503	159	1 192	34 565	113 882	+ 229,5
Other non-residential space <sup>2/</sup>						
Total square metres	1 295	2 197	959	7 876	22 855	+ 190,2
Total value at current prices (R'000)	1 791	3 504	1 272	9 539	29 936	+ 213,8
<b>Total value of non-residential buildings at current prices (R'000)</b>	<b>8 503</b>	<b>13 039</b>	<b>2 498</b>	<b>131 681</b>	<b>219 679</b>	<b>+ 66,8</b>
<b>Additions and alterations</b>						
Dwelling-houses						
Total square metres	10 272	10 454	12 088	95 277	102 040	+ 7,1
Total value at current prices (R'000)	11 681	13 244	14 881	99 455	121 182	+ 21,8
Other buildings <sup>3/</sup>						
Total square metres	5 618	2 038	18 641	47 404	63 569	+ 34,1
Total value at current prices (R'000)	6 428	4 300	29 342	64 109	91 631	+ 42,9
<b>Total value of additions and alterations at current prices (R'000)</b>	<b>18 109</b>	<b>17 544</b>	<b>44 223</b>	<b>163 564</b>	<b>212 813</b>	<b>+ 30,1</b>
<b>Total value of buildings completed at current prices (R'000)</b>	<b>65 525</b>	<b>117 018</b>	<b>71 680</b>	<b>544 242</b>	<b>802 487</b>	<b>+ 47,5</b>

1/ Other residential buildings include institutions for the disabled, boarding houses, old people's homes, hostels, hotels, motels, guest houses, holiday chalets, entertainment centres, bed-and-breakfast accommodation and casinos.

2/ Other non-residential space includes churches, sport and recreation clubs, schools, crèches, hospitals and all other non-residential space.

3/ Other buildings include additions and alterations to other residential buildings, non-residential buildings and internal alterations.



Table 22 - Buildings completed according to type of building and province: Northern Cape

Type of building	November 2000*	October 2001	November 2001	January 2000 to November 2000	January 2001 to November 2001	Percentage change between January 2000 to November 2000 and January 2001 to November 2001
<b>Residential buildings</b>						
Dwelling-houses smaller than 80 square metres						
Number of dwelling-houses	11	17	1	254	119	- 53,1
Total square metres	516	620	75	10 242	5 742	- 43,9
Total value at current prices (R'000)	649	856	150	10 357	8 465	- 18,3
Dwelling-houses equal to or larger than 80 square metres						
Number of dwelling-houses	8	3	9	103	126	+ 22,3
Total square metres	920	402	1 387	15 743	18 407	+ 16,9
Total value at current prices (R'000)	1 138	724	2 115	19 549	27 333	+ 39,8
Flats and townhouses						
Number of flats and townhouses	0	1	0	13	39	+ 200,0
Total square metres	0	156	0	1 715	4 120	+ 140,2
Total value at current prices (R'000)	0	239	0	2 305	5 935	+ 157,5
Other residential buildings <sup>1/</sup>						
Total square metres	0	0	0	2 758	346	- 87,5
Total value at current prices (R'000)	0	0	0	3 193	277	- 91,3
<b>Total value of residential buildings at current prices (R'000)</b>	<b>1 787</b>	<b>1 819</b>	<b>2 265</b>	<b>35 404</b>	<b>42 010</b>	<b>+ 18,7</b>
<b>Non-residential buildings</b>						
Office and banking space						
Total square metres	0	0	0	0	7 105	..
Total value at current prices (R'000)	0	0	0	0	15 631	..
Shopping space						
Total square metres	0	0	0	9 543	4 775	-50,0
Total value at current prices (R'000)	0	0	0	11 813	7 261	- 38,5
Industrial and warehouse space						
Total square metres	777	0	0	8 239	772	- 90,6
Total value at current prices (R'000)	544	0	0	11 689	618	- 94,7
Other non-residential space <sup>2/</sup>						
Total square metres	823	647	0	1 869	1 603	- 14,2
Total value at current prices (R'000)	0	1 145	0	3 267	2 870	- 12,2
<b>Total value of non-residential buildings at current prices (R'000)</b>	<b>2 277</b>	<b>1 145</b>	<b>0</b>	<b>26 769</b>	<b>26 380</b>	<b>- 1,5</b>
<b>Additions and alterations</b>						
Dwelling-houses						
Total square metres	2 999	1 774	2 414	18 657	19 927	+ 6,8
Total value at current prices (R'000)	4 034	3 184	3 424	25 422	32 580	+ 28,2
Other buildings <sup>3/</sup>						
Total square metres	3 915	153	557	9 172	5 914	- 35,5
Total value at current prices (R'000)	10 118	252	1 189	22 619	14 090	- 37,7
<b>Total value of additions and alterations at current prices (R'000)</b>	<b>14 152</b>	<b>3 436</b>	<b>4 613</b>	<b>48 041</b>	<b>46 670</b>	<b>- 2,9</b>
<b>Total value of buildings completed at current prices (R'000)</b>	<b>18 216</b>	<b>6 400</b>	<b>6 878</b>	<b>110 214</b>	<b>115 060</b>	<b>4,4</b>

1/ Other residential buildings include institutions for the disabled, boarding houses, old people's homes, hostels, hotels, motels, guest houses, holiday chalets, entertainment centres, bed-and-breakfast accommodation and casinos.

2/ Other non-residential space includes churches, sport and recreation clubs, schools, crèches, hospitals and all other non-residential space.

3/ Other buildings include additions and alterations to other residential buildings, non-residential buildings and internal alterations.

**Table 23 - Buildings completed according to type of building and province: Free State**

Type of building	November 2000*	October 2001*	November 2001	January 2000 to November 2000	January 2001 to November 2001	Percentage change between January 2000 to November 2000 and January 2001 to November 2001
<b>Residential buildings</b>						
Dwelling-houses smaller than 80 square metres						
Number of dwelling-houses	89	451	300	3 174	2 127	-33,0
Total square metres	3 781	17 264	13 290	125 895	88 948	-29,3
Total value at current prices (R'000)	2 672	8 515	7 163	71 048	48 852	-31,2
Dwelling-houses equal to or larger than 80 square metres						
Number of dwelling-houses	33	25	18	283	292	+ 3,2
Total square metres	5 965	4 244	2 761	45 831	51 940	+ 13,3
Total value at current prices (R'000)	6 441	5 222	3 386	52 888	61 930	+ 17,1
Flats and townhouses						
Number of flats and townhouses	55	10	24	319	181	-43,3
Total square metres	7 386	1 430	2 723	29 858	17 504	-41,4
Total value at current prices (R'000)	11 010	2 145	4 730	39 630	24 656	-37,8
Other residential buildings <sup>1/</sup>						
Total square metres	3 651	0	389	4 211	853	-79,7
Total value at current prices (R'000)	4 753	0	467	5 401	1 048	-80,6
<b>Total value of residential buildings at current prices (R'000)</b>	<b>24 876</b>	<b>15 882</b>	<b>15 746</b>	<b>168 967</b>	<b>136 486</b>	<b>-19,2</b>
<b>Non-residential buildings</b>						
Office and banking space						
Total square metres	405	0	1 255	6 914	18 450	+ 166,8
Total value at current prices (R'000)	322	0	1 500	12 409	33 703	+ 171,6
Shopping space						
Total square metres	2 148	0	6 320	17 395	12 022	-30,9
Total value at current prices (R'000)	2 597	0	5 372	22 714	12 430	-45,3
Industrial and warehouse space						
Total square metres	309	1 041	327	17 928	14 990	-16,4
Total value at current prices (R'000)	185	543	327	14 355	13 730	-4,4
Other non-residential space <sup>2/</sup>						
Total square metres	407	413	1 661	5 928	14 083	+ 137,6
Total value at current prices (R'000)	1 425	434	3 018	8 199	23 639	+ 188,3
<b>Total value of non-residential buildings at current prices (R'000)</b>	<b>4 529</b>	<b>977</b>	<b>10 217</b>	<b>57 677</b>	<b>83 502</b>	<b>+ 44,8</b>
<b>Additions and alterations</b>						
Dwelling-houses						
Total square metres	8 128	5 424	8 221	48 964	54 863	+ 12,0
Total value at current prices (R'000)	7 159	5 880	9 492	49 980	58 136	+ 16,3
Other buildings <sup>3/</sup>						
Total square metres	4 709	3 175	1 132	18 986	29 669	+ 56,3
Total value at current prices (R'000)	4 587	6 859	2 384	29 265	113 086	+ 286,4
<b>Total value of additions and alterations at current prices (R'000)</b>	<b>11 746</b>	<b>12 739</b>	<b>11 876</b>	<b>79 245</b>	<b>171 222</b>	<b>+ 116,1</b>
<b>Total value of buildings completed at current prices (R'000)</b>	<b>41 151</b>	<b>29 598</b>	<b>37 839</b>	<b>305 889</b>	<b>391 210</b>	<b>+ 27,9</b>

1/ Other residential buildings include institutions for the disabled, boarding houses, old people's homes, hostels, hotels, motels, guest houses, holiday chalets, entertainment centres, bed-and-breakfast accommodation and casinos.

2/ Other non-residential space includes churches, sport and recreation clubs, schools, crèches, hospitals and all other non-residential space.

3/ Other buildings include additions and alterations to other residential buildings, non-residential buildings and internal alterations.

**Table 24 - Buildings completed according to type of building and province: KwaZulu-Natal**

Type of building	November 2000*	October 2001	November 2001	January 2000 to November 2000	January 2001 to November 2001	Percentage change between January 2000 to November 2000 and January 2001 to November 2001
<b>Residential buildings</b>						
Dwelling-houses smaller than 80 square metres						
Number of dwelling-houses	174	209	158	2 832	2 212	-21,9
Total square metres	8 143	8 207	5 845	117 650	95 642	-18,7
Total value at current prices (R'000)	8 362	8 660	6 947	116 244	97 241	-16,3
Dwelling-houses equal to or larger than 80 square metres						
Number of dwelling-houses	127	153	159	1 504	1 529	+ 1,7
Total square metres	25 340	39 589	31 997	269 725	330 392	+ 22,5
Total value at current prices (R'000)	35 387	45 764	43 906	324 630	445 730	+ 37,3
Flats and townhouses						
Number of flats and townhouses	41	95	48	603	759	+ 25,9
Total square metres	7 275	13 603	6 587	94 816	97 646	+ 3,0
Total value at current prices (R'000)	10 813	19 240	9 560	136 280	140 951	+ 3,4
Other residential buildings <sup>1/</sup>						
Total square metres	0	422	871	4 033	10 023	+ 148,5
Total value at current prices (R'000)	0	450	1 300	5 666	42 290	+ 646,4
<b>Total value of residential buildings at current prices (R'000)</b>	<b>54 562</b>	<b>74 114</b>	<b>61 713</b>	<b>582 820</b>	<b>726 212</b>	<b>+ 24,6</b>
<b>Non-residential buildings</b>						
Office and banking space						
Total square metres	6 558	26 045	718	58 249	73 829	+ 26,7
Total value at current prices (R'000)	16 550	52 779	1 400	130 416	128 491	-1,5
Shopping space						
Total square metres	5 308	10 576	2 960	29 920	363 985	+ 1 116,5
Total value at current prices (R'000)	5 596	20 721	2 960	38 271	1 273 297	+ 3 227,1
Industrial and warehouse space						
Total square metres	6 979	20 837	2 705	187 014	155 106	-17,1
Total value at current prices (R'000)	8 974	17 926	3 025	200 431	168 825	-15,8
Other non-residential space <sup>2/</sup>						
Total square metres	3 784	7 447	1 146	24 518	27 559	+ 12,4
Total value at current prices (R'000)	4 580	9 609	1 242	30 911	32 912	+ 6,5
<b>Total value of non-residential buildings at current prices (R'000)</b>	<b>35 700</b>	<b>101 035</b>	<b>8 627</b>	<b>400 029</b>	<b>1 603 525</b>	<b>+ 300,9</b>
<b>Additions and alterations</b>						
Dwelling-houses						
Total square metres	29 177	26 070	26 809	275 449	313 652	+ 13,9
Total value at current prices (R'000)	35 059	30 696	29 744	304 770	350 520	+ 15,0
Other buildings <sup>3/</sup>						
Total square metres	11 313	9 667	6 838	178 469	104 179	-41,6
Total value at current prices (R'000)	35 155	15 597	10 682	352 042	187 903	-46,6
<b>Total value of additions and alterations at current prices (R'000)</b>	<b>70 214</b>	<b>46 293</b>	<b>40 426</b>	<b>656 812</b>	<b>538 423</b>	<b>-18,0</b>
<b>Total value of buildings completed at current prices (R'000)</b>	<b>160 476</b>	<b>221 442</b>	<b>110 766</b>	<b>1 639 661</b>	<b>2 868 160</b>	<b>+ 74,9</b>

1/ Other residential buildings include institutions for the disabled, boarding houses, old people's homes, hostels, hotels, motels, guest houses, holiday chalets, entertainment centres, bed-and-breakfast accommodation and casinos.

2/ Other non-residential space includes churches, sport and recreation clubs, schools, crèches, hospitals and all other non-residential space.

3/ Other buildings include additions and alterations to other residential buildings, non-residential buildings and internal alterations.

**Table 25 - Buildings completed according to type of building and province: North West**

Type of building	November 2000	October 2001	November 2001	January 2000 to November 2000	January 2001 to November 2001	Percentage change between January 2000 to November 2000 and January 2001 to November 2001
<b>Residential buildings</b>						
Dwelling-houses smaller than 80 square metres						
Number of dwelling-houses	906	53	211	2 030	1 495	- 26,4
Total square metres	22 705	2 508	7 736	76 871	60 481	- 21,3
Total value at current prices (R'000)	11 016	3 246	5 191	58 591	49 335	- 15,8
Dwelling-houses equal to or larger than 80 square metres						
Number of dwelling-houses	35	58	70	355	513	+ 44,5
Total square metres	6 006	10 549	13 933	61 115	98 100	+ 60,5
Total value at current prices (R'000)	6 119	13 973	18 463	67 264	126 509	+ 88,1
Flats and townhouses						
Number of flats and townhouses	13	55	10	167	169	+ 1,2
Total square metres	1 733	2 825	1 085	19 158	14 192	- 25,9
Total value at current prices (R'000)	1 342	3 520	1 051	20 235	16 600	- 18,0
Other residential buildings <sup>1/</sup>						
Total square metres	0	0	1 902	748	5 586	+ 646,8
Total value at current prices (R'000)	0	0	1 314	765	5 476	+ 615,8
<b>Total value of residential buildings at current prices (R'000)</b>	<b>18 477</b>	<b>20 739</b>	<b>26 019</b>	<b>146 855</b>	<b>197 920</b>	<b>+ 34,8</b>
<b>Non-residential buildings</b>						
Office and banking space						
Total square metres	159	0	156	12 362	2 008	- 83,8
Total value at current prices (R'000)	119	0	180	13 405	3 112	- 76,8
Shopping space						
Total square metres	1 022	0	1 301	26 126	8 503	- 67,5
Total value at current prices (R'000)	734	0	1 730	30 672	12 627	- 58,8
Industrial and warehouse space						
Total square metres	726	937	1 957	15 695	10 155	- 35,3
Total value at current prices (R'000)	468	600	1 905	12 591	9 869	- 21,6
Other non-residential space <sup>2/</sup>						
Total square metres	1 928	0	13 098	12 385	20 234	+ 63,4
Total value at current prices (R'000)	2 930	0	19 759	16 241	28 291	+ 74,2
<b>Total value of non-residential buildings at current prices (R'000)</b>	<b>4 251</b>	<b>600</b>	<b>23 574</b>	<b>72 909</b>	<b>53 899</b>	<b>- 26,1</b>
<b>Additions and alterations</b>						
Dwelling-houses						
Total square metres	3 403	5 498	9 494	45 949	48 435	+ 5,4
Total value at current prices (R'000)	2 957	5 049	9 282	43 340	45 168	+ 4,2
Other buildings <sup>3/</sup>						
Total square metres	1 129	280	2 370	19 933	19 806	- 0,6
Total value at current prices (R'000)	1 879	214	4 386	17 786	31 283	+ 75,9
<b>Total value of additions and alterations at current prices (R'000)</b>	<b>4 836</b>	<b>5 263</b>	<b>13 668</b>	<b>61 126</b>	<b>76 451</b>	<b>+ 25,1</b>
<b>Total value of buildings completed at current prices (R'000)</b>	<b>27 564</b>	<b>26 602</b>	<b>63 261</b>	<b>280 890</b>	<b>328 270</b>	<b>+ 16,9</b>

1/ Other residential buildings include institutions for the disabled, boarding houses, old people's homes, hostels, hotels, motels, guest houses, holiday chalets, entertainment centres, bed-and-breakfast accommodation and casinos.

2/ Other non-residential space includes churches, sport and recreation clubs, schools, crèches, hospitals and all other non-residential space.

3/ Other buildings include additions and alterations to other residential buildings, non-residential buildings and internal alterations.

**Table 26 - Buildings completed according to type of building and province: Gauteng**

Type of building	November 2000*	October 2001*	November 2001	January 2000 to November 2000	January 2001 to November 2001	Percentage change between January 2000 to November 2000 and January 2001 to November 2001
<b>Residential buildings</b>						
Dwelling-houses smaller than 80 square metres						
Number of dwelling-houses	886	475	475	14 190	7 443	-47,5
Total square metres	34 715	24 031	22 210	524 407	285 997	-45,5
Total value at current prices (R'000)	42 173	37 165	30 759	408 795	278 331	-31,9
Dwelling-houses equal to or larger than 80 square metres						
Number of dwelling-houses	347	391	405	2 986	3 305	+ 10,7
Total square metres	87 098	101 085	92 532	726 524	770 625	+ 6,1
Total value at current prices (R'000)	120 478	151 333	137 898	973 215	1 098 232	+ 12,8
Flats and townhouses						
Number of flats and townhouses	417	267	829	3 646	3 357	-7,9
Total square metres	41 262	34 040	96 100	328 055	365 973	+ 11,6
Total value at current prices (R'000)	67 435	55 909	147 387	465 061	570 482	+ 22,7
Other residential buildings <sup>1/</sup>						
Total square metres	0	8 844	0	11 993	44 534	+ 271,3
Total value at current prices (R'000)	0	17 689	0	19 280	271 584	+ 1 308,6
<b>Total value of residential buildings at current prices (R'000)</b>	<b>230 086</b>	<b>262 096</b>	<b>316 044</b>	<b>1 866 351</b>	<b>2 218 629</b>	<b>+ 18,9</b>
<b>Non-residential buildings</b>						
Office and banking space						
Total square metres	29 228	36 263	31 011	320 756	327 506	+ 2,1
Total value at current prices (R'000)	40 463	49 977	101 531	461 158	524 903	+ 13,8
Shopping space						
Total square metres	747	12 233	3 528	221 979	127 782	-42,4
Total value at current prices (R'000)	1 366	17 771	6 036	584 920	260 198	-55,5
Industrial and warehouse space						
Total square metres	7 547	27 491	6 773	180 371	205 047	+ 13,7
Total value at current prices (R'000)	12 084	47 187	9 487	272 660	314 713	+ 15,4
Other non-residential space <sup>2/</sup>						
Total square metres	2 458	6 959	5 374	88 470	47 319	-46,5
Total value at current prices (R'000)	3 658	10 987	9 136	113 410	68 238	-39,8
<b>Total value of non-residential buildings at current prices (R'000)</b>	<b>57 571</b>	<b>125 922</b>	<b>126 190</b>	<b>1 432 148</b>	<b>1 168 052</b>	<b>-18,4</b>
<b>Additions and alterations</b>						
Dwelling-houses						
Total square metres	20 704	46 266	29 489	272 294	267 788	-1,7
Total value at current prices (R'000)	29 464	59 935	41 061	334 151	333 541	-0,2
Other buildings <sup>3/</sup>						
Total square metres	13 031	11 267	22 026	105 617	125 515	+ 18,8
Total value at current prices (R'000)	17 901	16 023	50 624	232 955	218 708	-6,1
<b>Total value of additions and alterations at current prices (R'000)</b>	<b>47 365</b>	<b>75 958</b>	<b>91 685</b>	<b>567 106</b>	<b>552 249</b>	<b>-2,6</b>
<b>Total value of buildings completed at current prices (R'000)</b>	<b>335 022</b>	<b>463 976</b>	<b>533 919</b>	<b>3 865 605</b>	<b>3 938 930</b>	<b>+ 1,9</b>

1/ Other residential buildings include institutions for the disabled, boarding houses, old people's homes, hostels, hotels, motels, guest houses, holiday chalets, entertainment centres, bed-and-breakfast accommodation and casinos.

2/ Other non-residential space includes churches, sport and recreation clubs, schools, crèches, hospitals and all other non-residential space.

3/ Other buildings include additions and alterations to other residential buildings, non-residential buildings and internal alterations.

**Table 27 - Buildings completed according to type of building and province: Mpumalanga**

Type of building	November 2000*	October 2001	November 2001	January 2000 to November 2000	January 2001 to November 2001	Percentage change between January 2000 to November 2000 and January 2001 to November 2001
<b>Residential buildings</b>						
Dwelling-houses smaller than 80 square metres						
Number of dwelling-houses	193	160	136	2 213	2 851	+ 28,8
Total square metres	6 953	6 091	4 221	76 550	97 384	+ 27,2
Total value at current prices (R'000)	3 645	3 311	2 942	56 096	57 457	+ 2,4
Dwelling-houses equal to or larger than 80 square metres						
Number of dwelling-houses	36	25	40	428	333	-22,2
Total square metres	5 828	4 327	6 964	70 664	60 475	-14,4
Total value at current prices (R'000)	7 477	4 349	6 670	83 989	60 541	-27,9
Flats and townhouses						
Number of flats and townhouses	3	0	21	48	136	+ 183,3
Total square metres	497	0	2 830	5 325	16 021	+ 200,9
Total value at current prices (R'000)	473	0	2 247	5 207	14 498	+ 178,4
Other residential buildings <sup>1/</sup>						
Total square metres	0	0	0	1 444	0	..
Total value at current prices (R'000)	0	0	0	2 462	0	..
<b>Total value of residential buildings at current prices (R'000)</b>	<b>11 595</b>	<b>7 660</b>	<b>11 859</b>	<b>147 754</b>	<b>132 496</b>	<b>-10,3</b>
<b>Non-residential buildings</b>						
Office and banking space						
Total square metres	780	0	59	9 241	8 937	-3,3
Total value at current prices (R'000)	919	0	177	15 835	19 647	+ 24,1
Shopping space						
Total square metres	334	931	0	8 860	27 519	+ 210,6
Total value at current prices (R'000)	292	1 800	0	10 345	20 970	+ 102,7
Industrial and warehouse space						
Total square metres	0	0	0	19 606	2 808	-85,7
Total value at current prices (R'000)	0	0	0	20 002	2 382	-88,1
Other non-residential space <sup>2/</sup>						
Total square metres	0	0	0	7 145	2 845	-60,2
Total value at current prices (R'000)	0	0	0	9 113	3 161	-65,3
<b>Total value of non-residential buildings at current prices (R'000)</b>	<b>1 211</b>	<b>1 800</b>	<b>177</b>	<b>55 295</b>	<b>46 160</b>	<b>-16,5</b>
<b>Additions and alterations</b>						
Dwelling-houses						
Total square metres	4 017	3 844	6 950	30 841	41 878	+ 35,8
Total value at current prices (R'000)	3 407	3 721	6 021	24 745	35 998	+ 45,5
Other buildings <sup>3/</sup>						
Total square metres	822	1 074	0	6 547	15 777	+ 141,0
Total value at current prices (R'000)	1 677	1 016	120	9 428	20 817	+ 120,8
<b>Total value of additions and alterations at current prices (R'000)</b>	<b>5 084</b>	<b>4 737</b>	<b>6 141</b>	<b>34 173</b>	<b>56 815</b>	<b>+ 66,3</b>
<b>Total value of buildings completed at current prices (R'000)</b>	<b>17 890</b>	<b>14 197</b>	<b>18 177</b>	<b>237 222</b>	<b>235 471</b>	<b>-0,7</b>

1/ Other residential buildings include institutions for the disabled, boarding houses, old people's homes, hostels, hotels, motels, guest houses, holiday chalets, entertainment centres, bed-and-breakfast accommodation and casinos.

2/ Other non-residential space includes churches, sport and recreation clubs, schools, crèches, hospitals and all other non-residential space.

3/ Other buildings include additions and alterations to other residential buildings, non-residential buildings and internal alterations.

**Table 28 - Buildings completed according to type of building and province: Northern Province**

Type of building	November 2000	October 2001	November 2001	January 2000 to November 2000	January 2001 to November 2001	Percentage change between January 2000 to November 2000 and January 2001 to November 2001
<b>Residential buildings</b>						
Dwelling-houses smaller than 80 square metres						
Number of dwelling-houses	27	14	16	568	419	-26,2
Total square metres	1 635	763	849	29 331	21 306	-27,4
Total value at current prices (R'000)	2 205	1 068	1 043	30 818	21 933	-28,8
Dwelling-houses equal to or larger than 80 square metres						
Number of dwelling-houses	17	13	7	224	156	-30,4
Total square metres	2 398	1 775	2 295	31 669	25 966	-18,0
Total value at current prices (R'000)	3 021	2 326	3 529	40 456	34 213	-15,4
Flats and townhouses						
Number of flats and townhouses	3	1	0	65	32	-50,8
Total square metres	650	123	0	8 582	5 371	-37,4
Total value at current prices (R'000)	785	172	0	11 013	6 238	-43,4
Other residential buildings <sup>1/</sup>						
Total square metres	0	0	0	725	3 000	+ 313,8
Total value at current prices (R'000)	0	0	0	1 015	3 600	+ 254,7
<b>Total value of residential buildings at current prices (R'000)</b>	<b>6 011</b>	<b>3 566</b>	<b>4 572</b>	<b>83 302</b>	<b>65 984</b>	<b>-20,8</b>
<b>Non-residential buildings</b>						
Office and banking space						
Total square metres	0	29	0	3 271	998	-69,5
Total value at current prices (R'000)	0	29	0	5 067	1 126	-77,8
Shopping space						
Total square metres	0	0	0	10 612	4 860	-54,2
Total value at current prices (R'000)	0	0	0	24 860	7 647	-69,2
Industrial and warehouse space						
Total square metres	750	0	1 089	6 649	1 857	-72,1
Total value at current prices (R'000)	1 000	0	1 634	7 527	2 710	-64,0
Other non-residential space <sup>2/</sup>						
Total square metres	585	0	0	1 861	424	-77,2
Total value at current prices (R'000)	850	0	0	2 460	726	-70,5
<b>Total value of non-residential buildings at current prices (R'000)</b>	<b>1 850</b>	<b>29</b>	<b>1 634</b>	<b>39 914</b>	<b>12 209</b>	<b>-69,4</b>
<b>Additions and alterations</b>						
Dwelling-houses						
Total square metres	296	873	45	13 482	7 930	-41,2
Total value at current prices (R'000)	309	1 089	63	15 825	9 750	-38,4
Other buildings <sup>3/</sup>						
Total square metres	7 530	290	209	11 042	3 526	-68,1
Total value at current prices (R'000)	13 500	374	400	20 540	6 643	-67,7
<b>Total value of additions and alterations at current prices (R'000)</b>	<b>13 809</b>	<b>1 463</b>	<b>463</b>	<b>36 365</b>	<b>16 393</b>	<b>-54,9</b>
<b>Total value of buildings completed at current prices (R'000)</b>	<b>21 670</b>	<b>5 058</b>	<b>6 669</b>	<b>159 581</b>	<b>94 586</b>	<b>-40,7</b>

1/ Other residential buildings include institutions for the disabled, boarding houses, old people's homes, hostels, hotels, motels, guest houses, holiday chalets, entertainment centres, bed-and-breakfast accommodation and casinos.

2/ Other non-residential space includes churches, sport and recreation clubs, schools, crèches, hospitals and all other non-residential space.

3/ Other buildings include additions and alterations to other residential buildings, non-residential buildings and internal alterations.

**Table 29 - Building plans passed according to type of building and selected urban area: Cape Town**

Type of building	November 2000 *	October 2001	November 2001	January 2000 to November 2000	January 2001 to November 2001	Percentage change between January 2000 to November 2000 and January 2001 to November 2001
<b>Residential buildings</b>						
Dwelling-houses smaller than 80 square metres						
Number of dwelling-houses	961	352	455	6 028	5 452	- 9,6
Total square metres	36 123	16 771	19 430	245 401	233 530	- 4,8
Total value at current prices (R'000)	43 320	20 758	23 720	207 237	288 380	+ 39,2
Dwelling-houses equal to or larger than 80 square metres						
Number of dwelling-houses	288	359	290	3 228	3 470	+ 7,5
Total square metres	53 070	75 712	59 689	604 162	716 982	+ 18,7
Total value at current prices (R'000)	75 786	108 280	83 269	868 168	994 908	+ 14,6
Flats and townhouses						
Number of flats and townhouses	168	462	159	1 672	1 787	+ 6,9
Total square metres	18 705	37 442	18 360	191 406	173 139	- 9,5
Total value at current prices (R'000)	26 705	52 538	27 112	307 933	261 639	- 15,0
Other residential buildings <sup>1/</sup>						
Total square metres	324	138	185	48 719	33 316	- 31,6
Total value at current prices (R'000)	483	151	276	66 689	78 369	+ 17,5
<b>Total value of residential buildings at current prices (R'000)</b>	<b>146 294</b>	<b>181 727</b>	<b>134 377</b>	<b>1 450 027</b>	<b>1 623 296</b>	<b>+ 11,9</b>
<b>Non-residential buildings</b>						
Office and banking space						
Total square metres	29 576	24 040	9 505	211 068	195 137	- 7,5
Total value at current prices (R'000)	48 872	31 996	18 728	371 854	281 407	- 24,3
Shopping space						
Total square metres	6 485	326	1 078	169 480	98 925	- 41,6
Total value at current prices (R'000)	7 156	488	2 538	206 332	125 515	- 39,2
Industrial and warehouse space						
Total square metres	8 073	9 256	17 392	194 811	136 801	- 29,8
Total value at current prices (R'000)	8 961	10 296	19 400	218 877	147 219	- 32,7
Other non-residential space <sup>2/</sup>						
Total square metres	5 395	1 644	1 872	65 415	53 580	- 18,1
Total value at current prices (R'000)	7 857	2 273	2 541	78 552	72 359	- 7,9
<b>Total value of non-residential buildings at current prices (R'000)</b>	<b>72 846</b>	<b>45 053</b>	<b>43 207</b>	<b>875 615</b>	<b>626 500</b>	<b>- 28,5</b>
<b>Additions and alterations</b>						
Dwelling-houses						
Total square metres	51 492	59 747	69 725	562 121	570 151	+ 1,4
Total value at current prices (R'000)	60 682	74 232	73 881	648 775	680 115	+ 4,8
Other buildings <sup>3/</sup>						
Total square metres	14 845	14 982	29 863	162 043	179 741	+ 10,9
Total value at current prices (R'000)	35 886	31 766	50 924	358 022	342 920	- 4,2
<b>Total value of additions and alterations at current prices (R'000)</b>	<b>96 568</b>	<b>105 998</b>	<b>124 805</b>	<b>1 006 797</b>	<b>1 023 035</b>	<b>+ 1,6</b>
<b>Total value of building plans passed at current prices (R'000)</b>	<b>315 708</b>	<b>332 778</b>	<b>302 389</b>	<b>3 332 439</b>	<b>3 272 831</b>	<b>- 1,8</b>

1/ Other residential buildings include institutions for the disabled, boarding houses, old people's homes, hostels, hotels, motels, guest houses, holiday chalets, entertainment centres, bed-and-breakfast accommodation and casinos.

2/ Other non-residential space includes churches, sport and recreation clubs, schools, crèches, hospitals and all other non-residential space.

3/ Other buildings include additions and alterations to other residential buildings, non-residential buildings and internal alterations.



**Table 30 - Building plans passed according to type of building and selected urban area: Port Elizabeth**

Type of building	November 2000	October 2001	November 2001	January 2000 to November 2000	January 2001 to November 2001	Percentage change between January 2000 to November 2000 and January 2001 to November 2001
<b>Residential buildings</b>						
Dwelling-houses smaller than 80 square metres						
Number of dwelling-houses	114	65	68	1 809	1 378	- 23,8
Total square metres	4 886	2 781	3 070	75 694	61 858	- 18,3
Total value at current prices (R'000)	6 401	3 838	4 269	91 037	82 525	- 9,4
Dwelling-houses equal to or larger than 80 square metres						
Number of dwelling-houses	5	53	48	411	656	+ 59,6
Total square metres	617	8 668	9 049	54 179	92 524	+ 70,8
Total value at current prices (R'000)	793	11 745	12 835	68 770	126 013	+ 83,2
Flats and townhouses						
Number of flats and townhouses	4	8	10	157	158	+ 0,6
Total square metres	1 007	771	1 030	22 232	14 214	- 36,1
Total value at current prices (R'000)	1 159	1 039	1 494	27 537	19 618	- 28,8
Other residential buildings <sup>1/</sup>						
Total square metres	0	308	0	7 209	3 052	- 57,7
Total value at current prices (R'000)	0	317	0	9 640	3 629	- 62,4
<b>Total value of residential buildings at current prices (R'000)</b>	<b>8 353</b>	<b>16 939</b>	<b>18 598</b>	<b>196 984</b>	<b>231 785</b>	<b>+ 17,7</b>
<b>Non-residential buildings</b>						
Office and banking space						
Total square metres	0	0	0	0	5 293	..
Total value at current prices (R'000)	0	0	0	0	5 907	..
Shopping space						
Total square metres	8 292	876	461	17 002	5 529	- 67,5
Total value at current prices (R'000)	13 411	1 717	509	25 970	8 669	- 66,6
Industrial and warehouse space						
Total square metres	4 621	905	918	52 345	24 507	- 53,2
Total value at current prices (R'000)	6 206	548	566	64 124	22 972	- 64,2
Other non-residential space <sup>2/</sup>						
Total square metres	5 068	736	2 933	22 827	13 196	- 42,2
Total value at current prices (R'000)	9 376	1 032	5 749	34 506	24 053	- 30,3
<b>Total value of non-residential buildings at current prices (R'000)</b>	<b>28 993</b>	<b>3 297</b>	<b>6 824</b>	<b>124 600</b>	<b>61 601</b>	<b>- 50,6</b>
<b>Additions and alterations</b>						
Dwelling-houses						
Total square metres	8 788	13 380	13 852	103 332	117 041	+ 13,3
Total value at current prices (R'000)	15 149	17 240	18 130	132 326	153 518	+ 16,0
Other buildings <sup>3/</sup>						
Total square metres	3 678	4 060	1 700	31 393	72 765	+ 131,8
Total value at current prices (R'000)	7 586	2 986	2 544	44 422	80 920	+ 82,2
<b>Total value of additions and alterations at current prices (R'000)</b>	<b>22 735</b>	<b>20 226</b>	<b>20 674</b>	<b>176 748</b>	<b>234 438</b>	<b>+ 32,6</b>
<b>Total value of building plans passed at current prices (R'000)</b>	<b>60 081</b>	<b>40 462</b>	<b>46 096</b>	<b>498 332</b>	<b>527 824</b>	<b>+ 5,9</b>

1/ Other residential buildings include institutions for the disabled, boarding houses, old people's homes, hostels, hotels, motels, guest houses, holiday chalets, entertainment centres, bed-and-breakfast accommodation and casinos.

2/ Other non-residential space includes churches, sport and recreation clubs, schools, crèches, hospitals and all other non-residential space.

3/ Other buildings include additions and alterations to other residential buildings, non-residential buildings and internal alterations.

**Table 31 - Building plans passed according to type of building and selected urban area: Durban**

Type of building	November 2000	October 2001	November 2001	January 2000 to November 2000	January 2001 to November 2001	Percentage change between January 2000 to November 2000 and January 2001 to November 2001
<b>Residential buildings</b>						
Dwelling-houses smaller than 80 square metres						
Number of dwelling-houses	95	139	115	1 255	884	-29,6
Total square metres	4 785	4 958	5 115	62 683	42 749	-31,8
Total value at current prices (R'000)	5 034	5 619	5 911	66 760	49 108	-26,4
Dwelling-houses equal to or larger than 80 square metres						
Number of dwelling-houses	65	86	78	857	744	-13,2
Total square metres	11 649	16 531	14 346	144 525	142 471	-1,4
Total value at current prices (R'000)	14 503	23 019	19 924	186 658	178 045	-4,6
Flats and townhouses						
Number of flats and townhouses	22	5	2	229	166	-27,5
Total square metres	3 321	785	480	36 108	22 111	-38,8
Total value at current prices (R'000)	4 801	1 698	600	51 003	26 295	-48,4
Other residential buildings <sup>1/</sup>						
Total square metres	0	0	0	0	2 377	..
Total value at current prices (R'000)	0	0	0	0	2 431	..
<b>Total value of residential buildings at current prices (R'000)</b>	<b>24 338</b>	<b>30 336</b>	<b>26 435</b>	<b>304 421</b>	<b>255 879</b>	<b>-15,9</b>
<b>Non-residential buildings</b>						
Office and banking space						
Total square metres	0	918	0	10 027	22 535	+ 124,7
Total value at current prices (R'000)	0	2 150	0	20 668	36 456	+ 76,4
Shopping space						
Total square metres	492	612	1 163	17 104	15 007	-12,3
Total value at current prices (R'000)	590	620	1 700	23 547	17 285	-26,6
Industrial and warehouse space						
Total square metres	14 763	10 809	0	105 631	87 556	-17,1
Total value at current prices (R'000)	15 953	7 896	0	127 874	145 233	+ 13,6
Other non-residential space <sup>2/</sup>						
Total square metres	2 143	2 105	6 575	23 687	33 102	+ 39,7
Total value at current prices (R'000)	2 740	5 233	8 072	36 525	44 668	+ 22,3
<b>Total value of non-residential buildings at current prices (R'000)</b>	<b>19 283</b>	<b>15 899</b>	<b>9 772</b>	<b>208 614</b>	<b>243 642</b>	<b>+ 16,8</b>
<b>Additions and alterations</b>						
Dwelling-houses						
Total square metres	27 059	24 451	21 470	259 641	245 632	-5,4
Total value at current prices (R'000)	31 802	30 319	24 922	309 415	292 434	-5,5
Other buildings <sup>3/</sup>						
Total square metres	10 329	8 146	6 537	166 844	97 142	-41,8
Total value at current prices (R'000)	21 724	15 582	8 433	319 999	200 754	-37,3
<b>Total value of additions and alterations at current prices (R'000)</b>	<b>53 526</b>	<b>45 901</b>	<b>33 355</b>	<b>629 414</b>	<b>493 188</b>	<b>-21,6</b>
<b>Total value of building plans passed at current prices (R'000)</b>	<b>97 147</b>	<b>92 136</b>	<b>69 562</b>	<b>1 142 449</b>	<b>992 709</b>	<b>-13,1</b>

1/ Other residential buildings include institutions for the disabled, boarding houses, old people's homes, hostels, hotels, motels, guest houses, holiday chalets, entertainment centres, bed-and-breakfast accommodation and casinos.

2/ Other non-residential space includes churches, sport and recreation clubs, schools, crèches, hospitals and all other non-residential space.

3/ Other buildings include additions and alterations to other residential buildings, non-residential buildings and internal alterations.

**Table 32 - Building plans passed according to type of building and selected urban area: Witwatersrand**

Type of building	November 2000	October 2001	November 2001	January 2000 to November 2000	January 2001 to November 2001	Percentage change between January 2000 to November 2000 and January 2001 to November 2001
<b>Residential buildings</b>						
Dwelling-houses smaller than 80 square metres						
Number of dwelling-houses	1 057	591	649	13 592	7 526	- 44,6
Total square metres	41 410	25 539	28 067	523 502	296 187	- 43,4
Total value at current prices (R'000)	48 675	32 468	30 440	425 180	317 194	- 25,4
Dwelling-houses equal to or larger than 80 square metres						
Number of dwelling-houses	487	460	396	4 352	4 677	+ 7,5
Total square metres	123 138	117 094	110 936	1 036 565	1 100 539	+ 6,2
Total value at current prices (R'000)	175 681	185 684	163 237	1 455 274	1 621 507	+ 11,4
Flats and townhouses						
Number of flats and townhouses	422	136	439	3 274	2 778	- 15,1
Total square metres	48 384	19 050	72 372	335 112	343 586	+ 2,5
Total value at current prices (R'000)	81 779	29 086	114 206	529 147	548 074	+ 3,6
Other residential buildings <sup>1/</sup>						
Total square metres	154	0	5 000	10 233	10 274	+ 0,4
Total value at current prices (R'000)	231	0	5 000	16 020	11 380	- 29,0
<b>Total value of residential buildings at current prices (R'000)</b>	<b>306 366</b>	<b>247 238</b>	<b>312 883</b>	<b>2 425 621</b>	<b>2 498 155</b>	<b>+ 3,0</b>
<b>Non-residential buildings</b>						
Office and banking space						
Total square metres	81 548	3 601	16 052	636 441	222 797	- 65,0
Total value at current prices (R'000)	128 060	6 811	27 978	946 256	378 891	- 60,0
Shopping space						
Total square metres	6 008	2 769	5 966	145 723	76 299	- 47,6
Total value at current prices (R'000)	9 011	3 687	11 804	254 342	126 277	- 50,4
Industrial and warehouse space						
Total square metres	45 666	38 493	5 482	387 903	240 381	- 38,0
Total value at current prices (R'000)	76 926	57 222	8 506	606 660	395 864	- 34,7
Other non-residential space <sup>2/</sup>						
Total square metres	15 881	1 640	7 213	98 408	90 826	- 7,7
Total value at current prices (R'000)	23 043	2 411	8 860	158 126	135 034	- 14,6
<b>Total value of non-residential buildings at current prices (R'000)</b>	<b>237 040</b>	<b>70 131</b>	<b>57 148</b>	<b>1 965 384</b>	<b>1 036 066</b>	<b>- 47,3</b>
<b>Additions and alterations</b>						
Dwelling-houses						
Total square metres	77 773	60 172	65 159	741 975	714 080	- 3,8
Total value at current prices (R'000)	102 160	86 237	86 119	937 250	929 928	- 0,8
Other buildings <sup>3/</sup>						
Total square metres	18 765	11 140	20 001	231 654	198 041	- 14,5
Total value at current prices (R'000)	33 435	23 387	33 111	392 577	357 081	- 9,0
<b>Total value of additions and alterations at current prices (R'000)</b>	<b>135 595</b>	<b>109 624</b>	<b>119 230</b>	<b>1 329 827</b>	<b>1 287 009</b>	<b>- 3,2</b>
<b>Total value of building plans passed at current prices (R'000)</b>	<b>679 001</b>	<b>426 993</b>	<b>489 261</b>	<b>5 720 832</b>	<b>4 821 230</b>	<b>- 15,7</b>

1/ Other residential buildings include institutions for the disabled, boarding houses, old people's homes, hostels, hotels, motels, guest houses, holiday chalets, entertainment centres, bed-and-breakfast accommodation and casinos.

2/ Other non-residential space includes churches, sport and recreation clubs, schools, crèches, hospitals and all other non-residential space.

3/ Other buildings include additions and alterations to other residential buildings, non-residential buildings and internal alterations.

**Table 33 - Building plans passed according to type of building and selected urban area: Pretoria**

Type of building	November 2000	October 2001	November 2001	January 2000 to November 2000	January 2001 to November 2001	Percentage change between January 2000 to November 2000 and January 2001 to November 2001
<b>Residential buildings</b>						
Dwelling-houses smaller than 80 square metres						
Number of dwelling-houses	54	77	69	2 825	1 320	- 53,3
Total square metres	2 785	4 239	3 783	101 794	55 445	- 45,5
Total value at current prices (R'000)	3 919	6 016	5 689	82 993	67 541	- 18,6
Dwelling-houses equal to or larger than 80 square metres						
Number of dwelling-houses	276	293	233	2 712	2 641	- 2,6
Total square metres	72 235	75 419	61 268	693 822	749 841	+ 8,1
Total value at current prices (R'000)	97 598	109 605	85 653	908 064	1 054 919	+ 16,2
Flats and townhouses						
Number of flats and townhouses	99	346	268	2 238	2 264	+ 1,2
Total square metres	12 088	56 914	56 177	277 128	335 753	+ 21,2
Total value at current prices (R'000)	17 751	89 868	85 778	369 804	507 811	+ 37,3
Other residential buildings <sup>1/</sup>						
Total square metres	2 520	0	1 924	38 442	3 913	- 89,8
Total value at current prices (R'000)	2 761	0	2 982	51 403	5 910	- 88,5
<b>Total value of residential buildings at current prices (R'000)</b>	<b>122 029</b>	<b>205 489</b>	<b>180 102</b>	<b>1 412 264</b>	<b>1 636 181</b>	<b>+ 15,9</b>
<b>Non-residential buildings</b>						
Office and banking space						
Total square metres	26 518	8 585	14 929	84 647	115 500	+ 36,4
Total value at current prices (R'000)	36 683	14 019	23 593	113 804	186 918	+ 64,2
Shopping space						
Total square metres	3 042	100	29 198	39 955	62 307	+ 55,9
Total value at current prices (R'000)	4 411	288	45 389	49 505	94 568	+ 91,0
Industrial and warehouse space						
Total square metres	1 412	4 073	4 118	52 831	58 111	+ 10,0
Total value at current prices (R'000)	1 989	5 049	5 387	63 062	82 209	+ 30,4
Other non-residential space <sup>2/</sup>						
Total square metres	4 339	221	16 404	34 406	58 937	+ 71,3
Total value at current prices (R'000)	8 626	499	17 120	46 965	80 772	+ 72,0
<b>Total value of non-residential buildings at current prices (R'000)</b>	<b>51 709</b>	<b>19 855</b>	<b>91 489</b>	<b>273 336</b>	<b>444 467</b>	<b>+ 62,6</b>
<b>Additions and alterations</b>						
Dwelling-houses						
Total square metres	22 225	28 609	25 737	226 517	223 798	- 1,2
Total value at current prices (R'000)	27 471	41 533	35 463	272 592	302 310	+ 10,9
Other buildings <sup>3/</sup>						
Total square metres	4 565	17 520	68 321	60 661	136 985	+ 125,8
Total value at current prices (R'000)	6 353	29 524	71 142	91 957	186 830	+ 103,2
<b>Total value of additions and alterations at current prices (R'000)</b>	<b>33 824</b>	<b>71 057</b>	<b>106 605</b>	<b>364 549</b>	<b>489 140</b>	<b>+ 34,2</b>
<b>Total value of building plans passed at current prices (R'000)</b>	<b>207 562</b>	<b>296 401</b>	<b>378 196</b>	<b>2 050 149</b>	<b>2 569 788</b>	<b>+ 25,3</b>

1/ Other residential buildings include institutions for the disabled, boarding houses, old people's homes, hostels, hotels, motels, guest houses, holiday chalets, entertainment centres, bed-and-breakfast accommodation and casinos.

2/ Other non-residential space includes churches, sport and recreation clubs, schools, crèches, hospitals and all other non-residential space.

3/ Other buildings include additions and alterations to other residential buildings, non-residential buildings and internal alterations.

**Table 34 - Building plans passed according to type of building and selected urban area: Bloemfontein**

Type of building	November 2000	October 2001	November 2001	January 2000 to November 2000	January 2001 to November 2001	Percentage change between January 2000 to November 2000 and January 2001 to November 2001
<b>Residential buildings</b>						
Dwelling-houses smaller than 80 square metres						
Number of dwelling-houses	408	36	60	2 652	1 352	-49,0
Total square metres	17 722	1 819	2 809	117 251	60 150	-48,7
Total value at current prices (R'000)	8 296	1 616	2 522	55 802	36 817	-34,0
Dwelling-houses equal to or larger than 80 square metres						
Number of dwelling-houses	30	24	36	276	249	-9,8
Total square metres	4 886	4 143	6 435	49 207	42 837	-12,9
Total value at current prices (R'000)	6 202	5 421	8 421	63 623	55 280	-13,1
Flats and townhouses						
Number of flats and townhouses	41	31	37	287	347	+ 20,9
Total square metres	4 900	3 217	4 213	23 965	40 166	+ 67,6
Total value at current prices (R'000)	9 800	4 826	6 011	36 735	60 151	+ 63,7
Other residential buildings <sup>1/</sup>						
Total square metres	0	192	0	600	3 867	+ 544,5
Total value at current prices (R'000)	0	229	0	1 500	4 970	+ 231,3
<b>Total value of residential buildings at current prices (R'000)</b>	<b>24 298</b>	<b>12 092</b>	<b>16 954</b>	<b>157 660</b>	<b>157 218</b>	<b>-0,3</b>
<b>Non-residential buildings</b>						
Office and banking space						
Total square metres	0	0	0	9 222	13 256	+ 43,7
Total value at current prices (R'000)	0	0	0	14 571	26 025	+ 78,6
Shopping space						
Total square metres	0	1 308	0	6 992	4 923	-29,6
Total value at current prices (R'000)	0	1 000	0	6 614	5 000	-24,4
Industrial and warehouse space						
Total square metres	355	0	2 700	10 648	4 661	-56,2
Total value at current prices (R'000)	213	0	2 000	10 473	3 626	-65,4
Other non-residential space <sup>2/</sup>						
Total square metres	0	0	0	5 240	3 199	-39,0
Total value at current prices (R'000)	0	0	0	9 841	6 208	-36,9
<b>Total value of non-residential buildings at current prices (R'000)</b>	<b>213</b>	<b>1 000</b>	<b>2 000</b>	<b>41 499</b>	<b>40 859</b>	<b>-1,5</b>
<b>Additions and alterations</b>						
Dwelling-houses						
Total square metres	3 269	3 274	7 214	43 307	34 896	-19,4
Total value at current prices (R'000)	4 048	3 911	8 551	53 227	42 859	-19,5
Other buildings <sup>3/</sup>						
Total square metres	610	143	3 232	29 443	11 407	-61,3
Total value at current prices (R'000)	8 546	1 050	4 592	111 449	23 360	-79,0
<b>Total value of additions and alterations at current prices (R'000)</b>	<b>12 594</b>	<b>4 961</b>	<b>13 143</b>	<b>164 676</b>	<b>66 219</b>	<b>-59,8</b>
<b>Total value of building plans passed at current prices (R'000)</b>	<b>37 105</b>	<b>18 053</b>	<b>32 097</b>	<b>363 835</b>	<b>264 296</b>	<b>-27,4</b>

1/ Other residential buildings include institutions for the disabled, boarding houses, old people's homes, hostels, hotels, motels, guest houses, holiday chalets, entertainment centres, bed-and-breakfast accommodation and casinos.

2/ Other non-residential space includes churches, sport and recreation clubs, schools, crèches, hospitals and all other non-residential space.

3/ Other buildings include additions and alterations to other residential buildings, non-residential buildings and internal alterations.

Table 35 - Buildings completed according to type of building and selected urban area: Cape Town

Type of building	November 2000 *	October 2001	November 2001	January 2000 to November 2000	January 2001 to November 2001	Percentage change between January 2000 to November 2000 and January 2001 to November 2001
<b>Residential buildings</b>						
Dwelling-houses smaller than 80 square metres						
Number of dwelling-houses	624	249	347	5 717	3 740	- 34,6
Total square metres	21 956	10 144	13 029	204 900	157 487	- 23,1
Total value at current prices (R'000)	25 718	8 876	11 293	134 632	178 154	+ 32,3
Dwelling-houses equal to or larger than 80 square metres						
Number of dwelling-houses	247	188	185	1 832	1 716	- 6,3
Total square metres	38 370	35 233	37 139	316 515	326 745	+ 3,2
Total value at current prices (R'000)	55 049	52 063	51 978	427 822	454 992	+ 6,4
Flats and townhouses						
Number of flats and townhouses	69	48	98	960	1 270	+ 32,3
Total square metres	5 114	5 144	10 793	85 150	140 362	+ 64,8
Total value at current prices (R'000)	8 039	8 012	15 066	109 205	188 147	+ 72,3
Other residential buildings <sup>1/</sup>						
Total square metres	998	107	865	18 115	23 274	+ 28,5
Total value at current prices (R'000)	1 945	159	1 290	28 881	27 692	- 4,1
<b>Total value of residential buildings at current prices (R'000)</b>	<b>90 751</b>	<b>69 110</b>	<b>79 627</b>	<b>700 540</b>	<b>848 985</b>	<b>+ 21,2</b>
<b>Non-residential buildings</b>						
Office and banking space						
Total square metres	26 730	6 825	2 642	111 734	79 049	- 29,3
Total value at current prices (R'000)	42 684	9 576	3 726	173 041	139 392	- 19,4
Shopping space						
Total square metres	0	0	907	38 056	29 671	- 22,0
Total value at current prices (R'000)	0	0	1 899	59 613	37 413	- 37,2
Industrial and warehouse space						
Total square metres	7 937	4 927	77	146 310	70 059	- 52,1
Total value at current prices (R'000)	8 220	5 516	94	125 343	76 314	- 39,1
Other non-residential space <sup>2/</sup>						
Total square metres	7 305	701	925	28 584	17 203	- 39,8
Total value at current prices (R'000)	7 147	899	842	35 780	22 226	- 37,9
<b>Total value of non-residential buildings at current prices (R'000)</b>	<b>58 051</b>	<b>15 991</b>	<b>6 561</b>	<b>393 777</b>	<b>275 345</b>	<b>- 30,1</b>
<b>Additions and alterations</b>						
Dwelling-houses						
Total square metres	35 529	27 092	25 534	316 424	310 514	- 1,9
Total value at current prices (R'000)	29 210	32 109	32 590	340 492	352 691	+ 3,6
Other buildings <sup>3/</sup>						
Total square metres	12 561	4 220	6 195	97 221	99 213	+ 2,0
Total value at current prices (R'000)	16 717	14 411	14 747	165 419	281 835	+ 70,4
<b>Total value of additions and alterations at current prices (R'000)</b>	<b>45 927</b>	<b>46 520</b>	<b>47 337</b>	<b>505 911</b>	<b>634 526</b>	<b>+ 25,4</b>
<b>Total value of buildings completed at current prices (R'000)</b>	<b>194 729</b>	<b>131 621</b>	<b>133 525</b>	<b>1 600 228</b>	<b>1 758 856</b>	<b>+ 9,9</b>

1/ Other residential buildings include institutions for the disabled, boarding houses, old people's homes, hostels, hotels, motels, guest houses, holiday chalets, entertainment centres, bed-and-breakfast accommodation and casinos.

2/ Other non-residential space includes churches, sport and recreation clubs, schools, crèches, hospitals and all other non-residential space.

3/ Other buildings include additions and alterations to other residential buildings, non-residential buildings and internal alterations.

**Table 36 - Buildings completed according to type of building and selected urban area: Port Elizabeth**

Type of building	November 2000	October 2001	November 2001	January 2000 to November 2000	January 2001 to November 2001	Percentage change between January 2000 to November 2000 and January 2001 to November 2001
<b>Residential buildings</b>						
Dwelling-houses smaller than 80 square metres						
Number of dwelling-houses	89	95	56	888	1 321	+ 48,8
Total square metres	3 903	4 107	2 378	39 654	56 130	+ 41,5
Total value at current prices (R'000)	4 818	5 574	3 254	46 464	72 499	+ 56,0
Dwelling-houses equal to or larger than 80 square metres						
Number of dwelling-houses	40	51	35	212	507	+ 139,2
Total square metres	4 919	10 611	5 888	28 172	61 747	+ 119,2
Total value at current prices (R'000)	9 828	10 662	7 768	35 791	77 116	+ 115,5
Flats and townhouses						
Number of flats and townhouses	15	34	30	164	194	+ 18,3
Total square metres	2 668	6 349	3 474	19 882	20 339	+ 2,3
Total value at current prices (R'000)	4 235	7 175	3 509	23 758	22 146	- 6,8
Other residential buildings <sup>1/</sup>						
Total square metres	0	0	0	367	5 073	+ 1282,3
Total value at current prices (R'000)	0	0	0	440	7 000	+ 1490,9
<b>Total value of residential buildings at current prices (R'000)</b>	<b>18 881</b>	<b>23 411</b>	<b>14 531</b>	<b>106 453</b>	<b>178 761</b>	<b>+ 67,9</b>
<b>Non-residential buildings</b>						
Office and banking space						
Total square metres	55	0	27	55	22 627	+ 41040,0
Total value at current prices (R'000)	89	0	34	89	23 374	+ 26162,9
Shopping space						
Total square metres	0	4 625	0	31 404	24 379	- 22,4
Total value at current prices (R'000)	0	5 527	0	42 838	28 844	- 32,7
Industrial and warehouse space						
Total square metres	2 395	245	10 061	19 086	45 849	+ 140,2
Total value at current prices (R'000)	2 665	159	1 192	16 005	44 174	+ 176,0
Other non-residential space <sup>2/</sup>						
Total square metres	1 295	2 197	959	5 991	7 552	+ 26,1
Total value at current prices (R'000)	1 791	3 504	1 272	7 379	8 337	+ 13,0
<b>Total value of non-residential buildings at current prices (R'000)</b>	<b>4 545</b>	<b>9 190</b>	<b>2 498</b>	<b>66 311</b>	<b>104 729</b>	<b>+ 57,9</b>
<b>Additions and alterations</b>						
Dwelling-houses						
Total square metres	4 823	7 206	9 039	51 928	60 522	+ 16,5
Total value at current prices (R'000)	5 328	8 153	10 887	51 114	68 118	+ 33,3
Other buildings <sup>3/</sup>						
Total square metres	4 670	1 033	18 460	29 052	41 786	+ 43,8
Total value at current prices (R'000)	5 014	1 479	29 096	39 416	57 142	+ 45,0
<b>Total value of additions and alterations at current prices (R'000)</b>	<b>10 342</b>	<b>9 632</b>	<b>39 983</b>	<b>90 530</b>	<b>125 260</b>	<b>+ 38,4</b>
<b>Total value of buildings completed at current prices (R'000)</b>	<b>33 768</b>	<b>42 233</b>	<b>57 012</b>	<b>263 294</b>	<b>408 750</b>	<b>+ 55,2</b>

1/ Other residential buildings include institutions for the disabled, boarding houses, old people's homes, hostels, hotels, motels, guest houses, holiday chalets, entertainment centres, bed-and-breakfast accommodation and casinos.

2/ Other non-residential space includes churches, sport and recreation clubs, schools, crèches, hospitals and all other non-residential space.

3/ Other buildings include additions and alterations to other residential buildings, non-residential buildings and internal alterations.

Table 37 - Buildings completed according to type of building and selected urban area: Durban

Type of building	November 2000	October 2001	November 2001	January 2000 to November 2000	January 2001 to November 2001	Percentage change between January 2000 to November 2000 and January 2001 to November 2001
<b>Residential buildings</b>						
Dwelling-houses smaller than 80 square metres						
Number of dwelling-houses	51	98	19	1 157	732	- 36,7
Total square metres	2 940	4 696	1 382	60 824	38 529	- 36,7
Total value at current prices (R'000)	3 455	5 540	1 426	64 238	45 077	- 29,8
Dwelling-houses equal to or larger than 80 square metres						
Number of dwelling-houses	78	87	114	1 062	945	- 11,0
Total square metres	14 837	24 045	18 798	177 144	185 067	+ 4,5
Total value at current prices (R'000)	18 245	19 776	21 958	192 150	222 013	+ 15,5
Flats and townhouses						
Number of flats and townhouses	24	58	21	320	536	+ 67,5
Total square metres	4 562	4 636	3 273	53 288	54 801	+ 2,8
Total value at current prices (R'000)	6 259	6 787	6 120	70 606	76 891	+ 8,9
Other residential buildings <sup>1/</sup>						
Total square metres	0	0	0	0	0	..
Total value at current prices (R'000)	0	0	0	0	0	..
<b>Total value of residential buildings at current prices (R'000)</b>	<b>27 959</b>	<b>32 103</b>	<b>29 504</b>	<b>326 994</b>	<b>343 981</b>	<b>+ 5,2</b>
<b>Non-residential buildings</b>						
Office and banking space						
Total square metres	0	642	718	24 557	35 773	+ 45,7
Total value at current prices (R'000)	0	2 000	1 400	68 997	56 749	- 17,8
Shopping space						
Total square metres	5 232	1 865	2 960	22 079	24 141	+ 9,3
Total value at current prices (R'000)	5 516	3 122	2 960	29 324	40 298	+ 37,4
Industrial and warehouse space						
Total square metres	4 855	18 221	1 482	132 145	109 848	- 16,9
Total value at current prices (R'000)	6 914	15 702	2 225	158 084	130 100	- 17,7
Other non-residential space <sup>2/</sup>						
Total square metres	2 195	6 228	1 146	16 457	21 441	+ 30,3
Total value at current prices (R'000)	2 278	6 670	1 242	20 743	25 041	+ 20,7
<b>Total value of non-residential buildings at current prices (R'000)</b>	<b>14 708</b>	<b>27 494</b>	<b>7 827</b>	<b>277 148</b>	<b>252 188</b>	<b>- 9,0</b>
<b>Additions and alterations</b>						
Dwelling-houses						
Total square metres	21 820	21 183	23 335	232 251	271 351	+ 16,8
Total value at current prices (R'000)	25 303	24 468	25 593	252 738	299 234	+ 18,4
Other buildings <sup>3/</sup>						
Total square metres	10 527	6 791	6 260	163 261	85 978	- 47,3
Total value at current prices (R'000)	34 178	12 633	10 407	329 658	161 095	- 51,1
<b>Total value of additions and alterations at current prices (R'000)</b>	<b>59 481</b>	<b>37 101</b>	<b>36 000</b>	<b>582 396</b>	<b>460 329</b>	<b>- 21,0</b>
<b>Total value of buildings completed at current prices (R'000)</b>	<b>102 148</b>	<b>96 698</b>	<b>73 331</b>	<b>1 186 538</b>	<b>1 056 498</b>	<b>- 11,0</b>

1/ Other residential buildings include institutions for the disabled, boarding houses, old people's homes, hostels, hotels, motels, guest houses, holiday chalets, entertainment centres, bed-and-breakfast accommodation and casinos.

2/ Other non-residential space includes churches, sport and recreation clubs, schools, crèches, hospitals and all other non-residential space.

3/ Other buildings include additions and alterations to other residential buildings, non-residential buildings and internal alterations.



**Table 38 - Buildings completed according to type of building and selected urban area: Witwatersrand**

Type of building	November 2000	October 2001*	November 2001	January 2000 to November 2000	January 2001 to November 2001	Percentage change between January 2000 to November 2000 and January 2001 to November 2001
<b>Residential buildings</b>						
Dwelling-houses smaller than 80 square metres						
Number of dwelling-houses	760	432	414	10 715	6 572	-38,7
Total square metres	30 613	21 703	18 911	405 338	250 183	-38,3
Total value at current prices (R'000)	37 794	33 785	26 132	319 759	242 474	-24,2
Dwelling-houses equal to or larger than 80 square metres						
Number of dwelling-houses	204	249	261	1 940	2 195	+ 13,1
Total square metres	48 575	63 965	54 588	451 702	474 025	+ 4,9
Total value at current prices (R'000)	72 227	102 340	86 106	644 378	696 502	+ 8,1
Flats and townhouses						
Number of flats and townhouses	296	260	312	2 501	1 960	-21,6
Total square metres	31 037	32 814	37 037	188 948	207 544	+ 9,8
Total value at current prices (R'000)	54 965	54 070	59 935	295 948	342 630	+ 15,8
Other residential buildings <sup>1/</sup>						
Total square metres	0	8 844	0	9 736	42 714	+ 338,7
Total value at current prices (R'000)	0	17 689	0	16 769	269 217	+ 1 505,4
<b>Total value of residential buildings at current prices (R'000)</b>	<b>164 986</b>	<b>207 884</b>	<b>172 173</b>	<b>1 276 854</b>	<b>1 550 823</b>	<b>+ 21,5</b>
<b>Non-residential buildings</b>						
Office and banking space						
Total square metres	24 912	34 219	31 011	294 726	314 282	+ 6,6
Total value at current prices (R'000)	34 916	46 763	101 531	430 775	505 698	+ 17,4
Shopping space						
Total square metres	747	10 911	1 764	178 651	115 555	-35,3
Total value at current prices (R'000)	1 366	17 204	3 302	450 323	244 439	-45,7
Industrial and warehouse space						
Total square metres	5 687	23 244	4 390	161 655	182 697	+ 13,0
Total value at current prices (R'000)	10 031	42 873	7 046	253 016	292 403	+ 15,6
Other non-residential space <sup>2/</sup>						
Total square metres	1 133	5 909	0	75 096	33 378	-55,6
Total value at current prices (R'000)	1 684	9 787	0	98 643	48 043	-51,3
<b>Total value of non-residential buildings at current prices (R'000)</b>	<b>47 997</b>	<b>116 627</b>	<b>111 879</b>	<b>1 232 757</b>	<b>1 090 583</b>	<b>-11,5</b>
<b>Additions and alterations</b>						
Dwelling-houses						
Total square metres	17 724	36 675	25 281	220 507	233 629	+ 6,0
Total value at current prices (R'000)	25 889	49 955	35 509	275 660	293 918	+ 6,6
Other buildings <sup>3/</sup>						
Total square metres	12 073	8 942	21 567	83 209	114 364	+ 37,4
Total value at current prices (R'000)	16 882	13 584	49 937	208 558	203 791	-2,3
<b>Total value of additions and alterations at current prices (R'000)</b>	<b>42 771</b>	<b>63 539</b>	<b>85 446</b>	<b>484 218</b>	<b>497 709</b>	<b>+ 2,8</b>
<b>Total value of buildings completed at current prices (R'000)</b>	<b>255 754</b>	<b>388 050</b>	<b>369 498</b>	<b>2 993 829</b>	<b>3 139 115</b>	<b>+ 4,9</b>

1/ Other residential buildings include institutions for the disabled, boarding houses, old people's homes, hostels, hotels, motels, guest houses, holiday chalets, entertainment centres, bed-and-breakfast accommodation and casinos.

2/ Other non-residential space includes churches, sport and recreation clubs, schools, crèches, hospitals and all other non-residential space.

3/ Other buildings include additions and alterations to other residential buildings, non-residential buildings and internal alterations.

**Table 39 - Buildings completed according to type of building and selected urban area: Pretoria**

Type of building	November 2000	October 2001	November 2001	January 2000 to November 2000	January 2001 to November 2001	Percentage change between January 2000 to November 2000 and January 2001 to November 2001
<b>Residential buildings</b>						
Dwelling-houses smaller than 80 square metres						
Number of dwelling-houses	94	42	60	2 708	399	- 85,3
Total square metres	2 976	2 268	3 241	91 855	19 762	- 78,5
Total value at current prices (R'000)	3 525	3 320	4 569	72 706	24 712	- 66,0
Dwelling-houses equal to or larger than 80 square metres						
Number of dwelling-houses	136	116	144	956	1 037	+ 8,5
Total square metres	36 733	30 667	37 944	255 997	279 519	+ 9,2
Total value at current prices (R'000)	45 983	42 976	51 792	306 944	383 204	+ 24,8
Flats and townhouses						
Number of flats and townhouses	121	7	498	1 118	1 328	+ 18,8
Total square metres	10 225	1 226	57 278	135 275	149 654	+ 10,6
Total value at current prices (R'000)	12 470	1 839	85 188	164 425	217 117	+ 32,0
Other residential buildings <sup>1/</sup>						
Total square metres	0	0	0	1 851	50	- 97,3
Total value at current prices (R'000)	0	0	0	2 024	81	- 96,0
<b>Total value of residential buildings at current prices (R'000)</b>	<b>61 978</b>	<b>48 135</b>	<b>141 549</b>	<b>546 099</b>	<b>625 114</b>	<b>+ 14,5</b>
<b>Non-residential buildings</b>						
Office and banking space						
Total square metres	4 316	2 044	0	25 994	13 224	- 49,1
Total value at current prices (R'000)	5 547	3 214	0	30 373	19 205	- 36,8
Shopping space						
Total square metres	0	0	1 764	36 492	4 504	- 87,7
Total value at current prices (R'000)	0	0	2 734	123 961	6 959	- 94,4
Industrial and warehouse space						
Total square metres	0	3 445	2 383	14 529	14 432	- 0,7
Total value at current prices (R'000)	0	3 914	2 441	15 840	14 417	- 9,0
Other non-residential space <sup>2/</sup>						
Total square metres	0	0	5 374	11 589	10 942	- 5,6
Total value at current prices (R'000)	0	0	9 136	12 419	17 102	+ 37,7
<b>Total value of non-residential buildings at current prices (R'000)</b>	<b>5 547</b>	<b>7 128</b>	<b>14 311</b>	<b>182 593</b>	<b>57 683</b>	<b>- 68,4</b>
<b>Additions and alterations</b>						
Dwelling-houses						
Total square metres	2 803	4 605	3 802	37 107	19 590	- 47,2
Total value at current prices (R'000)	3 364	5 754	5 119	43 363	25 053	- 42,2
Other buildings <sup>3/</sup>						
Total square metres	927	1 378	459	18 225	6 705	- 63,2
Total value at current prices (R'000)	1 009	1 710	687	19 361	9 537	- 50,7
<b>Total value of additions and alterations at current prices (R'000)</b>	<b>4 373</b>	<b>7 464</b>	<b>5 806</b>	<b>62 724</b>	<b>34 590</b>	<b>- 44,9</b>
<b>Total value of buildings completed at current prices (R'000)</b>	<b>71 898</b>	<b>62 727</b>	<b>161 666</b>	<b>791 416</b>	<b>717 387</b>	<b>- 9,4</b>

1/ Other residential buildings include institutions for the disabled, boarding houses, old people's homes, hostels, hotels, motels, guest houses, holiday chalets, entertainment centres, bed-and-breakfast accommodation and casinos.

2/ Other non-residential space includes churches, sport and recreation clubs, schools, crèches, hospitals and all other non-residential space.

3/ Other buildings include additions and alterations to other residential buildings, non-residential buildings and internal alterations.

**Table 40 - Buildings completed according to type of building and selected urban area: Bloemfontein**

Type of building	November 2000	October 2001	November 2001	January 2000 to November 2000	January 2001 to November 2001	Percentage change between January 2000 to November 2000 and January 2001 to November 2001
<b>Residential buildings</b>						
Dwelling-houses smaller than 80 square metres						
Number of dwelling-houses	16	75	223	450	804	+ 78,7
Total square metres	790	3 383	9 618	18 706	34 115	+ 82,4
Total value at current prices (R'000)	941	2 430	5 026	11 322	20 016	+ 76,8
Dwelling-houses equal to or larger than 80 square metres						
Number of dwelling-houses	9	19	15	86	163	+ 89,5
Total square metres	2 085	3 087	2 354	17 689	31 462	+ 77,9
Total value at current prices (R'000)	2 659	3 813	2 962	23 706	39 607	+ 67,1
Flats and townhouses						
Number of flats and townhouses	53	10	19	278	143	- 48,6
Total square metres	7 015	1 430	1 888	24 365	13 046	- 46,5
Total value at current prices (R'000)	10 600	2 145	3 700	33 095	19 434	- 41,3
Other residential buildings <sup>1/</sup>						
Total square metres	3 651	0	389	3 651	540	- 85,2
Total value at current prices (R'000)	4 753	0	467	4 753	678	- 85,7
<b>Total value of residential buildings at current prices (R'000)</b>	<b>18 953</b>	<b>8 388</b>	<b>12 155</b>	<b>72 876</b>	<b>79 735</b>	<b>+ 9,4</b>
<b>Non-residential buildings</b>						
Office and banking space						
Total square metres	0	0	1 255	6 210	12 358	+ 99,0
Total value at current prices (R'000)	0	0	1 500	11 739	23 383	+ 99,2
Shopping space						
Total square metres	1 768	0	6 320	2 660	9 132	+ 243,3
Total value at current prices (R'000)	2 122	0	5 372	3 527	8 378	+ 137,5
Industrial and warehouse space						
Total square metres	0	1 041	327	15 646	6 178	- 60,5
Total value at current prices (R'000)	0	543	327	12 281	4 693	- 61,8
Other non-residential space <sup>2/</sup>						
Total square metres	0	0	1 534	3 903	7 287	+ 86,7
Total value at current prices (R'000)	0	0	2 868	5 545	13 319	+ 140,2
<b>Total value of non-residential buildings at current prices (R'000)</b>	<b>2 122</b>	<b>543</b>	<b>10 067</b>	<b>33 092</b>	<b>49 773</b>	<b>+ 50,4</b>
<b>Additions and alterations</b>						
Dwelling-houses						
Total square metres	2 205	3 548	6 372	22 934	34 306	+ 49,6
Total value at current prices (R'000)	2 529	4 078	7 578	27 306	38 255	+ 40,1
Other buildings <sup>3/</sup>						
Total square metres	3 161	2 374	506	9 775	21 127	+ 116,1
Total value at current prices (R'000)	2 965	5 790	1 691	19 766	97 349	+ 392,5
<b>Total value of additions and alterations at current prices (R'000)</b>	<b>5 494</b>	<b>9 868</b>	<b>9 269</b>	<b>47 072</b>	<b>135 604</b>	<b>+ 188,1</b>
<b>Total value of buildings completed at current prices (R'000)</b>	<b>26 569</b>	<b>18 799</b>	<b>31 491</b>	<b>153 040</b>	<b>265 112</b>	<b>+ 73,2</b>

1/ Other residential buildings include institutions for the disabled, boarding houses, old people's homes, hostels, hotels, motels, guest houses, holiday chalets, entertainment centres, bed-and-breakfast accommodation and casinos.

2/ Other non-residential space includes churches, sport and recreation clubs, schools, crèches, hospitals and all other non-residential space.

3/ Other buildings include additions and alterations to other residential buildings, non-residential buildings and internal alterations.

## Additional information

### Explanatory Notes

<b>Introduction</b>	<ol style="list-style-type: none"> <li>1 Statistics South Africa (Stats SA) conducts a monthly Building Statistics Survey collecting information regarding building plans approved and buildings completed, financed by the private sector, from a sample of local government institutions in South Africa. This statistical release contains information of building plans passed and buildings completed in respect of residential buildings, non-residential buildings and additions and alterations according to province and selected urban areas.</li> <li>2 In order to improve timeliness of the publication, some information for the current month have been estimated due to late submission by respondents. These estimates will be revised in the next statistical release(s) as soon as actual information is available.</li> <li>3 The actual and seasonally adjusted values (at current and at constant 1995 prices) and the percentage change of building plans passed and buildings completed according to type of building are reflected monthly from January 1999 in this statistical release (cf. tables 1 to 8).</li> </ol>
<b>Scope of the survey</b>	<ol style="list-style-type: none"> <li>4 This survey covers local government institutions conducting activities for the private sector regarding - <ul style="list-style-type: none"> <li>• approval of building plans; and</li> <li>• final inspection of completed buildings.</li> </ul> </li> </ol>
<b>Classification</b>	<ol style="list-style-type: none"> <li>5 The 1993 edition of the Standard Industrial Classification of all Economic Activities, (SIC) Fifth Edition, Report No. 09-90-02, was used to classify the statistical units. The SIC is based on the 1990 International Standard Industrial Classification of all Economic Activities (ISIC) with suitable adaptations for local conditions.</li> <li>6 The twelfth and last published edition of the Standard Code List of Areas, Report No. 09-09-03 (1994) was used to classify the statistical units according to province. The cities, towns and non-urban areas listed in this report are codified within magisterial district and province. The code list was compiled by Stats SA in collaboration with other interested bodies and the first edition was distributed in June 1977.</li> </ol>
<b>Statistical unit</b>	<ol style="list-style-type: none"> <li>7 The statistical unit for the collection of information is a local government institution. Local government institutions include municipalities, city councils, metropolitan councils, district councils, transitional councils and development and services boards.</li> </ol>
<b>Survey methodology and design</b>	<ol style="list-style-type: none"> <li>8 The sample for the monthly Building Statistics Survey consists of the largest local government institutions in South Africa, i.e. those that account for approximately 85% of the total rand value of buildings completed by the private sector.</li> <li>9 The survey is collected by mail each month from a sample of 158 local government institutions.</li> </ol>
<b>Constant prices</b>	<ol style="list-style-type: none"> <li>10 The value of building plans passed and buildings completed at constant prices measure the building activities in terms of ruling prices in a specific base year which is currently 1995.</li> <li>11 The value of building plans passed at constant prices for each month is obtained by deflating the values at current prices with a price index known as the “lump sum domestic buildings” as published in statistical release P0151 – JBCC Contract Price Adjustment Provisions Work Group Indices. In order to be applicable, these indices (base February 1991=100) are converted to the base year 1995=100.</li> </ol>

- 12** The value of buildings completed at constant prices is obtained by deflating the values at current prices with the same price index which is used to calculate building plans passed at constant prices (cf. paragraph 11). The value of buildings completed is reported as at the time the plans were passed. Since the completion of buildings may extend over a few months to a few years, the current value of buildings completed is deflated by price indices as at the time the plans were passed in order to calculate the value of buildings completed at the time the plans were passed. Therefore, the duration of the completion of different types of buildings are taken into account in ascertaining the deflators e.g. the value of dwelling-houses completed at constant prices at January 2000 is obtained by deflating the current value of dwelling-houses completed for January 2000 with the price index of a month six months prior to January 2000. Furthermore, the value of other residential buildings, non-residential buildings and additions and alterations at constant prices is obtained by deflating the current values with price indices of 12 months, 18 months and 12 months prior to the relevant month, respectively.
- Seasonal adjustment**
- 13** Seasonally adjusted estimates of building plans passed and buildings completed are generated each month, using the X-11 Seasonal Adjustment Program developed by US Bureau of the Census Economic Research and Analyses Division, 1968.
- 14** Seasonal adjustment is a means of removing the estimated effects of normal seasonal variation from the series so that the effects of other influences on the series can be more clearly recognised. Seasonal adjustment does not aim to remove irregular or non-seasonal influences which may be present in any particular month. Influences that are volatile or unsystematic can still make it difficult to interpret the movement of the series even after adjustment for seasonal variations. Therefore, the month-to-month movements of seasonally adjusted estimates may not be reliable indicators of trend behaviour.
- Trend cycle**
- 15** The trend is a long-term pattern or movement of a time series. The X-11 Seasonal Adjustment Program is used for smoothing seasonally adjusted data.
- Related publications**
- 16** Users may also wish to refer to the following publications:
- P5041.3 – Building statistics issued annually.
  - P9101.2 – Actual and expected expenditure on construction by the public sector per statistical region issued annually.
  - Bulletin of Statistics issued quarterly.
  - South African Statistics issued annually.
- Unpublished statistics**
- 17** In some cases Stats SA can also make available statistics which are not published. The statistics can be made available in one or more of the following ways: computer printouts, CD and diskette. Generally a charge is made for providing unpublished statistics.
- Rounding-off of figures**
- 18** The figures in the tables have, where necessary, been rounded off to the nearest digit shown. There may, therefore, be slight discrepancies between the sums of the constituent items and the totals shown.
- Pre-release policy**
- 19** Stats SA has adopted the confidential pre-release policy in respect of selected economic indicators and specific government departments. The policy accords with practice among leading statistical agencies. The statistical integrity of the information and strict observance of the release time has been assured by the following procedure:
- 20** In respect of this statistical release, an official representative from the Office of the President, the Department of Trade and Industry (DTI), National Treasury and the South African Reserve Bank (SARB) will receive a copy of the release on a strictly confidential basis two hours in advance of the public issue.
- 21** Stats SA pre-release policy may be inspected at its Website, [www.statssa.gov.za](http://www.statssa.gov.za)

**Symbols and abbreviations**

..	no meaningful percentage change between two specified periods available since either one or both of the totals are nil
0	nil or figure too small to publish
*	revised
Stats SA	Statistics South Africa
SIC	Standard Industrial Classification of all Economic Activities
ISIC	International Standard Industrial Classification of all Economic Activities
JBCC	Joint Building Contracts Committee
CD	Compact Disc
US	United States
SARB	South African Reserve Bank
DTI	Department of Trade and Industry

**Technical notes****Response rate**

The response rate for November is 98,7%.

## Local government institutions covered in the sample survey

### Local government institutions according to province

<b>Western Cape</b>	Blaauwberg (includes Milnerton), Brackenfell, Breede River District Council, Cape Town, City of Tygerberg (Bellville, Durbanville, Goodwood, Lingeletu West, Parow and South Administration), Fish Hoek, George (includes Pacaltsdorp, Thembaletu and Herolds Bay), Gordon's Bay, Hangklip-Kleinmond (includes Kleinmond, Betty's Bay and Rooi-Els), Hermanus (includes Onrus River, Zwelihle, Sandbaai, Vermont, Hawston and Fisher Haven), Ikapa, Klein-Karoo District Council, Knysna (includes Khayaletu), Kuils River, Malmesbury, Mossel Bay (includes Boggom's Bay, Kleinbrak, Rheeboek and Tergniet), Oostenberg (Kraaifontein and Melton Rose - Blue Downs), Oudtshoorn, Overberg District Council, Paarl, Plettenberg Bay, Sedgefield, Simon's Town, Somerset West, South Peninsula, Stellenbosch, Strand, Wellington, West Coast District Council, Western Coast Peninsula (previously Vredenburg-Saldanha), Winelands District Council and Worcester.
<b>Eastern Cape</b>	Aliwal-Maletswai (includes Dukathole), Despatch, East London (includes Beacon Bay, Gomo Town, Gonubie and Mdantsane), Grahamstown (includes Rhini Township), Jeffrey's Bay, King William's Town (includes Bisho and Zwelitsha), Port Alfred, Port Elizabeth (includes Ibhayi and Motherwell), Uitenhage (includes KwaNobuhle), Umtata and Western District Council.
<b>Northern Cape</b>	Benede-Oranje District Council, Keimoes, Kimberley (including Galeshewe), Kuruman, Namaqualand District Council and Upington (includes Paballelo).
<b>Free State</b>	Allanridge, Bethlehem (includes Bohlokong), Bloemfontein (includes Bainsvlei, Bloemspruit and Mangaung), Botshabelo, Deneysville (includes Refengkgotso), Harrismith (includes Tsiamé), Kroonstad (includes Maokeng), Ladybrand (includes Manyatseng), Odendaalsrus (includes Kutlwanong), Parys, Phuthaditjhaba, Sasolburg (includes Zamdela), Virginia (includes Meloding) and Welkom (includes Thabong).
<b>KwaZulu-Natal</b>	Development and Services Board - Inland, Development and Services Board – North Coast, Dolphin Coast Borough (includes Ballito, Etete, Shakaskraal, Tinley Manor Beach and Umhlali Beach), Durban, Edendale, Empangeni (includes Ngwelezana), Hilton, Howick, Inner West City Council (includes Clermont, KwaDabeka, KwaNdengezi, New Germany, Pinetown, Queensburgh, Reservoir Hills, Shallcross and Westville), Kokstad, Kwa-Dukuza/Stanger (includes Blythedale Beach, Shakaville and Stanger), KwaMashu, Ladysmith (includes Emnambithi), Margate (includes Uvongo), Mpenjati/Southbroom (includes Southbroom, Marina Beach, San Lameer and Trafalgar), Newcastle (includes Madadeni, Osizweni and Blaauwboschlaagte), North Local Council - Tongaat (includes Canelands and Hambanati), North Local Council - Umhlanga Rocks (includes Mount Edgecombe and Umdloti Beach), North Local Council - Verulam, Outer West Local Council (includes Assagay, Botha's Hill, Cato Ridge, Drummond, Everton, Gillitts, Hillcrest, Inchanga, Kloof, Mpumalanga and Waterfall), Pennington, Pietermaritzburg/Msundini, Port Shepstone, Richards Bay, South Local Council (includes Amanzimtoti, Isipingo, Kingsburgh, KwaMakuta and Umbogintwini), Umlazi and Umtamvuna/Port Edward (includes Munster, Port Edward and Palm Beach).
<b>North West</b>	Bophirima District Council, Brits (includes Lethabile), Ga-Rankuwa, Klerksdorp, Lichtenburg, Mmabatho, Orkney (includes Kanana), Potchefstroom, Rustenburg, Vryburg and Zeerust.

**Gauteng**

Akasia (includes Elandsdoorn, Klipfontein, Kruisfontein and Soshanguve), Alberton (includes Tokoza), Benoni (includes Daveyton and Wattville), Boksburg (includes Vosloorus), Brakpan (includes Tsakane), Bronkhorst-spruit, Carletonville (includes Khutsong), Centurion, Duduza, Eastern Services Council - Pretoria Area, Edenvale-Modderfontein, Germiston (includes Bedfordview and Katlehong), Greater Johannesburg - Eastern Metropolitan Local Council (includes Alexandra and Sandton), Greater Johannesburg - Northern Metropolitan Local Council (includes Randburg), Greater Johannesburg - Southern Metropolitan Local Council (includes Ennerdale, Lenasia and Johannesburg), Greater Johannesburg - Western Metropolitan Local Council (includes Diepmeadow, Dobsonville and Roodepoort), Heidelberg (includes Ratanda), Kempton Park (includes Tembisa), Krugersdorp (includes Kagiso and Munsieville), Meyerton, Midrand (includes Rabie Ridge and Ivory Park), Nigel, Pretoria (includes Atteridgeville and Mamelodi), Randfontein (includes Mohlakeng), Sebokeng (includes Boipatong, Bophelong and Sharpeville), Soweto, Springs (includes KwaThema), Vanderbijlpark, Vereeniging (includes Evaton), Western Services Council and Westonaria (includes Bekkersdal).

**Mpumalanga**

Delmas (includes Botleng), Eastvaal District Council, Ermelo (includes Wesselton and Cassim Park), Highveld District Council, Highveldridge Transitional Council (includes Evander, Embalenhle and Secunda), Komatipoort (includes Kamaqhekeza), KwaGuqa, KwaMhlanga, Malelane (includes Hectorspruit and Kamhlushwa), Middelburg (includes Mhluzi), Nelspruit (includes Kanyamazane and Lowveld Escarpment District Council as from January 2001), White River and Witbank.

**Northern Province**

Bosveld District Council, Giyani, Letaba (includes Nkowakowa and Tzaneen), Messina, Naboomspruit (includes Mookgophong), Nylstroom, Pietersburg-Polokwane (includes Seshego), Potgietersrus and Thabazimbi.

**Local government institutions according to selected urban areas****Cape Town**

Blaauwberg (includes Milnerton), Cape Town, City of Tygerberg (Bellville, Durbanville, Goodwood, Lingeletu West, Parow and South Administration), Fish Hoek, Ikapa, Oostenberg (Kraaifontein and Melton Rose - Blue Downs), Simon's Town and South Peninsula.

**Port Elizabeth**

Despatch, Port Elizabeth (including Ibhayi and Motherwell) and Uitenhage (including KwaNobuhle)

**Durban**

Durban, Inner West City Council (includes Clermont, KwaDabeka, KwaNdengezi, New Germany, Pinetown, Queenstown, Reservoir Hills, Shallcross and Westville), North Local Council - Verulam, Outer West Local Council (includes Assagay, Botha's Hill, Cato Ridge, Drummond, Everton, Gillitts, Hillcrest, Inchanga, Kloof, Mpumalanga and Waterfall) and South Local Council (includes Amanzimtoti, Isipingo, Kingsburgh, KwaMakuta and Umbogintwini).

**Witwatersrand**

Alberton (includes Thokoza), Benoni (includes Daveyton and Wattville), Boksburg (includes Vosloorus), Brakpan (includes Tsakane), Carletonville (includes Khutsong), Duduza, Edenvale-Modderfontein, Germiston (includes Bedfordview and Katlehong), Greater Johannesburg - Eastern Metropolitan Local Council (includes Alexandra and Sandton), Greater Johannesburg - Northern Metropolitan Local Council (includes Randburg), Greater Johannesburg - Southern Metropolitan Local Council (includes Ennerdale, Lenasia and Johannesburg), Greater Johannesburg - Western Metropolitan Local Council (includes Diepmeadow, Dobsonville and Roodepoort), Kempton Park (includes Tembisa), Krugersdorp (includes Kagiso and Munsieville), Midrand (includes Rabie Ridge and Ivory Park), Nigel, Randfontein (includes Mohlakeng), Soweto, Springs (includes KwaThema) and Westonaria (includes Bekkersdal).



**Pretoria**

Akasia (includes Elandsdoorn, Klipfontein and Soshanguve), Centurion, Eastern Services Council - Pretoria area and Pretoria (includes Atteridgeville and Mamelodi).

**Bloemfontein**

Bloemfontein (includes Bainsvlei, Bloemspruit and Mangaung).

## Glossary

<b>Additions and alterations</b>	Additions and alterations include extensions to existing buildings as well as internal and external alterations of existing buildings.
<b>Blocks of flats</b>	Blocks of flats are regarded as high-density housing consisting of a number of self-contained dwelling-units with at least one living-room together with a kitchen and bathroom conjoined to similar units in one building.
<b>Dwelling-house</b>	A dwelling-house refers to a free-standing, complete structure on a separate stand or a self-contained dwelling-unit, granny flat, on the same premises as an existing residence. Out-buildings and garages are included.
<b>Local government institutions</b>	A local government institution is a generic term referring to any number of institutions involved in the local sphere of government. Local government institutions consist of municipalities, city councils, metropolitan councils, district councils, transitional local councils and development and services boards.
<b>Non-residential buildings</b>	Non-residential buildings comprise factories, commercial, financial and other office buildings, as well as other buildings not used for residential purposes, such as churches, halls, clubs, schools and hospitals.
<b>Other residential buildings</b>	Other residential buildings include institutions for the disabled, boarding houses, old people's homes, hostels, hotels, motels, guest houses, holiday chalets, bed-and-breakfast accommodation, entertainment centres and casinos.
<b>Percentage change</b>	<p>When using monthly actual values, the percentage change is the change in actual values of building activities (building plans passed or buildings completed) of the relevant month compared with the actual values of building activities (building plans passed or buildings completed) of the same month in the previous year expressed as a percentage.</p> <p>When using annual actual values, the percentage change is the change in the actual values of building activities (building plans passed or buildings completed) of the relevant year compared with the actual values of building activities (building plans passed or buildings completed) of the previous year expressed as a percentage.</p> <p>When using seasonally adjusted values, the percentage change is the change in the seasonally adjusted values of building activities (building plans passed or buildings completed) of the relevant month compared with the seasonally adjusted values of building activities (building plans passed or buildings completed) of the previous month expressed as a percentage.</p>
<b>Reference period</b>	Reference period is one calendar month.
<b>Residential buildings</b>	Residential buildings comprise dwelling-houses, flats, townhouses and other residential buildings.
<b>Townhouses</b>	Townhouses are multiple, medium-density dwelling-units and include cluster housing, group housing, simplexes, duplexes, triplexes and other similar dwelling-units which are usually grouped together, with one level of each unit on ground level. This excludes blocks of flats.

## For more information

Stats SA publishes approximately 300 different statistical releases each year. It is not economically viable to produce them in more than one of South Africa's eleven official languages. Since the releases are used extensively, not only locally but also by international economic and social-scientific communities, Stats SA releases are published in English only.

Stats SA has copyright on this publication. Users may apply the information as they wish, provided that they acknowledge Stats SA as the source of the basic data wherever they process, apply, utilise, publish or distribute the data and also that they specify that the relevant application and analysis (where applicable) result from their own processing of the data.

### Stats SA products

A complete set of Stats SA publications is available at the Stats SA Library and the following libraries:

National Library of South Africa, Pretoria Division  
National Library of South Africa, Cape Town Division  
Natal Society Library, Pietermaritzburg  
Library of Parliament, Cape Town  
Bloemfontein Public Library  
Johannesburg Public Library  
Eastern Cape Library Services, King William's Town  
Central Regional Library, Pietersburg  
Central Reference Library, Nelspruit  
Central Reference Collection, Kimberley  
Central Reference Library, Mmabatho

Stats SA also provides a subscription service.

### Electronic services

A large range of data are available via on-line services, diskette, CD and computer printouts. For more details about our electronic data services, contact (012) 310 8600/8095/8390/8351

You can visit us on the Internet at: <http://www.statssa.gov.za>

### Enquiries

Telephone number: (012) 310 8600/8095/8390/8351 (user enquiries)  
(012) 310 8228/310 8007 (technical enquiries)  
(012) 310 8161 (publications)  
(012) 310 8490 (library)

Fax number: (012) 310 8182

e-mail: Corrieb@statssa.pwv.gov.za  
Gretaz@statssa.pwv.gov.za

Postal address: Private Bag X44, Pretoria, 0001