



**Statistics
South Africa**

Preferred supplier of quality statistics



Statistical release

P5041.1

Selected building statistics of the private sector as reported by local government institutions

**May 2007
(Preliminary)**

**Embargoed until:
18 July 2007
13:00**

Enquiries:

User Information Services
Tel: (012) 310 8600 / 4892 / 8390

Forthcoming issue:

June 2007

Expected release date

15 August 2007

Statistics South Africa • Mbalo-mbalo ya Afrika Tshipembe • Tinhlayo-tiko ta Afrika-Dzonga • Dipalopalo tsa Aforika Borwa • Ezezibalo zaseNingizimu Afrika
Dipalopalo tša Afrika Borwa • Dipalopalo tsa Afrika Borwa • Ubalo lwaseMzantsi Afrika • Telubalo eNingizimu Afrika • iNanimbalo leSewula Afrika • Statistiek Suid-Afrika

Contents

Page

SUMMARY OF FINDINGS: SELECTED BUILDING STATISTICS OF THE PRIVATE SECTOR

3

Tables

Table 1	Values and percentage change of recorded building plans passed by larger municipalities at current prices by type of building	9
Table 2	Seasonally adjusted values and percentage change of recorded building plans passed by larger municipalities at current prices by type of building	10
Table 3	Values and percentage change of recorded building plans passed by larger municipalities at constant 2000 prices by type of building	11
Table 4	Seasonally adjusted values and percentage change of recorded building plans passed by larger municipalities at constant 2000 prices by type of building	12
Table 5	Values and percentage change of buildings reported as completed to larger municipalities at current prices by type of building	13
Table 6	Seasonally adjusted values and percentage change of buildings reported as completed to larger municipalities at current prices by type of building	14
Table 7	Values and percentage change of buildings reported as completed to larger municipalities at constant 2000 prices by type of building	15
Table 8	Seasonally adjusted values and percentage change of buildings reported as completed to larger municipalities at constant 2000 prices by type of building	16
Table 9	Recorded building plans passed by larger municipalities at current prices by type of building: South Africa	17
Table 10	Recorded building plans passed by larger municipalities at current prices by type of building: Western Cape	18
Table 11	Recorded building plans passed by larger municipalities at current prices by type of building: Eastern Cape	19
Table 12	Recorded building plans passed by larger municipalities at current prices by type of building: Northern Cape	20
Table 13	Recorded building plans passed by larger municipalities at current prices by type of building: Free State	21
Table 14	Recorded building plans passed by larger municipalities at current prices by type of building: KwaZulu-Natal	22
Table 15	Recorded building plans passed by larger municipalities at current prices by type of building: North West	23
Table 16	Recorded building plans passed by larger municipalities at current prices by type of building: Gauteng	24
Table 17	Recorded building plans passed by larger municipalities at current prices by type of building: Mpumalanga	25
Table 18	Recorded building plans passed by larger municipalities at current prices by type of building: Limpopo	26
Table 19	Buildings reported as completed to larger municipalities at current prices by type of building: South Africa	27
Table 20	Buildings reported as completed to larger municipalities at current prices by type of building: Western Cape	28
Table 21	Buildings reported as completed to larger municipalities at current prices by type of building: Eastern Cape	29
Table 22	Buildings reported as completed to larger municipalities at current prices by type of building: Northern Cape	30
Table 23	Buildings reported as completed to larger municipalities at current prices by type of building: Free State	31
Table 24	Buildings reported as completed to larger municipalities at current prices by type of building: KwaZulu-Natal	32

Table 25	Buildings reported as completed to larger municipalities at current prices by type of building: North West	33
Table 26	Buildings reported as completed to larger municipalities at current prices by type of building: Gauteng	34
Table 27	Buildings reported as completed to larger municipalities at current prices by type of building: Mpumalanga	35
Table 28	Buildings reported as completed to larger municipalities at current prices by type of building: Limpopo.....	36
Table 29	Subsidised low-cost dwelling-houses completed or under construction by province	37
Table 30	Subsidised low-cost dwelling-houses completed by province	37
Explanatory notes		38
Glossary		41
General information		43

SUMMARY OF FINDINGS: SELECTED BUILDING STATISTICS OF THE PRIVATE SECTOR

Table A – Selected key figures regarding recorded building plans passed by larger municipalities at current prices for January to May 2007

Estimates at current prices	January to May 2006	January to May 2007 1/	Difference in value between January to May 2006 and January to May 2007	Percentage change between January to May 2006 and January to May 2007
	R'000	R'000	R'000	
Residential buildings	15 129 622	18 125 022	2 995 400	19,8
-Dwelling-houses	10 038 027	12 046 338	2 008 311	20,0
-Flats and townhouses	4 651 388	5 784 512	1 133 124	24,4
-Other residential buildings	440 207	294 172	-146 035	-33,2
Non-residential buildings	5 528 091	6 038 371	510 280	9,2
Additions and alterations	7 324 745	8 358 459	1 033 714	14,1
Total	27 982 458	32 521 852	4 539 394	16,2

1/ May 2007 figures should be regarded as preliminary because of possible backlogs and incomplete reporting by municipalities.

Total value of recorded building plans passed increased

As indicated in Table A, the value of recorded building plans passed by larger municipalities (at current prices) during the first five months of 2007 increased by 16,2% (R4 539,4 million) compared with the first five months of 2006.

The largest percentage increase was reported for residential buildings (19,8% or R2 995,4 million), followed by additions and alterations (14,1% or R1 033,7 million) and non-residential buildings (9,2% or R510,3 million).

Table B – Recorded building plans passed by larger municipalities aggregated to provincial level for January to May 2007

Estimates at current prices	January to May 2006	January to May 2007 1/	Percentage contribution to the total value of building plans passed during January to May 2006	Percentage change between January to May 2006 and January to May 2007	Contribution(percentage points) to the percentage change in the value of building plans passed between January to May 2006 and January to May 2007 2/	Difference in value between January to May 2006 and January to May 2007
	R'000	R'000				R'000
Western Cape	6 834 820	7 166 065	24,4	4,8	1,2	331 245
Eastern Cape	1 349 484	1 674 391	4,8	24,1	1,2	324 907
Northern Cape	190 866	219 533	0,7	15,0	0,1	28 667
Free State	678 163	955 541	2,4	40,9	1,0	277 378
Kwazulu-Natal	3 561 520	4 542 414	12,7	27,5	3,5	980 894
North West	916 505	1 379 140	3,3	50,5	1,7	462 635
Gauteng	12 259 471	14 377 126	43,8	17,3	7,6	2 117 655
Mpumalanga	1 676 059	1 581 058	6,0	-5,7	-0,3	-95 001
Limpopo	515 570	626 584	1,8	21,5	0,4	111 014
Total	27 982 458	32 521 852	100,0	16,2	16,2	4 539 394

1/ May 2007 figures should be regarded as preliminary because of possible backlogs and incomplete reporting by municipalities.

2/ The contribution (percentage points) is calculated by multiplying the percentage change of each province between January to May 2006 and January to May 2007 with the percentage contribution of the corresponding province to the total value of building plans passed during January to May 2006, divided by 100.

Eight provinces reported increases in the value of recorded building plans passed (see Table B). The largest contributors to the increase of 16,2% were Gauteng (7,6 percentage points or R2 117,7 million), followed by KwaZulu-Natal (3,5 percentage points or R980,9 million), North West (1,7 percentage points or R462,6 million), Western Cape (1,2 percentage points or R331,2 million) and Eastern Cape (1,2 percentage points or R324,9 million).

Table C – Selected key figures regarding recorded building plans passed by larger municipalities at constant 2000 prices for January to May 2007

Estimates at constant 2000 prices	January to May 2006	January to May 2007	Difference in value between January to May 2006 and January to May 2007	Percentage change between January to May 2006 and January to May 2007
	R'000	R'000 1/		
Residential buildings	10 024 597	10 712 606	688 009	6,9
Non-residential buildings	3 660 917	3 569 050	-91 867	-2,5
Additions and alterations	4 850 646	4 937 692	87 046	1,8
Total	18 536 160	19 219 348	683 188	3,7

1/ May 2007 figures should be regarded as preliminary because of possible backlogs and incomplete reporting by municipalities.

Seasonally adjusted estimates at constant 2000 prices	December 2006 to February 2007	March to May 2007	Percentage change between December 2006 to February 2007 and March to May 2007
	R'000	R'000	
Residential buildings	6 603 238	7 210 591	9,2
Non-residential buildings	2 461 522	2 068 890	-16,0
Additions and alterations	3 176 284	3 144 617	-1,0
Total	12 241 044	12 424 098	1,5

Total real value of recorded building plans passed increased

As indicated in Table C, the value of recorded building plans passed by larger municipalities (at constant 2000 prices) during the first five months of 2007 increased by 3,7% (R683,2 million) compared with the first five months of 2006. Increases were reported for residential buildings (6,9% or R688,0 million) and additions and alterations (1,8% or R87,0 million). Non-residential buildings decreased by 2,5% (-R91,9 million) during the same period.

The seasonally adjusted real value of recorded building plans passed by larger municipalities during the three months ending May 2007 increased by 1,5% compared with the previous three months, mainly due to increases reported for residential building plans passed (9,2%). This increase was partially counteracted by decreases reported for non-residential buildings (-16,0%) and additions and alterations (-1,0%) (see Table C).

Figure 1 shows both the seasonally adjusted and the trend series for recorded building plans passed at constant 2000 prices between January 2002 and May 2007. The trend series reflects a slight increase in 2002, followed by a steep increase from April 2003 up to the end of 2005. After a short period of downturn in 2006, the trend series started moving upwards from January 2007.

Figure 1 – Real value of recorded building plans passed by larger municipalities at constant 2000 prices

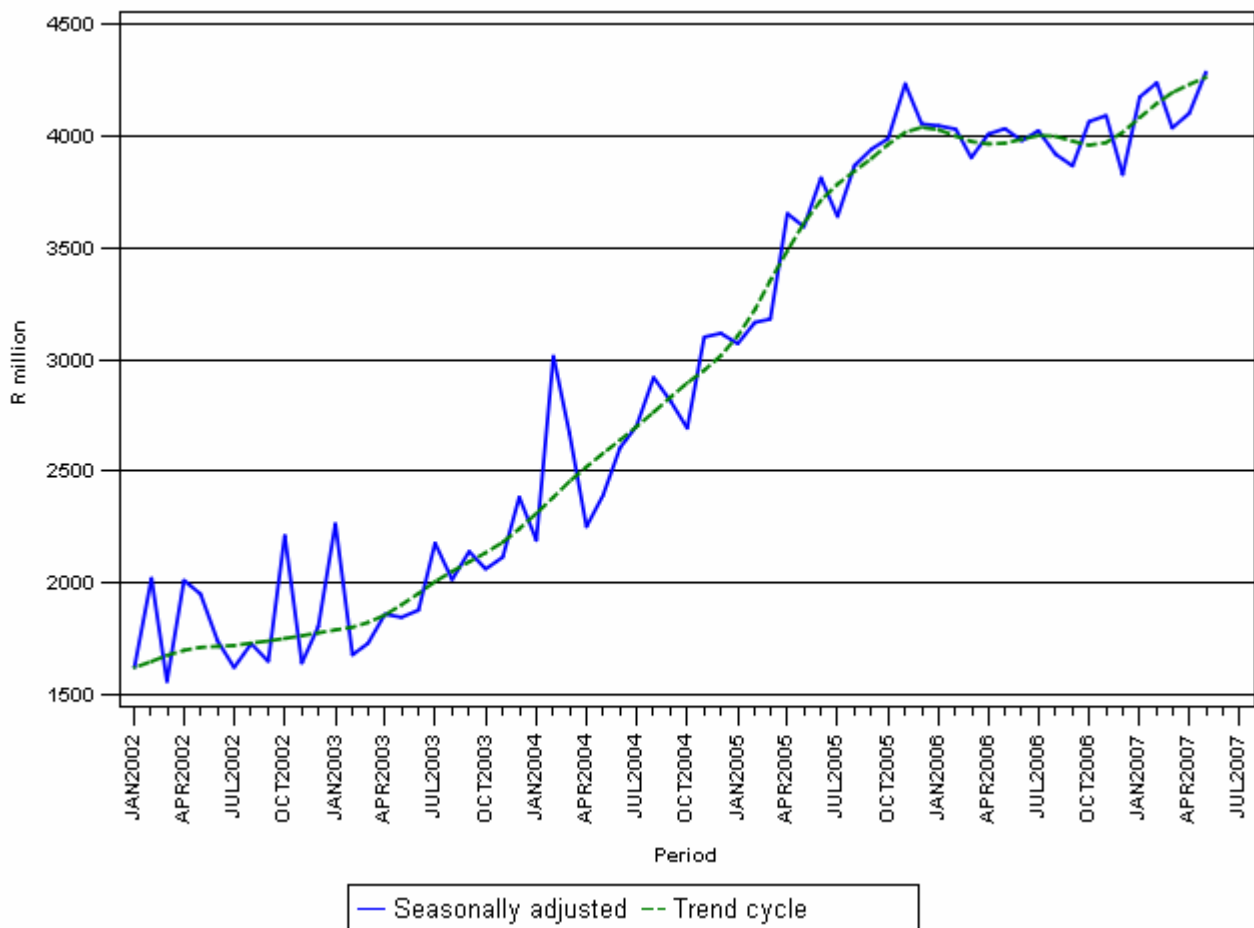


Table D – Selected key figures regarding buildings reported as completed to larger municipalities at current prices for January to May 2007

Estimates at current prices	January to May 2006	January to May 2007 1/	Difference in value between January to May 2006 and January to May 2007	Percentage change between January to May 2006 and January to May 2007
	R'000	R'000	R'000	
Residential buildings	8 881 423	11 000 102	2 118 679	23,9
-Dwelling-houses	5 480 211	6 855 356	1 375 145	25,1
-Flats and townhouses	3 327 725	3 648 143	320 418	9,6
-Other residential buildings	73 487	496 603	423 116	575,8
Non-residential buildings	2 160 028	3 482 387	1 322 359	61,2
Additions and alterations	2 575 698	3 061 042	485 344	18,8
Total	13 617 149	17 543 531	3 926 382	28,8

1/ May 2007 figures should be regarded as preliminary because of possible backlogs and incomplete reporting by municipalities.

Total value of buildings reported as completed increased

As indicated in Table D, the value of buildings reported as completed to larger municipalities (at current prices) during the first five months of 2007 increased by 28,8% (R3 926,4 million) compared with the first five months of 2006.

The largest percentage increase in the value of buildings completed was reported for non-residential buildings (61,2% or R1 322,4 million), followed by residential buildings (23,9% or R2 118,7 million) and additions and alterations (18,8% or R485,3 million). Large increases for non-residential buildings completed were reported for office and banking space (197,7% or R671,5 million) and industrial and warehouse space (109,5% or R778,1 million) (see table 19, page 27).

Within the residential buildings, 'other' residential buildings recorded the highest growth rate, mainly as a result of two casinos, one hotel and an old age home that were reported as completed to the value of R110,7 million, R154,9 million and R45,5 million respectively during the first four months of 2007.

Table E – Buildings reported as completed to larger municipalities aggregated to provincial level for January to May 2007

Estimates at current prices	January to May 2006	January to May 2007	Percentage contribution to the total value of buildings completed during January to May 2006	Percentage change between January to May 2006 and January to May 2007	Contribution (percentage points) to the percentage change in the value of buildings completed between January to May 2006 and January to May 2007 2/	Difference in value between January to May 2006 and January to May 2007
	R'000	R'000				R'000
Western Cape	4 006 135	4 763 819	29,4	18,9	5,6	757 684
Eastern Cape	539 294	546 288	4,0	1,3	0,1	6 994
Northern Cape	70 859	157 016	0,5	121,6	0,6	86 157
Free State	295 717	400 887	2,2	35,6	0,8	105 170
KwaZulu-Natal	1 668 805	2 715 022	12,3	62,7	7,7	1 046 217
North West	588 098	689 889	4,3	17,3	0,7	101 791
Gauteng	5 838 688	7 530 977	42,9	29,0	12,4	1 692 289
Mpumalanga	408 601	529 796	3,0	29,7	0,9	121 195
Limpopo	200 952	209 837	1,5	4,4	0,1	8 885
Total	13 617 149	17 543 531	100,0	28,8	28,8	3 926 382

1/ May 2007 figures should be regarded as preliminary because of possible backlogs and incomplete reporting by municipalities.

2/ The contribution (percentage points) is calculated by multiplying the percentage change of each province between January to May 2006 and January to May 2007 with the percentage contribution of the corresponding province to the total value of buildings completed during January to May 2006, divided by 100.

All of the provinces reported increases in the value of buildings completed. The largest contributor to the increase of 28,8% was Gauteng (12,4 percentage points or R1 692,3 million), followed by KwaZulu-Natal (7,7 percentage points or R1 046,2 million) and Western Cape (5,6 percentage points or R757,7 million) (see Table E).

Table F – Selected key figures regarding buildings reported as completed to larger municipalities at constant 2000 prices for January to May 2007

Estimates at constant 2000 prices	January to May 2006	January to May 2007	Difference in value between January to May 2006 and January to May 2007	Percentage change between January to May 2006 and January to May 2007
	R'000	R'000	R'000	
Residential buildings	6 123 929	6 956 184	832 255	13,6
Non-residential buildings	1 569 182	2 373 071	803 889	51,2
Additions and alterations	1 810 907	2 031 141	220 234	12,2
Total	9 504 018	11 360 396	1 856 378	19,5

1/ May 2007 figures should be regarded as preliminary because of possible backlogs and incomplete reporting by municipalities.

Seasonally adjusted estimates at constant 2000 prices	December 2006 to February 2007	March to May 2007	Percentage change between December 2006 to February 2007 and March to May 2007
	R'000	R'000	
Residential buildings	4 887 685	4 754 220	-2,7
Non-residential buildings	1 514 095	1 549 803	2,4
Additions and alterations	1 309 316	1 236 155	-5,6
Total	7 711 096	7 540 178	-2,2

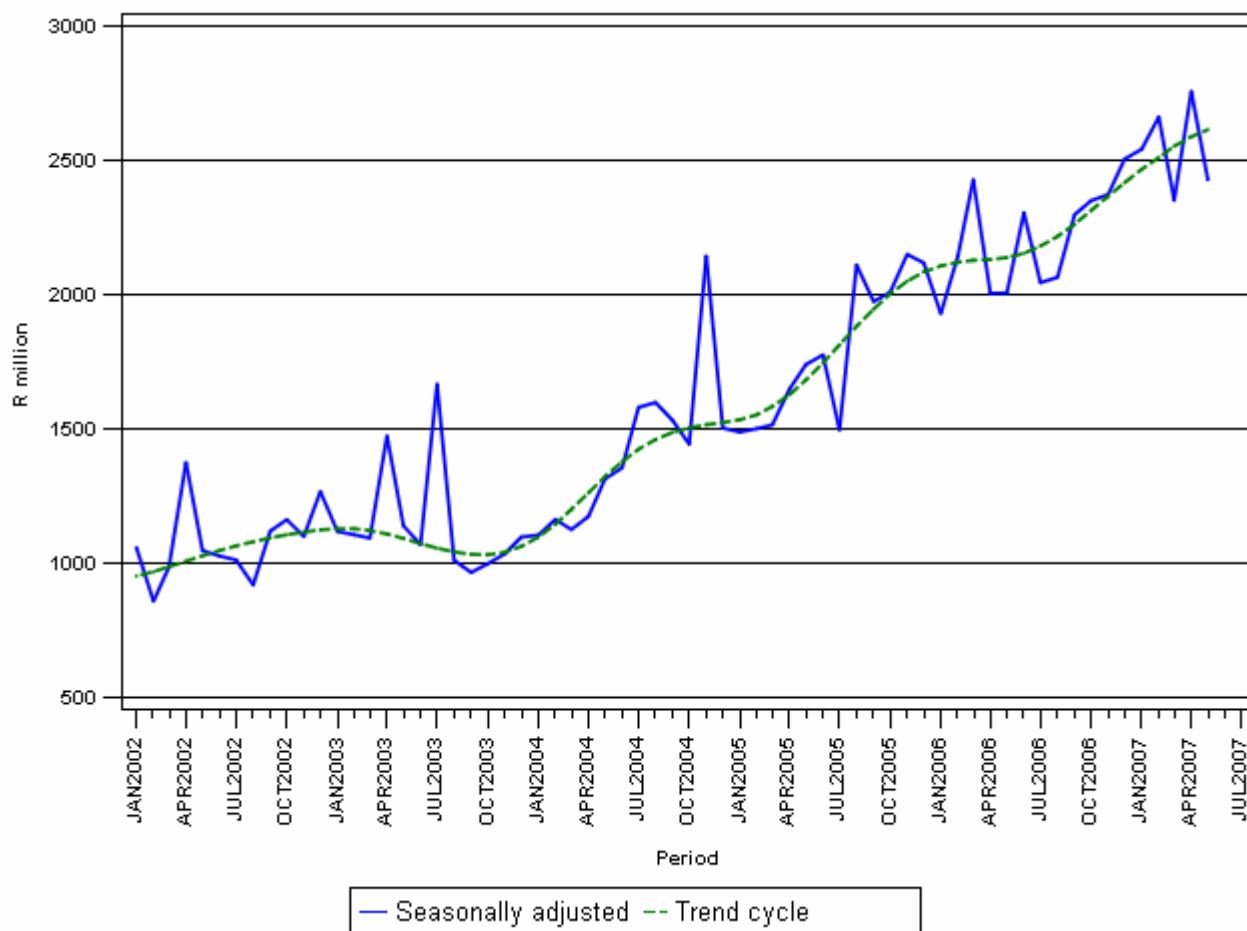
Total real value of buildings reported as completed increased

As indicated in Table F, the value of buildings reported as completed to larger municipalities (at constant 2000 prices) during the first five months of 2007 increased by 19,5% (R1 856,4 million) compared with the first five months of 2006. The largest percentage increase in the real value of buildings completed was reported for non-residential buildings (51,2% or R803,9 million), followed by residential buildings (13,6% or R832,3 million) and additions and alterations (12,2% or R220,2 million).

However, the seasonally adjusted real value of buildings reported as completed to larger municipalities during the three months ending May 2007 decreased by 2,2% compared with the previous three months, mainly due to decreases reported for additions and alterations (-5,6%) and residential buildings (-2,7%). These decreases were partially counteracted by an increase reported for non-residential buildings (2,4%).

Figure 2 shows both the seasonally adjusted and trend series for buildings reported as completed to municipalities at constant 2000 prices between January 2002 and May 2007. The trend series reflects a slight increase in 2002, slowing again until October 2003. The trend series increased from November 2003 till present.

Figure 2 - Real value of buildings reported as completed to larger municipalities at constant 2000 prices



PJ Lehohla
Statistician-General

Table 1 - Values and percentage change of recorded building plans passed by larger municipalities at current prices by type of building

Year and month		Residential buildings		Non-residential buildings		Additions and alterations		Total	
		R'000	% change 1/	R'000	% change 1/	R'000	% change 1/	R'000	% change 1/
2006*	January	2 558 041	45,9	778 449	44,6	1 090 691	21,0	4 427 181	38,6
	February	3 190 047	36,0	942 439	53,1	1 443 836	25,1	5 576 322	35,5
	March	2 999 970	28,1	1 241 790	28,9	1 558 522	26,4	5 800 282	27,8
	April	2 763 843	6,8	1 311 707	67,0	1 385 872	6,4	5 461 422	16,8
	May	3 617 721	3,9	1 253 706	59,0	1 845 824	36,6	6 717 251	19,5
	June	3 825 823	18,2	982 965	2,2	1 659 979	11,0	6 468 767	13,6
	July	3 918 713	11,6	1 443 525	42,7	1 845 449	26,1	7 207 687	20,4
	August	4 020 265	15,1	1 478 844	19,9	1 690 353	4,1	7 189 462	13,2
	September	3 758 874	-2,8	1 095 563	58,4	1 757 623	11,5	6 612 060	7,8
	October	3 901 590	4,7	1 743 478	78,3	1 836 658	-4,1	7 481 726	13,1
	November	4 018 174	7,8	1 381 760	3,2	1 846 062	13,5	7 245 996	8,3
	December	2 691 780	-7,0	1 081 202	67,8	1 438 672	6,7	5 211 654	6,6
	Total	41 264 841	11,6	14 735 428	39,7	19 399 541	14,2	75 399 810	16,9
2007	January *	2 742 134	7,2	992 280	27,5	1 387 298	27,2	5 121 712	15,7
	February *	3 536 260	10,9	1 395 611	48,1	1 619 834	12,2	6 551 705	17,5
	March *	3 974 270	32,5	995 997	-19,8	1 573 714	1,0	6 543 981	12,8
	April	3 468 218	25,5	1 176 463	-10,3	1 621 768	17,0	6 266 449	14,7
	May 2/	4 404 140	21,7	1 478 020	17,9	2 155 845	16,8	8 038 005	19,7

1/ The annual/monthly percentage change is the change in the values of recorded building plans passed by municipalities of the relevant year/month compared with the values of recorded building plans passed by municipalities of the comparable period of the previous year expressed as a percentage.

2/ Preliminary figures.

* Revised (see page 39 nr. 14).

Table 2 - Seasonally adjusted values and percentage change of recorded building plans passed by larger municipalities at current prices by type of building

Year and month		Residential buildings		Non-residential buildings		Additions and alterations		Total	
		R'000	% change 1/	R'000	% change 1/	R'000	% change 1/	R'000	% change 1/
2006	January	3 542 349	-3,2	1 029 840	36,8	1 464 843	-8,8	6 037 032	0,3
	February	3 452 968	-2,5	1 044 226	1,4	1 564 544	6,8	6 061 738	0,4
	March	3 208 306	-7,1	1 075 221	3,0	1 619 579	3,5	5 903 106	-2,6
	April	3 195 940	-0,4	1 352 278	25,8	1 547 958	-4,4	6 096 176	3,3
	May	3 308 278	3,5	1 250 263	-7,5	1 644 598	6,2	6 203 139	1,8
	June	3 620 327	9,4	993 182	-20,6	1 598 621	-2,8	6 212 130	0,1
	July	3 430 302	-5,2	1 257 526	26,6	1 668 473	4,4	6 356 301	2,3
	August	3 586 781	4,6	1 191 413	-5,3	1 526 353	-8,5	6 304 547	-0,8
	September	3 373 219	-6,0	1 207 557	1,4	1 686 060	10,5	6 266 836	-0,6
	October	3 505 763	3,9	1 536 108	27,2	1 598 205	-5,2	6 640 076	6,0
	November	3 558 909	1,5	1 464 858	-4,6	1 738 031	8,7	6 761 798	1,8
	December	3 420 004	-3,9	1 268 439	-13,4	1 690 485	-2,7	6 378 928	-5,7
2007	January	3 791 555	10,9	1 323 544	4,3	1 873 358	10,8	6 988 457	9,6
	February	3 830 351	1,0	1 529 041	15,5	1 747 957	-6,7	7 107 349	1,7
	March	4 295 061	12,1	875 424	-42,7	1 642 662	-6,0	6 813 147	-4,1
	April	4 017 407	-6,5	1 196 974	36,7	1 806 552	10,0	7 020 933	3,0
	May	4 012 986	-0,1	1 477 060	23,4	1 933 109	7,0	7 423 155	5,7
	Dec.06 - Feb.07	11 041 910		4 121 024		5 311 800		20 474 734	
	Mar. - May07 2/	12 325 454	11,6	3 549 458	-13,9	5 382 323	1,3	21 257 235	3,8

1/ The percentage change is the change in the seasonally adjusted values of recorded building plans passed by municipalities of the relevant month compared with the seasonally adjusted values of recorded building plans passed by municipalities of the previous month expressed as a percentage.

2/ The percentage change is the change in the seasonally adjusted values of recorded building plans passed by municipalities of the current quarter compared with the seasonally adjusted values of recorded building plans passed by municipalities of the previous quarter expressed as a percentage.

Table 3 - Values and percentage change of recorded building plans passed by larger municipalities at constant 2000 prices by type of building

Year and month		Residential buildings		Non-residential buildings		Additions and alterations		Total	
		R'000	% change 1/	R'000	% change 1/	R'000	% change 1/	R'000	% change 1/
2006*	January	1 716 806	38,0	522 449	36,7	732 007	14,4	2 971 262	31,1
	February	2 129 537	28,2	629 132	44,3	963 842	17,9	3 722 511	27,7
	March	1 998 648	21,3	827 308	22,0	1 038 322	19,7	3 864 278	21,0
	April	1 824 319	1,0	865 813	57,9	914 767	0,6	3 604 899	10,5
	May	2 355 287	-2,9	816 215	48,6	1 201 708	27,6	4 373 210	11,6
	June	2 447 743	8,9	628 896	-5,9	1 062 047	2,2	4 138 686	4,7
	July	2 470 815	2,4	910 167	31,0	1 163 587	15,8	4 544 569	10,5
	August	2 478 585	3,9	911 741	8,2	1 042 141	-6,0	4 432 467	2,2
	September	2 308 891	-12,3	672 950	42,8	1 079 621	0,6	4 061 462	-2,8
	October	2 386 294	-5,8	1 066 347	60,4	1 123 338	-13,7	4 575 979	1,7
	November	2 432 309	-3,7	836 416	-7,8	1 117 471	1,4	4 386 196	-3,2
	December	1 620 578	-17,2	650 934	49,4	866 148	-5,0	3 137 660	-5,1
	Total	26 169 812	2,7	9 338 368	28,3	12 304 999	5,0	47 813 179	7,5
2007	January*	1 640 032	-4,5	593 469	13,6	829 724	13,3	3 063 225	3,1
	February*	2 118 790	-0,5	836 196	32,9	970 542	0,7	3 925 528	5,5
	March*	2 372 699	18,7	594 625	-28,1	939 531	-9,5	3 906 855	1,1
	April	2 035 339	11,6	690 413	-20,3	951 742	4,0	3 677 494	2,0
	May 2/	2 545 746	8,1	854 347	4,7	1 246 153	3,7	4 646 246	6,2

1/ The annual/monthly percentage change is the change in the values of recorded building plans passed by municipalities of the relevant year/month compared with the values of recorded building plans passed by municipalities of the comparable period of the previous year expressed as a percentage.

2/ Preliminary figures.

*Revised (see page 39 nr.14)

Table 4 - Seasonally adjusted values and percentage change of recorded building plans passed by larger municipalities at constant 2000 prices by type of building

Year and month		Residential buildings		Non-residential buildings		Additions and alterations		Total	
		R'000	% change 1/	R'000	% change 1/	R'000	% change 1/	R'000	% change 1/
2006	January	2 374 967	-3,6	689 528	36,0	981 779	-9,3	4 046 274	-0,2
	February	2 296 331	-3,3	694 049	0,7	1 040 341	6,0	4 030 721	-0,4
	March	2 124 243	-7,5	707 258	1,9	1 071 509	3,0	3 903 010	-3,2
	April	2 100 982	-1,1	889 583	25,8	1 018 339	-5,0	4 008 904	2,7
	May	2 151 360	2,4	813 355	-8,6	1 068 712	4,9	4 033 427	0,6
	June	2 317 267	7,7	637 511	-21,6	1 024 573	-4,1	3 979 351	-1,3
	July	2 169 985	-6,4	797 165	25,0	1 056 762	3,1	4 023 912	1,1
	August	2 228 270	2,7	741 116	-7,0	949 615	-10,1	3 919 001	-2,6
	September	2 081 080	-6,6	745 159	0,5	1 040 366	9,6	3 866 605	-1,3
	October	2 148 220	3,2	941 291	26,3	975 439	-6,2	4 064 950	5,1
	November	2 151 528	0,2	887 366	-5,7	1 052 997	8,0	4 091 891	0,7
	December	2 052 721	-4,6	760 570	-14,3	1 014 451	-3,7	3 827 742	-6,5
2007	January	2 265 655	10,4	790 088	3,9	1 119 176	10,3	4 174 919	9,1
	February	2 284 862	0,8	910 864	15,3	1 042 657	-6,8	4 238 383	1,5
	March	2 545 807	11,4	517 600	-43,2	973 219	-6,7	4 036 626	-4,8
	April	2 347 183	-7,8	699 090	35,1	1 055 872	8,5	4 102 145	1,6
	May	2 317 601	-1,3	852 200	21,9	1 115 526	5,6	4 285 327	4,5
	Dec.06 - Feb.07	6 603 238		2 461 522		3 176 284		12 241 044	
	Mar. - May07 2/	7 210 591	9,2	2 068 890	-16,0	3 144 617	-1,0	12 424 098	1,5

1/ The percentage change is the change in the seasonally adjusted values of recorded building plans passed by municipalities of the relevant month compared with the seasonally adjusted values of recorded building plans passed by municipalities of the previous month expressed as a percentage.

2/ The percentage change is the change in the seasonally adjusted values of recorded building plans passed by municipalities of the current quarter compared with the seasonally adjusted values of recorded building plans passed by municipalities of the previous quarter expressed as a percentage.

Table 5 - Values and percentage change of buildings reported as completed to larger municipalities at current prices by type of building

Year and month		Residential buildings		Non-residential buildings		Additions and alterations		Total	
		R'000	% change 1/	R'000	% change 1/	R'000	% change 1/	R'000	% change 1/
2006*	January	1 257 968	45,0	316 723	10,1	406 962	28,1	1 981 653	34,6
	February	1 772 939	39,7	408 861	125,2	553 237	72,2	2 735 037	54,3
	March	2 113 187	56,6	656 158	110,5	589 069	85,3	3 358 414	69,7
	April	1 748 227	24,6	268 422	36,6	450 681	35,3	2 467 330	27,6
	May	1 989 102	18,0	509 864	26,4	575 749	21,9	3 074 715	20,0
	June	2 309 739	52,7	485 834	24,9	567 380	11,0	3 362 953	39,4
	July	2 268 183	44,5	333 643	38,0	554 641	57,2	3 156 467	45,9
	August	2 379 053	4,4	492 632	-16,0	557 684	37,9	3 429 369	4,9
	September	2 539 730	21,0	404 951	10,8	665 842	48,6	3 610 523	24,0
	October	2 371 124	19,9	768 141	44,7	603 131	19,2	3 742 396	24,1
	November	2 648 334	-1,7	651 400	47,9	853 416	91,1	4 153 150	16,0
	December	2 675 164	15,3	542 151	115,6	545 663	23,4	3 762 978	24,8
	Total	26 072 750	24,0	5 838 780	39,5	6 923 455	42,1	38 834 985	29,1
2007	January*	1 640 091	30,4	483 947	52,8	675 202	65,9	2 799 240	41,3
	February*	2 198 764	24,0	882 785	115,9	578 317	4,5	3 659 866	33,8
	March*	2 092 073	-1,0	778 349	18,6	667 493	13,3	3 537 915	5,3
	April	2 366 781	35,4	630 387	134,8	556 296	23,4	3 553 464	44,0
	May 2/	2 702 393	35,9	706 919	38,6	583 734	1,4	3 993 046	29,9

1/ The annual/monthly percentage change is the change in the values of buildings reported as completed to municipalities of the relevant year/month compared with the values of buildings reported as completed to municipalities of the comparable period of the previous year expressed as a percentage.

2/ Preliminary figures.

* Revised (see page 39 nr.14).

Table 6 - Seasonally adjusted values and percentage change of buildings reported as completed to larger municipalities at current prices by type of building

Year and month		Residential buildings		Non-residential buildings		Additions and alterations		Total	
		R'000	% change 1/	R'000	% change 1/	R'000	% change 1/	R'000	% change 1/
2006	January	1 845 617	-15,3	392 786	34,8	441 903	-13,3	2 680 306	-10,0
	February	2 028 565	9,9	447 101	13,8	559 858	26,7	3 035 524	13,3
	March	2 282 742	12,5	583 577	30,5	590 990	5,6	3 457 309	13,9
	April	1 953 659	-14,4	394 940	-32,3	531 265	-10,1	2 879 864	-16,7
	May	1 910 340	-2,2	441 922	11,9	539 109	1,5	2 891 371	0,4
	June	2 322 167	21,6	505 069	14,3	545 587	1,2	3 372 823	16,7
	July	2 099 728	-9,6	395 900	-21,6	528 612	-3,1	3 024 240	-10,3
	August	2 178 750	3,8	370 552	-6,4	543 906	2,9	3 093 208	2,3
	September	2 371 193	8,8	378 090	2,0	641 575	18,0	3 390 858	9,6
	October	2 286 819	-3,6	616 707	63,1	565 015	-11,9	3 468 541	2,3
	November	2 129 377	-6,9	628 936	2,0	776 663	37,5	3 534 976	1,9
	December	2 483 616	16,6	648 523	3,1	628 782	-19,0	3 760 921	6,4
2007	January	2 449 674	-1,4	598 242	-7,8	733 744	16,7	3 781 660	0,6
	February	2 518 234	2,8	951 224	59,0	593 274	-19,1	4 062 732	7,4
	March	2 261 980	-10,2	689 201	-27,5	665 471	12,2	3 616 652	-11,0
	April	2 641 698	16,8	949 659	37,8	655 621	-1,5	4 246 978	17,4
	May	2 617 171	-0,9	645 672	-32,0	547 779	-16,4	3 810 622	-10,3
	Dec.06 - Feb.07	7 451 524		2 197 989		1 955 800		11 605 313	
	Mar. - May07 2/	7 520 849	0,9	2 284 532	3,9	1 868 871	-4,4	11 674 252	0,6

1/ The percentage change is the change in the seasonally adjusted values of buildings reported as completed to municipalities of the relevant month compared with the seasonally adjusted values of buildings reported as completed to municipalities of the previous month expressed as a percentage.

2/ The percentage change is the change in the seasonally adjusted values of buildings reported as completed to municipalities of the current quarter compared with the seasonally adjusted values of buildings reported as completed to municipalities of the previous quarter expressed as a percentage.

Table 7 - Values and percentage change of buildings reported as completed to larger municipalities at constant 2000 prices by type of building

Year and month		Residential buildings		Non-residential buildings		Additions and alterations		Total	
		R'000	% change 1/	R'000	% change 1/	R'000	% change 1/	R'000	% change 1/
2006*	January	875 518	36,0	232 372	4,6	288 830	18,4	1 396 720	25,8
	February	1 228 110	30,7	298 221	112,9	391 811	60,8	1 918 142	44,9
	March	1 458 509	46,8	477 553	98,4	414 545	73,2	2 350 607	59,5
	April	1 200 870	17,0	194 227	27,9	314 502	26,3	1 709 599	19,8
	May	1 360 922	11,1	366 809	17,5	401 219	14,4	2 128 950	12,7
	June	1 578 421	43,9	349 270	16,0	394 014	4,7	2 321 705	30,9
	July	1 534 451	36,1	236 794	27,5	380 935	47,1	2 152 180	36,9
	August	1 603 497	-1,8	348 890	-21,5	380 932	29,2	2 333 319	-1,7
	September	1 708 000	14,2	284 976	3,6	453 571	39,1	2 446 547	16,7
	October	1 582 226	13,3	536 037	35,1	410 014	12,0	2 528 277	17,1
	November	1 751 468	-8,0	453 937	38,9	578 195	80,0	2 783 600	9,1
	December	1 752 041	7,2	376 494	103,3	368 941	16,1	2 497 476	16,8
	Total	17 634 033	16,7	4 155 580	30,6	4 777 509	33,1	26 567 122	21,4
2007	January*	1 058 853	20,9	332 381	43,0	453 156	56,9	1 844 390	32,1
	February*	1 398 502	13,9	602 995	102,2	386 059	-1,5	2 387 556	24,5
	March*	1 321 940	-9,4	530 210	11,0	444 699	7,3	2 296 849	-2,3
	April	1 496 189	24,6	428 543	120,6	367 192	16,8	2 291 924	34,1
	May 2/	1 680 700	23,5	478 942	30,6	380 035	-5,3	2 539 677	19,3

1/ The annual/monthly percentage change is the change in the values of buildings reported as completed to municipalities of the relevant year/month compared with the values of buildings reported as completed to municipalities of the comparable period of the previous year expressed as a percentage.

2/ Preliminary figures.

* Revised (see page 39 nr.14).

Table 8 - Seasonally adjusted values and percentage change of buildings reported as completed to larger municipalities at constant 2000 prices by type of building

Year and month		Residential buildings		Non-residential buildings		Additions and alterations		Total	
		R'000	%change 1/	R'000	% change 1/	R'000	% change 1/	R'000	% change 1/
2006	January	1 328 351	-13,7	288 857	34,5	312 650	-14,1	1 929 858	-8,9
	February	1 419 677	6,9	326 844	13,2	396 989	27,0	2 143 510	11,1
	March	1 588 367	11,9	424 371	29,8	416 172	4,8	2 428 910	13,3
	April	1 347 686	-15,2	285 353	-32,8	372 280	-10,5	2 005 319	-17,4
	May	1 312 717	-2,6	316 787	11,0	376 997	1,3	2 006 501	0,1
	June	1 569 375	19,6	360 178	13,7	376 192	-0,2	2 305 745	14,9
	July	1 399 397	-10,8	280 831	-22,0	364 784	-3,0	2 045 012	-11,3
	August	1 429 347	2,1	262 898	-6,4	372 711	2,2	2 064 956	1,0
	September	1 595 291	11,6	266 176	1,2	436 979	17,2	2 298 446	11,3
	October	1 535 292	-3,8	431 861	62,2	383 514	-12,2	2 350 667	2,3
	November	1 407 378	-8,3	439 142	1,7	526 853	37,4	2 373 373	1,0
	December	1 632 774	16,0	450 846	2,7	422 310	-19,8	2 505 930	5,6
2007	January	1 639 961	0,4	411 931	-8,6	490 692	16,2	2 542 584	1,5
	February	1 614 950	-1,5	651 318	58,1	396 314	-19,2	2 662 582	4,7
	March	1 439 578	-10,9	469 201	-28,0	443 656	11,9	2 352 435	-11,6
	April	1 679 088	16,6	644 674	37,4	434 619	-2,0	2 758 381	17,3
	May	1 635 554	-2,6	435 928	-32,4	357 880	-17,7	2 429 362	-11,9
	Dec.06 - Feb.07	4 887 685		1 514 095		1 309 316		7 711 096	
	Mar. - May07 2/	4 754 220	-2,7	1 549 803	2,4	1 236 155	-5,6	7 540 178	-2,2

1/ The percentage change is the change in the seasonally adjusted values of buildings reported as completed to municipalities of the relevant month compared with the seasonally adjusted values of buildings reported as completed to municipalities of the previous month expressed as a percentage.

2/ The percentage change is the change in the seasonally adjusted values of buildings reported as completed to municipalities of the current quarter compared with the seasonally adjusted values of buildings reported as completed to municipalities of the previous quarter expressed as a percentage.

Table 9 - Recorded building plans passed by larger municipalities at current prices by type of building: South Africa

			May 2006*	Apr. 2007	May 2007	Jan. - May 2006	Jan. - May 2007	% Change 1/
Category of building	Type of building	Measuring unit						
1. Residential buildings	1. Dwelling-houses < 80 square metres	Number	3 304	2 758	3 648	14 749	14 615	-0,9
		square metres	147 377	123 045	161 576	650 026	644 819	-0,8
		R'000	253 934	255 601	301 349	1 149 645	1 303 649	13,4
	2. Dwelling-houses >= 80 square metres	Number	3 273	2 516	2 956	13 397	13 242	-1,2
		square metres	741 069	621 553	814 306	3 083 306	3 347 597	8,6
		R'000	2 143 093	1 956 615	2 678 137	8 888 382	10 742 689	20,9
	3. Flats and townhouses	Number	3 099	2 595	3 844	12 139	14 207	17,0
		square metres	354 084	339 324	411 619	1 524 069	1 695 171	11,2
		R'000	1 095 353	1 147 663	1 413 469	4 651 388	5 784 512	24,4
	4. Other residential buildings 2/	square metres	21 420	25 498	3 402	108 743	83 282	-23,4
		R'000	125 341	108 339	11 185	440 207	294 172	-33,2
	5. Total residential buildings	R'000	3 617 721	3 468 218	4 404 140	15 129 622	18 125 022	19,8
2. Non-residential buildings	1. Office and banking space	square metres	70 355	82 188	75 908	369 591	389 210	5,3
		R'000	184 477	373 334	324 072	1 260 451	1 563 871	24,1
	2. Shopping space	square metres	67 136	84 450	94 204	399 881	411 365	2,9
		R'000	221 124	327 639	394 473	1 488 763	1 473 680	-1,0
	3. Industrial and warehouse space	square metres	250 700	188 647	183 851	853 758	874 714	2,5
		R'000	750 619	432 011	548 208	2 351 386	2 441 732	3,8
	4. Other non-residential buildings 3/	square metres	31 303	14 201	51 286	146 084	153 333	5,0
		R'000	97 486	43 479	211 267	427 491	559 088	30,8
	5. Total non-residential buildings	R'000	1 253 706	1 176 463	1 478 020	5 528 091	6 038 371	9,2
3. Additions and alterations	1. Dwelling-houses	square metres	501 985	383 630	531 539	2 083 655	2 094 248	0,5
		R'000	1 345 173	1 123 811	1 623 957	5 630 198	6 289 289	11,7
	2. Other buildings 4/	square metres	163 034	133 535	141 942	533 776	532 750	-0,2
		R'000	500 651	497 957	531 888	1 694 547	2 069 170	22,1
	3. Total additions and alterations	R'000	1 845 824	1 621 768	2 155 845	7 324 745	8 358 459	14,1
4. Recorded plans passed	1. Total at current prices	R'000	6 717 251	6 266 449	8 038 005	27 982 458	32 521 852	16,2

1/ The percentage change between cumulative figures for 2006 and 2007.

2/ Other residential buildings include institutions for the disabled, boarding houses, hostels and tourism accommodation e.g. hotels, motels, guesthouses, holiday chalets, bed-and-breakfast accommodation and casinos.

3/ Other non-residential space includes churches, sport and recreation clubs, schools, crèches, hospitals and all other non-residential space.

4/ Other buildings include other residential buildings, non-residential buildings and internal alterations.

* Revised.

Table 10 - Recorded building plans passed by larger municipalities at current prices by type of building: Western Cape

			May 2006*	Apr. 2007	May 2007	Jan. - May 2006	Jan. - May 2007	% Change 1/
Category of building	Type of building	Measuring unit						
1. Residential buildings	1. Dwelling-houses < 80 square metres	Number	866	175	514	2 954	1 483	-49,8
		square metres	38 832	7 959	22 643	128 771	66 970	-48,0
		R'000	64 780	13 903	62 474	205 919	151 496	-26,4
	2. Dwelling-houses >= 80 square metres	Number	654	537	609	2 928	2 915	-0,4
		square metres	142 610	136 253	164 486	659 911	715 589	8,4
		R'000	435 024	465 759	535 985	1 981 806	2 374 270	19,8
	3. Flats and townhouses	Number	668	371	621	2 279	2 485	9,0
		square metres	67 462	34 779	63 459	263 497	261 484	-0,8
		R'000	200 441	113 588	207 761	821 915	919 888	11,9
	4. Other residential buildings 2/	square metres	3 294	8 270	0	8 767	32 552	271,3
		R'000	9 543	29 667	0	54 075	113 724	110,3
	5. Total residential buildings	R'000	709 788	622 917	806 220	3 063 715	3 559 378	16,2
2. Non-residential buildings	1. Office and banking space	square metres	37 683	6 886	30 260	121 366	127 678	5,2
		R'000	77 797	25 264	102 908	354 619	427 827	20,6
	2. Shopping space	square metres	1 043	8 209	6 546	88 614	41 188	-53,5
		R'000	2 661	27 807	22 243	249 961	133 253	-46,7
	3. Industrial and warehouse space	square metres	58 820	57 733	48 004	252 160	212 250	-15,8
		R'000	178 846	96 075	140 549	741 011	565 284	-23,7
	4. Other non-residential buildings 3/	square metres	19 880	3 479	12 860	40 623	43 882	8,0
		R'000	66 522	8 866	39 469	128 934	135 638	5,2
	5. Total non-residential buildings	R'000	325 826	158 012	305 169	1 474 525	1 262 002	-14,4
3. Additions and alterations	1. Dwelling-houses	square metres	151 351	110 751	150 135	614 400	596 186	-3,0
		R'000	407 859	307 768	434 854	1 656 861	1 698 963	2,5
	2. Other buildings 4/	square metres	63 270	34 784	39 023	202 207	147 824	-26,9
		R'000	182 646	143 210	172 736	639 719	645 722	0,9
	3. Total additions and alterations	R'000	590 505	450 978	607 590	2 296 580	2 344 685	2,1
4. Recorded plans passed	1. Total at current prices	R'000	1 626 119	1 231 907	1 718 979	6 834 820	7 166 065	4,8

1/ The percentage change between cumulative figures for 2006 and 2007.

2/ Other residential buildings include institutions for the disabled, boarding houses, hostels and tourism accommodation e.g. hotels, motels, guesthouses, holiday chalets, bed-and-breakfast accommodation and casinos.

3/ Other non-residential space includes churches, sport and recreation clubs, schools, crèches, hospitals and all other non-residential space.

4/ Other buildings include other residential buildings, non-residential buildings and internal alterations.

* Revised.

Table 11 - Recorded building plans passed by larger municipalities at current prices by type of building: Eastern Cape

			May 2006*	Apr. 2007	May 2007	Jan. - May 2006	Jan. - May 2007	% Change 1/
Category of building	Type of building	Measuring unit						
1. Residential buildings	1. Dwelling-houses < 80 square metres	Number	350	83	248	722	611	-15,4
		square metres	15 065	3 715	10 692	32 823	26 795	-18,4
		R'000	15 515	4 226	19 616	45 368	39 393	-13,2
	2. Dwelling-houses >= 80 square metres	Number	329	178	191	1 039	809	-22,1
		square metres	72 280	47 174	50 393	224 515	210 046	-6,4
		R'000	170 539	139 997	158 320	525 808	602 718	14,6
	3. Flats and townhouses	Number	172	118	81	609	327	-46,3
		square metres	19 736	20 904	8 132	74 569	50 702	-32,0
		R'000	44 654	56 034	20 288	162 893	126 475	-22,4
	4. Other residential buildings 2/	square metres	611	986	0	3 901	3 647	-6,5
		R'000	1 340	2 400	0	8 343	8 010	-4,0
	5. Total residential buildings	R'000	232 048	202 657	198 224	742 412	776 596	4,6
2. Non-residential buildings	1. Office and banking space	square metres	0	3 832	810	2 033	9 689	376,6
		R'000	0	10 545	1 498	4 920	25 935	427,1
	2. Shopping space	square metres	765	2 392	426	14 009	78 603	461,1
		R'000	1 630	5 933	728	33 312	198 374	495,5
	3. Industrial and warehouse space	square metres	13 893	7 156	8 720	31 236	29 835	-4,5
		R'000	27 134	14 923	19 767	61 757	73 324	18,7
	4. Other non-residential buildings 3/	square metres	794	887	381	9 058	3 048	-66,4
		R'000	1 675	2 395	1 010	20 467	7 823	-61,8
	5. Total non-residential buildings	R'000	30 439	33 796	23 003	120 456	305 456	153,6
3. Additions and alterations	1. Dwelling-houses	square metres	42 133	33 462	37 323	175 287	170 110	-3,0
		R'000	89 740	77 539	100 503	399 360	438 493	9,8
	2. Other buildings 4/	square metres	7 957	32 146	16 747	30 274	59 058	95,1
		R'000	38 813	84 380	39 511	87 256	153 846	76,3
	3. Total additions and alterations	R'000	128 553	161 919	140 014	486 616	592 339	21,7
4. Recorded plans passed	1. Total at current prices	R'000	391 040	398 372	361 241	1 349 484	1 674 391	24,1

1/ The percentage change between cumulative figures for 2006 and 2007.

2/ Other residential buildings include institutions for the disabled, boarding houses, hostels and tourism accommodation e.g. hotels, motels, guesthouses, holiday chalets, bed-and-breakfast accommodation and casinos.

3/ Other non-residential space includes churches, sport and recreation clubs, schools, crèches, hospitals and all other non-residential space.

4/ Other buildings include other residential buildings, non-residential buildings and internal alterations.

* Revised.

Table 12 - Recorded building plans passed by larger municipalities at current prices by type of building: Northern Cape

			May 2006*	Apr. 2007	May 2007	Jan. - May 2006	Jan. - May 2007	% Change 1/
Category of building	Type of building	Measuring unit						
1. Residential buildings	1. Dwelling-houses < 80 square metres	Number	2	0	3	221	29	-86,9
		square metres	89	0	135	10 390	1 489	-85,7
		R'000	216	0	434	15 098	4 809	-68,1
	2. Dwelling-houses >= 80 square metres	Number	29	25	39	146	211	44,5
		square metres	6 191	4 598	7 725	29 021	34 900	20,3
		R'000	12 911	14 076	22 759	57 885	94 650	63,5
	3. Flats and townhouses	Number	4	6	32	88	46	-47,7
		square metres	570	325	4 780	10 873	6 536	-39,9
		R'000	1 140	1 138	13 384	20 932	18 670	-10,8
	4. Other residential buildings 2/	square metres	557	0	0	672	0	
		R'000	1 000	0	0	1 253	0	
	5. Total residential buildings	R'000	15 267	15 214	36 577	95 168	118 129	24,1
2. Non-residential buildings	1. Office and banking space	square metres	0	0	1 500	5 692	2 578	-54,7
		R'000	0	0	5 400	14 000	7 987	-43,0
	2. Shopping space	square metres	128	96	1 952	1 891	6 898	264,8
		R'000	360	344	5 856	4 021	14 700	265,6
	3. Industrial and warehouse space	square metres	256	1 915	0	6 106	2 990	-51,0
		R'000	512	4 596	0	18 762	6 488	-65,4
	4. Other non-residential buildings 3/	square metres	733	710	135	1 087	984	-9,5
		R'000	1 589	2 130	324	2 339	2 727	16,6
	5. Total non-residential buildings	R'000	2 461	7 070	11 580	39 122	31 902	-18,5
3. Additions and alterations	1. Dwelling-houses	square metres	3 656	4 960	5 175	24 586	23 416	-4,8
		R'000	6 993	14 520	16 722	47 494	57 767	21,6
	2. Other buildings 4/	square metres	0	650	1 146	3 564	2 987	-16,2
		R'000	407	1 889	5 672	9 082	11 735	29,2
	3. Total additions and alterations	R'000	7 400	16 409	22 394	56 576	69 502	22,8
4. Recorded plans passed	1. Total at current prices	R'000	25 128	38 693	70 551	190 866	219 533	15,0

1/ The percentage change between cumulative figures for 2006 and 2007.

2/ Other residential buildings include institutions for the disabled, boarding houses, hostels and tourism accommodation e.g. hotels, motels, guesthouses, holiday chalets, bed-and-breakfast accommodation and casinos.

3/ Other non-residential space includes churches, sport and recreation clubs, schools, crèches, hospitals and all other non-residential space.

4/ Other buildings include other residential buildings, non-residential buildings and internal alterations.

*Revised.

Table 13 - Recorded building plans passed by larger municipalities at current prices by type of building: Free State

			May 2006*	Apr. 2007	May 2007	Jan. - May 2006	Jan. - May 2007	% Change 1/
Category of building	Type of building	Measuring unit						
1. Residential buildings	1. Dwelling-houses < 80 square metres	Number	184	53	908	1 747	1 055	-39,6
		square metres	7 704	2 917	36 792	72 289	44 640	-38,2
		R'000	6 294	4 943	31 446	61 533	44 392	-27,9
	2. Dwelling-houses >= 80 square metres	Number	160	92	99	438	563	28,5
		square metres	27 559	20 221	20 698	78 957	121 271	53,6
		R'000	67 383	46 151	58 414	172 798	303 514	75,6
	3. Flats and townhouses	Number	186	110	114	460	621	35,0
		square metres	18 463	11 301	12 340	52 479	66 225	26,2
		R'000	46 414	35 555	30 176	124 700	178 398	43,1
	4. Other residential buildings 2/	square metres	4 987	907	1 318	5 789	13 858	139,4
		R'000	79 092	3 628	6 600	82 092	48 307	-41,2
	5. Total residential buildings	R'000	199 183	90 277	126 636	441 123	574 611	30,3
	2. Non-residential buildings	1. Office and banking space	square metres	625	225	216	9 689	5 496
R'000			2 250	672	756	28 742	19 626	-31,7
2. Shopping space		square metres	555	431	16 361	5 844	18 472	216,1
		R'000	1 140	1 100	82 736	14 004	89 884	541,8
3. Industrial and warehouse space		square metres	5 441	2 637	6 840	15 048	20 605	36,9
		R'000	13 630	5 920	13 444	27 314	38 923	42,5
4. Other non-residential buildings 3/		square metres	1 950	0	148	5 229	1 872	-64,2
		R'000	6 320	0	533	13 927	3 779	-72,9
5. Total non-residential buildings		R'000	23 340	7 692	97 469	83 987	152 212	81,2
3. Additions and alterations	1. Dwelling-houses	square metres	17 728	15 149	10 104	64 120	74 171	15,7
		R'000	36 179	35 764	23 858	118 784	174 144	46,6
	2. Other buildings 4/	square metres	3 787	2 982	1 606	14 881	14 618	-1,8
		R'000	6 954	11 262	4 502	34 269	54 574	59,3
	3. Total additions and alterations	R'000	43 133	47 026	28 360	153 053	228 718	49,4
4. Recorded plans passed	1. Total at current prices	R'000	265 656	144 995	252 465	678 163	955 541	40,9

1/ The percentage change between cumulative figures for 2006 and 2007.

2/ Other residential buildings include institutions for the disabled, boarding houses, hostels and tourism accommodation e.g. hotels, motels, guesthouses, holiday chalets, bed-and-breakfast accommodation and casinos.

3/ Other non-residential space includes churches, sport and recreation clubs, schools, crèches, hospitals and all other non-residential space.

4/ Other buildings include other residential buildings, non-residential buildings and internal alterations.

* Revised.

Table 14 - Recorded building plans passed by larger municipalities at current prices by type of building: KwaZulu-Natal

			May 2006*	Apr. 2007	May 2007	Jan. - May 2006	Jan. - May 2007	% Change 1/
Category of building	Type of building	Measuring unit						
1. Residential buildings	1. Dwelling-houses < 80 square metres	Number	124	95	104	408	472	15,7
		square metres	6 629	5 046	5 492	21 604	25 892	19,8
		R'000	17 284	13 043	14 895	53 086	76 742	44,6
	2. Dwelling-houses >= 80 square metres	Number	280	218	276	1 189	1 110	-6,6
		square metres	63 053	48 322	66 629	256 963	256 001	-0,4
		R'000	189 389	173 226	258 874	732 703	934 781	27,6
	3. Flats and townhouses	Number	430	374	804	1 508	2 926	94,0
		square metres	47 160	48 121	74 934	257 552	303 521	17,8
		R'000	152 704	192 526	262 788	860 056	1 101 775	28,1
	4. Other residential buildings 2/	square metres	565	14 542	0	10 413	16 214	55,7
		R'000	1 695	67 665	0	21 583	73 975	242,7
	5. Total residential buildings	R'000	361 072	446 460	536 557	1 667 428	2 187 273	31,2
2. Non-residential buildings	1. Office and banking space	square metres	11 624	23 725	13 720	38 323	54 204	41,4
		R'000	35 025	101 937	63 931	109 948	235 453	114,1
	2. Shopping space	square metres	3 994	17 286	31 363	28 706	67 573	135,4
		R'000	11 778	39 925	140 131	73 479	254 203	246,0
	3. Industrial and warehouse space	square metres	41 209	51 545	18 276	206 450	144 873	-29,8
		R'000	111 377	123 445	46 147	503 986	381 159	-24,4
	4. Other non-residential buildings 3/	square metres	2 299	1 349	26 867	25 759	47 389	84,0
		R'000	8 318	3 372	125 814	69 832	200 787	187,5
	5. Total non-residential buildings	R'000	166 498	268 679	376 023	757 245	1 071 602	41,5
3. Additions and alterations	1. Dwelling-houses	square metres	65 388	39 795	51 588	279 768	243 033	-13,1
		R'000	184 635	130 536	185 676	787 944	847 086	7,5
	2. Other buildings 4/	square metres	42 647	21 057	39 666	105 558	115 619	9,5
		R'000	133 497	63 182	145 704	348 903	436 453	25,1
	3. Total additions and alterations	R'000	318 132	193 718	331 380	1 136 847	1 283 539	12,9
4. Recorded plans passed	1. Total at current prices	R'000	845 702	908 857	1 243 960	3 561 520	4 542 414	27,5

1/ The percentage change between cumulative figures for 2006 and 2007.

2/ Other residential buildings include institutions for the disabled, boarding houses, hostels and tourism accommodation e.g. hotels, motels, guesthouses, holiday chalets, bed-and-breakfast accommodation and casinos.

3/ Other non-residential space includes churches, sport and recreation clubs, schools, crèches, hospitals and all other non-residential space.

4/ Other buildings include other residential buildings, non-residential buildings and internal alterations.

* Revised.

Table 15 - Recorded building plans passed by larger municipalities at current prices by type of building: North West

			May 2006*	Apr. 2007	May 2007	Jan. - May 2006	Jan. - May 2007	% Change 1/
Category of building	Type of building	Measuring unit						
1. Residential buildings	1. Dwelling-houses < 80 square metres	Number	76	94	109	321	1 199	273,5
		square metres	4 483	5 572	6 177	19 225	52 998	175,7
		R'000	5 261	6 680	6 951	24 834	63 315	155,0
	2. Dwelling-houses >= 80 square metres	Number	252	178	257	941	1 072	13,9
		square metres	51 483	43 794	56 599	188 273	243 218	29,2
		R'000	127 329	117 674	145 023	471 209	656 026	39,2
	3. Flats and townhouses	Number	46	300	22	416	763	83,4
		square metres	5 807	31 045	3 469	47 633	101 358	112,8
		R'000	14 229	71 920	7 526	124 516	252 326	102,6
	4. Other residential buildings 2/	square metres	6 272	0	2 084	6 272	4 364	-30,4
		R'000	15 694	0	4 585	15 694	12 565	-19,9
	5. Total residential buildings	R'000	162 513	196 274	164 085	636 253	984 232	54,7
2. Non-residential buildings	1. Office and banking space	square metres	135	490	0	7 211	19 764	174,1
		R'000	203	900	0	17 466	48 105	175,4
	2. Shopping space	square metres	12 714	1 068	12 706	21 979	34 868	58,6
		R'000	32 885	2 267	40 540	51 882	107 031	106,3
	3. Industrial and warehouse space	square metres	1 734	9 868	4 877	16 532	29 234	76,8
		R'000	2 618	15 333	8 581	40 120	55 161	37,5
	4. Other non-residential buildings 3/	square metres	322	1 919	208	6 948	9 024	29,9
		R'000	748	4 501	720	23 123	25 265	9,3
	5. Total non-residential buildings	R'000	36 454	23 001	49 841	132 591	235 562	77,7
	3. Additions and alterations	1. Dwelling-houses	square metres	15 267	9 256	19 880	58 230	63 869
			R'000	30 580	20 063	47 537	116 412	141 613
		2. Other buildings 4/	square metres	1 942	289	2 068	9 940	6 876
			R'000	5 038	648	4 674	31 249	17 733
	3. Total additions and alterations	R'000	35 618	20 711	52 211	147 661	159 346	7,9
4. Recorded plans passed	1. Total at current prices	R'000	234 585	239 986	266 137	916 505	1 379 140	50,5

1/ The percentage change between cumulative figures for 2006 and 2007.

2/ Other residential buildings include institutions for the disabled, boarding houses, hostels and tourism accommodation e.g. hotels, motels, guesthouses, holiday chalets, bed-and-breakfast accommodation and casinos.

3/ Other non-residential space includes churches, sport and recreation clubs, schools, crèches, hospitals and all other non-residential space.

4/ Other buildings include other residential buildings, non-residential buildings and internal alterations.

*Revised.

Table 16 - Recorded building plans passed by larger municipalities at current prices by type of building: Gauteng

			May 2006*	Apr. 2007	May 2007	Jan. - May 2006	Jan. - May 2007	% Change 1/
Category of building	Type of building	Measuring unit						
1. Residential buildings	1. Dwelling-houses < 80 square metres	Number	1 627	2 202	1 723	7 957	9 114	14,5
		square metres	69 810	94 104	77 050	339 437	394 825	16,3
		R'000	132 282	202 735	158 279	681 227	857 302	25,8
	2. Dwelling-houses >= 80 square metres	Number	1 252	963	1 141	5 324	4 981	-6,4
		square metres	301 658	252 785	358 404	1 331 198	1 394 755	4,8
		R'000	936 611	825 861	1 256 609	4 139 057	4 751 523	14,8
	3. Flats and townhouses	Number	1 339	1 144	1 901	5 761	6 007	4,3
		square metres	171 992	172 144	216 743	710 910	796 906	12,1
		R'000	571 787	611 280	805 183	2 269 613	2 890 454	27,4
	4. Other residential buildings 2/	square metres	4 842	793	0	64 611	2 493	-96,1
		R'000	16 245	4 979	0	232 270	12 191	-94,8
	5. Total residential buildings	R'000	1 656 925	1 644 855	2 220 071	7 322 167	8 511 470	16,2
2. Non-residential buildings	1. Office and banking space	square metres	12 236	44 948	28 846	167 966	156 139	-7,0
		R'000	40 959	229 313	148 223	677 233	762 142	12,5
	2. Shopping space	square metres	43 508	48 010	14 433	163 335	133 194	-18,5
		R'000	156 960	221 473	79 322	539 290	594 887	10,3
	3. Industrial and warehouse space	square metres	122 138	41 544	76 997	292 576	360 349	23,2
		R'000	400 745	130 087	272 205	880 186	1 078 188	22,5
	4. Other non-residential buildings 3/	square metres	3 829	3 951	10 201	49 652	37 947	-23,6
		R'000	9 068	15 920	42 242	149 150	161 449	8,2
	5. Total non-residential buildings	R'000	607 732	596 793	541 992	2 245 859	2 596 666	15,6
3. Additions and alterations	1. Dwelling-houses	square metres	176 440	149 558	223 121	732 296	781 245	6,7
		R'000	525 428	484 450	731 023	2 217 460	2 583 370	16,5
	2. Other buildings 4/	square metres	39 016	39 510	37 111	139 537	163 181	16,9
		R'000	122 666	187 711	143 631	473 985	685 620	44,7
	3. Total additions and alterations	R'000	648 094	672 161	874 654	2 691 445	3 268 990	21,5
4. Recorded plans passed	1. Total at current prices	R'000	2 912 751	2 913 809	3 636 717	12 259 471	14 377 126	17,3

1/ The percentage change between cumulative figures for 2006 and 2007.

2/ Other residential buildings include institutions for the disabled, boarding houses, hostels and tourism accommodation e.g. hotels, motels, guesthouses, holiday chalets, bed-and-breakfast accommodation and casinos.

3/ Other non-residential space includes churches, sport and recreation clubs, schools, crèches, hospitals and all other non-residential space.

4/ Other buildings include other residential buildings, non-residential buildings and internal alterations.

* Revised.

Table 17 - Recorded building plans passed by larger municipalities at current prices by type of building: Mpumalanga

			May 2006	Apr. 2007	May 2007	Jan. - May 2006	Jan. - May 2007	% Change 1/	
Category of building	Type of building	Measuring unit							
1. Residential buildings	1. Dwelling-houses < 80 square metres	Number	39	33	26	248	481	94,0	
		square metres	2 656	2 251	1 763	15 062	20 343	35,1	
		R'000	6 957	5 757	4 681	37 301	37 000	-0,8	
	2. Dwelling-houses >= 80 square metres	Number	199	247	235	875	1 131	29,3	
		square metres	51 243	55 115	62 342	204 197	276 250	35,3	
		R'000	147 037	135 325	166 771	544 650	765 372	40,5	
	3. Flats and townhouses	Number	225	129	168	779	691	-11,3	
		square metres	21 065	14 097	15 187	82 844	67 653	-18,3	
		R'000	59 960	49 169	37 144	207 455	197 846	-4,6	
	4. Other residential buildings 2/	square metres	292	0	0	7 371	3 889	-47,2	
		R'000	732	0	0	20 397	10 918	-46,5	
	5. Total residential buildings	R'000	214 686	190 251	208 596	809 803	1 011 136	24,9	
	2. Non-residential buildings	1. Office and banking space	square metres	8 052	2 082	556	13 069	11 845	-9,4
			R'000	28 243	4 703	1 356	43 452	32 126	-26,1
2. Shopping space		square metres	1 508	6 536	0	69 015	11 078	-83,9	
		R'000	5 278	27 862	0	508 464	41 705	-91,8	
3. Industrial and warehouse space		square metres	4 599	11 509	17 115	24 533	60 130	145,1	
		R'000	10 015	29 812	40 143	57 734	207 443	259,3	
4. Other non-residential buildings 3/		square metres	1 320	573	286	7 380	5 817	-21,2	
		R'000	2 964	3 189	715	18 837	13 576	-27,9	
5. Total non-residential buildings		R'000	46 500	65 566	42 214	628 487	294 850	-53,1	
3. Additions and alterations	1. Dwelling-houses	square metres	20 951	11 532	22 650	91 600	89 754	-2,0	
		R'000	46 774	30 958	56 304	199 979	222 492	11,3	
	2. Other buildings 4/	square metres	1 348	992	3 970	13 037	17 774	36,3	
		R'000	4 071	3 001	13 945	37 790	52 580	39,1	
	3. Total additions and alterations	R'000	50 845	33 959	70 249	237 769	275 072	15,7	
4. Recorded plans passed	1. Total at current prices	R'000	312 031	289 776	321 059	1 676 059	1 581 058	-5,7	

1/ The percentage change between cumulative figures for 2006 and 2007.

2/ Other residential buildings include institutions for the disabled, boarding houses, hostels and tourism accommodation e.g. hotels, motels, guesthouses, holiday chalets, bed-and-breakfast accommodation and casinos.

3/ Other non-residential space includes churches, sport and recreation clubs, schools, crèches, hospitals and all other non-residential space.

4/ Other buildings include other residential buildings, non-residential buildings and internal alterations.

Table 18 - Recorded building plans passed by larger municipalities at current prices by type of building: Limpopo

			May 2006	Apr. 2007	May 2007	Jan. - May 2006	Jan. - May 2007	% Change 1/
Category of building	Type of building	Measuring unit						
1. Dwelling-houses < 80 square metres	1. Dwelling-houses < 80 square metres	Number	36	23	13	171	171	-0,0
		square metres	2 109	1 481	832	10 425	10 867	4,2
		R'000	5 345	4 314	2 573	25 279	29 200	15,5
	2. Dwelling-houses >= 80 square metres	Number	118	78	109	517	450	-13,0
		square metres	24 992	13 291	27 030	110 271	95 567	-13,3
		R'000	56 870	38 546	75 382	262 466	259 835	-1,0
	3. Flats and townhouses	Number	29	43	101	239	341	42,7
		square metres	1 829	6 608	12 575	23 712	40 786	72,0
		R'000	4 024	16 453	29 219	59 308	98 680	66,4
	4. Other residential buildings 2/	square metres	0	0	0	947	6 265	561,6
		R'000	0	0	0	4 500	14 482	221,8
	5. Total residential buildings	R'000	66 239	59 313	107 174	351 553	402 197	14,4
2. Dwelling-houses >= 80 square metres	1. Office and banking space	square metres	0	0	0	4 242	1 817	-57,2
		R'000	0	0	0	10 071	4 670	-53,6
	2. Shopping space	square metres	2 921	422	10 417	6 488	19 491	200,4
		R'000	8 432	928	22 917	14 350	39 643	176,3
	3. Industrial and warehouse space	square metres	2 610	4 740	3 022	9 117	14 448	58,5
		R'000	5 742	11 820	7 372	20 516	35 762	74,3
	4. Other non-residential buildings 3/	square metres	176	1 333	200	348	3 370	868,4
		R'000	282	3 106	440	882	8 044	812,0
	5. Total non-residential buildings	R'000	14 456	15 854	30 729	45 819	88 119	92,3
3. Flats and townhouses	1. Dwelling-houses	square metres	9 071	9 167	11 563	43 368	52 464	21,0
		R'000	16 985	22 213	27 480	85 904	125 361	45,9
	2. Other buildings 4/	square metres	3 067	1 125	605	14 778	4 813	-67,4
		R'000	6 559	2 674	1 513	32 294	10 907	-66,2
	3. Total additions and alterations	R'000	23 544	24 887	28 993	118 198	136 268	15,3
4. Other residential buildings 2/	1. Total at current prices	R'000	104 239	100 054	166 896	515 570	626 584	21,5

1/ The percentage change between cumulative figures for 2006 and 2007.

2/ Other residential buildings include institutions for the disabled, boarding houses, hostels and tourism accommodation e.g. hotels, motels, guesthouses, holiday chalets, bed-and-breakfast accommodation and casinos.

3/ Other non-residential space includes churches, sport and recreation clubs, schools, crèches, hospitals and all other non-residential space.

4/ Other buildings include other residential buildings, non-residential buildings and internal alterations.

Table 19 - Buildings reported as completed to larger municipalities at current prices by type of building: South Africa

			May 2006*	Apr. 2007	May 2007	Jan. - May 2006	Jan. - May 2007	% Change 1/
Category of building	Type of building	Measuring unit						
1. Residential buildings	1. Dwelling-houses < 80 square metres	Number	1 636	1 373	2 705	8 082	10 636	31,6
		square metres	73 483	62 212	114 540	344 407	441 494	28,2
		R'000	127 025	119 550	184 055	642 745	782 052	21,7
	2. Dwelling-houses >= 80 square metres	Number	1 843	1 959	2 123	7 832	8 827	12,7
		square metres	420 546	412 907	491 662	1 781 179	1 986 272	11,5
		R'000	1 175 389	1 243 705	1 536 853	4 837 466	6 073 304	25,5
	3. Flats and townhouses	Number	1 614	2 395	2 556	8 487	10 435	23,0
		square metres	221 993	233 984	281 757	1 109 876	1 126 257	1,5
		R'000	676 684	776 572	958 716	3 327 725	3 648 143	9,6
	4. Other residential buildings 2/	square metres	3 544	63 333	9 077	20 216	106 875	428,7
		R'000	10 004	226 954	22 769	73 487	496 603	575,8
	5. Total residential buildings	R'000	1 989 102	2 366 781	2 702 393	8 881 423	11 000 102	23,9
	2. Non-residential buildings	1. Office and banking space	square metres	44 213	40 016	86 097	118 716	289 073
R'000			143 117	151 578	339 764	339 606	1 011 069	197,7
2. Shopping space		square metres	38 825	30 415	39 868	291 691	234 081	-19,8
		R'000	142 456	88 653	147 477	963 061	745 823	-22,6
3. Industrial and warehouse space		square metres	66 880	110 203	74 527	282 208	527 965	87,1
		R'000	172 591	359 841	199 779	710 860	1 488 987	109,5
4. Other non-residential buildings 3/		square metres	18 035	8 454	6 755	56 349	73 804	31,0
		R'000	51 700	30 315	19 899	146 501	236 508	61,4
5. Total non-residential buildings		R'000	509 864	630 387	706 919	2 160 028	3 482 387	61,2
3. Additions and alterations	1. Dwelling-houses	square metres	180 055	126 101	170 026	802 208	812 402	1,3
		R'000	443 796	358 902	481 627	1 967 643	2 261 452	14,9
	2. Other buildings 4/	square metres	43 528	44 291	29 309	214 797	230 725	7,4
		R'000	131 953	197 394	102 107	608 055	799 590	31,5
	3. Total additions and alterations	R'000	575 749	556 296	583 734	2 575 698	3 061 042	18,8
4. Recorded buildings completed	1. Total at current prices	R'000	3 074 715	3 553 464	3 993 046	13 617 149	17 543 531	28,8

1/ The percentage change between cumulative figures for 2006 and 2007.

2/ Other residential buildings include institutions for the disabled, boarding houses, hostels and tourism accommodation e.g. hotels, motels, guesthouses, holiday chalets, bed-and-breakfast accommodation and casinos.

3/ Other non-residential space includes churches, sport and recreation clubs, schools, crèches, hospitals and all other non-residential space.

4/ Other buildings include other residential buildings, non-residential buildings and internal alterations.

*Revised.

Table 20 - Buildings reported as completed to larger municipalities at current prices by type of building: Western Cape

			May 2006*	Apr. 2007	May 2007	Jan. - May 2006	Jan. - May 2007	% Change 1/
Category of building	Type of building	Measuring unit						
1. Residential buildings	1. Dwelling-houses < 80 square metres	Number	378	402	1 074	1 690	3 904	131,0
		square metres	15 219	16 976	40 206	67 809	142 772	110,6
		R'000	24 066	25 955	52 672	107 431	189 828	76,7
	2. Dwelling-houses >= 80 square metres	Number	567	445	494	2 276	2 206	-3,1
		square metres	132 758	95 840	105 427	526 035	488 065	-7,2
		R'000	366 787	292 430	331 565	1 419 098	1 464 534	3,2
	3. Flats and townhouses	Number	376	430	682	2 563	2 923	14,0
		square metres	42 639	51 668	82 541	324 691	307 272	-5,4
		R'000	111 384	146 459	285 204	952 688	979 759	2,8
	4. Other residential buildings 2/	square metres	1 828	2 112	669	9 453	19 163	102,7
		R'000	5 729	5 914	1 383	31 494	71 715	127,7
	5. Total residential buildings	R'000	507 966	470 758	670 824	2 510 711	2 705 836	7,8
2. Non-residential buildings	1. Office and banking space	square metres	8 660	1 568	37 819	27 795	114 179	310,8
		R'000	15 679	3 710	115 814	69 208	321 379	364,4
	2. Shopping space	square metres	1 888	4 651	2 652	38 711	16 404	-57,6
		R'000	3 848	15 348	8 898	94 524	49 681	-47,4
	3. Industrial and warehouse space	square metres	25 720	40 007	29 324	134 361	195 297	45,4
		R'000	73 398	116 152	88 494	354 635	560 296	58,0
	4. Other non-residential buildings 3/	square metres	7 507	2 187	1 987	19 255	23 471	21,9
		R'000	18 426	6 694	6 343	44 883	64 226	43,1
	5. Total non-residential buildings	R'000	111 351	141 904	219 549	563 250	995 582	76,8
3. Additions and alterations	1. Dwelling-houses	square metres	72 170	40 417	59 604	299 519	280 108	-6,5
		R'000	182 098	105 997	156 477	731 602	732 063	0,1
	2. Other buildings 4/	square metres	18 590	15 018	8 291	68 496	98 275	43,5
		R'000	57 910	59 378	30 526	200 572	330 338	64,7
	3. Total additions and alterations	R'000	240 008	165 375	187 003	932 174	1 062 401	14,0
4. Recorded buildings completed	1. Total at current prices	R'000	859 325	778 037	1 077 376	4 006 135	4 763 819	18,9

1/ The percentage change between cumulative figures for 2006 and 2007.

2/ Other residential buildings include institutions for the disabled, boarding houses, hostels and tourism accommodation e.g. hotels, motels, guesthouses, holiday chalets, bed-and-breakfast accommodation and casinos.

3/ Other non-residential space includes churches, sport and recreation clubs, schools, crèches, hospitals and all other non-residential space.

4/ Other buildings include other residential buildings, non-residential buildings and internal alterations.

* Revised.

Table 21 - Buildings reported as completed to larger municipalities at current prices by type of building: Eastern Cape

			May 2006*	Apr. 2007	May 2007	Jan. - May 2006	Jan. - May 2007	% Change 1/	
Category of building									
1. Residential buildings	1. Dwelling-houses < 80 square metres	Number	108	201	116	633	567	-10,4	
		square metres	5 087	8 075	5 171	27 617	24 000	-13,1	
		R'000	5 322	11 302	5 162	38 765	36 157	-6,7	
	2. Dwelling-houses >= 80 square metres	Number	61	75	126	456	478	4,8	
		square metres	9 285	18 876	22 771	85 233	81 861	-4,0	
		R'000	20 970	53 004	54 566	182 964	209 454	14,5	
	3. Flats and townhouses	Number	112	60	103	361	246	-31,9	
		square metres	10 893	5 979	9 143	33 051	26 154	-20,9	
		R'000	22 949	13 762	20 795	69 110	60 136	-13,0	
	4. Other residential buildings 2/	square metres	0	0	0	120	0		
		R'000	0	0	0	264	0		
	5. Total residential buildings	R'000	49 241	78 068	80 523	291 103	305 747	5,0	
	2. Non-residential buildings	1. Office and banking space	square metres	0	0	0	3 183	1 254	-60,6
			R'000	0	0	0	6 870	3 163	-54,0
2. Shopping space		square metres	4 683	0	8 476	11 737	10 088	-14,0	
		R'000	11 206	0	21 138	27 052	24 976	-7,7	
3. Industrial and warehouse space		square metres	4 684	2 538	1 968	20 604	19 650	-4,6	
		R'000	9 797	4 881	4 273	39 052	48 300	23,7	
4. Other non-residential buildings 3/		square metres	401	0	0	3 286	2 195	-33,2	
		R'000	792	0	0	7 443	4 795	-35,6	
5. Total non-residential buildings		R'000	21 795	4 881	25 411	80 417	81 234	1,0	
3. Additions and alterations		1. Dwelling-houses	square metres	7 232	10 315	9 113	52 805	56 135	6,3
	R'000		14 138	20 577	18 713	100 825	111 316	10,4	
	2. Other buildings 4/	square metres	2 792	2 863	1 646	36 452	21 221	-41,8	
		R'000	4 560	4 426	5 181	66 949	47 991	-28,3	
	3. Total additions and alterations	R'000	18 698	25 003	23 894	167 774	159 307	-5,0	
4. Recorded buildings completed	1. Total at current prices	R'000	89 734	107 952	129 828	539 294	546 288	1,3	

1/ The percentage change between cumulative figures for 2006 and 2007.

2/ Other residential buildings include institutions for the disabled, boarding houses, hostels and tourism accommodation e.g. hotels, motels, guesthouses, holiday chalets, bed-and-breakfast accommodation and casinos.

3/ Other non-residential space includes churches, sport and recreation clubs, schools, crèches, hospitals and all other non-residential space.

4/ Other buildings include other residential buildings, non-residential buildings and internal alterations.

* Revised.

Table 22 - Buildings reported as completed to larger municipalities at current prices by type of building: Northern Cape

			May 2006	Apr. 2007	May 2007	Jan. - May 2006	Jan. - May 2007	% Change 1/
Category of building	Type of building	Measuring unit						
1. Residential buildings	1. Dwelling-houses < 80 square metres	Number	1	0	0	19	14	-26,3
		square metres	65	0	0	930	743	-20,1
		R'000	130	0	0	1 561	1 201	-23,1
	2. Dwelling-houses >= 80 square metres	Number	15	15	32	80	87	8,8
		square metres	2 125	3 055	6 426	12 732	16 679	31,0
		R'000	4 360	9 427	15 484	26 538	41 649	56,9
	3. Flats and townhouses	Number	0	24	15	36	83	130,6
		square metres	0	3 177	1 978	5 042	11 659	131,2
		R'000	0	8 968	5 797	9 451	30 053	218,0
	4. Other residential buildings 2/	square metres	155	0	0	155	0	
		R'000	372	0	0	372	0	
	5. Total residential buildings	R'000	4 862	18 395	21 281	37 922	72 903	92,2
2. Non-residential buildings	1. Office and banking space	square metres	0	0	216	1 620	5 898	264,1
		R'000	0	0	518	3 240	14 518	348,1
	2. Shopping space	square metres	0	562	0	0	4 250	
		R'000	0	1 614	0	0	9 468	
	3. Industrial and warehouse space	square metres	459	1 133	1 223	1 917	3 429	78,9
		R'000	1 000	2 719	3 429	3 916	8 966	129,0
	4. Other non-residential buildings 3/	square metres	0	0	498	100	498	398,0
		R'000	0	0	1 195	200	1 195	497,5
	5. Total non-residential buildings	R'000	1 000	4 333	5 142	7 356	34 147	364,2
	3. Additions and alterations	1. Dwelling-houses	square metres	1 952	2 572	3 010	7 562	13 952
R'000			3 930	7 988	9 848	15 681	36 049	129,9
2. Other buildings 4/		square metres	0	1 510	1 109	5 658	2 876	-49,2
		R'000	493	9 589	3 631	9 900	13 917	40,6
3. Total additions and alterations		R'000	4 423	17 577	13 479	25 581	49 966	95,3
4. Recorded buildings completed	1. Total at current prices	R'000	10 285	40 305	39 902	70 859	157 016	121,6

1/ The percentage change between cumulative figures for 2006 and 2007.

2/ Other residential buildings include institutions for the disabled, boarding houses, hostels and tourism accommodation e.g. hotels, motels, guesthouses, holiday chalets, bed-and-breakfast accommodation and casinos.

3/ Other non-residential space includes churches, sport and recreation clubs, schools, crèches, hospitals and all other non-residential space.

4/ Other buildings include other residential buildings, non-residential buildings and internal alterations.

Table 23 - Buildings reported as completed to larger municipalities at current prices by type of building: Free State

			May 2006*	Apr. 2007	May 2007	Jan. - May 2006	Jan. - May 2007	% Change 1/
Category of building	Type of building	Measuring unit						
1. Residential buildings	1. Dwelling-houses < 80 square metres	Number	2	4	20	224	93	-58,5
		square metres	136	263	1 204	10 452	5 597	-46,5
		R'000	245	458	2 769	11 851	10 785	-9,0
	2. Dwelling-houses >= 80 square metres	Number	31	53	59	154	316	105,2
		square metres	5 654	10 141	10 519	30 517	59 796	95,9
		R'000	10 450	21 905	25 198	58 674	128 179	118,5
	3. Flats and townhouses	Number	6	31	117	250	224	-10,4
		square metres	756	4 238	13 137	28 796	26 160	-9,2
		R'000	1 521	12 576	34 899	57 490	73 495	27,8
	4. Other residential buildings 2/	square metres	0	0	0	8 310	4 987	-40,0
		R'000	0	0	0	35 872	79 092	120,5
	5. Total residential buildings	R'000	12 216	34 939	62 866	163 887	291 551	77,9
2. Non-residential buildings	1. Office and banking space	square metres	0	3 307	541	992	5 102	414,3
		R'000	0	10 000	2 164	2 454	16 678	579,6
	2. Shopping space	square metres	2 478	1 875	429	16 170	4 584	-71,7
		R'000	6 250	5 625	1 501	45 696	16 097	-64,8
	3. Industrial and warehouse space	square metres	1 307	1 362	0	2 859	2 201	-23,0
		R'000	2 886	4 093	0	4 664	6 033	29,4
	4. Other non-residential buildings 3/	square metres	0	0	298	3 064	489	-84,0
		R'000	0	0	298	6 277	827	-86,8
	5. Total non-residential buildings	R'000	9 136	19 718	3 963	59 091	39 635	-32,9
3. Additions and alterations	1. Dwelling-houses	square metres	6 752	5 627	6 470	28 999	25 656	-11,5
		R'000	11 180	10 613	14 098	47 278	49 448	4,6
	2. Other buildings 4/	square metres	2 540	2 943	2 121	8 223	8 616	4,8
		R'000	8 640	5 047	5 934	25 461	20 253	-20,5
	3. Total additions and alterations	R'000	19 820	15 660	20 032	72 739	69 701	-4,2
4. Recorded buildings completed	1. Total at current prices	R'000	41 172	70 317	86 861	295 717	400 887	35,6

1/ The percentage change between cumulative figures for 2006 and 2007.

2/ Other residential buildings include institutions for the disabled, boarding houses, hostels and tourism accommodation e.g. hotels, motels, guesthouses, holiday chalets, bed-and-breakfast accommodation and casinos.

3/ Other non-residential space includes churches, sport and recreation clubs, schools, crèches, hospitals and all other non-residential space.

4/ Other buildings include other residential buildings, non-residential buildings and internal alterations.

* Revised.

Table 24 - Buildings reported as completed to larger municipalities at current prices by type of building: KwaZulu-Natal

			May 2006*	Apr. 2007	May 2007	Jan. - May 2006	Jan. - May 2007	% Change 1/
Category of building	Type of building	Measuring unit						
1. Residential buildings	1. Dwelling-houses < 80 square metres	Number	63	96	128	543	603	11,0
		square metres	3 542	4 877	5 679	23 663	26 581	12,3
		R'000	9 902	14 489	13 782	60 927	69 049	13,3
	2. Dwelling-houses >= 80 square metres	Number	119	129	152	577	673	16,6
		square metres	25 949	28 053	31 621	122 442	150 592	23,0
		R'000	76 409	111 420	115 876	353 269	566 110	60,2
	3. Flats and townhouses	Number	227	178	221	1 013	993	-2,0
		square metres	37 345	29 821	48 038	173 969	176 198	1,3
		R'000	127 443	117 560	174 482	555 513	587 289	5,7
	4. Other residential buildings 2/	square metres	0	0	8 218	36	20 824	57 744,4
		R'000	0	0	20 545	79	122 445	154 893,7
	5. Total residential buildings	R'000	213 754	243 469	324 685	969 788	1 344 893	38,7
2. Non-residential buildings	1. Office and banking space	square metres	8 861	1 531	4 362	25 741	17 628	-31,5
		R'000	27 796	1 500	17 481	60 829	52 782	-13,2
	2. Shopping space	square metres	2 751	6 869	11 786	17 271	53 094	207,4
		R'000	10 354	15 372	37 564	38 964	170 669	338,0
	3. Industrial and warehouse space	square metres	15 332	51 205	9 652	38 176	164 179	330,1
		R'000	34 405	188 301	13 544	93 364	455 444	387,8
	4. Other non-residential buildings 3/	square metres	7 230	3 755	3 154	18 463	12 831	-30,5
		R'000	24 432	13 045	9 243	52 197	45 811	-12,2
	5. Total non-residential buildings	R'000	96 987	218 218	77 832	245 354	724 706	195,4
	3. Additions and alterations	1. Dwelling-houses	square metres	19 953	19 746	27 299	105 387	122 089
R'000			56 056	67 842	96 767	294 067	433 456	47,4
2. Other buildings 4/		square metres	10 841	14 418	8 941	47 004	52 381	11,4
		R'000	30 366	92 152	29 126	159 596	211 967	32,8
3. Total additions and alterations		R'000	86 422	159 994	125 893	453 663	645 423	42,3
4. Recorded buildings completed	1. Total at current prices	R'000	397 163	621 681	528 410	1 668 805	2 715 022	62,7

1/ The percentage change between cumulative figures for 2006 and 2007.

2/ Other residential buildings include institutions for the disabled, boarding houses, hostels and tourism accommodation e.g. hotels, motels, guesthouses, holiday chalets, bed-and-breakfast accommodation and casinos.

3/ Other non-residential space includes churches, sport and recreation clubs, schools, crèches, hospitals and all other non-residential space.

4/ Other buildings include other residential buildings, non-residential buildings and internal alterations.

* Revised.

Table 25 - Buildings reported as completed to larger municipalities at current prices by type of building: North West

			May 2006*	Apr. 2007	May 2007	Jan. - May 2006	Jan. - May 2007	% Change 1/
Category of building	Type of building	Measuring unit						
1. Residential buildings	1. Dwelling-houses < 80 square metres	Number	67	186	324	251	1 123	347,4
		square metres	3 484	7 394	12 114	13 543	42 719	215,4
		R'000	3 254	5 559	8 810	14 565	35 210	141,7
	2. Dwelling-houses >= 80 square metres	Number	127	116	155	577	652	13,0
		square metres	25 019	20 811	31 590	107 525	143 888	33,8
		R'000	62 118	59 277	85 591	257 274	411 029	59,8
	3. Flats and townhouses	Number	48	159	26	372	618	66,1
		square metres	19 033	13 503	2 988	42 794	48 424	13,2
		R'000	62 407	33 620	10 238	114 321	121 824	6,6
	4. Other residential buildings 2/	square metres	0	0	0	0	0	
		R'000	0	0	0	0	0	
	5. Total residential buildings	R'000	127 779	98 456	104 639	386 160	568 063	47,1
2. Non-residential buildings	1. Office and banking space	square metres	0	0	0	593	2 795	371,3
		R'000	0	0	0	1 305	6 148	371,1
	2. Shopping space	square metres	1 211	1 920	1 488	29 013	23 297	-19,7
		R'000	4 230	5 461	5 705	121 016	70 465	-41,8
	3. Industrial and warehouse space	square metres	689	0	2 576	4 989	2 576	-48,4
		R'000	1 103	0	4 634	11 074	4 634	-58,2
	4. Other non-residential buildings 3/	square metres	614	0	0	2 019	1 529	-24,3
		R'000	1 363	0	0	4 453	3 488	-21,7
	5. Total non-residential buildings	R'000	6 696	5 461	10 339	137 848	84 735	-38,5
	3. Additions and alterations	1. Dwelling-houses	square metres	4 497	1 520	4 293	23 802	15 962
R'000			9 651	3 584	7 504	44 028	32 218	-26,8
2. Other buildings 4/		square metres	718	0	494	9 092	2 011	-77,9
		R'000	1 545	0	1 160	20 062	4 873	-75,7
3. Total additions and alterations		R'000	11 196	3 584	8 664	64 090	37 091	-42,1
4. Recorded buildings completed	1. Total at current prices	R'000	145 671	107 501	123 642	588 098	689 889	17,3

1/ The percentage change between cumulative figures for 2006 and 2007.

2/ Other residential buildings include institutions for the disabled, boarding houses, hostels and tourism accommodation e.g. hotels, motels, guesthouses, holiday chalets, bed-and-breakfast accommodation and casinos.

3/ Other non-residential space includes churches, sport and recreation clubs, schools, crèches, hospitals and all other non-residential space.

4/ Other buildings include other residential buildings, non-residential buildings and internal alterations.

* Revised.

Table 26 - Buildings reported as completed to larger municipalities at current prices by type of building: Gauteng

			May 2006*	Apr. 2007	May 2007	Jan. - May 2006	Jan. - May 2007	% Change 1/
Category of building	Type of building	Measuring unit						
1. Residential buildings	1. Dwelling-houses < 80 square metres	Number	908	416	999	4 239	4 068	-4,0
		square metres	39 959	20 464	47 413	178 692	182 555	2,2
		R'000	75 115	50 453	92 325	369 294	394 487	6,8
	2. Dwelling-houses >= 80 square metres	Number	764	846	914	3 077	3 554	15,5
		square metres	189 684	197 175	247 005	779 979	895 231	14,8
		R'000	566 355	599 879	796 157	2 257 797	2 856 474	26,5
	3. Flats and townhouses	Number	817	1 500	1 339	3 583	5 137	43,4
		square metres	108 925	123 905	117 195	469 754	504 776	7,5
		R'000	344 974	438 517	405 319	1 495 464	1 722 770	15,2
	4. Other residential buildings 2/	square metres	1 561	61 021	190	1 561	61 211	3 821,3
		R'000	3 903	220 350	841	3 903	221 191	5 567,2
	5. Total residential buildings	R'000	990 347	1 309 199	1 294 642	4 126 458	5 194 922	25,9
2. Non-residential buildings	1. Office and banking space	square metres	24 500	27 707	42 234	47 778	127 833	167,6
		R'000	93 642	113 725	201 293	168 149	545 178	224,2
	2. Shopping space	square metres	20 712	902	14 509	151 545	101 267	-33,2
		R'000	67 542	4 586	71 193	556 046	344 280	-38,1
	3. Industrial and warehouse space	square metres	17 027	13 805	27 291	62 336	128 303	105,8
		R'000	48 102	43 095	78 012	172 075	376 309	118,7
	4. Other non-residential buildings 3/	square metres	978	2 392	538	8 268	31 171	277,0
		R'000	3 033	10 466	2 204	26 229	112 222	327,9
	5. Total non-residential buildings	R'000	212 319	171 872	352 702	922 499	1 377 989	49,4
	3. Additions and alterations	1. Dwelling-houses	square metres	52 795	40 587	58 196	253 132	268 859
R'000			145 762	128 372	173 527	681 248	800 814	17,6
2. Other buildings 4/		square metres	5 391	7 539	6 514	34 124	42 737	25,2
		R'000	20 981	22 776	25 957	108 483	157 252	45,0
3. Total additions and alterations		R'000	166 743	151 148	199 484	789 731	958 066	21,3
4. Recorded buildings completed	1. Total at current prices	R'000	1 369 409	1 632 219	1 846 828	5 838 688	7 530 977	29,0

1/ The percentage change between cumulative figures for 2006 and 2007.

2/ Other residential buildings include institutions for the disabled, boarding houses, hostels and tourism accommodation e.g. hotels, motels, guesthouses, holiday chalets, bed-and-breakfast accommodation and casinos.

3/ Other non-residential space includes churches, sport and recreation clubs, schools, crèches, hospitals and all other non-residential space.

4/ Other buildings include other residential buildings, non-residential buildings and internal alterations.

* Revised.

Table 27 - Buildings reported as completed to larger municipalities at current prices by type of building: Mpumalanga

			May 2006	Apr. 2007	May 2007	Jan. - May 2006	Jan. - May 2007	% Change 1/
Category of building	Type of building	Measuring unit						
1. Residential buildings	1. Dwelling-houses < 80 square metres	Number	88	11	20	389	103	-73,5
		square metres	4 840	678	1 198	15 850	6 441	-59,4
		R'000	6 058	2 101	4 256	24 549	18 999	-22,6
	2. Dwelling-houses >= 80 square metres	Number	114	229	138	447	616	37,8
		square metres	19 695	31 657	26 898	78 949	105 865	34,1
		R'000	43 359	72 261	80 739	182 245	270 337	48,3
	3. Flats and townhouses	Number	18	1	52	205	120	-41,5
		square metres	1 066	257	6 611	17 875	15 335	-14,2
		R'000	2 666	650	21 448	39 386	46 039	16,9
	4. Other residential buildings 2/	square metres	0	200	0	581	690	18,8
		R'000	0	690	0	1 503	2 160	43,7
5. Total residential buildings	R'000	52 083	75 702	106 443	247 683	337 535	36,3	
2. Non-residential buildings	1. Office and banking space	square metres	2 192	5 903	925	8 589	13 208	53,8
		R'000	6 000	22 643	2 494	22 248	47 695	114,4
	2. Shopping space	square metres	3 018	13 174	0	13 899	17 634	26,9
		R'000	35 000	40 000	0	55 700	51 153	-8,2
	3. Industrial and warehouse space	square metres	1 662	153	2 493	15 253	9 831	-35,5
		R'000	1 900	600	7 393	27 083	23 824	-12,0
	4. Other non-residential buildings 3/	square metres	0	120	0	589	1 340	127,5
		R'000	0	110	0	1 165	3 328	185,7
5. Total non-residential buildings	R'000	42 900	63 353	9 887	106 196	126 000	18,6	
3. Additions and alterations	1. Dwelling-houses	square metres	13 755	4 505	1 726	26 688	24 187	-9,4
		R'000	18 587	12 100	3 953	43 426	53 924	24,2
	2. Other buildings 4/	square metres	2 656	0	193	3 743	2 312	-38,2
		R'000	7 458	4 026	592	11 296	12 337	9,2
	3. Total additions and alterations	R'000	26 045	16 126	4 545	54 722	66 261	21,1
4. Recorded buildings completed	1. Total at current prices	R'000	121 028	155 181	120 875	408 601	529 796	29,7

1/ The percentage change between cumulative figures for 2006 and 2007.

2/ Other residential buildings include institutions for the disabled, boarding houses, hostels and tourism accommodation e.g. hotels, motels, guesthouses, holiday chalets, bed-and-breakfast accommodation and casinos.

3/ Other non-residential space includes churches, sport and recreation clubs, schools, crèches, hospitals and all other non-residential space.

4/ Other buildings include other residential buildings, non-residential buildings and internal alterations.

Table 28 - Buildings reported as completed to larger municipalities at current prices by type of building: Limpopo

Category of building	Type of building	Measuring unit	May 2006*	Apr. 2007	May 2007	Jan. - May 2006	Jan. - May 2007	% Change 1/
1. Residential buildings	1. Dwelling-houses < 80 square metres	Number	21	57	24	94	161	71,3
		square metres	1 151	3 485	1 555	5 851	10 086	72,4
		R'000	2 933	9 233	4 279	13 802	26 336	90,8
	2. Dwelling-houses >= 80 square metres	Number	45	51	53	188	245	30,3
		square metres	10 377	7 299	9 405	37 767	44 295	17,3
		R'000	24 581	24 102	31 677	99 607	125 538	26,0
	3. Flats and townhouses	Number	10	12	1	104	91	-12,5
		square metres	1 336	1 436	126	13 904	10 279	-26,1
		R'000	3 340	4 460	534	34 302	26 778	-21,9
	4. Other residential buildings 2/	square metres	0	0	0	0	0	
		R'000	0	0	0	0	0	
	5. Total residential buildings	R'000	30 854	37 795	36 490	147 711	178 652	20,9
2. Non-residential buildings	1. Office and banking space	square metres	0	0	0	2 425	1 176	-51,5
		R'000	0	0	0	5 303	3 528	-33,5
	2. Shopping space	square metres	2 084	462	528	13 345	3 463	-74,1
		R'000	4 026	647	1 478	24 063	9 034	-62,5
	3. Industrial and warehouse space	square metres	0	0	0	1 713	2 499	45,9
		R'000	0	0	0	4 997	5 181	3,7
	4. Other non-residential buildings 3/	square metres	1 305	0	280	1 305	280	-78,5
		R'000	3 654	0	616	3 654	616	-83,1
	5. Total non-residential buildings	R'000	7 680	647	2 094	38 017	18 359	-51,7
3. Additions and alterations	1. Dwelling-houses	square metres	949	812	315	4 314	5 454	26,4
		R'000	2 394	1 829	740	9 488	12 164	28,2
	2. Other buildings 4/	square metres	0	0	0	2 005	296	-85,2
		R'000	0	0	0	5 736	662	-88,5
	3. Total additions and alterations	R'000	2 394	1 829	740	15 224	12 826	-15,8
4. Recorded buildings completed	1. Total at current prices	R'000	40 928	40 271	39 324	200 952	209 837	4,4

1/ The percentage change between cumulative figures for 2006 and 2007.

2/ Other residential buildings include institutions for the disabled, boarding houses, hostels and tourism accommodation e.g. hotels, motels, guesthouses, holiday chalets, bed-and-breakfast accommodation and casinos.

3/ Other non-residential space includes churches, sport and recreation clubs, schools, crèches, hospitals and all other non-residential space.

4/ Other buildings include other residential buildings, non-residential buildings and internal alterations.

*Revised.

Table 29 - Subsidised low-cost dwelling-houses completed or under construction by province

Province	Year	Number 1/	Square metres 2/	Value R'000 2/
Western Cape	2002	19 534	531 116	168 852
	2003	16 926	507 780	247 187
	2004	12 751	382 530	211 424
Eastern Cape	2002	46 700	1 575 675	473 806
	2003	35 005	1 050 150	511 213
	2004	34 923	1 047 690	579 058
Northern Cape	2002	5 189	164 906	68 078
	2003	4 354	130 620	63 586
	2004	3 645	109 350	60 438
Free State	2002	8 617	348 492	154 121
	2003	14 848	445 440	216 840
	2004	16 522	495 660	273 951
KwaZulu-Natal	2002	21 958	831 349	234 041
	2003	31 372	941 160	458 157
	2004	35 968	1 079 040	596 385
North West	2002	21 309	630 115	210 439
	2003	13 809	414 270	201 667
	2004	10 149	304 470	168 281
Gauteng	2002	29 939	991 571	321 943
	2003	42 862	1 285 860	625 957
	2004	33 260	997 800	551 484
Mpumalanga	2002	19 883	660 505	253 931
	2003	21 336	640 080	246 079
	2004	18 808	564 240	311 855
Limpopo	2002	15 382	605 877	183 769
	2003	15 596	467 880	227 764
	2004	16 338	490 140	270 900
South Africa	2002	188 511	6 339 606	2 068 980
	2003	196 108	5 883 240	2 798 450
	2004	182 364	5 470 920	3 023 777

Source: Provincial Governments co-ordinated by the National Department of Housing
 1/ As soon as building commences, dwelling-houses are recorded as completed or under construction.

2/ Estimates by the National Department of Housing.

Table 30 - Subsidised low-cost dwelling-houses completed by province

Completions during financial year: 1 April 2005 to 31 March 2006			
Province	Number	Square metres 1/	Value R'000 1/
Western Cape	2 040	61 200	52 877
Eastern Cape	16 874	506 220	437 374
Northern Cape	5 293	158 790	137 195
Free State	17 635	529 050	457 099
KwaZulu-Natal	21 601	648 030	559 898
North West	14 445	433 350	374 414
Gauteng	23 409	702 270	606 761
Mpumalanga	14 389	431 670	372 963
Limpopo	21 973	659 190	569 540
South Africa	137 659	4 129 770	3 568 121

Source: Provincial Governments co-ordinated by the National Department of Housing
 1/ Estimates by the National Department of Housing.

Explanatory notes

Introduction	1	Statistics South Africa (Stats SA) conducts a monthly building statistics survey collecting information regarding building plans passed and buildings completed, financed by the private sector, from the largest local government institutions in South Africa. According to these institutions, they are not always notified about low-cost housing projects and therefore do not include the bulk of low-cost dwelling-houses. Data regarding subsidised low-cost dwelling-houses, supplied by the provincial governments and co-ordinated by the National Department of Housing, are shown in table 29 and table 30 (page 37).
	2	In order to improve timeliness of the publication, some information for the current month has been estimated due to late submission by respondents. These estimates will be revised in the next statistical release(s) as soon as actual information is available.
Purpose of the survey	3	The monthly survey data are used in monitoring the state of economy and formulation of economic policy. Furthermore, the results are important inputs to estimate the Gross Domestic Product (GDP) and to calculate the Composite Leading Business Cycle Indicator. The data are extensively used by the private sector.
Scope of the survey	4	This survey covers local government institutions conducting activities for the private sector regarding - <ul style="list-style-type: none"> • passing of building plans; and • final inspection of completed buildings.
Classification	5	Building activities is classified in division 5 according to the 1993 edition of the <i>Standard Industrial Classification of all Economic Activities, (SIC) Fifth Edition, Report No. 09-90-02</i> . The SIC is based on the 1990 <i>International Standard Industrial Classification of all Economic Activities (ISIC)</i> with suitable adaptations for local conditions.
Response rate	6	The preliminary response rate for the survey on building statistics for May 2007 was 93,9%. Improved response rate for April 2007 was 96,5%.
Statistical unit	7	The statistical unit for the collection of information is a local government institution. Local government institutions include district municipalities, metropolitan municipalities and local municipalities.
Survey methodology and design	8	<p>Stats SA conducts a monthly survey of metropolitan municipalities and large local municipalities on building plans passed and buildings completed. An annual survey of the remaining municipalities is conducted regarding buildings completed. The monthly survey represents approximately 90 percent of the total value of buildings completed. Information regarding building plans passed and buildings completed for the private sector is collected by mail, fax and telephone.</p> <p>According to the municipalities, they are not always notified about low-cost housing projects. Data regarding subsidised low-cost dwelling-houses, supplied by the provincial governments and co-ordinated by the National Department of Housing, are shown in table 29 and table 30 (page 37).</p>
Constant prices	9	The value of building plans passed and buildings completed at constant prices measures building activities in terms of ruling prices in a specific base year, which is currently 2000. The value of building plans passed at constant prices for each month is obtained by deflating the values at current prices with a price index known as the 'lump sum domestic buildings' as published in statistical release P0151: <i>JBCC Contract Price Adjustment Provisions Work Group Indices</i> . In order to be applicable, these indices (base February 1991=100) are converted to the base year 2000=100.

- 10** The value of buildings completed at constant prices is obtained by deflating the values at current prices with the price index which is used to calculate building plans passed at constant prices (see paragraph 8). Since the completion of buildings may extend over a few months to a few years, the current value of buildings completed is deflated by price indices which prevailed at the time the plans were passed. Therefore, the duration of the completion of different types of buildings are taken into account in ascertaining the deflators e.g. the value of dwelling-houses completed at constant prices at January 2007 is obtained by deflating the current value of dwelling-houses completed for January 2007 with the price index of a month six months prior to January 2007. Furthermore, the value of other residential buildings, non-residential buildings and additions and alterations at constant prices is obtained by deflating the current values with price indices of 12 months, 18 months and 12 months prior to the relevant month, respectively.
- Seasonal adjustment**
- 11** Seasonally adjusted estimates of building plans passed and buildings completed are generated each month, using the X-11 Seasonal Adjustment Program developed by US Bureau of the Census Economic Research and Analyses Division, 1968.
- 12** Seasonal adjustment is a means of removing the estimated effects of normal seasonal variation from the series so that the effects of other influences on the series can be more clearly recognised. Seasonal adjustment does not aim to remove irregular or non-seasonal influences which may be present in any particular month. Influences that are volatile or unsystematic can still make it difficult to interpret the movement of the series even after adjustment for seasonal variations. Therefore, the month-to-month movements of seasonally adjusted estimates may not be reliable indicators of trend behaviour.
- Trend cycle**
- 13** The trend is a long-term pattern or movement of a time series. The X-11 Seasonal Adjustment Program is used for smoothing seasonally adjusted data.
- Revised figures**
- 14** Revised figures are due to some municipalities that are charging new rates per square metre as from 1 July 2007. The figures had to be revised from 1 January 2006 in order not to distort the trend series.
- 15** Once a year the annual statistical release P5041.3 is published with the revised and updated information at provincial and municipal level for the previous calendar year. Due to this comprehensive revision, the monthly statistical release P5041.1 reflects provincial revision for 2006 where applicable.
- Related publications**
- 16** Users may also wish to refer to the following publications:
- P5041.3: Selected building statistics of the private sector as reported by local government institutions issued annually.
 - P9101.2: Actual and expected expenditure on construction by the public sector per statistical region issued annually.
 - Bulletin of Statistics issued quarterly.
 - South African Statistics issued annually.
 - Report 50-11-01 issued annually.
- Rounding-off of figures**
- 17** The figures in the tables have, where necessary, been rounded off to the nearest digit shown.
- Pre-release policy**
- 18** Stats SA's pre-release policy may be inspected at its website, www.statssa.gov.za

**Symbols and
abbreviations**

19	..	no meaningful percentage change between two specified periods available since either one or both of the totals are nil
	0	nil or figure too small to publish
	*	revised
	Stats SA	Statistics South Africa
	SIC	Standard Industrial Classification of all Economic Activities
	ISIC	International Standard Industrial Classification of all Economic Activities
	JBCC	Joint Building Contracts Committee
	CD	Compact Disc
	US	United States
	SARB	South African Reserve Bank
	DTI	Department of Trade and Industry

Glossary

Additions and alterations	They include extensions to existing buildings as well as internal and external alterations of existing buildings.
Blocks of flats	High-density housing consisting of a number of self-contained dwelling-units, each with at least one living-room together with a kitchen and bathroom, conjoined to similar units in one building.
Dwelling-house	A free-standing, complete structure on a separate stand or a self-contained dwelling-unit, granny flat, on the same premises as an existing residence. Out-buildings and garages are included.
Local government institutions	Include – <ul style="list-style-type: none"> • District municipalities; • Metropolitan municipalities; and • Local municipalities.
Municipality	A generic term describing the “unit” of government in the local spheres responsible for local government in a geographically demarcated area and including district, metropolitan and local municipalities. It is an institution consisting of a municipal council (elected political representatives) and municipal administration (appointed officials).
District municipality	Municipality that has municipal executive and legislative authority in an area that includes more than one municipality, and which is described in section 155(1) of the Constitution as a category C municipality (Refer to Local Government: Municipal Structure Act, 1998 (Act No. 117 of 1998)).
Metropolitan municipality	Municipality that has municipal executive and legislative authority in an area that includes more than one municipality, and which is described in section 155(1) of the Constitution as a category A municipality (Refer to Local Government: Municipal Structure Act, 1998 (Act No. 117 of 1998)).
Local municipality	Municipality that shares municipal executive and legislative authority in its area with a district municipality within whose area it falls, that is described in section 155(1) of the constitution as a category B municipality.
Non-residential buildings	Comprise factories, commercial, financial and other office buildings, as well as other buildings not used for residential purposes, such as churches, halls, clubs, schools and hospitals.
Other residential buildings	Institutions for the disabled, boarding houses, old people’s homes, hostels, hotels, motels, guesthouses, holiday chalets, bed-and-breakfast accommodation, entertainment centres and casinos.
Percentage change	<p>When using monthly actual values, the percentage change is the change in actual values of building activities (building plans passed or buildings completed) of the relevant month compared with the actual values of building activities (building plans passed or buildings completed) of the same month in the previous year expressed as a percentage.</p> <p>When using annual actual values, the percentage change is the change in the actual values of building activities (building plans passed or buildings completed) of the relevant year compared with the actual values of building activities (building plans passed or buildings completed) of the previous year expressed as a percentage.</p> <p>When using seasonally adjusted values, the percentage change is the change in the seasonally adjusted values of building activities (building plans passed or buildings completed) of the relevant month compared with the seasonally adjusted values of building activities (building plans passed or buildings completed) of the previous month expressed as a percentage.</p>

Reference period	One calendar month.
Residential buildings	Comprise dwelling-houses, flats, townhouses and other residential buildings.
Townhouses	Multiple, medium-density dwelling-units and include cluster housing, group housing, simplexes, duplexes, triplexes and other similar dwelling-units which are usually grouped together, with one level of each unit on ground level. This excludes blocks of flats.

General information

Stats SA publishes approximately 300 different statistical releases each year. It is not economically viable to produce them in more than one of South Africa's eleven official languages. Since the releases are used extensively, not only locally but also by international economic and social-scientific communities, Stats SA releases are published in English.

Stats SA has copyright on this publication. Users may apply the information as they wish, provided that they acknowledge Stats SA as the source of the basic data wherever they process, apply, utilise, publish or distribute the data and also that they specify that the relevant application and analysis (where applicable) result from their own processing of the data.

An advance release calendar is disseminated on www.statssa.gov.za

Stats SA products

A complete set of Stats SA publications is available at the Stats SA Library and the following libraries:

National Library of South Africa, Pretoria Division
National Library of South Africa, Cape Town Division
Natal Society Library, Pietermaritzburg
Library of Parliament, Cape Town
Bloemfontein Public Library
Johannesburg Public Library
Eastern Cape Library Services, King William's Town
Central Regional Library, Polokwane
Central Reference Library, Nelspruit
Central Reference Collection, Kimberley
Central Reference Library, Mmabatho

Stats SA also provides a subscription service.

Electronic services

A large range of data are available via on-line services, diskette, CD and computer printouts. For more details about our electronic data services, contact (012) 310 8600/8390/8351/4892/8496/8095.

You can visit us on the Internet at: www.statssa.gov.za

Enquiries

Telephone number: (012) 310 8600/8390/8351/4892/8496/8095 (user information services)
(012) 310 8228/310 8007 (technical enquiries)
(012) 310 8161 (orders)
(012) 310 4883/4885/8018 (library)

Fax number: (012) 310 8664 (technical enquiries)

Email: Gretaz@statssa.gov.za (technical enquiries)
info@statssa.gov.za (user information services)
distribution@statssa.gov.za (orders)

Postal address: Private Bag X44, Pretoria, 0001

Produced by Stats SA