

Selected building statistics of the private sector as reported by local government institutions May 2005

**Embargoed until:
20 July 2005
13:00**

Data published in this statistical release are based on a monthly survey of metropolitan municipalities and large local municipalities. They represent approximately 90% of the total value of buildings completed. In addition to this survey, an annual survey is conducted based on combined information from all local government institutions regarding buildings completed. The combined data of the monthly and annual surveys are published annually in a report entitled *Building statistics*, Report No. 50-11-01.

Table A – Selected key figures regarding recorded building plans passed by larger municipalities at current prices for May 2005

Estimates at current prices	January to May 2004 R'000	January to May 2005¹ R'000	Difference in value between January to May 2004 and January to May 2005 R'000	Percentage change between January to May 2004 and January to May 2005
Residential buildings	9 563 312	13 040 792	+3 477 480	+ 36,4
Non-residential buildings	2 258 550	3 820 655	+1 562 105	+ 69,2
Additions and alterations	3 804 280	6 197 267	+2 392 987	+ 62,9
Total	15 626 142	23 058 714	+7 432 572	+ 47,6

¹ May 2005 figures should be regarded as preliminary because of possible backlogs and incomplete reporting by municipalities.

Table B – Recorded building plans passed by larger municipalities aggregated to provincial level

Estimates at current prices	January to May 2004 R'000	January to May 2005¹ R'000	Difference in value between January to May 2004 and January to May 2005 R'000	Percentage change between January to May 2004 and January to May 2005
Western Cape	4 793 392	6 602 163	+ 1 808 771	+ 37,7
Eastern Cape	808 352	1 014 250	+ 205 898	+ 25,5
Northern Cape	117 097	119 133	+ 2 036	+ 1,7
Free State	328 629	913 080	+ 584 451	+ 177,8
KwaZulu-Natal	2 497 498	2 772 648	+ 275 150	+ 11,0
North West	466 488	873 080	+ 406 592	+ 87,2
Gauteng	5 909 623	9 446 435	+ 3 536 812	+ 59,8
Mpumalanga	429 420	896 437	+ 467 017	+ 108,8
Limpopo	275 643	421 488	+ 145 845	+ 52,9
Total	15 626 142	23 058 714	+ 7 432 572	+ 47,6

¹ May 2005 figures should be regarded as preliminary because of possible backlogs and incomplete reporting by municipalities.

Key findings regarding recorded building plans passed by larger municipalities at current prices for May 2005

Total value of recorded building plans passed increases

As indicated in Table A, the value of recorded building plans passed by municipalities (at current prices) during the first five months of 2005 increased by 47,6% (+R7 432,6 million) from R15 626,1 million to R23 058,7 million compared with the first five months of 2004. Large increases in the value of recorded building plans passed were reported for non-residential buildings (+69,2% or R1 562,1 million), additions and alterations (+62,9% or R2 393,0 million) and residential buildings (+36,4% or R3 477,5 million).

The largest contributors to the increase of 47,6% were Free State (+177,8% or R584,5 million), Mpumalanga (+108,8% or R467,0 million), North West (+87,2% or R406,6 million), Gauteng (+59,8% or R3 536,8 million) and Western Cape (+37,7% or R1 808,8 million) (see table B). Different patterns are prevalent in each province e.g. in Free State the increase of 177,8% was mainly due to building plans passed for a large shopping mall and residential buildings, whereas building plans passed for residential buildings mainly contributed to the increases in Mpumalanga (+108,8%) and North West (+87,2%).

Key findings regarding seasonally adjusted real value of recorded building plans passed by larger municipalities at constant 2000 prices for the three months ended May 2005

As indicated in table C, the seasonally adjusted real value of recorded building plans passed by municipalities during the three months ended May 2005 increased by 18,1% compared with the previous three months. This increase was due to increases in the seasonally adjusted real value of residential buildings (+24,7%), additions and alterations (+11,5%) and non-residential buildings (+8,2%).

Table C – Comparison between the current quarter and the previous quarter: Seasonally adjusted estimates at constant 2000 prices

Seasonally adjusted estimates at constant 2000 prices	December 2004 to February 2005	March to May 2005	Percentage change between December 2004 to February 2005 and March to May 2005
	R'000	R'000	
Residential buildings	5 051 897	6 297 279	+ 24,7
Non-residential buildings	1 615 834	1 748 358	+ 8,2
Additions and alterations	2 618 359	2 919 533	+ 11,5
Total	9 286 090	10 965 170	+ 18,1

Figure 1 shows both the seasonally adjusted and the trend series for recorded building plans passed at constant 2000 prices between January 2001 and May 2005. The trend series has been rising since July 2001 with a steep increase as from February 2005.

Figure 1 – Real value of recorded building plans passed by larger municipalities at constant 2000 prices

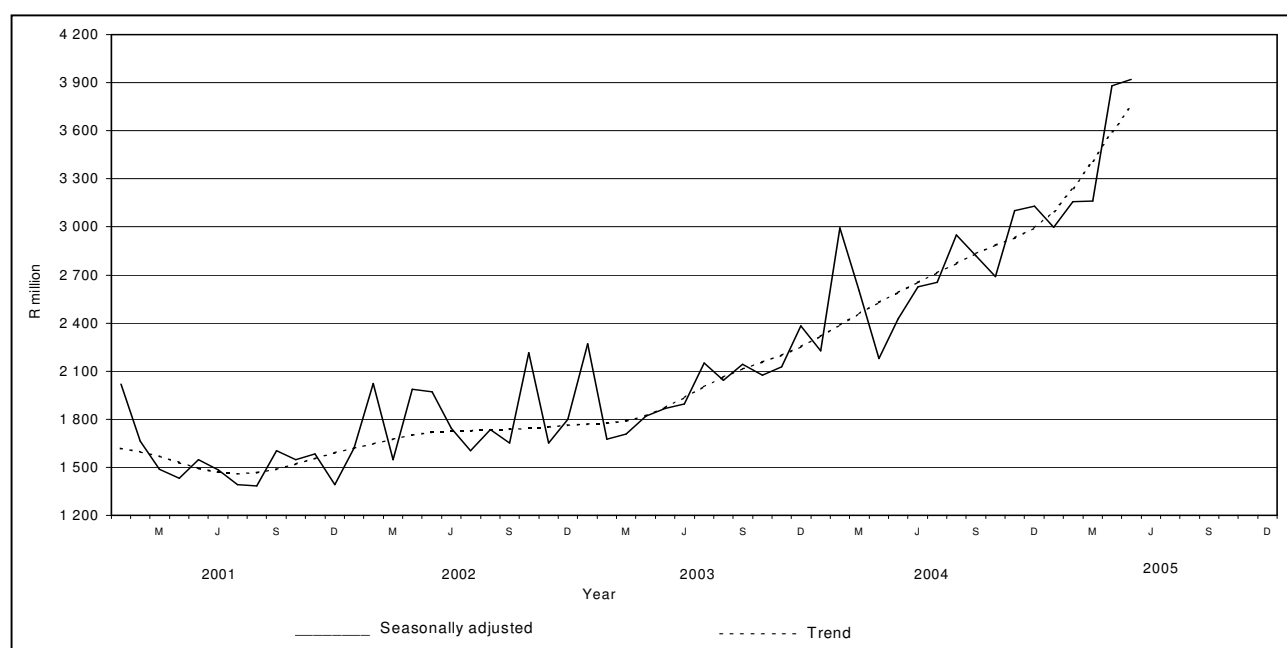


Table D – Selected key figures regarding buildings reported as completed to larger municipalities at current prices for May 2005

Estimates at current prices	January to May 2004	January to May 2005¹	Difference in value between January to May 2004 and January to May 2005	Percentage change between January to May 2004 and January to May 2005
	R'000	R'000	R'000	
Residential buildings	4 452 193	6 484 869	+2 032 676	+ 45,7
Non-residential buildings	1 130 101	1 397 144	+267 043	+ 23,6
Additions and alterations	1 385 932	1 757 884	+371 952	+ 26,8
Total	6 968 226	9 639 897	+2 671 671	+ 38,3

¹ May 2005 figures should be regarded as preliminary because of possible backlogs and incomplete reporting by municipalities.

Table E – Buildings reported as completed to larger municipalities aggregated to provincial level

Estimates at current prices	January to May 2004	January to May 2005¹	Difference in value between January to May 2004 and January to May 2005	Percentage change between January to May 2004 and January to May 2005
	R'000	R'000	R'000	
Western Cape	1 826 632	2 611 924	+ 785 292	+ 43,0
Eastern Cape	310 297	403 383	+ 93 086	+ 30,0
Northern Cape	42 606	67 779	+ 25 173	+ 59,1
Free State	202 370	243 868	+ 41 498	+ 20,5
KwaZulu-Natal	964 408	1 516 648	+ 552 240	+ 57,3
North West	265 686	397 245	+ 131 559	+ 49,5
Gauteng	3 148 567	4 149 912	+ 1 001 345	+ 31,8
Mpumalanga	124 296	151 621	+ 27 325	+ 22,0
Limpopo	83 364	97 517	+ 14 153	+ 17,0
Total	6 968 226	9 639 897	+ 2 671 671	+ 38,3

¹ May 2005 figures should be regarded as preliminary because of possible backlogs and incomplete reporting by municipalities.

Key findings regarding buildings reported as completed to larger municipalities at current prices for May 2005

Total value of buildings reported as completed increases

As indicated in Table D, the value of buildings reported as completed to municipalities (at current prices) during the first five months of 2005 increased by 38,3% (+R2 671,7 million) from R6 968,2 million to R9 639,9 million compared with the first five months of 2004. Large increases in the value of buildings reported as completed were reported for residential buildings (+45,7% or R2 032,7 million), additions and alterations (+26,8% or R372,0 million) and non-residential buildings (+23,6% or R267,0 million).

The largest contributors to the increase of 38,3% were KwaZulu-Natal (+57,3% or R552,2 million), Western Cape (+43,0% or R785,3 million) and Gauteng (+31,8% or R1 001,3 million) (see table E).

Key findings regarding seasonally adjusted real value of buildings reported as completed to larger municipalities at constant 2000 prices for the three months ended May 2005

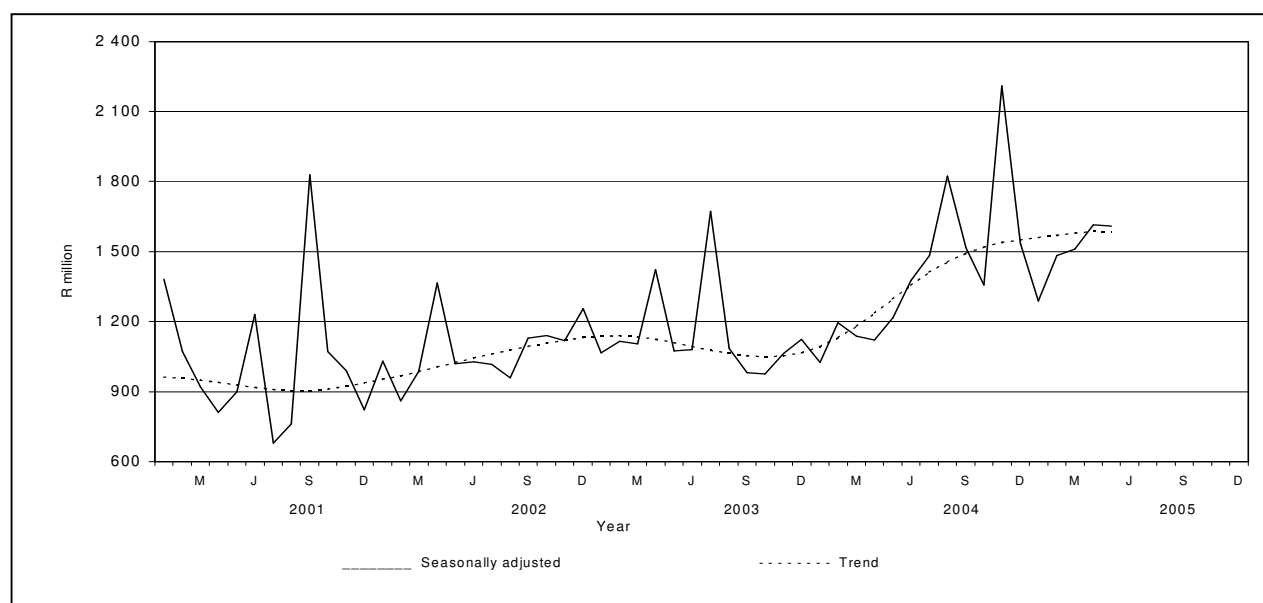
As indicated in table F, the seasonally adjusted real value of buildings reported as completed to municipalities for the three months ended May 2005 increased by 9,9% compared with the previous three months. This increase was due to increases in the seasonally adjusted real value of residential buildings (+15,5%) and additions and alterations (+9,2%). However, a decrease of 11,9% was reported for non-residential buildings.

Table F – Comparison between the current quarter and the previous quarter: Seasonally adjusted estimates at constant 2000 prices

Seasonally adjusted estimates at constant 2000 prices	December 2004 to February 2005	March to May 2005	Percentage change between December 2004 to February 2005 and March to May 2005
	R'000	R'000	
Residential buildings	2 823 938	3 261 589	+ 15,5
Non-residential buildings	704 723	620 755	- 11,9
Additions and alterations	779 307	850 975	+ 9,2
Total	4 307 968	4 733 319	+ 9,9

Figure 2 shows both the seasonally adjusted and the trend series for buildings reported as completed to municipalities at constant 2000 prices between January 2001 and May 2005. The trend series has been rising since November 2003.

Figure 2 – Real value of buildings reported as completed to larger municipalities at constant 2000 prices



P J Lehohla
Statistician-General

Contents	Page
Notes	6
Tables	
Table 1 Values and percentage change of recorded building plans passed by municipalities at current prices by type of building	7
Table 2 Seasonally adjusted values and percentage change of recorded building plans passed by municipalities at current prices by type of building	8
Table 3 Values and percentage change of recorded building plans passed by municipalities at constant 2000 prices by type of building	9
Table 4 Seasonally adjusted values and percentage change of recorded building plans passed by municipalities at constant 2000 prices by type of building	10
Table 5 Values and percentage change of buildings reported as completed to municipalities at current prices by type of building	11
Table 6 Seasonally adjusted values and percentage change of buildings reported as completed to municipalities at current prices by type of building	12
Table 7 Values and percentage change of buildings reported as completed to municipalities at constant 2000 prices by type of building	13
Table 8 Seasonally adjusted values and percentage change of buildings reported as completed to municipalities at constant 2000 prices by type of building	14
Table 9 Recorded building plans passed by municipalities by type of building: South Africa.....	15
Table 10 Recorded building plans passed by municipalities by type of building and province: Western Cape	16
Table 11 Recorded building plans passed by municipalities by type of building and province: Eastern Cape	17
Table 12 Recorded building plans passed by municipalities by type of building and province: Northern Cape	18
Table 13 Recorded building plans passed by municipalities by type of building and province: Free State	19
Table 14 Recorded building plans passed by municipalities by type of building and province: KwaZulu-Natal	20
Table 15 Recorded building plans passed by municipalities by type of building and province: North West	21
Table 16 Recorded building plans passed by municipalities by type of building and province: Gauteng	22
Table 17 Recorded building plans passed by municipalities by type of building and province: Mpumalanga	23
Table 18 Recorded building plans passed by municipalities by type of building and province: Limpopo.....	24
Table 19 Buildings reported as completed to municipalities by type of building: South Africa.....	25
Table 20 Buildings reported as completed to municipalities by type of building and province: Western Cape	26
Table 21 Buildings reported as completed to municipalities by type of building and province: Eastern Cape	27
Table 22 Buildings reported as completed to municipalities by type of building and province: Northern Cape	28
Table 23 Buildings reported as completed to municipalities by type of building and province: Free State	29
Table 24 Buildings reported as completed to municipalities by type of building and province: KwaZulu-Natal	30
Table 25 Buildings reported as completed to municipalities by type of building and province: North West	31
Table 26 Buildings reported as completed to municipalities by type of building and province: Gauteng	32
Table 27 Buildings reported as completed to municipalities by type of building and province: Mpumalanga	33
Table 28 Buildings reported as completed to municipalities by type of building and province: Limpopo.....	34
Table 29 Subsidised low-cost dwelling-houses completed or under construction by province	35
Explanatory notes	36
Glossary	38
General information	39

Notes**Forthcoming issue****Issue****Expected release date**

June 2005

17 August 2005

Subsidised low-cost dwelling-houses

The figures obtained from local government institutions do not include the bulk of low-cost dwelling-houses. Data regarding subsidised low-cost dwelling-houses completed or under construction, supplied by the provincial governments and co-ordinated by the National Department of Housing, are shown in table 29 (page 35).

Response rate

The response rate for May 2005 was 99,2%.

Table 1 - Values and percentage change of recorded building plans passed by municipalities at current prices by type of building

Year ¹ and month ²	Residential buildings		Non-residential buildings		Additions and alterations		Total	
	R'000	Percentage change	R'000	Percentage change	R'000	Percentage change	R'000	Percentage change
2003 Jan.	954 012	+ 19,0	685 795	+ 298,0	524 194	+ 25,3	2 164 001	+ 55,4
Feb.	1 216 120	+ 18,7	239 795	-61,5	531 253	+ 15,6	1 987 168	- 5,7
Mar.	1 405 792	+ 45,7	225 827	-54,4	604 632	+ 39,7	2 236 251	+ 18,1
Apr.	1 226 932	+ 6,5	284 104	-19,0	601 549	+ 12,8	2 112 585	+ 3,7
May	1 328 400	+ 12,2	408 130	-6,8	903 951	-3,5	2 640 481	+ 3,2
Jun.	1 452 398	+ 32,0	386 847	-22,3	673 001	+ 21,8	2 512 246	+ 16,8
Jul.	1 788 778	+ 42,9	489 467	+ 91,2	885 159	+ 31,2	3 163 404	+ 45,0
Aug.	1 694 233	+ 49,9	412 947	+ 5,6	725 583	+ 3,8	2 832 763	+ 25,6
Sep.	1 745 376	+ 42,7	474 167	+ 64,7	697 206	+ 13,0	2 916 749	+ 37,1
Oct.	1 788 657	-11,9	460 222	+ 37,2	775 961	+ 2,5	3 024 840	- 3,2
Nov.	1 859 149	+ 51,5	392 685	+ 26,9	730 309	+ 2,0	2 982 143	+ 32,4
Dec.	1 368 171	+ 23,9	471 920	+ 105,0	615 813	+ 46,6	2 455 904	+ 40,0
Total	17 828 018	+ 25,3	4 931 906	+ 12,4	8 268 611	+ 14,6	31 028 535	+ 20,1
2004 Jan.	1 322 714	+ 38,6	331 977	-51,6	524 139	+ 0,0	2 178 830	+ 0,7
Feb.	2 437 010	+ 100,4	392 385	+ 63,6	812 817	+ 53,0	3 642 212	+ 83,3
Mar.*	1 975 513	+ 40,5	729 072	+ 222,8	884 720	+ 46,3	3 589 305	+ 60,5
Apr.*	1 578 145	+ 28,6	413 939	+ 45,7	679 167	+ 12,9	2 671 251	+ 26,4
May*	2 249 930	+ 69,4	391 177	-4,2	903 437	-0,1	3 544 544	+ 34,2
Jun.*	2 214 823	+ 52,5	480 991	+ 24,3	940 580	+ 39,8	3 636 394	+ 44,7
Jul.*	2 506 247	+ 40,1	546 608	+ 11,7	1 064 235	+ 20,2	4 117 090	+ 30,1
Aug.*	2 464 952	+ 45,5	691 247	+ 67,4	1 196 197	+ 64,9	4 352 396	+ 53,6
Sep.*	2 455 083	+ 40,7	567 540	+ 19,7	1 056 310	+ 51,5	4 078 933	+ 39,8
Oct.*	2 533 577	+ 41,6	632 994	+ 37,5	1 013 791	+ 30,6	4 180 362	+ 38,2
Nov.*	2 908 368	+ 56,4	568 044	+ 44,7	1 180 768	+ 61,7	4 657 180	+ 56,2
Dec.*	1 859 507	+ 35,9	669 412	+ 41,8	986 631	+ 60,2	3 515 550	+ 43,1
Total	26 505 869	+ 48,7	6 415 386	+ 30,1	11 242 792	+ 36,0	44 164 047	+ 42,3
2005 Jan.*	1 721 250	+ 30,1	527 446	+ 58,9	889 200	+ 69,6	3 137 896	+ 44,0
Feb.*	2 374 908	-2,5	608 082	+ 55,0	1 067 585	+ 31,3	4 050 575	+ 11,2
Mar.*	2 393 485	+ 21,2	1 000 468	+ 37,2	1 288 516	+ 45,6	4 682 469	+ 30,5
Apr.	2 854 969	+ 80,9	888 319	+ 114,6	1 390 520	+ 104,7	5 133 808	+ 92,2
May ³	3 696 180	+ 64,3	796 340	+ 103,6	1 561 446	+ 72,8	6 053 966	+ 70,8

¹ The annual percentage change is the change in the values of recorded building plans passed by municipalities of the relevant year compared with the values of recorded building plans passed by municipalities of the previous year expressed as a percentage.

² The monthly percentage change is the change in the recorded values of building plans passed by municipalities of the relevant month compared with the recorded values of building plans passed by municipalities of the same month in the previous year expressed as a percentage.

³ Preliminary figures.

* Revised.

Table 2 - Seasonally adjusted values and percentage change of recorded building plans passed by municipalities at current prices by type of building

Year and month ¹	Residential buildings		Non-residential buildings		Additions and alterations		Total	
	R'000	Percentage change	R'000	Percentage change	R'000	Percentage change	R'000	Percentage change
2003 Jan.	1 245 554	- 12,5	962 302	+ 241,2	680 746	+ 20,9	2 888 602	+ 27,3
Feb.	1 242 364	- 0,3	290 302	- 69,8	607 973	- 10,7	2 140 639	- 25,9
Mar.	1 419 014	+ 14,2	176 382	- 39,2	596 314	- 1,9	2 191 710	+ 2,4
Apr.	1 354 288	- 4,6	320 602	+ 81,8	668 596	+ 12,1	2 343 486	+ 6,9
May	1 225 634	- 9,5	384 067	+ 19,8	791 160	+ 18,3	2 400 861	+ 2,4
Jun.	1 431 965	+ 16,8	347 564	- 9,5	667 533	- 15,6	2 447 062	+ 1,9
Jul.	1 599 959	+ 11,7	404 522	+ 16,4	770 577	+ 15,4	2 775 058	+ 13,4
Aug.	1 616 035	+ 1,0	379 351	- 6,2	645 711	- 16,2	2 641 097	- 4,8
Sep.	1 636 182	+ 1,2	467 772	+ 23,3	673 262	+ 4,3	2 777 216	+ 5,2
Oct.	1 534 707	- 6,2	469 888	+ 0,5	686 084	+ 1,9	2 690 679	- 3,1
Nov.	1 698 561	+ 10,7	406 108	- 13,6	665 643	- 3,0	2 770 312	+ 3,0
Dec.	1 731 834	+ 2,0	557 169	+ 37,2	809 226	+ 21,6	3 098 229	+ 11,8
2004 Jan.	1 751 867	+ 1,2	459 447	- 17,5	690 614	- 14,7	2 901 928	- 6,3
Feb.	2 529 340	+ 44,4	483 627	+ 5,3	932 497	+ 35,0	3 945 464	+ 36,0
Mar.	2 023 803	- 20,0	555 991	+ 15,0	880 762	- 5,5	3 460 556	- 12,3
Apr.	1 711 520	- 15,4	451 081	- 18,9	741 885	- 15,8	2 904 486	- 16,1
May	2 082 818	+ 21,7	386 714	- 14,3	786 778	+ 6,1	3 256 310	+ 12,1
Jun.	2 191 783	+ 5,2	427 113	+ 10,4	941 484	+ 19,7	3 560 380	+ 9,3
Jul.	2 226 285	+ 1,6	457 956	+ 7,2	920 624	- 2,2	3 604 865	+ 1,2
Aug.	2 349 314	+ 5,5	622 799	+ 36,0	1 056 491	+ 14,8	4 028 604	+ 11,8
Sep.	2 292 134	- 2,4	560 352	- 10,0	1 024 194	- 3,1	3 876 680	- 3,8
Oct.	2 180 717	- 4,9	647 343	+ 15,5	899 444	- 12,2	3 727 504	- 3,8
Nov.	2 650 829	+ 21,6	607 373	- 6,2	1 083 276	+ 20,4	4 341 478	+ 16,5
Dec.	2 322 466	- 12,4	778 819	+ 28,2	1 284 603	+ 18,6	4 385 888	+ 1,0
2005 Jan.	2 313 722	- 0,4	733 660	- 5,8	1 179 915	- 8,1	4 227 297	- 3,6
Feb.	2 474 769	+ 7,0	756 204	+ 3,1	1 225 129	+ 3,8	4 456 102	+ 5,4
Mar.	2 464 616	- 0,4	749 538	- 0,9	1 283 895	+ 4,8	4 498 049	+ 0,9
Apr.	3 074 269	+ 24,7	952 932	+ 27,1	1 515 625	+ 18,0	5 542 826	+ 23,2
May	3 446 517	+ 12,1	798 254	- 16,2	1 362 039	- 10,1	5 606 810	+ 1,2

¹ The percentage change is the change in the seasonally adjusted values of recorded building plans passed by municipalities of the relevant month compared with the seasonally adjusted values of recorded building plans passed by municipalities of the previous month expressed as a percentage.

Table 3 - Values and percentage change of recorded building plans passed by municipalities at constant 2000 prices by type of building

Year ¹ and month ²	Residential buildings		Non-residential buildings		Additions and alterations		Total	
	R'000	Percentage change	R'000	Percentage change	R'000	Percentage change	R'000	Percentage change
2003 Jan.	751 191	+4,8	539 996	+250,4	412 751	+10,3	1 703 938	+36,8
Feb.	951 581	+5,9	187 633	-65,6	415 691	+3,2	1 554 905	-15,8
Mar.	1 095 707	+30,0	176 015	-59,3	471 264	+24,6	1 742 986	+5,4
Apr.	951 110	-4,0	220 236	-27,0	466 317	+1,7	1 637 663	-6,5
May	1 028 970	+2,4	316 135	-14,9	700 194	-11,8	2 045 299	-5,8
Jun.	1 122 410	+21,0	298 954	-28,8	520 094	+11,6	1 941 458	+7,1
Jul.	1 381 296	+33,1	377 967	+78,1	683 520	+22,2	2 442 783	+35,0
Aug.	1 307 279	+36,9	318 632	-0,6	559 863	-2,3	2 185 774	+18,3
Sep.	1 347 781	+35,1	366 152	+55,9	538 383	+7,0	2 252 316	+29,8
Oct.	1 382 270	-15,7	355 658	+31,3	599 661	-1,9	2 337 589	-7,3
Nov.	1 438 970	+46,1	303 936	+22,3	565 255	-1,6	2 308 161	+27,7
Dec.	1 058 956	+20,0	365 263	+98,5	476 635	+42,0	1 900 854	+35,6
Total	13 817 521	+16,3	3 826 577	+3,5	6 409 628	+6,3	24 053 726	+11,3
2004 Jan.	1 015 909	+35,2	254 975	-52,8	402 565	-2,5	1 673 449	-1,8
Feb.	1 847 619	+94,2	297 487	+58,5	616 237	+48,2	2 761 343	+77,6
Mar.*	1 487 585	+35,8	549 000	+211,9	666 205	+41,4	2 702 790	+55,1
Apr.*	1 179 481	+24,0	309 371	+40,5	507 599	+8,9	1 996 451	+21,9
May*	1 670 327	+62,3	290 406	-8,1	670 703	-4,2	2 631 436	+28,7
Jun.*	1 630 945	+45,3	354 191	+18,5	692 622	+33,2	2 677 758	+37,9
Jul.*	1 838 773	+33,1	401 033	+6,1	780 803	+14,2	3 020 609	+23,7
Aug.*	1 797 923	+37,5	504 192	+58,2	872 500	+55,8	3 174 615	+45,2
Sep.*	1 786 814	+32,6	413 057	+12,8	768 785	+42,8	2 968 656	+31,8
Oct.*	1 833 268	+32,6	458 027	+28,8	733 568	+22,3	3 024 863	+29,4
Nov.*	2 092 351	+45,4	408 665	+34,5	849 473	+50,3	3 350 489	+45,2
Dec.*	1 336 813	+26,2	481 245	+31,8	709 296	+48,8	2 527 354	+33,0
Total	19 517 808	+41,3	4 721 649	+23,4	8 270 356	+29,0	32 509 813	+35,2
2005 Jan.*	1 221 611	+20,2	374 341	+46,8	631 086	+56,8	2 227 038	+33,1
Feb.*	1 681 946	-9,0	430 653	+44,8	756 080	+22,7	2 868 679	+3,9
Mar.*	1 684 367	+13,2	704 059	+28,2	906 767	+36,1	3 295 193	+21,9
Apr.	1 992 302	+68,9	619 902	+100,4	970 356	+91,2	3 582 560	+79,4
May	2 575 735	+54,2	554 941	+91,1	1 088 116	+62,2	4 218 792	+60,3

¹ The annual percentage change is the change in the values of recorded building plans passed by municipalities of the relevant year compared with the values of recorded building plans passed by municipalities of the previous year expressed as a percentage.

² The monthly percentage change is the change in the recorded values of building plans passed by municipalities of the relevant month compared with the recorded values of building plans passed by municipalities of the same month in the previous year expressed as a percentage.

* Revised.

Table 4 - Seasonally adjusted values and percentage change of recorded building plans passed by municipalities at constant 2000 prices by type of building

Year and month ¹	Residential buildings		Non-residential buildings		Additions and alterations		Total	
	R'000	Percentage change	R'000	Percentage change	R'000	Percentage change	R'000	Percentage change
2003 Jan.	979 112	-13,4	758 468	+236,7	534 782	+11,6	2 272 362	+26,1
Feb.	973 620	-0,6	228 049	-69,9	475 793	-11,0	1 677 462	-26,2
Mar.	1 105 602	+13,6	136 116	-40,3	464 982	-2,3	1 706 700	+1,7
Apr.	1 052 458	-4,8	249 280	+83,1	519 818	+11,8	1 821 556	+6,7
May	952 422	-9,5	298 771	+19,9	615 666	+18,4	1 866 859	+2,5
Jun.	1 108 953	+16,4	269 448	-9,8	516 992	-16,0	1 895 393	+1,5
Jul.	1 239 746	+11,8	313 127	+16,2	598 319	+15,7	2 151 192	+13,5
Aug.	1 251 283	+0,9	293 934	-6,1	499 476	-16,5	2 044 693	-5,0
Sep.	1 263 247	+1,0	360 980	+22,8	519 074	+3,9	2 143 301	+4,8
Oct.	1 184 438	-6,2	362 745	+0,5	528 087	+1,7	2 075 270	-3,2
Nov.	1 304 234	+10,1	312 579	-13,8	512 296	-3,0	2 129 109	+2,6
Dec.	1 330 567	+2,0	430 214	+37,6	620 811	+21,2	2 381 592	+11,9
2004 Jan.	1 344 105	+1,0	353 102	-17,9	529 478	-14,7	2 226 685	-6,5
Feb.	1 919 916	+42,8	367 882	+4,2	707 033	+33,5	2 994 831	+34,5
Mar.	1 524 210	-20,6	414 397	+12,6	663 845	-6,1	2 602 452	-13,1
Apr.	1 283 161	-15,8	338 451	-18,3	556 408	-16,2	2 178 020	-16,3
May	1 551 336	+20,9	288 284	-14,8	586 803	+5,5	2 426 423	+11,4
Jun.	1 617 576	+4,3	315 569	+9,5	694 762	+18,4	2 627 907	+8,3
Jul.	1 639 085	+1,3	336 820	+6,7	679 331	-2,2	2 655 236	+1,0
Aug.	1 719 570	+4,9	456 330	+35,5	772 424	+13,7	2 948 324	+11,0
Sep.	1 667 947	-3,0	407 781	-10,6	744 189	-3,7	2 819 917	-4,4
Oct.	1 575 887	-5,5	468 117	+14,8	648 128	-12,9	2 692 132	-4,5
Nov.	1 891 076	+20,0	434 804	-7,1	774 984	+19,6	3 100 864	+15,2
Dec.	1 657 209	-12,4	558 027	+28,3	915 221	+18,1	3 130 457	+1,0
2005 Jan.	1 640 151	-1,0	520 596	-6,7	835 753	-8,7	2 996 500	-4,3
Feb.	1 754 537	+7,0	537 211	+3,2	867 385	+3,8	3 159 133	+5,4
Mar.	1 735 191	-1,1	521 778	-2,9	904 477	+4,3	3 161 446	+0,1
Apr.	2 152 513	+24,1	667 910	+28,0	1 061 477	+17,4	3 881 900	+22,8
May	2 409 575	+11,9	558 670	-16,4	953 579	-10,2	3 921 824	+1,0
Dec.04-Feb.05	5 051 897		1 615 834		2 618 359		9 286 090	
Mar.-May 05 ²	6 297 279	+24,7	1 748 358	+8,2	2 919 533	+11,5	10 965 170	+18,1

¹ The percentage change is the change in the seasonally adjusted values of recorded building plans passed by municipalities of the relevant month compared with the seasonally adjusted values of recorded building plans passed by municipalities of the previous month expressed as a percentage.

² The percentage change is the change in the seasonally adjusted values of recorded building plans passed by municipalities of the current quarter compared with the seasonally adjusted values of recorded building plans passed by municipalities of the previous quarter expressed as a percentage.

Table 5 - Values and percentage change of buildings reported as completed to municipalities at current prices by type of building

Year ¹ and month ²	Residential buildings		Non-residential buildings		Additions and alterations		Total	
	R'000	Percentage change	R'000	Percentage change	R'000	Percentage change	R'000	Percentage change
2003 Jan.	623 401	+6,8	154 538	+13,2	237 996	+34,7	1 015 935	+13,2
Feb.	696 496	+47,1	158 143	+14,7	288 062	+42,4	1 142 701	+40,4
Mar.	713 231	+0,7	316 020	+84,6	242 725	+37,9	1 271 976	+20,5
Apr.	688 059	+5,3	534 865	+117,6	248 988	-36,2	1 471 912	+14,2
May	688 470	-0,3	605 218	+101,2	310 203	+1,4	1 603 891	+23,7
Jun.	763 026	+30,3	170 636	-17,6	303 112	+20,8	1 236 774	+18,5
Jul.	1 621 012	+137,8	191 080	-30,0	335 931	+38,8	2 148 023	+79,5
Aug.	883 426	+19,3	151 866	+57,7	294 759	+30,2	1 330 051	+25,1
Sep.	802 515	-2,2	179 081	-21,7	271 100	+9,1	1 252 696	-3,5
Oct.	866 838	-7,6	189 368	+6,3	299 330	+1,8	1 355 536	-3,9
Nov.	978 031	+15,4	222 723	-24,4	287 138	+21,1	1 487 892	+7,9
Dec.	873 835	+24,3	182 358	-50,3	243 158	+9,9	1 299 351	+0,7
Total	10 198 340	+21,0	3 055 896	+15,9	3 362 502	+13,2	16 616 738	+18,4
2004 Jan.	614 622	-1,4	201 839	+30,6	262 328	+10,2	1 078 789	+6,2
Feb.	766 356	+10,0	231 958	+46,7	307 001	+6,6	1 305 315	+14,2
Mar.*	922 656	+29,4	215 230	-31,9	281 273	+15,9	1 419 159	+11,6
Apr.*	921 088	+33,9	160 270	-70,0	221 997	-10,8	1 303 355	-11,5
May*	1 227 471	+78,3	320 804	-47,0	313 333	+1,0	1 861 608	+16,1
Jun.*	1 161 348	+52,2	216 179	+26,7	321 963	+6,2	1 699 490	+37,4
Jul.*	1 347 503	-16,9	338 975	+77,4	363 240	+8,1	2 049 718	-4,6
Aug.*	1 329 841	+50,5	541 139	+256,3	364 165	+23,5	2 235 145	+68,0
Sep.*	1 205 504	+50,2	534 681	+198,6	331 895	+22,4	2 072 080	+65,4
Oct.*	1 214 081	+40,1	379 232	+100,3	374 938	+25,3	1 968 251	+45,2
Nov.*	2 581 248	+163,9	281 285	+26,3	428 176	+49,1	3 290 709	+121,2
Dec.*	1 286 415	+47,2	326 223	+78,9	290 731	+19,6	1 903 369	+46,5
Total	14 578 133	+42,9	3 747 815	+22,6	3 861 040	+14,8	22 186 988	+33,5
2005 Jan.	828 454	+34,8	272 876	+35,2	305 473	+16,4	1 406 803	+30,4
Feb.*	1 195 727	+56,0	180 679	-22,1	318 591	+3,8	1 694 997	+29,9
Mar.*	1 328 858	+44,0	308 177	+43,2	314 410	+11,8	1 951 445	+37,5
Apr.	1 413 266	+53,4	226 189	+41,1	337 553	+52,1	1 977 008	+51,7
May ³	1 718 564	+40,0	409 223	+27,6	481 857	+53,8	2 609 644	+40,2

¹ The annual percentage change is the change in the values of buildings reported as completed to municipalities of the relevant year compared with the values of buildings reported as completed to municipalities of the previous year expressed as a percentage.

² The monthly percentage change is the change in the values of buildings reported as completed to municipalities of the relevant month compared with the values of buildings reported as completed to municipalities of the same month in the previous year expressed as a percentage.

³ Preliminary figures.

* Revised.

Table 6 - Seasonally adjusted values and percentage change of buildings reported as completed to municipalities at current prices by type of building

Year and month ¹	Residential buildings		Non-residential buildings		Additions and alterations		Total	
	R'000	Percentage change	R'000	Percentage change	R'000	Percentage change	R'000	Percentage change
2003 Jan.	747 639	-3,2	195 832	-45,3	269 538	-7,2	1 213 009	-14,6
Feb.	810 819	+8,5	199 121	+1,7	283 493	+5,2	1 293 433	+6,6
Mar.	711 545	-12,2	335 635	+68,6	236 550	-16,6	1 283 730	-0,8
Apr.	751 091	+5,6	604 028	+80,0	288 304	+21,9	1 643 423	+28,0
May	625 864	-16,7	378 332	-37,4	258 040	-10,5	1 262 236	-23,2
Jun.	817 413	+30,6	191 541	-49,4	294 881	+14,3	1 303 835	+3,3
Jul.	1 568 427	+91,9	161 629	-15,6	306 239	+3,9	2 036 295	+56,2
Aug.	840 889	-46,4	201 655	+24,8	289 059	-5,6	1 331 603	-34,6
Sep.	781 450	-7,1	150 192	-25,5	286 314	-0,9	1 217 956	-8,5
Oct.	747 736	-4,3	198 090	+31,9	268 644	-6,2	1 214 470	-0,3
Nov.	828 161	+10,8	224 715	+13,4	273 285	+1,7	1 326 161	+9,2
Dec.	946 918	+14,3	175 350	-22,0	306 806	+12,3	1 429 074	+7,8
2004 Jan.	742 670	-21,6	258 353	+47,3	295 967	-3,5	1 296 990	-9,2
Feb.	899 252	+21,1	308 161	+19,3	305 716	+3,3	1 513 129	+16,7
Mar.	946 261	+5,2	217 946	-29,3	290 193	-5,1	1 454 400	-3,9
Apr.	1 001 095	+5,8	182 472	-16,3	256 625	-11,6	1 440 192	-1,0
May	1 108 758	+10,8	194 643	+6,7	263 940	+2,9	1 567 341	+8,8
Jun.	1 237 672	+11,6	243 484	+25,1	306 774	+16,2	1 787 930	+14,1
Jul.	1 289 575	+4,2	301 027	+23,6	328 556	+7,1	1 919 158	+7,3
Aug.	1 261 178	-2,2	742 841	+146,8	355 390	+8,2	2 359 409	+22,9
Sep.	1 185 612	-6,0	449 437	-39,5	346 809	-2,4	1 981 858	-16,0
Oct.	1 039 973	-12,3	394 626	-12,2	336 576	-3,0	1 771 175	-10,6
Nov.	2 193 536	+110,9	276 365	-30,0	410 582	+22,0	2 880 483	+62,6
Dec.	1 378 060	-37,2	311 695	+12,8	358 216	-12,8	2 047 971	-28,9
2005 Jan.	1 012 568	-26,5	352 206	+13,0	343 509	-4,1	1 708 283	-16,6
Feb.	1 405 366	+38,8	247 473	-29,7	317 576	-7,5	1 970 415	+15,3
Mar.	1 386 146	-1,4	303 152	+22,5	334 076	+5,2	2 023 374	+2,7
Apr.	1 532 960	+10,6	259 898	-14,3	389 078	+16,5	2 181 936	+7,8
May	1 540 509	+0,5	243 134	-6,5	411 721	+5,8	2 195 364	+0,6

¹ The percentage change is the change in the seasonally adjusted values of buildings reported as completed to municipalities of the relevant month compared with the seasonally adjusted values of buildings reported as completed to municipalities of the previous month expressed as a percentage.

Table 7 - Values and percentage change of buildings reported as completed to municipalities at constant 2000 prices by type of building

Year ¹ and month ²	Residential buildings		Non-residential buildings		Additions and alterations		Total	
	R'000	Percentage change	R'000	Percentage change	R'000	Percentage change	R'000	Percentage change
2003 Jan.	531 864	-3,2	143 890	+5,8	212 877	+25,6	888 631	+3,9
Feb.	583 100	+19,9	146 837	+5,6	252 686	+10,2	982 623	+14,9
Mar.	590 702	-19,9	292 882	-14,9	211 987	+27,2	1 095 571	-11,2
Apr.	563 927	-12,4	494 787	-40,2	214 091	-42,2	1 272 805	-26,9
May	558 827	-16,8	556 778	-51,0	263 107	-25,8	1 378 712	-27,1
Jun.	620 508	-0,9	155 548	-28,5	255 575	-9,4	1 031 631	-8,6
Jul.	1 315 349	-0,9	170 912	-45,1	278 550	-5,5	1 764 811	-19,5
Aug.	701 270	-13,7	133 216	+56,4	241 606	+1,3	1 076 092	-7,9
Sep.	633 840	-19,7	156 403	-33,8	221 126	-7,5	1 011 369	-24,7
Oct.	677 693	-27,3	162 827	-14,4	241 590	-21,7	1 082 110	-29,5
Nov.	766 799	-35,1	188 908	-48,0	230 448	-2,4	1 186 155	-27,7
Dec.	683 334	-27,6	153 759	-58,1	194 371	+5,5	1 031 464	-22,6
Total	8 227 213	+8,1	2 756 747	+8,7	2 818 014	+1,4	13 801 974	+6,8
2004 Jan.*	476 961	-10,3	167 362	+16,3	206 557	-3,0	850 880	-4,2
Feb.	593 329	+1,8	190 130	+29,5	240 220	-4,9	1 023 679	+4,2
Mar.*	714 105	+20,9	175 555	-40,1	219 231	+3,4	1 108 891	+1,2
Apr.*	712 542	+26,4	129 354	-73,9	172 091	-19,6	1 013 987	-20,3
May*	950 317	+70,1	257 467	-53,8	242 706	-7,8	1 450 490	+5,2
Jun.*	898 426	+44,8	172 805	+11,1	248 812	-2,6	1 320 043	+28,0
Jul.*	1 036 985	-21,2	266 909	+56,2	280 494	+0,7	1 584 388	-10,2
Aug.*	1 014 826	+44,7	423 426	+217,8	280 992	+16,3	1 719 244	+59,8
Sep.*	914 345	+44,3	416 743	+166,5	256 290	+15,9	1 587 378	+57,0
Oct.*	916 163	+35,2	293 978	+80,5	289 751	+19,9	1 499 892	+38,6
Nov.*	1 963 537	+156,1	217 881	+15,3	331 406	+43,8	2 512 824	+111,8
Dec.*	962 871	+40,9	252 104	+64,0	225 024	+15,8	1 439 999	+39,6
Total	11 154 407	+35,6	2 963 714	+7,5	2 993 574	+6,2	17 111 695	+24,0
2005 Jan.	614 895	+28,9	210 715	+25,9	234 618	+13,6	1 060 228	+24,6
Feb.*	884 671	+49,1	139 413	-26,7	241 540	+0,5	1 265 624	+23,6
Mar.*	978 518	+37,0	237 975	+35,6	236 755	+8,0	1 453 248	+31,1
Apr.	1 033 377	+45,0	174 798	+35,1	252 282	+46,6	1 460 457	+44,0
May	1 249 719	+31,5	316 736	+23,0	357 726	+47,4	1 924 181	+32,7

¹ The annual percentage change is the change in the values of buildings reported as completed to municipalities of the relevant year compared with the values of buildings reported as completed to municipalities of the previous year expressed as a percentage.

² The monthly percentage change is the change in the values of buildings reported as completed to municipalities of the relevant month compared with the values of buildings reported as completed to municipalities of the same month in the previous year expressed as a percentage.

* Revised.

Table 8 - Seasonally adjusted values and percentage change of buildings reported as completed to municipalities at constant 2000 prices by type of building

Year and month ¹	Residential buildings		Non-residential buildings		Additions and alterations		Total	
	R'000	Percentage change	R'000	Percentage change	R'000	Percentage change	R'000	Percentage change
2003 Jan.	642 403	-2,2	182 596	-45,5	240 319	-8,6	1 065 318	-15,1
Feb.	682 270	+6,2	185 045	+1,3	248 866	+3,6	1 116 181	+4,8
Mar.	588 575	-13,7	310 367	+67,7	206 370	-17,1	1 105 312	-1,0
Apr.	614 948	+4,5	557 948	+79,8	248 431	+20,4	1 421 327	+28,6
May	507 155	-17,5	346 205	-38,0	219 998	-11,4	1 073 358	-24,5
Jun.	657 148	+29,6	173 739	-49,8	249 493	+13,4	1 080 380	+0,7
Jul.	1 272 197	+93,6	144 967	-16,6	254 732	+2,1	1 671 896	+54,8
Aug.	669 500	-47,4	178 035	+22,8	237 568	-6,7	1 085 103	-35,1
Sep.	617 949	-7,7	131 256	-26,3	233 255	-1,8	982 460	-9,5
Oct.	587 224	-5,0	170 811	+30,1	216 180	-7,3	974 215	-0,8
Nov.	652 923	+11,2	191 246	+12,0	218 103	+0,9	1 062 272	+9,0
Dec.	731 531	+12,0	147 991	-22,6	243 243	+11,5	1 122 765	+5,7
2004 Jan.	578 736	-20,9	214 635	+45,0	232 372	-4,5	1 025 743	-8,6
Feb.	701 365	+21,2	252 825	+17,8	239 615	+3,1	1 193 805	+16,4
Mar.	733 655	+4,6	177 306	-29,9	226 179	-5,6	1 137 140	-4,7
Apr.	774 732	+5,6	146 966	-17,1	199 587	-11,8	1 121 285	-1,4
May	856 461	+10,5	155 208	+5,6	205 526	+3,0	1 217 195	+8,6
Jun.	944 927	+10,3	193 625	+24,8	237 799	+15,7	1 376 351	+13,1
Jul.	990 280	+4,8	237 804	+22,8	254 532	+7,0	1 482 616	+7,7
Aug.	963 036	-2,8	585 151	+146,1	274 978	+8,0	1 823 165	+23,0
Sep.	898 349	-6,7	350 725	-40,1	267 436	-2,7	1 516 510	-16,8
Oct.	790 364	-12,0	306 965	-12,5	259 206	-3,1	1 356 535	-10,5
Nov.	1 679 620	+112,5	214 869	-30,0	315 720	+21,8	2 210 209	+62,9
Dec.	1 019 017	-39,3	241 086	+12,2	274 737	-13,0	1 534 840	-30,6
2005 Jan.	753 776	-26,0	272 489	+13,0	263 181	-4,2	1 289 446	-16,0
Feb.	1 051 145	+39,5	191 148	-29,9	241 389	-8,3	1 483 682	+15,1
Mar.	1 025 313	-2,5	233 452	+22,1	251 737	+4,3	1 510 502	+1,8
Apr.	1 121 180	+9,4	200 403	-14,2	291 899	+16,0	1 613 482	+6,8
May	1 115 096	-0,5	186 900	-6,7	307 339	+5,3	1 609 335	-0,3
Dec.04-Feb.05	2 823 938		704 723		779 307		4 307 968	
Mar.-May 05 ²	3 261 589	+15,5	620 755	-11,9	850 975	+9,2	4 733 319	+9,9

¹ The percentage change is the change in the seasonally adjusted values of buildings reported as completed to municipalities of the relevant month compared with the seasonally adjusted values of buildings reported as completed to municipalities of the previous month expressed as a percentage.

² The percentage change is the change in the seasonally adjusted values of buildings reported as completed to municipalities of the current quarter compared with the seasonally adjusted values of buildings reported as completed to municipalities of the previous quarter expressed as a percentage.

Table 9 - Recorded building plans passed by municipalities by type of building: South Africa

Type of building	May 2004 *	April 2005	May 2005	January 2004 to May 2004	January 2005 to May 2005	Percentage change between January 2004 to May 2004 and January 2005 to May 2005
Residential buildings						
Dwelling-houses smaller than 80 square metres						
Number of dwelling-houses	3 740	2 065	2 284	14 214	11 466	-19,3
Total square metres	153 246	97 198	107 861	591 312	516 549	-12,6
Total value at current prices (R'000)	148 655	156 016	186 144	574 809	755 969	+31,5
Dwelling-houses equal to or larger than 80 square metres						
Number of dwelling-houses	3 058	2 775	3 274	11 804	13 251	+12,3
Total square metres	695 885	668 828	777 799	2 718 623	3 125 785	+15,0
Total value at current prices (R'000)	1 437 445	1 762 467	2 091 779	5 533 347	8 014 126	+44,8
Flats and townhouses						
Number of flats and townhouses	1 826	2 009	3 423	7 712	10 114	+31,1
Total square metres	285 056	330 644	486 978	1 174 316	1 495 090	+27,3
Total value at current prices (R'000)	570 373	899 032	1 352 873	2 486 263	4 040 071	+62,5
Other residential buildings ¹						
Total square metres	15 192	9 206	17 573	115 153	71 177	-38,2
Total value at current prices (R'000)	93 457	37 454	65 384	968 893	230 626	-76,2
Total value of residential buildings at current prices (R'000)	2 249 930	2 854 969	3 696 180	9 563 312	13 040 792	+36,4
Non-residential buildings						
Office and banking space						
Total square metres	42 945	61 113	18 053	183 290	260 408	+42,1
Total value at current prices (R'000)	99 889	189 946	37 012	386 380	726 293	+88,0
Shopping space						
Total square metres	26 323	82 325	102 473	312 769	425 192	+35,9
Total value at current prices (R'000)	50 857	256 143	260 472	720 762	1 289 936	+79,0
Industrial and warehouse space						
Total square metres	93 104	170 153	156 128	459 296	649 515	+41,4
Total value at current prices (R'000)	167 650	368 032	396 641	821 783	1 506 740	+83,4
Other non-residential space ²						
Total square metres	35 874	26 693	42 771	179 450	128 227	-28,5
Total value at current prices (R'000)	72 781	74 198	102 215	329 625	297 686	-9,7
Total value of non-residential buildings at current prices (R'000)	391 177	888 319	796 340	2 258 550	3 820 655	+69,2
Additions and alterations						
Dwelling-houses						
Total square metres	375 436	451 131	503 161	1 548 310	1 981 899	+28,0
Total value at current prices (R'000)	683 543	1 105 113	1 263 608	2 702 554	4 748 597	+75,7
Other buildings ³						
Total square metres	112 122	78 276	98 309	502 585	492 042	-2,1
Total value at current prices (R'000)	219 894	285 407	297 838	1 101 726	1 448 670	+31,5
Total value of additions and alterations at current prices (R'000)	903 437	1 390 520	1 561 446	3 804 280	6 197 267	+62,9
Total value of recorded building plans passed at current prices (R'000)	3 544 544	5 133 808	6 053 966	15 626 142	23 058 714	+47,6

¹ Other residential buildings include institutions for the disabled, boarding houses, old people's homes, hostels, hotels, motels, guest-houses, holiday chalets, entertainment centres, bed-and-breakfast accommodation and casinos.

² Other non-residential space includes churches, sport and recreation clubs, schools, crèches, hospitals and all other non-residential space.

³ Other buildings include additions and alterations to other residential buildings, non-residential buildings and internal alterations.

* Revised.

Table 10 - Recorded building plans passed by municipalities by type of building and province: Western Cape

Type of building	May 2004	April 2005	May 2005	January 2004 to May 2004	January 2005 to May 2005	Percentage change between January 2004 to May 2004 and January 2005 to May 2005
Residential buildings						
Dwelling-houses smaller than 80 square metres						
Number of dwelling-houses	748	161	388	2 158	1 970	- 8,7
Total square metres	32 941	7 924	18 634	97 993	94 646	-3,4
Total value at current prices (R'000)	44 794	14 327	26 796	129 571	131 944	+ 1,8
Dwelling-houses equal to or larger than 80 square metres						
Number of dwelling-houses	1 110	713	776	3 844	3 403	-11,5
Total square metres	229 734	173 020	186 985	887 029	809 974	-8,7
Total value at current prices (R'000)	509 184	499 440	565 196	1 941 767	2 269 574	+ 16,9
Flats and townhouses						
Number of flats and townhouses	671	682	1 326	2 726	3 267	+ 19,8
Total square metres	92 413	100 534	179 400	347 252	423 909	+ 22,1
Total value at current prices (R'000)	189 269	273 292	473 775	772 173	1 143 912	+ 48,1
Other residential buildings ¹						
Total square metres	5 428	5 682	5 314	36 745	23 616	-35,7
Total value at current prices (R'000)	66 096	18 608	12 897	144 166	75 386	-47,7
Total value of residential buildings at current prices (R'000)	809 343	805 667	1 078 664	2 987 677	3 620 816	+ 21,2
Non-residential buildings						
Office and banking space						
Total square metres	10 067	26 850	1 178	62 508	37 758	-39,6
Total value at current prices (R'000)	19 785	86 443	2 397	125 176	115 652	-7,6
Shopping space						
Total square metres	6 951	15 255	4 256	120 010	93 351	-22,2
Total value at current prices (R'000)	14 047	48 347	14 735	256 233	253 356	-1,1
Industrial and warehouse space						
Total square metres	27 788	78 341	56 136	137 622	233 604	+ 69,7
Total value at current prices (R'000)	43 555	161 419	162 031	202 291	569 650	+ 181,6
Other non-residential space ²						
Total square metres	2 438	3 639	9 133	26 871	28 979	+ 7,8
Total value at current prices (R'000)	5 155	6 973	23 948	56 232	63 574	+ 13,1
Total value of non-residential buildings at current prices (R'000)	82 542	303 182	203 111	639 932	1 002 232	+ 56,6
Additions and alterations						
Dwelling-houses						
Total square metres	113 191	123 708	139 799	446 675	578 638	+ 29,5
Total value at current prices (R'000)	212 899	324 270	370 923	803 686	1 470 397	+ 83,0
Other buildings ³						
Total square metres	31 713	35 465	39 589	166 123	143 380	-13,7
Total value at current prices (R'000)	65 293	162 704	127 128	362 097	508 718	+ 40,5
Total value of additions and alterations at current prices (R'000)	278 192	486 974	498 051	1 165 783	1 979 115	+ 69,8
Total value of recorded building plans passed at current prices (R'000)	1 170 077	1 595 823	1 779 826	4 793 392	6 602 163	+ 37,7

¹ Other residential buildings include institutions for the disabled, boarding houses, old people's homes, hostels, hotels, motels, guest-houses, holiday chalets, entertainment centres, bed-and-breakfast accommodation and casinos.

² Other non-residential space includes churches, sport and recreation clubs, schools, crèches, hospitals and all other non-residential space.

³ Other buildings include additions and alterations to other residential buildings, non-residential buildings and internal alterations.

Table 11 - Recorded building plans passed by municipalities by type of building and province: Eastern Cape

Type of building	May 2004	April 2005	May 2005	January 2004 to May 2004	January 2005 to May 2005	Percentage change between January 2004 to May 2004 and January 2005 to May 2005
Residential buildings						
Dwelling-houses smaller than 80 square metres						
Number of dwelling-houses	440	186	155	2 515	1 017	-59,6
Total square metres	18 194	8 061	7 802	103 357	44 580	-56,9
Total value at current prices (R'000)	16 732	6 061	7 713	87 495	35 967	-58,9
Dwelling-houses equal to or larger than 80 square metres						
Number of dwelling-houses	149	130	182	736	757	+2,9
Total square metres	30 584	27 089	38 130	143 582	171 667	+19,6
Total value at current prices (R'000)	54 854	70 970	95 769	252 983	418 206	+65,3
Flats and townhouses						
Number of flats and townhouses	59	40	45	200	213	+6,5
Total square metres	8 043	7 314	13 223	43 850	36 338	-17,1
Total value at current prices (R'000)	14 269	15 732	32 979	78 343	81 333	+3,8
Other residential buildings ¹						
Total square metres	0	977	158	844	4 515	+435,0
Total value at current prices (R'000)	0	2 364	317	1 464	9 441	+544,9
Total value of residential buildings at current prices (R'000)	85 855	95 127	136 778	420 285	544 947	+29,7
Non-residential buildings						
Office and banking space						
Total square metres	498	723	0	2 452	957	-61,0
Total value at current prices (R'000)	1 115	1 784	0	5 077	2 369	-53,3
Shopping space						
Total square metres	1 993	71	4 507	7 535	9 496	+26,0
Total value at current prices (R'000)	3 793	78	8 503	14 718	14 604	-0,8
Industrial and warehouse space						
Total square metres	2 986	4 135	8 007	17 831	16 915	-5,1
Total value at current prices (R'000)	5 383	3 636	10 516	26 294	24 913	-5,3
Other non-residential space ²						
Total square metres	843	4	94	5 459	1 665	-69,5
Total value at current prices (R'000)	1 901	16	191	11 873	3 394	-71,4
Total value of non-residential buildings at current prices (R'000)	12 192	5 514	19 210	57 962	45 280	-21,9
Additions and alterations						
Dwelling-houses						
Total square metres	37 071	39 268	39 713	148 418	153 541	+3,5
Total value at current prices (R'000)	60 468	77 227	84 105	250 879	311 576	+24,2
Other buildings ³						
Total square metres	4 546	3 264	2 966	39 039	51 897	+32,9
Total value at current prices (R'000)	8 496	15 935	5 484	79 226	112 447	+41,9
Total value of additions and alterations at current prices (R'000)	68 964	93 162	89 589	330 105	424 023	+28,5
Total value of recorded building plans passed at current prices (R'000)	167 011	193 803	245 577	808 352	1 014 250	+25,5

¹ Other residential buildings include institutions for the disabled, boarding houses, old people's homes, hostels, hotels, motels, guest-houses, holiday chalets, entertainment centres, bed-and-breakfast accommodation and casinos.

² Other non-residential space includes churches, sport and recreation clubs, schools, crèches, hospitals and all other non-residential space.

³ Other buildings include additions and alterations to other residential buildings, non-residential buildings and internal alterations.

Table 12 - Recorded building plans passed by municipalities by type of building and province: Northern Cape

Type of building	May 2004	April 2005	May 2005	January 2004 to May 2004	January 2005 to May 2005	Percentage change between January 2004 to May 2004 and January 2005 to May 2005
Residential buildings						
Dwelling-houses smaller than 80 square metres						
Number of dwelling-houses	31	111	0	54	235	+335,2
Total square metres	1 240	4 440	0	2 497	8 844	+254,2
Total value at current prices (R'000)	1 860	4 440	0	4 098	8 102	+97,7
Dwelling-houses equal to or larger than 80 square metres						
Number of dwelling-houses	24	25	36	86	127	+47,7
Total square metres	5 274	4 390	6 908	16 822	22 807	+35,6
Total value at current prices (R'000)	9 539	7 930	12 631	29 637	41 187	+39,0
Flats and townhouses						
Number of flats and townhouses	34	0	7	78	37	-52,6
Total square metres	5 844	0	1 232	12 198	4 411	-63,8
Total value at current prices (R'000)	10 519	0	2 218	22 044	8 111	-63,2
Other residential buildings ¹						
Total square metres	0	54	128	1 299	182	-86,0
Total value at current prices (R'000)	0	156	800	2 338	956	-59,1
Total value of residential buildings at current prices (R'000)	21 918	12 526	15 649	58 117	58 356	+0,4
Non-residential buildings						
Office and banking space						
Total square metres	0	0	82	403	82	-79,7
Total value at current prices (R'000)	0	0	164	605	164	-72,9
Shopping space						
Total square metres	0	1 541	0	7 000	6 396	-8,6
Total value at current prices (R'000)	0	3 027	0	13 884	9 487	-31,7
Industrial and warehouse space						
Total square metres	1 418	1 132	0	2 454	1 738	-29,2
Total value at current prices (R'000)	2 792	2 406	0	4 665	3 316	-28,9
Other non-residential space ²						
Total square metres	318	0	0	318	840	+164,2
Total value at current prices (R'000)	572	0	0	572	2 100	+267,1
Total value of non-residential buildings at current prices (R'000)	3 364	5 433	164	19 726	15 067	-23,6
Additions and alterations						
Dwelling-houses						
Total square metres	3 984	3 481	5 350	20 184	20 811	+3,1
Total value at current prices (R'000)	6 216	6 866	10 597	35 398	39 702	+12,2
Other buildings ³						
Total square metres	304	679	238	1 138	2 254	+98,1
Total value at current prices (R'000)	1 339	1 980	566	3 856	6 008	+55,8
Total value of additions and alterations at current prices (R'000)	7 555	8 846	11 163	39 254	45 710	+16,4
Total value of recorded building plans passed at current prices (R'000)	32 837	26 805	26 976	117 097	119 133	+1,7

¹ Other residential buildings include institutions for the disabled, boarding houses, old people's homes, hostels, hotels, motels, guest-houses, holiday chalets, entertainment centres, bed-and-breakfast accommodation and casinos.

² Other non-residential space includes churches, sport and recreation clubs, schools, crèches, hospitals and all other non-residential space.

³ Other buildings include additions and alterations to other residential buildings, non-residential buildings and internal alterations.

Table 13 - Recorded building plans passed by municipalities by type of building and province: Free State

Type of building	May 2004	April 2005	May 2005	January 2004 to May 2004	January 2005 to May 2005	Percentage change between January 2004 to May 2004 and January 2005 to May 2005
Residential buildings						
Dwelling-houses smaller than 80 square metres						
Number of dwelling-houses	179	494	267	1 758	2 421	+37,7
Total square metres	8 242	20 502	11 314	72 517	100 496	+38,6
Total value at current prices (R'000)	5 628	13 581	9 252	45 653	67 815	+48,5
Dwelling-houses equal to or larger than 80 square metres						
Number of dwelling-houses	102	89	130	363	544	+49,9
Total square metres	18 116	15 288	24 393	59 061	95 283	+61,3
Total value at current prices (R'000)	31 992	27 565	46 566	96 549	175 741	+82,0
Flats and townhouses						
Number of flats and townhouses	65	92	118	300	450	+50,0
Total square metres	6 993	11 328	13 664	37 039	50 804	+37,2
Total value at current prices (R'000)	11 873	22 207	28 124	60 469	101 554	+67,9
Other residential buildings ¹						
Total square metres	0	2 243	0	47	8 167	+17 276,6
Total value at current prices (R'000)	0	15 701	0	80	35 614	+44 417,5
Total value of residential buildings at current prices (R'000)	49 493	79 054	83 942	202 751	380 724	+87,8
Non-residential buildings						
Office and banking space						
Total square metres	0	534	742	3 657	2 606	-28,7
Total value at current prices (R'000)	0	1 602	2 226	6 041	6 880	+13,9
Shopping space						
Total square metres	816	8 321	4 723	1 591	59 601	+3 646,1
Total value at current prices (R'000)	1 864	24 963	13 259	3 213	351 035	+10 825,5
Industrial and warehouse space						
Total square metres	1 484	2 099	1 315	2 941	8 099	+175,4
Total value at current prices (R'000)	2 079	3 015	2 304	4 433	11 557	+160,7
Other non-residential space ²						
Total square metres	676	4 878	1 478	1 878	8 211	+337,2
Total value at current prices (R'000)	527	21 995	1 970	2 284	25 925	+1 035,1
Total value of non-residential buildings at current prices (R'000)	4 470	51 575	19 759	15 971	395 397	+2 375,7
Additions and alterations						
Dwelling-houses						
Total square metres	13 091	13 929	17 705	52 835	72 639	+37,5
Total value at current prices (R'000)	18 929	22 803	28 734	70 825	112 583	+59,0
Other buildings ³						
Total square metres	4 270	1 599	5 418	14 624	12 203	-16,6
Total value at current prices (R'000)	6 967	3 393	11 002	39 082	24 376	-37,6
Total value of additions and alterations at current prices (R'000)	25 896	26 196	39 736	109 907	136 959	+24,6
Total value of recorded building plans passed at current prices (R'000)	79 859	156 825	143 437	328 629	913 080	+177,8

¹ Other residential buildings include institutions for the disabled, boarding houses, old people's homes, hostels, hotels, motels, guest-houses, holiday chalets, entertainment centres, bed-and-breakfast accommodation and casinos.

² Other non-residential space includes churches, sport and recreation clubs, schools, crèches, hospitals and all other non-residential space.

³ Other buildings include additions and alterations to other residential buildings, non-residential buildings and internal alterations.

Table 14 - Recorded building plans passed by municipalities by type of building and province: KwaZulu-Natal

Type of building	May 2004	April 2005	May 2005	January 2004 to May 2004	January 2005 to May 2005	Percentage change between January 2004 to May 2004 and January 2005 to May 2005
Residential buildings						
Dwelling-houses smaller than 80 square metres						
Number of dwelling-houses	438	234	459	2 056	1 482	-27,9
Total square metres	15 704	10 481	15 994	71 439	55 712	-22,0
Total value at current prices (R'000)	15 021	10 862	12 970	63 270	57 648	-8,9
Dwelling-houses equal to or larger than 80 square metres						
Number of dwelling-houses	226	201	215	1 104	956	-13,4
Total square metres	58 649	47 781	48 733	244 410	223 838	-8,4
Total value at current prices (R'000)	121 368	117 825	119 872	483 981	536 415	+10,8
Flats and townhouses						
Number of flats and townhouses	186	366	333	581	1 913	+229,3
Total square metres	37 034	81 571	55 722	129 229	380 549	+194,5
Total value at current prices (R'000)	91 432	228 931	150 433	302 877	1 057 130	+249,0
Other residential buildings ¹						
Total square metres	9 764	0	2 001	58 765	2 094	-96,4
Total value at current prices (R'000)	27 361	0	4 084	780 912	4 250	-99,5
Total value of residential buildings at current prices (R'000)	255 182	357 618	287 359	1 631 040	1 655 443	+1,5
Non-residential buildings						
Office and banking space						
Total square metres	8 801	3 754	9 521	19 516	24 845	+27,3
Total value at current prices (R'000)	28 000	9 588	14 185	49 127	52 753	+7,4
Shopping space						
Total square metres	2 612	25 845	2 774	36 106	54 583	+51,2
Total value at current prices (R'000)	4 070	97 400	6 860	139 590	152 774	+9,4
Industrial and warehouse space						
Total square metres	15 244	19 550	20 417	73 982	81 964	+10,8
Total value at current prices (R'000)	22 043	28 235	34 123	157 116	132 568	-15,6
Other non-residential space ²						
Total square metres	3 148	1 353	10 392	12 141	17 862	+47,1
Total value at current prices (R'000)	8 500	2 950	20 985	23 706	36 514	+54,0
Total value of non-residential buildings at current prices (R'000)	62 613	138 173	76 153	369 539	374 609	+1,4
Additions and alterations						
Dwelling-houses						
Total square metres	46 708	45 998	54 736	232 664	225 924	-2,9
Total value at current prices (R'000)	76 416	91 887	119 848	372 336	468 140	+25,7
Other buildings ³						
Total square metres	19 452	8 369	11 385	69 171	90 123	+30,3
Total value at current prices (R'000)	25 901	21 395	37 058	124 583	274 456	+120,3
Total value of additions and alterations at current prices (R'000)	102 317	113 282	156 906	496 919	742 596	+49,4
Total value of recorded building plans passed at current prices (R'000)	420 112	609 073	520 418	2 497 498	2 772 648	+11,0

¹ Other residential buildings include institutions for the disabled, boarding houses, old people's homes, hostels, hotels, motels, guest-houses, holiday chalets, entertainment centres, bed-and-breakfast accommodation and casinos.

² Other non-residential space includes churches, sport and recreation clubs, schools, crèches, hospitals and all other non-residential space.

³ Other buildings include additions and alterations to other residential buildings, non-residential buildings and internal alterations.

Table 15 - Recorded building plans passed by municipalities by type of building and province: North West

Type of building	May 2004	April 2005	May 2005	January 2004 to May 2004	January 2005 to May 2005	Percentage change between January 2004 to May 2004 and January 2005 to May 2005
Residential buildings						
Dwelling-houses smaller than 80 square metres						
Number of dwelling-houses	33	47	42	355	174	-51,0
Total square metres	1 914	2 836	2 502	16 717	10 506	-37,2
Total value at current prices (R'000)	2 431	4 126	4 153	20 073	18 259	-9,0
Dwelling-houses equal to or larger than 80 square metres						
Number of dwelling-houses	159	161	211	634	918	+44,8
Total square metres	29 036	31 114	39 777	122 361	178 026	+45,5
Total value at current prices (R'000)	52 749	71 893	95 671	222 204	417 236	+87,8
Flats and townhouses						
Number of flats and townhouses	44	198	164	162	591	+264,8
Total square metres	8 740	19 967	18 081	21 754	64 190	+195,1
Total value at current prices (R'000)	15 496	49 092	44 196	40 261	158 502	+293,7
Other residential buildings ¹						
Total square metres	0	0	4 000	4 149	4 400	+6,0
Total value at current prices (R'000)	0	0	30 000	12 387	30 800	+148,6
Total value of residential buildings at current prices (R'000)	70 676	125 111	174 020	294 925	624 797	+111,8
Non-residential buildings						
Office and banking space						
Total square metres	1 605	0	720	4 444	5 307	+19,4
Total value at current prices (R'000)	2 800	0	1 656	9 954	10 621	+6,7
Shopping space						
Total square metres	1 747	309	0	13 949	5 269	-62,2
Total value at current prices (R'000)	4 202	695	0	33 849	9 787	-71,1
Industrial and warehouse space						
Total square metres	0	7 472	9 924	9 423	28 178	+199,0
Total value at current prices (R'000)	0	13 925	23 223	10 125	50 183	+395,6
Other non-residential space ²						
Total square metres	1 147	2 075	799	7 980	9 366	+17,4
Total value at current prices (R'000)	2 268	4 384	1 755	17 240	20 667	+19,9
Total value of non-residential buildings at current prices (R'000)	9 270	19 004	26 634	71 168	91 258	+28,2
Additions and alterations						
Dwelling-houses						
Total square metres	8 895	14 277	13 790	45 101	59 600	+32,1
Total value at current prices (R'000)	14 978	30 768	25 847	68 969	118 656	+72,0
Other buildings ³						
Total square metres	2 134	5 707	4 447	19 015	14 609	-23,2
Total value at current prices (R'000)	4 306	15 395	11 041	31 426	38 369	+22,1
Total value of additions and alterations at current prices (R'000)	19 284	46 163	36 888	100 395	157 025	+56,4
Total value of recorded building plans passed at current prices (R'000)	99 230	190 278	237 542	466 488	873 080	+87,2

¹ Other residential buildings include institutions for the disabled, boarding houses, old people's homes, hostels, hotels, motels, guest-houses, holiday chalets, entertainment centres, bed-and-breakfast accommodation and casinos.

² Other non-residential space includes churches, sport and recreation clubs, schools, crèches, hospitals and all other non-residential space.

³ Other buildings include additions and alterations to other residential buildings, non-residential buildings and internal alterations.

Table 16 - Recorded building plans passed by municipalities by type of building and province: Gauteng

Type of building	May 2004 *	April 2005	May 2005	January 2004 to May 2004	January 2005 to May 2005	Percentage change between January 2004 to May 2004 and January 2005 to May 2005
Residential buildings						
Dwelling-houses smaller than 80 square metres						
Number of dwelling-houses	1 682	645	881	4 043	3 429	-15,2
Total square metres	66 302	33 203	46 053	169 435	165 327	-2,4
Total value at current prices (R'000)	53 406	87 437	112 725	185 452	384 669	+107,4
Dwelling-houses equal to or larger than 80 square metres						
Number of dwelling-houses	1 094	1 156	1 410	4 171	5 195	+24,6
Total square metres	285 703	311 989	371 801	1 071 964	1 361 932	+27,1
Total value at current prices (R'000)	592 401	839 492	1 015 123	2 236 324	3 601 618	+61,1
Flats and townhouses						
Number of flats and townhouses	589	567	1 204	3 235	3 093	-4,4
Total square metres	101 699	104 821	180 710	527 452	476 053	-9,7
Total value at current prices (R'000)	206 570	297 711	547 673	1 136 856	1 356 768	+19,3
Other residential buildings ¹						
Total square metres	0	250	554	9 758	18 290	+87,4
Total value at current prices (R'000)	0	625	1 108	19 307	42 821	+121,8
Total value of residential buildings at current prices (R'000)	852 377	1 225 265	1 676 629	3 577 939	5 385 876	+50,5
Non-residential buildings						
Office and banking space						
Total square metres	20 752	27 084	3 213	82 212	168 101	+104,5
Total value at current prices (R'000)	46 332	86 269	9 894	174 602	473 756	+171,3
Shopping space						
Total square metres	6 346	14 441	84 179	74 093	148 026	+99,8
Total value at current prices (R'000)	14 054	47 318	212 256	170 241	395 547	+132,3
Industrial and warehouse space						
Total square metres	40 723	51 195	53 800	191 297	241 140	+26,1
Total value at current prices (R'000)	87 114	140 128	151 352	383 688	628 582	+63,8
Other non-residential space ²						
Total square metres	27 001	9 214	18 810	114 156	47 439	-58,4
Total value at current prices (R'000)	53 258	24 368	48 428	197 306	115 592	-41,4
Total value of non-residential buildings at current prices (R'000)	200 758	298 083	421 930	925 837	1 613 477	+74,3
Additions and alterations						
Dwelling-houses						
Total square metres	133 850	188 848	196 869	510 054	750 252	+47,1
Total value at current prices (R'000)	269 652	510 021	551 999	984 867	2 003 961	+103,5
Other buildings ³						
Total square metres	40 395	15 671	31 378	168 989	160 184	-5,2
Total value at current prices (R'000)	92 632	47 910	97 627	420 980	443 121	+5,3
Total value of additions and alterations at current prices (R'000)	362 284	557 931	649 626	1 405 847	2 447 082	+74,1
Total value of recorded building plans passed at current prices (R'000)	1 415 419	2 081 279	2 748 185	5 909 623	9 446 435	+59,8

¹ Other residential buildings include institutions for the disabled, boarding houses, old people's homes, hostels, hotels, motels, guest-houses, holiday chalets, entertainment centres, bed-and-breakfast accommodation and casinos.

² Other non-residential space includes churches, sport and recreation clubs, schools, crèches, hospitals and all other non-residential space.

³ Other buildings include additions and alterations to other residential buildings, non-residential buildings and internal alterations.

* Revised.

Table 17 - Recorded building plans passed by municipalities by type of building and province: Mpumalanga

Type of building	May 2004	April 2005	May 2005	January 2004 to May 2004	January 2005 to May 2005	Percentage change between January 2004 to May 2004 and January 2005 to May 2005
Residential buildings						
Dwelling-houses smaller than 80 square metres						
Number of dwelling-houses	62	160	75	354	422	+19,2
Total square metres	2 950	8 070	4 539	17 291	21 566	+24,7
Total value at current prices (R'000)	3 141	11 641	10 466	13 160	31 677	+140,7
Dwelling-houses equal to or larger than 80 square metres						
Number of dwelling-houses	102	222	237	531	990	+86,4
Total square metres	19 426	43 577	46 114	108 546	197 007	+81,5
Total value at current prices (R'000)	30 029	97 177	107 518	157 895	419 280	+165,5
Flats and townhouses						
Number of flats and townhouses	133	28	75	321	317	-1,2
Total square metres	18 836	1 599	9 178	40 914	34 561	-15,5
Total value at current prices (R'000)	23 309	4 345	20 215	51 884	63 581	+22,5
Other residential buildings ¹						
Total square metres	0	0	5 418	3 546	9 913	+179,6
Total value at current prices (R'000)	0	0	16 178	8 239	31 358	+280,6
Total value of residential buildings at current prices (R'000)	56 479	113 163	154 377	231 178	545 896	+136,1
Non-residential buildings						
Office and banking space						
Total square metres	872	0	163	2 506	3 365	+34,3
Total value at current prices (R'000)	1 087	0	408	3 716	7 563	+103,5
Shopping space						
Total square metres	2 708	14 671	1 368	43 028	36 768	-14,5
Total value at current prices (R'000)	2 785	31 350	3 406	71 918	75 793	+5,4
Industrial and warehouse space						
Total square metres	3 461	5 205	4 653	15 862	28 658	+80,7
Total value at current prices (R'000)	4 684	13 015	8 178	18 872	65 294	+246,0
Other non-residential space ²						
Total square metres	303	5 369	1 817	3 803	13 281	+249,2
Total value at current prices (R'000)	600	13 254	4 593	5 427	29 072	+435,7
Total value of non-residential buildings at current prices (R'000)	9 156	57 619	16 585	99 933	177 722	+77,8
Additions and alterations						
Dwelling-houses						
Total square metres	12 846	13 490	23 312	65 233	79 263	+21,5
Total value at current prices (R'000)	15 837	25 136	47 865	77 648	148 430	+91,2
Other buildings ³						
Total square metres	4 217	1 856	1 640	12 362	8 991	-27,3
Total value at current prices (R'000)	6 674	5 429	5 943	20 661	24 389	+18,0
Total value of additions and alterations at current prices (R'000)	22 511	30 565	53 808	98 309	172 819	+75,8
Total value of recorded building plans passed at current prices (R'000)	88 146	201 347	224 770	429 420	896 437	+108,8

¹ Other residential buildings include institutions for the disabled, boarding houses, old people's homes, hostels, hotels, motels, guest-houses, holiday chalets, entertainment centres, bed-and-breakfast accommodation and casinos.

² Other non-residential space includes churches, sport and recreation clubs, schools, crèches, hospitals and all other non-residential space.

³ Other buildings include additions and alterations to other residential buildings, non-residential buildings and internal alterations.

Table 18 - Recorded building plans passed by municipalities by type of building and province: Limpopo

Type of building	May 2004	April 2005	May 2005	January 2004 to May 2004	January 2005 to May 2005	Percentage change between January 2004 to May 2004 and January 2005 to May 2005
Residential buildings						
Dwelling-houses smaller than 80 square metres						
Number of dwelling-houses	127	27	17	921	316	-65,7
Total square metres	5 759	1 681	1 023	40 066	14 872	-62,9
Total value at current prices (R'000)	5 642	3 541	2 069	26 037	19 888	-23,6
Dwelling-houses equal to or larger than 80 square metres						
Number of dwelling-houses	92	78	77	335	361	+7,8
Total square metres	19 363	14 580	14 958	64 848	65 251	+0,6
Total value at current prices (R'000)	35 329	30 175	33 433	112 007	134 869	+20,4
Flats and townhouses						
Number of flats and townhouses	45	36	151	109	233	+113,8
Total square metres	5 454	3 510	15 768	14 628	24 275	+65,9
Total value at current prices (R'000)	7 636	7 722	53 260	21 356	69 180	+223,9
Other residential buildings ¹						
Total square metres	0	0	0	0	0	..
Total value at current prices (R'000)	0	0	0	0	0	..
Total value of residential buildings at current prices (R'000)	48 607	41 438	88 762	159 400	223 937	+40,5
Non-residential buildings						
Office and banking space						
Total square metres	350	2 168	2 434	5 592	17 387	+210,9
Total value at current prices (R'000)	770	4 260	6 082	12 082	56 535	+367,9
Shopping space						
Total square metres	3 150	1 871	666	9 457	11 702	+23,7
Total value at current prices (R'000)	6 042	2 965	1 453	17 116	27 553	+61,0
Industrial and warehouse space						
Total square metres	0	1 024	1 876	7 884	9 219	+16,9
Total value at current prices (R'000)	0	2 253	4 914	14 299	20 677	+44,6
Other non-residential space ²						
Total square metres	0	161	248	6 844	584	-91,5
Total value at current prices (R'000)	0	258	345	14 985	848	-94,3
Total value of non-residential buildings at current prices (R'000)	6 812	9 736	12 794	58 482	105 613	+80,6
Additions and alterations						
Dwelling-houses						
Total square metres	5 800	8 132	11 887	27 146	41 231	+51,9
Total value at current prices (R'000)	8 148	16 135	23 690	37 946	75 152	+98,0
Other buildings ³						
Total square metres	4 569	5 666	1 248	12 124	8 401	-30,7
Total value at current prices (R'000)	8 286	11 266	1 989	19 815	16 786	-15,3
Total value of additions and alterations at current prices (R'000)	16 434	27 401	25 679	57 761	91 938	+59,2
Total value of recorded building plans passed at current prices (R'000)	71 853	78 575	127 235	275 643	421 488	+52,9

¹ Other residential buildings include institutions for the disabled, boarding houses, old people's homes, hostels, hotels, motels, guest-houses, holiday chalets, entertainment centres, bed-and-breakfast accommodation and casinos.

² Other non-residential space includes churches, sport and recreation clubs, schools, crèches, hospitals and all other non-residential space.

³ Other buildings include additions and alterations to other residential buildings, non-residential buildings and internal alterations.

Table 19 - Buildings reported as completed to municipalities by type of building: South Africa

Type of building	May 2004 *	April 2005	May 2005	January 2004 to May 2004	January 2005 to May 2005	Percentage change between January 2004 to May 2004 and January 2005 to May 2005
Residential buildings						
Dwelling-houses smaller than 80 square metres						
Number of dwelling-houses	5 656	2 269	1 767	18 150	9 754	-46,3
Total square metres	221 195	85 937	73 682	689 794	373 560	-45,8
Total value at current prices (R'000)	160 921	107 262	112 065	528 627	453 471	-14,2
Dwelling-houses equal to or larger than 80 square metres						
Number of dwelling-houses	1 418	1 749	1 966	5 916	7 924	+33,9
Total square metres	310 447	363 858	432 757	1 319 546	1 707 279	+29,4
Total value at current prices (R'000)	628 932	854 092	1 025 583	2 618 171	3 906 324	+49,2
Flats and townhouses						
Number of flats and townhouses	1 522	1 280	2 027	4 963	6 899	+39,0
Total square metres	191 902	183 854	234 597	616 779	889 678	+44,2
Total value at current prices (R'000)	429 688	450 437	561 291	1 250 588	2 080 972	+66,4
Other residential buildings ¹						
Total square metres	2 333	883	7 095	22 393	18 314	-18,2
Total value at current prices (R'000)	7 930	1 475	19 625	54 807	44 102	-19,5
Total value of residential buildings at current prices (R'000)	1 227 471	1 413 266	1 718 564	4 452 193	6 484 869	+45,7
Non-residential buildings						
Office and banking space						
Total square metres	17 333	27 874	41 437	153 411	160 236	+4,4
Total value at current prices (R'000)	34 420	69 925	105 062	303 826	380 072	+25,1
Shopping space						
Total square metres	82 513	22 984	29 406	130 631	114 112	-12,6
Total value at current prices (R'000)	169 871	48 160	64 784	257 034	253 412	-1,4
Industrial and warehouse space						
Total square metres	26 749	46 827	106 892	251 484	308 057	+22,5
Total value at current prices (R'000)	31 523	94 924	230 880	433 556	584 241	+34,8
Other non-residential space ²						
Total square metres	50 316	5 557	3 595	76 216	75 825	-0,5
Total value at current prices (R'000)	84 990	13 180	8 497	135 685	179 419	+32,2
Total value of non-residential buildings at current prices (R'000)	320 804	226 189	409 223	1 130 101	1 397 144	+23,6
Additions and alterations						
Dwelling-houses						
Total square metres	120 181	129 901	160 686	535 593	650 597	+21,5
Total value at current prices (R'000)	218 680	257 203	339 073	898 446	1 280 079	+42,5
Other buildings ³						
Total square metres	40 754	38 523	55 786	192 123	201 665	+5,0
Total value at current prices (R'000)	94 653	80 350	142 784	487 486	477 805	-2,0
Total value of additions and alterations at current prices (R'000)	313 333	337 553	481 857	1 385 932	1 757 884	+26,8
Total value of buildings reported as completed at current prices (R'000)	1 861 608	1 977 008	2 609 644	6 968 226	9 639 897	+38,3

¹ Other residential buildings include institutions for the disabled, boarding houses, old people's homes, hostels, hotels, motels, guest-houses, holiday chalets, entertainment centres, bed-and-breakfast accommodation and casinos.

² Other non-residential space includes churches, sport and recreation clubs, schools, crèches, hospitals and all other non-residential space.

³ Other buildings include additions and alterations to other residential buildings, non-residential buildings and internal alterations.

* Revised.

Table 20 - Buildings reported as completed to municipalities by type of building and province: Western Cape

Type of building	May 2004	April 2005	May 2005	January 2004 to May 2004	January 2005 to May 2005	Percentage change between January 2004 to May 2004 and January 2005 to May 2005
Residential buildings						
Dwelling-houses smaller than 80 square metres						
Number of dwelling-houses	2 303	875	308	3 704	2 742	-26,0
Total square metres	90 775	24 597	13 666	144 569	89 583	-38,0
Total value at current prices (R'000)	64 945	22 687	19 030	114 541	87 202	-23,9
Dwelling-houses equal to or larger than 80 square metres						
Number of dwelling-houses	445	648	733	1 844	2 705	+46,7
Total square metres	99 592	134 782	159 363	403 962	579 754	+43,5
Total value at current prices (R'000)	180 604	278 727	357 092	757 718	1 232 787	+62,7
Flats and townhouses						
Number of flats and townhouses	325	323	646	999	1 856	+85,8
Total square metres	31 033	43 180	52 365	99 610	197 943	+98,7
Total value at current prices (R'000)	63 415	90 016	111 148	190 533	403 871	+112,0
Other residential buildings ¹						
Total square metres	120	0	2 215	15 742	10 826	-31,2
Total value at current prices (R'000)	180	0	5 604	37 402	26 679	-28,7
Total value of residential buildings at current prices (R'000)	309 144	391 430	492 874	1 100 194	1 750 539	+59,1
Non-residential buildings						
Office and banking space						
Total square metres	7 060	12 088	7 966	16 800	26 609	+58,4
Total value at current prices (R'000)	13 959	21 197	22 131	31 914	56 299	+76,4
Shopping space						
Total square metres	76 754	1 866	12 953	90 077	19 176	-78,7
Total value at current prices (R'000)	159 900	4 615	32 779	181 962	47 787	-73,7
Industrial and warehouse space						
Total square metres	13 252	20 350	19 279	51 741	70 488	+36,2
Total value at current prices (R'000)	15 571	40 835	37 080	67 797	125 898	+85,7
Other non-residential space ²						
Total square metres	1 594	1 004	1 703	10 840	8 724	-19,5
Total value at current prices (R'000)	2 960	2 420	4 289	19 190	19 084	-0,6
Total value of non-residential buildings at current prices (R'000)	192 390	69 067	96 279	300 863	249 068	-17,2
Additions and alterations						
Dwelling-houses						
Total square metres	41 568	46 594	63 930	170 858	236 381	+38,3
Total value at current prices (R'000)	68 834	86 158	129 075	274 438	437 844	+59,5
Other buildings ³						
Total square metres	16 856	11 060	32 163	58 963	76 819	+30,3
Total value at current prices (R'000)	31 564	16 636	72 600	151 137	174 473	+15,4
Total value of additions and alterations at current prices (R'000)	100 398	102 794	201 675	425 575	612 317	+43,9
Total value of buildings reported as completed at current prices (R'000)	601 932	563 291	790 828	1 826 632	2 611 924	+43,0

¹ Other residential buildings include institutions for the disabled, boarding houses, old people's homes, hostels, hotels, motels, guest-houses, holiday chalets, entertainment centres, bed-and-breakfast accommodation and casinos.

² Other non-residential space includes churches, sport and recreation clubs, schools, crèches, hospitals and all other non-residential space.

³ Other buildings include additions and alterations to other residential buildings, non-residential buildings and internal alterations.

Table 21 - Buildings reported as completed to municipalities by type of building and province: Eastern Cape

Type of building	May 2004	April 2005	May 2005	January 2004 to May 2004	January 2005 to May 2005	Percentage change between January 2004 to May 2004 and January 2005 to May 2005
Residential buildings						
Dwelling-houses smaller than 80 square metres						
Number of dwelling-houses	822	144	164	1 633	753	-53,9
Total square metres	33 378	6 159	6 818	70 428	31 374	-55,5
Total value at current prices (R'000)	15 977	7 357	6 801	58 357	35 053	-39,9
Dwelling-houses equal to or larger than 80 square metres						
Number of dwelling-houses	115	82	65	424	433	+2,1
Total square metres	15 702	14 833	11 601	75 041	78 261	+4,3
Total value at current prices (R'000)	26 512	27 391	26 383	125 406	173 609	+38,4
Flats and townhouses						
Number of flats and townhouses	7	38	132	48	219	+356,3
Total square metres	1 780	3 459	13 086	10 110	21 633	+114,0
Total value at current prices (R'000)	3 204	6 562	26 781	19 109	40 363	+111,2
Other residential buildings ¹						
Total square metres	0	315	472	0	787	..
Total value at current prices (R'000)	0	453	909	0	1 362	..
Total value of residential buildings at current prices (R'000)	45 693	41 763	60 874	202 872	250 387	+23,4
Non-residential buildings						
Office and banking space						
Total square metres	0	0	0	1 180	0	..
Total value at current prices (R'000)	0	0	0	2 841	0	..
Shopping space						
Total square metres	262	1 990	1 990	1 913	3 980	+108,1
Total value at current prices (R'000)	587	4 099	4 099	3 999	8 198	+105,0
Industrial and warehouse space						
Total square metres	2 810	4 298	4 298	6 341	12 121	+91,2
Total value at current prices (R'000)	4 225	7 369	7 369	9 982	20 748	+107,9
Other non-residential space ²						
Total square metres	1 338	0	927	1 579	1 496	-5,3
Total value at current prices (R'000)	2 890	0	1 877	3 201	3 186	-0,5
Total value of non-residential buildings at current prices (R'000)	7 702	11 468	13 345	20 023	32 132	+60,5
Additions and alterations						
Dwelling-houses						
Total square metres	11 272	10 165	13 705	42 471	53 230	+25,3
Total value at current prices (R'000)	18 953	17 697	25 579	68 434	92 937	+35,8
Other buildings ³						
Total square metres	3 262	2 875	4 943	9 730	14 323	+47,2
Total value at current prices (R'000)	6 694	5 568	11 182	18 968	27 927	+47,2
Total value of additions and alterations at current prices (R'000)	25 647	23 265	36 761	87 402	120 864	+38,3
Total value of buildings reported as completed at current prices (R'000)	79 042	76 496	110 980	310 297	403 383	+30,0

¹ Other residential buildings include institutions for the disabled, boarding houses, old people's homes, hostels, hotels, motels, guest-houses, holiday chalets, entertainment centres, bed-and-breakfast accommodation and casinos.

² Other non-residential space includes churches, sport and recreation clubs, schools, crèches, hospitals and all other non-residential space.

³ Other buildings include additions and alterations to other residential buildings, non-residential buildings and internal alterations.

Table 22 - Buildings reported as completed to municipalities by type of building and province: Northern Cape

Type of building	May 2004	April 2005	May 2005	January 2004 to May 2004	January 2005 to May 2005	Percentage change between January 2004 to May 2004 and January 2005 to May 2005
Residential buildings						
Dwelling-houses smaller than 80 square metres						
Number of dwelling-houses	5	0	3	22	8	-63,6
Total square metres	232	0	151	1 050	410	-61,0
Total value at current prices (R'000)	402	0	232	1 504	640	-57,4
Dwelling-houses equal to or larger than 80 square metres						
Number of dwelling-houses	6	62	25	35	110	+214,3
Total square metres	1 172	11 088	4 512	5 818	19 767	+239,8
Total value at current prices (R'000)	2 000	20 041	8 640	9 491	36 044	+279,8
Flats and townhouses						
Number of flats and townhouses	2	0	11	16	28	+75,0
Total square metres	257	0	1 980	2 957	4 583	+55,0
Total value at current prices (R'000)	463	0	3 564	4 977	8 320	+67,2
Other residential buildings ¹						
Total square metres	0	0	0	0	0	..
Total value at current prices (R'000)	0	0	0	0	0	..
Total value of residential buildings at current prices (R'000)	2 865	20 041	12 436	15 972	45 004	+181,8
Non-residential buildings						
Office and banking space						
Total square metres	95	0	0	95	0	..
Total value at current prices (R'000)	171	0	0	171	0	..
Shopping space						
Total square metres	0	0	0	1 939	322	-83,4
Total value at current prices (R'000)	0	0	0	3 610	215	-94,0
Industrial and warehouse space						
Total square metres	145	0	0	576	0	..
Total value at current prices (R'000)	120	0	0	974	0	..
Other non-residential space ²						
Total square metres	0	187	0	1 016	187	-81,6
Total value at current prices (R'000)	0	225	0	2 123	225	-89,4
Total value of non-residential buildings at current prices (R'000)	291	225	0	6 878	440	-93,6
Additions and alterations						
Dwelling-houses						
Total square metres	2 307	2 385	1 390	9 730	10 542	+8,3
Total value at current prices (R'000)	3 520	4 684	2 694	16 935	20 315	+20,0
Other buildings ³						
Total square metres	573	0	0	948	936	-1,3
Total value at current prices (R'000)	1 684	120	0	2 821	2 020	-28,4
Total value of additions and alterations at current prices (R'000)	5 204	4 804	2 694	19 756	22 335	+13,1
Total value of buildings reported as completed at current prices (R'000)	8 360	25 070	15 130	42 606	67 779	+59,1

¹ Other residential buildings include institutions for the disabled, boarding houses, old people's homes, hostels, hotels, motels, guest-houses, holiday chalets, entertainment centres, bed-and-breakfast accommodation and casinos.

² Other non-residential space includes churches, sport and recreation clubs, schools, crèches, hospitals and all other non-residential space.

³ Other buildings include additions and alterations to other residential buildings, non-residential buildings and internal alterations.

Table 23 - Buildings reported as completed to municipalities by type of building and province: Free State

Type of building	May 2004	April 2005	May 2005	January 2004 to May 2004	January 2005 to May 2005	Percentage change between January 2004 to May 2004 and January 2005 to May 2005
Residential buildings						
Dwelling-houses smaller than 80 square metres						
Number of dwelling-houses	160	540	81	1 830	1 134	-38,0
Total square metres	6 949	22 222	3 448	77 144	47 146	-38,9
Total value at current prices (R'000)	4 106	15 099	2 781	41 355	31 899	-22,9
Dwelling-houses equal to or larger than 80 square metres						
Number of dwelling-houses	29	62	32	96	204	+112,5
Total square metres	5 427	9 441	7 534	16 511	34 038	+106,2
Total value at current prices (R'000)	8 044	17 066	15 062	24 843	61 918	+149,2
Flats and townhouses						
Number of flats and townhouses	48	205	32	242	415	+71,5
Total square metres	3 836	21 175	4 032	23 862	39 750	+66,6
Total value at current prices (R'000)	6 044	35 366	8 233	35 987	65 935	+83,2
Other residential buildings ¹						
Total square metres	0	568	0	0	1 240	..
Total value at current prices (R'000)	0	1 022	0	0	1 828	..
Total value of residential buildings at current prices (R'000)	18 194	68 553	26 076	102 185	161 580	+58,1
Non-residential buildings						
Office and banking space						
Total square metres	0	2 197	447	5 884	4 152	-29,4
Total value at current prices (R'000)	0	5 866	894	24 230	9 756	-59,7
Shopping space						
Total square metres	0	2 491	1 890	1 360	4 554	+234,9
Total value at current prices (R'000)	0	2 300	3 795	1 140	6 533	+473,1
Industrial and warehouse space						
Total square metres	0	435	1 318	4 435	7 715	+74,0
Total value at current prices (R'000)	0	725	1 520	3 109	11 060	+255,7
Other non-residential space ²						
Total square metres	742	285	81	1 839	811	-55,9
Total value at current prices (R'000)	1 107	284	121	3 762	761	-79,8
Total value of non-residential buildings at current prices (R'000)	1 107	9 175	6 330	32 241	28 110	-12,8
Additions and alterations						
Dwelling-houses						
Total square metres	4 403	5 234	7 986	21 427	25 308	+18,1
Total value at current prices (R'000)	6 363	7 716	12 165	28 461	36 690	+28,9
Other buildings ³						
Total square metres	1 412	4 225	3 702	6 298	12 282	+95,0
Total value at current prices (R'000)	3 723	4 508	4 231	39 483	17 488	-55,7
Total value of additions and alterations at current prices (R'000)	10 086	12 224	16 396	67 944	54 178	-20,3
Total value of buildings reported as completed at current prices (R'000)	29 387	89 952	48 802	202 370	243 868	+20,5

¹ Other residential buildings include institutions for the disabled, boarding houses, old people's homes, hostels, hotels, motels, guest-houses, holiday chalets, entertainment centres, bed-and-breakfast accommodation and casinos.

² Other non-residential space includes churches, sport and recreation clubs, schools, crèches, hospitals and all other non-residential space.

³ Other buildings include additions and alterations to other residential buildings, non-residential buildings and internal alterations.

Table 24 - Buildings reported as completed to municipalities by type of building and province: KwaZulu-Natal

Type of building	May 2004	April 2005	May 2005	January 2004 to May 2004	January 2005 to May 2005	Percentage change between January 2004 to May 2004 and January 2005 to May 2005
Residential buildings						
Dwelling-houses smaller than 80 square metres						
Number of dwelling-houses	1 300	288	177	2 632	1 784	-32,2
Total square metres	42 816	11 459	7 197	90 663	62 976	-30,5
Total value at current prices (R'000)	30 971	12 323	9 834	73 776	67 533	-8,5
Dwelling-houses equal to or larger than 80 square metres						
Number of dwelling-houses	151	190	152	555	826	+48,8
Total square metres	28 345	42 431	28 998	122 368	171 305	+40,0
Total value at current prices (R'000)	60 593	115 319	69 841	230 732	418 726	+81,5
Flats and townhouses						
Number of flats and townhouses	132	67	134	414	775	+87,2
Total square metres	29 943	13 354	21 394	89 479	100 535	+12,4
Total value at current prices (R'000)	79 045	35 751	58 384	218 358	251 738	+15,3
Other residential buildings ¹						
Total square metres	1 760	0	0	1 760	216	-87,7
Total value at current prices (R'000)	5 300	0	0	5 300	389	-92,7
Total value of residential buildings at current prices (R'000)	175 909	163 393	138 059	528 166	738 386	+39,8
Non-residential buildings						
Office and banking space						
Total square metres	1 740	626	17 601	21 546	30 099	+39,7
Total value at current prices (R'000)	3 500	1 100	34 300	35 908	65 899	+83,5
Shopping space						
Total square metres	1 327	4 275	7 319	11 596	19 898	+71,6
Total value at current prices (R'000)	2 869	10 661	19 140	23 399	50 949	+117,7
Industrial and warehouse space						
Total square metres	5 484	9 908	16 106	62 345	95 513	+53,2
Total value at current prices (R'000)	6 290	18 598	24 640	74 044	136 810	+84,8
Other non-residential space ²						
Total square metres	934	1 284	714	4 800	55 924	+1 065,1
Total value at current prices (R'000)	3 600	2 156	1 785	10 489	137 659	+1 212,4
Total value of non-residential buildings at current prices (R'000)	16 259	32 515	79 865	143 840	391 317	+172,1
Additions and alterations						
Dwelling-houses						
Total square metres	29 491	23 365	22 321	126 234	133 148	+5,5
Total value at current prices (R'000)	63 553	46 325	50 968	201 341	268 147	+33,2
Other buildings ³						
Total square metres	5 434	9 569	7 064	40 147	42 997	+7,1
Total value at current prices (R'000)	21 469	25 743	31 107	91 061	118 798	+30,5
Total value of additions and alterations at current prices (R'000)	85 022	72 068	82 075	292 402	386 945	+32,3
Total value of buildings reported as completed at current prices (R'000)	277 190	267 976	299 999	964 408	1 516 648	+57,3

¹ Other residential buildings include institutions for the disabled, boarding houses, old people's homes, hostels, hotels, motels, guest-houses, holiday chalets, entertainment centres, bed-and-breakfast accommodation and casinos.

² Other non-residential space includes churches, sport and recreation clubs, schools, crèches, hospitals and all other non-residential space.

³ Other buildings include additions and alterations to other residential buildings, non-residential buildings and internal alterations.

Table 25 - Buildings reported as completed to municipalities by type of building and province: North West

Type of building	May 2004	April 2005	May 2005	January 2004 to May 2004	January 2005 to May 2005	Percentage change between January 2004 to May 2004 and January 2005 to May 2005
Residential buildings						
Dwelling-houses smaller than 80 square metres						
Number of dwelling-houses	26	69	473	3 643	1 127	-69,1
Total square metres	1 498	2 797	15 006	112 638	37 305	-66,9
Total value at current prices (R'000)	1 830	2 264	9 923	60 545	27 665	-54,3
Dwelling-houses equal to or larger than 80 square metres						
Number of dwelling-houses	66	89	130	243	469	+93,0
Total square metres	12 224	16 291	21 220	48 644	82 296	+69,2
Total value at current prices (R'000)	22 440	35 720	50 114	86 695	175 364	+102,3
Flats and townhouses						
Number of flats and townhouses	5	86	53	495	311	-37,2
Total square metres	542	9 182	7 458	30 888	36 895	+19,4
Total value at current prices (R'000)	950	20 487	25 661	56 895	91 920	+61,6
Other residential buildings ¹						
Total square metres	0	0	4 149	228	4 149	+1 719,7
Total value at current prices (R'000)	0	0	12 387	250	12 387	+4 854,8
Total value of residential buildings at current prices (R'000)	25 220	58 471	98 085	204 385	307 336	+50,4
Non-residential buildings						
Office and banking space						
Total square metres	1 024	1 558	0	3 602	2 593	-28,0
Total value at current prices (R'000)	2 035	9 500	0	7 342	11 339	+54,4
Shopping space						
Total square metres	0	1 050	1 899	6 238	6 821	+9,3
Total value at current prices (R'000)	0	1 600	2 389	9 483	13 143	+38,6
Industrial and warehouse space						
Total square metres	1 797	480	5 017	5 834	6 102	+4,6
Total value at current prices (R'000)	1 250	980	8 935	8 032	11 037	+37,4
Other non-residential space ²						
Total square metres	411	0	170	1 313	404	-69,2
Total value at current prices (R'000)	795	0	425	2 071	947	-54,3
Total value of non-residential buildings at current prices (R'000)	4 080	12 080	11 749	26 928	36 466	+35,4
Additions and alterations						
Dwelling-houses						
Total square metres	5 195	2 595	4 312	16 715	18 939	+13,3
Total value at current prices (R'000)	6 521	4 394	6 528	21 430	29 633	+38,3
Other buildings ³						
Total square metres	1 367	5 156	936	6 598	10 831	+64,2
Total value at current prices (R'000)	2 500	11 591	3 349	12 943	23 810	+84,0
Total value of additions and alterations at current prices (R'000)	9 021	15 985	9 877	34 373	53 443	+55,5
Total value of buildings reported as completed at current prices (R'000)	38 321	86 536	119 711	265 686	397 245	+49,5

¹ Other residential buildings include institutions for the disabled, boarding houses, old people's homes, hostels, hotels, motels, guest-houses, holiday chalets, entertainment centres, bed-and-breakfast accommodation and casinos.

² Other non-residential space includes churches, sport and recreation clubs, schools, crèches, hospitals and all other non-residential space.

³ Other buildings include additions and alterations to other residential buildings, non-residential buildings and internal alterations.

Table 26 - Buildings reported as completed to municipalities by type of building and province: Gauteng

Type of building	May 2004*	April 2005	May 2005	January 2004 to May 2004	January 2005 to May 2005	Percentage change between January 2004 to May 2004 and January 2005 to May 2005
Residential buildings						
Dwelling-houses smaller than 80 square metres						
Number of dwelling-houses	811	326	490	3 531	1 704	-51,7
Total square metres	33 979	17 029	24 045	140 467	79 370	-43,5
Total value at current prices (R'000)	34 457	44 389	58 114	146 569	173 025	+18,1
Dwelling-houses equal to or larger than 80 square metres						
Number of dwelling-houses	504	566	751	2 317	2 805	+21,1
Total square metres	131 242	126 604	184 373	576 963	672 994	+16,6
Total value at current prices (R'000)	300 615	341 101	468 892	1 271 853	1 674 460	+31,7
Flats and townhouses						
Number of flats and townhouses	986	558	988	2 699	3 198	+18,5
Total square metres	120 133	93 147	129 529	349 882	476 685	+36,2
Total value at current prices (R'000)	268 105	261 470	319 687	708 274	1 198 652	+69,2
Other residential buildings ¹						
Total square metres	0	0	259	3 867	259	-93,3
Total value at current prices (R'000)	0	0	725	8 405	725	-91,4
Total value of residential buildings at current prices (R'000)	603 177	646 960	847 418	2 135 101	3 046 862	+42,7
Non-residential buildings						
Office and banking space						
Total square metres	7 414	10 330	15 423	100 725	95 502	-5,2
Total value at current prices (R'000)	14 755	31 189	47 737	197 080	235 294	+19,4
Shopping space						
Total square metres	2 119	4 354	0	13 281	42 313	+218,6
Total value at current prices (R'000)	3 800	13 479	0	27 137	100 723	+271,2
Industrial and warehouse space						
Total square metres	3 261	11 356	59 949	118 855	110 414	-7,1
Total value at current prices (R'000)	4 067	26 417	149 529	267 189	267 946	+0,3
Other non-residential space ²						
Total square metres	45 297	2 797	0	54 035	8 131	-85,0
Total value at current prices (R'000)	73 638	8 095	0	93 738	17 323	-81,5
Total value of non-residential buildings at current prices (R'000)	96 260	79 180	197 266	585 144	621 286	+6,2
Additions and alterations						
Dwelling-houses						
Total square metres	24 139	36 199	43 366	133 843	160 223	+19,7
Total value at current prices (R'000)	49 068	85 458	104 588	268 039	372 942	+39,1
Other buildings ³						
Total square metres	11 483	5 638	6 978	62 631	42 049	-32,9
Total value at current prices (R'000)	26 515	15 752	19 115	160 283	108 822	-32,1
Total value of additions and alterations at current prices (R'000)	75 583	101 210	123 703	428 322	481 764	+12,5
Total value of buildings reported as completed at current prices (R'000)	775 020	827 350	1 168 387	3 148 567	4 149 912	+31,8

¹ Other residential buildings include institutions for the disabled, boarding houses, old people's homes, hostels, hotels, motels, guest-houses, holiday chalets, entertainment centres, bed-and-breakfast accommodation and casinos.

² Other non-residential space includes churches, sport and recreation clubs, schools, crèches, hospitals and all other non-residential space.

³ Other buildings include additions and alterations to other residential buildings, non-residential buildings and internal alterations.

* Revised.

Table 27 - Buildings reported as completed to municipalities by type of building and province: Mpumalanga

Type of building	May 2004	April 2005	May 2005	January 2004 to May 2004	January 2005 to May 2005	Percentage change between January 2004 to May 2004 and January 2005 to May 2005
Residential buildings						
Dwelling-houses smaller than 80 square metres						
Number of dwelling-houses	207	12	50	625	418	-33,1
Total square metres	10 160	716	2 074	30 047	20 315	-32,4
Total value at current prices (R'000)	5 604	1 038	2 698	19 490	19 704	+1,1
Dwelling-houses equal to or larger than 80 square metres						
Number of dwelling-houses	56	28	46	255	234	-8,2
Total square metres	9 500	3 994	8 822	43 454	42 018	-3,3
Total value at current prices (R'000)	14 355	9 214	14 108	65 114	74 886	+15,0
Flats and townhouses						
Number of flats and townhouses	14	0	21	22	83	+277,3
Total square metres	4 048	0	3 190	5 458	9 553	+75,0
Total value at current prices (R'000)	8 000	0	4 650	10 117	15 952	+57,7
Other residential buildings ¹						
Total square metres	453	0	0	453	837	+84,8
Total value at current prices (R'000)	2 450	0	0	2 450	732	-70,1
Total value of residential buildings at current prices (R'000)	30 409	10 252	21 456	97 171	111 274	+14,5
Non-residential buildings						
Office and banking space						
Total square metres	0	1 075	0	2 670	1 075	-59,7
Total value at current prices (R'000)	0	1 073	0	3 000	1 073	-64,2
Shopping space						
Total square metres	1 189	6 958	3 355	1 189	14 112	+1 086,9
Total value at current prices (R'000)	1 460	11 406	2 582	1 460	18 318	+1 154,7
Industrial and warehouse space						
Total square metres	0	0	288	1 357	2 334	+72,0
Total value at current prices (R'000)	0	0	400	2 429	3 322	+36,8
Other non-residential space ²						
Total square metres	0	0	0	0	148	..
Total value at current prices (R'000)	0	0	0	0	234	..
Total value of non-residential buildings at current prices (R'000)	1 460	12 479	2 982	6 889	22 947	+233,1
Additions and alterations						
Dwelling-houses						
Total square metres	1 361	2 783	2 260	8 642	8 920	+3,2
Total value at current prices (R'000)	1 222	3 564	5 133	10 895	14 441	+32,5
Other buildings ³						
Total square metres	276	0	0	5 850	364	-93,8
Total value at current prices (R'000)	377	432	1 200	9 341	2 959	-68,3
Total value of additions and alterations at current prices (R'000)	1 599	3 996	6 333	20 236	17 400	-14,0
Total value of buildings reported as completed at current prices (R'000)	33 468	26 727	30 771	124 296	151 621	+22,0

¹ Other residential buildings include institutions for the disabled, boarding houses, old people's homes, hostels, hotels, motels, guest-houses, holiday chalets, entertainment centres, bed-and-breakfast accommodation and casinos.

² Other non-residential space includes churches, sport and recreation clubs, schools, crèches, hospitals and all other non-residential space.

³ Other buildings include additions and alterations to other residential buildings, non-residential buildings and internal alterations.

Table 28 - Buildings reported as completed to municipalities by type of building and province: Limpopo

Type of building	May 2004	April 2005	May 2005	January 2004 to May 2004	January 2005 to May 2005	Percentage change between January 2004 to May 2004 and January 2005 to May 2005
Residential buildings						
Dwelling-houses smaller than 80 square metres						
Number of dwelling-houses	22	15	21	530	84	-84,2
Total square metres	1 408	958	1 277	22 788	5 081	-77,7
Total value at current prices (R'000)	2 629	2 105	2 652	12 490	10 750	-13,9
Dwelling-houses equal to or larger than 80 square metres						
Number of dwelling-houses	46	22	32	147	138	-6,1
Total square metres	7 243	4 394	6 334	26 785	26 846	+0,2
Total value at current prices (R'000)	13 769	9 513	15 451	46 319	58 530	+26,4
Flats and townhouses						
Number of flats and townhouses	3	3	10	28	14	-50,0
Total square metres	330	357	1 563	4 533	2 101	-53,7
Total value at current prices (R'000)	462	785	3 183	6 338	4 221	-33,4
Other residential buildings ¹						
Total square metres	0	0	0	343	0	..
Total value at current prices (R'000)	0	0	0	1 000	0	..
Total value of residential buildings at current prices (R'000)	16 860	12 403	21 286	66 147	73 501	+11,1
Non-residential buildings						
Office and banking space						
Total square metres	0	0	0	909	206	-77,3
Total value at current prices (R'000)	0	0	0	1 340	412	-69,3
Shopping space						
Total square metres	862	0	0	3 038	2 936	-3,4
Total value at current prices (R'000)	1 255	0	0	4 844	7 546	+55,8
Industrial and warehouse space						
Total square metres	0	0	637	0	3 370	..
Total value at current prices (R'000)	0	0	1 407	0	7 420	..
Other non-residential space ²						
Total square metres	0	0	0	794	0	..
Total value at current prices (R'000)	0	0	0	1 111	0	..
Total value of non-residential buildings at current prices (R'000)	1 255	0	1 407	7 295	15 378	+110,8
Additions and alterations						
Dwelling-houses						
Total square metres	445	581	1 416	5 673	3 906	-31,1
Total value at current prices (R'000)	646	1 207	2 343	8 473	7 130	-15,9
Other buildings ³						
Total square metres	91	0	0	958	1 064	+11,1
Total value at current prices (R'000)	127	0	0	1 449	1 508	+4,1
Total value of additions and alterations at current prices (R'000)	773	1 207	2 343	9 922	8 638	-12,9
Total value of buildings reported as completed at current prices (R'000)	18 888	13 610	25 036	83 364	97 517	+17,0

¹ Other residential buildings include institutions for the disabled, boarding houses, old people's homes, hostels, hotels, motels, guest-houses, holiday chalets, entertainment centres, bed-and-breakfast accommodation and casinos.

² Other non-residential space includes churches, sport and recreation clubs, schools, crèches, hospitals and all other non-residential space.

³ Other buildings include additions and alterations to other residential buildings, non-residential buildings and internal alterations.

Table 29 - Subsidised low-cost dwelling-houses completed or under construction² by province¹

Province	Year	Number of subsidised dwelling-houses completed or under construction ¹	Square metres ³	Value of low-cost dwelling-houses R'000 ³
Western Cape	2002	19 534	531 116	168 852
	2003	16 926	507 780	247 187
	2004	12 751	382 530	211 424
Eastern Cape	2002	46 700	1 575 675	473 806
	2003	35 005	1 050 150	511 213
	2004	34 923	1 047 690	579 058
Northern Cape	2002	5 189	164 906	68 078
	2003	4 354	130 620	63 586
	2004	3 645	109 350	60 438
Free State	2002	8 617	348 492	154 121
	2003	14 848	445 440	216 840
	2004	16 522	495 660	273 951
KwaZulu-Natal	2002	21 958	831 349	234 041
	2003	31 372	941 160	458 157
	2004	35 968	1 079 040	596 385
North West	2002	21 309	630 115	210 439
	2003	13 809	414 270	201 667
	2004	10 149	304 470	168 281
Gauteng	2002	29 939	991 571	321 943
	2003	42 862	1 285 860	625 957
	2004	33 260	997 800	551 484
Mpumalanga	2002	19 883	660 505	253 931
	2003	21 336	640 080	246 079
	2004	18 808	564 240	311 855
Limpopo	2002	15 382	605 877	183 769
	2003	15 596	467 880	227 764
	2004	16 338	490 140	270 900
South Africa	2002	188 511	6 339 606	2 068 980
	2003	196 108	5 883 240	2 798 450
	2004	182 364	5 470 920	3 023 777

¹ Source: Provincial Governments co-ordinated by the National Department of Housing.

² As soon as building commences, dwelling-houses are recorded as completed or under construction.

³ Estimates.

Explanatory notes

Introduction	<p>1 Statistics South Africa (Stats SA) conducts a monthly building statistics survey collecting information regarding building plans passed and buildings completed, financed by the private sector, from the largest local government institutions in South Africa. According to these institutions, they are not always notified about low-cost housing projects. Data regarding subsidised low-cost dwelling-houses completed or under construction, supplied by the provincial governments and co-ordinated by the National Department of Housing, are shown in table 29 (page 35).</p> <p>2 In order to improve timeliness of the publication, some information for the current month has been estimated due to late submission by respondents. These estimates will be revised in the next statistical release(s) as soon as actual information is available.</p>
Purpose of the survey	<p>3 The monthly survey data are used in monitoring the state of economy and formulation of economic policy. Furthermore, the results are important inputs to estimate the Gross Domestic Product (GDP) and to calculate the Composite Leading Business Cycle Indicator. The data are extensively used by the private sector.</p>
Scope of the survey	<p>4 This survey covers local government institutions conducting activities for the private sector regarding -</p> <ul style="list-style-type: none"> • passing of building plans; and • final inspection of completed buildings.
Classification	<p>5 Building activities is classified in division 5 according to the 1993 edition of the <i>Standard Industrial Classification of all Economic Activities, (SIC) Fifth Edition, Report No. 09-90-02</i>. The <i>SIC</i> is based on the 1990 <i>International Standard Industrial Classification of all Economic Activities (ISIC)</i> with suitable adaptations for local conditions.</p>
Statistical unit	<p>6 The statistical unit for the collection of information is a local government institution. Local government institutions include district municipalities, metropolitan municipalities and local municipalities.</p>
Survey methodology and design	<p>7 Stats SA conducts a monthly survey of metropolitan municipalities and large local municipalities on building plans passed and buildings completed. An annual survey of the remaining municipalities is conducted regarding buildings completed. The monthly survey represents approximately 90 percent of the total value of buildings completed. Information regarding building plans passed and buildings completed for the private sector is collected by mail, fax and telephone.</p> <p>According to the municipalities, they are not always notified about low-cost housing projects. Data regarding subsidised low-cost dwelling-houses completed or under construction, supplied by the provincial governments and co-ordinated by the National Department of Housing, are shown in table 29 (page 35).</p>
Constant prices	<p>8 The value of building plans passed and buildings completed at constant prices measures building activities in terms of ruling prices in a specific base year, which is currently 2000. The value of building plans passed at constant prices for each month is obtained by deflating the values at current prices with a price index known as the 'lump sum domestic buildings' as published in statistical release P0151: <i>JBCC Contract Price Adjustment Provisions Work Group Indices</i>. In order to be applicable, these indices (base February 1991=100) are converted to the base year 2000=100.</p> <p>9 The value of buildings completed at constant prices is obtained by deflating the values at current prices with the price index which is used to calculate building plans passed at constant prices (see paragraph 8). Since the completion of buildings may extend over a few months to a few years, the current value of buildings completed is deflated by price indices which prevailed at the time the plans were passed. Therefore, the duration of the completion of different types of buildings are taken into account in ascertaining the deflators e.g. the value of dwelling-houses completed at constant prices at January 2000 is obtained by deflating the current value of dwelling-houses completed for January 2000 with the price index of a month six months prior to January 2000. Furthermore, the value of other residential buildings, non-residential buildings and additions and alterations at constant prices is obtained by deflating the current values with price indices of 12 months, 18 months and 12 months prior to the relevant month, respectively.</p>

Seasonal adjustment	10	Seasonally adjusted estimates of building plans passed and buildings completed are generated each month, using the X-11 Seasonal Adjustment Program developed by US Bureau of the Census Economic Research and Analyses Division, 1968.
	11	Seasonal adjustment is a means of removing the estimated effects of normal seasonal variation from the series so that the effects of other influences on the series can be more clearly recognised. Seasonal adjustment does not aim to remove irregular or non-seasonal influences which may be present in any particular month. Influences that are volatile or unsystematic can still make it difficult to interpret the movement of the series even after adjustment for seasonal variations. Therefore, the month-to-month movements of seasonally adjusted estimates may not be reliable indicators of trend behaviour.
Trend cycle	12	The trend is a long-term pattern or movement of a time series. The X-11 Seasonal Adjustment Program is used for smoothing seasonally adjusted data.
Revised figures	13	Revised figures are due to late submission of data to Stats SA, or to respondents reporting revisions or corrections to their figures. Figures for the latest month are therefore preliminary. Data are edited at municipal level.
	14	Once a year the annual statistical release P5041.3 is published with the revised and updated information at provincial and municipal level for the previous calendar year. Due to this comprehensive revision, the monthly statistical release P5041.1 reflects provincial revision for 2004 where applicable.
Related publications	15	Users may also wish to refer to the following publications: <ul style="list-style-type: none"> • P5041.3: <i>Selected building statistics of the private sector as reported by local government institutions</i> issued annually. • P9101.2: <i>Actual and expected expenditure on construction by the public sector per statistical region</i> issued annually. • <i>Bulletin of Statistics</i> issued quarterly. • <i>South African Statistics</i> issued annually.
Unpublished statistics	16	In some cases Stats SA can also make available statistics which are not published. The statistics can be made available in one or more of the following ways: computer printouts, CD and diskette. Generally a charge is made for providing unpublished statistics.
Rounding-off of figures	17	The figures in the tables have, where necessary, been rounded off to the nearest digit shown. There may, therefore, be slight discrepancies between the sums of the constituent items and the totals shown.
Pre-release policy	18	Stats SA's pre-release policy may be inspected at its website, www.statssa.gov.za
Symbols and abbreviations	19	.. no meaningful percentage change between two specified periods available since either one or both of the totals are nil
	0	nil or figure too small to publish
	*	revised
	Stats SA	Statistics South Africa
	SIC	Standard Industrial Classification of all Economic Activities
	ISIC	International Standard Industrial Classification of all Economic Activities
	JBCC	Joint Building Contracts Committee
	CD	Compact Disc
	US	United States
	SARB	South African Reserve Bank
	DTI	Department of Trade and Industry

Glossary

Additions and alterations	Additions and alterations include extensions to existing buildings as well as internal and external alterations of existing buildings.
Blocks of flats	Blocks of flats are regarded as high-density housing consisting of a number of self-contained dwelling-units, each with at least one living-room together with a kitchen and bathroom, conjoined to similar units in one building.
Dwelling-house	A dwelling-house refers to a free-standing, complete structure on a separate stand or a self-contained dwelling-unit, granny flat, on the same premises as an existing residence. Out-buildings and garages are included.
Local government institutions	Local government institutions include – <ul style="list-style-type: none"> • District municipalities; • Metropolitan municipalities; and • Local municipalities.
Municipality	Municipality is a generic term describing the “unit” of government in the local spheres responsible for local government in a geographically demarcated area and including district, metropolitan and local municipalities. A municipality is an institution consisting of a municipal council (elected political representatives) and municipal administration (appointed officials).
District municipality	District municipality means municipality that has municipal executive and legislative authority in an area that includes more than one municipality, and which is described in section 155(1) of the Constitution as a category C municipality (Refer to Local Government: Municipal Structure Act, 1998 (Act No. 117 of 1998)).
Metropolitan municipality	Metropolitan municipality means municipality that has municipal executive and legislative authority in an area that includes more than one municipality, and which is described in section 155(1) of the Constitution as a category A municipality (Refer to Local Government: Municipal Structure Act, 1998 (Act No. 117 of 1998)).
Local municipality	Local municipality means municipalities that share municipal executive and legislative authority in its areas with a district municipality within whose area it falls, that is described in section 155(1) of the constitution as a category B municipality.
Non-residential buildings	Non-residential buildings comprise factories, commercial, financial and other office buildings, as well as other buildings not used for residential purposes, such as churches, halls, clubs, schools and hospitals.
Other residential buildings	Other residential buildings include institutions for the disabled, boarding houses, old people’s homes, hostels, hotels, motels, guest-houses, holiday chalets, bed-and-breakfast accommodation, entertainment centres and casinos.
Percentage change	<p>When using monthly actual values, the percentage change is the change in actual values of building activities (building plans passed or buildings completed) of the relevant month compared with the actual values of building activities (building plans passed or buildings completed) of the same month in the previous year expressed as a percentage.</p> <p>When using annual actual values, the percentage change is the change in the actual values of building activities (building plans passed or buildings completed) of the relevant year compared with the actual values of building activities (building plans passed or buildings completed) of the previous year expressed as a percentage.</p> <p>When using seasonally adjusted values, the percentage change is the change in the seasonally adjusted values of building activities (building plans passed or buildings completed) of the relevant month compared with the seasonally adjusted values of building activities (building plans passed or buildings completed) of the previous month expressed as a percentage.</p>
Reference period	Reference period is one calendar month.
Residential buildings	Residential buildings comprise dwelling-houses, flats, townhouses and other residential buildings.
Townhouses	Townhouses are multiple, medium-density dwelling-units and include cluster housing, group housing, simplexes, duplexes, triplexes and other similar dwelling-units which are usually grouped together, with one level of each unit on ground level. This excludes blocks of flats.

General information

Stats SA publishes approximately 300 different statistical releases each year. It is not economically viable to produce them in more than one of South Africa's eleven official languages. Since the releases are used extensively, not only locally but also by international economic and social-scientific communities, Stats SA releases are published in English only.

Stats SA has copyright on this publication. Users may apply the information as they wish, provided that they acknowledge Stats SA as the source of the basic data wherever they process, apply, utilise, publish or distribute the data and also that they specify that the relevant application and analysis (where applicable) result from their own processing of the data.

Advance release calendar

An advance release calendar is disseminated on www.statssa.gov.za

Stats SA products

A complete set of Stats SA publications is available at the Stats SA Library and the following libraries:

National Library of South Africa, Pretoria Division
National Library of South Africa, Cape Town Division
Natal Society Library, Pietermaritzburg
Library of Parliament, Cape Town
Bloemfontein Public Library
Johannesburg Public Library
Eastern Cape Library Services, King William's Town
Central Regional Library, Polokwane
Central Reference Library, Nelspruit
Central Reference Collection, Kimberley
Central Reference Library, Mmabatho

Stats SA also provides a subscription service.

Electronic services

A large range of data are available via on-line services, diskette, CD and computer printouts. For more details about our electronic data services, contact (012) 310 8600/8390/8351/4892/8496/8095.

You can visit us on the Internet at: www.statssa.gov.za

Enquiries

Telephone number: (012) 310 8600/8390/8351/4892/8496/8095 (user information services)
(012) 310 8228/310 8007 (technical enquiries)
(012) 310 8161 (orders)
(012) 310 8490 (library)

Fax number: (012) 310 8664 (technical enquiries)

Email: Gretaz@statssa.gov.za (technical enquiries)
info@statssa.gov.za (user information services)
distribution@statssa.gov.za (orders)

Postal address: Private Bag X44, Pretoria, 0001

Produced by Stats SA