

Building statistics

May 2002

Co-operation between Statistics South Africa (Stats SA), the citizens of the country, the private sector and government institutions is essential for a successful statistical system. Without continued co-operation and goodwill, the timely release of relevant and reliable official statistics will not be possible.

Embargo: 13:00
Date: 17 July 2002

Stats SA publishes approximately three hundred different releases each year. It is not economically viable to produce them in more than one of South Africa's eleven official languages. Since the releases are used extensively, not only locally, but also by international economic and social-scientific communities, Stats SA releases are published in English only.

Key figures regarding building plans passed for the month ended May 2002

Actual estimates at constant 2000 prices	May 2002	January 2002 to May 2002	Percentage change between May 2001 and May 2002	Percentage change between March 2001 to May 2001 and March 2002 to May 2002	Percentage change between January 2001 to May 2001 and January 2002 to May 2002
	R million	R million			
Residential buildings					
Dwelling-houses	745,4	3 265,9	+6,0	+7,7	+4,7
Flats and townhouses	178,5	938,2	-10,8	+28,4	+25,8
Other residential buildings	14,1	134,0	-60,7	-68,4	-6,0
Total	938,0	4 338,1	-0,1	+9,2	+8,3
Non-residential buildings	370,1	1 441,1	+36,1	+42,3	-4,0
Additions and alterations	783,4	2 346,1	+66,8	+28,5	+15,3
Total	2 091,5	8 125,3	+24,4	+20,0	+7,7

Seasonally adjusted estimates at constant 2000 prices	May 2002	Percentage change between April 2002 and May 2002	Percentage change between December 2001 to February 2002 and March 2002 to May 2002
	R million		
Residential buildings	839,5	-25,5	+6,9
Non-residential buildings	319,2	-10,9	+52,6
Additions and alterations	730,5	+40,3	+17,1
Total	1 889,2	-5,8	+16,6

Key findings regarding building plans passed for the three months ended May 2002

Seasonally adjusted real value of building plans passed increases

The seasonally adjusted real value of building plans passed (at constant 2000 prices) for the three months ended May 2002 increased by 16,6% compared with the previous three months.

The increase of 16,6% in the seasonally adjusted real value of building plans passed was due to increases reported for non-residential buildings (+52,6%), additions and alterations (+17,1%) and residential buildings (+6,9%) during the three months ended May 2002 compared with the previous three months.

Key findings regarding building plans passed for the month ended May 2002

Total real value of building plans passed increases

The total real value of building plans passed (at constant 2000 prices) during the first five months of 2002 increased by 7,7% (+R583,0 million) to R8 125,3 million compared with the first five months of 2001. Large increases in the real value of building plans passed were reported for additions and alterations (+R311,1 million), flats and townhouses (+R192,6 million) and dwelling-houses (+R148,1 million). Large real increases for additions and alterations were reported by KwaZulu-Natal (R143,5 million), Gauteng (+R70,6 million) and Western Cape (+R67,7 million). The largest real increases for flats and townhouses and dwelling-houses were reported by Gauteng (+R136,6 million) and Western Cape (+R176,4 million) respectively during the above-mentioned period.

Eight of the nine provinces reported increases in the total real value of plans passed

The largest provincial contributors to the increase of 7,7% (+R583,0 million) in the total real value of building plans passed during the first five months of 2002 compared with the first five months of 2001 were KwaZulu-Natal (+2,7 percentage points or R206,6 million), Mpumalanga (+1,4 percentage points or R105,4 million) and Gauteng (+1,3 percentage points or R97,7 million) (cf. table A). Large real increases in KwaZulu-Natal were reported for additions and alterations (+R143,5 million, mainly due to the approval of building plans for additions and alterations to non-residential buildings to the real value of R164,3 million by Umhlathuze Municipality – Richards Bay Area during May 2002) and industrial and warehouse space (+R117,6 million, mainly due to the approval of building plans for industrial and warehouse space to the real value of R126,9 million by Msunduzi Municipality – Pietermaritzburg Area during May 2002). The largest real increase in Mpumalanga was reported for 'other' residential buildings (+R68,1 million, mainly due to the approval of building plans for a hotel to the real value of R61,4 million by Emalahleni Municipality – Witbank Area during February 2002). Large real increases in Gauteng were reported for flats and townhouses (+R136,6 million, mainly due to real increases as reported by the selected urban areas of Pretoria (+R106,4 million)) during the above-mentioned period.

Table A - Contribution of provinces to the total real value of building plans passed

Province	Percentage contribution to the total real value of plans passed during January 2001 to May 2001	Percentage change between January 2001 to May 2001 and January 2002 to May 2002	Contribution (percentage points) ^{1/} to the percentage change in the real value of plans passed between January 2001 to May 2001 and January 2002 to May 2002	Difference in total real value of plans passed between January 2001 to May 2001 and January 2002 to May 2002 R million
KwaZulu-Natal	12,0	+22,9	+2,7	+206,6
Mpumalanga	3,2	+44,1	+1,4	+105,4
Gauteng	41,9	+3,1	+1,3	+97,7
North West	2,6	+29,0	+0,8	+56,3
Eastern Cape	6,2	+12,0	+0,7	+56,5
Free State	2,5	+17,4	+0,4	+33,2
Western Cape	29,5	+0,6	+0,2	+13,7
Northern Province	1,5	+14,4	+0,2	+16,3
Northern Cape	0,6	-5,9	-0,0	-2,7
Total	100,0	+7,7	+7,7	+583,0

1/ The contribution (percentage points) is calculated by multiplying the percentage change of each province between January 2001 to May 2001 and January 2002 to May 2002 (cf. column 3) with the percentage contribution of the corresponding province to the total real value of plans passed during January 2001 to May 2001 (cf. column 2) divided by 100.

Key figures regarding buildings completed for the month ended May 2002

Actual estimates at constant 2000 prices	May 2002	January 2002 to May 2002	Percentage change between May 2001 and May 2002	Percentage change between March 2001 to May 2001 and March 2002 to May 2002	Percentage change between January 2001 to May 2001 and January 2002 to May 2002
	R million	R million			
Residential buildings					
Dwelling-houses	421,4	1 905,8	+8,1	+24,1	+20,1
Flats and townhouses	163,0	719,5	+248,1	+42,5	+66,0
Other residential buildings	38,6	255,1	+3 006,8	+1 293,6	-27,1
Total	623,0	2 880,4	+42,2	+45,8	+21,5
Non-residential buildings	291,9	974,7	-5,2	+8,6	-17,9
Additions and alterations	280,3	1 164,4	-5,9	+3,5	-6,1
Total	1 195,2	5 019,5	+14,5	+24,8	+4,7

Seasonally adjusted estimates at constant 2000 prices

	May 2002	Percentage change between April 2002 and May 2002	Percentage change between December 2001 to February 2002 and March 2002 to May 2002
	R million		
Residential buildings	603,0	-9,2	+11,0
Non-residential buildings	234,8	-17,9	+33,6
Additions and alterations	238,1	-41,2	+37,5
Total	1 075,9	-20,6	+20,8

Key findings regarding buildings completed for the three months ended May 2002

Seasonally adjusted real value of buildings completed increases

The seasonally adjusted real value of buildings completed (at constant 2000 prices) for the three months ended May 2002 increased by 20,8% compared with the previous three months.

The increase of 20,8% in the seasonally adjusted real value of buildings completed during the three months ended May 2002 compared with the previous three months was due to increases in the seasonally adjusted real value of additions and alterations (+37,5%), non-residential buildings (+33,6%) and residential buildings (+11,0%).

Key findings regarding buildings completed for the month ended May 2002

Total real value of buildings completed increases

The total real value of buildings completed (at constant 2000 prices) during the first five months of 2002 increased by 4,7% (+R223,1 million) to R5 019,5 million compared with the first five months of 2001. Large increases in the real value of buildings completed were reported for dwelling-houses (+R319,2 million, mainly due to increases reported by the selected urban areas of Cape Town (+R182,5 million) and Witwatersrand (+R59,9 million)) and flats and townhouses (+R286,0 million, mainly due to increases reported by the selected urban areas of Witwatersrand (+R111,2 million), Cape Town (+R64,5 million) and Pretoria (+R49,1 million)). However, these increases were partially counteracted by decreases in the real value of non-residential buildings completed (-R212,3 million, mainly due to decreases reported for industrial and warehouse space (-R147,0 million) and office and banking space (-R110,3 million)) and additions and alterations (-R75,2 million) during the above-mentioned period.

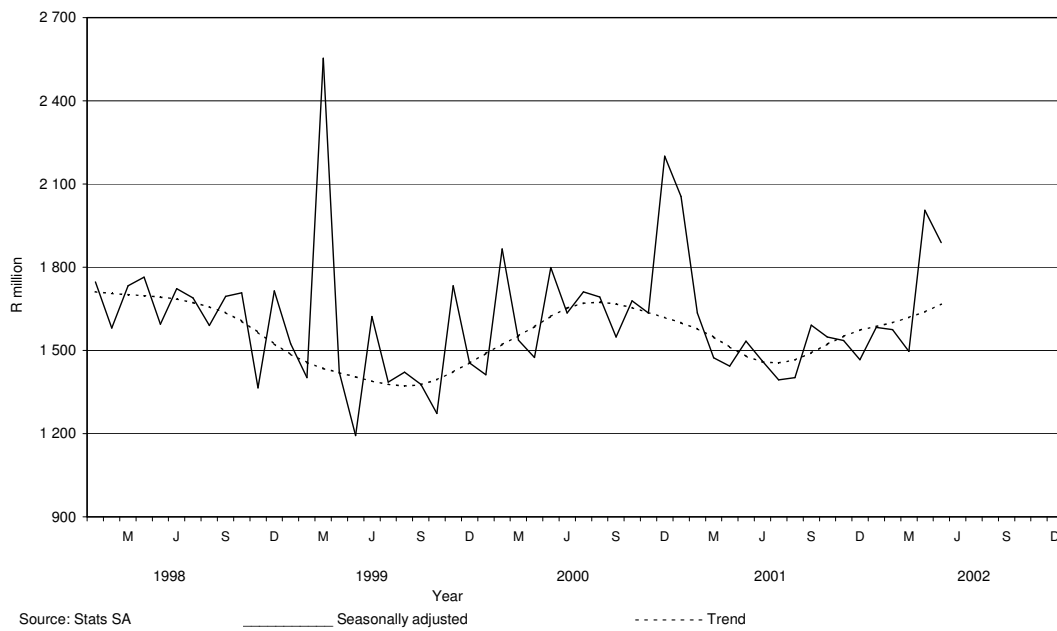
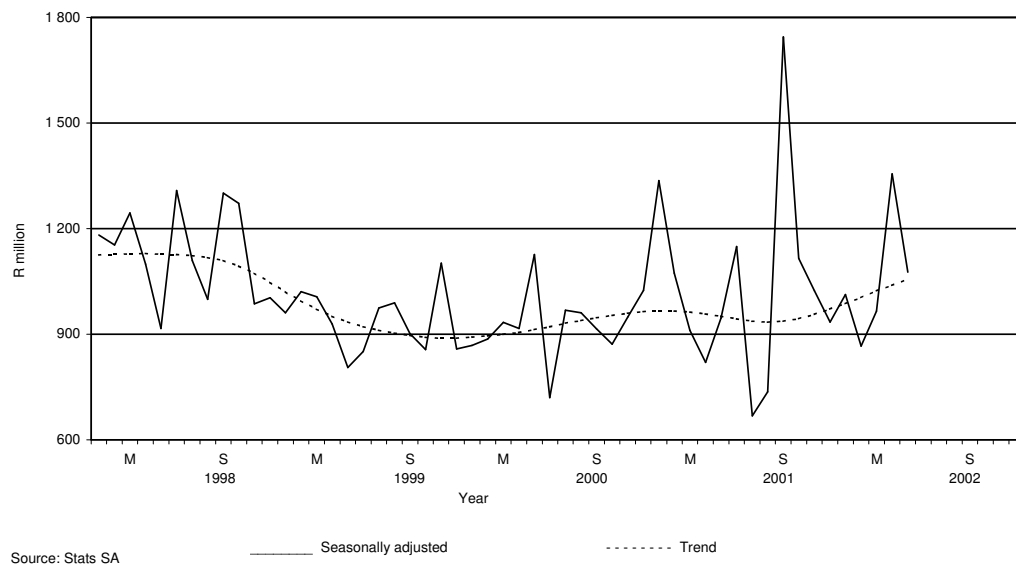
Four of the nine provinces reported increases in the total real value of buildings completed

The largest provincial contributor to the increase of 4,7% (+R223,1 million) in the total real value of buildings completed during the first five months of 2002 compared with the first five months of 2001 was Western Cape (+5,8 percentage points or R279,7 million) and Northern Province (+3,9 percentage points or R188,2 million) (cf. table B). Large real increases in Western Cape were reported for dwelling-houses (+R246,0 million) and flats and townhouses (+R105,9 million) during above-mentioned period. Large real increases in Northern Province were reported for 'other' residential buildings (+R193,7 million), mainly due to the completion of a hotel and casino to the real value of R195,1 million as reported by Polokwane Municipality (previously Pietersburg) during March 2002. However, these increases were partially counteracted by decreases in the total real value of buildings completed as reported by Eastern Cape (-2,9 percentage points or R139,6 million) and Free State (-2,3 percentage points or R109,4 million) (cf. table B).

Table B - Contribution of provinces to the total real value of building completed

Province	Percentage contribution to the total real value of plans passed during January 2001 to May 2001	Percentage change between January 2001 to May 2001 and January 2002 to May 2002	Contribution (percentage points) ^{1/} to the percentage change in the real value of plans passed between January 2001 to May 2001 and January 2002 to May 2002	Difference in total real value of plans passed between January 2001 to May 2001 and January 2002 to May 2002 R million
Western Cape	27,1	+21,5	+5,8	+279,7
Northern Province	1,0	+391,1	+3,9	+188,2
KwaZulu-Natal	14,9	+9,7	+1,5	+69,2
North West	2,5	+33,4	+0,8	+39,6
Mpumalanga	2,7	-22,8	-0,6	-29,9
Northern Cape	1,3	-54,3	-0,7	-34,8
Gauteng	37,4	-2,2	-0,8	-39,9
Free State	5,0	-45,5	-2,3	-109,4
Eastern Cape	8,1	-35,7	-2,9	-139,6
Total	100,0	+4,7	+4,7	+223,1

1/ The contribution (percentage points) is calculated by multiplying the percentage change of each province between January 2001 to May 2001 and January 2002 to May 2002 (cf. column 3) with the percentage contribution of the corresponding province to the total real value of buildings completed during January 2001 to May 2001 (cf. column 2) divided by 100.

Figure 1 – Total real value of building plans passed**Figure 2 – Total real value of buildings completed**

Contents

Page

Notes	7
Tables	
Table 1 Actual values and percentage change of building plans passed at current prices according to type of building	8
Table 2 Seasonally adjusted values and percentage change of building plans passed at current prices according to type of building	9
Table 3 Actual values and percentage change of building plans passed at constant 2000 prices according to type of building	10
Table 4 Seasonally adjusted values and percentage change of building plans passed at constant 2000 prices according to type of building	11
Table 5 Actual values and percentage change of buildings completed at current prices according to type of building	12
Table 6 Seasonally adjusted values and percentage change of buildings completed at current prices according to type of building	13
Table 7 Actual values and percentage change of buildings completed at constant 2000 prices according to type of building	14
Table 8 Seasonally adjusted values and percentage change of buildings completed at constant 2000 prices according to type of building	15
Table 9 Building plans passed according to type of building: Total RSA	16
Table 10 Building plans passed according to type of building and province: Western Cape	17
Table 11 Building plans passed according to type of building and province: Eastern Cape	18
Table 12 Building plans passed according to type of building and province: Northern Cape	19
Table 13 Building plans passed according to type of building and province: Free State	20
Table 14 Building plans passed according to type of building and province: KwaZulu-Natal	21
Table 15 Building plans passed according to type of building and province: North West	22
Table 16 Building plans passed according to type of building and province: Gauteng	23
Table 17 Building plans passed according to type of building and province: Mpumalanga	24
Table 18 Building plans passed according to type of building and province: Northern Province	25
Table 19 Buildings completed according to type of building: Total RSA	26
Table 20 Buildings completed according to type of building and province: Western Cape	27
Table 21 Buildings completed according to type of building and province: Eastern Cape	28
Table 22 Buildings completed according to type of building and province: Northern Cape	29
Table 23 Buildings completed according to type of building and province: Free State	30
Table 24 Buildings completed according to type of building and province: KwaZulu-Natal	31
Table 25 Buildings completed according to type of building and province: North West	32
Table 26 Buildings completed according to type of building and province: Gauteng	33
Table 27 Buildings completed according to type of building and province: Mpumalanga	34
Table 28 Buildings completed according to type of building and province: Northern Province	35
Table 29 Building plans passed according to type of building and selected urban area: Cape Town	36
Table 30 Building plans passed according to type of building and selected urban area: Port Elizabeth	37
Table 31 Building plans passed according to type of building and selected urban area: Durban	38
Table 32 Building plans passed according to type of building and selected urban area: Witwatersrand	39
Table 33 Building plans passed according to type of building and selected urban area: Pretoria	40
Table 34 Building plans passed according to type of building and selected urban area: Bloemfontein	41
Table 35 Buildings completed according to type of building and selected urban area: Cape Town	42
Table 36 Buildings completed according to type of building and selected urban area: Port Elizabeth	43
Table 37 Buildings completed according to type of building and selected urban area: Durban	44
Table 38 Buildings completed according to type of building and selected urban area: Witwatersrand	45
Table 39 Buildings completed according to type of building and selected urban area: Pretoria	46
Table 40 Buildings completed according to type of building and selected urban area: Bloemfontein	47
Additional information	
Explanatory notes	48
Technical notes	50
Local government institutions covered in the sample survey	51
Glossary	54
For more information	55

Notes

Forthcoming issues	Issue	Expected release date
	June 2002	14 August 2002
	July 2002	18 September 2002
	August 2002	16 October 2002
	September 2002	20 November 2002
	October 2002	18 December 2002
	November 2002	15 January 2003
	December 2002	19 February 2003
Purpose of the survey	<p>The Building Statistics Survey is a countrywide survey covering a sample of municipalities in South Africa. The information received is used to estimate key economic statistics used by the private and public sectors. The information is also used to compile estimates of the Gross Domestic Product (GDP). These statistics are also used by government to monitor the Reconstruction and Development Program (RDP) in South Africa.</p>	
Change in base year of constant prices from 1995 to 2000	<p>Following international practice, the base year of the price index ("lump sum domestic buildings" as published in statistical release P0151 –JBCC Contract Price Adjustment Provision Work Group Indices), which is used to deflate the current prices of building plans passed and buildings completed to constant prices, has been converted to 2000=100 with effect from May 2002. Previously the value of building plans passed and buildings completed was published at constant 1995 prices. It should be borne in mind that the change does not in any way affect the trends.</p>	

Table 1 - Actual values and percentage change of building plans passed at current prices according to type of building

Year ^{1/} and month ^{2/}	Residential buildings		Non-residential buildings		Additions and alterations		Total	
	R'000	Percentage change	R'000	Percentage change	R'000	Percentage change	R'000	Percentage change
2000 Jan	490 776	- 11.3	163 926	- 31.0	365 596	+ 31.8	1 020 298	- 4.5
Feb	784 023	+ 48.3	521 389	+ 32.1	399 280	+ 12.3	1 704 692	+ 33.3
Mar	747 421	+ 12.0	359 267	- 75.3	515 668	+ 8.2	1 622 356	- 37.6
Apr	627 642	+ 18.3	271 151	- 27.6	382 300	+ 15.8	1 281 093	+ 3.7
May	874 847	+ 65.8	573 853	+ 109.3	473 062	+ 17.3	1 921 762	+ 59.5
Jun	853 154	+ 1.8	336 324	- 19.6	532 278	+ 31.8	1 721 756	+ 3.7
Jul	908 061	+ 42.5	484 669	+ 5.2	549 932	+ 30.8	1 942 662	+ 27.9
Aug	929 836	+ 31.1	353 488	- 9.0	492 627	+ 18.5	1 775 951	+ 23.8
Sep	826 851	+ 37.8	354 456	+ 16.0	465 836	- 3.8	1 647 143	+ 18.5
Oct	916 410	+ 37.9	492 884	+ 49.8	539 561	+ 23.5	1 948 855	+ 36.2
Nov	914 346	+ 28.6	493 166	- 29.7	503 659	- 6.2	1 911 171	- 2.0
Dec	606 148	+ 22.7	704 410	+ 212.8	317 835	+ 0.9	1 628 393	+ 57.5
Total	9 479 515	+ 28.4	5 108 983	- 8.2	5 537 634	+ 14.1	20 126 132	+ 13.1
2001 Jan*	721 003	+ 46.9	477 489	+ 191.3	352 193	- 3.7	1 550 685	+ 52.0
Feb*	826 607	+ 5.4	300 417	- 42.4	474 953	+ 19.0	1 601 977	- 6.0
Mar	929 196	+ 24.3	301 148	- 16.2	436 645	- 15.3	1 666 989	+ 2.8
Apr	738 858	+ 17.7	207 874	- 23.3	377 373	- 1.3	1 324 105	+ 3.4
May	999 426	+ 14.2	289 330	- 49.6	499 673	+ 5.6	1 788 429	- 6.9
Jun	901 450	+ 5.7	299 913	- 10.8	447 228	- 16.0	1 648 591	- 4.2
Jul	891 483	- 1.8	366 953	- 24.3	427 464	- 22.3	1 685 900	- 13.2
Aug*	836 033	- 10.1	245 865	- 30.4	482 883	- 2.0	1 564 781	- 11.9
Sep*	960 995	+ 16.2	303 367	- 14.4	526 113	+ 12.9	1 790 475	+ 8.7
Oct	1 196 455	+ 30.6	185 828	- 62.3	542 954	+ 0.6	1 925 237	- 1.2
Nov*	974 628	+ 6.6	317 506	- 35.6	595 512	+ 18.2	1 887 646	- 1.2
Dec	649 614	+ 7.2	140 365	- 80.1	357 449	+ 12.5	1 147 428	- 29.5
Total	10 625 748	+ 12.1	3 436 055	- 32.7	5 520 440	- 0.3	19 582 243	- 2.7
2002 Jan*	777 744	+ 7.9	168 097	- 64.8	399 729	+ 13.5	1 345 570	- 13.2
Feb*	1 013 916	+ 22.7	247 016	- 17.8	447 620	- 5.8	1 708 552	+ 6.7
Mar*	962 925	+ 3.6	465 942	+ 54.7	421 614	- 3.4	1 850 481	+ 11.0
Apr*	1 138 926	+ 54.1	347 885	+ 67.4	519 452	+ 37.6	2 006 263	+ 51.5
May	1 108 751	+ 10.9	437 419	+ 51.2	925 945	+ 85.3	2 472 115	+ 38.2

^{1/} The annual percentage change is the change in the actual values of building plans passed of the relevant year compared with the actual values of building plans passed of the previous year expressed as a percentage.

^{2/} The monthly percentage change is the change in the actual values of building plans passed of the relevant month compared with the actual values of building plans passed of the same month in the previous year expressed as a percentage.

Table 2 - Seasonally adjusted values and percentage change of building plans passed at current prices according to type of building

Year and month ^{1/}	Residential buildings		Non-residential buildings		Additions and alterations		Total	
	R'000	Percentage change	R'000	Percentage change	R'000	Percentage change	R'000	Percentage change
2000 Jan	633 884	- 9.8	251 181	- 17.8	485 481	+ 15.2	1 370 545	- 4.2
Feb	782 859	+ 23.5	579 264	+ 130.6	446 742	- 8.0	1 808 865	+ 32.0
Mar	698 306	- 10.8	332 412	- 42.6	475 437	+ 6.4	1 506 155	- 16.7
Apr	700 993	+ 0.4	309 696	- 6.8	442 330	- 7.0	1 453 018	- 3.5
May	802 683	+ 14.5	525 120	+ 69.6	450 411	+ 1.8	1 778 213	+ 22.4
Jun	811 479	+ 1.1	307 722	- 41.4	512 518	+ 13.8	1 631 719	- 8.2
Jul	832 522	+ 2.6	386 754	+ 25.7	496 375	- 3.1	1 715 651	+ 5.1
Aug	892 816	+ 7.2	352 152	- 8.9	465 621	- 6.2	1 710 588	- 0.3
Sep	805 273	- 9.8	342 514	- 2.7	424 191	- 8.9	1 571 978	- 8.1
Oct	771 246	- 4.2	467 067	+ 36.4	474 849	+ 11.9	1 713 162	+ 9.0
Nov	858 542	+ 11.3	397 143	- 15.0	426 359	- 10.2	1 682 043	- 1.8
Dec	859 896	+ 0.2	982 294	+ 147.3	433 802	+ 1.7	2 275 992	+ 35.3
2001 Jan	922 271	+ 7.3	770 048	- 21.6	458 890	+ 5.8	2 151 209	- 5.5
Feb	820 551	- 11.0	345 061	- 55.2	541 890	+ 18.1	1 707 502	- 20.6
Mar	879 931	+ 7.2	268 530	- 22.2	403 664	- 25.5	1 552 126	- 9.1
Apr	841 573	- 4.4	244 622	- 8.9	438 145	+ 8.5	1 524 340	- 1.8
May	901 510	+ 7.1	253 611	+ 3.7	468 755	+ 7.0	1 623 876	+ 6.5
Jun	853 537	- 5.3	276 547	+ 9.0	429 097	- 8.5	1 559 181	- 4.0
Jul	818 856	- 4.1	283 691	+ 2.6	388 675	- 9.4	1 491 221	- 4.4
Aug	800 300	- 2.3	243 828	- 14.1	458 007	+ 17.8	1 502 135	+ 0.7
Sep	937 909	+ 17.2	294 456	+ 20.8	477 521	+ 4.3	1 709 886	+ 13.8
Oct	1 014 212	+ 8.1	180 138	- 38.8	479 215	+ 0.4	1 673 565	- 2.1
Nov	916 894	- 9.6	255 436	+ 41.8	501 112	+ 4.6	1 673 442	+ 0.0
Dec	916 055	- 0.1	198 731	- 22.2	495 074	- 1.2	1 609 860	- 3.8
2002 Jan	988 591	+ 7.9	278 994	+ 40.4	512 453	+ 3.5	1 780 038	+ 10.6
Feb	996 427	+ 0.8	283 776	+ 1.7	514 281	+ 0.4	1 794 485	+ 0.8
Mar	922 702	- 7.4	409 530	+ 44.3	391 858	- 23.8	1 724 090	- 3.9
Apr	1 313 170	+ 42.3	416 390	+ 1.7	604 617	+ 54.3	2 334 177	+ 35.4
May	987 568	- 24.8	374 263	- 10.1	859 412	+ 42.1	2 221 242	- 4.8

^{1/} The percentage change is the change in the seasonally adjusted values of building plans passed of the relevant month compared with the seasonally adjusted values of building plans passed of the previous month expressed as a percentage.

Table 3 - Actual values and percentage change of building plans passed at constant 2000 prices according to type of building

Year and month ^{2/}	Residential buildings		Non-residential buildings		Additions and alterations		Total	
	R'000	Percentage change	R'000	Percentage change	R'000	Percentage change	R'000	Percentage change
2000* Jan	508 050	- 13.2	169 696	- 32.5	378 464	+ 28.9	1 056 210	- 6.6
Feb	808 271	+ 46.0	537 514	+ 30.1	411 629	+ 10.6	1 757 414	+ 31.2
Mar	765 016	+ 9.7	367 725	- 75.8	527 808	+ 6.0	1 660 549	- 38.8
Apr	636 554	+ 15.4	275 001	- 29.4	387 728	+ 13.0	1 299 283	+ 1.2
May	881 014	+ 60.8	577 898	+ 103.0	476 397	+ 13.8	1 935 309	+ 54.7
Jun	855 721	- 1.2	337 336	- 22.0	533 880	+ 27.8	1 726 937	+ 0.6
Jul	903 543	+ 37.5	482 258	+ 1.5	547 196	+ 26.3	1 932 997	+ 23.5
Aug	917 903	+ 41.0	348 952	- 13.0	486 305	+ 13.4	1 753 160	+ 18.4
Sep	813 029	+ 31.7	348 531	+ 10.9	458 049	- 8.0	1 619 609	+ 13.3
Oct	897 561	+ 31.5	482 746	+ 42.9	528 463	+ 17.9	1 908 770	+ 29.9
Nov	891 175	+ 22.3	480 669	- 33.1	490 896	- 10.8	1 862 740	- 6.7
Dec	589 065	+ 16.7	684 558	+ 197.3	308 878	- 4.1	1 582 501	+ 49.7
Total	9 466 902	+ 23.9	5 092 884	- 11.7	5 535 693	+ 10.2	20 095 479	+ 9.0
2001* Jan	692 606	+ 36.3	458 683	+ 170.3	338 322	- 10.6	1 489 611	+ 41.0
Feb	791 011	- 2.1	287 480	- 46.5	454 500	+ 10.4	1 532 991	- 12.8
Mar	884 107	+ 15.6	286 535	- 22.1	415 457	- 21.3	1 586 099	- 4.5
Apr	699 014	+ 9.8	196 664	- 28.5	357 023	- 7.9	1 252 701	- 3.6
May	939 310	+ 6.6	271 927	- 52.9	469 617	- 1.4	1 680 854	- 13.1
Jun	845 638	- 1.2	281 344	- 16.6	419 538	- 21.4	1 546 520	- 10.4
Jul	831 607	- 8.0	342 307	- 29.0	398 754	- 27.1	1 572 668	- 18.6
Aug	778 429	- 15.2	228 925	- 34.4	449 612	- 7.5	1 456 966	- 16.9
Sep	893 118	+ 9.9	281 940	- 19.1	488 953	+ 6.7	1 664 011	+ 2.7
Oct	1 106 804	+ 23.3	171 904	- 64.4	502 270	- 5.0	1 780 978	- 6.7
Nov	896 622	+ 0.6	292 094	- 39.2	547 849	+ 11.6	1 736 565	- 6.8
Dec	594 885	+ 1.0	128 539	- 81.2	327 334	+ 6.0	1 050 758	- 33.6
Total	9 953 151	+ 5.1	3 228 342	- 36.6	5 169 229	- 6.6	18 350 722	- 8.7
2002 Jan	695 035	+ 0.4	150 221	- 67.2	357 220	+ 5.6	1 202 476	- 19.3
Feb	889 400	+ 12.4	216 681	- 24.6	392 649	- 13.6	1 498 730	- 2.2
Mar	838 055	- 5.2	405 520	+ 41.5	366 940	- 11.7	1 610 515	+ 1.5
Apr	977 619	+ 39.9	298 614	+ 51.8	445 882	+ 24.9	1 722 115	+ 37.5
May	938 030	- 0.1	370 067	+ 36.1	783 371	+ 66.8	2 091 468	+ 24.4

^{1/} The annual percentage change is the change in the actual values of building plans passed of the relevant year compared with the actual values of building plans passed of the previous year expressed as a percentage.

^{2/} The monthly percentage change is the change in the actual values of building plans passed of the relevant month compared with the actual values of building plans passed of the same month in the previous year expressed as a percentage.

Table 4 - Seasonally adjusted values and percentage change of building plans passed at constant 2000 prices according to type of building

Year and month ^{1/}	Residential buildings		Non-residential buildings		Additions and alterations		Total	
	R'000	Percentage change	R'000	Percentage change	R'000	Percentage change	R'000	Percentage change
2000 Jan	653 952	- 8.7	257 928	- 17.1	500 925	+ 25.5	1 412 805	- 2.9
Feb	806 726	+ 23.4	597 633	+ 131.7	461 363	- 7.9	1 865 722	+ 32.1
Mar	712 825	- 11.6	339 615	- 43.2	485 033	+ 5.1	1 537 473	- 17.6
Apr	710 872	- 0.3	314 410	- 7.4	449 405	- 7.3	1 474 686	- 4.1
May	811 819	+ 14.2	531 802	+ 69.1	455 685	+ 1.4	1 799 307	+ 22.0
Jun	812 862	+ 0.1	308 797	- 41.9	514 207	+ 12.8	1 635 865	- 9.1
Jul	829 753	+ 2.1	386 015	+ 25.0	494 840	- 3.8	1 710 608	+ 4.6
Aug	883 104	+ 6.4	348 542	- 9.7	460 827	- 6.9	1 692 472	- 1.1
Sep	792 956	- 10.2	337 206	- 3.3	417 653	- 9.4	1 547 816	- 8.5
Oct	755 840	- 4.7	457 710	+ 35.7	465 050	+ 11.3	1 678 600	+ 8.4
Nov	835 933	+ 10.6	385 096	- 15.9	414 145	- 10.9	1 635 174	- 2.6
Dec	832 152	- 0.5	949 611	+ 146.6	418 546	+ 1.1	2 200 308	+ 34.6
2001 Jan	883 115	+ 6.1	732 951	- 22.8	439 099	+ 4.9	2 055 165	- 6.6
Feb	785 051	- 11.1	330 351	- 54.9	519 633	+ 18.3	1 635 035	- 20.4
Mar	835 085	+ 6.4	255 019	- 22.8	383 091	- 26.3	1 473 195	- 9.9
Apr	796 040	- 4.7	231 826	- 9.1	415 747	+ 8.5	1 443 613	- 2.0
May	851 288	+ 6.9	240 069	+ 3.6	442 699	+ 6.5	1 534 056	+ 6.3
Jun	799 793	- 6.0	259 623	+ 8.1	402 718	- 9.0	1 462 134	- 4.7
Jul	765 200	- 4.3	265 474	+ 2.3	363 292	- 9.8	1 393 965	- 4.7
Aug	746 609	- 2.4	227 598	- 14.3	427 411	+ 17.6	1 401 618	+ 0.5
Sep	872 784	+ 16.9	273 881	+ 20.3	444 158	+ 3.9	1 590 823	+ 13.5
Oct	938 459	+ 7.5	166 665	- 39.1	442 966	- 0.3	1 548 091	- 2.7
Nov	842 562	- 10.2	233 657	+ 40.2	459 354	+ 3.7	1 535 573	- 0.8
Dec	835 266	- 0.9	181 006	- 22.5	450 418	- 1.9	1 466 690	- 4.5
2002 Jan	880 549	+ 5.4	246 809	+ 36.4	456 052	+ 1.3	1 583 411	+ 8.0
Feb	874 062	- 0.7	249 072	+ 0.9	452 115	- 0.9	1 575 248	- 0.5
Mar	801 029	- 8.4	355 779	+ 42.8	340 289	- 24.7	1 497 097	- 5.0
Apr	1 127 115	+ 40.7	358 142	+ 0.7	520 725	+ 53.0	2 005 982	+ 34.0
May	839 525	- 25.5	319 231	- 10.9	730 485	+ 40.3	1 889 241	- 5.8

^{1/} The percentage change is the change in the seasonally adjusted values of building plans passed of the relevant month compared with the seasonally adjusted values of building plans passed of the previous month expressed as a percentage.

Table 5 - Actual values and percentage change of buildings completed at current prices according to type of building

Year ^{1/} and month ^{2/}	Residential buildings		Non-residential buildings		Additions and alterations		Total	
	R'000	Percentage change	R'000	Percentage change	R'000	Percentage change	R'000	Percentage change
2000 Jan	299 212	- 4.7	195 988	- 0.6	183 959	- 4.7	679 159	- 3.5
Feb	353 141	- 11.0	205 549	- 4.3	221 978	- 9.3	780 668	- 8.8
Mar	419 416	- 3.0	212 379	- 13.7	268 745	+ 16.5	900 540	- 1.0
Apr	364 713	- 3.5	224 048	+ 23.4	188 808	- 5.8	777 569	+ 2.3
May	473 124	+ 21.0	390 533	+ 99.6	293 343	+ 64.1	1 157 000	+ 51.2
Jun	362 558	- 13.7	174 728	- 16.2	170 986	+ 11.2	708 272	- 9.5
Jul	407 406	- 15.3	472 668	+ 79.0	220 828	- 18.9	1 100 902	+ 8.2
Aug	449 691	- 2.4	285 994	+ 39.6	211 008	- 17.5	946 693	+ 2.7
Sep	510 979	+ 3.6	270 539	+ 37.2	199 622	- 10.6	981 140	+ 7.4
Oct	462 270	+ 10.2	195 491	- 4.0	238 257	+ 3.8	896 018	+ 5.1
Nov	555 802	+ 20.5	186 442	- 54.5	255 900	+ 21.7	998 144	- 7.7
Dec	383 114	+ 9.6	316 801	+ 74.5	149 622	+ 2.2	849 537	+ 25.4
Total	5 041 426	+ 0.9	3 131 160	+ 15.7	2 603 056	+ 2.5	10 775 642	+ 5.2
2001 Jan	643 047	+ 114.9	238 434	+ 21.7	201 057	+ 9.3	1 082 538	+ 59.4
Feb*	428 803	+ 21.4	285 619	+ 39.0	244 636	+ 10.2	959 058	+ 22.9
Mar	489 687	+ 16.8	159 637	- 24.8	286 396	+ 6.6	935 720	+ 3.9
Apr	366 061	+ 0.4	169 796	- 24.2	185 541	- 1.7	721 398	- 7.2
May	447 895	- 5.3	300 533	- 23.0	295 847	+ 0.9	1 044 275	- 9.7
Jun	539 545	+ 48.8	338 853	+ 93.9	294 854	+ 72.4	1 173 252	+ 65.6
Jul	396 717	- 2.6	121 617	- 74.3	232 836	+ 5.4	751 170	- 31.8
Aug	431 845	- 4.0	117 368	- 59.0	214 644	+ 1.7	763 857	- 19.3
Sep*	462 102	- 9.6	1 417 979	+ 424.1	169 974	- 14.9	2 050 055	+ 108.9
Oct	667 250	+ 44.3	285 644	+ 46.1	237 138	- 0.5	1 190 032	+ 32.8
Nov	616 443	+ 10.9	211 109	+ 13.2	288 778	+ 12.8	1 116 330	+ 11.8
Dec*	469 410	+ 22.5	173 587	- 45.2	124 610	- 16.7	767 607	- 9.6
Total	5 958 805	+ 18.2	3 820 176	+ 22.0	2 776 711	+ 6.7	12 555 292	+ 16.5
2002 Jan*	579 544	- 9.9	137 089	- 42.5	174 833	- 13.0	891 466	- 17.7
Feb*	487 783	+ 13.8	138 037	- 51.7	198 195	- 19.0	824 015	- 14.1
Mar*	699 202	+ 42.8	169 849	+ 6.4	174 052	- 39.2	1 043 103	+ 11.5
Apr*	641 454	+ 75.2	248 263	+ 46.2	381 482	+ 105.6	1 271 199	+ 76.2
May	672 596	+ 50.2	299 470	- 0.4	298 191	+ 0.8	1 270 257	+ 21.6

^{1/} The annual percentage change is the change in the actual values of buildings completed of the relevant year compared with the actual values of buildings completed of the previous year expressed as a percentage.

^{2/} The monthly percentage change is the change in the actual values of buildings completed of the relevant month compared with the actual values of buildings completed of the same month in the previous year expressed as a percentage.

Table 6 - Seasonally adjusted values and percentage change of buildings completed at current prices according to type of building

Year and month ^{1/}	Residential buildings		Non-residential buildings		Additions and alterations		Total	
	R'000	Percentage change	R'000	Percentage change	R'000	Percentage change	R'000	Percentage change
2000 Jan	365 144	- 9.0	243 195	+ 27.0	210 011	- 6.7	818 349	+ 0.0
Feb	397 881	+ 9.0	233 147	- 4.1	208 885	- 0.5	839 912	+ 2.6
Mar	399 106	+ 0.3	264 088	+ 13.3	225 954	+ 8.2	889 147	+ 5.9
Apr	404 349	+ 1.3	261 738	- 0.9	210 662	- 6.8	876 750	- 1.4
May	456 401	+ 12.9	357 327	+ 36.5	263 005	+ 24.8	1 076 734	+ 22.8
Jun	351 055	- 23.1	176 942	- 50.5	167 830	- 36.2	695 826	- 35.4
Jul	390 808	+ 11.3	340 060	+ 92.2	197 643	+ 17.8	928 512	+ 33.4
Aug	443 809	+ 13.6	270 103	- 20.6	209 963	+ 6.2	923 875	- 0.5
Sep	461 497	+ 4.0	217 874	- 19.3	207 865	- 1.0	887 236	- 4.0
Oct	444 380	- 3.7	180 633	- 17.1	222 821	+ 7.2	847 834	- 4.4
Nov	472 572	+ 6.3	207 418	+ 14.8	246 384	+ 10.6	926 373	+ 9.3
Dec	441 229	- 6.6	355 730	+ 71.5	231 342	- 6.1	1 028 301	+ 11.0
2001 Jan	764 002	+ 73.2	305 944	- 14.0	232 157	+ 0.4	1 302 103	+ 26.6
Feb	484 989	- 36.5	332 250	+ 8.6	236 119	+ 1.7	1 053 358	- 19.1
Mar	458 109	- 5.5	206 419	- 37.9	235 351	- 0.3	899 879	- 14.6
Apr	405 700	- 11.4	199 727	- 3.2	208 388	- 11.5	813 814	- 9.6
May	434 913	+ 7.2	252 951	+ 26.6	255 745	+ 22.7	943 609	+ 15.9
Jun	522 662	+ 20.2	341 893	+ 35.2	289 877	+ 13.3	1 154 431	+ 22.3
Jul	384 937	- 26.4	83 798	- 75.5	210 118	- 27.5	678 853	- 41.2
Aug	426 810	+ 10.9	109 285	+ 30.4	212 625	+ 1.2	748 720	+ 10.3
Sep	413 563	- 3.1	1 141 452	+ 944.5	179 027	- 15.8	1 734 041	+ 131.6
Oct	642 549	+ 55.4	275 507	- 75.9	221 390	+ 23.7	1 139 445	- 34.3
Nov	527 862	- 17.8	242 042	- 12.1	280 352	+ 26.6	1 050 256	- 7.8
Dec	543 945	+ 3.0	201 724	- 16.7	192 545	- 31.3	938 214	- 10.7
2002 Jan	680 653	+ 25.1	175 588	- 13.0	203 180	+ 5.5	1 059 422	+ 12.9
Feb	551 371	- 19.0	162 953	- 7.2	193 075	- 5.0	907 398	- 14.3
Mar	652 145	+ 18.3	219 353	+ 34.6	141 767	- 26.6	1 013 265	+ 11.7
Apr	711 628	+ 9.1	290 144	+ 32.3	428 587	+ 202.3	1 430 359	+ 41.2
May	648 283	- 8.9	239 840	- 17.3	253 024	- 41.0	1 141 147	- 20.2

^{1/} The percentage change is the change in the seasonally adjusted values of buildings completed of the relevant month compared with the seasonally adjusted values of buildings completed of the previous month expressed as a percentage.

Table 7 - Actual values and percentage change of buildings completed at constant 2000 prices according to type of building

Year ^{1/} and month ^{2/}	Residential buildings		Non-residential buildings		Additions and alterations		Total	
	R'000	Percentage change	R'000	Percentage change	R'000	Percentage change	R'000	Percentage change
2000* Jan	310 456	- 10.1	214 195	- 5.7	194 666	- 10.8	719 317	- 9.0
Feb	365 724	- 28.3	222 215	- 13.2	232 438	- 29.2	820 377	- 24.7
Mar	433 235	- 33.7	227 874	- 23.9	280 820	- 24.7	941 929	- 28.7
Apr	375 641	- 24.1	239 112	+ 3.6	196 266	- 12.8	811 019	- 14.3
May	486 811	- 26.2	415 461	- 3.9	304 614	- 1.9	1 206 886	- 14.6
Jun	371 504	- 31.4	185 683	- 9.6	176 821	+ 14.5	734 008	- 16.3
Jul	421 432	- 31.4	500 178	- 28.2	227 658	- 34.6	1 149 268	- 35.2
Aug	463 689	- 39.6	299 470	- 7.0	217 759	- 29.6	980 918	- 27.6
Sep	523 538	- 36.2	282 695	- 3.1	205 372	- 18.7	1 011 605	- 26.7
Oct	470 304	- 40.4	203 213	- 5.6	244 617	- 20.5	918 134	- 21.1
Nov	561 785	- 29.4	193 605	- 52.9	262 193	- 13.0	1 017 583	- 38.0
Dec	386 117	- 35.5	327 612	+ 6.6	152 988	+ 25.2	866 717	- 0.2
Total	5 170 236	- 3.1	3 311 313	+ 8.4	2 696 212	- 3.1	11 177 761	+ 0.0
2001* Jan	654 850	+ 110.9	245 808	+ 14.8	208 134	+ 6.9	1 108 792	+ 54.1
Feb	427 706	+ 16.9	294 756	+ 32.6	252 202	+ 8.5	974 664	+ 18.8
Mar	487 529	+ 12.5	164 236	- 27.9	293 138	+ 4.4	944 903	+ 0.3
Apr	361 669	- 3.7	174 329	- 27.1	188 175	- 4.1	724 173	- 10.7
May	438 090	- 10.0	307 923	- 25.9	297 933	- 2.2	1 043 946	- 13.5
Jun	528 083	+ 42.1	346 475	+ 86.6	295 741	+ 67.3	1 170 299	+ 59.4
Jul	383 132	- 9.1	125 898	- 74.8	231 678	+ 1.8	740 708	- 35.5
Aug	415 640	- 10.4	120 998	- 59.6	211 889	- 2.7	748 527	- 23.7
Sep	442 710	- 15.4	1 451 360	+ 413.4	167 133	- 18.6	2 061 203	+ 103.8
Oct	638 358	+ 35.7	289 700	+ 42.6	232 261	- 5.1	1 160 319	+ 26.4
Nov	586 177	+ 4.3	212 597	+ 9.8	281 460	+ 7.3	1 080 234	+ 6.2
Dec	443 262	+ 14.8	174 109	- 46.9	121 098	- 20.8	738 469	- 14.8
Total	5 807 206	+ 12.3	3 908 189	+ 18.0	2 780 842	+ 3.1	12 496 237	+ 11.8
2002 Jan	545 960	- 16.6	136 407	- 44.5	167 947	- 19.3	850 314	- 23.3
Feb	458 165	+ 7.1	136 266	- 53.8	189 660	- 24.8	784 091	- 19.6
Mar	656 718	+ 34.7	167 010	+ 1.7	165 606	- 43.5	989 334	+ 4.7
Apr	596 575	+ 65.0	243 157	+ 39.5	360 910	+ 91.8	1 200 642	+ 65.8
May	623 029	+ 42.2	291 881	- 5.2	280 255	- 5.9	1 195 165	+ 14.5

^{1/} The annual percentage change is the change in the actual values of buildings completed of the relevant year compared with the actual values of buildings completed of the previous year expressed as a percentage.

^{2/} The monthly percentage change is the change in the actual values of buildings completed of the relevant month compared with the actual values of buildings completed of the same month in the previous year expressed as a percentage.

Table 8 - Seasonally adjusted values and percentage change of buildings completed at constant 2000 prices according to type of building

Year and month ^{1/}	Residential buildings		Non-residential buildings		Additions and alterations		Total	
	R'000	Percentage change	R'000	Percentage change	R'000	Percentage change	R'000	Percentage change
2000 Jan	379 299	- 9.3	266 180	+ 25.7	221 242	- 7.3	866 721	- 0.2
Feb	413 422	+ 9.0	252 677	- 5.1	218 267	- 1.3	884 366	+ 2.0
Mar	412 968	- 0.1	283 834	+ 12.3	235 478	+ 7.9	932 280	+ 5.4
Apr	417 077	+ 1.0	279 512	- 1.5	218 687	- 7.1	915 276	- 1.8
May	470 816	+ 12.9	379 925	+ 35.9	273 734	+ 25.2	1 124 475	+ 22.9
Jun	356 437	- 24.3	187 528	- 50.6	173 260	- 36.7	717 225	- 36.2
Jul	403 146	+ 13.1	358 493	+ 91.2	204 158	+ 17.8	965 797	+ 34.7
Aug	457 663	+ 13.5	284 097	- 20.8	217 388	+ 6.5	959 149	- 0.7
Sep	472 106	+ 3.2	227 317	- 20.0	214 313	- 1.4	913 736	- 4.7
Oct	453 515	- 3.9	187 619	- 17.5	229 298	+ 7.0	870 432	- 4.7
Nov	478 169	+ 5.4	215 876	+ 15.1	253 019	+ 10.3	947 064	+ 8.8
Dec	444 589	- 7.0	367 319	+ 70.2	236 030	- 6.7	1 047 938	+ 10.7
2001 Jan	779 274	+ 75.3	315 862	- 14.0	239 225	+ 1.4	1 334 361	+ 27.3
Feb	485 017	- 37.8	343 655	+ 8.8	242 717	+ 1.5	1 071 389	- 19.7
Mar	456 592	- 5.9	212 844	- 38.1	240 165	- 1.1	909 600	- 15.1
Apr	401 784	- 12.0	205 300	- 3.5	211 135	- 12.1	818 219	- 10.0
May	426 929	+ 6.3	259 058	+ 26.2	257 958	+ 22.2	943 945	+ 15.4
Jun	506 577	+ 18.7	348 712	+ 34.6	290 191	+ 12.5	1 145 481	+ 21.4
Jul	370 703	- 26.8	86 427	- 75.2	209 518	- 27.8	666 649	- 41.8
Aug	410 672	+ 10.8	113 206	+ 31.0	210 565	+ 0.5	734 443	+ 10.2
Sep	395 502	- 3.7	1 166 497	+ 930.4	176 447	- 16.2	1 738 446	+ 136.7
Oct	616 755	+ 55.9	279 256	- 76.1	217 438	+ 23.2	1 113 450	- 36.0
Nov	502 512	- 18.5	244 216	- 12.5	274 010	+ 26.0	1 020 738	- 8.3
Dec	513 700	+ 2.2	201 956	- 17.3	186 782	- 31.8	902 439	- 11.6
2002 Jan	642 302	+ 25.0	174 926	- 13.4	194 232	+ 4.0	1 011 460	+ 12.1
Feb	519 131	- 19.2	161 127	- 7.9	184 122	- 5.2	864 379	- 14.5
Mar	612 981	+ 18.1	216 185	+ 34.2	134 464	- 27.0	963 629	+ 11.5
Apr	663 657	+ 8.3	284 600	+ 31.6	405 149	+ 201.3	1 353 406	+ 40.4
May	602 808	- 9.2	233 737	- 17.9	238 103	- 41.2	1 074 647	- 20.6

^{1/} The percentage change is the change in the seasonally adjusted values of buildings completed of the relevant month compared with the seasonally adjusted values of buildings completed of the previous month expressed as a percentage.

Table 9 - Building plans passed according to type of building: Total RSA

Type of building	May 2001 *	April 2002 *	May 2002	January 2001 to May 2001	January 2002 to May 2002	Percentage change between January 2001 to May 2001 and January 2002 to May 2002
Residential buildings						
Dwelling-houses smaller than 80 square metres						
Number of dwelling-houses	3 845	3 334	3 906	17 934	15 093	- 15.8
Total square metres	143 810	129 529	149 941	685 897	583 155	- 15.0
Total value at current prices (R'000)	126 296	128 546	152 763	632 170	594 918	- 5.9
Dwelling-houses equal to or larger than 80 square metres						
Number of dwelling-houses	2 014	2 136	2 121	8 815	9 497	+ 7.7
Total square metres	443 193	468 070	487 855	1 887 518	2 114 614	+ 12.0
Total value at current prices (R'000)	622 028	699 375	728 276	2 647 758	3 171 423	+ 19.8
Flats and townhouses						
Number of flats and townhouses	1 735	1 612	1 322	4 939	5 857	+ 18.6
Total square metres	136 859	179 839	147 684	507 851	691 867	+ 36.2
Total value at current prices (R'000)	212 785	296 436	210 970	784 953	1 082 204	+ 37.9
Other residential buildings ^{1/}						
Total square metres	19 809	9 178	12 950	55 807	69 390	+ 24.3
Total value at current prices (R'000)	38 317	14 569	16 742	150 209	153 717	+ 2.3
Total value of residential buildings at current prices (R'000)	999 426	1 138 926	1 108 751	4 215 090	5 002 262	+ 18.7
Non-residential buildings						
Office and banking space						
Total square metres	74 390	60 163	22 804	326 930	197 743	- 39.5
Total value at current prices (R'000)	125 699	112 980	45 008	587 021	402 271	- 31.5
Shopping space						
Total square metres	33 575	28 761	37 742	215 341	155 668	- 27.7
Total value at current prices (R'000)	51 087	40 125	64 134	303 333	250 112	- 17.5
Industrial and warehouse space						
Total square metres	52 136	94 464	146 978	343 600	424 821	+ 23.6
Total value at current prices (R'000)	52 927	148 328	288 149	435 770	687 804	+ 57.8
Other non-residential space ^{2/}						
Total square metres	42 144	29 058	25 058	184 411	224 205	+ 21.6
Total value at current prices (R'000)	59 617	46 452	40 128	250 134	326 172	+ 30.4
Total value of non-residential buildings at current prices (R'000)	289 330	347 885	437 419	1 576 258	1 666 359	+ 5.7
Additions and alterations						
Dwelling-houses						
Total square metres	266 309	283 075	287 443	1 164 361	1 277 117	+ 9.7
Total value at current prices (R'000)	339 706	384 165	397 655	1 448 056	1 717 034	+ 18.6
Other buildings ^{3/}						
Total square metres	86 068	72 602	217 067	391 682	461 621	+ 17.9
Total value at current prices (R'000)	159 967	135 287	528 290	692 781	997 326	+ 44.0
Total value of additions and alterations at current prices (R'000)	499 673	519 452	925 945	2 140 837	2 714 360	+ 26.8
Total value of building plans passed at current prices (R'000)	1 788 429	2 006 263	2 472 115	7 932 185	9 382 981	+ 18.3

1/ Other residential buildings include institutions for the disabled, boarding houses, old people's homes, hostels, hotels, motels, guest houses, holiday chalets, entertainment centres, bed-and-breakfast accommodation and casinos.

2/ Other non-residential space includes churches, sport and recreation clubs, schools, crèches, hospitals and all other non-residential space.

3/ Other buildings include additions and alterations to other residential buildings, non-residential buildings and internal alterations.

Table 10 - Building plans passed according to type of building and province: Western Cape

Type of building	May 2001 *	April 2002 *	May 2002	January 2001 to May 2001	January 2002 to May 2002	Percentage change between January 2001 to May 2001 and January 2002 to May 2002
Residential buildings						
Dwelling-houses smaller than 80 square metres						
Number of dwelling-houses	741	738	1 894	3 291	5 092	+ 54.7
Total square metres	28 374	23 836	64 651	127 659	173 664	+ 36.0
Total value at current prices (R'000)	30 471	25 876	74 131	150 467	199 381	+ 32.5
Dwelling-houses equal to or larger than 80 square metres						
Number of dwelling-houses	707	733	741	2 767	3 282	+ 18.6
Total square metres	141 289	160 624	163 867	585 703	698 577	+ 19.3
Total value at current prices (R'000)	208 073	257 188	265 608	855 008	1 106 502	+ 29.4
Flats and townhouses						
Number of flats and townhouses	381	258	438	1 308	1 595	+ 21.9
Total square metres	26 849	23 303	35 392	121 602	148 747	+ 22.3
Total value at current prices (R'000)	41 492	37 288	57 100	186 172	246 203	+ 32.2
Other residential buildings ^{1/}						
Total square metres	5 356	6 903	6 214	27 139	18 236	- 32.8
Total value at current prices (R'000)	13 236	12 142	6 548	65 431	26 687	- 59.2
Total value of residential buildings at current prices (R'000)	293 272	332 494	403 387	1 257 078	1 578 773	+ 25.6
Non-residential buildings						
Office and banking space						
Total square metres	11 336	6 354	11 496	80 640	35 517	- 56.0
Total value at current prices (R'000)	20 201	12 060	21 634	135 184	59 224	- 56.2
Shopping space						
Total square metres	13 633	242	740	105 895	15 737	- 85.1
Total value at current prices (R'000)	20 179	436	1 409	136 366	20 405	- 85.0
Industrial and warehouse space						
Total square metres	21 505	11 827	24 943	93 445	83 893	- 10.2
Total value at current prices (R'000)	16 120	15 092	30 085	89 195	97 423	+ 9.2
Other non-residential space ^{2/}						
Total square metres	11 952	7 636	6 522	64 369	28 341	- 56.0
Total value at current prices (R'000)	11 445	12 597	9 577	76 764	40 769	- 46.9
Total value of non-residential buildings at current prices (R'000)	67 945	40 185	62 705	437 509	217 821	- 50.2
Additions and alterations						
Dwelling-houses						
Total square metres	85 746	73 001	93 571	367 638	385 408	+ 4.8
Total value at current prices (R'000)	113 918	98 977	130 026	466 192	518 085	+ 11.1
Other buildings ^{3/}						
Total square metres	33 447	28 956	50 741	107 952	131 849	+ 22.1
Total value at current prices (R'000)	54 408	53 539	113 191	179 382	269 128	+ 50.0
Total value of additions and alterations at current prices (R'000)	168 326	152 516	243 217	645 574	787 213	+ 21.9
Total value of building plans passed at current prices (R'000)	529 543	525 195	709 309	2 340 161	2 583 807	+ 10.4

1/ Other residential buildings include institutions for the disabled, boarding houses, old people's homes, hostels, hotels, motels, guest houses, holiday chalets, entertainment centres, bed-and-breakfast accommodation and casinos.

2/ Other non-residential space includes churches, sport and recreation clubs, schools, crèches, hospitals and all other non-residential space.

3/ Other buildings include additions and alterations to other residential buildings, non-residential buildings and internal alterations.

Table 11 - Building plans passed according to type of building and province: Eastern Cape

Type of building	May 2001	April 2002	May 2002	January 2001 to May 2001	January 2002 to May 2002	Percentage change between January 2001 to May 2001 and January 2002 to May 2002
Residential buildings						
Dwelling-houses smaller than 80 square metres						
Number of dwelling-houses	231	858	527	1 088	2 130	+ 95.8
Total square metres	10 443	35 158	22 058	48 977	91 651	+ 87.1
Total value at current prices (R'000)	13 208	43 819	25 361	63 149	117 228	+ 85.6
Dwelling-houses equal to or larger than 80 square metres						
Number of dwelling-houses	87	121	121	552	559	+ 1.3
Total square metres	13 538	26 668	24 177	78 360	109 394	+ 39.6
Total value at current prices (R'000)	17 886	36 340	33 569	103 345	150 101	+ 45.2
Flats and townhouses						
Number of flats and townhouses	557	214	43	656	308	-53.0
Total square metres	24 166	14 297	5 584	34 249	25 641	-25.1
Total value at current prices (R'000)	26 524	24 541	9 398	40 743	43 304	+ 6.3
Other residential buildings ^{1/}						
Total square metres	12 992	472	0	18 812	472	-97.5
Total value at current prices (R'000)	23 000	661	0	73 000	661	-99.1
Total value of residential buildings at current prices (R'000)	80 618	105 361	68 328	280 237	311 294	+ 11.1
Non-residential buildings						
Office and banking space						
Total square metres	2 003	2 832	448	3 202	3 801	+ 18.7
Total value at current prices (R'000)	3 051	4 060	878	6 131	5 923	-3.4
Shopping space						
Total square metres	2 636	0	6 305	7 688	13 448	+ 74.9
Total value at current prices (R'000)	3 212	0	12 221	11 257	27 292	+ 142.4
Industrial and warehouse space						
Total square metres	4 814	10 656	7 794	14 447	33 360	+ 130.9
Total value at current prices (R'000)	1 682	16 599	12 052	14 539	59 936	+ 312.2
Other non-residential space ^{2/}						
Total square metres	1 369	5 950	3 580	4 691	15 723	+ 235.2
Total value at current prices (R'000)	2 497	9 384	5 587	7 502	24 987	+ 233.1
Total value of non-residential buildings at current prices (R'000)	10 442	30 043	30 738	39 429	118 138	+ 199.6
Additions and alterations						
Dwelling-houses						
Total square metres	19 643	21 288	25 574	84 270	97 736	+ 16.0
Total value at current prices (R'000)	25 268	28 654	35 935	108 587	131 806	+ 21.4
Other buildings ^{3/}						
Total square metres	9 139	6 291	5 873	45 028	24 738	-45.1
Total value at current prices (R'000)	13 280	12 520	10 227	66 105	47 458	-28.2
Total value of additions and alterations at current prices (R'000)	38 548	41 174	46 162	174 692	179 264	+ 2.6
Total value of building plans passed at current prices (R'000)	129 608	176 578	145 228	494 358	608 696	+ 23.1

1/ Other residential buildings include institutions for the disabled, boarding houses, old people's homes, hostels, hotels, motels, guest houses, holiday chalets, entertainment centres, bed-and-breakfast accommodation and casinos.

2/ Other non-residential space includes churches, sport and recreation clubs, schools, crèches, hospitals and all other non-residential space.

3/ Other buildings include additions and alterations to other residential buildings, non-residential buildings and internal alterations.

Table 12 - Building plans passed according to type of building and province: Northern Cape

Type of building	May 2001	April 2002	May 2002	January 2001 to May 2001	January 2002 to May 2002	Percentage change between January 2001 to May 2001 and January 2002 to May 2002
Residential buildings						
Dwelling-houses smaller than 80 square metres						
Number of dwelling-houses	4	8	8	30	31	+ 3.3
Total square metres	255	471	402	1 665	1 561	- 6.2
Total value at current prices (R'000)	414	730	646	2 496	2 553	+ 2.3
Dwelling-houses equal to or larger than 80 square metres						
Number of dwelling-houses	6	10	10	64	39	- 39.1
Total square metres	981	2 601	2 518	12 505	8 287	- 33.7
Total value at current prices (R'000)	1 571	4 120	3 962	15 028	12 682	- 15.6
Flats and townhouses						
Number of flats and townhouses	1	2	4	11	6	- 45.5
Total square metres	224	352	627	1 885	979	- 48.1
Total value at current prices (R'000)	314	634	1 129	2 556	1 763	- 31.0
Other residential buildings ^{1/}						
Total square metres	0	0	0	0	0	..
Total value at current prices (R'000)	0	0	0	0	0	..
Total value of residential buildings at current prices (R'000)	2 299	5 484	5 737	20 080	16 998	- 15.3
Non-residential buildings						
Office and banking space						
Total square metres	0	100	316	191	446	+ 133.5
Total value at current prices (R'000)	0	120	442	124	628	+ 406.5
Shopping space						
Total square metres	0	0	0	206	0	..
Total value at current prices (R'000)	0	0	0	226	0	..
Industrial and warehouse space						
Total square metres	0	669	448	1 092	1 917	+ 75.5
Total value at current prices (R'000)	0	1 228	424	1 002	2 772	+ 176.6
Other non-residential space ^{2/}						
Total square metres	376	0	125	1 519	1 124	- 26.0
Total value at current prices (R'000)	486	0	175	2 131	2 373	+ 11.4
Total value of non-residential buildings at current prices (R'000)	486	1 348	1 041	3 483	5 773	+ 65.7
Additions and alterations						
Dwelling-houses						
Total square metres	2 900	4 272	2 208	11 035	12 418	+ 12.5
Total value at current prices (R'000)	5 109	7 519	3 839	17 491	21 025	+ 20.2
Other buildings ^{3/}						
Total square metres	937	1 264	0	2 717	2 166	- 20.3
Total value at current prices (R'000)	2 421	3 065	155	6 654	5 572	- 16.3
Total value of additions and alterations at current prices (R'000)	7 530	10 584	3 994	24 145	26 597	+ 10.2
Total value of building plans passed at current prices (R'000)	10 315	17 416	10 772	47 708	49 368	+ 3.5

1/ Other residential buildings include institutions for the disabled, boarding houses, old people's homes, hostels, hotels, motels, guest houses, holiday chalets, entertainment centres, bed-and-breakfast accommodation and casinos.

2/ Other non-residential space includes churches, sport and recreation clubs, schools, crèches, hospitals and all other non-residential space.

3/ Other buildings include additions and alterations to other residential buildings, non-residential buildings and internal alterations.

Table 13 - Building plans passed according to type of building and province: Free State

Type of building	May 2001	April 2002	May 2002	January 2001 to May 2001	January 2002 to May 2002	Percentage change between January 2001 to May 2001 and January 2002 to May 2002
Residential buildings						
Dwelling-houses smaller than 80 square metres						
Number of dwelling-houses	39	324	355	1 033	914	-11.5
Total square metres	2 027	13 916	15 129	46 602	40 190	-13.8
Total value at current prices (R'000)	1 947	7 945	8 616	25 461	25 343	-0.5
Dwelling-houses equal to or larger than 80 square metres						
Number of dwelling-houses	60	67	68	309	375	+ 21.4
Total square metres	8 355	11 453	11 388	46 322	57 974	+ 25.2
Total value at current prices (R'000)	8 766	13 208	13 940	49 709	69 628	+ 40.1
Flats and townhouses						
Number of flats and townhouses	76	6	16	155	207	+ 33.5
Total square metres	7 207	768	2 208	18 246	21 055	+ 15.4
Total value at current prices (R'000)	12 481	922	3 188	29 792	31 589	+ 6.0
Other residential buildings ^{1/}						
Total square metres	0	0	0	1 252	2 758	+ 120.3
Total value at current prices (R'000)	0	0	0	1 851	7 105	+ 283.8
Total value of residential buildings at current prices (R'000)	23 194	22 075	25 744	106 813	133 665	+ 25.1
Non-residential buildings						
Office and banking space						
Total square metres	951	0	0	13 773	7 384	-46.4
Total value at current prices (R'000)	1 334	0	0	26 550	14 102	-46.9
Shopping space						
Total square metres	789	130	1 977	2 996	10 138	+ 238.4
Total value at current prices (R'000)	900	250	3 483	3 771	20 393	+ 440.8
Industrial and warehouse space						
Total square metres	248	2 565	2 821	2 805	7 963	+ 183.9
Total value at current prices (R'000)	248	1 418	2 211	1 926	6 123	+ 217.9
Other non-residential space ^{2/}						
Total square metres	1 594	2 450	0	3 865	6 082	+ 57.4
Total value at current prices (R'000)	1 864	4 100	0	5 754	7 703	+ 33.9
Total value of non-residential buildings at current prices (R'000)	4 346	5 768	5 694	38 001	48 321	+ 27.2
Additions and alterations						
Dwelling-houses						
Total square metres	8 155	8 462	10 352	37 508	42 676	+ 13.8
Total value at current prices (R'000)	9 791	9 201	11 137	40 052	46 251	+ 15.5
Other buildings ^{3/}						
Total square metres	2 642	3 469	3 665	7 281	11 310	+ 55.3
Total value at current prices (R'000)	6 920	8 306	13 064	15 611	29 276	+ 87.5
Total value of additions and alterations at current prices (R'000)	16 711	17 507	24 201	55 663	75 527	+ 35.7
Total value of building plans passed at current prices (R'000)	44 251	45 350	55 639	200 477	257 513	+ 28.5

1/ Other residential buildings include institutions for the disabled, boarding houses, old people's homes, hostels, hotels, motels, guest houses, holiday chalets, entertainment centres, bed-and-breakfast accommodation and casinos.

2/ Other non-residential space includes churches, sport and recreation clubs, schools, crèches, hospitals and all other non-residential space.

3/ Other buildings include additions and alterations to other residential buildings, non-residential buildings and internal alterations.

Table 14 - Building plans passed according to type of building and province: KwaZulu-Natal

Type of building	May 2001	April 2002	May 2002	January 2001 to May 2001	January 2002 to May 2002	Percentage change between January 2001 to May 2001 and January 2002 to May 2002
Residential buildings						
Dwelling-houses smaller than 80 square metres						
Number of dwelling-houses	237	229	170	1 359	908	- 33.2
Total square metres	8 537	9 125	6 922	58 559	37 487	- 36.0
Total value at current prices (R'000)	8 555	9 160	6 496	52 050	38 357	- 26.3
Dwelling-houses equal to or larger than 80 square metres						
Number of dwelling-houses	152	160	174	651	708	+ 8.8
Total square metres	31 331	40 223	34 432	143 375	154 263	+ 7.6
Total value at current prices (R'000)	44 546	58 838	51 233	208 384	230 888	+ 10.8
Flats and townhouses						
Number of flats and townhouses	39	65	35	355	386	+ 8.7
Total square metres	6 520	8 125	5 594	48 249	57 470	+ 19.1
Total value at current prices (R'000)	12 627	13 938	8 452	85 878	95 237	+ 10.9
Other residential buildings ^{1/}						
Total square metres	138	0	1 226	138	31 379	+ 22638.4
Total value at current prices (R'000)	330	0	1 594	330	33 415	+ 10025.8
Total value of residential buildings at current prices (R'000)	66 058	81 936	67 775	346 642	397 897	+ 14.8
Non-residential buildings						
Office and banking space						
Total square metres	24 163	8 080	1 853	75 736	12 753	- 83.2
Total value at current prices (R'000)	39 500	29 470	5 670	177 688	40 896	- 77.0
Shopping space						
Total square metres	946	10 806	8 091	11 751	27 207	+ 131.5
Total value at current prices (R'000)	1 386	11 525	18 855	14 626	47 319	+ 223.5
Industrial and warehouse space						
Total square metres	2 699	5 304	56 189	54 832	91 839	+ 67.5
Total value at current prices (R'000)	2 978	6 696	160 065	58 235	202 893	+ 248.4
Other non-residential space ^{2/}						
Total square metres	3 811	1 816	3 473	23 868	61 413	+ 157.3
Total value at current prices (R'000)	5 645	3 111	7 139	28 300	73 212	+ 158.7
Total value of non-residential buildings at current prices (R'000)	49 509	50 802	191 729	278 849	364 320	+ 30.7
Additions and alterations						
Dwelling-houses						
Total square metres	33 553	43 875	40 622	156 063	167 031	+ 7.0
Total value at current prices (R'000)	39 666	56 130	54 194	189 249	216 369	+ 14.3
Other buildings ^{3/}						
Total square metres	15 050	9 047	69 495	67 184	104 003	+ 54.8
Total value at current prices (R'000)	34 031	20 094	242 223	133 152	308 286	+ 131.5
Total value of additions and alterations at current prices (R'000)	73 697	76 224	296 417	322 401	524 655	+ 62.7
Total value of building plans passed at current prices (R'000)	189 264	208 962	555 921	947 892	1 286 872	+ 35.8

1/ Other residential buildings include institutions for the disabled, boarding houses, old people's homes, hostels, hotels, motels, guest houses, holiday chalets, entertainment centres, bed-and-breakfast accommodation and casinos.

2/ Other non-residential space includes churches, sport and recreation clubs, schools, crèches, hospitals and all other non-residential space.

3/ Other buildings include additions and alterations to other residential buildings, non-residential buildings and internal alterations.

Table 15 - Building plans passed according to type of building and province: North West

Type of building	May 2001*	April 2002	May 2002	January 2001 to May 2001	January 2002 to May 2002	Percentage change between January 2001 to May 2001 and January 2002 to May 2002
Residential buildings						
Dwelling-houses smaller than 80 square metres						
Number of dwelling-houses	215	43	25	1 650	518	- 68.6
Total square metres	7 517	2 458	1 353	58 689	23 488	- 60.0
Total value at current prices (R'000)	5 183	2 833	1 692	39 207	26 242	- 33.1
Dwelling-houses equal to or larger than 80 square metres						
Number of dwelling-houses	100	93	126	335	483	+ 44.2
Total square metres	17 146	15 887	22 535	57 504	83 094	+ 44.5
Total value at current prices (R'000)	20 096	20 122	27 770	67 041	109 850	+ 63.9
Flats and townhouses						
Number of flats and townhouses	0	1	292	120	337	+ 180.8
Total square metres	0	108	16 163	15 084	22 098	+ 46.5
Total value at current prices (R'000)	0	103	19 075	18 989	27 185	+ 43.2
Other residential buildings ^{1/}						
Total square metres	0	484	0	1 989	768	- 61.4
Total value at current prices (R'000)	0	581	0	1 664	781	- 53.1
Total value of residential buildings at current prices (R'000)	25 279	23 639	48 537	126 901	164 058	+ 29.3
Non-residential buildings						
Office and banking space						
Total square metres	0	749	218	3 304	4 679	+ 41.6
Total value at current prices (R'000)	0	1 124	180	5 625	7 566	+ 34.5
Shopping space						
Total square metres	1 873	6 548	4 006	11 920	12 663	+ 6.2
Total value at current prices (R'000)	2 637	10 454	4 810	14 220	19 368	+ 36.2
Industrial and warehouse space						
Total square metres	3 101	2 700	1 861	5 950	8 672	+ 45.7
Total value at current prices (R'000)	3 308	3 240	2 183	6 263	12 098	+ 93.2
Other non-residential space ^{2/}						
Total square metres	2 047	970	2 202	2 593	9 270	+ 257.5
Total value at current prices (R'000)	2 160	2 363	3 422	2 838	18 186	+ 540.8
Total value of non-residential buildings at current prices (R'000)	8 105	17 181	10 595	28 946	57 218	+ 97.7
Additions and alterations						
Dwelling-houses						
Total square metres	8 488	8 451	9 168	30 188	39 906	+ 32.2
Total value at current prices (R'000)	9 365	10 147	10 627	32 293	46 636	+ 44.4
Other buildings ^{3/}						
Total square metres	1 827	5 418	3 756	9 183	12 559	+ 36.8
Total value at current prices (R'000)	3 324	6 165	8 699	15 816	20 741	+ 31.1
Total value of additions and alterations at current prices (R'000)	12 689	16 312	19 326	48 109	67 377	+ 40.1
Total value of building plans passed at current prices (R'000)	46 073	57 132	78 458	203 956	288 653	+ 41.5

1/ Other residential buildings include institutions for the disabled, boarding houses, old people's homes, hostels, hotels, motels, guest houses, holiday chalets, entertainment centres, bed-and-breakfast accommodation and casinos.

2/ Other non-residential space includes churches, sport and recreation clubs, schools, crèches, hospitals and all other non-residential space.

3/ Other buildings include additions and alterations to other residential buildings, non-residential buildings and internal alterations.

Table 16 - Building plans passed according to type of building and province: Gauteng

Type of building	May 2001 *	April 2002	May 2002	January 2001 to May 2001	January 2002 to May 2002	Percentage change between January 2001 to May 2001 and January 2002 to May 2002
Residential buildings						
Dwelling-houses smaller than 80 square metres						
Number of dwelling-houses	1 335	780	571	5 602	4 150	- 25.9
Total square metres	48 505	29 609	24 959	205 630	158 700	- 22.8
Total value at current prices (R'000)	47 383	29 437	27 876	215 629	151 562	- 29.7
Dwelling-houses equal to or larger than 80 square metres						
Number of dwelling-houses	788	782	718	3 614	3 246	- 10.2
Total square metres	212 639	172 609	199 004	870 327	854 003	- 1.9
Total value at current prices (R'000)	294 631	257 280	293 283	1 227 594	1 295 470	+ 5.5
Flats and townhouses						
Number of flats and townhouses	608	991	482	2 127	2 777	+ 30.6
Total square metres	66 159	122 846	80 311	248 379	384 688	+ 54.9
Total value at current prices (R'000)	113 801	204 513	110 576	396 634	592 886	+ 49.5
Other residential buildings ^{1/}						
Total square metres	1 323	0	509	6 285	3 968	- 36.9
Total value at current prices (R'000)	1 751	0	970	7 837	6 253	- 20.2
Total value of residential buildings at current prices (R'000)	457 566	491 230	432 705	1 847 694	2 046 171	+ 10.7
Non-residential buildings						
Office and banking space						
Total square metres	35 641	41 173	4 830	148 046	127 502	- 13.9
Total value at current prices (R'000)	60 962	65 051	9 482	232 910	264 481	+ 13.6
Shopping space						
Total square metres	12 932	9 283	13 053	66 563	52 336	- 21.4
Total value at current prices (R'000)	21 373	15 000	17 834	110 313	82 324	- 25.4
Industrial and warehouse space						
Total square metres	19 058	57 680	50 860	149 674	184 632	+ 23.4
Total value at current prices (R'000)	28 141	99 594	78 117	246 383	291 176	+ 18.2
Other non-residential space ^{2/}						
Total square metres	19 503	8 420	6 560	75 817	93 616	+ 23.5
Total value at current prices (R'000)	32 574	12 311	10 118	115 819	146 903	+ 26.8
Total value of non-residential buildings at current prices (R'000)	143 050	191 956	115 551	705 425	784 884	+ 11.3
Additions and alterations						
Dwelling-houses						
Total square metres	92 738	107 407	85 805	412 790	452 897	+ 9.7
Total value at current prices (R'000)	119 298	154 424	127 792	524 819	644 081	+ 22.7
Other buildings ^{3/}						
Total square metres	20 326	16 023	81 159	139 300	159 526	+ 14.5
Total value at current prices (R'000)	40 143	28 558	137 266	249 858	287 918	+ 15.2
Total value of additions and alterations at current prices (R'000)	159 441	182 982	265 058	774 677	931 999	+ 20.3
Total value of building plans passed at current prices (R'000)	760 057	866 168	813 314	3 327 796	3 763 054	+ 13.1

1/ Other residential buildings include institutions for the disabled, boarding houses, old people's homes, hostels, hotels, motels, guest houses, holiday chalets, entertainment centres, bed-and-breakfast accommodation and casinos.

2/ Other non-residential space includes churches, sport and recreation clubs, schools, crèches, hospitals and all other non-residential space.

3/ Other buildings include additions and alterations to other residential buildings, non-residential buildings and internal alterations.

Table 17 - Building plans passed according to type of building and province: Mpumalanga

Type of building	May 2001	April 2002	May 2002	January 2001 to May 2001	January 2002 to May 2002	Percentage change between January 2001 to May 2001 and January 2002 to May 2002
Residential buildings						
Dwelling-houses smaller than 80 square metres						
Number of dwelling-houses	988	324	341	3 687	1 237	- 66.4
Total square metres	34 824	13 227	13 532	126 458	49 749	- 60.7
Total value at current prices (R'000)	14 626	6 133	6 651	68 317	24 608	- 64.0
Dwelling-houses equal to or larger than 80 square metres						
Number of dwelling-houses	76	102	127	334	578	+ 73.1
Total square metres	12 508	22 728	22 547	60 754	103 554	+ 70.4
Total value at current prices (R'000)	18 277	30 092	28 566	76 612	133 471	+ 74.2
Flats and townhouses						
Number of flats and townhouses	72	49	8	188	184	- 2.1
Total square metres	5 546	6 377	1 284	16 940	23 766	+ 40.3
Total value at current prices (R'000)	5 296	7 849	1 323	20 146	32 307	+ 60.4
Other residential buildings ^{1/}						
Total square metres	0	1 319	4 480	0	11 288	..
Total value at current prices (R'000)	0	1 185	6 700	0	77 885	..
Total value of residential buildings at current prices (R'000)	38 199	45 259	43 240	165 075	268 271	+ 62.5
Non-residential buildings						
Office and banking space						
Total square metres	0	600	1 821	1 162	3 110	+ 167.6
Total value at current prices (R'000)	0	600	2 800	1 550	4 279	+ 176.1
Shopping space						
Total square metres	766	1 634	1 630	940	19 530	+1 977.7
Total value at current prices (R'000)	1 400	2 260	2 127	1 574	24 959	+1 485.7
Industrial and warehouse space						
Total square metres	586	2 702	2 062	21 230	11 706	- 44.9
Total value at current prices (R'000)	275	4 003	3 012	18 052	14 325	- 20.6
Other non-residential space ^{2/}						
Total square metres	0	970	937	5 722	5 525	- 3.4
Total value at current prices (R'000)	0	922	937	7 580	6 034	- 20.4
Total value of non-residential buildings at current prices (R'000)	1 675	7 785	8 876	28 756	49 597	+ 72.5
Additions and alterations						
Dwelling-houses						
Total square metres	10 387	11 989	14 799	45 534	58 530	+ 28.5
Total value at current prices (R'000)	11 026	13 106	15 947	44 618	64 182	+ 43.8
Other buildings ^{3/}						
Total square metres	2 211	750	534	8 004	5 580	- 30.3
Total value at current prices (R'000)	2 672	1 035	923	12 825	13 931	+ 8.6
Total value of additions and alterations at current prices (R'000)	13 698	14 141	16 870	57 443	78 113	+ 36.0
Total value of building plans passed at current prices (R'000)	53 572	67 185	68 986	251 274	395 981	+ 57.6

1/ Other residential buildings include institutions for the disabled, boarding houses, old people's homes, hostels, hotels, motels, guest houses, holiday chalets, entertainment centres, bed-and-breakfast accommodation and casinos.

2/ Other non-residential space includes churches, sport and recreation clubs, schools, crèches, hospitals and all other non-residential space.

3/ Other buildings include additions and alterations to other residential buildings, non-residential buildings and internal alterations.

Table 18 - Building plans passed according to type of building and province: Northern Province

Type of building	May 2001	April 2002	May 2002	January 2001 to May 2001	January 2002 to May 2002	Percentage change between January 2001 to May 2001 and January 2002 to May 2002
Residential buildings						
Dwelling-houses smaller than 80 square metres						
Number of dwelling-houses	55	30	15	194	113	-41.8
Total square metres	3 328	1 729	935	11 658	6 665	-42.8
Total value at current prices (R'000)	4 509	2 613	1 294	15 394	9 644	-37.4
Dwelling-houses equal to or larger than 80 square metres						
Number of dwelling-houses	38	68	36	189	227	+ 20.1
Total square metres	5 406	15 277	7 387	32 668	45 468	+ 39.2
Total value at current prices (R'000)	8 182	22 187	10 345	45 037	62 831	+ 39.5
Flats and townhouses						
Number of flats and townhouses	1	26	4	19	57	+ 200.0
Total square metres	188	3 663	521	3 217	7 423	+ 130.7
Total value at current prices (R'000)	250	6 648	729	4 043	11 730	+ 190.1
Other residential buildings ^{1/}						
Total square metres	0	0	521	192	521	+ 171.4
Total value at current prices (R'000)	0	0	930	96	930	+ 868.8
Total value of residential buildings at current prices (R'000)	12 941	31 448	13 298	64 570	85 135	+ 31.8
Non-residential buildings						
Office and banking space						
Total square metres	296	275	1 822	876	2 551	+ 191.2
Total value at current prices (R'000)	651	495	3 922	1 259	5 172	+ 310.8
Shopping space						
Total square metres	0	118	1 940	7 382	4 609	-37.6
Total value at current prices (R'000)	0	200	3 395	10 980	8 052	-26.7
Industrial and warehouse space						
Total square metres	125	361	0	125	839	+ 571.2
Total value at current prices (R'000)	175	458	0	175	1 058	+ 504.6
Other non-residential space ^{2/}						
Total square metres	1 492	846	1 659	1 967	3 111	+ 58.2
Total value at current prices (R'000)	2 946	1 664	3 173	3 446	6 005	+ 74.3
Total value of non-residential buildings at current prices (R'000)	3 772	2 817	10 490	15 860	20 287	+ 27.9
Additions and alterations						
Dwelling-houses						
Total square metres	4 699	4 330	5 344	19 335	20 515	+ 6.1
Total value at current prices (R'000)	6 265	6 007	8 158	24 755	28 599	+ 15.5
Other buildings ^{3/}						
Total square metres	489	1 384	1 844	5 033	9 890	+ 96.5
Total value at current prices (R'000)	2 768	2 005	2 542	13 378	15 016	+ 12.2
Total value of additions and alterations at current prices (R'000)	9 033	8 012	10 700	38 133	43 615	+ 14.4
Total value of building plans passed at current prices (R'000)	25 746	42 277	34 488	118 563	149 037	+ 25.7

1/ Other residential buildings include institutions for the disabled, boarding houses, old people's homes, hostels, hotels, motels, guest houses, holiday chalets, entertainment centres, bed-and-breakfast accommodation and casinos.

2/ Other non-residential space includes churches, sport and recreation clubs, schools, crèches, hospitals and all other non-residential space.

3/ Other buildings include additions and alterations to other residential buildings, non-residential buildings and internal alterations.

Table 19 - Buildings completed according to type of building: Total RSA

Type of building	May 2001 *	April 2002*	May 2002	January 2001 to May 2001	January 2002 to May 2002	Percentage change between January 2001 to May 2001 and January 2002 to May 2002
Residential buildings						
Dwelling-houses smaller than 80 square metres						
Number of dwelling-houses	2 970	3 552	2 110	10 892	11 842	+ 8.7
Total square metres	114 146	132 138	85 584	430 069	448 920	+ 4.4
Total value at current prices (R'000)	87 334	106 123	78 554	352 546	397 266	+ 12.7
Dwelling-houses equal to or larger than 80 square metres						
Number of dwelling-houses	1 028	1 195	1 184	4 692	5 348	+ 14.0
Total square metres	223 259	255 707	255 709	950 385	1 119 134	+ 17.8
Total value at current prices (R'000)	312 846	383 694	379 566	1 261 125	1 658 264	+ 31.5
Flats and townhouses						
Number of flats and townhouses	293	763	757	2 884	4 522	+ 56.8
Total square metres	34 060	95 605	114 237	295 629	502 907	+ 70.1
Total value at current prices (R'000)	46 481	141 884	173 386	423 641	756 451	+ 78.6
Other residential buildings ^{1/}						
Total square metres	1 178	7 591	24 938	81 372	55 163	- 32.2
Total value at current prices (R'000)	1 234	9 753	41 090	338 181	268 598	- 20.6
Total value of residential buildings at current prices (R'000)	447 895	641 454	672 596	2 375 493	3 080 579	+ 29.7
Non-residential buildings						
Office and banking space						
Total square metres	133 973	72 912	66 774	337 810	250 880	- 25.7
Total value at current prices (R'000)	202 350	132 528	110 328	528 567	441 130	- 16.5
Shopping space						
Total square metres	17 881	23 267	27 420	104 898	102 392	- 2.4
Total value at current prices (R'000)	21 635	42 870	61 458	133 345	169 332	+ 27.0
Industrial and warehouse space						
Total square metres	50 154	43 089	68 565	329 737	202 385	- 38.6
Total value at current prices (R'000)	58 174	56 791	93 716	385 532	254 379	- 34.0
Other non-residential space ^{2/}						
Total square metres	15 284	12 267	29 669	88 386	87 693	- 0.8
Total value at current prices (R'000)	18 374	16 074	33 968	106 575	127 867	+ 20.0
Total value of non-residential buildings at current prices (R'000)	300 533	248 263	299 470	1 154 019	992 708	- 14.0
Additions and alterations						
Dwelling-houses						
Total square metres	145 897	147 686	176 318	602 524	643 433	+ 6.8
Total value at current prices (R'000)	161 523	188 379	225 146	699 198	809 664	+ 15.8
Other buildings ^{3/}						
Total square metres	51 071	130 120	34 538	234 143	249 029	+ 6.4
Total value at current prices (R'000)	134 324	193 103	73 045	514 279	417 089	- 18.9
Total value of additions and alterations at current prices (R'000)	295 847	381 482	298 191	1 213 477	1 226 753	+ 1.1
Total value of buildings completed at current prices (R'000)	1 044 275	1 271 199	1 270 257	4 742 989	5 300 040	+ 11.7

1/ Other residential buildings include institutions for the disabled, boarding houses, old people's homes, hostels, hotels, motels, guest houses, holiday chalets, entertainment centres, bed-and-breakfast accommodation and casinos.

2/ Other non-residential space includes churches, sport and recreation clubs, schools, crèches, hospitals and all other non-residential space.

3/ Other buildings include additions and alterations to other residential buildings, non-residential buildings and internal alterations.

Table 20 - Buildings completed according to type of building and province: Western Cape

Type of building	May 2001*	April 2002*	May 2002	January 2001 to May 2001	January 2002 to May 2002	Percentage change between January 2001 to May 2001 and January 2002 to May 2002
Residential buildings						
Dwelling-houses smaller than 80 square metres						
Number of dwelling-houses	412	686	602	2 018	3 206	+ 58.9
Total square metres	17 702	26 372	21 180	74 041	116 322	+ 57.1
Total value at current prices (R'000)	19 491	33 902	24 177	83 261	136 341	+ 63.8
Dwelling-houses equal to or larger than 80 square metres						
Number of dwelling-houses	334	491	488	1 557	2 075	+ 33.3
Total square metres	69 297	89 590	104 476	303 566	419 953	+ 38.3
Total value at current prices (R'000)	108 072	138 903	160 049	412 759	655 033	+ 58.7
Flats and townhouses						
Number of flats and townhouses	93	144	237	518	904	+ 74.5
Total square metres	10 855	23 427	27 461	52 540	115 270	+ 119.4
Total value at current prices (R'000)	16 088	33 757	44 804	71 363	187 891	+ 163.3
Other residential buildings ^{1/}						
Total square metres	144	2 100	1 720	26 869	4 493	- 83.3
Total value at current prices (R'000)	258	3 129	3 130	30 465	7 252	- 76.2
Total value of residential buildings at current prices (R'000)	143 909	209 691	232 160	597 848	986 517	+ 65.0
Non-residential buildings						
Office and banking space						
Total square metres	4 526	22 219	16 884	51 094	56 605	+ 10.8
Total value at current prices (R'000)	9 632	32 268	19 775	99 150	78 932	- 20.4
Shopping space						
Total square metres	3 753	10 006	4 869	23 437	36 160	+ 54.3
Total value at current prices (R'000)	3 558	14 216	12 524	30 000	51 214	+ 70.7
Industrial and warehouse space						
Total square metres	16 349	13 836	9 429	61 394	40 184	- 34.5
Total value at current prices (R'000)	16 732	15 900	10 965	71 420	43 346	- 39.3
Other non-residential space ^{2/}						
Total square metres	4 203	4 444	6 519	32 632	33 720	+ 3.3
Total value at current prices (R'000)	3 303	4 481	6 440	29 733	55 364	+ 86.2
Total value of non-residential buildings at current prices (R'000)	33 225	66 865	49 704	230 303	228 856	- 0.6
Additions and alterations						
Dwelling-houses						
Total square metres	60 877	43 920	52 665	226 946	202 250	- 10.9
Total value at current prices (R'000)	69 336	58 817	70 401	278 759	270 223	- 3.1
Other buildings ^{3/}						
Total square metres	11 911	76 565	11 929	62 112	113 959	+ 83.5
Total value at current prices (R'000)	17 672	102 140	34 667	180 475	187 666	+ 4.0
Total value of additions and alterations at current prices (R'000)	87 008	160 957	105 068	459 234	457 889	- 0.3
Total value of buildings completed at current prices (R'000)	264 142	437 513	386 932	1 287 385	1 673 262	30.0

1/ Other residential buildings include institutions for the disabled, boarding houses, old people's homes, hostels, hotels, motels, guest houses, holiday chalets, entertainment centres, bed-and-breakfast accommodation and casinos.

2/ Other non-residential space includes churches, sport and recreation clubs, schools, crèches, hospitals and all other non-residential space.

3/ Other buildings include additions and alterations to other residential buildings, non-residential buildings and internal alterations.

Table 21 - Buildings completed according to type of building and province: Eastern Cape

Type of building	May 2001	April 2002	May 2002	January 2001 to May 2001	January 2002 to May 2002	Percentage change between January 2001 to May 2001 and January 2002 to May 2002
Residential buildings						
Dwelling-houses smaller than 80 square metres						
Number of dwelling-houses	286	274	266	1 451	984	- 32.2
Total square metres	11 862	11 358	10 293	62 316	41 805	- 32.9
Total value at current prices (R'000)	10 654	14 400	11 770	52 189	52 494	+ 0.6
Dwelling-houses equal to or larger than 80 square metres						
Number of dwelling-houses	84	69	53	388	280	- 27.8
Total square metres	12 019	12 076	10 692	52 790	49 376	- 6.5
Total value at current prices (R'000)	16 835	15 044	14 545	67 213	64 493	- 4.0
Flats and townhouses						
Number of flats and townhouses	38	0	3	130	302	+ 132.3
Total square metres	3 047	0	393	11 799	15 539	+ 31.7
Total value at current prices (R'000)	3 448	0	570	12 396	22 355	+ 80.3
Other residential buildings ^{1/}						
Total square metres	0	0	12 992	4 347	15 736	+ 262.0
Total value at current prices (R'000)	0	0	23 000	7 000	26 312	+ 275.9
Total value of residential buildings at current prices (R'000)	30 937	29 444	49 885	138 798	165 654	+ 19.3
Non-residential buildings						
Office and banking space						
Total square metres	19 056	551	0	20 500	576	-97.2
Total value at current prices (R'000)	19 682	1 135	0	22 049	1 185	-94.6
Shopping space						
Total square metres	5 148	302	0	13 708	2 779	- 79.7
Total value at current prices (R'000)	5 488	369	0	19 121	3 520	- 81.6
Industrial and warehouse space						
Total square metres	8 422	0	10 304	100 257	10 782	- 89.2
Total value at current prices (R'000)	9 050	0	9 842	101 566	10 234	- 89.9
Other non-residential space ^{2/}						
Total square metres	1 802	0	0	18 067	2 300	-87.3
Total value at current prices (R'000)	2 727	0	0	23 213	2 664	-88.5
Total value of non-residential buildings at current prices (R'000)	36 947	1 504	9 842	165 949	17 603	- 89.4
Additions and alterations						
Dwelling-houses						
Total square metres	9 057	11 610	10 347	39 161	47 631	+ 21.6
Total value at current prices (R'000)	10 763	14 172	12 416	45 628	56 655	+ 24.2
Other buildings ^{3/}						
Total square metres	3 948	7 012	2 596	26 796	19 856	- 25.9
Total value at current prices (R'000)	5 158	9 044	4 079	35 764	27 013	- 24.5
Total value of additions and alterations at current prices (R'000)	15 921	23 216	16 495	81 392	83 668	+ 2.8
Total value of buildings completed at current prices (R'000)	83 805	54 164	76 222	386 139	266 925	- 30.9

1/ Other residential buildings include institutions for the disabled, boarding houses, old people's homes, hostels, hotels, motels, guest houses, holiday chalets, entertainment centres, bed-and-breakfast accommodation and casinos.

2/ Other non-residential space includes churches, sport and recreation clubs, schools, crèches, hospitals and all other non-residential space.

3/ Other buildings include additions and alterations to other residential buildings, non-residential buildings and internal alterations.

Table 22 - Buildings completed according to type of building and province: Northern Cape

Type of building	May 2001*	April 2002	May 2002	January 2001 to May 2001	January 2002 to May 2002	Percentage change between January 2001 to May 2001 and January 2002 to May 2002
Residential buildings						
Dwelling-houses smaller than 80 square metres						
Number of dwelling-houses	11	19	24	70	59	- 15.7
Total square metres	580	987	959	3 361	2 717	- 19.2
Total value at current prices (R'000)	1 037	1 556	890	4 757	3 409	- 28.3
Dwelling-houses equal to or larger than 80 square metres						
Number of dwelling-houses	16	5	6	75	25	- 66.7
Total square metres	2 432	1 325	650	12 652	3 848	- 69.6
Total value at current prices (R'000)	3 656	1 892	925	16 101	5 227	- 67.5
Flats and townhouses						
Number of flats and townhouses	1	1	3	15	4	- 73.3
Total square metres	145	180	457	1 457	637	- 56.3
Total value at current prices (R'000)	203	252	527	2 114	779	- 63.2
Other residential buildings ^{1/}						
Total square metres	0	0	0	346	0	..
Total value at current prices (R'000)	0	0	0	277	0	..
Total value of residential buildings at current prices (R'000)	4 896	3 700	2 342	23 249	9 415	- 59.5
Non-residential buildings						
Office and banking space						
Total square metres	0	0	0	7 105	0	..
Total value at current prices (R'000)	0	0	0	15 631	0	..
Shopping space						
Total square metres	1 563	0	0	4 883	784	-83.9
Total value at current prices (R'000)	2 188	0	0	7 331	1 098	- 85.0
Industrial and warehouse space						
Total square metres	0	0	223	854	223	- 73.9
Total value at current prices (R'000)	0	0	109	691	109	- 84.2
Other non-residential space ^{2/}						
Total square metres	173	157	379	354	1 001	+ 182.8
Total value at current prices (R'000)	0	345	531	566	1 309	+ 131.3
Total value of non-residential buildings at current prices (R'000)	2 465	345	640	24 219	2 516	- 89.6
Additions and alterations						
Dwelling-houses						
Total square metres	1 677	2 390	2 631	7 708	11 122	+ 44.3
Total value at current prices (R'000)	2 640	3 370	3 645	11 998	15 095	+ 25.8
Other buildings ^{3/}						
Total square metres	110	706	133	1 880	1 286	- 31.6
Total value at current prices (R'000)	375	1 786	351	3 866	3 940	+ 1.9
Total value of additions and alterations at current prices (R'000)	3 015	5 156	3 996	15 864	19 035	+ 20.0
Total value of buildings completed at current prices (R'000)	10 376	9 201	6 978	63 332	30 966	-51.1

1/ Other residential buildings include institutions for the disabled, boarding houses, old people's homes, hostels, hotels, motels, guest houses, holiday chalets, entertainment centres, bed-and-breakfast accommodation and casinos.

2/ Other non-residential space includes churches, sport and recreation clubs, schools, crèches, hospitals and all other non-residential space.

3/ Other buildings include additions and alterations to other residential buildings, non-residential buildings and internal alterations.

Table 23 - Buildings completed according to type of building and province: Free State

Type of building	May 2001	April 2002	May 2002	January 2001 to May 2001	January 2002 to May 2002	Percentage change between January 2001 to May 2001 and January 2002 to May 2002
Residential buildings						
Dwelling-houses smaller than 80 square metres						
Number of dwelling-houses	305	138	468	847	784	-7.4
Total square metres	13 088	7 765	20 284	35 745	36 448	+ 2.0
Total value at current prices (R'000)	6 992	6 625	10 006	20 532	22 362	+ 8.9
Dwelling-houses equal to or larger than 80 square metres						
Number of dwelling-houses	34	37	34	169	139	-17.8
Total square metres	6 259	6 234	4 927	30 404	23 034	-24.2
Total value at current prices (R'000)	7 867	7 687	5 807	35 345	27 645	-21.8
Flats and townhouses						
Number of flats and townhouses	3	9	35	121	80	-33.9
Total square metres	412	938	3 314	9 709	8 188	-15.7
Total value at current prices (R'000)	453	1 124	4 687	13 172	12 275	-6.8
Other residential buildings ^{1/}						
Total square metres	313	0	0	464	1 428	+ 207.8
Total value at current prices (R'000)	370	0	0	581	1 461	+ 151.5
Total value of residential buildings at current prices (R'000)	15 682	15 436	20 500	69 630	63 743	-8.5
Non-residential buildings						
Office and banking space						
Total square metres	10 480	0	2 368	11 574	4 423	-61.8
Total value at current prices (R'000)	21 000	0	4 120	21 903	7 975	-63.6
Shopping space						
Total square metres	762	564	0	3 303	1 904	-42.4
Total value at current prices (R'000)	1 006	659	0	3 286	3 159	-3.9
Industrial and warehouse space						
Total square metres	1 076	0	0	11 048	3 650	-67.0
Total value at current prices (R'000)	1 070	0	0	9 914	2 689	-72.9
Other non-residential space ^{2/}						
Total square metres	0	3 105	195	6 757	3 475	-48.6
Total value at current prices (R'000)	1 000	4 768	282	12 843	5 181	-59.7
Total value of non-residential buildings at current prices (R'000)	24 076	5 427	4 402	47 946	19 004	-60.4
Additions and alterations						
Dwelling-houses						
Total square metres	6 807	7 638	8 809	29 055	37 713	+ 29.8
Total value at current prices (R'000)	6 708	8 113	9 931	30 016	41 758	+ 39.1
Other buildings ^{3/}						
Total square metres	14 509	1 184	1 742	20 381	7 198	-64.7
Total value at current prices (R'000)	81 642	2 315	2 919	90 608	13 804	-84.8
Total value of additions and alterations at current prices (R'000)	88 350	10 428	12 850	120 624	55 562	-53.9
Total value of buildings completed at current prices (R'000)	128 108	31 291	37 752	238 200	138 309	-41.9

1/ Other residential buildings include institutions for the disabled, boarding houses, old people's homes, hostels, hotels, motels, guest houses, holiday chalets, entertainment centres, bed-and-breakfast accommodation and casinos.

2/ Other non-residential space includes churches, sport and recreation clubs, schools, crèches, hospitals and all other non-residential space.

3/ Other buildings include additions and alterations to other residential buildings, non-residential buildings and internal alterations.

Table 24 - Buildings completed according to type of building and province: KwaZulu-Natal

Type of building	May 2001	April 2002	May 2002	January 2001 to May 2001	January 2002 to May 2002	Percentage change between January 2001 to May 2001 and January 2002 to May 2002
Residential buildings						
Dwelling-houses smaller than 80 square metres						
Number of dwelling-houses	120	252	203	990	927	-6.4
Total square metres	5 594	10 264	8 568	46 574	39 211	-15.8
Total value at current prices (R'000)	6 235	9 708	7 845	41 030	38 461	-6.3
Dwelling-houses equal to or larger than 80 square metres						
Number of dwelling-houses	152	128	136	641	582	-9.2
Total square metres	29 885	24 013	26 774	128 913	113 340	-12.1
Total value at current prices (R'000)	36 959	32 587	39 745	165 009	158 041	-4.2
Flats and townhouses						
Number of flats and townhouses	45	114	30	454	297	-34.6
Total square metres	6 548	12 582	3 234	51 020	37 083	-27.3
Total value at current prices (R'000)	11 280	22 163	5 053	72 968	62 333	-14.6
Other residential buildings ^{1/}						
Total square metres	0	3 177	1 226	8 450	4 403	-47.9
Total value at current prices (R'000)	0	3 177	1 594	40 000	4 771	-88.1
Total value of residential buildings at current prices (R'000)	54 474	67 635	54 237	319 007	263 606	-17.4
Non-residential buildings						
Office and banking space						
Total square metres	1 470	12 353	9 990	19 962	66 006	+ 230.7
Total value at current prices (R'000)	3 500	31 800	29 900	37 233	149 158	+ 300.6
Shopping space						
Total square metres	1 190	9 589	8 937	17 576	27 840	+ 58.4
Total value at current prices (R'000)	1 905	23 487	24 792	31 800	58 354	+ 83.5
Industrial and warehouse space						
Total square metres	1 759	15 395	25 285	57 221	78 051	+ 36.4
Total value at current prices (R'000)	2 279	20 271	38 402	61 539	93 921	+ 52.6
Other non-residential space ^{2/}						
Total square metres	480	4 194	1 324	8 153	13 406	+ 64.4
Total value at current prices (R'000)	516	6 180	1 325	8 986	19 856	+ 121.0
Total value of non-residential buildings at current prices (R'000)	8 200	81 738	94 419	139 558	321 289	+ 130.2
Additions and alterations						
Dwelling-houses						
Total square metres	42 081	26 930	30 181	143 574	119 928	-16.5
Total value at current prices (R'000)	44 238	30 931	36 088	159 669	136 299	-14.6
Other buildings ^{3/}						
Total square metres	10 390	31 779	4 635	45 846	52 837	+ 15.2
Total value at current prices (R'000)	17 648	57 878	7 090	84 610	95 168	+ 12.5
Total value of additions and alterations at current prices (R'000)	61 886	88 809	43 178	244 279	231 467	-5.2
Total value of buildings completed at current prices (R'000)	124 560	238 182	191 834	702 844	816 362	+ 16.2

1/ Other residential buildings include institutions for the disabled, boarding houses, old people's homes, hostels, hotels, motels, guest houses, holiday chalets, entertainment centres, bed-and-breakfast accommodation and casinos.

2/ Other non-residential space includes churches, sport and recreation clubs, schools, crèches, hospitals and all other non-residential space.

3/ Other buildings include additions and alterations to other residential buildings, non-residential buildings and internal alterations.

Table 25 - Buildings completed according to type of building and province: North West

Type of building	May 2001*	April 2002	May 2002	January 2001 to May 2001	January 2002 to May 2002	Percentage change between January 2001 to May 2001 and January 2002 to May 2002
Residential buildings						
Dwelling-houses smaller than 80 square metres						
Number of dwelling-houses	335	909	105	642	1 399	+ 117.9
Total square metres	10 996	28 645	4 252	26 537	46 673	+ 75.9
Total value at current prices (R'000)	4 790	9 193	4 131	22 687	21 708	- 4.3
Dwelling-houses equal to or larger than 80 square metres						
Number of dwelling-houses	54	44	80	203	276	+ 36.0
Total square metres	11 021	8 547	14 751	38 732	48 947	+ 26.4
Total value at current prices (R'000)	13 506	12 033	20 690	46 434	71 371	+ 53.7
Flats and townhouses						
Number of flats and townhouses	12	0	70	64	240	+ 275.0
Total square metres	1 247	0	6 242	6 795	16 833	+ 147.7
Total value at current prices (R'000)	1 101	0	14 590	6 845	28 817	+ 321.0
Other residential buildings ^{1/}						
Total square metres	721	0	0	3 684	2 090	- 43.3
Total value at current prices (R'000)	606	0	0	4 162	2 483	- 40.3
Total value of residential buildings at current prices (R'000)	20 003	21 226	39 411	80 128	124 379	+ 55.2
Non-residential buildings						
Office and banking space						
Total square metres	0	237	40	750	723	- 3.6
Total value at current prices (R'000)	0	300	40	1 400	1 140	- 18.6
Shopping space						
Total square metres	667	0	303	2 266	3 845	+ 69.7
Total value at current prices (R'000)	670	0	260	3 112	4 305	+ 38.3
Industrial and warehouse space						
Total square metres	1 464	985	2 062	3 075	4 444	+ 44.5
Total value at current prices (R'000)	1 250	1 490	2 000	3 210	4 595	+ 43.1
Other non-residential space ^{2/}						
Total square metres	234	367	902	2 317	3 562	+ 53.7
Total value at current prices (R'000)	234	300	1 307	2 549	5 710	+ 124.0
Total value of non-residential buildings at current prices (R'000)	2 154	2 090	3 607	10 271	15 750	+ 53.3
Additions and alterations						
Dwelling-houses						
Total square metres	4 450	3 208	5 109	17 218	21 219	+ 23.2
Total value at current prices (R'000)	3 257	3 933	5 319	14 910	20 877	+ 40.0
Other buildings ^{3/}						
Total square metres	2 848	272	1 095	10 793	3 311	- 69.3
Total value at current prices (R'000)	2 558	576	3 848	13 125	7 120	- 45.8
Total value of additions and alterations at current prices (R'000)	5 815	4 509	9 167	28 035	27 997	- 0.1
Total value of buildings completed at current prices (R'000)	27 972	27 825	52 185	118 434	168 126	+ 42.0

1/ Other residential buildings include institutions for the disabled, boarding houses, old people's homes, hostels, hotels, motels, guest houses, holiday chalets, entertainment centres, bed-and-breakfast accommodation and casinos.

2/ Other non-residential space includes churches, sport and recreation clubs, schools, crèches, hospitals and all other non-residential space.

3/ Other buildings include additions and alterations to other residential buildings, non-residential buildings and internal alterations.

Table 26 - Buildings completed according to type of building and province: Gauteng

Type of building	May 2001*	April 2002	May 2002	January 2001 to May 2001	January 2002 to May 2002	Percentage change between January 2001 to May 2001 and January 2002 to May 2002
Residential buildings						
Dwelling-houses smaller than 80 square metres						
Number of dwelling-houses	983	820	178	2 940	2 998	+ 2.0
Total square metres	36 500	29 507	9 570	112 825	107 629	-4.6
Total value at current prices (R'000)	28 633	22 330	13 798	92 136	89 218	-3.2
Dwelling-houses equal to or larger than 80 square metres						
Number of dwelling-houses	320	383	334	1 414	1 751	+ 23.8
Total square metres	86 167	107 380	83 843	340 758	422 498	+ 24.0
Total value at current prices (R'000)	119 304	167 357	125 370	471 711	629 511	+ 33.5
Flats and townhouses						
Number of flats and townhouses	53	491	360	1 497	2 653	+ 77.2
Total square metres	6 166	58 043	70 232	151 934	303 131	+ 99.5
Total value at current prices (R'000)	8 321	84 011	100 201	234 341	435 650	+ 85.9
Other residential buildings ^{1/}						
Total square metres	0	2 314	7 924	34 212	11 978	-65.0
Total value at current prices (R'000)	0	3 447	11 886	252 096	17 333	-93.1
Total value of residential buildings at current prices (R'000)	156 258	277 145	251 255	1 050 284	1 171 712	+ 11.6
Non-residential buildings						
Office and banking space						
Total square metres	97 943	37 552	36 938	219 064	121 993	-44.3
Total value at current prices (R'000)	147 739	67 025	55 798	312 504	202 045	-35.3
Shopping space						
Total square metres	3 450	2 806	5 680	16 727	17 149	+ 2.5
Total value at current prices (R'000)	4 547	4 139	10 787	23 422	27 552	+ 17.6
Industrial and warehouse space						
Total square metres	20 719	12 873	20 384	95 523	63 315	-33.7
Total value at current prices (R'000)	27 633	19 130	31 450	137 032	97 701	-28.7
Other non-residential space ^{2/}						
Total square metres	7 552	0	8 564	17 328	17 105	-1.3
Total value at current prices (R'000)	10 317	0	13 436	25 337	26 115	+ 3.1
Total value of non-residential buildings at current prices (R'000)	190 236	90 294	111 471	498 295	353 413	-29.1
Additions and alterations						
Dwelling-houses						
Total square metres	19 656	48 249	60 575	113 173	182 256	+ 61.0
Total value at current prices (R'000)	23 269	65 289	80 756	135 959	246 887	+ 81.6
Other buildings ^{3/}						
Total square metres	6 995	12 058	12 133	51 748	47 904	-7.4
Total value at current prices (R'000)	8 701	18 537	19 538	84 006	78 086	-7.0
Total value of additions and alterations at current prices (R'000)	31 970	83 826	100 294	219 965	324 973	+ 47.7
Total value of buildings completed at current prices (R'000)	378 464	451 265	463 020	1 768 544	1 850 098	+ 4.6

1/ Other residential buildings include institutions for the disabled, boarding houses, old people's homes, hostels, hotels, motels, guest houses, holiday chalets, entertainment centres, bed-and-breakfast accommodation and casinos.

2/ Other non-residential space includes churches, sport and recreation clubs, schools, crèches, hospitals and all other non-residential space.

3/ Other buildings include additions and alterations to other residential buildings, non-residential buildings and internal alterations.

Table 27 - Buildings completed according to type of building and province: Mpumalanga

Type of building	May 2001	April 2002	May 2002	January 2001 to May 2001	January 2002 to May 2002	Percentage change between January 2001 to May 2001 and January 2002 to May 2002
Residential buildings						
Dwelling-houses smaller than 80 square metres						
Number of dwelling-houses	482	441	229	1 678	1 385	-17.5
Total square metres	16 012	16 424	8 624	56 674	52 342	-7.6
Total value at current prices (R'000)	7 817	7 074	3 225	26 065	24 579	-5.7
Dwelling-houses equal to or larger than 80 square metres						
Number of dwelling-houses	20	33	27	163	152	-6.7
Total square metres	4 173	5 736	4 598	29 312	26 665	-9.0
Total value at current prices (R'000)	3 885	7 063	5 431	28 752	30 895	+ 7.5
Flats and townhouses						
Number of flats and townhouses	40	4	19	63	37	-41.3
Total square metres	3 905	435	2 904	6 043	5 638	-6.7
Total value at current prices (R'000)	3 842	577	2 954	5 630	5 528	-1.8
Other residential buildings ^{1/}						
Total square metres	0	0	1 076	0	1 076	..
Total value at current prices (R'000)	0	0	1 480	0	1 480	..
Total value of residential buildings at current prices (R'000)	15 544	14 714	13 090	60 447	62 482	+ 3.4
Non-residential buildings						
Office and banking space						
Total square metres	0	0	460	7 263	460	-93.7
Total value at current prices (R'000)	0	0	563	17 900	563	-96.9
Shopping space						
Total square metres	166	0	2 639	21 228	5 083	-76.1
Total value at current prices (R'000)	200	0	6 016	12 670	10 578	-16.5
Industrial and warehouse space						
Total square metres	365	0	376	365	1 234	+ 238.1
Total value at current prices (R'000)	160	0	329	160	1 165	+ 628.1
Other non-residential space ^{2/}						
Total square metres	0	0	11 442	2 526	12 780	+ 405.9
Total value at current prices (R'000)	0	0	10 165	2 794	11 186	+ 300.4
Total value of non-residential buildings at current prices (R'000)	360	0	17 073	33 524	23 492	-29.9
Additions and alterations						
Dwelling-houses						
Total square metres	727	3 461	5 215	22 449	19 332	-13.9
Total value at current prices (R'000)	629	3 297	5 384	18 448	18 744	+ 1.6
Other buildings ^{3/}						
Total square metres	360	544	255	12 842	1 487	-88.4
Total value at current prices (R'000)	547	827	517	17 687	2 616	-85.2
Total value of additions and alterations at current prices (R'000)	1 176	4 124	5 901	36 135	21 360	-40.9
Total value of buildings completed at current prices (R'000)	17 080	18 838	36 064	130 106	107 334	-17.5

1/ Other residential buildings include institutions for the disabled, boarding houses, old people's homes, hostels, hotels, motels, guest houses, holiday chalets, entertainment centres, bed-and-breakfast accommodation and casinos.

2/ Other non-residential space includes churches, sport and recreation clubs, schools, crèches, hospitals and all other non-residential space.

3/ Other buildings include additions and alterations to other residential buildings, non-residential buildings and internal alterations.

Table 28 - Buildings completed according to type of building and province: Northern Province

Type of building	May 2001	April 2002	May 2002	January 2001 to May 2001	January 2002 to May 2002	Percentage change between January 2001 to May 2001 and January 2002 to May 2002
Residential buildings						
Dwelling-houses smaller than 80 square metres						
Number of dwelling-houses	36	13	35	256	100	-60.9
Total square metres	1 812	816	1 854	11 996	5 773	-51.9
Total value at current prices (R'000)	1 685	1 335	2 712	9 889	8 694	-12.1
Dwelling-houses equal to or larger than 80 square metres						
Number of dwelling-houses	14	5	26	82	68	-17.1
Total square metres	2 006	806	4 998	13 258	11 473	-13.5
Total value at current prices (R'000)	2 762	1 128	7 004	17 801	16 048	-9.8
Flats and townhouses						
Number of flats and townhouses	8	0	0	22	5	-77.3
Total square metres	1 735	0	0	4 332	588	-86.4
Total value at current prices (R'000)	1 745	0	0	4 812	823	-82.9
Other residential buildings ^{1/}						
Total square metres	0	0	0	3 000	13 959	+ 365.3
Total value at current prices (R'000)	0	0	0	3 600	207 506	+ 5 664.1
Total value of residential buildings at current prices (R'000)	6 192	2 463	9 716	36 102	233 071	+ 545.6
Non-residential buildings						
Office and banking space						
Total square metres	498	0	94	498	94	-81.1
Total value at current prices (R'000)	797	0	132	797	132	-83.4
Shopping space						
Total square metres	1 182	0	4 992	1 770	6 848	+ 286.9
Total value at current prices (R'000)	2 073	0	7 079	2 603	9 552	+ 267.0
Industrial and warehouse space						
Total square metres	0	0	502	0	502	..
Total value at current prices (R'000)	0	0	619	0	619	..
Other non-residential space ^{2/}						
Total square metres	0	0	344	252	344	+ 36.5
Total value at current prices (R'000)	0	0	482	554	482	-13.0
Total value of non-residential buildings at current prices (R'000)	2 870	0	8 312	3 954	10 785	+ 172.8
Additions and alterations						
Dwelling-houses						
Total square metres	565	280	786	3 240	1 982	-38.8
Total value at current prices (R'000)	683	457	1 206	3 811	3 126	-18.0
Other buildings ^{3/}						
Total square metres	0	0	20	1 745	1 191	-31.7
Total value at current prices (R'000)	23	0	36	4 138	1 676	-59.5
Total value of additions and alterations at current prices (R'000)	706	457	1 242	7 949	4 802	-39.6
Total value of buildings completed at current prices (R'000)	9 768	2 920	19 270	48 005	248 658	+ 418.0

1/ Other residential buildings include institutions for the disabled, boarding houses, old people's homes, hostels, hotels, motels, guest houses, holiday chalets, entertainment centres, bed-and-breakfast accommodation and casinos.

2/ Other non-residential space includes churches, sport and recreation clubs, schools, crèches, hospitals and all other non-residential space.

3/ Other buildings include additions and alterations to other residential buildings, non-residential buildings and internal alterations.

Table 29 - Building plans passed according to type of building and selected urban area: Cape Town

Type of building	May 2001*	April 2002*	May 2002	January 2001 to May 2001	January 2002 to May 2002	Percentage change between January 2001 to May 2001 and January 2002 to May 2002
Residential buildings						
Dwelling-houses smaller than 80 square metres						
Number of dwelling-houses	475	112	1 568	2 682	3 639	+ 35.7
Total square metres	19 696	6 094	54 310	105 159	127 669	+ 21.4
Total value at current prices (R'000)	22 506	7 648	63 672	126 732	152 909	+ 20.7
Dwelling-houses equal to or larger than 80 square metres						
Number of dwelling-houses	432	387	381	1 473	1 671	+ 13.4
Total square metres	79 367	79 343	84 460	319 205	339 775	+ 6.4
Total value at current prices (R'000)	110 738	110 731	123 090	434 053	477 503	+ 10.0
Flats and townhouses						
Number of flats and townhouses	236	183	216	669	926	+ 38.4
Total square metres	18 644	14 167	21 120	66 266	90 448	+ 36.5
Total value at current prices (R'000)	28 231	19 323	39 272	106 615	155 651	+ 46.0
Other residential buildings ^{1/}						
Total square metres	4 530	4 763	6 214	24 544	14 512	- 40.9
Total value at current prices (R'000)	12 000	6 924	6 548	62 106	19 002	- 69.4
Total value of residential buildings at current prices (R'000)	173 475	144 626	232 582	729 506	805 065	+ 10.4
Non-residential buildings						
Office and banking space						
Total square metres	8 763	5 522	10 214	67 966	26 880	- 60.5
Total value at current prices (R'000)	15 677	10 922	19 564	117 345	43 086	- 63.3
Shopping space						
Total square metres	10 057	0	0	82 736	12 802	- 84.5
Total value at current prices (R'000)	14 954	0	0	102 452	15 708	- 84.7
Industrial and warehouse space						
Total square metres	5 434	7 165	16 802	48 290	51 992	+ 7.7
Total value at current prices (R'000)	5 260	8 979	18 899	50 679	59 752	+ 17.9
Other non-residential space ^{2/}						
Total square metres	3 437	4 287	4 851	36 334	18 367	- 49.4
Total value at current prices (R'000)	5 155	6 390	7 003	52 622	25 105	- 52.3
Total value of non-residential buildings at current prices (R'000)	41 046	26 291	45 466	323 098	143 651	- 55.5
Additions and alterations						
Dwelling-houses						
Total square metres	55 678	43 460	58 455	236 719	245 965	+ 3.9
Total value at current prices (R'000)	69 505	53 547	73 526	284 927	307 994	+ 8.1
Other buildings ^{3/}						
Total square metres	23 860	15 081	39 799	75 846	92 078	+ 21.4
Total value at current prices (R'000)	31 868	36 439	92 648	131 845	193 456	+ 46.7
Total value of additions and alterations at current prices (R'000)	101 373	89 986	166 174	416 772	501 450	+ 20.3
Total value of building plans passed at current prices (R'000)	315 894	260 903	444 222	1 469 376	1 450 166	- 1.3

1/ Other residential buildings include institutions for the disabled, boarding houses, old people's homes, hostels, hotels, motels, guest houses, holiday chalets, entertainment centres, bed-and-breakfast accommodation and casinos.

2/ Other non-residential space includes churches, sport and recreation clubs, schools, crèches, hospitals and all other non-residential space.

3/ Other buildings include additions and alterations to other residential buildings, non-residential buildings and internal alterations.

Table 30 - Building plans passed according to type of building and selected urban area: Port Elizabeth

Type of building	May 2001	April 2002	May 2002	January 2001 to May 2001	January 2002 to May 2002	Percentage change between January 2001 to May 2001 and January 2002 to May 2002
Residential buildings						
Dwelling-houses smaller than 80 square metres						
Number of dwelling-houses	161	571	265	798	1 220	+ 52.9
Total square metres	6 851	23 216	10 993	35 600	52 416	+ 47.2
Total value at current prices (R'000)	8 876	32 677	15 280	47 162	74 199	+ 57.3
Dwelling-houses equal to or larger than 80 square metres						
Number of dwelling-houses	33	69	69	310	303	- 2.3
Total square metres	5 970	15 486	13 020	36 895	57 410	+ 55.6
Total value at current prices (R'000)	8 214	21 970	17 924	49 323	81 450	+ 65.1
Flats and townhouses						
Number of flats and townhouses	5	20	43	81	113	+ 39.5
Total square metres	398	2 051	5 584	7 523	13 330	+ 77.2
Total value at current prices (R'000)	524	2 974	9 398	10 775	21 630	+ 100.7
Other residential buildings ^{1/}						
Total square metres	0	0	0	0	0	..
Total value at current prices (R'000)	0	0	0	0	0	..
Total value of residential buildings at current prices (R'000)	17 614	57 621	42 602	107 260	177 279	+ 65.3
Non-residential buildings						
Office and banking space						
Total square metres	0	2 482	448	0	3 373	..
Total value at current prices (R'000)	0	3 600	878	0	5 346	..
Shopping space						
Total square metres	238	0	5 783	1 362	10 886	+ 699.3
Total value at current prices (R'000)	58	0	11 229	1 857	22 424	+ 1 107.5
Industrial and warehouse space						
Total square metres	4 814	10 470	5 998	6 927	20 407	+ 194.6
Total value at current prices (R'000)	1 682	16 292	9 089	4 746	31 384	+ 561.3
Other non-residential space ^{2/}						
Total square metres	231	4 992	2 640	2 501	12 605	+ 404.0
Total value at current prices (R'000)	254	7 951	4 071	3 903	19 825	+ 407.9
Total value of non-residential buildings at current prices (R'000)	1 994	27 843	25 267	10 506	78 979	+ 651.8
Additions and alterations						
Dwelling-houses						
Total square metres	9 677	13 520	16 621	43 599	60 924	+ 39.7
Total value at current prices (R'000)	12 097	18 035	22 353	56 942	79 044	+ 38.8
Other buildings ^{3/}						
Total square metres	6 735	3 927	3 951	36 648	17 472	- 52.3
Total value at current prices (R'000)	9 767	7 322	7 113	52 332	31 113	- 40.5
Total value of additions and alterations at current prices (R'000)	21 864	25 357	29 466	109 274	110 157	+ 0.8
Total value of building plans passed at current prices (R'000)	41 472	110 821	97 335	227 040	366 415	+ 61.4

1/ Other residential buildings include institutions for the disabled, boarding houses, old people's homes, hostels, hotels, motels, guest houses, holiday chalets, entertainment centres, bed-and-breakfast accommodation and casinos.

2/ Other non-residential space includes churches, sport and recreation clubs, schools, crèches, hospitals and all other non-residential space.

3/ Other buildings include additions and alterations to other residential buildings, non-residential buildings and internal alterations.

Table 31 - Building plans passed according to type of building and selected urban area: Durban

Type of building	May 2001	April 2002	May 2002	January 2001 to May 2001	January 2002 to May 2002	Percentage change between January 2001 to May 2001 and January 2002 to May 2002
Residential buildings						
Dwelling-houses smaller than 80 square metres						
Number of dwelling-houses	87	80	23	372	378	+ 1.6
Total square metres	4 474	3 748	1 259	19 606	16 342	-16.6
Total value at current prices (R'000)	5 381	4 513	1 446	22 714	18 243	-19.7
Dwelling-houses equal to or larger than 80 square metres						
Number of dwelling-houses	72	67	82	294	298	+ 1.4
Total square metres	12 447	16 963	14 140	55 743	56 875	+ 2.0
Total value at current prices (R'000)	16 538	19 783	17 187	69 384	70 311	+ 1.3
Flats and townhouses						
Number of flats and townhouses	11	6	9	77	187	+ 142.9
Total square metres	1 956	1 448	1 866	8 278	29 002	+ 250.4
Total value at current prices (R'000)	3 250	1 888	2 720	11 928	37 418	+ 213.7
Other residential buildings ^{1/}						
Total square metres	138	0	0	138	29 606	+ 21 353.6
Total value at current prices (R'000)	330	0	0	330	31 000	+ 9 293.9
Total value of residential buildings at current prices (R'000)	25 499	26 184	21 353	104 356	156 972	+ 50.4
Non-residential buildings						
Office and banking space						
Total square metres	993	226	0	5 505	226	-95.9
Total value at current prices (R'000)	1 500	250	0	13 539	250	-98.2
Shopping space						
Total square metres	616	1 981	1 664	7 158	4 182	-41.6
Total value at current prices (R'000)	986	2 700	1 760	8 756	5 697	-34.9
Industrial and warehouse space						
Total square metres	2 562	3 370	9 291	32 502	36 543	+ 12.4
Total value at current prices (R'000)	2 841	3 000	9 715	36 153	38 939	+ 7.7
Other non-residential space ^{2/}						
Total square metres	1 500	1 178	2 844	18 939	57 589	+ 204.1
Total value at current prices (R'000)	2 730	2 355	6 504	22 166	67 240	+ 203.3
Total value of non-residential buildings at current prices (R'000)	8 057	8 305	17 979	80 614	112 126	+ 39.1
Additions and alterations						
Dwelling-houses						
Total square metres	22 566	25 513	21 962	105 063	99 641	-5.2
Total value at current prices (R'000)	25 814	34 161	27 752	122 642	126 084	+ 2.8
Other buildings ^{3/}						
Total square metres	11 174	1 998	13 092	51 534	26 170	-49.2
Total value at current prices (R'000)	29 028	4 304	24 615	107 468	56 798	-47.1
Total value of additions and alterations at current prices (R'000)	54 842	38 465	52 367	230 110	182 882	-20.5
Total value of building plans passed at current prices (R'000)	88 398	72 954	91 699	415 080	451 980	+ 8.9

1/ Other residential buildings include institutions for the disabled, boarding houses, old people's homes, hostels, hotels, motels, guest houses, holiday chalets, entertainment centres, bed-and-breakfast accommodation and casinos.

2/ Other non-residential space includes churches, sport and recreation clubs, schools, crèches, hospitals and all other non-residential space.

3/ Other buildings include additions and alterations to other residential buildings, non-residential buildings and internal alterations.

Table 32 - Building plans passed according to type of building and selected urban area: Witwatersrand

Type of building	May 2001*	April 2002	May 2002	January 2001 to May 2001	January 2002 to May 2002	Percentage change between January 2001 to May 2001 and January 2002 to May 2002
Residential buildings						
Dwelling-houses smaller than 80 square metres						
Number of dwelling-houses	658	695	476	3 527	3 800	+ 7.7
Total square metres	27 144	25 014	19 506	134 168	139 355	+ 3.9
Total value at current prices (R'000)	27 301	23 249	20 291	143 261	123 742	- 13.6
Dwelling-houses equal to or larger than 80 square metres						
Number of dwelling-houses	462	440	396	2 240	1 752	- 21.8
Total square metres	117 453	79 409	105 887	496 282	433 151	- 12.7
Total value at current prices (R'000)	168 166	122 835	160 308	728 891	694 043	- 4.8
Flats and townhouses						
Number of flats and townhouses	429	429	245	1 383	1 360	- 1.7
Total square metres	44 319	59 545	41 442	145 379	177 184	+ 21.9
Total value at current prices (R'000)	81 284	113 255	57 024	246 139	296 457	+ 20.4
Other residential buildings ^{1/}						
Total square metres	1 323	0	509	1 323	3 968	+ 199.9
Total value at current prices (R'000)	1 751	0	970	1 751	6 253	+ 257.1
Total value of residential buildings at current prices (R'000)	278 502	259 339	238 593	1 120 042	1 120 495	+ 0.0
Non-residential buildings						
Office and banking space						
Total square metres	27 919	12 825	3 819	122 343	60 385	- 50.6
Total value at current prices (R'000)	49 191	18 600	7 612	190 601	158 204	- 17.0
Shopping space						
Total square metres	11 584	9 283	320	53 003	38 046	- 28.2
Total value at current prices (R'000)	19 461	15 000	320	89 659	63 039	- 29.7
Industrial and warehouse space						
Total square metres	14 273	52 892	19 756	127 311	131 791	+ 3.5
Total value at current prices (R'000)	22 378	92 708	33 890	215 904	215 408	- 0.2
Other non-residential space ^{2/}						
Total square metres	18 255	5 311	5 236	56 493	80 999	+ 43.4
Total value at current prices (R'000)	30 817	7 779	8 221	86 986	128 982	+ 48.3
Total value of non-residential buildings at current prices (R'000)	121 847	134 087	50 043	583 150	565 633	- 3.0
Additions and alterations						
Dwelling-houses						
Total square metres	69 663	71 742	57 315	309 128	306 954	- 0.7
Total value at current prices (R'000)	90 131	105 352	85 618	397 690	438 216	+ 10.2
Other buildings ^{3/}						
Total square metres	12 336	12 195	71 245	105 876	123 825	+ 17.0
Total value at current prices (R'000)	26 107	22 765	123 197	201 201	229 208	+ 13.9
Total value of additions and alterations at current prices (R'000)	116 238	128 117	208 815	598 891	667 424	+ 11.4
Total value of building plans passed at current prices (R'000)	516 587	521 543	497 451	2 302 083	2 353 552	+ 2.2

1/ Other residential buildings include institutions for the disabled, boarding houses, old people's homes, hostels, hotels, motels, guest houses, holiday chalets, entertainment centres, bed-and-breakfast accommodation and casinos.

2/ Other non-residential space includes churches, sport and recreation clubs, schools, crèches, hospitals and all other non-residential space.

3/ Other buildings include additions and alterations to other residential buildings, non-residential buildings and internal alterations.

Table 33 - Building plans passed according to type of building and selected urban area: Pretoria

Type of building	May 2001*	April 2002	May 2002	January 2001 to May 2001	January 2002 to May 2002	Percentage change between January 2001 to May 2001 and January 2002 to May 2002
Residential buildings						
Dwelling-houses smaller than 80 square metres						
Number of dwelling-houses	652	77	86	895	313	- 65.0
Total square metres	20 297	4 168	4 861	32 842	17 172	- 47.7
Total value at current prices (R'000)	19 258	5 635	6 837	34 157	25 088	- 26.6
Dwelling-houses equal to or larger than 80 square metres						
Number of dwelling-houses	278	262	232	1 150	1 112	- 3.3
Total square metres	85 459	69 374	59 849	329 788	294 446	- 10.7
Total value at current prices (R'000)	114 635	100 695	83 931	445 665	415 121	- 6.9
Flats and townhouses						
Number of flats and townhouses	178	555	237	715	1 354	+ 89.4
Total square metres	21 680	62 167	38 869	99 409	197 581	+ 98.8
Total value at current prices (R'000)	32 325	89 720	53 552	145 934	282 603	+ 93.7
Other residential buildings ^{1/}						
Total square metres	0	0	0	418	0	..
Total value at current prices (R'000)	0	0	0	627	0	..
Total value of residential buildings at current prices (R'000)	166 218	196 050	144 320	626 383	722 812	+ 15.4
Non-residential buildings						
Office and banking space						
Total square metres	7 722	28 348	1 011	25 658	67 117	+ 161.6
Total value at current prices (R'000)	11 771	46 451	1 870	42 234	106 277	+ 151.6
Shopping space						
Total square metres	800	0	12 303	12 008	12 359	+ 2.9
Total value at current prices (R'000)	1 200	0	17 084	18 669	17 160	- 8.1
Industrial and warehouse space						
Total square metres	4 785	3 412	30 434	18 304	48 148	+ 163.0
Total value at current prices (R'000)	5 763	5 321	43 557	25 057	70 459	+ 181.2
Other non-residential space ^{2/}						
Total square metres	1 248	2 566	1 268	19 091	9 923	- 48.0
Total value at current prices (R'000)	1 757	3 978	1 877	28 553	15 102	- 47.1
Total value of non-residential buildings at current prices (R'000)	20 491	55 750	64 388	114 513	208 998	+ 82.5
Additions and alterations						
Dwelling-houses						
Total square metres	19 389	28 814	24 977	80 137	124 392	+ 55.2
Total value at current prices (R'000)	25 090	41 365	36 937	100 909	179 788	+ 78.2
Other buildings ^{3/}						
Total square metres	4 883	3 119	9 125	22 705	32 288	+ 42.2
Total value at current prices (R'000)	10 582	4 852	12 962	38 205	54 757	+ 43.3
Total value of additions and alterations at current prices (R'000)	35 672	46 217	49 899	139 114	234 545	+ 68.6
Total value of building plans passed at current prices (R'000)	222 381	298 017	258 607	880 010	1 166 355	+ 32.5

1/ Other residential buildings include institutions for the disabled, boarding houses, old people's homes, hostels, hotels, motels, guest houses, holiday chalets, entertainment centres, bed-and-breakfast accommodation and casinos.

2/ Other non-residential space includes churches, sport and recreation clubs, schools, crèches, hospitals and all other non-residential space.

3/ Other buildings include additions and alterations to other residential buildings, non-residential buildings and internal alterations.

Table 34 - Building plans passed according to type of building and selected urban area: Bloemfontein

Type of building	May 2001	April 2002	May 2002	January 2001 to May 2001	January 2002 to May 2002	Percentage change between January 2001 to May 2001 and January 2002 to May 2002
Residential buildings						
Dwelling-houses smaller than 80 square metres						
Number of dwelling-houses	23	295	300	817	772	-5.5
Total square metres	1 146	12 362	12 411	35 766	32 819	-8.2
Total value at current prices (R'000)	1 249	6 544	6 565	17 828	19 238	+ 7.9
Dwelling-houses equal to or larger than 80 square metres						
Number of dwelling-houses	12	23	29	90	155	+ 72.2
Total square metres	1 792	4 295	4 361	15 396	23 245	+ 51.0
Total value at current prices (R'000)	2 325	5 765	5 350	19 787	32 253	+ 63.0
Flats and townhouses						
Number of flats and townhouses	73	6	8	138	188	+ 36.2
Total square metres	6 741	768	1 282	16 315	18 839	+ 15.5
Total value at current prices (R'000)	11 998	922	2 000	27 387	28 741	+ 4.9
Other residential buildings ^{1/}						
Total square metres	0	0	0	0	2 683	..
Total value at current prices (R'000)	0	0	0	0	7 000	..
Total value of residential buildings at current prices (R'000)	15 572	13 231	13 915	65 002	87 232	+ 34.2
Non-residential buildings						
Office and banking space						
Total square metres	0	0	0	12 809	7 267	-43.3
Total value at current prices (R'000)	0	0	0	25 200	14 000	-44.4
Shopping space						
Total square metres	0	130	1 557	0	9 116	..
Total value at current prices (R'000)	0	250	3 114	0	19 364	..
Industrial and warehouse space						
Total square metres	0	2 565	2 600	624	6 032	+ 866.7
Total value at current prices (R'000)	0	1 418	2 011	438	4 123	+ 841.3
Other non-residential space ^{2/}						
Total square metres	684	0	0	1 534	0	..
Total value at current prices (R'000)	1 368	0	0	2 868	0	..
Total value of non-residential buildings at current prices (R'000)	1 368	1 668	5 125	28 506	37 487	+ 31.5
Additions and alterations						
Dwelling-houses						
Total square metres	1 917	4 595	4 806	13 740	22 812	+ 66.0
Total value at current prices (R'000)	4 030	5 367	5 516	18 380	26 843	+ 46.0
Other buildings ^{3/}						
Total square metres	2 146	3 019	1 566	4 776	8 042	+ 68.4
Total value at current prices (R'000)	5 954	3 780	11 305	12 326	21 619	+ 75.4
Total value of additions and alterations at current prices (R'000)	9 984	9 147	16 821	30 706	48 462	+ 57.8
Total value of building plans passed at current prices (R'000)	26 924	24 046	35 861	124 214	173 181	+ 39.4

1/ Other residential buildings include institutions for the disabled, boarding houses, old people's homes, hostels, hotels, motels, guest houses, holiday chalets, entertainment centres, bed-and-breakfast accommodation and casinos.

2/ Other non-residential space includes churches, sport and recreation clubs, schools, crèches, hospitals and all other non-residential space.

3/ Other buildings include additions and alterations to other residential buildings, non-residential buildings and internal alterations.

Table 35 - Buildings completed according to type of building and selected urban area: Cape Town

Type of building	May 2001	April 2002*	May 2002	January 2001 to May 2001	January 2002 to May 2002	Percentage change between January 2001 to May 2001 and January 2002 to May 2002
Residential buildings						
Dwelling-houses smaller than 80 square metres						
Number of dwelling-houses	341	597	509	1 607	2 770	+ 72.4
Total square metres	14 568	22 477	17 885	58 890	99 634	+ 69.2
Total value at current prices (R'000)	16 326	30 013	21 306	69 159	119 465	+ 72.7
Dwelling-houses equal to or larger than 80 square metres						
Number of dwelling-houses	141	319	278	642	1 191	+ 85.5
Total square metres	31 636	56 115	56 189	129 781	233 170	+ 79.7
Total value at current prices (R'000)	46 886	82 416	78 514	179 969	341 537	+ 89.8
Flats and townhouses						
Number of flats and townhouses	79	90	137	401	507	+ 26.4
Total square metres	9 104	16 527	15 799	39 802	79 485	+ 99.7
Total value at current prices (R'000)	13 636	24 703	24 162	53 898	133 469	+ 147.6
Other residential buildings ^{1/}						
Total square metres	0	2 100	900	16 618	3 543	- 78.7
Total value at current prices (R'000)	0	3 129	1 080	12 524	5 002	- 60.1
Total value of residential buildings at current prices (R'000)	76 848	140 261	125 062	315 550	599 473	+ 90.0
Non-residential buildings						
Office and banking space						
Total square metres	3 082	22 009	16 734	42 169	55 211	+ 30.9
Total value at current prices (R'000)	6 542	31 890	19 505	87 393	76 489	- 12.5
Shopping space						
Total square metres	3 370	0	0	16 975	19 509	+ 14.9
Total value at current prices (R'000)	2 881	0	0	21 405	21 322	- 0.4
Industrial and warehouse space						
Total square metres	12 809	11 087	2 542	33 202	27 390	- 17.5
Total value at current prices (R'000)	13 968	12 768	1 930	37 988	27 968	- 26.4
Other non-residential space ^{2/}						
Total square metres	80	759	846	6 972	7 198	+ 3.2
Total value at current prices (R'000)	60	1 522	949	11 035	10 835	- 1.8
Total value of non-residential buildings at current prices (R'000)	23 451	46 180	22 384	157 821	136 614	- 13.4
Additions and alterations						
Dwelling-houses						
Total square metres	46 614	29 698	38 699	149 782	142 705	- 4.7
Total value at current prices (R'000)	48 855	37 180	48 410	166 348	178 820	+ 7.5
Other buildings ^{3/}						
Total square metres	8 856	70 158	8 811	46 901	94 203	+ 100.9
Total value at current prices (R'000)	13 738	92 619	25 451	163 774	145 008	- 11.5
Total value of additions and alterations at current prices (R'000)	62 593	129 799	73 861	330 122	323 828	- 1.9
Total value of buildings completed at current prices (R'000)	162 892	316 240	221 307	803 493	1 059 915	+ 31.9

1/ Other residential buildings include institutions for the disabled, boarding houses, old people's homes, hostels, hotels, motels, guest houses, holiday chalets, entertainment centres, bed-and-breakfast accommodation and casinos.

2/ Other non-residential space includes churches, sport and recreation clubs, schools, crèches, hospitals and all other non-residential space.

3/ Other buildings include additions and alterations to other residential buildings, non-residential buildings and internal alterations.

Table 36 - Buildings completed according to type of building and selected urban area: Port Elizabeth

Type of building	May 2001	April 2002	May 2002	January 2001 to May 2001	January 2002 to May 2002	Percentage change between January 2001 to May 2001 and January 2002 to May 2002
Residential buildings						
Dwelling-houses smaller than 80 square metres						
Number of dwelling-houses	147	214	96	529	595	+ 12.5
Total square metres	6 026	8 611	4 020	22 239	24 924	+ 12.1
Total value at current prices (R'000)	7 778	11 774	5 518	27 928	33 139	+ 18.7
Dwelling-houses equal to or larger than 80 square metres						
Number of dwelling-houses	58	24	28	209	115	- 45.0
Total square metres	7 273	3 909	5 065	24 085	18 440	- 23.4
Total value at current prices (R'000)	10 482	3 859	6 380	31 254	22 540	- 27.9
Flats and townhouses						
Number of flats and townhouses	23	0	3	72	12	- 83.3
Total square metres	1 472	0	393	5 291	1 479	- 72.0
Total value at current prices (R'000)	1 558	0	570	5 203	2 047	- 60.7
Other residential buildings ^{1/}						
Total square metres	0	0	0	4 347	2 744	- 36.9
Total value at current prices (R'000)	0	0	0	7 000	3 312	- 52.7
Total value of residential buildings at current prices (R'000)	19 818	15 633	12 468	71 385	61 038	- 14.5
Non-residential buildings						
Office and banking space						
Total square metres	18 905	0	0	18 905	0	..
Total value at current prices (R'000)	19 510	0	0	19 510	0	..
Shopping space						
Total square metres	5 047	302	0	9 472	1 944	- 79.5
Total value at current prices (R'000)	5 336	369	0	12 325	1 998	- 83.8
Industrial and warehouse space						
Total square metres	7 665	0	8 752	31 793	9 230	- 71.0
Total value at current prices (R'000)	8 217	0	7 527	38 803	7 919	-79.6
Other non-residential space ^{2/}						
Total square metres	0	0	0	3 808	2 300	- 39.6
Total value at current prices (R'000)	0	0	0	3 047	2 664	+12.6
Total value of non-residential buildings at current prices (R'000)	33 063	369	7 527	73 685	12 581	- 82.9
Additions and alterations						
Dwelling-houses						
Total square metres	4 079	4 567	4 886	18 849	24 443	+ 29.7
Total value at current prices (R'000)	4 256	5 007	5 713	20 946	27 176	+ 29.7
Other buildings ^{3/}						
Total square metres	2 272	4 810	1 120	11 664	13 361	+ 14.5
Total value at current prices (R'000)	2 730	4 966	1 933	14 354	15 048	+ 4.8
Total value of additions and alterations at current prices (R'000)	6 986	9 973	7 646	35 300	42 224	+ 19.6
Total value of buildings completed at current prices (R'000)	59 867	25 975	27 641	180 370	115 843	- 35.8

1/ Other residential buildings include institutions for the disabled, boarding houses, old people's homes, hostels, hotels, motels, guest houses, holiday chalets, entertainment centres, bed-and-breakfast accommodation and casinos.

2/ Other non-residential space includes churches, sport and recreation clubs, schools, crèches, hospitals and all other non-residential space.

3/ Other buildings include additions and alterations to other residential buildings, non-residential buildings and internal alterations.

Table 37 - Buildings completed according to type of building and selected urban area: Durban

Type of building	May 2001	April 2002	May 2002	January 2001 to May 2001	January 2002 to May 2002	Percentage change between January 2001 to May 2001 and January 2002 to May 2002
Residential buildings						
Dwelling-houses smaller than 80 square metres						
Number of dwelling-houses	57	102	58	291	389	+ 33.7
Total square metres	2 962	4 852	3 081	15 601	18 524	+ 18.7
Total value at current prices (R'000)	3 313	5 774	3 448	17 947	21 288	+ 18.6
Dwelling-houses equal to or larger than 80 square metres						
Number of dwelling-houses	82	83	86	391	373	- 4.6
Total square metres	14 787	14 480	16 072	69 543	67 180	- 3.4
Total value at current prices (R'000)	16 188	17 744	21 950	79 541	85 816	+ 7.9
Flats and townhouses						
Number of flats and townhouses	19	15	21	350	126	- 64.0
Total square metres	1 805	3 173	1 967	31 008	17 043	- 45.0
Total value at current prices (R'000)	3 864	6 128	2 740	39 849	27 459	- 31.1
Other residential buildings ^{1/}						
Total square metres	0	0	0	0	0	..
Total value at current prices (R'000)	0	0	0	0	0	..
Total value of residential buildings at current prices (R'000)	23 365	29 646	28 138	137 337	134 563	- 2.0
Non-residential buildings						
Office and banking space						
Total square metres	344	7 403	0	12 229	30 645	+ 150.6
Total value at current prices (R'000)	500	16 800	0	25 370	45 038	+ 77.5
Shopping space						
Total square metres	1 111	3 035	600	14 157	12 410	- 12.3
Total value at current prices (R'000)	1 800	4 350	600	25 789	14 423	- 44.1
Industrial and warehouse space						
Total square metres	1 349	8 951	24 000	41 148	64 505	+ 56.8
Total value at current prices (R'000)	1 665	8 092	35 830	47 735	74 111	+ 55.3
Other non-residential space ^{2/}						
Total square metres	0	3 764	1 324	4 304	9 867	+ 129.3
Total value at current prices (R'000)	0	5 430	1 325	5 326	14 277	+ 168.1
Total value of non-residential buildings at current prices (R'000)	3 965	34 672	37 755	104 220	147 849	+ 41.9
Additions and alterations						
Dwelling-houses						
Total square metres	35 971	21 740	26 124	122 090	97 917	- 19.8
Total value at current prices (R'000)	36 836	24 528	30 929	133 618	108 242	- 19.0
Other buildings ^{3/}						
Total square metres	8 280	26 137	2 712	40 079	40 732	+ 1.6
Total value at current prices (R'000)	15 742	50 807	4 905	73 781	77 656	+ 5.3
Total value of additions and alterations at current prices (R'000)	52 578	75 335	35 834	207 399	185 898	- 10.4
Total value of buildings completed at current prices (R'000)	79 908	139 653	101 727	448 956	468 310	+ 4.3

1/ Other residential buildings include institutions for the disabled, boarding houses, old people's homes, hostels, hotels, motels, guest houses, holiday chalets, entertainment centres, bed-and-breakfast accommodation and casinos.

2/ Other non-residential space includes churches, sport and recreation clubs, schools, crèches, hospitals and all other non-residential space.

3/ Other buildings include additions and alterations to other residential buildings, non-residential buildings and internal alterations.

Table 38 - Buildings completed according to type of building and selected urban area: Witwatersrand

Type of building	May 2001*	April 2002	May 2002	January 2001 to May 2001	January 2002 to May 2002	Percentage change between January 2001 to May 2001 and January 2002 to May 2002
Residential buildings						
Dwelling-houses smaller than 80 square metres						
Number of dwelling-houses	906	764	150	2 405	2 528	+ 5.1
Total square metres	32 976	26 724	8 323	92 131	90 075	-2.2
Total value at current prices (R'000)	25 213	18 729	12 455	75 575	74 465	-1.5
Dwelling-houses equal to or larger than 80 square metres						
Number of dwelling-houses	207	241	215	971	1 223	+ 26.0
Total square metres	51 095	63 002	48 154	217 788	262 840	+ 20.7
Total value at current prices (R'000)	73 363	92 708	72 920	306 750	395 538	+ 28.9
Flats and townhouses						
Number of flats and townhouses	49	245	220	833	1 349	+ 61.9
Total square metres	5 439	42 760	52 737	86 274	191 312	+ 121.7
Total value at current prices (R'000)	7 252	63 315	72 082	146 221	288 386	+ 97.2
Other residential buildings ^{1/}						
Total square metres	0	2 314	7 924	32 600	11 978	-63.3
Total value at current prices (R'000)	0	3 447	11 886	250 000	17 333	-93.1
Total value of residential buildings at current prices (R'000)	105 828	178 199	169 343	778 546	775 722	-0.4
Non-residential buildings						
Office and banking space						
Total square metres	97 943	37 552	36 867	213 921	111 404	-47.9
Total value at current prices (R'000)	147 739	67 025	55 658	305 729	185 971	-39.2
Shopping space						
Total square metres	1 434	2 806	5 560	10 526	13 466	+ 27.9
Total value at current prices (R'000)	1 940	4 139	10 534	15 530	21 381	+ 37.7
Industrial and warehouse space						
Total square metres	14 310	12 506	16 138	83 882	52 826	-37.0
Total value at current prices (R'000)	23 551	18 579	25 081	126 196	81 737	-35.2
Other non-residential space ^{2/}						
Total square metres	6 552	0	8 250	10 541	15 101	+ 43.3
Total value at current prices (R'000)	8 517	0	12 345	16 419	23 065	+ 40.5
Total value of non-residential buildings at current prices (R'000)	181 747	89 743	103 618	463 874	312 154	-32.7
Additions and alterations						
Dwelling-houses						
Total square metres	17 870	43 944	56 172	103 399	166 362	+ 60.9
Total value at current prices (R'000)	21 016	59 444	74 920	124 245	225 684	+ 81.6
Other buildings ^{3/}						
Total square metres	6 995	6 399	8 630	50 090	36 665	-26.8
Total value at current prices (R'000)	8 507	10 813	14 076	80 623	61 702	-23.5
Total value of additions and alterations at current prices (R'000)	29 523	70 257	88 996	204 868	287 386	+ 40.3
Total value of buildings completed at current prices (R'000)	317 098	338 199	361 957	1 447 288	1 375 262	-5.0

1/ Other residential buildings include institutions for the disabled, boarding houses, old people's homes, hostels, hotels, motels, guest houses, holiday chalets, entertainment centres, bed-and-breakfast accommodation and casinos.

2/ Other non-residential space includes churches, sport and recreation clubs, schools, crèches, hospitals and all other non-residential space.

3/ Other buildings include additions and alterations to other residential buildings, non-residential buildings and internal alterations.

Table 39 - Buildings completed according to type of building and selected urban area: Pretoria

Type of building	May 2001*	April 2002	May 2002	January 2001 to May 2001	January 2002 to May 2002	Percentage change between January 2001 to May 2001 and January 2002 to May 2002
Residential buildings						
Dwelling-houses smaller than 80 square metres						
Number of dwelling-houses	65	51	11	196	421	+ 114.8
Total square metres	2 998	2 507	616	9 135	15 563	+ 70.4
Total value at current prices (R'000)	2 962	3 277	845	9 906	12 484	+ 26.0
Dwelling-houses equal to or larger than 80 square metres						
Number of dwelling-houses	108	111	91	412	398	- 3.4
Total square metres	33 939	34 052	27 017	116 457	116 407	+ 0.0
Total value at current prices (R'000)	44 670	60 362	39 974	157 396	176 450	+ 12.1
Flats and townhouses						
Number of flats and townhouses	4	246	140	625	1 292	+ 106.7
Total square metres	727	15 283	17 495	60 700	110 608	+ 82.2
Total value at current prices (R'000)	1 069	20 696	28 119	81 964	146 381	+ 78.6
Other residential buildings ^{1/}						
Total square metres	0	0	0	0	0	..
Total value at current prices (R'000)	0	0	0	0	0	..
Total value of residential buildings at current prices (R'000)	48 701	84 335	68 938	249 266	335 315	+ 34.5
Non-residential buildings						
Office and banking space						
Total square metres	0	0	0	5 143	10 298	+ 100.2
Total value at current prices (R'000)	0	0	0	6 775	15 714	+ 131.9
Shopping space						
Total square metres	0	0	0	0	0	..
Total value at current prices (R'000)	0	0	0	0	0	..
Industrial and warehouse space						
Total square metres	4 511	367	3 868	6 855	9 226	+ 34.6
Total value at current prices (R'000)	1 988	551	5 802	5 504	14 247	+ 158.8
Other non-residential space ^{2/}						
Total square metres	1 000	0	314	5 260	2 004	- 61.9
Total value at current prices (R'000)	1 800	0	1 091	7 658	3 050	- 60.2
Total value of non-residential buildings at current prices (R'000)	3 788	551	6 893	19 937	33 011	+ 65.6
Additions and alterations						
Dwelling-houses						
Total square metres	953	3 772	2 455	5 188	11 453	+ 120.8
Total value at current prices (R'000)	1 283	5 224	3 459	6 588	16 135	+ 144.9
Other buildings ^{3/}						
Total square metres	0	5 659	241	957	7 810	+ 716.1
Total value at current prices (R'000)	134	7 724	362	1 688	11 099	+ 557.5
Total value of additions and alterations at current prices (R'000)	1 417	12 948	3 821	8 276	27 234	+ 229.1
Total value of buildings completed at current prices (R'000)	53 906	97 834	79 652	277 479	395 560	+ 42.6

1/ Other residential buildings include institutions for the disabled, boarding houses, old people's homes, hostels, hotels, motels, guest houses, holiday chalets, entertainment centres, bed-and-breakfast accommodation and casinos.

2/ Other non-residential space includes churches, sport and recreation clubs, schools, crèches, hospitals and all other non-residential space.

3/ Other buildings include additions and alterations to other residential buildings, non-residential buildings and internal alterations.

Table 40 - Buildings completed according to type of building and selected urban area: Bloemfontein

Type of building	May 2001	April 2002	May 2002	January 2001 to May 2001	January 2002 to May 2002	Percentage change between January 2001 to May 2001 and January 2002 to May 2002
Residential buildings						
Dwelling-houses smaller than 80 square metres						
Number of dwelling-houses	70	14	395	242	543	+ 124.4
Total square metres	3 091	842	16 969	9 854	23 971	+ 143.3
Total value at current prices (R'000)	1 939	955	7 783	6 878	12 619	+ 83.5
Dwelling-houses equal to or larger than 80 square metres						
Number of dwelling-houses	16	25	24	95	102	+ 7.4
Total square metres	3 183	4 583	3 152	18 398	17 214	- 6.4
Total value at current prices (R'000)	4 010	6 012	3 614	22 107	21 139	- 4.4
Flats and townhouses						
Number of flats and townhouses	0	8	32	96	70	- 27.1
Total square metres	0	896	2 656	7 014	6 444	- 8.1
Total value at current prices (R'000)	0	1 075	3 984	10 045	10 503	+ 4.6
Other residential buildings ^{1/}						
Total square metres	0	0	0	151	1 428	+ 845.7
Total value at current prices (R'000)	0	0	0	211	1 461	+ 592.4
Total value of residential buildings at current prices (R'000)	5 949	8 042	15 381	39 241	45 722	+ 16.5
Non-residential buildings						
Office and banking space						
Total square metres	10 480	0	2 236	10 782	4 244	- 60.6
Total value at current prices (R'000)	21 000	0	4 000	21 483	7 800	- 63.7
Shopping space						
Total square metres	762	0	0	2 812	1 340	- 52.3
Total value at current prices (R'000)	1 006	0	0	3 006	2 500	- 16.8
Industrial and warehouse space						
Total square metres	0	0	0	4 730	2 842	- 39.9
Total value at current prices (R'000)	0	0	0	3 711	2 280	- 38.6
Other non-residential space ^{2/}						
Total square metres	840	0	0	5 519	0	..
Total value at current prices (R'000)	1 000	0	0	10 170	0	..
Total value of non-residential buildings at current prices (R'000)	23 006	0	4 000	38 370	12 580	- 67.2
Additions and alterations						
Dwelling-houses						
Total square metres	2 696	5 892	6 624	18 550	29 468	+ 58.9
Total value at current prices (R'000)	2 940	6 155	7 683	19 673	32 939	+ 67.4
Other buildings ^{3/}						
Total square metres	14 104	811	425	16 132	5 169	- 68.0
Total value at current prices (R'000)	81 157	1 458	1 672	84 929	10 795	- 87.3
Total value of additions and alterations at current prices (R'000)	84 097	7 613	9 355	104 602	43 734	- 58.2
Total value of buildings completed at current prices (R'000)	113 052	15 655	28 736	182 213	102 036	- 44.0

1/ Other residential buildings include institutions for the disabled, boarding houses, old people's homes, hostels, hotels, motels, guest houses, holiday chalets, entertainment centres, bed-and-breakfast accommodation and casinos.

2/ Other non-residential space includes churches, sport and recreation clubs, schools, crèches, hospitals and all other non-residential space.

3/ Other buildings include additions and alterations to other residential buildings, non-residential buildings and internal alterations.

Additional information

Explanatory Notes

Introduction	<p>1 Statistics South Africa (Stats SA) conducts a monthly Building Statistics Survey collecting information regarding building plans approved and buildings completed, financed by the private sector, from a sample of local government institutions in South Africa. This statistical release contains information of building plans passed and buildings completed in respect of residential buildings, non-residential buildings and additions and alterations according to province and selected urban areas.</p> <p>2 In order to improve timeliness of the publication, some information for the current month have been estimated due to late submission by respondents. These estimates will be revised in the next statistical release(s) as soon as actual information is available.</p> <p>3 The actual and seasonally adjusted values (at current and at constant 2000 prices) and the percentage change of building plans passed and buildings completed according to type of building are reflected monthly from January 2000 in this statistical release (cf. tables 1 to 8).</p>
Scope of the survey	<p>4 This survey covers local government institutions conducting activities for the private sector regarding -</p> <ul style="list-style-type: none"> • approval of building plans; and • final inspection of completed buildings.
Classification	<p>5 The 1993 edition of the Standard Industrial Classification of all Economic Activities, (SIC) Fifth Edition, Report No. 09-90-02, was used to classify the statistical units. The SIC is based on the 1990 International Standard Industrial Classification of all Economic Activities (ISIC) with suitable adaptations for local conditions.</p> <p>6 The twelfth and last published edition of the Standard Code List of Areas, Report No. 09-09-03 (1994) was used to classify the statistical units according to province. The cities, towns and non-urban areas listed in this report are codified within magisterial district and province. The code list was compiled by Stats SA in collaboration with other interested bodies and the first edition was distributed in June 1977.</p>
Statistical unit	<p>7 The statistical unit for the collection of information is a local government institution. Local government institutions include municipalities, city councils, metropolitan councils, district councils, transitional councils and development and services boards.</p>
Survey methodology and design	<p>8 The sample for the monthly Building Statistics Survey consists of the largest local government institutions in South Africa, i.e. those that account for approximately 85% of the total rand value of buildings completed by the private sector.</p> <p>9 The survey is collected by mail each month from a sample of 128 local government institutions.</p>
Constant prices	<p>10 The value of building plans passed and buildings completed at constant prices measures building activities in terms of ruling prices in a specific base year, which is 2000 as from May 2002.</p> <p>11 The value of building plans passed at constant prices for each month is obtained by deflating the values at current prices with a price index known as the “lump sum domestic buildings” as published in statistical release P0151 – JBCC Contract Price Adjustment Provisions Work Group Indices. In order to be applicable, these indices (base February 1991=100) are converted to the base year 2000=100.</p>

- 12** The value of buildings completed at constant prices is obtained by deflating the values at current prices with the same price index which is used to calculate building plans passed at constant prices (cf. paragraph 11). The value of buildings completed is reported as at the time the plans were passed. Since the completion of buildings may extend over a few months to a few years, the current value of buildings completed is deflated by price indices as at the time the plans were passed in order to calculate the value of buildings completed at the time the plans were passed. Therefore, the duration of the completion of different types of buildings are taken into account in ascertaining the deflators e.g. the value of dwelling-houses completed at constant prices at January 2000 is obtained by deflating the current value of dwelling-houses completed for January 2000 with the price index of a month six months prior to January 2000. Furthermore, the value of other residential buildings, non-residential buildings and additions and alterations at constant prices is obtained by deflating the current values with price indices of 12 months, 18 months and 12 months prior to the relevant month, respectively.
- Seasonal adjustment**
- 13** Seasonally adjusted estimates of building plans passed and buildings completed are generated each month, using the X-11 Seasonal Adjustment Program developed by US Bureau of the Census Economic Research and Analyses Division, 1968.
- 14** Seasonal adjustment is a means of removing the estimated effects of normal seasonal variation from the series so that the effects of other influences on the series can be more clearly recognised. Seasonal adjustment does not aim to remove irregular or non-seasonal influences which may be present in any particular month. Influences that are volatile or unsystematic can still make it difficult to interpret the movement of the series even after adjustment for seasonal variations. Therefore, the month-to-month movements of seasonally adjusted estimates may not be reliable indicators of trend behaviour.
- Trend cycle**
- 15** The trend is a long-term pattern or movement of a time series. The X-11 Seasonal Adjustment Program is used for smoothing seasonally adjusted data.
- Related publications**
- 16** Users may also wish to refer to the following publications:
- P5041.3 – Building statistics issued annually.
 - P9101.2 – Actual and expected expenditure on construction by the public sector per statistical region issued annually.
 - Bulletin of Statistics issued quarterly.
 - South African Statistics issued annually.
- Unpublished statistics**
- 17** In some cases Stats SA can also make available statistics which are not published. The statistics can be made available in one or more of the following ways: computer printouts, CD and diskette. Generally a charge is made for providing unpublished statistics.
- Rounding-off of figures**
- 18** The figures in the tables have, where necessary, been rounded off to the nearest digit shown. There may, therefore, be slight discrepancies between the sums of the constituent items and the totals shown.
- Pre-release policy**
- 19** Stats SA has adopted the confidential pre-release policy in respect of selected economic indicators and specific government departments. The policy accords with practice among leading statistical agencies. The statistical integrity of the information and strict observance of the release time has been assured by the following procedure:
- 20** In respect of this statistical release, an official representative from the Office of the President, the Department of Trade and Industry (DTI), National Treasury and the South African Reserve Bank (SARB) will receive a copy of the release on a strictly confidential basis two hours in advance of the public issue.
- 21** Stats SA pre-release policy may be inspected at its Website, www.statssa.gov.za

Symbols and abbreviations

..	no meaningful percentage change between two specified periods available since either one or both of the totals are nil
0	nil or figure too small to publish
*	revised
Stats SA	Statistics South Africa
SIC	Standard Industrial Classification of all Economic Activities
ISIC	International Standard Industrial Classification of all Economic Activities
JBCC	Joint Building Contracts Committee
CD	Compact Disc
US	United States
SARB	South African Reserve Bank
DTI	Department of Trade and Industry

Technical notes**Response rate**

The response rate for May 2002 is 99,2%.

Local government institutions covered in the sample survey

Local government institutions according to province

Western Cape

Blaauwberg (includes Milnerton), Brackenfell, Breede River District Council, Cape Town, City of Tygerberg (Bellville, Durbanville, Goodwood, Lingeletu West, Parow and South Administration), Fish Hoek, George (includes Pacaltsdorp, Thembaletu and Herolds Bay), Gordon's Bay, Hangklip-Kleinmond (includes Kleinmond, Betty's Bay and Rooi-Elis), Hermanus (includes Onrus River, Zwelihle, Sandbaai, Vermont, Hawston and Fisher Haven), Ikapa, Klein-Karoo District Council, Knysna (includes Khayaletu), Kuils River, Malmesbury, Mossel Bay (includes Boggom's Bay, Kleinbrak, Rheeboek and Tergniet), Oostenberg (Kraaifontein and Melton Rose - Blue Downs), Oudtshoorn, Overberg District Council, Paarl, Plettenberg Bay, Sedgfield, Simon's Town, Somerset West, South Peninsula, Stellenbosch, Strand, Wellington, West Coast District Council, Western Coast Peninsula (previously Vredenburg-Saldanha), Winelands District Council and Worcester.

Eastern Cape

Aliwal-Maletswai (includes Dukathole), Despatch, East London (includes Beacon Bay, Gomo Town, Gonubie and Mdantsane), Grahamstown (includes Rhini Township), Jeffrey's Bay, King William's Town (includes Bisho and Zwelitsha), Port Alfred, Port Elizabeth (includes Ibhayi and Motherwell), Uitenhage (includes KwaNobuhle), Umtata and Western District Council.

Northern Cape

Benede-Oranje District Council, Keimoes, Kimberley (including Galeshewe), Kuruman, Namaqualand District Council and Upington (includes Paballelo).

Free State

Allanridge, Bethlehem (includes Bohlokong), Bloemfontein (includes Bainsvlei, Bloemspuit and Mangaung), Botshabelo, Deneysville (includes Refengkgotso), Harrismith (includes Tsiamé), Kroonstad (includes Maokeng), Ladybrand (includes Manyatseng), Odendaalsrus (includes Kutlwanong), Parys, Phuthaditjhaba, Sasolburg (includes Zamdela), Virginia (includes Meloding) and Welkom (includes Thabong).

KwaZulu-Natal

Development and Services Board - Inland, Development and Services Board – North Coast, Dolphin Coast Borough (includes Ballito, Etete, Shakaskraal, Tinley Manor Beach and Umhlali Beach), Durban, Edendale, Empangeni (includes Ngwelezana), Hilton, Howick, Inner West City Council (includes Clermont, KwaDabeka, KwaNdengezi, New Germany, Pinetown, Queensburgh, Reservoir Hills, Shallcross and Westville), Kokstad, Kwa-Dukuza/Stanger (includes Blythedale Beach, Shakaville and Stanger), KwaMashu, Ladysmith (includes Emnambithi), Margate (includes Uvongo), Mpenjati/Southbroom (includes Southbroom, Marina Beach, San Lameer and Trafalgar), Newcastle (includes Madadeni, Osizweni and Blaauwboschlaagte), North Local Council - Tongaat (includes Canelands and Hambanati), North Local Council - Umhlanga Rocks (includes Mount Edgecombe and Umdloti Beach), North Local Council - Verulam, Outer West Local Council (includes Assagay, Botha's Hill, Cato Ridge, Drummond, Everton, Gillitts, Hillcrest, Inchanga, Kloof, Mpumalanga and Waterfall), Pennington, Pietermaritzburg/Msundini, Port Shepstone, Richards Bay, South Local Council (includes Amanzimtoti, Isipingo, Kingsburgh, KwaMakuta and Umbogintwini), Umlazi and Umtamvuna/Port Edward (includes Munster, Port Edward and Palm Beach).

North West

Bophirima District Council, Brits (includes Lethabile), Ga-Rankuwa, Klerksdorp, Lichtenburg, Mmabatho, Orkney (includes Kanana), Potchefstroom, Rustenburg, Vryburg and Zeerust.

Gauteng

Akasia (includes Elandsdoorn, Klipfontein, Kruisfontein and Soshanguve), Alberton (includes Tokoza), Benoni (includes Daveyton and Wattville), Boksburg (includes Vosloorus), Brakpan (includes Tsakane), Bronkhorst-spruit, Carletonville (includes Khutsong), Centurion, Duduza, Eastern Services Council - Pretoria Area, Edenvale-Modderfontein, Germiston (includes Bedfordview and Katlehong), Greater Johannesburg - Eastern Metropolitan Local Council (includes Alexandra and Sandton), Greater Johannesburg - Northern Metropolitan Local Council (includes Randburg), Greater Johannesburg - Southern Metropolitan Local Council (includes Ennerdale, Lenasia and Johannesburg), Greater Johannesburg - Western Metropolitan Local Council (includes Diepmeadow, Dobsonville and Roodepoort), Heidelberg (includes Ratanda), Kempton Park (includes Tembisa), Krugersdorp (includes Kagiso and Munsieville), Meyerton, Midrand (includes Rabie Ridge and Ivory Park), Nigel, Pretoria (includes Atteridgeville and Mamelodi), Randfontein (includes Mohlakeng), Sebokeng (includes Boipatong, Bophelong and Sharpeville), Soweto, Springs (includes KwaThema), Vanderbijlpark, Vereeniging (includes Evaton), Western Services Council and Westonaria (includes Bekkersdal).

Mpumalanga

Delmas (includes Botleng), Eastvaal District Council, Ermelo (includes Wesselton and Cassim Park), Highveld District Council, Highveldridge Transitional Council (includes Evander, Embalenhle and Secunda), Komatipoort (includes Kamaqhekeza), KwaGuqa, KwaMhlanga, Malelane (includes Hectorspruit and Kamhlushwa), Middelburg (includes Mhluzi), Nelspruit (includes Kanyamazane and Lowveld Escarpment District Council as from January 2001), White River and Witbank.

Northern Province

Bosveld District Council, Giyani, Letaba (includes Nkowakowa and Tzaneen), Messina, Naboomspruit (includes Mookgophong), Nylstroom, Pietersburg-Polokwane (includes Seshego), Potgietersrus and Thabazimbi.

Local government institutions according to selected urban areas**Cape Town**

Blaauwberg (includes Milnerton), Cape Town, City of Tygerberg (Bellville, Durbanville, Goodwood, Lingeletu West, Parow and South Administration), Fish Hoek, Ikapa, Oostenberg (Kraaifontein and Melton Rose - Blue Downs), Simon's Town and South Peninsula.

Port Elizabeth

Despatch, Port Elizabeth (including Ibhayi and Motherwell) and Uitenhage (including KwaNobuhle)

Durban

Durban, Inner West City Council (includes Clermont, KwaDabeka, KwaNdengezi, New Germany, Pinetown, Queenstown, Reservoir Hills, Shallcross and Westville), North Local Council - Verulam, Outer West Local Council (includes Assagay, Botha's Hill, Cato Ridge, Drummond, Everton, Gillitts, Hillcrest, Inchanga, Kloof, Mpumalanga and Waterfall) and South Local Council (includes Amanzimtoti, Isipingo, Kingsburgh, KwaMakuta and Umbogintwini).

Witwatersrand

Alberton (includes Thokoza), Benoni (includes Daveyton and Wattville), Boksburg (includes Vosloorus), Brakpan (includes Tsakane), Carletonville (includes Khutsong), Duduza, Edenvale-Modderfontein, Germiston (includes Bedfordview and Katlehong), Greater Johannesburg - Eastern Metropolitan Local Council (includes Alexandra and Sandton), Greater Johannesburg - Northern Metropolitan Local Council (includes Randburg), Greater Johannesburg - Southern Metropolitan Local Council (includes Ennerdale, Lenasia and Johannesburg), Greater Johannesburg - Western Metropolitan Local Council (includes Diepmeadow, Dobsonville and Roodepoort), Kempton Park (includes Tembisa), Krugersdorp (includes Kagiso and Munsieville), Midrand (includes Rabie Ridge and Ivory Park), Nigel, Randfontein (includes Mohlakeng), Soweto, Springs (includes KwaThema) and Westonaria (includes Bekkersdal).

Pretoria

Akasia (includes Elandsdoorn, Klipfontein and Soshanguve), Centurion, Eastern Services Council - Pretoria area and Pretoria (includes Atteridgeville and Mamelodi).

Bloemfontein

Bloemfontein (includes Bainsvlei, Bloemspruit and Mangaung).

Glossary

Additions and alterations	Additions and alterations include extensions to existing buildings as well as internal and external alterations of existing buildings.
Blocks of flats	Blocks of flats are regarded as high-density housing consisting of a number of self-contained dwelling-units with at least one living-room together with a kitchen and bathroom conjoined to similar units in one building.
Dwelling-house	A dwelling-house refers to a free-standing, complete structure on a separate stand or a self-contained dwelling-unit, granny flat, on the same premises as an existing residence. Out-buildings and garages are included.
Local government institutions	A local government institution is a generic term referring to any number of institutions involved in the local sphere of government. Local government institutions consist of municipalities, city councils, metropolitan councils, district councils, transitional local councils and development and services boards.
Non-residential buildings	Non-residential buildings comprise factories, commercial, financial and other office buildings, as well as other buildings not used for residential purposes, such as churches, halls, clubs, schools and hospitals.
Other residential buildings	Other residential buildings include institutions for the disabled, boarding houses, old people's homes, hostels, hotels, motels, guest houses, holiday chalets, bed-and-breakfast accommodation, entertainment centres and casinos.
Percentage change	<p>When using monthly actual values, the percentage change is the change in actual values of building activities (building plans passed or buildings completed) of the relevant month compared with the actual values of building activities (building plans passed or buildings completed) of the same month in the previous year expressed as a percentage.</p> <p>When using annual actual values, the percentage change is the change in the actual values of building activities (building plans passed or buildings completed) of the relevant year compared with the actual values of building activities (building plans passed or buildings completed) of the previous year expressed as a percentage.</p> <p>When using seasonally adjusted values, the percentage change is the change in the seasonally adjusted values of building activities (building plans passed or buildings completed) of the relevant month compared with the seasonally adjusted values of building activities (building plans passed or buildings completed) of the previous month expressed as a percentage.</p>
Reference period	Reference period is one calendar month.
Residential buildings	Residential buildings comprise dwelling-houses, flats, townhouses and other residential buildings.
Townhouses	Townhouses are multiple, medium-density dwelling-units and include cluster housing, group housing, simplexes, duplexes, triplexes and other similar dwelling-units which are usually grouped together, with one level of each unit on ground level. This excludes blocks of flats.

For more information

Stats SA publishes approximately 300 different statistical releases each year. It is not economically viable to produce them in more than one of South Africa's eleven official languages. Since the releases are used extensively, not only locally but also by international economic and social-scientific communities, Stats SA releases are published in English only.

Stats SA has copyright on this publication. Users may apply the information as they wish, provided that they acknowledge Stats SA as the source of the basic data wherever they process, apply, utilise, publish or distribute the data and also that they specify that the relevant application and analysis (where applicable) result from their own processing of the data.

Stats SA products

A complete set of Stats SA publications is available at the Stats SA Library and the following libraries:

National Library of South Africa, Pretoria Division
National Library of South Africa, Cape Town Division
Natal Society Library, Pietermaritzburg
Library of Parliament, Cape Town
Bloemfontein Public Library
Johannesburg Public Library
Eastern Cape Library Services, King William's Town
Central Regional Library, Pietersburg
Central Reference Library, Nelspruit
Central Reference Collection, Kimberley
Central Reference Library, Mmabatho

Stats SA also provides a subscription service.

Electronic services

A large range of data are available via on-line services, diskette, CD and computer printouts. For more details about our electronic data services, contact (012) 310 8600/8095/8390/8351

You can visit us on the Internet at: <http://www.statssa.gov.za>

Enquiries

Telephone number: (012) 310 8600/8095/8390/8351 (user enquiries)
(012) 310 8228/310 8007 (technical enquiries)
(012) 310 8161 (publications)
(012) 310 8490 (library)

Fax number: (012) 310 8182

e-mail: Corrieb@statssa.pwv.gov.za
Gretaz@statssa.pwv.gov.za

Postal address: Private Bag X44, Pretoria, 0001