

Building statistics

May 2001

Co-operation between Statistics South Africa (Stats SA), the citizens of the country, the private sector and government institutions is essential for a successful statistical system. Without continued co-operation and goodwill, the timely release of relevant and reliable official statistics will not be possible.

Embargo: 13:00
Date: 18 July 2001

Stats SA publishes approximately three hundred different releases each year. It is not economically viable to produce them in more than one of South Africa's eleven official languages. Since the releases are used extensively, not only locally, but also by international economic and social-scientific communities, Stats SA releases are published in English only.

Key figures regarding building plans passed for the month ended May 2001

Actual estimates at constant 1995 prices

	May 2001	January 2001 to May 2001	Percentage change between May 2000 and May 2001	Percentage change between March 2000 to May 2000 and March 2001 to May 2001	Percentage change between January 2000 to May 2000 and January 2001 to May 2001
	R million	R million			
Residential buildings					
Dwelling-houses	535,5	2 331,5	+ 8,9	+ 9,4	+ 11,4
Flats and townhouses	149,0	557,1	- 5,4	+ 6,4	+ 7,5
Other residential buildings	26,9	106,0	+ 320,7	+ 346,0	+ 55,6
Total	711,4	2 994,6	+ 8,5	+ 11,6	+ 11,7
Non-residential buildings	204,6	1 123,6	- 52,4	- 37,3	- 19,7
Additions and alterations	355,4	1 521,7	+ 0,2	- 9,9	- 6,3
Total	1 271,4	5 639,9	- 11,7	- 6,7	- 1,1

Seasonally adjusted estimates at constant 1995 prices

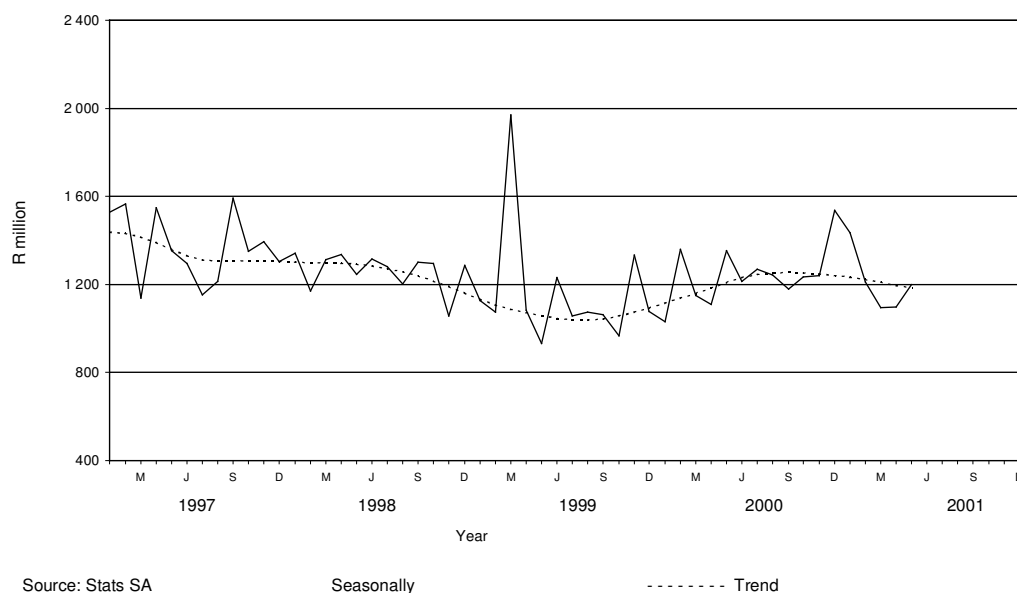
	May 2001	Percentage change between April 2001 and May 2001	Percentage change between December 2000 to February 2001 and March 2001 to May 2001
	R million		
Residential buildings	675,1	+ 13,3	- 0,3
Non-residential buildings	177,0	- 1,4	- 56,2
Additions and alterations	347,8	+ 8,0	- 5,5
Total	1 199,9	+ 9,3	- 18,9

Key findings regarding building plans passed for the three months ended May 2001

Seasonally adjusted real value of building plans passed decreases

The seasonally adjusted real value of building plans passed (at constant 1995 prices) for the three months ended May 2001 decreased by 18,9% compared with the previous three months. However, the seasonal adjusted real value of building plans passed (at constant 1995 prices) for May 2001 increased by 9,3% compared with April 2001.

The decrease of 18,9% in the seasonally adjusted real value of building plans passed was due to decreases in the seasonally adjusted real value of building plans passed for non-residential buildings (-56,2%), additions and alterations (-5,5%) and residential buildings (-0,3%) during the three months ended May 2001 compared with the previous three months.

Figure 1 - Total real value of building plans passed

Key findings regarding building plans passed for the first five months of 2001

Total real value of building plans passed decreases

The total real value of building plans passed (at constant 1995 prices) during the first five months of 2001 decreased by 1,1% (-R64,5 million) to R5 639,9 million compared with the first five months of 2000. Large real decreases were reported for non-residential buildings (-19,7% or R276,2 million, mainly due to decreases reported by Gauteng (-R244,7 million); and additions and alterations (-6,3% or R103,1 million, mainly due to decreases reported by Western Cape (-R49,8 million) and KwaZulu-Natal (-R26,6 million)). However, the real value of building plans passed for residential buildings increased by 11,7% (+R314,7 million) to R2 994,6 million during the above mentioned period.

Five of the nine provinces reported decreases in the total real value of building plans passed

The largest provincial contributors to the decrease of 1,1% (+R64,5 million) in the total real value of building plans passed during the first five months of 2001 compared with the five months of 2000 were Gauteng (-1,7 percentage points or R95,8 million) and Northern Cape (-0,6 of a percentage point or R35,9 million) (cf. table A). The largest real decreases in Gauteng were reported for non-residential building (-R244,7 million, mainly due to decreases reported by the selected urban areas of the Witwatersrand (-R254,5 million)). However, these decreases were partially counteracted by increases in the total real value of building plans passed reported by KwaZulu-Natal (+0,8 of a percentage point or R46,6 million) and Western Cape (+0,5 of a percentage point or R25,2 million) (cf. table A). KwaZulu-Natal reported a large increase in the real value of building plans passed for non-residential buildings (+R70,3 million, mainly due to approval of building plans for office and banking space to the real value of R102,6 million by North Local Council – Umhlanga Rocks), Western Cape reported a large increase in the real value of building plans passed for residential buildings (+R100,7 million, mainly due to approval of building plans for dwelling houses to the real value of R 74,2 million in the selected urban areas of Cape Town).

Table A - Contribution of provinces to the total real value of building plans passed

Province	Percentage contribution to the total real value of plans passed during January 2000 to May 2000	Percentage change between January 2000 to May 2000 and January 2001 to May 2001	Contribution (percentage points) ^{1/} to the percentage change in the real value of plans passed between January 2000 to May 2000 and January 2001 to May 2001	Difference in total real value of plans passed between January 2000 to May 2000 and January 2001 to May 2001 R million
KwaZulu-Natal	11,0	+ 7,4	+ 0,8	+ 46,6
Western Cape	28,2	+ 1,6	+ 0,5	+ 25,2
Mpumalanga	2,9	+ 8,0	+ 0,2	+ 13,3
North West	2,5	+ 3,7	+ 0,1	+ 5,1
Eastern Cape	6,2	- 0,3	- 0,0	- 1,2
Free State	2,6	- 4,4	- 0,1	- 6,5
Northern Province	1,7	- 15,5	- 0,3	- 15,3
Northern Cape	1,2	- 51,5	- 0,6	- 35,9
Gauteng	43,7	- 3,8	- 1,7	- 95,8
Total	100,0	- 1,1	- 1,1	- 64,5

1/ The contribution (percentage points) is calculated by multiplying the percentage change of each province with the percentage contribution of the corresponding province.

Total real value of residential building plans passed increases

The total real value of residential building plans passed during the first five months of 2001 increased by 11,7% (+R314,7 million) to R2 994,6 million compared with the first five months of 2000. Increases were reported by six of the nine provinces. The largest increase in the total real value of residential building plans passed was reported by Gauteng (+R150,7 million, mainly due to the increase in the real value of plans passed for dwelling-houses (+R131,2 million)); followed by Western Cape (+R100,7 million, mainly due to the increase in the real value of plans passed for dwelling-houses (+R116,0 million)); Eastern Cape (+R50,4 million), and Mpumalanga (+R31,8 million). Increases in the real value of residential building plans passed were reported for dwelling-houses (+R237,9 million), flats and townhouses (+R38,9 million) and other residential buildings (+R37,8 million) during the above-mentioned period.

Total real value of dwelling-house plans passed increases

The total real value of dwelling-house plans passed during the first five months of 2001 increased by 11,4% (+R237,9 million) to R2 331,5 million compared with the first five months of 2000. Increases were reported by five of the nine provinces. The largest increases in the real value of dwelling-house plans passed were reported by Gauteng (+R131,2 million) and Western Cape (+R116,0 million). Large real increases were reported by the selected urban areas of Cape Town (+R74,2 million), Pretoria (+R71,8 million), Witwatersrand (+R53,3 million) and Vereeniging (+R19,5 million).

The increase of 11,4% in the total real value of dwelling-house plans passed during the above-mentioned period can mainly be attributed to the increase in the real value of plans passed for dwelling-houses equal to or larger than 80 square metres (+11,9% or R198,6 million).

Total real value of plans passed for flats and townhouses increases

The total real value of plans passed for flats and townhouses during the first five months of 2001 increased by 7,5% (+R38,9 million) to R557,1 million compared with the first five months of 2000. Real increases were reported by six of the nine provinces. The largest increase in the real value of plans passed for flats and townhouses was reported by Gauteng (+R16,3 million), followed by KwaZulu-Natal (+R15,8 million) and Mpumalanga (+R8,9 million). Large real increases were reported by the selected urban areas of the Witwatersrand (+R31,2 million), North Local Council – Umhlanga Rocks (+R10,5 million) and Rustenburg (+R10,0 million). However, large decreases in the real value of building plans passed for flats and townhouses were reported by the selected urban areas of Cape Town (-R26,5 million) and Pretoria (+R18,6 million) during the above-mentioned period.

Total real value of 'other' residential building plans passed increases

The total real value of 'other' residential building plans passed during the five months of 2001 increased by 55,6% (+R37,8 million) to R106,0 million compared with the first five months of 2000. The largest real increase was reported by Eastern Cape (+R51,4 million, mainly due to the approval of building plans passed for a casino, to the real value of R51,6 million, by the local government institution of East London during the above- mentioned period).

Total real value of non-residential building plans passed decreases

The total real value of non-residential building plans passed during the first five months of 2001 decreased by 19,7% (-R276,2 million) to R1 123,6 million compared with the first five months of 2000. Large real decreases in the total value of non-residential building plans passed were reported by Gauteng (-R244,7 million) mainly to a decrease as reported by selected urban area of Witwatersrand (-R254,5 million) and Eastern Cape (-R67,1 million). However, KwaZulu-Natal reported a large increase in the total real value of non-residential building plans passed (+R70,3 million). This increase was mainly due to the increase in the total real value of non-residential building plans passed as reported by North Local Council – Umhlanga Rocks (+R102,6 million) during the above-mentioned period.

Total real value of building plans passed for additions and alterations decreases

The total real value of building plans passed for additions and alterations during the first five months of 2001 decreased by 6,3% (-R103,1 million) to R1 521,7 million compared with the first five months of 2000. Real decreases were reported by eight of the nine provinces. The largest decrease in the real value of building plans passed for additions and alterations was reported by Western Cape (-R49,8 million), followed by KwaZulu-Natal (-R26,6 million), Northern Cape (-R17,7 million), North West (-R11,1 million) and Northern Province (-R7,0 million). However, Eastern Cape reported a large increase in the total real value of building plans passed for additions and alterations (+R15,5 million).

P5041.1

Key figures regarding buildings completed for the month ended May 2001

Actual estimates at constant 1995 prices

	May 2001	January 2001 to May 2001	Percentage change between May 2000 and May 2001	Percentage change between March 2000 to May 2000 and March 2001 to May 2001	Percentage change between January 2000 to May 2000 and January 2001 to May 2001
	R million	R million			
Residential buildings					
Dwelling-houses	289,0	1 205,3	+ 14,3	+ 7,9	+ 9,9
Flats and townhouses	34,9	336,1	- 70,2	- 19,0	- 8,7
Other residential buildings	0,9	260,4	+ 165,8	+ 77,8	+ 644,8
Total	324,8	1 801,8	- 12,2	+ 1,1	+ 20,2
Non-residential buildings	234,2	899,0	- 25,9	- 27,3	- 10,4
Additions and alterations	221,8	922,1	- 4,3	- 2,4	+ 0,3
Total	780,8	3 622,9	- 14,9	- 8,3	+ 5,9

Seasonally adjusted estimates at constant 1995 prices

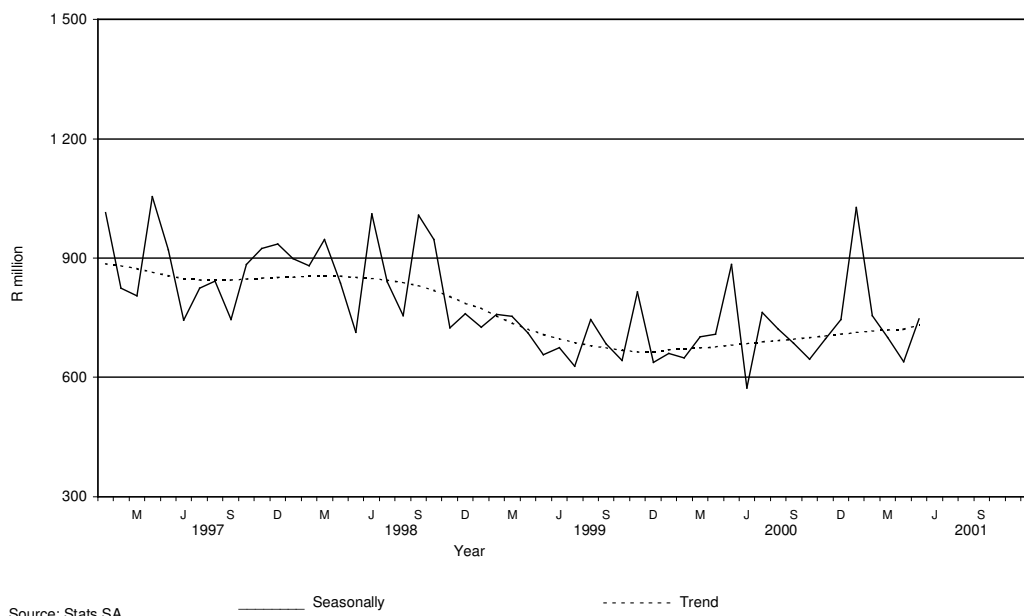
	May 2001	Percentage change between April 2001 and May 2001	Percentage change between December 2000 to February 2001 and March 2001 to May 2001
	R million		
Residential buildings	330,1	+ 4,9	- 23,0
Non-residential buildings	205,7	+ 25,2	- 25,5
Additions and alterations	211,8	+ 32,3	+ 7,7
Total	747,6	+ 17,0	- 17,5

Key findings regarding buildings completed for the three months ended May 2001

Seasonally adjusted real value of buildings completed decreases

The seasonally adjusted real value of buildings completed (at constant 1995 prices) for the three months ended May 2001 decreased by 17,5% compared with the previous three months. However, the seasonal adjusted real value of building plans completed (at constant 1995 prices) for May 2001 increased by 17,0% compared with April 2001.

The decrease of 17,5% in the seasonally adjusted real value of buildings completed was due to decreases in the seasonally adjusted real value of non-residential buildings (-25,5%) and residential buildings (-23,0%) during the three months ended May 2001 compared with the previous three months. However, these decreases were counteracted by an increase of 7,7% in the seasonally adjusted real value for additions and alterations during the above-mentioned period.

Figure 2 - Total real value of buildings completed

Key findings regarding buildings completed for the first five months of 2001

Total real value of buildings completed increases

The total real value of buildings completed (at constant 1995 prices) during the first five months of 2001 increased by 5,9% (+R201,0 million) to R3 622,9 million compared with the first five months of 2000. Increases in the real value of buildings completed were reported for 'other' residential buildings (+R225,4 million, mainly due to the completion of a hotel and casino, to the real value of R192,6 million, as reported by the Southern Metropolitan Local Council of Greater Johannesburg during January 2001); dwelling-houses (+R108,7 million) and additions and alterations (+R2,8 million). However, the value of non-residential buildings completed decreased by 10,4% or R104,0 million and flats and townhouses by 8,7% or R31,9 million during the above-mentioned period.

Six of the nine provinces reported increases in the total real value of buildings completed

The largest provincial contributors to the increase of 5,9% (+R201,0 million) in the total real value of buildings completed during the first five months of 2001 compared with the first five months of 2000 were Gauteng (+3,4 percentage points or R115,6 million), Eastern Cape (+2,3 percentage points or R77,6 million) and Free State (+2,1 percentage points or R72,5 million) (cf. table B). The largest real increases in Gauteng were reported for 'other' residential buildings (+R184,9 million, due to the completion of a hotel and casino to the real value of R192,6 million as reported during January 2001) and office and banking space (+R88,1 million).

However, these increases were partially counteracted by a real decrease reported by KwaZulu-Natal (-2,3 percentage points or R77,0 million) (cf. table B). The largest real decrease in KwaZulu-Natal was reported for non-residential buildings (-R68,0 million) and additions and alterations (-R68,1 million) during the above mentioned period.

Table B - Contribution of provinces to the total real value of buildings completed

Province	Percentage contribution to the total real value of buildings completed during January 2000 to May 2000	Percentage change between January 2000 to May 2000 and January 2001 to May 2001	Contribution (percentage points) ^{1/} to the percentage change in the real value of buildings completed between January 2000 to May 2000 and January 2001 to May 2001	Difference in total real value of buildings completed between January 2000 to May 2000 and January 2001 to May 2001 R million
Gauteng	36,5	+ 9,3	+ 3,4	+ 115,6
Eastern Cape	6,3	+ 35,9	+ 2,3	+ 77,6
Free State	3,1	+ 67,5	+ 2,1	+ 72,5
Western Cape	28,5	+ 1,7	+ 0,5	+ 16,1
Northern Cape	0,9	+ 40,5	+ 0,4	+ 12,4
Mpumalanga	2,5	+ 4,6	+ 0,1	+ 3,9
North West	2,9	- 11,8	- 0,3	- 11,6
Northern Province	1,3	- 19,4	- 0,3	- 8,5
KwaZulu-Natal	18,0	- 12,5	- 2,3	- 77,0
Total	100,0	+ 5,9	+ 5,9	+ 201,0

1/ The contribution (percentage points) is calculated by multiplying the percentage change of each province with the percentage contribution of the corresponding province.

Total real value of residential buildings completed increases

The total real value of residential buildings completed during the first five months of 2001 increased by 20,2% (+R302,2 million) to R1 801,8 million compared with the first five months of 2000. Increases in the real value of residential buildings completed were reported for 'other' residential buildings (+R225,4 million, mainly due to the completion of a hotel and casino in Gauteng to the real value of R192,6 million as reported during January 2001) and dwelling-houses (+R108,7 million). The largest provincial increase in the total real value of residential buildings completed was reported by Gauteng (+R216,9 million, mainly due to real increases reported for 'other' residential buildings (+R184,9 million)); followed by KwaZulu-Natal (+R59,1 million), North West (+R14,3 million), Eastern Cape (+R10,2 million). However, a decrease in the real value was reported for flats and townhouses (-R31,9 million).

Total real value of dwelling-houses completed increases

The total real value of dwelling-houses completed during the first five months of 2001 increased by 9,9% (+R108,7 million) to R1 205,3 million compared with the first five months of 2000. Large real increases were reported by Western Cape (+R59,6 million), KwaZulu-Natal (+R17,0 million), Eastern Cape (+R14,9 million) and North West (+R11,4 million). Large increases in the real value of dwelling-houses completed were reported by the selected urban areas of Mossel Bay (+R25,7 million), Cape Town (+R23,9 million), Helderberg Municipality - Strand (+R18,9 million), North Local Council – Umhlanga Rocks (+R17,0 million) and Rustenburg (+R13,0 million). The increase of 9,9% in the total real value of dwelling-houses completed during the first five months of 2001 compared with the first five months of 2000 can be attributed to the increase in the completion of dwelling-houses equal to or larger than 80 square metres (+20,8% or R162,8 million).

Total real value of flats and townhouses completed decreases

The total real value of flats and townhouses completed during the first five months of 2001 decreased by 8,7% (-R31,9 million) to R336,1 million compared with the first five months of 2000. Four of the nine provinces reported decreases in the real value of flats and townhouses completed. The largest real provincial decrease was reported by Western Cape (-R63,0 million). However, large real increase were reported by Gauteng (+R25,1 million) mainly due to increases as reported by the Western Metropolitan Council of Greater Johannesburg (+R35,2 million) and the Eastern Metropolitan Council of Greater Johannesburg (+R19,7 million) during the above-mentioned period.

Total real value of 'other' residential buildings completed increases

The total real value of 'other' residential buildings completed during the first five months of 2001 increased by R225,4 million to R260,4 million compared with the first five months of 2000. Large real increases were reported by Gauteng (+R184,9 million, mainly due to the completion of a hotel and casino to the real value of R192,6 million, as reported by the Southern Metropolitan Local Council of Greater Johannesburg during January 2001) and KwaZulu-Natal (+R30,2 million, due to the completion of a casino to the real value of R30,8 million, as reported by the North Local Council – Umhlanga Rocks during January 2001).

Total real value of non-residential buildings completed decreases

The total real value of non-residential buildings completed during the first five months of 2001 decreased by 10,4% (-R104,0 million) to R899,0 million compared with the first five months of 2000. Six of the nine provinces reported decreases in the real value of non-residential buildings completed. Large real decreases were reported by KwaZulu-Natal (-R68,0 million), Gauteng (-R43,5 million), Western Cape (-R24,5 million) and North West (-R22,5 million). Large decreases in the real value of non-residential buildings completed were reported for shopping space (-R181,8 million). However, a large real increase in the total real value of non-residential buildings completed was reported by Eastern Cape (+R56,2 million), mainly due to the real increase as reported by East London (+R24,1 million) and Port Elizabeth (+R20,4 million) during the above-mentioned period.

Total real value of additions and alterations completed increases slightly

The total real value of additions and alterations completed during the first five months of 2001 increased slightly by 0,3% (+R2,8 million) to R922,1 million compared with the first five months of 2000. The largest real increase was reported by Free State (+R64,4 million) and Western Cape (+R40,4 million). Large real increases were reported by the selected urban areas of Bloemfontein (+R64,4 million) and Cape Town (+R53,0 million). However, a large real decrease in the total real value of additions and alterations completed was reported by KwaZulu-Natal (-R68,1 million) and Gauteng (-R57,8 million). Large real decreases were reported by the selected urban areas of Durban (-R70,4 million) and Witwatersrand (-R43,7 million) during the above-mentioned period.

Contents

Page

Notes	10
Tables		
Table 1	Actual values and percentage change of building plans passed at current prices according to type of building	14
Table 2	Seasonally adjusted values and percentage change of building plans passed at current prices according to type of building	15
Table 3	Actual values and percentage change of building plans passed at constant 1995 prices according to type of building	16
Table 4	Seasonally adjusted values and percentage change of building plans passed at constant 1995 prices according to type of building	17
Table 5	Actual values and percentage change of buildings completed at current prices according to type of building	18
Table 6	Seasonally adjusted values and percentage change of buildings completed at current prices according to type of building	19
Table 7	Actual values and percentage change of buildings completed at constant 1995 prices according to type of building	20
Table 8	Seasonally adjusted values and percentage change of buildings completed at constant 1995 prices according to type of building	21
Table 9	Building plans passed according to type of building: Total RSA	22
Table 10	Building plans passed according to type of building and province: Western Cape	23
Table 11	Building plans passed according to type of building and province: Eastern Cape	24
Table 12	Building plans passed according to type of building and province: Northern Cape	25
Table 13	Building plans passed according to type of building and province: Free State	26
Table 14	Building plans passed according to type of building and province: KwaZulu-Natal	27
Table 15	Building plans passed according to type of building and province: North West	28
Table 16	Building plans passed according to type of building and province: Gauteng	29
Table 17	Building plans passed according to type of building and province: Mpumalanga	30
Table 18	Building plans passed according to type of building and province: Northern Province	31
Table 19	Buildings completed according to type of building: Total RSA	32
Table 20	Buildings completed according to type of building and province: Western Cape	33
Table 21	Buildings completed according to type of building and province: Eastern Cape	34
Table 22	Buildings completed according to type of building and province: Northern Cape.....	35
Table 23	Buildings completed according to type of building and province: Free State	36
Table 24	Buildings completed according to type of building and province: KwaZulu-Natal	37
Table 25	Buildings completed according to type of building and province: North West	38
Table 26	Buildings completed according to type of building and province: Gauteng	39
Table 27	Buildings completed according to type of building and province: Mpumalanga	40
Table 28	Buildings completed according to type of building and province: Northern Province	41
Table 29	Building plans passed according to type of building and selected urban area: Cape Town	42
Table 30	Building plans passed according to type of building and selected urban area: Port Elizabeth	43
Table 31	Building plans passed according to type of building and selected urban area: Durban	44
Table 32	Building plans passed according to type of building and selected urban area: Witwatersrand	45
Table 33	Building plans passed according to type of building and selected urban area: Pretoria	46
Table 34	Building plans passed according to type of building and selected urban area: Bloemfontein	47
Table 35	Buildings completed according to type of building and selected urban area: Cape Town	48
Table 36	Buildings completed according to type of building and selected urban area: Port Elizabeth	49
Table 37	Buildings completed according to type of building and selected urban area: Durban	50
Table 38	Buildings completed according to type of building and selected urban area: Witwatersrand	51
Table 39	Buildings completed according to type of building and selected urban area: Pretoria	52
Table 40	Buildings completed according to type of building and selected urban area: Bloemfontein	53
Additional information		
	Explanatory notes	54
	Technical notes	56
	Local government institutions covered in the sample survey	57
	Glossary	58

Notes

Forthcoming issues	Issue	Expected release date
	June 2001	15 August 2001
	July 2001	19 September 2001
	August 2001	17 October 2001
	September 2001	14 November 2001
	October 2001	19 December 2001
	November 2001	16 January 2002
	December 2001	20 February 2002
Purpose of the survey	<p>The Building Statistics Survey is a countrywide survey covering a sample of local government institutions in South Africa. The information received is used to estimate key economic statistics used by the private and public sectors. The information is also used to compile estimates of the Gross Domestic Product (GDP). These statistics are also used by government to monitor the Reconstruction and Development Program (RDP) in South Africa.</p>	
New questionnaire	<p>In order to lessen the respondent burden and improve reliability, Stats SA has overhauled and redesigned its Building Statistics Survey questionnaire. This resulted in the change of some data items on the old questionnaire. As from November 1999 information regarding dwelling-houses was collected according to size of dwelling-house.</p> <p>The Building Statistics Survey questionnaire collects the numbers, square metres and value of building plans passed and buildings completed for the private sector regarding –</p> <ul style="list-style-type: none"> • residential buildings; • non-residential buildings; and • additions and alterations. 	
Re-engineered building statistics statistical release	<p>Prior to March 2001, Stats SA published selected information per province namely, the value of building plans passed and buildings completed regarding residential buildings, non-residential buildings and additions and alterations. Due to users' needs, specifically compilers of National Accounts, Stats SA has overhauled and re-designed the statistical release. In order to provide users with more provincial information Stats SA extended the information per province to include more detailed information regarding residential buildings (e.g. dwelling-houses equal to or larger than 80 square metre; flats and townhouses; and other residential buildings), non-residential buildings (e.g. office and banking space; shopping space; industrial and warehouse space; and other non-residential space) and additions and alterations (e.g. additions to dwelling-houses and other buildings).</p> <p>Furthermore, to monitor the RDP housing program Stats SA publishes information regarding dwelling-houses smaller than 80 square metres and equal to or larger than 80 square metres according to province.</p>	
Changes in the numbering of tables	<p>It should be noted that the numbering of tables has changed as from March 2001 as indicated in table A, pages 11 to 13.</p>	

Table A – Title of table according to new and old numbers

New number (as from March 2001)	Title of table	Old number (prior to March 2001)
Table 1	Actual values and percentage change of building plans passed at current prices according to type of building	Table 3
Table 2	Seasonally adjusted values and percentage change of building plans passed at current prices according to type of building	Table 7
Table 3	Actual values and percentage change of building plans passed at constant 1995 prices according to type of building	Table 4
Table 4	Seasonally adjusted values and percentage change of building plans passed at constant 1995 prices according to type of building	Table 7
Table 5	Actual values and percentage change of buildings completed at current prices according to type of building	Table 5
Table 6	Seasonally adjusted values and percentage change of buildings completed at current prices according to type of building	Table 8
Table 7	Actual values and percentage change of buildings completed at constant 1995 prices according to type of building	Table 6
Table 8	Seasonally adjusted values and percentage change of buildings completed at constant 1995 prices according to type of building	Table 8
Table 9	Building plans passed according to type of building: Total RSA	Tables 1 and 9
Table 10	Building plans passed according to type of building and province: Western Cape	Table 1
Table 11	Building plans passed according to type of building and province: Eastern Cape	Table 1
Table 12	Building plans passed according to type of building and province: Northern Cape	Table 1
Table 13	Building plans passed according to type of building and province: Free State	Table 1
Table 14	Building plans passed according to type of building and province: KwaZulu-Natal	Table 1
Table 15	Building plans passed according to type of building and province: North West	Table 1
Table 16	Building plans passed according to type of building and province: Gauteng	Table 1
Table 17	Building plans passed according to type of building and province: Mpumalanga	Table 1

Table A – Title of table according to new and old numbers (continued)

New number (as from March 2001)	Title of table	Old number (prior to March 2001)
Table 18	Building plans passed according to type of building and province: Northern Province	Table 1
Table 19	Buildings completed according to type of building: Total RSA	Tables 2 and 11
Table 20	Buildings completed according to type of building and province: Western Cape	Table 2
Table 21	Buildings completed according to type of building and province: Eastern Cape	Table 2
Table 22	Buildings completed according to type of building and province: Northern Cape	Table 2
Table 23	Buildings completed according to type of building and province: Free State	Table 2
Table 24	Buildings completed according to type of building and province: KwaZulu-Natal	Table 2
Table 25	Buildings completed according to type of building and province: North West	Table 2
Table 26	Buildings completed according to type of building and province: Gauteng	Table 2
Table 27	Buildings completed according to type of building and province: Mpumalanga	Table 2
Table 28	Buildings completed according to type of building and province: Northern Province	Table 2
Table 29	Building plans passed according to type of building and selected urban area: Cape Town	Table 10
Table 30	Building plans passed according to type of building and selected urban area: Port Elizabeth	New
Table 31	Building plans passed according to type of building and selected urban area: Durban	Table 10
Table 32	Building plans passed according to type of building and selected urban area: Witwatersrand	Table 10
Table 33	Building plans passed according to type of building and selected urban area: Pretoria	Table 10
Table 34	Building plans passed according to type of building and selected urban area: Bloemfontein	Table 10
Table 35	Buildings completed according to type of building and selected urban area: Cape Town	Table 12
Table 36	Buildings completed according to type of building and selected urban area: Port Elizabeth	New

Table A – Title of table according to new and old numbers (concluded)

New number (as from March 2001)	Title of table	Old number (prior to March 2001)
Table 37	Buildings completed according to type of building and selected urban area: Durban	Table 12
Table 38	Buildings completed according to type of building and selected urban area: Witwatersrand	Table 12
Table 39	Buildings completed according to type of building and selected urban area: Pretoria	Table 12
Table 40	Buildings completed according to type of building and selected urban area: Bloemfontein	Table 12

Table 1 - Actual values and percentage change of building plans passed at current prices according to type of building

Year ^{1/} and month ^{2/}	Residential buildings		Non-residential buildings		Additions and alterations		Total	
	R'000	Percentage change	R'000	Percentage change	R'000	Percentage change	R'000	Percentage change
1999 Jan	553 051	+ 9,8	237 671	- 45,6	277 444	+ 9,9	1 068 166	- 7,0
Feb	528 673	- 18,9	394 629	- 4,6	355 506	- 2,0	1 278 809	- 7,0
Mar	667 232	- 17,0	1 454 021	+ 219,5	476 726	+ 10,2	2 597 979	+ 59,3
Apr	530 570	- 22,1	374 625	- 23,8	330 044	- 6,9	1 235 239	- 16,0
May	527 616	- 19,3	274 148	- 46,9	403 206	+ 14,2	1 204 970	- 17,9
Jun	837 779	+ 18,8	418 343	- 32,5	403 838	+ 2,5	1 659 959	+ 0,4
Jul	637 414	- 19,6	460 734	- 7,1	420 306	- 15,4	1 518 454	- 12,2
Aug	630 628	- 14,1	388 580	- 14,5	415 686	- 6,2	1 434 895	- 7,7
Sep	599 986	- 14,7	305 439	- 38,8	484 091	+ 9,7	1 389 516	- 13,4
Oct	664 785	- 22,6	329 137	- 38,8	436 746	- 11,1	1 430 668	- 22,7
Nov	710 950	+ 14,0	701 437	+ 44,0	536 870	+ 39,6	1 949 257	+ 33,3
Dec	493 844	+ 16,1	225 184	- 40,9	314 898	- 23,4	1 033 926	- 12,9
Total	7 382 530	- 8,9	5 563 948	- 3,8	4 855 360	+ 0,8	17 801 839	- 1,8
2000 Jan*	490 776	- 11,3	163 926	- 31,0	365 596	+ 31,8	1 020 298	- 4,5
Feb	784 023	+ 48,3	474 732	+ 20,3	399 280	+ 12,3	1 658 035	+ 29,7
Mar	747 421	+ 12,0	359 267	- 75,3	515 668	+ 8,2	1 622 356	- 37,6
Apr	627 642	+ 18,3	271 151	- 27,6	382 300	+ 15,8	1 281 093	+ 3,7
May	874 847	+ 65,8	573 853	+ 109,3	473 062	+ 17,3	1 921 762	+ 59,5
Jun	853 154	+ 1,8	336 324	- 19,6	532 278	+ 31,8	1 721 756	+ 3,7
Jul	908 061	+ 42,5	484 669	+ 5,2	549 932	+ 30,8	1 942 662	+ 27,9
Aug	929 836	+ 47,4	353 488	- 9,0	492 627	+ 18,5	1 775 951	+ 23,8
Sep	826 851	+ 37,8	354 456	+ 16,0	465 836	- 3,8	1 647 143	+ 18,5
Oct	916 410	+ 37,9	492 884	+ 49,8	539 561	+ 23,5	1 948 855	+ 36,2
Nov	914 346	+ 28,6	493 166	- 29,7	503 659	- 6,2	1 911 171	- 2,0
Dec	606 148	+ 22,7	704 410	+ 212,8	317 835	+ 0,9	1 628 393	+ 57,5
Total*	9 479 515	+ 28,4	5 062 326	- 9,0	5 537 634	+ 14,1	20 079 475	+ 12,8
2001 Jan	719 247	+ 46,6	475 094	+ 189,8	351 676	- 3,8	1 546 017	+ 51,5
Feb	817 492	+ 4,3	299 535	- 36,9	472 567	+ 18,4	1 589 594	- 4,1
Mar	932 343	+ 24,7	307 449	- 14,4	435 650	- 15,5	1 675 442	+ 3,3
Apr	747 870	+ 19,2	210 194	- 22,5	383 265	+ 0,3	1 341 329	+ 4,7
May	1 015 815	+ 16,1	292 244	- 49,1	507 491	+ 7,3	1 815 550	- 5,5

^{1/} The annual percentage change is the change in the actual values of building plans passed of the relevant year compared with the actual values of building plans passed of the previous year expressed as a percentage.

^{2/} The monthly percentage change is the change in the actual values of building plans passed of the relevant month compared with the actual values of building plans passed of the same month in the previous year expressed as a percentage.

Table 2 - Seasonally adjusted values and percentage change of building plans passed at current prices according to type of building

Year and month ^{1/}	Residential buildings		Non-residential buildings		Additions and alterations		Total	
	R'000	Percentage change	R'000	Percentage change	R'000	Percentage change	R'000	Percentage change
1999 Jan	720 331	+ 19,0	307 683	- 34,9	382 545	- 25,5	1 410 558	- 11,4
Feb	534 126	- 25,8	428 341	+ 39,2	380 757	- 0,5	1 343 224	- 4,8
Mar	622 127	+ 16,5	1 412 298	+ 229,7	439 186	+ 15,3	2 473 611	+ 84,2
Apr	578 811	- 7,0	413 972	- 70,7	382 030	- 13,0	1 374 813	- 44,4
May	508 832	- 12,1	247 100	- 40,3	397 351	+ 4,0	1 153 283	- 16,1
Jun	796 619	+ 56,6	385 831	+ 56,1	385 319	- 3,0	1 567 769	+ 35,9
Jul	567 602	- 28,7	414 623	+ 7,5	365 429	- 5,2	1 347 653	- 14,0
Aug	589 754	+ 3,9	386 916	- 6,7	391 366	+ 7,1	1 368 035	+ 1,5
Sep	587 884	- 0,3	323 723	- 16,3	448 971	+ 14,7	1 360 578	- 0,5
Oct	563 331	- 4,2	287 464	- 11,2	386 680	- 13,9	1 237 475	- 9,0
Nov	664 803	+ 18,0	585 596	+ 103,7	471 274	+ 21,9	1 721 674	+ 39,1
Dec	701 577	+ 5,5	279 732	- 52,2	414 275	- 12,1	1 395 584	- 18,9
2000 Jan	634 174	- 9,6	207 489	- 25,8	495 267	+ 19,6	1 336 929	- 4,2
Feb	803 986	+ 26,8	536 807	+ 158,7	427 335	- 13,7	1 768 127	+ 32,3
Mar	689 542	- 14,2	352 493	- 34,3	469 991	+ 10,0	1 512 026	- 14,5
Apr	700 735	+ 1,6	317 648	- 9,9	451 436	- 3,9	1 469 818	- 2,8
May	832 208	+ 18,8	508 583	+ 60,1	464 065	+ 2,8	1 804 857	+ 22,8
Jun	811 815	- 2,5	304 030	- 40,2	511 027	+ 10,1	1 626 872	- 9,9
Jul	808 852	- 0,4	423 385	+ 39,3	479 781	- 6,1	1 712 017	+ 5,2
Aug	864 545	+ 6,9	359 924	- 15,0	464 563	- 3,2	1 689 032	- 1,3
Sep	806 174	- 6,8	370 240	+ 2,9	430 904	- 7,2	1 607 319	- 4,8
Oct	783 003	- 2,9	432 812	+ 16,9	475 899	+ 10,4	1 691 714	+ 5,3
Nov	852 938	+ 8,9	416 128	- 3,9	438 966	- 7,8	1 708 032	+ 1,0
Dec	858 559	+ 0,7	855 327	+ 105,5	421 763	- 3,9	2 135 649	+ 25,0
2001 Jan	924 815	+ 7,7	604 779	- 29,3	472 733	+ 12,1	2 002 327	- 6,2
Feb	844 571	- 8,7	346 172	- 42,8	508 373	+ 7,5	1 699 116	- 15,1
Mar	857 593	+ 1,5	298 584	- 13,7	395 772	- 22,1	1 551 949	- 8,7
Apr	846 391	- 1,3	254 652	- 14,7	457 330	+ 15,6	1 558 373	+ 0,4
May	961 260	+ 13,6	252 697	- 0,8	496 544	+ 8,6	1 710 501	+ 9,8

^{1/} The percentage change is the change in the seasonally adjusted values of building plans passed of the relevant month compared with the seasonally adjusted values of building plans passed of the previous month expressed as a percentage.

Table 3 - Actual values and percentage change of building plans passed at constant 1995 prices according to type of building

Year and month ^{2/}	Residential buildings		Non-residential buildings		Additions and alterations		Total	
	R'000	Percentage change	R'000	Percentage change	R'000	Percentage change	R'000	Percentage change
1999 Jan	444 933	+ 2,8	191 208	- 45,6	223 205	+ 9,9	859 346	- 13,0
Feb	420 918	- 24,5	314 195	- 4,6	283 046	- 2,0	1 018 159	- 13,4
Mar	530 391	- 22,6	1 155 820	+ 219,5	378 955	+ 10,2	2 065 166	+ 48,5
Apr	419 423	- 27,3	296 146	- 23,8	260 904	- 6,9	976 473	- 21,6
May	416 759	- 24,5	216 546	- 46,9	318 488	+ 14,2	951 793	- 23,2
Jun	659 150	+ 11,2	329 145	- 32,5	317 732	+ 2,5	1 306 027	- 6,1
Jul	499 933	- 24,1	361 360	- 7,1	329 651	- 15,4	1 190 944	- 17,2
Aug	494 610	- 13,8	304 769	- 14,5	326 028	- 6,2	1 125 407	- 11,9
Sep	469 473	- 18,3	238 998	- 38,8	378 788	+ 9,7	1 087 259	- 17,0
Oct	519 363	- 25,5	257 138	- 38,8	341 208	- 11,1	1 117 709	- 25,6
Nov	553 699	+ 9,8	546 290	+ 44,0	418 123	+ 39,6	1 518 112	+ 28,3
Dec	384 016	+ 11,7	175 104	- 40,9	244 866	- 23,4	803 986	- 16,3
Total	5 812 668	- 8,9	4 386 719	- 3,8	3 820 994	+ 0,8	14 020 381	- 7,1
2000 Jan*	378 102	- 15,0	126 291	- 34,0	281 661	+ 26,2	786 054	- 8,5
Feb	602 168	+ 43,1	364 618	+ 16,0	306 667	+ 8,3	1 273 453	+ 25,1
Mar	570 115	+ 7,5	274 040	- 76,3	393 339	+ 3,8	1 237 494	- 40,1
Apr	473 692	+ 12,9	204 642	- 30,9	288 528	+ 10,6	966 862	- 1,0
May	655 807	+ 57,4	430 175	+ 98,7	354 619	+ 11,3	1 440 601	+ 51,4
Jun	637 634	- 3,3	251 363	- 23,6	397 816	+ 25,2	1 286 813	- 1,5
Jul	672 638	+ 34,5	359 014	- 0,6	407 357	+ 23,6	1 439 009	+ 20,8
Aug	682 699	+ 38,0	259 536	- 14,8	361 694	+ 10,9	1 303 929	+ 15,9
Sep	606 196	+ 29,1	259 865	+ 8,7	341 522	- 9,8	1 207 583	+ 11,1
Oct	668 425	+ 28,7	359 507	+ 39,8	393 553	+ 15,3	1 421 485	+ 27,2
Nov	664 013	+ 19,9	358 145	- 34,4	365 765	- 12,5	1 387 923	- 8,6
Dec	438 602	+ 14,2	509 703	+ 191,1	229 982	- 6,1	1 178 287	+ 46,6
Total*	7 050 091	+ 21,3	3 756 899	- 14,4	4 122 503	+ 7,9	14 929 493	+ 6,5
2001 Jan	514 851	+ 36,2	340 082	+ 169,3	251 737	- 10,6	1 106 670	+ 40,8
Feb	582 259	- 3,3	213 344	- 41,5	336 586	+ 9,8	1 132 189	- 11,1
Mar	659 832	+ 15,7	217 586	- 20,6	308 316	- 21,6	1 185 734	- 4,2
Apr	526 298	+ 11,1	147 920	- 27,7	269 715	- 6,5	943 933	- 2,4
May	711 355	+ 8,5	204 653	- 52,4	355 386	+ 0,2	1 271 394	- 11,7

^{1/} The annual percentage change is the change in the actual values of building plans passed of the relevant year compared with the actual values of building plans passed of the previous year expressed as a percentage.

^{2/} The monthly percentage change is the change in the actual values of building plans passed of the relevant month compared with the actual values of building plans passed of the same month in the previous year expressed as a percentage.

Table 4 - Seasonally adjusted values and percentage change of building plans passed at constant 1995 prices according to type of building

Year and month ^{1/}	Residential buildings		Non-residential buildings		Additions and alterations		Total	
	R'000	Percentage change	R'000	Percentage change	R'000	Percentage change	R'000	Percentage change
1999 Jan	580 061	+ 19,0	247 688	- 34,9	307 615	+ 7,9	1 135 364	- 11,4
Feb	425 354	- 26,7	341 661	+ 37,9	303 698	- 1,3	1 070 713	- 5,7
Mar	493 572	+ 16,0	1 121 940	+ 228,4	348 062	+ 14,6	1 963 573	+ 83,4
Apr	457 801	- 7,2	327 442	- 70,8	302 318	- 13,1	1 087 561	- 44,6
May	402 837	- 12,0	195 268	- 40,4	313 969	+ 3,9	912 074	- 16,1
Jun	625 187	+ 55,2	303 132	+ 55,2	302 851	- 3,5	1 231 169	+ 35,0
Jul	445 674	- 28,7	325 515	+ 7,4	286 747	- 5,3	1 057 937	- 14,1
Aug	463 276	+ 3,9	304 072	- 6,6	307 973	+ 7,4	1 075 320	+ 1,6
Sep	460 720	- 0,6	253 648	- 16,6	351 836	+ 14,2	1 066 204	- 0,8
Oct	440 416	- 4,4	224 625	- 11,4	302 338	- 14,1	967 380	- 9,3
Nov	517 109	+ 17,4	455 127	+ 102,6	366 897	+ 21,4	1 339 134	+ 38,4
Dec	543 208	+ 5,0	216 621	- 52,4	320 489	- 12,6	1 080 318	- 19,3
2000 Jan	489 366	- 9,9	160 101	- 26,1	381 276	+ 19,0	1 030 742	- 4,6
Feb	617 260	+ 26,1	412 916	+ 157,9	329 097	- 13,7	1 359 272	+ 31,9
Mar	524 899	- 15,0	268 731	- 34,9	356 950	+ 8,5	1 150 580	- 15,4
Apr	529 060	+ 0,8	239 973	- 10,7	341 059	- 4,5	1 110 092	- 3,5
May	625 392	+ 18,2	381 347	+ 58,9	348 043	+ 2,0	1 354 782	+ 22,0
Jun	604 993	- 3,3	226 786	- 40,5	381 477	+ 9,6	1 213 256	- 10,4
Jul	599 690	- 0,9	313 859	+ 38,4	355 641	- 6,8	1 269 190	+ 4,6
Aug	636 425	+ 6,1	264 842	- 15,6	342 175	- 3,8	1 243 442	- 2,0
Sep	591 811	- 7,0	271 778	+ 2,6	316 406	- 7,5	1 179 996	- 5,1
Oct	571 503	- 3,4	315 798	+ 16,2	347 463	+ 9,8	1 234 764	+ 4,6
Nov	618 631	+ 8,2	301 638	- 4,5	318 782	- 8,3	1 239 051	+ 0,3
Dec	618 440	+ 0,0	616 322	+ 104,3	303 621	- 4,8	1 538 384	+ 24,2
2001 Jan	663 453	+ 7,3	433 877	- 29,6	337 960	+ 11,3	1 435 289	- 6,7
Feb	601 083	- 9,4	246 849	- 43,1	363 105	+ 7,4	1 211 037	- 15,6
Mar	605 646	+ 0,8	211 172	- 14,5	278 790	- 23,2	1 095 607	- 9,5
Apr	595 687	- 1,6	179 412	- 15,0	322 272	+ 15,6	1 097 371	+ 0,2
May	675 056	+ 13,3	176 982	- 1,4	347 897	+ 8,0	1 199 934	+ 9,3

^{1/} The percentage change is the change in the seasonally adjusted values of building plans passed of the relevant month compared with the seasonally adjusted values of building plans passed of the previous month expressed as a percentage.

Table 5 - Actual values and percentage change of buildings completed at current prices according to type of building

Year ^{1/} and month ^{2/}	Residential buildings		Non-residential buildings		Additions and alterations		Total	
	R'000	Percentage change	R'000	Percentage change	R'000	Percentage change	R'000	Percentage change
1999 Jan	313 975	- 17,7	197 076	- 12,3	193 050	- 3,3	704 102	- 12,6
Feb	396 737	- 2,1	214 816	- 29,4	244 641	+ 26,9	856 194	- 5,1
Mar	432 499	- 38,0	246 125	+ 39,7	230 685	+ 8,8	909 309	- 16,2
Apr	377 800	- 17,0	181 550	- 25,2	200 507	+ 28,2	759 858	- 11,1
May	390 986	- 11,7	195 652	+ 10,4	178 758	- 2,4	765 395	- 4,7
Jun	420 016	- 30,4	208 557	- 38,5	153 702	- 21,1	782 276	- 31,2
Jul	480 991	- 18,3	264 068	+ 0,3	272 372	+ 26,1	1 017 432	- 4,7
Aug	460 657	+ 7,6	204 898	- 24,8	255 878	+ 47,4	921 432	+ 5,4
Sep	493 450	- 11,4	197 152	- 58,4	223 191	+ 10,3	913 793	- 25,9
Oct	419 578	- 15,9	203 652	- 58,9	229 463	+ 12,4	852 693	- 28,8
Nov	461 147	- 8,9	409 997	+ 45,4	210 237	+ 20,2	1 081 381	+ 12,3
Dec	349 510	- 15,3	181 596	- 13,0	146 343	+ 3,3	677 449	- 11,3
Total	4 997 346	- 16,4	2 705 139	- 21,8	2 538 827	+ 12,8	10 241 312	- 12,4
2000 Jan*	299 212	- 4,7	195 988	- 0,6	183 959	- 4,7	679 159	- 3,5
Feb	353 141	- 11,0	205 549	- 4,3	221 978	- 9,3	780 668	- 8,8
Mar	419 416	- 3,0	212 379	- 13,7	268 745	+ 16,5	900 540	- 1,0
Apr	364 713	- 3,5	224 048	+ 23,4	188 808	- 5,8	777 569	+ 2,3
May*	473 124	+ 21,0	390 533	+ 99,6	293 343	+ 64,1	1 157 000	+ 51,2
Jun	362 558	- 13,7	174 728	- 16,2	170 986	+ 11,2	708 272	- 9,5
Jul	407 406	- 15,3	472 668	+ 79,0	220 828	- 18,9	1 100 902	+ 8,2
Aug	449 691	- 2,4	285 994	+ 39,6	211 008	- 17,5	946 693	+ 2,7
Sep	510 979	+ 3,6	270 539	+ 37,2	199 622	- 10,6	981 140	+ 7,4
Oct	462 270	+ 10,2	195 491	- 4,0	238 257	+ 3,8	896 018	+ 5,1
Nov	555 802	+ 20,5	186 442	- 54,5	255 900	+ 21,7	998 144	- 7,7
Dec	383 114	+ 9,6	316 801	+ 74,5	149 622	+ 2,2	849 537	+ 25,4
Total*	5 041 426	+ 0,9	3 131 160	+ 15,7	2 603 056	+ 2,5	10 775 642	+ 5,2
2001 Jan	643 036	+ 114,9	238 434	+ 21,7	200 993	+ 9,3	1 082 463	+ 59,4
Feb	428 998	+ 21,5	285 620	+ 39,0	243 491	+ 9,7	958 109	+ 22,7
Mar	534 418	+ 27,4	150 947	- 28,9	287 215	+ 6,9	972 580	+ 8,0
Apr	373 202	+ 2,3	173 682	- 22,5	184 616	- 2,2	731 500	- 5,9
May	445 694	- 5,8	300 731	- 23,0	295 910	+ 0,9	1 042 335	- 9,9

^{1/} The annual percentage change is the change in the actual values of buildings completed of the relevant year compared with the actual values of buildings completed of the previous year expressed as a percentage.

^{2/} The monthly percentage change is the change in the actual values of buildings completed of the relevant month compared with the actual values of buildings completed of the same month in the previous year expressed as a percentage.

Table 6 - Seasonally adjusted values and percentage change of buildings completed at current prices according to type of building

Year and month ^{1/}	Residential buildings		Non-residential buildings		Additions and alterations		Total	
	R'000	Percentage change	R'000	Percentage change	R'000	Percentage change	R'000	Percentage change
1999 Jan	407 799	- 12,5	231 290	+ 14,8	216 171	+ 1,8	855 260	- 2,8
Feb	444 560	+ 9,0	227 968	- 1,4	222 151	+ 2,8	894 679	+ 4,6
Mar	417 145	- 6,2	278 071	+ 22,0	198 323	- 10,7	893 538	- 0,1
Apr	420 390	+ 0,8	205 625	- 26,1	222 047	+ 12,0	848 061	- 5,1
May	381 668	- 9,2	187 156	- 9,0	174 011	- 21,6	742 835	- 12,4
Jun	426 830	+ 11,8	219 344	+ 17,2	162 128	- 6,8	808 301	+ 8,8
Jul	438 815	+ 2,8	230 682	+ 5,2	234 558	+ 44,7	904 055	+ 11,8
Aug	439 746	+ 0,2	205 950	- 10,7	260 048	+ 10,9	905 744	+ 0,2
Sep	437 682	- 0,5	176 635	- 14,2	222 392	- 14,5	836 709	- 7,6
Oct	397 686	- 9,1	175 402	- 0,7	217 298	- 2,3	790 386	- 5,5
Nov	385 812	- 3,0	421 121	+ 140,1	193 747	- 10,8	1 000 681	+ 26,6
Dec	399 516	+ 3,6	174 845	- 58,5	218 913	+ 13,0	793 274	- 20,7
2000 Jan	387 646	- 3,0	227 203	+ 29,9	205 114	- 6,3	819 963	+ 3,4
Feb	396 467	+ 2,3	211 018	- 7,1	202 621	- 1,2	810 106	- 1,2
Mar	398 957	+ 0,6	254 587	+ 20,6	227 036	+ 12,0	880 580	+ 8,7
Apr	414 636	+ 3,9	264 958	+ 4,1	214 063	- 5,7	893 657	+ 1,5
May	472 734	+ 14,0	357 700	+ 35,0	279 267	+ 30,5	1 109 702	+ 24,2
Jun	364 214	- 23,0	184 013	- 48,6	182 299	- 34,7	730 526	- 34,2
Jul	368 300	+ 1,1	411 204	+ 123,5	190 804	+ 4,7	970 307	+ 32,8
Aug	427 355	+ 16,0	279 539	- 32,0	214 836	+ 12,6	921 731	- 5,0
Sep	446 781	+ 4,5	237 199	- 15,1	198 988	- 7,4	882 968	- 4,2
Oct	441 743	- 1,1	168 349	- 29,0	224 147	+ 12,6	834 239	- 5,5
Nov	470 078	+ 6,4	197 300	+ 17,2	238 394	+ 6,4	905 771	+ 8,6
Dec	436 625	- 7,1	311 717	+ 58,0	222 113	- 6,8	970 455	+ 7,1
2001 Jan	839 586	+ 92,3	278 191	- 10,8	224 041	+ 0,9	1 341 818	+ 38,3
Feb	479 374	- 42,9	288 652	+ 3,8	223 255	- 0,4	991 281	- 26,1
Mar	502 279	+ 4,8	184 005	- 36,3	240 045	+ 7,5	926 328	- 6,6
Apr	427 609	- 14,9	210 191	+ 14,2	211 936	- 11,7	849 735	- 8,3
May	450 278	+ 5,3	264 372	+ 25,8	280 323	+ 32,3	994 973	+ 17,1

^{1/} The percentage change is the change in the seasonally adjusted values of buildings completed of the relevant month compared with the seasonally adjusted values of buildings completed of the previous month expressed as a percentage.

Table 7 - Actual values and percentage change of buildings completed at constant 1995 prices according to type of building

Year and month ^{2/}	Residential buildings		Non-residential buildings		Additions and alterations		Total	
	R'000	Percentage change	R'000	Percentage change	R'000	Percentage change	R'000	Percentage change
1999 Jan	262 682	- 22,6	172 571	- 18,3	165 993	- 9,2	601 246	- 18,0
Feb	329 271	- 26,3	187 449	- 39,0	209 095	- 4,5	725 815	- 26,1
Mar	356 192	- 57,5	214 208	+ 5,4	196 662	- 12,9	767 062	- 38,1
Apr	311 031	- 34,2	157 322	- 23,5	169 922	+ 18,7	638 275	- 21,4
May	319 828	- 31,9	169 395	+ 5,1	150 851	+ 2,4	640 074	- 15,6
Jun	344 231	- 50,0	180 257	- 44,7	129 270	- 3,4	653 758	- 40,4
Jul	391 124	- 50,0	227 058	- 28,4	226 411	- 12,3	844 593	- 36,0
Aug	369 731	- 48,5	175 126	- 29,7	210 253	+ 9,6	755 110	- 21,4
Sep	396 579	- 28,6	168 075	- 59,5	182 196	- 5,7	746 850	- 44,4
Oct	334 635	- 45,1	172 586	- 61,0	186 252	- 6,2	693 473	- 42,4
Nov	366 364	- 38,2	345 989	- 30,9	170 095	+ 9,6	882 448	- 27,6
Dec	277 236	- 38,9	152 730	- 6,3	118 305	+ 35,6	548 271	- 8,6
Total	4 058 904	- 21,7	2 322 766	- 26,2	2 115 305	+ 6,4	8 496 975	- 17,7
2000 Jan*	236 149	- 10,1	162 916	- 5,6	147 996	- 10,8	547 061	- 9,0
Feb	277 982	- 15,6	168 898	- 9,9	176 734	- 15,5	623 614	- 14,1
Mar	329 523	- 7,5	173 371	- 19,1	213 629	+ 8,6	716 523	- 6,6
Apr	285 795	- 8,1	181 857	+ 15,6	149 255	- 12,2	616 907	- 3,3
May*	370 120	+ 15,7	315 965	+ 86,5	231 709	+ 53,6	917 794	+ 43,4
Jun	282 549	- 17,9	141 251	- 21,6	134 529	+ 4,1	558 329	- 14,6
Jul	314 890	- 19,5	380 264	+ 67,5	173 198	- 23,5	868 352	+ 2,8
Aug	346 783	- 6,2	227 702	+ 30,0	165 496	- 21,3	739 981	- 2,0
Sep	391 744	- 1,2	215 055	+ 28,0	156 199	- 14,3	762 998	+ 2,2
Oct	352 005	+ 5,2	154 538	- 10,5	186 138	- 0,1	692 681	- 0,1
Nov	420 080	+ 14,7	147 269	- 57,4	199 299	+ 17,2	766 648	- 13,1
Dec	289 205	+ 4,3	249 253	+ 63,2	116 347	- 1,7	654 805	+ 19,4
Total*	3 896 825	- 4,0	2 518 339	+ 8,4	2 050 529	- 3,1	8 465 693	- 0,4
2001 Jan	487 405	+ 106,4	187 007	+ 14,8	154 848	+ 4,6	829 260	+ 51,6
Feb	318 383	+ 14,5	224 016	+ 32,6	187 013	+ 5,8	729 412	+ 17,0
Ma	396 489	+ 20,3	118 112	- 31,9	219 081	+ 2,6	733 682	+ 2,4
Apr	274 728	- 3,9	135 689	- 25,4	139 333	- 6,6	549 750	- 10,9
May	324 788	- 12,2	234 214	- 25,9	221 822	- 4,3	780 824	- 14,9

^{1/} The annual percentage change is the change in the actual values of buildings completed of the relevant year compared with the actual values of buildings completed of the previous year expressed as a percentage.

^{2/} The monthly percentage change is the change in the actual values of buildings completed of the relevant month compared with the actual values of buildings completed of the same month in the previous year expressed as a percentage.

Table 8 - Seasonally adjusted values and percentage change of buildings completed at constant 1995 prices according to type of building

Year and month ^{1/}	Residential buildings		Non-residential buildings		Additions and alterations		Total	
	R'000	Percentage change	R'000	Percentage change	R'000	Percentage change	R'000	Percentage change
1999 Jan	341 116	- 13,9	202 756	+ 14,1	185 330	+ 1,5	729 202	- 3,6
Feb	370 434	+ 8,6	199 595	- 1,6	190 011	+ 2,5	760 041	+ 4,2
Mar	344 005	- 7,1	242 271	+ 21,4	168 910	- 11,1	755 186	- 0,6
Apr	345 375	+ 0,4	178 230	- 26,4	188 073	+ 11,3	711 678	- 5,8
May	313 777	- 9,1	161 829	- 9,2	147 785	- 21,4	623 391	- 12,4
Jun	347 291	+ 10,7	188 525	+ 16,5	136 596	- 7,6	672 413	+ 7,9
Jul	356 004	+ 2,5	197 657	+ 4,8	195 108	+ 42,8	748 770	+ 11,4
Aug	353 714	- 0,6	176 326	- 10,8	213 922	+ 9,6	743 961	- 0,6
Sep	351 211	- 0,7	150 605	- 14,6	181 700	- 15,1	683 516	- 8,1
Oct	317 423	- 9,6	148 585	- 1,3	176 276	- 3,0	642 284	- 6,0
Nov	306 850	- 3,3	356 387	+ 139,9	156 328	- 11,3	819 564	+ 27,6
Dec	316 200	+ 3,0	147 061	- 58,7	176 056	+ 12,6	639 316	- 22,0
2000 Jan	305 975	- 3,2	189 171	+ 28,6	164 497	- 6,6	659 643	+ 3,2
Feb	313 242	+ 2,4	173 955	- 8,0	161 249	- 2,0	648 446	- 1,7
Mar	313 896	+ 0,2	208 149	+ 19,7	180 226	+ 11,8	702 270	+ 8,3
Apr	324 816	+ 3,5	215 203	+ 3,4	169 265	- 6,1	709 284	+ 1,0
May	371 936	+ 14,5	289 160	+ 34,4	222 195	+ 31,3	883 290	+ 24,5
Jun	281 731	- 24,3	148 038	- 48,8	143 693	- 35,3	573 462	- 35,1
Jul	283 919	+ 0,8	329 756	+ 122,8	149 759	+ 4,2	763 434	+ 33,1
Aug	330 142	+ 16,3	222 801	- 32,4	168 648	+ 12,6	721 591	- 5,5
Sep	341 871	+ 3,6	188 502	- 15,4	155 855	- 7,6	686 228	- 4,9
Oct	336 655	- 1,5	132 990	- 29,4	175 044	+ 12,3	644 690	- 6,1
Nov	355 675	+ 5,6	156 246	+ 17,5	185 141	+ 5,8	697 062	+ 8,1
Dec	328 710	- 7,6	245 206	+ 56,9	171 785	- 7,2	745 701	+ 7,0
2001 Jan	636 930	+ 93,8	218 586	- 10,9	172 044	+ 0,2	1 027 559	+ 37,8
Feb	357 010	- 43,9	227 124	+ 3,9	171 342	- 0,4	755 476	- 26,5
Mar	373 202	+ 4,5	144 279	- 36,5	182 814	+ 6,7	700 294	- 7,3
Apr	314 774	- 15,7	164 361	+ 13,9	160 049	- 12,5	639 184	- 8,7
May	330 077	+ 4,9	205 751	+ 25,2	211 782	+ 32,3	747 610	+ 17,0

^{1/} The percentage change is the change in the seasonally adjusted values of buildings completed of the relevant month compared with the seasonally adjusted values of buildings completed of the previous month expressed as a percentage.

Table 9 - Building plans passed according to type of building: Total RSA

Type of building	May 2000 *	April 2001	May 2001	January 2000 to May 2000	January 2001 to May 2001	Percentage change between January 2000 to May 2000 and January 2001 to May 2001
Residential buildings						
Dwelling-houses smaller than 80 square metres						
Number of dwelling-houses	3 142	3 810	4 066	19 257	18 359	- 4,7
Total square metres	130 245	148 693	151 801	746 245	708 638	- 5,0
Total value at current prices (R'000)	105 784	129 376	130 947	559 075	657 089	+ 17,5
Dwelling-houses equal to or larger than 80 square metres						
Number of dwelling-houses	2 056	1 417	2 101	8 298	8 835	+ 6,5
Total square metres	414 805	322 538	452 733	1 652 759	1 889 652	+ 14,3
Total value at current prices (R'000)	550 465	448 417	633 766	2 194 088	2 637 909	+ 20,2
Flats and townhouses						
Number of flats and townhouses	1 596	616	1 735	4 565	4 951	+ 8,5
Total square metres	154 219	76 216	136 859	473 480	509 395	+ 7,6
Total value at current prices (R'000)	210 090	117 205	212 785	682 545	787 950	+ 15,4
Other residential buildings ^{1/}						
Total square metres	3 716	22 951	19 809	61 303	55 417	- 9,6
Total value at current prices (R'000)	8 508	52 872	38 317	89 001	149 819	+ 68,3
Total value of residential buildings at current prices (R'000)	874 847	747 870	1 015 815	3 524 709	4 232 767	+ 20,1
Non-residential buildings						
Office and banking space						
Total square metres	187 063	30 431	74 390	468 997	326 622	- 30,4
Total value at current prices (R'000)	257 190	50 614	125 699	691 681	586 182	- 15,3
Shopping space						
Total square metres	53 631	20 929	33 686	200 556	215 845	+ 7,6
Total value at current prices (R'000)	64 509	25 888	51 231	261 406	302 270	+ 15,6
Industrial and warehouse space						
Total square metres	152 711	66 888	53 458	538 676	350 301	- 35,0
Total value at current prices (R'000)	191 346	88 493	54 951	656 141	446 350	- 32,0
Other non-residential space ^{2/}						
Total square metres	50 588	39 011	42 707	208 345	183 835	- 11,8
Total value at current prices (R'000)	60 808	45 199	60 363	233 701	249 714	+ 6,9
Total value of non-residential buildings at current prices (R'000)	573 853	210 194	292 244	1 842 929	1 584 516	- 14,0
Additions and alterations						
Dwelling-houses						
Total square metres	270 514	217 430	271 966	1 188 549	1 169 026	- 1,6
Total value at current prices (R'000)	320 236	271 734	347 256	1 407 458	1 454 940	+ 3,4
Other buildings ^{3/}						
Total square metres	94 373	70 073	86 274	393 184	392 780	- 0,1
Total value at current prices (R'000)	152 826	111 531	160 235	728 448	695 709	- 4,5
Total value of additions and alterations at current prices (R'000)	473 062	383 265	507 491	2 135 906	2 150 649	+ 0,7
Total value of building plans passed at current prices (R'000)	1 921 762	1 341 329	1 815 550	7 503 544	7 967 932	+ 6,2

1/ Other residential buildings include institutions for the disabled, boarding houses, old people's homes, hostels, hotels, motels, guest houses, holiday chalets, entertainment centres, bed-and-breakfast accommodation and casinos.

2/ Other non-residential space includes churches, sport and recreation clubs, schools, crèches, hospitals and all other non-residential space.

3/ Other buildings include additions and alterations to other residential buildings, non-residential buildings and internal alterations.

Table 10 - Building plans passed according to type of building and province: Western Cape

Type of building	May 2000 *	April 2001	May 2001	January 2000 to May 2000	January 2001 to May 2001	Percentage change between January 2000 to May 2000 and January 2001 to May 2001
Residential buildings						
Dwelling-houses smaller than 80 square metres						
Number of dwelling-houses	596	343	741	4 022	3 284	- 18,3
Total square metres	20 817	16 471	28 374	149 486	127 297	- 14,8
Total value at current prices (R'000)	19 419	18 577	30 490	100 702	149 917	+ 48,9
Dwelling-houses equal to or larger than 80 square metres						
Number of dwelling-houses	576	477	702	2 493	2 686	+ 7,7
Total square metres	113 041	103 331	140 021	472 586	572 363	+ 21,1
Total value at current prices (R'000)	162 441	151 601	206 171	661 039	833 014	+ 26,0
Flats and townhouses						
Number of flats and townhouses	177	114	381	1 096	1 308	+ 19,3
Total square metres	19 175	13 079	26 849	121 317	121 602	+ 0,2
Total value at current prices (R'000)	27 077	19 272	41 492	188 528	186 172	- 1,2
Other residential buildings ^{1/}						
Total square metres	1 130	19 638	5 356	45 317	26 749	- 41,0
Total value at current prices (R'000)	1 610	49 347	13 236	63 850	65 041	+ 1,9
Total value of residential buildings at current prices (R'000)	210 547	238 797	291 389	1 014 119	1 234 144	+ 21,7
Non-residential buildings						
Office and banking space						
Total square metres	11 995	14 621	11 336	62 876	80 640	+ 28,3
Total value at current prices (R'000)	23 841	20 827	20 201	125 849	135 184	+ 7,4
Shopping space						
Total square metres	29 978	10 373	13 633	78 878	105 895	+ 34,3
Total value at current prices (R'000)	33 391	10 779	20 179	107 440	136 366	+ 26,9
Industrial and warehouse space						
Total square metres	28 166	18 449	21 505	146 164	93 321	- 36,2
Total value at current prices (R'000)	21 624	19 074	16 120	134 108	89 102	- 33,6
Other non-residential space ^{2/}						
Total square metres	16 789	12 127	11 952	89 059	62 870	- 29,4
Total value at current prices (R'000)	14 415	11 052	11 445	72 683	75 136	+ 3,4
Total value of non-residential buildings at current prices (R'000)	93 271	61 732	67 945	440 080	435 788	- 1,0
Additions and alterations						
Dwelling-houses						
Total square metres	84 848	69 278	85 504	370 306	362 959	- 2,0
Total value at current prices (R'000)	103 033	87 637	113 676	436 927	460 048	+ 5,3
Other buildings ^{3/}						
Total square metres	24 939	21 178	33 447	91 833	107 783	+ 17,4
Total value at current prices (R'000)	43 378	32 876	54 408	222 872	179 128	- 19,6
Total value of additions and alterations at current prices (R'000)	146 411	120 513	168 084	659 799	639 176	- 3,1
Total value of building plans passed at current prices (R'000)	450 229	421 042	527 418	2 113 998	2 309 108	+ 9,2

1/ Other residential buildings include institutions for the disabled, boarding houses, old people's homes, hostels, hotels, motels, guest houses, holiday chalets, entertainment centres, bed-and-breakfast accommodation and casinos.

2/ Other non-residential space includes churches, sport and recreation clubs, schools, crèches, hospitals and all other non-residential space.

3/ Other buildings include additions and alterations to other residential buildings, non-residential buildings and internal alterations.

Table 11 - Building plans passed according to type of building and province: Eastern Cape

Type of building	May 2000	April 2001*	May 2001	January 2000 to May 2000	January 2001 to May 2001	Percentage change between January 2000 to May 2000 and January 2001 to May 2001
Residential buildings						
Dwelling-houses smaller than 80 square metres						
Number of dwelling-houses	281	165	231	1 167	1 088	-6,8
Total square metres	12 055	7 612	10 443	52 245	48 977	-6,3
Total value at current prices (R'000)	11 455	10 039	13 208	53 789	63 149	+ 17,4
Dwelling-houses equal to or larger than 80 square metres						
Number of dwelling-houses	116	86	87	517	552	+ 6,8
Total square metres	21 874	14 261	13 538	84 844	78 360	-7,6
Total value at current prices (R'000)	26 378	18 422	17 886	106 873	103 345	-3,3
Flats and townhouses						
Number of flats and townhouses	10	21	557	359	656	+ 82,7
Total square metres	974	1 854	24 166	23 838	34 249	+ 43,7
Total value at current prices (R'000)	1 315	2 519	26 524	33 139	40 743	+ 22,9
Other residential buildings ^{1/}						
Total square metres	215	0	12 992	488	18 812	+ 3 754,9
Total value at current prices (R'000)	347	0	23 000	653	73 000	+ 11 079,2
Total value of residential buildings at current prices (R'000)	39 495	30 980	80 618	194 454	280 237	+ 44,1
Non-residential buildings						
Office and banking space						
Total square metres	291	785	2 003	3 379	3 202	-5,2
Total value at current prices (R'000)	524	2 000	3 051	5 183	6 131	+ 18,3
Shopping space						
Total square metres	4 572	772	2 636	9 218	5 019	-45,6
Total value at current prices (R'000)	7 327	1 429	3 212	13 644	7 257	-46,8
Industrial and warehouse space						
Total square metres	688	685	4 814	81 094	15 042	-81,5
Total value at current prices (R'000)	943	1 713	1 682	79 501	16 139	-79,7
Other non-residential space ^{2/}						
Total square metres	8 443	1 139	1 369	18 653	4 691	-74,9
Total value at current prices (R'000)	11 314	2 190	2 497	24 688	7 502	-69,6
Total value of non-residential buildings at current prices (R'000)	20 108	7 332	10 442	123 016	37 029	-69,9
Additions and alterations						
Dwelling-houses						
Total square metres	17 178	18 356	19 643	83 941	84 515	+ 0,7
Total value at current prices (R'000)	22 187	25 758	25 268	103 654	108 877	+ 5,0
Other buildings ^{3/}						
Total square metres	9 736	5 472	9 139	28 726	45 403	+ 58,1
Total value at current prices (R'000)	14 117	8 749	13 280	40 751	68 149	+ 67,2
Total value of additions and alterations at current prices (R'000)	36 304	34 507	38 548	144 405	177 026	+ 22,6
Total value of building plans passed at current prices (R'000)	95 907	72 819	129 608	461 875	494 292	+ 7,0

1/ Other residential buildings include institutions for the disabled, boarding houses, old people's homes, hostels, hotels, motels, guest houses, holiday chalets, entertainment centres, bed-and-breakfast accommodation and casinos.

2/ Other non-residential space includes churches, sport and recreation clubs, schools, crèches, hospitals and all other non-residential space.

3/ Other buildings include additions and alterations to other residential buildings, non-residential buildings and internal alterations.

Table 12 - Building plans passed according to type of building and province: Northern Cape

Type of building	May 2000	April 2001	May 2001	January 2000 to May 2000	January 2001 to May 2001	Percentage change between January 2000 to May 2000 and January 2001 to May 2001
Residential buildings						
Dwelling-houses smaller than 80 square metres						
Number of dwelling-houses	15	4	4	38	30	- 21,1
Total square metres	963	196	255	2 223	1 665	- 25,1
Total value at current prices (R'000)	1 232	291	414	3 167	2 496	- 21,2
Dwelling-houses equal to or larger than 80 square metres						
Number of dwelling-houses	12	9	6	43	64	+ 48,8
Total square metres	2 188	2 243	981	7 250	12 505	+ 72,5
Total value at current prices (R'000)	3 167	3 354	1 571	10 277	15 028	+ 46,2
Flats and townhouses						
Number of flats and townhouses	2	4	1	23	11	- 52,2
Total square metres	395	677	224	3 382	1 885	- 44,3
Total value at current prices (R'000)	711	948	314	5 767	2 556	- 55,7
Other residential buildings ^{1/}						
Total square metres	327	0	0	327	0	..
Total value at current prices (R'000)	266	0	0	266	0	..
Total value of residential buildings at current prices (R'000)	5 376	4 593	2 299	19 477	20 080	+ 3,1
Non-residential buildings						
Office and banking space						
Total square metres	0	0	0	7 715	191	- 97,5
Total value at current prices (R'000)	0	0	0	16 363	124	- 99,2
Shopping space						
Total square metres	0	0	0	911	206	- 77,4
Total value at current prices (R'000)	0	0	0	1 411	226	- 84,0
Industrial and warehouse space						
Total square metres	82	320	0	1 653	1 092	- 33,9
Total value at current prices (R'000)	73	384	0	2 478	1 002	- 59,6
Other non-residential space ^{2/}						
Total square metres	35	710	376	4 093	1 519	- 62,9
Total value at current prices (R'000)	28	921	486	6 117	2 131	- 65,2
Total value of non-residential buildings at current prices (R'000)	101	1 305	486	26 369	3 483	- 86,8
Additions and alterations						
Dwelling-houses						
Total square metres	2 976	1 673	2 900	15 680	11 035	- 29,6
Total value at current prices (R'000)	4 765	2 783	5 109	23 958	17 491	- 27,0
Other buildings ^{3/}						
Total square metres	310	437	937	9 682	2 717	- 71,9
Total value at current prices (R'000)	393	768	2 421	21 801	6 654	- 69,5
Total value of additions and alterations at current prices (R'000)	5 158	3 551	7 530	45 759	24 145	- 47,2
Total value of building plans passed at current prices (R'000)	10 635	9 449	10 315	91 605	47 708	- 47,9

1/ Other residential buildings include institutions for the disabled, boarding houses, old people's homes, hostels, hotels, motels, guest houses, holiday chalets, entertainment centres, bed-and-breakfast accommodation and casinos.

2/ Other non-residential space includes churches, sport and recreation clubs, schools, crèches, hospitals and all other non-residential space.

3/ Other buildings include additions and alterations to other residential buildings, non-residential buildings and internal alterations.

Table 13 - Building plans passed according to type of building and province: Free State

Type of building	May 2000	April 2001	May 2001	January 2000 to May 2000	January 2001 to May 2001	Percentage change between January 2000 to May 2000 and January 2001 to May 2001
Residential buildings						
Dwelling-houses smaller than 80 square metres						
Number of dwelling-houses	296	331	39	2 373	1 033	-56,5
Total square metres	14 841	14 723	2 027	94 092	46 602	-50,5
Total value at current prices (R'000)	7 268	7 923	1 947	50 727	25 461	-49,8
Dwelling-houses equal to or larger than 80 square metres						
Number of dwelling-houses	70	46	60	322	309	-4,0
Total square metres	11 076	7 183	8 355	49 372	46 322	-6,2
Total value at current prices (R'000)	12 054	7 363	8 766	56 343	49 709	-11,8
Flats and townhouses						
Number of flats and townhouses	145	0	76	222	155	-30,2
Total square metres	8 333	0	7 207	16 119	18 246	+ 13,2
Total value at current prices (R'000)	10 591	0	12 481	21 852	29 792	+ 36,3
Other residential buildings ^{1/}						
Total square metres	0	1 220	0	600	1 252	+ 108,7
Total value at current prices (R'000)	0	1 840	0	1 500	1 851	+ 23,4
Total value of residential buildings at current prices (R'000)	29 913	17 126	23 194	130 422	106 813	-18,1
Non-residential buildings						
Office and banking space						
Total square metres	448	0	951	2 062	13 773	+ 567,9
Total value at current prices (R'000)	700	0	1 334	3 394	26 550	+ 682,3
Shopping space						
Total square metres	324	789	789	1 634	2 996	+ 83,4
Total value at current prices (R'000)	260	1 181	900	1 868	3 771	+ 101,9
Industrial and warehouse space						
Total square metres	362	931	248	6 661	2 805	-57,9
Total value at current prices (R'000)	217	616	248	5 129	1 926	-62,4
Other non-residential space ^{2/}						
Total square metres	219	0	1 594	674	3 865	+ 473,4
Total value at current prices (R'000)	432	0	1 864	774	5 754	+ 643,4
Total value of non-residential buildings at current prices (R'000)	1 609	1 797	4 346	11 165	38 001	+ 240,4
Additions and alterations						
Dwelling-houses						
Total square metres	8 235	8 795	8 155	38 089	37 508	-1,5
Total value at current prices (R'000)	8 234	8 882	9 791	38 202	40 052	+ 4,8
Other buildings ^{3/}						
Total square metres	2 281	1 812	2 642	11 165	7 281	-34,8
Total value at current prices (R'000)	3 477	4 190	6 920	15 330	15 611	+ 1,8
Total value of additions and alterations at current prices (R'000)	11 711	13 072	16 711	53 532	55 663	+ 4,0
Total value of building plans passed at current prices (R'000)	43 233	31 995	44 251	195 119	200 477	+ 2,7

1/ Other residential buildings include institutions for the disabled, boarding houses, old people's homes, hostels, hotels, motels, guest houses, holiday chalets, entertainment centres, bed-and-breakfast accommodation and casinos.

2/ Other non-residential space includes churches, sport and recreation clubs, schools, crèches, hospitals and all other non-residential space.

3/ Other buildings include additions and alterations to other residential buildings, non-residential buildings and internal alterations.

Table 14 - Building plans passed according to type of building and province: KwaZulu-Natal

Type of building	May 2000	April 2001	May 2001	January 2000 to May 2000	January 2001 to May 2001	Percentage change between January 2000 to May 2000 and January 2001 to May 2001
Residential buildings						
Dwelling-houses smaller than 80 square metres						
Number of dwelling-houses	161	291	237	698	1 362	+ 95,1
Total square metres	6 991	9 892	8 537	34 613	58 709	+ 69,6
Total value at current prices (R'000)	7 107	8 824	8 555	39 003	52 154	+ 33,7
Dwelling-houses equal to or larger than 80 square metres						
Number of dwelling-houses	183	87	152	741	647	- 12,7
Total square metres	37 747	20 632	31 331	147 802	145 564	- 1,5
Total value at current prices (R'000)	54 011	28 753	44 546	207 701	204 533	- 1,5
Flats and townhouses						
Number of flats and townhouses	59	53	39	230	367	+ 59,6
Total square metres	10 339	8 220	6 520	37 861	49 793	+ 31,5
Total value at current prices (R'000)	16 357	13 016	12 627	62 094	88 875	+ 43,1
Other residential buildings ^{1/}						
Total square metres	2 044	0	138	3 869	138	- 96,4
Total value at current prices (R'000)	6 285	0	330	9 785	330	- 96,6
Total value of residential buildings at current prices (R'000)	83 760	50 593	66 058	318 583	345 892	+ 8,6
Non-residential buildings						
Office and banking space						
Total square metres	3 892	2 032	24 163	24 151	75 428	+ 212,3
Total value at current prices (R'000)	8 100	7 090	39 500	46 655	176 849	+ 279,1
Shopping space						
Total square metres	1 356	1 832	946	10 578	14 591	+ 37,9
Total value at current prices (R'000)	2 441	3 230	1 386	11 645	17 126	+ 47,1
Industrial and warehouse space						
Total square metres	18 363	11 593	2 699	51 969	56 314	+ 8,4
Total value at current prices (R'000)	19 434	12 130	2 978	81 091	60 460	- 25,4
Other non-residential space ^{2/}						
Total square metres	12 183	12 563	3 811	24 344	23 868	- 2,0
Total value at current prices (R'000)	17 617	12 870	5 645	31 909	28 300	- 11,3
Total value of non-residential buildings at current prices (R'000)	47 592	35 320	49 509	171 300	282 735	+ 65,1
Additions and alterations						
Dwelling-houses						
Total square metres	37 610	27 466	33 553	161 450	156 051	- 3,3
Total value at current prices (R'000)	42 875	32 664	39 666	189 256	190 198	+ 0,5
Other buildings ^{3/}						
Total square metres	16 861	11 022	15 050	79 574	67 436	- 15,3
Total value at current prices (R'000)	25 408	18 581	34 031	146 705	133 475	- 9,0
Total value of additions and alterations at current prices (R'000)	68 283	51 245	73 697	335 961	323 673	- 3,7
Total value of building plans passed at current prices (R'000)	199 635	137 158	189 264	825 844	952 300	+ 15,3

1/ Other residential buildings include institutions for the disabled, boarding houses, old people's homes, hostels, hotels, motels, guest houses, holiday chalets, entertainment centres, bed-and-breakfast accommodation and casinos.

2/ Other non-residential space includes churches, sport and recreation clubs, schools, crèches, hospitals and all other non-residential space.

3/ Other buildings include additions and alterations to other residential buildings, non-residential buildings and internal alterations.

Table 15 - Building plans passed according to type of building and province: North West

Type of building	May 2000*	April 2001	May 2001	January 2000 to May 2000	January 2001 to May 2001	Percentage change between January 2000 to May 2000 and January 2001 to May 2001
Residential buildings						
Dwelling-houses smaller than 80 square metres						
Number of dwelling-houses	76	340	379	405	1 814	+ 347,9
Total square metres	4 129	11 140	12 748	20 859	63 920	+ 206,4
Total value at current prices (R'000)	4 104	5 332	6 645	22 022	40 669	+ 84,7
Dwelling-houses equal to or larger than 80 square metres						
Number of dwelling-houses	73	42	98	371	333	- 10,2
Total square metres	10 331	8 603	17 801	55 953	58 159	+ 3,9
Total value at current prices (R'000)	10 849	8 407	19 630	59 847	66 575	+ 11,2
Flats and townhouses						
Number of flats and townhouses	46	17	0	105	120	+ 14,3
Total square metres	4 150	1 734	0	8 981	15 084	+ 68,0
Total value at current prices (R'000)	4 340	1 778	0	9 676	18 989	+ 96,2
Other residential buildings ^{1/}						
Total square metres	0	1 901	0	4 024	1 989	- 50,6
Total value at current prices (R'000)	0	1 589	0	4 786	1 664	- 65,2
Total value of residential buildings at current prices (R'000)	19 293	17 106	26 275	96 331	127 897	+ 32,8
Non-residential buildings						
Office and banking space						
Total square metres	800	758	0	924	3 304	+ 257,6
Total value at current prices (R'000)	814	1 200	0	946	5 625	+ 494,6
Shopping space						
Total square metres	3 452	45	1 873	6 392	11 920	+ 86,5
Total value at current prices (R'000)	4 514	68	2 637	9 304	14 220	+ 52,8
Industrial and warehouse space						
Total square metres	713	0	3 101	3 013	5 950	+ 97,5
Total value at current prices (R'000)	762	0	3 308	3 127	6 263	+ 100,3
Other non-residential space ^{2/}						
Total square metres	897	159	2 047	11 793	2 593	- 78,0
Total value at current prices (R'000)	1 950	160	2 160	14 900	2 838	- 81,0
Total value of non-residential buildings at current prices (R'000)	8 040	1 428	8 105	28 277	28 946	+ 2,4
Additions and alterations						
Dwelling-houses						
Total square metres	9 815	5 144	8 488	33 741	30 188	- 10,5
Total value at current prices (R'000)	9 227	4 901	9 365	33 104	32 293	- 2,4
Other buildings ^{3/}						
Total square metres	3 398	3 210	1 827	10 791	9 183	- 14,9
Total value at current prices (R'000)	3 334	6 391	3 324	26 138	15 816	- 39,5
Total value of additions and alterations at current prices (R'000)	12 561	11 292	12 689	59 242	48 109	- 18,8
Total value of building plans passed at current prices (R'000)	39 894	29 826	47 069	183 850	204 952	+ 11,5

1/ Other residential buildings include institutions for the disabled, boarding houses, old people's homes, hostels, hotels, motels, guest houses, holiday chalets, entertainment centres, bed-and-breakfast accommodation and casinos.

2/ Other non-residential space includes churches, sport and recreation clubs, schools, crèches, hospitals and all other non-residential space.

3/ Other buildings include additions and alterations to other residential buildings, non-residential buildings and internal alterations.

Table 16 - Building plans passed according to type of building and province: Gauteng

Type of building	May 2000	April 2001	May 2001	January 2000 to May 2000	January 2001 to May 2001	Percentage change between January 2000 to May 2000 and January 2001 to May 2001
Residential buildings						
Dwelling-houses smaller than 80 square metres						
Number of dwelling-houses	1 508	1 527	1 392	9 079	5 866	- 35,4
Total square metres	61 821	60 445	51 265	331 837	223 300	- 32,7
Total value at current prices (R'000)	49 010	65 609	50 553	239 130	239 438	+ 0,1
Dwelling-houses equal to or larger than 80 square metres						
Number of dwelling-houses	868	556	882	3 214	3 716	+ 15,6
Total square metres	193 635	143 937	222 792	732 036	881 792	+ 20,5
Total value at current prices (R'000)	252 132	201 512	308 737	968 565	1 243 555	+ 28,4
Flats and townhouses						
Number of flats and townhouses	1 149	390	608	2 425	2 127	- 12,3
Total square metres	109 887	49 029	66 159	250 477	248 379	- 0,8
Total value at current prices (R'000)	148 537	78 087	113 801	348 705	396 634	+ 13,7
Other residential buildings ^{1/}						
Total square metres	0	0	1 323	2 815	6 285	+ 123,3
Total value at current prices (R'000)	0	0	1 751	3 199	7 837	+ 145,0
Total value of residential buildings at current prices (R'000)	449 679	345 208	474 842	1 559 599	1 887 464	+ 21,0
Non-residential buildings						
Office and banking space						
Total square metres	169 637	11 125	35 641	359 641	148 046	- 58,8
Total value at current prices (R'000)	223 211	18 289	60 962	481 658	232 910	- 51,6
Shopping space						
Total square metres	8 051	5 870	13 043	83 317	66 896	- 19,7
Total value at current prices (R'000)	9 692	8 201	21 517	104 093	110 750	+ 6,4
Industrial and warehouse space						
Total square metres	98 814	32 514	20 380	229 711	154 422	- 32,8
Total value at current prices (R'000)	138 957	52 013	30 165	328 948	253 231	- 23,0
Other non-residential space ^{2/}						
Total square metres	9 846	10 100	20 066	52 550	76 740	+ 46,0
Total value at current prices (R'000)	12 916	14 809	33 320	74 563	117 027	+ 57,0
Total value of non-residential buildings at current prices (R'000)	384 776	93 312	145 964	989 262	713 918	- 27,8
Additions and alterations						
Dwelling-houses						
Total square metres	89 239	76 193	98 637	413 168	420 864	+ 1,9
Total value at current prices (R'000)	109 276	97 040	127 090	508 731	535 328	+ 5,2
Other buildings ^{3/}						
Total square metres	34 906	24 403	20 532	143 779	139 940	- 2,7
Total value at current prices (R'000)	59 270	35 293	40 411	225 202	250 773	+ 11,4
Total value of additions and alterations at current prices (R'000)	168 546	132 333	167 501	733 933	786 101	+ 7,1
Total value of building plans passed at current prices (R'000)	1 003 001	570 853	788 307	3 282 794	3 387 483	+ 3,2

1/ Other residential buildings include institutions for the disabled, boarding houses, old people's homes, hostels, hotels, motels, guest houses, holiday chalets, entertainment centres, bed-and-breakfast accommodation and casinos.

2/ Other non-residential space includes churches, sport and recreation clubs, schools, crèches, hospitals and all other non-residential space.

3/ Other buildings include additions and alterations to other residential buildings, non-residential buildings and internal alterations.

Table 17 - Building plans passed according to type of building and province: Mpumalanga

Type of building	May 2000	April 2001	May 2001	January 2000 to May 2000	January 2001 to May 2001	Percentage change between January 2000 to May 2000 and January 2001 to May 2001
Residential buildings						
Dwelling-houses smaller than 80 square metres						
Number of dwelling-houses	68	776	988	666	3 688	+ 453,8
Total square metres	2 456	26 119	34 824	25 626	126 510	+ 393,7
Total value at current prices (R'000)	2 226	9 833	14 626	25 729	68 411	+ 165,9
Dwelling-houses equal to or larger than 80 square metres						
Number of dwelling-houses	105	80	76	402	339	- 15,7
Total square metres	16 581	15 755	12 508	69 530	61 919	- 10,9
Total value at current prices (R'000)	18 260	20 125	18 277	78 214	77 113	- 1,4
Flats and townhouses						
Number of flats and townhouses	3	12	72	76	188	+ 147,4
Total square metres	265	1 020	5 546	6 835	16 940	+ 147,8
Total value at current prices (R'000)	224	901	5 296	7 040	20 146	+ 186,2
Other residential buildings ^{1/}						
Total square metres	0	0	0	863	0	..
Total value at current prices (R'000)	0	0	0	1 362	0	..
Total value of residential buildings at current prices (R'000)	20 710	30 859	38 199	112 345	165 670	+ 47,5
Non-residential buildings						
Office and banking space						
Total square metres	0	530	0	7 600	1 162	- 84,7
Total value at current prices (R'000)	0	600	0	10 549	1 550	- 85,3
Shopping space						
Total square metres	4 348	0	766	7 919	940	- 88,1
Total value at current prices (R'000)	5 200	0	1 400	10 112	1 574	- 84,4
Industrial and warehouse space						
Total square metres	5 523	2 396	586	16 697	21 230	+ 27,1
Total value at current prices (R'000)	9 336	2 563	275	19 994	18 052	- 9,7
Other non-residential space ^{2/}						
Total square metres	1 898	2 008	0	5 708	5 722	+ 0,2
Total value at current prices (R'000)	1 747	2 997	0	6 393	7 580	+ 18,6
Total value of non-residential buildings at current prices (R'000)	16 283	6 160	1 675	47 048	28 756	- 38,9
Additions and alterations						
Dwelling-houses						
Total square metres	15 417	7 345	10 387	53 109	46 571	- 12,3
Total value at current prices (R'000)	13 726	8 112	11 026	48 794	45 898	- 5,9
Other buildings ^{3/}						
Total square metres	1 157	832	2 211	7 867	8 004	+ 1,7
Total value at current prices (R'000)	2 031	1 105	2 672	9 917	12 725	+ 28,3
Total value of additions and alterations at current prices (R'000)	15 757	9 217	13 698	58 711	58 623	- 0,1
Total value of building plans passed at current prices (R'000)	52 750	46 236	53 572	218 104	253 049	+ 16,0

1/ Other residential buildings include institutions for the disabled, boarding houses, old people's homes, hostels, hotels, motels, guest houses, holiday chalets, entertainment centres, bed-and-breakfast accommodation and casinos.

2/ Other non-residential space includes churches, sport and recreation clubs, schools, crèches, hospitals and all other non-residential space.

3/ Other buildings include additions and alterations to other residential buildings, non-residential buildings and internal alterations.

Table 18 - Building plans passed according to type of building and province: Northern Province

Type of building	May 2000	April 2001	May 2001	January 2000 to May 2000	January 2001 to May 2001	Percentage change between January 2000 to May 2000 and January 2001 to May 2001
Residential buildings						
Dwelling-houses smaller than 80 square metres						
Number of dwelling-houses	141	33	55	809	194	-76,0
Total square metres	6 172	2 095	3 328	35 264	11 658	-66,9
Total value at current prices (R'000)	3 963	2 948	4 509	24 806	15 394	-37,9
Dwelling-houses equal to or larger than 80 square metres						
Number of dwelling-houses	53	34	38	195	189	-3,1
Total square metres	8 332	6 593	5 406	33 386	32 668	-2,2
Total value at current prices (R'000)	11 173	8 880	8 182	45 229	45 037	-0,4
Flats and townhouses						
Number of flats and townhouses	5	5	1	29	19	-34,5
Total square metres	701	603	188	4 670	3 217	-31,1
Total value at current prices (R'000)	938	684	250	5 744	4 043	-29,6
Other residential buildings ^{1/}						
Total square metres	0	192	0	3 000	192	-93,6
Total value at current prices (R'000)	0	96	0	3 600	96	-97,3
Total value of residential buildings at current prices (R'000)	16 074	12 608	12 941	79 379	64 570	-18,7
Non-residential buildings						
Office and banking space						
Total square metres	0	580	296	649	876	+ 35,0
Total value at current prices (R'000)	0	608	651	1 084	1 259	+ 16,1
Shopping space						
Total square metres	1 550	1 248	0	1 709	7 382	+ 331,9
Total value at current prices (R'000)	1 684	1 000	0	1 889	10 980	+ 481,3
Industrial and warehouse space						
Total square metres	0	0	125	1 714	125	-92,7
Total value at current prices (R'000)	0	0	175	1 765	175	-90,1
Other non-residential space ^{2/}						
Total square metres	278	205	1 492	1 471	1 967	+ 33,7
Total value at current prices (R'000)	389	200	2 946	1 674	3 446	+ 105,9
Total value of non-residential buildings at current prices (R'000)	2 073	1 808	3 772	6 412	15 860	+ 147,3
Additions and alterations						
Dwelling-houses						
Total square metres	5 196	3 180	4 699	19 065	19 335	+ 1,4
Total value at current prices (R'000)	6 913	3 957	6 265	24 832	24 755	-0,3
Other buildings ^{3/}						
Total square metres	694	1 707	489	9 767	5 033	-48,5
Total value at current prices (R'000)	1 418	3 578	2 768	19 732	13 378	-32,2
Total value of additions and alterations at current prices (R'000)	8 331	7 535	9 033	44 564	38 133	-14,4
Total value of building plans passed at current prices (R'000)	26 478	21 951	25 746	130 355	118 563	-9,0

1/ Other residential buildings include institutions for the disabled, boarding houses, old people's homes, hostels, hotels, motels, guest houses, holiday chalets, entertainment centres, bed-and-breakfast accommodation and casinos.

2/ Other non-residential space includes churches, sport and recreation clubs, schools, crèches, hospitals and all other non-residential space.

3/ Other buildings include additions and alterations to other residential buildings, non-residential buildings and internal alterations.

Table 19 - Buildings completed according to type of building: Total RSA

Type of building	May 2000 *	April 2001	May 2001	January 2000 to May 2000	January 2001 to May 2001	Percentage change between January 2000 to May 2000 and January 2001 to May 2001
Residential buildings						
Dwelling-houses smaller than 80 square metres						
Number of dwelling-houses	3 768	1 744	2 740	15 473	10 734	- 30,6
Total square metres	138 111	72 225	107 861	549 625	427 383	- 22,2
Total value at current prices (R'000)	95 333	57 371	85 742	402 577	355 973	- 11,6
Dwelling-houses equal to or larger than 80 square metres						
Number of dwelling-houses	1 060	805	1 093	4 030	4 698	+ 16,6
Total square metres	181 222	159 033	224 019	779 933	941 030	+ 20,7
Total value at current prices (R'000)	229 354	216 446	312 237	999 715	1 289 990	+ 29,0
Flats and townhouses						
Number of flats and townhouses	1 103	681	293	3 343	2 985	- 10,7
Total square metres	99 651	72 721	34 060	336 410	306 571	- 8,9
Total value at current prices (R'000)	147 997	99 213	46 481	463 578	441 118	- 4,8
Other residential buildings ^{1/}						
Total square metres	367	96	1 178	27 922	81 420	+ 191,6
Total value at current prices (R'000)	440	172	1 234	43 736	338 267	+ 673,4
Total value of residential buildings at current prices (R'000)	473 124	373 202	445 694	1 909 606	2 425 348	+ 27,0
Non-residential buildings						
Office and banking space						
Total square metres	47 035	15 782	133 973	244 998	334 085	+ 36,4
Total value at current prices (R'000)	69 446	28 357	202 350	421 885	515 344	+ 22,2
Shopping space						
Total square metres	148 649	20 443	18 033	241 266	103 335	- 57,2
Total value at current prices (R'000)	215 032	25 191	21 833	350 517	131 574	- 62,5
Industrial and warehouse space						
Total square metres	53 345	62 077	50 154	343 273	335 592	- 2,2
Total value at current prices (R'000)	82 364	82 348	58 174	375 965	392 961	+ 4,5
Other non-residential space ^{2/}						
Total square metres	23 008	30 696	15 284	87 852	90 584	+ 3,1
Total value at current prices (R'000)	23 691	37 786	18 374	80 130	109 535	+ 36,7
Total value of non-residential buildings at current prices (R'000)	390 533	173 682	300 731	1 228 497	1 149 414	- 6,4
Additions and alterations						
Dwelling-houses						
Total square metres	117 381	98 025	146 069	576 009	601 551	+ 4,4
Total value at current prices (R'000)	134 090	112 866	161 789	649 135	698 328	+ 7,6
Other buildings ^{3/}						
Total square metres	81 997	45 418	50 915	253 643	234 115	- 7,7
Total value at current prices (R'000)	159 253	71 750	134 121	507 698	513 897	+ 1,2
Total value of additions and alterations at current prices (R'000)	293 343	184 616	295 910	1 156 833	1 212 225	+ 4,8
Total value of buildings completed at current prices (R'000)	1 157 000	731 500	1 042 335	4 294 936	4 786 987	+ 11,5

1/ Other residential buildings include institutions for the disabled, boarding houses, old people's homes, hostels, hotels, motels, guest houses, holiday chalets, entertainment centres, bed-and-breakfast accommodation and casinos.

2/ Other non-residential space includes churches, sport and recreation clubs, schools, crèches, hospitals and all other non-residential space.

3/ Other buildings include additions and alterations to other residential buildings, non-residential buildings and internal alterations.

Table 20 - Buildings completed according to type of building and province: Western Cape

Type of building	May 2000 *	April 2001	May 2001	January 2000 to May 2000	January 2001 to May 2001	Percentage change between January 2000 to May 2000 and January 2001 to May 2001
Residential buildings						
Dwelling-houses smaller than 80 square metres						
Number of dwelling-houses	971	226	412	3 649	2 017	- 44,7
Total square metres	33 919	9 423	17 702	112 797	73 957	- 34,4
Total value at current prices (R'000)	16 948	10 619	19 491	69 964	83 135	+ 18,8
Dwelling-houses equal to or larger than 80 square metres						
Number of dwelling-houses	275	260	317	1 447	1 505	+ 4,0
Total square metres	42 570	48 931	66 835	257 447	295 574	+ 14,8
Total value at current prices (R'000)	57 224	72 513	103 540	345 934	442 373	+ 27,9
Flats and townhouses						
Number of flats and townhouses	414	118	93	1 060	518	- 51,1
Total square metres	31 997	11 322	10 855	107 931	52 540	- 51,3
Total value at current prices (R'000)	51 719	14 031	16 088	148 021	71 363	- 51,8
Other residential buildings ^{1/}						
Total square metres	0	96	144	14 915	26 917	+ 80,5
Total value at current prices (R'000)	0	172	258	24 549	30 551	+ 24,4
Total value of residential buildings at current prices (R'000)	125 891	97 335	139 377	588 468	627 422	+ 6,6
Non-residential buildings						
Office and banking space						
Total square metres	1 174	3 519	4 526	56 066	51 094	- 8,9
Total value at current prices (R'000)	1 215	5 872	9 632	103 593	99 150	- 4,3
Shopping space						
Total square metres	4 941	8 397	3 753	17 531	23 437	+ 33,7
Total value at current prices (R'000)	5 861	10 037	3 558	24 144	30 000	+ 24,3
Industrial and warehouse space						
Total square metres	12 591	5 364	16 349	102 951	61 394	- 40,4
Total value at current prices (R'000)	15 527	6 462	16 732	87 614	71 420	- 18,5
Other non-residential space ^{2/}						
Total square metres	7 981	5 082	4 203	47 765	32 632	- 31,7
Total value at current prices (R'000)	5 202	3 347	3 303	35 252	29 733	- 15,7
Total value of non-residential buildings at current prices (R'000)	27 805	25 718	33 225	250 603	230 303	- 8,1
Additions and alterations						
Dwelling-houses						
Total square metres	38 665	30 528	60 738	224 755	224 782	+ 0,0
Total value at current prices (R'000)	44 726	38 034	69 197	262 062	276 223	+ 5,4
Other buildings ^{3/}						
Total square metres	18 794	7 732	11 911	75 159	62 037	- 17,5
Total value at current prices (R'000)	26 746	9 358	17 672	124 627	180 362	+ 44,7
Total value of additions and alterations at current prices (R'000)	71 472	47 392	86 869	386 689	456 585	+ 18,1
Total value of buildings completed at current prices (R'000)	225 168	170 445	259 471	1 225 760	1 314 310	7,2

1/ Other residential buildings include institutions for the disabled, boarding houses, old people's homes, hostels, hotels, motels, guest houses, holiday chalets, entertainment centres, bed-and-breakfast accommodation and casinos.

2/ Other non-residential space includes churches, sport and recreation clubs, schools, crèches, hospitals and all other non-residential space.

3/ Other buildings include additions and alterations to other residential buildings, non-residential buildings and internal alterations.

Table 21 - Buildings completed according to type of building and province: Eastern Cape

Type of building	May 2000	April 2001	May 2001	January 2000 to May 2000	January 2001 to May 2001	Percentage change between January 2000 to May 2000 and January 2001 to May 2001
Residential buildings						
Dwelling-houses smaller than 80 square metres						
Number of dwelling-houses	184	324	286	833	1 451	+ 74,2
Total square metres	8 016	14 057	11 862	35 824	62 316	+ 74,0
Total value at current prices (R'000)	9 146	9 174	10 654	42 849	52 189	+ 21,8
Dwelling-houses equal to or larger than 80 square metres						
Number of dwelling-houses	85	127	84	268	388	+ 44,8
Total square metres	11 670	16 486	12 019	43 636	52 790	+ 21,0
Total value at current prices (R'000)	14 363	21 060	16 835	49 744	67 213	+ 35,1
Flats and townhouses						
Number of flats and townhouses	15	69	38	242	130	- 46,3
Total square metres	2 531	6 658	3 047	19 809	11 799	- 40,4
Total value at current prices (R'000)	3 124	5 956	3 448	23 948	12 396	- 48,2
Other residential buildings ^{1/}						
Total square metres	367	0	0	367	4 347	+ 1084,5
Total value at current prices (R'000)	440	0	0	440	7 000	+ 1490,9
Total value of residential buildings at current prices (R'000)	27 073	36 190	30 937	116 981	138 798	+ 18,7
Non-residential buildings						
Office and banking space						
Total square metres	511	91	19 056	632	20 500	+ 3 143,7
Total value at current prices (R'000)	767	119	19 682	916	22 049	+ 2 307,1
Shopping space						
Total square metres	25 610	4 361	5 148	49 326	13 708	- 72,2
Total value at current prices (R'000)	36 445	7 126	5 488	67 283	19 121	- 71,6
Industrial and warehouse space						
Total square metres	10 718	23 047	8 422	22 101	100 257	+ 353,6
Total value at current prices (R'000)	8 641	29 039	9 050	18 310	101 566	+ 454,7
Other non-residential space ^{2/}						
Total square metres	2 612	12 216	1 802	3 397	18 067	+ 431,9
Total value at current prices (R'000)	3 023	12 959	2 727	4 162	23 213	+ 457,7
Total value of non-residential buildings at current prices (R'000)	48 876	49 243	36 947	90 671	165 949	+ 83,0
Additions and alterations						
Dwelling-houses						
Total square metres	9 852	8 669	9 057	43 001	39 161	- 8,9
Total value at current prices (R'000)	9 845	10 461	10 763	42 304	45 628	+ 7,9
Other buildings ^{3/}						
Total square metres	6 238	6 393	3 948	17 933	26 796	+ 49,4
Total value at current prices (R'000)	6 818	8 873	5 158	21 510	35 764	+ 66,3
Total value of additions and alterations at current prices (R'000)	16 663	19 334	15 921	63 814	81 392	+ 27,5
Total value of buildings completed at current prices (R'000)	92 612	104 767	83 805	271 466	386 139	+ 42,2

1/ Other residential buildings include institutions for the disabled, boarding houses, old people's homes, hostels, hotels, motels, guest houses, holiday chalets, entertainment centres, bed-and-breakfast accommodation and casinos.

2/ Other non-residential space includes churches, sport and recreation clubs, schools, crèches, hospitals and all other non-residential space.

3/ Other buildings include additions and alterations to other residential buildings, non-residential buildings and internal alterations.

Table 22 - Buildings completed according to type of building and province: Northern Cape

Type of building	May 2000	April 2001	May 2001	January 2000 to May 2000	January 2001 to May 2001	Percentage change between January 2000 to May 2000 and January 2001 to May 2001
Residential buildings						
Dwelling-houses smaller than 80 square metres						
Number of dwelling-houses	8	8	11	192	64	- 66,7
Total square metres	384	421	580	7 214	2 991	- 58,5
Total value at current prices (R'000)	555	732	1 037	5 968	4 202	- 29,6
Dwelling-houses equal to or larger than 80 square metres						
Number of dwelling-houses	2	11	5	31	44	+ 41,9
Total square metres	406	1 450	668	4 954	7 388	+ 49,1
Total value at current prices (R'000)	578	1 960	920	5 787	10 215	+ 76,5
Flats and townhouses						
Number of flats and townhouses	0	9	1	13	15	+ 15,4
Total square metres	0	892	145	1 715	1 457	- 15,0
Total value at current prices (R'000)	0	1 323	203	2 305	2 114	- 8,3
Other residential buildings ^{1/}						
Total square metres	0	0	0	2 466	346	- 86,0
Total value at current prices (R'000)	0	0	0	2 959	277	- 90,6
Total value of residential buildings at current prices (R'000)	1 133	4 015	2 160	17 019	16 808	- 1,2
Non-residential buildings						
Office and banking space						
Total square metres	0	0	0	0	7 105	..
Total value at current prices (R'000)	0	0	0	0	15 631	..
Shopping space						
Total square metres	697	2 010	1 563	933	4 775	+ 411,8
Total value at current prices (R'000)	836	2 188	2 188	1 359	7 261	+ 434,3
Industrial and warehouse space						
Total square metres	0	772	0	1 645	772	- 53,1
Total value at current prices (R'000)	0	618	0	1 569	618	- 60,6
Other non-residential space ^{2/}						
Total square metres	497	0	173	769	354	- 54,0
Total value at current prices (R'000)	544	0	277	1 091	566	- 48,1
Total value of non-residential buildings at current prices (R'000)	1 383	2 806	2 465	4 019	24 076	+ 499,1
Additions and alterations						
Dwelling-houses						
Total square metres	1 830	1 898	1 677	7 485	7 581	+ 1,3
Total value at current prices (R'000)	2 041	3 012	2 640	10 120	11 915	+ 17,7
Other buildings ^{3/}						
Total square metres	322	835	110	2 676	1 849	- 30,9
Total value at current prices (R'000)	839	2 055	375	7 603	3 846	- 49,4
Total value of additions and alterations at current prices (R'000)	2 880	5 067	3 015	17 723	15 761	- 11,1
Total value of buildings completed at current prices (R'000)	5 396	11 888	7 640	38 761	56 645	46,1

1/ Other residential buildings include institutions for the disabled, boarding houses, old people's homes, hostels, hotels, motels, guest houses, holiday chalets, entertainment centres, bed-and-breakfast accommodation and casinos.

2/ Other non-residential space includes churches, sport and recreation clubs, schools, crèches, hospitals and all other non-residential space.

3/ Other buildings include additions and alterations to other residential buildings, non-residential buildings and internal alterations.

Table 23 - Buildings completed according to type of building and province: Free State

Type of building	May 2000	April 2001	May 2001	January 2000 to May 2000	January 2001 to May 2001	Percentage change between January 2000 to May 2000 and January 2001 to May 2001
Residential buildings						
Dwelling-houses smaller than 80 square metres						
Number of dwelling-houses	124	347	305	1 115	847	-24,0
Total square metres	5 413	14 233	13 088	45 769	35 745	-21,9
Total value at current prices (R'000)	3 200	7 959	6 992	24 884	20 532	-17,5
Dwelling-houses equal to or larger than 80 square metres						
Number of dwelling-houses	40	31	34	126	169	+ 34,1
Total square metres	5 023	5 160	6 259	20 333	30 404	+ 49,5
Total value at current prices (R'000)	5 733	5 782	7 867	24 684	35 345	+ 43,2
Flats and townhouses						
Number of flats and townhouses	20	45	3	95	121	+ 27,4
Total square metres	1 837	2 533	412	10 882	9 709	-10,8
Total value at current prices (R'000)	2 140	3 515	453	13 812	13 172	-4,6
Other residential buildings ^{1/}						
Total square metres	0	0	313	560	464	-17,1
Total value at current prices (R'000)	0	0	370	648	581	-10,3
Total value of residential buildings at current prices (R'000)	11 073	17 256	15 682	64 028	69 630	+ 8,7
Non-residential buildings						
Office and banking space						
Total square metres	2 145	0	10 480	5 124	11 574	+ 125,9
Total value at current prices (R'000)	5 752	0	21 000	9 703	21 903	+ 125,7
Shopping space						
Total square metres	715	491	762	13 372	3 303	-75,3
Total value at current prices (R'000)	800	280	1 006	16 330	3 286	-79,9
Industrial and warehouse space						
Total square metres	723	1 852	1 076	7 659	11 048	+ 44,2
Total value at current prices (R'000)	860	1 734	1 070	6 185	9 914	+ 60,3
Other non-residential space ^{2/}						
Total square metres	3 097	5 410	840	4 352	6 757	+ 55,3
Total value at current prices (R'000)	4 560	11 284	1 000	5 324	12 843	+ 141,2
Total value of non-residential buildings at current prices (R'000)	11 972	13 298	24 076	37 542	47 946	+ 27,7
Additions and alterations						
Dwelling-houses						
Total square metres	4 198	4 609	6 807	23 592	29 055	+ 23,2
Total value at current prices (R'000)	3 759	5 015	6 708	22 737	30 016	+ 32,0
Other buildings ^{3/}						
Total square metres	432	1 926	14 509	4 759	20 381	+ 328,3
Total value at current prices (R'000)	870	3 471	81 642	10 553	90 608	+ 758,6
Total value of additions and alterations at current prices (R'000)	4 629	8 486	88 350	33 290	120 624	+ 262,3
Total value of buildings completed at current prices (R'000)	27 674	39 040	128 108	134 860	238 200	+ 76,6

1/ Other residential buildings include institutions for the disabled, boarding houses, old people's homes, hostels, hotels, motels, guest houses, holiday chalets, entertainment centres, bed-and-breakfast accommodation and casinos.

2/ Other non-residential space includes churches, sport and recreation clubs, schools, crèches, hospitals and all other non-residential space.

3/ Other buildings include additions and alterations to other residential buildings, non-residential buildings and internal alterations.

Table 24 - Buildings completed according to type of building and province: KwaZulu-Natal

Type of building	May 2000*	April 2001	May 2001	January 2000 to May 2000	January 2001 to May 2001	Percentage change between January 2000 to May 2000 and January 2001 to May 2001
Residential buildings						
Dwelling-houses smaller than 80 square metres						
Number of dwelling-houses	200	144	120	1 492	989	-33,7
Total square metres	11 208	5 627	5 594	54 399	46 508	-14,5
Total value at current prices (R'000)	11 828	5 432	6 235	48 690	40 978	-15,8
Dwelling-houses equal to or larger than 80 square metres						
Number of dwelling-houses	228	109	152	557	637	+ 14,4
Total square metres	37 167	21 464	29 885	101 652	128 048	+ 26,0
Total value at current prices (R'000)	43 632	28 059	36 959	121 583	163 794	+ 34,7
Flats and townhouses						
Number of flats and townhouses	30	20	45	266	483	+ 81,6
Total square metres	3 364	4 136	6 548	40 477	54 993	+ 35,9
Total value at current prices (R'000)	4 256	4 921	11 280	63 139	81 385	+ 28,9
Other residential buildings ^{1/}						
Total square metres	0	0	0	728	8 450	+ 1 060,7
Total value at current prices (R'000)	0	0	0	833	40 000	+ 4 701,9
Total value of residential buildings at current prices (R'000)	59 716	38 412	54 474	234 245	326 157	+ 39,2
Non-residential buildings						
Office and banking space						
Total square metres	2 281	5 583	1 470	36 603	19 962	-45,5
Total value at current prices (R'000)	1 981	11 326	3 500	92 677	37 233	-59,8
Shopping space						
Total square metres	3 116	4 053	1 190	10 271	17 576	+ 71,1
Total value at current prices (R'000)	3 586	4 114	1 905	13 705	31 800	+ 132,0
Industrial and warehouse space						
Total square metres	7 356	13 351	1 759	98 471	59 541	-39,5
Total value at current prices (R'000)	7 476	13 941	2 279	103 320	64 299	-37,8
Other non-residential space ^{2/}						
Total square metres	2 884	2 691	480	8 378	8 340	-0,5
Total value at current prices (R'000)	3 351	2 430	516	9 231	9 286	+ 0,6
Total value of non-residential buildings at current prices (R'000)	16 394	31 811	8 200	218 933	142 618	-34,9
Additions and alterations						
Dwelling-houses						
Total square metres	21 601	25 420	42 081	108 894	143 922	+ 32,2
Total value at current prices (R'000)	23 271	28 581	44 238	123 055	160 170	+ 30,2
Other buildings ^{3/}						
Total square metres	33 176	15 595	10 390	98 582	46 183	-53,2
Total value at current prices (R'000)	86 112	26 796	17 648	197 030	84 862	-56,9
Total value of additions and alterations at current prices (R'000)	109 383	55 377	61 886	320 085	245 032	-23,4
Total value of buildings completed at current prices (R'000)	185 493	125 600	124 560	773 263	713 807	-7,7

1/ Other residential buildings include institutions for the disabled, boarding houses, old people's homes, hostels, hotels, motels, guest houses, holiday chalets, entertainment centres, bed-and-breakfast accommodation and casinos.

2/ Other non-residential space includes churches, sport and recreation clubs, schools, crèches, hospitals and all other non-residential space.

3/ Other buildings include additions and alterations to other residential buildings, non-residential buildings and internal alterations.

Table 25 - Buildings completed according to type of building and province: North West

Type of building	May 2000*	April 2001	May 2001	January 2000 to May 2000	January 2001 to May 2001	Percentage change between January 2000 to May 2000 and January 2001 to May 2001
Residential buildings						
Dwelling-houses smaller than 80 square metres						
Number of dwelling-houses	156	60	52	444	359	- 19,1
Total square metres	5 943	3 069	2 506	20 441	18 047	- 11,7
Total value at current prices (R'000)	4 280	3 975	2 134	19 150	20 031	+ 4,6
Dwelling-houses equal to or larger than 80 square metres						
Number of dwelling-houses	50	29	54	138	203	+ 47,1
Total square metres	10 442	7 572	11 021	26 382	38 732	+ 46,8
Total value at current prices (R'000)	10 472	8 372	13 506	28 582	46 434	+ 62,5
Flats and townhouses						
Number of flats and townhouses	2	34	12	38	64	+ 68,4
Total square metres	295	3 359	1 247	5 882	6 795	+ 15,5
Total value at current prices (R'000)	208	3 380	1 101	6 317	6 845	+ 8,4
Other residential buildings ^{1/}						
Total square metres	0	0	721	344	3 684	+ 970,9
Total value at current prices (R'000)	0	0	606	465	4 162	+ 795,1
Total value of residential buildings at current prices (R'000)	14 960	15 727	17 347	54 514	77 472	+ 42,1
Non-residential buildings						
Office and banking space						
Total square metres	8 160	0	0	9 442	750	- 92,1
Total value at current prices (R'000)	9 599	0	0	11 137	1 400	- 87,4
Shopping space						
Total square metres	10 912	220	667	16 743	2 266	- 86,5
Total value at current prices (R'000)	12 033	352	670	20 648	3 112	- 84,9
Industrial and warehouse space						
Total square metres	0	0	1 464	539	3 075	+ 470,5
Total value at current prices (R'000)	0	0	1 250	534	3 210	+ 501,1
Other non-residential space ^{2/}						
Total square metres	1 975	209	234	6 257	2 317	- 63,0
Total value at current prices (R'000)	2 342	177	234	5 345	2 549	- 52,3
Total value of non-residential buildings at current prices (R'000)	23 974	529	2 154	37 664	10 271	- 72,7
Additions and alterations						
Dwelling-houses						
Total square metres	9 083	4 384	4 450	27 027	17 218	- 36,3
Total value at current prices (R'000)	9 497	3 258	3 257	25 462	14 910	- 41,4
Other buildings ^{3/}						
Total square metres	3 090	2 554	2 848	6 186	10 793	+ 74,5
Total value at current prices (R'000)	3 228	2 569	2 558	5 650	13 125	+ 132,3
Total value of additions and alterations at current prices (R'000)	12 725	5 827	5 815	31 112	28 035	- 9,9
Total value of buildings completed at current prices (R'000)	51 659	22 083	25 316	123 290	115 778	- 6,1

1/ Other residential buildings include institutions for the disabled, boarding houses, old people's homes, hostels, hotels, motels, guest houses, holiday chalets, entertainment centres, bed-and-breakfast accommodation and casinos.

2/ Other non-residential space includes churches, sport and recreation clubs, schools, crèches, hospitals and all other non-residential space.

3/ Other buildings include additions and alterations to other residential buildings, non-residential buildings and internal alterations.

Table 26 - Buildings completed according to type of building and province: Gauteng

Type of building	May 2000	April 2001	May 2001	January 2000 to May 2000	January 2001 to May 2001	Percentage change between January 2000 to May 2000 and January 2001 to May 2001
Residential buildings						
Dwelling-houses smaller than 80 square metres						
Number of dwelling-houses	1 840	280	1 036	6 517	3 073	-52,8
Total square metres	63 733	13 128	38 705	228 835	119 149	-47,9
Total value at current prices (R'000)	39 259	14 597	29 697	155 591	98 952	-36,4
Dwelling-houses equal to or larger than 80 square metres						
Number of dwelling-houses	335	206	413	1 218	1 507	+ 23,7
Total square metres	65 826	51 768	91 153	284 489	345 524	+ 21,5
Total value at current prices (R'000)	88 250	72 655	125 963	375 654	478 063	+ 27,3
Flats and townhouses						
Number of flats and townhouses	610	377	53	1 596	1 569	-1,7
Total square metres	58 227	42 788	6 166	146 689	158 903	+ 8,3
Total value at current prices (R'000)	84 581	65 036	8 321	202 218	243 401	+ 20,4
Other residential buildings ^{1/}						
Total square metres	0	0	0	7 087	34 212	+ 382,7
Total value at current prices (R'000)	0	0	0	11 727	252 096	+ 2 049,7
Total value of residential buildings at current prices (R'000)	212 090	152 288	163 981	745 190	1 072 512	+ 43,9
Non-residential buildings						
Office and banking space						
Total square metres	32 753	3 711	97 943	128 913	217 931	+ 69,1
Total value at current prices (R'000)	50 112	8 040	147 739	189 319	311 031	+ 64,3
Shopping space						
Total square metres	102 184	911	3 602	124 469	16 879	-86,4
Total value at current prices (R'000)	154 921	1 094	4 745	185 534	23 621	-87,3
Industrial and warehouse space						
Total square metres	21 693	17 691	20 719	99 407	99 140	-0,3
Total value at current prices (R'000)	49 521	30 554	27 633	147 751	141 774	-4,0
Other non-residential space ^{2/}						
Total square metres	3 238	4 247	7 552	11 631	18 320	+ 57,5
Total value at current prices (R'000)	4 166	6 748	10 317	13 158	26 627	+ 102,4
Total value of non-residential buildings at current prices (R'000)	258 720	46 436	190 434	535 762	503 053	-6,1
Additions and alterations						
Dwelling-houses						
Total square metres	28 081	17 556	19 967	122 739	114 143	-7,0
Total value at current prices (R'000)	36 972	20 932	23 674	148 267	137 207	-7,5
Other buildings ^{3/}						
Total square metres	19 832	9 902	6 839	44 627	51 505	+ 15,4
Total value at current prices (R'000)	34 471	18 289	8 498	136 414	83 670	-38,7
Total value of additions and alterations at current prices (R'000)	71 443	39 221	32 172	284 681	220 877	-22,4
Total value of buildings completed at current prices (R'000)	542 253	237 945	386 587	1 565 633	1 796 442	+ 14,7

1/ Other residential buildings include institutions for the disabled, boarding houses, old people's homes, hostels, hotels, motels, guest houses, holiday chalets, entertainment centres, bed-and-breakfast accommodation and casinos.

2/ Other non-residential space includes churches, sport and recreation clubs, schools, crèches, hospitals and all other non-residential space.

3/ Other buildings include additions and alterations to other residential buildings, non-residential buildings and internal alterations.

Table 27 - Buildings completed according to type of building and province: Mpumalanga

Type of building	May 2000	April 2001	May 2001	January 2000 to May 2000	January 2001 to May 2001	Percentage change between January 2000 to May 2000 and January 2001 to May 2001
Residential buildings						
Dwelling-houses smaller than 80 square metres						
Number of dwelling-houses	243	321	482	971	1 678	+ 72,8
Total square metres	7 142	10 877	16 012	31 752	56 674	+ 78,5
Total value at current prices (R'000)	7 201	4 214	7 817	24 587	26 065	+ 6,0
Dwelling-houses equal to or larger than 80 square metres						
Number of dwelling-houses	27	21	20	168	163	-3,0
Total square metres	5 323	4 172	4 173	30 753	29 312	-4,7
Total value at current prices (R'000)	5 342	3 527	3 885	34 837	28 752	-17,5
Flats and townhouses						
Number of flats and townhouses	6	6	40	22	63	+ 186,4
Total square metres	715	649	3 905	1 477	6 043	+ 309,1
Total value at current prices (R'000)	696	514	3 842	1 412	5 630	+ 298,7
Other residential buildings ^{1/}						
Total square metres	0	0	0	730	0	..
Total value at current prices (R'000)	0	0	0	1 100	0	..
Total value of residential buildings at current prices (R'000)	13 239	8 255	15 544	61 936	60 447	-2,4
Non-residential buildings						
Office and banking space						
Total square metres	11	2 878	0	7 382	4 671	-36,7
Total value at current prices (R'000)	20	3 000	0	13 370	6 150	-54,0
Shopping space						
Total square metres	240	0	166	1 191	20 209	+ 1 596,8
Total value at current prices (R'000)	250	0	200	1 210	11 300	+ 833,9
Industrial and warehouse space						
Total square metres	264	0	365	9 347	365	-96,1
Total value at current prices (R'000)	339	0	160	9 401	160	-98,3
Other non-residential space ^{2/}						
Total square metres	500	841	0	4 958	3 545	-28,5
Total value at current prices (R'000)	500	841	0	6 321	4 164	-34,1
Total value of non-residential buildings at current prices (R'000)	1 109	3 841	360	30 302	21 774	-28,1
Additions and alterations						
Dwelling-houses						
Total square metres	2 275	4 403	727	14 991	22 449	+ 49,7
Total value at current prices (R'000)	1 877	2 856	629	11 098	18 448	+ 66,2
Other buildings ^{3/}						
Total square metres	113	481	360	3 263	12 826	+ 293,1
Total value at current prices (R'000)	169	339	547	3 425	17 522	+ 411,6
Total value of additions and alterations at current prices (R'000)	2 046	3 195	1 176	14 523	35 970	+ 147,7
Total value of buildings completed at current prices (R'000)	16 394	15 291	17 080	106 761	118 191	+ 10,7

1/ Other residential buildings include institutions for the disabled, boarding houses, old people's homes, hostels, hotels, motels, guest houses, holiday chalets, entertainment centres, bed-and-breakfast accommodation and casinos.

2/ Other non-residential space includes churches, sport and recreation clubs, schools, crèches, hospitals and all other non-residential space.

3/ Other buildings include additions and alterations to other residential buildings, non-residential buildings and internal alterations.

Table 28 - Buildings completed according to type of building and province: Northern Province

Type of building	May 2000	April 2001	May 2001	January 2000 to May 2000	January 2001 to May 2001	Percentage change between January 2000 to May 2000 and January 2001 to May 2001
Residential buildings						
Dwelling-houses smaller than 80 square metres						
Number of dwelling-houses	42	34	36	260	256	-1,5
Total square metres	2 353	1 390	1 812	12 594	11 996	-4,7
Total value at current prices (R'000)	2 916	669	1 685	10 894	9 889	-9,2
Dwelling-houses equal to or larger than 80 square metres						
Number of dwelling-houses	18	11	14	77	82	+ 6,5
Total square metres	2 795	2 030	2 006	10 287	13 258	+ 28,9
Total value at current prices (R'000)	3 760	2 518	2 762	12 910	17 801	+ 37,9
Flats and townhouses						
Number of flats and townhouses	6	3	8	11	22	+ 100,0
Total square metres	685	384	1 735	1 548	4 332	+ 179,8
Total value at current prices (R'000)	1 273	537	1 745	2 406	4 812	+ 100,0
Other residential buildings ^{1/}						
Total square metres	0	0	0	725	3 000	+ 313,8
Total value at current prices (R'000)	0	0	0	1 015	3 600	+ 254,7
Total value of residential buildings at current prices (R'000)	7 949	3 724	6 192	27 225	36 102	+ 32,6
Non-residential buildings						
Office and banking space						
Total square metres	0	0	498	836	498	-40,4
Total value at current prices (R'000)	0	0	797	1 170	797	-31,9
Shopping space						
Total square metres	234	0	1 182	7 430	1 182	-84,1
Total value at current prices (R'000)	300	0	2 073	20 304	2 073	-89,8
Industrial and warehouse space						
Total square metres	0	0	0	1 153	0	..
Total value at current prices (R'000)	0	0	0	1 281	0	..
Other non-residential space ^{2/}						
Total square metres	0	0	0	345	252	-27,0
Total value at current prices (R'000)	0	0	0	246	554	+ 125,2
Total value of non-residential buildings at current prices (R'000)	300	0	2 870	23 001	3 424	-85,1
Additions and alterations						
Dwelling-houses						
Total square metres	1 796	558	565	3 525	3 240	-8,1
Total value at current prices (R'000)	2 102	717	683	4 030	3 811	-5,4
Other buildings ^{3/}						
Total square metres	0	0	0	458	1 745	+ 281,0
Total value at current prices (R'000)	0	0	23	886	4 138	+ 367,0
Total value of additions and alterations at current prices (R'000)	2 102	717	706	4 916	7 949	+ 61,7
Total value of buildings completed at current prices (R'000)	10 351	4 441	9 768	55 142	47 475	-13,9

1/ Other residential buildings include institutions for the disabled, boarding houses, old people's homes, hostels, hotels, motels, guest houses, holiday chalets, entertainment centres, bed-and-breakfast accommodation and casinos.

2/ Other non-residential space includes churches, sport and recreation clubs, schools, crèches, hospitals and all other non-residential space.

3/ Other buildings include additions and alterations to other residential buildings, non-residential buildings and internal alterations.

Table 29 - Building plans passed according to type of building and selected urban area: Cape Town

Type of building	May 2000 *	April 2001	May 2001	January 2000 to May 2000	January 2001 to May 2001	Percentage change between January 2000 to May 2000 and January 2001 to May 2001
Residential buildings						
Dwelling-houses smaller than 80 square metres						
Number of dwelling-houses	379	292	475	2 915	2 682	- 8,0
Total square metres	14 769	13 722	19 696	113 736	105 159	- 7,5
Total value at current prices (R'000)	13 396	15 121	22 525	70 330	126 751	+ 80,2
Dwelling-houses equal to or larger than 80 square metres						
Number of dwelling-houses	319	253	432	1 425	1 473	+ 3,4
Total square metres	59 162	55 326	79 367	252 290	319 205	+ 26,5
Total value at current prices (R'000)	86 465	75 353	110 738	354 001	434 053	+ 22,6
Flats and townhouses						
Number of flats and townhouses	131	70	236	749	669	- 10,7
Total square metres	14 386	9 055	18 644	80 796	66 266	- 18,0
Total value at current prices (R'000)	21 593	12 482	28 231	134 222	106 615	- 20,6
Other residential buildings ^{1/}						
Total square metres	0	18 970	4 530	41 900	24 544	- 41,4
Total value at current prices (R'000)	0	48 550	12 000	58 843	62 106	+ 5,5
Total value of residential buildings at current prices (R'000)	121 454	151 506	173 494	617 396	729 525	+ 18,2
Non-residential buildings						
Office and banking space						
Total square metres	11 726	13 581	8 763	59 674	67 966	+ 13,9
Total value at current prices (R'000)	23 509	19 043	15 677	121 914	117 345	- 3,7
Shopping space						
Total square metres	29 814	9 486	10 057	63 165	82 736	+ 31,0
Total value at current prices (R'000)	33 191	9 719	14 954	76 334	102 452	+ 34,2
Industrial and warehouse space						
Total square metres	14 691	13 504	5 434	91 984	48 290	- 47,5
Total value at current prices (R'000)	14 772	14 750	5 260	93 465	50 679	- 45,8
Other non-residential space ^{2/}						
Total square metres	7 287	3 282	3 437	35 322	36 334	+ 2,9
Total value at current prices (R'000)	6 913	4 459	5 155	40 940	52 622	+ 28,5
Total value of non-residential buildings at current prices (R'000)	78 385	47 971	41 046	332 653	323 098	- 2,9
Additions and alterations						
Dwelling-houses						
Total square metres	57 017	46 221	55 678	243 501	236 719	- 2,8
Total value at current prices (R'000)	68 310	56 488	69 505	275 292	284 927	+ 3,5
Other buildings ^{3/}						
Total square metres	18 891	16 578	23 860	59 856	75 846	+ 26,7
Total value at current prices (R'000)	36 499	27 130	31 868	181 350	131 845	- 27,3
Total value of additions and alterations at current prices (R'000)	104 809	83 618	101 373	456 642	416 772	- 8,7
Total value of building plans passed at current prices (R'000)	304 648	283 095	315 913	1 406 691	1 469 395	+ 4,5

1/ Other residential buildings include institutions for the disabled, boarding houses, old people's homes, hostels, hotels, motels, guest houses, holiday chalets, entertainment centres, bed-and-breakfast accommodation and casinos.

2/ Other non-residential space includes churches, sport and recreation clubs, schools, crèches, hospitals and all other non-residential space.

3/ Other buildings include additions and alterations to other residential buildings, non-residential buildings and internal alterations.

Table 30 - Building plans passed according to type of building and selected urban area: Port Elizabeth

Type of building	May 2000	April 2001	May 2001	January 2000 to May 2000	January 2001 to May 2001	Percentage change between January 2000 to May 2000 and January 2001 to May 2001
Residential buildings						
Dwelling-houses smaller than 80 square metres						
Number of dwelling-houses	136	133	161	664	798	+ 20,2
Total square metres	5 949	5 844	6 851	27 878	35 600	+ 27,7
Total value at current prices (R'000)	6 542	7 582	8 876	32 419	47 162	+ 45,5
Dwelling-houses equal to or larger than 80 square metres						
Number of dwelling-houses	58	44	33	214	310	+ 44,9
Total square metres	9 108	6 548	5 970	28 582	36 895	+ 29,1
Total value at current prices (R'000)	10 614	8 461	8 214	35 953	49 323	+ 37,2
Flats and townhouses						
Number of flats and townhouses	10	19	5	67	81	+ 20,9
Total square metres	974	1 496	398	9 470	7 523	- 20,6
Total value at current prices (R'000)	1 315	1 924	524	12 504	10 775	- 13,8
Other residential buildings ^{1/}						
Total square metres	215	0	0	215	0	..
Total value at current prices (R'000)	347	0	0	347	0	..
Total value of residential buildings at current prices (R'000)	18 818	17 967	17 614	81 223	107 260	+ 32,1
Non-residential buildings						
Office and banking space						
Total square metres	0	0	0	0	0	..
Total value at current prices (R'000)	0	0	0	0	0	..
Shopping space						
Total square metres	3 264	772	238	6 197	1 362	- 78,0
Total value at current prices (R'000)	5 732	1 429	58	9 612	1 857	- 80,7
Industrial and warehouse space						
Total square metres	417	0	4 814	16 162	6 927	- 57,1
Total value at current prices (R'000)	653	0	1 682	19 725	4 746	- 75,9
Other non-residential space ^{2/}						
Total square metres	6 154	991	231	12 833	2 501	- 80,5
Total value at current prices (R'000)	8 297	2 005	254	17 700	3 903	- 77,9
Total value of non-residential buildings at current prices (R'000)	14 682	3 434	1 994	47 037	10 506	- 77,7
Additions and alterations						
Dwelling-houses						
Total square metres	9 468	9 779	9 677	45 607	43 599	- 4,4
Total value at current prices (R'000)	12 618	14 732	12 097	56 159	56 942	+ 1,4
Other buildings ^{3/}						
Total square metres	5 759	4 133	6 735	15 381	36 648	+ 138,3
Total value at current prices (R'000)	8 990	4 168	9 767	21 263	52 332	+ 146,1
Total value of additions and alterations at current prices (R'000)	21 608	18 900	21 864	77 422	109 274	+ 41,1
Total value of building plans passed at current prices (R'000)	55 108	40 301	41 472	205 682	227 040	+ 10,4

1/ Other residential buildings include institutions for the disabled, boarding houses, old people's homes, hostels, hotels, motels, guest houses, holiday chalets, entertainment centres, bed-and-breakfast accommodation and casinos.

2/ Other non-residential space includes churches, sport and recreation clubs, schools, crèches, hospitals and all other non-residential space.

3/ Other buildings include additions and alterations to other residential buildings, non-residential buildings and internal alterations.

Table 31 - Building plans passed according to type of building and selected urban area: Durban

Type of building	May 2000	April 2001	May 2001	January 2000 to May 2000	January 2001 to May 2001	Percentage change between January 2000 to May 2000 and January 2001 to May 2001
Residential buildings						
Dwelling-houses smaller than 80 square metres						
Number of dwelling-houses	85	75	87	432	375	-13,2
Total square metres	4 337	3 858	4 474	23 134	19 756	-14,6
Total value at current prices (R'000)	4 473	4 381	5 381	25 529	22 818	-10,6
Dwelling-houses equal to or larger than 80 square metres						
Number of dwelling-houses	81	39	72	340	290	-14,7
Total square metres	13 503	8 089	12 447	54 672	57 932	+ 6,0
Total value at current prices (R'000)	16 624	10 688	16 538	65 938	65 533	-0,6
Flats and townhouses						
Number of flats and townhouses	31	11	11	60	89	+ 48,3
Total square metres	4 363	1 417	1 956	10 433	9 822	-5,9
Total value at current prices (R'000)	6 780	2 174	3 250	13 842	14 925	+ 7,8
Other residential buildings ^{1/}						
Total square metres	0	0	138	0	138	..
Total value at current prices (R'000)	0	0	330	0	330	..
Total value of residential buildings at current prices (R'000)	27 877	17 243	25 499	105 309	103 606	-1,6
Non-residential buildings						
Office and banking space						
Total square metres	3 074	2 032	993	6 396	5 197	-18,7
Total value at current prices (R'000)	6 600	7 090	1 500	13 786	12 700	-7,9
Shopping space						
Total square metres	1 356	1 832	616	7 994	9 998	+ 25,1
Total value at current prices (R'000)	2 441	3 230	986	9 145	11 256	+ 23,1
Industrial and warehouse space						
Total square metres	10 012	8 389	2 562	29 518	33 984	+ 15,1
Total value at current prices (R'000)	11 931	9 966	2 841	37 218	38 378	+ 3,1
Other non-residential space ^{2/}						
Total square metres	6 049	12 486	1 500	11 295	18 939	+ 67,7
Total value at current prices (R'000)	10 572	12 750	2 730	15 960	22 166	+ 38,9
Total value of non-residential buildings at current prices (R'000)	31 544	33 036	8 057	76 109	84 500	+ 11,0
Additions and alterations						
Dwelling-houses						
Total square metres	24 194	16 843	22 566	108 750	105 051	-3,4
Total value at current prices (R'000)	26 322	18 406	25 814	123 609	123 591	+ 0,0
Other buildings ^{3/}						
Total square metres	12 674	7 845	11 174	49 665	51 786	+ 4,3
Total value at current prices (R'000)	19 679	11 586	29 028	113 588	107 791	-5,1
Total value of additions and alterations at current prices (R'000)	46 001	29 992	54 842	237 197	231 382	-2,5
Total value of building plans passed at current prices (R'000)	105 422	80 271	88 398	418 615	419 488	+ 0,2

1/ Other residential buildings include institutions for the disabled, boarding houses, old people's homes, hostels, hotels, motels, guest houses, holiday chalets, entertainment centres, bed-and-breakfast accommodation and casinos.

2/ Other non-residential space includes churches, sport and recreation clubs, schools, crèches, hospitals and all other non-residential space.

3/ Other buildings include additions and alterations to other residential buildings, non-residential buildings and internal alterations.

Table 32 - Building plans passed according to type of building and selected urban area: Witwatersrand

Type of building	May 2000	April 2001	May 2001	January 2000 to May 2000	January 2001 to May 2001	Percentage change between January 2000 to May 2000 and January 2001 to May 2001
Residential buildings						
Dwelling-houses smaller than 80 square metres						
Number of dwelling-houses	1 051	1 325	658	6 025	3 527	- 41,5
Total square metres	44 885	45 582	27 144	230 149	134 168	- 41,7
Total value at current prices (R'000)	36 142	45 912	27 301	170 295	143 261	- 15,9
Dwelling-houses equal to or larger than 80 square metres						
Number of dwelling-houses	503	334	482	1 846	2 260	+ 22,4
Total square metres	106 298	81 896	118 498	415 956	497 327	+ 19,6
Total value at current prices (R'000)	143 984	118 753	169 524	572 490	730 249	+ 27,6
Flats and townhouses						
Number of flats and townhouses	595	215	429	1 408	1 383	- 1,8
Total square metres	44 622	25 069	44 319	124 312	145 379	+ 16,9
Total value at current prices (R'000)	61 617	41 915	81 284	188 083	246 139	+ 30,9
Other residential buildings ^{1/}						
Total square metres	0	0	1 323	1 024	1 323	+ 29,2
Total value at current prices (R'000)	0	0	1 751	1 000	1 751	+ 75,1
Total value of residential buildings at current prices (R'000)	241 743	206 580	279 860	931 868	1 121 400	+ 20,3
Non-residential buildings						
Office and banking space						
Total square metres	155 304	10 040	27 919	326 779	122 343	- 62,6
Total value at current prices (R'000)	206 428	16 579	49 191	439 377	190 601	- 56,6
Shopping space						
Total square metres	4 022	3 857	11 584	66 863	53 003	- 20,7
Total value at current prices (R'000)	5 573	5 204	19 461	87 152	89 659	+ 2,9
Industrial and warehouse space						
Total square metres	95 304	24 370	13 646	202 413	126 684	- 37,4
Total value at current prices (R'000)	134 392	40 303	21 563	297 884	215 089	- 27,8
Other non-residential space ^{2/}						
Total square metres	5 908	3 075	18 255	35 557	56 071	+ 57,7
Total value at current prices (R'000)	7 696	3 962	30 817	53 696	86 353	+ 60,8
Total value of non-residential buildings at current prices (R'000)	354 089	66 048	121 032	878 109	581 702	- 33,8
Additions and alterations						
Dwelling-houses						
Total square metres	60 182	54 894	69 663	291 484	309 128	+ 6,1
Total value at current prices (R'000)	76 126	70 433	90 131	368 630	397 690	+ 7,9
Other buildings ^{3/}						
Total square metres	23 704	14 824	12 287	113 907	105 827	- 7,1
Total value at current prices (R'000)	38 934	21 915	26 031	175 264	201 125	+ 14,8
Total value of additions and alterations at current prices (R'000)	115 060	92 348	116 162	543 894	598 815	+ 10,1
Total value of building plans passed at current prices (R'000)	710 892	364 976	517 054	2 353 871	2 301 917	- 2,2

1/ Other residential buildings include institutions for the disabled, boarding houses, old people's homes, hostels, hotels, motels, guest houses, holiday chalets, entertainment centres, bed-and-breakfast accommodation and casinos.

2/ Other non-residential space includes churches, sport and recreation clubs, schools, crèches, hospitals and all other non-residential space.

3/ Other buildings include additions and alterations to other residential buildings, non-residential buildings and internal alterations.

Table 33 - Building plans passed according to type of building and selected urban area: Pretoria

Type of building	May 2000	April 2001	May 2001	January 2000 to May 2000	January 2001 to May 2001	Percentage change between January 2000 to May 2000 and January 2001 to May 2001
Residential buildings						
Dwelling-houses smaller than 80 square metres						
Number of dwelling-houses	137	197	709	2 330	1 159	- 50,3
Total square metres	6 204	14 632	23 057	76 871	50 512	- 34,3
Total value at current prices (R'000)	6 788	19 422	22 428	53 882	57 966	+ 7,6
Dwelling-houses equal to or larger than 80 square metres						
Number of dwelling-houses	281	182	352	1 084	1 232	+ 13,7
Total square metres	71 567	54 944	94 567	263 385	340 208	+ 29,2
Total value at current prices (R'000)	89 349	74 698	127 383	333 955	460 268	+ 37,8
Flats and townhouses						
Number of flats and townhouses	554	175	178	1 015	715	- 29,6
Total square metres	65 265	23 960	21 680	125 962	99 409	- 21,1
Total value at current prices (R'000)	86 920	36 172	32 325	160 419	145 934	- 9,0
Other residential buildings ^{1/}						
Total square metres	0	0	0	0	418	..
Total value at current prices (R'000)	0	0	0	0	627	..
Total value of residential buildings at current prices (R'000)	183 057	130 292	182 136	548 256	664 795	+ 21,3
Non-residential buildings						
Office and banking space						
Total square metres	14 333	1 040	7 722	31 628	25 658	- 18,9
Total value at current prices (R'000)	16 783	1 635	11 771	40 257	42 234	+ 4,9
Shopping space						
Total square metres	3 417	2 013	911	10 855	12 341	+ 13,7
Total value at current prices (R'000)	3 500	2 997	1 344	11 661	19 106	+ 63,8
Industrial and warehouse space						
Total square metres	3 510	8 144	6 734	22 638	23 679	+ 4,6
Total value at current prices (R'000)	4 565	11 710	8 602	26 366	32 720	+ 24,1
Other non-residential space ^{2/}						
Total square metres	3 624	7 025	1 811	9 960	20 436	+ 105,2
Total value at current prices (R'000)	4 842	10 847	2 503	12 692	30 394	+ 139,5
Total value of non-residential buildings at current prices (R'000)	29 690	27 189	24 220	90 976	124 454	+ 36,8
Additions and alterations						
Dwelling-houses						
Total square metres	22 132	18 220	25 288	92 152	88 211	- 4,3
Total value at current prices (R'000)	25 786	23 192	32 882	108 438	111 418	+ 2,7
Other buildings ^{3/}						
Total square metres	10 622	7 985	5 138	27 402	22 972	- 16,2
Total value at current prices (R'000)	19 369	11 678	10 926	46 565	38 565	- 17,2
Total value of additions and alterations at current prices (R'000)	45 155	34 870	43 808	155 003	149 983	- 3,2
Total value of building plans passed at current prices (R'000)	257 902	192 351	250 164	794 235	939 232	+ 18,3

1/ Other residential buildings include institutions for the disabled, boarding houses, old people's homes, hostels, hotels, motels, guest houses, holiday chalets, entertainment centres, bed-and-breakfast accommodation and casinos.

2/ Other non-residential space includes churches, sport and recreation clubs, schools, crèches, hospitals and all other non-residential space.

3/ Other buildings include additions and alterations to other residential buildings, non-residential buildings and internal alterations.

Table 34 - Building plans passed according to type of building and selected urban area: Bloemfontein

Type of building	May 2000	April 2001	May 2001	January 2000 to May 2000	January 2001 to May 2001	Percentage change between January 2000 to May 2000 and January 2001 to May 2001
Residential buildings						
Dwelling-houses smaller than 80 square metres						
Number of dwelling-houses	144	250	23	611	817	+ 33,7
Total square metres	8 147	10 641	1 146	28 308	35 766	+ 26,3
Total value at current prices (R'000)	3 540	4 970	1 249	14 371	17 828	+ 24,1
Dwelling-houses equal to or larger than 80 square metres						
Number of dwelling-houses	22	15	12	112	90	-19,6
Total square metres	3 914	3 178	1 792	20 301	15 396	-24,2
Total value at current prices (R'000)	5 538	3 903	2 325	26 853	19 787	-26,3
Flats and townhouses						
Number of flats and townhouses	100	0	73	174	138	-20,7
Total square metres	5 158	0	6 741	12 417	16 315	+ 31,4
Total value at current prices (R'000)	6 816	0	11 998	17 627	27 387	+ 55,4
Other residential buildings ^{1/}						
Total square metres	0	0	0	600	0	..
Total value at current prices (R'000)	0	0	0	1 500	0	..
Total value of residential buildings at current prices (R'000)	15 894	8 873	15 572	60 351	65 002	+ 7,7
Non-residential buildings						
Office and banking space						
Total square metres	448	0	0	1 763	12 809	+ 626,5
Total value at current prices (R'000)	700	0	0	2 945	25 200	+ 755,7
Shopping space						
Total square metres	0	0	0	334	0	..
Total value at current prices (R'000)	0	0	0	735	0	..
Industrial and warehouse space						
Total square metres	362	544	0	3 807	624	-83,6
Total value at current prices (R'000)	217	326	0	2 348	438	-81,3
Other non-residential space ^{2/}						
Total square metres	0	0	684	0	1 534	..
Total value at current prices (R'000)	0	0	1 368	0	2 868	..
Total value of non-residential buildings at current prices (R'000)	917	326	1 368	6 028	28 506	+ 372,9
Additions and alterations						
Dwelling-houses						
Total square metres	4 096	3 613	1 917	17 713	13 740	-22,4
Total value at current prices (R'000)	4 945	4 241	4 030	21 056	18 380	-12,7
Other buildings ^{3/}						
Total square metres	1 053	1 425	2 146	5 797	4 776	-17,6
Total value at current prices (R'000)	2 195	3 757	5 954	8 649	12 326	+ 42,5
Total value of additions and alterations at current prices (R'000)	7 140	7 998	9 984	29 705	30 706	+ 3,4
Total value of building plans passed at current prices (R'000)	23 951	17 197	26 924	96 084	124 214	+ 29,3

1/ Other residential buildings include institutions for the disabled, boarding houses, old people's homes, hostels, hotels, motels, guest houses, holiday chalets, entertainment centres, bed-and-breakfast accommodation and casinos.

2/ Other non-residential space includes churches, sport and recreation clubs, schools, crèches, hospitals and all other non-residential space.

3/ Other buildings include additions and alterations to other residential buildings, non-residential buildings and internal alterations.

Table 35 - Buildings completed according to type of building and selected urban area: Cape Town

Type of building	May 2000 *	April 2001	May 2001	January 2000 to May 2000	January 2001 to May 2001	Percentage change between January 2000 to May 2000 and January 2001 to May 2001
Residential buildings						
Dwelling-houses smaller than 80 square metres						
Number of dwelling-houses	713	181	341	2 229	1 607	- 27,9
Total square metres	27 852	6 692	14 568	75 103	58 890	- 21,6
Total value at current prices (R'000)	12 665	6 718	16 326	44 909	69 159	+ 54,0
Dwelling-houses equal to or larger than 80 square metres						
Number of dwelling-houses	169	95	141	703	642	- 8,7
Total square metres	22 794	18 958	31 636	122 095	129 781	+ 6,3
Total value at current prices (R'000)	31 470	25 811	46 886	157 764	179 969	+ 14,1
Flats and townhouses						
Number of flats and townhouses	75	97	79	404	401	- 0,7
Total square metres	3 913	8 831	9 104	36 465	39 802	+ 9,2
Total value at current prices (R'000)	5 460	9 669	13 636	48 276	53 898	+ 11,6
Other residential buildings ^{1/}						
Total square metres	0	0	0	11 988	16 618	+ 38,6
Total value at current prices (R'000)	0	0	0	20 874	12 524	- 40,0
Total value of residential buildings at current prices (R'000)	49 595	42 198	76 848	271 823	315 550	+ 16,1
Non-residential buildings						
Office and banking space						
Total square metres	1 174	3 519	3 082	49 512	42 169	- 14,8
Total value at current prices (R'000)	1 215	5 872	6 542	92 981	87 393	- 6,0
Shopping space						
Total square metres	0	7 058	3 370	8 631	16 975	+ 96,7
Total value at current prices (R'000)	0	8 214	2 881	14 465	21 405	+ 48,0
Industrial and warehouse space						
Total square metres	4 738	1 166	12 809	72 006	33 202	- 53,9
Total value at current prices (R'000)	5 026	806	13 968	58 743	37 988	- 35,3
Other non-residential space ^{2/}						
Total square metres	836	475	80	8 438	6 972	- 17,4
Total value at current prices (R'000)	591	555	60	9 666	11 035	+ 14,2
Total value of non-residential buildings at current prices (R'000)	6 832	15 447	23 451	175 855	157 821	- 10,3
Additions and alterations						
Dwelling-houses						
Total square metres	22 510	20 460	46 614	139 458	149 782	+ 7,4
Total value at current prices (R'000)	25 894	24 243	48 855	150 422	166 348	+ 10,6
Other buildings ^{3/}						
Total square metres	11 269	3 478	8 856	53 711	46 901	- 12,7
Total value at current prices (R'000)	18 387	5 819	13 738	98 898	163 774	+ 65,6
Total value of additions and alterations at current prices (R'000)	44 281	30 062	62 593	249 320	330 122	+ 32,4
Total value of building plans passed at current prices (R'000)	100 708	87 707	162 892	696 998	803 493	+ 15,3

1/ Other residential buildings include institutions for the disabled, boarding houses, old people's homes, hostels, hotels, motels, guest houses, holiday chalets, entertainment centres, bed-and-breakfast accommodation and casinos.

2/ Other non-residential space includes churches, sport and recreation clubs, schools, crèches, hospitals and all other non-residential space.

3/ Other buildings include additions and alterations to other residential buildings, non-residential buildings and internal alterations.

Table 36 - Buildings completed according to type of building and selected urban area: Port Elizabeth

Type of building	May 2000	April 2001	May 2001	January 2000 to May 2000	January 2001 to May 2001	Percentage change between January 2000 to May 2000 and January 2001 to May 2001
Residential buildings						
Dwelling-houses smaller than 80 square metres						
Number of dwelling-houses	108	81	147	497	529	+ 6,4
Total square metres	4 897	3 665	6 026	22 304	22 239	- 0,3
Total value at current prices (R'000)	5 500	3 988	7 778	26 413	27 928	+ 5,7
Dwelling-houses equal to or larger than 80 square metres						
Number of dwelling-houses	55	71	58	141	209	+ 48,2
Total square metres	6 012	7 661	7 273	19 949	24 085	+ 20,7
Total value at current prices (R'000)	7 382	9 634	10 482	22 162	31 254	+ 41,0
Flats and townhouses						
Number of flats and townhouses	15	36	23	86	72	- 16,3
Total square metres	2 531	2 917	1 472	10 524	5 291	- 49,7
Total value at current prices (R'000)	3 124	2 189	1 558	11 833	5 203	- 56,0
Other residential buildings ^{1/}						
Total square metres	367	0	0	367	4 347	+ 1084,5
Total value at current prices (R'000)	440	0	0	440	7 000	+ 1490,9
Total value of residential buildings at current prices (R'000)	16 446	15 811	19 818	60 848	71 385	+ 17,3
Non-residential buildings						
Office and banking space						
Total square metres	0	0	18 905	0	18 905	..
Total value at current prices (R'000)	0	0	19 510	0	19 510	..
Shopping space						
Total square metres	22 953	965	5 047	24 389	9 472	- 61,2
Total value at current prices (R'000)	33 970	1 554	5 336	35 747	12 325	- 65,5
Industrial and warehouse space						
Total square metres	6 101	23 047	7 665	8 351	31 793	+ 280,7
Total value at current prices (R'000)	3 695	29 039	8 217	5 681	38 803	+ 583,0
Other non-residential space ^{2/}						
Total square metres	2 612	2 748	0	3 397	3 808	+ 12,1
Total value at current prices (R'000)	3 023	2 337	0	4 162	3 047	- 26,8
Total value of non-residential buildings at current prices (R'000)	40 688	32 930	33 063	45 590	73 685	+ 61,6
Additions and alterations						
Dwelling-houses						
Total square metres	6 366	5 818	4 079	27 726	18 849	- 32,0
Total value at current prices (R'000)	5 968	6 887	4 256	25 308	20 946	- 17,2
Other buildings ^{3/}						
Total square metres	4 309	4 012	2 272	8 338	11 664	+ 39,9
Total value at current prices (R'000)	4 360	5 380	2 730	9 367	14 354	+ 53,2
Total value of additions and alterations at current prices (R'000)	10 328	12 267	6 986	34 675	35 300	+ 1,8
Total value of building plans passed at current prices (R'000)	67 462	61 008	59 867	141 113	180 370	+ 27,8

1/ Other residential buildings include institutions for the disabled, boarding houses, old people's homes, hostels, hotels, motels, guest houses, holiday chalets, entertainment centres, bed-and-breakfast accommodation and casinos.

2/ Other non-residential space includes churches, sport and recreation clubs, schools, crèches, hospitals and all other non-residential space.

3/ Other buildings include additions and alterations to other residential buildings, non-residential buildings and internal alterations.

Table 37 - Buildings completed according to type of building and selected urban area: Durban

Type of building	May 2000	April 2001	May 2001	January 2000 to May 2000	January 2001 to May 2001	Percentage change between January 2000 to May 2000 and January 2001 to May 2001
Residential buildings						
Dwelling-houses smaller than 80 square metres						
Number of dwelling-houses	144	50	57	407	290	- 28,7
Total square metres	8 803	2 913	2 962	20 578	15 535	- 24,5
Total value at current prices (R'000)	8 936	3 332	3 313	22 519	17 895	- 20,5
Dwelling-houses equal to or larger than 80 square metres						
Number of dwelling-houses	190	76	82	391	387	- 1,0
Total square metres	29 288	13 507	14 787	67 066	68 678	+ 2,4
Total value at current prices (R'000)	32 745	15 910	16 188	74 025	78 326	+ 5,8
Flats and townhouses						
Number of flats and townhouses	17	16	19	122	379	+ 210,7
Total square metres	1 392	3 879	1 805	19 870	34 981	+ 76,0
Total value at current prices (R'000)	1 378	4 621	3 864	30 720	48 266	+ 57,1
Other residential buildings ^{1/}						
Total square metres	0	0	0	0	0	..
Total value at current prices (R'000)	0	0	0	0	0	..
Total value of residential buildings at current prices (R'000)	43 059	23 863	23 365	127 264	144 487	+ 13,5
Non-residential buildings						
Office and banking space						
Total square metres	287	4 368	344	22 250	12 229	- 45,0
Total value at current prices (R'000)	431	9 700	500	65 957	25 370	- 61,5
Shopping space						
Total square metres	2 186	3 881	1 111	7 043	14 157	+ 101,0
Total value at current prices (R'000)	2 735	3 908	1 800	9 285	25 789	+ 177,7
Industrial and warehouse space						
Total square metres	5 501	13 351	1 349	73 161	43 468	- 40,6
Total value at current prices (R'000)	6 240	13 941	1 665	84 612	50 495	- 40,3
Other non-residential space ^{2/}						
Total square metres	2 308	402	0	7 146	4 491	- 37,2
Total value at current prices (R'000)	2 491	430	0	7 381	5 626	- 23,8
Total value of non-residential buildings at current prices (R'000)	11 897	27 979	3 965	167 235	107 280	- 35,9
Additions and alterations						
Dwelling-houses						
Total square metres	18 136	22 632	35 971	93 025	122 438	+ 31,6
Total value at current prices (R'000)	19 196	25 391	36 836	104 318	134 119	+ 28,6
Other buildings ^{3/}						
Total square metres	30 724	13 996	8 280	92 135	40 416	- 56,1
Total value at current prices (R'000)	83 555	23 083	15 742	183 481	74 033	- 59,7
Total value of additions and alterations at current prices (R'000)	102 751	48 474	52 578	287 799	208 152	- 27,7
Total value of building plans passed at current prices (R'000)	157 707	100 316	79 908	582 298	459 919	- 21,0

1/ Other residential buildings include institutions for the disabled, boarding houses, old people's homes, hostels, hotels, motels, guest houses, holiday chalets, entertainment centres, bed-and-breakfast accommodation and casinos.

2/ Other non-residential space includes churches, sport and recreation clubs, schools, crèches, hospitals and all other non-residential space.

3/ Other buildings include additions and alterations to other residential buildings, non-residential buildings and internal alterations.

Table 38 - Buildings completed according to type of building and selected urban area: Witwatersrand

Type of building	May 2000	April 2001	May 2001	January 2000 to May 2000	January 2001 to May 2001	Percentage change between January 2000 to May 2000 and January 2001 to May 2001
Residential buildings						
Dwelling-houses smaller than 80 square metres						
Number of dwelling-houses	775	188	906	4 129	2 405	-41,8
Total square metres	29 497	8 482	32 976	150 543	92 131	-38,8
Total value at current prices (R'000)	16 981	8 861	25 213	103 554	75 575	-27,0
Dwelling-houses equal to or larger than 80 square metres						
Number of dwelling-houses	257	142	293	842	1 057	+ 25,5
Total square metres	45 194	34 260	54 747	186 255	221 440	+ 18,9
Total value at current prices (R'000)	64 117	48 431	78 111	261 133	311 498	+ 19,3
Flats and townhouses						
Number of flats and townhouses	462	207	49	1 124	905	-19,5
Total square metres	25 381	23 845	5 439	77 094	93 243	+ 20,9
Total value at current prices (R'000)	43 102	41 065	7 252	118 631	155 281	+ 30,9
Other residential buildings ^{1/}						
Total square metres	0	0	0	5 954	32 600	+ 447,5
Total value at current prices (R'000)	0	0	0	10 340	250 000	+ 2 317,8
Total value of residential buildings at current prices (R'000)	124 200	98 357	110 576	493 658	792 354	+ 60,5
Non-residential buildings						
Office and banking space						
Total square metres	32 753	3 711	97 943	126 653	212 788	+ 68,0
Total value at current prices (R'000)	50 112	8 040	147 739	186 959	304 256	+ 62,7
Shopping space						
Total square metres	102 184	350	1 434	122 679	10 526	-91,4
Total value at current prices (R'000)	154 921	700	1 940	183 094	15 530	-91,5
Industrial and warehouse space						
Total square metres	20 827	16 895	14 310	93 540	86 703	-7,3
Total value at current prices (R'000)	48 971	29 479	23 551	141 905	129 863	-8,5
Other non-residential space ^{2/}						
Total square metres	2 853	1 727	6 552	8 632	11 533	+ 33,6
Total value at current prices (R'000)	3 781	3 748	8 517	11 043	17 709	+ 60,4
Total value of non-residential buildings at current prices (R'000)	257 785	41 967	181 747	523 001	467 358	-10,6
Additions and alterations						
Dwelling-houses						
Total square metres	25 595	15 065	17 870	103 840	103 399	-0,4
Total value at current prices (R'000)	34 461	17 786	21 016	128 870	124 245	-3,6
Other buildings ^{3/}						
Total square metres	8 895	9 409	6 839	31 104	49 934	+ 60,5
Total value at current prices (R'000)	23 172	17 268	8 304	122 071	80 420	-34,1
Total value of additions and alterations at current prices (R'000)	57 633	35 054	29 320	250 941	204 665	-18,4
Total value of building plans passed at current prices (R'000)	439 618	175 378	321 643	1 267 600	1 464 377	+ 15,5

1/ Other residential buildings include institutions for the disabled, boarding houses, old people's homes, hostels, hotels, motels, guest houses, holiday chalets, entertainment centres, bed-and-breakfast accommodation and casinos.

2/ Other non-residential space includes churches, sport and recreation clubs, schools, crèches, hospitals and all other non-residential space.

3/ Other buildings include additions and alterations to other residential buildings, non-residential buildings and internal alterations.

Table 39 - Buildings completed according to type of building and selected urban area: Pretoria

Type of building	May 2000	April 2001	May 2001	January 2000 to May 2000	January 2001 to May 2001	Percentage change between January 2000 to May 2000 and January 2001 to May 2001
Residential buildings						
Dwelling-houses smaller than 80 square metres						
Number of dwelling-houses	1 011	81	118	2 223	329	- 85,2
Total square metres	31 972	4 180	5 203	71 346	15 459	- 78,3
Total value at current prices (R'000)	20 943	5 161	4 026	47 143	16 722	- 64,5
Dwelling-houses equal to or larger than 80 square metres						
Number of dwelling-houses	68	56	115	331	419	+ 26,6
Total square metres	18 890	15 877	35 273	89 607	117 571	+ 31,2
Total value at current prices (R'000)	22 039	22 234	46 581	104 816	159 000	+ 51,7
Flats and townhouses						
Number of flats and townhouses	146	147	4	470	625	+ 33,0
Total square metres	32 113	16 362	727	68 862	60 700	- 11,9
Total value at current prices (R'000)	40 500	20 559	1 069	82 608	81 964	- 0,8
Other residential buildings ^{1/}						
Total square metres	0	0	0	727	0	..
Total value at current prices (R'000)	0	0	0	900	0	..
Total value of residential buildings at current prices (R'000)	83 482	47 954	51 676	235 467	257 686	+ 9,4
Non-residential buildings						
Office and banking space						
Total square metres	0	0	0	2 224	5 143	+ 131,3
Total value at current prices (R'000)	0	0	0	2 350	6 775	+ 188,3
Shopping space						
Total square metres	0	0	152	1 492	152	- 89,8
Total value at current prices (R'000)	0	0	198	2 086	198	- 90,5
Industrial and warehouse space						
Total square metres	0	796	4 511	5 001	7 651	+ 53,0
Total value at current prices (R'000)	0	1 075	1 988	5 296	6 579	+ 24,2
Other non-residential space ^{2/}						
Total square metres	385	2 520	1 000	2 999	5 260	+ 75,4
Total value at current prices (R'000)	385	3 000	1 800	2 115	7 658	+ 262,1
Total value of non-residential buildings at current prices (R'000)	385	4 075	3 986	11 847	21 210	+ 79,0
Additions and alterations						
Dwelling-houses						
Total square metres	1 371	1 106	1 264	10 229	6 158	- 39,8
Total value at current prices (R'000)	1 440	1 473	1 688	10 700	7 836	- 26,8
Other buildings ^{3/}						
Total square metres	10 309	0	0	11 584	870	- 92,5
Total value at current prices (R'000)	10 380	0	134	12 007	1 554	- 87,1
Total value of additions and alterations at current prices (R'000)	11 820	1 473	1 822	22 707	9 390	- 58,6
Total value of building plans passed at current prices (R'000)	95 687	53 502	57 484	270 021	288 286	+ 6,8

1/ Other residential buildings include institutions for the disabled, boarding houses, old people's homes, hostels, hotels, motels, guest houses, holiday chalets, entertainment centres, bed-and-breakfast accommodation and casinos.

2/ Other non-residential space includes churches, sport and recreation clubs, schools, crèches, hospitals and all other non-residential space.

3/ Other buildings include additions and alterations to other residential buildings, non-residential buildings and internal alterations.

Table 40 - Buildings completed according to type of building and selected urban area: Bloemfontein

Type of building	May 2000	April 2001	May 2001	January 2000 to May 2000	January 2001 to May 2001	Percentage change between January 2000 to May 2000 and January 2001 to May 2001
Residential buildings						
Dwelling-houses smaller than 80 square metres						
Number of dwelling-houses	37	142	70	339	242	- 28,6
Total square metres	1 646	5 238	3 091	13 688	9 854	- 28,0
Total value at current prices (R'000)	1 241	3 099	1 939	7 138	6 878	- 3,6
Dwelling-houses equal to or larger than 80 square metres						
Number of dwelling-houses	11	23	16	46	95	+ 106,5
Total square metres	1 961	3 583	3 183	8 793	18 398	+ 109,2
Total value at current prices (R'000)	2 253	4 174	4 010	12 911	22 107	+ 71,2
Flats and townhouses						
Number of flats and townhouses	19	43	0	71	96	+ 35,2
Total square metres	1 596	2 339	0	7 229	7 014	- 3,0
Total value at current prices (R'000)	1 915	3 276	0	9 465	10 045	+ 6,1
Other residential buildings ^{1/}						
Total square metres	0	0	0	0	151	..
Total value at current prices (R'000)	0	0	0	0	211	..
Total value of residential buildings at current prices (R'000)	5 409	10 549	5 949	29 514	39 241	+ 33,0
Non-residential buildings						
Office and banking space						
Total square metres	1 948	0	10 480	4 893	10 782	+ 120,4
Total value at current prices (R'000)	5 454	0	21 000	9 388	21 483	+ 128,8
Shopping space						
Total square metres	0	0	762	558	2 812	+ 403,9
Total value at current prices (R'000)	0	0	1 006	670	3 006	+ 348,7
Industrial and warehouse space						
Total square metres	723	1 852	0	5 981	4 730	- 20,9
Total value at current prices (R'000)	860	1 734	0	4 474	3 711	- 17,1
Other non-residential space ^{2/}						
Total square metres	3 097	4 539	840	3 097	5 519	+ 78,2
Total value at current prices (R'000)	4 336	9 000	1 000	4 336	10 170	+ 134,5
Total value of non-residential buildings at current prices (R'000)	10 650	10 734	23 006	18 868	38 370	+ 103,4
Additions and alterations						
Dwelling-houses						
Total square metres	1 692	3 071	2 696	12 002	18 550	+ 54,6
Total value at current prices (R'000)	1 737	3 550	2 940	12 390	19 673	+ 58,8
Other buildings ^{3/}						
Total square metres	128	270	14 104	2 007	16 132	+ 703,8
Total value at current prices (R'000)	489	1 092	81 157	6 676	84 929	+ 1172,2
Total value of additions and alterations at current prices (R'000)	2 226	4 642	84 097	19 066	104 602	+ 448,6
Total value of building plans passed at current prices (R'000)	18 285	25 925	113 052	67 448	182 213	+ 170,2

1/ Other residential buildings include institutions for the disabled, boarding houses, old people's homes, hostels, hotels, motels, guest houses, holiday chalets, entertainment centres, bed-and-breakfast accommodation and casinos.

2/ Other non-residential space includes churches, sport and recreation clubs, schools, crèches, hospitals and all other non-residential space.

3/ Other buildings include additions and alterations to other residential buildings, non-residential buildings and internal alterations.

Additional information

Explanatory Notes

Introduction	1	Statistics South Africa (Stats SA) conducts a monthly Building Statistics Survey collecting information regarding building plans approved and buildings completed, financed by the private sector, from a sample of local government institutions in South Africa. This statistical release contains information of building plans passed and buildings completed in respect of residential buildings, non-residential buildings and additions and alterations according to province and selected urban areas.
	2	In order to improve timeliness of the publication, some information for the current month have been estimated due to late submission by respondents. These estimates will be revised in the next statistical release(s) as soon as actual information is available.
	3	The actual and seasonally adjusted values (at current and at constant 1995 prices) and the percentage change of building plans passed and buildings completed according to type of building are reflected monthly from January 1999 in this statistical release (cf. tables 1 to 8).
Scope of the survey	4	This survey covers local government institutions conducting activities for the private sector regarding - <ul style="list-style-type: none"> • approval of building plans; and • final inspection of completed buildings.
Classification	5	The 1993 edition of the Standard Industrial Classification of all Economic Activities, (SIC) Fifth Edition, Report No. 09-90-02, was used to classify the statistical units. The SIC is based on the 1990 International Standard Industrial Classification of all Economic Activities (ISIC) with suitable adaptations for local conditions.
	6	The twelfth and last published edition of the Standard Code List of Areas, Report No. 09-09-03 (1994) was used to classify the statistical units according to province. The cities, towns and non-urban areas listed in this report are codified within magisterial district and province. The code list was compiled by Stats SA in collaboration with other interested bodies and the first edition was distributed in June 1977.
Statistical unit	7	The statistical unit for the collection of information is a local government institution. Local government institutions include municipalities, city councils, metropolitan councils, district councils, transitional councils and development and services boards.
Survey methodology and design	8	The sample for the monthly Building Statistics Survey consists of the largest local government institutions in South Africa, i.e. those that account for approximately 85% of the total rand value of buildings completed by the private sector.
	9	The survey is collected by mail each month from a sample of 158 local government institutions.
Constant prices	10	The value of building plans passed and buildings completed at constant prices measure the building activities in terms of ruling prices in a specific base year which is currently 1995.
	11	The value of building plans passed at constant prices for each month is obtained by deflating the values at current prices with a price index known as the “lump sum domestic buildings” as published in statistical release P0151 – JBCC Contract Price Adjustment Provisions Work Group Indices. In order to be applicable, these indices (base February 1991=100) are converted to the base year 1995=100.

- 12** The value of buildings completed at constant prices is obtained by deflating the values at current prices with the same price index which is used to calculate building plans passed at constant prices (cf. paragraph 11). The value of buildings completed is reported as at the time the plans were passed. Since the completion of buildings may extend over a few months to a few years, the current value of buildings completed is deflated by price indices as at the time the plans were passed in order to calculate the value of buildings completed at the time the plans were passed. Therefore, the duration of the completion of different types of buildings are taken into account in ascertaining the deflators e.g. the value of dwelling-houses completed at constant prices at January 2000 is obtained by deflating the current value of dwelling-houses completed for January 2000 with the price index of a month six months prior to January 2000. Furthermore, the value of other residential buildings, non-residential buildings and additions and alterations at constant prices is obtained by deflating the current values with price indices of 12 months, 18 months and 12 months prior to the relevant month, respectively.
- Seasonal adjustment**
- 13** Seasonally adjusted estimates of building plans passed and buildings completed are generated each month, using the X-11 Seasonal Adjustment Program developed by US Bureau of the Census Economic Research and Analyses Division, 1968.
- 14** Seasonal adjustment is a means of removing the estimated effects of normal seasonal variation from the series so that the effects of other influences on the series can be more clearly recognised. Seasonal adjustment does not aim to remove irregular or non-seasonal influences which may be present in any particular month. Influences that are volatile or unsystematic can still make it difficult to interpret the movement of the series even after adjustment for seasonal variations. Therefore, the month-to-month movements of seasonally adjusted estimates may not be reliable indicators of trend behaviour.
- Trend cycle**
- 15** The trend is a long-term pattern or movement of a time series. The X-11 Seasonal Adjustment Program is used for smoothing seasonally adjusted data.
- Related publications**
- 16** Users may also wish to refer to the following publications:
- P5041.3 – Building statistics issued annually.
 - P9101.2 – Actual and expected expenditure on construction by the public sector per region issued annually.
 - Bulletin of Statistics issued quarterly.
 - South African Statistics issued annually.
- Unpublished statistics**
- 17** In some cases Stats SA can also make available statistics which are not published. The statistics can be made available in one or more of the following ways: computer printouts, CD and diskette. Generally a charge is made for providing unpublished statistics.
- Rounding-off of figures**
- 18** The figures in the tables have, where necessary, been rounded off to the nearest digit shown. There may, therefore, be slight discrepancies between the sums of the constituent items and the totals shown.
- Pre-release policy**
- 19** Stats SA has adopted the confidential pre-release policy in respect of selected economic indicators and specific government departments. The policy accords with practice among leading statistical agencies. The statistical integrity of the information and strict observance of the release time has been assured by the following procedure:
- 20** In respect of this statistical release, an official representative from the Office of the President, the Department of Trade and Industry (DTI), National Treasury and the South African Reserve Bank (SARB) will receive a copy of the release on a strictly confidential basis two hours in advance of the public issue.
- 21** Stats SA pre-release policy may be inspected at its Website, www.statssa.gov.za

Symbols and abbreviations

..	no meaningful percentage change between two specified periods available since either one or both of the totals are nil
0	nil or figure too small to publish
*	revised
Stats SA	Statistics South Africa
SIC	Standard Industrial Classification of all Economic Activities
ISIC	International Standard Industrial Classification of all Economic Activities
JBCC	Joint Building Contracts Committee
CD	Compact Disc
US	United States
SARB	South African Reserve Bank
DTI	Department of Trade and Industry

Technical notes**Response rate**

The response rate for May 2001 is 98,7%.

Local government institutions covered in the sample survey

Local government institutions according to province

Western Cape	Blaauwberg (includes Milnerton), Brackenfell, Breede River District Council, Cape Town, City of Tygerberg (Bellville, Durbanville, Goodwood, Lingeletu West, Parow and South Administration), Fish Hoek, George (includes Pacaltsdorp, Thembalethu and Herolds Bay), Gordon's Bay, Hangklip-Kleinmond (includes Kleinmond, Betty's Bay and Rooi-El's), Hermanus (includes Onrus River, Zwelihle, Sandbaai, Vermont, Hawston and Fisher Haven), Ikapa, Klein-Karoo District Council, Knysna (includes Khayaletu), Kuils River, Malmesbury, Mossel Bay (includes Boggom's Bay, Kleinbrak, Rheeboek and Tergniet), Oostenberg (Kraaifontein and Melton Rose - Blue Downs), Oudtshoorn, Overberg District Council, Paarl, Plettenberg Bay, Sedgefield, Simon's Town, Somerset West, South Peninsula, Stellenbosch, Strand, Wellington, West Coast District Council, Western Coast Peninsula (previously Vredenburg-Saldanha), Winelands District Council and Worcester.
Eastern Cape	Aliwal-Maletswai (includes Dukathole), Despatch, East London (includes Beacon Bay, Gomo Town, Gonubie and Mdantsane), Grahamstown (includes Rhini Township), Jeffrey's Bay, King William's Town (includes Bisho and Zwelitsha), Port Alfred, Port Elizabeth (includes Ibhayi and Motherwell), Uitenhage (includes KwaNobuhle), Umtata and Western District Council.
Northern Cape	Benede-Oranje District Council, Keimoes, Kimberley (including Galeshewe), Kuruman, Namaqualand District Council and Upington (includes Paballelo).
Free State	Allanridge, Bethlehem (includes Bohlokong), Bloemfontein (includes Bainsvlei, Bloemspuit and Mangaung), Botshabelo, Deneysville (includes Refengkgotso), Harrismith (includes Tsiamé), Kroonstad (includes Maokeng), Ladybrand (includes Manyatseng), Odendaalsrus (includes Kutlwanong), Parys, Phuthaditjhaba, Sasolburg (includes Zamdela), Virginia (includes Meloding) and Welkom (includes Thabong).
KwaZulu-Natal	Development and Services Board - Inland, Development and Services Board – North Coast, Dolphin Coast Borough (includes Ballito, Etete, Shakaskraal, Tinley Manor Beach and Umhlali Beach), Durban, Edendale, Empangeni (includes Ngwelezana), Hilton, Howick, Inner West City Council (includes Clermont, KwaDabeka, KwaNdengezi, New Germany, Pinetown, Queensburgh, Reservoir Hills, Shallcross and Westville), Kokstad, Kwa-Dukuza/Stanger (includes Blythedale Beach, Shakaville and Stanger), KwaMashu, Ladysmith (includes Emnambithi), Margate (includes Uvongo), Mpenjati/Southbroom (includes Southbroom, Marina Beach, San Lameer and Trafalgar), Newcastle (includes Madadeni, Osizweni and Blaauwboschlaagte), North Local Council - Tongaat (includes Canelands and Hambanati), North Local Council - Umhlanga Rocks (includes Mount Edgecombe and Umdloti Beach), North Local Council - Verulam, Outer West Local Council (includes Assagay, Botha's Hill, Cato Ridge, Drummond, Everton, Gillitts, Hillcrest, Inchanga, Kloof, Mpumalanga and Waterfall), Pennington, Pietermaritzburg/Msundini, Port Shepstone, Richards Bay, South Local Council (includes Amanzimtoti, Isipingo, Kingsburgh, KwaMakuta and Umbogintwini), Umlazi and Umtamvuna/Port Edward (includes Munster, Port Edward and Palm Beach).
North West	Bophirima District Council, Brits (includes Lethabile), Ga-Rankuwa, Klerksdorp, Lichtenburg, Mmabatho, Orkney (includes Kanana), Potchefstroom, Rustenburg, Vryburg and Zeerust.

Gauteng

Akasia (includes Elandsdoorn, Klipfontein, Kruisfontein and Soshanguve), Alberton (includes Tokoza), Benoni (includes Daveyton and Wattville), Boksburg (includes Vosloorus), Brakpan (includes Tsakane), Bronkhorstspuit, Carletonville (includes Khutsong), Centurion, Duduza, Eastern Services Council - Pretoria Area, Edenvale-Modderfontein, Germiston (includes Bedfordview and Katlehong), Greater Johannesburg - Eastern Metropolitan Local Council (includes Alexandra and Sandton), Greater Johannesburg - Northern Metropolitan Local Council (includes Randburg), Greater Johannesburg - Southern Metropolitan Local Council (includes Ennerdale, Lenasia and Johannesburg), Greater Johannesburg - Western Metropolitan Local Council (includes Diepmeadow, Dobsonville and Roodepoort), Heidelberg (includes Ratanda), Kempton Park (includes Tembisa), Krugersdorp (includes Kagiso and Munsieville), Meyerton, Midrand (includes Rabie Ridge and Ivory Park), Nigel, Pretoria (includes Atteridgeville and Mamelodi), Randfontein (includes Mohlakeng), Sebokeng (includes Boipatong, Bophelong and Sharpeville), Soweto, Springs (includes KwaThema), Vanderbijlpark, Vereeniging (includes Evaton), Western Services Council and Westonaria (includes Bekkersdal).

Mpumalanga

Delmas (includes Botleng), Eastvaal District Council, Ermelo (includes Wesselton and Cassim Park), Highveld District Council, Highveldridge Transitional Council (includes Evander, Embalenhle and Secunda), Komatipoort (includes Kamaqhekeza), KwaGuqa, KwaMhlanga, Malelane (includes Hectorspruit and Kamhlushwa), Middelburg (includes Mhluzi), Nelspruit (includes Kanyamazane and Lowveld Escarpment District Council as from January 2001), White River and Witbank.

Northern Province

Bosveld District Council, Giyani, Letaba (includes Nkowakowa and Tzaneen), Messina, Naboomspruit (includes Mookgophong), Nylstroom, Pietersburg-Polokwane (includes Seshego), Potgietersrus and Thabazimbi.

Local government institutions according to selected urban areas**Cape Town**

Blaauwberg (includes Milnerton), Cape Town, City of Tygerberg (Bellville, Durbanville, Goodwood, Lingeletu West, Parow and South Administration), Fish Hoek, Ikapa, Oostenberg (Kraaifontein and Melton Rose - Blue Downs), Simon's Town and South Peninsula.

Port Elizabeth

Despatch, Port Elizabeth (including Ibhayi and Motherwell) and Uitenhage (including KwaNobuhle)

Durban

Durban, Inner West City Council (includes Clermont, KwaDabeka, KwaNdengezi, New Germany, Pinetown, Queenstown, Reservoir Hills, Shallcross and Westville), North Local Council - Verulam, Outer West Local Council (includes Assagay, Botha's Hill, Cato Ridge, Drummond, Everton, Gillitts, Hillcrest, Inchanga, Kloof, Mpumalanga and Waterfall) and South Local Council (includes Amanzimtoti, Isipingo, Kingsburgh, KwaMakuta and Umbogintwini).

Witwatersrand

Alberton (includes Thokoza), Benoni (includes Daveyton and Wattville), Boksburg (includes Vosloorus), Brakpan (includes Tsakane), Carletonville (includes Khutsong), Duduza, Edenvale-Modderfontein, Germiston (includes Bedfordview and Katlehong), Greater Johannesburg - Eastern Metropolitan Local Council (includes Alexandra and Sandton), Greater Johannesburg - Northern Metropolitan Local Council (includes Randburg), Greater Johannesburg - Southern Metropolitan Local Council (includes Ennerdale, Lenasia and Johannesburg), Greater Johannesburg - Western Metropolitan Local Council (includes Diepmeadow, Dobsonville and Roodepoort), Kempton Park (includes Tembisa), Krugersdorp (includes Kagiso and Munsieville), Midrand (includes Rabie Ridge and Ivory Park), Nigel, Randfontein (includes Mohlakeng), Soweto, Springs (includes KwaThema) and Westonaria (includes Bekkersdal).

Pretoria

Akasia (includes Elandsdoorn, Klipfontein and Soshanguve), Centurion, Eastern Services Council - Pretoria area and Pretoria (includes Atteridgeville and Mamelodi).

Bloemfontein

Bloemfontein (includes Bainsvlei, Bloemspruit and Mangaung).

Glossary

Additions and alterations	Additions and alterations include extensions to existing buildings as well as internal and external alterations of existing buildings.
Blocks of flats	Blocks of flats are regarded as high-density housing consisting of a number of self-contained dwelling-units with at least one living-room together with a kitchen and bathroom conjoined to similar units in one building.
Dwelling-house	A dwelling-house refers to a free-standing, complete structure on a separate stand or a self-contained dwelling-unit, granny flat, on the same premises as an existing residence. Out-buildings and garages are included.
Local government institutions	A local government institution is a generic term referring to any number of institutions involved in the local sphere of government. Local government institutions consist of municipalities, city councils, metropolitan councils, district councils, transitional local councils and development and services boards.
Non-residential buildings	Non-residential buildings comprise factories, commercial, financial and other office buildings, as well as other buildings not used for residential purposes, such as churches, halls, clubs, schools and hospitals.
Other residential buildings	Other residential buildings include institutions for the disabled, boarding houses, old people's homes, hostels, hotels, motels, guest houses, holiday chalets, bed-and-breakfast accommodation, entertainment centres and casinos.
Percentage change	<p>When using monthly actual values, the percentage change is the change in actual values of building activities (building plans passed or buildings completed) of the relevant month compared with the actual values of building activities (building plans passed or buildings completed) of the same month in the previous year expressed as a percentage.</p> <p>When using annual actual values, the percentage change is the change in the actual values of building activities (building plans passed or buildings completed) of the relevant year compared with the actual values of building activities (building plans passed or buildings completed) of the previous year expressed as a percentage.</p> <p>When using seasonally adjusted values, the percentage change is the change in the seasonally adjusted values of building activities (building plans passed or buildings completed) of the relevant month compared with the seasonally adjusted values of building activities (building plans passed or buildings completed) of the previous month expressed as a percentage.</p>
Reference period	Reference period is one calendar month.
Residential buildings	Residential buildings comprise dwelling-houses, flats, townhouses and other residential buildings.
Townhouses	Townhouses are multiple, medium-density dwelling-units and include cluster housing, group housing, simplexes, duplexes, triplexes and other similar dwelling-units which are usually grouped together, with one level of each unit on ground level. This excludes blocks of flats.

For more information

Stats SA publishes approximately 300 different statistical releases each year. It is not economically viable to produce them in more than one of South Africa's eleven official languages. Since the releases are used extensively, not only locally but also by international economic and social-scientific communities, Stats SA releases are published in English only.

Stats SA has copyright on this publication. Users may apply the information as they wish, provided that they acknowledge Stats SA as the source of the basic data wherever they process, apply, utilise, publish or distribute the data and also that they specify that the relevant application and analysis (where applicable) result from their own processing of the data.

Stats SA products

A complete set of Stats SA publications is available at the Stats SA Library and the following libraries:

National Library of South Africa, Pretoria Division
National Library of South Africa, Cape Town Division
Natal Society Library, Pietermaritzburg
Library of Parliament, Cape Town
Bloemfontein Public Library
Johannesburg Public Library
Eastern Cape Library Services, King William's Town
Central Regional Library, Pietersburg
Central Reference Library, Nelspruit
Central Reference Collection, Kimberley
Central Reference Library, Mmabatho

Stats SA also provides a subscription service.

Electronic services

A large range of data are available via on-line services, diskette, CD and computer printouts. For more details about our electronic data services, contact (012) 310 8600.

You can visit us on the Internet at: <http://www.statssa.gov.za>

Enquiries

Telephone number: (012) 310 8095/8390/8351 (user enquiries)
(012) 310 8228/310 8007 (technical enquiries)
(012) 310 8161 (publications)
(012) 310 8490 (library)

Fax number: (012) 310 8182

e-mail: Corrieb@statssa.pwv.gov.za
Gretaz@statssa.pwv.gov.za

Postal address: Private Bag X44, Pretoria, 0001