



**Statistics
South Africa**

Preferred supplier of quality statistics



Statistical release

P5041.1

Selected building statistics of the private sector as reported by local government institutions

**March 2008
(Preliminary)**

**Embargoed until:
21 May 2008
13:00**

Enquiries:

User Information Services
Tel: (012) 310 8600 / 4892 / 8390

Forthcoming issue:

April 2008

Expected release date

18 June 2008

Statistics South Africa • Mbalo-mbalo dza Afrika Tshipembe • Tinhlayo-tiko ta Afrika-Dzonga • Dipalopalo tsa Aforika Borwa • Ezezibalo zaseNingizimu Afrika
Dipalopalo tša Afrika Borwa • Dipalopalo tsa Afrika Borwa • Ubalo lwaseMzantsi Afrika • Telubalo eNingizimu Afrika • iNanimbalo leSewula Afrika • Statistiek Suid-Afrika

Contents

| | Page |
|------------------------------------------------------------------------------------------------------------------------------------------------------------------------|----------|
| SUMMARY OF FINDINGS | 3 |
| Tables | |
| Table 1 Values and percentage change of recorded building plans passed by larger municipalities at current prices by type of building | 9 |
| Table 2 Seasonally adjusted values and percentage change of recorded building plans passed by larger municipalities at current prices by type of building | 10 |
| Table 3 Values and percentage change of recorded building plans passed by larger municipalities at constant 2000 prices by type of building | 11 |
| Table 4 Seasonally adjusted values and percentage change of recorded building plans passed by larger municipalities at constant 2000 prices by type of building | 12 |
| Table 5 Values and percentage change of buildings reported as completed to larger municipalities at current prices by type of building | 13 |
| Table 6 Seasonally adjusted values and percentage change of buildings reported as completed to larger municipalities at current prices by type of building | 14 |
| Table 7 Values and percentage change of buildings reported as completed to larger municipalities at constant 2000 prices by type of building | 15 |
| Table 8 Seasonally adjusted values and percentage change of buildings reported as completed to larger municipalities at constant 2000 prices by type of building | 16 |
| Table 9 Recorded building plans passed by larger municipalities at current prices by type of building: South Africa | 17 |
| Table 10 Recorded building plans passed by larger municipalities at current prices by type of building: Western Cape | 18 |
| Table 11 Recorded building plans passed by larger municipalities at current prices by type of building: Eastern Cape | 19 |
| Table 12 Recorded building plans passed by larger municipalities at current prices by type of building: Northern Cape | 20 |
| Table 13 Recorded building plans passed by larger municipalities at current prices by type of building: Free State | 21 |
| Table 14 Recorded building plans passed by larger municipalities at current prices by type of building: KwaZulu-Natal | 22 |
| Table 15 Recorded building plans passed by larger municipalities at current prices by type of building: North West | 23 |
| Table 16 Recorded building plans passed by larger municipalities at current prices by type of building: Gauteng | 24 |
| Table 17 Recorded building plans passed by larger municipalities at current prices by type of building: Mpumalanga | 25 |
| Table 18 Recorded building plans passed by larger municipalities at current prices by type of building: Limpopo..... | 26 |
| Table 19 Buildings reported as completed to larger municipalities at current prices by type of building: South Africa | 27 |
| Table 20 Buildings reported as completed to larger municipalities at current prices by type of building: Western Cape | 28 |
| Table 21 Buildings reported as completed to larger municipalities at current prices by type of building: Eastern Cape | 29 |
| Table 22 Buildings reported as completed to larger municipalities at current prices by type of building: Northern Cape..... | 30 |
| Table 23 Buildings reported as completed to larger municipalities at current prices by type of building: Free State | 31 |
| Table 24 Buildings reported as completed to larger municipalities at current prices by type of building: KwaZulu-Natal | 32 |

| | | |
|----------------------------------|---------------------------------------------------------------------------------------------------------------------|----|
| Table 25 | Buildings reported as completed to larger municipalities at current prices by type of building: North West | 33 |
| Table 26 | Buildings reported as completed to larger municipalities at current prices by type of building: Gauteng | 34 |
| Table 27 | Buildings reported as completed to larger municipalities at current prices by type of building: Mpumalanga | 35 |
| Table 28 | Buildings reported as completed to larger municipalities at current prices by type of building: Limpopo..... | 36 |
| Table 29 | Subsidised low-cost dwelling-houses completed or under construction by province | 37 |
| Table 30 | Subsidised low-cost dwelling-houses completed by province | 37 |
| Explanatory notes | | 38 |
| Glossary | | 41 |
| General information | | 43 |

SUMMARY OF FINDINGS

SELECTED BUILDING STATISTICS OF THE PRIVATE SECTOR REGARDING BUILDING PLANS PASSED AT CURRENT PRICES

Table A – Selected key figures regarding recorded building plans passed by larger municipalities at current prices: January to March 2007 versus January to March 2008

| Estimates at current prices | January to March 2007 | January to March 2008 1/ | Difference in value between January to March 2007 and January to March 2008 | Percentage change between January to March 2007 and January to March 2008 |
|----------------------------------|-----------------------|-----------------------------|-----------------------------------------------------------------------------|---------------------------------------------------------------------------|
| | R'000 | R'000 | R'000 | |
| Residential buildings | 10 334 580 | 10 290 900 | -43 680 | -0,4 |
| -Dwelling-houses | 6 856 739 | 5 945 641 | -911 098 | -13,3 |
| -Flats and townhouses | 3 259 188 | 3 988 909 | 729 721 | 22,4 |
| -Other residential buildings | 218 653 | 356 350 | 137 697 | 63,0 |
| Non-residential buildings | 3 348 763 | 3 974 979 | 626 216 | 18,7 |
| Additions and alterations | 4 546 738 | 5 290 568 | 743 830 | 16,4 |
| Total | 18 230 081 | 19 556 447 | 1 326 366 | 7,3 |

1/ Mar. 2008 figures should be regarded as preliminary because of possible backlogs and incomplete reporting by municipalities.

Total value of recorded building plans passed at current prices increased

As indicated in Table A, the value of recorded building plans passed by larger municipalities (at current prices) during the first quarter of 2008 rose by 7,3% (R1 326,4 million) compared with the first quarter of 2007.

Two of the main categories of buildings contributed positively to the 7,3% year-on-year increase recorded for the first quarter of 2008, namely non-residential buildings (18,7% or R626,2 million) and additions and alterations (16,4% or R743,8 million). Residential buildings recorded a decrease of 0,4% (-R43,7 million) (see Table A).

Table B – Recorded building plans passed by larger municipalities aggregated to provincial level: January to March 2007 versus January to March 2008

| Estimates at current prices | January to March 2007 | January to March 2008 1/ | Percentage contribution to the total value of building plans passed during January to March 2007 | Percentage change between January to March 2007 and January to March 2008 | Contribution (percentage points) to the percentage change in the value of building plans passed between January to March 2007 and January to March 2008 2/ | Difference in value between January to March 2007 and January to March 2008 |
|-----------------------------|-----------------------|-----------------------------|--------------------------------------------------------------------------------------------------|---------------------------------------------------------------------------|------------------------------------------------------------------------------------------------------------------------------------------------------------|-----------------------------------------------------------------------------|
| | R'000 | R'000 | | | | R'000 |
| Western Cape | 4 213 883 | 4 248 891 | 23,1 | 0,8 | 0,2 | 35 008 |
| Eastern Cape | 916 914 | 828 957 | 5,0 | -9,6 | -0,5 | -87 957 |
| Northern Cape | 110 289 | 148 975 | 0,6 | 35,1 | 0,2 | 38 686 |
| Free State | 558 932 | 445 568 | 3,1 | -20,3 | -0,6 | -113 364 |
| KwaZulu-Natal | 2 389 597 | 3 870 166 | 13,1 | 62,0 | 8,1 | 1 480 569 |
| North West | 934 711 | 581 547 | 5,1 | -37,8 | -1,9 | -353 164 |
| Gauteng | 7 788 562 | 8 080 726 | 42,7 | 3,8 | 1,6 | 292 164 |
| Mpumalanga | 957 559 | 941 436 | 5,3 | -1,7 | -0,1 | -16 123 |
| Limpopo | 359 634 | 410 181 | 2,0 | 14,1 | 0,3 | 50 547 |
| Total | 18 230 081 | 19 556 447 | 100,0 | 7,3 | 7,3 | 1 326 366 |

1/ Mar. 2008 figures should be regarded as preliminary because of possible backlogs and incomplete reporting by municipalities.

2/ The contribution (percentage points) is calculated by multiplying the percentage change of each province between Jan. to Mar. 2007 and Jan. to Mar. 2008 with the percentage contribution of the corresponding province to the total value of building plans passed during Jan. to Mar. 2007, divided by 100.

Five provinces reported increases in the value of building plans passed (see Table B). The largest contributor to the increase of 7,3% was KwaZulu-Natal (contributing 8,1 percentage points or R1 480,6 million), followed by Gauteng (1,6 percentage points or R292,2 million) and Limpopo (0,3 of a percentage point or R50,5 million).

SELECTED BUILDING STATISTICS OF THE PRIVATE SECTOR REGARDING BUILDING PLANS PASSED AT CONSTANT PRICES

Table C – Selected key figures regarding recorded building plans passed by larger municipalities at constant 2000 prices: January to March 2007 versus January to March 2008

| Estimates at constant 2000 prices | January to March 2007 | January to March 2008 1/ | Difference in value between January to March 2007 and January to March 2008 | Percentage change between January to March 2007 and January to March 2008 |
|-----------------------------------|-----------------------|-----------------------------|-----------------------------------------------------------------------------|---------------------------------------------------------------------------|
| | R'000 | R'000 | R'000 | |
| Residential buildings | 6 180 488 | 5 633 118 | -547 370 | -8,9 |
| Non-residential buildings | 2 003 251 | 2 180 374 | 177 123 | 8,8 |
| Additions and alterations | 2 719 397 | 2 901 295 | 181 898 | 6,7 |
| Total | 10 903 136 | 10 714 787 | -188 349 | -1,7 |

1/ Mar. 2008 figures should be regarded as preliminary because of possible backlogs and incomplete reporting by municipalities.

Total real value of recorded building plans passed decreased

The real value of recorded building plans passed by larger municipalities (at constant 2000 prices) during the first quarter of 2008 decreased by 1,7% (-R188,3 million) compared with the first quarter of 2007. This is lower than the increase reported for January to March 2007 compared to January to March 2006. The decrease recorded for residential buildings (-8,9% or -R547,4 million) was to a certain extent counteracted by increases reported for non-residential buildings (8,8% or R177,1 million) and additions and alterations (6,7% or R181,9 million) (see Table C).

Table D – Seasonally adjusted key figures regarding recorded building plans passed by larger municipalities at constant 2000 prices: Current quarter versus previous quarter

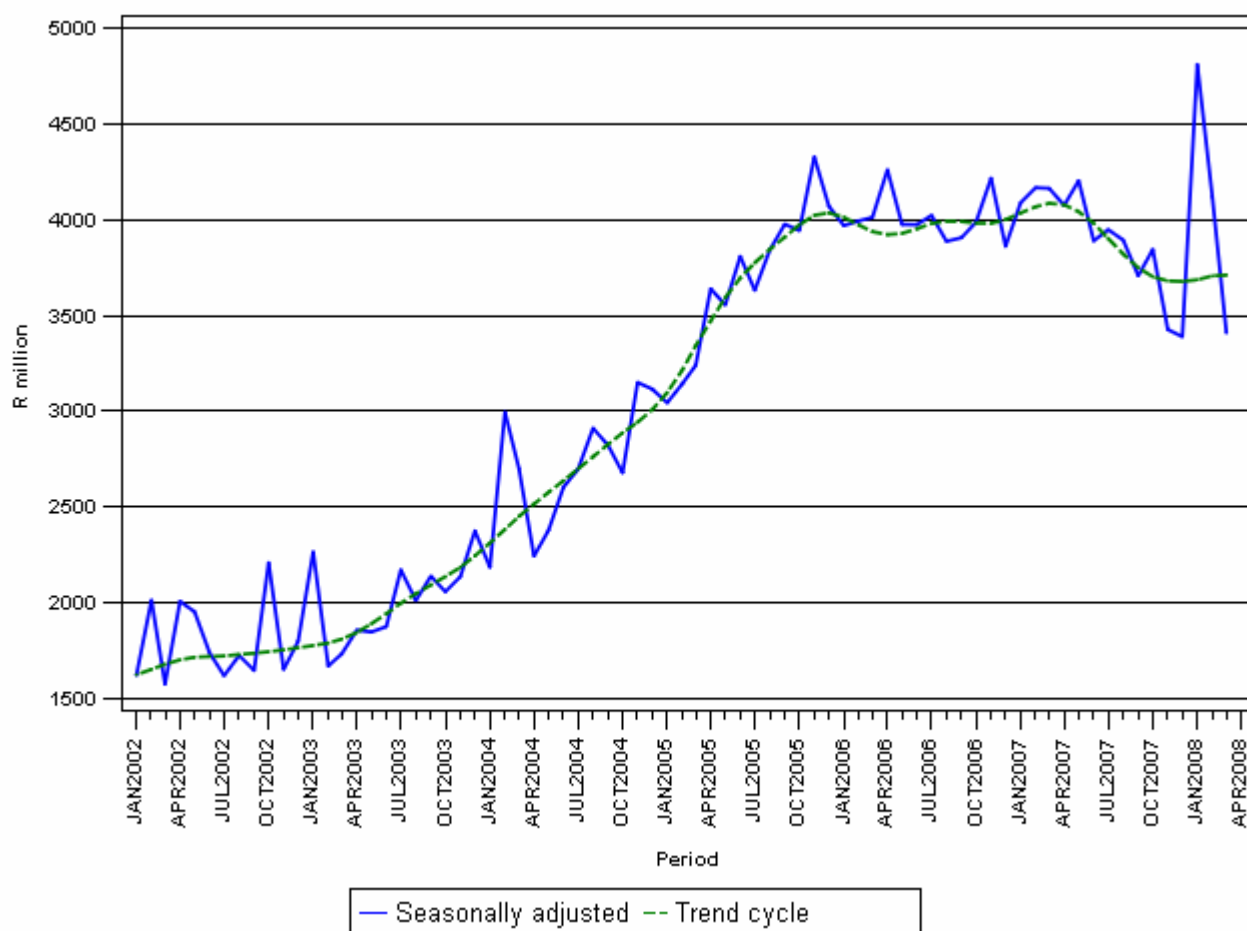
| Seasonally adjusted estimates at constant 2000 prices | October to December 2007 | January to March 2008 | Percentage change between October to December 2007 and January to March 2008 |
|-------------------------------------------------------|--------------------------|-----------------------|------------------------------------------------------------------------------|
| | R'000 | R'000 | |
| Residential buildings | 5 582 304 | 6 444 773 | 15,5 |
| Non-residential buildings | 2 095 264 | 2 486 832 | 18,7 |
| Additions and alterations | 2 984 978 | 3 411 007 | 14,3 |
| Total | 10 662 546 | 12 342 612 | 15,8 |

Seasonally adjusted real value of recorded building plans passed increased

The seasonally adjusted real value of recorded building plans passed by larger municipalities during the first quarter of 2008 increased by 15,8% compared with the previous quarter. Increases were reported for non-residential buildings (18,7%), followed by residential buildings (15,5%) and additions and alterations (14,3%) (see Table D).

Figure 1 shows both the seasonally adjusted and the trend series for recorded building plans passed at constant 2000 prices between January 2002 and March 2008. The sharp increase in the seasonally adjusted value for January 2008 was mainly due to large projects passed for shopping space and additions to non-residential space.

Figure 1 – Real value of recorded building plans passed by larger municipalities at constant 2000 prices



SELECTED BUILDING STATISTICS OF THE PRIVATE SECTOR REGARDING BUILDINGS COMPLETED AT CURRENT PRICES

Table E – Selected key figures regarding buildings reported as completed to larger municipalities at current prices: January to March 2007 versus January to March 2008

| Estimates at current prices | January to March 2007 | January to March 2008 | Difference in value between January to March 2007 and January to March 2008 | Percentage change between January to March 2007 and January to March 2008 |
|----------------------------------|-----------------------|-----------------------|-----------------------------------------------------------------------------|---------------------------------------------------------------------------|
| | R'000 | 1/ R'000 | R'000 | |
| Residential buildings | 5 971 148 | 6 161 853 | 190 705 | 3,2 |
| -Dwelling-houses | 3 790 779 | 3 898 320 | 107 541 | 2,8 |
| -Flats and townhouses | 1 933 489 | 2 173 836 | 240 347 | 12,4 |
| -Other residential buildings | 246 880 | 89 697 | -157 183 | -63,7 |
| Non-residential buildings | 2 147 135 | 2 223 534 | 76 399 | 3,6 |
| Additions and alterations | 1 871 091 | 2 298 137 | 427 046 | 22,8 |
| Total | 9 989 374 | 10 683 524 | 694 150 | 6,9 |

1/ Mar. 2008 figures should be regarded as preliminary because of possible backlogs and incomplete reporting by municipalities.

Total value of buildings reported as completed at current prices increased

As indicated in Table E, the value of buildings reported as completed to larger municipalities (at current prices) during the first quarter of 2008 increased by 6,9% (R694,2 million) compared with the first quarter of 2007.

Increases were reported for additions and alterations (22,8% or R427,0 million), non-residential buildings (3,6% or R76,4 million) and residential buildings (3,2% or R190,7 million) for the first quarter of 2008 compared to the first quarter of 2007.

Table F – Buildings reported as completed to larger municipalities aggregated to provincial level: January to March 2007 versus January to March 2008

| Estimates at current prices | January to March 2007 | January to March 2008 | Percentage contribution to the total value of buildings completed during January to March 2007 | Percentage change between January to March 2007 and January to March 2008 | Contribution (percentage points) to the percentage change in the value of buildings completed between January to March 2007 and January to March 2008 2/ | Difference in value between January to March 2007 and January to March 2008 |
|-----------------------------|-----------------------|-----------------------|------------------------------------------------------------------------------------------------|---------------------------------------------------------------------------|----------------------------------------------------------------------------------------------------------------------------------------------------------|-----------------------------------------------------------------------------|
| | R'000 | 1/ R'000 | | | | R'000 |
| Western Cape | 2 870 444 | 2 944 150 | 28,7 | 2,6 | 0,7 | 73 706 |
| Eastern Cape | 308 508 | 466 583 | 3,1 | 51,2 | 1,6 | 158 075 |
| Northern Cape | 85 599 | 77 548 | 0,9 | -9,4 | -0,1 | -8 051 |
| Free State | 253 823 | 217 352 | 2,5 | -14,4 | -0,4 | -36 471 |
| KwaZulu-Natal | 1 564 931 | 1 732 071 | 15,7 | 10,7 | 1,7 | 167 140 |
| North West | 474 375 | 422 129 | 4,7 | -11,0 | -0,5 | -52 246 |
| Gauteng | 4 033 012 | 4 303 449 | 40,4 | 6,7 | 2,7 | 270 437 |
| Mpumalanga | 268 350 | 402 699 | 2,7 | 50,1 | 1,3 | 134 349 |
| Limpopo | 130 332 | 117 543 | 1,3 | -9,8 | -0,1 | -12 789 |
| Total | 9 989 374 | 10 683 524 | 100,0 | 6,9 | 6,9 | 694 150 |

1/ Mar. 2008 figures should be regarded as preliminary because of possible backlogs and incomplete reporting by municipalities.

2/ The contribution (percentage points) is calculated by multiplying the percentage change of each province between Jan. to Mar. 2007 and Jan. to Mar. 2008 with the percentage contribution of the corresponding province to the total value of buildings completed during Jan. to Mar. 2007, divided by 100.

Five provinces reported increases in the value of buildings completed. The largest contributor to the increase of 6,9% was Gauteng (2,7 percentage points or R270,4 million), followed by KwaZulu-Natal (1,7 percentage points or R167,1 million) and Eastern Cape (1,6 percentage points or R158,1 million) (see Table F).

SELECTED BUILDING STATISTICS OF THE PRIVATE SECTOR REGARDING BUILDINGS COMPLETED AT CONSTANT PRICES

Table G – Selected key figures regarding buildings reported as completed to larger municipalities at constant 2000 prices: January to March 2007 versus January to March 2008

| Estimates at constant 2000 prices | January to March 2007 | January to March 2008 | Difference in value between January to March 2007 and January to March 2008 | Percentage change between January to March 2007 and January to March 2008 |
|-----------------------------------|-----------------------|-----------------------|-----------------------------------------------------------------------------|---------------------------------------------------------------------------|
| | R'000 | R'000 | R'000 | |
| Residential buildings | 3 805 147 | 3 562 242 | -242 905 | -6,4 |
| Non-residential buildings | 1 466 989 | 1 378 176 | -88 813 | -6,1 |
| Additions and alterations | 1 250 453 | 1 374 615 | 124 162 | 9,9 |
| Total | 6 522 589 | 6 315 033 | -207 556 | -3,2 |

1/ Mar. 2008 figures should be regarded as preliminary because of possible backlogs and incomplete reporting by municipalities.

Total real value of buildings reported as completed decreased

As indicated in Table G, the real value of buildings reported as completed to larger municipalities (at constant 2000 prices) during the first quarter of 2008 decreased by 3,2% (-R207,6 million) compared with the first quarter of 2007. Decreases in the real value of buildings completed were reported for residential buildings (-6,4% or -R242,9 million) and non-residential buildings (-6,1% or -R88,8 million). However, an increase of 9,9% (R124,2 million) was reported for additions and alterations during the above-mentioned period.

Table H – Seasonally adjusted key figures regarding buildings reported as completed to large municipalities at constant 2000 prices: Current quarter versus previous quarter

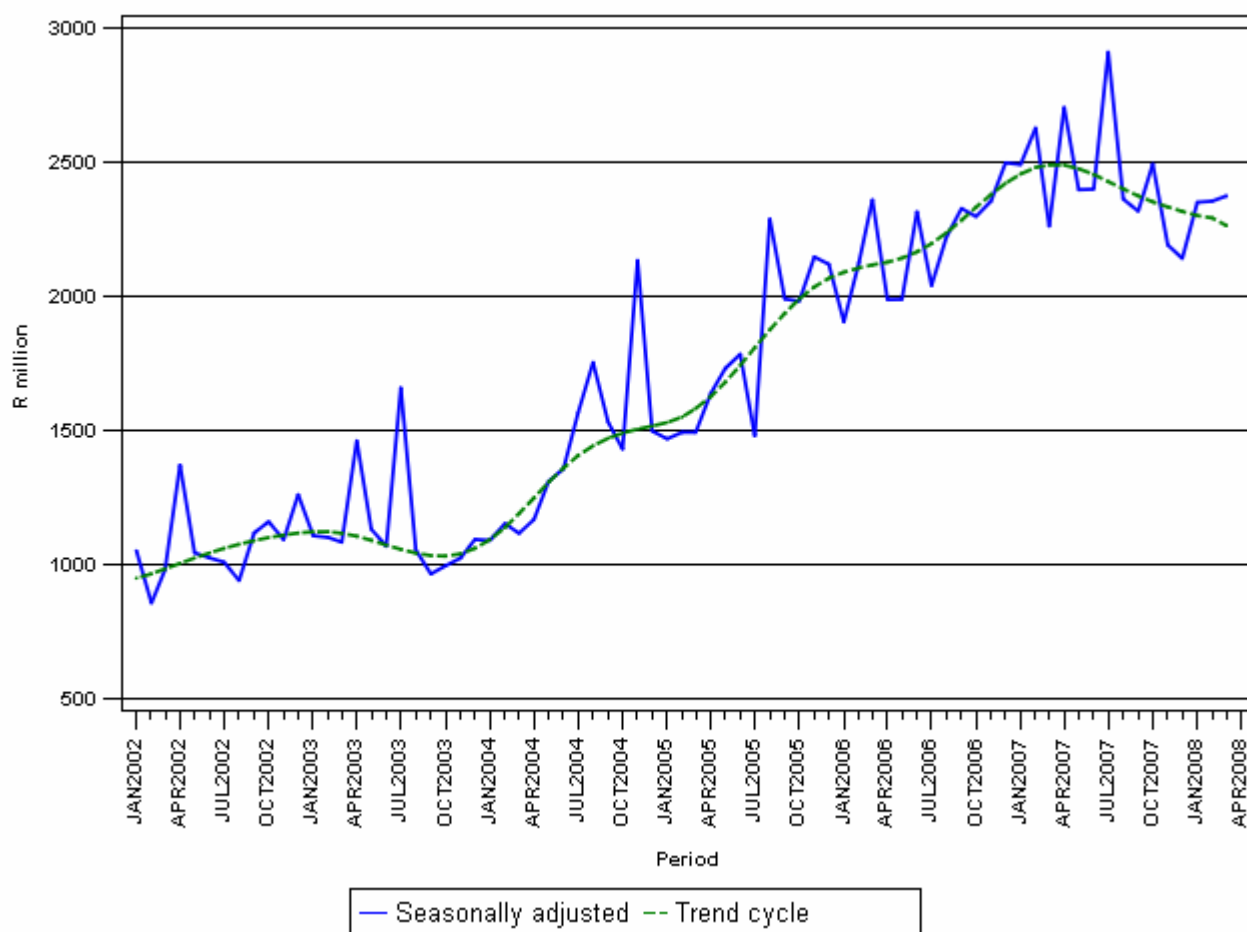
| Seasonally adjusted estimates at constant 2000 prices | October to December 2007 | January to March 2008 | Percentage change between October to December 2007 and January to March 2008 |
|-------------------------------------------------------|--------------------------|-----------------------|------------------------------------------------------------------------------|
| | R'000 | R'000 | |
| Residential buildings | 4 124 308 | 4 297 845 | 4,2 |
| Non-residential buildings | 1 485 294 | 1 354 337 | -8,8 |
| Additions and alterations | 1 218 413 | 1 428 651 | 17,3 |
| Total | 6 828 015 | 7 080 833 | 3,7 |

Seasonally adjusted real value of buildings reported as completed increased

The seasonally adjusted real value of buildings reported as completed to larger municipalities during the first quarter of 2008 increased by 3,7% compared with the fourth quarter 2007. The biggest increase was reported for additions and alterations (17,3%) followed by residential buildings (4,2%). A decrease was reported for non-residential buildings (-8,8%) (see Table H).

Figure 2 shows both the seasonally adjusted and trend series for buildings reported as completed to municipalities at constant 2000 prices between January 2002 and March 2008.

Figure 2 - Real value of buildings reported as completed to larger municipalities at constant 2000 prices



PJ Lehoula
Statistician-General

Table 1 – Value and percentage change of recorded building plans passed by larger municipalities at current prices by type of building

| Year and month | | Residential buildings | | Non-residential buildings | | Additions and alterations | | Total | |
|----------------|--------------|-----------------------|-------------|---------------------------|-------------|---------------------------|-------------|-------------------|-------------|
| | | R'000 | % change 1/ | R'000 | % change 1/ | R'000 | % change 1/ | R'000 | % change 1/ |
| 2007* | January | 2 827 517 | 10,5 | 987 578 | 26,9 | 1 346 316 | 23,4 | 5 161 411 | 16,6 |
| | February | 3 522 549 | 10,4 | 1 365 860 | 44,9 | 1 623 501 | 12,4 | 6 511 910 | 16,8 |
| | March | 3 984 514 | 32,8 | 995 325 | -19,8 | 1 576 921 | 1,2 | 6 556 760 | 13,0 |
| | April | 3 496 868 | 26,5 | 1 184 213 | -29,6 | 1 583 440 | 14,3 | 6 264 521 | 7,4 |
| | May | 4 442 501 | 22,8 | 1 461 981 | 16,6 | 2 117 343 | 14,7 | 8 021 825 | 19,4 |
| | June | 3 919 860 | 2,5 | 1 427 671 | 45,2 | 1 729 470 | 4,2 | 7 077 001 | 9,4 |
| | July | 4 165 556 | 6,3 | 1 397 269 | -3,2 | 2 230 946 | 20,9 | 7 793 771 | 8,1 |
| | August | 3 983 237 | -0,9 | 1 707 558 | 15,5 | 2 197 822 | 30,0 | 7 888 617 | 9,7 |
| | September | 3 553 483 | -5,5 | 1 494 949 | 36,5 | 1 696 134 | -3,5 | 6 744 566 | 2,0 |
| | October | 4 001 808 | 2,6 | 1 524 115 | -12,6 | 2 383 645 | 29,8 | 7 909 568 | 5,7 |
| | November | 3 508 017 | -12,7 | 1 005 570 | -27,2 | 1 863 343 | 0,9 | 6 376 930 | -12,0 |
| | December | 2 436 011 | -9,5 | 1 123 502 | 3,9 | 1 341 123 | -6,8 | 4 900 636 | -6,0 |
| | Total | 43 841 921 | 6,2 | 15 675 591 | 3,8 | 21 690 004 | 11,8 | 81 207 516 | 7,2 |
| 2008 | January* | 2 752 957 | -2,6 | 1 785 056 | 80,8 | 2 090 042 | 55,2 | 6 628 055 | 28,4 |
| | February | 4 159 784 | 18,1 | 1 065 573 | -22,0 | 1 823 239 | 12,3 | 7 048 596 | 8,2 |
| | March | 3 378 159 | -15,2 | 1 124 350 | 13,0 | 1 377 287 | -12,7 | 5 879 796 | -10,3 |

1/ The annual/monthly percentage change is the change in the values of recorded building plans passed by municipalities of the relevant year/month compared with the values of recorded building plans passed by municipalities of the comparable period of the previous year expressed as a percentage.

2/ Preliminary figures.

*Revised.

Table 2 – Seasonally adjusted values and percentage change of recorded building plans passed by larger municipalities at current prices by type of building

| Year and month | | Residential buildings | | Non-residential buildings | | Additions and alterations | | Total | |
|----------------|------------------|-----------------------|-------------|---------------------------|-------------|---------------------------|-------------|------------|-------------|
| | | R'000 | % change 1/ | R'000 | % change 1/ | R'000 | % change 1/ | R'000 | % change 1/ |
| 2007 | January | 3 769 483 | 7,7 | 1 265 476 | -0,8 | 1 815 153 | 8,1 | 6 850 112 | 6,1 |
| | February | 3 762 266 | -0,2 | 1 494 475 | 18,1 | 1 740 950 | -4,1 | 6 997 691 | 2,2 |
| | March | 4 355 133 | 15,8 | 970 347 | -35,1 | 1 658 986 | -4,7 | 6 984 466 | -0,2 |
| | April | 3 953 540 | -9,2 | 1 251 575 | 29,0 | 1 777 747 | 7,2 | 6 982 862 | -0,0 |
| | May | 3 939 024 | -0,4 | 1 440 417 | 15,1 | 1 912 628 | 7,6 | 7 292 069 | 4,4 |
| | June | 3 667 262 | -6,9 | 1 407 232 | -2,3 | 1 702 183 | -11,0 | 6 776 677 | -7,1 |
| | July | 3 677 732 | 0,3 | 1 235 796 | -12,2 | 1 989 372 | 16,9 | 6 902 900 | 1,9 |
| | August | 3 559 127 | -3,2 | 1 314 496 | 6,4 | 1 957 299 | -1,6 | 6 830 922 | -1,0 |
| | September | 3 267 934 | -8,2 | 1 590 521 | 21,0 | 1 675 970 | -14,4 | 6 534 425 | -4,3 |
| | October | 3 561 550 | 9,0 | 1 289 102 | -19,0 | 1 979 833 | 18,1 | 6 830 485 | 4,5 |
| | November | 3 237 118 | -9,1 | 1 092 890 | -15,2 | 1 778 469 | -10,2 | 6 108 477 | -10,6 |
| | December | 3 177 329 | -1,8 | 1 361 078 | 24,5 | 1 563 042 | -12,1 | 6 101 449 | -0,1 |
| 2008 | January | 3 643 077 | 14,7 | 2 268 390 | 66,7 | 2 808 802 | 79,7 | 8 720 269 | 42,9 |
| | February | 4 448 164 | 22,1 | 1 154 828 | -49,1 | 1 966 921 | -30,0 | 7 569 913 | -13,2 |
| | March | 3 706 102 | -16,7 | 1 129 319 | -2,2 | 1 464 246 | -25,6 | 6 299 667 | -16,8 |
| | Oct. - Dec.07 | 9 975 997 | | 3 743 070 | | 5 321 344 | | 19 040 411 | |
| | Jan. - Mar.08 2/ | 11 797 343 | 18,3 | 4 552 537 | 21,6 | 6 239 969 | 17,3 | 22 589 849 | 18,6 |

1/ The percentage change is the change in the seasonally adjusted values of recorded building plans passed by municipalities of the relevant month compared with the seasonally adjusted values of recorded building plans passed by municipalities of the previous month expressed as a percentage.

2/ The percentage change is the change in the seasonally adjusted values of recorded building plans passed by municipalities of the current quarter compared with the seasonally adjusted values of recorded building plans passed by municipalities of the previous quarter expressed as a percentage.

Table 3 – Values and percentage change of recorded building plans passed by larger municipalities at constant 2000 prices by type of building

| Year and month | | Residential buildings | | Non-residential buildings | | Additions and alterations | | Total | |
|----------------|------------------|-----------------------|-------------|---------------------------|-------------|---------------------------|-------------|-------------------|-------------|
| | | R'000 | % change 1/ | R'000 | % change 1/ | R'000 | % change 1/ | R'000 | % change 1/ |
| 2007* | January | 1 691 099 | -1,5 | 590 657 | 13,1 | 805 213 | 10,0 | 3 086 969 | 3,9 |
| | February | 2 110 575 | -0,9 | 818 370 | 30,1 | 972 739 | 0,9 | 3 901 684 | 4,8 |
| | March | 2 378 814 | 19,0 | 594 224 | -28,2 | 941 445 | -9,3 | 3 914 483 | 1,3 |
| | April | 2 052 153 | 12,5 | 694 961 | -37,4 | 929 249 | 1,6 | 3 676 363 | -4,5 |
| | May | 2 567 920 | 9,0 | 845 076 | 3,5 | 1 223 898 | 1,8 | 4 636 894 | 6,0 |
| | June | 2 247 626 | -8,2 | 818 619 | 30,2 | 991 669 | -6,6 | 4 057 914 | -2,0 |
| | July | 2 374 889 | -3,9 | 796 619 | -12,5 | 1 271 919 | 9,3 | 4 443 427 | -2,2 |
| | August | 2 251 689 | -9,2 | 965 267 | 5,9 | 1 242 409 | 19,2 | 4 459 365 | 0,6 |
| | September | 2 008 752 | -13,0 | 845 081 | 25,6 | 958 809 | -11,2 | 3 812 642 | -6,1 |
| | October | 2 246 944 | -5,8 | 855 764 | -19,7 | 1 338 375 | 19,1 | 4 441 083 | -2,9 |
| | November | 1 967 480 | -19,1 | 563 976 | -32,6 | 1 045 061 | -6,5 | 3 576 517 | -18,5 |
| | December | 1 361 661 | -16,0 | 628 006 | -3,5 | 749 650 | -13,5 | 2 739 317 | -12,7 |
| | Total | 25 259 602 | -3,5 | 9 016 620 | -5,9 | 12 470 436 | 1,3 | 46 746 658 | -2,7 |
| 2008 | January* | 1 521 811 | -10,0 | 986 764 | 67,1 | 1 155 358 | 43,5 | 3 663 933 | 18,7 |
| | February | 2 279 334 | 8,0 | 583 876 | -28,7 | 999 035 | 2,7 | 3 862 245 | -1,0 |
| | March | 1 831 973 | -23,0 | 609 734 | 2,6 | 746 902 | -20,7 | 3 188 609 | -18,5 |

1/ The annual/monthly percentage change is the change in the values of recorded building plans passed by municipalities of the relevant year/month compared with the values of recorded building plans passed by municipalities of the comparable period of the previous year expressed as a percentage.

2/ Preliminary figures.

*Revised.

Table 4 – Seasonally adjusted values and percentage change of recorded building plans passed by larger municipalities at constant 2000 prices by type of building

| Year and month | | Residential buildings | | Non-residential buildings | | Additions and alterations | | Total | |
|----------------|------------------|-----------------------|-------------|---------------------------|-------------|---------------------------|-------------|------------|-------------|
| | | R'000 | % change 1/ | R'000 | % change 1/ | R'000 | % change 1/ | R'000 | % change 1/ |
| 2007 | January | 2 249 735 | 7,7 | 754 981 | -1,2 | 1 084 539 | 7,6 | 4 089 255 | 5,9 |
| | February | 2 238 387 | -0,5 | 890 487 | 17,9 | 1 039 162 | -4,2 | 4 168 036 | 1,9 |
| | March | 2 607 018 | 16,5 | 575 510 | -35,4 | 982 151 | -5,5 | 4 164 679 | -0,1 |
| | April | 2 304 811 | -11,6 | 735 144 | 27,7 | 1 035 826 | 5,5 | 4 075 781 | -2,1 |
| | May | 2 271 352 | -1,5 | 830 767 | 13,0 | 1 102 490 | 6,4 | 4 204 609 | 3,2 |
| | June | 2 104 397 | -7,4 | 807 626 | -2,8 | 978 149 | -11,3 | 3 890 172 | -7,5 |
| | July | 2 102 054 | -0,1 | 707 017 | -12,5 | 1 139 839 | 16,5 | 3 948 910 | 1,5 |
| | August | 2 028 200 | -3,5 | 749 035 | 5,9 | 1 116 695 | -2,0 | 3 893 930 | -1,4 |
| | September | 1 856 356 | -8,5 | 902 213 | 20,5 | 949 370 | -15,0 | 3 707 939 | -4,8 |
| | October | 2 005 326 | 8,0 | 725 095 | -19,6 | 1 115 092 | 17,5 | 3 845 513 | 3,7 |
| | November | 1 816 210 | -9,4 | 612 658 | -15,5 | 998 197 | -10,5 | 3 427 065 | -10,9 |
| | December | 1 760 768 | -3,1 | 757 511 | 23,6 | 871 689 | -12,7 | 3 389 968 | -1,1 |
| 2008 | January | 2 009 631 | 14,1 | 1 250 580 | 65,1 | 1 551 219 | 78,0 | 4 811 430 | 41,9 |
| | February | 2 418 398 | 20,3 | 628 753 | -49,7 | 1 072 985 | -30,8 | 4 120 136 | -14,4 |
| | March | 2 016 744 | -16,6 | 607 499 | -3,4 | 786 803 | -26,7 | 3 411 046 | -17,2 |
| | Oct. - Dec.07 | 5 582 304 | | 2 095 264 | | 2 984 978 | | 10 662 546 | |
| | Jan. - Mar.08 2/ | 6 444 773 | 15,5 | 2 486 832 | 18,7 | 3 411 007 | 14,3 | 12 342 612 | 15,8 |

1/ The percentage change is the change in the seasonally adjusted values of recorded building plans passed by municipalities of the relevant month compared with the seasonally adjusted values of recorded building plans passed by municipalities of the previous month expressed as a percentage.

2/ The percentage change is the change in the seasonally adjusted values of recorded building plans passed by municipalities of the current quarter compared with the seasonally adjusted values of recorded building plans passed by municipalities of the previous quarter expressed as a percentage.

Table 5 – Values and percentage change of buildings reported as completed to larger municipalities at current prices by type of building

| Year and month | | Residential buildings | | Non-residential buildings | | Additions and alterations | | Total | |
|----------------|--------------|-----------------------|-------------|---------------------------|-------------|---------------------------|-------------|-------------------|-------------|
| | | R'000 | % change 1/ | R'000 | % change 1/ | R'000 | % change 1/ | R'000 | % change 1/ |
| 2007* | January | 1 643 461 | 30,6 | 483 947 | 52,8 | 637 592 | 56,7 | 2 765 000 | 39,5 |
| | February | 2 220 763 | 25,3 | 884 589 | 116,4 | 564 618 | 2,1 | 3 669 970 | 34,2 |
| | March | 2 106 924 | -0,3 | 778 599 | 18,7 | 668 881 | 13,5 | 3 554 404 | 5,8 |
| | April | 2 349 465 | 34,4 | 628 306 | 134,1 | 555 935 | 23,4 | 3 533 706 | 43,2 |
| | May | 2 684 077 | 34,9 | 713 817 | 40,0 | 587 834 | 2,1 | 3 985 728 | 29,6 |
| | June | 2 576 642 | 11,6 | 580 714 | 19,5 | 659 194 | 16,2 | 3 816 550 | 13,5 |
| | July | 2 781 646 | 22,6 | 1 108 133 | 232,1 | 720 746 | 29,9 | 4 610 525 | 46,1 |
| | August | 2 668 958 | 12,2 | 560 927 | 13,9 | 782 187 | 40,3 | 4 012 072 | 17,0 |
| | September | 2 340 305 | -7,9 | 943 457 | 133,0 | 677 900 | 1,8 | 3 961 662 | 9,7 |
| | October | 2 524 579 | 6,5 | 1 216 247 | 58,3 | 844 411 | 40,0 | 4 585 237 | 22,5 |
| | November | 2 705 875 | 2,2 | 698 089 | 7,2 | 897 925 | 5,2 | 4 301 889 | 3,6 |
| | December | 2 516 899 | -5,9 | 624 843 | 15,3 | 440 298 | -19,3 | 3 582 040 | -4,8 |
| | Total | 29 119 594 | 11,7 | 9 221 668 | 57,9 | 8 037 521 | 16,1 | 46 378 783 | 19,4 |
| 2008 | January* | 1 605 221 | -2,3 | 673 686 | 39,2 | 606 948 | -4,8 | 2 885 855 | 4,4 |
| | February | 2 127 174 | -4,2 | 620 965 | -29,8 | 905 697 | 60,4 | 3 653 836 | -0,4 |
| | March 2/ | 2 429 458 | 15,3 | 928 883 | 19,3 | 785 492 | 17,4 | 4 143 833 | 16,6 |

1/ The annual/monthly percentage change is the change in the values of buildings reported as completed to municipalities of the relevant year/month compared with the values of buildings reported as completed to municipalities of the comparable period of the previous year expressed as a percentage.

2/ Preliminary figures.

* Revised.

Table 6 – Seasonally adjusted values and percentage change of buildings reported as completed to larger municipalities at current prices by type of building

| Year and month | | Residential buildings | | Non-residential buildings | | Additions and alterations | | Total | |
|----------------|------------------|-----------------------|-------------|---------------------------|-------------|---------------------------|-------------|------------|-------------|
| | | R'000 | % change 1/ | R'000 | % change 1/ | R'000 | % change 1/ | R'000 | % change 1/ |
| 2007 | January | 2 401 387 | -2,7 | 570 217 | -11,1 | 724 608 | 15,4 | 3 696 212 | -1,1 |
| | February | 2 532 769 | 5,5 | 906 956 | 59,1 | 585 360 | -19,2 | 4 025 085 | 8,9 |
| | March | 2 242 764 | -11,5 | 624 751 | -31,1 | 652 767 | 11,5 | 3 520 282 | -12,5 |
| | April | 2 637 140 | 17,6 | 890 368 | 42,5 | 663 328 | 1,6 | 4 190 836 | 19,0 |
| | May | 2 603 911 | -1,3 | 620 756 | -30,3 | 559 082 | -15,7 | 3 783 749 | -9,7 |
| | June | 2 572 005 | -1,2 | 591 808 | -4,7 | 660 208 | 18,1 | 3 824 021 | 1,1 |
| | July | 2 557 257 | -0,6 | 1 366 274 | 130,9 | 712 218 | 7,9 | 4 635 749 | 21,2 |
| | August | 2 467 147 | -3,5 | 624 905 | -54,3 | 764 378 | 7,3 | 3 856 430 | -16,8 |
| | September | 2 209 772 | -10,4 | 866 158 | 38,6 | 662 175 | -13,4 | 3 738 105 | -3,1 |
| | October | 2 429 447 | 9,9 | 850 769 | -1,8 | 773 549 | 16,8 | 4 053 765 | 8,4 |
| | November | 2 218 002 | -8,7 | 672 533 | -20,9 | 731 005 | -5,5 | 3 621 540 | -10,7 |
| | December | 2 304 053 | 3,9 | 757 635 | 12,7 | 504 836 | -30,9 | 3 566 524 | -1,5 |
| 2008 | January | 2 365 837 | 2,7 | 809 900 | 6,9 | 693 803 | 37,4 | 3 869 540 | 8,5 |
| | February | 2 420 757 | 2,3 | 630 208 | -22,2 | 945 013 | 36,2 | 3 995 978 | 3,3 |
| | March | 2 583 482 | 6,7 | 726 507 | 15,3 | 758 928 | -19,7 | 4 068 917 | 1,8 |
| | Oct. - Dec.07 | 6 951 502 | | 2 280 937 | | 2 009 390 | | 11 241 829 | |
| | Jan. - Mar.08 2/ | 7 370 076 | 6,0 | 2 166 615 | -5,0 | 2 397 744 | 19,3 | 11 934 435 | 6,2 |

1/ The percentage change is the change in the seasonally adjusted values of buildings reported as completed to municipalities of the relevant month compared with the seasonally adjusted values of buildings reported as completed to municipalities of the previous month expressed as a percentage.

2/ The percentage change is the change in the seasonally adjusted values of buildings reported as completed to municipalities of the current quarter compared with the seasonally adjusted values of buildings reported as completed to municipalities of the previous quarter expressed as a percentage.

Table 7 – Values and percentage change of buildings reported as completed to larger municipalities at constant 2000 prices by type of building

| Year and month | | Residential buildings | | Non-residential buildings | | Additions and alterations | | Total | |
|----------------|--------------|-----------------------|-------------|---------------------------|-------------|---------------------------|-------------|-------------------|-------------|
| | | R'000 | % change 1/ | R'000 | % change 1/ | R'000 | % change 1/ | R'000 | % change 1/ |
| 2007* | January | 1 061 053 | 21,2 | 332 381 | 43,0 | 427 914 | 48,2 | 1 821 348 | 30,4 |
| | February | 1 412 524 | 15,0 | 604 227 | 102,6 | 376 915 | -3,8 | 2 393 666 | 24,8 |
| | March | 1 331 570 | -8,7 | 530 381 | 11,1 | 445 624 | 7,5 | 2 307 575 | -1,8 |
| | April | 1 485 694 | 23,7 | 427 128 | 119,9 | 366 954 | 16,7 | 2 279 776 | 33,4 |
| | May | 1 670 485 | 22,7 | 483 616 | 31,8 | 382 704 | -4,6 | 2 536 805 | 19,2 |
| | June | 1 598 013 | 1,2 | 392 640 | 12,4 | 421 749 | 7,0 | 2 412 402 | 3,9 |
| | July | 1 701 322 | 10,9 | 743 713 | 214,1 | 454 443 | 19,3 | 2 899 478 | 34,7 |
| | August | 1 613 224 | 0,6 | 374 451 | 7,3 | 482 236 | 26,6 | 2 469 911 | 5,9 |
| | September | 1 413 750 | -17,2 | 628 552 | 120,6 | 416 400 | -8,2 | 2 458 702 | 0,5 |
| | October | 1 503 001 | -5,0 | 802 803 | 49,8 | 516 459 | 26,0 | 2 822 263 | 11,6 |
| | November | 1 591 397 | -9,1 | 454 485 | 0,1 | 543 538 | -6,0 | 2 589 420 | -7,0 |
| | December | 1 467 797 | -16,2 | 399 772 | 6,2 | 265 080 | -28,2 | 2 132 649 | -14,6 |
| | Total | 17 849 830 | 1,2 | 6 174 149 | 48,6 | 5 100 016 | 6,8 | 29 123 995 | 9,6 |
| 2008 | January* | 931 131 | -12,2 | 424 770 | 27,8 | 363 007 | -15,2 | 1 718 908 | -5,6 |
| | February | 1 227 414 | -13,1 | 382 839 | -36,6 | 542 658 | 44,0 | 2 152 911 | -10,1 |
| | March 2/ | 1 403 697 | 5,4 | 570 567 | 7,6 | 468 950 | 5,2 | 2 443 214 | 5,9 |

1/ The annual/monthly percentage change is the change in the values of buildings reported as completed to municipalities of the relevant year/month compared with the values of buildings reported as completed to municipalities of the comparable period of the previous year expressed as a percentage.

2/ Preliminary figures.

*Revised.

Table 8 – Seasonally adjusted values and percentage change of buildings reported as completed to larger municipalities at constant 2000 prices by type of building

| Year and month | | Residential buildings | | Non-residential buildings | | Additions and alterations | | Total | |
|----------------|------------------|-----------------------|------------|---------------------------|-------------|---------------------------|-------------|-----------|-------------|
| | | R'000 | %change 1/ | R'000 | % change 1/ | R'000 | % change 1/ | R'000 | % change 1/ |
| 2007 | January | 1 613 037 | -1,0 | 393 591 | -11,9 | 485 465 | 14,7 | 2 492 093 | -0,3 |
| | February | 1 613 395 | -0,0 | 625 283 | 58,9 | 390 115 | -19,6 | 2 628 793 | 5,5 |
| | March | 1 403 175 | -13,0 | 427 361 | -31,7 | 431 816 | 10,7 | 2 262 352 | -13,9 |
| | April | 1 663 458 | 18,5 | 604 305 | 41,4 | 437 550 | 1,3 | 2 705 313 | 19,6 |
| | May | 1 614 786 | -2,9 | 418 774 | -30,7 | 364 654 | -16,7 | 2 398 214 | -11,4 |
| | June | 1 580 885 | -2,1 | 396 892 | -5,2 | 422 323 | 15,8 | 2 400 100 | 0,1 |
| | July | 1 547 187 | -2,1 | 914 459 | 130,4 | 450 078 | 6,6 | 2 911 724 | 21,3 |
| | August | 1 471 485 | -4,9 | 416 810 | -54,4 | 474 881 | 5,5 | 2 363 176 | -18,8 |
| | September | 1 335 108 | -9,3 | 574 822 | 37,9 | 408 105 | -14,1 | 2 318 035 | -1,9 |
| | October | 1 459 471 | 9,3 | 561 203 | -2,4 | 473 456 | 16,0 | 2 494 130 | 7,6 |
| | November | 1 311 983 | -10,1 | 438 024 | -21,9 | 441 885 | -6,7 | 2 191 892 | -12,1 |
| | December | 1 352 854 | 3,1 | 486 067 | 11,0 | 303 072 | -31,4 | 2 141 993 | -2,3 |
| 2008 | January | 1 423 655 | 5,2 | 513 471 | 5,6 | 414 178 | 36,7 | 2 351 304 | 9,8 |
| | February | 1 398 105 | -1,8 | 392 455 | -23,6 | 564 928 | 36,4 | 2 355 488 | 0,2 |
| | March | 1 476 085 | 5,6 | 448 411 | 14,3 | 449 545 | -20,4 | 2 374 041 | 0,8 |
| | Oct. - Dec.07 | 4 124 308 | | 1 485 294 | | 1 218 413 | | 6 828 015 | |
| | Jan. - Mar.08 2/ | 4 297 845 | 4,2 | 1 354 337 | -8,8 | 1 428 651 | 17,3 | 7 080 833 | 3,7 |

1/ The percentage change is the change in the seasonally adjusted values of buildings reported as completed to municipalities of the relevant month compared with the seasonally adjusted values of buildings reported as completed to municipalities of the previous month expressed as a percentage.

2/ The percentage change is the change in the seasonally adjusted values of buildings reported as completed to municipalities of the current quarter compared with the seasonally adjusted values of buildings reported as completed to municipalities of the previous quarter expressed as a percentage.

Table 9 – Recorded building plans passed by larger municipalities at current prices by type of building: South Africa

| | | | Mar. 2007* | Feb. 2008 | Mar. 2008 | Jan. - Mar. 2007 | Jan. - Mar. 2008 | % Change 1/ |
|------------------------------|----------------------------------------|----------------|------------|-----------|-----------|------------------|------------------|-------------|
| Category of building | Type of building | Measuring unit | | | | | | |
| 1. Residential buildings | 1. Dwelling-houses < 80 square metres | Number | 2 399 | 1 741 | 3 108 | 8 498 | 5 862 | -31,0 |
| | | square metres | 106 175 | 86 003 | 142 789 | 368 977 | 279 736 | -24,2 |
| | | R'000 | 225 467 | 206 871 | 288 291 | 757 964 | 604 153 | -20,3 |
| | 2. Dwelling-houses >= 80 square metres | Number | 3 087 | 1 993 | 2 045 | 7 751 | 5 729 | -26,1 |
| | | square metres | 731 460 | 511 238 | 534 897 | 1 908 481 | 1 476 389 | -22,6 |
| | | R'000 | 2 325 865 | 1 854 616 | 1 938 140 | 6 098 775 | 5 341 488 | -12,4 |
| | 3. Flats and townhouses | Number | 3 120 | 4 021 | 2 560 | 7 917 | 8 479 | 7,1 |
| | | square metres | 400 775 | 437 093 | 275 504 | 958 641 | 966 101 | 0,8 |
| | | R'000 | 1 379 295 | 1 839 335 | 1 127 616 | 3 259 188 | 3 988 909 | 22,4 |
| | 4. Other residential buildings 2/ | square metres | 18 653 | 68 695 | 6 816 | 65 683 | 87 772 | 33,6 |
| | | R'000 | 53 887 | 258 962 | 24 112 | 218 653 | 356 350 | 63,0 |
| | 5. Total residential buildings | R'000 | 3 984 514 | 4 159 784 | 3 378 159 | 10 334 580 | 10 290 900 | -0,4 |
| 2. Non-residential buildings | 1. Office and banking space | square metres | 102 156 | 55 261 | 80 509 | 217 294 | 168 759 | -22,3 |
| | | R'000 | 371 519 | 218 220 | 363 319 | 836 393 | 733 602 | -12,3 |
| | 2. Shopping space | square metres | 42 880 | 53 504 | 87 618 | 232 681 | 403 952 | 73,6 |
| | | R'000 | 134 169 | 181 905 | 330 191 | 751 842 | 1 730 036 | 130,1 |
| | 3. Industrial and warehouse space | square metres | 163 363 | 197 917 | 153 719 | 502 216 | 467 190 | -7,0 |
| | | R'000 | 447 730 | 618 485 | 404 231 | 1 461 513 | 1 385 608 | -5,2 |
| | 4. Other non-residential buildings 3/ | square metres | 14 721 | 16 394 | 8 623 | 84 630 | 40 372 | -52,3 |
| | | R'000 | 41 907 | 46 963 | 26 609 | 299 015 | 125 733 | -58,0 |
| | 5. Total non-residential buildings | R'000 | 995 325 | 1 065 573 | 1 124 350 | 3 348 763 | 3 974 979 | 18,7 |
| 3. Additions and alterations | 1. Dwelling-houses | square metres | 440 536 | 341 446 | 322 762 | 1 181 140 | 985 239 | -16,6 |
| | | R'000 | 1 331 874 | 1 169 831 | 1 074 759 | 3 549 096 | 3 339 421 | -5,9 |
| | 2. Other buildings 4/ | square metres | 60 088 | 149 367 | 79 596 | 246 953 | 456 140 | 84,7 |
| | | R'000 | 245 047 | 653 408 | 302 528 | 997 642 | 1 951 147 | 95,6 |
| | 3. Total additions and alterations | R'000 | 1 576 921 | 1 823 239 | 1 377 287 | 4 546 738 | 5 290 568 | 16,4 |
| 4. Recorded plans passed | 1. Total at current prices | R'000 | 6 556 760 | 7 048 596 | 5 879 796 | 18 230 081 | 19 556 447 | 7,3 |

1/ The percentage change between cumulative figures for 2007 and 2008.

2/ Other residential buildings include institutions for the disabled, boarding houses, hostels and tourism accommodation e.g. hotels, motels, guesthouses, holiday chalets, bed-and-breakfast accommodation and casinos.

3/ Other non-residential space includes churches, sport and recreation clubs, schools, crèches, hospitals and all other non-residential space.

4/ Other buildings include other residential buildings, non-residential buildings and internal alterations. No square metres are collected for internal alterations.

*Revised.

Table 10 – Recorded building plans passed by larger municipalities at current prices by type of building: Western Cape

| | | | Mar. 2007* | Feb. 2008 | Mar. 2008 | Jan. - Mar. 2007 | Jan. - Mar. 2008 | % Change 1/ |
|------------------------------------|----------------------------------------|--------------------|---------------|-----------|-----------|------------------|------------------|-------------|
| Category of building | Type of building | Measuring unit | | | | | | |
| 1. Residential buildings | 1. Dwelling-houses < 80 square metres | Number | 228 | 197 | 297 | 794 | 909 | 14,5 |
| | | square metres | 9 832 | 10 190 | 14 620 | 36 368 | 44 110 | 21,3 |
| | | R'000 | 17 742 | 23 086 | 35 048 | 75 119 | 84 262 | 12,2 |
| | 2. Dwelling-houses >= 80 square metres | Number | 720 | 486 | 446 | 1 769 | 1 384 | -21,8 |
| | | square metres | 163 399 | 119 445 | 127 281 | 414 850 | 355 571 | -14,3 |
| | | R'000 | 554 970 | 460 559 | 461 930 | 1 372 526 | 1 326 812 | -3,3 |
| | 3. Flats and townhouses | Number | 583 | 1 526 | 385 | 1 493 | 2 286 | 53,1 |
| | | square metres | 66 225 | 164 969 | 33 422 | 163 246 | 240 924 | 47,6 |
| | | R'000 | 265 633 | 598 211 | 121 741 | 598 539 | 877 749 | 46,6 |
| | 4. Other residential buildings 2/ | square metres | 282 | 445 | 4 652 | 34 782 | 5 097 | -85,3 |
| | | R'000 | 1 096 | 1 689 | 17 217 | 126 057 | 18 906 | -85,0 |
| | 5. Total residential buildings | R'000 | 839 441 | 1 083 545 | 635 936 | 2 172 241 | 2 307 729 | 6,2 |
| 2. Non-residential buildings | 1. Office and banking space | square metres | 57 432 | 11 481 | 14 904 | 90 532 | 30 074 | -66,8 |
| | | R'000 | 190 676 | 43 433 | 58 254 | 299 655 | 115 619 | -61,4 |
| | 2. Shopping space | square metres | 6 059 | 13 775 | 31 431 | 26 433 | 45 206 | 71,0 |
| | | R'000 | 17 747 | 54 575 | 121 142 | 83 203 | 175 717 | 111,2 |
| | 3. Industrial and warehouse space | square metres | 22 621 | 58 110 | 42 875 | 106 513 | 151 374 | 42,1 |
| | | R'000 | 64 673 | 201 935 | 104 728 | 328 660 | 479 955 | 46,0 |
| | 4. Other non-residential buildings 3/ | square metres | 2 550 | 6 885 | 3 436 | 27 363 | 13 427 | -50,9 |
| | | R'000 | 8 529 | 14 480 | 9 713 | 85 453 | 31 913 | -62,7 |
| | 5. Total non-residential buildings | R'000 | 281 625 | 314 423 | 293 837 | 796 971 | 803 204 | 0,8 |
| | 3. Additions and alterations | 1. Dwelling-houses | square metres | 122 460 | 91 385 | 90 308 | 335 300 | 254 378 |
| R'000 | | | 344 186 | 291 999 | 290 787 | 956 341 | 818 003 | -14,5 |
| 2. Other buildings 4/ | | square metres | 12 062 | 21 067 | 9 631 | 63 697 | 68 138 | 7,0 |
| | | R'000 | 71 383 | 119 666 | 47 583 | 288 330 | 319 955 | 11,0 |
| 3. Total additions and alterations | | R'000 | 415 569 | 411 665 | 338 370 | 1 244 671 | 1 137 958 | -8,6 |
| 4. Recorded plans passed | 1. Total at current prices | R'000 | 1 536 635 | 1 809 633 | 1 268 143 | 4 213 883 | 4 248 891 | 0,8 |

1/ The percentage change between cumulative figures for 2007 and 2008.

2/ Other residential buildings include institutions for the disabled, boarding houses, hostels and tourism accommodation e.g. hotels, motels, guesthouses, holiday chalets, bed-and-breakfast accommodation and casinos.

3/ Other non-residential space includes churches, sport and recreation clubs, schools, crèches, hospitals and all other non-residential space.

4/ Other buildings include other residential buildings, non-residential buildings and internal alterations. No square metres are collected for internal alterations.

*Revised.

Table 11 – Recorded building plans passed by larger municipalities at current prices by type of building: Eastern Cape

| | | | Mar. 2007* | Feb. 2008 | Mar. 2008 | Jan. - Mar. 2007 | Jan. - Mar. 2008 | % Change 1/ | |
|---------------------------------------|----------------------------------------|-----------------------------|---------------|-----------|-----------|------------------|------------------|-------------|-------|
| Category of building | Type of building | Measuring unit | | | | | | | |
| 1. Residential buildings | 1. Dwelling-houses < 80 square metres | Number | 145 | 45 | 116 | 280 | 205 | -26,8 | |
| | | square metres | 6 380 | 2 002 | 4 893 | 12 388 | 9 004 | -27,3 | |
| | | R'000 | 9 475 | 3 751 | 5 608 | 15 551 | 13 559 | -12,8 | |
| | 2. Dwelling-houses >= 80 square metres | Number | 145 | 83 | 100 | 440 | 251 | -43,0 | |
| | | square metres | 38 682 | 27 053 | 24 197 | 112 479 | 71 740 | -36,2 | |
| | | R'000 | 109 958 | 86 554 | 68 212 | 304 707 | 236 765 | -22,3 | |
| | 3. Flats and townhouses | Number | 84 | 0 | 4 | 128 | 4 | -96,9 | |
| | | square metres | 14 545 | 0 | 498 | 21 666 | 498 | -97,7 | |
| | | R'000 | 32 422 | 0 | 1 263 | 50 153 | 1 263 | -97,5 | |
| | 4. Other residential buildings 2/ | square metres | 2 240 | 0 | 1 169 | 2 661 | 1 169 | -56,1 | |
| | | R'000 | 4 502 | 0 | 3 372 | 5 610 | 3 372 | -39,9 | |
| | 5. Total residential buildings | R'000 | 156 357 | 90 305 | 78 455 | 376 021 | 254 959 | -32,2 | |
| | 2. Non-residential buildings | 1. Office and banking space | square metres | 3 918 | 0 | 3 435 | 5 047 | 3 435 | -31,9 |
| | | | R'000 | 11 006 | 0 | 8 389 | 13 892 | 8 389 | -39,6 |
| 2. Shopping space | | square metres | 9 846 | 1 936 | 0 | 75 785 | 85 499 | 12,8 | |
| | | R'000 | 18 608 | 4 353 | 0 | 191 713 | 362 125 | 88,9 | |
| 3. Industrial and warehouse space | | square metres | 37 | 7 686 | 2 720 | 13 959 | 13 755 | -1,5 | |
| | | R'000 | 100 | 16 756 | 6 558 | 38 634 | 31 793 | -17,7 | |
| 4. Other non-residential buildings 3/ | | square metres | 276 | 255 | 1 584 | 1 780 | 2 222 | 24,8 | |
| | | R'000 | 602 | 612 | 5 069 | 4 418 | 6 752 | 52,8 | |
| 5. Total non-residential buildings | | R'000 | 30 316 | 21 721 | 20 016 | 248 657 | 409 059 | 64,5 | |
| 3. Additions and alterations | | 1. Dwelling-houses | square metres | 36 282 | 16 351 | 21 647 | 99 325 | 52 794 | -46,8 |
| | R'000 | | 105 636 | 41 078 | 56 071 | 262 281 | 135 555 | -48,3 | |
| | 2. Other buildings 4/ | square metres | 1 164 | 850 | 3 280 | 10 165 | 9 662 | -4,9 | |
| | | R'000 | 6 931 | 7 586 | 6 989 | 29 955 | 29 384 | -1,9 | |
| | 3. Total additions and alterations | R'000 | 112 567 | 48 664 | 63 060 | 292 236 | 164 939 | -43,6 | |
| 4. Recorded plans passed | 1. Total at current prices | R'000 | 299 240 | 160 690 | 161 531 | 916 914 | 828 957 | -9,6 | |

1/ The percentage change between cumulative figures for 2007 and 2008.

2/ Other residential buildings include institutions for the disabled, boarding houses, hostels and tourism accommodation e.g. hotels, motels, guesthouses, holiday chalets, bed-and-breakfast accommodation and casinos.

3/ Other non-residential space includes churches, sport and recreation clubs, schools, crèches, hospitals and all other non-residential space.

4/ Other buildings include other residential buildings, non-residential buildings and internal alterations. No square metres are collected for internal alterations.

*Revised.

Table 12 – Recorded building plans passed by larger municipalities at current prices by type of building: Northern Cape

| | | | Mar. 2007* | Feb. 2008 | Mar. 2008 | Jan. - Mar. 2007 | Jan. - Mar. 2008 | % Change 1/ |
|------------------------------|----------------------------------------|----------------|------------|-----------|-----------|------------------|------------------|-------------|
| Category of building | Type of building | Measuring unit | | | | | | |
| 1. Residential buildings | 1. Dwelling-houses < 80 square metres | Number | 10 | 0 | 0 | 26 | 7 | -73,1 |
| | | square metres | 507 | 0 | 0 | 1 354 | 278 | -79,5 |
| | | R'000 | 1 587 | 0 | 0 | 4 375 | 469 | -89,3 |
| | 2. Dwelling-houses >= 80 square metres | Number | 89 | 23 | 12 | 147 | 59 | -59,9 |
| | | square metres | 9 977 | 5 053 | 2 812 | 22 577 | 12 668 | -43,9 |
| | | R'000 | 22 921 | 15 335 | 9 131 | 57 815 | 40 172 | -30,5 |
| | 3. Flats and townhouses | Number | 2 | 1 | 99 | 8 | 112 | 1 300,0 |
| | | square metres | 218 | 148 | 5 609 | 1 431 | 7 642 | 434,0 |
| | | R'000 | 786 | 414 | 14 514 | 4 148 | 20 206 | 387,1 |
| | 4. Other residential buildings 2/ | square metres | 0 | 931 | 0 | 0 | 2 167 | |
| | | R'000 | 0 | 3 259 | 0 | 0 | 7 585 | |
| | 5. Total residential buildings | R'000 | 25 294 | 19 008 | 23 645 | 66 338 | 68 432 | 3,2 |
| 2. Non-residential buildings | 1. Office and banking space | square metres | 0 | 2 587 | 1 411 | 1 078 | 4 561 | 323,1 |
| | | R'000 | 0 | 7 736 | 3 723 | 2 587 | 13 113 | 406,9 |
| | 2. Shopping space | square metres | 260 | 2 623 | 0 | 4 850 | 2 623 | -45,9 |
| | | R'000 | 572 | 8 516 | 0 | 8 500 | 8 516 | 0,2 |
| | 3. Industrial and warehouse space | square metres | 239 | 898 | 509 | 1 075 | 2 359 | 119,4 |
| | | R'000 | 220 | 2 514 | 1 120 | 1 892 | 6 195 | 227,4 |
| | 4. Other non-residential buildings 3/ | square metres | 0 | 253 | 276 | 139 | 853 | 513,7 |
| | | R'000 | 0 | 708 | 607 | 273 | 2 222 | 713,9 |
| | 5. Total non-residential buildings | R'000 | 792 | 19 474 | 5 450 | 13 252 | 30 046 | 126,7 |
| 3. Additions and alterations | 1. Dwelling-houses | square metres | 7 934 | 6 450 | 4 882 | 13 281 | 14 478 | 9,0 |
| | | R'000 | 15 557 | 19 293 | 14 922 | 26 525 | 43 583 | 64,3 |
| | 2. Other buildings 4/ | square metres | 612 | 842 | 1 455 | 1 191 | 2 369 | 98,9 |
| | | R'000 | 1 526 | 2 358 | 4 154 | 4 174 | 6 914 | 65,6 |
| | 3. Total additions and alterations | R'000 | 17 083 | 21 651 | 19 076 | 30 699 | 50 497 | 64,5 |
| 4. Recorded plans passed | 1. Total at current prices | R'000 | 43 169 | 60 133 | 48 171 | 110 289 | 148 975 | 35,1 |

1/ The percentage change between cumulative figures for 2007 and 2008.

2/ Other residential buildings include institutions for the disabled, boarding houses, hostels and tourism accommodation e.g. hotels, motels, guesthouses, holiday chalets, bed-and-breakfast accommodation and casinos.

3/ Other non-residential space includes churches, sport and recreation clubs, schools, crèches, hospitals and all other non-residential space.

4/ Other buildings include other residential buildings, non-residential buildings and internal alterations. No square metres are collected for internal alterations.

*Revised.

Table 13 – Recorded building plans passed by larger municipalities at current prices by type of building: Free State

| | | | Mar. 2007* | Feb. 2008 | Mar. 2008 | Jan. - Mar. 2007 | Jan. - Mar. 2008 | % Change 1/ |
|------------------------------|----------------------------------------|----------------|------------|-----------|-----------|------------------|------------------|-------------|
| Category of building | Type of building | Measuring unit | | | | | | |
| 1. Residential buildings | 1. Dwelling-houses < 80 square metres | Number | 28 | 15 | 12 | 94 | 35 | -62,8 |
| | | square metres | 1 598 | 1 004 | 802 | 4 931 | 2 269 | -54,0 |
| | | R'000 | 3 202 | 2 150 | 1 882 | 8 003 | 5 202 | -35,0 |
| | 2. Dwelling-houses >= 80 square metres | Number | 115 | 132 | 95 | 372 | 303 | -18,5 |
| | | square metres | 26 685 | 31 480 | 24 472 | 80 352 | 75 582 | -5,9 |
| | | R'000 | 65 584 | 87 722 | 74 330 | 199 039 | 217 518 | 9,3 |
| | 3. Flats and townhouses | Number | 142 | 38 | 8 | 397 | 110 | -72,3 |
| | | square metres | 21 025 | 4 950 | 933 | 42 584 | 12 431 | -70,8 |
| | | R'000 | 58 448 | 13 591 | 2 619 | 112 667 | 34 604 | -69,3 |
| | 4. Other residential buildings 2/ | square metres | 11 242 | 58 | 220 | 11 633 | 278 | -97,6 |
| | | R'000 | 37 471 | 128 | 792 | 38 079 | 920 | -97,6 |
| | 5. Total residential buildings | R'000 | 164 705 | 103 591 | 79 623 | 357 788 | 258 244 | -27,8 |
| 2. Non-residential buildings | 1. Office and banking space | square metres | 0 | 1 018 | 3 649 | 5 055 | 4 667 | -7,7 |
| | | R'000 | 0 | 2 461 | 12 609 | 18 198 | 15 070 | -17,2 |
| | 2. Shopping space | square metres | 0 | 820 | 162 | 1 680 | 1 156 | -31,2 |
| | | R'000 | 0 | 2 460 | 486 | 6 048 | 3 642 | -39,8 |
| | 3. Industrial and warehouse space | square metres | 3 415 | 2 072 | 967 | 11 128 | 3 039 | -72,7 |
| | | R'000 | 7 929 | 5 375 | 2 722 | 19 559 | 8 097 | -58,6 |
| | 4. Other non-residential buildings 3/ | square metres | 0 | 2 606 | 0 | 1 306 | 4 072 | 211,8 |
| | | R'000 | 0 | 7 892 | 0 | 3 246 | 13 015 | 301,0 |
| | 5. Total non-residential buildings | R'000 | 7 929 | 18 188 | 15 817 | 47 051 | 39 824 | -15,4 |
| 3. Additions and alterations | 1. Dwelling-houses | square metres | 14 722 | 18 191 | 14 065 | 48 918 | 43 366 | -11,3 |
| | | R'000 | 33 852 | 44 223 | 34 961 | 115 283 | 106 201 | -7,9 |
| | 2. Other buildings 4/ | square metres | 4 325 | 4 485 | 1 998 | 10 030 | 8 346 | -16,8 |
| | | R'000 | 10 005 | 13 327 | 10 333 | 38 810 | 41 299 | 6,4 |
| | 3. Total additions and alterations | R'000 | 43 857 | 57 550 | 45 294 | 154 093 | 147 500 | -4,3 |
| 4. Recorded plans passed | 1. Total at current prices | R'000 | 216 491 | 179 329 | 140 734 | 558 932 | 445 568 | -20,3 |

1/ The percentage change between cumulative figures for 2007 and 2008.

2/ Other residential buildings include institutions for the disabled, boarding houses, hostels and tourism accommodation e.g. hotels, motels, guesthouses, holiday chalets, bed-and-breakfast accommodation and casinos.

3/ Other non-residential space includes churches, sport and recreation clubs, schools, crèches, hospitals and all other non-residential space.

4/ Other buildings include other residential buildings, non-residential buildings and internal alterations. No square metres are collected for internal alterations.

*Revised.

Table 14 – Recorded building plans passed by larger municipalities at current prices by type of building: KwaZulu-Natal

| | | | Mar. 2007* | Feb. 2008 | Mar. 2008 | Jan. - Mar. 2007 | Jan. - Mar. 2008 | % Change 1/ |
|------------------------------|----------------------------------------|----------------|------------|-----------|-----------|------------------|------------------|-------------|
| Category of building | Type of building | Measuring unit | | | | | | |
| 1. Residential buildings | 1. Dwelling-houses < 80 square metres | Number | 113 | 83 | 69 | 273 | 213 | -22,0 |
| | | square metres | 6 034 | 4 569 | 3 938 | 15 354 | 11 973 | -22,0 |
| | | R'000 | 17 256 | 18 443 | 12 579 | 48 804 | 46 033 | -5,7 |
| | 2. Dwelling-houses >= 80 square metres | Number | 249 | 193 | 193 | 616 | 576 | -6,5 |
| | | square metres | 52 059 | 54 015 | 60 001 | 141 050 | 169 138 | 19,9 |
| | | R'000 | 178 472 | 241 443 | 274 607 | 502 681 | 765 173 | 52,2 |
| | 3. Flats and townhouses | Number | 748 | 1 145 | 237 | 1 748 | 1 581 | -9,6 |
| | | square metres | 68 508 | 116 066 | 39 854 | 180 466 | 192 186 | 6,5 |
| | | R'000 | 247 365 | 616 501 | 153 051 | 646 461 | 980 319 | 51,6 |
| | 4. Other residential buildings 2/ | square metres | 0 | 205 | 0 | 1 672 | 1 586 | -5,1 |
| | | R'000 | 0 | 750 | 0 | 6 310 | 7 750 | 22,8 |
| | 5. Total residential buildings | R'000 | 443 093 | 877 137 | 440 237 | 1 204 256 | 1 799 275 | 49,4 |
| 2. Non-residential buildings | 1. Office and banking space | square metres | 7 558 | 18 048 | 17 509 | 16 759 | 42 644 | 154,5 |
| | | R'000 | 25 908 | 90 470 | 82 063 | 69 585 | 198 777 | 185,7 |
| | 2. Shopping space | square metres | 7 795 | 18 768 | 1 151 | 18 924 | 105 057 | 455,2 |
| | | R'000 | 23 652 | 66 226 | 3 485 | 74 147 | 530 814 | 615,9 |
| | 3. Industrial and warehouse space | square metres | 26 258 | 63 509 | 43 469 | 75 052 | 125 390 | 67,1 |
| | | R'000 | 74 904 | 183 527 | 109 887 | 211 567 | 352 682 | 66,7 |
| | 4. Other non-residential buildings 3/ | square metres | 3 518 | 805 | 1 670 | 19 173 | 6 149 | -67,9 |
| | | R'000 | 9 104 | 3 623 | 5 981 | 71 601 | 26 474 | -63,0 |
| | 5. Total non-residential buildings | R'000 | 133 568 | 343 846 | 201 416 | 426 900 | 1 108 747 | 159,7 |
| 3. Additions and alterations | 1. Dwelling-houses | square metres | 61 665 | 58 471 | 39 512 | 151 650 | 153 493 | 1,2 |
| | | R'000 | 213 516 | 251 140 | 163 515 | 530 874 | 637 510 | 20,1 |
| | 2. Other buildings 4/ | square metres | 12 470 | 45 514 | 10 569 | 54 896 | 77 856 | 41,8 |
| | | R'000 | 36 360 | 181 433 | 48 435 | 227 567 | 324 634 | 42,7 |
| | 3. Total additions and alterations | R'000 | 249 876 | 432 573 | 211 950 | 758 441 | 962 144 | 26,9 |
| 4. Recorded plans passed | 1. Total at current prices | R'000 | 826 537 | 1 653 556 | 853 603 | 2 389 597 | 3 870 166 | 62,0 |

1/ The percentage change between cumulative figures for 2007 and 2008.

2/ Other residential buildings include institutions for the disabled, boarding houses, hostels and tourism accommodation e.g. hotels, motels, guesthouses, holiday chalets, bed-and-breakfast accommodation and casinos.

3/ Other non-residential space includes churches, sport and recreation clubs, schools, crèches, hospitals and all other non-residential space.

4/ Other buildings include other residential buildings, non-residential buildings and internal alterations. No square metres are collected for internal alterations.

*Revised.

Table 15 – Recorded building plans passed by larger municipalities at current prices by type of building: North West

| | | | Mar. 2007* | Feb. 2008 | Mar. 2008 | Jan. - Mar. 2007 | Jan. - Mar. 2008 | % Change 1/ | |
|---------------------------------------|----------------------------------------|-----------------------------|---------------|-----------|-----------|------------------|------------------|-------------|-------|
| Category of building | Type of building | Measuring unit | | | | | | | |
| 1. Residential buildings | 1. Dwelling-houses < 80 square metres | Number | 299 | 48 | 31 | 1 419 | 147 | -89,6 | |
| | | square metres | 11 333 | 2 767 | 1 696 | 54 103 | 9 313 | -82,8 | |
| | | R'000 | 12 277 | 7 043 | 3 675 | 63 932 | 18 047 | -71,8 | |
| | 2. Dwelling-houses >= 80 square metres | Number | 273 | 198 | 180 | 670 | 505 | -24,6 | |
| | | square metres | 62 570 | 34 327 | 39 265 | 148 469 | 102 563 | -30,9 | |
| | | R'000 | 169 845 | 87 430 | 114 043 | 410 172 | 271 811 | -33,7 | |
| | 3. Flats and townhouses | Number | 118 | 74 | 146 | 608 | 345 | -43,3 | |
| | | square metres | 12 141 | 6 585 | 18 883 | 81 926 | 38 920 | -52,5 | |
| | | R'000 | 38 222 | 19 592 | 61 022 | 210 288 | 113 760 | -45,9 | |
| | 4. Other residential buildings 2/ | square metres | 0 | 367 | 0 | 3 081 | 506 | -83,6 | |
| | | R'000 | 0 | 733 | 0 | 9 985 | 1 081 | -89,2 | |
| | 5. Total residential buildings | | R'000 | 220 344 | 114 798 | 178 740 | 694 377 | 404 699 | -41,7 |
| | 2. Non-residential buildings | 1. Office and banking space | square metres | 1 141 | 11 436 | 2 193 | 5 666 | 13 629 | 140,5 |
| R'000 | | | 3 084 | 32 021 | 5 745 | 17 769 | 37 766 | 112,5 | |
| 2. Shopping space | | square metres | 4 336 | 9 858 | 517 | 20 932 | 14 696 | -29,8 | |
| | | R'000 | 14 031 | 28 093 | 500 | 64 168 | 36 630 | -42,9 | |
| 3. Industrial and warehouse space | | square metres | 5 307 | 4 062 | 1 300 | 14 489 | 5 362 | -63,0 | |
| | | R'000 | 12 197 | 5 479 | 4 550 | 31 247 | 10 029 | -67,9 | |
| 4. Other non-residential buildings 3/ | | square metres | 3 364 | 0 | 1 372 | 8 018 | 1 372 | -82,9 | |
| | | R'000 | 7 921 | 0 | 3 962 | 22 778 | 3 962 | -82,6 | |
| 5. Total non-residential buildings | | R'000 | 37 233 | 65 593 | 14 757 | 135 962 | 88 387 | -35,0 | |
| 3. Additions and alterations | 1. Dwelling-houses | square metres | 13 270 | 11 970 | 8 656 | 38 734 | 29 364 | -24,2 | |
| | | R'000 | 28 997 | 25 979 | 18 354 | 84 905 | 64 181 | -24,4 | |
| | 2. Other buildings 4/ | square metres | 1 304 | 4 134 | 3 335 | 5 758 | 9 356 | 62,5 | |
| | | R'000 | 6 669 | 9 053 | 11 930 | 19 467 | 24 280 | 24,7 | |
| | 3. Total additions and alterations | | R'000 | 35 666 | 35 032 | 30 284 | 104 372 | 88 461 | -15,2 |
| 4. Recorded plans passed | 1. Total at current prices | R'000 | 293 243 | 215 423 | 223 781 | 934 711 | 581 547 | -37,8 | |

1/ The percentage change between cumulative figures for 2007 and 2008.

2/ Other residential buildings include institutions for the disabled, boarding houses, hostels and tourism accommodation e.g. hotels, motels, guesthouses, holiday chalets, bed-and-breakfast accommodation and casinos.

3/ Other non-residential space includes churches, sport and recreation clubs, schools, crèches, hospitals and all other non-residential space.

4/ Other buildings include other residential buildings, non-residential buildings and internal alterations. No square metres are collected for internal alterations.

*Revised.

Table 16 – Recorded building plans passed by larger municipalities at current prices by type of building: Gauteng

| | | | Mar. 2007* | Feb. 2008 | Mar. 2008 | Jan. - Mar. 2007 | Jan. - Mar. 2008 | % Change 1/ |
|------------------------------|----------------------------------------|----------------|------------|-----------|-----------|------------------|------------------|-------------|
| Category of building | Type of building | Measuring unit | | | | | | |
| 1. Residential buildings | 1. Dwelling-houses < 80 square metres | Number | 1 504 | 1 286 | 2 377 | 5 056 | 4 030 | -20,3 |
| | | square metres | 66 061 | 61 547 | 106 596 | 219 634 | 185 769 | -15,4 |
| | | R'000 | 152 015 | 143 303 | 211 358 | 493 418 | 401 726 | -18,6 |
| | 2. Dwelling-houses >= 80 square metres | Number | 1 208 | 645 | 823 | 2 850 | 2 058 | -27,8 |
| | | square metres | 307 894 | 187 449 | 209 037 | 779 099 | 549 997 | -29,4 |
| | | R'000 | 1 044 812 | 720 727 | 801 439 | 2 655 955 | 2 070 448 | -22,0 |
| | 3. Flats and townhouses | Number | 1 263 | 1 084 | 1 483 | 2 949 | 3 637 | 23,3 |
| | | square metres | 196 751 | 130 967 | 150 713 | 405 551 | 428 158 | 5,6 |
| | | R'000 | 684 007 | 551 678 | 709 303 | 1 468 435 | 1 837 992 | 25,2 |
| | 4. Other residential buildings 2/ | square metres | 0 | 61 742 | 31 | 1 700 | 70 824 | 4 066,1 |
| | | R'000 | 0 | 240 297 | 124 | 7 212 | 301 063 | 4 074,5 |
| | 5. Total residential buildings | R'000 | 1 880 834 | 1 656 005 | 1 722 224 | 4 625 020 | 4 611 229 | -0,3 |
| 2. Non-residential buildings | 1. Office and banking space | square metres | 30 293 | 4 546 | 28 692 | 82 133 | 50 922 | -38,0 |
| | | R'000 | 134 133 | 26 621 | 162 262 | 383 970 | 283 252 | -26,2 |
| | 2. Shopping space | square metres | 10 804 | 5 724 | 30 194 | 70 751 | 56 376 | -20,3 |
| | | R'000 | 48 764 | 17 682 | 145 754 | 294 092 | 238 534 | -18,9 |
| | 3. Industrial and warehouse space | square metres | 99 400 | 56 407 | 57 416 | 241 808 | 143 488 | -40,7 |
| | | R'000 | 271 331 | 189 966 | 162 676 | 675 896 | 436 606 | -35,4 |
| | 4. Other non-residential buildings 3/ | square metres | 3 337 | 1 504 | 156 | 23 468 | 2 654 | -88,7 |
| | | R'000 | 11 735 | 5 758 | 827 | 102 306 | 10 131 | -90,1 |
| | 5. Total non-residential buildings | R'000 | 465 963 | 240 027 | 471 519 | 1 456 264 | 968 523 | -33,5 |
| 3. Additions and alterations | 1. Dwelling-houses | square metres | 153 821 | 112 840 | 118 555 | 405 982 | 367 222 | -9,5 |
| | | R'000 | 517 753 | 424 822 | 430 548 | 1 360 056 | 1 343 121 | -1,2 |
| | 2. Other buildings 4/ | square metres | 18 609 | 66 545 | 45 968 | 85 321 | 267 573 | 213,6 |
| | | R'000 | 86 037 | 297 369 | 162 180 | 347 222 | 1 157 853 | 233,5 |
| | 3. Total additions and alterations | R'000 | 603 790 | 722 191 | 592 728 | 1 707 278 | 2 500 974 | 46,5 |
| 4. Recorded plans passed | 1. Total at current prices | R'000 | 2 950 587 | 2 618 223 | 2 786 471 | 7 788 562 | 8 080 726 | 3,8 |

1/ The percentage change between cumulative figures for 2007 and 2008.

2/ Other residential buildings include institutions for the disabled, boarding houses, hostels and tourism accommodation e.g. hotels, motels, guesthouses, holiday chalets, bed-and-breakfast accommodation and casinos.

3/ Other non-residential space includes churches, sport and recreation clubs, schools, crèches, hospitals and all other non-residential space.

4/ Other buildings include other residential buildings, non-residential buildings and internal alterations. No square metres are collected for internal alterations.

*Revised.

Table 17 – Recorded building plans passed by larger municipalities at current prices by type of building: Mpumalanga

| | | | Mar. 2007* | Feb. 2008 | Mar. 2008 | Jan. - Mar. 2007 | Jan. - Mar. 2008 | % Change 1/ |
|------------------------------------|----------------------------------------|--------------------|---------------|-----------|-----------|------------------|------------------|-------------|
| Category of building | Type of building | Measuring unit | | | | | | |
| 1. Residential buildings | 1. Dwelling-houses < 80 square metres | Number | 36 | 49 | 196 | 421 | 270 | -35,9 |
| | | square metres | 2 039 | 2 784 | 9 578 | 16 291 | 14 049 | -13,8 |
| | | R'000 | 5 754 | 6 104 | 16 079 | 26 449 | 27 262 | 3,1 |
| | 2. Dwelling-houses >= 80 square metres | Number | 205 | 150 | 115 | 624 | 375 | -39,9 |
| | | square metres | 52 107 | 36 341 | 30 115 | 154 359 | 92 647 | -40,0 |
| | | R'000 | 129 502 | 105 098 | 82 069 | 449 973 | 270 465 | -39,9 |
| | 3. Flats and townhouses | Number | 130 | 106 | 25 | 389 | 148 | -62,0 |
| | | square metres | 16 686 | 6 609 | 4 577 | 40 168 | 14 161 | -64,7 |
| | | R'000 | 40 216 | 20 283 | 11 565 | 115 489 | 39 628 | -65,7 |
| | 4. Other residential buildings 2/ | square metres | 78 | 0 | 744 | 3 889 | 744 | -80,9 |
| | | R'000 | 234 | 0 | 2 607 | 10 918 | 2 607 | -76,1 |
| | 5. Total residential buildings | R'000 | 175 706 | 131 485 | 112 320 | 602 829 | 339 962 | -43,6 |
| 2. Non-residential buildings | 1. Office and banking space | square metres | 1 100 | 1 680 | 5 886 | 9 207 | 11 532 | 25,3 |
| | | R'000 | 4 800 | 4 315 | 24 615 | 26 067 | 44 794 | 71,8 |
| | 2. Shopping space | square metres | 3 780 | 0 | 14 163 | 4 674 | 73 333 | 1 469,0 |
| | | R'000 | 10 795 | 0 | 36 824 | 14 173 | 329 667 | 2 226,0 |
| | 3. Industrial and warehouse space | square metres | 3 729 | 387 | 2 797 | 31 506 | 15 703 | -50,2 |
| | | R'000 | 10 629 | 968 | 7 604 | 137 488 | 43 230 | -68,6 |
| | 4. Other non-residential buildings 3/ | square metres | 349 | 398 | 129 | 1 546 | 2 367 | 53,1 |
| | | R'000 | 1 048 | 800 | 450 | 4 442 | 8 030 | 80,8 |
| | 5. Total non-residential buildings | R'000 | 27 272 | 6 083 | 69 493 | 182 170 | 425 721 | 133,7 |
| | 3. Additions and alterations | 1. Dwelling-houses | square metres | 21 087 | 17 065 | 18 148 | 56 216 | 47 854 |
| R'000 | | | 50 242 | 49 121 | 47 595 | 137 163 | 134 639 | -1,8 |
| 2. Other buildings 4/ | | square metres | 8 292 | 5 328 | 2 445 | 12 812 | 10 269 | -19,8 |
| | | R'000 | 23 184 | 21 336 | 9 088 | 35 397 | 41 114 | 16,2 |
| 3. Total additions and alterations | | R'000 | 73 426 | 70 457 | 56 683 | 172 560 | 175 753 | 1,9 |
| 4. Recorded plans passed | 1. Total at current prices | R'000 | 276 404 | 208 025 | 238 496 | 957 559 | 941 436 | -1,7 |

1/ The percentage change between cumulative figures for 2007 and 2008.

2/ Other residential buildings include institutions for the disabled, boarding houses, hostels and tourism accommodation e.g. hotels, motels, guesthouses, holiday chalets, bed-and-breakfast accommodation and casinos.

3/ Other non-residential space includes churches, sport and recreation clubs, schools, crèches, hospitals and all other non-residential space.

4/ Other buildings include other residential buildings, non-residential buildings and internal alterations. No square metres are collected for internal alterations.

*Revised.

Table 18 – Recorded building plans passed by larger municipalities at current prices by type of building: Limpopo

| | | | Mar. 2007 | Feb. 2008 | Mar. 2008 | Jan. - Mar. 2007 | Jan. - Mar. 2008 | % Change 1/ |
|----------------------------------------|----------------------------------------|----------------|-----------|-----------|-----------|------------------|------------------|-------------|
| Category of building | Type of building | Measuring unit | | | | | | |
| 1. Dwelling-houses < 80 square metres | 1. Dwelling-houses < 80 square metres | Number | 36 | 18 | 10 | 135 | 46 | -65,9 |
| | | square metres | 2 391 | 1 140 | 666 | 8 554 | 2 971 | -65,3 |
| | | R'000 | 6 159 | 2 991 | 2 062 | 22 313 | 7 593 | -66,0 |
| | 2. Dwelling-houses >= 80 square metres | Number | 83 | 83 | 81 | 263 | 218 | -17,1 |
| | | square metres | 18 087 | 16 075 | 17 717 | 55 246 | 46 483 | -15,9 |
| | | R'000 | 49 801 | 49 748 | 52 379 | 145 907 | 142 324 | -2,5 |
| | 3. Flats and townhouses | Number | 50 | 47 | 173 | 197 | 256 | 29,9 |
| | | square metres | 4 676 | 6 799 | 21 015 | 21 603 | 31 181 | 44,3 |
| | | R'000 | 12 196 | 19 065 | 52 538 | 53 008 | 83 388 | 57,3 |
| | 4. Other residential buildings 2/ | square metres | 4 811 | 4 947 | 0 | 6 265 | 5 401 | -13,8 |
| | | R'000 | 10 584 | 12 106 | 0 | 14 482 | 13 066 | -9,8 |
| | 5. Total residential buildings | R'000 | 78 740 | 83 910 | 106 979 | 235 710 | 246 371 | 4,5 |
| 2. Dwelling-houses >= 80 square metres | 1. Office and banking space | square metres | 714 | 4 465 | 2 830 | 1 817 | 7 295 | 301,5 |
| | | R'000 | 1 912 | 11 163 | 5 659 | 4 670 | 16 822 | 260,2 |
| | 2. Shopping space | square metres | 0 | 0 | 10 000 | 8 652 | 20 006 | 131,2 |
| | | R'000 | 0 | 0 | 22 000 | 15 798 | 44 391 | 181,0 |
| | 3. Industrial and warehouse space | square metres | 2 357 | 4 786 | 1 666 | 6 686 | 6 720 | 0,5 |
| | | R'000 | 5 747 | 11 965 | 4 386 | 16 570 | 17 021 | 2,7 |
| | 4. Other non-residential buildings 3/ | square metres | 1 327 | 3 688 | 0 | 1 837 | 7 256 | 295,0 |
| | | R'000 | 2 968 | 13 090 | 0 | 4 498 | 23 234 | 416,5 |
| | 5. Total non-residential buildings | R'000 | 10 627 | 36 218 | 32 045 | 41 536 | 101 468 | 144,3 |
| 3. Flats and townhouses | 1. Dwelling-houses | square metres | 9 295 | 8 723 | 6 989 | 31 734 | 22 290 | -29,8 |
| | | R'000 | 22 135 | 22 176 | 18 006 | 75 668 | 56 628 | -25,2 |
| | 2. Other buildings 4/ | square metres | 1 250 | 602 | 915 | 3 083 | 2 571 | -16,6 |
| | | R'000 | 2 952 | 1 280 | 1 836 | 6 720 | 5 714 | -15,0 |
| | 3. Total additions and alterations | R'000 | 25 087 | 23 456 | 19 842 | 82 388 | 62 342 | -24,3 |
| 4. Other residential buildings 2/ | 1. Total at current prices | R'000 | 114 454 | 143 584 | 158 866 | 359 634 | 410 181 | 14,1 |

1/ The percentage change between cumulative figures for 2007 and 2008.

2/ Other residential buildings include institutions for the disabled, boarding houses, hostels and tourism accommodation e.g. hotels, motels, guesthouses, holiday chalets, bed-and-breakfast accommodation and casinos.

3/ Other non-residential space includes churches, sport and recreation clubs, schools, crèches, hospitals and all other non-residential space.

4/ Other buildings include other residential buildings, non-residential buildings and internal alterations. No square metres are collected for internal alterations.

Table 19 – Buildings reported as completed to larger municipalities at current prices by type of building: South Africa

| | | | Mar. 2007* | Feb. 2008 | Mar. 2008 | Jan. - Mar. 2007 | Jan. - Mar. 2008 | % Change 1/ |
|---------------------------------|----------------------------------------|----------------|------------|-----------|-----------|------------------|------------------|-------------|
| Category of building | Type of building | Measuring unit | | | | | | |
| 1. Residential buildings | 1. Dwelling-houses < 80 square metres | Number | 2 249 | 1 949 | 2 246 | 6 864 | 4 968 | -27,6 |
| | | square metres | 92 350 | 84 367 | 95 444 | 277 689 | 218 026 | -21,5 |
| | | R'000 | 172 759 | 183 066 | 150 830 | 487 406 | 426 822 | -12,4 |
| | 2. Dwelling-houses >= 80 square metres | Number | 1 719 | 1 788 | 1 979 | 4 770 | 5 064 | 6,2 |
| | | square metres | 393 568 | 379 845 | 428 726 | 1 086 217 | 1 098 840 | 1,2 |
| | | R'000 | 1 214 708 | 1 207 720 | 1 322 063 | 3 303 373 | 3 471 498 | 5,1 |
| | 3. Flats and townhouses | Number | 1 972 | 1 847 | 2 339 | 5 573 | 5 472 | -1,8 |
| | | square metres | 212 725 | 190 904 | 253 507 | 619 298 | 586 116 | -5,4 |
| | | R'000 | 699 627 | 709 012 | 926 737 | 1 933 489 | 2 173 836 | 12,4 |
| | 4. Other residential buildings 2/ | square metres | 3 477 | 5 703 | 11 502 | 34 465 | 26 775 | -22,3 |
| | | R'000 | 19 830 | 27 376 | 29 828 | 246 880 | 89 697 | -63,7 |
| | 5. Total residential buildings | R'000 | 2 106 924 | 2 127 174 | 2 429 458 | 5 971 148 | 6 161 853 | 3,2 |
| 2. Non-residential buildings | 1. Office and banking space | square metres | 89 269 | 66 687 | 161 401 | 162 960 | 247 663 | 52,0 |
| | | R'000 | 246 234 | 261 898 | 578 450 | 519 727 | 929 085 | 78,8 |
| | 2. Shopping space | square metres | 75 713 | 29 836 | 25 090 | 163 798 | 133 657 | -18,4 |
| | | R'000 | 182 546 | 91 917 | 90 822 | 509 693 | 485 061 | -4,8 |
| | 3. Industrial and warehouse space | square metres | 135 597 | 87 549 | 83 656 | 344 103 | 262 569 | -23,7 |
| | | R'000 | 320 917 | 233 532 | 231 179 | 931 171 | 712 787 | -23,5 |
| | 4. Other non-residential buildings 3/ | square metres | 12 733 | 10 612 | 10 494 | 58 689 | 32 759 | -44,2 |
| | | R'000 | 28 902 | 33 618 | 28 432 | 186 544 | 96 601 | -48,2 |
| | 5. Total non-residential buildings | R'000 | 778 599 | 620 965 | 928 883 | 2 147 135 | 2 223 534 | 3,6 |
| 3. Additions and alterations | 1. Dwelling-houses | square metres | 173 759 | 154 772 | 171 034 | 512 018 | 476 304 | -7,0 |
| | | R'000 | 481 665 | 467 746 | 517 842 | 1 409 934 | 1 446 351 | 2,6 |
| | 2. Other buildings 4/ | square metres | 66 061 | 127 740 | 66 576 | 156 789 | 234 792 | 49,8 |
| | | R'000 | 187 216 | 437 951 | 267 650 | 461 157 | 851 786 | 84,7 |
| | 3. Total additions and alterations | R'000 | 668 881 | 905 697 | 785 492 | 1 871 091 | 2 298 137 | 22,8 |
| 4. Recorded buildings completed | 1. Total at current prices | R'000 | 3 554 404 | 3 653 836 | 4 143 833 | 9 989 374 | 10 683 524 | 6,9 |

1/ The percentage change between cumulative figures for 2007 and 2008.

2/ Other residential buildings include institutions for the disabled, boarding houses, hostels and tourism accommodation e.g. hotels, motels, guesthouses, holiday chalets, bed-and-breakfast accommodation and casinos.

3/ Other non-residential space includes churches, sport and recreation clubs, schools, crèches, hospitals and all other non-residential space.

4/ Other buildings include other residential buildings, non-residential buildings and internal alterations. No square metres are collected for internal alterations.

* Revised.

Table 20 – Buildings reported as completed to larger municipalities at current prices by type of building: Western Cape

| | | | Mar. 2007* | Feb. 2008 | Mar. 2008 | Jan. - Mar. 2007 | Jan. - Mar. 2008 | % Change 1/ |
|------------------------------------|----------------------------------------|--------------------|---------------|-----------|-----------|------------------|------------------|-------------|
| Category of building | Type of building | Measuring unit | | | | | | |
| 1. Residential buildings | 1. Dwelling-houses < 80 square metres | Number | 860 | 272 | 128 | 2 428 | 463 | -80,9 |
| | | square metres | 30 760 | 11 736 | 5 405 | 85 590 | 20 268 | -76,3 |
| | | R'000 | 42 585 | 21 146 | 10 371 | 111 201 | 39 727 | -64,3 |
| | 2. Dwelling-houses >= 80 square metres | Number | 435 | 527 | 516 | 1 267 | 1 371 | 8,2 |
| | | square metres | 108 468 | 113 348 | 107 427 | 286 798 | 303 627 | 5,9 |
| | | R'000 | 324 800 | 356 562 | 337 240 | 840 539 | 965 062 | 14,8 |
| | 3. Flats and townhouses | Number | 538 | 629 | 795 | 1 811 | 1 603 | -11,5 |
| | | square metres | 57 767 | 52 989 | 72 112 | 173 063 | 146 286 | -15,5 |
| | | R'000 | 178 426 | 207 065 | 227 749 | 548 096 | 507 900 | -7,3 |
| | 4. Other residential buildings 2/ | square metres | 3 177 | 0 | 2 256 | 16 382 | 2 256 | -86,2 |
| | | R'000 | 18 930 | 0 | 7 743 | 64 418 | 7 743 | -88,0 |
| | 5. Total residential buildings | R'000 | 564 741 | 584 773 | 583 103 | 1 564 254 | 1 520 432 | -2,8 |
| 2. Non-residential buildings | 1. Office and banking space | square metres | 63 079 | 27 371 | 17 333 | 74 792 | 45 217 | -39,5 |
| | | R'000 | 168 231 | 89 489 | 56 334 | 201 855 | 147 516 | -26,9 |
| | 2. Shopping space | square metres | 3 969 | 1 050 | 1 652 | 9 101 | 31 836 | 249,8 |
| | | R'000 | 13 691 | 3 771 | 4 130 | 25 435 | 113 748 | 347,2 |
| | 3. Industrial and warehouse space | square metres | 50 698 | 57 489 | 27 337 | 125 966 | 114 153 | -9,4 |
| | | R'000 | 130 486 | 141 637 | 89 387 | 355 650 | 308 729 | -13,2 |
| | 4. Other non-residential buildings 3/ | square metres | 8 220 | 1 136 | 3 686 | 19 297 | 8 919 | -53,8 |
| | | R'000 | 18 223 | 4 332 | 11 281 | 51 189 | 22 386 | -56,3 |
| | 5. Total non-residential buildings | R'000 | 330 631 | 239 229 | 161 132 | 634 129 | 592 379 | -6,6 |
| | 3. Additions and alterations | 1. Dwelling-houses | square metres | 60 888 | 62 518 | 58 991 | 180 087 | 184 553 |
| R'000 | | | 158 363 | 162 982 | 171 599 | 469 589 | 517 485 | 10,2 |
| 2. Other buildings 4/ | | square metres | 35 842 | 38 512 | 15 147 | 74 966 | 76 886 | 2,6 |
| | | R'000 | 85 269 | 158 217 | 79 811 | 202 472 | 313 854 | 55,0 |
| 3. Total additions and alterations | | R'000 | 243 632 | 321 199 | 251 410 | 672 061 | 831 339 | 23,7 |
| 4. Recorded buildings completed | 1. Total at current prices | R'000 | 1 139 004 | 1 145 201 | 995 645 | 2 870 444 | 2 944 150 | 2,6 |

1/ The percentage change between cumulative figures for 2007 and 2008.

2/ Other residential buildings include institutions for the disabled, boarding houses, hostels and tourism accommodation e.g. hotels, motels, guesthouses, holiday chalets, bed-and-breakfast accommodation and casinos.

3/ Other non-residential space includes churches, sport and recreation clubs, schools, crèches, hospitals and all other non-residential space.

4/ Other buildings include other residential buildings, non-residential buildings and internal alterations. No square metres are collected for internal alterations.

*Revised.

Table 21 – Buildings reported as completed to larger municipalities at current prices by type of building: Eastern Cape

| | | | Mar. 2007* | Feb. 2008 | Mar. 2008 | Jan. - Mar. 2007 | Jan. - Mar. 2008 | % Change 1/ | |
|---------------------------------------|----------------------------------------|-----------------------------|---------------|-----------|-----------|------------------|------------------|-------------|-------|
| Category of building | | | | | | | | | |
| 1. Residential buildings | 1. Dwelling-houses < 80 square metres | Number | 87 | 43 | 110 | 250 | 215 | -14,0 | |
| | | square metres | 3 959 | 2 120 | 4 618 | 10 754 | 9 319 | -13,3 | |
| | | R'000 | 7 830 | 4 260 | 6 580 | 19 693 | 14 303 | -27,4 | |
| | 2. Dwelling-houses >= 80 square metres | Number | 94 | 80 | 109 | 277 | 275 | -0,7 | |
| | | square metres | 12 352 | 16 583 | 24 021 | 40 214 | 61 167 | 52,1 | |
| | | R'000 | 30 212 | 42 527 | 68 178 | 101 884 | 171 050 | 67,9 | |
| | 3. Flats and townhouses | Number | 0 | 44 | 73 | 83 | 188 | 126,5 | |
| | | square metres | 0 | 5 380 | 7 365 | 11 032 | 18 834 | 70,7 | |
| | | R'000 | 0 | 17 563 | 22 321 | 25 579 | 56 956 | 122,7 | |
| | 4. Other residential buildings 2/ | square metres | 0 | 936 | 0 | 0 | 936 | | |
| | | R'000 | 0 | 1 920 | 0 | 0 | 1 920 | | |
| | 5. Total residential buildings | R'000 | 38 042 | 66 270 | 97 079 | 147 156 | 244 229 | 66,0 | |
| | 2. Non-residential buildings | 1. Office and banking space | square metres | 1 254 | 69 | 680 | 1 254 | 749 | -40,3 |
| | | | R'000 | 3 163 | 158 | 2 380 | 3 163 | 2 538 | -19,8 |
| 2. Shopping space | | square metres | 285 | 2 591 | 1 414 | 1 612 | 27 364 | 1 597,5 | |
| | | R'000 | 627 | 7 101 | 3 587 | 3 838 | 88 647 | 2 209,7 | |
| 3. Industrial and warehouse space | | square metres | 0 | 552 | 15 884 | 15 144 | 17 394 | 14,9 | |
| | | R'000 | 0 | 1 063 | 28 543 | 39 146 | 30 894 | -21,1 | |
| 4. Other non-residential buildings 3/ | | square metres | 1 488 | 46 | 36 | 2 195 | 221 | -89,9 | |
| | | R'000 | 2 976 | 100 | 78 | 4 795 | 516 | -89,2 | |
| 5. Total non-residential buildings | | R'000 | 6 766 | 8 422 | 34 588 | 50 942 | 122 595 | 140,7 | |
| 3. Additions and alterations | | 1. Dwelling-houses | square metres | 16 121 | 8 215 | 13 373 | 36 707 | 28 757 | -21,7 |
| | R'000 | | 32 969 | 17 972 | 30 326 | 72 026 | 62 250 | -13,6 | |
| | 2. Other buildings 4/ | square metres | 8 050 | 9 340 | 7 704 | 16 712 | 17 740 | 6,2 | |
| | | R'000 | 19 438 | 21 199 | 15 572 | 38 384 | 37 509 | -2,3 | |
| | 3. Total additions and alterations | R'000 | 52 407 | 39 171 | 45 898 | 110 410 | 99 759 | -9,6 | |
| 4. Recorded buildings completed | 1. Total at current prices | R'000 | 97 215 | 113 863 | 177 565 | 308 508 | 466 583 | 51,2 | |

1/ The percentage change between cumulative figures for 2007 and 2008.

2/ Other residential buildings include institutions for the disabled, boarding houses, hostels and tourism accommodation e.g. hotels, motels, guesthouses, holiday chalets, bed-and-breakfast accommodation and casinos.

3/ Other non-residential space includes churches, sport and recreation clubs, schools, crèches, hospitals and all other non-residential space.

4/ Other buildings include other residential buildings, non-residential buildings and internal alterations. No square metres are collected for internal alterations.

*Revised.

Table 22 – Buildings reported as completed to larger municipalities at current prices by type of building: Northern Cape

| | | | Mar. 2007* | Feb. 2008 | Mar. 2008 | Jan. - Mar. 2007 | Jan. - Mar. 2008 | % Change 1/ |
|---------------------------------|----------------------------------------|----------------|------------|-----------|-----------|------------------|------------------|-------------|
| Category of building | Type of building | Measuring unit | | | | | | |
| 1. Residential buildings | 1. Dwelling-houses < 80 square metres | Number | 3 | 0 | 2 | 14 | 3 | -78,6 |
| | | square metres | 204 | 0 | 132 | 743 | 172 | -76,9 |
| | | R'000 | 441 | 0 | 396 | 1 201 | 508 | -57,7 |
| | 2. Dwelling-houses >= 80 square metres | Number | 28 | 15 | 7 | 57 | 42 | -26,3 |
| | | square metres | 4 853 | 2 477 | 1 147 | 10 076 | 6 648 | -34,0 |
| | | R'000 | 10 912 | 7 418 | 3 386 | 23 244 | 19 335 | -16,8 |
| | 3. Flats and townhouses | Number | 35 | 6 | 32 | 54 | 59 | 9,3 |
| | | square metres | 4 633 | 688 | 3 159 | 7 320 | 6 599 | -9,8 |
| | | R'000 | 12 642 | 2 064 | 8 672 | 17 572 | 18 442 | 5,0 |
| | 4. Other residential buildings 2/ | square metres | 0 | 915 | 0 | 0 | 915 | |
| | | R'000 | 0 | 2 562 | 0 | 0 | 2 562 | |
| | 5. Total residential buildings | R'000 | 23 995 | 12 044 | 12 454 | 42 017 | 40 847 | -2,8 |
| 2. Non-residential buildings | 1. Office and banking space | square metres | 0 | 0 | 0 | 5 682 | 153 | -97,3 |
| | | R'000 | 0 | 0 | 0 | 14 000 | 428 | -96,9 |
| | 2. Shopping space | square metres | 1 532 | 659 | 0 | 3 688 | 835 | -77,4 |
| | | R'000 | 3 677 | 2 372 | 0 | 7 854 | 3 006 | -61,7 |
| | 3. Industrial and warehouse space | square metres | 591 | 0 | 0 | 1 073 | 302 | -71,9 |
| | | R'000 | 1 418 | 0 | 0 | 2 818 | 664 | -76,4 |
| | 4. Other non-residential buildings 3/ | square metres | 0 | 0 | 324 | 0 | 324 | |
| | | R'000 | 0 | 0 | 907 | 0 | 907 | |
| | 5. Total non-residential buildings | R'000 | 5 095 | 2 372 | 907 | 24 672 | 5 005 | -79,7 |
| 3. Additions and alterations | 1. Dwelling-houses | square metres | 2 595 | 2 915 | 2 893 | 8 370 | 8 943 | 6,8 |
| | | R'000 | 6 005 | 8 587 | 8 153 | 18 213 | 27 018 | 48,3 |
| | 2. Other buildings 4/ | square metres | 223 | 510 | 912 | 257 | 1 947 | 657,6 |
| | | R'000 | 535 | 1 428 | 2 110 | 697 | 4 678 | 571,2 |
| | 3. Total additions and alterations | R'000 | 6 540 | 10 015 | 10 263 | 18 910 | 31 696 | 67,6 |
| 4. Recorded buildings completed | 1. Total at current prices | R'000 | 35 630 | 24 431 | 23 624 | 85 599 | 77 548 | -9,4 |

1/ The percentage change between January 2007 and January 2008.

2/ Other residential buildings include institutions for the disabled, boarding houses, hostels and tourism accommodation e.g. hotels, motels, guesthouses, holiday chalets, bed-and-breakfast accommodation and casinos.

3/ Other non-residential space includes churches, sport and recreation clubs, schools, crèches, hospitals and all other non-residential space.

4/ Other buildings include other residential buildings, non-residential buildings and internal alterations. No square metres are collected for internal alterations.

*Revised.

Table 23 – Buildings reported as completed to larger municipalities at current prices by type of building: Free State

| | | | Mar. 2007* | Feb. 2008 | Mar. 2008 | Jan. - Mar. 2007 | Jan. - Mar. 2008 | % Change 1/ |
|----------------------------------------|--------------------------------------------------|----------------|---------------|---------------|----------------|------------------|------------------|--------------|
| Category of building | Type of building | Measuring unit | | | | | | |
| 1. Residential buildings | 1. Dwelling-houses < 80 square metres | Number | 15 | 23 | 85 | 319 | 117 | -63,3 |
| | | square metres | 897 | 1 396 | 4 355 | 14 330 | 6 244 | -56,4 |
| | | R'000 | 1 890 | 2 840 | 6 003 | 16 558 | 9 884 | -40,3 |
| | 2. Dwelling-houses >= 80 square metres | Number | 44 | 58 | 91 | 204 | 198 | -2,9 |
| | | square metres | 9 387 | 9 640 | 15 886 | 39 136 | 34 048 | -13,0 |
| | | R'000 | 19 286 | 23 767 | 36 631 | 81 387 | 83 705 | 2,8 |
| | 3. Flats and townhouses | Number | 29 | 37 | 7 | 76 | 57 | -25,0 |
| | | square metres | 2 856 | 5 005 | 305 | 8 785 | 7 096 | -19,2 |
| | | R'000 | 7 119 | 12 674 | 793 | 26 020 | 16 807 | -35,4 |
| | 4. Other residential buildings 2/ | square metres | 0 | 0 | 8 970 | 4 987 | 9 183 | 84,1 |
| | | R'000 | 0 | 0 | 21 395 | 79 092 | 21 864 | -72,4 |
| | 5. Total residential buildings | R'000 | 28 295 | 39 281 | 64 822 | 203 057 | 132 260 | -34,9 |
| 2. Non-residential buildings | 1. Office and banking space | square metres | 1 254 | 0 | 6 252 | 1 254 | 6 252 | 398,6 |
| | | R'000 | 4 514 | 0 | 21 848 | 4 514 | 21 848 | 384,0 |
| | 2. Shopping space | square metres | 0 | 0 | 0 | 2 280 | 0 | -100,0 |
| | | R'000 | 0 | 0 | 0 | 8 971 | 0 | -100,0 |
| | 3. Industrial and warehouse space | square metres | 775 | 1 307 | 2 800 | 839 | 4 107 | 389,5 |
| | | R'000 | 1 799 | 2 875 | 7 600 | 1 940 | 10 475 | 439,9 |
| | 4. Other non-residential buildings 3/ | square metres | 0 | 0 | 819 | 191 | 819 | 328,8 |
| | | R'000 | 0 | 0 | 1 802 | 529 | 1 802 | 240,6 |
| | 5. Total non-residential buildings | R'000 | 6 313 | 2 875 | 31 250 | 15 954 | 34 125 | 113,9 |
| 3. Additions and alterations | 1. Dwelling-houses | square metres | 6 165 | 7 069 | 7 075 | 13 559 | 19 424 | 43,3 |
| | | R'000 | 11 007 | 15 354 | 16 345 | 25 540 | 45 452 | 78,0 |
| | 2. Other buildings 4/ | square metres | 2 793 | 121 | 717 | 3 552 | 1 035 | -70,9 |
| | | R'000 | 6 131 | 977 | 2 972 | 9 272 | 5 515 | -40,5 |
| | 3. Total additions and alterations | R'000 | 17 138 | 16 331 | 19 317 | 34 812 | 50 967 | 46,4 |
| 4. Recorded buildings completed | 1. Total at current prices | R'000 | 51 746 | 58 487 | 115 389 | 253 823 | 217 352 | -14,4 |

1/ The percentage change between cumulative figures for 2007 and 2008.

2/ Other residential buildings include institutions for the disabled, boarding houses, hostels and tourism accommodation e.g. hotels, motels, guesthouses, holiday chalets, bed-and-breakfast accommodation and casinos.

3/ Other non-residential space includes churches, sport and recreation clubs, schools, crèches, hospitals and all other non-residential space.

4/ Other buildings include other residential buildings, non-residential buildings and internal alterations. No square metres are collected for internal alterations.

*Revised.

Table 24 – Buildings reported as completed to larger municipalities at current prices by type of building: KwaZulu-Natal

| | | | Mar. 2007* | Feb. 2008 | Mar. 2008 | Jan. - Mar. 2007 | Jan. - Mar. 2008 | % Change 1/ |
|------------------------------------|----------------------------------------|--------------------|---------------|-----------|-----------|------------------|------------------|-------------|
| Category of building | Type of building | Measuring unit | | | | | | |
| 1. Residential buildings | 1. Dwelling-houses < 80 square metres | Number | 151 | 146 | 211 | 379 | 427 | 12,7 |
| | | square metres | 6 100 | 6 295 | 8 091 | 16 025 | 17 948 | 12,0 |
| | | R'000 | 14 918 | 19 466 | 18 963 | 40 778 | 51 726 | 26,8 |
| | 2. Dwelling-houses >= 80 square metres | Number | 140 | 136 | 147 | 392 | 398 | 1,5 |
| | | square metres | 30 200 | 28 509 | 37 767 | 90 918 | 92 882 | 2,2 |
| | | R'000 | 109 601 | 118 286 | 160 218 | 338 814 | 393 349 | 16,1 |
| | 3. Flats and townhouses | Number | 346 | 138 | 283 | 594 | 541 | -8,9 |
| | | square metres | 41 885 | 20 701 | 47 484 | 98 339 | 89 988 | -8,5 |
| | | R'000 | 160 645 | 88 683 | 181 731 | 295 247 | 346 348 | 17,3 |
| | 4. Other residential buildings 2/ | square metres | 0 | 0 | 0 | 12 606 | 0 | -100,0 |
| | | R'000 | 0 | 0 | 0 | 101 900 | 0 | -100,0 |
| | 5. Total residential buildings | R'000 | 285 164 | 226 435 | 360 912 | 776 739 | 791 423 | 1,9 |
| 2. Non-residential buildings | 1. Office and banking space | square metres | 3 227 | 18 279 | 2 651 | 11 735 | 30 452 | 159,5 |
| | | R'000 | 8 675 | 86 187 | 13 255 | 33 801 | 148 713 | 340,0 |
| | 2. Shopping space | square metres | 833 | 2 993 | 2 290 | 34 439 | 5 283 | -84,7 |
| | | R'000 | 2 857 | 11 104 | 6 300 | 117 733 | 17 404 | -85,2 |
| | 3. Industrial and warehouse space | square metres | 41 696 | 1 775 | 19 694 | 103 322 | 47 545 | -54,0 |
| | | R'000 | 68 572 | 4 965 | 50 544 | 253 599 | 139 532 | -45,0 |
| | 4. Other non-residential buildings 3/ | square metres | 573 | 3 842 | 0 | 5 922 | 6 458 | 9,1 |
| | | R'000 | 1 514 | 14 658 | 0 | 23 523 | 27 738 | 17,9 |
| | 5. Total non-residential buildings | R'000 | 81 618 | 116 914 | 70 099 | 428 656 | 333 387 | -22,2 |
| | 3. Additions and alterations | 1. Dwelling-houses | square metres | 26 671 | 23 838 | 23 869 | 75 044 | 73 685 |
| R'000 | | | 96 647 | 110 011 | 101 095 | 268 847 | 327 926 | 22,0 |
| 2. Other buildings 4/ | | square metres | 6 225 | 67 700 | 13 159 | 29 022 | 84 212 | 190,2 |
| | | R'000 | 26 053 | 217 968 | 43 583 | 90 689 | 279 335 | 208,0 |
| 3. Total additions and alterations | | R'000 | 122 700 | 327 979 | 144 678 | 359 536 | 607 261 | 68,9 |
| 4. Recorded buildings completed | 1. Total at current prices | R'000 | 489 482 | 671 328 | 575 689 | 1 564 931 | 1 732 071 | 10,7 |

1/ The percentage change between cumulative figures for 2007 and 2008.

2/ Other residential buildings include institutions for the disabled, boarding houses, hostels and tourism accommodation e.g. hotels, motels, guesthouses, holiday chalets, bed-and-breakfast accommodation and casinos.

3/ Other non-residential space includes churches, sport and recreation clubs, schools, crèches, hospitals and all other non-residential space.

4/ Other buildings include other residential buildings, non-residential buildings and internal alterations. No square metres are collected for internal alterations.

*Revised.

Table 25 – Buildings reported as completed to larger municipalities at current prices by type of building: North West

| | | | Mar. 2007* | Feb. 2008 | Mar. 2008 | Jan. - Mar. 2007 | Jan. - Mar. 2008 | % Change 1/ |
|---------------------------------|----------------------------------------|----------------|------------|-----------|-----------|------------------|------------------|-------------|
| Category of building | Type of building | Measuring unit | | | | | | |
| 1. Residential buildings | 1. Dwelling-houses < 80 square metres | Number | 184 | 364 | 32 | 620 | 442 | -28,7 |
| | | square metres | 8 414 | 11 970 | 1 705 | 23 711 | 16 373 | -30,9 |
| | | R'000 | 8 051 | 20 958 | 3 368 | 21 895 | 30 688 | 40,2 |
| | 2. Dwelling-houses >= 80 square metres | Number | 185 | 153 | 149 | 397 | 431 | 8,6 |
| | | square metres | 41 981 | 27 440 | 39 624 | 94 904 | 91 471 | -3,6 |
| | | R'000 | 122 517 | 76 404 | 84 044 | 275 089 | 223 509 | -18,8 |
| | 3. Flats and townhouses | Number | 193 | 153 | 83 | 433 | 395 | -8,8 |
| | | square metres | 17 430 | 13 280 | 9 090 | 31 933 | 35 060 | 9,8 |
| | | R'000 | 42 408 | 38 050 | 26 392 | 77 966 | 107 300 | 37,6 |
| | 4. Other residential buildings 2/ | square metres | 0 | 0 | 276 | 0 | 276 | |
| | | R'000 | 0 | 0 | 690 | 0 | 690 | |
| | 5. Total residential buildings | R'000 | 172 976 | 135 412 | 114 494 | 374 950 | 362 187 | -3,4 |
| 2. Non-residential buildings | 1. Office and banking space | square metres | 1 509 | 2 237 | 2 705 | 2 795 | 5 723 | 104,8 |
| | | R'000 | 3 319 | 5 400 | 8 700 | 6 148 | 16 226 | 163,9 |
| | 2. Shopping space | square metres | 3 720 | 3 955 | 512 | 19 889 | 4 467 | -77,5 |
| | | R'000 | 9 300 | 8 176 | 1 126 | 59 299 | 9 302 | -84,3 |
| | 3. Industrial and warehouse space | square metres | 0 | 921 | 1 265 | 0 | 2 186 | |
| | | R'000 | 0 | 1 400 | 3 100 | 0 | 4 500 | |
| | 4. Other non-residential buildings 3/ | square metres | 979 | 2 459 | 602 | 1 623 | 3 282 | 102,2 |
| | | R'000 | 2 197 | 6 960 | 1 143 | 3 738 | 8 183 | 118,9 |
| | 5. Total non-residential buildings | R'000 | 14 816 | 21 936 | 14 069 | 69 185 | 38 211 | -44,8 |
| | | | | | | | | |
| 3. Additions and alterations | 1. Dwelling-houses | square metres | 3 574 | 4 257 | 2 289 | 10 803 | 12 559 | 16,3 |
| | | R'000 | 8 011 | 8 163 | 3 905 | 22 727 | 20 426 | -10,1 |
| | 2. Other buildings 4/ | square metres | 1 771 | 421 | 0 | 1 771 | 701 | -60,4 |
| | | R'000 | 7 393 | 463 | 0 | 7 513 | 1 305 | -82,6 |
| | 3. Total additions and alterations | R'000 | 15 404 | 8 626 | 3 905 | 30 240 | 21 731 | -28,1 |
| | | | | | | | | |
| 4. Recorded buildings completed | 1. Total at current prices | R'000 | 203 196 | 165 974 | 132 468 | 474 375 | 422 129 | -11,0 |

1/ The percentage change between cumulative figures for 2007 and 2008.

2/ Other residential buildings include institutions for the disabled, boarding houses, hostels and tourism accommodation e.g. hotels, motels, guesthouses, holiday chalets, bed-and-breakfast accommodation and casinos.

3/ Other non-residential space includes churches, sport and recreation clubs, schools, crèches, hospitals and all other non-residential space.

4/ Other buildings include other residential buildings, non-residential buildings and internal alterations. No square metres are collected for internal alterations.

*Revised.

Table 26 – Buildings reported as completed to larger municipalities at current prices by type of building: Gauteng

| | | | Mar. 2007* | Feb. 2008 | Mar. 2008 | Jan. - Mar. 2007 | Jan. - Mar. 2008 | % Change 1/ |
|----------------------------------------|--------------------------------------------------|----------------|------------------|------------------|------------------|------------------|------------------|-------------|
| Category of building | Type of building | Measuring unit | | | | | | |
| 1. Residential buildings | 1. Dwelling-houses < 80 square metres | Number | 910 | 854 | 1 543 | 2 650 | 2 770 | 4,5 |
| | | square metres | 39 647 | 39 137 | 64 414 | 114 453 | 121 679 | 6,3 |
| | | R'000 | 91 139 | 101 432 | 96 673 | 251 258 | 248 999 | -0,9 |
| | 2. Dwelling-houses >= 80 square metres | Number | 677 | 664 | 728 | 1 788 | 1 859 | 4,0 |
| | | square metres | 163 981 | 145 119 | 147 851 | 449 561 | 397 658 | -11,5 |
| | | R'000 | 538 728 | 489 595 | 473 253 | 1 456 193 | 1 310 351 | -10,0 |
| | 3. Flats and townhouses | Number | 757 | 779 | 964 | 2 298 | 2 413 | 5,0 |
| | | square metres | 79 766 | 87 585 | 106 359 | 263 676 | 263 660 | -0,0 |
| | | R'000 | 275 530 | 327 092 | 434 476 | 878 934 | 1 062 071 | 20,8 |
| | 4. Other residential buildings 2/ | square metres | 0 | 3 852 | 0 | 0 | 13 209 | |
| | | R'000 | 0 | 22 894 | 0 | 0 | 54 918 | |
| | 5. Total residential buildings | R'000 | 905 397 | 941 013 | 1 004 402 | 2 586 385 | 2 676 339 | 3,5 |
| 2. Non-residential buildings | 1. Office and banking space | square metres | 15 391 | 18 731 | 130 618 | 57 892 | 157 955 | 172,8 |
| | | R'000 | 45 546 | 80 664 | 472 933 | 230 160 | 588 816 | 155,8 |
| | 2. Shopping space | square metres | 59 600 | 14 378 | 19 222 | 85 856 | 58 870 | -31,4 |
| | | R'000 | 136 639 | 49 421 | 75 679 | 268 501 | 241 240 | -10,2 |
| | 3. Industrial and warehouse space | square metres | 39 489 | 23 540 | 12 426 | 87 807 | 70 667 | -19,5 |
| | | R'000 | 113 643 | 76 674 | 39 347 | 256 202 | 200 417 | -21,8 |
| | 4. Other non-residential buildings 3/ | square metres | 1 056 | 1 922 | 4 797 | 28 241 | 9 682 | -65,7 |
| | | R'000 | 2 991 | 5 368 | 12 186 | 99 552 | 27 306 | -72,6 |
| | 5. Total non-residential buildings | R'000 | 298 819 | 212 127 | 600 145 | 854 415 | 1 057 779 | 23,8 |
| | | | | | | | | |
| 3. Additions and alterations | 1. Dwelling-houses | square metres | 52 657 | 37 739 | 50 812 | 165 547 | 119 008 | -28,1 |
| | | R'000 | 157 917 | 123 836 | 159 375 | 486 693 | 374 806 | -23,0 |
| | 2. Other buildings 4/ | square metres | 10 494 | 9 384 | 27 371 | 28 684 | 47 310 | 64,9 |
| | | R'000 | 39 485 | 33 901 | 118 007 | 105 519 | 194 525 | 84,4 |
| | 3. Total additions and alterations | R'000 | 197 402 | 157 737 | 277 382 | 592 212 | 569 331 | -3,9 |
| 4. Recorded buildings completed | 1. Total at current prices | R'000 | 1 401 618 | 1 310 877 | 1 881 929 | 4 033 012 | 4 303 449 | 6,7 |

1/ The percentage change between cumulative figures for 2007 and 2008.

2/ Other residential buildings include institutions for the disabled, boarding houses, hostels and tourism accommodation e.g. hotels, motels, guesthouses, holiday chalets, bed-and-breakfast accommodation and casinos.

3/ Other non-residential space includes churches, sport and recreation clubs, schools, crèches, hospitals and all other non-residential space.

4/ Other buildings include other residential buildings, non-residential buildings and internal alterations. No square metres are collected for internal alterations.

*Revised.

Table 27 – Buildings reported as completed to larger municipalities at current prices by type of building: Mpumalanga

| | | | Mar. 2007* | Feb. 2008 | Mar. 2008 | Jan. - Mar. 2007 | Jan. - Mar. 2008 | % Change 1/ |
|------------------------------------|----------------------------------------|----------------|------------|-----------|-----------|------------------|------------------|-------------|
| Category of building | Type of building | Measuring unit | | | | | | |
| 1. Residential buildings | 1. Dwelling-houses < 80 square metres | Number | 16 | 224 | 120 | 124 | 484 | 290,3 |
| | | square metres | 972 | 10 214 | 5 771 | 7 037 | 22 948 | 226,1 |
| | | R'000 | 2 546 | 9 075 | 5 448 | 11 998 | 22 407 | 86,8 |
| | 2. Dwelling-houses >= 80 square metres | Number | 70 | 111 | 181 | 247 | 377 | 52,6 |
| | | square metres | 14 311 | 24 951 | 47 318 | 47 019 | 88 710 | 88,7 |
| | | R'000 | 35 066 | 64 115 | 129 744 | 116 464 | 237 986 | 104,3 |
| | 3. Flats and townhouses | Number | 26 | 61 | 7 | 146 | 121 | -17,1 |
| | | square metres | 3 877 | 5 276 | 512 | 16 433 | 11 472 | -30,2 |
| | | R'000 | 9 324 | 15 821 | 1 868 | 42 291 | 35 277 | -16,6 |
| | 4. Other residential buildings 2/ | square metres | 300 | 0 | 0 | 490 | 0 | -100,0 |
| | | R'000 | 900 | 0 | 0 | 1 470 | 0 | -100,0 |
| | 5. Total residential buildings | R'000 | 47 836 | 89 011 | 137 060 | 172 223 | 295 670 | 71,7 |
| 2. Non-residential buildings | 1. Office and banking space | square metres | 2 379 | 0 | 1 162 | 6 380 | 1 162 | -81,8 |
| | | R'000 | 9 258 | 0 | 3 000 | 22 558 | 3 000 | -86,7 |
| | 2. Shopping space | square metres | 4 017 | 1 547 | 0 | 4 460 | 1 547 | -65,3 |
| | | R'000 | 10 044 | 4 297 | 0 | 11 153 | 4 297 | -61,5 |
| | 3. Industrial and warehouse space | square metres | 2 348 | 1 965 | 4 250 | 7 453 | 6 215 | -16,6 |
| | | R'000 | 4 999 | 4 918 | 12 658 | 16 635 | 17 576 | 5,7 |
| | 4. Other non-residential buildings 3/ | square metres | 417 | 489 | 230 | 1 220 | 719 | -41,1 |
| | | R'000 | 1 001 | 620 | 1 035 | 3 218 | 1 655 | -48,6 |
| 5. Total non-residential buildings | R'000 | 25 302 | 9 835 | 16 693 | 53 564 | 26 528 | -50,5 | |
| 3. Additions and alterations | 1. Dwelling-houses | square metres | 4 206 | 7 373 | 11 154 | 17 537 | 27 280 | 55,6 |
| | | R'000 | 8 695 | 18 583 | 25 604 | 36 614 | 65 601 | 79,2 |
| | 2. Other buildings 4/ | square metres | 663 | 1 752 | 1 491 | 1 529 | 4 886 | 219,6 |
| | | R'000 | 2 912 | 3 798 | 5 430 | 5 949 | 14 900 | 150,5 |
| | 3. Total additions and alterations | R'000 | 11 607 | 22 381 | 31 034 | 42 563 | 80 501 | 89,1 |
| 4. Recorded buildings completed | 1. Total at current prices | R'000 | 84 745 | 121 227 | 184 787 | 268 350 | 402 699 | 50,1 |

1/ The percentage change between cumulative figures for 2007 and 2008.

2/ Other residential buildings include institutions for the disabled, boarding houses, hostels and tourism accommodation e.g. hotels, motels, guesthouses, holiday chalets, bed-and-breakfast accommodation and casinos.

3/ Other non-residential space includes churches, sport and recreation clubs, schools, crèches, hospitals and all other non-residential space.

4/ Other buildings include other residential buildings, non-residential buildings and internal alterations. No square metres are collected for internal alterations.

*Revised.

Table 28 – Buildings reported as completed to larger municipalities at current prices by type of building: Limpopo

| | | | Mar. 2007* | Feb. 2008 | Mar. 2008 | Jan. - Mar. 2007 | Jan. - Mar. 2008 | % Change 1/ |
|---------------------------------|----------------------------------------|----------------|------------|-----------|-----------|------------------|------------------|-------------|
| Category of building | Type of building | Measuring unit | | | | | | |
| 1. Residential buildings | 1. Dwelling-houses < 80 square metres | Number | 23 | 23 | 15 | 80 | 47 | -41,3 |
| | | square metres | 1 397 | 1 499 | 953 | 5 046 | 3 075 | -39,1 |
| | | R'000 | 3 359 | 3 889 | 3 028 | 12 824 | 8 580 | -33,1 |
| | 2. Dwelling-houses >= 80 square metres | Number | 46 | 44 | 51 | 141 | 113 | -19,9 |
| | | square metres | 8 035 | 11 778 | 7 685 | 27 591 | 22 629 | -18,0 |
| | | R'000 | 23 586 | 29 046 | 29 369 | 69 759 | 67 151 | -3,7 |
| | 3. Flats and townhouses | Number | 48 | 0 | 95 | 78 | 95 | 21,8 |
| | | square metres | 4 511 | 0 | 7 121 | 8 717 | 7 121 | -18,3 |
| | | R'000 | 13 533 | 0 | 22 735 | 21 784 | 22 735 | 4,4 |
| | 4. Other residential buildings 2/ | square metres | 0 | 0 | 0 | 0 | 0 | |
| | | R'000 | 0 | 0 | 0 | 0 | 0 | |
| | 5. Total residential buildings | R'000 | 40 478 | 32 935 | 55 132 | 104 367 | 98 466 | -5,7 |
| 2. Non-residential buildings | 1. Office and banking space | square metres | 1 176 | 0 | 0 | 1 176 | 0 | -100,0 |
| | | R'000 | 3 528 | 0 | 0 | 3 528 | 0 | -100,0 |
| | 2. Shopping space | square metres | 1 757 | 2 663 | 0 | 2 473 | 3 455 | 39,7 |
| | | R'000 | 5 711 | 5 675 | 0 | 6 909 | 7 417 | 7,4 |
| | 3. Industrial and warehouse space | square metres | 0 | 0 | 0 | 2 499 | 0 | -100,0 |
| | | R'000 | 0 | 0 | 0 | 5 181 | 0 | -100,0 |
| | 4. Other non-residential buildings 3/ | square metres | 0 | 718 | 0 | 0 | 2 335 | |
| | | R'000 | 0 | 1 580 | 0 | 0 | 6 108 | |
| | 5. Total non-residential buildings | R'000 | 9 239 | 7 255 | 0 | 15 618 | 13 525 | -13,4 |
| 3. Additions and alterations | 1. Dwelling-houses | square metres | 882 | 848 | 578 | 4 364 | 2 095 | -52,0 |
| | | R'000 | 2 051 | 2 258 | 1 440 | 9 685 | 5 387 | -44,4 |
| | 2. Other buildings 4/ | square metres | 0 | 0 | 75 | 296 | 75 | -74,7 |
| | | R'000 | 0 | 0 | 165 | 662 | 165 | -75,1 |
| | 3. Total additions and alterations | R'000 | 2 051 | 2 258 | 1 605 | 10 347 | 5 552 | -46,3 |
| 4. Recorded buildings completed | 1. Total at current prices | R'000 | 51 768 | 42 448 | 56 737 | 130 332 | 117 543 | -9,8 |

1/ The percentage change between cumulative figures for 2007 and 2008.

2/ Other residential buildings include institutions for the disabled, boarding houses, hostels and tourism accommodation e.g. hotels, motels, guesthouses, holiday chalets, bed-and-breakfast accommodation and casinos.

3/ Other non-residential space includes churches, sport and recreation clubs, schools, crèches, hospitals and all other non-residential space.

4/ Other buildings include other residential buildings, non-residential buildings and internal alterations. No square metres are collected for internal alterations.

*Revised.

Table 29 – Subsidised low-cost dwelling-houses completed and in process of completion 1/

| Province | Year | Number | Square metres 2/ | Value R'000 2/ |
|---------------------|-------------|----------------|---------------------|-------------------|
| Western Cape | 2002 | 19 534 | 531 116 | 168 852 |
| | 2003 | 16 926 | 507 780 | 247 187 |
| | 2004 | 12 751 | 382 530 | 211 424 |
| Eastern Cape | 2002 | 46 700 | 1 575 675 | 473 806 |
| | 2003 | 35 005 | 1 050 150 | 511 213 |
| | 2004 | 34 923 | 1 047 690 | 579 058 |
| Northern Cape | 2002 | 5 189 | 164 906 | 68 078 |
| | 2003 | 4 354 | 130 620 | 63 586 |
| | 2004 | 3 645 | 109 350 | 60 438 |
| Free State | 2002 | 8 617 | 348 492 | 154 121 |
| | 2003 | 14 848 | 445 440 | 216 840 |
| | 2004 | 16 522 | 495 660 | 273 951 |
| KwaZulu-Natal | 2002 | 21 958 | 831 349 | 234 041 |
| | 2003 | 31 372 | 941 160 | 458 157 |
| | 2004 | 35 968 | 1 079 040 | 596 385 |
| North West | 2002 | 21 309 | 630 115 | 210 439 |
| | 2003 | 13 809 | 414 270 | 201 667 |
| | 2004 | 10 149 | 304 470 | 168 281 |
| Gauteng | 2002 | 29 939 | 991 571 | 321 943 |
| | 2003 | 42 862 | 1 285 860 | 625 957 |
| | 2004 | 33 260 | 997 800 | 551 484 |
| Mpumalanga | 2002 | 19 883 | 660 505 | 253 931 |
| | 2003 | 21 336 | 640 080 | 246 079 |
| | 2004 | 18 808 | 564 240 | 311 855 |
| Limpopo | 2002 | 15 382 | 605 877 | 183 769 |
| | 2003 | 15 596 | 467 880 | 227 764 |
| | 2004 | 16 338 | 490 140 | 270 900 |
| South Africa | 2002 | 188 511 | 6 339 606 | 2 068 980 |
| | 2003 | 196 108 | 5 883 240 | 2 798 450 |
| | 2004 | 182 364 | 5 470 920 | 3 023 777 |

Table 30 – Subsidised low-cost dwelling-houses completed: 1 April 2005 to 31 March 2006

| Province | Number | Square metres 2/ | Value R'000 2/ |
|---------------------|----------------|---------------------|-------------------|
| Western Cape | 2 040 | 61 200 | 52 877 |
| Eastern Cape | 16 874 | 506 220 | 437 374 |
| Northern Cape | 5 293 | 158 790 | 137 195 |
| Free State | 17 635 | 529 050 | 457 099 |
| KwaZulu-Natal | 21 601 | 648 030 | 559 898 |
| North West | 14 445 | 433 350 | 374 414 |
| Gauteng | 23 409 | 702 270 | 606 761 |
| Mpumalanga | 14 389 | 431 670 | 372 963 |
| Limpopo | 21 973 | 659 190 | 569 540 |
| South Africa | 137 659 | 4 129 770 | 3 568 121 |

Table 31 – Subsidised low-cost dwelling-houses completed and in process of completion 1/: 1 April 2006 to 31 March 2007

| Province | Number | Square metres 2/ | R'000 2/ |
|---------------------|----------------|---------------------|------------------|
| Western Cape | 34 585 | 1 037 550 | 768 200 |
| Eastern Cape | 16 526 | 495 780 | 637 700 |
| Northern Cape | 3 880 | 116 400 | 104 800 |
| Free State | 19 662 | 589 860 | 528 400 |
| KwaZulu-Natal | 38 290 | 1 148 700 | 1 074 500 |
| North West | 46 972 | 1 409 160 | 696 500 |
| Gauteng | 77 044 | 2 311 320 | 1 748 300 |
| Mpumalanga | 10 651 | 319 530 | 329 900 |
| Limpopo | 23 609 | 708 270 | 646 700 |
| South Africa | 271 219 | 8 136 570 | 6 535 000 |

Source: Housing Subsidy System and Provincial Housing Departments co-ordinated by the National Department of Housing

1/ Includes all top structures completed and sites serviced in respect of the reporting period.

2/ Estimates by the National Department of Housing.

Explanatory notes

| | | |
|--------------------------------------|---|----------------------------------------------------------------------------------------------------------------------------------------------------------------------------------------------------------------------------------------------------------------------------------------------------------------------------------------------------------------------------------------------------------------------------------------------------------------------------------------------------------------------------------------------------------------------------------------------------------------------------------------------------------------------------------------------------------------------------------------------------------------------------------------------------|
| Introduction | 1 | Statistics South Africa (Stats SA) conducts a monthly building statistics survey collecting information regarding building plans passed and buildings completed, financed by the private sector, from the largest local government institutions in South Africa. According to these institutions, they are not always notified about low-cost housing projects and therefore do not include the bulk of low-cost dwelling-houses. Data regarding subsidised low-cost dwelling-houses, supplied by the Housing Subsidy System and Provincial Housing Departments and co-ordinated by the National Department of Housing, are shown in table 29 to table 31 (page 37). |
| | 2 | In order to improve timeliness of the publication, some information for the current month has been estimated due to late submission by respondents. These estimates will be revised in the next statistical release(s) as soon as actual information is available. |
| Purpose of the survey | 3 | The monthly survey data are used in monitoring the state of economy and formulation of economic policy. Furthermore, the results are important inputs to estimate the Gross Domestic Product (GDP) and to calculate the Composite Leading Business Cycle Indicator. The data are extensively used by the private sector. |
| Scope of the survey | 4 | This survey covers local government institutions conducting activities for the private sector regarding - <ul style="list-style-type: none"> • passing of building plans; and • final inspection of completed buildings. |
| Classification | 5 | Building activities are classified in division 5 according to the 1993 edition of the <i>Standard Industrial Classification of all Economic Activities, (SIC) Fifth Edition, Report No. 09-90-02</i> . The SIC is based on the 1990 <i>International Standard Industrial Classification of all Economic Activities (ISIC)</i> with suitable adaptations for local conditions. |
| Response rate | 6 | The preliminary response rate for the survey on building statistics for March 2008 was 95,7 %. Improved response rate for February 2008 was 95,7%. |
| Statistical unit | 7 | The statistical unit for the collection of information is a local government institution. Local government institutions include district municipalities, metropolitan municipalities and local municipalities. |
| Survey methodology and design | 8 | <p>Stats SA conducts a monthly survey of metropolitan municipalities and large local municipalities on building plans passed and buildings completed. An annual survey of the remaining municipalities is conducted regarding buildings completed. The monthly survey represents approximately 90 percent of the total value of buildings completed. Information regarding building plans passed and buildings completed for the private sector is collected by mail, fax and telephone.</p> <p>According to the municipalities, they are not always notified about low-cost housing projects. Data regarding subsidised low-cost dwelling-houses, supplied by the provincial governments and co-ordinated by the National Department of Housing, are shown in table 29 to table 31 (page 37).</p> |
| Constant prices | 9 | The value of building plans passed and buildings completed at constant prices measures building activities in terms of ruling prices in a specific base year, which is currently 2000. The value of building plans passed at constant prices for each month is obtained by deflating the values at current prices with a price index known as the 'lump sum domestic buildings' as published in statistical release P0151: <i>JBCC Contract Price Adjustment Provisions Work Group Indices</i> . In order to be applicable, these indices (base February 1991=100) are converted to the base year 2000=100. |

- 10** The value of buildings completed at constant prices is obtained by deflating the values at current prices with the price index which is used to calculate building plans passed at constant prices (see paragraph 8). Since the completion of buildings may extend over a few months to a few years, the current value of buildings completed is deflated by price indices which prevailed at the time the plans were passed. Therefore, the duration of the completion of different types of buildings are taken into account in ascertaining the deflators e.g. the value of dwelling-houses completed at constant prices at January 2007 is obtained by deflating the current value of dwelling-houses completed for January 2007 with the price index of a month six months prior to January 2007. Furthermore, the value of other residential buildings, non-residential buildings and additions and alterations at constant prices is obtained by deflating the current values with price indices of 12 months, 18 months and 12 months prior to the relevant month, respectively.
- Seasonal adjustment**
- 11** Seasonally adjusted estimates of building plans passed and buildings completed are generated each month, using the X-11 Seasonal Adjustment Program developed by US Bureau of the Census Economic Research and Analyses Division, 1968.
- 12** Seasonal adjustment is a means of removing the estimated effects of normal seasonal variation from the series so that the effects of other influences on the series can be more clearly recognised. Seasonal adjustment does not aim to remove irregular or non-seasonal influences which may be present in any particular month. Influences that are volatile or unsystematic can still make it difficult to interpret the movement of the series even after adjustment for seasonal variations. Therefore, the month-to-month movements of seasonally adjusted estimates may not be reliable indicators of trend behaviour.
- Trend cycle**
- 13** The trend is a long-term pattern or movement of a time series. The X-11 Seasonal Adjustment Program is used for smoothing seasonally adjusted data.
- Revised figures**
- 14** Revised figures are due to late submission of data to Stats SA, or to respondents reporting revisions or corrections to their figures. Figures for the latest month are therefore preliminary. Data are edited at municipal level.
- 15** Once a year the annual statistical release P5041.3 is published with the revised and updated information at provincial and municipal level for the previous calendar year. Due to this comprehensive revision, the monthly statistical release P5041.1 reflects provincial revision for 2007 where applicable.
- Related publications**
- 16** Users may also wish to refer to the following publications:
- P5041.3: Selected building statistics of the private sector as reported by local government institutions issued annually.
 - P9101.2: Actual and expected expenditure on construction by the public sector per statistical region issued annually.
 - Bulletin of Statistics issued quarterly.
 - South African Statistics issued annually.
 - Report 50-11-01 issued annually.
- Rounding-off of figures**
- 17** The figures in the tables have, where necessary, been rounded off to the nearest digit shown.
- Pre-release policy**
- 18** Stats SA's pre-release policy may be inspected at its website, www.statssa.gov.za

Symbols and abbreviations

| | | |
|-----------|----------|------------------------------------------------------------------------------------------------------------------------|
| 19 | .. | no meaningful percentage change between two specified periods available since either one or both of the totals are nil |
| | 0 | nil or figure too small to publish |
| | * | revised |
| | Stats SA | Statistics South Africa |
| | SIC | Standard Industrial Classification of all Economic Activities |
| | ISIC | International Standard Industrial Classification of all Economic Activities |
| | JBCC | Joint Building Contracts Committee |
| | CD | Compact Disc |
| | US | United States |
| | SARB | South African Reserve Bank |
| | DTI | Department of Trade and Industry |

2010 World Cup note

- 20** Information relating to the 2010 Soccer World Cup new stadia and renovations, as well as other public sector infrastructure spending e.g. Eskom expansions and the Gautrain project, will not be included in the private sector building data series, as these are partially public sector funded.

Glossary

| | |
|--------------------------------------|---------------------------------------------------------------------------------------------------------------------------------------------------------------------------------------------------------------------------------------------------------------------------------------------------------------------------------------------------------------------------------------------------------------------------------------------------------------------------------------------------------------------------------------------------------------------------------------------------------------------------------------------------------------------------------------------------------------------------------------------------------------------------------------------------------------------------------------------------------------------------------------------------------------------------------------------------------------------------------------------------------------------------------------------------------------------------------------------------------|
| Additions and alterations | They include extensions to existing buildings as well as internal and external alterations of existing buildings. |
| Blocks of flats | High-density housing consisting of a number of self-contained dwelling-units, each with at least one living-room together with a kitchen and bathroom, conjoined to similar units in one building. |
| Dwelling-house | A free-standing, complete structure on a separate stand or a self-contained dwelling-unit, e.g. granny flat, on the same premises as an existing residence. Out-buildings and garages are included. |
| Local government institutions | Include – <ul style="list-style-type: none"> • District municipalities; • Metropolitan municipalities; and • Local municipalities. |
| Municipality | A generic term describing the “unit” of government in the local spheres responsible for local government in a geographically demarcated area and including district, metropolitan and local municipalities. It is an institution consisting of a municipal council (elected political representatives) and municipal administration (appointed officials). |
| District municipality | Municipality that has municipal executive and legislative authority in an area that includes more than one municipality, and which is described in section 155(1) of the Constitution as a category C municipality (Refer to Local Government: Municipal Structure Act, 1998 (Act No. 117 of 1998)). |
| Metropolitan municipality | Municipality that has municipal executive and legislative authority in an area that includes more than one municipality, and which is described in section 155(1) of the Constitution as a category A municipality (Refer to Local Government: Municipal Structure Act, 1998 (Act No. 117 of 1998)). |
| Local municipality | Municipality that shares municipal executive and legislative authority in its area with a district municipality within whose area it falls, that is described in section 155(1) of the constitution as a category B municipality. |
| Non-residential buildings | Comprise factories, commercial, financial and other office buildings, as well as other buildings not used for residential purposes, such as churches, halls, clubs, schools and hospitals. |
| Other residential buildings | Institutions for the disabled, boarding houses, old people’s homes, hostels, hotels, motels, guesthouses, holiday chalets, bed-and-breakfast accommodation, entertainment centres and casinos. |
| Percentage change | <p>When using monthly actual values, the percentage change is the change in actual values of building activities (building plans passed or buildings completed) of the relevant month compared with the actual values of building activities (building plans passed or buildings completed) of the same month in the previous year expressed as a percentage.</p> <p>When using annual actual values, the percentage change is the change in the actual values of building activities (building plans passed or buildings completed) of the relevant year compared with the actual values of building activities (building plans passed or buildings completed) of the previous year expressed as a percentage.</p> <p>When using seasonally adjusted values, the percentage change is the change in the seasonally adjusted values of building activities (building plans passed or buildings completed) of the relevant month compared with the seasonally adjusted values of building activities (building plans passed or buildings completed) of the previous month expressed as a percentage.</p> |

| | |
|------------------------------|---------------------------------------------------------------------------------------------------------------------------------------------------------------------------------------------------------------------------------------------------------------------|
| Reference period | One calendar month. |
| Residential buildings | Comprise dwelling-houses, flats, townhouses and other residential buildings. |
| Townhouses | Multiple, medium-density dwelling-units and include cluster housing, group housing, simplexes, duplexes, triplexes and other similar dwelling-units which are usually grouped together, with one level of each unit on ground level. This excludes blocks of flats. |

General information

Stats SA publishes approximately 300 different statistical releases each year. It is not economically viable to produce them in more than one of South Africa's eleven official languages. Since the releases are used extensively, not only locally but also by international economic and social-scientific communities, Stats SA releases are published in English.

Stats SA has copyright on this publication. Users may apply the information as they wish, provided that they acknowledge Stats SA as the source of the basic data wherever they process, apply, utilise, publish or distribute the data and also that they specify that the relevant application and analysis (where applicable) result from their own processing of the data.

An advance release calendar is disseminated on www.statssa.gov.za

Stats SA products

A complete set of Stats SA publications is available at the Stats SA Library and the following libraries:

National Library of South Africa, Pretoria Division
National Library of South Africa, Cape Town Division
Natal Society Library, Pietermaritzburg
Library of Parliament, Cape Town
Bloemfontein Public Library
Johannesburg Public Library
Eastern Cape Library Services, King William's Town
Central Regional Library, Polokwane
Central Reference Library, Nelspruit
Central Reference Collection, Kimberley
Central Reference Library, Mmabatho

Stats SA also provides a subscription service.

Electronic services

A large range of data are available via on-line services, diskette, CD and computer printouts. For more details about our electronic data services, contact (012) 310 8600/8390/8351/4892/8496/8095.

You can visit us on the Internet at: www.statssa.gov.za

Enquiries

Telephone number: (012) 310 8600/8390/8351/4892/8496/8095 (user information services)
(012) 310 8228/310 8007 (technical enquiries)
(012) 310 8161 (orders)
(012) 310 4883/4885/8018 (library)

Fax number: (012) 310 8664 (technical enquiries)

Email: Gretaz@statssa.gov.za (technical enquiries)
info@statssa.gov.za (user information services)
distribution@statssa.gov.za (orders)

Postal address: Private Bag X44, Pretoria, 0001

Produced by Stats SA