



**Statistics
South Africa**

Preferred supplier of quality statistics



Statistical release

P5041.1

Selected building statistics of the private sector as reported by local government institutions

**March 2007
(Preliminary)**

**Embargoed until:
16 May 2007
13:00**

Enquiries:

User Information Services
Tel: (012) 310 8600 / 4892 / 8390

Forthcoming issue:

April 2007

Expected release date

20 June 2007

Statistics South Africa • Mbalo-mbalo ya Afrika Tshipembe • Tinhlayo-tiko ta Afrika-Dzonga • Dipalopalo tsa Aforika Borwa • Ezezibalo zaseNingizimu Afrika
Dipalopalo tša Afrika Borwa • Dipalopalo tsa Afrika Borwa • Ubalo lwaseMzantsi Afrika • Telubalo eNingizimu Afrika • iNanimbalo leSewula Afrika • Statistiek Suid-Afrika

Contents

	Page
SUMMARY OF FINDINGS: SELECTED BUILDING STATISTICS OF THE PRIVATE SECTOR	3
Tables	
Table 1 Values and percentage change of recorded building plans passed by larger municipalities at current prices by type of building	9
Table 2 Seasonally adjusted values and percentage change of recorded building plans passed by larger municipalities at current prices by type of building	10
Table 3 Values and percentage change of recorded building plans passed by larger municipalities at constant 2000 prices by type of building	11
Table 4 Seasonally adjusted values and percentage change of recorded building plans passed by larger municipalities at constant 2000 prices by type of building	12
Table 5 Values and percentage change of buildings reported as completed to larger municipalities at current prices by type of building	13
Table 6 Seasonally adjusted values and percentage change of buildings reported as completed to larger municipalities at current prices by type of building	14
Table 7 Values and percentage change of buildings reported as completed to larger municipalities at constant 2000 prices by type of building	15
Table 8 Seasonally adjusted values and percentage change of buildings reported as completed to larger municipalities at constant 2000 prices by type of building	16
Table 9 Recorded building plans passed by larger municipalities at current prices by type of building: South Africa	17
Table 10 Recorded building plans passed by larger municipalities at current prices by type of building: Western Cape	18
Table 11 Recorded building plans passed by larger municipalities at current prices by type of building: Eastern Cape	19
Table 12 Recorded building plans passed by larger municipalities at current prices by type of building: Northern Cape	20
Table 13 Recorded building plans passed by larger municipalities at current prices by type of building: Free State	21
Table 14 Recorded building plans passed by larger municipalities at current prices by type of building: KwaZulu-Natal	22
Table 15 Recorded building plans passed by larger municipalities at current prices by type of building: North West	23
Table 16 Recorded building plans passed by larger municipalities at current prices by type of building: Gauteng	24
Table 17 Recorded building plans passed by larger municipalities at current prices by type of building: Mpumalanga	25
Table 18 Recorded building plans passed by larger municipalities at current prices by type of building: Limpopo	26
Table 19 Buildings reported as completed to larger municipalities at current prices by type of building: South Africa	27
Table 20 Buildings reported as completed to larger municipalities at current prices by type of building: Western Cape	28
Table 21 Buildings reported as completed to larger municipalities at current prices by type of building: Eastern Cape	29
Table 22 Buildings reported as completed to larger municipalities at current prices by type of building: Northern Cape	30
Table 23 Buildings reported as completed to larger municipalities at current prices by type of building: Free State	31
Table 24 Buildings reported as completed to larger municipalities at current prices by type of building: KwaZulu-Natal	32

Table 25	Buildings reported as completed to larger municipalities at current prices by type of building: North West	33
Table 26	Buildings reported as completed to larger municipalities at current prices by type of building: Gauteng	34
Table 27	Buildings reported as completed to larger municipalities at current prices by type of building: Mpumalanga	35
Table 28	Buildings reported as completed to larger municipalities at current prices by type of building: Limpopo.....	36
Table 29	Subsidised low-cost dwelling-houses completed or under construction by province	37
Table 30	Subsidised low-cost dwelling-houses completed by province	37
Explanatory notes		38
Glossary		41
General information		43

SUMMARY OF FINDINGS: SELECTED BUILDING STATISTICS OF THE PRIVATE SECTOR

Table A – Selected key figures regarding recorded building plans passed by larger municipalities at current prices for January to March 2007

Estimates at current prices	January to March 2006	January to March 2007 1/	Difference in value between January to March 2006 and January to March 2007	Percentage change between January to March 2006 and January to March 2007
	R'000	R'000	R'000	
Residential buildings	8 495 551	9 631 623	+1 136 072	+13,4
-Dwelling-houses	5 755 174	6 556 608	+801 434	+13,9
-Flats and townhouses	2 590 779	2 904 834	+314 055	+12,1
-Other residential buildings	149 598	170 181	+20 583	+13,8
Non-residential buildings	2 837 240	3 165 397	+328 157	+11,6
Additions and alterations	3 943 050	4 295 192	+352 142	+8,9
Total	15 275 841	17 092 212	+1 816 371	+11,9

1/ March 2007 figures should be regarded as preliminary because of possible backlogs and incomplete reporting by municipalities.

Total value of recorded building plans passed increased

As indicated in Table A, the value of recorded building plans passed by larger municipalities (at current prices) during the first quarter of 2007 increased by 11,9% (+R1 816,4 million) compared with the first quarter of 2006.

The largest percentage increase was reported for residential buildings (+13,4% or R1 136,1 million), followed by non-residential buildings (+11,6% or R328,2 million) and additions and alterations (+8,9% or R352,1 million).

Table B – Recorded building plans passed by larger municipalities aggregated to provincial level for January to March 2007

Estimates at current prices	January to March 2006	January to March 2007 1/	Percentage contribution to the total value of building plans passed during January to March 2006	Percentage change between January to March 2006 and January to March 2007	Contribution(percentage points) to the percentage change in the value of building plans passed between January to March 2006 and January to March 2007 2/	Difference in value between January to March 2006 and January to March 2007
	R'000	R'000				R'000
Western Cape	3 788 237	4 202 414	24,8	+10,9	+2,7	+414 177
Eastern Cape	695 383	953 967	4,6	+37,2	+1,7	+258 584
Northern Cape	129 467	98 135	0,8	-24,2	-0,2	-31 332
Free State	311 691	555 206	2,0	+78,1	+1,6	+243 515
KwaZulu-Natal	1 870 574	1 996 837	12,2	+6,7	+0,8	+126 263
North West	467 268	873 017	3,1	+86,8	+2,7	+405 749
Gauteng	7 015 433	7 082 779	45,9	+1,0	+0,4	+67 346
Mpumalanga	696 936	970 223	4,6	+39,2	+1,8	+273 287
Limpopo	300 852	359 634	2,0	+19,5	+0,4	+58 782
Total	15 275 841	17 092 212	100,0	+11,9	+11,9	+1 816 371

1/ March 2007 figures should be regarded as preliminary because of possible backlogs and incomplete reporting by municipalities.

2/ The contribution (percentage points) is calculated by multiplying the percentage change of each province between January to March 2006 and January to March 2007 with the percentage contribution of the corresponding province to the total value of building plans passed during January to March 2006, divided by 100.

Eight provinces reported increases in the value of recorded building plans passed (see Table B). The largest contributors to the increase of 11,9% were Western Cape (+2,7 percentage points or R414,2 million), followed by North West (+2,7 percentage points or R405,7 million) and Mpumalanga (+1,8 percentage points or R273,3 million).

Table C – Selected key figures regarding recorded building plans passed by larger municipalities at constant 2000 prices for January to March 2007

Estimates at constant 2000 prices	January to March 2006	January to March 2007	Difference in value between January to March 2006 and January to March 2007	Percentage change between January to March 2006 and January to March 2007
	R'000	R'000		
Residential buildings	5 676 250	5 760 060	+83 810	+1,5
Non-residential buildings	1 895 136	1 893 559	-1 577	-0,1
Additions and alterations	2 633 942	2 568 914	-65 028	-2,5
Total	10 205 328	10 222 533	+17 205	+0,2

1/ March 2007 figures should be regarded as preliminary because of possible backlogs and incomplete reporting by municipalities.

Seasonally adjusted estimates at constant 2000 prices	October to December 2006	January to March 2007	Percentage change between October to December 2006 and January to March 2007
	R'000	R'000	
Residential buildings	6 049 033	6 682 850	+10,5
Non-residential buildings	2 406 580	2 088 823	-13,2
Additions and alterations	2 882 241	2 938 778	+2,0
Total	11 337 854	11 710 451	+3,3

Total real value of recorded building plans passed remained on the same level

As indicated in Table C, the value of recorded building plans passed by larger municipalities (at constant 2000 prices) during the first quarter of 2007 remained on the same level compared with the first quarter of 2006. The increase reported for residential buildings (+1,5% or R83,8 million) was largely counteracted by the decrease of 2,5% (-R65,0 million) reported for additions and alterations.

However, the seasonally adjusted real value of recorded building plans passed by larger municipalities during the first quarter of 2007 increased by 3,3% compared with the previous quarter, mainly due to increases reported for residential building plans passed (+10,5%) and additions and alterations (+2,0%). These increases were counteracted by a decrease reported for non-residential buildings (-13,2%) (see Table C).

Figure 1 shows both the seasonally adjusted and the trend series for recorded building plans passed at constant 2000 prices between January 2002 and March 2007. The trend series reflects a slight increase in 2002, followed by a steep increase from May 2003 up to the end of 2005. After a short period of downturn in 2006, the trend is currently moving upwards.

Figure 1 – Real value of recorded building plans passed by larger municipalities at constant 2000 prices

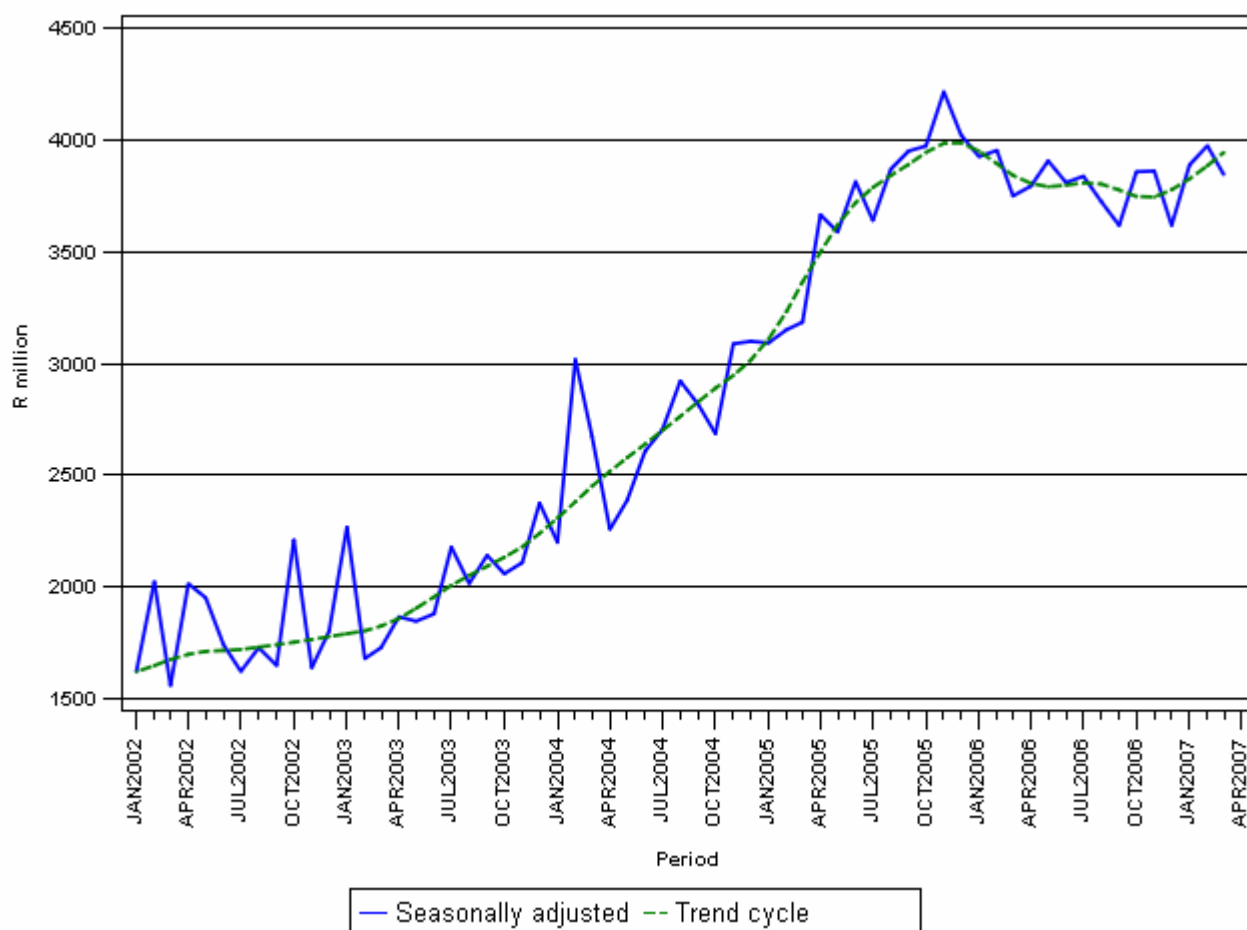


Table D – Selected key figures regarding buildings reported as completed to larger municipalities at current prices for January to March 2007

Estimates at current prices	January to March 2006	January to March 2007 1/	Difference in value between January to March 2006 and January to March 2007	Percentage change between January to March 2006 and January to March 2007
	R'000	R'000	R'000	
Residential buildings	4 989 227	5 621 462	+632 235	+12,7
-Dwelling-houses	3 022 702	3 602 677	+579 975	+19,2
-Flats and townhouses	1 956 697	1 837 235	-119 462	-6,1
-Other residential buildings	9 828	181 550	+171 722	+1 747,3
Non-residential buildings	1 315 956	2 124 953	+808 997	+61,5
Additions and alterations	1 506 878	1 804 068	+297 190	+19,7
Total	7 812 061	9 550 483	+1 738 422	+22,3

1/ March 2007 figures should be regarded as preliminary because of possible backlogs and incomplete reporting by municipalities.

Total value of buildings reported as completed increased

As indicated in Table D, the value of buildings reported as completed to larger municipalities (at current prices) during the first quarter of 2007 increased by 22,3% (+R1 738,4 million) compared with the first quarter of 2006.

The largest percentage increase in the value of buildings completed was reported for non-residential buildings (+61,5% or R809,0 million), followed by additions and alterations (+19,7% or R297,2 million) and residential buildings (+12,7% or R632,2 million). Within the residential buildings, 'other' residential buildings recorded the highest growth rate, mainly as a result of two casinos and an old age home that were reported as completed to the value of R110,7 million and R45,5 million respectively during the first quarter of 2007.

Table E – Buildings reported as completed to larger municipalities aggregated to provincial level for January to March 2007

Estimates at current prices	January to March 2006	January to March 2007 1/	Percentage contribution to the total value of buildings completed during January to March 2006	Percentage change between January to March 2006 and January to March 2007	Contribution (percentage points) to the percentage change in the value of buildings completed between January to March 2006 and January to March 2007 2/	Difference in value between January to March 2006 and January to March 2007
	R'000	R'000				R'000
Western Cape	2 224 739	2 959 305	28,5	+33,0	+9,4	+734 566
Eastern Cape	368 624	308 508	4,7	-16,3	-0,8	-60 116
Northern Cape	39 863	76 809	0,5	+92,7	+0,5	+36 946
Free State	162 794	253 516	2,1	+55,7	+1,2	+90 722
KwaZulu-Natal	882 361	1 257 887	11,3	+42,6	+4,8	+375 526
North West	352 646	458 746	4,5	+30,1	+1,4	+106 100
Gauteng	3 416 796	3 850 675	43,7	+12,7	+5,6	+433 879
Mpumalanga	248 039	254 795	3,2	+2,7	+0,1	+6 756
Limpopo	116 199	130 242	1,5	+12,1	+0,2	+14 043
Total	7 812 061	9 550 483	100,0	+22,3	+22,3	+1 738 422

1/ March 2007 figures should be regarded as preliminary because of possible backlogs and incomplete reporting by municipalities.

2/ The contribution (percentage points) is calculated by multiplying the percentage change of each province between January to March 2006 and January to March 2007 with the percentage contribution of the corresponding province to the total value of buildings completed during January to March 2006, divided by 100.

Eight provinces reported increases in the value of buildings completed. The largest contributor to the increase of 22,3% was Western Cape (+9,4 percentage points or R734,6 million), followed by Gauteng (+5,5 percentage points or R433,9 million) and KwaZulu-Natal (+4,8 percentage points or R375,5 million) (see Table E).

Table F – Selected key figures regarding buildings reported as completed to larger municipalities at constant 2000 prices for March 2007

Estimates at constant 2000 prices	January to March 2006	January to March 2007 1/	Difference in value between January to March 2006 and January to March 2007	Percentage change between January to March 2006 and January to March 2007
	R'000	R'000	R'000	
Residential buildings	3 454 947	3 584 214	+129 267	+3,7
Non-residential buildings	960 241	1 451 728	+491 487	+51,2
Additions and alterations	1 065 240	1 205 758	+140 518	+13,2
Total	5 480 428	6 241 700	+761 272	+13,9

1/ March 2007 figures should be regarded as preliminary because of possible backlogs and incomplete reporting by municipalities.

Seasonally adjusted estimates at constant 2000 prices	October to December 2006	January to March 2007	Percentage change between October to December 2006 and January to March 2007
	R'000	R'000	
Residential buildings	4 266 314	4 437 656	+4,0
Non-residential buildings	1 275 725	1 501 424	+17,7
Additions and alterations	1 267 430	1 263 209	-0,3
Total	6 809 469	7 202 289	+5,8

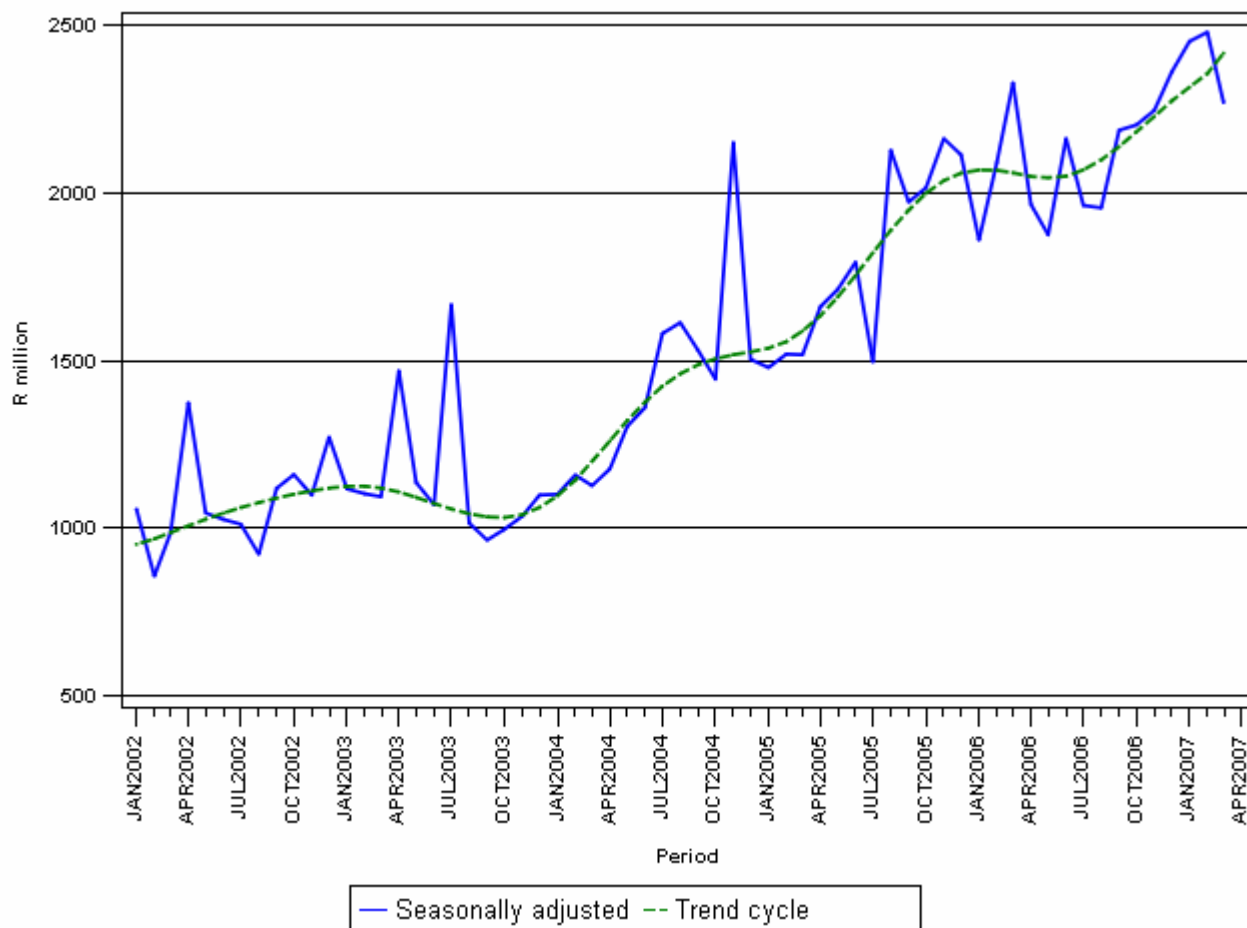
Total real value of buildings reported as completed increased

As indicated in Table F, the value of buildings reported as completed to larger municipalities (at constant 2000 prices) during the first quarter of 2007 increased by 13,9% (+R761,3 million) compared with the first quarter of 2006. The largest percentage increase in the real value of buildings completed was reported for non-residential buildings (+51,2% or R491,5 million), followed by additions and alterations (+13,2% or R140,5 million) and residential buildings (+3,7% or R129,3 million).

Furthermore, the seasonally adjusted real value of buildings reported as completed to larger municipalities during the first quarter of 2007 increased by 5,8% compared with the previous quarter. Increases in the seasonally adjusted real value of buildings completed were reported for non-residential buildings (+17,7%) and residential buildings (+4,0%). Reported completions of additions and alterations showed a decrease of 0,3% during the above-mentioned period.

Figure 2 shows both the seasonally adjusted and trend series for buildings reported as completed to municipalities at constant 2000 prices between January 2002 and March 2007. The trend series reflects a slight increase in 2002, slowing again until January 2003. A steep increase is evident from January 2003 to end of 2005, followed by a slight downturn from January 2006. The trend series increased from May 2006 till present.

Figure 2 - Real value of buildings reported as completed to larger municipalities at constant 2000 prices



PJ Lehohla
Statistician-General

Table 1 - Values and percentage change of recorded building plans passed by larger municipalities at current prices by type of building

Year and month		Residential buildings		Non-residential buildings		Additions and alterations		Total	
		R'000	% change 1/	R'000	% change 1/	R'000	% change 1/	R'000	% change 1/
2006	January	2 473 754	+41,1	742 112	+37,8	1 039 139	+15,3	4 255 005	+33,2
	February	3 114 074	+32,7	939 134	+58,5	1 410 112	+22,2	5 463 320	+33,5
	March	2 907 723	+24,2	1 155 994	+20,0	1 493 799	+21,2	5 557 516	+22,5
	April	2 549 409	-1,5	1 256 954	+60,3	1 355 457	+4,1	5 161 820	+10,4
	May	3 476 618	-0,2	1 225 043	+55,4	1 787 849	+32,3	6 489 510	+15,4
	June	3 626 925	+12,1	970 765	+0,9	1 592 276	+6,4	6 189 966	+8,7
	July	3 763 946	+7,2	1 365 159	+35,0	1 749 897	+19,6	6 879 002	+14,9
	August	3 805 509	+9,0	1 418 691	+15,0	1 609 868	-0,8	6 834 068	+7,6
	September	3 586 591	-7,2	939 920	+35,9	1 657 543	+5,2	6 184 054	+0,8
	October	3 750 109	+0,7	1 625 417	+66,2	1 752 538	-8,4	7 128 064	+7,7
	November	3 848 665	+3,3	1 280 929	-4,3	1 743 681	+7,2	6 873 275	+2,7
	December	2 577 037	-11,0	1 007 032	+56,3	1 381 123	+2,4	4 965 192	+1,6
	Total	39 480 360	+6,8	13 927 150	+32,3	18 573 282	+9,3	71 980 792	+11,6
2007	January	2 480 562	+0,3	944 529	+27,3	1 297 851	+24,9	4 722 942	+11,0
	February	3 345 232	+7,4	1 284 739	+36,8	1 505 088	+6,7	6 135 059	+12,3
	March 2/	3 805 829	+30,9	936 129	-19,0	1 492 253	-0,1	6 234 211	+12,2

1/ The annual/monthly percentage change is the change in the values of recorded building plans passed by municipalities of the relevant year/month compared with the values of recorded building plans passed by municipalities of the comparable period of the previous year expressed as a percentage.

2/ Preliminary figures.

Table 2 - Seasonally adjusted values and percentage change of recorded building plans passed by larger municipalities at current prices by type of building

Year and month		Residential buildings		Non-residential buildings		Additions and alterations		Total	
		R'000	% change 1/	R'000	% change 1/	R'000	% change 1/	R'000	% change 1/
2006	January	3 472 726	-4,3	980 210	+30,8	1 404 435	-11,7	5 857 371	-1,9
	February	3 374 075	-2,8	1 042 140	+6,3	1 526 916	+8,7	5 943 131	+1,5
	March	3 113 685	-7,7	1 030 997	-1,1	1 545 235	+1,2	5 689 917	-4,3
	April	2 982 787	-4,2	1 268 618	+23,0	1 519 520	-1,7	5 770 925	+1,4
	May	3 168 043	+6,2	1 234 095	-2,7	1 606 752	+5,7	6 008 890	+4,1
	June	3 447 172	+8,8	963 698	-21,9	1 533 499	-4,6	5 944 369	-1,1
	July	3 294 498	-4,4	1 180 817	+22,5	1 586 160	+3,4	6 061 475	+2,0
	August	3 405 634	+3,4	1 132 235	-4,1	1 453 212	-8,4	5 991 081	-1,2
	September	3 215 107	-5,6	1 056 736	-6,7	1 593 780	+9,7	5 865 623	-2,1
	October	3 352 771	+4,3	1 432 852	+35,6	1 515 010	-4,9	6 300 633	+7,4
	November	3 372 030	+0,6	1 358 735	-5,2	1 638 582	+8,2	6 369 347	+1,1
	December	3 247 600	-3,7	1 175 675	-13,5	1 608 024	-1,9	6 031 299	-5,3
2007	January	3 485 688	+7,3	1 258 172	+7,0	1 765 995	+9,8	6 509 855	+7,9
	February	3 629 315	+4,1	1 410 368	+12,1	1 623 399	-8,1	6 663 082	+2,4
	March	4 121 684	+13,6	846 023	-40,0	1 550 248	-4,5	6 517 955	-2,2
	Oct. - Dec.06	9 972 401		3 967 262		4 761 616		18 701 279	
	Jan. - Mar.07 2/	11 236 687	+12,7	3 514 563	-11,4	4 939 642	+3,7	19 690 892	+5,3

1/ The percentage change is the change in the seasonally adjusted values of recorded building plans passed by municipalities of the relevant month compared with the seasonally adjusted values of recorded building plans passed by municipalities of the previous month expressed as a percentage.

2/ The percentage change is the change in the seasonally adjusted values of recorded building plans passed by municipalities of the current quarter compared with the seasonally adjusted values of recorded building plans passed by municipalities of the previous quarter expressed as a percentage.

Table 3 - Values and percentage change of recorded building plans passed by larger municipalities at constant 2000 prices by type of building

Year and month		Residential buildings		Non-residential buildings		Additions and alterations		Total	
		R'000	% change 1/	R'000	% change 1/	R'000	% change 1/	R'000	% change 1/
2006	January	1 660 238	+33,4	498 062	+30,3	697 409	+9,0	2 855 709	+26,0
	February	2 078 821	+25,1	626 925	+49,4	941 330	+15,2	3 647 076	+25,8
	March	1 937 191	+17,6	770 149	+13,6	995 203	+14,7	3 702 543	+15,9
	April *	1 682 778	-6,8	829 673	+51,6	894 691	-1,6	3 407 142	+4,4
	May	2 263 423	-6,7	797 554	+45,2	1 163 964	+23,6	4 224 941	+7,8
	June	2 320 489	+3,3	621 091	-7,1	1 018 731	-1,9	3 960 311	+0,2
	July	2 373 232	-1,6	860 756	+23,9	1 103 340	+9,8	4 337 328	+5,5
	August	2 346 183	-1,7	874 655	+3,8	992 520	-10,5	4 213 358	-2,9
	September	2 203 066	-16,3	577 346	+22,5	1 018 147	-5,2	3 798 559	-9,1
	October	2 293 645	-9,4	994 139	+49,5	1 071 889	-17,6	4 359 673	-3,1
	November	2 329 700	-7,7	775 381	-14,5	1 055 497	-4,2	4 160 578	-8,2
	December	1 551 497	-20,7	606 281	+39,2	831 501	-8,8	2 989 279	-9,6
	Total	25 040 263	-1,7	8 832 012	+21,6	11 784 222	+0,6	45 656 497	+2,7
2007	January	1 483 590	-10,6	564 910	+13,4	776 227	+11,3	2 824 727	-1,1
	February	2 004 333	-3,6	769 766	+22,8	901 790	-4,2	3 675 889	+0,8
	March	2 272 137	+17,3	558 883	-27,4	890 897	-10,5	3 721 917	+0,5

1/ The annual/monthly percentage change is the change in the values of recorded building plans passed by municipalities of the relevant year/month compared with the values of recorded building plans passed by municipalities of the comparable period of the previous year expressed as a percentage.

2/ Preliminary figures.

* Revised.

Table 4 - Seasonally adjusted values and percentage change of recorded building plans passed by larger municipalities at constant 2000 prices by type of building

Year and month		Residential buildings		Non-residential buildings		Additions and alterations		Total	
		R'000	% change 1/	R'000	% change 1/	R'000	% change 1/	R'000	% change 1/
2006	January	2 328 474	-4,8	657 009	+30,1	941 057	-12,3	3 926 540	-2,4
	February	2 246 466	-3,5	693 531	+5,6	1 014 094	+7,8	3 954 091	+0,7
	March	2 056 997	-8,4	670 099	-3,4	1 021 868	+0,8	3 748 964	-5,2
	April	1 954 786	-5,0	838 259	+25,1	1 001 169	-2,0	3 794 214	+1,2
	May	2 057 007	+5,2	804 592	-4,0	1 045 644	+4,4	3 907 243	+3,0
	June	2 207 815	+7,3	619 316	-23,0	982 506	-6,0	3 809 637	-2,5
	July	2 085 017	-5,6	749 245	+21,0	1 004 232	+2,2	3 838 494	+0,8
	August	2 116 103	+1,5	704 761	-5,9	903 942	-10,0	3 724 806	-3,0
	September	1 983 511	-6,3	652 292	-7,4	982 483	+8,7	3 618 286	-2,9
	October	2 053 977	+3,6	878 249	+34,6	926 103	-5,7	3 858 329	+6,6
	November	2 046 431	-0,4	823 234	-6,3	991 923	+7,1	3 861 588	+0,1
	December	1 948 645	-4,8	705 265	-14,3	964 321	-2,8	3 618 231	-6,3
2007	January	2 082 874	+6,9	751 471	+6,6	1 054 639	+9,4	3 888 984	+7,5
	February	2 167 320	+4,1	840 939	+11,9	967 314	-8,3	3 975 573	+2,2
	March	2 436 635	+12,4	495 669	-41,1	918 148	-5,1	3 850 452	-3,1
	Oct. - Dec.06	6 049 053		2 406 748		2 882 347		11 338 148	
	Jan. - Mar.07 2/	6 686 829	+10,5	2 088 079	-13,2	2 940 101	+2,0	11 715 009	+3,3

1/ The percentage change is the change in the seasonally adjusted values of recorded building plans passed by municipalities of the relevant month compared with the seasonally adjusted values of recorded building plans passed by municipalities of the previous month expressed as a percentage.

2/ The percentage change is the change in the seasonally adjusted values of recorded building plans passed by municipalities of the current quarter compared with the seasonally adjusted values of recorded building plans passed by municipalities of the previous quarter expressed as a percentage.

Table 5 - Values and percentage change of buildings reported as completed to larger municipalities at current prices by type of building

Year and month		Residential buildings		Non-residential buildings		Additions and alterations		Total	
		R'000	% change 1/	R'000	% change 1/	R'000	% change 1/	R'000	% change 1/
2006	January	1 218 487	+40,5	314 128	+9,2	397 047	+25,0	1 929 662	+31,0
	February	1 728 454	+36,2	402 073	+96,6	540 760	+68,3	2 671 287	+48,8
	March	2 042 286	+51,3	599 755	+92,4	569 071	+79,0	3 211 112	+62,2
	April	1 693 547	+20,7	256 817	+30,7	436 368	+31,0	2 386 732	+23,5
	May	1 932 597	+14,7	476 600	+18,1	553 662	+17,2	2 962 859	+15,7
	June	2 219 247	+46,7	374 804	-3,6	538 298	+5,3	3 132 349	+29,8
	July	2 161 280	+37,7	323 492	+33,8	539 489	+52,9	3 024 261	+39,8
	August	2 224 806	-2,3	464 305	-20,8	535 849	+32,5	3 224 960	-1,3
	September	2 402 100	+14,5	393 077	+7,6	641 227	+43,1	3 436 404	+18,0
	October	2 217 277	+12,1	714 824	+34,6	557 047	+10,1	3 489 148	+15,7
	November	2 411 587	-10,5	638 538	+45,0	836 814	+87,4	3 886 939	+8,5
	December	2 534 158	+9,2	517 116	105,6	501 061	+13,4	3 552 335	+17,8
	Total	24 785 826	+17,9	5 475 529	+30,1	6 646 693	+36,4	36 908 048	+22,6
2007	January	1 599 599	+31,3	476 596	+51,7	648 796	+63,4	2 724 991	+41,2
	February	2 058 331	+19,1	825 847	105,4	532 372	-1,6	3 416 550	+27,9
	March 2/	1 963 532	-3,9	822 510	+37,1	622 900	+9,5	3 408 942	+6,2

1/ The annual/monthly percentage change is the change in the values of buildings reported as completed to municipalities of the relevant year/month compared with the values of buildings reported as completed to municipalities of the comparable period of the previous year expressed as a percentage.

2/ Preliminary figures.

Table 6 - Seasonally adjusted values and percentage change of buildings reported as completed to larger municipalities at current prices by type of building

Year and month		Residential buildings		Non-residential buildings		Additions and alterations		Total	
		R'000	% change 1/	R'000	% change 1/	R'000	% change 1/	R'000	% change 1/
2006	January	1 748 933	-19,5	387 562	+32,4	430 415	-15,9	2 566 910	-13,8
	February	1 977 425	+13,1	433 190	+11,8	553 691	+28,6	2 964 306	+15,5
	March	2 195 692	+11,0	532 229	+22,9	580 701	+4,9	3 308 622	+11,6
	April	1 921 228	-12,5	385 403	-27,6	522 279	-10,1	2 828 910	-14,5
	May	1 840 257	-4,2	369 309	-4,2	501 077	-4,1	2 710 643	-4,2
	June	2 233 210	+21,4	420 723	+13,9	516 147	+3,0	3 170 080	+16,9
	July	2 007 665	-10,1	387 219	-8,0	512 574	-0,7	2 907 458	-8,3
	August	2 046 650	+1,9	355 885	-8,1	517 374	+0,9	2 919 909	+0,4
	September	2 241 757	+9,5	371 986	+4,5	612 308	+18,3	3 226 051	+10,5
	October*	2 142 389	-4,4	586 025	+57,5	522 587	-14,7	3 251 001	+0,8
	November	1 953 199	-8,8	618 779	+5,6	773 587	+48,0	3 345 565	+2,9
	December	2 347 516	+20,2	624 570	+0,9	579 892	-25,0	3 551 978	+6,2
2007	January	2 330 846	-0,7	587 669	-5,9	703 309	+21,3	3 621 824	+2,0
	February	2 358 353	+1,2	878 263	+49,4	553 164	-21,3	3 789 780	+4,6
	March	2 112 706	-10,4	728 721	-17,0	632 522	+14,3	3 473 949	-8,3
	Oct. - Dec.06	6 443 104		1 829 374		1 876 066		10 148 544	
	Jan. - Mar.07 2/	6 801 905	+5,6	2 194 653	+20,0	1 888 995	+0,7	10 885 553	+7,3

1/ The percentage change is the change in the seasonally adjusted values of buildings reported as completed to municipalities of the relevant month compared with the seasonally adjusted values of buildings reported as completed to municipalities of the previous month expressed as a percentage.

2/ The percentage change is the change in the seasonally adjusted values of buildings reported as completed to municipalities of the current quarter compared with the seasonally adjusted values of buildings reported as completed to municipalities of the previous quarter expressed as a percentage.

Table 7 - Values and percentage change of buildings reported as completed to larger municipalities at constant 2000 prices by type of building

Year and month		Residential buildings		Non-residential buildings		Additions and alterations		Total	
		R'000	% change 1/	R'000	% change 1/	R'000	% change 1/	R'000	% change 1/
2006	January	848 051	+31,7	230 468	+3,7	281 793	+15,5	1 360 312	+22,5
	February	1 197 334	+27,4	293 270	+85,8	382 975	+57,2	1 873 579	+39,7
	March	1 409 562	+41,8	436 503	+81,4	400 472	+67,3	2 246 537	+52,4
	April	1 163 562	+13,3	185 830	+22,3	304 514	+22,3	1 653 906	+15,9
	May	1 322 179	+7,9	342 878	+9,8	385 827	+10,0	2 050 884	+8,6
	June	1 516 442	+38,3	269 449	-10,5	373 818	-0,7	2 159 709	+21,7
	July	1 462 064	+29,7	229 590	+23,6	370 528	+43,1	2 062 182	+31,2
	August	1 499 002	-8,2	328 828	-26,0	366 017	+24,1	2 193 847	-7,5
	September	1 615 181	+8,0	276 620	+0,5	436 803	+33,9	2 328 604	+11,1
	October *	1 478 882	+5,9	498 830	+25,7	378 686	+3,4	2 356 398	+9,1
	November	1 594 849	-16,2	444 974	+36,1	566 947	+76,5	2 606 770	+2,2
	December	1 659 400	+1,5	359 108	+93,9	338 784	+6,6	2 357 292	+10,3
	Total	16 766 508	+10,9	3 896 348	+21,8	4 587 164	+27,8	25 250 020	+15,3
2007	January	1 032 799	+21,8	327 332	+42,0	435 434	+54,5	1 795 565	+32,0
	February	1 308 122	+9,3	564 103	+92,3	355 389	-7,2	2 227 614	+18,9
	March	1 240 197	-12,0	560 293	+28,4	414 990	+3,6	2 215 480	-1,4

1/ The annual/monthly percentage change is the change in the values of buildings reported as completed to municipalities of the relevant year/month compared with the values of buildings reported as completed to municipalities of the comparable period of the previous year expressed as a percentage.

2/ Preliminary figures.

* Revised.

Table 8 - Seasonally adjusted values and percentage change of buildings reported as completed to larger municipalities at constant 2000 prices by type of building

Year and month		Residential buildings		Non-residential buildings		Additions and alterations		Total	
		R'000	%change 1/	R'000	% change 1/	R'000	% change 1/	R'000	% change 1/
2006	January	1 269 876	-17,0	284 499	+31,0	305 139	-16,6	1 859 514	-12,0
	February	1 382 071	+8,8	316 214	+11,1	392 791	+28,7	2 091 076	+12,5
	March	1 533 272	+10,9	386 439	+22,2	409 290	+4,2	2 329 001	+11,4
	April	1 322 873	-13,7	276 952	-28,3	366 033	-10,6	1 965 858	-15,6
	May	1 261 939	-4,6	262 831	-5,1	350 330	-4,3	1 875 100	-4,6
	June	1 507 633	+19,5	299 160	+13,8	355 813	+1,6	2 162 606	+15,3
	July	1 335 641	-11,4	273 932	-8,4	353 190	-0,7	1 962 763	-9,2
	August	1 342 718	+0,5	257 869	-5,9	354 810	+0,5	1 955 397	-0,4
	September	1 509 309	+12,4	260 593	+1,1	417 269	+17,6	2 187 171	+11,9
	October	1 437 989	-4,7	409 978	+57,3	354 893	-14,9	2 202 860	+0,7
	November	1 291 509	-10,2	431 851	+5,3	522 916	+47,3	2 246 276	+2,0
	December	1 536 600	+19,0	433 896	+0,5	389 626	-25,5	2 360 122	+5,1
2007	January	1 576 158	+2,6	404 363	-6,8	471 422	+21,0	2 451 943	+3,9
	February	1 508 749	-4,3	601 099	+48,7	369 708	-21,6	2 479 556	+1,1
	March	1 349 407	-10,6	495 962	-17,5	422 129	+14,2	2 267 498	-8,6
	Oct. - Dec.06	4 266 098		1 275 725		1 267 435		6 809 258	
	Jan. - Mar.07 2/	4 434 314	+3,9	1 501 424	+17,7	1 263 259	-0,3	7 198 997	+5,7

1/ The percentage change is the change in the seasonally adjusted values of buildings reported as completed to municipalities of the relevant month compared with the seasonally adjusted values of buildings reported as completed to municipalities of the previous month expressed as a percentage.

2/ The percentage change is the change in the seasonally adjusted values of buildings reported as completed to municipalities of the current quarter compared with the seasonally adjusted values of buildings reported as completed to municipalities of the previous quarter expressed as a percentage.

Table 9 - Recorded building plans passed by larger municipalities at current prices by type of building: South Africa

			*Mar. 2006	Feb. 2007	Mar. 2007	Jan. - Mar. 2006	Jan. - Mar. 2007	% Change 1/
Category of building	Type of building	Measuring unit						
1. Residential buildings	1. Dwelling-houses < 80 square metres	Number	4 205	2 806	2 337	9 677	8 244	-14,8
		square metres	187 255	128 548	104 704	417 878	361 662	-13,5
		R'000	305 321	242 236	205 098	681 211	687 506	+0,9
	2. Dwelling-houses >= 80 square metres	Number	3 097	2 570	3 025	7 718	7 713	-0,1
		square metres	707 241	655 241	722 171	1 795 894	1 903 262	+6,0
		R'000	2 010 770	2 085 500	2 212 925	5 073 963	5 861 454	+15,5
	3. Flats and townhouses	Number	1 574	2 564	3 098	6 908	7 758	+12,3
		square metres	206 290	311 207	400 937	886 162	945 950	+6,7
		R'000	579 077	928 206	1 329 107	2 590 779	2 905 834	+12,2
	4. Other residential buildings 2/	square metres	4 356	26 507	18 194	42 502	53 923	+26,9
		R'000	12 555	89 290	52 051	149 598	170 181	+13,8
	5. Total residential buildings	R'000	2 907 723	3 345 232	3 799 181	8 495 551	9 624 975	+13,3
2. Non-residential buildings	1. Office and banking space	square metres	85 255	95 915	99 731	229 506	228 307	-0,5
		R'000	277 517	303 428	326 428	736 782	744 528	+1,1
	2. Shopping space	square metres	76 433	120 748	46 520	199 210	235 517	+18,2
		R'000	244 323	351 718	132 947	609 479	721 192	+18,3
	3. Industrial and warehouse space	square metres	219 418	147 038	160 580	479 619	499 593	+4,2
		R'000	543 191	463 683	439 325	1 213 753	1 445 493	+19,1
	4. Other non-residential buildings 3/	square metres	34 840	53 644	14 721	99 063	87 596	-11,6
		R'000	90 963	165 527	39 210	277 226	255 582	-7,8
	5. Total non-residential buildings	R'000	1 155 994	1 284 356	937 910	2 837 240	3 166 795	+11,6
	3. Additions and alterations	1. Dwelling-houses	square metres	421 337	399 916	439 133	1 182 280	1 178 557
R'000			1 122 744	1 124 351	1 227 006	3 094 722	3 291 759	+6,4
2. Other buildings 4/		square metres	112 455	97 606	81 263	277 206	277 250	+0,0
		R'000	371 055	380 737	262 925	848 328	1 001 111	+18,0
3. Total additions and alterations		R'000	1 493 799	1 505 088	1 489 931	3 943 050	4 292 870	+8,9
4. Recorded plans passed	1. Total at current prices	R'000	5 557 516	6 134 676	6 227 022	15 275 841	17 084 640	+11,8

1/ The percentage change between cumulative figures for 2006 and 2007.

2/ Other residential buildings include institutions for the disabled, boarding houses, hostels and tourism accommodation e.g. hotels, motels, guesthouses, holiday chalets, bed-and-breakfast accommodation and casinos.

3/ Other non-residential space includes churches, sport and recreation clubs, schools, crèches, hospitals and all other non-residential space.

4/ Other buildings include other residential buildings, non-residential buildings and internal alterations.

* Revised.

Table 10 - Recorded building plans passed by larger municipalities at current prices by type of building: Western Cape

			*Mar. 2006	Feb. 2007	Mar. 2007	Jan. - Mar. 2006	Jan. - Mar. 2007	% Change 1/
Category of building	Type of building	Measuring unit						
1. Residential buildings	1. Dwelling-houses < 80 square metres	Number	579	281	229	1 454	795	-45,3
		square metres	26 940	14 108	9 930	64 001	36 466	-43,0
		R'000	48 944	35 885	18 055	101 166	75 432	-25,4
	2. Dwelling-houses >= 80 square metres	Number	716	655	718	1 835	1 767	-3,7
		square metres	162 360	154 880	161 614	406 740	413 065	+1,6
		R'000	479 342	511 500	549 029	1 209 472	1 366 585	+13,0
	3. Flats and townhouses	Number	301	361	582	863	1 492	+72,9
		square metres	33 305	42 354	65 971	97 425	162 992	+67,3
		R'000	100 126	132 375	265 063	298 012	597 969	+100,7
	4. Other residential buildings 2/	square metres	1 459	22 415	282	5 473	24 282	+343,7
		R'000	3 570	77 054	1 096	44 532	84 057	+88,8
	5. Total residential buildings	R'000	631 982	756 814	833 243	1 653 182	2 124 043	+28,5
2. Non-residential buildings	1. Office and banking space	square metres	33 346	30 741	54 625	82 943	87 725	+5,8
		R'000	110 856	103 310	183 703	274 159	292 682	+6,8
	2. Shopping space	square metres	18 378	8 404	6 059	28 477	26 433	-7,2
		R'000	60 647	25 332	17 747	122 231	83 203	-31,9
	3. Industrial and warehouse space	square metres	54 796	45 310	22 463	162 203	106 355	-34,4
		R'000	167 746	143 782	65 389	470 768	329 376	-30,0
	4. Other non-residential buildings 3/	square metres	10 314	22 498	2 550	17 926	27 543	+53,6
		R'000	30 255	70 610	8 529	53 994	87 303	+61,7
	5. Total non-residential buildings	R'000	369 504	343 034	275 368	921 152	792 564	-14,0
3. Additions and alterations	1. Dwelling-houses	square metres	130 009	111 452	121 293	337 865	334 133	-1,1
		R'000	351 005	322 614	343 505	912 411	955 660	+4,7
	2. Other buildings 4/	square metres	43 983	23 729	12 238	90 803	74 193	-18,3
		R'000	159 128	120 861	71 754	301 492	330 147	+9,5
	3. Total additions and alterations	R'000	510 133	443 475	415 259	1 213 903	1 285 807	+5,9
4. Recorded plans passed	1. Total at current prices	R'000	1 511 619	1 543 323	1 523 870	3 788 237	4 202 414	+10,9

1/ The percentage change between cumulative figures for 2006 and 2007.

2/ Other residential buildings include institutions for the disabled, boarding houses, hostels and tourism accommodation e.g. hotels, motels, guesthouses, holiday chalets, bed-and-breakfast accommodation and casinos.

3/ Other non-residential space includes churches, sport and recreation clubs, schools, crèches, hospitals and all other non-residential space.

4/ Other buildings include other residential buildings, non-residential buildings and internal alterations.

* Revised.

Table 11 - Recorded building plans passed by larger municipalities at current prices by type of building: Eastern Cape

			Mar. 2006	Feb. 2007	Mar. 2007	Jan. - Mar. 2006	Jan. - Mar. 2007	% Change 1/
Category of building	Type of building	Measuring unit						
1. Residential buildings	1. Dwelling-houses < 80 square metres	Number	216	11	148	315	283	-10,2
		square metres	9 533	679	6 380	14 835	12 388	-16,5
		R'000	11 575	1 305	9 970	20 678	16 022	-22,5
	2. Dwelling-houses >= 80 square metres	Number	152	177	145	509	440	-13,6
		square metres	33 692	45 449	38 682	108 390	112 479	+3,8
		R'000	84 485	127 101	109 652	260 317	304 401	+16,9
	3. Flats and townhouses	Number	81	21	84	274	128	-53,3
		square metres	12 568	4 440	14 545	38 934	21 666	-44,4
		R'000	26 015	10 951	32 422	85 335	50 153	-41,2
	4. Other residential buildings 2/	square metres	0	421	2 240	911	2 661	+192,1
		R'000	0	1 108	4 502	1 961	5 610	+186,1
	5. Total residential buildings	R'000	122 075	140 465	156 546	368 291	376 186	+2,1
2. Non-residential buildings	1. Office and banking space	square metres	0	1 045	3 918	2 033	5 047	+148,3
		R'000	0	2 742	11 006	4 920	13 892	+182,4
	2. Shopping space	square metres	1 344	65 723	9 846	12 068	75 785	+528,0
		R'000	3 288	172 523	18 608	27 934	191 713	+586,3
	3. Industrial and warehouse space	square metres	8 224	7 302	37	10 321	13 959	+35,2
		R'000	16 749	20 607	100	20 269	38 634	+90,6
	4. Other non-residential buildings 3/	square metres	1 570	347	276	4 187	1 780	-57,5
		R'000	3 319	806	602	9 285	4 418	-52,4
	5. Total non-residential buildings	R'000	23 356	196 678	30 316	62 408	248 657	+298,4
3. Additions and alterations	1. Dwelling-houses	square metres	28 148	37 726	36 282	94 571	99 325	+5,0
		R'000	80 647	93 160	103 965	229 164	260 451	+13,7
	2. Other buildings 4/	square metres	3 140	7 138	22 057	15 910	31 058	+95,2
		R'000	7 738	15 900	45 649	35 520	68 673	+93,3
	3. Total additions and alterations	R'000	88 385	109 060	149 614	264 684	329 124	+24,3
4. Recorded plans passed	1. Total at current prices	R'000	233 816	446 203	336 476	695 383	953 967	+37,2

1/ The percentage change between cumulative figures for 2006 and 2007.

2/ Other residential buildings include institutions for the disabled, boarding houses, hostels and tourism accommodation e.g. hotels, motels, guesthouses, holiday chalets, bed-and-breakfast accommodation and casinos.

3/ Other non-residential space includes churches, sport and recreation clubs, schools, crèches, hospitals and all other non-residential space.

4/ Other buildings include other residential buildings, non-residential buildings and internal alterations.

Table 12 - Recorded building plans passed by larger municipalities at current prices by type of building: Northern Cape

			Mar. 2006	Feb. 2007	Mar. 2007	Jan. - Mar. 2006	Jan. - Mar. 2007	% Change 1/
Category of building	Type of building	Measuring unit						
1. Residential buildings	1. Dwelling-houses < 80 square metres	Number	66	10	10	219	26	-88,1
		square metres	2 567	465	507	10 301	1 354	-86,9
		R'000	3 889	661	1 269	11 906	3 232	-72,9
	2. Dwelling-houses >= 80 square metres	Number	33	24	89	81	147	+81,5
		square metres	5 747	6 110	9 977	15 446	22 577	+46,2
		R'000	10 802	11 090	21 897	29 130	48 180	+65,4
	3. Flats and townhouses	Number	28	6	2	80	8	-90,0
		square metres	2 457	1 213	218	9 664	1 431	-85,2
		R'000	4 682	1 986	786	18 642	2 772	-85,1
	4. Other residential buildings 2/	square metres	115	0	0	115	0	-100,0
		R'000	253	0	0	253	0	-100,0
	5. Total residential buildings	R'000	19 626	13 737	23 952	59 931	54 184	-9,6
	2. Non-residential buildings	1. Office and banking space	square metres	0	1 078	0	5 692	1 078
R'000			0	2 587	0	14 000	2 587	-81,5
2. Shopping space		square metres	0	3 132	499	766	5 089	+564,4
		R'000	0	5 304	792	1 474	8 720	+491,6
3. Industrial and warehouse space		square metres	626	836	0	5 500	836	-84,8
		R'000	1 252	1 672	0	17 400	1 672	-90,4
4. Other non-residential buildings 3/		square metres	0	0	0	338	139	-58,9
		R'000	0	0	0	593	273	-54,0
5. Total non-residential buildings		R'000	1 252	9 563	792	33 467	13 252	-60,4
3. Additions and alterations	1. Dwelling-houses	square metres	5 080	3 416	7 934	15 285	13 281	-13,1
		R'000	9 336	7 062	15 557	28 925	26 525	-8,3
	2. Other buildings 4/	square metres	1 763	579	612	3 076	1 191	-61,3
		R'000	3 049	2 148	1 526	7 144	4 174	-41,6
	3. Total additions and alterations	R'000	12 385	9 210	17 083	36 069	30 699	-14,9
4. Recorded plans passed	1. Total at current prices	R'000	33 263	32 510	41 827	129 467	98 135	-24,2

1/ The percentage change between cumulative figures for 2006 and 2007.

2/ Other residential buildings include institutions for the disabled, boarding houses, hostels and tourism accommodation e.g. hotels, motels, guesthouses, holiday chalets, bed-and-breakfast accommodation and casinos.

3/ Other non-residential space includes churches, sport and recreation clubs, schools, crèches, hospitals and all other non-residential space.

4/ Other buildings include other residential buildings, non-residential buildings and internal alterations.

Table 13 - Recorded building plans passed by larger municipalities at current prices by type of building: Free State

			*Mar. 2006	Feb. 2007	Mar. 2007	Jan. - Mar. 2006	Jan. - Mar. 2007	% Change 1/
Category of building	Type of building	Measuring unit						
1. Residential buildings	1. Dwelling-houses < 80 square metres	Number	1 499	56	66	1 515	132	-91,3
		square metres	61 369	2 676	3 308	62 285	6 641	-89,3
		R'000	50 771	3 373	4 992	52 422	9 793	-81,3
	2. Dwelling-houses >= 80 square metres	Number	61	108	135	198	392	+98,0
		square metres	10 759	21 634	30 136	35 641	83 822	+135,2
		R'000	20 578	57 243	77 921	71 007	210 176	+196,0
	3. Flats and townhouses	Number	132	167	141	207	396	+91,3
		square metres	12 949	12 777	20 884	26 326	42 443	+61,2
		R'000	30 272	31 197	57 622	60 655	111 841	+84,4
	4. Other residential buildings 2/	square metres	0	0	10 783	802	11 174	+1 293,3
		R'000	0	0	35 635	3 000	36 243	+1 108,1
5. Total residential buildings	R'000	101 621	91 813	176 170	187 084	368 053	+96,7	
2. Non-residential buildings	1. Office and banking space	square metres	6 414	0	0	9 064	5 055	-44,2
		R'000	18 542	0	0	26 492	18 198	-31,3
	2. Shopping space	square metres	331	1 680	0	2 437	1 680	-31,1
		R'000	1 100	6 048	0	5 055	6 048	+19,6
	3. Industrial and warehouse space	square metres	3 247	4 674	3 415	7 809	11 288	+44,6
		R'000	6 063	6 790	7 929	11 241	20 039	+78,3
	4. Other non-residential buildings 3/	square metres	2 325	682	0	2 479	1 474	-40,5
		R'000	3 851	1 673	0	4 067	2 496	-38,6
	5. Total non-residential buildings	R'000	29 556	14 511	7 929	46 855	46 781	-0,2
3. Additions and alterations	1. Dwelling-houses	square metres	10 975	16 850	14 752	35 863	49 094	+36,9
		R'000	18 855	40 453	33 762	61 721	113 862	+84,5
	2. Other buildings 4/	square metres	2 974	2 197	4 410	7 982	8 917	+11,7
		R'000	5 824	7 291	10 260	16 031	26 510	+65,4
	3. Total additions and alterations	R'000	24 679	47 744	44 022	77 752	140 372	+80,5
4. Recorded plans passed	1. Total at current prices	R'000	155 856	154 068	228 121	311 691	555 206	+78,1

1/ The percentage change between cumulative figures for 2006 and 2007.

2/ Other residential buildings include institutions for the disabled, boarding houses, hostels and tourism accommodation e.g. hotels, motels, guesthouses, holiday chalets, bed-and-breakfast accommodation and casinos.

3/ Other non-residential space includes churches, sport and recreation clubs, schools, crèches, hospitals and all other non-residential space.

4/ Other buildings include other residential buildings, non-residential buildings and internal alterations.

* Revised.

Table 14 - Recorded building plans passed by larger municipalities at current prices by type of building: KwaZulu-Natal

			Mar. 2006*	Feb. 2007	Mar. 2007	Jan. - Mar. 2006	Jan. - Mar. 2007	% Change 1/
Category of building	Type of building	Measuring unit						
1. Residential buildings	1. Dwelling-houses < 80 square metres	Number	82	73	113	205	273	+33,2
		square metres	4 360	4 262	6 034	10 774	15 354	+42,5
		R'000	9 311	10 528	11 395	21 263	34 589	+62,7
	2. Dwelling-houses >= 80 square metres	Number	235	207	249	695	616	-11,4
		square metres	49 244	52 667	52 602	145 314	141 593	-2,6
		R'000	122 651	153 009	150 810	365 598	431 215	+17,9
	3. Flats and townhouses	Number	258	679	767	899	1 767	+96,6
		square metres	47 200	73 225	70 281	173 322	182 239	+5,1
		R'000	146 333	211 420	239 147	530 265	550 390	+3,8
	4. Other residential buildings 2/	square metres	1 630	580	0	10 028	1 672	-83,3
		R'000	3 880	1 500	0	18 432	5 013	-72,8
	5. Total residential buildings	R'000	282 175	376 457	401 352	935 558	1 021 207	+9,2
2. Non-residential buildings	1. Office and banking space	square metres	8 374	2 866	7 558	19 294	16 759	-13,1
		R'000	21 325	7 749	25 908	46 279	62 425	+34,9
	2. Shopping space	square metres	6 258	1 867	7 795	20 420	18 924	-7,3
		R'000	16 810	6 985	23 652	48 290	66 637	+38,0
	3. Industrial and warehouse space	square metres	71 366	17 030	26 258	139 687	75 052	-46,3
		R'000	134 750	43 732	71 963	264 324	200 531	-24,1
	4. Other non-residential buildings 3/	square metres	3 041	10 826	3 518	22 110	19 173	-13,3
		R'000	6 401	27 051	8 965	51 165	49 308	-3,6
	5. Total non-residential buildings	R'000	179 286	85 517	130 488	410 058	378 901	-7,6
3. Additions and alterations	1. Dwelling-houses	square metres	52 277	50 621	62 134	163 279	152 119	-6,8
		R'000	115 362	129 508	150 599	379 235	371 357	-2,1
	2. Other buildings 4/	square metres	18 667	30 390	12 491	48 150	54 917	+14,1
		R'000	62 169	130 597	35 097	145 723	218 724	+50,1
	3. Total additions and alterations	R'000	177 531	260 105	185 696	524 958	590 081	+12,4
4. Recorded plans passed	1. Total at current prices	R'000	638 992	722 079	717 536	1 870 574	1 990 189	+6,4

1/ The percentage change between cumulative figures for 2006 and 2007.

2/ Other residential buildings include institutions for the disabled, boarding houses, hostels and tourism accommodation e.g. hotels, motels, guesthouses, holiday chalets, bed-and-breakfast accommodation and casinos.

3/ Other non-residential space includes churches, sport and recreation clubs, schools, crèches, hospitals and all other non-residential space.

4/ Other buildings include other residential buildings, non-residential buildings and internal alterations.

* Revised.

Table 15 - Recorded building plans passed by larger municipalities at current prices by type of building: North West

			Mar. 2006*	Feb. 2007	Mar. 2007	Jan. - Mar. 2006	Jan. - Mar. 2007	% Change 1/
Category of building	Type of building	Measuring unit						
1. Residential buildings	1. Dwelling-houses < 80 square metres	Number	48	884	82	202	996	+393,1
		square metres	2 958	34 763	4 798	12 279	41 249	+235,9
		R'000	4 037	39 909	6 119	17 018	49 684	+191,9
	2. Dwelling-houses >= 80 square metres	Number	174	200	260	484	637	+31,6
		square metres	33 573	46 696	60 407	94 284	142 825	+51,5
		R'000	81 016	138 849	163 614	228 479	393 329	+72,2
	3. Flats and townhouses	Number	60	224	118	288	441	+53,1
		square metres	6 326	41 275	12 141	32 067	66 844	+108,5
		R'000	14 538	99 601	38 222	85 268	172 880	+102,7
	4. Other residential buildings 2/	square metres	0	0	0	0	2 280	
		R'000	0	0	0	0	7 980	
	5. Total residential buildings	R'000	99 591	278 359	207 955	330 765	623 873	+88,6
2. Non-residential buildings	1. Office and banking space	square metres	232	17 751	1 523	4 291	19 274	+349,2
		R'000	500	43 449	3 756	9 428	47 205	+400,7
	2. Shopping space	square metres	0	3 847	4 336	3 719	21 094	+467,2
		R'000	0	8 419	14 031	7 578	64 224	+747,5
	3. Industrial and warehouse space	square metres	1 052	6 820	5 307	8 560	14 489	+69,3
		R'000	2 200	15 174	12 197	27 328	31 247	+14,3
	4. Other non-residential buildings 3/	square metres	602	0	3 364	2 648	6 897	+160,5
		R'000	1 197	0	7 921	10 846	20 044	+84,8
	5. Total non-residential buildings	R'000	3 897	67 042	37 905	55 180	162 720	+194,9
	3. Additions and alterations	1. Dwelling-houses	square metres	12 049	12 171	11 283	29 876	+16,3
			R'000	25 080	28 132	23 615	60 151	+23,0
		2. Other buildings 4/	square metres	2 130	952	1 073	7 159	-36,9
			R'000	5 385	2 519	2 976	12 411	-41,4
	3. Total additions and alterations	R'000	30 465	30 651	26 591	81 323	86 424	+6,3
4. Recorded plans passed	1. Total at current prices	R'000	133 953	376 052	272 451	467 268	873 017	+86,8

1/ The percentage change between cumulative figures for 2006 and 2007.

2/ Other residential buildings include institutions for the disabled, boarding houses, hostels and tourism accommodation e.g. hotels, motels, guesthouses, holiday chalets, bed-and-breakfast accommodation and casinos.

3/ Other non-residential space includes churches, sport and recreation clubs, schools, crèches, hospitals and all other non-residential space.

4/ Other buildings include other residential buildings, non-residential buildings and internal alterations.

*Revised.

Table 16 - Recorded building plans passed by larger municipalities at current prices by type of building: Gauteng

			Mar. 2006*	Feb. 2007	Mar. 2007	Jan. - Mar. 2006	Jan. - Mar. 2007	% Change 1/
Category of building	Type of building	Measuring unit						
1. Residential buildings	1. Dwelling-houses < 80 square metres	Number	1 615	1 398	1 624	5 506	5 189	-5,8
		square metres	73 645	65 697	69 661	227 871	223 671	-1,8
		R'000	162 150	136 298	142 385	419 171	450 879	+7,6
	2. Dwelling-houses >= 80 square metres	Number	1 415	907	1 141	3 117	2 802	-10,1
		square metres	340 038	256 854	298 559	809 505	772 862	-4,5
		R'000	1 029 815	835 533	960 699	2 454 489	2 498 385	+1,8
	3. Flats and townhouses	Number	555	946	1 263	3 861	2 962	-23,3
		square metres	76 329	116 840	196 751	456 786	408 019	-10,7
		R'000	216 888	392 779	646 489	1 390 869	1 254 288	-9,8
	4. Other residential buildings 2/	square metres	672	1 637	0	17 242	1 700	-90,1
		R'000	2 352	5 730	0	57 540	5 878	-89,8
	5. Total residential buildings	R'000	1 411 205	1 370 340	1 749 573	4 322 069	4 209 430	-2,6
2. Non-residential buildings	1. Office and banking space	square metres	34 699	38 479	30 293	99 365	82 345	-17,1
		R'000	116 845	133 380	95 343	342 239	276 802	-19,1
	2. Shopping space	square metres	36 526	30 774	10 804	113 215	70 751	-37,5
		R'000	120 221	118 163	39 581	344 665	263 648	-23,5
	3. Industrial and warehouse space	square metres	67 835	41 006	99 400	121 779	241 808	+98,6
		R'000	185 811	117 765	271 331	345 601	675 896	+95,6
	4. Other non-residential buildings 3/	square metres	13 058	17 584	3 337	43 250	23 795	-45,0
		R'000	35 095	60 463	9 177	131 144	77 570	-40,9
	5. Total non-residential buildings	R'000	457 972	429 771	415 432	1 163 649	1 293 916	+11,2
3. Additions and alterations	1. Dwelling-houses	square metres	158 186	138 175	155 073	425 394	408 566	-4,0
		R'000	469 706	431 103	483 626	1 256 316	1 278 993	+1,8
	2. Other buildings 4/	square metres	32 078	28 921	18 840	85 884	86 560	+0,8
		R'000	108 998	91 664	71 849	273 399	300 440	+9,9
	3. Total additions and alterations	R'000	578 704	522 767	555 475	1 529 715	1 579 433	+3,3
4. Recorded plans passed	1. Total at current prices	R'000	2 447 881	2 322 878	2 720 480	7 015 433	7 082 779	+1,0

1/ The percentage change between cumulative figures for 2006 and 2007.

2/ Other residential buildings include institutions for the disabled, boarding houses, hostels and tourism accommodation e.g. hotels, motels, guesthouses, holiday chalets, bed-and-breakfast accommodation and casinos.

3/ Other non-residential space includes churches, sport and recreation clubs, schools, crèches, hospitals and all other non-residential space.

4/ Other buildings include other residential buildings, non-residential buildings and internal alterations.

* Revised.

Table 17 - Recorded building plans passed by larger municipalities at current prices by type of building: Mpumalanga

			Mar. 2006*	Feb. 2007	Mar. 2007	Jan. - Mar. 2006	Jan. - Mar. 2007	% Change 1/
Category of building	Type of building	Measuring unit						
1. Residential buildings	1. Dwelling-houses < 80 square metres	Number	67	50	36	157	422	+168,8
		square metres	3 908	3 056	2 039	9 206	16 329	+77,4
		R'000	9 667	6 651	5 754	22 358	26 562	+18,8
	2. Dwelling-houses >= 80 square metres	Number	179	192	205	501	649	+29,5
		square metres	43 117	49 866	52 107	115 448	158 793	+37,5
		R'000	112 111	198 861	129 502	295 561	463 276	+56,7
	3. Flats and townhouses	Number	138	73	118	333	394	+18,3
		square metres	12 817	9 470	15 126	41 294	38 369	-7,1
		R'000	34 339	23 690	36 160	96 071	111 533	+16,1
	4. Other residential buildings 2/	square metres	0	0	78	6 984	3 889	-44,3
		R'000	0	0	234	19 380	10 918	-43,7
	5. Total residential buildings	R'000	156 117	229 202	171 650	433 370	612 289	+41,3
2. Non-residential buildings	1. Office and banking space	square metres	2 190	3 603	1 100	3 868	9 207	+138,0
		R'000	9 449	9 331	4 800	12 409	26 067	+110,1
	2. Shopping space	square metres	12 876	0	3 780	15 295	4 542	-70,3
		R'000	40 857	0	10 795	47 504	13 843	-70,9
	3. Industrial and warehouse space	square metres	9 662	22 454	3 729	18 693	31 506	+68,5
		R'000	22 878	110 146	10 629	45 527	137 488	+202,0
	4. Other non-residential buildings 3/	square metres	3 930	1 197	349	5 953	4 958	-16,7
		R'000	10 845	3 394	1 048	15 532	9 672	-37,7
	5. Total non-residential buildings	R'000	84 029	122 871	27 272	120 972	187 070	+54,6
	3. Additions and alterations	1. Dwelling-houses	square metres	17 058	17 632	21 087	54 053	55 572
R'000			37 191	43 552	50 242	116 895	135 230	+15,7
2. Other buildings 4/		square metres	3 000	2 839	8 292	8 554	12 812	+49,8
		R'000	9 239	7 760	23 184	25 699	35 634	+38,7
3. Total additions and alterations		R'000	46 430	51 312	73 426	142 594	170 864	+19,8
4. Recorded plans passed	1. Total at current prices	R'000	286 576	403 385	272 348	696 936	970 223	+39,2

1/ The percentage change between cumulative figures for 2006 and 2007.

2/ Other residential buildings include institutions for the disabled, boarding houses, hostels and tourism accommodation e.g. hotels, motels, guesthouses, holiday chalets, bed-and-breakfast accommodation and casinos.

3/ Other non-residential space includes churches, sport and recreation clubs, schools, crèches, hospitals and all other non-residential space.

4/ Other buildings include other residential buildings, non-residential buildings and internal alterations.

* Revised.

Table 18 - Recorded building plans passed by larger municipalities at current prices by type of building: Limpopo

			Mar. 2006	Feb. 2007	Mar. 2007	Jan. - Mar. 2006	Jan. - Mar. 2007	% Change 1/
Category of building	Type of building	Measuring unit						
1. Dwelling-houses < 80 square metres	1. Dwelling-houses < 80 square metres	Number	33	43	36	104	135	+29,8
		square metres	1 975	2 842	2 391	6 326	8 554	+35,2
		R'000	4 977	7 626	6 159	15 229	22 313	+46,5
	2. Dwelling-houses >= 80 square metres	Number	132	100	83	298	263	-11,7
		square metres	28 711	21 085	18 087	65 126	55 246	-15,2
		R'000	69 970	52 314	49 801	159 910	145 907	-8,8
	3. Flats and townhouses	Number	21	87	16	103	163	+58,3
		square metres	2 339	9 613	4 676	10 344	21 603	+108,8
		R'000	5 884	24 207	12 196	25 662	53 008	+106,6
	4. Other residential buildings 2/	square metres	480	1 454	4 811	947	6 265	+561,6
		R'000	2 500	3 898	10 584	4 500	14 482	+221,8
	5. Total residential buildings	R'000	83 331	88 045	78 740	205 301	235 710	+14,8
	2. Dwelling-houses >= 80 square metres	1. Office and banking space	square metres	0	352	714	2 956	1 817
R'000			0	880	1 912	6 856	4 670	-31,9
2. Shopping space		square metres	720	6 155	0	2 813	8 652	+207,6
		R'000	1 400	9 327	0	4 748	15 798	+232,7
3. Industrial and warehouse space		square metres	2 610	1 606	2 357	5 067	6 686	+32,0
		R'000	5 742	4 015	5 747	11 295	16 570	+46,7
4. Other non-residential buildings 3/		square metres	0	510	1 327	172	1 837	+968,0
		R'000	0	1 530	2 968	600	4 498	+649,7
5. Total non-residential buildings		R'000	7 142	15 752	10 627	23 499	41 536	+76,8
3. Flats and townhouses	1. Dwelling-houses	square metres	7 555	11 873	9 295	26 094	31 734	+21,6
		R'000	15 562	28 767	22 135	49 904	75 668	+51,6
	2. Other buildings 4/	square metres	4 720	861	1 250	9 688	3 083	-68,2
		R'000	9 525	1 997	2 952	22 148	6 720	-69,7
	3. Total additions and alterations	R'000	25 087	30 764	25 087	72 052	82 388	+14,3
4. Other residential buildings 2/	1. Total at current prices	R'000	115 560	134 561	114 454	300 852	359 634	+19,5

1/ The percentage change between cumulative figures for 2006 and 2007.

2/ Other residential buildings include institutions for the disabled, boarding houses, hostels and tourism accommodation e.g. hotels, motels, guesthouses, holiday chalets, bed-and-breakfast accommodation and casinos.

3/ Other non-residential space includes churches, sport and recreation clubs, schools, crèches, hospitals and all other non-residential space.

4/ Other buildings include other residential buildings, non-residential buildings and internal alterations.

Table 19 - Buildings reported as completed to larger municipalities at current prices by type of building: South Africa

			Mar. 2006*	Feb. 2007	Mar. 2007	Jan. - Mar. 2006	Jan. - Mar. 2007	% Change 1/
Category of building	Type of building	Measuring unit						
1. Residential buildings	1. Dwelling-houses < 80 square metres	Number	1 660	3 219	2 243	5 266	6 556	+24,5
		square metres	74 064	123 792	91 949	220 089	264 616	+20,2
		R'000	128 025	192 124	154 670	375 505	451 026	+20,1
	2. Dwelling-houses >= 80 square metres	Number	1 806	1 694	1 704	4 462	4 743	+6,3
		square metres	420 366	383 320	392 049	1 017 976	1 082 828	+6,4
		R'000	1 099 372	1 099 795	1 152 804	2 647 197	3 151 651	+19,1
	3. Flats and townhouses	Number	2 094	1 931	2 008	5 250	5 569	+6,1
		square metres	274 320	243 692	210 374	678 133	614 954	-9,3
		R'000	812 472	684 354	640 875	1 956 697	1 841 882	-5,9
	4. Other residential buildings 2/	square metres	707	25 811	3 477	4 362	34 465	+690,1
		R'000	2 417	82 058	19 830	9 828	181 550	+1 747,3
	5. Total residential buildings	R'000	2 042 286	2 058 331	1 968 179	4 989 227	5 626 109	+12,8
	2. Non-residential buildings	1. Office and banking space	square metres	35 083	30 607	89 165	63 094	162 856
R'000			88 661	96 144	245 720	169 065	482 639	+185,5
2. Shopping space		square metres	96 487	72 369	75 713	216 357	163 798	-24,3
		R'000	295 963	279 467	181 267	660 225	500 630	-24,2
3. Industrial and warehouse space		square metres	75 050	139 480	152 121	171 525	359 759	+109,7
		R'000	188 362	399 406	367 337	412 493	969 350	+135,0
4. Other non-residential buildings 3/		square metres	11 088	19 979	12 328	34 159	58 284	+70,6
		R'000	26 769	50 830	28 186	74 173	172 334	+132,3
5. Total non-residential buildings		R'000	599 755	825 847	822 510	1 315 956	2 124 953	+61,5
3. Additions and alterations	1. Dwelling-houses	square metres	166 614	156 103	173 788	476 850	516 175	+8,2
		R'000	394 672	389 589	443 941	1 121 134	1 324 907	+18,2
	2. Other buildings 4/	square metres	73 710	53 813	65 807	149 901	156 905	+4,7
		R'000	174 399	142 783	178 876	385 744	479 078	+24,2
	3. Total additions and alterations	R'000	569 071	532 372	622 817	1 506 878	1 803 985	+19,7
4. Recorded buildings completed	1. Total at current prices	R'000	3 211 112	3 416 550	3 413 506	7 812 061	9 555 047	+22,3

1/ The percentage change between cumulative figures for 2006 and 2007.

2/ Other residential buildings include institutions for the disabled, boarding houses, hostels and tourism accommodation e.g. hotels, motels, guesthouses, holiday chalets, bed-and-breakfast accommodation and casinos.

3/ Other non-residential space includes churches, sport and recreation clubs, schools, crèches, hospitals and all other non-residential space.

4/ Other buildings include other residential buildings, non-residential buildings and internal alterations.

*Revised.

Table 20 - Buildings reported as completed to larger municipalities at current prices by type of building: Western Cape

			Mar. 2006	Feb. 2007	Mar. 2007	Jan. - Mar. 2006	Jan. - Mar. 2007	% Change 1/
Category of building	Type of building	Measuring unit						
1. Residential buildings	1. Dwelling-houses < 80 square metres	Number	376	1 463	860	1 062	2 428	+128,6
		square metres	16 861	49 048	30 760	42 338	85 590	+102,2
		R'000	31 792	54 474	42 585	64 322	111 201	+72,9
	2. Dwelling-houses >= 80 square metres	Number	506	437	433	1 294	1 265	-2,2
		square metres	118 419	91 822	109 418	297 122	287 748	-3,2
		R'000	303 646	268 293	324 225	777 866	839 964	+8,0
	3. Flats and townhouses	Number	778	486	539	1 414	1 812	+28,1
		square metres	95 848	49 224	58 095	178 151	173 391	-2,7
		R'000	278 498	156 028	179 416	505 737	549 086	+8,6
	4. Other residential buildings 2/	square metres	551	13 205	3 177	3 099	16 382	+428,6
		R'000	1 774	45 488	18 930	6 855	64 418	+839,7
5. Total residential buildings	R'000	615 710	524 283	565 156	1 354 780	1 564 669	+15,5	
2. Non-residential buildings	1. Office and banking space	square metres	9 664	848	62 975	15 132	74 688	+393,6
		R'000	27 140	2 761	168 040	43 818	201 664	+360,2
	2. Shopping space	square metres	9 310	284	3 969	32 161	9 101	-71,7
		R'000	17 899	937	13 691	80 993	25 435	-68,6
	3. Industrial and warehouse space	square metres	31 003	64 002	67 222	76 589	142 490	+86,0
		R'000	85 330	194 558	179 301	187 910	404 465	+115,2
	4. Other non-residential buildings 3/	square metres	2 218	1 964	8 220	11 138	19 297	+73,3
		R'000	6 637	5 865	18 223	24 516	51 189	+108,8
	5. Total non-residential buildings	R'000	137 006	204 121	379 255	337 237	682 753	+102,5
3. Additions and alterations	1. Dwelling-houses	square metres	52 800	59 525	61 747	176 765	180 946	+2,4
		R'000	128 471	152 576	160 223	419 449	471 449	+12,4
	2. Other buildings 4/	square metres	10 685	26 488	35 842	38 916	74 966	+92,6
		R'000	28 660	70 094	85 269	113 273	240 434	+112,3
	3. Total additions and alterations	R'000	157 131	222 670	245 492	532 722	711 883	+33,6
4. Recorded buildings completed	1. Total at current prices	R'000	909 847	951 074	1 189 903	2 224 739	2 959 305	+33,0

1/ The percentage change between cumulative figures for 2006 and 2007.

2/ Other residential buildings include institutions for the disabled, boarding houses, hostels and tourism accommodation e.g. hotels, motels, guesthouses, holiday chalets, bed-and-breakfast accommodation and casinos.

3/ Other non-residential space includes churches, sport and recreation clubs, schools, crèches, hospitals and all other non-residential space.

4/ Other buildings include other residential buildings, non-residential buildings and internal alterations.

Table 21 - Buildings reported as completed to larger municipalities at current prices by type of building: Eastern Cape

			Mar. 2006	Feb. 2007	Mar. 2007	Jan. - Mar. 2006	Jan. - Mar. 2007	% Change 1/
Category of building								
1. Residential buildings	1. Dwelling-houses < 80 square metres	Number	223	57	87	483	250	-48,2
		square metres	9 550	2 477	3 959	20 626	10 754	-47,9
		R'000	10 004	4 575	7 830	24 373	19 693	-19,2
	2. Dwelling-houses >= 80 square metres	Number	95	76	94	293	277	-5,5
		square metres	18 418	10 892	12 352	58 978	40 214	-31,8
		R'000	40 917	27 765	30 212	126 009	101 884	-19,1
	3. Flats and townhouses	Number	89	29	0	128	83	-35,2
		square metres	8 515	6 149	0	14 482	11 032	-23,8
		R'000	16 783	13 591	0	30 226	25 579	-15,4
	4. Other residential buildings 2/	square metres	120	0	0	120	0	100,0
		R'000	264	0	0	264	0	100,0
	5. Total residential buildings	R'000	67 968	45 931	38 042	180 872	147 156	-18,6
2. Non-residential buildings	1. Office and banking space	square metres	3 183	0	1 254	3 183	1 254	-60,6
		R'000	6 870	0	3 163	6 870	3 163	-54,0
	2. Shopping space	square metres	6 382	0	285	6 382	1 612	-74,7
		R'000	14 539	0	627	14 539	3 838	-73,6
	3. Industrial and warehouse space	square metres	10 690	14 123	0	15 920	15 144	-4,9
		R'000	20 255	37 189	0	29 255	39 146	+33,8
	4. Other non-residential buildings 3/	square metres	1 257	707	1 488	2 885	2 195	-23,9
		R'000	2 879	1 819	2 976	6 651	4 795	-27,9
	5. Total non-residential buildings	R'000	44 543	39 008	6 766	57 315	50 942	-11,1
	3. Additions and alterations	1. Dwelling-houses	square metres	18 955	6 376	16 121	36 651	36 707
R'000			36 225	12 629	32 969	70 055	72 026	+2,8
2. Other buildings 4/		square metres	26 722	8 456	8 050	33 062	16 712	-49,5
		R'000	46 686	18 485	19 355	60 382	38 301	-36,6
3. Total additions and alterations		R'000	82 911	31 114	52 324	130 437	110 327	-15,4
4. Recorded buildings completed	1. Total at current prices	R'000	195 422	116 053	97 132	368 624	308 425	-16,3

1/ The percentage change between cumulative figures for 2006 and 2007.

2/ Other residential buildings include institutions for the disabled, boarding houses, hostels and tourism accommodation e.g. hotels, motels, guesthouses, holiday chalets, bed-and-breakfast accommodation and casinos.

3/ Other non-residential space includes churches, sport and recreation clubs, schools, crèches, hospitals and all other non-residential space.

4/ Other buildings include other residential buildings, non-residential buildings and internal alterations.

Table 22 - Buildings reported as completed to larger municipalities at current prices by type of building: Northern Cape

			Mar. 2006	Feb. 2007	Mar. 2007	Jan. - Mar. 2006	Jan. - Mar. 2007	% Change 1/
Category of building	Type of building	Measuring unit						
1. Residential buildings	1. Dwelling-houses < 80 square metres	Number	0	8	3	3	14	+366,7
		square metres	0	339	204	198	743	+275,3
		R'000	0	400	441	356	1 201	+237,4
	2. Dwelling-houses >= 80 square metres	Number	16	9	22	36	40	+11,1
		square metres	2 698	1 502	3 830	5 870	7 198	+22,6
		R'000	5 357	3 952	8 550	11 307	16 738	+48,0
	3. Flats and townhouses	Number	14	12	25	23	44	+91,3
		square metres	2 414	1 684	3 817	3 465	6 504	+87,7
		R'000	4 379	3 125	10 358	6 481	15 288	+135,9
	4. Other residential buildings 2/	square metres	0	0	0	0	0	
		R'000	0	0	0	0	0	
	5. Total residential buildings	R'000	9 736	7 477	19 349	18 144	33 227	+83,1
2. Non-residential buildings	1. Office and banking space	square metres	0	5 682	0	1 620	5 682	+250,7
		R'000	0	14 000	0	3 240	14 000	+332,1
	2. Shopping space	square metres	0	446	1 532	0	3 688	
		R'000	0	941	3 677	0	7 854	
	3. Industrial and warehouse space	square metres	443	482	591	1 458	1 073	-26,4
		R'000	886	1 400	1 418	2 916	2 818	-3,4
	4. Other non-residential buildings 3/	square metres	100	0	0	100	0	-100,0
		R'000	200	0	0	200	0	-100,0
	5. Total non-residential buildings	R'000	1 086	16 341	5 095	6 356	24 672	+288,2
3. Additions and alterations	1. Dwelling-houses	square metres	1 431	3 480	2 595	3 058	8 370	+173,7
		R'000	2 554	7 539	6 005	6 975	18 213	+161,1
	2. Other buildings 4/	square metres	1 561	0	223	3 621	257	-92,9
		R'000	3 184	80	535	8 388	697	-91,7
	3. Total additions and alterations	R'000	5 738	7 619	6 540	15 363	18 910	+23,1
4. Recorded buildings completed	1. Total at current prices	R'000	16 560	31 437	30 984	39 863	76 809	+92,7

1/ The percentage change between cumulative figures for 2006 and 2007.

2/ Other residential buildings include institutions for the disabled, boarding houses, hostels and tourism accommodation e.g. hotels, motels, guesthouses, holiday chalets, bed-and-breakfast accommodation and casinos.

3/ Other non-residential space includes churches, sport and recreation clubs, schools, crèches, hospitals and all other non-residential space.

4/ Other buildings include other residential buildings, non-residential buildings and internal alterations.

Table 23 - Buildings reported as completed to larger municipalities at current prices by type of building: Free State

			Mar. 2006*	Feb. 2007	Mar. 2007	Jan. - Mar. 2006	Jan. - Mar. 2007	% Change 1/
Category of building	Type of building	Measuring unit						
1. Residential buildings	1. Dwelling-houses < 80 square metres	Number	135	29	15	168	69	-58,9
		square metres	5 976	1 730	897	7 818	4 130	-47,2
		R'000	5 847	2 986	1 890	9 018	7 558	-16,2
	2. Dwelling-houses >= 80 square metres	Number	35	78	44	87	207	+137,9
		square metres	6 830	17 462	9 387	16 223	39 908	+146,0
		R'000	12 861	36 283	19 286	30 392	83 797	+175,7
	3. Flats and townhouses	Number	88	40	29	232	99	-57,3
		square metres	13 997	5 245	2 946	25 884	11 577	-55,3
		R'000	26 287	15 457	7 287	51 343	35 188	-31,5
	4. Other residential buildings 2/	square metres	0	0	0	626	4 987	+696,6
		R'000	0	0	0	1 127	79 092	+6 917,9
	5. Total residential buildings	R'000	44 995	54 726	28 463	91 880	205 635	+123,8
2. Non-residential buildings	1. Office and banking space	square metres	0	0	1 254	992	1 254	+26,4
		R'000	0	0	4 514	2 454	4 514	+83,9
	2. Shopping space	square metres	390	1 930	0	8 817	2 280	-74,1
		R'000	1 221	7 720	0	25 219	8 971	-64,4
	3. Industrial and warehouse space	square metres	0	64	775	1 386	839	-39,5
		R'000	0	141	1 799	1 608	1 940	+20,6
	4. Other non-residential buildings 3/	square metres	2 366	191	0	2 366	191	-91,9
		R'000	4 579	529	0	4 579	529	-88,4
	5. Total non-residential buildings	R'000	5 800	8 390	6 313	33 860	15 954	-52,9
3. Additions and alterations	1. Dwelling-houses	square metres	6 220	2 452	6 032	16 148	13 020	-19,4
		R'000	10 168	4 076	10 475	25 246	23 175	-8,2
	2. Other buildings 4/	square metres	2 578	539	2 793	4 731	3 332	-29,6
		R'000	7 475	2 081	6 131	11 808	8 752	-25,9
	3. Total additions and alterations	R'000	17 643	6 157	16 606	37 054	31 927	-13,8
4. Recorded buildings completed	1. Total at current prices	R'000	68 438	69 273	51 382	162 794	253 516	+55,7

1/ The percentage change between cumulative figures for 2006 and 2007.

2/ Other residential buildings include institutions for the disabled, boarding houses, hostels and tourism accommodation e.g. hotels, motels, guesthouses, holiday chalets, bed-and-breakfast accommodation and casinos.

3/ Other non-residential space includes churches, sport and recreation clubs, schools, crèches, hospitals and all other non-residential space.

4/ Other buildings include other residential buildings, non-residential buildings and internal alterations.

Table 24 - Buildings reported as completed to larger municipalities at current prices by type of building: KwaZulu-Natal

			Mar. 2006*	Feb. 2007	Mar. 2007	Jan. - Mar. 2006	Jan. - Mar. 2007	% Change 1/
Category of building	Type of building	Measuring unit						
1. Residential buildings	1. Dwelling-houses < 80 square metres	Number	103	126	149	334	377	+12,9
		square metres	4 711	6 073	5 974	15 111	15 899	+5,2
		R'000	8 407	14 101	10 250	27 297	30 826	+12,9
	2. Dwelling-houses >= 80 square metres	Number	138	168	137	370	389	+5,1
		square metres	28 725	43 220	29 603	73 816	90 321	+22,4
		R'000	72 309	130 836	81 689	182 792	259 727	+42,1
	3. Flats and townhouses	Number	158	131	337	619	585	-5,5
		square metres	28 845	41 086	41 654	108 989	98 108	-10,0
		R'000	106 367	88 416	124 523	318 590	258 884	-18,7
	4. Other residential buildings 2/	square metres	36	12 606	0	36	12 606	+34 916,7
		R'000	79	36 570	0	79	36 570	+46 191,1
	5. Total residential buildings	R'000	187 162	269 923	216 462	528 758	586 007	+10,8
2. Non-residential buildings	1. Office and banking space	square metres	7 433	6 781	3 227	10 045	11 735	+16,8
		R'000	12 393	17 825	8 675	19 311	31 573	+63,5
	2. Shopping space	square metres	933	33 136	833	8 746	34 439	+293,8
		R'000	2 333	111 521	2 857	21 095	115 553	+447,8
	3. Industrial and warehouse space	square metres	6 033	26 159	41 696	19 907	103 322	+419,0
		R'000	16 312	65 100	66 177	48 112	244 767	+408,7
	4. Other non-residential buildings 3/	square metres	1 543	5 349	262	11 024	5 611	-49,1
		R'000	3 856	8 515	1 048	21 424	9 563	-55,4
	5. Total non-residential buildings	R'000	34 894	202 961	78 757	109 942	401 456	+265,2
	3. Additions and alterations	1. Dwelling-houses	square metres	25 961	30 080	26 251	68 971	74 624
R'000			61 085	73 825	63 112	158 802	183 524	+15,6
2. Other buildings 4/		square metres	14 926	6 548	6 225	30 074	29 022	-3,5
		R'000	41 413	16 840	25 806	84 859	86 900	+2,4
3. Total additions and alterations		R'000	102 498	90 665	88 918	243 661	270 424	+11,0
4. Recorded buildings completed	1. Total at current prices	R'000	324 554	563 549	384 137	882 361	1 257 887	+42,6

1/ The percentage change between cumulative figures for 2006 and 2007.

2/ Other residential buildings include institutions for the disabled, boarding houses, hostels and tourism accommodation e.g. hotels, motels, guesthouses, holiday chalets, bed-and-breakfast accommodation and casinos.

3/ Other non-residential space includes churches, sport and recreation clubs, schools, crèches, hospitals and all other non-residential space.

4/ Other buildings include other residential buildings, non-residential buildings and internal alterations.

* Revised.

Table 25 - Buildings reported as completed to larger municipalities at current prices by type of building: North West

			Mar. 2006*	Feb. 2007	Mar. 2007	Jan. - Mar. 2006	Jan. - Mar. 2007	% Change 1/
Category of building	Type of building	Measuring unit						
1. Residential buildings	1. Dwelling-houses < 80 square metres	Number	60	381	177	107	613	+472,9
		square metres	3 593	13 324	7 914	6 499	23 211	+257,1
		R'000	4 248	11 770	6 997	8 329	20 841	+150,2
	2. Dwelling-houses >= 80 square metres	Number	121	131	171	306	381	+24,5
		square metres	20 025	33 746	39 041	56 329	91 487	+62,4
		R'000	45 721	98 887	115 019	130 408	266 161	+104,1
	3. Flats and townhouses	Number	178	146	193	263	433	+64,6
		square metres	8 564	8 070	17 430	17 247	31 933	+85,2
		R'000	17 827	17 525	42 408	36 702	77 966	+112,4
	4. Other residential buildings 2/	square metres	0	0	0	0	0	
		R'000	0	0	0	0	0	
	5. Total residential buildings	R'000	67 796	128 182	164 424	175 439	364 968	+108,0
2. Non-residential buildings	1. Office and banking space	square metres	22	0	1 509	22	2 795	+12 604,5
		R'000	55	0	3 319	55	6 148	+11 078,2
	2. Shopping space	square metres	3 333	12 549	3 720	30 176	19 889	-34,1
		R'000	5 716	40 509	9 300	120 366	59 299	-50,7
	3. Industrial and warehouse space	square metres	2 173	0	0	2 173	0	
		R'000	6 000	0	0	6 000	0	
	4. Other non-residential buildings 3/	square metres	1 158	426	885	1 405	1 529	+8,8
		R'000	2 547	778	1 947	3 090	3 488	+12,9
	5. Total non-residential buildings	R'000	14 318	41 287	14 566	129 511	68 935	-46,8
	3. Additions and alterations	1. Dwelling-houses	square metres	4 225	4 444	3 132	13 419	10 149
R'000			7 703	9 384	6 926	23 788	21 130	-11,2
2. Other buildings 4/		square metres	4 998	0	1 517	11 208	1 517	-86,5
		R'000	9 849	10	3 593	23 908	3 713	-84,5
3. Total additions and alterations		R'000	17 552	9 394	10 519	47 696	24 843	-47,9
4. Recorded buildings completed	1. Total at current prices	R'000	99 666	178 863	189 509	352 646	458 746	+30,1

1/ The percentage change between cumulative figures for 2006 and 2007.

2/ Other residential buildings include institutions for the disabled, boarding houses, hostels and tourism accommodation e.g. hotels, motels, guesthouses, holiday chalets, bed-and-breakfast accommodation and casinos.

3/ Other non-residential space includes churches, sport and recreation clubs, schools, crèches, hospitals and all other non-residential space.

4/ Other buildings include other residential buildings, non-residential buildings and internal alterations.

* Revised.

Table 26 - Buildings reported as completed to larger municipalities at current prices by type of building: Gauteng

			Mar. 2006*	Feb. 2007	Mar. 2007	Jan. - Mar. 2006	Jan. - Mar. 2007	% Change 1/
Category of building	Type of building	Measuring unit						
1. Residential buildings	1. Dwelling-houses < 80 square metres	Number	719	1 090	913	2 771	2 653	-4,3
		square metres	30 616	46 679	39 872	114 073	114 678	+0,5
		R'000	60 248	92 873	78 772	217 373	234 371	+7,8
	2. Dwelling-houses >= 80 square metres	Number	747	629	687	1 704	1 794	+5,3
		square metres	198 788	153 958	166 072	442 340	451 051	+2,0
		R'000	552 370	462 349	515 171	1 223 451	1 395 098	+14,0
	3. Flats and townhouses	Number	775	1 029	757	2 300	2 298	-0,1
		square metres	114 650	124 619	79 766	301 605	263 676	-12,6
		R'000	358 453	370 689	256 885	942 760	829 519	-12,0
	4. Other residential buildings 2/	square metres	0	0	0	0	0	
		R'000	0	0	0	0	0	
	5. Total residential buildings	R'000	971 071	925 911	850 828	2 383 584	2 458 988	+3,2
2. Non-residential buildings	1. Office and banking space	square metres	9 695	15 912	15 391	23 278	57 892	+148,7
		R'000	29 728	54 558	45 223	71 766	195 491	+172,4
	2. Shopping space	square metres	71 302	23 308	59 600	118 233	85 856	-27,4
		R'000	244 555	116 641	135 360	375 776	261 618	-30,4
	3. Industrial and warehouse space	square metres	14 636	29 859	39 489	38 869	87 207	+124,4
		R'000	40 379	90 833	113 643	106 561	255 202	+139,5
	4. Other non-residential buildings 3/	square metres	2 446	11 342	1 056	4 652	28 241	+507,1
		R'000	6 071	33 324	2 991	12 548	99 552	+693,4
	5. Total non-residential buildings	R'000	320 733	295 356	297 217	566 651	811 863	+43,3
	3. Additions and alterations	1. Dwelling-houses	square metres	53 477	39 954	52 822	149 181	170 076
R'000			140 992	108 834	153 485	391 930	487 924	+24,5
2. Other buildings 4/		square metres	12 165	11 049	10 494	25 418	28 684	+12,8
		R'000	36 434	32 739	35 275	74 631	91 900	+23,1
3. Total additions and alterations		R'000	177 426	141 573	188 760	466 561	579 824	+24,3
4. Recorded buildings completed	1. Total at current prices	R'000	1 469 230	1 362 840	1 336 805	3 416 796	3 850 675	+12,7

1/ The percentage change between cumulative figures for 2006 and 2007.

2/ Other residential buildings include institutions for the disabled, boarding houses, hostels and tourism accommodation e.g. hotels, motels, guesthouses, holiday chalets, bed-and-breakfast accommodation and casinos.

3/ Other non-residential space includes churches, sport and recreation clubs, schools, crèches, hospitals and all other non-residential space.

4/ Other buildings include other residential buildings, non-residential buildings and internal alterations.

* Revised.

Table 27 - Buildings reported as completed to larger municipalities at current prices by type of building: Mpumalanga

			Mar. 2006*	Feb. 2007	Mar. 2007	Jan. - Mar. 2006	Jan. - Mar. 2007	% Change 1/
Category of building	Type of building	Measuring unit						
1. Residential buildings	1. Dwelling-houses < 80 square metres	Number	28	35	16	289	72	-75,1
		square metres	1 792	2 169	972	10 316	4 565	-55,7
		R'000	4 945	5 845	2 546	16 667	12 511	-24,9
	2. Dwelling-houses >= 80 square metres	Number	105	107	70	267	249	-6,7
		square metres	18 820	18 462	14 311	47 308	47 310	-0,0
		R'000	42 427	44 139	35 066	109 958	118 523	+7,8
	3. Flats and townhouses	Number	4	41	10	177	67	-62,1
		square metres	323	5 365	606	15 742	8 467	-46,2
		R'000	968	14 624	1 818	33 896	23 941	-29,4
	4. Other residential buildings 2/	square metres	0	0	300	481	490	+1,9
		R'000	300	0	900	1 503	1 470	-2,2
	5. Total residential buildings	R'000	48 640	64 608	40 330	162 024	156 445	-3,4
2. Non-residential buildings	1. Office and banking space	square metres	4 818	1 384	2 379	6 397	6 380	-0,3
		R'000	12 045	7 000	9 258	16 248	22 558	+38,8
	2. Shopping space	square metres	4 837	0	4 017	10 881	4 460	-59,0
		R'000	9 700	0	10 044	20 700	11 153	-46,1
	3. Industrial and warehouse space	square metres	9 560	4 263	2 348	13 591	7 185	-47,1
		R'000	17 500	9 340	4 999	25 183	15 831	-37,1
	4. Other non-residential buildings 3/	square metres	0	0	417	589	1 220	+107,1
		R'000	0	0	1 001	1 165	3 218	+176,2
	5. Total non-residential buildings	R'000	39 245	16 340	25 302	63 296	52 760	-16,6
	3. Additions and alterations	1. Dwelling-houses	square metres	2 766	7 483	4 206	10 071	17 956
R'000			5 447	15 739	8 695	19 693	37 871	+92,3
2. Other buildings 4/		square metres	75	733	663	866	2 119	+144,7
		R'000	698	2 454	2 912	3 026	7 719	+155,1
3. Total additions and alterations		R'000	6 145	18 193	11 607	22 719	45 590	+100,7
4. Recorded buildings completed	1. Total at current prices	R'000	94 030	99 141	77 239	248 039	254 795	+2,7

1/ The percentage change between cumulative figures for 2006 and 2007.

2/ Other residential buildings include institutions for the disabled, boarding houses, hostels and tourism accommodation e.g. hotels, motels, guesthouses, holiday chalets, bed-and-breakfast accommodation and casinos.

3/ Other non-residential space includes churches, sport and recreation clubs, schools, crèches, hospitals and all other non-residential space.

4/ Other buildings include other residential buildings, non-residential buildings and internal alterations.

* Revised.

Table 28 - Buildings reported as completed to larger municipalities at current prices by type of building: Limpopo

			Mar. 2006	Feb. 2007	Mar. 2007	Jan. - Mar. 2006	Jan. - Mar. 2007	% Change 1/
Category of building	Type of building	Measuring unit						
1. Residential buildings	1. Dwelling-houses < 80 square metres	Number	16	30	23	49	80	+63,3
		square metres	965	1 953	1 397	3 110	5 046	+62,3
		R'000	2 534	5 100	3 359	7 770	12 824	+65,0
	2. Dwelling-houses >= 80 square metres	Number	43	59	46	105	141	+34,3
		square metres	7 643	12 256	8 035	19 990	27 591	+38,0
		R'000	23 764	27 291	23 586	55 014	69 759	+26,8
	3. Flats and townhouses	Number	10	17	118	94	148	+57,4
		square metres	1 164	2 250	6 060	12 568	10 266	-18,3
		R'000	2 910	4 899	18 180	30 962	26 431	-14,6
	4. Other residential buildings 2/	square metres	0	0	0	0	0	
		R'000	0	0	0	0	0	
	5. Total residential buildings	R'000	29 208	37 290	45 125	93 746	109 014	+16,3
	2. Non-residential buildings	1. Office and banking space	square metres	268	0	1 176	2 425	1 176
R'000			430	0	3 528	5 303	3 528	-33,5
2. Shopping space		square metres	0	716	1 757	961	2 473	+157,3
		R'000	0	1 198	5 711	1 537	6 909	+349,5
3. Industrial and warehouse space		square metres	512	528	0	1 632	2 499	+53,1
		R'000	1 700	845	0	4 948	5 181	+4,7
4. Other non-residential buildings 3/		square metres	0	0	0	0	0	
		R'000	0	0	0	0	0	
5. Total non-residential buildings		R'000	2 130	2 043	9 239	11 788	15 618	+32,5
3. Additions and alterations		1. Dwelling-houses	square metres	779	2 309	882	2 586	4 327
	R'000		2 027	4 987	2 051	5 196	9 595	+84,7
	2. Other buildings 4/	square metres	0	0	0	2 005	296	-85,2
		R'000	0	0	0	5 469	662	-87,9
	3. Total additions and alterations	R'000	2 027	4 987	2 051	10 665	10 257	-3,8
4. Recorded buildings completed	1. Total at current prices	R'000	33 365	44 320	56 415	116 199	134 889	+16,1

1/ The percentage change between cumulative figures for 2006 and 2007.

2/ Other residential buildings include institutions for the disabled, boarding houses, hostels and tourism accommodation e.g. hotels, motels, guesthouses, holiday chalets, bed-and-breakfast accommodation and casinos.

3/ Other non-residential space includes churches, sport and recreation clubs, schools, crèches, hospitals and all other non-residential space.

4/ Other buildings include other residential buildings, non-residential buildings and internal alterations.

Table 29 - Subsidised low-cost dwelling-houses completed or under construction by province

Province	Year	Number 1/	Square metres 2/	Value R'000 2/
Western Cape	2002	19 534	531 116	168 852
	2003	16 926	507 780	247 187
	2004	12 751	382 530	211 424
Eastern Cape	2002	46 700	1 575 675	473 806
	2003	35 005	1 050 150	511 213
	2004	34 923	1 047 690	579 058
Northern Cape	2002	5 189	164 906	68 078
	2003	4 354	130 620	63 586
	2004	3 645	109 350	60 438
Free State	2002	8 617	348 492	154 121
	2003	14 848	445 440	216 840
	2004	16 522	495 660	273 951
KwaZulu-Natal	2002	21 958	831 349	234 041
	2003	31 372	941 160	458 157
	2004	35 968	1 079 040	596 385
North West	2002	21 309	630 115	210 439
	2003	13 809	414 270	201 667
	2004	10 149	304 470	168 281
Gauteng	2002	29 939	991 571	321 943
	2003	42 862	1 285 860	625 957
	2004	33 260	997 800	551 484
Mpumalanga	2002	19 883	660 505	253 931
	2003	21 336	640 080	246 079
	2004	18 808	564 240	311 855
Limpopo	2002	15 382	605 877	183 769
	2003	15 596	467 880	227 764
	2004	16 338	490 140	270 900
South Africa	2002	188 511	6 339 606	2 068 980
	2003	196 108	5 883 240	2 798 450
	2004	182 364	5 470 920	3 023 777

Source: Provincial Governments co-ordinated by the National Department of Housing
 1/ As soon as building commences, dwelling-houses are recorded as completed or under construction.

2/ Estimates by the National Department of Housing.

Table 30 - Subsidised low-cost dwelling-houses completed by province

Completions during financial year: 1 April 2005 to 31 March 2006			
Province	Number	Square metres 1/	Value R'000 1/
Western Cape	2 040	61 200	52 877
Eastern Cape	16 874	506 220	437 374
Northern Cape	5 293	158 790	137 195
Free State	17 635	529 050	457 099
KwaZulu-Natal	21 601	648 030	559 898
North West	14 445	433 350	374 414
Gauteng	23 409	702 270	606 761
Mpumalanga	14 389	431 670	372 963
Limpopo	21 973	659 190	569 540
South Africa	137 659	4 129 770	3 568 121

Source: Provincial Governments co-ordinated by the National Department of Housing
 1/ Estimates by the National Department of Housing.

Explanatory notes

Introduction	1	Statistics South Africa (Stats SA) conducts a monthly building statistics survey collecting information regarding building plans passed and buildings completed, financed by the private sector, from the largest local government institutions in South Africa. According to these institutions, they are not always notified about low-cost housing projects and therefore do not include the bulk of low-cost dwelling-houses. Data regarding subsidised low-cost dwelling-houses, supplied by the provincial governments and co-ordinated by the National Department of Housing, are shown in table 29 and table 30 (page 37).
	2	In order to improve timeliness of the publication, some information for the current month has been estimated due to late submission by respondents. These estimates will be revised in the next statistical release(s) as soon as actual information is available.
Purpose of the survey	3	The monthly survey data are used in monitoring the state of economy and formulation of economic policy. Furthermore, the results are important inputs to estimate the Gross Domestic Product (GDP) and to calculate the Composite Leading Business Cycle Indicator. The data are extensively used by the private sector.
Scope of the survey	4	This survey covers local government institutions conducting activities for the private sector regarding - <ul style="list-style-type: none"> • passing of building plans; and • final inspection of completed buildings.
Classification	5	Building activities is classified in division 5 according to the 1993 edition of the <i>Standard Industrial Classification of all Economic Activities, (SIC) Fifth Edition, Report No. 09-90-02</i> . The SIC is based on the 1990 <i>International Standard Industrial Classification of all Economic Activities (ISIC)</i> with suitable adaptations for local conditions.
Response rate	6	The preliminary response rate for the survey on building statistics for March 2007 was 98,2%. Improved response rate for February 2007 was 97,4%.
Statistical unit	7	The statistical unit for the collection of information is a local government institution. Local government institutions include district municipalities, metropolitan municipalities and local municipalities.
Survey methodology and design	8	<p>Stats SA conducts a monthly survey of metropolitan municipalities and large local municipalities on building plans passed and buildings completed. An annual survey of the remaining municipalities is conducted regarding buildings completed. The monthly survey represents approximately 90 percent of the total value of buildings completed. Information regarding building plans passed and buildings completed for the private sector is collected by mail, fax and telephone.</p> <p>According to the municipalities, they are not always notified about low-cost housing projects. Data regarding subsidised low-cost dwelling-houses, supplied by the provincial governments and co-ordinated by the National Department of Housing, are shown in table 29 and table 30 (page 37).</p>
Constant prices	9	The value of building plans passed and buildings completed at constant prices measures building activities in terms of ruling prices in a specific base year, which is currently 2000. The value of building plans passed at constant prices for each month is obtained by deflating the values at current prices with a price index known as the 'lump sum domestic buildings' as published in statistical release P0151: <i>JBCC Contract Price Adjustment Provisions Work Group Indices</i> . In order to be applicable, these indices (base February 1991=100) are converted to the base year 2000=100.

- 10** The value of buildings completed at constant prices is obtained by deflating the values at current prices with the price index which is used to calculate building plans passed at constant prices (see paragraph 8). Since the completion of buildings may extend over a few months to a few years, the current value of buildings completed is deflated by price indices which prevailed at the time the plans were passed. Therefore, the duration of the completion of different types of buildings are taken into account in ascertaining the deflators e.g. the value of dwelling-houses completed at constant prices at January 2007 is obtained by deflating the current value of dwelling-houses completed for January 2007 with the price index of a month six months prior to January 2007. Furthermore, the value of other residential buildings, non-residential buildings and additions and alterations at constant prices is obtained by deflating the current values with price indices of 12 months, 18 months and 12 months prior to the relevant month, respectively.
- Seasonal adjustment**
- 11** Seasonally adjusted estimates of building plans passed and buildings completed are generated each month, using the X-11 Seasonal Adjustment Program developed by US Bureau of the Census Economic Research and Analyses Division, 1968.
- 12** Seasonal adjustment is a means of removing the estimated effects of normal seasonal variation from the series so that the effects of other influences on the series can be more clearly recognised. Seasonal adjustment does not aim to remove irregular or non-seasonal influences which may be present in any particular month. Influences that are volatile or unsystematic can still make it difficult to interpret the movement of the series even after adjustment for seasonal variations. Therefore, the month-to-month movements of seasonally adjusted estimates may not be reliable indicators of trend behaviour.
- Trend cycle**
- 13** The trend is a long-term pattern or movement of a time series. The X-11 Seasonal Adjustment Program is used for smoothing seasonally adjusted data.
- Revised figures**
- 14** Revised figures are due to late submission of data to Stats SA, or to respondents reporting revisions or corrections to their figures. Figures for the latest month are therefore preliminary. Data are edited at municipal level.
- 15** Once a year the annual statistical release P5041.3 is published with the revised and updated information at provincial and municipal level for the previous calendar year. Due to this comprehensive revision, the monthly statistical release P5041.1 reflects provincial revision for 2005 where applicable.
- Related publications**
- 16** Users may also wish to refer to the following publications:
- P5041.3: Selected building statistics of the private sector as reported by local government institutions issued annually.
 - P9101.2: Actual and expected expenditure on construction by the public sector per statistical region issued annually.
 - Bulletin of Statistics issued quarterly.
 - South African Statistics issued annually.
 - Report 50-11-01 issued annually.
- Rounding-off of figures**
- 17** The figures in the tables have, where necessary, been rounded off to the nearest digit shown.
- Pre-release policy**
- 18** Stats SA's pre-release policy may be inspected at its website, www.statssa.gov.za

**Symbols and
abbreviations**

19	..	no meaningful percentage change between two specified periods available since either one or both of the totals are nil
	0	nil or figure too small to publish
	*	revised
	Stats SA	Statistics South Africa
	SIC	Standard Industrial Classification of all Economic Activities
	ISIC	International Standard Industrial Classification of all Economic Activities
	JBCC	Joint Building Contracts Committee
	CD	Compact Disc
	US	United States
	SARB	South African Reserve Bank
	DTI	Department of Trade and Industry

Glossary

Additions and alterations	They include extensions to existing buildings as well as internal and external alterations of existing buildings.
Blocks of flats	High-density housing consisting of a number of self-contained dwelling-units, each with at least one living-room together with a kitchen and bathroom, conjoined to similar units in one building.
Dwelling-house	A free-standing, complete structure on a separate stand or a self-contained dwelling-unit, granny flat, on the same premises as an existing residence. Out-buildings and garages are included.
Local government institutions	Include – <ul style="list-style-type: none"> • District municipalities; • Metropolitan municipalities; and • Local municipalities.
Municipality	A generic term describing the “unit” of government in the local spheres responsible for local government in a geographically demarcated area and including district, metropolitan and local municipalities. It is an institution consisting of a municipal council (elected political representatives) and municipal administration (appointed officials).
District municipality	Municipality that has municipal executive and legislative authority in an area that includes more than one municipality, and which is described in section 155(1) of the Constitution as a category C municipality (Refer to Local Government: Municipal Structure Act, 1998 (Act No. 117 of 1998)).
Metropolitan municipality	Municipality that has municipal executive and legislative authority in an area that includes more than one municipality, and which is described in section 155(1) of the Constitution as a category A municipality (Refer to Local Government: Municipal Structure Act, 1998 (Act No. 117 of 1998)).
Local municipality	Municipality that shares municipal executive and legislative authority in its area with a district municipality within whose area it falls, that is described in section 155(1) of the constitution as a category B municipality.
Non-residential buildings	Comprise factories, commercial, financial and other office buildings, as well as other buildings not used for residential purposes, such as churches, halls, clubs, schools and hospitals.
Other residential buildings	Institutions for the disabled, boarding houses, old people’s homes, hostels, hotels, motels, guesthouses, holiday chalets, bed-and-breakfast accommodation, entertainment centres and casinos.
Percentage change	<p>When using monthly actual values, the percentage change is the change in actual values of building activities (building plans passed or buildings completed) of the relevant month compared with the actual values of building activities (building plans passed or buildings completed) of the same month in the previous year expressed as a percentage.</p> <p>When using annual actual values, the percentage change is the change in the actual values of building activities (building plans passed or buildings completed) of the relevant year compared with the actual values of building activities (building plans passed or buildings completed) of the previous year expressed as a percentage.</p> <p>When using seasonally adjusted values, the percentage change is the change in the seasonally adjusted values of building activities (building plans passed or buildings completed) of the relevant month compared with the seasonally adjusted values of building activities (building plans passed or buildings completed) of the previous month expressed as a percentage.</p>

Reference period	One calendar month.
Residential buildings	Comprise dwelling-houses, flats, townhouses and other residential buildings.
Townhouses	Multiple, medium-density dwelling-units and include cluster housing, group housing, simplexes, duplexes, triplexes and other similar dwelling-units which are usually grouped together, with one level of each unit on ground level. This excludes blocks of flats.

General information

Stats SA publishes approximately 300 different statistical releases each year. It is not economically viable to produce them in more than one of South Africa's eleven official languages. Since the releases are used extensively, not only locally but also by international economic and social-scientific communities, Stats SA releases are published in English.

Stats SA has copyright on this publication. Users may apply the information as they wish, provided that they acknowledge Stats SA as the source of the basic data wherever they process, apply, utilise, publish or distribute the data and also that they specify that the relevant application and analysis (where applicable) result from their own processing of the data.

An advance release calendar is disseminated on www.statssa.gov.za

Stats SA products

A complete set of Stats SA publications is available at the Stats SA Library and the following libraries:

National Library of South Africa, Pretoria Division
National Library of South Africa, Cape Town Division
Natal Society Library, Pietermaritzburg
Library of Parliament, Cape Town
Bloemfontein Public Library
Johannesburg Public Library
Eastern Cape Library Services, King William's Town
Central Regional Library, Polokwane
Central Reference Library, Nelspruit
Central Reference Collection, Kimberley
Central Reference Library, Mmabatho

Stats SA also provides a subscription service.

Electronic services

A large range of data are available via on-line services, diskette, CD and computer printouts. For more details about our electronic data services, contact (012) 310 8600/8390/8351/4892/8496/8095.

You can visit us on the Internet at: www.statssa.gov.za

Enquiries

Telephone number: (012) 310 8600/8390/8351/4892/8496/8095 (user information services)
(012) 310 8228/310 8007 (technical enquiries)
(012) 310 8161 (orders)
(012) 310 4883/4885/8018 (library)

Fax number: (012) 310 8664 (technical enquiries)

Email: Gretaz@statssa.gov.za (technical enquiries)
info@statssa.gov.za (user information services)
distribution@statssa.gov.za (orders)

Postal address: Private Bag X44, Pretoria, 0001

Produced by Stats SA