

Selected building statistics of the private sector derived from data reported by local government institutions

March 2004

Co-operation between Statistics South Africa (Stats SA), the citizens of the country, the private sector and government institutions is essential for a successful statistical system. Without continued co-operation and goodwill, the timely release of relevant and reliable official statistics will not be possible.

**Embargoed until:
19 May 2004
13:00**

Stats SA publishes approximately three hundred different releases each year. It is not economically viable to produce them in more than one of South Africa's eleven official languages. Since the releases are used extensively, not only locally, but also by international economic and social-scientific communities, Stats SA releases are published in English only.

Key figures regarding building plans passed as at the end of March 2004

Actual estimates at constant 2000 prices

	March 2004	January 2004 to March 2004	Percentage change between March 2003 and March 2004	Percentage change between January 2003 to March 2003 and January 2004 to March 2004
	R million	R million		
Residential buildings				
Dwelling-houses	1 035,1	2 612,3	+ 40,2	+ 30,9
Flats and townhouses	409,7	1 099,6	+ 25,7	+ 50,7
Other residential buildings	58,1	86,9	+ 83,2	+ 18,8
Total	1 502,9	3 798,8	+ 37,2	+ 35,7
Non-residential buildings	418,3	970,4	+ 137,7	+ 7,4
Additions and alterations	653,6	1 669,1	+ 38,7	+ 28,4
Total	2 574,8	6 438,3	+ 47,7	+ 28,7

Seasonally adjusted estimates at constant 2000 prices

	March 2004	Percentage change between February 2004 and March 2004	Percentage change between October 2003 to December 2003 and January 2004 to March 2004
	R million		
Residential buildings	1 445,3	+ 9,0	+ 5,6
Non-residential buildings	396,1	+ 8,9	- 0,2
Additions and alterations	660,2	- 5,1	+ 9,9
Total	2 501,6	+ 4,8	+ 5,7

Key findings regarding seasonally adjusted real value of building plans passed as at the end of March 2004

The seasonally adjusted real value of building plans passed (at constant 2000 prices) for the first quarter of 2004 increased by 5,7% compared with the fourth quarter of 2003. Furthermore, the seasonally adjusted real value of building plans passed increased by 4,8% between February 2004 and March 2004.

The increase of 5,7% in the seasonally adjusted real value of building plans passed during the first quarter of 2004 compared with the fourth quarter of 2003 was due to increases in the seasonally adjusted real value of additions and alterations (+9,9%) and residential buildings (+5,6%). However, the seasonally adjusted real value of non-residential buildings decreased by 0,2% between the fourth quarter of 2003 and the first quarter of 2004.

The increase of 4,8% in the seasonally adjusted real value of building plans passed between February 2004 and March 2004 was due to increases in the seasonally adjusted real value of residential buildings (+9,0%) and non-residential buildings (+8,9%). However, the seasonally adjusted real value additions and alterations decreased by 5,1% between February 2004 and March 2004.

Key findings regarding building plans passed for the first three months of 2004

Total real value of building plans passed increases

The total real value of building plans passed (at constant 2000 prices) during the first three months of 2004 increased by 28,7% (+R1 436,5 million) to R6 438,3 million compared with the first three months of 2003. Large increases in the value of building plans passed were reported for dwelling-houses (+R616,9 million), flats and townhouses (+R369,7 million) and additions and alterations (+R369,4 million). The largest increases for dwelling-houses were reported by Western Cape (+R238,7 million) and Gauteng (+R206,0 million). Large increases for flats and townhouses were reported by Gauteng (+R215,0 million) and Western Cape (+R127,2 million).

Eight of the nine provinces reported increases in the total real value of building plans passed

The largest provincial contributors to the increase of 28,7% (+R1 436,5 million) in the total real value of building plans passed were Western Cape (+14,7 percentage points or R733,8 million) and Gauteng (+13,5 percentage points or R676,6 million) (see table A). Large increases for dwelling-houses in Western Cape were reported by City of Cape Town (+R67,7 million), Mossel Bay Municipality (+R60,3 million), Knysna Municipality (+R39,7 million) and Helderberg Administration (+R34,3 million). In Gauteng, the largest increase for dwelling-houses was reported by City of Johannesburg (+R115,6 million), whereas large increases for flats and townhouses were reported by City of Johannesburg (+R83,4 million) and City of Tshwane (+R62,3 million).

Table A - Contribution of provinces to the total real value of building plans passed

Province	Percentage contribution to the total real value of plans passed during January 2003 to March 2003	Percentage change between January 2003 to March 2003 and January 2004 to March 2004	Contribution (percentage points) 1/ to the percentage change in the real value of plans passed between January 2003 to March 2003 and January 2004 to March 2004	Difference in total real value of plans passed between January 2003 to March 2003 and January 2004 to March 2004 R million
Western Cape	25,9	+ 56,7	+ 14,7	+ 733,8
Gauteng	37,5	+ 36,1	+ 13,5	+ 676,6
Eastern Cape	4,9	+ 54,8	+ 2,7	+ 133,1
North West	2,8	+ 70,3	+ 2,0	+ 98,2
Limpopo	1,4	+ 84,1	+ 1,2	+ 58,1
Northern Cape	0,4	+ 125,8	+ 0,5	+ 27,8
Mpumalanga	3,5	+ 9,0	+ 0,3	+ 16,0
Free State	2,8	+ 7,9	+ 0,2	+ 11,1
KwaZulu-Natal	20,8	- 30,6	- 6,4	- 318,2
Total	100,0	+ 28,7	+ 28,7	+1 436,5

^{1/} The contribution (percentage points) is calculated by multiplying the percentage change of each province between January 2003 to March 2003 and January 2004 to March 2004 (see column 3) with the percentage contribution of the corresponding province to the total real value of plans passed during January 2003 to March 2003 (see column 2) divided by 100.

Key figures regarding buildings completed as at the end of March 2004

Actual estimates at constant 2000 prices

	March 2004	January 2004 to March 2004	Percentage change between March 2003 and March 2004	Percentage change between January 2003 to March 2003 and January 2004 to March 2004
	R million	R million		
Residential buildings				
Dwelling-houses	526,8	1 333,0	+ 15,7	+ 13,0
Flats and townhouses	164,4	412,0	+ 26,5	- 13,4
Other residential buildings	2,6	33,6	- 52,1	- 33,8
Total	693,8	1 778,6	+ 17,5	+ 4,3
Non-residential buildings	175,6	532,7	- 40,1	- 8,7
Additions and alterations	215,8	663,1	+ 1,8	- 2,1
Total	1 085,2	2 974,4	- 0,9	+ 0,3

Seasonally adjusted estimates at constant 2000 prices

	March 2004	Percentage change between February 2004 and March 2004	Percentage change between October 2003 to December 2003 and January 2004 to March 2004
	R million		
Residential buildings	655,9	- 2,4	- 4,5
Non-residential buildings	190,6	- 20,8	+ 24,3
Additions and alterations	211,5	- 9,1	- 3,7
Total	1 058,0	- 7,6	+ 0,5

Key findings regarding seasonally adjusted real value of buildings completed at the end of March 2004

The seasonally adjusted real value of buildings completed (at constant 2000 prices) for the first quarter of 2004 increased by 0,5% compared with the fourth quarter of 2003. However, the seasonally adjusted real value of buildings completed decreased by 7,6% between February 2004 and March 2004.

The increase of 0,5% in the seasonally adjusted real value of buildings completed during the first quarter of 2004 compared with the fourth quarter of 2003 was due to an increase in the seasonally adjusted real value of non-residential buildings (+24,3%). However, this increase was partially counteracted by decreases reported for residential buildings (-4,5%) and additions and alterations (-3,7%).

The decrease of 7,6% in the seasonally adjusted real value of buildings completed between February 2004 and March 2004 was due to decreases in the seasonally adjusted real value of non-residential buildings (-20,8%), additions and alterations (-9,1%) and residential buildings (-2,4%).

Key findings regarding buildings completed for the first three months of 2004

Total real value of buildings completed increases slightly

The total real value of buildings completed (at constant 2000 prices) during the first three months of 2004 increased by 0,3% (+R7,6 million) to R2 974,4 million compared with the first three months of 2003. The only increase in the real value of buildings completed was reported for dwelling-houses (+R153,7 million), mainly due to the large increase reported by Gauteng (+R99,3 million). However, this increase was partially counteracted by decreases reported for flats and townhouses (-R63,6 million), non-residential buildings (-R50,9 million), 'other' residential buildings (-R17,2 million) and additions and alterations (-R14,5 million).

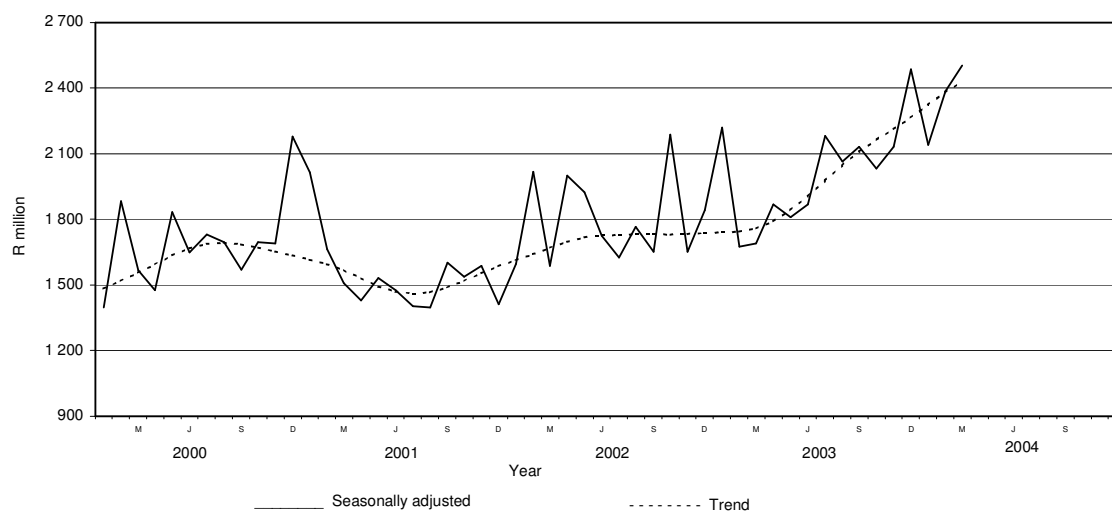
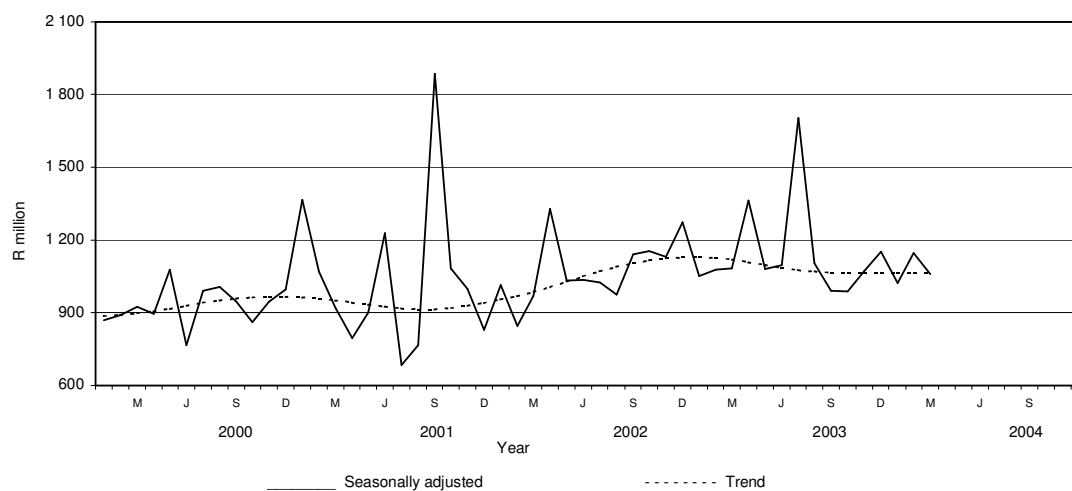
Six of the nine provinces reported increases in the total real value of buildings completed

The largest provincial contributor to the increase of 0,3% (+R7,6 million) in the total real value of buildings completed was Gauteng (+4,5 percentage points or R132,8 million), followed by KwaZulu-Natal (+1,3 percentage points or R39,4 million) and Limpopo (+0,7 of a percentage point or R20,0 million). However, these increases were partially counteracted by large decreases reported by Western Cape (-4,8 percentage points or R142,1 million) and Mpumalanga (-2,2 percentage points or R67,2 million) (see table B). Large increases in Gauteng were reported for dwelling-houses (+R99,3 million), office and banking space (+R60,8 million), industrial and warehouse space (+R52,2 million) and additions and alterations (+R41,3 million). In Gauteng, large increases for dwelling-houses completed were reported by the City of Johannesburg (+R55,7 million) and City of Tshwane (+R32,8 million).

Table B - Contribution of provinces to the total real value of buildings completed

Province	Percentage contribution to the total real value of buildings completed during January 2003 to March 2003	Percentage change between January 2003 to March 2003 and January 2004 to March 2004	Contribution (percentage points) 1/ to the percentage change in the real value of buildings completed between January 2003 to March 2003 and January 2004 to March 2004	Difference in total real value of buildings completed between January 2003 to March 2003 and January 2004 to March 2004 R million
Gauteng	40,3	+ 11,1	+ 4,5	+ 132,8
KwaZulu-Natal	12,7	+ 10,5	+ 1,3	+ 39,4
Limpopo	0,7	+ 93,7	+ 0,7	+ 20,0
North West	4,4	+ 12,2	+ 0,5	+ 16,0
Free State	2,8	+ 14,5	+ 0,4	+ 12,1
Northern Cape	0,6	+ 31,0	+ 0,2	+ 5,2
Eastern Cape	4,6	- 6,3	- 0,3	- 8,6
Mpumalanga	3,7	- 61,0	- 2,2	- 67,2
Western Cape	30,2	- 15,9	- 4,8	- 142,1
Total	100,0	+ 0,3	+ 0,3	+ 7,6

^{1/} The contribution (percentage points) is calculated by multiplying the percentage change of each province between January 2003 to March 2003 and January 2004 to March 2004 (see column 3) with the percentage contribution of the corresponding province to the total real value of buildings completed during January 2003 to March 2003 (see column 2) divided by 100.

Figure 1 – Total real value of building plans passed**Figure 2 – Total real value of buildings completed**

PP
PJ Lehohla
Statistician-General

Contents	Page
Notes	7
Tables	
Table 1 Actual values and percentage change of building plans passed at current prices according to type of building	8
Table 2 Seasonally adjusted values and percentage change of building plans passed at current prices according to type of building	9
Table 3 Actual values and percentage change of building plans passed at constant 2000 prices according to type of building	10
Table 4 Seasonally adjusted values and percentage change of building plans passed at constant 2000 prices according to type of building	11
Table 5 Actual values and percentage change of buildings completed at current prices according to type of building	12
Table 6 Seasonally adjusted values and percentage change of buildings completed at current prices according to type of building	13
Table 7 Actual values and percentage change of buildings completed at constant 2000 prices according to type of building	14
Table 8 Seasonally adjusted values and percentage change of buildings completed at constant 2000 prices according to type of building	15
Table 9 Building plans passed according to type of building: Total RSA	16
Table 10 Building plans passed according to type of building and province: Western Cape	17
Table 11 Building plans passed according to type of building and province: Eastern Cape	18
Table 12 Building plans passed according to type of building and province: Northern Cape	19
Table 13 Building plans passed according to type of building and province: Free State	20
Table 14 Building plans passed according to type of building and province: KwaZulu-Natal	21
Table 15 Building plans passed according to type of building and province: North West	22
Table 16 Building plans passed according to type of building and province: Gauteng	23
Table 17 Building plans passed according to type of building and province: Mpumalanga	24
Table 18 Building plans passed according to type of building and province: Limpopo.....	25
Table 19 Buildings completed according to type of building: Total RSA	26
Table 20 Buildings completed according to type of building and province: Western Cape	27
Table 21 Buildings completed according to type of building and province: Eastern Cape	28
Table 22 Buildings completed according to type of building and province: Northern Cape.....	29
Table 23 Buildings completed according to type of building and province: Free State	30
Table 24 Buildings completed according to type of building and province: KwaZulu-Natal	31
Table 25 Buildings completed according to type of building and province: North West	32
Table 26 Buildings completed according to type of building and province: Gauteng	33
Table 27 Buildings completed according to type of building and province: Mpumalanga	34
Table 28 Buildings completed according to type of building and province: Limpopo.....	35
Table 29 Building plans passed according to type of building and selected urban area: Cape Town	36
Table 30 Building plans passed according to type of building and selected urban area: Port Elizabeth	37
Table 31 Building plans passed according to type of building and selected urban area: Durban	38
Table 32 Building plans passed according to type of building and selected urban area: Witwatersrand	39
Table 33 Building plans passed according to type of building and selected urban area: Pretoria	40
Table 34 Building plans passed according to type of building and selected urban area: Bloemfontein	41
Table 35 Buildings completed according to type of building and selected urban area: Cape Town	42
Table 36 Buildings completed according to type of building and selected urban area: Port Elizabeth	43
Table 37 Buildings completed according to type of building and selected urban area: Durban	44
Table 38 Buildings completed according to type of building and selected urban area: Witwatersrand	45
Table 39 Buildings completed according to type of building and selected urban area: Pretoria	46
Table 40 Buildings completed according to type of building and selected urban area: Bloemfontein	47
Explanatory notes	48
Local government institutions covered in the sample survey	
Table C – Classification of towns and cities according to names of local government institutions before and after boundaries and name changes by province.....	51
Table D – Classification of selected urban areas according to names of local government institutions before and after boundaries and name changes	63
Glossary	66
General information	67

Notes

Forthcoming issues	Issues	Expected release date
	April 2004	15 June 2004
	May 2004	14 July 2004
	June 2004	18 August 2004
	July 2004	15 September 2004
	August 2004	13 October 2004
	September 2004	17 November 2004
	October 2004	15 December 2004
	November 2004	12 January 2005
	December 2004	16 February 2005

Name and boundary changes of local government institutions

Due to the Local Government: Municipal Structures Act (Act No. 117 of 1998) and the Local Government Municipal Demarcation Bill (B36B-98), the boundaries and the names of local government institutions have changed. In order to assist the reader to identify the approximate geographical locality and the names of the new local government institutions covered in the monthly sample survey, table C (page 51) and table D (page 63) provide lists of old and new names.

Further information may also be found on the website of the South African Government at www.gov.za, see section GOVZA: Government System, and the website of the Municipal Demarcation Board at www.demarcation.org.za

Response rate

The response rate for March 2004 was 98,4%.

Table 1 - Actual values and percentage change of building plans passed at current prices according to type of building

Year and month ^{2/}	Residential buildings		Non-residential buildings		Additions and alterations		Total	
	R'000	Percentage change	R'000	Percentage change	R'000	Percentage change	R'000	Percentage change
2002 Jan.	801 712	+ 10,5	172 295	- 65,2	418 217	+ 18,3	1 392 224	- 11,5
Feb.	1 024 424	+ 22,4	622 559	+ 102,5	459 378	- 3,5	2 106 361	+ 30,0
Mar.	965 121	+ 3,4	495 333	+ 63,0	432 948	- 1,3	1 893 402	+ 13,0
Apr.	1 152 506	+ 55,1	350 647	+ 67,7	533 421	+ 40,5	2 036 574	+ 52,9
May	1 184 437	+ 17,7	438 078	+ 49,3	936 496	+ 86,5	2 559 011	+ 42,0
Jun.	1 100 299	+ 21,6	497 829	+ 65,7	552 535	+ 23,3	2 150 663	+ 30,0
Jul.	1 251 404	+ 40,0	255 959	- 30,2	674 478	+ 54,8	2 181 841	+ 28,6
Aug.	1 164 715	+ 45,7	391 026	+ 58,0	698 946	+ 44,0	2 254 687	+ 43,4
Sep.	1 222 745	+ 26,3	287 969	- 6,0	617 044	+ 16,4	2 127 758	+ 17,9
Oct.	2 030 451	+ 69,7	335 491	+ 79,5	757 380	+ 40,1	3 123 322	+ 62,4
Nov.	1 226 825	+ 24,8	309 532	- 2,9	715 756	+ 19,7	2 252 113	+ 18,6
Dec.	1 103 944	+ 67,8	230 232	+ 63,9	420 030	+ 17,0	1 754 206	+ 51,5
Total	14 228 583	+ 33,1	4 386 950	+ 26,2	7 216 629	+ 30,1	25 832 162	+ 31,1
2003 Jan.*	954 012	+ 19,0	685 795	+ 298,0	524 194	+ 25,3	2 164 001	+ 55,4
Feb.*	1 216 120	+ 18,7	239 795	- 61,5	531 253	+ 15,6	1 987 168	- 5,7
Mar.*	1 405 792	+ 45,7	225 827	- 54,4	604 632	+ 39,7	2 236 251	+ 18,1
Apr.*	1 226 932	+ 6,5	284 104	- 19,0	601 549	+ 12,8	2 112 585	+ 3,7
May*	1 328 400	+ 12,2	408 130	- 6,8	903 951	- 3,5	2 640 481	+ 3,2
Jun.*	1 452 398	+ 32,0	386 847	- 22,3	673 001	+ 21,8	2 512 246	+ 16,8
Jul.*	1 788 778	+ 42,9	489 467	+ 91,2	885 159	+ 31,2	3 163 404	+ 45,0
Aug.*	1 644 613	+ 41,2	412 947	+ 5,6	725 583	+ 3,8	2 783 143	+ 23,4
Sep.*	1 745 376	+ 42,7	474 167	+ 64,7	697 206	+ 13,0	2 916 749	+ 37,1
Oct.*	1 788 657	- 11,9	460 222	+ 37,2	775 961	+ 2,5	3 024 840	- 3,2
Nov.*	1 859 149	+ 51,5	392 685	+ 26,9	730 309	+ 2,0	2 982 143	+ 32,4
Dec.*	1 368 171	+ 23,9	471 920	+ 105,0	615 813	+ 46,6	2 455 904	+ 40,0
Total	17 778 398	+ 24,9	4 931 906	+ 12,4	8 268 611	+ 14,6	30 978 915	+ 19,9
2004 Jan.*	1 322 714	+ 38,6	331 977	- 51,6	524 139	+ 0,0	2 178 830	+ 0,7
Feb.*	1 692 007	+ 39,1	392 654	+ 63,7	810 173	+ 52,5	2 894 834	+ 45,7
Mar	1 989 778	+ 41,5	553 892	+ 145,3	865 313	+ 43,1	3 408 983	+ 52,4

^{1/} The annual percentage change is the change in the actual values of building plans passed of the relevant year compared with the actual values of building plans passed of the previous year expressed as a percentage.

^{2/} The monthly percentage change is the change in the actual values of building plans passed of the relevant month compared with the actual values of building plans passed of the same month in the previous year expressed as a percentage.

Table 2 - Seasonally adjusted values and percentage change of building plans passed at current prices according to type of building

Year and month ^{1/}	Residential buildings		Non-residential buildings		Additions and alterations		Total	
	R'000	Percentage change	R'000	Percentage change	R'000	Percentage change	R'000	Percentage change
2002 Jan.	1 018 737	+ 17,9	248 043	+ 38,8	522 720	+ 3,1	1 789 500	+ 15,5
Feb.	1 038 814	+ 2,0	736 790	+ 197,0	523 351	+ 0,1	2 298 954	+ 28,5
Mar.	921 591	- 11,3	474 443	- 35,6	425 689	- 18,7	1 821 723	- 20,8
Apr.	1 317 440	+ 43,0	408 345	- 13,9	599 342	+ 40,8	2 325 127	+ 27,6
May	1 098 298	- 16,6	360 975	- 11,6	802 272	+ 33,9	2 261 545	- 2,7
Jun.	1 074 221	- 2,2	431 375	+ 19,5	537 414	- 33,0	2 043 010	- 9,7
Jul.	1 131 080	+ 5,3	206 135	- 52,2	616 555	+ 14,7	1 953 770	- 4,4
Aug.	1 127 890	- 0,3	377 115	+ 82,9	646 041	+ 4,8	2 151 046	+ 10,1
Sep.	1 160 903	+ 2,9	278 500	- 26,1	588 719	- 8,9	2 028 122	- 5,7
Oct.	1 719 535	+ 48,1	334 904	+ 20,3	662 609	+ 12,6	2 717 048	+ 34,0
Nov.	1 149 393	- 33,2	288 076	- 14,0	631 897	- 4,6	2 069 366	- 23,8
Dec.	1 425 710	+ 24,0	289 086	+ 0,4	594 456	- 5,9	2 309 252	+ 11,6
2003 Jan.	1 214 946	- 14,8	970 539	+ 235,7	648 582	+ 9,1	2 834 066	+ 22,7
Feb.	1 242 187	+ 2,2	290 644	- 70,1	601 326	- 7,3	2 134 157	- 24,7
Mar.	1 346 781	+ 8,4	217 752	- 25,1	604 429	+ 0,5	2 168 961	+ 1,6
Apr.	1 403 003	+ 4,2	331 498	+ 52,2	669 579	+ 10,8	2 404 079	+ 10,8
May	1 232 863	- 12,1	333 162	+ 0,5	761 614	+ 13,7	2 327 639	- 3,2
Jun.	1 424 447	+ 15,5	330 263	- 0,9	658 582	- 13,5	2 413 293	+ 3,7
Jul.	1 614 726	+ 13,4	394 792	+ 19,5	810 585	+ 23,1	2 820 103	+ 16,9
Aug.	1 605 023	- 0,6	397 067	+ 0,6	667 251	- 17,7	2 669 340	- 5,3
Sep.	1 646 208	+ 2,6	450 739	+ 13,5	670 162	+ 0,4	2 767 108	+ 3,7
Oct.	1 499 759	- 8,9	466 345	+ 3,5	676 055	+ 0,9	2 642 158	- 4,5
Nov.	1 750 778	+ 16,7	373 133	- 20,0	649 018	- 4,0	2 772 929	+ 4,9
Dec.	1 755 966	+ 0,3	590 314	+ 58,2	872 167	+ 34,4	3 218 446	+ 16,1
2004 Jan.	1 681 810	- 4,2	465 860	- 21,1	648 369	- 25,7	2 796 039	- 13,1
Feb.	1 745 397	+ 3,8	480 141	+ 3,1	916 290	+ 41,3	3 141 828	+ 12,4
Mar	1 907 874	+ 9,3	533 322	+ 11,1	872 599	- 4,8	3 313 795	+ 5,5

^{1/} The percentage change is the change in the seasonally adjusted values of building plans passed of the relevant month compared with the seasonally adjusted values of building plans passed of the previous month expressed as a percentage.

Table 3 - Actual values and percentage change of building plans passed at constant 2000 prices according to type of building

Year ^{1/} and month ^{2/}	Residential buildings		Non-residential buildings		Additions and alterations		Total	
	R'000	Percentage change	R'000	Percentage change	R'000	Percentage change	R'000	Percentage change
2002 Jan.	717 095	+ 3,0	154 110	- 67,5	374 076	+ 10,3	1 245 281	- 17,5
Feb.	898 618	+ 12,4	546 104	+ 86,0	402 963	- 11,4	1 847 685	+ 19,4
Mar.	842 900	- 5,0	432 605	+ 49,8	378 121	- 9,3	1 653 626	+ 3,8
Apr.	990 977	+ 41,4	301 502	+ 52,8	458 660	+ 28,1	1 751 139	+ 39,4
May	1 004 612	+ 6,4	371 567	+ 35,0	794 314	+ 68,7	2 170 493	+ 28,4
Jun.	927 739	+ 9,5	419 755	+ 49,2	465 881	+ 11,0	1 813 375	+ 17,1
Jul.	1 037 648	+ 24,7	212 238	- 37,9	559 269	+ 37,9	1 809 155	+ 14,5
Aug.	954 684	+ 22,5	320 513	+ 39,5	572 907	+ 27,2	1 848 104	+ 26,6
Sep.	997 345	+ 11,1	234 885	- 17,2	503 299	+ 2,5	1 735 529	+ 3,8
Oct.	1 638 782	+ 48,1	270 776	+ 56,6	611 283	+ 22,3	2 520 841	+ 41,6
Nov.	984 611	+ 8,9	248 421	- 15,3	574 443	+ 4,4	1 807 475	+ 3,4
Dec.	882 449	+ 47,1	184 038	+ 43,7	335 755	+ 2,6	1 402 242	+ 32,9
Total	11 877 460	+ 18,8	3 696 514	+ 13,4	6 030 971	+ 16,3	21 604 945	+ 17,2
2003 Jan.*	751 191	+ 4,8	539 996	+ 250,4	412 751	+ 10,3	1 703 938	+ 36,8
Feb.*	951 581	+ 5,9	187 633	- 65,6	415 691	+ 3,2	1 554 905	- 15,8
Mar.*	1 095 707	+ 30,0	176 015	- 59,3	471 264	+ 24,6	1 742 986	+ 5,4
Apr.*	951 110	- 4,0	220 236	- 27,0	466 317	+ 1,7	1 637 663	- 6,5
May*	1 028 970	+ 2,4	316 135	- 14,9	700 194	- 11,8	2 045 299	- 5,8
Jun.*	1 122 410	+ 21,0	298 954	- 28,8	520 094	+ 11,6	1 941 458	+ 7,1
Jul.*	1 380 230	+ 33,0	377 675	+ 77,9	682 993	+ 22,1	2 440 898	+ 34,9
Aug.*	1 268 013	+ 32,8	318 386	- 0,7	559 432	- 2,4	2 145 831	+ 16,1
Sep.*	1 345 702	+ 34,9	365 588	+ 55,6	537 553	+ 6,8	2 248 843	+ 29,6
Oct.*	1 380 137	- 15,8	355 110	+ 31,1	598 735	- 2,1	2 333 982	- 7,4
Nov.*	1 436 746	+ 45,9	303 466	+ 22,2	564 381	- 1,8	2 304 593	+ 27,5
Dec.*	1 057 319	+ 19,8	364 699	+ 98,2	475 899	+ 41,7	1 897 917	+ 35,3
Total	13 769 116	+ 15,9	3 823 893	+ 3,4	6 405 304	+ 6,2	23 998 313	+ 11,1
2004 Jan.*	1 015 130	+ 35,1	254 779	- 52,8	402 256	- 2,5	1 672 165	- 1,9
Feb.*	1 280 853	+ 34,6	297 240	+ 58,4	613 303	+ 47,5	2 191 396	+ 40,9
Mar	1 502 853	+ 37,2	418 347	+ 137,7	653 560	+ 38,7	2 574 760	+ 47,7

^{1/} The annual percentage change is the change in the actual values of building plans passed of the relevant year compared with the actual values of building plans passed of the previous year expressed as a percentage.

^{2/} The monthly percentage change is the change in the actual values of building plans passed of the relevant month compared with the actual values of building plans passed of the same month in the previous year expressed as a percentage.

Table 4 - Seasonally adjusted values and percentage change of building plans passed at constant 2000 prices according to type of building

Year and month ^{1/}	Residential buildings		Non-residential buildings		Additions and alterations		Total	
	R'000	Percentage change	R'000	Percentage change	R'000	Percentage change	R'000	Percentage change
2002 Jan.	909 800	+ 16,1	219 429	+ 31,1	466 509	+ 7,8	1 595 738	+ 13,2
Feb.	913 500	+ 0,4	645 180	+ 194,0	459 707	- 1,5	2 018 387	+ 26,5
Mar.	805 552	- 11,8	408 792	- 36,6	371 624	- 19,2	1 585 968	- 21,4
Apr.	1 133 833	+ 40,8	351 431	- 14,0	516 087	+ 38,9	2 001 351	+ 26,2
May	934 698	- 17,6	307 235	- 12,6	683 365	+ 32,4	1 925 298	- 3,8
Jun.	905 902	- 3,1	364 063	+ 18,5	454 984	- 33,4	1 724 949	- 10,4
Jul.	940 176	+ 3,8	171 146	- 53,0	512 718	+ 12,7	1 624 041	- 5,8
Aug.	926 638	- 1,4	310 255	+ 81,3	530 521	+ 3,5	1 767 414	+ 8,8
Sep.	946 061	+ 2,1	226 960	- 26,8	479 313	- 9,7	1 652 334	- 6,5
Oct.	1 384 761	+ 46,4	270 194	+ 19,0	532 999	+ 11,2	2 187 954	+ 32,4
Nov.	918 149	- 33,7	229 539	- 15,0	504 429	- 5,4	1 652 117	- 24,5
Dec.	1 132 238	+ 23,3	237 514	+ 3,5	471 738	- 6,5	1 841 490	+ 11,5
2003 Jan.	955 168	- 15,6	755 200	+ 218,0	509 875	+ 8,1	2 220 242	+ 20,6
Feb.	975 439	+ 2,1	227 341	- 69,9	471 592	- 7,5	1 674 372	- 24,6
Mar.	1 052 134	+ 7,9	167 174	- 26,5	471 577	+ 0,0	1 690 885	+ 1,0
Apr.	1 089 130	+ 3,5	257 243	+ 53,9	519 909	+ 10,2	1 866 281	+ 10,4
May	957 531	- 12,1	259 054	+ 0,7	592 693	+ 14,0	1 809 277	- 3,1
Jun.	1 101 103	+ 15,0	255 472	- 1,4	511 198	- 13,7	1 867 773	+ 3,2
Jul.	1 249 123	+ 13,4	305 005	+ 19,4	627 251	+ 22,7	2 181 378	+ 16,8
Aug.	1 240 486	- 0,7	307 354	+ 0,8	515 363	- 17,8	2 063 202	- 5,4
Sep.	1 267 995	+ 2,2	347 147	+ 12,9	515 560	+ 0,0	2 130 702	+ 3,3
Oct.	1 154 324	- 9,0	359 544	+ 3,6	519 592	+ 0,8	2 033 460	- 4,6
Nov.	1 345 777	+ 16,6	286 350	- 20,4	498 420	- 4,1	2 130 548	+ 4,8
Dec.	1 347 220	+ 0,1	469 196	+ 63,9	668 526	+ 34,1	2 484 941	+ 16,6
2004 Jan.	1 289 376	- 4,3	352 989	- 24,8	497 100	- 25,6	2 139 465	- 13,9
Feb.	1 326 604	+ 2,9	363 780	+ 3,1	695 841	+ 40,0	2 386 225	+ 11,5
Mar	1 445 339	+ 9,0	396 111	+ 8,9	660 158	- 5,1	2 501 608	+ 4,8

^{1/} The percentage change is the change in the seasonally adjusted values of building plans passed of the relevant month compared with the seasonally adjusted values of building plans passed of the previous month expressed as a percentage.

Table 5 - Actual values and percentage change of buildings completed at current prices according to type of building

Year ^{1/} and month ^{2/}	Residential buildings		Non-residential buildings		Additions and alterations		Total	
	R'000	Percentage change	R'000	Percentage change	R'000	Percentage change	R'000	Percentage change
2002 Jan.	583 954	- 9,8	136 570	- 47,4	176 643	- 12,7	897 167	- 19,1
Feb.	473 568	+ 9,9	137 817	- 51,8	202 239	- 17,9	813 624	- 15,5
Mar.	708 471	+ 44,3	171 227	+ 3,1	176 053	- 38,7	1 055 751	+ 11,8
Apr.	653 414	+ 77,8	245 773	+ 44,4	390 160	+ 110,0	1 289 347	+ 78,2
May	690 242	+ 53,3	300 836	- 5,5	305 996	+ 3,3	1 297 074	+ 21,8
Jun.	585 723	+ 8,4	207 030	- 38,9	251 004	- 14,5	1 043 757	- 11,0
Jul.	681 657	+ 71,7	273 139	+ 124,6	242 028	+ 3,7	1 196 824	+ 59,1
Aug.	740 221	+ 71,1	96 328	- 18,0	226 414	+ 4,9	1 062 963	+ 38,8
Sep.	820 510	+ 78,7	228 610	- 83,9	248 379	+ 47,0	1 297 499	- 36,6
Oct.	938 075	+ 41,8	178 099	- 36,8	293 977	+ 25,5	1 410 151	+ 19,7
Nov.	847 433	+ 38,8	294 710	+ 39,6	237 143	- 17,2	1 379 286	+ 24,5
Dec.	702 892	+ 51,2	366 760	+ 111,3	221 292	+ 76,9	1 290 944	+ 69,1
Total	8 426 160	+ 41,6	2 636 899	- 31,7	2 971 328	+ 7,1	14 034 387	+ 11,5
2003 Jan.*	623 401	+ 6,8	154 538	+ 13,2	237 996	+ 34,7	1 015 935	+ 13,2
Feb.*	696 496	+ 47,1	158 143	+ 14,7	288 062	+ 42,4	1 142 701	+ 40,4
Mar.*	713 231	+ 0,7	316 020	+ 84,6	242 725	+ 37,9	1 271 976	+ 20,5
Apr.*	688 059	+ 5,3	534 865	+ 117,6	248 988	- 36,2	1 471 912	+ 14,2
May*	688 470	- 0,3	605 218	+ 101,2	310 203	+ 1,4	1 603 891	+ 23,7
Jun.*	763 026	+ 30,3	170 636	- 17,6	303 112	+ 20,8	1 236 774	+ 18,5
Jul.*	1 586 505	+ 132,7	191 080	- 30,0	335 931	+ 38,8	2 113 516	+ 76,6
Aug.*	875 864	+ 18,3	151 866	+ 57,7	293 311	+ 29,5	1 321 041	+ 24,3
Sep.*	802 515	- 2,2	179 081	- 21,7	271 100	+ 9,1	1 252 696	- 3,5
Oct.*	866 838	- 7,6	189 368	+ 6,3	299 330	+ 1,8	1 355 536	- 3,9
Nov.*	978 031	+ 15,4	222 723	- 24,4	287 138	+ 21,1	1 487 892	+ 7,9
Dec.*	873 835	+ 24,3	182 358	- 50,3	243 158	+ 9,9	1 299 351	+ 0,7
Total	10 156 271	+ 20,5	3 055 896	+ 15,9	3 361 054	+ 13,1	16 573 221	+ 18,1
2004 Jan.*	626 733	+ 0,5	201 839	+ 30,6	263 121	+ 10,6	1 091 693	+ 7,5
Feb.*	773 647	+ 11,1	231 497	+ 46,4	306 777	+ 6,5	1 311 921	+ 14,8
Mar.	897 500	+ 25,8	215 230	- 31,9	276 922	+ 14,1	1 389 652	+ 9,3

^{1/} The annual percentage change is the change in the actual values of buildings completed of the relevant year compared with the actual values of buildings completed of the previous year expressed as a percentage.

^{2/} The monthly percentage change is the change in the actual values of buildings completed of the relevant month compared with the actual values of buildings completed of the same month in the previous year expressed as a percentage.

Table 6 - Seasonally adjusted values and percentage change of buildings completed at current prices according to type of building

Year and month ^{1/}	Residential buildings		Non-residential buildings		Additions and alterations		Total	
	R'000	Percentage change	R'000	Percentage change	R'000	Percentage change	R'000	Percentage change
2002 Jan.	683 905	+ 33,2	180 256	+ 3,0	200 554	+ 15,6	1 064 715	+ 23,5
Feb.	525 900	- 23,1	168 390	- 6,6	193 655	- 3,4	887 944	- 16,6
Mar.	668 549	+ 27,1	192 358	+ 14,2	162 548	- 16,1	1 023 455	+ 15,3
Apr.	716 979	+ 7,2	255 168	+ 32,7	434 446	+ 167,3	1 406 592	+ 37,4
May	664 494	- 7,3	186 874	- 26,8	246 128	- 43,3	1 097 495	- 22,0
Jun.	641 876	- 3,4	220 384	+ 17,9	252 111	+ 2,4	1 114 372	+ 1,5
Jul.	696 353	+ 8,5	204 591	- 7,2	221 014	- 12,3	1 121 958	+ 0,7
Aug.	716 867	+ 2,9	124 810	- 39,0	225 931	+ 2,2	1 067 608	- 4,8
Sep.	769 445	+ 7,3	216 208	+ 73,2	268 509	+ 18,8	1 254 162	+ 17,5
Oct.	819 159	+ 6,5	201 331	- 6,9	266 148	- 0,9	1 286 638	+ 2,6
Nov.	715 838	- 12,6	309 802	+ 53,9	235 250	- 11,6	1 260 890	- 2,0
Dec.	765 595	+ 7,0	365 167	+ 17,9	299 496	+ 27,3	1 430 259	+ 13,4
2003 Jan.	721 119	- 5,8	206 765	- 43,4	270 411	- 9,7	1 198 295	- 16,2
Feb.	776 809	+ 7,7	195 657	- 5,4	278 667	+ 3,1	1 251 132	+ 4,4
Mar.	672 757	- 13,4	351 406	+ 79,6	232 223	- 16,7	1 256 386	+ 0,4
Apr.	753 998	+ 12,1	546 035	+ 55,4	277 862	+ 19,7	1 577 895	+ 25,6
May	661 897	- 12,2	363 114	- 33,5	244 664	- 11,9	1 269 675	- 19,5
Jun.	839 765	+ 26,9	180 130	- 50,4	297 183	+ 21,5	1 317 079	+ 3,7
Jul.	1 639 539	+ 95,2	146 039	- 18,9	308 463	+ 3,8	2 094 041	+ 59,0
Aug.	852 611	- 48,0	206 711	+ 41,5	295 445	- 4,2	1 354 768	- 35,3
Sep.	762 869	- 10,5	168 724	- 18,4	295 000	- 0,2	1 226 592	- 9,5
Oct.	746 504	- 2,1	214 573	+ 27,2	269 922	- 8,5	1 231 000	+ 0,4
Nov.	825 359	+ 10,6	230 492	+ 7,4	286 132	+ 6,0	1 341 982	+ 9,0
Dec.	944 160	+ 14,4	179 969	- 21,9	324 645	+ 13,5	1 448 774	+ 8,0
2004 Jan.	719 088	- 23,8	276 732	+ 53,8	297 782	- 8,3	1 293 602	- 10,7
Feb.	867 286	+ 20,6	293 349	+ 6,0	297 203	- 0,2	1 457 838	+ 12,7
Mar.	850 614	- 1,9	234 089	- 20,2	272 463	- 8,3	1 357 166	- 6,9

^{1/} The percentage change is the change in the seasonally adjusted values of buildings completed of the relevant month compared with the seasonally adjusted values of buildings completed of the previous month expressed as a percentage.

Table 7 - Actual values and percentage change of buildings completed at constant 2000 prices according to type of building

Year and month ^{2/}	Residential buildings		Non-residential buildings		Additions and alterations		Total	
	R'000	Percentage change	R'000	Percentage change	R'000	Percentage change	R'000	Percentage change
2002 Jan.	549 418	- 16,6	136 026	- 49,0	169 523	- 18,8	854 967	- 24,6
Feb.	443 590	+ 27,8	136 318	- 53,7	193 160	- 32,9	773 068	- 12,5
Mar.	663 989	+ 12,2	169 030	- 20,2	167 351	- 42,2	1 000 370	- 10,3
Apr.	607 293	+ 51,3	240 718	- 21,9	368 075	- 10,1	1 216 086	+ 17,8
May	639 076	+ 24,7	293 499	- 58,1	287 051	- 43,2	1 219 626	- 19,6
Jun.	536 531	+ 3,9	201 195	- 60,6	235 022	- 42,5	972 748	- 26,8
Jul.	616 022	+ 3,9	262 130	+ 8,4	225 352	- 27,1	1 103 504	+ 15,4
Aug.	662 349	+ 43,4	92 004	+ 12,7	210 227	- 20,6	964 580	+ 14,0
Sep.	732 084	+ 32,1	217 310	- 90,6	230 194	+ 1,7	1 179 588	- 58,4
Oct.	820 069	+ 24,9	168 018	- 52,5	271 949	- 26,1	1 260 036	- 25,5
Nov.	734 664	- 13,0	276 463	- 36,0	218 163	- 39,3	1 229 290	- 20,2
Dec.	603 604	- 5,3	343 408	- 21,9	201 725	+ 39,5	1 148 737	+ 16,5
Total	7 608 689	+ 31,2	2 536 119	- 35,7	2 777 792	- 0,1	12 922 600	+ 3,2
2003 Jan.*	531 864	- 3,2	143 890	+ 5,8	212 877	+ 25,6	888 631	+ 3,9
Feb.*	583 100	+ 31,5	146 837	+ 7,7	252 686	+ 30,8	982 623	+ 27,1
Mar.*	590 702	- 11,0	292 882	+ 73,3	211 987	+ 26,7	1 095 571	+ 9,5
Apr.*	563 927	- 7,1	494 787	+ 105,5	214 091	- 41,8	1 272 805	+ 4,7
May*	558 827	- 12,6	556 778	+ 89,7	263 107	- 8,3	1 378 712	+ 13,0
Jun.*	620 508	+ 15,7	155 548	- 22,7	255 575	+ 8,7	1 031 631	+ 6,1
Jul.*	1 287 868	+ 109,1	170 912	- 34,8	278 550	+ 23,6	1 737 330	+ 57,4
Aug.*	695 353	+ 5,0	133 216	+ 44,8	240 419	+ 14,4	1 068 988	+ 10,8
Sep.*	633 840	- 13,4	156 403	- 28,0	221 126	- 3,9	1 011 369	- 14,3
Oct.*	677 693	- 17,4	162 827	- 3,1	241 590	- 11,2	1 082 110	- 14,1
Nov.*	766 799	+ 4,4	188 908	- 31,7	230 448	+ 5,6	1 186 155	- 3,5
Dec.*	683 334	+ 13,2	153 759	- 55,2	194 371	- 3,6	1 031 464	- 10,2
Total	8 193 815	+ 7,7	2 756 747	+ 8,7	2 816 827	+ 1,4	13 767 389	+ 6,5
2004 Jan.*	486 186	- 8,6	167 362	+ 16,3	207 182	- 2,7	860 730	- 3,1
Feb.*	598 676	+ 2,7	189 752	+ 29,2	240 045	- 5,0	1 028 473	+ 4,7
Mar	693 784	+ 17,5	175 555	- 40,1	215 839	+ 1,8	1 085 178	- 0,9
Total	1 778 646	- 78,3	532 669	- 80,7	663 066	- 76,5	2 974 381	- 78,4

^{1/} The annual percentage change is the change in the actual values of buildings completed of the relevant year compared with the actual values of buildings completed of the previous year expressed as a percentage.

^{2/} The monthly percentage change is the change in the actual values of buildings completed of the relevant month compared with the actual values of buildings completed of the same month in the previous year expressed as a percentage.

Table 8 - Seasonally adjusted values and percentage change of buildings completed at constant 2000 prices according to type of building

Year and month ^{1/}	Residential buildings		Non-residential buildings		Additions and alterations		Total	
	R'000	Percentage change	R'000	Percentage change	R'000	Percentage change	R'000	Percentage change
2002 Jan.	644 030	+ 32,8	179 786	+ 2,5	191 790	+ 14,3	1 015 606	+ 22,6
Feb.	493 635	- 23,4	166 768	- 7,2	184 874	- 3,6	845 277	- 16,8
Mar.	625 794	+ 26,8	189 748	+ 13,8	153 948	- 16,7	969 489	+ 14,7
Apr.	666 878	+ 6,6	250 171	+ 31,8	410 053	+ 166,4	1 327 102	+ 36,9
May	617 098	- 7,5	182 023	- 27,2	232 243	- 43,4	1 031 364	- 22,3
Jun.	585 677	- 5,1	213 485	+ 17,3	236 239	+ 1,7	1 035 401	+ 0,4
Jul.	622 446	+ 6,3	196 145	- 8,1	206 409	- 12,6	1 025 000	- 1,0
Aug.	642 622	+ 3,2	120 193	- 38,7	210 406	+ 1,9	973 220	- 5,1
Sep.	685 951	+ 6,7	205 121	+ 70,7	248 753	+ 18,2	1 139 825	+ 17,1
Oct.	718 899	+ 4,8	189 917	- 7,4	245 937	- 1,1	1 154 752	+ 1,3
Nov.	621 593	- 13,5	291 129	+ 53,3	215 879	- 12,2	1 128 601	- 2,3
Dec.	659 442	+ 6,1	341 647	+ 17,4	271 434	+ 25,7	1 272 523	+ 12,8
2003 Jan.	616 046	- 6,6	192 773	- 43,6	241 237	- 11,1	1 050 056	- 17,5
Feb.	651 236	+ 5,7	181 840	- 5,7	244 448	+ 1,3	1 077 523	+ 2,6
Mar.	555 913	- 14,6	325 204	+ 78,8	202 069	- 17,3	1 083 186	+ 0,5
Apr.	618 440	+ 11,2	505 572	+ 55,5	239 149	+ 18,4	1 363 161	+ 25,8
May	539 046	- 12,8	333 504	- 34,0	208 632	- 12,8	1 081 181	- 20,7
Jun.	680 212	+ 26,2	163 680	- 50,9	250 654	+ 20,1	1 094 544	+ 1,2
Jul.	1 315 591	+ 93,4	130 521	- 20,3	256 720	+ 2,4	1 702 831	+ 55,6
Aug.	678 322	- 48,4	183 050	+ 40,2	242 979	- 5,4	1 104 351	- 35,1
Sep.	602 151	- 11,2	147 050	- 19,7	240 455	- 1,0	989 656	- 10,4
Oct.	586 081	- 2,7	184 476	+ 25,5	217 545	- 9,5	988 102	- 0,2
Nov.	648 042	+ 10,6	195 832	+ 6,2	228 950	+ 5,2	1 072 824	+ 8,6
Dec.	740 715	+ 14,3	151 661	- 22,6	257 866	+ 12,6	1 150 242	+ 7,2
2004 Jan.	558 541	- 24,6	229 829	+ 51,5	234 020	- 9,2	1 022 390	- 11,1
Feb.	671 952	+ 20,3	240 660	+ 4,7	232 648	- 0,6	1 145 259	+ 12,0
Mar	655 878	- 2,4	190 586	- 20,8	211 574	- 9,1	1 058 038	- 7,6

^{1/} The percentage change is the change in the seasonally adjusted values of buildings completed of the relevant month compared with the seasonally adjusted values of buildings completed of the previous month expressed as a percentage.

Table 9 - Building plans passed according to type of building: Total RSA

Type of building	March 2003 *	February 2004 *	March 2004	January 2003 to March 2003	January 2004 to March 2004	Percentage change between January 2003 to March 2003 and January 2004 to March 2004
Residential buildings						
Dwelling-houses smaller than 80 square metres						
Number of dwelling-houses	2 784	3 350	6 935	10 867	11 971	+ 10,2
Total square metres	107 494	137 920	249 434	395 926	460 574	+ 16,3
Total value at current prices (R'000)	103 138	124 858	190 456	338 462	392 063	+ 15,8
Dwelling-houses equal to or larger than 80 square metres						
Number of dwelling-houses	2 030	2 466	2 639	5 470	6 744	+ 23,3
Total square metres	473 550	566 303	601 904	1 266 571	1 539 904	+ 21,6
Total value at current prices (R'000)	843 972	1 121 419	1 180 031	2 210 673	3 050 560	+ 38,0
Flats and townhouses						
Number of flats and townhouses	1 537	1 341	1 637	3 038	4 551	+ 49,8
Total square metres	207 637	209 172	274 107	454 445	684 141	+ 50,5
Total value at current prices (R'000)	417 993	429 118	542 373	933 182	1 447 209	+ 55,1
Other residential buildings ^{1/}						
Total square metres	16 250	6 339	34 296	47 936	46 921	- 2,1
Total value at current prices (R'000)	40 689	16 612	76 918	93 607	114 667	+ 22,5
Total value of residential buildings at current prices (R'000)	1 405 792	1 692 007	1 989 778	3 575 924	5 004 499	+ 39,9
Non-residential buildings						
Office and banking space						
Total square metres	36 351	19 811	66 630	93 712	101 999	+ 8,8
Total value at current prices (R'000)	62 604	44 952	132 587	167 919	203 487	+ 21,2
Shopping space						
Total square metres	21 499	63 701	91 615	128 159	224 926	+ 75,5
Total value at current prices (R'000)	41 293	123 875	182 243	617 665	440 729	- 28,6
Industrial and warehouse space						
Total square metres	51 159	114 641	97 760	171 726	283 393	+ 65,0
Total value at current prices (R'000)	78 962	184 048	188 905	261 368	501 498	+ 91,9
Other non-residential space ^{2/}						
Total square metres	23 007	16 907	26 176	59 721	73 028	+ 22,3
Total value at current prices (R'000)	42 968	39 779	50 157	104 465	132 809	+ 27,1
Total value of non-residential buildings at current prices (R'000)	225 827	392 654	553 892	1 151 417	1 278 523	+ 11,0
Additions and alterations						
Dwelling-houses						
Total square metres	270 066	314 281	333 888	741 056	898 857	+ 21,3
Total value at current prices (R'000)	427 327	555 648	564 104	1 141 273	1 516 254	+ 32,9
Other buildings ^{3/}						
Total square metres	97 282	118 113	125 509	259 612	302 167	+ 16,4
Total value at current prices (R'000)	177 305	254 525	301 209	518 806	683 371	+ 31,7
Total value of additions and alterations at current prices (R'000)	604 632	810 173	865 313	1 660 079	2 199 625	+ 32,5
Total value of building plans passed at current prices (R'000)	2 236 251	2 894 834	3 408 983	6 387 420	8 482 647	+ 32,8

1/ Other residential buildings include institutions for the disabled, boarding houses, old people's homes, hostels, hotels, motels, guest houses, holiday chalets, entertainment centres, bed-and-breakfast accommodation and casinos.

2/ Other non-residential space includes churches, sport and recreation clubs, schools, crèches, hospitals and all other non-residential space.

3/ Other buildings include additions and alterations to other residential buildings, non-residential buildings and internal alterations.

Table 10 - Building plans passed according to type of building and province: Western Cape

Type of building	March 2003 *	February 2004*	March 2004	January 2003 to March 2003	January 2004 to March 2004	Percentage change between January 2003 to March 2003 and January 2004 to March 2004
Residential buildings						
Dwelling-houses smaller than 80 square metres						
Number of dwelling-houses	617	359	661	1 332	1 229	- 7,7
Total square metres	23 671	16 704	29 580	51 305	55 468	+ 8,1
Total value at current prices (R'000)	28 021	22 685	37 041	59 937	69 546	+ 16,0
Dwelling-houses equal to or larger than 80 square metres						
Number of dwelling-houses	557	792	788	1 722	2 048	+ 18,9
Total square metres	132 557	188 675	182 454	391 796	481 581	+ 22,9
Total value at current prices (R'000)	240 048	391 211	399 718	697 634	1 026 787	+ 47,2
Flats and townhouses						
Number of flats and townhouses	306	469	521	775	1 336	+ 72,4
Total square metres	38 884	64 509	61 626	99 222	167 366	+ 68,7
Total value at current prices (R'000)	77 554	126 065	129 167	205 834	379 422	+ 84,3
Other residential buildings ^{1/}						
Total square metres	2 011	2 514	25 467	3 521	33 234	+ 843,9
Total value at current prices (R'000)	4 517	5 433	58 099	7 043	82 670	+1 073,8
Total value of residential buildings at current prices (R'000)	350 140	545 394	624 025	970 448	1 558 425	+ 60,6
Non-residential buildings						
Office and banking space						
Total square metres	13 246	3 750	33 131	27 224	41 174	+ 51,2
Total value at current prices (R'000)	19 917	9 465	64 953	45 153	82 093	+ 81,8
Shopping space						
Total square metres	714	16 990	75 342	6 850	100 537	+ 1 367,7
Total value at current prices (R'000)	901	30 894	154 336	8 220	198 711	+ 2 317,4
Industrial and warehouse space						
Total square metres	15 210	35 339	28 437	42 518	88 330	+ 107,7
Total value at current prices (R'000)	23 072	48 605	40 296	62 979	125 863	+ 99,8
Other non-residential space ^{2/}						
Total square metres	5 137	6 398	9 058	10 020	22 000	+ 119,6
Total value at current prices (R'000)	7 263	19 330	16 106	13 972	45 511	+ 225,7
Total value of non-residential buildings at current prices (R'000)	51 153	108 294	275 691	130 324	452 178	+ 247,0
Additions and alterations						
Dwelling-houses						
Total square metres	80 568	91 952	98 387	223 595	249 417	+ 11,5
Total value at current prices (R'000)	124 352	167 492	169 832	341 550	442 405	+ 29,5
Other buildings ^{3/}						
Total square metres	44 899	50 274	43 336	111 686	103 567	- 7,3
Total value at current prices (R'000)	67 071	109 695	82 222	209 748	219 246	+ 4,5
Total value of additions and alterations at current prices (R'000)	191 423	277 187	252 054	551 298	661 651	+ 20,0
Total value of building plans passed at current prices (R'000)	592 716	930 875	1 151 770	1 652 070	2 672 254	+ 61,8

1/ Other residential buildings include institutions for the disabled, boarding houses, old people's homes, hostels, hotels, motels, guest houses, holiday chalets, entertainment centres, bed-and-breakfast accommodation and casinos.

2/ Other non-residential space includes churches, sport and recreation clubs, schools, crèches, hospitals and all other non-residential space.

3/ Other buildings include additions and alterations to other residential buildings, non-residential buildings and internal alterations.

Table 11 - Building plans passed according to type of building and province: Eastern Cape

Type of building	March 2003*	February 2004*	March 2004	January 2003 to March 2003	January 2004 to March 2004	Percentage change between January 2003 to March 2003 and January 2004 to March 2004
Residential buildings						
Dwelling-houses smaller than 80 square metres						
Number of dwelling-houses	163	444	521	956	1 594	+ 66,7
Total square metres	7 028	18 640	21 340	40 853	65 257	+ 59,7
Total value at current prices (R'000)	10 571	16 067	20 831	52 635	57 021	+ 8,3
Dwelling-houses equal to or larger than 80 square metres						
Number of dwelling-houses	105	159	177	286	441	+ 54,2
Total square metres	22 673	30 632	34 917	54 324	86 979	+ 60,1
Total value at current prices (R'000)	38 073	55 051	60 641	99 221	153 171	+ 54,4
Flats and townhouses						
Number of flats and townhouses	3	31	38	24	112	+ 366,7
Total square metres	543	7 826	15 559	4 038	29 531	+ 631,3
Total value at current prices (R'000)	842	14 354	29 645	8 112	54 497	+ 571,8
Other residential buildings ^{1/}						
Total square metres	600	57	0	1 064	529	-50,3
Total value at current prices (R'000)	1 257	102	0	2 112	1 011	-52,1
Total value of residential buildings at current prices (R'000)	50 743	85 574	111 117	162 080	265 700	+ 63,9
Non-residential buildings						
Office and banking space						
Total square metres	0	0	0	4 785	0	..
Total value at current prices (R'000)	0	0	0	9 038	0	..
Shopping space						
Total square metres	0	1 228	1 691	381	5 188	+ 1 261,7
Total value at current prices (R'000)	0	2 241	2 888	702	9 783	+ 1 293,6
Industrial and warehouse space						
Total square metres	566	5 138	1 931	3 271	7 458	+ 128,0
Total value at current prices (R'000)	872	9 796	3 637	4 594	14 032	+ 205,4
Other non-residential space ^{2/}						
Total square metres	581	1 822	1 422	2 889	3 850	+ 33,3
Total value at current prices (R'000)	949	3 895	3 029	5 046	8 250	+ 63,5
Total value of non-residential buildings at current prices (R'000)	1 821	15 932	9 554	19 380	32 065	+ 65,5
Additions and alterations						
Dwelling-houses						
Total square metres	17 706	32 023	30 162	53 803	82 829	+ 53,9
Total value at current prices (R'000)	28 578	52 850	50 183	89 189	139 130	+ 56,0
Other buildings ^{3/}						
Total square metres	2 939	11 813	11 592	17 659	29 526	+ 67,2
Total value at current prices (R'000)	6 931	23 614	22 209	39 327	58 298	+ 48,2
Total value of additions and alterations at current prices (R'000)	35 509	76 464	72 392	128 516	197 428	+ 53,6
Total value of building plans passed at current prices (R'000)	88 073	177 970	193 063	309 976	495 193	+ 59,8

1/ Other residential buildings include institutions for the disabled, boarding houses, old people's homes, hostels, hotels, motels, guest houses, holiday chalets, entertainment centres, bed-and-breakfast accommodation and casinos.

2/ Other non-residential space includes churches, sport and recreation clubs, schools, crèches, hospitals and all other non-residential space.

3/ Other buildings include additions and alterations to other residential buildings, non-residential buildings and internal alterations.

Table 12 - Building plans passed according to type of building and province: Northern Cape

Type of building	March 2003	February 2004	March 2004	January 2003 to March 2003	January 2004 to March 2004	Percentage change between January 2003 to March 2003 and January 2004 to March 2004
Residential buildings						
Dwelling-houses smaller than 80 square metres						
Number of dwelling-houses	1	2	10	7	18	+ 157,1
Total square metres	70	143	458	288	900	+ 212,5
Total value at current prices (R'000)	105	272	796	430	1 549	+ 260,2
Dwelling-houses equal to or larger than 80 square metres						
Number of dwelling-houses	14	13	18	31	44	+ 41,9
Total square metres	2 516	2 377	3 219	5 878	7 743	+ 31,7
Total value at current prices (R'000)	3 803	4 448	5 703	9 139	13 588	+ 48,7
Flats and townhouses						
Number of flats and townhouses	1	2	20	2	34	+ 1 600,0
Total square metres	205	465	3 329	319	4 509	+ 1 313,5
Total value at current prices (R'000)	369	837	6 273	540	8 184	+ 1 415,6
Other residential buildings ^{1/}						
Total square metres	0	813	0	0	813	..
Total value at current prices (R'000)	0	1 463	0	0	1 463	..
Total value of residential buildings at current prices (R'000)	4 277	7 020	12 772	10 109	24 784	+ 145,2
Non-residential buildings						
Office and banking space						
Total square metres	0	0	0	118	403	+ 241,5
Total value at current prices (R'000)	0	0	0	177	605	+ 241,8
Shopping space						
Total square metres	75	3 465	1 138	611	6 241	+ 921,4
Total value at current prices (R'000)	113	7 623	2 504	1 292	12 584	+ 874,0
Industrial and warehouse space						
Total square metres	0	0	954	446	954	+ 113,9
Total value at current prices (R'000)	0	0	1 843	981	1 843	+ 87,9
Other non-residential space ^{2/}						
Total square metres	0	0	0	0	0	..
Total value at current prices (R'000)	0	0	0	0	0	..
Total value of non-residential buildings at current prices (R'000)	113	7 623	4 347	2 450	15 032	+ 513,6
Additions and alterations						
Dwelling-houses						
Total square metres	1 024	4 664	5 763	7 012	13 229	+ 88,7
Total value at current prices (R'000)	1 817	8 246	10 539	12 576	23 760	+ 88,9
Other buildings ^{3/}						
Total square metres	420	432	322	865	754	- 12,8
Total value at current prices (R'000)	1 132	1 489	795	3 094	2 289	- 26,0
Total value of additions and alterations at current prices (R'000)	2 949	9 735	11 334	15 670	26 049	+ 66,2
Total value of building plans passed at current prices (R'000)	7 339	24 378	28 453	28 229	65 865	+ 133,3

1/ Other residential buildings include institutions for the disabled, boarding houses, old people's homes, hostels, hotels, motels, guest houses, holiday chalets, entertainment centres, bed-and-breakfast accommodation and casinos.

2/ Other non-residential space includes churches, sport and recreation clubs, schools, crèches, hospitals and all other non-residential space.

3/ Other buildings include additions and alterations to other residential buildings, non-residential buildings and internal alterations.

Table 13 - Building plans passed according to type of building and province: Free State

Type of building	March 2003	February 2004*	March 2004	January 2003 to March 2003	January 2004 to March 2004	Percentage change between January 2003 to March 2003 and January 2004 to March 2004
Residential buildings						
Dwelling-houses smaller than 80 square metres						
Number of dwelling-houses	257	339	821	709	1 493	+ 110,6
Total square metres	11 295	14 002	32 826	29 658	60 296	+ 103,3
Total value at current prices (R'000)	6 252	8 878	16 637	16 844	36 749	+ 118,2
Dwelling-houses equal to or larger than 80 square metres						
Number of dwelling-houses	67	62	76	223	197	-11,7
Total square metres	10 530	9 218	11 977	37 621	31 150	-17,2
Total value at current prices (R'000)	15 344	13 877	18 899	52 713	48 319	-8,3
Flats and townhouses						
Number of flats and townhouses	70	20	50	118	185	+ 56,8
Total square metres	7 484	2 788	7 725	11 594	24 398	+ 110,4
Total value at current prices (R'000)	10 530	4 004	13 860	16 474	39 143	+ 137,6
Other residential buildings ^{1/}						
Total square metres	0	240	0	54	240	+ 344,4
Total value at current prices (R'000)	0	254	0	110	254	+ 130,9
Total value of residential buildings at current prices (R'000)	32 126	27 013	49 396	86 141	124 465	+ 44,5
Non-residential buildings						
Office and banking space						
Total square metres	128	0	1 573	1 744	3 657	+ 109,7
Total value at current prices (R'000)	128	0	3 748	2 936	6 041	+ 105,8
Shopping space						
Total square metres	1 566	0	185	12 776	185	-98,6
Total value at current prices (R'000)	2 029	0	310	22 248	310	-98,6
Industrial and warehouse space						
Total square metres	395	0	0	4 040	0	..
Total value at current prices (R'000)	225	0	0	2 213	0	..
Other non-residential space ^{2/}						
Total square metres	1 661	250	401	7 764	886	-88,6
Total value at current prices (R'000)	2 521	375	602	10 968	1 283	-88,3
Total value of non-residential buildings at current prices (R'000)	4 903	375	4 660	38 365	7 634	-80,1
Additions and alterations						
Dwelling-houses						
Total square metres	9 831	9 466	9 442	27 525	30 168	+ 9,6
Total value at current prices (R'000)	12 573	12 112	12 016	33 911	38 454	+ 13,4
Other buildings ^{3/}						
Total square metres	4 734	1 790	3 463	8 726	7 518	-13,8
Total value at current prices (R'000)	8 563	4 025	19 269	20 601	28 526	+ 38,5
Total value of additions and alterations at current prices (R'000)	21 136	16 137	31 285	54 512	66 980	+ 22,9
Total value of building plans passed at current prices (R'000)	58 165	43 525	85 341	179 018	199 079	+ 11,2

1/ Other residential buildings include institutions for the disabled, boarding houses, old people's homes, hostels, hotels, motels, guest houses, holiday chalets, entertainment centres, bed-and-breakfast accommodation and casinos.

2/ Other non-residential space includes churches, sport and recreation clubs, schools, crèches, hospitals and all other non-residential space.

3/ Other buildings include additions and alterations to other residential buildings, non-residential buildings and internal alterations.

Table 14 - Building plans passed according to type of building and province: KwaZulu-Natal

Type of building	March 2003*	February 2004*	March 2004	January 2003 to March 2003	January 2004 to March 2004	Percentage change between January 2003 to March 2003 and January 2004 to March 2004
Residential buildings						
Dwelling-houses smaller than 80 square metres						
Number of dwelling-houses	249	763	293	2 220	1 148	- 48,3
Total square metres	10 186	24 834	11 191	74 986	40 360	- 46,2
Total value at current prices (R'000)	8 666	18 928	11 851	51 131	35 825	- 29,9
Dwelling-houses equal to or larger than 80 square metres						
Number of dwelling-houses	189	204	248	479	648	+ 35,3
Total square metres	45 459	48 691	50 234	116 229	142 373	+ 22,5
Total value at current prices (R'000)	81 441	88 592	98 959	199 320	273 790	+ 37,4
Flats and townhouses						
Number of flats and townhouses	130	115	125	322	306	- 5,0
Total square metres	30 130	23 973	38 037	69 393	72 934	+ 5,1
Total value at current prices (R'000)	92 539	56 732	74 303	215 253	158 045	- 26,6
Other residential buildings ^{1/}						
Total square metres	2 619	2 103	0	12 969	2 188	- 83,1
Total value at current prices (R'000)	5 800	7 360	0	33 800	7 450	- 78,0
Total value of residential buildings at current prices (R'000)	188 446	171 612	185 113	499 504	475 110	- 4,9
Non-residential buildings						
Office and banking space						
Total square metres	641	523	7 535	2 266	10 715	+ 372,9
Total value at current prices (R'000)	1 200	933	16 194	3 050	21 127	+ 592,7
Shopping space						
Total square metres	6 728	433	6 552	70 284	14 477	- 79,4
Total value at current prices (R'000)	14 794	370	10 250	513 001	21 520	- 95,8
Industrial and warehouse space						
Total square metres	7 903	10 128	25 321	26 487	50 279	+ 89,8
Total value at current prices (R'000)	9 120	22 112	72 898	33 099	123 201	+ 272,2
Other non-residential space ^{2/}						
Total square metres	2 720	960	4 687	7 749	9 171	+ 18,4
Total value at current prices (R'000)	6 800	1 875	8 719	14 669	17 480	+ 19,2
Total value of non-residential buildings at current prices (R'000)	31 914	25 290	108 061	563 819	183 328	- 67,5
Additions and alterations						
Dwelling-houses						
Total square metres	36 122	39 715	49 144	117 284	144 652	+ 23,3
Total value at current prices (R'000)	55 723	63 848	99 560	152 606	226 270	+ 48,3
Other buildings ^{3/}						
Total square metres	19 793	12 482	9 167	57 056	32 579	- 42,9
Total value at current prices (R'000)	43 707	26 134	20 078	109 490	65 605	- 40,1
Total value of additions and alterations at current prices (R'000)	99 430	89 982	119 638	262 096	291 875	+ 11,4
Total value of building plans passed at current prices (R'000)	319 790	286 884	412 812	1 325 419	950 313	- 28,3

1/ Other residential buildings include institutions for the disabled, boarding houses, old people's homes, hostels, hotels, motels, guest houses, holiday chalets, entertainment centres, bed-and-breakfast accommodation and casinos.

2/ Other non-residential space includes churches, sport and recreation clubs, schools, crèches, hospitals and all other non-residential space.

3/ Other buildings include additions and alterations to other residential buildings, non-residential buildings and internal alterations.

Table 15 - Building plans passed according to type of building and province: North West

Type of building	March 2003*	February 2004	March 2004	January 2003 to March 2003	January 2004 to March 2004	Percentage change between January 2003 to March 2003 and January 2004 to March 2004
Residential buildings						
Dwelling-houses smaller than 80 square metres						
Number of dwelling-houses	30	208	3 368	88	3 613	+ 4 005,7
Total square metres	1 706	7 914	102 857	5 230	112 970	+ 2 060,0
Total value at current prices (R'000)	2 080	9 287	54 187	6 419	65 965	+ 927,7
Dwelling-houses equal to or larger than 80 square metres						
Number of dwelling-houses	100	143	130	294	386	+ 31,3
Total square metres	18 057	26 282	24 876	54 400	72 714	+ 33,7
Total value at current prices (R'000)	28 099	37 109	37 900	83 798	123 384	+ 47,2
Flats and townhouses						
Number of flats and townhouses	141	10	42	202	71	- 64,9
Total square metres	9 282	631	6 717	14 380	9 708	- 32,5
Total value at current prices (R'000)	15 766	1 044	14 246	22 788	18 934	- 16,9
Other residential buildings ^{1/}						
Total square metres	0	0	0	276	0	..
Total value at current prices (R'000)	0	0	0	600	0	..
Total value of residential buildings at current prices (R'000)	45 945	47 440	106 333	113 605	208 283	+ 83,3
Non-residential buildings						
Office and banking space						
Total square metres	1 642	1 205	0	2 056	2 839	+ 38,1
Total value at current prices (R'000)	3 252	4 677	0	3 709	7 154	+ 92,9
Shopping space						
Total square metres	0	9 068	1 047	3 319	10 372	+ 212,5
Total value at current prices (R'000)	0	23 820	2 161	10 738	26 495	+ 146,7
Industrial and warehouse space						
Total square metres	0	2 118	2 000	5 769	5 009	- 13,2
Total value at current prices (R'000)	0	1 891	1 188	7 502	4 079	- 45,6
Other non-residential space ^{2/}						
Total square metres	3 360	1 447	1 703	5 738	4 701	- 18,1
Total value at current prices (R'000)	5 952	4 079	4 052	10 699	10 045	- 6,1
Total value of non-residential buildings at current prices (R'000)	9 204	34 467	7 401	32 648	47 773	+ 46,3
Additions and alterations						
Dwelling-houses						
Total square metres	8 636	10 954	10 339	21 660	26 416	+ 22,0
Total value at current prices (R'000)	11 153	16 991	14 972	28 028	39 027	+ 39,2
Other buildings ^{3/}						
Total square metres	951	3 308	1 310	2 848	10 208	+ 258,4
Total value at current prices (R'000)	1 346	6 269	2 572	4 318	18 610	+ 331,0
Total value of additions and alterations at current prices (R'000)	12 499	23 260	17 544	32 346	57 637	+ 78,2
Total value of building plans passed at current prices (R'000)	67 648	105 167	131 278	178 599	313 693	+ 75,6

1/ Other residential buildings include institutions for the disabled, boarding houses, old people's homes, hostels, hotels, motels, guest houses, holiday chalets, entertainment centres, bed-and-breakfast accommodation and casinos.

2/ Other non-residential space includes churches, sport and recreation clubs, schools, crèches, hospitals and all other non-residential space.

3/ Other buildings include additions and alterations to other residential buildings, non-residential buildings and internal alterations.

Table 16 - Building plans passed according to type of building and province: Gauteng

Type of building	March 2003 *	February 2004*	March 2004	January 2003 to March 2003	January 2004 to March 2004	Percentage change between January 2003 to March 2003 and January 2004 to March 2004
Residential buildings						
Dwelling-houses smaller than 80 square metres						
Number of dwelling-houses	1 354	456	1 102	4 949	1 851	- 62,6
Total square metres	48 015	23 585	42 650	167 018	80 089	- 52,0
Total value at current prices (R'000)	41 720	35 580	42 072	133 261	99 483	- 25,3
Dwelling-houses equal to or larger than 80 square metres						
Number of dwelling-houses	781	887	1 020	1 941	2 478	+ 27,7
Total square metres	199 475	222 342	256 277	503 517	620 503	+ 23,2
Total value at current prices (R'000)	378 270	469 503	503 177	924 953	1 263 641	+ 36,6
Flats and townhouses						
Number of flats and townhouses	854	557	793	1 551	2 285	+ 47,3
Total square metres	118 028	97 609	132 403	250 811	349 760	+ 39,5
Total value at current prices (R'000)	216 223	211 609	263 446	458 168	754 287	+ 64,6
Other residential buildings ^{1/}						
Total square metres	11 020	0	7 445	30 052	7 445	- 75,2
Total value at current prices (R'000)	29 115	0	14 890	49 942	14 890	- 70,2
Total value of residential buildings at current prices (R'000)	665 328	716 692	823 585	1 566 324	2 132 301	+ 36,1
Non-residential buildings						
Office and banking space						
Total square metres	20 624	10 236	23 245	49 128	37 246	- 24,2
Total value at current prices (R'000)	38 037	21 530	45 602	93 313	74 530	- 20,1
Shopping space						
Total square metres	11 238	22 835	2 382	27 616	45 293	+ 64,0
Total value at current prices (R'000)	22 167	44 462	4 634	51 794	97 731	+ 88,7
Industrial and warehouse space						
Total square metres	18 731	61 424	29 753	59 933	117 424	+ 95,9
Total value at current prices (R'000)	34 227	100 902	55 351	113 409	212 598	+ 87,5
Other non-residential space ^{2/}						
Total square metres	8 687	3 501	2 164	23 532	21 516	- 8,6
Total value at current prices (R'000)	17 772	5 799	3 921	45 306	28 828	- 36,4
Total value of non-residential buildings at current prices (R'000)	112 203	172 693	109 508	303 822	413 687	+ 36,2
Additions and alterations						
Dwelling-houses						
Total square metres	96 374	104 495	111 265	237 866	299 365	+ 25,9
Total value at current prices (R'000)	167 692	208 393	184 778	413 367	544 832	+ 31,8
Other buildings ^{3/}						
Total square metres	21 653	34 047	51 339	52 121	104 925	+ 101,3
Total value at current prices (R'000)	43 202	77 346	146 825	114 649	272 302	+ 137,5
Total value of additions and alterations at current prices (R'000)	210 894	285 739	331 603	528 016	817 134	+ 54,8
Total value of building plans passed at current prices (R'000)	988 425	1 175 124	1 264 696	2 398 162	3 363 122	+ 40,2

1/ Other residential buildings include institutions for the disabled, boarding houses, old people's homes, hostels, hotels, motels, guest houses, holiday chalets, entertainment centres, bed-and-breakfast accommodation and casinos.

2/ Other non-residential space includes churches, sport and recreation clubs, schools, crèches, hospitals and all other non-residential space.

3/ Other buildings include additions and alterations to other residential buildings, non-residential buildings and internal alterations.

Table 17 - Building plans passed according to type of building and province: Mpumalanga

Type of building	March 2003*	February 2004	March 2004	January 2003 to March 2003	January 2004 to March 2004	Percentage change between January 2003 to March 2003 and January 2004 to March 2004
Residential buildings						
Dwelling-houses smaller than 80 square metres						
Number of dwelling-houses	85	87	120	283	260	- 8,1
Total square metres	3 808	4 077	6 082	12 113	12 705	+ 4,9
Total value at current prices (R'000)	3 376	2 862	3 441	8 674	8 192	- 5,6
Dwelling-houses equal to or larger than 80 square metres						
Number of dwelling-houses	124	121	120	323	316	- 2,2
Total square metres	26 909	22 760	25 829	71 375	62 489	- 12,4
Total value at current prices (R'000)	36 678	31 866	36 516	98 016	87 670	- 10,6
Flats and townhouses						
Number of flats and townhouses	29	132	26	38	164	+ 331,6
Total square metres	2 698	10 148	5 992	3 954	17 841	+ 351,2
Total value at current prices (R'000)	3 633	12 761	7 182	4 984	22 921	+359,9
Other residential buildings ^{1/}						
Total square metres	0	612	1 384	0	2 472	..
Total value at current prices (R'000)	0	2 000	3 929	0	6 929	..
Total value of residential buildings at current prices (R'000)	43 687	49 489	51 068	111 674	125 712	+ 12,6
Non-residential buildings						
Office and banking space						
Total square metres	70	488	1 146	6 391	1 634	- 74,4
Total value at current prices (R'000)	70	539	2 090	10 543	2 629	- 75,1
Shopping space						
Total square metres	991	8 938	0	6 005	35 302	+487,9
Total value at current prices (R'000)	914	13 423	0	9 155	61 132	+567,7
Industrial and warehouse space						
Total square metres	7 795	250	5 667	25 448	9 869	- 61,2
Total value at current prices (R'000)	10 551	400	5 978	29 374	11 556	- 60,7
Other non-residential space ^{2/}						
Total square metres	364	2 529	1 218	660	4 358	+ 560,3
Total value at current prices (R'000)	618	4 426	1 218	978	6 844	+ 599,8
Total value of non-residential buildings at current prices (R'000)	12 153	18 788	9 286	50 050	82 161	+ 64,2
Additions and alterations						
Dwelling-houses						
Total square metres	15 334	14 706	12 939	39 634	36 322	- 8,4
Total value at current prices (R'000)	19 437	17 227	13 195	53 560	39 460	- 26,3
Other buildings ^{3/}						
Total square metres	1 237	2 236	1 516	6 104	6 151	+ 0,8
Total value at current prices (R'000)	3 650	3 099	2 255	12 447	8 241	- 33,8
Total value of additions and alterations at current prices (R'000)	23 087	20 326	15 450	66 007	47 701	- 27,7
Total value of building plans passed at current prices (R'000)	78 927	88 603	75 804	227 731	255 574	+ 12,2

1/ Other residential buildings include institutions for the disabled, boarding houses, old people's homes, hostels, hotels, motels, guest houses, holiday chalets, entertainment centres, bed-and-breakfast accommodation and casinos.

2/ Other non-residential space includes churches, sport and recreation clubs, schools, crèches, hospitals and all other non-residential space.

3/ Other buildings include additions and alterations to other residential buildings, non-residential buildings and internal alterations.

Table 18 - Building plans passed according to type of building and province: Limpopo

Type of building	March 2003*	February 2004	March 2004	January 2003 to March 2003	January 2004 to March 2004	Percentage change between January 2003 to March 2003 and January 2004 to March 2004
Residential buildings						
Dwelling-houses smaller than 80 square metres						
Number of dwelling-houses	28	692	39	323	765	+ 136,8
Total square metres	1 715	28 021	2 450	14 475	32 529	+ 124,7
Total value at current prices (R'000)	2 347	10 299	3 600	9 131	17 733	+ 94,2
Dwelling-houses equal to or larger than 80 square metres						
Number of dwelling-houses	93	85	62	171	186	+ 8,8
Total square metres	15 374	15 326	12 121	31 431	34 372	+ 9,4
Total value at current prices (R'000)	22 216	29 762	18 518	45 879	60 210	+ 31,2
Flats and townhouses						
Number of flats and townhouses	3	5	22	6	58	+ 866,7
Total square metres	383	1 223	2 719	734	8 094	+ 1 002,7
Total value at current prices (R'000)	537	1 712	4 251	1 029	11 776	+ 1 044,4
Other residential buildings ^{1/}						
Total square metres	0	0	0	0	0	..
Total value at current prices (R'000)	0	0	0	0	0	..
Total value of residential buildings at current prices (R'000)	25 100	41 773	26 369	56 039	89 719	+ 60,1
Non-residential buildings						
Office and banking space						
Total square metres	0	3 609	0	0	4 331	..
Total value at current prices (R'000)	0	7 808	0	0	9 308	..
Shopping space						
Total square metres	187	744	3 278	317	7 331	+ 2 212,6
Total value at current prices (R'000)	375	1 042	5 160	515	12 463	+ 2 320,0
Industrial and warehouse space						
Total square metres	559	244	3 697	3 814	4 070	+ 6,7
Total value at current prices (R'000)	895	342	7 714	7 217	8 326	+ 15,4
Other non-residential space ^{2/}						
Total square metres	497	0	5 523	1 369	6 546	+ 378,2
Total value at current prices (R'000)	1 093	0	12 510	2 827	14 568	+ 415,3
Total value of non-residential buildings at current prices (R'000)	2 363	9 192	25 384	10 559	44 665	+ 323,0
Additions and alterations						
Dwelling-houses						
Total square metres	4 471	6 306	6 447	12 677	16 459	+ 29,8
Total value at current prices (R'000)	6 002	8 489	9 029	16 486	22 916	+ 39,0
Other buildings ^{3/}						
Total square metres	656	1 731	3 464	2 547	6 939	+ 172,4
Total value at current prices (R'000)	1 703	2 854	4 984	5 132	10 254	+ 99,8
Total value of additions and alterations at current prices (R'000)	7 705	11 343	14 013	21 618	33 170	+ 53,4
Total value of building plans passed at current prices (R'000)	35 168	62 308	65 766	88 216	167 554	+ 89,9

1/ Other residential buildings include institutions for the disabled, boarding houses, old people's homes, hostels, hotels, motels, guest houses, holiday chalets, entertainment centres, bed-and-breakfast accommodation and casinos.

2/ Other non-residential space includes churches, sport and recreation clubs, schools, crèches, hospitals and all other non-residential space.

3/ Other buildings include additions and alterations to other residential buildings, non-residential buildings and internal alterations.

Table 19 - Buildings completed according to type of building: Total RSA

Type of building	March 2003 *	February 2004*	March 2004	January 2003 to March 2003	January 2004 to March 2004	Percentage change between January 2003 to March 2003 and January 2004 to March 2004
Residential buildings						
Dwelling-houses smaller than 80 square metres						
Number of dwelling-houses	2 524	2 878	5 569	7 872	9 647	+ 22,5
Total square metres	92 440	123 546	187 908	283 980	363 687	+ 28,1
Total value at current prices (R'000)	75 624	116 775	117 887	222 360	290 267	+ 30,5
Dwelling-houses equal to or larger than 80 square metres						
Number of dwelling-houses	1 333	1 063	1 290	3 599	3 312	- 8,0
Total square metres	287 614	243 320	284 030	741 574	749 552	+ 1,1
Total value at current prices (R'000)	482 540	466 121	565 334	1 214 540	1 438 287	+ 18,4
Flats and townhouses						
Number of flats and townhouses	845	485	760	3 292	2 237	- 32,0
Total square metres	97 993	74 246	110 103	335 105	273 992	- 18,2
Total value at current prices (R'000)	148 770	151 490	210 902	538 425	526 295	- 2,3
Other residential buildings ^{1/}						
Total square metres	3 987	16 516	2 231	29 902	19 032	- 36,4
Total value at current prices (R'000)	6 297	39 261	3 377	57 803	43 031	- 25,6
Total value of residential buildings at current prices (R'000)	713 231	773 647	897 500	2 033 128	2 297 880	+ 13,0
Non-residential buildings						
Office and banking space						
Total square metres	38 541	25 903	18 878	117 715	106 044	- 9,9
Total value at current prices (R'000)	75 922	40 054	48 886	191 901	203 035	+ 5,8
Shopping space						
Total square metres	38 494	22 643	5 214	75 748	36 445	- 51,9
Total value at current prices (R'000)	64 740	41 940	6 119	122 220	65 000	- 46,8
Industrial and warehouse space						
Total square metres	100 810	86 092	68 175	191 745	185 352	- 3,3
Total value at current prices (R'000)	146 011	129 739	136 856	245 092	323 040	+ 31,8
Other non-residential space ^{2/}						
Total square metres	15 256	12 078	12 178	40 023	31 325	- 21,7
Total value at current prices (R'000)	29 347	19 764	23 369	69 488	57 491	- 17,3
Total value of non-residential buildings at current prices (R'000)	316 020	231 497	215 230	628 701	648 566	+ 3,2
Additions and alterations						
Dwelling-houses						
Total square metres	120 768	128 465	102 948	371 987	333 058	- 10,5
Total value at current prices (R'000)	162 278	202 129	181 039	504 474	543 550	+ 7,7
Other buildings ^{3/}						
Total square metres	41 468	39 067	28 954	139 898	113 040	- 19,2
Total value at current prices (R'000)	80 447	104 648	95 883	264 309	303 270	+ 14,7
Total value of additions and alterations at current prices (R'000)	242 725	306 777	276 922	768 783	846 820	+ 10,2
Total value of buildings completed at current prices (R'000)	1 271 976	1 311 921	1 389 652	3 430 612	3 793 266	+ 10,6

1/ Other residential buildings include institutions for the disabled, boarding houses, old people's homes, hostels, hotels, motels, guest houses, holiday chalets, entertainment centres, bed-and-breakfast accommodation and casinos.

2/ Other non-residential space includes churches, sport and recreation clubs, schools, crèches, hospitals and all other non-residential space.

3/ Other buildings include additions and alterations to other residential buildings, non-residential buildings and internal alterations.

Table 20 - Buildings completed according to type of building and province: Western Cape

Type of building	March 2003	February 2004	March 2004	January 2003 to March 2003	January 2004 to March 2004	Percentage change between January 2003 to March 2003 and January 2004 to March 2004
Residential buildings						
Dwelling-houses smaller than 80 square metres						
Number of dwelling-houses	370	352	248	700	815	+ 16,4
Total square metres	14 356	13 903	11 537	29 293	34 674	+ 18,4
Total value at current prices (R'000)	14 500	12 951	13 069	32 867	34 420	+ 4,7
Dwelling-houses equal to or larger than 80 square metres						
Number of dwelling-houses	443	347	375	1 406	1 040	- 26,0
Total square metres	88 857	81 260	82 620	259 536	229 162	- 11,7
Total value at current prices (R'000)	143 773	150 169	162 636	420 978	437 855	+ 4,0
Flats and townhouses						
Number of flats and townhouses	220	165	159	552	570	+ 3,3
Total square metres	28 042	16 039	19 948	57 715	56 575	- 2,0
Total value at current prices (R'000)	44 472	31 329	38 854	98 593	101 736	+ 3,2
Other residential buildings ^{1/}						
Total square metres	1 681	14 587	0	15 464	14 587	- 5,7
Total value at current prices (R'000)	2 540	34 600	0	40 997	34 600	- 15,6
Total value of residential buildings at current prices (R'000)	205 285	229 049	214 559	593 435	608 611	+ 2,6
Non-residential buildings						
Office and banking space						
Total square metres	20 463	1 072	2 986	59 429	6 520	- 89,0
Total value at current prices (R'000)	44 248	1 701	5 174	95 413	11 193	- 88,3
Shopping space						
Total square metres	5 234	11 064	686	11 706	13 269	+ 13,4
Total value at current prices (R'000)	7 995	18 786	975	16 675	21 886	+ 31,3
Industrial and warehouse space						
Total square metres	13 966	19 890	8 993	53 202	31 970	- 39,9
Total value at current prices (R'000)	19 178	20 833	14 080	58 861	41 756	- 29,1
Other non-residential space ^{2/}						
Total square metres	3 531	2 604	9 698	10 591	13 212	+ 24,7
Total value at current prices (R'000)	4 563	3 382	18 282	13 720	23 376	+ 70,4
Total value of non-residential buildings at current prices (R'000)	75 984	44 702	38 511	184 669	98 211	- 46,8
Additions and alterations						
Dwelling-houses						
Total square metres	35 279	38 350	38 589	119 353	104 087	- 12,8
Total value at current prices (R'000)	46 945	58 001	62 225	167 106	164 502	- 1,6
Other buildings ^{3/}						
Total square metres	14 501	10 745	13 049	42 767	30 489	- 28,7
Total value at current prices (R'000)	25 280	27 175	47 502	90 832	91 786	+ 1,1
Total value of additions and alterations at current prices (R'000)	72 225	85 176	109 727	257 938	256 288	- 0,6
Total value of buildings completed at current prices (R'000)	353 494	358 927	362 797	1 036 042	963 110	- 7,0

1/ Other residential buildings include institutions for the disabled, boarding houses, old people's homes, hostels, hotels, motels, guest houses, holiday chalets, entertainment centres, bed-and-breakfast accommodation and casinos.

2/ Other non-residential space includes churches, sport and recreation clubs, schools, crèches, hospitals and all other non-residential space.

3/ Other buildings include additions and alterations to other residential buildings, non-residential buildings and internal alterations.

Table 21 - Buildings completed according to type of building and province: Eastern Cape

Type of building	March 2003*	February 2004*	March 2004	January 2003 to March 2003	January 2004 to March 2004	Percentage change between January 2003 to March 2003 and January 2004 to March 2004
Residential buildings						
Dwelling-houses smaller than 80 square metres						
Number of dwelling-houses	155	327	123	407	560	+ 37,6
Total square metres	6 389	16 994	5 127	17 675	26 885	+ 52,1
Total value at current prices (R'000)	5 255	26 045	5 412	14 965	35 289	+ 135,8
Dwelling-houses equal to or larger than 80 square metres						
Number of dwelling-houses	71	46	79	160	197	+ 23,1
Total square metres	15 881	9 042	16 510	32 060	39 105	+ 22,0
Total value at current prices (R'000)	23 653	14 660	27 091	47 603	63 503	+ 33,4
Flats and townhouses						
Number of flats and townhouses	8	15	2	46	27	-41,3
Total square metres	1 154	2 323	811	3 828	4 489	+ 17,3
Total value at current prices (R'000)	1 295	4 152	2 004	5 271	8 602	+ 63,2
Other residential buildings ^{1/}						
Total square metres	0	0	0	871	0	..
Total value at current prices (R'000)	0	0	0	1 765	0	..
Total value of residential buildings at current prices (R'000)	30 203	44 857	34 507	69 604	107 394	+ 54,3
Non-residential buildings						
Office and banking space						
Total square metres	0	0	0	0	1 180	..
Total value at current prices (R'000)	0	0	0	0	2 841	..
Shopping space						
Total square metres	1 653	1 283	276	2 943	1 559	- 47,0
Total value at current prices (R'000)	2 920	2 858	330	4 912	3 188	- 35,1
Industrial and warehouse space						
Total square metres	0	2 699	832	3 532	3 531	+ 0,0
Total value at current prices (R'000)	0	4 300	1 457	5 319	5 757	+ 8,2
Other non-residential space ^{2/}						
Total square metres	204	0	131	1 728	241	-86,1
Total value at current prices (R'000)	364	0	206	3 511	311	-91,1
Total value of non-residential buildings at current prices (R'000)	3 284	7 158	1 993	13 742	12 097	- 12,0
Additions and alterations						
Dwelling-houses						
Total square metres	9 571	9 669	7 092	29 513	24 018	- 18,6
Total value at current prices (R'000)	12 355	14 979	10 988	39 793	38 171	- 4,1
Other buildings ^{3/}						
Total square metres	12 395	1 937	1 474	20 904	4 232	- 79,8
Total value at current prices (R'000)	20 230	3 639	2 950	36 549	7 703	- 78,9
Total value of additions and alterations at current prices (R'000)	32 585	18 618	13 938	76 342	45 874	- 39,9
Total value of buildings completed at current prices (R'000)	66 072	70 633	50 438	159 688	165 365	+ 3,6

1/ Other residential buildings include institutions for the disabled, boarding houses, old people's homes, hostels, hotels, motels, guest houses, holiday chalets, entertainment centres, bed-and-breakfast accommodation and casinos.

2/ Other non-residential space includes churches, sport and recreation clubs, schools, crèches, hospitals and all other non-residential space.

3/ Other buildings include additions and alterations to other residential buildings, non-residential buildings and internal alterations.

Table 22 - Buildings completed according to type of building and province: Northern Cape

Type of building	March 2003	February 2004	March 2004	January 2003 to March 2003	January 2004 to March 2004	Percentage change between January 2003 to March 2003 and January 2004 to March 2004
Residential buildings						
Dwelling-houses smaller than 80 square metres						
Number of dwelling-houses	1	4	7	3	16	+ 433,3
Total square metres	46	166	296	167	743	+ 344,9
Total value at current prices (R'000)	69	249	339	295	952	+ 222,7
Dwelling-houses equal to or larger than 80 square metres						
Number of dwelling-houses	6	12	8	15	23	+ 53,3
Total square metres	1 066	1 970	1 243	2 933	3 672	+ 25,2
Total value at current prices (R'000)	1 594	3 099	2 089	4 812	5 975	+ 24,2
Flats and townhouses						
Number of flats and townhouses	0	7	3	2	10	+ 400,0
Total square metres	0	1 474	506	226	1 980	+ 776,1
Total value at current prices (R'000)	0	2 301	917	317	3 218	+ 915,1
Other residential buildings ^{1/}						
Total square metres	0	161	0	0	161	..
Total value at current prices (R'000)	0	241	0	0	241	..
Total value of residential buildings at current prices (R'000)	1 663	5 890	3 345	5 424	10 386	+ 91,5
Non-residential buildings						
Office and banking space						
Total square metres	0	0	0	0	0	..
Total value at current prices (R'000)	0	0	0	0	0	..
Shopping space						
Total square metres	0	1 939	0	0	1 939	..
Total value at current prices (R'000)	0	3 610	0	0	3 610	..
Industrial and warehouse space						
Total square metres	0	431	0	0	431	..
Total value at current prices (R'000)	0	854	0	0	854	..
Other non-residential space ^{2/}						
Total square metres	0	0	855	125	855	+ 584,0
Total value at current prices (R'000)	0	0	1 881	188	1 881	+ 900,5
Total value of non-residential buildings at current prices (R'000)	0	4 464	1 881	188	6 345	+ 3275,0
Additions and alterations						
Dwelling-houses						
Total square metres	2 700	2 769	2 234	7 399	5 774	- 22,0
Total value at current prices (R'000)	4 382	5 144	4 163	11 847	10 551	- 10,9
Other buildings ^{3/}						
Total square metres	851	282	34	851	316	- 62,9
Total value at current prices (R'000)	1 994	645	105	2 046	750	- 63,3
Total value of additions and alterations at current prices (R'000)	6 376	5 789	4 268	13 893	11 301	- 18,7
Total value of buildings completed at current prices (R'000)	8 039	16 143	9 494	19 505	28 032	43,7

1/ Other residential buildings include institutions for the disabled, boarding houses, old people's homes, hostels, hotels, motels, guest houses, holiday chalets, entertainment centres, bed-and-breakfast accommodation and casinos.

2/ Other non-residential space includes churches, sport and recreation clubs, schools, crèches, hospitals and all other non-residential space.

3/ Other buildings include additions and alterations to other residential buildings, non-residential buildings and internal alterations.

Table 23 - Buildings completed according to type of building and province: Free State

Type of building	March 2003*	February 2004*	March 2004	January 2003 to March 2003	January 2004 to March 2004	Percentage change between January 2003 to March 2003 and January 2004 to March 2004
Residential buildings						
Dwelling-houses smaller than 80 square metres						
Number of dwelling-houses	161	506	404	599	1 125	+ 87,8
Total square metres	6 924	20 812	17 327	24 958	47 162	+ 89,0
Total value at current prices (R'000)	4 160	10 896	9 124	13 772	26 101	+ 89,5
Dwelling-houses equal to or larger than 80 square metres						
Number of dwelling-houses	31	15	16	89	47	-47,2
Total square metres	5 343	2 378	2 755	14 933	7 901	-47,1
Total value at current prices (R'000)	6 718	2 904	4 327	19 067	10 957	-42,5
Flats and townhouses						
Number of flats and townhouses	1	2	40	94	191	+ 103,2
Total square metres	192	320	4 322	10 192	19 694	+ 93,2
Total value at current prices (R'000)	195	420	7 538	14 966	29 368	+ 96,2
Other residential buildings ^{1/}						
Total square metres	0	0	0	60	0	..
Total value at current prices (R'000)	0	0	0	54	0	..
Total value of residential buildings at current prices (R'000)	11 073	14 220	20 989	47 859	66 426	+ 38,8
Non-residential buildings						
Office and banking space						
Total square metres	38	0	0	100	0	..
Total value at current prices (R'000)	43	0	0	147	0	..
Shopping space						
Total square metres	3 012	0	1 288	4 916	1 360	-72,3
Total value at current prices (R'000)	4 688	0	1 000	8 098	1 140	-85,9
Industrial and warehouse space						
Total square metres	6 439	1 487	0	6 439	4 435	-31,1
Total value at current prices (R'000)	6 600	847	0	6 600	3 109	-52,9
Other non-residential space ^{2/}						
Total square metres	2 319	0	155	2 799	1 097	-60,8
Total value at current prices (R'000)	4 005	0	300	4 005	2 655	-33,7
Total value of non-residential buildings at current prices (R'000)	15 336	847	1 300	18 850	6 904	-63,4
Additions and alterations						
Dwelling-houses						
Total square metres	8 252	5 183	3 588	17 426	12 838	-26,3
Total value at current prices (R'000)	8 829	6 383	4 526	19 368	15 687	-19,0
Other buildings ^{3/}						
Total square metres	1 290	1 061	832	2 232	2 424	+ 8,6
Total value at current prices (R'000)	6 165	28 707	1 920	10 027	33 121	+ 230,3
Total value of additions and alterations at current prices (R'000)	14 994	35 090	6 446	29 395	48 808	+ 66,0
Total value of buildings completed at current prices (R'000)	41 403	50 157	28 735	96 104	122 138	+ 27,1

1/ Other residential buildings include institutions for the disabled, boarding houses, old people's homes, hostels, hotels, motels, guest houses, holiday chalets, entertainment centres, bed-and-breakfast accommodation and casinos.

2/ Other non-residential space includes churches, sport and recreation clubs, schools, crèches, hospitals and all other non-residential space.

3/ Other buildings include additions and alterations to other residential buildings, non-residential buildings and internal alterations.

Table 24 - Buildings completed according to type of building and province: KwaZulu-Natal

Type of building	March 2003*	February 2004*	March 2004	January 2003 to March 2003	January 2004 to March 2004	Percentage change between January 2003 to March 2003 and January 2004 to March 2004
Residential buildings						
Dwelling-houses smaller than 80 square metres						
Number of dwelling-houses	299	251	356	967	848	-12,3
Total square metres	10 693	9 733	12 434	33 785	31 560	-6,6
Total value at current prices (R'000)	9 271	9 573	10 645	26 798	29 630	+ 10,6
Dwelling-houses equal to or larger than 80 square metres						
Number of dwelling-houses	116	123	90	367	288	-21,5
Total square metres	22 773	27 538	24 576	75 307	67 698	-10,1
Total value at current prices (R'000)	35 095	51 718	41 822	111 547	117 527	+ 5,4
Flats and townhouses						
Number of flats and townhouses	33	85	78	164	211	+ 28,7
Total square metres	6 640	22 062	18 517	29 032	48 397	+ 66,7
Total value at current prices (R'000)	12 569	52 585	45 549	47 561	112 290	+ 136,1
Other residential buildings ^{1/}						
Total square metres	83	0	0	186	0	..
Total value at current prices (R'000)	100	0	0	286	0	..
Total value of residential buildings at current prices (R'000)	57 035	113 876	98 016	186 192	259 447	+ 39,3
Non-residential buildings						
Office and banking space						
Total square metres	2 771	9 415	3 561	9 606	16 896	+ 75,9
Total value at current prices (R'000)	3 632	11 806	10 000	21 177	26 933	+ 27,2
Shopping space						
Total square metres	6 793	6 050	0	13 874	6 050	-56,4
Total value at current prices (R'000)	13 020	11 278	0	23 328	11 278	-51,7
Industrial and warehouse space						
Total square metres	17 720	23 694	21 521	37 892	50 117	+ 32,3
Total value at current prices (R'000)	18 846	22 450	35 050	37 818	60 750	+ 60,6
Other non-residential space ^{2/}						
Total square metres	1 602	1 183	1 339	6 685	3 786	-43,4
Total value at current prices (R'000)	3 245	1 041	2 700	11 591	6 639	-42,7
Total value of non-residential buildings at current prices (R'000)	38 743	46 575	47 750	93 914	105 600	+ 12,4
Additions and alterations						
Dwelling-houses						
Total square metres	26 456	27 719	21 593	83 231	75 956	-8,7
Total value at current prices (R'000)	31 395	33 921	41 986	97 887	104 707	+ 7,0
Other buildings ^{3/}						
Total square metres	3 412	11 515	5 800	33 550	24 542	-26,8
Total value at current prices (R'000)	5 013	14 130	26 084	53 694	59 533	+ 10,9
Total value of additions and alterations at current prices (R'000)	36 408	48 051	68 070	151 581	164 240	+ 8,4
Total value of buildings completed at current prices (R'000)	132 186	208 502	213 836	431 687	529 287	+ 22,6

1/ Other residential buildings include institutions for the disabled, boarding houses, old people's homes, hostels, hotels, motels, guest houses, holiday chalets, entertainment centres, bed-and-breakfast accommodation and casinos.

2/ Other non-residential space includes churches, sport and recreation clubs, schools, crèches, hospitals and all other non-residential space.

3/ Other buildings include additions and alterations to other residential buildings, non-residential buildings and internal alterations.

Table 25 - Buildings completed according to type of building and province: North West

Type of building	March 2003*	February 2004	March 2004	January 2003 to March 2003	January 2004 to March 2004	Percentage change between January 2003 to March 2003 and January 2004 to March 2004
Residential buildings						
Dwelling-houses smaller than 80 square metres						
Number of dwelling-houses	18	36	3 335	63	3 376	+ 5 258,7
Total square metres	993	1 831	100 920	3 527	102 981	+ 2 819,8
Total value at current prices (R'000)	1 063	1 871	51 566	4 250	53 678	+ 1 163,0
Dwelling-houses equal to or larger than 80 square metres						
Number of dwelling-houses	93	34	77	206	137	- 33,5
Total square metres	16 345	7 196	15 009	40 882	28 811	- 29,5
Total value at current prices (R'000)	23 635	11 536	25 360	58 902	49 024	- 16,8
Flats and townhouses						
Number of flats and townhouses	45	80	82	375	394	+ 5,1
Total square metres	4 293	4 372	9 593	29 079	19 646	- 32,4
Total value at current prices (R'000)	5 304	8 892	16 973	42 106	39 633	- 5,9
Other residential buildings ^{1/}						
Total square metres	0	0	0	579	228	- 60,6
Total value at current prices (R'000)	0	0	0	834	250	- 70,0
Total value of residential buildings at current prices (R'000)	30 002	22 299	93 899	106 092	142 585	+ 34,4
Non-residential buildings						
Office and banking space						
Total square metres	1 669	2 578	0	1 669	2 578	+ 54,5
Total value at current prices (R'000)	2 358	5 307	0	2 358	5 307	+ 125,1
Shopping space						
Total square metres	2 043	1 162	2 770	2 801	6 238	+ 122,7
Total value at current prices (R'000)	2 452	3 000	3 333	4 318	9 483	+ 119,6
Industrial and warehouse space						
Total square metres	0	2 781	0	3 672	4 037	+ 9,9
Total value at current prices (R'000)	0	6 332	0	3 976	6 782	+ 70,6
Other non-residential space ^{2/}						
Total square metres	2 161	0	0	3 981	902	- 77,3
Total value at current prices (R'000)	7 700	0	0	9 815	1 276	- 87,0
Total value of non-residential buildings at current prices (R'000)	12 510	14 639	3 333	20 467	22 848	+ 11,6
Additions and alterations						
Dwelling-houses						
Total square metres	3 988	3 584	5 612	17 576	10 439	- 40,6
Total value at current prices (R'000)	3 990	4 301	7 245	16 328	13 269	- 18,7
Other buildings ^{3/}						
Total square metres	1 222	1 501	632	7 493	5 015	- 33,1
Total value at current prices (R'000)	1 440	1 651	1 772	8 713	9 778	+ 12,2
Total value of additions and alterations at current prices (R'000)	5 430	5 952	9 017	25 041	23 047	- 8,0
Total value of buildings completed at current prices (R'000)	47 942	42 890	106 249	151 600	188 480	+ 24,3

1/ Other residential buildings include institutions for the disabled, boarding houses, old people's homes, hostels, hotels, motels, guest houses, holiday chalets, entertainment centres, bed-and-breakfast accommodation and casinos.

2/ Other non-residential space includes churches, sport and recreation clubs, schools, crèches, hospitals and all other non-residential space.

3/ Other buildings include additions and alterations to other residential buildings, non-residential buildings and internal alterations.

Table 26 - Buildings completed according to type of building and province: Gauteng

Type of building	March 2003*	February 2004	March 2004	January 2003 to March 2003	January 2004 to March 2004	Percentage change between January 2003 to March 2003 and January 2004 to March 2004
Residential buildings						
Dwelling-houses smaller than 80 square metres						
Number of dwelling-houses	1 493	847	920	4 903	2 097	-57,2
Total square metres	51 423	37 291	31 319	163 481	83 891	-48,7
Total value at current prices (R'000)	39 103	46 269	21 930	119 976	91 142	-24,0
Dwelling-houses equal to or larger than 80 square metres						
Number of dwelling-houses	524	403	598	1 186	1 392	+ 17,4
Total square metres	126 859	98 201	132 883	280 112	337 318	+ 20,4
Total value at current prices (R'000)	234 980	208 879	290 173	503 644	700 910	+ 39,2
Flats and townhouses						
Number of flats and townhouses	528	113	393	1 518	803	-47,1
Total square metres	57 005	24 812	56 046	172 198	117 984	-31,5
Total value at current prices (R'000)	84 032	47 793	98 453	289 465	223 994	-22,6
Other residential buildings ^{1/}						
Total square metres	2 223	1 768	1 888	12 286	3 713	-69,8
Total value at current prices (R'000)	3 657	4 420	2 377	11 667	6 940	-40,5
Total value of residential buildings at current prices (R'000)	361 772	307 361	412 933	924 752	1 022 986	+ 10,6
Non-residential buildings						
Office and banking space						
Total square metres	11 303	11 964	9 661	44 614	75 326	+ 68,8
Total value at current prices (R'000)	22 885	19 977	30 712	70 050	152 498	+ 117,7
Shopping space						
Total square metres	18 877	732	194	24 813	5 617	-77,4
Total value at current prices (R'000)	32 036	1 830	481	42 460	13 837	-67,4
Industrial and warehouse space						
Total square metres	58 572	34 753	36 829	74 074	90 474	+ 22,1
Total value at current prices (R'000)	99 617	73 694	86 269	123 769	203 603	+ 64,5
Other non-residential space ^{2/}						
Total square metres	4 959	7 497	0	13 672	10 438	-23,7
Total value at current prices (R'000)	9 470	14 230	0	26 040	20 242	-22,3
Total value of non-residential buildings at current prices (R'000)	164 008	109 731	117 462	262 319	390 180	+ 48,7
Additions and alterations						
Dwelling-houses						
Total square metres	31 534	37 296	22 752	86 719	90 884	+ 4,8
Total value at current prices (R'000)	50 841	73 930	48 058	138 114	184 104	+ 33,3
Other buildings ^{3/}						
Total square metres	7 696	11 205	3 497	31 086	40 084	+ 28,9
Total value at current prices (R'000)	19 594	26 325	10 838	60 176	91 191	+ 51,5
Total value of additions and alterations at current prices (R'000)	70 435	100 255	58 896	198 290	275 295	+ 38,8
Total value of buildings completed at current prices (R'000)	596 215	517 347	589 291	1 385 361	1 688 461	+ 21,9

1/ Other residential buildings include institutions for the disabled, boarding houses, old people's homes, hostels, hotels, motels, guest houses, holiday chalets, entertainment centres, bed-and-breakfast accommodation and casinos.

2/ Other non-residential space includes churches, sport and recreation clubs, schools, crèches, hospitals and all other non-residential space.

3/ Other buildings include additions and alterations to other residential buildings, non-residential buildings and internal alterations.

Table 27 - Buildings completed according to type of building and province: Mpumalanga

Type of building	March 2003*	February 2004*	March 2004	January 2003 to March 2003	January 2004 to March 2004	Percentage change between January 2003 to March 2003 and January 2004 to March 2004
Residential buildings						
Dwelling-houses smaller than 80 square metres						
Number of dwelling-houses	11	85	161	166	316	+ 90,4
Total square metres	698	3 806	8 017	7 440	15 281	+ 105,4
Total value at current prices (R'000)	983	2 974	4 358	4 498	10 653	+ 136,8
Dwelling-houses equal to or larger than 80 square metres						
Number of dwelling-houses	37	41	22	118	105	-11,0
Total square metres	8 564	7 984	4 571	27 446	19 840	-27,7
Total value at current prices (R'000)	10 536	10 043	5 692	36 175	25 491	-29,5
Flats and townhouses						
Number of flats and townhouses	9	1	2	519	8	-98,5
Total square metres	515	90	210	30 623	1 410	-95,4
Total value at current prices (R'000)	690	162	304	37 287	2 117	-94,3
Other residential buildings ^{1/}						
Total square metres	0	0	0	456	0	..
Total value at current prices (R'000)	0	0	0	2 200	0	..
Total value of residential buildings at current prices (R'000)	12 209	13 179	10 354	80 160	38 261	-52,3
Non-residential buildings						
Office and banking space						
Total square metres	2 297	0	2 670	2 297	2 670	+ 16,2
Total value at current prices (R'000)	2 756	0	3 000	2 756	3 000	+ 8,9
Shopping space						
Total square metres	195	0	0	14 008	0	..
Total value at current prices (R'000)	118	0	0	20 918	0	..
Industrial and warehouse space						
Total square metres	4 113	357	0	12 521	357	-97,1
Total value at current prices (R'000)	1 770	429	0	8 170	429	-94,7
Other non-residential space ^{2/}						
Total square metres	0	0	0	0	0	..
Total value at current prices (R'000)	0	0	0	0	0	..
Total value of non-residential buildings at current prices (R'000)	4 644	429	3 000	31 844	3 429	-89,2
Additions and alterations						
Dwelling-houses						
Total square metres	2 763	1 802	832	9 517	4 187	-56,0
Total value at current prices (R'000)	3 226	2 372	882	12 166	5 330	-56,2
Other buildings ^{3/}						
Total square metres	101	251	3 579	560	5 144	+ 818,6
Total value at current prices (R'000)	171	1 578	4 627	1 291	8 258	+ 539,7
Total value of additions and alterations at current prices (R'000)	3 397	3 950	5 509	13 457	13 588	+ 1,0
Total value of buildings completed at current prices (R'000)	20 250	17 558	18 863	125 461	55 278	-55,9

1/ Other residential buildings include institutions for the disabled, boarding houses, old people's homes, hostels, hotels, motels, guest houses, holiday chalets, entertainment centres, bed-and-breakfast accommodation and casinos.

2/ Other non-residential space includes churches, sport and recreation clubs, schools, crèches, hospitals and all other non-residential space.

3/ Other buildings include additions and alterations to other residential buildings, non-residential buildings and internal alterations.

Table 28 - Buildings completed according to type of building and province: Limpopo

Type of building	March 2003*	February 2004	March 2004	January 2003 to March 2003	January 2004 to March 2004	Percentage change between January 2003 to March 2003 and January 2004 to March 2004
Residential buildings						
Dwelling-houses smaller than 80 square metres						
Number of dwelling-houses	16	470	15	64	494	+ 671,9
Total square metres	918	19 010	931	3 654	20 510	+ 461,3
Total value at current prices (R'000)	1 220	5 947	1 444	4 939	8 402	+ 70,1
Dwelling-houses equal to or larger than 80 square metres						
Number of dwelling-houses	12	42	25	52	83	+ 59,6
Total square metres	1 926	7 751	3 863	8 365	16 045	+ 91,8
Total value at current prices (R'000)	2 556	13 113	6 144	11 812	27 045	+ 129,0
Flats and townhouses						
Number of flats and townhouses	1	17	1	22	23	+ 4,5
Total square metres	152	2 754	150	2 212	3 817	+ 72,6
Total value at current prices (R'000)	213	3 856	310	2 859	5 337	+ 86,7
Other residential buildings ^{1/}						
Total square metres	0	0	343	0	343	..
Total value at current prices (R'000)	0	0	1 000	0	1 000	..
Total value of residential buildings at current prices (R'000)	3 989	22 916	8 898	19 610	41 784	+ 113,1
Non-residential buildings						
Office and banking space						
Total square metres	0	874	0	0	874	..
Total value at current prices (R'000)	0	1 263	0	0	1 263	..
Shopping space						
Total square metres	687	413	0	687	413	-39,9
Total value at current prices (R'000)	1 511	578	0	1 511	578	-61,7
Industrial and warehouse space						
Total square metres	0	0	0	413	0	..
Total value at current prices (R'000)	0	0	0	579	0	..
Other non-residential space ^{2/}						
Total square metres	0	794	0	442	794	+ 79,6
Total value at current prices (R'000)	0	1 111	0	618	1 111	+ 79,8
Total value of non-residential buildings at current prices (R'000)	1 511	2 952	0	2 708	2 952	+ 9,0
Additions and alterations						
Dwelling-houses						
Total square metres	225	2 093	656	1 253	4 875	+ 289,1
Total value at current prices (R'000)	315	3 098	966	1 865	7 229	+ 287,6
Other buildings ^{3/}						
Total square metres	0	570	57	455	794	+ 74,5
Total value at current prices (R'000)	560	798	85	981	1 150	+ 17,2
Total value of additions and alterations at current prices (R'000)	875	3 896	1 051	2 846	8 379	+ 194,4
Total value of buildings completed at current prices (R'000)	6 375	29 764	9 949	25 164	53 115	+ 111,1

1/ Other residential buildings include institutions for the disabled, boarding houses, old people's homes, hostels, hotels, motels, guest houses, holiday chalets, entertainment centres, bed-and-breakfast accommodation and casinos.

2/ Other non-residential space includes churches, sport and recreation clubs, schools, crèches, hospitals and all other non-residential space.

3/ Other buildings include additions and alterations to other residential buildings, non-residential buildings and internal alterations.

Table 29 - Building plans passed according to type of building and selected urban area: Cape Town

Type of building	March 2003*	February 2004	March 2004	January 2003 to March 2003	January 2004 to March 2004	Percentage change between January 2003 to March 2003 and January 2004 to March 2004
Residential buildings						
Dwelling-houses smaller than 80 square metres						
Number of dwelling-houses	552	241	568	957	968	+ 1,1
Total square metres	20 512	11 275	24 749	37 800	42 920	+ 13,5
Total value at current prices (R'000)	23 624	15 593	28 475	44 347	50 743	+ 14,4
Dwelling-houses equal to or larger than 80 square metres						
Number of dwelling-houses	238	331	322	844	822	- 2,6
Total square metres	52 124	78 309	73 274	179 388	188 086	+ 4,8
Total value at current prices (R'000)	76 398	148 824	141 386	263 891	356 475	+ 35,1
Flats and townhouses						
Number of flats and townhouses	148	284	265	538	612	+ 13,8
Total square metres	15 420	38 690	28 540	65 956	75 701	+ 14,8
Total value at current prices (R'000)	24 869	71 797	57 002	135 096	145 354	+ 7,6
Other residential buildings ^{1/}						
Total square metres	0	0	22 950	0	25 931	..
Total value at current prices (R'000)	0	0	51 399	0	60 342	..
Total value of residential buildings at current prices (R'000)	124 891	236 214	278 262	443 334	612 914	+ 38,3
Non-residential buildings						
Office and banking space						
Total square metres	12 712	780	30 396	23 125	35 444	+ 53,3
Total value at current prices (R'000)	19 161	1 590	51 593	35 240	60 823	+ 72,6
Shopping space						
Total square metres	139	16 524	75 149	5 335	99 608	+ 1 767,1
Total value at current prices (R'000)	110	30 122	153 853	5 210	196 781	+ 3 677,0
Industrial and warehouse space						
Total square metres	3 168	19 482	17 907	14 551	51 077	+ 251,0
Total value at current prices (R'000)	3 472	28 127	26 582	16 786	72 571	+ 332,3
Other non-residential space ^{2/}						
Total square metres	3 301	5 218	5 245	4 184	10 552	+ 152,2
Total value at current prices (R'000)	4 875	17 168	10 627	6 081	27 930	+ 359,3
Total value of non-residential buildings at current prices (R'000)	27 618	77 007	242 655	63 317	358 105	+ 465,6
Additions and alterations						
Dwelling-houses						
Total square metres	53 334	59 938	64 964	141 877	157 841	+ 11,3
Total value at current prices (R'000)	74 511	107 781	109 941	194 872	274 965	+ 41,1
Other buildings ^{3/}						
Total square metres	36 859	45 702	39 463	88 436	92 408	+ 4,5
Total value at current prices (R'000)	50 127	99 673	73 833	166 305	192 536	+ 15,8
Total value of additions and alterations at current prices (R'000)	124 638	207 454	183 774	361 177	467 501	+ 29,4
Total value of building plans passed at current prices (R'000)	277 147	520 675	704 691	867 828	1 438 520	+ 65,8

1/ Other residential buildings include institutions for the disabled, boarding houses, old people's homes, hostels, hotels, motels, guest houses, holiday chalets, entertainment centres, bed-and-breakfast accommodation and casinos.

2/ Other non-residential space includes churches, sport and recreation clubs, schools, crèches, hospitals and all other non-residential space.

3/ Other buildings include additions and alterations to other residential buildings, non-residential buildings and internal alterations.

Table 30 - Building plans passed according to type of building and selected urban area: Port Elizabeth

Type of building	March 2003*	February 2004*	March 2004	January 2003 to March 2003	January 2004 to March 2004	Percentage change between January 2003 to March 2003 and January 2004 to March 2004
Residential buildings						
Dwelling-houses smaller than 80 square metres						
Number of dwelling-houses	40	310	449	659	1 297	+ 96,8
Total square metres	1 650	12 630	18 067	27 774	52 252	+ 88,1
Total value at current prices (R'000)	1 238	9 959	17 127	33 676	45 326	+ 34,6
Dwelling-houses equal to or larger than 80 square metres						
Number of dwelling-houses	34	8	58	103	77	- 25,2
Total square metres	8 054	1 220	12 371	19 215	16 011	- 16,7
Total value at current prices (R'000)	12 561	1 873	18 452	43 003	23 808	- 44,6
Flats and townhouses						
Number of flats and townhouses	3	27	14	19	50	+ 163,2
Total square metres	543	7 268	5 289	3 379	14 538	+ 330,2
Total value at current prices (R'000)	842	13 131	9 559	6 684	25 907	+ 287,6
Other residential buildings ^{1/}						
Total square metres	410	0	0	410	0	..
Total value at current prices (R'000)	845	0	0	845	0	..
Total value of residential buildings at current prices (R'000)	15 486	24 963	45 138	84 208	95 041	+ 12,9
Non-residential buildings						
Office and banking space						
Total square metres	0	0	0	2 607	0	..
Total value at current prices (R'000)	0	0	0	5 370	0	..
Shopping space						
Total square metres	0	0	0	381	1 404	+ 268,5
Total value at current prices (R'000)	0	0	0	702	2 752	+ 292,0
Industrial and warehouse space						
Total square metres	566	3 884	706	2 707	4 979	+ 83,9
Total value at current prices (R'000)	872	7 288	1 581	3 423	9 468	+ 176,6
Other non-residential space ^{2/}						
Total square metres	256	894	429	2 384	1 437	- 39,7
Total value at current prices (R'000)	265	1 983	808	4 101	3 097	- 24,5
Total value of non-residential buildings at current prices (R'000)	1 137	9 271	2 389	13 596	15 317	+ 12,7
Additions and alterations						
Dwelling-houses						
Total square metres	9 238	14 810	13 251	29 202	39 077	+ 33,8
Total value at current prices (R'000)	14 822	23 976	24 047	48 765	67 187	+ 37,8
Other buildings ^{3/}						
Total square metres	1 554	6 189	9 152	12 251	18 016	+ 47,1
Total value at current prices (R'000)	4 591	12 573	16 020	29 391	34 310	+ 16,7
Total value of additions and alterations at current prices (R'000)	19 413	36 549	40 067	78 156	101 497	+ 29,9
Total value of building plans passed at current prices (R'000)	36 036	70 783	87 594	175 960	211 855	+ 20,4

1/ Other residential buildings include institutions for the disabled, boarding houses, old people's homes, hostels, hotels, motels, guest houses, holiday chalets, entertainment centres, bed-and-breakfast accommodation and casinos.

2/ Other non-residential space includes churches, sport and recreation clubs, schools, crèches, hospitals and all other non-residential space.

3/ Other buildings include additions and alterations to other residential buildings, non-residential buildings and internal alterations.

Table 31 - Building plans passed according to type of building and selected urban area: Durban

Type of building	March 2003	February 2004*	March 2004	January 2003 to March 2003	January 2004 to March 2004	Percentage change between January 2003 to March 2003 and January 2004 to March 2004
Residential buildings						
Dwelling-houses smaller than 80 square metres						
Number of dwelling-houses	46	136	241	152	414	+ 172,4
Total square metres	2 288	5 339	8 298	7 992	15 811	+ 97,8
Total value at current prices (R'000)	2 639	5 875	7 967	9 304	16 827	+ 80,9
Dwelling-houses equal to or larger than 80 square metres						
Number of dwelling-houses	80	65	102	212	232	+ 9,4
Total square metres	17 518	14 063	19 432	44 596	46 781	+ 4,9
Total value at current prices (R'000)	27 053	25 317	33 181	64 597	83 144	+ 28,7
Flats and townhouses						
Number of flats and townhouses	24	39	116	57	218	+ 282,5
Total square metres	3 670	8 775	35 128	9 149	54 254	+ 493,0
Total value at current prices (R'000)	8 342	18 433	68 166	19 371	112 293	+ 479,7
Other residential buildings ^{1/}						
Total square metres	599	0	0	599	85	-85,8
Total value at current prices (R'000)	800	0	0	800	90	-88,8
Total value of residential buildings at current prices (R'000)	38 834	49 625	109 314	94 072	212 354	+ 125,7
Non-residential buildings						
Office and banking space						
Total square metres	641	523	6 484	2 266	9 664	+ 326,5
Total value at current prices (R'000)	1 200	933	14 075	3 050	19 008	+ 523,2
Shopping space						
Total square metres	6 261	0	500	28 642	500	-98,3
Total value at current prices (R'000)	14 420	0	1 000	274 910	1 000	-99,6
Industrial and warehouse space						
Total square metres	3 885	7 605	18 909	12 822	39 191	+ 205,7
Total value at current prices (R'000)	3 397	18 310	63 900	10 927	94 710	+ 766,8
Other non-residential space ^{2/}						
Total square metres	0	223	1 801	2 763	3 560	+ 28,8
Total value at current prices (R'000)	0	600	4 685	4 985	9 365	+ 87,9
Total value of non-residential buildings at current prices (R'000)	19 017	19 843	83 660	293 872	124 083	-57,8
Additions and alterations						
Dwelling-houses						
Total square metres	23 731	25 500	31 152	79 165	101 432	+ 28,1
Total value at current prices (R'000)	37 163	39 547	68 219	97 275	147 554	+ 51,7
Other buildings ^{3/}						
Total square metres	13 676	7 562	6 767	26 737	20 361	-23,8
Total value at current prices (R'000)	34 828	17 314	14 408	62 620	44 334	-29,2
Total value of additions and alterations at current prices (R'000)	71 991	56 861	82 627	159 895	191 888	+ 20,0
Total value of building plans passed at current prices (R'000)	129 842	126 329	275 601	547 839	528 325	-3,6

1/ Other residential buildings include institutions for the disabled, boarding houses, old people's homes, hostels, hotels, motels, guest houses, holiday chalets, entertainment centres, bed-and-breakfast accommodation and casinos.

2/ Other non-residential space includes churches, sport and recreation clubs, schools, crèches, hospitals and all other non-residential space.

3/ Other buildings include additions and alterations to other residential buildings, non-residential buildings and internal alterations.

Table 32 - Building plans passed according to type of building and selected urban area: Witwatersrand

Type of building	March 2003*	February 2004	March 2004	January 2003 to March 2003	January 2004 to March 2004	Percentage change between January 2003 to March 2003 and January 2004 to March 2004
Residential buildings						
Dwelling-houses smaller than 80 square metres						
Number of dwelling-houses	415	294	901	1 524	1 426	- 6,4
Total square metres	17 947	15 075	34 099	59 051	59 416	+ 0,6
Total value at current prices (R'000)	22 612	24 122	28 671	65 088	67 031	+ 3,0
Dwelling-houses equal to or larger than 80 square metres						
Number of dwelling-houses	520	548	672	1 176	1 568	+ 33,3
Total square metres	124 024	143 586	164 838	285 629	395 584	+ 38,5
Total value at current prices (R'000)	235 499	298 708	339 352	527 328	814 394	+ 54,4
Flats and townhouses						
Number of flats and townhouses	513	366	426	806	938	+ 16,4
Total square metres	60 840	62 379	82 209	103 943	170 497	+ 64,0
Total value at current prices (R'000)	105 991	129 644	156 464	190 018	339 566	+ 78,7
Other residential buildings ^{1/}						
Total square metres	10 770	0	7 445	17 835	7 445	- 58,3
Total value at current prices (R'000)	28 652	0	14 890	38 072	14 890	- 60,9
Total value of residential buildings at current prices (R'000)	392 754	452 474	539 377	820 506	1 235 881	+ 50,6
Non-residential buildings						
Office and banking space						
Total square metres	3 656	7 316	15 004	22 480	25 119	+ 11,7
Total value at current prices (R'000)	7 352	14 230	26 624	44 255	46 452	+ 5,0
Shopping space						
Total square metres	7 915	22 835	685	17 182	38 814	+ 125,9
Total value at current prices (R'000)	16 364	44 462	1 300	32 803	82 666	+ 152,0
Industrial and warehouse space						
Total square metres	13 792	54 380	25 271	35 391	91 915	+ 159,7
Total value at current prices (R'000)	25 556	86 774	48 795	66 007	157 558	+ 138,7
Other non-residential space ^{2/}						
Total square metres	3 008	2 108	1 527	9 727	16 808	+ 72,8
Total value at current prices (R'000)	7 940	3 604	2 960	20 390	21 025	+ 3,1
Total value of non-residential buildings at current prices (R'000)	57 212	149 070	79 679	163 455	307 701	+ 88,2
Additions and alterations						
Dwelling-houses						
Total square metres	71 768	68 974	80 587	160 310	217 030	+ 35,4
Total value at current prices (R'000)	122 955	130 476	130 180	274 278	381 062	+ 38,9
Other buildings ^{3/}						
Total square metres	12 503	26 144	33 217	30 024	68 176	+ 127,1
Total value at current prices (R'000)	27 829	60 296	71 002	77 814	154 962	+ 99,1
Total value of additions and alterations at current prices (R'000)	150 784	190 772	201 182	352 092	536 024	+ 52,2
Total value of building plans passed at current prices (R'000)	600 750	792 316	820 238	1 336 053	2 079 606	+ 55,7

1/ Other residential buildings include institutions for the disabled, boarding houses, old people's homes, hostels, hotels, motels, guest houses, holiday chalets, entertainment centres, bed-and-breakfast accommodation and casinos.

2/ Other non-residential space includes churches, sport and recreation clubs, schools, crèches, hospitals and all other non-residential space.

3/ Other buildings include additions and alterations to other residential buildings, non-residential buildings and internal alterations.

Table 33 - Building plans passed according to type of building and selected urban area: Pretoria

Type of building	March 2003*	February 2004*	March 2004	January 2003 to March 2003	January 2004 to March 2004	Percentage change between January 2003 to March 2003 and January 2004 to March 2004
Residential buildings						
Dwelling-houses smaller than 80 square metres						
Number of dwelling-houses	934	71	67	3 406	197	- 94,2
Total square metres	29 731	4 132	3 264	106 837	10 815	- 89,9
Total value at current prices (R'000)	18 677	9 084	8 923	66 621	25 392	- 61,9
Dwelling-houses equal to or larger than 80 square metres						
Number of dwelling-houses	193	204	206	567	533	- 6,0
Total square metres	52 713	46 292	51 473	154 739	130 134	- 15,9
Total value at current prices (R'000)	104 206	115 729	91 174	302 156	283 638	- 6,1
Flats and townhouses						
Number of flats and townhouses	119	51	134	463	917	+ 98,1
Total square metres	36 636	16 766	19 736	115 615	121 794	+ 5,3
Total value at current prices (R'000)	72 490	43 696	47 324	211 545	299 794	+ 41,7
Other residential buildings ^{1/}						
Total square metres	250	0	0	250	0	..
Total value at current prices (R'000)	463	0	0	463	0	..
Total value of residential buildings at current prices (R'000)	195 836	168 509	147 421	580 785	608 824	+ 4,8
Non-residential buildings						
Office and banking space						
Total square metres	16 334	2 920	7 096	26 014	10 016	- 61,5
Total value at current prices (R'000)	29 965	7 300	16 778	48 338	24 078	- 50,2
Shopping space						
Total square metres	3 323	0	0	8 154	4 691	- 42,5
Total value at current prices (R'000)	5 803	0	0	15 465	11 526	- 25,5
Industrial and warehouse space						
Total square metres	4 039	4 768	3 880	22 551	22 631	+ 0,4
Total value at current prices (R'000)	7 771	11 920	6 084	45 443	52 360	+ 15,2
Other non-residential space ^{2/}						
Total square metres	4 050	0	574	10 947	1 593	- 85,4
Total value at current prices (R'000)	8 232	0	861	21 228	3 365	- 84,1
Total value of non-residential buildings at current prices (R'000)	51 771	19 220	23 723	130 474	91 329	- 30,0
Additions and alterations						
Dwelling-houses						
Total square metres	19 473	26 480	21 683	60 196	58 600	- 2,7
Total value at current prices (R'000)	38 384	66 200	41 536	115 980	130 570	+ 12,6
Other buildings ^{3/}						
Total square metres	9 071	5 978	12 914	19 153	28 301	+ 47,8
Total value at current prices (R'000)	15 210	14 824	67 014	34 627	104 929	+ 203,0
Total value of additions and alterations at current prices (R'000)	53 594	81 024	108 550	150 607	235 499	+ 56,4
Total value of building plans passed at current prices (R'000)	301 201	268 753	279 694	861 866	935 652	+ 8,6

1/ Other residential buildings include institutions for the disabled, boarding houses, old people's homes, hostels, hotels, motels, guest houses, holiday chalets, entertainment centres, bed-and-breakfast accommodation and casinos.

2/ Other non-residential space includes churches, sport and recreation clubs, schools, crèches, hospitals and all other non-residential space.

3/ Other buildings include additions and alterations to other residential buildings, non-residential buildings and internal alterations.

Table 34 - Building plans passed according to type of building and selected urban area: Bloemfontein

Type of building	March 2003	February 2004	March 2004	January 2003 to March 2003	January 2004 to March 2004	Percentage change between January 2003 to March 2003 and January 2004 to March 2004
Residential buildings						
Dwelling-houses smaller than 80 square metres						
Number of dwelling-houses	254	215	215	695	640	-7,9
Total square metres	11 113	9 024	9 135	28 874	26 782	-7,2
Total value at current prices (R'000)	6 058	5 228	5 198	15 901	16 219	+ 2,0
Dwelling-houses equal to or larger than 80 square metres						
Number of dwelling-houses	38	32	36	110	100	-9,1
Total square metres	5 139	4 488	5 561	17 657	15 253	-13,6
Total value at current prices (R'000)	7 520	6 727	8 339	26 723	22 981	-14,0
Flats and townhouses						
Number of flats and townhouses	51	0	41	91	141	+ 54,9
Total square metres	5 275	0	7 134	8 023	19 550	+ 143,7
Total value at current prices (R'000)	7 912	0	12 660	12 036	31 285	+ 159,9
Other residential buildings ^{1/}						
Total square metres	0	0	0	0	0	..
Total value at current prices (R'000)	0	0	0	0	0	..
Total value of residential buildings at current prices (R'000)	21 490	11 955	26 197	54 660	70 485	+ 29,0
Non-residential buildings						
Office and banking space						
Total square metres	0	0	1 450	1 616	3 034	+ 87,7
Total value at current prices (R'000)	0	0	3 625	2 808	5 018	+ 78,7
Shopping space						
Total square metres	0	0	0	3 359	0	..
Total value at current prices (R'000)	0	0	0	8 000	0	..
Industrial and warehouse space						
Total square metres	0	0	0	3 645	0	..
Total value at current prices (R'000)	0	0	0	1 988	0	..
Other non-residential space ^{2/}						
Total square metres	473	0	0	2 679	0	..
Total value at current prices (R'000)	946	0	0	4 194	0	..
Total value of non-residential buildings at current prices (R'000)	946	0	3 625	16 990	5 018	-70,5
Additions and alterations						
Dwelling-houses						
Total square metres	6 465	4 708	4 791	14 801	16 145	+ 9,1
Total value at current prices (R'000)	8 814	5 867	6 546	20 342	21 652	+ 6,4
Other buildings ^{3/}						
Total square metres	2 773	1 428	2 059	4 163	4 019	-3,5
Total value at current prices (R'000)	7 065	3 448	4 994	15 866	11 252	-29,1
Total value of additions and alterations at current prices (R'000)	15 879	9 315	11 540	36 208	32 904	-9,1
Total value of building plans passed at current prices (R'000)	38 315	21 270	41 362	107 858	108 407	+ 0,5

1/ Other residential buildings include institutions for the disabled, boarding houses, old people's homes, hostels, hotels, motels, guest houses, holiday chalets, entertainment centres, bed-and-breakfast accommodation and casinos.

2/ Other non-residential space includes churches, sport and recreation clubs, schools, crèches, hospitals and all other non-residential space.

3/ Other buildings include additions and alterations to other residential buildings, non-residential buildings and internal alterations.

Table 35 - Buildings completed according to type of building and selected urban area: Cape Town

Type of building	March 2003	February 2004	March 2004	January 2003 to March 2003	January 2004 to March 2004	Percentage change between January 2003 to March 2003 and January 2004 to March 2004
Residential buildings						
Dwelling-houses smaller than 80 square metres						
Number of dwelling-houses	323	271	228	575	693	+ 20,5
Total square metres	12 193	11 135	10 394	23 072	29 643	+ 28,5
Total value at current prices (R'000)	11 451	9 810	10 874	23 348	26 948	+ 15,4
Dwelling-houses equal to or larger than 80 square metres						
Number of dwelling-houses	245	166	180	814	424	- 47,9
Total square metres	49 979	42 073	35 631	139 657	96 447	- 30,9
Total value at current prices (R'000)	70 083	67 556	58 662	194 281	155 930	- 19,7
Flats and townhouses						
Number of flats and townhouses	188	54	106	413	297	- 28,1
Total square metres	24 046	7 008	10 183	44 943	26 697	- 40,6
Total value at current prices (R'000)	36 079	13 883	18 710	70 529	44 872	- 36,4
Other residential buildings ^{1/}						
Total square metres	0	10 450	0	0	10 450	..
Total value at current prices (R'000)	0	30 000	0	0	30 000	..
Total value of residential buildings at current prices (R'000)	117 613	121 249	88 246	288 158	257 750	- 10,6
Non-residential buildings						
Office and banking space						
Total square metres	19 383	979	2 613	57 854	5 716	- 90,1
Total value at current prices (R'000)	41 078	1 566	4 208	91 308	9 517	- 89,6
Shopping space						
Total square metres	5 093	10 752	686	11 480	12 188	+ 6,2
Total value at current prices (R'000)	7 640	18 220	975	16 065	20 320	+ 26,5
Industrial and warehouse space						
Total square metres	7 233	6 327	2 619	34 858	8 946	- 74,3
Total value at current prices (R'000)	11 645	7 336	2 483	39 632	9 819	- 75,2
Other non-residential space ^{2/}						
Total square metres	2 648	645	2 246	3 997	2 891	- 27,7
Total value at current prices (R'000)	2 891	850	1 820	4 354	2 670	- 38,7
Total value of non-residential buildings at current prices (R'000)	63 254	27 972	9 486	151 359	42 326	- 72,0
Additions and alterations						
Dwelling-houses						
Total square metres	26 676	30 131	29 726	89 424	75 092	- 16,0
Total value at current prices (R'000)	32 542	42 361	43 550	111 725	108 149	- 3,2
Other buildings ^{3/}						
Total square metres	11 542	6 825	11 241	36 233	23 389	- 35,4
Total value at current prices (R'000)	19 314	18 995	41 249	76 856	72 520	- 5,6
Total value of additions and alterations at current prices (R'000)	51 856	61 356	84 799	188 581	180 669	- 4,2
Total value of buildings completed at current prices (R'000)	232 723	210 577	182 531	628 098	480 745	- 23,5

1/ Other residential buildings include institutions for the disabled, boarding houses, old people's homes, hostels, hotels, motels, guest houses, holiday chalets, entertainment centres, bed-and-breakfast accommodation and casinos.

2/ Other non-residential space includes churches, sport and recreation clubs, schools, crèches, hospitals and all other non-residential space.

3/ Other buildings include additions and alterations to other residential buildings, non-residential buildings and internal alterations.

Table 36 - Buildings completed according to type of building and selected urban area: Port Elizabeth

Type of building	March 2003*	February 2004	March 2004	January 2003 to March 2003	January 2004 to March 2004	Percentage change between January 2003 to March 2003 and January 2004 to March 2004
Residential buildings						
Dwelling-houses smaller than 80 square metres						
Number of dwelling-houses	54	266	69	261	380	+ 45,6
Total square metres	2 259	14 374	2 799	11 140	18 997	+ 70,5
Total value at current prices (R'000)	1 648	22 089	3 149	7 695	26 606	+ 245,8
Dwelling-houses equal to or larger than 80 square metres						
Number of dwelling-houses	20	2	16	27	30	+ 11,1
Total square metres	4 182	522	3 712	4 973	6 322	+ 27,1
Total value at current prices (R'000)	6 511	755	5 676	7 372	9 132	+ 23,9
Flats and townhouses						
Number of flats and townhouses	8	10	2	46	16	- 65,2
Total square metres	1 154	1 560	811	3 828	2 724	- 28,8
Total value at current prices (R'000)	1 295	2 555	2 004	5 271	5 194	- 1,5
Other residential buildings ^{1/}						
Total square metres	0	0	0	443	0	..
Total value at current prices (R'000)	0	0	0	1 055	0	..
Total value of residential buildings at current prices (R'000)	9 454	25 399	10 829	21 393	40 932	+ 91,3
Non-residential buildings						
Office and banking space						
Total square metres	0	0	0	0	0	..
Total value at current prices (R'000)	0	0	0	0	0	..
Shopping space						
Total square metres	1 468	268	0	1 936	268	- 86,2
Total value at current prices (R'000)	2 678	458	0	3 445	458	- 86,7
Industrial and warehouse space						
Total square metres	0	0	0	3 091	0	..
Total value at current prices (R'000)	0	0	0	4 569	0	..
Other non-residential space ^{2/}						
Total square metres	0	0	6	431	116	- 73,1
Total value at current prices (R'000)	0	0	6	732	111	- 84,8
Total value of non-residential buildings at current prices (R'000)	2 678	458	6	8 746	569	- 93,5
Additions and alterations						
Dwelling-houses						
Total square metres	3 881	4 738	2 513	15 748	9 641	- 38,8
Total value at current prices (R'000)	4 368	7 418	3 513	19 552	14 478	- 26,0
Other buildings ^{3/}						
Total square metres	6 903	1 507	648	12 572	2 583	- 79,5
Total value at current prices (R'000)	10 875	2 762	1 408	19 967	4 465	- 77,6
Total value of additions and alterations at current prices (R'000)	15 243	10 180	4 921	39 519	18 943	- 52,1
Total value of buildings completed at current prices (R'000)	27 375	36 037	15 756	69 658	60 444	- 13,2

1/ Other residential buildings include institutions for the disabled, boarding houses, old people's homes, hostels, hotels, motels, guest houses, holiday chalets, entertainment centres, bed-and-breakfast accommodation and casinos.

2/ Other non-residential space includes churches, sport and recreation clubs, schools, crèches, hospitals and all other non-residential space.

3/ Other buildings include additions and alterations to other residential buildings, non-residential buildings and internal alterations.

Table 37 - Buildings completed according to type of building and selected urban area: Durban

Type of building	March 2003	February 2004*	March 2004	January 2003 to March 2003	January 2004 to March 2004	Percentage change between January 2003 to March 2003 and January 2004 to March 2004
Residential buildings						
Dwelling-houses smaller than 80 square metres						
Number of dwelling-houses	69	159	245	154	541	+ 251,3
Total square metres	2 943	6 782	8 855	7 144	21 149	+ 196,0
Total value at current prices (R'000)	3 316	7 496	8 347	7 408	21 673	+ 192,6
Dwelling-houses equal to or larger than 80 square metres						
Number of dwelling-houses	49	74	49	186	167	- 10,2
Total square metres	7 532	14 981	12 294	35 146	35 379	+ 0,7
Total value at current prices (R'000)	8 036	24 566	18 614	43 072	53 224	+ 23,6
Flats and townhouses						
Number of flats and townhouses	17	23	30	70	101	+ 44,3
Total square metres	4 124	5 130	7 797	12 710	20 745	+ 63,2
Total value at current prices (R'000)	7 359	11 072	16 431	20 989	41 659	+ 98,5
Other residential buildings ^{1/}						
Total square metres	0	0	0	0	0	..
Total value at current prices (R'000)	0	0	0	0	0	..
Total value of residential buildings at current prices (R'000)	18 711	43 134	43 392	71 469	116 556	+ 63,1
Non-residential buildings						
Office and banking space						
Total square metres	2 539	9 415	3 561	6 274	14 258	+ 127,3
Total value at current prices (R'000)	3 354	11 806	10 000	11 899	22 976	+ 93,1
Shopping space						
Total square metres	6 085	5 615	0	10 049	5 615	- 44,1
Total value at current prices (R'000)	12 170	10 190	0	15 372	10 190	- 33,7
Industrial and warehouse space						
Total square metres	17 459	23 694	19 629	33 565	48 225	+ 43,7
Total value at current prices (R'000)	18 586	22 450	32 300	34 517	58 000	+ 68,0
Other non-residential space ^{2/}						
Total square metres	1 602	1 183	1 339	4 689	3 786	- 19,3
Total value at current prices (R'000)	3 245	1 041	2 700	8 526	6 639	- 22,1
Total value of non-residential buildings at current prices (R'000)	37 355	45 487	45 000	70 314	97 805	+ 39,1
Additions and alterations						
Dwelling-houses						
Total square metres	17 128	24 356	18 439	55 888	66 380	+ 18,8
Total value at current prices (R'000)	19 269	27 404	34 809	62 257	85 714	+ 37,7
Other buildings ^{3/}						
Total square metres	2 359	11 346	5 399	14 951	23 972	+ 60,3
Total value at current prices (R'000)	3 668	13 920	15 298	28 623	48 302	+ 68,8
Total value of additions and alterations at current prices (R'000)	22 937	41 324	50 107	90 880	134 016	+ 47,5
Total value of buildings completed at current prices (R'000)	79 003	129 945	138 499	232 663	348 377	+ 49,7

1/ Other residential buildings include institutions for the disabled, boarding houses, old people's homes, hostels, hotels, motels, guest houses, holiday chalets, entertainment centres, bed-and-breakfast accommodation and casinos.

2/ Other non-residential space includes churches, sport and recreation clubs, schools, crèches, hospitals and all other non-residential space.

3/ Other buildings include additions and alterations to other residential buildings, non-residential buildings and internal alterations.

Table 38 - Buildings completed according to type of building and selected urban area: Witwatersrand

Type of building	March 2003*	February 2004	March 2004	January 2003 to March 2003	January 2004 to March 2004	Percentage change between January 2003 to March 2003 and January 2004 to March 2004
Residential buildings						
Dwelling-houses smaller than 80 square metres						
Number of dwelling-houses	610	690	905	1 603	1 875	+ 17,0
Total square metres	24 248	25 946	30 544	61 956	69 598	+ 12,3
Total value at current prices (R'000)	23 075	25 227	20 225	61 087	63 734	+ 4,3
Dwelling-houses equal to or larger than 80 square metres						
Number of dwelling-houses	342	258	422	767	904	+ 17,9
Total square metres	83 152	56 208	84 026	168 957	199 711	+ 18,2
Total value at current prices (R'000)	147 003	111 599	185 901	291 779	405 853	+ 39,1
Flats and townhouses						
Number of flats and townhouses	493	92	341	1 311	520	-60,3
Total square metres	50 653	16 586	47 122	151 225	76 515	-49,4
Total value at current prices (R'000)	70 883	28 068	81 695	247 089	136 176	-44,9
Other residential buildings ^{1/}						
Total square metres	2 223	1 768	0	2 463	1 825	-25,9
Total value at current prices (R'000)	3 657	4 420	0	3 909	4 563	+ 16,7
Total value of residential buildings at current prices (R'000)	244 618	169 314	287 821	603 864	610 326	+ 1,1
Non-residential buildings						
Office and banking space						
Total square metres	488	11 813	9 661	33 799	55 537	+ 64,3
Total value at current prices (R'000)	1 123	19 599	30 712	48 288	113 526	+ 135,1
Shopping space						
Total square metres	7 704	0	0	12 768	0	..
Total value at current prices (R'000)	11 113	0	0	19 967	0	..
Industrial and warehouse space						
Total square metres	51 136	13 897	6 611	63 394	22 763	-64,1
Total value at current prices (R'000)	84 224	22 247	10 724	103 161	35 734	-65,4
Other non-residential space ^{2/}						
Total square metres	1 102	7 497	0	3 269	7 782	+ 138,1
Total value at current prices (R'000)	1 668	14 230	0	5 127	14 930	+ 191,2
Total value of non-residential buildings at current prices (R'000)	98 128	56 076	41 436	176 543	164 190	-7,0
Additions and alterations						
Dwelling-houses						
Total square metres	23 505	28 418	17 204	70 580	66 250	-6,1
Total value at current prices (R'000)	34 847	52 743	37 049	107 697	128 091	+ 18,9
Other buildings ^{3/}						
Total square metres	7 215	2 703	1 599	27 857	4 963	-82,2
Total value at current prices (R'000)	18 070	6 398	5 389	53 373	15 517	-70,9
Total value of additions and alterations at current prices (R'000)	52 917	59 141	42 438	161 070	143 608	-10,8
Total value of buildings completed at current prices (R'000)	395 663	284 531	371 695	941 477	918 124	-2,5

1/ Other residential buildings include institutions for the disabled, boarding houses, old people's homes, hostels, hotels, motels, guest houses, holiday chalets, entertainment centres, bed-and-breakfast accommodation and casinos.

2/ Other non-residential space includes churches, sport and recreation clubs, schools, crèches, hospitals and all other non-residential space.

3/ Other buildings include additions and alterations to other residential buildings, non-residential buildings and internal alterations.

Table 39 - Buildings completed according to type of building and selected urban area: Pretoria

Type of building	March 2003*	February 2004*	March 2004	January 2003 to March 2003	January 2004 to March 2004	Percentage change between January 2003 to March 2003 and January 2004 to March 2004
Residential buildings						
Dwelling-houses smaller than 80 square metres						
Number of dwelling-houses	882	22	13	3 295	78	- 97,6
Total square metres	27 123	1 222	656	101 239	3 820	- 96,2
Total value at current prices (R'000)	15 958	2 911	1 534	58 514	8 994	- 84,6
Dwelling-houses equal to or larger than 80 square metres						
Number of dwelling-houses	139	137	129	304	390	+ 28,3
Total square metres	29 637	40 323	34 980	68 589	107 434	+ 56,6
Total value at current prices (R'000)	60 915	95 407	79 553	139 439	244 227	+ 75,1
Flats and townhouses						
Number of flats and townhouses	35	17	42	204	219	+ 7,4
Total square metres	6 352	7 364	7 536	20 637	35 750	+ 73,2
Total value at current prices (R'000)	13 149	18 410	14 954	42 040	80 536	+ 91,6
Other residential buildings ^{1/}						
Total square metres	0	0	1 188	0	1 188	..
Total value at current prices (R'000)	0	0	1 782	0	1 782	..
Total value of residential buildings at current prices (R'000)	90 022	116 728	97 823	239 993	335 539	+ 39,8
Non-residential buildings						
Office and banking space						
Total square metres	10 815	151	0	10 815	19 789	+ 83,0
Total value at current prices (R'000)	21 762	378	0	21 762	38 972	+ 79,1
Shopping space						
Total square metres	5 285	732	0	5 285	5 423	+ 2,6
Total value at current prices (R'000)	10 581	1 830	0	10 581	13 356	+ 26,2
Industrial and warehouse space						
Total square metres	7 436	20 419	30 218	8 803	67 274	+ 664,2
Total value at current prices (R'000)	15 393	51 047	75 545	18 127	167 469	+ 823,9
Other non-residential space ^{2/}						
Total square metres	3 857	0	0	10 268	2 656	- 74,1
Total value at current prices (R'000)	7 802	0	0	20 710	5 312	- 74,4
Total value of non-residential buildings at current prices (R'000)	55 538	53 255	75 545	71 180	225 109	+ 216,3
Additions and alterations						
Dwelling-houses						
Total square metres	7 316	7 908	4 411	13 536	21 570	+ 59,4
Total value at current prices (R'000)	15 097	19 769	9 675	27 683	51 841	+ 87,3
Other buildings ^{3/}						
Total square metres	106	5 248	1 898	2 224	31 847	+ 1 332,0
Total value at current prices (R'000)	960	17 214	5 449	5 456	72 937	+ 1 236,8
Total value of additions and alterations at current prices (R'000)	16 057	36 983	15 124	33 139	124 778	+ 276,5
Total value of buildings completed at current prices (R'000)	161 617	206 966	188 492	344 312	685 426	+ 99,1

1/ Other residential buildings include institutions for the disabled, boarding houses, old people's homes, hostels, hotels, motels, guest houses, holiday chalets, entertainment centres, bed-and-breakfast accommodation and casinos.

2/ Other non-residential space includes churches, sport and recreation clubs, schools, crèches, hospitals and all other non-residential space.

3/ Other buildings include additions and alterations to other residential buildings, non-residential buildings and internal alterations.

Table 40 - Buildings completed according to type of building and selected urban area: Bloemfontein

Type of building	March 2003	February 2004	March 2004	January 2003 to March 2003	January 2004 to March 2004	Percentage change between January 2003 to March 2003 and January 2004 to March 2004
Residential buildings						
Dwelling-houses smaller than 80 square metres						
Number of dwelling-houses	159	338	282	591	724	+ 22,5
Total square metres	6 814	14 061	12 423	24 512	30 769	+ 25,5
Total value at current prices (R'000)	4 070	6 667	6 099	13 358	16 079	+ 20,4
Dwelling-houses equal to or larger than 80 square metres						
Number of dwelling-houses	21	10	10	54	35	- 35,2
Total square metres	3 500	1 667	1 473	7 999	5 798	- 27,5
Total value at current prices (R'000)	4 439	2 087	2 088	10 206	7 769	- 23,9
Flats and townhouses						
Number of flats and townhouses	0	0	38	76	186	+ 144,7
Total square metres	0	0	4 038	7 962	18 958	+ 138,1
Total value at current prices (R'000)	0	0	7 173	12 119	28 413	+ 134,5
Other residential buildings ^{1/}						
Total square metres	0	0	0	0	0	..
Total value at current prices (R'000)	0	0	0	0	0	..
Total value of residential buildings at current prices (R'000)	8 509	8 754	15 360	35 683	52 261	+ 46,5
Non-residential buildings						
Office and banking space						
Total square metres	0	0	0	0	0	..
Total value at current prices (R'000)	0	0	0	0	0	..
Shopping space						
Total square metres	3 012	0	0	4 569	0	..
Total value at current prices (R'000)	4 688	0	0	7 802	0	..
Industrial and warehouse space						
Total square metres	6 439	0	0	6 439	2 270	- 64,7
Total value at current prices (R'000)	6 600	0	0	6 600	1 362	- 79,4
Other non-residential space ^{2/}						
Total square metres	1 977	0	0	1 977	942	- 52,4
Total value at current prices (R'000)	2 836	0	0	2 836	2 355	- 17,0
Total value of non-residential buildings at current prices (R'000)	14 124	0	0	17 238	3 717	- 78,4
Additions and alterations						
Dwelling-houses						
Total square metres	5 529	3 341	2 101	10 867	7 377	- 32,1
Total value at current prices (R'000)	6 250	4 095	2 738	12 628	9 514	- 24,7
Other buildings ^{3/}						
Total square metres	1 029	1 002	295	1 512	1 403	- 7,2
Total value at current prices (R'000)	5 937	3 438	721	8 852	5 959	- 32,7
Total value of additions and alterations at current prices (R'000)	12 187	7 533	3 459	21 480	15 473	- 28,0
Total value of buildings completed at current prices (R'000)	34 820	16 287	18 819	74 401	71 451	- 4,0

1/ Other residential buildings include institutions for the disabled, boarding houses, old people's homes, hostels, hotels, motels, guest houses, holiday chalets, entertainment centres, bed-and-breakfast accommodation and casinos.

2/ Other non-residential space includes churches, sport and recreation clubs, schools, crèches, hospitals and all other non-residential space.

3/ Other buildings include additions and alterations to other residential buildings, non-residential buildings and internal alterations.

Explanatory notes

Introduction	<p>1 Statistics South Africa (Stats SA) conducts a monthly Building Statistics Survey collecting information regarding building plans passed and buildings completed, financed by the private sector, from a sample of 124 local government institutions in South Africa. According to these institutions, they are not always notified about low-cost housing projects. This statistical release contains information of building plans passed and buildings completed in respect of residential buildings, non-residential buildings and additions and alterations according to province and selected urban areas.</p> <p>2 In order to improve timeliness of the publication, some information for the current month have been estimated due to late submission by respondents. These estimates will be revised in the next statistical release(s) as soon as actual information is available.</p>
Purpose of the survey	<p>3 The Building Statistics Survey is a survey covering a sample of local government institutions in South Africa. The information received is used to estimate key economic statistics used by the private and public sectors. The information is also used to compile estimates of the Gross Domestic Product (GDP).</p>
Scope of the survey	<p>4 This survey covers local government institutions conducting activities for the private sector regarding -</p> <ul style="list-style-type: none"> • approval of building plans; and • final inspection of completed buildings.
Classification	<p>5 The 1993 edition of the <i>Standard Industrial Classification of all Economic Activities</i>, (SIC) Fifth Edition, Report No. 09-90-02, was used to classify the statistical units. The SIC is based on the 1990 <i>International Standard Industrial Classification of all Economic Activities</i> (ISIC) with suitable adaptations for local conditions.</p> <p>6 The twelfth and last published edition of the <i>Standard Code List of Areas</i>, Report No. 09-09-03 (1994) was used to classify the statistical units according to province. The cities, towns and non-urban areas listed in this report are codified within province. The code list was compiled by Stats SA in collaboration with other interested bodies and the first edition was distributed in June 1977. However, exceptions occur in respect of the new cross-border municipalities. GaRankuwa, which was previously classified in North West according to the <i>Standard Code List of Areas</i>, Report No. 09-09-03(1994), is included under City of Tshwane in Gauteng as from January 2002.</p>
Statistical unit	<p>7 The statistical unit for the collection of information is a local government institution. Local government institutions include district municipalities, metropolitan municipalities and local municipalities.</p>
Survey methodology and design	<p>8 The sample for the monthly Building Statistics Survey consists of the largest local government institutions in South Africa. The survey is collected by mail each month from a sample of 128 local government institutions.</p>
Constant prices	<p>9 The value of building plans passed and buildings completed at constant prices measures building activities in terms of ruling prices in a specific base year, which is 2000 as from May 2002.</p> <p>10 The value of building plans passed at constant prices for each month is obtained by deflating the values at current prices with a price index known as the “lump sum domestic buildings” as published in statistical release P0151: <i>JBCC Contract Price Adjustment Provisions Work Group Indices</i>. In order to be applicable, these indices (base February 1991=100) are converted to the base year 2000=100.</p>

- 11** The value of buildings completed at constant prices is obtained by deflating the values at current prices with the same price index which is used to calculate building plans passed at constant prices (see paragraph 10). The value of buildings completed is reported as at the time the plans were passed. Since the completion of buildings may extend over a few months to a few years, the current value of buildings completed is deflated by price indices as at the time the plans were passed in order to calculate the value of buildings completed at the time the plans were passed. Therefore, the duration of the completion of different types of buildings are taken into account in ascertaining the deflators e.g. the value of dwelling-houses completed at constant prices at January 2000 is obtained by deflating the current value of dwelling-houses completed for January 2000 with the price index of a month six months prior to January 2000. Furthermore, the value of other residential buildings, non-residential buildings and additions and alterations at constant prices is obtained by deflating the current values with price indices of 12 months, 18 months and 12 months prior to the relevant month, respectively.
- Seasonal adjustment** **12** Seasonally adjusted estimates of building plans passed and buildings completed are generated each month, using the X-11 Seasonal Adjustment Program developed by US Bureau of the Census Economic Research and Analyses Division, 1968.
- 13** Seasonal adjustment is a means of removing the estimated effects of normal seasonal variation from the series so that the effects of other influences on the series can be more clearly recognised. Seasonal adjustment does not aim to remove irregular or non-seasonal influences which may be present in any particular month. Influences that are volatile or unsystematic can still make it difficult to interpret the movement of the series even after adjustment for seasonal variations. Therefore, the month-to-month movements of seasonally adjusted estimates may not be reliable indicators of trend behaviour.
- Trend cycle** **14** The trend is a long-term pattern or movement of a time series. The X-11 Seasonal Adjustment Program is used for smoothing seasonally adjusted data.
- Related publications** **15** Users may also wish to refer to the following publications:
- P5041.3: *Building Statistics* issued annually.
 - P9101.2: *Actual and expected expenditure on construction by the public sector per statistical region* issued annually.
 - *Bulletin of Statistics* issued quarterly.
 - *South African Statistics* issued annually.
- Unpublished statistics** **16** In some cases Stats SA can also make available statistics which are not published. The statistics can be made available in one or more of the following ways: computer printouts, CD and diskette. Generally a charge is made for providing unpublished statistics.
- Rounding-off of figures** **17** The figures in the tables have, where necessary, been rounded off to the nearest digit shown. There may, therefore, be slight discrepancies between the sums of the constituent items and the totals shown.
- Pre-release policy** **18** Stats SA's pre-release policy may be inspected at its Website, www.statssa.gov.za

Symbols and abbreviations

..	no meaningful percentage change between two specified periods available since either one or both of the totals are nil
0	nil or figure too small to publish
*	revised
Stats SA	Statistics South Africa
SIC	Standard Industrial Classification of all Economic Activities
ISIC	International Standard Industrial Classification of all Economic Activities
JBCC	Joint Building Contracts Committee
CD	Compact Disc
US	United States
SARB	South African Reserve Bank
DTI	Department of Trade and Industry

Local government institutions covered in the sample survey

Table C - Classification of towns and cities according to names of local government institutions before and after boundaries and name changes by province

Western Cape			
Sample survey as from January 2002		Sample survey up to December 2001	
Name of local government institution after boundaries and name changes	Cities and towns	Name of local government institution before boundaries and name changes	Cities and towns
Breede Valley Municipality	Worcester Rawsonville De Doorns Touws River	Worcester	Worcester
		Breede River District Council	Rural areas - Dissolved as from July 2001. Activities were taken government institutions.
City of Cape Town - Blaauwberg Administration	Milnerton	Blaauwberg Municipality	Milnerton
Cape Town Administration	Cape Town	City of Cape Town	Cape Town
Helderberg Administration	Gordon's Bay, Somerset West and Strand	Helderberg Municipality	Gordon's Bay, Somerset West and Strand
Ikapa Administration	Guguletu, Langa, Khayelitsha and Nyanga	Ikapa	Guguletu, Langa, Khayelitsha and Nyanga
Oostenberg Administration -	Brackenfell Kraaifontein Kuils River Melton Rose - Blue Downs	Oostenberg Municipality -	Brackenfell Kraaifontein Kuils River Melton Rose - Blue Downs
South Peninsula Administration -	Fish Hoek Simon's Town Plumstead	Fish Hoek Simon's Town South Peninsula Municipality	Fish Hoek Simon's Town Plumstead
Tygerberg Administration - Bellville Administration Durbanville Administration Goodwood Administration Lingeletu West Administration Parow Administration South Administration	City of Tygerberg - Bellville Durbanville Goodwood Lingeletu West Parow Belhar, Delft, Driftsands and Efuleni	City of Tygerberg - Bellville Administration Durbanville Administration Goodwood Administration Lingeletu West Administration Parow Administration South Administration	Bellville Durbanville Goodwood Lingeletu West Parow Belhar, Delft, Driftsands and Efuleni
Drakenstein Municipality	Paarl Wellington Saron ¹	Paarl Wellington	Paarl Wellington
George Municipality	George, Herolds Bay, Pacaltsdorp and Thembaletu Wilderness ¹	George	George, Herolds Bay, Pacaltsdorp and Thembaletu

¹ Included in sample survey as from January 2001.

Table C - Classification of towns and cities according to names of local government institutions before and after boundaries and name changes by province (continued)

Western Cape (concluded)			
Sample survey as from January 2002		Sample survey up to December 2001	
Name of local government institution after boundaries and name changes	Cities and towns	Name of local government institution before boundaries and name changes	Cities and towns
Knysna Municipality	Knysna and Khayaletu Sedgfield	Knysna Sedgfield	Knysna and Khayaletu Sedgfield
Mossel Bay Municipality	Mossel Bay, Boggom's Bay, Kleinbrak, Rheeboek and Tergniet Friemersheim, Herbertsdale and Great Brak River ¹	Mossel Bay	Mossel Bay, Boggom's Bay, Kleinbrak, Rheeboek and Tergniet
Oudtshoorn Municipality	Oudtshoorn De Rust/Blomnek Dysselsdorp	Oudtshoorn	Oudtshoorn
		Overberg District Council	Rural areas - Dissolved as from July 2001. Activities were taken over by various local government institutions.
Overstrand Municipality	Hermanus, Fisher Haven, Hawston, Onrus River, Sandbaai, Vermont and Zwelihle Hangklip - Kleinmond, Betty's Bay and Rooi-Els Gansbaai and Stanford ¹	Hermanus Hangklip - Kleinmond	Hermanus, Fisher Haven, Hawston, Onrus River, Sandbaai, Vermont and Zwelihle Hangklip - Kleinmond, Betty's Bay and Rooi-Els ¹
Plettenberg Bay Municipality	Plettenberg Bay Knoetzie ¹	Plettenberg Bay	Plettenberg Bay
Saldanha Bay Municipality	Vredenburg and Saldanha Hopefield and Langebaan ¹	Western Coast Peninsula	Vredenburg and Saldanha
Stellenbosch Municipality	Stellenbosch Franschoek and Pniel	Stellenbosch	Stellenbosch
Swartland Municipality	Malmesbury Darling, Koringberg, Moorreesburg and Yzerfontein ¹	Malmesbury	Malmesbury
		West Coast District Council	Rural areas - Dissolved as from July 2001. Activities were taken over by various local government institutions
		Winelands District Council	Rural areas - Dissolved as from July 2001. Activities were taken over by various local government institutions

¹ Included in sample survey as from January 2001.

Table C - Classification of towns and cities according to names of local government institutions before and after boundaries and name changes by province (continued)

Eastern Cape			
Sample survey as from January 2002		Sample survey up to December 2001	
Name of local government institution after boundaries and name changes	Cities and towns	Name of local government institution before boundaries and name changes	Cities and towns
Buffalo City Municipality ¹ - East London Area King William's Town Area	East London, Beacon Bay, Gompo Town, Gonubie and Mdantsane King William's Town, Bisho and Zwelitsha	East London King William's Town	East London, Beacon Bay, Gompo Town, Gonubie and Mdantsane King William's Town, Bisho and Zwelitsha
King Sabata Dalindyebo Municipality - Umtata Area	Umtata	Umtata	Umtata
Kouga Municipality	Jeffreys Bay Humansdorp Hankey Patensie Oesterbaai Gamtoos St Francis Bay ² Cape St Francis ² Kromrivier ²	Jeffreys Bay	Jeffreys Bay
Makana Municipality - Grahamstown Area	Grahamstown and Rhini Township	Grahamstown	Grahamstown and Rhini Township
Maletswai Municipality - Aliwal North Area	Aliwal North and Dukathole	Aliwal - Maletswai	Aliwal North and Dukathole
Ndlambe Municipality	Port Alfred Alexandria Bathurst Boesmansriviermond Kenton-on-Sea	Port Alfred	Port Alfred
Nelson Mandela Metropolitan Municipality - Despatch Area ³ Port Elizabeth Area Uitenhage and Despatch Area	Despatch Port Elizabeth, Ibhayi and Motherwell Uitenhage, KwaNobuhle and Despatch	Despatch Port Elizabeth Uitenhage	Despatch Port Elizabeth, Ibhayi and Motherwell Uitenhage and KwaNobuhle
		Western District Council	Rural areas - Dissolved as from July 2001. Activities were taken over by various local government institutions

¹ East London and King William's Town amalgamated during 2003.² Included in sample survey as from January 2003.³ Despatch amalgamated with Uitenhage during 2003.

Table C - Classification of towns and cities according to names of local government institutions before and after boundaries and name changes by province (continued)

Northern Cape			
Sample survey as from January 2002		Sample survey up to December 2001	
Name of local government institution after boundaries and name changes	Cities and towns	Name of local government institution before boundaries and name changes	Cities and towns
//Khara Hais Municipality	Upington and Paballelo	Upington	Upington and Paballelo
		Benede-Oranje District Council	Rural areas - Dissolved as from July 2001. Activities were taken over by various local government institutions.
Ga-Segonyana Municipality	Kuruman and Mothibistad	Kuruman	Kuruman and Mothibistad
Kai! Garib Municipality - Keimoes Area	Keimoes Eksteenskuil ¹ Kenhardt ¹	Keimoes	Keimoes
		Namaqualand District Council	Rural areas - Dissolved as from July 2001. Activities were taken over by various local government institutions.
Sol Plaatje Municipality	Kimberley and Galeshewe Ritchie ¹	Kimberley	Kimberley and Galeshewe

¹ Included in sample survey as from January 2001.

Table C - Classification of towns and cities according to names of local government institutions before and after boundaries and name changes by province (continued)

Free State			
Sample survey as from January 2002		Sample survey up to December 2001	
Name of local government institution after boundaries and name changes	Cities and towns	Name of local government institution before boundaries and name changes	Cities and towns
Dihlabeng Municipality	Bethlehem and Bohlokong Clarens Fouriesburg Paul Roux Rosendal	Bethlehem	Bethlehem and Bohlokong
Maluti a Phofung Municipality Harrismith Area Phuthaditjhaba Area	Harrismith and Tsiamé Phuthaditjhaba	Harrismith Phuthaditjhaba	Harrismith and Tsiamé Phuthaditjhaba
Mangaung Municipality - Bloemfontein Area Botshabelo Area	Bloemfontein, Bainsvlei, Bloemspruit and Mangaung Botshabelo	Bloemfontein Botshabelo	Bloemfontein, Bainsvlei, Bloemspruit and Mangaung Botshabelo
Mantsopa Municipality	Ladybrand and Manyatseng Excelsior Hobhouse Thaba Patchoa Tweespruit/Kopano	Ladybrand	Ladybrand and Manyatseng
Matjhabeng Municipality - Odendaalsrus Area Virginia Area Welkom Area	Odendaalsrus, Allanridge and Kutlwanong Virginia and Meloding Welkom and Thabong	Odendaalsrus Virginia Welkom	Odendaalsrus, Allanridge and Kutlwanong Virginia and Meloding Welkom and Thabong
Metsimaholo Municipality - Deneysville Area Sasolburg Area	Deneysville , Refengkgotso and Oranjeville Sasolburg and Zamdela	Deneysville/Refengkgotso Sasolburg/Zamdela	Deneysville and Refengkgotso Sasolburg and Zamdela
Moqhaka Municipality - Kroonstad Area	Kroonstad and Maokeng	Kroonstad	Kroonstad and Maokeng
Nqwathe Municipality	Parys Edenville Heibron Koppies Vredefort	Parys	Parys

Table C - Classification of towns and cities according to names of local government institutions before and after boundaries and name changes by province (continued)

KwaZulu-Natal			
Sample survey as from January 2002		Sample survey up to December 2001	
Name of local government institution after boundaries and name changes	Cities and towns	Name of local government institution before boundaries and name changes	Cities and towns
Emnambithi Municipality	Ladysmith Colenso Nkanyesi	Ladysmith	Ladysmith
eThekweni Municipality - Inner West Operational Entity	Clermont, KwaDabeka, KwaNdengezi, New Germany, Pinetown, Queensburgh, Reservoir Hills, Shallcross and Westville	Inner West City Council	Clermont, KwaDabeka, KwaNdengezi, New Germany, Pinetown, Queensburgh, Reservoir Hills, Shallcross and Westville
Outer West Operational Entity	Assagay, Botha's Hill, Cato Ridge, Drummond, Everton, Gillitts, Hillcrest, Inchanga, Kloof, Mpumalanga and Waterfall	Outer West Local Council	Assagay, Botha's Hill, Cato Ridge, Drummond, Everton, Gillitts, Hillcrest, Inchanga, Kloof, Mpumalanga and Waterfall
KwaMashu	KwaMashu	KwaMashu	KwaMashu
Durban- North, South and Central	Durban	Durban	Durban
North Operational Entity - Tonga	Tonga, Canelands and Hambanati	North Local Council - Tonga	Tonga, Canelands and Hambanati
Umlanga Rocks	Umlanga Rocks, Mount Edgecombe and Umdloti Beach	North Local Council - Umlanga	Umlanga Rocks, Mount Edgecombe and Umdloti Beach
Verulam	Verulam	North Local Council - Verulam	Verulam
South Operational Entity	Amanzimtoti, Isipingo, Kingsburgh, KwaMakuta and Umbogintwini	South Local Council	Amanzimtoti, Isipingo, Kingsburgh, KwaMakuta and Umbogintwini
Umlazi	Umlazi	Umlazi	Umlazi
Greater Kokstad Municipality	Kokstad	Kokstad	Kokstad
Hibiscus Coast Municipality	Margate and Uvongo Marina Beach, San Lameer, Southbroom and Trafalgar Port Shepstone Hibberdene Munster, Port Edward and Palm Beach	Margate Mpenjati/Southbroom Port Shepstone Umtamvuna/Port Edward	Margate and Uvongo Marina Beach, San Lameer, Southbroom and Trafalgar Port Shepstone Munster, Port Edward and Palm Beach

Table C - Classification of towns and cities according to names of local government institutions before and after boundaries and name changes by province (continued)

KwaZulu-Natal (concluded)			
Sample survey as from January 2002		Sample survey up to December 2001	
Name of local government institution after boundaries and name changes	Cities and towns	Name of local government institution before boundaries and name changes	Cities and towns
KwaDukuza Municipality ¹ - Dolphin Coast Administrative Entity	Ballito, Etete, Shakaskraal, Tinley Manor Beach and Umhlali Beach	Dolphin Coast Borough	Ballito, Etete, Shakaskraal, Tinley Manor Beach and Umhlali Beach
Stanger Administrative Entity	Blythedale Beach, Shakaville and Stanger Nkwazi/Zinkwazi	KwaDukuza/Stanger	Blythedale Beach, Shakaville and Stanger
Msunduzi Municipality	Edendale Ashburton ² , Pietermaritzburg and Msundini	Edendale Pietermaritzburg/Msundini	Edendale Pietermaritzburg and Msundini
Newcastle Municipality	Blaauwboschlaagte, Madadeni, Osizweni and Newcastle	Newcastle	Blaauwboschlaagte, Madadeni, Osizweni and Newcastle
Umdoni Municipality	Pennington Scottburgh/Umzinto	Pennington	Pennington
Umdlathuze Municipality	Empangeni and Ngwelezana Richards Bay	Empangeni-Ngwelezana Richards Bay	Empangeni and Ngwelezana Richards Bay
Umngeni Municipality	Hilton Howick	Hilton Howick	Hilton Howick
Uthungulu District Council ²	KwaMbonambi, Nkandla and Ntambanana Municipalities	Development and Services Board - North Coast	KwaMbonambi, Nkandla, Tugela Mouth, Umlalazi, Mahlabathini, Ukuza, Umbambo, Engwavuma and Hluhluwe

¹ Dolphin Coast and Stanger amalgamated during 2003.² Included in sample survey as from January 2001.

Table C - Classification of towns and cities according to names of local government institutions before and after boundaries and name changes by province (continued)

North West			
Sample survey as from January 2002		Sample survey up to December 2001	
Name of local government institution after boundaries and name changes	Cities and towns	Name of local government institution before boundaries and name changes	Cities and towns
		Bophirima District Council	Rural areas - Dissolved as from July 2001. Activities were taken over by various local government institutions.
Ditsobotla Local Municipality	Lichtenburg and Itsoseng Biesiesvlei ¹ Coligny ¹	Lichtenburg	Lichtenburg and Itsoseng
Klerksdorp Local Municipality	Klerksdorp Orkney and Kanana Hartbeesfontein ¹ Stillfontein ¹	Klerksdorp Orkney	Klerksdorp Orkney and Kanana
GaRankuwa	As from January 2002 included in City of Tshwane - Northern Metropolitan Substructure (Gauteng)	GaRankuwa	GaRankuwa
Madibeng Local Municipality	Brits and Lethabile Hartbeespoort	Brits	Brits and Lethabile
Mafikeng Local Municipality	Mmabatho and Mafikeng	Mmabatho	Mmabatho and Mafikeng
Naledi Municipality	Vryburg	Vryburg	Vryburg
Potchefstroom Municipality	Potchefstroom	Potchefstroom	Potchefstroom
Rustenburg Local Municipality - Rustenburg Area	Rustenburg	Rustenburg	Rustenburg
Zeerust Local Municipality	Zeerust	Zeerust	Zeerust

¹ Included in sample survey as from January 2001.

Table C - Classification of towns and cities according to names of local government institutions before and after boundaries and name changes by province (continued)

Gauteng			
Sample survey as from January 2002		Sample survey up to December 2001	
Name of local government institution after boundaries and name changes	Cities and towns	Name of local government institution before boundaries and name changes	Cities and towns
City of Johannesburg Metropolitan Municipality	Alexandra and Sandton Midrand, Rabie Ridge and Ivory Park Randburg Ennerdale, Lenasia and Johannesburg Diepmeadow, Dobsonville and Roodepoort Soweto	Greater Johannesburg - Eastern Metropolitan Local Council Midrand Metropolitan Local Council Northern Metropolitan Local Council Southern Metropolitan Local Council Western Metropolitan Local Council Soweto	Alexandra and Sandton Midrand, Rabie Ridge and Ivory Park Randburg Ennerdale, Lenasia and Johannesburg Diepmeadow, Dobsonville and Roodepoort Soweto
City of Tshwane Metropolitan Municipality - Southern Region Central Region Northern Region	Centurion Pretoria, Atteridgeville and Mamelodi Akasia, Elandsdoorn, Klipfontein, Kruisfontein and Soshanguve Hammanskraal GaRankuwa ¹ Temba Winterveld ¹	Centurion Pretoria Akasia	Centurion Pretoria, Atteridgeville and Mamelodi Akasia, Elandsdoorn, Klipfontein, Kruisfontein and Soshanguve
		Eastern Services Council - Pretoria Area	Rural areas - Dissolved as from July 2001. Activities were taken over by various local government institutions.
Ekurhuleni Metropolitan Municipality - Service Delivery Centre of: Edenvale - Modderfontein Alberton Benoni Boksburg Brakpan Duduza Germiston Kempton Park Nigel Springs	Edenvale - Modderfontein Alberton and Tokoza Benoni, Daveyton and Wattville Boksburg and Vosloorus Brakpan and Tsakane Duduza Germiston, Bedfordview and Katlehong Kempton Park and Tembisa Nigel Springs and KwaThema	Edenvale - Modderfontein Alberton Benoni Boksburg Brakpan Duduza Germiston Kempton Park Nigel Springs	Edenvale - Modderfontein Alberton and Tokoza Benoni, Daveyton and Wattville Boksburg and Vosloorus Brakpan and Tsakane Duduza Germiston, Bedfordview and Katlehong Kempton Park and Tembisa Nigel Springs and KwaThema

¹ Was previously included under North West.

Table C - Classification of towns and cities according to names of local government institutions before and after boundaries and name changes by province (continued)

Gauteng (concluded)			
Sample survey as from January 2002		Sample survey up to December 2001	
Name of local government institution after boundaries and name changes	Cities and towns	Name of local government institution before boundaries and name changes	Cities and towns
Emfuleni Local Municipality	Vanderbijlpark Vereeniging and Evaton Sebokeng (Boipatong, Bophelong and Sharpville)	Vanderbijlpark Vereeniging Sebokeng	Vanderbijlpark Vereeniging and Evaton Sebokeng (Boipatong, Bophelong and Sharpville)
Kungwini Local Municipality –	Bronkhorstspuit Silver Lakes Mooikloof and rural areas Ekangala ¹	Bronkhorstspuit	Bronkhorstspuit
Lesedi Local Municipality	Heidelberg and Ratanda	Heidelberg	Heidelberg and Ratanda
Merafong City Local Municipality	Carletonville, Wedela, Khutsong and Welverdient	Carletonville	Carletonville, Wedela, Khutsong and Welverdient
Midvaal Local Municipality	Meyerton	Meyerton	Meyerton
Mogale City Municipality	Krugersdorp, Kagiso and Munsieville	Krugersdorp	Krugersdorp, Kagiso and Munsieville
Randfontein Local Municipality	Randfontein and Mohlakeng	Randfontein	Randfontein and Mohlakeng
Westonaria Local Municipality	Westonaria and Bekkersdal	Westonaria	Westonaria and Bekkersdal

¹ Included in sample survey as from January 2003.

Table C - Classification of towns and cities according to names of local government institutions before and after boundaries and name changes by province (continued)

Mpumalanga			
Sample survey as from January 2002		Sample survey up to December 2001	
Name of local government institution after boundaries and name changes	Cities and towns	Name of local government institution before boundaries and name changes	Cities and towns
Delmas Municipality	Delmas and Botleng	Delmas	Delmas and Botleng
Emalahleni Local Municipal Council- KwaGuqa Area Witbank Area	KwaGuqa Witbank	KwaGuqa Witbank	KwaGuqa Witbank
Govan Mbeki Municipality	Evander, Embalenhle and Secunda Bethal ² Leandra ²	Highveldridge Transitional Council	Evander, Embalenhle and Secunda
Mbombela Local Municipality	Nelspruit and Kanyamazane White River Hazyview ¹	Nelspruit White River	Nelspruit White River
Middelburg Municipality	Middelburg and Mhluzi Hendrina and KwaZamokhule ¹	Middelburg	Middelburg and Mhluzi
Msukaligwa Municipality	Ermelo, Cassim Park and Wesselton Breyton	Ermelo	Ermelo, Cassim Park and Wesselton
Nkomazi Municipality - Komatipoort Area Malelane Area	Komatipoort and Kamaqhekeza Malelane, Hectorspruit and Kamhlushwa	Komatipoort Malelane	Komatipoort and Kamaqhekeza Malelane, Hectorspruit and Kamhlushwa

¹ Included in sample survey as from January 2001.² Included in the sample survey as from January 2003.

Table C - Classification of towns and cities according to names of local government institutions before and after boundaries and name changes by province (concluded)

Limpopo			
Sample survey as from January 2002		Sample survey up to December 2001	
Name of local government institution after boundaries and name changes	Cities and towns	Name of local government institution before boundaries and name changes	Cities and towns
		Bosveld District Council	Rural areas - Dissolved as from July 2001. Activities were taken over by various local government institutions.
Greater Tzaneen Municipality	Tzaneen and Nkowakowa	Letaba	Tzaneen and Nkowakowa
Musina Municipality	Musina (previously Messina)	Messina	Messina
Modimolle Municipality	Modimolle (previously Nylstroom)	Nylstroom	Nylstroom
Mogolakwena Municipality	Mokopane (previously Potgietersrus)	Potgietersrus	Potgietersrus
Mookgopong Municipality	Naboomspruit and Mookgopong	Naboomspruit	Naboomspruit and Mookgopong
Polokwane Municipality	Polokwane (previously Pietersburg) and Seshego	Pietersburg - Polokwane	Pietersburg and Seshego
Thabazimbi Municipality	Thabazimbi	Thabazimbi	Thabazimbi

Table D - Classification of selected urban areas according to names of local government institutions before and after boundaries and name changes

Sample survey as from January 2002		Sample survey up to December 2001	
Name of local government institution after boundaries and name changes	Cities and towns	Name of local government institution before boundaries and name changes	Cities and towns
Selected urban areas: Cape Town		Selected urban areas: Cape Town	
City of Cape Town - Blaauwberg Administration	Milnerton	Blaauwberg Municipality	Milnerton
Cape Town Administration	Cape Town	City of Cape Town	Cape Town
Ikapa Administration	Guguletu, Langa, Khayelitsha and Nyanga	Ikapa	Guguletu, Langa, Khayelitsha and Nyanga
Oostenberg Administration -	Kraaifontein Melton Rose - Blue Downs	Oostenberg Municipality -	Kraaifontein Melton Rose - Blue Downs
South Peninsula Administration -	Fish Hoek Simon's Town Plumstead	Fish Hoek Simon's Town South Peninsula Municipality	Fish Hoek Simon's Town Plumstead
Tygerberg Administration - Bellville Administration Durbanville Administration Goodwood Administration Lingeletu West Administration Parow Administration South Administration	City of Tygerberg - Bellville Durbanville Goodwood Lingeletu West Parow Belhar, Delft, Driftsands and Efuleni	City of Tygerberg - Bellville Administration Durbanville Administration Goodwood Administration Lingeletu West Administration Parow Administration South Administration	Bellville Durbanville Goodwood Lingeletu West Parow Belhar, Delft, Driftsands and Efuleni
Selected urban areas: Port Elizabeth		Selected urban areas: Port Elizabeth	
Nelson Mandela Metropolitan Municipality - Despatch Area ¹	Despatch	Despatch	Despatch
Port Elizabeth Area	Port Elizabeth, Ibhayi and Motherwell	Port Elizabeth	Port Elizabeth, Ibhayi and Motherwell
Uitenhage Area	Uitenhage and KwaNobuhle	Uitenhage	Uitenhage and KwaNobuhle

¹ Despatch amalgamated with Uitenhage during 2003.

Table D - Classification of selected urban areas according to names of local government institutions before and after boundaries and name changes (continued)

Sample survey as from January 2002		Sample survey up to December 2001	
Name of local government institution after boundaries and name changes	Cities and towns	Name of local government institution before boundaries and name changes	Cities and towns
Selected urban areas: Durban eThekweni Municipality - Inner West Operational Entity	Clermont, KwaDabeka, KwaNdengezi, New Germany, Pinetown, Queensburgh, Reservoir Hills, Shallcross and Westville	Inner West City Council	Clermont, KwaDabeka, KwaNdengezi, New Germany, Pinetown, Queensburgh, Reservoir Hills, Shallcross and Westville
Outer West Operational Entity	Assagay, Botha's Hill, Cato Ridge, Drummond, Everton, Gillitts, Hillcrest, Inchanga, Kloof, Mpumalanga and Waterfall	Outer West Local Council	Assagay, Botha's Hill, Cato Ridge, Drummond, Everton, Gillitts, Hillcrest, Inchanga, Kloof, Mpumalanga and Waterfall
Durban- North, South and Central	Durban	Durban	Durban
North Operational Entity - Verulam	Verulam	North Local Council - Verulam	Verulam
South Operational Entity	Amanzimtoti, Isipingo, Kingsburgh, KwaMakuta and Umbogintwini	South Local Council	Amanzimtoti, Isipingo, Kingsburgh, KwaMakuta and Umbogintwini
Selected urban areas: Pretoria City of Tshwane Metropolitan Municipality - Southern Region Central Region Northern Region	Centurion Pretoria, Atteridgeville and Mamelodi Akasia, Elandsdoorn, Klipfontein, Kruisfontein and Soshanguve Hammanskraal GaRankuwa Temba Winterveld	Centurion Pretoria Akasia	Centurion Pretoria, Atteridgeville and Mamelodi Akasia, Elandsdoorn, Klipfontein, Kruisfontein and Soshanguve

Table D - Classification of selected urban areas according to names of local government institutions before and after boundaries and name changes (concluded)

Sample survey as from January 2002		Sample survey up to December 2001	
Name of local government institution after boundaries and name changes	Cities and towns	Name of local government institution before boundaries and name changes	Cities and towns
Selected urban areas: Witwatersrand City of Johannesburg Metropolitan Municipality	Alexandra and Sandton Midrand, Rabie Ridge and Ivory Park Randburg Ennerdale, Lenasia and Johannesburg Diepmeadow, Dobsonville and Roodepoort Soweto	Selected urban areas: Witwatersrand Greater Johannesburg - Eastern Metropolitan Local Council Midrand Metropolitan Local Council Northern Metropolitan Local Council Southern Metropolitan Local Council Western Metropolitan Local Council Soweto	Alexandra and Sandton Midrand, Rabie Ridge and Ivory Park Randburg Ennerdale, Lenasia and Johannesburg Diepmeadow, Dobsonville and Roodepoort Soweto
Ekurhuleni Metropolitan Municipality - Service Delivery Centre of: Edenvale - Modderfontein Alberton Benoni Boksburg Brakpan Duduza Germiston Kempton Park Nigel Springs	Edenvale - Modderfontein Alberton and Tokoza Benoni, Daveyton and Wattville Boksburg and Vosloorus Brakpan and Tsakane Duduza Germiston, Bedfordview and Katlehong Kempton Park and Tembisa Nigel Springs and KwaThema	Edenvale - Modderfontein Alberton Benoni Boksburg Brakpan Duduza Germiston Kempton Park Nigel Springs	Edenvale - Modderfontein Alberton and Tokoza Benoni, Daveyton and Wattville Boksburg and Vosloorus Brakpan and Tsakane Duduza Germiston, Bedfordview and Katlehong Kempton Park and Tembisa Nigel Springs and KwaThema
Mogale City Municipality	Krugersdorp, Kagiso and Munsieville	Krugersdorp	Krugersdorp, Kagiso and Munsieville
Randfontein Local Municipality	Randfontein and Mohlakeng	Randfontein	Randfontein and Mohlakeng
Westonaria Local Municipality	Westonaria and Bekkersdal	Westonaria	Westonaria and Bekkersdal
Merafong City Local Municipality	Carletonville, Wedela, Khutsong and Welverdient	Carletonville	Carletonville, Wedela, Khutsong and Welverdient
Lesedi Local Municipality	Heidelberg and Ratanda	Heidelberg	Heidelberg and Ratanda
Selected urban area: Bloemfontein Mangaung Municipality - Bloemfontein Area	Bloemfontein, Bainsvlei, Bloemspruit and Mangaung	Selected urban area: Bloemfontein Bloemfontein	Bloemfontein, Bainsvlei, Bloemspruit and Mangaung

Glossary

Additions and alterations	Additions and alterations include extensions to existing buildings as well as internal and external alterations of existing buildings.
Blocks of flats	Blocks of flats are regarded as high-density housing consisting of a number of self-contained dwelling-units with at least one living-room together with a kitchen and bathroom conjoined to similar units in one building.
Dwelling-house	A dwelling-house refers to a free-standing, complete structure on a separate stand or a self-contained dwelling-unit, granny flat, on the same premises as an existing residence. Out-buildings and garages are included.
Local government	A local government is a distinct and constitutionally defined sphere of government, pertaining to government that is not national or provincial in nature and is manifested in the form of municipalities. It is a generic term referring to municipalities and local authorities of varied nature and type involved in activities of a governmental nature in the local sphere.
Local government institutions	Local government institutions consist of local authorities and district councils as defined in terms of- <ul style="list-style-type: none"> • South African Constitution, 1996 (Act 108 of 1996); • Local Government Transition Act, 1993 (Act 209 of 1993); • Local Government Transition Act, Second Amendment Act, 1996 (Act 97 of 1996); and • Municipal Structures Act, 1998 (Act 117 of 1998).
Non-residential buildings	Non-residential buildings comprise factories, commercial, financial and other office buildings, as well as other buildings not used for residential purposes, such as churches, halls, clubs, schools and hospitals.
Other residential buildings	Other residential buildings include institutions for the disabled, boarding houses, old people's homes, hostels, hotels, motels, guest houses, holiday chalets, bed-and-breakfast accommodation, entertainment centres and casinos.
Percentage change	<p>When using monthly actual values, the percentage change is the change in actual values of building activities (building plans passed or buildings completed) of the relevant month compared with the actual values of building activities (building plans passed or buildings completed) of the same month in the previous year expressed as a percentage.</p> <p>When using annual actual values, the percentage change is the change in the actual values of building activities (building plans passed or buildings completed) of the relevant year compared with the actual values of building activities (building plans passed or buildings completed) of the previous year expressed as a percentage.</p> <p>When using seasonally adjusted values, the percentage change is the change in the seasonally adjusted values of building activities (building plans passed or buildings completed) of the relevant month compared with the seasonally adjusted values of building activities (building plans passed or buildings completed) of the previous month expressed as a percentage.</p>
Reference period	Reference period is one calendar month.
Residential buildings	Residential buildings comprise dwelling-houses, flats, townhouses and other residential buildings.
Townhouses	Townhouses are multiple, medium-density dwelling-units and include cluster housing, group housing, simplexes, duplexes, triplexes and other similar dwelling-units which are usually grouped together, with one level of each unit on ground level. This excludes blocks of flats.

General information

Stats SA publishes approximately 300 different statistical releases each year. It is not economically viable to produce them in more than one of South Africa's eleven official languages. Since the releases are used extensively, not only locally but also by international economic and social-scientific communities, Stats SA releases are published in English only.

Stats SA has copyright on this publication. Users may apply the information as they wish, provided that they acknowledge Stats SA as the source of the basic data wherever they process, apply, utilise, publish or distribute the data and also that they specify that the relevant application and analysis (where applicable) result from their own processing of the data.

Stats SA products

A complete set of Stats SA publications is available at the Stats SA Library and the following libraries:

National Library of South Africa, Pretoria Division
National Library of South Africa, Cape Town Division
Natal Society Library, Pietermaritzburg
Library of Parliament, Cape Town
Bloemfontein Public Library
Johannesburg Public Library
Eastern Cape Library Services, King William's Town
Central Regional Library, Polokwane
Central Reference Library, Nelspruit
Central Reference Collection, Kimberley
Central Reference Library, Mmabatho

Stats SA also provides a subscription service.

Electronic services

A large range of data are available via on-line services, diskette, CD and computer printouts. For more details about our electronic data services, contact (012) 310 8600/8390/8351/4892/8496/8095.

You can visit us on the Internet at: www.statssa.gov.za

Enquiries

Telephone number: (012) 310 8600/8390/8351/4892/8496/8095 (user information services)
(012) 310 8228/310 8007 (technical enquiries)
(012) 310 8161 (orders)
(012) 310 8490 (library)

Fax number: (012) 310 8182 (technical enquiries)

email: Thabelom@statssa.gov.za
Gretaz@statssa.gov.za

Postal address: Private Bag X44, Pretoria, 0001

Produced by Stats SA