

Selected building statistics of the private sector derived from data reported by local government institutions

March 2003

Co-operation between Statistics South Africa (Stats SA), the citizens of the country, the private sector and government institutions is essential for a successful statistical system. Without continued co-operation and goodwill, the timely release of relevant and reliable official statistics will not be possible.

**Embargo: 13:00
Date: 21 May 2003**

Stats SA publishes approximately three hundred different releases each year. It is not economically viable to produce them in more than one of South Africa's eleven official languages. Since the releases are used extensively, not only locally, but also by international economic and social-scientific communities, Stats SA releases are published in English only.

Key figures regarding building plans passed for the month ended March 2003

| Actual estimates at constant 2000 prices | March 2003 | January 2003 to March 2003 | Percentage change between March 2002 and March 2003 | Percentage change between January 2002 to March 2002 and January 2003 to March 2003 |
|---|----------------|----------------------------|---|---|
| | R million | R million | | |
| Residential buildings | | | | |
| Dwelling-houses | 710,7 | 1 944,0 | + 12,2 | + 5,5 |
| Flats, townhouses and other residential buildings | 342,2 | 769,0 | + 63,2 | + 24,5 |
| Total | 1 052,9 | 2 713,0 | + 24,9 | + 10,3 |
| Non-residential buildings | 173,1 | 706,5 | - 59,9 | - 12,1 |
| Additions and alterations | 462,8 | 1 276,8 | + 22,5 | + 10,6 |
| Total | 1 688,8 | 4 696,3 | + 2,2 | + 6,3 |

| Seasonally adjusted estimates at constant 2000 prices | March 2003 | Percentage change between February 2003 and March 2003 | Percentage change between October 2002 to December 2002 and January 2003 to March 2003 |
|---|----------------|--|--|
| | R million | | |
| Residential buildings | 1 013,3 | + 9,9 | - 17,7 |
| Non-residential buildings | 158,4 | - 25,0 | + 10,5 |
| Additions and alterations | 448,0 | - 5,1 | - 4,5 |
| Total | 1 619,7 | + 0,9 | - 10,6 |

Key findings regarding building plans passed for the first quarter of 2003

Seasonally adjusted real value of building plans passed decreases

The seasonally adjusted real value of building plans passed (at constant 2000 prices) for the first quarter of 2003 decreased by 10,6% compared with the fourth quarter of 2002.

The decrease of 10,6% in the seasonally adjusted real value of building plans passed was due to decreases reported for residential buildings (-17,7%) and additions and alterations (-4,5%) during the first quarter of 2003 compared with the fourth quarter of 2002. However, these decreases were partially counteracted by an increase in the seasonally adjusted real value of non-residential building plans passed (+10,5%) during the above-mentioned period.

Key findings regarding building plans passed for the month ended March 2003

Total real value of building plans passed increases

The total real value of building plans passed (at constant 2000 prices) during the first quarter of 2003 increased by 6,3% (+R278,6 million) to R4 696,3 million compared with the first quarter of 2002. Large increases in the real value of building plans passed were reported for residential buildings (+R253,5 million, mainly due to real increases reported for flats and townhouses (+R193,4 million) and dwelling-houses (+R102,0 million)) and additions and alterations (+R122,0 million). The largest real increases for flats and townhouses were reported by KwaZulu-Natal (+R103,1 million) and Gauteng (+R95,1 million). Regarding dwelling-houses, large real increases were also reported by KwaZulu-Natal (+R62,0 million) and Gauteng (+R21,6 million) during the above-mentioned period.

Five of the nine provinces reported increases in the total real value of building plans passed

The largest provincial contributors to the increase of 6,3% (+R278,6 million) in the total real value of building plans passed were KwaZulu-Natal (+8,8 percentage points or R388,9 million) and Western Cape (+2,2 percentage points or R98,6 million). However, these increases were partially counteracted by a large decrease reported by Gauteng (-3,4 percentage points or R150,8 million) (cf. table A). The largest real increases in KwaZulu-Natal were reported for shopping space (+R207,0 million, due to the real increase of R214,1 million reported by the selected urban areas of eThekwin Municipality) and flats and townhouses (+R103,1 million, due to the real increase of R112,1 million reported by North Operational Entity - Umhlanga Rocks). Western Cape reported large real increases for additions and alterations (+R85,1 million, mainly due to real increases reported by the selected urban areas of Cape Town (+R65,3 million)).

Table A - Contribution of provinces to the total real value of building plans passed

| Province | Percentage contribution to the total real value of plans passed during January 2002 to March 2002 | Percentage change between January 2002 to March 2002 and January 2003 to March 2003 | Contribution (percentage points) ^{1/} to the percentage change in the real value of plans passed between January 2002 to March 2002 and January 2003 to March 2003 | Difference in total real value of plans passed between January 2002 to March 2002 and January 2003 to March 2003 R million |
|---------------|---|---|---|---|
| KwaZulu-Natal | 10,4 | + 84,7 | + 8,8 | + 388,9 |
| Western Cape | 26,9 | + 8,3 | + 2,2 | + 98,6 |
| Northern Cape | 0,4 | + 18,2 | + 0,1 | + 3,4 |
| North West | 3,1 | + 2,8 | + 0,1 | + 3,8 |
| Free State | 3,1 | + 1,1 | + 0,0 | + 1,5 |
| Limpopo | 1,4 | - 2,1 | - 0,0 | - 1,3 |
| Eastern Cape | 5,7 | - 3,9 | - 0,2 | - 9,9 |
| Mpumalanga | 5,2 | - 24,3 | - 1,3 | - 55,6 |
| Gauteng | 43,8 | - 7,8 | - 3,4 | - 150,8 |
| Total | 100,0 | + 6,3 | + 6,3 | +278,6 |

1/ The contribution (percentage points) is calculated by multiplying the percentage change of each province between January 2002 to March 2002 and January 2003 to March 2003 (cf. column 3) with the percentage contribution of the corresponding province to the total real value of plans passed during January 2002 to March 2002 (cf. column 2) divided by 100.

Key figures regarding buildings completed for the month ended March 2003

Actual estimates at constant 2000 prices

| | March 2003 | January 2003 to March 2003 | Percentage change between March 2002 and March 2003 | Percentage change between January 2002 to March 2002 and January 2003 to March 2003 |
|-----------------------------|----------------|----------------------------|---|---|
| | R million | R million | | |
| Residential buildings | | | | |
| Dwelling-houses | 450,2 | 1 154,2 | + 22,1 | + 11,6 |
| Flats and townhouses | 118,8 | 455,4 | + 28,6 | + 8,9 |
| Other residential buildings | 5,5 | 51,0 | - 97,3 | - 75,4 |
| Total | 574,5 | 1 660,6 | - 13,5 | + 0,0 |
| Non-residential buildings | 285,6 | 570,4 | + 69,0 | + 29,2 |
| Additions and alterations | 208,1 | 668,3 | + 24,3 | + 26,1 |
| Total | 1 068,2 | 2 899,3 | + 6,8 | + 10,2 |

Seasonally adjusted estimates at constant 2000 prices

| | March 2003 | Percentage change between February 2003 and March 2003 | Percentage change between October 2002 to December 2002 and January 2003 to March 2003 |
|---------------------------|----------------|--|--|
| | R million | | |
| Residential buildings | 536,7 | - 14,6 | - 13,3 |
| Non-residential buildings | 345,5 | + 82,7 | - 10,4 |
| Additions and alterations | 175,5 | - 28,2 | - 11,5 |
| Total | 1 057,7 | - 0,4 | - 12,3 |

Key findings regarding buildings completed for the first quarter of 2003

Seasonally adjusted real value of buildings completed decreases

The seasonally adjusted real value of buildings completed (at constant 2000 prices) for the first quarter of 2003 decreased by 12,3% compared with the fourth quarter of 2002.

The decrease of 12,3% in the seasonally adjusted real value of buildings completed during the first quarter of 2003 compared with the fourth quarter of 2002 was due to decreases in the seasonally adjusted real value of residential buildings (-13,3%), additions and alterations (-11,5%) and non-residential buildings (-10,4%).

Key findings regarding buildings completed for the month ended March 2003

Total real value of buildings completed increases

The total real value of buildings completed (at constant 2000 prices) during the first quarter of 2003 increased by 10,2% (+R268,1 million) to R2 899,3 million compared with the first quarter of 2002. Large real increases were reported for additions and alterations (+R138,2 million, mainly due to real increases reported by Western Cape (+R44,2 million), KwaZulu-Natal (+R38,8 million), Eastern Cape (+R25,1 million) and Gauteng (+R22,6 million)), non-residential buildings (+R129,0 million, mainly due to increases reported by Gauteng (+R80,5 million) and Western Cape (+R60,3 million)) and dwelling-houses (+R120,3 million, mainly due to increases reported by Gauteng (+R107,7 million)).

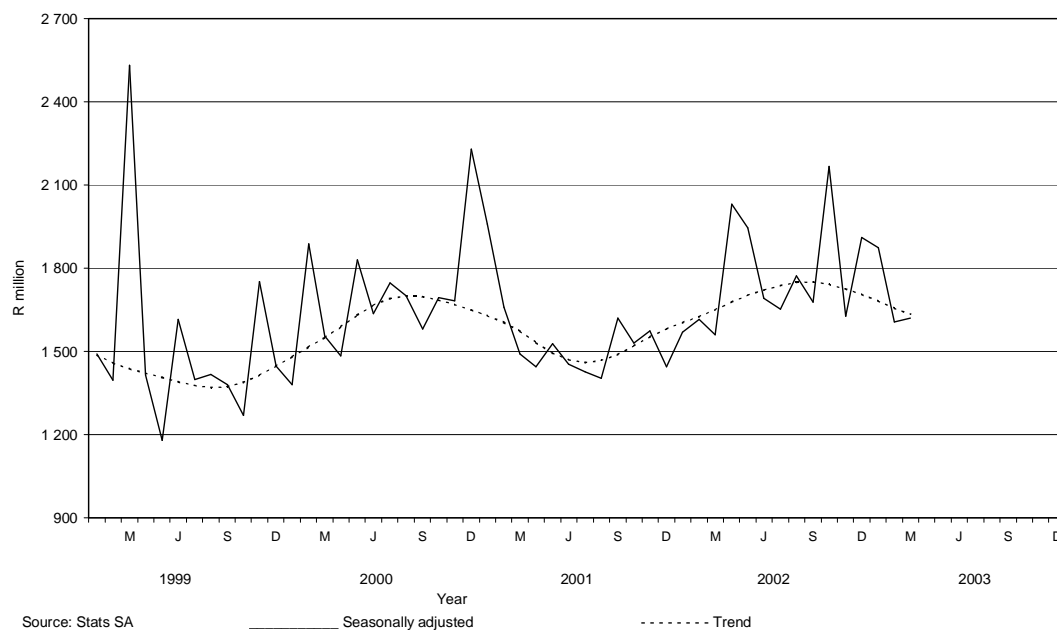
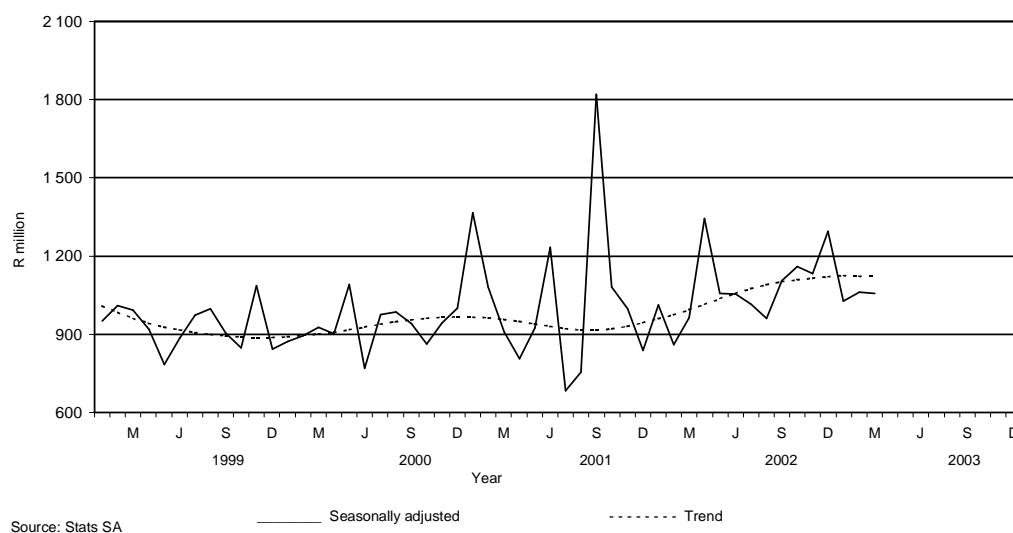
Eight of the nine provinces reported increases in the total real value of buildings completed

The largest provincial contributor to the increase of 10,2% (+R268,1 million) in the total real value of buildings completed was Gauteng (+8,6 percentage points or R227,7 million), followed by Western Cape (+3,3 percentage points or R86,7 million) and Mpumalanga (+2,4 percentage points or R61,7 million). However, these increases were partially counteracted by a large decrease reported by Limpopo (-7,3 percentage points or R192,6 million) (cf. table B). Large real increases in Gauteng were reported for dwelling-houses (+R107,7 million, mainly due to increases reported by the selected urban areas of City of Tshwane (+R54,1 million), Kungwini Local Municipality (+R28,8 million) and Witwatersrand (+R24,3 million)) and non-residential buildings (+R80,5 million, mainly due to increases reported by the selected urban areas of Witwatersrand (+R45,6 million) and City of Tshwane (+R28,9 million)). In Western Cape the largest real increase was reported for non-residential buildings (+R60,3 million, mainly due to real increases reported for office and banking space (+R62,0 million) and industrial and warehouse space (+R38,3 million)).

Table B - Contribution of provinces to the total real value of buildings completed

| Province | Percentage contribution to the total real value of buildings completed during January 2002 to March 2002 | Percentage change between January 2002 to March 2002 and January 2003 to March 2003 | Contribution (percentage points) ^{1/} to the percentage change in the real value of buildings completed between January 2002 to March 2002 and January 2003 to March 2003 | Difference in total real value of buildings completed between January 2002 to March 2002 and January 2003 to March 2003 R million |
|---------------|--|---|--|--|
| Gauteng | 34,2 | + 25,3 | + 8,6 | + 227,7 |
| Western Cape | 30,5 | + 10,8 | + 3,3 | + 86,7 |
| Mpumalanga | 1,9 | + 124,8 | + 2,4 | + 61,7 |
| North West | 3,2 | + 57,8 | + 1,8 | + 48,1 |
| Free State | 2,5 | + 24,1 | + 0,6 | + 15,9 |
| Eastern Cape | 4,9 | + 9,5 | + 0,5 | + 12,3 |
| KwaZulu-Natal | 14,1 | + 1,5 | + 0,2 | + 5,5 |
| Northern Cape | 0,5 | + 19,6 | + 0,1 | + 2,8 |
| Limpopo | 8,2 | - 89,5 | - 7,3 | - 192,6 |
| Total | 100,0 | + 10,2 | + 10,2 | + 268,1 |

1/ The contribution (percentage points) is calculated by multiplying the percentage change of each province between January 2002 to March 2002 and January 2003 to March 2003 (cf. column 3) with the percentage contribution of the corresponding province to the total real value of buildings completed during January 2002 to March 2002 (cf. column 2) divided by 100.

Figure 1 – Total real value of building plans passed**Figure 2 – Total real value of buildings completed**

pp
PJ Lehohla
 Statistician-General: Statistics South Africa

| | |
|---|--|
| Page | |
| Notes | 7 |
| Tables | |
| Table 1 | Actual values and percentage change of building plans passed at current prices according to type of building 8 |
| Table 2 | Seasonally adjusted values and percentage change of building plans passed at current prices according to type of building 9 |
| Table 3 | Actual values and percentage change of building plans passed at constant 2000 prices according to type of building 10 |
| Table 4 | Seasonally adjusted values and percentage change of building plans passed at constant 2000 prices according to type of building 11 |
| Table 5 | Actual values and percentage change of buildings completed at current prices according to type of building 12 |
| Table 6 | Seasonally adjusted values and percentage change of buildings completed at current prices according to type of building 13 |
| Table 7 | Actual values and percentage change of buildings completed at constant 2000 prices according to type of building 14 |
| Table 8 | Seasonally adjusted values and percentage change of buildings completed at constant 2000 prices according to type of building 15 |
| Table 9 | Building plans passed according to type of building: Total RSA 16 |
| Table 10 | Building plans passed according to type of building and province: Western Cape 17 |
| Table 11 | Building plans passed according to type of building and province: Eastern Cape 18 |
| Table 12 | Building plans passed according to type of building and province: Northern Cape 19 |
| Table 13 | Building plans passed according to type of building and province: Free State 20 |
| Table 14 | Building plans passed according to type of building and province: KwaZulu-Natal 21 |
| Table 15 | Building plans passed according to type of building and province: North West 22 |
| Table 16 | Building plans passed according to type of building and province: Gauteng 23 |
| Table 17 | Building plans passed according to type of building and province: Mpumalanga 24 |
| Table 18 | Building plans passed according to type of building and province: Limpopo..... 25 |
| Table 19 | Buildings completed according to type of building: Total RSA 26 |
| Table 20 | Buildings completed according to type of building and province: Western Cape 27 |
| Table 21 | Buildings completed according to type of building and province: Eastern Cape 28 |
| Table 22 | Buildings completed according to type of building and province: Northern Cape..... 29 |
| Table 23 | Buildings completed according to type of building and province: Free State 30 |
| Table 24 | Buildings completed according to type of building and province: KwaZulu-Natal 31 |
| Table 25 | Buildings completed according to type of building and province: North West 32 |
| Table 26 | Buildings completed according to type of building and province: Gauteng 33 |
| Table 27 | Buildings completed according to type of building and province: Mpumalanga 34 |
| Table 28 | Buildings completed according to type of building and province: Limpopo..... 35 |
| Table 29 | Building plans passed according to type of building and selected urban area: Cape Town 36 |
| Table 30 | Building plans passed according to type of building and selected urban area: Port Elizabeth 37 |
| Table 31 | Building plans passed according to type of building and selected urban area: Durban 38 |
| Table 32 | Building plans passed according to type of building and selected urban area: Witwatersrand 39 |
| Table 33 | Building plans passed according to type of building and selected urban area: Pretoria 40 |
| Table 34 | Building plans passed according to type of building and selected urban area: Bloemfontein 41 |
| Table 35 | Buildings completed according to type of building and selected urban area: Cape Town 42 |
| Table 36 | Buildings completed according to type of building and selected urban area: Port Elizabeth 43 |
| Table 37 | Buildings completed according to type of building and selected urban area: Durban 44 |
| Table 38 | Buildings completed according to type of building and selected urban area: Witwatersrand 45 |
| Table 39 | Buildings completed according to type of building and selected urban area: Pretoria 46 |
| Table 40 | Buildings completed according to type of building and selected urban area: Bloemfontein 47 |
| Additional information | |
| Explanatory notes | 48 |
| Technical notes | 50 |
| Local government institutions covered in the sample survey | |
| Table C – Classification of towns and cities according to new municipalities and previous local government institutions by province | 51 |
| Table D – Classification of selected urban areas according to new municipalities and previous local government institutions | 63 |
| Glossary | 66 |
| For more information | 68 |

Notes

| Forthcoming issues | Issue | Expected release date |
|---|---|------------------------------|
| | April 2003 | 18 June 2003 |
| | May 2003 | 16 July 2003 |
| | June 2003 | 20 August 2003 |
| | July 2003 | 17 September 2003 |
| | August 2003 | 15 October 2003 |
| | September 2003 | 19 November 2003 |
| | October 2003 | 17 December 2003 |
| | November 2003 | 21 January 2004 |
| | December 2003 | 18 February 2004 |
| Purpose of the survey | The Building statistics survey is a countrywide survey covering a sample of municipalities in South Africa. The information received is used to estimate key economic statistics used by the private and public sectors. The information is also used to compile estimates of the Gross Domestic Product (GDP). These statistics are also used by government to monitor the Reconstruction and Development Programme (RDP) in South Africa. | |
| Name change of statistical release | As from the November 2002 publication the name of the monthly Statistical release P5041.1, <i>Building statistics</i> , has changed to <i>Selected building statistics of the private sector derived from data reported by local government institutions</i> . | |
| Change in base year of constant prices from 1995 to 2000 | Following international practice, the base year of the price index ('lump sum domestic buildings' as published in statistical release P0151 – JBCC Contract Price Adjustment Provision Work Group Indices), which is used to deflate the current prices of building plans passed and buildings completed to constant prices, has been converted to 2000=100 with effect from May 2002. Previously the value of building plans passed and buildings completed was published at constant 1995 prices. It should be borne in mind that the change does not in any way affect the trends. | |
| Name and boundary changes of local government institutions | Due to the Local Government: Municipal structures Act (Act No. 117 of 1998) and the Local Government Municipal Demarcation Bill (B36B-98), the boundaries and the names of local government institutions have changed. In order to assist the reader to identify the approximate geographical locality and the names of the new local government institutions covered in the monthly sample survey, Table C (page 51) and Table D (page 63) provide lists of old and new names. | |

Table 1 - Actual values and percentage change of building plans passed at current prices according to type of building

| Year ^{1/} and month ^{2/} | Residential buildings | | Non-residential buildings | | Additions and alterations | | Total | |
|--|-----------------------|----------------------|------------------------------|----------------------|------------------------------|----------------------|-------------------|----------------------|
| | R'000 | Percentage change | R'000 | Percentage change | R'000 | Percentage change | R'000 | Percentage change |
| 2001 Jan | 725,361 | + 47.3 | 494,719 | + 195.7 | 353,381 | - 3.7 | 1,573,461 | + 53.3 |
| Feb | 836,784 | + 6.3 | 307,366 | - 42.7 | 476,205 | + 18.9 | 1,620,355 | - 6.0 |
| Mar | 933,489 | + 24.6 | 303,878 | - 18.6 | 438,569 | - 15.1 | 1,675,936 | + 2.3 |
| Apr | 742,978 | + 18.0 | 209,133 | - 24.6 | 379,527 | - 1.0 | 1,331,638 | + 3.2 |
| May | 1,006,490 | + 14.4 | 293,506 | - 52.9 | 502,062 | + 5.8 | 1,802,058 | - 8.9 |
| Jun | 904,990 | + 5.8 | 300,500 | - 12.2 | 448,243 | - 15.9 | 1,653,733 | - 4.4 |
| Jul | 893,707 | - 2.0 | 366,953 | - 25.1 | 435,627 | - 20.9 | 1,696,287 | - 13.1 |
| Aug | 839,388 | + 3.8 | 247,416 | - 30.7 | 485,215 | - 1.9 | 1,572,019 | - 11.9 |
| Sep | 968,469 | + 16.6 | 306,265 | - 15.0 | 529,909 | + 13.3 | 1,804,643 | + 8.8 |
| Oct | 1,196,410 | + 29.8 | 186,942 | - 63.0 | 540,454 | - 0.1 | 1,923,806 | - 2.2 |
| Nov | 982,841 | + 6.9 | 318,627 | - 37.6 | 597,940 | + 18.5 | 1,899,408 | - 1.8 |
| Dec | 658,017 | + 7.7 | 140,452 | - 80.8 | 359,110 | + 12.7 | 1,157,579 | - 30.4 |
| Total | 10,688,924 | + 12.3 | 3,475,757 | - 34.1 | 5,546,242 | - 0.1 | 19,710,923 | - 3.1 |
| 2002 Jan | 802,811 | + 10.7 | 172,455 | - 65.1 | 418,217 | + 18.3 | 1,393,483 | - 11.4 |
| Feb | 1,024,424 | + 22.4 | 247,345 | - 19.5 | 459,378 | - 3.5 | 1,731,147 | + 6.8 |
| Mar | 965,876 | + 3.5 | 495,333 | + 63.0 | 432,948 | - 1.3 | 1,894,157 | + 13.0 |
| Apr | 1,154,488 | + 55.4 | 350,647 | + 67.7 | 533,421 | + 40.5 | 2,038,556 | + 53.1 |
| May | 1,191,137 | + 18.3 | 438,078 | + 49.3 | 936,496 | + 86.5 | 2,565,711 | + 42.4 |
| Jun | 1,100,299 | + 21.6 | 497,829 | + 65.7 | 552,535 | + 23.3 | 2,150,663 | + 30.0 |
| Jul | 1,251,404 | + 40.0 | 255,959 | - 30.2 | 674,478 | + 54.8 | 2,181,841 | + 28.6 |
| Aug | 1,164,715 | + 38.8 | 391,026 | + 58.0 | 698,946 | + 44.0 | 2,254,687 | + 43.4 |
| Sep | 1,222,745 | + 26.3 | 287,969 | - 6.0 | 617,044 | + 16.4 | 2,127,758 | + 17.9 |
| Oct | 2,030,451 | + 69.7 | 335,491 | + 79.5 | 757,380 | + 40.1 | 3,123,322 | + 62.4 |
| Nov | 1,227,675 | + 24.9 | 309,532 | - 2.9 | 715,756 | + 19.7 | 2,252,963 | + 18.6 |
| Dec | 1,103,944 | + 67.8 | 230,232 | + 63.9 | 420,030 | + 17.0 | 1,754,206 | + 51.5 |
| Total | 14,239,969 | + 33.2 | 4,011,896 | + 15.4 | 7,216,629 | + 30.1 | 25,468,494 | + 29.2 |
| 2003 Jan | 940,456 | + 17.1 | 454,141 | + 163.3 | 517,143 | + 23.7 | 1,911,740 | + 37.2 |
| Feb | 1,184,508 | + 15.6 | 227,515 | - 8.0 | 524,418 | + 14.2 | 1,936,441 | + 11.9 |
| Mar | 1,358,237 | + 40.6 | 223,353 | - 54.9 | 596,998 | + 37.9 | 2,178,588 | + 15.0 |

^{1/} The annual percentage change is the change in the actual values of building plans passed of the relevant year compared with the actual values of building plans passed of the previous year expressed as a percentage.

^{2/} The monthly percentage change is the change in the actual values of building plans passed of the relevant month compared with the actual values of building plans passed of the same month in the previous year expressed as a percentage.

Table 2 - Seasonally adjusted values and percentage change of building plans passed at current prices according to type of building

| Year and month ^{1/} | Residential buildings | | Non-residential buildings | | Additions and alterations | | Total | |
|------------------------------|-----------------------|-------------------|---------------------------|-------------------|---------------------------|-------------------|-----------|-------------------|
| | R'000 | Percentage change | R'000 | Percentage change | R'000 | Percentage change | R'000 | Percentage change |
| 2001 Jan | 921,403 | + 9.5 | 675,153 | - 33.8 | 450,166 | + 2.2 | 2,046,722 | - 11.1 |
| Feb | 830,618 | - 9.9 | 358,382 | - 46.9 | 544,507 | + 21.0 | 1,733,506 | - 15.3 |
| Mar | 886,280 | + 6.7 | 275,037 | - 23.3 | 411,994 | - 24.3 | 1,573,312 | - 9.2 |
| Apr | 852,812 | - 3.8 | 242,771 | - 11.7 | 437,923 | + 6.3 | 1,533,505 | - 2.5 |
| May | 902,834 | + 5.9 | 250,297 | + 3.1 | 471,333 | + 7.6 | 1,624,465 | + 5.9 |
| Jun | 868,149 | - 3.8 | 262,235 | + 4.8 | 422,728 | - 10.3 | 1,553,113 | - 4.4 |
| Jul | 821,594 | - 5.4 | 305,954 | + 16.7 | 400,836 | - 5.2 | 1,528,384 | - 1.6 |
| Aug | 813,731 | - 1.0 | 241,222 | - 21.2 | 451,494 | + 12.6 | 1,506,448 | - 1.4 |
| Sep | 945,181 | + 16.2 | 309,949 | + 28.5 | 493,380 | + 9.3 | 1,748,511 | + 16.1 |
| Oct | 1,003,707 | + 6.2 | 183,948 | - 40.7 | 467,744 | - 5.2 | 1,655,399 | - 5.3 |
| Nov | 935,164 | - 6.8 | 274,102 | + 49.0 | 507,553 | + 8.5 | 1,716,818 | + 3.7 |
| Dec | 887,534 | - 5.1 | 197,668 | - 27.9 | 507,536 | + 0.0 | 1,592,738 | - 7.2 |
| 2002 Jan | 1,012,730 | + 14.1 | 226,929 | + 14.8 | 519,285 | + 2.3 | 1,758,945 | + 10.4 |
| Feb | 1,017,989 | + 0.5 | 290,977 | + 28.2 | 529,576 | + 2.0 | 1,838,541 | + 4.5 |
| Mar | 925,295 | - 9.1 | 451,177 | + 55.1 | 414,695 | - 21.7 | 1,791,168 | - 2.6 |
| Apr | 1,341,441 | + 45.0 | 412,815 | - 8.5 | 615,353 | + 48.4 | 2,369,609 | + 32.3 |
| May | 1,054,926 | - 21.4 | 364,436 | - 11.7 | 869,284 | + 41.3 | 2,288,645 | - 3.4 |
| Jun | 1,055,423 | + 0.0 | 437,006 | + 19.9 | 516,248 | - 40.6 | 2,008,677 | - 12.2 |
| Jul | 1,155,406 | + 9.5 | 211,824 | - 51.5 | 624,638 | + 21.0 | 1,991,868 | - 0.8 |
| Aug | 1,130,416 | - 2.2 | 381,275 | + 80.0 | 648,300 | + 3.8 | 2,159,991 | + 8.4 |
| Sep | 1,193,324 | + 5.6 | 291,946 | - 23.4 | 577,197 | - 11.0 | 2,062,467 | - 4.5 |
| Oct | 1,707,145 | + 43.1 | 334,470 | + 14.6 | 653,609 | + 13.2 | 2,695,224 | + 30.7 |
| Nov | 1,166,016 | - 31.7 | 265,872 | - 20.5 | 608,466 | - 6.9 | 2,040,354 | - 24.3 |
| Dec | 1,480,345 | + 27.0 | 329,416 | + 23.9 | 597,446 | - 1.8 | 2,407,207 | + 18.0 |
| 2003 Jan | 1,182,043 | - 20.2 | 577,307 | + 75.3 | 635,806 | + 6.4 | 2,395,156 | - 0.5 |
| Feb | 1,179,427 | - 0.2 | 271,259 | - 53.0 | 606,442 | - 4.6 | 2,057,128 | - 14.1 |
| Mar | 1,308,361 | + 10.9 | 204,987 | - 24.4 | 579,260 | - 4.5 | 2,092,609 | + 1.7 |

^{1/} The percentage change is the change in the seasonally adjusted values of building plans passed of the relevant month compared with the seasonally adjusted values of building plans passed of the previous month expressed as a percentage.

Table 3 - Actual values and percentage change of building plans passed at constant 2000 prices according to type of building

| Year and month ^{2/} | Residential buildings | | Non-residential buildings | | Additions and alterations | | Total | |
|------------------------------------|-----------------------|----------------------|------------------------------|----------------------|------------------------------|----------------------|-------------------|----------------------|
| | R'000 | Percentage change | R'000 | Percentage change | R'000 | Percentage change | R'000 | Percentage change |
| 2001 Jan | 696,124 | + 36.9 | 474,778 | + 175.0 | 339,137 | - 10.4 | 1,510,039 | + 42.5 |
| Feb | 799,221 | - 1.1 | 293,568 | - 46.7 | 454,828 | + 10.6 | 1,547,617 | - 12.6 |
| Mar | 887,347 | + 15.9 | 288,857 | - 24.2 | 416,891 | - 21.0 | 1,593,095 | - 4.8 |
| Apr | 700,923 | + 9.6 | 197,295 | - 29.9 | 358,044 | - 8.0 | 1,256,262 | - 4.1 |
| May | 944,174 | + 6.6 | 275,334 | - 56.1 | 470,977 | - 1.5 | 1,690,485 | - 15.1 |
| Jun | 847,369 | - 1.2 | 281,367 | - 18.0 | 419,703 | - 21.5 | 1,548,439 | - 10.8 |
| Jul | 832,129 | - 8.4 | 341,669 | - 30.0 | 405,612 | - 26.1 | 1,579,410 | - 18.8 |
| Aug | 779,376 | - 15.5 | 229,727 | - 35.0 | 450,525 | - 7.9 | 1,459,628 | - 17.3 |
| Sep | 897,562 | + 9.4 | 283,842 | - 20.2 | 491,111 | + 6.4 | 1,672,515 | + 2.1 |
| Oct | 1,106,762 | + 22.6 | 172,934 | - 65.0 | 499,957 | - 5.6 | 1,779,653 | - 7.6 |
| Nov | 904,178 | + 0.8 | 293,125 | - 41.1 | 550,083 | + 11.7 | 1,747,386 | - 7.4 |
| Dec | 599,833 | + 1.0 | 128,033 | - 82.0 | 327,356 | + 5.7 | 1,055,222 | - 34.7 |
| Total | 9,994,998 | + 5.1 | 3,260,529 | - 38.0 | 5,184,224 | - 6.6 | 18,439,751 | - 9.2 |
| 2002 Jan | 718,078 | + 3.2 | 154,253 | - 67.5 | 374,076 | + 10.3 | 1,246,407 | - 17.5 |
| Feb | 898,618 | + 12.4 | 216,969 | - 26.1 | 402,963 | - 11.4 | 1,518,550 | - 1.9 |
| Mar | 842,824 | - 5.0 | 432,228 | + 49.6 | 377,791 | - 9.4 | 1,652,843 | + 3.8 |
| Apr | 990,127 | + 41.3 | 300,726 | + 52.4 | 457,479 | + 27.8 | 1,748,332 | + 39.2 |
| May | 1,009,438 | + 6.9 | 371,253 | + 34.8 | 793,641 | + 68.5 | 2,174,332 | + 28.6 |
| Jun | 926,178 | + 9.3 | 419,048 | + 48.9 | 465,097 | + 10.8 | 1,810,323 | + 16.9 |
| Jul | 1,035,074 | + 24.4 | 211,711 | - 38.0 | 557,881 | + 37.5 | 1,804,666 | + 14.3 |
| Aug | 953,122 | + 22.3 | 319,989 | + 39.3 | 571,969 | + 27.0 | 1,845,080 | + 26.4 |
| Sep | 994,910 | + 10.8 | 234,312 | - 17.4 | 502,070 | + 2.2 | 1,731,292 | + 3.5 |
| Oct | 1,634,824 | + 47.7 | 270,122 | + 56.2 | 609,807 | + 22.0 | 2,514,753 | + 41.3 |
| Nov | 982,926 | + 8.7 | 247,824 | - 15.5 | 573,063 | + 4.2 | 1,803,813 | + 3.2 |
| Dec | 879,637 | + 46.6 | 183,452 | + 43.3 | 334,685 | + 2.2 | 1,397,774 | + 32.5 |
| Total | 11,865,756 | + 18.7 | 3,361,887 | + 3.1 | 6,020,522 | + 16.1 | 21,248,165 | + 15.2 |
| 2003 Jan | 737,613 | + 2.7 | 356,189 | + 130.9 | 405,602 | + 8.4 | 1,499,404 | + 20.3 |
| Feb | 922,514 | + 2.7 | 177,192 | - 18.3 | 408,425 | + 1.4 | 1,508,131 | - 0.7 |
| Mar | 1,052,897 | + 24.9 | 173,142 | - 59.9 | 462,789 | + 22.5 | 1,688,828 | + 2.2 |

^{1/} The annual percentage change is the change in the actual values of building plans passed of the relevant year compared with the actual values of building plans passed of the previous year expressed as a percentage.

^{2/} The monthly percentage change is the change in the actual values of building plans passed of the relevant month compared with the actual values of building plans passed of the same month in the previous year expressed as a percentage.

Table 4 - Seasonally adjusted values and percentage change of building plans passed at constant 2000 prices according to type of building

| Year and month ^{1/} | Residential buildings | | Non-residential buildings | | Additions and alterations | | Total | |
|------------------------------|-----------------------|-------------------|---------------------------|-------------------|---------------------------|-------------------|-----------|-------------------|
| | R'000 | Percentage change | R'000 | Percentage change | R'000 | Percentage change | R'000 | Percentage change |
| 2001 Jan | 883,851 | + 8.4 | 645,465 | - 34.6 | 430,575 | - 13.1 | 1,959,891 | - 12.0 |
| Feb | 797,823 | - 9.7 | 342,284 | - 47.0 | 519,782 | + 20.7 | 1,659,890 | - 15.3 |
| Mar | 839,902 | + 5.3 | 260,655 | - 23.8 | 390,478 | - 24.9 | 1,491,035 | - 10.2 |
| Apr | 803,227 | - 4.4 | 229,186 | - 12.1 | 413,422 | + 5.9 | 1,445,834 | - 3.0 |
| May | 849,764 | + 5.8 | 235,541 | + 2.8 | 443,561 | + 7.3 | 1,528,866 | + 5.7 |
| Jun | 811,855 | - 4.5 | 245,787 | + 4.3 | 396,936 | - 10.5 | 1,454,578 | - 4.9 |
| Jul | 766,711 | - 5.6 | 285,535 | + 16.2 | 374,302 | - 5.7 | 1,426,548 | - 1.9 |
| Aug | 757,347 | - 1.2 | 224,982 | - 21.2 | 420,453 | + 12.3 | 1,402,782 | - 1.7 |
| Sep | 875,545 | + 15.6 | 287,505 | + 27.8 | 457,219 | + 8.7 | 1,620,270 | + 15.5 |
| Oct | 927,098 | + 5.9 | 170,317 | - 40.8 | 432,408 | - 5.4 | 1,529,823 | - 5.6 |
| Nov | 857,656 | - 7.5 | 251,087 | + 47.4 | 465,351 | + 7.6 | 1,574,094 | + 2.9 |
| Dec | 806,130 | - 6.0 | 179,377 | - 28.6 | 460,323 | - 1.1 | 1,445,831 | - 8.1 |
| 2002 Jan | 905,163 | + 12.3 | 202,121 | + 12.7 | 463,269 | + 0.6 | 1,570,553 | + 8.6 |
| Feb | 897,153 | - 0.9 | 255,108 | + 26.2 | 464,397 | + 0.2 | 1,616,659 | + 2.9 |
| Mar | 805,870 | - 10.2 | 392,311 | + 53.8 | 360,925 | - 22.3 | 1,559,106 | - 3.6 |
| Apr | 1,148,727 | + 42.5 | 354,371 | - 9.7 | 528,296 | + 46.4 | 2,031,394 | + 30.3 |
| May | 896,999 | - 21.9 | 309,978 | - 12.5 | 738,730 | + 39.8 | 1,945,707 | - 4.2 |
| Jun | 887,702 | - 1.0 | 368,479 | + 18.9 | 436,172 | - 41.0 | 1,692,353 | - 13.0 |
| Jul | 958,199 | + 7.9 | 175,661 | - 52.3 | 518,403 | + 18.9 | 1,652,262 | - 2.4 |
| Aug | 927,335 | - 3.2 | 313,494 | + 78.5 | 532,117 | + 2.6 | 1,772,946 | + 7.3 |
| Sep | 970,205 | + 4.6 | 237,667 | - 24.2 | 469,397 | - 11.8 | 1,677,270 | - 5.4 |
| Oct | 1,372,076 | + 41.4 | 269,446 | + 13.4 | 525,632 | + 12.0 | 2,167,155 | + 29.2 |
| Nov | 930,432 | - 32.2 | 211,888 | - 21.4 | 485,352 | - 7.7 | 1,627,672 | - 24.9 |
| Dec | 1,175,489 | + 26.3 | 261,196 | + 23.3 | 473,233 | - 2.5 | 1,909,918 | + 17.3 |
| 2003 Jan | 926,227 | - 21.2 | 450,761 | + 72.6 | 497,655 | + 5.2 | 1,874,642 | - 1.8 |
| Feb | 922,100 | - 0.4 | 211,159 | - 53.2 | 472,258 | - 5.1 | 1,605,517 | - 14.4 |
| Mar | 1,013,289 | + 9.9 | 158,367 | - 25.0 | 448,022 | - 5.1 | 1,619,678 | + 0.9 |

^{1/} The percentage change is the change in the seasonally adjusted values of building plans passed of the relevant month compared with the seasonally adjusted values of building plans passed of the previous month expressed as a percentage.

Table 5 - Actual values and percentage change of buildings completed at current prices according to type of building

| Year ^{1/} and month ^{2/} | Residential buildings | | Non-residential buildings | | Additions and alterations | | Total | |
|--|-----------------------|----------------------|------------------------------|----------------------|------------------------------|----------------------|-------------------|----------------------|
| | R'000 | Percentage change | R'000 | Percentage change | R'000 | Percentage change | R'000 | Percentage change |
| 2001 Jan | 647,534 | + 114.7 | 259,518 | + 29.2 | 202,270 | + 9.1 | 1,109,322 | + 61.3 |
| Feb | 430,827 | + 21.7 | 286,095 | + 32.2 | 246,240 | + 10.6 | 963,162 | + 21.4 |
| Mar | 491,002 | + 16.6 | 166,131 | - 23.4 | 287,103 | + 6.7 | 944,236 | + 4.1 |
| Apr | 367,407 | + 0.5 | 170,257 | - 24.1 | 185,784 | - 1.8 | 723,448 | - 7.1 |
| May | 450,136 | - 5.1 | 318,370 | - 19.1 | 296,280 | + 0.9 | 1,064,786 | - 8.3 |
| Jun | 540,135 | + 48.6 | 338,853 | + 89.8 | 293,697 | + 71.5 | 1,172,685 | + 64.4 |
| Jul | 396,941 | - 3.1 | 121,617 | - 74.9 | 233,487 | + 5.6 | 752,045 | - 32.6 |
| Aug | 432,578 | - 4.3 | 117,526 | - 58.9 | 215,777 | + 1.8 | 765,881 | - 19.4 |
| Sep | 459,190 | - 10.5 | 1,417,964 | + 400.6 | 168,922 | - 15.6 | 2,046,076 | + 105.4 |
| Oct | 661,378 | + 42.6 | 281,963 | + 39.6 | 234,250 | - 1.9 | 1,177,591 | + 30.2 |
| Nov | 610,558 | + 9.5 | 211,109 | + 9.8 | 286,352 | + 11.6 | 1,108,019 | + 10.1 |
| Dec | 464,851 | + 19.9 | 173,587 | - 45.5 | 125,061 | - 18.2 | 763,499 | - 11.1 |
| Total | 5,952,537 | + 17.6 | 3,862,990 | + 20.8 | 2,775,223 | + 6.2 | 12,590,750 | + 15.8 |
| 2002 Jan | 583,954 | - 9.8 | 136,570 | - 47.4 | 176,643 | - 12.7 | 897,167 | - 19.1 |
| Feb | 476,506 | + 10.6 | 137,817 | - 51.8 | 202,239 | - 17.9 | 816,562 | - 15.2 |
| Mar | 708,527 | + 44.3 | 171,227 | + 3.1 | 176,053 | - 38.7 | 1,055,807 | + 11.8 |
| Apr | 653,414 | + 77.8 | 245,773 | + 44.4 | 390,160 | + 110.0 | 1,289,347 | + 78.2 |
| May | 690,242 | + 53.3 | 300,836 | - 5.5 | 305,996 | + 3.3 | 1,297,074 | + 21.8 |
| Jun | 585,723 | + 8.4 | 207,030 | - 38.9 | 251,004 | - 14.5 | 1,043,757 | - 11.0 |
| Jul | 681,657 | + 71.7 | 273,139 | + 124.6 | 242,028 | + 3.7 | 1,196,824 | + 59.1 |
| Aug | 740,221 | + 71.1 | 96,328 | - 18.0 | 226,414 | + 4.9 | 1,062,963 | + 38.8 |
| Sep | 820,510 | + 78.7 | 228,610 | - 83.9 | 248,379 | + 47.0 | 1,297,499 | - 36.6 |
| Oct | 938,075 | + 41.8 | 178,099 | - 36.8 | 293,977 | + 25.5 | 1,410,151 | + 19.7 |
| Nov | 847,433 | + 38.8 | 294,710 | + 39.6 | 237,143 | - 17.2 | 1,379,286 | + 24.5 |
| Dec | 702,892 | + 51.2 | 366,760 | + 111.3 | 221,292 | + 76.9 | 1,290,944 | + 69.1 |
| Total | 8,429,154 | + 41.6 | 2,636,899 | - 31.7 | 2,971,328 | + 7.1 | 14,037,381 | + 11.5 |
| 2003 Jan | 616,863 | + 5.6 | 149,935 | + 9.8 | 234,496 | + 32.8 | 1,001,294 | + 11.6 |
| Feb | 670,393 | + 40.7 | 156,333 | + 13.4 | 285,510 | + 41.2 | 1,112,236 | + 36.2 |
| Mar | 695,699 | - 1.8 | 308,189 | + 80.0 | 238,463 | + 35.4 | 1,242,351 | + 17.7 |

^{1/} The annual percentage change is the change in the actual values of buildings completed of the relevant year compared with the actual values of buildings completed of the previous year expressed as a percentage.

^{2/} The monthly percentage change is the change in the actual values of buildings completed of the relevant month compared with the actual values of buildings completed of the same month in the previous year expressed as a percentage.

Table 6 - Seasonally adjusted values and percentage change of buildings completed at current prices according to type of building

| Year and month ^{1/} | Residential buildings | | Non-residential buildings | | Additions and alterations | | Total | |
|------------------------------|-----------------------|-------------------|---------------------------|-------------------|---------------------------|-------------------|-----------|-------------------|
| | R'000 | Percentage change | R'000 | Percentage change | R'000 | Percentage change | R'000 | Percentage change |
| 2001 Jan | 756,874 | + 72.9 | 341,688 | + 6.9 | 231,499 | + 2.6 | 1,330,060 | + 35.3 |
| Feb | 477,372 | - 36.9 | 346,946 | + 1.5 | 234,617 | + 1.3 | 1,058,935 | - 20.4 |
| Mar | 452,986 | - 5.1 | 200,469 | - 42.2 | 242,111 | + 3.2 | 895,566 | - 15.4 |
| Apr | 399,701 | - 11.8 | 194,307 | - 3.1 | 206,768 | - 14.6 | 800,776 | - 10.6 |
| May | 426,536 | + 6.7 | 255,144 | + 31.3 | 238,200 | + 15.2 | 919,881 | + 14.9 |
| Jun | 586,580 | + 37.5 | 341,002 | + 33.7 | 313,740 | + 31.7 | 1,241,322 | + 34.9 |
| Jul | 399,273 | - 31.9 | 81,642 | - 76.1 | 215,276 | - 31.4 | 696,191 | - 43.9 |
| Aug | 427,226 | + 7.0 | 124,916 | + 53.0 | 216,996 | + 0.8 | 769,138 | + 10.5 |
| Sep | 418,900 | - 1.9 | 1,223,662 | + 879.6 | 181,274 | - 16.5 | 1,823,835 | + 137.1 |
| Oct | 602,575 | + 43.8 | 303,904 | - 75.2 | 213,210 | + 17.6 | 1,119,689 | - 38.6 |
| Nov | 525,628 | - 12.8 | 225,267 | - 25.9 | 281,475 | + 32.0 | 1,032,370 | - 7.8 |
| Dec | 525,210 | - 0.1 | 169,197 | - 24.9 | 180,385 | - 35.9 | 874,792 | - 15.3 |
| 2002 Jan | 666,265 | + 26.9 | 185,880 | + 9.9 | 203,120 | + 12.6 | 1,055,265 | + 20.6 |
| Feb | 524,276 | - 21.3 | 177,244 | - 4.6 | 194,690 | - 4.2 | 896,210 | - 15.1 |
| Mar | 651,630 | + 24.3 | 203,697 | + 14.9 | 149,461 | - 23.2 | 1,004,789 | + 12.1 |
| Apr | 709,191 | + 8.8 | 278,398 | + 36.7 | 433,337 | + 189.9 | 1,420,926 | + 41.4 |
| May | 650,258 | - 8.3 | 228,775 | - 17.8 | 239,704 | - 44.7 | 1,118,737 | - 21.3 |
| Jun | 649,106 | - 0.2 | 211,827 | - 7.4 | 269,659 | + 12.5 | 1,130,592 | + 1.1 |
| Jul | 699,406 | + 7.7 | 177,086 | - 16.4 | 225,867 | - 16.2 | 1,102,359 | - 2.5 |
| Aug | 727,836 | + 4.1 | 103,362 | - 41.6 | 227,622 | + 0.8 | 1,058,820 | - 3.9 |
| Sep | 753,644 | + 3.5 | 202,193 | + 95.6 | 270,314 | + 18.8 | 1,226,151 | + 15.8 |
| Oct | 848,732 | + 12.6 | 200,555 | - 0.8 | 265,713 | - 1.7 | 1,315,000 | + 7.2 |
| Nov | 726,431 | - 14.4 | 317,499 | + 58.3 | 231,289 | - 13.0 | 1,275,220 | - 3.0 |
| Dec | 797,692 | + 9.8 | 346,074 | + 9.0 | 318,054 | + 37.5 | 1,461,820 | + 14.6 |
| 2003 Jan | 691,246 | - 13.3 | 205,799 | - 40.5 | 270,724 | - 14.9 | 1,167,769 | - 20.1 |
| Feb | 740,743 | + 7.2 | 203,320 | - 1.2 | 277,472 | + 2.5 | 1,221,535 | + 4.6 |
| Mar | 638,343 | - 13.8 | 372,581 | + 83.2 | 202,295 | - 27.1 | 1,213,218 | - 0.7 |

^{1/} The percentage change is the change in the seasonally adjusted values of buildings completed of the relevant month compared with the seasonally adjusted values of buildings completed of the previous month expressed as a percentage.

Table 7 - Actual values and percentage change of buildings completed at constant 2000 prices according to type of building

| Year and month ^{2/} | Residential buildings | | Non-residential buildings | | Additions and alterations | | Total | |
|------------------------------------|-----------------------|----------------------|------------------------------|----------------------|------------------------------|----------------------|-------------------|----------------------|
| | R'000 | Percentage change | R'000 | Percentage change | R'000 | Percentage change | R'000 | Percentage change |
| 2001 Jan | 658,496 | + 111.1 | 266,719 | + 21.9 | 208,741 | + 6.7 | 1,133,956 | + 56.1 |
| Feb | 429,923 | + 80.3 | 294,034 | + 14.5 | 252,813 | - 10.1 | 976,770 | + 36.6 |
| Mar | 489,834 | + 51.9 | 170,391 | + 15.0 | 293,261 | - 25.5 | 953,486 | + 19.9 |
| Apr | 363,080 | + 75.5 | 174,265 | + 11.8 | 188,613 | + 6.5 | 725,958 | + 40.0 |
| May | 440,667 | + 35.4 | 324,867 | - 36.1 | 298,369 | - 31.3 | 1,063,903 | - 6.1 |
| Jun | 528,664 | + 77.4 | 345,416 | + 41.0 | 294,581 | + 18.2 | 1,168,661 | + 53.9 |
| Jul | 383,095 | + 77.4 | 125,508 | - 47.8 | 232,557 | - 8.2 | 741,160 | - 2.3 |
| Aug | 415,855 | + 55.8 | 120,663 | - 10.7 | 213,429 | - 4.1 | 749,947 | + 15.7 |
| Sep | 439,959 | + 41.9 | 1,448,380 | - 9.6 | 166,754 | + 1.7 | 2,055,093 | + 10.7 |
| Oct | 631,622 | + 25.6 | 286,257 | + 27.5 | 229,432 | - 14.6 | 1,147,311 | + 22.5 |
| Nov | 579,923 | + 39.6 | 212,597 | + 34.0 | 279,368 | - 20.3 | 1,071,888 | + 10.7 |
| Dec | 438,298 | + 16.9 | 174,109 | - 18.7 | 121,536 | + 34.0 | 733,943 | + 29.7 |
| Total | 5,799,416 | + 12.0 | 3,943,206 | + 17.0 | 2,779,454 | + 3.1 | 12,522,076 | + 11.3 |
| 2002 Jan | 549,418 | - 16.6 | 136,026 | - 49.0 | 169,523 | - 18.8 | 854,967 | - 24.6 |
| Feb | 446,318 | + 3.8 | 136,318 | - 53.6 | 193,160 | - 23.6 | 775,796 | - 20.6 |
| Mar | 664,041 | + 35.6 | 169,030 | - 0.8 | 167,351 | - 42.9 | 1,000,422 | + 4.9 |
| Apr | 607,293 | + 67.3 | 240,718 | + 38.1 | 368,075 | + 95.1 | 1,216,086 | + 67.5 |
| May | 639,076 | + 45.0 | 293,499 | - 9.7 | 287,051 | - 3.8 | 1,219,626 | + 14.6 |
| Jun | 536,531 | + 1.5 | 201,195 | - 41.8 | 235,022 | - 20.2 | 972,748 | - 16.8 |
| Jul | 616,022 | + 60.8 | 262,130 | + 108.9 | 225,352 | - 3.1 | 1,103,504 | + 48.9 |
| Aug | 662,349 | + 59.3 | 92,004 | - 23.8 | 210,227 | - 1.5 | 964,580 | + 28.6 |
| Sep | 731,679 | + 66.3 | 217,310 | - 85.0 | 230,194 | + 38.0 | 1,179,183 | - 42.6 |
| Oct | 818,450 | + 29.6 | 168,018 | - 41.3 | 271,949 | + 18.5 | 1,258,417 | + 9.7 |
| Nov | 734,214 | + 26.6 | 276,463 | + 30.0 | 218,163 | - 21.9 | 1,228,840 | + 14.6 |
| Dec | 602,833 | + 37.5 | 343,408 | + 97.2 | 201,725 | + 66.0 | 1,147,966 | + 56.4 |
| Total | 7,608,224 | + 31.2 | 2,536,119 | - 35.7 | 2,777,792 | - 0.1 | 12,922,135 | + 3.2 |
| 2003 Jan | 525,463 | - 4.4 | 139,604 | + 2.6 | 209,746 | + 23.7 | 874,813 | + 2.3 |
| Feb | 560,661 | + 25.6 | 145,156 | + 6.5 | 250,447 | + 29.7 | 956,264 | + 23.3 |
| Mar | 574,463 | - 13.5 | 285,625 | + 69.0 | 208,083 | + 24.3 | 1,068,171 | + 6.8 |

^{1/} The annual percentage change is the change in the actual values of buildings completed of the relevant year compared with the actual values of buildings completed of the previous year expressed as a percentage.

^{2/} The monthly percentage change is the change in the actual values of buildings completed of the relevant month compared with the actual values of buildings completed of the same month in the previous year expressed as a percentage.

Table 8 - Seasonally adjusted values and percentage change of buildings completed at constant 2000 prices according to type of building

| Year and month ^{1/} | Residential buildings | | Non-residential buildings | | Additions and alterations | | Total | |
|------------------------------|-----------------------|-------------------|---------------------------|-------------------|---------------------------|-------------------|-----------|-------------------|
| | R'000 | Percentage change | R'000 | Percentage change | R'000 | Percentage change | R'000 | Percentage change |
| 2001 Jan | 775,881 | + 76.1 | 351,732 | + 6.8 | 238,071 | + 3.7 | 1,365,685 | + 36.6 |
| Feb | 481,452 | - 37.9 | 357,592 | + 1.7 | 241,107 | + 1.3 | 1,080,151 | - 20.9 |
| Mar | 457,320 | - 5.0 | 205,863 | - 42.4 | 246,170 | + 2.1 | 909,352 | - 15.8 |
| Apr | 396,759 | - 13.2 | 199,122 | - 3.3 | 209,568 | - 14.9 | 805,448 | - 11.4 |
| May | 422,788 | + 6.6 | 260,255 | + 30.7 | 241,435 | + 15.2 | 924,477 | + 14.8 |
| Jun | 572,478 | + 35.4 | 346,751 | + 33.2 | 315,611 | + 30.7 | 1,234,840 | + 33.6 |
| Jul | 385,009 | - 32.7 | 84,054 | - 75.8 | 214,578 | - 32.0 | 683,642 | - 44.6 |
| Aug | 410,091 | + 6.5 | 128,703 | + 53.1 | 214,786 | + 0.1 | 753,580 | + 10.2 |
| Sep | 395,918 | - 3.5 | 1,247,240 | + 869.1 | 178,783 | - 16.8 | 1,821,942 | + 141.8 |
| Oct | 564,447 | + 42.6 | 308,338 | - 75.3 | 208,525 | + 16.6 | 1,081,310 | - 40.7 |
| Nov | 495,019 | - 12.3 | 227,207 | - 26.3 | 274,371 | + 31.6 | 996,597 | - 7.8 |
| Dec | 493,972 | - 0.2 | 169,616 | - 25.3 | 175,064 | - 36.2 | 838,651 | - 15.8 |
| 2002 Jan | 632,304 | + 28.0 | 185,414 | + 9.3 | 194,467 | + 11.1 | 1,012,185 | + 20.7 |
| Feb | 497,960 | - 21.2 | 175,668 | - 5.3 | 186,477 | - 4.1 | 860,106 | - 15.0 |
| Mar | 621,358 | + 24.8 | 201,247 | + 14.6 | 141,256 | - 24.3 | 963,861 | + 12.1 |
| Apr | 662,122 | + 6.6 | 273,056 | + 35.7 | 408,192 | + 189.0 | 1,343,371 | + 39.4 |
| May | 607,089 | - 8.3 | 223,175 | - 18.3 | 226,247 | - 44.6 | 1,056,511 | - 21.4 |
| Jun | 594,800 | - 2.0 | 205,435 | - 7.9 | 253,086 | + 11.9 | 1,053,321 | - 0.3 |
| Jul | 634,006 | + 6.6 | 169,576 | - 17.5 | 210,478 | - 16.8 | 1,014,061 | - 3.7 |
| Aug | 650,127 | + 2.5 | 99,098 | - 41.6 | 211,502 | + 0.5 | 960,727 | - 5.3 |
| Sep | 663,396 | + 2.0 | 191,744 | + 93.5 | 250,237 | + 18.3 | 1,105,377 | + 15.1 |
| Oct | 724,771 | + 9.3 | 189,113 | - 1.4 | 245,357 | - 2.0 | 1,159,241 | + 4.9 |
| Nov | 622,602 | - 14.1 | 298,186 | + 57.7 | 212,554 | - 13.4 | 1,133,342 | - 2.2 |
| Dec | 681,263 | + 9.4 | 323,898 | + 8.6 | 289,681 | + 36.3 | 1,294,843 | + 14.2 |
| 2003 Jan | 593,636 | - 12.9 | 191,898 | - 40.8 | 241,657 | - 16.6 | 1,027,192 | - 20.7 |
| Feb | 628,322 | + 5.8 | 189,123 | - 1.4 | 244,254 | + 1.1 | 1,061,699 | + 3.4 |
| Mar | 536,693 | - 14.6 | 345,513 | + 82.7 | 175,480 | - 28.2 | 1,057,686 | - 0.4 |

^{1/} The percentage change is the change in the seasonally adjusted values of buildings completed of the relevant month compared with the seasonally adjusted values of buildings completed of the previous month expressed as a percentage.

Table 9 - Building plans passed according to type of building: Total RSA

| Type of building | March 2002 * | February 2003 | March 2003 | January 2002 to March 2002 | January 2003 to March 2003 | Percentage change between January 2002 to March 2002 and January 2003 to March 2003 |
|---|------------------|------------------|------------------|----------------------------|----------------------------|---|
| Residential buildings | | | | | | |
| Dwelling-houses smaller than 80 square metres | | | | | | |
| Number of dwelling-houses | 2,610 | 3,125 | 2,592 | 7,853 | 10,267 | + 30.7 |
| Total square metres | 108,291 | 114,529 | 100,407 | 303,685 | 374,954 | + 23.5 |
| Total value at current prices (R'000) | 113,308 | 100,121 | 100,410 | 319,676 | 327,734 | + 2.5 |
| Dwelling-houses equal to or larger than 80 square metres | | | | | | |
| Number of dwelling-houses | 1,755 | 1,948 | 2,034 | 5,240 | 5,646 | + 7.7 |
| Total square metres | 384,673 | 427,845 | 466,567 | 1,158,689 | 1,265,852 | + 9.2 |
| Total value at current prices (R'000) | 612,347 | 733,678 | 816,440 | 1,771,482 | 2,167,348 | + 22.3 |
| Flats and townhouses | | | | | | |
| Number of flats and townhouses | 1,023 | 834 | 1,509 | 2,923 | 2,967 | + 1.5 |
| Total square metres | 144,869 | 137,529 | 203,645 | 364,344 | 444,469 | + 22.0 |
| Total value at current prices (R'000) | 239,466 | 307,222 | 409,522 | 579,049 | 903,336 | + 56.0 |
| Other residential buildings ^{1/} | | | | | | |
| Total square metres | 485 | 20,830 | 16,250 | 47,262 | 47,936 | + 1.4 |
| Total value at current prices (R'000) | 755 | 43,487 | 31,865 | 122,904 | 84,783 | - 31.0 |
| Total value of residential buildings at current prices (R'000) | 965,876 | 1,184,508 | 1,358,237 | 2,793,111 | 3,483,201 | + 24.7 |
| Non-residential buildings | | | | | | |
| Office and banking space | | | | | | |
| Total square metres | 34,957 | 31,485 | 36,664 | 114,776 | 94,025 | - 18.1 |
| Total value at current prices (R'000) | 118,201 | 58,426 | 62,322 | 247,874 | 166,623 | - 32.8 |
| Shopping space | | | | | | |
| Total square metres | 39,300 | 23,943 | 20,728 | 89,165 | 89,148 | + 0.0 |
| Total value at current prices (R'000) | 72,983 | 37,152 | 40,524 | 148,813 | 386,896 | + 160.0 |
| Industrial and warehouse space | | | | | | |
| Total square metres | 71,232 | 70,314 | 51,159 | 183,379 | 171,726 | - 6.4 |
| Total value at current prices (R'000) | 104,998 | 103,969 | 78,962 | 264,719 | 251,464 | - 5.0 |
| Other non-residential space ^{2/} | | | | | | |
| Total square metres | 129,993 | 17,862 | 24,002 | 170,082 | 60,716 | - 64.3 |
| Total value at current prices (R'000) | 199,151 | 27,968 | 41,545 | 253,727 | 100,026 | - 60.6 |
| Total value of non-residential buildings at current prices (R'000) | 495,333 | 227,515 | 223,353 | 915,133 | 905,009 | - 1.1 |
| Additions and alterations | | | | | | |
| Dwelling-houses | | | | | | |
| Total square metres | 248,409 | 245,875 | 270,829 | 706,599 | 741,819 | + 5.0 |
| Total value at current prices (R'000) | 345,536 | 366,139 | 421,589 | 972,571 | 1,125,533 | + 15.7 |
| Other buildings ^{3/} | | | | | | |
| Total square metres | 44,367 | 61,179 | 96,744 | 171,952 | 259,074 | + 50.7 |
| Total value at current prices (R'000) | 87,412 | 158,279 | 175,409 | 337,972 | 513,026 | + 51.8 |
| Total value of additions and alterations at current prices (R'000) | 432,948 | 524,418 | 596,998 | 1,310,543 | 1,638,559 | + 25.0 |
| Total value of building plans passed at current prices (R'000) | 1,894,157 | 1,936,441 | 2,178,588 | 5,018,787 | 6,026,769 | + 20.1 |

1/ Other residential buildings include institutions for the disabled, boarding houses, old people's homes, hostels, hotels, motels, guest houses, holiday chalets, entertainment centres, bed-and-breakfast accommodation and casinos.

2/ Other non-residential space includes churches, sport and recreation clubs, schools, crèches, hospitals and all other non-residential space.

3/ Other buildings include additions and alterations to other residential buildings, non-residential buildings and internal alterations.

Table 10 - Building plans passed according to type of building and province: Western Cape

| Type of building | March 2002* | February 2003 | March 2003 | January 2002 to March 2002 | January 2003 to March 2003 | Percentage change between January 2002 to March 2002 and January 2003 to March 2003 |
|---|----------------|----------------|----------------|----------------------------|----------------------------|---|
| Residential buildings | | | | | | |
| Dwelling-houses smaller than 80 square metres | | | | | | |
| Number of dwelling-houses | 353 | 517 | 617 | 2,460 | 1,332 | - 45.9 |
| Total square metres | 15,348 | 19,172 | 23,671 | 85,177 | 51,305 | - 39.8 |
| Total value at current prices (R'000) | 19,445 | 21,327 | 28,021 | 99,374 | 59,937 | - 39.7 |
| Dwelling-houses equal to or larger than 80 square metres | | | | | | |
| Number of dwelling-houses | 597 | 745 | 618 | 1,808 | 1,955 | + 8.1 |
| Total square metres | 124,289 | 142,015 | 134,586 | 374,086 | 400,089 | + 7.0 |
| Total value at current prices (R'000) | 198,802 | 253,237 | 242,925 | 583,706 | 708,344 | + 21.4 |
| Flats and townhouses | | | | | | |
| Number of flats and townhouses | 239 | 238 | 299 | 899 | 725 | - 19.4 |
| Total square metres | 33,293 | 28,724 | 36,855 | 90,052 | 91,209 | + 1.3 |
| Total value at current prices (R'000) | 62,091 | 71,795 | 74,777 | 151,815 | 195,223 | + 28.6 |
| Other residential buildings ^{1/} | | | | | | |
| Total square metres | 410 | 618 | 2,011 | 5,119 | 3,521 | - 31.2 |
| Total value at current prices (R'000) | 650 | 1,017 | 4,517 | 7,997 | 7,043 | - 11.9 |
| Total value of residential buildings at current prices (R'000) | 280,988 | 347,376 | 350,240 | 842,892 | 970,547 | + 15.1 |
| Non-residential buildings | | | | | | |
| Office and banking space | | | | | | |
| Total square metres | 6,221 | 4,707 | 13,246 | 17,667 | 27,224 | + 54.1 |
| Total value at current prices (R'000) | 9,285 | 10,733 | 19,917 | 25,530 | 45,153 | + 76.9 |
| Shopping space | | | | | | |
| Total square metres | 1,023 | 5,423 | 714 | 14,755 | 6,850 | - 53.6 |
| Total value at current prices (R'000) | 1,161 | 5,629 | 901 | 18,560 | 8,220 | - 55.7 |
| Industrial and warehouse space | | | | | | |
| Total square metres | 26,717 | 13,374 | 15,210 | 47,123 | 42,518 | - 9.8 |
| Total value at current prices (R'000) | 31,655 | 22,636 | 23,072 | 52,246 | 62,979 | + 20.5 |
| Other non-residential space ^{2/} | | | | | | |
| Total square metres | 1,137 | 1,923 | 5,137 | 14,183 | 10,020 | - 29.4 |
| Total value at current prices (R'000) | 1,798 | 2,638 | 7,263 | 18,595 | 13,972 | - 24.9 |
| Total value of non-residential buildings at current prices (R'000) | 43,899 | 41,636 | 51,153 | 114,931 | 130,324 | + 13.4 |
| Additions and alterations | | | | | | |
| Dwelling-houses | | | | | | |
| Total square metres | 83,495 | 73,501 | 80,568 | 218,836 | 223,595 | + 2.2 |
| Total value at current prices (R'000) | 109,954 | 110,670 | 124,352 | 289,082 | 341,550 | + 18.1 |
| Other buildings ^{3/} | | | | | | |
| Total square metres | 8,455 | 13,855 | 44,899 | 52,152 | 111,686 | + 114.2 |
| Total value at current prices (R'000) | 14,066 | 65,427 | 67,071 | 102,398 | 209,748 | + 104.8 |
| Total value of additions and alterations at current prices (R'000) | 124,020 | 176,097 | 191,423 | 391,480 | 551,298 | + 40.8 |
| Total value of building plans passed at current prices (R'000) | 448,907 | 565,109 | 592,816 | 1,349,303 | 1,652,169 | + 22.4 |

1/ Other residential buildings include institutions for the disabled, boarding houses, old people's homes, hostels, hotels, motels, guest houses, holiday chalets, entertainment centres, bed-and-breakfast accommodation and casinos.

2/ Other non-residential space includes churches, sport and recreation clubs, schools, crèches, hospitals and all other non-residential space.

3/ Other buildings include additions and alterations to other residential buildings, non-residential buildings and internal alterations.

Table 11 - Building plans passed according to type of building and province: Eastern Cape

| Type of building | March 2002 | February 2003 | March 2003 | January 2002 to March 2002 | January 2003 to March 2003 | Percentage change between January 2002 to March 2002 and January 2003 to March 2003 |
|---|----------------|----------------|---------------|----------------------------|----------------------------|---|
| Residential buildings | | | | | | |
| Dwelling-houses smaller than 80 square metres | | | | | | |
| Number of dwelling-houses | 374 | 253 | 163 | 745 | 956 | + 28.3 |
| Total square metres | 18,114 | 11,013 | 7,028 | 34,435 | 40,852 | + 18.6 |
| Total value at current prices (R'000) | 26,074 | 10,302 | 11,679 | 48,048 | 53,665 | + 11.7 |
| Dwelling-houses equal to or larger than 80 square metres | | | | | | |
| Number of dwelling-houses | 115 | 115 | 105 | 317 | 286 | -9.8 |
| Total square metres | 21,598 | 21,011 | 22,673 | 58,549 | 54,324 | -7.2 |
| Total value at current prices (R'000) | 30,172 | 43,748 | 38,073 | 80,192 | 99,221 | + 23.7 |
| Flats and townhouses | | | | | | |
| Number of flats and townhouses | 27 | 21 | 3 | 51 | 24 | -52.9 |
| Total square metres | 2,706 | 3,495 | 543 | 5,760 | 4,038 | -29.9 |
| Total value at current prices (R'000) | 4,637 | 7,270 | 842 | 9,365 | 8,112 | -13.4 |
| Other residential buildings ^{1/} | | | | | | |
| Total square metres | 0 | 323 | 600 | 0 | 1,064 | .. |
| Total value at current prices (R'000) | 0 | 690 | 1,257 | 0 | 2,112 | .. |
| Total value of residential buildings at current prices (R'000) | 60,883 | 62,010 | 51,851 | 137,605 | 163,110 | + 18.5 |
| Non-residential buildings | | | | | | |
| Office and banking space | | | | | | |
| Total square metres | 292 | 2,178 | 0 | 521 | 4,785 | + 818.4 |
| Total value at current prices (R'000) | 535 | 3,668 | 0 | 985 | 9,038 | + 817.6 |
| Shopping space | | | | | | |
| Total square metres | 2,040 | 0 | 0 | 7,143 | 381 | -94.7 |
| Total value at current prices (R'000) | 3,876 | 0 | 0 | 15,071 | 702 | -95.3 |
| Industrial and warehouse space | | | | | | |
| Total square metres | 1,154 | 1,906 | 566 | 14,910 | 3,271 | -78.1 |
| Total value at current prices (R'000) | 1,864 | 2,415 | 872 | 31,285 | 4,594 | -85.3 |
| Other non-residential space ^{2/} | | | | | | |
| Total square metres | 238 | 2,308 | 581 | 6,193 | 2,889 | -53.4 |
| Total value at current prices (R'000) | 387 | 4,097 | 949 | 10,016 | 5,046 | -49.6 |
| Total value of non-residential buildings at current prices (R'000) | 6,662 | 10,180 | 1,821 | 57,357 | 19,380 | -66.2 |
| Additions and alterations | | | | | | |
| Dwelling-houses | | | | | | |
| Total square metres | 16,609 | 21,573 | 17,706 | 50,874 | 53,803 | + 5.8 |
| Total value at current prices (R'000) | 21,390 | 39,546 | 28,579 | 67,217 | 89,190 | + 32.7 |
| Other buildings ^{3/} | | | | | | |
| Total square metres | 6,727 | 7,355 | 2,939 | 12,574 | 17,659 | + 40.4 |
| Total value at current prices (R'000) | 14,201 | 18,087 | 6,931 | 24,711 | 39,327 | + 59.1 |
| Total value of additions and alterations at current prices (R'000) | 35,591 | 57,633 | 35,510 | 91,928 | 128,517 | + 39.8 |
| Total value of building plans passed at current prices (R'000) | 103,136 | 129,823 | 89,182 | 286,890 | 311,007 | + 8.4 |

1/ Other residential buildings include institutions for the disabled, boarding houses, old people's homes, hostels, hotels, motels, guest houses, holiday chalets, entertainment centres, bed-and-breakfast accommodation and casinos.

2/ Other non-residential space includes churches, sport and recreation clubs, schools, crèches, hospitals and all other non-residential space.

3/ Other buildings include additions and alterations to other residential buildings, non-residential buildings and internal alterations.

Table 12 - Building plans passed according to type of building and province: Northern Cape

| Type of building | March 2002 | February 2003 | March 2003 | January 2002 to March 2002 | January 2003 to March 2003 | Percentage change between January 2002 to March 2002 and January 2003 to March 2003 |
|---|--------------|---------------|--------------|----------------------------|----------------------------|---|
| Residential buildings | | | | | | |
| Dwelling-houses smaller than 80 square metres | | | | | | |
| Number of dwelling-houses | 2 | 2 | 1 | 15 | 7 | - 53.3 |
| Total square metres | 62 | 56 | 70 | 688 | 288 | - 58.1 |
| Total value at current prices (R'000) | 93 | 84 | 105 | 1,177 | 430 | - 63.5 |
| Dwelling-houses equal to or larger than 80 square metres | | | | | | |
| Number of dwelling-houses | 10 | 7 | 14 | 19 | 31 | + 63.2 |
| Total square metres | 1,608 | 1,421 | 2,516 | 3,168 | 5,878 | + 85.5 |
| Total value at current prices (R'000) | 2,249 | 2,332 | 3,803 | 4,600 | 9,139 | + 98.7 |
| Flats and townhouses | | | | | | |
| Number of flats and townhouses | 0 | 1 | 1 | 0 | 2 | .. |
| Total square metres | 0 | 114 | 205 | 0 | 319 | .. |
| Total value at current prices (R'000) | 0 | 171 | 369 | 0 | 540 | .. |
| Other residential buildings ^{1/} | | | | | | |
| Total square metres | 0 | 0 | 0 | 0 | 0 | .. |
| Total value at current prices (R'000) | 0 | 0 | 0 | 0 | 0 | .. |
| Total value of residential buildings at current prices (R'000) | 2,342 | 2,587 | 4,277 | 5,777 | 10,109 | + 75.0 |
| Non-residential buildings | | | | | | |
| Office and banking space | | | | | | |
| Total square metres | 30 | 118 | 0 | 30 | 118 | + 293.3 |
| Total value at current prices (R'000) | 66 | 177 | 0 | 66 | 177 | + 168.2 |
| Shopping space | | | | | | |
| Total square metres | 0 | 176 | 75 | 0 | 611 | .. |
| Total value at current prices (R'000) | 0 | 387 | 113 | 0 | 1,292 | .. |
| Industrial and warehouse space | | | | | | |
| Total square metres | 0 | 446 | 0 | 800 | 446 | - 44.3 |
| Total value at current prices (R'000) | 0 | 981 | 0 | 1,120 | 981 | - 12.4 |
| Other non-residential space ^{2/} | | | | | | |
| Total square metres | 144 | 0 | 0 | 999 | 0 | .. |
| Total value at current prices (R'000) | 317 | 0 | 0 | 2,198 | 0 | .. |
| Total value of non-residential buildings at current prices (R'000) | 383 | 1,545 | 113 | 3,384 | 2,450 | - 27.6 |
| Additions and alterations | | | | | | |
| Dwelling-houses | | | | | | |
| Total square metres | 1,444 | 2,747 | 1,024 | 5,938 | 7,012 | + 18.1 |
| Total value at current prices (R'000) | 2,262 | 5,016 | 1,817 | 9,667 | 12,576 | + 30.1 |
| Other buildings ^{3/} | | | | | | |
| Total square metres | 346 | 137 | 420 | 902 | 865 | - 4.1 |
| Total value at current prices (R'000) | 599 | 1,061 | 1,132 | 2,352 | 3,094 | + 31.5 |
| Total value of additions and alterations at current prices (R'000) | 2,861 | 6,077 | 2,949 | 12,019 | 15,670 | + 30.4 |
| Total value of building plans passed at current prices (R'000) | 5,586 | 10,209 | 7,339 | 21,180 | 28,229 | + 33.3 |

1/ Other residential buildings include institutions for the disabled, boarding houses, old people's homes, hostels, hotels, motels, guest houses, holiday chalets, entertainment centres, bed-and-breakfast accommodation and casinos.

2/ Other non-residential space includes churches, sport and recreation clubs, schools, crèches, hospitals and all other non-residential space.

3/ Other buildings include additions and alterations to other residential buildings, non-residential buildings and internal alterations.

Table 13 - Building plans passed according to type of building and province: Free State

| Type of building | March 2002 | February 2003 | March 2003 | January 2002 to March 2002 | January 2003 to March 2003 | Percentage change between January 2002 to March 2002 and January 2003 to March 2003 |
|---|---------------|---------------|---------------|----------------------------|----------------------------|---|
| Residential buildings | | | | | | |
| Dwelling-houses smaller than 80 square metres | | | | | | |
| Number of dwelling-houses | 47 | 57 | 257 | 235 | 709 | + 201.7 |
| Total square metres | 2,836 | 2,409 | 11,295 | 11,145 | 29,658 | + 166.1 |
| Total value at current prices (R'000) | 2,939 | 1,961 | 6,252 | 8,782 | 16,844 | + 91.8 |
| Dwelling-houses equal to or larger than 80 square metres | | | | | | |
| Number of dwelling-houses | 95 | 77 | 67 | 240 | 223 | -7.1 |
| Total square metres | 13,737 | 13,193 | 10,530 | 35,133 | 37,621 | + 7.1 |
| Total value at current prices (R'000) | 14,392 | 18,829 | 15,344 | 42,480 | 52,713 | + 24.1 |
| Flats and townhouses | | | | | | |
| Number of flats and townhouses | 29 | 36 | 70 | 185 | 118 | -36.2 |
| Total square metres | 2,193 | 2,729 | 7,484 | 18,079 | 11,594 | -35.9 |
| Total value at current prices (R'000) | 2,979 | 3,988 | 10,530 | 27,479 | 16,474 | -40.0 |
| Other residential buildings ^{1/} | | | | | | |
| Total square metres | 75 | 54 | 0 | 2,758 | 54 | -98.0 |
| Total value at current prices (R'000) | 105 | 110 | 0 | 7,105 | 110 | -98.5 |
| Total value of residential buildings at current prices (R'000) | 20,415 | 24,888 | 32,126 | 85,846 | 86,141 | + 0.3 |
| Non-residential buildings | | | | | | |
| Office and banking space | | | | | | |
| Total square metres | 0 | 1,616 | 128 | 7,384 | 1,744 | -76.4 |
| Total value at current prices (R'000) | 0 | 2,808 | 128 | 14,102 | 2,936 | -79.2 |
| Shopping space | | | | | | |
| Total square metres | 7,429 | 7,711 | 1,566 | 8,031 | 12,776 | + 59.1 |
| Total value at current prices (R'000) | 16,000 | 12,044 | 2,029 | 16,660 | 22,248 | + 33.5 |
| Industrial and warehouse space | | | | | | |
| Total square metres | 0 | 2,259 | 395 | 2,577 | 4,040 | + 56.8 |
| Total value at current prices (R'000) | 0 | 1,388 | 225 | 2,494 | 2,213 | -11.3 |
| Other non-residential space ^{2/} | | | | | | |
| Total square metres | 871 | 3,914 | 1,661 | 3,632 | 7,764 | + 113.8 |
| Total value at current prices (R'000) | 991 | 6,569 | 2,521 | 3,603 | 10,968 | + 204.4 |
| Total value of non-residential buildings at current prices (R'000) | 16,991 | 22,809 | 4,903 | 36,859 | 38,365 | + 4.1 |
| Additions and alterations | | | | | | |
| Dwelling-houses | | | | | | |
| Total square metres | 6,777 | 8,267 | 9,831 | 23,862 | 27,525 | + 15.4 |
| Total value at current prices (R'000) | 7,389 | 9,332 | 12,573 | 25,913 | 33,911 | + 30.9 |
| Other buildings ^{3/} | | | | | | |
| Total square metres | 557 | 2,009 | 4,734 | 4,176 | 8,726 | + 109.0 |
| Total value at current prices (R'000) | 1,516 | 2,762 | 8,563 | 7,906 | 20,601 | + 160.6 |
| Total value of additions and alterations at current prices (R'000) | 8,905 | 12,094 | 21,136 | 33,819 | 54,512 | + 61.2 |
| Total value of building plans passed at current prices (R'000) | 46,311 | 59,791 | 58,165 | 156,524 | 179,018 | + 14.4 |

1/ Other residential buildings include institutions for the disabled, boarding houses, old people's homes, hostels, hotels, motels, guest houses, holiday chalets, entertainment centres, bed-and-breakfast accommodation and casinos.

2/ Other non-residential space includes churches, sport and recreation clubs, schools, crèches, hospitals and all other non-residential space.

3/ Other buildings include additions and alterations to other residential buildings, non-residential buildings and internal alterations.

Table 14 - Building plans passed according to type of building and province: KwaZulu-Natal

| Type of building | March 2002* | February 2003 | March 2003 | January 2002 to March 2002 | January 2003 to March 2003 | Percentage change between January 2002 to March 2002 and January 2003 to March 2003 |
|---|----------------|----------------|----------------|----------------------------|----------------------------|---|
| Residential buildings | | | | | | |
| Dwelling-houses smaller than 80 square metres | | | | | | |
| Number of dwelling-houses | 250 | 95 | 91 | 509 | 1,654 | + 225.0 |
| Total square metres | 9,923 | 5,311 | 4,805 | 21,440 | 55,721 | + 159.9 |
| Total value at current prices (R'000) | 9,464 | 6,290 | 6,303 | 22,701 | 42,558 | + 87.5 |
| Dwelling-houses equal to or larger than 80 square metres | | | | | | |
| Number of dwelling-houses | 122 | 156 | 189 | 374 | 479 | + 28.1 |
| Total square metres | 24,642 | 37,309 | 45,459 | 79,608 | 116,229 | + 46.0 |
| Total value at current prices (R'000) | 33,469 | 62,203 | 81,441 | 120,817 | 199,320 | + 65.0 |
| Flats and townhouses | | | | | | |
| Number of flats and townhouses | 72 | 140 | 130 | 286 | 322 | + 12.6 |
| Total square metres | 11,803 | 30,911 | 30,130 | 43,751 | 69,393 | + 58.6 |
| Total value at current prices (R'000) | 28,551 | 103,125 | 92,539 | 72,847 | 215,253 | + 195.5 |
| Other residential buildings ^{1/} | | | | | | |
| Total square metres | 0 | 10,350 | 2,619 | 30,153 | 12,969 | - 57.0 |
| Total value at current prices (R'000) | 0 | 28,000 | 5,800 | 31,821 | 33,800 | + 6.2 |
| Total value of residential buildings at current prices (R'000) | 71,484 | 199,618 | 186,083 | 248,186 | 490,931 | + 97.8 |
| Non-residential buildings | | | | | | |
| Office and banking space | | | | | | |
| Total square metres | 2,183 | 1,314 | 641 | 2,820 | 2,266 | - 19.6 |
| Total value at current prices (R'000) | 4,800 | 1,500 | 1,200 | 5,756 | 3,050 | - 47.0 |
| Shopping space | | | | | | |
| Total square metres | 3,989 | 696 | 6,753 | 8,310 | 32,069 | + 285.9 |
| Total value at current prices (R'000) | 8,265 | 1,377 | 14,821 | 16,939 | 283,028 | + 1570.9 |
| Industrial and warehouse space | | | | | | |
| Total square metres | 5,958 | 8,558 | 7,903 | 30,346 | 26,487 | - 12.7 |
| Total value at current prices (R'000) | 8,626 | 12,530 | 9,120 | 36,132 | 33,099 | - 8.4 |
| Other non-residential space ^{2/} | | | | | | |
| Total square metres | 50,681 | 1,907 | 2,720 | 56,117 | 7,749 | - 86.2 |
| Total value at current prices (R'000) | 55,183 | 1,856 | 6,800 | 62,463 | 14,669 | - 76.5 |
| Total value of non-residential buildings at current prices (R'000) | 76,874 | 17,263 | 31,941 | 121,290 | 333,846 | + 175.2 |
| Additions and alterations | | | | | | |
| Dwelling-houses | | | | | | |
| Total square metres | 25,466 | 42,631 | 36,409 | 82,534 | 117,571 | + 42.5 |
| Total value at current prices (R'000) | 34,874 | 49,819 | 56,039 | 106,045 | 152,922 | + 44.2 |
| Other buildings ^{3/} | | | | | | |
| Total square metres | 7,732 | 22,554 | 19,793 | 25,461 | 57,056 | + 124.1 |
| Total value at current prices (R'000) | 18,993 | 38,094 | 43,707 | 45,969 | 109,490 | + 138.2 |
| Total value of additions and alterations at current prices (R'000) | 53,867 | 87,913 | 99,746 | 152,014 | 262,412 | + 72.6 |
| Total value of building plans passed at current prices (R'000) | 202,225 | 304,794 | 317,770 | 521,490 | 1,087,189 | + 108.5 |

1/ Other residential buildings include institutions for the disabled, boarding houses, old people's homes, hostels, hotels, motels, guest houses, holiday chalets, entertainment centres, bed-and-breakfast accommodation and casinos.

2/ Other non-residential space includes churches, sport and recreation clubs, schools, crèches, hospitals and all other non-residential space.

3/ Other buildings include additions and alterations to other residential buildings, non-residential buildings and internal alterations.

Table 15 - Building plans passed according to type of building and province: North West

| Type of building | March 2002 | February 2003 | March 2003 | January 2002 to March 2002 | January 2003 to March 2003 | Percentage change between January 2002 to March 2002 and January 2003 to March 2003 |
|---|---------------|---------------|---------------|----------------------------|----------------------------|---|
| Residential buildings | | | | | | |
| Dwelling-houses smaller than 80 square metres | | | | | | |
| Number of dwelling-houses | 309 | 30 | 30 | 450 | 88 | - 80.4 |
| Total square metres | 10,756 | 1,771 | 1,706 | 19,677 | 5,230 | - 73.4 |
| Total value at current prices (R'000) | 7,591 | 2,103 | 2,080 | 21,717 | 6,419 | - 70.4 |
| Dwelling-houses equal to or larger than 80 square metres | | | | | | |
| Number of dwelling-houses | 108 | 100 | 100 | 264 | 294 | + 11.4 |
| Total square metres | 18,564 | 19,311 | 18,057 | 44,672 | 54,400 | + 21.8 |
| Total value at current prices (R'000) | 24,401 | 30,920 | 28,099 | 61,958 | 83,798 | + 35.2 |
| Flats and townhouses | | | | | | |
| Number of flats and townhouses | 8 | 36 | 141 | 44 | 202 | + 359.1 |
| Total square metres | 1,106 | 2,679 | 9,282 | 5,827 | 14,380 | + 146.8 |
| Total value at current prices (R'000) | 1,137 | 3,548 | 15,766 | 8,007 | 22,788 | + 184.6 |
| Other residential buildings ^{1/} | | | | | | |
| Total square metres | 0 | 276 | 0 | 284 | 276 | - 2.8 |
| Total value at current prices (R'000) | 0 | 600 | 0 | 200 | 600 | + 200.0 |
| Total value of residential buildings at current prices (R'000) | 33,129 | 37,171 | 45,945 | 91,882 | 113,605 | + 23.6 |
| Non-residential buildings | | | | | | |
| Office and banking space | | | | | | |
| Total square metres | 408 | 394 | 1,642 | 3,712 | 2,056 | -44.6 |
| Total value at current prices (R'000) | 286 | 433 | 3,252 | 6,262 | 3,709 | -40.8 |
| Shopping space | | | | | | |
| Total square metres | 0 | 0 | 0 | 2,109 | 3,319 | + 57.4 |
| Total value at current prices (R'000) | 0 | 0 | 0 | 4,104 | 10,738 | + 161.6 |
| Industrial and warehouse space | | | | | | |
| Total square metres | 960 | 2,484 | 0 | 4,111 | 5,769 | + 40.3 |
| Total value at current prices (R'000) | 1,500 | 4,035 | 0 | 6,675 | 7,502 | + 12.4 |
| Other non-residential space ^{2/} | | | | | | |
| Total square metres | 5,237 | 1,959 | 4,337 | 6,098 | 6,715 | + 10.1 |
| Total value at current prices (R'000) | 11,557 | 3,918 | 5,952 | 12,401 | 10,699 | - 13.7 |
| Total value of non-residential buildings at current prices (R'000) | 13,343 | 8,386 | 9,204 | 29,442 | 32,648 | + 10.9 |
| Additions and alterations | | | | | | |
| Dwelling-houses | | | | | | |
| Total square metres | 7,105 | 6,244 | 8,230 | 22,287 | 21,254 | - 4.6 |
| Total value at current prices (R'000) | 8,517 | 8,057 | 10,772 | 25,862 | 27,647 | + 6.9 |
| Other buildings ^{3/} | | | | | | |
| Total square metres | 1,590 | 1,838 | 852 | 3,385 | 2,749 | - 18.8 |
| Total value at current prices (R'000) | 2,573 | 2,795 | 1,246 | 5,877 | 4,218 | - 28.2 |
| Total value of additions and alterations at current prices (R'000) | 11,090 | 10,852 | 12,018 | 31,739 | 31,865 | + 0.4 |
| Total value of building plans passed at current prices (R'000) | 57,562 | 56,409 | 67,167 | 153,063 | 178,118 | + 16.4 |

1/ Other residential buildings include institutions for the disabled, boarding houses, old people's homes, hostels, hotels, motels, guest houses, holiday chalets, entertainment centres, bed-and-breakfast accommodation and casinos.

2/ Other non-residential space includes churches, sport and recreation clubs, schools, crèches, hospitals and all other non-residential space.

3/ Other buildings include additions and alterations to other residential buildings, non-residential buildings and internal alterations.

Table 16 - Building plans passed according to type of building and province: Gauteng

| Type of building | March 2002 * | February 2003 | March 2003 | January 2002 to March 2002 | January 2003 to March 2003 | Percentage change between January 2002 to March 2002 and January 2003 to March 2003 |
|---|----------------|----------------|----------------|----------------------------|----------------------------|---|
| Residential buildings | | | | | | |
| Dwelling-houses smaller than 80 square metres | | | | | | |
| Number of dwelling-houses | 996 | 1,963 | 1,329 | 2,799 | 4,924 | + 75.9 |
| Total square metres | 39,467 | 65,714 | 46,856 | 104,132 | 165,859 | + 59.3 |
| Total value at current prices (R'000) | 41,090 | 51,497 | 40,906 | 100,316 | 130,735 | + 30.3 |
| Dwelling-houses equal to or larger than 80 square metres | | | | | | |
| Number of dwelling-houses | 574 | 602 | 779 | 1,746 | 1,939 | + 11.1 |
| Total square metres | 154,080 | 159,264 | 199,620 | 482,390 | 503,662 | + 4.4 |
| Total value at current prices (R'000) | 272,279 | 273,339 | 360,569 | 772,617 | 883,626 | + 14.4 |
| Flats and townhouses | | | | | | |
| Number of flats and townhouses | 615 | 352 | 854 | 1,304 | 1,551 | + 18.9 |
| Total square metres | 91,045 | 67,510 | 118,028 | 181,531 | 250,811 | + 38.2 |
| Total value at current prices (R'000) | 137,398 | 115,769 | 212,492 | 282,048 | 440,896 | + 56.3 |
| Other residential buildings ^{1/} | | | | | | |
| Total square metres | 0 | 9,209 | 11,020 | 3,459 | 30,052 | + 768.8 |
| Total value at current prices (R'000) | 0 | 13,070 | 20,291 | 5,781 | 41,118 | + 611.3 |
| Total value of residential buildings at current prices (R'000) | 450,767 | 453,675 | 634,258 | 1,160,762 | 1,496,375 | + 28.9 |
| Non-residential buildings | | | | | | |
| Office and banking space | | | | | | |
| Total square metres | 25,823 | 15,680 | 20,624 | 81,499 | 49,128 | - 39.7 |
| Total value at current prices (R'000) | 103,229 | 29,934 | 37,365 | 193,539 | 91,627 | - 52.7 |
| Shopping space | | | | | | |
| Total square metres | 18,749 | 8,356 | 11,238 | 30,000 | 27,616 | - 7.9 |
| Total value at current prices (R'000) | 34,194 | 15,415 | 22,167 | 52,450 | 51,794 | - 1.3 |
| Industrial and warehouse space | | | | | | |
| Total square metres | 36,332 | 29,360 | 18,731 | 76,092 | 59,933 | - 21.2 |
| Total value at current prices (R'000) | 61,218 | 49,892 | 34,227 | 126,857 | 103,505 | - 18.4 |
| Other non-residential space ^{2/} | | | | | | |
| Total square metres | 70,922 | 5,116 | 8,687 | 78,636 | 23,532 | - 70.1 |
| Total value at current prices (R'000) | 127,691 | 7,457 | 16,309 | 139,108 | 40,827 | - 70.7 |
| Total value of non-residential buildings at current prices (R'000) | 326,332 | 102,698 | 110,068 | 511,954 | 287,753 | - 43.8 |
| Additions and alterations | | | | | | |
| Dwelling-houses | | | | | | |
| Total square metres | 92,589 | 72,400 | 96,772 | 259,685 | 238,264 | - 8.2 |
| Total value at current prices (R'000) | 143,760 | 117,738 | 160,991 | 399,222 | 396,664 | - 0.6 |
| Other buildings ^{3/} | | | | | | |
| Total square metres | 17,424 | 9,289 | 20,568 | 62,344 | 51,036 | - 18.1 |
| Total value at current prices (R'000) | 33,051 | 22,458 | 40,863 | 126,317 | 108,426 | - 14.2 |
| Total value of additions and alterations at current prices (R'000) | 176,811 | 140,196 | 201,854 | 525,539 | 505,090 | - 3.9 |
| Total value of building plans passed at current prices (R'000) | 953,910 | 696,569 | 946,180 | 2,198,255 | 2,289,218 | + 4.1 |

1/ Other residential buildings include institutions for the disabled, boarding houses, old people's homes, hostels, hotels, motels, guest houses, holiday chalets, entertainment centres, bed-and-breakfast accommodation and casinos.

2/ Other non-residential space includes churches, sport and recreation clubs, schools, crèches, hospitals and all other non-residential space.

3/ Other buildings include additions and alterations to other residential buildings, non-residential buildings and internal alterations.

Table 17 - Building plans passed according to type of building and province: Mpumalanga

| Type of building | March 2002 | February 2003 | March 2003 | January 2002 to March 2002 | January 2003 to March 2003 | Percentage change between January 2002 to March 2002 and January 2003 to March 2003 |
|---|---------------|---------------|---------------|----------------------------|----------------------------|---|
| Residential buildings | | | | | | |
| Dwelling-houses smaller than 80 square metres | | | | | | |
| Number of dwelling-houses | 256 | 183 | 84 | 572 | 282 | - 50.7 |
| Total square metres | 10,458 | 7,557 | 3,817 | 22,990 | 12,122 | - 47.3 |
| Total value at current prices (R'000) | 4,726 | 4,310 | 3,396 | 11,824 | 8,694 | - 26.5 |
| Dwelling-houses equal to or larger than 80 square metres | | | | | | |
| Number of dwelling-houses | 95 | 105 | 121 | 349 | 320 | - 8.3 |
| Total square metres | 18,859 | 25,940 | 24,935 | 58,279 | 69,401 | + 19.1 |
| Total value at current prices (R'000) | 27,108 | 36,336 | 33,140 | 74,813 | 94,478 | + 26.3 |
| Flats and townhouses | | | | | | |
| Number of flats and townhouses | 33 | 8 | 8 | 127 | 17 | - 86.6 |
| Total square metres | 2,723 | 1,133 | 735 | 16,105 | 1,991 | - 87.6 |
| Total value at current prices (R'000) | 2,673 | 1,228 | 1,670 | 23,135 | 3,021 | - 86.9 |
| Other residential buildings ^{1/} | | | | | | |
| Total square metres | 0 | 0 | 0 | 5,489 | 0 | .. |
| Total value at current prices (R'000) | 0 | 0 | 0 | 70,000 | 0 | .. |
| Total value of residential buildings at current prices (R'000) | 34,507 | 41,874 | 38,206 | 179,772 | 106,193 | - 40.9 |
| Non-residential buildings | | | | | | |
| Office and banking space | | | | | | |
| Total square metres | 0 | 5,478 | 383 | 689 | 6,704 | + 873.0 |
| Total value at current prices (R'000) | 0 | 9,173 | 460 | 879 | 10,933 | + 1143.8 |
| Shopping space | | | | | | |
| Total square metres | 4,497 | 1,581 | 195 | 16,266 | 5,209 | +68.0 |
| Total value at current prices (R'000) | 6,668 | 2,300 | 118 | 20,572 | 8,359 | +59.4 |
| Industrial and warehouse space | | | | | | |
| Total square metres | 111 | 10,879 | 7,795 | 6,942 | 25,448 | + 266.6 |
| Total value at current prices (R'000) | 135 | 8,625 | 10,551 | 7,310 | 29,374 | + 301.8 |
| Other non-residential space ^{2/} | | | | | | |
| Total square metres | 420 | 0 | 364 | 3,618 | 660 | - 81.8 |
| Total value at current prices (R'000) | 504 | 0 | 618 | 4,175 | 978 | - 76.6 |
| Total value of non-residential buildings at current prices (R'000) | 7,307 | 20,098 | 11,747 | 32,936 | 49,644 | + 50.7 |
| Additions and alterations | | | | | | |
| Dwelling-houses | | | | | | |
| Total square metres | 11,602 | 13,665 | 15,282 | 31,742 | 39,582 | + 24.7 |
| Total value at current prices (R'000) | 13,234 | 19,156 | 19,374 | 35,129 | 53,497 | + 52.3 |
| Other buildings ^{3/} | | | | | | |
| Total square metres | 1,428 | 3,177 | 1,237 | 4,296 | 6,104 | + 42.1 |
| Total value at current prices (R'000) | 2,029 | 6,028 | 3,748 | 11,973 | 12,545 | + 4.8 |
| Total value of additions and alterations at current prices (R'000) | 15,263 | 25,184 | 23,122 | 47,102 | 66,042 | + 40.2 |
| Total value of building plans passed at current prices (R'000) | 57,077 | 87,156 | 73,075 | 259,810 | 221,879 | - 14.6 |

1/ Other residential buildings include institutions for the disabled, boarding houses, old people's homes, hostels, hotels, motels, guest houses, holiday chalets, entertainment centres, bed-and-breakfast accommodation and casinos.

2/ Other non-residential space includes churches, sport and recreation clubs, schools, crèches, hospitals and all other non-residential space.

3/ Other buildings include additions and alterations to other residential buildings, non-residential buildings and internal alterations.

Table 18 - Building plans passed according to type of building and province: Limpopo

| Type of building | March 2002 | February 2003 | March 2003 | January 2002 to March 2002 | January 2003 to March 2003 | Percentage change between January 2002 to March 2002 and January 2003 to March 2003 |
|---|---------------|---------------|---------------|----------------------------|----------------------------|---|
| Residential buildings | | | | | | |
| Dwelling-houses smaller than 80 square metres | | | | | | |
| Number of dwelling-houses | 23 | 25 | 20 | 68 | 315 | + 363.2 |
| Total square metres | 1,327 | 1,526 | 1,159 | 4,001 | 13,919 | + 247.9 |
| Total value at current prices (R'000) | 1,886 | 2,247 | 1,668 | 5,737 | 8,452 | + 47.3 |
| Dwelling-houses equal to or larger than 80 square metres | | | | | | |
| Number of dwelling-houses | 39 | 41 | 41 | 123 | 119 | -3.3 |
| Total square metres | 7,296 | 8,381 | 8,191 | 22,804 | 24,248 | + 6.3 |
| Total value at current prices (R'000) | 9,475 | 12,734 | 13,046 | 30,299 | 36,709 | + 21.2 |
| Flats and townhouses | | | | | | |
| Number of flats and townhouses | 0 | 2 | 3 | 27 | 6 | -77.8 |
| Total square metres | 0 | 234 | 383 | 3,239 | 734 | -77.3 |
| Total value at current prices (R'000) | 0 | 328 | 537 | 4,353 | 1,029 | -76.4 |
| Other residential buildings ^{1/} | | | | | | |
| Total square metres | 0 | 0 | 0 | 0 | 0 | .. |
| Total value at current prices (R'000) | 0 | 0 | 0 | 0 | 0 | .. |
| Total value of residential buildings at current prices (R'000) | 11,361 | 15,309 | 15,251 | 40,389 | 46,190 | + 14.4 |
| Non-residential buildings | | | | | | |
| Office and banking space | | | | | | |
| Total square metres | 0 | 0 | 0 | 454 | 0 | .. |
| Total value at current prices (R'000) | 0 | 0 | 0 | 755 | 0 | .. |
| Shopping space | | | | | | |
| Total square metres | 1,573 | 0 | 187 | 2,551 | 317 | -87.6 |
| Total value at current prices (R'000) | 2,819 | 0 | 375 | 4,457 | 515 | -88.4 |
| Industrial and warehouse space | | | | | | |
| Total square metres | 0 | 1,048 | 559 | 478 | 3,814 | + 697.9 |
| Total value at current prices (R'000) | 0 | 1,467 | 895 | 600 | 7,217 | + 1,102.8 |
| Other non-residential space ^{2/} | | | | | | |
| Total square metres | 343 | 735 | 515 | 606 | 1,387 | + 128.9 |
| Total value at current prices (R'000) | 723 | 1,433 | 1,133 | 1,168 | 2,867 | + 145.5 |
| Total value of non-residential buildings at current prices (R'000) | 3,542 | 2,900 | 2,403 | 6,980 | 10,599 | + 51.8 |
| Additions and alterations | | | | | | |
| Dwelling-houses | | | | | | |
| Total square metres | 3,322 | 4,847 | 5,007 | 10,841 | 13,213 | + 21.9 |
| Total value at current prices (R'000) | 4,156 | 6,805 | 7,092 | 14,434 | 17,576 | + 21.8 |
| Other buildings ^{3/} | | | | | | |
| Total square metres | 108 | 965 | 1,302 | 6,662 | 3,193 | -52.1 |
| Total value at current prices (R'000) | 384 | 1,567 | 2,148 | 10,469 | 5,577 | -46.7 |
| Total value of additions and alterations at current prices (R'000) | 4,540 | 8,372 | 9,240 | 24,903 | 23,153 | -7.0 |
| Total value of building plans passed at current prices (R'000) | 19,443 | 26,581 | 26,894 | 72,272 | 79,942 | + 10.6 |

1/ Other residential buildings include institutions for the disabled, boarding houses, old people's homes, hostels, hotels, motels, guest houses, holiday chalets, entertainment centres, bed-and-breakfast accommodation and casinos.

2/ Other non-residential space includes churches, sport and recreation clubs, schools, crèches, hospitals and all other non-residential space.

3/ Other buildings include additions and alterations to other residential buildings, non-residential buildings and internal alterations.

Table 19 - Buildings completed according to type of building: Total RSA

| Type of building | March 2002 * | February 2003 | March 2003 | January 2002 to March 2002 | January 2003 to March 2003 | Percentage change between January 2002 to March 2002 and January 2003 to March 2003 |
|---|------------------|------------------|------------------|----------------------------|----------------------------|---|
| Residential buildings | | | | | | |
| Dwelling-houses smaller than 80 square metres | | | | | | |
| Number of dwelling-houses | 1,918 | 3,196 | 2,703 | 6,180 | 8,019 | + 29.8 |
| Total square metres | 73,564 | 118,226 | 97,708 | 231,198 | 288,040 | + 24.6 |
| Total value at current prices (R'000) | 65,469 | 90,397 | 83,813 | 213,632 | 230,314 | + 7.8 |
| Dwelling-houses equal to or larger than 80 square metres | | | | | | |
| Number of dwelling-houses | 1,175 | 1,178 | 1,339 | 2,969 | 3,597 | + 21.2 |
| Total square metres | 222,662 | 236,175 | 288,799 | 607,718 | 740,528 | + 21.9 |
| Total value at current prices (R'000) | 332,405 | 375,157 | 469,451 | 899,547 | 1,179,034 | + 31.1 |
| Flats and townhouses | | | | | | |
| Number of flats and townhouses | 711 | 769 | 790 | 3,002 | 3,227 | + 7.5 |
| Total square metres | 65,273 | 91,865 | 91,648 | 293,065 | 326,513 | + 11.4 |
| Total value at current prices (R'000) | 97,175 | 162,601 | 136,138 | 437,393 | 515,630 | + 17.9 |
| Other residential buildings ^{1/} | | | | | | |
| Total square metres | 18,443 | 15,283 | 3,987 | 22,634 | 30,029 | + 32.7 |
| Total value at current prices (R'000) | 213,478 | 42,238 | 6,297 | 218,415 | 57,977 | - 73.5 |
| Total value of residential buildings at current prices (R'000) | 708,527 | 670,393 | 695,699 | 1,768,987 | 1,982,955 | + 12.1 |
| Non-residential buildings | | | | | | |
| Office and banking space | | | | | | |
| Total square metres | 41,849 | 35,638 | 38,541 | 111,194 | 117,715 | + 5.9 |
| Total value at current prices (R'000) | 82,067 | 53,638 | 74,851 | 195,272 | 190,830 | - 2.3 |
| Shopping space | | | | | | |
| Total square metres | 10,714 | 19,594 | 37,807 | 51,705 | 75,061 | + 45.2 |
| Total value at current prices (R'000) | 15,853 | 31,025 | 63,119 | 66,401 | 120,599 | + 81.6 |
| Industrial and warehouse space | | | | | | |
| Total square metres | 19,608 | 46,300 | 100,810 | 90,731 | 191,745 | + 111.3 |
| Total value at current prices (R'000) | 22,915 | 52,765 | 141,772 | 105,773 | 239,385 | + 126.3 |
| Other non-residential space ^{2/} | | | | | | |
| Total square metres | 25,778 | 12,518 | 15,256 | 45,914 | 40,023 | - 12.8 |
| Total value at current prices (R'000) | 50,392 | 18,905 | 28,447 | 78,168 | 63,643 | - 18.6 |
| Total value of non-residential buildings at current prices (R'000) | 171,227 | 156,333 | 308,189 | 445,614 | 614,457 | + 37.9 |
| Additions and alterations | | | | | | |
| Dwelling-houses | | | | | | |
| Total square metres | 101,773 | 138,175 | 121,268 | 319,429 | 371,287 | + 16.2 |
| Total value at current prices (R'000) | 132,019 | 187,398 | 158,485 | 404,296 | 496,030 | + 22.7 |
| Other buildings ^{3/} | | | | | | |
| Total square metres | 22,404 | 42,992 | 41,488 | 84,371 | 139,918 | + 65.8 |
| Total value at current prices (R'000) | 44,034 | 98,112 | 79,978 | 150,639 | 262,439 | + 74.2 |
| Total value of additions and alterations at current prices (R'000) | 176,053 | 285,510 | 238,463 | 554,935 | 758,469 | + 36.7 |
| Total value of buildings completed at current prices (R'000) | 1,055,807 | 1,112,236 | 1,242,351 | 2,769,536 | 3,355,881 | + 21.2 |

1/ Other residential buildings include institutions for the disabled, boarding houses, old people's homes, hostels, hotels, motels, guest houses, holiday chalets, entertainment centres, bed-and-breakfast accommodation and casinos.

2/ Other non-residential space includes churches, sport and recreation clubs, schools, crèches, hospitals and all other non-residential space.

3/ Other buildings include additions and alterations to other residential buildings, non-residential buildings and internal alterations.

Table 20 - Buildings completed according to type of building and province: Western Cape

| Type of building | March 2002* | February 2003 | March 2003 | January 2002 to March 2002 | January 2003 to March 2003 | Percentage change between January 2002 to March 2002 and January 2003 to March 2003 |
|---|----------------|----------------|----------------|----------------------------|----------------------------|---|
| Residential buildings | | | | | | |
| Dwelling-houses smaller than 80 square metres | | | | | | |
| Number of dwelling-houses | 415 | 189 | 571 | 1,918 | 901 | - 53.0 |
| Total square metres | 14,939 | 9,111 | 20,421 | 68,770 | 35,358 | - 48.6 |
| Total value at current prices (R'000) | 16,103 | 12,235 | 22,704 | 78,262 | 41,071 | - 47.5 |
| Dwelling-houses equal to or larger than 80 square metres | | | | | | |
| Number of dwelling-houses | 416 | 571 | 443 | 1,096 | 1,406 | + 28.3 |
| Total square metres | 82,652 | 96,925 | 88,857 | 225,887 | 259,536 | + 14.9 |
| Total value at current prices (R'000) | 131,153 | 157,343 | 143,773 | 356,081 | 420,978 | + 18.2 |
| Flats and townhouses | | | | | | |
| Number of flats and townhouses | 86 | 204 | 172 | 523 | 494 | - 5.5 |
| Total square metres | 9,903 | 19,533 | 21,977 | 64,382 | 49,403 | - 23.3 |
| Total value at current prices (R'000) | 14,695 | 39,568 | 36,268 | 109,330 | 87,490 | - 20.0 |
| Other residential buildings ^{1/} | | | | | | |
| Total square metres | 0 | 13,783 | 1,681 | 673 | 15,591 | + 2216.6 |
| Total value at current prices (R'000) | 0 | 38,457 | 2,540 | 993 | 41,171 | + 4046.1 |
| Total value of residential buildings at current prices (R'000) | 161,951 | 247,603 | 205,285 | 544,666 | 590,710 | + 8.5 |
| Non-residential buildings | | | | | | |
| Office and banking space | | | | | | |
| Total square metres | 3,430 | 9,157 | 20,463 | 17,502 | 59,429 | + 239.6 |
| Total value at current prices (R'000) | 7,145 | 15,914 | 44,248 | 26,889 | 95,413 | + 254.8 |
| Shopping space | | | | | | |
| Total square metres | 623 | 5,862 | 5,234 | 21,285 | 11,706 | - 45.0 |
| Total value at current prices (R'000) | 1,134 | 7,704 | 7,995 | 24,474 | 16,675 | - 31.9 |
| Industrial and warehouse space | | | | | | |
| Total square metres | 5,346 | 21,604 | 13,966 | 16,919 | 53,202 | + 214.5 |
| Total value at current prices (R'000) | 5,813 | 21,837 | 19,178 | 16,481 | 58,861 | + 257.1 |
| Other non-residential space ^{2/} | | | | | | |
| Total square metres | 16,742 | 3,844 | 3,531 | 22,757 | 10,591 | - 53.5 |
| Total value at current prices (R'000) | 36,892 | 4,625 | 4,563 | 44,443 | 13,720 | - 69.1 |
| Total value of non-residential buildings at current prices (R'000) | 50,984 | 50,080 | 75,984 | 112,287 | 184,669 | + 64.5 |
| Additions and alterations | | | | | | |
| Dwelling-houses | | | | | | |
| Total square metres | 30,923 | 49,386 | 35,279 | 105,665 | 119,353 | + 13.0 |
| Total value at current prices (R'000) | 42,170 | 71,089 | 46,945 | 141,005 | 167,106 | + 18.5 |
| Other buildings ^{3/} | | | | | | |
| Total square metres | 3,246 | 7,476 | 14,501 | 25,465 | 42,767 | + 67.9 |
| Total value at current prices (R'000) | 9,020 | 26,078 | 25,280 | 50,859 | 90,832 | + 78.6 |
| Total value of additions and alterations at current prices (R'000) | 51,190 | 97,167 | 72,225 | 191,864 | 257,938 | + 34.4 |
| Total value of buildings completed at current prices (R'000) | 264,125 | 394,850 | 353,494 | 848,817 | 1,033,317 | + 21.7 |

1/ Other residential buildings include institutions for the disabled, boarding houses, old people's homes, hostels, hotels, motels, guest houses, holiday chalets, entertainment centres, bed-and-breakfast accommodation and casinos.

2/ Other non-residential space includes churches, sport and recreation clubs, schools, crèches, hospitals and all other non-residential space.

3/ Other buildings include additions and alterations to other residential buildings, non-residential buildings and internal alterations.

Table 21 - Buildings completed according to type of building and province: Eastern Cape

| Type of building | March 2002 | February 2003 | March 2003 | January 2002 to March 2002 | January 2003 to March 2003 | Percentage change between January 2002 to March 2002 and January 2003 to March 2003 |
|---|---------------|---------------|---------------|----------------------------|----------------------------|---|
| Residential buildings | | | | | | |
| Dwelling-houses smaller than 80 square metres | | | | | | |
| Number of dwelling-houses | 171 | 126 | 155 | 444 | 407 | - 8.3 |
| Total square metres | 7,576 | 5,559 | 6,389 | 20,154 | 17,676 | - 12.3 |
| Total value at current prices (R'000) | 10,399 | 5,067 | 6,668 | 26,324 | 19,762 | - 24.9 |
| Dwelling-houses equal to or larger than 80 square metres | | | | | | |
| Number of dwelling-houses | 40 | 57 | 71 | 158 | 160 | + 1.3 |
| Total square metres | 7,197 | 10,034 | 15,881 | 26,608 | 32,060 | + 20.5 |
| Total value at current prices (R'000) | 10,010 | 14,395 | 23,653 | 34,904 | 47,603 | + 36.4 |
| Flats and townhouses | | | | | | |
| Number of flats and townhouses | 294 | 37 | 8 | 299 | 46 | -84.6 |
| Total square metres | 14,361 | 2,576 | 1,154 | 15,146 | 3,828 | - 74.7 |
| Total value at current prices (R'000) | 20,699 | 3,839 | 1,295 | 21,785 | 5,271 | - 75.8 |
| Other residential buildings ^{1/} | | | | | | |
| Total square metres | 2,744 | 225 | 0 | 2,744 | 871 | - 68.3 |
| Total value at current prices (R'000) | 3,312 | 495 | 0 | 3,312 | 1,765 | - 46.7 |
| Total value of residential buildings at current prices (R'000) | 44,420 | 23,796 | 31,616 | 86,325 | 74,401 | - 13.8 |
| Non-residential buildings | | | | | | |
| Office and banking space | | | | | | |
| Total square metres | 25 | 0 | 0 | 25 | 0 | .. |
| Total value at current prices (R'000) | 50 | 0 | 0 | 50 | 0 | .. |
| Shopping space | | | | | | |
| Total square metres | 77 | 822 | 1,653 | 2,477 | 2,943 | + 18.8 |
| Total value at current prices (R'000) | 103 | 1,225 | 2,920 | 3,151 | 4,912 | + 55.9 |
| Industrial and warehouse space | | | | | | |
| Total square metres | 0 | 1,911 | 0 | 478 | 3,532 | + 638.9 |
| Total value at current prices (R'000) | 0 | 2,969 | 0 | 392 | 5,319 | + 1256.9 |
| Other non-residential space ^{2/} | | | | | | |
| Total square metres | 491 | 917 | 204 | 2,300 | 1,728 | -24.9 |
| Total value at current prices (R'000) | 736 | 1,877 | 364 | 2,664 | 3,511 | + 31.8 |
| Total value of non-residential buildings at current prices (R'000) | 889 | 6,071 | 3,284 | 6,257 | 13,742 | + 119.6 |
| Additions and alterations | | | | | | |
| Dwelling-houses | | | | | | |
| Total square metres | 9,783 | 8,465 | 9,573 | 25,674 | 29,515 | + 15.0 |
| Total value at current prices (R'000) | 11,222 | 11,814 | 12,355 | 30,067 | 39,793 | + 32.3 |
| Other buildings ^{3/} | | | | | | |
| Total square metres | 3,843 | 7,830 | 12,395 | 10,248 | 20,904 | + 104.0 |
| Total value at current prices (R'000) | 5,150 | 14,744 | 20,230 | 13,890 | 36,549 | + 163.1 |
| Total value of additions and alterations at current prices (R'000) | 16,372 | 26,558 | 32,585 | 43,957 | 76,342 | + 73.7 |
| Total value of buildings completed at current prices (R'000) | 61,681 | 56,425 | 67,485 | 136,539 | 164,485 | + 20.5 |

1/ Other residential buildings include institutions for the disabled, boarding houses, old people's homes, hostels, hotels, motels, guest houses, holiday chalets, entertainment centres, bed-and-breakfast accommodation and casinos.

2/ Other non-residential space includes churches, sport and recreation clubs, schools, crèches, hospitals and all other non-residential space.

3/ Other buildings include additions and alterations to other residential buildings, non-residential buildings and internal alterations.

Table 22 - Buildings completed according to type of building and province: Northern Cape

| Type of building | March 2002 | February 2003 | March 2003 | January 2002 to March 2002 | January 2003 to March 2003 | Percentage change between January 2002 to March 2002 and January 2003 to March 2003 |
|---|--------------|---------------|--------------|----------------------------|----------------------------|---|
| Residential buildings | | | | | | |
| Dwelling-houses smaller than 80 square metres | | | | | | |
| Number of dwelling-houses | 8 | 2 | 1 | 16 | 3 | - 81.3 |
| Total square metres | 430 | 121 | 46 | 771 | 167 | - 78.3 |
| Total value at current prices (R'000) | 685 | 226 | 69 | 963 | 295 | - 69.4 |
| Dwelling-houses equal to or larger than 80 square metres | | | | | | |
| Number of dwelling-houses | 2 | 4 | 6 | 14 | 15 | + 7.1 |
| Total square metres | 193 | 1,059 | 1,066 | 1,873 | 2,933 | + 56.6 |
| Total value at current prices (R'000) | 270 | 1,821 | 1,594 | 2,410 | 4,812 | + 99.7 |
| Flats and townhouses | | | | | | |
| Number of flats and townhouses | 0 | 2 | 0 | 0 | 2 | .. |
| Total square metres | 0 | 226 | 0 | 0 | 226 | .. |
| Total value at current prices (R'000) | 0 | 317 | 0 | 0 | 317 | .. |
| Other residential buildings ^{1/} | | | | | | |
| Total square metres | 0 | 0 | 0 | 0 | 0 | .. |
| Total value at current prices (R'000) | 0 | 0 | 0 | 0 | 0 | .. |
| Total value of residential buildings at current prices (R'000) | 955 | 2,364 | 1,663 | 3,373 | 5,424 | + 60.8 |
| Non-residential buildings | | | | | | |
| Office and banking space | | | | | | |
| Total square metres | 0 | 0 | 0 | 0 | 0 | .. |
| Total value at current prices (R'000) | 0 | 0 | 0 | 0 | 0 | .. |
| Shopping space | | | | | | |
| Total square metres | 0 | 0 | 0 | 784 | 0 | .. |
| Total value at current prices (R'000) | 0 | 0 | 0 | 1,098 | 0 | .. |
| Industrial and warehouse space | | | | | | |
| Total square metres | 0 | 0 | 0 | 0 | 0 | .. |
| Total value at current prices (R'000) | 0 | 0 | 0 | 0 | 0 | .. |
| Other non-residential space ^{2/} | | | | | | |
| Total square metres | 465 | 0 | 0 | 465 | 125 | - 73.1 |
| Total value at current prices (R'000) | 0 | 0 | 0 | 433 | 188 | - 56.6 |
| Total value of non-residential buildings at current prices (R'000) | 433 | 0 | 0 | 1,531 | 188 | - 87.7 |
| Additions and alterations | | | | | | |
| Dwelling-houses | | | | | | |
| Total square metres | 2,438 | 2,908 | 2,700 | 6,101 | 7,399 | + 21.3 |
| Total value at current prices (R'000) | 2,902 | 4,918 | 4,382 | 8,080 | 11,847 | + 46.6 |
| Other buildings ^{3/} | | | | | | |
| Total square metres | 315 | 0 | 851 | 447 | 851 | + 90.4 |
| Total value at current prices (R'000) | 881 | 52 | 1,994 | 1,803 | 2,046 | + 13.5 |
| Total value of additions and alterations at current prices (R'000) | 3,783 | 4,970 | 6,376 | 9,883 | 13,893 | + 40.6 |
| Total value of buildings completed at current prices (R'000) | 5,171 | 7,334 | 8,039 | 14,787 | 19,505 | 31.9 |

1/ Other residential buildings include institutions for the disabled, boarding houses, old people's homes, hostels, hotels, motels, guest houses, holiday chalets, entertainment centres, bed-and-breakfast accommodation and casinos.

2/ Other non-residential space includes churches, sport and recreation clubs, schools, crèches, hospitals and all other non-residential space.

3/ Other buildings include additions and alterations to other residential buildings, non-residential buildings and internal alterations.

Table 23 - Buildings completed according to type of building and province: Free State

| Type of building | March 2002 | February 2003 | March 2003 | January 2002 to March 2002 | January 2003 to March 2003 | Percentage change between January 2002 to March 2002 and January 2003 to March 2003 |
|---|---------------|---------------|---------------|----------------------------|----------------------------|---|
| Residential buildings | | | | | | |
| Dwelling-houses smaller than 80 square metres | | | | | | |
| Number of dwelling-houses | 55 | 420 | 161 | 178 | 598 | + 236.0 |
| Total square metres | 2,419 | 16,988 | 6,924 | 8,399 | 24,889 | + 196.3 |
| Total value at current prices (R'000) | 1,414 | 8,172 | 4,160 | 5,731 | 13,702 | + 139.1 |
| Dwelling-houses equal to or larger than 80 square metres | | | | | | |
| Number of dwelling-houses | 31 | 19 | 30 | 68 | 83 | + 22.1 |
| Total square metres | 4,831 | 3,204 | 5,124 | 11,873 | 14,081 | + 18.6 |
| Total value at current prices (R'000) | 5,977 | 4,489 | 6,434 | 14,151 | 18,122 | + 28.1 |
| Flats and townhouses | | | | | | |
| Number of flats and townhouses | 0 | 90 | 1 | 36 | 94 | + 161.1 |
| Total square metres | 0 | 9,506 | 192 | 3,936 | 10,192 | + 158.9 |
| Total value at current prices (R'000) | 0 | 14,203 | 195 | 6,464 | 14,966 | + 131.5 |
| Other residential buildings ^{1/} | | | | | | |
| Total square metres | 0 | 0 | 0 | 1,428 | 60 | -95.8 |
| Total value at current prices (R'000) | 0 | 0 | 0 | 1,461 | 54 | -96.3 |
| Total value of residential buildings at current prices (R'000) | 7,391 | 26,864 | 10,789 | 27,807 | 46,844 | + 68.5 |
| Non-residential buildings | | | | | | |
| Office and banking space | | | | | | |
| Total square metres | 0 | 62 | 38 | 2,055 | 100 | -95.1 |
| Total value at current prices (R'000) | 0 | 104 | 43 | 3,855 | 147 | -96.2 |
| Shopping space | | | | | | |
| Total square metres | 710 | 180 | 3,012 | 1,340 | 4,916 | + 266.9 |
| Total value at current prices (R'000) | 2,000 | 86 | 4,688 | 2,500 | 8,098 | + 223.9 |
| Industrial and warehouse space | | | | | | |
| Total square metres | 808 | 0 | 6,439 | 3,650 | 6,439 | + 76.4 |
| Total value at current prices (R'000) | 409 | 0 | 6,600 | 2,689 | 6,600 | + 145.4 |
| Other non-residential space ^{2/} | | | | | | |
| Total square metres | 0 | 0 | 2,799 | 175 | 2,799 | + 1,499.4 |
| Total value at current prices (R'000) | 0 | 0 | 4,005 | 131 | 4,005 | + 2,957.3 |
| Total value of non-residential buildings at current prices (R'000) | 2,409 | 190 | 15,336 | 9,175 | 18,850 | + 105.4 |
| Additions and alterations | | | | | | |
| Dwelling-houses | | | | | | |
| Total square metres | 3,777 | 3,893 | 7,802 | 21,266 | 16,716 | -21.4 |
| Total value at current prices (R'000) | 4,024 | 4,522 | 8,401 | 23,714 | 18,750 | -20.9 |
| Other buildings ^{3/} | | | | | | |
| Total square metres | 1,303 | 371 | 1,290 | 4,272 | 2,232 | -47.8 |
| Total value at current prices (R'000) | 1,220 | 2,997 | 6,163 | 8,570 | 10,014 | + 16.8 |
| Total value of additions and alterations at current prices (R'000) | 5,244 | 7,519 | 14,564 | 32,284 | 28,764 | -10.9 |
| Total value of buildings completed at current prices (R'000) | 15,044 | 34,573 | 40,689 | 69,266 | 94,458 | + 36.4 |

1/ Other residential buildings include institutions for the disabled, boarding houses, old people's homes, hostels, hotels, motels, guest houses, holiday chalets, entertainment centres, bed-and-breakfast accommodation and casinos.

2/ Other non-residential space includes churches, sport and recreation clubs, schools, crèches, hospitals and all other non-residential space.

3/ Other buildings include additions and alterations to other residential buildings, non-residential buildings and internal alterations.

Table 24 - Buildings completed according to type of building and province: KwaZulu-Natal

| Type of building | March 2002* | February 2003 | March 2003 | January 2002 to March 2002 | January 2003 to March 2003 | Percentage change between January 2002 to March 2002 and January 2003 to March 2003 |
|---|----------------|----------------|----------------|----------------------------|----------------------------|---|
| Residential buildings | | | | | | |
| Dwelling-houses smaller than 80 square metres | | | | | | |
| Number of dwelling-houses | 275 | 336 | 299 | 472 | 967 | + 104.9 |
| Total square metres | 10,506 | 11,966 | 10,693 | 20,379 | 33,785 | + 65.8 |
| Total value at current prices (R'000) | 9,345 | 9,268 | 9,271 | 20,908 | 26,798 | + 28.2 |
| Dwelling-houses equal to or larger than 80 square metres | | | | | | |
| Number of dwelling-houses | 113 | 110 | 116 | 318 | 367 | + 15.4 |
| Total square metres | 22,905 | 25,021 | 22,773 | 62,553 | 75,307 | + 20.4 |
| Total value at current prices (R'000) | 32,259 | 37,290 | 35,095 | 85,709 | 111,547 | + 30.1 |
| Flats and townhouses | | | | | | |
| Number of flats and townhouses | 43 | 59 | 33 | 153 | 164 | + 7.2 |
| Total square metres | 3,663 | 13,221 | 6,640 | 21,267 | 29,032 | + 36.5 |
| Total value at current prices (R'000) | 5,213 | 21,258 | 12,569 | 35,117 | 47,561 | + 35.4 |
| Other residential buildings ^{1/} | | | | | | |
| Total square metres | 0 | 0 | 83 | 0 | 186 | .. |
| Total value at current prices (R'000) | 0 | 0 | 100 | 0 | 286 | .. |
| Total value of residential buildings at current prices (R'000) | 46,817 | 67,816 | 57,035 | 141,734 | 186,192 | + 31.4 |
| Non-residential buildings | | | | | | |
| Office and banking space | | | | | | |
| Total square metres | 24,070 | 3,100 | 2,771 | 43,663 | 9,606 | -78.0 |
| Total value at current prices (R'000) | 51,888 | 9,000 | 3,632 | 87,458 | 21,177 | -75.8 |
| Shopping space | | | | | | |
| Total square metres | 3,186 | 5,566 | 6,793 | 9,314 | 13,874 | + 49.0 |
| Total value at current prices (R'000) | 3,302 | 8,650 | 13,020 | 10,075 | 23,328 | + 131.5 |
| Industrial and warehouse space | | | | | | |
| Total square metres | 6,901 | 4,446 | 17,720 | 37,371 | 37,892 | + 1.4 |
| Total value at current prices (R'000) | 6,682 | 5,581 | 18,846 | 35,248 | 37,818 | + 7.3 |
| Other non-residential space ^{2/} | | | | | | |
| Total square metres | 2,297 | 4,037 | 1,602 | 8,045 | 6,685 | -16.9 |
| Total value at current prices (R'000) | 3,584 | 7,210 | 3,245 | 12,351 | 11,591 | -6.2 |
| Total value of non-residential buildings at current prices (R'000) | 65,456 | 30,441 | 38,743 | 145,132 | 93,914 | -35.3 |
| Additions and alterations | | | | | | |
| Dwelling-houses | | | | | | |
| Total square metres | 23,127 | 28,673 | 26,483 | 62,817 | 83,258 | + 32.5 |
| Total value at current prices (R'000) | 26,068 | 33,444 | 31,424 | 69,280 | 97,916 | + 41.3 |
| Other buildings ^{3/} | | | | | | |
| Total square metres | 5,657 | 7,500 | 3,412 | 16,423 | 33,550 | + 104.3 |
| Total value at current prices (R'000) | 13,586 | 24,254 | 5,013 | 30,200 | 53,694 | + 77.8 |
| Total value of additions and alterations at current prices (R'000) | 39,654 | 57,698 | 36,437 | 99,480 | 151,610 | + 52.4 |
| Total value of buildings completed at current prices (R'000) | 151,927 | 155,955 | 132,215 | 386,346 | 431,716 | + 11.7 |

1/ Other residential buildings include institutions for the disabled, boarding houses, old people's homes, hostels, hotels, motels, guest houses, holiday chalets, entertainment centres, bed-and-breakfast accommodation and casinos.

2/ Other non-residential space includes churches, sport and recreation clubs, schools, crèches, hospitals and all other non-residential space.

3/ Other buildings include additions and alterations to other residential buildings, non-residential buildings and internal alterations.

Table 25 - Buildings completed according to type of building and province: North West

| Type of building | March 2002 | February 2003 | March 2003 | January 2002 to March 2002 | January 2003 to March 2003 | Percentage change between January 2002 to March 2002 and January 2003 to March 2003 |
|---|---------------|---------------|---------------|----------------------------|----------------------------|---|
| Residential buildings | | | | | | |
| Dwelling-houses smaller than 80 square metres | | | | | | |
| Number of dwelling-houses | 58 | 27 | 19 | 385 | 64 | - 83.4 |
| Total square metres | 2,909 | 1,493 | 1,041 | 13,776 | 3,575 | - 74.0 |
| Total value at current prices (R'000) | 3,022 | 1,767 | 1,118 | 8,384 | 4,305 | - 48.7 |
| Dwelling-houses equal to or larger than 80 square metres | | | | | | |
| Number of dwelling-houses | 44 | 39 | 96 | 152 | 209 | + 37.5 |
| Total square metres | 8,240 | 7,758 | 16,661 | 25,649 | 41,198 | + 60.6 |
| Total value at current prices (R'000) | 11,248 | 12,275 | 23,990 | 38,648 | 59,257 | + 53.3 |
| Flats and townhouses | | | | | | |
| Number of flats and townhouses | 14 | 26 | 45 | 170 | 375 | + 120.6 |
| Total square metres | 2,288 | 2,619 | 4,293 | 10,591 | 29,079 | + 174.6 |
| Total value at current prices (R'000) | 2,343 | 2,643 | 5,304 | 14,227 | 42,106 | + 196.0 |
| Other residential buildings ^{1/} | | | | | | |
| Total square metres | 0 | 579 | 0 | 2,090 | 579 | - 72.3 |
| Total value at current prices (R'000) | 0 | 834 | 0 | 2,483 | 834 | - 66.4 |
| Total value of residential buildings at current prices (R'000) | 16,613 | 17,519 | 30,412 | 63,742 | 106,502 | + 67.1 |
| Non-residential buildings | | | | | | |
| Office and banking space | | | | | | |
| Total square metres | 446 | 0 | 1,669 | 446 | 1,669 | + 274.2 |
| Total value at current prices (R'000) | 800 | 0 | 2,358 | 800 | 2,358 | + 194.8 |
| Shopping space | | | | | | |
| Total square metres | 2,967 | 758 | 2,043 | 3,542 | 2,801 | - 20.9 |
| Total value at current prices (R'000) | 3,642 | 1,866 | 2,452 | 4,045 | 4,318 | + 6.7 |
| Industrial and warehouse space | | | | | | |
| Total square metres | 551 | 956 | 0 | 1,397 | 3,672 | + 162.8 |
| Total value at current prices (R'000) | 500 | 1,263 | 0 | 1,105 | 3,976 | + 259.8 |
| Other non-residential space ^{2/} | | | | | | |
| Total square metres | 578 | 360 | 2,161 | 2,293 | 3,981 | + 73.6 |
| Total value at current prices (R'000) | 952 | 645 | 7,700 | 4,103 | 9,815 | + 139.2 |
| Total value of non-residential buildings at current prices (R'000) | 5,894 | 3,774 | 12,510 | 10,053 | 20,467 | + 103.6 |
| Additions and alterations | | | | | | |
| Dwelling-houses | | | | | | |
| Total square metres | 2,277 | 6,556 | 3,916 | 12,902 | 17,504 | + 35.7 |
| Total value at current prices (R'000) | 2,270 | 5,565 | 3,911 | 11,625 | 16,249 | + 39.8 |
| Other buildings ^{3/} | | | | | | |
| Total square metres | 939 | 4,559 | 1,222 | 1,944 | 7,493 | + 285.4 |
| Total value at current prices (R'000) | 1,543 | 4,243 | 1,440 | 2,696 | 8,713 | + 223.2 |
| Total value of additions and alterations at current prices (R'000) | 3,813 | 9,808 | 5,351 | 14,321 | 24,962 | + 74.3 |
| Total value of buildings completed at current prices (R'000) | 26,320 | 31,101 | 48,273 | 88,116 | 151,931 | + 72.4 |

1/ Other residential buildings include institutions for the disabled, boarding houses, old people's homes, hostels, hotels, motels, guest houses, holiday chalets, entertainment centres, bed-and-breakfast accommodation and casinos.

2/ Other non-residential space includes churches, sport and recreation clubs, schools, crèches, hospitals and all other non-residential space.

3/ Other buildings include additions and alterations to other residential buildings, non-residential buildings and internal alterations.

Table 26 - Buildings completed according to type of building and province: Gauteng

| Type of building | March 2002* | February 2003 | March 2003 | January 2002 to March 2002 | January 2003 to March 2003 | Percentage change between January 2002 to March 2002 and January 2003 to March 2003 |
|---|----------------|----------------|----------------|----------------------------|----------------------------|---|
| Residential buildings | | | | | | |
| Dwelling-houses smaller than 80 square metres | | | | | | |
| Number of dwelling-houses | 533 | 1,930 | 1,459 | 2,000 | 4,838 | + 141.9 |
| Total square metres | 18,930 | 65,727 | 49,903 | 68,552 | 160,821 | + 134.6 |
| Total value at current prices (R'000) | 16,296 | 49,442 | 36,606 | 54,133 | 113,930 | + 110.5 |
| Dwelling-houses equal to or larger than 80 square metres | | | | | | |
| Number of dwelling-houses | 492 | 333 | 522 | 1,034 | 1,181 | + 14.2 |
| Total square metres | 90,361 | 82,073 | 126,435 | 231,275 | 278,090 | + 20.2 |
| Total value at current prices (R'000) | 133,577 | 133,596 | 219,594 | 341,327 | 466,502 | + 36.7 |
| Flats and townhouses | | | | | | |
| Number of flats and townhouses | 265 | 325 | 528 | 1,802 | 1,518 | -15.8 |
| Total square metres | 33,997 | 41,149 | 57,005 | 174,856 | 172,198 | -1.5 |
| Total value at current prices (R'000) | 53,276 | 76,502 | 80,024 | 247,650 | 278,193 | + 12.3 |
| Other residential buildings ^{1/} | | | | | | |
| Total square metres | 1,740 | 240 | 2,223 | 1,740 | 12,286 | + 606.1 |
| Total value at current prices (R'000) | 2,660 | 252 | 3,657 | 2,660 | 11,667 | + 338.6 |
| Total value of residential buildings at current prices (R'000) | 205,809 | 259,792 | 339,881 | 645,770 | 870,292 | + 34.8 |
| Non-residential buildings | | | | | | |
| Office and banking space | | | | | | |
| Total square metres | 13,878 | 23,319 | 11,303 | 47,503 | 44,614 | -6.1 |
| Total value at current prices (R'000) | 22,184 | 28,620 | 21,814 | 76,220 | 68,979 | -9.5 |
| Shopping space | | | | | | |
| Total square metres | 1,015 | 5,206 | 18,877 | 8,663 | 24,813 | + 186.4 |
| Total value at current prices (R'000) | 1,572 | 9,694 | 31,926 | 14,023 | 42,350 | + 202.0 |
| Industrial and warehouse space | | | | | | |
| Total square metres | 6,002 | 10,076 | 58,572 | 30,058 | 74,074 | + 146.4 |
| Total value at current prices (R'000) | 9,511 | 16,415 | 95,378 | 49,022 | 118,062 | + 140.8 |
| Other non-residential space ^{2/} | | | | | | |
| Total square metres | 4,340 | 3,360 | 4,959 | 8,541 | 13,672 | + 60.1 |
| Total value at current prices (R'000) | 6,974 | 4,548 | 8,570 | 13,022 | 20,195 | + 55.1 |
| Total value of non-residential buildings at current prices (R'000) | 40,241 | 59,277 | 157,688 | 152,287 | 249,586 | + 63.9 |
| Additions and alterations | | | | | | |
| Dwelling-houses | | | | | | |
| Total square metres | 25,020 | 34,106 | 31,084 | 73,432 | 85,329 | + 16.2 |
| Total value at current prices (R'000) | 38,370 | 50,905 | 45,548 | 108,999 | 128,360 | + 17.8 |
| Other buildings ^{3/} | | | | | | |
| Total square metres | 7,101 | 14,878 | 7,696 | 23,713 | 31,086 | + 31.1 |
| Total value at current prices (R'000) | 12,634 | 25,348 | 19,534 | 39,709 | 58,726 | + 47.9 |
| Total value of additions and alterations at current prices (R'000) | 51,004 | 76,253 | 65,082 | 148,708 | 187,086 | + 25.8 |
| Total value of buildings completed at current prices (R'000) | 297,054 | 395,322 | 562,651 | 946,765 | 1,306,964 | + 38.0 |

1/ Other residential buildings include institutions for the disabled, boarding houses, old people's homes, hostels, hotels, motels, guest houses, holiday chalets, entertainment centres, bed-and-breakfast accommodation and casinos.

2/ Other non-residential space includes churches, sport and recreation clubs, schools, crèches, hospitals and all other non-residential space.

3/ Other buildings include additions and alterations to other residential buildings, non-residential buildings and internal alterations.

Table 27 - Buildings completed according to type of building and province: Mpumalanga

| Type of building | March 2002 | February 2003 | March 2003 | January 2002 to March 2002 | January 2003 to March 2003 | Percentage change between January 2002 to March 2002 and January 2003 to March 2003 |
|---|---------------|---------------|---------------|----------------------------|----------------------------|---|
| Residential buildings | | | | | | |
| Dwelling-houses smaller than 80 square metres | | | | | | |
| Number of dwelling-houses | 385 | 136 | 13 | 715 | 168 | -76.5 |
| Total square metres | 14,861 | 5,563 | 805 | 27,294 | 7,547 | -72.3 |
| Total value at current prices (R'000) | 6,796 | 1,972 | 1,090 | 14,280 | 4,605 | -67.8 |
| Dwelling-houses equal to or larger than 80 square metres | | | | | | |
| Number of dwelling-houses | 23 | 30 | 38 | 92 | 119 | + 29.3 |
| Total square metres | 3,714 | 7,288 | 9,010 | 16,331 | 27,892 | + 70.8 |
| Total value at current prices (R'000) | 4,553 | 9,980 | 10,982 | 18,401 | 36,621 | + 99.0 |
| Flats and townhouses | | | | | | |
| Number of flats and townhouses | 9 | 7 | 2 | 14 | 512 | + 3,557.1 |
| Total square metres | 1,061 | 1,243 | 235 | 2,299 | 30,343 | + 1,219.8 |
| Total value at current prices (R'000) | 949 | 2,000 | 270 | 1,997 | 36,867 | + 1,746.1 |
| Other residential buildings ^{1/} | | | | | | |
| Total square metres | 0 | 456 | 0 | 0 | 456 | .. |
| Total value at current prices (R'000) | 0 | 2,200 | 0 | 0 | 2,200 | .. |
| Total value of residential buildings at current prices (R'000) | 12,298 | 16,152 | 12,342 | 34,678 | 80,293 | + 131.5 |
| Non-residential buildings | | | | | | |
| Office and banking space | | | | | | |
| Total square metres | 0 | 0 | 2,297 | 0 | 2,297 | .. |
| Total value at current prices (R'000) | 0 | 0 | 2,756 | 0 | 2,756 | .. |
| Shopping space | | | | | | |
| Total square metres | 2,136 | 1,200 | 195 | 2,444 | 14,008 | + 473.2 |
| Total value at current prices (R'000) | 4,100 | 1,800 | 118 | 4,562 | 20,918 | + 358.5 |
| Industrial and warehouse space | | | | | | |
| Total square metres | 0 | 7,307 | 4,113 | 858 | 12,521 | + 1,359.3 |
| Total value at current prices (R'000) | 0 | 4,700 | 1,770 | 836 | 8,170 | + 877.3 |
| Other non-residential space ^{2/} | | | | | | |
| Total square metres | 865 | 0 | 0 | 1,338 | 0 | .. |
| Total value at current prices (R'000) | 821 | 0 | 0 | 1,021 | 0 | .. |
| Total value of non-residential buildings at current prices (R'000) | 4,921 | 6,500 | 4,644 | 6,419 | 31,844 | + 396.1 |
| Additions and alterations | | | | | | |
| Dwelling-houses | | | | | | |
| Total square metres | 4,021 | 3,385 | 3,523 | 10,656 | 10,277 | -3.6 |
| Total value at current prices (R'000) | 4,390 | 3,907 | 4,138 | 10,063 | 13,078 | + 30.0 |
| Other buildings ^{3/} | | | | | | |
| Total square metres | 0 | 61 | 101 | 688 | 560 | -18.6 |
| Total value at current prices (R'000) | 0 | 196 | 288 | 1,272 | 1,408 | + 10.7 |
| Total value of additions and alterations at current prices (R'000) | 4,390 | 4,103 | 4,426 | 11,335 | 14,486 | + 27.8 |
| Total value of buildings completed at current prices (R'000) | 21,609 | 26,755 | 21,412 | 52,432 | 126,623 | + 141.5 |

1/ Other residential buildings include institutions for the disabled, boarding houses, old people's homes, hostels, hotels, motels, guest houses, holiday chalets, entertainment centres, bed-and-breakfast accommodation and casinos.

2/ Other non-residential space includes churches, sport and recreation clubs, schools, crèches, hospitals and all other non-residential space.

3/ Other buildings include additions and alterations to other residential buildings, non-residential buildings and internal alterations.

Table 28 - Buildings completed according to type of building and province: Limpopo

| Type of building | March 2002 | February 2003 | March 2003 | January 2002 to March 2002 | January 2003 to March 2003 | Percentage change between January 2002 to March 2002 and January 2003 to March 2003 |
|---|----------------|---------------|--------------|----------------------------|----------------------------|---|
| Residential buildings | | | | | | |
| Dwelling-houses smaller than 80 square metres | | | | | | |
| Number of dwelling-houses | 18 | 30 | 25 | 52 | 73 | + 40.4 |
| Total square metres | 994 | 1,698 | 1,486 | 3,103 | 4,222 | + 36.1 |
| Total value at current prices (R'000) | 1,409 | 2,248 | 2,127 | 4,647 | 5,846 | + 25.8 |
| Dwelling-houses equal to or larger than 80 square metres | | | | | | |
| Number of dwelling-houses | 14 | 15 | 17 | 37 | 57 | + 54.1 |
| Total square metres | 2,569 | 2,813 | 2,992 | 5,669 | 9,431 | + 66.4 |
| Total value at current prices (R'000) | 3,358 | 3,968 | 4,336 | 7,916 | 13,592 | + 71.7 |
| Flats and townhouses | | | | | | |
| Number of flats and townhouses | 0 | 19 | 1 | 5 | 22 | + 340.0 |
| Total square metres | 0 | 1,792 | 152 | 588 | 2,212 | + 276.2 |
| Total value at current prices (R'000) | 0 | 2,271 | 213 | 823 | 2,859 | + 247.4 |
| Other residential buildings ^{1/} | | | | | | |
| Total square metres | 13,959 | 0 | 0 | 13,959 | 0 | .. |
| Total value at current prices (R'000) | 207,506 | 0 | 0 | 207,506 | 0 | .. |
| Total value of residential buildings at current prices (R'000) | 212,273 | 8,487 | 6,676 | 220,892 | 22,297 | -89.9 |
| Non-residential buildings | | | | | | |
| Office and banking space | | | | | | |
| Total square metres | 0 | 0 | 0 | 0 | 0 | .. |
| Total value at current prices (R'000) | 0 | 0 | 0 | 0 | 0 | .. |
| Shopping space | | | | | | |
| Total square metres | 0 | 0 | 0 | 1,856 | 0 | .. |
| Total value at current prices (R'000) | 0 | 0 | 0 | 2,473 | 0 | .. |
| Industrial and warehouse space | | | | | | |
| Total square metres | 0 | 0 | 0 | 0 | 413 | .. |
| Total value at current prices (R'000) | 0 | 0 | 0 | 0 | 579 | .. |
| Other non-residential space ^{2/} | | | | | | |
| Total square metres | 0 | 0 | 0 | 0 | 442 | .. |
| Total value at current prices (R'000) | 0 | 0 | 0 | 0 | 618 | .. |
| Total value of non-residential buildings at current prices (R'000) | 0 | 0 | 0 | 2,473 | 1,197 | -51.6 |
| Additions and alterations | | | | | | |
| Dwelling-houses | | | | | | |
| Total square metres | 407 | 803 | 908 | 916 | 1,936 | + 111.4 |
| Total value at current prices (R'000) | 603 | 1,234 | 1,381 | 1,463 | 2,931 | + 100.3 |
| Other buildings ^{3/} | | | | | | |
| Total square metres | 0 | 317 | 20 | 1,171 | 475 | -59.4 |
| Total value at current prices (R'000) | 0 | 200 | 36 | 1,640 | 457 | -72.1 |
| Total value of additions and alterations at current prices (R'000) | 603 | 1,434 | 1,417 | 3,103 | 3,388 | + 9.2 |
| Total value of buildings completed at current prices (R'000) | 212,876 | 9,921 | 8,093 | 226,468 | 26,882 | -88.1 |

1/ Other residential buildings include institutions for the disabled, boarding houses, old people's homes, hostels, hotels, motels, guest houses, holiday chalets, entertainment centres, bed-and-breakfast accommodation and casinos.

2/ Other non-residential space includes churches, sport and recreation clubs, schools, crèches, hospitals and all other non-residential space.

3/ Other buildings include additions and alterations to other residential buildings, non-residential buildings and internal alterations.

Table 29 - Building plans passed according to type of building and selected urban area: Cape Town

| Type of building | March 2002* | February 2003 | March 2003 | January 2002 to March 2002 | January 2003 to March 2003 | Percentage change between January 2002 to March 2002 and January 2003 to March 2003 |
|---|----------------|----------------|----------------|----------------------------|----------------------------|---|
| Residential buildings | | | | | | |
| Dwelling-houses smaller than 80 square metres | | | | | | |
| Number of dwelling-houses | 294 | 263 | 552 | 1,959 | 957 | - 51.1 |
| Total square metres | 12,244 | 11,590 | 20,512 | 67,265 | 37,800 | - 43.8 |
| Total value at current prices (R'000) | 15,339 | 13,961 | 23,624 | 81,589 | 44,347 | - 45.6 |
| Dwelling-houses equal to or larger than 80 square metres | | | | | | |
| Number of dwelling-houses | 278 | 456 | 299 | 903 | 1,077 | + 19.3 |
| Total square metres | 55,346 | 72,343 | 54,153 | 175,972 | 187,681 | + 6.7 |
| Total value at current prices (R'000) | 79,264 | 109,253 | 79,275 | 243,682 | 274,601 | + 12.7 |
| Flats and townhouses | | | | | | |
| Number of flats and townhouses | 105 | 206 | 141 | 527 | 488 | - 7.4 |
| Total square metres | 17,636 | 24,726 | 13,391 | 55,161 | 57,943 | + 5.0 |
| Total value at current prices (R'000) | 36,657 | 63,222 | 22,092 | 97,056 | 124,485 | + 28.3 |
| Other residential buildings ^{1/} | | | | | | |
| Total square metres | 0 | 0 | 0 | 3,535 | 0 | .. |
| Total value at current prices (R'000) | 0 | 0 | 0 | 5,530 | 0 | .. |
| Total value of residential buildings at current prices (R'000) | 131,260 | 186,436 | 124,991 | 427,857 | 443,433 | + 3.6 |
| Non-residential buildings | | | | | | |
| Office and banking space | | | | | | |
| Total square metres | 4,167 | 1,597 | 12,712 | 11,144 | 23,125 | + 107.5 |
| Total value at current prices (R'000) | 3,957 | 2,471 | 19,161 | 12,600 | 35,240 | + 179.7 |
| Shopping space | | | | | | |
| Total square metres | 288 | 5,196 | 139 | 12,802 | 5,335 | - 58.3 |
| Total value at current prices (R'000) | 298 | 5,100 | 110 | 15,708 | 5,210 | - 66.8 |
| Industrial and warehouse space | | | | | | |
| Total square metres | 13,879 | 4,552 | 3,168 | 28,025 | 14,551 | - 48.1 |
| Total value at current prices (R'000) | 16,566 | 5,450 | 3,472 | 31,874 | 16,786 | - 47.3 |
| Other non-residential space ^{2/} | | | | | | |
| Total square metres | 489 | 0 | 3,301 | 9,229 | 4,184 | - 54.7 |
| Total value at current prices (R'000) | 681 | 0 | 4,875 | 11,712 | 6,081 | - 48.1 |
| Total value of non-residential buildings at current prices (R'000) | 21,502 | 13,021 | 27,618 | 71,894 | 63,317 | - 11.9 |
| Additions and alterations | | | | | | |
| Dwelling-houses | | | | | | |
| Total square metres | 53,425 | 46,321 | 53,334 | 144,050 | 141,877 | - 1.5 |
| Total value at current prices (R'000) | 65,283 | 62,181 | 74,511 | 180,921 | 194,872 | + 7.7 |
| Other buildings ^{3/} | | | | | | |
| Total square metres | 3,852 | 9,645 | 36,859 | 37,198 | 88,436 | + 137.7 |
| Total value at current prices (R'000) | 8,157 | 58,274 | 50,127 | 64,369 | 166,305 | + 158.4 |
| Total value of additions and alterations at current prices (R'000) | 73,440 | 120,455 | 124,638 | 245,290 | 361,177 | + 47.2 |
| Total value of building plans passed at current prices (R'000) | 226,202 | 319,912 | 277,247 | 745,041 | 867,927 | + 16.5 |

1/ Other residential buildings include institutions for the disabled, boarding houses, old people's homes, hostels, hotels, motels, guest houses, holiday chalets, entertainment centres, bed-and-breakfast accommodation and casinos.

2/ Other non-residential space includes churches, sport and recreation clubs, schools, crèches, hospitals and all other non-residential space.

3/ Other buildings include additions and alterations to other residential buildings, non-residential buildings and internal alterations.

Table 30 - Building plans passed according to type of building and selected urban area: Port Elizabeth

| Type of building | March 2002 | February 2003 | March 2003 | January 2002 to March 2002 | January 2003 to March 2003 | Percentage change between January 2002 to March 2002 and January 2003 to March 2003 |
|---|---------------|---------------|---------------|----------------------------|----------------------------|---|
| Residential buildings | | | | | | |
| Dwelling-houses smaller than 80 square metres | | | | | | |
| Number of dwelling-houses | 268 | 177 | 40 | 384 | 659 | + 71.6 |
| Total square metres | 13,206 | 7,492 | 1,650 | 18,207 | 27,774 | + 52.5 |
| Total value at current prices (R'000) | 18,774 | 5,383 | 2,346 | 26,242 | 34,706 | + 32.3 |
| Dwelling-houses equal to or larger than 80 square metres | | | | | | |
| Number of dwelling-houses | 48 | 65 | 34 | 165 | 103 | - 37.6 |
| Total square metres | 8,562 | 10,413 | 8,054 | 28,904 | 19,215 | - 33.5 |
| Total value at current prices (R'000) | 12,580 | 29,414 | 12,561 | 41,556 | 43,003 | + 3.5 |
| Flats and townhouses | | | | | | |
| Number of flats and townhouses | 27 | 16 | 3 | 50 | 19 | - 62.0 |
| Total square metres | 2,706 | 2,836 | 543 | 5,695 | 3,379 | - 40.7 |
| Total value at current prices (R'000) | 4,637 | 5,842 | 842 | 9,258 | 6,684 | - 27.8 |
| Other residential buildings ^{1/} | | | | | | |
| Total square metres | 0 | 0 | 410 | 0 | 410 | .. |
| Total value at current prices (R'000) | 0 | 0 | 845 | 0 | 845 | .. |
| Total value of residential buildings at current prices (R'000) | 35,991 | 40,639 | 16,594 | 77,056 | 85,238 | + 10.6 |
| Non-residential buildings | | | | | | |
| Office and banking space | | | | | | |
| Total square metres | 239 | 0 | 0 | 443 | 2,607 | + 488.5 |
| Total value at current prices (R'000) | 468 | 0 | 0 | 868 | 5,370 | + 518.7 |
| Shopping space | | | | | | |
| Total square metres | 0 | 0 | 0 | 5,103 | 381 | -92.5 |
| Total value at current prices (R'000) | 0 | 0 | 0 | 11,195 | 702 | -93.7 |
| Industrial and warehouse space | | | | | | |
| Total square metres | 1,154 | 1,691 | 566 | 3,939 | 2,707 | - 31.3 |
| Total value at current prices (R'000) | 1,864 | 1,942 | 872 | 6,003 | 3,423 | - 43.0 |
| Other non-residential space ^{2/} | | | | | | |
| Total square metres | 0 | 2,128 | 256 | 4,973 | 2,384 | - 52.1 |
| Total value at current prices (R'000) | 0 | 3,836 | 265 | 7,803 | 4,101 | - 47.4 |
| Total value of non-residential buildings at current prices (R'000) | 2,332 | 5,778 | 1,137 | 25,869 | 13,596 | - 47.4 |
| Additions and alterations | | | | | | |
| Dwelling-houses | | | | | | |
| Total square metres | 9,063 | 10,949 | 9,238 | 30,783 | 29,202 | - 5.1 |
| Total value at current prices (R'000) | 10,745 | 21,101 | 14,822 | 38,656 | 48,765 | + 26.2 |
| Other buildings ^{3/} | | | | | | |
| Total square metres | 4,073 | 6,190 | 1,554 | 9,594 | 12,251 | + 27.7 |
| Total value at current prices (R'000) | 7,859 | 15,991 | 4,591 | 16,678 | 29,391 | + 76.2 |
| Total value of additions and alterations at current prices (R'000) | 18,604 | 37,092 | 19,413 | 55,334 | 78,156 | + 41.2 |
| Total value of building plans passed at current prices (R'000) | 56,927 | 83,509 | 37,144 | 158,259 | 176,990 | + 11.8 |

1/ Other residential buildings include institutions for the disabled, boarding houses, old people's homes, hostels, hotels, motels, guest houses, holiday chalets, entertainment centres, bed-and-breakfast accommodation and casinos.

2/ Other non-residential space includes churches, sport and recreation clubs, schools, crèches, hospitals and all other non-residential space.

3/ Other buildings include additions and alterations to other residential buildings, non-residential buildings and internal alterations.

Table 31 - Building plans passed according to type of building and selected urban area: Durban

| Type of building | March 2002* | February 2003 | March 2003 | January 2002 to March 2002 | January 2003 to March 2003 | Percentage change between January 2002 to March 2002 and January 2003 to March 2003 |
|---|----------------|---------------|----------------|----------------------------|----------------------------|---|
| Residential buildings | | | | | | |
| Dwelling-houses smaller than 80 square metres | | | | | | |
| Number of dwelling-houses | 91 | 58 | 46 | 275 | 152 | -44.7 |
| Total square metres | 3,673 | 3,209 | 2,288 | 11,335 | 7,992 | -29.5 |
| Total value at current prices (R'000) | 3,698 | 3,773 | 2,639 | 12,284 | 9,304 | -24.3 |
| Dwelling-houses equal to or larger than 80 square metres | | | | | | |
| Number of dwelling-houses | 45 | 70 | 80 | 149 | 212 | + 42.3 |
| Total square metres | 7,388 | 13,308 | 17,518 | 25,772 | 44,596 | + 73.0 |
| Total value at current prices (R'000) | 8,332 | 18,134 | 27,053 | 33,341 | 64,597 | + 93.7 |
| Flats and townhouses | | | | | | |
| Number of flats and townhouses | 8 | 11 | 24 | 172 | 57 | -66.9 |
| Total square metres | 890 | 2,830 | 3,670 | 25,688 | 9,149 | -64.4 |
| Total value at current prices (R'000) | 890 | 5,879 | 8,342 | 32,810 | 19,371 | -41.0 |
| Other residential buildings ^{1/} | | | | | | |
| Total square metres | 0 | 0 | 599 | 29,606 | 599 | -98.0 |
| Total value at current prices (R'000) | 0 | 0 | 800 | 31,000 | 800 | -97.4 |
| Total value of residential buildings at current prices (R'000) | 12,920 | 27,786 | 38,834 | 109,435 | 94,072 | -14.0 |
| Non-residential buildings | | | | | | |
| Office and banking space | | | | | | |
| Total square metres | 0 | 1,314 | 641 | 0 | 2,266 | .. |
| Total value at current prices (R'000) | 0 | 1,500 | 1,200 | 0 | 3,050 | .. |
| Shopping space | | | | | | |
| Total square metres | 37 | 87 | 6,261 | 537 | 28,642 | + 5,233.7 |
| Total value at current prices (R'000) | 37 | 150 | 14,420 | 1,237 | 274,910 | ##### |
| Industrial and warehouse space | | | | | | |
| Total square metres | 2,223 | 4,827 | 3,885 | 23,882 | 12,822 | -46.3 |
| Total value at current prices (R'000) | 2,674 | 4,030 | 3,397 | 26,224 | 10,927 | -58.3 |
| Other non-residential space ^{2/} | | | | | | |
| Total square metres | 50,383 | 1,492 | 0 | 53,560 | 2,763 | -94.8 |
| Total value at current prices (R'000) | 54,600 | 1,233 | 0 | 57,882 | 4,985 | -91.4 |
| Total value of non-residential buildings at current prices (R'000) | 57,311 | 6,913 | 19,017 | 85,343 | 293,872 | + 244.3 |
| Additions and alterations | | | | | | |
| Dwelling-houses | | | | | | |
| Total square metres | 15,781 | 28,031 | 23,731 | 52,166 | 79,165 | + 51.8 |
| Total value at current prices (R'000) | 20,440 | 29,230 | 37,163 | 64,171 | 97,275 | + 51.6 |
| Other buildings ^{3/} | | | | | | |
| Total square metres | 4,028 | 7,736 | 13,676 | 11,080 | 26,737 | + 141.3 |
| Total value at current prices (R'000) | 14,134 | 16,080 | 34,828 | 27,879 | 62,620 | + 124.6 |
| Total value of additions and alterations at current prices (R'000) | 34,574 | 45,310 | 71,991 | 92,050 | 159,895 | + 73.7 |
| Total value of building plans passed at current prices (R'000) | 104,805 | 80,009 | 129,842 | 286,828 | 547,839 | + 91.0 |

1/ Other residential buildings include institutions for the disabled, boarding houses, old people's homes, hostels, hotels, motels, guest houses, holiday chalets, entertainment centres, bed-and-breakfast accommodation and casinos.

2/ Other non-residential space includes churches, sport and recreation clubs, schools, crèches, hospitals and all other non-residential space.

3/ Other buildings include additions and alterations to other residential buildings, non-residential buildings and internal alterations.

Table 32 - Building plans passed according to type of building and selected urban area: Witwatersrand

| Type of building | March 2002* | February 2003 | March 2003 | January 2002 to March 2002 | January 2003 to March 2003 | Percentage change between January 2002 to March 2002 and January 2003 to March 2003 |
|---|----------------|----------------|----------------|----------------------------|----------------------------|---|
| Residential buildings | | | | | | |
| Dwelling-houses smaller than 80 square metres | | | | | | |
| Number of dwelling-houses | 949 | 683 | 390 | 2,629 | 1,499 | - 43.0 |
| Total square metres | 36,964 | 25,440 | 16,788 | 94,835 | 57,892 | - 39.0 |
| Total value at current prices (R'000) | 35,933 | 26,760 | 21,798 | 86,269 | 64,274 | - 25.5 |
| Dwelling-houses equal to or larger than 80 square metres | | | | | | |
| Number of dwelling-houses | 307 | 353 | 518 | 916 | 1,174 | + 28.2 |
| Total square metres | 77,054 | 89,865 | 124,169 | 247,855 | 285,774 | + 15.3 |
| Total value at current prices (R'000) | 158,185 | 162,180 | 235,194 | 438,610 | 527,023 | + 20.2 |
| Flats and townhouses | | | | | | |
| Number of flats and townhouses | 290 | 151 | 513 | 686 | 806 | + 17.5 |
| Total square metres | 36,991 | 21,277 | 60,840 | 76,197 | 103,943 | + 36.4 |
| Total value at current prices (R'000) | 63,242 | 43,866 | 105,991 | 130,429 | 190,018 | + 45.7 |
| Other residential buildings ^{1/} | | | | | | |
| Total square metres | 0 | 7,065 | 10,770 | 3,459 | 17,835 | + 415.6 |
| Total value at current prices (R'000) | 0 | 9,420 | 19,828 | 5,781 | 29,248 | + 405.9 |
| Total value of residential buildings at current prices (R'000) | 257,360 | 242,226 | 382,811 | 661,089 | 810,563 | + 22.6 |
| Non-residential buildings | | | | | | |
| Office and banking space | | | | | | |
| Total square metres | 24,529 | 13,803 | 3,656 | 43,741 | 22,480 | - 48.6 |
| Total value at current prices (R'000) | 101,288 | 27,052 | 7,352 | 135,583 | 44,255 | - 67.4 |
| Shopping space | | | | | | |
| Total square metres | 18,314 | 1,485 | 7,915 | 28,443 | 17,182 | - 39.6 |
| Total value at current prices (R'000) | 33,681 | 2,431 | 16,364 | 50,679 | 32,803 | - 35.3 |
| Industrial and warehouse space | | | | | | |
| Total square metres | 27,689 | 10,169 | 13,792 | 59,143 | 35,391 | - 40.2 |
| Total value at current prices (R'000) | 48,254 | 21,445 | 25,556 | 102,202 | 66,007 | - 35.4 |
| Other non-residential space ^{2/} | | | | | | |
| Total square metres | 67,755 | 421 | 3,008 | 70,452 | 9,727 | - 86.2 |
| Total value at current prices (R'000) | 123,692 | 818 | 7,940 | 127,616 | 20,390 | - 84.0 |
| Total value of non-residential buildings at current prices (R'000) | 306,915 | 51,746 | 57,212 | 416,080 | 163,455 | - 60.7 |
| Additions and alterations | | | | | | |
| Dwelling-houses | | | | | | |
| Total square metres | 60,162 | 45,562 | 72,166 | 177,897 | 160,708 | - 9.7 |
| Total value at current prices (R'000) | 97,657 | 75,394 | 123,218 | 284,603 | 274,541 | - 3.5 |
| Other buildings ^{3/} | | | | | | |
| Total square metres | 7,202 | 4,710 | 11,418 | 40,385 | 28,939 | - 28.3 |
| Total value at current prices (R'000) | 12,931 | 17,372 | 26,322 | 87,469 | 76,307 | - 12.8 |
| Total value of additions and alterations at current prices (R'000) | 110,588 | 92,766 | 149,540 | 372,072 | 350,848 | - 5.7 |
| Total value of building plans passed at current prices (R'000) | 674,863 | 386,738 | 589,563 | 1,449,241 | 1,324,866 | - 8.6 |

1/ Other residential buildings include institutions for the disabled, boarding houses, old people's homes, hostels, hotels, motels, guest houses, holiday chalets, entertainment centres, bed-and-breakfast accommodation and casinos.

2/ Other non-residential space includes churches, sport and recreation clubs, schools, crèches, hospitals and all other non-residential space.

3/ Other buildings include additions and alterations to other residential buildings, non-residential buildings and internal alterations.

Table 33 - Building plans passed according to type of building and selected urban area: Pretoria

| Type of building | March 2002 | February 2003 | March 2003 | January 2002 to March 2002 | January 2003 to March 2003 | Percentage change between January 2002 to March 2002 and January 2003 to March 2003 |
|---|----------------|----------------|----------------|----------------------------|----------------------------|---|
| Residential buildings | | | | | | |
| Dwelling-houses smaller than 80 square metres | | | | | | |
| Number of dwelling-houses | 42 | 1,271 | 934 | 150 | 3,406 | + 2170.7 |
| Total square metres | 2,210 | 39,794 | 29,731 | 8,143 | 106,837 | + 1212.0 |
| Total value at current prices (R'000) | 4,814 | 24,025 | 18,677 | 12,616 | 64,909 | + 414.5 |
| Dwelling-houses equal to or larger than 80 square metres | | | | | | |
| Number of dwelling-houses | 191 | 187 | 193 | 618 | 567 | - 8.3 |
| Total square metres | 50,705 | 51,152 | 52,713 | 165,223 | 154,739 | - 6.3 |
| Total value at current prices (R'000) | 71,304 | 85,756 | 86,810 | 230,495 | 261,134 | + 13.3 |
| Flats and townhouses | | | | | | |
| Number of flats and townhouses | 290 | 193 | 119 | 562 | 463 | - 17.6 |
| Total square metres | 47,343 | 44,852 | 36,636 | 96,545 | 115,615 | + 19.8 |
| Total value at current prices (R'000) | 63,946 | 70,040 | 68,759 | 139,331 | 194,273 | + 39.4 |
| Other residential buildings ^{1/} | | | | | | |
| Total square metres | 0 | 0 | 250 | 0 | 250 | .. |
| Total value at current prices (R'000) | 0 | 0 | 463 | 0 | 463 | .. |
| Total value of residential buildings at current prices (R'000) | 140,064 | 179,821 | 174,709 | 382,442 | 520,779 | + 36.2 |
| Non-residential buildings | | | | | | |
| Office and banking space | | | | | | |
| Total square metres | 1,294 | 1,877 | 16,334 | 37,758 | 26,014 | - 31.1 |
| Total value at current prices (R'000) | 1,941 | 2,882 | 29,293 | 57,956 | 46,652 | - 19.5 |
| Shopping space | | | | | | |
| Total square metres | 0 | 4,831 | 3,323 | 56 | 8,154 | + 14460.7 |
| Total value at current prices (R'000) | 0 | 9,662 | 5,803 | 76 | 15,465 | + 20248.7 |
| Industrial and warehouse space | | | | | | |
| Total square metres | 7,436 | 18,512 | 4,039 | 14,302 | 22,551 | + 57.7 |
| Total value at current prices (R'000) | 11,154 | 27,768 | 7,771 | 21,581 | 35,539 | + 64.7 |
| Other non-residential space ^{2/} | | | | | | |
| Total square metres | 1,907 | 4,460 | 4,050 | 6,089 | 10,947 | + 79.8 |
| Total value at current prices (R'000) | 2,739 | 6,341 | 6,769 | 9,247 | 16,749 | + 81.1 |
| Total value of non-residential buildings at current prices (R'000) | 15,834 | 46,653 | 49,636 | 88,860 | 114,405 | + 28.7 |
| Additions and alterations | | | | | | |
| Dwelling-houses | | | | | | |
| Total square metres | 27,924 | 20,684 | 19,473 | 70,601 | 60,196 | - 14.7 |
| Total value at current prices (R'000) | 40,485 | 34,359 | 31,420 | 101,486 | 99,014 | - 2.4 |
| Other buildings ^{3/} | | | | | | |
| Total square metres | 10,148 | 2,463 | 9,071 | 20,044 | 19,153 | - 4.4 |
| Total value at current prices (R'000) | 20,043 | 3,791 | 14,378 | 36,943 | 29,911 | - 19.0 |
| Total value of additions and alterations at current prices (R'000) | 60,528 | 38,150 | 45,798 | 138,429 | 128,925 | - 6.9 |
| Total value of building plans passed at current prices (R'000) | 216,426 | 264,624 | 270,143 | 609,731 | 764,109 | + 25.3 |

1/ Other residential buildings include institutions for the disabled, boarding houses, old people's homes, hostels, hotels, motels, guest houses, holiday chalets, entertainment centres, bed-and-breakfast accommodation and casinos.

2/ Other non-residential space includes churches, sport and recreation clubs, schools, crèches, hospitals and all other non-residential space.

3/ Other buildings include additions and alterations to other residential buildings, non-residential buildings and internal alterations.

Table 34 - Building plans passed according to type of building and selected urban area: Bloemfontein

| Type of building | March 2002 | February 2003 | March 2003 | January 2002 to March 2002 | January 2003 to March 2003 | Percentage change between January 2002 to March 2002 and January 2003 to March 2003 |
|---|---------------|---------------|---------------|----------------------------|----------------------------|---|
| Residential buildings | | | | | | |
| Dwelling-houses smaller than 80 square metres | | | | | | |
| Number of dwelling-houses | 24 | 51 | 254 | 177 | 695 | + 292.7 |
| Total square metres | 1,523 | 2,085 | 11,113 | 8,046 | 28,874 | + 258.9 |
| Total value at current prices (R'000) | 1,761 | 1,576 | 6,058 | 6,129 | 15,901 | + 159.4 |
| Dwelling-houses equal to or larger than 80 square metres | | | | | | |
| Number of dwelling-houses | 33 | 32 | 38 | 103 | 110 | + 6.8 |
| Total square metres | 4,139 | 6,197 | 5,139 | 14,589 | 17,657 | + 21.0 |
| Total value at current prices (R'000) | 5,066 | 9,710 | 7,520 | 21,138 | 26,723 | + 26.4 |
| Flats and townhouses | | | | | | |
| Number of flats and townhouses | 26 | 34 | 51 | 174 | 91 | -47.7 |
| Total square metres | 1,700 | 2,391 | 5,275 | 16,789 | 8,023 | -52.2 |
| Total value at current prices (R'000) | 2,519 | 3,588 | 7,912 | 25,819 | 12,036 | -53.4 |
| Other residential buildings ^{1/} | | | | | | |
| Total square metres | 0 | 0 | 0 | 2,683 | 0 | .. |
| Total value at current prices (R'000) | 0 | 0 | 0 | 7,000 | 0 | .. |
| Total value of residential buildings at current prices (R'000) | 9,346 | 14,874 | 21,490 | 60,086 | 54,660 | -9.0 |
| Non-residential buildings | | | | | | |
| Office and banking space | | | | | | |
| Total square metres | 0 | 1,616 | 0 | 7,267 | 1,616 | -77.8 |
| Total value at current prices (R'000) | 0 | 2,808 | 0 | 14,000 | 2,808 | -79.9 |
| Shopping space | | | | | | |
| Total square metres | 7,429 | 0 | 0 | 7,429 | 3,359 | -54.8 |
| Total value at current prices (R'000) | 16,000 | 0 | 0 | 16,000 | 8,000 | -50.0 |
| Industrial and warehouse space | | | | | | |
| Total square metres | 0 | 2,259 | 0 | 867 | 3,645 | + 320.4 |
| Total value at current prices (R'000) | 0 | 1,388 | 0 | 694 | 1,988 | + 186.5 |
| Other non-residential space ^{2/} | | | | | | |
| Total square metres | 0 | 2,206 | 473 | 0 | 2,679 | .. |
| Total value at current prices (R'000) | 0 | 3,248 | 946 | 0 | 4,194 | .. |
| Total value of non-residential buildings at current prices (R'000) | 16,000 | 7,444 | 946 | 30,694 | 16,990 | -44.6 |
| Additions and alterations | | | | | | |
| Dwelling-houses | | | | | | |
| Total square metres | 3,530 | 3,460 | 6,465 | 13,411 | 14,801 | + 10.4 |
| Total value at current prices (R'000) | 4,271 | 4,615 | 8,814 | 15,960 | 20,342 | + 27.5 |
| Other buildings ^{3/} | | | | | | |
| Total square metres | 357 | 178 | 2,773 | 3,457 | 4,163 | + 20.4 |
| Total value at current prices (R'000) | 1,060 | 685 | 7,065 | 6,534 | 15,866 | + 142.8 |
| Total value of additions and alterations at current prices (R'000) | 5,331 | 5,300 | 15,879 | 22,494 | 36,208 | + 61.0 |
| Total value of building plans passed at current prices (R'000) | 30,677 | 27,618 | 38,315 | 113,274 | 107,858 | -4.8 |

1/ Other residential buildings include institutions for the disabled, boarding houses, old people's homes, hostels, hotels, motels, guest houses, holiday chalets, entertainment centres, bed-and-breakfast accommodation and casinos.

2/ Other non-residential space includes churches, sport and recreation clubs, schools, crèches, hospitals and all other non-residential space.

3/ Other buildings include additions and alterations to other residential buildings, non-residential buildings and internal alterations.

Table 35 - Buildings completed according to type of building and selected urban area: Cape Town

| Type of building | March 2002* | February 2003 | March 2003 | January 2002 to March 2002 | January 2003 to March 2003 | Percentage change between January 2002 to March 2002 and January 2003 to March 2003 |
|---|----------------|----------------|----------------|----------------------------|----------------------------|---|
| Residential buildings | | | | | | |
| Dwelling-houses smaller than 80 square metres | | | | | | |
| Number of dwelling-houses | 340 | 141 | 524 | 1,664 | 776 | - 53.4 |
| Total square metres | 11,793 | 6,572 | 18,258 | 59,272 | 29,137 | - 50.8 |
| Total value at current prices (R'000) | 12,799 | 8,047 | 19,655 | 68,146 | 31,552 | - 53.7 |
| Dwelling-houses equal to or larger than 80 square metres | | | | | | |
| Number of dwelling-houses | 215 | 353 | 245 | 594 | 814 | + 37.0 |
| Total square metres | 41,927 | 50,536 | 49,979 | 120,866 | 139,657 | + 15.5 |
| Total value at current prices (R'000) | 60,478 | 70,497 | 70,083 | 180,607 | 194,281 | + 7.6 |
| Flats and townhouses | | | | | | |
| Number of flats and townhouses | 62 | 106 | 140 | 280 | 355 | + 26.8 |
| Total square metres | 7,998 | 12,081 | 17,981 | 47,159 | 36,631 | - 22.3 |
| Total value at current prices (R'000) | 12,027 | 22,188 | 27,875 | 84,604 | 59,426 | - 29.8 |
| Other residential buildings ^{1/} | | | | | | |
| Total square metres | 0 | 0 | 0 | 543 | 127 | - 76.6 |
| Total value at current prices (R'000) | 0 | 0 | 0 | 793 | 174 | - 78.1 |
| Total value of residential buildings at current prices (R'000) | 85,304 | 100,732 | 117,613 | 334,150 | 285,433 | - 14.6 |
| Non-residential buildings | | | | | | |
| Office and banking space | | | | | | |
| Total square metres | 3,353 | 8,662 | 19,383 | 16,468 | 57,854 | + 251.3 |
| Total value at current prices (R'000) | 7,025 | 14,979 | 41,078 | 25,094 | 91,308 | + 263.9 |
| Shopping space | | | | | | |
| Total square metres | 0 | 5,777 | 5,093 | 19,509 | 11,480 | - 41.2 |
| Total value at current prices (R'000) | 0 | 7,449 | 7,640 | 21,322 | 16,065 | - 24.7 |
| Industrial and warehouse space | | | | | | |
| Total square metres | 4,779 | 13,756 | 7,233 | 13,761 | 34,858 | + 153.3 |
| Total value at current prices (R'000) | 4,933 | 13,056 | 11,645 | 13,270 | 39,632 | + 198.7 |
| Other non-residential space ^{2/} | | | | | | |
| Total square metres | 1,726 | 1,349 | 2,648 | 5,593 | 3,997 | - 28.5 |
| Total value at current prices (R'000) | 2,742 | 1,463 | 2,891 | 8,364 | 4,354 | - 47.9 |
| Total value of non-residential buildings at current prices (R'000) | 14,700 | 36,947 | 63,254 | 68,050 | 151,359 | + 122.4 |
| Additions and alterations | | | | | | |
| Dwelling-houses | | | | | | |
| Total square metres | 22,295 | 37,719 | 26,676 | 74,308 | 89,424 | + 20.3 |
| Total value at current prices (R'000) | 27,711 | 48,039 | 32,542 | 93,230 | 111,725 | + 19.8 |
| Other buildings ^{3/} | | | | | | |
| Total square metres | 2,591 | 6,071 | 11,542 | 15,234 | 36,233 | + 137.8 |
| Total value at current prices (R'000) | 7,951 | 22,635 | 19,314 | 26,938 | 76,856 | + 185.3 |
| Total value of additions and alterations at current prices (R'000) | 35,662 | 70,674 | 51,856 | 120,168 | 188,581 | + 56.9 |
| Total value of buildings completed at current prices (R'000) | 135,666 | 208,353 | 232,723 | 522,368 | 625,373 | + 19.7 |

1/ Other residential buildings include institutions for the disabled, boarding houses, old people's homes, hostels, hotels, motels, guest houses, holiday chalets, entertainment centres, bed-and-breakfast accommodation and casinos.

2/ Other non-residential space includes churches, sport and recreation clubs, schools, crèches, hospitals and all other non-residential space.

3/ Other buildings include additions and alterations to other residential buildings, non-residential buildings and internal alterations.

Table 36 - Buildings completed according to type of building and selected urban area: Port Elizabeth

| Type of building | March 2002 | February 2003 | March 2003 | January 2002 to March 2002 | January 2003 to March 2003 | Percentage change between January 2002 to March 2002 and January 2003 to March 2003 |
|---|---------------|---------------|---------------|----------------------------|----------------------------|---|
| Residential buildings | | | | | | |
| Dwelling-houses smaller than 80 square metres | | | | | | |
| Number of dwelling-houses | 94 | 91 | 54 | 285 | 261 | - 8.4 |
| Total square metres | 4,070 | 3,743 | 2,259 | 12,293 | 11,140 | - 9.4 |
| Total value at current prices (R'000) | 5,248 | 2,290 | 3,061 | 15,847 | 12,492 | - 21.2 |
| Dwelling-houses equal to or larger than 80 square metres | | | | | | |
| Number of dwelling-houses | 7 | 6 | 20 | 63 | 27 | - 57.1 |
| Total square metres | 774 | 663 | 4,182 | 9,466 | 4,973 | - 47.5 |
| Total value at current prices (R'000) | 1,128 | 713 | 6,511 | 12,301 | 7,372 | - 40.1 |
| Flats and townhouses | | | | | | |
| Number of flats and townhouses | 6 | 37 | 8 | 9 | 46 | + 411.1 |
| Total square metres | 535 | 2,576 | 1,154 | 1,086 | 3,828 | + 252.5 |
| Total value at current prices (R'000) | 699 | 3,839 | 1,295 | 1,477 | 5,271 | + 256.9 |
| Other residential buildings ^{1/} | | | | | | |
| Total square metres | 2,744 | 0 | 0 | 2,744 | 443 | - 83.9 |
| Total value at current prices (R'000) | 3,312 | 0 | 0 | 3,312 | 1,055 | - 68.1 |
| Total value of residential buildings at current prices (R'000) | 10,387 | 6,842 | 10,867 | 32,937 | 26,190 | - 20.5 |
| Non-residential buildings | | | | | | |
| Office and banking space | | | | | | |
| Total square metres | 0 | 0 | 0 | 0 | 0 | .. |
| Total value at current prices (R'000) | 0 | 0 | 0 | 0 | 0 | .. |
| Shopping space | | | | | | |
| Total square metres | 77 | 0 | 1,468 | 1,642 | 1,936 | + 17.9 |
| Total value at current prices (R'000) | 103 | 0 | 2,678 | 1,629 | 3,445 | + 111.5 |
| Industrial and warehouse space | | | | | | |
| Total square metres | 0 | 1,470 | 0 | 478 | 3,091 | + 546.7 |
| Total value at current prices (R'000) | 0 | 2,219 | 0 | 392 | 4,569 | + 1,065.6 |
| Other non-residential space ^{2/} | | | | | | |
| Total square metres | 491 | 210 | 0 | 2,300 | 431 | - 81.3 |
| Total value at current prices (R'000) | 736 | 323 | 0 | 2,664 | 732 | - 72.5 |
| Total value of non-residential buildings at current prices (R'000) | 839 | 2,542 | 2,678 | 4,685 | 8,746 | + 86.7 |
| Additions and alterations | | | | | | |
| Dwelling-houses | | | | | | |
| Total square metres | 6,009 | 3,948 | 3,883 | 14,990 | 15,750 | + 5.1 |
| Total value at current prices (R'000) | 6,329 | 4,813 | 4,368 | 16,456 | 19,552 | + 18.8 |
| Other buildings ^{3/} | | | | | | |
| Total square metres | 3,675 | 5,280 | 6,903 | 7,431 | 12,572 | + 69.2 |
| Total value at current prices (R'000) | 4,229 | 8,472 | 10,875 | 8,149 | 19,967 | + 145.0 |
| Total value of additions and alterations at current prices (R'000) | 10,558 | 13,285 | 15,243 | 24,605 | 39,519 | + 60.6 |
| Total value of buildings completed at current prices (R'000) | 21,784 | 22,669 | 28,788 | 62,227 | 74,455 | + 19.7 |

1/ Other residential buildings include institutions for the disabled, boarding houses, old people's homes, hostels, hotels, motels, guest houses, holiday chalets, entertainment centres, bed-and-breakfast accommodation and casinos.

2/ Other non-residential space includes churches, sport and recreation clubs, schools, crèches, hospitals and all other non-residential space.

3/ Other buildings include additions and alterations to other residential buildings, non-residential buildings and internal alterations.

Table 37 - Buildings completed according to type of building and selected urban area: Durban

| Type of building | March 2002* | February 2003 | March 2003 | January 2002 to March 2002 | January 2003 to March 2003 | Percentage change between January 2002 to March 2002 and January 2003 to March 2003 |
|---|---------------|---------------|---------------|----------------------------|----------------------------|---|
| Residential buildings | | | | | | |
| Dwelling-houses smaller than 80 square metres | | | | | | |
| Number of dwelling-houses | 126 | 61 | 69 | 229 | 154 | - 32.8 |
| Total square metres | 5,138 | 3,043 | 2,943 | 10,591 | 7,144 | - 32.5 |
| Total value at current prices (R'000) | 5,447 | 2,952 | 3,316 | 12,066 | 7,408 | - 38.6 |
| Dwelling-houses equal to or larger than 80 square metres | | | | | | |
| Number of dwelling-houses | 85 | 42 | 49 | 204 | 186 | - 8.8 |
| Total square metres | 16,263 | 9,992 | 7,532 | 36,628 | 35,146 | - 4.0 |
| Total value at current prices (R'000) | 20,428 | 11,876 | 8,036 | 46,122 | 43,072 | - 6.6 |
| Flats and townhouses | | | | | | |
| Number of flats and townhouses | 21 | 17 | 17 | 90 | 70 | - 22.2 |
| Total square metres | 2,466 | 4,030 | 4,124 | 11,903 | 12,710 | + 6.8 |
| Total value at current prices (R'000) | 3,350 | 6,619 | 7,359 | 18,591 | 20,989 | + 12.9 |
| Other residential buildings ^{1/} | | | | | | |
| Total square metres | 0 | 0 | 0 | 0 | 0 | .. |
| Total value at current prices (R'000) | 0 | 0 | 0 | 0 | 0 | .. |
| Total value of residential buildings at current prices (R'000) | 29,225 | 21,447 | 18,711 | 76,779 | 71,469 | - 6.9 |
| Non-residential buildings | | | | | | |
| Office and banking space | | | | | | |
| Total square metres | 13,920 | 0 | 2,539 | 23,242 | 6,274 | - 73.0 |
| Total value at current prices (R'000) | 16,888 | 0 | 3,354 | 28,238 | 11,899 | - 57.9 |
| Shopping space | | | | | | |
| Total square metres | 2,647 | 3,896 | 6,085 | 8,775 | 10,049 | + 14.5 |
| Total value at current prices (R'000) | 2,700 | 3,150 | 12,170 | 9,473 | 15,372 | + 62.3 |
| Industrial and warehouse space | | | | | | |
| Total square metres | 5,099 | 3,727 | 17,459 | 31,554 | 33,565 | + 6.4 |
| Total value at current prices (R'000) | 5,150 | 4,646 | 18,586 | 30,189 | 34,517 | + 14.3 |
| Other non-residential space ^{2/} | | | | | | |
| Total square metres | 946 | 2,041 | 1,602 | 4,936 | 4,689 | - 5.0 |
| Total value at current prices (R'000) | 743 | 4,145 | 3,245 | 7,522 | 8,526 | + 13.3 |
| Total value of non-residential buildings at current prices (R'000) | 25,481 | 11,941 | 37,355 | 75,422 | 70,314 | - 6.8 |
| Additions and alterations | | | | | | |
| Dwelling-houses | | | | | | |
| Total square metres | 19,301 | 20,630 | 17,128 | 50,053 | 55,888 | + 11.7 |
| Total value at current prices (R'000) | 21,104 | 22,475 | 19,269 | 52,785 | 62,257 | + 17.9 |
| Other buildings ^{3/} | | | | | | |
| Total square metres | 3,341 | 5,748 | 2,359 | 11,883 | 14,951 | + 25.8 |
| Total value at current prices (R'000) | 8,511 | 16,947 | 3,668 | 21,944 | 28,623 | + 30.4 |
| Total value of additions and alterations at current prices (R'000) | 29,615 | 39,422 | 22,937 | 74,729 | 90,880 | + 21.6 |
| Total value of buildings completed at current prices (R'000) | 84,321 | 72,810 | 79,003 | 226,930 | 232,663 | + 2.5 |

1/ Other residential buildings include institutions for the disabled, boarding houses, old people's homes, hostels, hotels, motels, guest houses, holiday chalets, entertainment centres, bed-and-breakfast accommodation and casinos.

2/ Other non-residential space includes churches, sport and recreation clubs, schools, crèches, hospitals and all other non-residential space.

3/ Other buildings include additions and alterations to other residential buildings, non-residential buildings and internal alterations.

Table 38 - Buildings completed according to type of building and selected urban area: Witwatersrand

| Type of building | March 2002* | February 2003 | March 2003 | January 2002 to March 2002 | January 2003 to March 2003 | Percentage change between January 2002 to March 2002 and January 2003 to March 2003 |
|---|----------------|----------------|----------------|----------------------------|----------------------------|---|
| Residential buildings | | | | | | |
| Dwelling-houses smaller than 80 square metres | | | | | | |
| Number of dwelling-houses | 495 | 683 | 576 | 1,614 | 1,538 | -4.7 |
| Total square metres | 17,011 | 26,959 | 22,728 | 55,028 | 59,296 | + 7.8 |
| Total value at current prices (R'000) | 13,727 | 26,832 | 21,660 | 44,324 | 57,620 | + 30.0 |
| Dwelling-houses equal to or larger than 80 square metres | | | | | | |
| Number of dwelling-houses | 413 | 181 | 340 | 767 | 762 | -0.7 |
| Total square metres | 64,165 | 41,320 | 82,728 | 151,684 | 166,935 | + 10.1 |
| Total value at current prices (R'000) | 100,037 | 69,711 | 146,240 | 234,453 | 288,140 | + 22.9 |
| Flats and townhouses | | | | | | |
| Number of flats and townhouses | 227 | 219 | 493 | 884 | 1,311 | + 48.3 |
| Total square metres | 26,974 | 31,888 | 50,653 | 95,815 | 151,225 | + 57.8 |
| Total value at current prices (R'000) | 42,233 | 62,562 | 70,883 | 149,201 | 247,089 | + 65.6 |
| Other residential buildings ^{1/} | | | | | | |
| Total square metres | 1,740 | 240 | 2,223 | 1,740 | 2,463 | + 41.6 |
| Total value at current prices (R'000) | 2,660 | 252 | 3,657 | 2,660 | 3,909 | + 47.0 |
| Total value of residential buildings at current prices (R'000) | 158,657 | 159,357 | 242,440 | 430,638 | 596,758 | + 38.6 |
| Non-residential buildings | | | | | | |
| Office and banking space | | | | | | |
| Total square metres | 8,409 | 23,319 | 488 | 36,985 | 33,799 | -8.6 |
| Total value at current prices (R'000) | 13,707 | 28,620 | 1,123 | 60,286 | 48,288 | -19.9 |
| Shopping space | | | | | | |
| Total square metres | 795 | 4,334 | 7,704 | 5,100 | 12,768 | + 150.4 |
| Total value at current prices (R'000) | 1,352 | 8,124 | 11,113 | 8,105 | 19,967 | + 146.4 |
| Industrial and warehouse space | | | | | | |
| Total square metres | 3,764 | 8,869 | 51,136 | 24,182 | 63,394 | + 162.2 |
| Total value at current prices (R'000) | 6,331 | 14,604 | 84,224 | 39,978 | 103,161 | + 158.0 |
| Other non-residential space ^{2/} | | | | | | |
| Total square metres | 4,035 | 762 | 1,102 | 6,851 | 3,269 | -52.3 |
| Total value at current prices (R'000) | 6,577 | 1,143 | 1,668 | 11,063 | 5,127 | -53.7 |
| Total value of non-residential buildings at current prices (R'000) | 27,967 | 52,491 | 98,128 | 119,432 | 176,543 | + 47.8 |
| Additions and alterations | | | | | | |
| Dwelling-houses | | | | | | |
| Total square metres | 22,919 | 28,810 | 23,055 | 66,246 | 69,190 | + 4.4 |
| Total value at current prices (R'000) | 35,870 | 43,256 | 33,814 | 99,477 | 104,971 | + 5.5 |
| Other buildings ^{3/} | | | | | | |
| Total square metres | 6,931 | 13,120 | 7,215 | 21,636 | 27,857 | + 28.8 |
| Total value at current prices (R'000) | 12,438 | 22,493 | 18,070 | 36,511 | 53,373 | + 46.2 |
| Total value of additions and alterations at current prices (R'000) | 48,308 | 65,749 | 51,884 | 135,988 | 158,344 | + 16.4 |
| Total value of buildings completed at current prices (R'000) | 234,932 | 277,597 | 392,452 | 686,058 | 931,645 | + 35.8 |

1/ Other residential buildings include institutions for the disabled, boarding houses, old people's homes, hostels, hotels, motels, guest houses, holiday chalets, entertainment centres, bed-and-breakfast accommodation and casinos.

2/ Other non-residential space includes churches, sport and recreation clubs, schools, crèches, hospitals and all other non-residential space.

3/ Other buildings include additions and alterations to other residential buildings, non-residential buildings and internal alterations.

Table 39 - Buildings completed according to type of building and selected urban area: Pretoria

| Type of building | March 2002* | February 2003 | March 2003 | January 2002 to March 2002 | January 2003 to March 2003 | Percentage change between January 2002 to March 2002 and January 2003 to March 2003 |
|---|---------------|---------------|----------------|----------------------------|----------------------------|---|
| Residential buildings | | | | | | |
| Dwelling-houses smaller than 80 square metres | | | | | | |
| Number of dwelling-houses | 36 | 1,246 | 882 | 359 | 3,295 | + 817.8 |
| Total square metres | 1,835 | 38,713 | 27,123 | 12,440 | 101,239 | + 713.8 |
| Total value at current prices (R'000) | 2,472 | 22,545 | 14,876 | 8,362 | 55,935 | + 568.9 |
| Dwelling-houses equal to or larger than 80 square metres | | | | | | |
| Number of dwelling-houses | 53 | 118 | 139 | 196 | 304 | + 55.1 |
| Total square metres | 16,810 | 28,242 | 29,637 | 55,338 | 68,589 | + 23.9 |
| Total value at current prices (R'000) | 20,927 | 43,796 | 46,292 | 76,114 | 105,936 | + 39.2 |
| Flats and townhouses | | | | | | |
| Number of flats and townhouses | 38 | 103 | 35 | 906 | 204 | - 77.5 |
| Total square metres | 7,023 | 8,925 | 6,352 | 77,830 | 20,637 | - 73.5 |
| Total value at current prices (R'000) | 11,043 | 13,604 | 9,141 | 97,566 | 30,768 | - 68.5 |
| Other residential buildings ^{1/} | | | | | | |
| Total square metres | 0 | 0 | 0 | 0 | 0 | .. |
| Total value at current prices (R'000) | 0 | 0 | 0 | 0 | 0 | .. |
| Total value of residential buildings at current prices (R'000) | 34,442 | 79,945 | 70,309 | 182,042 | 192,639 | + 5.8 |
| Non-residential buildings | | | | | | |
| Office and banking space | | | | | | |
| Total square metres | 5,469 | 0 | 10,815 | 10,298 | 10,815 | + 5.0 |
| Total value at current prices (R'000) | 8,477 | 0 | 20,691 | 15,714 | 20,691 | + 31.7 |
| Shopping space | | | | | | |
| Total square metres | 0 | 0 | 5,285 | 0 | 5,285 | .. |
| Total value at current prices (R'000) | 0 | 0 | 10,471 | 0 | 10,471 | .. |
| Industrial and warehouse space | | | | | | |
| Total square metres | 1,353 | 0 | 7,436 | 4,991 | 8,803 | + 76.4 |
| Total value at current prices (R'000) | 2,030 | 0 | 11,154 | 7,894 | 12,420 | + 57.3 |
| Other non-residential space ^{2/} | | | | | | |
| Total square metres | 305 | 2,463 | 3,857 | 1,690 | 10,268 | + 507.6 |
| Total value at current prices (R'000) | 397 | 3,202 | 6,902 | 1,959 | 14,865 | + 658.8 |
| Total value of non-residential buildings at current prices (R'000) | 10,904 | 3,202 | 49,218 | 25,567 | 58,447 | + 128.6 |
| Additions and alterations | | | | | | |
| Dwelling-houses | | | | | | |
| Total square metres | 1,251 | 4,052 | 7,316 | 5,226 | 13,536 | + 159.0 |
| Total value at current prices (R'000) | 1,506 | 6,460 | 10,837 | 7,452 | 20,655 | + 177.2 |
| Other buildings ^{3/} | | | | | | |
| Total square metres | 80 | 1,128 | 106 | 1,910 | 2,224 | + 16.4 |
| Total value at current prices (R'000) | 106 | 2,072 | 900 | 3,013 | 4,006 | + 33.0 |
| Total value of additions and alterations at current prices (R'000) | 1,612 | 8,532 | 11,737 | 10,465 | 24,661 | + 135.7 |
| Total value of buildings completed at current prices (R'000) | 46,958 | 91,679 | 131,264 | 218,074 | 275,747 | + 26.4 |

1/ Other residential buildings include institutions for the disabled, boarding houses, old people's homes, hostels, hotels, motels, guest houses, holiday chalets, entertainment centres, bed-and-breakfast accommodation and casinos.

2/ Other non-residential space includes churches, sport and recreation clubs, schools, crèches, hospitals and all other non-residential space.

3/ Other buildings include additions and alterations to other residential buildings, non-residential buildings and internal alterations.

Table 40 - Buildings completed according to type of building and selected urban area: Bloemfontein

| Type of building | March 2002 | February 2003 | March 2003 | January 2002 to March 2002 | January 2003 to March 2003 | Percentage change between January 2002 to March 2002 and January 2003 to March 2003 |
|---|---------------|---------------|---------------|----------------------------|----------------------------|---|
| Residential buildings | | | | | | |
| Dwelling-houses smaller than 80 square metres | | | | | | |
| Number of dwelling-houses | 48 | 415 | 159 | 134 | 591 | + 341.0 |
| Total square metres | 2,095 | 16,721 | 6,814 | 6,160 | 24,512 | + 297.9 |
| Total value at current prices (R'000) | 998 | 7,918 | 4,070 | 3,881 | 13,358 | + 244.2 |
| Dwelling-houses equal to or larger than 80 square metres | | | | | | |
| Number of dwelling-houses | 24 | 9 | 21 | 53 | 54 | + 1.9 |
| Total square metres | 3,871 | 751 | 3,500 | 9,479 | 7,999 | - 15.6 |
| Total value at current prices (R'000) | 4,836 | 1,030 | 4,439 | 11,513 | 10,206 | - 11.4 |
| Flats and townhouses | | | | | | |
| Number of flats and townhouses | 0 | 76 | 0 | 30 | 76 | + 153.3 |
| Total square metres | 0 | 7,962 | 0 | 2,892 | 7,962 | + 175.3 |
| Total value at current prices (R'000) | 0 | 12,119 | 0 | 5,444 | 12,119 | + 122.6 |
| Other residential buildings ^{1/} | | | | | | |
| Total square metres | 0 | 0 | 0 | 1,428 | 0 | .. |
| Total value at current prices (R'000) | 0 | 0 | 0 | 1,461 | 0 | .. |
| Total value of residential buildings at current prices (R'000) | 5,834 | 21,067 | 8,509 | 22,299 | 35,683 | + 60.0 |
| Non-residential buildings | | | | | | |
| Office and banking space | | | | | | |
| Total square metres | 0 | 0 | 0 | 2,008 | 0 | .. |
| Total value at current prices (R'000) | 0 | 0 | 0 | 3,800 | 0 | .. |
| Shopping space | | | | | | |
| Total square metres | 710 | 0 | 3,012 | 1,340 | 4,569 | + 241.0 |
| Total value at current prices (R'000) | 2,000 | 0 | 4,688 | 2,500 | 7,802 | + 212.1 |
| Industrial and warehouse space | | | | | | |
| Total square metres | 0 | 0 | 6,439 | 2,842 | 6,439 | + 126.6 |
| Total value at current prices (R'000) | 0 | 0 | 6,600 | 2,280 | 6,600 | + 189.5 |
| Other non-residential space ^{2/} | | | | | | |
| Total square metres | 0 | 0 | 1,977 | 0 | 1,977 | .. |
| Total value at current prices (R'000) | 0 | 0 | 2,836 | 0 | 2,836 | .. |
| Total value of non-residential buildings at current prices (R'000) | 2,000 | 0 | 14,124 | 8,580 | 17,238 | + 100.9 |
| Additions and alterations | | | | | | |
| Dwelling-houses | | | | | | |
| Total square metres | 2,930 | 1,708 | 5,529 | 16,952 | 10,867 | - 35.9 |
| Total value at current prices (R'000) | 3,136 | 2,113 | 6,250 | 19,101 | 12,628 | - 33.9 |
| Other buildings ^{3/} | | | | | | |
| Total square metres | 1,057 | 212 | 1,029 | 3,933 | 1,512 | - 61.6 |
| Total value at current prices (R'000) | 614 | 2,431 | 5,937 | 7,665 | 8,852 | + 15.5 |
| Total value of additions and alterations at current prices (R'000) | 3,750 | 4,544 | 12,187 | 26,766 | 21,480 | - 19.7 |
| Total value of buildings completed at current prices (R'000) | 11,584 | 25,611 | 34,820 | 57,645 | 74,401 | + 29.1 |

1/ Other residential buildings include institutions for the disabled, boarding houses, old people's homes, hostels, hotels, motels, guest houses, holiday chalets, entertainment centres, bed-and-breakfast accommodation and casinos.

2/ Other non-residential space includes churches, sport and recreation clubs, schools, crèches, hospitals and all other non-residential space.

3/ Other buildings include additions and alterations to other residential buildings, non-residential buildings and internal alterations.

Additional information

Explanatory Notes

| | |
|--------------------------------------|--|
| Introduction | <ol style="list-style-type: none"> 1 Statistics South Africa (Stats SA) conducts a monthly Building Statistics Survey collecting information regarding building plans approved and buildings completed, financed by the private sector, from a sample of local government institutions in South Africa. According to these institutions, they are not always notified about low-cost housing projects. This statistical release contains information of building plans passed and buildings completed in respect of residential buildings, non-residential buildings and additions and alterations according to province and selected urban areas. 2 In order to improve timeliness of the publication, some information for the current month have been estimated due to late submission by respondents. These estimates will be revised in the next statistical release(s) as soon as actual information is available. 3 The actual and seasonally adjusted values (at current and at constant 2000 prices) and the percentage change of building plans passed and buildings completed according to type of building are reflected monthly from January 2000 in this statistical release (cf. tables 1 to 8). |
| Scope of the survey | <ol style="list-style-type: none"> 4 This survey covers local government institutions conducting activities for the private sector regarding - <ul style="list-style-type: none"> • approval of building plans; and • final inspection of completed buildings. |
| Classification | <ol style="list-style-type: none"> 5 The 1993 edition of the Standard Industrial Classification of all Economic Activities, (SIC) Fifth Edition, Report No. 09-90-02, was used to classify the statistical units. The SIC is based on the 1990 International Standard Industrial Classification of all Economic Activities (ISIC) with suitable adaptations for local conditions. 6 The twelfth and last published edition of the Standard Code List of Areas, Report No. 09-09-03 (1994) was used to classify the statistical units according to province. The cities, towns and non-urban areas listed in this report are codified within province. The code list was compiled by Stats SA in collaboration with other interested bodies and the first edition was distributed in June 1977. However, exceptions occur in respect of the new cross-border municipalities. GaRankuwa, which was previously classified in North West according to the Standard Code List of Areas, Report No. 09-09-03(1994), is included in Gauteng, City of Tshwane as from January 2002. |
| Statistical unit | <ol style="list-style-type: none"> 7 The statistical unit for the collection of information is a local government institution. Local government institutions include district municipalities, metropolitan municipalities and local municipalities. |
| Survey methodology and design | <ol style="list-style-type: none"> 8 The sample for the monthly Building Statistics Survey consists of the largest local government institutions in South Africa, i.e. those that account for approximately 85% of the total rand value of buildings completed by the private sector. 9 The survey is collected by mail each month from a sample of 128 local government institutions. |
| Constant prices | <ol style="list-style-type: none"> 10 The value of building plans passed and buildings completed at constant prices measures building activities in terms of ruling prices in a specific base year, which is 2000 as from May 2002. 11 The value of building plans passed at constant prices for each month is obtained by deflating the values at current prices with a price index known as the “lump sum domestic buildings” as published in statistical release P0151 – JBCC Contract Price Adjustment Provisions Work Group Indices. In order to be applicable, these indices (base February 1991=100) are converted to the base year 2000=100. |

- 12 The value of buildings completed at constant prices is obtained by deflating the values at current prices with the same price index which is used to calculate building plans passed at constant prices (cf. paragraph 11). The value of buildings completed is reported as at the time the plans were passed. Since the completion of buildings may extend over a few months to a few years, the current value of buildings completed is deflated by price indices as at the time the plans were passed in order to calculate the value of buildings completed at the time the plans were passed. Therefore, the duration of the completion of different types of buildings are taken into account in ascertaining the deflators e.g. the value of dwelling-houses completed at constant prices at January 2000 is obtained by deflating the current value of dwelling-houses completed for January 2000 with the price index of a month six months prior to January 2000. Furthermore, the value of other residential buildings, non-residential buildings and additions and alterations at constant prices is obtained by deflating the current values with price indices of 12 months, 18 months and 12 months prior to the relevant month, respectively.
- Seasonal adjustment**
- 13 Seasonally adjusted estimates of building plans passed and buildings completed are generated each month, using the X-11 Seasonal Adjustment Program developed by US Bureau of the Census Economic Research and Analyses Division, 1968.
- 14 Seasonal adjustment is a means of removing the estimated effects of normal seasonal variation from the series so that the effects of other influences on the series can be more clearly recognised. Seasonal adjustment does not aim to remove irregular or non-seasonal influences which may be present in any particular month. Influences that are volatile or unsystematic can still make it difficult to interpret the movement of the series even after adjustment for seasonal variations. Therefore, the month-to-month movements of seasonally adjusted estimates may not be reliable indicators of trend behaviour.
- Trend cycle**
- 15 The trend is a long-term pattern or movement of a time series. The X-11 Seasonal Adjustment Program is used for smoothing seasonally adjusted data.
- Related publications**
- 16 Users may also wish to refer to the following publications:
- P5041.3 – Building statistics issued annually.
 - P9101.2 – Actual and expected expenditure on construction by the public sector per statistical region issued annually.
 - Bulletin of Statistics issued quarterly.
 - South African Statistics issued annually.
- Unpublished statistics**
- 17 In some cases Stats SA can also make available statistics which are not published. The statistics can be made available in one or more of the following ways: computer printouts, CD and diskette. Generally a charge is made for providing unpublished statistics.
- Rounding-off of figures**
- 18 The figures in the tables have, where necessary, been rounded off to the nearest digit shown. There may, therefore, be slight discrepancies between the sums of the constituent items and the totals shown.
- Pre-release policy**
- 19 Stats SA has adopted the confidential pre-release policy in respect of selected economic indicators and specific government departments. The policy accords with practice among leading statistical agencies. The statistical integrity of the information and strict observance of the release time has been assured by the following procedure:
- 20 In respect of this statistical release, an official representative from the Office of the President, the Department of Trade and Industry (DTI), National Treasury and the South African Reserve Bank (SARB) will receive a copy of the release on a strictly confidential basis two hours in advance of the public issue.
- 21 Stats SA pre-release policy may be inspected at its Website, www.statssa.gov.za

Symbols and abbreviations

| | |
|----------|--|
| .. | no meaningful percentage change between two specified periods available since either one or both of the totals are nil |
| 0 | nil or figure too small to publish |
| * | revised |
| Stats SA | Statistics South Africa |
| SIC | Standard Industrial Classification of all Economic Activities |
| ISIC | International Standard Industrial Classification of all Economic Activities |
| JBCC | Joint Building Contracts Committee |
| CD | Compact Disc |
| US | United States |
| SARB | South African Reserve Bank |
| DTI | Department of Trade and Industry |

Technical notes**Response rate**

The response rate for March 2003 is 95,0%.

Local government institutions covered in the sample survey

Table C - Classification of towns and cities according to new municipalities and previous local government institution by province

| Western Cape | | | |
|--|---|---|---|
| Sample survey as from January 2002 | | Sample survey up to December 2001 | |
| Name of municipality | Cities and towns | Name of previously published local government institution | Cities and towns |
| Breede Valley Municipality | Worcester Rawsonville De Doorns Touws River | Worcester | Worcester |
| | | Breede River District Council | Rural areas - Dissolved as from July 2001. Activities were taken over by various local government institutions. |
| City of Cape Town - Blaauwberg Administration | Milnerton | Blaauwberg Municipality | Milnerton |
| Cape Town Administration | Cape Town | City of Cape Town | Cape Town |
| Helderberg Administration | Gordon's Bay, Somerset West and Strand | Helderberg Municipality | Gordon's Bay, Somerset West and Strand |
| Ikapa Administration | Guguletu, Langa, Khayelitsha and Nyanga | Ikapa | Guguletu, Langa, Khayelitsha and Nyanga |
| Oostenberg Administration - | Brackenfell Kraaifontein Kuils River Melton Rose - Blue Downs | Oostenberg Municipality - | Brackenfell Kraaifontein Kuils River Melton Rose - Blue Downs |
| South Peninsula Administration - | Fish Hoek Simon's Town Plumstead | Fish Hoek Simon's Town South Peninsula Municipality | Fish Hoek Simon's Town Plumstead |
| Tygerberg Administration - Bellville Administration Durbanville Administration Goodwood Administration Lingeletu West Administration Parow Administration South Administration | City of Tygerberg - Bellville Durbanville Goodwood Lingeletu West Parow Belhar, Delft, Driftsands and Efuleni | City of Tygerberg - Bellville Administration Durbanville Administration Goodwood Administration Lingeletu West Administration Parow Administration South Administration | Bellville Durbanville Goodwood Lingeletu West Parow Belhar, Delft, Driftsands and Efuleni |
| Drakenstein Municipality | Paarl Wellington Saron ^{1/} | Paarl Wellington | Paarl Wellington |
| George Municipality | George, Herolds Bay, Pacaltsdorp and Thembaletu Wilderness ^{1/} | George | George, Herolds Bay, Pacaltsdorp and Thembaletu |

^{1/} Included in sample survey as from January 2001

Table C - Classification of towns and cities according to new municipalities and previous local government institution by province (continued)

| Western Cape (concluded) | | | |
|---|--|--|---|
| Sample survey as from January 2002 | | Sample survey up to December 2001 | |
| Name of municipality | Cities and towns | Name of previously published local government institution | Cities and towns |
| Knysna Municipality | Knysna and Khayaletu Sedgefield | Knysna Sedgefield | Knysna and Khayaletu Sedgefield |
| Mossel Bay Municipality | Mossel Bay, Boggom's Bay, Kleinbrak, Rheebok and Tergniet Friemersheim, Herbertsdale and Great Brak River ^{1/} | Mossel Bay | Mossel Bay, Boggom's Bay, Kleinbrak, Rheebok and Tergniet |
| Oudtshoorn Municipality | Oudtshoorn De Rust/Blomnek Dysselsdorp | Oudtshoorn | Oudtshoorn |
| Overberg District Council | Rural areas - Dissolved as from July 2001. Activities were taken over by various local government institutions. | Overberg District Council | Rural areas |
| Overstrand Municipality | Hermanus, Fisher Haven, Hawston, Onrus River, Sandbaai, Vermont and Zwelihle Hangklip - Kleinmond, Betty's Bay and Rooi-Els Gansbaai and Stanford ^{1/} | Hermanus Hangklip - Kleinmond | Hermanus, Fisher Haven, Hawston, Onrus River, Sandbaai, Vermont and Zwelihle Hangklip - Kleinmond, Betty's Bay and Rooi-Els |
| Plettenberg Bay Municipality | Plettenberg Bay Knoetzie ^{1/} | Plettenberg Bay | Plettenberg Bay |
| Saldanha Bay Municipality | Vredenburg and Saldanha Hopefield and Langebaan ^{1/} | Western Coast Peninsula | Vredenburg and Saldanha |
| Stellenbosch Municipality | Stellenbosch Franschhoek and Pniel | Stellenbosch | Stellenbosch |
| Swartland Municipality | Malmesbury Darling, Koringberg, Moorreesburg and Yzerfontein ^{1/} | Malmesbury | Malmesbury |
| | | West Coast District Council | Rural areas - Dissolved as from July 2001. Activities were taken over by various local government institutions. |
| | | Winelands District Council | Rural areas - Dissolved as from July 2001. Activities were taken over by various local government institutions. |

^{1/} Included in sample survey as from January 2001

Table C - Classification of towns and cities according to new municipalities and previous local government institution by province (continued)

| Eastern Cape | | | |
|--|---|--|--|
| Sample survey as from January 2002 | | Sample survey up to December 2001 | |
| Name of municipality | Cities and towns | Name of previously published local government institution | Cities and towns |
| Buffalo City Municipality - East London Area | East London, Beacon Bay, Gompo Town, Gonubie and Mdantsane | East London | East London, Beacon Bay, Gompo Town, Gonubie and Mdantsane |
| King William's Town Area | King William's Town, Bisho and Zwelitsha | King William's Town | King William's Town, Bisho and Zwelitsha |
| King Sabata Dalindyebo Municipality - Umtata Area | Umtata | Umtata | Umtata |
| Kouga Municipality - Jeffreys Bay Area | Jeffreys Bay Humansdorp Hankey Patensie Oesterbaai Gamtoos St Francis Bay ¹ Cape St Francis ¹ Kromrivier ¹ | Jeffreys Bay | Jeffreys Bay |
| Makana Municipality - Grahamstown Area | Grahamstown and Rhini Township | Grahamstown | Grahamstown and Rhini Township |
| Maletswai Municipality - Aliwal North Area | Aliwal North and Dukathole | Aliwal - Maletswai | Aliwal North and Dukathole |
| Ndlambe Municipality | Port Alfred Alexandria Bathurst Boesmansriviermond Kenton-on-Sea | Port Alfred | Port Alfred |
| Nelson Mandela Metropolitan Municipality - Despatch Area | Despatch | Despatch | Despatch |
| Port Elizabeth Area | Port Elizabeth, Ibhayi and Motherwell | Port Elizabeth | Port Elizabeth, Ibhayi and Motherwell |
| Uitenhage Area | Uitenhage and KwaNobuhle | Uitenhage | Uitenhage and KwaNobuhle |
| | | Western District Council | Rural areas - Dissolved as from July 2001. Activities were taken over by various local government institutions. |

¹ Included in sample survey as from January 2003

Table C - Classification of towns and cities according to new municipalities and previous local government institution by province (continued)

| Northern Cape | | | |
|---|---|--|---|
| Sample survey as from January 2002 | | Sample survey up to December 2001 | |
| Name of municipality | Cities and towns | Name of previously published local government institution | Cities and towns |
| //Khara Hais Municipality | Upington, Mothibistad and Paballelo | Upington | Upington, Mothibistad and Paballelo |
| | | Benede-Oranje District Council | Rural areas - Dissolved as from July 2001. Activities were taken over by various local government institutions. |
| Ga-Segonyana Municipality | Kuruman | Kuruman | Kuruman |
| Kai! Garib Municipality - Keimoes Area | Keimoes Eksteenskuil ^{1/} Kenhardt ^{1/} | Keimoes | Keimoes |
| | | Namaqualand District Council | Rural areas - Dissolved as from July 2001. Activities were taken over by various local government institutions. |
| Sol Plaatje Municipality | Kimberley and Galeshewe Ritchie ^{1/} | Kimberley | Kimberley and Galeshewe |

^{1/} Included in sample survey as from January 2001

Table C - Classification of towns and cities according to new municipalities and previous local government institution by province (continued)

| Free State | | | |
|--|---|--|---|
| Sample survey as from January 2002 | | Sample survey up to December 2001 | |
| Name of municipality | Cities and towns | Name of previously published local government institution | Cities and towns |
| Dihlabeng Municipality | Bethlehem and Bohlokong Clarens Mashae-Fourie Paul Roux | Bethlehem | Bethlehem and Bohlokong |
| Maluti a Phofung Municipality Harrismith Area Phuthaditjhaba Area | Harrismith and Tsiamé Phuthaditjhaba | Harrismith Phuthaditjhaba | Harrismith and Tsiamé Phuthaditjhaba |
| Mangaung Municipality - Bloemfontein Area Botshabelo Area | Bloemfontein, Bainsvlei, Bloemspruit and Mangaung Botshabelo | Bloemfontein Botshabelo | Bloemfontein, Bainsvlei, Bloemspruit and Mangaung Botshabelo |
| Mantsopa Municipality | Ladybrand and Manyatseng Excelsior Hobhouse Thaba Patchoa Tweespruit/Kopano | Ladybrand | Ladybrand and Manyatseng |
| Matjhabeng Municipality - Odendaalsrus Area Virginia Area Welkom Area | Odendaalsrus, Allanridge and Kutlwanong Virginia and Meloding Welkom and Thabong | Odendaalsrus Virginia Welkom | Odendaalsrus, Allanridge and Kutlwanong Virginia and Meloding Welkom and Thabong |
| Metsimaholo Municipality - Deneyville Area Sasolburg Area | Deneyville , Refengkgotso and Oranjeville Sasolburg and Zamdela | Deneyville/Refengkgotso Sasolburg/Zamdela | Deneyville and Refengkgotso Sasolburg and Zamdela |
| Moqhaka Municipality - Kroonstad Area | Kroonstad and Maokeng | Kroonstad | Kroonstad and Maokeng |
| Nqwathe Municipality | Parys Edenville Heibron Koppies Vredefort | Parys | Parys |

Table C - Classification of towns and cities according to new municipalities and previous local government institution by province (continued)

| KwaZulu-Natal | | | |
|---|---|---|---|
| Sample survey as from January 2002 | | Sample survey up to December 2001 | |
| Name of municipality | Cities and towns | Name of previously published local government institution | Cities and towns |
| Emnambithi Municipality | Ladysmith Colenso | Ladysmith | Ladysmith |
| eThekweni Municipality - Inner West Operational Entity | Clermont, KwaDabeka, KwaNdengezi, New Germany, Pinetown, Queensburgh, Reservoir Hills, Shallcross and Westville | Inner West City Council | Clermont, KwaDabeka, KwaNdengezi, New Germany, Pinetown, Queensburgh, Reservoir Hills, Shallcross and Westville |
| Outer West Operational Entity | Assagay, Botha's Hill, Cato Ridge, Drummond, Everton, Gillitts, Hillcrest, Inchanga, Kloof, Mpumalanga and Waterfall | Outer West Local Council | Assagay, Botha's Hill, Cato Ridge, Drummond, Everton, Gillitts, Hillcrest, Inchanga, Kloof, Mpumalanga and Waterfall |
| KwaMashu | KwaMashu | KwaMashu | KwaMashu |
| Durban- North, South and Central | Durban | Durban | Durban |
| North Operational Entity - Tonga | Tonga | North Local Council - Tonga | Tonga |
| Umhlanga Rocks | Umhlanga Rocks, Mount Edgecombe and Umdloti Beach | North Local Council - Umhlanga | Umhlanga Rocks, Mount Edgecombe and Umdloti Beach |
| Verulam | Verulam | North Local Council - Verulam | Verulam |
| South Operational Entity | Amanzimtoti, Isipingo, Kingsburgh, KwaMakuta and Umbogintwini | South Local Council | Amanzimtoti, Isipingo, Kingsburgh, KwaMakuta and Umbogintwini |
| Umlazi | Umlazi | Umlazi | Umlazi |
| Greater Kokstad Municipality | Kokstad | Kokstad | Kokstad |
| Hibiscus Coast Municipality | Margate and Uvongo Marina Beach, San Lameer, Southbroom and Trafalgar Port Shepstone Hibberdene Munster, Port Edward and Palm Beach | Margate Mpenjati/Southbroom Port Shepstone Umtamvuna/Port Edward | Margate and Uvongo Marina Beach, San Lameer, Southbroom and Trafalgar Port Shepstone Munster, Port Edward and Palm Beach |

Table C - Classification of towns and cities according to new municipalities and previous local government institution by province (continued)

| KwaZulu-Natal (concluded) | | | |
|---|---|--|--|
| Sample survey as from January 2002 | | Sample survey up to December 2001 | |
| Name of municipality | Cities and towns | Name of previously published local government institution | Cities and towns |
| KwaDukuza Municipality - Dolphin Coast Administrative Entity | Ballito, Etete, Shakaskraal, Tinley Manor Beach and Umhlali Beach | Dolphin Coast Borough | Ballito, Etete, Shakaskraal, Tinley Manor Beach and Umhlali Beach |
| Stanger Administrative Entity | Blythedale Beach, Shakaville and Stanger Nkwazi/Stanger | KwaDukuza/Stanger | Blythedale Beach, Shakaville and Stanger |
| Msunduzi Municipality | Edendale Ashburton ^{1/} , Pietermaritzburg and Msundini | Edendale Pietermaritzburg/Msundini | Edendale Pietermaritzburg and Msundini |
| Newcastle Municipality | Blaauwboschlaagte, Madadeni, Osizweni and Newcastle | Newcastle | Blaauwboschlaagte, Madadeni, Osizweni and Newcastle |
| Umdoni Municipality | Pennington Scottburgh/Umzinto | Pennington | Pennington |
| Umhlathuze Municipality | Empangeni and Ngwelezana Richards Bay | Empangeni-Ngwelezana Richards Bay | Empangeni and Ngwelezana Richards Bay |
| Umngeni Municipality | Hilton Howick | Hilton Howick | Hilton Howick |
| Uthungulu District Council ^{1/} | Kwambonati, Nkandla and Ntambanana Municipalities | Development and Services Board - North Coast | Kwambonati, Nkandla, Tugela Mouth, Umlalazi, Mahlabathini, Ukuza, Umbambo, Egwavuma and Hluhlumi |

^{1/} Included in sample survey as from January 2001

Table C - Classification of towns and cities according to new municipalities and previous local government institution by province (continued)

| North West | | | |
|---|---|--|---|
| Sample survey as from January 2002 | | Sample survey up to December 2001 | |
| Name of municipality | Cities and towns | Name of previously published local government institution | Cities and towns |
| | | Bophirima District Council | Rural areas - Dissolved as from July 2001. Activities were taken over by various local government institutions. |
| Ditsobotla Local Municipality | Lichtenburg and Itsoseng Biesiesvlei ^{1/} Coligny ^{1/} | Lichtenburg | Lichtenburg and Itsoseng |
| Klerksdorp Local Municipality | Klerksdorp Orkney and Kanana Hartbeesfontein ^{1/} Stillfontein ^{1/} | Klerksdorp Orkney | Klerksdorp Orkney and Kanana |
| GaRankuwa | As from January 2002 included in City of Tshwane - Northern Metropolitan Substructure (Gauteng) | GaRankuwa | GaRankuwa |
| Madibeng Local Municipality | Brits and Lethabile Hartbeespoort | Brits | Brits and Lethabile |
| Mafikeng Local Municipality | Mmabatho and Mafikeng | Mmabatho | Mmabatho and Mafikeng |
| Naledi Municipality | Vryburg | Vryburg | Vryburg |
| Potchefstroom Municipality | Potchefstroom | Potchefstroom | Potchefstroom |
| Rustenburg Local Municipality - Rustenburg Area | Rustenburg | Rustenburg | Rustenburg |
| Zeerust Local Municipality | Zeerust | Zeerust | Zeerust |

^{1/} Included in sample survey as from January 2001

Table C - Classification of towns and cities according to new municipalities and previous local government institution by province (continued)

| Gauteng | | | |
|--|---|---|---|
| Sample survey as from January 2002 | | Sample survey up to December 2001 | |
| Name of municipality | Cities and towns | Name of previously published local government institution | Cities and towns |
| City of Johannesburg Metropolitan Municipality | Alexandra and Sandton Midrand, Rabie Ridge and Ivory Park Randburg Ennerdale, Lenasia and Johannesburg Diepmeadow, Dobsonville and Roodepoort Soweto | Greater Johannesburg - Eastern Metropolitan Local Council Midrand Metropolitan Local Council Northern Metropolitan Local Council Southern Metropolitan Local Council Western Metropolitan Local Council Soweto | Alexandra and Sandton Midrand, Rabie Ridge and Ivory Park Randburg Ennerdale, Lenasia and Johannesburg Diepmeadow, Dobsonville and Roodepoort Soweto |
| City of Tshwane Metropolitan Municipality - Centurion Town Council City Council of Pretoria Northern Pretoria Metropolitan Substructure | Centurion Pretoria, Atteridgeville and Mamelodi Akasia, Elandsdoorn, Klipfontein, Kruisfontein and Soshanguve Hammanskraal GaRankuwa ^{2/} Temba Winterveld ^{2/} | Centurion Pretoria Akasia | Centurion Pretoria, Atteridgeville and Mamelodi Akasia, Elandsdoorn, Klipfontein, Kruisfontein and Soshanguve |
| | | Eastern Services Council - Pretoria Area | Rural areas - Dissolved as from July 2001. Activities were taken over by various local government institutions. |
| Ekurheleni Metropolitan Municipality - Service Delivery Centre of: Edenvale - Modderfontein Alberton Benoni Boksburg Brakpan Duduza Germiston Kempton Park Nigel Springs | Edenvale - Modderfontein Alberton and Tokoza Benoni, Daveyton and Wattville Boksburg and Vosloorus Brakpan and Tsakane Duduza Germiston, Bedfordview and Katlehong Kempton Park and Tembisa Nigel Springs and KwaThema | Edenvale - Modderfontein Alberton Benoni Boksburg Brakpan Duduza Germiston Kempton Park Nigel Springs | Edenvale - Modderfontein Alberton and Tokoza Benoni, Daveyton and Wattville Boksburg and Vosloorus Brakpan and Tsakane Duduza Germiston, Bedfordview and Katlehong Kempton Park and Tembisa Nigel Springs and KwaThema |

^{2/} Was previously included under North West

Table C - Classification of towns and cities according to new municipalities and previous local government institution by province (continued)

| Gauteng (concluded) | | | |
|---|---|--|---|
| Sample survey as from January 2002 | | Sample survey up to December 2001 | |
| Name of municipality | Cities and towns | Name of previously published local government institution | Cities and towns |
| Emfuleni Local Municipality | Vanderbijlpark Vereeniging and Evaton Sebokeng (Boipatong, Bophelong and Sharpville) | Vanderbijlpark Vereeniging Sebokeng | Vanderbijlpark Vereeniging and Evaton Sebokeng (Boipatong, Bophelong and Sharpville) |
| Kungwini Local Municipality – Bronkhorstspuit Area | Bronkhorstspuit | Bronkhorstspuit | Bronkhorstspuit |
| Lesedi Local Municipality | Heidelberg and Ratanda | Heidelberg | Heidelberg and Ratanda |
| Merafong City Local Municipality | Carletonville, Wedela, Khutsong and Wilverdient | Carletonville | Carletonville, Wedela, Khutsong and Wilverdient |
| Midvaal Local Municipality | Meyerton | Meyerton | Meyerton |
| Mogale City Municipality | Krugersdorp, Kagiso and Munsieville | Krugersdorp | Krugersdorp, Kagiso and Munsieville |
| Randfontein Local Municipality | Randfontein and Mohlakeng | Randfontein | Randfontein and Mohlakeng |
| Westonaria Local Municipality | Westonaria and Bekkersdal | Westonaria | Westonaria and Bekkersdal |

Table C - Classification of towns and cities according to new municipalities and previous local government institution by province (continued)

| Mpumalanga | | | |
|---|--|--|--|
| Sample survey as from January 2002 | | Sample survey up to December 2001 | |
| Name of municipality | Cities and towns | Name of previously published local government institution | Cities and towns |
| Delmas Municipality | Delmas and Botleng | Delmas | Delmas and Botleng |
| Emalahleni Local Municipal Council- KwaGuqa Area Witbank Area | KwaGuqa Witbank | KwaGuqa Witbank | KwaGuqa Witbank |
| Govan Mbeki Municipality - Secunda Area | Evander, Embalenhle and Secunda | Highveldridge Transitional Council | Evander, Embalenhle and Secunda |
| Mbombela Local Municipality | Nelspruit and Kanyamazane White River Hazyview ^{1/} | Nelspruit White River | Nelspruit White River |
| Middelburg Municipality | Middelburg and Mhluzi Hendrina ^{1/} | Middelburg | Middelburg and Mhluzi |
| Msukaligwa Municipality | Ermelo, Cassim Park and Wesselton | Ermelo | Ermelo, Cassim Park and Wesselton |
| Nkomazi Municipality - Komatipoort Area Malelane Area | Komatipoort and Kamaqhekeza Malelane, Hectorspruit and Kamhlushwa | Komatipoort Malelane | Komatipoort and Kamaqhekeza Malelane, Hectorspruit and Kamhlushwa |

^{1/} Included in sample survey as from January 2001

Table C - Classification of towns and cities according to new municipalities and previous local government institution by province (concluded)

| Limpopo | | | |
|---|--|--|---|
| Sample survey as from January 2002 | | Sample survey up to December 2001 | |
| Name of municipality | Cities and towns | Name of previously published local government institution | Cities and towns |
| | | Bosveld District Council | Rural areas - Dissolved as from July 2001. Activities were taken over by various local government institutions. |
| Greater Tzaneen Municipality | Tzaneen and Nkowakowa | Letaba | Tzaneen and Nkowakowa |
| Musina Municipality | Musina (previously Messina) | Messina | Messina |
| Modimolle Municipality | Modimolle (previously Nylstroom) | Nylstroom | Nylstroom |
| Mogolakwena Municipality | Mokopane (previously Potgietersrus) | Potgietersrus | Potgietersrus |
| Mookgopong Municipality | Naboomspruit and Mookgopong | Naboomspruit | Naboomspruit and Mookgopong |
| Polokwane Municipality | Polokwane (previously Pietersburg) and Seshego | Pietersburg - Polokwane | Pietersburg and Seshego |
| Thabazimbi Municipality | Thabazimbi | Thabazimbi | Thabazimbi |

Table D - Classification of selected urban areas according to new municipalities and previous local government institution

| Sample survey as from January 2002 | | Sample survey up to December 2001 | |
|--|---|---|--|
| Name of selected urban area and municipality | Cities and towns | Name of selected urban area and previously published local government institution | Cities and towns |
| Cape Town City of Cape Town - Blaauwberg Administration | Milnerton | Cape Town Blaauwberg Municipality | Milnerton |
| Cape Town Administration | Cape Town | City of Cape Town | Cape Town |
| Ikapa Administration | Guguletu, Langa, Khayelitsha and Nyanga | Ikapa | Guguletu, Langa, Khayelitsha and Nyanga |
| Oostenberg Administration - | Kraaifontein Melton Rose - Blue Downs | Oostenberg Municipality - | Kraaifontein Melton Rose - Blue Downs |
| South Peninsula Administration - | Fish Hoek Simon's Town Plumstead | Fish Hoek Simon's Town South Peninsula Municipality | Fish Hoek Simon's Town Plumstead |
| Tygerberg Administration - Bellville Administration Durbanville Administration Goodwood Administration Lingeletu West Administration | City of Tygerberg - Bellville Durbanville Goodwood Lingeletu West | City of Tygerberg - Bellville Administration Durbanville Administration Goodwood Administration Lingeletu West Administration | Bellville Durbanville Goodwood Lingeletu West |
| Parow Administration South Administration | Parow Belhar, Delft, Driftsands and Efuleni | Parow Administration South Administration | Parow Belhar, Delft, Driftsands and Efuleni |
| Port Elizabeth Nelson Mandela Metropolitan Municipality - Despatch Area | Despatch | Port Elizabeth Despatch | Despatch |
| Port Elizabeth Area | Port Elizabeth, Ibhayi and Motherwell | Port Elizabeth | Port Elizabeth, Ibhayi and Motherwell |
| Uitenhage Area | Uitenhage and KwaNobuhle | Uitenhage | Uitenhage and KwaNobuhle |

Table D - Classification of selected urban areas according to new municipalities and previous local government institution (continued)

| Sample survey as from January 2002 | | Sample survey up to December 2001 | |
|--|--|---|--|
| Name of selected urban area and municipality | Cities and towns | Name of selected urban area and previously published local government institution | Cities and towns |
| Durban eThekweni Municipality - Inner West Operational Entity | Clermont, KwaDabeka, KwaNdengezi, New Germany, Pinetown, Queensburgh, Reservoir Hills, Shallcross and Westville | Durban Inner West City Council | Clermont, KwaDabeka, KwaNdengezi, New Germany, Pinetown, Queensburgh, Reservoir Hills, Shallcross and Westville |
| Outer West Operational Entity | Assagay, Botha's Hill, Cato Ridge, Drummond, Everton, Gillitts, Hillcrest, Inchanga, Kloof, Mpumalanga and Waterfall | Outer West Local Council | Assagay, Botha's Hill, Cato Ridge, Drummond, Everton, Gillitts, Hillcrest, Inchanga, Kloof, Mpumalanga and Waterfall |
| Durban- North, South and Central | Durban | Durban | Durban |
| North Operational Entity - Verulam | Verulam | North Local Council - Verulam | Verulam |
| South Operational Entity | Amanzimtoti, Isipingo, Kingsburgh, KwaMakuta and Umbogintwini | South Local Council | Amanzimtoti, Isipingo, Kingsburgh, KwaMakuta and Umbogintwini |
| Pretoria City of Tshwane Metropolitan Municipality - Southern Region City Council of Pretoria | Centurion Pretoria, Atteridgeville and Mamelodi | Pretoria Centurion Pretoria | Centurion Pretoria, Atteridgeville and Mamelodi |
| Northern Region | Akasia, Elandsdoorn, Klipfontein, Kruisfontein and Soshanguve Hammanskraal GaRankuwa Temba Winterveld | Akasia | Akasia, Elandsdoorn, Klipfontein, Kruisfontein and Soshanguve |

Table D - Classification of selected urban areas according to new municipalities and previous local government institution (concluded)

| Sample survey as from January 2002 | | Sample survey up to December 2001 | |
|--|---|---|---|
| Name of selected urban area and municipality | Cities and towns | Name of selected urban area and previously published local government institution | Cities and towns |
| Witwatersrand City of Johannesburg Metropolitan Municipality | Alexandra and Sandton Midrand, Rabie Ridge and Ivory Park Randburg Ennerdale, Lenasia and Johannesburg Diepmeadow, Dobsonville and Roodepoort Soweto | Witwatersrand Greater Johannesburg - Eastern Metropolitan Local Council Midrand Metropolitan Local Council Northern Metropolitan Local Council Southern Metropolitan Local Council Western Metropolitan Local Council Soweto | Alexandra and Sandton Midrand, Rabie Ridge and Ivory Park Randburg Ennerdale, Lenasia and Johannesburg Diepmeadow, Dobsonville and Roodepoort Soweto |
| Ekurheleni Metropolitan Municipality - Service Delivery Centre of: Edenvale - Modderfontein Alberton Benoni Boksburg Brakpan Duduza Germiston Kempton Park Nigel Springs | Edenvale - Modderfontein Alberton and Tokoza Benoni, Daveyton and Wattville Boksburg and Vosloorus Brakpan and Tsakane Duduza Germiston, Bedfordview and Katlehong Kempton Park and Tembisa Nigel Springs and KwaThema | Edenvale - Modderfontein Alberton Benoni Boksburg Brakpan Duduza Germiston Kempton Park Nigel Springs | Edenvale - Modderfontein Alberton and Tokoza Benoni, Daveyton and Wattville Boksburg and Vosloorus Brakpan and Tsakane Duduza Germiston, Bedfordview and Katlehong Kempton Park and Tembisa Nigel Springs and KwaThema |
| Mogale City Municipality | Krugersdorp, Kagiso and Munsieville | Krugersdorp | Krugersdorp, Kagiso and Munsieville |
| Randfontein Local Municipality | Randfontein and Mohlakeng | Randfontein | Randfontein and Mohlakeng |
| Westonaria Local Municipality | Westonaria and Bekkersdal | Westonaria | Westonaria and Bekkersdal |
| Merafong City Local Municipality | Carletonville, Wedela, Khutsong and Welverdiend | Carletonville | Carletonville, Wedela, Khutsong and Welverdiend |
| Lesedi Local Municipality | Heidelberg and Ratanda | Heidelberg | Heidelberg and Ratanda |
| Bloemfontein Mangaung Municipality - Bloemfontein Area | Bloemfontein, Bainsvlei, Bloemspruit and Mangaung | Bloemfontein Bloemfontein | Bloemfontein, Bainsvlei, Bloemspruit and Mangaung |

Glossary

| | |
|---|---|
| Additions and alterations | Additions and alterations include extensions to existing buildings as well as internal and external alterations of existing buildings. |
| Blocks of flats | Blocks of flats are regarded as high-density housing consisting of a number of self-contained dwelling-units with at least one living-room together with a kitchen and bathroom conjoined to similar units in one building. |
| Dwelling-house | A dwelling-house refers to a free-standing, complete structure on a separate stand or a self-contained dwelling-unit, granny flat, on the same premises as an existing residence. Out-buildings and garages are included. |
| Local government | A local government is a distinct and constitutionally defined sphere of government, pertaining to government that is not national or provincial in nature and is manifested in the form of municipalities. It is a generic term referring to municipalities and local authorities of varied nature and type involved in activities of a governmental nature in the local sphere. |
| Local government institutions | <p>Up to December 2001 local government institutions included:</p> <ul style="list-style-type: none"> • City councils; • district councils; • development and services boards; • metropolitan councils; • municipalities; and • transitional local councils. <p>As from January 2002 local government institutions includes:</p> <ul style="list-style-type: none"> • District and metropolitan municipalities; and • local municipalities. |
| Metropolitan and district municipalities | Metropolitan and district municipalities means municipalities that has the exclusive executive and legislative authority in its area, and which is described in section 155(1) of the Constitution as category A (metropolitan municipality) and category C (district municipality) (Refer to local government: Municipal Structure Act, Act No. 117.1998). |
| Non-residential buildings | Non-residential buildings comprise factories, commercial, financial and other office buildings, as well as other buildings not used for residential purposes, such as churches, halls, clubs, schools and hospitals. |
| Other residential buildings | Other residential buildings include institutions for the disabled, boarding houses, old people's homes, hostels, hotels, motels, guest houses, holiday chalets, bed-and-breakfast accommodation, entertainment centres and casinos. |
| Percentage change | <p>When using monthly actual values, the percentage change is the change in actual values of building activities (building plans passed or buildings completed) of the relevant month compared with the actual values of building activities (building plans passed or buildings completed) of the same month in the previous year expressed as a percentage.</p> <p>When using annual actual values, the percentage change is the change in the actual values of building activities (building plans passed or buildings completed) of the relevant year compared with the actual values of building activities (building plans passed or buildings completed) of the previous year expressed as a percentage.</p> <p>When using seasonally adjusted values, the percentage change is the change in the seasonally adjusted values of building activities (building plans passed or buildings completed) of the relevant month compared with the seasonally adjusted values of building activities (building plans passed or buildings completed) of the previous month expressed as a percentage.</p> |

| | |
|------------------------------|--|
| Reference period | Reference period is one calendar month. |
| Residential buildings | Residential buildings comprise dwelling-houses, flats, townhouses and other residential buildings. |
| Townhouses | Townhouses are multiple, medium-density dwelling-units and include cluster housing, group housing, simplexes, duplexes, triplexes and other similar dwelling-units which are usually grouped together, with one level of each unit on ground level. This excludes blocks of flats. |

For more information

Stats SA publishes approximately 300 different statistical releases each year. It is not economically viable to produce them in more than one of South Africa's eleven official languages. Since the releases are used extensively, not only locally but also by international economic and social-scientific communities, Stats SA releases are published in English only.

Stats SA has copyright on this publication. Users may apply the information as they wish, provided that they acknowledge Stats SA as the source of the basic data wherever they process, apply, utilise, publish or distribute the data and also that they specify that the relevant application and analysis (where applicable) result from their own processing of the data.

Stats SA products

A complete set of Stats SA publications is available at the Stats SA Library and the following libraries:

National Library of South Africa, Pretoria Division
 National Library of South Africa, Cape Town Division
 Natal Society Library, Pietermaritzburg
 Library of Parliament, Cape Town
 Bloemfontein Public Library
 Johannesburg Public Library
 Eastern Cape Library Services, King William's Town
 Central Regional Library, Polokwane
 Central Reference Library, Nelspruit
 Central Reference Collection, Kimberley
 Central Reference Library, Mmabatho

Stats SA also provides a subscription service.

Electronic services

A large range of data are available via on-line services, diskette, CD and computer printouts. For more details about our electronic data services, contact (012) 310 8600/8390/8351/4892/8496/8095.

You can visit us on the Internet at: <http://www.statssa.gov.za>

Enquiries

Telephone number: (012) 310 8600/8390/8351/4892/8496/8095 (user enquiries)
 (012) 310 8228/310 8007 (technical enquiries)
 (012) 310 8161 (publications)
 (012) 310 8490 (library)

Fax number: (012) 310 8182

e-mail: Corrieb@statssa.gov.za
 Gretaz@statssa.gov.za

Postal address: Private Bag X44, Pretoria, 0001