

Building statistics

March 2002

Co-operation between Statistics South Africa (Stats SA), the citizens of the country, the private sector and government institutions is essential for a successful statistical system. Without continued co-operation and goodwill, the timely release of relevant and reliable official statistics will not be possible.

Embargo: 13:00
Date: 15 May 2002

Stats SA publishes approximately three hundred different releases each year. It is not economically viable to produce them in more than one of South Africa's eleven official languages. Since the releases are used extensively, not only locally, but also by international economic and social-scientific communities, Stats SA releases are published in English only.

Key figures regarding building plans passed for the month ended March 2002

Actual estimates at constant 1995 prices

	March 2002 R million	January 2002 to March 2002 R million	Percentage change between March 2001 and March 2002	Percentage change between January 2001 to March 2001 and January 2002 to March 2002
Residential buildings				
Dwelling-houses	466,8	1 339,4	- 9,8	- 4,1
Flats and townhouses	154,6	376,0	+ 10,4	+ 16,2
Other residential buildings	0,5	60,3	+ 608,7	+ 44,0
Total	621,9	1 775,7	- 5,4	+ 0,8
Non-residential buildings	271,2	542,4	+ 27,3	- 29,5
Additions and alterations	275,2	835,4	- 10,9	- 7,1
Total	1 168,3	3 153,5	- 1,0	- 8,1

Seasonally adjusted estimates at constant 1995 prices

	March 2002 R million	Percentage change between February 2002 and March 2002	Percentage change between October 2001 to December 2001 and January 2002 to March 2002
Residential buildings	587,9	- 6,2	- 4,2
Non-residential buildings	234,2	+ 31,8	+ 37,2
Additions and alterations	268,1	- 15,1	- 8,4
Total	1 090,2	- 2,6	- 0,2

Key findings regarding building plans passed for the first quarter of 2002

Seasonally adjusted real value of building plans passed decreases slightly

The seasonally adjusted real value of building plans passed (at constant 1995 prices) for the first quarter of 2002 decreased by 0,2% compared with the fourth quarter of 2001.

The decrease of 0,2% in the seasonally adjusted real value of building plans passed was due to decreases reported for additions and alterations (-8,4%) and residential buildings (-4,2%) during the first quarter of 2002 compared with the fourth quarter of 2001. However, these decreases were partially counteracted by an increase in the seasonally adjusted real value of non-residential building plans passed (+37,2%) during the above-mentioned period.

Key findings regarding building plans passed for the month ended March 2002

Total real value of building plans passed decreases

The total real value of building plans passed (at constant 1995 prices) during the first quarter of 2002 decreased by 8,1% (-R277,3 million) to R3 153,5 million compared with the first quarter of 2001. Large real decreases were reported for non-residential buildings (-R226,5 million, mainly due to decreases reported for office and banking space (-R134,0 million), shopping space (-R64,8 million) and industrial and warehouse space (-R46,8 million)), additions and alterations (-R64,0 million) and dwelling-houses (-R57,6 million) during the above-mentioned period. Large decreases in the total real value of non-residential building plans passed were reported by the selected urban areas of Cape Town (-R119,9 million), North Local Council – Umhlanga Rocks (-R86,1 million) and Witwatersrand (-R32,1 million). However, a large increase in the real value of building plans passed was reported for flats and townhouses (+R52,4 million, mainly due to real increases reported by the selected urban areas of Pretoria (+R36,1 million), Durban (+R16,8 million) and Cape Town (+R16,6 million)) during this period.

Six of the nine provinces reported decreases in the total real value of building plans passed

The largest provincial contributor to the decrease of 8,1% (-R277,3 million) in the total real value of building plans passed during the first quarter of 2002 compared with the first quarter of 2001 was KwaZulu-Natal (-4,2 percentage points or R145,7 million), followed by Western Cape (-3,2 percentage points or R108,3 million) and Gauteng (-2,3 percentage points or R78,1 million) (cf. table A). Large real decreases in KwaZulu-Natal were reported for office and banking space (-R90,2 million), additions and alterations (-R31,3 million) and dwelling-houses (-R28,9 million). The largest real decreases in Western Cape and Gauteng were reported for non-residential buildings (-R143,6 million) and dwelling-houses (-R55,3 million) respectively.

Table A - Contribution of provinces to the total real value of building plans passed

Province	Percentage contribution to the total real value of plans passed during January 2001 to March 2001	Percentage change between January 2001 to March 2001 and January 2002 to March 2002	Contribution (percentage points) ^{1/} to the percentage change in the real value of plans passed between January 2001 to March 2001 and January 2002 to March 2002	Difference in total real value of plans passed between January 2001 to March 2001 and January 2002 to March 2002 R million
KwaZulu-Natal	12,9	- 32,9	- 4,2	- 145,7
Western Cape	28,6	- 11,0	- 3,2	- 108,3
Gauteng	42,0	- 5,4	- 2,3	- 78,1
Eastern Cape	6,1	- 10,3	- 0,6	- 21,5
Northern Cape	0,6	- 30,4	- 0,2	- 6,0
Northern Province	1,5	- 6,3	- 0,1	- 3,2
North West	2,6	+ 10,1	+ 0,3	+ 9,2
Free State	2,6	+ 16,1	+ 0,4	+ 14,2
Mpumalanga	3,1	+ 57,6	+ 1,8	+ 62,1
Total	100,0	- 8,1	- 8,1	- 277,3

1/ The contribution (percentage points) is calculated by multiplying the percentage change of each province between January 2001 to March 2001 and January 2002 to March 2002 (cf. column 3) with the percentage contribution of the corresponding province to the total real value of plans passed during January 2001 to March 2001 (cf. column 2) divided by 100.

Key figures regarding buildings completed for the month ended March 2002

Actual estimates at constant 1995 prices	March 2002	January 2002 to March 2002	Percentage change between March 2001 and March 2002	Percentage change between January 2001 to March 2001 and January 2002 to March 2002
	R million	R million		
Residential buildings				
Dwelling-houses	259,7	747,0	+ 4,2	+ 8,3
Flats and townhouses	79,5	323,6	- 21,9	+ 47,1
Other residential buildings	150,6	154,1	+ 1 115,1	- 40,6
Total	489,8	1 224,7	+ 34,8	+ 4,8
Non-residential buildings	118,4	321,1	- 5,2	- 40,1
Additions and alterations	123,1	386,0	- 43,6	- 31,2
Total	731,3	1 931,8	+ 3,5	- 14,8

Seasonally adjusted estimates at constant 1995 prices	March 2002	Percentage change between February 2002 and March 2002	Percentage change between October 2001 to December 2001 and January 2002 to March 2002
	R million		
Residential buildings	452,1	+ 19,8	+ 7,5
Non-residential buildings	160,9	+ 42,4	- 24,5
Additions and alterations	105,6	- 17,9	- 24,5
Total	718,6	+ 16,1	- 7,1

Key findings regarding buildings completed for the first quarter of 2002

Seasonally adjusted real value of buildings completed decreases

The seasonally adjusted real value of buildings completed (at constant 1995 prices) for the first quarter of 2002 decreased by 7,1% compared with the fourth quarter of 2001.

The decrease of 7,1% in the seasonally adjusted real value of buildings completed during the first quarter of 2002 compared with the fourth quarter of 2001 was due to decreases in the seasonally adjusted real value of non-residential buildings completed (-24,5%) and additions and alterations (-24,5%). However, these decreases were partially counteracted by an increase in the seasonally adjusted real value of residential buildings completed (+7,5%) during the above-mentioned period.

Key findings regarding buildings completed for the month ended March 2002

Total real value of buildings completed decreases

The total real value of buildings completed (at constant 1995 prices) during the first quarter of 2002 decreased by 14,8% (-R334,4 million) to R1 931,8 million compared with the first quarter of 2001. Large decreases in the real value of buildings completed were reported for non-residential buildings (-R214,9 million, mainly due to decreases reported by Witwatersrand (-R103,5 million), East London (-R50,8 million) and Cape Town (-R43,1 million)), additions and alterations (-R175,2 million, mainly due to decreases reported by the selected urban areas of Cape Town (-R102,2 million)) and 'other' residential buildings (- R105,2 million). However, large increases in the real value of buildings completed were reported for flats and townhouses (+R103,7 million, mainly due to increases reported by the selected urban area of Cape Town (+R33,6 million), Witwatersrand (+R24,0 million) and Pretoria (+R20,9 million)) and dwelling-houses (+R57,2 million, mainly due to increases reported by the selected urban areas of Cape Town (+R44,9 million) and Witwatersrand (+R22,6 million)).

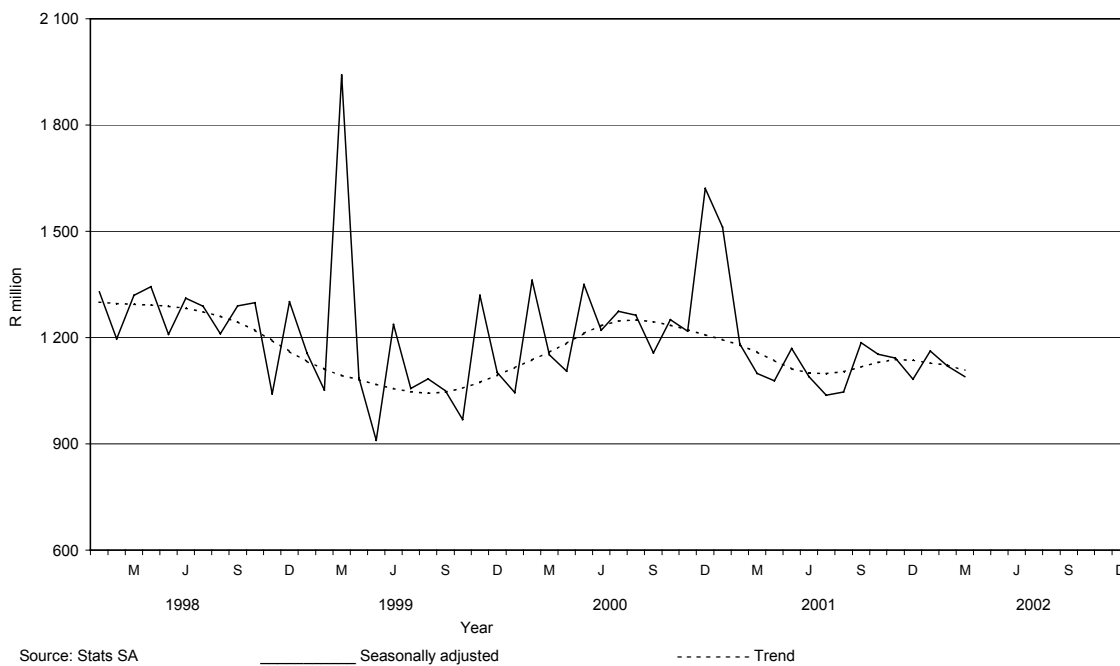
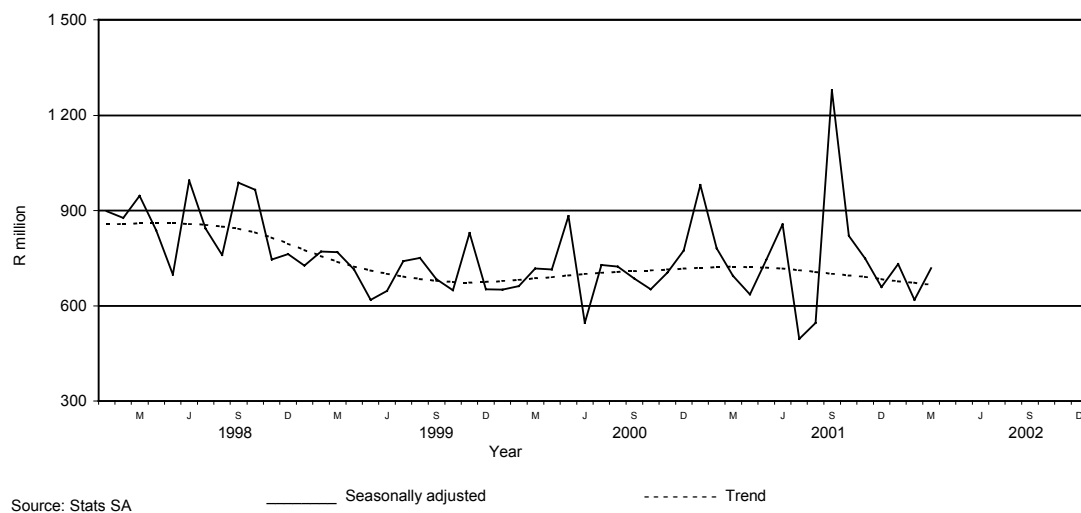
Seven of the nine provinces reported decreases in the total real value of buildings completed

The largest provincial contributor to the decrease of 14,8% (-R334,4 million) in the total real value of buildings completed during the first quarter of 2002 compared with the first quarter of 2001 was Gauteng (-10,2 percentage points or R230,4 million), followed by KwaZulu-Natal (-3,0 percentage points or R67,4 million), Western Cape (-3,0 percentage points or R67,3 million) and Eastern Cape (-2,4 percentage points or R54,8 million) (cf. table B). Large real decreases in Gauteng were reported for 'other' residential buildings (-R192,8 million, mainly due to the completion of a hotel and casino to the real value of R192,6 million during January 2001) and non-residential buildings (-R96,9 million, due to decreases reported by Witwatersrand (-R103,5 million)).

Table B - Contribution of provinces to the total real value of buildings completed

Province	Percentage contribution to the total real value of buildings completed during January 2001 to March 2001	Percentage change between January 2001 to March 2001 and January 2002 to March 2002	Contribution (percentage points) ^{1/} to the percentage change in the real value of buildings completed between January 2001 to March 2001 and January 2002 to March 2002	Difference in total real value of buildings completed between January 2001 to March 2001 and January 2002 to March 2002 R million
Gauteng	39,3	- 25,9	- 10,2	- 230,4
KwaZulu-Natal	15,2	- 19,5	- 3,0	- 67,4
Western Cape	28,5	- 10,4	- 3,0	- 67,3
Eastern Cape	6,6	- 36,3	- 2,4	- 54,8
Mpumalanga	3,3	- 50,4	- 1,7	- 37,4
Northern Cape	1,3	- 63,7	- 0,8	- 18,4
Free State	2,4	- 8,6	- 0,2	- 4,6
North West	2,3	+ 20,8	+ 0,5	+ 10,6
Northern Province	1,1	+ 543,2	+ 6,0	+ 135,3
Total	100,0	- 14,8	- 14,8	- 334,4

1/ The contribution (percentage points) is calculated by multiplying the percentage change of each province between January 2001 to March 2001 and January 2002 to March 2002 (cf. column 3) with the percentage contribution of the corresponding province to the total real value of buildings completed during January 2001 to March 2001 (cf. column 2) divided by 100.

Figure 1 – Total real value of building plans passed**Figure 2 – Total real value of buildings completed**

Contents

Page

Notes	7
Tables		
Table 1	Actual values and percentage change of building plans passed at current prices according to type of building	8
Table 2	Seasonally adjusted values and percentage change of building plans passed at current prices according to type of building	9
Table 3	Actual values and percentage change of building plans passed at constant 1995 prices according to type of building	10
Table 4	Seasonally adjusted values and percentage change of building plans passed at constant 1995 prices according to type of building	11
Table 5	Actual values and percentage change of buildings completed at current prices according to type of building	12
Table 6	Seasonally adjusted values and percentage change of buildings completed at current prices according to type of building	13
Table 7	Actual values and percentage change of buildings completed at constant 1995 prices according to type of building	14
Table 8	Seasonally adjusted values and percentage change of buildings completed at constant 1995 prices according to type of building	15
Table 9	Building plans passed according to type of building: Total RSA	16
Table 10	Building plans passed according to type of building and province: Western Cape	17
Table 11	Building plans passed according to type of building and province: Eastern Cape	18
Table 12	Building plans passed according to type of building and province: Northern Cape	19
Table 13	Building plans passed according to type of building and province: Free State	20
Table 14	Building plans passed according to type of building and province: KwaZulu-Natal	21
Table 15	Building plans passed according to type of building and province: North West	22
Table 16	Building plans passed according to type of building and province: Gauteng	23
Table 17	Building plans passed according to type of building and province: Mpumalanga	24
Table 18	Building plans passed according to type of building and province: Northern Province	25
Table 19	Buildings completed according to type of building: Total RSA	26
Table 20	Buildings completed according to type of building and province: Western Cape	27
Table 21	Buildings completed according to type of building and province: Eastern Cape	28
Table 22	Buildings completed according to type of building and province: Northern Cape	29
Table 23	Buildings completed according to type of building and province: Free State	30
Table 24	Buildings completed according to type of building and province: KwaZulu-Natal	31
Table 25	Buildings completed according to type of building and province: North West	32
Table 26	Buildings completed according to type of building and province: Gauteng	33
Table 27	Buildings completed according to type of building and province: Mpumalanga	34
Table 28	Buildings completed according to type of building and province: Northern Province	35
Table 29	Building plans passed according to type of building and selected urban area: Cape Town	36
Table 30	Building plans passed according to type of building and selected urban area: Port Elizabeth	37
Table 31	Building plans passed according to type of building and selected urban area: Durban	38
Table 32	Building plans passed according to type of building and selected urban area: Witwatersrand	39
Table 33	Building plans passed according to type of building and selected urban area: Pretoria	40
Table 34	Building plans passed according to type of building and selected urban area: Bloemfontein	41
Table 35	Buildings completed according to type of building and selected urban area: Cape Town	42
Table 36	Buildings completed according to type of building and selected urban area: Port Elizabeth	43
Table 37	Buildings completed according to type of building and selected urban area: Durban	44
Table 38	Buildings completed according to type of building and selected urban area: Witwatersrand	45
Table 39	Buildings completed according to type of building and selected urban area: Pretoria	46
Table 40	Buildings completed according to type of building and selected urban area: Bloemfontein	47
Additional information		
	Explanatory notes	48
	Technical notes	50
	Local government institutions covered in the sample survey	51
	Glossary	54
For more information	55

Notes

Forthcoming issues	Issue	Expected release date
	April 2002	19 June 2002
	May 2002	17 July 2002
	June 2002	14 August 2002
	July 2002	18 September 2002
	August 2002	16 October 2002
	September 2002	20 November 2002
	October 2002	18 December 2002
	November 2002	15 January 2003
	December 2002	19 February 2003
Purpose of the survey	<p>The Building Statistics Survey is a countrywide survey covering a sample of local government institutions in South Africa. The information received is used to estimate key economic statistics used by the private and public sectors. The information is also used to compile estimates of the Gross Domestic Product (GDP). These statistics are also used by government to monitor the Reconstruction and Development Program (RDP) in South Africa.</p>	
New questionnaire	<p>In order to lessen the respondent burden and improve reliability, Stats SA has overhauled and redesigned its Building Statistics Survey questionnaire. This resulted in the change of some data items on the old questionnaire. As from November 1999 information regarding dwelling-houses was collected according to size of dwelling-house.</p> <p>The Building Statistics Survey questionnaire collects the numbers, square metres and value of building plans passed and buildings completed for the private sector regarding –</p> <ul style="list-style-type: none"> • residential buildings; • non-residential buildings; and • additions and alterations. 	

Table 1 - Actual values and percentage change of building plans passed at current prices according to type of building

Year ^{1/} and month ^{2/}	Residential buildings		Non-residential buildings		Additions and alterations		Total	
	R'000	Percentage change	R'000	Percentage change	R'000	Percentage change	R'000	Percentage change
2000 Jan	490,776	- 11.3	163,926	- 34.0	365,596	+ 26.2	1,020,298	- 4.5
Feb	784,023	+ 48.3	521,389	+ 27.5	399,280	+ 8.3	1,704,692	+ 33.3
Mar	747,421	+ 12.0	359,267	- 76.3	515,668	+ 3.8	1,622,356	- 37.6
Apr	627,642	+ 18.3	271,151	- 30.9	382,300	+ 10.6	1,281,093	+ 3.7
May	874,847	+ 65.8	573,853	+ 98.7	473,062	+ 11.3	1,921,762	+ 59.5
Jun	853,154	+ 1.8	336,324	- 23.6	532,278	+ 25.2	1,721,756	+ 3.7
Jul	908,061	+ 42.5	484,669	- 0.6	549,932	+ 23.6	1,942,662	+ 27.9
Aug	929,836	+ 31.1	353,488	- 14.8	492,627	+ 10.9	1,775,951	+ 23.8
Sep	826,851	+ 37.8	354,456	+ 8.7	465,836	- 9.8	1,647,143	+ 18.5
Oct	916,410	+ 37.9	492,884	+ 39.8	539,561	+ 15.3	1,948,855	+ 36.2
Nov	914,346	+ 28.6	493,166	- 34.4	503,659	- 12.5	1,911,171	- 2.0
Dec	606,148	+ 22.7	704,410	+ 191.1	317,835	- 6.1	1,628,393	+ 57.5
Total	9,479,515	+ 28.4	5,108,983	- 13.5	5,537,634	+ 7.9	20,126,132	+ 13.1
2001 Jan*	721,003	+ 46.9	477,489	+ 191.3	352,192	- 3.7	1,550,684	+ 52.0
Feb*	826,607	+ 5.4	300,417	- 42.4	474,952	+ 19.0	1,601,976	- 6.0
Mar*	929,196	+ 24.3	301,148	- 16.2	436,645	- 15.3	1,666,989	+ 2.8
Apr*	738,858	+ 17.7	207,874	- 23.3	377,373	- 1.3	1,324,105	+ 3.4
May*	999,426	+ 14.2	289,330	- 49.6	499,673	+ 5.6	1,788,429	- 6.9
Jun*	901,450	+ 5.7	299,913	- 10.8	447,228	- 16.0	1,648,591	- 4.2
Jul*	891,483	- 1.8	366,953	- 24.3	427,464	- 22.3	1,685,900	- 13.2
Aug*	836,033	- 10.1	245,865	- 30.4	482,863	- 2.0	1,564,761	- 11.9
Sep*	960,995	+ 16.2	303,367	- 14.4	526,112	+ 12.9	1,790,474	+ 8.7
Oct*	1,196,455	+ 30.6	185,828	- 62.3	542,954	+ 0.6	1,925,237	- 1.2
Nov*	974,678	+ 6.6	317,506	- 35.6	595,512	+ 18.2	1,887,696	- 1.2
Dec*	649,614	+ 7.2	140,365	- 80.1	357,449	+ 12.5	1,147,428	- 29.5
Total	10,625,798	+ 12.1	3,436,055	- 32.7	5,520,417	- 0.3	19,582,270	- 2.7
2002 Jan	774,464	+ 7.4	167,897	- 64.8	396,857	+ 12.7	1,339,218	- 13.6
Feb	978,203	+ 18.3	244,256	- 18.7	453,647	- 4.5	1,676,106	+ 4.6
Mar	960,168	+ 3.3	418,767	+ 39.1	424,913	- 2.7	1,803,848	+ 8.2

^{1/} The annual percentage change is the change in the actual values of building plans passed of the relevant year compared with the actual values of building plans passed of the previous year expressed as a percentage.

^{2/} The monthly percentage change is the change in the actual values of building plans passed of the relevant month compared with the actual values of building plans passed of the same month in the previous year expressed as a percentage.

Table 2 - Seasonally adjusted values and percentage change of building plans passed at current prices according to type of building

Year and month ^{1/}	Residential buildings		Non-residential buildings		Additions and alterations		Total	
	R'000	Percentage change	R'000	Percentage change	R'000	Percentage change	R'000	Percentage change
2000 Jan	628,752	- 10.6	246,500	- 18.7	480,212	+ 14.7	1,355,464	- 4.9
Feb	777,612	+ 23.7	569,312	+ 131.0	422,180	- 12.1	1,769,103	+ 30.5
Mar	693,063	- 10.9	327,672	- 42.4	488,781	+ 15.8	1,509,515	- 14.7
Apr	698,277	+ 0.8	317,584	- 3.1	446,911	- 8.6	1,462,771	- 3.1
May	815,605	+ 16.8	522,297	+ 64.5	458,149	+ 2.5	1,796,051	+ 22.8
Jun	810,693	- 0.6	310,282	- 40.6	514,377	+ 12.3	1,635,351	- 8.9
Jul	831,552	+ 2.6	391,041	+ 26.0	499,631	- 2.9	1,722,224	+ 5.3
Aug	893,733	+ 7.5	355,435	- 9.1	468,121	- 6.3	1,717,288	- 0.3
Sep	807,782	- 9.6	344,621	- 3.0	425,734	- 9.1	1,578,136	- 8.1
Oct	774,414	- 4.1	466,986	+ 35.5	474,633	+ 11.5	1,716,034	+ 8.7
Nov	860,540	+ 11.1	398,889	- 14.6	423,749	- 10.7	1,683,177	- 1.9
Dec	859,190	- 0.2	966,987	+ 142.4	428,529	+ 1.1	2,254,706	+ 34.0
2001 Jan	914,355	+ 6.4	746,290	- 22.8	450,450	+ 5.1	2,111,094	- 6.4
Feb	816,198	- 10.7	334,675	- 55.2	502,642	+ 11.6	1,653,514	- 21.7
Mar	868,846	+ 6.5	263,211	- 21.4	421,003	- 16.2	1,553,060	- 6.1
Apr	833,590	- 4.1	251,652	- 4.4	444,980	+ 5.7	1,530,222	- 1.5
May	924,488	+ 10.9	257,936	+ 2.5	482,185	+ 8.4	1,664,608	+ 8.8
Jun	852,274	- 7.8	279,158	+ 8.2	430,674	- 10.7	1,562,106	- 6.2
Jul	817,440	- 4.1	286,992	+ 2.8	390,122	- 9.4	1,494,554	- 4.3
Aug	800,992	- 2.0	246,096	- 14.2	460,203	+ 18.0	1,507,291	+ 0.9
Sep	940,892	+ 17.5	296,074	+ 20.3	478,933	+ 4.1	1,715,899	+ 13.8
Oct	1,019,182	+ 8.3	179,706	- 39.3	479,075	+ 0.0	1,677,962	- 2.2
Nov	919,678	- 9.8	256,362	+ 42.7	497,914	+ 3.9	1,673,954	- 0.2
Dec	915,843	- 0.4	195,127	- 23.9	488,716	- 1.8	1,599,687	- 4.4
2002 Jan	977,163	+ 6.7	268,666	+ 37.7	498,935	+ 2.1	1,744,765	+ 9.1
Feb	957,925	- 2.0	271,027	+ 0.9	479,138	- 4.0	1,708,090	- 2.1
Mar	907,468	- 5.3	360,568	+ 33.0	414,343	- 13.5	1,682,379	- 1.5

^{1/} The percentage change is the change in the seasonally adjusted values of building plans passed of the relevant month compared with the seasonally adjusted values of building plans passed of the previous month expressed as a percentage.

Table 3 - Actual values and percentage change of building plans passed at constant 1995 prices according to type of building

Year ^{1/} and month ^{2/}	Residential buildings		Non-residential buildings		Additions and alterations		Total	
	R'000	Percentage change	R'000	Percentage change	R'000	Percentage change	R'000	Percentage change
2000 Jan	378,102	- 15.0	126,291	- 34.0	281,661	+ 26.2	786,054	- 8.5
Feb	602,168	+ 43.1	400,452	+ 27.5	306,667	+ 8.3	1,309,287	+ 28.6
Mar	570,115	+ 7.5	274,040	- 76.3	393,339	+ 3.8	1,237,494	- 40.1
Apr	473,692	+ 12.9	204,642	- 30.9	288,528	+ 10.6	966,862	- 1.0
May	655,807	+ 57.4	430,175	+ 98.7	354,619	+ 11.3	1,440,601	+ 51.4
Jun	637,634	- 3.3	251,363	- 23.6	397,816	+ 25.2	1,286,813	- 1.5
Jul	672,638	+ 34.5	359,014	- 0.6	407,357	+ 23.6	1,439,009	+ 20.8
Aug	682,699	+ 38.0	259,536	- 14.8	361,694	+ 10.9	1,303,929	+ 15.9
Sep	606,196	+ 29.1	259,865	+ 8.7	341,522	- 9.8	1,207,583	+ 11.1
Oct	668,425	+ 28.7	359,507	+ 39.8	393,553	+ 15.3	1,421,485	+ 27.2
Nov	664,013	+ 19.9	358,145	- 34.4	365,765	- 12.5	1,387,923	- 8.6
Dec	438,602	+ 14.2	509,703	+ 191.1	229,982	- 6.1	1,178,287	+ 46.6
Total	7,050,091	+ 28.4	3,792,733	- 13.5	4,122,503	+ 7.9	14,965,327	+ 6.7
2001 Jan*	516,108	+ 36.5	341,796	+ 170.6	252,106	- 10.5	1,110,010	+ 41.2
Feb*	588,751	- 2.2	213,972	- 46.6	338,285	+ 10.3	1,141,008	- 12.9
Mar*	657,605	+ 15.3	213,127	- 22.2	309,020	- 21.4	1,179,752	- 4.7
Apr*	519,956	+ 9.8	146,287	- 28.5	265,569	- 8.0	931,812	- 3.6
May*	699,388	+ 6.6	202,470	- 52.9	349,666	- 1.4	1,251,524	- 13.1
Jun*	629,504	- 1.3	209,436	- 16.7	312,310	- 21.5	1,151,250	- 10.5
Jul*	619,085	- 8.0	254,828	- 29.0	296,850	- 27.1	1,170,763	- 18.6
Aug*	578,970	- 15.2	170,267	- 34.4	334,393	- 7.5	1,083,630	- 16.9
Sep*	664,129	+ 9.6	209,652	- 19.3	363,588	+ 6.5	1,237,369	+ 2.5
Oct*	822,871	+ 23.1	127,805	- 64.4	373,421	- 5.1	1,324,097	- 6.9
Nov*	667,131	+ 0.5	217,321	- 39.3	407,606	+ 11.4	1,292,058	- 6.9
Dec*	442,516	+ 0.9	95,616	- 81.2	243,494	+ 5.9	781,626	- 33.7
Total	7,406,014	+ 5.0	2,402,577	- 36.7	3,846,308	- 6.7	13,654,899	- 8.8
2002 Jan	514,936	- 0.2	111,634	- 67.3	263,868	+ 4.7	890,438	- 19.8
Feb	638,931	+ 8.5	159,540	- 25.4	296,308	- 12.4	1,094,779	- 4.1
Mar	621,870	- 5.4	271,222	+ 27.3	275,203	- 10.9	1,168,295	- 1.0

^{1/} The annual percentage change is the change in the actual values of building plans passed of the relevant year compared with the actual values of building plans passed of the previous year expressed as a percentage.

^{2/} The monthly percentage change is the change in the actual values of building plans passed of the relevant month compared with the actual values of building plans passed of the same month in the previous year expressed as a percentage.

Table 4 - Seasonally adjusted values and percentage change of building plans passed at constant 1995 prices according to type of building

Year and month ^{1/}	Residential buildings		Non-residential buildings		Additions and alterations		Total	
	R'000	Percentage change	R'000	Percentage change	R'000	Percentage change	R'000	Percentage change
2000 Jan	485,724	- 10.6	189,272	- 19.1	370,494	+ 22.3	1,045,490	- 5.1
Feb	597,624	+ 23.0	438,405	+ 131.6	326,070	- 12.0	1,362,098	+ 30.3
Mar	528,143	- 11.6	250,293	- 42.9	372,303	+ 14.2	1,150,739	- 15.5
Apr	527,265	- 0.2	239,974	- 4.1	338,073	- 9.2	1,105,312	- 3.9
May	613,040	+ 16.3	392,331	+ 63.5	345,007	+ 2.1	1,350,378	+ 22.2
Jun	604,738	- 1.4	231,904	- 40.9	384,672	+ 11.5	1,221,314	- 9.6
Jul	616,668	+ 2.0	290,348	+ 25.2	367,088	- 4.6	1,274,104	+ 4.3
Aug	657,595	+ 6.6	261,586	- 9.9	344,663	- 6.1	1,263,844	- 0.8
Sep	592,465	- 9.9	252,615	- 3.4	312,224	- 9.4	1,157,304	- 8.4
Oct	564,574	- 4.7	340,365	+ 34.7	345,966	+ 10.8	1,250,905	+ 8.1
Nov	623,307	+ 10.4	288,396	- 15.3	306,777	- 11.3	1,218,481	- 2.6
Dec	617,700	- 0.9	694,334	+ 140.8	308,509	+ 0.6	1,620,543	+ 33.0
2001 Jan	656,351	+ 6.3	532,595	- 23.3	323,161	+ 4.7	1,512,106	- 6.7
Feb	581,976	- 11.3	239,143	- 55.1	360,734	+ 11.6	1,181,854	- 21.8
Mar	614,812	+ 5.6	186,742	- 21.9	297,580	- 17.5	1,099,134	- 7.0
Apr	586,695	- 4.6	177,359	- 5.0	314,011	+ 5.5	1,078,065	- 1.9
May	648,876	+ 10.6	180,889	+ 2.0	338,872	+ 7.9	1,168,637	+ 8.4
Jun	594,039	- 8.5	194,971	+ 7.8	300,966	- 11.2	1,089,976	- 6.7
Jul	568,313	- 4.3	199,771	+ 2.5	268,584	- 10.8	1,036,668	- 4.9
Aug	555,864	- 2.2	170,804	- 14.5	319,517	+ 19.0	1,046,184	+ 0.9
Sep	650,428	+ 17.0	204,491	+ 19.7	330,958	+ 3.6	1,185,876	+ 13.4
Oct	700,435	+ 7.7	123,458	- 39.6	329,091	- 0.6	1,152,984	- 2.8
Nov	627,760	- 10.4	174,628	+ 41.4	339,670	+ 3.2	1,142,058	- 0.9
Dec	619,762	- 1.3	131,841	- 24.5	331,179	- 2.5	1,082,782	- 5.2
2002 Jan	651,386	+ 5.1	178,115	+ 35.1	332,658	+ 0.4	1,162,159	+ 7.3
Feb	626,499	- 3.8	177,683	- 0.2	315,615	- 5.1	1,119,797	- 3.6
Mar	587,938	- 6.2	234,220	+ 31.8	268,111	- 15.1	1,090,268	- 2.6

^{1/} The percentage change is the change in the seasonally adjusted values of building plans passed of the relevant month compared with the seasonally adjusted values of building plans passed of the previous month expressed as a percentage.

Table 5 - Actual values and percentage change of buildings completed at current prices according to type of building

Year ^{1/} and month ^{2/}	Residential buildings		Non-residential buildings		Additions and alterations		Total	
	R'000	Percentage change	R'000	Percentage change	R'000	Percentage change	R'000	Percentage change
2000 Jan	299,212	- 4.7	195,988	- 0.6	183,959	- 4.7	679,159	- 3.5
Feb	353,141	- 11.0	205,549	- 4.3	221,978	- 9.3	780,668	- 8.8
Mar	419,416	- 3.0	212,379	- 13.7	268,745	+ 16.5	900,540	- 1.0
Apr	364,713	- 3.5	224,048	+ 23.4	188,808	- 5.8	777,569	+ 2.3
May	473,124	+ 21.0	390,533	+ 99.6	293,343	+ 64.1	1,157,000	+ 51.2
Jun	362,558	- 13.7	174,728	- 16.2	170,986	+ 11.2	708,272	- 9.5
Jul	407,406	- 15.3	472,668	+ 79.0	220,828	- 18.9	1,100,902	+ 8.2
Aug	449,691	- 2.4	285,994	+ 39.6	211,008	- 17.5	946,693	+ 2.7
Sep	510,979	+ 3.6	270,539	+ 37.2	199,622	- 10.6	981,140	+ 7.4
Oct	462,270	+ 10.2	195,491	- 4.0	238,257	+ 3.8	896,018	+ 5.1
Nov	555,802	+ 20.5	186,442	- 54.5	255,900	+ 21.7	998,144	- 7.7
Dec	383,114	+ 9.6	316,801	+ 74.5	149,622	+ 2.2	849,537	+ 25.4
Total	5,041,426	+ 0.9	3,131,160	+ 15.7	2,603,056	+ 2.5	10,775,642	+ 5.2
2001 Jan*	643,047	+ 114.9	238,434	+ 21.7	201,057	+ 9.3	1,082,538	+ 59.4
Feb*	428,803	+ 21.4	285,620	+ 39.0	244,637	+ 10.2	959,060	+ 22.9
Mar*	489,687	+ 16.8	159,637	- 24.8	286,396	+ 6.6	935,720	+ 3.9
Apr*	366,061	+ 0.4	169,796	- 24.2	185,541	- 1.7	721,398	- 7.2
May*	447,895	- 5.3	300,533	- 23.0	295,847	+ 0.9	1,044,275	- 9.7
Jun*	539,545	+ 48.8	338,853	+ 93.9	294,854	+ 72.4	1,173,252	+ 65.6
Jul*	396,717	- 2.6	121,617	- 74.3	232,836	+ 5.4	751,170	- 31.8
Aug*	431,845	- 4.0	117,368	- 59.0	214,644	+ 1.7	763,857	- 19.3
Sep*	462,102	- 9.6	1,417,979	+ 424.1	169,956	- 14.9	2,050,037	+ 108.9
Oct*	667,250	+ 44.3	285,644	+ 46.1	237,138	- 0.5	1,190,032	+ 32.8
Nov*	616,443	+ 10.9	211,109	+ 13.2	288,778	+ 12.8	1,116,330	+ 11.8
Dec*	469,410	+ 22.5	173,587	- 45.2	124,610	- 16.7	767,607	- 9.6
Total	5,958,805	+ 18.2	3,820,177	+ 22.0	2,776,294	+ 6.7	12,555,276	+ 16.5
2002 Jan	571,758	- 11.1	136,789	- 42.6	172,594	- 14.2	881,141	- 18.6
Feb	477,617	+ 11.4	138,037	- 51.7	195,702	- 20.0	811,356	- 15.4
Mar	700,881	+ 43.1	161,473	+ 1.2	173,944	- 39.3	1,036,298	+ 10.7

^{1/} The annual percentage change is the change in the actual values of buildings completed of the relevant year compared with the actual values of buildings completed of the previous year expressed as a percentage.

^{2/} The monthly percentage change is the change in the actual values of buildings completed of the relevant month compared with the actual values of buildings completed of the same month in the previous year expressed as a percentage.

Table 6 - Seasonally adjusted values and percentage change of buildings completed at current prices according to type of building

Year and month ^{1/}	Residential buildings		Non-residential buildings		Additions and alterations		Total	
	R'000	Percentage change	R'000	Percentage change	R'000	Percentage change	R'000	Percentage change
2000 Jan	364,276	- 9.0	237,796	+ 27.6	205,708	- 7.2	807,780	- 0.1
Feb	397,228	+ 9.0	226,792	- 4.6	203,182	- 1.2	827,202	+ 2.4
Mar	396,732	- 0.1	268,738	+ 18.5	232,619	+ 14.5	898,089	+ 8.6
Apr	410,522	+ 3.5	277,556	+ 3.3	213,534	- 8.2	901,612	+ 0.4
May	454,823	+ 10.8	379,135	+ 36.6	279,516	+ 30.9	1,113,475	+ 23.5
Jun	352,041	- 22.6	177,166	- 53.3	165,831	- 40.7	695,037	- 37.6
Jul	391,732	+ 11.3	337,355	+ 90.4	197,714	+ 19.2	926,800	+ 33.3
Aug	445,404	+ 13.7	266,314	- 21.1	210,721	+ 6.6	922,439	- 0.5
Sep	462,571	+ 3.9	215,789	- 19.0	204,569	- 2.9	882,929	- 4.3
Oct	441,382	- 4.6	179,927	- 16.6	221,617	+ 8.3	842,926	- 4.5
Nov	471,667	+ 6.9	203,747	+ 13.2	240,496	+ 8.5	915,910	+ 8.7
Dec	439,251	- 6.9	341,511	+ 67.6	225,771	- 6.1	1,006,533	+ 9.9
2001 Jan	761,139	+ 73.3	294,328	- 13.8	224,454	- 0.6	1,279,921	+ 27.2
Feb	483,670	- 36.5	316,482	+ 7.5	225,558	+ 0.5	1,025,709	- 19.9
Mar	453,778	- 6.2	212,632	- 32.8	246,987	+ 9.5	913,396	- 10.9
Apr	415,222	- 8.5	218,119	+ 2.6	212,074	- 14.1	845,414	- 7.4
May	434,978	+ 4.8	279,796	+ 28.3	280,193	+ 32.1	994,966	+ 17.7
Jun	523,963	+ 20.5	340,910	+ 21.8	285,116	+ 1.8	1,149,989	+ 15.6
Jul	385,775	- 26.4	82,649	- 75.8	209,488	- 26.5	677,912	- 41.1
Aug	428,233	+ 11.0	106,963	+ 29.4	212,584	+ 1.5	747,780	+ 10.3
Sep	414,351	- 3.2	1,122,688	+ 949.6	175,100	- 17.6	1,712,139	+ 129.0
Oct	637,217	+ 53.8	272,710	- 75.7	219,443	+ 25.3	1,129,369	- 34.0
Nov	526,480	- 17.4	236,572	- 13.3	272,708	+ 24.3	1,035,759	- 8.3
Dec	541,050	+ 2.8	192,655	- 18.6	187,364	- 31.3	921,069	- 11.1
2002 Jan	668,548	+ 23.6	167,728	- 12.9	193,095	+ 3.1	1,029,371	+ 11.8
Feb	538,128	- 19.5	154,104	- 8.1	181,034	- 6.2	873,265	- 15.2
Mar	646,729	+ 20.2	215,738	+ 40.0	149,632	- 17.3	1,012,099	+ 15.9

^{1/} The percentage change is the change in the seasonally adjusted values of buildings completed of the relevant month compared with the seasonally adjusted values of buildings completed of the previous month expressed as a percentage.

Table 7 - Actual values and percentage change of buildings completed at constant 1995 prices according to type of building

Year and month ^{2/}	Residential buildings		Non-residential buildings		Additions and alterations		Total	
	R'000	Percentage change	R'000	Percentage change	R'000	Percentage change	R'000	Percentage change
2000 Jan	236,149	- 10.1	162,916	- 5.6	147,996	- 10.8	547,061	- 9.0
Feb	277,982	- 28.3	168,898	- 13.1	176,734	- 29.2	623,614	- 24.6
Mar	329,523	- 33.7	173,371	- 23.9	213,629	- 24.7	716,523	- 28.7
Apr	285,795	- 24.1	181,857	+ 3.6	149,255	- 12.9	616,907	- 14.3
May	370,120	- 26.2	315,965	- 3.8	231,709	- 1.9	917,794	- 14.5
Jun	282,549	- 31.4	141,251	- 9.6	134,529	+ 14.5	558,329	- 16.3
Jul	314,890	- 31.4	380,264	- 28.2	173,198	- 34.6	868,352	- 35.2
Aug	346,783	- 39.6	227,702	- 7.0	165,496	- 29.6	739,981	- 27.6
Sep	391,744	- 36.1	215,055	- 3.1	156,199	- 18.8	762,998	- 26.8
Oct	352,005	- 40.5	154,538	- 5.6	186,138	- 20.5	692,681	- 21.1
Nov	420,080	- 29.4	147,269	- 52.9	199,299	- 13.0	766,648	- 38.0
Dec	289,205	- 35.5	249,253	+ 6.7	116,347	+ 25.1	654,805	- 0.2
Total	3,896,825	- 4.0	2,518,339	+ 8.4	2,050,529	- 3.1	8,465,693	- 0.4
2001 Jan*	487,413	+ 106.4	187,007	+ 14.8	154,898	+ 4.7	829,318	+ 51.6
Feb*	318,240	+ 14.5	224,016	+ 32.6	187,893	+ 6.3	730,149	+ 17.1
Mar*	363,446	+ 10.3	124,912	- 28.0	218,456	+ 2.3	706,814	- 1.4
Apr*	269,288	- 5.8	132,653	- 27.1	140,031	- 6.2	541,972	- 12.1
May*	326,386	- 11.8	234,060	- 25.9	221,774	- 4.3	782,220	- 14.8
Jun*	393,265	+ 39.2	263,494	+ 86.5	220,369	+ 63.8	877,128	+ 57.1
Jul*	285,456	- 9.3	93,696	- 75.4	172,471	- 0.4	551,623	- 36.5
Aug*	309,319	- 10.8	90,144	- 60.4	157,595	- 4.8	557,058	- 24.7
Sep*	329,460	- 15.9	1,081,601	+ 402.9	124,601	- 20.2	1,535,662	+ 101.3
Oct*	475,019	+ 34.9	215,580	+ 39.5	172,967	- 7.1	863,566	+ 24.7
Nov*	436,553	+ 3.9	158,253	+ 7.5	209,715	+ 5.2	804,521	+ 4.9
Dec*	329,984	+ 14.1	129,736	- 48.0	90,166	- 22.5	549,886	- 16.0
Total	4,323,829	+ 11.0	2,935,152	+ 16.6	2,070,936	+ 1.0	9,329,917	+ 10.2
2002 Jan	401,164	- 17.7	101,325	- 45.8	123,546	- 20.2	626,035	- 24.5
Feb	333,806	+ 4.9	101,349	- 54.8	139,389	- 25.8	574,544	- 21.3
Ma	489,774	+ 34.8	118,382	- 5.2	123,103	- 43.6	731,259	+ 3.5

^{1/} The annual percentage change is the change in the actual values of buildings completed of the relevant year compared with the actual values of buildings completed of the previous year expressed as a percentage.

^{2/} The monthly percentage change is the change in the actual values of buildings completed of the relevant month compared with the actual values of buildings completed of the same month in the previous year expressed as a percentage.

Table 8 - Seasonally adjusted values and percentage change of buildings completed at constant 1995 prices according to type of building

Year and month ^{1/}	Residential buildings		Non-residential buildings		Additions and alterations		Total	
	R'000	Percentage change	R'000	Percentage change	R'000	Percentage change	R'000	Percentage change
2000 Jan	287,882	- 9.3	197,805	+ 26.4	165,028	- 7.5	650,716	- 0.2
Feb	313,851	+ 9.0	186,595	- 5.7	161,591	- 2.1	662,037	+ 1.7
Mar	312,019	- 0.6	221,324	+ 18.6	184,514	+ 14.2	717,857	+ 8.4
Apr	321,493	+ 3.0	225,166	+ 1.7	168,676	- 8.6	715,334	- 0.4
May	355,488	+ 10.6	305,564	+ 35.7	221,790	+ 31.5	882,841	+ 23.4
Jun	272,503	- 23.3	142,478	- 53.4	130,740	- 41.1	545,721	- 38.2
Jul	302,390	+ 11.0	270,666	+ 90.0	155,220	+ 18.7	728,276	+ 33.5
Aug	344,054	+ 13.8	212,937	- 21.3	165,666	+ 6.7	722,656	- 0.8
Sep	354,355	+ 3.0	171,370	- 19.5	160,424	- 3.2	686,150	- 5.1
Oct	336,974	- 4.9	142,256	- 17.0	173,128	+ 7.9	652,358	- 4.9
Nov	356,949	+ 5.9	161,354	+ 13.4	187,003	+ 8.0	705,306	+ 8.1
Dec	331,314	- 7.2	268,067	+ 66.1	174,657	- 6.6	774,038	+ 9.7
2001 Jan	577,981	+ 74.5	230,807	- 13.9	172,463	- 1.3	981,250	+ 26.8
Feb	360,114	- 37.7	248,180	+ 7.5	172,960	+ 0.3	781,253	- 20.4
Mar	336,996	- 6.4	168,919	- 31.9	187,928	+ 8.7	693,843	- 11.2
Apr	305,318	- 9.4	170,359	+ 0.9	159,961	- 14.9	635,638	- 8.4
May	316,819	+ 3.8	216,988	+ 27.4	211,041	+ 31.9	744,848	+ 17.2
Jun	379,225	+ 19.7	263,634	+ 21.5	213,557	+ 1.2	856,415	+ 15.0
Jul	277,267	- 26.9	63,496	- 75.9	155,309	- 27.3	496,071	- 42.1
Aug	307,201	+ 10.8	82,507	+ 29.9	156,405	+ 0.7	546,112	+ 10.1
Sep	295,160	- 3.9	855,428	+ 936.8	128,670	- 17.7	1,279,258	+ 134.2
Oct	454,885	+ 54.1	205,941	- 75.9	160,068	+ 24.4	820,894	- 35.8
Nov	373,339	- 17.9	177,766	- 13.7	197,780	+ 23.6	748,885	- 8.8
Dec	380,115	+ 1.8	143,588	- 19.2	134,881	- 31.8	658,585	- 12.1
2002 Jan	469,984	+ 23.6	124,166	- 13.5	137,864	+ 2.2	732,014	+ 11.1
Feb	377,242	- 19.7	113,020	- 9.0	128,698	- 6.6	618,960	- 15.4
Mar	452,064	+ 19.8	160,905	+ 42.4	105,631	- 17.9	718,599	+ 16.1

^{1/} The percentage change is the change in the seasonally adjusted values of buildings completed of the relevant month compared with the seasonally adjusted values of buildings completed of the previous month expressed as a percentage.

Table 9 - Building plans passed according to type of building: Total RSA

Type of building	March 2001 *	February 2002	March 2002	January 2001 to March 2001	January 2002 to March 2002	Percentage change between January 2001 to March 2001 and January 2002 to March 2002
Residential buildings						
Dwelling-houses smaller than 80 square metres						
Number of dwelling-houses	4,310	2,782	2,609	10,433	7,840	- 24.9
Total square metres	167,057	105,465	107,907	405,933	302,216	- 25.6
Total value at current prices (R'000)	152,989	99,938	110,620	393,525	311,722	- 20.8
Dwelling-houses equal to or larger than 80 square metres						
Number of dwelling-houses	1,909	1,853	1,747	5,354	5,212	- 2.7
Total square metres	405,176	413,724	383,248	1,116,594	1,151,911	+ 3.2
Total value at current prices (R'000)	578,313	616,024	610,142	1,569,688	1,734,039	+ 10.5
Flats and townhouses						
Number of flats and townhouses	1,047	1,137	1,025	2,588	2,923	+ 12.9
Total square metres	121,334	111,144	144,739	294,776	364,125	+ 23.5
Total value at current prices (R'000)	197,797	172,860	238,651	454,963	574,668	+ 26.3
Other residential buildings ^{1/}						
Total square metres	80	16,414	485	12,657	18,212	+ 43.9
Total value at current prices (R'000)	97	89,381	755	58,630	92,406	+ 57.6
Total value of residential buildings at current prices (R'000)	929,196	978,203	960,168	2,476,806	2,712,835	+ 9.5
Non-residential buildings						
Office and banking space						
Total square metres	29,770	56,410	34,657	222,109	114,476	- 48.5
Total value at current prices (R'000)	46,298	87,524	117,901	410,708	243,983	- 40.6
Shopping space						
Total square metres	38,436	18,035	39,343	160,353	89,208	- 44.4
Total value at current prices (R'000)	55,445	26,200	71,012	224,902	146,066	- 35.1
Industrial and warehouse space						
Total square metres	91,103	61,614	75,822	227,158	185,524	- 18.3
Total value at current prices (R'000)	129,817	95,329	96,692	298,641	253,239	- 15.2
Other non-residential space ^{2/}						
Total square metres	50,155	23,827	81,684	102,814	121,564	+ 18.2
Total value at current prices (R'000)	69,588	35,203	133,162	144,803	187,632	+ 29.6
Total value of non-residential buildings at current prices (R'000)	301,148	244,256	418,767	1,079,054	830,920	- 23.0
Additions and alterations						
Dwelling-houses						
Total square metres	246,060	245,027	250,930	683,685	705,738	+ 3.2
Total value at current prices (R'000)	302,039	326,887	335,217	840,070	931,396	+ 10.9
Other buildings ^{3/}						
Total square metres	76,317	66,474	44,229	236,310	176,024	- 25.5
Total value at current prices (R'000)	134,606	126,760	89,696	423,719	344,021	- 18.8
Total value of additions and alterations at current prices (R'000)	436,645	453,647	424,913	1,263,789	1,275,417	+ 0.9
Total value of building plans passed at current prices (R'000)	1,666,989	1,676,106	1,803,848	4,819,649	4,819,172	+ 0.0

1/ Other residential buildings include institutions for the disabled, boarding houses, old people's homes, hostels, hotels, motels, guest houses, holiday chalets, entertainment centres, bed-and-breakfast accommodation and casinos.

2/ Other non-residential space includes churches, sport and recreation clubs, schools, crèches, hospitals and all other non-residential space.

3/ Other buildings include additions and alterations to other residential buildings, non-residential buildings and internal alterations.

Table 10 - Building plans passed according to type of building and province: Western Cape

Type of building	March 2001 *	February 2002	March 2002	January 2001 to March 2001	January 2002 to March 2002	Percentage change between January 2001 to March 2001 and January 2002 to March 2002
Residential buildings						
Dwelling-houses smaller than 80 square metres						
Number of dwelling-houses	680	497	353	2,203	2,460	+ 11.7
Total square metres	26,651	18,146	15,348	82,633	85,177	+ 3.1
Total value at current prices (R'000)	32,311	19,495	19,445	101,173	99,375	- 1.8
Dwelling-houses equal to or larger than 80 square metres						
Number of dwelling-houses	570	621	589	1,566	1,784	+ 13.9
Total square metres	121,648	131,821	122,081	337,413	367,462	+ 8.9
Total value at current prices (R'000)	183,121	206,487	196,042	489,765	575,426	+ 17.5
Flats and townhouses						
Number of flats and townhouses	334	506	239	813	899	+ 10.6
Total square metres	35,437	37,536	33,293	81,674	90,052	+ 10.3
Total value at current prices (R'000)	61,304	56,905	62,091	125,408	151,815	+ 21.1
Other residential buildings ^{1/}						
Total square metres	48	4,251	410	1,755	5,119	+ 191.7
Total value at current prices (R'000)	86	6,660	650	2,458	7,997	+ 225.3
Total value of residential buildings at current prices (R'000)	276,822	289,547	278,228	718,804	834,613	+ 16.1
Non-residential buildings						
Office and banking space						
Total square metres	6,779	7,300	6,221	54,683	17,667	- 67.7
Total value at current prices (R'000)	12,883	9,224	9,285	94,156	25,530	- 72.9
Shopping space						
Total square metres	13,721	1,098	1,023	81,889	14,755	- 82.0
Total value at current prices (R'000)	17,841	1,809	1,161	105,408	18,560	- 82.4
Industrial and warehouse space						
Total square metres	16,970	9,556	26,717	53,367	47,123	- 11.7
Total value at current prices (R'000)	20,261	10,079	31,655	53,908	52,246	- 3.1
Other non-residential space ^{2/}						
Total square metres	22,146	6,525	1,137	39,767	14,183	- 64.3
Total value at current prices (R'000)	27,574	8,938	1,798	53,639	18,595	- 65.3
Total value of non-residential buildings at current prices (R'000)	78,559	30,050	43,899	307,111	114,931	- 62.6
Additions and alterations						
Dwelling-houses						
Total square metres	78,569	76,436	81,260	209,986	212,131	+ 1.0
Total value at current prices (R'000)	99,657	102,903	107,199	260,540	280,817	+ 7.8
Other buildings ^{3/}						
Total square metres	17,392	24,870	8,455	53,327	52,152	- 2.2
Total value at current prices (R'000)	28,915	58,621	14,066	92,098	102,398	+ 11.2
Total value of additions and alterations at current prices (R'000)	128,572	161,524	121,265	352,638	383,215	+ 8.7
Total value of building plans passed at current prices (R'000)	483,953	481,121	443,392	1,378,553	1,332,759	- 3.3

1/ Other residential buildings include institutions for the disabled, boarding houses, old people's homes, hostels, hotels, motels, guest houses, holiday chalets, entertainment centres, bed-and-breakfast accommodation and casinos.

2/ Other non-residential space includes churches, sport and recreation clubs, schools, crèches, hospitals and all other non-residential space.

3/ Other buildings include additions and alterations to other residential buildings, non-residential buildings and internal alterations.

Table 11 - Building plans passed according to type of building and province: Eastern Cape

Type of building	March 2001*	February 2002	March 2002	January 2001 to March 2001	January 2002 to March 2002	Percentage change between January 2001 to March 2001 and January 2002 to March 2002
Residential buildings						
Dwelling-houses smaller than 80 square metres						
Number of dwelling-houses	250	244	374	692	745	+ 7.7
Total square metres	11,351	10,354	18,114	30,922	34,435	+ 11.4
Total value at current prices (R'000)	14,966	12,936	26,074	39,902	48,048	+ 20.4
Dwelling-houses equal to or larger than 80 square metres						
Number of dwelling-houses	189	114	115	379	317	-16.4
Total square metres	22,172	21,906	21,598	50,561	58,549	+ 15.8
Total value at current prices (R'000)	29,856	29,601	30,172	67,037	80,192	+ 19.6
Flats and townhouses						
Number of flats and townhouses	31	14	27	78	51	-34.6
Total square metres	3,199	1,818	2,706	8,229	5,760	-30.0
Total value at current prices (R'000)	4,270	3,008	4,637	11,700	9,365	-20.0
Other residential buildings ^{1/}						
Total square metres	0	0	0	5,820	0	..
Total value at current prices (R'000)	0	0	0	50,000	0	..
Total value of residential buildings at current prices (R'000)	49,092	45,545	60,883	168,639	137,605	-18.4
Non-residential buildings						
Office and banking space						
Total square metres	0	229	292	414	521	+ 25.8
Total value at current prices (R'000)	0	450	535	1,080	985	-8.8
Shopping space						
Total square metres	1,276	0	2,040	3,685	7,143	+ 93.8
Total value at current prices (R'000)	2,070	0	3,876	5,016	15,071	+ 200.5
Industrial and warehouse space						
Total square metres	3,691	13,097	1,154	9,543	14,910	+ 56.2
Total value at current prices (R'000)	5,348	28,588	1,864	12,744	31,285	+ 145.5
Other non-residential space ^{2/}						
Total square metres	918	5,068	238	2,183	6,193	+ 183.7
Total value at current prices (R'000)	1,101	9,125	387	2,815	10,016	+ 255.8
Total value of non-residential buildings at current prices (R'000)	8,519	38,163	6,662	21,655	57,357	+ 164.9
Additions and alterations						
Dwelling-houses						
Total square metres	15,004	20,893	16,609	46,096	50,874	+ 10.4
Total value at current prices (R'000)	19,366	27,608	21,390	57,372	67,217	+ 17.2
Other buildings ^{3/}						
Total square metres	4,208	3,279	6,727	30,752	12,574	-59.1
Total value at current prices (R'000)	5,287	5,255	14,201	45,865	24,711	-46.1
Total value of additions and alterations at current prices (R'000)	24,653	32,863	35,591	103,237	91,928	-11.0
Total value of building plans passed at current prices (R'000)	82,264	116,571	103,136	293,531	286,890	-2.3

1/ Other residential buildings include institutions for the disabled, boarding houses, old people's homes, hostels, hotels, motels, guest houses, holiday chalets, entertainment centres, bed-and-breakfast accommodation and casinos.

2/ Other non-residential space includes churches, sport and recreation clubs, schools, crèches, hospitals and all other non-residential space.

3/ Other buildings include additions and alterations to other residential buildings, non-residential buildings and internal alterations.

Table 12 - Building plans passed according to type of building and province: Northern Cape

Type of building	March 2001	February 2002	March 2002	January 2001 to March 2001	January 2002 to March 2002	Percentage change between January 2001 to March 2001 and January 2002 to March 2002
Residential buildings						
Dwelling-houses smaller than 80 square metres						
Number of dwelling-houses	4	8	2	22	15	- 31.8
Total square metres	254	377	62	1,214	688	- 43.3
Total value at current prices (R'000)	404	674	93	1,791	1,177	- 34.3
Dwelling-houses equal to or larger than 80 square metres						
Number of dwelling-houses	9	5	10	49	19	- 61.2
Total square metres	1,353	895	1,608	9,281	3,168	- 65.9
Total value at current prices (R'000)	1,920	1,284	2,249	10,103	4,600	- 54.5
Flats and townhouses						
Number of flats and townhouses	1	0	0	6	0	..
Total square metres	140	0	0	984	0	..
Total value at current prices (R'000)	112	0	0	1,294	0	..
Other residential buildings ^{1/}						
Total square metres	0	0	0	0	0	..
Total value at current prices (R'000)	0	0	0	0	0	..
Total value of residential buildings at current prices (R'000)	2,436	1,958	2,342	13,188	5,777	- 56.2
Non-residential buildings						
Office and banking space						
Total square metres	0	0	30	191	30	- 84.3
Total value at current prices (R'000)	0	0	66	124	66	- 46.8
Shopping space						
Total square metres	0	0	0	206	0	..
Total value at current prices (R'000)	0	0	0	226	0	..
Industrial and warehouse space						
Total square metres	772	800	0	772	800	+ 3.6
Total value at current prices (R'000)	618	1,120	0	618	1,120	+ 81.2
Other non-residential space ^{2/}						
Total square metres	198	855	144	433	999	+ 130.7
Total value at current prices (R'000)	278	1,881	317	724	2,198	+ 203.6
Total value of non-residential buildings at current prices (R'000)	896	3,001	383	1,692	3,384	+ 100.0
Additions and alterations						
Dwelling-houses						
Total square metres	2,329	2,900	1,444	6,462	5,938	- 8.1
Total value at current prices (R'000)	3,453	4,940	2,262	9,599	9,667	+ 0.7
Other buildings ^{3/}						
Total square metres	1,080	556	346	1,343	902	- 32.8
Total value at current prices (R'000)	2,737	1,646	599	3,465	2,352	- 32.1
Total value of additions and alterations at current prices (R'000)	6,190	6,586	2,861	13,064	12,019	- 8.0
Total value of building plans passed at current prices (R'000)	9,522	11,545	5,586	27,944	21,180	- 24.2

1/ Other residential buildings include institutions for the disabled, boarding houses, old people's homes, hostels, hotels, motels, guest houses, holiday chalets, entertainment centres, bed-and-breakfast accommodation and casinos.

2/ Other non-residential space includes churches, sport and recreation clubs, schools, crèches, hospitals and all other non-residential space.

3/ Other buildings include additions and alterations to other residential buildings, non-residential buildings and internal alterations.

Table 13 - Building plans passed according to type of building and province: Free State

Type of building	March 2001	February 2002	March 2002	January 2001 to March 2001	January 2002 to March 2002	Percentage change between January 2001 to March 2001 and January 2002 to March 2002
Residential buildings						
Dwelling-houses smaller than 80 square metres						
Number of dwelling-houses	272	97	47	663	235	-64.6
Total square metres	12,265	4,192	2,836	29,852	11,145	-62.7
Total value at current prices (R'000)	6,527	3,440	2,939	15,591	8,782	-43.7
Dwelling-houses equal to or larger than 80 square metres						
Number of dwelling-houses	66	78	95	203	240	+ 18.2
Total square metres	10,409	13,282	13,737	30,784	35,133	+ 14.1
Total value at current prices (R'000)	11,051	15,559	14,392	33,580	42,480	+ 26.5
Flats and townhouses						
Number of flats and townhouses	19	68	29	79	185	+ 134.2
Total square metres	2,357	7,210	2,193	11,039	18,079	+ 63.8
Total value at current prices (R'000)	3,775	11,000	2,979	17,311	27,479	+ 58.7
Other residential buildings ^{1/}						
Total square metres	32	2,683	75	32	2,758	+ 8,518.8
Total value at current prices (R'000)	11	7,000	105	11	7,105	+ 64,490.9
Total value of residential buildings at current prices (R'000)	21,364	36,999	20,415	66,493	85,846	+ 29.1
Non-residential buildings						
Office and banking space						
Total square metres	334	117	0	12,822	7,384	-42.4
Total value at current prices (R'000)	416	102	0	25,216	14,102	-44.1
Shopping space						
Total square metres	253	0	7,429	1,418	8,031	+ 466.4
Total value at current prices (R'000)	290	0	16,000	1,690	16,660	+ 885.8
Industrial and warehouse space						
Total square metres	0	1,710	0	1,626	2,577	+ 58.5
Total value at current prices (R'000)	0	1,800	0	1,062	2,494	+ 134.8
Other non-residential space ^{2/}						
Total square metres	1,530	2,195	871	2,271	3,632	+ 59.9
Total value at current prices (R'000)	2,480	2,107	991	3,890	3,603	-7.4
Total value of non-residential buildings at current prices (R'000)	3,186	4,009	16,991	31,858	36,859	+ 15.7
Additions and alterations						
Dwelling-houses						
Total square metres	6,889	9,610	6,777	20,558	23,862	+ 16.1
Total value at current prices (R'000)	7,406	10,451	7,389	21,379	25,913	+ 21.2
Other buildings ^{3/}						
Total square metres	1,643	1,381	557	2,827	4,176	+ 47.7
Total value at current prices (R'000)	2,480	2,483	1,516	4,501	7,906	+ 75.6
Total value of additions and alterations at current prices (R'000)	9,886	12,934	8,905	25,880	33,819	+ 30.7
Total value of building plans passed at current prices (R'000)	34,436	53,942	46,311	124,231	156,524	+ 26.0

1/ Other residential buildings include institutions for the disabled, boarding houses, old people's homes, hostels, hotels, motels, guest houses, holiday chalets, entertainment centres, bed-and-breakfast accommodation and casinos.

2/ Other non-residential space includes churches, sport and recreation clubs, schools, crèches, hospitals and all other non-residential space.

3/ Other buildings include additions and alterations to other residential buildings, non-residential buildings and internal alterations.

Table 14 - Building plans passed according to type of building and province: KwaZulu-Natal

Type of building	March 2001*	February 2002	March 2002	January 2001 to March 2001	January 2002 to March 2002	Percentage change between January 2001 to March 2001 and January 2002 to March 2002
Residential buildings						
Dwelling-houses smaller than 80 square metres						
Number of dwelling-houses	378	99	249	831	496	- 40.3
Total square metres	19,485	5,229	9,539	40,130	19,971	- 50.2
Total value at current prices (R'000)	15,648	6,507	8,952	34,671	20,813	- 40.0
Dwelling-houses equal to or larger than 80 square metres						
Number of dwelling-houses	166	126	122	412	370	- 10.2
Total square metres	34,224	27,145	25,425	91,412	79,454	- 13.1
Total value at current prices (R'000)	51,840	42,411	34,024	135,085	119,364	- 11.6
Flats and townhouses						
Number of flats and townhouses	117	36	74	263	286	+ 8.7
Total square metres	15,783	5,263	11,673	33,509	43,532	+ 29.9
Total value at current prices (R'000)	27,404	10,168	28,511	60,235	72,717	+ 20.7
Other residential buildings ^{1/}						
Total square metres	0	547	0	0	1,103	..
Total value at current prices (R'000)	0	821	0	0	1,821	..
Total value of residential buildings at current prices (R'000)	94,892	59,907	71,487	229,991	214,715	- 6.6
Non-residential buildings						
Office and banking space						
Total square metres	339	0	1,883	49,541	2,520	- 94.9
Total value at current prices (R'000)	854	0	4,500	131,098	5,456	- 95.8
Shopping space						
Total square metres	1,071	3,147	4,032	8,973	8,353	- 6.9
Total value at current prices (R'000)	1,800	6,800	8,478	10,010	17,152	+ 71.3
Industrial and warehouse space						
Total square metres	23,741	8,462	10,548	40,540	32,491	- 19.9
Total value at current prices (R'000)	24,136	10,300	13,238	43,127	38,044	- 11.8
Other non-residential space ^{2/}						
Total square metres	2,946	2,787	2,372	7,494	7,599	+ 1.4
Total value at current prices (R'000)	3,516	3,710	3,483	9,785	11,002	+ 12.4
Total value of non-residential buildings at current prices (R'000)	30,306	20,810	29,699	194,020	71,654	- 63.1
Additions and alterations						
Dwelling-houses						
Total square metres	35,996	30,212	30,222	95,044	88,378	- 7.0
Total value at current prices (R'000)	42,096	37,265	38,999	116,919	110,492	- 5.5
Other buildings ^{3/}						
Total square metres	16,659	13,294	7,594	41,112	29,533	- 28.2
Total value at current prices (R'000)	37,654	20,014	20,922	80,540	56,241	- 30.2
Total value of additions and alterations at current prices (R'000)	79,750	57,279	59,921	197,459	166,733	- 15.6
Total value of building plans passed at current prices (R'000)	204,948	137,996	161,107	621,470	453,102	- 27.1

1/ Other residential buildings include institutions for the disabled, boarding houses, old people's homes, hostels, hotels, motels, guest houses, holiday chalets, entertainment centres, bed-and-breakfast accommodation and casinos.

2/ Other non-residential space includes churches, sport and recreation clubs, schools, crèches, hospitals and all other non-residential space.

3/ Other buildings include additions and alterations to other residential buildings, non-residential buildings and internal alterations.

Table 15 - Building plans passed according to type of building and province: North West

Type of building	March 2001	February 2002	March 2002	January 2001 to March 2001	January 2002 to March 2002	Percentage change between January 2001 to March 2001 and January 2002 to March 2002
Residential buildings						
Dwelling-houses smaller than 80 square metres						
Number of dwelling-houses	500	117	309	1,095	450	- 58.9
Total square metres	17,907	7,478	10,756	40,032	19,677	- 50.8
Total value at current prices (R'000)	11,537	12,358	7,591	28,692	21,717	- 24.3
Dwelling-houses equal to or larger than 80 square metres						
Number of dwelling-houses	73	45	108	193	264	+ 36.8
Total square metres	12,640	7,601	18,564	31,755	44,672	+ 40.7
Total value at current prices (R'000)	15,100	9,463	24,401	38,538	61,958	+ 60.8
Flats and townhouses						
Number of flats and townhouses	47	27	8	103	44	- 57.3
Total square metres	5,326	2,582	1,106	13,350	5,827	- 56.4
Total value at current prices (R'000)	8,820	3,792	1,137	17,211	8,007	- 53.5
Other residential buildings ^{1/}						
Total square metres	0	284	0	88	284	+ 222.7
Total value at current prices (R'000)	0	200	0	75	200	+ 166.7
Total value of residential buildings at current prices (R'000)	35,457	25,813	33,129	84,516	91,882	+ 8.7
Non-residential buildings						
Office and banking space						
Total square metres	450	649	408	2,546	3,712	+ 45.8
Total value at current prices (R'000)	800	1,000	286	4,425	6,262	+ 41.5
Shopping space						
Total square metres	5,009	0	0	10,002	2,109	- 78.9
Total value at current prices (R'000)	4,451	0	0	11,515	4,104	- 64.4
Industrial and warehouse space						
Total square metres	1,038	879	960	2,849	4,111	+ 44.3
Total value at current prices (R'000)	893	1,000	1,500	2,955	6,675	+ 125.9
Other non-residential space ^{2/}						
Total square metres	387	0	5,237	387	6,098	+ 1,475.7
Total value at current prices (R'000)	518	0	11,557	518	12,401	+ 2,294.0
Total value of non-residential buildings at current prices (R'000)	6,662	2,000	13,343	19,413	29,442	+ 51.7
Additions and alterations						
Dwelling-houses						
Total square metres	5,938	7,174	7,105	16,556	22,287	+ 34.6
Total value at current prices (R'000)	6,359	8,869	8,517	18,027	25,862	+ 43.5
Other buildings ^{3/}						
Total square metres	1,677	683	1,590	4,146	3,385	- 18.4
Total value at current prices (R'000)	2,445	918	2,573	6,101	5,877	- 3.7
Total value of additions and alterations at current prices (R'000)	8,804	9,787	11,090	24,128	31,739	+ 31.5
Total value of building plans passed at current prices (R'000)	50,923	37,600	57,562	128,057	153,063	+ 19.5

1/ Other residential buildings include institutions for the disabled, boarding houses, old people's homes, hostels, hotels, motels, guest houses, holiday chalets, entertainment centres, bed-and-breakfast accommodation and casinos.

2/ Other non-residential space includes churches, sport and recreation clubs, schools, crèches, hospitals and all other non-residential space.

3/ Other buildings include additions and alterations to other residential buildings, non-residential buildings and internal alterations.

Table 16 - Building plans passed according to type of building and province: Gauteng

Type of building	March 2001 *	February 2002	March 2002	January 2001 to March 2001	January 2002 to March 2002	Percentage change between January 2001 to March 2001 and January 2002 to March 2002
Residential buildings						
Dwelling-houses smaller than 80 square metres						
Number of dwelling-houses	1,563	1,548	996	2,898	2,799	- 3.4
Total square metres	56,231	51,625	39,467	109,400	104,132	- 4.8
Total value at current prices (R'000)	58,755	38,324	38,914	119,910	94,249	- 21.4
Dwelling-houses equal to or larger than 80 square metres						
Number of dwelling-houses	738	636	574	2,257	1,746	- 22.6
Total square metres	184,439	175,808	154,080	512,228	482,390	- 5.8
Total value at current prices (R'000)	261,313	267,811	272,279	729,395	744,907	+ 2.1
Flats and townhouses						
Number of flats and townhouses	461	376	615	1,129	1,304	+ 15.5
Total square metres	54,483	41,618	91,045	133,191	181,531	+ 36.3
Total value at current prices (R'000)	85,922	65,170	136,623	204,746	277,797	+ 35.7
Other residential buildings ^{1/}						
Total square metres	0	3,160	0	4,962	3,459	- 30.3
Total value at current prices (R'000)	0	4,700	0	6,086	5,283	- 13.2
Total value of residential buildings at current prices (R'000)	405,990	376,005	447,816	1,060,137	1,122,236	+ 5.9
Non-residential buildings						
Office and banking space						
Total square metres	21,868	47,442	25,823	101,280	81,499	- 19.5
Total value at current prices (R'000)	31,345	75,664	103,229	153,659	189,948	+ 23.6
Shopping space						
Total square metres	15,365	4,297	18,749	47,872	30,000	- 37.3
Total value at current prices (R'000)	25,163	6,419	32,010	80,883	49,490	- 38.8
Industrial and warehouse space						
Total square metres	40,800	23,177	36,332	100,213	76,092	- 24.1
Total value at current prices (R'000)	73,028	38,371	48,300	169,013	113,465	- 32.9
Other non-residential space ^{2/}						
Total square metres	19,847	4,356	70,922	46,295	78,636	+ 69.9
Total value at current prices (R'000)	31,551	6,931	113,402	68,549	124,474	+ 81.6
Total value of non-residential buildings at current prices (R'000)	161,087	127,385	296,941	472,104	477,377	+ 1.1
Additions and alterations						
Dwelling-houses						
Total square metres	88,172	84,474	92,589	249,725	259,685	+ 4.0
Total value at current prices (R'000)	111,196	119,290	132,071	316,221	361,865	+ 14.4
Other buildings ^{3/}						
Total square metres	31,675	14,946	17,424	95,005	62,344	- 34.4
Total value at current prices (R'000)	50,971	26,376	33,406	175,069	122,094	- 30.3
Total value of additions and alterations at current prices (R'000)	162,167	145,666	165,477	491,290	483,959	- 1.5
Total value of building plans passed at current prices (R'000)	729,244	649,056	910,234	2,023,531	2,083,572	+ 3.0

1/ Other residential buildings include institutions for the disabled, boarding houses, old people's homes, hostels, hotels, motels, guest houses, holiday chalets, entertainment centres, bed-and-breakfast accommodation and casinos.

2/ Other non-residential space includes churches, sport and recreation clubs, schools, crèches, hospitals and all other non-residential space.

3/ Other buildings include additions and alterations to other residential buildings, non-residential buildings and internal alterations.

Table 17 - Building plans passed according to type of building and province: Mpumalanga

Type of building	March 2001*	February 2002	March 2002	January 2001 to March 2001	January 2002 to March 2002	Percentage change between January 2001 to March 2001 and January 2002 to March 2002
Residential buildings						
Dwelling-houses smaller than 80 square metres						
Number of dwelling-houses	623	137	256	1,923	572	- 70.3
Total square metres	20,573	6,011	10,458	65,515	22,990	- 64.9
Total value at current prices (R'000)	9,797	3,228	4,726	43,858	11,824	- 73.0
Dwelling-houses equal to or larger than 80 square metres						
Number of dwelling-houses	61	177	95	178	349	+ 96.1
Total square metres	12,126	26,158	18,859	32,491	58,279	+ 79.4
Total value at current prices (R'000)	15,603	30,792	27,108	38,210	74,813	+ 95.8
Flats and townhouses						
Number of flats and townhouses	35	92	33	104	127	+ 22.1
Total square metres	4,332	13,054	2,723	10,374	16,105	+ 55.2
Total value at current prices (R'000)	5,878	20,217	2,673	13,949	23,135	+ 65.9
Other residential buildings ^{1/}						
Total square metres	0	5,489	0	0	5,489	..
Total value at current prices (R'000)	0	70,000	0	0	70,000	..
Total value of residential buildings at current prices (R'000)	31,278	124,237	34,507	96,017	179,772	+ 87.2
Non-residential buildings						
Office and banking space						
Total square metres	0	219	0	632	689	+ 9.0
Total value at current prices (R'000)	0	329	0	950	879	- 7.5
Shopping space						
Total square metres	0	9,493	4,497	174	16,266	+9,248.3
Total value at current prices (R'000)	0	11,172	6,668	174	20,572	+11,723.0
Industrial and warehouse space						
Total square metres	4,091	3,455	111	18,248	6,942	- 62.0
Total value at current prices (R'000)	5,533	3,471	135	15,214	7,310	- 52.0
Other non-residential space ^{2/}						
Total square metres	1,913	1,778	420	3,714	3,618	- 2.6
Total value at current prices (R'000)	2,270	2,066	504	4,583	4,175	- 8.9
Total value of non-residential buildings at current prices (R'000)	7,803	17,038	7,307	20,921	32,936	+ 57.4
Additions and alterations						
Dwelling-houses						
Total square metres	9,367	9,492	11,602	27,802	31,742	+ 14.2
Total value at current prices (R'000)	7,955	10,360	13,234	25,480	35,129	+ 37.9
Other buildings ^{3/}						
Total square metres	1,369	1,061	1,428	4,961	4,296	- 13.4
Total value at current prices (R'000)	2,620	1,572	2,029	9,048	11,973	+ 32.3
Total value of additions and alterations at current prices (R'000)	10,575	11,932	15,263	34,528	47,102	+ 36.4
Total value of building plans passed at current prices (R'000)	49,656	153,207	57,077	151,466	259,810	+ 71.5

1/ Other residential buildings include institutions for the disabled, boarding houses, old people's homes, hostels, hotels, motels, guest houses, holiday chalets, entertainment centres, bed-and-breakfast accommodation and casinos.

2/ Other non-residential space includes churches, sport and recreation clubs, schools, crèches, hospitals and all other non-residential space.

3/ Other buildings include additions and alterations to other residential buildings, non-residential buildings and internal alterations.

Table 18 - Building plans passed according to type of building and province: Northern Province

Type of building	March 2001	February 2002	March 2002	January 2001 to March 2001	January 2002 to March 2002	Percentage change between January 2001 to March 2001 and January 2002 to March 2002
Residential buildings						
Dwelling-houses smaller than 80 square metres						
Number of dwelling-houses	40	35	23	106	68	-35.8
Total square metres	2,340	2,053	1,327	6,235	4,001	-35.8
Total value at current prices (R'000)	3,044	2,976	1,886	7,937	5,737	-27.7
Dwelling-houses equal to or larger than 80 square metres						
Number of dwelling-houses	37	51	39	117	123	+ 5.1
Total square metres	6,165	9,108	7,296	20,669	22,804	+ 10.3
Total value at current prices (R'000)	8,509	12,616	9,475	27,975	30,299	+ 8.3
Flats and townhouses						
Number of flats and townhouses	2	18	0	13	27	+ 107.7
Total square metres	277	2,063	0	2,426	3,239	+ 33.5
Total value at current prices (R'000)	312	2,600	0	3,109	4,353	+ 40.0
Other residential buildings ^{1/}						
Total square metres	0	0	0	0	0	..
Total value at current prices (R'000)	0	0	0	0	0	..
Total value of residential buildings at current prices (R'000)	11,865	18,192	11,361	39,021	40,389	+ 3.5
Non-residential buildings						
Office and banking space						
Total square metres	0	454	0	0	454	..
Total value at current prices (R'000)	0	755	0	0	755	..
Shopping space						
Total square metres	1,741	0	1,573	6,134	2,551	-58.4
Total value at current prices (R'000)	3,830	0	2,819	9,980	4,457	-55.3
Industrial and warehouse space						
Total square metres	0	478	0	0	478	..
Total value at current prices (R'000)	0	600	0	0	600	..
Other non-residential space ^{2/}						
Total square metres	270	263	343	270	606	+ 124.4
Total value at current prices (R'000)	300	445	723	300	1,168	+ 289.3
Total value of non-residential buildings at current prices (R'000)	4,130	1,800	3,542	10,280	6,980	-32.1
Additions and alterations						
Dwelling-houses						
Total square metres	3,796	3,836	3,322	11,456	10,841	-5.4
Total value at current prices (R'000)	4,551	5,201	4,156	14,533	14,434	-0.7
Other buildings ^{3/}						
Total square metres	614	6,404	108	2,837	6,662	+ 134.8
Total value at current prices (R'000)	1,497	9,875	384	7,032	10,469	+ 48.9
Total value of additions and alterations at current prices (R'000)	6,048	15,076	4,540	21,565	24,903	+ 15.5
Total value of building plans passed at current prices (R'000)	22,043	35,068	19,443	70,866	72,272	+ 2.0

1/ Other residential buildings include institutions for the disabled, boarding houses, old people's homes, hostels, hotels, motels, guest houses, holiday chalets, entertainment centres, bed-and-breakfast accommodation and casinos.

2/ Other non-residential space includes churches, sport and recreation clubs, schools, crèches, hospitals and all other non-residential space.

3/ Other buildings include additions and alterations to other residential buildings, non-residential buildings and internal alterations.

Table 19 - Buildings completed according to type of building: Total RSA

Type of building	March 2001 *	February 2002	March 2002	January 2001 to March 2001	January 2002 to March 2002	Percentage change between January 2001 to March 2001 and January 2002 to March 2002
Residential buildings						
Dwelling-houses smaller than 80 square metres						
Number of dwelling-houses	2,567	1,997	1,939	6,235	5,922	- 5.0
Total square metres	102,775	72,914	74,474	246,679	223,278	- 9.5
Total value at current prices (R'000)	87,568	61,418	66,210	211,528	210,642	- 0.4
Dwelling-houses equal to or larger than 80 square metres						
Number of dwelling-houses	1,085	851	1,149	2,831	2,924	+ 3.3
Total square metres	212,849	173,816	214,583	562,787	590,189	+ 4.9
Total value at current prices (R'000)	252,402	261,742	309,563	726,141	867,783	+ 19.5
Flats and townhouses						
Number of flats and townhouses	878	1,127	929	1,982	3,220	+ 62.5
Total square metres	88,642	101,065	78,248	195,817	306,040	+ 56.3
Total value at current prices (R'000)	133,467	153,756	112,290	287,007	454,076	+ 58.2
Other residential buildings ^{1/}						
Total square metres	8,925	465	18,443	80,146	22,634	- 71.8
Total value at current prices (R'000)	16,250	701	212,818	336,861	217,755	- 35.4
Total value of residential buildings at current prices (R'000)	489,687	477,617	700,881	1,561,537	1,750,256	+ 12.1
Non-residential buildings						
Office and banking space						
Total square metres	37,268	39,074	31,924	186,922	101,269	- 45.8
Total value at current prices (R'000)	62,466	67,609	73,791	296,387	191,056	- 35.5
Shopping space						
Total square metres	12,318	10,986	9,202	65,878	50,193	- 23.8
Total value at current prices (R'000)	17,877	15,671	14,338	85,920	63,489	- 26.1
Industrial and warehouse space						
Total square metres	60,604	35,937	20,372	221,041	91,495	- 58.6
Total value at current prices (R'000)	65,928	36,556	23,858	249,679	104,611	- 58.1
Other non-residential space ^{2/}						
Total square metres	13,326	12,469	25,474	43,398	45,088	+ 3.9
Total value at current prices (R'000)	13,366	18,201	49,486	51,705	77,143	+ 49.2
Total value of non-residential buildings at current prices (R'000)	159,637	138,037	161,473	683,691	436,299	- 36.2
Additions and alterations						
Dwelling-houses						
Total square metres	115,286	116,447	100,726	357,812	315,030	- 12.0
Total value at current prices (R'000)	136,668	140,824	128,889	424,124	390,532	- 7.9
Other buildings ^{3/}						
Total square metres	53,395	33,591	22,638	137,471	84,605	- 38.5
Total value at current prices (R'000)	149,728	54,878	45,055	307,966	151,708	- 50.7
Total value of additions and alterations at current prices (R'000)	286,396	195,702	173,944	732,090	542,240	- 25.9
Total value of buildings completed at current prices (R'000)	935,720	811,356	1,036,298	2,977,318	2,728,795	- 8.3

1/ Other residential buildings include institutions for the disabled, boarding houses, old people's homes, hostels, hotels, motels, guest houses, holiday chalets, entertainment centres, bed-and-breakfast accommodation and casinos.

2/ Other non-residential space includes churches, sport and recreation clubs, schools, crèches, hospitals and all other non-residential space.

3/ Other buildings include additions and alterations to other residential buildings, non-residential buildings and internal alterations.

Table 20 - Buildings completed according to type of building and province: Western Cape

Type of building	March 2001*	February 2002	March 2002	January 2001 to March 2001	January 2002 to March 2002	Percentage change between January 2001 to March 2001 and January 2002 to March 2002
Residential buildings						
Dwelling-houses smaller than 80 square metres						
Number of dwelling-houses	403	614	415	1,380	1,918	+ 39.0
Total square metres	13,982	21,571	14,939	46,916	68,770	+ 46.6
Total value at current prices (R'000)	14,221	23,135	16,103	53,151	78,262	+ 47.2
Dwelling-houses equal to or larger than 80 square metres						
Number of dwelling-houses	407	336	408	957	1,072	+ 12.0
Total square metres	78,991	71,462	78,444	184,016	213,263	+ 15.9
Total value at current prices (R'000)	74,984	113,489	124,153	230,285	335,081	+ 45.5
Flats and townhouses						
Number of flats and townhouses	34	82	86	307	523	+ 70.4
Total square metres	3,596	8,335	9,903	30,363	64,382	+ 112.0
Total value at current prices (R'000)	4,982	12,731	14,695	41,244	109,330	+ 165.1
Other residential buildings ^{1/}						
Total square metres	8,925	465	0	26,677	673	- 97.5
Total value at current prices (R'000)	16,250	701	0	30,121	993	- 96.7
Total value of residential buildings at current prices (R'000)	110,437	150,056	154,951	354,801	523,666	+ 47.6
Non-residential buildings						
Office and banking space						
Total square metres	8,941	9,289	3,430	43,049	17,502	- 59.3
Total value at current prices (R'000)	9,506	14,027	7,145	83,646	26,889	- 67.9
Shopping space						
Total square metres	2,034	290	623	11,287	21,285	+ 88.6
Total value at current prices (R'000)	2,275	552	1,134	16,405	24,474	+ 49.2
Industrial and warehouse space						
Total square metres	7,929	6,589	5,346	39,681	16,919	- 57.4
Total value at current prices (R'000)	8,812	6,499	5,813	48,226	16,481	- 65.8
Other non-residential space ^{2/}						
Total square metres	8,804	5,103	16,742	23,347	22,757	- 2.5
Total value at current prices (R'000)	8,822	6,914	36,892	23,083	44,443	+ 92.5
Total value of non-residential buildings at current prices (R'000)	29,415	27,992	50,984	171,360	112,287	- 34.5
Additions and alterations						
Dwelling-houses						
Total square metres	43,436	39,950	28,085	134,561	99,989	- 25.7
Total value at current prices (R'000)	55,880	52,914	38,138	170,374	132,941	- 22.0
Other buildings ^{3/}						
Total square metres	11,890	15,736	3,246	42,469	25,465	- 40.0
Total value at current prices (R'000)	76,567	26,105	9,020	153,445	50,859	- 66.9
Total value of additions and alterations at current prices (R'000)	132,447	79,019	47,158	323,819	183,800	- 43.2
Total value of buildings completed at current prices (R'000)	272,299	257,067	253,093	849,980	819,753	-3.6

1/ Other residential buildings include institutions for the disabled, boarding houses, old people's homes, hostels, hotels, motels, guest houses, holiday chalets, entertainment centres, bed-and-breakfast accommodation and casinos.

2/ Other non-residential space includes churches, sport and recreation clubs, schools, crèches, hospitals and all other non-residential space.

3/ Other buildings include additions and alterations to other residential buildings, non-residential buildings and internal alterations.

Table 21 - Buildings completed according to type of building and province: Eastern Cape

Type of building	March 2001	February 2002	March 2002	January 2001 to March 2001	January 2002 to March 2002	Percentage change between January 2001 to March 2001 and January 2002 to March 2002
Residential buildings						
Dwelling-houses smaller than 80 square metres						
Number of dwelling-houses	367	52	171	841	444	- 47.2
Total square metres	15,862	2,616	7,576	36,397	20,154	- 44.6
Total value at current prices (R'000)	15,759	3,246	10,399	32,361	26,324	- 18.7
Dwelling-houses equal to or larger than 80 square metres						
Number of dwelling-houses	54	64	40	177	158	- 10.7
Total square metres	7,815	10,596	7,197	24,285	26,608	+ 9.6
Total value at current prices (R'000)	9,819	13,607	10,010	29,318	34,904	+ 19.1
Flats and townhouses						
Number of flats and townhouses	0	1	294	23	299	+ 1,200.0
Total square metres	0	117	14,361	2,094	15,146	+ 623.3
Total value at current prices (R'000)	0	170	20,699	2,992	21,785	+ 628.1
Other residential buildings ^{1/}						
Total square metres	0	0	2,744	4,347	2,744	- 36.9
Total value at current prices (R'000)	0	0	3,312	7,000	3,312	- 52.7
Total value of residential buildings at current prices (R'000)	25,578	17,023	44,420	71,671	86,325	+ 20.4
Non-residential buildings						
Office and banking space						
Total square metres	1,062	0	25	1,353	25	-98.2
Total value at current prices (R'000)	1,724	0	50	2,248	50	-97.8
Shopping space						
Total square metres	3,108	343	77	4,199	2,477	- 41.0
Total value at current prices (R'000)	5,004	652	103	6,507	3,151	- 51.6
Industrial and warehouse space						
Total square metres	209	0	0	68,788	478	- 99.3
Total value at current prices (R'000)	303	0	0	63,477	392	- 99.4
Other non-residential space ^{2/}						
Total square metres	550	340	491	4,049	2,300	-43.2
Total value at current prices (R'000)	605	428	736	7,527	2,664	-64.6
Total value of non-residential buildings at current prices (R'000)	7,636	1,080	889	79,759	6,257	- 92.2
Additions and alterations						
Dwelling-houses						
Total square metres	6,248	8,390	9,783	21,435	25,674	+ 19.8
Total value at current prices (R'000)	6,981	9,839	11,222	24,404	30,067	+ 23.2
Other buildings ^{3/}						
Total square metres	7,579	3,369	3,843	16,455	10,248	- 37.7
Total value at current prices (R'000)	10,963	4,958	5,150	21,733	13,890	- 36.1
Total value of additions and alterations at current prices (R'000)	17,944	14,797	16,372	46,137	43,957	- 4.7
Total value of buildings completed at current prices (R'000)	51,158	32,900	61,681	197,567	136,539	- 30.9

1/ Other residential buildings include institutions for the disabled, boarding houses, old people's homes, hostels, hotels, motels, guest houses, holiday chalets, entertainment centres, bed-and-breakfast accommodation and casinos.

2/ Other non-residential space includes churches, sport and recreation clubs, schools, crèches, hospitals and all other non-residential space.

3/ Other buildings include additions and alterations to other residential buildings, non-residential buildings and internal alterations.

Table 22 - Buildings completed according to type of building and province: Northern Cape

Type of building	March 2001*	February 2002	March 2002	January 2001 to March 2001	January 2002 to March 2002	Percentage change between January 2001 to March 2001 and January 2002 to March 2002
Residential buildings						
Dwelling-houses smaller than 80 square metres						
Number of dwelling-houses	33	8	8	51	16	- 68.6
Total square metres	1,343	341	430	2,360	771	- 67.3
Total value at current prices (R'000)	1,267	278	685	2,988	963	- 67.8
Dwelling-houses equal to or larger than 80 square metres						
Number of dwelling-houses	3	7	2	28	14	- 50.0
Total square metres	413	975	193	5,270	1,873	- 64.5
Total value at current prices (R'000)	640	990	270	7,335	2,410	- 67.1
Flats and townhouses						
Number of flats and townhouses	5	0	0	5	0	..
Total square metres	420	0	0	420	0	..
Total value at current prices (R'000)	588	0	0	588	0	..
Other residential buildings ^{1/}						
Total square metres	0	0	0	346	0	..
Total value at current prices (R'000)	0	0	0	277	0	..
Total value of residential buildings at current prices (R'000)	2,495	1,268	955	11,188	3,373	- 69.9
Non-residential buildings						
Office and banking space						
Total square metres	0	0	0	7,105	0	..
Total value at current prices (R'000)	0	0	0	15,631	0	..
Shopping space						
Total square metres	522	784	0	1,202	784	-34.8
Total value at current prices (R'000)	735	1,098	0	2,885	1,098	- 61.9
Industrial and warehouse space						
Total square metres	0	0	0	0	0	..
Total value at current prices (R'000)	0	0	0	0	0	..
Other non-residential space ^{2/}						
Total square metres	0	0	465	181	465	+ 156.9
Total value at current prices (R'000)	121	0	433	289	433	+ 49.8
Total value of non-residential buildings at current prices (R'000)	735	1,098	433	18,805	1,531	- 91.9
Additions and alterations						
Dwelling-houses						
Total square metres	1,269	1,978	2,438	4,006	6,101	+ 52.3
Total value at current prices (R'000)	1,983	2,776	2,902	6,263	8,080	+ 29.0
Other buildings ^{3/}						
Total square metres	532	0	315	904	447	- 50.6
Total value at current prices (R'000)	828	578	881	1,416	1,803	+ 27.3
Total value of additions and alterations at current prices (R'000)	2,811	3,354	3,783	7,679	9,883	+ 28.7
Total value of buildings completed at current prices (R'000)	6,041	5,720	5,171	37,672	14,787	-60.7

1/ Other residential buildings include institutions for the disabled, boarding houses, old people's homes, hostels, hotels, motels, guest houses, holiday chalets, entertainment centres, bed-and-breakfast accommodation and casinos.

2/ Other non-residential space includes churches, sport and recreation clubs, schools, crèches, hospitals and all other non-residential space.

3/ Other buildings include additions and alterations to other residential buildings, non-residential buildings and internal alterations.

Table 23 - Buildings completed according to type of building and province: Free State

Type of building	March 2001	February 2002	March 2002	January 2001 to March 2001	January 2002 to March 2002	Percentage change between January 2001 to March 2001 and January 2002 to March 2002
Residential buildings						
Dwelling-houses smaller than 80 square metres						
Number of dwelling-houses	97	76	55	195	178	-8.7
Total square metres	4,090	3,409	2,419	8,424	8,399	-0.3
Total value at current prices (R'000)	2,427	1,906	1,414	5,581	5,731	+ 2.7
Dwelling-houses equal to or larger than 80 square metres						
Number of dwelling-houses	27	16	31	104	68	-34.6
Total square metres	4,507	2,512	4,831	18,985	11,873	-37.5
Total value at current prices (R'000)	4,851	2,938	5,977	21,696	14,151	-34.8
Flats and townhouses						
Number of flats and townhouses	20	19	0	73	36	-50.7
Total square metres	1,777	1,658	0	6,764	3,936	-41.8
Total value at current prices (R'000)	2,396	3,174	0	9,204	6,464	-29.8
Other residential buildings ^{1/}						
Total square metres	0	0	0	151	1,428	+ 845.7
Total value at current prices (R'000)	0	0	0	211	1,461	+ 592.4
Total value of residential buildings at current prices (R'000)	9,674	8,018	7,391	36,692	27,807	-24.2
Non-residential buildings						
Office and banking space						
Total square metres	0	0	0	1,094	2,055	+ 87.8
Total value at current prices (R'000)	0	0	0	903	3,855	+ 326.9
Shopping space						
Total square metres	0	0	710	2,050	1,340	-34.6
Total value at current prices (R'000)	0	0	2,000	2,000	2,500	+ 25.0
Industrial and warehouse space						
Total square metres	4,187	284	808	8,120	3,650	-55.0
Total value at current prices (R'000)	4,598	180	409	7,110	2,689	-62.2
Other non-residential space ^{2/}						
Total square metres	151	175	0	507	175	-65.5
Total value at current prices (R'000)	164	131	0	559	131	-76.6
Total value of non-residential buildings at current prices (R'000)	4,762	311	2,409	10,572	9,175	-13.2
Additions and alterations						
Dwelling-houses						
Total square metres	4,770	6,391	3,777	17,639	21,266	+ 20.6
Total value at current prices (R'000)	5,197	6,925	4,024	18,293	23,714	+ 29.6
Other buildings ^{3/}						
Total square metres	1,038	1,541	1,303	3,946	4,272	+ 8.3
Total value at current prices (R'000)	1,225	2,606	1,220	5,495	8,570	+ 56.0
Total value of additions and alterations at current prices (R'000)	6,422	9,531	5,244	23,788	32,284	+ 35.7
Total value of buildings completed at current prices (R'000)	20,858	17,860	15,044	71,052	69,266	-2.5

1/ Other residential buildings include institutions for the disabled, boarding houses, old people's homes, hostels, hotels, motels, guest houses, holiday chalets, entertainment centres, bed-and-breakfast accommodation and casinos.

2/ Other non-residential space includes churches, sport and recreation clubs, schools, crèches, hospitals and all other non-residential space.

3/ Other buildings include additions and alterations to other residential buildings, non-residential buildings and internal alterations.

Table 24 - Buildings completed according to type of building and province: KwaZulu-Natal

Type of building	March 2001*	February 2002	March 2002	January 2001 to March 2001	January 2002 to March 2002	Percentage change between January 2001 to March 2001 and January 2002 to March 2002
Residential buildings						
Dwelling-houses smaller than 80 square metres						
Number of dwelling-houses	421	111	302	726	494	-32.0
Total square metres	21,078	5,352	11,596	35,353	20,859	-41.0
Total value at current prices (R'000)	17,003	6,166	10,635	29,363	21,588	-26.5
Dwelling-houses equal to or larger than 80 square metres						
Number of dwelling-houses	125	121	95	380	297	-21.8
Total square metres	24,459	22,766	19,034	77,564	57,648	-25.7
Total value at current prices (R'000)	32,515	30,236	26,809	99,991	79,488	-20.5
Flats and townhouses						
Number of flats and townhouses	284	67	261	389	371	-4.6
Total square metres	20,179	11,053	16,638	40,336	34,242	-15.1
Total value at current prices (R'000)	21,079	17,910	18,108	56,767	48,012	-15.4
Other residential buildings ^{1/}						
Total square metres	0	0	0	8,450	0	..
Total value at current prices (R'000)	0	0	0	40,000	0	..
Total value of residential buildings at current prices (R'000)	70,597	54,312	55,552	226,121	149,088	-34.1
Non-residential buildings						
Office and banking space						
Total square metres	6,712	19,593	14,145	12,909	33,738	+ 161.4
Total value at current prices (R'000)	13,523	35,570	44,670	22,407	80,240	+ 258.1
Shopping space						
Total square metres	2,203	2,905	1,674	12,333	7,802	-36.7
Total value at current prices (R'000)	3,058	2,780	1,787	25,781	8,560	-66.8
Industrial and warehouse space						
Total square metres	21,265	20,070	7,665	42,111	38,135	-9.4
Total value at current prices (R'000)	19,473	16,912	7,421	45,319	35,987	-20.6
Other non-residential space ^{2/}						
Total square metres	1,298	4,338	1,993	4,982	7,219	+ 44.9
Total value at current prices (R'000)	1,362	7,393	3,202	6,040	11,669	+ 93.2
Total value of non-residential buildings at current prices (R'000)	37,416	62,655	57,080	99,547	136,456	+ 37.1
Additions and alterations						
Dwelling-houses						
Total square metres	26,523	17,835	24,918	76,073	64,094	-15.7
Total value at current prices (R'000)	30,837	18,134	29,210	86,850	71,737	-17.4
Other buildings ^{3/}						
Total square metres	12,574	3,444	5,891	19,861	16,657	-16.1
Total value at current prices (R'000)	23,926	4,593	14,368	40,166	30,967	-22.9
Total value of additions and alterations at current prices (R'000)	54,763	22,727	43,578	127,016	102,704	-19.1
Total value of buildings completed at current prices (R'000)	162,776	139,694	156,210	452,684	388,248	-14.2

1/ Other residential buildings include institutions for the disabled, boarding houses, old people's homes, hostels, hotels, motels, guest houses, holiday chalets, entertainment centres, bed-and-breakfast accommodation and casinos.

2/ Other non-residential space includes churches, sport and recreation clubs, schools, crèches, hospitals and all other non-residential space.

3/ Other buildings include additions and alterations to other residential buildings, non-residential buildings and internal alterations.

Table 25 - Buildings completed according to type of building and province: North West

Type of building	March 2001	February 2002	March 2002	January 2001 to March 2001	January 2002 to March 2002	Percentage change between January 2001 to March 2001 and January 2002 to March 2002
Residential buildings						
Dwelling-houses smaller than 80 square metres						
Number of dwelling-houses	105	298	58	247	385	+ 55.9
Total square metres	4,990	9,384	2,909	12,472	13,776	+ 10.5
Total value at current prices (R'000)	5,658	3,834	3,022	13,922	8,384	- 39.8
Dwelling-houses equal to or larger than 80 square metres						
Number of dwelling-houses	39	63	44	120	152	+ 26.7
Total square metres	4,823	9,638	8,240	20,139	25,649	+ 27.4
Total value at current prices (R'000)	6,308	16,108	11,248	24,556	38,648	+ 57.4
Flats and townhouses						
Number of flats and townhouses	0	156	14	18	170	+ 844.4
Total square metres	0	8,303	2,288	2,189	10,591	+ 383.8
Total value at current prices (R'000)	0	11,884	2,343	2,364	14,227	+ 501.8
Other residential buildings ^{1/}						
Total square metres	0	0	0	2,963	2,090	- 29.5
Total value at current prices (R'000)	0	0	0	3,556	2,483	- 30.2
Total value of residential buildings at current prices (R'000)	11,966	31,826	16,613	44,398	63,742	+ 43.6
Non-residential buildings						
Office and banking space						
Total square metres	0	0	446	750	446	- 40.5
Total value at current prices (R'000)	0	0	800	1,400	800	- 42.9
Shopping space						
Total square metres	0	0	2,967	1,379	3,542	+ 156.9
Total value at current prices (R'000)	0	0	3,642	2,090	4,045	+ 93.5
Industrial and warehouse space						
Total square metres	699	486	551	1,611	1,397	- 13.3
Total value at current prices (R'000)	700	425	500	1,960	1,105	- 43.6
Other non-residential space ^{2/}						
Total square metres	153	650	578	1,874	2,293	+ 22.4
Total value at current prices (R'000)	180	808	952	2,138	4,103	+ 91.9
Total value of non-residential buildings at current prices (R'000)	880	1,233	5,894	7,588	10,053	+ 32.5
Additions and alterations						
Dwelling-houses						
Total square metres	2,869	8,306	2,277	8,384	12,902	+ 53.9
Total value at current prices (R'000)	2,827	7,101	2,270	8,395	11,625	+ 38.5
Other buildings ^{3/}						
Total square metres	1,357	696	939	5,391	1,944	- 63.9
Total value at current prices (R'000)	4,060	794	1,543	7,998	2,696	- 66.3
Total value of additions and alterations at current prices (R'000)	6,887	7,895	3,813	16,393	14,321	- 12.6
Total value of buildings completed at current prices (R'000)	19,733	40,954	26,320	68,379	88,116	+ 28.9

1/ Other residential buildings include institutions for the disabled, boarding houses, old people's homes, hostels, hotels, motels, guest houses, holiday chalets, entertainment centres, bed-and-breakfast accommodation and casinos.

2/ Other non-residential space includes churches, sport and recreation clubs, schools, crèches, hospitals and all other non-residential space.

3/ Other buildings include additions and alterations to other residential buildings, non-residential buildings and internal alterations.

Table 26 - Buildings completed according to type of building and province: Gauteng

Type of building	March 2001*	February 2002	March 2002	January 2001 to March 2001	January 2002 to March 2002	Percentage change between January 2001 to March 2001 and January 2002 to March 2002
Residential buildings						
Dwelling-houses smaller than 80 square metres						
Number of dwelling-houses	703	582	527	1,734	1,720	-0.8
Total square metres	25,862	19,831	18,750	66,178	60,152	-9.1
Total value at current prices (R'000)	23,092	15,721	15,747	52,593	50,463	-4.0
Dwelling-houses equal to or larger than 80 square metres						
Number of dwelling-houses	353	193	492	886	1,034	+ 16.7
Total square metres	78,761	47,910	90,361	202,339	231,275	+ 14.3
Total value at current prices (R'000)	109,890	74,520	123,185	279,099	336,784	+ 20.7
Flats and townhouses						
Number of flats and townhouses	527	796	265	1,139	1,802	+ 58.2
Total square metres	61,627	70,288	33,997	109,949	174,856	+ 59.0
Total value at current prices (R'000)	103,208	106,659	55,496	170,044	251,438	+ 47.9
Other residential buildings ^{1/}						
Total square metres	0	0	1,740	34,212	1,740	-94.9
Total value at current prices (R'000)	0	0	2,000	252,096	2,000	-99.2
Total value of residential buildings at current prices (R'000)	236,190	196,900	196,428	753,832	640,685	-15.0
Non-residential buildings						
Office and banking space						
Total square metres	17,961	10,192	13,878	116,277	47,503	-59.1
Total value at current prices (R'000)	25,963	18,012	21,126	155,252	79,222	-49.0
Shopping space						
Total square metres	3,432	5,748	1,015	12,366	8,663	-29.9
Total value at current prices (R'000)	5,435	9,154	1,572	17,782	12,626	-29.0
Industrial and warehouse space						
Total square metres	26,315	8,058	6,002	60,730	30,058	-50.5
Total value at current prices (R'000)	32,042	12,190	9,715	83,587	47,121	-43.6
Other non-residential space ^{2/}						
Total square metres	1,704	1,863	4,340	6,521	8,541	+ 31.0
Total value at current prices (R'000)	1,650	2,527	6,450	9,562	12,679	+ 32.6
Total value of non-residential buildings at current prices (R'000)	65,090	41,883	38,863	266,183	151,648	-43.0
Additions and alterations						
Dwelling-houses						
Total square metres	20,433	29,712	25,020	76,278	73,432	-3.7
Total value at current prices (R'000)	24,984	39,149	36,130	92,171	100,842	+ 9.4
Other buildings ^{3/}						
Total square metres	10,719	8,145	7,101	34,699	23,713	-31.7
Total value at current prices (R'000)	21,694	14,271	12,873	56,797	40,011	-29.6
Total value of additions and alterations at current prices (R'000)	46,678	53,420	49,003	148,968	140,853	-5.4
Total value of buildings completed at current prices (R'000)	347,958	292,203	284,294	1,168,983	933,186	-20.2

1/ Other residential buildings include institutions for the disabled, boarding houses, old people's homes, hostels, hotels, motels, guest houses, holiday chalets, entertainment centres, bed-and-breakfast accommodation and casinos.

2/ Other non-residential space includes churches, sport and recreation clubs, schools, crèches, hospitals and all other non-residential space.

3/ Other buildings include additions and alterations to other residential buildings, non-residential buildings and internal alterations.

Table 27 - Buildings completed according to type of building and province: Mpumalanga

Type of building	March 2001*	February 2002	March 2002	January 2001 to March 2001	January 2002 to March 2002	Percentage change between January 2001 to March 2001 and January 2002 to March 2002
Residential buildings						
Dwelling-houses smaller than 80 square metres						
Number of dwelling-houses	339	228	385	875	715	-18.3
Total square metres	11,249	8,686	14,861	29,785	27,294	-8.4
Total value at current prices (R'000)	5,540	4,392	6,796	14,034	14,280	+ 1.8
Dwelling-houses equal to or larger than 80 square metres						
Number of dwelling-houses	57	36	23	122	92	-24.6
Total square metres	10,865	6,123	3,714	20,967	16,331	-22.1
Total value at current prices (R'000)	10,354	7,050	4,553	21,340	18,401	-13.8
Flats and townhouses						
Number of flats and townhouses	4	4	9	17	14	-17.6
Total square metres	300	1,105	1,061	1,489	2,299	+ 54.4
Total value at current prices (R'000)	240	940	949	1,274	1,997	+ 56.8
Other residential buildings ^{1/}						
Total square metres	0	0	0	0	0	..
Total value at current prices (R'000)	0	0	0	0	0	..
Total value of residential buildings at current prices (R'000)	16,134	12,382	12,298	36,648	34,678	-5.4
Non-residential buildings						
Office and banking space						
Total square metres	2,592	0	0	4,385	0	..
Total value at current prices (R'000)	11,750	0	0	14,900	0	..
Shopping space						
Total square metres	1,019	308	2,136	21,062	2,444	-88.4
Total value at current prices (R'000)	1,370	462	4,100	12,470	4,562	-63.4
Industrial and warehouse space						
Total square metres	0	450	0	0	858	..
Total value at current prices (R'000)	0	350	0	0	836	..
Other non-residential space ^{2/}						
Total square metres	666	0	865	1,685	1,338	-20.6
Total value at current prices (R'000)	583	0	821	1,953	1,021	-47.7
Total value of non-residential buildings at current prices (R'000)	13,703	812	4,921	29,323	6,419	-78.1
Additions and alterations						
Dwelling-houses						
Total square metres	9,030	3,497	4,021	17,319	10,656	-38.5
Total value at current prices (R'000)	7,285	3,325	4,390	14,963	10,063	-32.7
Other buildings ^{3/}						
Total square metres	6,756	660	0	12,001	688	-94.3
Total value at current prices (R'000)	9,104	973	0	16,801	1,272	-92.4
Total value of additions and alterations at current prices (R'000)	16,389	4,298	4,390	31,764	11,335	-64.3
Total value of buildings completed at current prices (R'000)	46,226	17,492	21,609	97,735	52,432	-46.4

1/ Other residential buildings include institutions for the disabled, boarding houses, old people's homes, hostels, hotels, motels, guest houses, holiday chalets, entertainment centres, bed-and-breakfast accommodation and casinos.

2/ Other non-residential space includes churches, sport and recreation clubs, schools, crèches, hospitals and all other non-residential space.

3/ Other buildings include additions and alterations to other residential buildings, non-residential buildings and internal alterations.

Table 28 - Buildings completed according to type of building and province: Northern Province

Type of building	March 2001	February 2002	March 2002	January 2001 to March 2001	January 2002 to March 2002	Percentage change between January 2001 to March 2001 and January 2002 to March 2002
Residential buildings						
Dwelling-houses smaller than 80 square metres						
Number of dwelling-houses	99	28	18	186	52	-72.0
Total square metres	4,319	1,724	994	8,794	3,103	-64.7
Total value at current prices (R'000)	2,601	2,740	1,409	7,535	4,647	-38.3
Dwelling-houses equal to or larger than 80 square metres						
Number of dwelling-houses	20	15	14	57	37	-35.1
Total square metres	2,215	1,834	2,569	9,222	5,669	-38.5
Total value at current prices (R'000)	3,041	2,804	3,358	12,521	7,916	-36.8
Flats and townhouses						
Number of flats and townhouses	4	2	0	11	5	-54.5
Total square metres	743	206	0	2,213	588	-73.4
Total value at current prices (R'000)	974	288	0	2,530	823	-67.5
Other residential buildings ^{1/}						
Total square metres	0	0	13,959	3,000	13,959	+ 365.3
Total value at current prices (R'000)	0	0	207,506	3,600	207,506	+ 5,664.1
Total value of residential buildings at current prices (R'000)	6,616	5,832	212,273	26,186	220,892	+ 743.5
Non-residential buildings						
Office and banking space						
Total square metres	0	0	0	0	0	..
Total value at current prices (R'000)	0	0	0	0	0	..
Shopping space						
Total square metres	0	608	0	0	1,856	..
Total value at current prices (R'000)	0	973	0	0	2,473	..
Industrial and warehouse space						
Total square metres	0	0	0	0	0	..
Total value at current prices (R'000)	0	0	0	0	0	..
Other non-residential space ^{2/}						
Total square metres	0	0	0	252	0	..
Total value at current prices (R'000)	0	0	0	554	0	..
Total value of non-residential buildings at current prices (R'000)	0	973	0	554	2,473	+ 346.4
Additions and alterations						
Dwelling-houses						
Total square metres	708	388	407	2,117	916	-56.7
Total value at current prices (R'000)	694	661	603	2,411	1,463	-39.3
Other buildings ^{3/}						
Total square metres	950	0	0	1,745	1,171	-32.9
Total value at current prices (R'000)	1,361	0	0	4,115	1,640	-60.1
Total value of additions and alterations at current prices (R'000)	2,055	661	603	6,526	3,103	-52.5
Total value of buildings completed at current prices (R'000)	8,671	7,466	212,876	33,266	226,468	+ 580.8

1/ Other residential buildings include institutions for the disabled, boarding houses, old people's homes, hostels, hotels, motels, guest houses, holiday chalets, entertainment centres, bed-and-breakfast accommodation and casinos.

2/ Other non-residential space includes churches, sport and recreation clubs, schools, crèches, hospitals and all other non-residential space.

3/ Other buildings include additions and alterations to other residential buildings, non-residential buildings and internal alterations.

Table 29 - Building plans passed according to type of building and selected urban area: Cape Town

Type of building	March 2001	February 2002	March 2002	January 2001 to March 2001	January 2002 to March 2002	Percentage change between January 2001 to March 2001 and January 2002 to March 2002
Residential buildings						
Dwelling-houses smaller than 80 square metres						
Number of dwelling-houses	591	157	294	1,915	1,959	+ 2.3
Total square metres	23,358	7,025	12,244	71,741	67,265	- 6.2
Total value at current prices (R'000)	29,222	8,717	15,339	89,105	81,590	- 8.4
Dwelling-houses equal to or larger than 80 square metres						
Number of dwelling-houses	285	275	270	788	879	+ 11.5
Total square metres	63,845	56,285	53,138	184,512	169,348	- 8.2
Total value at current prices (R'000)	92,845	75,678	76,504	247,962	235,402	- 5.1
Flats and townhouses						
Number of flats and townhouses	220	321	105	363	527	+ 45.2
Total square metres	21,554	24,257	17,636	38,567	55,161	+ 43.0
Total value at current prices (R'000)	40,608	37,013	36,657	65,902	97,056	+ 47.3
Other residential buildings ^{1/}						
Total square metres	0	3,535	0	1,044	3,535	+ 238.6
Total value at current prices (R'000)	0	5,530	0	1,556	5,530	+ 255.4
Total value of residential buildings at current prices (R'000)	162,675	126,938	128,500	404,525	419,578	+ 3.7
Non-residential buildings						
Office and banking space						
Total square metres	3,876	6,731	4,167	45,622	11,144	- 75.6
Total value at current prices (R'000)	7,280	8,200	3,957	82,625	12,600	- 84.8
Shopping space						
Total square metres	3,830	0	288	63,193	12,802	- 79.7
Total value at current prices (R'000)	4,863	0	298	77,779	15,708	- 79.8
Industrial and warehouse space						
Total square metres	9,083	5,380	13,879	29,352	28,025	- 4.5
Total value at current prices (R'000)	9,139	6,406	16,566	30,669	31,874	+ 3.9
Other non-residential space ^{2/}						
Total square metres	18,264	4,654	489	29,615	9,229	- 68.8
Total value at current prices (R'000)	23,431	5,489	681	43,008	11,712	- 72.8
Total value of non-residential buildings at current prices (R'000)	44,713	20,095	21,502	234,081	71,894	- 69.3
Additions and alterations						
Dwelling-houses						
Total square metres	49,521	51,059	51,190	134,820	137,345	+ 1.9
Total value at current prices (R'000)	58,802	64,924	62,528	158,934	172,656	+ 8.6
Other buildings ^{3/}						
Total square metres	12,625	20,915	3,852	35,408	37,198	+ 5.1
Total value at current prices (R'000)	24,623	39,259	8,157	72,847	64,369	- 11.6
Total value of additions and alterations at current prices (R'000)	83,425	104,183	70,685	231,781	237,025	+ 2.3
Total value of building plans passed at current prices (R'000)	290,813	251,216	220,687	870,387	728,497	- 16.3

1/ Other residential buildings include institutions for the disabled, boarding houses, old people's homes, hostels, hotels, motels, guest houses, holiday chalets, entertainment centres, bed-and-breakfast accommodation and casinos.

2/ Other non-residential space includes churches, sport and recreation clubs, schools, crèches, hospitals and all other non-residential space.

3/ Other buildings include additions and alterations to other residential buildings, non-residential buildings and internal alterations.

Table 30 - Building plans passed according to type of building and selected urban area: Port Elizabeth

Type of building	March 2001	February 2002	March 2002	January 2001 to March 2001	January 2002 to March 2002	Percentage change between January 2001 to March 2001 and January 2002 to March 2002
Residential buildings						
Dwelling-houses smaller than 80 square metres						
Number of dwelling-houses	174	53	268	504	384	- 23.8
Total square metres	8,408	2,295	13,206	22,905	18,207	- 20.5
Total value at current prices (R'000)	11,703	3,179	18,774	30,704	26,242	- 14.5
Dwelling-houses equal to or larger than 80 square metres						
Number of dwelling-houses	141	67	48	233	165	- 29.2
Total square metres	12,049	12,249	8,562	24,377	28,904	+ 18.6
Total value at current prices (R'000)	16,519	18,466	12,580	32,648	41,556	+ 27.3
Flats and townhouses						
Number of flats and townhouses	27	14	27	57	50	- 12.3
Total square metres	2,631	1,818	2,706	5,629	5,695	+ 1.2
Total value at current prices (R'000)	3,548	3,008	4,637	8,327	9,258	+ 11.2
Other residential buildings ^{1/}						
Total square metres	0	0	0	0	0	..
Total value at current prices (R'000)	0	0	0	0	0	..
Total value of residential buildings at current prices (R'000)	31,770	24,653	35,991	71,679	77,056	+ 7.5
Non-residential buildings						
Office and banking space						
Total square metres	0	204	239	0	443	..
Total value at current prices (R'000)	0	400	468	0	868	..
Shopping space						
Total square metres	352	0	0	352	5,103	+ 1,349.7
Total value at current prices (R'000)	370	0	0	370	11,195	+ 2,925.7
Industrial and warehouse space						
Total square metres	0	2,126	1,154	2,113	3,939	+ 86.4
Total value at current prices (R'000)	0	3,306	1,864	3,064	6,003	+ 95.9
Other non-residential space ^{2/}						
Total square metres	509	4,086	0	1,279	4,973	+ 288.8
Total value at current prices (R'000)	581	7,299	0	1,644	7,803	+ 374.6
Total value of non-residential buildings at current prices (R'000)	951	11,005	2,332	5,078	25,869	+ 409.4
Additions and alterations						
Dwelling-houses						
Total square metres	8,212	13,012	9,063	24,143	30,783	+ 27.5
Total value at current prices (R'000)	10,742	16,726	10,745	30,113	38,656	+ 28.4
Other buildings ^{3/}						
Total square metres	3,476	3,053	4,073	25,780	9,594	- 62.8
Total value at current prices (R'000)	3,862	4,555	7,859	38,397	16,678	- 56.6
Total value of additions and alterations at current prices (R'000)	14,604	21,281	18,604	68,510	55,334	- 19.2
Total value of building plans passed at current prices (R'000)	47,325	56,939	56,927	145,267	158,259	+ 8.9

1/ Other residential buildings include institutions for the disabled, boarding houses, old people's homes, hostels, hotels, motels, guest houses, holiday chalets, entertainment centres, bed-and-breakfast accommodation and casinos.

2/ Other non-residential space includes churches, sport and recreation clubs, schools, crèches, hospitals and all other non-residential space.

3/ Other buildings include additions and alterations to other residential buildings, non-residential buildings and internal alterations.

Table 31 - Building plans passed according to type of building and selected urban area: Durban

Type of building	March 2001*	February 2002	March 2002	January 2001 to March 2001	January 2002 to March 2002	Percentage change between January 2001 to March 2001 and January 2002 to March 2002
Residential buildings						
Dwelling-houses smaller than 80 square metres						
Number of dwelling-houses	64	55	92	210	272	+ 29.5
Total square metres	3,362	3,049	3,722	11,274	11,138	-1.2
Total value at current prices (R'000)	3,544	3,786	3,619	12,952	11,698	-9.7
Dwelling-houses equal to or larger than 80 square metres						
Number of dwelling-houses	76	53	45	183	148	-19.1
Total square metres	13,658	9,217	8,171	35,207	26,228	-25.5
Total value at current prices (R'000)	18,006	12,389	8,972	42,158	32,903	-22.0
Flats and townhouses						
Number of flats and townhouses	12	6	10	55	172	+ 212.7
Total square metres	1,258	1,220	760	4,905	25,469	+ 419.2
Total value at current prices (R'000)	1,400	2,770	850	6,504	32,680	+ 402.5
Other residential buildings ^{1/}						
Total square metres	0	0	0	0	556	..
Total value at current prices (R'000)	0	0	0	0	1,000	..
Total value of residential buildings at current prices (R'000)	22,950	18,945	13,441	61,614	78,281	+ 27.1
Non-residential buildings						
Office and banking space						
Total square metres	308	0	0	2,480	0	..
Total value at current prices (R'000)	839	0	0	4,949	0	..
Shopping space						
Total square metres	430	0	430	4,710	930	-80.3
Total value at current prices (R'000)	600	0	600	4,540	1,800	-60.4
Industrial and warehouse space						
Total square metres	8,351	8,314	6,813	21,551	26,271	+ 21.9
Total value at current prices (R'000)	8,690	10,050	7,286	23,346	28,336	+ 21.4
Other non-residential space ^{2/}						
Total square metres	1,914	2,200	2,074	4,953	5,042	+ 1.8
Total value at current prices (R'000)	2,460	2,550	2,900	6,686	6,421	-4.0
Total value of non-residential buildings at current prices (R'000)	12,589	12,600	10,786	39,521	36,557	-7.5
Additions and alterations						
Dwelling-houses						
Total square metres	24,559	20,057	20,842	65,654	58,477	-10.9
Total value at current prices (R'000)	27,385	23,483	24,921	78,422	69,196	-11.8
Other buildings ^{3/}						
Total square metres	14,212	5,692	3,903	32,515	15,165	-53.4
Total value at current prices (R'000)	32,085	9,867	16,178	66,854	38,244	-42.8
Total value of additions and alterations at current prices (R'000)	59,470	33,350	41,099	145,276	107,440	-26.0
Total value of building plans passed at current prices (R'000)	95,009	64,895	65,326	246,411	222,278	-9.8

1/ Other residential buildings include institutions for the disabled, boarding houses, old people's homes, hostels, hotels, motels, guest houses, holiday chalets, entertainment centres, bed-and-breakfast accommodation and casinos.

2/ Other non-residential space includes churches, sport and recreation clubs, schools, crèches, hospitals and all other non-residential space.

3/ Other buildings include additions and alterations to other residential buildings, non-residential buildings and internal alterations.

Table 32 - Building plans passed according to type of building and selected urban area: Witwatersrand

Type of building	March 2001	February 2002	March 2002	January 2001 to March 2001	January 2002 to March 2002	Percentage change between January 2001 to March 2001 and January 2002 to March 2002
Residential buildings						
Dwelling-houses smaller than 80 square metres						
Number of dwelling-houses	413	1,485	949	1,544	2,629	+ 70.3
Total square metres	17,693	48,091	36,964	61,442	94,835	+ 54.3
Total value at current prices (R'000)	19,918	33,496	33,757	70,048	80,202	+ 14.5
Dwelling-houses equal to or larger than 80 square metres						
Number of dwelling-houses	407	341	307	1,444	916	- 36.6
Total square metres	95,766	92,359	77,054	296,933	247,855	- 16.5
Total value at current prices (R'000)	141,987	145,304	158,185	441,972	410,900	- 7.0
Flats and townhouses						
Number of flats and townhouses	264	288	290	739	686	- 7.2
Total square metres	27,239	28,139	36,991	75,991	76,197	+ 0.3
Total value at current prices (R'000)	47,743	44,690	62,467	122,940	126,178	+ 2.6
Other residential buildings ^{1/}						
Total square metres	0	3,160	0	0	3,459	..
Total value at current prices (R'000)	0	4,700	0	0	5,283	..
Total value of residential buildings at current prices (R'000)	209,648	228,190	254,409	634,960	622,563	- 2.0
Non-residential buildings						
Office and banking space						
Total square metres	21,009	12,105	24,529	84,384	43,741	- 48.2
Total value at current prices (R'000)	30,234	21,354	101,288	124,831	131,992	+ 5.7
Shopping space						
Total square metres	7,617	4,061	18,314	37,562	28,443	- 24.3
Total value at current prices (R'000)	13,001	6,091	31,497	64,994	47,719	- 26.6
Industrial and warehouse space						
Total square metres	36,954	16,831	27,689	88,668	59,143	- 33.3
Total value at current prices (R'000)	68,306	29,174	35,336	153,223	88,810	- 42.0
Other non-residential space ^{2/}						
Total square metres	14,045	1,024	67,755	34,741	70,452	+ 102.8
Total value at current prices (R'000)	22,659	1,646	109,403	51,574	112,982	+ 119.1
Total value of non-residential buildings at current prices (R'000)	134,200	58,265	277,524	394,622	381,503	- 3.3
Additions and alterations						
Dwelling-houses						
Total square metres	64,025	60,096	60,162	184,571	177,897	- 3.6
Total value at current prices (R'000)	81,059	84,935	85,968	237,126	247,246	+ 4.3
Other buildings ^{3/}						
Total square metres	26,921	5,341	7,202	78,716	40,385	- 48.7
Total value at current prices (R'000)	44,154	10,432	13,286	153,179	83,246	- 45.7
Total value of additions and alterations at current prices (R'000)	125,213	95,367	99,254	390,305	330,492	- 15.3
Total value of building plans passed at current prices (R'000)	469,061	381,822	631,187	1,419,887	1,334,558	- 6.0

1/ Other residential buildings include institutions for the disabled, boarding houses, old people's homes, hostels, hotels, motels, guest houses, holiday chalets, entertainment centres, bed-and-breakfast accommodation and casinos.

2/ Other non-residential space includes churches, sport and recreation clubs, schools, crèches, hospitals and all other non-residential space.

3/ Other buildings include additions and alterations to other residential buildings, non-residential buildings and internal alterations.

Table 33 - Building plans passed according to type of building and selected urban area: Pretoria

Type of building	March 2001*	February 2002	March 2002	January 2001 to March 2001	January 2002 to March 2002	Percentage change between January 2001 to March 2001 and January 2002 to March 2002
Residential buildings						
Dwelling-houses smaller than 80 square metres						
Number of dwelling-houses	97	56	42	204	150	- 26.5
Total square metres	5,163	3,097	2,210	10,633	8,143	- 23.4
Total value at current prices (R'000)	6,090	4,315	4,814	12,750	12,616	- 1.1
Dwelling-houses equal to or larger than 80 square metres						
Number of dwelling-houses	277	232	191	677	618	- 8.7
Total square metres	78,351	63,498	50,705	187,862	165,223	- 12.1
Total value at current prices (R'000)	106,694	93,409	71,304	254,276	230,495	- 9.4
Flats and townhouses						
Number of flats and townhouses	195	88	290	362	562	+ 55.2
Total square metres	26,943	13,479	47,343	53,769	96,545	+ 79.6
Total value at current prices (R'000)	37,788	20,480	63,946	77,437	139,331	+ 79.9
Other residential buildings ^{1/}						
Total square metres	0	0	0	418	0	..
Total value at current prices (R'000)	0	0	0	627	0	..
Total value of residential buildings at current prices (R'000)	150,572	118,204	140,064	345,090	382,442	+ 10.8
Non-residential buildings						
Office and banking space						
Total square metres	859	35,337	1,294	16,896	37,758	+ 123.5
Total value at current prices (R'000)	1,111	54,310	1,941	28,828	57,956	+ 101.0
Shopping space						
Total square metres	7,748	56	0	9,306	56	- 99.4
Total value at current prices (R'000)	12,162	76	0	14,616	76	- 99.5
Industrial and warehouse space						
Total square metres	2,349	5,584	7,436	7,486	14,302	+ 91.0
Total value at current prices (R'000)	3,056	8,376	11,154	10,368	21,581	+ 108.2
Other non-residential space ^{2/}						
Total square metres	5,802	3,252	1,907	11,321	6,089	- 46.2
Total value at current prices (R'000)	8,892	5,100	2,739	16,695	9,247	- 44.6
Total value of non-residential buildings at current prices (R'000)	25,221	67,862	15,834	70,507	88,860	+ 26.0
Additions and alterations						
Dwelling-houses						
Total square metres	17,484	21,138	27,924	48,394	70,601	+ 45.9
Total value at current prices (R'000)	22,424	30,693	40,485	60,367	101,486	+ 68.1
Other buildings ^{3/}						
Total square metres	3,186	9,341	10,148	9,849	20,044	+ 103.5
Total value at current prices (R'000)	4,956	15,612	20,043	15,961	36,943	+ 131.5
Total value of additions and alterations at current prices (R'000)	27,380	46,305	60,528	76,328	138,429	+ 81.4
Total value of building plans passed at current prices (R'000)	203,173	232,371	216,426	491,925	609,731	+ 23.9

1/ Other residential buildings include institutions for the disabled, boarding houses, old people's homes, hostels, hotels, motels, guest houses, holiday chalets, entertainment centres, bed-and-breakfast accommodation and casinos.

2/ Other non-residential space includes churches, sport and recreation clubs, schools, crèches, hospitals and all other non-residential space.

3/ Other buildings include additions and alterations to other residential buildings, non-residential buildings and internal alterations.

Table 34 - Building plans passed according to type of building and selected urban area: Bloemfontein

Type of building	March 2001	February 2002	March 2002	January 2001 to March 2001	January 2002 to March 2002	Percentage change between January 2001 to March 2001 and January 2002 to March 2002
Residential buildings						
Dwelling-houses smaller than 80 square metres						
Number of dwelling-houses	190	71	24	544	177	-67.5
Total square metres	8,371	2,953	1,523	23,979	8,046	-66.4
Total value at current prices (R'000)	4,014	2,355	1,761	11,609	6,129	-47.2
Dwelling-houses equal to or larger than 80 square metres						
Number of dwelling-houses	23	41	33	63	103	+ 63.5
Total square metres	3,269	7,779	4,139	10,426	14,589	+ 39.9
Total value at current prices (R'000)	4,260	8,950	5,066	13,559	21,138	+ 55.9
Flats and townhouses						
Number of flats and townhouses	6	68	26	65	174	+ 167.7
Total square metres	960	7,210	1,700	9,574	16,789	+ 75.4
Total value at current prices (R'000)	1,920	11,000	2,519	15,389	25,819	+ 67.8
Other residential buildings ^{1/}						
Total square metres	0	2,683	0	0	2,683	..
Total value at current prices (R'000)	0	7,000	0	0	7,000	..
Total value of residential buildings at current prices (R'000)	10,194	29,305	9,346	40,557	60,086	+ 48.2
Non-residential buildings						
Office and banking space						
Total square metres	321	0	0	12,809	7,267	-43.3
Total value at current prices (R'000)	400	0	0	25,200	14,000	-44.4
Shopping space						
Total square metres	0	0	7,429	0	7,429	..
Total value at current prices (R'000)	0	0	16,000	0	16,000	..
Industrial and warehouse space						
Total square metres	0	0	0	80	867	+ 983.8
Total value at current prices (R'000)	0	0	0	112	694	+ 519.6
Other non-residential space ^{2/}						
Total square metres	850	0	0	850	0	..
Total value at current prices (R'000)	1,500	0	0	1,500	0	..
Total value of non-residential buildings at current prices (R'000)	1,900	0	16,000	26,812	30,694	+ 14.5
Additions and alterations						
Dwelling-houses						
Total square metres	2,683	5,380	3,530	8,210	13,411	+ 63.3
Total value at current prices (R'000)	3,432	6,386	4,271	10,109	15,960	+ 57.9
Other buildings ^{3/}						
Total square metres	535	1,343	357	1,205	3,457	+ 186.9
Total value at current prices (R'000)	1,438	2,241	1,060	2,615	6,534	+ 149.9
Total value of additions and alterations at current prices (R'000)	4,870	8,627	5,331	12,724	22,494	+ 76.8
Total value of building plans passed at current prices (R'000)	16,964	37,932	30,677	80,093	113,274	+ 41.4

1/ Other residential buildings include institutions for the disabled, boarding houses, old people's homes, hostels, hotels, motels, guest houses, holiday chalets, entertainment centres, bed-and-breakfast accommodation and casinos.

2/ Other non-residential space includes churches, sport and recreation clubs, schools, crèches, hospitals and all other non-residential space.

3/ Other buildings include additions and alterations to other residential buildings, non-residential buildings and internal alterations.

Table 35 - Buildings completed according to type of building and selected urban area: Cape Town

Type of building	March 2001	February 2002	March 2002	January 2001 to March 2001	January 2002 to March 2002	Percentage change between January 2001 to March 2001 and January 2002 to March 2002
Residential buildings						
Dwelling-houses smaller than 80 square metres						
Number of dwelling-houses	327	519	340	1,085	1,664	+ 53.4
Total square metres	11,246	18,336	11,793	37,630	59,272	+ 57.5
Total value at current prices (R'000)	12,400	19,977	12,799	46,115	68,146	+ 47.8
Dwelling-houses equal to or larger than 80 square metres						
Number of dwelling-houses	111	156	207	406	570	+ 40.4
Total square metres	22,773	32,662	37,719	79,187	108,242	+ 36.7
Total value at current prices (R'000)	30,600	47,861	53,478	107,272	159,607	+ 48.8
Flats and townhouses						
Number of flats and townhouses	16	76	62	225	280	+ 24.4
Total square metres	2,010	7,826	7,998	21,867	47,159	+ 115.7
Total value at current prices (R'000)	2,818	11,869	12,027	30,593	84,604	+ 176.5
Other residential buildings ^{1/}						
Total square metres	0	335	0	16,618	543	- 96.7
Total value at current prices (R'000)	0	501	0	12,524	793	- 93.7
Total value of residential buildings at current prices (R'000)	45,818	80,208	78,304	196,504	313,150	+ 59.4
Non-residential buildings						
Office and banking space						
Total square metres	2,796	8,979	3,353	35,568	16,468	- 53.7
Total value at current prices (R'000)	3,571	13,469	7,025	74,979	25,094	- 66.5
Shopping space						
Total square metres	1,523	0	0	6,547	19,509	+ 198.0
Total value at current prices (R'000)	1,550	0	0	10,310	21,322	+ 106.8
Industrial and warehouse space						
Total square metres	5,252	4,270	4,779	19,227	13,761	- 28.4
Total value at current prices (R'000)	6,500	4,270	4,933	23,214	13,270	- 42.8
Other non-residential space ^{2/}						
Total square metres	2,907	3,867	1,726	6,417	5,593	- 12.8
Total value at current prices (R'000)	4,473	5,622	2,742	10,420	8,364	- 19.7
Total value of non-residential buildings at current prices (R'000)	16,094	23,361	14,700	118,923	68,050	- 42.8
Additions and alterations						
Dwelling-houses						
Total square metres	29,748	28,515	19,457	82,708	68,632	- 17.0
Total value at current prices (R'000)	34,934	35,860	23,679	93,250	85,166	- 8.7
Other buildings ^{3/}						
Total square metres	8,565	8,257	2,591	34,567	15,234	- 55.9
Total value at current prices (R'000)	73,298	11,259	7,951	144,217	26,938	- 81.3
Total value of additions and alterations at current prices (R'000)	108,232	47,119	31,630	237,467	112,104	- 52.8
Total value of buildings completed at current prices (R'000)	170,144	150,688	124,634	552,894	493,304	- 10.8

1/ Other residential buildings include institutions for the disabled, boarding houses, old people's homes, hostels, hotels, motels, guest houses, holiday chalets, entertainment centres, bed-and-breakfast accommodation and casinos.

2/ Other non-residential space includes churches, sport and recreation clubs, schools, crèches, hospitals and all other non-residential space.

3/ Other buildings include additions and alterations to other residential buildings, non-residential buildings and internal alterations.

Table 36 - Buildings completed according to type of building and selected urban area: Port Elizabeth

Type of building	March 2001	February 2002	March 2002	January 2001 to March 2001	January 2002 to March 2002	Percentage change between January 2001 to March 2001 and January 2002 to March 2002
Residential buildings						
Dwelling-houses smaller than 80 square metres						
Number of dwelling-houses	127	13	94	301	285	- 5.3
Total square metres	5,269	673	4,070	12,548	12,293	- 2.0
Total value at current prices (R'000)	6,712	882	5,248	16,162	15,847	- 1.9
Dwelling-houses equal to or larger than 80 square metres						
Number of dwelling-houses	19	31	7	80	63	- 21.3
Total square metres	2,626	4,424	774	9,151	9,466	+ 3.4
Total value at current prices (R'000)	3,218	5,928	1,128	11,138	12,301	+ 10.4
Flats and townhouses						
Number of flats and townhouses	0	1	6	13	9	- 30.8
Total square metres	0	117	535	902	1,086	+ 20.4
Total value at current prices (R'000)	0	170	699	1,456	1,477	+ 1.4
Other residential buildings ^{1/}						
Total square metres	0	0	2,744	4,347	2,744	- 36.9
Total value at current prices (R'000)	0	0	3,312	7,000	3,312	- 52.7
Total value of residential buildings at current prices (R'000)	9,930	6,980	10,387	35,756	32,937	- 7.9
Non-residential buildings						
Office and banking space						
Total square metres	0	0	0	0	0	..
Total value at current prices (R'000)	0	0	0	0	0	..
Shopping space						
Total square metres	3,108	0	77	3,460	1,642	- 52.5
Total value at current prices (R'000)	5,004	0	103	5,435	1,629	- 70.0
Industrial and warehouse space						
Total square metres	209	0	0	1,081	478	- 55.8
Total value at current prices (R'000)	303	0	0	1,547	392	-74.7
Other non-residential space ^{2/}						
Total square metres	550	340	491	1,060	2,300	+ 117.0
Total value at current prices (R'000)	605	428	736	710	2,664	+275.2
Total value of non-residential buildings at current prices (R'000)	5,912	428	839	7,692	4,685	- 39.1
Additions and alterations						
Dwelling-houses						
Total square metres	2,325	4,863	6,009	8,952	14,990	+ 67.4
Total value at current prices (R'000)	2,518	5,424	6,329	9,803	16,456	+ 67.9
Other buildings ^{3/}						
Total square metres	2,510	1,281	3,675	5,380	7,431	+ 38.1
Total value at current prices (R'000)	2,432	1,174	4,229	6,244	8,149	+ 30.5
Total value of additions and alterations at current prices (R'000)	4,950	6,598	10,558	16,047	24,605	+ 53.3
Total value of buildings completed at current prices (R'000)	20,792	14,006	21,784	59,495	62,227	+ 4.6

1/ Other residential buildings include institutions for the disabled, boarding houses, old people's homes, hostels, hotels, motels, guest houses, holiday chalets, entertainment centres, bed-and-breakfast accommodation and casinos.

2/ Other non-residential space includes churches, sport and recreation clubs, schools, crèches, hospitals and all other non-residential space.

3/ Other buildings include additions and alterations to other residential buildings, non-residential buildings and internal alterations.

Table 37 - Buildings completed according to type of building and selected urban area: Durban

Type of building	March 2001*	February 2002	March 2002	January 2001 to March 2001	January 2002 to March 2002	Percentage change between January 2001 to March 2001 and January 2002 to March 2002
Residential buildings						
Dwelling-houses smaller than 80 square metres						
Number of dwelling-houses	94	59	155	184	258	+ 40.2
Total square metres	5,359	3,079	6,426	9,726	11,879	+ 22.1
Total value at current prices (R'000)	6,573	3,635	6,935	11,302	13,554	+ 19.9
Dwelling-houses equal to or larger than 80 square metres						
Number of dwelling-houses	74	82	67	233	186	- 20.2
Total square metres	12,554	14,316	12,392	41,249	32,757	- 20.6
Total value at current prices (R'000)	15,020	18,284	14,978	47,443	40,672	- 14.3
Flats and townhouses						
Number of flats and townhouses	245	42	239	315	308	- 2.2
Total square metres	15,597	6,051	15,441	25,324	24,878	- 1.8
Total value at current prices (R'000)	15,765	9,117	16,245	31,364	31,486	+ 0.4
Other residential buildings ^{1/}						
Total square metres	0	0	0	0	0	..
Total value at current prices (R'000)	0	0	0	0	0	..
Total value of residential buildings at current prices (R'000)	37,358	31,036	38,158	90,109	85,712	- 4.9
Non-residential buildings						
Office and banking space						
Total square metres	3,995	9,322	3,995	7,517	13,317	+ 77.2
Total value at current prices (R'000)	9,670	11,350	9,670	15,170	21,020	+ 38.6
Shopping space						
Total square metres	1,663	2,905	1,135	9,165	7,263	- 20.8
Total value at current prices (R'000)	1,978	2,780	1,185	20,081	7,958	- 60.4
Industrial and warehouse space						
Total square metres	9,443	16,196	5,863	26,448	32,318	+ 22.2
Total value at current prices (R'000)	10,089	13,505	5,889	32,129	30,928	- 3.7
Other non-residential space ^{2/}						
Total square metres	218	3,367	642	3,902	4,475	+ 14.7
Total value at current prices (R'000)	218	6,313	361	4,896	7,140	+ 45.8
Total value of non-residential buildings at current prices (R'000)	21,955	33,948	17,105	72,276	67,046	- 7.2
Additions and alterations						
Dwelling-houses						
Total square metres	22,896	15,287	21,292	63,487	52,044	- 18.0
Total value at current prices (R'000)	25,780	15,458	24,511	71,391	56,192	- 21.3
Other buildings ^{3/}						
Total square metres	11,436	2,750	3,575	17,803	12,117	- 31.9
Total value at current prices (R'000)	20,267	3,453	9,297	34,956	22,730	- 35.0
Total value of additions and alterations at current prices (R'000)	46,047	18,911	33,808	106,347	78,922	- 25.8
Total value of buildings completed at current prices (R'000)	105,360	83,895	89,071	268,732	231,680	- 13.8

1/ Other residential buildings include institutions for the disabled, boarding houses, old people's homes, hostels, hotels, motels, guest houses, holiday chalets, entertainment centres, bed-and-breakfast accommodation and casinos.

2/ Other non-residential space includes churches, sport and recreation clubs, schools, crèches, hospitals and all other non-residential space.

3/ Other buildings include additions and alterations to other residential buildings, non-residential buildings and internal alterations.

Table 38 - Buildings completed according to type of building and selected urban area: Witwatersrand

Type of building	March 2001	February 2002	March 2002	January 2001 to March 2001	January 2002 to March 2002	Percentage change between January 2001 to March 2001 and January 2002 to March 2002
Residential buildings						
Dwelling-houses smaller than 80 square metres						
Number of dwelling-houses	355	556	495	1,311	1,614	+ 23.1
Total square metres	13,832	18,723	17,011	50,673	55,028	+ 8.6
Total value at current prices (R'000)	15,307	14,225	13,234	41,501	43,281	+ 4.3
Dwelling-houses equal to or larger than 80 square metres						
Number of dwelling-houses	235	140	413	622	767	+ 23.3
Total square metres	45,973	33,202	64,165	132,433	151,684	+ 14.5
Total value at current prices (R'000)	64,101	54,690	89,645	184,956	229,910	+ 24.3
Flats and townhouses						
Number of flats and townhouses	161	371	227	649	884	+ 36.2
Total square metres	28,272	40,331	26,974	63,959	95,815	+ 49.8
Total value at current prices (R'000)	56,313	70,953	44,453	106,964	152,989	+ 43.0
Other residential buildings ^{1/}						
Total square metres	0	0	1,740	32,600	1,740	-94.7
Total value at current prices (R'000)	0	0	2,000	250,000	2,000	-99.2
Total value of residential buildings at current prices (R'000)	135,721	139,868	149,332	583,421	428,180	-26.6
Non-residential buildings						
Office and banking space						
Total square metres	17,961	5,681	8,409	111,134	36,985	-66.7
Total value at current prices (R'000)	25,963	11,362	12,649	148,477	63,288	-57.4
Shopping space						
Total square metres	3,062	2,405	795	8,742	5,100	-41.7
Total value at current prices (R'000)	5,058	3,456	1,352	12,890	6,708	-48.0
Industrial and warehouse space						
Total square metres	24,469	5,574	3,764	55,498	24,182	-56.4
Total value at current prices (R'000)	30,159	8,057	6,535	76,833	38,077	-50.4
Other non-residential space ^{2/}						
Total square metres	0	478	4,035	3,254	6,851	+ 110.5
Total value at current prices (R'000)	0	965	6,053	5,444	10,720	+ 96.9
Total value of non-residential buildings at current prices (R'000)	61,180	23,840	26,589	243,644	118,793	-51.2
Additions and alterations						
Dwelling-houses						
Total square metres	18,945	27,115	22,919	70,464	66,246	-6.0
Total value at current prices (R'000)	23,109	35,167	33,630	85,443	91,320	+ 6.9
Other buildings ^{3/}						
Total square metres	10,660	7,605	6,931	33,686	21,636	-35.8
Total value at current prices (R'000)	21,598	13,300	12,677	54,848	36,813	-32.9
Total value of additions and alterations at current prices (R'000)	44,707	48,467	46,307	140,291	128,133	-8.7
Total value of buildings completed at current prices (R'000)	241,608	212,175	222,228	967,356	675,106	-30.2

1/ Other residential buildings include institutions for the disabled, boarding houses, old people's homes, hostels, hotels, motels, guest houses, holiday chalets, entertainment centres, bed-and-breakfast accommodation and casinos.

2/ Other non-residential space includes churches, sport and recreation clubs, schools, crèches, hospitals and all other non-residential space.

3/ Other buildings include additions and alterations to other residential buildings, non-residential buildings and internal alterations.

Table 39 - Buildings completed according to type of building and selected urban area: Pretoria

Type of building	March 2001*	February 2002	March 2002	January 2001 to March 2001	January 2002 to March 2002	Percentage change between January 2001 to March 2001 and January 2002 to March 2002
Residential buildings						
Dwelling-houses smaller than 80 square metres						
Number of dwelling-houses	63	26	30	107	79	- 26.2
Total square metres	2,791	1,108	1,655	4,938	4,040	- 18.2
Total value at current prices (R'000)	3,051	1,496	2,416	5,470	5,735	+ 4.8
Dwelling-houses equal to or larger than 80 square metres						
Number of dwelling-houses	112	34	53	246	196	- 20.3
Total square metres	31,410	8,650	16,810	66,157	55,338	- 16.4
Total value at current prices (R'000)	44,299	12,924	20,927	89,839	76,114	- 15.3
Flats and townhouses						
Number of flats and townhouses	351	425	38	474	906	+ 91.1
Total square metres	31,248	29,957	7,023	43,611	77,830	+ 78.5
Total value at current prices (R'000)	44,505	35,706	11,043	60,336	97,566	+ 61.7
Other residential buildings ^{1/}						
Total square metres	0	0	0	0	0	..
Total value at current prices (R'000)	0	0	0	0	0	..
Total value of residential buildings at current prices (R'000)	91,855	50,126	34,386	155,645	179,415	+ 15.3
Non-residential buildings						
Office and banking space						
Total square metres	0	4,291	5,469	5,143	10,298	+ 100.2
Total value at current prices (R'000)	0	6,430	8,477	6,775	15,714	+ 131.9
Shopping space						
Total square metres	0	0	0	0	0	..
Total value at current prices (R'000)	0	0	0	0	0	..
Industrial and warehouse space						
Total square metres	0	2,484	1,353	2,344	4,991	+ 112.9
Total value at current prices (R'000)	0	4,133	2,030	3,516	7,894	+ 124.5
Other non-residential space ^{2/}						
Total square metres	1,077	1,385	305	1,740	1,690	- 2.9
Total value at current prices (R'000)	1,200	1,562	397	2,858	1,959	- 31.5
Total value of non-residential buildings at current prices (R'000)	1,200	12,125	10,904	13,149	25,567	+ 94.4
Additions and alterations						
Dwelling-houses						
Total square metres	1,184	2,406	1,251	3,446	5,226	+ 51.7
Total value at current prices (R'000)	1,550	3,782	1,506	4,245	7,452	+ 75.5
Other buildings ^{3/}						
Total square metres	59	540	80	805	1,910	+ 137.3
Total value at current prices (R'000)	89	971	106	1,334	3,013	+ 125.9
Total value of additions and alterations at current prices (R'000)	1,639	4,753	1,612	5,579	10,465	+ 87.6
Total value of buildings completed at current prices (R'000)	94,694	67,004	46,902	174,373	215,447	+ 23.6

1/ Other residential buildings include institutions for the disabled, boarding houses, old people's homes, hostels, hotels, motels, guest houses, holiday chalets, entertainment centres, bed-and-breakfast accommodation and casinos.

2/ Other non-residential space includes churches, sport and recreation clubs, schools, crèches, hospitals and all other non-residential space.

3/ Other buildings include additions and alterations to other residential buildings, non-residential buildings and internal alterations.

Table 40 - Buildings completed according to type of building and selected urban area: Bloemfontein

Type of building	March 2001	February 2002	March 2002	January 2001 to March 2001	January 2002 to March 2002	Percentage change between January 2001 to March 2001 and January 2002 to March 2002
Residential buildings						
Dwelling-houses smaller than 80 square metres						
Number of dwelling-houses	8	65	48	30	134	+ 346.7
Total square metres	415	2,865	2,095	1,525	6,160	+ 303.9
Total value at current prices (R'000)	490	1,521	998	1,840	3,881	+ 110.9
Dwelling-houses equal to or larger than 80 square metres						
Number of dwelling-houses	14	12	24	56	53	- 5.4
Total square metres	2,557	2,065	3,871	11,632	9,479	- 18.5
Total value at current prices (R'000)	2,891	2,550	4,836	13,923	11,513	- 17.3
Flats and townhouses						
Number of flats and townhouses	16	18	0	53	30	- 43.4
Total square metres	1,397	1,507	0	4,675	2,892	- 38.1
Total value at current prices (R'000)	1,956	3,014	0	6,769	5,444	- 19.6
Other residential buildings ^{1/}						
Total square metres	0	0	0	151	1,428	+ 845.7
Total value at current prices (R'000)	0	0	0	211	1,461	+ 592.4
Total value of residential buildings at current prices (R'000)	5,337	7,085	5,834	22,743	22,299	- 2.0
Non-residential buildings						
Office and banking space						
Total square metres	0	0	0	302	2,008	+ 564.9
Total value at current prices (R'000)	0	0	0	483	3,800	+ 686.7
Shopping space						
Total square metres	0	0	710	2,050	1,340	- 34.6
Total value at current prices (R'000)	0	0	2,000	2,000	2,500	+ 25.0
Industrial and warehouse space						
Total square metres	0	284	0	2,878	2,842	- 1.3
Total value at current prices (R'000)	0	180	0	1,977	2,280	+ 15.3
Other non-residential space ^{2/}						
Total square metres	0	0	0	140	0	..
Total value at current prices (R'000)	0	0	0	170	0	..
Total value of non-residential buildings at current prices (R'000)	0	180	2,000	4,630	8,580	+ 85.3
Additions and alterations						
Dwelling-houses						
Total square metres	3,179	4,870	2,930	12,783	16,952	+ 32.6
Total value at current prices (R'000)	3,291	5,352	3,136	13,183	19,101	+ 44.9
Other buildings ^{3/}						
Total square metres	95	1,448	1,057	1,758	3,933	+ 123.7
Total value at current prices (R'000)	49	2,399	614	2,680	7,665	+ 186.0
Total value of additions and alterations at current prices (R'000)	3,340	7,751	3,750	15,863	26,766	+ 68.7
Total value of buildings completed at current prices (R'000)	8,677	15,016	11,584	43,236	57,645	+ 33.3

1/ Other residential buildings include institutions for the disabled, boarding houses, old people's homes, hostels, hotels, motels, guest houses, holiday chalets, entertainment centres, bed-and-breakfast accommodation and casinos.

2/ Other non-residential space includes churches, sport and recreation clubs, schools, crèches, hospitals and all other non-residential space.

3/ Other buildings include additions and alterations to other residential buildings, non-residential buildings and internal alterations.

Additional information

Explanatory Notes

Introduction	<ol style="list-style-type: none"> 1 Statistics South Africa (Stats SA) conducts a monthly Building Statistics Survey collecting information regarding building plans approved and buildings completed, financed by the private sector, from a sample of local government institutions in South Africa. This statistical release contains information of building plans passed and buildings completed in respect of residential buildings, non-residential buildings and additions and alterations according to province and selected urban areas. 2 In order to improve timeliness of the publication, some information for the current month have been estimated due to late submission by respondents. These estimates will be revised in the next statistical release(s) as soon as actual information is available. 3 The actual and seasonally adjusted values (at current and at constant 1995 prices) and the percentage change of building plans passed and buildings completed according to type of building are reflected monthly from January 2000 in this statistical release (cf. tables 1 to 8).
Scope of the survey	<ol style="list-style-type: none"> 4 This survey covers local government institutions conducting activities for the private sector regarding - <ul style="list-style-type: none"> • approval of building plans; and • final inspection of completed buildings.
Classification	<ol style="list-style-type: none"> 5 The 1993 edition of the Standard Industrial Classification of all Economic Activities, (SIC) Fifth Edition, Report No. 09-90-02, was used to classify the statistical units. The SIC is based on the 1990 International Standard Industrial Classification of all Economic Activities (ISIC) with suitable adaptations for local conditions. 6 The twelfth and last published edition of the Standard Code List of Areas, Report No. 09-09-03 (1994) was used to classify the statistical units according to province. The cities, towns and non-urban areas listed in this report are codified within magisterial district and province. The code list was compiled by Stats SA in collaboration with other interested bodies and the first edition was distributed in June 1977.
Statistical unit	<ol style="list-style-type: none"> 7 The statistical unit for the collection of information is a local government institution. Local government institutions include municipalities, city councils, metropolitan councils, district councils, transitional councils and development and services boards.
Survey methodology and design	<ol style="list-style-type: none"> 8 The sample for the monthly Building Statistics Survey consists of the largest local government institutions in South Africa, i.e. those that account for approximately 85% of the total rand value of buildings completed by the private sector. 9 The survey is collected by mail each month from a sample of 135 local government institutions.
Constant prices	<ol style="list-style-type: none"> 10 The value of building plans passed and buildings completed at constant prices measure the building activities in terms of ruling prices in a specific base year which is currently 1995. 11 The value of building plans passed at constant prices for each month is obtained by deflating the values at current prices with a price index known as the “lump sum domestic buildings” as published in statistical release P0151 – JBCC Contract Price Adjustment Provisions Work Group Indices. In order to be applicable, these indices (base February 1991=100) are converted to the base year 1995=100.

- 12** The value of buildings completed at constant prices is obtained by deflating the values at current prices with the same price index which is used to calculate building plans passed at constant prices (cf. paragraph 11). The value of buildings completed is reported as at the time the plans were passed. Since the completion of buildings may extend over a few months to a few years, the current value of buildings completed is deflated by price indices as at the time the plans were passed in order to calculate the value of buildings completed at the time the plans were passed. Therefore, the duration of the completion of different types of buildings are taken into account in ascertaining the deflators e.g. the value of dwelling-houses completed at constant prices at January 2000 is obtained by deflating the current value of dwelling-houses completed for January 2000 with the price index of a month six months prior to January 2000. Furthermore, the value of other residential buildings, non-residential buildings and additions and alterations at constant prices is obtained by deflating the current values with price indices of 12 months, 18 months and 12 months prior to the relevant month, respectively.
- Seasonal adjustment**
- 13** Seasonally adjusted estimates of building plans passed and buildings completed are generated each month, using the X-11 Seasonal Adjustment Program developed by US Bureau of the Census Economic Research and Analyses Division, 1968.
- 14** Seasonal adjustment is a means of removing the estimated effects of normal seasonal variation from the series so that the effects of other influences on the series can be more clearly recognised. Seasonal adjustment does not aim to remove irregular or non-seasonal influences which may be present in any particular month. Influences that are volatile or unsystematic can still make it difficult to interpret the movement of the series even after adjustment for seasonal variations. Therefore, the month-to-month movements of seasonally adjusted estimates may not be reliable indicators of trend behaviour.
- Trend cycle**
- 15** The trend is a long-term pattern or movement of a time series. The X-11 Seasonal Adjustment Program is used for smoothing seasonally adjusted data.
- Related publications**
- 16** Users may also wish to refer to the following publications:
- P5041.3 – Building statistics issued annually.
 - P9101.2 – Actual and expected expenditure on construction by the public sector per statistical region issued annually.
 - Bulletin of Statistics issued quarterly.
 - South African Statistics issued annually.
- Unpublished statistics**
- 17** In some cases Stats SA can also make available statistics which are not published. The statistics can be made available in one or more of the following ways: computer printouts, CD and diskette. Generally a charge is made for providing unpublished statistics.
- Rounding-off of figures**
- 18** The figures in the tables have, where necessary, been rounded off to the nearest digit shown. There may, therefore, be slight discrepancies between the sums of the constituent items and the totals shown.
- Pre-release policy**
- 19** Stats SA has adopted the confidential pre-release policy in respect of selected economic indicators and specific government departments. The policy accords with practice among leading statistical agencies. The statistical integrity of the information and strict observance of the release time has been assured by the following procedure:
- 20** In respect of this statistical release, an official representative from the Office of the President, the Department of Trade and Industry (DTI), National Treasury and the South African Reserve Bank (SARB) will receive a copy of the release on a strictly confidential basis two hours in advance of the public issue.
- 21** Stats SA pre-release policy may be inspected at its Website, www.statssa.gov.za

Symbols and abbreviations

..	no meaningful percentage change between two specified periods available since either one or both of the totals are nil
0	nil or figure too small to publish
*	revised
Stats SA	Statistics South Africa
SIC	Standard Industrial Classification of all Economic Activities
ISIC	International Standard Industrial Classification of all Economic Activities
JBCC	Joint Building Contracts Committee
CD	Compact Disc
US	United States
SARB	South African Reserve Bank
DTI	Department of Trade and Industry

Technical notes**Response rate**

The response rate for March 2002 is 99,2%.

Local government institutions covered in the sample survey

Local government institutions according to province

Western Cape	Blaauwberg (includes Milnerton), Brackenfell, Breede River District Council, Cape Town, City of Tygerberg (Bellville, Durbanville, Goodwood, Lingeletu West, Parow and South Administration), Fish Hoek, George (includes Pacaltsdorp, Thembaletu and Herolds Bay), Gordon's Bay, Hangklip-Kleinmond (includes Kleinmond, Betty's Bay and Rooi-Els), Hermanus (includes Onrus River, Zwelihle, Sandbaai, Vermont, Hawston and Fisher Haven), Ikapa, Klein-Karoo District Council, Knysna (includes Khayaletu), Kuils River, Malmesbury, Mossel Bay (includes Boggom's Bay, Kleinbrak, Rheeboek and Tergniet), Oostenberg (Kraaifontein and Melton Rose - Blue Downs), Oudtshoorn, Overberg District Council, Paarl, Plettenberg Bay, Sedgefield, Simon's Town, Somerset West, South Peninsula, Stellenbosch, Strand, Wellington, West Coast District Council, Western Coast Peninsula (previously Vredenburg-Saldanha), Winelands District Council and Worcester.
Eastern Cape	Aliwal-Maletswai (includes Dukathole), Despatch, East London (includes Beacon Bay, Gompo Town, Gonubie and Mdantsane), Grahamstown (includes Rhini Township), Jeffrey's Bay, King William's Town (includes Bisho and Zwelitsha), Port Alfred, Port Elizabeth (includes Ibhayi and Motherwell), Uitenhage (includes KwaNobuhle), Umtata and Western District Council.
Northern Cape	Benede-Oranje District Council, Keimoes, Kimberley (including Galeshewe), Kuruman, Namaqualand District Council and Upington (includes Paballelo).
Free State	Allanridge, Bethlehem (includes Bohlokong), Bloemfontein (includes Bainsvlei, Bloemspruit and Mangaung), Botshabelo, Deneysville (includes Refengkgotso), Harrismith (includes Tsiamé), Kroonstad (includes Maokeng), Ladybrand (includes Manyatseng), Odendaalsrus (includes Kutlwanong), Parys, Phuthaditjhaba, Sasolburg (includes Zamdela), Virginia (includes Meloding) and Welkom (includes Thabong).
KwaZulu-Natal	Development and Services Board - Inland, Development and Services Board – North Coast, Dolphin Coast Borough (includes Ballito, Etete, Shakaskraal, Tinley Manor Beach and Umhlali Beach), Durban, Edendale, Empangeni (includes Ngwelezana), Hilton, Howick, Inner West City Council (includes Clermont, KwaDabeka, KwaNdengezi, New Germany, Pinetown, Queensburgh, Reservoir Hills, Shallcross and Westville), Kokstad, Kwa-Dukuza/Stanger (includes Blythedale Beach, Shakaville and Stanger), KwaMashu, Ladysmith (includes Emnambithi), Margate (includes Uvongo), Mpenjati/Southbroom (includes Southbroom, Marina Beach, San Lameer and Trafalgar), Newcastle (includes Madadeni, Osizweni and Blaauwboschlaagte), North Local Council - Tongaat (includes Canelands and Hambanati), North Local Council - Umhlanga Rocks (includes Mount Edgecombe and Umdloti Beach), North Local Council - Verulam, Outer West Local Council (includes Assagay, Botha's Hill, Cato Ridge, Drummond, Everton, Gillitts, Hillcrest, Inchanga, Kloof, Mpumalanga and Waterfall), Pennington, Pietermaritzburg/Msundini, Port Shepstone, Richards Bay, South Local Council (includes Amanzimtoti, Isipingo, Kingsburgh, KwaMakuta and Umbogintwini), Umlazi and Umtamvuna/Port Edward (includes Munster, Port Edward and Palm Beach).
North West	Bophirima District Council, Brits (includes Lethabile), Ga-Rankuwa, Klerksdorp, Lichtenburg, Mmabatho, Orkney (includes Kanana), Potchefstroom, Rustenburg, Vryburg and Zeerust.

Gauteng

Akasia (includes Elandsdoorn, Klipfontein, Kruisfontein and Soshanguve), Alberton (includes Tokoza), Benoni (includes Daveyton and Wattville), Boksburg (includes Vosloorus), Brakpan (includes Tsakane), Bronkhorst-spruit, Carletonville (includes Khutsong), Centurion, Duduza, Eastern Services Council - Pretoria Area, Edenvale-Modderfontein, Germiston (includes Bedfordview and Katlehong), Greater Johannesburg - Eastern Metropolitan Local Council (includes Alexandra and Sandton), Greater Johannesburg - Northern Metropolitan Local Council (includes Randburg), Greater Johannesburg - Southern Metropolitan Local Council (includes Ennerdale, Lenasia and Johannesburg), Greater Johannesburg - Western Metropolitan Local Council (includes Diepmeadow, Dobsonville and Roodepoort), Heidelberg (includes Ratanda), Kempton Park (includes Tembisa), Krugersdorp (includes Kagiso and Munsieville), Meyerton, Midrand (includes Rabie Ridge and Ivory Park), Nigel, Pretoria (includes Atteridgeville and Mamelodi), Randfontein (includes Mohlakeng), Sebokeng (includes Boipatong, Bophelong and Sharpeville), Soweto, Springs (includes KwaThema), Vanderbijlpark, Vereeniging (includes Evaton), Western Services Council and Westonaria (includes Bekkersdal).

Mpumalanga

Delmas (includes Botleng), Eastvaal District Council, Ermelo (includes Wesselton and Cassim Park), Highveld District Council, Highveldridge Transitional Council (includes Evander, Embalenhle and Secunda), Komatipoort (includes Kamaqhekeza), KwaGuqa, KwaMhlanga, Malelane (includes Hectorspruit and Kamhlushwa), Middelburg (includes Mhluzi), Nelspruit (includes Kanyamazane and Lowveld Escarpment District Council as from January 2001), White River and Witbank.

Northern Province

Bosveld District Council, Giyani, Letaba (includes Nkowakowa and Tzaneen), Messina, Naboomspruit (includes Mookgophong), Nylstroom, Pietersburg-Polokwane (includes Seshego), Potgietersrus and Thabazimbi.

Local government institutions according to selected urban areas**Cape Town**

Blaauwberg (includes Milnerton), Cape Town, City of Tygerberg (Bellville, Durbanville, Goodwood, Lingeletu West, Parow and South Administration), Fish Hoek, Ikapa, Oostenberg (Kraaifontein and Melton Rose - Blue Downs), Simon's Town and South Peninsula.

Port Elizabeth

Despatch, Port Elizabeth (including Ibhayi and Motherwell) and Uitenhage (including KwaNobuhle)

Durban

Durban, Inner West City Council (includes Clermont, KwaDabeka, KwaNdengezi, New Germany, Pinetown, Queenstown, Reservoir Hills, Shallcross and Westville), North Local Council - Verulam, Outer West Local Council (includes Assagay, Botha's Hill, Cato Ridge, Drummond, Everton, Gillitts, Hillcrest, Inchanga, Kloof, Mpumalanga and Waterfall) and South Local Council (includes Amanzimtoti, Isipingo, Kingsburgh, KwaMakuta and Umbogintwini).

Witwatersrand

Alberton (includes Thokoza), Benoni (includes Daveyton and Wattville), Boksburg (includes Vosloorus), Brakpan (includes Tsakane), Carletonville (includes Khutsong), Duduza, Edenvale-Modderfontein, Germiston (includes Bedfordview and Katlehong), Greater Johannesburg - Eastern Metropolitan Local Council (includes Alexandra and Sandton), Greater Johannesburg - Northern Metropolitan Local Council (includes Randburg), Greater Johannesburg - Southern Metropolitan Local Council (includes Ennerdale, Lenasia and Johannesburg), Greater Johannesburg - Western Metropolitan Local Council (includes Diepmeadow, Dobsonville and Roodepoort), Kempton Park (includes Tembisa), Krugersdorp (includes Kagiso and Munsieville), Midrand (includes Rabie Ridge and Ivory Park), Nigel, Randfontein (includes Mohlakeng), Soweto, Springs (includes KwaThema) and Westonaria (includes Bekkersdal).

Pretoria

Akasia (includes Elandsdoorn, Klipfontein and Soshanguve), Centurion, Eastern Services Council - Pretoria area and Pretoria (includes Atteridgeville and Mamelodi).

Bloemfontein

Bloemfontein (includes Bainsvlei, Bloemspruit and Mangaung).

Glossary

Additions and alterations	Additions and alterations include extensions to existing buildings as well as internal and external alterations of existing buildings.
Blocks of flats	Blocks of flats are regarded as high-density housing consisting of a number of self-contained dwelling-units with at least one living-room together with a kitchen and bathroom conjoined to similar units in one building.
Dwelling-house	A dwelling-house refers to a free-standing, complete structure on a separate stand or a self-contained dwelling-unit, granny flat, on the same premises as an existing residence. Out-buildings and garages are included.
Local government institutions	A local government institution is a generic term referring to any number of institutions involved in the local sphere of government. Local government institutions consist of municipalities, city councils, metropolitan councils, district councils, transitional local councils and development and services boards.
Non-residential buildings	Non-residential buildings comprise factories, commercial, financial and other office buildings, as well as other buildings not used for residential purposes, such as churches, halls, clubs, schools and hospitals.
Other residential buildings	Other residential buildings include institutions for the disabled, boarding houses, old people's homes, hostels, hotels, motels, guest houses, holiday chalets, bed-and-breakfast accommodation, entertainment centres and casinos.
Percentage change	<p>When using monthly actual values, the percentage change is the change in actual values of building activities (building plans passed or buildings completed) of the relevant month compared with the actual values of building activities (building plans passed or buildings completed) of the same month in the previous year expressed as a percentage.</p> <p>When using annual actual values, the percentage change is the change in the actual values of building activities (building plans passed or buildings completed) of the relevant year compared with the actual values of building activities (building plans passed or buildings completed) of the previous year expressed as a percentage.</p> <p>When using seasonally adjusted values, the percentage change is the change in the seasonally adjusted values of building activities (building plans passed or buildings completed) of the relevant month compared with the seasonally adjusted values of building activities (building plans passed or buildings completed) of the previous month expressed as a percentage.</p>
Reference period	Reference period is one calendar month.
Residential buildings	Residential buildings comprise dwelling-houses, flats, townhouses and other residential buildings.
Townhouses	Townhouses are multiple, medium-density dwelling-units and include cluster housing, group housing, simplexes, duplexes, triplexes and other similar dwelling-units which are usually grouped together, with one level of each unit on ground level. This excludes blocks of flats.

For more information

Stats SA publishes approximately 300 different statistical releases each year. It is not economically viable to produce them in more than one of South Africa's eleven official languages. Since the releases are used extensively, not only locally but also by international economic and social-scientific communities, Stats SA releases are published in English only.

Stats SA has copyright on this publication. Users may apply the information as they wish, provided that they acknowledge Stats SA as the source of the basic data wherever they process, apply, utilise, publish or distribute the data and also that they specify that the relevant application and analysis (where applicable) result from their own processing of the data.

Stats SA products

A complete set of Stats SA publications is available at the Stats SA Library and the following libraries:

National Library of South Africa, Pretoria Division
National Library of South Africa, Cape Town Division
Natal Society Library, Pietermaritzburg
Library of Parliament, Cape Town
Bloemfontein Public Library
Johannesburg Public Library
Eastern Cape Library Services, King William's Town
Central Regional Library, Pietersburg
Central Reference Library, Nelspruit
Central Reference Collection, Kimberley
Central Reference Library, Mmabatho

Stats SA also provides a subscription service.

Electronic services

A large range of data are available via on-line services, diskette, CD and computer printouts. For more details about our electronic data services, contact (012) 310 8600/8095/8390/8351

You can visit us on the Internet at: <http://www.statssa.gov.za>

Enquiries

Telephone number: (012) 310 8600/8095/8390/8351 (user enquiries)
(012) 310 8228/310 8007 (technical enquiries)
(012) 310 8161 (publications)
(012) 310 8490 (library)

Fax number: (012) 310 8182

e-mail: Corrieb@statssa.pwv.gov.za
Gretaz@statssa.pwv.gov.za

Postal address: Private Bag X44, Pretoria, 0001