

# **Building statistics**

**March 2001**

Co-operation between Statistics South Africa (Stats SA), the citizens of the country, the private sector and government institutions is essential for a successful statistical system. Without continued co-operation and goodwill, the timely release of relevant and reliable official statistics will not be possible.

**Embargo: 13:00  
Date: 16 May 2001**

Stats SA publishes approximately three hundred different releases each year. It is not economically viable to produce them in more than one of South Africa's eleven official languages. Since the releases are used extensively, not only locally, but also by international economic and social-scientific communities, Stats SA releases are published in English only.

### Key figures regarding building plans passed for the month ended March 2001

Actual estimates at constant 1995 prices	March 2001	January 2001 to March 2001	Percentage change between March 2000 and March 2001	Percentage change between January 2000 to March 2000 and January 2001 to March 2001
	R million	R million		
Residential buildings				
Dwelling-houses	531,0	1 402,7	+ 15,8	+ 15,0
Flats and townhouses	139,0	322,5	+ 30,7	+ 15,7
Other residential buildings	0,0	42,0	..	- 34,0
<b>Total</b>	<b>670,0</b>	<b>1 767,2</b>	<b>+ 17,5</b>	<b>+ 13,1</b>
Non-residential buildings	198,9	752,3	- 27,4	- 3,0
Additions and alterations	308,8	897,1	- 12,3	- 3,6
<b>Total</b>	<b>1 177,7</b>	<b>3 416,6</b>	<b>- 1,5</b>	<b>+ 4,5</b>

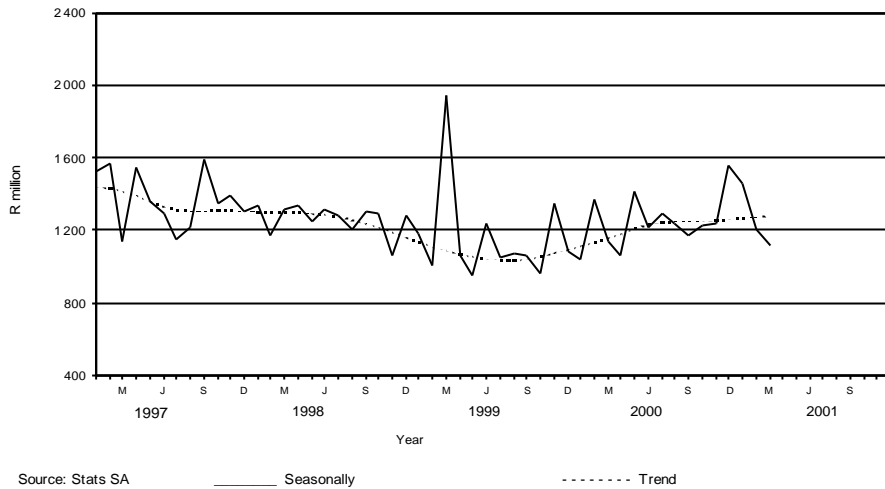
Seasonally adjusted estimates at constant 1995 prices	March 2001	Percentage change between February 2001 and March 2001	Percentage change between October 2000 to December 2000 and January 2001 to March 2001
	R million		
Residential buildings	616,9	+ 2,3	+ 4,8
Non-residential buildings	194,9	- 21,8	- 28,3
Additions and alterations	299,8	- 15,9	+ 3,1
<b>Total</b>	<b>1 111,6</b>	<b>- 8,0</b>	<b>- 6,0</b>

### Key findings regarding building plans passed for the first quarter of 2001

#### Seasonally adjusted real value of building plans passed decreases

*The seasonally adjusted real value of building plans passed (at constant 1995 prices) for the first quarter of 2001 decreased by 6,0% compared with the fourth quarter of 2000.*

The decrease of 6,0% in the seasonally adjusted real value of building plans passed was due to a decrease in the seasonally adjusted real value of building plans passed for non-residential buildings (-28,3%) during the first quarter of 2001 compared with the fourth quarter of 2000. However, increases in the seasonally adjusted real value were reported for residential buildings (+4,8%) and additions and alterations (+3,1%) during the above-mentioned period.

**Figure 1 - Total real value of building plans passed**

### **Key findings regarding building plans passed for the first quarter of 2001**

#### ***Total real value of building plans passed increases***

*The total real value of building plans passed (at constant 1995 prices) during the first quarter of 2001 increased by 4,5% (+R148,4 million) to R3 416,6 million compared with the first quarter of 2000. Large real increases were reported for dwelling-houses (+15,0% or R182,9 million, mainly due to increases reported by Gauteng (+R112,8 million) and Western Cape (+R62,7 million)); and flats and townhouses (+15,7% or R43,7 million, mainly due to increases reported by Gauteng (+R36,5 million)).*

#### **Five of the nine provinces reported increases in the total real value of building plans passed**

The largest provincial contributors to the increase of 4,5% (+R148,4 million) in the total real value of building plans passed during the first quarter of 2001 compared with the first quarter of 2000 were Gauteng (+3,2 percentage points or R103,7 million) and KwaZulu-Natal (+1,9 percentage points or R62,2 million) (cf. table A). The largest real increases in Gauteng were reported for dwelling-houses (+R112,8 million, mainly due to increases reported by the selected urban areas of the Witwatersrand (+R67,1 million), Vereeniging (+R24,3 million) and Pretoria (+R23,8 million)); and flats and townhouses (+R36,5 million, mainly due to increases reported by the selected urban areas of the Witwatersrand (+R21,1 million) and Pretoria (+R12,2 million)). KwaZulu-Natal reported a large increase in the value of building plans passed for non-residential buildings (+R50,8 million, mainly due to the approval of building plans for office and banking space to the real value of R73,0 million by North Local Council – Umhlanga Rocks during January 2001).

**Table A - Contribution of provinces to the total real value of building plans passed**

Province	Percentage contribution to the total real value of plans passed during January 2000 to March 2000	Percentage change between January 2000 to March 2000 and January 2001 to March 2001	Contribution (percentage points) <sup>1/</sup> to the percentage change in the real value of plans passed between January 2000 to March 2000 and January 2001 to March 2001	Difference in total real value of plans passed between January 2000 to March 2000 and January 2001 to March 2001  R million
Gauteng	40,7	+ 7,8	+ 3,2	+ 103,7
KwaZulu-Natal	11,7	+ 16,2	+ 1,9	+ 62,2
Eastern Cape	5,9	+ 8,2	+ 0,5	+ 15,7
Mpumalanga	3,2	+ 4,8	+ 0,2	+ 5,0
North West	2,7	+ 3,0	+ 0,1	+ 2,6
Free State	2,8	- 1,6	- 0,1	- 1,4
Western Cape	29,7	- 0,1	- 0,1	- 1,4
Northern Province	2,0	- 22,4	- 0,5	- 14,6
Northern Cape	1,3	- 54,1	- 0,7	- 23,4
<b>Total</b>	<b>100,0</b>	<b>+ 4,5</b>	<b>+ 4,5</b>	<b>+ 148,4</b>

1/ The contribution (percentage points) is calculated by multiplying the percentage change of each province with the percentage contribution of the corresponding province.

#### **Total real value of residential building plans passed increases**

The total real value of residential building plans passed during the first quarter of 2001 increased by 13,1% (+R205,0 million) to R1 767,2 million compared with the first quarter of 2000. Increases were reported by six of the nine provinces. The largest increase in the total real value of residential building plans passed was reported by Gauteng (+R151,1 million, mainly due to the increase in the real value of plans passed for dwelling-houses (+R112,8 million)); followed by KwaZulu-Natal (+R26,7 million), Eastern Cape (+R25,3 million), North West (+R12,7 million) and Mpumalanga (+R10,3 million). Increases in the real value of residential building plans passed were reported for dwelling-houses (+R182,9 million) and flats and townhouses (+R43,7 million), while the real value of building plans passed for other residential buildings decreased by R21,6 million during the above-mentioned period.

#### **Total real value of dwelling-house plans passed increases**

The total real value of dwelling-house plans passed during the first quarter of 2001 increased by 15,0% (+R182,9 million) to R1 402,7 million compared with the first quarter of 2000. Increases were reported by seven of the nine provinces. The largest increase in the real value of dwelling-house plans passed was reported by Gauteng (+R112,8 million), followed by Western Cape (+R62,7 million), KwaZulu-Natal (+R11,6 million) and Mpumalanga (+R10,1 million). Large real increases were reported by the selected urban areas of the Witwatersrand (+R67,1 million), Cape Town (+R43,9 million), Vereeniging (+R24,3 million), Pretoria (+R23,8 million), Edendale (+R8,1 million) and Highveldridge Transitional Council (+R8,0 million).

**Total real value of plans passed for flats and townhouses increases**

The total real value of plans passed for flats and townhouses during the first quarter of 2001 increased by 15,7% (+R43,7 million) to R322,5 million compared with the first quarter of 2000. Real increases were reported by five of the nine provinces. The largest increase in the real value of plans passed for flats and townhouses was reported by Gauteng (+R36,5 million), followed by KwaZulu-Natal (+R17,7 million), Free State (+R11,2 million) and North West (+R8,2 million). Large real increases were reported by the selected urban areas of the Witwatersrand (+R21,1 million), Pretoria (+12,2 million), Bloemfontein (+R10,1 million), Rustenburg (+R10,0 million) and North Local Council – Umhlanga Rocks (+R10,0 million). However, large decreases in the real value of building plans passed for flats and townhouses were reported by the selected urban areas of Cape Town (-R34,3 million) and East London (-R14,4 million) during the above-mentioned period.

**Total real value of other residential building plans passed decreases**

The total real value of other residential building plans passed during the first quarter of 2001 decreased by 34,0% (-R21,6 million) to R42,0 million compared with the first quarter of 2000. The largest real decrease was reported by Western Cape (-R43,9 million, mainly due to the approval of building plans for an entertainment centre and casino to the real value of R33,4 million, by the City of Tygerberg – Goodwood Administration during February 2000). However, the Eastern Cape reported an increase of R35,6 million in the real value of other residential building plans passed during the above-mentioned period. This increase was mainly due to the approval of building plans for a casino, to the real value of R35,8 million, by the local government institution of East London during January 2001.

**Total real value of non-residential building plans passed decreases**

The total real value of non-residential building plans passed during the first quarter of 2001 decreased by 3,0% (-R23,4 million) to R752,3 million compared with the first quarter of 2000. The largest real decrease in the total value of non-residential building plans passed was reported by Gauteng (-R58,7 million), followed by Eastern Cape (-R19,9 million) and Northern Cape (-R18,1 million). However, KwaZulu-Natal reported a large increase in the total real value of non-residential building plans passed (+R50,8 million). This increase was mainly due to the increase in the total real value of non-residential building plans passed as reported by North Local Council – Umhlanga Rocks (+R76,6 million) during the above-mentioned period.

**Total real value of building plans passed for additions and alterations decreases**

The total real value of building plans passed for additions and alterations during the first quarter of 2001 decreased by 3,6% (-R33,2 million) to R897,1 million compared with the first quarter of 2000. This decrease was due to the decrease in the real value of plans passed for additions and alterations to dwelling-houses (-R42,0 million). Real decreases were reported by five of the nine provinces. Large decreases in the real value of building plans passed for additions and alterations were reported by Western Cape (-R15,3 million), KwaZulu-Natal (-R15,3 million) and North West (-R13,4 million).

### Key figures regarding buildings completed for the month ended March 2001

Actual estimates at constant 1995 prices	March 2001	January 2001 to March 2001	Percentage change between March 2000 and March 2001	Percentage change between January 2000 to March 2000 and January 2001 to March 2001
	R million	R million		
Residential buildings				
Dwelling-houses	284,1	724,8	+ 18,4	+ 16,0
Flats and townhouses	108,2	226,4	+ 28,9	+ 22,1
Other residential buildings	12,4	259,3	+ 611,5	+ 817,9
<b>Total</b>	<b>404,7</b>	<b>1 210,5</b>	<b>+ 24,3</b>	<b>+ 44,3</b>
Non-residential buildings	118,1	529,1	- 23,4	+ 9,4
Additions and alterations	177,9	519,8	- 16,5	- 3,1
<b>Total</b>	<b>700,7</b>	<b>2 259,4</b>	<b>+ 1,1</b>	<b>+ 21,6</b>

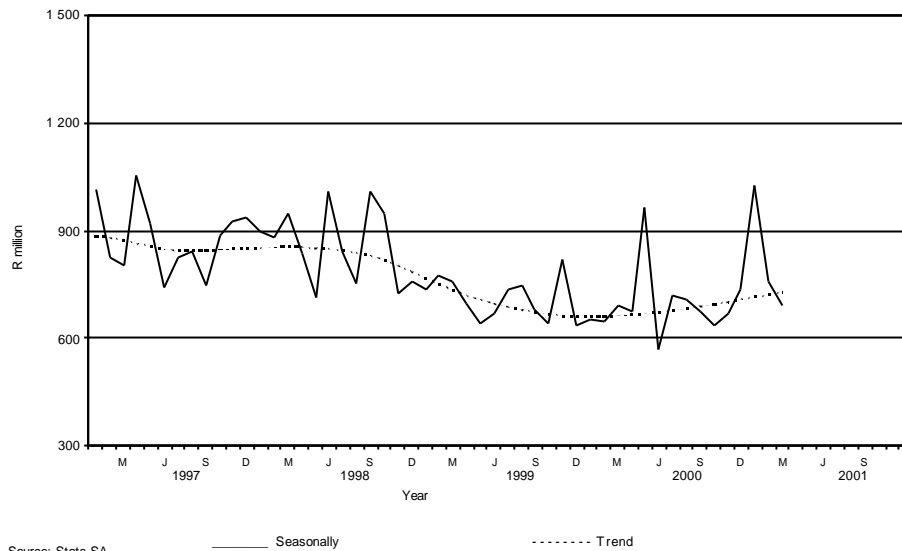
Seasonally adjusted estimates at constant 1995 prices	March 2001	Percentage change between February 2001 and March 2001	Percentage change between October 2000 to December 2000 and January 2001 to March 2001
	R million		
Residential buildings	388,5	+ 7,1	+ 38,6
Non-residential buildings	150,5	- 34,0	+ 13,9
Additions and alterations	152,4	- 8,8	- 5,2
<b>Total</b>	<b>691,4</b>	<b>- 8,8</b>	<b>+ 21,2</b>

### Key findings regarding buildings completed for the first quarter of 2001

#### Seasonally adjusted real value of buildings completed increases

*The seasonally adjusted real value of buildings completed (at constant 1995 prices) for the first quarter of 2001 increased by 21,2% compared with the fourth quarter of 2000.*

The increase of 21,2% in the seasonally adjusted real value of buildings completed was due to increases in the seasonally adjusted real value of residential buildings (+38,6%) and non-residential buildings completed (+13,9%) during the first quarter of 2001 compared with the fourth quarter of 2000. However, the seasonally adjusted real value of additions and alterations completed decreased by 5,2% during the above-mentioned period.

**Figure 2 - Total real value of buildings completed**

### Key findings regarding buildings completed for the first quarter of 2001

#### *Total real value of buildings completed increases*

*The total real value of buildings completed (at constant 1995 prices) during the first quarter of 2001 increased by 21,6% (+R400,6 million) to R2 259,4 million compared with the first quarter of 2000. Increases in the real value of buildings completed were reported for other residential buildings (+R231,1 million, mainly due to the completion of a hotel and casino, to the real value of R192,6 million, as reported by the Southern Metropolitan Local Council of Greater Johannesburg during January 2001)); dwelling-houses (+R99,7 million), non-residential buildings (+R45,4 million) and flats and townhouses (+R41,0 million).*

#### **Eight of the nine provinces reported increases in the total real value of buildings completed**

The largest provincial contributor to the increase of 21,6% (+R400,6 million) in the total real value of buildings completed during the first quarter of 2001 compared with the first quarter of 2000 was Gauteng (+13,9 percentage points or R258,0 million), followed by Eastern Cape (+3,0 percentage points or R57,0 million) and Western Cape (+2,1 percentage points or R38,3 million) (cf. table B). The largest real increases in Gauteng were reported for other residential buildings (+R187,9 million), due to the completion of a hotel and casino to the real value of R192,6 million as reported during January 2001) and flats and townhouses (+R60,7 million).

**Table B - Contribution of provinces to the total real value of buildings completed**

Province	Percentage contribution to the total real value of buildings completed during January 2000 to March 2000	Percentage change between January 2000 to March 2000 and January 2001 to March 2001	Contribution (percentage points) <sup>1/</sup> to the percentage change in the real value of buildings completed between January 2000 to March 2000 and January 2001 to March 2001	Difference in total real value of buildings completed between January 2000 to March 2000 and January 2001 to March 2001 R million
Gauteng	34,6	+ 40,1	+ 13,9	+ 258,0
Eastern Cape	5,0	+ 60,7	+ 3,0	+ 57,0
Western Cape	31,8	+ 6,5	+ 2,1	+ 38,3
KwaZulu-Natal	18,1	+ 5,1	+ 0,9	+ 17,0
Northern Cape	0,9	+ 72,4	+ 0,7	+ 12,0
Northern Province	0,8	+ 74,7	+ 0,6	+ 10,7
North West	2,2	+ 26,0	+ 0,6	+ 10,6
Mpumalanga	3,4	+ 3,6	+ 0,1	+ 2,3
Free State	3,2	- 9,0	- 0,3	- 5,3
<b>Total</b>	<b>100,0</b>	<b>+ 21,6</b>	<b>+ 21,6</b>	<b>+ 400,6</b>

1/ The contribution (percentage points) is calculated by multiplying the percentage change of each province with the percentage contribution of the corresponding province.

### **Total real value of residential buildings completed increases**

The total real value of residential buildings completed during the first quarter of 2001 increased by 44,3% (+R371,8 million) to R1 210,5 million compared with the first quarter of 2000. Increases in the real value of residential buildings completed were reported for other residential buildings (+R231,1 million, mainly due to the completion of a hotel and casino in Gauteng to the real value of R192,6 million as reported during January 2001), dwelling-houses (+R99,7 million) and flat and townhouses (+R41,0 million). The largest provincial increase in the total real value of residential buildings completed was reported by Gauteng (+R265,7 million, mainly due to real increases reported for other residential buildings (+R187,9 million)); followed by KwaZulu-Natal (+R76,5 million) and Western Cape (+R26,9 million).

### **Total real value of dwelling-houses completed increases**

The total real value of dwelling-houses completed during the first quarter of 2001 increased by 16,0% (+R99,7 million) to R724,8 million compared with the first quarter of 2000. Large real increases were reported by KwaZulu-Natal (+R38,9 million), Western Cape (+R33,3 million) and Gauteng (+R17,1 million). Large increases in the real value of dwelling-houses completed were reported by the selected urban areas of Cape Town (+R20,1 million), Pretoria (+R15,2 million), North Local Council – Umhlanga Rocks (+R12,4 million), Durban (+R9,4 million) and Edendale (+R8,6 million).

The increase of 16,0% in the total real value of dwelling-houses completed during the first quarter of 2001 compared with the first quarter of 2000 can be attributed to the increase in the completion of dwelling-houses equal to or larger than 80 square metres (+21,3% or R100,0 million).



**Total real value of flats and townhouses completed increases**

The total real value of flats and townhouses completed during the first quarter of 2001 increased by 22,1% (+R41,0 million) to R226,3 million compared with the first quarter of 2000. Only three of the nine provinces reported increases in the real value of flats and townhouses completed. Gauteng reported the largest increase (+R60,7 million), mainly due to increases as reported by the selected urban areas of the Witwatersrand (+R40,2 million) and Pretoria (+R12,0 million) during the above-mentioned period.

**Total real value of other residential buildings completed increases**

The total real value of other residential buildings completed during the first quarter of 2001 increased by R231,1 million to R259,3 million compared with the first quarter of 2000. Large real increases were reported by Gauteng (+R187,9 million, mainly due to the completion of a hotel and casino to the real value of R192,6 million, as reported by the Southern Metropolitan Local Council of Greater Johannesburg during January 2001) and KwaZulu-Natal (+R30,2 million, due to the completion of a casino to the real value of R30,8 million, as reported by the Northern Local Council – Umhlanga Rocks during January 2001).

**Total real value of non-residential buildings completed increases**

The total real value of non-residential buildings completed during the first quarter of 2001 increased by 9,4% (+R45,4 million) to R529,1 million compared with the first quarter of 2000. The largest increase in the total real value of non-residential buildings completed was reported by Eastern Cape (+R54,3 million, mainly due to the completion of industrial and warehouse space to the real value of R47,5 million, as reported by East London during February 2001), followed by Gauteng (+R18,7 million) and Northern Cape (+R13,0 million). Large increases in the real value of non-residential buildings completed were reported for industrial and warehouse space (+R33,7 million) and for shopping space (+R28,4 million).

**Total real value of additions and alterations completed decreases**

The total real value of additions and alterations completed during the first quarter of 2001 decreased by 3,1% (-R16,6 million) to R519,8 million compared with the first quarter of 2000. Large real decreases were reported by Gauteng (-R26,4 million, mainly due to the decrease in the real value of additions and alterations completed as reported by the Witwatersrand (-R20,4 million)); and KwaZulu-Natal (-R21,5 million, mainly due to the decrease in the real value of additions and alterations completed as reported by the selected urban area of Durban (-R22,0 million)).

# Contents

## Page

<b>Notes</b>	10
--------------	----

## Tables

Table 1	Actual values and percentage change of building plans passed at current prices according to type of building	14
Table 2	Seasonally adjusted values and percentage change of building plans passed at current prices according to type of building	15
Table 3	Actual values and percentage change of building plans passed at constant 1995 prices according to type of building	16
Table 4	Seasonally adjusted values and percentage change of building plans passed at constant 1995 prices according to type of building	17
Table 5	Actual values and percentage change of buildings completed at current prices according to type of building	18
Table 6	Seasonally adjusted values and percentage change of buildings completed at current prices according to type of building	19
Table 7	Actual values and percentage change of buildings completed at constant 1995 prices according to type of building	20
Table 8	Seasonally adjusted values and percentage change of buildings completed at constant 1995 prices according to type of building	21
Table 9	Building plans passed according to type of building : Total RSA	22
Table 10	Building plans passed according to type of building and province: Western Cape	23
Table 11	Building plans passed according to type of building and province: Eastern Cape	24
Table 12	Building plans passed according to type of building and province: Northern Cape	25
Table 13	Building plans passed according to type of building and province: Free State	26
Table 14	Building plans passed according to type of building and province: KwaZulu-Natal	27
Table 15	Building plans passed according to type of building and province: North West	28
Table 16	Building plans passed according to type of building and province: Gauteng	29
Table 17	Building plans passed according to type of building and province: Mpumalanga	30
Table 18	Building plans passed according to type of building and province: Northern Province	31
Table 19	Buildings completed according to type of building : Total RSA	32
Table 20	Buildings completed according to type of building and province: Western Cape	33
Table 21	Buildings completed according to type of building and province: Eastern Cape	34
Table 22	Buildings completed according to type of building and province: Northern Cape	35
Table 23	Buildings completed according to type of building and province: Free State	36
Table 24	Buildings completed according to type of building and province: KwaZulu-Natal	37
Table 25	Buildings completed according to type of building and province: North West	38
Table 26	Buildings completed according to type of building and province: Gauteng	39
Table 27	Buildings completed according to type of building and province: Mpumalanga	40
Table 28	Buildings completed according to type of building and province: Northern Province	41
Table 29	Building plans passed according to type of building and selected urban area: Cape Town	42
Table 30	Building plans passed according to type of building and selected urban area: Port Elizabeth	43
Table 31	Building plans passed according to type of building and selected urban area: Durban	44
Table 32	Building plans passed according to type of building and selected urban area: Witwatersrand	45
Table 33	Building plans passed according to type of building and selected urban area: Pretoria	46
Table 34	Building plans passed according to type of building and selected urban area: Bloemfontein	47
Table 35	Buildings completed according to type of building and selected urban area: Cape Town	48
Table 36	Buildings completed according to type of building and selected urban area: Port Elizabeth	49
Table 37	Buildings completed according to type of building and selected urban area: Durban	50
Table 38	Buildings completed according to type of building and selected urban area: Witwatersrand	51
Table 39	Buildings completed according to type of building and selected urban area: Pretoria	52
Table 40	Buildings completed according to type of building and selected urban area: Bloemfontein	53

## Additional information

## Notes

<b>Forthcoming issues</b>	<b>Issue</b>	<b>Expected release date</b>
	April 2001	20 June 2001
	May 2001	18 July 2001
	June 2001	15 August 2001
	July 2001	19 September 2001
	August 2001	17 October 2001
	September 2001	14 November 2001
	October 2001	19 December 2001
	November 2001	16 January 2002
	December 2001	20 February 2002
<b>Purpose of the survey</b>	<p>The Building Statistics Survey is a countrywide survey covering a sample of local government institutions in South Africa. The information received is used to estimate key economic statistics used by the private and public sectors. The information is also used to compile estimates of the Gross Domestic Product (GDP). These statistics are also used by government to monitor the Reconstruction and Development Program (RDP) in South Africa.</p>	
<b>New questionnaire</b>	<p>In order to lessen the respondent burden and improve reliability, Stats SA has overhauled and redesigned its Building Statistics Survey questionnaire. This resulted in the change of some data items on the old questionnaire. As from November 1999 information regarding dwelling-houses was collected according to size of dwelling-house.</p> <p>The Building Statistics Survey questionnaire collects the numbers, square metres and value of building plans passed and buildings completed for the private sector regarding –</p> <ul style="list-style-type: none"> <li>• residential buildings;</li> <li>• non-residential buildings; and</li> <li>• additions and alterations.</li> </ul>	
<b>Re-engineered building statistics statistical release</b>	<p>Prior to March 2001, Stats SA published selected information per province namely, the value of building plans passed and buildings completed regarding residential buildings, non-residential buildings and additions and alterations. Due to users' needs, specifically compilers of National Accounts, Stats SA has overhauled and re-designed the statistical release. In order to provide users with more provincial information Stats SA extended the information per province to include more detailed information regarding residential buildings (e.g. dwelling-houses equal to or larger than 80 square metre; flats and townhouses; and other residential buildings), non-residential buildings (e.g. office and banking space; shopping space; industrial and warehouse space; and other non-residential space) and additions and alterations (e.g. additions to dwelling-houses and other buildings).</p> <p>Furthermore, to monitor the RDP housing program Stats SA publishes information regarding dwelling-houses smaller than 80 square metres and equal to or larger than 80 square metres according to province.</p>	
<b>Changes in the numbering of tables</b>	<p>It should be noted that the numbering of tables has changed as from March 2001 as indicated in table A, pages 11 to 13.</p>	

**Table A – Title of table according to new and old numbers**

<b>New number (as from March 2001)</b>	<b>Title of table</b>	<b>Old number (prior to March 2001)</b>
Table 1	Actual values and percentage change of building plans passed at current prices according to type of building	Table 3
Table 2	Seasonally adjusted values and percentage change of building plans passed at current prices according to type of building	Table 7
Table 3	Actual values and percentage change of building plans passed at constant 1995 prices according to type of building	Table 4
Table 4	Seasonally adjusted values and percentage change of building plans passed at constant 1995 prices according to type of building	Table 7
Table 5	Actual values and percentage change of buildings completed at current prices according to type of building	Table 5
Table 6	Seasonally adjusted values and percentage change of buildings completed at current prices according to type of building	Table 8
Table 7	Actual values and percentage change of buildings completed at constant 1995 prices according to type of building	Table 6
Table 8	Seasonally adjusted values and percentage change of buildings completed at constant 1995 prices according to type of building	Table 8
Table 9	Building plans passed according to type of building: Total RSA	Tables 1 and 9
Table 10	Building plans passed according to type of building and province: Western Cape	Table 1
Table 11	Building plans passed according to type of building and province: Eastern Cape	Table 1
Table 12	Building plans passed according to type of building and province: Northern Cape	Table 1
Table 13	Building plans passed according to type of building and province: Free State	Table 1
Table 14	Building plans passed according to type of building and province: KwaZulu-Natal	Table 1
Table 15	Building plans passed according to type of building and province: North West	Table 1

**Table A – Title of table according to new and old numbers (continued)**

<b>New number (as from March 2001)</b>	<b>Title of table</b>	<b>Old number (prior to March 2001)</b>
Table 18	Building plans passed according to type of building and province: Northern Province	Table 1
Table 19	Buildings completed according to type of building: Total RSA	Tables 2 and 11
Table 20	Buildings completed according to type of building and province: Western Cape	Table 2
Table 21	Buildings completed according to type of building and province: Eastern Cape	Table 2
Table 22	Buildings completed according to type of building and province: Northern Cape	Table 2
Table 23	Buildings completed according to type of building and province: Free State	Table 2
Table 24	Buildings completed according to type of building and province: KwaZulu-Natal	Table 2
Table 25	Buildings completed according to type of building and province: North West	Table 2
Table 26	Buildings completed according to type of building and province: Gauteng	Table 2
Table 27	Buildings completed according to type of building and province: Mpumalanga	Table 2
Table 28	Buildings completed according to type of building and province: Northern Province	Table 2
Table 29	Building plans passed according to type of building and selected urban area: Cape Town	Table 10
Table 30	Building plans passed according to type of building and selected urban area: Port Elizabeth	New
Table 31	Building plans passed according to type of building and selected urban area: Durban	Table 10
Table 32	Building plans passed according to type of building and selected urban area: Witwatersrand	Table 10
Table 33	Building plans passed according to type of building and selected urban area: Pretoria	Table 10
Table 34	Building plans passed according to type of building and selected urban area: Bloemfontein	Table 10

**Table A – Title of table according to new and old numbers (concluded)**

<b>New number (as from March 2001)</b>	<b>Title of table</b>	<b>Old number (prior to March 2001)</b>
Table 37	Buildings completed according to type of building and selected urban area: Durban	Table 12
Table 38	Buildings completed according to type of building and selected urban area: Witwatersrand	Table 12
Table 39	Buildings completed according to type of building and selected urban area: Pretoria	Table 12
Table 40	Buildings completed according to type of building and selected urban area: Bloemfontein	Table 12

Table 1 - Actual values and percentage change of building plans passed at current prices according to type of building

Year <sup>1/</sup> and month <sup>2/</sup>	Residential buildings		Non-residential buildings		Additions and alterations		Total	
	R'000	Percentage change	R'000	Percentage change	R'000	Percentage change	R'000	Percentage change
1999 Jan	553 051	+ 9,8	237 671	- 45,6	277 444	+ 9,9	1 068 166	- 7,0
Feb	528 673	- 18,9	394 629	- 4,6	355 506	- 2,0	1 278 809	- 7,0
Mar	667 232	- 17,0	1 454 021	+ 219,5	476 726	+ 10,2	2 597 979	+ 59,3
Apr	530 570	- 22,1	374 625	- 23,8	330 044	- 6,9	1 235 239	- 16,0
May	527 616	- 19,3	274 148	- 46,9	403 206	+ 14,2	1 204 970	- 17,9
Jun	837 779	+ 18,8	418 343	- 32,5	403 838	+ 2,5	1 659 959	+ 0,4
Jul	637 414	- 19,6	460 734	- 7,1	420 306	- 15,4	1 518 454	- 12,2
Aug	630 628	- 14,1	388 580	- 14,5	415 686	- 6,2	1 434 895	- 7,7
Sep	599 986	- 14,7	305 439	- 38,8	484 091	+ 9,7	1 389 516	- 13,4
Oct	664 785	- 22,6	329 137	- 38,8	436 746	- 11,1	1 430 668	- 22,7
Nov	710 950	+ 14,0	701 437	+ 44,0	536 870	+ 39,6	1 949 257	+ 33,3
Dec	493 844	+ 16,1	225 184	- 40,9	314 898	- 23,4	1 033 926	- 12,9
<b>Total</b>	<b>7 382 530</b>	<b>- 8,9</b>	<b>5 563 948</b>	<b>- 3,8</b>	<b>4 855 360</b>	<b>+ 0,8</b>	<b>17 801 839</b>	<b>- 1,8</b>
2000 Jan	503 965	- 8,9	171 426	- 27,9	352 096	+ 26,9	1 027 487	- 3,8
Feb	786 141	+ 48,7	481 218	+ 21,9	399 601	+ 12,4	1 666 960	+ 30,4
Mar	747 421	+ 12,0	359 267	- 75,3	461 571	- 3,2	1 568 259	- 39,6
Apr	627 642	+ 18,3	271 151	- 27,6	382 300	+ 15,8	1 281 093	+ 3,7
May	874 847	+ 65,8	573 853	+ 109,3	483 381	+ 19,9	1 932 081	+ 60,3
Jun	853 154	+ 1,8	336 324	- 19,6	532 278	+ 31,8	1 721 756	+ 3,7
Jul	975 138	+ 53,0	486 164	+ 5,5	549 932	+ 30,8	2 011 234	+ 32,5
Aug	930 844	+ 47,6	353 488	- 9,0	492 784	+ 18,5	1 777 116	+ 23,8
Sep	826 851	+ 37,8	355 956	+ 16,5	465 836	- 3,8	1 648 643	+ 18,6
Oct	905 732	+ 36,2	492 884	+ 49,8	539 561	+ 23,5	1 938 177	+ 35,5
Nov	908 267	+ 27,8	497 357	- 29,1	497 554	- 7,3	1 903 178	- 2,4
Dec	606 148	+ 22,7	704 410	+ 212,8	317 835	+ 0,9	1 628 393	+ 57,5
<b>Total</b>	<b>9 546 150</b>	<b>+ 29,3</b>	<b>5 083 498</b>	<b>- 8,6</b>	<b>5 474 729</b>	<b>+ 12,8</b>	<b>20 104 377</b>	<b>+ 12,9</b>
2001 Jan	719 247	+ 42,7	475 094	+ 177,1	351 676	- 0,1	1 546 017	+ 50,5
Feb	817 492	+ 4,0	299 535	- 37,8	472 567	+ 18,3	1 589 594	- 4,6
Mar	945 448	+ 26,5	280 644	- 21,9	435 650	- 5,6	1 661 742	+ 6,0

<sup>1/</sup> The annual percentage change is the change in the actual values of building plans passed of the relevant year compared with the actual values of building plans passed of the previous year expressed as a percentage.

<sup>2/</sup> The monthly percentage change is the change in the actual values of building plans passed of the relevant month compared with the actual values of building plans passed of the same month in the previous year expressed as a percentage.

**Table 2 - Seasonally adjusted values and percentage change of building plans passed at current prices according to type of building**

Year and month <sup>1/</sup>	Residential buildings		Non-residential buildings		Additions and alterations		Total	
	R'000	Percentage change	R'000	Percentage change	R'000	Percentage change	R'000	Percentage change
1999 Jan	714 521	+ 18,1	316 304	- 33,9	383 910	- 24,6	1 414 735	- 11,2
Feb	533 657	- 25,3	426 869	+ 35,0	377 284	- 1,7	1 337 811	- 5,4
Mar	621 636	+ 16,5	1 424 072	+ 233,6	464 469	+ 23,1	2 510 177	+ 87,6
Apr	575 972	- 7,3	387 067	- 72,8	375 948	- 19,1	1 338 987	- 46,7
May	525 517	- 8,8	258 706	- 33,2	396 249	+ 5,4	1 180 472	- 11,8
Jun	802 599	+ 52,7	383 875	+ 48,4	382 215	- 3,5	1 568 689	+ 32,9
Jul	558 779	- 30,4	409 910	+ 6,8	365 270	- 4,4	1 333 959	- 15,0
Aug	587 782	+ 5,2	383 701	- 6,4	388 279	+ 6,3	1 359 762	+ 1,9
Sep	586 337	- 0,2	320 858	- 16,4	444 982	+ 14,6	1 352 176	- 0,6
Oct	562 709	- 4,0	287 074	- 10,5	383 204	- 13,9	1 232 987	- 8,8
Nov	664 150	+ 18,0	589 866	+ 105,5	474 550	+ 23,8	1 728 566	+ 40,2
Dec	701 012	+ 5,6	286 209	- 51,5	410 033	- 13,6	1 397 253	- 19,2
2000 Jan	645 469	- 7,9	226 918	- 20,7	477 093	+ 16,4	1 349 480	- 3,4
Feb	805 747	+ 24,8	547 965	+ 141,5	422 608	- 11,4	1 776 320	+ 31,6
Mar	689 043	- 14,5	356 762	- 34,9	448 608	+ 6,2	1 494 414	- 15,9
Apr	685 129	- 0,6	282 042	- 20,9	440 562	- 1,8	1 407 734	- 5,8
May	873 210	+ 27,5	532 896	+ 88,9	477 758	+ 8,4	1 883 864	+ 33,8
Jun	818 765	- 6,2	302 949	- 43,2	506 289	+ 6,0	1 628 002	- 13,6
Jul	852 952	+ 4,2	420 521	+ 38,8	478 385	- 5,5	1 751 859	+ 7,6
Aug	864 728	+ 1,4	357 446	- 15,0	460 467	- 3,7	1 682 642	- 4,0
Sep	803 445	- 7,1	369 703	+ 3,4	426 532	- 7,4	1 599 680	- 4,9
Oct	772 888	- 3,8	433 343	+ 17,2	471 184	+ 10,5	1 677 416	+ 4,9
Nov	846 416	+ 9,5	423 500	- 2,3	437 340	- 7,2	1 707 256	+ 1,8
Dec	858 724	+ 1,5	878 092	+ 107,3	417 709	- 4,5	2 154 525	+ 26,2
2001 Jan	916 678	+ 6,7	636 897	- 27,5	472 219	+ 13,0	2 025 794	- 6,0
Feb	845 088	- 7,8	348 969	- 45,2	501 988	+ 6,3	1 696 045	- 16,3
Mar	870 441	+ 3,0	276 256	- 20,8	425 102	- 15,3	1 571 798	- 7,3

<sup>1/</sup> The percentage change is the change in the seasonally adjusted values of building plans passed of the relevant month compared with the seasonally adjusted values of building plans passed of the previous month expressed as a percentage.



Table 3 - Actual values and percentage change of building plans passed at constant 1995 prices according to type of building

Year <sup>1/</sup> and month <sup>2/</sup>	Residential buildings		Non-residential buildings		Additions and alterations		Total	
	R'000	Percentage change	R'000	Percentage change	R'000	Percentage change	R'000	Percentage change
1999 Jan	444 933	+ 2,8	191 208	- 45,6	223 205	+ 9,9	859 346	- 13,0
Feb	420 918	- 24,5	314 195	- 4,6	283 046	- 2,0	1 018 159	- 13,4
Mar	530 391	- 22,6	1 155 820	+ 219,5	378 955	+ 10,2	2 065 166	+ 48,5
Apr	419 423	- 27,3	296 146	- 23,8	260 904	- 6,9	976 473	- 21,6
May	416 759	- 24,5	216 546	- 46,9	318 488	+ 14,2	951 793	- 23,2
Jun	659 150	+ 11,2	329 145	- 32,5	317 732	+ 2,5	1 306 027	- 6,1
Jul	499 933	- 24,1	361 360	- 7,1	329 651	- 15,4	1 190 944	- 17,2
Aug	494 610	- 13,8	304 769	- 14,5	326 028	- 6,2	1 125 407	- 11,9
Sep	469 473	- 18,3	238 998	- 38,8	378 788	+ 9,7	1 087 259	- 17,0
Oct	519 363	- 25,5	257 138	- 38,8	341 208	- 11,1	1 117 709	- 25,6
Nov	553 699	+ 9,8	546 290	+ 44,0	418 123	+ 39,6	1 518 112	+ 28,3
Dec	384 016	+ 11,7	175 104	- 40,9	244 866	- 23,4	803 986	- 16,3
<b>Total</b>	<b>5 812 668</b>	<b>- 8,9</b>	<b>4 386 719</b>	<b>- 3,8</b>	<b>3 820 994</b>	<b>+ 0,8</b>	<b>14 020 381</b>	<b>- 7,1</b>
2000 Jan	388 263	- 12,7	132 069	- 30,9	271 260	+ 21,5	791 592	- 7,9
Feb	603 795	+ 43,4	369 599	+ 17,6	306 913	+ 8,4	1 280 307	+ 25,7
Mar	570 115	+ 7,5	274 040	- 76,3	352 076	- 7,1	1 196 231	- 42,1
Apr	473 692	+ 12,9	204 642	- 30,9	288 528	+ 10,6	966 862	- 1,0
May	655 807	+ 57,4	430 175	+ 98,7	362 355	+ 13,8	1 448 337	+ 52,2
Jun	637 634	- 3,3	251 363	- 23,6	397 816	+ 25,2	1 286 813	- 1,5
Jul	722 324	+ 44,5	360 121	- 0,3	407 357	+ 23,6	1 489 802	+ 25,1
Aug	683 439	+ 38,2	259 536	- 14,8	361 809	+ 11,0	1 304 784	+ 15,9
Sep	606 196	+ 29,1	260 965	+ 9,2	341 522	- 9,8	1 208 683	+ 11,2
Oct	660 636	+ 27,2	359 507	+ 39,8	393 553	+ 15,3	1 413 696	+ 26,5
Nov	659 598	+ 19,1	361 189	- 33,9	361 332	- 13,6	1 382 119	- 9,0
Dec	438 602	+ 14,2	509 703	+ 191,1	229 982	- 6,1	1 178 287	+ 46,6
<b>Total</b>	<b>7 100 101</b>	<b>+ 22,1</b>	<b>3 772 909</b>	<b>- 14,0</b>	<b>4 074 503</b>	<b>+ 6,6</b>	<b>14 947 513</b>	<b>+ 6,6</b>
2001 Jan	514 851	+ 32,6	340 082	+ 157,5	251 737	- 7,2	1 106 670	+ 39,8
Feb	582 259	- 3,6	213 344	- 42,3	336 586	+ 9,7	1 132 189	- 11,6
Mar	670 055	+ 17,5	198 897	- 27,4	308 753	- 12,3	1 177 705	- 1,5

<sup>1/</sup> The annual percentage change is the change in the actual values of building plans passed of the relevant year compared with the actual values of building plans passed of the previous year expressed as a percentage.

<sup>2/</sup> The monthly percentage change is the change in the actual values of building plans passed of the relevant month compared with the actual values of building plans passed of the same month in the previous year expressed as a percentage.

**Table 4 - Seasonally adjusted values and percentage change of building plans passed at constant 1995 prices according to type of building**

Year and month <sup>1/</sup>	Residential buildings		Non-residential buildings		Additions and alterations		Total	
	R'000	Percentage change	R'000	Percentage change	R'000	Percentage change	R'000	Percentage change
1999 Jan	577 816	+ 18,7	254 342	- 34,0	306 833	+ 8,1	1 138 991	- 11,3
Feb	425 442	- 26,4	340 963	+ 34,1	300 250	- 2,1	1 066 655	- 6,4
Mar	494 209	+ 16,2	1 128 964	+ 231,1	367 396	+ 22,4	1 990 569	+ 86,6
Apr	456 915	- 7,5	306 100	- 72,9	298 043	- 18,9	1 061 057	- 46,7
May	414 458	- 9,3	204 328	- 33,2	314 769	+ 5,6	933 556	- 12,0
Jun	629 186	+ 51,8	301 670	+ 47,6	300 541	- 4,5	1 231 397	+ 31,9
Jul	438 286	- 30,3	321 923	+ 6,7	284 607	- 5,3	1 044 815	- 15,2
Aug	461 310	+ 5,3	301 607	- 6,3	305 634	+ 7,4	1 068 550	+ 2,3
Sep	459 090	- 0,5	251 467	- 16,6	348 819	+ 14,1	1 059 376	- 0,9
Oct	439 614	- 4,2	224 415	- 10,8	299 707	- 14,1	963 736	- 9,0
Nov	516 354	+ 17,5	458 810	+ 104,4	370 522	+ 23,6	1 345 686	+ 39,6
Dec	542 572	+ 5,1	221 733	- 51,7	318 869	- 13,9	1 083 174	- 19,5
2000 Jan	500 640	- 7,7	174 920	- 21,1	366 156	+ 14,8	1 041 716	- 3,8
Feb	619 684	+ 23,8	422 328	+ 141,4	324 099	- 11,5	1 366 111	+ 31,1
Mar	525 666	- 15,2	271 081	- 35,8	340 602	+ 5,1	1 137 349	- 16,7
Apr	518 467	- 1,4	212 967	- 21,4	332 670	- 2,3	1 064 103	- 6,4
May	653 303	+ 26,0	399 232	+ 87,5	360 269	+ 8,3	1 412 804	+ 32,8
Jun	609 496	- 6,7	226 072	- 43,4	378 046	+ 4,9	1 213 615	- 14,1
Jul	631 736	+ 3,6	311 891	+ 38,0	352 513	- 6,8	1 296 140	+ 6,8
Aug	635 927	+ 0,7	263 121	- 15,6	339 176	- 3,8	1 238 224	- 4,5
Sep	589 296	- 7,3	271 488	+ 3,2	313 218	- 7,7	1 174 002	- 5,2
Oct	563 658	- 4,4	316 342	+ 16,5	344 015	+ 9,8	1 224 016	+ 4,3
Nov	613 563	+ 8,9	307 258	- 2,9	318 498	- 7,4	1 239 319	+ 1,3
Dec	618 279	+ 0,8	633 018	+ 106,0	302 040	- 5,2	1 553 336	+ 25,3
2001 Jan	661 434	+ 7,0	456 404	- 27,9	337 483	+ 11,7	1 455 321	- 6,3
Feb	602 727	- 8,9	249 407	- 45,4	356 670	+ 5,7	1 208 803	- 16,9
Mar	616 862	+ 2,3	194 921	- 21,8	299 820	- 15,9	1 111 604	- 8,0

<sup>1/</sup> The percentage change is the change in the seasonally adjusted values of building plans passed of the relevant month compared with the seasonally adjusted values of building plans passed of the previous month expressed as a percentage.

Table 5 - Actual values and percentage change of buildings completed at current prices according to type of building

Year <sup>1/</sup> and month <sup>2/</sup>	Residential buildings		Non-residential buildings		Additions and alterations		Total	
	R'000	Percentage change	R'000	Percentage change	R'000	Percentage change	R'000	Percentage change
1999 Jan	313 975	- 17,7	197 076	- 12,3	193 050	- 3,3	704 102	- 12,6
Feb	396 737	- 2,1	214 816	- 29,4	244 641	+ 26,9	856 194	- 5,1
Mar	432 499	- 38,0	246 125	+ 39,7	230 685	+ 8,8	909 309	- 16,2
Apr	377 800	- 17,0	181 550	- 25,2	200 507	+ 28,2	759 858	- 11,1
May	390 986	- 11,7	195 652	+ 10,4	178 758	- 2,4	765 395	- 4,7
Jun	420 016	- 30,4	208 557	- 38,5	153 702	- 21,1	782 276	- 31,2
Jul	480 991	- 18,3	264 068	+ 0,3	272 372	+ 26,1	1 017 432	- 4,7
Aug	460 657	+ 7,6	204 898	- 24,8	255 878	+ 47,4	921 432	+ 5,4
Sep	493 450	- 11,4	197 152	- 58,4	223 191	+ 10,3	913 793	- 25,9
Oct	419 578	- 15,9	203 652	- 58,9	229 463	+ 12,4	852 693	- 28,8
Nov	461 147	- 8,9	409 997	+ 45,4	210 237	+ 20,2	1 081 381	+ 12,3
Dec	349 510	- 15,3	181 596	- 13,0	146 343	+ 3,3	677 449	- 11,3
<b>Total</b>	<b>4 997 346</b>	<b>- 16,4</b>	<b>2 705 139</b>	<b>- 21,8</b>	<b>2 538 827</b>	<b>+ 12,8</b>	<b>10 241 312</b>	<b>- 12,4</b>
2000 Jan	299 422	- 4,6	194 434	- 1,3	183 372	- 5,0	677 228	- 3,8
Feb	351 607	- 11,4	204 261	- 4,9	220 609	- 9,8	776 477	- 9,3
Mar	414 292	- 4,2	188 990	- 23,2	268 164	+ 16,2	871 446	- 4,2
Apr	361 945	- 4,2	223 898	+ 23,3	187 630	- 6,4	773 473	+ 1,8
May	470 699	+ 20,4	389 673	+ 99,2	292 429	+ 63,6	1 152 801	+ 50,6
Jun	357 603	- 14,9	169 128	- 18,9	170 070	+ 10,6	696 801	- 10,9
Jul	401 695	- 16,5	472 336	+ 78,9	219 139	- 19,5	1 093 170	+ 7,4
Aug	443 459	- 3,7	279 447	+ 36,4	209 421	- 18,2	932 327	+ 1,2
Sep	495 864	+ 0,5	268 130	+ 36,0	198 563	- 11,0	962 557	+ 5,3
Oct	454 980	+ 8,4	195 288	- 4,1	236 338	+ 3,0	886 606	+ 4,0
Nov	532 183	+ 15,4	182 088	- 55,6	236 849	+ 12,7	951 120	- 12,0
Dec	376 641	+ 7,8	316 068	+ 74,1	148 873	+ 1,7	841 582	+ 24,2
<b>Total</b>	<b>4 960 390</b>	<b>- 0,7</b>	<b>3 083 741</b>	<b>+ 14,0</b>	<b>2 571 457</b>	<b>+ 1,3</b>	<b>10 615 588</b>	<b>+ 3,7</b>
2001 Jan	643 036	+ 114,8	238 434	+ 22,6	200 993	+ 9,6	1 082 463	+ 59,8
Feb	428 998	+ 22,0	285 620	+ 39,8	243 491	+ 10,4	958 109	+ 23,4
Mar	545 599	+ 31,7	150 947	- 20,1	233 215	- 13,0	929 761	+ 6,7

<sup>1/</sup> The annual percentage change is the change in the actual values of buildings completed of the relevant year compared with the actual values of buildings completed of the previous year expressed as a percentage.

<sup>2/</sup> The monthly percentage change is the change in the actual values of buildings completed of the relevant month compared with the actual values of buildings completed of the same month in the previous year expressed as a percentage.

**Table 6 - Seasonally adjusted values and percentage change of buildings completed at current prices according to type of building**

Year and month <sup>1/</sup>	Residential buildings		Non-residential buildings		Additions and alterations		Total	
	R'000	Percentage change	R'000	Percentage change	R'000	Percentage change	R'000	Percentage change
1999 Jan	407 269	- 13,0	229 893	+ 16,0	213 346	+ 1,5	850 508	- 3,0
Feb	447 690	+ 9,9	228 611	- 0,6	218 671	+ 2,5	894 972	+ 5,2
Mar	421 738	- 5,8	286 455	+ 25,3	200 128	- 8,5	908 321	+ 1,5
Apr	411 477	- 2,4	200 457	- 30,0	214 295	+ 7,1	826 229	- 9,0
May	368 870	- 10,4	227 734	+ 13,6	186 988	- 12,7	783 592	- 5,2
Jun	437 586	+ 18,6	218 421	- 4,1	160 705	- 14,1	816 712	+ 4,2
Jul	438 174	+ 0,1	206 015	- 5,7	233 442	+ 45,3	877 631	+ 7,5
Aug	438 829	+ 0,1	205 879	- 0,1	260 376	+ 11,5	905 084	+ 3,1
Sep	438 740	+ 0,0	174 708	- 15,1	221 433	- 15,0	834 880	- 7,8
Oct	397 836	- 9,3	172 802	- 1,1	216 199	- 2,4	786 838	- 5,8
Nov	389 792	- 2,0	417 403	+ 141,5	196 499	- 9,1	1 003 694	+ 27,6
Dec	402 359	+ 3,2	172 206	- 58,7	215 864	+ 9,9	790 429	- 21,2
2000 Jan	388 476	- 3,5	223 998	+ 30,1	200 476	- 7,1	812 949	+ 2,8
Feb	399 461	+ 2,8	210 228	- 6,1	196 518	- 2,0	806 207	- 0,8
Mar	400 315	+ 0,2	234 661	+ 11,6	231 137	+ 17,6	866 113	+ 7,4
Apr	396 662	- 0,9	249 663	+ 6,4	201 381	- 12,9	847 706	- 2,1
May	449 704	+ 13,4	465 485	+ 86,4	306 011	+ 52,0	1 221 200	+ 44,1
Jun	368 854	- 18,0	176 748	- 62,0	179 473	- 41,4	725 076	- 40,6
Jul	362 907	- 1,6	360 650	+ 104,0	188 231	+ 4,9	911 787	+ 25,8
Aug	420 884	+ 16,0	272 586	- 24,4	213 333	+ 13,3	906 803	- 0,5
Sep	435 366	+ 3,4	231 892	- 14,9	196 828	- 7,7	864 085	- 4,7
Oct	435 362	+ 0,0	165 228	- 28,7	220 885	+ 12,2	821 475	- 4,9
Nov	455 740	+ 4,7	190 850	+ 15,5	224 187	+ 1,5	870 776	+ 6,0
Dec	432 750	- 5,0	307 008	+ 60,9	217 714	- 2,9	957 472	+ 10,0
2001 Jan	842 380	+ 94,7	276 932	- 9,8	219 269	+ 0,7	1 338 581	+ 39,8
Feb	485 916	- 42,3	289 818	+ 4,7	217 281	- 0,9	993 015	- 25,8
Mar	521 658	+ 7,4	191 990	- 33,8	199 695	- 8,1	913 343	- 8,0

<sup>1/</sup> The percentage change is the change in the seasonally adjusted values of buildings completed of the relevant month compared with the seasonally adjusted values of buildings completed of the previous month expressed as a percentage.

Table 7 - Actual values and percentage change of buildings completed at constant 1995 prices according to type of building

Year <sup>1/</sup> and month <sup>2/</sup>	Residential buildings		Non-residential buildings		Additions and alterations		Total	
	R'000	Percentage change	R'000	Percentage change	R'000	Percentage change	R'000	Percentage change
1999 Jan	262 682	- 22,6	172 571	- 18,3	165 993	- 9,2	601 246	- 18,0
Feb	329 271	- 26,3	187 449	- 39,0	209 095	- 4,5	725 815	- 26,1
Mar	356 192	- 57,5	214 208	+ 5,4	196 662	- 12,9	767 062	- 38,1
Apr	311 031	- 34,2	157 322	- 23,5	169 922	+ 18,7	638 275	- 21,4
May	319 828	- 31,9	169 395	+ 5,1	150 851	+ 2,4	640 074	- 15,6
Jun	344 231	- 50,0	180 257	- 44,7	129 270	- 3,4	653 758	- 40,4
Jul	391 124	- 50,0	227 058	- 28,4	226 411	- 12,3	844 593	- 36,0
Aug	369 731	- 48,5	175 126	- 29,7	210 253	+ 9,6	755 110	- 21,4
Sep	396 579	- 28,6	168 075	- 59,5	182 196	- 5,7	746 850	- 44,4
Oct	334 635	- 45,1	172 586	- 61,0	186 252	- 6,2	693 473	- 42,4
Nov	366 364	- 38,2	345 989	- 30,9	170 095	+ 9,6	882 448	- 27,6
Dec	277 236	- 38,9	152 730	- 6,3	118 305	+ 35,6	548 271	- 8,6
<b>Total</b>	<b>4 058 904</b>	<b>- 21,7</b>	<b>2 322 766</b>	<b>- 26,2</b>	<b>2 115 305</b>	<b>+ 6,4</b>	<b>8 496 975</b>	<b>- 17,7</b>
2000 Jan	236 352	- 10,0	161 624	- 6,3	147 524	- 11,1	545 500	- 9,3
Feb	276 779	- 15,9	167 840	- 10,5	175 644	- 16,0	620 263	- 14,5
Mar	325 514	- 8,6	154 278	- 28,0	213 167	+ 8,4	692 959	- 9,7
Apr	283 632	- 8,8	181 735	+ 15,5	148 324	- 12,7	613 691	- 3,9
May	368 258	+ 15,1	315 269	+ 86,1	230 987	+ 53,1	914 514	+ 42,9
Jun	278 696	- 19,0	136 724	- 24,2	133 808	+ 3,5	549 228	- 16,0
Jul	310 490	- 20,6	379 997	+ 67,4	171 874	- 24,1	862 361	+ 2,1
Aug	341 997	- 7,5	222 490	+ 27,0	164 252	- 21,9	728 739	- 3,5
Sep	380 208	- 4,1	213 140	+ 26,8	155 370	- 14,7	748 718	+ 0,3
Oct	346 503	+ 3,5	154 378	- 10,6	184 639	- 0,9	685 520	- 1,1
Nov	402 392	+ 9,8	143 829	- 58,4	184 462	+ 8,4	730 683	- 17,2
Dec	284 367	+ 2,6	248 677	+ 62,8	115 764	- 2,1	648 808	+ 18,3
<b>Total</b>	<b>3 835 188</b>	<b>- 5,5</b>	<b>2 479 981</b>	<b>+ 6,8</b>	<b>2 025 815</b>	<b>- 4,2</b>	<b>8 340 984</b>	<b>- 1,8</b>
2001 Jan	487 405	+ 106,2	187 007	+ 15,7	154 848	+ 5,0	829 260	+ 52,0
Feb	318 383	+ 15,0	224 016	+ 33,5	187 013	+ 6,5	729 412	+ 17,6
Mar	404 686	+ 24,3	118 112	- 23,4	177 891	- 16,5	700 689	+ 1,1

<sup>1/</sup> The annual percentage change is the change in the actual values of buildings completed of the relevant year compared with the actual values of buildings completed of the previous year expressed as a percentage.

<sup>2/</sup> The monthly percentage change is the change in the actual values of buildings completed of the relevant month compared with the actual values of buildings completed of the same month in the previous year expressed as a percentage.

**Table 8 - Seasonally adjusted values and percentage change of buildings completed at constant 1995 prices according to type of building**

Year and month <sup>1/</sup>	Residential buildings		Non-residential buildings		Additions and alterations		Total	
	R'000	Percentage change	R'000	Percentage change	R'000	Percentage change	R'000	Percentage change
1999 Jan	341 496	- 14,3	201 514	+ 15,3	183 354	+ 1,3	726 364	- 3,7
Feb	373 938	+ 9,5	200 140	- 0,7	187 259	+ 2,1	761 336	+ 4,8
Mar	348 517	- 6,8	249 539	+ 24,7	170 575	- 8,9	768 630	+ 1,0
Apr	338 961	- 2,7	173 811	- 30,3	181 425	+ 6,4	694 197	- 9,7
May	296 716	- 12,5	196 790	+ 13,2	158 128	- 12,8	651 634	- 6,1
Jun	356 966	+ 20,3	187 718	- 4,6	135 351	- 14,4	680 036	+ 4,4
Jul	356 427	- 0,2	176 471	- 6,0	194 288	+ 43,5	727 186	+ 6,9
Aug	353 175	- 0,9	176 369	- 0,1	214 192	+ 10,2	743 735	+ 2,3
Sep	352 838	- 0,1	149 043	- 15,5	181 003	- 15,5	682 884	- 8,2
Oct	318 265	- 9,8	146 349	- 1,8	175 494	- 3,0	640 107	- 6,3
Nov	310 472	- 2,4	353 385	+ 141,5	158 261	- 9,8	822 118	+ 28,4
Dec	319 230	+ 2,8	144 848	- 59,0	173 816	+ 9,8	637 893	- 22,4
2000 Jan	307 671	- 3,6	186 492	+ 28,8	161 197	- 7,3	655 359	+ 2,7
Feb	316 456	+ 2,9	173 294	- 7,1	156 656	- 2,8	646 406	- 1,4
Mar	315 801	- 0,2	191 844	+ 10,7	183 757	+ 17,3	691 402	+ 7,0
Apr	311 293	- 1,4	202 819	+ 5,7	159 052	- 13,4	673 164	- 2,6
May	345 307	+ 10,9	375 870	+ 85,3	242 201	+ 52,3	963 378	+ 43,1
Jun	286 015	- 17,2	142 185	- 62,2	141 411	- 41,6	569 611	- 40,9
Jul	280 702	- 1,9	289 145	+ 103,4	147 833	+ 4,5	717 681	+ 26,0
Aug	325 329	+ 15,9	217 409	- 24,8	167 474	+ 13,3	710 213	- 1,0
Sep	334 101	+ 2,7	184 403	- 15,2	154 257	- 7,9	672 761	- 5,3
Oct	332 718	- 0,4	130 498	- 29,2	172 633	+ 11,9	635 849	- 5,5
Nov	345 578	+ 3,9	151 215	+ 15,9	173 753	+ 0,6	670 546	+ 5,5
Dec	326 611	- 5,5	241 523	+ 59,7	168 611	- 3,0	736 744	+ 9,9
2001 Jan	641 259	+ 96,3	217 590	- 9,9	168 818	+ 0,1	1 027 666	+ 39,5
Feb	362 757	- 43,4	228 034	+ 4,8	167 077	- 1,0	757 868	- 26,3
Mar	388 460	+ 7,1	150 537	- 34,0	152 382	- 8,8	691 379	- 8,8

<sup>1/</sup> The percentage change is the change in the seasonally adjusted values of buildings completed of the relevant month compared with the seasonally adjusted values of buildings completed of the previous month expressed as a percentage.

Table 9 - Building plans passed according to type of building: Total RSA

Type of building	March 2000 *	February 2001 *	March 2001	January 2000 to March 2000	January 2001 to March 2001	Percentage change between January 2000 to March 2000 and January 2001 to March 2001
<b>Residential buildings</b>						
Dwelling-houses smaller than 80 square metres						
Number of dwelling-houses	4 945	3 529	4 348	13 217	10 483	- 20,7
Total square metres	187 013	139 053	168 219	501 069	408 144	- 18,5
Total value at current prices (R'000)	127 315	126 383	155 052	359 549	396 766	+ 10,4
Dwelling-houses equal to or larger than 80 square metres						
Number of dwelling-houses	1 766	1 938	1 954	4 651	5 350	+ 15,0
Total square metres	351 963	390 870	424 311	933 646	1 128 074	+ 20,8
Total value at current prices (R'000)	473 890	532 142	594 202	1 231 397	1 573 528	+ 27,8
Flats and townhouses						
Number of flats and townhouses	848	984	1 019	2 352	2 560	+ 8,8
Total square metres	98 309	100 631	119 265	244 321	292 707	+ 19,8
Total value at current prices (R'000)	139 436	151 419	196 097	363 831	453 263	+ 24,6
Other residential buildings <sup>1/</sup>						
Total square metres	4 191	5 994	80	59 582	12 657	- 78,8
Total value at current prices (R'000)	6 780	7 548	97	82 750	58 630	- 29,1
<b>Total value of residential buildings at current prices (R'000)</b>	<b>747 421</b>	<b>817 492</b>	<b>945 448</b>	<b>2 037 527</b>	<b>2 482 187</b>	<b>+ 21,8</b>
<b>Non-residential buildings</b>						
Office and banking space						
Total square metres	95 609	74 201	13 311	226 058	205 650	- 9,0
Total value at current prices (R'000)	144 757	133 332	24 459	350 680	388 869	+ 10,9
Shopping space						
Total square metres	29 071	21 457	41 387	121 009	161 230	+ 33,2
Total value at current prices (R'000)	41 532	28 749	58 089	163 967	225 151	+ 37,3
Industrial and warehouse space						
Total square metres	107 150	80 933	93 900	269 640	229 955	- 14,7
Total value at current prices (R'000)	110 297	90 943	133 950	347 249	302 906	- 12,8
Other non-residential space <sup>2/</sup>						
Total square metres	53 486	33 524	45 969	119 403	97 652	- 18,2
Total value at current prices (R'000)	62 681	46 511	64 146	150 015	138 347	- 7,8
<b>Total value of non-residential buildings at current prices (R'000)</b>	<b>359 267</b>	<b>299 535</b>	<b>280 644</b>	<b>1 011 911</b>	<b>1 055 273</b>	<b>+ 4,3</b>
<b>Additions and alterations</b>						
Dwelling-houses						
Total square metres	274 632	243 400	244 490	704 340	679 630	- 3,5
Total value at current prices (R'000)	323 644	297 550	300 746	831 132	835 950	+ 0,6
Other buildings <sup>3/</sup>						
Total square metres	78 134	102 081	76 609	224 035	236 433	+ 5,5
Total value at current prices (R'000)	137 927	175 017	134 904	382 136	423 943	+ 10,9
<b>Total value of additions and alterations at current prices (R'000)</b>	<b>461 571</b>	<b>472 567</b>	<b>435 650</b>	<b>1 213 268</b>	<b>1 259 893</b>	<b>+ 3,8</b>
<b>Total value of building plans passed at current prices (R'000)</b>	<b>1 568 259</b>	<b>1 589 594</b>	<b>1 661 742</b>	<b>4 262 706</b>	<b>4 797 353</b>	<b>+ 12,5</b>

1/ Other residential buildings include institutions for the disabled, boarding houses, old people's homes, hostels, hotels, motels, guest houses, holiday chalets, entertainment centres, bed-and-breakfast accommodation and casinos.

2/ Other non-residential space includes churches, sport and recreation clubs, schools, crèches, hospitals and all other non-residential space.

3/ Other buildings include additions and alterations to other residential buildings, non-residential buildings and internal alterations.

Table 10 - Building plans passed according to type of building and province: Western Cape

Type of building	March 2000 *	February 2001 *	March 2001	January 2000 to March 2000	January 2001 to March 2001	Percentage change between January 2000 to March 2000 and January 2001 to March 2001
<b>Residential buildings</b>						
Dwelling-houses smaller than 80 square metres						
Number of dwelling-houses	1 096	813	680	2 880	2 200	- 23,6
Total square metres	39 830	29 444	26 651	109 473	82 452	- 24,7
Total value at current prices (R'000)	25 820	36 940	32 311	66 950	100 850	+ 50,6
Dwelling-houses equal to or larger than 80 square metres						
Number of dwelling-houses	547	535	546	1 500	1 507	+ 0,5
Total square metres	96 141	130 251	118 756	281 128	329 011	+ 17,0
Total value at current prices (R'000)	142 278	172 995	177 823	386 234	475 242	+ 23,0
Flats and townhouses						
Number of flats and townhouses	268	356	334	799	813	+ 1,8
Total square metres	26 332	31 591	35 437	86 315	81 674	- 5,4
Total value at current prices (R'000)	34 692	42 491	61 304	134 884	125 408	- 7,0
Other residential buildings <sup>1/</sup>						
Total square metres	338	1 450	48	42 515	1 755	- 95,9
Total value at current prices (R'000)	480	2 089	86	59 427	2 458	- 95,9
<b>Total value of residential buildings at current prices (R'000)</b>	<b>203 270</b>	<b>254 515</b>	<b>271 524</b>	<b>647 495</b>	<b>703 958</b>	<b>+ 8,7</b>
<b>Non-residential buildings</b>						
Office and banking space						
Total square metres	13 432	26 108	6 779	38 286	54 683	+ 42,8
Total value at current prices (R'000)	27 001	43 275	12 883	82 020	94 156	+ 14,8
Shopping space						
Total square metres	14 091	3 794	13 721	38 132	81 889	+ 114,8
Total value at current prices (R'000)	22 016	6 434	17 841	63 477	105 408	+ 66,1
Industrial and warehouse space						
Total square metres	37 255	24 603	16 970	84 996	53 367	- 37,2
Total value at current prices (R'000)	35 458	20 225	20 261	80 929	53 908	- 33,4
Other non-residential space <sup>2/</sup>						
Total square metres	15 883	7 623	22 146	45 000	38 791	- 13,8
Total value at current prices (R'000)	13 379	10 884	27 574	45 966	52 639	+ 14,5
<b>Total value of non-residential buildings at current prices (R'000)</b>	<b>97 854</b>	<b>80 818</b>	<b>78 559</b>	<b>272 392</b>	<b>306 111</b>	<b>+ 12,4</b>
<b>Additions and alterations</b>						
Dwelling-houses						
Total square metres	84 144	76 581	78 506	217 712	208 177	- 4,4
Total value at current prices (R'000)	99 744	93 324	99 594	254 161	258 735	+ 1,8
Other buildings <sup>3/</sup>						
Total square metres	15 632	20 793	17 392	47 898	53 158	+ 11,0
Total value at current prices (R'000)	32 443	34 456	28 915	91 343	91 844	+ 0,5
<b>Total value of additions and alterations at current prices (R'000)</b>	<b>132 187</b>	<b>127 780</b>	<b>128 509</b>	<b>345 504</b>	<b>350 579</b>	<b>+ 1,5</b>
<b>Total value of building plans passed at current prices (R'000)</b>	<b>433 311</b>	<b>463 113</b>	<b>478 592</b>	<b>1 265 391</b>	<b>1 360 648</b>	<b>+ 7,5</b>

1/ Other residential buildings include institutions for the disabled, boarding houses, old people's homes, hostels, hotels, motels, guest houses, holiday chalets, entertainment centres, bed-and-breakfast accommodation and casinos.

2/ Other non-residential space includes churches, sport and recreation clubs, schools, crèches, hospitals and all other non-residential space.

3/ Other buildings include additions and alterations to other residential buildings, non-residential buildings and internal alterations.



Table 11 - Building plans passed according to type of building and province: Eastern Cape

Type of building	March 2000 *	February 2001	March 2001	January 2000 to March 2000	January 2001 to March 2001	Percentage change between January 2000 to March 2000 and January 2001 to March 2001
<b>Residential buildings</b>						
Dwelling-houses smaller than 80 square metres						
Number of dwelling-houses	222	260	250	676	692	+ 2,4
Total square metres	10 825	11 887	11 351	30 896	30 922	+ 0,1
Total value at current prices (R'000)	9 902	15 423	14 966	34 427	39 902	+ 15,9
Dwelling-houses equal to or larger than 80 square metres						
Number of dwelling-houses	113	110	189	298	379	+ 27,2
Total square metres	18 413	15 307	22 172	47 345	50 561	+ 6,8
Total value at current prices (R'000)	23 329	20 039	29 856	61 000	67 037	+ 9,9
Flats and townhouses						
Number of flats and townhouses	27	27	31	327	78	-76,1
Total square metres	4 060	2 784	3 199	19 524	8 229	-57,9
Total value at current prices (R'000)	5 958	4 539	4 270	28 062	11 700	-58,3
Other residential buildings <sup>1/</sup>						
Total square metres	0	0	0	273	5 820	+ 2 031,9
Total value at current prices (R'000)	0	0	0	306	50 000	#####
<b>Total value of residential buildings at current prices (R'000)</b>	<b>39 189</b>	<b>40 001</b>	<b>49 092</b>	<b>123 795</b>	<b>168 639</b>	<b>+ 36,2</b>
<b>Non-residential buildings</b>						
Office and banking space						
Total square metres	93	247	0	987	414	-58,1
Total value at current prices (R'000)	140	779	0	1 472	1 080	-26,6
Shopping space						
Total square metres	2 256	139	1 276	4 384	1 611	-63,3
Total value at current prices (R'000)	2 756	237	2 070	5 956	2 616	-56,1
Industrial and warehouse space						
Total square metres	6 729	5 364	3 691	19 520	9 543	-51,1
Total value at current prices (R'000)	6 925	6 664	5 348	23 225	12 744	-45,1
Other non-residential space <sup>2/</sup>						
Total square metres	7 695	1 112	918	10 143	2 183	-78,5
Total value at current prices (R'000)	10 487	1 459	1 101	13 266	2 815	-78,8
<b>Total value of non-residential buildings at current prices (R'000)</b>	<b>20 308</b>	<b>9 139</b>	<b>8 519</b>	<b>43 919</b>	<b>19 255</b>	<b>-56,2</b>
<b>Additions and alterations</b>						
Dwelling-houses						
Total square metres	18 947	18 117	15 138	52 587	46 516	-11,5
Total value at current prices (R'000)	23 231	22 317	19 506	63 846	57 851	-9,4
Other buildings <sup>3/</sup>						
Total square metres	3 925	23 977	4 248	13 684	30 792	+ 125,0
Total value at current prices (R'000)	6 631	36 675	5 362	19 273	46 120	+ 139,3
<b>Total value of additions and alterations at current prices (R'000)</b>	<b>29 862</b>	<b>58 992</b>	<b>24 868</b>	<b>83 119</b>	<b>103 971</b>	<b>+ 25,1</b>
<b>Total value of building plans passed at current prices (R'000)</b>	<b>89 359</b>	<b>108 132</b>	<b>82 479</b>	<b>250 833</b>	<b>291 865</b>	<b>+ 16,4</b>

1/ Other residential buildings include institutions for the disabled, boarding houses, old people's homes, hostels, hotels, motels, guest houses, holiday chalets, entertainment centres, bed-and-breakfast accommodation and casinos.

2/ Other non-residential space includes churches, sport and recreation clubs, schools, crèches, hospitals and all other non-residential space.

3/ Other buildings include additions and alterations to other residential buildings, non-residential buildings and internal alterations.

Table 12 - Building plans passed according to type of building and province: Northern Cape

Type of building	March 2000	February 2001	March 2001	January 2000 to March 2000	January 2001 to March 2001	Percentage change between January 2000 to March 2000 and January 2001 to March 2001
<b>Residential buildings</b>						
Dwelling-houses smaller than 80 square metres						
Number of dwelling-houses	2	16	4	22	22	+ 0,0
Total square metres	107	848	254	1 220	1 214	- 0,5
Total value at current prices (R'000)	110	1 217	404	1 887	1 791	- 5,1
Dwelling-houses equal to or larger than 80 square metres						
Number of dwelling-houses	15	7	9	25	49	+ 96,0
Total square metres	1 906	1 169	1 353	4 143	9 281	+ 124,0
Total value at current prices (R'000)	2 595	1 631	1 920	5 939	10 103	+ 70,1
Flats and townhouses						
Number of flats and townhouses	15	4	1	21	6	- 71,4
Total square metres	2 453	699	140	2 987	984	- 67,1
Total value at current prices (R'000)	4 415	979	112	5 056	1 294	- 74,4
Other residential buildings <sup>1/</sup>						
Total square metres	0	0	0	0	0	..
Total value at current prices (R'000)	0	0	0	0	0	..
<b>Total value of residential buildings at current prices (R'000)</b>	<b>7 120</b>	<b>3 827</b>	<b>2 436</b>	<b>12 882</b>	<b>13 188</b>	<b>+ 2,4</b>
<b>Non-residential buildings</b>						
Office and banking space						
Total square metres	7 105	0	0	7 715	191	- 97,5
Total value at current prices (R'000)	15 631	0	0	16 363	124	- 99,2
Shopping space						
Total square metres	781	22	0	911	206	- 77,4
Total value at current prices (R'000)	1 203	35	0	1 411	226	- 84,0
Industrial and warehouse space						
Total square metres	650	0	772	1 571	772	- 50,9
Total value at current prices (R'000)	1 300	0	618	2 405	618	- 74,3
Other non-residential space <sup>2/</sup>						
Total square metres	2 310	147	198	3 569	433	- 87,9
Total value at current prices (R'000)	3 548	323	278	5 111	724	- 85,8
<b>Total value of non-residential buildings at current prices (R'000)</b>	<b>21 682</b>	<b>358</b>	<b>896</b>	<b>25 290</b>	<b>1 692</b>	<b>- 93,3</b>
<b>Additions and alterations</b>						
Dwelling-houses						
Total square metres	4 185	2 694	2 329	9 580	6 462	- 32,5
Total value at current prices (R'000)	6 016	4 100	3 453	14 043	9 599	- 31,6
Other buildings <sup>3/</sup>						
Total square metres	483	232	1 080	1 597	1 343	- 15,9
Total value at current prices (R'000)	1 441	404	2 737	4 401	3 465	- 21,3
<b>Total value of additions and alterations at current prices (R'000)</b>	<b>7 457</b>	<b>4 504</b>	<b>6 190</b>	<b>18 444</b>	<b>13 064</b>	<b>- 29,2</b>
<b>Total value of building plans passed at current prices (R'000)</b>	<b>36 259</b>	<b>8 689</b>	<b>9 522</b>	<b>56 616</b>	<b>27 944</b>	<b>- 50,6</b>

1/ Other residential buildings include institutions for the disabled, boarding houses, old people's homes, hostels, hotels, motels, guest houses, holiday chalets, entertainment centres, bed-and-breakfast accommodation and casinos.

2/ Other non-residential space includes churches, sport and recreation clubs, schools, crèches, hospitals and all other non-residential space.

3/ Other buildings include additions and alterations to other residential buildings, non-residential buildings and internal alterations.

Table 13 - Building plans passed according to type of building and province: Free State

Type of building	March 2000	February 2001	March 2001	January 2000 to March 2000	January 2001 to March 2001	Percentage change between January 2000 to March 2000 and January 2001 to March 2001
<b>Residential buildings</b>						
Dwelling-houses smaller than 80 square metres						
Number of dwelling-houses	349	314	272	1 913	663	-65,3
Total square metres	14 635	14 030	12 265	71 939	29 852	-58,5
Total value at current prices (R'000)	6 613	6 759	6 527	38 984	15 591	-60,0
Dwelling-houses equal to or larger than 80 square metres						
Number of dwelling-houses	60	72	66	201	203	+ 1,0
Total square metres	10 170	9 431	10 409	30 573	30 784	+ 0,7
Total value at current prices (R'000)	12 364	10 467	11 051	34 866	33 580	-3,7
Flats and townhouses						
Number of flats and townhouses	2	18	19	16	79	+ 393,8
Total square metres	449	3 356	2 357	1 379	11 039	+ 700,5
Total value at current prices (R'000)	370	5 369	3 775	1 486	17 311	+ 1 064,9
Other residential buildings <sup>1/</sup>						
Total square metres	600	0	32	600	32	-94,7
Total value at current prices (R'000)	1 500	0	11	1 500	11	-99,3
<b>Total value of residential buildings at current prices (R'000)</b>	<b>20 847</b>	<b>22 595</b>	<b>21 364</b>	<b>76 836</b>	<b>66 493</b>	<b>-13,5</b>
<b>Non-residential buildings</b>						
Office and banking space						
Total square metres	747	12 488	334	1 614	12 822	+ 694,4
Total value at current prices (R'000)	1 145	24 800	416	2 694	25 216	+ 836,0
Shopping space						
Total square metres	608	0	253	1 137	1 418	+ 24,7
Total value at current prices (R'000)	954	0	290	1 435	1 690	+ 17,8
Industrial and warehouse space						
Total square metres	1 332	1 429	0	2 854	1 626	-43,0
Total value at current prices (R'000)	1 263	1 012	0	2 781	1 062	-61,8
Other non-residential space <sup>2/</sup>						
Total square metres	112	345	1 530	412	2 271	+ 451,2
Total value at current prices (R'000)	130	410	2 480	325	3 890	+ 1 096,9
<b>Total value of non-residential buildings at current prices (R'000)</b>	<b>3 492</b>	<b>26 222</b>	<b>3 186</b>	<b>7 235</b>	<b>31 858</b>	<b>+ 340,3</b>
<b>Additions and alterations</b>						
Dwelling-houses						
Total square metres	8 887	7 019	6 889	23 602	20 558	-12,9
Total value at current prices (R'000)	9 653	7 506	7 406	23 837	21 379	-10,3
Other buildings <sup>3/</sup>						
Total square metres	2 594	628	1 643	7 147	2 827	-60,4
Total value at current prices (R'000)	3 406	1 195	2 480	9 281	4 501	-51,5
<b>Total value of additions and alterations at current prices (R'000)</b>	<b>13 059</b>	<b>8 701</b>	<b>9 886</b>	<b>33 118</b>	<b>25 880</b>	<b>-21,9</b>
<b>Total value of building plans passed at current prices (R'000)</b>	<b>37 398</b>	<b>57 518</b>	<b>34 436</b>	<b>117 189</b>	<b>124 231</b>	<b>+ 6,0</b>

1/ Other residential buildings include institutions for the disabled, boarding houses, old people's homes, hostels, hotels, motels, guest houses, holiday chalets, entertainment centres, bed-and-breakfast accommodation and casinos.

2/ Other non-residential space includes churches, sport and recreation clubs, schools, crèches, hospitals and all other non-residential space.

3/ Other buildings include additions and alterations to other residential buildings, non-residential buildings and internal alterations.

Table 14 - Building plans passed according to type of building and province: KwaZulu-Natal

Type of building	March 2000	February 2001 *	March 2001	January 2000 to March 2000	January 2001 to March 2001	Percentage change between January 2000 to March 2000 and January 2001 to March 2001
<b>Residential buildings</b>						
Dwelling-houses smaller than 80 square metres						
Number of dwelling-houses	160	305	381	399	834	+ 109,0
Total square metres	8 571	12 859	19 635	21 165	40 280	+ 90,3
Total value at current prices (R'000)	9 880	11 286	15 752	25 101	34 775	+ 38,5
Dwelling-houses equal to or larger than 80 square metres						
Number of dwelling-houses	172	116	162	411	408	- 0,7
Total square metres	34 201	29 595	36 413	82 396	93 601	+ 13,6
Total value at current prices (R'000)	46 066	40 173	47 989	113 881	131 234	+ 15,2
Flats and townhouses						
Number of flats and townhouses	56	97	129	122	275	+ 125,4
Total square metres	11 398	9 535	17 327	21 272	35 053	+ 64,8
Total value at current prices (R'000)	18 775	19 629	30 401	35 645	63 232	+ 77,4
Other residential buildings <sup>1/</sup>						
Total square metres	1 825	0	0	1 825	0	..
Total value at current prices (R'000)	3 500	0	0	3 500	0	..
<b>Total value of residential buildings at current prices (R'000)</b>	<b>78 221</b>	<b>71 088</b>	<b>94 142</b>	<b>178 127</b>	<b>229 241</b>	<b>+ 28,7</b>
<b>Non-residential buildings</b>						
Office and banking space						
Total square metres	5 566	12 102	31	20 259	49 233	+ 143,0
Total value at current prices (R'000)	10 019	22 910	15	38 555	130 259	+ 237,9
Shopping space						
Total square metres	724	7 144	3 911	8 909	11 813	+ 32,6
Total value at current prices (R'000)	720	7 416	4 300	8 891	12 510	+ 40,7
Industrial and warehouse space						
Total square metres	13 999	6 953	25 223	30 028	42 022	+ 39,9
Total value at current prices (R'000)	16 460	7 398	26 361	56 997	45 352	- 20,4
Other non-residential space <sup>2/</sup>						
Total square metres	6 842	1 097	2 946	11 461	7 494	- 34,6
Total value at current prices (R'000)	7 608	1 617	3 516	13 512	9 785	- 27,6
<b>Total value of non-residential buildings at current prices (R'000)</b>	<b>34 807</b>	<b>39 341</b>	<b>34 192</b>	<b>117 955</b>	<b>197 906</b>	<b>+ 67,8</b>
<b>Additions and alterations</b>						
Dwelling-houses						
Total square metres	42 845	32 780	35 984	95 628	95 032	- 0,6
Total value at current prices (R'000)	48 999	40 279	43 045	113 268	117 868	+ 4,1
Other buildings <sup>3/</sup>						
Total square metres	23 422	14 651	16 911	47 814	41 364	- 13,5
Total value at current prices (R'000)	38 869	27 295	37 977	91 223	80 863	- 11,4
<b>Total value of additions and alterations at current prices (R'000)</b>	<b>87 868</b>	<b>67 574</b>	<b>81 022</b>	<b>204 491</b>	<b>198 731</b>	<b>- 2,8</b>
<b>Total value of building plans passed at current prices (R'000)</b>	<b>200 896</b>	<b>178 003</b>	<b>209 356</b>	<b>500 573</b>	<b>625 878</b>	<b>+ 25,0</b>

1/ Other residential buildings include institutions for the disabled, boarding houses, old people's homes, hostels, hotels, motels, guest houses, holiday chalets, entertainment centres, bed-and-breakfast accommodation and casinos.

2/ Other non-residential space includes churches, sport and recreation clubs, schools, crèches, hospitals and all other non-residential space.

3/ Other buildings include additions and alterations to other residential buildings, non-residential buildings and internal alterations.

Table 15 - Building plans passed according to type of building and province: North West

Type of building	March 2000	February 2001	March 2001	January 2000 to March 2000	January 2001 to March 2001	Percentage change between January 2000 to March 2000 and January 2001 to March 2001
<b>Residential buildings</b>						
Dwelling-houses smaller than 80 square metres						
Number of dwelling-houses	72	396	500	276	1 095	+ 296,7
Total square metres	3 670	12 965	17 907	13 934	40 032	+ 187,3
Total value at current prices (R'000)	3 972	6 316	11 537	14 682	28 692	+ 95,4
Dwelling-houses equal to or larger than 80 square metres						
Number of dwelling-houses	86	57	73	235	193	- 17,9
Total square metres	13 482	8 343	12 640	35 853	31 755	- 11,4
Total value at current prices (R'000)	14 483	10 545	15 100	38 017	38 538	+ 1,4
Flats and townhouses						
Number of flats and townhouses	37	24	47	59	103	+ 74,6
Total square metres	2 535	3 471	5 326	4 831	13 350	+ 176,3
Total value at current prices (R'000)	3 011	3 565	8 820	5 336	17 211	+ 222,5
Other residential buildings <sup>1/</sup>						
Total square metres	404	0	0	3 367	88	- 97,4
Total value at current prices (R'000)	300	0	0	3 856	75	- 98,1
<b>Total value of residential buildings at current prices (R'000)</b>	<b>21 766</b>	<b>20 426</b>	<b>35 457</b>	<b>61 891</b>	<b>84 516</b>	<b>+ 36,6</b>
<b>Non-residential buildings</b>						
Office and banking space						
Total square metres	0	750	450	0	2 546	..
Total value at current prices (R'000)	0	1 400	800	0	4 425	..
Shopping space						
Total square metres	949	1 372	5 009	2 636	10 002	+ 279,4
Total value at current prices (R'000)	2 638	1 646	4 451	4 547	11 515	+ 153,2
Industrial and warehouse space						
Total square metres	206	638	1 038	1 692	2 849	+ 68,4
Total value at current prices (R'000)	165	742	893	1 565	2 955	+ 88,8
Other non-residential space <sup>2/</sup>						
Total square metres	5 758	0	387	6 961	387	- 94,4
Total value at current prices (R'000)	5 278	0	518	7 532	518	- 93,1
<b>Total value of non-residential buildings at current prices (R'000)</b>	<b>8 081</b>	<b>3 788</b>	<b>6 662</b>	<b>13 644</b>	<b>19 413</b>	<b>+ 42,3</b>
<b>Additions and alterations</b>						
Dwelling-houses						
Total square metres	6 579	6 077	5 938	19 804	16 556	- 16,4
Total value at current prices (R'000)	5 864	6 843	6 359	19 115	18 027	- 5,7
Other buildings <sup>3/</sup>						
Total square metres	1 613	1 186	1 677	5 668	4 146	- 26,9
Total value at current prices (R'000)	7 896	1 600	2 445	20 815	6 101	- 70,7
<b>Total value of additions and alterations at current prices (R'000)</b>	<b>13 760</b>	<b>8 443</b>	<b>8 804</b>	<b>39 930</b>	<b>24 128</b>	<b>- 39,6</b>
<b>Total value of building plans passed at current prices (R'000)</b>	<b>43 607</b>	<b>32 657</b>	<b>50 923</b>	<b>115 465</b>	<b>128 057</b>	<b>+ 10,9</b>

1/ Other residential buildings include institutions for the disabled, boarding houses, old people's homes, hostels, hotels, motels, guest houses, holiday chalets, entertainment centres, bed-and-breakfast accommodation and casinos.

2/ Other non-residential space includes churches, sport and recreation clubs, schools, crèches, hospitals and all other non-residential space.

3/ Other buildings include additions and alterations to other residential buildings, non-residential buildings and internal alterations.

Table 16 - Building plans passed according to type of building and province: Gauteng

Type of building	March 2000 *	February 2001	March 2001	January 2000 to March 2000	January 2001 to March 2001	Percentage change between January 2000 to March 2000 and January 2001 to March 2001
<b>Residential buildings</b>						
Dwelling-houses smaller than 80 square metres						
Number of dwelling-houses	2 505	544	1 598	6 075	2 947	- 51,5
Total square metres	86 196	25 295	57 243	212 137	111 590	- 47,4
Total value at current prices (R'000)	54 398	29 428	60 714	146 200	123 276	- 15,7
Dwelling-houses equal to or larger than 80 square metres						
Number of dwelling-houses	632	938	807	1 647	2 311	+ 40,3
Total square metres	153 186	179 613	203 322	392 606	528 756	+ 34,7
Total value at current prices (R'000)	203 266	255 249	286 227	518 601	751 108	+ 44,8
Flats and townhouses						
Number of flats and townhouses	409	394	421	868	1 089	+ 25,5
Total square metres	48 154	43 731	50 870	95 114	129 578	+ 36,2
Total value at current prices (R'000)	69 148	67 209	81 225	138 310	200 049	+ 44,6
Other residential buildings <sup>1/</sup>						
Total square metres	1 024	4 544	0	2 815	4 962	+ 76,3
Total value at current prices (R'000)	1 000	5 459	0	3 199	6 086	+ 90,2
<b>Total value of residential buildings at current prices (R'000)</b>	<b>327 812</b>	<b>357 345</b>	<b>428 166</b>	<b>806 310</b>	<b>1 080 519</b>	<b>+ 34,0</b>
<b>Non-residential buildings</b>						
Office and banking space						
Total square metres	66 563	21 874	5 717	148 948	85 129	- 42,8
Total value at current prices (R'000)	88 468	39 218	10 345	197 943	132 659	- 33,0
Shopping space						
Total square metres	8 447	8 812	15 476	63 039	47 983	- 23,9
Total value at current prices (R'000)	9 559	12 807	25 307	75 828	81 032	+ 6,9
Industrial and warehouse space						
Total square metres	41 746	30 511	42 115	116 948	101 528	- 13,2
Total value at current prices (R'000)	42 893	48 007	74 936	168 129	171 053	+ 1,7
Other non-residential space <sup>2/</sup>						
Total square metres	12 803	21 399	15 661	33 648	42 109	+ 25,1
Total value at current prices (R'000)	19 127	29 505	26 109	50 872	63 093	+ 24,0
<b>Total value of non-residential buildings at current prices (R'000)</b>	<b>160 047</b>	<b>129 537</b>	<b>136 697</b>	<b>492 772</b>	<b>447 837</b>	<b>- 9,1</b>
<b>Additions and alterations</b>						
Dwelling-houses						
Total square metres	92 614	84 955	85 506	243 886	246 034	+ 0,9
Total value at current prices (R'000)	112 757	106 695	107 597	300 432	311 198	+ 3,6
Other buildings <sup>3/</sup>						
Total square metres	28 748	38 730	31 675	94 891	95 005	+ 0,1
Total value at current prices (R'000)	44 020	69 660	50 971	136 436	175 069	+ 28,3
<b>Total value of additions and alterations at current prices (R'000)</b>	<b>156 777</b>	<b>176 355</b>	<b>158 568</b>	<b>436 868</b>	<b>486 267</b>	<b>+ 11,3</b>
<b>Total value of building plans passed at current prices (R'000)</b>	<b>644 636</b>	<b>663 237</b>	<b>723 431</b>	<b>1 735 950</b>	<b>2 014 623</b>	<b>+ 16,1</b>

1/ Other residential buildings include institutions for the disabled, boarding houses, old people's homes, hostels, hotels, motels, guest houses, holiday chalets, entertainment centres, bed-and-breakfast accommodation and casinos.

2/ Other non-residential space includes churches, sport and recreation clubs, schools, crèches, hospitals and all other non-residential space.

3/ Other buildings include additions and alterations to other residential buildings, non-residential buildings and internal alterations.

Table 17 - Building plans passed according to type of building and province: Mpumalanga

Type of building	March 2000	February 2001	March 2001	January 2000 to March 2000	January 2001 to March 2001	Percentage change between January 2000 to March 2000 and January 2001 to March 2001
<b>Residential buildings</b>						
Dwelling-houses smaller than 80 square metres						
Number of dwelling-houses	156	847	623	419	1 924	+ 359,2
Total square metres	7 372	29 708	20 573	16 331	65 567	+ 301,5
Total value at current prices (R'000)	9 286	16 422	9 797	17 494	43 952	+ 151,2
Dwelling-houses equal to or larger than 80 square metres						
Number of dwelling-houses	109	59	65	232	183	- 21,1
Total square metres	19 300	9 700	13 081	40 394	33 656	- 16,7
Total value at current prices (R'000)	23 054	10 931	15 727	46 221	38 711	- 16,2
Flats and townhouses						
Number of flats and townhouses	26	60	35	122	104	- 14,8
Total square metres	1 550	4 876	4 332	9 717	10 374	+ 6,8
Total value at current prices (R'000)	1 582	6 922	5 878	11 188	13 949	+ 24,7
Other residential buildings <sup>1/</sup>						
Total square metres	0	0	0	863	0	..
Total value at current prices (R'000)	0	0	0	1 362	0	..
<b>Total value of residential buildings at current prices (R'000)</b>	<b>33 922</b>	<b>34 275</b>	<b>31 402</b>	<b>76 265</b>	<b>96 612</b>	<b>+ 26,7</b>
<b>Non-residential buildings</b>						
Office and banking space						
Total square metres	1 674	632	0	7 600	632	- 91,7
Total value at current prices (R'000)	1 753	950	0	10 549	950	- 91,0
Shopping space						
Total square metres	1 124	174	0	1 702	174	- 89,8
Total value at current prices (R'000)	1 577	174	0	2 217	174	- 92,2
Industrial and warehouse space						
Total square metres	4 553	11 435	4 091	10 317	18 248	+ 76,9
Total value at current prices (R'000)	5 017	6 895	5 533	9 453	15 214	+ 60,9
Other non-residential space <sup>2/</sup>						
Total square metres	1 809	1 801	1 913	3 810	3 714	- 2,5
Total value at current prices (R'000)	2 740	2 313	2 270	4 646	4 583	- 1,4
<b>Total value of non-residential buildings at current prices (R'000)</b>	<b>11 087</b>	<b>10 332</b>	<b>7 803</b>	<b>26 865</b>	<b>20 921</b>	<b>- 22,1</b>
<b>Additions and alterations</b>						
Dwelling-houses						
Total square metres	11 973	10 013	10 404	30 185	28 839	- 4,5
Total value at current prices (R'000)	11 430	9 742	9 235	27 705	26 760	- 3,4
Other buildings <sup>3/</sup>						
Total square metres	1 076	1 144	1 369	4 274	4 961	+ 16,1
Total value at current prices (R'000)	1 424	2 212	2 520	5 023	8 948	+ 78,1
<b>Total value of additions and alterations at current prices (R'000)</b>	<b>12 854</b>	<b>11 954</b>	<b>11 755</b>	<b>32 728</b>	<b>35 708</b>	<b>+ 9,1</b>
<b>Total value of building plans passed at current prices (R'000)</b>	<b>57 863</b>	<b>56 561</b>	<b>50 960</b>	<b>135 858</b>	<b>153 241</b>	<b>+ 12,8</b>

1/ Other residential buildings include institutions for the disabled, boarding houses, old people's homes, hostels, hotels, motels, guest houses, holiday chalets, entertainment centres, bed-and-breakfast accommodation and casinos.

2/ Other non-residential space includes churches, sport and recreation clubs, schools, crèches, hospitals and all other non-residential space.

3/ Other buildings include additions and alterations to other residential buildings, non-residential buildings and internal alterations.

Table 18 - Building plans passed according to type of building and province: Northern Province

Type of building	March 2000	February 2001	March 2001	January 2000 to March 2000	January 2001 to March 2001	Percentage change between January 2000 to March 2000 and January 2001 to March 2001
<b>Residential buildings</b>						
Dwelling-houses smaller than 80 square metres						
Number of dwelling-houses	383	34	40	557	106	-81,0
Total square metres	15 807	2 017	2 340	23 974	6 235	-74,0
Total value at current prices (R'000)	7 334	2 592	3 044	13 824	7 937	-42,6
Dwelling-houses equal to or larger than 80 square metres						
Number of dwelling-houses	32	44	37	102	117	+ 14,7
Total square metres	5 164	7 461	6 165	19 208	20 669	+ 7,6
Total value at current prices (R'000)	6 455	10 112	8 509	26 638	27 975	+ 5,0
Flats and townhouses						
Number of flats and townhouses	8	4	2	18	13	-27,8
Total square metres	1 378	588	277	3 182	2 426	-23,8
Total value at current prices (R'000)	1 485	716	312	3 864	3 109	-19,5
Other residential buildings <sup>1/</sup>						
Total square metres	0	0	0	7 324	0	..
Total value at current prices (R'000)	0	0	0	9 600	0	..
<b>Total value of residential buildings at current prices (R'000)</b>	<b>15 274</b>	<b>13 420</b>	<b>11 865</b>	<b>53 926</b>	<b>39 021</b>	<b>-27,6</b>
<b>Non-residential buildings</b>						
Office and banking space						
Total square metres	429	0	0	649	0	..
Total value at current prices (R'000)	600	0	0	1 084	0	..
Shopping space						
Total square metres	91	0	1 741	159	6 134	+ 3 757,9
Total value at current prices (R'000)	109	0	3 830	205	9 980	+ 4 768,3
Industrial and warehouse space						
Total square metres	680	0	0	1 714	0	..
Total value at current prices (R'000)	816	0	0	1 765	0	..
Other non-residential space <sup>2/</sup>						
Total square metres	274	0	270	4 399	270	-93,9
Total value at current prices (R'000)	384	0	300	8 785	300	-96,6
<b>Total value of non-residential buildings at current prices (R'000)</b>	<b>1 909</b>	<b>0</b>	<b>4 130</b>	<b>11 839</b>	<b>10 280</b>	<b>-13,2</b>
<b>Additions and alterations</b>						
Dwelling-houses						
Total square metres	4 458	5 164	3 796	11 356	11 456	+ 0,9
Total value at current prices (R'000)	5 950	6 744	4 551	14 725	14 533	-1,3
Other buildings <sup>3/</sup>						
Total square metres	641	740	614	1 062	2 837	+ 167,1
Total value at current prices (R'000)	1 797	1 520	1 497	4 341	7 032	+ 62,0
<b>Total value of additions and alterations at current prices (R'000)</b>	<b>7 747</b>	<b>8 264</b>	<b>6 048</b>	<b>19 066</b>	<b>21 565</b>	<b>+ 13,1</b>
<b>Total value of building plans passed at current prices (R'000)</b>	<b>24 930</b>	<b>21 684</b>	<b>22 043</b>	<b>84 831</b>	<b>70 866</b>	<b>-16,5</b>

1/ Other residential buildings include institutions for the disabled, boarding houses, old people's homes, hostels, hotels, motels, guest houses, holiday chalets, entertainment centres, bed-and-breakfast accommodation and casinos.

2/ Other non-residential space includes churches, sport and recreation clubs, schools, crèches, hospitals and all other non-residential space.

3/ Other buildings include additions and alterations to other residential buildings, non-residential buildings and internal alterations.



Table 19 - Buildings completed according to type of building: Total RSA

Type of building	March 2000*	February 2001 *	March 2001	January 2000 to March 2000	January 2001 to March 2001	Percentage change between January 2000 to March 2000 and January 2001 to March 2001
<b>Residential buildings</b>						
Dwelling-houses smaller than 80 square metres						
Number of dwelling-houses	2 920	2 265	2 582	7 442	6 250	- 16,0
Total square metres	108 568	87 548	103 351	269 364	247 297	- 8,2
Total value at current prices (R'000)	82 184	69 640	88 595	200 069	212 860	+ 6,4
Dwelling-houses equal to or larger than 80 square metres						
Number of dwelling-houses	886	996	1 042	2 288	2 787	+ 21,8
Total square metres	171 351	190 165	216 723	466 842	566 579	+ 21,4
Total value at current prices (R'000)	224 335	258 654	298 870	597 602	772 488	+ 29,3
Flats and townhouses						
Number of flats and townhouses	618	490	735	1 735	1 839	+ 6,0
Total square metres	74 386	48 881	92 615	171 266	199 790	+ 16,7
Total value at current prices (R'000)	105 582	74 441	141 884	232 377	295 424	+ 27,1
Other residential buildings <sup>1/</sup>						
Total square metres	1 678	26 671	8 925	21 257	80 146	+ 277,0
Total value at current prices (R'000)	2 191	26 263	16 250	35 273	336 861	+ 855,0
<b>Total value of residential buildings at current prices (R'000)</b>	<b>414 292</b>	<b>428 998</b>	<b>545 599</b>	<b>1 065 321</b>	<b>1 617 633</b>	<b>+ 51,8</b>
<b>Non-residential buildings</b>						
Office and banking space						
Total square metres	72 714	36 104	34 676	176 029	184 330	+ 4,7
Total value at current prices (R'000)	123 087	76 790	50 716	304 394	284 637	- 6,5
Shopping space						
Total square metres	7 524	34 540	11 299	35 215	64 859	+ 84,2
Total value at current prices (R'000)	8 035	33 162	16 507	45 842	84 550	+ 84,4
Industrial and warehouse space						
Total square metres	67 338	130 104	62 924	211 920	223 361	+ 5,4
Total value at current prices (R'000)	52 022	149 336	68 688	199 525	252 439	+ 26,5
Other non-residential space <sup>2/</sup>						
Total square metres	7 247	20 927	14 532	40 396	44 604	+ 10,4
Total value at current prices (R'000)	5 846	26 332	15 036	37 924	53 375	+ 40,7
<b>Total value of non-residential buildings at current prices (R'000)</b>	<b>188 990</b>	<b>285 620</b>	<b>150 947</b>	<b>587 685</b>	<b>675 001</b>	<b>+ 14,9</b>
<b>Additions and alterations</b>						
Dwelling-houses						
Total square metres	127 350	135 766	115 766	358 931	357 457	- 0,4
Total value at current prices (R'000)	140 131	159 858	137 328	400 616	423 673	+ 5,8
Other buildings <sup>3/</sup>						
Total square metres	36 143	43 629	53 771	121 911	137 782	+ 13,0
Total value at current prices (R'000)	128 033	83 633	95 887	271 529	254 026	- 6,4
<b>Total value of additions and alterations at current prices (R'000)</b>	<b>268 164</b>	<b>243 491</b>	<b>233 215</b>	<b>672 145</b>	<b>677 699</b>	<b>+ 0,8</b>
<b>Total value of buildings completed at current prices (R'000)</b>	<b>871 446</b>	<b>958 109</b>	<b>929 761</b>	<b>2 325 151</b>	<b>2 970 333</b>	<b>+ 27,7</b>

1/ Other residential buildings include institutions for the disabled, boarding houses, old people's homes, hostels, hotels, motels, guest houses, holiday chalets, entertainment centres, bed-and-breakfast accommodation and casinos.

2/ Other non-residential space includes churches, sport and recreation clubs, schools, crèches, hospitals and all other non-residential space.

3/ Other buildings include additions and alterations to other residential buildings, non-residential buildings and internal alterations.

Table 20 - Buildings completed according to type of building and province: Western Cape

Type of building	March 2000 *	February 2001	March 2001	January 2000 to March 2000	January 2001 to March 2001	Percentage change between January 2000 to March 2000 and January 2001 to March 2001
<b>Residential buildings</b>						
Dwelling-houses smaller than 80 square metres						
Number of dwelling-houses	929	537	402	2 125	1 379	- 35,1
Total square metres	28 140	18 331	13 898	61 826	46 832	- 24,3
Total value at current prices (R'000)	19 413	19 791	14 095	37 897	53 025	+ 39,9
Dwelling-houses equal to or larger than 80 square metres						
Number of dwelling-houses	377	297	378	907	928	+ 2,3
Total square metres	63 087	56 535	74 783	164 427	179 808	+ 9,4
Total value at current prices (R'000)	86 087	82 233	111 019	219 408	266 320	+ 21,4
Flats and townhouses						
Number of flats and townhouses	174	151	34	386	307	- 20,5
Total square metres	18 325	14 065	3 596	40 463	30 363	- 25,0
Total value at current prices (R'000)	22 111	20 600	4 982	52 161	41 244	- 20,9
Other residential buildings <sup>1/</sup>						
Total square metres	393	16 361	8 925	14 781	26 677	+ 80,5
Total value at current prices (R'000)	528	12 107	16 250	24 399	30 121	+ 23,5
<b>Total value of residential buildings at current prices (R'000)</b>	<b>128 139</b>	<b>134 731</b>	<b>146 346</b>	<b>333 865</b>	<b>390 710</b>	<b>+ 17,0</b>
<b>Non-residential buildings</b>						
Office and banking space						
Total square metres	33 292	27 497	8 941	43 693	43 049	- 1,5
Total value at current prices (R'000)	60 044	65 544	9 506	73 857	83 646	+ 13,3
Shopping space						
Total square metres	1 504	7 511	2 034	4 706	11 287	+ 139,8
Total value at current prices (R'000)	1 525	10 915	2 275	5 145	16 405	+ 218,9
Industrial and warehouse space						
Total square metres	22 387	21 940	7 929	74 049	39 681	- 46,4
Total value at current prices (R'000)	17 949	29 515	8 812	60 415	48 226	- 20,2
Other non-residential space <sup>2/</sup>						
Total square metres	5 780	10 488	8 804	23 828	23 347	- 2,0
Total value at current prices (R'000)	4 515	9 905	8 822	18 860	23 083	+ 22,4
<b>Total value of non-residential buildings at current prices (R'000)</b>	<b>84 033</b>	<b>115 879</b>	<b>29 415</b>	<b>158 277</b>	<b>171 360</b>	<b>+ 8,3</b>
<b>Additions and alterations</b>						
Dwelling-houses						
Total square metres	48 593	48 756	43 436	141 785	133 516	- 5,8
Total value at current prices (R'000)	55 695	61 272	55 880	162 696	168 992	+ 3,9
Other buildings <sup>3/</sup>						
Total square metres	11 382	11 937	11 890	49 350	42 394	- 14,1
Total value at current prices (R'000)	19 910	30 157	22 567	86 423	99 332	+ 14,9
<b>Total value of additions and alterations at current prices (R'000)</b>	<b>75 605</b>	<b>91 429</b>	<b>78 447</b>	<b>249 119</b>	<b>268 324</b>	<b>+ 7,7</b>
<b>Total value of buildings completed at current prices (R'000)</b>	<b>287 777</b>	<b>342 039</b>	<b>254 208</b>	<b>741 261</b>	<b>830 394</b>	<b>12,0</b>

1/ Other residential buildings include institutions for the disabled, boarding houses, old people's homes, hostels, hotels, motels, guest houses, holiday chalets, entertainment centres, bed-and-breakfast accommodation and casinos.

2/ Other non-residential space includes churches, sport and recreation clubs, schools, crèches, hospitals and all other non-residential space.

3/ Other buildings include additions and alterations to other residential buildings, non-residential buildings and internal alterations.

Table 21 - Buildings completed according to type of building and province: Eastern Cape

Type of building	March 2000	February 2001 *	March 2001	January 2000 to March 2000	January 2001 to March 2001	Percentage change between January 2000 to March 2000 and January 2001 to March 2001
<b>Residential buildings</b>						
Dwelling-houses smaller than 80 square metres						
Number of dwelling-houses	141	338	367	576	841	+ 46,0
Total square metres	7 330	14 956	15 862	24 209	36 397	+ 50,3
Total value at current prices (R'000)	9 205	12 199	15 759	29 499	32 361	+ 9,7
Dwelling-houses equal to or larger than 80 square metres						
Number of dwelling-houses	21	95	54	133	177	+ 33,1
Total square metres	3 759	12 337	7 815	25 564	24 285	- 5,0
Total value at current prices (R'000)	4 178	14 668	9 819	27 686	29 318	+ 5,9
Flats and townhouses						
Number of flats and townhouses	11	23	0	208	23	- 88,9
Total square metres	2 955	2 094	0	15 181	2 094	- 86,2
Total value at current prices (R'000)	3 674	2 992	0	17 971	2 992	- 83,4
Other residential buildings <sup>1/</sup>						
Total square metres	0	4 347	0	0	4 347	..
Total value at current prices (R'000)	0	7 000	0	0	7 000	..
<b>Total value of residential buildings at current prices (R'000)</b>	<b>17 057</b>	<b>36 859</b>	<b>25 578</b>	<b>75 156</b>	<b>71 671</b>	<b>- 4,6</b>
<b>Non-residential buildings</b>						
Office and banking space						
Total square metres	0	0	1 062	121	1 353	+ 1018,2
Total value at current prices (R'000)	0	0	1 724	149	2 248	+ 1408,7
Shopping space						
Total square metres	334	352	3 108	1 770	4 199	+ 137,2
Total value at current prices (R'000)	531	431	5 004	2 308	6 507	+ 181,9
Industrial and warehouse space						
Total square metres	1 187	67 693	209	7 290	68 788	+ 843,6
Total value at current prices (R'000)	1 072	61 844	303	6 669	63 477	+ 851,8
Other non-residential space <sup>2/</sup>						
Total square metres	0	3 103	550	540	4 049	+ 649,8
Total value at current prices (R'000)	0	6 326	605	869	7 527	+ 766,2
<b>Total value of non-residential buildings at current prices (R'000)</b>	<b>1 603</b>	<b>68 601</b>	<b>7 636</b>	<b>9 995</b>	<b>79 759</b>	<b>+ 698,0</b>
<b>Additions and alterations</b>						
Dwelling-houses						
Total square metres	7 200	9 961	6 248	25 714	21 435	- 16,6
Total value at current prices (R'000)	7 194	10 956	6 981	24 957	24 404	- 2,2
Other buildings <sup>3/</sup>						
Total square metres	3 643	8 307	7 579	9 524	16 455	+ 72,8
Total value at current prices (R'000)	3 784	9 663	10 963	8 171	21 733	+ 166,0
<b>Total value of additions and alterations at current prices (R'000)</b>	<b>10 978</b>	<b>20 619</b>	<b>17 944</b>	<b>33 128</b>	<b>46 137</b>	<b>+ 39,3</b>
<b>Total value of buildings completed at current prices (R'000)</b>	<b>29 638</b>	<b>126 079</b>	<b>51 158</b>	<b>118 279</b>	<b>197 567</b>	<b>+ 67,0</b>

1/ Other residential buildings include institutions for the disabled, boarding houses, old people's homes, hostels, hotels, motels, guest houses, holiday chalets, entertainment centres, bed-and-breakfast accommodation and casinos.

2/ Other non-residential space includes churches, sport and recreation clubs, schools, crèches, hospitals and all other non-residential space.

3/ Other buildings include additions and alterations to other residential buildings, non-residential buildings and internal alterations.

Table 22 - Buildings completed according to type of building and province: Northern Cape

Type of building	March 2000	February 2001	March 2001	January 2000 to March 2000	January 2001 to March 2001	Percentage change between January 2000 to March 2000 and January 2001 to March 2001
<b>Residential buildings</b>						
Dwelling-houses smaller than 80 square metres						
Number of dwelling-houses	7	8	27	24	45	+ 87,5
Total square metres	366	454	973	1 219	1 990	+ 63,2
Total value at current prices (R'000)	636	779	712	1 963	2 433	+ 23,9
Dwelling-houses equal to or larger than 80 square metres						
Number of dwelling-houses	4	14	3	12	28	+ 133,3
Total square metres	851	3 116	413	2 136	5 270	+ 146,7
Total value at current prices (R'000)	1 101	4 120	640	2 856	7 335	+ 156,8
Flats and townhouses						
Number of flats and townhouses	6	0	5	11	5	- 54,5
Total square metres	705	0	420	1 461	420	- 71,3
Total value at current prices (R'000)	846	0	588	1 951	588	- 69,9
Other residential buildings <sup>1/</sup>						
Total square metres	0	0	0	0	346	..
Total value at current prices (R'000)	0	0	0	0	277	..
<b>Total value of residential buildings at current prices (R'000)</b>	<b>2 583</b>	<b>4 899</b>	<b>1 940</b>	<b>6 770</b>	<b>10 633</b>	<b>+ 57,1</b>
<b>Non-residential buildings</b>						
Office and banking space						
Total square metres	0	0	0	0	7 105	..
Total value at current prices (R'000)	0	0	0	0	15 631	..
Shopping space						
Total square metres	0	0	522	236	1 202	+ 409,3
Total value at current prices (R'000)	0	0	735	523	2 885	+ 451,6
Industrial and warehouse space						
Total square metres	270	0	0	1 645	0	..
Total value at current prices (R'000)	324	0	0	1 569	0	..
Other non-residential space <sup>2/</sup>						
Total square metres	0	76	0	0	181	..
Total value at current prices (R'000)	0	121	0	0	289	..
<b>Total value of non-residential buildings at current prices (R'000)</b>	<b>324</b>	<b>121</b>	<b>735</b>	<b>2 092</b>	<b>18 805</b>	<b>+ 798,9</b>
<b>Additions and alterations</b>						
Dwelling-houses						
Total square metres	1 666	1 460	1 269	3 839	4 006	+ 4,4
Total value at current prices (R'000)	2 592	2 180	1 983	5 402	6 263	+ 15,9
Other buildings <sup>3/</sup>						
Total square metres	653	36	532	2 126	904	- 57,5
Total value at current prices (R'000)	1 955	131	828	6 434	1 416	- 78,0
<b>Total value of additions and alterations at current prices (R'000)</b>	<b>4 547</b>	<b>2 311</b>	<b>2 811</b>	<b>11 836</b>	<b>7 679</b>	<b>- 35,1</b>
<b>Total value of buildings completed at current prices (R'000)</b>	<b>7 454</b>	<b>7 331</b>	<b>5 486</b>	<b>20 698</b>	<b>37 117</b>	<b>79,3</b>

1/ Other residential buildings include institutions for the disabled, boarding houses, old people's homes, hostels, hotels, motels, guest houses, holiday chalets, entertainment centres, bed-and-breakfast accommodation and casinos.

2/ Other non-residential space includes churches, sport and recreation clubs, schools, crèches, hospitals and all other non-residential space.

3/ Other buildings include additions and alterations to other residential buildings, non-residential buildings and internal alterations.

Table 23 - Buildings completed according to type of building and province: Free State

Type of building	March 2000	February 2001	March 2001	January 2000 to March 2000	January 2001 to March 2001	Percentage change between January 2000 to March 2000 and January 2001 to March 2001
<b>Residential buildings</b>						
Dwelling-houses smaller than 80 square metres						
Number of dwelling-houses	232	58	97	867	195	-77,5
Total square metres	9 719	2 495	4 090	35 381	8 424	-76,2
Total value at current prices (R'000)	5 047	1 665	2 427	19 093	5 581	-70,8
Dwelling-houses equal to or larger than 80 square metres						
Number of dwelling-houses	19	27	27	60	104	+ 73,3
Total square metres	2 738	4 716	4 507	10 790	18 985	+ 75,9
Total value at current prices (R'000)	2 708	4 893	4 851	10 780	21 696	+ 101,3
Flats and townhouses						
Number of flats and townhouses	33	31	20	60	73	+ 21,7
Total square metres	4 925	2 526	1 777	7 992	6 764	-15,4
Total value at current prices (R'000)	6 969	3 623	2 396	10 444	9 204	-11,9
Other residential buildings <sup>1/</sup>						
Total square metres	560	0	0	560	151	-73,0
Total value at current prices (R'000)	648	0	0	648	211	-67,4
<b>Total value of residential buildings at current prices (R'000)</b>	<b>15 372</b>	<b>10 181</b>	<b>9 674</b>	<b>40 965</b>	<b>36 692</b>	<b>-10,4</b>
<b>Non-residential buildings</b>						
Office and banking space						
Total square metres	1 813	792	0	2 834	1 094	-61,4
Total value at current prices (R'000)	2 500	420	0	3 806	903	-76,3
Shopping space						
Total square metres	0	0	0	462	2 050	+ 343,7
Total value at current prices (R'000)	0	0	0	477	2 000	+ 319,3
Industrial and warehouse space						
Total square metres	5 693	1 055	4 187	5 715	8 120	+ 42,1
Total value at current prices (R'000)	3 842	535	4 598	3 860	7 110	+ 84,2
Other non-residential space <sup>2/</sup>						
Total square metres	660	216	151	1 007	507	-49,7
Total value at current prices (R'000)	381	225	164	728	559	-23,2
<b>Total value of non-residential buildings at current prices (R'000)</b>	<b>6 723</b>	<b>1 180</b>	<b>4 762</b>	<b>8 871</b>	<b>10 572</b>	<b>+ 19,2</b>
<b>Additions and alterations</b>						
Dwelling-houses						
Total square metres	5 844	5 107	4 770	16 359	17 639	+ 7,8
Total value at current prices (R'000)	5 344	5 223	5 197	15 979	18 293	+ 14,5
Other buildings <sup>3/</sup>						
Total square metres	2 469	835	1 038	3 639	3 946	+ 8,4
Total value at current prices (R'000)	5 437	1 567	1 225	8 680	5 495	-36,7
<b>Total value of additions and alterations at current prices (R'000)</b>	<b>10 781</b>	<b>6 790</b>	<b>6 422</b>	<b>24 659</b>	<b>23 788</b>	<b>-3,5</b>
<b>Total value of buildings completed at current prices (R'000)</b>	<b>32 876</b>	<b>18 151</b>	<b>20 858</b>	<b>74 495</b>	<b>71 052</b>	<b>-4,6</b>

1/ Other residential buildings include institutions for the disabled, boarding houses, old people's homes, hostels, hotels, motels, guest houses, holiday chalets, entertainment centres, bed-and-breakfast accommodation and casinos.

2/ Other non-residential space includes churches, sport and recreation clubs, schools, crèches, hospitals and all other non-residential space.

3/ Other buildings include additions and alterations to other residential buildings, non-residential buildings and internal alterations.

Table 24 - Buildings completed according to type of building and province: KwaZulu-Natal

Type of building	March 2000	February 2001 *	March 2001	January 2000 to March 2000	January 2001 to March 2001	Percentage change between January 2000 to March 2000 and January 2001 to March 2001
<b>Residential buildings</b>						
Dwelling-houses smaller than 80 square metres						
Number of dwelling-houses	129	139	420	305	725	+ 137,7
Total square metres	5 946	5 934	21 012	13 551	35 287	+ 160,4
Total value at current prices (R'000)	7 314	4 734	16 951	16 339	29 311	+ 79,4
Dwelling-houses equal to or larger than 80 square metres						
Number of dwelling-houses	77	144	121	230	376	+ 63,5
Total square metres	16 993	28 256	23 594	45 523	76 699	+ 68,5
Total value at current prices (R'000)	20 723	36 526	31 300	54 283	98 776	+ 82,0
Flats and townhouses						
Number of flats and townhouses	64	71	313	199	418	+ 110,1
Total square metres	13 658	10 737	24 152	32 678	44 309	+ 35,6
Total value at current prices (R'000)	23 738	18 250	29 496	53 422	65 184	+ 22,0
Other residential buildings <sup>1/</sup>						
Total square metres	0	0	0	728	8 450	+ 1 060,7
Total value at current prices (R'000)	0	0	0	833	40 000	+ 4 701,9
<b>Total value of residential buildings at current prices (R'000)</b>	<b>51 775</b>	<b>59 510</b>	<b>77 747</b>	<b>124 877</b>	<b>233 271</b>	<b>+ 86,8</b>
<b>Non-residential buildings</b>						
Office and banking space						
Total square metres	1 654	3 875	6 712	27 069	12 909	-52,3
Total value at current prices (R'000)	3 069	4 784	13 523	75 726	22 407	-70,4
Shopping space						
Total square metres	1 970	4 191	2 203	5 619	12 333	+ 119,5
Total value at current prices (R'000)	3 319	7 186	3 058	8 319	25 781	+ 209,9
Industrial and warehouse space						
Total square metres	19 050	18 613	23 585	60 552	44 431	-26,6
Total value at current prices (R'000)	16 899	22 106	22 233	55 847	48 079	-13,9
Other non-residential space <sup>2/</sup>						
Total square metres	0	2 417	1 485	3 029	5 169	+ 70,7
Total value at current prices (R'000)	0	3 300	1 662	3 514	6 340	+ 80,4
<b>Total value of non-residential buildings at current prices (R'000)</b>	<b>23 287</b>	<b>37 376</b>	<b>40 476</b>	<b>143 406</b>	<b>102 607</b>	<b>-28,4</b>
<b>Additions and alterations</b>						
Dwelling-houses						
Total square metres	30 659	29 794	26 871	68 080	76 421	+ 12,3
Total value at current prices (R'000)	34 190	33 552	31 338	78 197	87 351	+ 11,7
Other buildings <sup>3/</sup>						
Total square metres	10 220	4 492	12 911	38 024	20 198	-46,9
Total value at current prices (R'000)	19 302	11 234	24 178	71 314	40 418	-43,3
<b>Total value of additions and alterations at current prices (R'000)</b>	<b>53 492</b>	<b>44 786</b>	<b>55 516</b>	<b>149 511</b>	<b>127 769</b>	<b>-14,5</b>
<b>Total value of buildings completed at current prices (R'000)</b>	<b>128 554</b>	<b>141 672</b>	<b>173 739</b>	<b>417 794</b>	<b>463 647</b>	<b>+ 11,0</b>

1/ Other residential buildings include institutions for the disabled, boarding houses, old people's homes, hostels, hotels, motels, guest houses, holiday chalets, entertainment centres, bed-and-breakfast accommodation and casinos.

2/ Other non-residential space includes churches, sport and recreation clubs, schools, crèches, hospitals and all other non-residential space.

3/ Other buildings include additions and alterations to other residential buildings, non-residential buildings and internal alterations.

Table 25 - Buildings completed according to type of building and province: North West

Type of building	March 2000	February 2001	March 2001	January 2000 to March 2000	January 2001 to March 2001	Percentage change between January 2000 to March 2000 and January 2001 to March 2001
<b>Residential buildings</b>						
Dwelling-houses smaller than 80 square metres						
Number of dwelling-houses	99	49	105	232	247	+ 6,5
Total square metres	4 722	2 688	4 990	11 234	12 472	+ 11,0
Total value at current prices (R'000)	4 499	2 905	5 658	11 789	13 922	+ 18,1
Dwelling-houses equal to or larger than 80 square metres						
Number of dwelling-houses	23	47	39	68	120	+ 76,5
Total square metres	3 776	8 803	4 823	12 061	20 139	+ 67,0
Total value at current prices (R'000)	4 331	10 745	6 308	13 187	24 556	+ 86,2
Flats and townhouses						
Number of flats and townhouses	0	8	0	25	18	- 28,0
Total square metres	0	896	0	3 966	2 189	- 44,8
Total value at current prices (R'000)	0	980	0	4 631	2 364	- 49,0
Other residential buildings <sup>1/</sup>						
Total square metres	0	2 963	0	344	2 963	+ 761,3
Total value at current prices (R'000)	0	3 556	0	465	3 556	+ 664,7
<b>Total value of residential buildings at current prices (R'000)</b>	<b>8 830</b>	<b>18 186</b>	<b>11 966</b>	<b>30 072</b>	<b>44 398</b>	<b>+ 47,6</b>
<b>Non-residential buildings</b>						
Office and banking space						
Total square metres	0	750	0	1 282	750	- 41,5
Total value at current prices (R'000)	0	1 400	0	1 538	1 400	- 9,0
Shopping space						
Total square metres	0	0	0	1 495	1 379	- 7,8
Total value at current prices (R'000)	0	0	0	2 312	2 090	- 9,6
Industrial and warehouse space						
Total square metres	388	0	699	539	1 611	+ 198,9
Total value at current prices (R'000)	349	0	700	534	1 960	+ 267,0
Other non-residential space <sup>2/</sup>						
Total square metres	0	1 367	153	1 778	1 874	+ 5,4
Total value at current prices (R'000)	0	1 658	180	1 600	2 138	+ 33,6
<b>Total value of non-residential buildings at current prices (R'000)</b>	<b>349</b>	<b>3 058</b>	<b>880</b>	<b>5 984</b>	<b>7 588</b>	<b>+ 26,8</b>
<b>Additions and alterations</b>						
Dwelling-houses						
Total square metres	6 201	2 846	2 869	14 954	8 384	- 43,9
Total value at current prices (R'000)	5 561	3 074	2 827	13 628	8 395	- 38,4
Other buildings <sup>3/</sup>						
Total square metres	670	1 633	1 357	2 331	5 391	+ 131,3
Total value at current prices (R'000)	518	1 415	4 060	1 643	7 998	+ 386,8
<b>Total value of additions and alterations at current prices (R'000)</b>	<b>6 079</b>	<b>4 489</b>	<b>6 887</b>	<b>15 271</b>	<b>16 393</b>	<b>+ 7,3</b>
<b>Total value of buildings completed at current prices (R'000)</b>	<b>15 258</b>	<b>25 733</b>	<b>19 733</b>	<b>51 327</b>	<b>68 379</b>	<b>+ 33,2</b>

1/ Other residential buildings include institutions for the disabled, boarding houses, old people's homes, hostels, hotels, motels, guest houses, holiday chalets, entertainment centres, bed-and-breakfast accommodation and casinos.

2/ Other non-residential space includes churches, sport and recreation clubs, schools, crèches, hospitals and all other non-residential space.

3/ Other buildings include additions and alterations to other residential buildings, non-residential buildings and internal alterations.

Table 26 - Buildings completed according to type of building and province: Gauteng

Type of building	March 2000	February 2001	March 2001	January 2000 to March 2000	January 2001 to March 2001	Percentage change between January 2000 to March 2000 and January 2001 to March 2001
<b>Residential buildings</b>						
Dwelling-houses smaller than 80 square metres						
Number of dwelling-houses	1 158	753	726	2 714	1 757	-35,3
Total square metres	43 727	28 438	26 958	99 371	67 316	-32,3
Total value at current prices (R'000)	27 003	19 873	24 852	65 933	54 658	-17,1
Dwelling-houses equal to or larger than 80 square metres						
Number of dwelling-houses	264	317	343	709	875	+ 23,4
Total square metres	63 624	65 970	87 708	178 667	211 204	+ 18,2
Total value at current prices (R'000)	83 877	92 694	121 538	236 311	290 626	+ 23,0
Flats and townhouses						
Number of flats and townhouses	321	193	355	802	967	+ 20,6
Total square metres	32 796	17 396	61 627	65 794	109 949	+ 67,1
Total value at current prices (R'000)	47 180	26 831	103 208	87 112	170 044	+ 95,2
Other residential buildings <sup>1/</sup>						
Total square metres	0	0	0	4 119	34 212	+ 730,6
Total value at current prices (R'000)	0	0	0	7 913	252 096	+ 3 085,8
<b>Total value of residential buildings at current prices (R'000)</b>	<b>158 060</b>	<b>139 398</b>	<b>249 598</b>	<b>397 269</b>	<b>767 424</b>	<b>+ 93,2</b>
<b>Non-residential buildings</b>						
Office and banking space						
Total square metres	35 955	2 558	17 961	93 659	116 277	+ 24,1
Total value at current prices (R'000)	57 474	3 692	25 963	135 968	155 252	+ 14,2
Shopping space						
Total square metres	3 555	2 886	3 432	20 655	12 366	-40,1
Total value at current prices (R'000)	2 500	3 830	5 435	26 538	17 782	-33,0
Industrial and warehouse space						
Total square metres	14 205	20 803	26 315	51 894	60 730	+ 17,0
Total value at current prices (R'000)	7 705	35 336	32 042	60 288	83 587	+ 38,6
Other non-residential space <sup>2/</sup>						
Total square metres	807	1 989	1 704	7 382	6 521	-11,7
Total value at current prices (R'000)	950	2 873	1 650	8 016	9 562	+ 19,3
<b>Total value of non-residential buildings at current prices (R'000)</b>	<b>68 629</b>	<b>45 731</b>	<b>65 090</b>	<b>230 810</b>	<b>266 183</b>	<b>+ 15,3</b>
<b>Additions and alterations</b>						
Dwelling-houses						
Total square metres	22 953	31 122	20 565	76 594	76 620	+ 0,0
Total value at current prices (R'000)	26 569	37 554	25 143	91 071	92 601	+ 1,7
Other buildings <sup>3/</sup>						
Total square metres	5 661	11 150	10 774	14 007	34 764	+ 148,2
Total value at current prices (R'000)	75 511	20 298	21 766	85 802	56 883	-33,7
<b>Total value of additions and alterations at current prices (R'000)</b>	<b>102 080</b>	<b>57 852</b>	<b>46 909</b>	<b>176 873</b>	<b>149 484</b>	<b>-15,5</b>
<b>Total value of buildings completed at current prices (R'000)</b>	<b>328 769</b>	<b>242 981</b>	<b>361 597</b>	<b>804 952</b>	<b>1 183 091</b>	<b>+ 47,0</b>

1/ Other residential buildings include institutions for the disabled, boarding houses, old people's homes, hostels, hotels, motels, guest houses, holiday chalets, entertainment centres, bed-and-breakfast accommodation and casinos.

2/ Other non-residential space includes churches, sport and recreation clubs, schools, crèches, hospitals and all other non-residential space.

3/ Other buildings include additions and alterations to other residential buildings, non-residential buildings and internal alterations.



Table 27 - Buildings completed according to type of building and province: Mpumalanga

Type of building	March 2000	February 2001	March 2001	January 2000 to March 2000	January 2001 to March 2001	Percentage change between January 2000 to March 2000 and January 2001 to March 2001
<b>Residential buildings</b>						
Dwelling-houses smaller than 80 square metres						
Number of dwelling-houses	202	338	339	416	875	+ 110,3
Total square metres	7 210	11 815	11 249	14 360	29 785	+ 107,4
Total value at current prices (R'000)	7 170	5 038	5 540	12 210	14 034	+ 14,9
Dwelling-houses equal to or larger than 80 square metres						
Number of dwelling-houses	70	37	57	119	122	+ 2,5
Total square metres	13 318	6 317	10 865	21 220	20 967	-1,2
Total value at current prices (R'000)	17 214	7 045	10 354	25 193	21 340	-15,3
Flats and townhouses						
Number of flats and townhouses	6	11	4	40	17	-57,5
Total square metres	451	745	300	3 006	1 489	-50,5
Total value at current prices (R'000)	374	665	240	3 745	1 274	-66,0
Other residential buildings <sup>1/</sup>						
Total square metres	0	0	0	0	0	..
Total value at current prices (R'000)	0	0	0	0	0	..
<b>Total value of residential buildings at current prices (R'000)</b>	<b>24 758</b>	<b>12 748</b>	<b>16 134</b>	<b>41 148</b>	<b>36 648</b>	<b>-10,9</b>
<b>Non-residential buildings</b>						
Office and banking space						
Total square metres	0	632	0	7 371	1 793	-75,7
Total value at current prices (R'000)	0	950	0	13 350	3 150	-76,4
Shopping space						
Total square metres	0	19 600	0	111	20 043	#####
Total value at current prices (R'000)	0	10 800	0	60	11 100	#####
Industrial and warehouse space						
Total square metres	4 158	0	0	9 083	0	..
Total value at current prices (R'000)	3 882	0	0	9 062	0	..
Other non-residential space <sup>2/</sup>						
Total square metres	0	1 019	1 685	2 487	2 704	+ 8,7
Total value at current prices (R'000)	0	1 370	1 953	4 091	3 323	-18,8
<b>Total value of non-residential buildings at current prices (R'000)</b>	<b>3 882</b>	<b>13 120</b>	<b>1 953</b>	<b>26 563</b>	<b>17 573</b>	<b>-33,8</b>
<b>Additions and alterations</b>						
Dwelling-houses						
Total square metres	3 968	5 889	9 030	10 669	17 319	+ 62,3
Total value at current prices (R'000)	2 743	5 051	7 285	7 710	14 963	+ 94,1
Other buildings <sup>3/</sup>						
Total square metres	1 337	5 196	6 740	2 763	11 985	+ 333,8
Total value at current prices (R'000)	1 464	7 618	8 939	2 860	16 636	+ 481,7
<b>Total value of additions and alterations at current prices (R'000)</b>	<b>4 207</b>	<b>12 669</b>	<b>16 224</b>	<b>10 570</b>	<b>31 599</b>	<b>+ 198,9</b>
<b>Total value of buildings completed at current prices (R'000)</b>	<b>32 847</b>	<b>38 537</b>	<b>34 311</b>	<b>78 281</b>	<b>85 820</b>	<b>+ 9,6</b>

1/ Other residential buildings include institutions for the disabled, boarding houses, old people's homes, hostels, hotels, motels, guest houses, holiday chalets, entertainment centres, bed-and-breakfast accommodation and casinos.

2/ Other non-residential space includes churches, sport and recreation clubs, schools, crèches, hospitals and all other non-residential space.

3/ Other buildings include additions and alterations to other residential buildings, non-residential buildings and internal alterations.

Table 28 - Buildings completed according to type of building and province: Northern Province

Type of building	March 2000	February 2001	March 2001	January 2000 to March 2000	January 2001 to March 2001	Percentage change between January 2000 to March 2000 and January 2001 to March 2001
<b>Residential buildings</b>						
Dwelling-houses smaller than 80 square metres						
Number of dwelling-houses	23	45	99	183	186	+ 1,6
Total square metres	1 408	2 437	4 319	8 213	8 794	+ 7,1
Total value at current prices (R'000)	1 897	2 656	2 601	5 346	7 535	+ 40,9
Dwelling-houses equal to or larger than 80 square metres						
Number of dwelling-houses	31	18	20	50	57	+ 14,0
Total square metres	3 205	4 115	2 215	6 454	9 222	+ 42,9
Total value at current prices (R'000)	4 116	5 730	3 041	7 898	12 521	+ 58,5
Flats and townhouses						
Number of flats and townhouses	3	2	4	4	11	+ 175,0
Total square metres	571	422	743	725	2 213	+ 205,2
Total value at current prices (R'000)	690	500	974	940	2 530	+ 169,1
Other residential buildings <sup>1/</sup>						
Total square metres	725	3 000	0	725	3 000	+ 313,8
Total value at current prices (R'000)	1 015	3 600	0	1 015	3 600	+ 254,7
<b>Total value of residential buildings at current prices (R'000)</b>	<b>7 718</b>	<b>12 486</b>	<b>6 616</b>	<b>15 199</b>	<b>26 186</b>	<b>+ 72,3</b>
<b>Non-residential buildings</b>						
Office and banking space						
Total square metres	0	0	0	0	0	..
Total value at current prices (R'000)	0	0	0	0	0	..
Shopping space						
Total square metres	161	0	0	161	0	..
Total value at current prices (R'000)	160	0	0	160	0	..
Industrial and warehouse space						
Total square metres	0	0	0	1 153	0	..
Total value at current prices (R'000)	0	0	0	1 281	0	..
Other non-residential space <sup>2/</sup>						
Total square metres	0	252	0	345	252	-27,0
Total value at current prices (R'000)	0	554	0	246	554	+ 125,2
<b>Total value of non-residential buildings at current prices (R'000)</b>	<b>160</b>	<b>554</b>	<b>0</b>	<b>1 687</b>	<b>554</b>	<b>-67,2</b>
<b>Additions and alterations</b>						
Dwelling-houses						
Total square metres	266	831	708	937	2 117	+ 125,9
Total value at current prices (R'000)	243	996	694	976	2 411	+ 147,0
Other buildings <sup>3/</sup>						
Total square metres	108	43	950	147	1 745	+ 1 087,1
Total value at current prices (R'000)	152	1 550	1 361	202	4 115	+ 1 937,1
<b>Total value of additions and alterations at current prices (R'000)</b>	<b>395</b>	<b>2 546</b>	<b>2 055</b>	<b>1 178</b>	<b>6 526</b>	<b>+ 454,0</b>
<b>Total value of buildings completed at current prices (R'000)</b>	<b>8 273</b>	<b>15 586</b>	<b>8 671</b>	<b>18 064</b>	<b>33 266</b>	<b>+ 84,2</b>

1/ Other residential buildings include institutions for the disabled, boarding houses, old people's homes, hostels, hotels, motels, guest houses, holiday chalets, entertainment centres, bed-and-breakfast accommodation and casinos.

2/ Other non-residential space includes churches, sport and recreation clubs, schools, crèches, hospitals and all other non-residential space.

3/ Other buildings include additions and alterations to other residential buildings, non-residential buildings and internal alterations.

Table 29 - Building plans passed according to type of building and selected urban area: Cape Town

Type of building	March 2000 *	February 2001 *	March 2001	January 2000 to March 2000	January 2001 to March 2001	Percentage change between January 2000 to March 2000 and January 2001 to March 2001
<b>Residential buildings</b>						
Dwelling-houses smaller than 80 square metres						
Number of dwelling-houses	745	678	591	2 118	1 915	- 9,6
Total square metres	28 852	24 666	23 358	84 010	71 741	- 14,6
Total value at current prices (R'000)	17 735	31 403	29 222	47 004	89 105	+ 89,6
Dwelling-houses equal to or larger than 80 square metres						
Number of dwelling-houses	326	280	285	872	788	- 9,6
Total square metres	52 234	80 060	63 845	151 376	184 512	+ 21,9
Total value at current prices (R'000)	81 230	93 463	92 845	208 743	247 962	+ 18,8
Flats and townhouses						
Number of flats and townhouses	171	89	220	581	363	- 37,5
Total square metres	13 288	9 188	21 554	61 852	38 567	- 37,6
Total value at current prices (R'000)	19 536	12 413	40 608	105 893	65 902	- 37,8
Other residential buildings <sup>1/</sup>						
Total square metres	200	1 044	0	41 521	1 044	- 97,5
Total value at current prices (R'000)	300	1 556	0	58 279	1 556	- 97,3
<b>Total value of residential buildings at current prices (R'000)</b>	<b>118 801</b>	<b>138 835</b>	<b>162 675</b>	<b>419 919</b>	<b>404 525</b>	<b>- 3,7</b>
<b>Non-residential buildings</b>						
Office and banking space						
Total square metres	12 187	19 992	3 876	35 478	45 622	+ 28,6
Total value at current prices (R'000)	25 340	37 406	7 280	78 461	82 625	+ 5,3
Shopping space						
Total square metres	13 195	1 370	3 830	22 781	63 193	+ 177,4
Total value at current prices (R'000)	20 882	2 543	4 863	32 771	77 779	+ 137,3
Industrial and warehouse space						
Total square metres	23 951	10 749	9 083	58 169	29 352	- 49,5
Total value at current prices (R'000)	23 386	11 087	9 139	56 813	30 669	- 46,0
Other non-residential space <sup>2/</sup>						
Total square metres	4 495	3 268	18 264	24 785	29 615	+ 19,5
Total value at current prices (R'000)	6 912	5 821	23 431	29 726	43 008	+ 44,7
<b>Total value of non-residential buildings at current prices (R'000)</b>	<b>76 520</b>	<b>56 857</b>	<b>44 713</b>	<b>197 771</b>	<b>234 081</b>	<b>+ 18,4</b>
<b>Additions and alterations</b>						
Dwelling-houses						
Total square metres	54 969	49 737	49 521	140 454	134 820	- 4,0
Total value at current prices (R'000)	61 928	59 042	58 802	156 211	158 934	+ 1,7
Other buildings <sup>3/</sup>						
Total square metres	9 522	13 664	12 625	26 221	35 408	+ 35,0
Total value at current prices (R'000)	25 003	27 404	24 623	66 427	72 847	+ 9,7
<b>Total value of additions and alterations at current prices (R'000)</b>	<b>86 931</b>	<b>86 446</b>	<b>83 425</b>	<b>222 638</b>	<b>231 781</b>	<b>+ 4,1</b>
<b>Total value of building plans passed at current prices (R'000)</b>	<b>282 252</b>	<b>282 138</b>	<b>290 813</b>	<b>840 328</b>	<b>870 387</b>	<b>+ 3,6</b>

1/ Other residential buildings include institutions for the disabled, boarding houses, old people's homes, hostels, hotels, motels, guest houses, holiday chalets, entertainment centres, bed-and-breakfast accommodation and casinos.

2/ Other non-residential space includes churches, sport and recreation clubs, schools, crèches, hospitals and all other non-residential space.

3/ Other buildings include additions and alterations to other residential buildings, non-residential buildings and internal alterations.

Table 30 - Building plans passed according to type of building and selected urban area: Port Elizabeth

Type of building	March 2000	February 2001	March 2001	January 2000 to March 2000	January 2001 to March 2001	Percentage change between January 2000 to March 2000 and January 2001 to March 2001
<b>Residential buildings</b>						
Dwelling-houses smaller than 80 square metres						
Number of dwelling-houses	88	198	174	452	504	+ 11,5
Total square metres	3 743	8 908	8 408	18 688	22 905	+ 22,6
Total value at current prices (R'000)	4 184	11 653	11 703	22 113	30 704	+ 38,9
Dwelling-houses equal to or larger than 80 square metres						
Number of dwelling-houses	50	58	141	116	233	+ 100,9
Total square metres	6 953	7 055	12 049	15 755	24 377	+ 54,7
Total value at current prices (R'000)	8 852	9 277	16 519	20 267	32 648	+ 61,1
Flats and townhouses						
Number of flats and townhouses	27	27	27	35	57	+ 62,9
Total square metres	4 060	2 784	2 631	5 156	5 629	+ 9,2
Total value at current prices (R'000)	5 958	4 539	3 548	7 427	8 327	+ 12,1
Other residential buildings <sup>1/</sup>						
Total square metres	0	0	0	0	0	..
Total value at current prices (R'000)	0	0	0	0	0	..
<b>Total value of residential buildings at current prices (R'000)</b>	<b>18 994</b>	<b>25 469</b>	<b>31 770</b>	<b>49 807</b>	<b>71 679</b>	<b>+ 43,9</b>
<b>Non-residential buildings</b>						
Office and banking space						
Total square metres	0	0	0	0	0	..
Total value at current prices (R'000)	0	0	0	0	0	..
Shopping space						
Total square metres	1 477	0	352	2 671	352	- 86,8
Total value at current prices (R'000)	1 625	0	370	3 519	370	- 89,5
Industrial and warehouse space						
Total square metres	2 954	2 113	0	15 745	2 113	- 86,6
Total value at current prices (R'000)	2 772	3 064	0	19 072	3 064	- 83,9
Other non-residential space <sup>2/</sup>						
Total square metres	5 749	731	509	6 612	1 279	- 80,7
Total value at current prices (R'000)	8 375	1 008	581	9 295	1 644	- 82,3
<b>Total value of non-residential buildings at current prices (R'000)</b>	<b>12 772</b>	<b>4 072</b>	<b>951</b>	<b>31 886</b>	<b>5 078</b>	<b>- 84,1</b>
<b>Additions and alterations</b>						
Dwelling-houses						
Total square metres	11 024	10 408	8 212	29 618	24 143	- 18,5
Total value at current prices (R'000)	12 899	12 674	10 742	35 345	30 113	- 14,8
Other buildings <sup>3/</sup>						
Total square metres	2 367	21 570	3 476	6 948	25 780	+ 271,0
Total value at current prices (R'000)	4 023	33 433	3 862	8 720	38 397	+ 340,3
<b>Total value of additions and alterations at current prices (R'000)</b>	<b>16 922</b>	<b>46 107</b>	<b>14 604</b>	<b>44 065</b>	<b>68 510</b>	<b>+ 55,5</b>
<b>Total value of building plans passed at current prices (R'000)</b>	<b>48 688</b>	<b>75 648</b>	<b>47 325</b>	<b>125 758</b>	<b>145 267</b>	<b>+ 15,5</b>

1/ Other residential buildings include institutions for the disabled, boarding houses, old people's homes, hostels, hotels, motels, guest houses, holiday chalets, entertainment centres, bed-and-breakfast accommodation and casinos.

2/ Other non-residential space includes churches, sport and recreation clubs, schools, crèches, hospitals and all other non-residential space.

3/ Other buildings include additions and alterations to other residential buildings, non-residential buildings and internal alterations.

Table 31 - Building plans passed according to type of building and selected urban area: Durban

Type of building	March 2000	February 2001 *	March 2001	January 2000 to March 2000	January 2001 to March 2001	Percentage change between January 2000 to March 2000 and January 2001 to March 2001
<b>Residential buildings</b>						
Dwelling-houses smaller than 80 square metres						
Number of dwelling-houses	102	76	67	277	213	-23,1
Total square metres	5 611	4 110	3 512	15 045	11 424	-24,1
Total value at current prices (R'000)	6 300	4 527	3 648	17 163	13 056	-23,9
Dwelling-houses equal to or larger than 80 square metres						
Number of dwelling-houses	92	51	72	196	179	-8,7
Total square metres	14 917	12 237	15 847	30 902	37 396	+ 21,0
Total value at current prices (R'000)	17 948	11 413	14 155	37 083	38 307	+ 3,3
Flats and townhouses						
Number of flats and townhouses	16	43	24	26	67	+ 157,7
Total square metres	3 372	3 647	2 802	5 511	6 449	+ 17,0
Total value at current prices (R'000)	3 950	5 104	4 397	6 465	9 501	+ 47,0
Other residential buildings <sup>1/</sup>						
Total square metres	0	0	0	0	0	..
Total value at current prices (R'000)	0	0	0	0	0	..
<b>Total value of residential buildings at current prices (R'000)</b>	<b>28 198</b>	<b>21 044</b>	<b>22 200</b>	<b>60 711</b>	<b>60 864</b>	<b>+ 0,3</b>
<b>Non-residential buildings</b>						
Office and banking space						
Total square metres	1 806	1 122	0	3 322	2 172	-34,6
Total value at current prices (R'000)	5 000	2 110	0	7 186	4 110	-42,8
Shopping space						
Total square metres	724	3 838	3 270	6 325	7 550	+ 19,4
Total value at current prices (R'000)	720	3 498	3 100	6 391	7 040	+ 10,2
Industrial and warehouse space						
Total square metres	13 285	6 585	9 833	17 612	23 033	+ 30,8
Total value at current prices (R'000)	15 670	7 028	10 915	22 787	25 571	+ 12,2
Other non-residential space <sup>2/</sup>						
Total square metres	4 676	898	1 914	4 766	4 953	+ 3,9
Total value at current prices (R'000)	4 848	1 418	2 460	4 938	6 686	+ 35,4
<b>Total value of non-residential buildings at current prices (R'000)</b>	<b>26 238</b>	<b>14 054</b>	<b>16 475</b>	<b>41 302</b>	<b>43 407</b>	<b>+ 5,1</b>
<b>Additions and alterations</b>						
Dwelling-houses						
Total square metres	31 805	22 486	24 547	67 066	65 642	-2,1
Total value at current prices (R'000)	34 796	25 951	28 334	77 538	79 371	+ 2,4
Other buildings <sup>3/</sup>						
Total square metres	20 546	12 066	14 464	29 028	32 767	+ 12,9
Total value at current prices (R'000)	35 226	22 796	32 408	71 768	67 177	-6,4
<b>Total value of additions and alterations at current prices (R'000)</b>	<b>70 022</b>	<b>48 747</b>	<b>60 742</b>	<b>149 306</b>	<b>146 548</b>	<b>-1,8</b>
<b>Total value of building plans passed at current prices (R'000)</b>	<b>124 458</b>	<b>83 845</b>	<b>99 417</b>	<b>251 319</b>	<b>250 819</b>	<b>-0,2</b>

1/ Other residential buildings include institutions for the disabled, boarding houses, old people's homes, hostels, hotels, motels, guest houses, holiday chalets, entertainment centres, bed-and-breakfast accommodation and casinos.

2/ Other non-residential space includes churches, sport and recreation clubs, schools, crèches, hospitals and all other non-residential space.

3/ Other buildings include additions and alterations to other residential buildings, non-residential buildings and internal alterations.

Table 32 - Building plans passed according to type of building and selected urban area: Witwatersrand

Type of building	March 2000	February 2001	March 2001	January 2000 to March 2000	January 2001 to March 2001	Percentage change between January 2000 to March 2000 and January 2001 to March 2001
<b>Residential buildings</b>						
Dwelling-houses smaller than 80 square metres						
Number of dwelling-houses	1 163	446	413	3 611	1 544	- 57,2
Total square metres	43 880	20 208	17 693	133 469	61 442	- 54,0
Total value at current prices (R'000)	29 298	23 756	19 918	96 407	70 048	- 27,3
Dwelling-houses equal to or larger than 80 square metres						
Number of dwelling-houses	369	661	440	892	1 477	+ 65,6
Total square metres	90 901	109 060	109 459	223 715	310 626	+ 38,8
Total value at current prices (R'000)	126 849	161 197	159 789	308 008	459 774	+ 49,3
Flats and townhouses						
Number of flats and townhouses	270	349	224	536	699	+ 30,4
Total square metres	25 265	37 271	23 626	48 833	72 378	+ 48,2
Total value at current prices (R'000)	42 852	57 727	43 046	82 218	118 243	+ 43,8
Other residential buildings <sup>1/</sup>						
Total square metres	1 024	0	0	1 024	0	..
Total value at current prices (R'000)	1 000	0	0	1 000	0	..
<b>Total value of residential buildings at current prices (R'000)</b>	<b>199 999</b>	<b>242 680</b>	<b>222 753</b>	<b>487 633</b>	<b>648 065</b>	<b>+ 32,9</b>
<b>Non-residential buildings</b>						
Office and banking space						
Total square metres	62 234	11 857	4 858	135 772	68 233	- 49,7
Total value at current prices (R'000)	82 629	21 133	9 234	180 356	103 831	- 42,4
Shopping space						
Total square metres	3 884	6 631	7 617	52 242	37 562	- 28,1
Total value at current prices (R'000)	5 328	9 538	13 001	64 496	64 994	+ 0,8
Industrial and warehouse space						
Total square metres	32 529	27 786	36 954	96 459	88 668	- 8,1
Total value at current prices (R'000)	32 616	44 358	68 306	146 014	153 223	+ 4,9
Other non-residential space <sup>2/</sup>						
Total square metres	10 131	17 589	9 580	27 513	30 276	+ 10,0
Total value at current prices (R'000)	15 793	24 384	16 854	43 660	45 769	+ 4,8
<b>Total value of non-residential buildings at current prices (R'000)</b>	<b>136 366</b>	<b>99 413</b>	<b>107 395</b>	<b>434 526</b>	<b>367 817</b>	<b>- 15,4</b>
<b>Additions and alterations</b>						
Dwelling-houses						
Total square metres	62 335	61 635	64 025	170 212	184 571	+ 8,4
Total value at current prices (R'000)	76 868	79 021	81 059	214 930	237 126	+ 10,3
Other buildings <sup>3/</sup>						
Total square metres	23 495	32 046	26 921	78 918	78 716	- 0,3
Total value at current prices (R'000)	36 243	59 097	44 154	111 483	153 179	+ 37,4
<b>Total value of additions and alterations at current prices (R'000)</b>	<b>113 111</b>	<b>138 118</b>	<b>125 213</b>	<b>326 413</b>	<b>390 305</b>	<b>+ 19,6</b>
<b>Total value of building plans passed at current prices (R'000)</b>	<b>449 476</b>	<b>480 211</b>	<b>455 361</b>	<b>1 248 572</b>	<b>1 406 187</b>	<b>+ 12,6</b>

1/ Other residential buildings include institutions for the disabled, boarding houses, old people's homes, hostels, hotels, motels, guest houses, holiday chalets, entertainment centres, bed-and-breakfast accommodation and casinos.

2/ Other non-residential space includes churches, sport and recreation clubs, schools, crèches, hospitals and all other non-residential space.

3/ Other buildings include additions and alterations to other residential buildings, non-residential buildings and internal alterations.

Table 33 - Building plans passed according to type of building and selected urban area: Pretoria

Type of building	March 2000 *	February 2001	March 2001	January 2000 to March 2000	January 2001 to March 2001	Percentage change between January 2000 to March 2000 and January 2001 to March 2001
<b>Residential buildings</b>						
Dwelling-houses smaller than 80 square metres						
Number of dwelling-houses	1 017	65	132	2 112	253	- 88,0
Total square metres	31 983	3 403	6 175	66 853	12 823	- 80,8
Total value at current prices (R'000)	19 900	4 008	8 049	42 864	16 116	- 62,4
Dwelling-houses equal to or larger than 80 square metres						
Number of dwelling-houses	205	225	313	607	698	+ 15,0
Total square metres	52 135	61 115	83 541	142 795	190 697	+ 33,5
Total value at current prices (R'000)	64 547	82 710	113 806	180 737	258 187	+ 42,9
Flats and townhouses						
Number of flats and townhouses	139	42	195	330	362	+ 9,7
Total square metres	22 889	6 040	26 943	46 078	53 769	+ 16,7
Total value at current prices (R'000)	26 296	8 967	37 788	55 889	77 437	+ 38,6
Other residential buildings <sup>1/</sup>						
Total square metres	0	0	0	0	418	..
Total value at current prices (R'000)	0	0	0	0	627	..
<b>Total value of residential buildings at current prices (R'000)</b>	<b>110 743</b>	<b>95 685</b>	<b>159 643</b>	<b>279 490</b>	<b>352 367</b>	<b>+ 26,1</b>
<b>Non-residential buildings</b>						
Office and banking space						
Total square metres	4 139	10 017	859	11 978	16 896	+ 41,1
Total value at current prices (R'000)	5 599	18 085	1 111	15 573	28 828	+ 85,1
Shopping space						
Total square metres	978	1 447	7 859	6 455	9 417	+ 45,9
Total value at current prices (R'000)	891	2 315	12 306	7 171	14 765	+ 105,9
Industrial and warehouse space						
Total square metres	8 300	1 840	3 664	15 829	8 801	- 44,4
Total value at current prices (R'000)	9 645	2 498	4 964	17 417	12 408	- 28,8
Other non-residential space <sup>2/</sup>						
Total square metres	2 146	3 577	6 081	4 696	11 600	+ 147,0
Total value at current prices (R'000)	2 755	4 841	9 255	5 751	17 044	+ 196,4
<b>Total value of non-residential buildings at current prices (R'000)</b>	<b>18 890</b>	<b>27 739</b>	<b>27 636</b>	<b>45 912</b>	<b>73 045</b>	<b>+ 59,1</b>
<b>Additions and alterations</b>						
Dwelling-houses						
Total square metres	23 294	17 137	14 818	55 316	44 703	- 19,2
Total value at current prices (R'000)	28 037	20 922	18 825	65 810	55 344	- 15,9
Other buildings <sup>3/</sup>						
Total square metres	4 649	5 990	3 186	14 503	9 849	- 32,1
Total value at current prices (R'000)	7 162	9 754	4 956	23 080	15 961	- 30,8
<b>Total value of additions and alterations at current prices (R'000)</b>	<b>35 199</b>	<b>30 676</b>	<b>23 781</b>	<b>88 890</b>	<b>71 305</b>	<b>- 19,8</b>
<b>Total value of building plans passed at current prices (R'000)</b>	<b>164 832</b>	<b>154 100</b>	<b>211 060</b>	<b>414 292</b>	<b>496 717</b>	<b>+ 19,9</b>

1/ Other residential buildings include institutions for the disabled, boarding houses, old people's homes, hostels, hotels, motels, guest houses, holiday chalets, entertainment centres, bed-and-breakfast accommodation and casinos.

2/ Other non-residential space includes churches, sport and recreation clubs, schools, crèches, hospitals and all other non-residential space.

3/ Other buildings include additions and alterations to other residential buildings, non-residential buildings and internal alterations.

Table 34 - Building plans passed according to type of building and selected urban area: Bloemfontein

Type of building	March 2000	February 2001	March 2001	January 2000 to March 2000	January 2001 to March 2001	Percentage change between January 2000 to March 2000 and January 2001 to March 2001
<b>Residential buildings</b>						
Dwelling-houses smaller than 80 square metres						
Number of dwelling-houses	174	301	190	322	544	+ 68,9
Total square metres	7 245	13 309	8 371	13 884	23 979	+ 72,7
Total value at current prices (R'000)	3 143	6 162	4 014	7 256	11 609	+ 60,0
Dwelling-houses equal to or larger than 80 square metres						
Number of dwelling-houses	27	15	23	66	63	-4,5
Total square metres	5 270	2 501	3 269	12 970	10 426	-19,6
Total value at current prices (R'000)	6 760	3 250	4 260	16 753	13 559	-19,1
Flats and townhouses						
Number of flats and townhouses	0	18	6	14	65	+ 364,3
Total square metres	0	3 356	960	930	9 574	+ 929,5
Total value at current prices (R'000)	0	5 369	1 920	1 116	15 389	+ 1 278,9
Other residential buildings <sup>1/</sup>						
Total square metres	600	0	0	600	0	..
Total value at current prices (R'000)	1 500	0	0	1 500	0	..
<b>Total value of residential buildings at current prices (R'000)</b>	<b>11 403</b>	<b>14 781</b>	<b>10 194</b>	<b>26 625</b>	<b>40 557</b>	<b>+ 52,3</b>
<b>Non-residential buildings</b>						
Office and banking space						
Total square metres	747	12 488	321	1 315	12 809	+ 874,1
Total value at current prices (R'000)	1 145	24 800	400	2 245	25 200	+ 1 022,5
Shopping space						
Total square metres	334	0	0	334	0	..
Total value at current prices (R'000)	735	0	0	735	0	..
Industrial and warehouse space						
Total square metres	0	80	0	0	80	..
Total value at current prices (R'000)	0	112	0	0	112	..
Other non-residential space <sup>2/</sup>						
Total square metres	0	0	850	0	850	..
Total value at current prices (R'000)	0	0	1 500	0	1 500	..
<b>Total value of non-residential buildings at current prices (R'000)</b>	<b>1 880</b>	<b>24 912</b>	<b>1 900</b>	<b>2 980</b>	<b>26 812</b>	<b>+ 799,7</b>
<b>Additions and alterations</b>						
Dwelling-houses						
Total square metres	5 389	2 633	2 683	11 388	8 210	-27,9
Total value at current prices (R'000)	6 621	3 401	3 432	13 340	10 109	-24,2
Other buildings <sup>3/</sup>						
Total square metres	1 264	262	535	3 810	1 205	-68,4
Total value at current prices (R'000)	1 661	727	1 438	5 188	2 615	-49,6
<b>Total value of additions and alterations at current prices (R'000)</b>	<b>8 282</b>	<b>4 128</b>	<b>4 870</b>	<b>18 528</b>	<b>12 724</b>	<b>-31,3</b>
<b>Total value of building plans passed at current prices (R'000)</b>	<b>21 565</b>	<b>43 821</b>	<b>16 964</b>	<b>48 133</b>	<b>80 093</b>	<b>+ 66,4</b>

1/ Other residential buildings include institutions for the disabled, boarding houses, old people's homes, hostels, hotels, motels, guest houses, holiday chalets, entertainment centres, bed-and-breakfast accommodation and casinos.

2/ Other non-residential space includes churches, sport and recreation clubs, schools, crèches, hospitals and all other non-residential space.

3/ Other buildings include additions and alterations to other residential buildings, non-residential buildings and internal alterations.



Table 35 - Buildings completed according to type of building and selected urban area: Cape Town

Type of building	March 2000 *	February 2001	March 2001	January 2000 to March 2000	January 2001 to March 2001	Percentage change between January 2000 to March 2000 and January 2001 to March 2001
<b>Residential buildings</b>						
Dwelling-houses smaller than 80 square metres						
Number of dwelling-houses	666	364	327	1 161	1 085	- 6,5
Total square metres	20 217	12 894	11 246	35 259	37 630	+ 6,7
Total value at current prices (R'000)	12 506	16 169	12 400	20 430	46 115	+ 125,7
Dwelling-houses equal to or larger than 80 square metres						
Number of dwelling-houses	161	150	111	419	406	- 3,1
Total square metres	27 387	29 825	22 773	76 102	79 187	+ 4,1
Total value at current prices (R'000)	36 021	41 153	30 600	97 860	107 272	+ 9,6
Flats and townhouses						
Number of flats and townhouses	75	113	16	224	225	+ 0,4
Total square metres	6 172	10 637	2 010	22 597	21 867	- 3,2
Total value at current prices (R'000)	8 767	16 231	2 818	31 375	30 593	- 2,5
Other residential buildings <sup>1/</sup>						
Total square metres	45	16 104	0	11 988	16 618	+ 38,6
Total value at current prices (R'000)	140	11 824	0	20 874	12 524	- 40,0
<b>Total value of residential buildings at current prices (R'000)</b>	<b>57 434</b>	<b>85 377</b>	<b>45 818</b>	<b>170 539</b>	<b>196 504</b>	<b>+ 15,2</b>
<b>Non-residential buildings</b>						
Office and banking space						
Total square metres	27 038	26 161	2 796	37 186	35 568	- 4,4
Total value at current prices (R'000)	49 846	62 812	3 571	63 355	74 979	+ 18,3
Shopping space						
Total square metres	305	3 826	1 523	819	6 547	+ 699,4
Total value at current prices (R'000)	346	7 184	1 550	1 422	10 310	+ 625,0
Industrial and warehouse space						
Total square metres	10 092	9 597	5 252	52 706	19 227	- 63,5
Total value at current prices (R'000)	9 891	12 518	6 500	43 912	23 214	- 47,1
Other non-residential space <sup>2/</sup>						
Total square metres	765	2 935	2 907	3 702	6 417	+ 73,3
Total value at current prices (R'000)	440	4 058	4 473	4 748	10 420	+ 119,5
<b>Total value of non-residential buildings at current prices (R'000)</b>	<b>60 523</b>	<b>86 572</b>	<b>16 094</b>	<b>113 437</b>	<b>118 923</b>	<b>+ 4,8</b>
<b>Additions and alterations</b>						
Dwelling-houses						
Total square metres	31 681	30 391	29 748	83 968	82 708	- 1,5
Total value at current prices (R'000)	31 165	32 702	34 934	85 668	93 250	+ 8,9
Other buildings <sup>3/</sup>						
Total square metres	7 246	10 434	8 565	37 111	34 567	- 6,9
Total value at current prices (R'000)	15 306	27 419	19 298	71 341	90 217	+ 26,5
<b>Total value of additions and alterations at current prices (R'000)</b>	<b>46 471</b>	<b>60 121</b>	<b>54 232</b>	<b>157 009</b>	<b>183 467</b>	<b>+ 16,9</b>
<b>Total value of building plans passed at current prices (R'000)</b>	<b>164 428</b>	<b>232 070</b>	<b>116 144</b>	<b>440 985</b>	<b>498 894</b>	<b>+ 13,1</b>

1/ Other residential buildings include institutions for the disabled, boarding houses, old people's homes, hostels, hotels, motels, guest houses, holiday chalets, entertainment centres, bed-and-breakfast accommodation and casinos.

2/ Other non-residential space includes churches, sport and recreation clubs, schools, crèches, hospitals and all other non-residential space.

3/ Other buildings include additions and alterations to other residential buildings, non-residential buildings and internal alterations.

Table 36 - Buildings completed according to type of building and selected urban area: Port Elizabeth

Type of building	March 2000	February 2001	March 2001	January 2000 to March 2000	January 2001 to March 2001	Percentage change between January 2000 to March 2000 and January 2001 to March 2001
<b>Residential buildings</b>						
Dwelling-houses smaller than 80 square metres						
Number of dwelling-houses	116	111	127	329	301	- 8,5
Total square metres	5 940	4 669	5 269	14 589	12 548	- 14,0
Total value at current prices (R'000)	7 422	6 103	6 712	17 688	16 162	- 8,6
Dwelling-houses equal to or larger than 80 square metres						
Number of dwelling-houses	2	48	19	59	80	+ 35,6
Total square metres	517	5 088	2 626	11 508	9 151	- 20,5
Total value at current prices (R'000)	375	6 085	3 218	11 851	11 138	- 6,0
Flats and townhouses						
Number of flats and townhouses	7	13	0	54	13	- 75,9
Total square metres	1 173	902	0	6 144	902	- 85,3
Total value at current prices (R'000)	1 357	1 456	0	6 154	1 456	- 76,3
Other residential buildings <sup>1/</sup>						
Total square metres	0	4 347	0	0	4 347	..
Total value at current prices (R'000)	0	7 000	0	0	7 000	..
<b>Total value of residential buildings at current prices (R'000)</b>	<b>9 154</b>	<b>20 644</b>	<b>9 930</b>	<b>35 693</b>	<b>35 756</b>	<b>+ 0,2</b>
<b>Non-residential buildings</b>						
Office and banking space						
Total square metres	0	0	0	0	0	..
Total value at current prices (R'000)	0	0	0	0	0	..
Shopping space						
Total square metres	0	352	3 108	1 436	3 460	+ 140,9
Total value at current prices (R'000)	0	431	5 004	1 777	5 435	+ 205,9
Industrial and warehouse space						
Total square metres	1 187	872	209	2 250	1 081	- 52,0
Total value at current prices (R'000)	1 072	1 244	303	1 986	1 547	- 22,1
Other non-residential space <sup>2/</sup>						
Total square metres	0	510	550	540	1 060	+ 96,3
Total value at current prices (R'000)	0	105	605	869	710	- 18,3
<b>Total value of non-residential buildings at current prices (R'000)</b>	<b>1 072</b>	<b>1 780</b>	<b>5 912</b>	<b>4 632</b>	<b>7 692</b>	<b>+ 66,1</b>
<b>Additions and alterations</b>						
Dwelling-houses						
Total square metres	4 056	4 509	2 325	16 830	8 952	- 46,8
Total value at current prices (R'000)	3 438	5 112	2 518	14 906	9 803	- 34,2
Other buildings <sup>3/</sup>						
Total square metres	2 249	2 856	2 510	3 203	5 380	+ 68,0
Total value at current prices (R'000)	2 060	3 772	2 432	3 911	6 244	+ 59,7
<b>Total value of additions and alterations at current prices (R'000)</b>	<b>5 498</b>	<b>8 884</b>	<b>4 950</b>	<b>18 817</b>	<b>16 047</b>	<b>- 14,7</b>
<b>Total value of building plans passed at current prices (R'000)</b>	<b>15 724</b>	<b>31 308</b>	<b>20 792</b>	<b>59 142</b>	<b>59 495</b>	<b>+ 0,6</b>

1/ Other residential buildings include institutions for the disabled, boarding houses, old people's homes, hostels, hotels, motels, guest houses, holiday chalets, entertainment centres, bed-and-breakfast accommodation and casinos.

2/ Other non-residential space includes churches, sport and recreation clubs, schools, crèches, hospitals and all other non-residential space.

3/ Other buildings include additions and alterations to other residential buildings, non-residential buildings and internal alterations.

Table 37 - Buildings completed according to type of building and selected urban area: Durban

Type of building	March 2000	February 2001	March 2001	January 2000 to March 2000	January 2001 to March 2001	Percentage change between January 2000 to March 2000 and January 2001 to March 2001
<b>Residential buildings</b>						
Dwelling-houses smaller than 80 square metres						
Number of dwelling-houses	78	5	93	207	183	- 11,6
Total square metres	3 543	226	5 293	8 855	9 660	+ 9,1
Total value at current prices (R'000)	4 148	332	6 521	10 385	11 250	+ 8,3
Dwelling-houses equal to or larger than 80 square metres						
Number of dwelling-houses	48	102	70	148	229	+ 54,7
Total square metres	10 511	17 880	11 689	28 614	40 384	+ 41,1
Total value at current prices (R'000)	11 453	20 503	13 805	31 628	46 228	+ 46,2
Flats and townhouses						
Number of flats and townhouses	61	49	274	89	344	+ 286,5
Total square metres	13 362	7 824	19 570	16 787	29 297	+ 74,5
Total value at current prices (R'000)	23 380	13 087	24 182	27 345	39 781	+ 45,5
Other residential buildings <sup>1/</sup>						
Total square metres	0	0	0	0	0	..
Total value at current prices (R'000)	0	0	0	0	0	..
<b>Total value of residential buildings at current prices (R'000)</b>	<b>38 981</b>	<b>33 922</b>	<b>44 508</b>	<b>69 358</b>	<b>97 259</b>	<b>+ 40,2</b>
<b>Non-residential buildings</b>						
Office and banking space						
Total square metres	68	1 200	3 995	21 963	7 517	- 65,8
Total value at current prices (R'000)	69	1 400	9 670	65 526	15 170	- 76,8
Shopping space						
Total square metres	50	1 747	1 663	3 699	9 165	+ 147,8
Total value at current prices (R'000)	50	2 786	1 978	5 050	20 081	+ 297,6
Industrial and warehouse space						
Total square metres	6 509	15 557	11 763	41 151	28 768	- 30,1
Total value at current prices (R'000)	6 862	18 990	12 849	42 469	34 889	- 17,8
Other non-residential space <sup>2/</sup>						
Total square metres	0	2 417	405	3 008	4 089	+ 35,9
Total value at current prices (R'000)	0	3 300	518	3 490	5 196	+ 48,9
<b>Total value of non-residential buildings at current prices (R'000)</b>	<b>6 981</b>	<b>26 476</b>	<b>25 015</b>	<b>116 535</b>	<b>75 336</b>	<b>- 35,4</b>
<b>Additions and alterations</b>						
Dwelling-houses						
Total square metres	26 271	24 486	23 244	59 764	63 835	+ 6,8
Total value at current prices (R'000)	28 934	27 442	26 281	68 338	71 892	+ 5,2
Other buildings <sup>3/</sup>						
Total square metres	9 277	4 250	11 773	35 600	18 140	- 49,0
Total value at current prices (R'000)	18 023	10 869	20 519	62 160	35 208	- 43,4
<b>Total value of additions and alterations at current prices (R'000)</b>	<b>46 957</b>	<b>38 311</b>	<b>46 800</b>	<b>130 498</b>	<b>107 100</b>	<b>- 17,9</b>
<b>Total value of building plans passed at current prices (R'000)</b>	<b>92 919</b>	<b>98 709</b>	<b>116 323</b>	<b>316 391</b>	<b>279 695</b>	<b>- 11,6</b>

1/ Other residential buildings include institutions for the disabled, boarding houses, old people's homes, hostels, hotels, motels, guest houses, holiday chalets, entertainment centres, bed-and-breakfast accommodation and casinos.

2/ Other non-residential space includes churches, sport and recreation clubs, schools, crèches, hospitals and all other non-residential space.

3/ Other buildings include additions and alterations to other residential buildings, non-residential buildings and internal alterations.

Table 38 - Buildings completed according to type of building and selected urban area: Witwatersrand

Type of building	March 2000	February 2001	March 2001	January 2000 to March 2000	January 2001 to March 2001	Percentage change between January 2000 to March 2000 and January 2001 to March 2001
<b>Residential buildings</b>						
Dwelling-houses smaller than 80 square metres						
Number of dwelling-houses	1 069	706	355	2 466	1 311	-46,8
Total square metres	39 606	26 322	13 832	88 663	50 673	-42,8
Total value at current prices (R'000)	22 801	17 613	15 307	57 032	41 501	-27,2
Dwelling-houses equal to or larger than 80 square metres						
Number of dwelling-houses	161	241	222	469	609	+ 29,9
Total square metres	41 093	46 752	54 574	117 988	141 034	+ 19,5
Total value at current prices (R'000)	57 783	66 654	75 282	165 219	196 137	+ 18,7
Flats and townhouses						
Number of flats and townhouses	106	107	161	485	649	+ 33,8
Total square metres	9 583	9 100	28 272	30 425	63 959	+ 110,2
Total value at current prices (R'000)	18 520	16 620	56 313	46 821	106 964	+ 128,5
Other residential buildings <sup>1/</sup>						
Total square metres	0	0	0	3 713	32 600	+ 778,0
Total value at current prices (R'000)	0	0	0	7 426	250 000	+ 3 266,5
<b>Total value of residential buildings at current prices (R'000)</b>	<b>99 104</b>	<b>100 887</b>	<b>146 902</b>	<b>276 498</b>	<b>594 602</b>	<b>+ 115,0</b>
<b>Non-residential buildings</b>						
Office and banking space						
Total square metres	34 228	541	17 961	91 435	111 134	+ 21,5
Total value at current prices (R'000)	55 745	731	25 963	133 618	148 477	+ 11,1
Shopping space						
Total square metres	3 555	1 549	3 062	18 865	8 742	-53,7
Total value at current prices (R'000)	2 500	2 626	5 058	24 098	12 890	-46,5
Industrial and warehouse space						
Total square metres	14 205	17 417	24 469	50 716	55 498	+ 9,4
Total value at current prices (R'000)	7 705	30 465	30 159	58 815	76 833	+ 30,6
Other non-residential space <sup>2/</sup>						
Total square metres	60	426	0	4 768	3 254	-31,8
Total value at current prices (R'000)	150	405	0	6 286	5 444	-13,4
<b>Total value of non-residential buildings at current prices (R'000)</b>	<b>66 100</b>	<b>34 227</b>	<b>61 180</b>	<b>222 817</b>	<b>243 644</b>	<b>+ 9,3</b>
<b>Additions and alterations</b>						
Dwelling-houses						
Total square metres	17 668	29 186	18 945	62 867	70 464	+ 12,1
Total value at current prices (R'000)	20 890	35 345	23 109	76 910	85 443	+ 11,1
Other buildings <sup>3/</sup>						
Total square metres	5 108	10 942	10 660	12 122	33 686	+ 177,9
Total value at current prices (R'000)	74 776	19 628	21 598	83 491	54 848	-34,3
<b>Total value of additions and alterations at current prices (R'000)</b>	<b>95 666</b>	<b>54 973</b>	<b>44 707</b>	<b>160 401</b>	<b>140 291</b>	<b>-12,5</b>
<b>Total value of building plans passed at current prices (R'000)</b>	<b>260 870</b>	<b>190 087</b>	<b>252 789</b>	<b>659 716</b>	<b>978 537</b>	<b>+ 48,3</b>

1/ Other residential buildings include institutions for the disabled, boarding houses, old people's homes, hostels, hotels, motels, guest houses, holiday chalets, entertainment centres, bed-and-breakfast accommodation and casinos.

2/ Other non-residential space includes churches, sport and recreation clubs, schools, crèches, hospitals and all other non-residential space.

3/ Other buildings include additions and alterations to other residential buildings, non-residential buildings and internal alterations.

Table 39 - Buildings completed according to type of building and selected urban area: Pretoria

Type of building	March 2000	February 2001	March 2001	January 2000 to March 2000	January 2001 to March 2001	Percentage change between January 2000 to March 2000 and January 2001 to March 2001
<b>Residential buildings</b>						
Dwelling-houses smaller than 80 square metres						
Number of dwelling-houses	54	28	86	175	130	- 25,7
Total square metres	2 562	1 315	3 887	7 515	6 076	- 19,1
Total value at current prices (R'000)	2 556	1 666	4 811	6 377	7 535	+ 18,2
Dwelling-houses equal to or larger than 80 square metres						
Number of dwelling-houses	95	71	115	215	248	+ 15,3
Total square metres	21 128	18 375	31 756	55 868	66 421	+ 18,9
Total value at current prices (R'000)	24 478	25 097	44 766	65 923	90 185	+ 36,8
Flats and townhouses						
Number of flats and townhouses	215	86	179	317	302	- 4,7
Total square metres	23 213	8 296	31 248	35 369	43 611	+ 23,3
Total value at current prices (R'000)	28 660	10 211	44 505	40 291	60 336	+ 49,8
Other residential buildings <sup>1/</sup>						
Total square metres	0	0	0	0	0	..
Total value at current prices (R'000)	0	0	0	0	0	..
<b>Total value of residential buildings at current prices (R'000)</b>	<b>55 694</b>	<b>36 974</b>	<b>94 082</b>	<b>112 591</b>	<b>158 056</b>	<b>+ 40,4</b>
<b>Non-residential buildings</b>						
Office and banking space						
Total square metres	1 727	2 017	0	2 224	5 143	+ 131,3
Total value at current prices (R'000)	1 729	2 961	0	2 350	6 775	+ 188,3
Shopping space						
Total square metres	0	0	0	1 492	0	..
Total value at current prices (R'000)	0	0	0	2 086	0	..
Industrial and warehouse space						
Total square metres	0	2 344	0	1 178	2 344	+ 99,0
Total value at current prices (R'000)	0	3 516	0	1 473	3 516	+ 138,7
Other non-residential space <sup>2/</sup>						
Total square metres	747	663	1 077	2 614	1 740	- 33,4
Total value at current prices (R'000)	800	1 658	1 200	1 730	2 858	+ 65,2
<b>Total value of non-residential buildings at current prices (R'000)</b>	<b>2 529</b>	<b>8 135</b>	<b>1 200</b>	<b>7 639</b>	<b>13 149</b>	<b>+ 72,1</b>
<b>Additions and alterations</b>						
Dwelling-houses						
Total square metres	3 193	1 260	1 316	7 015	3 788	- 46,0
Total value at current prices (R'000)	3 440	1 467	1 709	7 386	4 675	- 36,7
Other buildings <sup>3/</sup>						
Total square metres	59	0	114	975	870	- 10,8
Total value at current prices (R'000)	132	62	161	1 277	1 420	+ 11,2
<b>Total value of additions and alterations at current prices (R'000)</b>	<b>3 572</b>	<b>1 529</b>	<b>1 870</b>	<b>8 663</b>	<b>6 095</b>	<b>- 29,6</b>
<b>Total value of building plans passed at current prices (R'000)</b>	<b>61 795</b>	<b>46 638</b>	<b>97 152</b>	<b>128 893</b>	<b>177 300</b>	<b>+ 37,6</b>

1/ Other residential buildings include institutions for the disabled, boarding houses, old people's homes, hostels, hotels, motels, guest houses, holiday chalets, entertainment centres, bed-and-breakfast accommodation and casinos.

2/ Other non-residential space includes churches, sport and recreation clubs, schools, crèches, hospitals and all other non-residential space.

3/ Other buildings include additions and alterations to other residential buildings, non-residential buildings and internal alterations.

Table 40 - Buildings completed according to type of building and selected urban area: Bloemfontein

Type of building	March 2000	February 2001	March 2001	January 2000 to March 2000	January 2001 to March 2001	Percentage change between January 2000 to March 2000 and January 2001 to March 2001
<b>Residential buildings</b>						
Dwelling-houses smaller than 80 square metres						
Number of dwelling-houses	108	10	8	270	30	- 88,9
Total square metres	4 429	453	415	10 682	1 525	- 85,7
Total value at current prices (R'000)	2 152	532	490	5 187	1 840	- 64,5
Dwelling-houses equal to or larger than 80 square metres						
Number of dwelling-houses	5	9	14	22	56	+ 154,5
Total square metres	495	2 165	2 557	4 452	11 632	+ 161,3
Total value at current prices (R'000)	458	2 477	2 891	4 323	13 923	+ 222,1
Flats and townhouses						
Number of flats and townhouses	18	29	16	38	53	+ 39,5
Total square metres	2 956	2 217	1 397	4 703	4 675	- 0,6
Total value at current prices (R'000)	4 434	3 313	1 956	6 434	6 769	+ 5,2
Other residential buildings <sup>1/</sup>						
Total square metres	0	0	0	0	151	..
Total value at current prices (R'000)	0	0	0	0	211	..
<b>Total value of residential buildings at current prices (R'000)</b>	<b>7 044</b>	<b>6 322</b>	<b>5 337</b>	<b>15 944</b>	<b>22 743</b>	<b>+ 42,6</b>
<b>Non-residential buildings</b>						
Office and banking space						
Total square metres	1 813	0	0	2 800	302	- 89,2
Total value at current prices (R'000)	2 500	0	0	3 789	483	- 87,3
Shopping space						
Total square metres	0	0	0	0	2 050	..
Total value at current prices (R'000)	0	0	0	0	2 000	..
Industrial and warehouse space						
Total square metres	5 258	0	0	5 258	2 878	- 45,3
Total value at current prices (R'000)	3 614	0	0	3 614	1 977	- 45,3
Other non-residential space <sup>2/</sup>						
Total square metres	0	0	0	0	140	..
Total value at current prices (R'000)	0	0	0	0	170	..
<b>Total value of non-residential buildings at current prices (R'000)</b>	<b>6 114</b>	<b>0</b>	<b>0</b>	<b>7 403</b>	<b>4 630</b>	<b>- 37,5</b>
<b>Additions and alterations</b>						
Dwelling-houses						
Total square metres	2 147	2 887	3 179	9 369	12 783	+ 36,4
Total value at current prices (R'000)	2 204	3 071	3 291	9 677	13 183	+ 36,2
Other buildings <sup>3/</sup>						
Total square metres	1 214	110	95	1 879	1 758	- 6,4
Total value at current prices (R'000)	4 112	469	49	6 107	2 680	- 56,1
<b>Total value of additions and alterations at current prices (R'000)</b>	<b>6 316</b>	<b>3 540</b>	<b>3 340</b>	<b>15 784</b>	<b>15 863</b>	<b>+ 0,5</b>
<b>Total value of building plans passed at current prices (R'000)</b>	<b>19 474</b>	<b>9 862</b>	<b>8 677</b>	<b>39 131</b>	<b>43 236</b>	<b>+ 10,5</b>

1/ Other residential buildings include institutions for the disabled, boarding houses, old people's homes, hostels, hotels, motels, guest houses, holiday chalets, entertainment centres, bed-and-breakfast accommodation and casinos.

2/ Other non-residential space includes churches, sport and recreation clubs, schools, crèches, hospitals and all other non-residential space.

3/ Other buildings include additions and alterations to other residential buildings, non-residential buildings and internal alterations.

## Additional information

### Explanatory Notes

<b>Introduction</b>	<b>1</b>	Statistics South Africa (Stats SA) conducts a monthly Building Statistics Survey collecting information regarding building plans approved and buildings completed, financed by the private sector, from a sample of local government institutions in South Africa. This statistical release contains information of building plans passed and buildings completed in respect of residential buildings, non-residential buildings and additions and alterations according to province and selected urban areas.
	<b>2</b>	In order to improve timeliness of the publication, some information for the current month have been estimated due to late submission by respondents. These estimates will be revised in the next statistical release(s) as soon as actual information is available.
	<b>3</b>	The actual and seasonally adjusted values (at current and at constant 1995 prices) and the percentage change of building plans passed and buildings completed according to type of building are reflected monthly from January 1999 in this statistical release (cf. tables 1 to 8).
<b>Scope of the survey</b>	<b>4</b>	This survey covers local government institutions conducting activities for the private sector regarding - <ul style="list-style-type: none"> <li>• approval of building plans; and</li> <li>• final inspection of completed buildings.</li> </ul>
<b>Classification</b>	<b>5</b>	The 1993 edition of the Standard Industrial Classification of all Economic Activities, (SIC) Fifth Edition, Report No. 09-90-02, was used to classify the statistical units. The SIC is based on the 1990 International Standard Industrial Classification of all Economic Activities (ISIC) with suitable adaptations for local conditions.
	<b>6</b>	The twelfth and last published edition of the Standard Code List of Areas, Report No. 09-09-03 (1994) was used to classify the statistical units according to province. The cities, towns and non-urban areas listed in this report are codified within magisterial district and province. The code list was compiled by Stats SA in collaboration with other interested bodies and the first edition was distributed in June 1977.
<b>Statistical unit</b>	<b>7</b>	The statistical unit for the collection of information is a local government institution. Local government institutions include municipalities, city councils, metropolitan councils, district councils, transitional councils and development and services boards.
<b>Survey methodology and design</b>	<b>8</b>	The sample for the monthly Building Statistics Survey consists of the largest local government institutions in South Africa, i.e. those that account for approximately 85% of the total rand value of buildings completed by the private sector.
	<b>9</b>	The survey is collected by mail each month from a sample of 158 local government institutions.
<b>Constant prices</b>	<b>10</b>	The value of building plans passed and buildings completed at constant prices measure the building activities in terms of ruling prices in a specific base year which is currently 1995.
	<b>11</b>	The value of building plans passed at constant prices for each month is obtained by deflating the values at current prices with a price index known as the “lump sum domestic buildings” as published in statistical release P0151 – JBCC Contract Price Adjustment Provisions Work Group Indices. In order to be applicable, these indices (base February 1991=100) are converted to the base year 1995=100.

- 12 The value of buildings completed at constant prices is obtained by deflating the values at current prices with the same price index which is used to calculate building plans passed at constant prices (cf. paragraph 11). The value of buildings completed is reported as at the time the plans were passed. Since the completion of buildings may extend over a few months to a few years, the current value of buildings completed is deflated by price indices as at the time the plans were passed in order to calculate the value of buildings completed at the time the plans were passed. Therefore, the duration of the completion of different types of buildings are taken into account in ascertaining the deflators e.g. the value of dwelling-houses completed at constant prices at January 2000 is obtained by deflating the current value of dwelling-houses completed for January 2000 with the price index of a month six months prior to January 2000. Furthermore, the value of other residential buildings, non-residential buildings and additions and alterations at constant prices is obtained by deflating the current values with price indices of 12 months, 18 months and 12 months prior to the relevant month, respectively.

#### Seasonal adjustment

- 13 Seasonally adjusted estimates of building plans passed and buildings completed are generated each month, using the X-11 Seasonal Adjustment Program developed by US Bureau of the Census Economic Research and Analyses Division, 1968.
- 14 Seasonal adjustment is a means of removing the estimated effects of normal seasonal variation from the series so that the effects of other influences on the series can be more clearly recognised. Seasonal adjustment does not aim to remove irregular or non-seasonal influences which may be present in any particular month. Influences that are volatile or unsystematic can still make it difficult to interpret the movement of the series even after adjustment for seasonal variations. Therefore, the month-to-month movements of seasonally adjusted estimates may not be reliable indicators of trend behaviour.

#### Trend cycle

- 15 The trend is a long-term pattern or movement of a time series. The X-11 Seasonal Adjustment Program is used for smoothing seasonally adjusted data.

#### Related publications

- 16 Users may also wish to refer to the following publications:
- P5041.3 – Building statistics issued annually.
  - P9101.2 – Actual and expected expenditure on construction by the public sector per region issued annually.
  - Bulletin of Statistics issued quarterly.
  - South African Statistics issued annually.

#### Unpublished statistics

- 17 In some cases Stats SA can also make available statistics which are not published. The statistics can be made available in one or more of the following ways: computer printouts, CD and diskette. Generally a charge is made for providing unpublished statistics.

#### Rounding-off of figures

- 18 The figures in the tables have, where necessary, been rounded off to the nearest digit shown. There may, therefore, be slight discrepancies between the sums of the constituent items and the totals shown.

#### Pre-release policy

- 19 Stats SA has adopted the confidential pre-release policy in respect of selected economic indicators and specific government departments. The policy accords with practice among leading statistical agencies. The statistical integrity of the information and strict observance of the release time has been assured by the following procedure:
- 20 In respect of this statistical release, an official representative from the Office of the President, the Department of Trade and Industry (DTI), National Treasury and the South African Reserve Bank (SARB) will receive a copy of the release on a strictly confidential basis two hours in advance of the public issue.
- 21 Stats SA pre-release policy may be inspected at its Website, [www.statssa.gov.za](http://www.statssa.gov.za)



<b>Symbols and abbreviations</b>	..	no meaningful percentage change between two specified periods available since either one or both of the totals are nil
	0	nil or figure too small to publish
	*	revised
	Stats SA	Statistics South Africa
	SIC	Standard Industrial Classification of all Economic Activities
	ISIC	International Standard Industrial Classification of all Economic Activities
	JBCC	Joint Building Contracts Committee
	CD	Compact Disc
	US	United States
	SARB	South African Reserve Bank
	DTI	Department of Trade and Industry

## Technical notes

**Response rate** The response rate for March 2001 is 97,5%.

## Local government institutions covered in the sample survey

### Local government institutions according to province

<b>Western Cape</b>	Blaauwberg (includes Milnerton), Brackenfell, Breede River District Council, Cape Town, City of Tygerberg (Bellville, Durbanville, Goodwood, Lingeletu West, Parow and South Administration), Fish Hoek, George (includes Pacaltsdorp, Thembaletu and Herolds Bay), Gordon's Bay, Hangklip-Kleinmond (includes Kleinmond, Betty's Bay and Rooi-El), Hermanus (includes Onrus River, Zwelihle, Sandbaai, Vermont, Hawston and Fisher Haven), Ikapa, Klein-Karoo District Council, Knysna (includes Khayalethu), Kuils River, Malmesbury, Mossel Bay (includes Boggom's Bay, Kleinbrak, Rheeboek and Tergniet), Oostenberg (Kraaifontein and Melton Rose - Blue Downs), Oudtshoorn, Overberg District Council, Paarl, Plettenberg Bay, Sedgefield, Simon's Town, Somerset West, South Peninsula, Stellenbosch, Strand, Wellington, West Coast District Council, Western Coast Peninsula (previously Vredenburg-Saldanha), Winelands District Council and Worcester.
<b>Eastern Cape</b>	Aliwal-Maletswai (includes Dukathole), Despatch, East London (includes Beacon Bay, Gampo Town, Gonubie and Mdantsane), Grahamstown (includes Rhini Township), Jeffrey's Bay, King William's Town (includes Bisho and Zwelitsha), Port Alfred, Port Elizabeth (includes Ibhayi and Motherwell), Uitenhage (includes Kwa Nobuhle), Umtata and Western District Council.
<b>Northern Cape</b>	Benede-Oranje District Council, Keimoes, Kimberley (including Galeshewe), Kuruman, Namaqualand District Council and Upington (includes Paballelo).
<b>Free State</b>	Allanridge, Bethlehem (includes Bohlokong), Bloemfontein (includes Bainsvlei, Bloemspuit and Mangaung), Botshabelo, Deneyville (includes Refengkgotso), Harrismith (includes Tsiamé), Kroonstad (includes Maokeng), Ladybrand (includes Manyatseng), Odendaalsrus (includes Kutlwanong), Parys, Phuthaditjhaba, Sasolburg (includes Zamdela), Virginia (includes Meloding) and Welkom (includes Thabong).
<b>KwaZulu-Natal</b>	Development and Services Board - Inland, Development and Services Board – North Coast, Dolphin Coast Borough (includes Ballito, Etete, Shakaskraal, Tinley Manor Beach and Umhlali Beach), Durban, Edendale, Empangeni (includes Ngwelezana), Hilton, Howick, Inner West City Council (includes Clermont, KwaDabeka, KwaNdengezi, New Germany, Pinetown, Queensburgh, Reservoir Hills, Shallcross and Westville), Kokstad, Kwa-Dukuza/Stanger (includes Blythedale Beach, Shakaville and Stanger), KwaMashu, Ladysmith (includes Emnambithi), Margate (includes Uvongo), Mpenjati/Southbroom (includes Southbroom, Marina Beach, San Lameer and Trafalgar), Newcastle (includes Madadeni, Osizweni and Blaauwbosch-laagte), North Local Council - Tongaat (includes Canelands and Hambanati), North Local Council - Umhlanga Rocks (includes Mount Edgecombe and Umdloti Beach), North Local Council - Verulam, Outer West Local Council (includes Assagay, Botha's Hill, Cato Ridge, Drummond, Everton, Gillitts, Hillcrest, Inchanga, Kloof, Mpumalanga and Waterfall), Pennington, Pietermaritzburg/Msundini, Port Shepstone, Richards Bay, South Local Council (includes Amanzimtoti, Isipingo, Kingsburgh, KwaMakuta and Umbogintwini), Umlazi and Umtamvuna/Port Edward (includes Munster, Port Edward and Palm Beach).
<b>North West</b>	Bophirima District Council, Brits (includes Lethabile), Ga-Rankuwa, Klerksdorp, Lichtenburg, Mmabatho, Orkney (includes Kanana), Potchefstroom, Rustenburg, Vryburg and Zeerust.

**Gauteng**

Akasia (includes Elandsdoorn, Klipfontein, Kruisfontein and Soshanguve), Alberton (includes Tokoza), Benoni (includes Daveyton and Wattville), Boksburg (includes Vosloorus), Brakpan (includes Tsakane), Bronkhorst-spruit, Carletonville (includes Khutsong), Centurion, Duduza, Eastern Services Council - Pretoria Area, Edenvale-Modderfontein, Germiston (includes Bedfordview and Katlehong), Greater Johannesburg - Eastern Metropolitan Local Council (includes Alexandra and Sandton), Greater Johannesburg - Northern Metropolitan Local Council (includes Randburg), Greater Johannesburg - Southern Metropolitan Local Council (includes Ennerdale, Lenasia and Johannesburg), Greater Johannesburg - Western Metropolitan Local Council (includes Diepmeadow, Dobsonville and Roodepoort), Heidelberg (includes Ratanda), Kempton Park (includes Tembisa), Krugersdorp (includes Kagiso and Munsieville), Meyerton, Midrand (includes Rabie Ridge and Ivory Park), Nigel, Pretoria (includes Atteridgeville and Mamelodi), Randfontein (includes Mohlakeng), Sebokeng (includes Boipatong, Bophelong and Sharpeville), Soweto, Springs (includes KwaThema), Vanderbijlpark, Vereeniging (includes Evaton), Western Services Council and Westonaria (includes Bekkersdal).

**Mpumalanga**

Delmas (includes Botleng), Eastvaal District Council, Ermelo (includes Wesselson and Cassim Park), Highveld District Council, Highveldridge Transitional Council (includes Evander, Embalenhle and Secunda), Komatipoort (includes Kamaqhekeza), KwaGuqa, KwaMhlanga, Lowveld Escarpment District Council, Malelane (includes Hectorspruit and Kamhlushwa), Middelburg (includes Mhluzi), Nelspruit (includes Kanyamazane), White River and Witbank.

**Northern Province**

Bosveld District Council, Giyani, Letaba (includes Nkowakowa and Tzaneen), Messina, Naboomspruit (includes Mookgophong), Nylstroom, Pietersburg-Polokwane (includes Seshego), Potgietersrus and Thabazimbi.

**Local government institutions according to selected urban areas****Cape Town**

Blaauwberg (includes Milnerton), Cape Town, City of Tygerberg (Bellville, Durbanville, Goodwood, Lingeletu West, Parow and South Administration), Fish Hoek, Ikapa, Oostenberg (Kraaifontein and Melton Rose - Blue Downs), Simon's Town and South Peninsula.

**Port Elizabeth**

Despatch, Port Elizabeth (including Ibhayi and Motherwell) and Uitenhage (including KwaNobuhle)

**Durban**

Durban, Inner West City Council (includes Clermont, KwaDabeka, KwaNdengezi, New Germany, Pinetown, Queenstown, Reservoir Hills, Shallcross and Westville), North Local Council - Verulam, Outer West Local Council (includes Assagay, Botha's Hill, Cato Ridge, Drummond, Everton, Gillitts, Hillcrest, Inchanga, Kloof, Mpumalanga and Waterfall) and South Local Council (includes Amanzimtoti, Isipingo, Kingsburgh, KwaMakuta and Umbogintwini).

**Witwatersrand**

Alberton (includes Thokoza), Benoni (includes Daveyton and Wattville), Boksburg (includes Vosloorus), Brakpan (includes Tsakane), Carletonville (includes Khutsong), Duduza, Edenvale-Modderfontein, Germiston (includes Bedfordview and Katlehong), Greater Johannesburg - Eastern Metropolitan Local Council (includes Alexandra and Sandton), Greater Johannesburg - Northern Metropolitan Local Council (includes Randburg), Greater Johannesburg - Southern Metropolitan Local Council (includes Ennerdale, Lenasia and Johannesburg), Greater Johannesburg - Western Metropolitan Local Council (includes Diepmeadow, Dobsonville and Roodepoort), Kempton Park (includes Tembisa), Krugersdorp (includes Kagiso and Munsieville), Midrand (includes Rabie Ridge and Ivory Park), Nigel, Randfontein (includes Mohlakeng), Soweto, Springs (includes KwaThema) and Westonaria (includes Bekkersdal).

**Pretoria**

Akasia (includes Elandsdoorn, Klipfontein and Soshanguve), Centurion, Eastern Services Council - Pretoria area and Pretoria (includes Atteridgeville and Mamelodi).

**Bloemfontein**

Bloemfontein (includes Bainsvlei, Bloemspruit and Mangaung).

## Glossary

<b>Additions and alterations</b>	Additions and alterations include extensions to existing buildings as well as internal and external alterations of existing buildings.
<b>Blocks of flats</b>	Blocks of flats are regarded as high-density housing consisting of a number of self-contained dwelling-units with at least one living-room together with a kitchen and bathroom conjoined to similar units in one building.
<b>Dwelling-house</b>	A dwelling-house refers to a free-standing, complete structure on a separate stand or a self-contained dwelling-unit, granny flat, on the same premises as an existing residence. Out-buildings and garages are included.
<b>Local government institutions</b>	A local government institution is a generic term referring to any number of institutions involved in the local sphere of government. Local government institutions consist of municipalities, city councils, metropolitan councils, district councils, transitional local councils and development and services boards.
<b>Non-residential buildings</b>	Non-residential buildings comprise factories, commercial, financial and other office buildings, as well as other buildings not used for residential purposes, such as churches, halls, clubs, schools and hospitals.
<b>Other residential buildings</b>	Other residential buildings include institutions for the disabled, boarding houses, old people's homes, hostels, hotels, motels, guest houses, holiday chalets, bed-and-breakfast accommodation, entertainment centres and casinos.
<b>Percentage change</b>	<p>When using monthly actual values, the percentage change is the change in actual values of building activities (building plans passed or buildings completed) of the relevant month compared with the actual values of building activities (building plans passed or buildings completed) of the same month in the previous year expressed as a percentage.</p> <p>When using annual actual values, the percentage change is the change in the actual values of building activities (building plans passed or buildings completed) of the relevant year compared with the actual values of building activities (building plans passed or buildings completed) of the previous year expressed as a percentage.</p> <p>When using seasonally adjusted values, the percentage change is the change in the seasonally adjusted values of building activities (building plans passed or buildings completed) of the relevant month compared with the seasonally adjusted values of building activities (building plans passed or buildings completed) of the previous month expressed as a percentage.</p>
<b>Reference period</b>	Reference period is one calendar month.
<b>Residential buildings</b>	Residential buildings comprise dwelling-houses, flats, townhouses and other residential buildings.
<b>Townhouses</b>	Townhouses are multiple, medium-density dwelling-units and include cluster housing, group housing, simplexes, duplexes, triplexes and other similar dwelling-units which are usually grouped together, with one level of each unit on ground level. This excludes blocks of flats.

## For more information

Stats SA publishes approximately 300 different statistical releases each year. It is not economically viable to produce them in more than one of South Africa's eleven official languages. Since the releases are used extensively, not only locally but also by international economic and social-scientific communities, Stats SA releases are published in English only.

Stats SA has copyright on this publication. Users may apply the information as they wish, provided that they acknowledge Stats SA as the source of the basic data wherever they process, apply, utilise, publish or distribute the data and also that they specify that the relevant application and analysis (where applicable) result from their own processing of the data.

### Stats SA products

A complete set of Stats SA publications is available at the Stats SA Library and the following libraries:

National Library of South Africa, Pretoria Division  
National Library of South Africa, Cape Town Division  
Natal Society Library, Pietermaritzburg  
Library of Parliament, Cape Town  
Bloemfontein Public Library  
Johannesburg Public Library  
Eastern Cape Library Services, King William's Town  
Central Regional Library, Pietersburg  
Central Reference Library, Nelspruit  
Central Reference Collection, Kimberley  
Central Reference Library, Mmabatho

Stats SA also provides a subscription service.

### Electronic services

A large range of data are available via on-line services, diskette, CD and computer printouts. For more details about our electronic data services, contact (012) 310 8600.

You can visit us on the Internet at: <http://www.statssa.gov.za>

### Enquiries

Telephone number: (012) 310 8095/8390/8351 (user enquiries)  
(012) 310 8228/310 8007 (technical enquiries)  
(012) 310 8161 (publications)  
(012) 310 8490 (library)

Fax number: (012) 310 8182

e-mail: Corrieb@statssa.pwv.gov.za  
Gretaz@statssa.pwv.gov.za

Postal address: Private Bag X44, Pretoria, 0001

*Produced by Stats SA*