



**Statistics  
South Africa**

Preferred supplier of quality statistics



# Statistical release

## P5041.1

### Selected building statistics of the private sector as reported by local government institutions

**June 2007  
(Preliminary)**

**Embargoed until:  
15 August 2007  
13:00**

#### **Enquiries:**

User Information Services  
Tel: (012) 310 8600 / 4892 / 8390

#### **Forthcoming issue:**

July 2007

#### **Expected release date**

19 September 2007

Statistics South Africa • Mbalo-mbalo dza Afrika Tshipembe • Tinhlayo-tiko ta Afrika-Dzonga • Dipalopalo tsa Aforika Borwa • Ezezibalo zaseNingizimu Afrika  
Dipalopalo tša Afrika Borwa • Dipalopalo tsa Afrika Borwa • Ubalo lwaseMzantsi Afrika • Telubalo eNingizimu Afrika • iNanimbalo leSewula Afrika • Statistiek Suid-Afrika

email: [info@statssa.gov.za](mailto:info@statssa.gov.za)  
[www.statssa.gov.za](http://www.statssa.gov.za)

170 Andries Street • Private Bag X44, 0001 Pretoria, South Africa  
Tel: +27(12) 310 8911, Fax: +27(12) 321 7381

## Contents

### Page

#### SUMMARY OF FINDINGS: SELECTED BUILDING STATISTICS OF THE PRIVATE SECTOR

3

#### Tables

Table 1	Values and percentage change of recorded building plans passed by larger municipalities at current prices by type of building .....	9
Table 2	Seasonally adjusted values and percentage change of recorded building plans passed by larger municipalities at current prices by type of building .....	10
Table 3	Values and percentage change of recorded building plans passed by larger municipalities at constant 2000 prices by type of building .....	11
Table 4	Seasonally adjusted values and percentage change of recorded building plans passed by larger municipalities at constant 2000 prices by type of building .....	12
Table 5	Values and percentage change of buildings reported as completed to larger municipalities at current prices by type of building .....	13
Table 6	Seasonally adjusted values and percentage change of buildings reported as completed to larger municipalities at current prices by type of building .....	14
Table 7	Values and percentage change of buildings reported as completed to larger municipalities at constant 2000 prices by type of building .....	15
Table 8	Seasonally adjusted values and percentage change of buildings reported as completed to larger municipalities at constant 2000 prices by type of building .....	16
Table 9	Recorded building plans passed by larger municipalities at current prices by type of building: South Africa .....	17
Table 10	Recorded building plans passed by larger municipalities at current prices by type of building: Western Cape .....	18
Table 11	Recorded building plans passed by larger municipalities at current prices by type of building: Eastern Cape .....	19
Table 12	Recorded building plans passed by larger municipalities at current prices by type of building: Northern Cape .....	20
Table 13	Recorded building plans passed by larger municipalities at current prices by type of building: Free State .....	21
Table 14	Recorded building plans passed by larger municipalities at current prices by type of building: KwaZulu-Natal .....	22
Table 15	Recorded building plans passed by larger municipalities at current prices by type of building: North West .....	23
Table 16	Recorded building plans passed by larger municipalities at current prices by type of building: Gauteng .....	24
Table 17	Recorded building plans passed by larger municipalities at current prices by type of building: Mpumalanga .....	25
Table 18	Recorded building plans passed by larger municipalities at current prices by type of building: Limpopo .....	26
Table 19	Buildings reported as completed to larger municipalities at current prices by type of building: South Africa .....	27
Table 20	Buildings reported as completed to larger municipalities at current prices by type of building: Western Cape .....	28
Table 21	Buildings reported as completed to larger municipalities at current prices by type of building: Eastern Cape .....	29
Table 22	Buildings reported as completed to larger municipalities at current prices by type of building: Northern Cape .....	30
Table 23	Buildings reported as completed to larger municipalities at current prices by type of building: Free State .....	31
Table 24	Buildings reported as completed to larger municipalities at current prices by type of building: KwaZulu-Natal .....	32

Table 25	Buildings reported as completed to larger municipalities at current prices by type of building: North West .....	33
Table 26	Buildings reported as completed to larger municipalities at current prices by type of building: Gauteng .....	34
Table 27	Buildings reported as completed to larger municipalities at current prices by type of building: Mpumalanga .....	35
Table 28	Buildings reported as completed to larger municipalities at current prices by type of building: Limpopo.....	36
Table 29	Subsidised low-cost dwelling-houses completed or under construction by province .....	37
Table 30	Subsidised low-cost dwelling-houses completed by province .....	37
<b>Explanatory notes</b> .....		38
<b>Glossary</b> .....		41
<b>General information</b> .....		43

## SUMMARY OF FINDINGS: SELECTED BUILDING STATISTICS OF THE PRIVATE SECTOR

**Table A – Selected key figures regarding recorded building plans passed by larger municipalities at current prices for January to June 2007**

Estimates at current prices	January to June 2006	January to June 2007 1/	Difference in value between January to June 2006 and January to June 2007	Percentage change between January to June 2006 and January to June 2007
	R'000	R'000	R'000	
<b>Residential buildings</b>	18 955 445	22 137 036	3 181 591	16,8
-Dwelling-houses	12 490 520	14 737 897	2 247 377	18,0
-Flats and townhouses	5 860 138	7 091 600	1 231 462	21,0
-Other residential buildings	604 787	307 539	-297 248	-49,1
<b>Non-residential buildings</b>	6 511 056	7 435 688	924 632	14,2
<b>Additions and alterations</b>	8 984 724	10 035 275	1 050 551	11,7
<b>Total</b>	34 451 225	39 607 999	5 156 774	15,0

1/ Jun. 2007 figures should be regarded as preliminary because of possible backlogs and incomplete reporting by municipalities.

### Total value of recorded building plans passed increased

*As indicated in Table A, the value of recorded building plans passed by larger municipalities (at current prices) during the first six months of 2007 increased by 15,0% (R5 156,8 million) compared with the first six months of 2006.*

The largest percentage increase was reported for residential buildings (16,8% or R3 181,6 million), followed by non-residential buildings (14,2% or R924,6 million) and additions and alterations (11,7% or R1 050,6 million).

**Table B – Recorded building plans passed by larger municipalities aggregated to provincial level for January to June 2007**

Estimates at current prices	January to June 2006	January to June 2007 1/	Percentage contribution to the total value of building plans passed during January to June 2006	Percentag e change between January to June 2006 and January to June 2007	Contribution(percentage points) to the percentage change in the value of building plans passed between January to June 2006 and January to June 2007 2/	Difference in value between January to June 2006 and January to June 2007
	R'000	R'000				R'000
<b>Western Cape</b>	8 381 618	8 760 050	24,3	4,5	1,1	378 432
<b>Eastern Cape</b>	1 688 518	2 058 028	4,9	21,9	1,1	369 510
<b>Northern Cape</b>	234 300	271 749	0,7	16,0	0,1	37 449
<b>Free State</b>	880 612	1 173 227	2,6	33,2	0,8	292 615
<b>Kwazulu-Natal</b>	4 644 026	5 653 683	13,5	21,7	2,9	1 009 657
<b>North West</b>	1 149 520	1 590 643	3,3	38,4	1,3	441 123
<b>Gauteng</b>	14 886 827	17 429 027	43,2	17,1	7,4	2 542 200
<b>Mpumalanga</b>	1 942 385	1 880 949	5,6	-3,2	-0,2	-61 436
<b>Limpopo</b>	643 419	790 643	1,9	22,9	0,4	147 224
<b>Total</b>	34 451 225	39 607 999	100,0	15,0	15,0	5 156 774

1/ Jun. 2007 figures should be regarded as preliminary because of possible backlogs and incomplete reporting by municipalities.

2/ The contribution (percentage points) is calculated by multiplying the percentage change of each province between January to Jun. 2006 and January to Jun. 2007 with the percentage contribution of the corresponding province to the total value of building plans passed during January to Jun. 2006, divided by 100.

Eight provinces reported increases in the value of recorded building plans passed (see Table B). The largest contributors to the increase of 15,0% were Gauteng (7,4 percentage points or R2 542,2 million), followed by KwaZulu-Natal (2,9 percentage points or R1 009,7 million), North West (1,3 percentage points or R441,1 million), Western Cape (1,1 percentage points or R378,4 million) and Eastern Cape (1,1 percentage points or R369,5 million).

**Table C – Selected key figures regarding recorded building plans passed by larger municipalities at constant 2000 prices for January to June 2007**

Estimates at constant 2000 prices	January to June 2006	January to June 2007	Difference in value between January to June 2006 and January to June 2007	Percentage change between January to June 2006 and January to June 2007
	R'000	R'000 1/		
<b>Residential buildings</b>	12 472 340	13 013 124	540 784	4,3
<b>Non-residential buildings</b>	4 289 813	4 370 264	80 451	1,9
<b>Additions and alterations</b>	5 912 693	5 898 986	-13 707	-0,2
<b>Total</b>	22 674 846	23 282 374	607 528	2,7

1/ Jun. 2007 figures should be regarded as preliminary because of possible backlogs and incomplete reporting by municipalities.

Seasonally adjusted estimates at constant 2000 prices	January to March 2007	April to June 2007	Percentage change between January to March 2007 and April to June 2007
	R'000	R'000	
<b>Residential buildings</b>	7 106 874	6 796 970	-4,4
<b>Non-residential buildings</b>	2 218 558	2 364 858	6,6
<b>Additions and alterations</b>	3 115 545	3 101 054	-0,5
<b>Total</b>	12 440 977	12 262 882	-1,4

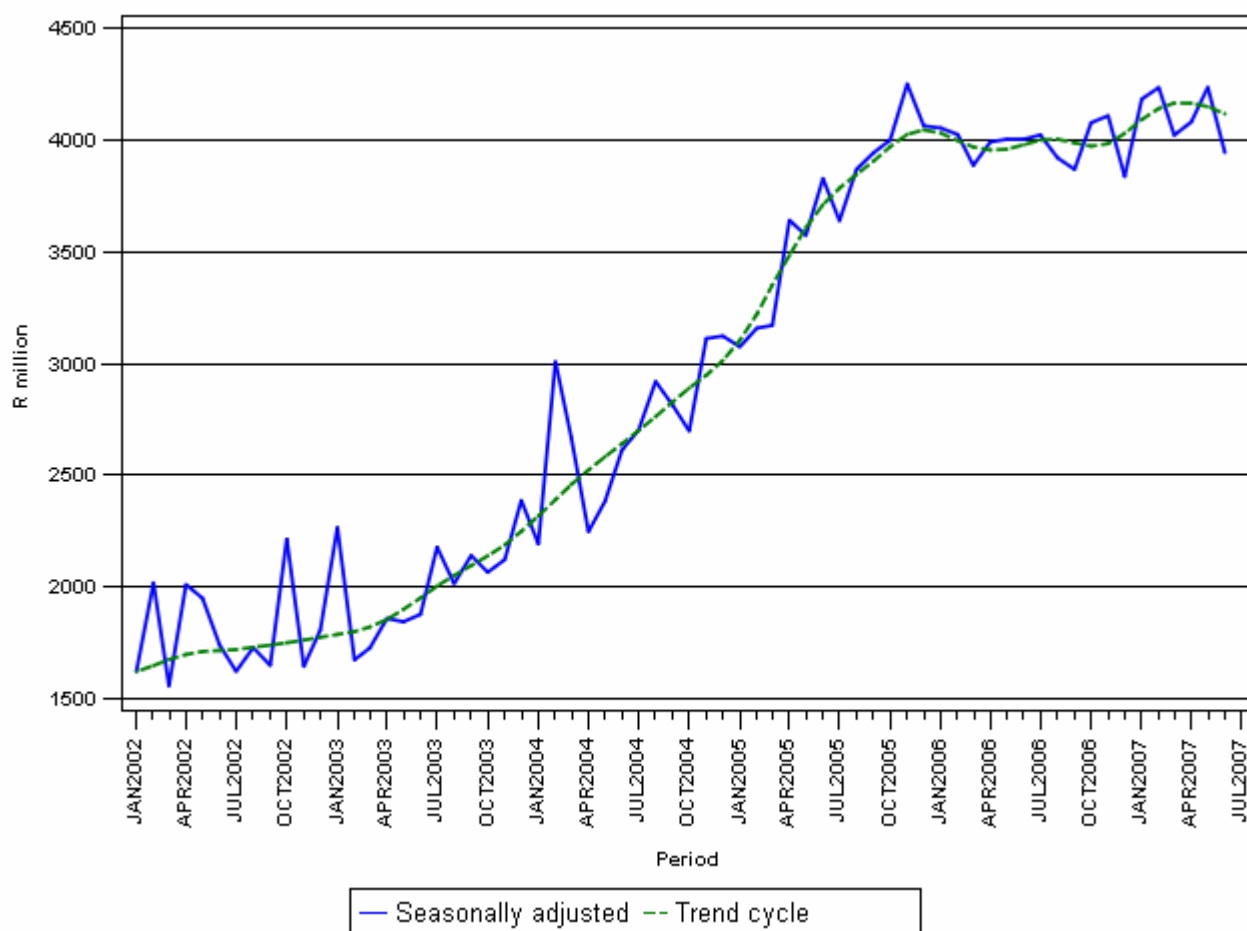
### Total real value of recorded building plans passed increased

*As indicated in Table C, the value of recorded building plans passed by larger municipalities (at constant 2000 prices) during the first six months of 2007 increased by 2,7% (R607,5 million) compared with the first six months of 2006 slowing from the 3,7% increase for the comparison of the first five months. Increases were reported for residential buildings (4,3% or R540,8 million) and non-residential buildings (1,9% or R80,5 million). A decrease was reported for additions and alterations (-0,2% or -R13,7 million) for the same period.*

The seasonally adjusted real value of recorded building plans passed by larger municipalities during the second quarter of 2007 decreased by 1,4% compared with the previous quarter, mainly due to decreases reported for residential building plans passed (-4,4%) and additions and alterations (-0,5%). This decrease was partially counteracted by an increase reported for non-residential buildings (6,6%). ( see Table C).

Figure 1 shows both the seasonally adjusted and the trend series for recorded building plans passed at constant 2000 prices between January 2002 and June 2007. The trend series reflects a slight increase in 2002, followed by a steep increase from April 2003 up to the end of 2005. After a short period of downturn in 2006, the trend series started moving upwards from November 2006 up until March 2007. The trend series moved downwards from April 2007.

**Figure 1 – Real value of recorded building plans passed by larger municipalities at constant 2000 prices**



**Table D – Selected key figures regarding buildings reported as completed to larger municipalities at current prices for January to June 2007**

Estimates at current prices	January to June 2006	January to June 2007 1/	Difference in value between January to June 2006 and January to June 2007	Percentage change between January to June 2006 and January to June 2007
	R'000	R'000	R'000	
<b>Residential buildings</b>	11 191 162	13 516 432	2 325 270	20,8
-Dwelling-houses	6 876 224	8 144 360	1 268 136	18,4
-Flats and townhouses	4 232 966	4 867 896	634 930	15,0
-Other residential buildings	81 972	504 176	422 204	515,1
<b>Non-residential buildings</b>	2 645 862	4 054 148	1 408 286	53,2
<b>Additions and alterations</b>	3 143 078	3 721 225	578 147	18,4
<b>Total</b>	16 980 102	21 291 805	4 311 703	25,4

1/ Jun. 2007 figures should be regarded as preliminary because of possible backlogs and incomplete reporting by municipalities.

### Total value of buildings reported as completed increased

*As indicated in Table D, the value of buildings reported as completed to larger municipalities (at current prices) during the first six months of 2007 increased by 25,4% (R4 311,7 million) compared with the first six months of 2006.*

The largest percentage increase in the value of buildings completed was reported for non-residential buildings (53,2% or R1 408,3 million), followed by residential buildings (20,8% or R2 325,3 million) and additions and alterations (18,4% or R578,1 million). Large increases for non-residential buildings completed were reported for office and banking space (166,0% or R691,5 million) and industrial and warehouse space (107,9% or R905,6 million) (see table 19, page 27).

Within the residential buildings, 'other' residential buildings recorded the highest growth rate, mainly as a result of two casinos, one hotel and an old age home that were reported as completed to the value of R110,7 million, R154,9 million and R45,5 million respectively during the first four months of 2007.

**Table E – Buildings reported as completed to larger municipalities aggregated to provincial level for January to June 2007**

Estimates at current prices	January to June 2006	January to June 2007 1/	Percentage contribution to the total value of buildings completed during January to June 2006	Percentage change between January to June 2006 and January to June 2007	Contribution (percentage points) to the percentage change in the value of buildings completed between January to June 2006 and January to June 2007 2/	Difference in value between January to June 2006 and January to June 2007
	R'000	R'000				R'000
<b>Western Cape</b>	5 006 780	5 694 115	29,5	13,7	4,0	687 335
<b>Eastern Cape</b>	611 265	674 521	3,6	10,3	0,4	63 256
<b>Northern Cape</b>	95 503	186 134	0,6	94,9	0,5	90 631
<b>Free State</b>	326 666	503 064	1,9	54,0	1,0	176 398
<b>Kwazulu-Natal</b>	2 061 006	3 222 761	12,1	56,4	6,8	1 161 755
<b>North West</b>	698 592	832 967	4,1	19,2	0,8	134 375
<b>Gauteng</b>	7 440 343	9 327 990	43,8	25,4	11,1	1 887 647
<b>Mpumalanga</b>	494 672	609 200	2,9	23,2	0,7	114 528
<b>Limpopo</b>	245 275	241 053	1,4	-1,7	-0,0	-4 222
<b>Total</b>	16 980 102	21 291 805	100,0	25,4	25,4	4 311 703

1/ Jun. 2007 figures should be regarded as preliminary because of possible backlogs and incomplete reporting by municipalities.

2/ The contribution (percentage points) is calculated by multiplying the percentage change of each province between January to June 2006 and January to June 2007 with the percentage contribution of the corresponding province to the total value of buildings completed during January to June 2006, divided by 100.

Eight provinces reported increases in the value of buildings completed. The largest contributor to the increase of 25,4% was Gauteng (11,1 percentage points or R1 887,6 million), followed by KwaZulu-Natal (6,8 percentage points or R1 161,8 million) and Western Cape (4,0 percentage points or R687,3 million) (see Table E).

**Table F – Selected key figures regarding buildings reported as completed to larger municipalities at constant 2000 prices for January to June 2007**

Estimates at constant 2000 prices	January to June 2006	January to June 2007 1/	Difference in value between January to June 2006 and January to June 2007	Percentage change between January to June 2006 and January to June 2007
	R'000	R'000	R'000	
<b>Residential buildings</b>	7 702 350	8 517 184	814 834	10,6
<b>Non-residential buildings</b>	1 918 452	2 759 664	841 212	43,8
<b>Additions and alterations</b>	2 204 921	2 453 506	248 585	11,3
<b>Total</b>	11 825 723	13 730 354	1 904 631	16,1

1/ Jun. 2007 figures should be regarded as preliminary because of possible backlogs and incomplete reporting by municipalities.

Seasonally adjusted estimates at constant 2000 prices	January to March 2007	April to June 2007	Percentage change between January to March 2007 and April to June 2007
	R'000	R'000	
<b>Residential buildings</b>	4 676 252	4 881 784	4,4
<b>Non-residential buildings</b>	1 519 884	1 458 344	-4,0
<b>Additions and alterations</b>	1 330 244	1 193 157	-10,3
<b>Total</b>	7 526 380	7 533 285	0,1

### Total real value of buildings reported as completed increased

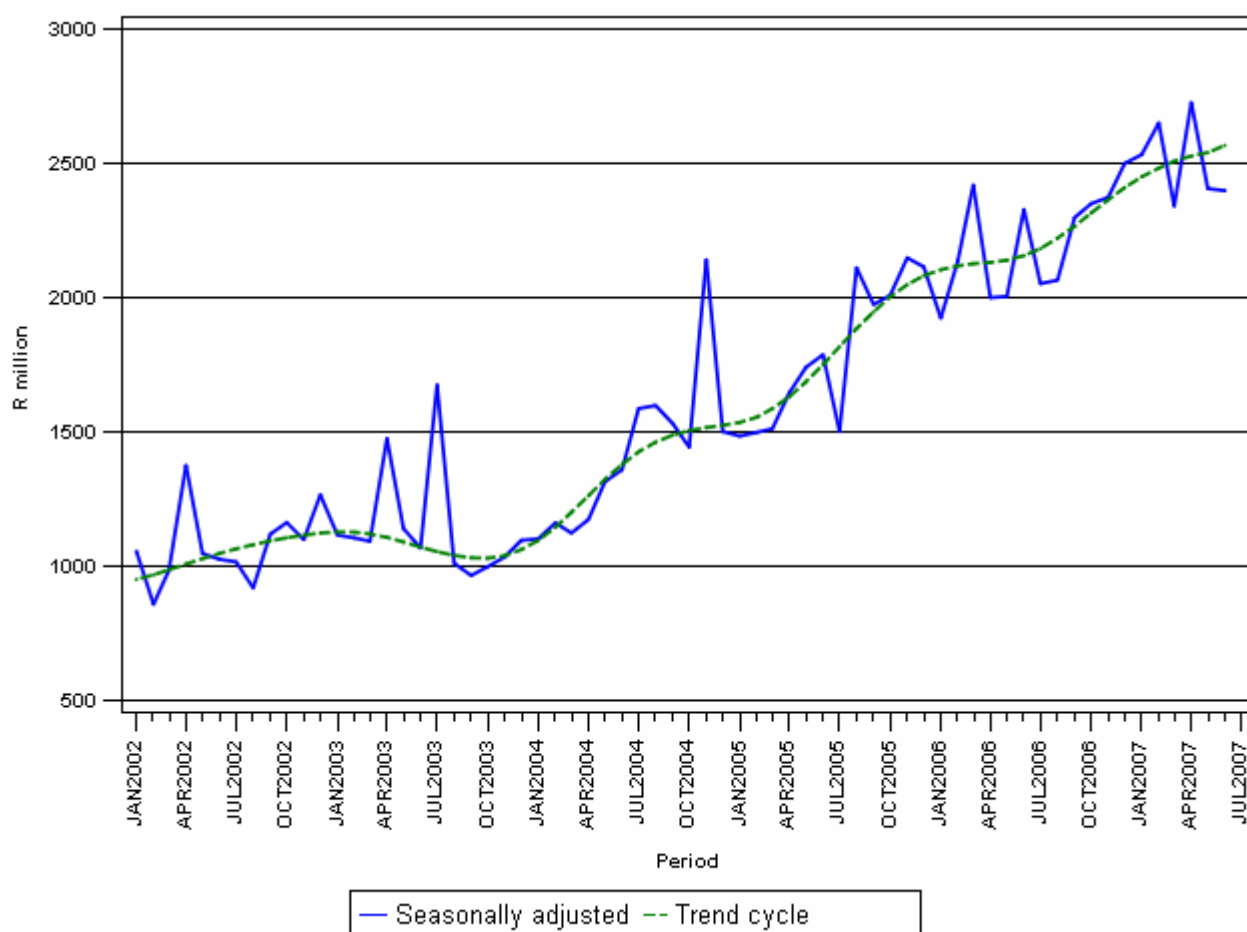
*As indicated in Table F, the value of buildings reported as completed to larger municipalities (at constant 2000 prices) during the first six months of 2007 increased by 16,1% (R1 904,6 million) compared with the first six months of 2006. The largest percentage increase in the real value of buildings completed was reported for non-residential buildings (43,8% or R841,2 million), followed by additions and alterations (11,3% or R248,6 million) and residential buildings (10,6% or R814,8 million).*

The seasonally adjusted real value of buildings reported as completed to larger municipalities during the second quarter of 2007 increased by 0,1% compared with the previous three months, mainly due to an increase reported for residential buildings (4,4%). This increase was partially counteracted by decreases reported for non-residential buildings (-4,0%) and additions and alterations (-10,3%) .



Figure 2 shows both the seasonally adjusted and trend series for buildings reported as completed to municipalities at constant 2000 prices between January 2002 and June 2007. The trend series reflects a slight increase in 2002, slowing again until October 2003. The trend series increased from November 2003 till present.

**Figure 2 - Real value of buildings reported as completed to larger municipalities at constant 2000 prices**



**PJ Lehohla**  
Statistician-General

**Table 1 - Values and percentage change of recorded building plans passed by larger municipalities at current prices by type of building**

Year and month		Residential buildings		Non-residential buildings		Additions and alterations		Total	
		R'000	% change 1/	R'000	% change 1/	R'000	% change 1/	R'000	% change 1/
2006	January	2 558 041	45,9	778 449	44,6	1 090 691	21,0	4 427 181	38,6
	February	3 190 047	36,0	942 439	53,1	1 443 836	25,1	5 576 322	35,5
	March	2 999 970	28,1	1 241 790	28,9	1 558 522	26,4	5 800 282	27,8
	April	2 763 843	6,8	1 311 707	67,0	1 385 872	6,4	5 461 422	16,8
	May	3 617 721	3,9	1 253 706	59,0	1 845 824	36,6	6 717 251	19,5
	June	3 825 823	18,2	982 965	2,2	1 659 979	11,0	6 468 767	13,6
	July	3 918 713	11,6	1 443 525	42,7	1 845 449	26,1	7 207 687	20,4
	August	4 020 265	15,1	1 478 844	19,9	1 690 353	4,1	7 189 462	13,2
	September	3 758 874	-2,8	1 095 563	58,4	1 757 623	11,5	6 612 060	7,8
	October	3 901 590	4,7	1 743 478	78,3	1 836 658	-4,1	7 481 726	13,1
	November	4 018 174	7,8	1 381 760	3,2	1 846 062	13,5	7 245 996	8,3
	December	2 691 780	-7,0	1 081 202	67,8	1 438 672	6,7	5 211 654	6,6
	Total	41 264 841	11,6	14 735 428	39,7	19 399 541	14,2	75 399 810	16,9
2007	January	2 742 134	7,2	992 280	27,5	1 387 298	27,2	5 121 712	15,7
	February	3 536 260	10,9	1 395 611	48,1	1 619 834	12,2	6 551 705	17,5
	March	3 974 270	32,5	995 997	-19,8	1 573 714	1,0	6 543 981	12,8
	April	3 468 218	25,5	1 176 463	-10,3	1 621 768	17,0	6 266 449	14,7
	May	4 415 315	22,0	1 478 020	17,9	2 116 399	14,7	8 009 734	19,2
	June 2/	4 000 839	4,6	1 397 317	42,2	1 716 262	3,4	7 114 418	10,0

1/ The annual/monthly percentage change is the change in the values of recorded building plans passed by municipalities of the relevant year/month compared with the values of recorded building plans passed by municipalities of the comparable period of the previous year expressed as a percentage.

2/ Preliminary figures.

**Table 2 - Seasonally adjusted values and percentage change of recorded building plans passed by larger municipalities at current prices by type of building**

Year and month		Residential buildings		Non-residential buildings		Additions and alterations		Total	
		R'000	% change 1/	R'000	% change 1/	R'000	% change 1/	R'000	% change 1/
2006	January	3 553 296	-3,2	1 032 943	36,8	1 463 551	-9,0	6 049 790	0,3
	February	3 459 481	-2,6	1 047 705	1,4	1 558 911	6,5	6 066 097	0,3
	March	3 205 686	-7,3	1 063 777	1,5	1 613 183	3,5	5 882 646	-3,0
	April	3 177 359	-0,9	1 354 532	27,3	1 538 611	-4,6	6 070 502	3,2
	May	3 276 883	3,1	1 253 028	-7,5	1 627 744	5,8	6 157 655	1,4
	June	3 638 916	11,0	988 738	-21,1	1 625 976	-0,1	6 253 630	1,6
	July	3 429 132	-5,8	1 255 308	27,0	1 669 253	2,7	6 353 693	1,6
	August	3 586 633	4,6	1 191 323	-5,1	1 528 396	-8,4	6 306 352	-0,7
	September	3 375 816	-5,9	1 208 894	1,5	1 688 279	10,5	6 272 989	-0,5
	October	3 512 005	4,0	1 540 229	27,4	1 601 887	-5,1	6 654 121	6,1
	November	3 565 209	1,5	1 470 243	-4,5	1 739 912	8,6	6 775 364	1,8
	December	3 432 882	-3,7	1 272 227	-13,5	1 690 681	-2,8	6 395 790	-5,6
2007	January	3 806 343	10,9	1 327 450	4,3	1 871 161	10,7	7 004 954	9,5
	February	3 839 672	0,9	1 534 146	15,6	1 741 338	-6,9	7 115 156	1,6
	March	4 292 183	11,8	864 811	-43,6	1 635 289	-6,1	6 792 283	-4,5
	April	3 993 678	-7,0	1 198 825	38,6	1 793 966	9,7	6 986 469	2,9
	May	3 982 856	-0,3	1 480 414	23,5	1 877 150	4,6	7 340 420	5,1
	June	3 781 928	-5,0	1 412 585	-4,6	1 682 821	-10,4	6 877 334	-6,3
	Jan. - Mar.07	11 938 198		3 726 407		5 247 788		20 912 393	
	Apr. - Jun 07 2/	11 758 462	-1,5	4 091 824	9,8	5 353 937	2,0	21 204 223	1,4

1/ The percentage change is the change in the seasonally adjusted values of recorded building plans passed by municipalities of the relevant month compared with the seasonally adjusted values of recorded building plans passed by municipalities of the previous month expressed as a percentage.

2/ The percentage change is the change in the seasonally adjusted values of recorded building plans passed by municipalities of the current quarter compared with the seasonally adjusted values of recorded building plans passed by municipalities of the previous quarter expressed as a percentage.

**Table 3 - Values and percentage change of recorded building plans passed by larger municipalities at constant 2000 prices by type of building**

Year and month		Residential buildings		Non-residential buildings		Additions and alterations		Total	
		R'000	% change 1/	R'000	% change 1/	R'000	% change 1/	R'000	% change 1/
2006	January	1 716 806	38,0	522 449	36,7	732 007	14,4	2 971 262	31,1
	February	2 129 537	28,2	629 132	44,3	963 842	17,9	3 722 511	27,7
	March	1 998 648	21,3	827 308	22,0	1 038 322	19,7	3 864 278	21,0
	April	1 824 319	1,0	865 813	57,9	914 767	0,6	3 604 899	10,5
	May	2 355 287	-2,9	816 215	48,6	1 201 708	27,6	4 373 210	11,6
	June	2 447 743	8,9	628 896	-5,9	1 062 047	2,2	4 138 686	4,7
	July	2 470 815	2,4	910 167	31,0	1 163 587	15,8	4 544 569	10,5
	August	2 478 585	3,9	911 741	8,2	1 042 141	-6,0	4 432 467	2,2
	September	2 308 891	-12,3	672 950	42,8	1 079 621	0,6	4 061 462	-2,8
	October	2 386 294	-5,8	1 066 347	60,4	1 123 338	-13,7	4 575 979	1,7
	November	2 432 309	-3,7	836 416	-7,8	1 117 471	1,4	4 386 196	-3,2
	December	1 620 578	-17,2	650 934	49,4	866 148	-5,0	3 137 660	-5,1
	Total	26 169 812	2,7	9 338 368	28,3	12 304 999	5,0	47 813 179	7,5
2007	January	1 640 032	-4,5	593 469	13,6	829 724	13,3	3 063 225	3,1
	February	2 118 790	-0,5	836 196	32,9	970 542	0,7	3 925 528	5,5
	March	2 372 699	18,7	594 625	-28,1	939 531	-9,5	3 906 855	1,1
	April	2 035 339	11,6	690 413	-20,3	951 742	4,0	3 677 494	2,0
	May	2 552 205	8,4	854 347	4,7	1 223 352	1,8	4 629 904	5,9
	June 2/	2 294 059	-6,3	801 214	27,4	984 095	-7,3	4 079 368	-1,4

1/ The annual/monthly percentage change is the change in the values of recorded building plans passed by municipalities of the relevant year/month compared with the values of recorded building plans passed by municipalities of the comparable period of the previous year expressed as a percentage.

2/ Preliminary figures.

**Table 4 - Seasonally adjusted values and percentage change of recorded building plans passed by larger municipalities at constant 2000 prices by type of building**

Year and month		Residential buildings		Non-residential buildings		Additions and alterations		Total	
		R'000	% change 1/	R'000	% change 1/	R'000	% change 1/	R'000	% change 1/
2006	January	2 381 479	-3,7	691 713	36,0	980 748	-9,4	4 053 940	-0,2
	February	2 299 544	-3,4	696 524	0,7	1 028 651	4,9	4 024 719	-0,7
	March	2 122 160	-7,7	700 136	0,5	1 064 494	3,5	3 886 790	-3,4
	April	2 087 907	-1,6	891 229	27,3	1 012 611	-4,9	3 991 747	2,7
	May	2 127 818	1,9	815 081	-8,5	1 061 045	4,8	4 003 944	0,3
	June	2 328 816	9,4	633 527	-22,3	1 041 778	-1,8	4 004 121	-0,0
	July	2 168 191	-6,9	795 905	25,6	1 058 867	1,6	4 022 963	0,5
	August	2 227 118	2,7	741 035	-6,9	952 290	-10,1	3 920 443	-2,5
	September	2 082 035	-6,5	746 042	0,7	1 040 963	9,3	3 869 040	-1,3
	October	2 151 714	3,3	943 898	26,5	982 034	-5,7	4 077 646	5,4
	November	2 164 830	0,6	890 813	-5,6	1 053 405	7,3	4 109 048	0,8
	December	2 060 097	-4,8	763 042	-14,3	1 013 852	-3,8	3 836 991	-6,6
2007	January	2 273 668	10,4	792 632	3,9	1 117 236	10,2	4 183 536	9,0
	February	2 289 304	0,7	914 173	15,3	1 031 817	-7,6	4 235 294	1,2
	March	2 543 902	11,1	511 753	-44,0	966 492	-6,3	4 022 147	-5,0
	April	2 331 930	-8,3	700 336	36,9	1 048 938	8,5	4 081 204	1,5
	May	2 296 271	-1,5	854 072	22,0	1 085 981	3,5	4 236 324	3,8
	June	2 168 769	-5,6	810 450	-5,1	966 135	-11,0	3 945 354	-6,9
	Jan.-Mar.07	7 106 874		2 218 558		3 115 545		12 440 977	
	Apr. - May 07 2/	6 796 970	-4,4	2 364 858	6,6	3 101 054	-0,5	12 262 882	-1,4

1/ The percentage change is the change in the seasonally adjusted values of recorded building plans passed by municipalities of the relevant month compared with the seasonally adjusted values of recorded building plans passed by municipalities of the previous month expressed as a percentage.

2/ The percentage change is the change in the seasonally adjusted values of recorded building plans passed by municipalities of the current quarter compared with the seasonally adjusted values of recorded building plans passed by municipalities of the previous quarter expressed as a percentage.

**Table 5 - Values and percentage change of buildings reported as completed to larger municipalities at current prices by type of building**

Year and month		Residential buildings		Non-residential buildings		Additions and alterations		Total	
		R'000	% change 1/	R'000	% change 1/	R'000	% change 1/	R'000	% change 1/
2006	January	1 257 968	45,0	316 723	10,1	406 962	28,1	1 981 653	34,6
	February	1 772 939	39,7	408 861	125,2	553 237	72,2	2 735 037	54,3
	March	2 113 187	56,6	656 158	110,5	589 069	85,3	3 358 414	69,7
	April	1 748 227	24,6	268 422	36,6	450 681	35,3	2 467 330	27,6
	May	1 989 102	18,0	509 864	26,4	575 749	21,9	3 074 715	20,0
	June	2 309 739	52,7	485 834	24,9	567 380	11,0	3 362 953	39,4
	July	2 268 183	44,5	333 643	38,0	554 641	57,2	3 156 467	45,9
	August	2 379 053	4,4	492 632	-16,0	557 684	37,9	3 429 369	4,9
	September	2 539 730	21,0	404 951	10,8	665 842	48,6	3 610 523	24,0
	October	2 371 124	19,9	768 141	44,7	603 131	19,2	3 742 396	24,1
	November	2 648 334	-1,7	651 400	47,9	853 416	91,1	4 153 150	16,0
	December	2 675 164	15,3	542 151	115,6	545 663	23,4	3 762 978	24,8
	Total	26 072 750	24,0	5 838 780	39,5	6 923 455	42,1	38 834 985	29,1
2007	January	1 640 091	30,4	483 947	52,8	675 202	65,9	2 799 240	41,3
	February	2 198 764	24,0	882 785	115,9	578 317	4,5	3 659 866	33,8
	March	2 092 073	-1,0	778 349	18,6	667 493	13,3	3 537 915	5,3
	April	2 342 981	34,0	630 387	134,8	556 296	23,4	3 529 664	43,1
	May	2 670 297	34,2	711 574	39,6	582 170	1,1	3 964 041	28,9
	June 2/	2 572 226	11,4	567 106	16,7	661 747	16,6	3 801 079	13,0

1/ The annual/monthly percentage change is the change in the values of buildings reported as completed to municipalities of the relevant year/month compared with the values of buildings reported as completed to municipalities of the comparable period of the previous year expressed as a percentage.

2/ Preliminary figures.

**Table 6 - Seasonally adjusted values and percentage change of buildings reported as completed to larger municipalities at current prices by type of building**

Year and month		Residential buildings		Non-residential buildings		Additions and alterations		Total	
		R'000	% change 1/	R'000	% change 1/	R'000	% change 1/	R'000	% change 1/
2006	January	1 838 367	-15,2	392 189	34,5	442 985	-13,2	2 673 541	-10,0
	February	2 024 365	10,1	443 932	13,2	560 477	26,5	3 028 774	13,3
	March	2 281 665	12,7	578 503	30,3	589 921	5,3	3 450 089	13,9
	April	1 959 911	-14,1	388 203	-32,9	532 014	-9,8	2 880 128	-16,5
	May	1 917 882	-2,1	434 856	12,0	541 923	1,9	2 894 661	0,5
	June	2 325 819	21,3	523 499	20,4	535 069	-1,3	3 384 387	16,9
	July	2 107 148	-9,4	396 052	-24,3	525 013	-1,9	3 028 213	-10,5
	August	2 184 185	3,7	371 426	-6,2	545 691	3,9	3 101 302	2,4
	September	2 373 882	8,7	379 188	2,1	642 613	17,8	3 395 683	9,5
	October	2 283 522	-3,8	619 273	63,3	565 899	-11,9	3 468 694	2,2
	November	2 120 674	-7,1	630 949	1,9	785 299	38,8	3 536 922	2,0
	December	2 471 489	16,5	648 384	2,8	629 430	-19,8	3 749 303	6,0
2007	January	2 438 041	-1,4	596 457	-8,0	735 520	16,9	3 770 018	0,6
	February	2 511 829	3,0	942 508	58,0	593 824	-19,3	4 048 161	7,4
	March	2 260 343	-10,0	681 615	-27,7	663 951	11,8	3 605 909	-10,9
	April	2 624 071	16,1	929 156	36,3	656 366	-1,1	4 209 593	16,7
	May	2 596 740	-1,0	636 387	-31,5	549 490	-16,3	3 782 617	-10,1
	June	2 580 213	-0,6	593 171	-6,8	623 696	13,5	3 797 080	0,4
	Jan.- Mar.07	7 210 213		2 220 580		1 993 295		11 424 088	
	Apr.-Jun.07 2/	7 801 024	8,2	2 158 714	-2,8	1 829 552	-8,2	11 789 290	3,2

1/ The percentage change is the change in the seasonally adjusted values of buildings reported as completed to municipalities of the relevant month compared with the seasonally adjusted values of buildings reported as completed to municipalities of the previous month expressed as a percentage.

2/ The percentage change is the change in the seasonally adjusted values of buildings reported as completed to municipalities of the current quarter compared with the seasonally adjusted values of buildings reported as completed to municipalities of the previous quarter expressed as a percentage.

**Table 7 - Values and percentage change of buildings reported as completed to larger municipalities at constant 2000 prices by type of building**

Year and month		Residential buildings		Non-residential buildings		Additions and alterations		Total	
		R'000	% change 1/	R'000	% change 1/	R'000	% change 1/	R'000	% change 1/
2006	January	875 518	36,0	232 372	4,6	288 830	18,4	1 396 720	25,8
	February	1 228 110	30,7	298 221	112,9	391 811	60,8	1 918 142	44,9
	March	1 458 509	46,8	477 553	98,4	414 545	73,2	2 350 607	59,5
	April	1 200 870	17,0	194 227	27,9	314 502	26,3	1 709 599	19,8
	May	1 360 922	11,1	366 809	17,5	401 219	14,4	2 128 950	12,7
	June	1 578 421	43,9	349 270	16,0	394 014	4,7	2 321 705	30,9
	July	1 534 451	36,1	236 794	27,5	380 935	47,1	2 152 180	36,9
	August	1 603 497	-1,8	348 890	-21,5	380 932	29,2	2 333 319	-1,7
	September	1 708 000	14,2	284 976	3,6	453 571	39,1	2 446 547	16,7
	October	1 582 226	13,3	536 037	35,1	410 014	12,0	2 528 277	17,1
	November	1 751 468	-8,0	453 937	38,9	578 195	80,0	2 783 600	9,1
	December	1 752 041	7,2	376 494	103,3	368 941	16,1	2 497 476	16,8
	Total	17 634 033	16,7	4 155 580	30,6	4 777 509	33,1	26 567 122	21,4
2007	January	1 058 853	20,9	332 381	43,0	453 156	56,9	1 844 390	32,1
	February	1 398 502	13,9	602 995	102,2	386 059	-1,5	2 387 556	24,5
	March	1 321 940	-9,4	530 210	11,0	444 699	7,3	2 296 849	-2,3
	April	1 481 633	23,4	428 543	120,6	367 192	16,8	2 277 368	33,2
	May	1 661 575	22,1	482 096	31,4	379 017	-5,5	2 522 688	18,5
	June 2/	1 594 681	1,0	383 439	9,8	423 383	7,5	2 401 503	3,4

1/ The annual/monthly percentage change is the change in the values of buildings reported as completed to municipalities of the relevant year/month compared with the values of buildings reported as completed to municipalities of the comparable period of the previous year expressed as a percentage.

2/ Preliminary figures.



**Table 8 - Seasonally adjusted values and percentage change of buildings reported as completed to larger municipalities at constant 2000 prices by type of building**

Year and month		Residential buildings		Non-residential buildings		Additions and alterations		Total	
		R'000	%change 1/	R'000	% change 1/	R'000	% change 1/	R'000	% change 1/
2006	January	1 321 729	-14,0	288 395	34,2	313 923	-13,8	1 924 047	-9,0
	February	1 416 234	7,2	324 486	12,5	397 007	26,5	2 137 727	11,1
	March	1 585 230	11,9	420 625	29,6	414 211	4,3	2 420 066	13,2
	April	1 348 149	-15,0	280 402	-33,3	371 770	-10,2	2 000 321	-17,3
	May	1 314 810	-2,5	311 650	11,1	378 511	1,8	2 004 971	0,2
	June	1 582 373	20,3	373 775	19,9	372 980	-1,5	2 329 128	16,2
	July	1 409 803	-10,9	280 959	-24,8	361 697	-3,0	2 052 459	-11,9
	August	1 428 173	1,3	263 495	-6,2	373 908	3,4	2 065 576	0,6
	September	1 593 776	11,6	266 926	1,3	437 773	17,1	2 298 475	11,3
	October	1 532 707	-3,8	433 616	62,4	384 128	-12,3	2 350 451	2,3
	November	1 402 525	-8,5	440 514	1,6	531 051	38,2	2 374 090	1,0
	December	1 627 226	16,0	450 676	2,3	422 542	-20,4	2 500 444	5,3
2007	January	1 630 142	0,2	410 663	-8,9	492 802	16,6	2 533 607	1,3
	February	1 610 123	-1,2	645 257	57,1	396 214	-19,6	2 651 594	4,7
	March	1 435 987	-10,8	463 964	-28,1	441 228	11,4	2 341 179	-11,7
	April	1 662 949	15,8	630 537	35,9	433 858	-1,7	2 727 344	16,5
	May	1 618 788	-2,7	429 538	-31,9	358 526	-17,4	2 406 852	-11,8
	June	1 600 047	-1,2	398 269	-7,3	400 773	11,8	2 399 089	-0,3
	Jan.- Feb.07	4 676 252		1 519 884		1 330 244		7 526 380	
	Mar. – Jun.07 2/	4 881 784	4,4	1 458 344	-4,0	1 193 157	-10,3	7 533 285	0,1

1/ The percentage change is the change in the seasonally adjusted values of buildings reported as completed to municipalities of the relevant month compared with the seasonally adjusted values of buildings reported as completed to municipalities of the previous month expressed as a percentage.

2/ The percentage change is the change in the seasonally adjusted values of buildings reported as completed to municipalities of the current quarter compared with the seasonally adjusted values of buildings reported as completed to municipalities of the previous quarter expressed as a percentage.

Table 9 - Recorded building plans passed by larger municipalities at current prices by type of building: South Africa

			Jun. 2006	May 2007	Jun. 2007	Jan. - Jun. 2006	Jan. - Jun. 2007	% Change 1/
Category of building	Type of building	Measuring unit						
1. Residential buildings	1. Dwelling-houses < 80 square metres	Number	3 427	3 631	3 866	18 176	18 464	1,6
		square metres	152 463	160 347	170 880	802 489	814 470	1,5
		R'000	264 305	296 952	301 142	1 413 950	1 600 394	13,2
	2. Dwelling-houses >= 80 square metres	Number	3 214	2 950	2 942	16 611	16 178	-2,6
		square metres	732 542	806 066	750 091	3 815 848	4 089 448	7,2
		R'000	2 188 188	2 663 096	2 409 855	11 076 570	13 137 503	18,6
	3. Flats and townhouses	Number	2 798	3 928	3 039	14 937	17 330	16,0
		square metres	364 240	419 793	357 590	1 888 309	2 060 935	9,1
		R'000	1 208 750	1 444 082	1 276 475	5 860 138	7 091 600	21,0
	4. Other residential buildings 2/	square metres	32 892	3 402	4 541	141 635	87 823	-38,0
		R'000	164 580	11 185	13 367	604 787	307 539	-49,1
	5. Total residential buildings	R'000	3 825 823	4 415 315	4 000 839	18 955 445	22 137 036	16,8
2. Non-residential buildings	1. Office and banking space	square metres	39 706	75 908	101 623	409 297	490 833	19,9
		R'000	130 914	324 072	452 570	1 391 365	2 016 441	44,9
	2. Shopping space	square metres	59 321	94 204	76 816	459 202	488 181	6,3
		R'000	217 489	394 473	249 131	1 706 252	1 722 811	1,0
	3. Industrial and warehouse space	square metres	194 842	183 851	215 381	1 048 600	1 090 095	4,0
		R'000	535 469	548 208	567 276	2 886 855	3 009 008	4,2
	4. Other non-residential buildings 3/	square metres	32 893	51 286	48 138	178 977	201 471	12,6
		R'000	99 093	211 267	128 340	526 584	687 428	30,5
	5. Total non-residential buildings	R'000	982 965	1 478 020	1 397 317	6 511 056	7 435 688	14,2
3. Additions and alterations	1. Dwelling-houses	square metres	447 299	512 492	446 488	2 530 954	2 521 689	-0,4
		R'000	1 245 189	1 579 947	1 289 863	6 875 387	7 535 142	9,6
	2. Other buildings 4/	square metres	126 517	143 986	117 863	660 293	652 657	-1,2
		R'000	414 790	536 452	426 399	2 109 337	2 500 133	18,5
	3. Total additions and alterations	R'000	1 659 979	2 116 399	1 716 262	8 984 724	10 035 275	11,7
4. Recorded plans passed	1. Total at current prices	R'000	6 468 767	8 009 734	7 114 418	34 451 225	39 607 999	15,0

1/ The percentage change between cumulative figures for 2006 and 2007.

2/ Other residential buildings include institutions for the disabled, boarding houses, hostels and tourism accommodation e.g. hotels, motels, guesthouses, holiday chalets, bed-and-breakfast accommodation and casinos.

3/ Other non-residential space includes churches, sport and recreation clubs, schools, crèches, hospitals and all other non-residential space.

4/ Other buildings include other residential buildings, non-residential buildings and internal alterations.

**Table 10 - Recorded building plans passed by larger municipalities at current prices by type of building: Western Cape**

			Jun. 2006	May 2007	Jun. 2007	Jan. - Jun. 2006	Jan. - Jun. 2007	% Change 1/
Category of building	Type of building	Measuring unit						
1. Residential buildings	1. Dwelling-houses < 80 square metres	Number	285	512	404	3 239	1 885	-41,8
		square metres	15 410	22 565	17 938	144 181	84 830	-41,2
		R'000	40 934	62 265	53 474	246 853	204 761	-17,1
	2. Dwelling-houses >= 80 square metres	Number	655	609	582	3 583	3 497	-2,4
		square metres	143 078	163 563	154 855	802 989	869 521	8,3
		R'000	433 951	531 172	548 233	2 415 757	2 917 690	20,8
	3. Flats and townhouses	Number	762	619	554	3 041	3 037	-0,1
		square metres	73 397	63 153	47 240	336 894	308 418	-8,5
		R'000	235 747	207 029	161 641	1 057 662	1 080 797	2,2
	4. Other residential buildings 2/	square metres	20 340	0	631	29 107	33 183	14,0
		R'000	61 753	0	1 885	115 828	115 609	-0,2
	5. Total residential buildings	R'000	772 385	800 466	765 233	3 836 100	4 318 857	12,6
2. Non-residential buildings	1. Office and banking space	square metres	8 601	30 260	29 661	129 967	157 339	21,1
		R'000	22 243	102 908	102 838	376 862	530 665	40,8
	2. Shopping space	square metres	5 929	6 546	5 877	94 543	47 065	-50,2
		R'000	16 754	22 243	13 912	266 715	147 165	-44,8
	3. Industrial and warehouse space	square metres	57 419	48 004	66 375	309 579	278 625	-10,0
		R'000	171 822	140 549	212 144	912 833	777 428	-14,8
	4. Other non-residential buildings 3/	square metres	12 957	12 860	9 477	53 580	53 359	-0,4
		R'000	39 647	39 469	21 576	168 581	157 214	-6,7
	5. Total non-residential buildings	R'000	250 466	305 169	350 470	1 724 991	1 612 472	-6,5
3. Additions and alterations	1. Dwelling-houses	square metres	142 413	148 661	112 223	756 813	706 935	-6,6
		R'000	387 579	432 777	332 138	2 044 440	2 029 024	-0,8
	2. Other buildings 4/	square metres	40 686	40 925	33 512	242 893	183 238	-24,6
		R'000	136 368	176 732	149 979	776 087	799 697	3,0
	3. Total additions and alterations	R'000	523 947	609 509	482 117	2 820 527	2 828 721	0,3
4. Recorded plans passed	1. Total at current prices	R'000	1 546 798	1 715 144	1 597 820	8 381 618	8 760 050	4,5

1/ The percentage change between cumulative figures for 2006 and 2007.

2/ Other residential buildings include institutions for the disabled, boarding houses, hostels and tourism accommodation e.g. hotels, motels, guesthouses, holiday chalets, bed-and-breakfast accommodation and casinos.

3/ Other non-residential space includes churches, sport and recreation clubs, schools, crèches, hospitals and all other non-residential space.

4/ Other buildings include other residential buildings, non-residential buildings and internal alterations.

Table 11 - Recorded building plans passed by larger municipalities at current prices by type of building: Eastern Cape

			Jun. 2006	May 2007	Jun. 2007	Jan. - Jun. 2006	Jan. - Jun. 2007	% Change 1/
Category of building	Type of building	Measuring unit						
1. Residential buildings	1. Dwelling-houses < 80 square metres	Number	219	248	164	941	775	-17,6
		square metres	9 966	10 692	7 474	42 789	34 269	-19,9
		R'000	16 387	19 616	8 806	61 755	48 199	-22,0
	2. Dwelling-houses >= 80 square metres	Number	280	191	260	1 319	1 069	-19,0
		square metres	62 616	50 393	49 649	287 131	259 695	-9,6
		R'000	146 776	158 320	140 560	672 584	743 278	10,5
	3. Flats and townhouses	Number	74	141	57	683	444	-35,0
		square metres	13 808	13 282	8 215	88 377	64 067	-27,5
		R'000	32 496	38 313	22 587	195 389	167 087	-14,5
	4. Other residential buildings 2/	square metres	260	0	0	4 161	3 647	-12,4
		R'000	477	0	0	8 820	8 010	-9,2
	5. Total residential buildings	R'000	196 136	216 249	171 953	938 548	966 574	3,0
2. Non-residential buildings	1. Office and banking space	square metres	620	810	0	2 653	9 689	265,2
		R'000	1 532	1 498	0	6 452	25 935	302,0
	2. Shopping space	square metres	1 584	426	464	15 593	79 067	407,1
		R'000	3 851	728	1 091	37 163	199 465	436,7
	3. Industrial and warehouse space	square metres	7 838	8 720	25 492	39 074	55 327	41,6
		R'000	17 020	19 767	53 842	78 777	127 166	61,4
	4. Other non-residential buildings 3/	square metres	208	381	1 485	9 266	4 533	-51,1
		R'000	483	1 010	3 989	20 950	11 812	-43,6
	5. Total non-residential buildings	R'000	22 886	23 003	58 922	143 342	364 378	154,2
3. Additions and alterations	1. Dwelling-houses	square metres	45 330	37 323	40 092	220 617	210 202	-4,7
		R'000	107 025	100 503	108 465	506 385	546 958	8,0
	2. Other buildings 4/	square metres	6 488	16 747	11 112	36 762	70 170	90,9
		R'000	12 987	39 511	26 272	100 243	180 118	79,7
	3. Total additions and alterations	R'000	120 012	140 014	134 737	606 628	727 076	19,9
4. Recorded plans passed	1. Total at current prices	R'000	339 034	379 266	365 612	1 688 518	2 058 028	21,9

1/ The percentage change between cumulative figures for 2006 and 2007.

2/ Other residential buildings include institutions for the disabled, boarding houses, hostels and tourism accommodation e.g. hotels, motels, guesthouses, holiday chalets, bed-and-breakfast accommodation and casinos.

3/ Other non-residential space includes churches, sport and recreation clubs, schools, crèches, hospitals and all other non-residential space.

4/ Other buildings include other residential buildings, non-residential buildings and internal alterations.

**Table 12 - Recorded building plans passed by larger municipalities at current prices by type of building: Northern Cape**

			Jun. 2006	May 2007	Jun. 2007	Jan. - Jun. 2006	Jan. - Jun. 2007	% Change 1/
Category of building	Type of building	Measuring unit						
1. Residential buildings	1. Dwelling-houses < 80 square metres	Number	1	3	2	222	31	-86,0
		square metres	52	135	115	10 442	1 604	-84,6
		R'000	104	434	415	15 202	5 224	-65,6
	2. Dwelling-houses >= 80 square metres	Number	35	39	25	181	236	30,4
		square metres	7 627	7 725	5 618	36 648	40 518	10,6
		R'000	17 648	22 759	16 847	75 533	111 497	47,6
	3. Flats and townhouses	Number	19	32	38	107	84	-21,5
		square metres	2 317	4 780	4 905	13 190	11 441	-13,3
		R'000	4 126	13 384	14 918	25 058	33 588	34,0
	4. Other residential buildings 2/	square metres	0	0	0	672	0	-100,0
		R'000	0	0	0	1 253	0	-100,0
	5. Total residential buildings	R'000	21 878	36 577	32 180	117 046	150 309	28,4
2. Non-residential buildings	1. Office and banking space	square metres	0	1 500	207	5 692	2 785	-51,1
		R'000	0	5 400	745	14 000	8 732	-37,6
	2. Shopping space	square metres	64	1 952	277	1 955	7 175	267,0
		R'000	140	5 856	770	4 161	15 470	271,8
	3. Industrial and warehouse space	square metres	408	0	1 030	6 514	4 020	-38,3
		R'000	816	0	2 472	19 578	8 960	-54,2
	4. Other non-residential buildings 3/	square metres	300	135	0	1 387	984	-29,1
		R'000	540	324	0	2 879	2 727	-5,3
	5. Total non-residential buildings	R'000	1 496	11 580	3 987	40 618	35 889	-11,6
3. Additions and alterations	1. Dwelling-houses	square metres	7 163	5 175	4 993	31 749	28 409	-10,5
		R'000	15 859	16 722	15 169	63 353	72 936	15,1
	2. Other buildings 4/	square metres	1 497	1 146	256	5 061	3 243	-35,9
		R'000	4 201	5 672	880	13 283	12 615	-5,0
	3. Total additions and alterations	R'000	20 060	22 394	16 049	76 636	85 551	11,6
4. Recorded plans passed	1. Total at current prices	R'000	43 434	70 551	52 216	234 300	271 749	16,0

1/ The percentage change between cumulative figures for 2006 and 2007.

2/ Other residential buildings include institutions for the disabled, boarding houses, hostels and tourism accommodation e.g. hotels, motels, guesthouses, holiday chalets, bed-and-breakfast accommodation and casinos.

3/ Other non-residential space includes churches, sport and recreation clubs, schools, crèches, hospitals and all other non-residential space.

4/ Other buildings include other residential buildings, non-residential buildings and internal alterations.

Table 13 - Recorded building plans passed by larger municipalities at current prices by type of building: Free State

			Jun. 2006	May 2007	Jun. 2007	Jan. - Jun. 2006	Jan. - Jun. 2007	% Change 1/
Category of building	Type of building	Measuring unit						
1. Residential buildings	1. Dwelling-houses < 80 square metres	Number	164	908	259	1 911	1 314	-31,2
		square metres	7 088	36 792	11 117	79 377	55 757	-29,8
		R'000	7 842	31 446	11 560	69 375	55 952	-19,3
	2. Dwelling-houses >= 80 square metres	Number	92	99	123	530	686	29,4
		square metres	16 081	20 698	33 241	95 038	154 512	62,6
		R'000	37 819	58 414	80 690	210 617	384 204	82,4
	3. Flats and townhouses	Number	80	114	258	540	879	62,8
		square metres	9 191	12 340	14 934	61 670	81 159	31,6
		R'000	23 528	30 176	37 344	148 228	215 742	45,5
	4. Other residential buildings 2/	square metres	0	1 318	1 660	5 789	15 518	168,1
		R'000	0	6 600	5 976	82 092	54 283	-33,9
	5. Total residential buildings	R'000	69 189	126 636	135 570	510 312	710 181	39,2
2. Non-residential buildings	1. Office and banking space	square metres	0	216	795	9 689	6 291	-35,1
		R'000	0	756	2 862	28 742	22 488	-21,8
	2. Shopping space	square metres	9 412	16 361	6 429	15 256	24 901	63,2
		R'000	33 496	82 736	16 482	47 500	106 366	123,9
	3. Industrial and warehouse space	square metres	2 605	6 840	5 974	17 653	26 579	50,6
		R'000	5 215	13 444	9 228	32 529	48 151	48,0
	4. Other non-residential buildings 3/	square metres	4 790	148	896	10 019	2 768	-72,4
		R'000	12 527	533	1 910	26 454	5 689	-78,5
	5. Total non-residential buildings	R'000	51 238	97 469	30 482	135 225	182 694	35,1
3. Additions and alterations	1. Dwelling-houses	square metres	16 671	10 104	19 766	80 791	93 937	16,3
		R'000	35 924	23 858	47 555	154 708	221 699	43,3
	2. Other buildings 4/	square metres	6 634	1 606	1 502	21 515	16 120	-25,1
		R'000	46 098	4 502	4 079	80 367	58 653	-27,0
	3. Total additions and alterations	R'000	82 022	28 360	51 634	235 075	280 352	19,3
4. Recorded plans passed	1. Total at current prices	R'000	202 449	252 465	217 686	880 612	1 173 227	33,2

1/ The percentage change between cumulative figures for 2006 and 2007.

2/ Other residential buildings include institutions for the disabled, boarding houses, hostels and tourism accommodation e.g. hotels, motels, guesthouses, holiday chalets, bed-and-breakfast accommodation and casinos.

3/ Other non-residential space includes churches, sport and recreation clubs, schools, crèches, hospitals and all other non-residential space.

4/ Other buildings include other residential buildings, non-residential buildings and internal alterations.

Table 14 - Recorded building plans passed by larger municipalities at current prices by type of building: KwaZulu-Natal

			Jun. 2006	May 2007	Jun. 2007	Jan. - Jun. 2006	Jan. - Jun. 2007	% Change 1/
Category of building	Type of building	Measuring unit						
1. Residential buildings	1. Dwelling-houses < 80 square metres	Number	83	104	112	491	584	18,9
		square metres	4 693	5 492	5 861	26 297	31 753	20,7
		R'000	12 141	14 895	13 175	65 227	89 917	37,9
	2. Dwelling-houses >= 80 square metres	Number	280	276	214	1 469	1 324	-9,9
		square metres	70 734	66 629	50 132	327 697	306 133	-6,6
		R'000	232 440	258 874	174 692	965 143	1 109 473	15,0
	3. Flats and townhouses	Number	396	804	762	1 904	3 688	93,7
		square metres	77 831	74 934	100 730	335 383	404 251	20,5
		R'000	293 820	262 788	463 875	1 153 876	1 565 650	35,7
	4. Other residential buildings 2/	square metres	11 890	0	596	22 303	16 810	-24,6
		R'000	101 000	0	1 788	122 583	75 763	-38,2
	5. Total residential buildings	R'000	639 401	536 557	653 530	2 306 829	2 840 803	23,1
	2. Non-residential buildings	1. Office and banking space	square metres	3 023	13 720	10 308	41 346	64 512
R'000			10 292	63 931	37 420	120 240	272 873	126,9
2. Shopping space		square metres	10 336	31 363	11 224	39 042	78 797	101,8
		R'000	59 831	140 131	30 041	133 310	284 244	113,2
3. Industrial and warehouse space		square metres	51 019	18 276	41 799	257 469	186 672	-27,5
		R'000	127 324	46 147	108 992	631 310	490 151	-22,4
4. Other non-residential buildings 3/		square metres	1 168	26 867	1 380	26 927	48 769	81,1
		R'000	3 704	125 814	5 215	73 536	206 002	180,1
5. Total non-residential buildings		R'000	201 151	376 023	181 668	958 396	1 253 270	30,8
3. Additions and alterations	1. Dwelling-houses	square metres	56 180	51 588	68 219	335 948	311 252	-7,4
		R'000	164 389	185 676	182 424	952 333	1 029 510	8,1
	2. Other buildings 4/	square metres	23 871	39 666	27 026	129 429	142 645	10,2
		R'000	77 565	145 704	93 647	426 468	530 100	24,3
	3. Total additions and alterations	R'000	241 954	331 380	276 071	1 378 801	1 559 610	13,1
4. Recorded plans passed	1. Total at current prices	R'000	1 082 506	1 243 960	1 111 269	4 644 026	5 653 683	21,7

1/ The percentage change between cumulative figures for 2006 and 2007.

2/ Other residential buildings include institutions for the disabled, boarding houses, hostels and tourism accommodation e.g. hotels, motels, guesthouses, holiday chalets, bed-and-breakfast accommodation and casinos.

3/ Other non-residential space includes churches, sport and recreation clubs, schools, crèches, hospitals and all other non-residential space.

4/ Other buildings include other residential buildings, non-residential buildings and internal alterations.

Table 15 - Recorded building plans passed by larger municipalities at current prices by type of building: North West

			Jun. 2006	May 2007	Jun. 2007	Jan. - Jun. 2006	Jan. - Jun. 2007	% Change 1/
Category of building	Type of building	Measuring unit						
1. Residential buildings	1. Dwelling-houses < 80 square metres	Number	54	109	82	375	1 281	241,6
		square metres	3 262	6 177	4 667	22 487	57 665	156,4
		R'000	4 441	6 951	5 888	29 275	69 203	136,4
	2. Dwelling-houses >= 80 square metres	Number	246	257	181	1 187	1 253	5,6
		square metres	52 234	56 599	42 273	240 507	285 491	18,7
		R'000	131 868	145 023	117 482	603 077	773 508	28,3
	3. Flats and townhouses	Number	76	22	108	492	871	77,0
		square metres	8 678	3 469	13 215	56 311	114 573	103,5
		R'000	21 132	7 526	31 636	145 648	283 962	95,0
	4. Other residential buildings 2/	square metres	100	2 084	0	6 372	4 364	-31,5
		R'000	350	4 585	0	16 044	12 565	-21,7
	5. Total residential buildings	R'000	157 791	164 085	155 006	794 044	1 139 238	43,5
2. Non-residential buildings	1. Office and banking space	square metres	167	0	1 568	7 378	21 332	189,1
		R'000	350	0	3 920	17 816	52 025	192,0
	2. Shopping space	square metres	5 557	12 706	229	27 536	35 097	27,5
		R'000	17 301	40 540	595	69 183	107 626	55,6
	3. Industrial and warehouse space	square metres	9 867	4 877	1 970	26 399	31 204	18,2
		R'000	18 883	8 581	3 300	59 003	58 461	-0,9
	4. Other non-residential buildings 3/	square metres	2 015	208	855	8 963	9 879	10,2
		R'000	5 889	720	2 294	29 012	27 559	-5,0
	5. Total non-residential buildings	R'000	42 423	49 841	10 109	175 014	245 671	40,4
	3. Additions and alterations	1. Dwelling-houses	square metres	12 712	19 880	13 644	70 942	9,3
			R'000	27 786	47 537	30 620	144 198	19,4
		2. Other buildings 4/	square metres	2 534	2 068	4 038	12 474	-12,5
			R'000	5 015	4 674	15 768	33 501	-7,6
	3. Total additions and alterations	R'000	32 801	52 211	46 388	180 462	205 734	14,0
4. Recorded plans passed	1. Total at current prices	R'000	233 015	266 137	211 503	1 149 520	1 590 643	38,4

1/ The percentage change between cumulative figures for 2006 and 2007.

2/ Other residential buildings include institutions for the disabled, boarding houses, hostels and tourism accommodation e.g. hotels, motels, guesthouses, holiday chalets, bed-and-breakfast accommodation and casinos.

3/ Other non-residential space includes churches, sport and recreation clubs, schools, crèches, hospitals and all other non-residential space.

4/ Other buildings include other residential buildings, non-residential buildings and internal alterations.



**Table 16 - Recorded building plans passed by larger municipalities at current prices by type of building: Gauteng**

			Jun. 2006	May 2007	Jun. 2007	Jan. - Jun. 2006	Jan. - Jun. 2007	% Change 1/
Category of building	Type of building	Measuring unit						
1. Residential buildings	1. Dwelling-houses < 80 square metres	Number	2 112	1 711	2 253	10 069	11 355	12,8
		square metres	89 179	76 111	94 096	428 616	487 982	13,9
		R'000	156 080	155 141	152 246	837 307	1 006 410	20,2
	2. Dwelling-houses >= 80 square metres	Number	1 304	1 144	1 206	6 628	6 190	-6,6
		square metres	312 588	352 136	338 420	1 643 786	1 726 907	5,1
		R'000	1 018 086	1 252 861	1 127 022	5 157 143	5 874 797	13,9
	3. Flats and townhouses	Number	1 177	1 927	1 080	6 938	7 113	2,5
		square metres	157 205	220 073	147 756	868 115	947 992	9,2
		R'000	540 369	818 503	492 091	2 809 982	3 395 865	20,9
	4. Other residential buildings 2/	square metres	0	0	264	64 611	2 757	-95,7
		R'000	0	0	660	232 270	12 851	-94,5
	5. Total residential buildings	R'000	1 714 535	2 226 505	1 772 019	9 036 702	10 289 923	13,9
2. Non-residential buildings	1. Office and banking space	square metres	20 798	28 846	54 770	188 764	210 909	11,7
		R'000	74 438	148 223	293 997	751 671	1 056 139	40,5
	2. Shopping space	square metres	20 703	14 433	43 670	184 038	176 864	-3,9
		R'000	74 549	79 322	171 056	613 839	765 943	24,8
	3. Industrial and warehouse space	square metres	61 018	76 997	59 180	353 594	419 529	18,6
		R'000	183 128	272 205	145 048	1 063 314	1 223 236	15,0
	4. Other non-residential buildings 3/	square metres	7 318	10 201	34 045	56 970	71 992	26,4
		R'000	19 703	42 242	93 356	168 853	254 805	50,9
	5. Total non-residential buildings	R'000	351 818	541 992	703 457	2 597 677	3 300 123	27,0
3. Additions and alterations	1. Dwelling-houses	square metres	138 422	205 309	157 327	870 718	920 760	5,7
		R'000	440 152	688 253	500 224	2 657 612	3 040 824	14,4
	2. Other buildings 4/	square metres	40 515	37 253	33 558	180 052	196 881	9,3
		R'000	120 851	144 199	111 969	594 836	798 157	34,2
	3. Total additions and alterations	R'000	561 003	832 452	612 193	3 252 448	3 838 981	18,0
4. Recorded plans passed	1. Total at current prices	R'000	2 627 356	3 600 949	3 087 669	14 886 827	17 429 027	17,1

1/ The percentage change between cumulative figures for 2006 and 2007.

2/ Other residential buildings include institutions for the disabled, boarding houses, hostels and tourism accommodation e.g. hotels, motels, guesthouses, holiday chalets, bed-and-breakfast accommodation and casinos.

3/ Other non-residential space includes churches, sport and recreation clubs, schools, crèches, hospitals and all other non-residential space.

4/ Other buildings include other residential buildings, non-residential buildings and internal alterations.

Table 17 - Recorded building plans passed by larger municipalities at current prices by type of building: Mpumalanga

			Jun. 2006	May 2007	Jun. 2007	Jan. - Jun. 2006	Jan. - Jun. 2007	% Change 1/
Category of building	Type of building	Measuring unit						
1. Residential buildings	1. Dwelling-houses < 80 square metres	Number	61	26	70	309	551	78,3
		square metres	3 737	1 763	3 814	18 799	24 157	28,5
		R'000	8 955	4 681	8 002	46 256	45 002	-2,7
	2. Dwelling-houses >= 80 square metres	Number	174	235	273	1 049	1 404	33,8
		square metres	38 820	62 342	57 692	243 017	333 942	37,4
		R'000	100 566	166 771	156 601	645 216	921 973	42,9
	3. Flats and townhouses	Number	205	168	136	984	827	-16,0
		square metres	21 037	15 187	17 208	103 881	84 861	-18,3
		R'000	55 919	37 144	43 915	263 374	241 761	-8,2
	4. Other residential buildings 2/	square metres	302	0	0	7 673	3 889	-49,3
		R'000	1 000	0	0	21 397	10 918	-49,0
	5. Total residential buildings	R'000	166 440	208 596	208 518	976 243	1 219 654	24,9
2. Non-residential buildings	1. Office and banking space	square metres	6 497	556	187	19 566	12 032	-38,5
		R'000	22 059	1 356	470	65 511	32 596	-50,2
	2. Shopping space	square metres	742	0	4 834	69 757	15 912	-77,2
		R'000	2 180	0	4 590	510 644	46 295	-90,9
	3. Industrial and warehouse space	square metres	2 127	17 115	7 000	26 660	67 130	151,8
		R'000	4 908	40 143	15 871	62 642	223 314	256,5
	4. Other non-residential buildings 3/	square metres	4 137	286	0	11 517	5 817	-49,5
		R'000	16 600	715	0	35 437	13 576	-61,7
	5. Total non-residential buildings	R'000	45 747	42 214	20 931	674 234	315 781	-53,2
3. Additions and alterations	1. Dwelling-houses	square metres	19 544	22 650	21 013	111 144	110 767	-0,3
		R'000	44 912	56 304	50 580	244 891	273 072	11,5
	2. Other buildings 4/	square metres	3 118	3 970	5 652	16 155	23 426	45,0
		R'000	9 227	13 945	19 862	47 017	72 442	54,1
	3. Total additions and alterations	R'000	54 139	70 249	70 442	291 908	345 514	18,4
4. Recorded plans passed	1. Total at current prices	R'000	266 326	321 059	299 891	1 942 385	1 880 949	-3,2

1/ The percentage change between cumulative figures for 2006 and 2007.

2/ Other residential buildings include institutions for the disabled, boarding houses, hostels and tourism accommodation e.g. hotels, motels, guesthouses, holiday chalets, bed-and-breakfast accommodation and casinos.

3/ Other non-residential space includes churches, sport and recreation clubs, schools, crèches, hospitals and all other non-residential space.

4/ Other buildings include other residential buildings, non-residential buildings and internal alterations.

Table 18 - Recorded building plans passed by larger municipalities at current prices by type of building: Limpopo

			Jun. 2006	May 2007	Jun. 2007	Jan. - Jun. 2006	Jan. - Jun. 2007	% Change 1/
Category of building	Type of building	Measuring unit						
1. Dwelling-houses < 80 square metres	1. Dwelling-houses < 80 square metres	Number	448	10	520	619	688	11,1
		square metres	19 076	620	25 798	29 501	36 453	23,6
		R'000	17 421	1 523	47 576	42 700	75 726	77,3
	2. Dwelling-houses >= 80 square metres	Number	148	100	78	665	519	-22,0
		square metres	28 764	25 981	18 211	139 035	112 729	-18,9
		R'000	69 034	68 902	47 728	331 500	301 083	-9,2
	3. Flats and townhouses	Number	9	101	46	248	387	56,0
		square metres	776	12 575	3 387	24 488	44 173	80,4
		R'000	1 613	29 219	8 468	60 921	107 148	75,9
	4. Other residential buildings 2/	square metres	0	0	1 390	947	7 655	708,3
		R'000	0	0	3 058	4 500	17 540	289,8
	5. Total residential buildings	R'000	88 068	99 644	106 830	439 621	501 497	14,1
2. Dwelling-houses >= 80 square metres	1. Office and banking space	square metres	0	0	4 127	4 242	5 944	40,1
		R'000	0	0	10 318	10 071	14 988	48,8
	2. Shopping space	square metres	4 994	10 417	3 812	11 482	23 303	103,0
		R'000	9 387	22 917	10 594	23 737	50 237	111,6
	3. Industrial and warehouse space	square metres	2 541	3 022	6 561	11 658	21 009	80,2
		R'000	6 353	7 372	16 379	26 869	52 141	94,1
	4. Other non-residential buildings 3/	square metres	0	200	0	348	3 370	868,4
		R'000	0	440	0	882	8 044	812,0
	5. Total non-residential buildings	R'000	15 740	30 729	37 291	61 559	125 410	103,7
	3. Flats and townhouses	1. Dwelling-houses	square metres	8 864	11 802	9 211	52 232	61 914
R'000			21 563	28 317	22 688	107 467	148 886	38,5
2. Other buildings 4/		square metres	1 174	605	1 207	15 952	6 020	-62,3
		R'000	2 478	1 513	3 943	34 772	14 850	-57,3
3. Total additions and alterations		R'000	24 041	29 830	26 631	142 239	163 736	15,1
4. Other residential buildings 2/	1. Total at current prices	R'000	127 849	160 203	170 752	643 419	790 643	22,9

1/ The percentage change between cumulative figures for 2006 and 2007.

2/ Other residential buildings include institutions for the disabled, boarding houses, hostels and tourism accommodation e.g. hotels, motels, guesthouses, holiday chalets, bed-and-breakfast accommodation and casinos.

3/ Other non-residential space includes churches, sport and recreation clubs, schools, crèches, hospitals and all other non-residential space.

4/ Other buildings include other residential buildings, non-residential buildings and internal alterations.

**Table 19 - Buildings reported as completed to larger municipalities at current prices by type of building: South Africa**

			Jun. 2006	May 2007	Jun. 2007	Jan. - Jun. 2006	Jan. - Jun. 2007	% Change 1/
Category of building	Type of building	Measuring unit						
1. Residential buildings	1. Dwelling-houses < 80 square metres	Number	2 245	2 701	2 260	10 327	12 892	24,8
		square metres	103 504	114 281	98 336	447 911	539 571	20,5
		R'000	154 553	182 884	174 974	797 298	955 855	19,9
	2. Dwelling-houses >= 80 square metres	Number	2 007	2 068	1 780	9 839	10 520	6,9
		square metres	440 181	478 592	396 641	2 221 360	2 360 323	6,3
		R'000	1 241 460	1 499 293	1 176 561	6 078 926	7 188 505	18,3
	3. Flats and townhouses	Number	2 090	2 586	2 743	10 577	13 208	24,9
		square metres	292 312	283 712	352 913	1 402 188	1 481 125	5,6
		R'000	905 241	965 351	1 213 118	4 232 966	4 867 896	15,0
	4. Other residential buildings 2/	square metres	3 166	9 077	3 066	23 382	109 941	370,2
		R'000	8 485	22 769	7 573	81 972	504 176	515,1
	5. Total residential buildings	R'000	2 309 739	2 670 297	2 572 226	11 191 162	13 516 432	20,8
2. Non-residential buildings	1. Office and banking space	square metres	21 485	86 097	25 561	140 201	314 634	124,4
		R'000	76 987	339 764	97 059	416 593	1 108 128	166,0
	2. Shopping space	square metres	105 378	39 868	52 852	397 069	286 933	-27,7
		R'000	255 523	147 477	201 117	1 218 584	946 940	-22,3
	3. Industrial and warehouse space	square metres	60 914	76 427	97 317	343 122	627 182	82,8
		R'000	128 696	204 434	251 491	839 556	1 745 133	107,9
	4. Other non-residential buildings 3/	square metres	8 647	6 755	6 227	64 996	80 031	23,1
		R'000	24 628	19 899	17 439	171 129	253 947	48,4
	5. Total non-residential buildings	R'000	485 834	711 574	567 106	2 645 862	4 054 148	53,2
3. Additions and alterations	1. Dwelling-houses	square metres	164 017	169 412	183 550	966 225	995 338	3,0
		R'000	405 982	480 063	485 904	2 373 625	2 745 792	15,7
	2. Other buildings 4/	square metres	43 022	29 309	52 279	257 819	283 004	9,8
		R'000	161 398	102 107	175 843	769 453	975 433	26,8
	3. Total additions and alterations	R'000	567 380	582 170	661 747	3 143 078	3 721 225	18,4
4. Recorded buildings completed	1. Total at current prices	R'000	3 362 953	3 964 041	3 801 079	16 980 102	21 291 805	25,4

1/ The percentage change between cumulative figures for 2006 and 2007.

2/ Other residential buildings include institutions for the disabled, boarding houses, hostels and tourism accommodation e.g. hotels, motels, guesthouses, holiday chalets, bed-and-breakfast accommodation and casinos.

3/ Other non-residential space includes churches, sport and recreation clubs, schools, crèches, hospitals and all other non-residential space.

4/ Other buildings include other residential buildings, non-residential buildings and internal alterations.

Table 20 - Buildings reported as completed to larger municipalities at current prices by type of building: Western Cape

			Jun. 2006	May 2007	Jun. 2007	Jan. - Jun. 2006	Jan. - Jun. 2007	% Change 1/
Category of building	Type of building	Measuring unit						
1. Residential buildings	1. Dwelling-houses < 80 square metres	Number	437	1 078	622	2 127	4 530	113,0
		square metres	15 795	40 440	26 900	83 604	169 906	103,2
		R'000	20 721	53 280	50 483	128 152	240 919	88,0
	2. Dwelling-houses >= 80 square metres	Number	626	483	498	2 902	2 693	-7,2
		square metres	139 853	103 467	104 330	665 888	590 435	-11,3
		R'000	388 986	325 361	313 499	1 808 084	1 771 829	-2,0
	3. Flats and townhouses	Number	518	688	605	3 081	3 534	14,7
		square metres	60 728	82 476	60 903	385 419	368 110	-4,5
		R'000	166 440	284 537	190 141	1 119 128	1 169 233	4,5
	4. Other residential buildings 2/	square metres	2 478	669	0	11 931	19 163	60,6
		R'000	7 092	1 383	0	38 586	71 715	85,9
	5. Total residential buildings	R'000	583 239	664 561	554 123	3 093 950	3 253 696	5,2
2. Non-residential buildings	1. Office and banking space	square metres	3 174	37 819	3 053	30 969	117 232	278,5
		R'000	7 332	115 814	10 114	76 540	331 493	333,1
	2. Shopping space	square metres	55 700	2 652	19 754	94 411	36 158	-61,7
		R'000	104 586	8 898	65 461	199 110	115 142	-42,2
	3. Industrial and warehouse space	square metres	27 984	31 224	23 869	162 345	221 066	36,2
		R'000	59 534	93 149	71 149	414 169	636 100	53,6
	4. Other non-residential buildings 3/	square metres	2 078	1 987	671	21 333	24 142	13,2
		R'000	6 756	6 343	1 393	51 639	65 619	27,1
	5. Total non-residential buildings	R'000	178 208	224 204	148 117	741 458	1 148 354	54,9
3. Additions and alterations	1. Dwelling-houses	square metres	65 101	59 171	73 083	364 620	352 758	-3,3
		R'000	153 973	155 351	191 312	885 575	922 249	4,1
	2. Other buildings 4/	square metres	18 115	8 291	8 984	86 611	107 259	23,8
		R'000	85 225	30 526	39 478	285 797	369 816	29,4
	3. Total additions and alterations	R'000	239 198	185 877	230 790	1 171 372	1 292 065	10,3
4. Recorded buildings completed	1. Total at current prices	R'000	1 000 645	1 074 642	933 030	5 006 780	5 694 115	13,7

1/ The percentage change between cumulative figures for 2006 and 2007.

2/ Other residential buildings include institutions for the disabled, boarding houses, hostels and tourism accommodation e.g. hotels, motels, guesthouses, holiday chalets, bed-and-breakfast accommodation and casinos.

3/ Other non-residential space includes churches, sport and recreation clubs, schools, crèches, hospitals and all other non-residential space.

4/ Other buildings include other residential buildings, non-residential buildings and internal alterations.

Table 21 - Buildings reported as completed to larger municipalities at current prices by type of building: Eastern Cape

			Jun. 2006	May 2007	Jun. 2007	Jan. - Jun. 2006	Jan. - Jun. 2007	% Change 1/
Category of building								
1. Residential buildings	1. Dwelling-houses < 80 square metres	Number	108	116	161	741	728	-1,8
		square metres	4 582	5 171	6 924	32 199	30 924	-4,0
		R'000	4 833	5 162	7 285	43 598	43 442	-0,4
	2. Dwelling-houses >= 80 square metres	Number	109	126	85	565	563	-0,4
		square metres	17 497	22 771	16 383	102 730	98 244	-4,4
		R'000	38 885	54 566	41 320	221 849	250 774	13,0
	3. Flats and townhouses	Number	35	125	174	396	442	11,6
		square metres	3 626	10 943	13 546	36 677	41 500	13,1
		R'000	7 724	27 305	29 298	76 834	95 944	24,9
	4. Other residential buildings 2/	square metres	0	0	2 412	120	2 412	1 910,0
		R'000	0	0	6 100	264	6 100	2 210,6
	5. Total residential buildings	R'000	51 442	87 033	84 003	342 545	396 260	15,7
2. Non-residential buildings	1. Office and banking space	square metres	0	0	0	3 183	1 254	-60,6
		R'000	0	0	0	6 870	3 163	-54,0
	2. Shopping space	square metres	136	8 476	3 223	11 873	13 311	12,1
		R'000	261	21 138	8 058	27 313	33 034	20,9
	3. Industrial and warehouse space	square metres	289	1 968	966	20 893	20 616	-1,3
		R'000	419	4 273	1 631	39 471	49 931	26,5
	4. Other non-residential buildings 3/	square metres	513	0	225	3 799	2 420	-36,3
		R'000	979	0	531	8 422	5 326	-36,8
	5. Total non-residential buildings	R'000	1 659	25 411	10 220	82 076	91 454	11,4
	3. Additions and alterations	1. Dwelling-houses	square metres	7 319	9 113	12 477	60 124	68 612
R'000			14 047	18 713	25 638	114 872	136 954	19,2
2. Other buildings 4/		square metres	2 522	1 646	1 068	38 974	22 289	-42,8
		R'000	4 823	5 181	1 862	71 772	49 853	-30,5
3. Total additions and alterations		R'000	18 870	23 894	27 500	186 644	186 807	0,1
4. Recorded buildings completed	1. Total at current prices	R'000	71 971	136 338	121 723	611 265	674 521	10,3

1/ The percentage change between cumulative figures for 2006 and 2007.

2/ Other residential buildings include institutions for the disabled, boarding houses, hostels and tourism accommodation e.g. hotels, motels, guesthouses, holiday chalets, bed-and-breakfast accommodation and casinos.

3/ Other non-residential space includes churches, sport and recreation clubs, schools, crèches, hospitals and all other non-residential space.

4/ Other buildings include other residential buildings, non-residential buildings and internal alterations.

Table 22 - Buildings reported as completed to larger municipalities at current prices by type of building: Northern Cape

			Jun. 2006	May 2007	Jun. 2007	Jan. - Jun. 2006	Jan. - Jun. 2007	% Change 1/
Category of building	Type of building	Measuring unit						
1. Residential buildings	1. Dwelling-houses < 80 square metres	Number	0	0	30	19	44	131,6
		square metres	0	0	1 080	930	1 823	96,0
		R'000	0	0	1 080	1 561	2 281	46,1
	2. Dwelling-houses >= 80 square metres	Number	11	32	10	91	97	6,6
		square metres	3 282	6 426	1 924	16 014	18 603	16,2
		R'000	6 214	15 484	4 876	32 752	46 525	42,1
	3. Flats and townhouses	Number	7	15	33	43	116	169,8
		square metres	714	1 978	4 763	5 756	16 422	185,3
		R'000	1 292	5 797	10 113	10 743	40 166	273,9
	4. Other residential buildings 2/	square metres	557	0	174	712	174	-75,6
		R'000	1 000	0	609	1 372	609	-55,6
	5. Total residential buildings	R'000	8 506	21 281	16 678	46 428	89 581	92,9
	2. Non-residential buildings	1. Office and banking space	square metres	0	216	0	1 620	5 898
R'000			0	518	0	3 240	14 518	348,1
2. Shopping space		square metres	627	0	517	627	4 767	660,3
		R'000	1 556	0	1 034	1 556	10 502	574,9
3. Industrial and warehouse space		square metres	1 631	1 223	0	3 548	3 429	-3,4
		R'000	3 262	3 429	0	7 178	8 966	24,9
4. Other non-residential buildings 3/		square metres	649	498	0	749	498	-33,5
		R'000	1 255	1 195	0	1 455	1 195	-17,9
5. Total non-residential buildings		R'000	6 073	5 142	1 034	13 429	35 181	162,0
3. Additions and alterations		1. Dwelling-houses	square metres	1 536	3 010	3 588	9 098	17 540
	R'000		3 099	9 848	9 523	18 780	45 572	142,7
	2. Other buildings 4/	square metres	2 861	1 109	732	8 519	3 608	-57,6
		R'000	6 966	3 631	1 883	16 866	15 800	-6,3
	3. Total additions and alterations	R'000	10 065	13 479	11 406	35 646	61 372	72,2
4. Recorded buildings completed	1. Total at current prices	R'000	24 644	39 902	29 118	95 503	186 134	94,9

1/ The percentage change between cumulative figures for 2006 and 2007.

2/ Other residential buildings include institutions for the disabled, boarding houses, hostels and tourism accommodation e.g. hotels, motels, guesthouses, holiday chalets, bed-and-breakfast accommodation and casinos.

3/ Other non-residential space includes churches, sport and recreation clubs, schools, crèches, hospitals and all other non-residential space.

4/ Other buildings include other residential buildings, non-residential buildings and internal alterations.

Table 23 - Buildings reported as completed to larger municipalities at current prices by type of building: Free State

			Jun. 2006	May 2007	Jun. 2007	Jan. - Jun. 2006	Jan. - Jun. 2007	% Change 1/
Category of building	Type of building	Measuring unit						
1. Residential buildings	1. Dwelling-houses < 80 square metres	Number	1	20	52	225	145	-35,6
		square metres	69	1 204	3 186	10 521	8 783	-16,5
		R'000	124	2 769	5 285	11 975	16 070	34,2
	2. Dwelling-houses >= 80 square metres	Number	21	59	146	175	462	164,0
		square metres	3 743	10 519	22 153	34 260	81 949	139,2
		R'000	7 727	25 198	42 145	66 401	170 324	156,5
	3. Flats and townhouses	Number	29	117	42	279	266	-4,7
		square metres	4 259	13 137	7 001	33 055	33 161	0,3
		R'000	9 425	34 899	17 587	66 915	91 082	36,1
	4. Other residential buildings 2/	square metres	0	0	480	8 310	5 467	-34,2
		R'000	0	0	864	35 872	79 956	122,9
	5. Total residential buildings	R'000	17 276	62 866	65 881	181 163	357 432	97,3
2. Non-residential buildings	1. Office and banking space	square metres	0	541	0	992	5 102	414,3
		R'000	0	2 164	0	2 454	16 678	579,6
	2. Shopping space	square metres	0	429	90	16 170	4 674	-71,1
		R'000	0	1 501	270	45 696	16 367	-64,2
	3. Industrial and warehouse space	square metres	1 886	0	2 362	4 745	4 563	-3,8
		R'000	4 968	0	5 650	9 632	11 683	21,3
	4. Other non-residential buildings 3/	square metres	466	298	2 464	3 530	2 953	-16,3
		R'000	932	298	7 021	7 209	7 848	8,9
	5. Total non-residential buildings	R'000	5 900	3 963	12 941	64 991	52 576	-19,1
3. Additions and alterations	1. Dwelling-houses	square metres	4 058	6 470	8 318	33 057	33 974	2,8
		R'000	7 126	14 098	17 613	54 404	67 061	23,3
	2. Other buildings 4/	square metres	376	2 121	2 712	8 599	11 328	31,7
		R'000	647	5 934	5 742	26 108	25 995	-0,4
	3. Total additions and alterations	R'000	7 773	20 032	23 355	80 512	93 056	15,6
4. Recorded buildings completed	1. Total at current prices	R'000	30 949	86 861	102 177	326 666	503 064	54,0

1/ The percentage change between cumulative figures for 2006 and 2007.

2/ Other residential buildings include institutions for the disabled, boarding houses, hostels and tourism accommodation e.g. hotels, motels, guesthouses, holiday chalets, bed-and-breakfast accommodation and casinos.

3/ Other non-residential space includes churches, sport and recreation clubs, schools, crèches, hospitals and all other non-residential space.

4/ Other buildings include other residential buildings, non-residential buildings and internal alterations.



Table 24 - Buildings reported as completed to larger municipalities at current prices by type of building: KwaZulu-Natal

			Jun. 2006	May 2007	Jun. 2007	Jan. - Jun. 2006	Jan. - Jun. 2007	% Change 1/
Category of building	Type of building	Measuring unit						
1. Residential buildings	1. Dwelling-houses < 80 square metres	Number	85	128	80	628	683	8,8
		square metres	3 977	5 679	3 817	27 640	30 398	10,0
		R'000	10 042	13 782	8 326	70 969	77 375	9,0
	2. Dwelling-houses >= 80 square metres	Number	126	152	116	703	789	12,2
		square metres	28 779	31 621	27 612	151 221	178 204	17,8
		R'000	89 182	115 876	90 880	442 451	656 990	48,5
	3. Flats and townhouses	Number	171	221	280	1 184	1 273	7,5
		square metres	33 751	48 038	61 273	207 720	237 471	14,3
		R'000	111 029	174 482	263 759	666 542	851 048	27,7
	4. Other residential buildings 2/	square metres	0	8 218	0	36	20 824	57 744,4
		R'000	0	20 545	0	79	122 445	154 893,7
	5. Total residential buildings	R'000	210 253	324 685	362 965	1 180 041	1 707 858	44,7
2. Non-residential buildings	1. Office and banking space	square metres	11 111	4 362	2 749	36 852	20 377	-44,7
		R'000	39 552	17 481	6 910	100 381	59 692	-40,5
	2. Shopping space	square metres	6 014	11 786	3 369	23 285	56 463	142,5
		R'000	17 533	37 564	8 614	56 497	179 283	217,3
	3. Industrial and warehouse space	square metres	12 336	9 652	15 285	50 512	179 464	255,3
		R'000	21 539	13 544	33 708	114 903	489 152	325,7
	4. Other non-residential buildings 3/	square metres	2 513	3 154	2 395	20 976	15 226	-27,4
		R'000	9 305	9 243	6 600	61 502	52 411	-14,8
	5. Total non-residential buildings	R'000	87 929	77 832	55 832	333 283	780 538	134,2
	3. Additions and alterations	1. Dwelling-houses	square metres	26 271	27 299	27 198	131 658	149 287
R'000			79 166	96 767	77 467	373 233	510 923	36,9
2. Other buildings 4/		square metres	4 542	8 941	4 106	51 546	56 487	9,6
		R'000	14 853	29 126	11 475	174 449	223 442	28,1
3. Total additions and alterations		R'000	94 019	125 893	88 942	547 682	734 365	34,1
4. Recorded buildings completed	1. Total at current prices	R'000	392 201	528 410	507 739	2 061 006	3 222 761	56,4

1/ The percentage change between cumulative figures for 2006 and 2007.

2/ Other residential buildings include institutions for the disabled, boarding houses, hostels and tourism accommodation e.g. hotels, motels, guesthouses, holiday chalets, bed-and-breakfast accommodation and casinos.

3/ Other non-residential space includes churches, sport and recreation clubs, schools, crèches, hospitals and all other non-residential space.

4/ Other buildings include other residential buildings, non-residential buildings and internal alterations.

Table 25 - Buildings reported as completed to larger municipalities at current prices by type of building: North West

			Jun. 2006	May 2007	Jun. 2007	Jan. - Jun. 2006	Jan. - Jun. 2007	% Change 1/
Category of building	Type of building	Measuring unit						
1. Residential buildings	1. Dwelling-houses < 80 square metres	Number	34	324	351	285	1 474	417,2
		square metres	2 092	12 114	12 650	15 635	55 369	254,1
		R'000	2 297	8 810	9 156	16 862	44 366	163,1
	2. Dwelling-houses >= 80 square metres	Number	142	155	119	719	771	7,2
		square metres	30 282	31 590	23 851	137 807	167 739	21,7
		R'000	75 082	85 591	63 704	332 356	474 733	42,8
	3. Flats and townhouses	Number	51	26	93	423	711	68,1
		square metres	7 328	2 988	6 354	50 122	54 778	9,3
		R'000	14 487	10 238	15 767	128 808	137 591	6,8
	4. Other residential buildings 2/	square metres	0	0	0	0	0	
		R'000	0	0	0	0	0	
	5. Total residential buildings	R'000	91 866	104 639	88 627	478 026	656 690	37,4
2. Non-residential buildings	1. Office and banking space	square metres	1 894	0	106	2 487	2 901	16,6
		R'000	4 015	0	300	5 320	6 448	21,2
	2. Shopping space	square metres	291	1 488	5 192	29 304	28 489	-2,8
		R'000	548	5 705	15 757	121 564	86 222	-29,1
	3. Industrial and warehouse space	square metres	0	2 576	5 727	4 989	8 303	66,4
		R'000	0	4 634	13 054	11 074	17 688	59,7
	4. Other non-residential buildings 3/	square metres	1 980	0	0	3 999	1 529	-61,8
		R'000	4 601	0	0	9 054	3 488	-61,5
	5. Total non-residential buildings	R'000	9 164	10 339	29 111	147 012	113 846	-22,6
	3. Additions and alterations	1. Dwelling-houses	square metres	5 106	4 293	8 621	28 908	24 583
R'000			9 281	7 504	17 132	53 309	49 350	-7,4
2. Other buildings 4/		square metres	252	494	4 351	9 344	6 362	-31,9
		R'000	183	1 160	8 208	20 245	13 081	-35,4
3. Total additions and alterations		R'000	9 464	8 664	25 340	73 554	62 431	-15,1
4. Recorded buildings completed	1. Total at current prices	R'000	110 494	123 642	143 078	698 592	832 967	19,2

1/ The percentage change between cumulative figures for 2006 and 2007.

2/ Other residential buildings include institutions for the disabled, boarding houses, hostels and tourism accommodation e.g. hotels, motels, guesthouses, holiday chalets, bed-and-breakfast accommodation and casinos.

3/ Other non-residential space includes churches, sport and recreation clubs, schools, crèches, hospitals and all other non-residential space.

4/ Other buildings include other residential buildings, non-residential buildings and internal alterations.

Table 26 - Buildings reported as completed to larger municipalities at current prices by type of building: Gauteng

			Jun. 2006	May 2007	Jun. 2007	Jan. - Jun. 2006	Jan. - Jun. 2007	% Change 1/
Category of building	Type of building	Measuring unit						
1. Residential buildings	1. Dwelling-houses < 80 square metres	Number	1 496	994	928	5 735	4 991	-13,0
		square metres	72 005	47 132	41 458	250 697	223 732	-10,8
		R'000	105 858	91 596	87 632	475 152	481 390	1,3
	2. Dwelling-houses >= 80 square metres	Number	792	879	624	3 869	4 111	6,3
		square metres	182 398	236 944	169 326	962 377	1 044 976	8,6
		R'000	554 884	771 281	542 523	2 812 681	3 350 321	19,1
	3. Flats and townhouses	Number	1 228	1 341	1 497	4 811	6 636	37,9
		square metres	177 758	117 415	197 939	647 512	702 935	8,6
		R'000	583 073	406 111	682 895	2 078 537	2 406 457	15,8
	4. Other residential buildings 2/	square metres	0	190	0	1 561	61 211	3 821,3
		R'000	0	841	0	3 903	221 191	5 567,2
	5. Total residential buildings	R'000	1 243 815	1 269 829	1 313 050	5 370 273	6 459 359	20,3
2. Non-residential buildings	1. Office and banking space	square metres	5 239	42 234	19 653	53 017	147 486	178,2
		R'000	25 941	201 293	79 735	194 090	624 913	222,0
	2. Shopping space	square metres	37 757	14 509	18 897	189 302	120 164	-36,5
		R'000	120 594	71 193	97 703	676 640	441 983	-34,7
	3. Industrial and warehouse space	square metres	15 722	27 291	45 661	78 058	173 964	122,9
		R'000	36 308	78 012	120 399	208 383	496 708	138,4
	4. Other non-residential buildings 3/	square metres	448	538	472	8 716	31 643	263,0
		R'000	800	2 204	1 894	27 029	114 116	322,2
	5. Total non-residential buildings	R'000	183 643	352 702	299 731	1 106 142	1 677 720	51,7
3. Additions and alterations	1. Dwelling-houses	square metres	48 692	57 776	45 778	301 824	314 217	4,1
		R'000	127 892	172 252	136 033	809 140	935 572	15,6
	2. Other buildings 4/	square metres	13 357	6 514	26 977	47 481	69 714	46,8
		R'000	46 305	25 957	98 087	154 788	255 339	65,0
	3. Total additions and alterations	R'000	174 197	198 209	234 120	963 928	1 190 911	23,5
4. Recorded buildings completed	1. Total at current prices	R'000	1 601 655	1 820 740	1 846 901	7 440 343	9 327 990	25,4

1/ The percentage change between cumulative figures for 2006 and 2007.

2/ Other residential buildings include institutions for the disabled, boarding houses, hostels and tourism accommodation e.g. hotels, motels, guesthouses, holiday chalets, bed-and-breakfast accommodation and casinos.

3/ Other non-residential space includes churches, sport and recreation clubs, schools, crèches, hospitals and all other non-residential space.

4/ Other buildings include other residential buildings, non-residential buildings and internal alterations.

**Table 27 - Buildings reported as completed to larger municipalities at current prices by type of building: Mpumalanga**

			Jun. 2006	May 2007	Jun. 2007	Jan. - Jun. 2006	Jan. - Jun. 2007	% Change 1/
Category of building	Type of building	Measuring unit						
1. Residential buildings	1. Dwelling-houses < 80 square metres	Number	60	20	7	449	110	-75,5
		square metres	3 442	1 198	455	19 292	6 896	-64,3
		R'000	6 699	4 256	1 049	31 248	20 048	-35,8
	2. Dwelling-houses >= 80 square metres	Number	126	138	131	573	747	30,4
		square metres	23 146	26 898	22 273	102 095	128 138	25,5
		R'000	53 911	80 739	51 956	236 156	322 293	36,5
	3. Flats and townhouses	Number	15	52	18	220	138	-37,3
		square metres	785	6 611	1 008	18 660	16 343	-12,4
		R'000	2 355	21 448	3 024	41 741	49 063	17,5
	4. Other residential buildings 2/	square metres	131	0	0	712	690	-3,1
		R'000	393	0	0	1 896	2 160	13,9
	5. Total residential buildings	R'000	63 358	106 443	56 029	311 041	393 564	26,5
	2. Non-residential buildings	1. Office and banking space	square metres	67	925	0	8 656	13 208
R'000			147	2 494	0	22 395	47 695	113,0
2. Shopping space		square metres	4 097	0	1 100	17 996	18 734	4,1
		R'000	8 403	0	2 800	64 103	53 953	-15,8
3. Industrial and warehouse space		square metres	1 066	2 493	3 447	16 319	13 278	-18,6
		R'000	2 666	7 393	5 900	29 749	29 724	-0,1
4. Other non-residential buildings 3/		square metres	0	0	0	589	1 340	127,5
		R'000	0	0	0	1 165	3 328	185,7
5. Total non-residential buildings		R'000	11 216	9 887	8 700	117 412	134 700	14,7
3. Additions and alterations		1. Dwelling-houses	square metres	5 063	1 726	3 203	31 751	27 390
	R'000		9 101	3 953	7 820	52 527	61 744	17,5
	2. Other buildings 4/	square metres	997	193	2 222	4 740	4 534	-4,3
		R'000	2 396	592	6 855	13 692	19 192	40,2
	3. Total additions and alterations	R'000	11 497	4 545	14 675	66 219	80 936	22,2
4. Recorded buildings completed	1. Total at current prices	R'000	86 071	120 875	79 404	494 672	609 200	23,2

1/ The percentage change between cumulative figures for 2006 and 2007.

2/ Other residential buildings include institutions for the disabled, boarding houses, hostels and tourism accommodation e.g. hotels, motels, guesthouses, holiday chalets, bed-and-breakfast accommodation and casinos.

3/ Other non-residential space includes churches, sport and recreation clubs, schools, crèches, hospitals and all other non-residential space.

4/ Other buildings include other residential buildings, non-residential buildings and internal alterations.

**Table 28 - Buildings reported as completed to larger municipalities at current prices by type of building: Limpopo**

			Jun. 2006	May 2007	Jun. 2007	Jan. - Jun. 2006	Jan. - Jun. 2007	% Change 1/
Category of building	Type of building	Measuring unit						
1. Residential buildings	1. Dwelling-houses < 80 square metres	Number	24	21	29	118	187	58,5
		square metres	1 542	1 343	1 866	7 393	11 740	58,8
		R'000	3 979	3 229	4 678	17 781	29 964	68,5
	2. Dwelling-houses >= 80 square metres	Number	54	44	51	242	287	18,6
		square metres	11 201	8 356	8 789	48 968	52 035	6,3
		R'000	26 589	25 197	25 658	126 196	144 716	14,7
	3. Flats and townhouses	Number	36	1	1	140	92	-34,3
		square metres	3 363	126	126	17 267	10 405	-39,7
		R'000	9 416	534	534	43 718	27 312	-37,5
	4. Other residential buildings 2/	square metres	0	0	0	0	0	
		R'000	0	0	0	0	0	
	5. Total residential buildings	R'000	39 984	28 960	30 870	187 695	201 992	7,6
2. Non-residential buildings	1. Office and banking space	square metres	0	0	0	2 425	1 176	-51,5
		R'000	0	0	0	5 303	3 528	-33,5
	2. Shopping space	square metres	756	528	710	14 101	4 173	-70,4
		R'000	2 042	1 478	1 420	26 105	10 454	-60,0
	3. Industrial and warehouse space	square metres	0	0	0	1 713	2 499	45,9
		R'000	0	0	0	4 997	5 181	3,7
	4. Other non-residential buildings 3/	square metres	0	280	0	1 305	280	-78,5
		R'000	0	616	0	3 654	616	-83,1
	5. Total non-residential buildings	R'000	2 042	2 094	1 420	40 059	19 779	-50,6
	3. Additions and alterations	1. Dwelling-houses	square metres	871	554	1 284	5 185	6 977
R'000			2 297	1 577	3 366	11 785	16 367	38,9
2. Other buildings 4/		square metres	0	0	1 127	2 005	1 423	-29,0
		R'000	0	0	2 253	5 736	2 915	-49,2
3. Total additions and alterations		R'000	2 297	1 577	5 619	17 521	19 282	10,1
4. Recorded buildings completed	1. Total at current prices	R'000	44 323	32 631	37 909	245 275	241 053	-1,7

1/ The percentage change between cumulative figures for 2006 and 2007.

2/ Other residential buildings include institutions for the disabled, boarding houses, hostels and tourism accommodation e.g. hotels, motels, guesthouses, holiday chalets, bed-and-breakfast accommodation and casinos.

3/ Other non-residential space includes churches, sport and recreation clubs, schools, crèches, hospitals and all other non-residential space.

4/ Other buildings include other residential buildings, non-residential buildings and internal alterations.

**Table 29 - Subsidised low-cost dwelling-houses completed and in process of completion 1/**

Province	Year	Number	Square metres 2/	Value R'000 2/
Western Cape	2002	19 534	531 116	168 852
	2003	16 926	507 780	247 187
	2004	12 751	382 530	211 424
Eastern Cape	2002	46 700	1 575 675	473 806
	2003	35 005	1 050 150	511 213
	2004	34 923	1 047 690	579 058
Northern Cape	2002	5 189	164 906	68 078
	2003	4 354	130 620	63 586
	2004	3 645	109 350	60 438
Free State	2002	8 617	348 492	154 121
	2003	14 848	445 440	216 840
	2004	16 522	495 660	273 951
KwaZulu-Natal	2002	21 958	831 349	234 041
	2003	31 372	941 160	458 157
	2004	35 968	1 079 040	596 385
North West	2002	21 309	630 115	210 439
	2003	13 809	414 270	201 667
	2004	10 149	304 470	168 281
Gauteng	2002	29 939	991 571	321 943
	2003	42 862	1 285 860	625 957
	2004	33 260	997 800	551 484
Mpumalanga	2002	19 883	660 505	253 931
	2003	21 336	640 080	246 079
	2004	18 808	564 240	311 855
Limpopo	2002	15 382	605 877	183 769
	2003	15 596	467 880	227 764
	2004	16 338	490 140	270 900
<b>South Africa</b>	<b>2002</b>	<b>188 511</b>	<b>6 339 606</b>	<b>2 068 980</b>
	<b>2003</b>	<b>196 108</b>	<b>5 883 240</b>	<b>2 798 450</b>
	<b>2004</b>	<b>182 364</b>	<b>5 470 920</b>	<b>3 023 777</b>

**Table 30 - Subsidised low-cost dwelling-houses completed: 1 April 2005 to 31 March 2006**

Province	Number	Square metres 2/	Value R'000 2/
Western Cape	2 040	61 200	52 877
Eastern Cape	16 874	506 220	437 374
Northern Cape	5 293	158 790	137 195
Free State	17 635	529 050	457 099
KwaZulu-Natal	21 601	648 030	559 898
North West	14 445	433 350	374 414
Gauteng	23 409	702 270	606 761
Mpumalanga	14 389	431 670	372 963
Limpopo	21 973	659 190	569 540
<b>South Africa</b>	<b>137 659</b>	<b>4 129 770</b>	<b>3 568 121</b>

**Table 31 - Subsidised low-cost dwelling-houses completed and in process of completion 1/: 1 April 2006 to 31 March 2007**

Province	Number	Square metres 2/	R'000 2/
Western Cape	34 585	1 037 550	768 200
Eastern Cape	16 526	495 780	637 700
Northern Cape	3 880	116 400	104 800
Free State	19 662	589 860	528 400
KwaZulu-Natal	38 290	1 148 700	1 074 500
North West	46 972	1 409 160	696 500
Gauteng	77 044	2 311 320	1 748 300
Mpumalanga	10 651	319 530	329 900
Limpopo	23 609	708 270	646 700
<b>South Africa</b>	<b>271 219</b>	<b>8 136 570</b>	<b>6 535 000</b>

Source: Housing Subsidy System and Provincial Housing Departments co-ordinated by the National Department of Housing

1/ Includes all top structures completed and sites serviced in respect of the reporting period.

2/ Estimates by the National Department of Housing.

## Explanatory notes

<b>Introduction</b>	1	Statistics South Africa (Stats SA) conducts a monthly building statistics survey collecting information regarding building plans passed and buildings completed, financed by the private sector, from the largest local government institutions in South Africa. According to these institutions, they are not always notified about low-cost housing projects and therefore do not include the bulk of low-cost dwelling-houses. Data regarding subsidised low-cost dwelling-houses, supplied by the Housing Subsidy System and Provincial Housing Departments and co-ordinated by the National Department of Housing, are shown in table 29 to table 31 (page 37).
	2	In order to improve timeliness of the publication, some information for the current month has been estimated due to late submission by respondents. These estimates will be revised in the next statistical release(s) as soon as actual information is available.
<b>Purpose of the survey</b>	3	The monthly survey data are used in monitoring the state of economy and formulation of economic policy. Furthermore, the results are important inputs to estimate the Gross Domestic Product (GDP) and to calculate the Composite Leading Business Cycle Indicator. The data are extensively used by the private sector.
<b>Scope of the survey</b>	4	This survey covers local government institutions conducting activities for the private sector regarding - <ul style="list-style-type: none"> <li>• passing of building plans; and</li> <li>• final inspection of completed buildings.</li> </ul>
<b>Classification</b>	5	Building activities is classified in division 5 according to the 1993 edition of the <i>Standard Industrial Classification of all Economic Activities, (SIC) Fifth Edition, Report No. 09-90-02</i> . The SIC is based on the 1990 <i>International Standard Industrial Classification of all Economic Activities (ISIC)</i> with suitable adaptations for local conditions.
<b>Response rate</b>	6	The preliminary response rate for the survey on building statistics for June 2007 was 94,7%. Improved response rate for May 2007 was 96,5%.
<b>Statistical unit</b>	7	The statistical unit for the collection of information is a local government institution. Local government institutions include district municipalities, metropolitan municipalities and local municipalities.
<b>Survey methodology and design</b>	8	Stats SA conducts a monthly survey of metropolitan municipalities and large local municipalities on building plans passed and buildings completed. An annual survey of the remaining municipalities is conducted regarding buildings completed. The monthly survey represents approximately 90 percent of the total value of buildings completed. Information regarding building plans passed and buildings completed for the private sector is collected by mail, fax and telephone.  According to the municipalities, they are not always notified about low-cost housing projects. Data regarding subsidised low-cost dwelling-houses, supplied by the provincial governments and co-ordinated by the National Department of Housing, are shown in table 29 and table 30 (page 37).
<b>Constant prices</b>	9	The value of building plans passed and buildings completed at constant prices measures building activities in terms of ruling prices in a specific base year, which is currently 2000. The value of building plans passed at constant prices for each month is obtained by deflating the values at current prices with a price index known as the 'lump sum domestic buildings' as published in statistical release P0151: <i>JBCC Contract Price Adjustment Provisions Work Group Indices</i> . In order to be applicable, these indices (base February 1991=100) are converted to the base year 2000=100.



- 10** The value of buildings completed at constant prices is obtained by deflating the values at current prices with the price index which is used to calculate building plans passed at constant prices (see paragraph 8). Since the completion of buildings may extend over a few months to a few years, the current value of buildings completed is deflated by price indices which prevailed at the time the plans were passed. Therefore, the duration of the completion of different types of buildings are taken into account in ascertaining the deflators e.g. the value of dwelling-houses completed at constant prices at January 2007 is obtained by deflating the current value of dwelling-houses completed for January 2007 with the price index of a month six months prior to January 2007. Furthermore, the value of other residential buildings, non-residential buildings and additions and alterations at constant prices is obtained by deflating the current values with price indices of 12 months, 18 months and 12 months prior to the relevant month, respectively.
- Seasonal adjustment**
- 11** Seasonally adjusted estimates of building plans passed and buildings completed are generated each month, using the X-11 Seasonal Adjustment Program developed by US Bureau of the Census Economic Research and Analyses Division, 1968.
- 12** Seasonal adjustment is a means of removing the estimated effects of normal seasonal variation from the series so that the effects of other influences on the series can be more clearly recognised. Seasonal adjustment does not aim to remove irregular or non-seasonal influences which may be present in any particular month. Influences that are volatile or unsystematic can still make it difficult to interpret the movement of the series even after adjustment for seasonal variations. Therefore, the month-to-month movements of seasonally adjusted estimates may not be reliable indicators of trend behaviour.
- Trend cycle**
- 13** The trend is a long-term pattern or movement of a time series. The X-11 Seasonal Adjustment Program is used for smoothing seasonally adjusted data.
- Revised figures**
- 14** Revised figures are due to late submission of data to Stats SA, or to respondents reporting revisions or corrections to their figures. Figures for the latest month are therefore preliminary. Data are edited at municipal level.
- 15** Once a year the annual statistical release P5041.3 is published with the revised and updated information at provincial and municipal level for the previous calendar year. Due to this comprehensive revision, the monthly statistical release P5041.1 reflects provincial revision for 2006 where applicable.
- Related publications**
- 16** Users may also wish to refer to the following publications:
- P5041.3: Selected building statistics of the private sector as reported by local government institutions issued annually.
  - P9101.2: Actual and expected expenditure on construction by the public sector per statistical region issued annually.
  - Bulletin of Statistics issued quarterly.
  - South African Statistics issued annually.
  - Report 50-11-01 issued annually.
- Rounding-off of figures**
- 17** The figures in the tables have, where necessary, been rounded off to the nearest digit shown.
- Pre-release policy**
- 18** Stats SA's pre-release policy may be inspected at its website, [www.statssa.gov.za](http://www.statssa.gov.za)



**Symbols and  
abbreviations**

<b>19</b>	..	no meaningful percentage change between two specified periods available since either one or both of the totals are nil
	0	nil or figure too small to publish
	*	revised
	Stats SA	Statistics South Africa
	SIC	Standard Industrial Classification of all Economic Activities
	ISIC	International Standard Industrial Classification of all Economic Activities
	JBCC	Joint Building Contracts Committee
	CD	Compact Disc
	US	United States
	SARB	South African Reserve Bank
	DTI	Department of Trade and Industry

## Glossary

<b>Additions and alterations</b>	They include extensions to existing buildings as well as internal and external alterations of existing buildings.
<b>Blocks of flats</b>	High-density housing consisting of a number of self-contained dwelling-units, each with at least one living-room together with a kitchen and bathroom, conjoined to similar units in one building.
<b>Dwelling-house</b>	A free-standing, complete structure on a separate stand or a self-contained dwelling-unit, granny flat, on the same premises as an existing residence. Out-buildings and garages are included.
<b>Local government institutions</b>	Include – <ul style="list-style-type: none"> <li>• District municipalities;</li> <li>• Metropolitan municipalities; and</li> <li>• Local municipalities.</li> </ul>
<b>Municipality</b>	A generic term describing the “unit” of government in the local spheres responsible for local government in a geographically demarcated area and including district, metropolitan and local municipalities. It is an institution consisting of a municipal council (elected political representatives) and municipal administration (appointed officials).
<b>District municipality</b>	Municipality that has municipal executive and legislative authority in an area that includes more than one municipality, and which is described in section 155(1) of the Constitution as a category C municipality (Refer to Local Government: Municipal Structure Act, 1998 (Act No. 117 of 1998)).
<b>Metropolitan municipality</b>	Municipality that has municipal executive and legislative authority in an area that includes more than one municipality, and which is described in section 155(1) of the Constitution as a category A municipality (Refer to Local Government: Municipal Structure Act, 1998 (Act No. 117 of 1998)).
<b>Local municipality</b>	Municipality that shares municipal executive and legislative authority in its area with a district municipality within whose area it falls, that is described in section 155(1) of the constitution as a category B municipality.
<b>Non-residential buildings</b>	Comprise factories, commercial, financial and other office buildings, as well as other buildings not used for residential purposes, such as churches, halls, clubs, schools and hospitals.
<b>Other residential buildings</b>	Institutions for the disabled, boarding houses, old people’s homes, hostels, hotels, motels, guesthouses, holiday chalets, bed-and-breakfast accommodation, entertainment centres and casinos.
<b>Percentage change</b>	<p>When using monthly actual values, the percentage change is the change in actual values of building activities (building plans passed or buildings completed) of the relevant month compared with the actual values of building activities (building plans passed or buildings completed) of the same month in the previous year expressed as a percentage.</p> <p>When using annual actual values, the percentage change is the change in the actual values of building activities (building plans passed or buildings completed) of the relevant year compared with the actual values of building activities (building plans passed or buildings completed) of the previous year expressed as a percentage.</p> <p>When using seasonally adjusted values, the percentage change is the change in the seasonally adjusted values of building activities (building plans passed or buildings completed) of the relevant month compared with the seasonally adjusted values of building activities (building plans passed or buildings completed) of the previous month expressed as a percentage.</p>

<b>Reference period</b>	One calendar month.
<b>Residential buildings</b>	Comprise dwelling-houses, flats, townhouses and other residential buildings.
<b>Townhouses</b>	Multiple, medium-density dwelling-units and include cluster housing, group housing, simplexes, duplexes, triplexes and other similar dwelling-units which are usually grouped together, with one level of each unit on ground level. This excludes blocks of flats.

## General information

Stats SA publishes approximately 300 different statistical releases each year. It is not economically viable to produce them in more than one of South Africa's eleven official languages. Since the releases are used extensively, not only locally but also by international economic and social-scientific communities, Stats SA releases are published in English.

Stats SA has copyright on this publication. Users may apply the information as they wish, provided that they acknowledge Stats SA as the source of the basic data wherever they process, apply, utilise, publish or distribute the data and also that they specify that the relevant application and analysis (where applicable) result from their own processing of the data.

An advance release calendar is disseminated on [www.statssa.gov.za](http://www.statssa.gov.za)

## Stats SA products

A complete set of Stats SA publications is available at the Stats SA Library and the following libraries:

National Library of South Africa, Pretoria Division  
National Library of South Africa, Cape Town Division  
Natal Society Library, Pietermaritzburg  
Library of Parliament, Cape Town  
Bloemfontein Public Library  
Johannesburg Public Library  
Eastern Cape Library Services, King William's Town  
Central Regional Library, Polokwane  
Central Reference Library, Nelspruit  
Central Reference Collection, Kimberley  
Central Reference Library, Mmabatho

Stats SA also provides a subscription service.

## Electronic services

A large range of data are available via on-line services, diskette, CD and computer printouts. For more details about our electronic data services, contact (012) 310 8600/8390/8351/4892/8496/8095.

You can visit us on the Internet at: [www.statssa.gov.za](http://www.statssa.gov.za)

## Enquiries

Telephone number: (012) 310 8600/8390/8351/4892/8496/8095 (user information services)  
(012) 310 8228/310 8007 (technical enquiries)  
(012) 310 8161 (orders)  
(012) 310 4883/4885/8018 (library)

Fax number: (012) 310 8664 (technical enquiries)

Email: [Gretaz@statssa.gov.za](mailto:Gretaz@statssa.gov.za) (technical enquiries)  
[info@statssa.gov.za](mailto:info@statssa.gov.za) (user information services)  
[distribution@statssa.gov.za](mailto:distribution@statssa.gov.za) (orders)

Postal address: Private Bag X44, Pretoria, 0001

*Produced by Stats SA*