

Selected building statistics of the private sector as reported by local government institutions

June 2006

**Embargoed until:
16 August 2006
13:00**

Data published in this statistical release are based on a monthly survey of metropolitan municipalities and large local municipalities. They represent approximately 90% of the total value of buildings completed. In addition to this survey, an annual survey is conducted based on combined information from all local government institutions regarding buildings completed. The combined data of the monthly and annual surveys are published annually in a report entitled *Building statistics*, Report No. 50-11-01.

Table A – Selected key figures regarding recorded building plans passed by larger municipalities at current prices for June 2006

Estimates at current prices	January to June 2005	January to June 2006 1/	Difference in value between January to June 2005 and January to June 2006	Percentage change between January to June 2005 and January to June 2006
	R'000	R'000	R'000	
Residential buildings	16 568 653	18 852 646	+2 283 993	+ 13,8
Dwelling-houses	11 267 051	12 564 091	+1 297 040	+ 11,5
Flats and townhouses	4 998 869	5 958 584	+959 715	+ 19,2
Other residential buildings	302 733	329 971	+27 238	+ 9,0
Non-residential buildings	4 888 831	6 317 604	+1 428 773	+ 29,2
Additions and alterations	7 951 876	8 897 304	+945 428	+ 11,9
Total	29 409 360	34 067 554	+4 658 194	+ 15,8

1/ June 2006 figures should be regarded as preliminary because of possible backlogs and incomplete reporting by municipalities.

Total value of recorded building plans passed increased

As indicated in Table A, the value of recorded building plans passed by larger municipalities (at current prices) during the first six months of 2006 increased by 15,8% (+R4 658,2 million) compared with the first six months of 2005.

The largest percentage increase was reported for non-residential buildings (+29,2% or R1 428,8 million), followed by residential buildings (+13,8% or R2 284,0 million) and additions and alterations (+11,9% or R945,4 million). In the category of non-residential buildings large increases were reported for industrial and warehouse space (+63,2% or R1 186,3 million) and office and banking space (+40,1% or R359,7 million) (see Table 9).

Table B – Recorded building plans passed by larger municipalities aggregated to provincial level for June 2006

Estimates at current prices	January to June 2005	January to June 2006 1/	Percentage contribution to the total value of building plans passed during January to June 2005	Percentage change between January to June 2005 and January to June 2006	Contribution (percentage points) to the percentage change in the value of buildings plans passed between January to June 2005 and January to June 2006 2/	Difference in value between January to June 2005 and January to June 2006
	R'000	R'000				R'000
Western Cape	8 280 244	8 382 992	28,2	+ 1,2	+ 0,4	+ 102 748
Eastern Cape	1 334 594	1 719 735	4,5	+ 28,9	+ 1,3	+ 385 141
Northern Cape	186 499	224 830	0,6	+ 20,6	+ 0,1	+ 38 331
Free State	1 048 997	787 446	3,6	-24,9	-0,9	-261 551
KwaZulu-Natal	3 675 111	4 164 435	12,5	+ 13,3	+ 1,7	+ 489 324
North West	1 086 414	1 092 095	3,7	+ 0,5	+ 0,0	+ 5 681
Gauteng	12 070 141	15 110 643	41,0	+ 25,2	+ 10,3	+ 3 040 502
Mpumalanga	1 201 995	1 942 488	4,1	+ 61,6	+ 2,5	+ 740 493
Limpopo	525 365	642 890	1,8	+ 22,4	+ 0,4	+ 117 525
Total	29 409 360	34 067 554	100,0	+ 15,8	+ 15,8	+ 4 658 194

1/ June 2006 figures should be regarded as preliminary because of possible backlogs and incomplete reporting by municipalities.

2/ The contribution (percentage points) is calculated by multiplying the percentage change of each province between January to June 2005 and January to June 2006 with the percentage contribution of the corresponding province to the total value of building plans passed during January to June 2005, divided by 100.

Eight provinces reported increases in the value of recorded building plans passed (see Table B). The largest contributor to the increase of 15,8% was Gauteng (+10,3 percentage points or R3 040,5 million), followed by Mpumalanga (+2,5 percentage points or R740,5 million), KwaZulu-Natal (+1,7 percentage points or R489,3 million) and Eastern Cape (+1,3 percentage points or R385,1 million). In Gauteng increases were reported for residential buildings (+35,6% or R2 444,8 million), mainly due to the large increases reported for flats and townhouses (+86,4% or R1 415,1 million) (see Table 16).

Table C – Selected key figures regarding recorded building plans passed by larger municipalities at constant 2000 prices for June 2006

Estimates at constant 2000 prices	January to June 2005 R'000	January to June 2006 1/ R'000	Difference in value between January to June 2005 and January to June 2006 R'000	Percentage change between January to June 2005 and January to June 2006
Residential buildings	11 607 317	12 405 212	+797 895	+ 6,9
Non-residential buildings	3 426 061	4 160 045	+733 984	+ 21,4
Additions and alterations	5 571 619	5 854 127	+282 508	+ 5,1
Total	20 604 997	22 419 384	+1 814 387	+ 8,8

1/ June 2006 figures should be regarded as preliminary because of possible backlogs and incomplete reporting by municipalities.

Seasonally adjusted estimates at constant 2000 prices	January to March 2006 R'000	April to June 2006 R'000	Percentage change between January to March 2006 and April to June 2006
Residential buildings	6 904 961	6 458 342	-6,5
Non-residential buildings	2 023 560	2 321 432	+ 14,7
Additions and alterations	3 104 292	3 112 102	+ 0,3
Total	12 032 813	11 891 876	-1,2

Total value of recorded building plans passed increased

As indicated in Table C, the value of recorded building plans passed by larger municipalities (at constant 2000 prices) during the first six months of 2006 increased by 8,8% (+R1 814,4 million) compared with the first six months of 2005. The largest percentage increase was reported for non-residential buildings (+21,4% or R734,0 million), followed by residential buildings (+6,9% or R797,9 million) and additions and alterations (+5,1% or R282,5 million).

However, the seasonally adjusted real value of recorded building plans passed by larger municipalities during the three months ended June 2006 decreased by 1,2% compared with the previous three months. The seasonally adjusted value of residential building plans passed decreased by 6,5%, whereas an increase was reported for non-residential buildings (+14,7%) and additions and alterations (+0,3%).

Figure 1 shows both the seasonally adjusted and the trend series for recorded building plans passed at constant 2000 prices between January 2002 and June 2006. The trend series reflects a slight increase in 2002, showing a steep increase as from May 2003 and a flattening off trend as from October 2005.

Figure 1 – Real value of recorded building plans passed by larger municipalities at constant 2000 prices

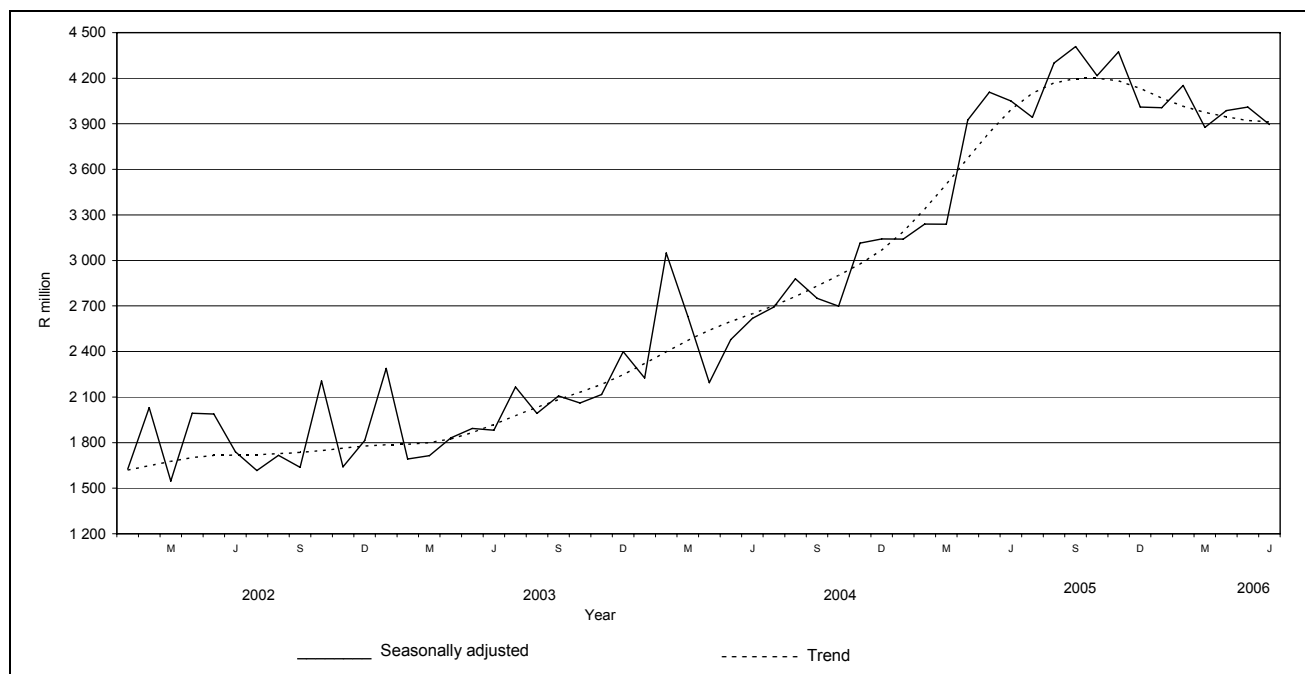


Table D – Selected key figures regarding buildings reported as completed to larger municipalities at current prices for June 2006

Estimates at current prices	January to June 2005 R'000	January to June 2006 1/ R'000	Difference in value between January to June 2005 and January to June 2006 R'000	Percentage change between January to June 2005 and January to June 2006
Residential buildings	8 369 842	10 927 286	+2 557 444	+ 30,6
Dwelling-houses	5 587 169	6 798 704	+1 211 535	+ 21,7
Flats and townhouses	2 723 679	4 035 910	+1 312 231	+ 48,2
Other residential buildings	58 994	92 672	+33 678	+ 57,1
Non-residential buildings	1 841 629	2 454 562	+612 933	+ 33,3
Additions and alterations	2 323 501	3 086 006	+762 505	+ 32,8
Total	12 534 972	16 467 854	+3 932 882	+ 31,4

1/ June 2006 figures should be regarded as preliminary because of possible backlogs and incomplete reporting by municipalities.

Total value of buildings reported as completed increased

As indicated in Table D, the value of buildings reported as completed to larger municipalities (at current prices) during the first six months of 2006 increased by 31,4% (+R3 932,9 million) compared with the first six months of 2005.

The largest percentage increase in the value of buildings completed was reported for non-residential buildings (+33,3% or R612,9 million), followed by additions and alterations (+32,8% or R762,5 million) and residential buildings (+30,6% or R2 557,4 million).

Table E – Buildings reported as completed to larger municipalities aggregated to provincial level for June 2006

Estimates at current prices	January to June 2005 R'000	January to June 2006 1/ R'000	Percentage contribution to the total value of buildings completed during January to June 2005	Percentage change between January to June 2005 and January to June 2006	Contribution (percentage points) to the percentage change in the value of buildings completed between January to June 2005 and January to June 2006 2/ 2/	Difference in value between January to June 2005 and January to June 2006 R'000
Western Cape	3 360 451	4 884 981	26,8	+ 45,4	+ 12,2	+ 1 524 530
Eastern Cape	541 906	601 781	4,3	+ 11,0	+ 0,5	+ 59 875
Northern Cape	109 042	91 872	0,9	-15,7	-0,1	-17 170
Free State	341 370	317 984	2,7	-6,9	-0,2	-23 386
KwaZulu-Natal	1 819 608	1 834 314	14,5	+ 0,8	+ 0,1	+ 14 706
North West	562 284	698 976	4,5	+ 24,3	+ 1,1	+ 136 692
Gauteng	5 428 657	7 266 916	43,3	+ 33,9	+ 14,7	+ 1 838 259
Mpumalanga	223 227	494 738	1,8	+ 121,6	+ 2,1	+ 271 511
Limpopo	148 427	276 292	1,2	+ 86,1	+ 1,0	+ 127 865
Total	12 534 972	16 467 854	100,0	+ 31,4	+ 31,4	+ 3 932 882

1/ June 2006 figures should be regarded as preliminary because of possible backlogs and incomplete reporting by municipalities.

2/ The contribution (percentage points) is calculated by multiplying the percentage change of each province between January to June 2005 and January to June 2006 with the percentage contribution of the corresponding province to the total value of buildings completed during January to June 2005, divided by 100.

Seven provinces reported increases in the value of buildings completed. The largest contributors to the increase of 31,4% were Gauteng (+14,7 percentage points or R1 838,3 million) and Western Cape (+12,2 percentage points or R1 524,5 million) (see Table E).

Table F – Selected key figures regarding buildings reported as completed to larger municipalities at constant 2000 prices for June 2006

Estimates at constant 2000 prices	January to June 2005 R'000	January to June 2006 1/ R'000	Difference in value between January to June 2005 and January to June 2006 R'000	Percentage change between January to June 2005 and January to June 2006
Residential buildings	6 129 565	7 518 840	+1 389 275	+ 22,7
Non-residential buildings	1 423 574	1 780 301	+356 727	+ 25,1
Additions and alterations	1 740 105	2 164 916	+424 811	+ 24,4
Total	9 293 244	11 464 057	+2 170 813	+ 23,4

1/ June 2006 figures should be regarded as preliminary because of possible backlogs and incomplete reporting by municipalities.

Seasonally adjusted estimates at constant 2000 prices	January to March 2006 R'000	April to June 2006 R'000	Percentage change between January to March 2006 and April to June 2006
Residential buildings	4 285 485	4 200 425	- 2,0
Non-residential buildings	1 047 515	879 415	- 16,0
Additions and alterations	1 132 927	1 111 829	- 1,9
Total	6 465 927	6 191 669	- 4,2

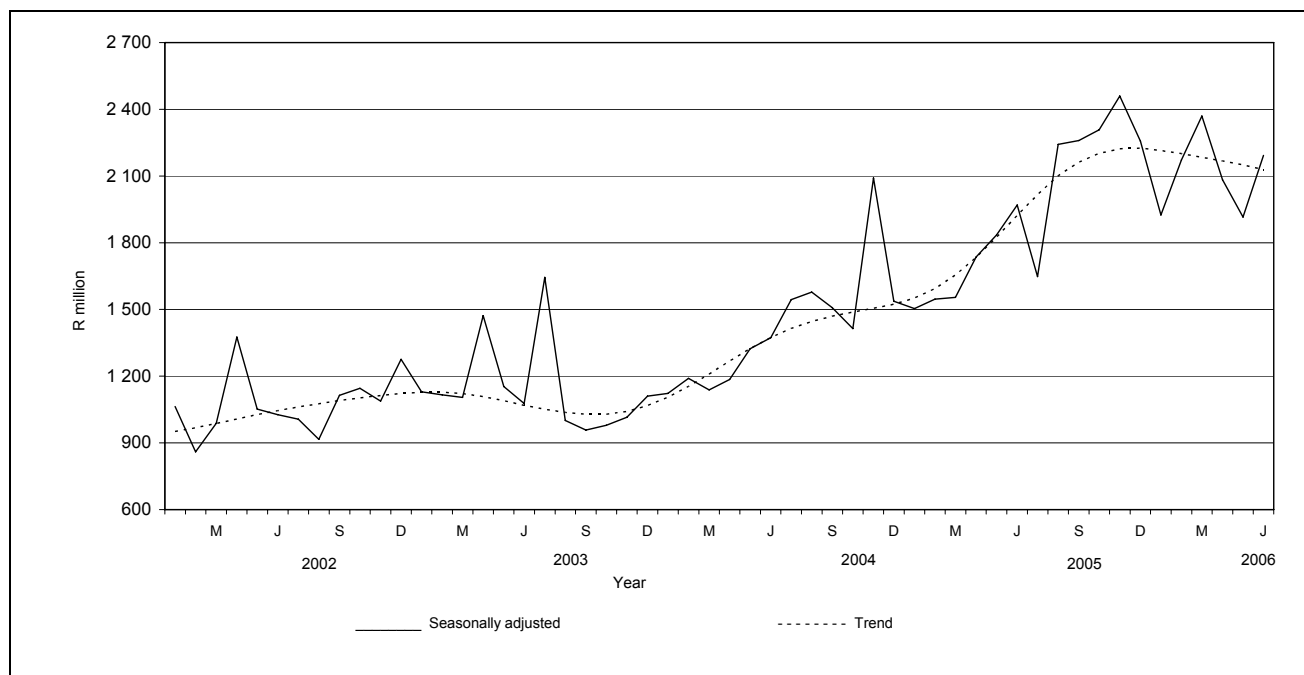
Total value of buildings reported as completed increased

As indicated in Table F, the value of buildings reported as completed to larger municipalities (at constant 2000 prices) during the first six months of 2006, increased by 23,4% (+R2 170,8 million) compared with the first six months of 2005. The largest percentage increase in the value of buildings completed was reported for non-residential buildings (+25,1% or R356,7 million), followed by additions and alterations (+24,4% or R424,8 million) and residential buildings (+22,7% or R1 389,3 million).

The seasonally adjusted real value of buildings reported as completed to larger municipalities during the three months ended June 2006 decreased by 4,2% compared with the previous three months. Decreases in the seasonally adjusted real value of non-residential buildings 16,0% and residential buildings 2,0% and additions and alterations 1,9% were reported for the above-mentioned period (see Table F).

Figure 2 shows both the seasonally adjusted and trend series for buildings reported as completed to municipalities at constant 2000 prices between January 2002 and June 2006. The trend series reflects a slight increase in 2002, slowing again until September 2003. A steep increase is evident from November 2003 to end of 2005, followed by a downward trend as from January 2006.

Figure 2 - Real value of buildings reported as completed to larger municipalities at constant 2000 prices



P J Lehohla
Statistician-General

Contents**Page**

Notes	9
Tables	
Table 1 Values and percentage change of recorded building plans passed by larger municipalities at current prices by type of building	10
Table 2 Seasonally adjusted values and percentage change of recorded building plans passed by larger municipalities at current prices by type of building	11
Table 3 Values and percentage change of recorded building plans passed by larger municipalities at constant 2000 prices by type of building	12
Table 4 Seasonally adjusted values and percentage change of recorded building plans passed by larger municipalities at constant 2000 prices by type of building	13
Table 5 Values and percentage change of buildings reported as completed to larger municipalities at current prices by type of building	14
Table 6 Seasonally adjusted values and percentage change of buildings reported as completed to larger municipalities at current prices by type of building	15
Table 7 Values and percentage change of buildings reported as completed to larger municipalities at constant 2000 prices by type of building	16
Table 8 Seasonally adjusted values and percentage change of buildings reported as completed to larger municipalities at constant 2000 prices by type of building	17
Table 9 Recorded building plans passed by larger municipalities at current prices by type of building: South Africa	18
Table 10 Recorded building plans passed by larger municipalities at current prices by type of building: Western Cape	19
Table 11 Recorded building plans passed by larger municipalities at current prices by type of building: Eastern Cape	20
Table 12 Recorded building plans passed by larger municipalities at current prices by type of building: Northern Cape	21
Table 13 Recorded building plans passed by larger municipalities at current prices by type of building: Free State	22
Table 14 Recorded building plans passed by larger municipalities at current prices by type of building: KwaZulu-Natal	23
Table 15 Recorded building plans passed by larger municipalities at current prices by type of building: North West	24
Table 16 Recorded building plans passed by larger municipalities at current prices by type of building: Gauteng	25
Table 17 Recorded building plans passed by larger municipalities at current prices by type of building: Mpumalanga	26
Table 18 Recorded building plans passed by larger municipalities at current prices by type of building: Limpopo	27
Table 19 Buildings reported as completed to larger municipalities at current prices by type of building: South Africa	28
Table 20 Buildings reported as completed to larger municipalities at current prices by type of building: Western Cape	29
Table 21 Buildings reported as completed to larger municipalities at current prices by type of building: Eastern Cape	30
Table 22 Buildings reported as completed to larger municipalities at current prices by type of building: Northern Cape	31
Table 23 Buildings reported as completed to larger municipalities at current prices by type of building: Free State	32
Table 24 Buildings reported as completed to larger municipalities at current prices by type of building: KwaZulu-Natal	33
Table 25 Buildings reported as completed to larger municipalities at current prices by type of building: North West	34
Table 26 Buildings reported as completed to larger municipalities at current prices by type of building: Gauteng	35

Table 27	Buildings reported as completed to larger municipalities at current prices by type of building: Mpumalanga	36
Table 28	Buildings reported as completed to larger municipalities at current prices by type of building: Limpopo.....	37
Table 29	Subsidised low-cost dwelling-houses completed or under construction by province	38
Table 30	Subsidised low-cost dwelling-houses completed by province	38
Explanatory notes		39
Glossary		41
General information		42

Notes**Forthcoming issue****Issue****Expected release date**

July 2006

13 September 2006

Subsidised low-cost dwelling-houses

The figures obtained from local government institutions do not include the bulk of low-cost dwelling-houses. Data regarding subsidised low-cost dwelling-houses, supplied by the provincial governments and co-ordinated by the National Department of Housing, are shown in table 29 and table 30 (page 38).

Response rate

The response rate for June 2006 was 95,5%.

Table 1 - Values and percentage change of recorded building plans passed by larger municipalities at current prices by type of building

Year and month		Residential buildings		Non-residential buildings		Additions and alterations		Total	
		R'000	% change 1/	R'000	% change 1/	R'000	% change 1/	R'000	% change 1/
2005	January	1 744 449	+36,2	533 930	+63,4	905 667	+72,0	3 184 046	+49,2
	February	2 412 994	-1,6	616 327	+53,7	1 090 557	+34,3	4 119 878	+12,4
	March	2 420 632	+22,5	1 008 017	+37,9	1 296 962	+46,1	4 725 611	+31,4
	April	2 877 399	+81,2	898 281	+117,1	1 408 346	+108,6	5 184 026	+93,6
	May	3 797 293	+68,8	821 058	+109,9	1 573 449	+74,1	6 191 800	+74,7
	June	3 315 886	+48,8	1 011 218	+105,0	1 676 895	+78,2	6 003 999	+63,9
	July	3 718 323	+46,6	1 163 653	+112,9	1 645 027	+54,5	6 527 003	+57,4
	August	3 969 775	+57,1	1 420 525	+105,3	1 760 409	+47,1	7 150 709	+62,0
	September	4 321 147	+75,2	917 404	+61,6	1 781 838	+68,7	7 020 389	+71,6
	October	3 977 650	+55,9	1 050 851	+65,2	1 930 883	+90,4	6 959 384	+65,6
	November	3 905 643	+33,1	1 338 538	+136,0	1 593 893	+35,0	6 838 074	+46,0
	December	2 803 658	+50,4	644 370	-3,8	1 372 621	+39,1	4 820 649	+36,9
	Total	39 264 849	+47,3	11 424 172	+77,5	18 036 547	+60,4	68 725 568	+55,0
2006	January	2 474 346	+41,8	743 879	+39,3	1 029 459	+13,7	4 247 684	+33,4
	February	3 245 630	+34,5	918 179	+49,0	1 425 005	+30,7	5 588 814	+35,7
	March	3 194 515	+32,0	1 154 730	+14,6	1 576 407	+21,5	5 925 652	+25,4
	April	2 823 108	-1,9	1 305 098	+45,3	1 486 517	+5,6	5 614 723	+8,3
	May	3 401 618	-10,4	1 224 893	+49,2	1 787 849	+13,6	6 414 360	+3,6
	June 2/	3 713 429	+12,0	970 825	-4,0	1 592 067	-5,1	6 276 321	+4,5

1/ The annual/monthly percentage change is the change in the values of recorded building plans passed by municipalities of the relevant year/month compared with the values of recorded building plans passed by municipalities of the comparable period of the previous year expressed as a percentage.

2/ Preliminary figures.

Table 2 - Seasonally adjusted values and percentage change of recorded building plans passed by larger municipalities at current prices by type of building

Year and month		Residential buildings		Non-residential buildings		Additions and alterations		Total	
		R'000	% change 1/	R'000	% change 1/	R'000	% change 1/	R'000	% change 1/
2005	January	2 453 860	+3,5	733 692	-8,7	1 249 820	+2,1	4 437 372	+0,9
	February	2 572 717	+4,8	748 503	+2,0	1 263 956	+1,1	4 585 176	+3,3
	March	2 533 776	-1,5	790 746	+5,6	1 294 335	+2,4	4 618 857	+0,7
	April	3 191 002	+25,9	908 772	+14,9	1 533 347	+18,5	5 633 121	+22,0
	May	3 545 984	+11,1	827 644	-8,9	1 427 136	-6,9	5 800 764	+3,0
	June	3 192 245	-10,0	996 994	+20,5	1 614 907	+13,2	5 804 146	+0,1
	July	3 262 599	+2,2	1 005 110	+0,8	1 462 980	-9,4	5 730 689	-1,3
	August	3 589 066	+10,0	1 147 723	+14,2	1 539 037	+5,2	6 275 826	+9,5
	September	3 855 037	+7,4	923 940	-19,5	1 692 114	+9,9	6 471 091	+3,1
	October	3 556 709	-7,7	1 000 385	+8,3	1 652 648	-2,3	6 209 742	-4,0
	November	3 483 650	-2,1	1 494 530	+49,4	1 523 584	-7,8	6 501 764	+4,7
	December	3 555 044	+2,0	753 230	-49,6	1 670 989	+9,7	5 979 263	-8,0
2006	January	3 530 233	-0,7	1 016 406	+34,9	1 442 321	-13,7	5 988 960	+0,2
	February	3 480 986	-1,4	1 112 550	+9,5	1 644 397	+14,0	6 237 933	+4,2
	March	3 355 307	-3,6	912 501	-18,0	1 568 591	-4,6	5 836 399	-6,4
	April	3 124 530	-6,9	1 306 243	+43,1	1 620 687	+3,3	6 051 460	+3,7
	May	3 172 899	+1,5	1 265 045	-3,2	1 634 324	+0,8	6 072 268	+0,3
	June	3 556 849	+12,1	982 970	-22,3	1 520 944	-6,9	6 060 763	-0,2
	Jan.-Mar.06	10 366 526		3 041 457		4 655 309		18 063 292	
	Apr.-Jun. 06 2/	9 854 278	-4,9	3 554 258	+16,9	4 775 955	+2,6	18 184 491	+0,7

1/ The percentage change is the change in the seasonally adjusted values of recorded building plans passed by municipalities of the relevant month compared with the seasonally adjusted values of recorded building plans passed by municipalities of the previous month expressed as a percentage.

2/ The percentage change is the change in the seasonally adjusted values of recorded building plans passed by municipalities of the current quarter compared with the seasonally adjusted values of recorded building plans passed by municipalities of the previous quarter expressed as a percentage.

Table 3 - Values and percentage change of recorded building plans passed by larger municipalities at constant 2000 prices by type of building

Year and month		Residential buildings		Non-residential buildings		Additions and alterations		Total	
		R'000	% change 1/	R'000	% change 1/	R'000	% change 1/	R'000	% change 1/
2005	January	1 238 076	+25,9	378 943	+50,9	642 773	+58,9	2 259 792	+37,9
	February	1 708 919	-8,1	436 492	+43,6	772 349	+25,5	2 917 760	+5,0
	March	1 703 471	+14,4	709 372	+28,9	912 711	+36,5	3 325 554	+22,8
	April	2 007 955	+69,2	626 853	+102,7	982 796	+94,7	3 617 604	+80,8
	May	2 646 197	+58,4	572 166	+97,0	1 096 480	+63,4	4 314 843	+63,9
	June	2 302 699	+40,3	702 235	+93,3	1 164 510	+68,1	4 169 444	+54,6
	July	2 553 793	+37,3	799 212	+99,3	1 129 826	+44,6	4 482 831	+47,3
	August	2 711 595	+47,1	970 304	+92,2	1 202 465	+37,8	4 884 364	+51,7
	September	2 943 561	+64,0	624 935	+51,3	1 213 786	+57,9	4 782 282	+60,7
	October	2 704 045	+46,5	714 379	+55,2	1 312 633	+78,9	4 731 057	+55,6
	November	2 646 100	+25,4	906 869	+122,2	1 079 873	+27,1	4 632 842	+37,5
	December	1 895 644	+41,4	435 680	-9,5	928 074	+30,8	3 259 398	+28,8
	Total	27 062 055	+37,9	7 877 440	+66,3	12 438 276	+50,4	47 377 771	+45,2
2006	January	1 660 635	+34,1	499 248	+31,7	690 912	+7,5	2 850 795	+26,2
	February	2 166 642	+26,8	612 937	+40,4	951 272	+23,2	3 730 851	+27,9
	March	2 128 258	+24,9	769 307	+8,4	1 050 238	+15,1	3 947 803	+18,7
	April	1 862 208	-7,3	860 883	+37,3	980 552	-0,2	3 703 643	+2,4
	May	2 213 154	-16,4	796 938	+39,3	1 163 207	+6,1	4 173 299	-3,3
	June 2/	2 374 315	+3,1	620 732	-11,6	1 017 946	-12,6	4 012 993	-3,8

1/ The annual/monthly percentage change is the change in the values of recorded building plans passed by municipalities of the relevant year/month compared with the values of recorded building plans passed by municipalities of the comparable period of the previous year expressed as a percentage.

2/ Preliminary figures.

Table 4 - Seasonally adjusted values and percentage change of recorded building plans passed by larger municipalities at constant 2000 prices by type of building

Year and month		Residential buildings		Non-residential buildings		Additions and alterations		Total	
		R'000	% change 1/	R'000	% change 1/	R'000	% change 1/	R'000	% change 1/
2005	January	1 734 602	+2,7	519 521	-10,2	885 441	+1,3	3 139 564	-0,1
	February	1 816 072	+4,7	530 049	+2,0	893 824	+0,9	3 239 945	+3,2
	March	1 780 023	-2,0	549 704	+3,7	909 460	+1,7	3 239 187	-0,0
	April	2 219 417	+24,7	634 757	+15,5	1 070 759	+17,7	3 924 933	+21,2
	May	2 534 412	+14,2	578 346	-8,9	995 706	-7,0	4 108 464	+4,7
	June	2 226 032	-12,2	696 130	+20,4	1 127 110	+13,2	4 049 272	-1,4
	July	2 243 062	+0,8	692 458	-0,5	1 006 094	-10,7	3 941 614	-2,7
	August	2 456 084	+9,5	788 236	+13,8	1 055 144	+4,9	4 299 464	+9,1
	September	2 623 881	+6,8	630 790	-20,0	1 153 652	+9,3	4 408 323	+2,5
	October	2 412 403	-8,1	680 548	+7,9	1 123 558	-2,6	4 216 509	-4,4
	November	2 333 207	-3,3	1 011 495	+48,6	1 029 245	-8,4	4 373 947	+3,7
	December	2 382 102	+2,1	506 125	-50,0	1 121 991	+9,0	4 010 218	-8,3
2006	January	2 358 990	-1,0	679 728	+34,3	966 009	-13,9	4 004 727	-0,1
	February	2 314 185	-1,9	742 524	+9,2	1 095 175	+13,4	4 151 884	+3,7
	March	2 231 786	-3,6	601 308	-19,0	1 043 108	-4,8	3 876 202	-6,6
	April	2 053 693	-8,0	862 982	+43,5	1 069 400	+2,5	3 986 075	+2,8
	May	2 119 625	+3,2	825 878	-4,3	1 064 754	-0,4	4 010 257	+0,6
	June	2 285 024	+7,8	632 572	-23,4	977 948	-8,2	3 895 544	-2,9
	Jan.-Mar.06	6 904 961		2 023 560		3 104 292		12 032 813	
	Apr.-Jun. 06 2/	6 458 342	-6,5	2 321 432	+14,7	3 112 102	+0,3	11 891 876	-1,2

1/ The percentage change is the change in the seasonally adjusted values of recorded building plans passed by municipalities of the relevant month compared with the seasonally adjusted values of recorded building plans passed by municipalities of the previous month expressed as a percentage.

2/ The percentage change is the change in the seasonally adjusted values of recorded building plans passed by municipalities of the current quarter compared with the seasonally adjusted values of recorded building plans passed by municipalities of the previous quarter expressed as a percentage.

Table 5 - Values and percentage change of buildings reported as completed to larger municipalities at current prices by type of building

Year and month		Residential buildings		Non-residential buildings		Additions and alterations		Total	
		R'000	% change 1/	R'000	% change 1/	R'000	% change 1/	R'000	% change 1/
2005	January	860 576	+39,9	277 811	+37,1	317 446	+19,6	1 455 833	+34,4
	February	1 232 105	+61,0	201 630	-13,1	324 468	+4,5	1 758 203	+34,5
	March	1 361 145	+47,7	323 892	+50,5	319 764	+13,0	2 004 801	+41,2
	April	1 430 720	+52,9	230 168	+42,4	341 581	+52,9	2 002 469	+51,6
	May	1 796 272	+45,2	412 249	+28,1	488 108	+54,3	2 696 629	+43,8
	June	1 689 024	+43,4	395 879	+83,1	532 134	+64,9	2 617 037	+52,4
	July	1 796 294	+24,8	278 448	-18,2	388 913	+6,6	2 463 655	+14,9
	August	2 434 492	+79,6	642 276	+17,9	438 078	+11,9	3 514 846	+53,4
	September	2 465 622	+100,2	398 357	-26,0	486 129	+42,3	3 350 108	+58,7
	October	2 461 380	+90,2	530 888	+39,9	556 708	+47,2	3 548 976	+73,0
	November	3 064 213	+17,3	635 265	+122,5	509 694	+18,8	4 209 172	+26,5
	December	2 323 504	+78,9	252 193	-24,6	520 528	+77,2	3 096 225	+60,7
	Total	22 915 347	+53,9	4 579 056	+21,4	5 223 551	+33,2	32 717 954	+44,9
2006	January	1 231 609	+43,1	314 128	+13,1	397 047	+25,1	1 942 784	+33,4
	February	1 702 746	+38,2	401 158	+99,0	541 390	+66,9	2 645 294	+50,5
	March	2 058 253	+51,2	599 555	+85,1	579 987	+81,4	3 237 795	+61,5
	April	1 782 202	+24,6	270 317	+17,4	466 231	+36,5	2 518 750	+25,8
	May	1 921 188	+7,0	494 600	+20,0	565 071	+15,8	2 980 859	+10,5
	June 2/	2 231 288	+32,1	374 804	-5,3	536 280	+0,8	3 142 372	+20,1

1/ The annual/monthly percentage change is the change in the values of buildings reported as completed to municipalities of the relevant year/month compared with the values of buildings reported as completed to municipalities of the comparable period of the previous year expressed as a percentage.

2/ Preliminary figures.

Table 6 - Seasonally adjusted values and percentage change of buildings reported as completed to larger municipalities at current prices by type of building

Year and month		Residential buildings		Non-residential buildings		Additions and alterations		Total	
		R'000	% change 1/	R'000	% change 1/	R'000	% change 1/	R'000	% change 1/
2005	January	1 249 282	-3,9	356 222	-8,6	364 203	+8,5	1 969 707	-2,7
	February	1 468 606	+17,6	255 108	-28,4	322 579	-11,4	2 046 293	+3,9
	March	1 438 514	-2,0	299 100	+17,2	331 627	+2,8	2 069 241	+1,1
	April	1 613 460	+12,2	314 865	+5,3	401 888	+21,2	2 330 213	+12,6
	May	1 722 077	+6,7	318 294	+1,1	438 919	+9,2	2 479 290	+6,4
	June	1 715 807	-0,4	458 090	+43,9	518 392	+18,1	2 692 289	+8,6
	July	1 672 203	-2,5	287 289	-37,3	362 653	-30,0	2 322 145	-13,7
	August	2 176 125	+30,1	510 872	+77,8	419 718	+15,7	3 106 715	+33,8
	September	2 323 300	+6,8	350 007	-31,5	482 824	+15,0	3 156 131	+1,6
	October	2 224 431	-4,3	497 976	+42,3	498 546	+3,3	3 220 953	+2,1
	November	2 427 284	+9,1	542 647	+9,0	483 244	-3,1	3 453 175	+7,2
	December	2 294 340	-5,5	292 963	-46,0	580 803	+20,2	3 168 106	-8,3
2006	January	1 840 585	-19,8	391 313	+33,6	456 161	-21,5	2 688 059	-15,2
	February	2 026 966	+10,1	494 824	+26,5	538 631	+18,1	3 060 421	+13,9
	March	2 199 818	+8,5	548 918	+10,9	607 067	+12,7	3 355 803	+9,7
	April	2 027 368	-7,8	397 194	-27,6	553 378	-8,8	2 977 940	-11,3
	May	1 845 076	-9,0	395 927	-0,3	515 810	-6,8	2 756 813	-7,4
	June	2 236 853	+21,2	435 654	+10,0	524 656	+1,7	3 197 163	+16,0
	Jan.-Mar.06	6 067 369		1 435 055		1 601 859		9 104 283	
	Apr.-Jun. 06 2/	6 109 297	+0,7	1 228 775	-14,4	1 593 844	-0,5	8 931 916	-1,9

1/ The percentage change is the change in the seasonally adjusted values of buildings reported as completed to municipalities of the relevant month compared with the seasonally adjusted values of buildings reported as completed to municipalities of the previous month expressed as a percentage.

2/ The percentage change is the change in the seasonally adjusted values of recorded building plans passed by municipalities of the current quarter compared with the seasonally adjusted values of recorded building plans passed by municipalities of the previous quarter expressed as a percentage.

Table 7 - Values and percentage change of buildings reported as completed to larger municipalities at constant 2000 prices by type of building

Year and month		Residential buildings		Non-residential buildings		Additions and alterations		Total	
		R'000	% change 1/	R'000	% change 1/	R'000	% change 1/	R'000	% change 1/
2005	January	638 887	+33,8	214 526	+27,7	243 814	+16,7	1 097 227	+28,4
	February	911 434	+53,9	155 579	-18,2	245 995	+1,2	1 313 008	+28,0
	March	1 002 201	+40,5	250 110	+42,5	240 786	+9,2	1 493 097	+34,6
	April	1 045 988	+44,5	177 873	+36,4	255 292	+47,4	1 479 153	+43,9
	May	1 306 299	+36,4	319 078	+23,6	362 367	+47,9	1 987 744	+36,0
	June	1 224 756	+34,4	306 408	+77,3	391 851	+57,1	1 923 015	+44,2
	July	1 291 460	+16,5	213 862	-20,2	285 336	+1,3	1 790 658	+8,0
	August	1 744 944	+68,7	486 942	+14,3	319 532	+5,8	2 551 418	+44,7
	September	1 758 676	+88,3	299 968	-28,5	353 806	+34,1	2 412 450	+49,2
	October	1 740 076	+78,3	396 777	+34,9	402 828	+37,9	2 539 681	+62,6
	November	2 167 630	+8,9	471 615	+113,2	366 686	+10,4	3 005 931	+18,2
	December	1 636 289	+68,4	185 709	-28,1	374 211	+64,6	2 196 209	+50,7
	Total	16 468 640	+44,6	3 478 447	+16,6	3 842 504	+26,4	23 789 591	+36,6
2006	January	856 996	+34,1	230 468	+7,4	281 793	+15,6	1 369 257	+24,8
	February	1 178 828	+29,3	292 602	+88,1	383 421	+55,9	1 854 851	+41,3
	March	1 420 103	+41,7	436 357	+74,5	408 154	+69,5	2 264 614	+51,7
	April	1 223 902	+17,0	195 598	+10,0	325 353	+27,4	1 744 853	+18,0
	May	1 314 228	+0,6	355 827	+11,5	393 778	+8,7	2 063 833	+3,8
	June 2/	1 524 783	+24,5	269 449	-12,1	372 417	-5,0	2 166 649	+12,7

1/ The annual/monthly percentage change is the change in the values of buildings reported as completed to municipalities of the relevant year/month compared with the values of buildings reported as completed to municipalities of the comparable period of the previous year expressed as a percentage.

2/ Preliminary figures.

Table 8 - Seasonally adjusted values and percentage change of buildings reported as completed to larger municipalities at constant 2000 prices by type of building

Year and month		Residential buildings		Non-residential buildings		Additions and alterations		Total	
		R'000	% change 1/	R'000	% change 1/	R'000	% change 1/	R'000	% change 1/
2005	January	948 837	-3,0	275 664	-8,5	278 934	+8,2	1 503 435	-2,2
	February	1 103 761	+16,3	197 118	-28,5	245 104	-12,1	1 545 983	+2,8
	March	1 073 781	-2,7	230 472	+16,9	250 003	+2,0	1 554 256	+0,5
	April	1 191 958	+11,0	242 380	+5,2	301 482	+20,6	1 735 820	+11,7
	May	1 263 319	+6,0	244 597	+0,9	327 099	+8,5	1 835 015	+5,7
	June	1 236 579	-2,1	351 607	+43,7	380 844	+16,4	1 969 030	+7,3
	July	1 159 613	-6,2	220 735	-37,2	267 000	-29,9	1 647 348	-16,3
	August	1 546 234	+33,3	388 984	+76,2	307 237	+15,1	2 242 455	+36,1
	September	1 643 440	+6,3	264 323	-32,0	351 187	+14,3	2 258 950	+0,7
	October	1 573 878	-4,2	373 974	+41,5	360 026	+2,5	2 307 878	+2,2
	November	1 707 859	+8,5	404 607	+8,2	346 464	-3,8	2 458 930	+6,5
	December	1 626 349	-4,8	215 800	-46,7	414 387	+19,6	2 256 536	-8,2
2006	January	1 314 207	-19,2	287 657	+33,3	322 742	-22,1	1 924 606	-14,7
	February	1 428 314	+8,7	361 325	+25,6	382 290	+18,5	2 171 929	+12,9
	March	1 542 964	+8,0	398 533	+10,3	427 895	+11,9	2 369 392	+9,1
	April	1 409 268	-8,7	286 199	-28,2	387 733	-9,4	2 083 200	-12,1
	May	1 272 346	-9,7	282 790	-1,2	360 775	-7,0	1 915 911	-8,0
	June	1 518 811	+19,4	310 426	+9,8	363 321	+0,7	2 192 558	+14,4
	Jan.-Mar.06	4 285 485		1 047 515		1 132 927		6 465 927	
	Apr.-Jun. 06 2/	4 200 425	-2,0	879 415	-16,0	1 111 829	-1,9	6 191 669	-4,2

1/ The percentage change is the change in the seasonally adjusted values of buildings reported as completed to municipalities of the relevant month compared with the seasonally adjusted values of buildings reported as completed to municipalities of the previous month expressed as a percentage.

2/ The percentage change is the change in the seasonally adjusted values of buildings reported as completed to municipalities of the current quarter compared with the seasonally adjusted values of buildings reported as completed to municipalities of the previous quarter expressed as a percentage.

Table 9 - Recorded building plans passed by larger municipalities at current prices by type of building: South Africa

Category of building	Type of building	Measuring unit	Jun. 2005	May 2006	Jun. 2006	Jan. - Jun. 2005	Jan. - Jun. 2006	% Change 1/
1. Residential buildings	1. Dwelling-houses < 80 square metres	Number	5 276	3 306	3 335	16 828	18 668	+10,9
		square metres	219 561	147 496	148 663	740 281	847 543	+14,5
		R'000	334 933	243 802	249 783	1 086 303	1 523 988	+40,3
	2. Dwelling-houses >= 80 square metres	Number	3 149	3 267	3 342	16 635	17 084	+2,7
		square metres	744 216	739 602	762 147	3 911 307	3 895 447	-0,4
		R'000	1 987 765	2 073 045	2 196 791	10 180 748	11 040 103	+8,4
	3. Flats and townhouses	Number	2 304	3 084	2 665	12 485	15 162	+21,4
		square metres	331 434	352 956	353 869	1 839 888	1 978 119	+7,5
		R'000	921 773	1 034 661	1 102 275	4 998 869	5 958 584	+19,2
	4. Other residential buildings 2/	square metres	27 389	18 007	32 892	98 056	92 901	-5,3
		R'000	71 415	50 110	164 580	302 733	329 971	+9,0
	5. Total residential buildings	R'000	3 315 886	3 401 618	3 713 429	16 568 653	18 852 646	+13,8
2. Non-residential buildings	1. Office and banking space	square metres	53 226	70 526	39 706	312 771	402 043	+28,5
		R'000	156 558	180 181	126 258	896 562	1 256 229	+40,1
	2. Shopping space	square metres	114 090	63 639	59 502	544 542	400 337	-26,5
		R'000	378 489	201 429	216 327	1 683 708	1 552 987	-7,8
	3. Industrial and warehouse space	square metres	141 393	250 700	194 842	790 908	1 169 900	+47,9
		R'000	349 793	749 807	529 855	1 877 536	3 063 853	+63,2
	4. Other non-residential buildings 3/	square metres	38 799	31 303	32 893	167 064	163 891	-1,9
		R'000	126 378	93 476	98 385	431 025	444 535	+3,1
	5. Total non-residential buildings	R'000	1 011 218	1 224 893	970 825	4 888 831	6 317 604	+29,2
3. Additions and alterations	1. Dwelling-houses	square metres	525 598	520 496	457 967	2 507 211	2 632 728	+5,0
		R'000	1 349 955	1 298 312	1 172 783	6 145 947	6 851 292	+11,5
	2. Other buildings 4/	square metres	109 690	163 232	131 326	613 831	660 571	+7,6
		R'000	326 940	489 537	419 284	1 805 929	2 046 012	+13,3
	3. Total additions and alterations	R'000	1 676 895	1 787 849	1 592 067	7 951 876	8 897 304	+11,9
4. Recorded plans passed	1. Total at current prices	R'000	6 003 999	6 414 360	6 276 321	29 409 360	34 067 554	+15,8

1/ The percentage change between cumulative figures for 2005 and 2006.

2/ Other residential buildings include institutions for the disabled, boarding houses, hostels and tourism accommodation e.g. hotels, motels, guesthouses, holiday chalets, bed-and-breakfast accommodation and casinos.

3/ Other non-residential space includes churches, sport and recreation clubs, schools, crèches, hospitals and all other non-residential space.

4/ Other buildings include other residential buildings, non-residential buildings and internal alterations.

Table 10 - Recorded building plans passed by larger municipalities at current prices by type of building: Western Cape

Category of building	Type of building	Measuring unit	Jun. 2005	May 2006	Jun. 2006	Jan. - Jun. 2005	Jan. - Jun. 2006	% Change 1/
1. Residential buildings	1. Dwelling-houses < 80 square metres	Number	599	866	285	2 569	3 239	+26,1
		square metres	28 626	38 832	15 410	123 272	144 181	+17,0
		R'000	43 236	64 745	40 868	175 181	246 682	+40,8
	2. Dwelling-houses >= 80 square metres	Number	722	654	655	4 125	3 583	-13,1
		square metres	175 628	142 610	143 078	985 602	802 989	-18,5
		R'000	513 918	435 024	429 938	2 783 492	2 401 598	-13,7
	3. Flats and townhouses	Number	558	668	762	3 825	3 041	-20,5
		square metres	76 193	67 462	73 397	500 102	336 894	-32,6
		R'000	228 293	199 465	235 081	1 372 204	1 053 682	-23,2
	4. Other residential buildings 2/	square metres	24 844	3 294	20 340	48 460	25 420	-47,5
		R'000	66 237	9 543	61 753	141 623	74 858	-47,1
	5. Total residential buildings	R'000	851 684	708 777	767 640	4 472 500	3 776 820	-15,6
2. Non-residential buildings	1. Office and banking space	square metres	27 711	37 854	8 601	65 469	130 238	+98,9
		R'000	84 930	78 276	22 243	200 582	377 621	+88,3
	2. Shopping space	square metres	8 885	1 043	5 929	102 236	43 579	-57,4
		R'000	28 740	2 562	16 734	282 096	166 209	-41,1
	3. Industrial and warehouse space	square metres	31 279	58 820	57 419	264 883	411 610	+55,4
		R'000	83 978	178 034	171 822	653 628	1 092 170	+67,1
	4. Other non-residential buildings 3/	square metres	23 154	19 880	12 957	52 133	53 580	+2,8
		R'000	94 385	66 179	39 647	157 959	165 188	+4,6
	5. Total non-residential buildings	R'000	292 033	325 051	250 446	1 294 265	1 801 188	+39,2
3. Additions and alterations	1. Dwelling-houses	square metres	153 185	151 351	142 413	731 823	756 812	+3,4
		R'000	414 197	406 589	384 995	1 884 594	2 032 149	+7,8
	2. Other buildings 4/	square metres	38 919	63 099	40 686	182 299	242 623	+33,1
		R'000	120 147	181 958	136 368	628 885	772 835	+22,9
	3. Total additions and alterations	R'000	534 344	588 547	521 363	2 513 479	2 804 984	+11,6
4. Recorded plans passed	1. Total at current prices	R'000	1 678 061	1 622 375	1 539 449	8 280 244	8 382 992	+1,2

1/ The percentage change between cumulative figures for 2005 and 2006.

2/ Other residential buildings include institutions for the disabled, boarding houses, hostels and tourism accommodation e.g. hotels, motels, guesthouses, holiday chalets, bed-and-breakfast accommodation and casinos.

3/ Other non-residential space includes churches, sport and recreation clubs, schools, crèches, hospitals and all other non-residential space.

4/ Other buildings include other residential buildings, non-residential buildings and internal alterations.

Table 11 - Recorded building plans passed by larger municipalities at current prices by type of building: Eastern Cape

Category of building	Type of building	Measuring unit	Jun. 2005	May 2006	Jun. 2006	Jan. - Jun. 2005	Jan. - Jun. 2006	% Change 1/
1. Residential buildings	1. Dwelling-houses < 80 square metres	Number	123	350	119	1 139	841	-26,2
		square metres	5 536	15 065	5 966	50 107	38 949	-22,3
		R'000	5 633	13 781	9 187	41 140	48 491	+17,9
	2. Dwelling-houses >= 80 square metres	Number	206	329	267	1 063	1 306	+22,9
		square metres	48 603	72 280	82 490	236 619	307 005	+29,7
		R'000	126 543	170 539	192 500	574 787	718 308	+25,0
	3. Flats and townhouses	Number	76	172	74	292	683	+133,9
		square metres	17 668	19 736	13 808	54 330	88 377	+62,7
		R'000	37 907	44 654	32 496	119 823	195 389	+63,1
	4. Other residential buildings 2/	square metres	1 090	611	260	5 605	4 161	-25,8
		R'000	2 053	1 340	477	11 494	8 820	-23,3
	5. Total residential buildings	R'000	172 136	230 314	234 660	747 244	971 008	+29,9
2. Non-residential buildings	1. Office and banking space	square metres	955	0	620	1 912	2 653	+38,8
		R'000	2 303	0	1 532	4 672	6 452	+38,1
	2. Shopping space	square metres	3 493	765	1 584	12 989	15 593	+20,0
		R'000	7 499	1 630	3 851	22 103	35 920	+62,5
	3. Industrial and warehouse space	square metres	9 033	13 893	7 838	25 948	39 074	+50,6
		R'000	13 243	27 134	17 020	38 156	78 777	+106,5
	4. Other non-residential buildings 3/	square metres	2 117	794	208	3 782	9 266	+145,0
		R'000	3 410	1 675	483	6 804	20 950	+207,9
	5. Total non-residential buildings	R'000	26 455	30 439	22 886	71 735	142 099	+98,1
3. Additions and alterations	1. Dwelling-houses	square metres	43 550	42 133	56 964	197 091	232 251	+17,8
		R'000	80 557	89 740	107 025	392 133	506 385	+29,1
	2. Other buildings 4/	square metres	5 007	7 957	6 488	56 938	36 762	-35,4
		R'000	10 967	38 813	12 987	123 482	100 243	-18,8
	3. Total additions and alterations	R'000	91 524	128 553	120 012	515 615	606 628	+17,7
4. Recorded plans passed	1. Total at current prices	R'000	290 115	389 306	377 558	1 334 594	1 719 735	+28,9

1/ The percentage change between cumulative figures for 2005 and 2006.

2/ Other residential buildings include institutions for the disabled, boarding houses, hostels and tourism accommodation e.g. hotels, motels, guesthouses, holiday chalets, bed-and-breakfast accommodation and casinos.

3/ Other non-residential space includes churches, sport and recreation clubs, schools, crèches, hospitals and all other non-residential space.

4/ Other buildings include other residential buildings, non-residential buildings and internal alterations.

Table 12 - Recorded building plans passed by larger municipalities at current prices by type of building: Northern Cape

Category of building	Type of building	Measuring unit	Jun. 2005	May 2006	Jun. 2006	Jan. - Jun. 2005	Jan. - Jun. 2006	% Change 1/	
1. Residential buildings	1. Dwelling-houses < 80 square metres	Number	163	2	1	394	222	-43,7	
		square metres	6 221	89	52	14 791	10 442	-29,4	
		R'000	3 734	134	104	11 288	12 144	+7,6	
	2. Dwelling-houses >= 80 square metres	Number	50	29	35	177	181	+2,3	
		square metres	9 432	6 191	7 627	32 950	36 648	+11,2	
		R'000	17 329	11 790	16 230	59 501	69 846	+17,4	
	3. Flats and townhouses	Number	15	4	19	95	107	+12,6	
		square metres	1 980	570	2 317	12 840	13 190	+2,7	
		R'000	3 623	1 140	4 126	23 332	25 058	+7,4	
	4. Other residential buildings 2/	square metres	0	557	0	182	672	+269,2	
		R'000	0	1 000	0	956	1 253	+31,1	
		5. Total residential buildings	R'000	24 686	14 064	20 460	95 077	108 301	+13,9
	2. Non-residential buildings	1. Office and banking space	square metres	1 144	0	0	1 226	5 692	+364,3
			R'000	2 288	0	0	2 452	14 000	+471,0
2. Shopping space		square metres	324	128	64	6 720	1 955	-70,9	
		R'000	810	360	140	10 297	3 974	-61,4	
3. Industrial and warehouse space		square metres	788	256	408	2 526	6 514	+157,9	
		R'000	1 576	512	816	4 892	19 578	+300,2	
4. Other non-residential buildings 3/		square metres	0	733	300	1 047	1 387	+32,5	
		R'000	0	1 190	540	2 618	2 355	-10,0	
5. Total non-residential buildings		R'000	4 674	2 062	1 496	20 259	39 907	+97,0	
3. Additions and alterations		1. Dwelling-houses	square metres	5 245	3 656	7 163	26 149	31 749	+21,4
	R'000		10 497	6 993	15 859	51 641	63 339	+22,7	
	2. Other buildings 4/	square metres	1 939	0	1 497	7 918	5 061	-36,1	
		R'000	4 384	407	4 201	19 522	13 283	-32,0	
	3. Total additions and alterations	R'000	14 881	7 400	20 060	71 163	76 622	+7,7	
4. Recorded plans passed	1. Total at current prices	R'000	44 241	23 526	42 016	186 499	224 830	+20,6	

1/ The percentage change between cumulative figures for 2005 and 2006.

2/ Other residential buildings include institutions for the disabled, boarding houses, hostels and tourism accommodation e.g. hotels, motels, guesthouses, holiday chalets, bed-and-breakfast accommodation and casinos.

3/ Other non-residential space includes churches, sport and recreation clubs, schools, crèches, hospitals and all other non-residential space.

4/ Other buildings include other residential buildings, non-residential buildings and internal alterations.

Table 13 - Recorded building plans passed by larger municipalities at current prices by type of building: Free State

Category of building	Type of building	Measuring unit	Jun. 2005	May 2006	Jun. 2006	Jan. - Jun. 2005	Jan. - Jun. 2006	% Change 1/
1. Residential buildings	1. Dwelling-houses < 80 square metres	Number	128	184	165	2 558	1 911	-25,3
		square metres	6 174	7 704	7 103	107 218	79 267	-26,1
		R'000	7 070	6 294	7 852	75 690	69 058	-8,8
	2. Dwelling-houses >= 80 square metres	Number	117	160	90	678	528	-22,1
		square metres	21 840	27 559	15 806	119 336	94 763	-20,6
		R'000	44 130	66 595	37 649	223 156	206 827	-7,3
	3. Flats and townhouses	Number	119	186	80	569	540	-5,1
		square metres	17 351	18 463	9 191	68 155	61 550	-9,7
		R'000	36 502	46 414	22 251	138 056	145 912	+5,7
	4. Other residential buildings 2/	square metres	0	1 574	0	8 167	2 376	-70,9
		R'000	0	4 092	0	35 614	7 092	-80,1
	5. Total residential buildings	R'000	87 702	123 395	67 752	472 516	428 889	-9,2
2. Non-residential buildings	1. Office and banking space	square metres	0	625	0	2 050	9 689	+372,6
		R'000	0	2 250	0	6 046	28 742	+375,4
	2. Shopping space	square metres	3 098	450	9 593	62 699	15 332	-75,5
		R'000	8 800	990	33 556	359 835	47 410	-86,8
	3. Industrial and warehouse space	square metres	2 691	5 441	2 605	10 790	17 653	+63,6
		R'000	4 622	13 630	5 215	16 179	32 529	+101,1
	4. Other non-residential buildings 3/	square metres	1 170	1 950	4 790	10 069	10 019	-0,5
		R'000	2 774	6 320	12 383	29 651	23 570	-20,5
	5. Total non-residential buildings	R'000	16 196	23 190	51 154	411 711	132 251	-67,9
3. Additions and alterations	1. Dwelling-houses	square metres	14 697	17 728	16 656	88 311	80 457	-8,9
		R'000	22 728	35 762	33 819	136 888	148 720	+8,6
	2. Other buildings 4/	square metres	1 054	3 787	6 634	13 257	21 760	+64,1
		R'000	3 506	6 594	46 098	27 882	77 586	+178,3
	3. Total additions and alterations	R'000	26 234	42 356	79 917	164 770	226 306	+37,3
4. Recorded plans passed	1. Total at current prices	R'000	130 132	188 941	198 823	1 048 997	787 446	-24,9

1/ The percentage change between cumulative figures for 2005 and 2006.

2/ Other residential buildings include institutions for the disabled, boarding houses, hostels and tourism accommodation e.g. hotels, motels, guesthouses, holiday chalets, bed-and-breakfast accommodation and casinos.

3/ Other non-residential space includes churches, sport and recreation clubs, schools, crèches, hospitals and all other non-residential space.

4/ Other buildings include other residential buildings, non-residential buildings and internal alterations.

Table 14 - Recorded building plans passed by larger municipalities at current prices by type of building: KwaZulu-Natal

Category of building	Type of building	Measuring unit	Jun. 2005	May 2006	Jun. 2006	Jan. - Jun. 2005	Jan. - Jun. 2006	% Change 1/
1. Residential buildings	1. Dwelling-houses < 80 square metres	Number	105	124	83	1 587	491	-69,1
		square metres	5 852	6 629	4 693	61 564	26 297	-57,3
		R'000	10 762	12 306	10 324	68 410	52 413	-23,4
	2. Dwelling-houses >= 80 square metres	Number	243	280	280	1 199	1 469	+22,5
		square metres	54 559	63 053	70 734	278 397	327 697	+17,7
		R'000	141 319	157 139	213 885	677 734	868 661	+28,2
	3. Flats and townhouses	Number	759	430	396	2 672	1 903	-28,8
		square metres	105 942	47 160	77 831	486 491	335 299	-31,1
		R'000	308 234	128 988	253 309	1 365 364	1 053 148	-22,9
	4. Other residential buildings 2/	square metres	292	565	11 890	2 386	22 567	+845,8
		R'000	496	1 695	101 000	4 746	121 253	+2 454,8
	5. Total residential buildings	R'000	460 811	300 128	578 518	2 116 254	2 095 475	-1,0
2. Non-residential buildings	1. Office and banking space	square metres	8 236	11 624	3 023	33 081	41 346	+25,0
		R'000	20 593	33 151	9 330	73 346	115 495	+57,5
	2. Shopping space	square metres	35 482	3 994	10 336	90 065	39 042	-56,7
		R'000	152 204	11 778	59 831	304 978	128 191	-58,0
	3. Industrial and warehouse space	square metres	40 435	41 209	51 019	122 399	257 469	+110,4
		R'000	82 209	111 377	121 710	214 777	560 481	+161,0
	4. Other non-residential buildings 3/	square metres	4 328	2 299	1 168	22 190	26 927	+21,3
		R'000	10 815	5 206	3 405	47 329	63 396	+33,9
		5. Total non-residential buildings	R'000	265 821	161 512	194 276	640 430	867 563
3. Additions and alterations	1. Dwelling-houses	square metres	58 654	65 388	56 180	284 578	335 948	+18,1
		R'000	122 559	158 677	124 350	591 699	789 339	+33,4
	2. Other buildings 4/	square metres	17 601	42 647	23 871	107 724	129 429	+20,1
		R'000	52 272	130 063	75 527	326 728	412 058	+26,1
	3. Total additions and alterations	R'000	174 831	288 740	199 877	918 427	1 201 397	+30,8
4. Recorded plans passed	1. Total at current prices	R'000	901 463	750 380	972 671	3 675 111	4 164 435	+13,3

1/ The percentage change between cumulative figures for 2005 and 2006.

2/ Other residential buildings include institutions for the disabled, boarding houses, hostels and tourism accommodation e.g. hotels, motels, guesthouses, holiday chalets, bed-and-breakfast accommodation and casinos.

3/ Other non-residential space includes churches, sport and recreation clubs, schools, crèches, hospitals and all other non-residential space.

4/ Other buildings include other residential buildings, non-residential buildings and internal alterations.

Table 15 - Recorded building plans passed by larger municipalities at current prices by type of building: North West

Category of building	Type of building	Measuring unit	Jun. 2005	May 2006	Jun. 2006	Jan. - Jun. 2005	Jan. - Jun. 2006	% Change 1/	
1. Residential buildings	1. Dwelling-houses < 80 square metres	Number	41	78	56	215	388	+80,5	
		square metres	2 390	4 602	3 381	12 896	23 265	+80,4	
		R'000	4 873	5 499	4 679	23 132	30 784	+33,1	
	2. Dwelling-houses >= 80 square metres	Number	191	246	239	1 116	1 155	+3,5	
		square metres	41 376	50 016	51 011	221 782	234 958	+5,9	
		R'000	100 091	123 917	129 682	521 191	589 603	+13,1	
	3. Flats and townhouses	Number	95	31	25	686	405	-41,0	
		square metres	9 624	4 679	1 703	73 814	45 610	-38,2	
		R'000	23 641	12 029	4 014	182 211	120 611	-33,8	
	4. Other residential buildings 2/	square metres	0	6 272	100	4 400	6 372	+44,8	
		R'000	0	15 694	350	30 800	16 044	-47,9	
5. Total residential buildings		R'000	128 605	157 139	138 725	757 334	757 042	-0,0	
2. Non-residential buildings	1. Office and banking space	square metres	587	135	167	6 602	8 468	+28,3	
		R'000	2 315	203	350	13 999	19 062	+36,2	
	2. Shopping space	square metres	2 129	9 322	5 557	7 398	19 676	+166,0	
		R'000	3 706	26 072	17 301	13 547	53 300	+293,4	
	3. Industrial and warehouse space	square metres	689	1 734	9 867	28 867	26 399	-8,5	
		R'000	1 585	2 618	18 883	52 758	59 003	+11,8	
	4. Other non-residential buildings 3/	square metres	241	322	2 015	9 607	8 963	-6,7	
		R'000	456	748	5 889	21 140	26 264	+24,2	
	5. Total non-residential buildings		R'000	8 062	29 641	42 423	101 444	157 629	+55,4
	3. Additions and alterations	1. Dwelling-houses	square metres	14 045	14 168	11 867	74 318	67 773	-8,8
R'000			29 756	28 315	25 799	152 014	136 738	-10,0	
2. Other buildings 4/		square metres	10 539	2 311	2 903	25 148	14 688	-41,6	
		R'000	37 079	5 775	5 752	75 622	40 686	-46,2	
3. Total additions and alterations		R'000	66 835	34 090	31 551	227 636	177 424	-22,1	
4. Recorded plans passed	1. Total at current prices	R'000	203 502	220 870	212 699	1 086 414	1 092 095	+0,5	

1/ The percentage change between cumulative figures for 2005 and 2006.

2/ Other residential buildings include institutions for the disabled, boarding houses, hostels and tourism accommodation e.g. hotels, motels, guesthouses, holiday chalets, bed-and-breakfast accommodation and casinos.

3/ Other non-residential space includes churches, sport and recreation clubs, schools, crèches, hospitals and all other non-residential space.

4/ Other buildings include other residential buildings, non-residential buildings and internal alterations.

Table 16 - Recorded building plans passed by larger municipalities at current prices by type of building: Gauteng

Category of building	Type of building	Measuring unit	Jun. 2005	May 2006	Jun. 2006	Jan. - Jun. 2005	Jan. - Jun. 2006	% Change 1/
1. Residential buildings	1. Dwelling-houses < 80 square metres	Number	4 052	1 627	2 112	7 483	10 642	+42,2
		square metres	161 000	69 810	89 159	326 222	476 743	+46,1
		R'000	252 414	128 741	150 208	627 478	975 268	+55,4
	2. Dwelling-houses >= 80 square metres	Number	1 257	1 252	1 454	6 452	7 148	+10,8
		square metres	318 943	301 658	324 011	1 680 875	1 709 529	+1,7
		R'000	870 352	904 134	1 007 990	4 557 071	5 209 227	+14,3
	3. Flats and townhouses	Number	609	1 339	1 184	3 702	7 340	+98,3
		square metres	94 148	171 992	158 249	570 201	973 270	+70,7
		R'000	264 337	537 987	506 787	1 638 736	3 053 810	+86,4
	4. Other residential buildings 2/	square metres	0	4 842	0	18 290	22 713	+24,2
		R'000	0	16 014	0	44 967	74 754	+66,2
	5. Total residential buildings	R'000	1 387 103	1 586 876	1 664 985	6 868 252	9 313 059	+35,6
2. Non-residential buildings	1. Office and banking space	square metres	14 372	12 236	20 798	181 757	180 149	-0,9
		R'000	43 804	38 058	70 744	531 362	619 275	+16,5
	2. Shopping space	square metres	57 758	43 508	20 703	205 784	184 038	-10,6
		R'000	170 825	144 327	73 347	568 451	583 722	+2,7
	3. Industrial and warehouse space	square metres	46 562	122 138	61 018	287 702	372 863	+29,6
		R'000	139 502	400 745	183 128	788 062	1 131 804	+43,6
	4. Other non-residential buildings 3/	square metres	3 079	3 829	7 318	50 518	41 767	-17,3
		R'000	7 960	8 912	19 438	131 247	106 373	-19,0
	5. Total non-residential buildings	R'000	362 091	592 042	346 657	2 019 122	2 441 174	+20,9
3. Additions and alterations	1. Dwelling-houses	square metres	204 628	176 440	138 248	955 086	944 684	-1,1
		R'000	598 703	508 477	414 396	2 648 043	2 822 199	+6,6
	2. Other buildings 4/	square metres	31 278	39 016	40 515	191 361	173 701	-9,2
		R'000	87 073	115 297	113 325	534 724	534 211	-0,1
	3. Total additions and alterations	R'000	685 776	623 774	527 721	3 182 767	3 356 410	+5,5
4. Recorded plans passed	1. Total at current prices	R'000	2 434 970	2 802 692	2 539 363	12 070 141	15 110 643	+25,2

1/ The percentage change between cumulative figures for 2005 and 2006.

2/ Other residential buildings include institutions for the disabled, boarding houses, hostels and tourism accommodation e.g. hotels, motels, guesthouses, holiday chalets, bed-and-breakfast accommodation and casinos.

3/ Other non-residential space includes churches, sport and recreation clubs, schools, crèches, hospitals and all other non-residential space.

4/ Other buildings include other residential buildings, non-residential buildings and internal alterations.

Table 17 - Recorded building plans passed by larger municipalities at current prices by type of building: Mpumalanga

Category of building	Type of building	Measuring unit	Jun. 2005	May 2006	Jun. 2006	Jan. - Jun. 2005	Jan. - Jun. 2006	% Change 1/
1. Residential buildings	1. Dwelling-houses < 80 square metres	Number	36	39	66	538	315	-41,4
		square metres	1 989	2 656	3 823	27 566	18 898	-31,4
		R'000	3 750	6 957	9 140	40 635	46 448	+14,3
	2. Dwelling-houses >= 80 square metres	Number	268	199	174	1 369	1 049	-23,4
		square metres	56 087	51 243	38 820	272 747	243 017	-10,9
		R'000	131 021	147 037	100 566	601 862	645 216	+7,2
	3. Flats and townhouses	Number	18	225	116	356	895	+151,4
		square metres	3 357	21 065	16 597	44 509	99 441	+123,4
		R'000	8 008	59 960	42 598	76 947	250 053	+225,0
	4. Other residential buildings 2/	square metres	1 163	292	302	10 566	7 673	-27,4
		R'000	2 629	732	1 000	32 533	21 397	-34,2
	5. Total residential buildings	R'000	145 408	214 686	153 304	751 977	963 114	+28,1
2. Non-residential buildings	1. Office and banking space	square metres	25	8 052	6 497	3 091	19 566	+533,0
		R'000	63	28 243	22 059	7 306	65 511	+796,7
	2. Shopping space	square metres	112	1 508	742	42 140	69 640	+65,3
		R'000	280	5 278	2 180	89 223	510 524	+472,2
	3. Industrial and warehouse space	square metres	6 010	4 599	2 127	34 668	26 660	-23,1
		R'000	14 996	10 015	4 908	80 290	62 642	-22,0
	4. Other non-residential buildings 3/	square metres	4 710	1 320	4 137	17 134	11 634	-32,1
		R'000	6 578	2 964	16 600	33 196	35 557	+7,1
	5. Total non-residential buildings	R'000	21 917	46 500	45 747	210 015	674 234	+221,0
3. Additions and alterations	1. Dwelling-houses	square metres	21 223	20 951	19 502	98 253	111 102	+13,1
		R'000	46 617	46 774	44 823	189 229	244 802	+29,4
	2. Other buildings 4/	square metres	2 602	1 348	7 558	20 034	20 595	+2,8
		R'000	10 267	4 071	22 548	50 774	60 338	+18,8
	3. Total additions and alterations	R'000	56 884	50 845	67 371	240 003	305 140	+27,1
4. Recorded plans passed	1. Total at current prices	R'000	224 209	312 031	266 422	1 201 995	1 942 488	+61,6

1/ The percentage change between cumulative figures for 2005 and 2006.

2/ Other residential buildings include institutions for the disabled, boarding houses, hostels and tourism accommodation e.g. hotels, motels, guesthouses, holiday chalets, bed-and-breakfast accommodation and casinos.

3/ Other non-residential space includes churches, sport and recreation clubs, schools, crèches, hospitals and all other non-residential space.

4/ Other buildings include other residential buildings, non-residential buildings and internal alterations.

Table 18 - Recorded building plans passed by larger municipalities at current prices by type of building: Limpopo

Category of building	Type of building	Measuring unit	Jun. 2005	May 2006	Jun. 2006	Jan. - Jun. 2005	Jan. - Jun. 2006	% Change 1/	
1. Residential buildings	1. Dwelling-houses < 80 square metres	Number	29	36	448	345	619	+79,4	
		square metres	1 773	2 109	19 076	16 645	29 501	+77,2	
		R'000	3 461	5 345	17 421	23 349	42 700	+82,9	
	2. Dwelling-houses >= 80 square metres	Number	95	118	148	456	665	+45,8	
		square metres	17 748	24 992	28 570	82 999	138 841	+67,3	
		R'000	43 062	56 870	68 351	181 954	330 817	+81,8	
	3. Flats and townhouses	Number	55	29	9	288	248	-13,9	
		square metres	5 171	1 829	776	29 446	24 488	-16,8	
		R'000	11 228	4 024	1 613	82 196	60 921	-25,9	
	4. Other residential buildings 2/	square metres	0	0	0	0	947	..	
		R'000	0	0	0	0	4 500	..	
	5. Total residential buildings		R'000	57 751	66 239	87 385	287 499	438 938	+52,7
	2. Non-residential buildings	1. Office and banking space	square metres	196	0	0	17 583	4 242	-75,9
R'000			262	0	0	56 797	10 071	-82,3	
2. Shopping space		square metres	2 809	2 921	4 994	14 511	11 482	-20,9	
		R'000	5 625	8 432	9 387	33 178	23 737	-28,5	
3. Industrial and warehouse space		square metres	3 906	2 610	2 541	13 125	11 658	-11,2	
		R'000	8 082	5 742	6 353	28 794	26 869	-6,7	
4. Other non-residential buildings 3/		square metres	0	176	0	584	348	-40,4	
		R'000	0	282	0	1 081	882	-18,4	
5. Total non-residential buildings		R'000	13 969	14 456	15 740	119 850	61 559	-48,6	
3. Additions and alterations		1. Dwelling-houses	square metres	10 371	28 681	8 974	51 602	71 952	+39,4
			R'000	24 341	16 985	21 717	99 706	107 621	+7,9
		2. Other buildings 4/	square metres	751	3 067	1 174	9 152	15 952	+74,3
			R'000	1 245	6 559	2 478	18 310	34 772	+89,9
	3. Total additions and alterations		R'000	25 586	23 544	24 195	118 016	142 393	+20,7
4. Recorded plans passed	1. Total at current prices	R'000	97 306	104 239	127 320	525 365	642 890	+22,4	

1/ The percentage change between cumulative figures for 2005 and 2006.

2/ Other residential buildings include institutions for the disabled, boarding houses, hostels and tourism accommodation e.g. hotels, motels, guesthouses, holiday chalets, bed-and-breakfast accommodation and casinos.

3/ Other non-residential space includes churches, sport and recreation clubs, schools, crèches, hospitals and all other non-residential space.

4/ Other buildings include other residential buildings, non-residential buildings and internal alterations.

Table 19 - Buildings reported as completed to larger municipalities at current prices by type of building: South Africa

Category of building	Type of building	Measuring unit	Jun. 2005	May 2006	Jun. 2006	Jan. - Jun. 2005	Jan. - Jun. 2006	% Change 1/
1. Residential buildings	1. Dwelling-houses < 80 square metres	Number	2 117	1 636	2 240	12 417	10 496	-15,5
		square metres	87 943	73 508	103 323	481 442	461 423	-4,2
		R'000	145 221	121 629	147 138	607 404	783 007	+28,9
	2. Dwelling-houses >= 80 square metres	Number	1 792	1 847	2 001	9 955	10 004	+0,5
		square metres	392 408	421 684	438 839	2 148 565	2 246 479	+4,6
		R'000	942 497	1 148 066	1 202 902	4 979 765	6 015 697	+20,8
	3. Flats and townhouses	Number	1 909	1 587	2 090	8 886	10 459	+17,7
		square metres	231 556	218 059	291 839	1 133 093	1 380 831	+21,9
		R'000	586 414	641 489	862 063	2 723 679	4 035 910	+48,2
	4. Other residential buildings 2/	square metres	5 974	3 544	5 965	24 288	26 081	+7,4
		R'000	14 892	10 004	19 185	58 994	92 672	+57,1
	5. Total residential buildings	R'000	1 689 024	1 921 188	2 231 288	8 369 842	10 927 286	+30,6
2. Non-residential buildings	1. Office and banking space	square metres	24 683	44 213	20 501	185 485	136 807	-26,2
		R'000	68 789	124 481	57 572	464 078	366 083	-21,1
	2. Shopping space	square metres	53 130	49 125	61 248	164 832	368 527	+123,6
		R'000	129 033	158 120	165 583	380 695	1 106 616	+190,7
	3. Industrial and warehouse space	square metres	75 240	66 290	60 914	377 709	340 394	-9,9
		R'000	180 531	167 191	128 047	770 741	827 948	+7,4
	4. Other non-residential buildings 3/	square metres	9 099	18 035	8 647	110 422	64 996	-41,1
		R'000	17 526	44 808	23 602	226 115	153 915	-31,9
	5. Total non-residential buildings	R'000	395 879	494 600	374 804	1 841 629	2 454 562	+33,3
3. Additions and alterations	1. Dwelling-houses	square metres	162 183	178 257	161 783	818 086	970 236	+18,6
		R'000	323 953	424 572	379 656	1 630 816	2 303 858	+41,3
	2. Other buildings 4/	square metres	76 438	47 831	43 512	280 312	273 062	-2,6
		R'000	208 181	140 499	156 624	692 685	782 148	+12,9
	3. Total additions and alterations	R'000	532 134	565 071	536 280	2 323 501	3 086 006	+32,8
4. Recorded buildings completed	1. Total at current prices	R'000	2 617 037	2 980 859	3 142 372	12 534 972	16 467 854	+31,4

1/ The percentage change between cumulative figures for 2005 and 2006.

2/ Other residential buildings include institutions for the disabled, boarding houses, hostels and tourism accommodation e.g. hotels, motels, guesthouses, holiday chalets, bed-and-breakfast accommodation and casinos.

3/ Other non-residential space includes churches, sport and recreation clubs, schools, crèches, hospitals and all other non-residential space.

4/ Other buildings include other residential buildings, non-residential buildings and internal alterations.

Table 20 - Buildings reported as completed to larger municipalities at current prices by type of building: Western Cape

Category of building	Type of building	Measuring unit	Jun. 2005	May 2006	Jun. 2006	Jan. - Jun. 2005	Jan. - Jun. 2006	% Change 1/	
1. Residential buildings	1. Dwelling-houses < 80 square metres	Number	782	378	437	3 524	2 127	-39,6	
		square metres	28 869	15 219	15 795	118 452	83 604	-29,4	
		R'000	35 295	24 066	20 645	122 503	127 963	+4,5	
	2. Dwelling-houses >= 80 square metres	Number	621	567	626	3 325	2 902	-12,7	
		square metres	140 577	132 758	139 853	720 331	665 888	-7,6	
		R'000	298 745	361 375	386 109	1 531 532	1 788 437	+16,8	
	3. Flats and townhouses	Number	440	376	518	2 296	3 106	+35,3	
		square metres	51 917	42 639	60 728	249 860	385 419	+54,3	
		R'000	116 099	110 668	166 221	519 970	1 107 852	+113,1	
	4. Other residential buildings 2/	square metres	0	1 828	2 478	10 826	11 931	+10,2	
		R'000	0	5 729	7 092	26 679	38 586	+44,6	
	5. Total residential buildings		R'000	450 139	501 838	580 067	2 200 684	3 062 838	+39,2
	2. Non-residential buildings	1. Office and banking space	square metres	9 554	8 660	3 174	36 163	30 969	-14,4
R'000			18 031	15 679	7 332	74 330	76 540	+3,0	
2. Shopping space		square metres	9 245	1 888	11 570	28 421	50 281	+76,9	
		R'000	26 578	3 848	24 093	74 565	116 745	+56,6	
3. Industrial and warehouse space		square metres	21 870	25 720	27 984	92 333	162 345	+75,8	
		R'000	35 727	73 046	59 534	161 575	413 413	+155,9	
4. Other non-residential buildings 3/		square metres	6 728	7 507	2 078	38 304	21 333	-44,3	
		R'000	12 653	18 426	6 756	54 737	50 486	-7,8	
5. Total non-residential buildings		R'000	92 989	110 999	97 715	365 207	657 184	+79,9	
3. Additions and alterations		1. Dwelling-houses	square metres	65 240	72 170	65 101	301 621	364 620	+20,9
	R'000		113 964	180 188	153 973	551 808	879 435	+59,4	
	2. Other buildings 4/	square metres	16 017	18 590	18 115	92 861	86 611	-6,7	
		R'000	68 229	57 910	85 225	242 752	285 524	+17,6	
	3. Total additions and alterations		R'000	182 193	238 098	239 198	794 560	1 164 959	+46,6
4. Recorded buildings completed	1. Total at current prices		R'000	725 321	850 935	916 980	3 360 451	4 884 981	+45,4

1/ The percentage change between cumulative figures for 2005 and 2006.

2/ Other residential buildings include institutions for the disabled, boarding houses, hostels and tourism accommodation e.g. hotels, motels, guesthouses, holiday chalets, bed-and-breakfast accommodation and casinos.

3/ Other non-residential space includes churches, sport and recreation clubs, schools, crèches, hospitals and all other non-residential space.

4/ Other buildings include other residential buildings, non-residential buildings and internal alterations.

Table 21 - Buildings reported as completed to larger municipalities at current prices by type of building: Eastern Cape

Category of building	Type of building	Measuring unit	Jun. 2005	May 2006	Jun. 2006	Jan. - Jun. 2005	Jan. - Jun. 2006	% Change 1/	
1. Residential buildings	1. Dwelling-houses < 80 square metres	Number	160	108	108	815	741	-9,1	
		square metres	6 610	5 087	4 582	34 018	32 199	-5,3	
		R'000	7 203	4 982	4 806	36 734	36 720	-0,0	
	2. Dwelling-houses >= 80 square metres	Number	143	61	109	711	565	-20,5	
		square metres	27 257	9 285	17 497	133 190	102 730	-22,9	
		R'000	58 411	20 970	38 885	282 845	221 849	-21,6	
	3. Flats and townhouses	Number	21	112	35	244	396	+62,3	
		square metres	5 742	10 893	3 626	27 985	36 677	+31,1	
		R'000	10 287	22 949	7 724	51 757	76 834	+48,5	
	4. Other residential buildings 2/	square metres	0	0	0	787	120	-84,8	
		R'000	0	0	0	1 362	264	-80,6	
	5. Total residential buildings		R'000	75 901	48 901	51 415	372 698	335 667	-9,9
	2. Non-residential buildings	1. Office and banking space	square metres	0	0	0	0	3 183	..
R'000			0	0	0	0	6 870	..	
2. Shopping space		square metres	1 559	4 683	136	3 549	11 873	+234,5	
		R'000	3 208	11 206	261	7 307	27 313	+273,8	
3. Industrial and warehouse space		square metres	3 471	4 684	289	11 294	20 893	+85,0	
		R'000	5 014	9 797	419	18 393	39 471	+114,6	
4. Other non-residential buildings 3/		square metres	20	401	513	1 516	3 799	+150,6	
		R'000	50	792	610	3 236	8 053	+148,9	
5. Total non-residential buildings		R'000	8 272	21 795	1 290	28 936	81 707	+182,4	
3. Additions and alterations		1. Dwelling-houses	square metres	12 770	7 232	5 960	66 000	58 765	-11,0
			R'000	17 596	14 138	11 810	110 533	112 635	+1,9
		2. Other buildings 4/	square metres	943	2 792	2 522	15 266	38 974	+155,3
			R'000	1 812	4 560	4 823	29 739	71 772	+141,3
	3. Total additions and alterations		R'000	19 408	18 698	16 633	140 272	184 407	+31,5
4. Recorded buildings completed	1. Total at current prices	R'000	103 581	89 394	69 338	541 906	601 781	+11,0	

1/ The percentage change between cumulative figures for 2005 and 2006.

2/ Other residential buildings include institutions for the disabled, boarding houses, hostels and tourism accommodation e.g. hotels, motels, guesthouses, holiday chalets, bed-and-breakfast accommodation and casinos.

3/ Other non-residential space includes churches, sport and recreation clubs, schools, crèches, hospitals and all other non-residential space.

4/ Other buildings include other residential buildings, non-residential buildings and internal alterations.

Table 22 - Buildings reported as completed to larger municipalities at current prices by type of building: Northern Cape

Category of building	Type of building	Measuring unit	Jun. 2005	May 2006	Jun. 2006	Jan. - Jun. 2005	Jan. - Jun. 2006	% Change 1/	
1. Residential buildings	1. Dwelling-houses < 80 square metres	Number	0	1	0	7	16	+128,6	
		square metres	0	65	0	354	732	+106,8	
		R'000	0	130	0	539	1 205	+123,6	
	2. Dwelling-houses >= 80 square metres	Number	8	15	11	132	91	-31,1	
		square metres	1 524	2 125	3 282	25 245	16 014	-36,6	
		R'000	2 614	4 360	6 214	45 804	30 784	-32,8	
	3. Flats and townhouses	Number	16	0	17	77	56	-27,3	
		square metres	2 548	0	1 271	12 339	6 511	-47,2	
		R'000	4 796	0	2 292	22 656	12 099	-46,6	
	4. Other residential buildings 2/	square metres	4 396	155	0	4 396	155	-96,5	
		R'000	8 792	372	0	8 792	372	-95,8	
5. Total residential buildings		R'000	16 202	4 862	8 506	77 791	44 460	-42,8	
2. Non-residential buildings	1. Office and banking space	square metres	0	0	0	0	1 620	..	
		R'000	0	0	0	0	3 240	..	
	2. Shopping space	square metres	0	0	627	322	627	+94,7	
		R'000	0	0	941	415	941	+126,7	
	3. Industrial and warehouse space	square metres	0	459	1 631	599	3 548	+492,3	
		R'000	0	1 000	3 262	1 318	7 178	+444,6	
	4. Other non-residential buildings 3/	square metres	0	0	649	187	749	+300,5	
		R'000	0	0	1 255	225	1 455	+546,7	
	5. Total non-residential buildings	R'000	0	1 000	5 458	1 958	12 814	+554,4	
	3. Additions and alterations	1. Dwelling-houses	square metres	977	1 952	1 536	11 932	9 098	-23,8
			R'000	1 583	3 930	3 099	22 937	18 633	-18,8
2. Other buildings 4/		square metres	574	0	2 861	2 718	8 519	+213,4	
		R'000	1 244	493	6 065	6 356	15 965	+151,2	
3. Total additions and alterations		R'000	2 827	4 423	9 164	29 293	34 598	+18,1	
4. Recorded buildings completed	1. Total at current prices	R'000	19 029	10 285	23 128	109 042	91 872	-15,7	

1/ The percentage change between cumulative figures for 2005 and 2006.

2/ Other residential buildings include institutions for the disabled, boarding houses, hostels and tourism accommodation e.g. hotels, motels, guesthouses, holiday chalets, bed-and-breakfast accommodation and casinos.

3/ Other non-residential space includes churches, sport and recreation clubs, schools, crèches, hospitals and all other non-residential space.

4/ Other buildings include other residential buildings, non-residential buildings and internal alterations.

Table 23 - Buildings reported as completed to larger municipalities at current prices by type of building: Free State

Category of building	Type of building	Measuring unit	Jun. 2005	May 2006	Jun. 2006	Jan. - Jun. 2005	Jan. - Jun. 2006	% Change 1/	
1. Residential buildings	1. Dwelling-houses < 80 square metres	Number	116	2	1	1 250	206	-83,5	
		square metres	5 026	136	69	52 172	9 578	-81,6	
		R'000	3 676	245	124	35 575	10 936	-69,3	
	2. Dwelling-houses >= 80 square metres	Number	29	31	15	233	169	-27,5	
		square metres	5 290	5 654	3 052	39 328	33 569	-14,6	
		R'000	9 338	10 450	6 207	71 256	64 881	-8,9	
	3. Flats and townhouses	Number	199	6	21	614	273	-55,5	
		square metres	20 174	756	3 435	59 924	32 388	-46,0	
		R'000	37 189	1 521	7 415	103 124	65 225	-36,8	
	4. Other residential buildings 2/	square metres	0	0	0	1 240	8 310	+570,2	
		R'000	0	0	0	1 828	35 872	+1 862,4	
		5. Total residential buildings	R'000	50 203	12 216	13 746	211 783	176 914	-16,5
	2. Non-residential buildings	1. Office and banking space	square metres	0	0	0	4 152	992	-76,1
R'000			0	0	0	9 756	2 454	-74,8	
2. Shopping space		square metres	255	2 478	0	4 809	16 170	+236,2	
		R'000	510	6 250	0	7 043	45 696	+548,8	
3. Industrial and warehouse space		square metres	490	717	1 886	8 205	4 155	-49,4	
		R'000	900	2 001	4 968	11 960	8 747	-26,9	
4. Other non-residential buildings 3/		square metres	0	0	466	811	3 530	+335,3	
		R'000	0	0	932	761	7 009	+821,0	
5. Total non-residential buildings		R'000	1 410	8 251	5 900	29 520	63 906	+116,5	
3. Additions and alterations		1. Dwelling-houses	square metres	5 079	5 877	3 998	30 450	31 770	+4,3
			R'000	6 837	9 435	6 998	43 568	51 577	+18,4
		2. Other buildings 4/	square metres	22 444	2 540	376	34 726	8 599	-75,2
			R'000	39 011	8 640	647	56 499	25 587	-54,7
	3. Total additions and alterations	R'000	45 848	18 075	7 645	100 067	77 164	-22,9	
	4. Recorded buildings completed	1. Total at current prices	R'000	97 461	38 542	27 291	341 370	317 984	-6,9

1/ The percentage change between cumulative figures for 2005 and 2006.

2/ Other residential buildings include institutions for the disabled, boarding houses, hostels and tourism accommodation e.g. hotels, motels, guesthouses, holiday chalets, bed-and-breakfast accommodation and casinos.

3/ Other non-residential space includes churches, sport and recreation clubs, schools, crèches, hospitals and all other non-residential space.

4/ Other buildings include other residential buildings, non-residential buildings and internal alterations.

Table 24 - Buildings reported as completed to larger municipalities at current prices by type of building: KwaZulu-Natal

Category of building	Type of building	Measuring unit	Jun. 2005	May 2006	Jun. 2006	Jan. - Jun. 2005	Jan. - Jun. 2006	% Change 1/	
1. Residential buildings	1. Dwelling-houses < 80 square metres	Number	192	63	85	1 976	628	-68,2	
		square metres	7 330	3 542	3 977	70 306	27 640	-60,7	
		R'000	9 457	7 644	7 711	76 990	51 498	-33,1	
	2. Dwelling-houses >= 80 square metres	Number	182	119	126	1 008	703	-30,3	
		square metres	38 200	25 949	28 779	209 505	151 221	-27,8	
		R'000	96 615	68 535	73 336	515 341	383 294	-25,6	
	3. Flats and townhouses	Number	180	227	171	955	1 184	+24,0	
		square metres	25 155	37 345	33 751	125 690	207 266	+64,9	
		R'000	62 162	119 912	105 784	313 900	638 415	+103,4	
	4. Other residential buildings 2/	square metres	1 265	0	0	1 481	36	-97,6	
		R'000	5 000	0	0	5 389	79	-98,5	
		5. Total residential buildings	R'000	173 234	196 091	186 831	911 620	1 073 286	+17,7
2. Non-residential buildings	1. Office and banking space	square metres	979	8 861	11 111	31 078	36 852	+18,6	
		R'000	2 265	22 496	29 857	68 164	84 103	+23,4	
	2. Shopping space	square metres	12 594	2 751	6 014	32 492	23 285	-28,3	
		R'000	21 536	10 354	13 973	72 485	54 083	-25,4	
	3. Industrial and warehouse space	square metres	7 402	15 332	12 336	102 915	50 512	-50,9	
		R'000	19 155	30 242	20 890	155 965	107 837	-30,9	
	4. Other non-residential buildings 3/	square metres	997	7 230	2 513	56 921	20 976	-63,1	
		R'000	600	17 540	8 700	138 259	48 187	-65,1	
		5. Total non-residential buildings	R'000	43 556	80 632	73 420	434 873	294 210	-32,3
	3. Additions and alterations	1. Dwelling-houses	square metres	30 889	19 953	26 271	164 037	131 658	-19,7
			R'000	64 009	44 183	59 140	332 256	298 832	-10,1
		2. Other buildings 4/	square metres	7 060	10 841	4 542	50 057	54 574	+9,0
R'000			22 055	29 553	13 246	140 859	167 986	+19,3	
	3. Total additions and alterations	R'000	86 064	73 736	72 386	473 115	466 818	-1,3	
4. Recorded buildings completed	1. Total at current prices	R'000	302 854	350 459	332 637	1 819 608	1 834 314	+0,8	

1/ The percentage change between cumulative figures for 2005 and 2006.

2/ Other residential buildings include institutions for the disabled, boarding houses, hostels and tourism accommodation e.g. hotels, motels, guesthouses, holiday chalets, bed-and-breakfast accommodation and casinos.

3/ Other non-residential space includes churches, sport and recreation clubs, schools, crèches, hospitals and all other non-residential space.

4/ Other buildings include other residential buildings, non-residential buildings and internal alterations.

Table 25 - Buildings reported as completed to larger municipalities at current prices by type of building: North West

Category of building	Type of building	Measuring unit	Jun. 2005	May 2006	Jun. 2006	Jan. - Jun. 2005	Jan. - Jun. 2006	% Change 1/	
1. Residential buildings	1. Dwelling-houses < 80 square metres	Number	338	67	35	1 465	289	-80,3	
		square metres	10 713	3 509	2 171	48 018	16 024	-66,6	
		R'000	8 963	3 371	2 495	37 131	17 923	-51,7	
	2. Dwelling-houses >= 80 square metres	Number	111	131	141	580	721	+24,3	
		square metres	21 234	26 157	29 326	103 530	136 928	+32,3	
		R'000	58 674	64 737	74 081	240 415	333 324	+38,6	
	3. Flats and townhouses	Number	2	21	50	313	347	+10,9	
		square metres	141	15 099	7 212	37 036	40 572	+9,5	
		R'000	283	50 998	14 137	94 975	104 782	+10,3	
	4. Other residential buildings 2/	square metres	0	0	0	4 149	0	-100,0	
		R'000	0	0	0	12 387	0	-100,0	
		5. Total residential buildings	R'000	67 920	119 106	90 713	384 908	456 029	+18,5
2. Non-residential buildings	1. Office and banking space	square metres	0	0	910	2 593	1 503	-42,0	
		R'000	0	0	2 002	11 339	3 307	-70,8	
	2. Shopping space	square metres	26 783	1 211	291	33 604	31 678	-5,7	
		R'000	69 698	4 230	548	82 888	125 144	+51,0	
	3. Industrial and warehouse space	square metres	1 997	689	0	8 099	2 862	-64,7	
		R'000	2 891	1 103	0	14 117	7 103	-49,7	
	4. Other non-residential buildings 3/	square metres	0	614	1 980	404	3 999	+889,9	
		R'000	0	1 363	4 601	947	9 054	+856,1	
		5. Total non-residential buildings	R'000	72 589	6 696	7 151	109 291	144 608	+32,3
	3. Additions and alterations	1. Dwelling-houses	square metres	2 608	3 574	4 334	21 409	26 011	+21,5
			R'000	5 044	7 945	7 756	38 285	48 185	+25,9
		2. Other buildings 4/	square metres	1 376	5 021	737	12 207	21 460	+75,8
R'000			4 456	13 691	1 270	29 800	50 154	+68,3	
	3. Total additions and alterations	R'000	9 500	21 636	9 026	68 085	98 339	+44,4	
4. Recorded buildings completed	1. Total at current prices	R'000	150 009	147 438	106 890	562 284	698 976	+24,3	

1/ The percentage change between cumulative figures for 2005 and 2006.

2/ Other residential buildings include institutions for the disabled, boarding houses, hostels and tourism accommodation e.g. hotels, motels, guesthouses, holiday chalets, bed-and-breakfast accommodation and casinos.

3/ Other non-residential space includes churches, sport and recreation clubs, schools, crèches, hospitals and all other non-residential space.

4/ Other buildings include other residential buildings, non-residential buildings and internal alterations.

Table 26 - Buildings reported as completed to larger municipalities at current prices by type of building: Gauteng

Category of building	Type of building	Measuring unit	Jun. 2005	May 2006	Jun. 2006	Jan. - Jun. 2005	Jan. - Jun. 2006	% Change 1/	
1. Residential buildings	1. Dwelling-houses < 80 square metres	Number	492	908	1 490	2 818	5 922	+110,1	
		square metres	26 993	39 959	71 745	128 785	264 961	+105,7	
		R'000	75 646	72 200	100 679	260 416	487 667	+87,3	
	2. Dwelling-houses >= 80 square metres	Number	600	764	793	3 416	4 041	+18,3	
		square metres	140 053	189 684	182 703	814 392	989 470	+21,5	
		R'000	378 172	549 699	537 570	2 083 455	2 831 736	+35,9	
	3. Flats and townhouses	Number	1 040	817	1 227	4 238	4 731	+11,6	
		square metres	123 798	108 925	177 668	600 483	635 667	+5,9	
		R'000	352 138	329 435	546 719	1 580 881	1 944 284	+23,0	
	4. Other residential buildings 2/	square metres	0	1 561	3 356	259	4 917	+1 798,5	
		R'000	0	3 903	11 700	725	15 603	+2 052,1	
	5. Total residential buildings	R'000	805 956	955 237	1 196 668	3 925 477	5 279 290	+34,5	
2. Non-residential buildings	1. Office and banking space	square metres	13 462	24 500	5 239	108 964	50 607	-53,6	
		R'000	47 117	80 306	18 234	296 213	161 871	-45,4	
	2. Shopping space	square metres	2 694	20 712	37 757	45 341	192 216	+323,9	
		R'000	7 503	65 206	115 322	111 858	614 986	+449,8	
	3. Industrial and warehouse space	square metres	40 010	17 027	15 722	150 424	78 047	-48,1	
		R'000	116 844	48 102	36 308	401 069	209 453	-47,8	
	4. Other non-residential buildings 3/	square metres	1 354	978	448	9 485	8 716	-8,1	
		R'000	4 223	3 033	748	21 546	24 852	+15,3	
		5. Total non-residential buildings	R'000	175 687	196 647	170 612	830 686	1 011 162	+21,7
	3. Additions and alterations	1. Dwelling-houses	square metres	38 905	52 795	48 865	200 541	311 259	+55,2
			R'000	104 751	143 772	125 965	494 265	830 465	+68,0
2. Other buildings 4/		square metres	27 578	5 391	13 362	69 627	47 580	-31,7	
		R'000	70 345	18 194	42 952	178 229	145 999	-18,1	
		3. Total additions and alterations	R'000	175 096	161 966	168 917	672 494	976 464	+45,2
4. Recorded buildings completed	1. Total at current prices	R'000	1 156 739	1 313 850	1 536 197	5 428 657	7 266 916	+33,9	

1/ The percentage change between cumulative figures for 2005 and 2006.

2/ Other residential buildings include institutions for the disabled, boarding houses, hostels and tourism accommodation e.g. hotels, motels, guesthouses, holiday chalets, bed-and-breakfast accommodation and casinos.

3/ Other non-residential space includes churches, sport and recreation clubs, schools, crèches, hospitals and all other non-residential space.

4/ Other buildings include other residential buildings, non-residential buildings and internal alterations.

Table 27 - Buildings reported as completed to larger municipalities at current prices by type of building: Mpumalanga

Category of building	Type of building	Measuring unit	Jun. 2005	May 2006	Jun. 2006	Jan. - Jun. 2005	Jan. - Jun. 2006	% Change 1/
1. Residential buildings	1. Dwelling-houses < 80 square metres	Number	13	88	60	445	449	+0,9
		square metres	979	4 840	3 442	22 027	19 292	-12,4
		R'000	2 171	6 058	6 699	23 032	31 314	+36,0
	2. Dwelling-houses >= 80 square metres	Number	60	114	126	370	570	+54,1
		square metres	10 323	19 695	23 146	65 705	101 691	+54,8
		R'000	22 775	43 359	53 911	129 835	235 196	+81,1
	3. Flats and townhouses	Number	4	18	15	73	226	+209,6
		square metres	815	1 066	785	8 842	19 064	+115,6
		R'000	928	2 666	2 355	14 785	42 701	+188,8
	4. Other residential buildings 2/	square metres	313	0	131	1 150	612	-46,8
		R'000	1 100	0	393	1 832	1 896	+3,5
		5. Total residential buildings	R'000	26 974	52 083	63 358	169 484	311 107
	2. Non-residential buildings	1. Office and banking space	square metres	0	2 192	67	1 641	8 656
R'000			0	6 000	147	2 488	22 395	+800,1
2. Shopping space		square metres	0	3 018	4 097	14 112	17 996	+27,5
		R'000	0	35 000	8 403	18 318	64 103	+249,9
3. Industrial and warehouse space		square metres	0	1 662	1 066	2 334	16 319	+599,2
		R'000	0	1 900	2 666	3 322	29 749	+795,5
4. Other non-residential buildings 3/		square metres	0	0	0	2 004	589	-70,6
		R'000	0	0	0	4 874	1 165	-76,1
5. Total non-residential buildings		R'000	0	42 900	11 216	29 002	117 412	+304,8
3. Additions and alterations		1. Dwelling-houses	square metres	3 724	13 755	5 063	12 665	31 751
	R'000		6 276	18 587	9 101	19 445	52 527	+170,1
	2. Other buildings 4/	square metres	0	2 656	997	1 238	4 740	+282,9
		R'000	139	7 458	2 396	5 296	13 692	+158,5
	3. Total additions and alterations	R'000	6 415	26 045	11 497	24 741	66 219	+167,6
4. Recorded buildings completed	1. Total at current prices	R'000	33 389	121 028	86 071	223 227	494 738	+121,6

1/ The percentage change between cumulative figures for 2005 and 2006.

2/ Other residential buildings include institutions for the disabled, boarding houses, hostels and tourism accommodation e.g. hotels, motels, guesthouses, holiday chalets, bed-and-breakfast accommodation and casinos.

3/ Other non-residential space includes churches, sport and recreation clubs, schools, crèches, hospitals and all other non-residential space.

4/ Other buildings include other residential buildings, non-residential buildings and internal alterations.

Table 28 - Buildings reported as completed to larger municipalities at current prices by type of building: Limpopo

Category of building	Type of building	Measuring unit	Jun. 2005	May 2006	Jun. 2006	Jan. - Jun. 2005	Jan. - Jun. 2006	% Change 1/
1. Residential buildings	1. Dwelling-houses < 80 square metres	Number	24	21	24	117	118	+0,9
		square metres	1 423	1 151	1 542	7 310	7 393	+1,1
		R'000	2 810	2 933	3 979	14 484	17 781	+22,8
	2. Dwelling-houses >= 80 square metres	Number	38	45	54	180	242	+34,4
		square metres	7 950	10 377	11 201	37 339	48 968	+31,1
		R'000	17 153	24 581	26 589	79 282	126 196	+59,2
	3. Flats and townhouses	Number	7	10	36	76	140	+84,2
		square metres	1 266	1 336	3 363	10 934	17 267	+57,9
		R'000	2 532	3 340	9 416	21 631	43 718	+102,1
	4. Other residential buildings 2/	square metres	0	0	0	0	0	..
		R'000	0	0	0	0	0	..
	5. Total residential buildings	R'000	22 495	30 854	39 984	115 397	187 695	+62,7
2. Non-residential buildings	1. Office and banking space	square metres	688	0	0	894	2 425	+171,3
		R'000	1 376	0	0	1 788	5 303	+196,6
	2. Shopping space	square metres	0	12 384	756	2 182	24 401	+1 018,3
		R'000	0	22 026	2 042	5 816	57 605	+890,5
	3. Industrial and warehouse space	square metres	0	0	0	1 506	1 713	+13,7
		R'000	0	0	0	3 022	4 997	+65,4
	4. Other non-residential buildings 3/	square metres	0	1 305	0	790	1 305	+65,2
		R'000	0	3 654	0	1 530	3 654	+138,8
	5. Total non-residential buildings	R'000	1 376	25 680	2 042	12 156	71 559	+488,7
3. Additions and alterations	1. Dwelling-houses	square metres	1 991	949	655	9 431	5 304	-43,8
		R'000	3 893	2 394	1 814	17 719	11 569	-34,7
	2. Other buildings 4/	square metres	446	0	0	1 612	2 005	+24,4
		R'000	890	0	0	3 155	5 469	+73,3
	3. Total additions and alterations	R'000	4 783	2 394	1 814	20 874	17 038	-18,4
4. Recorded buildings completed	1. Total at current prices	R'000	28 654	58 928	43 840	148 427	276 292	+86,1

1/ The percentage change between cumulative figures for 2005 and 2006.

2/ Other residential buildings include institutions for the disabled, boarding houses, hostels and tourism accommodation e.g. hotels, motels, guesthouses, holiday chalets, bed-and-breakfast accommodation and casinos.

3/ Other non-residential space includes churches, sport and recreation clubs, schools, crèches, hospitals and all other non-residential space.

4/ Other buildings include other residential buildings, non-residential buildings and internal alterations.

Table 29 - Subsidised low-cost dwelling-houses completed or under construction by province

Province	Year	Number 1/	Square metres 2/	Value R'000 2/
Western Cape	2002	19 534	531 116	168 852
	2003	16 926	507 780	247 187
	2004	12 751	382 530	211 424
Eastern Cape	2002	46 700	1 575 675	473 806
	2003	35 005	1 050 150	511 213
	2004	34 923	1 047 690	579 058
Northern Cape	2002	5 189	164 906	68 078
	2003	4 354	130 620	63 586
	2004	3 645	109 350	60 438
Free State	2002	8 617	348 492	154 121
	2003	14 848	445 440	216 840
	2004	16 522	495 660	273 951
KwaZulu-Natal	2002	21 958	831 349	234 041
	2003	31 372	941 160	458 157
	2004	35 968	1 079 040	596 385
North West	2002	21 309	630 115	210 439
	2003	13 809	414 270	201 667
	2004	10 149	304 470	168 281
Gauteng	2002	29 939	991 571	321 943
	2003	42 862	1 285 860	625 957
	2004	33 260	997 800	551 484
Mpumalanga	2002	19 883	660 505	253 931
	2003	21 336	640 080	246 079
	2004	18 808	564 240	311 855
Limpopo	2002	15 382	605 877	183 769
	2003	15 596	467 880	227 764
	2004	16 338	490 140	270 900
South Africa	2002	188 511	6 339 606	2 068 980
	2003	196 108	5 883 240	2 798 450
	2004	182 364	5 470 920	3 023 777

Source: Provincial Governments co-ordinated by the National Department of Housing

1/ As soon as building commences, dwelling-houses are recorded as completed or under construction.

2/ Estimates by the National Department of Housing.

Table 30 - Subsidised low-cost dwelling-houses completed by province

Completions during financial year: 1 April 2005 to 31 March 2006			
Province	Number	Square metres 1/	Value R'000 1/
Western Cape	2 040	61 200	52 877
Eastern Cape	16 874	506 220	437 374
Northern Cape	5 293	158 790	137 195
Free State	17 635	529 050	457 099
KwaZulu-Natal	21 601	648 030	559 898
North West	14 445	433 350	374 414
Gauteng	23 409	702 270	606 761
Mpumalanga	14 389	431 670	372 963
Limpopo	21 973	659 190	569 540
South Africa	137 659	4 129 770	3 568 121

Source: Provincial Governments co-ordinated by the National Department of Housing

1/ Estimates by the National Department of Housing.

Explanatory notes

Introduction	<p>1 Statistics South Africa (Stats SA) conducts a monthly building statistics survey collecting information regarding building plans passed and buildings completed, financed by the private sector, from the largest local government institutions in South Africa. According to these institutions, they are not always notified about low-cost housing projects. Data regarding subsidised low-cost dwelling-houses, supplied by the provincial governments and co-ordinated by the National Department of Housing, are shown in table 29 and table 30 (page 38).</p> <p>2 In order to improve timeliness of the publication, some information for the current month has been estimated due to late submission by respondents. These estimates will be revised in the next statistical release(s) as soon as actual information is available.</p>
Purpose of the survey	<p>3 The monthly survey data are used in monitoring the state of economy and formulation of economic policy. Furthermore, the results are important inputs to estimate the Gross Domestic Product (GDP) and to calculate the Composite Leading Business Cycle Indicator. The data are extensively used by the private sector.</p>
Scope of the survey	<p>4 This survey covers local government institutions conducting activities for the private sector regarding -</p> <ul style="list-style-type: none"> • passing of building plans; and • final inspection of completed buildings.
Classification	<p>5 Building activities is classified in division 5 according to the 1993 edition of the <i>Standard Industrial Classification of all Economic Activities, (SIC) Fifth Edition, Report No. 09-90-02</i>. The <i>SIC</i> is based on the 1990 <i>International Standard Industrial Classification of all Economic Activities (ISIC)</i> with suitable adaptations for local conditions.</p>
Statistical unit	<p>6 The statistical unit for the collection of information is a local government institution. Local government institutions include district municipalities, metropolitan municipalities and local municipalities.</p>
Survey methodology and design	<p>7 Stats SA conducts a monthly survey of metropolitan municipalities and large local municipalities on building plans passed and buildings completed. An annual survey of the remaining municipalities is conducted regarding buildings completed. The monthly survey represents approximately 90 percent of the total value of buildings completed. Information regarding building plans passed and buildings completed for the private sector is collected by mail, fax and telephone.</p>
	<p>According to the municipalities, they are not always notified about low-cost housing projects. Data regarding subsidised low-cost dwelling-houses, supplied by the provincial governments and co-ordinated by the National Department of Housing, are shown in table 29 and table 30 (page 38).</p>
Constant prices	<p>8 The value of building plans passed and buildings completed at constant prices measures building activities in terms of ruling prices in a specific base year, which is currently 2000. The value of building plans passed at constant prices for each month is obtained by deflating the values at current prices with a price index known as the 'lump sum domestic buildings' as published in statistical release P0151: <i>JBCC Contract Price Adjustment Provisions Work Group Indices</i>. In order to be applicable, these indices (base February 1991=100) are converted to the base year 2000=100.</p>
	<p>9 The value of buildings completed at constant prices is obtained by deflating the values at current prices with the price index which is used to calculate building plans passed at constant prices (see paragraph 8). Since the completion of buildings may extend over a few months to a few years, the current value of buildings completed is deflated by price indices which prevailed at the time the plans were passed. Therefore, the duration of the completion of different types of buildings are taken into account in ascertaining the deflators e.g. the value of dwelling-houses completed at constant prices at January 2006 is obtained by deflating the current value of dwelling-houses completed for January 2006 with the price index of a month six months prior to January 2006. Furthermore, the value of other residential buildings, non-residential buildings and additions and alterations at constant prices is obtained by deflating the current values with price indices of 12 months, 18 months and 12 months prior to the relevant month, respectively.</p>

Seasonal adjustment	10	Seasonally adjusted estimates of building plans passed and buildings completed are generated each month, using the X-11 Seasonal Adjustment Program developed by US Bureau of the Census Economic Research and Analyses Division, 1968.
	11	Seasonal adjustment is a means of removing the estimated effects of normal seasonal variation from the series so that the effects of other influences on the series can be more clearly recognised. Seasonal adjustment does not aim to remove irregular or non-seasonal influences which may be present in any particular month. Influences that are volatile or unsystematic can still make it difficult to interpret the movement of the series even after adjustment for seasonal variations. Therefore, the month-to-month movements of seasonally adjusted estimates may not be reliable indicators of trend behaviour.
Trend cycle	12	The trend is a long-term pattern or movement of a time series. The X-11 Seasonal Adjustment Program is used for smoothing seasonally adjusted data.
Revised figures	13	Revised figures are due to late submission of data to Stats SA, or to respondents reporting revisions or corrections to their figures. Figures for the latest month are therefore preliminary. Data are edited at municipal level.
	14	Once a year the annual statistical release P5041.3 is published with the revised and updated information at provincial and municipal level for the previous calendar year. Due to this comprehensive revision, the monthly statistical release P5041.1 reflects provincial revision for 2005 where applicable.
Related publications	15	Users may also wish to refer to the following publications: <ul style="list-style-type: none"> • P5041.3: <i>Selected building statistics of the private sector as reported by local government institutions</i> issued annually. • P9101.2: <i>Actual and expected expenditure on construction by the public sector per statistical region</i> issued annually. • <i>Bulletin of Statistics</i> issued quarterly. • <i>South African Statistics</i> issued annually. • <i>Report 50-11-01</i> issued annually.
Unpublished statistics	16	In some cases Stats SA can also make available statistics which are not published. The statistics can be made available in one or more of the following ways: computer printouts, CD and diskette. Generally a charge is made for providing unpublished statistics.
Rounding-off of figures	17	The figures in the tables have, where necessary, been rounded off to the nearest digit shown. There may, therefore, be slight discrepancies between the sums of the constituent items and the totals shown.
Pre-release policy	18	Stats SA's pre-release policy may be inspected at its website, www.statssa.gov.za
Symbols and abbreviations	19	.. no meaningful percentage change between two specified periods available since either one or both of the totals are nil
	0	nil or figure too small to publish
	*	revised
	Stats SA	Statistics South Africa
	SIC	Standard Industrial Classification of all Economic Activities
	ISIC	International Standard Industrial Classification of all Economic Activities
	JBCC	Joint Building Contracts Committee
	CD	Compact Disc
	US	United States
	SARB	South African Reserve Bank
	DTI	Department of Trade and Industry

Glossary

Additions and alterations	They include extensions to existing buildings as well as internal and external alterations of existing buildings.
Blocks of flats	High-density housing consisting of a number of self-contained dwelling-units, each with at least one living-room together with a kitchen and bathroom, conjoined to similar units in one building.
Dwelling-house	A free-standing, complete structure on a separate stand or a self-contained dwelling-unit, granny flat, on the same premises as an existing residence. Out-buildings and garages are included.
Local government institutions	Include – <ul style="list-style-type: none"> • District municipalities; • Metropolitan municipalities; and • Local municipalities.
Municipality	A generic term describing the “unit” of government in the local spheres responsible for local government in a geographically demarcated area and including district, metropolitan and local municipalities. It is an institution consisting of a municipal council (elected political representatives) and municipal administration (appointed officials).
District municipality	Municipality that has municipal executive and legislative authority in an area that includes more than one municipality, and which is described in section 155(1) of the Constitution as a category C municipality (Refer to Local Government: Municipal Structure Act, 1998 (Act No. 117 of 1998)).
Metropolitan municipality	Municipality that has municipal executive and legislative authority in an area that includes more than one municipality, and which is described in section 155(1) of the Constitution as a category A municipality (Refer to Local Government: Municipal Structure Act, 1998 (Act No. 117 of 1998)).
Local municipality	Municipality that shares municipal executive and legislative authority in its area with a district municipality within whose area it falls, that is described in section 155(1) of the constitution as a category B municipality.
Non-residential buildings	Comprise factories, commercial, financial and other office buildings, as well as other buildings not used for residential purposes, such as churches, halls, clubs, schools and hospitals.
Other residential buildings	Institutions for the disabled, boarding houses, old people’s homes, hostels, hotels, motels, guesthouses, holiday chalets, bed-and-breakfast accommodation, entertainment centres and casinos.
Percentage change	<p>When using monthly actual values, the percentage change is the change in actual values of building activities (building plans passed or buildings completed) of the relevant month compared with the actual values of building activities (building plans passed or buildings completed) of the same month in the previous year expressed as a percentage.</p> <p>When using annual actual values, the percentage change is the change in the actual values of building activities (building plans passed or buildings completed) of the relevant year compared with the actual values of building activities (building plans passed or buildings completed) of the previous year expressed as a percentage.</p> <p>When using seasonally adjusted values, the percentage change is the change in the seasonally adjusted values of building activities (building plans passed or buildings completed) of the relevant month compared with the seasonally adjusted values of building activities (building plans passed or buildings completed) of the previous month expressed as a percentage.</p>
Reference period	One calendar month.
Residential buildings	Comprise dwelling-houses, flats, townhouses and other residential buildings.
Townhouses	Multiple, medium-density dwelling-units and include cluster housing, group housing, simplexes, duplexes, triplexes and other similar dwelling-units which are usually grouped together, with one level of each unit on ground level. This excludes blocks of flats.

General information

Stats SA publishes approximately 300 different statistical releases each year. It is not economically viable to produce them in more than one of South Africa's eleven official languages. Since the releases are used extensively, not only locally but also by international economic and social-scientific communities, Stats SA releases are published in English.

Stats SA has copyright on this publication. Users may apply the information as they wish, provided that they acknowledge Stats SA as the source of the basic data wherever they process, apply, utilise, publish or distribute the data and also that they specify that the relevant application and analysis (where applicable) result from their own processing of the data.

Advance release calendar

An advance release calendar is disseminated on www.statssa.gov.za

Stats SA products

A complete set of Stats SA publications is available at the Stats SA Library and the following libraries:

National Library of South Africa, Pretoria Division
National Library of South Africa, Cape Town Division
Natal Society Library, Pietermaritzburg
Library of Parliament, Cape Town
Bloemfontein Public Library
Johannesburg Public Library
Eastern Cape Library Services, King William's Town
Central Regional Library, Polokwane
Central Reference Library, Nelspruit
Central Reference Collection, Kimberley
Central Reference Library, Mmabatho

Stats SA also provides a subscription service.

Electronic services

A large range of data are available via on-line services, diskette, CD and computer printouts. For more details about our electronic data services, contact (012) 310 8600/8390/8351/4892/8496/8095.

You can visit us on the Internet at: www.statssa.gov.za

Enquiries

Telephone number: (012) 310 8600/8390/8351/4892/8496/8095 (user information services)
(012) 310 8228/310 8007 (technical enquiries)
(012) 310 8161 (orders)
(012) 310 4883/4885/8018 (library)

Fax number: (012) 310 8664 (technical enquiries)

Email: Gretaz@statssa.gov.za (technical enquiries)
info@statssa.gov.za (user information services)
distribution@statssa.gov.za (orders)

Postal address: Private Bag X44, Pretoria, 0001

Produced by Stats SA