

# **Selected building statistics of the private sector derived from data reported by local government institutions**

**June 2004**

**Embargoed until:  
18 August 2004  
13:00**

### Key figures regarding building plans passed as at the end of June 2004

<b>Actual estimates at constant 2000 prices</b>	<b>June 2004</b>	<b>January to June 2004</b>	<b>Percentage change between June 2003 and June 2004</b>	<b>Percentage change between April to June 2003 and April to June 2004</b>	<b>Percentage change between January to June 2003 and January to June 2004</b>
	<b>R million</b>	<b>R million</b>			
Residential buildings					
Dwelling-houses	1 144,3	5 715,4	+ 39,7	+ 37,5	+ 34,0
Flats and townhouses	394,4	2 238,7	+ 32,4	+ 42,1	+ 46,5
Other residential buildings	12,4	180,3	+ 130,2	+ 198,3	+ 70,5
Total	1 551,1	8 134,4	+ 38,2	+ 40,4	+ 37,8
Non-residential buildings	316,0	1 841,0	+ 5,7	+ 4,1	+ 5,9
Additions and alterations	696,8	3 554,8	+ 34,0	+ 10,9	+ 19,0
Total	2 563,9	13 530,2	+ 32,1	+ 26,1	+ 27,3

<b>Seasonally adjusted estimates at constant 2000 prices</b>	<b>June 2004</b>	<b>Percentage change between May and June 2004</b>	<b>Percentage change between January to March 2004 and April to June 2004</b>
	<b>R million</b>		
Residential buildings	1 537,0	+ 0,8	+ 9,8
Non-residential buildings	268,3	+ 4,9	- 20,9
Additions and alterations	691,7	+ 23,3	- 1,2
Total	2 497,0	+ 6,6	+ 2,2

### Key findings regarding seasonally adjusted real value of building plans passed as at the end of June 2004

*The seasonally adjusted real value of building plans passed (at constant 2000 prices) for the second quarter of 2004 increased by 2,2% compared with the first quarter of 2004. Furthermore, the seasonally adjusted real value of building plans passed increased by 6,6% between May 2004 and June 2004.*

The increase of 2,2% between the first quarter of 2004 and the second quarter of 2004 was due to an increase in the seasonally adjusted real value of residential buildings (+9,8%). However, this increase was counteracted by decreases reported for non-residential buildings (-20,9%) and additions and alterations (-1,2%) during the above-mentioned period.

The increase of 6,6% between May 2004 and June 2004 was due to increases in the seasonally adjusted real value of additions and alterations (+23,3%), non-residential buildings (+4,9%) and residential buildings (+0,8%).

## Key findings regarding building plans passed for the first six months of 2004

### Total real value of building plans passed increases

*The total real value of building plans passed (at constant 2000 prices) during the first six months of 2004 increased by 27,3% (+R2 904,0 million) to R13 530,2 million compared with the first six months of 2003. The largest increase in the value of building plans passed was reported for residential buildings (+R2 233,4 million), mainly due to large increases reported for dwelling-houses (+R1 448,7 million) and flats and townhouses (+R710,1 million).*

### Eight of the nine provinces reported increases in the total real value of building plans passed

The largest provincial contributors to the increase of 27,3% (+R2 904,0 million) in the total real value of building plans passed were Western Cape (+14,6 percentage points or R1 543,2 million) and Gauteng (+8,9 percentage points or R944,1 million) (see table A). The largest increase in Western Cape was reported for dwelling-houses (+R654,2 million), followed by flats and townhouses (+R367,5 million), additions and alterations (+R212,7 million) and non-residential buildings (+R210,0 million). Large increases for dwelling-houses were reported by Mossel Bay Municipality (+R252,7 million), City of Cape Town (+R97,4 million), Knysna Municipality (+R71,9 million) and Overstrand Municipality (+R57,6 million). Regarding flats and townhouses in Western Cape, large increases were reported by the selected urban areas of Cape Town (+R112,4 million), Knysna Municipality (+R64,3 million), Oostenberg Administration – Brackenfell Area (+R53,6 million) and Saldanha Bay Municipality (+R49,1 million). In Gauteng, the largest increase for dwelling-houses was reported by City of Johannesburg (+R225,1 million), followed by Ekurhuleni Metropolitan Municipality (+R137,7 million) and Mogale City Municipality (+R60,5 million).

**Table A - Contribution of provinces to the total real value of building plans passed**

Province	Percentage contribution to the total real value of plans passed during January to June 2003	Percentage change between January to June 2003 and January to June 2004	Contribution (percentage points) <sup>1</sup> to the percentage change in the real value of plans passed between January to June 2003 and January to June 2004	Difference in total real value of plans passed between January to June 2003 and January to June 2004  R million
Western Cape	26,6	+ 54,7	+ 14,6	+ 1 543,2
Gauteng	41,7	+ 21,3	+ 8,9	+ 944,1
Eastern Cape	4,6	+ 57,3	+ 2,6	+ 278,6
North West	2,6	+ 51,9	+ 1,3	+ 147,5
Limpopo	1,7	+ 41,7	+ 0,7	+ 73,5
Northern Cape	0,4	+ 96,8	+ 0,4	+ 49,5
Mpumalanga	3,6	+ 6,1	+ 0,2	+ 23,2
Free State	2,5	+ 18,8	+ 0,5	+ 50,7
KwaZulu-Natal	16,3	- 11,9	- 1,9	- 206,3
<b>Total</b>	<b>100,0</b>	<b>+ 27,3</b>	<b>+ 27,3</b>	<b>+2 904,0</b>

<sup>1</sup> The contribution (percentage points) is calculated by multiplying the percentage change of each province between January 2003 to June 2003 and January 2004 to June 2004 (see column 3) with the percentage contribution of the corresponding province to the total real value of plans passed during January 2003 to June 2003 (see column 2) divided by 100.

**Key figures regarding buildings completed as at the end of June 2004**

<b>Actual estimates at constant 2000 prices</b>	<b>June 2004</b>	<b>January to June 2004</b>	<b>Percentage change between June 2003 and June 2004</b>	<b>Percentage change between April to June 2003 and April to June 2004</b>	<b>Percentage change between January to June 2003 and January to June 2004</b>
	<b>R million</b>	<b>R million</b>			
Residential buildings					
Dwelling-houses	595,8	3 020,8	+ 42,9	+ 30,9	+ 22,7
Flats and townhouses	236,6	1 153,1	+ 16,7	+ 75,5	+ 28,1
Other residential buildings	0,0	42,5	..	- 77,1	- 50,8
Total	832,4	4 216,4	+ 34,1	+ 39,5	+ 22,3
Non-residential buildings	160,6	1 080,3	+ 3,3	- 54,7	- 39,7
Additions and alterations	246,7	1 324,4	- 3,5	- 10,2	- 6,1
Total	1 239,7	6 621,1	+ 20,2	- 1,2	- 0,4

<b>Seasonally adjusted estimates at constant 2000 prices</b>	<b>June 2004</b>	<b>Percentage change between May and June 2004</b>	<b>Percentage change between January to March 2004 and April to June 2004</b>
	<b>R million</b>		
Residential buildings	882,3	+ 4,2	+ 26,9
Non-residential buildings	168,8	+ 11,7	- 29,3
Additions and alterations	225,1	+ 13,9	- 7,6
Total	1 276,2	+ 6,7	+ 8,6

.. No meaningful percentage change

**Key findings regarding seasonally adjusted real value of buildings completed as at the end of June 2004**

*The seasonally adjusted real value of buildings completed (at constant 2000 prices) for the second quarter of 2004 increased by 8,6% compared with the first quarter of 2004. Furthermore, the seasonally adjusted real value of buildings completed increased by 6,7% between May 2004 and June 2004.*

The increase of 8,6% between the first quarter of 2004 and the second quarter of 2004 was due to an increase in the seasonally adjusted real value of residential buildings completed (+26,9%). However, this increase was counteracted by decreases reported for non-residential buildings (-29,3%) and additions and alterations (-7,6%).

The increase of 6,7% between May 2004 and June 2004 was due to increases in the seasonally adjusted real value of additions and alterations (+13,9%), non-residential buildings (+11,7%) and residential buildings (+4,2%).

## Key findings regarding buildings completed for the first six months of 2004

### Total real value of buildings completed decreases slightly

*The total real value of buildings completed (at constant 2000 prices) during the first six months of 2004 decreased by 0,4% (-R28,8 million) to R6 621,1 million compared with the first six months of 2003. The largest decrease was reported for non-residential buildings (-R710,5 million), mainly due to the large decrease reported by Gauteng (-R582,9 million). However, this decrease was largely counteracted by increases reported for dwelling-houses (+R558,7 million) and flats and townhouses (+R252,7 million). The largest increase for dwelling-houses completed was reported by Gauteng (+R256,8 million), followed by KwaZulu-Natal (+R91,1 million), Western Cape (+R76,7 million) and Eastern Cape (+R75,5 million). Large increases for flats and townhouses were reported by KwaZulu-Natal (+R139,3 million) and Gauteng (+R86,4 million).*

### Four of the nine provinces reported decreases in the total real value of buildings completed

The largest provincial contributor to the decrease of 0,4% (-R28,8 million) in the total real value of buildings completed was Gauteng (-4,3 percentage points or R283,0 million). However, this decrease was largely counteracted by the increase reported by KwaZulu-Natal (+3,7 percentage points or R243,0 million) (see table B). The largest increase in KwaZulu-Natal was reported for flats and townhouses (+R139,3 million) and dwelling-houses (+R91,1 million). Large increases were reported by the selected urban areas of eThekweni Municipality for flats and townhouses (+R88,4 million) and dwelling-houses (+R70,0 million).

**Table B - Contribution of provinces to the total real value of buildings completed**

Province	Percentage contribution to the total real value of buildings completed during January to June 2003	Percentage change between January to June 2003 and January to June 2004	Contribution (percentage points) <sup>1</sup> to the percentage change in the real value of buildings completed between January to June 2003 and January to June 2004	Difference in total real value of buildings completed between January to June 2003 and January to June 2004 R million
Gauteng	47,8	- 8,9	- 4,3	- 283,0
Western Cape	27,6	- 2,8	- 0,8	- 51,7
Mpumalanga	2,5	- 22,5	- 0,6	- 37,8
Northern Cape	0,7	- 12,5	- 0,1	- 5,8
North West	3,7	+ 6,2	+ 0,2	+ 15,3
Free State	2,6	+ 1,8	+ 0,1	+ 3,1
Limpopo	0,6	+ 74,0	+ 0,5	+ 31,4
Eastern Cape	3,9	+ 21,8	+ 0,9	+ 56,7
KwaZulu-Natal	10,6	+ 34,6	+ 3,7	+ 243,0
<b>Total</b>	<b>100,0</b>	<b>- 0,4</b>	<b>- 0,4</b>	<b>- 28,8</b>

<sup>1</sup> The contribution (percentage points) is calculated by multiplying the percentage change of each province between January 2003 to June 2003 and January 2004 to June 2004 (see column 3) with the percentage contribution of the corresponding province to the total real value of buildings completed during January 2003 to June 2003 (see column 2) divided by 100.

Figure 1 shows the seasonally adjusted and trend series for building plans passed at constant 2000 prices between January 2000 and June 2004. The trend series has been rising since July 2001. The seasonally adjusted value for building plans passed for June 2004 is higher than May 2004, and slightly higher than the peak reached at December 2003.

**Figure 1 – Total real value of building plans passed**

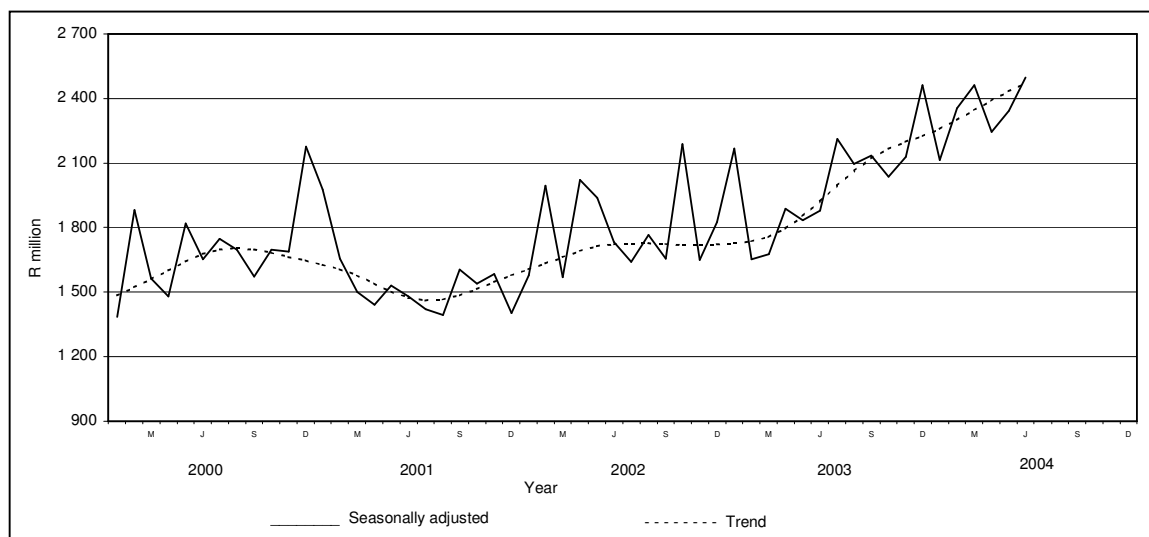
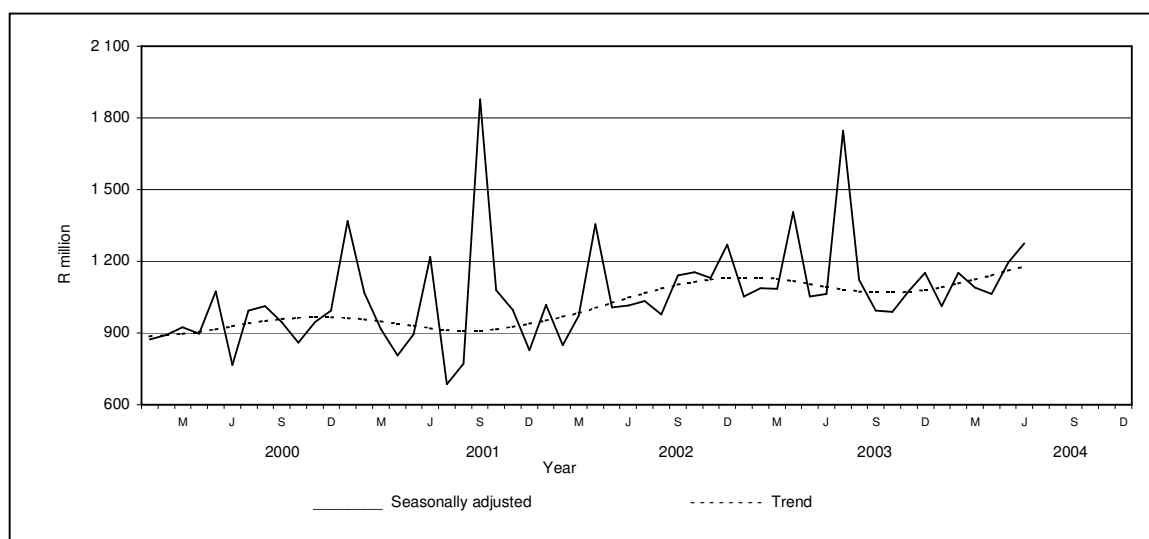


Figure 2 shows the seasonally adjusted and trend series for buildings completed at constant 2000 prices between January 2000 and June 2004. The trend series of buildings completed has been rising slightly since January 2004. The seasonally adjusted value for buildings completed for June 2004 is higher than May 2004, but lower than the peak reached at September 2001.

**Figure 2 – Total real value of buildings completed**



**PP  
PJ Lehohla  
Statistician-General**

<b>Contents</b>	<b>Page</b>
<b>Notes</b> .....	7
<b>Tables</b>	
Table 1 Actual values and percentage change of building plans passed at current prices by type of building .....	8
Table 2 Seasonally adjusted values and percentage change of building plans passed at current prices by type of building .....	9
Table 3 Actual values and percentage change of building plans passed at constant 2000 prices by type of building .....	10
Table 4 Seasonally adjusted values and percentage change of building plans passed at constant 2000 prices by type of building .....	11
Table 5 Actual values and percentage change of buildings completed at current prices according to type of building .....	12
Table 6 Seasonally adjusted values and percentage change of buildings completed at current prices by type of building .....	13
Table 7 Actual values and percentage change of buildings completed at constant 2000 prices by type of building .....	14
Table 8 Seasonally adjusted values and percentage change of buildings completed at constant 2000 prices by type of building .....	15
Table 9 Building plans passed by type of building: Total South Africa.....	16
Table 10 Building plans passed by type of building and province: Western Cape .....	17
Table 11 Building plans passed by type of building and province: Eastern Cape .....	18
Table 12 Building plans passed by type of building and province: Northern Cape .....	19
Table 13 Building plans passed by type of building and province: Free State .....	20
Table 14 Building plans passed by type of building and province: KwaZulu-Natal .....	21
Table 15 Building plans passed by type of building and province: North West .....	22
Table 16 Building plans passed by type of building and province: Gauteng .....	23
Table 17 Building plans passed by type of building and province: Mpumalanga .....	24
Table 18 Building plans passed by type of building and province: Limpopo.....	25
Table 19 Buildings completed by type of building: Total South Africa.....	26
Table 20 Buildings completed by type of building and province: Western Cape .....	27
Table 21 Buildings completed by type of building and province: Eastern Cape .....	28
Table 22 Buildings completed by type of building and province: Northern Cape.....	29
Table 23 Buildings completed by type of building and province: Free State .....	30
Table 24 Buildings completed by type of building and province: KwaZulu-Natal .....	31
Table 25 Buildings completed by type of building and province: North West .....	32
Table 26 Buildings completed by type of building and province: Gauteng .....	33
Table 27 Buildings completed by type of building and province: Mpumalanga .....	34
Table 28 Buildings completed by type of building and province: Limpopo.....	35
Table 29 Building plans passed by type of building and selected urban area: Cape Town .....	36
Table 30 Building plans passed by type of building and selected urban area: Port Elizabeth .....	37
Table 31 Building plans passed by type of building and selected urban area: Durban.....	38
Table 32 Building plans passed by type of building and selected urban area: Witwatersrand .....	39
Table 33 Building plans passed by type of building and selected urban area: Pretoria .....	40
Table 34 Building plans passed by type of building and selected urban area: Bloemfontein .....	41
Table 35 Buildings completed by type of building and selected urban area: Cape Town .....	42
Table 36 Buildings completed by type of building and selected urban area: Port Elizabeth .....	43
Table 37 Buildings completed by type of building and selected urban area: Durban .....	44
Table 38 Buildings completed by type of building and selected urban area: Witwatersrand .....	45
Table 39 Buildings completed by type of building and selected urban area: Pretoria .....	46
Table 40 Buildings completed by type of building and selected urban area: Bloemfontein .....	47
Table 41 Subsidised low-cost dwelling-houses completed or under construction by province .....	48
<b>Explanatory notes</b> .....	49
<b>Local government institutions covered in the monthly survey</b>	
Table C – Classification of towns and cities according to names of local government institutions before and after boundary and name changes by province .....	52
Table D – Classification of selected urban areas according to names of local government institutions before and after boundary and name changes .....	64
<b>Glossary</b> .....	67
<b>General information</b> .....	68

## Notes

### Forthcoming issue

### Issue

### Expected release date

July 2004

15 September 2004

### Name and boundary changes of local government institutions

Due to the Local Government: Municipal Structures Act (Act No. 117 of 1998) and the Local Government Municipal Demarcation Bill (B36B-98), the boundaries and the names of local government institutions have changed. In order to assist the reader to identify the approximate geographical locality and the names of the new local government institutions covered in the monthly sample survey, table C (page 52) and table D (page 64) provide lists of old and new names.

Further information may also be found on the website of the South African Government, [www.gov.za](http://www.gov.za), see section GOVZA: Government System, and the website of the Municipal Demarcation Board, [www.demarcation.org.za](http://www.demarcation.org.za)

### Subsidised low-cost dwelling-houses

The figures obtained from local government institutions do not include the bulk of low-cost dwelling-houses. Data regarding subsidised low-cost dwelling-houses completed or under construction, supplied by the provincial governments and co-ordinated by the National Department of Housing, are shown in table 41 (page 48).

### Response rate

The response rate for June 2004 was 100,0%.



**Table 1 - Actual values and percentage change of building plans passed at current prices by type of building**

Year and month <sup>2/</sup>	Residential buildings		Non-residential buildings		Additions and alterations		Total	
	R'000	Percentage change	R'000	Percentage change	R'000	Percentage change	R'000	Percentage change
2002 Jan.	801 712	+ 10,5	172 295	- 65,2	418 217	+ 18,3	1 392 224	- 11,5
Feb.	1 024 424	+ 22,4	622 559	+ 102,5	459 378	- 3,5	2 106 361	+ 30,0
Mar.	965 121	+ 3,4	495 333	+ 63,0	432 948	- 1,3	1 893 402	+ 13,0
Apr.	1 152 506	+ 55,1	350 647	+ 67,7	533 421	+ 40,5	2 036 574	+ 52,9
May	1 184 437	+ 17,7	438 078	+ 49,3	936 496	+ 86,5	2 559 011	+ 42,0
Jun.	1 100 299	+ 21,6	497 829	+ 65,7	552 535	+ 23,3	2 150 663	+ 30,0
Jul.	1 251 404	+ 40,0	255 959	- 30,2	674 478	+ 54,8	2 181 841	+ 28,6
Aug.	1 164 715	+ 45,7	391 026	+ 58,0	698 946	+ 44,0	2 254 687	+ 43,4
Sep.	1 222 745	+ 26,3	287 969	- 6,0	617 044	+ 16,4	2 127 758	+ 17,9
Oct.	2 030 451	+ 69,7	335 491	+ 79,5	757 380	+ 40,1	3 123 322	+ 62,4
Nov.	1 226 825	+ 24,8	309 532	- 2,9	715 756	+ 19,7	2 252 113	+ 18,6
Dec.	1 103 944	+ 67,8	230 232	+ 63,9	420 030	+ 17,0	1 754 206	+ 51,5
<b>Total</b>	<b>14 228 583</b>	<b>+ 33,1</b>	<b>4 386 950</b>	<b>+ 26,2</b>	<b>7 216 629</b>	<b>+ 30,1</b>	<b>25 832 162</b>	<b>+ 31,1</b>
2003 Jan.	954 012	+ 19,0	685 795	+ 298,0	524 194	+ 25,3	2 164 001	+ 55,4
Feb.	1 216 120	+ 18,7	239 795	- 61,5	531 253	+ 15,6	1 987 168	- 5,7
Mar.	1 405 792	+ 45,7	225 827	- 54,4	604 632	+ 39,7	2 236 251	+ 18,1
Apr.	1 226 932	+ 6,5	284 104	- 19,0	601 549	+ 12,8	2 112 585	+ 3,7
May	1 328 400	+ 12,2	408 130	- 6,8	903 951	- 3,5	2 640 481	+ 3,2
Jun.	1 452 398	+ 32,0	386 847	- 22,3	673 001	+ 21,8	2 512 246	+ 16,8
Jul.	1 788 778	+ 42,9	489 467	+ 91,2	885 159	+ 31,2	3 163 404	+ 45,0
Aug.	1 694 233	+ 45,5	412 947	+ 5,6	725 583	+ 3,8	2 832 763	+ 25,6
Sep.	1 745 376	+ 42,7	474 167	+ 64,7	697 206	+ 13,0	2 916 749	+ 37,1
Oct.	1 788 657	- 11,9	460 222	+ 37,2	775 961	+ 2,5	3 024 840	- 3,2
Nov.	1 859 149	+ 51,5	392 685	+ 26,9	730 309	+ 2,0	2 982 143	+ 32,4
Dec.	1 368 171	+ 23,9	471 920	+ 105,0	615 813	+ 46,6	2 455 904	+ 40,0
<b>Total</b>	<b>17 828 018</b>	<b>+ 25,3</b>	<b>4 931 906</b>	<b>+ 12,4</b>	<b>8 268 611</b>	<b>+ 14,6</b>	<b>31 028 535</b>	<b>+ 20,1</b>
2004 Jan.	1 322 714	+ 38,6	331 977	- 51,6	524 139	+ 0,0	2 178 830	+ 0,7
Feb.	1 692 010	+ 39,1	392 385	+ 63,6	812 817	+ 53,0	2 897 212	+ 45,8
Mar.	1 965 458	+ 39,8	556 522	+ 146,4	884 720	+ 46,3	3 406 700	+ 52,3
Apr.	1 578 145	+ 28,6	362 254	+ 27,5	679 167	+ 12,9	2 619 566	+ 24,0
May	2 188 975	+ 64,8	380 858	- 6,7	896 367	- 0,8	3 466 200	+ 31,3
Jun. <sup>3/</sup>	2 106 408	+ 45,0	429 121	+ 10,9	946 218	+ 40,6	3 481 747	+ 38,6

<sup>1/</sup> The annual percentage change is the change in the actual values of building plans passed of the relevant year compared with the actual values of building plans passed of the previous year expressed as a percentage.

<sup>2/</sup> The monthly percentage change is the change in the actual values of building plans passed of the relevant month compared with the actual values of building plans passed of the same month in the previous year expressed as a percentage.

<sup>3/</sup> Preliminary figures.

**Table 2 - Seasonally adjusted values and percentage change of building plans passed at current prices by type of building**

Year and month <sup>1/</sup>	Residential buildings		Non-residential buildings		Additions and alterations		Total	
	R'000	Percentage change	R'000	Percentage change	R'000	Percentage change	R'000	Percentage change
2002 Jan.	1 013 790	+ 17,9	233 057	+ 26,9	522 457	+ 3,9	1 769 304	+ 14,4
Feb.	1 035 287	+ 2,1	713 432	+ 206,1	517 825	- 0,9	2 266 545	+ 28,1
Mar.	927 310	- 10,4	452 286	- 36,6	418 577	- 19,2	1 798 173	- 20,7
Apr.	1 330 774	+ 43,5	409 557	- 9,4	605 132	+ 44,6	2 345 463	+ 30,4
May	1 094 976	- 17,7	373 199	- 8,9	818 679	+ 35,3	2 286 854	- 2,5
Jun.	1 076 189	- 1,7	434 761	+ 16,5	535 353	- 34,6	2 046 303	- 10,5
Jul.	1 134 281	+ 5,4	216 659	- 50,2	620 883	+ 16,0	1 971 823	- 3,6
Aug.	1 122 420	- 1,0	378 916	+ 74,9	645 516	+ 4,0	2 146 852	+ 8,9
Sep.	1 162 549	+ 3,6	279 410	- 26,3	588 136	- 8,9	2 030 095	- 5,4
Oct.	1 721 378	+ 48,1	335 571	+ 20,1	661 507	+ 12,5	2 718 456	+ 33,9
Nov.	1 145 140	- 33,5	286 235	- 14,7	634 090	- 4,1	2 065 465	- 24,0
Dec.	1 415 603	+ 23,6	295 891	+ 3,4	587 157	- 7,4	2 298 651	+ 11,3
2003 Jan.	1 206 242	- 14,8	911 644	+ 208,1	648 877	+ 10,5	2 766 763	+ 20,4
Feb.	1 236 116	+ 2,5	277 228	- 69,6	592 712	- 8,7	2 106 057	- 23,9
Mar.	1 357 261	+ 9,8	202 784	- 26,9	590 900	- 0,3	2 150 945	+ 2,1
Apr.	1 420 639	+ 4,7	328 005	+ 61,8	680 020	+ 15,1	2 428 663	+ 12,9
May	1 233 673	- 13,2	356 480	+ 8,7	780 719	+ 14,8	2 370 872	- 2,4
Jun.	1 430 391	+ 15,9	332 605	- 6,7	655 201	- 16,1	2 418 197	+ 2,0
Jul.	1 618 502	+ 13,2	418 084	+ 25,7	816 995	+ 24,7	2 853 581	+ 18,0
Aug.	1 642 780	+ 1,5	399 187	- 4,5	666 554	- 18,4	2 708 520	- 5,1
Sep.	1 647 419	+ 0,3	451 816	+ 13,2	669 130	+ 0,4	2 768 365	+ 2,2
Oct.	1 500 709	- 8,9	465 951	+ 3,1	674 450	+ 0,8	2 641 110	- 4,6
Nov.	1 742 561	+ 16,1	370 002	- 20,6	652 002	- 3,3	2 764 566	+ 4,7
Dec.	1 740 631	- 0,1	604 515	+ 63,4	860 825	+ 32,0	3 205 971	+ 16,0
2004 Jan.	1 667 122	- 4,2	439 332	- 27,3	649 300	- 24,6	2 755 754	- 14,0
Feb.	1 734 855	+ 4,1	454 816	+ 3,5	905 757	+ 39,5	3 095 428	+ 12,3
Mar.	1 899 663	+ 9,5	493 839	+ 8,6	870 193	- 3,9	3 263 694	+ 5,4
Apr.	1 819 972	- 4,2	409 940	- 17,0	763 419	- 12,3	2 993 331	- 8,3
May	2 047 510	+ 12,5	342 444	- 16,5	767 102	+ 0,5	3 157 056	+ 5,5
Jun.	2 083 619	+ 1,8	362 506	+ 5,9	929 170	+ 21,1	3 375 295	+ 6,9

<sup>1/</sup> The percentage change is the change in the seasonally adjusted values of building plans passed of the relevant month compared with the seasonally adjusted values of building plans passed of the previous month expressed as a percentage.

**Table 3 - Actual values and percentage change of building plans passed at constant 2000 prices by type of building**

Year <sup>1/</sup> and month <sup>2/</sup>	Residential buildings		Non-residential buildings		Additions and alterations		Total	
	R'000	Percentage change	R'000	Percentage change	R'000	Percentage change	R'000	Percentage change
2002 Jan.	717 095	+ 3,0	154 110	- 67,5	374 076	+ 10,3	1 245 281	- 17,5
Feb.	898 618	+ 12,4	546 104	+ 86,0	402 963	- 11,4	1 847 685	+ 19,4
Mar.	842 900	- 5,0	432 605	+ 49,8	378 121	- 9,3	1 653 626	+ 3,8
Apr.	990 977	+ 41,4	301 502	+ 52,8	458 660	+ 28,1	1 751 139	+ 39,4
May	1 004 612	+ 6,4	371 567	+ 35,0	794 314	+ 68,7	2 170 493	+ 28,4
Jun.	927 739	+ 9,5	419 755	+ 49,2	465 881	+ 11,0	1 813 375	+ 17,1
Jul.	1 037 648	+ 24,7	212 238	- 37,9	559 269	+ 37,9	1 809 155	+ 14,5
Aug.	954 684	+ 22,5	320 513	+ 39,5	572 907	+ 27,2	1 848 104	+ 26,6
Sep.	997 345	+ 11,1	234 885	- 17,2	503 299	+ 2,5	1 735 529	+ 3,8
Oct.	1 638 782	+ 48,1	270 776	+ 56,6	611 283	+ 22,3	2 520 841	+ 41,6
Nov.	984 611	+ 8,9	248 421	- 15,3	574 443	+ 4,4	1 807 475	+ 3,4
Dec.	882 449	+ 47,1	184 038	+ 43,7	335 755	+ 2,6	1 402 242	+ 32,9
<b>Total</b>	<b>11 877 460</b>	<b>+ 18,8</b>	<b>3 696 514</b>	<b>+ 13,4</b>	<b>6 030 971</b>	<b>+ 16,3</b>	<b>21 604 945</b>	<b>+ 17,2</b>
2003 Jan.	751 191	+ 4,8	539 996	+ 250,4	412 751	+ 10,3	1 703 938	+ 36,8
Feb.	951 581	+ 5,9	187 633	- 65,6	415 691	+ 3,2	1 554 905	- 15,8
Mar.	1 095 707	+ 30,0	176 015	- 59,3	471 264	+ 24,6	1 742 986	+ 5,4
Apr.	951 110	- 4,0	220 236	- 27,0	466 317	+ 1,7	1 637 663	- 6,5
May	1 028 970	+ 2,4	316 135	- 14,9	700 194	- 11,8	2 045 299	- 5,8
Jun.	1 122 410	+ 21,0	298 954	- 28,8	520 094	+ 11,6	1 941 458	+ 7,1
Jul.	1 381 296	+ 33,1	377 967	+ 78,1	683 520	+ 22,2	2 442 783	+ 35,0
Aug.	1 307 279	+ 36,9	318 632	- 0,6	559 863	- 2,3	2 185 774	+ 18,3
Sep.	1 347 781	+ 35,1	366 152	+ 55,9	538 383	+ 7,0	2 252 316	+ 29,8
Oct.	1 382 270	- 15,7	355 658	+ 31,3	599 661	- 1,9	2 337 589	- 7,3
Nov.	1 438 970	+ 46,1	303 936	+ 22,3	565 255	- 1,6	2 308 161	+ 27,7
Dec.	1 058 956	+ 20,0	365 263	+ 98,5	476 635	+ 42,0	1 900 854	+ 35,6
<b>Total</b>	<b>13 817 521</b>	<b>+ 16,3</b>	<b>3 826 577</b>	<b>+ 3,5</b>	<b>6 409 628</b>	<b>+ 6,3</b>	<b>24 053 726</b>	<b>+ 11,3</b>
2004 Jan.	1 015 909	+ 35,2	254 975	- 52,8	402 565	- 2,5	1 673 449	- 1,8
Feb.	1 282 798	+ 34,8	297 487	+ 58,5	616 237	+ 48,2	2 196 522	+ 41,3
Mar.	1 480 014	+ 35,1	419 068	+ 138,1	666 205	+ 41,4	2 565 287	+ 47,2
Apr.	1 179 481	+ 24,0	270 743	+ 22,9	507 599	+ 8,9	1 957 823	+ 19,5
May	1 625 074	+ 57,9	282 745	- 10,6	665 454	- 5,0	2 573 273	+ 25,8
Jun.	1 551 110	+ 38,2	315 995	+ 5,7	696 773	+ 34,0	2 563 878	+ 32,1

<sup>1/</sup> The annual percentage change is the change in the actual values of building plans passed of the relevant year compared with the actual values of building plans passed of the previous year expressed as a percentage.

<sup>2/</sup> The monthly percentage change is the change in the actual values of building plans passed of the relevant month compared with the actual values of building plans passed of the same month in the previous year expressed as a percentage.

**Table 4 - Seasonally adjusted values and percentage change of building plans passed at constant 2000 prices by type of building**

Year and month <sup>1/</sup>	Residential buildings		Non-residential buildings		Additions and alterations		Total	
	R'000	Percentage change	R'000	Percentage change	R'000	Percentage change	R'000	Percentage change
2002 Jan.	905 411	+ 16,1	205 647	+ 23,9	467 658	+ 8,1	1 578 715	+ 12,6
Feb.	909 975	+ 0,5	628 516	+ 205,6	455 636	- 2,6	1 994 127	+ 26,3
Mar.	809 441	- 11,0	394 717	- 37,2	365 760	- 19,7	1 569 918	- 21,3
Apr.	1 145 619	+ 41,5	353 122	- 10,5	522 120	+ 42,7	2 020 861	+ 28,7
May	932 011	- 18,6	318 362	- 9,8	687 845	+ 31,7	1 938 217	- 4,1
Jun.	908 420	- 2,5	367 963	+ 15,6	454 813	- 33,9	1 731 195	- 10,7
Jul.	942 955	+ 3,8	180 036	- 51,1	517 392	+ 13,8	1 640 383	- 5,2
Aug.	922 306	- 2,2	311 995	+ 73,3	530 427	+ 2,5	1 764 729	+ 7,6
Sep.	947 441	+ 2,7	227 872	- 27,0	479 044	- 9,7	1 654 357	- 6,3
Oct.	1 386 398	+ 46,3	270 607	+ 18,8	532 321	+ 11,1	2 189 326	+ 32,3
Nov.	914 904	- 34,0	228 419	- 15,6	506 564	- 4,8	1 649 888	- 24,6
Dec.	1 124 518	+ 22,9	234 258	+ 2,6	466 398	- 7,9	1 825 174	+ 10,6
2003 Jan.	948 294	- 15,7	708 199	+ 202,3	512 389	+ 9,9	2 168 882	+ 18,8
Feb.	969 786	+ 2,3	217 823	- 69,2	465 761	- 9,1	1 653 370	- 23,8
Mar.	1 058 308	+ 9,1	158 021	- 27,5	461 338	- 0,9	1 677 667	+ 1,5
Apr.	1 103 332	+ 4,3	255 208	+ 61,5	529 522	+ 14,8	1 888 062	+ 12,5
May	958 459	- 13,1	277 687	+ 8,8	597 035	+ 12,7	1 833 180	- 2,9
Jun.	1 107 323	+ 15,5	258 255	- 7,0	511 314	- 14,4	1 876 892	+ 2,4
Jul.	1 253 198	+ 13,2	323 581	+ 25,3	634 262	+ 24,0	2 211 041	+ 17,8
Aug.	1 270 891	+ 1,4	309 544	- 4,3	515 652	- 18,7	2 096 087	- 5,2
Sep.	1 270 903	+ 0,0	348 810	+ 12,7	515 854	+ 0,0	2 135 566	+ 1,9
Oct.	1 156 887	- 9,0	359 613	+ 3,1	519 408	+ 0,7	2 035 908	- 4,7
Nov.	1 341 675	+ 16,0	284 548	- 20,9	501 873	- 3,4	2 128 097	+ 4,5
Dec.	1 337 854	- 0,3	463 045	+ 62,7	661 483	+ 31,8	2 462 382	+ 15,7
2004 Jan.	1 279 002	- 4,4	332 912	- 28,1	500 705	- 24,3	2 112 619	- 14,2
Feb.	1 319 154	+ 3,1	346 163	+ 4,0	690 322	+ 37,9	2 355 638	+ 11,5
Mar.	1 431 678	+ 8,5	371 922	+ 7,4	656 883	- 4,8	2 460 483	+ 4,5
Apr.	1 363 136	- 4,8	307 664	- 17,3	573 516	- 12,7	2 244 316	- 8,8
May	1 524 691	+ 11,9	255 682	- 16,9	561 174	- 2,2	2 341 546	+ 4,3
Jun.	1 537 059	+ 0,8	268 286	+ 4,9	691 704	+ 23,3	2 497 049	+ 6,6

<sup>1/</sup> The percentage change is the change in the seasonally adjusted values of building plans passed of the relevant month compared with the seasonally adjusted values of building plans passed of the previous month expressed as a percentage.

**Table 5 - Actual values and percentage change of buildings completed at current prices by type of building**

Year and month <sup>2/</sup>	Residential buildings		Non-residential buildings		Additions and alterations		Total	
	R'000	Percentage change	R'000	Percentage change	R'000	Percentage change	R'000	Percentage change
2002 Jan.	583 954	- 9,8	136 570	- 47,4	176 643	- 12,7	897 167	- 19,1
Feb.	473 568	+ 9,9	137 817	- 51,8	202 239	- 17,9	813 624	- 15,5
Mar.	708 471	+ 44,3	171 227	+ 3,1	176 053	- 38,7	1 055 751	+ 11,8
Apr.	653 414	+ 77,8	245 773	+ 44,4	390 160	+ 110,0	1 289 347	+ 78,2
May	690 242	+ 53,3	300 836	- 5,5	305 996	+ 3,3	1 297 074	+ 21,8
Jun.	585 723	+ 8,4	207 030	- 38,9	251 004	- 14,5	1 043 757	- 11,0
Jul.	681 657	+ 71,7	273 139	+ 124,6	242 028	+ 3,7	1 196 824	+ 59,1
Aug.	740 221	+ 71,1	96 328	- 18,0	226 414	+ 4,9	1 062 963	+ 38,8
Sep.	820 510	+ 78,7	228 610	- 83,9	248 379	+ 47,0	1 297 499	- 36,6
Oct.	938 075	+ 41,8	178 099	- 36,8	293 977	+ 25,5	1 410 151	+ 19,7
Nov.	847 433	+ 38,8	294 710	+ 39,6	237 143	- 17,2	1 379 286	+ 24,5
Dec.	702 892	+ 51,2	366 760	+ 111,3	221 292	+ 76,9	1 290 944	+ 69,1
<b>Total</b>	<b>8 426 160</b>	<b>+ 41,6</b>	<b>2 636 899</b>	<b>- 31,7</b>	<b>2 971 328</b>	<b>+ 7,1</b>	<b>14 034 387</b>	<b>+ 11,5</b>
2003 Jan.	623 401	+ 6,8	154 538	+ 13,2	237 996	+ 34,7	1 015 935	+ 13,2
Feb.	696 496	+ 47,1	158 143	+ 14,7	288 062	+ 42,4	1 142 701	+ 40,4
Mar.	713 231	+ 0,7	316 020	+ 84,6	242 725	+ 37,9	1 271 976	+ 20,5
Apr.	688 059	+ 5,3	534 865	+ 117,6	248 988	- 36,2	1 471 912	+ 14,2
May	688 470	- 0,3	605 218	+ 101,2	310 203	+ 1,4	1 603 891	+ 23,7
Jun.	763 026	+ 30,3	170 636	- 17,6	303 112	+ 20,8	1 236 774	+ 18,5
Jul.	1 621 012	+ 137,8	191 080	- 30,0	335 931	+ 38,8	2 148 023	+ 79,5
Aug.	883 426	+ 19,3	151 866	+ 57,7	294 759	+ 30,2	1 330 051	+ 25,1
Sep.	802 515	- 2,2	179 081	- 21,7	271 100	+ 9,1	1 252 696	- 3,5
Oct.	866 838	- 7,6	189 368	+ 6,3	299 330	+ 1,8	1 355 536	- 3,9
Nov.	978 031	+ 15,4	222 723	- 24,4	287 138	+ 21,1	1 487 892	+ 7,9
Dec.	873 835	+ 24,3	182 358	- 50,3	243 158	+ 9,9	1 299 351	+ 0,7
<b>Total</b>	<b>10 198 340</b>	<b>+ 21,0</b>	<b>3 055 896</b>	<b>+ 15,9</b>	<b>3 362 502</b>	<b>+ 13,2</b>	<b>16 616 738</b>	<b>+ 18,4</b>
2004 Jan.	614 622	- 1,4	201 839	+ 30,6	262 328	+ 10,2	1 078 789	+ 6,2
Feb.	766 356	+ 10,0	231 958	+ 46,7	307 001	+ 6,6	1 305 315	+ 14,2
Mar.	922 238	+ 29,3	215 230	- 31,9	281 273	+ 15,9	1 418 741	+ 11,5
Apr.	851 281	+ 23,7	160 270	- 70,0	221 997	- 10,8	1 233 548	- 16,2
May	1 216 229	+ 76,7	320 550	- 47,0	309 243	- 0,3	1 846 022	+ 15,1
Jun. <sup>3/</sup>	1 075 887	+ 41,0	200 916	+ 17,7	319 287	+ 5,3	1 596 090	+ 29,1

<sup>1/</sup> The annual percentage change is the change in the actual values of buildings completed of the relevant year compared with the actual values of buildings completed of the previous year expressed as a percentage.

<sup>2/</sup> The monthly percentage change is the change in the actual values of buildings completed of the relevant month compared with the actual values of buildings completed of the same month in the previous year expressed as a percentage.

<sup>3/</sup> Preliminary figures.

**Table 6 - Seasonally adjusted values and percentage change of buildings completed at current prices by type of building**

Year and month <sup>1/</sup>	Residential buildings		Non-residential buildings		Additions and alterations		Total	
	R'000	Percentage change	R'000	Percentage change	R'000	Percentage change	R'000	Percentage change
2002 Jan.	690 273	+ 34,1	177 579	+ 2,7	199 774	+ 15,6	1 067 626	+ 24,0
Feb.	534 696	- 22,5	165 271	- 6,9	192 390	- 3,7	892 356	- 16,4
Mar.	679 162	+ 27,0	187 729	+ 13,6	160 150	- 16,8	1 027 040	+ 15,1
Apr.	723 564	+ 6,5	270 238	+ 44,0	444 540	+ 177,6	1 438 342	+ 40,0
May	633 126	- 12,5	188 876	- 30,1	252 256	- 43,3	1 074 258	- 25,3
Jun.	630 632	- 0,4	217 443	+ 15,1	243 985	- 3,3	1 092 060	+ 1,7
Jul.	699 221	+ 10,9	205 315	- 5,6	222 244	- 8,9	1 126 780	+ 3,2
Aug.	717 845	+ 2,7	129 199	- 37,1	226 723	+ 2,0	1 073 767	- 4,7
Sep.	771 302	+ 7,4	215 164	+ 66,5	269 688	+ 19,0	1 256 154	+ 17,0
Oct.	818 607	+ 6,1	199 998	- 7,0	266 853	- 1,1	1 285 458	+ 2,3
Nov.	720 328	- 12,0	306 759	+ 53,4	235 008	- 11,9	1 262 096	- 1,8
Dec.	768 333	+ 6,7	360 875	+ 17,6	298 025	+ 26,8	1 427 233	+ 13,1
2003 Jan.	728 494	- 5,2	202 800	- 43,8	268 875	- 9,8	1 200 169	- 15,9
Feb.	797 396	+ 9,5	190 739	- 5,9	275 766	+ 2,6	1 263 901	+ 5,3
Mar.	689 654	- 13,5	339 855	+ 78,2	227 244	- 17,6	1 256 753	- 0,6
Apr.	760 934	+ 10,3	580 087	+ 70,7	286 487	+ 26,1	1 627 508	+ 29,5
May	621 430	- 18,3	363 625	- 37,3	254 127	- 11,3	1 239 182	- 23,9
Jun.	816 486	+ 31,4	180 337	- 50,4	282 591	+ 11,2	1 279 413	+ 3,2
Jul.	1 684 122	+ 106,3	147 018	- 18,5	310 758	+ 10,0	2 141 898	+ 67,4
Aug.	862 027	- 48,8	215 849	+ 46,8	298 472	- 4,0	1 376 348	- 35,7
Sep.	766 019	- 11,1	168 075	- 22,1	296 569	- 0,6	1 230 663	- 10,6
Oct.	747 080	- 2,5	213 583	+ 27,1	270 490	- 8,8	1 231 153	+ 0,0
Nov.	831 828	+ 11,3	229 092	+ 7,3	285 718	+ 5,6	1 346 638	+ 9,4
Dec.	947 535	+ 13,9	178 685	- 22,0	322 893	+ 13,0	1 449 113	+ 7,6
2004 Jan.	712 615	- 24,8	272 382	+ 52,4	294 732	- 8,7	1 279 729	- 11,7
Feb.	884 284	+ 24,1	287 384	+ 5,5	293 685	- 0,4	1 465 354	+ 14,5
Mar.	898 265	+ 1,6	227 210	- 20,9	269 653	- 8,2	1 395 129	- 4,8
Apr.	939 358	+ 4,6	170 918	- 24,8	255 147	- 5,4	1 365 424	- 2,1
May	1 098 728	+ 17,0	188 839	+ 10,5	254 568	- 0,2	1 542 136	+ 12,9
Jun.	1 146 497	+ 4,3	212 290	+ 12,4	291 416	+ 14,5	1 650 203	+ 7,0

<sup>1/</sup> The percentage change is the change in the seasonally adjusted values of buildings completed of the relevant month compared with the seasonally adjusted values of buildings completed of the previous month expressed as a percentage.

**Table 7 - Actual values and percentage change of buildings completed at constant 2000 prices by type of building**

Year and month <sup>2/</sup>	Residential buildings		Non-residential buildings		Additions and alterations		Total	
	R'000	Percentage change	R'000	Percentage change	R'000	Percentage change	R'000	Percentage change
2002 Jan.	549 418	- 16,6	136 026	- 49,0	169 523	- 18,8	854 967	- 24,6
Feb.	443 590	+ 27,8	136 318	- 53,7	193 160	- 32,9	773 068	- 12,5
Mar.	663 989	+ 12,2	169 030	- 20,2	167 351	- 42,2	1 000 370	- 10,3
Apr.	607 293	+ 51,3	240 718	- 21,9	368 075	- 10,1	1 216 086	+ 17,8
May	639 076	+ 24,7	293 499	- 58,1	287 051	- 43,2	1 219 626	- 19,6
Jun.	536 531	+ 3,9	201 195	- 60,6	235 022	- 42,5	972 748	- 26,8
Jul.	616 022	+ 3,9	262 130	+ 8,4	225 352	- 27,1	1 103 504	+ 15,4
Aug.	662 349	+ 43,4	92 004	+ 12,7	210 227	- 20,6	964 580	+ 14,0
Sep.	732 084	+ 32,1	217 310	- 90,6	230 194	+ 1,7	1 179 588	- 58,4
Oct.	820 069	+ 24,9	168 018	- 52,5	271 949	- 26,1	1 260 036	- 25,5
Nov.	734 664	- 13,0	276 463	- 36,0	218 163	- 39,3	1 229 290	- 20,2
Dec.	603 604	- 5,3	343 408	- 21,9	201 725	+ 39,5	1 148 737	+ 16,5
<b>Total</b>	<b>7 608 689</b>	<b>+ 31,2</b>	<b>2 536 119</b>	<b>- 35,7</b>	<b>2 777 792</b>	<b>- 0,1</b>	<b>12 922 600</b>	<b>+ 3,2</b>
2003 Jan.	531 864	- 3,2	143 890	+ 5,8	212 877	+ 25,6	888 631	+ 3,9
Feb.	583 100	+ 31,5	146 837	+ 7,7	252 686	+ 30,8	982 623	+ 27,1
Mar.	590 702	- 11,0	292 882	+ 73,3	211 987	+ 26,7	1 095 571	+ 9,5
Apr.	563 927	- 7,1	494 787	+ 105,5	214 091	- 41,8	1 272 805	+ 4,7
May	558 827	- 12,6	556 778	+ 89,7	263 107	- 8,3	1 378 712	+ 13,0
Jun.	620 508	+ 15,7	155 548	- 22,7	255 575	+ 8,7	1 031 631	+ 6,1
Jul.	1 315 349	+ 113,5	170 912	- 34,8	278 550	+ 23,6	1 764 811	+ 59,9
Aug.	701 270	+ 5,9	133 216	+ 44,8	241 606	+ 14,9	1 076 092	+ 11,6
Sep.	633 840	- 13,4	156 403	- 28,0	221 126	- 3,9	1 011 369	- 14,3
Oct.	677 693	- 17,4	162 827	- 3,1	241 590	- 11,2	1 082 110	- 14,1
Nov.	766 799	+ 4,4	188 908	- 31,7	230 448	+ 5,6	1 186 155	- 3,5
Dec.	683 334	+ 13,2	153 759	- 55,2	194 371	- 3,6	1 031 464	- 10,2
<b>Total</b>	<b>8 227 213</b>	<b>+ 8,1</b>	<b>2 756 747</b>	<b>+ 8,7</b>	<b>2 818 014</b>	<b>+ 1,4</b>	<b>13 801 974</b>	<b>+ 6,8</b>
2004 Jan.	476 960	- 10,3	167 362	+ 16,3	206 557	- 3,0	850 879	- 4,2
Feb.	593 329	+ 1,8	190 130	+ 29,5	240 220	- 4,9	1 023 679	+ 4,2
Mar.	713 782	+ 20,8	175 555	- 40,1	219 231	+ 3,4	1 108 568	+ 1,2
Apr.	658 428	+ 16,8	129 354	- 73,9	172 091	- 19,6	959 873	- 24,6
May	941 614	+ 68,5	257 263	- 53,8	239 538	- 9,0	1 438 415	+ 4,3
Jun.	832 364	+ 34,1	160 604	+ 3,3	246 744	- 3,5	1 239 712	+ 20,2

<sup>1/</sup> The annual percentage change is the change in the actual values of buildings completed of the relevant year compared with the actual values of buildings completed of the previous year expressed as a percentage.

<sup>2/</sup> The monthly percentage change is the change in the actual values of buildings completed of the relevant month compared with the actual values of buildings completed of the same month in the previous year expressed as a percentage.

**Table 8 - Seasonally adjusted values and percentage change of buildings completed at constant 2000 prices by type of building**

Year and month <sup>1/</sup>	Residential buildings		Non-residential buildings		Additions and alterations		Total	
	R'000	Percentage change	R'000	Percentage change	R'000	Percentage change	R'000	Percentage change
2002 Jan.	649 919	+ 33,6	177 145	+ 2,2	191 065	+ 14,3	1 018 129	+ 23,1
Feb.	502 184	- 22,7	163 763	- 7,6	183 697	- 3,9	849 643	- 16,5
Mar.	636 067	+ 26,7	185 209	+ 13,1	151 891	- 17,3	973 167	+ 14,5
Apr.	672 466	+ 5,7	264 704	+ 42,9	419 218	+ 176,0	1 356 388	+ 39,4
May	584 747	- 13,0	183 881	- 30,5	237 644	- 43,3	1 006 271	- 25,8
Jun.	575 283	- 1,6	210 400	+ 14,4	228 949	- 3,7	1 014 632	+ 0,8
Jul.	627 416	+ 9,1	197 433	- 6,2	207 401	- 9,4	1 032 250	+ 1,7
Aug.	643 463	+ 2,6	124 260	- 37,1	210 961	+ 1,7	978 683	- 5,2
Sep.	687 696	+ 6,9	204 014	+ 64,2	249 696	+ 18,4	1 141 406	+ 16,6
Oct.	719 022	+ 4,6	188 571	- 7,6	246 445	- 1,3	1 154 038	+ 1,1
Nov.	625 827	- 13,0	288 265	+ 52,9	216 103	- 12,3	1 130 195	- 2,1
Dec.	662 245	+ 5,8	337 628	+ 17,1	270 185	+ 25,0	1 270 058	+ 12,4
2003 Jan.	622 369	- 6,0	189 168	- 44,0	240 023	- 11,2	1 051 560	- 17,2
Feb.	669 197	+ 7,5	177 471	- 6,2	242 100	+ 0,9	1 088 768	+ 3,5
Mar.	570 474	- 14,8	314 665	+ 77,3	198 211	- 18,1	1 083 349	- 0,5
Apr.	623 411	+ 9,3	536 533	+ 70,5	246 447	+ 24,3	1 406 390	+ 29,8
May	502 581	- 19,4	333 731	- 37,8	216 082	- 12,3	1 052 394	- 25,2
Jun.	660 835	+ 31,5	163 573	- 51,0	238 233	+ 10,3	1 062 641	+ 1,0
Jul.	1 356 893	+ 105,3	131 850	- 19,4	258 485	+ 8,5	1 747 227	+ 64,4
Aug.	685 749	- 49,5	190 857	+ 44,8	245 301	- 5,1	1 121 906	- 35,8
Sep.	604 799	- 11,8	146 395	- 23,3	241 648	- 1,5	992 842	- 11,5
Oct.	587 167	- 2,9	183 539	+ 25,4	217 926	- 9,8	988 632	- 0,4
Nov.	653 571	+ 11,3	194 651	+ 6,1	229 212	+ 5,2	1 077 434	+ 9,0
Dec.	743 955	+ 13,8	150 590	- 22,6	256 593	+ 11,9	1 151 138	+ 6,8
2004 Jan.	553 761	- 25,6	226 369	+ 50,3	231 789	- 9,7	1 011 918	- 12,1
Feb.	686 346	+ 23,9	236 116	+ 4,3	230 104	- 0,7	1 152 565	+ 13,9
Mar.	694 371	+ 1,2	185 107	- 21,6	209 978	- 8,7	1 089 456	- 5,5
Apr.	726 197	+ 4,6	137 908	- 25,5	197 922	- 5,7	1 062 028	- 2,5
May	846 999	+ 16,6	151 159	+ 9,6	197 522	- 0,2	1 195 680	+ 12,6
Jun.	882 312	+ 4,2	168 798	+ 11,7	225 057	+ 13,9	1 276 167	+ 6,7

<sup>1/</sup> The percentage change is the change in the seasonally adjusted values of buildings completed of the relevant month compared with the seasonally adjusted values of buildings completed of the previous month expressed as a percentage.



**Table 9 - Building plans passed by type of building: Total South Africa**

Type of building	June 2003 *	May 2004 *	June 2004	January 2003 to June 2003	January 2004 to June 2004	Percentage change between January 2003 to June 2003 and January 2004 to June 2004
<b>Residential buildings</b>						
Dwelling-houses smaller than 80 square metres						
Number of dwelling-houses	2 476	3 740	2 840	19 501	17 054	- 12,5
Total square metres	110 036	153 246	117 311	752 143	708 623	- 5,8
Total value at current prices (R'000)	107 857	148 618	138 416	663 266	713 188	+ 7,5
Dwelling-houses equal to or larger than 80 square metres						
Number of dwelling-houses	2 249	2 993	2 931	11 625	14 670	+ 26,2
Total square metres	525 720	687 553	691 947	2 708 696	3 402 238	+ 25,6
Total value at current prices (R'000)	952 065	1 404 907	1 415 609	4 819 820	6 916 418	+ 43,5
Flats and townhouses						
Number of flats and townhouses	1 208	1 788	1 770	6 549	9 414	+ 43,7
Total square metres	189 489	274 338	266 015	992 155	1 425 591	+ 43,7
Total value at current prices (R'000)	385 512	541 993	535 559	1 964 932	2 983 387	+ 51,8
Other residential buildings <sup>1/</sup>						
Total square metres	4 606	15 192	9 074	75 259	77 979	+ 3,6
Total value at current prices (R'000)	6 964	93 457	16 824	135 636	240 717	+ 77,5
<b>Total value of residential buildings at current prices (R'000)</b>	<b>1 452 398</b>	<b>2 188 975</b>	<b>2 106 408</b>	<b>7 583 654</b>	<b>10 853 710</b>	<b>+ 43,1</b>
<b>Non-residential buildings</b>						
Office and banking space						
Total square metres	42 245	42 945	18 256	212 262	187 239	- 11,8
Total value at current prices (R'000)	98 552	99 316	36 706	429 818	390 373	- 9,2
Shopping space						
Total square metres	38 790	26 323	55 824	280 977	335 261	+ 19,3
Total value at current prices (R'000)	76 624	50 804	112 053	856 475	680 182	- 20,6
Industrial and warehouse space						
Total square metres	96 272	93 104	127 845	416 152	580 910	+ 39,6
Total value at current prices (R'000)	150 333	157 979	211 442	647 369	1 004 009	+ 55,1
Other non-residential space <sup>2/</sup>						
Total square metres	30 407	35 874	32 481	163 117	202 977	+ 24,4
Total value at current prices (R'000)	61 338	72 759	68 920	296 836	378 553	+ 27,5
<b>Total value of non-residential buildings at current prices (R'000)</b>	<b>386 847</b>	<b>380 858</b>	<b>429 121</b>	<b>2 230 498</b>	<b>2 453 117</b>	<b>+ 10,0</b>
<b>Additions and alterations</b>						
Dwelling-houses						
Total square metres	302 233	375 436	387 195	1 611 232	1 935 505	+ 20,1
Total value at current prices (R'000)	487 870	678 515	710 488	2 533 708	3 408 014	+ 34,5
Other buildings <sup>3/</sup>						
Total square metres	90 161	112 122	70 769	623 713	573 354	- 8,1
Total value at current prices (R'000)	185 131	217 852	235 730	1 304 872	1 335 414	+ 2,3
<b>Total value of additions and alterations at current prices (R'000)</b>	<b>673 001</b>	<b>896 367</b>	<b>946 218</b>	<b>3 838 580</b>	<b>4 743 428</b>	<b>+ 23,6</b>
<b>Total value of building plans passed at current prices (R'000)</b>	<b>2 512 246</b>	<b>3 466 200</b>	<b>3 481 747</b>	<b>13 652 732</b>	<b>18 050 255</b>	<b>+ 32,2</b>

1/ Other residential buildings include institutions for the disabled, boarding houses, old people's homes, hostels, hotels, motels, guest houses, holiday chalets, entertainment centres, bed-and-breakfast accommodation and casinos.

2/ Other non-residential space includes churches, sport and recreation clubs, schools, crèches, hospitals and all other non-residential space.

3/ Other buildings include additions and alterations to other residential buildings, non-residential buildings and internal alterations.

**Table 10 - Building plans passed by type of building and province: Western Cape**

Type of building	June 2003 *	May 2004*	June 2004	January 2003 to June 2003	January 2004 to June 2004	Percentage change between January 2003 to June 2003 and January 2004 to June 2004
<b>Residential buildings</b>						
Dwelling-houses smaller than 80 square metres						
Number of dwelling-houses	575	748	375	2 575	2 533	- 1,6
Total square metres	25 309	32 941	17 060	107 356	115 053	+ 7,2
Total value at current prices (R'000)	30 310	44 794	26 867	130 568	156 438	+ 19,8
Dwelling-houses equal to or larger than 80 square metres						
Number of dwelling-houses	628	1 110	938	3 737	4 782	+ 28,0
Total square metres	138 211	229 734	215 918	836 061	1 102 947	+ 31,9
Total value at current prices (R'000)	238 370	509 184	479 970	1 509 474	2 421 737	+ 60,4
Flats and townhouses						
Number of flats and townhouses	252	671	443	1 648	3 169	+ 92,3
Total square metres	31 186	92 413	50 527	193 852	397 779	+ 105,2
Total value at current prices (R'000)	55 915	189 269	104 880	373 086	877 053	+ 135,1
Other residential buildings <sup>1/</sup>						
Total square metres	891	5 428	640	8 972	37 385	+ 316,7
Total value at current prices (R'000)	1 743	66 096	1 920	13 872	146 086	+953,1
<b>Total value of residential buildings at current prices (R'000)</b>	<b>326 338</b>	<b>809 343</b>	<b>613 637</b>	<b>2 027 000</b>	<b>3 601 314</b>	<b>+ 77,7</b>
<b>Non-residential buildings</b>						
Office and banking space						
Total square metres	19 927	10 067	7 307	74 523	69 815	- 6,3
Total value at current prices (R'000)	47 543	19 785	14 886	155 369	140 062	- 9,9
Shopping space						
Total square metres	13 857	6 951	19 751	66 330	139 761	+ 110,7
Total value at current prices (R'000)	25 066	14 047	43 027	80 422	299 260	+ 272,1
Industrial and warehouse space						
Total square metres	43 261	27 788	31 904	133 045	169 526	+ 27,4
Total value at current prices (R'000)	65 184	43 555	54 214	189 507	256 505	+ 35,4
Other non-residential space <sup>2/</sup>						
Total square metres	4 156	2 438	8 687	32 502	35 558	+ 9,4
Total value at current prices (R'000)	6 839	5 155	21 872	52 164	78 104	+ 49,7
<b>Total value of non-residential buildings at current prices (R'000)</b>	<b>144 632</b>	<b>82 542</b>	<b>133 999</b>	<b>477 462</b>	<b>773 931</b>	<b>+ 62,1</b>
<b>Additions and alterations</b>						
Dwelling-houses						
Total square metres	79 827	113 191	107 567	474 185	554 242	+ 16,9
Total value at current prices (R'000)	117 509	212 899	215 852	726 056	1 019 538	+ 40,4
Other buildings <sup>3/</sup>						
Total square metres	28 775	31 713	20 182	199 972	186 305	- 6,8
Total value at current prices (R'000)	59 003	65 293	70 334	398 010	432 431	+ 8,6
<b>Total value of additions and alterations at current prices (R'000)</b>	<b>176 512</b>	<b>278 192</b>	<b>286 186</b>	<b>1 124 066</b>	<b>1 451 969</b>	<b>+ 29,2</b>
<b>Total value of building plans passed at current prices (R'000)</b>	<b>647 482</b>	<b>1 170 077</b>	<b>1 033 822</b>	<b>3 628 528</b>	<b>5 827 214</b>	<b>+ 60,6</b>

1/ Other residential buildings include institutions for the disabled, boarding houses, old people's homes, hostels, hotels, motels, guest houses, holiday chalets, entertainment centres, bed-and-breakfast accommodation and casinos.

2/ Other non-residential space includes churches, sport and recreation clubs, schools, crèches, hospitals and all other non-residential space.

3/ Other buildings include additions and alterations to other residential buildings, non-residential buildings and internal alterations.

Table 11 - Building plans passed by type of building and province: Eastern Cape

Type of building	June 2003*	May 2004	June 2004	January 2003 to June 2003	January 2004 to June 2004	Percentage change between January 2003 to June 2003 and January 2004 to June 2004
<b>Residential buildings</b>						
Dwelling-houses smaller than 80 square metres						
Number of dwelling-houses	406	440	338	1 779	2 853	+ 60,4
Total square metres	17 333	18 194	14 356	77 655	117 713	+ 51,6
Total value at current prices (R'000)	15 906	16 732	20 789	90 590	108 284	+ 19,5
Dwelling-houses equal to or larger than 80 square metres						
Number of dwelling-houses	164	149	147	550	883	+ 60,5
Total square metres	32 785	30 584	28 384	104 895	171 966	+ 63,9
Total value at current prices (R'000)	48 967	54 854	49 383	176 683	302 366	+ 71,1
Flats and townhouses						
Number of flats and townhouses	21	59	69	65	269	+ 313,8
Total square metres	2 159	8 043	12 830	9 974	56 680	+ 468,3
Total value at current prices (R'000)	4 816	14 269	27 080	18 886	105 423	+ 458,2
Other residential buildings <sup>1/</sup>						
Total square metres	263	0	0	2 808	844	-69,9
Total value at current prices (R'000)	449	0	0	4 815	1 464	-69,6
<b>Total value of residential buildings at current prices (R'000)</b>	<b>70 138</b>	<b>85 855</b>	<b>97 252</b>	<b>290 974</b>	<b>517 537</b>	<b>+ 77,9</b>
<b>Non-residential buildings</b>						
Office and banking space						
Total square metres	416	498	111	6 706	2 563	-61,8
Total value at current prices (R'000)	770	1 115	195	12 387	5 272	-57,4
Shopping space						
Total square metres	1 435	1 993	3 026	2 191	10 561	+ 382,0
Total value at current prices (R'000)	3 072	3 793	4 796	4 485	19 514	+ 335,1
Industrial and warehouse space						
Total square metres	5 245	2 986	28 054	15 684	45 885	+ 192,6
Total value at current prices (R'000)	8 259	5 383	21 010	25 144	47 304	+ 88,1
Other non-residential space <sup>2/</sup>						
Total square metres	1 606	843	1 837	5 661	7 296	+ 28,9
Total value at current prices (R'000)	2 950	1 901	3 645	10 237	15 518	+ 51,6
<b>Total value of non-residential buildings at current prices (R'000)</b>	<b>15 051</b>	<b>12 192</b>	<b>29 646</b>	<b>52 253</b>	<b>87 608</b>	<b>+ 67,7</b>
<b>Additions and alterations</b>						
Dwelling-houses						
Total square metres	27 299	37 071	38 310	117 789	186 728	+ 58,5
Total value at current prices (R'000)	42 923	60 468	63 506	192 384	314 385	+ 63,4
Other buildings <sup>3/</sup>						
Total square metres	4 316	4 546	7 389	32 733	46 428	+ 41,8
Total value at current prices (R'000)	29 468	8 496	21 707	89 411	100 933	+ 12,9
<b>Total value of additions and alterations at current prices (R'000)</b>	<b>72 391</b>	<b>68 964</b>	<b>85 213</b>	<b>281 795</b>	<b>415 318</b>	<b>+ 47,4</b>
<b>Total value of building plans passed at current prices (R'000)</b>	<b>157 580</b>	<b>167 011</b>	<b>212 111</b>	<b>625 022</b>	<b>1 020 463</b>	<b>+ 63,3</b>

1/ Other residential buildings include institutions for the disabled, boarding houses, old people's homes, hostels, hotels, motels, guest houses, holiday chalets, entertainment centres, bed-and-breakfast accommodation and casinos.

2/ Other non-residential space includes churches, sport and recreation clubs, schools, crèches, hospitals and all other non-residential space.

3/ Other buildings include additions and alterations to other residential buildings, non-residential buildings and internal alterations.

**Table 12 - Building plans passed by of building and province: Northern Cape**

Type of building	June 2003	May 2004	June 2004	January 2003 to June 2003	January 2004 to June 2004	Percentage change between January 2003 to June 2003 and January 2004 to June 2004
<b>Residential buildings</b>						
Dwelling-houses smaller than 80 square metres						
Number of dwelling-houses	2	31	12	12	66	+ 450,0
Total square metres	76	1 240	430	481	2 927	+ 508,5
Total value at current prices (R'000)	114	1 860	460	732	4 558	+ 522,7
Dwelling-houses equal to or larger than 80 square metres						
Number of dwelling-houses	8	24	23	56	109	+ 94,6
Total square metres	998	5 274	4 045	10 355	20 867	+ 101,5
Total value at current prices (R'000)	1 541	9 539	6 968	16 125	36 605	+ 127,0
Flats and townhouses						
Number of flats and townhouses	9	34	7	13	85	+ 553,8
Total square metres	1 311	5 844	1 021	2 044	13 219	+ 546,7
Total value at current prices (R'000)	2 360	10 519	1 838	3 645	23 882	+ 555,2
Other residential buildings <sup>1/</sup>						
Total square metres	0	0	0	0	1 299	..
Total value at current prices (R'000)	0	0	0	0	2 338	..
<b>Total value of residential buildings at current prices (R'000)</b>	<b>4 015</b>	<b>21 918</b>	<b>9 266</b>	<b>20 502</b>	<b>67 383</b>	<b>+ 228,7</b>
<b>Non-residential buildings</b>						
Office and banking space						
Total square metres	598	0	0	1 139	403	- 64,6
Total value at current prices (R'000)	897	0	0	1 709	605	- 64,6
Shopping space						
Total square metres	765	0	90	2 744	7 090	+ 158,4
Total value at current prices (R'000)	1 683	0	225	5 985	14 109	+ 135,7
Industrial and warehouse space						
Total square metres	1 241	1 418	0	2 479	2 454	- 1,0
Total value at current prices (R'000)	1 862	2 792	0	4 585	4 665	+ 1,7
Other non-residential space <sup>2/</sup>						
Total square metres	0	318	498	0	816	..
Total value at current prices (R'000)	0	572	896	0	1 468	..
<b>Total value of non-residential buildings at current prices (R'000)</b>	<b>4 442</b>	<b>3 364</b>	<b>1 121</b>	<b>12 279</b>	<b>20 847</b>	<b>+ 69,8</b>
<b>Additions and alterations</b>						
Dwelling-houses						
Total square metres	2 807	3 984	3 039	15 008	23 223	+ 54,7
Total value at current prices (R'000)	5 277	6 216	5 341	26 874	40 739	+ 51,6
Other buildings <sup>3/</sup>						
Total square metres	47	304	628	1 918	1 766	- 7,9
Total value at current prices (R'000)	971	1 339	1 352	6 042	5 208	- 13,8
<b>Total value of additions and alterations at current prices (R'000)</b>	<b>6 248</b>	<b>7 555</b>	<b>6 693</b>	<b>32 916</b>	<b>45 947</b>	<b>+ 39,6</b>
<b>Total value of building plans passed at current prices (R'000)</b>	<b>14 705</b>	<b>32 837</b>	<b>17 080</b>	<b>65 697</b>	<b>134 177</b>	<b>+ 104,2</b>

1/ Other residential buildings include institutions for the disabled, boarding houses, old people's homes, hostels, hotels, motels, guest houses, holiday chalets, entertainment centres, bed-and-breakfast accommodation and casinos.

2/ Other non-residential space includes churches, sport and recreation clubs, schools, crèches, hospitals and all other non-residential space.

3/ Other buildings include additions and alterations to other residential buildings, non-residential buildings and internal alterations.

Table 13 - Building plans passed by type of building and province: Free State

Type of building	June 2003	May 2004	June 2004	January 2003 to June 2003	January 2004 to June 2004	Percentage change between January 2003 to June 2003 and January 2004 to June 2004
<b>Residential buildings</b>						
Dwelling-houses smaller than 80 square metres						
Number of dwelling-houses	616	179	123	1 993	1 881	-5,6
Total square metres	26 197	8 242	5 640	82 914	78 157	-5,7
Total value at current prices (R'000)	12 975	5 628	4 946	46 269	50 599	+ 9,4
Dwelling-houses equal to or larger than 80 square metres						
Number of dwelling-houses	54	102	117	440	480	+ 9,1
Total square metres	8 117	18 116	19 486	72 451	78 547	+ 8,4
Total value at current prices (R'000)	12 270	31 992	34 485	103 542	131 034	+ 26,6
Flats and townhouses						
Number of flats and townhouses	1	65	95	190	395	+ 107,9
Total square metres	104	6 993	9 603	21 532	46 642	+ 116,6
Total value at current prices (R'000)	148	11 873	18 073	31 158	78 542	+ 152,1
Other residential buildings <sup>1/</sup>						
Total square metres	0	0	5 139	954	5 186	+ 443,6
Total value at current prices (R'000)	0	0	9 770	1 110	9 850	+ 787,4
<b>Total value of residential buildings at current prices (R'000)</b>	<b>25 393</b>	<b>49 493</b>	<b>67 274</b>	<b>182 079</b>	<b>270 025</b>	<b>+ 48,3</b>
<b>Non-residential buildings</b>						
Office and banking space						
Total square metres	3 756	0	3 035	5 994	6 692	+ 11,6
Total value at current prices (R'000)	5 390	0	6 482	9 526	12 523	+ 31,5
Shopping space						
Total square metres	443	816	662	15 638	2 253	-85,6
Total value at current prices (R'000)	488	1 864	941	28 642	4 154	-85,5
Industrial and warehouse space						
Total square metres	4 219	1 484	2 214	11 987	5 155	-57,0
Total value at current prices (R'000)	2 365	2 079	1 575	7 497	6 008	-19,9
Other non-residential space <sup>2/</sup>						
Total square metres	198	676	271	9 608	2 149	-77,6
Total value at current prices (R'000)	190	527	287	14 285	2 571	-82,0
<b>Total value of non-residential buildings at current prices (R'000)</b>	<b>8 433</b>	<b>4 470</b>	<b>9 285</b>	<b>59 950</b>	<b>25 256</b>	<b>-57,9</b>
<b>Additions and alterations</b>						
Dwelling-houses						
Total square metres	7 230	13 091	13 351	51 823	66 186	+ 27,7
Total value at current prices (R'000)	8 907	18 929	17 308	63 895	88 133	+ 37,9
Other buildings <sup>3/</sup>						
Total square metres	2 751	4 270	2 504	14 629	17 128	+ 17,1
Total value at current prices (R'000)	5 797	6 967	4 687	40 069	43 769	+ 9,2
<b>Total value of additions and alterations at current prices (R'000)</b>	<b>14 704</b>	<b>25 896</b>	<b>21 995</b>	<b>103 964</b>	<b>131 902</b>	<b>+ 26,9</b>
<b>Total value of building plans passed at current prices (R'000)</b>	<b>48 530</b>	<b>79 859</b>	<b>98 554</b>	<b>345 993</b>	<b>427 183</b>	<b>+ 23,5</b>

1/ Other residential buildings include institutions for the disabled, boarding houses, old people's homes, hostels, hotels, motels, guest houses, holiday chalets, entertainment centres, bed-and-breakfast accommodation and casinos.

2/ Other non-residential space includes churches, sport and recreation clubs, schools, crèches, hospitals and all other non-residential space.

3/ Other buildings include additions and alterations to other residential buildings, non-residential buildings and internal alterations.

**Table 14 - Building plans passed by type of building and province: KwaZulu-Natal**

Type of building	June 2003*	May 2004	June 2004	January 2003 to June 2003	January 2004 to June 2004	Percentage change between January 2003 to June 2003 and January 2004 to June 2004
<b>Residential buildings</b>						
Dwelling-houses smaller than 80 square metres						
Number of dwelling-houses	345	438	417	5 768	2 473	- 57,1
Total square metres	13 546	15 704	15 594	200 538	87 033	- 56,6
Total value at current prices (R'000)	9 642	15 021	15 380	121 709	78 650	- 35,4
Dwelling-houses equal to or larger than 80 square metres						
Number of dwelling-houses	203	226	231	1 037	1 335	+ 28,7
Total square metres	49 371	58 649	54 514	251 186	298 924	+ 19,0
Total value at current prices (R'000)	104 492	121 368	108 328	458 657	592 309	+ 29,1
Flats and townhouses						
Number of flats and townhouses	259	186	361	831	942	+ 13,4
Total square metres	36 033	37 034	58 281	148 450	187 510	+ 26,3
Total value at current prices (R'000)	83 977	91 432	118 857	383 276	421 734	+ 10,0
Other residential buildings <sup>1/</sup>						
Total square metres	1 228	9 764	2 963	15 786	15 480	- 1,9
Total value at current prices (R'000)	1 645	27 361	4 536	38 953	40 448	+ 3,8
<b>Total value of residential buildings at current prices (R'000)</b>	<b>199 756</b>	<b>255 182</b>	<b>247 101</b>	<b>1 002 595</b>	<b>1 133 141</b>	<b>+ 13,0</b>
<b>Non-residential buildings</b>						
Office and banking space						
Total square metres	10 058	8 801	3 963	17 068	23 479	+ 37,6
Total value at current prices (R'000)	29 250	28 000	7 821	45 578	56 948	+ 24,9
Shopping space						
Total square metres	522	2 612	1 393	81 963	21 100	- 74,3
Total value at current prices (R'000)	477	4 070	2 397	532 080	36 987	- 93,0
Industrial and warehouse space						
Total square metres	11 417	15 244	5 922	49 538	79 904	+ 61,3
Total value at current prices (R'000)	15 787	22 043	7 778	60 432	164 894	+ 172,9
Other non-residential space <sup>2/</sup>						
Total square metres	3 303	3 148	2 549	16 772	14 690	- 12,4
Total value at current prices (R'000)	6 880	8 500	2 818	32 275	26 524	- 17,8
<b>Total value of non-residential buildings at current prices (R'000)</b>	<b>52 394</b>	<b>62 613</b>	<b>20 814</b>	<b>670 365</b>	<b>285 353</b>	<b>- 57,4</b>
<b>Additions and alterations</b>						
Dwelling-houses						
Total square metres	43 755	46 708	56 483	249 666	289 147	+ 15,8
Total value at current prices (R'000)	71 576	76 416	90 949	344 874	463 285	+ 34,3
Other buildings <sup>3/</sup>						
Total square metres	12 894	19 452	10 623	100 675	79 794	- 20,7
Total value at current prices (R'000)	21 136	25 901	26 001	198 957	150 584	- 24,3
<b>Total value of additions and alterations at current prices (R'000)</b>	<b>92 712</b>	<b>102 317</b>	<b>116 950</b>	<b>543 831</b>	<b>613 869</b>	<b>+ 12,9</b>
<b>Total value of building plans passed at current prices (R'000)</b>	<b>344 862</b>	<b>420 112</b>	<b>384 865</b>	<b>2 216 791</b>	<b>2 032 363</b>	<b>- 8,3</b>

1/ Other residential buildings include institutions for the disabled, boarding houses, old people's homes, hostels, hotels, motels, guest houses, holiday chalets, entertainment centres, bed-and-breakfast accommodation and casinos.

2/ Other non-residential space includes churches, sport and recreation clubs, schools, crèches, hospitals and all other non-residential space.

3/ Other buildings include additions and alterations to other residential buildings, non-residential buildings and internal alterations.

Table 15 - Building plans passed by type of building and province: North West

Type of building	June 2003	May 2004	June 2004	January 2003 to June 2003	January 2004 to June 2004	Percentage change between January 2003 to June 2003 and January 2004 to June 2004
<b>Residential buildings</b>						
Dwelling-houses smaller than 80 square metres						
Number of dwelling-houses	48	33	54	196	409	+ 108,7
Total square metres	2 725	1 914	3 148	11 442	19 865	+ 73,6
Total value at current prices (R'000)	3 460	2 431	3 814	14 031	23 887	+ 70,2
Dwelling-houses equal to or larger than 80 square metres						
Number of dwelling-houses	80	159	178	540	812	+ 50,4
Total square metres	16 281	29 036	32 777	102 809	155 138	+ 50,9
Total value at current prices (R'000)	28 310	52 749	51 837	157 826	274 041	+ 73,6
Flats and townhouses						
Number of flats and townhouses	83	44	99	383	261	- 31,9
Total square metres	7 473	8 740	9 578	30 140	31 332	+ 4,0
Total value at current prices (R'000)	13 022	15 496	16 413	47 349	56 674	+ 19,7
Other residential buildings <sup>1/</sup>						
Total square metres	0	0	0	9 676	4 149	- 57,1
Total value at current prices (R'000)	0	0	0	15 033	12 387	- 17,6
<b>Total value of residential buildings at current prices (R'000)</b>	<b>44 792</b>	<b>70 676</b>	<b>72 064</b>	<b>234 239</b>	<b>366 989</b>	<b>+ 56,7</b>
<b>Non-residential buildings</b>						
Office and banking space						
Total square metres	1 112	1 605	0	4 793	4 444	-7,3
Total value at current prices (R'000)	2 089	2 800	0	9 978	9 954	-0,2
Shopping space						
Total square metres	1 614	1 747	4 531	6 989	18 480	+ 164,4
Total value at current prices (R'000)	2 421	4 202	7 938	15 999	41 787	+ 161,2
Industrial and warehouse space						
Total square metres	1 651	0	3 636	8 733	13 059	+ 49,5
Total value at current prices (R'000)	1 487	0	4 746	10 189	14 871	+ 46,0
Other non-residential space <sup>2/</sup>						
Total square metres	5 581	1 147	263	13 092	8 243	- 37,0
Total value at current prices (R'000)	10 016	2 268	296	23 770	17 536	- 26,2
<b>Total value of non-residential buildings at current prices (R'000)</b>	<b>16 013</b>	<b>9 270</b>	<b>12 980</b>	<b>59 936</b>	<b>84 148</b>	<b>+ 40,4</b>
<b>Additions and alterations</b>						
Dwelling-houses						
Total square metres	9 006	8 895	11 970	45 434	57 071	+ 25,6
Total value at current prices (R'000)	13 823	14 978	18 253	61 813	87 222	+ 41,1
Other buildings <sup>3/</sup>						
Total square metres	124	2 656	2 647	5 483	21 662	+ 295,1
Total value at current prices (R'000)	398	4 306	5 773	9 050	37 199	+ 311,0
<b>Total value of additions and alterations at current prices (R'000)</b>	<b>14 221</b>	<b>19 284</b>	<b>24 026</b>	<b>70 863</b>	<b>124 421</b>	<b>+ 75,6</b>
<b>Total value of building plans passed at current prices (R'000)</b>	<b>75 026</b>	<b>99 230</b>	<b>109 070</b>	<b>365 038</b>	<b>575 558</b>	<b>+ 57,7</b>

1/ Other residential buildings include institutions for the disabled, boarding houses, old people's homes, hostels, hotels, motels, guest houses, holiday chalets, entertainment centres, bed-and-breakfast accommodation and casinos.

2/ Other non-residential space includes churches, sport and recreation clubs, schools, crèches, hospitals and all other non-residential space.

3/ Other buildings include additions and alterations to other residential buildings, non-residential buildings and internal alterations.

**Table 16 - Building plans passed by type of building and province: Gauteng**

Type of building	June 2003 *	May 2004	June 2004	January 2003 to June 2003	January 2004 to June 2004	Percentage change between January 2003 to June 2003 and January 2004 to June 2004
<b>Residential buildings</b>						
Dwelling-houses smaller than 80 square metres						
Number of dwelling-houses	374	1 682	1 310	6 188	5 353	- 13,5
Total square metres	19 001	66 302	50 661	227 332	220 096	- 3,2
Total value at current prices (R'000)	30 152	53 369	55 994	222 715	241 409	+ 8,4
Dwelling-houses equal to or larger than 80 square metres						
Number of dwelling-houses	839	1 029	1 065	4 183	5 171	+ 23,6
Total square metres	225 973	277 371	288 244	1 112 603	1 351 876	+ 21,5
Total value at current prices (R'000)	441 705	559 863	608 680	2 091 827	2 812 466	+ 34,5
Flats and townhouses						
Number of flats and townhouses	567	551	529	3 274	3 696	+ 12,9
Total square metres	109 471	90 981	109 945	570 764	622 657	+ 9,1
Total value at current prices (R'000)	222 534	178 190	228 665	1 085 840	1 327 086	+ 22,2
Other residential buildings <sup>1/</sup>						
Total square metres	1 775	0	0	35 284	9 758	- 72,3
Total value at current prices (R'000)	2 227	0	0	58 403	19 307	- 66,9
<b>Total value of residential buildings at current prices (R'000)</b>	<b>696 618</b>	<b>791 422</b>	<b>893 339</b>	<b>3 458 785</b>	<b>4 400 268</b>	<b>+ 27,2</b>
<b>Non-residential buildings</b>						
Office and banking space						
Total square metres	5 622	20 752	1 134	93 054	69 039	- 25,8
Total value at current prices (R'000)	11 313	45 759	3 220	179 597	145 109	- 19,2
Shopping space						
Total square metres	5 293	6 346	23 383	47 746	80 543	+ 68,7
Total value at current prices (R'000)	10 113	14 001	47 719	81 911	170 327	+ 107,9
Industrial and warehouse space						
Total square metres	26 492	40 723	54 538	158 057	239 604	+ 51,6
Total value at current prices (R'000)	50 989	77 443	120 016	303 912	474 488	+ 56,1
Other non-residential space <sup>2/</sup>						
Total square metres	15 120	27 001	16 146	78 924	121 348	+ 53,8
Total value at current prices (R'000)	33 522	53 236	36 367	153 651	213 681	+ 39,1
<b>Total value of non-residential buildings at current prices (R'000)</b>	<b>105 937</b>	<b>190 439</b>	<b>207 322</b>	<b>719 071</b>	<b>1 003 605</b>	<b>+ 39,6</b>
<b>Additions and alterations</b>						
Dwelling-houses						
Total square metres	115 232	133 850	128 424	557 904	638 478	+ 14,4
Total value at current prices (R'000)	206 475	264 624	264 015	988 792	1 243 854	+ 25,8
Other buildings <sup>3/</sup>						
Total square metres	33 448	40 395	21 859	243 766	190 848	- 21,7
Total value at current prices (R'000)	59 143	90 590	97 107	524 799	516 045	- 1,7
<b>Total value of additions and alterations at current prices (R'000)</b>	<b>265 618</b>	<b>355 214</b>	<b>361 122</b>	<b>1 513 591</b>	<b>1 759 899</b>	<b>+ 16,3</b>
<b>Total value of building plans passed at current prices (R'000)</b>	<b>1 068 173</b>	<b>1 337 075</b>	<b>1 461 783</b>	<b>5 691 447</b>	<b>7 163 772</b>	<b>+ 25,9</b>

1/ Other residential buildings include institutions for the disabled, boarding houses, old people's homes, hostels, hotels, motels, guest houses, holiday chalets, entertainment centres, bed-and-breakfast accommodation and casinos.

2/ Other non-residential space includes churches, sport and recreation clubs, schools, crèches, hospitals and all other non-residential space.

3/ Other buildings include additions and alterations to other residential buildings, non-residential buildings and internal alterations.



Table 17 - Building plans passed by type of building and province: Mpumalanga

Type of building	June 2003	May 2004	June 2004	January 2003 to June 2003	January 2004 to June 2004	Percentage change between January 2003 to June 2003 and January 2004 to June 2004
<b>Residential buildings</b>						
Dwelling-houses smaller than 80 square metres						
Number of dwelling-houses	80	62	184	554	538	- 2,9
Total square metres	4 053	2 950	8 737	24 201	26 028	+ 7,5
Total value at current prices (R'000)	2 884	3 141	7 614	19 492	20 774	+ 6,6
Dwelling-houses equal to or larger than 80 square metres						
Number of dwelling-houses	210	102	185	727	716	- 1,5
Total square metres	42 742	19 426	37 942	154 304	146 488	- 5,1
Total value at current prices (R'000)	61 880	30 029	59 497	215 054	217 392	+ 1,1
Flats and townhouses						
Number of flats and townhouses	12	133	6	67	327	+ 388,1
Total square metres	1 129	18 836	1 030	7 408	41 944	+ 466,2
Total value at current prices (R'000)	1 868	23 309	1 272	10 205	53 156	+420,9
Other residential buildings <sup>1/</sup>						
Total square metres	449	0	0	1 779	3 546	+ 99,3
Total value at current prices (R'000)	900	0	0	3 450	8 239	+ 138,8
<b>Total value of residential buildings at current prices (R'000)</b>	<b>67 532</b>	<b>56 479</b>	<b>68 383</b>	<b>248 201</b>	<b>299 561</b>	<b>+ 20,7</b>
<b>Non-residential buildings</b>						
Office and banking space						
Total square metres	756	872	1 075	7 452	3 581	- 51,9
Total value at current prices (R'000)	1 300	1 087	1 073	12 301	4 789	- 61,1
Shopping space						
Total square metres	2 545	2 708	2 494	39 852	45 522	+14,2
Total value at current prices (R'000)	2 700	2 785	3 927	62 965	75 845	+20,5
Industrial and warehouse space						
Total square metres	2 746	3 461	1 577	32 815	17 439	- 46,9
Total value at current prices (R'000)	4 400	4 684	2 103	38 886	20 975	- 46,1
Other non-residential space <sup>2/</sup>						
Total square metres	0	303	2 091	3 675	5 894	+ 60,4
Total value at current prices (R'000)	0	600	2 516	4 581	7 943	+ 73,4
<b>Total value of non-residential buildings at current prices (R'000)</b>	<b>8 400</b>	<b>9 156</b>	<b>9 619</b>	<b>118 733</b>	<b>109 552</b>	<b>- 7,7</b>
<b>Additions and alterations</b>						
Dwelling-houses						
Total square metres	11 060	12 846	20 927	72 346	86 160	+ 19,1
Total value at current prices (R'000)	12 808	15 837	25 170	92 453	102 818	+ 11,2
Other buildings <sup>3/</sup>						
Total square metres	7 262	4 217	2 041	20 060	14 403	- 28,2
Total value at current prices (R'000)	8 712	6 674	3 541	27 833	24 202	- 13,0
<b>Total value of additions and alterations at current prices (R'000)</b>	<b>21 520</b>	<b>22 511</b>	<b>28 711</b>	<b>120 286</b>	<b>127 020</b>	<b>+ 5,6</b>
<b>Total value of building plans passed at current prices (R'000)</b>	<b>97 452</b>	<b>88 146</b>	<b>106 713</b>	<b>487 220</b>	<b>536 133</b>	<b>+ 10,0</b>

1/ Other residential buildings include institutions for the disabled, boarding houses, old people's homes, hostels, hotels, motels, guest houses, holiday chalets, entertainment centres, bed-and-breakfast accommodation and casinos.

2/ Other non-residential space includes churches, sport and recreation clubs, schools, crèches, hospitals and all other non-residential space.

3/ Other buildings include additions and alterations to other residential buildings, non-residential buildings and internal alterations.

**Table 18 - Building plans passed by type of building and province: Limpopo**

Type of building	June 2003	May 2004*	June 2004	January 2003 to June 2003	January 2004 to June 2004	Percentage change between January 2003 to June 2003 and January 2004 to June 2004
<b>Residential buildings</b>						
Dwelling-houses smaller than 80 square metres						
Number of dwelling-houses	30	127	27	436	948	+ 117,4
Total square metres	1 796	5 759	1 685	20 224	41 751	+ 106,4
Total value at current prices (R'000)	2 414	5 642	2 552	17 160	28 589	+ 66,6
Dwelling-houses equal to or larger than 80 square metres						
Number of dwelling-houses	63	92	47	355	382	+ 7,6
Total square metres	11 242	19 363	10 637	64 032	75 485	+ 17,9
Total value at current prices (R'000)	14 530	35 329	16 461	90 632	128 468	+ 41,7
Flats and townhouses						
Number of flats and townhouses	4	45	161	78	270	+ 246,2
Total square metres	623	5 454	13 200	7 991	27 828	+ 248,2
Total value at current prices (R'000)	872	7 636	18 481	11 487	39 837	+ 246,8
Other residential buildings <sup>1/</sup>						
Total square metres	0	0	332	0	332	..
Total value at current prices (R'000)	0	0	598	0	598	..
<b>Total value of residential buildings at current prices (R'000)</b>	<b>17 816</b>	<b>48 607</b>	<b>38 092</b>	<b>119 279</b>	<b>197 492</b>	<b>+ 65,6</b>
<b>Non-residential buildings</b>						
Office and banking space						
Total square metres	0	350	1 631	1 533	7 223	+ 371,2
Total value at current prices (R'000)	0	770	3 029	3 373	15 111	+ 348,0
Shopping space						
Total square metres	12 316	3 150	494	17 524	9 951	-43,2
Total value at current prices (R'000)	30 604	6 042	1 083	43 986	18 199	-58,6
Industrial and warehouse space						
Total square metres	0	0	0	3 814	7 884	+ 106,7
Total value at current prices (R'000)	0	0	0	7 217	14 299	+ 98,1
Other non-residential space <sup>2/</sup>						
Total square metres	443	0	139	2 883	6 983	+ 142,2
Total value at current prices (R'000)	941	0	223	5 873	15 208	+ 158,9
<b>Total value of non-residential buildings at current prices (R'000)</b>	<b>31 545</b>	<b>6 812</b>	<b>4 335</b>	<b>60 449</b>	<b>62 817</b>	<b>+ 3,9</b>
<b>Additions and alterations</b>						
Dwelling-houses						
Total square metres	6 017	5 800	7 124	27 077	34 270	+ 26,6
Total value at current prices (R'000)	8 572	8 148	10 094	36 567	48 040	+ 31,4
Other buildings <sup>3/</sup>						
Total square metres	514	4 569	2 896	4 477	15 020	+ 235,5
Total value at current prices (R'000)	503	8 286	5 228	10 701	25 043	+ 134,0
<b>Total value of additions and alterations at current prices (R'000)</b>	<b>9 075</b>	<b>16 434</b>	<b>15 322</b>	<b>47 268</b>	<b>73 083</b>	<b>+ 54,6</b>
<b>Total value of building plans passed at current prices (R'000)</b>	<b>58 436</b>	<b>71 853</b>	<b>57 749</b>	<b>226 996</b>	<b>333 392</b>	<b>+ 46,9</b>

1/ Other residential buildings include institutions for the disabled, boarding houses, old people's homes, hostels, hotels, motels, guest houses, holiday chalets, entertainment centres, bed-and-breakfast accommodation and casinos.

2/ Other non-residential space includes churches, sport and recreation clubs, schools, crèches, hospitals and all other non-residential space.

3/ Other buildings include additions and alterations to other residential buildings, non-residential buildings and internal alterations.

**Table 19 - Buildings completed by type of building: Total South Africa**

Type of building	June 2003 *	May 2004*	June 2004	January 2003 to June 2003	January 2004 to June 2004	Percentage change between January 2003 to June 2003 and January 2004 to June 2004
<b>Residential buildings</b>						
Dwelling-houses smaller than 80 square metres						
Number of dwelling-houses	1 299	5 656	2 731	13 507	20 881	+ 54,6
Total square metres	54 855	221 195	108 706	505 040	798 500	+ 58,1
Total value at current prices (R'000)	60 255	160 865	111 914	433 100	640 485	+ 47,9
Dwelling-houses equal to or larger than 80 square metres						
Number of dwelling-houses	1 224	1 418	1 367	7 252	7 279	+ 0,4
Total square metres	271 651	310 447	311 614	1 540 540	1 630 740	+ 5,9
Total value at current prices (R'000)	461 391	621 231	657 802	2 601 308	3 267 854	+ 25,6
Flats and townhouses						
Number of flats and townhouses	1 085	1 522	1 113	5 562	5 894	+ 6,0
Total square metres	124 083	191 902	155 850	607 075	740 594	+ 22,0
Total value at current prices (R'000)	240 358	426 203	306 171	1 038 990	1 483 744	+ 42,8
Other residential buildings <sup>1/</sup>						
Total square metres	408	2 333	0	47 233	22 239	- 52,9
Total value at current prices (R'000)	1 022	7 930	0	99 285	54 530	- 45,1
<b>Total value of residential buildings at current prices (R'000)</b>	<b>763 026</b>	<b>1 216 229</b>	<b>1 075 887</b>	<b>4 172 683</b>	<b>5 446 613</b>	<b>+ 30,5</b>
<b>Non-residential buildings</b>						
Office and banking space						
Total square metres	37 040	17 333	32 900	311 054	186 311	- 40,1
Total value at current prices (R'000)	70 010	34 250	74 375	627 679	378 031	- 39,8
Shopping space						
Total square metres	4 439	82 513	24 275	160 400	154 906	- 3,4
Total value at current prices (R'000)	6 601	169 867	57 707	292 108	314 737	+ 7,7
Industrial and warehouse space						
Total square metres	38 904	26 749	36 234	295 268	287 718	- 2,6
Total value at current prices (R'000)	60 308	31 523	63 326	397 737	496 882	+ 24,9
Other non-residential space <sup>2/</sup>						
Total square metres	20 291	50 316	3 950	321 243	80 166	- 75,0
Total value at current prices (R'000)	33 717	84 910	5 508	621 896	141 113	- 77,3
<b>Total value of non-residential buildings at current prices (R'000)</b>	<b>170 636</b>	<b>320 550</b>	<b>200 916</b>	<b>1 939 420</b>	<b>1 330 763</b>	<b>- 31,4</b>
<b>Additions and alterations</b>						
Dwelling-houses						
Total square metres	121 753	120 181	119 338	750 435	654 931	- 12,7
Total value at current prices (R'000)	177 363	217 379	203 618	1 032 668	1 100 763	+ 6,6
Other buildings <sup>3/</sup>						
Total square metres	49 158	40 754	61 709	275 057	253 832	- 7,7
Total value at current prices (R'000)	125 749	91 864	115 669	598 418	600 366	+ 0,3
<b>Total value of additions and alterations at current prices (R'000)</b>	<b>303 112</b>	<b>309 243</b>	<b>319 287</b>	<b>1 631 086</b>	<b>1 701 129</b>	<b>+ 4,3</b>
<b>Total value of buildings completed at current prices (R'000)</b>	<b>1 236 774</b>	<b>1 846 022</b>	<b>1 596 090</b>	<b>7 743 189</b>	<b>8 478 505</b>	<b>+ 9,5</b>

1/ Other residential buildings include institutions for the disabled, boarding houses, old people's homes, hostels, hotels, motels, guest houses, holiday chalets, entertainment centres, bed-and-breakfast accommodation and casinos.

2/ Other non-residential space includes churches, sport and recreation clubs, schools, crèches, hospitals and all other non-residential space.

3/ Other buildings include additions and alterations to other residential buildings, non-residential buildings and internal alterations.

**Table 20 - Buildings completed by type of building and province: Western Cape**

Type of building	June 2003	May 2004*	June 2004	January 2003 to June 2003	January 2004 to June 2004	Percentage change between January 2003 to June 2003 and January 2004 to June 2004
<b>Residential buildings</b>						
Dwelling-houses smaller than 80 square metres						
Number of dwelling-houses	292	2 303	620	1 369	4 324	+ 215,9
Total square metres	11 317	90 775	24 324	56 286	168 893	+ 200,1
Total value at current prices (R'000)	15 883	64 945	26 288	68 054	140 829	+ 106,9
Dwelling-houses equal to or larger than 80 square metres						
Number of dwelling-houses	441	445	491	2 784	2 335	- 16,1
Total square metres	96 339	99 592	110 434	537 775	514 396	- 4,3
Total value at current prices (R'000)	159 227	180 604	210 740	894 194	968 458	+ 8,3
Flats and townhouses						
Number of flats and townhouses	188	325	289	1 052	1 288	+ 22,4
Total square metres	17 764	31 033	36 555	118 191	136 165	+ 15,2
Total value at current prices (R'000)	32 800	63 415	72 158	198 043	262 691	+ 32,6
Other residential buildings <sup>1/</sup>						
Total square metres	408	120	0	15 872	15 742	- 0,8
Total value at current prices (R'000)	1 022	180	0	42 019	37 402	- 11,0
<b>Total value of residential buildings at current prices (R'000)</b>	<b>208 932</b>	<b>309 144</b>	<b>309 186</b>	<b>1 202 310</b>	<b>1 409 380</b>	<b>+ 17,2</b>
<b>Non-residential buildings</b>						
Office and banking space						
Total square metres	11 017	7 060	9 550	92 770	26 350	- 71,6
Total value at current prices (R'000)	22 471	13 959	27 338	170 977	59 252	- 65,3
Shopping space						
Total square metres	772	76 754	431	22 199	90 508	+ 307,7
Total value at current prices (R'000)	947	159 900	1 293	33 100	183 255	+ 453,6
Industrial and warehouse space						
Total square metres	19 376	13 252	8 485	96 866	60 226	- 37,8
Total value at current prices (R'000)	30 799	15 571	14 584	116 229	82 381	- 29,1
Other non-residential space <sup>2/</sup>						
Total square metres	5 048	1 594	1 201	36 473	12 041	- 67,0
Total value at current prices (R'000)	6 568	2 960	1 891	49 704	21 081	- 57,6
<b>Total value of non-residential buildings at current prices (R'000)</b>	<b>60 785</b>	<b>192 390</b>	<b>45 106</b>	<b>370 010</b>	<b>345 969</b>	<b>- 6,5</b>
<b>Additions and alterations</b>						
Dwelling-houses						
Total square metres	52 197	41 568	43 005	266 808	213 863	- 19,8
Total value at current prices (R'000)	68 148	68 834	66 335	355 255	340 773	- 4,1
Other buildings <sup>3/</sup>						
Total square metres	27 346	16 856	9 699	98 381	68 662	- 30,2
Total value at current prices (R'000)	49 324	31 564	36 499	226 645	187 636	- 17,2
<b>Total value of additions and alterations at current prices (R'000)</b>	<b>117 472</b>	<b>100 398</b>	<b>102 834</b>	<b>581 900</b>	<b>528 409</b>	<b>- 9,2</b>
<b>Total value of buildings completed at current prices (R'000)</b>	<b>387 189</b>	<b>601 932</b>	<b>457 126</b>	<b>2 154 220</b>	<b>2 283 758</b>	<b>+ 6,0</b>

1/ Other residential buildings include institutions for the disabled, boarding houses, old people's homes, hostels, hotels, motels, guest houses, holiday chalets, entertainment centres, bed-and-breakfast accommodation and casinos.

2/ Other non-residential space includes churches, sport and recreation clubs, schools, crèches, hospitals and all other non-residential space.

3/ Other buildings include additions and alterations to other residential buildings, non-residential buildings and internal alterations.

**Table 21 - Buildings completed by type of building and province: Eastern Cape**

Type of building	June 2003*	May 2004	June 2004	January 2003 to June 2003	January 2004 to June 2004	Percentage change between January 2003 to June 2003 and January 2004 to June 2004
<b>Residential buildings</b>						
Dwelling-houses smaller than 80 square metres						
Number of dwelling-houses	91	822	228	787	1 861	+ 136,5
Total square metres	3 669	33 378	11 503	34 609	81 931	+ 136,7
Total value at current prices (R'000)	3 013	15 977	16 617	30 801	74 974	+ 143,4
Dwelling-houses equal to or larger than 80 square metres						
Number of dwelling-houses	54	115	63	285	487	+ 70,9
Total square metres	11 893	15 702	10 985	57 813	86 026	+ 48,8
Total value at current prices (R'000)	18 638	26 512	18 547	84 600	143 953	+ 70,2
Flats and townhouses						
Number of flats and townhouses	98	7	3	167	51	-69,5
Total square metres	4 140	1 780	776	9 533	10 886	+ 14,2
Total value at current prices (R'000)	7 300	3 204	1 299	14 627	20 408	+ 39,5
Other residential buildings <sup>1/</sup>						
Total square metres	0	0	0	6 084	0	..
Total value at current prices (R'000)	0	0	0	10 024	0	..
<b>Total value of residential buildings at current prices (R'000)</b>	<b>28 951</b>	<b>45 693</b>	<b>36 463</b>	<b>140 052</b>	<b>239 335</b>	<b>+ 70,9</b>
<b>Non-residential buildings</b>						
Office and banking space						
Total square metres	160	0	8 324	160	9 504	+ 5 840,0
Total value at current prices (R'000)	267	0	10 269	267	13 110	+ 4 810,1
Shopping space						
Total square metres	1 286	262	934	4 229	2 847	- 32,7
Total value at current prices (R'000)	2 443	587	1 930	7 355	5 929	- 19,4
Industrial and warehouse space						
Total square metres	5 548	2 810	336	13 203	6 677	- 49,4
Total value at current prices (R'000)	8 593	4 225	544	19 685	10 526	- 46,5
Other non-residential space <sup>2/</sup>						
Total square metres	2 690	1 338	251	6 529	1 830	-72,0
Total value at current prices (R'000)	4 414	2 890	361	10 204	3 562	-65,1
<b>Total value of non-residential buildings at current prices (R'000)</b>	<b>15 717</b>	<b>7 702</b>	<b>13 104</b>	<b>37 511</b>	<b>33 127</b>	<b>- 11,7</b>
<b>Additions and alterations</b>						
Dwelling-houses						
Total square metres	4 676	11 272	12 710	54 086	55 181	+ 2,0
Total value at current prices (R'000)	6 483	18 953	19 601	73 263	88 035	+ 20,2
Other buildings <sup>3/</sup>						
Total square metres	2 383	3 262	29 456	31 811	39 186	+ 23,2
Total value at current prices (R'000)	3 738	6 694	28 568	54 459	47 536	- 12,7
<b>Total value of additions and alterations at current prices (R'000)</b>	<b>10 221</b>	<b>25 647</b>	<b>48 169</b>	<b>127 722</b>	<b>135 571</b>	<b>+ 6,1</b>
<b>Total value of buildings completed at current prices (R'000)</b>	<b>54 889</b>	<b>79 042</b>	<b>97 736</b>	<b>305 285</b>	<b>408 033</b>	<b>+ 33,7</b>

1/ Other residential buildings include institutions for the disabled, boarding houses, old people's homes, hostels, hotels, motels, guest houses, holiday chalets, entertainment centres, bed-and-breakfast accommodation and casinos.

2/ Other non-residential space includes churches, sport and recreation clubs, schools, crèches, hospitals and all other non-residential space.

3/ Other buildings include additions and alterations to other residential buildings, non-residential buildings and internal alterations.

Table 22 - Buildings completed by type of building and province: Northern Cape

Type of building	June 2003	May 2004	June 2004	January 2003 to June 2003	January 2004 to June 2004	Percentage change between January 2003 to June 2003 and January 2004 to June 2004
<b>Residential buildings</b>						
Dwelling-houses smaller than 80 square metres						
Number of dwelling-houses	1	5	10	48	32	- 33,3
Total square metres	70	232	457	1 855	1 507	- 18,8
Total value at current prices (R'000)	126	402	426	1 708	1 930	+ 13,0
Dwelling-houses equal to or larger than 80 square metres						
Number of dwelling-houses	6	6	6	38	41	+ 7,9
Total square metres	718	1 172	936	6 612	6 754	+ 2,1
Total value at current prices (R'000)	1 260	2 000	1 705	10 810	11 196	+ 3,6
Flats and townhouses						
Number of flats and townhouses	0	2	10	22	26	+ 18,2
Total square metres	0	257	1 475	2 467	4 432	+ 79,7
Total value at current prices (R'000)	0	463	3 035	4 004	8 012	+ 100,1
Other residential buildings <sup>1/</sup>						
Total square metres	0	0	0	0	0	..
Total value at current prices (R'000)	0	0	0	0	0	..
<b>Total value of residential buildings at current prices (R'000)</b>	<b>1 386</b>	<b>2 865</b>	<b>5 166</b>	<b>16 522</b>	<b>21 138</b>	<b>+ 27,9</b>
<b>Non-residential buildings</b>						
Office and banking space						
Total square metres	0	95	0	0	95	..
Total value at current prices (R'000)	0	171	0	0	171	..
Shopping space						
Total square metres	0	0	0	3 333	1 939	-41,8
Total value at current prices (R'000)	0	0	0	7 333	3 610	- 50,8
Industrial and warehouse space						
Total square metres	0	145	0	1 017	576	- 43,4
Total value at current prices (R'000)	0	120	0	2 057	974	- 52,6
Other non-residential space <sup>2/</sup>						
Total square metres	0	0	0	125	1 016	+ 712,8
Total value at current prices (R'000)	0	0	0	188	2 123	+ 1029,3
<b>Total value of non-residential buildings at current prices (R'000)</b>	<b>0</b>	<b>291</b>	<b>0</b>	<b>9 578</b>	<b>6 878</b>	<b>- 28,2</b>
<b>Additions and alterations</b>						
Dwelling-houses						
Total square metres	2 583	2 307	2 465	13 327	12 195	- 8,5
Total value at current prices (R'000)	4 440	3 520	3 590	21 429	20 525	- 4,2
Other buildings <sup>3/</sup>						
Total square metres	186	573	278	3 473	1 226	- 64,7
Total value at current prices (R'000)	388	1 684	700	6 502	3 521	- 45,8
<b>Total value of additions and alterations at current prices (R'000)</b>	<b>4 828</b>	<b>5 204</b>	<b>4 290</b>	<b>27 931</b>	<b>24 046</b>	<b>- 13,9</b>
<b>Total value of buildings completed at current prices (R'000)</b>	<b>6 214</b>	<b>8 360</b>	<b>9 456</b>	<b>54 031</b>	<b>52 062</b>	<b>-3,6</b>

1/ Other residential buildings include institutions for the disabled, boarding houses, old people's homes, hostels, hotels, motels, guest houses, holiday chalets, entertainment centres, bed-and-breakfast accommodation and casinos.

2/ Other non-residential space includes churches, sport and recreation clubs, schools, crèches, hospitals and all other non-residential space.

3/ Other buildings include additions and alterations to other residential buildings, non-residential buildings and internal alterations.

Table 23 - Buildings completed by type of building and province: Free State

Type of building	June 2003*	May 2004	June 2004	January 2003 to June 2003	January 2004 to June 2004	Percentage change between January 2003 to June 2003 and January 2004 to June 2004
<b>Residential buildings</b>						
Dwelling-houses smaller than 80 square metres						
Number of dwelling-houses	250	160	82	1 465	1 912	+ 30,5
Total square metres	10 667	6 949	3 390	61 981	80 534	+ 29,9
Total value at current prices (R'000)	7 155	4 106	2 366	36 138	43 721	+ 21,0
Dwelling-houses equal to or larger than 80 square metres						
Number of dwelling-houses	34	29	20	171	112	-34,5
Total square metres	5 215	5 427	4 663	27 184	20 754	-23,7
Total value at current prices (R'000)	7 055	8 044	6 091	34 799	30 516	-12,3
Flats and townhouses						
Number of flats and townhouses	34	48	0	156	242	+ 55,1
Total square metres	4 413	3 836	0	18 001	23 862	+ 32,6
Total value at current prices (R'000)	6 623	6 044	0	26 522	35 987	+ 35,7
Other residential buildings <sup>1/</sup>						
Total square metres	0	0	0	2 743	0	..
Total value at current prices (R'000)	0	0	0	7 054	0	..
<b>Total value of residential buildings at current prices (R'000)</b>	<b>20 833</b>	<b>18 194</b>	<b>8 457</b>	<b>104 513</b>	<b>110 224</b>	<b>+ 5,5</b>
<b>Non-residential buildings</b>						
Office and banking space						
Total square metres	0	0	0	5 730	5 884	+ 2,7
Total value at current prices (R'000)	0	0	0	7 847	24 230	+ 208,8
Shopping space						
Total square metres	84	0	467	10 991	1 827	-83,4
Total value at current prices (R'000)	70	0	1 237	17 340	2 377	-86,3
Industrial and warehouse space						
Total square metres	2 225	0	0	8 664	4 435	-48,8
Total value at current prices (R'000)	1 112	0	0	7 712	3 109	-59,7
Other non-residential space <sup>2/</sup>						
Total square metres	237	742	1 505	3 240	3 344	+ 3,2
Total value at current prices (R'000)	553	1 107	2 043	4 558	5 805	+ 27,4
<b>Total value of non-residential buildings at current prices (R'000)</b>	<b>1 735</b>	<b>1 107</b>	<b>3 280</b>	<b>37 457</b>	<b>35 521</b>	<b>-5,2</b>
<b>Additions and alterations</b>						
Dwelling-houses						
Total square metres	5 151	4 403	4 386	30 882	25 813	-16,4
Total value at current prices (R'000)	5 890	6 363	5 996	34 412	34 457	+ 0,1
Other buildings <sup>3/</sup>						
Total square metres	2 340	1 412	1 305	6 669	7 603	+ 14,0
Total value at current prices (R'000)	5 045	3 723	2 583	23 019	42 066	+ 82,7
<b>Total value of additions and alterations at current prices (R'000)</b>	<b>10 935</b>	<b>10 086</b>	<b>8 579</b>	<b>57 431</b>	<b>76 523</b>	<b>+ 33,2</b>
<b>Total value of buildings completed at current prices (R'000)</b>	<b>33 503</b>	<b>29 387</b>	<b>20 316</b>	<b>199 401</b>	<b>222 268</b>	<b>+ 11,5</b>

1/ Other residential buildings include institutions for the disabled, boarding houses, old people's homes, hostels, hotels, motels, guest houses, holiday chalets, entertainment centres, bed-and-breakfast accommodation and casinos.

2/ Other non-residential space includes churches, sport and recreation clubs, schools, crèches, hospitals and all other non-residential space.

3/ Other buildings include additions and alterations to other residential buildings, non-residential buildings and internal alterations.

**Table 24 - Buildings completed by type of building and province: KwaZulu-Natal**

Type of building	June 2003*	May 2004	June 2004	January 2003 to June 2003	January 2004 to June 2004	Percentage change between January 2003 to June 2003 and January 2004 to June 2004
<b>Residential buildings</b>						
Dwelling-houses smaller than 80 square metres						
Number of dwelling-houses	263	1 300	599	2 012	3 231	+ 60,6
Total square metres	10 256	42 816	19 946	73 650	110 609	+ 50,2
Total value at current prices (R'000)	7 939	30 971	19 570	57 896	93 346	+ 61,2
Dwelling-houses equal to or larger than 80 square metres						
Number of dwelling-houses	76	151	143	624	698	+ 11,9
Total square metres	15 359	28 345	30 846	130 151	153 214	+ 17,7
Total value at current prices (R'000)	22 025	60 593	59 134	194 418	289 866	+ 49,1
Flats and townhouses						
Number of flats and townhouses	23	132	89	345	503	+ 45,8
Total square metres	3 124	29 943	17 704	46 168	107 183	+ 132,2
Total value at current prices (R'000)	5 699	79 045	43 198	73 432	261 556	+ 256,2
Other residential buildings <sup>1/</sup>						
Total square metres	0	1 760	0	186	1 760	+ 846,2
Total value at current prices (R'000)	0	5 300	0	286	5 300	+ 1 753,1
<b>Total value of residential buildings at current prices (R'000)</b>	<b>35 663</b>	<b>175 909</b>	<b>121 902</b>	<b>326 032</b>	<b>650 068</b>	<b>+ 99,4</b>
<b>Non-residential buildings</b>						
Office and banking space						
Total square metres	678	1 740	5 718	13 556	27 264	+ 101,1
Total value at current prices (R'000)	1 300	3 500	15 380	27 037	51 288	+ 89,7
Shopping space						
Total square metres	272	1 327	2 513	32 863	14 109	-57,1
Total value at current prices (R'000)	408	2 869	6 465	62 478	29 864	-52,2
Industrial and warehouse space						
Total square metres	7 330	5 484	8 571	55 659	70 916	+ 27,4
Total value at current prices (R'000)	11 898	6 290	18 408	61 598	92 452	+ 50,1
Other non-residential space <sup>2/</sup>						
Total square metres	4 726	934	993	16 760	5 793	-65,4
Total value at current prices (R'000)	10 334	3 600	1 213	30 593	11 702	-61,7
<b>Total value of non-residential buildings at current prices (R'000)</b>	<b>23 940</b>	<b>16 259</b>	<b>41 466</b>	<b>181 706</b>	<b>185 306</b>	<b>+ 2,0</b>
<b>Additions and alterations</b>						
Dwelling-houses						
Total square metres	16 709	29 491	27 036	147 724	153 270	+ 3,8
Total value at current prices (R'000)	19 297	63 553	56 926	175 341	258 267	+ 47,3
Other buildings <sup>3/</sup>						
Total square metres	5 620	5 434	13 990	55 758	54 137	-2,9
Total value at current prices (R'000)	46 665	21 469	25 715	131 313	116 776	-11,1
<b>Total value of additions and alterations at current prices (R'000)</b>	<b>65 962</b>	<b>85 022</b>	<b>82 641</b>	<b>306 654</b>	<b>375 043</b>	<b>+ 22,3</b>
<b>Total value of buildings completed at current prices (R'000)</b>	<b>125 565</b>	<b>277 190</b>	<b>246 009</b>	<b>814 392</b>	<b>1 210 417</b>	<b>+ 48,6</b>

1/ Other residential buildings include institutions for the disabled, boarding houses, old people's homes, hostels, hotels, motels, guest houses, holiday chalets, entertainment centres, bed-and-breakfast accommodation and casinos.

2/ Other non-residential space includes churches, sport and recreation clubs, schools, crèches, hospitals and all other non-residential space.

3/ Other buildings include additions and alterations to other residential buildings, non-residential buildings and internal alterations.



**Table 25 - Buildings completed by type of building and province: North West**

Type of building	June 2003	May 2004	June 2004	January 2003 to June 2003	January 2004 to June 2004	Percentage change between January 2003 to June 2003 and January 2004 to June 2004
<b>Residential buildings</b>						
Dwelling-houses smaller than 80 square metres						
Number of dwelling-houses	18	26	224	135	3 867	+ 2 764,4
Total square metres	1 136	1 498	7 323	7 781	119 961	+ 1 441,7
Total value at current prices (R'000)	1 283	1 830	4 530	9 015	65 075	+ 621,9
Dwelling-houses equal to or larger than 80 square metres						
Number of dwelling-houses	89	66	59	472	302	- 36,0
Total square metres	16 889	12 224	11 095	89 690	59 739	- 33,4
Total value at current prices (R'000)	27 793	22 440	25 510	135 252	112 205	- 17,0
Flats and townhouses						
Number of flats and townhouses	0	5	50	407	545	+ 33,9
Total square metres	0	542	6 337	34 291	37 225	+ 8,6
Total value at current prices (R'000)	0	950	9 812	54 676	66 707	+ 22,0
Other residential buildings <sup>1/</sup>						
Total square metres	0	0	0	732	228	- 68,9
Total value at current prices (R'000)	0	0	0	1 140	250	- 78,1
<b>Total value of residential buildings at current prices (R'000)</b>	<b>29 076</b>	<b>25 220</b>	<b>39 852</b>	<b>200 083</b>	<b>244 237</b>	<b>+ 22,1</b>
<b>Non-residential buildings</b>						
Office and banking space						
Total square metres	2 232	1 024	1 279	7 692	4 881	- 36,5
Total value at current prices (R'000)	3 076	2 035	2 700	11 494	10 042	- 12,6
Shopping space						
Total square metres	634	0	7 463	3 998	13 701	+ 242,7
Total value at current prices (R'000)	1 050	0	19 404	6 494	28 887	+ 344,8
Industrial and warehouse space						
Total square metres	390	1 797	0	4 062	5 834	+ 43,6
Total value at current prices (R'000)	600	1 250	0	4 576	8 032	+ 75,5
Other non-residential space <sup>2/</sup>						
Total square metres	16	411	0	7 342	1 313	- 82,1
Total value at current prices (R'000)	20	795	0	27 900	2 071	- 92,6
<b>Total value of non-residential buildings at current prices (R'000)</b>	<b>4 746</b>	<b>4 080</b>	<b>22 104</b>	<b>50 464</b>	<b>49 032</b>	<b>- 2,8</b>
<b>Additions and alterations</b>						
Dwelling-houses						
Total square metres	2 013	5 195	3 319	25 630	20 034	- 21,8
Total value at current prices (R'000)	2 545	6 521	3 613	25 384	25 043	- 1,3
Other buildings <sup>3/</sup>						
Total square metres	1 324	1 367	2 138	9 818	8 736	- 11,0
Total value at current prices (R'000)	2 383	2 500	5 014	13 973	17 957	+ 28,5
<b>Total value of additions and alterations at current prices (R'000)</b>	<b>4 928</b>	<b>9 021</b>	<b>8 627</b>	<b>39 357</b>	<b>43 000</b>	<b>+ 9,3</b>
<b>Total value of buildings completed at current prices (R'000)</b>	<b>38 750</b>	<b>38 321</b>	<b>70 583</b>	<b>289 904</b>	<b>336 269</b>	<b>+ 16,0</b>

1/ Other residential buildings include institutions for the disabled, boarding houses, old people's homes, hostels, hotels, motels, guest houses, holiday chalets, entertainment centres, bed-and-breakfast accommodation and casinos.

2/ Other non-residential space includes churches, sport and recreation clubs, schools, crèches, hospitals and all other non-residential space.

3/ Other buildings include additions and alterations to other residential buildings, non-residential buildings and internal alterations.

**Table 26 - Buildings completed by type of building and province: Gauteng**

Type of building	June 2003*	May 2004	June 2004	January 2003 to June 2003	January 2004 to June 2004	Percentage change between January 2003 to June 2003 and January 2004 to June 2004
<b>Residential buildings</b>						
Dwelling-houses smaller than 80 square metres						
Number of dwelling-houses	255	811	670	7 114	4 201	-40,9
Total square metres	11 650	33 979	27 624	241 905	168 091	-30,5
Total value at current prices (R'000)	21 022	34 401	32 292	205 431	178 805	-13,0
Dwelling-houses equal to or larger than 80 square metres						
Number of dwelling-houses	463	504	489	2 534	2 806	+ 10,7
Total square metres	113 263	131 242	123 875	618 112	700 838	+ 13,4
Total value at current prices (R'000)	208 773	292 914	307 348	1 145 922	1 571 500	+ 37,1
Flats and townhouses						
Number of flats and townhouses	739	986	655	2 860	3 172	+ 10,9
Total square metres	94 216	120 133	89 947	344 179	407 794	+ 18,5
Total value at current prices (R'000)	187 339	264 620	172 061	625 565	807 320	+ 29,1
Other residential buildings <sup>1/</sup>						
Total square metres	0	0	0	19 901	3 713	-81,3
Total value at current prices (R'000)	0	0	0	34 512	8 128	-76,4
<b>Total value of residential buildings at current prices (R'000)</b>	<b>417 134</b>	<b>591 935</b>	<b>511 701</b>	<b>2 011 430</b>	<b>2 565 753</b>	<b>+ 27,6</b>
<b>Non-residential buildings</b>						
Office and banking space						
Total square metres	22 766	7 414	7 632	188 662	108 357	-42,6
Total value at current prices (R'000)	42 485	14 585	18 034	406 890	214 944	-47,2
Shopping space						
Total square metres	1 071	2 119	11 176	66 349	24 457	-63,1
Total value at current prices (R'000)	1 171	3 796	24 957	132 898	52 090	-60,8
Industrial and warehouse space						
Total square metres	3 774	3 261	16 562	99 600	135 417	+ 36,0
Total value at current prices (R'000)	6 914	4 067	27 390	172 111	294 579	+ 71,2
Other non-residential space <sup>2/</sup>						
Total square metres	7 219	45 297	0	250 181	54 035	-78,4
Total value at current prices (R'000)	11 496	73 558	0	497 799	93 658	-81,2
<b>Total value of non-residential buildings at current prices (R'000)</b>	<b>62 066</b>	<b>96 006</b>	<b>70 381</b>	<b>1 209 698</b>	<b>655 271</b>	<b>-45,8</b>
<b>Additions and alterations</b>						
Dwelling-houses						
Total square metres	36 469	24 139	23 140	192 714	156 983	-18,5
Total value at current prices (R'000)	68 054	47 767	43 172	322 726	309 910	-4,0
Other buildings <sup>3/</sup>						
Total square metres	8 535	11 483	3 995	65 341	66 626	+ 2,0
Total value at current prices (R'000)	16 210	23 726	15 069	135 943	172 563	+ 26,9
<b>Total value of additions and alterations at current prices (R'000)</b>	<b>84 264</b>	<b>71 493</b>	<b>58 241</b>	<b>458 669</b>	<b>482 473</b>	<b>+ 5,2</b>
<b>Total value of buildings completed at current prices (R'000)</b>	<b>563 464</b>	<b>759 434</b>	<b>640 323</b>	<b>3 679 797</b>	<b>3 703 497</b>	<b>+ 0,6</b>

1/ Other residential buildings include institutions for the disabled, boarding houses, old people's homes, hostels, hotels, motels, guest houses, holiday chalets, entertainment centres, bed-and-breakfast accommodation and casinos.

2/ Other non-residential space includes churches, sport and recreation clubs, schools, crèches, hospitals and all other non-residential space.

3/ Other buildings include additions and alterations to other residential buildings, non-residential buildings and internal alterations.

Table 27 - Buildings completed by type of building and province: Mpumalanga

Type of building	June 2003	May 2004	June 2004	January 2003 to June 2003	January 2004 to June 2004	Percentage change between January 2003 to June 2003 and January 2004 to June 2004
<b>Residential buildings</b>						
Dwelling-houses smaller than 80 square metres						
Number of dwelling-houses	116	207	285	445	910	+ 104,5
Total square metres	5 339	10 160	13 298	19 479	43 345	+ 122,5
Total value at current prices (R'000)	2 864	5 604	8 648	14 000	28 138	+ 101,0
Dwelling-houses equal to or larger than 80 square metres						
Number of dwelling-houses	45	56	80	245	335	+ 36,7
Total square metres	8 885	9 500	15 542	57 041	58 996	+ 3,4
Total value at current prices (R'000)	12 102	14 355	22 548	77 928	87 662	+ 12,5
Flats and townhouses						
Number of flats and townhouses	0	14	4	519	26	-95,0
Total square metres	0	4 048	556	30 623	6 014	-80,4
Total value at current prices (R'000)	0	8 000	1 112	37 287	11 229	-69,9
Other residential buildings <sup>1/</sup>						
Total square metres	0	453	0	1 715	453	-73,6
Total value at current prices (R'000)	0	2 450	0	4 250	2 450	-42,4
<b>Total value of residential buildings at current prices (R'000)</b>	<b>14 966</b>	<b>30 409</b>	<b>32 308</b>	<b>133 465</b>	<b>129 479</b>	<b>-3,0</b>
<b>Non-residential buildings</b>						
Office and banking space						
Total square metres	0	0	368	2 297	3 038	+ 32,3
Total value at current prices (R'000)	0	0	590	2 756	3 590	+ 30,3
Shopping space						
Total square metres	0	1 189	1 291	14 594	2 480	-83,0
Total value at current prices (R'000)	0	1 460	2 421	21 518	3 881	-82,0
Industrial and warehouse space						
Total square metres	261	0	2 280	15 084	3 637	-75,9
Total value at current prices (R'000)	392	0	2 400	11 930	4 829	-59,5
Other non-residential space <sup>2/</sup>						
Total square metres	0	0	0	0	0	..
Total value at current prices (R'000)	0	0	0	0	0	..
<b>Total value of non-residential buildings at current prices (R'000)</b>	<b>392</b>	<b>1 460</b>	<b>5 411</b>	<b>36 204</b>	<b>12 300</b>	<b>-66,0</b>
<b>Additions and alterations</b>						
Dwelling-houses						
Total square metres	1 442	1 361	2 888	16 443	11 530	-29,9
Total value at current prices (R'000)	1 818	1 222	3 755	20 708	14 650	-29,3
Other buildings <sup>3/</sup>						
Total square metres	1 424	276	848	3 157	6 698	+ 112,2
Total value at current prices (R'000)	1 996	377	1 521	5 201	10 862	+ 108,8
<b>Total value of additions and alterations at current prices (R'000)</b>	<b>3 814</b>	<b>1 599</b>	<b>5 276</b>	<b>25 909</b>	<b>25 512</b>	<b>-1,5</b>
<b>Total value of buildings completed at current prices (R'000)</b>	<b>19 172</b>	<b>33 468</b>	<b>42 995</b>	<b>195 578</b>	<b>167 291</b>	<b>-14,5</b>

1/ Other residential buildings include institutions for the disabled, boarding houses, old people's homes, hostels, hotels, motels, guest houses, holiday chalets, entertainment centres, bed-and-breakfast accommodation and casinos.

2/ Other non-residential space includes churches, sport and recreation clubs, schools, crèches, hospitals and all other non-residential space.

3/ Other buildings include additions and alterations to other residential buildings, non-residential buildings and internal alterations.

**Table 28 - Buildings completed by to type of building and province: Limpopo**

Type of building	June 2003	May 2004*	June 2004	January 2003 to June 2003	January 2004 to June 2004	Percentage change between January 2003 to June 2003 and January 2004 to June 2004
<b>Residential buildings</b>						
Dwelling-houses smaller than 80 square metres						
Number of dwelling-houses	13	22	13	132	543	+ 311,4
Total square metres	751	1 408	841	7 494	23 629	+ 215,3
Total value at current prices (R'000)	970	2 629	1 177	10 057	13 667	+ 35,9
Dwelling-houses equal to or larger than 80 square metres						
Number of dwelling-houses	16	46	16	99	163	+ 64,6
Total square metres	3 090	7 243	3 238	16 162	30 023	+ 85,8
Total value at current prices (R'000)	4 518	13 769	6 179	23 385	52 498	+ 124,5
Flats and townhouses						
Number of flats and townhouses	3	3	13	34	41	+ 20,6
Total square metres	426	330	2 500	3 622	7 033	+ 94,2
Total value at current prices (R'000)	597	462	3 496	4 834	9 834	+ 103,4
Other residential buildings <sup>1/</sup>						
Total square metres	0	0	0	0	343	..
Total value at current prices (R'000)	0	0	0	0	1 000	..
<b>Total value of residential buildings at current prices (R'000)</b>	<b>6 085</b>	<b>16 860</b>	<b>10 852</b>	<b>38 276</b>	<b>76 999</b>	<b>+ 101,2</b>
<b>Non-residential buildings</b>						
Office and banking space						
Total square metres	187	0	29	187	938	+ 401,6
Total value at current prices (R'000)	411	0	64	411	1 404	+ 241,6
Shopping space						
Total square metres	320	862	0	1 844	3 038	+ 64,8
Total value at current prices (R'000)	512	1 255	0	3 592	4 844	+ 34,9
Industrial and warehouse space						
Total square metres	0	0	0	1 113	0	..
Total value at current prices (R'000)	0	0	0	1 839	0	..
Other non-residential space <sup>2/</sup>						
Total square metres	151	0	0	593	794	+ 33,9
Total value at current prices (R'000)	332	0	0	950	1 111	+ 16,9
<b>Total value of non-residential buildings at current prices (R'000)</b>	<b>1 255</b>	<b>1 255</b>	<b>64</b>	<b>6 792</b>	<b>7 359</b>	<b>+ 8,3</b>
<b>Additions and alterations</b>						
Dwelling-houses						
Total square metres	513	445	389	2 821	6 062	+ 114,9
Total value at current prices (R'000)	688	646	630	4 150	9 103	+ 119,3
Other buildings <sup>3/</sup>						
Total square metres	0	91	0	649	958	+ 47,6
Total value at current prices (R'000)	0	127	0	1 363	1 449	+ 6,3
<b>Total value of additions and alterations at current prices (R'000)</b>	<b>688</b>	<b>773</b>	<b>630</b>	<b>5 513</b>	<b>10 552</b>	<b>+ 91,4</b>
<b>Total value of buildings completed at current prices (R'000)</b>	<b>8 028</b>	<b>18 888</b>	<b>11 546</b>	<b>50 581</b>	<b>94 910</b>	<b>+ 87,6</b>

1/ Other residential buildings include institutions for the disabled, boarding houses, old people's homes, hostels, hotels, motels, guest houses, holiday chalets, entertainment centres, bed-and-breakfast accommodation and casinos.

2/ Other non-residential space includes churches, sport and recreation clubs, schools, crèches, hospitals and all other non-residential space.

3/ Other buildings include additions and alterations to other residential buildings, non-residential buildings and internal alterations.

**Table 29 - Building plans passed by type of building and selected urban area: Cape Town**

Type of building	June 2003*	May 2004*	June 2004	January 2003 to June 2003	January 2004 to June 2004	Percentage change between January 2003 to June 2003 and January 2004 to June 2004
<b>Residential buildings</b>						
Dwelling-houses smaller than 80 square metres						
Number of dwelling-houses	309	595	300	1 805	1 985	+ 10,0
Total square metres	14 168	25 460	12 441	76 350	86 531	+ 13,3
Total value at current prices (R'000)	17 809	32 423	17 613	92 012	107 342	+ 16,7
Dwelling-houses equal to or larger than 80 square metres						
Number of dwelling-houses	339	312	331	1 868	1 625	- 13,0
Total square metres	77 467	74 258	75 916	402 488	381 268	- 5,3
Total value at current prices (R'000)	107 685	141 007	142 568	583 507	724 332	+ 24,1
Flats and townhouses						
Number of flats and townhouses	213	346	211	1 104	1 659	+ 50,3
Total square metres	25 871	36 802	20 668	129 988	186 081	+ 43,2
Total value at current prices (R'000)	44 046	75 698	43 479	237 499	395 972	+ 66,7
Other residential buildings <sup>1/</sup>						
Total square metres	0	5 110	0	0	31 041	..
Total value at current prices (R'000)	0	65 000	0	0	125 342	..
<b>Total value of residential buildings at current prices (R'000)</b>	<b>169 540</b>	<b>314 128</b>	<b>203 660</b>	<b>913 018</b>	<b>1 352 988</b>	<b>+ 48,2</b>
<b>Non-residential buildings</b>						
Office and banking space						
Total square metres	19 196	9 341	4 372	69 373	57 483	- 17,1
Total value at current prices (R'000)	45 798	17 827	8 040	143 237	103 488	- 27,8
Shopping space						
Total square metres	11 359	6 556	13 318	59 466	124 247	+ 108,9
Total value at current prices (R'000)	19 131	12 721	27 967	66 062	248 469	+ 276,1
Industrial and warehouse space						
Total square metres	20 383	19 967	18 008	59 915	96 319	+ 60,8
Total value at current prices (R'000)	24 472	29 294	31 556	70 981	146 688	+ 106,7
Other non-residential space <sup>2/</sup>						
Total square metres	1 421	383	4 104	8 030	17 742	+ 120,9
Total value at current prices (R'000)	2 249	670	8 515	11 885	41 335	+ 247,8
<b>Total value of non-residential buildings at current prices (R'000)</b>	<b>91 650</b>	<b>60 512</b>	<b>76 078</b>	<b>292 165</b>	<b>539 980</b>	<b>+ 84,8</b>
<b>Additions and alterations</b>						
Dwelling-houses						
Total square metres	52 176	68 843	59 438	307 278	337 935	+ 10,0
Total value at current prices (R'000)	69 020	126 207	123 864	429 283	613 664	+ 43,0
Other buildings <sup>3/</sup>						
Total square metres	23 144	14 886	11 077	155 390	144 662	- 6,9
Total value at current prices (R'000)	42 681	37 561	57 205	306 151	352 279	+ 15,1
<b>Total value of additions and alterations at current prices (R'000)</b>	<b>111 701</b>	<b>163 768</b>	<b>181 069</b>	<b>735 434</b>	<b>965 943</b>	<b>+ 31,3</b>
<b>Total value of building plans passed at current prices (R'000)</b>	<b>372 891</b>	<b>538 408</b>	<b>460 807</b>	<b>1 940 617</b>	<b>2 858 911</b>	<b>+ 47,3</b>

1/ Other residential buildings include institutions for the disabled, boarding houses, old people's homes, hostels, hotels, motels, guest houses, holiday chalets, entertainment centres, bed-and-breakfast accommodation and casinos.

2/ Other non-residential space includes churches, sport and recreation clubs, schools, crèches, hospitals and all other non-residential space.

3/ Other buildings include additions and alterations to other residential buildings, non-residential buildings and internal alterations.

**Table 30 - Building plans passed by type of building and selected urban area: Port Elizabeth**

Type of building	June 2003*	May 2004	June 2004	January 2003 to June 2003	January 2004 to June 2004	Percentage change between January 2003 to June 2003 and January 2004 to June 2004
<b>Residential buildings</b>						
Dwelling-houses smaller than 80 square metres						
Number of dwelling-houses	243	374	226	1 129	1 948	+ 72,5
Total square metres	9 928	15 313	9 428	47 554	79 276	+ 66,7
Total value at current prices (R'000)	7 509	13 855	15 721	50 227	78 335	+ 56,0
Dwelling-houses equal to or larger than 80 square metres						
Number of dwelling-houses	54	12	16	162	112	- 30,9
Total square metres	10 366	1 645	1 950	30 481	20 555	- 32,6
Total value at current prices (R'000)	11 088	2 286	2 806	55 303	30 212	- 45,4
Flats and townhouses						
Number of flats and townhouses	1	19	20	37	109	+ 194,6
Total square metres	218	4 492	5 851	6 894	29 566	+ 328,9
Total value at current prices (R'000)	603	8 086	12 532	12 353	53 124	+ 330,0
Other residential buildings <sup>1/</sup>						
Total square metres	60	0	0	470	0	..
Total value at current prices (R'000)	124	0	0	969	0	..
<b>Total value of residential buildings at current prices (R'000)</b>	<b>19 324</b>	<b>24 227</b>	<b>31 059</b>	<b>118 852</b>	<b>161 671</b>	<b>+ 36,0</b>
<b>Non-residential buildings</b>						
Office and banking space						
Total square metres	0	498	0	3 348	498	- 85,1
Total value at current prices (R'000)	0	1 115	0	6 345	1 115	- 82,4
Shopping space						
Total square metres	0	669	0	756	3 017	+ 299,1
Total value at current prices (R'000)	0	1 077	0	1 413	6 056	+ 328,6
Industrial and warehouse space						
Total square metres	4 175	2 692	25 607	10 900	38 440	+ 252,7
Total value at current prices (R'000)	6 386	4 817	16 400	16 460	34 172	+ 107,6
Other non-residential space <sup>2/</sup>						
Total square metres	191	230	189	2 575	2 135	- 17,1
Total value at current prices (R'000)	326	428	413	4 427	4 563	+ 3,1
<b>Total value of non-residential buildings at current prices (R'000)</b>	<b>6 712</b>	<b>7 437</b>	<b>16 813</b>	<b>28 645</b>	<b>45 906</b>	<b>+ 60,3</b>
<b>Additions and alterations</b>						
Dwelling-houses						
Total square metres	12 026	19 589	21 054	48 934	96 741	+ 97,7
Total value at current prices (R'000)	19 584	33 790	34 685	80 555	166 770	+ 107,0
Other buildings <sup>3/</sup>						
Total square metres	2 677	2 686	4 139	21 314	28 724	+ 34,8
Total value at current prices (R'000)	26 183	4 704	16 842	66 555	65 578	- 1,5
<b>Total value of additions and alterations at current prices (R'000)</b>	<b>45 767</b>	<b>38 494</b>	<b>51 527</b>	<b>147 110</b>	<b>232 348</b>	<b>+ 57,9</b>
<b>Total value of building plans passed at current prices (R'000)</b>	<b>71 803</b>	<b>70 158</b>	<b>99 399</b>	<b>294 607</b>	<b>439 925</b>	<b>+ 49,3</b>

1/ Other residential buildings include institutions for the disabled, boarding houses, old people's homes, hostels, hotels, motels, guest houses, holiday chalets, entertainment centres, bed-and-breakfast accommodation and casinos.

2/ Other non-residential space includes churches, sport and recreation clubs, schools, crèches, hospitals and all other non-residential space.

3/ Other buildings include additions and alterations to other residential buildings, non-residential buildings and internal alterations.

**Table 31 - Building plans passed by type of building and selected urban area: Durban**

Type of building	June 2003	May 2004	June 2004	January 2003 to June 2003	January 2004 to June 2004	Percentage change between January 2003 to June 2003 and January 2004 to June 2004
<b>Residential buildings</b>						
Dwelling-houses smaller than 80 square metres						
Number of dwelling-houses	94	244	250	358	1 134	+ 216,8
Total square metres	4 379	8 363	8 841	18 735	40 588	+ 116,6
Total value at current prices (R'000)	4 055	9 175	9 770	21 170	42 558	+ 101,0
Dwelling-houses equal to or larger than 80 square metres						
Number of dwelling-houses	83	96	94	440	482	+ 9,5
Total square metres	17 596	19 599	20 270	92 753	100 487	+ 8,3
Total value at current prices (R'000)	42 042	37 600	33 493	153 772	178 478	+ 16,1
Flats and townhouses						
Number of flats and townhouses	160	104	100	371	451	+ 21,6
Total square metres	18 989	23 409	20 897	55 198	105 667	+ 91,4
Total value at current prices (R'000)	46 856	52 348	45 037	122 352	230 383	+ 88,3
Other residential buildings <sup>1/</sup>						
Total square metres	274	0	2 443	873	2 528	+ 189,6
Total value at current prices (R'000)	500	0	3 600	1 300	3 690	+ 183,8
<b>Total value of residential buildings at current prices (R'000)</b>	<b>93 453</b>	<b>99 123</b>	<b>91 900</b>	<b>298 594</b>	<b>455 109</b>	<b>+ 52,4</b>
<b>Non-residential buildings</b>						
Office and banking space						
Total square metres	145	5 491	274	5 415	15 429	+ 184,9
Total value at current prices (R'000)	150	18 000	821	12 978	37 829	+ 191,5
Shopping space						
Total square metres	0	0	961	36 867	2 088	-94,3
Total value at current prices (R'000)	0	0	1 747	288 360	3 547	-98,8
Industrial and warehouse space						
Total square metres	6 582	13 960	3 942	24 667	65 282	+ 164,7
Total value at current prices (R'000)	6 830	20 270	4 358	24 483	130 778	+ 434,2
Other non-residential space <sup>2/</sup>						
Total square metres	1 581	773	1 242	4 634	4 257	-8,1
Total value at current prices (R'000)	3 755	2 000	1 250	9 140	8 915	-2,5
<b>Total value of non-residential buildings at current prices (R'000)</b>	<b>10 735</b>	<b>40 270</b>	<b>8 176</b>	<b>334 961</b>	<b>181 069</b>	<b>-45,9</b>
<b>Additions and alterations</b>						
Dwelling-houses						
Total square metres	28 675	29 406	35 418	162 263	193 401	+ 19,2
Total value at current prices (R'000)	44 609	46 993	54 395	206 484	292 748	+ 41,8
Other buildings <sup>3/</sup>						
Total square metres	5 822	16 719	7 451	53 371	57 508	+ 7,8
Total value at current prices (R'000)	11 299	22 003	19 392	126 434	110 588	-12,5
<b>Total value of additions and alterations at current prices (R'000)</b>	<b>55 908</b>	<b>68 996</b>	<b>73 787</b>	<b>332 918</b>	<b>403 336</b>	<b>+ 21,2</b>
<b>Total value of building plans passed at current prices (R'000)</b>	<b>160 096</b>	<b>208 389</b>	<b>173 863</b>	<b>966 473</b>	<b>1 039 514</b>	<b>+ 7,6</b>

1/ Other residential buildings include institutions for the disabled, boarding houses, old people's homes, hostels, hotels, motels, guest houses, holiday chalets, entertainment centres, bed-and-breakfast accommodation and casinos.

2/ Other non-residential space includes churches, sport and recreation clubs, schools, crèches, hospitals and all other non-residential space.

3/ Other buildings include additions and alterations to other residential buildings, non-residential buildings and internal alterations.

Table 32 - Building plans passed by type of building and selected urban area: Witwatersrand

Type of building	June 2003	May 2004	June 2004	January 2003 to June 2003	January 2004 to June 2004	Percentage change between January 2003 to June 2003 and January 2004 to June 2004
<b>Residential buildings</b>						
Dwelling-houses smaller than 80 square metres						
Number of dwelling-houses	265	1 539	1 152	2 373	4 441	+ 87,1
Total square metres	12 326	60 028	44 686	99 666	179 561	+ 80,2
Total value at current prices (R'000)	17 060	45 954	51 179	121 351	191 147	+ 57,5
Dwelling-houses equal to or larger than 80 square metres						
Number of dwelling-houses	464	665	751	2 473	3 393	+ 37,2
Total square metres	126 922	174 514	198 717	637 054	872 616	+ 37,0
Total value at current prices (R'000)	254 410	351 597	400 693	1 202 414	1 776 684	+ 47,8
Flats and townhouses						
Number of flats and townhouses	300	436	427	1 621	2 075	+ 28,0
Total square metres	58 187	71 362	88 739	269 818	392 543	+ 45,5
Total value at current prices (R'000)	119 331	133 897	188 636	505 839	801 747	+ 58,5
Other residential buildings <sup>1/</sup>						
Total square metres	1 775	0	0	21 216	9 624	- 54,6
Total value at current prices (R'000)	2 227	0	0	43 299	19 056	- 56,0
<b>Total value of residential buildings at current prices (R'000)</b>	<b>393 028</b>	<b>531 448</b>	<b>640 508</b>	<b>1 872 903</b>	<b>2 788 634</b>	<b>+ 48,9</b>
<b>Non-residential buildings</b>						
Office and banking space						
Total square metres	5 622	12 679	650	46 116	46 543	+ 0,9
Total value at current prices (R'000)	11 313	25 576	1 284	87 686	89 476	+ 2,0
Shopping space						
Total square metres	984	4 327	17 489	29 856	63 914	+ 114,1
Total value at current prices (R'000)	1 895	9 273	34 457	48 699	132 809	+ 172,7
Industrial and warehouse space						
Total square metres	19 952	24 445	29 150	101 188	156 666	+ 54,8
Total value at current prices (R'000)	36 738	47 639	58 772	188 100	284 800	+ 51,4
Other non-residential space <sup>2/</sup>						
Total square metres	11 257	26 687	10 827	45 790	108 545	+ 137,0
Total value at current prices (R'000)	25 655	52 451	23 109	97 783	186 355	+ 90,6
<b>Total value of non-residential buildings at current prices (R'000)</b>	<b>75 601</b>	<b>134 939</b>	<b>117 622</b>	<b>422 268</b>	<b>693 440</b>	<b>+ 64,2</b>
<b>Additions and alterations</b>						
Dwelling-houses						
Total square metres	70 465	104 106	93 633	368 597	467 885	+ 26,9
Total value at current prices (R'000)	119 619	201 733	186 617	640 054	872 319	+ 36,3
Other buildings <sup>3/</sup>						
Total square metres	18 443	28 713	7 640	93 648	122 939	+ 31,3
Total value at current prices (R'000)	29 945	62 109	48 118	209 739	303 335	+ 44,6
<b>Total value of additions and alterations at current prices (R'000)</b>	<b>149 564</b>	<b>263 842</b>	<b>234 735</b>	<b>849 793</b>	<b>1 175 654</b>	<b>+ 38,3</b>
<b>Total value of building plans passed at current prices (R'000)</b>	<b>618 193</b>	<b>930 229</b>	<b>992 865</b>	<b>3 144 964</b>	<b>4 657 728</b>	<b>+ 48,1</b>

1/ Other residential buildings include institutions for the disabled, boarding houses, old people's homes, hostels, hotels, motels, guest houses, holiday chalets, entertainment centres, bed-and-breakfast accommodation and casinos.

2/ Other non-residential space includes churches, sport and recreation clubs, schools, crèches, hospitals and all other non-residential space.

3/ Other buildings include additions and alterations to other residential buildings, non-residential buildings and internal alterations.



Table 33 - Building plans passed by type of building and selected urban area: Pretoria

Type of building	June 2003*	May 2004	June 2004	January 2003 to June 2003	January 2004 to June 2004	Percentage change between January 2003 to June 2003 and January 2004 to June 2004
<b>Residential buildings</b>						
Dwelling-houses smaller than 80 square metres						
Number of dwelling-houses	102	36	15	3 764	274	- 92,7
Total square metres	6 297	2 051	753	124 549	15 110	- 87,9
Total value at current prices (R'000)	12 583	5 236	1 883	97 109	35 473	- 63,5
Dwelling-houses equal to or larger than 80 square metres						
Number of dwelling-houses	200	182	159	1 144	983	- 14,1
Total square metres	52 623	49 704	47 949	305 764	265 562	- 13,1
Total value at current prices (R'000)	107 724	116 672	115 330	618 942	641 389	+ 3,6
Flats and townhouses						
Number of flats and townhouses	264	60	81	1 260	1 113	- 11,7
Total square metres	50 819	11 073	18 128	247 284	160 826	- 35,0
Total value at current prices (R'000)	102 598	27 645	34 189	485 346	387 602	- 20,1
Other residential buildings <sup>1/</sup>						
Total square metres	0	0	0	1 267	0	..
Total value at current prices (R'000)	0	0	0	2 497	0	..
<b>Total value of residential buildings at current prices (R'000)</b>	<b>222 905</b>	<b>149 553</b>	<b>151 402</b>	<b>1 203 894</b>	<b>1 064 464</b>	<b>- 11,6</b>
<b>Non-residential buildings</b>						
Office and banking space						
Total square metres	0	8 073	0	46 304	19 698	- 57,5
Total value at current prices (R'000)	0	20 183	0	91 191	49 247	- 46,0
Shopping space						
Total square metres	3 559	740	0	14 402	6 085	- 57,7
Total value at current prices (R'000)	7 219	1 850	0	27 863	15 011	- 46,1
Industrial and warehouse space						
Total square metres	6 540	14 606	22 218	54 878	73 283	+ 33,5
Total value at current prices (R'000)	14 251	27 881	55 546	113 853	173 973	+ 52,8
Other non-residential space <sup>2/</sup>						
Total square metres	3 863	314	5 283	27 866	8 818	- 68,4
Total value at current prices (R'000)	7 867	785	13 208	49 761	22 003	- 55,8
<b>Total value of non-residential buildings at current prices (R'000)</b>	<b>29 337</b>	<b>50 699</b>	<b>68 754</b>	<b>282 668</b>	<b>260 234</b>	<b>- 7,9</b>
<b>Additions and alterations</b>						
Dwelling-houses						
Total square metres	37 053	20 530	26 574	146 718	121 612	- 17,1
Total value at current prices (R'000)	75 831	47 754	64 323	290 442	297 793	+ 2,5
Other buildings <sup>3/</sup>						
Total square metres	14 110	8 682	13 619	144 510	54 178	- 62,5
Total value at current prices (R'000)	28 321	20 280	47 586	310 159	188 827	- 39,1
<b>Total value of additions and alterations at current prices (R'000)</b>	<b>104 152</b>	<b>68 034</b>	<b>111 909</b>	<b>600 601</b>	<b>486 620</b>	<b>- 19,0</b>
<b>Total value of building plans passed at current prices (R'000)</b>	<b>356 394</b>	<b>268 286</b>	<b>332 065</b>	<b>2 087 163</b>	<b>1 811 318</b>	<b>- 13,2</b>

1/ Other residential buildings include institutions for the disabled, boarding houses, old people's homes, hostels, hotels, motels, guest houses, holiday chalets, entertainment centres, bed-and-breakfast accommodation and casinos.

2/ Other non-residential space includes churches, sport and recreation clubs, schools, crèches, hospitals and all other non-residential space.

3/ Other buildings include additions and alterations to other residential buildings, non-residential buildings and internal alterations.

**Table 34 - Building plans passed by type of building and selected urban area: Bloemfontein**

Type of building	June 2003	May 2004	June 2004	January 2003 to June 2003	January 2004 to June 2004	Percentage change between January 2003 to June 2003 and January 2004 to June 2004
<b>Residential buildings</b>						
Dwelling-houses smaller than 80 square metres						
Number of dwelling-houses	545	155	37	1 766	864	-51,1
Total square metres	23 189	6 967	2 001	72 989	37 238	-49,0
Total value at current prices (R'000)	10 783	4 711	2 511	38 501	24 605	-36,1
Dwelling-houses equal to or larger than 80 square metres						
Number of dwelling-houses	25	44	60	202	230	+ 13,9
Total square metres	3 112	7 853	9 243	32 986	35 612	+ 8,0
Total value at current prices (R'000)	5 242	13 445	17 032	50 438	58 412	+ 15,8
Flats and townhouses						
Number of flats and townhouses	0	49	70	155	281	+ 81,3
Total square metres	0	4 780	6 297	16 552	32 942	+ 99,0
Total value at current prices (R'000)	0	7 545	11 516	24 831	54 513	+ 119,5
Other residential buildings <sup>1/</sup>						
Total square metres	0	0	5 139	0	5 139	..
Total value at current prices (R'000)	0	0	9 770	0	9 770	..
<b>Total value of residential buildings at current prices (R'000)</b>	<b>16 025</b>	<b>25 701</b>	<b>40 829</b>	<b>113 770</b>	<b>147 300</b>	<b>+ 29,5</b>
<b>Non-residential buildings</b>						
Office and banking space						
Total square metres	3 756	0	2 289	5 372	5 323	-0,9
Total value at current prices (R'000)	5 390	0	5 082	8 198	10 100	+ 23,2
Shopping space						
Total square metres	0	330	0	5 778	638	-89,0
Total value at current prices (R'000)	0	990	0	13 906	1 606	-88,5
Industrial and warehouse space						
Total square metres	1 141	0	1 909	5 591	2 403	-57,0
Total value at current prices (R'000)	685	0	1 462	3 473	1 759	-49,4
Other non-residential space <sup>2/</sup>						
Total square metres	0	0	161	2 679	161	-94,0
Total value at current prices (R'000)	0	0	189	4 194	189	-95,5
<b>Total value of non-residential buildings at current prices (R'000)</b>	<b>6 075</b>	<b>990</b>	<b>6 733</b>	<b>29 771</b>	<b>13 654</b>	<b>-54,1</b>
<b>Additions and alterations</b>						
Dwelling-houses						
Total square metres	3 693	6 537	6 540	28 658	34 516	+ 20,4
Total value at current prices (R'000)	5 077	9 725	8 735	38 399	47 441	+ 23,5
Other buildings <sup>3/</sup>						
Total square metres	218	1 745	1 414	6 285	8 542	+ 35,9
Total value at current prices (R'000)	742	2 182	2 709	27 526	17 333	-37,0
<b>Total value of additions and alterations at current prices (R'000)</b>	<b>5 819</b>	<b>11 907</b>	<b>11 444</b>	<b>65 925</b>	<b>64 774</b>	<b>-1,7</b>
<b>Total value of building plans passed at current prices (R'000)</b>	<b>27 919</b>	<b>38 598</b>	<b>59 006</b>	<b>209 466</b>	<b>225 728</b>	<b>+ 7,8</b>

1/ Other residential buildings include institutions for the disabled, boarding houses, old people's homes, hostels, hotels, motels, guest houses, holiday chalets, entertainment centres, bed-and-breakfast accommodation and casinos.

2/ Other non-residential space includes churches, sport and recreation clubs, schools, crèches, hospitals and all other non-residential space.

3/ Other buildings include additions and alterations to other residential buildings, non-residential buildings and internal alterations.

Table 35 - Buildings completed by type of building and selected urban area: Cape Town

Type of building	June 2003*	May 2004*	June 2004	January 2003 to June 2003	January 2004 to June 2004	Percentage change between January 2003 to June 2003 and January 2004 to June 2004
<b>Residential buildings</b>						
Dwelling-houses smaller than 80 square metres						
Number of dwelling-houses	251	234	351	1 126	1 473	+ 30,8
Total square metres	9 759	10 048	15 059	44 854	62 745	+ 39,9
Total value at current prices (R'000)	13 652	10 260	17 913	49 847	62 190	+ 24,8
Dwelling-houses equal to or larger than 80 square metres						
Number of dwelling-houses	202	169	210	1 473	926	- 37,1
Total square metres	46 369	40 176	49 407	277 050	213 754	- 22,8
Total value at current prices (R'000)	65 875	63 120	79 739	386 864	343 105	- 11,3
Flats and townhouses						
Number of flats and townhouses	148	81	210	823	644	- 21,7
Total square metres	12 409	10 632	23 341	93 581	65 970	- 29,5
Total value at current prices (R'000)	21 605	22 991	48 186	145 908	128 387	- 12,0
Other residential buildings <sup>1/</sup>						
Total square metres	0	0	0	0	10 800	..
Total value at current prices (R'000)	0	0	0	0	31 300	..
<b>Total value of residential buildings at current prices (R'000)</b>	<b>101 132</b>	<b>96 371</b>	<b>145 838</b>	<b>582 619</b>	<b>564 982</b>	<b>- 3,0</b>
<b>Non-residential buildings</b>						
Office and banking space						
Total square metres	9 436	7 060	7 550	88 937	23 546	- 73,5
Total value at current prices (R'000)	18 057	13 959	22 838	161 292	53 076	- 67,1
Shopping space						
Total square metres	0	76 636	0	20 862	88 824	+ 325,8
Total value at current prices (R'000)	0	159 800	0	30 943	180 120	+ 482,1
Industrial and warehouse space						
Total square metres	6 208	2 180	2 486	57 988	15 548	- 73,2
Total value at current prices (R'000)	7 248	2 616	3 369	63 361	18 200	- 71,3
Other non-residential space <sup>2/</sup>						
Total square metres	1 202	697	1 201	21 677	4 789	- 77,9
Total value at current prices (R'000)	1 968	1 631	1 891	29 123	6 192	- 78,7
<b>Total value of non-residential buildings at current prices (R'000)</b>	<b>27 273</b>	<b>178 006</b>	<b>28 098</b>	<b>284 719</b>	<b>257 588</b>	<b>- 9,5</b>
<b>Additions and alterations</b>						
Dwelling-houses						
Total square metres	39 575	27 602	32 639	197 942	151 770	- 23,3
Total value at current prices (R'000)	48 395	43 054	48 981	247 658	223 820	- 9,6
Other buildings <sup>3/</sup>						
Total square metres	24 342	9 316	9 020	82 401	47 679	- 42,1
Total value at current prices (R'000)	42 130	17 106	35 143	192 766	137 245	- 28,8
<b>Total value of additions and alterations at current prices (R'000)</b>	<b>90 525</b>	<b>60 160</b>	<b>84 124</b>	<b>440 424</b>	<b>361 065</b>	<b>- 18,0</b>
<b>Total value of buildings completed at current prices (R'000)</b>	<b>218 930</b>	<b>334 537</b>	<b>258 060</b>	<b>1 307 762</b>	<b>1 183 635</b>	<b>- 9,5</b>

1/ Other residential buildings include institutions for the disabled, boarding houses, old people's homes, hostels, hotels, motels, guest houses, holiday chalets, entertainment centres, bed-and-breakfast accommodation and casinos.

2/ Other non-residential space includes churches, sport and recreation clubs, schools, crèches, hospitals and all other non-residential space.

3/ Other buildings include additions and alterations to other residential buildings, non-residential buildings and internal alterations.

**Table 36 - Buildings completed by type of building and selected urban area: Port Elizabeth**

Type of building	June 2003*	May 2004	June 2004	January 2003 to June 2003	January 2004 to June 2004	Percentage change between January 2003 to June 2003 and January 2004 to June 2004
<b>Residential buildings</b>						
Dwelling-houses smaller than 80 square metres						
Number of dwelling-houses	30	57	99	539	584	+ 8,3
Total square metres	1 237	2 295	4 102	23 378	27 320	+ 16,9
Total value at current prices (R'000)	976	1 889	6 294	17 858	36 444	+ 104,1
Dwelling-houses equal to or larger than 80 square metres						
Number of dwelling-houses	15	46	0	47	106	+ 125,5
Total square metres	3 099	4 378	0	8 645	15 732	+ 82,0
Total value at current prices (R'000)	4 515	7 431	0	12 713	25 462	+ 100,3
Flats and townhouses						
Number of flats and townhouses	0	7	3	69	40	- 42,0
Total square metres	0	1 780	776	5 393	9 121	+ 69,1
Total value at current prices (R'000)	0	3 204	1 299	7 327	17 000	+ 132,0
Other residential buildings <sup>1/</sup>						
Total square metres	0	0	0	5 656	0	..
Total value at current prices (R'000)	0	0	0	9 314	0	..
<b>Total value of residential buildings at current prices (R'000)</b>	<b>5 491</b>	<b>12 524</b>	<b>7 593</b>	<b>47 212</b>	<b>78 906</b>	<b>+ 67,1</b>
<b>Non-residential buildings</b>						
Office and banking space						
Total square metres	0	0	5 784	0	5 784	..
Total value at current prices (R'000)	0	0	4 714	0	4 714	..
Shopping space						
Total square metres	0	262	287	1 936	909	- 53,0
Total value at current prices (R'000)	0	587	464	3 445	1 733	- 49,7
Industrial and warehouse space						
Total square metres	5 100	251	336	12 314	587	- 95,2
Total value at current prices (R'000)	7 854	442	544	18 196	986	-94,6
Other non-residential space <sup>2/</sup>						
Total square metres	0	746	0	1 705	862	- 49,4
Total value at current prices (R'000)	0	1 671	0	2 160	1 782	- 17,5
<b>Total value of non-residential buildings at current prices (R'000)</b>	<b>7 854</b>	<b>2 700</b>	<b>5 722</b>	<b>23 801</b>	<b>9 215</b>	<b>- 61,3</b>
<b>Additions and alterations</b>						
Dwelling-houses						
Total square metres	495	6 786	8 069	23 287	28 134	+ 20,8
Total value at current prices (R'000)	745	11 799	12 062	28 819	43 539	+ 51,1
Other buildings <sup>3/</sup>						
Total square metres	1 683	1 194	27 301	20 658	32 762	+ 58,6
Total value at current prices (R'000)	2 119	2 588	23 297	32 543	33 812	+ 3,9
<b>Total value of additions and alterations at current prices (R'000)</b>	<b>2 864</b>	<b>14 387</b>	<b>35 359</b>	<b>61 362</b>	<b>77 351</b>	<b>+ 26,1</b>
<b>Total value of buildings completed at current prices (R'000)</b>	<b>16 209</b>	<b>29 611</b>	<b>48 674</b>	<b>132 375</b>	<b>165 472</b>	<b>+ 25,0</b>

1/ Other residential buildings include institutions for the disabled, boarding houses, old people's homes, hostels, hotels, motels, guest houses, holiday chalets, entertainment centres, bed-and-breakfast accommodation and casinos.

2/ Other non-residential space includes churches, sport and recreation clubs, schools, crèches, hospitals and all other non-residential space.

3/ Other buildings include additions and alterations to other residential buildings, non-residential buildings and internal alterations.

Table 37 - Buildings completed by type of building and selected urban area: Durban

Type of building	June 2003	May 2004	June 2004	January 2003 to June 2003	January 2004 to June 2004	Percentage change between January 2003 to June 2003 and January 2004 to June 2004
<b>Residential buildings</b>						
Dwelling-houses smaller than 80 square metres						
Number of dwelling-houses	80	250	426	464	1 452	+ 212,9
Total square metres	3 560	8 792	14 050	20 979	52 072	+ 148,2
Total value at current prices (R'000)	3 789	10 632	15 269	22 996	54 674	+ 137,8
Dwelling-houses equal to or larger than 80 square metres						
Number of dwelling-houses	26	89	76	293	403	+ 37,5
Total square metres	4 854	15 022	13 460	53 383	76 230	+ 42,8
Total value at current prices (R'000)	5 532	29 506	24 742	63 815	127 015	+ 99,0
Flats and townhouses						
Number of flats and townhouses	2	109	29	158	293	+ 85,4
Total square metres	346	26 398	6 587	20 650	61 033	+ 195,6
Total value at current prices (R'000)	759	72 106	16 455	31 915	149 338	+ 367,9
Other residential buildings <sup>1/</sup>						
Total square metres	0	0	0	0	0	..
Total value at current prices (R'000)	0	0	0	0	0	..
<b>Total value of residential buildings at current prices (R'000)</b>	<b>10 080</b>	<b>112 244</b>	<b>56 466</b>	<b>118 726</b>	<b>331 027</b>	<b>+ 178,8</b>
<b>Non-residential buildings</b>						
Office and banking space						
Total square metres	678	0	2 678	10 224	17 742	+ 73,5
Total value at current prices (R'000)	1 300	0	8 680	17 759	32 381	+ 82,3
Shopping space						
Total square metres	0	231	2 513	10 731	12 578	+ 17,2
Total value at current prices (R'000)	0	578	6 465	17 872	26 485	+ 48,2
Industrial and warehouse space						
Total square metres	6 325	3 090	5 464	44 382	63 014	+ 42,0
Total value at current prices (R'000)	10 692	2 742	12 208	49 759	79 190	+ 59,1
Other non-residential space <sup>2/</sup>						
Total square metres	902	934	895	8 065	5 695	- 29,4
Total value at current prices (R'000)	1 623	3 600	1 113	13 589	11 602	- 14,6
<b>Total value of non-residential buildings at current prices (R'000)</b>	<b>13 615</b>	<b>6 920</b>	<b>28 466</b>	<b>98 979</b>	<b>149 658</b>	<b>+ 51,2</b>
<b>Additions and alterations</b>						
Dwelling-houses						
Total square metres	11 635	26 774	23 443	103 409	133 141	+ 28,8
Total value at current prices (R'000)	10 854	57 827	50 512	112 721	220 156	+ 95,3
Other buildings <sup>3/</sup>						
Total square metres	4 794	3 749	13 761	32 550	50 856	+ 56,2
Total value at current prices (R'000)	45 519	16 666	25 350	99 504	99 291	- 0,2
<b>Total value of additions and alterations at current prices (R'000)</b>	<b>56 373</b>	<b>74 493</b>	<b>75 862</b>	<b>212 225</b>	<b>319 447</b>	<b>+ 50,5</b>
<b>Total value of buildings completed at current prices (R'000)</b>	<b>80 068</b>	<b>193 657</b>	<b>160 794</b>	<b>429 930</b>	<b>800 132</b>	<b>+ 86,1</b>

1/ Other residential buildings include institutions for the disabled, boarding houses, old people's homes, hostels, hotels, motels, guest houses, holiday chalets, entertainment centres, bed-and-breakfast accommodation and casinos.

2/ Other non-residential space includes churches, sport and recreation clubs, schools, crèches, hospitals and all other non-residential space.

3/ Other buildings include additions and alterations to other residential buildings, non-residential buildings and internal alterations.

**Table 38 - Buildings completed by type of building and selected urban area: Witwatersrand**

Type of building	June 2003*	May 2004	June 2004	January 2003 to June 2003	January 2004 to June 2004	Percentage change between January 2003 to June 2003 and January 2004 to June 2004
<b>Residential buildings</b>						
Dwelling-houses smaller than 80 square metres						
Number of dwelling-houses	186	362	472	2 103	3 329	+ 58,3
Total square metres	9 132	16 625	19 757	86 238	128 425	+ 48,9
Total value at current prices (R'000)	16 281	24 074	22 918	106 202	131 316	+ 23,6
Dwelling-houses equal to or larger than 80 square metres						
Number of dwelling-houses	313	364	361	1 683	1 908	+ 13,4
Total square metres	67 308	88 946	89 329	375 031	448 810	+ 19,7
Total value at current prices (R'000)	128 197	199 898	235 114	687 290	1 012 683	+ 47,3
Flats and townhouses						
Number of flats and townhouses	199	569	461	2 029	2 115	+ 4,2
Total square metres	36 503	66 507	54 409	249 943	256 219	+ 2,5
Total value at current prices (R'000)	80 621	133 680	107 665	448 581	479 039	+ 6,8
Other residential buildings <sup>1/</sup>						
Total square metres	0	0	0	10 078	1 825	-81,9
Total value at current prices (R'000)	0	0	0	26 754	4 563	-82,9
<b>Total value of residential buildings at current prices (R'000)</b>	<b>225 099</b>	<b>357 652</b>	<b>365 697</b>	<b>1 268 827</b>	<b>1 627 601</b>	<b>+ 28,3</b>
<b>Non-residential buildings</b>						
Office and banking space						
Total square metres	20 754	5 026	3 486	171 901	82 034	-52,3
Total value at current prices (R'000)	38 101	8 615	7 669	374 670	159 637	-57,4
Shopping space						
Total square metres	395	531	5 800	43 962	11 876	-73,0
Total value at current prices (R'000)	560	898	11 517	94 450	21 915	-76,8
Industrial and warehouse space						
Total square metres	1 528	3 261	3 289	82 857	35 625	-57,0
Total value at current prices (R'000)	2 719	4 067	6 189	139 562	57 614	-58,7
Other non-residential space <sup>2/</sup>						
Total square metres	5 653	44 170	0	235 220	50 252	-78,6
Total value at current prices (R'000)	9 813	70 740	0	469 040	85 528	-81,8
<b>Total value of non-residential buildings at current prices (R'000)</b>	<b>51 193</b>	<b>84 320</b>	<b>25 375</b>	<b>1 077 722</b>	<b>324 694</b>	<b>-69,9</b>
<b>Additions and alterations</b>						
Dwelling-houses						
Total square metres	27 113	17 297	14 726	150 383	113 797	-24,3
Total value at current prices (R'000)	48 591	31 740	27 318	240 841	213 217	-11,5
Other buildings <sup>3/</sup>						
Total square metres	4 276	9 814	1 505	51 576	19 791	-61,6
Total value at current prices (R'000)	8 568	19 901	9 826	102 337	68 949	-32,6
<b>Total value of additions and alterations at current prices (R'000)</b>	<b>57 159</b>	<b>51 641</b>	<b>37 144</b>	<b>343 178</b>	<b>282 166</b>	<b>-17,8</b>
<b>Total value of buildings completed at current prices (R'000)</b>	<b>333 451</b>	<b>493 613</b>	<b>428 216</b>	<b>2 689 727</b>	<b>2 234 461</b>	<b>-16,9</b>

1/ Other residential buildings include institutions for the disabled, boarding houses, old people's homes, hostels, hotels, motels, guest houses, holiday chalets, entertainment centres, bed-and-breakfast accommodation and casinos.

2/ Other non-residential space includes churches, sport and recreation clubs, schools, crèches, hospitals and all other non-residential space.

3/ Other buildings include additions and alterations to other residential buildings, non-residential buildings and internal alterations.

Table 39 - Buildings completed by type of building and selected urban area: Pretoria

Type of building	June 2003*	May 2004	June 2004	January 2003 to June 2003	January 2004 to June 2004	Percentage change between January 2003 to June 2003 and January 2004 to June 2004
<b>Residential buildings</b>						
Dwelling-houses smaller than 80 square metres						
Number of dwelling-houses	39	16	42	4 972	139	- 97,2
Total square metres	1 919	781	2 529	154 575	7 282	- 95,3
Total value at current prices (R'000)	4 115	1 952	6 473	97 916	17 799	- 81,8
Dwelling-houses equal to or larger than 80 square metres						
Number of dwelling-houses	112	98	112	648	702	+ 8,3
Total square metres	30 470	28 648	30 769	164 471	193 222	+ 17,5
Total value at current prices (R'000)	61 570	65 954	66 917	332 785	452 972	+ 36,1
Flats and townhouses						
Number of flats and townhouses	305	373	187	588	826	+ 40,5
Total square metres	34 962	49 098	34 016	70 589	124 440	+ 76,3
Total value at current prices (R'000)	60 188	122 746	61 638	129 558	282 202	+ 117,8
Other residential buildings <sup>1/</sup>						
Total square metres	0	0	0	0	1 188	..
Total value at current prices (R'000)	0	0	0	0	2 970	..
<b>Total value of residential buildings at current prices (R'000)</b>	<b>125 873</b>	<b>190 652</b>	<b>135 028</b>	<b>560 259</b>	<b>755 943</b>	<b>+ 34,9</b>
<b>Non-residential buildings</b>						
Office and banking space						
Total square metres	2 012	2 388	4 146	16 761	26 323	+ 57,0
Total value at current prices (R'000)	4 384	5 970	10 365	32 220	55 307	+ 71,7
Shopping space						
Total square metres	0	56	5 376	8 978	10 855	+ 20,9
Total value at current prices (R'000)	0	140	13 440	17 187	26 936	+ 56,7
Industrial and warehouse space						
Total square metres	1 653	0	13 273	13 716	97 505	+ 610,9
Total value at current prices (R'000)	3 602	0	21 201	28 639	231 065	+ 706,8
Other non-residential space <sup>2/</sup>						
Total square metres	0	1 127	0	13 162	3 783	- 71,3
Total value at current prices (R'000)	0	2 818	0	26 823	8 130	- 69,7
<b>Total value of non-residential buildings at current prices (R'000)</b>	<b>7 986</b>	<b>8 928</b>	<b>45 006</b>	<b>104 869</b>	<b>321 438</b>	<b>+ 206,5</b>
<b>Additions and alterations</b>						
Dwelling-houses						
Total square metres	8 517	6 577	5 460	36 061	36 081	+ 0,1
Total value at current prices (R'000)	18 277	15 608	12 697	74 108	87 569	+ 18,2
Other buildings <sup>3/</sup>						
Total square metres	3 182	1 262	1 867	8 675	42 351	+ 388,2
Total value at current prices (R'000)	6 850	3 030	4 001	26 302	98 480	+ 274,4
<b>Total value of additions and alterations at current prices (R'000)</b>	<b>25 127</b>	<b>18 638</b>	<b>16 698</b>	<b>100 410</b>	<b>186 049</b>	<b>+ 85,3</b>
<b>Total value of buildings completed at current prices (R'000)</b>	<b>158 986</b>	<b>218 218</b>	<b>196 732</b>	<b>765 538</b>	<b>1 263 430</b>	<b>+ 65,0</b>

1/ Other residential buildings include institutions for the disabled, boarding houses, old people's homes, hostels, hotels, motels, guest houses, holiday chalets, entertainment centres, bed-and-breakfast accommodation and casinos.

2/ Other non-residential space includes churches, sport and recreation clubs, schools, crèches, hospitals and all other non-residential space.

3/ Other buildings include additions and alterations to other residential buildings, non-residential buildings and internal alterations.

**Table 40 - Buildings completed by type of building and selected urban area: Bloemfontein**

Type of building	June 2003	May 2004	June 2004	January 2003 to June 2003	January 2004 to June 2004	Percentage change between January 2003 to June 2003 and January 2004 to June 2004
<b>Residential buildings</b>						
Dwelling-houses smaller than 80 square metres						
Number of dwelling-houses	151	134	25	1 239	1 309	+ 5,6
Total square metres	6 498	5 856	1 093	52 003	55 785	+ 7,3
Total value at current prices (R'000)	4 389	3 449	941	30 074	29 042	- 3,4
Dwelling-houses equal to or larger than 80 square metres						
Number of dwelling-houses	24	15	10	103	65	- 36,9
Total square metres	3 198	3 031	2 671	14 722	12 451	- 15,4
Total value at current prices (R'000)	4 203	3 589	2 645	18 593	15 428	- 17,0
Flats and townhouses						
Number of flats and townhouses	28	40	0	127	226	+ 78,0
Total square metres	4 025	2 640	0	14 575	21 598	+ 48,2
Total value at current prices (R'000)	6 038	3 960	0	22 039	32 373	+ 46,9
Other residential buildings <sup>1/</sup>						
Total square metres	0	0	0	2 683	0	..
Total value at current prices (R'000)	0	0	0	7 000	0	..
<b>Total value of residential buildings at current prices (R'000)</b>	<b>14 630</b>	<b>10 998</b>	<b>3 586</b>	<b>77 706</b>	<b>76 843</b>	<b>- 1,1</b>
<b>Non-residential buildings</b>						
Office and banking space						
Total square metres	0	0	0	5 630	5 884	+ 4,5
Total value at current prices (R'000)	0	0	0	7 700	24 230	+ 214,7
Shopping space						
Total square metres	0	0	330	5 414	330	- 93,9
Total value at current prices (R'000)	0	0	990	9 914	990	- 90,0
Industrial and warehouse space						
Total square metres	2 225	0	0	8 664	2 270	- 73,8
Total value at current prices (R'000)	1 112	0	0	7 712	1 362	- 82,3
Other non-residential space <sup>2/</sup>						
Total square metres	204	473	905	2 181	2 320	+ 6,4
Total value at current prices (R'000)	244	946	543	3 080	3 844	+ 24,8
<b>Total value of non-residential buildings at current prices (R'000)</b>	<b>1 356</b>	<b>946</b>	<b>1 533</b>	<b>28 406</b>	<b>30 426</b>	<b>+ 7,1</b>
<b>Additions and alterations</b>						
Dwelling-houses						
Total square metres	2 700	2 201	2 445	16 458	14 126	- 14,2
Total value at current prices (R'000)	3 068	3 522	3 363	19 298	19 206	- 0,5
Other buildings <sup>3/</sup>						
Total square metres	139	466	1 235	1 740	3 323	+ 91,0
Total value at current prices (R'000)	398	2 430	2 146	14 444	10 887	- 24,6
<b>Total value of additions and alterations at current prices (R'000)</b>	<b>3 466</b>	<b>5 952</b>	<b>5 509</b>	<b>33 742</b>	<b>30 093</b>	<b>- 10,8</b>
<b>Total value of buildings completed at current prices (R'000)</b>	<b>19 452</b>	<b>17 896</b>	<b>10 628</b>	<b>139 854</b>	<b>137 362</b>	<b>- 1,8</b>

1/ Other residential buildings include institutions for the disabled, boarding houses, old people's homes, hostels, hotels, motels, guest houses, holiday chalets, entertainment centres, bed-and-breakfast accommodation and casinos.

2/ Other non-residential space includes churches, sport and recreation clubs, schools, crèches, hospitals and all other non-residential space.

3/ Other buildings include additions and alterations to other residential buildings, non-residential buildings and internal alterations.



**Table 41 - Subsidised low-cost dwelling-houses completed or under construction<sup>2</sup> by province<sup>1</sup>**

Province	Year	Number of subsidised dwelling-houses completed or under construction <sup>1</sup>	Square metres <sup>3</sup>	Value of low-cost dwelling-houses R'000 <sup>3</sup>
Western Cape	2002	19 534	531 116	168 852
	2003	16 926	507 780	247 187
Eastern Cape	2002	46 701	1 575 675	473 805
	2003	35 005	1 050 150	511 213
Northern Cape	2002	5 189	164 906	68 078
	2003	4 354	130 620	63 586
Free State	2002	8 618	348 492	154 120
	2003	14 848	445 440	216 840
KwaZulu-Natal	2002	21 959	831 349	234 041
	2003	31 372	941 160	458 157
North West	2002	21 309	630 115	210 439
	2003	13 809	414 270	201 667
Gauteng	2002	29 939	991 571	321 943
	2003	42 862	1 285 860	625 957
Mpumalanga	2002	19 883	660 505	253 931
	2003	21 336	640 080	246 079
Limpopo	2002	15 382	605 877	183 769
	2003	15 596	467 880	227 764
South Africa	2002	188 511	6 339 606	2 068 980
	2003	196 108	5 883 240	2 798 450

<sup>1</sup> Source: Provincial Governments co-ordinated by the National Department of Housing

<sup>2</sup> As soon as building commences, dwelling-houses are recorded as completed or under construction.

<sup>3</sup> Estimates

## Explanatory notes

<b>Introduction</b>	<p>1 Statistics South Africa (Stats SA) conducts a monthly Building Statistics Survey collecting information regarding building plans passed and buildings completed, financed by the private sector, from a sample of 124 local government institutions in South Africa. According to these institutions, they are not always notified about low-cost housing projects. This statistical release contains information of building plans passed and buildings completed in respect of residential buildings, non-residential buildings and additions and alterations according to province and selected urban areas.</p> <p>2 In order to improve timeliness of the publication, some information for the current month have been estimated due to late submission by respondents. These estimates will be revised in the next statistical release(s) as soon as actual information is available.</p>
<b>Purpose of the survey</b>	<p>3 The Building Statistics Survey is a monthly survey covering a sample of local government institutions involved in the approval of building plans and in the final inspection of buildings completed for the private sector. The monthly survey data are used in monitoring the state of economy and formulation of economic policy. They are also important inputs to estimation of the Gross Domestic Product (GDP).</p>
<b>Scope of the survey</b>	<p>4 This survey covers local government institutions conducting activities for the private sector regarding -</p> <ul style="list-style-type: none"> <li>• approval of building plans; and</li> <li>• final inspection of completed buildings.</li> </ul>
<b>Classification</b>	<p>5 The 1993 edition of the <i>Standard Industrial Classification of all Economic Activities</i>, (SIC) Fifth Edition, Report No. 09-90-02, was used to classify the statistical units. The SIC is based on the 1990 <i>International Standard Industrial Classification of all Economic Activities</i> (ISIC) with suitable adaptations for local conditions.</p> <p>6 The twelfth and last published edition of the <i>Standard Code List of Areas</i>, Report No. 09-09-03 (1994) was used to classify the statistical units according to province. Exceptions occur in respect of the new cross-border municipalities. GaRankuwa, which was previously classified in North West according to the <i>Standard Code List of Areas</i>, Report No. 09-09-03(1994), is included under City of Tshwane in Gauteng as from January 2002.</p>
<b>Statistical unit</b>	<p>7 The statistical unit for the collection of information is a local government institution. Local government institutions include district municipalities, metropolitan municipalities and local municipalities.</p>
<b>Survey methodology and design</b>	<p>8 The sample for the monthly Building Statistics Survey consists of the largest local government institutions in South Africa. The survey is collected by mail each month from a sample of 124 local government institutions.</p>
<b>Constant prices</b>	<p>9 The value of building plans passed and buildings completed at constant prices measures building activities in terms of ruling prices in a specific base year, which is 2000 as from May 2002.</p> <p>10 The value of building plans passed at constant prices for each month is obtained by deflating the values at current prices with a price index known as the “lump sum domestic buildings” as published in statistical release P0151: <i>JBCC Contract Price Adjustment Provisions Work Group Indices</i>. In order to be applicable, these indices (base February 1991=100) are converted to the base year 2000=100.</p>

- 11** The value of buildings completed at constant prices is obtained by deflating the values at current prices with the same price index which is used to calculate building plans passed at constant prices (see paragraph 10). The value of buildings completed is reported as at the time the plans were passed. Since the completion of buildings may extend over a few months to a few years, the current value of buildings completed is deflated by price indices as at the time the plans were passed in order to calculate the value of buildings completed at the time the plans were passed. Therefore, the duration of the completion of different types of buildings are taken into account in ascertaining the deflators e.g. the value of dwelling-houses completed at constant prices at January 2000 is obtained by deflating the current value of dwelling-houses completed for January 2000 with the price index of a month six months prior to January 2000. Furthermore, the value of other residential buildings, non-residential buildings and additions and alterations at constant prices is obtained by deflating the current values with price indices of 12 months, 18 months and 12 months prior to the relevant month, respectively.
- Seasonal adjustment**
- 12** Seasonally adjusted estimates of building plans passed and buildings completed are generated each month, using the X-11 Seasonal Adjustment Program developed by US Bureau of the Census Economic Research and Analyses Division, 1968.
- 13** Seasonal adjustment is a means of removing the estimated effects of normal seasonal variation from the series so that the effects of other influences on the series can be more clearly recognised. Seasonal adjustment does not aim to remove irregular or non-seasonal influences which may be present in any particular month. Influences that are volatile or unsystematic can still make it difficult to interpret the movement of the series even after adjustment for seasonal variations. Therefore, the month-to-month movements of seasonally adjusted estimates may not be reliable indicators of trend behaviour.
- Trend cycle**
- 14** The trend is a long-term pattern or movement of a time series. The X-11 Seasonal Adjustment Program is used for smoothing seasonally adjusted data.
- Related publications**
- 15** Users may also wish to refer to the following publications:
- P5041.3: *Building Statistics* issued annually.
  - P9101.2: *Actual and expected expenditure on construction by the public sector per statistical region* issued annually.
  - *Bulletin of Statistics* issued quarterly.
  - *South African Statistics* issued annually.
- Unpublished statistics**
- 16** In some cases Stats SA can also make available statistics which are not published. The statistics can be made available in one or more of the following ways: computer printouts, CD and diskette. Generally a charge is made for providing unpublished statistics.
- Rounding-off of figures**
- 17** The figures in the tables have, where necessary, been rounded off to the nearest digit shown. There may, therefore, be slight discrepancies between the sums of the constituent items and the totals shown.
- Pre-release policy**
- 18** Stats SA's pre-release policy may be inspected at its Website, [www.statssa.gov.za](http://www.statssa.gov.za)

**Symbols and  
abbreviations**

..	no meaningful percentage change between two specified periods available since either one or both of the totals are nil
0	nil or figure too small to publish
*	revised
Stats SA	Statistics South Africa
SIC	Standard Industrial Classification of all Economic Activities
ISIC	International Standard Industrial Classification of all Economic Activities
JBCC	Joint Building Contracts Committee
CD	Compact Disc
US	United States
SARB	South African Reserve Bank
DTI	Department of Trade and Industry

## Local government institutions covered in the monthly survey

**Table C - Classification of towns and cities according to names of local government institutions before and after boundary and name changes by province**

<b>Western Cape</b>			
<b>Monthly survey as from January 2002</b>		<b>Monthly survey up to December 2001</b>	
<b>Name of local government institution after boundary and name changes</b>	<b>Cities and towns</b>	<b>Name of local government institution before boundary and name changes</b>	<b>Cities and towns</b>
Breede Valley Municipality	Worcester Rawsonville De Doorns Touws River	Worcester	Worcester
		Breede River District Council	Rural areas - Dissolved as from July 2001. Activities were taken over by various local government institutions.
<b>City of Cape Town -</b> Blaauwberg Administration	Milnerton	Blaauwberg Municipality	Milnerton
Cape Town Administration	Cape Town	City of Cape Town	Cape Town
Helderberg Administration	Gordon's Bay, Somerset West and Strand	Helderberg Municipality	Gordon's Bay, Somerset West and Strand
Ikapa Administration	Guguletu, Langa, Khayelitsha and Nyanga	Ikapa	Guguletu, Langa, Khayelitsha and Nyanga
Oostenberg Administration -	Brackenfell Kraaifontein Kuils River Melton Rose - Blue Downs	Oostenberg Municipality -	Brackenfell Kraaifontein Kuils River Melton Rose - Blue Downs
South Peninsula Administration -	Fish Hoek Simon's Town Plumstead	Fish Hoek Simon's Town South Peninsula Municipality	Fish Hoek Simon's Town Plumstead
Tygerberg Administration - Bellville Administration Durbanville Administration Goodwood Administration Lingeletu West Administration Parow Administration South Administration	City of Tygerberg - Bellville Durbanville Goodwood Lingeletu West Parow Belhar, Delft, Driftsands and Mfuleni	City of Tygerberg - Bellville Administration Durbanville Administration Goodwood Administration Lingeletu West Administration Parow Administration South Administration	Bellville Durbanville Goodwood Lingeletu West Parow Belhar, Delft, Driftsands and Mfuleni
Drakenstein Municipality	Paarl Wellington Saron <sup>1</sup>	Paarl Wellington	Paarl Wellington
George Municipality	George, Herolds Bay, Pacaltsdorp and Thembaletu Wilderness <sup>1</sup>	George	George, Herolds Bay, Pacaltsdorp and Thembaletu

<sup>1</sup> Included in monthly survey as from January 2001.

**Table C - Classification of towns and cities according to names of local government institutions before and after boundary and name changes by province (continued)**

<b>Western Cape (concluded)</b>			
<b>Monthly survey as from January 2002</b>		<b>Monthly survey up to December 2001</b>	
<b>Name of local government institution after boundary and name changes</b>	<b>Cities and towns</b>	<b>Name of local government institution before boundary and name changes</b>	<b>Cities and towns</b>
Knysna Municipality	Knysna and Khayaletu Sedgefield	Knysna Sedgefield	Knysna and Khayaletu Sedgefield
Mossel Bay Municipality	Mossel Bay, Boggom's Bay, Kleinbrak, Rheeboek and Tergniet Friemersheim, Herbertsdale and Great Brak River <sup>1</sup>	Mossel Bay	Mossel Bay, Boggom's Bay, Kleinbrak, Rheeboek and Tergniet
Oudtshoorn Municipality	Oudtshoorn De Rust/Blomnek Dysseisdorp	Oudtshoorn	Oudtshoorn
		Overberg District Council	Rural areas - Dissolved as from July 2001. Activities were taken over by various local government institutions.
Overstrand Municipality	Hermanus, Fisher Haven, Hawston, Onrus River, Sandbaai, Vermont and Zwelihle  Hangklip - Kleinmond, Betty's Bay and Rooi-Els Gansbaai and Stanford <sup>1</sup>	Hermanus  Hangklip - Kleinmond	Hermanus, Fisher Haven, Hawston, Onrus River, Sandbaai, Vermont and Zwelihle Hangklip - Kleinmond, Betty's Bay and Rooi-Els <sup>1</sup>
Plettenberg Bay Municipality	Plettenberg Bay Knoetzie <sup>1</sup>	Plettenberg Bay	Plettenberg Bay
Saldanha Bay Municipality	Vredenburg and Saldanha Hopefield and Langebaan <sup>1</sup>	Western Coast Peninsula	Vredenburg and Saldanha
Stellenbosch Municipality	Stellenbosch Franschoek and Pniel	Stellenbosch	Stellenbosch
Swartland Municipality	Malmesbury Darling, Koringberg, Moorreesburg and Yzerfontein <sup>1</sup>	Malmesbury	Malmesbury
		West Coast District Council	Rural areas - Dissolved as from July 2001. Activities were taken over by various local government institutions
		Winelands District Council	Rural areas - Dissolved as from July 2001. Activities were taken over by various local government institutions

<sup>1</sup> Included in monthly survey as from January 2001.

**Table C - Classification of towns and cities according to names of local government institutions before and after boundary and name changes by province (continued)**

<b>Eastern Cape</b>			
<b>Monthly survey as from January 2002</b>		<b>Monthly survey up to December 2001</b>	
<b>Name of local government institution after boundary and name changes</b>	<b>Cities and towns</b>	<b>Name of local government institution before boundary and name changes</b>	<b>Cities and towns</b>
Buffalo City Municipality <sup>1</sup> - East London Area  King William's Town Area	East London, Beacon Bay, Gomo Town, Gonubie and Mdantsane King William's Town, Bisho and Zwelitsha	East London  King William's Town	East London, Beacon Bay, Gomo Town, Gonubie and Mdantsane King William's Town, Bisho and Zwelitsha
King Sabata Dalindyebo Municipality - Umtata Area	Umtata	Umtata	Umtata
Kouga Municipality	Jeffreys Bay Humansdorp Hankey Patensie Oesterbaai Gamtoos St Francis Bay <sup>2</sup> Cape St Francis <sup>2</sup> Kromrivier <sup>2</sup>	Jeffreys Bay	Jeffreys Bay
Makana Municipality - Grahamstown Area	Grahamstown and Rhini Township Alicedale and Riebeek East	Grahamstown	Grahamstown and Rhini Township
Maletswai Municipality - Aliwal North Area	Aliwal North and Dukathole	Aliwal - Maletswai	Aliwal North and Dukathole
Ndlambe Municipality	Port Alfred Alexandria Bathurst Boesmansriviermond Kenton-on-Sea	Port Alfred	Port Alfred
Nelson Mandela Metropolitan Municipality - Despatch Area <sup>3</sup>  Port Elizabeth Area  Uitenhage and Despatch Area	Despatch  Port Elizabeth, Ibhayi and Motherwell Uitenhage, KwaNobuhle and Despatch	Despatch  Port Elizabeth  Uitenhage	Despatch  Port Elizabeth, Ibhayi and Motherwell Uitenhage and KwaNobuhle
		Western District Council	Rural areas - Dissolved as from July 2001. Activities were taken over by various local government institutions

<sup>1</sup> East London and King William's Town amalgamated during 2003.<sup>2</sup> Included in monthly survey as from January 2003.<sup>3</sup> Despatch amalgamated with Uitenhage during 2003.

**Table C - Classification of towns and cities according to names of local government institutions before and after boundary and name changes by province (continued)**

Northern Cape			
Monthly survey as from January 2002		Monthly survey up to December 2001	
Name of local government institution after boundary and name changes	Cities and towns	Name of local government institution before boundary and name changes	Cities and towns
//Khara Hais Municipality	Upington and Paballelo	Upington	Upington and Paballelo
		Benede-Oranje District Council	Rural areas - Dissolved as from July 2001. Activities were taken over by various local government institutions.
Ga-Segonyana Municipality	Kuruman and Mothibistad	Kuruman	Kuruman and Mothibistad
Kai! Garib Municipality - Keimoes Area	Keimoes Eksteenskuil <sup>1</sup> Kenhardt <sup>1</sup>	Keimoes	Keimoes
		Namaqualand District Council	Rural areas - Dissolved as from July 2001. Activities were taken over by various local government institutions.
Sol Plaatje Municipality	Kimberley and Galeshewe Ritchie <sup>1</sup>	Kimberley	Kimberley and Galeshewe

<sup>1</sup> Included in monthly survey as from January 2001.



**Table C - Classification of towns and cities according to names of local government institutions before and after boundary and name changes by province (continued)**

<b>Free State</b>			
<b>Monthly survey as from January 2002</b>		<b>Monthly survey up to December 2001</b>	
<b>Name of local government institution after boundary and name changes</b>	<b>Cities and towns</b>	<b>Name of local government institution before boundary and name changes</b>	<b>Cities and towns</b>
Dihlabeng Municipality	Bethlehem and Bohlakong Clarens Fouriesburg Paul Roux Rosendal	Bethlehem	Bethlehem and Bohlakong
Maluti a Phofung Municipality- Harrismith Area Phuthaditjhaba Area	Harrismith and Tsiamé Phuthaditjhaba	Harrismith Phuthaditjhaba	Harrismith and Tsiamé Phuthaditjhaba
Mangaung Municipality - Bloemfontein Area  Botshabelo Area	Bloemfontein, Bainsvlei, Bloemspruit and Mangaung  Botshabelo	Bloemfontein  Botshabelo	Bloemfontein, Bainsvlei, Bloemspruit and Mangaung Botshabelo
Mantsopa Municipality	Ladybrand and Manyatseng Excelsior Hobhouse Thaba Patchoa Tweespruit/Kopano	Ladybrand	Ladybrand and Manyatseng
Matjhabeng Municipality - Odendaalsrus Area  Virginia Area Welkom Area	Odendaalsrus, Allanridge and Kutlwanong Virginia and Meloding Welkom and Thabong	Odendaalsrus  Virginia Welkom	Odendaalsrus, Allanridge and Kutlwanong Virginia and Meloding Welkom and Thabong
Metsimaholo Municipality - Deneysville Area  Sasolburg Area	Deneysville , Refengkgotso and Oranjeville Sasolburg and Zamdela	Deneysville/Refengkgotso  Sasolburg/Zamdela	Deneysville and Refengkgotso Sasolburg and Zamdela
Moqhaka Municipality - Kroonstad Area	Kroonstad and Maokeng	Kroonstad	Kroonstad and Maokeng
Nqwathe Municipality	Parys Edenville Heibron Koppies Vredefort	Parys	Parys

**Table C - Classification of towns and cities according to names of local government institutions before and after boundary and name changes by province (continued)**

<b>KwaZulu-Natal</b>			
<b>Monthly survey as from January 2002</b>		<b>Monthly survey up to December 2001</b>	
<b>Name of local government institution after boundary and name changes</b>	<b>Cities and towns</b>	<b>Name of local government institution before boundary and name changes</b>	<b>Cities and towns</b>
Emnambithi Municipality	Ladysmith Colenso Nkanyesi	Ladysmith	Ladysmith
eThekweni Municipality - Inner West Operational Entity	Clermont, KwaDabeka, KwaNdengezi, New Germany, Pinetown, Queensburgh, Reservoir Hills, Shallcross and Westville	Inner West City Council	Clermont, KwaDabeka, KwaNdengezi, New Germany, Pinetown, Queensburgh, Reservoir Hills, Shallcross and Westville
Outer West Operational Entity	Assagay, Botha's Hill, Cato Ridge, Drummond, Everton, Gillitts, Hillcrest, Inchanga, Kloof, Mpumalanga and Waterfall	Outer West Local Council	Assagay, Botha's Hill, Cato Ridge, Drummond, Everton, Gillitts, Hillcrest, Inchanga, Kloof, Mpumalanga and Waterfall
KwaMashu	KwaMashu	KwaMashu	KwaMashu
Durban- North, South and Central	Durban	Durban	Durban
North Operational Entity - Tongaat	Tongaat, Canelands and Hambanati	North Local Council - Tongaat	Tongaat, Canelands and Hambanati
Umhlanga Rocks	Umhlanga Rocks, Mount Edgecombe and Umdloti Beach	North Local Council - Umhlanga	Umhlanga Rocks, Mount Edgecombe and Umdloti Beach
Verulam	Verulam	North Local Council - Verulam	Verulam
South Operational Entity	Amanzimtoti, Isipingo, Kingsburgh, KwaMakuta and Umbogintwini	South Local Council	Amanzimtoti, Isipingo, Kingsburgh, KwaMakuta and Umbogintwini
Umlazi	Umlazi	Umlazi	Umlazi
Greater Kokstad Municipality	Kokstad	Kokstad	Kokstad
Hibiscus Coast Municipality	Margate and Uvongo Marina Beach, San Lameer, Southbroom and Trafalgar Port Shepstone Hibberdene Munster, Port Edward and Palm Beach	Margate Mpenjati/Southbroom  Port Shepstone  Umtamvuna/Port Edward	Margate and Uvongo Marina Beach, San Lameer, Southbroom and Trafalgar Port Shepstone  Munster, Port Edward and Palm Beach

**Table C - Classification of towns and cities according to names of local government institutions before and after boundary and name changes by province (continued)**

<b>KwaZulu-Natal (concluded)</b>			
<b>Monthly as from January 2002</b>		<b>Monthly survey up to December 2001</b>	
<b>Name of local government institution after boundary and name changes</b>	<b>Cities and towns</b>	<b>Name of local government institution before boundary and name changes</b>	<b>Cities and towns</b>
KwaDukuza Municipality <sup>1</sup> - Dolphin Coast Administrative Entity	Ballito, Etete, Shakaskraal, Tinley Manor Beach and Umhlali Beach	Dolphin Coast Borough	Ballito, Etete, Shakaskraal, Tinley Manor Beach and Umhlali Beach
Stanger Administrative Entity	Blythedale Beach, Shakaville and Stanger Nkwazi/Zinkwazi	KwaDukuza/Stanger	Blythedale Beach, Shakaville and Stanger
Msunduzi Municipality	Edendale Ashburton <sup>2</sup> , Pietermaritzburg and Msunduzi	Edendale Pietermaritzburg/Msunduzi	Edendale Pietermaritzburg and Msunduzi
Newcastle Municipality	Blaauwboschlaagte, Madadeni, Osizweni and Newcastle	Newcastle	Blaauwboschlaagte, Madadeni, Osizweni and Newcastle
Umdoni Municipality	Pennington Scottburgh/Umqinto	Pennington	Pennington
Umlathuze Municipality	Empangeni and Ngwelezana Richards Bay	Empangeni-Ngwelezana Richards Bay	Empangeni and Ngwelezana Richards Bay
Umnjeni Municipality	Hilton Howick	Hilton Howick	Hilton Howick
Uthungulu District Council <sup>2</sup>	KwaMbonambi, Nkandla and Ntambanana Municipalities	Development and Services Board- North Coast	KwaMbonambi, Nkandla, Tugela Mouth, Umlalazi, Mahlabathini, Mkhuze, Ubombo, Ingwavuma and Hluhluwe

<sup>1</sup> Dolphin Coast and Stanger amalgamated during 2003.<sup>2</sup> Included in monthly survey as from January 2001.

**Table C - Classification of towns and cities according to names of local government institutions before and after boundary and name changes by province (continued)**

North West			
Monthly survey as from January 2002		Monthly survey up to December 2001	
Name of local government institution after boundary and name changes	Cities and towns	Name of local government institution before boundary and name changes	Cities and towns
		Bophirima District Council	Rural areas - Dissolved as from July 2001. Activities were taken over by various local government institutions.
Ditsobotla Local Municipality	Lichtenburg and Itsoseng Biesiesvlei <sup>1</sup> Coligny <sup>1</sup>	Lichtenburg	Lichtenburg and Itsoseng
Klerksdorp Local Municipality	Klerksdorp Orkney and Kanana Hartbeesfontein <sup>1</sup> Stilfontein <sup>1</sup>	Klerksdorp Orkney	Klerksdorp Orkney and Kanana
GaRankuwa	As from January 2002 included in City of Tshwane - Northern Metropolitan Substructure (Gauteng)	GaRankuwa	GaRankuwa
Madibeng Local Municipality	Brits and Letlhabile Hartbeespoort	Brits	Brits and Letlhabile
Mafikeng Local Municipality	Mmabatho and Mafikeng	Mmabatho	Mmabatho and Mafikeng
Naledi Municipality	Vryburg Stella	Vryburg	Vryburg
Potchefstroom Municipality	Potchefstroom	Potchefstroom	Potchefstroom
Rustenburg Local Municipality - Rustenburg Area	Rustenburg	Rustenburg	Rustenburg
Zeerust Local Municipality	Zeerust	Zeerust	Zeerust

<sup>1</sup> Included in monthly survey as from January 2001.

**Table C - Classification of towns and cities according to names of local government institutions before and after boundary and name changes by province (continued)**

<b>Gauteng</b>			
<b>Monthly survey as from January 2002</b>		<b>Monthly survey up to December 2001</b>	
<b>Name of local government institution after boundary and name changes</b>	<b>Cities and towns</b>	<b>Name of local government institution before boundary and name changes</b>	<b>Cities and towns</b>
<b>City of Johannesburg Metropolitan Municipality</b>	Alexandra and Sandton  Midrand, Rabie Ridge and Ivory Park Randburg  Ennerdale, Lenasia and Johannesburg Diepmeadow, Dobsonville and Roodepoort Soweto	<b>Greater Johannesburg -</b> Eastern Metropolitan Local Council Midrand Metropolitan Local Council Northern Metropolitan Local Council Southern Metropolitan Local Council Western Metropolitan Local Council Soweto	Alexandra and Sandton  Midrand, Rabie Ridge and Ivory Park Randburg  Ennerdale, Lenasia and Johannesburg Diepmeadow, Dobsonville and Roodepoort Soweto
<b>City of Tshwane Metropolitan Municipality -</b> Southern Region Central Region  Northern Region	Centurion Pretoria, Atteridgeville and Mamelodi Akasia, Elandsdoorn, Klipfontein, Kruisfontein and Soshanguve Hammanskraal GaRankuwa <sup>1</sup> Temba Winterveld <sup>1</sup>	Centurion Pretoria  Akasia	Centurion Pretoria, Atteridgeville and Mamelodi Akasia, Elandsdoorn, Klipfontein, Kruisfontein and Soshanguve
		Eastern Services Council - Pretoria Area	Rural areas - Dissolved as from July 2001. Activities were taken over by various local government institutions.
<b>Ekurhuleni Metropolitan Municipality -</b> Service Delivery Centre of: Edenvale - Modderfontein Alberton Benoni  Boksburg Brakpan Duduza Germiston  Kempton Park Nigel Springs	Edenvale - Modderfontein Alberton and Tokoza Benoni, Daveyton and Wattville Boksburg and Vosloorus Brakpan and Tsakane Duduza Germiston, Bedfordview and Katlehong Kempton Park and Tembisa Nigel Springs and KwaThema	Edenvale - Modderfontein Alberton Benoni  Boksburg Brakpan Duduza Germiston  Kempton Park Nigel Springs	Edenvale - Modderfontein Alberton and Tokoza Benoni, Daveyton and Wattville Boksburg and Vosloorus Brakpan and Tsakane Duduza Germiston, Bedfordview and Katlehong Kempton Park and Tembisa Nigel Springs and KwaThema

<sup>1</sup> Was previously included under North West.

**Table C - Classification of towns and cities according to names of local government institutions before and after boundary and name changes by province (continued)**

<b>Gauteng (concluded)</b>			
<b>Monthly survey as from January 2002</b>		<b>Monthly survey up to December 2001</b>	
<b>Name of local government institution after boundary and name changes</b>	<b>Cities and towns</b>	<b>Name of local government institution before boundary and name changes</b>	<b>Cities and towns</b>
Emfuleni Local Municipality	Vanderbijlpark Vereeniging and Evaton Sebokeng (Boipatong, Bophelong and Sharpville)	Vanderbijlpark Vereeniging Sebokeng	Vanderbijlpark Vereeniging and Evaton Sebokeng (Boipatong, Bophelong and Sharpville)
Kungwini Local Municipality	Bronkhorstspuit Silver Lakes Mooikloof and rural areas Ekangala <sup>1</sup>	Bronkhorstspuit	Bronkhorstspuit
Lesedi Local Municipality	Heidelberg and Ratanda	Heidelberg	Heidelberg and Ratanda
Merafong City Local Municipality	Carletonville, Wedela, Khutsong and Wolverdient Fochville <sup>2</sup>	Carletonville	Carletonville, Wedela, Khutsong and Wolverdient
Midvaal Local Municipality	Meyerton	Meyerton	Meyerton
Mogale City Municipality	Krugersdorp, Kagiso and Munsieville	Krugersdorp	Krugersdorp, Kagiso and Munsieville
Randfontein Local Municipality	Randfontein and Mohlakeng	Randfontein	Randfontein and Mohlakeng
Westonaria Local Municipality	Westonaria and Bekkersdal	Westonaria	Westonaria and Bekkersdal

<sup>1</sup> Included in monthly survey as from January 2003.

<sup>2</sup> Previously included in North West in annual survey.

**Table C - Classification of towns and cities according to names of local government institutions before and after boundary and name changes by province (continued)**

<b>Mpumalanga</b>			
<b>Monthly survey as from January 2002</b>		<b>Monthly survey up to December 2001</b>	
<b>Name of local government institution after boundary and name changes</b>	<b>Cities and towns</b>	<b>Name of local government institution before boundary and name changes</b>	<b>Cities and towns</b>
Delmas Municipality	Delmas and Botleng	Delmas	Delmas and Botleng
Emalahleni Local Municipal Council- KwaGuqa Area Witbank Area	KwaGuqa Witbank	KwaGuqa Witbank	KwaGuqa Witbank
Govan Mbeki Municipality	Evander, Embalenhle and Secunda Bethal <sup>2</sup> Leandra <sup>2</sup>	Highveldridge Transitional Council	Evander, Embalenhle and Secunda
Mbombela Local Municipality	Nelspruit and Kanyamazane White River Hazyview <sup>1</sup>	Nelspruit White River	Nelspruit White River
Middelburg Municipality	Middelburg and Mhluzi Hendrina and KwaZamokhule <sup>1</sup>	Middelburg	Middelburg and Mhluzi
Msukaligwa Municipality	Ermelo, Cassim Park and Wesselton Breyton and KwaZenele	Ermelo	Ermelo, Cassim Park and Wesselton
Nkomazi Municipality - Komatipoort Area  Malelane Area	Komatipoort and Kamaqhekeza Malelane, Hectorspruit and Kamhlushwa	Komatipoort  Malelane	Komatipoort and Kamaqhekeza Malelane, Hectorspruit and Kamhlushwa

<sup>1</sup> Included in monthly survey as from January 2001.<sup>2</sup> Included in the monthly survey as from January 2003.

**Table C - Classification of towns and cities according to names of local government institutions before and after boundary and name changes by province (concluded)**

<b>Limpopo</b>			
<b>Monthly survey as from January 2002</b>		<b>Monthly survey up to December 2001</b>	
<b>Name of local government institution after boundary and name changes</b>	<b>Cities and towns</b>	<b>Name of local government institution before boundary and name changes</b>	<b>Cities and towns</b>
		Bosveld District Council	Rural areas - Dissolved as from July 2001. Activities were taken over by various local government institutions.
Greater Tzaneen Municipality	Tzaneen and Nkowakowa	Letaba	Tzaneen and Nkowakowa
Musina Municipality	Musina (previously Messina)	Messina	Messina
Modimolle Municipality	Modimolle (previously Nylstroom)	Nylstroom	Nylstroom
Mogolakwena Municipality	Mokopane (previously Potgietersrus)	Potgietersrus	Potgietersrus
Mookgopong Municipality	Naboomspruit and Mookgopong	Naboomspruit	Naboomspruit and Mookgopong
Polokwane Municipality	Polokwane (previously Pietersburg) and Seshego	Pietersburg - Polokwane	Pietersburg and Seshego
Thabazimbi Municipality	Thabazimbi	Thabazimbi	Thabazimbi



**Table D - Classification of selected urban areas according to names of local government institutions before and after boundary and name changes**

Monthly survey as from January 2002		Monthly survey up to December 2001	
Name of local government institution after boundary and name changes	Cities and towns	Name of local government institution before boundary and name changes	Cities and towns
<b>Selected urban areas: Cape Town</b>		<b>Selected urban areas: Cape Town</b>	
City of Cape Town - Blaauwberg Administration	Milnerton	Blaauwberg Municipality	Milnerton
Cape Town Administration	Cape Town	City of Cape Town	Cape Town
Ikapa Administration	Guguletu, Langa, Khayelitsha and Nyanga	Ikapa	Guguletu, Langa, Khayelitsha and Nyanga
Oostenberg Administration	Kraaifontein Melton Rose - Blue Downs	Oostenberg Municipality -	Kraaifontein Melton Rose - Blue Downs
South Peninsula Administration	Fish Hoek Simon's Town Plumstead	Fish Hoek Simon's Town South Peninsula Municipality	Fish Hoek Simon's Town Plumstead
Tygerberg Administration - Bellville Administration Durbanville Administration Goodwood Administration Lingeletu West Administration Parow Administration South Administration	City of Tygerberg - Bellville Durbanville Goodwood Lingeletu West Parow Belhar, Delft, Driftsands and Mfuleni	City of Tygerberg - Bellville Administration Durbanville Administration Goodwood Administration Lingeletu West Administration Parow Administration South Administration	Bellville Durbanville Goodwood Lingeletu West Parow Belhar, Delft, Driftsands and Mfuleni
<b>Selected urban areas: Port Elizabeth</b>		<b>Selected urban areas: Port Elizabeth</b>	
Nelson Mandela Metropolitan Municipality - Despatch Area <sup>1</sup>	Despatch	Despatch	Despatch
Port Elizabeth Area	Port Elizabeth, Ibhayi and Motherwell	Port Elizabeth	Port Elizabeth, Ibhayi and Motherwell
Uitenhage Area	Uitenhage and KwaNobuhle	Uitenhage	Uitenhage and KwaNobuhle

<sup>1</sup> Despatch amalgamated with Uitenhage during 2003.

**Table D - Classification of selected urban areas according to names of local government institutions before and after boundary and name changes (continued)**

Monthly survey as from January 2002		Monthly survey up to December 2001	
Name of local government institution after boundary and name changes	Cities and towns	Name of local government institution before boundary and name changes	Cities and towns
<b>Selected urban areas: Durban</b>		<b>Selected urban areas: Durban</b>	
eThekweni Municipality - Inner West Operational Entity	Clermont, KwaDabeka, KwaNdengezi, New Germany, Pinetown, Queensburgh, Reservoir Hills, Shallcross and Westville	Inner West City Council	Clermont, KwaDabeka, KwaNdengezi, New Germany, Pinetown, Queensburgh, Reservoir Hills, Shallcross and Westville
Outer West Operational Entity	Assagay, Botha's Hill, Cato Ridge, Drummond, Everton, Gillitts, Hillcrest, Inchanga, Kloof, Mpumalanga and Waterfall	Outer West Local Council	Assagay, Botha's Hill, Cato Ridge, Drummond, Everton, Gillitts, Hillcrest, Inchanga, Kloof, Mpumalanga and Waterfall
Durban- North, South and Central	Durban	Durban	Durban
North Operational Entity - Verulam	Verulam	North Local Council - Verulam	Verulam
South Operational Entity	Amanzimtoti, Isipingo, Kingsburgh, KwaMakuta and Umbogintwini	South Local Council	Amanzimtoti, Isipingo, Kingsburgh, KwaMakuta and Umbogintwini
<b>Selected urban areas: Pretoria</b>		<b>Selected urban areas: Pretoria</b>	
City of Tshwane Metropolitan Municipality - Southern Region	Centurion	Centurion	Centurion
Central Region	Pretoria, Atteridgeville and Mamelodi	Pretoria	Pretoria, Atteridgeville and Mamelodi
Northern Region	Akasia, Elandsdoorn, Klipfontein, Kruisfontein and Soshanguve Hammanskraal GaRankuwa Temba Winterveld	Akasia	Akasia, Elandsdoorn, Klipfontein, Kruisfontein and Soshanguve

**Table D - Classification of selected urban areas according to names of local government institutions before and after boundary and name changes (concluded)**

Monthly survey as from January 2002		Monthly survey up to December 2001	
Name of local government institution after boundary and name changes	Cities and towns	Name of local government institution before boundary and name changes	Cities and towns
<b>Selected urban areas:</b> <b>Witwatersrand</b> City of Johannesburg Metropolitan Municipality	Alexandra and Sandton  Midrand, Rabie Ridge and Ivory Park Randburg  Ennerdale, Lenasia and Johannesburg Diepmeadow, Dobsonville and Roodepoort Soweto	<b>Selected urban areas:</b> <b>Witwatersrand</b> Greater Johannesburg - Eastern Metropolitan Local Council Midrand Metropolitan Local Council Northern Metropolitan Local Council Southern Metropolitan Local Council Western Metropolitan Local Council Soweto	Alexandra and Sandton  Midrand, Rabie Ridge and Ivory Park Randburg  Ennerdale, Lenasia and Johannesburg Diepmeadow, Dobsonville and Roodepoort Soweto
Ekurhuleni Metropolitan Municipality - Service Delivery Centre of: Edenvale - Modderfontein Alberton Benoni  Boksburg Brakpan Duduza Germiston  Kempton Park Nigel Springs	Edenvale - Modderfontein Alberton and Tokoza Benoni, Daveyton and Wattville Boksburg and Vosloorus Brakpan and Tsakane Duduza Germiston, Bedfordview and Katlehong Kempton Park and Tembisa Nigel Springs and KwaThema	Edenvale - Modderfontein Alberton Benoni  Boksburg Brakpan Duduza Germiston  Kempton Park Nigel Springs	Edenvale - Modderfontein Alberton and Tokoza Benoni, Daveyton and Wattville Boksburg and Vosloorus Brakpan and Tsakane Duduza Germiston, Bedfordview and Katlehong Kempton Park and Tembisa Nigel Springs and KwaThema
Mogale City Municipality	Krugersdorp, Kagiso and Munsieville	Krugersdorp	Krugersdorp, Kagiso and Munsieville
Randfontein Local Municipality	Randfontein and Mohlakeng	Randfontein	Randfontein and Mohlakeng
Westonaria Local Municipality	Westonaria and Bekkersdal	Westonaria	Westonaria and Bekkersdal
Merafong City Local Municipality	Carletonville, Wedela, Khutsong and Welverdiend	Carletonville	Carletonville, Wedela, Khutsong and Welverdiend
Lesedi Local Municipality	Heidelberg and Ratanda	Heidelberg	Heidelberg and Ratanda
<b>Selected urban area:</b> <b>Bloemfontein</b> Mangaung Municipality - Bloemfontein Area	Bloemfontein, Bainsvlei, Bloemspuit and Mangaung	<b>Selected urban area:</b> <b>Bloemfontein</b> Bloemfontein	Bloemfontein, Bainsvlei, Bloemspuit and Mangaung

## Glossary

<b>Additions and alterations</b>	Additions and alterations include extensions to existing buildings as well as internal and external alterations of existing buildings.
<b>Blocks of flats</b>	Blocks of flats are regarded as high-density housing consisting of a number of self-contained dwelling-units, each with at least one living-room together with a kitchen and bathroom, conjoined to similar units in one building.
<b>Dwelling-house</b>	A dwelling-house refers to a free-standing, complete structure on a separate stand or a self-contained dwelling-unit, granny flat, on the same premises as an existing residence. Out-buildings and garages are included.
<b>Local government</b>	A local government is a distinct and constitutionally defined sphere of government, pertaining to government that is not national or provincial in nature and is manifested in the form of municipalities. It is a generic term referring to municipalities and local authorities of varied nature and type involved in activities of a governmental nature in the local sphere.
<b>Local government institutions</b>	Local government institutions consist of local authorities and district councils as defined in terms of - <ul style="list-style-type: none"> <li>• South African Constitution, 1996 (Act 108 of 1996);</li> <li>• Local Government Transition Act, 1993 (Act 209 of 1993);</li> <li>• Local Government Transition Act, Second Amendment Act, 1996 (Act 97 of 1996); and</li> <li>• Municipal Structures Act, 1998 (Act 117 of 1998).</li> </ul>
<b>Non-residential buildings</b>	Non-residential buildings comprise factories, commercial, financial and other office buildings, as well as other buildings not used for residential purposes, such as churches, halls, clubs, schools and hospitals.
<b>Other residential buildings</b>	Other residential buildings include institutions for the disabled, boarding houses, old people's homes, hostels, hotels, motels, guest houses, holiday chalets, bed-and-breakfast accommodation, entertainment centres and casinos.
<b>Percentage change</b>	<p>When using monthly actual values, the percentage change is the change in actual values of building activities (building plans passed or buildings completed) of the relevant month compared with the actual values of building activities (building plans passed or buildings completed) of the same month in the previous year expressed as a percentage.</p> <p>When using annual actual values, the percentage change is the change in the actual values of building activities (building plans passed or buildings completed) of the relevant year compared with the actual values of building activities (building plans passed or buildings completed) of the previous year expressed as a percentage.</p> <p>When using seasonally adjusted values, the percentage change is the change in the seasonally adjusted values of building activities (building plans passed or buildings completed) of the relevant month compared with the seasonally adjusted values of building activities (building plans passed or buildings completed) of the previous month expressed as a percentage.</p>
<b>Reference period</b>	Reference period is one calendar month.
<b>Residential buildings</b>	Residential buildings comprise dwelling-houses, flats, townhouses and other residential buildings.
<b>Townhouses</b>	Townhouses are multiple, medium-density dwelling-units and include cluster housing, group housing, simplexes, duplexes, triplexes and other similar dwelling-units which are usually grouped together, with one level of each unit on ground level. This excludes blocks of flats.

## General information

Stats SA publishes approximately 300 different statistical releases each year. It is not economically viable to produce them in more than one of South Africa's eleven official languages. Since the releases are used extensively, not only locally but also by international economic and social-scientific communities, Stats SA releases are published in English only.

Stats SA has copyright on this publication. Users may apply the information as they wish, provided that they acknowledge Stats SA as the source of the basic data wherever they process, apply, utilise, publish or distribute the data and also that they specify that the relevant application and analysis (where applicable) result from their own processing of the data.

## Advance release calendar

An advance release calendar is disseminated on [www.statssa.gov.za](http://www.statssa.gov.za)

## Stats SA products

A complete set of Stats SA publications is available at the Stats SA Library and the following libraries:

National Library of South Africa, Pretoria Division  
National Library of South Africa, Cape Town Division  
Natal Society Library, Pietermaritzburg  
Library of Parliament, Cape Town  
Bloemfontein Public Library  
Johannesburg Public Library  
Eastern Cape Library Services, King William's Town  
Central Regional Library, Polokwane  
Central Reference Library, Nelspruit  
Central Reference Collection, Kimberley  
Central Reference Library, Mmabatho

Stats SA also provides a subscription service.

## Electronic services

A large range of data are available via on-line services, diskette, CD and computer printouts. For more details about our electronic data services, contact (012) 310 8600/8390/8351/4892/8496/8095.

You can visit us on the Internet at: [www.statssa.gov.za](http://www.statssa.gov.za)

## Enquiries

Telephone number: (012) 310 8600/8390/8351/4892/8496/8095 (user information services)  
(012) 310 8228/310 8007 (technical enquiries)  
(012) 310 8161 (orders)  
(012) 310 8490 (library)

Fax number: (012) 310 8664 (technical enquiries)

Email: [Gretaz@statssa.gov.za](mailto:Gretaz@statssa.gov.za) (technical enquiries)  
[info@statssa.gov.za](mailto:info@statssa.gov.za) (user information services)  
[distribution@statssa.gov.za](mailto:distribution@statssa.gov.za) (orders)

Postal address: Private Bag X44, Pretoria, 0001

*Produced by Stats SA*