

Selected building statistics of the private sector derived from data reported by local government institutions

June 2003

Co-operation between Statistics South Africa (Stats SA), the citizens of the country, the private sector and government institutions is essential for a successful statistical system. Without continued co-operation and goodwill, the timely release of relevant and reliable official statistics will not be possible.

**Embargo: 13:00
Date: 20 August 2003**

Stats SA publishes approximately three hundred different releases each year. It is not economically viable to produce them in more than one of South Africa's eleven official languages. Since the releases are used extensively, not only locally, but also by international economic and social-scientific communities, Stats SA releases are published in English only.

Key figures regarding building plans passed for the month ended June 2003

Actual estimates at constant 2000 prices

	June 2003	January 2003 to June 2003	Percentage change between June 2002 and June 2003	Percentage change between April 2002 to June 2002 and April 2003 to June 2003	Percentage change between January 2002 to June 2002 and January 2003 to June 2003
	R million	R million			
Residential buildings					
Dwelling-houses	808,3	4 171,6	+ 10,8	- 0,3	+ 2,8
Flats and townhouses	292,4	1 465,1	+ 78,7	+ 24,9	+ 31,1
Other residential buildings	5,4	106,5	- 84,5	- 66,6	- 48,7
Total	1 106,1	5 743,2	+ 19,2	+ 2,7	+ 6,7
Non-residential buildings	294,4	1 700,6	- 29,9	- 25,9	- 23,6
Additions and alterations	539,2	2 939,2	+ 15,7	- 3,7	+ 2,3
Total	1 939,7	10 383,0	+ 7,0	- 4,7	- 0,9

Seasonally adjusted estimates at constant 2000 prices

	June 2003	Percentage change between May 2003 and June 2003	Percentage change between January 2003 to March 2003 and April 2003 to June 2003
	R million		
Residential buildings	1 054,8	+ 18,1	+ 3,5
Non-residential buildings	244,2	+ 2,2	- 29,8
Additions and alterations	510,2	- 10,1	+ 9,6
Total	1 809,2	+ 6,5	- 1,3

Key findings regarding building plans passed for the second quarter of 2003

Seasonally adjusted real value of building plans passed decreases

The seasonally adjusted real value of building plans passed (at constant 2000 prices) for the second quarter of 2003 decreased by 1,3% compared with the first quarter of 2003.

The decrease of 1,3% in the seasonally adjusted real value of building plans passed was due to a decrease reported for non-residential buildings (-29,8%) during the second quarter of 2003 compared with the first quarter of 2003. However, this decrease was partially counteracted by increases in the seasonally adjusted real value of building plans passed for additions and alterations (+9,6%) and residential buildings (+3,5%) during the above-mentioned period.

Key findings regarding building plans passed for the month ended June 2003

Total real value of building plans passed decreases slightly

The total real value of building plans passed (at constant 2000 prices) during the first six months of 2003 decreased by 0,9% (-R98,6 million) to R10 383,0 million compared with the first six months of 2002. Decreases in the real value of building plans passed were reported for non-residential buildings (-R525,1 million, mainly due to real decreases reported by Gauteng (-R609,6 million)) and 'other' residential buildings (-R101,3 million). However, these decreases were to a certain extent counteracted by real increases reported for flats and townhouses (+R348,0 million), dwelling-houses (+R114,6 million) and additions and alterations (+R65,2 million). Large real increases for flats and townhouses were reported by KwaZulu-Natal (+R206,8 million) and Gauteng (+R185,0 million).

Six of the nine provinces reported decreases in the total real value of building plans passed

The largest provincial contributors to the decrease of 0,9% (-R98,6 million) in the total real value of building plans passed were Limpopo (-1,5 percentage points or R154,1 million), Gauteng (-1,4 percentage points or R145,4 million) and Eastern Cape (-1,1 percentage points or R119,1 million). However, these decreases were to a certain extent counteracted by a large increase reported by KwaZulu-Natal (+3,8 percentage points or R400,8 million) (see table A). Large real increases in KwaZulu-Natal were reported for shopping space (+R369,4 million, mainly due to real increases reported by the selected urban areas of eThekweni Municipality (+R220,9 million) and Msunduzi Municipality (+R185,6 million)), flats and townhouses (+R206,8 million, mainly due to real increases reported by North Operational Entity, Umhlanga Rocks (+R124,6 million) and Outer West Operational Entity (+R54,3 million)) and dwelling-houses (+R109,0 million).

Table A - Contribution of provinces to the total real value of building plans passed

Province	Percentage contribution to the total real value of plans passed during January 2002 to June 2002	Percentage change between January 2002 to June 2002 and January 2003 to June 2003	Contribution (percentage points) ^{1/} to the percentage change in the real value of plans passed between January 2002 to June 2002 and January 2003 to June 2003	Difference in total real value of plans passed between January 2002 to June 2002 and January 2003 to June 2003 R million
Limpopo	3,2	- 46,4	- 1,5	- 154,1
Gauteng	41,2	- 3,4	- 1,4	- 145,4
Eastern Cape	5,9	- 19,3	- 1,1	- 119,1
Mpumalanga	4,2	- 14,7	- 0,6	- 64,3
North West	3,0	- 11,7	- 0,3	- 37,6
Northern Cape	0,5	- 1,7	- 0,0	- 0,9
Free State	2,6	+ 0,8	+ 0,0	+ 2,1
Western Cape	27,1	+ 0,7	+ 0,2	+ 19,9
KwaZulu-Natal	12,3	+ 31,1	+ 3,8	+ 400,8
Total	100,0	- 0,9	- 0,9	-98,6

¹ The contribution (percentage points) is calculated by multiplying the percentage change of each province between January 2002 to June 2002 and January 2003 to June 2003 (see column 3) with the percentage contribution of the corresponding province to the total real value of plans passed during January 2002 to June 2002 (see column 2) divided by 100.

Key figures regarding buildings completed for the month ended June 2003

Actual estimates at constant 2000 prices	June 2003	January 2003 to June 2003	Percentage change between June 2002 and June 2003	Percentage change between April 2002 to June 2002 and April 2003 to June 2003	Percentage change between January 2002 to June 2002 and January 2003 to June 2003
	R million	R million			
Residential buildings					
Dwelling-houses	437,4	2 439,8	- 0,2	- 3,3	+ 3,4
Flats and townhouses	244,8	913,9	+ 153,3	+ 12,9	+ 10,9
Other residential buildings	0,9	86,6	- 48,3	- 28,3	- 66,3
Total	683,1	3 440,3	+ 27,3	- 0,3	+ 0,0
Non-residential buildings	150,6	1 771,1	- 25,2	+ 63,1	+ 50,5
Additions and alterations	249,1	1 377,2	+ 6,0	- 20,4	- 3,0
Total	1 082,8	6 588,6	+ 11,3	+ 8,1	+ 9,1

Seasonally adjusted estimates at constant 2000 prices

	June 2003	Percentage change between May 2003 and June 2003	Percentage change between January 2003 to March 2003 and April 2003 to June 2003
	R million		
Residential buildings	609,6	+ 12,4	- 1,5
Non-residential buildings	152,0	- 62,9	+ 36,8
Additions and alterations	239,9	+ 16,8	+ 1,7
Total	1 001,5	- 13,5	+ 8,2

Key findings regarding buildings completed for the second quarter of 2003

Seasonally adjusted real value of buildings completed increases

The seasonally adjusted real value of buildings completed (at constant 2000 prices) for the second quarter of 2003 increased by 8,2% compared with the first quarter of 2003.

The increase of 8,2% in the seasonally adjusted real value of buildings completed during the second quarter of 2003 compared with the first quarter of 2003 was due to increases in the seasonally adjusted real value of non-residential buildings (+36,8%) and additions and alterations (+1,7%). However, these increases were partially counteracted by a decrease in the seasonally adjusted real value of residential buildings completed (-1,5%) during the above-mentioned period.

Key findings regarding buildings completed for the month ended June 2003

Total real value of buildings completed increases

The total real value of buildings completed (at constant 2000 prices) during the first six months of 2003 increased by 9,1% (+R551,8 million) to R6 588,6 million compared with the first six months of 2002. The largest increase in the real value of buildings completed was reported for non-residential buildings (+R594,4 million, mainly due to real increases reported by Gauteng (+R703,4 million)), followed by flats and townhouses (+R89,8 million) and dwelling-houses (+R81,3 million). However, these increases were partially counteracted by real decreases reported for 'other' residential buildings (-R170,7 million) and additions and alterations (-R43,0 million).

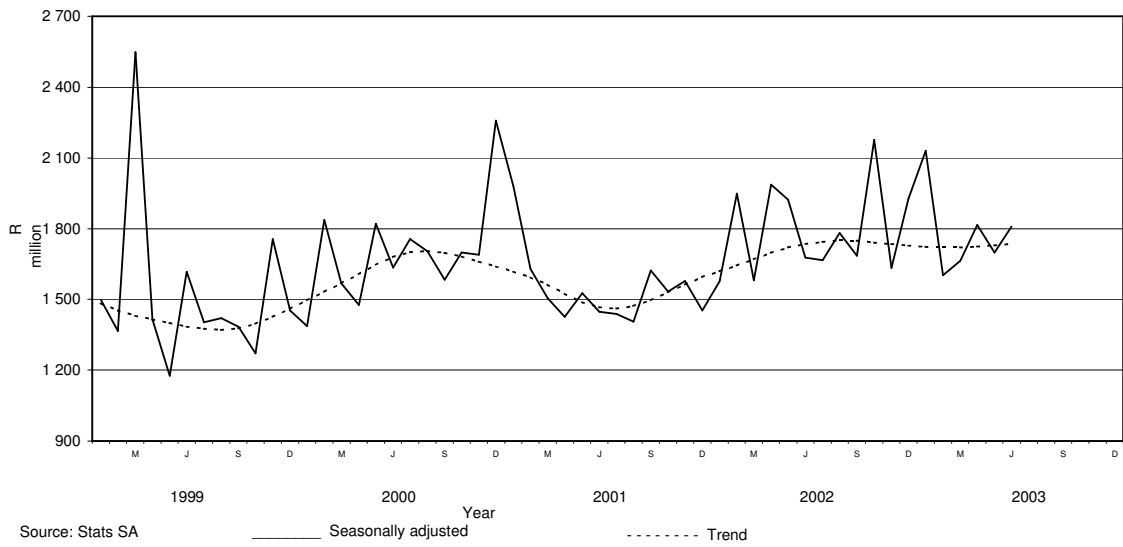
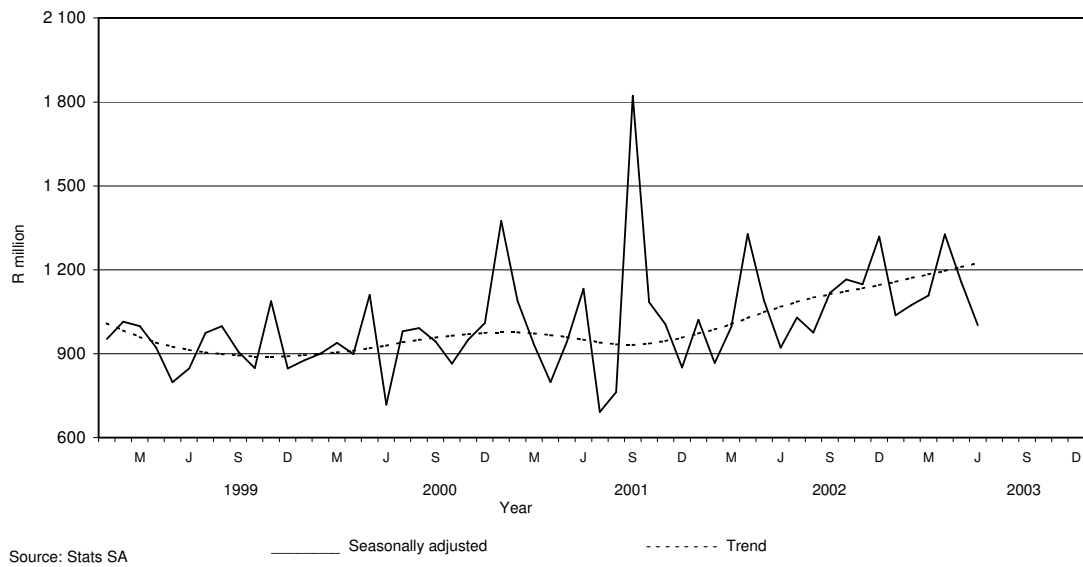
Five of the nine provinces reported increases in the total real value of buildings completed

The largest provincial contributor to the increase of 9,1% (+R551,8 million) in the total real value of buildings completed was Gauteng (+17,4 percentage points or R1 049,5 million), followed by North West (+1,1 percentage points or R68,3 million) and Mpumalanga (+0,8 of a percentage point or R49,2 million). However, these increases were partially counteracted by large decreases reported by KwaZulu-Natal (-3,8 percentage points or R227,6 million), Limpopo (-3,3 percentage points or R197,6 million) and Western Cape (-2,6 percentage points or R153,5 million) (see table B). Large real increases in Gauteng were reported for non-residential buildings (+R703,4 million, mainly due to increases reported by City of Johannesburg (+R603,2 million)), dwelling-houses (+R225,9 million, mainly due to increases reported by City of Tshwane (+R101,6 million) and Witwatersrand (+R93,3 million)) and flats and townhouses (+R121,5 million, mainly due to increases reported by Witwatersrand (+R169,9 million)).

Table B - Contribution of provinces to the total real value of buildings completed

Province	Percentage contribution to the total real value of buildings completed during January 2002 to June 2002	Percentage change between January 2002 to June 2002 and January 2003 to June 2003	Contribution (percentage points) ¹ to the percentage change in the real value of buildings completed between January 2002 to June 2002 and January 2003 to June 2003	Difference in total real value of buildings completed between January 2002 to June 2002 and January 2003 to June 2003 R million
Gauteng	34,5	+ 50,4	+ 17,4	+1 049,5
North West	3,0	+ 38,2	+ 1,1	+ 68,3
Mpumalanga	2,0	+ 41,2	+ 0,8	+ 49,2
Northern Cape	0,6	+ 25,8	+ 0,2	+ 9,0
Free State	2,7	+ 2,3	+ 0,1	+ 3,8
Eastern Cape	5,1	- 15,9	- 0,8	- 49,3
Western Cape	32,8	- 7,8	- 2,6	- 153,5
Limpopo	4,0	- 81,7	- 3,3	- 197,6
KwaZulu-Natal	15,3	- 24,6	- 3,8	- 227,6
Total	100,0	+ 9,1	+ 9,1	+ 551,8

¹ The contribution (percentage points) is calculated by multiplying the percentage change of each province between January 2002 to June 2002 and January 2003 to June 2003 (see column 3) with the percentage contribution of the corresponding province to the total real value of buildings completed during January 2002 to June 2002 (see column 2) divided by 100.

Figure 1 – Total real value of building plans passed**Figure 2 – Total real value of buildings completed**

pp
PJ Lehohla
 Statistician-General: Statistics South Africa

Contents

Page

Notes	7
Tables	
Table 1 Actual values and percentage change of building plans passed at current prices according to type of building	8
Table 2 Seasonally adjusted values and percentage change of building plans passed at current prices according to type of building	9
Table 3 Actual values and percentage change of building plans passed at constant 2000 prices according to type of building	10
Table 4 Seasonally adjusted values and percentage change of building plans passed at constant 2000 prices according to type of building	11
Table 5 Actual values and percentage change of buildings completed at current prices according to type of building	12
Table 6 Seasonally adjusted values and percentage change of buildings completed at current prices according to type of building	13
Table 7 Actual values and percentage change of buildings completed at constant 2000 prices according to type of building	14
Table 8 Seasonally adjusted values and percentage change of buildings completed at constant 2000 prices according to type of building	15
Table 9 Building plans passed according to type of building: Total RSA	16
Table 10 Building plans passed according to type of building and province: Western Cape	17
Table 11 Building plans passed according to type of building and province: Eastern Cape	18
Table 12 Building plans passed according to type of building and province: Northern Cape	19
Table 13 Building plans passed according to type of building and province: Free State	20
Table 14 Building plans passed according to type of building and province: KwaZulu-Natal	21
Table 15 Building plans passed according to type of building and province: North West	22
Table 16 Building plans passed according to type of building and province: Gauteng	23
Table 17 Building plans passed according to type of building and province: Mpumalanga	24
Table 18 Building plans passed according to type of building and province: Limpopo	25
Table 19 Buildings completed according to type of building: Total RSA	26
Table 20 Buildings completed according to type of building and province: Western Cape	27
Table 21 Buildings completed according to type of building and province: Eastern Cape	28
Table 22 Buildings completed according to type of building and province: Northern Cape	29
Table 23 Buildings completed according to type of building and province: Free State	30
Table 24 Buildings completed according to type of building and province: KwaZulu-Natal	31
Table 25 Buildings completed according to type of building and province: North West	32
Table 26 Buildings completed according to type of building and province: Gauteng	33
Table 27 Buildings completed according to type of building and province: Mpumalanga	34
Table 28 Buildings completed according to type of building and province: Limpopo	35
Table 29 Building plans passed according to type of building and selected urban area: Cape Town	36
Table 30 Building plans passed according to type of building and selected urban area: Port Elizabeth	37
Table 31 Building plans passed according to type of building and selected urban area: Durban	38
Table 32 Building plans passed according to type of building and selected urban area: Witwatersrand	39
Table 33 Building plans passed according to type of building and selected urban area: Pretoria	40
Table 34 Building plans passed according to type of building and selected urban area: Bloemfontein	41
Table 35 Buildings completed according to type of building and selected urban area: Cape Town	42
Table 36 Buildings completed according to type of building and selected urban area: Port Elizabeth	43
Table 37 Buildings completed according to type of building and selected urban area: Durban	44
Table 38 Buildings completed according to type of building and selected urban area: Witwatersrand	45
Table 39 Buildings completed according to type of building and selected urban area: Pretoria	46
Table 40 Buildings completed according to type of building and selected urban area: Bloemfontein	47
Additional information	
Explanatory notes	48
Technical notes	50
Local government institutions covered in the sample survey	
Table C – Classification of towns and cities according to new municipalities and previous local government institutions by province	51
Table D – Classification of selected urban areas according to new municipalities and previous local government institutions	63
Glossary	66
For more information	68

Notes

Forthcoming issues	Issue	Expected release date
	July 2003	17 September 2003
	August 2003	15 October 2003
	September 2003	19 November 2003
	October 2003	17 December 2003
	November 2003	21 January 2004
	December 2003	18 February 2004
Purpose of the survey	The Building statistics survey is a countrywide survey covering a sample of municipalities in South Africa. The information received is used to estimate key economic statistics used by the private and public sectors. The information is also used to compile estimates of the Gross Domestic Product (GDP). These statistics are also used by government to monitor the Reconstruction and Development Programme (RDP) in South Africa.	
Name change of statistical release	As from the November 2002 publication the name of the monthly Statistical Release P5041.1: <i>Building Statistics</i> , has changed to <i>Selected building statistics of the private sector derived from data reported by local government institutions</i> .	
Change in base year of constant prices from 1995 to 2000	Following international practice, the base year of the price index ('lump sum domestic buildings' as published in Statistical Release P0151: <i>JBCC Contract Price Adjustment Provision Work Group Indices</i>), which is used to deflate the current prices of building plans passed and buildings completed to constant prices, has been converted to 2000=100 with effect from May 2002. Previously the value of building plans passed and buildings completed was published at constant 1995 prices. It should be borne in mind that the change does not in any way affect the trends.	
Name and boundary changes of local government institutions	Due to the Local Government: Municipal Structures Act (Act No. 117 of 1998) and the Local Government Municipal Demarcation Bill (B36B-98), the boundaries and the names of local government institutions have changed. In order to assist the reader to identify the approximate geographical locality and the names of the new local government institutions covered in the monthly sample survey, Table C (page 51) and Table D (page 63) provide lists of old and new names.	
	Further information may also be found on the website of the South African Government at www.gov.za ; see section GOVZA: Government System, and the website of the Municipal Demarcation Board at www.demarcation.org.za	

Table 1 - Actual values and percentage change of building plans passed at current prices according to type of building

Year ^{1/} and month ^{2/}	Residential buildings		Non-residential buildings		Additions and alterations		Total	
	R'000	Percentage change	R'000	Percentage change	R'000	Percentage change	R'000	Percentage change
2001 Jan	725 361	+ 47.3	494 719	+ 195.7	353 381	- 3.7	1 573 461	+ 53.3
Feb	836 784	+ 6.3	307 366	- 42.7	476 205	+ 18.9	1 620 355	- 6.0
Mar	933 489	+ 24.6	303 878	- 18.6	438 569	- 15.1	1 675 936	+ 2.3
Apr	742 978	+ 18.0	209 133	- 24.6	379 527	- 1.0	1 331 638	+ 3.2
May	1 006 490	+ 14.4	293 506	- 52.9	502 062	+ 5.8	1 802 058	- 8.9
Jun	904 990	+ 5.8	300 500	- 12.2	448 243	- 15.9	1 653 733	- 4.4
Jul	893 707	- 2.0	366 953	- 25.1	435 627	- 20.9	1 696 287	- 13.1
Aug	839 388	+ 3.8	247 416	- 30.7	485 215	- 1.9	1 572 019	- 11.9
Sep	968 469	+ 16.6	306 265	- 15.0	529 909	+ 13.3	1 804 643	+ 8.8
Oct	1 196 410	+ 29.8	186 942	- 63.0	540 454	- 0.1	1 923 806	- 2.2
Nov	982 841	+ 6.9	318 627	- 37.6	597 940	+ 18.5	1 899 408	- 1.8
Dec	658 017	+ 7.7	140 452	- 80.8	359 110	+ 12.7	1 157 579	- 30.4
Total	10 688 924	+ 12.3	3 475 757	- 34.1	5 546 242	- 0.1	19 710 923	- 3.1
2002 Jan	801 712	+ 10.5	172 295	- 65.2	418 217	+ 18.3	1 392 224	- 11.5
Feb	1 024 424	+ 22.4	622 559	+ 102.5	459 378	- 3.5	2 106 361	+ 30.0
Mar	965 121	+ 3.4	495 333	+ 63.0	432 948	- 1.3	1 893 402	+ 13.0
Apr	1 152 506	+ 55.1	350 647	+ 67.7	533 421	+ 40.5	2 036 574	+ 52.9
May	1 184 437	+ 17.7	438 078	+ 49.3	936 496	+ 86.5	2 559 011	+ 42.0
Jun	1 100 299	+ 21.6	497 829	+ 65.7	552 535	+ 23.3	2 150 663	+ 30.0
Jul	1 251 404	+ 40.0	255 959	- 30.2	674 478	+ 54.8	2 181 841	+ 28.6
Aug	1 164 715	+ 38.8	391 026	+ 58.0	698 946	+ 44.0	2 254 687	+ 43.4
Sep	1 222 745	+ 26.3	287 969	- 6.0	617 044	+ 16.4	2 127 758	+ 17.9
Oct	2 030 451	+ 69.7	335 491	+ 79.5	757 380	+ 40.1	3 123 322	+ 62.4
Nov	1 226 825	+ 24.8	309 532	- 2.9	715 756	+ 19.7	2 252 113	+ 18.6
Dec	1 103 944	+ 67.8	230 232	+ 63.9	420 030	+ 17.0	1 754 206	+ 51.5
Total	14 228 583	+ 33.1	4 386 950	+ 26.2	7 216 629	+ 30.1	25 832 162	+ 31.1
2003 Jan	940 456	+ 17.3	684 141	+ 297.1	517 143	+ 23.7	2 141 740	+ 53.8
Feb	1 184 508	+ 15.6	227 515	- 63.5	524 418	+ 14.2	1 936 441	- 8.1
Mar*	1 379 225	+ 42.9	223 313	- 54.9	598 067	+ 38.1	2 200 605	+ 16.2
Apr	1 199 250	+ 4.1	281 248	- 19.8	589 838	+ 10.6	2 070 336	+ 1.7
May	1 245 995	+ 5.2	383 890	- 12.4	850 874	- 9.1	2 480 759	- 3.1
Jun	1 431 274	+ 30.1	380 987	- 23.5	697 677	+ 26.3	2 509 938	+ 16.7

^{1/} The annual percentage change is the change in the actual values of building plans passed of the relevant year compared with the actual values of building plans passed of the previous year expressed as a percentage.

^{2/} The monthly percentage change is the change in the actual values of building plans passed of the relevant month compared with the actual values of building plans passed of the same month in the previous year expressed as a percentage.

Table 2 - Seasonally adjusted values and percentage change of building plans passed at current prices according to type of building

Year and month ^{1/}	Residential buildings		Non-residential buildings		Additions and alterations		Total	
	R'000	Percentage change	R'000	Percentage change	R'000	Percentage change	R'000	Percentage change
2001 Jan	919 595	+ 9.6	701 069	- 32.3	453 244	+ 2.5	2 073 909	- 10.5
Feb	831 930	- 9.5	357 256	- 49.0	550 526	+ 21.5	1 739 712	- 16.1
Mar	887 582	+ 6.7	278 475	- 22.1	420 144	- 23.7	1 586 201	- 8.8
Apr	834 942	- 5.9	239 000	- 14.2	435 306	+ 3.6	1 509 248	- 4.9
May	928 942	+ 11.3	238 467	- 0.2	451 932	+ 3.8	1 619 341	+ 7.3
Jun	864 809	- 6.9	256 474	+ 7.6	424 639	- 6.0	1 545 922	- 4.5
Jul	823 913	- 4.7	309 205	+ 20.6	399 952	- 5.8	1 533 071	- 0.8
Aug	813 860	- 1.2	242 354	- 21.6	451 870	+ 13.0	1 508 083	- 1.6
Sep	942 160	+ 15.8	312 130	+ 28.8	493 687	+ 9.3	1 747 976	+ 15.9
Oct	1 002 015	+ 6.4	185 090	- 40.7	468 473	- 5.1	1 655 578	- 5.3
Nov	929 696	- 7.2	277 101	+ 49.7	509 987	+ 8.9	1 716 783	+ 3.7
Dec	883 960	- 4.9	201 916	- 27.1	511 519	+ 0.3	1 597 395	- 7.0
2002 Jan	1 009 486	+ 14.2	236 074	+ 16.9	525 011	+ 2.6	1 770 571	+ 10.8
Feb	1 019 993	+ 1.0	735 343	+ 211.5	538 769	+ 2.6	2 294 104	+ 29.6
Mar	926 306	- 9.2	462 827	- 37.1	425 494	- 21.0	1 814 626	- 20.9
Apr	1 296 974	+ 40.0	401 297	- 13.3	607 236	+ 42.7	2 305 507	+ 27.1
May	1 092 980	- 15.7	349 367	- 12.9	814 604	+ 34.1	2 256 951	- 2.1
Jun	1 047 895	- 4.1	415 944	+ 19.1	522 098	- 35.9	1 985 936	- 12.0
Jul	1 159 252	+ 10.6	214 518	- 48.4	624 028	+ 19.5	1 997 798	+ 0.6
Aug	1 130 690	- 2.5	383 720	+ 78.9	650 026	+ 4.2	2 164 435	+ 8.3
Sep	1 189 002	+ 5.2	294 819	- 23.2	578 765	- 11.0	2 062 585	- 4.7
Oct	1 702 719	+ 43.2	337 197	+ 14.4	655 700	+ 13.3	2 695 616	+ 30.7
Nov	1 156 956	- 32.1	269 214	- 20.2	612 152	- 6.6	2 038 322	- 24.4
Dec	1 473 449	+ 27.4	337 574	+ 25.4	602 867	- 1.5	2 413 889	+ 18.4
2003 Jan	1 179 919	- 19.9	906 739	+ 168.6	643 958	+ 6.8	2 730 616	+ 13.1
Feb	1 181 571	+ 0.1	272 036	- 70.0	618 715	- 3.9	2 072 322	- 24.1
Mar	1 331 436	+ 12.7	211 181	- 22.4	596 423	- 3.6	2 139 039	+ 3.2
Apr	1 346 869	+ 1.2	322 393	+ 52.7	667 211	+ 11.9	2 336 473	+ 9.2
May	1 150 829	- 14.6	305 253	- 5.3	729 692	+ 9.4	2 185 775	- 6.4
Jun	1 365 433	+ 18.6	312 772	+ 2.5	661 001	- 9.4	2 339 207	+ 7.0

^{1/} The percentage change is the change in the seasonally adjusted values of building plans passed of the relevant month compared with the seasonally adjusted values of building plans passed of the previous month expressed as a percentage.

Table 3 - Actual values and percentage change of building plans passed at constant 2000 prices according to type of building

Year ^{1/} and month ^{2/}	Residential buildings		Non-residential buildings		Additions and alterations		Total	
	R'000	Percentage change	R'000	Percentage change	R'000	Percentage change	R'000	Percentage change
2001 Jan	696 124	+ 36.9	474 778	+ 175.0	339 137	- 10.4	1 510 039	+ 42.5
Feb	799 221	- 1.1	293 568	- 46.7	454 828	+ 10.6	1 547 617	- 12.6
Mar	887 347	+ 15.9	288 857	- 24.2	416 891	- 21.0	1 593 095	- 4.8
Apr	700 923	+ 9.6	197 295	- 29.9	358 044	- 8.0	1 256 262	- 4.1
May	944 174	+ 6.6	275 334	- 56.1	470 977	- 1.5	1 690 485	- 15.1
Jun	847 369	- 1.2	281 367	- 18.0	419 703	- 21.5	1 548 439	- 10.8
Jul	832 129	- 8.4	341 669	- 30.0	405 612	- 26.1	1 579 410	- 18.8
Aug	779 376	- 15.5	229 727	- 35.0	450 525	- 7.9	1 459 628	- 17.3
Sep	897 562	+ 9.4	283 842	- 20.2	491 111	+ 6.4	1 672 515	+ 2.1
Oct	1 106 762	+ 22.6	172 934	- 65.0	499 957	- 5.6	1 779 653	- 7.6
Nov	904 178	+ 0.8	293 125	- 41.1	550 083	+ 11.7	1 747 386	- 7.4
Dec	599 833	+ 1.0	128 033	- 82.0	327 356	+ 5.7	1 055 222	- 34.7
Total	9 994 998	+ 5.1	3 260 529	- 38.0	5 184 224	- 6.6	18 439 751	- 9.2
2002 Jan	717 095	+ 3.0	154 110	- 67.5	374 076	+ 10.3	1 245 281	- 17.5
Feb	898 618	+ 12.4	546 104	+ 86.0	402 963	- 11.4	1 847 685	+ 19.4
Mar	842 900	- 5.0	432 605	+ 49.8	378 121	- 9.3	1 653 626	+ 3.8
Apr	990 977	+ 41.4	301 502	+ 52.8	458 660	+ 28.1	1 751 139	+ 39.4
May	1 004 612	+ 6.4	371 567	+ 35.0	794 314	+ 68.7	2 170 493	+ 28.4
Jun	927 739	+ 9.5	419 755	+ 49.2	465 881	+ 11.0	1 813 375	+ 17.1
Jul	1 037 648	+ 24.7	212 238	- 37.9	559 269	+ 37.9	1 809 155	+ 14.5
Aug	954 684	+ 22.5	320 513	+ 39.5	572 907	+ 27.2	1 848 104	+ 26.6
Sep	997 345	+ 11.1	234 885	- 17.2	503 299	+ 2.5	1 735 529	+ 3.8
Oct	1 638 782	+ 48.1	270 776	+ 56.6	611 283	+ 22.3	2 520 841	+ 41.6
Nov	984 611	+ 8.9	248 421	- 15.3	574 443	+ 4.4	1 807 475	+ 3.4
Dec	882 449	+ 47.1	184 038	+ 43.7	335 755	+ 2.6	1 402 242	+ 32.9
Total	11 877 460	+ 18.8	3 696 514	+ 13.4	6 030 971	+ 16.3	21 604 945	+ 17.2
2003 Jan	740 517	+ 3.3	538 694	+ 249.6	407 199	+ 8.9	1 686 410	+ 35.4
Feb	926 845	+ 3.1	178 024	- 67.4	410 343	+ 1.8	1 515 212	- 18.0
Mar*	1 075 000	+ 27.5	174 055	- 59.8	466 147	+ 23.3	1 715 202	+ 3.7
Apr	929 651	- 6.2	218 022	- 27.7	457 239	- 0.3	1 604 912	- 8.4
May	965 139	- 3.9	297 359	- 20.0	659 081	- 17.0	1 921 579	- 11.5
Jun	1 106 085	+ 19.2	294 426	- 29.9	539 163	+ 15.7	1 939 674	+ 7.0

^{1/} The annual percentage change is the change in the actual values of building plans passed of the relevant year compared with the actual values of building plans passed of the previous year expressed as a percentage.

^{2/} The monthly percentage change is the change in the actual values of building plans passed of the relevant month compared with the actual values of building plans passed of the same month in the previous year expressed as a percentage.

Table 4 - Seasonally adjusted values and percentage change of building plans passed at constant 2000 prices according to type of building

Year and month ^{1/}	Residential buildings		Non-residential buildings		Additions and alterations		Total	
	R'000	Percentage change	R'000	Percentage change	R'000	Percentage change	R'000	Percentage change
2001 Jan	882 289	+ 8.5	662 458	- 34.8	433 779	- 12.8	1 978 526	- 12.4
Feb	797 114	- 9.7	306 447	- 53.7	525 931	+ 21.2	1 629 492	- 17.6
Mar	841 072	+ 5.5	265 885	- 13.2	398 506	- 24.2	1 505 462	- 7.6
Apr	787 143	- 6.4	227 537	- 14.4	410 761	+ 3.1	1 425 441	- 5.3
May	873 716	+ 11.0	226 626	- 0.4	425 461	+ 3.6	1 525 804	+ 7.0
Jun	808 826	- 7.4	241 631	+ 6.6	397 399	- 6.6	1 447 856	- 5.1
Jul	768 736	- 5.0	295 774	+ 22.4	373 187	- 6.1	1 437 697	- 0.7
Aug	757 649	- 1.4	227 517	- 23.1	420 956	+ 12.8	1 406 121	- 2.2
Sep	873 010	+ 15.2	292 460	+ 28.5	457 640	+ 8.7	1 623 110	+ 15.4
Oct	926 151	+ 6.1	173 118	- 40.8	433 226	- 5.3	1 532 496	- 5.6
Nov	853 118	- 7.9	256 840	+ 48.4	467 808	+ 8.0	1 577 766	+ 3.0
Dec	803 546	- 5.8	185 948	- 27.6	464 175	- 0.8	1 453 669	- 7.9
2002 Jan	902 349	+ 12.3	206 009	+ 10.8	468 721	+ 1.0	1 577 079	+ 8.5
Feb	896 963	- 0.6	578 743	+ 180.9	472 938	+ 0.9	1 948 644	+ 23.6
Mar	807 220	- 10.0	402 761	- 30.4	371 085	- 21.5	1 581 067	- 18.9
Apr	1 115 172	+ 38.1	349 276	- 13.3	522 348	+ 40.8	1 986 796	+ 25.7
May	929 123	- 16.7	299 916	- 14.1	693 391	+ 32.7	1 922 430	- 3.2
Jun	883 016	- 5.0	353 727	+ 17.9	439 839	- 36.6	1 676 581	- 12.8
Jul	963 525	+ 9.1	183 454	- 48.1	518 725	+ 17.9	1 665 703	- 0.6
Aug	929 284	- 3.6	318 293	+ 73.5	534 633	+ 3.1	1 782 211	+ 7.0
Sep	969 339	+ 4.3	243 178	- 23.6	471 994	- 11.7	1 684 511	- 5.5
Oct	1 372 719	+ 41.6	275 150	+ 13.1	528 795	+ 12.0	2 176 664	+ 29.2
Nov	925 886	- 32.6	217 758	- 20.9	489 737	- 7.4	1 633 381	- 25.0
Dec	1 174 646	+ 26.9	272 777	+ 25.3	479 310	- 2.1	1 926 733	+ 18.0
2003 Jan	928 194	- 21.0	695 111	+ 154.8	506 387	+ 5.6	2 129 692	+ 10.5
Feb	926 332	- 0.2	191 057	- 72.5	484 585	- 4.3	1 601 974	- 24.8
Mar	1 036 269	+ 11.9	163 168	- 14.6	464 445	- 4.2	1 663 882	+ 3.9
Apr	1 044 747	+ 0.8	253 529	+ 55.4	517 434	+ 11.4	1 815 710	+ 9.1
May	893 035	- 14.5	238 993	- 5.7	567 389	+ 9.7	1 699 417	- 6.4
Jun	1 054 776	+ 18.1	244 178	+ 2.2	510 191	- 10.1	1 809 145	+ 6.5

^{1/} The percentage change is the change in the seasonally adjusted values of building plans passed of the relevant month compared with the seasonally adjusted values of building plans passed of the previous month expressed as a percentage.

Table 5 - Actual values and percentage change of buildings completed at current prices according to type of building

Year ^{1/} and month ^{2/}	Residential buildings		Non-residential buildings		Additions and alterations		Total	
	R'000	Percentage change	R'000	Percentage change	R'000	Percentage change	R'000	Percentage change
2001 Jan	647 534	+ 114.7	259 518	+ 29.2	202 270	+ 9.1	1 109 322	+ 61.3
Feb	430 827	+ 21.7	286 095	+ 32.2	246 240	+ 10.6	963 162	+ 21.4
Mar	491 002	+ 16.6	166 131	- 23.4	287 103	+ 6.7	944 236	+ 4.1
Apr	367 407	+ 0.5	170 257	- 24.1	185 784	- 1.8	723 448	- 7.1
May	450 136	- 5.1	318 370	- 19.1	296 280	+ 0.9	1 064 786	- 8.3
Jun	540 135	+ 48.6	338 853	+ 89.8	293 697	+ 71.5	1 172 685	+ 64.4
Jul	396 941	- 3.1	121 617	- 74.9	233 487	+ 5.6	752 045	- 32.6
Aug	432 578	- 4.3	117 526	- 58.9	215 777	+ 1.8	765 881	- 19.4
Sep	459 190	- 10.5	1 417 964	+ 400.6	168 922	- 15.6	2 046 076	+ 105.4
Oct	661 378	+ 42.6	281 963	+ 39.6	234 250	- 1.9	1 177 591	+ 30.2
Nov	610 558	+ 9.5	211 109	+ 9.8	286 352	+ 11.6	1 108 019	+ 10.1
Dec	464 851	+ 19.9	173 587	- 45.5	125 061	- 18.2	763 499	- 11.1
Total	5 952 537	+ 17.6	3 862 990	+ 20.8	2 775 223	+ 6.2	12 590 750	+ 15.8
2002 Jan	583 954	- 9.8	136 570	- 47.4	176 643	- 12.7	897 167	- 19.1
Feb	473 568	+ 9.9	137 817	- 51.8	202 239	- 17.9	813 624	- 15.5
Mar	708 471	+ 44.3	171 227	+ 3.1	176 053	- 38.7	1 055 751	+ 11.8
Apr	653 414	+ 77.8	245 773	+ 44.4	390 160	+ 110.0	1 289 347	+ 78.2
May	690 242	+ 53.3	300 836	- 5.5	305 996	+ 3.3	1 297 074	+ 21.8
Jun	585 723	+ 8.4	207 030	- 38.9	251 004	- 14.5	1 043 757	- 11.0
Jul	681 657	+ 71.7	273 139	+ 124.6	242 028	+ 3.7	1 196 824	+ 59.1
Aug	740 221	+ 71.1	96 328	- 18.0	226 414	+ 4.9	1 062 963	+ 38.8
Sep	820 510	+ 78.7	228 610	- 83.9	248 379	+ 47.0	1 297 499	- 36.6
Oct	938 075	+ 41.8	178 099	- 36.8	293 977	+ 25.5	1 410 151	+ 19.7
Nov	847 433	+ 38.8	294 710	+ 39.6	237 143	- 17.2	1 379 286	+ 24.5
Dec	702 892	+ 51.2	366 760	+ 111.3	221 292	+ 76.9	1 290 944	+ 69.1
Total	8 426 160	+ 41.6	2 636 899	- 31.7	2 971 328	+ 7.1	14 034 387	+ 11.5
2003 Jan	616 863	+ 5.6	149 935	+ 9.8	234 496	+ 32.8	1 001 294	+ 11.6
Feb	670 393	+ 41.6	156 333	+ 13.4	285 510	+ 41.2	1 112 236	+ 36.7
Mar*	695 346	- 1.9	309 700	+ 80.9	238 216	+ 35.3	1 243 262	+ 17.8
Apr	674 992	+ 3.3	533 635	+ 117.1	234 615	- 39.9	1 443 242	+ 11.9
May	666 678	- 3.4	603 424	+ 100.6	304 362	- 0.5	1 574 464	+ 21.4
Jun	838 597	+ 43.2	165 197	- 20.2	295 403	+ 17.7	1 299 197	+ 24.5

^{1/} The annual percentage change is the change in the actual values of buildings completed of the relevant year compared with the actual values of buildings completed of the previous year expressed as a percentage.

^{2/} The monthly percentage change is the change in the actual values of buildings completed of the relevant month compared with the actual values of buildings completed of the same month in the previous year expressed as a percentage.

Table 6 - Seasonally adjusted values and percentage change of buildings completed at current prices according to type of building

Year and month ^{1/}	Residential buildings		Non-residential buildings		Additions and alterations		Total	
	R'000	Percentage change	R'000	Percentage change	R'000	Percentage change	R'000	Percentage change
2001 Jan	762 758	+ 74.0	346 746	+ 6.8	230 389	+ 1.9	1 339 893	+ 35.4
Feb	485 343	- 36.4	348 679	+ 0.6	233 434	+ 1.3	1 067 456	- 20.3
Mar	463 606	- 4.5	208 600	- 40.2	246 407	+ 5.6	918 613	- 13.9
Apr	404 303	- 12.8	179 710	- 13.8	208 688	- 15.3	792 700	- 13.7
May	446 431	+ 10.4	251 313	+ 39.8	243 807	+ 16.8	941 552	+ 18.8
Jun	540 942	+ 21.2	345 394	+ 37.4	295 196	+ 21.1	1 181 532	+ 25.5
Jul	403 043	- 25.5	81 243	- 76.5	216 164	- 26.8	700 449	- 40.7
Aug	429 720	+ 6.6	126 332	+ 55.5	216 710	+ 0.3	772 762	+ 10.3
Sep	416 127	- 3.2	1 218 626	+ 864.6	181 409	- 16.3	1 816 162	+ 135.0
Oct	585 110	+ 40.6	304 320	- 75.0	212 850	+ 17.3	1 102 279	- 39.3
Nov	521 401	- 10.9	227 487	- 25.2	282 843	+ 32.9	1 031 731	- 6.4
Dec	524 780	+ 0.6	173 740	- 23.6	181 317	- 35.9	879 837	- 14.7
2002 Jan	672 123	+ 28.1	190 840	+ 9.8	201 907	+ 11.4	1 064 870	+ 21.0
Feb	532 535	- 20.8	178 788	- 6.3	193 330	- 4.2	904 653	- 15.0
Mar	672 542	+ 26.3	217 621	+ 21.7	153 770	- 20.5	1 043 933	+ 15.4
Apr	717 835	+ 6.7	246 069	+ 13.1	439 955	+ 186.1	1 403 859	+ 34.5
May	687 611	- 4.2	224 867	- 8.6	245 693	- 44.2	1 158 171	- 17.5
Jun	582 204	- 15.3	212 684	- 5.4	246 186	+ 0.2	1 041 074	- 10.1
Jul	710 836	+ 22.1	176 745	- 16.9	227 420	- 7.6	1 115 001	+ 7.1
Aug	733 340	+ 3.2	105 062	- 40.6	228 050	+ 0.3	1 066 452	- 4.4
Sep	750 612	+ 2.4	201 953	+ 92.2	271 042	+ 18.9	1 223 607	+ 14.7
Oct	822 621	+ 9.6	201 146	- 0.4	265 748	- 2.0	1 289 515	+ 5.4
Nov	720 179	- 12.5	321 754	+ 60.0	232 772	- 12.4	1 274 705	- 1.1
Dec	796 042	+ 10.5	357 229	+ 11.0	320 886	+ 37.9	1 474 157	+ 15.6
2003 Jan	696 812	- 12.5	212 448	- 40.5	269 319	- 16.1	1 178 579	- 20.1
Feb	757 979	+ 8.8	205 657	- 3.2	275 742	+ 2.4	1 239 377	+ 5.2
Mar	660 300	- 12.9	404 818	+ 96.8	209 093	- 24.2	1 274 211	+ 2.8
Apr	742 546	+ 12.5	523 160	+ 29.2	266 579	+ 27.5	1 532 285	+ 20.3
May	667 078	- 10.2	444 510	- 15.0	240 608	- 9.7	1 352 197	- 11.8
Jun	828 593	+ 24.2	167 654	- 62.3	284 131	+ 18.1	1 280 377	- 5.3

^{1/} The percentage change is the change in the seasonally adjusted values of buildings completed of the relevant month compared with the seasonally adjusted values of buildings completed of the previous month expressed as a percentage.

Table 7 - Actual values and percentage change of buildings completed at constant 2000 prices according to type of building

Year ^{1/} and month ^{2/}	Residential buildings		Non-residential buildings		Additions and alterations		Total	
	R'000	Percentage change	R'000	Percentage change	R'000	Percentage change	R'000	Percentage change
2001 Jan	658 496	+ 111.1	266 719	+ 21.9	208 741	+ 6.7	1 133 956	+ 56.1
Feb	429 923	+ 80.3	294 034	+ 14.5	252 813	- 10.1	976 770	+ 36.6
Mar	489 834	+ 51.9	170 391	+ 15.0	293 261	- 25.5	953 486	+ 19.9
Apr	363 080	+ 75.5	174 265	+ 11.8	188 613	+ 6.5	725 958	+ 40.0
May	440 667	+ 35.4	324 867	- 36.1	298 369	- 31.3	1 063 903	- 6.1
Jun	528 664	+ 77.4	345 416	+ 41.0	294 581	+ 18.2	1 168 661	+ 53.9
Jul	383 095	+ 77.4	125 508	- 47.8	232 557	- 8.2	741 160	- 2.3
Aug	415 855	+ 55.8	120 663	- 10.7	213 429	- 4.1	749 947	+ 15.7
Sep	439 959	+ 41.9	1 448 380	- 9.6	166 754	+ 1.7	2 055 093	+ 10.7
Oct	631 622	+ 25.6	286 257	+ 27.5	229 432	- 14.6	1 147 311	+ 22.5
Nov	579 923	+ 39.6	212 597	+ 34.0	279 368	- 20.3	1 071 888	+ 10.7
Dec	438 298	+ 16.9	174 109	- 18.7	121 536	+ 34.0	733 943	+ 29.7
Total	5 799 416	+ 12.0	3 943 206	+ 17.0	2 779 454	+ 3.1	12 522 076	+ 11.3
2002 Jan	549 418	- 16.6	136 026	- 49.0	169 523	- 18.8	854 967	- 24.6
Feb	443 590	+ 3.2	136 318	- 53.6	193 160	- 23.6	773 068	- 20.9
Mar	663 989	+ 35.6	169 030	- 0.8	167 351	- 42.9	1 000 370	+ 4.9
Apr	607 293	+ 67.3	240 718	+ 38.1	368 075	+ 95.1	1 216 086	+ 67.5
May	639 076	+ 45.0	293 499	- 9.7	287 051	- 3.8	1 219 626	+ 14.6
Jun	536 531	+ 1.5	201 195	- 41.8	235 022	- 20.2	972 748	- 16.8
Jul	616 022	+ 60.8	262 130	+ 108.9	225 352	- 3.1	1 103 504	+ 48.9
Aug	662 349	+ 59.3	92 004	- 23.8	210 227	- 1.5	964 580	+ 28.6
Sep	732 084	+ 66.4	217 310	- 85.0	230 194	+ 38.0	1 179 588	- 42.6
Oct	820 069	+ 29.8	168 018	- 41.3	271 949	+ 18.5	1 260 036	+ 9.8
Nov	734 664	+ 26.7	276 463	+ 30.0	218 163	- 21.9	1 229 290	+ 14.7
Dec	603 604	+ 37.7	343 408	+ 97.2	201 725	+ 66.0	1 148 737	+ 56.5
Total	7 608 689	+ 31.2	2 536 119	- 35.7	2 777 792	- 0.1	12 922 600	+ 3.2
2003 Jan	526 267	- 4.2	139 604	+ 2.6	209 746	+ 23.7	875 617	+ 2.4
Feb	561 286	+ 26.5	145 156	+ 6.5	250 447	+ 29.7	956 889	+ 23.8
Mar*	575 386	- 13.3	287 025	+ 69.8	208 049	+ 24.3	1 070 460	+ 7.0
Apr	553 134	- 8.9	493 649	+ 105.1	201 733	- 45.2	1 248 516	+ 2.7
May	541 089	- 15.3	555 128	+ 89.1	258 153	- 10.1	1 354 370	+ 11.0
Jun	683 108	+ 27.3	150 590	- 25.2	249 075	+ 6.0	1 082 773	+ 11.3

^{1/} The annual percentage change is the change in the actual values of buildings completed of the relevant year compared with the actual values of buildings completed of the previous year expressed as a percentage.

^{2/} The monthly percentage change is the change in the actual values of buildings completed of the relevant month compared with the actual values of buildings completed of the same month in the previous year expressed as a percentage.

Table 8 - Seasonally adjusted values and percentage change of buildings completed at constant 2000 prices according to type of building

Year and month ^{1/}	Residential buildings		Non-residential buildings		Additions and alterations		Total	
	R'000	Percentage change	R'000	Percentage change	R'000	Percentage change	R'000	Percentage change
2001 Jan	782 098	+ 75.6	356 892	+ 6.7	236 590	+ 2.9	1 375 581	+ 36.2
Feb	489 540	- 37.4	359 375	+ 0.7	239 421	+ 1.2	1 088 336	- 20.9
Mar	465 979	- 4.8	214 263	- 40.4	250 886	+ 4.8	931 128	- 14.4
Apr	401 977	- 13.7	184 275	- 14.0	211 850	- 15.6	798 103	- 14.3
May	438 360	+ 9.1	256 678	+ 39.3	247 307	+ 16.7	942 345	+ 18.1
Jun	484 880	+ 10.6	350 589	+ 36.6	296 797	+ 20.0	1 132 266	+ 20.2
Jul	391 456	- 19.3	83 677	- 76.1	215 565	- 27.4	690 698	- 39.0
Aug	417 020	+ 6.5	130 118	+ 55.5	214 614	- 0.4	761 752	+ 10.3
Sep	401 238	- 3.8	1 242 048	+ 854.6	178 969	- 16.6	1 822 256	+ 139.2
Oct	567 285	+ 41.4	308 703	- 75.1	208 119	+ 16.3	1 084 106	- 40.5
Nov	500 918	- 11.7	229 345	- 25.7	275 414	+ 32.3	1 005 677	- 7.2
Dec	500 256	- 0.1	174 094	- 24.1	176 015	- 36.1	850 365	- 15.4
2002 Jan	637 781	+ 27.5	190 332	+ 9.3	192 833	+ 9.6	1 020 946	+ 20.1
Feb	504 365	- 20.9	177 216	- 6.9	184 544	- 4.3	866 125	- 15.2
Mar	634 762	+ 25.9	215 106	+ 21.4	145 694	- 21.1	995 562	+ 14.9
Apr	670 887	+ 5.7	241 502	+ 12.3	415 450	+ 185.2	1 327 838	+ 33.4
May	637 635	- 5.0	219 784	- 9.0	232 078	- 44.1	1 089 497	- 17.9
Jun	484 774	- 24.0	205 644	- 6.4	230 981	- 0.5	921 399	- 15.4
Jul	647 628	+ 33.6	169 324	- 17.7	212 034	- 8.2	1 028 987	+ 11.7
Aug	662 984	+ 2.4	100 691	- 40.5	211 995	+ 0.0	975 670	- 5.2
Sep	674 972	+ 1.8	191 511	+ 90.2	250 969	+ 18.4	1 117 453	+ 14.5
Oct	731 292	+ 8.3	189 640	- 1.0	245 308	- 2.3	1 166 240	+ 4.4
Nov	632 280	- 13.5	302 054	+ 59.3	213 675	- 12.9	1 148 009	- 1.6
Dec	692 283	+ 9.5	334 197	+ 10.6	292 356	+ 36.8	1 318 836	+ 14.9
2003 Jan	599 480	- 13.4	198 064	- 40.7	239 739	- 18.0	1 037 282	- 21.3
Feb	641 776	+ 7.1	191 319	- 3.4	241 792	+ 0.9	1 074 887	+ 3.6
Mar	550 069	- 14.3	375 617	+ 96.3	182 060	- 24.7	1 107 746	+ 3.1
Apr	611 939	+ 11.2	484 923	+ 29.1	229 583	+ 26.1	1 326 445	+ 19.7
May	542 447	- 11.4	409 781	- 15.5	205 385	- 10.5	1 157 613	- 12.7
Jun	609 549	+ 12.4	152 019	- 62.9	239 922	+ 16.8	1 001 490	- 13.5

^{1/} The percentage change is the change in the seasonally adjusted values of buildings completed of the relevant month compared with the seasonally adjusted values of buildings completed of the previous month expressed as a percentage.

Table 9 - Building plans passed according to type of building: Total RSA

Type of building	June 2002 *	May 2003	June 2003	January 2002 to June 2002	January 2003 to June 2003	Percentage change between January 2002 to June 2002 and January 2003 to June 2003
Residential buildings						
Dwelling-houses smaller than 80 square metres						
Number of dwelling-houses	3 696	1 820	2 287	18 780	16 188	- 13.8
Total square metres	139 232	82 294	105 146	721 666	641 622	- 11.1
Total value at current prices (R'000)	138 189	97 231	113 979	742 316	629 986	- 15.1
Dwelling-houses equal to or larger than 80 square metres						
Number of dwelling-houses	2 031	1 994	2 249	11 506	11 861	+ 3.1
Total square metres	472 978	468 295	525 720	2 583 906	2 717 059	+ 5.2
Total value at current prices (R'000)	726 805	846 921	931 985	3 953 334	4 730 775	+ 19.7
Flats and townhouses						
Number of flats and townhouses	1 080	1 174	1 175	6 937	6 476	- 6.6
Total square metres	114 709	168 888	184 451	806 576	970 263	+ 20.3
Total value at current prices (R'000)	194 080	289 767	378 346	1 292 109	1 883 311	+ 45.8
Other residential buildings ^{1/}						
Total square metres	16 379	6 789	4 606	86 389	76 159	- 11.8
Total value at current prices (R'000)	41 225	12 076	6 964	240 740	136 636	- 43.2
Total value of residential buildings at current prices (R'000)	1 100 299	1 245 995	1 431 274	6 228 499	7 380 708	+ 18.5
Non-residential buildings						
Office and banking space						
Total square metres	24 554	50 504	42 245	274 257	212 575	- 22.5
Total value at current prices (R'000)	44 691	89 408	98 552	583 622	417 895	- 28.4
Shopping space						
Total square metres	30 311	80 847	38 790	186 229	280 231	+ 50.5
Total value at current prices (R'000)	44 810	108 125	76 212	300 041	854 949	+ 184.9
Industrial and warehouse space						
Total square metres	180 869	76 971	96 272	605 912	416 202	- 31.3
Total value at current prices (R'000)	337 725	109 419	145 892	1 037 306	618 364	- 40.4
Other non-residential space ^{2/}						
Total square metres	38 638	44 860	30 407	384 527	163 366	- 57.5
Total value at current prices (R'000)	70 603	76 938	60 331	655 772	289 886	- 55.8
Total value of non-residential buildings at current prices (R'000)	497 829	383 890	380 987	2 576 741	2 181 094	- 15.4
Additions and alterations						
Dwelling-houses						
Total square metres	294 037	297 456	303 178	1 570 846	1 612 754	+ 2.7
Total value at current prices (R'000)	400 030	471 558	472 471	2 175 230	2 485 401	+ 14.3
Other buildings ^{3/}						
Total square metres	90 603	185 557	90 161	554 075	623 948	+ 12.6
Total value at current prices (R'000)	152 505	379 316	225 206	1 157 765	1 292 616	+ 11.6
Total value of additions and alterations at current prices (R'000)	552 535	850 874	697 677	3 332 995	3 778 017	+ 13.4
Total value of building plans passed at current prices (R'000)	2 150 663	2 480 759	2 509 938	12 138 235	13 339 819	+ 9.9

1/ Other residential buildings include institutions for the disabled, boarding houses, old people's homes, hostels, hotels, motels, guest houses, holiday chalets, entertainment centres, bed-and-breakfast accommodation and casinos.

2/ Other non-residential space includes churches, sport and recreation clubs, schools, crèches, hospitals and all other non-residential space.

3/ Other buildings include additions and alterations to other residential buildings, non-residential buildings and internal alterations.

Table 10 - Building plans passed according to type of building and province: Western Cape

Type of building	June 2002*	May 2003	June 2003	January 2002 to June 2002	January 2003 to June 2003	Percentage change between January 2002 to June 2002 and January 2003 to June 2003
Residential buildings						
Dwelling-houses smaller than 80 square metres						
Number of dwelling-houses	1 627	377	608	6 719	2 773	- 58.7
Total square metres	54 138	16 237	27 835	227 802	116 681	- 48.8
Total value at current prices (R'000)	59 614	22 960	33 690	258 995	143 266	- 44.7
Dwelling-houses equal to or larger than 80 square metres						
Number of dwelling-houses	860	682	628	4 142	3 970	- 4.2
Total square metres	192 119	152 726	138 211	890 696	844 354	- 5.2
Total value at current prices (R'000)	298 678	295 114	238 370	1 405 180	1 520 184	+ 8.2
Flats and townhouses						
Number of flats and townhouses	127	367	219	1 722	1 598	- 7.2
Total square metres	22 109	33 409	26 148	170 856	174 070	+ 1.9
Total value at current prices (R'000)	36 053	58 267	52 535	282 256	349 884	+ 24.0
Other residential buildings ^{1/}						
Total square metres	14 470	423	891	32 706	8 972	- 72.6
Total value at current prices (R'000)	38 482	486	1 743	65 169	13 872	- 78.7
Total value of residential buildings at current prices (R'000)	432 827	376 827	326 338	2 011 600	2 027 206	+ 0.8
Non-residential buildings						
Office and banking space						
Total square metres	8 386	16 623	19 927	43 903	74 523	+ 69.7
Total value at current prices (R'000)	15 255	34 481	47 543	74 479	155 369	+ 108.6
Shopping space						
Total square metres	14 548	38 955	13 857	30 285	66 330	+ 119.0
Total value at current prices (R'000)	17 321	37 381	25 066	37 726	80 422	+ 113.2
Industrial and warehouse space						
Total square metres	29 290	25 782	43 261	113 183	133 045	+ 17.5
Total value at current prices (R'000)	39 518	33 976	65 184	136 941	189 507	+ 38.4
Other non-residential space ^{2/}						
Total square metres	10 185	10 426	4 156	38 526	32 502	- 15.6
Total value at current prices (R'000)	17 146	19 137	6 839	57 915	52 164	- 9.9
Total value of non-residential buildings at current prices (R'000)	89 240	124 975	144 632	307 061	477 462	+ 55.5
Additions and alterations						
Dwelling-houses						
Total square metres	123 289	92 008	79 827	508 697	474 185	- 6.8
Total value at current prices (R'000)	150 633	144 324	117 509	668 718	726 056	+ 8.6
Other buildings ^{3/}						
Total square metres	22 122	33 977	28 775	153 971	199 972	+ 29.9
Total value at current prices (R'000)	39 689	86 008	100 475	308 817	448 698	+ 45.3
Total value of additions and alterations at current prices (R'000)	190 322	230 332	217 984	977 535	1 174 754	+ 20.2
Total value of building plans passed at current prices (R'000)	712 389	732 134	688 954	3 296 196	3 679 422	+ 11.6

1/ Other residential buildings include institutions for the disabled, boarding houses, old people's homes, hostels, hotels, motels, guest houses, holiday chalets, entertainment centres, bed-and-breakfast accommodation and casinos.

2/ Other non-residential space includes churches, sport and recreation clubs, schools, crèches, hospitals and all other non-residential space.

3/ Other buildings include additions and alterations to other residential buildings, non-residential buildings and internal alterations.

Table 11 - Building plans passed according to type of building and province: Eastern Cape

Type of building	June 2002	May 2003	June 2003	January 2002 to June 2002	January 2003 to June 2003	Percentage change between January 2002 to June 2002 and January 2003 to June 2003
Residential buildings						
Dwelling-houses smaller than 80 square metres						
Number of dwelling-houses	665	276	406	2 795	1 778	-36.4
Total square metres	27 884	12 789	17 333	119 535	77 640	-35.0
Total value at current prices (R'000)	31 128	16 583	22 532	148 356	103 020	-30.6
Dwelling-houses equal to or larger than 80 square metres						
Number of dwelling-houses	104	39	164	663	550	-17.0
Total square metres	22 005	6 699	32 785	131 399	104 895	-20.2
Total value at current prices (R'000)	30 724	10 976	48 967	180 825	176 683	-2.3
Flats and townhouses						
Number of flats and townhouses	22	3	21	330	63	-80.9
Total square metres	1 996	480	2 159	27 637	9 827	-64.4
Total value at current prices (R'000)	2 894	892	4 816	46 198	18 703	-59.5
Other residential buildings ^{1/}						
Total square metres	340	606	263	812	2 808	+ 245.8
Total value at current prices (R'000)	443	1 018	449	1 104	4 815	+ 336.1
Total value of residential buildings at current prices (R'000)	65 189	29 469	76 764	376 483	303 221	-19.5
Non-residential buildings						
Office and banking space						
Total square metres	0	741	416	3 801	6 706	+ 76.4
Total value at current prices (R'000)	0	975	770	5 923	12 387	+ 109.1
Shopping space						
Total square metres	804	375	1 435	14 252	2 191	-84.6
Total value at current prices (R'000)	964	711	3 072	28 256	4 485	-84.1
Industrial and warehouse space						
Total square metres	611	4 224	5 245	33 971	15 734	-53.7
Total value at current prices (R'000)	966	7 051	8 259	60 902	25 144	-58.7
Other non-residential space ^{2/}						
Total square metres	2 888	481	1 606	18 611	5 661	-69.6
Total value at current prices (R'000)	5 660	841	2 950	30 647	10 237	-66.6
Total value of non-residential buildings at current prices (R'000)	7 590	9 578	15 051	125 728	52 253	-58.4
Additions and alterations						
Dwelling-houses						
Total square metres	15 513	20 203	27 299	113 249	118 509	+ 4.6
Total value at current prices (R'000)	20 819	31 813	42 923	152 625	193 074	+ 26.5
Other buildings ^{3/}						
Total square metres	6 360	7 441	4 316	31 098	32 733	+ 5.3
Total value at current prices (R'000)	11 035	13 608	29 468	58 493	89 411	+ 52.9
Total value of additions and alterations at current prices (R'000)	31 854	45 421	72 391	211 118	282 485	+ 33.8
Total value of building plans passed at current prices (R'000)	104 633	84 468	164 206	713 329	637 959	-10.6

1/ Other residential buildings include institutions for the disabled, boarding houses, old people's homes, hostels, hotels, motels, guest houses, holiday chalets, entertainment centres, bed-and-breakfast accommodation and casinos.

2/ Other non-residential space includes churches, sport and recreation clubs, schools, crèches, hospitals and all other non-residential space.

3/ Other buildings include additions and alterations to other residential buildings, non-residential buildings and internal alterations.

Table 12 - Building plans passed according to type of building and province: Northern Cape

Type of building	June 2002	May 2003	June 2003	January 2002 to June 2002	January 2003 to June 2003	Percentage change between January 2002 to June 2002 and January 2003 to June 2003
Residential buildings						
Dwelling-houses smaller than 80 square metres						
Number of dwelling-houses	3	1	2	33	12	- 63.6
Total square metres	139	49	76	1 630	481	- 70.5
Total value at current prices (R'000)	239	74	114	2 680	732	- 72.7
Dwelling-houses equal to or larger than 80 square metres						
Number of dwelling-houses	10	10	8	49	56	+ 14.3
Total square metres	2 145	1 919	998	10 432	10 355	- 0.7
Total value at current prices (R'000)	3 344	3 019	1 541	16 026	16 125	+ 0.6
Flats and townhouses						
Number of flats and townhouses	0	1	9	6	13	+ 116.7
Total square metres	0	175	1 311	979	2 044	+ 108.8
Total value at current prices (R'000)	0	315	2 360	1 763	3 645	+ 106.7
Other residential buildings ^{1/}						
Total square metres	0	0	0	0	0	..
Total value at current prices (R'000)	0	0	0	0	0	..
Total value of residential buildings at current prices (R'000)	3 583	3 408	4 015	20 469	20 502	+ 0.2
Non-residential buildings						
Office and banking space						
Total square metres	0	423	598	446	1 139	+ 155.4
Total value at current prices (R'000)	0	635	897	628	1 709	+ 172.1
Shopping space						
Total square metres	0	1 368	765	0	2 744	..
Total value at current prices (R'000)	0	3 010	1 683	0	5 985	..
Industrial and warehouse space						
Total square metres	498	0	1 241	2 415	2 479	+ 2.7
Total value at current prices (R'000)	697	0	1 862	3 469	4 585	+ 32.2
Other non-residential space ^{2/}						
Total square metres	797	0	0	1 921	0	..
Total value at current prices (R'000)	1 753	0	0	4 126	0	..
Total value of non-residential buildings at current prices (R'000)	2 450	3 645	4 442	8 223	12 279	+ 49.3
Additions and alterations						
Dwelling-houses						
Total square metres	2 430	2 825	2 807	14 848	15 008	+ 1.1
Total value at current prices (R'000)	4 302	5 071	5 277	25 327	26 874	+ 6.1
Other buildings ^{3/}						
Total square metres	251	29	47	2 417	1 918	- 20.6
Total value at current prices (R'000)	768	77	971	6 340	6 042	- 4.7
Total value of additions and alterations at current prices (R'000)	5 070	5 148	6 248	31 667	32 916	+ 3.9
Total value of building plans passed at current prices (R'000)	11 103	12 201	14 705	60 359	65 697	+ 8.8

1/ Other residential buildings include institutions for the disabled, boarding houses, old people's homes, hostels, hotels, motels, guest houses, holiday chalets, entertainment centres, bed-and-breakfast accommodation and casinos.

2/ Other non-residential space includes churches, sport and recreation clubs, schools, crèches, hospitals and all other non-residential space.

3/ Other buildings include additions and alterations to other residential buildings, non-residential buildings and internal alterations.

Table 13 - Building plans passed according to type of building and province: Free State

Type of building	June 2002*	May 2003	June 2003	January 2002 to June 2002	January 2003 to June 2003	Percentage change between January 2002 to June 2002 and January 2003 to June 2003
Residential buildings						
Dwelling-houses smaller than 80 square metres						
Number of dwelling-houses	309	524	616	1 223	1 993	+ 63.0
Total square metres	12 609	20 812	26 197	52 799	82 897	+ 57.0
Total value at current prices (R'000)	6 425	11 688	12 975	31 768	46 231	+ 45.5
Dwelling-houses equal to or larger than 80 square metres						
Number of dwelling-houses	73	93	54	448	448	+ 0.0
Total square metres	12 322	16 219	8 117	70 296	74 105	+ 5.4
Total value at current prices (R'000)	14 809	23 291	12 270	84 437	105 438	+ 24.9
Flats and townhouses						
Number of flats and townhouses	114	32	1	321	190	-40.8
Total square metres	10 061	4 237	104	31 116	21 532	-30.8
Total value at current prices (R'000)	12 227	6 177	148	43 816	31 158	-28.9
Other residential buildings ^{1/}						
Total square metres	0	900	0	2 758	1 854	-32.8
Total value at current prices (R'000)	0	1 000	0	7 105	2 110	-70.3
Total value of residential buildings at current prices (R'000)	33 461	42 156	25 393	167 126	184 937	+ 10.7
Non-residential buildings						
Office and banking space						
Total square metres	5 530	494	3 756	12 914	5 994	-53.6
Total value at current prices (R'000)	7 700	1 200	5 390	21 802	9 526	-56.3
Shopping space						
Total square metres	1 020	2 419	443	11 158	15 638	+ 40.2
Total value at current prices (R'000)	1 115	5 906	488	21 508	28 642	+ 33.2
Industrial and warehouse space						
Total square metres	131	3 420	4 219	8 094	11 987	+ 48.1
Total value at current prices (R'000)	180	2 728	2 365	6 303	7 497	+ 18.9
Other non-residential space ^{2/}						
Total square metres	1 646	818	198	7 728	9 857	+ 27.5
Total value at current prices (R'000)	1 458	1 638	190	9 161	14 534	+ 58.7
Total value of non-residential buildings at current prices (R'000)	10 453	11 472	8 433	58 774	60 199	+ 2.4
Additions and alterations						
Dwelling-houses						
Total square metres	7 049	8 705	7 230	49 725	51 987	+ 4.5
Total value at current prices (R'000)	7 789	10 848	8 907	54 040	63 960	+ 18.4
Other buildings ^{3/}						
Total square metres	1 305	2 204	2 751	12 615	14 764	+ 17.0
Total value at current prices (R'000)	2 474	8 845	5 797	31 750	40 179	+ 26.5
Total value of additions and alterations at current prices (R'000)	10 263	19 693	14 704	85 790	104 139	+ 21.4
Total value of building plans passed at current prices (R'000)	54 177	73 321	48 530	311 690	349 275	+ 12.1

1/ Other residential buildings include institutions for the disabled, boarding houses, old people's homes, hostels, hotels, motels, guest houses, holiday chalets, entertainment centres, bed-and-breakfast accommodation and casinos.

2/ Other non-residential space includes churches, sport and recreation clubs, schools, crèches, hospitals and all other non-residential space.

3/ Other buildings include additions and alterations to other residential buildings, non-residential buildings and internal alterations.

Table 14 - Building plans passed according to type of building and province: KwaZulu-Natal

Type of building	June 2002	May 2003	June 2003	January 2002 to June 2002	January 2003 to June 2003	Percentage change between January 2002 to June 2002 and January 2003 to June 2003
Residential buildings						
Dwelling-houses smaller than 80 square metres						
Number of dwelling-houses	371	77	123	1 280	2 266	+ 77.0
Total square metres	13 058	4 452	6 130	50 572	81 234	+ 60.6
Total value at current prices (R'000)	9 662	5 948	6 496	48 088	68 158	+ 41.7
Dwelling-houses equal to or larger than 80 square metres						
Number of dwelling-houses	157	200	203	866	1 035	+ 19.5
Total square metres	40 044	48 577	49 371	194 394	250 887	+ 29.1
Total value at current prices (R'000)	69 339	85 466	104 492	300 358	458 358	+ 52.6
Flats and townhouses						
Number of flats and townhouses	29	94	259	415	831	+ 100.2
Total square metres	5 103	18 036	36 033	62 573	148 450	+ 137.2
Total value at current prices (R'000)	9 443	37 804	83 977	104 680	383 276	+ 266.1
Other residential buildings ^{1/}						
Total square metres	461	1 115	1 228	31 840	15 786	- 50.4
Total value at current prices (R'000)	600	2 788	1 645	34 015	38 953	+ 14.5
Total value of residential buildings at current prices (R'000)	89 044	132 006	196 610	487 141	948 745	+ 94.8
Non-residential buildings						
Office and banking space						
Total square metres	5 973	2 063	10 058	18 726	17 068	- 8.9
Total value at current prices (R'000)	16 022	4 250	29 250	56 918	45 578	- 19.9
Shopping space						
Total square metres	3 350	4 885	522	30 557	82 013	+ 168.4
Total value at current prices (R'000)	10 000	8 552	477	57 319	532 134	+ 828.4
Industrial and warehouse space						
Total square metres	5 637	6 942	11 417	97 476	49 538	- 49.2
Total value at current prices (R'000)	6 199	8 321	15 787	209 092	60 432	- 71.1
Other non-residential space ^{2/}						
Total square metres	3 088	3 254	3 303	64 453	16 772	- 74.0
Total value at current prices (R'000)	3 892	4 474	6 880	76 520	32 275	- 57.8
Total value of non-residential buildings at current prices (R'000)	36 113	25 597	52 394	399 849	670 419	+ 67.7
Additions and alterations						
Dwelling-houses						
Total square metres	38 311	47 328	44 700	205 485	250 022	+ 21.7
Total value at current prices (R'000)	52 504	69 281	72 521	269 000	345 288	+ 28.4
Other buildings ^{3/}						
Total square metres	19 652	12 059	12 894	123 655	100 735	- 18.5
Total value at current prices (R'000)	31 823	33 376	21 136	340 109	199 017	- 41.5
Total value of additions and alterations at current prices (R'000)	84 327	102 657	93 657	609 109	544 305	- 10.6
Total value of building plans passed at current prices (R'000)	209 484	260 260	342 661	1 496 099	2 163 469	+ 44.6

1/ Other residential buildings include institutions for the disabled, boarding houses, old people's homes, hostels, hotels, motels, guest houses, holiday chalets, entertainment centres, bed-and-breakfast accommodation and casinos.

2/ Other non-residential space includes churches, sport and recreation clubs, schools, crèches, hospitals and all other non-residential space.

3/ Other buildings include additions and alterations to other residential buildings, non-residential buildings and internal alterations.

Table 15 - Building plans passed according to type of building and province: North West

Type of building	June 2002	May 2003	June 2003	January 2002 to June 2002	January 2003 to June 2003	Percentage change between January 2002 to June 2002 and January 2003 to June 2003
Residential buildings						
Dwelling-houses smaller than 80 square metres						
Number of dwelling-houses	27	30	48	528	196	- 62.9
Total square metres	1 493	1 848	2 725	23 929	11 442	- 52.2
Total value at current prices (R'000)	1 721	2 254	3 460	26 578	14 031	- 47.2
Dwelling-houses equal to or larger than 80 square metres						
Number of dwelling-houses	129	92	80	597	540	- 9.5
Total square metres	25 223	17 603	16 281	106 585	102 809	- 3.5
Total value at current prices (R'000)	27 914	25 196	28 310	135 425	157 826	+ 16.5
Flats and townhouses						
Number of flats and townhouses	197	64	83	534	383	- 28.3
Total square metres	10 724	5 076	7 473	32 822	30 140	- 8.2
Total value at current prices (R'000)	24 411	7 435	13 022	51 596	47 349	- 8.2
Other residential buildings ^{1/}						
Total square metres	0	564	0	768	9 676	+ 1159.9
Total value at current prices (R'000)	0	1 000	0	781	15 033	+ 1824.8
Total value of residential buildings at current prices (R'000)	54 046	35 885	44 792	214 380	234 239	+ 9.3
Non-residential buildings						
Office and banking space						
Total square metres	873	1 162	1 112	5 552	4 793	-13.7
Total value at current prices (R'000)	982	3 485	2 089	8 548	9 978	+ 16.7
Shopping space						
Total square metres	1 099	2 056	1 614	13 762	6 989	- 49.2
Total value at current prices (R'000)	1 750	2 840	2 421	21 118	15 999	- 24.2
Industrial and warehouse space						
Total square metres	0	1 313	1 651	8 672	8 733	+ 0.7
Total value at current prices (R'000)	0	1 200	1 487	12 098	10 189	- 15.8
Other non-residential space ^{2/}						
Total square metres	5 904	1 503	5 581	14 868	13 092	- 11.9
Total value at current prices (R'000)	20 510	2 380	10 016	38 536	23 770	- 38.3
Total value of non-residential buildings at current prices (R'000)	23 242	9 905	16 013	80 300	59 936	- 25.4
Additions and alterations						
Dwelling-houses						
Total square metres	8 428	6 079	9 006	48 334	45 434	- 6.0
Total value at current prices (R'000)	9 601	8 837	13 823	56 237	61 813	+ 9.9
Other buildings ^{3/}						
Total square metres	628	1 942	154	13 187	5 483	- 58.4
Total value at current prices (R'000)	1 386	3 156	398	22 127	9 050	- 59.1
Total value of additions and alterations at current prices (R'000)	10 987	11 993	14 221	78 364	70 863	- 9.6
Total value of building plans passed at current prices (R'000)	88 275	57 783	75 026	373 044	365 038	- 2.1

1/ Other residential buildings include institutions for the disabled, boarding houses, old people's homes, hostels, hotels, motels, guest houses, holiday chalets, entertainment centres, bed-and-breakfast accommodation and casinos.

2/ Other non-residential space includes churches, sport and recreation clubs, schools, crèches, hospitals and all other non-residential space.

3/ Other buildings include additions and alterations to other residential buildings, non-residential buildings and internal alterations.

Table 16 - Building plans passed according to type of building and province: Gauteng

Type of building	June 2002 *	May 2003	June 2003	January 2002 to June 2002	January 2003 to June 2003	Percentage change between January 2002 to June 2002 and January 2003 to June 2003
Residential buildings						
Dwelling-houses smaller than 80 square metres						
Number of dwelling-houses	554	469	374	4 712	6 188	+ 31.3
Total square metres	22 347	22 491	19 001	181 421	227 337	+ 25.3
Total value at current prices (R'000)	19 770	32 702	29 414	181 969	218 567	+ 20.1
Dwelling-houses equal to or larger than 80 square metres						
Number of dwelling-houses	570	738	839	3 808	4 183	+ 9.8
Total square metres	153 405	195 023	225 973	1 005 367	1 112 603	+ 10.7
Total value at current prices (R'000)	245 640	364 524	421 625	1 598 424	1 992 161	+ 24.6
Flats and townhouses						
Number of flats and townhouses	563	604	567	3 340	3 274	- 2.0
Total square metres	61 429	106 612	109 471	446 117	570 764	+ 27.9
Total value at current prices (R'000)	104 326	177 800	218 748	713 037	1 029 567	+ 44.4
Other residential buildings ^{1/}						
Total square metres	0	1 851	1 775	3 968	35 284	+ 789.2
Total value at current prices (R'000)	0	3 234	2 227	6 751	58 403	+ 765.1
Total value of residential buildings at current prices (R'000)	369 736	578 260	672 014	2 500 181	3 298 698	+ 31.9
Non-residential buildings						
Office and banking space						
Total square metres	3 792	27 465	5 622	183 254	93 054	- 49.2
Total value at current prices (R'000)	4 732	41 009	11 313	405 873	167 284	- 58.8
Shopping space						
Total square metres	7 617	7 852	5 293	60 203	47 746	- 20.7
Total value at current prices (R'000)	10 539	10 910	9 701	97 982	81 127	- 17.2
Industrial and warehouse space						
Total square metres	47 864	33 794	26 492	232 718	158 057	- 32.1
Total value at current prices (R'000)	78 521	54 357	46 548	381 474	274 907	- 27.9
Other non-residential space ^{2/}						
Total square metres	5 828	24 990	15 120	221 482	78 924	- 64.4
Total value at current prices (R'000)	8 841	43 817	32 515	415 485	146 452	- 64.8
Total value of non-residential buildings at current prices (R'000)	102 633	150 093	100 077	1 300 814	669 770	- 48.5
Additions and alterations						
Dwelling-houses						
Total square metres	82 105	104 947	115 232	534 551	557 904	+ 4.4
Total value at current prices (R'000)	131 763	182 242	190 131	833 883	938 572	+ 12.6
Other buildings ^{3/}						
Total square metres	36 644	123 871	33 448	198 021	243 766	+ 23.1
Total value at current prices (R'000)	59 834	228 377	57 746	355 686	461 515	+ 29.8
Total value of additions and alterations at current prices (R'000)	191 597	410 619	247 877	1 189 569	1 400 087	+ 17.7
Total value of building plans passed at current prices (R'000)	663 966	1 138 972	1 019 968	4 990 564	5 368 555	+ 7.6

1/ Other residential buildings include institutions for the disabled, boarding houses, old people's homes, hostels, hotels, motels, guest houses, holiday chalets, entertainment centres, bed-and-breakfast accommodation and casinos.

2/ Other non-residential space includes churches, sport and recreation clubs, schools, crèches, hospitals and all other non-residential space.

3/ Other buildings include additions and alterations to other residential buildings, non-residential buildings and internal alterations.

Table 17 - Building plans passed according to type of building and province: Mpumalanga

Type of building	June 2002	May 2003	June 2003	January 2002 to June 2002	January 2003 to June 2003	Percentage change between January 2002 to June 2002 and January 2003 to June 2003
Residential buildings						
Dwelling-houses smaller than 80 square metres						
Number of dwelling-houses	106	41	80	1 343	553	- 58.8
Total square metres	5 363	2 092	4 053	55 112	24 210	- 56.1
Total value at current prices (R'000)	6 382	2 906	2 884	30 990	19 512	- 37.0
Dwelling-houses equal to or larger than 80 square metres						
Number of dwelling-houses	77	102	210	655	724	+ 10.5
Total square metres	16 834	21 397	42 742	120 388	152 330	+ 26.5
Total value at current prices (R'000)	22 638	28 246	61 880	156 109	211 516	+ 35.5
Flats and townhouses						
Number of flats and townhouses	12	8	12	196	46	- 76.5
Total square metres	1 413	679	1 129	25 179	5 445	- 78.4
Total value at current prices (R'000)	1 576	820	1 868	33 883	8 242	- 75.7
Other residential buildings ^{1/}						
Total square metres	1 108	1 330	449	13 016	1 779	- 86.3
Total value at current prices (R'000)	1 700	2 550	900	124 885	3 450	- 97.2
Total value of residential buildings at current prices (R'000)	32 296	34 522	67 532	345 867	242 720	- 29.8
Non-residential buildings						
Office and banking space						
Total square metres	0	0	756	3 110	7 765	+ 149.7
Total value at current prices (R'000)	0	0	1 300	4 279	12 691	+ 196.6
Shopping space						
Total square metres	1 428	22 818	2 545	20 958	39 056	+86.4
Total value at current prices (R'000)	2 142	38 648	2 700	27 101	62 169	+129.4
Industrial and warehouse space						
Total square metres	1 381	1 496	2 746	13 087	32 815	+ 150.7
Total value at current prices (R'000)	1 639	1 786	4 400	15 964	38 886	+ 143.6
Other non-residential space ^{2/}						
Total square metres	8 302	2 317	0	13 827	3 675	- 73.4
Total value at current prices (R'000)	11 343	2 546	0	17 377	4 581	- 73.6
Total value of non-residential buildings at current prices (R'000)	15 124	42 980	8 400	64 721	118 327	+ 82.8
Additions and alterations						
Dwelling-houses						
Total square metres	11 963	11 259	11 060	70 493	72 294	+ 2.6
Total value at current prices (R'000)	15 886	13 449	12 808	80 068	92 390	+ 15.4
Other buildings ^{3/}						
Total square metres	1 970	3 474	7 262	7 550	20 060	+ 165.7
Total value at current prices (R'000)	2 684	3 547	8 712	16 615	27 931	+ 68.1
Total value of additions and alterations at current prices (R'000)	18 570	16 996	21 520	96 683	120 321	+ 24.4
Total value of building plans passed at current prices (R'000)	65 990	94 498	97 452	507 271	481 368	- 5.1

1/ Other residential buildings include institutions for the disabled, boarding houses, old people's homes, hostels, hotels, motels, guest houses, holiday chalets, entertainment centres, bed-and-breakfast accommodation and casinos.

2/ Other non-residential space includes churches, sport and recreation clubs, schools, crèches, hospitals and all other non-residential space.

3/ Other buildings include additions and alterations to other residential buildings, non-residential buildings and internal alterations.

Table 18 - Building plans passed according to type of building and province: Limpopo

Type of building	June 2002	May 2003	June 2003	January 2002 to June 2002	January 2003 to June 2003	Percentage change between January 2002 to June 2002 and January 2003 to June 2003
Residential buildings						
Dwelling-houses smaller than 80 square metres						
Number of dwelling-houses	34	25	30	147	429	+ 191.8
Total square metres	2 201	1 524	1 796	8 866	19 700	+ 122.2
Total value at current prices (R'000)	3 248	2 116	2 414	12 892	16 469	+ 27.7
Dwelling-houses equal to or larger than 80 square metres						
Number of dwelling-houses	51	38	63	278	355	+ 27.7
Total square metres	8 881	8 132	11 242	54 349	64 721	+ 19.1
Total value at current prices (R'000)	13 719	11 089	14 530	76 550	92 484	+ 20.8
Flats and townhouses						
Number of flats and townhouses	16	1	4	73	78	+ 6.8
Total square metres	1 874	184	623	9 297	7 991	-14.0
Total value at current prices (R'000)	3 150	257	872	14 880	11 487	-22.8
Other residential buildings ^{1/}						
Total square metres	0	0	0	521	0	..
Total value at current prices (R'000)	0	0	0	930	0	..
Total value of residential buildings at current prices (R'000)	20 117	13 462	17 816	105 252	120 440	+ 14.4
Non-residential buildings						
Office and banking space						
Total square metres	0	1 533	0	2 551	1 533	-39.9
Total value at current prices (R'000)	0	3 373	0	5 172	3 373	-34.8
Shopping space						
Total square metres	445	119	12 316	5 054	17 524	+ 246.7
Total value at current prices (R'000)	979	167	30 604	9 031	43 986	+ 387.1
Industrial and warehouse space						
Total square metres	95 457	0	0	96 296	3 814	-96.0
Total value at current prices (R'000)	210 005	0	0	211 063	7 217	-96.6
Other non-residential space ^{2/}						
Total square metres	0	1 071	443	3 111	2 883	-7.3
Total value at current prices (R'000)	0	2 105	941	6 005	5 873	-2.2
Total value of non-residential buildings at current prices (R'000)	210 984	5 645	31 545	231 271	60 449	-73.9
Additions and alterations						
Dwelling-houses						
Total square metres	4 949	4 102	6 017	25 464	27 411	+ 7.6
Total value at current prices (R'000)	6 733	5 693	8 572	35 332	37 374	+ 5.8
Other buildings ^{3/}						
Total square metres	1 671	560	514	11 561	4 517	-60.9
Total value at current prices (R'000)	2 812	2 322	503	17 828	10 773	-39.6
Total value of additions and alterations at current prices (R'000)	9 545	8 015	9 075	53 160	48 147	-9.4
Total value of building plans passed at current prices (R'000)	240 646	27 122	58 436	389 683	229 036	-41.2

1/ Other residential buildings include institutions for the disabled, boarding houses, old people's homes, hostels, hotels, motels, guest houses, holiday chalets, entertainment centres, bed-and-breakfast accommodation and casinos.

2/ Other non-residential space includes churches, sport and recreation clubs, schools, crèches, hospitals and all other non-residential space.

3/ Other buildings include additions and alterations to other residential buildings, non-residential buildings and internal alterations.

Table 19 - Buildings completed according to type of building: Total RSA

Type of building	June 2002 *	May 2003	June 2003	January 2002 to June 2002	January 2003 to June 2003	Percentage change between January 2002 to June 2002 and January 2003 to June 2003
Residential buildings						
Dwelling-houses smaller than 80 square metres						
Number of dwelling-houses	2 734	1 544	1 163	14 291	13 315	- 6.8
Total square metres	108 680	63 107	50 337	548 677	495 748	- 9.6
Total value at current prices (R'000)	103 555	70 740	58 725	500 569	443 110	- 11.5
Dwelling-houses equal to or larger than 80 square metres						
Number of dwelling-houses	1 173	1 254	1 423	6 532	7 423	+ 13.6
Total square metres	247 055	276 696	294 717	1 368 571	1 558 288	+ 13.9
Total value at current prices (R'000)	377 142	463 626	488 472	2 053 997	2 564 199	+ 24.8
Flats and townhouses						
Number of flats and townhouses	465	518	1 433	4 987	5 792	+ 16.1
Total square metres	62 248	68 430	157 018	565 155	625 264	+ 10.6
Total value at current prices (R'000)	103 245	131 462	290 378	869 446	1 056 101	+ 21.5
Other residential buildings ^{1/}						
Total square metres	1 121	566	408	56 284	47 360	- 15.9
Total value at current prices (R'000)	1 781	850	1 022	271 360	99 459	- 63.3
Total value of residential buildings at current prices (R'000)	585 723	666 678	838 597	3 695 372	4 162 869	+ 12.7
Non-residential buildings						
Office and banking space						
Total square metres	23 488	80 065	37 040	274 368	311 054	+ 13.4
Total value at current prices (R'000)	43 397	193 817	68 644	480 624	625 242	+ 30.1
Shopping space						
Total square metres	29 533	39 441	4 355	131 925	160 316	+ 21.5
Total value at current prices (R'000)	42 983	72 524	6 531	213 342	291 928	+ 36.8
Industrial and warehouse space						
Total square metres	87 408	31 733	36 167	287 634	293 176	+ 1.9
Total value at current prices (R'000)	99 331	39 649	56 305	354 624	386 472	+ 9.0
Other non-residential space ^{2/}						
Total square metres	19 428	150 605	20 291	107 340	321 243	+ 199.3
Total value at current prices (R'000)	21 319	297 434	33 717	150 663	614 582	+ 307.9
Total value of non-residential buildings at current prices (R'000)	207 030	603 424	165 197	1 199 253	1 918 224	+ 60.0
Additions and alterations						
Dwelling-houses						
Total square metres	140 919	134 402	121 165	784 622	741 479	- 5.5
Total value at current prices (R'000)	183 809	176 689	171 534	1 019 070	1 001 838	- 1.7
Other buildings ^{3/}						
Total square metres	44 615	51 661	49 158	292 996	273 447	- 6.7
Total value at current prices (R'000)	67 195	127 673	123 869	483 025	590 764	+ 22.3
Total value of additions and alterations at current prices (R'000)	251 004	304 362	295 403	1 502 095	1 592 602	+ 6.0
Total value of buildings completed at current prices (R'000)	1 043 757	1 574 464	1 299 197	6 396 720	7 673 695	+ 20.0

1/ Other residential buildings include institutions for the disabled, boarding houses, old people's homes, hostels, hotels, motels, guest houses, holiday chalets, entertainment centres, bed-and-breakfast accommodation and casinos.

2/ Other non-residential space includes churches, sport and recreation clubs, schools, crèches, hospitals and all other non-residential space.

3/ Other buildings include additions and alterations to other residential buildings, non-residential buildings and internal alterations.

Table 20 - Buildings completed according to type of building and province: Western Cape

Type of building	June 2002	May 2003	June 2003	January 2002 to June 2002	January 2003 to June 2003	Percentage change between January 2002 to June 2002 and January 2003 to June 2003
Residential buildings						
Dwelling-houses smaller than 80 square metres						
Number of dwelling-houses	470	280	324	3 676	1 805	- 50.9
Total square metres	17 582	9 816	12 684	133 904	68 717	- 48.7
Total value at current prices (R'000)	17 716	13 779	17 547	154 057	84 903	- 44.9
Dwelling-houses equal to or larger than 80 square metres						
Number of dwelling-houses	515	520	441	2 602	2 784	+ 7.0
Total square metres	110 845	102 509	96 339	533 318	537 775	+ 0.8
Total value at current prices (R'000)	169 892	169 847	159 227	828 596	894 194	+ 7.9
Flats and townhouses						
Number of flats and townhouses	153	72	181	1 057	965	- 8.7
Total square metres	18 712	8 368	16 397	133 982	103 513	- 22.7
Total value at current prices (R'000)	28 158	13 907	31 135	216 049	178 294	- 17.5
Other residential buildings ^{1/}						
Total square metres	992	0	408	5 485	15 999	+ 191.7
Total value at current prices (R'000)	1 504	0	1 022	8 756	42 193	+ 381.9
Total value of residential buildings at current prices (R'000)	217 270	197 533	208 931	1 207 458	1 199 584	- 0.7
Non-residential buildings						
Office and banking space						
Total square metres	10 725	19 831	11 017	67 330	92 770	+ 37.8
Total value at current prices (R'000)	20 265	48 921	22 471	99 197	170 977	+ 72.4
Shopping space						
Total square metres	11 103	4 949	772	47 263	22 199	- 53.0
Total value at current prices (R'000)	12 679	7 759	947	63 893	33 100	- 48.2
Industrial and warehouse space						
Total square metres	43 300	16 227	16 639	84 407	94 129	+ 11.5
Total value at current prices (R'000)	45 850	17 154	27 918	90 191	113 348	+ 25.7
Other non-residential space ^{2/}						
Total square metres	15 737	16 835	5 048	49 519	36 473	- 26.3
Total value at current prices (R'000)	16 996	24 069	6 568	72 435	49 704	- 31.4
Total value of non-residential buildings at current prices (R'000)	95 790	97 903	57 904	325 716	367 129	+ 12.7
Additions and alterations						
Dwelling-houses						
Total square metres	72 570	55 884	52 197	275 570	266 808	- 3.2
Total value at current prices (R'000)	97 926	68 894	68 148	369 430	355 255	- 3.8
Other buildings ^{3/}						
Total square metres	8 879	21 256	27 346	122 838	98 381	- 19.9
Total value at current prices (R'000)	15 271	66 245	49 324	202 962	226 645	+ 11.7
Total value of additions and alterations at current prices (R'000)	113 197	135 139	117 472	572 392	581 900	+ 1.7
Total value of buildings completed at current prices (R'000)	426 257	430 575	384 307	2 105 566	2 148 613	+ 2.0

1/ Other residential buildings include institutions for the disabled, boarding houses, old people's homes, hostels, hotels, motels, guest houses, holiday chalets, entertainment centres, bed-and-breakfast accommodation and casinos.

2/ Other non-residential space includes churches, sport and recreation clubs, schools, crèches, hospitals and all other non-residential space.

3/ Other buildings include additions and alterations to other residential buildings, non-residential buildings and internal alterations.

Table 21 - Buildings completed according to type of building and province: Eastern Cape

Type of building	June 2002	May 2003	June 2003	January 2002 to June 2002	January 2003 to June 2003	Percentage change between January 2002 to June 2002 and January 2003 to June 2003
Residential buildings						
Dwelling-houses smaller than 80 square metres						
Number of dwelling-houses	498	133	91	1 482	787	- 46.9
Total square metres	20 776	6 272	3 669	62 581	34 610	- 44.7
Total value at current prices (R'000)	26 235	9 326	3 786	78 729	42 812	- 45.6
Dwelling-houses equal to or larger than 80 square metres						
Number of dwelling-houses	116	30	52	396	280	- 29.3
Total square metres	12 961	6 359	11 598	62 337	57 151	- 8.3
Total value at current prices (R'000)	18 118	6 897	18 318	82 611	83 890	+ 1.5
Flats and townhouses						
Number of flats and townhouses	5	0	98	307	167	-45.6
Total square metres	440	0	4 140	15 979	9 533	- 40.3
Total value at current prices (R'000)	716	0	7 300	23 071	14 627	- 36.6
Other residential buildings ^{1/}						
Total square metres	129	0	0	15 865	6 084	- 61.7
Total value at current prices (R'000)	277	0	0	26 589	10 024	- 62.3
Total value of residential buildings at current prices (R'000)	45 346	16 223	29 404	211 000	151 353	- 28.3
Non-residential buildings						
Office and banking space						
Total square metres	0	0	160	576	160	-72.2
Total value at current prices (R'000)	0	0	267	1 185	267	-77.5
Shopping space						
Total square metres	0	0	1 286	2 779	4 229	+ 52.2
Total value at current prices (R'000)	0	0	2 443	3 520	7 355	+ 108.9
Industrial and warehouse space						
Total square metres	0	2 260	5 548	10 782	13 203	+ 22.5
Total value at current prices (R'000)	0	2 848	8 593	10 234	19 685	+ 92.3
Other non-residential space ^{2/}						
Total square metres	0	1 615	2 690	2 300	6 529	+ 183.9
Total value at current prices (R'000)	0	1 839	4 414	2 664	10 204	+ 283.0
Total value of non-residential buildings at current prices (R'000)	0	4 687	15 717	17 603	37 511	+ 113.1
Additions and alterations						
Dwelling-houses						
Total square metres	8 097	7 330	4 676	55 261	49 002	- 11.3
Total value at current prices (R'000)	10 364	10 217	6 493	66 241	66 750	+ 0.8
Other buildings ^{3/}						
Total square metres	10 697	583	2 383	29 905	30 181	+ 0.9
Total value at current prices (R'000)	11 705	1 226	3 738	37 501	51 807	+ 38.1
Total value of additions and alterations at current prices (R'000)	22 069	11 443	10 231	103 742	118 557	+ 14.3
Total value of buildings completed at current prices (R'000)	67 415	32 353	55 352	332 345	307 421	- 7.5

1/ Other residential buildings include institutions for the disabled, boarding houses, old people's homes, hostels, hotels, motels, guest houses, holiday chalets, entertainment centres, bed-and-breakfast accommodation and casinos.

2/ Other non-residential space includes churches, sport and recreation clubs, schools, crèches, hospitals and all other non-residential space.

3/ Other buildings include additions and alterations to other residential buildings, non-residential buildings and internal alterations.

Table 22 - Buildings completed according to type of building and province: Northern Cape

Type of building	June 2002	May 2003	June 2003	January 2002 to June 2002	January 2003 to June 2003	Percentage change between January 2002 to June 2002 and January 2003 to June 2003
Residential buildings						
Dwelling-houses smaller than 80 square metres						
Number of dwelling-houses	2	1	1	60	48	- 20.0
Total square metres	116	70	70	2 763	1 855	- 32.9
Total value at current prices (R'000)	162	126	126	3 459	1 708	- 50.6
Dwelling-houses equal to or larger than 80 square metres						
Number of dwelling-houses	3	8	6	28	33	+ 17.9
Total square metres	468	1 492	718	4 316	5 796	+ 34.3
Total value at current prices (R'000)	744	2 535	1 260	5 971	9 587	+ 60.6
Flats and townhouses						
Number of flats and townhouses	0	2	0	4	7	+ 75.0
Total square metres	0	470	0	637	1 312	+ 106.0
Total value at current prices (R'000)	0	846	0	779	2 272	+ 191.7
Other residential buildings ^{1/}						
Total square metres	0	0	0	0	0	..
Total value at current prices (R'000)	0	0	0	0	0	..
Total value of residential buildings at current prices (R'000)	906	3 507	1 386	10 209	13 567	+ 32.9
Non-residential buildings						
Office and banking space						
Total square metres	0	0	0	0	0	..
Total value at current prices (R'000)	0	0	0	0	0	..
Shopping space						
Total square metres	0	3 333	0	784	3 333	+ 325.1
Total value at current prices (R'000)	0	7 333	0	1 098	7 333	+ 567.9
Industrial and warehouse space						
Total square metres	0	1 017	0	223	1 017	+ 356.1
Total value at current prices (R'000)	0	2 057	0	109	2 057	+ 1787.2
Other non-residential space ^{2/}						
Total square metres	0	0	0	1 001	125	- 87.5
Total value at current prices (R'000)	531	0	0	1 309	188	- 85.6
Total value of non-residential buildings at current prices (R'000)	0	9 390	0	2 516	9 578	+ 280.7
Additions and alterations						
Dwelling-houses						
Total square metres	2 609	2 003	2 583	13 731	13 327	- 2.9
Total value at current prices (R'000)	4 309	3 373	4 440	19 404	21 429	+ 10.4
Other buildings ^{3/}						
Total square metres	416	2 436	186	1 702	3 473	+ 104.1
Total value at current prices (R'000)	1 062	3 867	388	5 002	6 502	+ 30.0
Total value of additions and alterations at current prices (R'000)	5 371	7 240	4 828	24 406	27 931	+ 14.4
Total value of buildings completed at current prices (R'000)	6 277	20 137	6 214	37 131	51 076	37.6

1/ Other residential buildings include institutions for the disabled, boarding houses, old people's homes, hostels, hotels, motels, guest houses, holiday chalets, entertainment centres, bed-and-breakfast accommodation and casinos.

2/ Other non-residential space includes churches, sport and recreation clubs, schools, crèches, hospitals and all other non-residential space.

3/ Other buildings include additions and alterations to other residential buildings, non-residential buildings and internal alterations.

Table 23 - Buildings completed according to type of building and province: Free State

Type of building	June 2002*	May 2003	June 2003	January 2002 to June 2002	January 2003 to June 2003	Percentage change between January 2002 to June 2002 and January 2003 to June 2003
Residential buildings						
Dwelling-houses smaller than 80 square metres						
Number of dwelling-houses	588	331	246	1 372	1 459	+ 6.3
Total square metres	24 361	14 624	10 379	60 809	61 554	+ 1.2
Total value at current prices (R'000)	12 418	8 959	6 869	34 780	35 691	+ 2.6
Dwelling-houses equal to or larger than 80 square metres						
Number of dwelling-houses	28	21	34	167	158	-5.4
Total square metres	5 086	3 070	5 215	28 120	25 563	-9.1
Total value at current prices (R'000)	6 314	4 082	7 055	33 959	33 083	-2.6
Flats and townhouses						
Number of flats and townhouses	33	3	34	113	156	+ 38.1
Total square metres	3 459	460	4 413	11 647	18 001	+ 54.6
Total value at current prices (R'000)	5 161	561	6 623	17 436	26 522	+ 52.1
Other residential buildings ^{1/}						
Total square metres	0	0	0	1 428	2 743	+ 92.1
Total value at current prices (R'000)	0	0	0	1 461	7 054	+ 382.8
Total value of residential buildings at current prices (R'000)	23 893	13 602	20 547	87 636	102 350	+ 16.8
Non-residential buildings						
Office and banking space						
Total square metres	271	0	0	4 694	5 730	+ 22.1
Total value at current prices (R'000)	280	0	0	8 255	7 847	-4.9
Shopping space						
Total square metres	0	5 778	0	1 904	10 907	+ 472.8
Total value at current prices (R'000)	0	8 882	0	3 159	17 270	+ 446.7
Industrial and warehouse space						
Total square metres	1 020	645	2 225	4 670	9 309	+ 99.3
Total value at current prices (R'000)	714	465	1 112	3 403	8 177	+ 140.3
Other non-residential space ^{2/}						
Total square metres	0	0	441	3 475	3 240	-6.8
Total value at current prices (R'000)	0	0	553	5 181	4 558	-12.0
Total value of non-residential buildings at current prices (R'000)	994	9 347	1 665	19 998	37 852	+ 89.3
Additions and alterations						
Dwelling-houses						
Total square metres	5 824	4 556	4 711	43 537	29 198	-32.9
Total value at current prices (R'000)	6 270	4 776	5 440	48 028	32 837	-31.6
Other buildings ^{3/}						
Total square metres	407	1 009	2 340	7 605	6 669	-12.3
Total value at current prices (R'000)	5 103	1 732	5 045	18 907	23 019	+ 21.7
Total value of additions and alterations at current prices (R'000)	11 373	6 508	10 485	66 935	55 856	-16.6
Total value of buildings completed at current prices (R'000)	36 260	29 457	32 697	174 569	196 058	+ 12.3

1/ Other residential buildings include institutions for the disabled, boarding houses, old people's homes, hostels, hotels, motels, guest houses, holiday chalets, entertainment centres, bed-and-breakfast accommodation and casinos.

2/ Other non-residential space includes churches, sport and recreation clubs, schools, crèches, hospitals and all other non-residential space.

3/ Other buildings include additions and alterations to other residential buildings, non-residential buildings and internal alterations.

Table 24 - Buildings completed according to type of building and province: KwaZulu-Natal

Type of building	June 2002	May 2003	June 2003	January 2002 to June 2002	January 2003 to June 2003	Percentage change between January 2002 to June 2002 and January 2003 to June 2003
Residential buildings						
Dwelling-houses smaller than 80 square metres						
Number of dwelling-houses	200	292	99	1 125	1 438	+ 27.8
Total square metres	8 571	11 411	4 659	47 709	54 019	+ 13.2
Total value at current prices (R'000)	8 720	12 004	5 352	47 117	48 949	+ 3.9
Dwelling-houses equal to or larger than 80 square metres						
Number of dwelling-houses	94	96	76	676	626	-7.4
Total square metres	20 299	21 006	15 359	133 639	130 321	-2.5
Total value at current prices (R'000)	28 691	37 453	22 025	186 732	194 588	+ 4.2
Flats and townhouses						
Number of flats and townhouses	68	100	23	365	329	-9.9
Total square metres	12 228	9 296	3 124	49 311	46 168	-6.4
Total value at current prices (R'000)	23 606	12 980	5 699	85 939	73 432	-14.6
Other residential buildings ^{1/}						
Total square metres	0	0	0	4 403	186	-95.8
Total value at current prices (R'000)	0	0	0	4 771	286	-94.0
Total value of residential buildings at current prices (R'000)	61 017	62 437	33 076	324 559	317 255	-2.3
Non-residential buildings						
Office and banking space						
Total square metres	4 243	500	678	70 249	13 556	-80.7
Total value at current prices (R'000)	11 200	1 000	1 300	160 358	27 037	-83.1
Shopping space						
Total square metres	3 329	16 652	272	31 169	32 863	+ 5.4
Total value at current prices (R'000)	3 607	34 742	408	61 961	62 478	+ 0.8
Industrial and warehouse space						
Total square metres	34 064	5 376	7 330	112 115	55 659	-50.4
Total value at current prices (R'000)	38 541	7 182	11 898	132 462	61 598	-53.5
Other non-residential space ^{2/}						
Total square metres	1 582	3 349	4 726	15 145	16 760	+ 10.7
Total value at current prices (R'000)	1 900	4 668	10 334	21 756	30 593	+ 40.6
Total value of non-residential buildings at current prices (R'000)	55 248	47 592	23 940	376 537	181 706	-51.7
Additions and alterations						
Dwelling-houses						
Total square metres	22 827	26 934	16 709	142 755	148 018	+ 3.7
Total value at current prices (R'000)	24 474	32 160	19 297	160 773	175 639	+ 9.2
Other buildings ^{3/}						
Total square metres	5 978	8 946	5 620	58 815	55 758	-5.2
Total value at current prices (R'000)	10 787	15 344	46 665	105 955	131 313	+ 23.9
Total value of additions and alterations at current prices (R'000)	35 261	47 504	65 962	266 728	306 952	+ 15.1
Total value of buildings completed at current prices (R'000)	151 526	157 533	122 978	967 824	805 913	-16.7

1/ Other residential buildings include institutions for the disabled, boarding houses, old people's homes, hostels, hotels, motels, guest houses, holiday chalets, entertainment centres, bed-and-breakfast accommodation and casinos.

2/ Other non-residential space includes churches, sport and recreation clubs, schools, crèches, hospitals and all other non-residential space.

3/ Other buildings include additions and alterations to other residential buildings, non-residential buildings and internal alterations.

Table 25 - Buildings completed according to type of building and province: North West

Type of building	June 2002	May 2003	June 2003	January 2002 to June 2002	January 2003 to June 2003	Percentage change between January 2002 to June 2002 and January 2003 to June 2003
Residential buildings						
Dwelling-houses smaller than 80 square metres						
Number of dwelling-houses	71	22	18	1 189	135	- 88.6
Total square metres	3 017	1 313	1 136	41 240	7 781	- 81.1
Total value at current prices (R'000)	2 404	1 508	1 283	21 417	9 015	- 57.9
Dwelling-houses equal to or larger than 80 square metres						
Number of dwelling-houses	59	79	89	334	472	+ 41.3
Total square metres	8 720	14 264	16 889	57 529	89 690	+ 55.9
Total value at current prices (R'000)	11 741	20 359	27 793	82 925	135 252	+ 63.1
Flats and townhouses						
Number of flats and townhouses	34	28	0	274	407	+ 48.5
Total square metres	2 816	4 800	0	19 649	34 291	+ 74.5
Total value at current prices (R'000)	7 300	11 850	0	36 117	54 676	+ 51.4
Other residential buildings ^{1/}						
Total square metres	0	0	0	2 090	732	- 65.0
Total value at current prices (R'000)	0	0	0	2 483	1 140	- 54.1
Total value of residential buildings at current prices (R'000)	21 445	33 717	29 076	142 942	200 083	+ 40.0
Non-residential buildings						
Office and banking space						
Total square metres	0	191	2 232	723	7 692	+ 963.9
Total value at current prices (R'000)	0	300	3 076	1 140	11 494	+ 908.2
Shopping space						
Total square metres	572	0	634	4 417	3 998	- 9.5
Total value at current prices (R'000)	686	0	1 050	4 991	6 494	+ 30.1
Industrial and warehouse space						
Total square metres	0	0	390	4 444	4 062	- 8.6
Total value at current prices (R'000)	0	0	600	4 595	4 576	- 0.4
Other non-residential space ^{2/}						
Total square metres	0	2 470	16	3 562	7 342	+ 106.1
Total value at current prices (R'000)	0	16 000	20	5 710	27 900	+ 388.6
Total value of non-residential buildings at current prices (R'000)	686	16 300	4 746	16 436	50 464	+ 207.0
Additions and alterations						
Dwelling-houses						
Total square metres	2 803	1 900	2 013	24 022	25 630	+ 6.7
Total value at current prices (R'000)	2 936	2 699	2 545	23 813	25 384	+ 6.6
Other buildings ^{3/}						
Total square metres	350	531	1 324	3 661	9 818	+ 168.2
Total value at current prices (R'000)	546	930	2 383	7 666	13 973	+ 82.3
Total value of additions and alterations at current prices (R'000)	3 482	3 629	4 928	31 479	39 357	+ 25.0
Total value of buildings completed at current prices (R'000)	25 613	53 646	38 750	190 857	289 904	+ 51.9

1/ Other residential buildings include institutions for the disabled, boarding houses, old people's homes, hostels, hotels, motels, guest houses, holiday chalets, entertainment centres, bed-and-breakfast accommodation and casinos.

2/ Other non-residential space includes churches, sport and recreation clubs, schools, crèches, hospitals and all other non-residential space.

3/ Other buildings include additions and alterations to other residential buildings, non-residential buildings and internal alterations.

Table 26 - Buildings completed according to type of building and province: Gauteng

Type of building	June 2002*	May 2003	June 2003	January 2002 to June 2002	January 2003 to June 2003	Percentage change between January 2002 to June 2002 and January 2003 to June 2003
Residential buildings						
Dwelling-houses smaller than 80 square metres						
Number of dwelling-houses	836	411	255	3 833	7 060	+ 84.2
Total square metres	31 259	15 608	11 650	138 558	239 852	+ 73.1
Total value at current prices (R'000)	32 702	19 783	19 928	124 539	195 364	+ 56.9
Dwelling-houses equal to or larger than 80 square metres						
Number of dwelling-houses	320	450	664	2 071	2 722	+ 31.4
Total square metres	82 257	115 210	136 624	504 755	637 623	+ 26.3
Total value at current prices (R'000)	132 570	205 002	236 174	777 188	1 110 550	+ 42.9
Flats and townhouses						
Number of flats and townhouses	119	307	1 094	2 772	3 215	+ 16.0
Total square metres	19 649	44 346	128 518	322 780	378 481	+ 17.3
Total value at current prices (R'000)	30 819	90 352	239 024	476 219	664 577	+ 39.6
Other residential buildings ^{1/}						
Total square metres	0	0	0	11 978	19 901	+ 66.1
Total value at current prices (R'000)	0	0	0	18 314	34 512	+ 88.4
Total value of residential buildings at current prices (R'000)	196 091	315 137	495 126	1 396 260	2 005 003	+ 43.6
Non-residential buildings						
Office and banking space						
Total square metres	8 249	59 543	22 766	130 242	188 662	+ 44.9
Total value at current prices (R'000)	11 652	143 596	41 119	209 794	404 453	+ 92.8
Shopping space						
Total square metres	13 762	8 049	1 071	30 911	66 349	+ 114.6
Total value at current prices (R'000)	24 783	12 584	1 171	53 362	132 788	+ 148.8
Industrial and warehouse space						
Total square metres	8 324	5 123	3 774	68 557	99 600	+ 45.3
Total value at current prices (R'000)	13 626	8 310	5 792	111 246	163 262	+ 46.8
Other non-residential space ^{2/}						
Total square metres	1 030	126 336	7 219	18 135	250 181	+ 1 279.5
Total value at current prices (R'000)	1 452	250 858	11 496	28 969	490 485	+ 1 593.1
Total value of non-residential buildings at current prices (R'000)	51 513	415 348	59 578	403 371	1 190 988	+ 195.3
Additions and alterations						
Dwelling-houses						
Total square metres	23 220	31 490	36 321	205 463	189 254	-7.9
Total value at current prices (R'000)	34 739	49 278	62 665	306 720	298 359	-2.7
Other buildings ^{3/}						
Total square metres	17 517	16 266	8 535	65 421	65 341	-0.1
Total value at current prices (R'000)	22 082	37 409	14 330	100 101	130 788	+ 30.7
Total value of additions and alterations at current prices (R'000)	56 821	86 687	76 995	406 821	429 147	+ 5.5
Total value of buildings completed at current prices (R'000)	304 425	817 172	631 699	2 206 452	3 625 138	+ 64.3

1/ Other residential buildings include institutions for the disabled, boarding houses, old people's homes, hostels, hotels, motels, guest houses, holiday chalets, entertainment centres, bed-and-breakfast accommodation and casinos.

2/ Other non-residential space includes churches, sport and recreation clubs, schools, crèches, hospitals and all other non-residential space.

3/ Other buildings include additions and alterations to other residential buildings, non-residential buildings and internal alterations.

Table 27 - Buildings completed according to type of building and province: Mpumalanga

Type of building	June 2002	May 2003	June 2003	January 2002 to June 2002	January 2003 to June 2003	Percentage change between January 2002 to June 2002 and January 2003 to June 2003
Residential buildings						
Dwelling-houses smaller than 80 square metres						
Number of dwelling-houses	62	47	116	1 447	447	-69.1
Total square metres	2 583	2 457	5 339	54 925	19 586	-64.3
Total value at current prices (R'000)	2 561	3 133	2 864	27 140	14 107	-48.0
Dwelling-houses equal to or larger than 80 square metres						
Number of dwelling-houses	24	33	45	176	246	+ 39.8
Total square metres	4 098	10 506	8 885	30 763	57 487	+ 86.9
Total value at current prices (R'000)	5 696	14 162	12 102	36 591	78 374	+ 114.2
Flats and townhouses						
Number of flats and townhouses	52	0	0	89	512	+ 475.3
Total square metres	4 839	0	0	10 477	30 343	+ 189.6
Total value at current prices (R'000)	7 338	0	0	12 866	36 867	+ 186.5
Other residential buildings ^{1/}						
Total square metres	0	566	0	1 076	1 715	+ 59.4
Total value at current prices (R'000)	0	850	0	1 480	4 250	+ 187.2
Total value of residential buildings at current prices (R'000)	15 595	18 145	14 966	78 077	133 598	+ 71.1
Non-residential buildings						
Office and banking space						
Total square metres	0	0	0	460	2 297	+ 399.3
Total value at current prices (R'000)	0	0	0	563	2 756	+ 389.5
Shopping space						
Total square metres	0	0	0	5 083	14 594	+ 187.1
Total value at current prices (R'000)	0	0	0	10 578	21 518	+ 103.4
Industrial and warehouse space						
Total square metres	700	385	261	1 934	15 084	+ 679.9
Total value at current prices (R'000)	600	373	392	1 765	11 930	+ 575.9
Other non-residential space ^{2/}						
Total square metres	1 079	0	0	13 859	0	..
Total value at current prices (R'000)	971	0	0	12 157	0	..
Total value of non-residential buildings at current prices (R'000)	1 571	373	392	25 063	36 204	+ 44.5
Additions and alterations						
Dwelling-houses						
Total square metres	2 522	3 773	1 442	21 854	17 203	-21.3
Total value at current prices (R'000)	2 259	4 462	1 818	21 003	21 620	+ 2.9
Other buildings ^{3/}						
Total square metres	133	440	1 424	1 620	3 157	+ 94.9
Total value at current prices (R'000)	258	538	1 996	2 874	5 318	+ 85.0
Total value of additions and alterations at current prices (R'000)	2 517	5 000	3 814	23 877	26 938	+ 12.8
Total value of buildings completed at current prices (R'000)	19 683	23 518	19 172	127 017	196 740	+ 54.9

1/ Other residential buildings include institutions for the disabled, boarding houses, old people's homes, hostels, hotels, motels, guest houses, holiday chalets, entertainment centres, bed-and-breakfast accommodation and casinos.

2/ Other non-residential space includes churches, sport and recreation clubs, schools, crèches, hospitals and all other non-residential space.

3/ Other buildings include additions and alterations to other residential buildings, non-residential buildings and internal alterations.

Table 28 - Buildings completed according to type of building and province: Limpopo

Type of building	June 2002	May 2003	June 2003	January 2002 to June 2002	January 2003 to June 2003	Percentage change between January 2002 to June 2002 and January 2003 to June 2003
Residential buildings						
Dwelling-houses smaller than 80 square metres						
Number of dwelling-houses	7	27	13	107	136	+ 27.1
Total square metres	415	1 536	751	6 188	7 774	+ 25.6
Total value at current prices (R'000)	637	2 122	970	9 331	10 561	+ 13.2
Dwelling-houses equal to or larger than 80 square metres						
Number of dwelling-houses	14	17	16	82	102	+ 24.4
Total square metres	2 321	2 280	3 090	13 794	16 882	+ 22.4
Total value at current prices (R'000)	3 376	3 289	4 518	19 424	24 681	+ 27.1
Flats and townhouses						
Number of flats and townhouses	1	6	3	6	34	+ 466.7
Total square metres	105	690	426	693	3 622	+ 422.7
Total value at current prices (R'000)	147	966	597	970	4 834	+ 398.4
Other residential buildings ^{1/}						
Total square metres	0	0	0	13 959	0	..
Total value at current prices (R'000)	0	0	0	207 506	0	..
Total value of residential buildings at current prices (R'000)	4 160	6 377	6 085	237 231	40 076	-83.1
Non-residential buildings						
Office and banking space						
Total square metres	0	0	187	94	187	+ 98.9
Total value at current prices (R'000)	0	0	411	132	411	+ 211.4
Shopping space						
Total square metres	767	680	320	7 615	1 844	-75.8
Total value at current prices (R'000)	1 228	1 224	512	10 780	3 592	-66.7
Industrial and warehouse space						
Total square metres	0	700	0	502	1 113	+ 121.7
Total value at current prices (R'000)	0	1 260	0	619	1 839	+ 197.1
Other non-residential space ^{2/}						
Total square metres	0	0	151	344	593	+ 72.4
Total value at current prices (R'000)	0	0	332	482	950	+ 97.1
Total value of non-residential buildings at current prices (R'000)	1 228	2 484	1 255	12 013	6 792	-43.5
Additions and alterations						
Dwelling-houses						
Total square metres	447	532	513	2 429	3 039	+ 25.1
Total value at current prices (R'000)	532	830	688	3 658	4 565	+ 24.8
Other buildings ^{3/}						
Total square metres	238	194	0	1 429	669	-53.2
Total value at current prices (R'000)	381	382	0	2 057	1 399	-32.0
Total value of additions and alterations at current prices (R'000)	913	1 212	688	5 715	5 964	+ 4.4
Total value of buildings completed at current prices (R'000)	6 301	10 073	8 028	254 959	52 832	-79.3

1/ Other residential buildings include institutions for the disabled, boarding houses, old people's homes, hostels, hotels, motels, guest houses, holiday chalets, entertainment centres, bed-and-breakfast accommodation and casinos.

2/ Other non-residential space includes churches, sport and recreation clubs, schools, crèches, hospitals and all other non-residential space.

3/ Other buildings include additions and alterations to other residential buildings, non-residential buildings and internal alterations.

Table 29 - Building plans passed according to type of building and selected urban area: Cape Town

Type of building	June 2002	May 2003	June 2003	January 2002 to June 2002	January 2003 to June 2003	Percentage change between January 2002 to June 2002 and January 2003 to June 2003
Residential buildings						
Dwelling-houses smaller than 80 square metres						
Number of dwelling-houses	1 106	270	342	4 745	2 003	- 57.8
Total square metres	38 243	11 251	16 694	165 912	85 675	- 48.4
Total value at current prices (R'000)	44 849	14 784	21 189	197 758	104 710	- 47.1
Dwelling-houses equal to or larger than 80 square metres						
Number of dwelling-houses	464	315	339	2 135	2 101	- 1.6
Total square metres	99 801	72 791	77 467	439 576	410 781	- 6.6
Total value at current prices (R'000)	130 938	107 489	107 685	608 441	594 217	- 2.3
Flats and townhouses						
Number of flats and townhouses	85	200	180	1 011	1 054	+ 4.3
Total square metres	9 584	18 650	20 833	100 032	110 206	+ 10.2
Total value at current prices (R'000)	13 646	30 166	40 666	169 297	214 297	+ 26.6
Other residential buildings ^{1/}						
Total square metres	1 104	0	0	15 616	0	..
Total value at current prices (R'000)	2 226	0	0	21 228	0	..
Total value of residential buildings at current prices (R'000)	191 659	152 439	169 540	996 724	913 224	- 8.4
Non-residential buildings						
Office and banking space						
Total square metres	7 745	16 420	19 196	34 625	69 373	+ 100.4
Total value at current prices (R'000)	13 805	34 217	45 798	56 891	143 237	+ 151.8
Shopping space						
Total square metres	1 398	37 234	11 359	14 200	59 466	+ 318.8
Total value at current prices (R'000)	2 719	33 396	19 131	18 427	66 062	+ 258.5
Industrial and warehouse space						
Total square metres	20 507	18 660	20 383	72 499	59 915	- 17.4
Total value at current prices (R'000)	21 638	22 639	24 472	81 390	70 981	- 12.8
Other non-residential space ^{2/}						
Total square metres	5 785	553	1 421	24 152	8 030	- 66.8
Total value at current prices (R'000)	9 275	918	2 249	34 380	11 885	- 65.4
Total value of non-residential buildings at current prices (R'000)	47 437	91 170	91 650	191 088	292 165	+ 52.9
Additions and alterations						
Dwelling-houses						
Total square metres	76 675	59 820	52 176	322 640	307 278	- 4.8
Total value at current prices (R'000)	93 553	84 278	69 020	401 547	429 283	+ 6.9
Other buildings ^{3/}						
Total square metres	12 359	23 837	23 144	104 437	155 390	+ 48.8
Total value at current prices (R'000)	23 069	65 951	84 153	216 525	356 839	+ 64.8
Total value of additions and alterations at current prices (R'000)	116 622	150 229	153 173	618 072	786 122	+ 27.2
Total value of building plans passed at current prices (R'000)	355 718	393 838	414 363	1 805 884	1 991 511	+ 10.3

1/ Other residential buildings include institutions for the disabled, boarding houses, old people's homes, hostels, hotels, motels, guest houses, holiday chalets, entertainment centres, bed-and-breakfast accommodation and casinos.

2/ Other non-residential space includes churches, sport and recreation clubs, schools, crèches, hospitals and all other non-residential space.

3/ Other buildings include additions and alterations to other residential buildings, non-residential buildings and internal alterations.

Table 30 - Building plans passed according to type of building and selected urban area: Port Elizabeth

Type of building	June 2002	May 2003	June 2003	January 2002 to June 2002	January 2003 to June 2003	Percentage change between January 2002 to June 2002 and January 2003 to June 2003
Residential buildings						
Dwelling-houses smaller than 80 square metres						
Number of dwelling-houses	301	156	243	1 521	1 128	- 25.8
Total square metres	12 223	6 299	9 928	64 639	47 539	- 26.5
Total value at current prices (R'000)	17 243	9 051	14 135	91 442	62 657	- 31.5
Dwelling-houses equal to or larger than 80 square metres						
Number of dwelling-houses	42	2	54	345	162	- 53.0
Total square metres	8 550	247	10 366	65 960	30 481	- 53.8
Total value at current prices (R'000)	11 684	323	11 088	93 134	55 303	- 40.6
Flats and townhouses						
Number of flats and townhouses	22	0	1	135	35	- 74.1
Total square metres	1 996	0	218	15 326	6 747	- 56.0
Total value at current prices (R'000)	2 894	0	603	24 524	12 170	- 50.4
Other residential buildings ^{1/}						
Total square metres	0	0	60	0	470	..
Total value at current prices (R'000)	0	0	124	0	969	..
Total value of residential buildings at current prices (R'000)	31 821	9 374	25 950	209 100	131 099	- 37.3
Non-residential buildings						
Office and banking space						
Total square metres	0	741	0	3 373	3 348	- 0.7
Total value at current prices (R'000)	0	975	0	5 346	6 345	+ 18.7
Shopping space						
Total square metres	444	375	0	11 330	756	-93.3
Total value at current prices (R'000)	280	711	0	22 704	1 413	-93.8
Industrial and warehouse space						
Total square metres	611	4 018	4 175	21 018	10 900	- 48.1
Total value at current prices (R'000)	966	6 651	6 386	32 350	16 460	- 49.1
Other non-residential space ^{2/}						
Total square metres	2 888	0	191	15 493	2 575	- 83.4
Total value at current prices (R'000)	5 660	0	326	25 485	4 427	- 82.6
Total value of non-residential buildings at current prices (R'000)	6 906	8 337	6 712	85 885	28 645	- 66.6
Additions and alterations						
Dwelling-houses						
Total square metres	8 651	1 757	12 026	69 575	49 654	- 28.6
Total value at current prices (R'000)	10 986	2 144	19 584	90 030	81 244	- 9.8
Other buildings ^{3/}						
Total square metres	2 436	5 651	2 677	19 908	21 314	+ 7.1
Total value at current prices (R'000)	4 053	10 006	26 183	35 166	66 555	+ 89.3
Total value of additions and alterations at current prices (R'000)	15 039	12 150	45 767	125 196	147 799	+ 18.1
Total value of building plans passed at current prices (R'000)	53 766	29 861	78 429	420 181	307 543	- 26.8

1/ Other residential buildings include institutions for the disabled, boarding houses, old people's homes, hostels, hotels, motels, guest houses, holiday chalets, entertainment centres, bed-and-breakfast accommodation and casinos.

2/ Other non-residential space includes churches, sport and recreation clubs, schools, crèches, hospitals and all other non-residential space.

3/ Other buildings include additions and alterations to other residential buildings, non-residential buildings and internal alterations.

Table 31 - Building plans passed according to type of building and selected urban area: Durban

Type of building	June 2002	May 2003	June 2003	January 2002 to June 2002	January 2003 to June 2003	Percentage change between January 2002 to June 2002 and January 2003 to June 2003
Residential buildings						
Dwelling-houses smaller than 80 square metres						
Number of dwelling-houses	30	45	94	408	358	-12.3
Total square metres	1 755	2 612	4 379	18 097	18 735	+ 3.5
Total value at current prices (R'000)	2 226	3 425	4 055	20 469	21 170	+ 3.4
Dwelling-houses equal to or larger than 80 square metres						
Number of dwelling-houses	47	88	83	345	440	+ 27.5
Total square metres	11 047	19 252	17 596	67 922	92 753	+ 36.6
Total value at current prices (R'000)	16 133	28 279	42 042	86 444	153 772	+ 77.9
Flats and townhouses						
Number of flats and townhouses	1	54	160	188	371	+ 97.3
Total square metres	144	9 762	18 989	29 146	55 198	+ 89.4
Total value at current prices (R'000)	335	24 672	46 856	37 753	122 352	+ 224.1
Other residential buildings ^{1/}						
Total square metres	0	0	274	29 606	873	-97.1
Total value at current prices (R'000)	0	0	500	31 000	1 300	-95.8
Total value of residential buildings at current prices (R'000)	18 694	56 376	93 453	175 666	298 594	+ 70.0
Non-residential buildings						
Office and banking space						
Total square metres	0	323	145	226	5 415	+ 2 296.0
Total value at current prices (R'000)	0	750	150	250	12 978	+ 5 091.2
Shopping space						
Total square metres	0	1 953	0	4 182	36 867	+ 781.6
Total value at current prices (R'000)	0	3 400	0	5 697	288 360	+ 4 961.6
Industrial and warehouse space						
Total square metres	2 167	4 947	6 582	38 710	24 667	-36.3
Total value at current prices (R'000)	2 600	6 326	6 830	41 539	24 483	-41.1
Other non-residential space ^{2/}						
Total square metres	1 516	290	1 581	59 098	4 634	-92.2
Total value at current prices (R'000)	1 250	400	3 755	67 991	9 140	-86.6
Total value of non-residential buildings at current prices (R'000)	3 850	10 876	10 735	115 477	334 961	+ 190.1
Additions and alterations						
Dwelling-houses						
Total square metres	20 744	30 630	28 675	120 385	162 263	+ 34.8
Total value at current prices (R'000)	27 571	39 712	44 609	153 655	206 484	+ 34.4
Other buildings ^{3/}						
Total square metres	9 831	8 747	5 822	36 001	53 371	+ 48.2
Total value at current prices (R'000)	13 905	26 824	11 299	70 703	126 434	+ 78.8
Total value of additions and alterations at current prices (R'000)	41 476	66 536	55 908	224 358	332 918	+ 48.4
Total value of building plans passed at current prices (R'000)	64 020	133 788	160 096	515 501	966 473	+ 87.5

1/ Other residential buildings include institutions for the disabled, boarding houses, old people's homes, hostels, hotels, motels, guest houses, holiday chalets, entertainment centres, bed-and-breakfast accommodation and casinos.

2/ Other non-residential space includes churches, sport and recreation clubs, schools, crèches, hospitals and all other non-residential space.

3/ Other buildings include additions and alterations to other residential buildings, non-residential buildings and internal alterations.

Table 32 - Building plans passed according to type of building and selected urban area: Witwatersrand

Type of building	June 2002*	May 2003	June 2003	January 2002 to June 2002	January 2003 to June 2003	Percentage change between January 2002 to June 2002 and January 2003 to June 2003
Residential buildings						
Dwelling-houses smaller than 80 square metres						
Number of dwelling-houses	510	329	265	4 318	2 373	- 45.0
Total square metres	19 824	15 596	12 326	159 553	99 671	- 37.5
Total value at current prices (R'000)	16 779	22 245	17 060	151 158	121 379	- 19.7
Dwelling-houses equal to or larger than 80 square metres						
Number of dwelling-houses	364	448	464	2 108	2 473	+ 17.3
Total square metres	93 920	117 522	126 922	525 030	637 054	+ 21.3
Total value at current prices (R'000)	158 849	239 765	254 410	910 206	1 202 421	+ 32.1
Flats and townhouses						
Number of flats and townhouses	151	198	300	1 511	1 621	+ 7.3
Total square metres	23 534	47 545	58 187	200 718	269 818	+ 34.4
Total value at current prices (R'000)	40 939	87 804	119 331	353 221	505 839	+ 43.2
Other residential buildings ^{1/}						
Total square metres	0	0	1 775	3 968	21 216	+ 434.7
Total value at current prices (R'000)	0	0	2 227	6 751	43 299	+ 541.4
Total value of residential buildings at current prices (R'000)	216 567	349 814	393 028	1 421 336	1 872 938	+ 31.8
Non-residential buildings						
Office and banking space						
Total square metres	0	10 942	5 622	112 345	46 116	- 59.0
Total value at current prices (R'000)	0	16 097	11 313	294 864	87 686	- 70.3
Shopping space						
Total square metres	2 523	5 319	984	40 819	29 856	- 26.9
Total value at current prices (R'000)	4 954	6 200	1 895	73 112	48 699	- 33.4
Industrial and warehouse space						
Total square metres	30 708	14 499	19 952	162 721	101 188	- 37.8
Total value at current prices (R'000)	54 038	25 591	36 738	281 223	188 100	- 33.1
Other non-residential space ^{2/}						
Total square metres	4 911	14 164	11 257	207 948	45 790	- 78.0
Total value at current prices (R'000)	7 875	30 864	25 655	396 598	97 783	- 75.3
Total value of non-residential buildings at current prices (R'000)	66 867	78 752	75 601	1 045 797	422 268	- 59.6
Additions and alterations						
Dwelling-houses						
Total square metres	59 499	68 564	70 465	366 002	368 597	+ 0.7
Total value at current prices (R'000)	100 107	124 668	119 619	596 362	640 054	+ 7.3
Other buildings ^{3/}						
Total square metres	32 660	29 852	18 443	158 336	93 648	- 40.9
Total value at current prices (R'000)	54 770	67 858	29 945	291 912	209 739	- 28.1
Total value of additions and alterations at current prices (R'000)	154 877	192 526	149 564	888 274	849 793	- 4.3
Total value of building plans passed at current prices (R'000)	438 311	621 092	618 193	3 355 407	3 144 999	- 6.3

1/ Other residential buildings include institutions for the disabled, boarding houses, old people's homes, hostels, hotels, motels, guest houses, holiday chalets, entertainment centres, bed-and-breakfast accommodation and casinos.

2/ Other non-residential space includes churches, sport and recreation clubs, schools, crèches, hospitals and all other non-residential space.

3/ Other buildings include additions and alterations to other residential buildings, non-residential buildings and internal alterations.

Table 33 - Building plans passed according to type of building and selected urban area: Pretoria

Type of building	June 2002*	May 2003	June 2003	January 2002 to June 2002	January 2003 to June 2003	Percentage change between January 2002 to June 2002 and January 2003 to June 2003
Residential buildings						
Dwelling-houses smaller than 80 square metres						
Number of dwelling-houses	35	121	102	348	3 764	+ 981.6
Total square metres	2 079	5 692	6 297	19 251	124 549	+ 547.0
Total value at current prices (R'000)	2 407	8 782	11 845	27 495	92 933	+ 238.0
Dwelling-houses equal to or larger than 80 square metres						
Number of dwelling-houses	155	190	200	1 267	1 144	- 9.7
Total square metres	42 667	45 585	52 623	337 113	305 764	- 9.3
Total value at current prices (R'000)	60 940	73 573	87 644	476 061	519 269	+ 9.1
Flats and townhouses						
Number of flats and townhouses	215	375	264	1 569	1 260	- 19.7
Total square metres	25 755	54 786	50 819	223 336	247 284	+ 10.7
Total value at current prices (R'000)	43 145	84 755	98 812	325 748	429 073	+ 31.7
Other residential buildings ^{1/}						
Total square metres	0	1 017	0	0	1 267	..
Total value at current prices (R'000)	0	2 034	0	0	2 497	..
Total value of residential buildings at current prices (R'000)	106 492	169 144	198 301	829 304	1 043 772	+ 25.9
Non-residential buildings						
Office and banking space						
Total square metres	3 792	16 523	0	70 909	46 304	- 34.7
Total value at current prices (R'000)	4 732	24 912	0	111 009	78 878	- 28.9
Shopping space						
Total square metres	2 205	2 075	3 559	14 564	14 402	- 1.1
Total value at current prices (R'000)	2 205	3 886	6 807	19 365	27 079	+ 39.8
Industrial and warehouse space						
Total square metres	17 039	19 295	6 540	65 187	54 878	- 15.8
Total value at current prices (R'000)	24 343	28 766	9 810	94 802	84 848	- 10.5
Other non-residential space ^{2/}						
Total square metres	695	8 935	3 863	10 618	27 866	+ 162.4
Total value at current prices (R'000)	695	10 875	6 860	15 797	42 562	+ 169.4
Total value of non-residential buildings at current prices (R'000)	31 975	68 439	23 477	240 973	233 367	- 3.2
Additions and alterations						
Dwelling-houses						
Total square metres	18 124	28 436	37 053	142 516	146 718	+ 2.9
Total value at current prices (R'000)	26 324	45 829	59 487	206 112	240 222	+ 16.5
Other buildings ^{3/}						
Total square metres	3 465	93 292	14 110	35 753	144 510	+ 304.2
Total value at current prices (R'000)	4 427	159 621	26 924	59 184	246 875	+ 317.1
Total value of additions and alterations at current prices (R'000)	30 751	205 450	86 411	265 296	487 097	+ 83.6
Total value of building plans passed at current prices (R'000)	169 218	443 033	308 189	1 335 573	1 764 236	+ 32.1

1/ Other residential buildings include institutions for the disabled, boarding houses, old people's homes, hostels, hotels, motels, guest houses, holiday chalets, entertainment centres, bed-and-breakfast accommodation and casinos.

2/ Other non-residential space includes churches, sport and recreation clubs, schools, crèches, hospitals and all other non-residential space.

3/ Other buildings include additions and alterations to other residential buildings, non-residential buildings and internal alterations.

Table 34 - Building plans passed according to type of building and selected urban area: Bloemfontein

Type of building	June 2002	May 2003	June 2003	January 2002 to June 2002	January 2003 to June 2003	Percentage change between January 2002 to June 2002 and January 2003 to June 2003
Residential buildings						
Dwelling-houses smaller than 80 square metres						
Number of dwelling-houses	300	432	545	1 072	1 766	+ 64.7
Total square metres	12 147	16 945	23 189	44 966	72 989	+ 62.3
Total value at current prices (R'000)	5 962	9 049	10 783	25 200	38 501	+ 52.8
Dwelling-houses equal to or larger than 80 square metres						
Number of dwelling-houses	32	33	25	187	202	+ 8.0
Total square metres	5 895	7 079	3 112	29 140	32 986	+ 13.2
Total value at current prices (R'000)	7 807	10 841	5 242	40 060	50 438	+ 25.9
Flats and townhouses						
Number of flats and townhouses	93	30	0	281	155	-44.8
Total square metres	8 322	3 857	0	27 161	16 552	-39.1
Total value at current prices (R'000)	10 041	5 786	0	38 782	24 831	-36.0
Other residential buildings ^{1/}						
Total square metres	0	0	0	2 683	0	..
Total value at current prices (R'000)	0	0	0	7 000	0	..
Total value of residential buildings at current prices (R'000)	23 810	25 676	16 025	111 042	113 770	+ 2.5
Non-residential buildings						
Office and banking space						
Total square metres	5 530	0	3 756	12 797	5 372	-58.0
Total value at current prices (R'000)	7 700	0	5 390	21 700	8 198	-62.2
Shopping space						
Total square metres	0	2 419	0	9 116	5 778	-36.6
Total value at current prices (R'000)	0	5 906	0	19 364	13 906	-28.2
Industrial and warehouse space						
Total square metres	0	805	1 141	6 032	5 591	-7.3
Total value at current prices (R'000)	0	800	685	4 123	3 473	-15.8
Other non-residential space ^{2/}						
Total square metres	1 243	0	0	1 243	2 679	+ 115.5
Total value at current prices (R'000)	1 050	0	0	1 050	4 194	+ 299.4
Total value of non-residential buildings at current prices (R'000)	8 750	6 706	6 075	46 237	29 771	-35.6
Additions and alterations						
Dwelling-houses						
Total square metres	3 946	4 825	3 693	26 758	28 658	+ 7.1
Total value at current prices (R'000)	4 819	6 533	5 077	31 662	38 399	+ 21.3
Other buildings ^{3/}						
Total square metres	303	1 550	218	8 345	6 285	-24.7
Total value at current prices (R'000)	1 204	6 896	742	22 823	27 526	+ 20.6
Total value of additions and alterations at current prices (R'000)	6 023	13 429	5 819	54 485	65 925	+ 21.0
Total value of building plans passed at current prices (R'000)	38 583	45 811	27 919	211 764	209 466	-1.1

1/ Other residential buildings include institutions for the disabled, boarding houses, old people's homes, hostels, hotels, motels, guest houses, holiday chalets, entertainment centres, bed-and-breakfast accommodation and casinos.

2/ Other non-residential space includes churches, sport and recreation clubs, schools, crèches, hospitals and all other non-residential space.

3/ Other buildings include additions and alterations to other residential buildings, non-residential buildings and internal alterations.

Table 35 - Buildings completed according to type of building and selected urban area: Cape Town

Type of building	June 2002	May 2003	June 2003	January 2002 to June 2002	January 2003 to June 2003	Percentage change between January 2002 to June 2002 and January 2003 to June 2003
Residential buildings						
Dwelling-houses smaller than 80 square metres						
Number of dwelling-houses	396	235	283	3 166	1 562	- 50.7
Total square metres	14 323	7 932	11 126	113 957	57 285	- 49.7
Total value at current prices (R'000)	14 136	10 078	15 316	133 601	66 696	- 50.1
Dwelling-houses equal to or larger than 80 square metres						
Number of dwelling-houses	280	252	202	1 471	1 473	+ 0.1
Total square metres	61 779	49 882	46 369	294 949	277 050	- 6.1
Total value at current prices (R'000)	86 531	66 261	65 875	428 068	386 864	- 9.6
Flats and townhouses						
Number of flats and townhouses	103	55	141	610	736	+ 20.7
Total square metres	10 996	5 991	11 042	90 481	78 903	- 12.8
Total value at current prices (R'000)	16 090	9 100	19 940	149 559	126 159	- 15.6
Other residential buildings ^{1/}						
Total square metres	600	0	0	4 143	127	- 96.9
Total value at current prices (R'000)	720	0	0	5 722	174	- 97.0
Total value of residential buildings at current prices (R'000)	117 477	85 439	101 131	716 950	579 893	- 19.1
Non-residential buildings						
Office and banking space						
Total square metres	9 412	19 190	9 436	64 623	88 937	+ 37.6
Total value at current prices (R'000)	17 705	47 827	18 057	94 194	161 292	+ 71.2
Shopping space						
Total square metres	10 888	4 949	0	30 397	20 862	- 31.4
Total value at current prices (R'000)	12 249	7 759	0	33 571	30 943	- 7.8
Industrial and warehouse space						
Total square metres	26 547	12 370	3 471	53 937	55 251	+ 2.4
Total value at current prices (R'000)	28 348	11 475	4 367	56 316	60 480	+ 7.4
Other non-residential space ^{2/}						
Total square metres	10 310	13 516	1 202	17 508	21 677	+ 23.8
Total value at current prices (R'000)	7 460	19 019	1 968	18 295	29 123	+ 59.2
Total value of non-residential buildings at current prices (R'000)	65 762	86 080	24 392	202 376	281 838	+ 39.3
Additions and alterations						
Dwelling-houses						
Total square metres	35 628	39 339	39 575	178 333	197 942	+ 11.0
Total value at current prices (R'000)	46 047	51 347	48 395	224 867	247 658	+ 10.1
Other buildings ^{3/}						
Total square metres	3 061	18 176	24 342	97 264	82 401	- 15.3
Total value at current prices (R'000)	8 087	61 593	42 130	153 095	192 766	+ 25.9
Total value of additions and alterations at current prices (R'000)	54 134	112 940	90 525	377 962	440 424	+ 16.5
Total value of buildings completed at current prices (R'000)	237 373	284 459	216 048	1 297 288	1 302 155	+ 0.4

1/ Other residential buildings include institutions for the disabled, boarding houses, old people's homes, hostels, hotels, motels, guest houses, holiday chalets, entertainment centres, bed-and-breakfast accommodation and casinos.

2/ Other non-residential space includes churches, sport and recreation clubs, schools, crèches, hospitals and all other non-residential space.

3/ Other buildings include additions and alterations to other residential buildings, non-residential buildings and internal alterations.

Table 36 - Buildings completed according to type of building and selected urban area: Port Elizabeth

Type of building	June 2002	May 2003	June 2003	January 2002 to June 2002	January 2003 to June 2003	Percentage change between January 2002 to June 2002 and January 2003 to June 2003
Residential buildings						
Dwelling-houses smaller than 80 square metres						
Number of dwelling-houses	381	104	30	976	539	- 44.8
Total square metres	15 623	4 660	1 237	40 547	23 378	- 42.3
Total value at current prices (R'000)	21 551	6 706	1 749	54 690	29 869	- 45.4
Dwelling-houses equal to or larger than 80 square metres						
Number of dwelling-houses	85	3	15	200	47	- 76.5
Total square metres	8 123	398	3 099	26 563	8 645	- 67.5
Total value at current prices (R'000)	11 018	617	4 515	33 558	12 713	- 62.1
Flats and townhouses						
Number of flats and townhouses	0	0	0	12	69	+ 475.0
Total square metres	0	0	0	1 479	5 393	+ 264.6
Total value at current prices (R'000)	0	0	0	2 047	7 327	+ 257.9
Other residential buildings ^{1/}						
Total square metres	0	0	0	2 744	5 656	+ 106.1
Total value at current prices (R'000)	0	0	0	3 312	9 314	+ 181.2
Total value of residential buildings at current prices (R'000)	32 569	7 323	6 264	93 607	59 223	- 36.7
Non-residential buildings						
Office and banking space						
Total square metres	0	0	0	0	0	..
Total value at current prices (R'000)	0	0	0	0	0	..
Shopping space						
Total square metres	0	0	0	1 944	1 936	- 0.4
Total value at current prices (R'000)	0	0	0	1 998	3 445	+ 72.4
Industrial and warehouse space						
Total square metres	0	2 260	5 100	9 230	12 314	+ 33.4
Total value at current prices (R'000)	0	2 848	7 854	7 919	18 196	+ 129.8
Other non-residential space ^{2/}						
Total square metres	0	778	0	2 300	1 705	- 25.9
Total value at current prices (R'000)	0	988	0	2 664	2 160	- 18.9
Total value of non-residential buildings at current prices (R'000)	0	3 836	7 854	12 581	23 801	+ 89.2
Additions and alterations						
Dwelling-houses						
Total square metres	4 048	475	495	28 024	22 814	- 18.6
Total value at current prices (R'000)	5 108	490	745	31 506	28 939	- 8.1
Other buildings ^{3/}						
Total square metres	8 858	92	1 683	21 571	20 658	- 4.2
Total value at current prices (R'000)	8 342	163	2 119	22 173	32 543	+ 46.8
Total value of additions and alterations at current prices (R'000)	13 450	653	2 864	53 679	61 482	+ 14.5
Total value of buildings completed at current prices (R'000)	46 019	11 812	16 982	159 867	144 506	- 9.6

1/ Other residential buildings include institutions for the disabled, boarding houses, old people's homes, hostels, hotels, motels, guest houses, holiday chalets, entertainment centres, bed-and-breakfast accommodation and casinos.

2/ Other non-residential space includes churches, sport and recreation clubs, schools, crèches, hospitals and all other non-residential space.

3/ Other buildings include additions and alterations to other residential buildings, non-residential buildings and internal alterations.

Table 37 - Buildings completed according to type of building and selected urban area: Durban

Type of building	June 2002	May 2003	June 2003	January 2002 to June 2002	January 2003 to June 2003	Percentage change between January 2002 to June 2002 and January 2003 to June 2003
Residential buildings						
Dwelling-houses smaller than 80 square metres						
Number of dwelling-houses	62	166	80	451	464	+ 2.9
Total square metres	3 446	7 002	3 560	21 970	20 979	- 4.5
Total value at current prices (R'000)	4 385	8 206	3 789	25 673	22 996	- 10.4
Dwelling-houses equal to or larger than 80 square metres						
Number of dwelling-houses	49	30	26	422	293	- 30.6
Total square metres	9 556	4 667	4 854	76 736	53 383	- 30.4
Total value at current prices (R'000)	11 861	6 447	5 532	97 677	63 815	- 34.7
Flats and townhouses						
Number of flats and townhouses	16	81	2	142	158	+ 11.3
Total square metres	1 876	6 430	346	18 919	20 650	+ 9.1
Total value at current prices (R'000)	3 080	7 615	759	30 539	31 915	+ 4.5
Other residential buildings ^{1/}						
Total square metres	0	0	0	0	0	..
Total value at current prices (R'000)	0	0	0	0	0	..
Total value of residential buildings at current prices (R'000)	19 326	22 268	10 080	153 889	118 726	- 22.8
Non-residential buildings						
Office and banking space						
Total square metres	1 193	500	678	31 838	10 224	- 67.9
Total value at current prices (R'000)	2 000	1 000	1 300	47 038	17 759	- 62.2
Shopping space						
Total square metres	522	0	0	12 932	10 731	- 17.0
Total value at current prices (R'000)	800	0	0	15 223	17 872	+ 17.4
Industrial and warehouse space						
Total square metres	32 904	709	6 325	97 409	44 382	- 54.4
Total value at current prices (R'000)	37 441	700	10 692	111 552	49 759	- 55.4
Other non-residential space ^{2/}						
Total square metres	1 377	2 474	902	11 401	8 065	- 29.3
Total value at current prices (R'000)	1 500	3 440	1 623	15 777	13 589	- 13.9
Total value of non-residential buildings at current prices (R'000)	41 741	5 140	13 615	189 590	98 979	- 47.8
Additions and alterations						
Dwelling-houses						
Total square metres	19 554	20 101	11 635	117 471	103 409	- 12.0
Total value at current prices (R'000)	19 784	21 327	10 854	128 026	112 721	- 12.0
Other buildings ^{3/}						
Total square metres	5 351	6 441	4 794	46 083	32 550	- 29.4
Total value at current prices (R'000)	8 498	11 954	45 519	86 154	99 504	+ 15.5
Total value of additions and alterations at current prices (R'000)	28 282	33 281	56 373	214 180	212 225	- 0.9
Total value of buildings completed at current prices (R'000)	89 349	60 689	80 068	557 659	429 930	- 22.9

1/ Other residential buildings include institutions for the disabled, boarding houses, old people's homes, hostels, hotels, motels, guest houses, holiday chalets, entertainment centres, bed-and-breakfast accommodation and casinos.

2/ Other non-residential space includes churches, sport and recreation clubs, schools, crèches, hospitals and all other non-residential space.

3/ Other buildings include additions and alterations to other residential buildings, non-residential buildings and internal alterations.

Table 38 - Buildings completed according to type of building and selected urban area: Witwatersrand

Type of building	June 2002*	May 2003	June 2003	January 2002 to June 2002	January 2003 to June 2003	Percentage change between January 2002 to June 2002 and January 2003 to June 2003
Residential buildings						
Dwelling-houses smaller than 80 square metres						
Number of dwelling-houses	755	121	186	3 282	2 049	-37.6
Total square metres	27 090	6 019	9 132	116 835	84 185	-27.9
Total value at current prices (R'000)	26 808	12 137	16 281	103 892	102 506	-1.3
Dwelling-houses equal to or larger than 80 square metres						
Number of dwelling-houses	188	292	311	1 411	1 668	+ 18.2
Total square metres	42 691	66 453	66 802	305 531	370 675	+ 21.3
Total value at current prices (R'000)	71 622	121 217	127 286	482 267	679 450	+ 40.9
Flats and townhouses						
Number of flats and townhouses	75	232	757	1 424	2 587	+ 81.7
Total square metres	12 929	30 502	94 672	204 241	308 112	+ 50.9
Total value at current prices (R'000)	20 128	66 976	176 941	318 264	544 901	+ 71.2
Other residential buildings ^{1/}						
Total square metres	0	0	0	11 978	10 078	-15.9
Total value at current prices (R'000)	0	0	0	18 314	26 754	+ 46.1
Total value of residential buildings at current prices (R'000)	118 558	200 330	320 508	922 737	1 353 611	+ 46.7
Non-residential buildings						
Office and banking space						
Total square metres	5 670	56 314	20 754	117 074	171 901	+ 46.8
Total value at current prices (R'000)	9 073	137 945	38 101	191 141	374 670	+ 96.0
Shopping space						
Total square metres	5 886	0	395	19 352	43 962	+ 127.2
Total value at current prices (R'000)	11 000	0	560	33 408	94 450	+ 182.7
Industrial and warehouse space						
Total square metres	8 324	3 336	1 528	58 068	82 857	+ 42.7
Total value at current prices (R'000)	13 626	5 629	2 719	95 282	139 562	+ 46.5
Other non-residential space ^{2/}						
Total square metres	1 030	123 442	5 653	16 131	235 220	+ 1 358.2
Total value at current prices (R'000)	1 452	246 214	9 813	25 919	469 040	+ 1 709.6
Total value of non-residential buildings at current prices (R'000)	35 151	389 788	51 193	345 750	1 077 722	+ 211.7
Additions and alterations						
Dwelling-houses						
Total square metres	19 214	22 810	26 965	185 563	146 923	-20.8
Total value at current prices (R'000)	29 120	36 000	48 324	279 898	235 124	-16.0
Other buildings ^{3/}						
Total square metres	16 627	11 988	4 276	53 292	51 576	-3.2
Total value at current prices (R'000)	20 798	23 070	8 568	82 433	102 337	+ 24.1
Total value of additions and alterations at current prices (R'000)	49 918	59 070	56 892	362 331	337 461	-6.9
Total value of buildings completed at current prices (R'000)	203 627	649 188	428 593	1 630 818	2 768 794	+ 69.8

1/ Other residential buildings include institutions for the disabled, boarding houses, old people's homes, hostels, hotels, motels, guest houses, holiday chalets, entertainment centres, bed-and-breakfast accommodation and casinos.

2/ Other non-residential space includes churches, sport and recreation clubs, schools, crèches, hospitals and all other non-residential space.

3/ Other buildings include additions and alterations to other residential buildings, non-residential buildings and internal alterations.

Table 39 - Buildings completed according to type of building and selected urban area: Pretoria

Type of building	June 2002*	May 2003	June 2003	January 2002 to June 2002	January 2003 to June 2003	Percentage change between January 2002 to June 2002 and January 2003 to June 2003
Residential buildings						
Dwelling-houses smaller than 80 square metres						
Number of dwelling-houses	76	288	39	497	4 972	+ 900.4
Total square metres	3 839	9 478	1 919	19 402	154 575	+ 696.7
Total value at current prices (R'000)	5 479	7 484	3 021	17 963	91 545	+ 409.6
Dwelling-houses equal to or larger than 80 square metres						
Number of dwelling-houses	102	133	315	500	851	+ 70.2
Total square metres	28 666	38 798	54 337	145 073	188 338	+ 29.8
Total value at current prices (R'000)	44 267	65 661	89 882	220 717	305 253	+ 38.3
Flats and townhouses						
Number of flats and townhouses	44	70	102	1 336	385	- 71.2
Total square metres	6 720	13 284	11 095	117 328	46 722	- 60.2
Total value at current prices (R'000)	10 691	22 816	15 553	157 072	72 250	- 54.0
Other residential buildings ^{1/}						
Total square metres	0	0	0	0	0	..
Total value at current prices (R'000)	0	0	0	0	0	..
Total value of residential buildings at current prices (R'000)	60 437	95 961	108 456	395 752	469 048	+ 18.5
Non-residential buildings						
Office and banking space						
Total square metres	2 579	3 229	2 012	12 877	16 761	+ 30.2
Total value at current prices (R'000)	2 579	5 651	3 018	18 293	29 783	+ 62.8
Shopping space						
Total square metres	7 876	3 121	0	7 876	8 978	+ 14.0
Total value at current prices (R'000)	13 783	5 462	0	13 783	17 077	+ 23.9
Industrial and warehouse space						
Total square metres	0	1 230	1 653	9 226	13 716	+ 48.7
Total value at current prices (R'000)	0	1 845	2 480	14 247	19 790	+ 38.9
Other non-residential space ^{2/}						
Total square metres	0	2 894	0	2 004	13 162	+ 556.8
Total value at current prices (R'000)	0	4 644	0	3 050	19 509	+ 539.6
Total value of non-residential buildings at current prices (R'000)	16 362	17 602	5 498	49 373	86 159	+ 74.5
Additions and alterations						
Dwelling-houses						
Total square metres	2 901	7 549	8 517	14 354	36 061	+ 151.2
Total value at current prices (R'000)	4 209	11 564	13 155	20 344	55 458	+ 172.6
Other buildings ^{3/}						
Total square metres	259	1 270	3 182	8 069	8 675	+ 7.5
Total value at current prices (R'000)	467	9 174	4 970	11 566	21 147	+ 82.8
Total value of additions and alterations at current prices (R'000)	4 676	20 738	18 125	31 910	76 605	+ 140.1
Total value of buildings completed at current prices (R'000)	81 475	134 301	132 079	477 035	631 812	+ 32.4

1/ Other residential buildings include institutions for the disabled, boarding houses, old people's homes, hostels, hotels, motels, guest houses, holiday chalets, entertainment centres, bed-and-breakfast accommodation and casinos.

2/ Other non-residential space includes churches, sport and recreation clubs, schools, crèches, hospitals and all other non-residential space.

3/ Other buildings include additions and alterations to other residential buildings, non-residential buildings and internal alterations.

Table 40 - Buildings completed according to type of building and selected urban area: Bloemfontein

Type of building	June 2002	May 2003	June 2003	January 2002 to June 2002	January 2003 to June 2003	Percentage change between January 2002 to June 2002 and January 2003 to June 2003
Residential buildings						
Dwelling-houses smaller than 80 square metres						
Number of dwelling-houses	436	216	151	979	1 239	+ 26.6
Total square metres	18 104	9 498	6 498	42 075	52 003	+ 23.6
Total value at current prices (R'000)	8 514	6 348	4 389	21 133	30 074	+ 42.3
Dwelling-houses equal to or larger than 80 square metres						
Number of dwelling-houses	17	11	24	119	103	- 13.4
Total square metres	3 343	1 568	3 198	20 557	14 722	- 28.4
Total value at current prices (R'000)	4 148	2 054	4 203	25 287	18 593	- 26.5
Flats and townhouses						
Number of flats and townhouses	31	0	28	101	127	+ 25.7
Total square metres	3 217	0	4 025	9 661	14 575	+ 50.9
Total value at current prices (R'000)	4 826	0	6 038	15 329	22 039	+ 43.8
Other residential buildings ^{1/}						
Total square metres	0	0	0	1 428	2 683	+ 87.9
Total value at current prices (R'000)	0	0	0	1 461	7 000	+ 379.1
Total value of residential buildings at current prices (R'000)	17 488	8 402	14 630	63 210	77 706	+ 22.9
Non-residential buildings						
Office and banking space						
Total square metres	0	0	0	4 244	5 630	+ 32.7
Total value at current prices (R'000)	0	0	0	7 800	7 700	- 1.3
Shopping space						
Total square metres	0	845	0	1 340	5 414	+ 304.0
Total value at current prices (R'000)	0	2 112	0	2 500	9 914	+ 296.6
Industrial and warehouse space						
Total square metres	1 020	0	2 225	3 862	8 664	+ 124.3
Total value at current prices (R'000)	714	0	1 112	2 994	7 712	+ 157.6
Other non-residential space ^{2/}						
Total square metres	0	0	204	0	2 181	..
Total value at current prices (R'000)	0	0	244	0	3 080	..
Total value of non-residential buildings at current prices (R'000)	714	2 112	1 356	13 294	28 406	+ 113.7
Additions and alterations						
Dwelling-houses						
Total square metres	4 033	1 849	2 700	33 501	16 458	- 50.9
Total value at current prices (R'000)	4 589	2 278	3 068	37 528	19 298	- 48.6
Other buildings ^{3/}						
Total square metres	123	89	139	5 292	1 740	- 67.1
Total value at current prices (R'000)	4 742	352	398	15 537	14 444	- 7.0
Total value of additions and alterations at current prices (R'000)	9 331	2 630	3 466	53 065	33 742	- 36.4
Total value of buildings completed at current prices (R'000)	27 533	13 144	19 452	129 569	139 854	+ 7.9

1/ Other residential buildings include institutions for the disabled, boarding houses, old people's homes, hostels, hotels, motels, guest houses, holiday chalets, entertainment centres, bed-and-breakfast accommodation and casinos.

2/ Other non-residential space includes churches, sport and recreation clubs, schools, crèches, hospitals and all other non-residential space.

3/ Other buildings include additions and alterations to other residential buildings, non-residential buildings and internal alterations.

Additional information

Explanatory Notes

Introduction	<p>1 Statistics South Africa (Stats SA) conducts a monthly Building Statistics Survey collecting information regarding building plans approved and buildings completed, financed by the private sector, from a sample of local government institutions in South Africa. According to these institutions, they are not always notified about low-cost housing projects. This statistical release contains information of building plans passed and buildings completed in respect of residential buildings, non-residential buildings and additions and alterations according to province and selected urban areas.</p> <p>2 In order to improve timeliness of the publication, some information for the current month have been estimated due to late submission by respondents. These estimates will be revised in the next statistical release(s) as soon as actual information is available.</p> <p>3 The actual and seasonally adjusted values (at current and at constant 2000 prices) and the percentage change of building plans passed and buildings completed according to type of building are reflected monthly from January 2000 in this statistical release (cf. tables 1 to 8).</p>
Scope of the survey	<p>4 This survey covers local government institutions conducting activities for the private sector regarding -</p> <ul style="list-style-type: none"> • approval of building plans; and • final inspection of completed buildings.
Classification	<p>5 The 1993 edition of the <i>Standard Industrial Classification of all Economic Activities</i>, (SIC) Fifth Edition, Report No. 09-90-02, was used to classify the statistical units. The SIC is based on the 1990 <i>International Standard Industrial Classification of all Economic Activities</i> (ISIC) with suitable adaptations for local conditions.</p> <p>6 The twelfth and last published edition of the <i>Standard Code List of Areas</i>, Report No. 09-09-03 (1994) was used to classify the statistical units according to province. The cities, towns and non-urban areas listed in this report are codified within province. The code list was compiled by Stats SA in collaboration with other interested bodies and the first edition was distributed in June 1977. However, exceptions occur in respect of the new cross-border municipalities. GaRankuwa, which was previously classified in North West according to the <i>Standard Code List of Areas</i>, Report No. 09-09-03(1994), is included in Gauteng, City of Tshwane as from January 2002.</p>
Statistical unit	<p>7 The statistical unit for the collection of information is a local government institution. Local government institutions include district municipalities, metropolitan municipalities and local municipalities.</p>
Survey methodology and design	<p>8 The sample for the monthly Building Statistics Survey consists of the largest local government institutions in South Africa, i.e. those that account for approximately 85% of the total rand value of buildings completed by the private sector.</p> <p>9 The survey is collected by mail each month from a sample of 128 local government institutions.</p>
Constant prices	<p>10 The value of building plans passed and buildings completed at constant prices measures building activities in terms of ruling prices in a specific base year, which is 2000 as from May 2002.</p> <p>11 The value of building plans passed at constant prices for each month is obtained by deflating the values at current prices with a price index known as the “lump sum domestic buildings” as published in statistical release P0151: <i>JBCC Contract Price Adjustment Provisions Work Group Indices</i>. In order to be applicable, these indices (base February 1991=100) are converted to the base year 2000=100.</p>

- 12** The value of buildings completed at constant prices is obtained by deflating the values at current prices with the same price index which is used to calculate building plans passed at constant prices (cf. paragraph 11). The value of buildings completed is reported as at the time the plans were passed. Since the completion of buildings may extend over a few months to a few years, the current value of buildings completed is deflated by price indices as at the time the plans were passed in order to calculate the value of buildings completed at the time the plans were passed. Therefore, the duration of the completion of different types of buildings are taken into account in ascertaining the deflators e.g. the value of dwelling-houses completed at constant prices at January 2000 is obtained by deflating the current value of dwelling-houses completed for January 2000 with the price index of a month six months prior to January 2000. Furthermore, the value of other residential buildings, non-residential buildings and additions and alterations at constant prices is obtained by deflating the current values with price indices of 12 months, 18 months and 12 months prior to the relevant month, respectively.

Seasonal adjustment

- 13** Seasonally adjusted estimates of building plans passed and buildings completed are generated each month, using the X-11 Seasonal Adjustment Program developed by US Bureau of the Census Economic Research and Analyses Division, 1968.
- 14** Seasonal adjustment is a means of removing the estimated effects of normal seasonal variation from the series so that the effects of other influences on the series can be more clearly recognised. Seasonal adjustment does not aim to remove irregular or non-seasonal influences which may be present in any particular month. Influences that are volatile or unsystematic can still make it difficult to interpret the movement of the series even after adjustment for seasonal variations. Therefore, the month-to-month movements of seasonally adjusted estimates may not be reliable indicators of trend behaviour.

Trend cycle

- 15** The trend is a long-term pattern or movement of a time series. The X-11 Seasonal Adjustment Program is used for smoothing seasonally adjusted data.

Related publications

- 16** Users may also wish to refer to the following publications:
- P5041.3: *Building Statistics* issued annually.
 - P9101.2: *Actual and expected expenditure on construction by the public sector per statistical region* issued annually.
 - *Bulletin of Statistics* issued quarterly.
 - *South African Statistics* issued annually.

Unpublished statistics

- 17** In some cases Stats SA can also make available statistics which are not published. The statistics can be made available in one or more of the following ways: computer printouts, CD and diskette. Generally a charge is made for providing unpublished statistics.

Rounding-off of figures

- 18** The figures in the tables have, where necessary, been rounded off to the nearest digit shown. There may, therefore, be slight discrepancies between the sums of the constituent items and the totals shown.

Pre-release policy

- 19** Stats SA has adopted the confidential pre-release policy in respect of selected economic indicators and specific government departments. The policy accords with practice among leading statistical agencies. The statistical integrity of the information and strict observance of the release time has been assured by the following procedure:
- 20** In respect of this statistical release, an official representative from the Office of the President, the Department of Trade and Industry (DTI), National Treasury and the South African Reserve Bank (SARB) will receive a copy of the release on a strictly confidential basis two hours in advance of the public issue.
- 21** Stats SA pre-release policy may be inspected at its Website, www.statssa.gov.za

Symbols and abbreviations

..	no meaningful percentage change between two specified periods available since either one or both of the totals are nil
0	nil or figure too small to publish
*	revised
Stats SA	Statistics South Africa
SIC	Standard Industrial Classification of all Economic Activities
ISIC	International Standard Industrial Classification of all Economic Activities
JBCC	Joint Building Contracts Committee
CD	Compact Disc
US	United States
SARB	South African Reserve Bank
DTI	Department of Trade and Industry

Technical notes**Response rate**

The response rate for June 2003 was 100%.

Local government institutions covered in the sample survey

Table C - Classification of towns and cities according to new municipalities and previous local government institution by province

Western Cape			
Sample survey as from January 2002		Sample survey up to December 2001	
Name of municipality	Cities and towns	Name of previously published local government institution	Cities and towns
Breede Valley Municipality	Worcester Rawsonville De Doorns Touws River	Worcester	Worcester
		Breede River District Council	Rural areas - Dissolved as from July 2001. Activities were taken over by various local government institutions.
City of Cape Town - Blaauwberg Administration	Milnerton	Blaauwberg Municipality	Milnerton
Cape Town Administration	Cape Town	City of Cape Town	Cape Town
Helderberg Administration	Gordon's Bay, Somerset West and Strand	Helderberg Municipality	Gordon's Bay, Somerset West and Strand
Ikapa Administration	Guguletu, Langa, Khayelitsha and Nyanga	Ikapa	Guguletu, Langa, Khayelitsha and Nyanga
Oostenberg Administration -	Brackenfell Kraaifontein Kuils River Melton Rose - Blue Downs	Oostenberg Municipality -	Brackenfell Kraaifontein Kuils River Melton Rose - Blue Downs
South Peninsula Administration -	Fish Hoek Simon's Town Plumstead	Fish Hoek Simon's Town South Peninsula Municipality	Fish Hoek Simon's Town Plumstead
Tygerberg Administration - Bellville Administration Durbanville Administration Goodwood Administration Lingeletu West Administration Parow Administration South Administration	City of Tygerberg - Bellville Durbanville Goodwood Lingeletu West Parow Belhar, Delft, Driftsands and Efuleni	City of Tygerberg - Bellville Administration Durbanville Administration Goodwood Administration Lingeletu West Administration Parow Administration South Administration	Bellville Durbanville Goodwood Lingeletu West Parow Belhar, Delft, Driftsands and Efuleni
Drakenstein Municipality	Paarl Wellington Saron ¹	Paarl Wellington	Paarl Wellington
George Municipality	George, Herolds Bay, Pacaltsdorp and Thembaletu Wilderness ¹	George	George, Herolds Bay, Pacaltsdorp and Thembaletu

¹ Included in sample survey as from January 2001.

Table C - Classification of towns and cities according to new municipalities and previous local government institution by province (continued)

Western Cape (concluded)			
Sample survey as from January 2002		Sample survey up to December 2001	
Name of municipality	Cities and towns	Name of previously published local government institution	Cities and towns
Knysna Municipality	Knysna and Khayaletu Sedgfield	Knysna Sedgfield	Knysna and Khayaletu Sedgfield
Mossel Bay Municipality	Mossel Bay, Boggom's Bay, Kleinbrak, Rheeboek and Tergniet Friemersheim, Herbertsdale and Great Brak River ¹	Mossel Bay	Mossel Bay, Boggom's Bay, Kleinbrak, Rheeboek and Tergniet
Oudtshoorn Municipality	Oudtshoorn De Rust/Blomnek Dysselsdorp	Oudtshoorn	Oudtshoorn
Overberg District Council	Rural areas - Dissolved as from July 2001. Activities were taken over by various local government institutions.	Overberg District Council	Rural areas
Overstrand Municipality	Hermanus, Fisher Haven, Hawston, Onrus River, Sandbaai, Vermont and Zwelihle Hangklip - Kleinmond, Betty's Bay and Rooi-Els Gansbaai and Stanford ¹	Hermanus Hangklip - Kleinmond	Hermanus, Fisher Haven, Hawston, Onrus River, Sandbaai, Vermont and Zwelihle Hangklip - Kleinmond, Betty's Bay and Rooi-Els
Plettenberg Bay Municipality	Plettenberg Bay Knoetzie ¹	Plettenberg Bay	Plettenberg Bay
Saldanha Bay Municipality	Vredenburg and Saldanha Hopefield and Langebaan ¹	Western Coast Peninsula	Vredenburg and Saldanha
Stellenbosch Municipality	Stellenbosch Franschhoek and Pniel	Stellenbosch	Stellenbosch
Swartland Municipality	Malmesbury Darling, Koringberg, Moorreesburg and Yzerfontein ¹	Malmesbury	Malmesbury
		West Coast District Council	Rural areas - Dissolved as from July 2001. Activities were taken over by various local government institutions.
		Winelands District Council	Rural areas - Dissolved as from July 2001. Activities were taken over by various local government institutions.

¹ Included in sample survey as from January 2001.

Table C - Classification of towns and cities according to new municipalities and previous local government institution by province (continued)

Eastern Cape			
Sample survey as from January 2002		Sample survey up to December 2001	
Name of municipality	Cities and towns	Name of previously published local government institution	Cities and towns
Buffalo City Municipality - East London Area	East London, Beacon Bay, Gompo Town, Gonubie and Mdantsane	East London	East London, Beacon Bay, Gompo Town, Gonubie and Mdantsane
King William's Town Area	King William's Town, Bisho and Zwelitsha	King William's Town	King William's Town, Bisho and Zwelitsha
King Sabata Dalindyebo Municipality - Umtata Area	Umtata	Umtata	Umtata
Kouga Municipality - Jeffreys Bay Area	Jeffreys Bay Humansdorp Hankey Patensie Oesterbaai Gamtoos St Francis Bay ¹ Cape St Francis ¹ Kromrivier ¹	Jeffreys Bay	Jeffreys Bay
Makana Municipality - Grahamstown Area	Grahamstown and Rhini Township	Grahamstown	Grahamstown and Rhini Township
Maletswai Municipality - Aliwal North Area	Aliwal North and Dukathole	Aliwal - Maletswai	Aliwal North and Dukathole
Ndlambe Municipality	Port Alfred Alexandria Bathurst Boesmansriviermond Kenton-on-Sea	Port Alfred	Port Alfred
Nelson Mandela Metropolitan Municipality - Despatch Area	Despatch	Despatch	Despatch
Port Elizabeth Area	Port Elizabeth, Ibhayi and Motherwell	Port Elizabeth	Port Elizabeth, Ibhayi and Motherwell
Uitenhage Area	Uitenhage and KwaNobuhle	Uitenhage	Uitenhage and KwaNobuhle
		Western District Council	Rural areas - Dissolved as from July 2001. Activities were taken over by various local government institutions.

¹ Included in sample survey as from January 2003.

Table C - Classification of towns and cities according to new municipalities and previous local government institution by province (continued)

Northern Cape			
Sample survey as from January 2002		Sample survey up to December 2001	
Name of municipality	Cities and towns	Name of previously published local government institution	Cities and towns
//Khara Hais Municipality	Upington and Paballelo	Upington	Upington and Paballelo
		Benede-Oranje District Council	Rural areas - Dissolved as from July 2001. Activities were taken over by various local government institutions.
Ga-Segonyana Municipality	Kuruman and Mothibistad	Kuruman	Kuruman and Mothibistad
Kai! Garib Municipality - Keimoes Area	Keimoes Eksteenskuil ¹ Kenhardt ¹	Keimoes	Keimoes
		Namaqualand District Council	Rural areas - Dissolved as from July 2001. Activities were taken over by various local government institutions.
Sol Plaatje Municipality	Kimberley and Galeshewe Ritchie ¹	Kimberley	Kimberley and Galeshewe

¹ Included in sample survey as from January 2001.

Table C - Classification of towns and cities according to new municipalities and previous local government institution by province (continued)

Free State			
Sample survey as from January 2002		Sample survey up to December 2001	
Name of municipality	Cities and towns	Name of previously published local government institution	Cities and towns
Dihlabeng Municipality	Bethlehem and Bohlokong Clarens Fouriesburg Paul Roux Rosendal	Bethlehem	Bethlehem and Bohlokong
Maluti a Phofung Municipality Harrismith Area Phuthaditjhaba Area	Harrismith and Tsiamé Phuthaditjhaba	Harrismith Phuthaditjhaba	Harrismith and Tsiamé Phuthaditjhaba
Mangaung Municipality - Bloemfontein Area Botshabelo Area	Bloemfontein, Bainsvlei, Bloemspruit and Mangaung Botshabelo	Bloemfontein Botshabelo	Bloemfontein, Bainsvlei, Bloemspruit and Mangaung Botshabelo
Mantsopa Municipality	Ladybrand and Manyatseng Excelsior Hobhouse Thaba Patchoa Tweespruit/Kopano	Ladybrand	Ladybrand and Manyatseng
Matjhabeng Municipality - Odendaalsrus Area Virginia Area Welkom Area	Odendaalsrus, Allanridge and Kutlwanong Virginia and Meloding Welkom and Thabong	Odendaalsrus Virginia Welkom	Odendaalsrus, Allanridge and Kutlwanong Virginia and Meloding Welkom and Thabong
Metsimaholo Municipality - Deneysville Area Sasolburg Area	Deneysville , Refengkgotso and Oranjeville Sasolburg and Zamdela	Deneysville/Refengkgotso Sasolburg/Zamdela	Deneysville and Refengkgotso Sasolburg and Zamdela
Moghaka Municipality - Kroonstad Area	Kroonstad and Maokeng	Kroonstad	Kroonstad and Maokeng
Nqwathe Municipality	Parys Edenville Heibron Koppies Vredefort	Parys	Parys

Table C - Classification of towns and cities according to new municipalities and previous local government institution by province (continued)

KwaZulu-Natal			
Sample survey as from January 2002		Sample survey up to December 2001	
Name of municipality	Cities and towns	Name of previously published local government institution	Cities and towns
Emnambithi Municipality	Ladysmith Colenso Nkanyesi	Ladysmith	Ladysmith
eThekweni Municipality - Inner West Operational Entity	Clermont, KwaDabeka, KwaNdengezi, New Germany, Pinetown, Queensburgh, Reservoir Hills, Shallcross and Westville	Inner West City Council	Clermont, KwaDabeka, KwaNdengezi, New Germany, Pinetown, Queensburgh, Reservoir Hills, Shallcross and Westville
Outer West Operational Entity	Assagay, Botha's Hill, Cato Ridge, Drummond, Everton, Gillitts, Hillcrest, Inchanga, Kloof, Mpumalanga and Waterfall	Outer West Local Council	Assagay, Botha's Hill, Cato Ridge, Drummond, Everton, Gillitts, Hillcrest, Inchanga, Kloof, Mpumalanga and Waterfall
KwaMashu	KwaMashu	KwaMashu	KwaMashu
Durban- North, South and Central	Durban	Durban	Durban
North Operational Entity - Tonga	Tonga, Canelands and Hambanati	North Local Council - Tonga	Tonga, Canelands and Hambanati
Umhlanga Rocks	Umhlanga Rocks, Mount Edgecombe and Umdloti Beach	North Local Council - Umhlanga	Umhlanga Rocks, Mount Edgecombe and Umdloti Beach
Verulam	Verulam	North Local Council - Verulam	Verulam
South Operational Entity	Amanzimtoti, Isipingo, Kingsburgh, KwaMakuta and Umbogintwini	South Local Council	Amanzimtoti, Isipingo, Kingsburgh, KwaMakuta and Umbogintwini
Umlazi	Umlazi	Umlazi	Umlazi
Greater Kokstad Municipality	Kokstad	Kokstad	Kokstad
Hibiscus Coast Municipality	Margate and Uvongo Marina Beach, San Lameer, Southbroom and Trafalgar Port Shepstone Hibberdene Munster, Port Edward and Palm Beach	Margate Mpenjati/Southbroom Port Shepstone Umtamvuna/Port Edward	Margate and Uvongo Marina Beach, San Lameer, Southbroom and Trafalgar Port Shepstone Munster, Port Edward and Palm Beach

Table C - Classification of towns and cities according to new municipalities and previous local government institution by province (continued)

KwaZulu-Natal (concluded)			
Sample survey as from January 2002		Sample survey up to December 2001	
Name of municipality	Cities and towns	Name of previously published local government institution	Cities and towns
KwaDukuza Municipality - Dolphin Coast Administrative Entity	Ballito, Etete, Shakaskraal, Tinley Manor Beach and Umhlali Beach	Dolphin Coast Borough	Ballito, Etete, Shakaskraal, Tinley Manor Beach and Umhlali Beach
Stanger Administrative Entity	Blythedale Beach, Shakaville and Stanger Nkwazi/Zinkwazi	KwaDukuza/Stanger	Blythedale Beach, Shakaville and Stanger
Msunduzi Municipality	Edendale Ashburton ¹ , Pietermaritzburg and Msundini	Edendale Pietermaritzburg/Msundini	Edendale Pietermaritzburg and Msundini
Newcastle Municipality	Blaauwboschlaagte, Madadeni, Osizweni and Newcastle	Newcastle	Blaauwboschlaagte, Madadeni, Osizweni and Newcastle
Umdoni Municipality	Pennington Scottburgh/Umzinto	Pennington	Pennington
Umhlathuze Municipality	Empangeni and Ngwelezana Richards Bay	Empangeni-Ngwelezana Richards Bay	Empangeni and Ngwelezana Richards Bay
Umngeni Municipality	Hilton Howick	Hilton Howick	Hilton Howick
Uthungulu District Council ¹	KwaMbonambi, Nkandla and Ntambanana Municipalities	Development and Services Board - North Coast	KwaMbonambi, Nkandla, Tugela Mouth, Umlalazi, Mahlabathini, Ukuza, Umbambo, Engwavuma and Hluhluwe

¹ Included in sample survey as from January 2001.

Table C - Classification of towns and cities according to new municipalities and previous local government institution by province (continued)

North West			
Sample survey as from January 2002		Sample survey up to December 2001	
Name of municipality	Cities and towns	Name of previously published local government institution	Cities and towns
		Bophirima District Council	Rural areas - Dissolved as from July 2001. Activities were taken over by various local government institutions.
Ditsobotla Local Municipality	Lichtenburg and Itsoseng Biesiesvlei ¹ Coligny ¹	Lichtenburg	Lichtenburg and Itsoseng
Klerksdorp Local Municipality	Klerksdorp Orkney and Kanana Hartbeesfontein ¹ Stillfontein ¹	Klerksdorp Orkney	Klerksdorp Orkney and Kanana
GaRankuwa	As from January 2002 included in City of Tshwane - Northern Metropolitan Substructure (Gauteng)	GaRankuwa	GaRankuwa
Madibeng Local Municipality	Brits and Lethabile Hartbeespoort	Brits	Brits and Lethabile
Mafikeng Local Municipality	Mmabatho and Mafikeng	Mmabatho	Mmabatho and Mafikeng
Naledi Municipality	Vryburg	Vryburg	Vryburg
Potchefstroom Municipality	Potchefstroom	Potchefstroom	Potchefstroom
Rustenburg Local Municipality - Rustenburg Area	Rustenburg	Rustenburg	Rustenburg
Zeerust Local Municipality	Zeerust	Zeerust	Zeerust

¹ Included in sample survey as from January 2001.

Table C - Classification of towns and cities according to new municipalities and previous local government institution by province (continued)

Gauteng			
Sample survey as from January 2002		Sample survey up to December 2001	
Name of municipality	Cities and towns	Name of previously published local government institution	Cities and towns
City of Johannesburg Metropolitan Municipality	Alexandra and Sandton Midrand, Rabie Ridge and Ivory Park Randburg Ennerdale, Lenasia and Johannesburg Diepmeadow, Dobsonville and Roodepoort Soweto	Greater Johannesburg - Eastern Metropolitan Local Council Midrand Metropolitan Local Council Northern Metropolitan Local Council Southern Metropolitan Local Council Western Metropolitan Local Council Soweto	Alexandra and Sandton Midrand, Rabie Ridge and Ivory Park Randburg Ennerdale, Lenasia and Johannesburg Diepmeadow, Dobsonville and Roodepoort Soweto
City of Tshwane Metropolitan Municipality - Centurion Town Council City Council of Pretoria Northern Pretoria Metropolitan Substructure	Centurion Pretoria, Atteridgeville and Mamelodi Akasia, Elandsdoorn, Klipfontein, Kruisfontein and Soshanguve Hammanskraal GaRankuwa ² Temba ¹ Winterveld ²	Centurion Pretoria Akasia	Centurion Pretoria, Atteridgeville and Mamelodi Akasia, Elandsdoorn, Klipfontein, Kruisfontein and Soshanguve
		Eastern Services Council - Pretoria Area	Rural areas - Dissolved as from July 2001. Activities were taken over by various local government institutions.
Ekurhuleni Metropolitan Municipality - Service Delivery Centre of: Edenvale - Modderfontein Alberton Benoni Boksburg Brakpan Duduza Germiston Kempton Park Nigel Springs	Edenvale - Modderfontein Alberton and Tokoza Benoni, Daveyton and Wattville Boksburg and Vosloorus Brakpan and Tsakane Duduza Germiston, Bedfordview and Katlehong Kempton Park and Tembisa Nigel Springs and KwaThema	Edenvale - Modderfontein Alberton Benoni Boksburg Brakpan Duduza Germiston Kempton Park Nigel Springs	Edenvale - Modderfontein Alberton and Tokoza Benoni, Daveyton and Wattville Boksburg and Vosloorus Brakpan and Tsakane Duduza Germiston, Bedfordview and Katlehong Kempton Park and Tembisa Nigel Springs and KwaThema

² Was previously included under North West.

Table C - Classification of towns and cities according to new municipalities and previous local government institution by province (continued)

Gauteng (concluded)			
Sample survey as from January 2002		Sample survey up to December 2001	
Name of municipality	Cities and towns	Name of previously published local government institution	Cities and towns
Emfuleni Local Municipality	Vanderbijlpark Vereeniging and Evaton Sebokeng (Boipatong, Bophelong and Sharpville)	Vanderbijlpark Vereeniging Sebokeng	Vanderbijlpark Vereeniging and Evaton Sebokeng (Boipatong, Bophelong and Sharpville)
Kungwini Local Municipality –	Bronkhorstspuit Silver Lakes Mooikloof and rural areas Ekangala ¹	Bronkhorstspuit	Bronkhorstspuit
Lesedi Local Municipality	Heidelberg and Ratanda	Heidelberg	Heidelberg and Ratanda
Merafong City Local Municipality	Carletonville, Wedela, Khutsong and Wolverdient	Carletonville	Carletonville, Wedela, Khutsong and Wolverdient
Midvaal Local Municipality	Meyerton	Meyerton	Meyerton
Mogale City Municipality	Krugersdorp, Kagiso and Munsieville	Krugersdorp	Krugersdorp, Kagiso and Munsieville
Randfontein Local Municipality	Randfontein and Mohlakeng	Randfontein	Randfontein and Mohlakeng
Westonaria Local Municipality	Westonaria and Bekkersdal	Westonaria	Westonaria and Bekkersdal

¹ Included in sample survey as from January 2003.

Table C - Classification of towns and cities according to new municipalities and previous local government institution by province (continued)

Mpumalanga			
Sample survey as from January 2002		Sample survey up to December 2001	
Name of municipality	Cities and towns	Name of previously published local government institution	Cities and towns
Delmas Municipality	Delmas and Botleng	Delmas	Delmas and Botleng
Emalahleni Local Municipal Council- KwaGuqa Area Witbank Area	KwaGuqa Witbank	KwaGuqa Witbank	KwaGuqa Witbank
Govan Mbeki Municipality - Secunda Area	Evander, Embalenhle and Secunda	Highveldridge Transitional Council	Evander, Embalenhle and Secunda
Mbombela Local Municipality	Nelspruit and Kanyamazane White River Hazyview ¹	Nelspruit White River	Nelspruit White River
Middelburg Municipality	Middelburg and Mhluzi Hendrina and KwaZamokhule ¹	Middelburg	Middelburg and Mhluzi
Msukaligwa Municipality	Ermelo, Cassim Park and Wesselton Breyton	Ermelo	Ermelo, Cassim Park and Wesselton
Nkomazi Municipality - Komatipoort Area Malelane Area	Komatipoort and Kamaqhekeza Malelane, Hectorspruit and Kamhlushwa	Komatipoort Malelane	Komatipoort and Kamaqhekeza Malelane, Hectorspruit and Kamhlushwa

¹ Included in sample survey as from January 2001.

Table C - Classification of towns and cities according to new municipalities and previous local government institution by province (concluded)

Limpopo			
Sample survey as from January 2002		Sample survey up to December 2001	
Name of municipality	Cities and towns	Name of previously published local government institution	Cities and towns
		Bosveld District Council	Rural areas - Dissolved as from July 2001. Activities were taken over by various local government institutions.
Greater Tzaneen Municipality	Tzaneen and Nkowakowa	Letaba	Tzaneen and Nkowakowa
Musina Municipality	Musina (previously Messina)	Messina	Messina
Modimolle Municipality	Modimolle (previously Nylstroom)	Nylstroom	Nylstroom
Mogolakwena Municipality	Mokopane (previously Potgietersrus)	Potgietersrus	Potgietersrus
Mookgopong Municipality	Naboomspruit and Mookgopong	Naboomspruit	Naboomspruit and Mookgopong
Polokwane Municipality	Polokwane (previously Pietersburg) and Seshego	Pietersburg - Polokwane	Pietersburg and Seshego
Thabazimbi Municipality	Thabazimbi	Thabazimbi	Thabazimbi

Table D - Classification of selected urban areas according to new municipalities and previous local government institution

Sample survey as from January 2002		Sample survey up to December 2001	
Name of selected urban area and municipality	Cities and towns	Name of selected urban area and previously published local government institution	Cities and towns
Cape Town City of Cape Town - Blaauwberg Administration	Milnerton	Cape Town Blaauwberg Municipality	Milnerton
Cape Town Administration	Cape Town	City of Cape Town	Cape Town
Ikapa Administration	Guguletu, Langa, Khayelitsha and Nyanga	Ikapa	Guguletu, Langa, Khayelitsha and Nyanga
Oostenberg Administration -	Kraaifontein Melton Rose - Blue Downs	Oostenberg Municipality -	Kraaifontein Melton Rose - Blue Downs
South Peninsula Administration -	Fish Hoek Simon's Town Plumstead	Fish Hoek Simon's Town South Peninsula Municipality	Fish Hoek Simon's Town Plumstead
Tygerberg Administration - Bellville Administration Durbanville Administration Goodwood Administration Lingeletu West Administration Parow Administration South Administration	City of Tygerberg - Bellville Durbanville Goodwood Lingeletu West Parow Belhar, Delft, Driftsands and Efuleni	City of Tygerberg - Bellville Administration Durbanville Administration Goodwood Administration Lingeletu West Administration Parow Administration South Administration	Bellville Durbanville Goodwood Lingeletu West Parow Belhar, Delft, Driftsands and Efuleni
Port Elizabeth Nelson Mandela Metropolitan Municipality - Despatch Area	Despatch	Port Elizabeth Despatch	Despatch
Port Elizabeth Area	Port Elizabeth, Ibhayi and Motherwell	Port Elizabeth	Port Elizabeth, Ibhayi and Motherwell
Uitenhage Area	Uitenhage and KwaNobuhle	Uitenhage	Uitenhage and KwaNobuhle

Table D - Classification of selected urban areas according to new municipalities and previous local government institution (continued)

Sample survey as from January 2002		Sample survey up to December 2001	
Name of selected urban area and municipality	Cities and towns	Name of selected urban area and previously published local government institution	Cities and towns
Durban eThekweni Municipality - Inner West Operational Entity	Clermont, KwaDabeka, KwaNdengezi, New Germany, Pinetown, Queensburgh, Reservoir Hills, Shallcross and Westville	Durban Inner West City Council	Clermont, KwaDabeka, KwaNdengezi, New Germany, Pinetown, Queensburgh, Reservoir Hills, Shallcross and Westville
Outer West Operational Entity	Assagay, Botha's Hill, Cato Ridge, Drummond, Everton, Gillitts, Hillcrest, Inchanga, Kloof, Mpumalanga and Waterfall	Outer West Local Council	Assagay, Botha's Hill, Cato Ridge, Drummond, Everton, Gillitts, Hillcrest, Inchanga, Kloof, Mpumalanga and Waterfall
Durban- North, South and Central	Durban	Durban	Durban
North Operational Entity - Verulam	Verulam	North Local Council - Verulam	Verulam
South Operational Entity	Amanzimtoti, Isipingo, Kingsburgh, KwaMakuta and Umbogintwini	South Local Council	Amanzimtoti, Isipingo, Kingsburgh, KwaMakuta and Umbogintwini
Pretoria City of Tshwane Metropolitan Municipality - Southern Region City Council of Pretoria	Centurion Pretoria, Atteridgeville and Mamelodi	Pretoria Centurion Pretoria	Centurion Pretoria, Atteridgeville and Mamelodi
Northern Region	Akasia, Elandsdoorn, Klipfontein, Kruisfontein and Soshanguve Hammanskraal GaRankuwa Temba Winterveld	Akasia	Akasia, Elandsdoorn, Klipfontein, Kruisfontein and Soshanguve

Table D - Classification of selected urban areas according to new municipalities and previous local government institution (concluded)

Sample survey as from January 2002		Sample survey up to December 2001	
Name of selected urban area and municipality	Cities and towns	Name of selected urban area and previously published local government institution	Cities and towns
Witwatersrand City of Johannesburg Metropolitan Municipality	Alexandra and Sandton Midrand, Rabie Ridge and Ivory Park Randburg Ennerdale, Lenasia and Johannesburg Diepmeadow, Dobsonville and Roodepoort Soweto	Witwatersrand Greater Johannesburg - Eastern Metropolitan Local Council Midrand Metropolitan Local Council Northern Metropolitan Local Council Southern Metropolitan Local Council Western Metropolitan Local Council Soweto	Alexandra and Sandton Midrand, Rabie Ridge and Ivory Park Randburg Ennerdale, Lenasia and Johannesburg Diepmeadow, Dobsonville and Roodepoort Soweto
Ekurhuleni Metropolitan Municipality - Service Delivery Centre of: Edenvale - Modderfontein Alberton Benoni	Edenvale - Modderfontein Alberton and Tokoza Benoni, Daveyton and Wattville	Edenvale - Modderfontein Alberton Benoni	Edenvale - Modderfontein Alberton and Tokoza Benoni, Daveyton and Wattville
Boksburg Brakpan Duduza Germiston	Boksburg and Vosloorus Brakpan and Tsakane Duduza Germiston, Bedfordview and Katlehong	Boksburg Brakpan Duduza Germiston	Boksburg and Vosloorus Brakpan and Tsakane Duduza Germiston, Bedfordview and Katlehong
Kempton Park Nigel Springs	Kempton Park and Tembisa Nigel Springs and KwaThema	Kempton Park Nigel Springs	Kempton Park and Tembisa Nigel Springs and KwaThema
Mogale City Municipality	Krugersdorp, Kagiso and Munsieville	Krugersdorp	Krugersdorp, Kagiso and Munsieville
Randfontein Local Municipality	Randfontein and Mohlakeng	Randfontein	Randfontein and Mohlakeng
Westonaria Local Municipality	Westonaria and Bekkersdal	Westonaria	Westonaria and Bekkersdal
Merafong City Local Municipality	Carletonville, Wedela, Khutsong and Welverdiend	Carletonville	Carletonville, Wedela, Khutsong and Welverdiend
Lesedi Local Municipality	Heidelberg and Ratanda	Heidelberg	Heidelberg and Ratanda
Bloemfontein Mangaung Municipality - Bloemfontein Area	Bloemfontein, Bainsvlei, Bloemspruit and Mangaung	Bloemfontein Bloemfontein	Bloemfontein, Bainsvlei, Bloemspruit and Mangaung

Glossary

Additions and alterations	Additions and alterations include extensions to existing buildings as well as internal and external alterations of existing buildings.
Blocks of flats	Blocks of flats are regarded as high-density housing consisting of a number of self-contained dwelling-units with at least one living-room together with a kitchen and bathroom conjoined to similar units in one building.
Dwelling-house	A dwelling-house refers to a free-standing, complete structure on a separate stand or a self-contained dwelling-unit, granny flat, on the same premises as an existing residence. Out-buildings and garages are included.
Local government	A local government is a distinct and constitutionally defined sphere of government, pertaining to government that is not national or provincial in nature and is manifested in the form of municipalities. It is a generic term referring to municipalities and local authorities of varied nature and type involved in activities of a governmental nature in the local sphere.
Local government institutions	<p>Up to December 2001 local government institutions included:</p> <ul style="list-style-type: none"> • City councils; • district councils; • development and services boards; • metropolitan councils; • municipalities; and • transitional local councils. <p>As from January 2002 local government institutions includes:</p> <ul style="list-style-type: none"> • District and metropolitan municipalities; and • local municipalities.
Metropolitan and district municipalities	Metropolitan and district municipalities means municipalities that has the exclusive executive and legislative authority in its area, and which is described in section 155(1) of the Constitution as category A (metropolitan municipality) and category C (district municipality) (Refer to local government: Municipal Structure Act, Act No. 117.1998).
Non-residential buildings	Non-residential buildings comprise factories, commercial, financial and other office buildings, as well as other buildings not used for residential purposes, such as churches, halls, clubs, schools and hospitals.
Other residential buildings	Other residential buildings include institutions for the disabled, boarding houses, old people's homes, hostels, hotels, motels, guest houses, holiday chalets, bed-and-breakfast accommodation, entertainment centres and casinos.
Percentage change	<p>When using monthly actual values, the percentage change is the change in actual values of building activities (building plans passed or buildings completed) of the relevant month compared with the actual values of building activities (building plans passed or buildings completed) of the same month in the previous year expressed as a percentage.</p> <p>When using annual actual values, the percentage change is the change in the actual values of building activities (building plans passed or buildings completed) of the relevant year compared with the actual values of building activities (building plans passed or buildings completed) of the previous year expressed as a percentage.</p> <p>When using seasonally adjusted values, the percentage change is the change in the seasonally adjusted values of building activities (building plans passed or buildings completed) of the relevant month compared with the seasonally adjusted values of building activities (building plans passed or buildings completed) of the previous month expressed as a percentage.</p>

Reference period	Reference period is one calendar month.
Residential buildings	Residential buildings comprise dwelling-houses, flats, townhouses and other residential buildings.
Townhouses	Townhouses are multiple, medium-density dwelling-units and include cluster housing, group housing, simplexes, duplexes, triplexes and other similar dwelling-units which are usually grouped together, with one level of each unit on ground level. This excludes blocks of flats.

For more information

Stats SA publishes approximately 300 different statistical releases each year. It is not economically viable to produce them in more than one of South Africa's eleven official languages. Since the releases are used extensively, not only locally but also by international economic and social-scientific communities, Stats SA releases are published in English only.

Stats SA has copyright on this publication. Users may apply the information as they wish, provided that they acknowledge Stats SA as the source of the basic data wherever they process, apply, utilise, publish or distribute the data and also that they specify that the relevant application and analysis (where applicable) result from their own processing of the data.

Stats SA products

A complete set of Stats SA publications is available at the Stats SA Library and the following libraries:

National Library of South Africa, Pretoria Division
National Library of South Africa, Cape Town Division
Natal Society Library, Pietermaritzburg
Library of Parliament, Cape Town
Bloemfontein Public Library
Johannesburg Public Library
Eastern Cape Library Services, King William's Town
Central Regional Library, Polokwane
Central Reference Library, Nelspruit
Central Reference Collection, Kimberley
Central Reference Library, Mmabatho

Stats SA also provides a subscription service.

Electronic services

A large range of data are available via on-line services, diskette, CD and computer printouts. For more details about our electronic data services, contact (012) 310 8600/8390/8351/4892/8496/8095.

You can visit us on the Internet at: www.statssa.gov.za

Enquiries

Telephone number: (012) 310 8600/8390/8351/4892/8496/8095 (user information services)
(012) 310 8228/310 8007 (technical enquiries)
(012) 310 8161 (orders)
(012) 310 8490 (library)

Fax number: (012) 310 8182 (technical enquiries)

e-mail: Thabelom@statssa.gov.za
Gretaz@statssa.gov.za

Postal address: Private Bag X44, Pretoria, 0001