

Building statistics

June 2002

Co-operation between Statistics South Africa (Stats SA), the citizens of the country, the private sector and government institutions is essential for a successful statistical system. Without continued co-operation and goodwill, the timely release of relevant and reliable official statistics will not be possible.

Embargo: 13:00
Date: 14 August 2002

Stats SA publishes approximately three hundred different releases each year. It is not economically viable to produce them in more than one of South Africa's eleven official languages. Since the releases are used extensively, not only locally, but also by international economic and social-scientific communities, Stats SA releases are published in English only.

Key figures regarding building plans passed for the month ended June 2002

Actual estimates at constant 2000 prices	June 2002	January 2002 to June 2002	Percentage change between June 2001 and June 2002	Percentage change between April 2001 to June 2001 and April 2002 to June 2002	Percentage change between January 2001 to June 2001 and January 2002 to June 2002
	R million	R million			
Residential buildings					
Dwelling-houses	717,5	3 980,5	+ 5,7	+ 13,1	+ 4,8
Flats and townhouses	159,2	1 097,4	+ 1,8	+ 26,7	+ 21,7
Other residential buildings	34,6	168,6	+ 236,4	- 36,6	+ 10,3
Total	911,3	5 246,5	+ 7,8	+ 13,7	+ 8,1
Non-residential buildings	411,0	1 851,9	+ 46,1	+ 43,9	+ 3,9
Additions and alterations	453,0	2 799,6	+ 8,0	+ 35,0	+ 14,1
Total	1 775,3	9 898,0	+ 14,8	+ 24,7	+ 8,9

Seasonally adjusted estimates at constant 2000 prices

	June 2002	Percentage change between May 2002 and June 2002	Percentage change between January 2002 to March 2002 and April 2002 to June 2002
	R million		
Residential buildings	857,4	+ 2,4	+ 10,5
Non-residential buildings	382,3	+ 17,9	+ 24,7
Additions and alterations	425,6	- 42,3	+ 34,7
Total	1 665,3	- 12,3	+ 19,6

Key findings regarding building plans passed for the second quarter of 2002

Seasonally adjusted real value of building plans passed increases

The seasonally adjusted real value of building plans passed (at constant 2000 prices) for the second quarter of 2002 increased by 19,6% compared with the first quarter of 2002.

The increase of 19,6% in the seasonally adjusted real value of building plans passed was due to increases reported for additions and alterations (+34,7%), non-residential buildings (+24,7%) and residential buildings (+10,5%) during the second quarter of 2002 compared with the first quarter of 2002.

Key findings regarding building plans passed for the first six months of 2002

Total real value of building plans passed increases

The total real value of building plans passed (at constant 2000 prices) during the first six months of 2002 increased by 8,9% (+R809,3 million) to R9 898,0 million compared with the first six months of 2001. Large increases in the real value of building plans passed were reported for additions and alterations (+R345,2 million), flats and townhouses (+R195,5 million) and dwelling-houses (+R183,7 million). Large real increases for additions and alterations were reported by KwaZulu-Natal (R148,0 million), Western Cape (+R98,2 million) and Gauteng (+R73,9 million). The largest real increases for flats and townhouses and dwelling-houses were reported by Gauteng (+R125,9 million) and Western Cape (+R247,9 million) respectively during the above-mentioned period.

Seven of the nine provinces reported increases in the total real value of plans passed

The largest provincial contributors to the increase of 8,9% (+R809,3 million) in the total real value of building plans passed during the first six months of 2002 compared with the first six months of 2001 were KwaZulu-Natal (+2,5 percentage points or R226,3 million), Limpopo (+2,1 percentage points or R187,5 million), Western Cape (+1,9 percentage points or R168,7 million) and Mpumalanga (+1,3 percentage points or R115,6 million) (cf. table A). Large real increases in KwaZulu-Natal were reported for additions and alterations (+R148,0 million, mainly due to the approval of building plans for additions and alterations to non-residential buildings to the real value of R164,3 million by Umhlathuze Municipality – Richards Bay Area during May 2002) and industrial and warehouse space (+R112,2 million, mainly due to the approval of building plans for industrial and warehouse space to the real value of R126,9 million by Msunduzi Municipality – Pietermaritzburg Area during May 2002). The largest real increase in Limpopo was reported for industrial and warehouse space (+R175,9 million, mainly due to the approval of building plans for industrial and warehouse space to the real value of R176,2 million by Polokwane Municipality during June 2002). The largest real increase in Western Cape was reported for dwelling-houses (+R247,9 million, mainly due to increases reported by Knysna Municipality (+R61,7 million), Overstrand Municipality (+R44,4 million) and the selected urban areas of Cape Town (+R32,6 million)). The largest real increase in Mpumalanga was reported for 'other' residential buildings (+R69,0 million, mainly due to the approval of building plans for a hotel to the real value of R61,4 million by Emalahleni Municipality – Witbank Area during February 2002).

Table A - Contribution of provinces to the total real value of building plans passed

Province	Percentage contribution to the total real value of plans passed during January 2001 to June 2001	Percentage change between January 2001 to June 2001 and January 2002 to June 2002	Contribution (percentage points) ^{1/} to the percentage change in the real value of plans passed between January 2001 to June 2001 and January 2002 to June 2002	Difference in total real value of plans passed between January 2001 to June 2001 and January 2002 to June 2002 R million
KwaZulu-Natal	11,6	+ 21,4	+ 2,5	+ 226,3
Limpopo	1,6	+ 130,8	+ 2,1	+ 187,5
Western Cape	29,4	+ 6,3	+ 1,9	+ 168,7
Mpumalanga	3,1	+ 40,7	+ 1,3	+ 115,6
North West	2,7	+ 34,7	+ 0,9	+ 83,6
Eastern Cape	6,2	+ 10,0	+ 0,6	+ 55,8
Free State	2,5	+ 20,4	+ 0,5	+ 45,8
Northern Cape	0,6	- 9,3	- 0,1	- 5,4
Gauteng	42,3	- 1,8	- 0,8	- 68,6
Total	100,0	+ 8,9	+ 8,9	+ 809,3

1/ The contribution (percentage points) is calculated by multiplying the percentage change of each province between January 2001 to June 2001 and January 2002 to June 2002 (cf. column 3) with the percentage contribution of the corresponding province to the total real value of plans passed during January 2001 to June 2001 (cf. column 2) divided by 100.

Key figures regarding buildings completed for the month ended June 2002

Actual estimates at constant 2000 prices	June 2002	January 2002 to June 2002	Percentage change between June 2001 and June 2002	Percentage change between April 2001 to June 2001 and April 2002 to June 2002	Percentage change between January 2001 to June 2001 and January 2002 to June 2002
	R million	R million			
Residential buildings					
Dwelling-houses	433,1	2 338,3	+ 6,2	+ 22,4	+ 17,2
Flats and townhouses	95,8	815,3	- 17,6	+ 54,4	+ 48,3
Other residential buildings	1,6	256,7	- 59,6	+ 805,1	- 27,4
Total	530,5	3 410,3	+ 0,5	+ 31,8	+ 17,7
Non-residential buildings	200,3	1 169,1	- 42,2	- 12,0	- 23,8
Additions and alterations	233,0	1 397,3	- 21,2	+ 11,8	- 9,0
Total	963,8	5 976,7	- 17,6	+ 14,1	+ 0,2

Seasonally adjusted estimates at constant 2000 prices

	June 2002	Percentage change between May 2002 and June 2002	Percentage change between January 2002 to March 2002 and April 2002 to June 2002
	R million		
Residential buildings	586,7	- 0,8	+ 4,5
Non-residential buildings	212,3	- 7,9	+ 31,5
Additions and alterations	258,9	+ 7,9	+ 76,9
Total	1 057,9	- 0,4	+ 22,9

Key findings regarding buildings completed for the second quarter of 2002

Seasonally adjusted real value of buildings completed increases

The seasonally adjusted real value of buildings completed (at constant 2000 prices) for the second quarter of 2002 increased by 22,9% compared with the first quarter of 2002.

The increase of 22,9% in the seasonally adjusted real value of buildings completed during the second quarter of 2002 compared with the first quarter of 2002 was due to increases in the seasonally adjusted real value of additions and alterations (+76,9%), non-residential buildings (+31,5%) and residential buildings (+4,5%).

Key findings regarding buildings completed for the first six months of 2002

Total real value of buildings completed increases slightly

The total real value of buildings completed (at constant 2000 prices) during the first six months of 2002 increased by 0,2% (+R9,9 million) to R5 976,7 million compared with the first six months of 2001. Large increases in the real value of buildings completed were reported for dwelling-houses (+R344,0 million, mainly due to increases reported by the selected urban areas of Cape Town (+R203,0 million) and Witwatersrand (+R95,9 million)) and flats and townhouses (+R265,5 million, mainly due to increases reported by the selected urban areas of Witwatersrand (+R94,7 million), Pretoria (+R62,1 million) and Cape Town (+R41,6 million)). However, these increases were partially counteracted by decreases in the real value of non-residential buildings completed (-R364,5 million, mainly due to decreases reported for office and banking space (-R157,0 million), industrial and warehouse space (-R140,8 million) and shopping space (-79,1 million)) and additions and alterations (-R138,0 million) during the above-mentioned period.

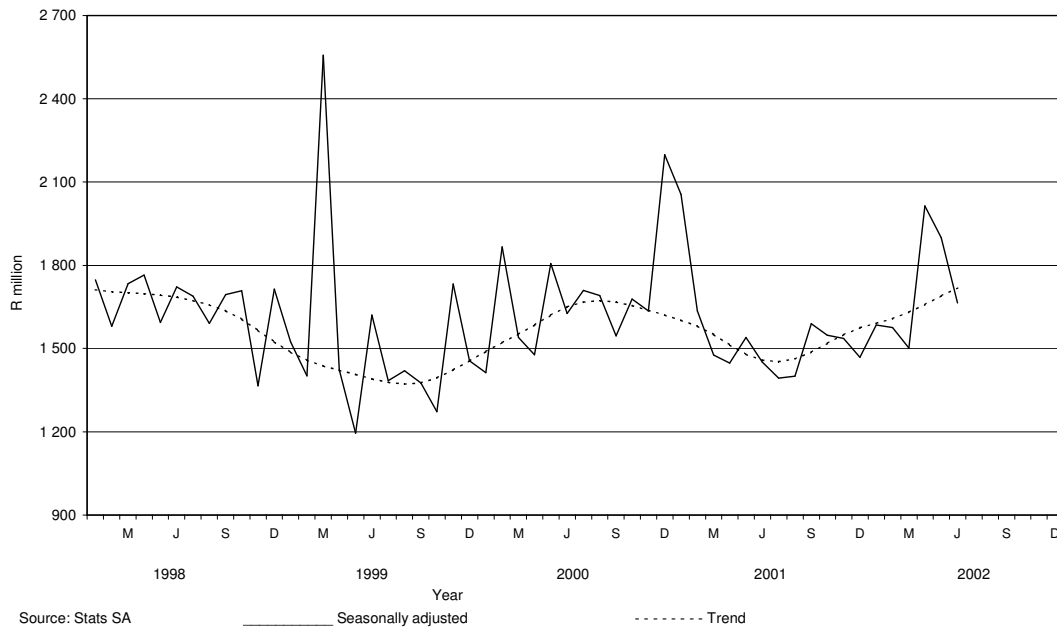
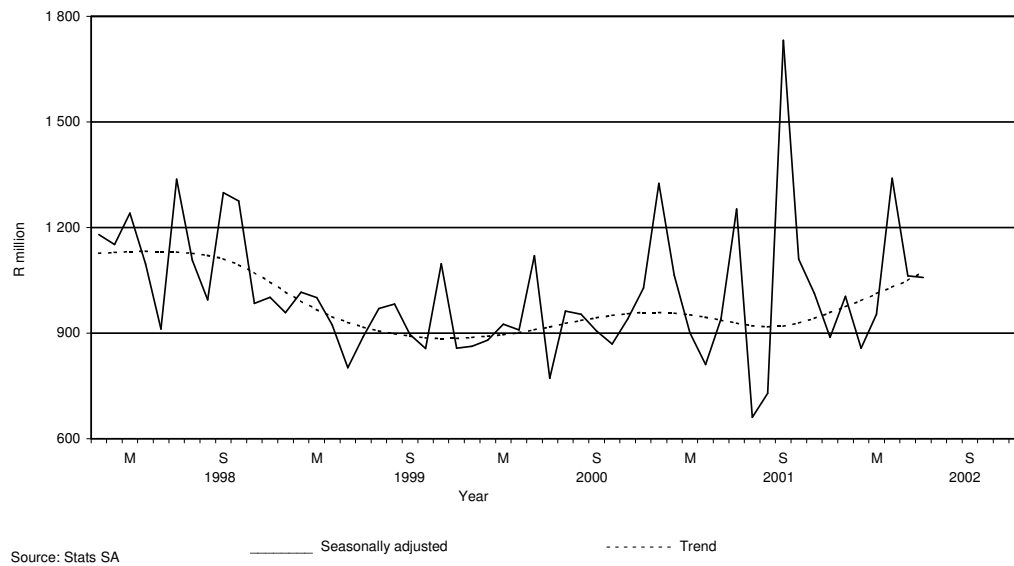
Four of the nine provinces reported increases in the total real value of buildings completed

The largest provincial contributor to the increase of 0,2% (+R9,9 million) in the total real value of buildings completed during the first six months of 2002 compared with the first six months of 2001 was Western Cape (+4,3 percentage points or R255,1 million) and Limpopo (+3,0 percentage points or R178,3 million) (cf. table B). Large real increases in Western Cape were reported for dwelling-houses (+R276,8 million) and flats and townhouses (+R80,6 million) during the above-mentioned period. Large real increases in Limpopo were reported for 'other' residential buildings (+R193,7 million), mainly due to the completion of a hotel and casino to the real value of R195,1 million as reported by Polokwane Municipality (previously Pietersburg) during March 2002. However, these increases were partially counteracted by decreases in the total real value of buildings completed as reported by Eastern Cape (-2,7 percentage points or R160,9 million), Gauteng (-2,2 percentage points or R132,1 million) and Free State (-1,6 percentage points or R97,1 million) (cf. table B).

Table B - Contribution of provinces to the total real value of buildings completed

Province	Percentage contribution to the total real value of buildings completed during January 2001 to June 2001	Percentage change between January 2001 to June 2001 and January 2002 to June 2002	Contribution (percentage points) ^{1/} to the percentage change in the real value of buildings completed between January 2001 to June 2001 and January 2002 to June 2002	Difference in total real value of buildings completed between January 2001 to June 2001 and January 2002 to June 2002 R million
Western Cape	28,9	+ 14,8	+ 4,3	+ 255,1
Limpopo	1,1	+ 279,4	+ 3,0	+ 178,3
North West	2,6	+ 16,3	+ 0,4	+ 25,4
KwaZulu-Natal	15,4	+ 0,6	+ 0,1	+ 5,9
Mpumalanga	2,5	- 18,4	- 0,5	- 27,0
Northern Cape	1,2	- 51,7	- 0,6	- 37,7
Free State	4,4	- 37,1	- 1,6	- 97,1
Gauteng	36,0	- 6,1	- 2,2	- 132,1
Eastern Cape	7,9	- 33,9	- 2,7	- 160,9
Total	100,0	+ 0,2	+ 0,2	+ 9,9

1/ The contribution (percentage points) is calculated by multiplying the percentage change of each province between January 2001 to June 2001 and January 2002 to June 2002 (cf. column 3) with the percentage contribution of the corresponding province to the total real value of buildings completed during January 2001 to June 2001 (cf. column 2) divided by 100.

Figure 1 – Total real value of building plans passed**Figure 2 – Total real value of buildings completed**

Contents

Page

Notes	7
Tables	
Table 1 Actual values and percentage change of building plans passed at current prices according to type of building	8
Table 2 Seasonally adjusted values and percentage change of building plans passed at current prices according to type of building	9
Table 3 Actual values and percentage change of building plans passed at constant 2000 prices according to type of building	10
Table 4 Seasonally adjusted values and percentage change of building plans passed at constant 2000 prices according to type of building	11
Table 5 Actual values and percentage change of buildings completed at current prices according to type of building	12
Table 6 Seasonally adjusted values and percentage change of buildings completed at current prices according to type of building	13
Table 7 Actual values and percentage change of buildings completed at constant 2000 prices according to type of building	14
Table 8 Seasonally adjusted values and percentage change of buildings completed at constant 2000 prices according to type of building	15
Table 9 Building plans passed according to type of building: Total RSA	16
Table 10 Building plans passed according to type of building and province: Western Cape	17
Table 11 Building plans passed according to type of building and province: Eastern Cape	18
Table 12 Building plans passed according to type of building and province: Northern Cape	19
Table 13 Building plans passed according to type of building and province: Free State	20
Table 14 Building plans passed according to type of building and province: KwaZulu-Natal	21
Table 15 Building plans passed according to type of building and province: North West	22
Table 16 Building plans passed according to type of building and province: Gauteng	23
Table 17 Building plans passed according to type of building and province: Mpumalanga	24
Table 18 Building plans passed according to type of building and province: Limpopo	25
Table 19 Buildings completed according to type of building: Total RSA	26
Table 20 Buildings completed according to type of building and province: Western Cape	27
Table 21 Buildings completed according to type of building and province: Eastern Cape	28
Table 22 Buildings completed according to type of building and province: Northern Cape	29
Table 23 Buildings completed according to type of building and province: Free State	30
Table 24 Buildings completed according to type of building and province: KwaZulu-Natal	31
Table 25 Buildings completed according to type of building and province: North West	32
Table 26 Buildings completed according to type of building and province: Gauteng	33
Table 27 Buildings completed according to type of building and province: Mpumalanga	34
Table 28 Buildings completed according to type of building and province: Limpopo	35
Table 29 Building plans passed according to type of building and selected urban area: Cape Town	36
Table 30 Building plans passed according to type of building and selected urban area: Port Elizabeth	37
Table 31 Building plans passed according to type of building and selected urban area: Durban	38
Table 32 Building plans passed according to type of building and selected urban area: Witwatersrand	39
Table 33 Building plans passed according to type of building and selected urban area: Pretoria	40
Table 34 Building plans passed according to type of building and selected urban area: Bloemfontein	41
Table 35 Buildings completed according to type of building and selected urban area: Cape Town	42
Table 36 Buildings completed according to type of building and selected urban area: Port Elizabeth	43
Table 37 Buildings completed according to type of building and selected urban area: Durban	44
Table 38 Buildings completed according to type of building and selected urban area: Witwatersrand	45
Table 39 Buildings completed according to type of building and selected urban area: Pretoria	46
Table 40 Buildings completed according to type of building and selected urban area: Bloemfontein	47
Additional information	
Explanatory notes	48
Technical notes	50
Local government institutions covered in the sample survey	51
Glossary	54
For more information	55

Notes

Forthcoming issues	Issue	Expected release date
	July 2002	18 September 2002
	August 2002	16 October 2002
	September 2002	20 November 2002
	October 2002	18 December 2002
	November 2002	15 January 2003
	December 2002	19 February 2003
Purpose of the survey	<p>The Building Statistics Survey is a countrywide survey covering a sample of municipalities in South Africa. The information received is used to estimate key economic statistics used by the private and public sectors. The information is also used to compile estimates of the Gross Domestic Product (GDP). These statistics are also used by government to monitor the Reconstruction and Development Program (RDP) in South Africa.</p>	
Change in base year of constant prices from 1995 to 2000	<p>Following international practice, the base year of the price index ("lump sum domestic buildings" as published in statistical release P0151 –JBCC Contract Price Adjustment Provision Work Group Indices), which is used to deflate the current prices of building plans passed and buildings completed to constant prices, has been converted to 2000=100 with effect from May 2002. Previously the value of building plans passed and buildings completed was published at constant 1995 prices. It should be borne in mind that the change does not in any way affect the trends.</p>	

Table 1 - Actual values and percentage change of building plans passed at current prices according to type of building

Year ^{1/} and month ^{2/}	Residential buildings		Non-residential buildings		Additions and alterations		Total	
	R'000	Percentage change	R'000	Percentage change	R'000	Percentage change	R'000	Percentage change
2000 Jan	490 776	- 11,3	163 926	- 31,0	365 596	+ 31,8	1 020 298	- 4,5
Feb	784 023	+ 48,3	521 389	+ 32,1	399 280	+ 12,3	1 704 692	+ 33,3
Mar	747 421	+ 12,0	359 267	- 75,3	515 668	+ 8,2	1 622 356	- 37,6
Apr	627 642	+ 18,3	271 151	- 27,6	382 300	+ 15,8	1 281 093	+ 3,7
May	874 847	+ 65,8	573 853	+ 109,3	473 062	+ 17,3	1 921 762	+ 59,5
Jun	853 154	+ 1,8	336 324	- 19,6	532 278	+ 31,8	1 721 756	+ 3,7
Jul	908 061	+ 42,5	484 669	+ 5,2	549 932	+ 30,8	1 942 662	+ 27,9
Aug	929 836	+ 31,1	353 488	- 9,0	492 627	+ 18,5	1 775 951	+ 23,8
Sep	826 851	+ 37,8	354 456	+ 16,0	465 836	- 3,8	1 647 143	+ 18,5
Oct	916 410	+ 37,9	492 884	+ 49,8	539 561	+ 23,5	1 948 855	+ 36,2
Nov	914 346	+ 28,6	493 166	- 29,7	503 659	- 6,2	1 911 171	- 2,0
Dec	606 148	+ 22,7	704 410	+ 212,8	317 835	+ 0,9	1 628 393	+ 57,5
Total	9 479 515	+ 28,4	5 108 983	- 8,2	5 537 634	+ 14,1	20 126 132	+ 13,1
2001 Jan	721 003	+ 46,9	477 489	+ 191,3	352 193	- 3,7	1 550 685	+ 52,0
Feb	826 607	+ 5,4	300 417	- 42,4	474 953	+ 19,0	1 601 977	- 6,0
Mar	929 196	+ 24,3	301 148	- 16,2	436 645	- 15,3	1 666 989	+ 2,8
Apr	738 858	+ 17,7	207 874	- 23,3	377 373	- 1,3	1 324 105	+ 3,4
May	999 426	+ 14,2	289 330	- 49,6	499 673	+ 5,6	1 788 429	- 6,9
Jun	901 450	+ 5,7	299 913	- 10,8	447 228	- 16,0	1 648 591	- 4,2
Jul	891 483	- 1,8	366 953	- 24,3	427 464	- 22,3	1 685 900	- 13,2
Aug	836 033	- 10,1	245 865	- 30,4	482 883	- 2,0	1 564 781	- 11,9
Sep	960 995	+ 16,2	303 367	- 14,4	526 113	+ 12,9	1 790 475	+ 8,7
Oct	1 196 455	+ 30,6	185 828	- 62,3	542 954	+ 0,6	1 925 237	- 1,2
Nov	974 628	+ 6,6	317 506	- 35,6	595 512	+ 18,2	1 887 646	- 1,2
Dec	649 614	+ 7,2	140 365	- 80,1	357 449	+ 12,5	1 147 428	- 29,5
Total	10 625 748	+ 12,1	3 436 055	- 32,7	5 520 440	- 0,3	19 582 243	- 2,7
2002 Jan	777 744	+ 7,9	168 097	- 64,8	399 729	+ 13,5	1 345 570	- 13,2
Feb	1 013 916	+ 22,7	247 016	- 17,8	447 620	- 5,8	1 708 552	+ 6,7
Mar	962 925	+ 3,6	465 942	+ 54,7	421 614	- 3,4	1 850 481	+ 11,0
Apr	1 138 926	+ 54,1	347 885	+ 67,4	519 452	+ 37,6	2 006 263	+ 51,5
May*	1 105 380	+ 10,6	437 175	+ 51,1	926 607	+ 85,4	2 469 162	+ 38,1
Jun	1 086 216	+ 20,5	489 867	+ 63,3	540 001	+ 20,7	2 116 084	+ 28,4

^{1/} The annual percentage change is the change in the actual values of building plans passed of the relevant year compared with the actual values of building plans passed of the previous year expressed as a percentage.

^{2/} The monthly percentage change is the change in the actual values of building plans passed of the relevant month compared with the actual values of building plans passed of the same month in the previous year expressed as a percentage.

Table 2 - Seasonally adjusted values and percentage change of building plans passed at current prices according to type of building

Year and month ^{1/}	Residential buildings		Non-residential buildings		Additions and alterations		Total	
	R'000	Percentage change	R'000	Percentage change	R'000	Percentage change	R'000	Percentage change
2000 Jan	632 121	- 10,2	249 563	- 18,0	485 814	+ 15,2	1 367 499	- 4,4
Feb	778 138	+ 23,1	583 489	+ 133,8	447 134	- 8,0	1 808 762	+ 32,3
Mar	699 999	- 10,0	334 004	- 42,8	476 118	+ 6,5	1 510 121	- 16,5
Apr	703 181	+ 0,5	311 146	- 6,8	442 673	- 7,0	1 457 000	- 3,5
May	802 590	+ 14,1	532 017	+ 71,0	452 333	+ 2,2	1 786 939	+ 22,6
Jun	808 323	+ 0,7	305 241	- 42,6	507 381	+ 12,2	1 620 945	- 9,3
Jul	833 225	+ 3,1	385 008	+ 26,1	496 759	- 2,1	1 714 992	+ 5,8
Aug	893 619	+ 7,2	350 450	- 9,0	465 701	- 6,3	1 709 770	- 0,3
Sep	806 162	- 9,8	340 447	- 2,9	424 142	- 8,9	1 570 751	- 8,1
Oct	772 285	- 4,2	466 080	+ 36,9	474 860	+ 12,0	1 713 225	+ 9,1
Nov	859 687	+ 11,3	397 648	- 14,7	426 446	- 10,2	1 683 781	- 1,7
Dec	861 023	+ 0,2	976 322	+ 145,5	434 201	+ 1,8	2 271 545	+ 34,9
2001 Jan	920 134	+ 6,9	764 104	- 21,7	459 390	+ 5,8	2 143 628	- 5,6
Feb	816 071	- 11,3	348 325	- 54,4	542 705	+ 18,1	1 707 101	- 20,4
Mar	881 362	+ 8,0	270 562	- 22,3	404 705	- 25,4	1 556 629	- 8,8
Apr	844 657	- 4,2	246 622	- 8,8	438 827	+ 8,4	1 530 106	- 1,7
May	902 432	+ 6,8	257 980	+ 4,6	472 318	+ 7,6	1 632 731	+ 6,7
Jun	848 582	- 6,0	274 348	+ 6,3	421 605	- 10,7	1 544 536	- 5,4
Jul	819 625	- 3,4	281 841	+ 2,7	389 115	- 7,7	1 490 581	- 3,5
Aug	801 079	- 2,3	242 164	- 14,1	458 205	+ 17,8	1 501 448	+ 0,7
Sep	939 003	+ 17,2	292 081	+ 20,6	477 595	+ 4,2	1 708 679	+ 13,8
Oct	1 015 626	+ 8,2	179 568	- 38,5	479 387	+ 0,4	1 674 580	- 2,0
Nov	918 174	- 9,6	255 688	+ 42,4	501 449	+ 4,6	1 675 311	+ 0,0
Dec	917 730	+ 0,0	197 418	- 22,8	496 016	- 1,1	1 611 164	- 3,8
2002 Jan	987 249	+ 7,6	276 624	+ 40,1	513 367	+ 3,5	1 777 240	+ 10,3
Feb	992 098	+ 0,5	286 929	+ 3,7	515 450	+ 0,4	1 794 477	+ 1,0
Mar	924 161	- 6,8	413 131	+ 44,0	393 222	- 23,7	1 730 513	- 3,6
Apr	1 318 973	+ 42,7	420 466	+ 1,8	606 021	+ 54,1	2 345 460	+ 35,5
May	986 574	- 25,2	381 264	- 9,3	867 959	+ 43,2	2 235 796	- 4,7
Jun	1 021 514	+ 3,5	453 826	+ 19,0	505 612	- 41,7	1 980 952	- 11,4

^{1/} The percentage change is the change in the seasonally adjusted values of building plans passed of the relevant month compared with the seasonally adjusted values of building plans passed of the previous month expressed as a percentage.

Table 3 - Actual values and percentage change of building plans passed at constant 2000 prices according to type of building

Year ^{1/} and month ^{2/}	Residential buildings		Non-residential buildings		Additions and alterations		Total	
	R'000	Percentage change	R'000	Percentage change	R'000	Percentage change	R'000	Percentage change
2000 Jan	508 050	- 13,2	169 696	- 32,5	378 464	+ 28,9	1 056 210	- 6,6
Feb	808 271	+ 46,0	537 514	+ 30,1	411 629	+ 10,6	1 757 414	+ 31,2
Mar	765 016	+ 9,7	367 725	- 75,8	527 808	+ 6,0	1 660 549	- 38,8
Apr	636 554	+ 15,4	275 001	- 29,4	387 728	+ 13,0	1 299 283	+ 1,2
May	881 014	+ 60,8	577 898	+ 103,0	476 397	+ 13,8	1 935 309	+ 54,7
Jun	855 721	- 1,2	337 336	- 22,0	533 880	+ 27,8	1 726 937	+ 0,6
Jul	903 543	+ 37,5	482 258	+ 1,5	547 196	+ 26,3	1 932 997	+ 23,5
Aug	917 903	+ 41,0	348 952	- 13,0	486 305	+ 13,4	1 753 160	+ 18,4
Sep	813 029	+ 31,7	348 531	+ 10,9	458 049	- 8,0	1 619 609	+ 13,3
Oct	897 561	+ 31,5	482 746	+ 42,9	528 463	+ 17,9	1 908 770	+ 29,9
Nov	891 175	+ 22,3	480 669	- 33,1	490 896	- 10,8	1 862 740	- 6,7
Dec	589 065	+ 16,7	684 558	+ 197,3	308 878	- 4,1	1 582 501	+ 49,7
Total	9 466 902	+ 23,9	5 092 884	- 11,7	5 535 693	+ 10,2	20 095 479	+ 9,0
2001 Jan	692 606	+ 36,3	458 683	+ 170,3	338 322	- 10,6	1 489 611	+ 41,0
Feb	791 011	- 2,1	287 480	- 46,5	454 500	+ 10,4	1 532 991	- 12,8
Mar	884 107	+ 15,6	286 535	- 22,1	415 457	- 21,3	1 586 099	- 4,5
Apr	699 014	+ 9,8	196 664	- 28,5	357 023	- 7,9	1 252 701	- 3,6
May	939 310	+ 6,6	271 927	- 52,9	469 617	- 1,4	1 680 854	- 13,1
Jun	845 638	- 1,2	281 344	- 16,6	419 538	- 21,4	1 546 520	- 10,4
Jul	831 607	- 8,0	342 307	- 29,0	398 754	- 27,1	1 572 668	- 18,6
Aug	778 429	- 15,2	228 925	- 34,4	449 612	- 7,5	1 456 966	- 16,9
Sep	893 118	+ 9,9	281 940	- 19,1	488 953	+ 6,7	1 664 011	+ 2,7
Oct	1 106 804	+ 23,3	171 904	- 64,4	502 270	- 5,0	1 780 978	- 6,7
Nov	896 622	+ 0,6	292 094	- 39,2	547 849	+ 11,6	1 736 565	- 6,8
Dec	594 885	+ 1,0	128 539	- 81,2	327 334	+ 6,0	1 050 758	- 33,6
Total	9 953 151	+ 5,1	3 228 342	- 36,6	5 169 229	- 6,6	18 350 722	- 8,7
2002 Jan	695 035	+ 0,4	150 221	- 67,2	357 220	+ 5,6	1 202 476	- 19,3
Feb	889 400	+ 12,4	216 681	- 24,6	392 649	- 13,6	1 498 730	- 2,2
Mar	838 055	- 5,2	405 520	+ 41,5	366 940	- 11,7	1 610 515	+ 1,5
Apr	977 619	+ 39,9	298 614	+ 51,8	445 882	+ 24,9	1 722 115	+ 37,5
May*	935 178	- 0,4	369 860	+ 36,0	783 931	+ 66,9	2 088 969	+ 24,3
Jun	911 255	+ 7,8	410 962	+ 46,1	453 021	+ 8,0	1 775 238	+ 14,8

^{1/} The annual percentage change is the change in the actual values of building plans passed of the relevant year compared with the actual values of building plans passed of the previous year expressed as a percentage.

^{2/} The monthly percentage change is the change in the actual values of building plans passed of the relevant month compared with the actual values of building plans passed of the same month in the previous year expressed as a percentage.

Table 4 - Seasonally adjusted values and percentage change of building plans passed at constant 2000 prices according to type of building

Year and month ^{1/}	Residential buildings		Non-residential buildings		Additions and alterations		Total	
	R'000	Percentage change	R'000	Percentage change	R'000	Percentage change	R'000	Percentage change
2000 Jan	654 259	- 8,7	257 778	- 17,0	501 135	+ 25,5	1 413 171	- 2,9
Feb	805 454	+ 23,1	599 800	+ 132,7	461 530	- 7,9	1 866 784	+ 32,1
Mar	713 504	- 11,4	341 393	- 43,1	485 643	+ 5,2	1 540 539	- 17,5
Apr	712 514	- 0,1	315 669	- 7,5	449 549	- 7,4	1 477 732	- 4,1
May	810 446	+ 13,7	537 937	+ 70,4	457 594	+ 1,8	1 805 977	+ 22,2
Jun	810 022	- 0,1	306 721	- 43,0	509 742	+ 11,4	1 626 485	- 9,9
Jul	830 229	+ 2,5	384 234	+ 25,3	495 221	- 2,8	1 709 684	+ 5,1
Aug	883 607	+ 6,4	346 830	- 9,7	460 957	- 6,9	1 691 394	- 1,1
Sep	793 438	- 10,2	335 228	- 3,3	417 675	- 9,4	1 546 341	- 8,6
Oct	756 341	- 4,7	456 668	+ 36,2	465 105	+ 11,4	1 678 113	+ 8,5
Nov	836 484	+ 10,6	384 859	- 15,7	414 218	- 10,9	1 635 561	- 2,5
Dec	832 687	- 0,5	947 345	+ 146,2	418 809	+ 1,1	2 198 841	+ 34,4
2001 Jan	883 496	+ 6,1	732 496	- 22,7	439 407	+ 4,9	2 055 400	- 6,5
Feb	783 785	- 11,3	332 001	- 54,7	520 009	+ 18,3	1 635 795	- 20,4
Mar	835 573	+ 6,6	256 955	- 22,6	383 975	- 26,2	1 476 503	- 9,7
Apr	798 240	- 4,5	233 483	- 9,1	416 051	+ 8,4	1 447 774	- 1,9
May	850 680	+ 6,6	243 666	+ 4,4	445 942	+ 7,2	1 540 289	+ 6,4
Jun	796 013	- 6,4	258 202	+ 6,0	396 535	- 11,1	1 450 750	- 5,8
Jul	765 714	- 3,8	263 713	+ 2,1	363 704	- 8,3	1 393 130	- 4,0
Aug	747 075	- 2,4	226 022	- 14,3	427 651	+ 17,6	1 400 747	+ 0,5
Sep	873 341	+ 16,9	271 764	+ 20,2	444 305	+ 3,9	1 589 410	+ 13,5
Oct	939 114	+ 7,5	166 099	- 38,9	443 161	- 0,3	1 548 374	- 2,6
Nov	843 181	- 10,2	233 376	+ 40,5	459 630	+ 3,7	1 536 187	- 0,8
Dec	836 316	- 0,8	180 560	- 22,6	451 116	- 1,9	1 467 991	- 4,4
2002 Jan	881 386	+ 5,4	246 745	+ 36,7	456 664	+ 1,2	1 584 795	+ 8,0
Feb	873 125	- 0,9	250 570	+ 1,6	452 736	- 0,9	1 576 431	- 0,5
Mar	801 761	- 8,2	358 833	+ 43,2	341 373	- 24,6	1 501 966	- 4,7
Apr	1 131 082	+ 41,1	361 235	+ 0,7	521 441	+ 52,7	2 013 759	+ 34,1
May	837 262	- 26,0	324 352	- 10,2	737 494	+ 41,4	1 899 108	- 5,7
Jun	857 412	+ 2,4	382 279	+ 17,9	425 565	- 42,3	1 665 255	- 12,3

^{1/} The percentage change is the change in the seasonally adjusted values of building plans passed of the relevant month compared with the seasonally adjusted values of building plans passed of the previous month expressed as a percentage.

Table 5 - Actual values and percentage change of buildings completed at current prices according to type of building

Year ^{1/} and month ^{2/}	Residential buildings		Non-residential buildings		Additions and alterations		Total	
	R'000	Percentage change	R'000	Percentage change	R'000	Percentage change	R'000	Percentage change
2000 Jan	299 212	- 4,7	195 988	- 0,6	183 959	- 4,7	679 159	- 3,5
Feb	353 141	- 11,0	205 549	- 4,3	221 978	- 9,3	780 668	- 8,8
Mar	419 416	- 3,0	212 379	- 13,7	268 745	+ 16,5	900 540	- 1,0
Apr	364 713	- 3,5	224 048	+ 23,4	188 808	- 5,8	777 569	+ 2,3
May	473 124	+ 21,0	390 533	+ 99,6	293 343	+ 64,1	1 157 000	+ 51,2
Jun	362 558	- 13,7	174 728	- 16,2	170 986	+ 11,2	708 272	- 9,5
Jul	407 406	- 15,3	472 668	+ 79,0	220 828	- 18,9	1 100 902	+ 8,2
Aug	449 691	- 2,4	285 994	+ 39,6	211 008	- 17,5	946 693	+ 2,7
Sep	510 979	+ 3,6	270 539	+ 37,2	199 622	- 10,6	981 140	+ 7,4
Oct	462 270	+ 10,2	195 491	- 4,0	238 257	+ 3,8	896 018	+ 5,1
Nov	555 802	+ 20,5	186 442	- 54,5	255 900	+ 21,7	998 144	- 7,7
Dec	383 114	+ 9,6	316 801	+ 74,5	149 622	+ 2,2	849 537	+ 25,4
Total	5 041 426	+ 0,9	3 131 160	+ 15,7	2 603 056	+ 2,5	10 775 642	+ 5,2
2001 Jan	643 047	+ 114,9	238 434	+ 21,7	201 057	+ 9,3	1 082 538	+ 59,4
Feb	428 803	+ 21,4	285 619	+ 39,0	244 636	+ 10,2	959 058	+ 22,9
Mar	489 687	+ 16,8	159 637	- 24,8	286 396	+ 6,6	935 720	+ 3,9
Apr	366 061	+ 0,4	169 796	- 24,2	185 541	- 1,7	721 398	- 7,2
May	447 895	- 5,3	300 533	- 23,0	295 847	+ 0,9	1 044 275	- 9,7
Jun	539 545	+ 48,8	338 853	+ 93,9	294 854	+ 72,4	1 173 252	+ 65,6
Jul	396 717	- 2,6	121 617	- 74,3	232 836	+ 5,4	751 170	- 31,8
Aug	431 845	- 4,0	117 368	- 59,0	214 644	+ 1,7	763 857	- 19,3
Sep*	461 515	- 9,7	1 417 979	+ 424,1	169 974	- 14,9	2 049 468	+ 108,9
Oct	667 250	+ 44,3	285 644	+ 46,1	237 138	- 0,5	1 190 032	+ 32,8
Nov	616 443	+ 10,9	211 109	+ 13,2	288 778	+ 12,8	1 116 330	+ 11,8
Dec	469 410	+ 22,5	173 587	- 45,2	124 610	- 16,7	767 607	- 9,6
Total	5 958 218	+ 18,2	3 820 176	+ 22,0	2 776 311	+ 6,7	12 554 705	+ 16,5
2002 Jan	579 544	- 9,9	137 089	- 42,5	174 833	- 13,0	891 466	- 17,7
Feb	487 783	+ 13,8	138 037	- 51,7	198 195	- 19,0	824 015	- 14,1
Mar	699 202	+ 42,8	169 849	+ 6,4	174 052	- 39,2	1 043 103	+ 11,5
Apr	641 454	+ 75,2	248 263	+ 46,2	381 482	+ 105,6	1 271 199	+ 76,2
May*	671 871	+ 50,0	293 306	- 2,4	298 168	+ 0,8	1 263 345	+ 21,0
Jun	576 813	+ 6,9	206 136	- 39,2	248 350	- 15,8	1 031 299	- 12,1

^{1/} The annual percentage change is the change in the actual values of buildings completed of the relevant year compared with the actual values of buildings completed of the previous year expressed as a percentage.

^{2/} The monthly percentage change is the change in the actual values of buildings completed of the relevant month compared with the actual values of buildings completed of the same month in the previous year expressed as a percentage.

Table 6 - Seasonally adjusted values and percentage change of buildings completed at current prices according to type of building

Year and month ^{1/}	Residential buildings		Non-residential buildings		Additions and alterations		Total	
	R'000	Percentage change	R'000	Percentage change	R'000	Percentage change	R'000	Percentage change
2000 Jan	364 183	- 9,1	243 717	+ 32,2	208 191	- 6,6	816 091	+ 1,0
Feb	397 046	+ 9,0	233 470	- 4,2	207 065	- 0,5	837 581	+ 2,6
Mar	397 294	+ 0,1	263 479	+ 12,9	223 731	+ 8,0	884 504	+ 5,6
Apr	401 211	+ 1,0	260 979	- 0,9	209 067	- 6,6	871 257	- 1,5
May	445 933	+ 11,1	358 592	+ 37,4	264 501	+ 26,5	1 069 026	+ 22,7
Jun	378 003	- 15,2	179 286	- 50,0	186 814	- 29,4	744 103	- 30,4
Jul	389 064	+ 2,9	340 982	+ 90,2	194 962	+ 4,4	925 008	+ 24,3
Aug	433 598	+ 11,4	269 797	- 20,9	207 656	+ 6,5	911 052	- 1,5
Sep	458 787	+ 5,8	218 474	- 19,0	203 863	- 1,8	881 123	- 3,3
Oct	444 181	- 3,2	182 931	- 16,3	220 150	+ 8,0	847 262	- 3,8
Nov	471 439	+ 6,1	208 116	+ 13,8	242 919	+ 10,3	922 474	+ 8,9
Dec	440 513	- 6,6	340 593	+ 63,7	228 960	- 5,7	1 010 066	+ 9,5
2001 Jan	762 165	+ 73,0	306 286	- 10,1	230 179	+ 0,5	1 298 630	+ 28,6
Feb	485 038	- 36,4	332 256	+ 8,5	234 412	+ 1,8	1 051 705	- 19,0
Mar	456 492	- 5,9	205 518	- 38,1	233 191	- 0,5	895 201	- 14,9
Apr	401 330	- 12,1	198 954	- 3,2	207 159	- 11,2	807 442	- 9,8
May	424 103	+ 5,7	254 109	+ 27,7	258 176	+ 24,6	936 387	+ 16,0
Jun	574 574	+ 35,5	351 248	+ 38,2	325 169	+ 25,9	1 250 991	+ 33,6
Jul	381 630	- 33,6	83 941	- 76,1	206 640	- 36,5	672 211	- 46,3
Aug	416 748	+ 9,2	109 018	+ 29,9	209 817	+ 1,5	735 583	+ 9,4
Sep	409 694	- 1,7	1 143 427	+ 948,8	175 009	- 16,6	1 728 130	+ 134,9
Oct	641 702	+ 56,6	278 193	- 75,7	218 372	+ 24,8	1 138 266	- 34,1
Nov	524 855	- 18,2	242 712	- 12,8	275 912	+ 26,3	1 043 479	- 8,3
Dec	542 439	+ 3,4	192 742	- 20,6	190 682	- 30,9	925 863	- 11,3
2002 Jan	678 906	+ 25,2	176 122	- 8,6	201 636	+ 5,7	1 056 663	+ 14,1
Feb	551 616	- 18,7	163 246	- 7,3	191 980	- 4,8	906 842	- 14,2
Mar	649 834	+ 17,8	218 701	+ 34,0	140 604	- 26,8	1 009 139	+ 11,3
Apr	702 561	+ 8,1	289 402	+ 32,3	426 650	+ 203,4	1 418 614	+ 40,6
May	632 361	- 10,0	236 457	- 18,3	255 546	- 40,1	1 124 364	- 20,7
Jun	627 140	- 0,8	218 825	- 7,5	276 917	+ 8,4	1 122 882	- 0,1

^{1/} The percentage change is the change in the seasonally adjusted values of buildings completed of the relevant month compared with the seasonally adjusted values of buildings completed of the previous month expressed as a percentage.

Table 7 - Actual values and percentage change of buildings completed at constant 2000 prices according to type of building

Year ^{1/} and month ^{2/}	Residential buildings		Non-residential buildings		Additions and alterations		Total	
	R'000	Percentage change	R'000	Percentage change	R'000	Percentage change	R'000	Percentage change
2000 Jan	310 456	- 10,1	214 195	- 5,7	194 666	- 10,8	719 317	- 9,0
Feb	365 724	- 28,3	222 215	- 13,2	232 438	- 29,2	820 377	- 24,7
Mar	433 235	- 33,7	227 874	- 23,9	280 820	- 24,7	941 929	- 28,7
Apr	375 641	- 24,1	239 112	+ 3,6	196 266	- 12,8	811 019	- 14,3
May	486 811	- 26,2	415 461	- 3,9	304 614	- 1,9	1 206 886	- 14,6
Jun	371 504	- 31,4	185 683	- 9,6	176 821	+ 14,5	734 008	- 16,3
Jul	421 432	- 31,4	500 178	- 28,2	227 658	- 34,6	1 149 268	- 35,2
Aug	463 689	- 39,6	299 470	- 7,0	217 759	- 29,6	980 918	- 27,6
Sep	523 538	- 36,2	282 695	- 3,1	205 372	- 18,7	1 011 605	- 26,7
Oct	470 304	- 40,4	203 213	- 5,6	244 617	- 20,5	918 134	- 21,1
Nov	561 785	- 29,4	193 605	- 52,9	262 193	- 13,0	1 017 583	- 38,0
Dec	386 117	- 35,5	327 612	+ 6,6	152 988	+ 25,2	866 717	- 0,2
Total	5 170 236	- 3,1	3 311 313	+ 8,4	2 696 212	- 3,1	11 177 761	+ 0,0
2001 Jan	654 850	+ 110,9	245 808	+ 14,8	208 134	+ 6,9	1 108 792	+ 54,1
Feb	427 706	+ 16,9	294 756	+ 32,6	252 202	+ 8,5	974 664	+ 18,8
Mar	487 529	+ 12,5	164 236	- 27,9	293 138	+ 4,4	944 903	+ 0,3
Apr	361 669	- 3,7	174 329	- 27,1	188 175	- 4,1	724 173	- 10,7
May	438 090	- 10,0	307 923	- 25,9	297 933	- 2,2	1 043 946	- 13,5
Jun	528 083	+ 42,1	346 475	+ 86,6	295 741	+ 67,3	1 170 299	+ 59,4
Jul	383 132	- 9,1	125 898	- 74,8	231 678	+ 1,8	740 708	- 35,5
Aug	415 640	- 10,4	120 998	- 59,6	211 889	- 2,7	748 527	- 23,7
Sep*	442 133	- 15,5	1 451 360	+ 413,4	167 133	- 18,6	2 060 626	+ 103,7
Oct	638 358	+ 35,7	289 700	+ 42,6	232 261	- 5,1	1 160 319	+ 26,4
Nov	586 177	+ 4,3	212 597	+ 9,8	281 460	+ 7,3	1 080 234	+ 6,2
Dec	443 262	+ 14,8	174 109	- 46,9	121 098	- 20,8	738 469	- 14,8
Total	5 806 629	+ 12,3	3 908 189	+ 18,0	2 780 842	+ 3,1	12 495 660	+ 11,8
2002 Jan	545 960	- 16,6	136 407	- 44,5	167 947	- 19,3	850 314	- 23,3
Feb	458 165	+ 7,1	136 266	- 53,8	189 660	- 24,8	784 091	- 19,6
Mar	656 718	+ 34,7	167 010	+ 1,7	165 606	- 43,5	989 334	+ 4,7
Apr	596 575	+ 65,0	243 157	+ 39,5	360 910	+ 91,8	1 200 642	+ 65,8
May*	622 362	+ 42,1	285 873	- 7,2	280 233	- 5,9	1 188 468	+ 13,8
Jun	530 538	+ 0,5	200 327	- 42,2	232 974	- 21,2	963 839	- 17,6

^{1/} The annual percentage change is the change in the actual values of buildings completed of the relevant year compared with the actual values of buildings completed of the previous year expressed as a percentage.

^{2/} The monthly percentage change is the change in the actual values of buildings completed of the relevant month compared with the actual values of buildings completed of the same month in the previous year expressed as a percentage.

Table 8 - Seasonally adjusted values and percentage change of buildings completed at constant 2000 prices according to type of building

Year and month ^{1/}	Residential buildings		Non-residential buildings		Additions and alterations		Total	
	R'000	Percentage change	R'000	Percentage change	R'000	Percentage change	R'000	Percentage change
2000 Jan	376 486	- 9,6	266 751	+ 30,9	219 700	- 7,2	862 936	+ 0,7
Feb	410 068	+ 8,9	253 026	- 5,1	216 656	- 1,4	879 750	+ 1,9
Mar	408 782	- 0,3	283 172	+ 11,9	233 471	+ 7,8	925 425	+ 5,2
Apr	412 789	+ 1,0	278 650	- 1,6	217 115	- 7,0	908 554	- 1,8
May	464 641	+ 12,6	381 274	+ 36,8	274 188	+ 26,3	1 120 103	+ 23,3
Jun	388 927	- 16,3	190 014	- 50,2	192 363	- 29,8	771 304	- 31,1
Jul	400 647	+ 3,0	359 424	+ 89,2	201 808	+ 4,9	961 879	+ 24,7
Aug	452 320	+ 12,9	283 742	- 21,1	216 991	+ 7,5	953 052	- 0,9
Sep	469 805	+ 3,9	227 903	- 19,7	208 480	- 3,9	906 187	- 4,9
Oct	451 674	- 3,9	190 003	- 16,6	227 030	+ 8,9	868 708	- 4,1
Nov	475 806	+ 5,3	216 619	+ 14,0	248 256	+ 9,3	940 681	+ 8,3
Dec	441 724	- 7,2	351 927	+ 62,5	233 992	- 5,7	1 027 642	+ 9,2
2001 Jan	771 795	+ 74,7	316 207	- 10,1	237 577	+ 1,5	1 325 578	+ 29,0
Feb	479 723	- 37,8	343 647	+ 8,7	241 203	+ 1,5	1 064 573	- 19,7
Mar	450 479	- 6,1	211 894	- 38,3	238 231	- 1,2	900 604	- 15,4
Apr	395 849	- 12,1	204 488	- 3,5	209 859	- 11,9	810 195	- 10,0
May	419 805	+ 6,1	260 246	+ 27,3	259 596	+ 23,7	939 647	+ 16,0
Jun	569 120	+ 35,6	358 282	+ 37,7	324 786	+ 25,1	1 252 189	+ 33,3
Jul	367 666	- 35,4	86 562	- 75,8	206 476	- 36,4	660 704	- 47,2
Aug	405 541	+ 10,3	112 911	+ 30,4	209 877	+ 1,6	728 329	+ 10,2
Sep	392 330	- 3,3	1 168 301	+ 934,7	170 823	- 18,6	1 731 453	+ 137,7
Oct	613 071	+ 56,3	281 970	- 75,9	214 894	+ 25,8	1 109 935	- 35,9
Nov	498 829	- 18,6	244 910	- 13,1	268 626	+ 25,0	1 012 366	- 8,8
Dec	509 493	+ 2,1	193 109	- 21,2	185 231	- 31,0	887 833	- 12,3
2002 Jan	635 665	+ 24,8	175 447	- 9,1	193 023	+ 4,2	1 004 134	+ 13,1
Feb	512 917	- 19,3	161 405	- 8,0	183 206	- 5,1	857 528	- 14,6
Mar	604 069	+ 17,8	215 511	+ 33,5	133 487	- 27,1	953 067	+ 11,1
Apr	652 657	+ 8,0	283 835	+ 31,7	403 072	+ 202,0	1 339 564	+ 40,6
May	591 707	- 9,3	230 435	- 18,8	239 930	- 40,5	1 062 071	- 20,7
Jun	586 748	- 0,8	212 251	- 7,9	258 855	+ 7,9	1 057 853	- 0,4

^{1/} The percentage change is the change in the seasonally adjusted values of buildings completed of the relevant month compared with the seasonally adjusted values of buildings completed of the previous month expressed as a percentage.

Table 9 - Building plans passed according to type of building: Total RSA

Type of building	June 2001 *	May 2002 *	June 2002	January 2001 to June 2001	January 2002 to June 2002	Percentage change between January 2001 to June 2001 and January 2002 to June 2002
Residential buildings						
Dwelling-houses smaller than 80 square metres						
Number of dwelling-houses	3 825	3 913	3 707	21 759	18 807	- 13,6
Total square metres	154 096	150 274	139 809	839 993	723 297	- 13,9
Total value at current prices (R'000)	134 596	153 474	138 354	766 766	733 983	- 4,3
Dwelling-houses equal to or larger than 80 square metres						
Number of dwelling-houses	1 862	2 113	2 063	10 677	11 552	+ 8,2
Total square metres	411 355	485 814	478 910	2 298 873	2 591 483	+ 12,7
Total value at current prices (R'000)	589 213	724 194	716 907	3 236 971	3 884 248	+ 20,0
Flats and townhouses						
Number of flats and townhouses	1 065	1 322	1 080	6 004	6 937	+ 15,5
Total square metres	113 920	147 684	114 709	621 771	806 576	+ 29,7
Total value at current prices (R'000)	166 681	210 970	189 730	951 634	1 271 934	+ 33,7
Other residential buildings ^{1/}						
Total square metres	12 113	12 950	16 379	67 920	85 769	+ 26,3
Total value at current prices (R'000)	10 960	16 742	41 225	161 169	194 942	+ 21,0
Total value of residential buildings at current prices (R'000)	901 450	1 105 380	1 086 216	5 116 540	6 085 107	+ 18,9
Non-residential buildings						
Office and banking space						
Total square metres	70 060	22 804	24 554	396 990	222 297	- 44,0
Total value at current prices (R'000)	131 754	45 008	44 691	718 775	446 962	- 37,8
Shopping space						
Total square metres	37 673	37 992	30 311	253 014	186 229	- 26,4
Total value at current prices (R'000)	51 019	64 634	44 810	354 352	295 422	- 16,6
Industrial and warehouse space						
Total square metres	68 692	147 200	181 179	412 292	606 222	+ 47,0
Total value at current prices (R'000)	89 728	288 593	330 828	525 498	1 019 076	+ 93,9
Other non-residential space ^{2/}						
Total square metres	22 266	24 554	37 736	206 677	261 437	+ 26,5
Total value at current prices (R'000)	27 412	38 940	69 538	277 546	394 522	+ 42,1
Total value of non-residential buildings at current prices (R'000)	299 913	437 175	489 867	1 876 171	2 155 982	+ 14,9
Additions and alterations						
Dwelling-houses						
Total square metres	256 320	287 136	296 893	1 420 681	1 573 703	+ 10,8
Total value at current prices (R'000)	318 687	396 466	393 102	1 766 743	2 108 947	+ 19,4
Other buildings ^{3/}						
Total square metres	62 881	218 918	91 814	454 563	555 286	+ 22,2
Total value at current prices (R'000)	128 541	530 141	146 899	821 322	1 146 076	+ 39,5
Total value of additions and alterations at current prices (R'000)	447 228	926 607	540 001	2 588 065	3 255 023	+ 25,8
Total value of building plans passed at current prices (R'000)	1 648 591	2 469 162	2 116 084	9 580 776	11 496 112	+ 20,0

1/ Other residential buildings include institutions for the disabled, boarding houses, old people's homes, hostels, hotels, motels, guest houses, holiday chalets, entertainment centres, bed-and-breakfast accommodation and casinos.

2/ Other non-residential space includes churches, sport and recreation clubs, schools, crèches, hospitals and all other non-residential space.

3/ Other buildings include additions and alterations to other residential buildings, non-residential buildings and internal alterations.

Table 10 - Building plans passed according to type of building and province: Western Cape

Type of building	June 2001 *	May 2002	June 2002	January 2001 to June 2001	January 2002 to June 2002	Percentage change between January 2001 to June 2001 and January 2002 to June 2002
Residential buildings						
Dwelling-houses smaller than 80 square metres						
Number of dwelling-houses	842	1 894	1 627	4 133	6 719	+ 62,6
Total square metres	36 458	64 651	54 138	164 117	227 802	+ 38,8
Total value at current prices (R'000)	45 345	74 131	59 614	195 812	258 995	+ 32,3
Dwelling-houses equal to or larger than 80 square metres						
Number of dwelling-houses	659	741	878	3 426	4 160	+ 21,4
Total square metres	134 098	163 867	196 204	719 801	894 781	+ 24,3
Total value at current prices (R'000)	204 300	265 608	304 808	1 059 308	1 411 310	+ 33,2
Flats and townhouses						
Number of flats and townhouses	176	438	127	1 484	1 722	+ 16,0
Total square metres	16 297	35 392	22 109	137 899	170 856	+ 23,9
Total value at current prices (R'000)	23 499	57 100	36 053	209 671	282 256	+ 34,6
Other residential buildings ^{1/}						
Total square metres	4 528	6 214	14 470	31 667	32 706	+ 3,3
Total value at current prices (R'000)	6 332	6 548	38 482	71 763	65 169	- 9,2
Total value of residential buildings at current prices (R'000)	279 476	403 387	438 957	1 536 554	2 017 730	+ 31,3
Non-residential buildings						
Office and banking space						
Total square metres	16 094	11 496	8 386	96 734	43 903	- 54,6
Total value at current prices (R'000)	26 025	21 634	15 255	161 209	74 479	- 53,8
Shopping space						
Total square metres	6 893	740	14 548	112 788	30 285	- 73,1
Total value at current prices (R'000)	7 656	1 409	17 321	144 022	37 726	- 73,8
Industrial and warehouse space						
Total square metres	20 761	24 943	31 038	114 206	114 931	+ 0,6
Total value at current prices (R'000)	19 951	30 085	41 282	109 146	138 705	+ 27,1
Other non-residential space ^{2/}						
Total square metres	6 552	6 522	9 283	70 921	37 624	- 46,9
Total value at current prices (R'000)	7 175	9 577	16 081	83 939	56 850	- 32,3
Total value of non-residential buildings at current prices (R'000)	60 807	62 705	89 939	498 316	307 760	- 38,2
Additions and alterations						
Dwelling-houses						
Total square metres	76 242	93 571	124 438	443 880	509 846	+ 14,9
Total value at current prices (R'000)	94 796	130 026	152 056	560 988	670 141	+ 19,5
Other buildings ^{3/}						
Total square metres	21 560	50 741	22 538	129 512	154 387	+ 19,2
Total value at current prices (R'000)	44 549	113 191	40 120	223 931	309 248	+ 38,1
Total value of additions and alterations at current prices (R'000)	139 345	243 217	192 176	784 919	979 389	+ 24,8
Total value of building plans passed at current prices (R'000)	479 628	709 309	721 072	2 819 789	3 304 879	+ 17,2

1/ Other residential buildings include institutions for the disabled, boarding houses, old people's homes, hostels, hotels, motels, guest houses, holiday chalets, entertainment centres, bed-and-breakfast accommodation and casinos.

2/ Other non-residential space includes churches, sport and recreation clubs, schools, crèches, hospitals and all other non-residential space.

3/ Other buildings include additions and alterations to other residential buildings, non-residential buildings and internal alterations.

Table 11 - Building plans passed according to type of building and province: Eastern Cape

Type of building	June 2001	May 2002	June 2002	January 2001 to June 2001	January 2002 to June 2002	Percentage change between January 2001 to June 2001 and January 2002 to June 2002
Residential buildings						
Dwelling-houses smaller than 80 square metres						
Number of dwelling-houses	267	527	665	1 355	2 795	+ 106,3
Total square metres	12 602	22 058	27 884	61 579	119 535	+ 94,1
Total value at current prices (R'000)	15 252	25 361	31 128	78 401	148 356	+ 89,2
Dwelling-houses equal to or larger than 80 square metres						
Number of dwelling-houses	132	121	104	684	663	-3,1
Total square metres	18 692	24 177	22 005	97 052	131 399	+ 35,4
Total value at current prices (R'000)	24 610	33 569	30 724	127 955	180 825	+ 41,3
Flats and townhouses						
Number of flats and townhouses	15	43	22	671	330	-50,8
Total square metres	1 365	5 584	1 996	35 614	27 637	-22,4
Total value at current prices (R'000)	1 825	9 398	2 894	42 568	46 198	+ 8,5
Other residential buildings ^{1/}						
Total square metres	7 144	0	340	25 956	812	-96,9
Total value at current prices (R'000)	4 028	0	443	77 028	1 104	-98,6
Total value of residential buildings at current prices (R'000)	45 715	68 328	65 189	325 952	376 483	+ 15,5
Non-residential buildings						
Office and banking space						
Total square metres	346	448	0	3 548	3 801	+ 7,1
Total value at current prices (R'000)	520	878	0	6 651	5 923	-10,9
Shopping space						
Total square metres	168	6 305	804	7 856	14 252	+ 81,4
Total value at current prices (R'000)	294	12 221	964	11 551	28 256	+ 144,6
Industrial and warehouse space						
Total square metres	3 338	7 794	611	17 785	33 971	+ 91,0
Total value at current prices (R'000)	5 153	12 052	966	19 692	60 902	+ 209,3
Other non-residential space ^{2/}						
Total square metres	1 724	3 580	2 888	6 415	18 611	+ 190,1
Total value at current prices (R'000)	2 776	5 587	5 660	10 278	30 647	+ 198,2
Total value of non-residential buildings at current prices (R'000)	8 743	30 738	7 590	48 172	125 728	+ 161,0
Additions and alterations						
Dwelling-houses						
Total square metres	23 684	25 574	15 513	107 954	113 249	+ 4,9
Total value at current prices (R'000)	31 395	35 935	20 819	139 982	152 625	+ 9,0
Other buildings ^{3/}						
Total square metres	6 728	5 873	6 360	51 756	31 098	-39,9
Total value at current prices (R'000)	8 403	10 227	11 035	74 508	58 493	-21,5
Total value of additions and alterations at current prices (R'000)	39 798	46 162	31 854	214 490	211 118	-1,6
Total value of building plans passed at current prices (R'000)	94 256	145 228	104 633	588 614	713 329	+ 21,2

1/ Other residential buildings include institutions for the disabled, boarding houses, old people's homes, hostels, hotels, motels, guest houses, holiday chalets, entertainment centres, bed-and-breakfast accommodation and casinos.

2/ Other non-residential space includes churches, sport and recreation clubs, schools, crèches, hospitals and all other non-residential space.

3/ Other buildings include additions and alterations to other residential buildings, non-residential buildings and internal alterations.

Table 12 - Building plans passed according to type of building and province: Northern Cape

Type of building	June 2001	May 2002	June 2002	January 2001 to June 2001	January 2002 to June 2002	Percentage change between January 2001 to June 2001 and January 2002 to June 2002
Residential buildings						
Dwelling-houses smaller than 80 square metres						
Number of dwelling-houses	7	8	3	37	34	- 8,1
Total square metres	446	402	139	2 111	1 700	- 19,5
Total value at current prices (R'000)	726	646	239	3 222	2 792	- 13,3
Dwelling-houses equal to or larger than 80 square metres						
Number of dwelling-houses	32	10	10	96	49	- 49,0
Total square metres	3 725	2 518	2 145	16 230	10 432	- 35,7
Total value at current prices (R'000)	5 849	3 962	3 344	20 877	16 026	- 23,2
Flats and townhouses						
Number of flats and townhouses	0	4	0	11	6	- 45,5
Total square metres	0	627	0	1 885	979	- 48,1
Total value at current prices (R'000)	0	1 129	0	2 556	1 763	- 31,0
Other residential buildings ^{1/}						
Total square metres	0	0	0	0	0	..
Total value at current prices (R'000)	0	0	0	0	0	..
Total value of residential buildings at current prices (R'000)	6 575	5 737	3 583	26 655	20 581	- 22,8
Non-residential buildings						
Office and banking space						
Total square metres	0	316	0	191	446	+ 133,5
Total value at current prices (R'000)	0	442	0	124	628	+ 406,5
Shopping space						
Total square metres	0	0	0	206	0	..
Total value at current prices (R'000)	0	0	0	226	0	..
Industrial and warehouse space						
Total square metres	0	448	498	1 092	2 415	+ 121,2
Total value at current prices (R'000)	0	424	697	1 002	3 469	+ 246,2
Other non-residential space ^{2/}						
Total square metres	113	125	797	1 632	1 921	+ 17,7
Total value at current prices (R'000)	181	175	1 753	2 312	4 126	+ 78,5
Total value of non-residential buildings at current prices (R'000)	181	1 041	2 450	3 664	8 223	+ 124,4
Additions and alterations						
Dwelling-houses						
Total square metres	2 840	2 208	2 430	13 875	14 848	+ 7,0
Total value at current prices (R'000)	4 691	3 839	4 302	22 182	25 327	+ 14,2
Other buildings ^{3/}						
Total square metres	903	0	251	3 620	2 417	- 33,2
Total value at current prices (R'000)	1 322	155	768	7 976	6 340	- 20,5
Total value of additions and alterations at current prices (R'000)	6 013	3 994	5 070	30 158	31 667	+ 5,0
Total value of building plans passed at current prices (R'000)	12 769	10 772	11 103	60 477	60 471	+ 0,0

1/ Other residential buildings include institutions for the disabled, boarding houses, old people's homes, hostels, hotels, motels, guest houses, holiday chalets, entertainment centres, bed-and-breakfast accommodation and casinos.

2/ Other non-residential space includes churches, sport and recreation clubs, schools, crèches, hospitals and all other non-residential space.

3/ Other buildings include additions and alterations to other residential buildings, non-residential buildings and internal alterations.

Table 13 - Building plans passed according to type of building and province: Free State

Type of building	June 2001	May 2002	June 2002	January 2001 to June 2001	January 2002 to June 2002	Percentage change between January 2001 to June 2001 and January 2002 to June 2002
Residential buildings						
Dwelling-houses smaller than 80 square metres						
Number of dwelling-houses	325	355	309	1 358	1 223	-9,9
Total square metres	14 288	15 129	12 627	60 890	52 817	-13,3
Total value at current prices (R'000)	7 674	8 616	6 446	33 135	31 789	-4,1
Dwelling-houses equal to or larger than 80 square metres						
Number of dwelling-houses	63	68	73	372	448	+ 20,4
Total square metres	9 923	11 388	12 376	56 245	70 350	+ 25,1
Total value at current prices (R'000)	9 586	13 940	14 874	59 295	84 502	+ 42,5
Flats and townhouses						
Number of flats and townhouses	34	16	114	189	321	+ 69,8
Total square metres	5 547	2 208	10 061	23 793	31 116	+ 30,8
Total value at current prices (R'000)	7 487	3 188	12 227	37 279	43 816	+ 17,5
Other residential buildings ^{1/}						
Total square metres	0	0	0	1 252	2 758	+ 120,3
Total value at current prices (R'000)	0	0	0	1 851	7 105	+ 283,8
Total value of residential buildings at current prices (R'000)	24 747	25 744	33 547	131 560	167 212	+ 27,1
Non-residential buildings						
Office and banking space						
Total square metres	28	0	5 530	13 801	12 914	-6,4
Total value at current prices (R'000)	50	0	7 700	26 600	21 802	-18,0
Shopping space						
Total square metres	0	1 977	1 020	2 996	11 158	+ 272,4
Total value at current prices (R'000)	0	3 483	1 115	3 771	21 508	+ 470,4
Industrial and warehouse space						
Total square metres	580	2 821	131	3 385	8 094	+ 139,1
Total value at current prices (R'000)	600	2 211	180	2 526	6 303	+ 149,5
Other non-residential space ^{2/}						
Total square metres	2 103	0	1 646	5 968	7 728	+ 29,5
Total value at current prices (R'000)	1 892	0	1 458	7 646	9 161	+ 19,8
Total value of non-residential buildings at current prices (R'000)	2 542	5 694	10 453	40 543	58 774	+ 45,0
Additions and alterations						
Dwelling-houses						
Total square metres	7 572	10 352	7 140	45 080	49 816	+ 10,5
Total value at current prices (R'000)	7 165	11 137	7 839	47 217	54 090	+ 14,6
Other buildings ^{3/}						
Total square metres	519	3 665	2 100	7 800	13 410	+ 71,9
Total value at current prices (R'000)	1 335	13 064	3 165	16 946	32 441	+ 91,4
Total value of additions and alterations at current prices (R'000)	8 500	24 201	11 004	64 163	86 531	+ 34,9
Total value of building plans passed at current prices (R'000)	35 789	55 639	55 004	236 266	312 517	+ 32,3

1/ Other residential buildings include institutions for the disabled, boarding houses, old people's homes, hostels, hotels, motels, guest houses, holiday chalets, entertainment centres, bed-and-breakfast accommodation and casinos.

2/ Other non-residential space includes churches, sport and recreation clubs, schools, crèches, hospitals and all other non-residential space.

3/ Other buildings include additions and alterations to other residential buildings, non-residential buildings and internal alterations.

Table 14 - Building plans passed according to type of building and province: KwaZulu-Natal

Type of building	June 2001	May 2002*	June 2002	January 2001 to June 2001	January 2002 to June 2002	Percentage change between January 2001 to June 2001 and January 2002 to June 2002
Residential buildings						
Dwelling-houses smaller than 80 square metres						
Number of dwelling-houses	136	169	371	1 495	1 278	- 14,5
Total square metres	6 888	6 881	13 058	65 447	50 504	- 22,8
Total value at current prices (R'000)	8 025	6 460	9 662	60 075	47 983	- 20,1
Dwelling-houses equal to or larger than 80 square metres						
Number of dwelling-houses	130	174	157	781	865	+ 10,8
Total square metres	28 203	34 432	40 044	171 578	194 307	+ 13,2
Total value at current prices (R'000)	41 594	51 233	69 339	249 978	300 227	+ 20,1
Flats and townhouses						
Number of flats and townhouses	109	35	29	464	415	- 10,6
Total square metres	15 811	5 594	5 103	64 060	62 573	- 2,3
Total value at current prices (R'000)	18 184	8 452	9 443	104 062	104 680	+ 0,6
Other residential buildings ^{1/}						
Total square metres	0	1 226	461	138	31 840	+22 972,5
Total value at current prices (R'000)	0	1 594	600	330	34 015	+10 207,6
Total value of residential buildings at current prices (R'000)	67 803	67 739	89 044	414 445	486 905	+ 17,5
Non-residential buildings						
Office and banking space						
Total square metres	6 306	1 853	5 973	82 042	18 726	- 77,2
Total value at current prices (R'000)	8 333	5 670	16 022	186 021	56 918	- 69,4
Shopping space						
Total square metres	1 064	8 091	3 350	12 815	30 557	+ 138,4
Total value at current prices (R'000)	1 200	18 855	10 000	15 826	57 319	+ 262,2
Industrial and warehouse space						
Total square metres	10 946	56 189	5 637	65 778	97 476	+ 48,2
Total value at current prices (R'000)	11 256	160 065	6 199	69 491	209 092	+ 200,9
Other non-residential space ^{2/}						
Total square metres	5 903	3 473	3 088	29 771	64 501	+ 116,7
Total value at current prices (R'000)	7 123	7 139	3 892	35 423	77 104	+ 117,7
Total value of non-residential buildings at current prices (R'000)	27 912	191 729	36 113	306 761	400 433	+ 30,5
Additions and alterations						
Dwelling-houses						
Total square metres	35 010	40 766	38 311	191 073	205 486	+ 7,5
Total value at current prices (R'000)	39 496	54 321	52 504	228 745	269 000	+ 17,6
Other buildings ^{3/}						
Total square metres	9 894	69 495	19 652	77 078	123 655	+ 60,4
Total value at current prices (R'000)	31 274	242 223	31 823	164 426	340 109	+ 106,8
Total value of additions and alterations at current prices (R'000)	70 770	296 544	84 327	393 171	609 109	+ 54,9
Total value of building plans passed at current prices (R'000)	166 485	556 012	209 484	1 114 377	1 496 447	+ 34,3

1/ Other residential buildings include institutions for the disabled, boarding houses, old people's homes, hostels, hotels, motels, guest houses, holiday chalets, entertainment centres, bed-and-breakfast accommodation and casinos.

2/ Other non-residential space includes churches, sport and recreation clubs, schools, crèches, hospitals and all other non-residential space.

3/ Other buildings include additions and alterations to other residential buildings, non-residential buildings and internal alterations.

Table 15 - Building plans passed according to type of building and province: North West

Type of building	June 2001*	May 2002	June 2002	January 2001 to June 2001	January 2002 to June 2002	Percentage change between January 2001 to June 2001 and January 2002 to June 2002
Residential buildings						
Dwelling-houses smaller than 80 square metres						
Number of dwelling-houses	1 271	25	27	2 921	545	- 81,3
Total square metres	43 588	1 353	1 493	102 277	24 981	- 75,6
Total value at current prices (R'000)	18 737	1 692	1 721	57 944	27 963	- 51,7
Dwelling-houses equal to or larger than 80 square metres						
Number of dwelling-houses	80	126	129	415	612	+ 47,5
Total square metres	14 063	22 535	25 223	71 567	108 317	+ 51,4
Total value at current prices (R'000)	15 297	27 770	27 914	82 338	137 764	+ 67,3
Flats and townhouses						
Number of flats and townhouses	22	292	197	142	534	+ 276,1
Total square metres	2 715	16 163	10 724	17 799	32 822	+ 84,4
Total value at current prices (R'000)	4 300	19 075	24 411	23 289	51 596	+ 121,5
Other residential buildings ^{1/}						
Total square metres	0	0	0	1 989	768	- 61,4
Total value at current prices (R'000)	0	0	0	1 664	781	- 53,1
Total value of residential buildings at current prices (R'000)	38 334	48 537	54 046	165 235	218 104	+ 32,0
Non-residential buildings						
Office and banking space						
Total square metres	340	218	873	3 644	5 552	+ 52,4
Total value at current prices (R'000)	374	180	982	5 999	8 548	+ 42,5
Shopping space						
Total square metres	1 373	4 006	1 099	13 293	13 762	+ 3,5
Total value at current prices (R'000)	1 781	4 810	1 750	16 001	21 118	+ 32,0
Industrial and warehouse space						
Total square metres	1 372	1 861	0	7 322	8 672	+ 18,4
Total value at current prices (R'000)	1 200	2 183	0	7 463	12 098	+ 62,1
Other non-residential space ^{2/}						
Total square metres	101	2 202	5 904	2 694	15 174	+ 463,3
Total value at current prices (R'000)	96	3 422	20 510	2 934	38 696	+ 1 218,9
Total value of non-residential buildings at current prices (R'000)	3 451	10 595	23 242	32 397	80 460	+ 148,4
Additions and alterations						
Dwelling-houses						
Total square metres	4 804	9 168	8 428	34 992	48 334	+ 38,1
Total value at current prices (R'000)	4 902	10 627	9 601	37 195	56 237	+ 51,2
Other buildings ^{3/}						
Total square metres	2 189	3 756	628	11 446	13 187	+ 15,2
Total value at current prices (R'000)	3 199	8 699	1 386	19 015	22 127	+ 16,4
Total value of additions and alterations at current prices (R'000)	8 101	19 326	10 987	56 210	78 364	+ 39,4
Total value of building plans passed at current prices (R'000)	49 886	78 458	88 275	253 842	376 928	+ 48,5

1/ Other residential buildings include institutions for the disabled, boarding houses, old people's homes, hostels, hotels, motels, guest houses, holiday chalets, entertainment centres, bed-and-breakfast accommodation and casinos.

2/ Other non-residential space includes churches, sport and recreation clubs, schools, crèches, hospitals and all other non-residential space.

3/ Other buildings include additions and alterations to other residential buildings, non-residential buildings and internal alterations.

Table 16 - Building plans passed according to type of building and province: Gauteng

Type of building	June 2001 *	May 2002*	June 2002	January 2001 to June 2001	January 2002 to June 2002	Percentage change between January 2001 to June 2001 and January 2002 to June 2002
Residential buildings						
Dwelling-houses smaller than 80 square metres						
Number of dwelling-houses	750	579	565	6 352	4 723	- 25,6
Total square metres	29 843	25 333	22 906	235 473	181 980	- 22,7
Total value at current prices (R'000)	31 154	28 623	19 914	246 783	172 223	- 30,2
Dwelling-houses equal to or larger than 80 square metres						
Number of dwelling-houses	655	710	584	4 269	3 822	- 10,5
Total square metres	181 872	196 963	155 198	1 052 199	1 007 160	- 4,3
Total value at current prices (R'000)	261 662	289 201	229 547	1 489 256	1 520 935	+ 2,1
Flats and townhouses						
Number of flats and townhouses	631	482	563	2 758	3 340	+ 21,1
Total square metres	64 631	80 311	61 429	313 010	446 117	+ 42,5
Total value at current prices (R'000)	100 862	110 576	99 976	497 496	692 862	+ 39,3
Other residential buildings ^{1/}						
Total square metres	0	509	0	6 285	3 968	- 36,9
Total value at current prices (R'000)	0	970	0	7 837	6 253	- 20,2
Total value of residential buildings at current prices (R'000)	393 678	429 370	349 437	2 241 372	2 392 273	+ 6,7
Non-residential buildings						
Office and banking space						
Total square metres	44 437	4 830	3 792	192 483	131 294	- 31,8
Total value at current prices (R'000)	92 252	9 482	4 732	325 162	269 213	- 17,2
Shopping space						
Total square metres	23 664	13 303	7 617	90 227	60 203	- 33,3
Total value at current prices (R'000)	33 427	18 334	10 539	143 740	93 363	- 35,0
Industrial and warehouse space						
Total square metres	27 952	51 082	46 426	177 626	231 280	+ 30,2
Total value at current prices (R'000)	47 607	78 561	69 860	293 990	361 480	+ 23,0
Other non-residential space ^{2/}						
Total square metres	4 805	6 056	5 828	80 622	98 940	+ 22,7
Total value at current prices (R'000)	7 085	8 930	8 841	122 904	154 556	+ 25,8
Total value of non-residential buildings at current prices (R'000)	180 371	115 307	93 972	885 796	878 612	- 0,8
Additions and alterations						
Dwelling-houses						
Total square metres	91 261	85 354	83 721	504 051	536 167	+ 6,4
Total value at current prices (R'000)	119 472	126 476	123 362	644 291	766 127	+ 18,9
Other buildings ^{3/}						
Total square metres	19 497	83 010	36 644	158 797	198 021	+ 24,7
Total value at current prices (R'000)	35 382	139 117	53 106	285 240	342 875	+ 20,2
Total value of additions and alterations at current prices (R'000)	154 854	265 593	176 468	929 531	1 109 002	+ 19,3
Total value of building plans passed at current prices (R'000)	728 903	810 270	619 877	4 056 699	4 379 887	+ 8,0

1/ Other residential buildings include institutions for the disabled, boarding houses, old people's homes, hostels, hotels, motels, guest houses, holiday chalets, entertainment centres, bed-and-breakfast accommodation and casinos.

2/ Other non-residential space includes churches, sport and recreation clubs, schools, crèches, hospitals and all other non-residential space.

3/ Other buildings include additions and alterations to other residential buildings, non-residential buildings and internal alterations.

Table 17 - Building plans passed according to type of building and province: Mpumalanga

Type of building	June 2001*	May 2002	June 2002	January 2001 to June 2001	January 2002 to June 2002	Percentage change between January 2001 to June 2001 and January 2002 to June 2002
Residential buildings						
Dwelling-houses smaller than 80 square metres						
Number of dwelling-houses	166	341	106	3 853	1 343	- 65,1
Total square metres	6 688	13 532	5 363	133 146	55 112	- 58,6
Total value at current prices (R'000)	3 884	6 651	6 382	72 201	30 990	- 57,1
Dwelling-houses equal to or larger than 80 square metres						
Number of dwelling-houses	71	127	77	405	655	+ 61,7
Total square metres	13 692	22 547	16 834	74 446	120 388	+ 61,7
Total value at current prices (R'000)	16 757	28 566	22 638	93 369	156 109	+ 67,2
Flats and townhouses						
Number of flats and townhouses	58	8	12	246	196	- 20,3
Total square metres	5 572	1 284	1 413	22 512	25 179	+ 11,8
Total value at current prices (R'000)	7 846	1 323	1 576	27 992	33 883	+ 21,0
Other residential buildings ^{1/}						
Total square metres	441	4 480	1 108	441	12 396	+2 710,9
Total value at current prices (R'000)	600	6 700	1 700	600	79 585	+ 13164,2
Total value of residential buildings at current prices (R'000)	29 087	43 240	32 296	194 162	300 567	+ 54,8
Non-residential buildings						
Office and banking space						
Total square metres	2 509	1 821	0	3 671	3 110	- 15,3
Total value at current prices (R'000)	4 200	2 800	0	5 750	4 279	- 25,6
Shopping space						
Total square metres	440	1 630	1 428	1 380	20 958	+1 418,7
Total value at current prices (R'000)	528	2 127	2 142	2 102	27 101	+1 189,3
Industrial and warehouse space						
Total square metres	2 926	2 062	1 381	24 156	13 087	- 45,8
Total value at current prices (R'000)	2 817	3 012	1 639	20 869	15 964	- 23,5
Other non-residential space ^{2/}						
Total square metres	13	937	8 302	5 735	13 827	+ 141,1
Total value at current prices (R'000)	20	937	11 343	7 600	17 377	+ 128,6
Total value of non-residential buildings at current prices (R'000)	7 565	8 876	15 124	36 321	64 721	+ 78,2
Additions and alterations						
Dwelling-houses						
Total square metres	10 684	14 799	11 963	56 218	70 493	+ 25,4
Total value at current prices (R'000)	10 949	15 947	15 886	55 567	80 068	+ 44,1
Other buildings ^{3/}						
Total square metres	123	534	1 970	8 127	7 550	- 7,1
Total value at current prices (R'000)	609	923	2 684	13 434	16 615	+ 23,7
Total value of additions and alterations at current prices (R'000)	11 558	16 870	18 570	69 001	96 683	+ 40,1
Total value of building plans passed at current prices (R'000)	48 210	68 986	65 990	299 484	461 971	+ 54,3

1/ Other residential buildings include institutions for the disabled, boarding houses, old people's homes, hostels, hotels, motels, guest houses, holiday chalets, entertainment centres, bed-and-breakfast accommodation and casinos.

2/ Other non-residential space includes churches, sport and recreation clubs, schools, crèches, hospitals and all other non-residential space.

3/ Other buildings include additions and alterations to other residential buildings, non-residential buildings and internal alterations.

Table 18 - Building plans passed according to type of building and province: Limpopo

Type of building	June 2001	May 2002	June 2002	January 2001 to June 2001	January 2002 to June 2002	Percentage change between January 2001 to June 2001 and January 2002 to June 2002
Residential buildings						
Dwelling-houses smaller than 80 square metres						
Number of dwelling-houses	61	15	34	255	147	-42,4
Total square metres	3 295	935	2 201	14 953	8 866	-40,7
Total value at current prices (R'000)	3 799	1 294	3 248	19 193	12 892	-32,8
Dwelling-houses equal to or larger than 80 square metres						
Number of dwelling-houses	40	36	51	229	278	+ 21,4
Total square metres	7 087	7 387	8 881	39 755	54 349	+ 36,7
Total value at current prices (R'000)	9 558	10 345	13 719	54 595	76 550	+ 40,2
Flats and townhouses						
Number of flats and townhouses	20	4	16	39	73	+ 87,2
Total square metres	1 982	521	1 874	5 199	9 297	+ 78,8
Total value at current prices (R'000)	2 678	729	3 150	6 721	14 880	+ 121,4
Other residential buildings ^{1/}						
Total square metres	0	521	0	192	521	+ 171,4
Total value at current prices (R'000)	0	930	0	96	930	+ 868,8
Total value of residential buildings at current prices (R'000)	16 035	13 298	20 117	80 605	105 252	+ 30,6
Non-residential buildings						
Office and banking space						
Total square metres	0	1 822	0	876	2 551	+ 191,2
Total value at current prices (R'000)	0	3 922	0	1 259	5 172	+ 310,8
Shopping space						
Total square metres	4 071	1 940	445	11 453	5 054	-55,9
Total value at current prices (R'000)	6 133	3 395	979	17 113	9 031	-47,2
Industrial and warehouse space						
Total square metres	817	0	95 457	942	96 296	+ 10 122,5
Total value at current prices (R'000)	1 144	0	210 005	1 319	211 063	+ 15 901,7
Other non-residential space ^{2/}						
Total square metres	952	1 659	0	2 919	3 111	+ 6,6
Total value at current prices (R'000)	1 064	3 173	0	4 510	6 005	+ 33,1
Total value of non-residential buildings at current prices (R'000)	8 341	10 490	210 984	24 201	231 271	+ 855,6
Additions and alterations						
Dwelling-houses						
Total square metres	4 223	5 344	4 949	23 558	25 464	+ 8,1
Total value at current prices (R'000)	5 821	8 158	6 733	30 576	35 332	+ 15,6
Other buildings ^{3/}						
Total square metres	1 394	1 844	1 671	6 427	11 561	+ 79,9
Total value at current prices (R'000)	2 468	2 542	2 812	15 846	17 828	+ 12,5
Total value of additions and alterations at current prices (R'000)	8 289	10 700	9 545	46 422	53 160	+ 14,5
Total value of building plans passed at current prices (R'000)	32 665	34 488	240 646	151 228	389 683	+ 157,7

1/ Other residential buildings include institutions for the disabled, boarding houses, old people's homes, hostels, hotels, motels, guest houses, holiday chalets, entertainment centres, bed-and-breakfast accommodation and casinos.

2/ Other non-residential space includes churches, sport and recreation clubs, schools, crèches, hospitals and all other non-residential space.

3/ Other buildings include additions and alterations to other residential buildings, non-residential buildings and internal alterations.

Table 19 - Buildings completed according to type of building: Total RSA

Type of building	June 2001 *	May 2002*	June 2002	January 2001 to June 2001	January 2002 to June 2002	Percentage change between January 2001 to June 2001 and January 2002 to June 2002
Residential buildings						
Dwelling-houses smaller than 80 square metres						
Number of dwelling-houses	2 476	2 107	2 713	13 368	14 552	+ 8,9
Total square metres	111 557	85 181	107 936	541 626	556 453	+ 2,7
Total value at current prices (R'000)	106 018	77 829	101 698	458 564	498 239	+ 8,7
Dwelling-houses equal to or larger than 80 square metres						
Number of dwelling-houses	1 085	1 184	1 175	5 777	6 523	+ 12,9
Total square metres	213 946	255 709	247 159	1 164 331	1 366 293	+ 17,3
Total value at current prices (R'000)	313 468	379 566	371 233	1 574 593	2 029 497	+ 28,9
Flats and townhouses						
Number of flats and townhouses	792	757	465	3 676	4 987	+ 35,7
Total square metres	85 372	114 237	62 248	381 001	565 155	+ 48,3
Total value at current prices (R'000)	115 930	173 386	102 101	539 571	858 552	+ 59,1
Other residential buildings ^{1/}						
Total square metres	2 742	24 938	1 121	84 114	56 284	- 33,1
Total value at current prices (R'000)	4 129	41 090	1 781	342 310	270 379	- 21,0
Total value of residential buildings at current prices (R'000)	539 545	671 871	576 813	2 915 038	3 656 667	+ 25,4
Non-residential buildings						
Office and banking space						
Total square metres	64 374	66 774	23 488	402 184	274 368	- 31,8
Total value at current prices (R'000)	86 238	110 328	42 682	614 805	483 812	- 21,3
Shopping space						
Total square metres	67 649	27 420	29 533	172 547	131 925	- 23,5
Total value at current prices (R'000)	146 603	61 458	42 983	279 948	212 315	- 24,2
Industrial and warehouse space						
Total square metres	58 236	65 483	87 408	387 973	286 711	- 26,1
Total value at current prices (R'000)	82 339	87 552	99 239	467 871	347 454	- 25,7
Other non-residential space ^{2/}						
Total square metres	19 019	29 669	19 428	107 405	107 121	- 0,3
Total value at current prices (R'000)	23 673	33 968	21 232	130 248	149 099	+ 14,5
Total value of non-residential buildings at current prices (R'000)	338 853	293 306	206 136	1 492 872	1 192 680	- 20,1
Additions and alterations						
Dwelling-houses						
Total square metres	138 056	176 305	141 033	740 580	784 453	+ 5,9
Total value at current prices (R'000)	170 755	225 123	180 993	869 953	990 634	+ 13,9
Other buildings ^{3/}						
Total square metres	65 562	34 538	44 741	299 705	293 770	- 2,0
Total value at current prices (R'000)	124 099	73 045	67 357	638 378	484 446	- 24,1
Total value of additions and alterations at current prices (R'000)	294 854	298 168	248 350	1 508 331	1 475 080	- 2,2
Total value of buildings completed at current prices (R'000)	1 173 252	1 263 345	1 031 299	5 916 241	6 324 427	+ 6,9

1/ Other residential buildings include institutions for the disabled, boarding houses, old people's homes, hostels, hotels, motels, guest houses, holiday chalets, entertainment centres, bed-and-breakfast accommodation and casinos.

2/ Other non-residential space includes churches, sport and recreation clubs, schools, crèches, hospitals and all other non-residential space.

3/ Other buildings include additions and alterations to other residential buildings, non-residential buildings and internal alterations.

Table 20 - Buildings completed according to type of building and province: Western Cape

Type of building	June 2001*	May 2002	June 2002	January 2001 to June 2001	January 2002 to June 2002	Percentage change between January 2001 to June 2001 and January 2002 to June 2002
Residential buildings						
Dwelling-houses smaller than 80 square metres						
Number of dwelling-houses	574	602	470	2 592	3 676	+ 41,8
Total square metres	34 484	21 180	17 582	108 525	133 904	+ 23,4
Total value at current prices (R'000)	36 622	24 177	17 716	119 883	154 057	+ 28,5
Dwelling-houses equal to or larger than 80 square metres						
Number of dwelling-houses	364	488	515	1 921	2 590	+ 34,8
Total square metres	72 205	104 476	110 845	375 771	530 798	+ 41,3
Total value at current prices (R'000)	108 453	160 049	169 892	521 212	824 925	+ 58,3
Flats and townhouses						
Number of flats and townhouses	345	237	153	863	1 057	+ 22,5
Total square metres	44 728	27 461	18 712	97 268	133 982	+ 37,7
Total value at current prices (R'000)	51 593	44 804	28 158	122 956	216 049	+ 75,7
Other residential buildings ^{1/}						
Total square metres	96	1 720	992	26 965	5 485	- 79,7
Total value at current prices (R'000)	174	3 130	1 504	30 639	8 756	- 71,4
Total value of residential buildings at current prices (R'000)	196 842	232 160	217 270	794 690	1 203 787	+ 51,5
Non-residential buildings						
Office and banking space						
Total square metres	40 099	16 884	10 725	91 193	67 330	- 26,2
Total value at current prices (R'000)	50 101	19 775	20 265	149 251	99 197	- 33,5
Shopping space						
Total square metres	4 306	4 869	11 103	27 743	47 263	+ 70,4
Total value at current prices (R'000)	4 995	12 524	12 679	34 995	63 893	+ 82,6
Industrial and warehouse space						
Total square metres	18 016	9 429	43 300	79 410	83 484	+ 5,1
Total value at current prices (R'000)	23 480	10 965	45 850	94 900	89 196	- 6,0
Other non-residential space ^{2/}						
Total square metres	6 767	6 519	15 737	39 399	49 457	+ 25,5
Total value at current prices (R'000)	8 052	6 440	16 996	37 785	72 360	+ 91,5
Total value of non-residential buildings at current prices (R'000)	86 628	49 704	95 790	316 931	324 646	+ 2,4
Additions and alterations						
Dwelling-houses						
Total square metres	61 818	52 665	72 570	288 764	274 820	- 4,8
Total value at current prices (R'000)	83 671	70 401	97 926	362 430	368 149	+ 1,6
Other buildings ^{3/}						
Total square metres	28 195	11 929	8 879	90 307	122 838	+ 36,0
Total value at current prices (R'000)	57 945	34 667	15 271	238 420	202 937	- 14,9
Total value of additions and alterations at current prices (R'000)	141 616	105 068	113 197	600 850	571 086	- 5,0
Total value of buildings completed at current prices (R'000)	425 086	386 932	426 257	1 712 471	2 099 519	22,6

1/ Other residential buildings include institutions for the disabled, boarding houses, old people's homes, hostels, hotels, motels, guest houses, holiday chalets, entertainment centres, bed-and-breakfast accommodation and casinos.

2/ Other non-residential space includes churches, sport and recreation clubs, schools, crèches, hospitals and all other non-residential space.

3/ Other buildings include additions and alterations to other residential buildings, non-residential buildings and internal alterations.

Table 21 - Buildings completed according to type of building and province: Eastern Cape

Type of building	June 2001	May 2002	June 2002	January 2001 to June 2001	January 2002 to June 2002	Percentage change between January 2001 to June 2001 and January 2002 to June 2002
Residential buildings						
Dwelling-houses smaller than 80 square metres						
Number of dwelling-houses	472	266	498	1 923	1 482	- 22,9
Total square metres	20 746	10 293	20 776	83 062	62 581	- 24,7
Total value at current prices (R'000)	20 362	11 770	26 235	72 551	78 729	+ 8,5
Dwelling-houses equal to or larger than 80 square metres						
Number of dwelling-houses	178	53	116	566	396	- 30,0
Total square metres	18 369	10 692	12 961	71 159	62 337	- 12,4
Total value at current prices (R'000)	24 128	14 545	18 118	91 341	82 611	- 9,6
Flats and townhouses						
Number of flats and townhouses	5	3	5	135	307	+ 127,4
Total square metres	762	393	440	12 561	15 979	+ 27,2
Total value at current prices (R'000)	841	570	716	13 237	23 071	+ 74,3
Other residential buildings ^{1/}						
Total square metres	2 646	12 992	129	6 993	15 865	+ 126,9
Total value at current prices (R'000)	3 955	23 000	277	10 955	26 589	+ 142,7
Total value of residential buildings at current prices (R'000)	49 286	49 885	45 346	188 084	211 000	+ 12,2
Non-residential buildings						
Office and banking space						
Total square metres	3 039	0	0	23 539	576	-97,6
Total value at current prices (R'000)	3 185	0	0	25 234	1 185	-95,3
Shopping space						
Total square metres	8 803	0	0	22 511	2 779	- 87,7
Total value at current prices (R'000)	10 267	0	0	29 388	3 520	- 88,0
Industrial and warehouse space						
Total square metres	1 506	10 304	0	101 763	10 782	- 89,4
Total value at current prices (R'000)	1 790	9 842	0	103 356	10 234	- 90,1
Other non-residential space ^{2/}						
Total square metres	70	0	0	18 137	2 300	-87,3
Total value at current prices (R'000)	98	0	0	23 311	2 664	-88,6
Total value of non-residential buildings at current prices (R'000)	15 340	9 842	0	181 289	17 603	- 90,3
Additions and alterations						
Dwelling-houses						
Total square metres	7 467	10 347	8 097	46 628	55 728	+ 19,5
Total value at current prices (R'000)	10 800	12 416	10 364	56 428	67 019	+ 18,8
Other buildings ^{3/}						
Total square metres	5 652	2 596	10 697	32 448	30 553	- 5,8
Total value at current prices (R'000)	8 911	4 079	11 705	44 675	38 718	- 13,3
Total value of additions and alterations at current prices (R'000)	19 711	16 495	22 069	101 103	105 737	+ 4,6
Total value of buildings completed at current prices (R'000)	84 337	76 222	67 415	470 476	334 340	- 28,9

1/ Other residential buildings include institutions for the disabled, boarding houses, old people's homes, hostels, hotels, motels, guest houses, holiday chalets, entertainment centres, bed-and-breakfast accommodation and casinos.

2/ Other non-residential space includes churches, sport and recreation clubs, schools, crèches, hospitals and all other non-residential space.

3/ Other buildings include additions and alterations to other residential buildings, non-residential buildings and internal alterations.

Table 22 - Buildings completed according to type of building and province: Northern Cape

Type of building	June 2001*	May 2002	June 2002	January 2001 to June 2001	January 2002 to June 2002	Percentage change between January 2001 to June 2001 and January 2002 to June 2002
Residential buildings						
Dwelling-houses smaller than 80 square metres						
Number of dwelling-houses	5	24	2	75	61	- 18,7
Total square metres	254	959	116	3 615	2 833	- 21,6
Total value at current prices (R'000)	440	890	162	5 197	3 571	- 31,3
Dwelling-houses equal to or larger than 80 square metres						
Number of dwelling-houses	16	6	3	91	28	- 69,2
Total square metres	1 980	650	468	14 632	4 316	- 70,5
Total value at current prices (R'000)	2 880	925	744	18 981	5 971	- 68,5
Flats and townhouses						
Number of flats and townhouses	2	3	0	17	4	- 76,5
Total square metres	180	457	0	1 637	637	- 61,1
Total value at current prices (R'000)	252	527	0	2 366	779	- 67,1
Other residential buildings ^{1/}						
Total square metres	0	0	0	346	0	..
Total value at current prices (R'000)	0	0	0	277	0	..
Total value of residential buildings at current prices (R'000)	3 572	2 342	906	26 821	10 321	- 61,5
Non-residential buildings						
Office and banking space						
Total square metres	0	0	0	7 105	0	..
Total value at current prices (R'000)	0	0	0	15 631	0	..
Shopping space						
Total square metres	0	0	0	4 883	784	-83,9
Total value at current prices (R'000)	0	0	0	7 331	1 098	- 85,0
Industrial and warehouse space						
Total square metres	0	223	0	854	223	- 73,9
Total value at current prices (R'000)	0	109	0	691	109	- 84,2
Other non-residential space ^{2/}						
Total square metres	489	379	0	843	1 001	+ 18,7
Total value at current prices (R'000)	277	531	0	1 544	1 309	- 15,2
Total value of non-residential buildings at current prices (R'000)	978	640	0	25 197	2 516	- 90,0
Additions and alterations						
Dwelling-houses						
Total square metres	2 131	2 631	2 609	9 839	13 731	+ 39,6
Total value at current prices (R'000)	3 363	3 645	4 309	15 361	19 404	+ 26,3
Other buildings ^{3/}						
Total square metres	15	133	416	1 895	1 702	- 10,2
Total value at current prices (R'000)	909	351	1 062	4 775	5 002	+ 4,8
Total value of additions and alterations at current prices (R'000)	4 272	3 996	5 371	20 136	24 406	+ 21,2
Total value of buildings completed at current prices (R'000)	8 822	6 978	6 277	72 154	37 243	-48,4

1/ Other residential buildings include institutions for the disabled, boarding houses, old people's homes, hostels, hotels, motels, guest houses, holiday chalets, entertainment centres, bed-and-breakfast accommodation and casinos.

2/ Other non-residential space includes churches, sport and recreation clubs, schools, crèches, hospitals and all other non-residential space.

3/ Other buildings include additions and alterations to other residential buildings, non-residential buildings and internal alterations.

Table 23 - Buildings completed according to type of building and province: Free State

Type of building	June 2001	May 2002	June 2002	January 2001 to June 2001	January 2002 to June 2002	Percentage change between January 2001 to June 2001 and January 2002 to June 2002
Residential buildings						
Dwelling-houses smaller than 80 square metres						
Number of dwelling-houses	198	468	588	1 045	1 372	+ 31,3
Total square metres	8 138	20 284	24 361	43 883	60 809	+ 38,6
Total value at current prices (R'000)	3 779	10 006	12 418	24 311	34 780	+ 43,1
Dwelling-houses equal to or larger than 80 square metres						
Number of dwelling-houses	25	34	29	194	168	-13,4
Total square metres	4 109	4 927	5 233	34 513	28 267	-18,1
Total value at current prices (R'000)	4 839	5 807	6 624	40 184	34 269	-14,7
Flats and townhouses						
Number of flats and townhouses	1	35	33	122	113	-7,4
Total square metres	132	3 314	3 459	9 841	11 647	+ 18,4
Total value at current prices (R'000)	200	4 687	5 161	13 372	17 436	+ 30,4
Other residential buildings ^{1/}						
Total square metres	0	0	0	464	1 428	+ 207,8
Total value at current prices (R'000)	0	0	0	581	1 461	+ 151,5
Total value of residential buildings at current prices (R'000)	8 818	20 500	24 203	78 448	87 946	+ 12,1
Non-residential buildings						
Office and banking space						
Total square metres	0	2 368	271	11 574	4 694	-59,4
Total value at current prices (R'000)	0	4 120	280	21 903	8 255	-62,3
Shopping space						
Total square metres	1 234	0	0	4 537	1 904	-58,0
Total value at current prices (R'000)	1 872	0	0	5 158	3 159	-38,8
Industrial and warehouse space						
Total square metres	1 702	0	1 020	12 750	4 670	-63,4
Total value at current prices (R'000)	1 734	0	714	11 648	3 403	-70,8
Other non-residential space ^{2/}						
Total square metres	2 916	195	0	9 673	3 475	-64,1
Total value at current prices (R'000)	3 706	282	0	16 549	5 181	-68,7
Total value of non-residential buildings at current prices (R'000)	7 312	4 402	994	55 258	19 998	-63,8
Additions and alterations						
Dwelling-houses						
Total square metres	3 092	8 809	5 735	32 147	43 448	+ 35,2
Total value at current prices (R'000)	2 947	9 931	6 224	32 963	47 982	+ 45,6
Other buildings ^{3/}						
Total square metres	2 280	1 742	533	22 661	7 731	-65,9
Total value at current prices (R'000)	2 705	2 919	5 253	93 313	19 057	-79,6
Total value of additions and alterations at current prices (R'000)	5 652	12 850	11 477	126 276	67 039	-46,9
Total value of buildings completed at current prices (R'000)	21 782	37 752	36 674	259 982	174 983	-32,7

1/ Other residential buildings include institutions for the disabled, boarding houses, old people's homes, hostels, hotels, motels, guest houses, holiday chalets, entertainment centres, bed-and-breakfast accommodation and casinos.

2/ Other non-residential space includes churches, sport and recreation clubs, schools, crèches, hospitals and all other non-residential space.

3/ Other buildings include additions and alterations to other residential buildings, non-residential buildings and internal alterations.

Table 24 - Buildings completed according to type of building and province: KwaZulu-Natal

Type of building	June 2001	May 2002*	June 2002	January 2001 to June 2001	January 2002 to June 2002	Percentage change between January 2001 to June 2001 and January 2002 to June 2002
Residential buildings						
Dwelling-houses smaller than 80 square metres						
Number of dwelling-houses	270	201	200	1 260	1 125	-10,7
Total square metres	10 474	8 495	8 571	57 048	47 709	-16,4
Total value at current prices (R'000)	13 547	7 781	8 720	54 577	47 117	-13,7
Dwelling-houses equal to or larger than 80 square metres						
Number of dwelling-houses	151	136	94	792	676	-14,6
Total square metres	39 531	26 774	20 299	168 444	133 639	-20,7
Total value at current prices (R'000)	68 125	39 745	28 691	233 134	186 732	-19,9
Flats and townhouses						
Number of flats and townhouses	47	30	68	501	365	-27,1
Total square metres	6 247	3 234	12 228	57 267	49 311	-13,9
Total value at current prices (R'000)	8 627	5 053	23 606	81 595	85 939	+ 5,3
Other residential buildings ^{1/}						
Total square metres	0	1 226	0	8 450	4 403	-47,9
Total value at current prices (R'000)	0	1 594	0	40 000	4 771	-88,1
Total value of residential buildings at current prices (R'000)	90 299	54 173	61 017	409 306	324 559	-20,7
Non-residential buildings						
Office and banking space						
Total square metres	17 263	9 990	4 243	37 225	70 249	+ 88,7
Total value at current prices (R'000)	23 323	29 900	11 200	60 556	160 358	+ 164,8
Shopping space						
Total square metres	1 080	8 937	3 329	18 656	31 169	+ 67,1
Total value at current prices (R'000)	2 253	24 792	3 607	34 053	61 961	+ 82,0
Industrial and warehouse space						
Total square metres	21 208	25 285	34 064	78 429	112 115	+ 43,0
Total value at current prices (R'000)	33 697	38 402	38 541	95 236	132 462	+ 39,1
Other non-residential space ^{2/}						
Total square metres	3 599	1 324	1 582	11 752	14 988	+ 27,5
Total value at current prices (R'000)	4 467	1 325	1 900	13 453	21 756	+ 61,7
Total value of non-residential buildings at current prices (R'000)	63 740	94 419	55 248	203 298	376 537	+ 85,2
Additions and alterations						
Dwelling-houses						
Total square metres	34 994	30 181	22 827	178 568	142 755	-20,1
Total value at current prices (R'000)	37 315	36 088	24 474	196 984	160 773	-18,4
Other buildings ^{3/}						
Total square metres	8 511	4 635	5 978	54 357	58 815	+ 8,2
Total value at current prices (R'000)	15 762	7 090	10 787	100 372	105 955	+ 5,6
Total value of additions and alterations at current prices (R'000)	53 077	43 178	35 261	297 356	266 728	-10,3
Total value of buildings completed at current prices (R'000)	207 116	191 770	151 526	909 960	967 824	+ 6,4

1/ Other residential buildings include institutions for the disabled, boarding houses, old people's homes, hostels, hotels, motels, guest houses, holiday chalets, entertainment centres, bed-and-breakfast accommodation and casinos.

2/ Other non-residential space includes churches, sport and recreation clubs, schools, crèches, hospitals and all other non-residential space.

3/ Other buildings include additions and alterations to other residential buildings, non-residential buildings and internal alterations.

Table 25 - Buildings completed according to type of building and province: North West

Type of building	June 2001*	May 2002	June 2002	January 2001 to June 2001	January 2002 to June 2002	Percentage change between January 2001 to June 2001 and January 2002 to June 2002
Residential buildings						
Dwelling-houses smaller than 80 square metres						
Number of dwelling-houses	380	105	71	1 022	1 470	+ 43,8
Total square metres	12 978	4 252	3 017	39 515	49 690	+ 25,7
Total value at current prices (R'000)	7 403	4 131	2 404	30 090	24 112	- 19,9
Dwelling-houses equal to or larger than 80 square metres						
Number of dwelling-houses	61	80	59	264	335	+ 26,9
Total square metres	11 863	14 751	8 720	50 595	57 667	+ 14,0
Total value at current prices (R'000)	14 473	20 690	11 741	60 907	83 112	+ 36,5
Flats and townhouses						
Number of flats and townhouses	6	70	34	70	274	+ 291,4
Total square metres	794	6 242	2 816	7 589	19 649	+ 158,9
Total value at current prices (R'000)	764	14 590	7 300	7 609	36 117	+ 374,7
Other residential buildings ^{1/}						
Total square metres	0	0	0	3 684	2 090	- 43,3
Total value at current prices (R'000)	0	0	0	4 162	2 483	- 40,3
Total value of residential buildings at current prices (R'000)	22 640	39 411	21 445	102 768	145 824	+ 41,9
Non-residential buildings						
Office and banking space						
Total square metres	0	40	0	750	723	- 3,6
Total value at current prices (R'000)	0	40	0	1 400	1 140	- 18,6
Shopping space						
Total square metres	479	303	572	2 745	4 417	+ 60,9
Total value at current prices (R'000)	459	260	686	3 571	4 991	+ 39,8
Industrial and warehouse space						
Total square metres	3 190	2 062	0	6 265	4 444	- 29,1
Total value at current prices (R'000)	3 195	2 000	0	6 405	4 595	- 28,3
Other non-residential space ^{2/}						
Total square metres	3 319	902	0	5 636	3 562	- 36,8
Total value at current prices (R'000)	3 983	1 307	0	6 532	5 710	- 12,6
Total value of non-residential buildings at current prices (R'000)	7 637	3 607	686	17 908	16 436	- 8,2
Additions and alterations						
Dwelling-houses						
Total square metres	4 243	5 109	2 803	21 461	24 022	+ 11,9
Total value at current prices (R'000)	4 086	5 319	2 936	18 996	23 813	+ 25,4
Other buildings ^{3/}						
Total square metres	3 396	1 095	350	14 189	3 661	- 74,2
Total value at current prices (R'000)	3 937	3 848	546	17 062	7 666	- 55,1
Total value of additions and alterations at current prices (R'000)	8 023	9 167	3 482	36 058	31 479	- 12,7
Total value of buildings completed at current prices (R'000)	38 300	52 185	25 613	156 734	193 739	+ 23,6

1/ Other residential buildings include institutions for the disabled, boarding houses, old people's homes, hostels, hotels, motels, guest houses, holiday chalets, entertainment centres, bed-and-breakfast accommodation and casinos.

2/ Other non-residential space includes churches, sport and recreation clubs, schools, crèches, hospitals and all other non-residential space.

3/ Other buildings include additions and alterations to other residential buildings, non-residential buildings and internal alterations.

Table 26 - Buildings completed according to type of building and province: Gauteng

Type of building	June 2001*	May 2002*	June 2002	January 2001 to June 2001	January 2002 to June 2002	Percentage change between January 2001 to June 2001 and January 2002 to June 2002
Residential buildings						
Dwelling-houses smaller than 80 square metres						
Number of dwelling-houses	360	177	815	3 300	3 812	+ 15,5
Total square metres	15 625	9 240	30 515	128 450	137 814	+ 7,3
Total value at current prices (R'000)	16 308	13 137	30 845	108 444	119 402	+ 10,1
Dwelling-houses equal to or larger than 80 square metres						
Number of dwelling-houses	232	334	321	1 646	2 072	+ 25,9
Total square metres	57 473	83 843	82 214	398 231	504 712	+ 26,7
Total value at current prices (R'000)	81 445	125 370	126 351	553 156	755 862	+ 36,6
Flats and townhouses						
Number of flats and townhouses	365	360	119	1 862	2 772	+ 48,9
Total square metres	30 316	70 232	19 649	182 250	322 780	+ 77,1
Total value at current prices (R'000)	51 144	100 201	29 675	285 485	465 325	+ 63,0
Other residential buildings ^{1/}						
Total square metres	0	7 924	0	34 212	11 978	-65,0
Total value at current prices (R'000)	0	11 886	0	252 096	17 333	-93,1
Total value of residential buildings at current prices (R'000)	148 897	250 594	186 871	1 199 181	1 357 922	+ 13,2
Non-residential buildings						
Office and banking space						
Total square metres	3 973	36 938	8 249	223 037	130 242	-41,6
Total value at current prices (R'000)	9 629	55 798	10 937	322 133	212 982	-33,9
Shopping space						
Total square metres	49 239	5 680	13 762	65 966	30 911	-53,1
Total value at current prices (R'000)	122 911	10 787	24 783	146 333	52 335	-64,2
Industrial and warehouse space						
Total square metres	11 846	17 302	8 324	107 369	68 557	-36,1
Total value at current prices (R'000)	17 367	25 286	13 534	154 399	105 071	-31,9
Other non-residential space ^{2/}						
Total square metres	1 381	8 564	1 030	18 709	18 135	-3,1
Total value at current prices (R'000)	1 859	13 436	1 365	27 196	27 480	+ 1,0
Total value of non-residential buildings at current prices (R'000)	151 766	105 307	50 619	650 061	397 868	-38,8
Additions and alterations						
Dwelling-houses						
Total square metres	19 102	60 562	23 423	132 275	205 666	+ 55,5
Total value at current prices (R'000)	23 358	80 733	31 969	159 317	278 833	+ 75,0
Other buildings ^{3/}						
Total square metres	16 217	12 133	17 517	67 965	65 421	-3,7
Total value at current prices (R'000)	32 263	19 538	22 094	116 269	100 180	-13,8
Total value of additions and alterations at current prices (R'000)	55 621	100 271	54 063	275 586	379 013	+ 37,5
Total value of buildings completed at current prices (R'000)	356 284	456 172	291 553	2 124 828	2 134 803	+ 0,5

1/ Other residential buildings include institutions for the disabled, boarding houses, old people's homes, hostels, hotels, motels, guest houses, holiday chalets, entertainment centres, bed-and-breakfast accommodation and casinos.

2/ Other non-residential space includes churches, sport and recreation clubs, schools, crèches, hospitals and all other non-residential space.

3/ Other buildings include additions and alterations to other residential buildings, non-residential buildings and internal alterations.

Table 27 - Buildings completed according to type of building and province: Mpumalanga

Type of building	June 2001*	May 2002	June 2002	January 2001 to June 2001	January 2002 to June 2002	Percentage change between January 2001 to June 2001 and January 2002 to June 2002
Residential buildings						
Dwelling-houses smaller than 80 square metres						
Number of dwelling-houses	171	229	62	1 849	1 447	-21,7
Total square metres	6 253	8 624	2 583	62 927	54 925	-12,7
Total value at current prices (R'000)	4 632	3 225	2 561	30 697	27 140	-11,6
Dwelling-houses equal to or larger than 80 square metres						
Number of dwelling-houses	30	27	24	193	176	-8,8
Total square metres	4 900	4 598	4 098	34 212	30 763	-10,1
Total value at current prices (R'000)	5 214	5 431	5 696	33 966	36 591	+ 7,7
Flats and townhouses						
Number of flats and townhouses	17	19	52	80	89	+ 11,3
Total square metres	1 927	2 904	4 839	7 970	10 477	+ 31,5
Total value at current prices (R'000)	2 109	2 954	7 338	7 739	12 866	+ 66,2
Other residential buildings ^{1/}						
Total square metres	0	1 076	0	0	1 076	..
Total value at current prices (R'000)	0	1 480	0	0	1 480	..
Total value of residential buildings at current prices (R'000)	11 955	13 090	15 595	72 402	78 077	+ 7,8
Non-residential buildings						
Office and banking space						
Total square metres	0	460	0	7 263	460	-93,7
Total value at current prices (R'000)	0	563	0	17 900	563	-96,9
Shopping space						
Total square metres	0	2 639	0	21 228	5 083	-76,1
Total value at current prices (R'000)	0	6 016	0	12 670	10 578	-16,5
Industrial and warehouse space						
Total square metres	0	376	700	365	1 934	+ 429,9
Total value at current prices (R'000)	0	329	600	160	1 765	+ 1 003,1
Other non-residential space ^{2/}						
Total square metres	306	11 442	1 079	2 832	13 859	+ 389,4
Total value at current prices (R'000)	358	10 165	971	3 152	12 157	+ 285,7
Total value of non-residential buildings at current prices (R'000)	358	17 073	1 571	33 882	25 063	-26,0
Additions and alterations						
Dwelling-houses						
Total square metres	3 860	5 215	2 522	26 309	21 854	-16,9
Total value at current prices (R'000)	3 372	5 384	2 259	21 820	21 003	-3,7
Other buildings ^{3/}						
Total square metres	83	255	133	12 925	1 620	-87,5
Total value at current prices (R'000)	69	517	258	17 756	2 874	-83,8
Total value of additions and alterations at current prices (R'000)	3 441	5 901	2 517	39 576	23 877	-39,7
Total value of buildings completed at current prices (R'000)	15 754	36 064	19 683	145 860	127 017	-12,9

1/ Other residential buildings include institutions for the disabled, boarding houses, old people's homes, hostels, hotels, motels, guest houses, holiday chalets, entertainment centres, bed-and-breakfast accommodation and casinos.

2/ Other non-residential space includes churches, sport and recreation clubs, schools, crèches, hospitals and all other non-residential space.

3/ Other buildings include additions and alterations to other residential buildings, non-residential buildings and internal alterations.

Table 28 - Buildings completed according to type of building and province: Limpopo

Type of building	June 2001	May 2002	June 2002	January 2001 to June 2001	January 2002 to June 2002	Percentage change between January 2001 to June 2001 and January 2002 to June 2002
Residential buildings						
Dwelling-houses smaller than 80 square metres						
Number of dwelling-houses	46	35	7	302	107	-64,6
Total square metres	2 605	1 854	415	14 601	6 188	-57,6
Total value at current prices (R'000)	2 925	2 712	637	12 814	9 331	-27,2
Dwelling-houses equal to or larger than 80 square metres						
Number of dwelling-houses	28	26	14	110	82	-25,5
Total square metres	3 516	4 998	2 321	16 774	13 794	-17,8
Total value at current prices (R'000)	3 911	7 004	3 376	21 712	19 424	-10,5
Flats and townhouses						
Number of flats and townhouses	4	0	1	26	6	-76,9
Total square metres	286	0	105	4 618	693	-85,0
Total value at current prices (R'000)	400	0	147	5 212	970	-81,4
Other residential buildings ^{1/}						
Total square metres	0	0	0	3 000	13 959	+ 365,3
Total value at current prices (R'000)	0	0	0	3 600	207 506	+ 5 664,1
Total value of residential buildings at current prices (R'000)	7 236	9 716	4 160	43 338	237 231	+ 447,4
Non-residential buildings						
Office and banking space						
Total square metres	0	94	0	498	94	-81,1
Total value at current prices (R'000)	0	132	0	797	132	-83,4
Shopping space						
Total square metres	2 508	4 992	767	4 278	7 615	+ 78,0
Total value at current prices (R'000)	3 846	7 079	1 228	6 449	10 780	+ 67,2
Industrial and warehouse space						
Total square metres	768	502	0	768	502	-34,6
Total value at current prices (R'000)	1 076	619	0	1 076	619	-42,5
Other non-residential space ^{2/}						
Total square metres	172	344	0	424	344	-18,9
Total value at current prices (R'000)	172	482	0	726	482	-33,6
Total value of non-residential buildings at current prices (R'000)	5 094	8 312	1 228	9 048	12 013	+ 32,8
Additions and alterations						
Dwelling-houses						
Total square metres	1 349	786	447	4 589	2 429	-47,1
Total value at current prices (R'000)	1 843	1 206	532	5 654	3 658	-35,3
Other buildings ^{3/}						
Total square metres	1 213	20	238	2 958	1 429	-51,7
Total value at current prices (R'000)	1 598	36	381	5 736	2 057	-64,1
Total value of additions and alterations at current prices (R'000)	3 441	1 242	913	11 390	5 715	-49,8
Total value of buildings completed at current prices (R'000)	15 771	19 270	6 301	63 776	254 959	+ 299,8

1/ Other residential buildings include institutions for the disabled, boarding houses, old people's homes, hostels, hotels, motels, guest houses, holiday chalets, entertainment centres, bed-and-breakfast accommodation and casinos.

2/ Other non-residential space includes churches, sport and recreation clubs, schools, crèches, hospitals and all other non-residential space.

3/ Other buildings include additions and alterations to other residential buildings, non-residential buildings and internal alterations.

Table 29 - Building plans passed according to type of building and selected urban area: Cape Town

Type of building	June 2001*	May 2002	June 2002	January 2001 to June 2001	January 2002 to June 2002	Percentage change between January 2001 to June 2001 and January 2002 to June 2002
Residential buildings						
Dwelling-houses smaller than 80 square metres						
Number of dwelling-houses	666	1 568	1 106	3 348	4 745	+ 41,7
Total square metres	30 792	54 310	38 243	135 951	165 912	+ 22,0
Total value at current prices (R'000)	40 025	63 672	44 849	166 757	197 758	+ 18,6
Dwelling-houses equal to or larger than 80 square metres						
Number of dwelling-houses	365	381	464	1 838	2 135	+ 16,2
Total square metres	70 254	84 460	99 801	389 459	439 576	+ 12,9
Total value at current prices (R'000)	97 520	123 090	130 938	531 573	608 441	+ 14,5
Flats and townhouses						
Number of flats and townhouses	151	216	85	820	1 011	+ 23,3
Total square metres	13 455	21 120	9 584	79 721	100 032	+ 25,5
Total value at current prices (R'000)	19 513	39 272	13 646	126 128	169 297	+ 34,2
Other residential buildings ^{1/}						
Total square metres	2 933	6 214	1 104	27 477	15 616	- 43,2
Total value at current prices (R'000)	3 637	6 548	2 226	65 743	21 228	- 67,7
Total value of residential buildings at current prices (R'000)	160 695	232 582	191 659	890 201	996 724	+ 12,0
Non-residential buildings						
Office and banking space						
Total square metres	15 751	10 214	7 745	83 717	34 625	- 58,6
Total value at current prices (R'000)	25 315	19 564	13 805	142 660	56 891	- 60,1
Shopping space						
Total square metres	5 103	0	1 398	87 839	14 200	- 83,8
Total value at current prices (R'000)	5 336	0	2 719	107 788	18 427	- 82,9
Industrial and warehouse space						
Total square metres	11 639	16 802	20 507	59 929	72 499	+ 21,0
Total value at current prices (R'000)	13 776	18 899	21 638	64 455	81 390	+ 26,3
Other non-residential space ^{2/}						
Total square metres	3 526	4 851	5 785	39 860	24 152	- 39,4
Total value at current prices (R'000)	4 643	7 003	9 275	57 265	34 380	- 40,0
Total value of non-residential buildings at current prices (R'000)	49 070	45 466	47 437	372 168	191 088	- 48,7
Additions and alterations						
Dwelling-houses						
Total square metres	52 325	58 455	76 675	289 044	322 640	+ 11,6
Total value at current prices (R'000)	60 424	73 526	93 553	345 351	401 547	+ 16,3
Other buildings ^{3/}						
Total square metres	17 269	39 799	12 359	93 115	104 437	+ 12,2
Total value at current prices (R'000)	38 085	92 648	23 069	169 930	216 525	+ 27,4
Total value of additions and alterations at current prices (R'000)	98 509	166 174	116 622	515 281	618 072	+ 19,9
Total value of building plans passed at current prices (R'000)	308 274	444 222	355 718	1 777 650	1 805 884	+ 1,6

1/ Other residential buildings include institutions for the disabled, boarding houses, old people's homes, hostels, hotels, motels, guest houses, holiday chalets, entertainment centres, bed-and-breakfast accommodation and casinos.

2/ Other non-residential space includes churches, sport and recreation clubs, schools, crèches, hospitals and all other non-residential space.

3/ Other buildings include additions and alterations to other residential buildings, non-residential buildings and internal alterations.

Table 30 - Building plans passed according to type of building and selected urban area: Port Elizabeth

Type of building	June 2001	May 2002	June 2002	January 2001 to June 2001	January 2002 to June 2002	Percentage change between January 2001 to June 2001 and January 2002 to June 2002
Residential buildings						
Dwelling-houses smaller than 80 square metres						
Number of dwelling-houses	184	265	301	982	1 521	+ 54,9
Total square metres	8 613	10 993	12 223	44 213	64 639	+ 46,2
Total value at current prices (R'000)	11 451	15 280	17 243	58 613	91 442	+ 56,0
Dwelling-houses equal to or larger than 80 square metres						
Number of dwelling-houses	89	69	42	399	345	- 13,5
Total square metres	9 176	13 020	8 550	46 071	65 960	+ 43,2
Total value at current prices (R'000)	12 627	17 924	11 684	61 950	93 134	+ 50,3
Flats and townhouses						
Number of flats and townhouses	15	43	22	96	135	+ 40,6
Total square metres	1 365	5 584	1 996	8 888	15 326	+ 72,4
Total value at current prices (R'000)	1 825	9 398	2 894	12 600	24 524	+ 94,6
Other residential buildings ^{1/}						
Total square metres	2 744	0	0	2 744	0	..
Total value at current prices (R'000)	3 312	0	0	3 312	0	..
Total value of residential buildings at current prices (R'000)	29 215	42 602	31 821	136 475	209 100	+ 53,2
Non-residential buildings						
Office and banking space						
Total square metres	0	448	0	0	3 373	..
Total value at current prices (R'000)	0	878	0	0	5 346	..
Shopping space						
Total square metres	0	5 783	444	1 362	11 330	+ 731,9
Total value at current prices (R'000)	0	11 229	280	1 857	22 704	+ 1 122,6
Industrial and warehouse space						
Total square metres	859	5 998	611	7 786	21 018	+ 169,9
Total value at current prices (R'000)	1 325	9 089	966	6 071	32 350	+ 432,9
Other non-residential space ^{2/}						
Total square metres	1 724	2 640	2 888	4 225	15 493	+ 266,7
Total value at current prices (R'000)	2 776	4 071	5 660	6 679	25 485	+ 281,6
Total value of non-residential buildings at current prices (R'000)	4 101	25 267	6 906	14 607	85 885	+ 488,0
Additions and alterations						
Dwelling-houses						
Total square metres	12 998	16 621	8 651	56 597	69 575	+ 22,9
Total value at current prices (R'000)	17 576	22 353	10 986	74 518	90 030	+ 20,8
Other buildings ^{3/}						
Total square metres	2 455	3 951	2 436	39 103	19 908	- 49,1
Total value at current prices (R'000)	2 107	7 113	4 053	54 439	35 166	- 35,4
Total value of additions and alterations at current prices (R'000)	19 683	29 466	15 039	128 957	125 196	- 2,9
Total value of building plans passed at current prices (R'000)	52 999	97 335	53 766	280 039	420 181	+ 50,0

1/ Other residential buildings include institutions for the disabled, boarding houses, old people's homes, hostels, hotels, motels, guest houses, holiday chalets, entertainment centres, bed-and-breakfast accommodation and casinos.

2/ Other non-residential space includes churches, sport and recreation clubs, schools, crèches, hospitals and all other non-residential space.

3/ Other buildings include additions and alterations to other residential buildings, non-residential buildings and internal alterations.

Table 31 - Building plans passed according to type of building and selected urban area: Durban

Type of building	June 2001	May 2002	June 2002	January 2001 to June 2001	January 2002 to June 2002	Percentage change between January 2001 to June 2001 and January 2002 to June 2002
Residential buildings						
Dwelling-houses smaller than 80 square metres						
Number of dwelling-houses	76	23	30	448	408	-8,9
Total square metres	3 859	1 259	1 755	23 465	18 097	-22,9
Total value at current prices (R'000)	4 103	1 446	2 226	26 817	20 469	-23,7
Dwelling-houses equal to or larger than 80 square metres						
Number of dwelling-houses	50	82	47	344	345	+ 0,3
Total square metres	9 542	14 140	11 047	65 285	67 922	+ 4,0
Total value at current prices (R'000)	12 153	17 187	16 133	81 537	86 444	+ 6,0
Flats and townhouses						
Number of flats and townhouses	46	9	1	123	188	+ 52,8
Total square metres	7 369	1 866	144	15 647	29 146	+ 86,3
Total value at current prices (R'000)	3 585	2 720	335	15 513	37 753	+ 143,4
Other residential buildings ^{1/}						
Total square metres	0	0	0	138	29 606	+ 21 353,6
Total value at current prices (R'000)	0	0	0	330	31 000	+ 9 293,9
Total value of residential buildings at current prices (R'000)	19 841	21 353	18 694	124 197	175 666	+ 41,4
Non-residential buildings						
Office and banking space						
Total square metres	4 935	0	0	10 440	226	-97,8
Total value at current prices (R'000)	6 500	0	0	20 039	250	-98,8
Shopping space						
Total square metres	1 064	1 664	0	8 222	4 182	-49,1
Total value at current prices (R'000)	1 200	1 760	0	9 956	5 697	-42,8
Industrial and warehouse space						
Total square metres	10 346	9 291	2 167	42 848	38 710	-9,7
Total value at current prices (R'000)	10 806	9 715	2 600	46 959	41 539	-11,5
Other non-residential space ^{2/}						
Total square metres	1 444	2 844	1 516	20 383	59 105	+ 190,0
Total value at current prices (R'000)	2 057	6 504	1 250	24 223	68 490	+ 182,7
Total value of non-residential buildings at current prices (R'000)	20 563	17 979	3 850	101 177	115 976	+ 14,6
Additions and alterations						
Dwelling-houses						
Total square metres	21 951	21 962	20 744	127 014	120 385	-5,2
Total value at current prices (R'000)	23 297	27 752	27 571	145 939	153 655	+ 5,3
Other buildings ^{3/}						
Total square metres	7 196	13 092	9 831	58 730	36 001	-38,7
Total value at current prices (R'000)	26 146	24 615	13 905	133 614	70 703	-47,1
Total value of additions and alterations at current prices (R'000)	49 443	52 367	41 476	279 553	224 358	-19,7
Total value of building plans passed at current prices (R'000)	89 847	91 699	64 020	504 927	516 000	+ 2,2

1/ Other residential buildings include institutions for the disabled, boarding houses, old people's homes, hostels, hotels, motels, guest houses, holiday chalets, entertainment centres, bed-and-breakfast accommodation and casinos.

2/ Other non-residential space includes churches, sport and recreation clubs, schools, crèches, hospitals and all other non-residential space.

3/ Other buildings include additions and alterations to other residential buildings, non-residential buildings and internal alterations.

Table 32 - Building plans passed according to type of building and selected urban area: Witwatersrand

Type of building	June 2001*	May 2002*	June 2002	January 2001 to June 2001	January 2002 to June 2002	Percentage change between January 2001 to June 2001 and January 2002 to June 2002
Residential buildings						
Dwelling-houses smaller than 80 square metres						
Number of dwelling-houses	698	484	510	4 225	4 318	+ 2,2
Total square metres	27 188	19 880	19 824	161 356	159 553	- 1,1
Total value at current prices (R'000)	28 008	21 038	15 628	171 269	140 117	- 18,2
Dwelling-houses equal to or larger than 80 square metres						
Number of dwelling-houses	379	388	364	2 619	2 108	- 19,5
Total square metres	100 828	103 846	93 920	597 110	525 030	- 12,1
Total value at current prices (R'000)	150 257	156 226	139 531	879 148	829 492	- 5,6
Flats and townhouses						
Number of flats and townhouses	288	245	151	1 671	1 511	- 9,6
Total square metres	35 118	41 442	23 534	180 497	200 718	+ 11,2
Total value at current prices (R'000)	55 379	57 024	36 589	301 518	333 046	+ 10,5
Other residential buildings ^{1/}						
Total square metres	0	509	0	1 323	3 968	+ 199,9
Total value at current prices (R'000)	0	970	0	1 751	6 253	+ 257,1
Total value of residential buildings at current prices (R'000)	233 644	235 258	191 748	1 353 686	1 308 908	- 3,3
Non-residential buildings						
Office and banking space						
Total square metres	28 074	3 819	0	150 417	60 385	- 59,9
Total value at current prices (R'000)	67 363	7 612	0	257 964	158 204	- 38,7
Shopping space						
Total square metres	400	570	2 523	53 403	40 819	- 23,6
Total value at current prices (R'000)	360	820	4 954	90 019	68 493	- 23,9
Industrial and warehouse space						
Total square metres	21 257	19 978	30 708	148 568	162 721	+ 9,5
Total value at current prices (R'000)	37 389	34 334	47 103	253 293	262 955	+ 3,8
Other non-residential space ^{2/}						
Total square metres	4 090	4 732	4 911	60 583	85 406	+ 41,0
Total value at current prices (R'000)	6 011	7 033	7 875	92 997	135 669	+ 45,9
Total value of non-residential buildings at current prices (R'000)	111 123	49 799	59 932	694 273	625 321	- 9,9
Additions and alterations						
Dwelling-houses						
Total square metres	66 025	56 864	59 499	375 153	366 002	- 2,4
Total value at current prices (R'000)	86 175	84 302	89 524	483 865	526 424	+ 8,8
Other buildings ^{3/}						
Total square metres	13 247	73 096	32 660	119 123	158 336	+ 32,9
Total value at current prices (R'000)	24 596	125 048	48 042	225 797	279 101	+ 23,6
Total value of additions and alterations at current prices (R'000)	110 771	209 350	137 566	709 662	805 525	+ 13,5
Total value of building plans passed at current prices (R'000)	455 538	494 407	389 246	2 757 621	2 739 754	- 0,6

1/ Other residential buildings include institutions for the disabled, boarding houses, old people's homes, hostels, hotels, motels, guest houses, holiday chalets, entertainment centres, bed-and-breakfast accommodation and casinos.

2/ Other non-residential space includes churches, sport and recreation clubs, schools, crèches, hospitals and all other non-residential space.

3/ Other buildings include additions and alterations to other residential buildings, non-residential buildings and internal alterations.

Table 33 - Building plans passed according to type of building and selected urban area: Pretoria

Type of building	June 2001*	May 2002	June 2002	January 2001 to June 2001	January 2002 to June 2002	Percentage change between January 2001 to June 2001 and January 2002 to June 2002
Residential buildings						
Dwelling-houses smaller than 80 square metres						
Number of dwelling-houses	38	86	46	933	359	- 61,5
Total square metres	2 019	4 861	2 638	34 861	19 810	- 43,2
Total value at current prices (R'000)	2 634	6 837	3 702	36 791	28 790	- 21,7
Dwelling-houses equal to or larger than 80 square metres						
Number of dwelling-houses	243	232	169	1 393	1 281	- 8,0
Total square metres	74 648	59 849	44 460	404 436	338 906	- 16,2
Total value at current prices (R'000)	103 423	83 931	64 165	549 088	479 286	- 12,7
Flats and townhouses						
Number of flats and townhouses	338	237	215	1 053	1 569	+ 49,0
Total square metres	28 931	38 869	25 755	128 340	223 336	+ 74,0
Total value at current prices (R'000)	44 752	53 552	43 145	190 686	325 748	+ 70,8
Other residential buildings ^{1/}						
Total square metres	0	0	0	418	0	..
Total value at current prices (R'000)	0	0	0	627	0	..
Total value of residential buildings at current prices (R'000)	150 809	144 320	111 012	777 192	833 824	+ 7,3
Non-residential buildings						
Office and banking space						
Total square metres	16 363	1 011	3 792	42 021	70 909	+ 68,7
Total value at current prices (R'000)	24 889	1 870	4 732	67 123	111 009	+ 65,4
Shopping space						
Total square metres	20 785	12 303	2 205	32 793	14 564	- 55,6
Total value at current prices (R'000)	29 915	17 084	2 205	48 584	19 365	- 60,1
Industrial and warehouse space						
Total square metres	6 695	30 434	15 601	24 999	63 749	+ 155,0
Total value at current prices (R'000)	10 218	43 557	22 617	35 275	93 076	+ 163,9
Other non-residential space ^{2/}						
Total square metres	361	1 268	695	19 452	10 618	- 45,4
Total value at current prices (R'000)	646	1 877	695	29 199	15 797	- 45,9
Total value of non-residential buildings at current prices (R'000)	65 668	64 388	30 249	180 181	239 247	+ 32,8
Additions and alterations						
Dwelling-houses						
Total square metres	22 102	24 977	19 740	102 239	144 132	+ 41,0
Total value at current prices (R'000)	29 757	36 937	28 506	130 666	208 294	+ 59,4
Other buildings ^{3/}						
Total square metres	6 070	9 125	3 465	28 775	35 753	+ 24,3
Total value at current prices (R'000)	10 139	12 962	4 427	48 344	59 184	+ 22,4
Total value of additions and alterations at current prices (R'000)	39 896	49 899	32 933	179 010	267 478	+ 49,4
Total value of building plans passed at current prices (R'000)	256 373	258 607	174 194	1 136 383	1 340 549	+ 18,0

1/ Other residential buildings include institutions for the disabled, boarding houses, old people's homes, hostels, hotels, motels, guest houses, holiday chalets, entertainment centres, bed-and-breakfast accommodation and casinos.

2/ Other non-residential space includes churches, sport and recreation clubs, schools, crèches, hospitals and all other non-residential space.

3/ Other buildings include additions and alterations to other residential buildings, non-residential buildings and internal alterations.

Table 34 - Building plans passed according to type of building and selected urban area: Bloemfontein

Type of building	June 2001	May 2002	June 2002	January 2001 to June 2001	January 2002 to June 2002	Percentage change between January 2001 to June 2001 and January 2002 to June 2002
Residential buildings						
Dwelling-houses smaller than 80 square metres						
Number of dwelling-houses	270	300	300	1 087	1 072	-1,4
Total square metres	11 630	12 411	12 147	47 396	44 966	-5,1
Total value at current prices (R'000)	5 505	6 565	5 962	23 333	25 200	+ 8,0
Dwelling-houses equal to or larger than 80 square metres						
Number of dwelling-houses	18	29	32	108	187	+ 73,1
Total square metres	3 170	4 361	5 895	18 566	29 140	+ 57,0
Total value at current prices (R'000)	3 807	5 350	7 807	23 594	40 060	+ 69,8
Flats and townhouses						
Number of flats and townhouses	25	8	93	163	281	+ 72,4
Total square metres	4 575	1 282	8 322	20 890	27 161	+ 30,0
Total value at current prices (R'000)	6 227	2 000	10 041	33 614	38 782	+ 15,4
Other residential buildings ^{1/}						
Total square metres	0	0	0	0	2 683	..
Total value at current prices (R'000)	0	0	0	0	7 000	..
Total value of residential buildings at current prices (R'000)	15 539	13 915	23 810	80 541	111 042	+ 37,9
Non-residential buildings						
Office and banking space						
Total square metres	0	0	5 530	12 809	12 797	-0,1
Total value at current prices (R'000)	0	0	7 700	25 200	21 700	-13,9
Shopping space						
Total square metres	0	1 557	0	0	9 116	..
Total value at current prices (R'000)	0	3 114	0	0	19 364	..
Industrial and warehouse space						
Total square metres	180	2 600	0	804	6 032	+ 650,2
Total value at current prices (R'000)	200	2 011	0	638	4 123	+ 546,2
Other non-residential space ^{2/}						
Total square metres	0	0	1 243	1 534	1 243	-19,0
Total value at current prices (R'000)	0	0	1 050	2 868	1 050	-63,4
Total value of non-residential buildings at current prices (R'000)	200	5 125	8 750	28 706	46 237	+ 61,1
Additions and alterations						
Dwelling-houses						
Total square metres	3 270	4 806	3 946	17 010	26 758	+ 57,3
Total value at current prices (R'000)	3 648	5 516	4 819	22 028	31 662	+ 43,7
Other buildings ^{3/}						
Total square metres	258	1 566	303	5 034	8 345	+ 65,8
Total value at current prices (R'000)	773	11 305	1 204	13 099	22 823	+ 74,2
Total value of additions and alterations at current prices (R'000)	4 421	16 821	6 023	35 127	54 485	+ 55,1
Total value of building plans passed at current prices (R'000)	20 160	35 861	38 583	144 374	211 764	+ 46,7

1/ Other residential buildings include institutions for the disabled, boarding houses, old people's homes, hostels, hotels, motels, guest houses, holiday chalets, entertainment centres, bed-and-breakfast accommodation and casinos.

2/ Other non-residential space includes churches, sport and recreation clubs, schools, crèches, hospitals and all other non-residential space.

3/ Other buildings include additions and alterations to other residential buildings, non-residential buildings and internal alterations.

Table 35 - Buildings completed according to type of building and selected urban area: Cape Town

Type of building	June 2001	May 2002	June 2002	January 2001 to June 2001	January 2002 to June 2002	Percentage change between January 2001 to June 2001 and January 2002 to June 2002
Residential buildings						
Dwelling-houses smaller than 80 square metres						
Number of dwelling-houses	500	509	396	2 107	3 166	+ 50,3
Total square metres	30 898	17 885	14 323	89 788	113 957	+ 26,9
Total value at current prices (R'000)	32 748	21 306	14 136	101 907	133 601	+ 31,1
Dwelling-houses equal to or larger than 80 square metres						
Number of dwelling-houses	170	278	280	812	1 471	+ 81,2
Total square metres	31 656	56 189	61 779	161 437	294 949	+ 82,7
Total value at current prices (R'000)	40 906	78 514	86 531	220 875	428 068	+ 93,8
Flats and townhouses						
Number of flats and townhouses	329	137	103	730	610	- 16,4
Total square metres	39 818	15 799	10 996	79 620	90 481	+ 13,6
Total value at current prices (R'000)	44 691	24 162	16 090	98 589	149 559	+ 51,7
Other residential buildings ^{1/}						
Total square metres	0	900	600	16 618	4 143	- 75,1
Total value at current prices (R'000)	0	1 080	720	12 524	5 722	- 54,3
Total value of residential buildings at current prices (R'000)	118 345	125 062	117 477	433 895	716 950	+ 65,2
Non-residential buildings						
Office and banking space						
Total square metres	20 357	16 734	9 412	62 526	64 623	+ 3,4
Total value at current prices (R'000)	29 055	19 505	17 705	116 448	94 194	- 19,1
Shopping space						
Total square metres	3 312	0	10 888	20 287	30 397	+ 49,8
Total value at current prices (R'000)	3 229	0	12 249	24 634	33 571	+ 36,3
Industrial and warehouse space						
Total square metres	7 947	2 542	26 547	41 149	53 937	+ 31,1
Total value at current prices (R'000)	7 719	1 930	28 348	45 707	56 316	+ 23,2
Other non-residential space ^{2/}						
Total square metres	5 047	846	10 310	12 019	17 508	+ 45,7
Total value at current prices (R'000)	6 296	949	7 460	17 331	18 295	+ 5,6
Total value of non-residential buildings at current prices (R'000)	46 299	22 384	65 762	204 120	202 376	- 0,9
Additions and alterations						
Dwelling-houses						
Total square metres	33 828	38 699	35 628	183 610	178 333	- 2,9
Total value at current prices (R'000)	38 594	48 410	46 047	204 942	224 867	+ 9,7
Other buildings ^{3/}						
Total square metres	23 057	8 811	3 061	69 958	97 264	+ 39,0
Total value at current prices (R'000)	47 545	25 451	8 087	211 319	153 095	- 27,6
Total value of additions and alterations at current prices (R'000)	86 139	73 861	54 134	416 261	377 962	- 9,2
Total value of buildings completed at current prices (R'000)	250 783	221 307	237 373	1 054 276	1 297 288	+ 23,1

1/ Other residential buildings include institutions for the disabled, boarding houses, old people's homes, hostels, hotels, motels, guest houses, holiday chalets, entertainment centres, bed-and-breakfast accommodation and casinos.

2/ Other non-residential space includes churches, sport and recreation clubs, schools, crèches, hospitals and all other non-residential space.

3/ Other buildings include additions and alterations to other residential buildings, non-residential buildings and internal alterations.

Table 36 - Buildings completed according to type of building and selected urban area: Port Elizabeth

Type of building	June 2001	May 2002	June 2002	January 2001 to June 2001	January 2002 to June 2002	Percentage change between January 2001 to June 2001 and January 2002 to June 2002
Residential buildings						
Dwelling-houses smaller than 80 square metres						
Number of dwelling-houses	229	96	381	758	976	+ 28,8
Total square metres	10 647	4 020	15 623	32 886	40 547	+ 23,3
Total value at current prices (R'000)	14 361	5 518	21 551	42 289	54 690	+ 29,3
Dwelling-houses equal to or larger than 80 square metres						
Number of dwelling-houses	139	28	85	348	200	- 42,5
Total square metres	11 707	5 065	8 123	35 792	26 563	- 25,8
Total value at current prices (R'000)	15 441	6 380	11 018	46 695	33 558	- 28,1
Flats and townhouses						
Number of flats and townhouses	3	3	0	75	12	- 84,0
Total square metres	530	393	0	5 821	1 479	- 74,6
Total value at current prices (R'000)	542	570	0	5 745	2 047	- 64,4
Other residential buildings ^{1/}						
Total square metres	0	0	0	4 347	2 744	- 36,9
Total value at current prices (R'000)	0	0	0	7 000	3 312	- 52,7
Total value of residential buildings at current prices (R'000)	30 344	12 468	32 569	101 729	93 607	- 8,0
Non-residential buildings						
Office and banking space						
Total square metres	1 907	0	0	20 812	0	..
Total value at current prices (R'000)	1 660	0	0	21 170	0	..
Shopping space						
Total square metres	5 819	0	0	15 291	1 944	- 87,3
Total value at current prices (R'000)	6 117	0	0	18 442	1 998	- 89,2
Industrial and warehouse space						
Total square metres	0	8 752	0	31 793	9 230	- 71,0
Total value at current prices (R'000)	0	7 527	0	38 803	7 919	-79,6
Other non-residential space ^{2/}						
Total square metres	0	0	0	3 808	2 300	- 39,6
Total value at current prices (R'000)	0	0	0	3 047	2 664	+12,6
Total value of non-residential buildings at current prices (R'000)	7 777	7 527	0	81 462	12 581	- 84,6
Additions and alterations						
Dwelling-houses						
Total square metres	4 036	4 886	4 048	22 885	28 491	+ 24,5
Total value at current prices (R'000)	6 448	5 713	5 108	27 394	32 284	+ 17,9
Other buildings ^{3/}						
Total square metres	4 396	1 120	8 858	16 060	22 219	+ 38,3
Total value at current prices (R'000)	5 866	1 933	8 342	20 220	23 390	+ 15,7
Total value of additions and alterations at current prices (R'000)	12 314	7 646	13 450	47 614	55 674	+ 16,9
Total value of buildings completed at current prices (R'000)	50 435	27 641	46 019	230 805	161 862	- 29,9

1/ Other residential buildings include institutions for the disabled, boarding houses, old people's homes, hostels, hotels, motels, guest houses, holiday chalets, entertainment centres, bed-and-breakfast accommodation and casinos.

2/ Other non-residential space includes churches, sport and recreation clubs, schools, crèches, hospitals and all other non-residential space.

3/ Other buildings include additions and alterations to other residential buildings, non-residential buildings and internal alterations.

Table 37 - Buildings completed according to type of building and selected urban area: Durban

Type of building	June 2001	May 2002	June 2002	January 2001 to June 2001	January 2002 to June 2002	Percentage change between January 2001 to June 2001 and January 2002 to June 2002
Residential buildings						
Dwelling-houses smaller than 80 square metres						
Number of dwelling-houses	118	58	62	409	451	+ 10,3
Total square metres	5 502	3 081	3 446	21 103	21 970	+ 4,1
Total value at current prices (R'000)	7 238	3 448	4 385	25 185	25 673	+ 1,9
Dwelling-houses equal to or larger than 80 square metres						
Number of dwelling-houses	109	86	49	500	422	- 15,6
Total square metres	26 291	16 072	9 556	95 834	76 736	- 19,9
Total value at current prices (R'000)	47 120	21 950	11 861	126 661	97 677	- 22,9
Flats and townhouses						
Number of flats and townhouses	35	21	16	385	142	- 63,1
Total square metres	4 458	1 967	1 876	35 466	18 919	- 46,7
Total value at current prices (R'000)	5 621	2 740	3 080	45 470	30 539	- 32,8
Other residential buildings ^{1/}						
Total square metres	0	0	0	0	0	..
Total value at current prices (R'000)	0	0	0	0	0	..
Total value of residential buildings at current prices (R'000)	59 979	28 138	19 326	197 316	153 889	- 22,0
Non-residential buildings						
Office and banking space						
Total square metres	13 743	0	1 193	25 972	31 838	+ 22,6
Total value at current prices (R'000)	16 323	0	2 000	41 693	47 038	+ 12,8
Shopping space						
Total square metres	1 080	600	522	15 237	12 932	- 15,1
Total value at current prices (R'000)	2 253	600	800	28 042	15 223	- 45,7
Industrial and warehouse space						
Total square metres	19 857	24 000	32 904	61 005	97 409	+ 59,7
Total value at current prices (R'000)	32 549	35 830	37 441	80 284	111 552	+ 38,9
Other non-residential space ^{2/}						
Total square metres	2 652	1 324	1 377	6 956	11 244	+ 61,6
Total value at current prices (R'000)	3 312	1 325	1 500	8 638	15 777	+ 82,6
Total value of non-residential buildings at current prices (R'000)	54 437	37 755	41 741	158 657	189 590	+ 19,5
Additions and alterations						
Dwelling-houses						
Total square metres	31 106	26 124	19 554	153 196	117 471	- 23,3
Total value at current prices (R'000)	32 869	30 929	19 784	166 487	128 026	- 23,1
Other buildings ^{3/}						
Total square metres	7 272	2 712	5 351	47 351	46 083	- 2,7
Total value at current prices (R'000)	14 130	4 905	8 498	87 911	86 154	- 2,0
Total value of additions and alterations at current prices (R'000)	46 999	35 834	28 282	254 398	214 180	- 15,8
Total value of buildings completed at current prices (R'000)	161 415	101 727	89 349	610 371	557 659	- 8,6

1/ Other residential buildings include institutions for the disabled, boarding houses, old people's homes, hostels, hotels, motels, guest houses, holiday chalets, entertainment centres, bed-and-breakfast accommodation and casinos.

2/ Other non-residential space includes churches, sport and recreation clubs, schools, crèches, hospitals and all other non-residential space.

3/ Other buildings include additions and alterations to other residential buildings, non-residential buildings and internal alterations.

Table 38 - Buildings completed according to type of building and selected urban area: Witwatersrand

Type of building	June 2001*	May 2002*	June 2002	January 2001 to June 2001	January 2002 to June 2002	Percentage change between January 2001 to June 2001 and January 2002 to June 2002
Residential buildings						
Dwelling-houses smaller than 80 square metres						
Number of dwelling-houses	314	149	755	2 719	3 282	+ 20,7
Total square metres	13 643	7 993	27 090	105 774	116 835	+ 10,5
Total value at current prices (R'000)	14 532	11 794	25 913	90 107	99 717	+ 10,7
Dwelling-houses equal to or larger than 80 square metres						
Number of dwelling-houses	117	215	188	1 088	1 411	+ 29,7
Total square metres	23 771	48 154	42 691	241 559	305 531	+ 26,5
Total value at current prices (R'000)	34 063	72 920	65 305	340 813	460 843	+ 35,2
Flats and townhouses						
Number of flats and townhouses	352	220	75	1 185	1 424	+ 20,2
Total square metres	27 780	52 737	12 929	114 054	204 241	+ 79,1
Total value at current prices (R'000)	47 318	72 082	18 984	193 539	307 370	+ 58,8
Other residential buildings ^{1/}						
Total square metres	0	7 924	0	32 600	11 978	-63,3
Total value at current prices (R'000)	0	11 886	0	250 000	17 333	-93,1
Total value of residential buildings at current prices (R'000)	95 913	168 682	110 202	874 459	885 263	+ 1,2
Non-residential buildings						
Office and banking space						
Total square metres	3 973	36 867	5 670	217 894	117 074	-46,3
Total value at current prices (R'000)	9 629	55 658	8 358	315 358	194 329	-38,4
Shopping space						
Total square metres	49 239	5 560	5 886	59 765	19 352	-67,6
Total value at current prices (R'000)	122 911	10 534	11 000	138 441	32 381	-76,6
Industrial and warehouse space						
Total square metres	9 944	13 056	8 324	93 826	58 068	-38,1
Total value at current prices (R'000)	15 655	18 917	13 534	141 851	89 107	-37,2
Other non-residential space ^{2/}						
Total square metres	1 073	8 250	1 030	11 614	16 131	+ 38,9
Total value at current prices (R'000)	1 551	12 345	1 365	17 970	24 430	+ 35,9
Total value of non-residential buildings at current prices (R'000)	149 746	97 454	34 257	613 620	340 247	-44,6
Additions and alterations						
Dwelling-houses						
Total square metres	16 812	56 159	19 214	120 211	185 563	+ 54,4
Total value at current prices (R'000)	20 851	74 897	26 076	145 096	251 737	+ 73,5
Other buildings ^{3/}						
Total square metres	11 507	8 630	16 627	61 597	53 292	-13,5
Total value at current prices (R'000)	26 240	14 076	20 810	106 863	82 512	-22,8
Total value of additions and alterations at current prices (R'000)	47 091	88 973	46 886	251 959	334 249	+ 32,7
Total value of buildings completed at current prices (R'000)	292 750	355 109	191 345	1 740 038	1 559 759	-10,4

1/ Other residential buildings include institutions for the disabled, boarding houses, old people's homes, hostels, hotels, motels, guest houses, holiday chalets, entertainment centres, bed-and-breakfast accommodation and casinos.

2/ Other non-residential space includes churches, sport and recreation clubs, schools, crèches, hospitals and all other non-residential space.

3/ Other buildings include additions and alterations to other residential buildings, non-residential buildings and internal alterations.

Table 39 - Buildings completed according to type of building and selected urban area: Pretoria

Type of building	June 2001*	May 2002	June 2002	January 2001 to June 2001	January 2002 to June 2002	Percentage change between January 2001 to June 2001 and January 2002 to June 2002
Residential buildings						
Dwelling-houses smaller than 80 square metres						
Number of dwelling-houses	19	11	55	215	476	+ 121,4
Total square metres	965	616	3 095	10 100	18 658	+ 84,7
Total value at current prices (R'000)	1 330	845	4 517	11 236	17 001	+ 51,3
Dwelling-houses equal to or larger than 80 square metres						
Number of dwelling-houses	110	91	103	522	501	- 4,0
Total square metres	31 867	27 017	28 623	148 324	145 030	- 2,2
Total value at current prices (R'000)	45 263	39 974	44 365	202 659	220 815	+ 9,0
Flats and townhouses						
Number of flats and townhouses	11	140	44	636	1 336	+ 110,1
Total square metres	2 259	17 495	6 720	62 959	117 328	+ 86,4
Total value at current prices (R'000)	3 511	28 119	10 691	85 475	157 072	+ 83,8
Other residential buildings ^{1/}						
Total square metres	0	0	0	0	0	..
Total value at current prices (R'000)	0	0	0	0	0	..
Total value of residential buildings at current prices (R'000)	50 104	68 938	59 573	299 370	394 888	+ 31,9
Non-residential buildings						
Office and banking space						
Total square metres	0	0	2 579	5 143	12 877	+ 150,4
Total value at current prices (R'000)	0	0	2 579	6 775	18 293	+ 170,0
Shopping space						
Total square metres	0	0	7 876	0	7 876	..
Total value at current prices (R'000)	0	0	13 783	0	13 783	..
Industrial and warehouse space						
Total square metres	0	3 868	0	6 855	9 226	+ 34,6
Total value at current prices (R'000)	0	5 802	0	5 504	14 247	+ 158,8
Other non-residential space ^{2/}						
Total square metres	308	314	0	5 568	2 004	- 64,0
Total value at current prices (R'000)	308	1 091	0	7 966	3 050	- 61,7
Total value of non-residential buildings at current prices (R'000)	308	6 893	16 362	20 245	49 373	+ 143,9
Additions and alterations						
Dwelling-houses						
Total square metres	1 343	2 455	3 104	6 531	14 557	+ 122,9
Total value at current prices (R'000)	1 523	3 459	4 483	8 111	20 618	+ 154,2
Other buildings ^{3/}						
Total square metres	2 365	241	259	3 322	8 069	+ 142,9
Total value at current prices (R'000)	3 605	362	467	5 293	11 566	+ 118,5
Total value of additions and alterations at current prices (R'000)	5 128	3 821	4 950	13 404	32 184	+ 140,1
Total value of buildings completed at current prices (R'000)	55 540	79 652	80 885	333 019	476 445	+ 43,1

1/ Other residential buildings include institutions for the disabled, boarding houses, old people's homes, hostels, hotels, motels, guest houses, holiday chalets, entertainment centres, bed-and-breakfast accommodation and casinos.

2/ Other non-residential space includes churches, sport and recreation clubs, schools, crèches, hospitals and all other non-residential space.

3/ Other buildings include additions and alterations to other residential buildings, non-residential buildings and internal alterations.

Table 40 - Buildings completed according to type of building and selected urban area: Bloemfontein

Type of building	June 2001	May 2002	June 2002	January 2001 to June 2001	January 2002 to June 2002	Percentage change between January 2001 to June 2001 and January 2002 to June 2002
Residential buildings						
Dwelling-houses smaller than 80 square metres						
Number of dwelling-houses	120	395	436	362	979	+ 170,4
Total square metres	4 944	16 969	18 104	14 798	42 075	+ 184,3
Total value at current prices (R'000)	2 210	7 783	8 514	9 088	21 133	+ 132,5
Dwelling-houses equal to or larger than 80 square metres						
Number of dwelling-houses	9	24	17	104	119	+ 14,4
Total square metres	1 890	3 152	3 343	20 288	20 557	+ 1,3
Total value at current prices (R'000)	2 472	3 614	4 148	24 579	25 287	+ 2,9
Flats and townhouses						
Number of flats and townhouses	0	32	31	96	101	+ 5,2
Total square metres	0	2 656	3 217	7 014	9 661	+ 37,7
Total value at current prices (R'000)	0	3 984	4 826	10 045	15 329	+ 52,6
Other residential buildings ^{1/}						
Total square metres	0	0	0	151	1 428	+ 845,7
Total value at current prices (R'000)	0	0	0	211	1 461	+ 592,4
Total value of residential buildings at current prices (R'000)	4 682	15 381	17 488	43 923	63 210	+ 43,9
Non-residential buildings						
Office and banking space						
Total square metres	0	2 236	0	10 782	4 244	- 60,6
Total value at current prices (R'000)	0	4 000	0	21 483	7 800	- 63,7
Shopping space						
Total square metres	0	0	0	2 812	1 340	- 52,3
Total value at current prices (R'000)	0	0	0	3 006	2 500	- 16,8
Industrial and warehouse space						
Total square metres	80	0	1 020	4 810	3 862	- 19,7
Total value at current prices (R'000)	112	0	714	3 823	2 994	- 21,7
Other non-residential space ^{2/}						
Total square metres	0	0	0	5 519	0	..
Total value at current prices (R'000)	0	0	0	10 170	0	..
Total value of non-residential buildings at current prices (R'000)	112	4 000	714	38 482	13 294	- 65,5
Additions and alterations						
Dwelling-houses						
Total square metres	1 116	6 624	4 033	19 666	33 501	+ 70,3
Total value at current prices (R'000)	1 334	7 683	4 589	21 007	37 528	+ 78,6
Other buildings ^{3/}						
Total square metres	1 227	425	123	17 359	5 292	- 69,5
Total value at current prices (R'000)	1 223	1 672	4 742	86 152	15 537	- 82,0
Total value of additions and alterations at current prices (R'000)	2 557	9 355	9 331	107 159	53 065	- 50,5
Total value of buildings completed at current prices (R'000)	7 351	28 736	27 533	189 564	129 569	- 31,6

1/ Other residential buildings include institutions for the disabled, boarding houses, old people's homes, hostels, hotels, motels, guest houses, holiday chalets, entertainment centres, bed-and-breakfast accommodation and casinos.

2/ Other non-residential space includes churches, sport and recreation clubs, schools, crèches, hospitals and all other non-residential space.

3/ Other buildings include additions and alterations to other residential buildings, non-residential buildings and internal alterations.

Additional information

Explanatory Notes

Introduction	<p>1 Statistics South Africa (Stats SA) conducts a monthly Building Statistics Survey collecting information regarding building plans approved and buildings completed, financed by the private sector, from a sample of local government institutions in South Africa. This statistical release contains information of building plans passed and buildings completed in respect of residential buildings, non-residential buildings and additions and alterations according to province and selected urban areas.</p> <p>2 In order to improve timeliness of the publication, some information for the current month have been estimated due to late submission by respondents. These estimates will be revised in the next statistical release(s) as soon as actual information is available.</p> <p>3 The actual and seasonally adjusted values (at current and at constant 2000 prices) and the percentage change of building plans passed and buildings completed according to type of building are reflected monthly from January 2000 in this statistical release (cf. tables 1 to 8).</p>
Scope of the survey	<p>4 This survey covers local government institutions conducting activities for the private sector regarding -</p> <ul style="list-style-type: none"> • approval of building plans; and • final inspection of completed buildings.
Classification	<p>5 The 1993 edition of the Standard Industrial Classification of all Economic Activities, (SIC) Fifth Edition, Report No. 09-90-02, was used to classify the statistical units. The SIC is based on the 1990 International Standard Industrial Classification of all Economic Activities (ISIC) with suitable adaptations for local conditions.</p> <p>6 The twelfth and last published edition of the Standard Code List of Areas, Report No. 09-09-03 (1994) was used to classify the statistical units according to province. The cities, towns and non-urban areas listed in this report are codified within magisterial district and province. The code list was compiled by Stats SA in collaboration with other interested bodies and the first edition was distributed in June 1977.</p>
Statistical unit	<p>7 The statistical unit for the collection of information is a local government institution. Local government institutions include municipalities, city councils, metropolitan councils, district councils, transitional councils and development and services boards.</p>
Survey methodology and design	<p>8 The sample for the monthly Building Statistics Survey consists of the largest local government institutions in South Africa, i.e. those that account for approximately 85% of the total rand value of buildings completed by the private sector.</p> <p>9 The survey is collected by mail each month from a sample of 128 local government institutions.</p>
Constant prices	<p>10 The value of building plans passed and buildings completed at constant prices measures building activities in terms of ruling prices in a specific base year, which is 2000 as from May 2002.</p> <p>11 The value of building plans passed at constant prices for each month is obtained by deflating the values at current prices with a price index known as the “lump sum domestic buildings” as published in statistical release P0151 – JBCC Contract Price Adjustment Provisions Work Group Indices. In order to be applicable, these indices (base February 1991=100) are converted to the base year 2000=100.</p>

- 12** The value of buildings completed at constant prices is obtained by deflating the values at current prices with the same price index which is used to calculate building plans passed at constant prices (cf. paragraph 11). The value of buildings completed is reported as at the time the plans were passed. Since the completion of buildings may extend over a few months to a few years, the current value of buildings completed is deflated by price indices as at the time the plans were passed in order to calculate the value of buildings completed at the time the plans were passed. Therefore, the duration of the completion of different types of buildings are taken into account in ascertaining the deflators e.g. the value of dwelling-houses completed at constant prices at January 2000 is obtained by deflating the current value of dwelling-houses completed for January 2000 with the price index of a month six months prior to January 2000. Furthermore, the value of other residential buildings, non-residential buildings and additions and alterations at constant prices is obtained by deflating the current values with price indices of 12 months, 18 months and 12 months prior to the relevant month, respectively.
- Seasonal adjustment**
- 13** Seasonally adjusted estimates of building plans passed and buildings completed are generated each month, using the X-11 Seasonal Adjustment Program developed by US Bureau of the Census Economic Research and Analyses Division, 1968.
- 14** Seasonal adjustment is a means of removing the estimated effects of normal seasonal variation from the series so that the effects of other influences on the series can be more clearly recognised. Seasonal adjustment does not aim to remove irregular or non-seasonal influences which may be present in any particular month. Influences that are volatile or unsystematic can still make it difficult to interpret the movement of the series even after adjustment for seasonal variations. Therefore, the month-to-month movements of seasonally adjusted estimates may not be reliable indicators of trend behaviour.
- Trend cycle**
- 15** The trend is a long-term pattern or movement of a time series. The X-11 Seasonal Adjustment Program is used for smoothing seasonally adjusted data.
- Related publications**
- 16** Users may also wish to refer to the following publications:
- P5041.3 – Building statistics issued annually.
 - P9101.2 – Actual and expected expenditure on construction by the public sector per statistical region issued annually.
 - Bulletin of Statistics issued quarterly.
 - South African Statistics issued annually.
- Unpublished statistics**
- 17** In some cases Stats SA can also make available statistics which are not published. The statistics can be made available in one or more of the following ways: computer printouts, CD and diskette. Generally a charge is made for providing unpublished statistics.
- Rounding-off of figures**
- 18** The figures in the tables have, where necessary, been rounded off to the nearest digit shown. There may, therefore, be slight discrepancies between the sums of the constituent items and the totals shown.
- Pre-release policy**
- 19** Stats SA has adopted the confidential pre-release policy in respect of selected economic indicators and specific government departments. The policy accords with practice among leading statistical agencies. The statistical integrity of the information and strict observance of the release time has been assured by the following procedure:
- 20** In respect of this statistical release, an official representative from the Office of the President, the Department of Trade and Industry (DTI), National Treasury and the South African Reserve Bank (SARB) will receive a copy of the release on a strictly confidential basis two hours in advance of the public issue.
- 21** Stats SA pre-release policy may be inspected at its Website, www.statssa.gov.za

Symbols and abbreviations

..	no meaningful percentage change between two specified periods available since either one or both of the totals are nil
0	nil or figure too small to publish
*	revised
Stats SA	Statistics South Africa
SIC	Standard Industrial Classification of all Economic Activities
ISIC	International Standard Industrial Classification of all Economic Activities
JBCC	Joint Building Contracts Committee
CD	Compact Disc
US	United States
SARB	South African Reserve Bank
DTI	Department of Trade and Industry

Technical notes**Response rate**

The response rate for June 2002 is 99,2%.

Local government institutions covered in the sample survey

Local government institutions according to province

Western Cape

Blaauwberg (includes Milnerton), Brackenfell, Breede River District Council, Cape Town, City of Tygerberg (Bellville, Durbanville, Goodwood, Lingeletu West, Parow and South Administration), Fish Hoek, George (includes Pacaltsdorp, Thembalethu and Herolds Bay), Gordon's Bay, Hangklip-Kleinmond (includes Kleinmond, Betty's Bay and Rooi-Els), Hermanus (includes Onrus River, Zwelihle, Sandbaai, Vermont, Hawston and Fisher Haven), Ikapa, Klein-Karoo District Council, Knysna (includes Khayaletu), Kuils River, Malmesbury, Mossel Bay (includes Boggom's Bay, Kleinbrak, Rheeboek and Tergniet), Oostenberg (Kraaifontein and Melton Rose - Blue Downs), Oudtshoorn, Overberg District Council, Paarl, Plettenberg Bay, Sedgfield, Simon's Town, Somerset West, South Peninsula, Stellenbosch, Strand, Wellington, West Coast District Council, Western Coast Peninsula (previously Vredenburg-Saldanha), Winelands District Council and Worcester.

Eastern Cape

Aliwal-Maletswai (includes Dukathole), Despatch, East London (includes Beacon Bay, Gomo Town, Gonubie and Mdantsane), Grahamstown (includes Rhini Township), Jeffrey's Bay, King William's Town (includes Bisho and Zwelitsha), Port Alfred, Port Elizabeth (includes Ibhayi and Motherwell), Uitenhage (includes KwaNobuhle), Umtata and Western District Council.

Northern Cape

Benede-Oranje District Council, Keimoes, Kimberley (including Galeshewe), Kuruman, Namaqualand District Council and Upington (includes Paballelo).

Free State

Allanridge, Bethlehem (includes Bohlokong), Bloemfontein (includes Bainsvlei, Bloemspruit and Mangaung), Botshabelo, Deneysville (includes Refengkgotso), Harrismith (includes Tsiamé), Kroonstad (includes Maokeng), Ladybrand (includes Manyatseng), Odendaalsrus (includes Kutlwanong), Parys, Phuthaditjhaba, Sasolburg (includes Zamdela), Virginia (includes Meloding) and Welkom (includes Thabong).

KwaZulu-Natal

Development and Services Board - Inland, Development and Services Board – North Coast, Dolphin Coast Borough (includes Ballito, Etete, Shakaskraal, Tinley Manor Beach and Umhlali Beach), Durban, Edendale, Empangeni (includes Ngwelezana), Hilton, Howick, Inner West City Council (includes Clermont, KwaDabeka, KwaNdengezi, New Germany, Pinetown, Queensburgh, Reservoir Hills, Shallcross and Westville), Kokstad, Kwa-Dukuza/Stanger (includes Blythedale Beach, Shakaville and Stanger), KwaMashu, Ladysmith (includes Emnambithi), Margate (includes Uvongo), Mpenjati/Southbroom (includes Southbroom, Marina Beach, San Lameer and Trafalgar), Newcastle (includes Madadeni, Osizweni and Blaauwboschlaagte), North Local Council - Tongaat (includes Canelands and Hambanati), North Local Council - Umhlanga Rocks (includes Mount Edgecombe and Umdloti Beach), North Local Council - Verulam, Outer West Local Council (includes Assagay, Botha's Hill, Cato Ridge, Drummond, Everton, Gillitts, Hillcrest, Inchanga, Kloof, Mpumalanga and Waterfall), Pennington, Pietermaritzburg/Msundini, Port Shepstone, Richards Bay, South Local Council (includes Amanzimtoti, Isipingo, Kingsburgh, KwaMakuta and Umbogintwini), Umlazi and Umtamvuna/Port Edward (includes Munster, Port Edward and Palm Beach).

North West

Bophirima District Council, Brits (includes Lethabile), Ga-Rankuwa, Klerksdorp, Lichtenburg, Mmabatho, Orkney (includes Kanana), Potchefstroom, Rustenburg, Vryburg and Zeerust.

Gauteng	Akasia (includes Elandsdoorn, Klipfontein, Kruisfontein and Soshanguve), Alberton (includes Tokoza), Benoni (includes Daveyton and Wattville), Boksburg (includes Vosloorus), Brakpan (includes Tsakane), Bronkhorst-spruit, Carletonville (includes Khutsong), Centurion, Duduza, Eastern Services Council - Pretoria Area, Edenvale-Modderfontein, Germiston (includes Bedfordview and Katlehong), Greater Johannesburg - Eastern Metropolitan Local Council (includes Alexandra and Sandton), Greater Johannesburg - Northern Metropolitan Local Council (includes Randburg), Greater Johannesburg - Southern Metropolitan Local Council (includes Ennerdale, Lenasia and Johannesburg), Greater Johannesburg - Western Metropolitan Local Council (includes Diepmeadow, Dobsonville and Roodepoort), Heidelberg (includes Ratanda), Kempton Park (includes Tembisa), Krugersdorp (includes Kagiso and Munsieville), Meyerton, Midrand (includes Rabie Ridge and Ivory Park), Nigel, Pretoria (includes Atteridgeville and Mamelodi), Randfontein (includes Mohlakeng), Sebokeng (includes Boipatong, Bophelong and Sharpeville), Soweto, Springs (includes KwaThema), Vanderbijlpark, Vereeniging (includes Evaton), Western Services Council and Westonaria (includes Bekkersdal).
Mpumalanga	Delmas (includes Botleng), Eastvaal District Council, Ermelo (includes Wesselton and Cassim Park), Highveld District Council, Highveldridge Transitional Council (includes Evander, Embalenhle and Secunda), Komatipoort (includes Kamaqhekeza), KwaGuqa, KwaMhlanga, Malelane (includes Hectorspruit and Kamhlushwa), Middelburg (includes Mhluzi), Nelspruit (includes Kanyamazane and Lowveld Escarpment District Council as from January 2001), White River and Witbank.
Limpopo	Bosveld District Council, Giyani, Letaba (includes Nkowakowa and Tzaneen), Messina, Naboomspruit (includes Mookgophong), Nylstroom, Pietersburg-Polokwane (includes Seshego), Potgietersrus and Thabazimbi.

Local government institutions according to selected urban areas

Cape Town	Blaauwberg (includes Milnerton), Cape Town, City of Tygerberg (Bellville, Durbanville, Goodwood, Lingeletu West, Parow and South Administration), Fish Hoek, Ikapa, Oostenberg (Kraaifontein and Melton Rose - Blue Downs), Simon's Town and South Peninsula.
Port Elizabeth	Despatch, Port Elizabeth (including Ibhayi and Motherwell) and Uitenhage (including KwaNobuhle)
Durban	Durban, Inner West City Council (includes Clermont, KwaDabeka, KwaNdengezi, New Germany, Pinetown, Queenstown, Reservoir Hills, Shallcross and Westville), North Local Council - Verulam, Outer West Local Council (includes Assagay, Botha's Hill, Cato Ridge, Drummond, Everton, Gillitts, Hillcrest, Inchanga, Kloof, Mpumalanga and Waterfall) and South Local Council (includes Amanzimtoti, Isipingo, Kingsburgh, KwaMakuta and Umbogintwini).
Witwatersrand	Alberton (includes Thokoza), Benoni (includes Daveyton and Wattville), Boksburg (includes Vosloorus), Brakpan (includes Tsakane), Carletonville (includes Khutsong), Duduza, Edenvale-Modderfontein, Germiston (includes Bedfordview and Katlehong), Greater Johannesburg - Eastern Metropolitan Local Council (includes Alexandra and Sandton), Greater Johannesburg - Northern Metropolitan Local Council (includes Randburg), Greater Johannesburg - Southern Metropolitan Local Council (includes Ennerdale, Lenasia and Johannesburg), Greater Johannesburg - Western Metropolitan Local Council (includes Diepmeadow, Dobsonville and Roodepoort), Kempton Park (includes Tembisa), Krugersdorp (includes Kagiso and Munsieville), Midrand (includes Rabie Ridge and Ivory Park), Nigel, Randfontein (includes Mohlakeng), Soweto, Springs (includes KwaThema) and Westonaria (includes Bekkersdal).

Pretoria

Akasia (includes Elandsdoorn, Klipfontein and Soshanguve), Centurion, Eastern Services Council - Pretoria area and Pretoria (includes Atteridgeville and Mamelodi).

Bloemfontein

Bloemfontein (includes Bainsvlei, Bloemspruit and Mangaung).

Glossary

Additions and alterations	Additions and alterations include extensions to existing buildings as well as internal and external alterations of existing buildings.
Blocks of flats	Blocks of flats are regarded as high-density housing consisting of a number of self-contained dwelling-units with at least one living-room together with a kitchen and bathroom conjoined to similar units in one building.
Dwelling-house	A dwelling-house refers to a free-standing, complete structure on a separate stand or a self-contained dwelling-unit, granny flat, on the same premises as an existing residence. Out-buildings and garages are included.
Local government institutions	A local government institution is a generic term referring to any number of institutions involved in the local sphere of government. Local government institutions consist of municipalities, city councils, metropolitan councils, district councils, transitional local councils and development and services boards.
Non-residential buildings	Non-residential buildings comprise factories, commercial, financial and other office buildings, as well as other buildings not used for residential purposes, such as churches, halls, clubs, schools and hospitals.
Other residential buildings	Other residential buildings include institutions for the disabled, boarding houses, old people's homes, hostels, hotels, motels, guest houses, holiday chalets, bed-and-breakfast accommodation, entertainment centres and casinos.
Percentage change	<p>When using monthly actual values, the percentage change is the change in actual values of building activities (building plans passed or buildings completed) of the relevant month compared with the actual values of building activities (building plans passed or buildings completed) of the same month in the previous year expressed as a percentage.</p> <p>When using annual actual values, the percentage change is the change in the actual values of building activities (building plans passed or buildings completed) of the relevant year compared with the actual values of building activities (building plans passed or buildings completed) of the previous year expressed as a percentage.</p> <p>When using seasonally adjusted values, the percentage change is the change in the seasonally adjusted values of building activities (building plans passed or buildings completed) of the relevant month compared with the seasonally adjusted values of building activities (building plans passed or buildings completed) of the previous month expressed as a percentage.</p>
Reference period	Reference period is one calendar month.
Residential buildings	Residential buildings comprise dwelling-houses, flats, townhouses and other residential buildings.
Townhouses	Townhouses are multiple, medium-density dwelling-units and include cluster housing, group housing, simplexes, duplexes, triplexes and other similar dwelling-units which are usually grouped together, with one level of each unit on ground level. This excludes blocks of flats.

For more information

Stats SA publishes approximately 300 different statistical releases each year. It is not economically viable to produce them in more than one of South Africa's eleven official languages. Since the releases are used extensively, not only locally but also by international economic and social-scientific communities, Stats SA releases are published in English only.

Stats SA has copyright on this publication. Users may apply the information as they wish, provided that they acknowledge Stats SA as the source of the basic data wherever they process, apply, utilise, publish or distribute the data and also that they specify that the relevant application and analysis (where applicable) result from their own processing of the data.

Stats SA products

A complete set of Stats SA publications is available at the Stats SA Library and the following libraries:

National Library of South Africa, Pretoria Division
National Library of South Africa, Cape Town Division
Natal Society Library, Pietermaritzburg
Library of Parliament, Cape Town
Bloemfontein Public Library
Johannesburg Public Library
Eastern Cape Library Services, King William's Town
Central Regional Library, Pietersburg
Central Reference Library, Nelspruit
Central Reference Collection, Kimberley
Central Reference Library, Mmabatho

Stats SA also provides a subscription service.

Electronic services

A large range of data are available via on-line services, diskette, CD and computer printouts. For more details about our electronic data services, contact (012) 310 8600/8095/8390/8351

You can visit us on the Internet at: <http://www.statssa.gov.za>

Enquiries

Telephone number: (012) 310 8600/8095/8390/8351 (user enquiries)
(012) 310 8228/310 8007 (technical enquiries)
(012) 310 8161 (publications)
(012) 310 8490 (library)

Fax number: (012) 310 8182

e-mail: Corrieb@statssa.pwv.gov.za
Gretaz@statssa.pwv.gov.za

Postal address: Private Bag X44, Pretoria, 0001