

Building statistics

June 2001

Co-operation between Statistics South Africa (Stats SA), the citizens of the country, the private sector and government institutions is essential for a successful statistical system. Without continued co-operation and goodwill, the timely release of relevant and reliable official statistics will not be possible.

Embargo: 13:00
Date: 15 August 2001

Stats SA publishes approximately three hundred different releases each year. It is not economically viable to produce them in more than one of South Africa's eleven official languages. Since the releases are used extensively, not only locally, but also by international economic and social-scientific communities, Stats SA releases are published in English only.

Key figures regarding building plans passed for the month ended June 2001

Actual estimates at constant 1995 prices

	June 2001	January 2001 to June 2001	Percentage change between June 2000 and June 2001	Percentage change between April 2000 to June 2000 and April 2001 to June 2001	Percentage change between January 2000 to June 2000 and January 2001 to June 2001
	R million	R million			
Residential buildings					
Dwelling-houses	521,8	2 852,9	+ 5,0	+ 6,6	+ 10,1
Flats and townhouses	117,0	674,0	+ 2,0	- 3,1	+ 6,5
Other residential buildings	8,7	114,7	- 66,5	+ 106,3	+ 21,8
Total	647,5	3 641,6	+ 1,5	+ 6,6	+ 9,8
Non-residential buildings	224,8	1 348,2	- 10,6	- 34,9	- 18,3
Additions and alterations	329,6	1 851,1	- 17,1	- 8,3	- 8,5
Total	1 201,9	6 840,9	- 6,6	- 7,5	- 2,2

Seasonally adjusted estimates at constant 1995 prices

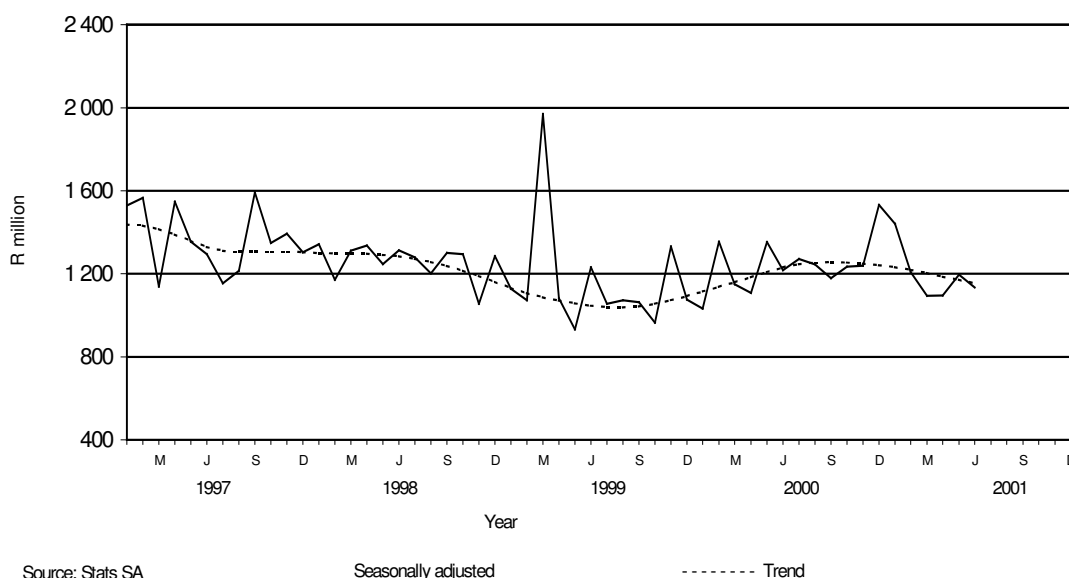
	June 2001	Percentage change between May 2001 and June 2001	Percentage change between January 2001 to March 2001 and April 2001 to June 2001
	R million		
Residential buildings	612,2	- 8,8	+ 0,4
Non-residential buildings	206,9	+ 16,4	- 36,9
Additions and alterations	315,9	- 9,1	+ 0,5
Total	1 135,0	- 5,1	- 8,5

Key findings regarding building plans passed for the second quarter of 2001

Seasonally adjusted real value of building plans passed decreases

The seasonally adjusted real value of building plans passed (at constant 1995 prices) for the second quarter of 2001 decreased by 8,5% compared with the first quarter of 2001.

The decrease of 8,5% in the seasonally adjusted real value of building plans passed was due to a decrease in the seasonally adjusted real value of building plans passed for non-residential buildings (-36,9%). However, slight increases in the seasonally adjusted real value of building plans passed were reported for additions and alterations (+0,5%) and residential buildings (+0,4%) during the above-mentioned period.

Figure 1 - Total real value of building plans passed

Key findings regarding building plans passed for the first six months of 2001

Total real value of building plans passed decreases

The total real value of building plans passed (at constant 1995 prices) during the first six months of 2001 decreased by 2,2% (-R150,4 million) to R6 840,9 million compared with the first six months of 2000. Large real decreases were reported for non-residential buildings (-18,3% or R302,9 million, mainly due to decreases reported by Gauteng (-R213,4 million), Western Cape (-R82,4 million) and Eastern Cape (-R71,6 million)); and additions and alterations (-8,5% or R171,5 million, mainly due to decreases reported by KwaZulu-Natal (-R94,5 million) and Western Cape (-R47,9 million)). However, the real value of building plans passed for residential buildings increased by 9,8% (+R324,1 million, mainly due to increases reported by Gauteng (+R171,6 million) and Western Cape (+R133,4 million)) during the above-mentioned period.

Seven of the nine provinces reported decreases in the total real value of building plans passed

The largest provincial contributors to the decrease of 2,2% (-R150,4 million) in the total real value of building plans passed during the first six months of 2001 compared with the first six months of 2000 were Eastern Cape (-0,6 of a percentage point or R40,2 million), Northern Cape (-0,5 of a percentage point or R33,0 million), Gauteng (-0,4 of a percentage point or R27,4 million) and KwaZulu-Natal (-0,4 of a percentage point or R27,0 million) (cf. table A). The largest real decrease in Eastern Cape was reported for non-residential buildings (-R71,6 million, mainly due to decreases reported by the selected urban areas of East London (-R36,9 million) and Port Elizabeth (-R31,7 million)). Large real decreases in Northern Cape were reported for non-residential buildings (-R17,5 million) and additions and alterations (-R17,2 million), mainly due to decreases reported by Kimberley for non-residential buildings (-R16,3 million) and additions and alterations (-R18,1 million).

Table A - Contribution of provinces to the total real value of building plans passed

Province	Percentage contribution to the total real value of plans passed during January 2000 to June 2000	Percentage change between January 2000 to June 2000 and January 2001 to June 2001	Contribution (percentage points) ^{1/} to the percentage change in the real value of plans passed between January 2000 to June 2000 and January 2001 to June 2001	Difference in total real value of plans passed between January 2000 to June 2000 and January 2001 to June 2001 R million
Eastern Cape	6,5	- 8,8	- 0,6	- 40,2
Northern Cape	1,1	- 43,6	- 0,5	- 33,0
Gauteng	42,8	-0,9	- 0,4	- 27,4
KwaZulu-Natal	11,7	- 3,3	- 0,4	- 27,0
Free State	2,6	- 8,1	- 0,2	- 14,8
Northern Province	1,7	- 11,6	- 0,2	- 13,9
North West	2,5	- 1,9	- 0,0	- 3,3
Western Cape	28,1	+ 0,2	+ 0,0	+ 3,0
Mpumalanga	3,0	+ 3,0	+ 0,1	+ 6,2
Total	100,0	- 2,2	- 2,2	- 150,4

1/ The contribution (percentage points) is calculated by multiplying the percentage change of each province between January 2000 to June 2000 and January 2001 to June 2001 (cf. column 3) with the percentage contribution of the corresponding province to the total real value of plans passed during January 2000 to June 2000 (cf. column 2) divided by 100.

Total real value of residential building plans passed increases

The total real value of residential building plans passed during the first six months of 2001 increased by 9,8% (+R324,1 million) to R3 641,6 million compared with the first six months of 2000. Increases were reported by six of the nine provinces. Large increases in the total real value of residential building plans passed were reported by Gauteng (+R171,6 million, mainly due to the increase in the real value of plans passed for dwelling-houses (+R150,3 million)); and Western Cape (+R133,4 million, due to the increase in the real value of plans passed for dwelling-houses (+R165,4 million)). Increases in the real value of residential building plans passed were reported for dwelling-houses (+R262,4 million), flats and townhouses (+R41,2 million) and 'other' residential buildings (+R20,5 million) during the above-mentioned period.

Total real value of dwelling-house plans passed increases

The total real value of dwelling-house plans passed during the first six months of 2001 increased by 10,1% (+R262,4 million) to R2 852,9 million compared with the first six months of 2000. Increases were reported by five of the nine provinces. The largest increases in the real value of dwelling-house plans passed were reported by Western Cape (+R165,4 million) and Gauteng (+R150,3 million). Large real increases were reported by the selected urban areas of Cape Town (+R108,8 million), Pretoria (+R91,0 million) and Witwatersrand (+R54,7 million).

The increase of 10,1% in the total real value of dwelling-house plans passed during the above-mentioned period can mainly be attributed to the increase in the real value of plans passed for dwelling-houses equal to or larger than 80 square metres (+12,0% or R247,2 million).

Total real value of plans passed for flats and townhouses increases

The total real value of plans passed for flats and townhouses during the first six months of 2001 increased by 6,5% (+R41,2 million) to R674,0 million compared with the first six months of 2000. Real increases were reported by five of the nine provinces. The largest increase in the real value of plans passed for flats and townhouses was reported by Gauteng (+R32,5 million), followed by KwaZulu-Natal (+R16,2 million), Mpumalanga (+R12,7 million), North West (+R8,8 million) and Free State (+R7,3 million). Large real increases were reported by the selected urban areas of Witwatersrand (+R26,3 million), North Local Council – Umhlanga Rocks (+R18,9 million), Rustenburg (+R13,0 million), Highveldridge Transitional Council (+R11,2 million) and Bloemfontein (+R7,8 million). However, a large decrease in the real value of building plans passed for flats and townhouses was reported by Western Cape (-R29,6 million, due to the decrease reported by the selected urban area of Cape Town (-R43,2 million)) during the above-mentioned period.

Total real value of 'other' residential building plans passed increases

The total real value of 'other' residential building plans passed during the first six months of 2001 increased by 21,8% (+R20,5 million) to R114,7 million compared with the first six months of 2000. The largest real increase was reported by Eastern Cape (+R47,3 million), mainly due to the approval of building plans passed for a casino, to the real value of R35,8 million, by the local government institution of East London during January 2001.

Total real value of non-residential building plans passed decreases

The total real value of non-residential building plans passed during the first six months of 2001 decreased by 18,3% (-R302,9 million) to R1 348,2 million compared with the first six months of 2000. Large decreases in the total real value of non-residential building plans passed were reported by Gauteng (-R213,4 million), Western Cape (-R82,4 million) and Eastern Cape (-R71,6 million). Large decreases were reported by the selected urban areas of Witwatersrand (-R243,9 million), Cape Town (-R79,0 million), East London (-R36,9 million) and Port Elizabeth (-R31,7 million). However, KwaZulu-Natal reported a large increase in the total real value of non-residential building plans passed (+R73,2 million). This increase was mainly due to the increase in the total real value of non-residential building plans passed as reported by North Local Council – Umhlanga Rocks (+R102,9 million) during the above-mentioned period.

Total real value of building plans passed for additions and alterations decreases

The total real value of building plans passed for additions and alterations during the first six months of 2001 decreased by 8,5% (-R171,5 million) to R1 851,1 million compared with the first six months of 2000. Real decreases were reported by seven of the nine provinces. Large decreases in the real value of building plans passed for additions and alterations were reported by KwaZulu-Natal (-R94,5 million) and Western Cape (-R47,9 million).

Key figures regarding buildings completed for the month ended June 2001

Actual estimates at constant 1995 prices

	June 2001	January 2001 to June 2001	Percentage change between June 2000 and June 2001	Percentage change between April 2000 to June 2000 and April 2001 to June 2001	Percentage change between January 2000 to June 2000 and January 2001 to June 2001
	R million	R million			
Residential buildings					
Dwelling-houses	319,7	1 525,0	+ 39,5	+ 16,5	+ 15,0
Flats and townhouses	87,2	423,3	+ 73,0	- 16,4	+ 1,2
Other residential buildings	3,1	263,4	+ 3,1	- 53,8	+ 594,0
Total	410,0	2 211,7	+ 45,1	+ 7,6	+ 24,1
Non-residential buildings	286,6	1 185,6	+ 102,9	+ 2,7	+ 3,6
Additions and alterations	207,7	1 129,8	+ 54,4	+ 10,3	+ 7,2
Total	904,2	4 527,1	+ 62,0	+ 6,8	+ 13,7

Seasonally adjusted estimates at constant 1995 prices

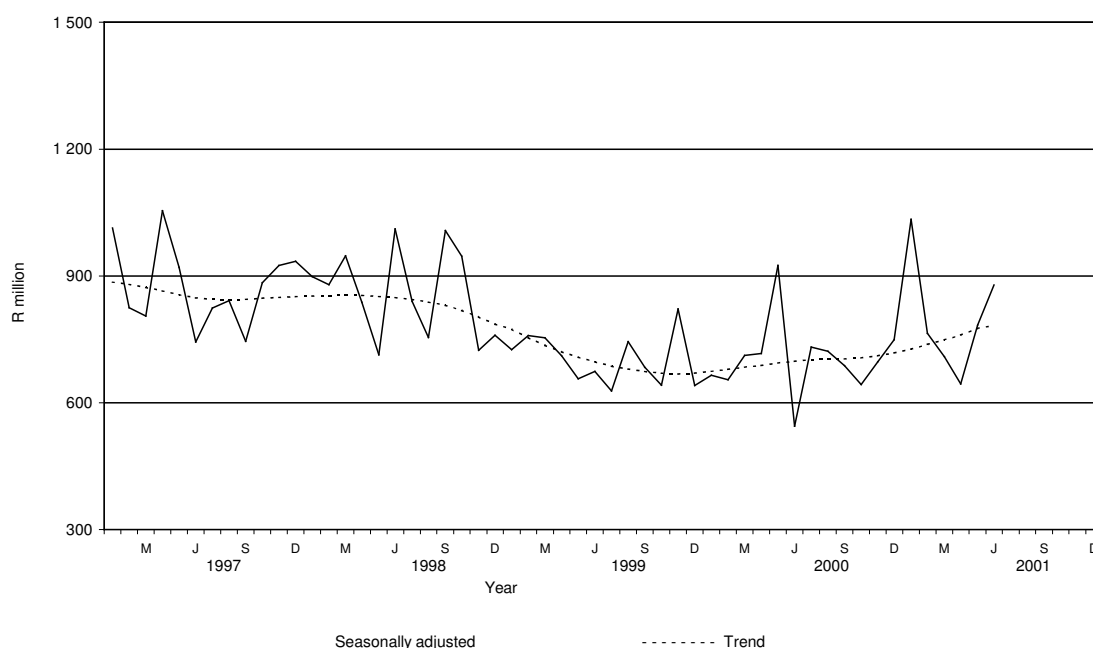
	June 2001	Percentage change between May 2001 and June 2001	Percentage change between January 2001 to March 2001 and April 2001 to June 2001
	R million		
Residential buildings	395,6	+ 14,7	- 22,8
Non-residential buildings	262,6	+ 20,2	+ 7,5
Additions and alterations	220,3	- 0,3	+ 12,7
Total	878,5	+ 12,0	- 7,9

Key findings regarding buildings completed for the second quarter of 2001

Seasonally adjusted real value of buildings completed decreases

The seasonally adjusted real value of buildings completed (at constant 1995 prices) for the second quarter of 2001 decreased by 7,9% compared with the first quarter of 2001.

The decrease of 7,9% in the seasonally adjusted real value of buildings completed was due to a decrease in the seasonally adjusted real value of residential buildings completed (-22,8%) during the second quarter of 2001 compared with the first quarter of 2001. However, this decrease was counteracted by increases in the seasonally adjusted real value of additions and alterations completed (+12,7%) and non-residential buildings completed (+7,5%) during the above-mentioned period.

Figure 2 - Total real value of buildings completed

Key findings regarding buildings completed for the first six months of 2001

Total real value of buildings completed increases

The total real value of buildings completed (at constant 1995 prices) during the first six months of 2001 increased by 13,7% (+R546,9 million) to R4 527,1 million compared with the first six months of 2000. Increases in the real value of buildings completed were reported for 'other' residential buildings (+R225,5 million, mainly due to the completion of a hotel and casino, to the real value of R192,6 million, as reported by the Southern Metropolitan Local Council of Greater Johannesburg during January 2001); dwelling-houses (+R199,2 million, mainly due to increases in the real value of dwelling-houses completed as reported by Western Cape (+R103,1 million), KwaZulu-Natal (+R52,5 million) and Eastern Cape (+R37,3 million)); additions and alterations (+R75,9 million) and non-residential buildings (+R41,4 million).

Six of the nine provinces reported increases in the total real value of buildings completed

The largest provincial contributors to the increase of 13,7% (+R546,9 million) in the total real value of buildings completed during the first six months of 2001 compared with the first six months of 2000 were Gauteng (+4,8 percentage points or R191,5 million), Western Cape (+4,4 percentage points or R176,8 million) and Eastern Cape (+3,0 percentage points or R118,1 million) (cf. table B). The largest real increase in Gauteng was reported for 'other' residential buildings (+R184,0 million), due to the completion of a hotel and casino to the real value of R192,6 million as reported during January 2001. Large real increases in Western Cape were reported for dwelling-houses (+R103,1 million) and additions and alterations (+R89,9 million), while in Eastern Cape large real increases were reported for industrial and warehouse space (+R65,9 million) and dwelling-houses (+R37,3 million).

Table B - Contribution of provinces to the total real value of buildings completed

Province	Percentage contribution to the total real value of buildings completed during January 2000 to June 2000	Percentage change between January 2000 to June 2000 and January 2001 to June 2001	Contribution (percentage points) ^{1/} to the percentage change in the real value of buildings completed between January 2000 to June 2000 and January 2001 to June 2001	Difference in total real value of buildings completed between January 2000 to June 2000 and January 2001 to June 2001 R million
Gauteng	37,3	+ 12,9	+ 4,8	+ 191,5
Western Cape	28,1	+ 15,8	+ 4,4	+ 176,8
Eastern Cape	6,0	+ 49,6	+ 3,0	+ 118,1
Free State	3,1	+ 61,3	+ 1,9	+ 74,5
Northern Cape	1,1	+ 12,5	+ 0,1	+ 5,5
Mpumalanga	2,4	+ 1,4	+ 0,0	+ 1,3
North West	2,9	- 2,0	- 0,1	- 2,3
KwaZulu-Natal	17,6	- 0,5	- 0,1	- 3,7
Northern Province	1,5	- 23,9	- 0,3	- 14,8
Total	100,0	+ 13,7	+ 13,7	+ 546,9

1/ The contribution (percentage points) is calculated by multiplying the percentage change of each province between January 2000 to June 2000 and January 2001 and June 2001 (cf. column 3) with the percentage contribution of the corresponding province to the total real value of buildings completed during January 2000 to June 2000 (cf. column 2) divided by 100.

Total real value of residential buildings completed increases

The total real value of residential buildings completed during the first six months of 2001 increased by 24,1% (+R429,6 million) to R2 211,7 million compared with the first six months of 2000. Large increases in the real value of residential buildings completed were reported for 'other' residential buildings (+R225,5 million, mainly due to the completion of a hotel and casino in Gauteng to the real value of R192,6 million as reported during January 2001) and dwelling-houses (+R199,2 million). The largest provincial increase in the total real value of residential buildings completed was reported by Gauteng (+R219,9 million, mainly due to a real increase reported for 'other' residential buildings (+R184,0 million)); followed by KwaZulu-Natal (+R91,4 million), Western Cape (+R72,0 million), Eastern Cape (+R31,9 million) and North West (+R20,2 million).

Total real value of dwelling-houses completed increases

The total real value of dwelling-houses completed during the first six months of 2001 increased by 15,0% (+R199,2 million) to R1 525,0 million compared with the first six months of 2000. Large real increases were reported by Western Cape (+R103,1 million), KwaZulu-Natal (+R52,5 million) and Eastern Cape (+R37,3 million). Large increases in the real value of dwelling-houses completed were reported by the selected urban areas of Cape Town (+R43,0 million), Mossel Bay (+R31,0 million), Port Elizabeth (+R25,2 million), Pretoria (+R23,0 million), Helderberg Municipality (+R21,8 million), Durban (+R21,7 million) and North Local Council – Umhlanga Rocks (+R20,0 million). The increase of 15,0% in the total real value of dwelling-houses completed during the first six months of 2001 compared with the first six months of 2000 can be attributed to an increase in the completion of dwelling-houses equal to or larger than 80 square metres (+24,3% or R231,3 million).

Total real value of flats and townhouses completed increases

The total real value of flats and townhouses completed during the first six months of 2001 increased by 1,2% (+R4,9 million) to R423,3 million compared with the first six months of 2000. Four of the nine provinces reported increases in the real value of flats and townhouses completed. The largest provincial increase in the real value of flats and townhouses completed was reported by Gauteng (+R38,3 million), mainly due to an increase reported by Witwatersrand (+R47,2 million). However, a large real decrease was reported by Western Cape (-R33,3 million) during the above-mentioned period.

Total real value of 'other' residential buildings completed increases

The total real value of 'other' residential buildings completed during the first six months of 2001 increased by R225,5 million to R263,4 million compared with the first six months of 2000. Large real increases were reported by Gauteng (+R184,0 million, mainly due to the completion of a hotel and casino to the real value of R192,6 million, as reported by Southern Metropolitan Local Council of Greater Johannesburg during January 2001) and KwaZulu-Natal (+R29,9 million, due to the completion of a casino to the real value of R30,8 million, as reported by the North Local Council – Umhlanga Rocks during January 2001).

Total real value of non-residential buildings completed increases

The total real value of non-residential buildings completed during the first six months of 2001 increased by 3,6% (+R41,4 million) to R1 185,6 million compared with the first six months of 2000. Five of the nine provinces reported increases in the total real value of non-residential buildings completed. The largest real increase was reported by Eastern Cape (+R67,0 million), mainly due to real increases reported by East London (+R28,7 million) and Port Elizabeth (+R25,4 million) during the above-mentioned period.

Total real value of additions and alterations completed increases

The total real value of additions and alterations completed during the first six months of 2001 increased by 7,2% (+R75,9 million) to R1 129,8 million compared with the first six months of 2000. The largest real increases were reported by Western Cape (+R89,9 million) and Free State (+R63,0 million). Large real increases were reported by the selected urban areas of Cape Town (+R92,9 million) and Bloemfontein (+R62,2 million). However, a large real decrease in the total real value of additions and alterations completed was reported by KwaZulu-Natal (-R57,3 million) and Gauteng (-R51,8 million). Large real decreases were reported by the selected urban areas of Durban (-R61,0 million) and Witwatersrand (-R42,0 million) during the above-mentioned period.

Contents

Page

Notes	10
Tables		
Table 1	Actual values and percentage change of building plans passed at current prices according to type of building	14
Table 2	Seasonally adjusted values and percentage change of building plans passed at current prices according to type of building	15
Table 3	Actual values and percentage change of building plans passed at constant 1995 prices according to type of building	16
Table 4	Seasonally adjusted values and percentage change of building plans passed at constant 1995 prices according to type of building	17
Table 5	Actual values and percentage change of buildings completed at current prices according to type of building	18
Table 6	Seasonally adjusted values and percentage change of buildings completed at current prices according to type of building	19
Table 7	Actual values and percentage change of buildings completed at constant 1995 prices according to type of building	20
Table 8	Seasonally adjusted values and percentage change of buildings completed at constant 1995 prices according to type of building	21
Table 9	Building plans passed according to type of building: Total RSA	22
Table 10	Building plans passed according to type of building and province: Western Cape	23
Table 11	Building plans passed according to type of building and province: Eastern Cape	24
Table 12	Building plans passed according to type of building and province: Northern Cape	25
Table 13	Building plans passed according to type of building and province: Free State	26
Table 14	Building plans passed according to type of building and province: KwaZulu-Natal	27
Table 15	Building plans passed according to type of building and province: North West	28
Table 16	Building plans passed according to type of building and province: Gauteng	29
Table 17	Building plans passed according to type of building and province: Mpumalanga	30
Table 18	Building plans passed according to type of building and province: Northern Province	31
Table 19	Buildings completed according to type of building: Total RSA	32
Table 20	Buildings completed according to type of building and province: Western Cape	33
Table 21	Buildings completed according to type of building and province: Eastern Cape	34
Table 22	Buildings completed according to type of building and province: Northern Cape	35
Table 23	Buildings completed according to type of building and province: Free State	36
Table 24	Buildings completed according to type of building and province: KwaZulu-Natal	37
Table 25	Buildings completed according to type of building and province: North West	38
Table 26	Buildings completed according to type of building and province: Gauteng	39
Table 27	Buildings completed according to type of building and province: Mpumalanga	40
Table 28	Buildings completed according to type of building and province: Northern Province	41
Table 29	Building plans passed according to type of building and selected urban area: Cape Town	42
Table 30	Building plans passed according to type of building and selected urban area: Port Elizabeth	43
Table 31	Building plans passed according to type of building and selected urban area: Durban	44
Table 32	Building plans passed according to type of building and selected urban area: Witwatersrand	45
Table 33	Building plans passed according to type of building and selected urban area: Pretoria	46
Table 34	Building plans passed according to type of building and selected urban area: Bloemfontein	47
Table 35	Buildings completed according to type of building and selected urban area: Cape Town	48
Table 36	Buildings completed according to type of building and selected urban area: Port Elizabeth	49
Table 37	Buildings completed according to type of building and selected urban area: Durban	50
Table 38	Buildings completed according to type of building and selected urban area: Witwatersrand	51
Table 39	Buildings completed according to type of building and selected urban area: Pretoria	52
Table 40	Buildings completed according to type of building and selected urban area: Bloemfontein	53
Additional information		
	Explanatory notes	54
	Technical notes	56
	Local government institutions covered in the sample survey	57
	Glossary	58
For more information	61

Notes

Forthcoming issues	Issue	Expected release date
	July 2001	19 September 2001
	August 2001	17 October 2001
	September 2001	14 November 2001
	October 2001	19 December 2001
	November 2001	16 January 2002
	December 2001	20 February 2002
Purpose of the survey	<p>The Building Statistics Survey is a countrywide survey covering a sample of local government institutions in South Africa. The information received is used to estimate key economic statistics used by the private and public sectors. The information is also used to compile estimates of the Gross Domestic Product (GDP). These statistics are also used by government to monitor the Reconstruction and Development Program (RDP) in South Africa.</p>	
New questionnaire	<p>In order to lessen the respondent burden and improve reliability, Stats SA has overhauled and redesigned its Building Statistics Survey questionnaire. This resulted in the change of some data items on the old questionnaire. As from November 1999 information regarding dwelling-houses was collected according to size of dwelling-house.</p> <p>The Building Statistics Survey questionnaire collects the numbers, square metres and value of building plans passed and buildings completed for the private sector regarding –</p> <ul style="list-style-type: none"> • residential buildings; • non-residential buildings; and • additions and alterations. 	
Re-engineered building statistics statistical release	<p>Prior to March 2001, Stats SA published selected information per province namely, the value of building plans passed and buildings completed regarding residential buildings, non-residential buildings and additions and alterations. Due to users' needs, specifically compilers of National Accounts, Stats SA has overhauled and re-designed the statistical release. In order to provide users with more provincial information Stats SA extended the information per province to include more detailed information regarding residential buildings (e.g. dwelling-houses equal to or larger than 80 square metre; flats and townhouses; and other residential buildings), non-residential buildings (e.g. office and banking space; shopping space; industrial and warehouse space; and other non-residential space) and additions and alterations (e.g. additions to dwelling-houses and other buildings).</p> <p>Furthermore, to monitor the RDP housing program Stats SA publishes information regarding dwelling-houses smaller than 80 square metres and equal to or larger than 80 square metres according to province.</p>	
Changes in the numbering of tables	<p>It should be noted that the numbering of tables has changed as from March 2001 as indicated in table A, pages 11 to 13.</p>	

Table A – Title of table according to new and old numbers

New number (as from March 2001)	Title of table	Old number (prior to March 2001)
Table 1	Actual values and percentage change of building plans passed at current prices according to type of building	Table 3
Table 2	Seasonally adjusted values and percentage change of building plans passed at current prices according to type of building	Table 7
Table 3	Actual values and percentage change of building plans passed at constant 1995 prices according to type of building	Table 4
Table 4	Seasonally adjusted values and percentage change of building plans passed at constant 1995 prices according to type of building	Table 7
Table 5	Actual values and percentage change of buildings completed at current prices according to type of building	Table 5
Table 6	Seasonally adjusted values and percentage change of buildings completed at current prices according to type of building	Table 8
Table 7	Actual values and percentage change of buildings completed at constant 1995 prices according to type of building	Table 6
Table 8	Seasonally adjusted values and percentage change of buildings completed at constant 1995 prices according to type of building	Table 8
Table 9	Building plans passed according to type of building: Total RSA	Tables 1 and 9
Table 10	Building plans passed according to type of building and province: Western Cape	Table 1
Table 11	Building plans passed according to type of building and province: Eastern Cape	Table 1
Table 12	Building plans passed according to type of building and province: Northern Cape	Table 1
Table 13	Building plans passed according to type of building and province: Free State	Table 1
Table 14	Building plans passed according to type of building and province: KwaZulu-Natal	Table 1
Table 15	Building plans passed according to type of building and province: North West	Table 1
Table 16	Building plans passed according to type of building and province: Gauteng	Table 1
Table 17	Building plans passed according to type of building and province: Mpumalanga	Table 1

Table A – Title of table according to new and old numbers (continued)

New number (as from March 2001)	Title of table	Old number (prior to March 2001)
Table 18	Building plans passed according to type of building and province: Northern Province	Table 1
Table 19	Buildings completed according to type of building: Total RSA	Tables 2 and 11
Table 20	Buildings completed according to type of building and province: Western Cape	Table 2
Table 21	Buildings completed according to type of building and province: Eastern Cape	Table 2
Table 22	Buildings completed according to type of building and province: Northern Cape	Table 2
Table 23	Buildings completed according to type of building and province: Free State	Table 2
Table 24	Buildings completed according to type of building and province: KwaZulu-Natal	Table 2
Table 25	Buildings completed according to type of building and province: North West	Table 2
Table 26	Buildings completed according to type of building and province: Gauteng	Table 2
Table 27	Buildings completed according to type of building and province: Mpumalanga	Table 2
Table 28	Buildings completed according to type of building and province: Northern Province	Table 2
Table 29	Building plans passed according to type of building and selected urban area: Cape Town	Table 10
Table 30	Building plans passed according to type of building and selected urban area: Port Elizabeth	New
Table 31	Building plans passed according to type of building and selected urban area: Durban	Table 10
Table 32	Building plans passed according to type of building and selected urban area: Witwatersrand	Table 10
Table 33	Building plans passed according to type of building and selected urban area: Pretoria	Table 10
Table 34	Building plans passed according to type of building and selected urban area: Bloemfontein	Table 10
Table 35	Buildings completed according to type of building and selected urban area: Cape Town	Table 12
Table 36	Buildings completed according to type of building and selected urban area: Port Elizabeth	New

Table A – Title of table according to new and old numbers (concluded)

New number (as from March 2001)	Title of table	Old number (prior to March 2001)
Table 37	Buildings completed according to type of building and selected urban area: Durban	Table 12
Table 38	Buildings completed according to type of building and selected urban area: Witwatersrand	Table 12
Table 39	Buildings completed according to type of building and selected urban area: Pretoria	Table 12
Table 40	Buildings completed according to type of building and selected urban area: Bloemfontein	Table 12

Table 1 - Actual values and percentage change of building plans passed at current prices according to type of building

Year ^{1/} and month ^{2/}	Residential buildings		Non-residential buildings		Additions and alterations		Total	
	R'000	Percentage change	R'000	Percentage change	R'000	Percentage change	R'000	Percentage change
1999 Jan	553 051	+ 9,8	237 671	- 45,6	277 444	+ 9,9	1 068 166	- 7,0
Feb	528 673	- 18,9	394 629	- 4,6	355 506	- 2,0	1 278 809	- 7,0
Mar	667 232	- 17,0	1 454 021	+ 219,5	476 726	+ 10,2	2 597 979	+ 59,3
Apr	530 570	- 22,1	374 625	- 23,8	330 044	- 6,9	1 235 239	- 16,0
May	527 616	- 19,3	274 148	- 46,9	403 206	+ 14,2	1 204 970	- 17,9
Jun	837 779	+ 18,8	418 343	- 32,5	403 838	+ 2,5	1 659 959	+ 0,4
Jul	637 414	- 19,6	460 734	- 7,1	420 306	- 15,4	1 518 454	- 12,2
Aug	630 628	- 14,1	388 580	- 14,5	415 686	- 6,2	1 434 895	- 7,7
Sep	599 986	- 14,7	305 439	- 38,8	484 091	+ 9,7	1 389 516	- 13,4
Oct	664 785	- 22,6	329 137	- 38,8	436 746	- 11,1	1 430 668	- 22,7
Nov	710 950	+ 14,0	701 437	+ 44,0	536 870	+ 39,6	1 949 257	+ 33,3
Dec	493 844	+ 16,1	225 184	- 40,9	314 898	- 23,4	1 033 926	- 12,9
Total	7 382 530	- 8,9	5 563 948	- 3,8	4 855 360	+ 0,8	17 801 839	- 1,8
2000 Jan	490 776	- 11,3	163 926	- 31,0	365 596	+ 31,8	1 020 298	- 4,5
Feb	784 023	+ 48,3	474 732	+ 20,3	399 280	+ 12,3	1 658 035	+ 29,7
Mar	747 421	+ 12,0	359 267	- 75,3	515 668	+ 8,2	1 622 356	- 37,6
Apr	627 642	+ 18,3	271 151	- 27,6	382 300	+ 15,8	1 281 093	+ 3,7
May	874 847	+ 65,8	573 853	+ 109,3	473 062	+ 17,3	1 921 762	+ 59,5
Jun	853 154	+ 1,8	336 324	- 19,6	532 278	+ 31,8	1 721 756	+ 3,7
Jul	908 061	+ 42,5	484 669	+ 5,2	549 932	+ 30,8	1 942 662	+ 27,9
Aug	929 836	+ 47,4	353 488	- 9,0	492 627	+ 18,5	1 775 951	+ 23,8
Sep	826 851	+ 37,8	354 456	+ 16,0	465 836	- 3,8	1 647 143	+ 18,5
Oct	916 410	+ 37,9	492 884	+ 49,8	539 561	+ 23,5	1 948 855	+ 36,2
Nov	914 346	+ 28,6	493 166	- 29,7	503 659	- 6,2	1 911 171	- 2,0
Dec	606 148	+ 22,7	704 410	+ 212,8	317 835	+ 0,9	1 628 393	+ 57,5
Total	9 479 515	+ 28,4	5 062 326	- 9,0	5 537 634	+ 14,1	20 079 475	+ 12,8
2001 Jan	719 247	+ 46,6	475 094	+ 189,8	351 676	- 3,8	1 546 017	+ 51,5
Feb	817 492	+ 4,3	299 535	- 36,9	472 567	+ 18,4	1 589 594	- 4,1
Mar	932 343	+ 24,7	307 449	- 14,4	435 650	- 15,5	1 675 442	+ 3,3
Apr	747 870	+ 19,2	210 194	- 22,5	383 265	+ 0,3	1 341 329	+ 4,7
May	1 015 815	+ 16,1	292 244	- 49,1	507 491	+ 7,3	1 815 550	- 5,5
Jun	927 179	+ 8,7	321 864	- 4,3	472 052	- 11,3	1 721 095	+ 0,0

^{1/} The annual percentage change is the change in the actual values of building plans passed of the relevant year compared with the actual values of building plans passed of the previous year expressed as a percentage.

^{2/} The monthly percentage change is the change in the actual values of building plans passed of the relevant month compared with the actual values of building plans passed of the same month in the previous year expressed as a percentage.

Table 2 - Seasonally adjusted values and percentage change of building plans passed at current prices according to type of building

Year and month ^{1/}	Residential buildings		Non-residential buildings		Additions and alterations		Total	
	R'000	Percentage change	R'000	Percentage change	R'000	Percentage change	R'000	Percentage change
1999 Jan	720 302	+ 19,0	310 676	- 34,1	383 187	- 25,1	1 414 164	- 11,0
Feb	534 453	- 25,8	425 510	+ 37,0	380 042	- 0,8	1 340 006	- 5,2
Mar	622 150	+ 16,4	1 408 300	+ 231,0	438 520	+ 15,4	2 468 969	+ 84,3
Apr	578 547	- 7,0	413 193	- 70,7	381 064	- 13,1	1 372 804	- 44,4
May	507 013	- 12,4	249 081	- 39,7	396 242	+ 4,0	1 152 336	- 16,1
Jun	797 635	+ 57,3	386 527	+ 55,2	385 749	- 2,6	1 569 911	+ 36,2
Jul	568 321	- 28,7	414 730	+ 7,3	366 062	- 5,1	1 349 112	- 14,1
Aug	590 458	+ 3,9	386 724	- 6,8	391 275	+ 6,9	1 368 456	+ 1,4
Sep	588 199	- 0,4	322 282	- 16,7	449 278	+ 14,8	1 359 758	- 0,6
Oct	563 305	- 4,2	286 611	- 11,1	387 220	- 13,8	1 237 135	- 9,0
Nov	664 464	+ 18,0	587 360	+ 104,9	473 600	+ 22,3	1 725 424	+ 39,5
Dec	701 364	+ 5,6	278 606	- 52,6	412 594	- 12,9	1 392 564	- 19,3
2000 Jan	634 286	- 9,6	210 005	- 24,6	496 191	+ 20,3	1 340 482	- 3,7
Feb	804 748	+ 26,9	531 373	+ 153,0	426 220	- 14,1	1 762 341	+ 31,5
Mar	689 690	- 14,3	350 500	- 34,0	469 705	+ 10,2	1 509 895	- 14,3
Apr	700 217	+ 1,5	316 180	- 9,8	450 536	- 4,1	1 466 934	- 2,8
May	828 252	+ 18,3	511 786	+ 61,9	462 536	+ 2,7	1 802 574	+ 22,9
Jun	811 936	- 2,0	307 805	- 39,9	510 751	+ 10,4	1 630 492	- 9,5
Jul	810 310	- 0,2	423 415	+ 37,6	480 370	- 5,9	1 714 095	+ 5,1
Aug	865 902	+ 6,9	359 471	- 15,1	464 514	- 3,3	1 689 887	- 1,4
Sep	806 918	- 6,8	368 531	+ 2,5	431 309	- 7,1	1 606 758	- 4,9
Oct	783 175	- 2,9	431 035	+ 17,0	476 763	+ 10,5	1 690 973	+ 5,2
Nov	852 600	+ 8,9	417 180	- 3,2	441 512	- 7,4	1 711 292	+ 1,2
Dec	858 589	+ 0,7	851 647	+ 104,1	420 082	- 4,9	2 130 317	+ 24,5
2001 Jan	925 288	+ 7,8	613 547	- 28,0	473 598	+ 12,7	2 012 432	- 5,5
Feb	845 751	- 8,6	342 267	- 44,2	507 024	+ 7,1	1 695 042	- 15,8
Mar	858 112	+ 1,5	296 836	- 13,3	395 616	- 22,0	1 550 563	- 8,5
Apr	845 976	- 1,4	253 339	- 14,7	456 497	+ 15,4	1 555 812	+ 0,3
May	956 434	+ 13,1	254 574	+ 0,5	494 970	+ 8,4	1 705 978	+ 9,7
Jun	878 527	- 8,1	296 750	+ 16,6	451 708	- 8,7	1 626 985	- 4,6

^{1/} The percentage change is the change in the seasonally adjusted values of building plans passed of the relevant month compared with the seasonally adjusted values of building plans passed of the previous month expressed as a percentage.

Table 3 - Actual values and percentage change of building plans passed at constant 1995 prices according to type of building

Year ^{1/} and month ^{2/}	Residential buildings		Non-residential buildings		Additions and alterations		Total	
	R'000	Percentage change	R'000	Percentage change	R'000	Percentage change	R'000	Percentage change
1999 Jan	444 933	+ 2,8	191 208	- 45,6	223 205	+ 9,9	859 346	- 13,0
Feb	420 918	- 24,5	314 195	- 4,6	283 046	- 2,0	1 018 159	- 13,4
Mar	530 391	- 22,6	1 155 820	+ 219,5	378 955	+ 10,2	2 065 166	+ 48,5
Apr	419 423	- 27,3	296 146	- 23,8	260 904	- 6,9	976 473	- 21,6
May	416 759	- 24,5	216 546	- 46,9	318 488	+ 14,2	951 793	- 23,2
Jun	659 150	+ 11,2	329 145	- 32,5	317 732	+ 2,5	1 306 027	- 6,1
Jul	499 933	- 24,1	361 360	- 7,1	329 651	- 15,4	1 190 944	- 17,2
Aug	494 610	- 13,8	304 769	- 14,5	326 028	- 6,2	1 125 407	- 11,9
Sep	469 473	- 18,3	238 998	- 38,8	378 788	+ 9,7	1 087 259	- 17,0
Oct	519 363	- 25,5	257 138	- 38,8	341 208	- 11,1	1 117 709	- 25,6
Nov	553 699	+ 9,8	546 290	+ 44,0	418 123	+ 39,6	1 518 112	+ 28,3
Dec	384 016	+ 11,7	175 104	- 40,9	244 866	- 23,4	803 986	- 16,3
Total	5 812 668	- 8,9	4 386 719	- 3,8	3 820 994	+ 0,8	14 020 381	- 7,1
2000 Jan	378 102	- 15,0	126 291	- 34,0	281 661	+ 26,2	786 054	- 8,5
Feb	602 168	+ 43,1	364 618	+ 16,0	306 667	+ 8,3	1 273 453	+ 25,1
Mar	570 115	+ 7,5	274 040	- 76,3	393 339	+ 3,8	1 237 494	- 40,1
Apr	473 692	+ 12,9	204 642	- 30,9	288 528	+ 10,6	966 862	- 1,0
May	655 807	+ 57,4	430 175	+ 98,7	354 619	+ 11,3	1 440 601	+ 51,4
Jun	637 634	- 3,3	251 363	- 23,6	397 816	+ 25,2	1 286 813	- 1,5
Jul	672 638	+ 34,5	359 014	- 0,6	407 357	+ 23,6	1 439 009	+ 20,8
Aug	682 699	+ 38,0	259 536	- 14,8	361 694	+ 10,9	1 303 929	+ 15,9
Sep	606 196	+ 29,1	259 865	+ 8,7	341 522	- 9,8	1 207 583	+ 11,1
Oct	668 425	+ 28,7	359 507	+ 39,8	393 553	+ 15,3	1 421 485	+ 27,2
Nov	664 013	+ 19,9	358 145	- 34,4	365 765	- 12,5	1 387 923	- 8,6
Dec	438 602	+ 14,2	509 703	+ 191,1	229 982	- 6,1	1 178 287	+ 46,6
Total	7 050 091	+ 21,3	3 756 899	- 14,4	4 122 503	+ 7,9	14 929 493	+ 6,5
2001 Jan	514 851	+ 36,2	340 082	+ 169,3	251 737	- 10,6	1 106 670	+ 40,8
Feb	582 259	- 3,3	213 344	- 41,5	336 586	+ 9,8	1 132 189	- 11,1
Mar	659 832	+ 15,7	217 586	- 20,6	308 316	- 21,6	1 185 734	- 4,2
Apr	526 298	+ 11,1	147 920	- 27,7	269 715	- 6,5	943 933	- 2,4
May*	710 857	+ 8,4	204 509	- 52,5	355 137	+ 0,1	1 270 503	- 11,8
Jun	647 471	+ 1,5	224 765	- 10,6	329 645	- 17,1	1 201 881	- 6,6

^{1/} The annual percentage change is the change in the actual values of building plans passed of the relevant year compared with the actual values of building plans passed of the previous year expressed as a percentage.

^{2/} The monthly percentage change is the change in the actual values of building plans passed of the relevant month compared with the actual values of building plans passed of the same month in the previous year expressed as a percentage.

Table 4 - Seasonally adjusted values and percentage change of building plans passed at constant 1995 prices according to type of building

Year and month ^{1/}	Residential buildings		Non-residential buildings		Additions and alterations		Total	
	R'000	Percentage change	R'000	Percentage change	R'000	Percentage change	R'000	Percentage change
1999 Jan	579 964	+ 19,0	249 412	- 34,3	308 604	+ 8,0	1 137 981	- 10,8
Feb	425 618	- 26,6	339 453	+ 36,1	303 474	- 1,7	1 068 545	- 6,1
Mar	493 541	+ 16,0	1 118 876	+ 229,6	347 565	+ 14,5	1 959 981	+ 83,4
Apr	457 535	- 7,3	326 907	- 70,8	302 178	- 13,1	1 086 620	- 44,6
May	401 360	- 12,3	196 494	- 39,9	313 785	+ 3,8	911 640	- 16,1
Jun	626 245	+ 56,0	303 734	+ 54,6	303 767	- 3,2	1 233 746	+ 35,3
Jul	446 242	- 28,7	325 822	+ 7,3	286 851	- 5,6	1 058 915	- 14,2
Aug	463 838	+ 3,9	304 088	- 6,7	308 398	+ 7,5	1 076 324	+ 1,6
Sep	460 971	- 0,6	252 701	- 16,9	352 707	+ 14,4	1 066 379	- 0,9
Oct	440 395	- 4,5	224 105	- 11,3	303 411	- 14,0	967 911	- 9,2
Nov	516 834	+ 17,4	456 732	+ 103,8	366 382	+ 20,8	1 339 948	+ 38,4
Dec	543 020	+ 5,1	215 875	- 52,7	316 566	- 13,6	1 075 460	- 19,7
2000 Jan	489 376	- 9,9	161 473	- 25,2	382 826	+ 20,9	1 033 675	- 3,9
Feb	617 850	+ 26,3	408 818	+ 153,2	328 664	- 14,1	1 355 331	+ 31,1
Mar	524 938	- 15,0	267 243	- 34,6	356 418	+ 8,4	1 148 598	- 15,3
Apr	528 557	+ 0,7	238 935	- 10,6	341 119	- 4,3	1 108 610	- 3,5
May	622 296	+ 17,7	382 980	+ 60,3	347 833	+ 2,0	1 353 110	+ 22,1
Jun	605 513	- 2,7	229 683	- 40,0	382 262	+ 9,9	1 217 458	- 10,0
Jul	600 772	- 0,8	314 121	+ 36,8	355 805	- 6,9	1 270 698	+ 4,4
Aug	637 430	+ 6,1	264 683	- 15,7	342 726	- 3,7	1 244 838	- 2,0
Sep	592 359	- 7,1	270 733	+ 2,3	317 305	- 7,4	1 180 398	- 5,2
Oct	571 621	- 3,5	314 733	+ 16,3	348 886	+ 10,0	1 235 240	+ 4,6
Nov	618 363	+ 8,2	302 575	- 3,9	318 317	- 8,8	1 239 256	+ 0,3
Dec	618 418	+ 0,0	614 071	+ 102,9	299 665	- 5,9	1 532 154	+ 23,6
2001 Jan	663 669	+ 7,3	438 407	- 28,6	339 453	+ 13,3	1 441 530	- 5,9
Feb	601 925	- 9,3	244 130	- 44,3	362 667	+ 6,8	1 208 721	- 16,2
Mar	605 914	+ 0,7	209 971	- 14,0	278 396	- 23,2	1 094 282	- 9,5
Apr	595 244	- 1,8	178 557	- 15,0	322 452	+ 15,8	1 096 254	+ 0,2
May	671 037	+ 12,7	177 784	- 0,4	347 515	+ 7,8	1 196 336	+ 9,1
Jun	612 209	- 8,8	206 899	+ 16,4	315 899	- 9,1	1 135 007	- 5,1

^{1/} The percentage change is the change in the seasonally adjusted values of building plans passed of the relevant month compared with the seasonally adjusted values of building plans passed of the previous month expressed as a percentage.

Table 5 - Actual values and percentage change of buildings completed at current prices according to type of building

Year ^{1/} and month ^{2/}	Residential buildings		Non-residential buildings		Additions and alterations		Total	
	R'000	Percentage change	R'000	Percentage change	R'000	Percentage change	R'000	Percentage change
1999 Jan	313 975	- 17,7	197 076	- 12,3	193 050	- 3,3	704 102	- 12,6
Feb	396 737	- 2,1	214 816	- 29,4	244 641	+ 26,9	856 194	- 5,1
Mar	432 499	- 38,0	246 125	+ 39,7	230 685	+ 8,8	909 309	- 16,2
Apr	377 800	- 17,0	181 550	- 25,2	200 507	+ 28,2	759 858	- 11,1
May	390 986	- 11,7	195 652	+ 10,4	178 758	- 2,4	765 395	- 4,7
Jun	420 016	- 30,4	208 557	- 38,5	153 702	- 21,1	782 276	- 31,2
Jul	480 991	- 18,3	264 068	+ 0,3	272 372	+ 26,1	1 017 432	- 4,7
Aug	460 657	+ 7,6	204 898	- 24,8	255 878	+ 47,4	921 432	+ 5,4
Sep	493 450	- 11,4	197 152	- 58,4	223 191	+ 10,3	913 793	- 25,9
Oct	419 578	- 15,9	203 652	- 58,9	229 463	+ 12,4	852 693	- 28,8
Nov	461 147	- 8,9	409 997	+ 45,4	210 237	+ 20,2	1 081 381	+ 12,3
Dec	349 510	- 15,3	181 596	- 13,0	146 343	+ 3,3	677 449	- 11,3
Total	4 997 346	- 16,4	2 705 139	- 21,8	2 538 827	+ 12,8	10 241 312	- 12,4
2000 Jan	299 212	- 4,7	195 988	- 0,6	183 959	- 4,7	679 159	- 3,5
Feb	353 141	- 11,0	205 549	- 4,3	221 978	- 9,3	780 668	- 8,8
Mar	419 416	- 3,0	212 379	- 13,7	268 745	+ 16,5	900 540	- 1,0
Apr	364 713	- 3,5	224 048	+ 23,4	188 808	- 5,8	777 569	+ 2,3
May	473 124	+ 21,0	390 533	+ 99,6	293 343	+ 64,1	1 157 000	+ 51,2
Jun	362 558	- 13,7	174 728	- 16,2	170 986	+ 11,2	708 272	- 9,5
Jul	407 406	- 15,3	472 668	+ 79,0	220 828	- 18,9	1 100 902	+ 8,2
Aug	449 691	- 2,4	285 994	+ 39,6	211 008	- 17,5	946 693	+ 2,7
Sep	510 979	+ 3,6	270 539	+ 37,2	199 622	- 10,6	981 140	+ 7,4
Oct	462 270	+ 10,2	195 491	- 4,0	238 257	+ 3,8	896 018	+ 5,1
Nov	555 802	+ 20,5	186 442	- 54,5	255 900	+ 21,7	998 144	- 7,7
Dec	383 114	+ 9,6	316 801	+ 74,5	149 622	+ 2,2	849 537	+ 25,4
Total	5 041 426	+ 0,9	3 131 160	+ 15,7	2 603 056	+ 2,5	10 775 642	+ 5,2
2001 Jan	643 036	+ 114,9	238 434	+ 21,7	200 993	+ 9,3	1 082 463	+ 59,4
Feb	428 998	+ 21,5	285 620	+ 39,0	243 491	+ 9,7	958 109	+ 22,7
Mar	534 418	+ 27,4	150 947	- 28,9	287 215	+ 6,9	972 580	+ 8,0
Apr*	373 116	+ 2,3	173 682	- 22,5	184 616	- 2,2	731 414	- 5,9
May	445 694	- 5,8	300 731	- 23,0	295 910	+ 0,9	1 042 335	- 9,9
Jun	562 609	+ 55,2	368 550	+ 110,9	277 868	+ 62,5	1 209 027	+ 70,7

^{1/} The annual percentage change is the change in the actual values of buildings completed of the relevant year compared with the actual values of buildings completed of the previous year expressed as a percentage.

^{2/} The monthly percentage change is the change in the actual values of buildings completed of the relevant month compared with the actual values of buildings completed of the same month in the previous year expressed as a percentage.

Table 6 - Seasonally adjusted values and percentage change of buildings completed at current prices according to type of building

Year and month ^{1/}	Residential buildings		Non-residential buildings		Additions and alterations		Total	
	R'000	Percentage change	R'000	Percentage change	R'000	Percentage change	R'000	Percentage change
1999 Jan	408 324	- 12,2	234 850	+ 15,8	216 858	+ 2,2	860 032	- 2,3
Feb	444 534	+ 8,9	233 264	- 0,7	222 860	+ 2,8	900 659	+ 4,7
Mar	418 025	- 6,0	285 046	+ 22,2	199 424	- 10,5	902 495	+ 0,2
Apr	420 778	+ 0,7	213 245	- 25,2	219 880	+ 10,3	853 903	- 5,4
May	397 811	- 5,5	195 173	- 8,5	179 184	- 18,5	772 168	- 9,6
Jun	412 773	+ 3,8	199 352	+ 2,1	159 094	- 11,2	771 219	- 0,1
Jul	437 413	+ 6,0	212 023	+ 6,4	233 954	+ 47,1	883 390	+ 14,5
Aug	439 670	+ 0,5	209 451	- 1,2	259 316	+ 10,8	908 437	+ 2,8
Sep	436 209	- 0,8	179 697	- 14,2	221 591	- 14,5	837 496	- 7,8
Oct	396 332	- 9,1	175 781	- 2,2	216 587	- 2,3	788 700	- 5,8
Nov	385 043	- 2,8	425 004	+ 141,8	192 632	- 11,1	1 002 678	+ 27,1
Dec	398 739	+ 3,6	177 031	- 58,3	218 795	+ 13,6	794 565	- 20,8
2000 Jan	388 098	- 2,7	231 735	+ 30,9	205 835	- 5,9	825 668	+ 3,9
Feb	396 845	+ 2,3	217 106	- 6,3	203 653	- 1,1	817 604	- 1,0
Mar	400 535	+ 0,9	262 977	+ 21,1	229 049	+ 12,5	892 561	+ 9,2
Apr	416 417	+ 4,0	277 126	+ 5,4	210 428	- 8,1	903 971	+ 1,3
May	494 355	+ 18,7	377 929	+ 36,4	290 059	+ 37,8	1 162 343	+ 28,6
Jun	351 570	- 28,9	162 519	- 57,0	178 870	- 38,3	692 959	- 40,4
Jul	366 740	+ 4,3	374 017	+ 130,1	190 022	+ 6,2	930 778	+ 34,3
Aug	427 172	+ 16,5	284 794	- 23,9	213 939	+ 12,6	925 905	- 0,5
Sep	444 891	+ 4,1	241 816	- 15,1	198 045	- 7,4	884 752	- 4,4
Oct	440 056	- 1,1	168 833	- 30,2	223 180	+ 12,7	832 069	- 6,0
Nov	468 920	+ 6,6	199 631	+ 18,2	236 710	+ 6,1	905 261	+ 8,8
Dec	435 569	- 7,1	316 913	+ 58,7	221 906	- 6,3	974 388	+ 7,6
2001 Jan	839 693	+ 92,8	284 620	- 10,2	224 762	+ 1,3	1 349 075	+ 38,5
Feb	479 819	- 42,9	297 919	+ 4,7	224 477	- 0,1	1 002 216	- 25,7
Mar	504 336	+ 5,1	191 116	- 35,8	242 346	+ 8,0	937 798	- 6,4
Apr	429 600	- 14,8	220 802	+ 15,5	207 727	- 14,3	858 129	- 8,5
May	471 032	+ 9,6	280 941	+ 27,2	292 438	+ 40,8	1 044 411	+ 21,7
Jun	545 090	+ 15,7	338 936	+ 20,6	293 015	+ 0,2	1 177 041	+ 12,7

^{1/} The percentage change is the change in the seasonally adjusted values of buildings completed of the relevant month compared with the seasonally adjusted values of buildings completed of the previous month expressed as a percentage.

Table 7 - Actual values and percentage change of buildings completed at constant 1995 prices according to type of building

Year ^{1/} and month ^{2/}	Residential buildings		Non-residential buildings		Additions and alterations		Total	
	R'000	Percentage change	R'000	Percentage change	R'000	Percentage change	R'000	Percentage change
1999 Jan	262 682	- 22,6	172 571	- 18,3	165 993	- 9,2	601 246	- 18,0
Feb	329 271	- 26,3	187 449	- 39,0	209 095	- 4,5	725 815	- 26,1
Mar	356 192	- 57,5	214 208	+ 5,4	196 662	- 12,9	767 062	- 38,1
Apr	311 031	- 34,2	157 322	- 23,5	169 922	+ 18,7	638 275	- 21,4
May	319 828	- 31,9	169 395	+ 5,1	150 851	+ 2,4	640 074	- 15,6
Jun	344 231	- 50,0	180 257	- 44,7	129 270	- 3,4	653 758	- 40,4
Jul	391 124	- 50,0	227 058	- 28,4	226 411	- 12,3	844 593	- 36,0
Aug	369 731	- 48,5	175 126	- 29,7	210 253	+ 9,6	755 110	- 21,4
Sep	396 579	- 28,6	168 075	- 59,5	182 196	- 5,7	746 850	- 44,4
Oct	334 635	- 45,1	172 586	- 61,0	186 252	- 6,2	693 473	- 42,4
Nov	366 364	- 38,2	345 989	- 30,9	170 095	+ 9,6	882 448	- 27,6
Dec	277 236	- 38,9	152 730	- 6,3	118 305	+ 35,6	548 271	- 8,6
Total	4 058 904	- 21,7	2 322 766	- 26,2	2 115 305	+ 6,4	8 496 975	- 17,7
2000 Jan	236 149	- 10,1	162 916	- 5,6	147 996	- 10,8	547 061	- 9,0
Feb	277 982	- 15,6	168 898	- 9,9	176 734	- 15,5	623 614	- 14,1
Mar	329 523	- 7,5	173 371	- 19,1	213 629	+ 8,6	716 523	- 6,6
Apr	285 795	- 8,1	181 857	+ 15,6	149 255	- 12,2	616 907	- 3,3
May	370 120	+ 15,7	315 965	+ 86,5	231 709	+ 53,6	917 794	+ 43,4
Jun	282 549	- 17,9	141 251	- 21,6	134 529	+ 4,1	558 329	- 14,6
Jul	314 890	- 19,5	380 264	+ 67,5	173 198	- 23,5	868 352	+ 2,8
Aug	346 783	- 6,2	227 702	+ 30,0	165 496	- 21,3	739 981	- 2,0
Sep	391 744	- 1,2	215 055	+ 28,0	156 199	- 14,3	762 998	+ 2,2
Oct	352 005	+ 5,2	154 538	- 10,5	186 138	- 0,1	692 681	- 0,1
Nov	420 080	+ 14,7	147 269	- 57,4	199 299	+ 17,2	766 648	- 13,1
Dec	289 205	+ 4,3	249 253	+ 63,2	116 347	- 1,7	654 805	+ 19,4
Total	3 896 825	- 4,0	2 518 339	+ 8,4	2 050 529	- 3,1	8 465 693	- 0,4
2001 Jan	487 405	+ 106,4	187 007	+ 14,8	154 848	+ 4,6	829 260	+ 51,6
Feb	318 383	+ 14,5	224 016	+ 32,6	187 013	+ 5,8	729 412	+ 17,0
Ma	396 489	+ 20,3	118 112	- 31,9	219 081	+ 2,6	733 682	+ 2,4
Apr*	274 663	- 3,9	135 689	- 25,4	139 333	- 6,6	549 685	- 10,9
May	324 788	- 12,2	234 214	- 25,9	221 822	- 4,3	780 824	- 14,9
Jun	409 972	+ 45,1	286 586	+ 102,9	207 674	+ 54,4	904 232	+ 62,0

^{1/} The annual percentage change is the change in the actual values of buildings completed of the relevant year compared with the actual values of buildings completed of the previous year expressed as a percentage.

^{2/} The monthly percentage change is the change in the actual values of buildings completed of the relevant month compared with the actual values of buildings completed of the same month in the previous year expressed as a percentage.

Table 8 - Seasonally adjusted values and percentage change of buildings completed at constant 1995 prices according to type of building

Year and month ^{1/}	Residential buildings		Non-residential buildings		Additions and alterations		Total	
	R'000	Percentage change	R'000	Percentage change	R'000	Percentage change	R'000	Percentage change
1999 Jan	341 484	- 13,6	205 868	+ 15,1	186 321	+ 1,9	733 673	- 3,1
Feb	370 324	+ 8,4	204 210	- 0,8	190 913	+ 2,5	765 447	+ 4,3
Mar	344 603	- 6,9	248 304	+ 21,6	170 109	- 10,9	763 016	- 0,3
Apr	345 542	+ 0,3	184 819	- 25,6	186 222	+ 9,5	716 583	- 6,1
May	326 728	- 5,4	168 676	- 8,7	152 145	- 18,3	647 549	- 9,6
Jun	336 677	+ 3,0	171 471	+ 1,7	134 349	- 11,7	642 497	- 0,8
Jul	354 863	+ 5,4	181 659	+ 5,9	194 943	+ 45,1	731 464	+ 13,8
Aug	353 684	- 0,3	179 414	- 1,2	209 732	+ 7,6	742 830	+ 1,6
Sep	350 049	- 1,0	153 325	- 14,5	181 342	- 13,5	684 716	- 7,8
Oct	316 364	- 9,6	148 852	- 2,9	176 003	- 2,9	641 219	- 6,4
Nov	306 259	- 3,2	359 784	+ 141,7	155 828	- 11,5	821 872	+ 28,2
Dec	315 564	+ 3,0	148 925	- 58,6	176 281	+ 13,1	640 770	- 22,0
2000 Jan	306 285	- 2,9	192 942	+ 29,6	165 458	- 6,1	664 684	+ 3,7
Feb	313 419	+ 2,3	178 948	- 7,3	162 366	- 1,9	654 734	- 1,5
Mar	314 949	+ 0,5	214 954	+ 20,1	182 138	+ 12,2	712 041	+ 8,8
Apr	325 982	+ 3,5	225 031	+ 4,7	166 231	- 8,7	717 244	+ 0,7
May	388 433	+ 19,2	305 274	+ 35,7	230 811	+ 38,8	924 518	+ 28,9
Jun	272 843	- 29,8	130 898	- 57,1	141 485	- 38,7	545 225	- 41,0
Jul	282 718	+ 3,6	299 906	+ 129,1	149 435	+ 5,6	732 059	+ 34,3
Aug	330 030	+ 16,7	227 116	- 24,3	164 749	+ 10,2	721 895	- 1,4
Sep	340 441	+ 3,2	192 323	- 15,3	155 403	- 5,7	688 167	- 4,7
Oct	335 390	- 1,5	133 317	- 30,7	174 620	+ 12,4	643 327	- 6,5
Nov	354 809	+ 5,8	158 146	+ 18,6	184 358	+ 5,6	697 313	+ 8,4
Dec	327 876	- 7,6	249 339	+ 57,7	171 959	- 6,7	749 174	+ 7,4
2001 Jan	636 957	+ 94,3	223 633	- 10,3	173 014	+ 0,6	1 033 604	+ 38,0
Feb	357 187	- 43,9	234 376	+ 4,8	172 619	- 0,2	764 182	- 26,1
Mar	374 484	+ 4,8	149 814	- 36,1	184 882	+ 7,1	709 180	- 7,2
Apr	315 992	- 15,6	172 602	+ 15,2	156 678	- 15,3	645 272	- 9,0
May	344 802	+ 9,1	218 462	+ 26,6	220 962	+ 41,0	784 226	+ 21,5
Jun	395 584	+ 14,7	262 619	+ 20,2	220 301	- 0,3	878 504	+ 12,0

^{1/} The percentage change is the change in the seasonally adjusted values of buildings completed of the relevant month compared with the seasonally adjusted values of buildings completed of the previous month expressed as a percentage.

Table 9 - Building plans passed according to type of building: Total RSA

Type of building	June 2000 *	May 2001	June 2001	January 2000 to June 2000	January 2001 to June 2001	Percentage change between January 2000 to June 2000 and January 2001 to June 2001
Residential buildings						
Dwelling-houses smaller than 80 square metres						
Number of dwelling-houses	6 396	4 066	2 947	25 653	21 306	- 16,9
Total square metres	236 093	151 801	123 203	982 338	831 841	- 15,3
Total value at current prices (R'000)	146 827	130 947	122 582	705 902	779 671	+ 10,5
Dwelling-houses equal to or larger than 80 square metres						
Number of dwelling-houses	1 893	2 101	1 952	10 191	10 787	+ 5,8
Total square metres	381 459	452 733	437 672	2 034 218	2 327 324	+ 14,4
Total value at current prices (R'000)	518 111	633 766	624 640	2 712 199	3 262 549	+ 20,3
Flats and townhouses						
Number of flats and townhouses	820	1 735	1 077	5 385	6 028	+ 11,9
Total square metres	99 393	136 859	114 532	572 873	623 927	+ 8,9
Total value at current prices (R'000)	153 360	212 785	167 477	835 905	955 427	+ 14,3
Other residential buildings ^{1/}						
Total square metres	27 278	19 809	13 282	88 581	68 699	- 22,4
Total value at current prices (R'000)	34 856	38 317	12 480	123 857	162 299	+ 31,0
Total value of residential buildings at current prices (R'000)	853 154	1 015 815	927 179	4 377 863	5 159 946	+ 17,9
Non-residential buildings						
Office and banking space						
Total square metres	71 578	74 390	78 365	540 575	404 987	- 25,1
Total value at current prices (R'000)	104 705	125 699	142 551	796 386	728 733	- 8,5
Shopping space						
Total square metres	64 055	33 686	38 439	264 611	254 284	- 3,9
Total value at current prices (R'000)	81 871	51 231	52 419	343 277	354 689	+ 3,3
Industrial and warehouse space						
Total square metres	89 373	53 458	70 943	628 049	421 244	- 32,9
Total value at current prices (R'000)	122 569	54 951	93 179	778 710	539 529	- 30,7
Other non-residential space ^{2/}						
Total square metres	25 691	42 707	27 158	234 036	210 993	- 9,8
Total value at current prices (R'000)	27 179	60 363	33 715	260 880	283 429	+ 8,6
Total value of non-residential buildings at current prices (R'000)	336 324	292 244	321 864	2 179 253	1 906 380	- 12,5
Additions and alterations						
Dwelling-houses						
Total square metres	269 096	271 966	265 821	1 457 645	1 434 847	- 1,6
Total value at current prices (R'000)	321 602	347 256	345 698	1 729 060	1 800 638	+ 4,1
Other buildings ^{3/}						
Total square metres	124 680	86 274	62 399	517 864	455 179	- 12,1
Total value at current prices (R'000)	210 676	160 235	126 354	939 124	822 063	- 12,5
Total value of additions and alterations at current prices (R'000)	532 278	507 491	472 052	2 668 184	2 622 701	- 1,7
Total value of building plans passed at current prices (R'000)	1 721 756	1 815 550	1 721 095	9 225 300	9 689 027	+ 5,0

1/ Other residential buildings include institutions for the disabled, boarding houses, old people's homes, hostels, hotels, motels, guest houses, holiday chalets, entertainment centres, bed-and-breakfast accommodation and casinos.

2/ Other non-residential space includes churches, sport and recreation clubs, schools, crèches, hospitals and all other non-residential space.

3/ Other buildings include additions and alterations to other residential buildings, non-residential buildings and internal alterations.

Table 10 - Building plans passed according to type of building and province: Western Cape

Type of building	June 2000 *	May 2001	June 2001	January 2000 to June 2000	January 2001 to June 2001	Percentage change between January 2000 to June 2000 and January 2001 to June 2001
Residential buildings						
Dwelling-houses smaller than 80 square metres						
Number of dwelling-houses	841	741	842	4 863	4 126	- 15,2
Total square metres	30 586	28 374	36 458	180 072	163 755	- 9,1
Total value at current prices (R'000)	20 106	30 490	45 402	120 808	195 319	+ 61,7
Dwelling-houses equal to or larger than 80 square metres						
Number of dwelling-houses	481	702	641	2 974	3 327	+ 11,9
Total square metres	97 926	140 021	131 564	570 512	703 927	+ 23,4
Total value at current prices (R'000)	143 326	206 171	200 499	804 365	1 033 513	+ 28,5
Flats and townhouses						
Number of flats and townhouses	205	381	176	1 301	1 484	+ 14,1
Total square metres	21 185	26 849	16 297	142 502	137 899	- 3,2
Total value at current prices (R'000)	45 370	41 492	23 499	233 898	209 671	- 10,4
Other residential buildings ^{1/}						
Total square metres	5 823	5 356	4 528	51 140	31 277	- 38,8
Total value at current prices (R'000)	4 949	13 236	6 332	68 799	71 373	+ 3,7
Total value of residential buildings at current prices (R'000)	213 751	291 389	275 732	1 227 870	1 509 876	+ 23,0
Non-residential buildings						
Office and banking space						
Total square metres	20 827	11 336	16 094	83 703	96 734	+ 15,6
Total value at current prices (R'000)	30 432	20 201	26 025	156 281	161 209	+ 3,2
Shopping space						
Total square metres	33 861	13 633	6 893	112 739	112 788	+ 0,0
Total value at current prices (R'000)	41 166	20 179	7 656	148 606	144 022	- 3,1
Industrial and warehouse space						
Total square metres	33 631	21 505	20 761	179 795	114 082	- 36,5
Total value at current prices (R'000)	49 794	16 120	19 951	183 902	109 053	- 40,7
Other non-residential space ^{2/}						
Total square metres	13 944	11 952	6 552	103 003	69 422	- 32,6
Total value at current prices (R'000)	11 319	11 445	7 175	84 002	82 311	- 2,0
Total value of non-residential buildings at current prices (R'000)	132 711	67 945	60 807	572 791	496 595	- 13,3
Additions and alterations						
Dwelling-houses						
Total square metres	72 981	85 504	76 156	443 287	439 115	- 0,9
Total value at current prices (R'000)	91 772	113 676	94 710	528 699	554 758	+ 4,9
Other buildings ^{3/}						
Total square metres	15 334	33 447	21 560	107 167	129 343	+ 20,7
Total value at current prices (R'000)	35 713	54 408	44 549	258 585	223 677	- 13,5
Total value of additions and alterations at current prices (R'000)	127 485	168 084	139 259	787 284	778 435	- 1,1
Total value of building plans passed at current prices (R'000)	473 947	527 418	475 798	2 587 945	2 784 906	+ 7,6

1/ Other residential buildings include institutions for the disabled, boarding houses, old people's homes, hostels, hotels, motels, guest houses, holiday chalets, entertainment centres, bed-and-breakfast accommodation and casinos.

2/ Other non-residential space includes churches, sport and recreation clubs, schools, crèches, hospitals and all other non-residential space.

3/ Other buildings include additions and alterations to other residential buildings, non-residential buildings and internal alterations.

Table 11 - Building plans passed according to type of building and province: Eastern Cape

Type of building	June 2000	May 2001	June 2001	January 2000 to June 2000	January 2001 to June 2001	Percentage change between January 2000 to June 2000 and January 2001 to June 2001
Residential buildings						
Dwelling-houses smaller than 80 square metres						
Number of dwelling-houses	1 555	231	267	2 722	1 355	-50,2
Total square metres	62 922	10 443	12 602	115 167	61 579	-46,5
Total value at current prices (R'000)	30 331	13 208	15 252	84 120	78 401	-6,8
Dwelling-houses equal to or larger than 80 square metres						
Number of dwelling-houses	188	87	132	705	684	-3,0
Total square metres	27 387	13 538	18 692	112 231	97 052	-13,5
Total value at current prices (R'000)	35 188	17 886	24 610	142 061	127 955	-9,9
Flats and townhouses						
Number of flats and townhouses	72	557	15	431	671	+ 55,7
Total square metres	7 320	24 166	1 365	31 158	35 614	+ 14,3
Total value at current prices (R'000)	9 074	26 524	1 825	42 213	42 568	+ 0,8
Other residential buildings ^{1/}						
Total square metres	6 994	12 992	7 144	7 482	25 956	+ 246,9
Total value at current prices (R'000)	9 293	23 000	4 028	9 946	77 028	+ 674,5
Total value of residential buildings at current prices (R'000)	83 886	80 618	45 715	278 340	325 952	+ 17,1
Non-residential buildings						
Office and banking space						
Total square metres	946	2 003	346	4 325	3 548	-18,0
Total value at current prices (R'000)	1 135	3 051	520	6 318	6 651	+ 5,3
Shopping space						
Total square metres	2 593	2 636	168	11 811	5 187	-56,1
Total value at current prices (R'000)	4 260	3 212	294	17 904	7 551	-57,8
Industrial and warehouse space						
Total square metres	6 682	4 814	3 338	87 776	18 380	-79,1
Total value at current prices (R'000)	6 000	1 682	5 153	85 501	21 292	-75,1
Other non-residential space ^{2/}						
Total square metres	1 738	1 369	1 724	20 391	6 415	-68,5
Total value at current prices (R'000)	2 784	2 497	2 776	27 472	10 278	-62,6
Total value of non-residential buildings at current prices (R'000)	14 179	10 442	8 743	137 195	45 772	-66,6
Additions and alterations						
Dwelling-houses						
Total square metres	24 416	19 643	23 733	108 357	108 248	-0,1
Total value at current prices (R'000)	31 191	25 268	31 450	134 845	140 327	+ 4,1
Other buildings ^{3/}						
Total square metres	7 857	9 139	6 679	36 583	52 082	+ 42,4
Total value at current prices (R'000)	10 883	13 280	8 348	51 634	76 497	+ 48,2
Total value of additions and alterations at current prices (R'000)	42 074	38 548	39 798	186 479	216 824	+ 16,3
Total value of building plans passed at current prices (R'000)	140 139	129 608	94 256	602 014	588 548	-2,2

1/ Other residential buildings include institutions for the disabled, boarding houses, old people's homes, hostels, hotels, motels, guest houses, holiday chalets, entertainment centres, bed-and-breakfast accommodation and casinos.

2/ Other non-residential space includes churches, sport and recreation clubs, schools, crèches, hospitals and all other non-residential space.

3/ Other buildings include additions and alterations to other residential buildings, non-residential buildings and internal alterations.

Table 12 - Building plans passed according to type of building and province: Northern Cape

Type of building	June 2000	May 2001	June 2001	January 2000 to June 2000	January 2001 to June 2001	Percentage change between January 2000 to June 2000 and January 2001 to June 2001
Residential buildings						
Dwelling-houses smaller than 80 square metres						
Number of dwelling-houses	3	4	7	41	37	- 9,8
Total square metres	159	255	446	2 382	2 111	- 11,4
Total value at current prices (R'000)	253	414	726	3 420	3 222	- 5,8
Dwelling-houses equal to or larger than 80 square metres						
Number of dwelling-houses	7	6	32	50	96	+ 92,0
Total square metres	1 133	981	3 725	8 383	16 230	+ 93,6
Total value at current prices (R'000)	1 381	1 571	5 849	11 658	20 877	+ 79,1
Flats and townhouses						
Number of flats and townhouses	9	1	0	32	11	- 65,6
Total square metres	1 188	224	0	4 570	1 885	- 58,8
Total value at current prices (R'000)	1 426	314	0	7 193	2 556	- 64,5
Other residential buildings ^{1/}						
Total square metres	0	0	0	327	0	..
Total value at current prices (R'000)	0	0	0	266	0	..
Total value of residential buildings at current prices (R'000)	3 060	2 299	6 575	22 537	26 655	+ 18,3
Non-residential buildings						
Office and banking space						
Total square metres	0	0	0	7 715	191	- 97,5
Total value at current prices (R'000)	0	0	0	16 363	124	- 99,2
Shopping space						
Total square metres	0	0	0	911	206	- 77,4
Total value at current prices (R'000)	0	0	0	1 411	226	- 84,0
Industrial and warehouse space						
Total square metres	0	0	0	1 653	1 092	- 33,9
Total value at current prices (R'000)	0	0	0	2 478	1 002	- 59,6
Other non-residential space ^{2/}						
Total square metres	0	376	113	4 093	1 632	- 60,1
Total value at current prices (R'000)	0	486	181	6 117	2 312	- 62,2
Total value of non-residential buildings at current prices (R'000)	0	486	181	26 369	3 664	- 86,1
Additions and alterations						
Dwelling-houses						
Total square metres	2 403	2 900	2 840	18 083	13 875	- 23,3
Total value at current prices (R'000)	3 742	5 109	4 691	27 700	22 182	- 19,9
Other buildings ^{3/}						
Total square metres	689	937	903	10 371	3 620	- 65,1
Total value at current prices (R'000)	1 209	2 421	1 322	23 010	7 976	- 65,3
Total value of additions and alterations at current prices (R'000)	4 951	7 530	6 013	50 710	30 158	- 40,5
Total value of building plans passed at current prices (R'000)	8 011	10 315	12 769	99 616	60 477	- 39,3

1/ Other residential buildings include institutions for the disabled, boarding houses, old people's homes, hostels, hotels, motels, guest houses, holiday chalets, entertainment centres, bed-and-breakfast accommodation and casinos.

2/ Other non-residential space includes churches, sport and recreation clubs, schools, crèches, hospitals and all other non-residential space.

3/ Other buildings include additions and alterations to other residential buildings, non-residential buildings and internal alterations.

Table 13 - Building plans passed according to type of building and province: Free State

Type of building	June 2000	May 2001	June 2001	January 2000 to June 2000	January 2001 to June 2001	Percentage change between January 2000 to June 2000 and January 2001 to June 2001
Residential buildings						
Dwelling-houses smaller than 80 square metres						
Number of dwelling-houses	287	39	325	2 660	1 358	-48,9
Total square metres	12 784	2 027	14 288	106 876	60 890	-43,0
Total value at current prices (R'000)	6 245	1 947	7 674	56 972	33 135	-41,8
Dwelling-houses equal to or larger than 80 square metres						
Number of dwelling-houses	69	60	63	391	372	-4,9
Total square metres	10 462	8 355	9 923	59 834	56 245	-6,0
Total value at current prices (R'000)	10 984	8 766	9 586	67 327	59 295	-11,9
Flats and townhouses						
Number of flats and townhouses	32	76	34	254	189	-25,6
Total square metres	2 695	7 207	5 547	18 814	23 793	+ 26,5
Total value at current prices (R'000)	3 450	12 481	7 487	25 302	37 279	+ 47,3
Other residential buildings ^{1/}						
Total square metres	0	0	0	600	1 252	+ 108,7
Total value at current prices (R'000)	0	0	0	1 500	1 851	+ 23,4
Total value of residential buildings at current prices (R'000)	20 679	23 194	24 747	151 101	131 560	-12,9
Non-residential buildings						
Office and banking space						
Total square metres	1 920	951	28	3 982	13 801	+ 246,6
Total value at current prices (R'000)	2 541	1 334	50	5 935	26 600	+ 348,2
Shopping space						
Total square metres	1 518	789	0	3 152	2 996	-4,9
Total value at current prices (R'000)	2 507	900	0	4 375	3 771	-13,8
Industrial and warehouse space						
Total square metres	70	248	580	6 731	3 385	-49,7
Total value at current prices (R'000)	77	248	600	5 206	2 526	-51,5
Other non-residential space ^{2/}						
Total square metres	996	1 594	2 103	1 670	5 968	+ 257,4
Total value at current prices (R'000)	933	1 864	1 892	1 707	7 646	+ 347,9
Total value of non-residential buildings at current prices (R'000)	6 058	4 346	2 542	17 223	40 543	+ 135,4
Additions and alterations						
Dwelling-houses						
Total square metres	9 878	8 155	7 572	47 967	45 080	-6,0
Total value at current prices (R'000)	10 767	9 791	7 165	48 969	47 217	-3,6
Other buildings ^{3/}						
Total square metres	5 608	2 642	519	16 773	7 800	-53,5
Total value at current prices (R'000)	6 983	6 920	1 335	22 313	16 946	-24,1
Total value of additions and alterations at current prices (R'000)	17 750	16 711	8 500	71 282	64 163	-10,0
Total value of building plans passed at current prices (R'000)	44 487	44 251	35 789	239 606	236 266	-1,4

1/ Other residential buildings include institutions for the disabled, boarding houses, old people's homes, hostels, hotels, motels, guest houses, holiday chalets, entertainment centres, bed-and-breakfast accommodation and casinos.

2/ Other non-residential space includes churches, sport and recreation clubs, schools, crèches, hospitals and all other non-residential space.

3/ Other buildings include additions and alterations to other residential buildings, non-residential buildings and internal alterations.

Table 14 - Building plans passed according to type of building and province: KwaZulu-Natal

Type of building	June 2000*	May 2001	June 2001	January 2000 to June 2000	January 2001 to June 2001	Percentage change between January 2000 to June 2000 and January 2001 to June 2001
Residential buildings						
Dwelling-houses smaller than 80 square metres						
Number of dwelling-houses	159	237	136	857	1 498	+ 74,8
Total square metres	7 276	8 537	6 888	41 889	65 597	+ 56,6
Total value at current prices (R'000)	7 638	8 555	8 025	46 641	60 179	+ 29,0
Dwelling-houses equal to or larger than 80 square metres						
Number of dwelling-houses	158	152	130	899	777	- 13,6
Total square metres	33 110	31 331	28 203	180 912	173 767	- 3,9
Total value at current prices (R'000)	50 802	44 546	41 594	258 503	246 127	- 4,8
Flats and townhouses						
Number of flats and townhouses	65	39	109	295	476	+ 61,4
Total square metres	11 740	6 520	15 811	49 601	65 604	+ 32,3
Total value at current prices (R'000)	16 457	12 627	18 184	78 551	107 059	+ 36,3
Other residential buildings ^{1/}						
Total square metres	0	138	0	3 869	138	- 96,4
Total value at current prices (R'000)	0	330	0	9 785	330	- 96,6
Total value of residential buildings at current prices (R'000)	74 897	66 058	67 803	393 480	413 695	+ 5,1
Non-residential buildings						
Office and banking space						
Total square metres	582	24 163	6 306	24 733	81 734	+ 230,5
Total value at current prices (R'000)	582	39 500	8 333	47 237	185 182	+ 292,0
Shopping space						
Total square metres	3 092	946	1 064	13 670	15 655	+ 14,5
Total value at current prices (R'000)	3 999	1 386	1 200	15 644	18 326	+ 17,1
Industrial and warehouse space						
Total square metres	12 329	2 699	10 946	64 298	67 260	+ 4,6
Total value at current prices (R'000)	12 092	2 978	11 256	93 183	71 716	- 23,0
Other non-residential space ^{2/}						
Total square metres	4 364	3 811	5 903	28 708	29 771	+ 3,7
Total value at current prices (R'000)	5 481	5 645	7 123	37 390	35 423	- 5,3
Total value of non-residential buildings at current prices (R'000)	22 154	49 509	27 912	193 454	310 647	+ 60,6
Additions and alterations						
Dwelling-houses						
Total square metres	37 395	33 553	35 010	198 845	191 061	- 3,9
Total value at current prices (R'000)	44 378	39 666	39 496	233 634	229 694	- 1,7
Other buildings ^{3/}						
Total square metres	64 868	15 050	9 894	144 442	77 330	- 46,5
Total value at current prices (R'000)	112 495	34 031	31 274	259 200	164 749	- 36,4
Total value of additions and alterations at current prices (R'000)	156 873	73 697	70 770	492 834	394 443	- 20,0
Total value of building plans passed at current prices (R'000)	253 924	189 264	166 485	1 079 768	1 118 785	+ 3,6

1/ Other residential buildings include institutions for the disabled, boarding houses, old people's homes, hostels, hotels, motels, guest houses, holiday chalets, entertainment centres, bed-and-breakfast accommodation and casinos.

2/ Other non-residential space includes churches, sport and recreation clubs, schools, crèches, hospitals and all other non-residential space.

3/ Other buildings include additions and alterations to other residential buildings, non-residential buildings and internal alterations.

Table 15 - Building plans passed according to type of building and province: North West

Type of building	June 2000*	May 2001	June 2001	January 2000 to June 2000	January 2001 to June 2001	Percentage change between January 2000 to June 2000 and January 2001 to June 2001
Residential buildings						
Dwelling-houses smaller than 80 square metres						
Number of dwelling-houses	1 350	379	409	1 755	2 223	+ 26,7
Total square metres	36 118	12 748	14 252	56 977	78 172	+ 37,2
Total value at current prices (R'000)	14 034	6 645	8 570	36 056	49 239	+ 36,6
Dwelling-houses equal to or larger than 80 square metres						
Number of dwelling-houses	132	98	80	503	413	- 17,9
Total square metres	17 508	17 801	14 850	73 461	73 009	- 0,6
Total value at current prices (R'000)	20 217	19 630	15 335	80 064	81 910	+ 2,3
Flats and townhouses						
Number of flats and townhouses	4	0	22	109	142	+ 30,3
Total square metres	357	0	2 715	9 338	17 799	+ 90,6
Total value at current prices (R'000)	500	0	4 300	10 176	23 289	+ 128,9
Other residential buildings ^{1/}						
Total square metres	0	0	0	4 024	1 989	- 50,6
Total value at current prices (R'000)	0	0	0	4 786	1 664	- 65,2
Total value of residential buildings at current prices (R'000)	34 751	26 275	28 205	131 082	156 102	+ 19,1
Non-residential buildings						
Office and banking space						
Total square metres	159	0	340	1 083	3 644	+ 236,5
Total value at current prices (R'000)	119	0	374	1 065	5 999	+ 463,3
Shopping space						
Total square metres	626	1 873	1 373	7 018	13 293	+ 89,4
Total value at current prices (R'000)	618	2 637	1 781	9 922	16 001	+ 61,3
Industrial and warehouse space						
Total square metres	903	3 101	1 372	3 916	7 322	+ 87,0
Total value at current prices (R'000)	685	3 308	1 200	3 812	7 463	+ 95,8
Other non-residential space ^{2/}						
Total square metres	258	2 047	101	12 051	2 694	- 77,6
Total value at current prices (R'000)	100	2 160	96	15 000	2 934	- 80,4
Total value of non-residential buildings at current prices (R'000)	1 522	8 105	3 451	29 799	32 397	+ 8,7
Additions and alterations						
Dwelling-houses						
Total square metres	5 719	8 488	4 804	39 460	34 992	- 11,3
Total value at current prices (R'000)	5 745	9 365	4 902	38 849	37 195	- 4,3
Other buildings ^{3/}						
Total square metres	3 897	1 827	2 263	14 688	11 446	- 22,1
Total value at current prices (R'000)	6 405	3 324	3 199	32 543	19 015	- 41,6
Total value of additions and alterations at current prices (R'000)	12 150	12 689	8 101	71 392	56 210	- 21,3
Total value of building plans passed at current prices (R'000)	48 423	47 069	39 757	232 273	244 709	+ 5,4

1/ Other residential buildings include institutions for the disabled, boarding houses, old people's homes, hostels, hotels, motels, guest houses, holiday chalets, entertainment centres, bed-and-breakfast accommodation and casinos.

2/ Other non-residential space includes churches, sport and recreation clubs, schools, crèches, hospitals and all other non-residential space.

3/ Other buildings include additions and alterations to other residential buildings, non-residential buildings and internal alterations.

Table 16 - Building plans passed according to type of building and province: Gauteng

Type of building	June 2000	May 2001	June 2001	January 2000 to June 2000	January 2001 to June 2001	Percentage change between January 2000 to June 2000 and January 2001 to June 2001
Residential buildings						
Dwelling-houses smaller than 80 square metres						
Number of dwelling-houses	1 730	1 392	744	10 809	6 610	- 38,8
Total square metres	69 699	51 265	28 865	401 536	252 165	- 37,2
Total value at current prices (R'000)	56 067	50 553	30 062	295 197	269 500	- 8,7
Dwelling-houses equal to or larger than 80 square metres						
Number of dwelling-houses	701	882	768	3 915	4 484	+ 14,5
Total square metres	170 181	222 792	210 377	902 217	1 092 169	+ 21,1
Total value at current prices (R'000)	227 014	308 737	300 388	1 195 579	1 543 943	+ 29,1
Flats and townhouses						
Number of flats and townhouses	411	608	643	2 836	2 770	- 2,3
Total square metres	51 704	66 159	65 243	302 181	313 622	+ 3,8
Total value at current prices (R'000)	73 185	113 801	101 658	421 890	498 292	+ 18,1
Other residential buildings ^{1/}						
Total square metres	14 461	1 323	1 169	17 276	7 454	- 56,9
Total value at current prices (R'000)	20 614	1 751	1 520	23 813	9 357	- 60,7
Total value of residential buildings at current prices (R'000)	376 880	474 842	433 628	1 936 479	2 321 092	+ 19,9
Non-residential buildings						
Office and banking space						
Total square metres	45 552	35 641	52 742	405 193	200 788	- 50,4
Total value at current prices (R'000)	67 946	60 962	103 049	549 604	335 959	- 38,9
Shopping space						
Total square metres	15 869	13 043	23 664	99 186	90 560	- 8,7
Total value at current prices (R'000)	22 072	21 517	33 427	126 165	144 177	+ 14,3
Industrial and warehouse space						
Total square metres	31 311	20 380	30 203	261 022	184 625	- 29,3
Total value at current prices (R'000)	49 253	30 165	51 058	378 201	304 289	- 19,5
Other non-residential space ^{2/}						
Total square metres	4 344	20 066	9 710	56 894	86 450	+ 51,9
Total value at current prices (R'000)	6 512	33 320	13 408	81 075	130 435	+ 60,9
Total value of non-residential buildings at current prices (R'000)	145 783	145 964	200 942	1 135 045	914 860	- 19,4
Additions and alterations						
Dwelling-houses						
Total square metres	100 728	98 637	101 476	513 896	522 340	+ 1,6
Total value at current prices (R'000)	118 212	127 090	147 627	626 943	682 955	+ 8,9
Other buildings ^{3/}						
Total square metres	22 029	20 532	19 064	165 808	159 004	- 4,1
Total value at current prices (R'000)	29 066	40 411	33 250	254 268	284 023	+ 11,7
Total value of additions and alterations at current prices (R'000)	147 278	167 501	180 877	881 211	966 978	+ 9,7
Total value of building plans passed at current prices (R'000)	669 941	788 307	815 447	3 952 735	4 202 930	+ 6,3

1/ Other residential buildings include institutions for the disabled, boarding houses, old people's homes, hostels, hotels, motels, guest houses, holiday chalets, entertainment centres, bed-and-breakfast accommodation and casinos.

2/ Other non-residential space includes churches, sport and recreation clubs, schools, crèches, hospitals and all other non-residential space.

3/ Other buildings include additions and alterations to other residential buildings, non-residential buildings and internal alterations.

Table 17 - Building plans passed according to type of building and province: Mpumalanga

Type of building	June 2000	May 2001	June 2001	January 2000 to June 2000	January 2001 to June 2001	Percentage change between January 2000 to June 2000 and January 2001 to June 2001
Residential buildings						
Dwelling-houses smaller than 80 square metres						
Number of dwelling-houses	387	988	156	1 053	3 844	+ 265,1
Total square metres	12 501	34 824	6 109	38 127	132 619	+ 247,8
Total value at current prices (R'000)	6 674	14 626	3 072	32 403	71 483	+ 120,6
Dwelling-houses equal to or larger than 80 square metres						
Number of dwelling-houses	109	76	66	511	405	- 20,7
Total square metres	16 519	12 508	13 251	86 049	75 170	- 12,6
Total value at current prices (R'000)	19 606	18 277	17 221	97 820	94 334	- 3,6
Flats and townhouses						
Number of flats and townhouses	13	72	58	89	246	+ 176,4
Total square metres	1 891	5 546	5 572	8 726	22 512	+ 158,0
Total value at current prices (R'000)	2 252	5 296	7 846	9 292	27 992	+ 201,2
Other residential buildings ^{1/}						
Total square metres	0	0	441	863	441	- 48,9
Total value at current prices (R'000)	0	0	600	1 362	600	- 55,9
Total value of residential buildings at current prices (R'000)	28 532	38 199	28 739	140 877	194 409	+ 38,0
Non-residential buildings						
Office and banking space						
Total square metres	595	0	2 509	8 195	3 671	- 55,2
Total value at current prices (R'000)	800	0	4 200	11 349	5 750	- 49,3
Shopping space						
Total square metres	4 290	766	1 206	12 209	2 146	- 82,4
Total value at current prices (R'000)	4 689	1 400	1 928	14 801	3 502	- 76,3
Industrial and warehouse space						
Total square metres	3 405	586	2 926	20 102	24 156	+ 20,2
Total value at current prices (R'000)	3 463	275	2 817	23 457	20 869	- 11,0
Other non-residential space ^{2/}						
Total square metres	0	0	0	5 708	5 722	+ 0,2
Total value at current prices (R'000)	0	0	0	6 393	7 580	+ 18,6
Total value of non-residential buildings at current prices (R'000)	8 952	1 675	8 945	56 000	37 701	- 32,7
Additions and alterations						
Dwelling-houses						
Total square metres	12 012	10 387	10 007	65 121	56 578	- 13,1
Total value at current prices (R'000)	11 268	11 026	9 836	60 062	55 734	- 7,2
Other buildings ^{3/}						
Total square metres	2 983	2 211	123	10 850	8 127	- 25,1
Total value at current prices (R'000)	5 558	2 672	609	15 475	13 334	- 13,8
Total value of additions and alterations at current prices (R'000)	16 826	13 698	10 445	75 537	69 068	- 8,6
Total value of building plans passed at current prices (R'000)	54 310	53 572	48 129	272 414	301 178	+ 10,6

1/ Other residential buildings include institutions for the disabled, boarding houses, old people's homes, hostels, hotels, motels, guest houses, holiday chalets, entertainment centres, bed-and-breakfast accommodation and casinos.

2/ Other non-residential space includes churches, sport and recreation clubs, schools, crèches, hospitals and all other non-residential space.

3/ Other buildings include additions and alterations to other residential buildings, non-residential buildings and internal alterations.

Table 18 - Building plans passed according to type of building and province: Northern Province

Type of building	June 2000	May 2001	June 2001	January 2000 to June 2000	January 2001 to June 2001	Percentage change between January 2000 to June 2000 and January 2001 to June 2001
Residential buildings						
Dwelling-houses smaller than 80 square metres						
Number of dwelling-houses	84	55	61	893	255	-71,4
Total square metres	4 048	3 328	3 295	39 312	14 953	-62,0
Total value at current prices (R'000)	5 479	4 509	3 799	30 285	19 193	-36,6
Dwelling-houses equal to or larger than 80 square metres						
Number of dwelling-houses	48	38	40	243	229	-5,8
Total square metres	7 233	5 406	7 087	40 619	39 755	-2,1
Total value at current prices (R'000)	9 593	8 182	9 558	54 822	54 595	-0,4
Flats and townhouses						
Number of flats and townhouses	9	1	20	38	39	+ 2,6
Total square metres	1 313	188	1 982	5 983	5 199	-13,1
Total value at current prices (R'000)	1 646	250	2 678	7 390	6 721	-9,1
Other residential buildings ^{1/}						
Total square metres	0	0	0	3 000	192	-93,6
Total value at current prices (R'000)	0	0	0	3 600	96	-97,3
Total value of residential buildings at current prices (R'000)	16 718	12 941	16 035	96 097	80 605	-16,1
Non-residential buildings						
Office and banking space						
Total square metres	997	296	0	1 646	876	-46,8
Total value at current prices (R'000)	1 150	651	0	2 234	1 259	-43,6
Shopping space						
Total square metres	2 206	0	4 071	3 915	11 453	+ 192,5
Total value at current prices (R'000)	2 560	0	6 133	4 449	17 113	+ 284,6
Industrial and warehouse space						
Total square metres	1 042	125	817	2 756	942	-65,8
Total value at current prices (R'000)	1 205	175	1 144	2 970	1 319	-55,6
Other non-residential space ^{2/}						
Total square metres	47	1 492	952	1 518	2 919	+ 92,3
Total value at current prices (R'000)	50	2 946	1 064	1 724	4 510	+ 161,6
Total value of non-residential buildings at current prices (R'000)	4 965	3 772	8 341	11 377	24 201	+ 112,7
Additions and alterations						
Dwelling-houses						
Total square metres	3 564	4 699	4 223	22 629	23 558	+ 4,1
Total value at current prices (R'000)	4 527	6 265	5 821	29 359	30 576	+ 4,1
Other buildings ^{3/}						
Total square metres	1 415	489	1 394	11 182	6 427	-42,5
Total value at current prices (R'000)	2 364	2 768	2 468	22 096	15 846	-28,3
Total value of additions and alterations at current prices (R'000)	6 891	9 033	8 289	51 455	46 422	-9,8
Total value of building plans passed at current prices (R'000)	28 574	25 746	32 665	158 929	151 228	-4,8

1/ Other residential buildings include institutions for the disabled, boarding houses, old people's homes, hostels, hotels, motels, guest houses, holiday chalets, entertainment centres, bed-and-breakfast accommodation and casinos.

2/ Other non-residential space includes churches, sport and recreation clubs, schools, crèches, hospitals and all other non-residential space.

3/ Other buildings include additions and alterations to other residential buildings, non-residential buildings and internal alterations.

Table 19 - Buildings completed according to type of building: Total RSA

Type of building	June 2000 *	May 2001	June 2001	January 2000 to June 2000	January 2001 to June 2001	Percentage change between January 2000 to June 2000 and January 2001 to June 2001
Residential buildings						
Dwelling-houses smaller than 80 square metres						
Number of dwelling-houses	2 475	2 740	2 320	17 948	13 054	- 27,3
Total square metres	93 236	107 861	107 491	642 861	534 874	- 16,8
Total value at current prices (R'000)	78 229	85 742	114 493	480 806	470 466	- 2,2
Dwelling-houses equal to or larger than 80 square metres						
Number of dwelling-houses	888	1 093	1 169	4 918	5 867	+ 19,3
Total square metres	173 795	224 019	224 883	953 728	1 165 913	+ 22,2
Total value at current prices (R'000)	216 448	312 237	327 321	1 216 163	1 617 311	+ 33,0
Flats and townhouses						
Number of flats and townhouses	498	293	786	3 841	3 771	- 1,8
Total square metres	48 629	34 060	85 938	385 039	392 509	+ 1,9
Total value at current prices (R'000)	64 075	46 481	116 666	527 653	557 784	+ 5,7
Other residential buildings ^{1/}						
Total square metres	3 491	1 178	2 742	31 413	84 114	+ 167,8
Total value at current prices (R'000)	3 806	1 234	4 129	47 542	342 310	+ 620,0
Total value of residential buildings at current prices (R'000)	362 558	445 694	562 609	2 272 164	2 987 871	+ 31,5
Non-residential buildings						
Office and banking space						
Total square metres	30 804	133 973	75 892	275 802	409 977	+ 48,6
Total value at current prices (R'000)	52 305	202 350	101 211	474 190	616 555	+ 30,0
Shopping space						
Total square metres	31 834	18 033	67 649	273 100	170 984	- 37,4
Total value at current prices (R'000)	42 933	21 833	146 603	393 450	278 177	- 29,3
Industrial and warehouse space						
Total square metres	48 781	50 154	63 010	392 054	398 602	+ 1,7
Total value at current prices (R'000)	62 055	58 174	88 546	438 020	481 507	+ 9,9
Other non-residential space ^{2/}						
Total square metres	18 342	15 284	25 571	106 194	116 155	+ 9,4
Total value at current prices (R'000)	17 435	18 374	32 190	97 565	141 725	+ 45,3
Total value of non-residential buildings at current prices (R'000)	174 728	300 731	368 550	1 403 225	1 517 964	+ 8,2
Additions and alterations						
Dwelling-houses						
Total square metres	97 763	146 069	130 238	673 772	731 789	+ 8,6
Total value at current prices (R'000)	111 670	161 789	154 993	760 805	853 321	+ 12,2
Other buildings ^{3/}						
Total square metres	39 159	50 915	64 905	292 802	299 020	+ 2,1
Total value at current prices (R'000)	59 316	134 121	122 875	567 014	636 772	+ 12,3
Total value of additions and alterations at current prices (R'000)	170 986	295 910	277 868	1 327 819	1 490 093	+ 12,2
Total value of buildings completed at current prices (R'000)	708 272	1 042 335	1 209 027	5 003 208	5 995 928	+ 19,8

1/ Other residential buildings include institutions for the disabled, boarding houses, old people's homes, hostels, hotels, motels, guest houses, holiday chalets, entertainment centres, bed-and-breakfast accommodation and casinos.

2/ Other non-residential space includes churches, sport and recreation clubs, schools, crèches, hospitals and all other non-residential space.

3/ Other buildings include additions and alterations to other residential buildings, non-residential buildings and internal alterations.

Table 20 - Buildings completed according to type of building and province: Western Cape

Type of building	June 2000 *	May 2001	June 2001	January 2000 to June 2000	January 2001 to June 2001	Percentage change between January 2000 to June 2000 and January 2001 to June 2001
Residential buildings						
Dwelling-houses smaller than 80 square metres						
Number of dwelling-houses	468	412	573	4 117	2 590	- 37,1
Total square metres	14 435	17 702	34 445	127 232	108 402	- 14,8
Total value at current prices (R'000)	10 169	19 491	36 583	80 133	119 718	+ 49,4
Dwelling-houses equal to or larger than 80 square metres						
Number of dwelling-houses	321	317	359	1 768	1 864	+ 5,4
Total square metres	50 682	66 835	70 889	308 129	366 463	+ 18,9
Total value at current prices (R'000)	67 031	103 540	106 478	412 965	548 851	+ 32,9
Flats and townhouses						
Number of flats and townhouses	61	93	345	1 121	863	- 23,0
Total square metres	8 718	10 855	44 728	116 649	97 268	- 16,6
Total value at current prices (R'000)	11 261	16 088	51 593	159 282	122 956	- 22,8
Other residential buildings ^{1/}						
Total square metres	1 378	144	96	16 293	26 965	+ 65,5
Total value at current prices (R'000)	1 835	258	174	26 384	30 639	+ 16,1
Total value of residential buildings at current prices (R'000)	90 296	139 377	194 828	678 764	822 164	+ 21,1
Non-residential buildings						
Office and banking space						
Total square metres	0	4 526	40 099	56 066	91 193	+ 62,7
Total value at current prices (R'000)	0	9 632	50 101	103 593	149 251	+ 44,1
Shopping space						
Total square metres	6 161	3 753	4 306	23 692	27 743	+ 17,1
Total value at current prices (R'000)	11 328	3 558	4 995	35 472	34 995	- 1,3
Industrial and warehouse space						
Total square metres	17 295	16 349	18 016	120 246	79 410	- 34,0
Total value at current prices (R'000)	16 070	16 732	23 480	103 684	94 900	- 8,5
Other non-residential space ^{2/}						
Total square metres	9 319	4 203	6 767	57 084	39 399	- 31,0
Total value at current prices (R'000)	7 244	3 303	8 052	42 496	37 785	- 11,1
Total value of non-residential buildings at current prices (R'000)	34 642	33 225	86 628	285 245	316 931	+ 11,1
Additions and alterations						
Dwelling-houses						
Total square metres	35 717	60 738	52 691	260 472	277 473	+ 6,5
Total value at current prices (R'000)	42 571	69 197	67 142	304 633	343 365	+ 12,7
Other buildings ^{3/}						
Total square metres	8 993	11 911	28 195	84 152	90 232	+ 7,2
Total value at current prices (R'000)	13 354	17 672	57 945	137 981	238 307	+ 72,7
Total value of additions and alterations at current prices (R'000)	55 925	86 869	125 087	442 614	581 672	+ 31,4
Total value of buildings completed at current prices (R'000)	180 863	259 471	406 543	1 406 623	1 720 767	22,3

1/ Other residential buildings include institutions for the disabled, boarding houses, old people's homes, hostels, hotels, motels, guest houses, holiday chalets, entertainment centres, bed-and-breakfast accommodation and casinos.

2/ Other non-residential space includes churches, sport and recreation clubs, schools, crèches, hospitals and all other non-residential space.

3/ Other buildings include additions and alterations to other residential buildings, non-residential buildings and internal alterations.

Table 21 - Buildings completed according to type of building and province: Eastern Cape

Type of building	June 2000*	May 2001	June 2001	January 2000 to June 2000	January 2001 to June 2001	Percentage change between January 2000 to June 2000 and January 2001 to June 2001
Residential buildings						
Dwelling-houses smaller than 80 square metres						
Number of dwelling-houses	82	286	472	915	1 923	+ 110,2
Total square metres	3 646	11 862	20 746	39 470	83 062	+ 110,4
Total value at current prices (R'000)	3 443	10 654	20 362	46 292	72 551	+ 56,7
Dwelling-houses equal to or larger than 80 square metres						
Number of dwelling-houses	35	84	178	303	566	+ 86,8
Total square metres	8 564	12 019	18 369	52 200	71 159	+ 36,3
Total value at current prices (R'000)	9 092	16 835	24 128	58 836	91 341	+ 55,2
Flats and townhouses						
Number of flats and townhouses	53	38	5	295	135	- 54,2
Total square metres	4 964	3 047	762	24 773	12 561	- 49,3
Total value at current prices (R'000)	5 516	3 448	841	29 464	13 237	- 55,1
Other residential buildings ^{1/}						
Total square metres	0	0	2 646	367	6 993	+ 1805,4
Total value at current prices (R'000)	0	0	3 955	440	10 955	+ 2389,8
Total value of residential buildings at current prices (R'000)	18 051	30 937	49 286	135 032	188 084	+ 39,3
Non-residential buildings						
Office and banking space						
Total square metres	0	19 056	3 039	632	23 539	+ 3 624,5
Total value at current prices (R'000)	0	19 682	3 185	916	25 234	+ 2 654,8
Shopping space						
Total square metres	599	5 148	8 803	49 925	22 511	- 54,9
Total value at current prices (R'000)	786	5 488	10 267	68 069	29 388	- 56,8
Industrial and warehouse space						
Total square metres	183	8 422	1 506	22 284	101 763	+ 356,7
Total value at current prices (R'000)	165	9 050	1 790	18 475	103 356	+ 459,4
Other non-residential space ^{2/}						
Total square metres	471	1 802	70	3 868	18 137	+ 368,9
Total value at current prices (R'000)	441	2 727	98	4 603	23 311	+ 406,4
Total value of non-residential buildings at current prices (R'000)	1 392	36 947	15 340	92 063	181 289	+ 96,9
Additions and alterations						
Dwelling-houses						
Total square metres	6 718	9 057	7 467	49 719	46 628	- 6,2
Total value at current prices (R'000)	7 062	10 763	10 800	49 366	56 428	+ 14,3
Other buildings ^{3/}						
Total square metres	1 317	3 948	5 652	19 250	32 448	+ 68,6
Total value at current prices (R'000)	1 457	5 158	8 911	22 967	44 675	+ 94,5
Total value of additions and alterations at current prices (R'000)	8 519	15 921	19 711	72 333	101 103	+ 39,8
Total value of buildings completed at current prices (R'000)	27 962	83 805	84 337	299 428	470 476	+ 57,1

1/ Other residential buildings include institutions for the disabled, boarding houses, old people's homes, hostels, hotels, motels, guest houses, holiday chalets, entertainment centres, bed-and-breakfast accommodation and casinos.

2/ Other non-residential space includes churches, sport and recreation clubs, schools, crèches, hospitals and all other non-residential space.

3/ Other buildings include additions and alterations to other residential buildings, non-residential buildings and internal alterations.

Table 22 - Buildings completed according to type of building and province: Northern Cape

Type of building	June 2000*	May 2001	June 2001	January 2000 to June 2000	January 2001 to June 2001	Percentage change between January 2000 to June 2000 and January 2001 to June 2001
Residential buildings						
Dwelling-houses smaller than 80 square metres						
Number of dwelling-houses	15	11	5	207	69	- 66,7
Total square metres	782	580	254	7 996	3 245	- 59,4
Total value at current prices (R'000)	1 122	1 037	440	7 090	4 642	- 34,5
Dwelling-houses equal to or larger than 80 square metres						
Number of dwelling-houses	7	5	16	38	60	+ 57,9
Total square metres	1 202	668	1 980	6 156	9 368	+ 52,2
Total value at current prices (R'000)	1 636	920	2 880	7 423	13 095	+ 76,4
Flats and townhouses						
Number of flats and townhouses	0	1	2	13	17	+ 30,8
Total square metres	0	145	180	1 715	1 637	- 4,5
Total value at current prices (R'000)	0	203	252	2 305	2 366	+ 2,6
Other residential buildings ^{1/}						
Total square metres	292	0	0	2 758	346	- 87,5
Total value at current prices (R'000)	234	0	0	3 193	277	- 91,3
Total value of residential buildings at current prices (R'000)	2 992	2 160	3 572	20 011	20 380	+ 1,8
Non-residential buildings						
Office and banking space						
Total square metres	0	0	0	0	7 105	..
Total value at current prices (R'000)	0	0	0	0	15 631	..
Shopping space						
Total square metres	8 000	1 563	0	8 933	4 775	-46,5
Total value at current prices (R'000)	9 600	2 188	0	10 959	7 261	- 33,7
Industrial and warehouse space						
Total square metres	0	0	0	1 645	772	- 53,1
Total value at current prices (R'000)	0	0	0	1 569	618	- 60,6
Other non-residential space ^{2/}						
Total square metres	0	173	489	769	843	+ 9,6
Total value at current prices (R'000)	547	277	978	1 091	1 544	+ 41,5
Total value of non-residential buildings at current prices (R'000)	9 600	2 465	978	13 619	25 054	+ 84,0
Additions and alterations						
Dwelling-houses						
Total square metres	1 800	1 677	2 131	9 285	9 712	+ 4,6
Total value at current prices (R'000)	2 519	2 640	3 363	12 639	15 278	+ 20,9
Other buildings ^{3/}						
Total square metres	967	110	15	3 643	1 864	- 48,8
Total value at current prices (R'000)	1 751	375	909	9 354	4 755	- 49,2
Total value of additions and alterations at current prices (R'000)	4 270	3 015	4 272	21 993	20 033	- 8,9
Total value of buildings completed at current prices (R'000)	16 862	7 640	8 822	55 623	65 467	17,7

1/ Other residential buildings include institutions for the disabled, boarding houses, old people's homes, hostels, hotels, motels, guest houses, holiday chalets, entertainment centres, bed-and-breakfast accommodation and casinos.

2/ Other non-residential space includes churches, sport and recreation clubs, schools, crèches, hospitals and all other non-residential space.

3/ Other buildings include additions and alterations to other residential buildings, non-residential buildings and internal alterations.

Table 23 - Buildings completed according to type of building and province: Free State

Type of building	June 2000	May 2001	June 2001	January 2000 to June 2000	January 2001 to June 2001	Percentage change between January 2000 to June 2000 and January 2001 to June 2001
Residential buildings						
Dwelling-houses smaller than 80 square metres						
Number of dwelling-houses	113	305	198	1 228	1 045	-14,9
Total square metres	5 134	13 088	8 138	50 903	43 883	-13,8
Total value at current prices (R'000)	3 435	6 992	3 779	28 319	24 311	-14,2
Dwelling-houses equal to or larger than 80 square metres						
Number of dwelling-houses	30	34	25	156	194	+ 24,4
Total square metres	5 977	6 259	4 109	26 310	34 513	+ 31,2
Total value at current prices (R'000)	6 220	7 867	4 839	30 904	40 184	+ 30,0
Flats and townhouses						
Number of flats and townhouses	9	3	1	104	122	+ 17,3
Total square metres	455	412	132	11 337	9 841	-13,2
Total value at current prices (R'000)	546	453	200	14 358	13 372	-6,9
Other residential buildings ^{1/}						
Total square metres	0	313	0	560	464	-17,1
Total value at current prices (R'000)	0	370	0	648	581	-10,3
Total value of residential buildings at current prices (R'000)	10 201	15 682	8 818	74 229	78 448	+ 5,7
Non-residential buildings						
Office and banking space						
Total square metres	0	10 480	0	5 124	11 574	+ 125,9
Total value at current prices (R'000)	0	21 000	0	9 703	21 903	+ 125,7
Shopping space						
Total square metres	0	762	1 234	13 372	4 537	-66,1
Total value at current prices (R'000)	0	1 006	1 872	16 330	5 158	-68,4
Industrial and warehouse space						
Total square metres	1 386	1 076	1 702	9 045	12 750	+ 41,0
Total value at current prices (R'000)	800	1 070	1 734	6 985	11 648	+ 66,8
Other non-residential space ^{2/}						
Total square metres	0	840	2 916	4 352	9 673	+ 122,3
Total value at current prices (R'000)	0	1 000	3 706	5 324	16 549	+ 210,8
Total value of non-residential buildings at current prices (R'000)	800	24 076	7 312	38 342	55 258	+ 44,1
Additions and alterations						
Dwelling-houses						
Total square metres	3 927	6 807	3 092	27 519	32 147	+ 16,8
Total value at current prices (R'000)	3 485	6 708	2 947	26 222	32 963	+ 25,7
Other buildings ^{3/}						
Total square metres	1 845	14 509	2 280	6 604	22 661	+ 243,1
Total value at current prices (R'000)	3 695	81 642	2 705	14 248	93 313	+ 554,9
Total value of additions and alterations at current prices (R'000)	7 180	88 350	5 652	40 470	126 276	+ 212,0
Total value of buildings completed at current prices (R'000)	18 181	128 108	21 782	153 041	259 982	+ 69,9

1/ Other residential buildings include institutions for the disabled, boarding houses, old people's homes, hostels, hotels, motels, guest houses, holiday chalets, entertainment centres, bed-and-breakfast accommodation and casinos.

2/ Other non-residential space includes churches, sport and recreation clubs, schools, crèches, hospitals and all other non-residential space.

3/ Other buildings include additions and alterations to other residential buildings, non-residential buildings and internal alterations.

Table 24 - Buildings completed according to type of building and province: KwaZulu-Natal

Type of building	June 2000*	May 2001	June 2001	January 2000 to June 2000	January 2001 to June 2001	Percentage change between January 2000 to June 2000 and January 2001 to June 2001
Residential buildings						
Dwelling-houses smaller than 80 square metres						
Number of dwelling-houses	127	120	270	1 619	1 259	-22,2
Total square metres	5 719	5 594	10 474	60 118	56 982	-5,2
Total value at current prices (R'000)	6 002	6 235	13 547	54 692	54 525	-0,3
Dwelling-houses equal to or larger than 80 square metres						
Number of dwelling-houses	104	152	151	661	788	+ 19,2
Total square metres	22 110	29 885	39 531	123 762	167 579	+ 35,4
Total value at current prices (R'000)	24 303	36 959	68 125	145 886	231 919	+ 59,0
Flats and townhouses						
Number of flats and townhouses	103	45	47	369	530	+ 43,6
Total square metres	9 690	6 548	6 247	50 167	61 240	+ 22,1
Total value at current prices (R'000)	11 961	11 280	8 627	75 100	90 012	+ 19,9
Other residential buildings ^{1/}						
Total square metres	293	0	0	1 021	8 450	+ 727,6
Total value at current prices (R'000)	313	0	0	1 146	40 000	+ 3 390,4
Total value of residential buildings at current prices (R'000)	42 579	54 474	90 299	276 824	416 456	+ 50,4
Non-residential buildings						
Office and banking space						
Total square metres	193	1 470	17 263	36 796	37 225	+ 1,2
Total value at current prices (R'000)	200	3 500	23 323	92 877	60 556	-34,8
Shopping space						
Total square metres	6 809	1 190	1 080	17 080	18 656	+ 9,2
Total value at current prices (R'000)	7 075	1 905	2 253	20 780	34 053	+ 63,9
Industrial and warehouse space						
Total square metres	10 063	1 759	21 208	108 534	80 749	-25,6
Total value at current prices (R'000)	10 935	2 279	33 697	114 255	97 996	-14,2
Other non-residential space ^{2/}						
Total square metres	5 336	480	3 599	13 714	11 939	-12,9
Total value at current prices (R'000)	5 770	516	4 467	15 001	13 753	-8,3
Total value of non-residential buildings at current prices (R'000)	23 980	8 200	63 740	242 913	206 358	-15,0
Additions and alterations						
Dwelling-houses						
Total square metres	22 478	42 081	34 994	131 372	178 916	+ 36,2
Total value at current prices (R'000)	24 046	44 238	37 315	147 101	197 485	+ 34,3
Other buildings ^{3/}						
Total square metres	8 131	10 390	8 511	106 713	54 694	-48,7
Total value at current prices (R'000)	12 714	17 648	15 762	209 744	100 624	-52,0
Total value of additions and alterations at current prices (R'000)	36 760	61 886	53 077	356 845	298 109	-16,5
Total value of buildings completed at current prices (R'000)	103 319	124 560	207 116	876 582	920 923	+ 5,1

1/ Other residential buildings include institutions for the disabled, boarding houses, old people's homes, hostels, hotels, motels, guest houses, holiday chalets, entertainment centres, bed-and-breakfast accommodation and casinos.

2/ Other non-residential space includes churches, sport and recreation clubs, schools, crèches, hospitals and all other non-residential space.

3/ Other buildings include additions and alterations to other residential buildings, non-residential buildings and internal alterations.

Table 25 - Buildings completed according to type of building and province: North West

Type of building	June 2000*	May 2001	June 2001	January 2000 to June 2000	January 2001 to June 2001	Percentage change between January 2000 to June 2000 and January 2001 to June 2001
Residential buildings						
Dwelling-houses smaller than 80 square metres						
Number of dwelling-houses	110	52	97	554	456	- 17,7
Total square metres	4 995	2 506	4 488	25 436	22 535	- 11,4
Total value at current prices (R'000)	3 538	2 134	4 747	22 688	24 778	+ 9,2
Dwelling-houses equal to or larger than 80 square metres						
Number of dwelling-houses	33	54	61	171	264	+ 54,4
Total square metres	5 050	11 021	11 863	31 432	50 595	+ 61,0
Total value at current prices (R'000)	5 640	13 506	14 473	34 222	60 907	+ 78,0
Flats and townhouses						
Number of flats and townhouses	10	12	6	48	70	+ 45,8
Total square metres	1 260	1 247	794	7 142	7 589	+ 6,3
Total value at current prices (R'000)	1 612	1 101	764	7 929	7 609	- 4,0
Other residential buildings ^{1/}						
Total square metres	404	721	0	748	3 684	+ 392,5
Total value at current prices (R'000)	300	606	0	765	4 162	+ 444,1
Total value of residential buildings at current prices (R'000)	11 090	17 347	19 984	65 604	97 456	+ 48,6
Non-residential buildings						
Office and banking space						
Total square metres	0	0	0	9 442	750	- 92,1
Total value at current prices (R'000)	0	0	0	11 137	1 400	- 87,4
Shopping space						
Total square metres	1 632	667	479	18 375	2 745	- 85,1
Total value at current prices (R'000)	1 927	670	459	22 575	3 571	- 84,2
Industrial and warehouse space						
Total square metres	0	1 464	3 190	539	6 265	+ 1062,3
Total value at current prices (R'000)	0	1 250	3 195	534	6 405	+ 1099,4
Other non-residential space ^{2/}						
Total square metres	0	234	3 319	6 257	5 636	- 9,9
Total value at current prices (R'000)	0	234	3 983	5 345	6 532	+ 22,2
Total value of non-residential buildings at current prices (R'000)	1 927	2 154	7 637	39 591	17 908	- 54,8
Additions and alterations						
Dwelling-houses						
Total square metres	3 675	4 450	4 243	30 702	21 461	- 30,1
Total value at current prices (R'000)	4 626	3 257	4 086	30 088	18 996	- 36,9
Other buildings ^{3/}						
Total square metres	5 188	2 848	3 396	11 374	14 189	+ 24,7
Total value at current prices (R'000)	4 252	2 558	3 937	9 902	17 062	+ 72,3
Total value of additions and alterations at current prices (R'000)	8 878	5 815	8 023	39 990	36 058	- 9,8
Total value of buildings completed at current prices (R'000)	21 895	25 316	35 644	145 185	151 422	+ 4,3

1/ Other residential buildings include institutions for the disabled, boarding houses, old people's homes, hostels, hotels, motels, guest houses, holiday chalets, entertainment centres, bed-and-breakfast accommodation and casinos.

2/ Other non-residential space includes churches, sport and recreation clubs, schools, crèches, hospitals and all other non-residential space.

3/ Other buildings include additions and alterations to other residential buildings, non-residential buildings and internal alterations.

Table 26 - Buildings completed according to type of building and province: Gauteng

Type of building	June 2000	May 2001	June 2001	January 2000 to June 2000	January 2001 to June 2001	Percentage change between January 2000 to June 2000 and January 2001 to June 2001
Residential buildings						
Dwelling-houses smaller than 80 square metres						
Number of dwelling-houses	1 349	1 036	500	7 866	3 573	-54,6
Total square metres	49 436	38 705	20 802	278 271	139 951	-49,7
Total value at current prices (R'000)	40 766	29 697	28 392	196 357	127 344	-35,1
Dwelling-houses equal to or larger than 80 square metres						
Number of dwelling-houses	297	413	332	1 515	1 839	+ 21,4
Total square metres	70 066	91 153	71 619	354 555	417 143	+ 17,7
Total value at current prices (R'000)	90 717	125 963	99 913	466 371	577 976	+ 23,9
Flats and townhouses						
Number of flats and townhouses	258	53	359	1 854	1 928	+ 4,0
Total square metres	22 864	6 166	30 882	169 553	189 785	+ 11,9
Total value at current prices (R'000)	32 434	8 321	51 880	234 652	295 281	+ 25,8
Other residential buildings ^{1/}						
Total square metres	1 124	0	0	8 211	34 212	+ 316,7
Total value at current prices (R'000)	1 124	0	0	12 851	252 096	+ 1 861,7
Total value of residential buildings at current prices (R'000)	165 041	163 981	180 185	910 231	1 252 697	+ 37,6
Non-residential buildings						
Office and banking space						
Total square metres	27 097	97 943	15 491	156 010	233 422	+ 49,6
Total value at current prices (R'000)	46 662	147 739	24 602	235 981	335 633	+ 42,2
Shopping space						
Total square metres	6 975	3 602	49 239	131 444	66 118	-49,7
Total value at current prices (R'000)	10 462	4 745	122 911	195 996	146 532	-25,2
Industrial and warehouse space						
Total square metres	17 354	20 719	16 620	116 761	115 760	-0,9
Total value at current prices (R'000)	31 085	27 633	23 574	178 836	165 348	-7,5
Other non-residential space ^{2/}						
Total square metres	2 819	7 552	7 933	14 450	26 253	+ 81,7
Total value at current prices (R'000)	3 580	10 317	10 376	16 738	37 003	+ 121,1
Total value of non-residential buildings at current prices (R'000)	91 789	190 434	181 463	627 551	684 516	+ 9,1
Additions and alterations						
Dwelling-houses						
Total square metres	19 347	19 967	20 579	142 086	134 722	-5,2
Total value at current prices (R'000)	23 073	23 674	24 266	171 340	161 473	-5,8
Other buildings ^{3/}						
Total square metres	12 546	6 839	15 560	57 173	67 065	+ 17,3
Total value at current prices (R'000)	21 802	8 498	31 039	158 216	114 709	-27,5
Total value of additions and alterations at current prices (R'000)	44 875	32 172	55 305	329 556	276 182	-16,2
Total value of buildings completed at current prices (R'000)	301 705	386 587	416 953	1 867 338	2 213 395	+ 18,5

1/ Other residential buildings include institutions for the disabled, boarding houses, old people's homes, hostels, hotels, motels, guest houses, holiday chalets, entertainment centres, bed-and-breakfast accommodation and casinos.

2/ Other non-residential space includes churches, sport and recreation clubs, schools, crèches, hospitals and all other non-residential space.

3/ Other buildings include additions and alterations to other residential buildings, non-residential buildings and internal alterations.

Table 27 - Buildings completed according to type of building and province: Mpumalanga

Type of building	June 2000*	May 2001	June 2001	January 2000 to June 2000	January 2001 to June 2001	Percentage change between January 2000 to June 2000 and January 2001 to June 2001
Residential buildings						
Dwelling-houses smaller than 80 square metres						
Number of dwelling-houses	173	482	159	1 144	1 837	+ 60,6
Total square metres	6 834	16 012	5 539	38 586	62 213	+ 61,2
Total value at current prices (R'000)	6 803	7 817	3 718	31 390	29 783	-5,1
Dwelling-houses equal to or larger than 80 square metres						
Number of dwelling-houses	20	20	19	188	182	-3,2
Total square metres	3 712	4 173	3 007	34 465	32 319	-6,2
Total value at current prices (R'000)	3 487	3 885	2 574	38 324	31 326	-18,3
Flats and townhouses						
Number of flats and townhouses	0	40	17	22	80	+ 263,6
Total square metres	0	3 905	1 927	1 477	7 970	+ 439,6
Total value at current prices (R'000)	0	3 842	2 109	1 412	7 739	+ 448,1
Other residential buildings ^{1/}						
Total square metres	0	0	0	730	0	..
Total value at current prices (R'000)	0	0	0	1 100	0	..
Total value of residential buildings at current prices (R'000)	10 290	15 544	8 401	72 226	68 848	-4,7
Non-residential buildings						
Office and banking space						
Total square metres	1 079	0	0	8 461	4 671	-44,8
Total value at current prices (R'000)	1 546	0	0	14 916	6 150	-58,8
Shopping space						
Total square metres	1 159	166	0	2 350	20 209	+ 760,0
Total value at current prices (R'000)	1 043	200	0	2 253	11 300	+ 401,6
Industrial and warehouse space						
Total square metres	0	365	0	9 347	365	-96,1
Total value at current prices (R'000)	0	160	0	9 401	160	-98,3
Other non-residential space ^{2/}						
Total square metres	363	0	306	5 321	3 851	-27,6
Total value at current prices (R'000)	360	0	358	6 681	4 522	-32,3
Total value of non-residential buildings at current prices (R'000)	2 949	360	358	33 251	22 132	-33,4
Additions and alterations						
Dwelling-houses						
Total square metres	1 410	727	3 692	16 401	26 141	+ 59,4
Total value at current prices (R'000)	1 071	629	3 231	12 169	21 679	+ 78,1
Other buildings ^{3/}						
Total square metres	152	360	83	3 415	12 909	+ 278,0
Total value at current prices (R'000)	261	547	69	3 686	17 591	+ 377,2
Total value of additions and alterations at current prices (R'000)	1 332	1 176	3 300	15 855	39 270	+ 147,7
Total value of buildings completed at current prices (R'000)	14 571	17 080	12 059	121 332	130 250	+ 7,4

1/ Other residential buildings include institutions for the disabled, boarding houses, old people's homes, hostels, hotels, motels, guest houses, holiday chalets, entertainment centres, bed-and-breakfast accommodation and casinos.

2/ Other non-residential space includes churches, sport and recreation clubs, schools, crèches, hospitals and all other non-residential space.

3/ Other buildings include additions and alterations to other residential buildings, non-residential buildings and internal alterations.

Table 28 - Buildings completed according to type of building and province: Northern Province

Type of building	June 2000	May 2001	June 2001	January 2000 to June 2000	January 2001 to June 2001	Percentage change between January 2000 to June 2000 and January 2001 to June 2001
Residential buildings						
Dwelling-houses smaller than 80 square metres						
Number of dwelling-houses	38	36	46	298	302	+ 1,3
Total square metres	2 255	1 812	2 605	14 849	14 601	-1,7
Total value at current prices (R'000)	2 951	1 685	2 925	13 845	12 814	-7,4
Dwelling-houses equal to or larger than 80 square metres						
Number of dwelling-houses	41	14	28	118	110	-6,8
Total square metres	6 432	2 006	3 516	16 719	16 774	+ 0,3
Total value at current prices (R'000)	8 322	2 762	3 911	21 232	21 712	+ 2,3
Flats and townhouses						
Number of flats and townhouses	4	8	4	15	26	+ 73,3
Total square metres	678	1 735	286	2 226	4 618	+ 107,5
Total value at current prices (R'000)	745	1 745	400	3 151	5 212	+ 65,4
Other residential buildings ^{1/}						
Total square metres	0	0	0	725	3 000	+ 313,8
Total value at current prices (R'000)	0	0	0	1 015	3 600	+ 254,7
Total value of residential buildings at current prices (R'000)	12 018	6 192	7 236	39 243	43 338	+ 10,4
Non-residential buildings						
Office and banking space						
Total square metres	2 435	498	0	3 271	498	-84,8
Total value at current prices (R'000)	3 897	797	0	5 067	797	-84,3
Shopping space						
Total square metres	499	1 182	2 508	7 929	3 690	-53,5
Total value at current prices (R'000)	712	2 073	3 846	21 016	5 919	-71,8
Industrial and warehouse space						
Total square metres	2 500	0	768	3 653	768	-79,0
Total value at current prices (R'000)	3 000	0	1 076	4 281	1 076	-74,9
Other non-residential space ^{2/}						
Total square metres	34	0	172	379	424	+ 11,9
Total value at current prices (R'000)	40	0	172	286	726	+ 153,8
Total value of non-residential buildings at current prices (R'000)	7 649	2 870	5 094	30 650	8 518	-72,2
Additions and alterations						
Dwelling-houses						
Total square metres	2 691	565	1 349	6 216	4 589	-26,2
Total value at current prices (R'000)	3 217	683	1 843	7 247	5 654	-22,0
Other buildings ^{3/}						
Total square metres	20	0	1 213	478	2 958	+ 518,8
Total value at current prices (R'000)	30	23	1 598	916	5 736	+ 526,2
Total value of additions and alterations at current prices (R'000)	3 247	706	3 441	8 163	11 390	+ 39,5
Total value of buildings completed at current prices (R'000)	22 914	9 768	15 771	78 056	63 246	-19,0

1/ Other residential buildings include institutions for the disabled, boarding houses, old people's homes, hostels, hotels, motels, guest houses, holiday chalets, entertainment centres, bed-and-breakfast accommodation and casinos.

2/ Other non-residential space includes churches, sport and recreation clubs, schools, crèches, hospitals and all other non-residential space.

3/ Other buildings include additions and alterations to other residential buildings, non-residential buildings and internal alterations.

Table 29 - Building plans passed according to type of building and selected urban area: Cape Town

Type of building	June 2000 *	May 2001	June 2001	January 2000 to June 2000	January 2001 to June 2001	Percentage change between January 2000 to June 2000 and January 2001 to June 2001
Residential buildings						
Dwelling-houses smaller than 80 square metres						
Number of dwelling-houses	570	475	666	3 485	3 348	- 3,9
Total square metres	22 540	19 696	30 792	136 276	135 951	- 0,2
Total value at current prices (R'000)	14 287	22 525	40 082	84 617	166 833	+ 97,2
Dwelling-houses equal to or larger than 80 square metres						
Number of dwelling-houses	232	432	365	1 657	1 838	+ 10,9
Total square metres	45 984	79 367	70 254	298 274	389 459	+ 30,6
Total value at current prices (R'000)	68 156	110 738	97 520	422 157	531 573	+ 25,9
Flats and townhouses						
Number of flats and townhouses	168	236	151	917	820	- 10,6
Total square metres	16 947	18 644	13 455	97 743	79 721	- 18,4
Total value at current prices (R'000)	40 435	28 231	19 513	174 657	126 128	- 27,8
Other residential buildings ^{1/}						
Total square metres	4 086	4 530	2 933	45 986	27 477	- 40,2
Total value at current prices (R'000)	3 107	12 000	3 637	61 950	65 743	+ 6,1
Total value of residential buildings at current prices (R'000)	125 985	173 494	160 752	743 381	890 277	+ 19,8
Non-residential buildings						
Office and banking space						
Total square metres	18 589	8 763	15 751	78 263	83 717	+ 7,0
Total value at current prices (R'000)	26 575	15 677	25 315	148 489	142 660	- 3,9
Shopping space						
Total square metres	32 992	10 057	5 103	96 157	87 839	- 8,7
Total value at current prices (R'000)	39 024	14 954	5 336	115 358	107 788	- 6,6
Industrial and warehouse space						
Total square metres	27 131	5 434	11 639	119 115	59 929	- 49,7
Total value at current prices (R'000)	44 888	5 260	13 776	138 353	64 455	- 53,4
Other non-residential space ^{2/}						
Total square metres	9 175	3 437	3 526	44 497	39 860	- 10,4
Total value at current prices (R'000)	8 588	5 155	4 643	49 528	57 265	+ 15,6
Total value of non-residential buildings at current prices (R'000)	119 075	41 046	49 070	451 728	372 168	- 17,6
Additions and alterations						
Dwelling-houses						
Total square metres	39 783	55 678	52 325	283 284	289 044	+ 2,0
Total value at current prices (R'000)	50 387	69 505	60 424	325 679	345 351	+ 6,0
Other buildings ^{3/}						
Total square metres	10 801	23 860	17 269	70 657	93 115	+ 31,8
Total value at current prices (R'000)	29 827	31 868	38 085	211 177	169 930	- 19,5
Total value of additions and alterations at current prices (R'000)	80 214	101 373	98 509	536 856	515 281	- 4,0
Total value of building plans passed at current prices (R'000)	325 274	315 913	308 331	1 731 965	1 777 726	+ 2,6

1/ Other residential buildings include institutions for the disabled, boarding houses, old people's homes, hostels, hotels, motels, guest houses, holiday chalets, entertainment centres, bed-and-breakfast accommodation and casinos.

2/ Other non-residential space includes churches, sport and recreation clubs, schools, crèches, hospitals and all other non-residential space.

3/ Other buildings include additions and alterations to other residential buildings, non-residential buildings and internal alterations.

Table 30 - Building plans passed according to type of building and selected urban area: Port Elizabeth

Type of building	June 2000	May 2001	June 2001	January 2000 to June 2000	January 2001 to June 2001	Percentage change between January 2000 to June 2000 and January 2001 to June 2001
Residential buildings						
Dwelling-houses smaller than 80 square metres						
Number of dwelling-houses	196	161	184	860	982	+ 14,2
Total square metres	8 687	6 851	8 613	36 565	44 213	+ 20,9
Total value at current prices (R'000)	10 160	8 876	11 451	42 579	58 613	+ 37,7
Dwelling-houses equal to or larger than 80 square metres						
Number of dwelling-houses	116	33	89	330	399	+ 20,9
Total square metres	14 025	5 970	9 176	42 607	46 071	+ 8,1
Total value at current prices (R'000)	18 052	8 214	12 627	54 005	61 950	+ 14,7
Flats and townhouses						
Number of flats and townhouses	54	5	15	121	96	- 20,7
Total square metres	6 606	398	1 365	16 076	8 888	- 44,7
Total value at current prices (R'000)	7 874	524	1 825	20 378	12 600	- 38,2
Other residential buildings ^{1/}						
Total square metres	6 994	0	2 744	7 209	2 744	- 61,9
Total value at current prices (R'000)	9 293	0	3 312	9 640	3 312	- 65,6
Total value of residential buildings at current prices (R'000)	45 379	17 614	29 215	126 602	136 475	+ 7,8
Non-residential buildings						
Office and banking space						
Total square metres	0	0	0	0	0	..
Total value at current prices (R'000)	0	0	0	0	0	..
Shopping space						
Total square metres	687	238	0	6 884	1 362	- 80,2
Total value at current prices (R'000)	927	58	0	10 539	1 857	- 82,4
Industrial and warehouse space						
Total square metres	6 437	4 814	859	22 599	7 786	- 65,5
Total value at current prices (R'000)	5 730	1 682	1 325	25 455	6 071	- 76,2
Other non-residential space ^{2/}						
Total square metres	1 091	231	1 724	13 924	4 225	- 69,7
Total value at current prices (R'000)	1 762	254	2 776	19 462	6 679	- 65,7
Total value of non-residential buildings at current prices (R'000)	8 419	1 994	4 101	55 456	14 607	- 73,7
Additions and alterations						
Dwelling-houses						
Total square metres	15 112	9 677	12 998	60 719	56 597	- 6,8
Total value at current prices (R'000)	19 762	12 097	17 576	75 921	74 518	- 1,8
Other buildings ^{3/}						
Total square metres	4 336	6 735	2 455	19 717	39 103	+ 98,3
Total value at current prices (R'000)	5 534	9 767	2 107	26 797	54 439	+ 103,2
Total value of additions and alterations at current prices (R'000)	25 296	21 864	19 683	102 718	128 957	+ 25,5
Total value of building plans passed at current prices (R'000)	79 094	41 472	52 999	284 776	280 039	- 1,7

1/ Other residential buildings include institutions for the disabled, boarding houses, old people's homes, hostels, hotels, motels, guest houses, holiday chalets, entertainment centres, bed-and-breakfast accommodation and casinos.

2/ Other non-residential space includes churches, sport and recreation clubs, schools, crèches, hospitals and all other non-residential space.

3/ Other buildings include additions and alterations to other residential buildings, non-residential buildings and internal alterations.

Table 31 - Building plans passed according to type of building and selected urban area: Durban

Type of building	June 2000	May 2001	June 2001	January 2000 to June 2000	January 2001 to June 2001	Percentage change between January 2000 to June 2000 and January 2001 to June 2001
Residential buildings						
Dwelling-houses smaller than 80 square metres						
Number of dwelling-houses	95	87	76	527	451	-14,4
Total square metres	4 358	4 474	3 859	27 492	23 615	-14,1
Total value at current prices (R'000)	4 267	5 381	4 103	29 796	26 921	-9,6
Dwelling-houses equal to or larger than 80 square metres						
Number of dwelling-houses	87	72	50	427	340	-20,4
Total square metres	16 406	12 447	9 542	71 078	67 474	-5,1
Total value at current prices (R'000)	22 870	16 538	12 153	88 808	77 686	-12,5
Flats and townhouses						
Number of flats and townhouses	28	11	46	88	135	+ 53,4
Total square metres	4 173	1 956	7 369	14 606	17 191	+ 17,7
Total value at current prices (R'000)	4 980	3 250	3 585	18 822	18 510	-1,7
Other residential buildings ^{1/}						
Total square metres	0	138	0	0	138	..
Total value at current prices (R'000)	0	330	0	0	330	..
Total value of residential buildings at current prices (R'000)	32 117	25 499	19 841	137 426	123 447	-10,2
Non-residential buildings						
Office and banking space						
Total square metres	582	993	4 935	6 978	10 132	+ 45,2
Total value at current prices (R'000)	582	1 500	6 500	14 368	19 200	+ 33,6
Shopping space						
Total square metres	588	616	1 064	8 582	11 062	+ 28,9
Total value at current prices (R'000)	790	986	1 200	9 935	12 456	+ 25,4
Industrial and warehouse space						
Total square metres	7 823	2 562	10 346	37 341	44 330	+ 18,7
Total value at current prices (R'000)	7 890	2 841	10 806	45 108	49 184	+ 9,0
Other non-residential space ^{2/}						
Total square metres	1 808	1 500	1 444	13 103	20 383	+ 55,6
Total value at current prices (R'000)	2 696	2 730	2 057	18 656	24 223	+ 29,8
Total value of non-residential buildings at current prices (R'000)	11 958	8 057	20 563	88 067	105 063	+ 19,3
Additions and alterations						
Dwelling-houses						
Total square metres	23 783	22 566	21 951	132 533	127 002	-4,2
Total value at current prices (R'000)	25 783	25 814	23 297	149 392	146 888	-1,7
Other buildings ^{3/}						
Total square metres	53 567	11 174	7 196	103 232	58 982	-42,9
Total value at current prices (R'000)	99 268	29 028	26 146	212 856	133 937	-37,1
Total value of additions and alterations at current prices (R'000)	125 051	54 842	49 443	362 248	280 825	-22,5
Total value of building plans passed at current prices (R'000)	169 126	88 398	89 847	587 741	509 335	-13,3

1/ Other residential buildings include institutions for the disabled, boarding houses, old people's homes, hostels, hotels, motels, guest houses, holiday chalets, entertainment centres, bed-and-breakfast accommodation and casinos.

2/ Other non-residential space includes churches, sport and recreation clubs, schools, crèches, hospitals and all other non-residential space.

3/ Other buildings include additions and alterations to other residential buildings, non-residential buildings and internal alterations.

Table 32 - Building plans passed according to type of building and selected urban area: Witwatersrand

Type of building	June 2000	May 2001	June 2001	January 2000 to June 2000	January 2001 to June 2001	Percentage change between January 2000 to June 2000 and January 2001 to June 2001
Residential buildings						
Dwelling-houses smaller than 80 square metres						
Number of dwelling-houses	1 613	658	621	7 638	4 148	- 45,7
Total square metres	63 808	27 144	22 607	293 957	156 775	- 46,7
Total value at current prices (R'000)	49 839	27 301	22 052	220 134	165 313	- 24,9
Dwelling-houses equal to or larger than 80 square metres						
Number of dwelling-houses	388	482	437	2 234	2 697	+ 20,7
Total square metres	88 939	118 498	113 971	504 895	611 298	+ 21,1
Total value at current prices (R'000)	125 816	169 524	168 245	698 306	898 494	+ 28,7
Flats and townhouses						
Number of flats and townhouses	339	429	300	1 747	1 683	- 3,7
Total square metres	38 684	44 319	35 730	162 996	181 109	+ 11,1
Total value at current prices (R'000)	58 836	81 284	56 175	246 919	302 314	+ 22,4
Other residential buildings ^{1/}						
Total square metres	3 884	1 323	1 169	4 908	2 492	- 49,2
Total value at current prices (R'000)	5 987	1 751	1 520	6 987	3 271	- 53,2
Total value of residential buildings at current prices (R'000)	240 478	279 860	247 992	1 172 346	1 369 392	+ 16,8
Non-residential buildings						
Office and banking space						
Total square metres	34 632	27 919	36 379	361 411	158 722	- 56,1
Total value at current prices (R'000)	55 046	49 191	78 160	494 423	268 761	- 45,6
Shopping space						
Total square metres	4 940	11 584	400	71 803	53 403	- 25,6
Total value at current prices (R'000)	8 757	19 461	360	95 909	90 019	- 6,1
Industrial and warehouse space						
Total square metres	20 757	13 646	20 464	223 170	147 148	- 34,1
Total value at current prices (R'000)	35 882	21 563	36 739	333 766	251 828	- 24,5
Other non-residential space ^{2/}						
Total square metres	2 693	18 255	7 665	38 250	63 736	+ 66,6
Total value at current prices (R'000)	4 549	30 817	10 553	58 245	96 906	+ 66,4
Total value of non-residential buildings at current prices (R'000)	104 234	121 032	125 812	982 343	707 514	- 28,0
Additions and alterations						
Dwelling-houses						
Total square metres	70 420	69 663	67 712	361 904	376 840	+ 4,1
Total value at current prices (R'000)	82 368	90 131	89 668	450 998	487 358	+ 8,1
Other buildings ^{3/}						
Total square metres	14 140	12 287	12 437	128 047	118 264	- 7,6
Total value at current prices (R'000)	19 599	26 031	21 936	194 863	223 061	+ 14,5
Total value of additions and alterations at current prices (R'000)	101 967	116 162	111 604	645 861	710 419	+ 10,0
Total value of building plans passed at current prices (R'000)	446 679	517 054	485 408	2 800 550	2 787 325	- 0,5

1/ Other residential buildings include institutions for the disabled, boarding houses, old people's homes, hostels, hotels, motels, guest houses, holiday chalets, entertainment centres, bed-and-breakfast accommodation and casinos.

2/ Other non-residential space includes churches, sport and recreation clubs, schools, crèches, hospitals and all other non-residential space.

3/ Other buildings include additions and alterations to other residential buildings, non-residential buildings and internal alterations.

Table 33 - Building plans passed according to type of building and selected urban area: Pretoria

Type of building	June 2000	May 2001	June 2001	January 2000 to June 2000	January 2001 to June 2001	Percentage change between January 2000 to June 2000 and January 2001 to June 2001
Residential buildings						
Dwelling-houses smaller than 80 square metres						
Number of dwelling-houses	103	709	109	2 433	1 268	- 47,9
Total square metres	5 124	23 057	5 622	81 995	56 134	- 31,5
Total value at current prices (R'000)	5 299	22 428	7 498	59 181	65 464	+ 10,6
Dwelling-houses equal to or larger than 80 square metres						
Number of dwelling-houses	268	352	298	1 352	1 530	+ 13,2
Total square metres	73 222	94 567	90 010	336 607	430 218	+ 27,8
Total value at current prices (R'000)	91 945	127 383	124 161	425 900	584 429	+ 37,2
Flats and townhouses						
Number of flats and townhouses	72	178	338	1 087	1 053	- 3,1
Total square metres	13 020	21 680	28 931	138 982	128 340	- 7,7
Total value at current prices (R'000)	14 349	32 325	44 752	174 768	190 686	+ 9,1
Other residential buildings ^{1/}						
Total square metres	6 979	0	0	6 979	418	- 94,0
Total value at current prices (R'000)	9 960	0	0	9 960	627	- 93,7
Total value of residential buildings at current prices (R'000)	121 553	182 136	176 411	669 809	841 206	+ 25,6
Non-residential buildings						
Office and banking space						
Total square metres	10 371	7 722	16 363	41 999	42 021	+ 0,1
Total value at current prices (R'000)	12 500	11 771	24 889	52 757	67 123	+ 27,2
Shopping space						
Total square metres	8 916	911	20 785	19 771	33 126	+ 67,5
Total value at current prices (R'000)	9 893	1 344	29 915	21 554	49 021	+ 127,4
Industrial and warehouse space						
Total square metres	9 337	6 734	9 739	31 975	33 418	+ 4,5
Total value at current prices (R'000)	12 253	8 602	14 319	38 619	47 039	+ 21,8
Other non-residential space ^{2/}						
Total square metres	1 044	1 811	1 691	11 004	22 127	+ 101,1
Total value at current prices (R'000)	1 158	2 503	2 427	13 850	32 821	+ 137,0
Total value of non-residential buildings at current prices (R'000)	35 804	24 220	71 550	126 780	196 004	+ 54,6
Additions and alterations						
Dwelling-houses						
Total square metres	24 008	25 288	30 630	116 160	118 841	+ 2,3
Total value at current prices (R'000)	29 376	32 882	54 419	137 814	165 837	+ 20,3
Other buildings ^{3/}						
Total square metres	6 582	5 138	6 447	33 984	29 419	- 13,4
Total value at current prices (R'000)	7 970	10 926	10 667	54 535	49 232	- 9,7
Total value of additions and alterations at current prices (R'000)	37 346	43 808	65 086	192 349	215 069	+ 11,8
Total value of building plans passed at current prices (R'000)	194 703	250 164	313 047	988 938	1 252 279	+ 26,6

1/ Other residential buildings include institutions for the disabled, boarding houses, old people's homes, hostels, hotels, motels, guest houses, holiday chalets, entertainment centres, bed-and-breakfast accommodation and casinos.

2/ Other non-residential space includes churches, sport and recreation clubs, schools, crèches, hospitals and all other non-residential space.

3/ Other buildings include additions and alterations to other residential buildings, non-residential buildings and internal alterations.

Table 34 - Building plans passed according to type of building and selected urban area: Bloemfontein

Type of building	June 2000	May 2001	June 2001	January 2000 to June 2000	January 2001 to June 2001	Percentage change between January 2000 to June 2000 and January 2001 to June 2001
Residential buildings						
Dwelling-houses smaller than 80 square metres						
Number of dwelling-houses	251	23	270	862	1 087	+ 26,1
Total square metres	11 131	1 146	11 630	39 439	47 396	+ 20,2
Total value at current prices (R'000)	5 103	1 249	5 505	19 474	23 333	+ 19,8
Dwelling-houses equal to or larger than 80 square metres						
Number of dwelling-houses	20	12	18	132	108	-18,2
Total square metres	3 480	1 792	3 170	23 781	18 566	-21,9
Total value at current prices (R'000)	4 350	2 325	3 807	31 203	23 594	-24,4
Flats and townhouses						
Number of flats and townhouses	30	73	25	204	163	-20,1
Total square metres	2 545	6 741	4 575	14 962	20 890	+ 39,6
Total value at current prices (R'000)	3 300	11 998	6 227	20 927	33 614	+ 60,6
Other residential buildings ^{1/}						
Total square metres	0	0	0	600	0	..
Total value at current prices (R'000)	0	0	0	1 500	0	..
Total value of residential buildings at current prices (R'000)	12 753	15 572	15 539	73 104	80 541	+ 10,2
Non-residential buildings						
Office and banking space						
Total square metres	1 558	0	0	3 321	12 809	+ 285,7
Total value at current prices (R'000)	2 185	0	0	5 130	25 200	+ 391,2
Shopping space						
Total square metres	338	0	0	672	0	..
Total value at current prices (R'000)	507	0	0	1 242	0	..
Industrial and warehouse space						
Total square metres	0	0	180	3 807	804	-78,9
Total value at current prices (R'000)	0	0	200	2 348	638	-72,8
Other non-residential space ^{2/}						
Total square metres	0	684	0	0	1 534	..
Total value at current prices (R'000)	0	1 368	0	0	2 868	..
Total value of non-residential buildings at current prices (R'000)	2 692	1 368	200	8 720	28 706	+ 229,2
Additions and alterations						
Dwelling-houses						
Total square metres	5 630	1 917	3 270	23 343	17 010	-27,1
Total value at current prices (R'000)	7 144	4 030	3 648	28 200	22 028	-21,9
Other buildings ^{3/}						
Total square metres	3 154	2 146	258	8 951	5 034	-43,8
Total value at current prices (R'000)	4 741	5 954	773	13 390	13 099	-2,2
Total value of additions and alterations at current prices (R'000)	11 885	9 984	4 421	41 590	35 127	-15,5
Total value of building plans passed at current prices (R'000)	27 330	26 924	20 160	123 414	144 374	+ 17,0

1/ Other residential buildings include institutions for the disabled, boarding houses, old people's homes, hostels, hotels, motels, guest houses, holiday chalets, entertainment centres, bed-and-breakfast accommodation and casinos.

2/ Other non-residential space includes churches, sport and recreation clubs, schools, crèches, hospitals and all other non-residential space.

3/ Other buildings include additions and alterations to other residential buildings, non-residential buildings and internal alterations.

Table 35 - Buildings completed according to type of building and selected urban area: Cape Town

Type of building	June 2000 *	May 2001	June 2001	January 2000 to June 2000	January 2001 to June 2001	Percentage change between January 2000 to June 2000 and January 2001 to June 2001
Residential buildings						
Dwelling-houses smaller than 80 square metres						
Number of dwelling-houses	339	341	500	2 568	2 107	- 18,0
Total square metres	11 492	14 568	30 898	86 595	89 788	+ 3,7
Total value at current prices (R'000)	7 501	16 326	32 748	52 410	101 907	+ 94,4
Dwelling-houses equal to or larger than 80 square metres						
Number of dwelling-houses	193	141	170	896	812	- 9,4
Total square metres	27 298	31 636	31 656	149 393	161 437	+ 8,1
Total value at current prices (R'000)	36 516	46 886	40 906	194 280	220 875	+ 13,7
Flats and townhouses						
Number of flats and townhouses	16	79	329	420	730	+ 73,8
Total square metres	1 266	9 104	39 818	37 731	79 620	+ 111,0
Total value at current prices (R'000)	2 500	13 636	44 691	50 776	98 589	+ 94,2
Other residential buildings ^{1/}						
Total square metres	0	0	0	11 988	16 618	+ 38,6
Total value at current prices (R'000)	0	0	0	20 874	12 524	- 40,0
Total value of residential buildings at current prices (R'000)	46 517	76 848	118 345	318 340	433 895	+ 36,3
Non-residential buildings						
Office and banking space						
Total square metres	0	3 082	20 357	49 512	62 526	+ 26,3
Total value at current prices (R'000)	0	6 542	29 055	92 981	116 448	+ 25,2
Shopping space						
Total square metres	5 963	3 370	3 312	14 594	20 287	+ 39,0
Total value at current prices (R'000)	11 128	2 881	3 229	25 593	24 634	- 3,7
Industrial and warehouse space						
Total square metres	9 831	12 809	7 947	81 837	41 149	- 49,7
Total value at current prices (R'000)	10 029	13 968	7 719	68 772	45 707	- 33,5
Other non-residential space ^{2/}						
Total square metres	3 266	80	5 047	11 704	12 019	+ 2,7
Total value at current prices (R'000)	3 973	60	6 296	13 639	17 331	+ 27,1
Total value of non-residential buildings at current prices (R'000)	25 130	23 451	46 299	200 985	204 120	+ 1,6
Additions and alterations						
Dwelling-houses						
Total square metres	19 711	46 614	33 828	159 169	183 610	+ 15,4
Total value at current prices (R'000)	22 805	48 855	38 594	173 227	204 942	+ 18,3
Other buildings ^{3/}						
Total square metres	4 396	8 856	23 057	58 107	69 958	+ 20,4
Total value at current prices (R'000)	8 494	13 738	47 545	107 392	211 319	+ 96,8
Total value of additions and alterations at current prices (R'000)	31 299	62 593	86 139	280 619	416 261	+ 48,3
Total value of buildings completed at current prices (R'000)	102 946	162 892	250 783	799 944	1 054 276	+ 31,8

1/ Other residential buildings include institutions for the disabled, boarding houses, old people's homes, hostels, hotels, motels, guest houses, holiday chalets, entertainment centres, bed-and-breakfast accommodation and casinos.

2/ Other non-residential space includes churches, sport and recreation clubs, schools, crèches, hospitals and all other non-residential space.

3/ Other buildings include additions and alterations to other residential buildings, non-residential buildings and internal alterations.

Table 36 - Buildings completed according to type of building and selected urban area: Port Elizabeth

Type of building	June 2000	May 2001	June 2001	January 2000 to June 2000	January 2001 to June 2001	Percentage change between January 2000 to June 2000 and January 2001 to June 2001
Residential buildings						
Dwelling-houses smaller than 80 square metres						
Number of dwelling-houses	51	147	229	548	758	+ 38,3
Total square metres	2 131	6 026	10 647	24 435	32 886	+ 34,6
Total value at current prices (R'000)	2 216	7 778	14 361	28 629	42 289	+ 47,7
Dwelling-houses equal to or larger than 80 square metres						
Number of dwelling-houses	1	58	139	142	348	+ 145,1
Total square metres	101	7 273	11 707	20 050	35 792	+ 78,5
Total value at current prices (R'000)	112	10 482	15 441	22 274	46 695	+ 109,6
Flats and townhouses						
Number of flats and townhouses	51	23	3	137	75	- 45,3
Total square metres	4 691	1 472	530	15 215	5 821	- 61,7
Total value at current prices (R'000)	5 210	1 558	542	17 043	5 745	- 66,3
Other residential buildings ^{1/}						
Total square metres	0	0	0	367	4 347	+ 1084,5
Total value at current prices (R'000)	0	0	0	440	7 000	+ 1490,9
Total value of residential buildings at current prices (R'000)	7 538	19 818	30 344	68 386	101 729	+ 48,8
Non-residential buildings						
Office and banking space						
Total square metres	0	18 905	1 907	0	20 812	..
Total value at current prices (R'000)	0	19 510	1 660	0	21 170	..
Shopping space						
Total square metres	599	5 047	5 819	24 988	15 291	- 38,8
Total value at current prices (R'000)	786	5 336	6 117	36 533	18 442	- 49,5
Industrial and warehouse space						
Total square metres	0	7 665	0	8 351	31 793	+ 280,7
Total value at current prices (R'000)	0	8 217	0	5 681	38 803	+ 583,0
Other non-residential space ^{2/}						
Total square metres	471	0	0	3 868	3 808	- 1,6
Total value at current prices (R'000)	441	0	0	4 603	3 047	- 33,8
Total value of non-residential buildings at current prices (R'000)	1 227	33 063	7 777	46 817	81 462	+ 74,0
Additions and alterations						
Dwelling-houses						
Total square metres	4 304	4 079	4 036	32 030	22 885	- 28,6
Total value at current prices (R'000)	4 314	4 256	6 448	29 622	27 394	- 7,5
Other buildings ^{3/}						
Total square metres	828	2 272	4 396	9 166	16 060	+ 75,2
Total value at current prices (R'000)	945	2 730	5 866	10 312	20 220	+ 96,1
Total value of additions and alterations at current prices (R'000)	5 259	6 986	12 314	39 934	47 614	+ 19,2
Total value of buildings completed at current prices (R'000)	14 024	59 867	50 435	155 137	230 805	+ 48,8

1/ Other residential buildings include institutions for the disabled, boarding houses, old people's homes, hostels, hotels, motels, guest houses, holiday chalets, entertainment centres, bed-and-breakfast accommodation and casinos.

2/ Other non-residential space includes churches, sport and recreation clubs, schools, crèches, hospitals and all other non-residential space.

3/ Other buildings include additions and alterations to other residential buildings, non-residential buildings and internal alterations.

Table 37 - Buildings completed according to type of building and selected urban area: Durban

Type of building	June 2000	May 2001	June 2001	January 2000 to June 2000	January 2001 to June 2001	Percentage change between January 2000 to June 2000 and January 2001 to June 2001
Residential buildings						
Dwelling-houses smaller than 80 square metres						
Number of dwelling-houses	62	57	118	469	408	- 13,0
Total square metres	3 370	2 962	5 502	23 948	21 037	- 12,2
Total value at current prices (R'000)	3 334	3 313	7 238	25 853	25 133	- 2,8
Dwelling-houses equal to or larger than 80 square metres						
Number of dwelling-houses	68	82	109	459	496	+ 8,1
Total square metres	14 166	14 787	26 291	81 232	94 969	+ 16,9
Total value at current prices (R'000)	13 111	16 188	47 120	87 136	125 446	+ 44,0
Flats and townhouses						
Number of flats and townhouses	65	19	35	187	414	+ 121,4
Total square metres	6 474	1 805	4 458	26 344	39 439	+ 49,7
Total value at current prices (R'000)	7 182	3 864	5 621	37 902	53 887	+ 42,2
Other residential buildings ^{1/}						
Total square metres	0	0	0	0	0	..
Total value at current prices (R'000)	0	0	0	0	0	..
Total value of residential buildings at current prices (R'000)	23 627	23 365	59 979	150 891	204 466	+ 35,5
Non-residential buildings						
Office and banking space						
Total square metres	193	344	13 743	22 443	25 972	+ 15,7
Total value at current prices (R'000)	200	500	16 323	66 157	41 693	- 37,0
Shopping space						
Total square metres	5 050	1 111	1 080	12 093	15 237	+ 26,0
Total value at current prices (R'000)	5 075	1 800	2 253	14 360	28 042	+ 95,3
Industrial and warehouse space						
Total square metres	8 209	1 349	19 857	81 370	63 325	- 22,2
Total value at current prices (R'000)	9 206	1 665	32 549	93 818	83 044	- 11,5
Other non-residential space ^{2/}						
Total square metres	2 241	0	2 652	9 387	7 143	- 23,9
Total value at current prices (R'000)	2 598	0	3 312	9 979	8 938	- 10,4
Total value of non-residential buildings at current prices (R'000)	17 079	3 965	54 437	184 314	161 717	- 12,3
Additions and alterations						
Dwelling-houses						
Total square metres	19 784	35 971	31 106	112 809	153 544	+ 36,1
Total value at current prices (R'000)	20 763	36 836	32 869	125 081	166 988	+ 33,5
Other buildings ^{3/}						
Total square metres	7 094	8 280	7 272	99 229	47 688	- 51,9
Total value at current prices (R'000)	11 996	15 742	14 130	195 477	88 163	- 54,9
Total value of additions and alterations at current prices (R'000)	32 759	52 578	46 999	320 558	255 151	- 20,4
Total value of buildings completed at current prices (R'000)	73 465	79 908	161 415	655 763	621 334	- 5,3

1/ Other residential buildings include institutions for the disabled, boarding houses, old people's homes, hostels, hotels, motels, guest houses, holiday chalets, entertainment centres, bed-and-breakfast accommodation and casinos.

2/ Other non-residential space includes churches, sport and recreation clubs, schools, crèches, hospitals and all other non-residential space.

3/ Other buildings include additions and alterations to other residential buildings, non-residential buildings and internal alterations.

Table 38 - Buildings completed according to type of building and selected urban area: Witwatersrand

Type of building	June 2000	May 2001	June 2001	January 2000 to June 2000	January 2001 to June 2001	Percentage change between January 2000 to June 2000 and January 2001 to June 2001
Residential buildings						
Dwelling-houses smaller than 80 square metres						
Number of dwelling-houses	1 039	906	362	5 168	2 767	-46,5
Total square metres	39 180	32 976	15 019	189 723	107 150	-43,5
Total value at current prices (R'000)	33 444	25 213	16 406	136 998	91 981	-32,9
Dwelling-houses equal to or larger than 80 square metres						
Number of dwelling-houses	185	293	209	1 027	1 266	+ 23,3
Total square metres	39 781	54 747	36 359	226 036	257 799	+ 14,1
Total value at current prices (R'000)	54 938	78 111	50 428	316 071	361 926	+ 14,5
Flats and townhouses						
Number of flats and townhouses	40	49	346	1 164	1 251	+ 7,5
Total square metres	3 390	5 439	28 346	80 484	121 589	+ 51,1
Total value at current prices (R'000)	8 475	7 252	48 054	127 106	203 335	+ 60,0
Other residential buildings ^{1/}						
Total square metres	0	0	0	5 954	32 600	+ 447,5
Total value at current prices (R'000)	0	0	0	10 340	250 000	+ 2 317,8
Total value of residential buildings at current prices (R'000)	96 857	110 576	114 888	590 515	907 242	+ 53,6
Non-residential buildings						
Office and banking space						
Total square metres	26 664	97 943	15 491	153 317	228 279	+ 48,9
Total value at current prices (R'000)	45 969	147 739	24 602	232 928	328 858	+ 41,2
Shopping space						
Total square metres	6 975	1 434	49 239	129 654	59 765	-53,9
Total value at current prices (R'000)	10 462	1 940	122 911	193 556	138 441	-28,5
Industrial and warehouse space						
Total square metres	16 914	14 310	14 566	110 454	101 269	-8,3
Total value at current prices (R'000)	30 425	23 551	21 664	172 330	151 527	-12,1
Other non-residential space ^{2/}						
Total square metres	896	6 552	7 203	9 528	18 736	+ 96,6
Total value at current prices (R'000)	1 195	8 517	9 435	12 238	27 144	+ 121,8
Total value of non-residential buildings at current prices (R'000)	88 051	181 747	178 612	611 052	645 970	+ 5,7
Additions and alterations						
Dwelling-houses						
Total square metres	16 980	17 870	17 808	120 820	121 207	+ 0,3
Total value at current prices (R'000)	20 218	21 016	21 124	149 088	145 369	-2,5
Other buildings ^{3/}						
Total square metres	12 227	6 839	10 850	43 331	60 784	+ 40,3
Total value at current prices (R'000)	21 355	8 304	25 016	143 426	105 436	-26,5
Total value of additions and alterations at current prices (R'000)	41 573	29 320	46 140	292 514	250 805	-14,3
Total value of buildings completed at current prices (R'000)	226 481	321 643	339 640	1 494 081	1 804 017	+ 20,7

1/ Other residential buildings include institutions for the disabled, boarding houses, old people's homes, hostels, hotels, motels, guest houses, holiday chalets, entertainment centres, bed-and-breakfast accommodation and casinos.

2/ Other non-residential space includes churches, sport and recreation clubs, schools, crèches, hospitals and all other non-residential space.

3/ Other buildings include additions and alterations to other residential buildings, non-residential buildings and internal alterations.

Table 39 - Buildings completed according to type of building and selected urban area: Pretoria

Type of building	June 2000	May 2001	June 2001	January 2000 to June 2000	January 2001 to June 2001	Percentage change between January 2000 to June 2000 and January 2001 to June 2001
Residential buildings						
Dwelling-houses smaller than 80 square metres						
Number of dwelling-houses	38	118	111	2 261	440	- 80,5
Total square metres	1 933	5 203	4 766	73 279	20 225	- 72,4
Total value at current prices (R'000)	2 605	4 026	11 540	49 748	28 262	- 43,2
Dwelling-houses equal to or larger than 80 square metres						
Number of dwelling-houses	109	115	118	440	537	+ 22,0
Total square metres	29 895	35 273	33 425	119 502	150 996	+ 26,4
Total value at current prices (R'000)	35 321	46 581	47 366	140 137	206 366	+ 47,3
Flats and townhouses						
Number of flats and townhouses	218	4	11	688	636	- 7,6
Total square metres	19 474	727	2 259	88 336	62 959	- 28,7
Total value at current prices (R'000)	23 959	1 069	3 511	106 567	85 475	- 19,8
Other residential buildings ^{1/}						
Total square metres	1 124	0	0	1 851	0	..
Total value at current prices (R'000)	1 124	0	0	2 024	0	..
Total value of residential buildings at current prices (R'000)	63 009	51 676	62 417	298 476	320 103	+ 7,2
Non-residential buildings						
Office and banking space						
Total square metres	433	0	0	2 657	5 143	+ 93,6
Total value at current prices (R'000)	693	0	0	3 043	6 775	+ 122,6
Shopping space						
Total square metres	0	152	0	1 492	152	- 89,8
Total value at current prices (R'000)	0	198	0	2 086	198	- 90,5
Industrial and warehouse space						
Total square metres	440	4 511	152	5 441	7 803	+ 43,4
Total value at current prices (R'000)	660	1 988	198	5 956	6 777	+ 13,8
Other non-residential space ^{2/}						
Total square metres	1 923	1 000	308	4 922	5 568	+ 13,1
Total value at current prices (R'000)	2 385	1 800	308	4 500	7 966	+ 77,0
Total value of non-residential buildings at current prices (R'000)	3 738	3 986	506	15 585	21 716	+ 39,3
Additions and alterations						
Dwelling-houses						
Total square metres	1 462	1 264	1 824	11 691	7 982	- 31,7
Total value at current prices (R'000)	1 789	1 688	2 158	12 489	9 994	- 20,0
Other buildings ^{3/}						
Total square metres	0	0	2 365	11 584	3 235	- 72,1
Total value at current prices (R'000)	42	134	3 605	12 049	5 159	- 57,2
Total value of additions and alterations at current prices (R'000)	1 831	1 822	5 763	24 538	15 153	- 38,2
Total value of buildings completed at current prices (R'000)	68 578	57 484	68 686	338 599	356 972	+ 5,4

1/ Other residential buildings include institutions for the disabled, boarding houses, old people's homes, hostels, hotels, motels, guest houses, holiday chalets, entertainment centres, bed-and-breakfast accommodation and casinos.

2/ Other non-residential space includes churches, sport and recreation clubs, schools, crèches, hospitals and all other non-residential space.

3/ Other buildings include additions and alterations to other residential buildings, non-residential buildings and internal alterations.

Table 40 - Buildings completed according to type of building and selected urban area: Bloemfontein

Type of building	June 2000	May 2001	June 2001	January 2000 to June 2000	January 2001 to June 2001	Percentage change between January 2000 to June 2000 and January 2001 to June 2001
Residential buildings						
Dwelling-houses smaller than 80 square metres						
Number of dwelling-houses	17	70	120	356	362	+ 1,7
Total square metres	896	3 091	4 944	14 584	14 798	+ 1,5
Total value at current prices (R'000)	1 024	1 939	2 210	8 162	9 088	+ 11,3
Dwelling-houses equal to or larger than 80 square metres						
Number of dwelling-houses	13	16	9	59	104	+ 76,3
Total square metres	3 382	3 183	1 890	12 175	20 288	+ 66,6
Total value at current prices (R'000)	3 999	4 010	2 472	16 910	24 579	+ 45,4
Flats and townhouses						
Number of flats and townhouses	9	0	0	80	96	+ 20,0
Total square metres	455	0	0	7 684	7 014	- 8,7
Total value at current prices (R'000)	546	0	0	10 011	10 045	+ 0,3
Other residential buildings ^{1/}						
Total square metres	0	0	0	0	151	..
Total value at current prices (R'000)	0	0	0	0	211	..
Total value of residential buildings at current prices (R'000)	5 569	5 949	4 682	35 083	43 923	+ 25,2
Non-residential buildings						
Office and banking space						
Total square metres	0	10 480	0	4 893	10 782	+ 120,4
Total value at current prices (R'000)	0	21 000	0	9 388	21 483	+ 128,8
Shopping space						
Total square metres	0	762	0	558	2 812	+ 403,9
Total value at current prices (R'000)	0	1 006	0	670	3 006	+ 348,7
Industrial and warehouse space						
Total square metres	1 386	0	80	7 367	4 810	- 34,7
Total value at current prices (R'000)	800	0	112	5 274	3 823	- 27,5
Other non-residential space ^{2/}						
Total square metres	0	840	0	3 097	5 519	+ 78,2
Total value at current prices (R'000)	0	1 000	0	4 336	10 170	+ 134,5
Total value of non-residential buildings at current prices (R'000)	800	23 006	112	19 668	38 482	+ 95,7
Additions and alterations						
Dwelling-houses						
Total square metres	2 136	2 696	1 116	14 138	19 666	+ 39,1
Total value at current prices (R'000)	1 856	2 940	1 334	14 246	21 007	+ 47,5
Other buildings ^{3/}						
Total square metres	1 241	14 104	1 227	3 248	17 359	+ 434,5
Total value at current prices (R'000)	3 083	81 157	1 223	9 759	86 152	+ 782,8
Total value of additions and alterations at current prices (R'000)	4 939	84 097	2 557	24 005	107 159	+ 346,4
Total value of buildings completed at current prices (R'000)	11 308	113 052	7 351	78 756	189 564	+ 140,7

1/ Other residential buildings include institutions for the disabled, boarding houses, old people's homes, hostels, hotels, motels, guest houses, holiday chalets, entertainment centres, bed-and-breakfast accommodation and casinos.

2/ Other non-residential space includes churches, sport and recreation clubs, schools, crèches, hospitals and all other non-residential space.

3/ Other buildings include additions and alterations to other residential buildings, non-residential buildings and internal alterations.

Additional information

Explanatory Notes

Introduction	<ol style="list-style-type: none"> 1 Statistics South Africa (Stats SA) conducts a monthly Building Statistics Survey collecting information regarding building plans approved and buildings completed, financed by the private sector, from a sample of local government institutions in South Africa. This statistical release contains information of building plans passed and buildings completed in respect of residential buildings, non-residential buildings and additions and alterations according to province and selected urban areas. 2 In order to improve timeliness of the publication, some information for the current month have been estimated due to late submission by respondents. These estimates will be revised in the next statistical release(s) as soon as actual information is available. 3 The actual and seasonally adjusted values (at current and at constant 1995 prices) and the percentage change of building plans passed and buildings completed according to type of building are reflected monthly from January 1999 in this statistical release (cf. tables 1 to 8).
Scope of the survey	<ol style="list-style-type: none"> 4 This survey covers local government institutions conducting activities for the private sector regarding - <ul style="list-style-type: none"> • approval of building plans; and • final inspection of completed buildings.
Classification	<ol style="list-style-type: none"> 5 The 1993 edition of the Standard Industrial Classification of all Economic Activities, (SIC) Fifth Edition, Report No. 09-90-02, was used to classify the statistical units. The SIC is based on the 1990 International Standard Industrial Classification of all Economic Activities (ISIC) with suitable adaptations for local conditions. 6 The twelfth and last published edition of the Standard Code List of Areas, Report No. 09-09-03 (1994) was used to classify the statistical units according to province. The cities, towns and non-urban areas listed in this report are codified within magisterial district and province. The code list was compiled by Stats SA in collaboration with other interested bodies and the first edition was distributed in June 1977.
Statistical unit	<ol style="list-style-type: none"> 7 The statistical unit for the collection of information is a local government institution. Local government institutions include municipalities, city councils, metropolitan councils, district councils, transitional councils and development and services boards.
Survey methodology and design	<ol style="list-style-type: none"> 8 The sample for the monthly Building Statistics Survey consists of the largest local government institutions in South Africa, i.e. those that account for approximately 85% of the total rand value of buildings completed by the private sector. 9 The survey is collected by mail each month from a sample of 158 local government institutions.
Constant prices	<ol style="list-style-type: none"> 10 The value of building plans passed and buildings completed at constant prices measure the building activities in terms of ruling prices in a specific base year which is currently 1995. 11 The value of building plans passed at constant prices for each month is obtained by deflating the values at current prices with a price index known as the “lump sum domestic buildings” as published in statistical release P0151 – JBCC Contract Price Adjustment Provisions Work Group Indices. In order to be applicable, these indices (base February 1991=100) are converted to the base year 1995=100.

- 12** The value of buildings completed at constant prices is obtained by deflating the values at current prices with the same price index which is used to calculate building plans passed at constant prices (cf. paragraph 11). The value of buildings completed is reported as at the time the plans were passed. Since the completion of buildings may extend over a few months to a few years, the current value of buildings completed is deflated by price indices as at the time the plans were passed in order to calculate the value of buildings completed at the time the plans were passed. Therefore, the duration of the completion of different types of buildings are taken into account in ascertaining the deflators e.g. the value of dwelling-houses completed at constant prices at January 2000 is obtained by deflating the current value of dwelling-houses completed for January 2000 with the price index of a month six months prior to January 2000. Furthermore, the value of other residential buildings, non-residential buildings and additions and alterations at constant prices is obtained by deflating the current values with price indices of 12 months, 18 months and 12 months prior to the relevant month, respectively.
- Seasonal adjustment**
- 13** Seasonally adjusted estimates of building plans passed and buildings completed are generated each month, using the X-11 Seasonal Adjustment Program developed by US Bureau of the Census Economic Research and Analyses Division, 1968.
- 14** Seasonal adjustment is a means of removing the estimated effects of normal seasonal variation from the series so that the effects of other influences on the series can be more clearly recognised. Seasonal adjustment does not aim to remove irregular or non-seasonal influences which may be present in any particular month. Influences that are volatile or unsystematic can still make it difficult to interpret the movement of the series even after adjustment for seasonal variations. Therefore, the month-to-month movements of seasonally adjusted estimates may not be reliable indicators of trend behaviour.
- Trend cycle**
- 15** The trend is a long-term pattern or movement of a time series. The X-11 Seasonal Adjustment Program is used for smoothing seasonally adjusted data.
- Related publications**
- 16** Users may also wish to refer to the following publications:
- P5041.3 – Building statistics issued annually.
 - P9101.2 – Actual and expected expenditure on construction by the public sector per region issued annually.
 - Bulletin of Statistics issued quarterly.
 - South African Statistics issued annually.
- Unpublished statistics**
- 17** In some cases Stats SA can also make available statistics which are not published. The statistics can be made available in one or more of the following ways: computer printouts, CD and diskette. Generally a charge is made for providing unpublished statistics.
- Rounding-off of figures**
- 18** The figures in the tables have, where necessary, been rounded off to the nearest digit shown. There may, therefore, be slight discrepancies between the sums of the constituent items and the totals shown.
- Pre-release policy**
- 19** Stats SA has adopted the confidential pre-release policy in respect of selected economic indicators and specific government departments. The policy accords with practice among leading statistical agencies. The statistical integrity of the information and strict observance of the release time has been assured by the following procedure:
- 20** In respect of this statistical release, an official representative from the Office of the President, the Department of Trade and Industry (DTI), National Treasury and the South African Reserve Bank (SARB) will receive a copy of the release on a strictly confidential basis two hours in advance of the public issue.
- 21** Stats SA pre-release policy may be inspected at its Website, www.statssa.gov.za

Symbols and abbreviations

..	no meaningful percentage change between two specified periods available since either one or both of the totals are nil
0	nil or figure too small to publish
*	revised
Stats SA	Statistics South Africa
SIC	Standard Industrial Classification of all Economic Activities
ISIC	International Standard Industrial Classification of all Economic Activities
JBCC	Joint Building Contracts Committee
CD	Compact Disc
US	United States
SARB	South African Reserve Bank
DTI	Department of Trade and Industry

Technical notes**Response rate**

The response rate for June 2001 is 98,1%.

Local government institutions covered in the sample survey

Local government institutions according to province

Western Cape	Blaauwberg (includes Milnerton), Brackenfell, Breede River District Council, Cape Town, City of Tygerberg (Bellville, Durbanville, Goodwood, Lingeletu West, Parow and South Administration), Fish Hoek, George (includes Pacaltsdorp, Thembaletu and Herolds Bay), Gordon's Bay, Hangklip-Kleinmond (includes Kleinmond, Betty's Bay and Rooi-Els), Hermanus (includes Onrus River, Zwelihle, Sandbaai, Vermont, Hawston and Fisher Haven), Ikapa, Klein-Karoo District Council, Knysna (includes Khayaletu), Kuils River, Malmesbury, Mossel Bay (includes Boggom's Bay, Kleinbrak, Rheeboek and Tergniet), Oostenberg (Kraaifontein and Melton Rose - Blue Downs), Oudtshoorn, Overberg District Council, Paarl, Plettenberg Bay, Sedgefield, Simon's Town, Somerset West, South Peninsula, Stellenbosch, Strand, Wellington, West Coast District Council, Western Coast Peninsula (previously Vredenburg-Saldanha), Winelands District Council and Worcester.
Eastern Cape	Aliwal-Maletswai (includes Dukathole), Despatch, East London (includes Beacon Bay, Gomo Town, Gonubie and Mdantsane), Grahamstown (includes Rhini Township), Jeffrey's Bay, King William's Town (includes Bisho and Zwelitsha), Port Alfred, Port Elizabeth (includes Ibhayi and Motherwell), Uitenhage (includes KwaNobuhle), Umtata and Western District Council.
Northern Cape	Benede-Oranje District Council, Keimoes, Kimberley (including Galeshewe), Kuruman, Namaqualand District Council and Upington (includes Paballelo).
Free State	Allanridge, Bethlehem (includes Bohlokong), Bloemfontein (includes Bainsvlei, Bloemspruit and Mangaung), Botshabelo, Deneysville (includes Refengkgotso), Harrismith (includes Tsiamé), Kroonstad (includes Maokeng), Ladybrand (includes Manyatseng), Odendaalsrus (includes Kutlwanong), Parys, Phuthaditjhaba, Sasolburg (includes Zamdela), Virginia (includes Meloding) and Welkom (includes Thabong).
KwaZulu-Natal	Development and Services Board - Inland, Development and Services Board – North Coast, Dolphin Coast Borough (includes Ballito, Etete, Shakaskraal, Tinley Manor Beach and Umhlali Beach), Durban, Edendale, Empangeni (includes Ngwelezana), Hilton, Howick, Inner West City Council (includes Clermont, KwaDabeka, KwaNdengezi, New Germany, Pinetown, Queensburgh, Reservoir Hills, Shallcross and Westville), Kokstad, Kwa-Dukuza/Stanger (includes Blythedale Beach, Shakaville and Stanger), KwaMashu, Ladysmith (includes Emnambithi), Margate (includes Uvongo), Mpenjati/Southbroom (includes Southbroom, Marina Beach, San Lameer and Trafalgar), Newcastle (includes Madadeni, Osizweni and Blaauwboschlaagte), North Local Council - Tongaat (includes Canelands and Hambanati), North Local Council - Umhlanga Rocks (includes Mount Edgecombe and Umdloti Beach), North Local Council - Verulam, Outer West Local Council (includes Assagay, Botha's Hill, Cato Ridge, Drummond, Everton, Gillitts, Hillcrest, Inchanga, Kloof, Mpumalanga and Waterfall), Pennington, Pietermaritzburg/Msundini, Port Shepstone, Richards Bay, South Local Council (includes Amanzimtoti, Isipingo, Kingsburgh, KwaMakuta and Umbogintwini), Umlazi and Umtamvuna/Port Edward (includes Munster, Port Edward and Palm Beach).
North West	Bophirima District Council, Brits (includes Lethabile), Ga-Rankuwa, Klerksdorp, Lichtenburg, Mmabatho, Orkney (includes Kanana), Potchefstroom, Rustenburg, Vryburg and Zeerust.

Gauteng

Akasia (includes Elandsdoorn, Klipfontein, Kruisfontein and Soshanguve), Alberton (includes Tokoza), Benoni (includes Daveyton and Wattville), Boksburg (includes Vosloorus), Brakpan (includes Tsakane), Bronkhorst-spruit, Carletonville (includes Khutsong), Centurion, Duduza, Eastern Services Council - Pretoria Area, Edenvale-Modderfontein, Germiston (includes Bedfordview and Katlehong), Greater Johannesburg - Eastern Metropolitan Local Council (includes Alexandra and Sandton), Greater Johannesburg - Northern Metropolitan Local Council (includes Randburg), Greater Johannesburg - Southern Metropolitan Local Council (includes Ennerdale, Lenasia and Johannesburg), Greater Johannesburg - Western Metropolitan Local Council (includes Diepmeadow, Dobsonville and Roodepoort), Heidelberg (includes Ratanda), Kempton Park (includes Tembisa), Krugersdorp (includes Kagiso and Munsieville), Meyerton, Midrand (includes Rabie Ridge and Ivory Park), Nigel, Pretoria (includes Atteridgeville and Mamelodi), Randfontein (includes Mohlakeng), Sebokeng (includes Boipatong, Bophelong and Sharpeville), Soweto, Springs (includes KwaThema), Vanderbijlpark, Vereeniging (includes Evaton), Western Services Council and Westonaria (includes Bekkersdal).

Mpumalanga

Delmas (includes Botleng), Eastvaal District Council, Ermelo (includes Wesselton and Cassim Park), Highveld District Council, Highveldridge Transitional Council (includes Evander, Embalenhle and Secunda), Komatipoort (includes Kamaqhekeza), KwaGuqa, KwaMhlanga, Malelane (includes Hectorspruit and Kamhlushwa), Middelburg (includes Mhluzi), Nelspruit (includes Kanyamazane and Lowveld Escarpment District Council as from January 2001), White River and Witbank.

Northern Province

Bosveld District Council, Giyani, Letaba (includes Nkowakowa and Tzaneen), Messina, Naboomspruit (includes Mookgophong), Nylstroom, Pietersburg-Polokwane (includes Seshego), Potgietersrus and Thabazimbi.

Local government institutions according to selected urban areas**Cape Town**

Blaauwberg (includes Milnerton), Cape Town, City of Tygerberg (Bellville, Durbanville, Goodwood, Lingeletu West, Parow and South Administration), Fish Hoek, Ikapa, Oostenberg (Kraaifontein and Melton Rose - Blue Downs), Simon's Town and South Peninsula.

Port Elizabeth

Despatch, Port Elizabeth (including Ibhayi and Motherwell) and Uitenhage (including KwaNobuhle)

Durban

Durban, Inner West City Council (includes Clermont, KwaDabeka, KwaNdengezi, New Germany, Pinetown, Queenstown, Reservoir Hills, Shallcross and Westville), North Local Council - Verulam, Outer West Local Council (includes Assagay, Botha's Hill, Cato Ridge, Drummond, Everton, Gillitts, Hillcrest, Inchanga, Kloof, Mpumalanga and Waterfall) and South Local Council (includes Amanzimtoti, Isipingo, Kingsburgh, KwaMakuta and Umbogintwini).

Witwatersrand

Alberton (includes Thokoza), Benoni (includes Daveyton and Wattville), Boksburg (includes Vosloorus), Brakpan (includes Tsakane), Carletonville (includes Khutsong), Duduza, Edenvale-Modderfontein, Germiston (includes Bedfordview and Katlehong), Greater Johannesburg - Eastern Metropolitan Local Council (includes Alexandra and Sandton), Greater Johannesburg - Northern Metropolitan Local Council (includes Randburg), Greater Johannesburg - Southern Metropolitan Local Council (includes Ennerdale, Lenasia and Johannesburg), Greater Johannesburg - Western Metropolitan Local Council (includes Diepmeadow, Dobsonville and Roodepoort), Kempton Park (includes Tembisa), Krugersdorp (includes Kagiso and Munsieville), Midrand (includes Rabie Ridge and Ivory Park), Nigel, Randfontein (includes Mohlakeng), Soweto, Springs (includes KwaThema) and Westonaria (includes Bekkersdal).

Pretoria

Akasia (includes Elandsdoorn, Klipfontein and Soshanguve), Centurion, Eastern Services Council - Pretoria area and Pretoria (includes Atteridgeville and Mamelodi).

Bloemfontein

Bloemfontein (includes Bainsvlei, Bloemspruit and Mangaung).

Glossary

Additions and alterations	Additions and alterations include extensions to existing buildings as well as internal and external alterations of existing buildings.
Blocks of flats	Blocks of flats are regarded as high-density housing consisting of a number of self-contained dwelling-units with at least one living-room together with a kitchen and bathroom conjoined to similar units in one building.
Dwelling-house	A dwelling-house refers to a free-standing, complete structure on a separate stand or a self-contained dwelling-unit, granny flat, on the same premises as an existing residence. Out-buildings and garages are included.
Local government institutions	A local government institution is a generic term referring to any number of institutions involved in the local sphere of government. Local government institutions consist of municipalities, city councils, metropolitan councils, district councils, transitional local councils and development and services boards.
Non-residential buildings	Non-residential buildings comprise factories, commercial, financial and other office buildings, as well as other buildings not used for residential purposes, such as churches, halls, clubs, schools and hospitals.
Other residential buildings	Other residential buildings include institutions for the disabled, boarding houses, old people's homes, hostels, hotels, motels, guest houses, holiday chalets, bed-and-breakfast accommodation, entertainment centres and casinos.
Percentage change	<p>When using monthly actual values, the percentage change is the change in actual values of building activities (building plans passed or buildings completed) of the relevant month compared with the actual values of building activities (building plans passed or buildings completed) of the same month in the previous year expressed as a percentage.</p> <p>When using annual actual values, the percentage change is the change in the actual values of building activities (building plans passed or buildings completed) of the relevant year compared with the actual values of building activities (building plans passed or buildings completed) of the previous year expressed as a percentage.</p> <p>When using seasonally adjusted values, the percentage change is the change in the seasonally adjusted values of building activities (building plans passed or buildings completed) of the relevant month compared with the seasonally adjusted values of building activities (building plans passed or buildings completed) of the previous month expressed as a percentage.</p>
Reference period	Reference period is one calendar month.
Residential buildings	Residential buildings comprise dwelling-houses, flats, townhouses and other residential buildings.
Townhouses	Townhouses are multiple, medium-density dwelling-units and include cluster housing, group housing, simplexes, duplexes, triplexes and other similar dwelling-units which are usually grouped together, with one level of each unit on ground level. This excludes blocks of flats.

For more information

Stats SA publishes approximately 300 different statistical releases each year. It is not economically viable to produce them in more than one of South Africa's eleven official languages. Since the releases are used extensively, not only locally but also by international economic and social-scientific communities, Stats SA releases are published in English only.

Stats SA has copyright on this publication. Users may apply the information as they wish, provided that they acknowledge Stats SA as the source of the basic data wherever they process, apply, utilise, publish or distribute the data and also that they specify that the relevant application and analysis (where applicable) result from their own processing of the data.

Stats SA products

A complete set of Stats SA publications is available at the Stats SA Library and the following libraries:

National Library of South Africa, Pretoria Division
National Library of South Africa, Cape Town Division
Natal Society Library, Pietermaritzburg
Library of Parliament, Cape Town
Bloemfontein Public Library
Johannesburg Public Library
Eastern Cape Library Services, King William's Town
Central Regional Library, Pietersburg
Central Reference Library, Nelspruit
Central Reference Collection, Kimberley
Central Reference Library, Mmabatho

Stats SA also provides a subscription service.

Electronic services

A large range of data are available via on-line services, diskette, CD and computer printouts. For more details about our electronic data services, contact (012) 310 8600.

You can visit us on the Internet at: <http://www.statssa.gov.za>

Enquiries

Telephone number: (012) 310 8095/8390/8351 (user enquiries)
(012) 310 8228/310 8007 (technical enquiries)
(012) 310 8161 (publications)
(012) 310 8490 (library)

Fax number: (012) 310 8182

e-mail: Corrieb@statssa.pwv.gov.za
Gretaz@statssa.pwv.gov.za

Postal address: Private Bag X44, Pretoria, 0001