



**Statistics
South Africa**

Preferred supplier of quality statistics



Statistical release

P5041.1

Selected building statistics of the private sector as reported by local government institutions

**July 2007
(Preliminary)**

**Embargoed until:
19 September 2007
13:00**

Enquiries:

User Information Services
Tel: (012) 310 8600 / 4892 / 8390

Forthcoming issue:

August 2007

Expected release date

17 October 2007

Statistics South Africa • Mbalo-mbalo dza Afrika Tshipembe • Tinhlayo-tiko ta Afrika-Dzonga • Dipalopalo tsa Aforika Borwa • Ezezibalo zaseNingizimu Afrika
Dipalopalo tša Afrika Borwa • Dipalopalo tsa Afrika Borwa • Ubalo lwaseMzantsi Afrika • Telubalo eNingizimu Afrika • iNanimbalo leSewula Afrika • Statistiek Suid-Afrika

Contents

Page

SUMMARY OF FINDINGS: SELECTED BUILDING STATISTICS OF THE PRIVATE SECTOR

3

Tables

Table 1	Values and percentage change of recorded building plans passed by larger municipalities at current prices by type of building	9
Table 2	Seasonally adjusted values and percentage change of recorded building plans passed by larger municipalities at current prices by type of building	10
Table 3	Values and percentage change of recorded building plans passed by larger municipalities at constant 2000 prices by type of building	11
Table 4	Seasonally adjusted values and percentage change of recorded building plans passed by larger municipalities at constant 2000 prices by type of building	12
Table 5	Values and percentage change of buildings reported as completed to larger municipalities at current prices by type of building	13
Table 6	Seasonally adjusted values and percentage change of buildings reported as completed to larger municipalities at current prices by type of building	14
Table 7	Values and percentage change of buildings reported as completed to larger municipalities at constant 2000 prices by type of building	15
Table 8	Seasonally adjusted values and percentage change of buildings reported as completed to larger municipalities at constant 2000 prices by type of building	16
Table 9	Recorded building plans passed by larger municipalities at current prices by type of building: South Africa	17
Table 10	Recorded building plans passed by larger municipalities at current prices by type of building: Western Cape	18
Table 11	Recorded building plans passed by larger municipalities at current prices by type of building: Eastern Cape	19
Table 12	Recorded building plans passed by larger municipalities at current prices by type of building: Northern Cape	20
Table 13	Recorded building plans passed by larger municipalities at current prices by type of building: Free State	21
Table 14	Recorded building plans passed by larger municipalities at current prices by type of building: KwaZulu-Natal	22
Table 15	Recorded building plans passed by larger municipalities at current prices by type of building: North West	23
Table 16	Recorded building plans passed by larger municipalities at current prices by type of building: Gauteng	24
Table 17	Recorded building plans passed by larger municipalities at current prices by type of building: Mpumalanga	25
Table 18	Recorded building plans passed by larger municipalities at current prices by type of building: Limpopo	26
Table 19	Buildings reported as completed to larger municipalities at current prices by type of building: South Africa	27
Table 20	Buildings reported as completed to larger municipalities at current prices by type of building: Western Cape	28
Table 21	Buildings reported as completed to larger municipalities at current prices by type of building: Eastern Cape	29
Table 22	Buildings reported as completed to larger municipalities at current prices by type of building: Northern Cape	30
Table 23	Buildings reported as completed to larger municipalities at current prices by type of building: Free State	31
Table 24	Buildings reported as completed to larger municipalities at current prices by type of building: KwaZulu-Natal	32

Table 25	Buildings reported as completed to larger municipalities at current prices by type of building: North West	33
Table 26	Buildings reported as completed to larger municipalities at current prices by type of building: Gauteng	34
Table 27	Buildings reported as completed to larger municipalities at current prices by type of building: Mpumalanga	35
Table 28	Buildings reported as completed to larger municipalities at current prices by type of building: Limpopo.....	36
Table 29	Subsidised low-cost dwelling-houses completed or under construction by province	37
Table 30	Subsidised low-cost dwelling-houses completed by province	37
Explanatory notes		38
Glossary		41
General information		43

SUMMARY OF FINDINGS: SELECTED BUILDING STATISTICS OF THE PRIVATE SECTOR

Table A – Selected key figures regarding recorded building plans passed by larger municipalities at current prices for January to July 2007

Estimates at current prices	January to July 2006	January to July 2007 1/	Difference in value between January to July 2006 and January to July 2007	Percentage change between January to July 2006 and January to July 2007
	R'000	R'000	R'000	
Residential buildings	22 874 158	26 271 309	3 397 151	14,9
-Dwelling-houses	14 930 022	17 623 115	2 693 093	18,0
-Flats and townhouses	7 313 616	8 322 676	1 009 060	13,8
-Other residential buildings	630 520	325 518	-305 002	-48,4
Non-residential buildings	7 954 581	8 740 815	786 234	9,9
Additions and alterations	10 830 173	12 099 292	1 269 119	11,7
Total	41 658 912	47 111 416	5 452 504	13,1

1/ Jul. 2007 figures should be regarded as preliminary because of possible backlogs and incomplete reporting by municipalities.

Total value of recorded building plans passed at current prices increased

As indicated in Table A, the value of recorded building plans passed by larger municipalities (at current prices) during the first seven months of 2007 increased by 13,1% (R5 452,5 million) compared with the first seven months of 2006.

The largest percentage increase was reported for residential buildings (14,9% or R3 397,2 million), followed by additions and alterations (11,7% or R1 269,1 million) and non-residential buildings (9,9% or R786,2 million).

Table B – Recorded building plans passed by larger municipalities aggregated to provincial level for January to July 2007

Estimates at current prices	January to July 2006	January to July 2007 1/	Percentage contribution to the total value of building plans passed during January to July 2006	Percentage change between January to July 2006 and January to July 2007	Contribution (percentage points) to the percentage change in the value of building plans passed between January to July 2006 and January to July 2007 2/	Difference in value between January to July 2006 and January to July 2007
	R'000	R'000				R'000
Western Cape	9 878 274	10 368 327	23,7	5,0	1,2	490 053
Eastern Cape	1 984 103	2 456 591	4,8	23,8	1,1	472 488
Northern Cape	294 295	381 459	0,7	29,6	0,2	87 164
Free State	1 064 170	1 318 926	2,6	23,9	0,6	254 756
KwaZulu-Natal	5 568 512	6 653 814	13,4	19,5	2,6	1 085 302
North West	1 633 544	1 788 237	3,9	9,5	0,4	154 693
Gauteng	18 148 394	20 918 733	43,6	15,3	6,7	2 770 339
Mpumalanga	2 342 314	2 296 860	5,6	-1,9	-0,1	-45 454
Limpopo	745 306	928 469	1,8	24,6	0,4	183 163
Total	41 658 912	47 111 416	100,0	13,1	13,1	5 452 504

1/ Jul. 2007 figures should be regarded as preliminary because of possible backlogs and incomplete reporting by municipalities.

2/ The contribution (percentage points) is calculated by multiplying the percentage change of each province between Jan. to Jul. 2006 and Jan. to Jul. 2007 with the percentage contribution of the corresponding province to the total value of building plans passed during Jan. to Jul. 2006, divided by 100.

Eight provinces reported increases in the value of recorded building plans passed (see Table B). The largest contributor to the increase of 13,1% was Gauteng (6,7 percentage points or R2 770,3 million), followed by KwaZulu-Natal (2,6 percentage points or R1 085,3 million), Western Cape (1,2 percentage points or R490,1 million) and Eastern Cape (1,1 percentage points or R472,5 million).

Table C – Selected key figures regarding recorded building plans passed by larger municipalities at constant 2000 prices for January to July 2007

Estimates at constant 2000 prices	January to July 2006	January to July 2007	Difference in value between January to July 2006 and January to July 2007	Percentage change between January to July 2006 and January to July 2007
	R'000	R'000 1/		
Residential buildings	14 943 155	15 372 854	429 699	2,9
Non-residential buildings	5 199 980	5 115 215	-84 765	-1,6
Additions and alterations	7 076 280	7 077 148	868	0,0
Total	27 219 415	27 565 217	345 802	1,3

1/ Jul. 2007 figures should be regarded as preliminary because of possible backlogs and incomplete reporting by municipalities.

Seasonally adjusted estimates at constant 2000 prices	February to April 2007	May to July 2007	Percentage change between February to April 2007 and May to July 2007
	R'000	R'000	
Residential buildings	7 158 751	6 550 192	-8,5
Non-residential buildings	2 117 181	2 319 923	9,6
Additions and alterations	3 044 902	3 140 442	3,1
Total	12 320 834	12 010 557	-2,5

Increase in total real value of recorded building plans passed increased

As indicated in Table C, the value of recorded building plans passed by larger municipalities (at constant 2000 prices) during the first seven months of 2007 increased by 1,3% (R345,8 million) compared with the first seven months of 2006, slowing from the 2,7% increase for the comparison of the first six months of 2007. Increases were reported for residential buildings (2,9% or R429,7 million) and additions and alterations (0,0% or R0,9 million). A decrease was reported for non-residential buildings (-1,6% or -R84,8 million) for the same period.

The seasonally adjusted real value of recorded building plans passed by larger municipalities during the three months ending July 2007 decreased by 2,5% compared with the previous three months, mainly due to a decrease reported for residential building plans passed (-8,5%). This decrease was partially counteracted by increases reported for non-residential buildings (9,6%) and additions and alterations (3,1%) (see Table C).

Figure 1 shows both the seasonally adjusted and the trend series for recorded building plans passed at constant 2000 prices between January 2002 and July 2007. The trend series reflects a slight increase in 2002, followed by a steep increase from April 2003 up to the end of 2005. After a short period of downturn in 2006, the trend series started moving upwards from November 2006 up until March 2007. The trend series moved downwards from April 2007 till present.

Figure 1 – Real value of recorded building plans passed by larger municipalities at constant 2000 prices

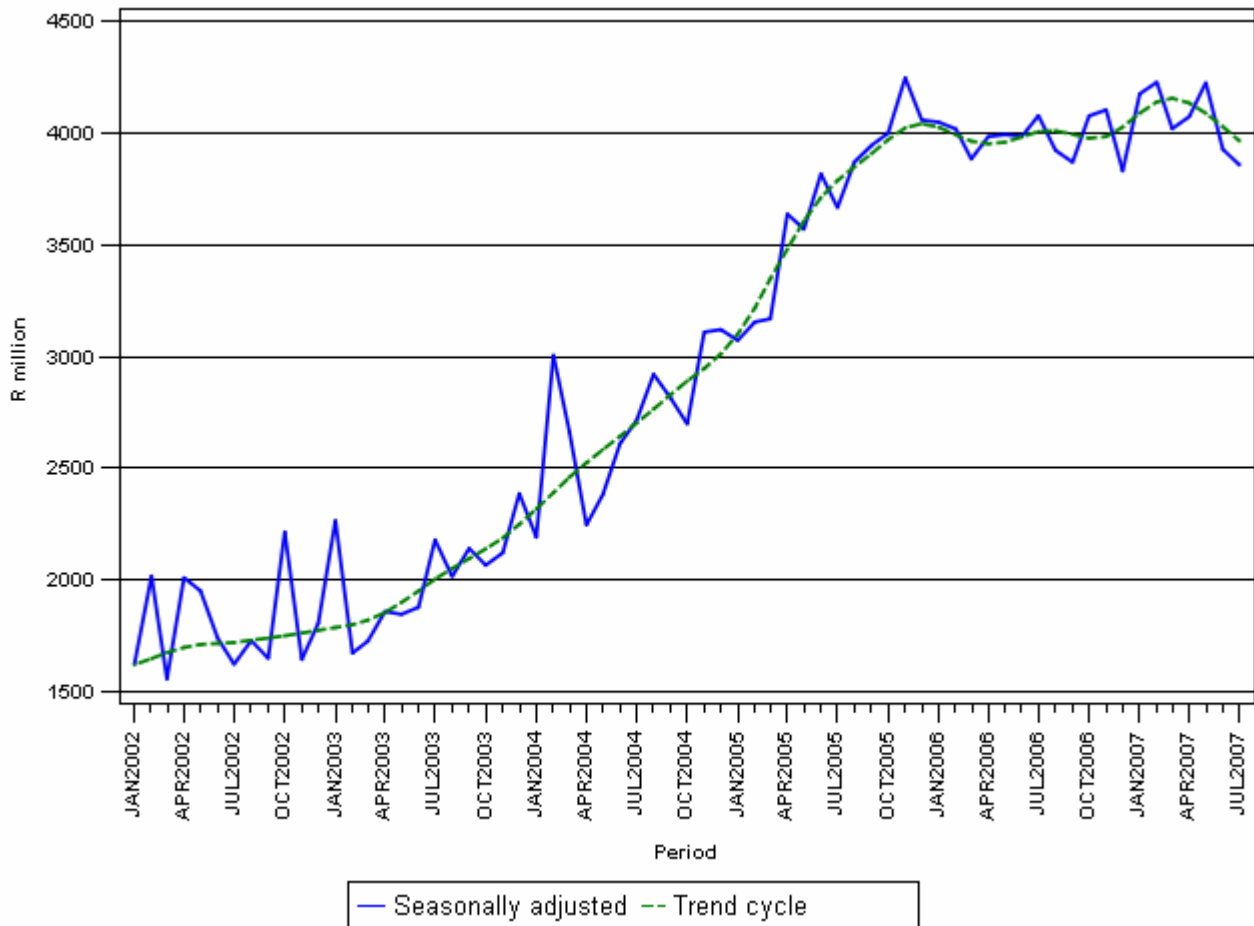


Table D – Selected key figures regarding buildings reported as completed to larger municipalities at current prices for January to July 2007

Estimates at current prices	January to July 2006	January to July 2007 1/	Difference in value between January to July 2006 and January to July 2007	Percentage change between January to July 2006 and January to July 2007
	R'000	R'000	R'000	
Residential buildings	13 459 345	16 057 862	2 598 517	19,3
-Dwelling-houses	8 367 196	9 729 652	1 362 456	16,3
-Flats and townhouses	4 985 023	5 824 034	839 011	16,8
-Other residential buildings	107 126	504 176	397 050	370,6
Non-residential buildings	2 979 505	4 936 775	1 957 270	65,7
Additions and alterations	3 697 719	4 403 089	705 370	19,1
Total	20 136 569	25 397 726	5 261 157	26,1

1/ Jul. 2007 figures should be regarded as preliminary because of possible backlogs and incomplete reporting by municipalities.

Total value of buildings reported as completed at current prices increased

As indicated in Table D, the value of buildings reported as completed to larger municipalities (at current prices) during the first seven months of 2007 increased by 26,1% (R5 261,2 million) compared with the first seven months of 2006.

The largest percentage increase in the value of buildings completed was reported for non-residential buildings (65,7% or R1 957,3 million), followed by residential buildings (19,3% or R2 598,5 million) and additions and alterations (19,1% or R705,4 million). Large increases for non-residential buildings completed were reported for office and banking space (172,0% or R894,8 million) and industrial and warehouse space (120,8% or R1 215,3 million) (see table 19, page 27).

Within the residential buildings category, 'other' residential buildings recorded the highest growth rate, mainly as a result of two casinos, one hotel and an old age home that were reported as completed to the value of R110,7 million, R154,9 million and R45,5 million respectively during the first four months of 2007.

Table E – Buildings reported as completed to larger municipalities aggregated to provincial level for January to July 2007

Estimates at current prices	January to July 2006	January to July 2007 1/	Percentage contribution to the total value of buildings completed during January to July 2006	Percentage change between January to July 2006 and January to July 2007	Contribution (percentage points) to the percentage change in the value of buildings completed between January to July 2006 and January to July 2007 2/	Difference in value between January to July 2006 and January to July 2007
	R'000	R'000				R'000
Western Cape	5 909 714	6 667 096	29,3	12,8	3,8	757 382
Eastern Cape	739 026	874 155	3,7	18,3	0,7	135 129
Northern Cape	119 340	221 471	0,6	85,6	0,5	102 131
Free State	356 373	622 268	1,8	74,6	1,3	265 895
KwaZulu-Natal	2 398 227	3 711 999	11,9	54,8	6,5	1 313 772
North West	748 259	961 998	3,7	28,6	1,1	213 739
Gauteng	9 001 660	11 261 703	44,7	25,1	11,2	2 260 043
Mpumalanga	574 892	784 916	2,9	36,5	1,0	210 024
Limpopo	289 078	292 120	1,4	1,1	0,0	3 042
Total	20 136 569	25 397 726	100,0	26,1	26,1	5 261 157

1/ Jul. 2007 figures should be regarded as preliminary because of possible backlogs and incomplete reporting by municipalities.

2/ The contribution (percentage points) is calculated by multiplying the percentage change of each province between Jan. to Jul. 2006 and Jan. to Jul. 2007 with the percentage contribution of the corresponding province to the total value of buildings completed during Jan. to Jul. 2006, divided by 100.

All the provinces reported increases in the value of buildings completed. The largest contributor to the increase of 26,1% was Gauteng (11,2 percentage points or R2 260,0 million), followed by KwaZulu-Natal (6,5 percentage points or R1 313,8 million) and Western Cape (3,8 percentage points or R757,4 million) (see Table E).

Table F – Selected key figures regarding buildings reported as completed to larger municipalities at constant 2000 prices for January to July 2007

Estimates at constant 2000 prices	January to July 2006	January to July 2007 1/	Difference in value between January to July 2006 and January to July 2007	Percentage change between January to July 2006 and January to July 2007
	R'000	R'000	R'000	
Residential buildings	9 236 801	10 068 135	831 334	9,0
Non-residential buildings	2 155 246	3 352 029	1 196 783	55,5
Additions and alterations	2 585 856	2 883 416	297 560	11,5
Total	13 977 903	16 303 580	2 325 677	16,6

1/ Jul. 2007 figures should be regarded as preliminary because of possible backlogs and incomplete reporting by municipalities.

Seasonally adjusted estimates at constant 2000 prices	February to April 2007	May to July 2007	Percentage change between February to April 2007 and May to July 2007
	R'000	R'000	
Residential buildings	4 677 018	4 711 490	0,7
Non-residential buildings	1 753 554	1 535 634	-12,4
Additions and alterations	1 265 451	1 185 529	-6,3
Total	7 696 023	7 432 653	-3,4

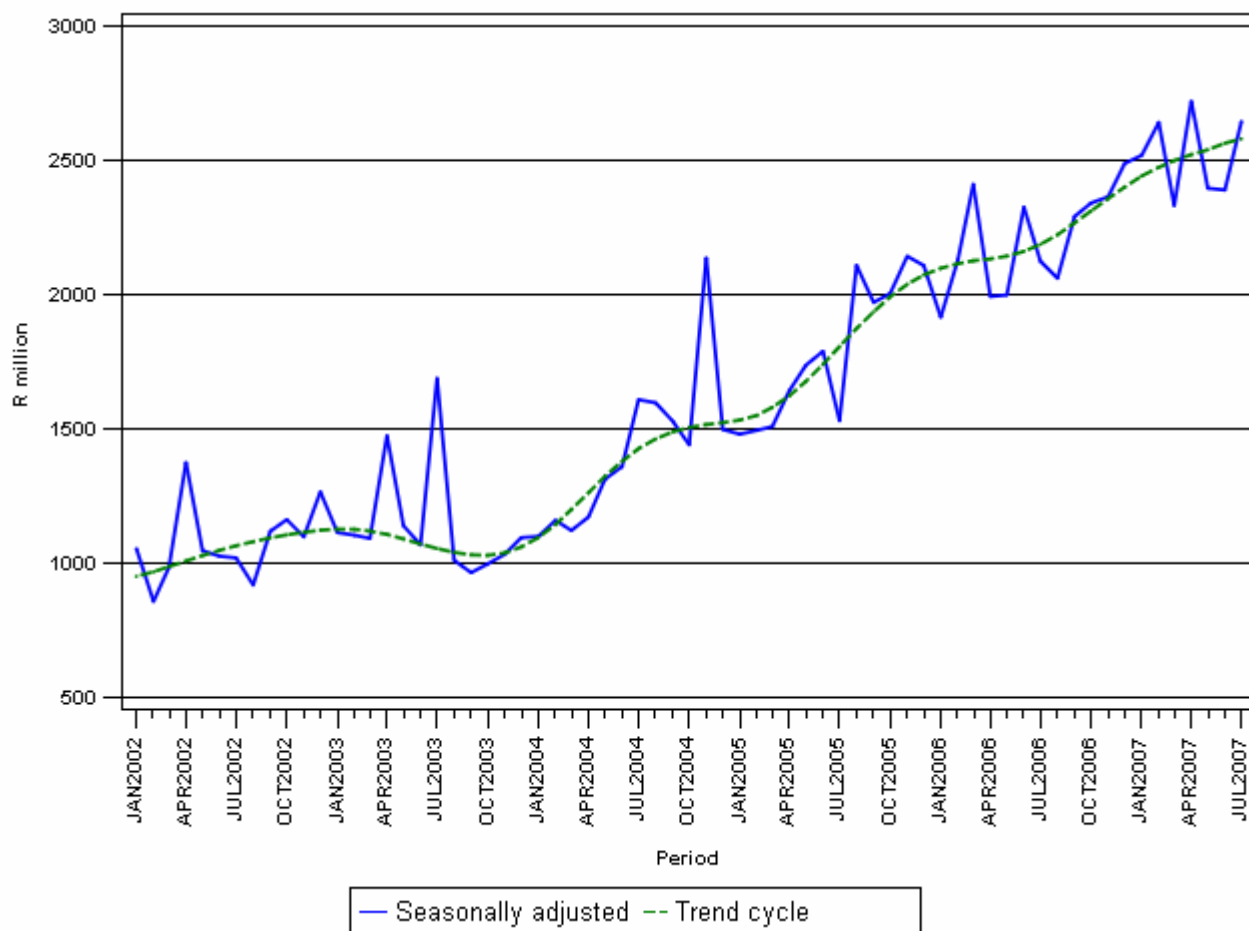
Total real value of buildings reported as completed increased

As indicated in Table F, the value of buildings reported as completed to larger municipalities (at constant 2000 prices) during the first seven months of 2007 increased by 16,6% (R2 325,7 million) compared with the first seven months of 2006. The largest percentage increase in the real value of buildings completed was reported for non-residential buildings (55,5% or R1 196,8 million), followed by additions and alterations (11,5% or R297,6 million) and residential buildings (9,0% or R831,3 million).

However, the seasonally adjusted real value of buildings reported as completed to larger municipalities during the three months ending July 2007 decreased by 3,4% compared with the previous three months, mainly due to decreases reported for non-residential buildings (-12,4%) and additions and alterations (-6,3%). This increase was partially counteracted by an increase reported for residential buildings (0,7%).

Figure 2 shows both the seasonally adjusted and trend series for buildings reported as completed to municipalities at constant 2000 prices between January 2002 and July 2007. The trend series reflects a slight increase in 2002, slowing again until October 2003. The trend series increased from November 2003 till present.

Figure 2 - Real value of buildings reported as completed to larger municipalities at constant 2000 prices



PJ Lehohla
Statistician-General

Table 1 - Values and percentage change of recorded building plans passed by larger municipalities at current prices by type of building

Year and month		Residential buildings		Non-residential buildings		Additions and alterations		Total	
		R'000	% change 1/	R'000	% change 1/	R'000	% change 1/	R'000	% change 1/
2006	January	2 558 041	45,9	778 449	44,6	1 090 691	21,0	4 427 181	38,6
	February	3 190 047	36,0	942 439	53,1	1 443 836	25,1	5 576 322	35,5
	March	2 999 970	28,1	1 241 790	28,9	1 558 522	26,4	5 800 282	27,8
	April	2 763 843	6,8	1 311 707	67,0	1 385 872	6,4	5 461 422	16,8
	May	3 617 721	3,9	1 253 706	59,0	1 845 824	36,6	6 717 251	19,5
	June	3 825 823	18,2	982 965	2,2	1 659 979	11,0	6 468 767	13,6
	July	3 918 713	11,6	1 443 525	42,7	1 845 449	26,1	7 207 687	20,4
	August	4 020 265	15,1	1 478 844	19,9	1 690 353	4,1	7 189 462	13,2
	September	3 758 874	-2,8	1 095 563	58,4	1 757 623	11,5	6 612 060	7,8
	October	3 901 590	4,7	1 743 478	78,3	1 836 658	-4,1	7 481 726	13,1
	November	4 018 174	7,8	1 381 760	3,2	1 846 062	13,5	7 245 996	8,3
	December	2 691 780	-7,0	1 081 202	67,8	1 438 672	6,7	5 211 654	6,6
	Total	41 264 841	11,6	14 735 428	39,7	19 399 541	14,2	75 399 810	16,9
2007	January	2 742 134	7,2	992 280	27,5	1 387 298	27,2	5 121 712	15,7
	February	3 536 260	10,9	1 395 611	48,1	1 619 834	12,2	6 551 705	17,5
	March	3 974 270	32,5	995 997	-19,8	1 573 714	1,0	6 543 981	12,8
	April	3 468 218	25,5	1 176 463	-10,3	1 621 768	17,0	6 266 449	14,7
	May *	4 415 889	22,1	1 478 020	17,9	2 122 253	15,0	8 016 162	19,3
	June	3 993 470	4,4	1 403 481	42,8	1 726 801	4,0	7 123 752	10,1
	July 2/	4 141 068	5,7	1 298 963	-10,0	2 047 624	11,0	7 487 655	3,9

1/ The annual/monthly percentage change is the change in the values of recorded building plans passed by municipalities of the relevant year/month compared with the values of recorded building plans passed by municipalities of the comparable period of the previous year expressed as a percentage.

2/ Preliminary figures.

* Revised.

Table 2 - Seasonally adjusted values and percentage change of recorded building plans passed by larger municipalities at current prices by type of building

Year and month		Residential buildings		Non-residential buildings		Additions and alterations		Total	
		R'000	% change 1/	R'000	% change 1/	R'000	% change 1/	R'000	% change 1/
2006	January	3 548 614	-3,2	1 032 401	36,6	1 460 346	-9,0	6 041 361	0,3
	February	3 455 781	-2,6	1 044 544	1,2	1 544 612	5,8	6 044 937	0,1
	March	3 204 002	-7,3	1 061 141	1,6	1 610 389	4,3	5 875 532	-2,8
	April	3 171 988	-1,0	1 345 729	26,8	1 540 650	-4,3	6 058 367	3,1
	May	3 265 884	3,0	1 238 987	-7,9	1 638 705	6,4	6 143 576	1,4
	June	3 619 544	10,8	975 278	-21,3	1 629 963	-0,5	6 224 785	1,3
	July	3 474 180	-4,0	1 298 373	33,1	1 676 670	2,9	6 449 223	3,6
	August	3 590 902	3,4	1 190 272	-8,3	1 529 708	-8,8	6 310 882	-2,1
	September	3 378 651	-5,9	1 208 873	1,6	1 686 715	10,3	6 274 239	-0,6
	October	3 511 790	3,9	1 541 134	27,5	1 602 708	-5,0	6 655 632	6,1
	November	3 559 150	1,3	1 471 110	-4,5	1 735 035	8,3	6 765 295	1,6
	December	3 426 233	-3,7	1 272 330	-13,5	1 685 751	-2,8	6 384 314	-5,6
2007	January	3 799 843	10,9	1 325 467	4,2	1 865 268	10,6	6 990 578	9,5
	February	3 835 732	0,9	1 528 542	15,3	1 726 552	-7,4	7 090 826	1,4
	March	4 290 117	11,8	862 776	-43,6	1 632 053	-5,5	6 784 946	-4,3
	April	3 986 925	-7,1	1 189 811	37,9	1 795 924	10,0	6 972 660	2,8
	May	3 968 476	-0,5	1 461 269	22,8	1 893 795	5,4	7 323 540	5,0
	June	3 752 715	-5,4	1 396 555	-4,4	1 697 172	-10,4	6 846 442	-6,5
	July	3 689 366	-1,7	1 177 789	-15,7	1 872 253	10,3	6 739 408	-1,6
	Feb. - Apr.07	12 112 774		3 581 129		5 154 529		20 848 432	
	May - Jul.07 2/	11 410 557	-5,8	4 035 613	12,7	5 463 220	6,0	20 909 390	0,3

1/ The percentage change is the change in the seasonally adjusted values of recorded building plans passed by municipalities of the relevant month compared with the seasonally adjusted values of recorded building plans passed by municipalities of the previous month expressed as a percentage.

2/ The percentage change is the change in the seasonally adjusted values of recorded building plans passed by municipalities of the current quarter compared with the seasonally adjusted values of recorded building plans passed by municipalities of the previous quarter expressed as a percentage.

Table 3 - Values and percentage change of recorded building plans passed by larger municipalities at constant 2000 prices by type of building

Year and month		Residential buildings		Non-residential buildings		Additions and alterations		Total	
		R'000	% change 1/	R'000	% change 1/	R'000	% change 1/	R'000	% change 1/
2006	January	1 716 806	38,0	522 449	36,7	732 007	14,4	2 971 262	31,1
	February	2 129 537	28,2	629 132	44,3	963 842	17,9	3 722 511	27,7
	March	1 998 648	21,3	827 308	22,0	1 038 322	19,7	3 864 278	21,0
	April	1 824 319	1,0	865 813	57,9	914 767	0,6	3 604 899	10,5
	May	2 355 287	-2,9	816 215	48,6	1 201 708	27,6	4 373 210	11,6
	June	2 447 743	8,9	628 896	-5,9	1 062 047	2,2	4 138 686	4,7
	July	2 470 815	2,4	910 167	31,0	1 163 587	15,8	4 544 569	10,5
	August	2 478 585	3,9	911 741	8,2	1 042 141	-6,0	4 432 467	2,2
	September	2 308 891	-12,3	672 950	42,8	1 079 621	0,6	4 061 462	-2,8
	October	2 386 294	-5,8	1 066 347	60,4	1 123 338	-13,7	4 575 979	1,7
	November	2 432 309	-3,7	836 416	-7,8	1 117 471	1,4	4 386 196	-3,2
	December	1 620 578	-17,2	650 934	49,4	866 148	-5,0	3 137 660	-5,1
	Total	26 169 812	2,7	9 338 368	28,3	12 304 999	5,0	47 813 179	7,5
2007	January	1 640 032	-4,5	593 469	13,6	829 724	13,3	3 063 225	3,1
	February	2 118 790	-0,5	836 196	32,9	970 542	0,7	3 925 528	5,5
	March	2 372 699	18,7	594 625	-28,1	939 531	-9,5	3 906 855	1,1
	April	2 035 339	11,6	690 413	-20,3	951 742	4,0	3 677 494	2,0
	May *	2 552 537	8,4	854 347	4,7	1 226 736	2,1	4 633 620	6,0
	June	2 289 834	-6,5	804 748	28,0	990 138	-6,8	4 084 720	-1,3
	July 2/	2 363 623	-4,3	741 417	-18,5	1 168 735	0,4	4 273 775	-6,0

1/ The annual/monthly percentage change is the change in the values of recorded building plans passed by municipalities of the relevant year/month compared with the values of recorded building plans passed by municipalities of the comparable period of the previous year expressed as a percentage.

2/ Preliminary figures.

* Revised.

Table 4 - Seasonally adjusted values and percentage change of recorded building plans passed by larger municipalities at constant 2000 prices by type of building

Year and month		Residential buildings		Non-residential buildings		Additions and alterations		Total	
		R'000	% change 1/	R'000	% change 1/	R'000	% change 1/	R'000	% change 1/
2006	January	2 378 665	-3,7	691 375	35,8	978 623	-9,4	4 048 663	-0,3
	February	2 297 295	-3,4	694 598	0,5	1 026 448	4,9	4 018 341	-0,7
	March	2 121 594	-7,6	698 618	0,6	1 063 647	3,6	3 883 859	-3,3
	April	2 084 477	-1,7	885 730	26,8	1 013 968	-4,7	3 984 175	2,6
	May	2 120 777	1,7	806 293	-9,0	1 066 168	5,1	3 993 238	0,2
	June	2 315 690	9,2	625 192	-22,5	1 044 082	-2,1	3 984 964	-0,2
	July	2 195 301	-5,2	821 815	31,5	1 061 085	1,6	4 078 201	2,3
	August	2 229 780	1,6	740 459	-9,9	952 457	-10,2	3 922 696	-3,8
	September	2 083 850	-6,5	745 959	0,7	1 040 063	9,2	3 869 872	-1,3
	October	2 151 795	3,3	944 441	26,6	980 796	-5,7	4 077 032	5,4
	November	2 161 658	0,5	891 350	-5,6	1 050 822	7,1	4 103 830	0,7
	December	2 056 549	-4,9	763 305	-14,4	1 011 242	-3,8	3 831 096	-6,6
2007	January	2 270 183	10,4	791 552	3,7	1 114 009	10,2	4 175 744	9,0
	February	2 287 196	0,7	911 148	15,1	1 029 234	-7,6	4 227 578	1,2
	March	2 543 435	11,2	510 660	-44,0	965 481	-6,2	4 019 576	-4,9
	April	2 328 120	-8,5	695 373	36,2	1 050 187	8,8	4 073 680	1,3
	May	2 288 222	-1,7	843 493	21,3	1 093 909	4,2	4 225 624	3,7
	June	2 151 271	-6,0	801 728	-5,0	974 152	-10,9	3 927 151	-7,1
	July	2 110 699	-1,9	674 702	-15,8	1 072 381	10,1	3 857 782	-1,8
	Feb. - Apr.07	7 158 751		2 117 181		3 044 902		12 320 834	
	May - Jul.07 2/	6 550 192	-8,5	2 319 923	9,6	3 140 442	3,1	12 010 557	-2,5

1/ The percentage change is the change in the seasonally adjusted values of recorded building plans passed by municipalities of the relevant month compared with the seasonally adjusted values of recorded building plans passed by municipalities of the previous month expressed as a percentage.

2/ The percentage change is the change in the seasonally adjusted values of recorded building plans passed by municipalities of the current quarter compared with the seasonally adjusted values of recorded building plans passed by municipalities of the previous quarter expressed as a percentage.

Table 5 - Values and percentage change of buildings reported as completed to larger municipalities at current prices by type of building

Year and month		Residential buildings		Non-residential buildings		Additions and alterations		Total	
		R'000	% change 1/	R'000	% change 1/	R'000	% change 1/	R'000	% change 1/
2006	January	1 257 968	45,0	316 723	10,1	406 962	28,1	1 981 653	34,6
	February	1 772 939	39,7	408 861	125,2	553 237	72,2	2 735 037	54,3
	March	2 113 187	56,6	656 158	110,5	589 069	85,3	3 358 414	69,7
	April	1 748 227	24,6	268 422	36,6	450 681	35,3	2 467 330	27,6
	May	1 989 102	18,0	509 864	26,4	575 749	21,9	3 074 715	20,0
	June	2 309 739	52,7	485 834	24,9	567 380	11,0	3 362 953	39,4
	July	2 268 183	44,5	333 643	38,0	554 641	57,2	3 156 467	45,9
	August	2 379 053	4,4	492 632	-16,0	557 684	37,9	3 429 369	4,9
	September	2 539 730	21,0	404 951	10,8	665 842	48,6	3 610 523	24,0
	October	2 371 124	19,9	768 141	44,7	603 131	19,2	3 742 396	24,1
	November	2 648 334	-1,7	651 400	47,9	853 416	91,1	4 153 150	16,0
	December	2 675 164	15,3	542 151	115,6	545 663	23,4	3 762 978	24,8
	Total	26 072 750	24,0	5 838 780	39,5	6 923 455	42,1	38 834 985	29,1
2007	January	1 640 091	30,4	483 947	52,8	675 202	65,9	2 799 240	41,3
	February	2 198 764	24,0	882 785	115,9	578 317	4,5	3 659 866	33,8
	March	2 092 073	-1,0	778 349	18,6	667 493	13,3	3 537 915	5,3
	April	2 342 981	34,0	630 387	134,8	556 296	23,4	3 529 664	43,1
	May *	2 665 547	34,0	711 574	39,6	583 329	1,3	3 960 450	28,8
	June	2 567 996	11,2	566 836	16,7	657 464	15,9	3 792 296	12,8
	July 2/	2 550 410	12,4	882 897	164,6	684 988	23,5	4 118 295	30,5

1/ The annual/monthly percentage change is the change in the values of buildings reported as completed to municipalities of the relevant year/month compared with the values of buildings reported as completed to municipalities of the comparable period of the previous year expressed as a percentage.

2/ Preliminary figures.

* Revised.

Table 6 - Seasonally adjusted values and percentage change of buildings reported as completed to larger municipalities at current prices by type of building

Year and month		Residential buildings		Non-residential buildings		Additions and alterations		Total	
		R'000	% change 1/	R'000	% change 1/	R'000	% change 1/	R'000	% change 1/
2006	January	1 838 350	-15,0	392 240	34,8	441 459	-13,1	2 672 049	-9,8
	February	2 017 265	9,7	445 726	13,6	558 251	26,5	3 021 242	13,1
	March	2 271 111	12,6	581 301	30,4	588 784	5,5	3 441 196	13,9
	April	1 951 105	-14,1	392 672	-32,4	531 427	-9,7	2 875 204	-16,4
	May	1 906 980	-2,3	438 950	11,8	542 190	2,0	2 888 120	0,4
	June	2 312 158	21,2	529 914	20,7	543 202	0,2	3 385 274	17,2
	July	2 193 417	-5,1	387 597	-26,9	529 974	-2,4	3 110 988	-8,1
	August	2 173 227	-0,9	370 029	-4,5	545 198	2,9	3 088 454	-0,7
	September	2 368 630	9,0	377 652	2,1	641 566	17,7	3 387 848	9,7
	October	2 277 792	-3,8	616 239	63,2	564 037	-12,1	3 458 068	2,1
	November	2 113 323	-7,2	628 303	2,0	781 677	38,6	3 523 303	1,9
	December	2 462 690	16,5	646 205	2,8	625 782	-19,9	3 734 677	6,0
2007	January	2 436 284	-1,1	596 561	-7,7	732 041	17,0	3 764 886	0,8
	February	2 502 082	2,7	946 860	58,7	590 816	-19,3	4 039 758	7,3
	March	2 248 611	-10,1	685 446	-27,6	662 083	12,1	3 596 140	-11,0
	April	2 610 670	16,1	941 721	37,4	655 150	-1,0	4 207 541	17,0
	May	2 575 075	-1,4	643 639	-31,7	550 491	-16,0	3 769 205	-10,4
	June	2 558 378	-0,6	600 911	-6,6	629 841	14,4	3 789 130	0,5
	July	2 495 255	-2,5	1 040 962	73,2	663 679	5,4	4 199 896	10,8
	Feb. - Apr.07	7 361 363		2 574 027		1 908 049		11 843 439	
	May - Jul.07 2/	7 628 708	3,6	2 285 512	-11,2	1 844 011	-3,4	11 758 231	-0,7

1/ The percentage change is the change in the seasonally adjusted values of buildings reported as completed to municipalities of the relevant month compared with the seasonally adjusted values of buildings reported as completed to municipalities of the previous month expressed as a percentage.

2/ The percentage change is the change in the seasonally adjusted values of buildings reported as completed to municipalities of the current quarter compared with the seasonally adjusted values of buildings reported as completed to municipalities of the previous quarter expressed as a percentage.

Table 7 - Values and percentage change of buildings reported as completed to larger municipalities at constant 2000 prices by type of building

Year and month		Residential buildings		Non-residential buildings		Additions and alterations		Total	
		R'000	% change 1/	R'000	% change 1/	R'000	% change 1/	R'000	% change 1/
2006	January	875 518	36,0	232 372	4,6	288 830	18,4	1 396 720	25,8
	February	1 228 110	30,7	298 221	112,9	391 811	60,8	1 918 142	44,9
	March	1 458 509	46,8	477 553	98,4	414 545	73,2	2 350 607	59,5
	April	1 200 870	17,0	194 227	27,9	314 502	26,3	1 709 599	19,8
	May	1 360 922	11,1	366 809	17,5	401 219	14,4	2 128 950	12,7
	June	1 578 421	43,9	349 270	16,0	394 014	4,7	2 321 705	30,9
	July	1 534 451	36,1	236 794	27,5	380 935	47,1	2 152 180	36,9
	August	1 603 497	-1,8	348 890	-21,5	380 932	29,2	2 333 319	-1,7
	September	1 708 000	14,2	284 976	3,6	453 571	39,1	2 446 547	16,7
	October	1 582 226	13,3	536 037	35,1	410 014	12,0	2 528 277	17,1
	November	1 751 468	-8,0	453 937	38,9	578 195	80,0	2 783 600	9,1
	December	1 752 041	7,2	376 494	103,3	368 941	16,1	2 497 476	16,8
	Total	17 634 033	16,7	4 155 580	30,6	4 777 509	33,1	26 567 122	21,4
2007	January	1 058 853	20,9	332 381	43,0	453 156	56,9	1 844 390	32,1
	February	1 398 502	13,9	602 995	102,2	386 059	-1,5	2 387 556	24,5
	March	1 321 940	-9,4	530 210	11,0	444 699	7,3	2 296 849	-2,3
	April	1 481 633	23,4	428 543	120,6	367 192	16,8	2 277 368	33,2
	May*	1 658 700	21,9	482 096	31,4	379 771	-5,3	2 520 567	18,4
	June	1 592 133	0,9	383 256	9,7	420 642	6,8	2 396 031	3,2
	July 2/	1 556 374	1,4	592 548	150,2	431 897	13,4	2 580 819	19,9

1/ The annual/monthly percentage change is the change in the values of buildings reported as completed to municipalities of the relevant year/month compared with the values of buildings reported as completed to municipalities of the comparable period of the previous year expressed as a percentage.

2/ Preliminary figures.

* Revised.

Table 8 - Seasonally adjusted values and percentage change of buildings reported as completed to larger municipalities at constant 2000 prices by type of building

Year and month		Residential buildings		Non-residential buildings		Additions and alterations		Total	
		R'000	%change 1/	R'000	% change 1/	R'000	% change 1/	R'000	% change 1/
2006	January	1 315 090	-14,2	288 435	34,5	312 765	-13,7	1 916 290	-9,1
	February	1 408 796	7,1	325 780	12,9	395 103	26,3	2 129 679	11,1
	March	1 576 226	11,9	422 601	29,7	412 918	4,5	2 411 745	13,2
	April	1 339 248	-15,0	283 535	-32,9	370 706	-10,2	1 993 489	-17,3
	May	1 306 221	-2,5	314 502	10,9	378 374	2,1	1 999 097	0,3
	June	1 570 495	20,2	378 222	20,3	377 814	-0,1	2 326 531	16,4
	July	1 482 207	-5,6	274 970	-27,3	367 519	-2,7	2 124 696	-8,7
	August	1 425 461	-3,8	262 541	-4,5	373 380	1,6	2 061 382	-3,0
	September	1 589 031	11,5	265 871	1,3	436 825	17,0	2 291 727	11,2
	October	1 527 686	-3,9	431 583	62,3	382 704	-12,4	2 341 973	2,2
	November	1 396 427	-8,6	438 760	1,7	529 821	38,4	2 365 008	1,0
	December	1 620 294	16,0	449 234	2,4	419 885	-20,7	2 489 413	5,3
2007	January	1 618 806	-0,1	410 750	-8,6	490 295	16,8	2 519 851	1,2
	February	1 600 328	-1,1	648 213	57,8	393 840	-19,7	2 642 381	4,9
	March	1 426 512	-10,9	466 510	-28,0	439 403	11,6	2 332 425	-11,7
	April	1 650 178	15,7	638 831	36,9	432 208	-1,6	2 721 217	16,7
	May	1 603 795	-2,8	434 309	-32,0	358 833	-17,0	2 396 937	-11,9
	June	1 583 402	-1,3	403 319	-7,1	403 719	12,5	2 390 440	-0,3
	July	1 524 293	-3,7	698 006	73,1	422 977	4,8	2 645 276	10,7
	Feb. - Apr.07	4 677 018		1 753 554		1 265 451		7 696 023	
	May - Jul.07 2/	4 711 490	0,7	1 535 634	-12,4	1 185 529	-6,3	7 432 653	-3,4

1/ The percentage change is the change in the seasonally adjusted values of buildings reported as completed to municipalities of the relevant month compared with the seasonally adjusted values of buildings reported as completed to municipalities of the previous month expressed as a percentage.

2/ The percentage change is the change in the seasonally adjusted values of buildings reported as completed to municipalities of the current quarter compared with the seasonally adjusted values of buildings reported as completed to municipalities of the previous quarter expressed as a percentage.

Table 9 - Recorded building plans passed by larger municipalities at current prices by type of building: South Africa

			Jul. 2006*	Jun. 2007	Jul. 2007	Jan. - Jul. 2006	Jan. - Jul. 2007	% Change 1/
Category of building	Type of building	Measuring unit						
1. Residential buildings	1. Dwelling-houses < 80 square metres	Number	2 410	3 857	3 993	20 586	22 562	9,6
		square metres	113 343	170 556	171 703	915 832	989 748	8,1
		R'000	201 612	300 883	291 529	1 615 562	1 894 783	17,3
	2. Dwelling-houses >= 80 square metres	Number	3 113	2 926	2 952	19 724	19 110	-3,1
		square metres	739 577	747 234	754 313	4 555 425	4 839 886	6,2
		R'000	2 237 890	2 402 745	2 600 484	13 314 460	15 728 332	18,1
	3. Flats and townhouses	Number	3 240	3 039	2 709	18 177	20 039	10,2
		square metres	442 114	357 590	362 283	2 330 423	2 423 218	4,0
		R'000	1 453 478	1 276 475	1 231 076	7 313 616	8 322 676	13,8
	4. Other residential buildings 2/	square metres	8 667	4 541	5 228	150 302	93 051	-38,1
		R'000	25 733	13 367	17 979	630 520	325 518	-48,4
	5. Total residential buildings	R'000	3 918 713	3 993 470	4 141 068	22 874 158	26 271 309	14,9
2. Non-residential buildings	1. Office and banking space	square metres	113 045	101 623	59 532	522 342	550 365	5,4
		R'000	457 895	452 570	261 664	1 849 260	2 278 105	23,2
	2. Shopping space	square metres	137 880	76 816	103 226	597 082	591 407	-1,0
		R'000	464 625	256 251	430 366	2 170 877	2 160 297	-0,5
	3. Industrial and warehouse space	square metres	137 289	215 381	181 483	1 185 889	1 271 578	7,2
		R'000	365 973	567 276	526 709	3 252 828	3 535 717	8,7
	4. Other non-residential buildings 3/	square metres	49 011	47 865	21 756	227 988	222 954	-2,2
		R'000	155 032	127 384	80 224	681 616	766 696	12,5
	5. Total non-residential buildings	R'000	1 443 525	1 403 481	1 298 963	7 954 581	8 740 815	9,9
3. Additions and alterations	1. Dwelling-houses	square metres	477 163	446 615	490 915	3 008 117	3 011 688	0,1
		R'000	1 339 552	1 296 991	1 519 170	8 214 939	9 058 832	10,3
	2. Other buildings 4/	square metres	165 208	118 136	136 625	825 501	792 577	-4,0
		R'000	505 897	429 810	528 454	2 615 234	3 040 460	16,3
	3. Total additions and alterations	R'000	1 845 449	1 726 801	2 047 624	10 830 173	12 099 292	11,7
4. Recorded plans passed	1. Total at current prices	R'000	7 207 687	7 123 752	7 487 655	41 658 912	47 111 416	13,1

1/ The percentage change between cumulative figures for 2006 and 2007.

2/ Other residential buildings include institutions for the disabled, boarding houses, hostels and tourism accommodation e.g. hotels, motels, guesthouses, holiday chalets, bed-and-breakfast accommodation and casinos.

3/ Other non-residential space includes churches, sport and recreation clubs, schools, crèches, hospitals and all other non-residential space.

4/ Other buildings include other residential buildings, non-residential buildings and internal alterations.

* Revised.

Table 10 - Recorded building plans passed by larger municipalities at current prices by type of building: Western Cape

			Jul. 2006*	Jun. 2007	Jul. 2007	Jan. - Jul. 2006	Jan. - Jul. 2007	% Change 1/
Category of building	Type of building	Measuring unit						
1. Residential buildings	1. Dwelling-houses < 80 square metres	Number	413	404	349	3 652	2 234	-38,8
		square metres	18 239	17 938	16 531	162 420	101 361	-37,6
		R'000	35 751	53 474	37 984	282 604	242 745	-14,1
	2. Dwelling-houses >= 80 square metres	Number	704	582	659	4 287	4 156	-3,1
		square metres	159 915	154 855	158 887	962 904	1 028 408	6,8
		R'000	466 627	548 233	542 640	2 882 384	3 460 330	20,1
	3. Flats and townhouses	Number	569	554	541	3 610	3 578	-0,9
		square metres	57 445	47 240	54 685	394 339	363 103	-7,9
		R'000	178 027	161 641	190 413	1 235 689	1 271 210	2,9
	4. Other residential buildings 2/	square metres	996	631	0	30 103	33 183	10,2
		R'000	3 287	1 885	0	119 115	115 609	-2,9
	5. Total residential buildings	R'000	683 692	765 233	771 037	4 519 792	5 089 894	12,6
2. Non-residential buildings	1. Office and banking space	square metres	22 953	29 661	20 535	152 920	177 874	16,3
		R'000	74 465	102 838	69 221	451 327	599 886	32,9
	2. Shopping space	square metres	12 538	5 877	6 936	107 081	54 001	-49,6
		R'000	41 913	13 912	27 646	308 628	174 811	-43,4
	3. Industrial and warehouse space	square metres	34 402	66 375	43 747	343 981	322 372	-6,3
		R'000	101 982	212 144	138 664	1 014 815	916 092	-9,7
	4. Other non-residential buildings 3/	square metres	7 500	9 204	3 840	61 080	56 926	-6,8
		R'000	21 305	20 620	11 276	189 886	167 534	-11,8
	5. Total non-residential buildings	R'000	239 665	349 514	246 807	1 964 656	1 858 323	-5,4
3. Additions and alterations	1. Dwelling-houses	square metres	136 240	112 223	132 984	893 053	839 919	-5,9
		R'000	362 681	332 138	399 438	2 407 121	2 428 462	0,9
	2. Other buildings 4/	square metres	66 920	33 785	45 751	309 813	229 262	-26,0
		R'000	210 618	153 455	188 475	986 705	991 648	0,5
	3. Total additions and alterations	R'000	573 299	485 593	587 913	3 393 826	3 420 110	0,8
4. Recorded plans passed	1. Total at current prices	R'000	1 496 656	1 600 340	1 605 757	9 878 274	10 368 327	5,0

1/ The percentage change between cumulative figures for 2006 and 2007.

2/ Other residential buildings include institutions for the disabled, boarding houses, hostels and tourism accommodation e.g. hotels, motels, guesthouses, holiday chalets, bed-and-breakfast accommodation and casinos.

3/ Other non-residential space includes churches, sport and recreation clubs, schools, crèches, hospitals and all other non-residential space.

4/ Other buildings include other residential buildings, non-residential buildings and internal alterations.

* Revised.

Table 11 - Recorded building plans passed by larger municipalities at current prices by type of building: Eastern Cape

			Jul. 2006*	Jun. 2007	Jul. 2007	Jan. - Jul. 2006	Jan. - Jul. 2007	% Change 1/
Category of building	Type of building	Measuring unit						
1. Residential buildings	1. Dwelling-houses < 80 square metres	Number	143	164	94	1 084	869	-19,8
		square metres	6 544	7 474	4 637	49 333	38 906	-21,1
		R'000	12 525	8 806	10 069	74 280	58 268	-21,6
	2. Dwelling-houses >= 80 square metres	Number	325	260	181	1 644	1 250	-24,0
		square metres	58 015	49 649	35 854	345 146	295 549	-14,4
		R'000	137 311	140 560	102 345	809 895	845 623	4,4
	3. Flats and townhouses	Number	70	57	287	753	731	-2,9
		square metres	7 537	8 215	28 410	95 914	92 477	-3,6
		R'000	18 457	22 587	78 107	213 846	245 194	14,7
	4. Other residential buildings 2/	square metres	1 073	0	1 560	5 234	5 207	-0,5
		R'000	2 079	0	4 043	10 899	12 053	10,6
	5. Total residential buildings	R'000	170 372	171 953	194 564	1 108 920	1 161 138	4,7
2. Non-residential buildings	1. Office and banking space	square metres	142	0	0	2 795	9 689	246,7
		R'000	344	0	0	6 796	25 935	281,6
	2. Shopping space	square metres	170	464	18 647	15 763	97 714	519,9
		R'000	411	1 091	49 040	37 574	248 505	561,4
	3. Industrial and warehouse space	square metres	3 975	25 492	17 490	43 049	72 817	69,1
		R'000	8 134	53 842	36 798	86 911	163 964	88,7
	4. Other non-residential buildings 3/	square metres	537	1 485	1 182	9 803	5 715	-41,7
		R'000	1 273	3 989	3 086	22 223	14 898	-33,0
	5. Total non-residential buildings	R'000	10 162	58 922	88 924	153 504	453 302	195,3
	3. Additions and alterations	1. Dwelling-houses	square metres	47 088	40 092	35 143	267 705	245 345
R'000			102 917	108 465	90 559	609 302	637 517	4,6
2. Other buildings 4/		square metres	5 311	11 112	10 059	42 073	80 229	90,7
		R'000	12 134	26 272	24 516	112 377	204 634	82,1
3. Total additions and alterations		R'000	115 051	134 737	115 075	721 679	842 151	16,7
4. Recorded plans passed	1. Total at current prices	R'000	295 585	365 612	398 563	1 984 103	2 456 591	23,8

1/ The percentage change between cumulative figures for 2006 and 2007.

2/ Other residential buildings include institutions for the disabled, boarding houses, hostels and tourism accommodation e.g. hotels, motels, guesthouses, holiday chalets, bed-and-breakfast accommodation and casinos.

3/ Other non-residential space includes churches, sport and recreation clubs, schools, crèches, hospitals and all other non-residential space.

4/ Other buildings include other residential buildings, non-residential buildings and internal alterations.

* Revised.

Table 12 - Recorded building plans passed by larger municipalities at current prices by type of building: Northern Cape

			Jul. 2006*	Jun. 2007	Jul. 2007	Jan. - Jul. 2006	Jan. - Jul. 2007	% Change 1/
Category of building	Type of building	Measuring unit						
1. Residential buildings	1. Dwelling-houses < 80 square metres	Number	4	2	4	226	35	-84,5
		square metres	114	115	206	10 556	1 810	-82,9
		R'000	290	415	682	15 492	5 906	-61,9
	2. Dwelling-houses >= 80 square metres	Number	27	25	31	208	267	28,4
		square metres	5 838	5 618	5 142	42 486	45 660	7,5
		R'000	13 588	16 847	15 655	89 121	127 152	42,7
	3. Flats and townhouses	Number	104	38	9	211	93	-55,9
		square metres	7 199	4 905	1 298	20 389	12 739	-37,5
		R'000	13 024	14 918	3 894	38 082	37 482	-1,6
	4. Other residential buildings 2/	square metres	0	0	0	672	0	
		R'000	0	0	0	1 253	0	
	5. Total residential buildings	R'000	26 902	32 180	20 231	143 948	170 540	18,5
2. Non-residential buildings	1. Office and banking space	square metres	67	207	3 425	5 759	6 210	7,8
		R'000	161	745	8 666	14 161	17 398	22,9
	2. Shopping space	square metres	0	277	3 456	1 955	10 631	443,8
		R'000	0	770	9 012	4 161	24 482	488,4
	3. Industrial and warehouse space	square metres	901	1 030	2 511	7 415	6 531	-11,9
		R'000	2 600	2 472	6 278	22 178	15 238	-31,3
	4. Other non-residential buildings 3/	square metres	4 627	0	1 448	6 014	2 432	-59,6
		R'000	11 766	0	4 085	14 645	6 812	-53,5
	5. Total non-residential buildings	R'000	14 527	3 987	28 041	55 145	63 930	15,9
3. Additions and alterations	1. Dwelling-houses	square metres	4 281	4 993	5 913	36 030	34 322	-4,7
		R'000	8 734	15 169	17 336	72 087	90 272	25,2
	2. Other buildings 4/	square metres	3 475	256	17 634	8 536	20 877	144,6
		R'000	9 832	880	44 102	23 115	56 717	145,4
	3. Total additions and alterations	R'000	18 566	16 049	61 438	95 202	146 989	54,4
4. Recorded plans passed	1. Total at current prices	R'000	59 995	52 216	109 710	294 295	381 459	29,6

1/ The percentage change between cumulative figures for 2006 and 2007.

2/ Other residential buildings include institutions for the disabled, boarding houses, hostels and tourism accommodation e.g. hotels, motels, guesthouses, holiday chalets, bed-and-breakfast accommodation and casinos.

3/ Other non-residential space includes churches, sport and recreation clubs, schools, crèches, hospitals and all other non-residential space.

4/ Other buildings include other residential buildings, non-residential buildings and internal alterations.

* Revised.

Table 13 - Recorded building plans passed by larger municipalities at current prices by type of building: Free State

			Jul. 2006*	Jun. 2007	Jul. 2007	Jan. - Jul. 2006	Jan. - Jul. 2007	% Change 1/
Category of building	Type of building	Measuring unit						
1. Residential buildings	1. Dwelling-houses < 80 square metres	Number	57	259	274	1 968	1 588	-19,3
		square metres	2 562	11 117	12 548	81 939	68 305	-16,6
		R'000	2 470	11 560	10 689	71 845	66 641	-7,2
	2. Dwelling-houses >= 80 square metres	Number	97	123	124	627	810	29,2
		square metres	22 320	33 241	26 402	117 358	180 914	54,2
		R'000	50 931	80 690	70 416	261 548	454 620	73,8
	3. Flats and townhouses	Number	151	258	1	691	880	27,4
		square metres	18 516	14 934	138	80 186	81 297	1,4
		R'000	45 205	37 344	552	193 433	216 294	11,8
	4. Other residential buildings 2/	square metres	0	1 660	0	5 789	15 518	168,1
		R'000	0	5 976	0	82 092	54 283	-33,9
	5. Total residential buildings	R'000	98 606	135 570	81 657	608 918	791 838	30,0
2. Non-residential buildings	1. Office and banking space	square metres	2 616	795	941	12 305	7 232	-41,2
		R'000	7 003	2 862	1 650	35 745	24 138	-32,5
	2. Shopping space	square metres	4 906	6 429	4 354	20 162	29 255	45,1
		R'000	13 893	16 482	15 674	61 393	122 040	98,8
	3. Industrial and warehouse space	square metres	8 112	5 974	1 366	25 765	27 945	8,5
		R'000	17 193	9 228	3 470	49 722	51 621	3,8
	4. Other non-residential buildings 3/	square metres	246	896	876	10 265	3 644	-64,5
		R'000	561	1 910	1 628	27 015	7 317	-72,9
	5. Total non-residential buildings	R'000	38 650	30 482	22 422	173 875	205 116	18,0
	3. Additions and alterations	1. Dwelling-houses	square metres	20 134	19 766	15 222	100 925	109 159
R'000			39 577	47 555	36 239	194 285	257 938	32,8
2. Other buildings 4/		square metres	2 402	1 502	2 381	23 917	18 501	-22,6
		R'000	6 725	4 079	5 381	87 092	64 034	-26,5
3. Total additions and alterations		R'000	46 302	51 634	41 620	281 377	321 972	14,4
4. Recorded plans passed	1. Total at current prices	R'000	183 558	217 686	145 699	1 064 170	1 318 926	23,9

1/ The percentage change between cumulative figures for 2006 and 2007.

2/ Other residential buildings include institutions for the disabled, boarding houses, hostels and tourism accommodation e.g. hotels, motels, guesthouses, holiday chalets, bed-and-breakfast accommodation and casinos.

3/ Other non-residential space includes churches, sport and recreation clubs, schools, crèches, hospitals and all other non-residential space.

4/ Other buildings include other residential buildings, non-residential buildings and internal alterations.

* Revised.

Table 14 - Recorded building plans passed by larger municipalities at current prices by type of building: KwaZulu-Natal

			Jul. 2006*	Jun. 2007	Jul. 2007	Jan. - Jul. 2006	Jan. - Jul. 2007	% Change 1/
Category of building	Type of building	Measuring unit						
1. Residential buildings	1. Dwelling-houses < 80 square metres	Number	196	112	79	687	663	-3,5
		square metres	9 192	5 861	4 485	35 489	36 238	2,1
		R'000	15 466	13 175	12 515	80 693	102 432	26,9
	2. Dwelling-houses >= 80 square metres	Number	239	214	236	1 708	1 560	-8,7
		square metres	53 385	50 132	64 607	381 082	370 740	-2,7
		R'000	171 299	174 692	274 087	1 136 442	1 383 560	21,7
	3. Flats and townhouses	Number	401	762	256	2 305	3 944	71,1
		square metres	72 228	100 730	43 753	407 611	448 004	9,9
		R'000	277 178	463 875	225 728	1 431 054	1 791 378	25,2
	4. Other residential buildings 2/	square metres	2 371	596	3 668	24 674	20 478	-17,0
		R'000	9 513	1 788	13 936	132 096	89 699	-32,1
	5. Total residential buildings	R'000	473 456	653 530	526 266	2 780 285	3 367 069	21,1
2. Non-residential buildings	1. Office and banking space	square metres	12 291	10 308	8 562	53 637	73 074	36,2
		R'000	38 170	37 420	41 110	158 410	313 983	98,2
	2. Shopping space	square metres	5 935	11 224	7 702	44 977	86 499	92,3
		R'000	24 884	30 041	37 430	158 194	321 674	103,3
	3. Industrial and warehouse space	square metres	26 982	41 799	11 958	284 451	198 630	-30,2
		R'000	62 781	108 992	33 708	694 091	523 859	-24,5
	4. Other non-residential buildings 3/	square metres	4 635	1 380	7 521	31 562	56 290	78,3
		R'000	15 551	5 215	29 720	89 087	235 722	164,6
	5. Total non-residential buildings	R'000	141 386	181 668	141 968	1 099 782	1 395 238	26,9
3. Additions and alterations	1. Dwelling-houses	square metres	64 278	67 720	77 849	400 226	388 602	-2,9
		R'000	196 129	180 928	258 648	1 148 462	1 286 662	12,0
	2. Other buildings 4/	square metres	43 433	27 026	16 447	172 862	159 092	-8,0
		R'000	113 515	93 647	74 745	539 983	604 845	12,0
	3. Total additions and alterations	R'000	309 644	274 575	333 393	1 688 445	1 891 507	12,0
4. Recorded plans passed	1. Total at current prices	R'000	924 486	1 109 773	1 001 627	5 568 512	6 653 814	19,5

1/ The percentage change between cumulative figures for 2006 and 2007.

2/ Other residential buildings include institutions for the disabled, boarding houses, hostels and tourism accommodation e.g. hotels, motels, guesthouses, holiday chalets, bed-and-breakfast accommodation and casinos.

3/ Other non-residential space includes churches, sport and recreation clubs, schools, crèches, hospitals and all other non-residential space.

4/ Other buildings include other residential buildings, non-residential buildings and internal alterations.

* Revised.

Table 15 - Recorded building plans passed by larger municipalities at current prices by type of building: North West

			Jul. 2006*	Jun. 2007	Jul. 2007	Jan. - Jul. 2006	Jan. - Jul. 2007	% Change 1/
Category of building	Type of building	Measuring unit						
1. Residential buildings	1. Dwelling-houses < 80 square metres	Number	75	82	72	450	1 353	200,7
		square metres	4 551	4 667	5 043	27 038	62 708	131,9
		R'000	5 300	5 888	7 725	34 575	76 928	122,5
	2. Dwelling-houses >= 80 square metres	Number	184	181	152	1 371	1 405	2,5
		square metres	33 344	42 273	39 182	273 851	324 673	18,6
		R'000	80 318	117 482	107 430	683 395	880 938	28,9
	3. Flats and townhouses	Number	115	108	148	607	1 019	67,9
		square metres	13 661	13 215	16 023	69 972	130 596	86,6
		R'000	36 612	31 636	40 972	182 260	324 934	78,3
	4. Other residential buildings 2/	square metres	0	0	0	6 372	4 364	-31,5
		R'000	0	0	0	16 044	12 565	-21,7
	5. Total residential buildings	R'000	122 230	155 006	156 127	916 274	1 295 365	41,4
2. Non-residential buildings	1. Office and banking space	square metres	0	1 568	827	7 378	22 159	200,3
		R'000	0	3 920	2 200	17 816	54 225	204,4
	2. Shopping space	square metres	97 649	229	2 793	125 185	37 890	-69,7
		R'000	332 700	595	7 020	401 883	114 646	-71,5
	3. Industrial and warehouse space	square metres	419	1 970	1 700	26 818	32 904	22,7
		R'000	671	3 300	4 125	59 674	62 586	4,9
	4. Other non-residential buildings 3/	square metres	205	855	115	9 168	9 994	9,0
		R'000	226	2 294	287	29 238	27 846	-4,8
	5. Total non-residential buildings	R'000	333 597	10 109	13 632	508 611	259 303	-49,0
3. Additions and alterations	1. Dwelling-houses	square metres	12 610	13 644	11 901	83 552	89 414	7,0
		R'000	27 264	30 620	26 591	171 462	198 824	16,0
	2. Other buildings 4/	square metres	248	4 038	435	12 722	11 349	-10,8
		R'000	933	15 768	1 244	37 197	34 745	-6,6
	3. Total additions and alterations	R'000	28 197	46 388	27 835	208 659	233 569	11,9
4. Recorded plans passed	1. Total at current prices	R'000	484 024	211 503	197 594	1 633 544	1 788 237	9,5

1/ The percentage change between cumulative figures for 2006 and 2007.

2/ Other residential buildings include institutions for the disabled, boarding houses, hostels and tourism accommodation e.g. hotels, motels, guesthouses, holiday chalets, bed-and-breakfast accommodation and casinos.

3/ Other non-residential space includes churches, sport and recreation clubs, schools, crèches, hospitals and all other non-residential space.

4/ Other buildings include other residential buildings, non-residential buildings and internal alterations.

* Revised.

Table 16 - Recorded building plans passed by larger municipalities at current prices by type of building: Gauteng

			Jul. 2006*	Jun. 2007	Jul. 2007	Jan. - Jul. 2006	Jan. - Jul. 2007	% Change 1/
Category of building	Type of building	Measuring unit						
1. Residential buildings	1. Dwelling-houses < 80 square metres	Number	1 417	2 244	3 013	11 486	14 473	26,0
		square metres	66 023	93 772	122 746	494 639	614 303	24,2
		R'000	116 654	151 987	199 879	953 961	1 209 149	26,8
	2. Dwelling-houses >= 80 square metres	Number	1 172	1 200	1 270	7 800	7 450	-4,5
		square metres	327 807	336 359	355 701	1 971 593	2 079 529	5,5
		R'000	1 092 023	1 121 868	1 280 007	6 249 166	7 147 105	14,4
	3. Flats and townhouses	Number	1 527	1 080	1 193	8 465	8 306	-1,9
		square metres	228 857	147 756	179 825	1 096 972	1 127 817	2,8
		R'000	797 455	492 091	587 154	3 607 437	3 983 019	10,4
	4. Other residential buildings 2/	square metres	3 944	264	0	68 555	2 757	-96,0
		R'000	10 005	660	0	242 275	12 851	-94,7
	5. Total residential buildings	R'000	2 016 137	1 766 606	2 067 040	11 052 839	12 352 124	11,8
2. Non-residential buildings	1. Office and banking space	square metres	73 836	54 770	23 342	262 600	234 251	-10,8
		R'000	335 452	293 997	134 279	1 087 123	1 190 418	9,5
	2. Shopping space	square metres	12 565	43 670	57 492	196 603	234 356	19,2
		R'000	43 226	171 056	281 989	657 065	1 047 932	59,5
	3. Industrial and warehouse space	square metres	54 913	59 180	78 956	408 507	498 485	22,0
		R'000	151 993	145 048	217 421	1 215 307	1 440 657	18,5
	4. Other non-residential buildings 3/	square metres	11 668	34 045	6 352	68 638	78 344	14,1
		R'000	38 196	93 356	29 086	207 049	283 891	37,1
	5. Total non-residential buildings	R'000	568 867	703 457	662 775	3 166 544	3 962 898	25,1
3. Additions and alterations	1. Dwelling-houses	square metres	166 065	157 953	167 481	1 036 783	1 087 824	4,9
		R'000	540 571	501 789	578 720	3 198 183	3 618 501	13,1
	2. Other buildings 4/	square metres	37 819	33 558	40 661	217 871	240 564	10,4
		R'000	135 992	111 904	178 656	730 828	985 210	34,8
	3. Total additions and alterations	R'000	676 563	613 693	757 376	3 929 011	4 603 711	17,2
4. Recorded plans passed	1. Total at current prices	R'000	3 261 567	3 083 756	3 487 191	18 148 394	20 918 733	15,3

1/ The percentage change between cumulative figures for 2006 and 2007.

2/ Other residential buildings include institutions for the disabled, boarding houses, hostels and tourism accommodation e.g. hotels, motels, guesthouses, holiday chalets, bed-and-breakfast accommodation and casinos.

3/ Other non-residential space includes churches, sport and recreation clubs, schools, crèches, hospitals and all other non-residential space.

4/ Other buildings include other residential buildings, non-residential buildings and internal alterations.

* Revised.

Table 17 - Recorded building plans passed by larger municipalities at current prices by type of building: Mpumalanga

			Jul. 2006*	Jun. 2007	Jul. 2007	Jan. - Jul. 2006	Jan. - Jul. 2007	% Change 1/
Category of building	Type of building	Measuring unit						
1. Residential buildings	1. Dwelling-houses < 80 square metres	Number	82	70	77	391	628	60,6
		square metres	4 663	3 814	3 486	23 462	27 643	17,8
		R'000	9 443	8 002	6 429	55 699	51 431	-7,7
	2. Dwelling-houses >= 80 square metres	Number	276	273	218	1 325	1 622	22,4
		square metres	63 275	57 692	51 319	306 292	385 261	25,8
		R'000	186 395	156 601	158 346	831 611	1 080 319	29,9
	3. Flats and townhouses	Number	198	136	193	1 182	1 020	-13,7
		square metres	25 356	17 208	20 626	129 237	105 487	-18,4
		R'000	58 300	43 915	58 806	321 674	300 567	-6,6
	4. Other residential buildings 2/	square metres	283	0	0	7 956	3 889	-51,1
		R'000	849	0	0	22 246	10 918	-50,9
	5. Total residential buildings	R'000	254 987	208 518	223 581	1 231 230	1 443 235	17,2
2. Non-residential buildings	1. Office and banking space	square metres	1 140	187	309	20 706	12 341	-40,4
		R'000	2 300	470	772	67 811	33 368	-50,8
	2. Shopping space	square metres	949	4 834	1 588	70 706	17 500	-75,2
		R'000	3 375	11 710	2 040	514 019	55 455	-89,2
	3. Industrial and warehouse space	square metres	5 854	7 000	21 611	32 514	88 741	172,9
		R'000	16 076	15 871	80 958	78 718	304 272	286,5
	4. Other non-residential buildings 3/	square metres	19 593	0	422	31 110	6 239	-79,9
		R'000	66 154	0	1 056	101 591	14 632	-85,6
	5. Total non-residential buildings	R'000	87 905	28 051	84 826	762 139	407 727	-46,5
3. Additions and alterations	1. Dwelling-houses	square metres	19 050	21 013	32 476	130 194	143 243	10,0
		R'000	44 316	57 639	82 800	289 207	362 931	25,5
	2. Other buildings 4/	square metres	3 500	5 652	2 917	19 655	26 343	34,0
		R'000	12 721	19 862	10 525	59 738	82 967	38,9
	3. Total additions and alterations	R'000	57 037	77 501	93 325	348 945	445 898	27,8
4. Recorded plans passed	1. Total at current prices	R'000	399 929	314 070	401 732	2 342 314	2 296 860	-1,9

1/ The percentage change between cumulative figures for 2006 and 2007.

2/ Other residential buildings include institutions for the disabled, boarding houses, hostels and tourism accommodation e.g. hotels, motels, guesthouses, holiday chalets, bed-and-breakfast accommodation and casinos.

3/ Other non-residential space includes churches, sport and recreation clubs, schools, crèches, hospitals and all other non-residential space.

4/ Other buildings include other residential buildings, non-residential buildings and internal alterations.

* Revised.

Table 18 - Recorded building plans passed by larger municipalities at current prices by type of building: Limpopo

			Jul. 2006	Jun. 2007	Jul. 2007	Jan. - Jul. 2006	Jan. - Jul. 2007	% Change 1/
Category of building	Type of building	Measuring unit						
1. Dwelling-houses < 80 square metres	1. Dwelling-houses < 80 square metres	Number	23	520	31	642	719	12,0
		square metres	1 455	25 798	2 021	30 956	38 474	24,3
		R'000	3 713	47 576	5 557	46 413	81 283	75,1
	2. Dwelling-houses >= 80 square metres	Number	89	68	81	754	590	-21,8
		square metres	15 678	17 415	17 219	154 713	129 152	-16,5
		R'000	39 398	45 772	49 558	370 898	348 685	-6,0
	3. Flats and townhouses	Number	105	46	81	353	468	32,6
		square metres	11 315	3 387	17 525	35 803	61 698	72,3
		R'000	29 220	8 468	45 450	90 141	152 598	69,3
	4. Other residential buildings 2/	square metres	0	1 390	0	947	7 655	708,3
		R'000	0	3 058	0	4 500	17 540	289,8
	5. Total residential buildings	R'000	72 331	104 874	100 565	511 952	600 106	17,2
2. Dwelling-houses >= 80 square metres	1. Office and banking space	square metres	0	4 127	1 591	4 242	7 535	77,6
		R'000	0	10 318	3 766	10 071	18 754	86,2
	2. Shopping space	square metres	3 168	3 812	258	14 650	23 561	60,8
		R'000	4 223	10 594	515	27 960	50 752	81,5
	3. Industrial and warehouse space	square metres	1 731	6 561	2 144	13 389	23 153	72,9
		R'000	4 543	16 379	5 287	31 412	57 428	82,8
	4. Other non-residential buildings 3/	square metres	0	0	0	348	3 370	868,4
		R'000	0	0	0	882	8 044	812,0
	5. Total non-residential buildings	R'000	8 766	37 291	9 568	70 325	134 978	91,9
	3. Flats and townhouses	1. Dwelling-houses	square metres	7 417	9 211	11 946	59 649	73 860
R'000			17 363	22 688	28 839	124 830	177 725	42,4
2. Other buildings 4/		square metres	2 100	1 207	340	18 052	6 360	-64,8
		R'000	3 427	3 943	810	38 199	15 660	-59,0
3. Total additions and alterations		R'000	20 790	26 631	29 649	163 029	193 385	18,6
4. Other residential buildings 2/	1. Total at current prices	R'000	101 887	168 796	139 782	745 306	928 469	24,6

1/ The percentage change between cumulative figures for 2006 and 2007.

2/ Other residential buildings include institutions for the disabled, boarding houses, hostels and tourism accommodation e.g. hotels, motels, guesthouses, holiday chalets, bed-and-breakfast accommodation and casinos.

3/ Other non-residential space includes churches, sport and recreation clubs, schools, crèches, hospitals and all other non-residential space.

4/ Other buildings include other residential buildings, non-residential buildings and internal alterations.

Table 19 - Buildings reported as completed to larger municipalities at current prices by type of building: South Africa

			Jul. 2006*	Jun. 2007	Jul. 2007	Jan. - Jul. 2006	Jan. - Jul. 2007	% Change 1/
Category of building	Type of building	Measuring unit						
1. Residential buildings	1. Dwelling-houses < 80 square metres	Number	1 778	2 254	2 159	12 105	15 039	24,2
		square metres	74 658	97 948	94 910	522 569	633 705	21,3
		R'000	135 792	174 004	167 988	933 090	1 121 903	20,2
	2. Dwelling-houses >= 80 square metres	Number	1 824	1 775	1 924	11 663	12 434	6,6
		square metres	447 172	395 337	450 805	2 668 532	2 808 312	5,2
		R'000	1 355 180	1 173 301	1 426 284	7 434 106	8 607 749	15,8
	3. Flats and townhouses	Number	2 021	2 743	2 423	12 598	15 631	24,1
		square metres	229 594	352 913	280 688	1 631 782	1 761 813	8,0
		R'000	752 057	1 213 118	956 138	4 985 023	5 824 034	16,8
	4. Other residential buildings 2/	square metres	7 698	3 066	0	31 080	109 941	253,7
		R'000	25 154	7 573	0	107 126	504 176	370,6
	5. Total residential buildings	R'000	2 268 183	2 567 996	2 550 410	13 459 345	16 057 862	19,3
	2. Non-residential buildings	1. Office and banking space	square metres	29 578	25 561	87 514	169 779	402 148
R'000			103 617	97 059	306 882	520 210	1 415 010	172,0
2. Shopping space		square metres	3 406	52 762	20 869	400 475	307 712	-23,2
		R'000	12 107	200 847	67 548	1 230 691	1 014 218	-17,6
3. Industrial and warehouse space		square metres	65 345	97 317	173 139	408 467	800 321	95,9
		R'000	166 786	251 491	476 551	1 006 342	2 221 684	120,8
4. Other non-residential buildings 3/		square metres	18 369	6 227	12 151	83 365	92 182	10,6
		R'000	51 133	17 439	31 916	222 262	285 863	28,6
5. Total non-residential buildings	R'000	333 643	566 836	882 897	2 979 505	4 936 775	65,7	
3. Additions and alterations	1. Dwelling-houses	square metres	162 095	181 749	201 469	1 128 320	1 193 332	5,8
		R'000	419 381	481 306	559 246	2 793 006	3 296 115	18,0
	2. Other buildings 4/	square metres	45 737	52 405	40 336	303 556	325 421	7,2
		R'000	135 260	176 158	125 742	904 713	1 106 974	22,4
	3. Total additions and alterations	R'000	554 641	657 464	684 988	3 697 719	4 403 089	19,1
4. Recorded buildings completed	1. Total at current prices	R'000	3 156 467	3 792 296	4 118 295	20 136 569	25 397 726	26,1

1/ The percentage change between cumulative figures for 2006 and 2007.

2/ Other residential buildings include institutions for the disabled, boarding houses, hostels and tourism accommodation e.g. hotels, motels, guesthouses, holiday chalets, bed-and-breakfast accommodation and casinos.

3/ Other non-residential space includes churches, sport and recreation clubs, schools, crèches, hospitals and all other non-residential space.

4/ Other buildings include other residential buildings, non-residential buildings and internal alterations.

* Revised.

Table 20 - Buildings reported as completed to larger municipalities at current prices by type of building: Western Cape

			Jul. 2006*	Jun. 2007	Jul. 2007	Jan. - Jul. 2006	Jan. - Jul. 2007	% Change 1/	
Category of building	Type of building	Measuring unit							
1. Residential buildings	1. Dwelling-houses < 80 square metres	Number	588	622	479	2 715	5 009	84,5	
		square metres	21 779	26 900	21 993	105 383	191 899	82,1	
		R'000	32 374	50 483	41 637	160 526	282 556	76,0	
	2. Dwelling-houses >= 80 square metres	Number	523	498	493	3 425	3 186	-7,0	
		square metres	122 259	104 330	106 386	788 147	696 821	-11,6	
		R'000	329 425	313 499	332 709	2 137 509	2 104 538	-1,5	
	3. Flats and townhouses	Number	725	605	375	3 806	3 909	2,7	
		square metres	73 893	60 903	36 389	459 312	404 499	-11,9	
		R'000	250 668	190 141	119 507	1 369 796	1 288 740	-5,9	
	4. Other residential buildings 2/	square metres	0	0	0	11 931	19 163	60,6	
		R'000	0	0	0	38 586	71 715	85,9	
	5. Total residential buildings	R'000	612 467	554 123	493 853	3 706 417	3 747 549	1,1	
	2. Non-residential buildings	1. Office and banking space	square metres	4 040	3 053	26 581	35 009	143 813	310,8
			R'000	9 509	10 114	87 558	86 049	419 051	387,0
2. Shopping space		square metres	1 360	19 754	1 018	95 771	37 176	-61,2	
		R'000	4 924	65 461	3 563	204 034	118 705	-41,8	
3. Industrial and warehouse space		square metres	15 464	23 869	56 018	177 809	277 084	55,8	
		R'000	36 362	71 149	137 996	450 531	774 096	71,8	
4. Other non-residential buildings 3/		square metres	11 950	671	4 131	33 283	28 273	-15,1	
		R'000	33 807	1 393	11 873	85 446	77 492	-9,3	
5. Total non-residential buildings		R'000	84 602	148 117	240 990	826 060	1 389 344	68,2	
3. Additions and alterations		1. Dwelling-houses	square metres	58 057	73 083	69 648	422 677	422 406	-0,1
	R'000		139 254	191 312	188 050	1 024 829	1 110 299	8,3	
	2. Other buildings 4/	square metres	21 771	8 984	13 216	108 382	120 475	11,2	
		R'000	66 611	39 478	50 088	352 408	419 904	19,2	
	3. Total additions and alterations	R'000	205 865	230 790	238 138	1 377 237	1 530 203	11,1	
4. Recorded buildings completed	1. Total at current prices	R'000	902 934	933 030	972 981	5 909 714	6 667 096	12,8	

1/ The percentage change between cumulative figures for 2006 and 2007.

2/ Other residential buildings include institutions for the disabled, boarding houses, hostels and tourism accommodation e.g. hotels, motels, guesthouses, holiday chalets, bed-and-breakfast accommodation and casinos.

3/ Other non-residential space includes churches, sport and recreation clubs, schools, crèches, hospitals and all other non-residential space.

4/ Other buildings include other residential buildings, non-residential buildings and internal alterations.

* Revised.

Table 21 - Buildings reported as completed to larger municipalities at current prices by type of building: Eastern Cape

			Jul. 2006*	Jun. 2007	Jul. 2007	Jan. - Jul. 2006	Jan. - Jul. 2007	% Change 1/
Category of building								
1. Residential buildings	1. Dwelling-houses < 80 square metres	Number	381	161	181	1 122	909	-19,0
		square metres	15 790	6 924	7 817	47 989	38 741	-19,3
		R'000	27 390	7 285	10 816	70 988	54 258	-23,6
	2. Dwelling-houses >= 80 square metres	Number	132	85	116	697	679	-2,6
		square metres	22 508	16 383	20 338	125 238	118 582	-5,3
		R'000	47 774	41 320	45 768	269 623	296 542	10,0
	3. Flats and townhouses	Number	46	174	330	442	772	74,7
		square metres	4 214	13 546	29 246	40 891	70 746	73,0
		R'000	9 205	29 298	83 376	86 039	179 320	108,4
	4. Other residential buildings 2/	square metres	0	2 412	0	120	2 412	1 910,0
		R'000	0	6 100	0	264	6 100	2 210,6
	5. Total residential buildings	R'000	84 369	84 003	139 960	426 914	536 220	25,6
	2. Non-residential buildings	1. Office and banking space	square metres	959	0	50	4 142	1 304
R'000			2 398	0	131	9 268	3 294	-64,5
2. Shopping space		square metres	414	3 223	3 015	12 287	16 326	32,9
		R'000	1 087	8 058	5 488	28 400	38 522	35,6
3. Industrial and warehouse space		square metres	406	966	1 419	21 299	22 035	3,5
		R'000	1 015	1 631	3 026	40 486	52 957	30,8
4. Other non-residential buildings 3/		square metres	1 710	225	394	5 509	2 814	-48,9
		R'000	3 740	531	774	12 162	6 100	-49,8
5. Total non-residential buildings		R'000	8 240	10 220	9 419	90 316	100 873	11,7
3. Additions and alterations		1. Dwelling-houses	square metres	12 193	12 477	20 574	72 317	89 186
	R'000		22 680	25 638	44 037	137 552	180 991	31,6
	2. Other buildings 4/	square metres	4 937	1 068	3 393	43 911	25 682	-41,5
		R'000	12 472	1 862	6 218	84 244	56 071	-33,4
	3. Total additions and alterations	R'000	35 152	27 500	50 255	221 796	237 062	6,9
4. Recorded buildings completed	1. Total at current prices	R'000	127 761	121 723	199 634	739 026	874 155	18,3

1/ The percentage change between cumulative figures for 2006 and 2007.

2/ Other residential buildings include institutions for the disabled, boarding houses, hostels and tourism accommodation e.g. hotels, motels, guesthouses, holiday chalets, bed-and-breakfast accommodation and casinos.

3/ Other non-residential space includes churches, sport and recreation clubs, schools, crèches, hospitals and all other non-residential space.

4/ Other buildings include other residential buildings, non-residential buildings and internal alterations.

* Revised.

Table 22 - Buildings reported as completed to larger municipalities at current prices by type of building: Northern Cape

			Jul. 2006	Jun. 2007	Jul. 2007	Jan. - Jul. 2006	Jan. - Jul. 2007	% Change 1/
Category of building	Type of building	Measuring unit						
1. Residential buildings	1. Dwelling-houses < 80 square metres	Number	0	30	0	19	44	131,6
		square metres	0	1 080	0	930	1 823	96,0
		R'000	0	1 080	0	1 561	2 281	46,1
	2. Dwelling-houses >= 80 square metres	Number	20	10	15	111	112	0,9
		square metres	4 700	1 924	3 268	20 714	21 871	5,6
		R'000	10 794	4 876	9 363	43 546	55 888	28,3
	3. Flats and townhouses	Number	27	33	19	70	135	92,9
		square metres	3 623	4 763	2 629	9 379	19 051	103,1
		R'000	7 151	10 113	7 887	17 894	48 053	168,5
	4. Other residential buildings 2/	square metres	0	174	0	712	174	-75,6
		R'000	0	609	0	1 372	609	-55,6
	5. Total residential buildings	R'000	17 945	16 678	17 250	64 373	106 831	66,0
2. Non-residential buildings	1. Office and banking space	square metres	0	0	293	1 620	6 191	282,2
		R'000	0	0	820	3 240	15 338	373,4
	2. Shopping space	square metres	0	517	1 455	627	6 222	892,3
		R'000	0	1 034	3 638	1 556	14 140	808,7
	3. Industrial and warehouse space	square metres	0	0	1 301	3 548	4 730	33,3
		R'000	0	0	3 194	7 178	12 160	69,4
	4. Other non-residential buildings 3/	square metres	0	0	0	749	498	-33,5
		R'000	0	0	0	1 455	1 195	-17,9
	5. Total non-residential buildings	R'000	0	1 034	7 652	13 429	42 833	219,0
	3. Additions and alterations	1. Dwelling-houses	square metres	2 184	3 588	3 371	11 282	20 911
R'000			4 524	9 523	9 935	23 304	55 507	138,2
2. Other buildings 4/		square metres	539	732	200	9 058	3 808	-58,0
		R'000	1 368	1 883	500	18 234	16 300	-10,6
3. Total additions and alterations		R'000	5 892	11 406	10 435	41 538	71 807	72,9
4. Recorded buildings completed	1. Total at current prices	R'000	23 837	29 118	35 337	119 340	221 471	85,6

1/ The percentage change between cumulative figures for 2006 and 2007.

2/ Other residential buildings include institutions for the disabled, boarding houses, hostels and tourism accommodation e.g. hotels, motels, guesthouses, holiday chalets, bed-and-breakfast accommodation and casinos.

3/ Other non-residential space includes churches, sport and recreation clubs, schools, crèches, hospitals and all other non-residential space.

4/ Other buildings include other residential buildings, non-residential buildings and internal alterations.

Table 23 - Buildings reported as completed to larger municipalities at current prices by type of building: Free State

			Jul. 2006*	Jun. 2007	Jul. 2007	Jan. - Jul. 2006	Jan. - Jul. 2007	% Change 1/
Category of building	Type of building	Measuring unit						
1. Residential buildings	1. Dwelling-houses < 80 square metres	Number	17	52	107	242	252	4,1
		square metres	955	3 186	5 067	11 476	13 850	20,7
		R'000	1 327	5 285	5 358	13 302	21 428	61,1
	2. Dwelling-houses >= 80 square metres	Number	51	146	100	226	562	148,7
		square metres	8 212	22 153	21 256	42 472	103 205	143,0
		R'000	14 053	42 145	47 613	80 454	217 937	170,9
	3. Flats and townhouses	Number	12	42	67	291	333	14,4
		square metres	1 806	7 001	5 970	34 861	39 131	12,2
		R'000	3 137	17 587	12 818	70 052	103 900	48,3
	4. Other residential buildings 2/	square metres	0	480	0	8 310	5 467	-34,2
		R'000	0	864	0	35 872	79 956	122,9
	5. Total residential buildings	R'000	18 517	65 881	65 789	199 680	423 221	111,9
2. Non-residential buildings	1. Office and banking space	square metres	0	0	2 323	992	7 425	648,5
		R'000	0	0	6 680	2 454	23 358	851,8
	2. Shopping space	square metres	0	0	4 770	16 170	9 354	-42,2
		R'000	0	0	17 208	45 696	33 305	-27,1
	3. Industrial and warehouse space	square metres	0	2 362	6 690	4 745	11 253	137,2
		R'000	0	5 650	5 922	9 632	17 605	82,8
	4. Other non-residential buildings 3/	square metres	229	2 464	107	3 759	3 060	-18,6
		R'000	600	7 021	160	7 809	8 008	2,5
	5. Total non-residential buildings	R'000	600	12 671	29 970	65 591	82 276	25,4
	3. Additions and alterations	1. Dwelling-houses	square metres	4 850	8 408	11 720	37 907	45 784
R'000			8 190	17 883	19 857	62 594	87 188	39,3
2. Other buildings 4/		square metres	651	2 712	3 172	9 250	14 500	56,8
		R'000	2 400	5 742	3 588	28 508	29 583	3,8
3. Total additions and alterations		R'000	10 590	23 625	23 445	91 102	116 771	28,2
4. Recorded buildings completed	1. Total at current prices	R'000	29 707	102 177	119 204	356 373	622 268	74,6

1/ The percentage change between cumulative figures for 2006 and 2007.

2/ Other residential buildings include institutions for the disabled, boarding houses, hostels and tourism accommodation e.g. hotels, motels, guesthouses, holiday chalets, bed-and-breakfast accommodation and casinos.

3/ Other non-residential space includes churches, sport and recreation clubs, schools, crèches, hospitals and all other non-residential space.

4/ Other buildings include other residential buildings, non-residential buildings and internal alterations.

* Revised.

Table 24 - Buildings reported as completed to larger municipalities at current prices by type of building: KwaZulu-Natal

			Jul. 2006*	Jun. 2007	Jul. 2007	Jan. - Jul. 2006	Jan. - Jul. 2007	% Change 1/
Category of building	Type of building	Measuring unit						
1. Residential buildings	1. Dwelling-houses < 80 square metres	Number	74	80	55	702	738	5,1
		square metres	3 346	3 817	3 360	30 986	33 758	8,9
		R'000	8 563	8 326	10 042	79 532	87 417	9,9
	2. Dwelling-houses >= 80 square metres	Number	116	116	134	819	923	12,7
		square metres	22 058	27 612	27 171	173 279	205 375	18,5
		R'000	74 993	90 880	95 737	517 444	752 727	45,5
	3. Flats and townhouses	Number	165	280	225	1 349	1 498	11,0
		square metres	34 256	61 273	39 889	241 976	277 360	14,6
		R'000	106 483	263 759	128 768	773 025	979 816	26,8
	4. Other residential buildings 2/	square metres	3 907	0	0	3 943	20 824	428,1
		R'000	15 676	0	0	15 755	122 445	677,2
	5. Total residential buildings	R'000	205 715	362 965	234 547	1 385 756	1 942 405	40,2
2. Non-residential buildings	1. Office and banking space	square metres	3 771	2 749	9 326	40 623	29 703	-26,9
		R'000	13 108	6 910	23 313	113 489	83 005	-26,9
	2. Shopping space	square metres	535	3 369	2 579	23 820	59 042	147,9
		R'000	2 147	8 614	10 066	58 644	189 349	222,9
	3. Industrial and warehouse space	square metres	14 111	15 285	41 529	64 623	220 993	242,0
		R'000	33 538	33 708	116 393	148 441	605 545	307,9
	4. Other non-residential buildings 3/	square metres	3 145	2 395	3 044	24 121	18 270	-24,3
		R'000	10 000	6 600	8 001	71 502	60 412	-15,5
	5. Total non-residential buildings	R'000	58 793	55 832	157 773	392 076	938 311	139,3
3. Additions and alterations	1. Dwelling-houses	square metres	18 559	27 198	25 573	150 217	174 860	16,4
		R'000	57 311	77 467	85 485	430 544	596 408	38,5
	2. Other buildings 4/	square metres	4 756	4 106	3 215	56 302	59 702	6,0
		R'000	15 402	11 475	11 433	189 851	234 875	23,7
	3. Total additions and alterations	R'000	72 713	88 942	96 918	620 395	831 283	34,0
4. Recorded buildings completed	1. Total at current prices	R'000	337 221	507 739	489 238	2 398 227	3 711 999	54,8

1/ The percentage change between cumulative figures for 2006 and 2007.

2/ Other residential buildings include institutions for the disabled, boarding houses, hostels and tourism accommodation e.g. hotels, motels, guesthouses, holiday chalets, bed-and-breakfast accommodation and casinos.

3/ Other non-residential space includes churches, sport and recreation clubs, schools, crèches, hospitals and all other non-residential space.

4/ Other buildings include other residential buildings, non-residential buildings and internal alterations.

* Revised.

Table 25 - Buildings reported as completed to larger municipalities at current prices by type of building: North West

			Jul. 2006*	Jun. 2007	Jul. 2007	Jan. - Jul. 2006	Jan. - Jul. 2007	% Change 1/
Category of building	Type of building	Measuring unit						
1. Residential buildings	1. Dwelling-houses < 80 square metres	Number	3	351	215	288	1 689	486,5
		square metres	119	12 650	8 741	15 754	64 110	306,9
		R'000	213	9 156	10 231	17 075	54 597	219,7
	2. Dwelling-houses >= 80 square metres	Number	44	119	127	763	898	17,7
		square metres	10 890	23 851	26 388	148 697	194 127	30,6
		R'000	28 975	63 704	75 810	361 331	550 543	52,4
	3. Flats and townhouses	Number	51	93	39	474	750	58,2
		square metres	4 170	6 354	4 525	54 292	59 303	9,2
		R'000	10 032	15 767	15 872	138 840	153 463	10,5
	4. Other residential buildings 2/	square metres	0	0	0	0	0	
		R'000	0	0	0	0	0	
	5. Total residential buildings	R'000	39 220	88 627	101 913	517 246	758 603	46,7
2. Non-residential buildings	1. Office and banking space	square metres	0	106	0	2 487	2 901	16,6
		R'000	0	300	0	5 320	6 448	21,2
	2. Shopping space	square metres	0	5 192	3 889	29 304	32 378	10,5
		R'000	0	15 757	10 980	121 564	97 202	-20,0
	3. Industrial and warehouse space	square metres	69	5 727	1 015	5 058	9 318	84,2
		R'000	35	13 054	1 000	11 109	18 688	68,2
	4. Other non-residential buildings 3/	square metres	0	0	0	3 999	1 529	-61,8
		R'000	0	0	0	9 054	3 488	-61,5
	5. Total non-residential buildings	R'000	35	29 111	11 980	147 047	125 826	-14,4
3. Additions and alterations	1. Dwelling-houses	square metres	3 492	8 621	3 554	32 400	28 137	-13,2
		R'000	6 628	17 132	8 028	59 937	57 378	-4,3
	2. Other buildings 4/	square metres	1 575	4 351	3 250	10 919	9 612	-12,0
		R'000	3 784	8 208	7 110	24 029	20 191	-16,0
	3. Total additions and alterations	R'000	10 412	25 340	15 138	83 966	77 569	-7,6
4. Recorded buildings completed	1. Total at current prices	R'000	49 667	143 078	129 031	748 259	961 998	28,6

1/ The percentage change between cumulative figures for 2006 and 2007.

2/ Other residential buildings include institutions for the disabled, boarding houses, hostels and tourism accommodation e.g. hotels, motels, guesthouses, holiday chalets, bed-and-breakfast accommodation and casinos.

3/ Other non-residential space includes churches, sport and recreation clubs, schools, crèches, hospitals and all other non-residential space.

4/ Other buildings include other residential buildings, non-residential buildings and internal alterations.

* Revised.

Table 26 - Buildings reported as completed to larger municipalities at current prices by type of building: Gauteng

			Jul. 2006*	Jun. 2007	Jul. 2007	Jan. - Jul. 2006	Jan. - Jul. 2007	% Change 1/
Category of building	Type of building	Measuring unit						
1. Residential buildings	1. Dwelling-houses < 80 square metres	Number	664	922	1 095	6 399	6 074	-5,1
		square metres	29 624	41 070	46 143	280 321	269 099	-4,0
		R'000	57 947	86 662	85 547	533 099	564 997	6,0
	2. Dwelling-houses >= 80 square metres	Number	793	619	729	4 662	4 830	3,6
		square metres	230 454	168 022	207 812	1 192 831	1 249 972	4,8
		R'000	777 026	539 263	706 806	3 589 707	4 050 087	12,8
	3. Flats and townhouses	Number	902	1 497	1 169	5 713	7 805	36,6
		square metres	102 020	197 939	136 314	749 532	839 249	12,0
		R'000	349 782	682 895	519 739	2 428 319	2 926 196	20,5
	4. Other residential buildings 2/	square metres	3 791	0	0	5 352	61 211	1 043,7
		R'000	9 478	0	0	13 381	221 191	1 553,0
	5. Total residential buildings	R'000	1 194 233	1 308 820	1 312 092	6 564 506	7 762 471	18,2
2. Non-residential buildings	1. Office and banking space	square metres	20 808	19 653	44 826	73 825	192 312	160,5
		R'000	78 602	79 735	173 121	272 692	798 034	192,7
	2. Shopping space	square metres	1 097	18 897	4 143	190 399	124 307	-34,7
		R'000	3 949	97 703	16 605	680 589	458 588	-32,6
	3. Industrial and warehouse space	square metres	30 331	45 661	61 118	108 389	235 082	116,9
		R'000	82 086	120 399	200 859	290 469	697 567	140,2
	4. Other non-residential buildings 3/	square metres	1 335	472	1 372	10 051	33 015	228,5
		R'000	2 986	1 894	6 822	30 015	120 938	302,9
	5. Total non-residential buildings	R'000	167 623	299 731	397 407	1 273 765	2 075 127	62,9
3. Additions and alterations	1. Dwelling-houses	square metres	55 615	43 887	62 025	357 439	372 677	4,3
		R'000	167 133	131 165	191 910	976 273	1 118 289	14,5
	2. Other buildings 4/	square metres	11 249	27 103	12 430	58 730	84 225	43,4
		R'000	32 328	98 402	44 678	187 116	305 816	63,4
	3. Total additions and alterations	R'000	199 461	229 567	236 588	1 163 389	1 424 105	22,4
4. Recorded buildings completed	1. Total at current prices	R'000	1 561 317	1 838 118	1 946 087	9 001 660	11 261 703	25,1

1/ The percentage change between cumulative figures for 2006 and 2007.

2/ Other residential buildings include institutions for the disabled, boarding houses, hostels and tourism accommodation e.g. hotels, motels, guesthouses, holiday chalets, bed-and-breakfast accommodation and casinos.

3/ Other non-residential space includes churches, sport and recreation clubs, schools, crèches, hospitals and all other non-residential space.

4/ Other buildings include other residential buildings, non-residential buildings and internal alterations.

* Revised.

Table 27 - Buildings reported as completed to larger municipalities at current prices by type of building: Mpumalanga

			Jul. 2006*	Jun. 2007	Jul. 2007	Jan. - Jul. 2006	Jan. - Jul. 2007	% Change 1/
Category of building	Type of building	Measuring unit						
1. Residential buildings	1. Dwelling-houses < 80 square metres	Number	23	7	9	472	119	-74,8
		square metres	1 321	455	543	20 613	7 439	-63,9
		R'000	3 487	1 049	1 138	34 735	21 186	-39,0
	2. Dwelling-houses >= 80 square metres	Number	84	131	156	657	903	37,4
		square metres	15 513	22 273	26 756	117 608	154 894	31,7
		R'000	41 492	51 956	77 868	277 648	400 161	44,1
	3. Flats and townhouses	Number	69	18	168	289	306	5,9
		square metres	3 552	1 008	22 512	22 212	38 855	74,9
		R'000	10 449	3 024	58 639	52 190	107 702	106,4
	4. Other residential buildings 2/	square metres	0	0	0	712	690	-3,1
		R'000	0	0	0	1 896	2 160	13,9
	5. Total residential buildings	R'000	55 428	56 029	137 645	366 469	531 209	45,0
2. Non-residential buildings	1. Office and banking space	square metres	0	0	4 115	8 656	17 323	100,1
		R'000	0	0	15 259	22 395	62 954	181,1
	2. Shopping space	square metres	0	1 100	0	17 996	18 734	4,1
		R'000	0	2 800	0	64 103	53 953	-15,8
	3. Industrial and warehouse space	square metres	4 964	3 447	4 049	21 283	17 327	-18,6
		R'000	13 750	5 900	8 161	43 499	37 885	-12,9
	4. Other non-residential buildings 3/	square metres	0	0	2 210	589	3 550	502,7
		R'000	0	0	2 500	1 165	5 828	400,3
	5. Total non-residential buildings	R'000	13 750	8 700	25 920	131 162	160 620	22,5
	3. Additions and alterations	1. Dwelling-houses	square metres	5 813	3 203	4 322	37 564	31 712
R'000			10 147	7 820	10 207	62 674	71 951	14,8
2. Other buildings 4/		square metres	259	2 222	1 377	4 999	5 911	18,2
		R'000	895	6 855	1 944	14 587	21 136	44,9
3. Total additions and alterations		R'000	11 042	14 675	12 151	77 261	93 087	20,5
4. Recorded buildings completed	1. Total at current prices	R'000	80 220	79 404	175 716	574 892	784 916	36,5

1/ The percentage change between cumulative figures for 2006 and 2007.

2/ Other residential buildings include institutions for the disabled, boarding houses, hostels and tourism accommodation e.g. hotels, motels, guesthouses, holiday chalets, bed-and-breakfast accommodation and casinos.

3/ Other non-residential space includes churches, sport and recreation clubs, schools, crèches, hospitals and all other non-residential space.

4/ Other buildings include other residential buildings, non-residential buildings and internal alterations.

* Revised.

Table 28 - Buildings reported as completed to larger municipalities at current prices by type of building: Limpopo

			Jul. 2006*	Jun. 2007	Jul. 2007	Jan. - Jul. 2006	Jan. - Jul. 2007	% Change 1/
Category of building	Type of building	Measuring unit						
1. Residential buildings	1. Dwelling-houses < 80 square metres	Number	28	29	18	146	205	40,4
		square metres	1 724	1 866	1 246	9 117	12 986	42,4
		R'000	4 491	4 678	3 219	22 272	33 183	49,0
	2. Dwelling-houses >= 80 square metres	Number	61	51	54	303	341	12,5
		square metres	10 578	8 789	11 430	59 546	63 465	6,6
		R'000	30 648	25 658	34 610	156 844	179 326	14,3
	3. Flats and townhouses	Number	24	1	31	164	123	-25,0
		square metres	2 060	126	3 214	19 327	13 619	-29,5
		R'000	5 150	534	9 532	48 868	36 844	-24,6
	4. Other residential buildings 2/	square metres	0	0	0	0	0	
		R'000	0	0	0	0	0	
5. Total residential buildings	R'000	40 289	30 870	47 361	227 984	249 353	9,4	
2. Non-residential buildings	1. Office and banking space	square metres	0	0	0	2 425	1 176	-51,5
		R'000	0	0	0	5 303	3 528	-33,5
	2. Shopping space	square metres	0	710	0	14 101	4 173	-70,4
		R'000	0	1 420	0	26 105	10 454	-60,0
	3. Industrial and warehouse space	square metres	0	0	0	1 713	2 499	45,9
		R'000	0	0	0	4 997	5 181	3,7
	4. Other non-residential buildings 3/	square metres	0	0	893	1 305	1 173	-10,1
		R'000	0	0	1 786	3 654	2 402	-34,3
	5. Total non-residential buildings	R'000	0	1 420	1 786	40 059	21 565	-46,2
3. Additions and alterations	1. Dwelling-houses	square metres	1 332	1 284	682	6 517	7 659	17,5
		R'000	3 514	3 366	1 737	15 299	18 104	18,3
	2. Other buildings 4/	square metres	0	1 127	83	2 005	1 506	-24,9
		R'000	0	2 253	183	5 736	3 098	-46,0
	3. Total additions and alterations	R'000	3 514	5 619	1 920	21 035	21 202	0,8
4. Recorded buildings completed	1. Total at current prices	R'000	43 803	37 909	51 067	289 078	292 120	1,1

1/ The percentage change between cumulative figures for 2006 and 2007.

2/ Other residential buildings include institutions for the disabled, boarding houses, hostels and tourism accommodation e.g. hotels, motels, guesthouses, holiday chalets, bed-and-breakfast accommodation and casinos.

3/ Other non-residential space includes churches, sport and recreation clubs, schools, crèches, hospitals and all other non-residential space.

4/ Other buildings include other residential buildings, non-residential buildings and internal alterations.

* Revised.

Table 29 - Subsidised low-cost dwelling-houses completed and in process of completion 1/

Province	Year	Number	Square metres 2/	Value R'000 2/
Western Cape	2002	19 534	531 116	168 852
	2003	16 926	507 780	247 187
	2004	12 751	382 530	211 424
Eastern Cape	2002	46 700	1 575 675	473 806
	2003	35 005	1 050 150	511 213
	2004	34 923	1 047 690	579 058
Northern Cape	2002	5 189	164 906	68 078
	2003	4 354	130 620	63 586
	2004	3 645	109 350	60 438
Free State	2002	8 617	348 492	154 121
	2003	14 848	445 440	216 840
	2004	16 522	495 660	273 951
KwaZulu-Natal	2002	21 958	831 349	234 041
	2003	31 372	941 160	458 157
	2004	35 968	1 079 040	596 385
North West	2002	21 309	630 115	210 439
	2003	13 809	414 270	201 667
	2004	10 149	304 470	168 281
Gauteng	2002	29 939	991 571	321 943
	2003	42 862	1 285 860	625 957
	2004	33 260	997 800	551 484
Mpumalanga	2002	19 883	660 505	253 931
	2003	21 336	640 080	246 079
	2004	18 808	564 240	311 855
Limpopo	2002	15 382	605 877	183 769
	2003	15 596	467 880	227 764
	2004	16 338	490 140	270 900
South Africa	2002	188 511	6 339 606	2 068 980
	2003	196 108	5 883 240	2 798 450
	2004	182 364	5 470 920	3 023 777

Table 30 - Subsidised low-cost dwelling-houses completed: 1 April 2005 to 31 March 2006

Province	Number	Square metres 2/	Value R'000 2/
Western Cape	2 040	61 200	52 877
Eastern Cape	16 874	506 220	437 374
Northern Cape	5 293	158 790	137 195
Free State	17 635	529 050	457 099
KwaZulu-Natal	21 601	648 030	559 898
North West	14 445	433 350	374 414
Gauteng	23 409	702 270	606 761
Mpumalanga	14 389	431 670	372 963
Limpopo	21 973	659 190	569 540
South Africa	137 659	4 129 770	3 568 121

Table 31 - Subsidised low-cost dwelling-houses completed and in process of completion 1/: 1 April 2006 to 31 March 2007

Province	Number	Square metres 2/	R'000 2/
Western Cape	34 585	1 037 550	768 200
Eastern Cape	16 526	495 780	637 700
Northern Cape	3 880	116 400	104 800
Free State	19 662	589 860	528 400
KwaZulu-Natal	38 290	1 148 700	1 074 500
North West	46 972	1 409 160	696 500
Gauteng	77 044	2 311 320	1 748 300
Mpumalanga	10 651	319 530	329 900
Limpopo	23 609	708 270	646 700
South Africa	271 219	8 136 570	6 535 000

Source: Housing Subsidy System and Provincial Housing Departments co-ordinated by the National Department of Housing

1/ Includes all top structures completed and sites serviced in respect of the reporting period.

2/ Estimates by the National Department of Housing.

Explanatory notes

Introduction	1	Statistics South Africa (Stats SA) conducts a monthly building statistics survey collecting information regarding building plans passed and buildings completed, financed by the private sector, from the largest local government institutions in South Africa. According to these institutions, they are not always notified about low-cost housing projects and therefore do not include the bulk of low-cost dwelling-houses. Data regarding subsidised low-cost dwelling-houses, supplied by the Housing Subsidy System and Provincial Housing Departments and co-ordinated by the National Department of Housing, are shown in table 29 to table 31 (page 37).
	2	In order to improve timeliness of the publication, some information for the current month has been estimated due to late submission by respondents. These estimates will be revised in the next statistical release(s) as soon as actual information is available.
Purpose of the survey	3	The monthly survey data are used in monitoring the state of economy and formulation of economic policy. Furthermore, the results are important inputs to estimate the Gross Domestic Product (GDP) and to calculate the Composite Leading Business Cycle Indicator. The data are extensively used by the private sector.
Scope of the survey	4	This survey covers local government institutions conducting activities for the private sector regarding - <ul style="list-style-type: none"> • passing of building plans; and • final inspection of completed buildings.
Classification	5	Building activities is classified in division 5 according to the 1993 edition of the <i>Standard Industrial Classification of all Economic Activities, (SIC) Fifth Edition, Report No. 09-90-02</i> . The SIC is based on the 1990 <i>International Standard Industrial Classification of all Economic Activities (ISIC)</i> with suitable adaptations for local conditions.
Response rate	6	The preliminary response rate for the survey on building statistics for July 2007 was 94,7%. Improved response rate for June 2007 was 95,6%.
Statistical unit	7	The statistical unit for the collection of information is a local government institution. Local government institutions include district municipalities, metropolitan municipalities and local municipalities.
Survey methodology and design	8	<p>Stats SA conducts a monthly survey of metropolitan municipalities and large local municipalities on building plans passed and buildings completed. An annual survey of the remaining municipalities is conducted regarding buildings completed. The monthly survey represents approximately 90 percent of the total value of buildings completed. Information regarding building plans passed and buildings completed for the private sector is collected by mail, fax and telephone.</p> <p>According to the municipalities, they are not always notified about low-cost housing projects. Data regarding subsidised low-cost dwelling-houses, supplied by the provincial governments and co-ordinated by the National Department of Housing, are shown in table 29 and table 30 (page 37).</p>
Constant prices	9	The value of building plans passed and buildings completed at constant prices measures building activities in terms of ruling prices in a specific base year, which is currently 2000. The value of building plans passed at constant prices for each month is obtained by deflating the values at current prices with a price index known as the 'lump sum domestic buildings' as published in statistical release P0151: <i>JBCC Contract Price Adjustment Provisions Work Group Indices</i> . In order to be applicable, these indices (base February 1991=100) are converted to the base year 2000=100.

- 10** The value of buildings completed at constant prices is obtained by deflating the values at current prices with the price index which is used to calculate building plans passed at constant prices (see paragraph 8). Since the completion of buildings may extend over a few months to a few years, the current value of buildings completed is deflated by price indices which prevailed at the time the plans were passed. Therefore, the duration of the completion of different types of buildings are taken into account in ascertaining the deflators e.g. the value of dwelling-houses completed at constant prices at January 2007 is obtained by deflating the current value of dwelling-houses completed for January 2007 with the price index of a month six months prior to January 2007. Furthermore, the value of other residential buildings, non-residential buildings and additions and alterations at constant prices is obtained by deflating the current values with price indices of 12 months, 18 months and 12 months prior to the relevant month, respectively.
- Seasonal adjustment**
- 11** Seasonally adjusted estimates of building plans passed and buildings completed are generated each month, using the X-11 Seasonal Adjustment Program developed by US Bureau of the Census Economic Research and Analyses Division, 1968.
- 12** Seasonal adjustment is a means of removing the estimated effects of normal seasonal variation from the series so that the effects of other influences on the series can be more clearly recognised. Seasonal adjustment does not aim to remove irregular or non-seasonal influences which may be present in any particular month. Influences that are volatile or unsystematic can still make it difficult to interpret the movement of the series even after adjustment for seasonal variations. Therefore, the month-to-month movements of seasonally adjusted estimates may not be reliable indicators of trend behaviour.
- Trend cycle**
- 13** The trend is a long-term pattern or movement of a time series. The X-11 Seasonal Adjustment Program is used for smoothing seasonally adjusted data.
- Revised figures**
- 14** Revised figures are due to late submission of data to Stats SA, or to respondents reporting revisions or corrections to their figures. Figures for the latest month are therefore preliminary. Data are edited at municipal level.
- 15** Once a year the annual statistical release P5041.3 is published with the revised and updated information at provincial and municipal level for the previous calendar year. Due to this comprehensive revision, the monthly statistical release P5041.1 reflects provincial revision for 2006 where applicable.
- Related publications**
- 16** Users may also wish to refer to the following publications:
- P5041.3: Selected building statistics of the private sector as reported by local government institutions issued annually.
 - P9101.2: Actual and expected expenditure on construction by the public sector per statistical region issued annually.
 - Bulletin of Statistics issued quarterly.
 - South African Statistics issued annually.
 - Report 50-11-01 issued annually.
- Rounding-off of figures**
- 17** The figures in the tables have, where necessary, been rounded off to the nearest digit shown.
- Pre-release policy**
- 18** Stats SA's pre-release policy may be inspected at its website, www.statssa.gov.za

**Symbols and
abbreviations**

19	..	no meaningful percentage change between two specified periods available since either one or both of the totals are nil
	0	nil or figure too small to publish
	*	revised
	Stats SA	Statistics South Africa
	SIC	Standard Industrial Classification of all Economic Activities
	ISIC	International Standard Industrial Classification of all Economic Activities
	JBCC	Joint Building Contracts Committee
	CD	Compact Disc
	US	United States
	SARB	South African Reserve Bank
	DTI	Department of Trade and Industry

Glossary

Additions and alterations	They include extensions to existing buildings as well as internal and external alterations of existing buildings.
Blocks of flats	High-density housing consisting of a number of self-contained dwelling-units, each with at least one living-room together with a kitchen and bathroom, conjoined to similar units in one building.
Dwelling-house	A free-standing, complete structure on a separate stand or a self-contained dwelling-unit, granny flat, on the same premises as an existing residence. Out-buildings and garages are included.
Local government institutions	Include – <ul style="list-style-type: none"> • District municipalities; • Metropolitan municipalities; and • Local municipalities.
Municipality	A generic term describing the “unit” of government in the local spheres responsible for local government in a geographically demarcated area and including district, metropolitan and local municipalities. It is an institution consisting of a municipal council (elected political representatives) and municipal administration (appointed officials).
District municipality	Municipality that has municipal executive and legislative authority in an area that includes more than one municipality, and which is described in section 155(1) of the Constitution as a category C municipality (Refer to Local Government: Municipal Structure Act, 1998 (Act No. 117 of 1998)).
Metropolitan municipality	Municipality that has municipal executive and legislative authority in an area that includes more than one municipality, and which is described in section 155(1) of the Constitution as a category A municipality (Refer to Local Government: Municipal Structure Act, 1998 (Act No. 117 of 1998)).
Local municipality	Municipality that shares municipal executive and legislative authority in its area with a district municipality within whose area it falls, that is described in section 155(1) of the constitution as a category B municipality.
Non-residential buildings	Comprise factories, commercial, financial and other office buildings, as well as other buildings not used for residential purposes, such as churches, halls, clubs, schools and hospitals.
Other residential buildings	Institutions for the disabled, boarding houses, old people’s homes, hostels, hotels, motels, guesthouses, holiday chalets, bed-and-breakfast accommodation, entertainment centres and casinos.
Percentage change	<p>When using monthly actual values, the percentage change is the change in actual values of building activities (building plans passed or buildings completed) of the relevant month compared with the actual values of building activities (building plans passed or buildings completed) of the same month in the previous year expressed as a percentage.</p> <p>When using annual actual values, the percentage change is the change in the actual values of building activities (building plans passed or buildings completed) of the relevant year compared with the actual values of building activities (building plans passed or buildings completed) of the previous year expressed as a percentage.</p> <p>When using seasonally adjusted values, the percentage change is the change in the seasonally adjusted values of building activities (building plans passed or buildings completed) of the relevant month compared with the seasonally adjusted values of building activities (building plans passed or buildings completed) of the previous month expressed as a percentage.</p>

Reference period	One calendar month.
Residential buildings	Comprise dwelling-houses, flats, townhouses and other residential buildings.
Townhouses	Multiple, medium-density dwelling-units and include cluster housing, group housing, simplexes, duplexes, triplexes and other similar dwelling-units which are usually grouped together, with one level of each unit on ground level. This excludes blocks of flats.

General information

Stats SA publishes approximately 300 different statistical releases each year. It is not economically viable to produce them in more than one of South Africa's eleven official languages. Since the releases are used extensively, not only locally but also by international economic and social-scientific communities, Stats SA releases are published in English.

Stats SA has copyright on this publication. Users may apply the information as they wish, provided that they acknowledge Stats SA as the source of the basic data wherever they process, apply, utilise, publish or distribute the data and also that they specify that the relevant application and analysis (where applicable) result from their own processing of the data.

An advance release calendar is disseminated on www.statssa.gov.za

Stats SA products

A complete set of Stats SA publications is available at the Stats SA Library and the following libraries:

National Library of South Africa, Pretoria Division
National Library of South Africa, Cape Town Division
Natal Society Library, Pietermaritzburg
Library of Parliament, Cape Town
Bloemfontein Public Library
Johannesburg Public Library
Eastern Cape Library Services, King William's Town
Central Regional Library, Polokwane
Central Reference Library, Nelspruit
Central Reference Collection, Kimberley
Central Reference Library, Mmabatho

Stats SA also provides a subscription service.

Electronic services

A large range of data are available via on-line services, diskette, CD and computer printouts. For more details about our electronic data services, contact (012) 310 8600/8390/8351/4892/8496/8095.

You can visit us on the Internet at: www.statssa.gov.za

Enquiries

Telephone number: (012) 310 8600/8390/8351/4892/8496/8095 (user information services)
(012) 310 8228/310 8007 (technical enquiries)
(012) 310 8161 (orders)
(012) 310 4883/4885/8018 (library)

Fax number: (012) 310 8664 (technical enquiries)

Email: Gretaz@statssa.gov.za (technical enquiries)
info@statssa.gov.za (user information services)
distribution@statssa.gov.za (orders)

Postal address: Private Bag X44, Pretoria, 0001

Produced by Stats SA