

Building statistics

July 2002

Co-operation between Statistics South Africa (Stats SA), the citizens of the country, the private sector and government institutions is essential for a successful statistical system. Without continued co-operation and goodwill, the timely release of relevant and reliable official statistics will not be possible.

**Embargo: 13:00
Date: 18 September 2002**

Stats SA publishes approximately three hundred different releases each year. It is not economically viable to produce them in more than one of South Africa's eleven official languages. Since the releases are used extensively, not only locally, but also by international economic and social-scientific communities, Stats SA releases are published in English only.

Additional information

Explanatory Notes

Introduction	<p>1 Statistics South Africa (Stats SA) conducts a monthly Building Statistics Survey collecting information regarding building plans approved and buildings completed, financed by the private sector, from a sample of local government institutions in South Africa. This statistical release contains information of building plans passed and buildings completed in respect of residential buildings, non-residential buildings and additions and alterations according to province and selected urban areas.</p> <p>2 In order to improve timeliness of the publication, some information for the current month have been estimated due to late submission by respondents. These estimates will be revised in the next statistical release(s) as soon as actual information is available.</p> <p>3 The actual and seasonally adjusted values (at current and at constant 2000 prices) and the percentage change of building plans passed and buildings completed according to type of building are reflected monthly from January 2000 in this statistical release (cf. tables 1 to 8).</p>
Scope of the survey	<p>4 This survey covers local government institutions conducting activities for the private sector regarding -</p> <ul style="list-style-type: none"> • approval of building plans; and • final inspection of completed buildings.
Classification	<p>5 The 1993 edition of the Standard Industrial Classification of all Economic Activities, (SIC) Fifth Edition, Report No. 09-90-02, was used to classify the statistical units. The SIC is based on the 1990 International Standard Industrial Classification of all Economic Activities (ISIC) with suitable adaptations for local conditions.</p> <p>6 The twelfth and last published edition of the Standard Code List of Areas, Report No. 09-09-03 (1994) was used to classify the statistical units according to province. The cities, towns and non-urban areas listed in this report are codified within magisterial district and province. The code list was compiled by Stats SA in collaboration with other interested bodies and the first edition was distributed in June 1977.</p>
Statistical unit	<p>7 The statistical unit for the collection of information is a local government institution. Local government institutions include municipalities, city councils, metropolitan councils, district councils, transitional councils and development and services boards.</p>
Survey methodology and design	<p>8 The sample for the monthly Building Statistics Survey consists of the largest local government institutions in South Africa, i.e. those that account for approximately 85% of the total rand value of buildings completed by the private sector.</p> <p>9 The survey is collected by mail each month from a sample of 128 local government institutions.</p>
Constant prices	<p>10 The value of building plans passed and buildings completed at constant prices measures building activities in terms of ruling prices in a specific base year, which is 2000 as from May 2002.</p> <p>11 The value of building plans passed at constant prices for each month is obtained by deflating the values at current prices with a price index known as the “lump sum domestic buildings” as published in statistical release P0151 – JBCC Contract Price Adjustment Provisions Work Group Indices. In order to be applicable, these indices (base February 1991=100) are converted to the base year 2000=100.</p>

- 12** The value of buildings completed at constant prices is obtained by deflating the values at current prices with the same price index which is used to calculate building plans passed at constant prices (cf. paragraph 11). The value of buildings completed is reported as at the time the plans were passed. Since the completion of buildings may extend over a few months to a few years, the current value of buildings completed is deflated by price indices as at the time the plans were passed in order to calculate the value of buildings completed at the time the plans were passed. Therefore, the duration of the completion of different types of buildings are taken into account in ascertaining the deflators e.g. the value of dwelling-houses completed at constant prices at January 2000 is obtained by deflating the current value of dwelling-houses completed for January 2000 with the price index of a month six months prior to January 2000. Furthermore, the value of other residential buildings, non-residential buildings and additions and alterations at constant prices is obtained by deflating the current values with price indices of 12 months, 18 months and 12 months prior to the relevant month, respectively.
- Seasonal adjustment**
- 13** Seasonally adjusted estimates of building plans passed and buildings completed are generated each month, using the X-11 Seasonal Adjustment Program developed by US Bureau of the Census Economic Research and Analyses Division, 1968.
- 14** Seasonal adjustment is a means of removing the estimated effects of normal seasonal variation from the series so that the effects of other influences on the series can be more clearly recognised. Seasonal adjustment does not aim to remove irregular or non-seasonal influences which may be present in any particular month. Influences that are volatile or unsystematic can still make it difficult to interpret the movement of the series even after adjustment for seasonal variations. Therefore, the month-to-month movements of seasonally adjusted estimates may not be reliable indicators of trend behaviour.
- Trend cycle**
- 15** The trend is a long-term pattern or movement of a time series. The X-11 Seasonal Adjustment Program is used for smoothing seasonally adjusted data.
- Related publications**
- 16** Users may also wish to refer to the following publications:
- P5041.3 – Building statistics issued annually.
 - P9101.2 – Actual and expected expenditure on construction by the public sector per statistical region issued annually.
 - Bulletin of Statistics issued quarterly.
 - South African Statistics issued annually.
- Unpublished statistics**
- 17** In some cases Stats SA can also make available statistics which are not published. The statistics can be made available in one or more of the following ways: computer printouts, CD and diskette. Generally a charge is made for providing unpublished statistics.
- Rounding-off of figures**
- 18** The figures in the tables have, where necessary, been rounded off to the nearest digit shown. There may, therefore, be slight discrepancies between the sums of the constituent items and the totals shown.
- Pre-release policy**
- 19** Stats SA has adopted the confidential pre-release policy in respect of selected economic indicators and specific government departments. The policy accords with practice among leading statistical agencies. The statistical integrity of the information and strict observance of the release time has been assured by the following procedure:
- 20** In respect of this statistical release, an official representative from the Office of the President, the Department of Trade and Industry (DTI), National Treasury and the South African Reserve Bank (SARB) will receive a copy of the release on a strictly confidential basis two hours in advance of the public issue.
- 21** Stats SA pre-release policy may be inspected at its Website, www.statssa.gov.za

Symbols and abbreviations	..	no meaningful percentage change between two specified periods available since either one or both of the totals are nil
	0	nil or figure too small to publish
	*	revised
	Stats SA	Statistics South Africa
	SIC	Standard Industrial Classification of all Economic Activities
	ISIC	International Standard Industrial Classification of all Economic Activities
	JBCC	Joint Building Contracts Committee
	CD	Compact Disc
	US	United States
	SARB	South African Reserve Bank
	DTI	Department of Trade and Industry

Technical notes

Response rate The response rate for July 2002 is 99,2%.

Local government institutions covered in the sample survey

Local government institutions according to province

Western Cape	Blaauwberg (includes Milnerton), Brackenfell, Breede River District Council, Cape Town, City of Tygerberg (Bellville, Durbanville, Goodwood, Lingeletu West, Parow and South Administration), Fish Hoek, George (includes Pacaltsdorp, Thembalethu and Herolds Bay), Gordon's Bay, Hangklip-Kleinmond (includes Kleinmond, Betty's Bay and Rooi-Els), Hermanus (includes Onrus River, Zwelihle, Sandbaai, Vermont, Hawston and Fisher Haven), Ikapa, Klein-Karoo District Council, Knysna (includes Khayaletu), Kuils River, Malmesbury, Mossel Bay (includes Boggom's Bay, Kleinbrak, Rheeboek and Tergniet), Oostenberg (Kraaifontein and Melton Rose - Blue Downs), Oudtshoorn, Overberg District Council, Paarl, Plettenberg Bay, Sedgfield, Simon's Town, Somerset West, South Peninsula, Stellenbosch, Strand, Wellington, West Coast District Council, Western Coast Peninsula (previously Vredenburg-Saldanha), Winelands District Council and Worcester.
Eastern Cape	Aliwal-Maletswai (includes Dukathole), Despatch, East London (includes Beacon Bay, Gomo Town, Gonubie and Mdantsane), Grahamstown (includes Rhini Township), Jeffrey's Bay, King William's Town (includes Bisho and Zwelitsha), Port Alfred, Port Elizabeth (includes Ibhayi and Motherwell), Uitenhage (includes KwaNobuhle), Umtata and Western District Council.
Northern Cape	Benede-Oranje District Council, Keimoes, Kimberley (including Galeshewe), Kuruman, Namaqualand District Council and Upington (includes Paballelo).
Free State	Allanridge, Bethlehem (includes Bohlokong), Bloemfontein (includes Bainsvlei, Bloemspuit and Mangaung), Botshabelo, Deneysville (includes Refengkgotso), Harrismith (includes Tsiamé), Kroonstad (includes Maokeng), Ladybrand (includes Manyatseng), Odendaalsrus (includes Kutlwanong), Parys, Phuthaditjhaba, Sasolburg (includes Zamdela), Virginia (includes Meloding) and Welkom (includes Thabong).
KwaZulu-Natal	Development and Services Board - Inland, Development and Services Board – North Coast, Dolphin Coast Borough (includes Ballito, Etete, Shakaskraal, Tinley Manor Beach and Umhlali Beach), Durban, Edendale, Empangeni (includes Ngwelezana), Hilton, Howick, Inner West City Council (includes Clermont, KwaDabeka, KwaNdengezi, New Germany, Pinetown, Queensburgh, Reservoir Hills, Shallcross and Westville), Kokstad, Kwa-Dukuza/Stanger (includes Blythedale Beach, Shakaville and Stanger), KwaMashu, Ladysmith (includes Emnambithi), Margate (includes Uvongo), Mpenjati/Southbroom (includes Southbroom, Marina Beach, San Lameer and Trafalgar), Newcastle (includes Madadeni, Osizweni and Blaauwboschlaagte), North Local Council - Tongaat (includes Canelands and Hambanati), North Local Council - Umhlanga Rocks (includes Mount Edgecombe and Umdloti Beach), North Local Council - Verulam, Outer West Local Council (includes Assagay, Botha's Hill, Cato Ridge, Drummond, Everton, Gillitts, Hillcrest, Inchanga, Kloof, Mpumalanga and Waterfall), Pennington, Pietermaritzburg/Msundini, Port Shepstone, Richards Bay, South Local Council (includes Amanzimtoti, Isipingo, Kingsburgh, KwaMakuta and Umbogintwini), Umlazi and Umtamvuna/Port Edward (includes Munster, Port Edward and Palm Beach).
North West	Bophirima District Council, Brits (includes Lethabile), Ga-Rankuwa, Klerksdorp, Lichtenburg, Mmabatho, Orkney (includes Kanana), Potchefstroom, Rustenburg, Vryburg and Zeerust.

Gauteng	Akasia (includes Elandsdoorn, Klipfontein, Kruisfontein and Soshanguve), Alberton (includes Tokoza), Benoni (includes Daveyton and Wattville), Boksburg (includes Vosloorus), Brakpan (includes Tsakane), Bronkhorstspuit, Carletonville (includes Khutsong), Centurion, Duduza, Eastern Services Council - Pretoria Area, Edenvale-Modderfontein, Germiston (includes Bedfordview and Katlehong), Greater Johannesburg - Eastern Metropolitan Local Council (includes Alexandra and Sandton), Greater Johannesburg - Northern Metropolitan Local Council (includes Randburg), Greater Johannesburg - Southern Metropolitan Local Council (includes Ennerdale, Lenasia and Johannesburg), Greater Johannesburg - Western Metropolitan Local Council (includes Diepmeadow, Dobsonville and Roodepoort), Heidelberg (includes Ratanda), Kempton Park (includes Tembisa), Krugersdorp (includes Kagiso and Munsieville), Meyerton, Midrand (includes Rabie Ridge and Ivory Park), Nigel, Pretoria (includes Atteridgeville and Mamelodi), Randfontein (includes Mohlakeng), Sebokeng (includes Boipatong, Bophelong and Sharpeville), Soweto, Springs (includes KwaThema), Vanderbijlpark, Vereeniging (includes Evaton), Western Services Council and Westonaria (includes Bekkersdal).
Mpumalanga	Delmas (includes Botleng), Eastvaal District Council, Ermelo (includes Wesselton and Cassim Park), Highveld District Council, Highveldridge Transitional Council (includes Evander, Embalenhle and Secunda), Komatipoort (includes Kamaqhekeza), KwaGuqa, KwaMhlanga, Malelane (includes Hectorspruit and Kamhlushwa), Middelburg (includes Mhluzi), Nelspruit (includes Kanyamazane and Lowveld Escarpment District Council as from January 2001), White River and Witbank.
Limpopo	Bosveld District Council, Giyani, Letaba (includes Nkowakowa and Tzaneen), Messina, Naboomspruit (includes Mookgophong), Nylstroom, Pietersburg-Polokwane (includes Seshego), Potgietersrus and Thabazimbi.

Local government institutions according to selected urban areas

Cape Town	Blaauwberg (includes Milnerton), Cape Town, City of Tygerberg (Bellville, Durbanville, Goodwood, Lingeletu West, Parow and South Administration), Fish Hoek, Ikapa, Oostenberg (Kraaifontein and Melton Rose - Blue Downs), Simon's Town and South Peninsula.
Port Elizabeth	Despatch, Port Elizabeth (including Ibhayi and Motherwell) and Uitenhage (including KwaNobuhle)
Durban	Durban, Inner West City Council (includes Clermont, KwaDabeka, KwaNdengezi, New Germany, Pinetown, Queenstown, Reservoir Hills, Shallcross and Westville), North Local Council - Verulam, Outer West Local Council (includes Assagay, Botha's Hill, Cato Ridge, Drummond, Everton, Gillitts, Hillcrest, Inchanga, Kloof, Mpumalanga and Waterfall) and South Local Council (includes Amanzimtoti, Isipingo, Kingsburgh, KwaMakuta and Umbogintwini).
Witwatersrand	Alberton (includes Thokoza), Benoni (includes Daveyton and Wattville), Boksburg (includes Vosloorus), Brakpan (includes Tsakane), Carletonville (includes Khutsong), Duduza, Edenvale-Modderfontein, Germiston (includes Bedfordview and Katlehong), Greater Johannesburg - Eastern Metropolitan Local Council (includes Alexandra and Sandton), Greater Johannesburg - Northern Metropolitan Local Council (includes Randburg), Greater Johannesburg - Southern Metropolitan Local Council (includes Ennerdale, Lenasia and Johannesburg), Greater Johannesburg - Western Metropolitan Local Council (includes Diepmeadow, Dobsonville and Roodepoort), Kempton Park (includes Tembisa), Krugersdorp (includes Kagiso and Munsieville), Midrand (includes Rabie Ridge and Ivory Park), Nigel, Randfontein (includes Mohlakeng), Soweto, Springs (includes KwaThema) and Westonaria (includes Bekkersdal).

Pretoria

Akasia (includes Elandsdoorn, Klipfontein and Soshanguve), Centurion, Eastern Services Council - Pretoria area and Pretoria (includes Atteridgeville and Mamelodi).

Bloemfontein

Bloemfontein (includes Bainsvlei, Bloemspruit and Mangaung).

Glossary

Additions and alterations	Additions and alterations include extensions to existing buildings as well as internal and external alterations of existing buildings.
Blocks of flats	Blocks of flats are regarded as high-density housing consisting of a number of self-contained dwelling-units with at least one living-room together with a kitchen and bathroom conjoined to similar units in one building.
Dwelling-house	A dwelling-house refers to a free-standing, complete structure on a separate stand or a self-contained dwelling-unit, granny flat, on the same premises as an existing residence. Out-buildings and garages are included.
Local government institutions	A local government institution is a generic term referring to any number of institutions involved in the local sphere of government. Local government institutions consist of municipalities, city councils, metropolitan councils, district councils, transitional local councils and development and services boards.
Non-residential buildings	Non-residential buildings comprise factories, commercial, financial and other office buildings, as well as other buildings not used for residential purposes, such as churches, halls, clubs, schools and hospitals.
Other residential buildings	Other residential buildings include institutions for the disabled, boarding houses, old people's homes, hostels, hotels, motels, guest houses, holiday chalets, bed-and-breakfast accommodation, entertainment centres and casinos.
Percentage change	<p>When using monthly actual values, the percentage change is the change in actual values of building activities (building plans passed or buildings completed) of the relevant month compared with the actual values of building activities (building plans passed or buildings completed) of the same month in the previous year expressed as a percentage.</p> <p>When using annual actual values, the percentage change is the change in the actual values of building activities (building plans passed or buildings completed) of the relevant year compared with the actual values of building activities (building plans passed or buildings completed) of the previous year expressed as a percentage.</p> <p>When using seasonally adjusted values, the percentage change is the change in the seasonally adjusted values of building activities (building plans passed or buildings completed) of the relevant month compared with the seasonally adjusted values of building activities (building plans passed or buildings completed) of the previous month expressed as a percentage.</p>
Reference period	Reference period is one calendar month.
Residential buildings	Residential buildings comprise dwelling-houses, flats, townhouses and other residential buildings.
Townhouses	Townhouses are multiple, medium-density dwelling-units and include cluster housing, group housing, simplexes, duplexes, triplexes and other similar dwelling-units which are usually grouped together, with one level of each unit on ground level. This excludes blocks of flats.

For more information

Stats SA publishes approximately 300 different statistical releases each year. It is not economically viable to produce them in more than one of South Africa's eleven official languages. Since the releases are used extensively, not only locally but also by international economic and social-scientific communities, Stats SA releases are published in English only.

Stats SA has copyright on this publication. Users may apply the information as they wish, provided that they acknowledge Stats SA as the source of the basic data wherever they process, apply, utilise, publish or distribute the data and also that they specify that the relevant application and analysis (where applicable) result from their own processing of the data.

Stats SA products

A complete set of Stats SA publications is available at the Stats SA Library and the following libraries:

National Library of South Africa, Pretoria Division
 National Library of South Africa, Cape Town Division
 Natal Society Library, Pietermaritzburg
 Library of Parliament, Cape Town
 Bloemfontein Public Library
 Johannesburg Public Library
 Eastern Cape Library Services, King William's Town
 Central Regional Library, Polokwane
 Central Reference Library, Nelspruit
 Central Reference Collection, Kimberley
 Central Reference Library, Mmabatho

Stats SA also provides a subscription service.

Electronic services

A large range of data are available via on-line services, diskette, CD and computer printouts. For more details about our electronic data services, contact (012) 310 8600/8390/8351/4892/8496/8095.

You can visit us on the Internet at: <http://www.statssa.gov.za>

Enquiries

Telephone number: (012) 310 8600/8390/8351/4892/8496/8095 (user enquiries)
 (012) 310 8228/310 8007 (technical enquiries)
 (012) 310 8161 (publications)
 (012) 310 8490 (library)

Fax number: (012) 310 8182

e-mail: Corrieb@statssa.pwv.gov.za
 Gretaz@statssa.pwv.gov.za

Postal address: Private Bag X44, Pretoria, 0001

Table 1 - Actual values and percentage change of building plans passed at current prices according to type of building

Year and month ^{2/}	Residential buildings		Non-residential buildings		Additions and alterations		Total	
	R'000	Percentage change	R'000	Percentage change	R'000	Percentage change	R'000	Percentage change
2000 Jan	490,776	- 11.3	163,926	- 31.0	365,596	+ 31.8	1,020,298	- 4.5
Feb	784,023	+ 48.3	521,389	+ 32.1	399,280	+ 12.3	1,704,692	+ 33.3
Mar	747,421	+ 12.0	359,267	- 75.3	515,668	+ 8.2	1,622,356	- 37.6
Apr	627,642	+ 18.3	271,151	- 27.6	382,300	+ 15.8	1,281,093	+ 3.7
May	874,847	+ 65.8	573,853	+ 109.3	473,062	+ 17.3	1,921,762	+ 59.5
Jun	853,154	+ 1.8	336,324	- 19.6	532,278	+ 31.8	1,721,756	+ 3.7
Jul	908,061	+ 42.5	484,669	+ 5.2	549,932	+ 30.8	1,942,662	+ 27.9
Aug	929,836	+ 31.1	353,488	- 9.0	492,627	+ 18.5	1,775,951	+ 23.8
Sep	826,851	+ 37.8	354,456	+ 16.0	465,836	- 3.8	1,647,143	+ 18.5
Oct	916,410	+ 37.9	492,884	+ 49.8	539,561	+ 23.5	1,948,855	+ 36.2
Nov	914,346	+ 28.6	493,166	- 29.7	503,659	- 6.2	1,911,171	- 2.0
Dec	606,148	+ 22.7	704,410	+ 212.8	317,835	+ 0.9	1,628,393	+ 57.5
Total	9,479,515	+ 28.4	5,108,983	- 8.2	5,537,634	+ 14.1	20,126,132	+ 13.1
2001 Jan	721,003	+ 46.9	477,489	+ 191.3	352,193	- 3.7	1,550,685	+ 52.0
Feb	826,607	+ 5.4	300,417	- 42.4	474,953	+ 19.0	1,601,977	- 6.0
Mar	929,196	+ 24.3	301,148	- 16.2	436,645	- 15.3	1,666,989	+ 2.8
Apr	738,858	+ 17.7	207,874	- 23.3	377,373	- 1.3	1,324,105	+ 3.4
May	999,426	+ 14.2	289,330	- 49.6	499,673	+ 5.6	1,788,429	- 6.9
Jun	901,450	+ 5.7	299,913	- 10.8	447,228	- 16.0	1,648,591	- 4.2
Jul	891,483	- 1.8	366,953	- 24.3	427,464	- 22.3	1,685,900	- 13.2
Aug	836,033	- 10.1	245,865	- 30.4	482,883	- 2.0	1,564,781	- 11.9
Sep	960,995	+ 16.2	303,367	- 14.4	526,113	+ 12.9	1,790,475	+ 8.7
Oct	1,196,455	+ 30.6	185,828	- 62.3	542,954	+ 0.6	1,925,237	- 1.2
Nov	974,628	+ 6.6	317,506	- 35.6	595,512	+ 18.2	1,887,646	- 1.2
Dec	649,614	+ 7.2	140,365	- 80.1	357,449	+ 12.5	1,147,428	- 29.5
Total	10,625,748	+ 12.1	3,436,055	- 32.7	5,520,440	- 0.3	19,582,243	- 2.7
2002 Jan	777,744	+ 7.9	168,097	- 64.8	399,729	+ 13.5	1,345,570	- 13.2
Feb	1,013,916	+ 22.7	247,016	- 17.8	447,620	- 5.8	1,708,552	+ 6.7
Mar	962,925	+ 3.6	465,942	+ 54.7	421,614	- 3.4	1,850,481	+ 11.0
Apr	1,138,926	+ 54.1	347,885	+ 67.4	519,452	+ 37.6	2,006,263	+ 51.5
May	1,105,380	+ 10.6	437,175	+ 51.1	926,607	+ 85.4	2,469,162	+ 38.1
Jun	1,086,216	+ 20.5	489,867	+ 63.3	540,001	+ 20.7	2,116,084	+ 28.4
Jul	1,114,528	+ 25.0	235,299	- 35.9	605,759	+ 41.7	1,955,586	+ 16.0

^{1/} The annual percentage change is the change in the actual values of building plans passed of the relevant year compared with the actual values of building plans passed of the previous year expressed as a percentage.

^{2/} The monthly percentage change is the change in the actual values of building plans passed of the relevant month compared with the actual values of building plans passed of the same month in the previous year expressed as a percentage.

Table 2 - Seasonally adjusted values and percentage change of building plans passed at current prices according to type of building

Year and month ^{1/}	Residential buildings		Non-residential buildings		Additions and alterations		Total	
	R'000	Percentage change	R'000	Percentage change	R'000	Percentage change	R'000	Percentage change
2000 Jan	630,059	- 10.3	250,972	- 17.6	485,102	+ 15.0	1,366,132	- 4.4
Feb	775,975	+ 23.2	586,966	+ 133.9	445,320	- 8.2	1,808,261	+ 32.4
Mar	699,205	- 9.9	333,224	- 43.2	472,133	+ 6.0	1,504,561	- 16.8
Apr	703,298	+ 0.6	311,315	- 6.6	440,312	- 6.7	1,454,924	- 3.3
May	803,098	+ 14.2	519,109	+ 66.7	451,222	+ 2.5	1,773,429	+ 21.9
Jun	810,287	+ 0.9	304,356	- 41.4	508,262	+ 12.6	1,622,905	- 8.5
Jul	836,059	+ 3.2	387,171	+ 27.2	508,623	+ 0.1	1,731,853	+ 6.7
Aug	895,069	+ 7.1	350,740	- 9.4	465,056	- 8.6	1,710,865	- 1.2
Sep	807,182	- 9.8	340,560	- 2.9	423,823	- 8.9	1,571,565	- 8.1
Oct	772,366	- 4.3	466,483	+ 37.0	474,502	+ 12.0	1,713,351	+ 9.0
Nov	858,518	+ 11.2	402,209	- 13.8	426,063	- 10.2	1,686,790	- 1.6
Dec	858,793	+ 0.0	977,182	+ 143.0	433,624	+ 1.8	2,269,600	+ 34.6
2001 Jan	916,249	+ 6.7	769,400	- 21.3	458,088	+ 5.6	2,143,737	- 5.5
Feb	812,961	- 11.3	350,715	- 54.4	539,396	+ 17.7	1,703,072	- 20.6
Mar	879,644	+ 8.2	269,984	- 23.0	400,969	- 25.7	1,550,597	- 9.0
Apr	844,633	- 4.0	246,571	- 8.7	435,026	+ 8.5	1,526,230	- 1.6
May	903,357	+ 7.0	251,357	+ 1.9	470,404	+ 8.1	1,625,118	+ 6.5
Jun	851,413	- 5.8	272,879	+ 8.6	422,876	- 10.1	1,547,168	- 4.8
Jul	824,855	- 3.1	283,770	+ 4.0	402,532	- 4.8	1,511,157	- 2.3
Aug	802,293	- 2.7	242,473	- 14.6	457,250	+ 13.6	1,502,016	- 0.6
Sep	940,004	+ 17.2	292,338	+ 20.6	476,896	+ 4.3	1,709,237	+ 13.8
Oct	1,015,335	+ 8.0	179,747	- 38.5	478,615	+ 0.4	1,673,697	- 2.1
Nov	916,399	- 9.7	258,973	+ 44.1	500,490	+ 4.6	1,675,862	+ 0.1
Dec	914,733	- 0.2	197,529	- 23.7	494,781	- 1.1	1,607,043	- 4.1
2002 Jan	982,392	+ 7.4	278,768	+ 41.1	511,493	+ 3.4	1,772,653	+ 10.3
Feb	987,808	+ 0.6	289,094	+ 3.7	511,892	+ 0.1	1,788,793	+ 0.9
Mar	921,884	- 6.7	412,438	+ 42.7	389,678	- 23.9	1,724,000	- 3.6
Apr	1,318,636	+ 43.0	420,305	+ 1.9	600,082	+ 54.0	2,339,023	+ 35.7
May	987,642	- 25.1	371,170	- 11.7	863,899	+ 44.0	2,222,711	- 5.0
Jun	1,025,120	+ 3.8	451,115	+ 21.5	507,317	- 41.3	1,983,552	- 10.8
Jul	1,038,112	+ 1.3	179,300	- 60.3	577,567	+ 13.8	1,794,979	- 9.5

^{1/} The percentage change is the change in the seasonally adjusted values of building plans passed of the relevant month compared with the seasonally adjusted values of building plans passed of the previous month expressed as a percentage.

Table 3 - Actual values and percentage change of building plans passed at constant 2000 prices according to type of building

Year and month ^{2/}	Residential buildings		Non-residential buildings		Additions and alterations		Total	
	R'000	Percentage change	R'000	Percentage change	R'000	Percentage change	R'000	Percentage change
2000 Jan	508,050	- 13.2	169,696	- 32.5	378,464	+ 28.9	1,056,210	- 6.6
Feb	808,271	+ 46.0	537,514	+ 30.1	411,629	+ 10.6	1,757,414	+ 31.2
Mar	765,016	+ 9.7	367,725	- 75.8	527,808	+ 6.0	1,660,549	- 38.8
Apr	636,554	+ 15.4	275,001	- 29.4	387,728	+ 13.0	1,299,283	+ 1.2
May	881,014	+ 60.8	577,898	+ 103.0	476,397	+ 13.8	1,935,309	+ 54.7
Jun	855,721	- 1.2	337,336	- 22.0	533,880	+ 27.8	1,726,937	+ 0.6
Jul	903,543	+ 37.5	482,258	+ 1.5	547,196	+ 26.3	1,932,997	+ 23.5
Aug	917,903	+ 41.0	348,952	- 13.0	486,305	+ 13.4	1,753,160	+ 18.4
Sep	813,029	+ 31.7	348,531	+ 10.9	458,049	- 8.0	1,619,609	+ 13.3
Oct	897,561	+ 31.5	482,746	+ 42.9	528,463	+ 17.9	1,908,770	+ 29.9
Nov	891,175	+ 22.3	480,669	- 33.1	490,896	- 10.8	1,862,740	- 6.7
Dec	589,065	+ 16.7	684,558	+ 197.3	308,878	- 4.1	1,582,501	+ 49.7
Total	9,466,902	+ 23.9	5,092,884	- 11.7	5,535,693	+ 10.2	20,095,479	+ 9.0
2001 Jan	692,606	+ 36.3	458,683	+ 170.3	338,322	- 10.6	1,489,611	+ 41.0
Feb	791,011	- 2.1	287,480	- 46.5	454,500	+ 10.4	1,532,991	- 12.8
Mar	884,107	+ 15.6	286,535	- 22.1	415,457	- 21.3	1,586,099	- 4.5
Apr	699,014	+ 9.8	196,664	- 28.5	357,023	- 7.9	1,252,701	- 3.6
May	939,310	+ 6.6	271,927	- 52.9	469,617	- 1.4	1,680,854	- 13.1
Jun	845,638	- 1.2	281,344	- 16.6	419,538	- 21.4	1,546,520	- 10.4
Jul	831,607	- 8.0	342,307	- 29.0	398,754	- 27.1	1,572,668	- 18.6
Aug	778,429	- 15.2	228,925	- 34.4	449,612	- 7.5	1,456,966	- 16.9
Sep	893,118	+ 9.9	281,940	- 19.1	488,953	+ 6.7	1,664,011	+ 2.7
Oct	1,106,804	+ 23.3	171,904	- 64.4	502,270	- 5.0	1,780,978	- 6.7
Nov	896,622	+ 0.6	292,094	- 39.2	547,849	+ 11.6	1,736,565	- 6.8
Dec	594,885	+ 1.0	128,539	- 81.2	327,334	+ 6.0	1,050,758	- 33.6
Total	9,953,151	+ 5.1	3,228,342	- 36.6	5,169,229	- 6.6	18,350,722	- 8.7
2002 Jan	695,035	+ 0.4	150,221	- 67.2	357,220	+ 5.6	1,202,476	- 19.3
Feb	889,400	+ 12.4	216,681	- 24.6	392,649	- 13.6	1,498,730	- 2.2
Mar	838,055	- 5.2	405,520	+ 41.5	366,940	- 11.7	1,610,515	+ 1.5
Apr	977,619	+ 39.9	298,614	+ 51.8	445,882	+ 24.9	1,722,115	+ 37.5
May	935,178	- 0.4	369,860	+ 36.0	783,931	+ 66.9	2,088,969	+ 24.3
Jun*	937,201	+ 10.8	422,664	+ 50.2	465,920	+ 11.1	1,825,785	+ 18.1
Jul	955,037	+ 14.8	201,627	- 41.1	519,074	+ 30.2	1,675,738	+ 6.6

^{1/} The annual percentage change is the change in the actual values of building plans passed of the relevant year compared with the actual values of building plans passed of the previous year expressed as a percentage.

^{2/} The monthly percentage change is the change in the actual values of building plans passed of the relevant month compared with the actual values of building plans passed of the same month in the previous year expressed as a percentage.

Table 4 - Seasonally adjusted values and percentage change of building plans passed at constant 2000 prices according to type of building

Year and month ^{1/}	Residential buildings		Non-residential buildings		Additions and alterations		Total	
	R'000	Percentage change	R'000	Percentage change	R'000	Percentage change	R'000	Percentage change
2000 Jan	652,482	- 8.8	257,959	- 17.0	500,410	+ 25.4	1,410,850	- 2.9
Feb	802,894	+ 23.1	601,307	+ 133.1	459,897	- 8.1	1,864,098	+ 32.1
Mar	712,829	- 11.2	341,298	- 43.2	483,957	+ 5.2	1,538,084	- 17.5
Apr	712,556	+ 0.0	315,456	- 7.6	447,472	- 7.5	1,475,484	- 4.1
May	813,045	+ 14.1	533,447	+ 69.1	456,270	+ 2.0	1,802,762	+ 22.2
Jun	810,365	- 0.3	304,154	- 43.0	509,586	+ 11.7	1,624,105	- 9.9
Jul	832,531	+ 2.7	388,925	+ 27.9	506,130	- 0.7	1,727,586	+ 6.4
Aug	884,955	+ 6.3	346,809	- 10.8	460,090	- 9.1	1,691,854	- 2.1
Sep	794,424	- 10.2	334,974	- 3.4	417,096	- 9.3	1,546,494	- 8.6
Oct	756,431	- 4.8	456,664	+ 36.3	464,550	+ 11.4	1,677,644	+ 8.5
Nov	835,352	+ 10.4	385,740	- 15.5	413,740	- 10.9	1,634,832	- 2.6
Dec	830,443	- 0.6	947,371	+ 145.6	418,242	+ 1.1	2,196,056	+ 34.3
2001 Jan	880,125	+ 6.0	733,359	- 22.6	438,330	+ 4.8	2,051,814	- 6.6
Feb	780,425	- 11.3	333,023	- 54.6	517,410	+ 18.0	1,630,858	- 20.5
Mar	834,336	+ 6.9	256,816	- 22.9	382,140	- 26.1	1,473,291	- 9.7
Apr	798,171	- 4.3	233,131	- 9.2	413,102	+ 8.1	1,444,404	- 2.0
May	854,607	+ 7.1	241,272	+ 3.5	444,028	+ 7.5	1,539,907	+ 6.6
Jun	796,220	- 6.8	254,549	+ 5.5	396,557	- 10.7	1,447,326	- 6.0
Jul	769,902	- 3.3	268,460	+ 5.5	375,305	- 5.4	1,413,667	- 2.3
Aug	748,131	- 2.8	226,058	- 15.8	426,562	+ 13.7	1,400,751	- 0.9
Sep	874,268	+ 16.9	271,625	+ 20.2	443,400	+ 3.9	1,589,293	+ 13.5
Oct	938,900	+ 7.4	166,108	- 38.8	442,313	- 0.2	1,547,320	- 2.6
Nov	841,631	- 10.4	233,972	+ 40.9	458,727	+ 3.7	1,534,331	- 0.8
Dec	833,567	- 1.0	180,500	- 22.9	450,099	- 1.9	1,464,166	- 4.6
2002 Jan	877,312	+ 5.2	247,027	+ 36.9	455,244	+ 1.1	1,579,583	+ 7.9
Feb	868,853	- 1.0	251,487	+ 1.8	450,220	- 1.1	1,570,559	- 0.6
Mar	800,236	- 7.9	358,708	+ 42.6	339,606	- 24.6	1,498,549	- 4.6
Apr	1,130,740	+ 41.3	360,666	+ 0.5	517,300	+ 52.3	2,008,706	+ 34.0
May	841,342	- 25.6	321,027	- 11.0	733,927	+ 41.9	1,896,295	- 5.6
Jun	881,915	+ 4.8	386,870	+ 20.5	437,733	- 40.4	1,706,517	- 10.0
Jul	890,070	+ 0.9	156,030	- 59.7	494,611	+ 13.0	1,540,711	- 9.7

^{1/} The percentage change is the change in the seasonally adjusted values of building plans passed of the relevant month compared with the seasonally adjusted values of building plans passed of the previous month expressed as a percentage.

Table 5 - Actual values and percentage change of buildings completed at current prices according to type of building

Year ^{1/} and month ^{2/}	Residential buildings		Non-residential buildings		Additions and alterations		Total	
	R'000	Percentage change	R'000	Percentage change	R'000	Percentage change	R'000	Percentage change
2000 Jan	299,212	- 4.7	195,988	- 0.6	183,959	- 4.7	679,159	- 3.5
Feb	353,141	- 11.0	205,549	- 4.3	221,978	- 9.3	780,668	- 8.8
Mar	419,416	- 3.0	212,379	- 13.7	268,745	+ 16.5	900,540	- 1.0
Apr	364,713	- 3.5	224,048	+ 23.4	188,808	- 5.8	777,569	+ 2.3
May	473,124	+ 21.0	390,533	+ 99.6	293,343	+ 64.1	1,157,000	+ 51.2
Jun	362,558	- 13.7	174,728	- 16.2	170,986	+ 11.2	708,272	- 9.5
Jul	407,406	- 15.3	472,668	+ 79.0	220,828	- 18.9	1,100,902	+ 8.2
Aug	449,691	- 2.4	285,994	+ 39.6	211,008	- 17.5	946,693	+ 2.7
Sep	510,979	+ 3.6	270,539	+ 37.2	199,622	- 10.6	981,140	+ 7.4
Oct	462,270	+ 10.2	195,491	- 4.0	238,257	+ 3.8	896,018	+ 5.1
Nov	555,802	+ 20.5	186,442	- 54.5	255,900	+ 21.7	998,144	- 7.7
Dec	383,114	+ 9.6	316,801	+ 74.5	149,622	+ 2.2	849,537	+ 25.4
Total	5,041,426	+ 0.9	3,131,160	+ 15.7	2,603,056	+ 2.5	10,775,642	+ 5.2
2001 Jan	643,047	+ 114.9	238,434	+ 21.7	201,057	+ 9.3	1,082,538	+ 59.4
Feb	428,803	+ 21.4	285,619	+ 39.0	244,636	+ 10.2	959,058	+ 22.9
Mar	489,687	+ 16.8	159,637	- 24.8	286,396	+ 6.6	935,720	+ 3.9
Apr	366,061	+ 0.4	169,796	- 24.2	185,541	- 1.7	721,398	- 7.2
May	447,895	- 5.3	300,533	- 23.0	295,847	+ 0.9	1,044,275	- 9.7
Jun	539,545	+ 48.8	338,853	+ 93.9	294,854	+ 72.4	1,173,252	+ 65.6
Jul	396,717	- 2.6	121,617	- 74.3	232,836	+ 5.4	751,170	- 31.8
Aug	431,845	- 4.0	117,368	- 59.0	214,644	+ 1.7	763,857	- 19.3
Sep*	461,515	- 9.7	1,417,979	+ 424.1	169,974	- 14.9	2,049,468	+ 108.9
Oct	667,250	+ 44.3	285,644	+ 46.1	237,138	- 0.5	1,190,032	+ 32.8
Nov	616,443	+ 10.9	211,109	+ 13.2	288,778	+ 12.8	1,116,330	+ 11.8
Dec	469,410	+ 22.5	173,587	- 45.2	124,610	- 16.7	767,607	- 9.6
Total	5,958,218	+ 18.2	3,820,176	+ 22.0	2,776,311	+ 6.7	12,554,705	+ 16.5
2002 Jan	579,544	- 9.9	137,089	- 42.5	174,833	- 13.0	891,466	- 17.7
Feb	487,783	+ 13.8	138,037	- 51.7	198,195	- 19.0	824,015	- 14.1
Mar	699,202	+ 42.8	169,849	+ 6.4	174,052	- 39.2	1,043,103	+ 11.5
Apr	641,454	+ 75.2	248,263	+ 46.2	381,482	+ 105.6	1,271,199	+ 76.2
May	671,871	+ 50.0	293,306	- 2.4	298,168	+ 0.8	1,263,345	+ 21.0
Jun	576,813	+ 6.9	206,136	- 39.2	248,350	- 15.8	1,031,299	- 12.1
Jul	586,285	+ 47.8	181,359	+ 49.1	204,590	- 12.1	972,234	+ 29.4

^{1/} The annual percentage change is the change in the actual values of buildings completed of the relevant year compared with the actual values of buildings completed of the previous year expressed as a percentage.

^{2/} The monthly percentage change is the change in the actual values of buildings completed of the relevant month compared with the actual values of buildings completed of the same month in the previous year expressed as a percentage.

Table 6 - Seasonally adjusted values and percentage change of buildings completed at current prices according to type of building

Year and month ^{1/}	Residential buildings		Non-residential buildings		Additions and alterations		Total	
	R'000	Percentage change	R'000	Percentage change	R'000	Percentage change	R'000	Percentage change
2000 Jan	361,952	- 9.1	242,858	+ 29.7	209,327	- 6.6	814,136	+ 0.6
Feb	393,136	+ 8.6	231,569	- 4.6	208,081	- 0.6	832,786	+ 2.3
Mar	393,720	+ 0.1	260,796	+ 12.6	225,229	+ 8.2	879,745	+ 5.6
Apr	399,228	+ 1.4	256,789	- 1.5	210,598	- 6.5	866,615	- 1.5
May	449,753	+ 12.7	350,522	+ 36.5	260,780	+ 23.8	1,061,055	+ 22.4
Jun	379,512	- 15.6	174,785	- 50.1	176,291	- 32.4	730,588	- 31.1
Jul	400,125	+ 5.4	372,724	+ 113.2	197,280	+ 11.9	970,129	+ 32.8
Aug	441,086	+ 10.2	267,897	- 28.1	207,258	+ 5.1	916,240	- 5.6
Sep	459,101	+ 4.1	216,330	- 19.2	207,145	- 0.1	882,575	- 3.7
Oct	441,649	- 3.8	179,505	- 17.0	221,138	+ 6.8	842,292	- 4.6
Nov	467,987	+ 6.0	207,138	+ 15.4	245,969	+ 11.2	921,093	+ 9.4
Dec	436,328	- 6.8	345,842	+ 67.0	230,155	- 6.4	1,012,324	+ 9.9
2001 Jan	754,573	+ 72.9	304,995	- 11.8	231,212	+ 0.5	1,290,779	+ 27.5
Feb	476,657	- 36.8	329,112	+ 7.9	235,177	+ 1.7	1,040,946	- 19.4
Mar	449,214	- 5.8	202,658	- 38.4	234,078	- 0.5	885,950	- 14.9
Apr	397,539	- 11.5	194,250	- 4.1	208,848	- 10.8	800,638	- 9.6
May	425,688	+ 7.1	246,621	+ 27.0	254,074	+ 21.7	926,383	+ 15.7
Jun	576,420	+ 35.4	338,416	+ 37.2	305,512	+ 20.2	1,220,348	+ 31.7
Jul	404,882	- 29.8	93,813	- 72.3	211,639	- 30.7	710,335	- 41.8
Aug	423,108	+ 4.5	108,172	+ 15.3	209,242	- 1.1	740,521	+ 4.2
Sep	409,679	- 3.2	1,130,948	+ 945.5	178,097	- 14.9	1,718,724	+ 132.1
Oct	636,369	+ 55.3	273,302	- 75.8	219,254	+ 23.1	1,128,924	- 34.3
Nov	520,896	- 18.1	241,230	- 11.7	278,944	+ 27.2	1,041,070	- 7.8
Dec	535,665	+ 2.8	195,368	- 19.0	191,489	- 31.4	922,522	- 11.4
2002 Jan	669,785	+ 25.0	175,310	- 10.3	202,193	+ 5.6	1,047,288	+ 13.5
Feb	540,214	- 19.3	161,759	- 7.7	192,353	- 4.9	894,326	- 14.6
Mar	637,501	+ 18.0	215,563	+ 33.3	140,981	- 26.7	994,046	+ 11.2
Apr	694,733	+ 9.0	282,110	+ 30.9	429,907	+ 204.9	1,406,750	+ 41.5
May	632,342	- 9.0	229,274	- 18.7	251,338	- 41.5	1,112,955	- 20.9
Jun	628,378	- 0.6	209,848	- 8.5	259,508	+ 3.3	1,097,734	- 1.4
Jul	614,844	- 2.2	137,722	- 34.4	188,219	- 27.5	940,784	- 14.3

^{1/} The percentage change is the change in the seasonally adjusted values of buildings completed of the relevant month compared with the seasonally adjusted values of buildings completed of the previous month expressed as a percentage.

Table 7 - Actual values and percentage change of buildings completed at constant 2000 prices according to type of building

Year ^{1/} and month ^{2/}	Residential buildings		Non-residential buildings		Additions and alterations		Total	
	R'000	Percentage change	R'000	Percentage change	R'000	Percentage change	R'000	Percentage change
2000 Jan	310,456	- 10.1	214,195	- 5.7	194,666	- 10.8	719,317	- 9.0
Feb	365,724	- 28.3	222,215	- 13.2	232,438	- 29.2	820,377	- 24.7
Mar	433,235	- 33.7	227,874	- 23.9	280,820	- 24.7	941,929	- 28.7
Apr	375,641	- 24.1	239,112	+ 3.6	196,266	- 12.8	811,019	- 14.3
May	486,811	- 26.2	415,461	- 3.9	304,614	- 1.9	1,206,886	- 14.6
Jun	371,504	- 31.4	185,683	- 9.6	176,821	+ 14.5	734,008	- 16.3
Jul	421,432	- 31.4	500,178	- 28.2	227,658	- 34.6	1,149,268	- 35.2
Aug	463,689	- 39.6	299,470	- 7.0	217,759	- 29.6	980,918	- 27.6
Sep	523,538	- 36.2	282,695	- 3.1	205,372	- 18.7	1,011,605	- 26.7
Oct	470,304	- 40.4	203,213	- 5.6	244,617	- 20.5	918,134	- 21.1
Nov	561,785	- 29.4	193,605	- 52.9	262,193	- 13.0	1,017,583	- 38.0
Dec	386,117	- 35.5	327,612	+ 6.6	152,988	+ 25.2	866,717	- 0.2
Total	5,170,236	- 3.1	3,311,313	+ 8.4	2,696,212	- 3.1	11,177,761	+ 0.0
2001 Jan	654,850	+ 110.9	245,808	+ 14.8	208,134	+ 6.9	1,108,792	+ 54.1
Feb	427,706	+ 16.9	294,756	+ 32.6	252,202	+ 8.5	974,664	+ 18.8
Mar	487,529	+ 12.5	164,236	- 27.9	293,138	+ 4.4	944,903	+ 0.3
Apr	361,669	- 3.7	174,329	- 27.1	188,175	- 4.1	724,173	- 10.7
May	438,090	- 10.0	307,923	- 25.9	297,933	- 2.2	1,043,946	- 13.5
Jun	528,083	+ 42.1	346,475	+ 86.6	295,741	+ 67.3	1,170,299	+ 59.4
Jul	383,132	- 9.1	125,898	- 74.8	231,678	+ 1.8	740,708	- 35.5
Aug	415,640	- 10.4	120,998	- 59.6	211,889	- 2.7	748,527	- 23.7
Sep*	442,133	- 15.5	1,451,360	+ 413.4	167,133	- 18.6	2,060,626	+ 103.7
Oct	638,358	+ 35.7	289,700	+ 42.6	232,261	- 5.1	1,160,319	+ 26.4
Nov	586,177	+ 4.3	212,597	+ 9.8	281,460	+ 7.3	1,080,234	+ 6.2
Dec	443,262	+ 14.8	174,109	- 46.9	121,098	- 20.8	738,469	- 14.8
Total	5,806,629	+ 12.3	3,908,189	+ 18.0	2,780,842	+ 3.1	12,495,660	+ 11.8
2002 Jan	545,960	- 16.6	136,407	- 44.5	167,947	- 19.3	850,314	- 23.3
Feb	458,165	+ 7.1	136,266	- 53.8	189,660	- 24.8	784,091	- 19.6
Mar	656,718	+ 34.7	167,010	+ 1.7	165,606	- 43.5	989,334	+ 4.7
Apr	596,575	+ 65.0	243,157	+ 39.5	360,910	+ 91.8	1,200,642	+ 65.8
May	622,362	+ 42.1	285,873	- 7.2	280,233	- 5.9	1,188,468	+ 13.8
Jun	530,538	+ 0.5	200,327	- 42.2	232,974	- 21.2	963,839	- 17.6
Jul	529,569	+ 38.2	174,216	+ 38.4	190,849	- 17.6	894,634	+ 20.8

^{1/} The annual percentage change is the change in the actual values of buildings completed of the relevant year compared with the actual values of buildings completed of the previous year expressed as a percentage.

^{2/} The monthly percentage change is the change in the actual values of buildings completed of the relevant month compared with the actual values of buildings completed of the same month in the previous year expressed as a percentage.

Table 8 - Seasonally adjusted values and percentage change of buildings completed at constant 2000 prices according to type of building

Year and month ^{1/}	Residential buildings		Non-residential buildings		Additions and alterations		Total	
	R'000	Percentage change	R'000	Percentage change	R'000	Percentage change	R'000	Percentage change
2000 Jan	375,745	- 9.5	265,946	+ 29.0	220,418	- 7.2	862,109	+ 0.4
Feb	408,174	+ 8.6	251,149	- 5.6	217,354	- 1.4	876,676	+ 1.7
Mar	406,905	- 0.3	280,448	+ 11.7	234,585	+ 7.9	921,938	+ 5.2
Apr	411,174	+ 1.0	274,336	- 2.2	218,563	- 6.8	904,074	- 1.9
May	463,425	+ 12.7	372,975	+ 36.0	272,062	+ 24.5	1,108,462	+ 22.6
Jun	386,468	- 16.6	185,444	- 50.3	182,468	- 32.9	754,380	- 31.9
Jul	413,629	+ 7.0	394,071	+ 112.5	203,576	+ 11.6	1,011,276	+ 34.1
Aug	454,889	+ 10.0	280,791	- 28.7	214,423	+ 5.3	950,103	- 6.0
Sep	469,638	+ 3.2	225,419	- 19.7	213,558	- 0.4	908,616	- 4.4
Oct	450,284	- 4.1	186,509	- 17.3	227,395	+ 6.5	864,188	- 4.9
Nov	473,716	+ 5.2	215,635	+ 15.6	252,442	+ 11.0	941,792	+ 9.0
Dec	439,582	- 7.2	355,730	+ 65.0	234,667	- 7.0	1,029,979	+ 9.4
2001 Jan	768,814	+ 74.9	315,097	- 11.4	238,128	+ 1.5	1,322,039	+ 28.4
Feb	476,145	- 38.1	340,692	+ 8.1	241,678	+ 1.5	1,058,515	- 19.9
Mar	446,936	- 6.1	209,075	- 38.6	238,720	- 1.2	894,731	- 15.5
Apr	392,795	- 12.1	199,780	- 4.4	211,566	- 11.4	804,140	- 10.1
May	416,871	+ 6.1	252,771	+ 26.5	256,928	+ 21.4	926,569	+ 15.2
Jun	562,248	+ 34.9	345,574	+ 36.7	306,739	+ 19.4	1,214,560	+ 31.1
Jul	391,366	- 30.4	97,079	- 71.9	210,795	- 31.3	699,240	- 42.4
Aug	407,057	+ 4.0	111,604	+ 15.0	207,024	- 1.8	725,685	+ 3.8
Sep	391,685	- 3.8	1,153,991	+ 934.0	175,511	- 15.2	1,721,187	+ 137.2
Oct	610,011	+ 55.7	277,150	- 76.0	215,151	+ 22.6	1,102,312	- 36.0
Nov	495,818	- 18.7	243,445	- 12.2	272,460	+ 26.6	1,011,722	- 8.2
Dec	505,660	+ 2.0	194,747	- 20.0	185,636	- 31.9	886,042	- 12.4
2002 Jan	631,183	+ 24.8	174,770	- 10.3	193,190	+ 4.1	999,143	+ 12.8
Feb	507,938	- 19.5	160,090	- 8.4	183,389	- 5.1	851,417	- 14.8
Mar	597,961	+ 17.7	212,553	+ 32.8	133,636	- 27.1	944,150	+ 10.9
Apr	646,116	+ 8.1	276,858	+ 30.3	406,349	+ 204.1	1,329,323	+ 40.8
May	586,109	- 9.3	223,603	- 19.2	237,110	- 41.6	1,046,822	- 21.3
Jun	577,489	- 1.5	203,778	- 8.9	243,734	+ 2.8	1,025,001	- 2.1
Jul	556,043	- 3.7	132,294	- 35.1	175,778	- 27.9	864,115	- 15.7

^{1/} The percentage change is the change in the seasonally adjusted values of buildings completed of the relevant month compared with the seasonally adjusted values of buildings completed of the previous month expressed as a percentage.

Table 9 - Building plans passed according to type of building: Total RSA

Type of building	July 2001 *	June 2002	July 2002	January 2001 to July 2001	January 2002 to July 2002	Percentage change between January 2001 to July 2001 and January 2002 to July 2002
Residential buildings						
Dwelling-houses smaller than 80 square metres						
Number of dwelling-houses	3,126	3,707	3,557	24,885	22,364	- 10.1
Total square metres	128,245	139,809	135,842	968,238	859,139	- 11.3
Total value at current prices (R'000)	126,334	138,354	143,299	893,100	877,282	- 1.8
Dwelling-houses equal to or larger than 80 square metres						
Number of dwelling-houses	1,786	2,063	2,127	12,463	13,679	+ 9.8
Total square metres	387,642	478,910	476,323	2,686,515	3,067,806	+ 14.2
Total value at current prices (R'000)	576,644	716,907	738,755	3,813,615	4,623,003	+ 21.2
Flats and townhouses						
Number of flats and townhouses	1,400	1,080	1,059	7,404	7,996	+ 8.0
Total square metres	130,797	114,709	120,714	752,568	927,290	+ 23.2
Total value at current prices (R'000)	180,746	189,730	217,757	1,132,380	1,489,691	+ 31.6
Other residential buildings ^{1/}						
Total square metres	6,971	16,379	13,036	74,891	98,805	+ 31.9
Total value at current prices (R'000)	7,759	41,225	14,717	168,928	209,659	+ 24.1
Total value of residential buildings at current prices (R'000)	891,483	1,086,216	1,114,528	6,008,023	7,199,635	+ 19.8
Non-residential buildings						
Office and banking space						
Total square metres	94,989	24,554	26,482	491,979	248,779	- 49.4
Total value at current prices (R'000)	120,367	44,691	37,596	839,142	484,558	- 42.3
Shopping space						
Total square metres	42,069	30,311	26,362	295,083	212,591	- 28.0
Total value at current prices (R'000)	69,274	44,810	50,922	423,626	346,344	- 18.2
Industrial and warehouse space						
Total square metres	100,671	181,179	69,083	512,963	675,305	+ 31.6
Total value at current prices (R'000)	129,307	330,828	108,052	654,805	1,127,128	+ 72.1
Other non-residential space ^{2/}						
Total square metres	39,746	37,736	25,466	246,423	286,903	+ 16.4
Total value at current prices (R'000)	48,005	69,538	38,729	325,551	433,251	+ 33.1
Total value of non-residential buildings at current prices (R'000)	366,953	489,867	235,299	2,243,124	2,391,281	+ 6.6
Additions and alterations						
Dwelling-houses						
Total square metres	245,848	296,893	270,076	1,666,529	1,843,779	+ 10.6
Total value at current prices (R'000)	299,850	393,102	382,423	2,066,593	2,491,370	+ 20.6
Other buildings ^{3/}						
Total square metres	79,182	91,814	103,493	533,745	658,779	+ 23.4
Total value at current prices (R'000)	127,614	146,899	223,336	948,936	1,369,412	+ 44.3
Total value of additions and alterations at current prices (R'000)	427,464	540,001	605,759	3,015,529	3,860,782	+ 28.0
Total value of building plans passed at current prices (R'000)	1,685,900	2,116,084	1,955,586	11,266,676	13,451,698	+ 19.4

1/ Other residential buildings include institutions for the disabled, boarding houses, old people's homes, hostels, hotels, motels, guest houses, holiday chalets, entertainment centres, bed-and-breakfast accommodation and casinos.

2/ Other non-residential space includes churches, sport and recreation clubs, schools, crèches, hospitals and all other non-residential space.

3/ Other buildings include additions and alterations to other residential buildings, non-residential buildings and internal alterations.

Table 10 - Building plans passed according to type of building and province: Western Cape

Type of building	July 2001 *	June 2002	July 2002	January 2001 to July 2001	January 2002 to July 2002	Percentage change between January 2001 to July 2001 and January 2002 to July 2002
Residential buildings						
Dwelling-houses smaller than 80 square metres						
Number of dwelling-houses	506	1,627	1,749	4,639	8,468	+ 82.5
Total square metres	24,181	54,138	58,782	188,298	286,584	+ 52.2
Total value at current prices (R'000)	29,143	59,614	68,030	224,955	327,025	+ 45.4
Dwelling-houses equal to or larger than 80 square metres						
Number of dwelling-houses	657	878	879	4,083	5,039	+ 23.4
Total square metres	131,128	196,204	184,514	850,929	1,079,295	+ 26.8
Total value at current prices (R'000)	216,157	304,808	299,339	1,275,465	1,710,649	+ 34.1
Flats and townhouses						
Number of flats and townhouses	220	127	280	1,704	2,002	+ 17.5
Total square metres	24,447	22,109	28,151	162,346	199,007	+ 22.6
Total value at current prices (R'000)	37,252	36,053	44,837	246,923	327,093	+ 32.5
Other residential buildings ^{1/}						
Total square metres	0	14,470	12,286	31,667	44,992	+ 42.1
Total value at current prices (R'000)	0	38,482	13,669	71,763	78,838	+ 9.9
Total value of residential buildings at current prices (R'000)	282,552	438,957	425,875	1,819,106	2,443,605	+ 34.3
Non-residential buildings						
Office and banking space						
Total square metres	66,800	8,386	13,783	163,534	57,686	- 64.7
Total value at current prices (R'000)	67,658	15,255	17,775	228,867	92,254	- 59.7
Shopping space						
Total square metres	15,162	14,548	4,296	127,950	34,581	- 73.0
Total value at current prices (R'000)	26,901	17,321	8,179	170,923	45,905	- 73.1
Industrial and warehouse space						
Total square metres	35,574	31,038	21,793	149,780	136,724	- 8.7
Total value at current prices (R'000)	38,738	41,282	33,278	147,884	171,983	+ 16.3
Other non-residential space ^{2/}						
Total square metres	9,283	9,283	5,128	80,204	42,752	- 46.7
Total value at current prices (R'000)	7,209	16,081	9,379	91,148	66,229	- 27.3
Total value of non-residential buildings at current prices (R'000)	140,506	89,939	68,611	638,822	376,371	- 41.1
Additions and alterations						
Dwelling-houses						
Total square metres	76,859	124,438	98,246	520,739	608,092	+ 16.8
Total value at current prices (R'000)	93,069	152,056	139,248	654,057	809,389	+ 23.7
Other buildings ^{3/}						
Total square metres	19,851	22,538	33,656	149,363	188,043	+ 25.9
Total value at current prices (R'000)	31,018	40,120	67,506	254,949	376,754	+ 47.8
Total value of additions and alterations at current prices (R'000)	124,087	192,176	206,754	909,006	1,186,143	+ 30.5
Total value of building plans passed at current prices (R'000)	547,145	721,072	701,240	3,366,934	4,006,119	+ 19.0

1/ Other residential buildings include institutions for the disabled, boarding houses, old people's homes, hostels, hotels, motels, guest houses, holiday chalets, entertainment centres, bed-and-breakfast accommodation and casinos.

2/ Other non-residential space includes churches, sport and recreation clubs, schools, crèches, hospitals and all other non-residential space.

3/ Other buildings include additions and alterations to other residential buildings, non-residential buildings and internal alterations.

Table 11 - Building plans passed according to type of building and province: Eastern Cape

Type of building	July 2001*	June 2002	July 2002	January 2001 to July 2001	January 2002 to July 2002	Percentage change between January 2001 to July 2001 and January 2002 to July 2002
Residential buildings						
Dwelling-houses smaller than 80 square metres						
Number of dwelling-houses	408	665	530	1,763	3,325	+ 88.6
Total square metres	16,546	27,884	22,908	78,125	142,443	+ 82.3
Total value at current prices (R'000)	17,336	31,128	28,307	95,737	176,663	+ 84.5
Dwelling-houses equal to or larger than 80 square metres						
Number of dwelling-houses	96	104	118	780	781	+ 0.1
Total square metres	20,200	22,005	24,052	117,252	155,451	+ 32.6
Total value at current prices (R'000)	24,244	30,724	34,746	152,199	215,571	+ 41.6
Flats and townhouses						
Number of flats and townhouses	17	22	18	688	348	-49.4
Total square metres	1,117	1,996	2,337	36,731	29,974	-18.4
Total value at current prices (R'000)	1,597	2,894	4,218	44,165	50,416	+ 14.2
Other residential buildings ^{1/}						
Total square metres	0	340	323	25,956	1,135	-95.6
Total value at current prices (R'000)	0	443	550	77,028	1,654	-97.9
Total value of residential buildings at current prices (R'000)	43,177	65,189	67,821	369,129	444,304	+ 20.4
Non-residential buildings						
Office and banking space						
Total square metres	196	0	2,482	3,744	6,283	+ 67.8
Total value at current prices (R'000)	376	0	3,600	7,027	9,523	+ 35.5
Shopping space						
Total square metres	830	804	1,664	8,686	15,916	+ 83.2
Total value at current prices (R'000)	1,293	964	3,261	12,844	31,517	+ 145.4
Industrial and warehouse space						
Total square metres	10,107	611	5,439	27,892	39,410	+ 41.3
Total value at current prices (R'000)	8,789	966	8,556	28,481	69,458	+ 143.9
Other non-residential space ^{2/}						
Total square metres	502	2,888	2,632	6,917	21,243	+ 207.1
Total value at current prices (R'000)	816	5,660	4,070	11,094	34,717	+ 212.9
Total value of non-residential buildings at current prices (R'000)	11,274	7,590	19,487	59,446	145,215	+ 144.3
Additions and alterations						
Dwelling-houses						
Total square metres	21,064	15,513	23,554	129,018	136,803	+ 6.0
Total value at current prices (R'000)	25,670	20,819	33,373	165,652	185,998	+ 12.3
Other buildings ^{3/}						
Total square metres	3,428	6,360	5,249	55,184	36,347	-34.1
Total value at current prices (R'000)	4,940	11,035	5,565	79,448	64,058	-19.4
Total value of additions and alterations at current prices (R'000)	30,610	31,854	38,938	245,100	250,056	+ 2.0
Total value of building plans passed at current prices (R'000)	85,061	104,633	126,246	673,675	839,575	+ 24.6

1/ Other residential buildings include institutions for the disabled, boarding houses, old people's homes, hostels, hotels, motels, guest houses, holiday chalets, entertainment centres, bed-and-breakfast accommodation and casinos.

2/ Other non-residential space includes churches, sport and recreation clubs, schools, crèches, hospitals and all other non-residential space.

3/ Other buildings include additions and alterations to other residential buildings, non-residential buildings and internal alterations.

Table 12 - Building plans passed according to type of building and province: Northern Cape

Type of building	July 2001	June 2002	July 2002	January 2001 to July 2001	January 2002 to July 2002	Percentage change between January 2001 to July 2001 and January 2002 to July 2002
Residential buildings						
Dwelling-houses smaller than 80 square metres						
Number of dwelling-houses	8	3	9	45	43	- 4.4
Total square metres	484	139	437	2,595	2,137	- 17.6
Total value at current prices (R'000)	754	239	750	3,976	3,542	- 10.9
Dwelling-houses equal to or larger than 80 square metres						
Number of dwelling-houses	23	10	12	119	61	- 48.7
Total square metres	4,365	2,145	2,127	20,595	12,559	- 39.0
Total value at current prices (R'000)	6,747	3,344	3,380	27,624	19,406	- 29.7
Flats and townhouses						
Number of flats and townhouses	1	0	6	12	12	+ 0.0
Total square metres	200	0	828	2,085	1,807	- 13.3
Total value at current prices (R'000)	278	0	1,490	2,834	3,253	+ 14.8
Other residential buildings ^{1/}						
Total square metres	0	0	0	0	0	..
Total value at current prices (R'000)	0	0	0	0	0	..
Total value of residential buildings at current prices (R'000)	7,779	3,583	5,620	34,434	26,201	- 23.9
Non-residential buildings						
Office and banking space						
Total square metres	0	0	0	191	446	+ 133.5
Total value at current prices (R'000)	0	0	0	124	628	+ 406.5
Shopping space						
Total square metres	0	0	192	206	192	- 6.8
Total value at current prices (R'000)	0	0	288	226	288	+ 27.4
Industrial and warehouse space						
Total square metres	1,244	498	0	2,336	2,415	+ 3.4
Total value at current prices (R'000)	1,742	697	0	2,744	3,469	+ 26.4
Other non-residential space ^{2/}						
Total square metres	0	797	207	1,632	2,128	+ 30.4
Total value at current prices (R'000)	0	1,753	455	2,312	4,581	+ 98.1
Total value of non-residential buildings at current prices (R'000)	1,742	2,450	743	5,406	8,966	+ 65.9
Additions and alterations						
Dwelling-houses						
Total square metres	3,058	2,430	3,796	16,933	18,644	+ 10.1
Total value at current prices (R'000)	5,110	4,302	6,390	27,292	31,717	+ 16.2
Other buildings ^{3/}						
Total square metres	1,751	251	876	5,371	3,293	- 38.7
Total value at current prices (R'000)	3,166	768	2,291	11,142	8,631	- 22.5
Total value of additions and alterations at current prices (R'000)	8,276	5,070	8,681	38,434	40,348	+ 5.0
Total value of building plans passed at current prices (R'000)	17,797	11,103	15,044	78,274	75,515	- 3.5

1/ Other residential buildings include institutions for the disabled, boarding houses, old people's homes, hostels, hotels, motels, guest houses, holiday chalets, entertainment centres, bed-and-breakfast accommodation and casinos.

2/ Other non-residential space includes churches, sport and recreation clubs, schools, crèches, hospitals and all other non-residential space.

3/ Other buildings include additions and alterations to other residential buildings, non-residential buildings and internal alterations.

Table 13 - Building plans passed according to type of building and province: Free State

Type of building	July 2001	June 2002	July 2002	January 2001 to July 2001	January 2002 to July 2002	Percentage change between January 2001 to July 2001 and January 2002 to July 2002
Residential buildings						
Dwelling-houses smaller than 80 square metres						
Number of dwelling-houses	248	309	340	1,606	1,563	-2.7
Total square metres	12,140	12,627	14,061	73,030	66,878	-8.4
Total value at current prices (R'000)	8,848	6,446	7,495	41,983	39,284	-6.4
Dwelling-houses equal to or larger than 80 square metres						
Number of dwelling-houses	56	73	69	428	517	+ 20.8
Total square metres	8,253	12,376	10,598	64,498	80,948	+ 25.5
Total value at current prices (R'000)	10,033	14,874	13,071	69,328	97,573	+ 40.7
Flats and townhouses						
Number of flats and townhouses	44	114	139	233	460	+ 97.4
Total square metres	6,282	10,061	17,210	30,075	48,326	+ 60.7
Total value at current prices (R'000)	8,030	12,227	25,277	45,309	69,093	+ 52.5
Other residential buildings ^{1/}						
Total square metres	3,154	0	267	4,406	3,025	-31.3
Total value at current prices (R'000)	3,061	0	258	4,912	7,363	+ 49.9
Total value of residential buildings at current prices (R'000)	29,972	33,547	46,101	161,532	213,313	+ 32.1
Non-residential buildings						
Office and banking space						
Total square metres	0	5,530	0	13,801	12,914	-6.4
Total value at current prices (R'000)	0	7,700	0	26,600	21,802	-18.0
Shopping space						
Total square metres	505	1,020	2,768	3,501	13,926	+ 297.8
Total value at current prices (R'000)	541	1,115	6,300	4,312	27,808	+ 544.9
Industrial and warehouse space						
Total square metres	1,000	131	5,053	4,385	13,147	+ 199.8
Total value at current prices (R'000)	800	180	6,000	3,326	12,303	+ 269.9
Other non-residential space ^{2/}						
Total square metres	1,071	1,646	712	7,039	8,440	+ 19.9
Total value at current prices (R'000)	1,600	1,458	875	9,246	10,036	+ 8.5
Total value of non-residential buildings at current prices (R'000)	2,941	10,453	13,175	43,484	71,949	+ 65.5
Additions and alterations						
Dwelling-houses						
Total square metres	7,493	7,140	9,334	52,573	59,150	+ 12.5
Total value at current prices (R'000)	7,846	7,839	10,951	55,063	65,041	+ 18.1
Other buildings ^{3/}						
Total square metres	3,486	2,100	4,998	11,286	18,408	+ 63.1
Total value at current prices (R'000)	5,200	3,165	7,441	22,146	39,882	+ 80.1
Total value of additions and alterations at current prices (R'000)	13,046	11,004	18,392	77,209	104,923	+ 35.9
Total value of building plans passed at current prices (R'000)	45,959	55,004	77,668	282,225	390,185	+ 38.3

1/ Other residential buildings include institutions for the disabled, boarding houses, old people's homes, hostels, hotels, motels, guest houses, holiday chalets, entertainment centres, bed-and-breakfast accommodation and casinos.

2/ Other non-residential space includes churches, sport and recreation clubs, schools, crèches, hospitals and all other non-residential space.

3/ Other buildings include additions and alterations to other residential buildings, non-residential buildings and internal alterations.

Table 14 - Building plans passed according to type of building and province: KwaZulu-Natal

Type of building	July 2001	June 2002	July 2002	January 2001 to July 2001	January 2002 to July 2002	Percentage change between January 2001 to July 2001 and January 2002 to July 2002
Residential buildings						
Dwelling-houses smaller than 80 square metres						
Number of dwelling-houses	119	371	165	1,614	1,443	- 10.6
Total square metres	6,043	13,058	7,043	71,490	57,547	- 19.5
Total value at current prices (R'000)	7,058	9,662	6,872	67,133	54,855	- 18.3
Dwelling-houses equal to or larger than 80 square metres						
Number of dwelling-houses	159	157	158	940	1,023	+ 8.8
Total square metres	35,796	40,044	34,638	207,374	228,945	+ 10.4
Total value at current prices (R'000)	51,589	69,339	56,167	301,567	356,394	+ 18.2
Flats and townhouses						
Number of flats and townhouses	86	29	85	550	500	- 9.1
Total square metres	12,060	5,103	16,252	76,120	78,825	+ 3.6
Total value at current prices (R'000)	19,794	9,443	27,688	123,856	132,368	+ 6.9
Other residential buildings ^{1/}						
Total square metres	1,135	461	0	1,273	31,840	+2,401.2
Total value at current prices (R'000)	901	600	0	1,231	34,015	+2,663.2
Total value of residential buildings at current prices (R'000)	79,342	89,044	90,727	493,787	577,632	+ 17.0
Non-residential buildings						
Office and banking space						
Total square metres	5,711	5,973	6,567	87,753	25,293	- 71.2
Total value at current prices (R'000)	11,355	16,022	9,054	197,376	65,972	- 66.6
Shopping space						
Total square metres	12,806	3,350	0	25,621	30,557	+ 19.3
Total value at current prices (R'000)	17,723	10,000	0	33,549	57,319	+ 70.9
Industrial and warehouse space						
Total square metres	15,006	5,637	14,164	80,784	111,640	+ 38.2
Total value at current prices (R'000)	20,332	6,199	23,904	89,823	232,996	+ 159.4
Other non-residential space ^{2/}						
Total square metres	2,501	3,088	6,115	32,272	70,616	+ 118.8
Total value at current prices (R'000)	3,325	3,892	7,565	38,748	84,669	+ 118.5
Total value of non-residential buildings at current prices (R'000)	52,735	36,113	40,523	359,496	440,956	+ 22.7
Additions and alterations						
Dwelling-houses						
Total square metres	37,700	38,311	38,756	228,773	244,242	+ 6.8
Total value at current prices (R'000)	44,208	52,504	50,343	272,953	319,343	+ 17.0
Other buildings ^{3/}						
Total square metres	19,659	19,652	15,029	96,737	138,684	+ 43.4
Total value at current prices (R'000)	40,390	31,823	57,067	204,816	397,176	+ 93.9
Total value of additions and alterations at current prices (R'000)	84,598	84,327	107,410	477,769	716,519	+ 50.0
Total value of building plans passed at current prices (R'000)	216,675	209,484	238,660	1,331,052	1,735,107	+ 30.4

1/ Other residential buildings include institutions for the disabled, boarding houses, old people's homes, hostels, hotels, motels, guest houses, holiday chalets, entertainment centres, bed-and-breakfast accommodation and casinos.

2/ Other non-residential space includes churches, sport and recreation clubs, schools, crèches, hospitals and all other non-residential space.

3/ Other buildings include additions and alterations to other residential buildings, non-residential buildings and internal alterations.

Table 15 - Building plans passed according to type of building and province: North West

Type of building	July 2001	June 2002	July 2002	January 2001 to July 2001	January 2002 to July 2002	Percentage change between January 2001 to July 2001 and January 2002 to July 2002
Residential buildings						
Dwelling-houses smaller than 80 square metres						
Number of dwelling-houses	904	27	43	3,825	588	- 84.6
Total square metres	28,955	1,493	2,500	131,232	27,481	- 79.1
Total value at current prices (R'000)	12,623	1,721	2,797	70,567	30,760	- 56.4
Dwelling-houses equal to or larger than 80 square metres						
Number of dwelling-houses	77	129	135	492	747	+ 51.8
Total square metres	14,396	25,223	28,358	85,963	136,675	+ 59.0
Total value at current prices (R'000)	19,517	27,914	33,706	101,855	171,470	+ 68.3
Flats and townhouses						
Number of flats and townhouses	58	197	47	200	581	+ 190.5
Total square metres	5,412	10,724	4,827	23,211	37,649	+ 62.2
Total value at current prices (R'000)	7,341	24,411	5,366	30,630	56,962	+ 86.0
Other residential buildings ^{1/}						
Total square metres	0	0	0	1,989	768	- 61.4
Total value at current prices (R'000)	0	0	0	1,664	781	- 53.1
Total value of residential buildings at current prices (R'000)	39,481	54,046	41,869	204,716	259,973	+ 27.0
Non-residential buildings						
Office and banking space						
Total square metres	0	873	322	3,644	5,874	+ 61.2
Total value at current prices (R'000)	0	982	600	5,999	9,148	+ 52.5
Shopping space						
Total square metres	3,415	1,099	1,146	16,708	14,908	- 10.8
Total value at current prices (R'000)	7,132	1,750	1,839	23,133	22,957	- 0.8
Industrial and warehouse space						
Total square metres	0	0	0	7,322	8,672	+ 18.4
Total value at current prices (R'000)	0	0	0	7,463	12,098	+ 62.1
Other non-residential space ^{2/}						
Total square metres	3,226	5,904	685	5,920	15,859	+ 167.9
Total value at current prices (R'000)	2,367	20,510	741	5,301	39,437	+ 644.0
Total value of non-residential buildings at current prices (R'000)	9,499	23,242	3,180	41,896	83,640	+ 99.6
Additions and alterations						
Dwelling-houses						
Total square metres	5,103	8,428	14,712	40,095	63,046	+ 57.2
Total value at current prices (R'000)	5,393	9,601	19,801	42,588	76,038	+ 78.5
Other buildings ^{3/}						
Total square metres	1,859	628	334	13,305	13,521	+ 1.6
Total value at current prices (R'000)	2,563	1,386	769	21,578	22,896	+ 6.1
Total value of additions and alterations at current prices (R'000)	7,956	10,987	20,570	64,166	98,934	+ 54.2
Total value of building plans passed at current prices (R'000)	56,936	88,275	65,619	310,778	442,547	+ 42.4

1/ Other residential buildings include institutions for the disabled, boarding houses, old people's homes, hostels, hotels, motels, guest houses, holiday chalets, entertainment centres, bed-and-breakfast accommodation and casinos.

2/ Other non-residential space includes churches, sport and recreation clubs, schools, crèches, hospitals and all other non-residential space.

3/ Other buildings include additions and alterations to other residential buildings, non-residential buildings and internal alterations.

Table 16 - Building plans passed according to type of building and province: Gauteng

Type of building	July 2001 *	June 2002	July 2002	January 2001 to July 2001	January 2002 to July 2002	Percentage change between January 2001 to July 2001 and January 2002 to July 2002
Residential buildings						
Dwelling-houses smaller than 80 square metres						
Number of dwelling-houses	788	565	574	7,140	5,297	- 25.8
Total square metres	33,660	22,906	22,891	269,133	204,871	- 23.9
Total value at current prices (R'000)	45,528	19,914	23,179	292,311	195,402	- 33.2
Dwelling-houses equal to or larger than 80 square metres						
Number of dwelling-houses	579	584	565	4,848	4,387	- 9.5
Total square metres	147,283	155,198	158,356	1,199,482	1,165,516	- 2.8
Total value at current prices (R'000)	214,540	229,547	252,078	1,703,796	1,773,013	+ 4.1
Flats and townhouses						
Number of flats and townhouses	400	563	462	3,158	3,802	+ 20.4
Total square metres	43,242	61,429	48,978	356,252	495,095	+ 39.0
Total value at current prices (R'000)	58,605	99,976	105,189	556,101	798,051	+ 43.5
Other residential buildings ^{1/}						
Total square metres	1,528	0	0	7,813	3,968	- 49.2
Total value at current prices (R'000)	2,292	0	0	10,129	6,253	- 38.3
Total value of residential buildings at current prices (R'000)	320,965	349,437	380,446	2,562,337	2,772,719	+ 8.2
Non-residential buildings						
Office and banking space						
Total square metres	22,282	3,792	3,328	214,765	134,622	- 37.3
Total value at current prices (R'000)	40,978	4,732	6,567	366,140	275,780	- 24.7
Shopping space						
Total square metres	9,202	7,617	14,073	99,429	74,276	- 25.3
Total value at current prices (R'000)	15,526	10,539	27,655	159,266	121,018	- 24.0
Industrial and warehouse space						
Total square metres	34,158	46,426	17,338	211,784	248,618	+ 17.4
Total value at current prices (R'000)	55,754	69,860	28,300	349,744	389,780	+ 11.4
Other non-residential space ^{2/}						
Total square metres	17,233	5,828	8,438	97,855	107,378	+ 9.7
Total value at current prices (R'000)	26,736	8,841	13,401	149,640	167,957	+ 12.2
Total value of non-residential buildings at current prices (R'000)	138,994	93,972	75,923	1,024,790	954,535	- 6.9
Additions and alterations						
Dwelling-houses						
Total square metres	77,646	83,721	63,211	581,697	599,378	+ 3.0
Total value at current prices (R'000)	100,188	123,362	100,892	744,479	867,019	+ 16.5
Other buildings ^{3/}						
Total square metres	26,523	36,644	39,034	185,320	237,055	+ 27.9
Total value at current prices (R'000)	35,597	53,106	75,431	320,837	418,306	+ 30.4
Total value of additions and alterations at current prices (R'000)	135,785	176,468	176,323	1,065,316	1,285,325	+ 20.7
Total value of building plans passed at current prices (R'000)	595,744	619,877	632,692	4,652,443	5,012,579	+ 7.7

1/ Other residential buildings include institutions for the disabled, boarding houses, old people's homes, hostels, hotels, motels, guest houses, holiday chalets, entertainment centres, bed-and-breakfast accommodation and casinos.

2/ Other non-residential space includes churches, sport and recreation clubs, schools, crèches, hospitals and all other non-residential space.

3/ Other buildings include additions and alterations to other residential buildings, non-residential buildings and internal alterations.

Table 17 - Building plans passed according to type of building and province: Mpumalanga

Type of building	July 2001*	June 2002	July 2002	January 2001 to July 2001	January 2002 to July 2002	Percentage change between January 2001 to July 2001 and January 2002 to July 2002
Residential buildings						
Dwelling-houses smaller than 80 square metres						
Number of dwelling-houses	117	106	121	3,970	1,464	- 63.1
Total square metres	4,492	5,363	5,584	137,638	60,696	- 55.9
Total value at current prices (R'000)	2,695	6,382	3,606	74,896	34,596	- 53.8
Dwelling-houses equal to or larger than 80 square metres						
Number of dwelling-houses	92	77	151	497	806	+ 62.2
Total square metres	18,068	16,834	25,760	92,514	146,148	+ 58.0
Total value at current prices (R'000)	23,810	22,638	35,559	117,179	191,668	+ 63.6
Flats and townhouses						
Number of flats and townhouses	573	12	15	819	211	- 74.2
Total square metres	37,949	1,413	1,572	60,461	26,751	- 55.8
Total value at current prices (R'000)	47,725	1,576	2,492	75,717	36,375	- 52.0
Other residential buildings ^{1/}						
Total square metres	1,154	1,108	160	1,595	12,556	+ 687.2
Total value at current prices (R'000)	1,505	1,700	240	2,105	79,825	+ 3692.2
Total value of residential buildings at current prices (R'000)	75,735	32,296	41,897	269,897	342,464	+ 26.9
Non-residential buildings						
Office and banking space						
Total square metres	0	0	0	3,671	3,110	- 15.3
Total value at current prices (R'000)	0	0	0	5,750	4,279	- 25.6
Shopping space						
Total square metres	149	1,428	2,223	1,529	23,181	+1,416.1
Total value at current prices (R'000)	158	2,142	3,400	2,260	30,501	+1,249.6
Industrial and warehouse space						
Total square metres	2,819	1,381	3,857	26,975	16,944	- 37.2
Total value at current prices (R'000)	2,542	1,639	5,356	23,411	21,320	- 8.9
Other non-residential space ^{2/}						
Total square metres	5,930	8,302	1,549	11,665	15,376	+ 31.8
Total value at current prices (R'000)	5,952	11,343	2,243	13,552	19,620	+ 44.8
Total value of non-residential buildings at current prices (R'000)	8,652	15,124	10,999	44,973	75,720	+ 68.4
Additions and alterations						
Dwelling-houses						
Total square metres	12,829	11,963	13,963	69,047	84,456	+ 22.3
Total value at current prices (R'000)	13,111	15,886	15,749	68,678	95,817	+ 39.5
Other buildings ^{3/}						
Total square metres	1,177	1,970	2,824	9,304	10,374	+ 11.5
Total value at current prices (R'000)	2,724	2,684	3,166	16,158	19,781	+ 22.4
Total value of additions and alterations at current prices (R'000)	15,835	18,570	18,915	84,836	115,598	+ 36.3
Total value of building plans passed at current prices (R'000)	100,222	65,990	71,811	399,706	533,782	+ 33.5

1/ Other residential buildings include institutions for the disabled, boarding houses, old people's homes, hostels, hotels, motels, guest houses, holiday chalets, entertainment centres, bed-and-breakfast accommodation and casinos.

2/ Other non-residential space includes churches, sport and recreation clubs, schools, crèches, hospitals and all other non-residential space.

3/ Other buildings include additions and alterations to other residential buildings, non-residential buildings and internal alterations.

Table 18 - Building plans passed according to type of building and province: Limpopo

Type of building	July 2001	June 2002	July 2002	January 2001 to July 2001	January 2002 to July 2002	Percentage change between January 2001 to July 2001 and January 2002 to July 2002
Residential buildings						
Dwelling-houses smaller than 80 square metres						
Number of dwelling-houses	28	34	26	283	173	-38.9
Total square metres	1,744	2,201	1,636	16,697	10,502	-37.1
Total value at current prices (R'000)	2,349	3,248	2,263	21,542	15,155	-29.6
Dwelling-houses equal to or larger than 80 square metres						
Number of dwelling-houses	47	51	40	276	318	+ 15.2
Total square metres	8,153	8,881	7,920	47,908	62,269	+ 30.0
Total value at current prices (R'000)	10,007	13,719	10,709	64,602	87,259	+ 35.1
Flats and townhouses						
Number of flats and townhouses	1	16	7	40	80	+ 100.0
Total square metres	88	1,874	559	5,287	9,856	+ 86.4
Total value at current prices (R'000)	124	3,150	1,200	6,845	16,080	+ 134.9
Other residential buildings ^{1/}						
Total square metres	0	0	0	192	521	+ 171.4
Total value at current prices (R'000)	0	0	0	96	930	+ 868.8
Total value of residential buildings at current prices (R'000)	12,480	20,117	14,172	93,085	119,424	+ 28.3
Non-residential buildings						
Office and banking space						
Total square metres	0	0	0	876	2,551	+ 191.2
Total value at current prices (R'000)	0	0	0	1,259	5,172	+ 310.8
Shopping space						
Total square metres	0	445	0	11,453	5,054	-55.9
Total value at current prices (R'000)	0	979	0	17,113	9,031	-47.2
Industrial and warehouse space						
Total square metres	763	95,457	1,439	1,705	97,735	+ 5,632.3
Total value at current prices (R'000)	610	210,005	2,658	1,929	213,721	+ 10,979.4
Other non-residential space ^{2/}						
Total square metres	0	0	0	2,919	3,111	+ 6.6
Total value at current prices (R'000)	0	0	0	4,510	6,005	+ 33.1
Total value of non-residential buildings at current prices (R'000)	610	210,984	2,658	24,811	233,929	+ 842.8
Additions and alterations						
Dwelling-houses						
Total square metres	4,096	4,949	4,504	27,654	29,968	+ 8.4
Total value at current prices (R'000)	5,255	6,733	5,676	35,831	41,008	+ 14.4
Other buildings ^{3/}						
Total square metres	1,448	1,671	1,493	7,875	13,054	+ 65.8
Total value at current prices (R'000)	2,016	2,812	4,100	17,862	21,928	+ 22.8
Total value of additions and alterations at current prices (R'000)	7,271	9,545	9,776	53,693	62,936	+ 17.2
Total value of building plans passed at current prices (R'000)	20,361	240,646	26,606	171,589	416,289	+ 142.6

1/ Other residential buildings include institutions for the disabled, boarding houses, old people's homes, hostels, hotels, motels, guest houses, holiday chalets, entertainment centres, bed-and-breakfast accommodation and casinos.

2/ Other non-residential space includes churches, sport and recreation clubs, schools, crèches, hospitals and all other non-residential space.

3/ Other buildings include additions and alterations to other residential buildings, non-residential buildings and internal alterations.

Table 19 - Buildings completed according to type of building: Total RSA

Type of building	July 2001 *	June 2002	July 2002	January 2001 to July 2001	January 2002 to July 2002	Percentage change between January 2001 to July 2001 and January 2002 to July 2002
Residential buildings						
Dwelling-houses smaller than 80 square metres						
Number of dwelling-houses	2,111	2,713	2,805	15,479	17,357	+ 12.1
Total square metres	79,087	107,936	110,833	620,713	667,286	+ 7.5
Total value at current prices (R'000)	80,797	101,698	97,652	539,361	595,891	+ 10.5
Dwelling-houses equal to or larger than 80 square metres						
Number of dwelling-houses	986	1,175	1,115	6,763	7,638	+ 12.9
Total square metres	184,703	247,159	223,480	1,349,034	1,589,773	+ 17.8
Total value at current prices (R'000)	256,632	371,233	344,872	1,831,225	2,374,369	+ 29.7
Flats and townhouses						
Number of flats and townhouses	291	465	871	3,967	5,858	+ 47.7
Total square metres	40,800	62,248	92,159	421,801	657,314	+ 55.8
Total value at current prices (R'000)	58,103	102,101	142,363	597,674	1,000,915	+ 67.5
Other residential buildings ^{1/}						
Total square metres	846	1,121	921	84,960	57,205	- 32.7
Total value at current prices (R'000)	1,185	1,781	1,398	343,495	271,777	- 20.9
Total value of residential buildings at current prices (R'000)	396,717	576,813	586,285	3,311,755	4,242,952	+ 28.1
Non-residential buildings						
Office and banking space						
Total square metres	11,562	23,488	33,089	413,746	307,457	- 25.7
Total value at current prices (R'000)	18,401	42,682	48,301	633,206	532,113	- 16.0
Shopping space						
Total square metres	16,609	29,533	33,977	189,156	165,902	- 12.3
Total value at current prices (R'000)	18,141	42,983	56,826	298,089	269,141	- 9.7
Industrial and warehouse space						
Total square metres	51,445	87,408	32,173	439,418	318,884	- 27.4
Total value at current prices (R'000)	65,811	99,239	42,259	533,682	389,713	- 27.0
Other non-residential space ^{2/}						
Total square metres	17,348	19,428	18,147	124,753	125,268	+ 0.4
Total value at current prices (R'000)	19,264	21,232	33,973	149,512	183,072	+ 22.4
Total value of non-residential buildings at current prices (R'000)	121,617	206,136	181,359	1,614,489	1,374,039	- 14.9
Additions and alterations						
Dwelling-houses						
Total square metres	120,568	141,033	112,394	861,148	896,847	+ 4.1
Total value at current prices (R'000)	139,689	180,993	137,831	1,009,642	1,128,465	+ 11.8
Other buildings ^{3/}						
Total square metres	51,442	44,741	35,599	351,147	329,369	- 6.2
Total value at current prices (R'000)	93,147	67,357	66,759	731,525	551,205	- 24.6
Total value of additions and alterations at current prices (R'000)	232,836	248,350	204,590	1,741,167	1,679,670	- 3.5
Total value of buildings completed at current prices (R'000)	751,170	1,031,299	972,234	6,667,411	7,296,661	+ 9.4

1/ Other residential buildings include institutions for the disabled, boarding houses, old people's homes, hostels, hotels, motels, guest houses, holiday chalets, entertainment centres, bed-and-breakfast accommodation and casinos.

2/ Other non-residential space includes churches, sport and recreation clubs, schools, crèches, hospitals and all other non-residential space.

3/ Other buildings include additions and alterations to other residential buildings, non-residential buildings and internal alterations.

Table 20 - Buildings completed according to type of building and province: Western Cape

Type of building	July 2001*	June 2002	July 2002	January 2001 to July 2001	January 2002 to July 2002	Percentage change between January 2001 to July 2001 and January 2002 to July 2002
Residential buildings						
Dwelling-houses smaller than 80 square metres						
Number of dwelling-houses	539	470	611	3,131	4,287	+ 36.9
Total square metres	18,861	17,582	20,992	127,386	154,896	+ 21.6
Total value at current prices (R'000)	18,932	17,716	23,444	138,815	177,501	+ 27.9
Dwelling-houses equal to or larger than 80 square metres						
Number of dwelling-houses	359	515	525	2,280	3,115	+ 36.6
Total square metres	66,103	110,845	96,537	441,874	627,335	+ 42.0
Total value at current prices (R'000)	95,556	169,892	151,039	616,768	975,964	+ 58.2
Flats and townhouses						
Number of flats and townhouses	132	153	141	995	1,198	+ 20.4
Total square metres	17,531	18,712	16,363	114,799	150,345	+ 31.0
Total value at current prices (R'000)	25,006	28,158	24,026	147,962	240,075	+ 62.3
Other residential buildings ^{1/}						
Total square metres	846	992	446	27,811	5,931	- 78.7
Total value at current prices (R'000)	1,185	1,504	734	31,824	9,490	- 70.2
Total value of residential buildings at current prices (R'000)	140,679	217,270	199,243	935,369	1,403,030	+ 50.0
Non-residential buildings						
Office and banking space						
Total square metres	1,007	10,725	7,388	92,200	74,718	- 19.0
Total value at current prices (R'000)	1,234	20,265	12,751	150,485	111,948	- 25.6
Shopping space						
Total square metres	1,367	11,103	21,079	29,110	68,342	+ 134.8
Total value at current prices (R'000)	1,149	12,679	30,190	36,144	94,083	+ 160.3
Industrial and warehouse space						
Total square metres	7,780	43,300	17,488	87,190	100,972	+ 15.8
Total value at current prices (R'000)	6,054	45,850	21,864	100,954	111,060	+ 10.0
Other non-residential space ^{2/}						
Total square metres	10,137	15,737	3,493	49,536	52,950	+ 6.9
Total value at current prices (R'000)	9,787	16,996	2,888	47,572	75,248	+ 58.2
Total value of non-residential buildings at current prices (R'000)	18,224	95,790	67,693	335,155	392,339	+ 17.1
Additions and alterations						
Dwelling-houses						
Total square metres	51,366	72,570	43,965	340,130	318,785	- 6.3
Total value at current prices (R'000)	62,584	97,926	54,065	425,014	422,214	- 0.7
Other buildings ^{3/}						
Total square metres	19,303	8,879	9,001	109,610	131,839	+ 20.3
Total value at current prices (R'000)	30,802	15,271	16,379	269,222	219,316	- 18.5
Total value of additions and alterations at current prices (R'000)	93,386	113,197	70,444	694,236	641,530	- 7.6
Total value of buildings completed at current prices (R'000)	252,289	426,257	337,380	1,964,760	2,436,899	24.0

1/ Other residential buildings include institutions for the disabled, boarding houses, old people's homes, hostels, hotels, motels, guest houses, holiday chalets, entertainment centres, bed-and-breakfast accommodation and casinos.

2/ Other non-residential space includes churches, sport and recreation clubs, schools, crèches, hospitals and all other non-residential space.

3/ Other buildings include additions and alterations to other residential buildings, non-residential buildings and internal alterations.

Table 21 - Buildings completed according to type of building and province: Eastern Cape

Type of building	July 2001*	June 2002	July 2002	January 2001 to July 2001	January 2002 to July 2002	Percentage change between January 2001 to July 2001 and January 2002 to July 2002
Residential buildings						
Dwelling-houses smaller than 80 square metres						
Number of dwelling-houses	194	498	298	2,117	1,780	- 15.9
Total square metres	8,461	20,776	12,603	91,523	75,184	- 17.9
Total value at current prices (R'000)	9,669	26,235	16,857	82,220	95,586	+ 16.3
Dwelling-houses equal to or larger than 80 square metres						
Number of dwelling-houses	68	116	83	634	479	- 24.4
Total square metres	9,805	12,961	14,109	80,964	76,446	- 5.6
Total value at current prices (R'000)	12,384	18,118	20,690	103,725	103,301	- 0.4
Flats and townhouses						
Number of flats and townhouses	30	5	13	165	320	+ 93.9
Total square metres	3,915	440	1,649	16,476	17,628	+ 7.0
Total value at current prices (R'000)	5,178	716	2,391	18,415	25,462	+ 38.3
Other residential buildings ^{1/}						
Total square metres	0	129	0	6,993	15,865	+ 126.9
Total value at current prices (R'000)	0	277	0	10,955	26,589	+ 142.7
Total value of residential buildings at current prices (R'000)	27,231	45,346	39,938	215,315	250,938	+ 16.5
Non-residential buildings						
Office and banking space						
Total square metres	2,244	0	0	25,783	576	-97.8
Total value at current prices (R'000)	3,358	0	0	28,592	1,185	-95.9
Shopping space						
Total square metres	5,359	0	0	27,870	2,779	- 90.0
Total value at current prices (R'000)	6,297	0	0	35,685	3,520	- 90.1
Industrial and warehouse space						
Total square metres	2,311	0	457	104,074	11,239	- 89.2
Total value at current prices (R'000)	2,027	0	248	105,383	10,482	- 90.1
Other non-residential space ^{2/}						
Total square metres	1,377	0	570	19,514	2,870	-85.3
Total value at current prices (R'000)	1,627	0	796	24,938	3,460	-86.1
Total value of non-residential buildings at current prices (R'000)	13,309	0	1,044	194,598	18,647	- 90.4
Additions and alterations						
Dwelling-houses						
Total square metres	13,494	8,097	10,153	60,122	65,881	+ 9.6
Total value at current prices (R'000)	14,581	10,364	12,993	71,009	80,012	+ 12.7
Other buildings ^{3/}						
Total square metres	5,348	10,697	2,054	37,796	32,607	- 13.7
Total value at current prices (R'000)	5,488	11,705	2,865	50,163	41,583	- 17.1
Total value of additions and alterations at current prices (R'000)	20,069	22,069	15,858	121,172	121,595	+ 0.3
Total value of buildings completed at current prices (R'000)	60,609	67,415	56,840	531,085	391,180	- 26.3

1/ Other residential buildings include institutions for the disabled, boarding houses, old people's homes, hostels, hotels, motels, guest houses, holiday chalets, entertainment centres, bed-and-breakfast accommodation and casinos.

2/ Other non-residential space includes churches, sport and recreation clubs, schools, crèches, hospitals and all other non-residential space.

3/ Other buildings include additions and alterations to other residential buildings, non-residential buildings and internal alterations.

Table 22 - Buildings completed according to type of building and province: Northern Cape

Type of building	July 2001*	June 2002	July 2002	January 2001 to July 2001	January 2002 to July 2002	Percentage change between January 2001 to July 2001 and January 2002 to July 2002
Residential buildings						
Dwelling-houses smaller than 80 square metres						
Number of dwelling-houses	10	2	1	85	62	- 27.1
Total square metres	630	116	77	4,245	2,910	- 31.4
Total value at current prices (R'000)	1,009	162	139	6,206	3,710	- 40.2
Dwelling-houses equal to or larger than 80 square metres						
Number of dwelling-houses	41	3	7	132	35	- 73.5
Total square metres	5,377	468	1,029	20,009	5,345	- 73.3
Total value at current prices (R'000)	8,547	744	1,477	27,528	7,448	- 72.9
Flats and townhouses						
Number of flats and townhouses	2	0	20	19	24	+ 26.3
Total square metres	264	0	3,122	1,901	3,759	+ 97.7
Total value at current prices (R'000)	442	0	5,621	2,808	6,400	+ 127.9
Other residential buildings ^{1/}						
Total square metres	0	0	0	346	0	..
Total value at current prices (R'000)	0	0	0	277	0	..
Total value of residential buildings at current prices (R'000)	9,998	906	7,237	36,819	17,558	- 52.3
Non-residential buildings						
Office and banking space						
Total square metres	0	0	0	7,105	0	..
Total value at current prices (R'000)	0	0	0	15,631	0	..
Shopping space						
Total square metres	0	0	0	4,883	784	-83.9
Total value at current prices (R'000)	0	0	0	7,331	1,098	- 85.0
Industrial and warehouse space						
Total square metres	0	0	800	854	1,023	+ 19.8
Total value at current prices (R'000)	0	0	1,120	691	1,229	+ 77.9
Other non-residential space ^{2/}						
Total square metres	113	0	0	956	1,001	+ 4.7
Total value at current prices (R'000)	978	0	0	1,725	1,309	- 24.1
Total value of non-residential buildings at current prices (R'000)	181	0	1,120	25,378	3,636	- 85.7
Additions and alterations						
Dwelling-houses						
Total square metres	2,145	2,609	2,456	11,984	16,187	+ 35.1
Total value at current prices (R'000)	3,770	4,309	3,436	19,131	22,840	+ 19.4
Other buildings ^{3/}						
Total square metres	781	416	226	2,676	1,928	- 28.0
Total value at current prices (R'000)	1,819	1,062	592	6,594	5,594	- 15.2
Total value of additions and alterations at current prices (R'000)	5,589	5,371	4,028	25,725	28,434	+ 10.5
Total value of buildings completed at current prices (R'000)	15,768	6,277	12,385	87,922	49,628	-43.6

1/ Other residential buildings include institutions for the disabled, boarding houses, old people's homes, hostels, hotels, motels, guest houses, holiday chalets, entertainment centres, bed-and-breakfast accommodation and casinos.

2/ Other non-residential space includes churches, sport and recreation clubs, schools, crèches, hospitals and all other non-residential space.

3/ Other buildings include additions and alterations to other residential buildings, non-residential buildings and internal alterations.

Table 23 - Buildings completed according to type of building and province: Free State

Type of building	July 2001*	June 2002	July 2002	January 2001 to July 2001	January 2002 to July 2002	Percentage change between January 2001 to July 2001 and January 2002 to July 2002
Residential buildings						
Dwelling-houses smaller than 80 square metres						
Number of dwelling-houses	48	588	604	1,093	1,976	+ 80.8
Total square metres	2,274	24,361	25,302	46,157	86,111	+ 86.6
Total value at current prices (R'000)	1,958	12,418	12,399	26,269	47,179	+ 79.6
Dwelling-houses equal to or larger than 80 square metres						
Number of dwelling-houses	38	29	32	232	200	-13.8
Total square metres	5,729	5,233	5,727	40,242	33,994	-15.5
Total value at current prices (R'000)	6,231	6,624	7,653	46,415	41,922	-9.7
Flats and townhouses						
Number of flats and townhouses	6	33	41	128	154	+ 20.3
Total square metres	987	3,459	6,721	10,828	18,368	+ 69.6
Total value at current prices (R'000)	1,444	5,161	8,892	14,816	26,328	+ 77.7
Other residential buildings ^{1/}						
Total square metres	0	0	75	464	1,503	+ 223.9
Total value at current prices (R'000)	0	0	64	581	1,525	+ 162.5
Total value of residential buildings at current prices (R'000)	9,633	24,203	29,008	88,081	116,954	+ 32.8
Non-residential buildings						
Office and banking space						
Total square metres	2,745	271	410	14,319	5,104	-64.4
Total value at current prices (R'000)	3,300	280	473	25,203	8,728	-65.4
Shopping space						
Total square metres	1,165	0	37	5,702	1,941	-66.0
Total value at current prices (R'000)	1,900	0	61	7,058	3,220	-54.4
Industrial and warehouse space						
Total square metres	0	1,020	563	12,750	5,233	-59.0
Total value at current prices (R'000)	0	714	501	11,648	3,904	-66.5
Other non-residential space ^{2/}						
Total square metres	1,367	0	6,596	11,040	10,071	-8.8
Total value at current prices (R'000)	2,052	0	20,998	18,601	26,179	+ 40.7
Total value of non-residential buildings at current prices (R'000)	7,252	994	22,033	62,510	42,031	-32.8
Additions and alterations						
Dwelling-houses						
Total square metres	4,646	5,735	4,770	36,793	48,218	+ 31.1
Total value at current prices (R'000)	5,310	6,224	5,178	38,273	53,160	+ 38.9
Other buildings ^{3/}						
Total square metres	1,661	533	721	24,322	8,452	-65.2
Total value at current prices (R'000)	4,533	5,253	1,383	97,846	20,440	-79.1
Total value of additions and alterations at current prices (R'000)	9,843	11,477	6,561	136,119	73,600	-45.9
Total value of buildings completed at current prices (R'000)	26,728	36,674	57,602	286,710	232,585	-18.9

1/ Other residential buildings include institutions for the disabled, boarding houses, old people's homes, hostels, hotels, motels, guest houses, holiday chalets, entertainment centres, bed-and-breakfast accommodation and casinos.

2/ Other non-residential space includes churches, sport and recreation clubs, schools, crèches, hospitals and all other non-residential space.

3/ Other buildings include additions and alterations to other residential buildings, non-residential buildings and internal alterations.

Table 24 - Buildings completed according to type of building and province: KwaZulu-Natal

Type of building	July 2001*	June 2002	July 2002	January 2001 to July 2001	January 2002 to July 2002	Percentage change between January 2001 to July 2001 and January 2002 to July 2002
Residential buildings						
Dwelling-houses smaller than 80 square metres						
Number of dwelling-houses	195	200	163	1,455	1,288	-11.5
Total square metres	8,577	8,571	6,665	65,625	54,374	-17.1
Total value at current prices (R'000)	10,244	8,720	6,291	64,821	53,408	-17.6
Dwelling-houses equal to or larger than 80 square metres						
Number of dwelling-houses	146	94	119	938	795	-15.2
Total square metres	27,916	20,299	25,710	196,360	159,349	-18.8
Total value at current prices (R'000)	35,718	28,691	38,309	268,852	225,041	-16.3
Flats and townhouses						
Number of flats and townhouses	15	68	121	516	486	-5.8
Total square metres	2,767	12,228	16,171	60,034	65,482	+ 9.1
Total value at current prices (R'000)	4,066	23,606	29,384	85,661	115,323	+ 34.6
Other residential buildings ^{1/}						
Total square metres	0	0	0	8,450	4,403	-47.9
Total value at current prices (R'000)	0	0	0	40,000	4,771	-88.1
Total value of residential buildings at current prices (R'000)	50,028	61,017	73,984	459,334	398,543	-13.2
Non-residential buildings						
Office and banking space						
Total square metres	87	4,243	4,540	37,312	74,789	+ 100.4
Total value at current prices (R'000)	87	11,200	7,650	60,643	168,008	+ 177.0
Shopping space						
Total square metres	2,747	3,329	9,045	21,403	40,214	+ 87.9
Total value at current prices (R'000)	2,647	3,607	20,450	36,700	82,411	+ 124.6
Industrial and warehouse space						
Total square metres	19,942	34,064	2,743	98,371	114,858	+ 16.8
Total value at current prices (R'000)	21,352	38,541	3,260	116,588	135,722	+ 16.4
Other non-residential space ^{2/}						
Total square metres	2,132	1,582	4,435	13,884	19,423	+ 39.9
Total value at current prices (R'000)	2,342	1,900	6,509	15,795	28,265	+ 78.9
Total value of non-residential buildings at current prices (R'000)	26,428	55,248	37,869	229,726	414,406	+ 80.4
Additions and alterations						
Dwelling-houses						
Total square metres	30,289	22,827	29,993	208,857	172,748	-17.3
Total value at current prices (R'000)	32,799	24,474	33,494	229,783	194,267	-15.5
Other buildings ^{3/}						
Total square metres	6,597	5,978	9,931	60,954	68,746	+ 12.8
Total value at current prices (R'000)	19,731	10,787	25,892	120,103	131,847	+ 9.8
Total value of additions and alterations at current prices (R'000)	52,530	35,261	59,386	349,886	326,114	-6.8
Total value of buildings completed at current prices (R'000)	128,986	151,526	171,239	1,038,946	1,139,063	+ 9.6

1/ Other residential buildings include institutions for the disabled, boarding houses, old people's homes, hostels, hotels, motels, guest houses, holiday chalets, entertainment centres, bed-and-breakfast accommodation and casinos.

2/ Other non-residential space includes churches, sport and recreation clubs, schools, crèches, hospitals and all other non-residential space.

3/ Other buildings include additions and alterations to other residential buildings, non-residential buildings and internal alterations.

Table 25 - Buildings completed according to type of building and province: North West

Type of building	July 2001	June 2002	July 2002	January 2001 to July 2001	January 2002 to July 2002	Percentage change between January 2001 to July 2001 and January 2002 to July 2002
Residential buildings						
Dwelling-houses smaller than 80 square metres						
Number of dwelling-houses	366	71	96	1,388	1,566	+ 12.8
Total square metres	12,356	3,017	3,285	51,871	52,975	+ 2.1
Total value at current prices (R'000)	6,399	2,404	2,338	36,489	26,450	- 27.5
Dwelling-houses equal to or larger than 80 square metres						
Number of dwelling-houses	31	59	60	295	395	+ 33.9
Total square metres	6,078	8,720	10,564	56,673	68,231	+ 20.4
Total value at current prices (R'000)	8,170	11,741	14,531	69,077	97,643	+ 41.4
Flats and townhouses						
Number of flats and townhouses	14	34	52	84	326	+ 288.1
Total square metres	1,061	2,816	5,367	8,650	25,016	+ 189.2
Total value at current prices (R'000)	2,027	7,300	9,168	9,636	45,285	+ 370.0
Other residential buildings ^{1/}						
Total square metres	0	0	0	3,684	2,090	- 43.3
Total value at current prices (R'000)	0	0	0	4,162	2,483	- 40.3
Total value of residential buildings at current prices (R'000)	16,596	21,445	26,037	119,364	171,861	+ 44.0
Non-residential buildings						
Office and banking space						
Total square metres	147	0	0	897	723	- 19.4
Total value at current prices (R'000)	150	0	0	1,550	1,140	- 26.5
Shopping space						
Total square metres	1,627	572	0	4,372	4,417	+ 1.0
Total value at current prices (R'000)	1,750	686	0	5,321	4,991	- 6.2
Industrial and warehouse space						
Total square metres	0	0	767	6,265	5,211	- 16.8
Total value at current prices (R'000)	0	0	862	6,405	5,457	- 14.8
Other non-residential space ^{2/}						
Total square metres	1,000	0	0	6,636	3,562	- 46.3
Total value at current prices (R'000)	1,500	0	0	8,032	5,710	- 28.9
Total value of non-residential buildings at current prices (R'000)	3,400	686	862	21,308	17,298	- 18.8
Additions and alterations						
Dwelling-houses						
Total square metres	1,499	2,803	1,914	22,960	25,936	+ 13.0
Total value at current prices (R'000)	1,874	2,936	2,041	20,870	25,854	+ 23.9
Other buildings ^{3/}						
Total square metres	1,181	350	4,837	15,370	8,498	- 44.7
Total value at current prices (R'000)	7,644	546	6,435	24,706	14,101	- 42.9
Total value of additions and alterations at current prices (R'000)	9,518	3,482	8,476	45,576	39,955	- 12.3
Total value of buildings completed at current prices (R'000)	29,514	25,613	35,375	186,248	229,114	+ 23.0

1/ Other residential buildings include institutions for the disabled, boarding houses, old people's homes, hostels, hotels, motels, guest houses, holiday chalets, entertainment centres, bed-and-breakfast accommodation and casinos.

2/ Other non-residential space includes churches, sport and recreation clubs, schools, crèches, hospitals and all other non-residential space.

3/ Other buildings include additions and alterations to other residential buildings, non-residential buildings and internal alterations.

Table 26 - Buildings completed according to type of building and province: Gauteng

Type of building	July 2001*	June 2002	July 2002	January 2001 to July 2001	January 2002 to July 2002	Percentage change between January 2001 to July 2001 and January 2002 to July 2002
Residential buildings						
Dwelling-houses smaller than 80 square metres						
Number of dwelling-houses	395	815	896	3,695	4,708	+ 27.4
Total square metres	15,154	30,515	35,432	143,604	173,246	+ 20.6
Total value at current prices (R'000)	20,919	30,845	31,350	129,363	150,752	+ 16.5
Dwelling-houses equal to or larger than 80 square metres						
Number of dwelling-houses	265	321	238	1,911	2,310	+ 20.9
Total square metres	56,305	82,214	61,497	454,536	566,209	+ 24.6
Total value at current prices (R'000)	82,037	126,351	99,232	635,193	855,094	+ 34.6
Flats and townhouses						
Number of flats and townhouses	71	119	432	1,933	3,204	+ 65.8
Total square metres	10,242	19,649	39,114	192,492	361,894	+ 88.0
Total value at current prices (R'000)	16,691	29,675	58,130	302,176	523,455	+ 73.2
Other residential buildings ^{1/}						
Total square metres	0	0	0	34,212	11,978	-65.0
Total value at current prices (R'000)	0	0	0	252,096	17,333	-93.1
Total value of residential buildings at current prices (R'000)	119,647	186,871	188,712	1,318,828	1,546,634	+ 17.3
Non-residential buildings						
Office and banking space						
Total square metres	4,861	8,249	20,429	227,898	150,671	-33.9
Total value at current prices (R'000)	9,972	10,937	26,927	332,105	239,909	-27.8
Shopping space						
Total square metres	502	13,762	2,227	66,468	33,138	-50.1
Total value at current prices (R'000)	898	24,783	4,161	147,231	56,496	-61.6
Industrial and warehouse space						
Total square metres	19,263	8,324	9,238	126,632	77,795	-38.6
Total value at current prices (R'000)	34,420	13,534	14,298	188,819	119,369	-36.8
Other non-residential space ^{2/}						
Total square metres	1,209	1,030	2,850	19,918	20,985	+ 5.4
Total value at current prices (R'000)	1,766	1,365	2,550	28,962	30,030	+ 3.7
Total value of non-residential buildings at current prices (R'000)	47,056	50,619	47,936	697,117	445,804	-36.1
Additions and alterations						
Dwelling-houses						
Total square metres	15,467	23,423	14,677	147,742	220,343	+ 49.1
Total value at current prices (R'000)	17,060	31,969	22,421	176,377	301,254	+ 70.8
Other buildings ^{3/}						
Total square metres	15,601	17,517	8,691	83,566	74,112	-11.3
Total value at current prices (R'000)	21,990	22,094	12,799	138,259	112,979	-18.3
Total value of additions and alterations at current prices (R'000)	39,050	54,063	35,220	314,636	414,233	+ 31.7
Total value of buildings completed at current prices (R'000)	205,753	291,553	271,868	2,330,581	2,406,671	+ 3.3

1/ Other residential buildings include institutions for the disabled, boarding houses, old people's homes, hostels, hotels, motels, guest houses, holiday chalets, entertainment centres, bed-and-breakfast accommodation and casinos.

2/ Other non-residential space includes churches, sport and recreation clubs, schools, crèches, hospitals and all other non-residential space.

3/ Other buildings include additions and alterations to other residential buildings, non-residential buildings and internal alterations.

Table 27 - Buildings completed according to type of building and province: Mpumalanga

Type of building	July 2001*	June 2002	July 2002	January 2001 to July 2001	January 2002 to July 2002	Percentage change between January 2001 to July 2001 and January 2002 to July 2002
Residential buildings						
Dwelling-houses smaller than 80 square metres						
Number of dwelling-houses	337	62	117	2,186	1,564	-28.5
Total square metres	11,254	2,583	5,258	74,181	60,183	-18.9
Total value at current prices (R'000)	9,497	2,561	3,082	40,194	30,222	-24.8
Dwelling-houses equal to or larger than 80 square metres						
Number of dwelling-houses	28	24	32	221	208	-5.9
Total square metres	5,385	4,098	5,320	39,597	36,083	-8.9
Total value at current prices (R'000)	5,412	5,696	6,565	39,378	43,156	+ 9.6
Flats and townhouses						
Number of flats and townhouses	21	52	44	101	133	+ 31.7
Total square metres	4,033	4,839	3,049	12,003	13,526	+ 12.7
Total value at current prices (R'000)	3,249	7,338	3,775	10,988	16,641	+ 51.4
Other residential buildings ^{1/}						
Total square metres	0	0	400	0	1,476	..
Total value at current prices (R'000)	0	0	600	0	2,080	..
Total value of residential buildings at current prices (R'000)	18,158	15,595	14,022	90,560	92,099	+ 1.7
Non-residential buildings						
Office and banking space						
Total square metres	0	0	0	7,263	460	-93.7
Total value at current prices (R'000)	0	0	0	17,900	563	-96.9
Shopping space						
Total square metres	3,842	0	673	25,070	5,756	-77.0
Total value at current prices (R'000)	3,500	0	764	16,170	11,342	-29.9
Industrial and warehouse space						
Total square metres	2,149	700	117	2,514	2,051	-18.4
Total value at current prices (R'000)	1,958	600	106	2,118	1,871	-11.7
Other non-residential space ^{2/}						
Total square metres	13	1,079	0	2,845	13,859	+ 387.1
Total value at current prices (R'000)	9	971	0	3,161	12,157	+ 284.6
Total value of non-residential buildings at current prices (R'000)	5,467	1,571	870	39,349	25,933	-34.1
Additions and alterations						
Dwelling-houses						
Total square metres	1,431	2,522	4,074	27,740	25,928	-6.5
Total value at current prices (R'000)	1,402	2,259	3,654	23,222	24,657	+ 6.2
Other buildings ^{3/}						
Total square metres	970	133	138	13,895	1,758	-87.3
Total value at current prices (R'000)	1,140	258	330	18,896	3,204	-83.0
Total value of additions and alterations at current prices (R'000)	2,542	2,517	3,984	42,118	27,861	-33.9
Total value of buildings completed at current prices (R'000)	26,167	19,683	18,876	172,027	145,893	-15.2

1/ Other residential buildings include institutions for the disabled, boarding houses, old people's homes, hostels, hotels, motels, guest houses, holiday chalets, entertainment centres, bed-and-breakfast accommodation and casinos.

2/ Other non-residential space includes churches, sport and recreation clubs, schools, crèches, hospitals and all other non-residential space.

3/ Other buildings include additions and alterations to other residential buildings, non-residential buildings and internal alterations.

Table 28 - Buildings completed according to type of building and province: Limpopo

Type of building	July 2001	June 2002	July 2002	January 2001 to July 2001	January 2002 to July 2002	Percentage change between January 2001 to July 2001 and January 2002 to July 2002
Residential buildings						
Dwelling-houses smaller than 80 square metres						
Number of dwelling-houses	27	7	19	329	126	-61.7
Total square metres	1,520	415	1,219	16,121	7,407	-54.1
Total value at current prices (R'000)	2,170	637	1,752	14,984	11,083	-26.0
Dwelling-houses equal to or larger than 80 square metres						
Number of dwelling-houses	10	14	19	120	101	-15.8
Total square metres	2,005	2,321	2,987	18,779	16,781	-10.6
Total value at current prices (R'000)	2,577	3,376	5,376	24,289	24,800	+ 2.1
Flats and townhouses						
Number of flats and townhouses	0	1	7	26	13	-50.0
Total square metres	0	105	603	4,618	1,296	-71.9
Total value at current prices (R'000)	0	147	976	5,212	1,946	-62.7
Other residential buildings ^{1/}						
Total square metres	0	0	0	3,000	13,959	+ 365.3
Total value at current prices (R'000)	0	0	0	3,600	207,506	+ 5,664.1
Total value of residential buildings at current prices (R'000)	4,747	4,160	8,104	48,085	245,335	+ 410.2
Non-residential buildings						
Office and banking space						
Total square metres	471	0	322	969	416	-57.1
Total value at current prices (R'000)	300	0	500	1,097	632	-42.4
Shopping space						
Total square metres	0	767	916	4,278	8,531	+ 99.4
Total value at current prices (R'000)	0	1,228	1,200	6,449	11,980	+ 85.8
Industrial and warehouse space						
Total square metres	0	0	0	768	502	-34.6
Total value at current prices (R'000)	0	0	0	1,076	619	-42.5
Other non-residential space ^{2/}						
Total square metres	0	0	203	424	547	+ 29.0
Total value at current prices (R'000)	0	0	232	726	714	-1.7
Total value of non-residential buildings at current prices (R'000)	300	1,228	1,932	9,348	13,945	+ 49.2
Additions and alterations						
Dwelling-houses						
Total square metres	231	447	392	4,820	2,821	-41.5
Total value at current prices (R'000)	309	532	549	5,963	4,207	-29.4
Other buildings ^{3/}						
Total square metres	0	238	0	2,958	1,429	-51.7
Total value at current prices (R'000)	0	381	84	5,736	2,141	-62.7
Total value of additions and alterations at current prices (R'000)	309	913	633	11,699	6,348	-45.7
Total value of buildings completed at current prices (R'000)	5,356	6,301	10,669	69,132	265,628	+ 284.2

1/ Other residential buildings include institutions for the disabled, boarding houses, old people's homes, hostels, hotels, motels, guest houses, holiday chalets, entertainment centres, bed-and-breakfast accommodation and casinos.

2/ Other non-residential space includes churches, sport and recreation clubs, schools, crèches, hospitals and all other non-residential space.

3/ Other buildings include additions and alterations to other residential buildings, non-residential buildings and internal alterations.

Table 29 - Building plans passed according to type of building and selected urban area: Cape Town

Type of building	July 2001	June 2002	July 2002	January 2001 to July 2001	January 2002 to July 2002	Percentage change between January 2001 to July 2001 and January 2002 to July 2002
Residential buildings						
Dwelling-houses smaller than 80 square metres						
Number of dwelling-houses	420	1,106	1,493	3,768	6,238	+ 65.6
Total square metres	19,216	38,243	50,324	155,167	216,236	+ 39.4
Total value at current prices (R'000)	23,101	44,849	60,802	189,858	258,560	+ 36.2
Dwelling-houses equal to or larger than 80 square metres						
Number of dwelling-houses	343	464	506	2,181	2,641	+ 21.1
Total square metres	67,253	99,801	97,346	456,712	536,922	+ 17.6
Total value at current prices (R'000)	97,573	130,938	136,729	629,146	745,170	+ 18.4
Flats and townhouses						
Number of flats and townhouses	104	85	218	924	1,229	+ 33.0
Total square metres	11,703	9,584	20,781	91,424	120,813	+ 32.1
Total value at current prices (R'000)	17,754	13,646	29,253	143,882	198,550	+ 38.0
Other residential buildings ^{1/}						
Total square metres	0	1,104	0	27,477	15,616	- 43.2
Total value at current prices (R'000)	0	2,226	0	65,743	21,228	- 67.7
Total value of residential buildings at current prices (R'000)	138,428	191,659	226,784	1,028,629	1,223,508	+ 18.9
Non-residential buildings						
Office and banking space						
Total square metres	66,640	7,745	9,497	150,357	44,122	- 70.7
Total value at current prices (R'000)	67,370	13,805	13,092	210,030	69,983	- 66.7
Shopping space						
Total square metres	233	1,398	323	88,072	14,523	- 83.5
Total value at current prices (R'000)	240	2,719	700	108,028	19,127	- 82.3
Industrial and warehouse space						
Total square metres	32,392	20,507	8,302	92,321	80,801	- 12.5
Total value at current prices (R'000)	35,602	21,638	8,427	100,057	89,817	- 10.2
Other non-residential space ^{2/}						
Total square metres	2,361	5,785	1,865	42,221	26,017	- 38.4
Total value at current prices (R'000)	2,505	9,275	2,695	59,770	37,075	- 38.0
Total value of non-residential buildings at current prices (R'000)	105,717	47,437	24,914	477,885	216,002	- 54.8
Additions and alterations						
Dwelling-houses						
Total square metres	53,180	76,675	64,290	342,224	386,930	+ 13.1
Total value at current prices (R'000)	61,637	93,553	84,729	406,988	486,276	+ 19.5
Other buildings ^{3/}						
Total square metres	12,612	12,359	28,982	105,727	133,419	+ 26.2
Total value at current prices (R'000)	21,790	23,069	57,431	191,720	273,956	+ 42.9
Total value of additions and alterations at current prices (R'000)	83,427	116,622	142,160	598,708	760,232	+ 27.0
Total value of building plans passed at current prices (R'000)	327,572	355,718	393,858	2,105,222	2,199,742	+ 4.5

1/ Other residential buildings include institutions for the disabled, boarding houses, old people's homes, hostels, hotels, motels, guest houses, holiday chalets, entertainment centres, bed-and-breakfast accommodation and casinos.

2/ Other non-residential space includes churches, sport and recreation clubs, schools, crèches, hospitals and all other non-residential space.

3/ Other buildings include additions and alterations to other residential buildings, non-residential buildings and internal alterations.

Table 30 - Building plans passed according to type of building and selected urban area: Port Elizabeth

Type of building	July 2001*	June 2002	July 2002	January 2001 to July 2001	January 2002 to July 2002	Percentage change between January 2001 to July 2001 and January 2002 to July 2002
Residential buildings						
Dwelling-houses smaller than 80 square metres						
Number of dwelling-houses	133	301	268	1,115	1,789	+ 60.4
Total square metres	5,596	12,223	11,024	49,809	75,663	+ 51.9
Total value at current prices (R'000)	7,513	17,243	15,739	66,126	107,181	+ 62.1
Dwelling-houses equal to or larger than 80 square metres						
Number of dwelling-houses	41	42	62	440	407	- 7.5
Total square metres	7,246	8,550	11,925	53,317	77,885	+ 46.1
Total value at current prices (R'000)	9,878	11,684	16,751	71,828	109,885	+ 53.0
Flats and townhouses						
Number of flats and townhouses	17	22	13	113	148	+ 31.0
Total square metres	1,117	1,996	1,573	10,005	16,899	+ 68.9
Total value at current prices (R'000)	1,597	2,894	2,751	14,197	27,275	+ 92.1
Other residential buildings ^{1/}						
Total square metres	0	0	323	2,744	323	- 88.2
Total value at current prices (R'000)	0	0	550	3,312	550	- 83.4
Total value of residential buildings at current prices (R'000)	18,988	31,821	35,791	155,463	244,891	+ 57.5
Non-residential buildings						
Office and banking space						
Total square metres	0	0	2,482	0	5,855	..
Total value at current prices (R'000)	0	0	3,600	0	8,946	..
Shopping space						
Total square metres	338	444	1,664	1,700	12,994	+ 664.4
Total value at current prices (R'000)	373	280	3,261	2,230	25,965	+ 1,064.3
Industrial and warehouse space						
Total square metres	10,107	611	4,278	17,893	25,296	+ 41.4
Total value at current prices (R'000)	8,789	966	6,833	14,860	39,183	+ 163.7
Other non-residential space ^{2/}						
Total square metres	502	2,888	2,480	4,727	17,973	+ 280.2
Total value at current prices (R'000)	816	5,660	3,781	7,495	29,266	+ 290.5
Total value of non-residential buildings at current prices (R'000)	9,978	6,906	17,475	24,585	103,360	+ 320.4
Additions and alterations						
Dwelling-houses						
Total square metres	11,824	8,651	13,604	68,421	83,179	+ 21.6
Total value at current prices (R'000)	14,742	10,986	17,848	89,260	107,878	+ 20.9
Other buildings ^{3/}						
Total square metres	1,155	2,436	3,453	40,258	23,361	- 42.0
Total value at current prices (R'000)	1,450	4,053	1,746	55,889	36,912	- 34.0
Total value of additions and alterations at current prices (R'000)	16,192	15,039	19,594	145,149	144,790	- 0.2
Total value of building plans passed at current prices (R'000)	45,158	53,766	72,860	325,197	493,041	+ 51.6

1/ Other residential buildings include institutions for the disabled, boarding houses, old people's homes, hostels, hotels, motels, guest houses, holiday chalets, entertainment centres, bed-and-breakfast accommodation and casinos.

2/ Other non-residential space includes churches, sport and recreation clubs, schools, crèches, hospitals and all other non-residential space.

3/ Other buildings include additions and alterations to other residential buildings, non-residential buildings and internal alterations.

Table 31 - Building plans passed according to type of building and selected urban area: Durban

Type of building	July 2001	June 2002	July 2002	January 2001 to July 2001	January 2002 to July 2002	Percentage change between January 2001 to July 2001 and January 2002 to July 2002
Residential buildings						
Dwelling-houses smaller than 80 square metres						
Number of dwelling-houses	66	30	35	514	443	-13.8
Total square metres	3,272	1,755	1,894	26,737	19,991	-25.2
Total value at current prices (R'000)	3,940	2,226	2,123	30,757	22,592	-26.5
Dwelling-houses equal to or larger than 80 square metres						
Number of dwelling-houses	69	47	73	413	418	+ 1.2
Total square metres	13,423	11,047	15,399	78,708	83,321	+ 5.9
Total value at current prices (R'000)	17,179	16,133	24,018	98,716	110,462	+ 11.9
Flats and townhouses						
Number of flats and townhouses	3	1	16	126	204	+ 61.9
Total square metres	503	144	2,864	16,150	32,010	+ 98.2
Total value at current prices (R'000)	900	335	4,230	16,413	41,983	+ 155.8
Other residential buildings ^{1/}						
Total square metres	1,135	0	0	1,273	29,606	+ 2,225.7
Total value at current prices (R'000)	901	0	0	1,231	31,000	+ 2,418.3
Total value of residential buildings at current prices (R'000)	22,920	18,694	30,371	147,117	206,037	+ 40.0
Non-residential buildings						
Office and banking space						
Total square metres	2,679	0	4,639	13,119	4,865	-62.9
Total value at current prices (R'000)	6,000	0	6,200	26,039	6,450	-75.2
Shopping space						
Total square metres	400	0	0	8,622	4,182	-51.5
Total value at current prices (R'000)	500	0	0	10,456	5,697	-45.5
Industrial and warehouse space						
Total square metres	12,267	2,167	6,424	55,115	45,134	-18.1
Total value at current prices (R'000)	15,453	2,600	7,520	62,412	49,059	-21.4
Other non-residential space ^{2/}						
Total square metres	1,206	1,516	3,756	21,589	62,861	+ 191.2
Total value at current prices (R'000)	1,900	1,250	5,400	26,123	73,890	+ 182.9
Total value of non-residential buildings at current prices (R'000)	23,853	3,850	19,120	125,030	135,096	+ 8.1
Additions and alterations						
Dwelling-houses						
Total square metres	26,766	20,744	23,848	153,780	144,233	-6.2
Total value at current prices (R'000)	31,173	27,571	30,153	177,112	183,808	+ 3.8
Other buildings ^{3/}						
Total square metres	4,545	9,831	5,371	63,275	41,372	-34.6
Total value at current prices (R'000)	11,178	13,905	11,859	144,792	82,562	-43.0
Total value of additions and alterations at current prices (R'000)	42,351	41,476	42,012	321,904	266,370	-17.3
Total value of building plans passed at current prices (R'000)	89,124	64,020	91,503	594,051	607,503	+ 2.3

1/ Other residential buildings include institutions for the disabled, boarding houses, old people's homes, hostels, hotels, motels, guest houses, holiday chalets, entertainment centres, bed-and-breakfast accommodation and casinos.

2/ Other non-residential space includes churches, sport and recreation clubs, schools, crèches, hospitals and all other non-residential space.

3/ Other buildings include additions and alterations to other residential buildings, non-residential buildings and internal alterations.

Table 32 - Building plans passed according to type of building and selected urban area: Witwatersrand

Type of building	July 2001*	June 2002	July 2002	January 2001 to July 2001	January 2002 to July 2002	Percentage change between January 2001 to July 2001 and January 2002 to July 2002
Residential buildings						
Dwelling-houses smaller than 80 square metres						
Number of dwelling-houses	627	510	477	4,852	4,795	- 1.2
Total square metres	26,305	19,824	18,763	187,661	178,316	- 5.0
Total value at current prices (R'000)	35,594	15,628	17,440	206,863	157,557	- 23.8
Dwelling-houses equal to or larger than 80 square metres						
Number of dwelling-houses	332	364	273	2,951	2,381	- 19.3
Total square metres	76,591	93,920	65,884	673,701	590,914	- 12.3
Total value at current prices (R'000)	113,447	139,531	110,148	992,595	939,640	- 5.3
Flats and townhouses						
Number of flats and townhouses	294	151	40	1,965	1,551	- 21.1
Total square metres	30,025	23,534	7,018	210,522	207,736	- 1.3
Total value at current prices (R'000)	42,414	36,589	12,778	343,932	345,824	+ 0.6
Other residential buildings ^{1/}						
Total square metres	0	0	0	1,323	3,968	+ 199.9
Total value at current prices (R'000)	0	0	0	1,751	6,253	+ 257.1
Total value of residential buildings at current prices (R'000)	191,455	191,748	140,366	1,545,141	1,449,274	- 6.2
Non-residential buildings						
Office and banking space						
Total square metres	4,589	0	3,328	155,006	63,713	- 58.9
Total value at current prices (R'000)	10,119	0	6,567	268,083	164,771	- 38.5
Shopping space						
Total square metres	3,718	2,523	13,155	57,121	53,974	- 5.5
Total value at current prices (R'000)	5,711	4,954	26,250	95,730	94,743	- 1.0
Industrial and warehouse space						
Total square metres	17,819	30,708	12,127	166,387	174,848	+ 5.1
Total value at current prices (R'000)	31,825	47,103	22,010	285,118	284,965	- 0.1
Other non-residential space ^{2/}						
Total square metres	4,029	4,911	2,479	64,612	87,885	+ 36.0
Total value at current prices (R'000)	6,672	7,875	4,100	99,669	139,769	+ 40.2
Total value of non-residential buildings at current prices (R'000)	54,327	59,932	58,927	748,600	684,248	- 8.6
Additions and alterations						
Dwelling-houses						
Total square metres	56,384	59,499	35,261	431,537	401,263	- 7.0
Total value at current prices (R'000)	71,208	89,524	59,556	555,073	585,980	+ 5.6
Other buildings ^{3/}						
Total square metres	16,132	32,660	33,729	135,255	192,065	+ 42.0
Total value at current prices (R'000)	16,538	48,042	66,982	242,335	346,083	+ 42.8
Total value of additions and alterations at current prices (R'000)	87,746	137,566	126,538	797,408	932,063	+ 16.9
Total value of building plans passed at current prices (R'000)	333,528	389,246	325,831	3,091,149	3,065,585	- 0.8

1/ Other residential buildings include institutions for the disabled, boarding houses, old people's homes, hostels, hotels, motels, guest houses, holiday chalets, entertainment centres, bed-and-breakfast accommodation and casinos.

2/ Other non-residential space includes churches, sport and recreation clubs, schools, crèches, hospitals and all other non-residential space.

3/ Other buildings include additions and alterations to other residential buildings, non-residential buildings and internal alterations.

Table 33 - Building plans passed according to type of building and selected urban area: Pretoria

Type of building	July 2001*	June 2002	July 2002	January 2001 to July 2001	January 2002 to July 2002	Percentage change between January 2001 to July 2001 and January 2002 to July 2002
Residential buildings						
Dwelling-houses smaller than 80 square metres						
Number of dwelling-houses	69	46	42	1,002	401	- 60.0
Total square metres	3,450	2,638	2,323	38,311	22,133	- 42.2
Total value at current prices (R'000)	4,785	3,702	3,327	41,576	32,117	- 22.8
Dwelling-houses equal to or larger than 80 square metres						
Number of dwelling-houses	224	169	199	1,617	1,480	- 8.5
Total square metres	64,348	44,460	56,376	468,784	395,282	- 15.7
Total value at current prices (R'000)	92,408	64,165	82,752	641,496	562,038	- 12.4
Flats and townhouses						
Number of flats and townhouses	95	215	135	1,148	1,704	+ 48.4
Total square metres	11,988	25,755	17,166	140,328	240,502	+ 71.4
Total value at current prices (R'000)	14,549	43,145	25,683	205,235	351,431	+ 71.2
Other residential buildings ^{1/}						
Total square metres	1,528	0	0	1,946	0	..
Total value at current prices (R'000)	2,292	0	0	2,919	0	..
Total value of residential buildings at current prices (R'000)	114,034	111,012	111,762	891,226	945,586	+ 6.1
Non-residential buildings						
Office and banking space						
Total square metres	17,693	3,792	0	59,714	70,909	+ 18.7
Total value at current prices (R'000)	30,859	4,732	0	97,982	111,009	+ 13.3
Shopping space						
Total square metres	111	2,205	413	32,904	14,977	- 54.5
Total value at current prices (R'000)	144	2,205	620	48,728	19,985	- 59.0
Industrial and warehouse space						
Total square metres	16,339	15,601	0	41,338	63,749	+ 54.2
Total value at current prices (R'000)	23,929	22,617	0	59,204	93,076	+ 57.2
Other non-residential space ^{2/}						
Total square metres	13,016	695	812	32,468	11,430	- 64.8
Total value at current prices (R'000)	19,876	695	1,096	49,075	16,893	- 65.6
Total value of non-residential buildings at current prices (R'000)	74,808	30,249	1,716	254,989	240,963	- 5.5
Additions and alterations						
Dwelling-houses						
Total square metres	19,555	19,740	23,792	121,794	167,924	+ 37.9
Total value at current prices (R'000)	27,187	28,506	35,944	157,853	244,238	+ 54.7
Other buildings ^{3/}						
Total square metres	9,105	3,465	4,286	37,880	40,039	+ 5.7
Total value at current prices (R'000)	17,348	4,427	6,860	65,692	66,044	+ 0.5
Total value of additions and alterations at current prices (R'000)	44,535	32,933	42,804	223,545	310,282	+ 38.8
Total value of building plans passed at current prices (R'000)	233,377	174,194	156,282	1,369,760	1,496,831	+ 9.3

1/ Other residential buildings include institutions for the disabled, boarding houses, old people's homes, hostels, hotels, motels, guest houses, holiday chalets, entertainment centres, bed-and-breakfast accommodation and casinos.

2/ Other non-residential space includes churches, sport and recreation clubs, schools, crèches, hospitals and all other non-residential space.

3/ Other buildings include additions and alterations to other residential buildings, non-residential buildings and internal alterations.

Table 34 - Building plans passed according to type of building and selected urban area: Bloemfontein

Type of building	July 2001	June 2002	July 2002	January 2001 to July 2001	January 2002 to July 2002	Percentage change between January 2001 to July 2001 and January 2002 to July 2002
Residential buildings						
Dwelling-houses smaller than 80 square metres						
Number of dwelling-houses	60	300	333	1,147	1,405	+ 22.5
Total square metres	2,637	12,147	13,685	50,033	58,651	+ 17.2
Total value at current prices (R'000)	1,653	5,962	7,187	24,986	32,387	+ 29.6
Dwelling-houses equal to or larger than 80 square metres						
Number of dwelling-houses	28	32	28	136	215	+ 58.1
Total square metres	4,170	5,895	4,643	22,736	33,783	+ 48.6
Total value at current prices (R'000)	5,201	7,807	6,788	28,795	46,848	+ 62.7
Flats and townhouses						
Number of flats and townhouses	41	93	138	204	419	+ 105.4
Total square metres	5,850	8,322	17,096	26,740	44,257	+ 65.5
Total value at current prices (R'000)	7,550	10,041	25,137	41,164	63,919	+ 55.3
Other residential buildings ^{1/}						
Total square metres	1,488	0	0	1,488	2,683	+ 80.3
Total value at current prices (R'000)	1,461	0	0	1,461	7,000	+ 379.1
Total value of residential buildings at current prices (R'000)	15,865	23,810	39,112	96,406	150,154	+ 55.8
Non-residential buildings						
Office and banking space						
Total square metres	0	5,530	0	12,809	12,797	-0.1
Total value at current prices (R'000)	0	7,700	0	25,200	21,700	-13.9
Shopping space						
Total square metres	0	0	2,468	0	11,584	..
Total value at current prices (R'000)	0	0	6,000	0	25,364	..
Industrial and warehouse space						
Total square metres	1,000	0	5,053	1,804	11,085	+ 514.5
Total value at current prices (R'000)	800	0	6,000	1,438	10,123	+ 604.0
Other non-residential space ^{2/}						
Total square metres	0	1,243	240	1,534	1,483	-3.3
Total value at current prices (R'000)	0	1,050	260	2,868	1,310	-54.3
Total value of non-residential buildings at current prices (R'000)	800	8,750	12,260	29,506	58,497	+ 98.3
Additions and alterations						
Dwelling-houses						
Total square metres	3,510	3,946	4,649	20,520	31,407	+ 53.1
Total value at current prices (R'000)	3,866	4,819	6,047	25,894	37,709	+ 45.6
Other buildings ^{3/}						
Total square metres	2,316	303	3,358	7,350	11,703	+ 59.2
Total value at current prices (R'000)	3,763	1,204	5,397	16,862	28,220	+ 67.4
Total value of additions and alterations at current prices (R'000)	7,629	6,023	11,444	42,756	65,929	+ 54.2
Total value of building plans passed at current prices (R'000)	24,294	38,583	62,816	168,668	274,580	+ 62.8

1/ Other residential buildings include institutions for the disabled, boarding houses, old people's homes, hostels, hotels, motels, guest houses, holiday chalets, entertainment centres, bed-and-breakfast accommodation and casinos.

2/ Other non-residential space includes churches, sport and recreation clubs, schools, crèches, hospitals and all other non-residential space.

3/ Other buildings include additions and alterations to other residential buildings, non-residential buildings and internal alterations.

Table 35 - Buildings completed according to type of building and selected urban area: Cape Town

Type of building	July 2001	June 2002	July 2002	January 2001 to July 2001	January 2002 to July 2002	Percentage change between January 2001 to July 2001 and January 2002 to July 2002
Residential buildings						
Dwelling-houses smaller than 80 square metres						
Number of dwelling-houses	166	396	337	2,273	3,503	+ 54.1
Total square metres	7,197	14,323	12,377	96,985	126,334	+ 30.3
Total value at current prices (R'000)	8,180	14,136	14,873	110,087	148,474	+ 34.9
Dwelling-houses equal to or larger than 80 square metres						
Number of dwelling-houses	174	280	245	986	1,716	+ 74.0
Total square metres	28,716	61,779	45,290	190,153	340,239	+ 78.9
Total value at current prices (R'000)	38,118	86,531	64,468	258,993	492,536	+ 90.2
Flats and townhouses						
Number of flats and townhouses	86	103	120	816	730	- 10.5
Total square metres	12,406	10,996	13,069	92,026	103,550	+ 12.5
Total value at current prices (R'000)	17,565	16,090	18,229	116,154	167,788	+ 44.5
Other residential buildings ^{1/}						
Total square metres	217	600	0	16,835	4,143	- 75.4
Total value at current prices (R'000)	323	720	0	12,847	5,722	- 55.5
Total value of residential buildings at current prices (R'000)	64,186	117,477	97,570	498,081	814,520	+ 63.5
Non-residential buildings						
Office and banking space						
Total square metres	1,007	9,412	2,849	63,533	67,472	+ 6.2
Total value at current prices (R'000)	1,234	17,705	5,320	117,682	99,514	- 15.4
Shopping space						
Total square metres	795	10,888	5,976	21,082	36,373	+ 72.5
Total value at current prices (R'000)	411	12,249	8,992	25,045	42,563	+ 69.9
Industrial and warehouse space						
Total square metres	2,262	26,547	12,015	43,411	65,952	+ 51.9
Total value at current prices (R'000)	2,472	28,348	15,314	48,179	71,630	+ 48.7
Other non-residential space ^{2/}						
Total square metres	133	10,310	1,705	12,152	19,213	+ 58.1
Total value at current prices (R'000)	92	7,460	1,448	17,423	19,743	+ 13.3
Total value of non-residential buildings at current prices (R'000)	4,209	65,762	31,074	208,329	233,450	+ 12.1
Additions and alterations						
Dwelling-houses						
Total square metres	29,300	35,628	28,063	212,910	206,396	- 3.1
Total value at current prices (R'000)	31,867	46,047	31,159	236,809	256,026	+ 8.1
Other buildings ^{3/}						
Total square metres	12,309	3,061	7,044	82,267	104,308	+ 26.8
Total value at current prices (R'000)	21,419	8,087	13,657	232,738	166,752	- 28.4
Total value of additions and alterations at current prices (R'000)	53,286	54,134	44,816	469,547	422,778	- 10.0
Total value of buildings completed at current prices (R'000)	121,681	237,373	173,460	1,175,957	1,470,748	+ 25.1

1/ Other residential buildings include institutions for the disabled, boarding houses, old people's homes, hostels, hotels, motels, guest houses, holiday chalets, entertainment centres, bed-and-breakfast accommodation and casinos.

2/ Other non-residential space includes churches, sport and recreation clubs, schools, crèches, hospitals and all other non-residential space.

3/ Other buildings include additions and alterations to other residential buildings, non-residential buildings and internal alterations.

Table 36 - Buildings completed according to type of building and selected urban area: Port Elizabeth

Type of building	July 2001*	June 2002	July 2002	January 2001 to July 2001	January 2002 to July 2002	Percentage change between January 2001 to July 2001 and January 2002 to July 2002
Residential buildings						
Dwelling-houses smaller than 80 square metres						
Number of dwelling-houses	138	381	233	896	1,209	+ 34.9
Total square metres	5,788	15,623	9,455	38,674	50,002	+ 29.3
Total value at current prices (R'000)	7,434	21,551	12,864	49,723	67,554	+ 35.9
Dwelling-houses equal to or larger than 80 square metres						
Number of dwelling-houses	31	85	42	379	242	- 36.1
Total square metres	4,532	8,123	7,305	40,324	33,868	- 16.0
Total value at current prices (R'000)	5,756	11,018	10,655	52,451	44,213	- 15.7
Flats and townhouses						
Number of flats and townhouses	28	0	13	103	25	- 75.7
Total square metres	3,583	0	1,649	9,404	3,128	- 66.7
Total value at current prices (R'000)	4,732	0	2,391	10,477	4,438	- 57.6
Other residential buildings ^{1/}						
Total square metres	0	0	0	4,347	2,744	- 36.9
Total value at current prices (R'000)	0	0	0	7,000	3,312	- 52.7
Total value of residential buildings at current prices (R'000)	17,922	32,569	25,910	119,651	119,517	- 0.1
Non-residential buildings						
Office and banking space						
Total square metres	1,682	0	0	22,494	0	..
Total value at current prices (R'000)	2,020	0	0	23,190	0	..
Shopping space						
Total square metres	4,463	0	0	19,754	1,944	- 90.2
Total value at current prices (R'000)	4,875	0	0	23,317	1,998	- 91.4
Industrial and warehouse space						
Total square metres	1,823	0	0	33,616	9,230	- 72.5
Total value at current prices (R'000)	1,295	0	0	40,098	7,919	-80.3
Other non-residential space ^{2/}						
Total square metres	588	0	0	4,396	2,300	- 47.7
Total value at current prices (R'000)	514	0	0	3,561	2,664	+25.2
Total value of non-residential buildings at current prices (R'000)	8,704	0	0	90,166	12,581	- 86.0
Additions and alterations						
Dwelling-houses						
Total square metres	9,961	4,048	4,227	32,846	32,718	- 0.4
Total value at current prices (R'000)	10,034	5,108	4,592	37,428	36,876	- 1.5
Other buildings ^{3/}						
Total square metres	5,055	8,858	1,360	21,115	23,579	+ 11.7
Total value at current prices (R'000)	4,735	8,342	2,278	24,955	25,668	+ 2.9
Total value of additions and alterations at current prices (R'000)	14,769	13,450	6,870	62,383	62,544	+ 0.3
Total value of buildings completed at current prices (R'000)	41,395	46,019	32,780	272,200	194,642	- 28.5

1/ Other residential buildings include institutions for the disabled, boarding houses, old people's homes, hostels, hotels, motels, guest houses, holiday chalets, entertainment centres, bed-and-breakfast accommodation and casinos.

2/ Other non-residential space includes churches, sport and recreation clubs, schools, crèches, hospitals and all other non-residential space.

3/ Other buildings include additions and alterations to other residential buildings, non-residential buildings and internal alterations.

Table 37 - Buildings completed according to type of building and selected urban area: Durban

Type of building	July 2001	June 2002	July 2002	January 2001 to July 2001	January 2002 to July 2002	Percentage change between January 2001 to July 2001 and January 2002 to July 2002
Residential buildings						
Dwelling-houses smaller than 80 square metres						
Number of dwelling-houses	66	62	63	475	514	+ 8.2
Total square metres	3,589	3,446	3,200	24,692	25,170	+ 1.9
Total value at current prices (R'000)	4,084	4,385	3,574	29,269	29,247	- 0.1
Dwelling-houses equal to or larger than 80 square metres						
Number of dwelling-houses	89	49	68	589	490	- 16.8
Total square metres	16,358	9,556	12,982	112,192	89,718	- 20.0
Total value at current prices (R'000)	19,571	11,861	16,227	146,232	113,904	- 22.1
Flats and townhouses						
Number of flats and townhouses	4	16	33	389	175	- 55.0
Total square metres	1,080	1,876	5,431	36,546	24,350	- 33.4
Total value at current prices (R'000)	1,130	3,080	7,954	46,600	38,493	- 17.4
Other residential buildings ^{1/}						
Total square metres	0	0	0	0	0	..
Total value at current prices (R'000)	0	0	0	0	0	..
Total value of residential buildings at current prices (R'000)	24,785	19,326	27,755	222,101	181,644	- 18.2
Non-residential buildings						
Office and banking space						
Total square metres	87	1,193	4,540	26,059	36,378	+ 39.6
Total value at current prices (R'000)	87	2,000	7,650	41,780	54,688	+ 30.9
Shopping space						
Total square metres	2,747	522	9,045	17,984	21,977	+ 22.2
Total value at current prices (R'000)	2,647	800	20,450	30,689	35,673	+ 16.2
Industrial and warehouse space						
Total square metres	15,742	32,904	2,743	76,747	100,152	+ 30.5
Total value at current prices (R'000)	17,781	37,441	3,260	98,065	114,812	+ 17.1
Other non-residential space ^{2/}						
Total square metres	2,117	1,377	3,718	9,073	14,962	+ 64.9
Total value at current prices (R'000)	2,302	1,500	5,792	10,940	21,569	+ 97.2
Total value of non-residential buildings at current prices (R'000)	22,817	41,741	37,152	181,474	226,742	+ 24.9
Additions and alterations						
Dwelling-houses						
Total square metres	27,450	19,554	26,532	180,646	144,003	- 20.3
Total value at current prices (R'000)	29,584	19,784	29,399	196,071	157,425	- 19.7
Other buildings ^{3/}						
Total square metres	6,456	5,351	9,467	53,807	55,550	+ 3.2
Total value at current prices (R'000)	19,419	8,498	25,273	107,330	111,427	+ 3.8
Total value of additions and alterations at current prices (R'000)	49,003	28,282	54,672	303,401	268,852	- 11.4
Total value of buildings completed at current prices (R'000)	96,605	89,349	119,579	706,976	677,238	- 4.2

1/ Other residential buildings include institutions for the disabled, boarding houses, old people's homes, hostels, hotels, motels, guest houses, holiday chalets, entertainment centres, bed-and-breakfast accommodation and casinos.

2/ Other non-residential space includes churches, sport and recreation clubs, schools, crèches, hospitals and all other non-residential space.

3/ Other buildings include additions and alterations to other residential buildings, non-residential buildings and internal alterations.

Table 38 - Buildings completed according to type of building and selected urban area: Witwatersrand

Type of building	July 2001*	June 2002	July 2002	January 2001 to July 2001	January 2002 to July 2002	Percentage change between January 2001 to July 2001 and January 2002 to July 2002
Residential buildings						
Dwelling-houses smaller than 80 square metres						
Number of dwelling-houses	375	755	834	3,094	4,116	+ 33.0
Total square metres	14,212	27,090	31,793	119,986	148,628	+ 23.9
Total value at current prices (R'000)	19,747	25,913	25,468	109,854	125,185	+ 14.0
Dwelling-houses equal to or larger than 80 square metres						
Number of dwelling-houses	176	188	107	1,264	1,518	+ 20.1
Total square metres	34,377	42,691	25,188	275,936	330,719	+ 19.9
Total value at current prices (R'000)	52,144	65,305	41,366	392,957	502,209	+ 27.8
Flats and townhouses						
Number of flats and townhouses	55	75	42	1,240	1,466	+ 18.2
Total square metres	7,307	12,929	6,657	121,361	210,898	+ 73.8
Total value at current prices (R'000)	12,481	18,984	10,956	206,020	318,326	+ 54.5
Other residential buildings ^{1/}						
Total square metres	0	0	0	32,600	11,978	-63.3
Total value at current prices (R'000)	0	0	0	250,000	17,333	-93.1
Total value of residential buildings at current prices (R'000)	84,372	110,202	77,790	958,831	963,053	+ 0.4
Non-residential buildings						
Office and banking space						
Total square metres	2,680	5,670	0	220,574	117,074	-46.9
Total value at current prices (R'000)	6,700	8,358	0	322,058	194,329	-39.7
Shopping space						
Total square metres	350	5,886	1,640	60,115	20,992	-65.1
Total value at current prices (R'000)	700	11,000	3,280	139,141	35,661	-74.4
Industrial and warehouse space						
Total square metres	18,500	8,324	4,668	112,326	62,736	-44.1
Total value at current prices (R'000)	33,390	13,534	8,402	175,241	97,509	-44.4
Other non-residential space ^{2/}						
Total square metres	1,209	1,030	2,850	12,823	18,981	+ 48.0
Total value at current prices (R'000)	1,766	1,365	2,550	19,736	26,980	+ 36.7
Total value of non-residential buildings at current prices (R'000)	42,556	34,257	14,232	656,176	354,479	-46.0
Additions and alterations						
Dwelling-houses						
Total square metres	13,125	19,214	10,564	133,336	196,127	+ 47.1
Total value at current prices (R'000)	14,200	26,076	16,143	159,296	267,880	+ 68.2
Other buildings ^{3/}						
Total square metres	14,212	16,627	7,961	75,809	61,253	-19.2
Total value at current prices (R'000)	20,402	20,810	10,627	127,265	93,139	-26.8
Total value of additions and alterations at current prices (R'000)	34,602	46,886	26,770	286,561	361,019	+ 26.0
Total value of buildings completed at current prices (R'000)	161,530	191,345	118,792	1,901,568	1,678,551	-11.7

1/ Other residential buildings include institutions for the disabled, boarding houses, old people's homes, hostels, hotels, motels, guest houses, holiday chalets, entertainment centres, bed-and-breakfast accommodation and casinos.

2/ Other non-residential space includes churches, sport and recreation clubs, schools, crèches, hospitals and all other non-residential space.

3/ Other buildings include additions and alterations to other residential buildings, non-residential buildings and internal alterations.

Table 39 - Buildings completed according to type of building and selected urban area: Pretoria

Type of building	July 2001*	June 2002	July 2002	January 2001 to July 2001	January 2002 to July 2002	Percentage change between January 2001 to July 2001 and January 2002 to July 2002
Residential buildings						
Dwelling-houses smaller than 80 square metres						
Number of dwelling-houses	17	55	59	232	535	+ 130.6
Total square metres	822	3,095	3,472	10,922	22,130	+ 102.6
Total value at current prices (R'000)	1,028	4,517	5,664	12,264	22,665	+ 84.8
Dwelling-houses equal to or larger than 80 square metres						
Number of dwelling-houses	88	103	110	610	611	+ 0.2
Total square metres	21,702	28,623	27,090	170,026	172,120	+ 1.2
Total value at current prices (R'000)	29,622	44,365	44,806	232,281	265,621	+ 14.4
Flats and townhouses						
Number of flats and townhouses	12	44	390	648	1,726	+ 166.4
Total square metres	2,294	6,720	32,457	65,253	149,785	+ 129.5
Total value at current prices (R'000)	3,441	10,691	47,174	88,916	204,246	+ 129.7
Other residential buildings ^{1/}						
Total square metres	0	0	0	0	0	..
Total value at current prices (R'000)	0	0	0	0	0	..
Total value of residential buildings at current prices (R'000)	34,091	59,573	97,644	333,461	492,532	+ 47.7
Non-residential buildings						
Office and banking space						
Total square metres	2,181	2,579	20,429	7,324	33,306	+ 354.8
Total value at current prices (R'000)	3,272	2,579	26,927	10,047	45,220	+ 350.1
Shopping space						
Total square metres	152	7,876	587	152	8,463	+ 5467.8
Total value at current prices (R'000)	198	13,783	881	198	14,664	+ 7306.1
Industrial and warehouse space						
Total square metres	763	0	4,570	7,618	13,796	+ 81.1
Total value at current prices (R'000)	1,030	0	5,896	6,534	20,143	+ 208.3
Other non-residential space ^{2/}						
Total square metres	0	0	0	5,568	2,004	- 64.0
Total value at current prices (R'000)	0	0	0	7,966	3,050	- 61.7
Total value of non-residential buildings at current prices (R'000)	4,500	16,362	33,704	24,745	83,077	+ 235.7
Additions and alterations						
Dwelling-houses						
Total square metres	1,561	3,104	3,390	8,092	17,947	+ 121.8
Total value at current prices (R'000)	2,068	4,483	5,368	10,179	25,986	+ 155.3
Other buildings ^{3/}						
Total square metres	1,299	259	704	4,621	8,773	+ 89.9
Total value at current prices (R'000)	1,492	467	2,130	6,785	13,696	+ 101.9
Total value of additions and alterations at current prices (R'000)	3,560	4,950	7,498	16,964	39,682	+ 133.9
Total value of buildings completed at current prices (R'000)	42,151	80,885	138,846	375,170	615,291	+ 64.0

1/ Other residential buildings include institutions for the disabled, boarding houses, old people's homes, hostels, hotels, motels, guest houses, holiday chalets, entertainment centres, bed-and-breakfast accommodation and casinos.

2/ Other non-residential space includes churches, sport and recreation clubs, schools, crèches, hospitals and all other non-residential space.

3/ Other buildings include additions and alterations to other residential buildings, non-residential buildings and internal alterations.

Table 40 - Buildings completed according to type of building and selected urban area: Bloemfontein

Type of building	July 2001	June 2002	July 2002	January 2001 to July 2001	January 2002 to July 2002	Percentage change between January 2001 to July 2001 and January 2002 to July 2002
Residential buildings						
Dwelling-houses smaller than 80 square metres						
Number of dwelling-houses	14	436	520	376	1,499	+ 298.7
Total square metres	741	18,104	21,820	15,539	63,895	+ 311.2
Total value at current prices (R'000)	850	8,514	10,225	9,938	31,358	+ 215.5
Dwelling-houses equal to or larger than 80 square metres						
Number of dwelling-houses	15	17	27	119	146	+ 22.7
Total square metres	2,792	3,343	4,460	23,080	25,017	+ 8.4
Total value at current prices (R'000)	3,490	4,148	5,796	28,069	31,083	+ 10.7
Flats and townhouses						
Number of flats and townhouses	3	31	39	99	140	+ 41.4
Total square metres	718	3,217	6,553	7,732	16,214	+ 109.7
Total value at current prices (R'000)	1,149	4,826	8,572	11,194	23,901	+ 113.5
Other residential buildings ^{1/}						
Total square metres	0	0	0	151	1,428	+ 845.7
Total value at current prices (R'000)	0	0	0	211	1,461	+ 592.4
Total value of residential buildings at current prices (R'000)	5,489	17,488	24,593	49,412	87,803	+ 77.7
Non-residential buildings						
Office and banking space						
Total square metres	321	0	0	11,103	4,244	- 61.8
Total value at current prices (R'000)	400	0	0	21,883	7,800	- 64.4
Shopping space						
Total square metres	0	0	0	2,812	1,340	- 52.3
Total value at current prices (R'000)	0	0	0	3,006	2,500	- 16.8
Industrial and warehouse space						
Total square metres	0	1,020	326	4,810	4,188	- 12.9
Total value at current prices (R'000)	0	714	196	3,823	3,190	- 16.6
Other non-residential space ^{2/}						
Total square metres	0	0	5,764	5,519	5,764	+ 4.4
Total value at current prices (R'000)	0	0	20,000	10,170	20,000	+ 96.7
Total value of non-residential buildings at current prices (R'000)	400	714	20,196	38,882	33,490	- 13.9
Additions and alterations						
Dwelling-houses						
Total square metres	3,337	4,033	3,249	23,003	36,750	+ 59.8
Total value at current prices (R'000)	4,153	4,589	3,890	25,160	41,418	+ 64.6
Other buildings ^{3/}						
Total square metres	843	123	657	18,202	5,949	- 67.3
Total value at current prices (R'000)	3,605	4,742	1,192	89,757	16,729	- 81.4
Total value of additions and alterations at current prices (R'000)	7,758	9,331	5,082	114,917	58,147	- 49.4
Total value of buildings completed at current prices (R'000)	13,647	27,533	49,871	203,211	179,440	- 11.7

1/ Other residential buildings include institutions for the disabled, boarding houses, old people's homes, hostels, hotels, motels, guest houses, holiday chalets, entertainment centres, bed-and-breakfast accommodation and casinos.

2/ Other non-residential space includes churches, sport and recreation clubs, schools, crèches, hospitals and all other non-residential space.

3/ Other buildings include additions and alterations to other residential buildings, non-residential buildings and internal alterations.

Key figures regarding building plans passed for the month ended July 2002

Actual estimates at constant 2000 prices	July 2002	January 2002 to July 2002	Percentage change between July 2001 and July 2002	Percentage change between May 2001 to July 2001 and May 2002 to July 2002	Percentage change between January 2001 to July 2001 and January 2002 to July 2002
	R million	R million			
Residential buildings					
Dwelling-houses	755,8	4 756,8	+ 15,3	+ 9,7	+ 6,8
Flats and townhouses	186,6	1 288,5	+ 10,7	+ 0,7	+ 20,4
Other residential buildings	12,6	182,2	+ 74,2	+ 16,5	+ 13,8
Total	955,0	6 227,5	+ 14,8	+ 8,1	+ 9,6
Non-residential buildings	201,6	2 065,2	- 41,1	+ 11,0	- 2,8
Additions and alterations	519,1	3 331,6	+ 30,2	+ 37,3	+ 16,8
Total	1 675,7	11 624,3	+ 6,6	+ 16,5	+ 9,0

Seasonally adjusted estimates at constant 2000 prices

	July 2002	Percentage change between June 2002 and July 2002	Percentage change between February 2002 to April 2002 and May 2002 to July 2002
	R million		
Residential buildings	890,1	+ 0,9	- 6,7
Non-residential buildings	156,0	- 59,7	- 11,0
Additions and alterations	494,6	+ 13,0	+ 27,5
Total	1 540,7	- 9,7	+ 1,3

Key findings regarding building plans passed for the three months ended July 2002

Seasonally adjusted real value of building plans passed increases

The seasonally adjusted real value of building plans passed (at constant 2000 prices) for the three months ended July 2002 increased by 1,3% compared with the previous three months.

The increase of 1,3% in the seasonally adjusted real value of building plans passed was mainly due to an increase reported for additions and alterations (+27,5%) during the three months ended July 2002 compared with the previous three months. However, this increase was to a large extent counteracted by decreases reported for residential buildings (-6,7%) and non-residential buildings (-11,0%) during the above-mentioned period.

Key findings regarding building plans passed for the first seven months of 2002

Total real value of building plans passed increases

The total real value of building plans passed (at constant 2000 prices) during the first seven months of 2002 increased by 9,0% (+R962,9 million) to R11 624,3 million compared with the first seven months of 2001. Large increases in the real value of building plans passed were reported for additions and alterations (+R478,4 million), dwelling-houses (+R304,2 million) and flats and townhouses (+R218,0 million). Large real increases for additions and alterations were reported by Western Cape (+R164,3 million), KwaZulu-Natal (+R163,1 million) and Gauteng (+R102,5 million). The largest real increases for dwelling-houses and flats and townhouses were reported by Western Cape (+R342,6 million) and Gauteng (+R163,7 million) respectively during the above-mentioned period.

Seven of the nine provinces reported increases in the total real value of building plans passed

The largest provincial contributors to the increase of 9,0% (+R962,9 million) in the total real value of building plans passed were Western Cape (+2,6 percentage points or R276,4 million), KwaZulu-Natal (+2,2 percentage points or R233,7 million) and Limpopo (+1,8 percentage points or R197,1 million) (cf. table A). The largest real increase in Western Cape was reported for dwelling-houses (+R342,6 million, mainly due to increases reported by the selected urban areas of Cape Town (+R93,3 million), Knysna Municipality (+R65,0 million), Overstrand Municipality (+R62,7 million) and Drakenstein Municipality (+R30,0 million)). Large real increases in KwaZulu-Natal were reported for additions and alterations (+R163,1 million, mainly due to the approval of building plans for additions and alterations to non-residential buildings to the real value of R164,3 million by Umhlathuze Municipality – Richards Bay Area during May 2002) and industrial and warehouse space (+R113,9 million, mainly due to the approval of building plans for industrial and warehouse space to the real value of R126,9 million by Msunduzi Municipality – Pietermaritzburg Area during May 2002). The largest real increase in Limpopo was reported for industrial and warehouse space (+R182,6 million, mainly due to the approval of building plans for industrial and warehouse space to the real value of R176,2 million by Polokwane Municipality during June 2002).

Table A - Contribution of provinces to the total real value of building plans passed

Province	Percentage contribution to the total real value of plans passed during January 2001 to July 2001	Percentage change between January 2001 to July 2001 and January 2002 to July 2002	Contribution (percentage points) ^{1/} to the percentage change in the real value of plans passed between January 2001 to July 2001 and January 2002 to July 2002	Difference in total real value of plans passed between January 2001 to July 2001 and January 2002 to July 2002 R million
Western Cape	29,9	+ 8,7	+ 2,6	+ 276,4
KwaZulu-Natal	11,8	+ 18,5	+ 2,2	+ 233,7
Limpopo	1,5	+ 121,3	+ 1,8	+ 197,1
Mpumalanga	3,5	+ 22,6	+ 0,8	+ 85,2
North West	2,8	+ 30,2	+ 0,8	+ 88,8
Eastern Cape	6,0	+ 13,7	+ 0,8	+ 87,1
Free State	2,5	+ 26,5	+ 0,7	+ 70,8
Northern Cape	0,7	- 11,9	- 0,1	- 8,8
Gauteng	41,3	- 1,5	- 0,6	- 67,4
Total	100,0	+ 9,0	+ 9,0	+ 962,9

1/ The contribution (percentage points) is calculated by multiplying the percentage change of each province between January 2001 to July 2001 and January 2002 to July 2002 (cf. column 3) with the percentage contribution of the corresponding province to the total real value of plans passed during January 2001 to July 2001 (cf. column 2) divided by 100.

Key figures regarding buildings completed for the month ended July 2002

Actual estimates at constant 2000 prices

	July 2002	January 2002 to July 2002	Percentage change between July 2001 and July 2002	Percentage change between May 2001 to July 2001 and May 2002 to July 2002	Percentage change between January 2001 to July 2001 and January 2002 to July 2002
	R million	R million			
Residential buildings					
Dwelling-houses	395,5	2 733,7	+ 22,0	+ 11,4	+ 17,9
Flats and townhouses	132,8	948,1	+ 129,7	+ 77,2	+ 56,0
Other residential buildings	1,3	258,1	+ 10,6	+ 533,7	- 27,3
Total	529,6	3 939,9	+ 38,2	+ 24,7	+ 20,1
Non-residential buildings	174,2	1 343,2	+ 38,4	- 15,4	- 19,1
Additions and alterations	190,8	1 588,2	- 17,6	- 14,7	- 10,1
Total	894,6	6 871,3	+ 20,8	+ 3,1	+ 2,4

Seasonally adjusted estimates at constant 2000 prices

	July 2002	Percentage change between June 2002 and July 2002	Percentage change between February 2002 to April 2002 and May 2002 to July 2002
	R million		
Residential buildings	556,0	- 3,7	- 1,8
Non-residential buildings	132,3	- 35,1	- 13,8
Additions and alterations	175,8	- 27,9	- 9,2
Total	864,1	- 15,7	- 6,0

Key findings regarding buildings completed for the three months ended July 2002

Seasonally adjusted real value of buildings completed decreases

The seasonally adjusted real value of buildings completed (at constant 2000 prices) for the three months ended July 2002 decreased by 6,0% compared with the previous three months.

The decrease of 6,0% in the seasonally adjusted real value of buildings completed during the three months ended July 2002 compared with the previous three months was due to decreases in the seasonally adjusted real value of non-residential buildings (-13,8%), additions and alterations (-9,2%) and residential buildings (-1,8%).

Key findings regarding buildings completed for the first seven months of 2002

Total real value of buildings completed increases

The total real value of buildings completed (at constant 2000 prices) during the first seven months of 2002 increased by 2,4% (+R163,8 million) to R6 871,3 million compared with the first seven months of 2001. Large increases in the real value of buildings completed were reported for dwelling-houses (+R415,3 million, mainly due to increases reported by the selected urban areas of Cape Town (+R229,0 million) and Witwatersrand (+R85,7 million)) and flats and townhouses (+R340,5 million, mainly due to increases reported by the selected urban areas of Pretoria (+R103,1 million), Witwatersrand (+R92,1 million) and Cape Town (+R40,9 million)). However, these increases were partially counteracted by decreases in the real value of non-residential buildings completed (-R316,2 million, mainly due to decreases reported for industrial and warehouse space (-R168,3 million) and office and banking space (-R129,7 million)) and additions and alterations (-R178,8 million) during the above-mentioned period.

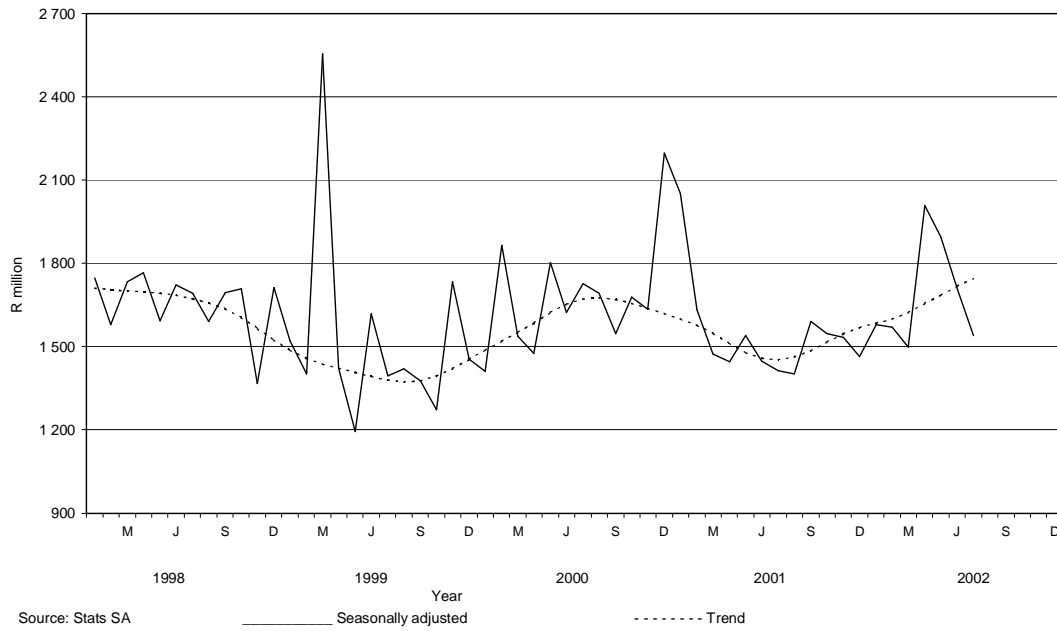
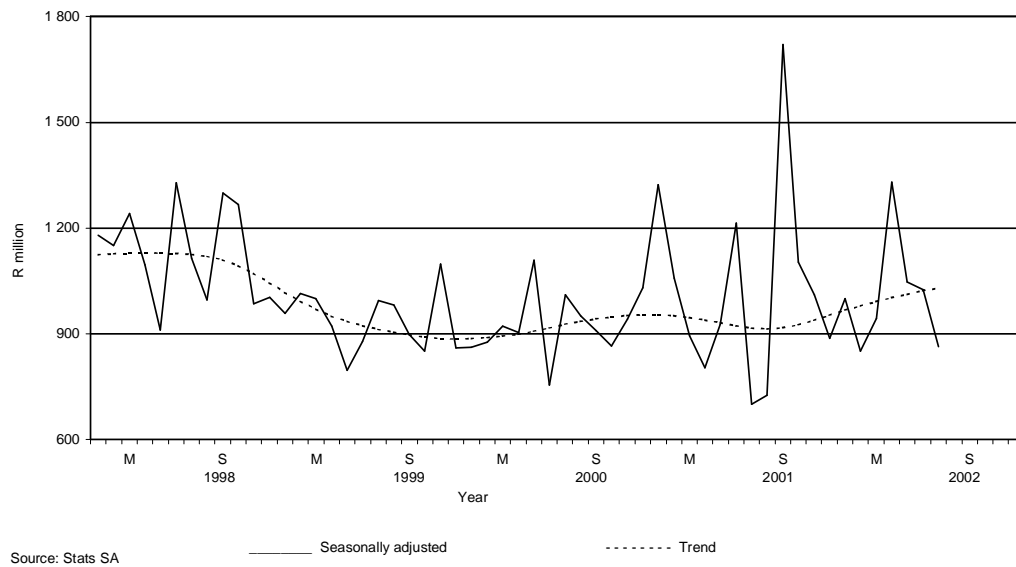
Four of the nine provinces reported increases in the total real value of buildings completed

The largest provincial contributor to the increase of 2,4% (+R163,8 million) in the total real value of buildings completed was Western Cape (+4,7 percentage points or R317,0 million) and Limpopo (+2,7 percentage points or R182,9 million) (cf. table B). The largest real increase in Western Cape was reported for dwelling-houses (+R322,7 million, mainly due to increases reported by the selected urban areas of Cape Town (+R229,0 million), George Municipality (+R33,8 million), Stellenbosch Municipality (+R26,1 million), Helderberg Municipality (+R22,8 million) and Drakenstein Municipality (+R18,8 million)). Large real increases in Limpopo were reported for 'other' residential buildings (+R193,7 million), mainly due to the completion of a hotel and casino to the real value of R195,1 million as reported by Polokwane Municipality (previously Pietersburg) during March 2002. However, these increases were partially counteracted by decreases in the total real value of buildings completed as reported by Eastern Cape (-2,5 percentage points or R169,4 million), Gauteng (-1,3 percentage points or R85,4 million) and Free State (-1,1 percentage points or R70,2 million) (cf. table B).

Table B - Contribution of provinces to the total real value of buildings completed

Province	Percentage contribution to the total real value of buildings completed during January 2001 to July 2001	Percentage change between January 2001 to July 2001 and January 2002 to July 2002	Contribution (percentage points) ^{1/} to the percentage change in the real value of buildings completed between January 2001 to July 2001 and January 2002 to July 2002	Difference in total real value of buildings completed between January 2001 to July 2001 and January 2002 to July 2002 R million
Western Cape	29,4	+ 16,1	+ 4,7	+ 317,0
Limpopo	1,0	+ 265,0	+ 2,7	+ 182,9
KwaZulu-Natal	15,6	+ 3,6	+ 0,6	+ 37,1
North West	2,7	+ 15,5	+ 0,4	+ 28,8
Mpumalanga	2,6	- 20,6	- 0,5	- 35,5
Northern Cape	1,3	- 47,1	- 0,6	- 41,5
Free State	4,3	- 24,3	- 1,1	- 70,2
Gauteng	35,1	- 3,6	- 1,3	- 85,4
Eastern Cape	8,0	- 31,7	- 2,5	- 169,4
Total	100,0	+ 2,4	+ 2,4	+ 163,8

1/ The contribution (percentage points) is calculated by multiplying the percentage change of each province between January 2001 to July 2001 and January 2002 to July 2002 (cf. column 3) with the percentage contribution of the corresponding province to the total real value of buildings completed during January 2001 to July 2001 (cf. column 2) divided by 100.

Figure 1 – Total real value of building plans passed**Figure 2 – Total real value of buildings completed**

pp
PJ Lehohla
 Statistician-General: Statistics South Africa

Contents

Page

Notes	7
Tables		
Table 1	Actual values and percentage change of building plans passed at current prices according to type of building	8
Table 2	Seasonally adjusted values and percentage change of building plans passed at current prices according to type of building	9
Table 3	Actual values and percentage change of building plans passed at constant 2000 prices according to type of building	10
Table 4	Seasonally adjusted values and percentage change of building plans passed at constant 2000 prices according to type of building	11
Table 5	Actual values and percentage change of buildings completed at current prices according to type of building	12
Table 6	Seasonally adjusted values and percentage change of buildings completed at current prices according to type of building	13
Table 7	Actual values and percentage change of buildings completed at constant 2000 prices according to type of building	14
Table 8	Seasonally adjusted values and percentage change of buildings completed at constant 2000 prices according to type of building	15
Table 9	Building plans passed according to type of building: Total RSA	16
Table 10	Building plans passed according to type of building and province: Western Cape	17
Table 11	Building plans passed according to type of building and province: Eastern Cape	18
Table 12	Building plans passed according to type of building and province: Northern Cape	19
Table 13	Building plans passed according to type of building and province: Free State	20
Table 14	Building plans passed according to type of building and province: KwaZulu-Natal	21
Table 15	Building plans passed according to type of building and province: North West	22
Table 16	Building plans passed according to type of building and province: Gauteng	23
Table 17	Building plans passed according to type of building and province: Mpumalanga	24
Table 18	Building plans passed according to type of building and province: Limpopo.....	25
Table 19	Buildings completed according to type of building: Total RSA	26
Table 20	Buildings completed according to type of building and province: Western Cape	27
Table 21	Buildings completed according to type of building and province: Eastern Cape	28
Table 22	Buildings completed according to type of building and province: Northern Cape.....	29
Table 23	Buildings completed according to type of building and province: Free State	30
Table 24	Buildings completed according to type of building and province: KwaZulu-Natal	31
Table 25	Buildings completed according to type of building and province: North West	32
Table 26	Buildings completed according to type of building and province: Gauteng	33
Table 27	Buildings completed according to type of building and province: Mpumalanga	34
Table 28	Buildings completed according to type of building and province: Limpopo.....	35
Table 29	Building plans passed according to type of building and selected urban area: Cape Town	36
Table 30	Building plans passed according to type of building and selected urban area: Port Elizabeth	37
Table 31	Building plans passed according to type of building and selected urban area: Durban	38
Table 32	Building plans passed according to type of building and selected urban area: Witwatersrand	39
Table 33	Building plans passed according to type of building and selected urban area: Pretoria	40
Table 34	Building plans passed according to type of building and selected urban area: Bloemfontein	41
Table 35	Buildings completed according to type of building and selected urban area: Cape Town	42
Table 36	Buildings completed according to type of building and selected urban area: Port Elizabeth	43
Table 37	Buildings completed according to type of building and selected urban area: Durban	44
Table 38	Buildings completed according to type of building and selected urban area: Witwatersrand	45
Table 39	Buildings completed according to type of building and selected urban area: Pretoria	46
Table 40	Buildings completed according to type of building and selected urban area: Bloemfontein	47
Additional information		
	Explanatory notes	48
	Technical notes	50
	Local government institutions covered in the sample survey	51
	Glossary	54
For more information	55

Notes

Forthcoming issues	Issue	Expected release date
	August 2002	16 October 2002
	September 2002	20 November 2002
	October 2002	18 December 2002
	November 2002	15 January 2003
	December 2002	19 February 2003
Purpose of the survey	<p>The Building Statistics Survey is a countrywide survey covering a sample of municipalities in South Africa. The information received is used to estimate key economic statistics used by the private and public sectors. The information is also used to compile estimates of the Gross Domestic Product (GDP). These statistics are also used by government to monitor the Reconstruction and Development Program (RDP) in South Africa.</p>	
Change in base year of constant prices from 1995 to 2000	<p>Following international practice, the base year of the price index ("lump sum domestic buildings" as published in statistical release P0151 –JBCC Contract Price Adjustment Provision Work Group Indices), which is used to deflate the current prices of building plans passed and buildings completed to constant prices, has been converted to 2000=100 with effect from May 2002. Previously the value of building plans passed and buildings completed was published at constant 1995 prices. It should be borne in mind that the change does not in any way affect the trends.</p>	