

Building statistics

July 2001

Co-operation between Statistics South Africa (Stats SA), the citizens of the country, the private sector and government institutions is essential for a successful statistical system. Without continued co-operation and goodwill, the timely release of relevant and reliable official statistics will not be possible.

Embargo: 13:00
Date: 19 September 2001

Stats SA publishes approximately three hundred different releases each year. It is not economically viable to produce them in more than one of South Africa's eleven official languages. Since the releases are used extensively, not only locally, but also by international economic and social-scientific communities, Stats SA releases are published in English only.

Key figures regarding building plans passed for the month ended July 2001

Actual estimates at constant 1995 prices

	July 2001	January 2001 to July 2001	Percentage change between July 2000 and July 2001	Percentage change between May 2000 to July 2000 and May 2001 to July 2001	Percentage change between January 2000 to July 2000 and January 2001 to July 2001
	R million	R million			
Residential buildings					
Dwelling-houses	528,1	3 380,9	+ 1,9	+ 5,2	+ 8,8
Flats and townhouses	122,8	796,8	- 13,4	- 6,1	+ 2,9
Other residential buildings	6,5	121,2	- 48,8	- 6,9	+ 13,4
Total	657,4	4 298,9	- 2,3	+ 2,5	+ 7,7
Non-residential buildings	266,3	1 614,5	- 25,8	- 33,2	- 19,7
Additions and alterations	307,9	2 159,0	- 24,4	- 14,4	- 11,1
Total	1 231,6	8 072,4	- 14,4	- 11,1	- 4,2

Seasonally adjusted estimates at constant 1995 prices

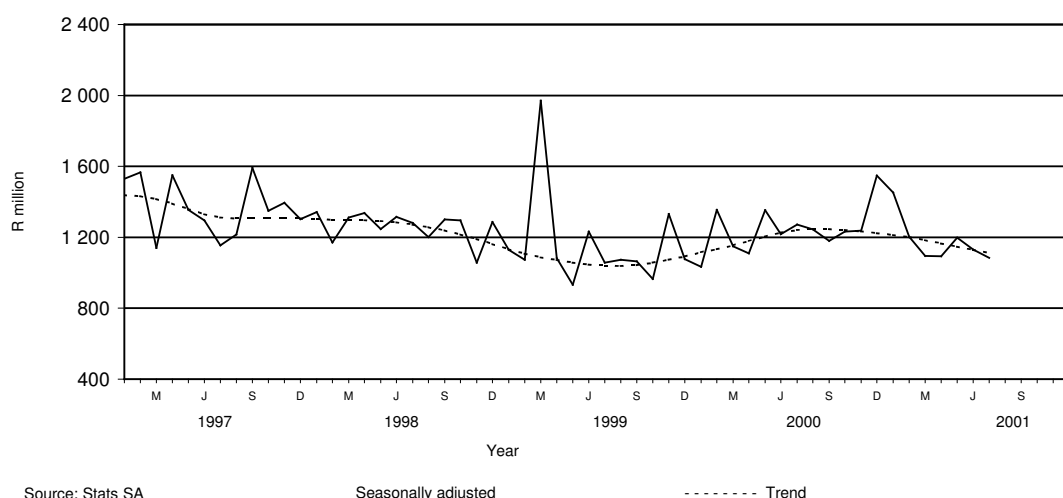
	July 2001	Percentage change between June 2001 and July 2001	Percentage change between February 2001 to April 2001 and May 2001 to July 2001
	R million		
Residential buildings	593,1	- 2,8	+ 4,0
Non-residential buildings	210,5	+ 1,0	- 4,1
Additions and alterations	280,7	- 9,9	- 2,8
Total	1 084,3	- 4,0	+0,6

Key findings regarding building plans passed for the three months ended July 2001

Seasonally adjusted real value of building plans passed increases slightly

The seasonally adjusted real value of building plans passed (at constant 1995 prices) for the three months ended July 2001 increased slightly by 0,6% compared with the previous three months.

The increase of 0,6% in the seasonally adjusted real value of building plans passed was due to an increase in the seasonally adjusted real value of building plans passed for residential buildings (+4,0%) during the three months ended July 2001 compared with the previous three months. However, this increase was counteracted by decreases in the seasonally adjusted real value of building plans passed for non-residential buildings (-4,1%) and additions and alterations (-2,8%) during the above-mentioned period.

Figure 1 - Total real value of building plans passed

Key findings regarding building plans passed for the first seven months of 2001

Total real value of building plans passed decreases

The total real value of building plans passed (at constant 1995 prices) during the first seven months of 2001 decreased by 4,2% (-R357,9 million) to R8 072,4 million compared with the first seven months of 2000. Large real decreases were reported for non-residential buildings (-19,7% or R395,7 million, mainly due to decreases reported by Gauteng (-R319,3 million), Western Cape (-R78,2 million) and Eastern Cape (-R67,7 million)); and additions and alterations (-11,1% or R270,9 million, mainly due to decreases reported by KwaZulu-Natal (-R104,6 million), Western Cape (-R70,3 million) and Free State (-R63,5 million)). However, the real value of building plans passed for residential buildings increased by 7,7% (+R308,7 million, mainly due to increases reported by Western Cape (+R152,3 million), Gauteng (+R108,5 million) and Mpumalanga (R66,7 million)) during the above-mentioned period.

Six of the nine provinces reported decreases in the total real value of building plans passed

The largest provincial contributor to the decrease of 4,2% (-R357,9 million) in the total real value of building plans passed during the first seven months of 2001 compared with the first seven months of 2000 was Gauteng (-2,4 percentage points or R202,7 million), followed by Free State (-0,9 of a percentage point or R78,4 million), Eastern Cape (-0,5 of a percentage point or R40,8 million) and KwaZulu-Natal (-0,5 of a percentage point or R39,9 million) (cf. table A). The largest real decrease in Gauteng was reported for non-residential buildings (-R319,3 million, mainly due to decreases reported for office and banking space (-R225,7 million) and industrial and warehouse space (-R91,3 million)). However, these decreases were partially counteracted by an increase as reported by Gauteng in the real value of dwelling-house plans passed (+R140,0 million) during the above-mentioned period.

Table A - Contribution of provinces to the total real value of building plans passed

Province	Percentage contribution to the total real value of plans passed during January 2000 to July 2000	Percentage change between January 2000 to July 2000 and January 2001 to July 2001	Contribution (percentage points) ^{1/} to the percentage change in the real value of plans passed between January 2000 to July 2000 and January 2001 to July 2001	Difference in total real value of plans passed between January 2000 to July 2000 and January 2001 to July 2001 R million
Gauteng	43,1	- 5,6	- 2,4	- 202,7
Free State	3,3	- 28,3	- 0,9	- 78,4
Eastern Cape	6,2	- 7,9	- 0,5	- 40,8
KwaZulu-Natal	11,6	- 4,1	- 0,5	- 39,9
Northern Cape	1,0	- 33,0	- 0,3	- 27,1
Northern Province	1,7	- 14,2	- 0,2	- 19,9
North West	2,4	+ 4,2	+ 0,1	+ 8,5
Western Cape	27,8	+ 0,2	+ 0,0	+ 3,7
Mpumalanga	2,9	+ 15,8	+ 0,5	+ 38,7
Total	100,0	- 4,2	- 4,2	- 357,9

1/ The contribution (percentage points) is calculated by multiplying the percentage change of each province between January 2000 to July 2000 and January 2001 to July 2001 (cf. column 3) with the percentage contribution of the corresponding province to the total real value of plans passed during January 2000 to July 2000 (cf. column 2) divided by 100.

Total real value of residential building plans passed increases

The total real value of residential building plans passed during the first seven months of 2001 increased by 7,7% (+R308,7 million) to R4 298,9 million compared with the first seven months of 2000. Increases were reported by six of the nine provinces. Large increases in the total real value of residential building plans passed were reported by Western Cape (+R152,3 million, due to the increase in the real value of dwelling-house plans passed (+R184,9 million)); Gauteng (+R108,5 million, due to the increase in the real value of dwelling-house plans passed (+R140,0 million)); and Mpumalanga (+R66,7 million, mainly due to increases in the real value of plans passed for flats and townhouses (+R44,5 million) and dwelling-houses (+R21,7 million)).

Total real value of dwelling-house plans passed increases

The total real value of dwelling-house plans passed during the first seven months of 2001 increased by 8,8% (+R272,3 million) to R3 380,9 million compared with the first seven months of 2000. The largest increases in the real value of dwelling-house plans passed were reported by Western Cape (+R184,9 million) and Gauteng (+R140,0 million). Large real increases were reported by the selected urban areas of Cape Town (+R112,6 million), Pretoria (+R101,8 million), Helderberg Municipality (+R41,2 million) and Witwatersrand (+R35,4 million).

The increase of 8,8% in the total real value of dwelling-house plans passed during the above-mentioned period can mainly be attributed to the increase in the real value of plans passed for dwelling-houses equal to or larger than 80 square metres (+10,8% or R268,5 million).

Total real value of plans passed for flats and townhouses increases

The total real value of plans passed for flats and townhouses during the first seven months of 2001 increased by 2,9% (+R22,1 million) to R796,8 million compared with the first seven months of 2000. The largest increase in the real value of plans passed for flats and townhouses was reported by Mpumalanga (+R44,5 million), followed by Free State (+R11,2 million) and North West (+R10,6 million). Large real increases were reported by the selected urban areas of Witwatersrand (+R26,8 million), Middelburg (+R24,6 million), Highveldridge Transitional Council (+R18,8 million), Rustenburg (+R14,7 million), North Local Council – Umhlanga Rocks (+R14,1 million) and Bloemfontein (+R13,2 million). However, large decreases in the real value of building plans passed for flats and townhouses were reported by the selected urban areas of Pretoria (-R46,1 million) and Cape Town (-R41,3 million) during the above-mentioned period.

Total real value of 'other' residential building plans passed increases

The total real value of 'other' residential building plans passed during the first seven months of 2001 increased by 13,4% (+R14,3 million) to R121,2 million compared with the first seven months of 2000. The largest real increase was reported by Eastern Cape (+R47,3 million), mainly due to the approval of building plans passed for a casino, to the real value of R35,8 million, by the local government institution of East London during January 2001.

Total real value of non-residential building plans passed decreases

The total real value of non-residential building plans passed during the first seven months of 2001 decreased by 19,7% (-R395,7 million) to R1 614,5 million compared with the first seven months of 2000. Large decreases in the total real value of non-residential building plans passed were reported by Gauteng (-R319,3 million), Western Cape (-R78,2 million) and Eastern Cape (-R67,7 million). Large decreases were reported by the selected urban areas of Witwatersrand (-R376,2 million), Cape Town (-R86,1 million), East London (-R36,6 million) and Port Elizabeth (-R26,4 million). However, KwaZulu-Natal reported a large increase in the total real value of non-residential building plans passed (+R87,4 million). This increase was mainly due to the increase in the total real value of non-residential building plans passed as reported by North Local Council – Umhlanga Rocks (+R105,4 million) during the above-mentioned period.

Total real value of building plans passed for additions and alterations decreases

The total real value of building plans passed for additions and alterations during the first seven months of 2001 decreased by 11,1% (-R270,9 million) to R2 159,0 million compared with the first seven months of 2000. Real decreases were reported by seven of the nine provinces. Large decreases in the real value of building plans passed for additions and alterations were reported by KwaZulu-Natal (-R104,6 million), Western Cape (-R70,3 million) and Free State (-R63,5 million). Large decreases were reported by the selected urban areas of Durban (-R95,6 million), Bloemfontein (-R62,9 million) and Cape Town (-R49,2 million).

Key figures regarding buildings completed for the month ended July 2001

Actual estimates at constant 1995 prices

	July 2001	January 2001 to July 2001	Percentage change between July 2000 and July 2001	Percentage change between May 2000 to July 2000 and May 2001 to July 2001	Percentage change between January 2000 to July 2000 and January 2001 to July 2001
	R million	R million			
Residential buildings					
Dwelling-houses	260,6	1 781,9	+ 1,2	+ 17,1	+ 12,5
Flats and townhouses	45,4	468,7	- 14,8	- 24,1	- 0,6
Other residential buildings	1,0	264,4	- 75,2	- 32,3	+ 529,3
Total	307,0	2 515,0	- 2,5	+ 7,3	+ 19,9
Non-residential buildings	116,7	1 302,3	- 69,3	- 23,9	- 14,6
Additions and alterations	172,9	1 302,7	- 0,2	+ 11,7	+ 6,2
Total	596,6	5 120,0	- 31,3	- 2,8	+ 5,6

Seasonally adjusted estimates at constant 1995 prices

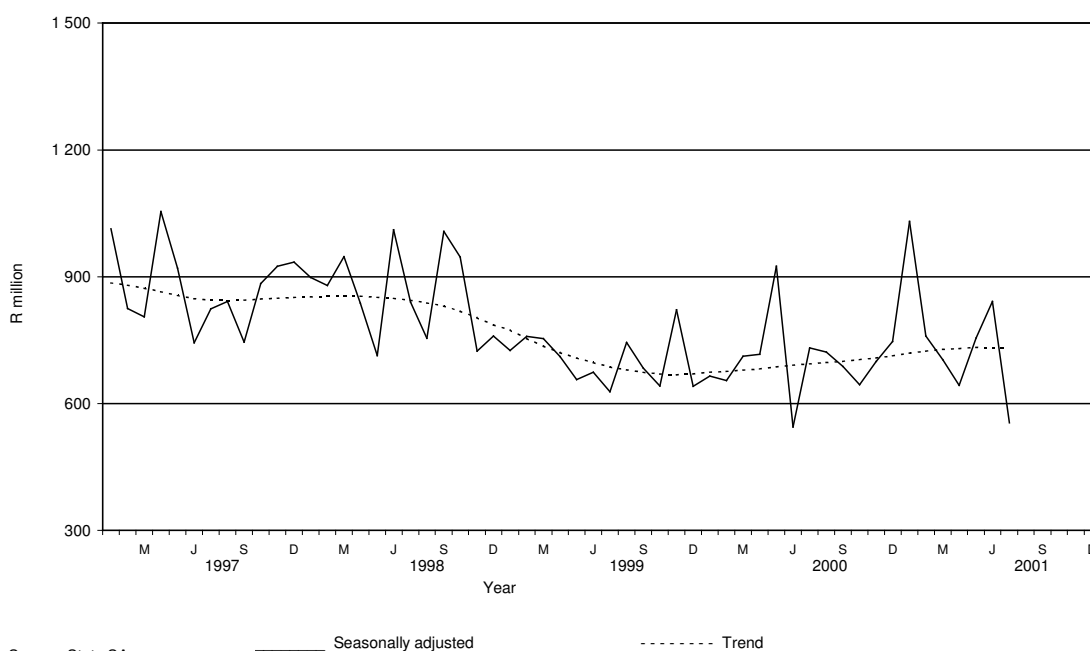
	July 2001	Percentage change between June 2001 and July 2001	Percentage change between February 2001 to April 2001 and May 2001 to July 2001
	R million		
Residential buildings	293,6	- 23,8	- 3,3
Non-residential buildings	107,9	- 58,3	+ 6,1
Additions and alterations	153,2	- 22,8	+ 8,9
Total	554,7	- 34,2	+ 2,2

Key findings regarding buildings completed for the three months ended July 2001

Seasonally adjusted real value of buildings completed increases

The seasonally adjusted real value of buildings completed (at constant 1995 prices) for the three months ended July 2001 increased by 2,2% compared with the previous three months.

The increase of 2,2% in the seasonally adjusted real value of buildings completed was due to increases in the seasonally adjusted real value of additions and alterations (+8,9%) and non-residential buildings completed (+6,1%) during the three months ended July 2001 compared with the previous three months. However, these increases were partially counteracted by a decrease in the seasonally adjusted real value of residential buildings completed (-3,3%) during the above-mentioned period.

Figure 2 - Total real value of buildings completed

Key findings regarding buildings completed for the first seven months of 2001

Total real value of buildings completed increases

The total real value of buildings completed (at constant 1995 prices) during the first seven months of 2001 increased by 5,6% (+R271,5 million) to R5 120,0 million compared with the first seven months of 2000. Increases in the real value of buildings completed were reported for 'other' residential buildings (+R222,4 million, mainly due to the completion of a hotel and casino, to the real value of R192,6 million, as reported by the Southern Metropolitan Local Council of Greater Johannesburg during January 2001)); dwelling-houses (+R198,7 million, mainly due to increases in the real value of dwelling-houses completed as reported by Western Cape (+R114,5 million), KwaZulu-Natal (+R63,5 million) and Eastern Cape (+R39,8 million)); and additions and alterations (+R75,6 million). However, the total real value of non-residential buildings completed decreased by R222,2 million, mainly due to the decrease in the real value of shopping space completed (-R313,9 million) during the above-mentioned period.

Five of the nine provinces reported increases in the total real value of buildings completed

The largest provincial contributors to the increase of 5,6% (+R271,5 million) in the total real value of buildings completed during the first seven months of 2001 compared with the first seven months of 2000 were Western Cape (+3,5 percentage points or R171,7 million), Eastern Cape (+2,8 percentage points or R134,9 million) and Free State (+1,6 percentage points or R79,5 million) (cf. table B). The largest real increase in Western Cape was reported for dwelling-houses (+R114,5 million) and additions and alterations (+R94,8 million), while in Eastern Cape large real increases were reported for industrial and warehouse space (+R63,3 million) and dwelling-houses (+R39,8 million).

Table B - Contribution of provinces to the total real value of buildings completed

Province	Percentage contribution to the total real value of buildings completed during January 2000 to July 2000	Percentage change between January 2000 to July 2000 and January 2001 to July 2001	Contribution (percentage points)^{1/} to the percentage change in the real value of buildings completed between January 2000 to July 2000 and January 2001 to July 2001	Difference in total real value of buildings completed between January 2000 to July 2000 and January 2001 to July 2001 R million
Western Cape	27,0	+ 13,1	+ 3,5	+ 171,7
Eastern Cape	5,5	+ 50,6	+ 2,8	+ 134,9
Free State	2,8	+ 58,7	+ 1,6	+ 79,5
Northern Cape	1,0	+ 19,6	+ 0,2	+ 9,9
KwaZulu-Natal	16,3	+ 0,1	+ 0,0	+ 0,8
Mpumalanga	2,6	- 8,9	- 0,2	- 11,4
North West	3,1	- 9,6	- 0,3	- 14,2
Northern Province	1,5	- 28,9	- 0,4	- 20,8
Gauteng	40,2	- 4,0	- 1,6	- 78,9
Total	100,0	+ 5,6	+ 5,6	+ 271,5

1/ The contribution (percentage points) is calculated by multiplying the percentage change of each province between January 2000 to July 2000 and January 2001 and July 2001 (cf. column 3) with the percentage contribution of the corresponding province to the total real value of buildings completed during January 2000 to July 2000 (cf. column 2) divided by 100.

Total real value of residential buildings completed increases

The total real value of residential buildings completed during the first seven months of 2001 increased by 19,9% (+R418,0 million) to R2 515,0 million compared with the first seven months of 2000. Large increases in the real value of residential buildings completed were reported for 'other' residential buildings (+R222,4 million, mainly due to the completion of a hotel and casino in Gauteng to the real value of R192,6 million as reported during January 2001) and dwelling-houses (+R198,7 million, mainly due to real increases reported by Western Cape (+R114,5 million), KwaZulu-Natal (+R63,5 million) and Eastern Cape (+R39,8 million)). The largest provincial increase in the total real value of residential buildings completed was reported by Gauteng (+R196,2 million, mainly due to a real increase reported for 'other' residential buildings (+R184,0 million)); followed by KwaZulu-Natal (+R96,6 million) and Western Cape (+R88,9 million).

Total real value of dwelling-houses completed increases

The total real value of dwelling-houses completed during the first seven months of 2001 increased by 12,5% (+R198,7 million) to R1 781,9 million compared with the first seven months of 2000. Large real increases were reported by Western Cape (+R114,5 million), KwaZulu-Natal (+R63,5 million) and Eastern Cape (+R39,8 million). Large increases in the real value of dwelling-houses completed were reported by the selected urban areas of Cape Town (+R39,5 million), Mossel Bay (+R35,1 million), Port Elizabeth (+R30,1 million), Durban (+R27,9 million), Pretoria (+R26,7 million), Helderberg Municipality (+R23,9 million) and North Local Council – Umhlanga Rocks (+R19,7 million). The increase of 12,5% in the total real value of dwelling-houses completed during the first seven months of 2001 compared with the first seven months of 2000 can be attributed to an increase in the completion of dwelling-houses equal to or larger than 80 square metres (+21,2% or R240,6 million).

Total real value of flats and townhouses completed decreases slightly

The total real value of flats and townhouses completed during the first seven months of 2001 decreased by 0,6% (-R3,0 million) to R468,7 million compared with the first seven months of 2000. Four of the nine provinces reported decreases in the real value of flats and townhouses completed. The largest provincial decrease in the real value of flats and townhouses completed was reported by Western Cape (-R25,7 million). However, a large real increase was reported by Gauteng (+R28,2 million) during the above-mentioned period.

Total real value of 'other' residential buildings completed increases

The total real value of 'other' residential buildings completed during the first seven months of 2001 increased by R222,4 million to R264,4 million compared with the first seven months of 2000. Large real increases were reported by Gauteng (+R184,0 million, mainly due to the completion of a hotel and casino to the real value of R192,6 million, as reported by Southern Metropolitan Local Council of Greater Johannesburg during January 2001) and KwaZulu-Natal (+R29,9 million, due to the completion of a casino to the real value of R30,8 million, as reported by the North Local Council – Umhlanga Rocks during January 2001).

Total real value of non-residential buildings completed decreases

The total real value of non-residential buildings completed during the first seven months of 2001 decreased by 14,6% (-R222,2 million) to R1 302,3 million compared with the first seven months of 2000. Six of the nine provinces reported decreases in the total real value of non-residential buildings completed. The largest real decrease was reported by Gauteng (-R215,1 million), due to a decrease in the real value of shopping space completed (-R252,7 million) during the above-mentioned period. The real decrease in shopping space completed can be mainly attributed to the completion of a shopping centre, to the real value of R201,1 million, as reported by the Southern Metropolitan Local Council of Greater Johannesburg during June 2000.

Total real value of additions and alterations completed increases

The total real value of additions and alterations completed during the first seven months of 2001 increased by 6,2% (+R75,6 million) to R1 302,7 million compared with the first seven months of 2000. The largest real increases were reported by Western Cape (+R94,8 million) and Free State (+R65,6 million). Large real increases were reported by the selected urban areas of Cape Town (+R94,7 million) and Bloemfontein (+R64,8 million). However, large real decreases in the total real value of additions and alterations completed were reported by KwaZulu-Natal (-R62,6 million) and Gauteng (-R60,0 million).

Contents

Page

Notes	10
Tables		
Table 1	Actual values and percentage change of building plans passed at current prices according to type of building	14
Table 2	Seasonally adjusted values and percentage change of building plans passed at current prices according to type of building	15
Table 3	Actual values and percentage change of building plans passed at constant 1995 prices according to type of building	16
Table 4	Seasonally adjusted values and percentage change of building plans passed at constant 1995 prices according to type of building	17
Table 5	Actual values and percentage change of buildings completed at current prices according to type of building	18
Table 6	Seasonally adjusted values and percentage change of buildings completed at current prices according to type of building	19
Table 7	Actual values and percentage change of buildings completed at constant 1995 prices according to type of building	20
Table 8	Seasonally adjusted values and percentage change of buildings completed at constant 1995 prices according to type of building	21
Table 9	Building plans passed according to type of building: Total RSA	22
Table 10	Building plans passed according to type of building and province: Western Cape	23
Table 11	Building plans passed according to type of building and province: Eastern Cape	24
Table 12	Building plans passed according to type of building and province: Northern Cape	25
Table 13	Building plans passed according to type of building and province: Free State	26
Table 14	Building plans passed according to type of building and province: KwaZulu-Natal	27
Table 15	Building plans passed according to type of building and province: North West	28
Table 16	Building plans passed according to type of building and province: Gauteng	29
Table 17	Building plans passed according to type of building and province: Mpumalanga	30
Table 18	Building plans passed according to type of building and province: Northern Province	31
Table 19	Buildings completed according to type of building: Total RSA	32
Table 20	Buildings completed according to type of building and province: Western Cape	33
Table 21	Buildings completed according to type of building and province: Eastern Cape	34
Table 22	Buildings completed according to type of building and province: Northern Cape	35
Table 23	Buildings completed according to type of building and province: Free State	36
Table 24	Buildings completed according to type of building and province: KwaZulu-Natal	37
Table 25	Buildings completed according to type of building and province: North West	38
Table 26	Buildings completed according to type of building and province: Gauteng	39
Table 27	Buildings completed according to type of building and province: Mpumalanga	40
Table 28	Buildings completed according to type of building and province: Northern Province	41
Table 29	Building plans passed according to type of building and selected urban area: Cape Town	42
Table 30	Building plans passed according to type of building and selected urban area: Port Elizabeth	43
Table 31	Building plans passed according to type of building and selected urban area: Durban	44
Table 32	Building plans passed according to type of building and selected urban area: Witwatersrand	45
Table 33	Building plans passed according to type of building and selected urban area: Pretoria	46
Table 34	Building plans passed according to type of building and selected urban area: Bloemfontein	47
Table 35	Buildings completed according to type of building and selected urban area: Cape Town	48
Table 36	Buildings completed according to type of building and selected urban area: Port Elizabeth	49
Table 37	Buildings completed according to type of building and selected urban area: Durban	50
Table 38	Buildings completed according to type of building and selected urban area: Witwatersrand	51
Table 39	Buildings completed according to type of building and selected urban area: Pretoria	52
Table 40	Buildings completed according to type of building and selected urban area: Bloemfontein	53
Additional information		
	Explanatory notes	54
	Technical notes	56
	Local government institutions covered in the sample survey	57
	Glossary	58
For more information	61

Notes

Forthcoming issues	Issue	Expected release date
	August 2001	17 October 2001
	September 2001	14 November 2001
	October 2001	19 December 2001
	November 2001	16 January 2002
	December 2001	20 February 2002
Purpose of the survey	<p>The Building Statistics Survey is a countrywide survey covering a sample of local government institutions in South Africa. The information received is used to estimate key economic statistics used by the private and public sectors. The information is also used to compile estimates of the Gross Domestic Product (GDP). These statistics are also used by government to monitor the Reconstruction and Development Program (RDP) in South Africa.</p>	
New questionnaire	<p>In order to lessen the respondent burden and improve reliability, Stats SA has overhauled and redesigned its Building Statistics Survey questionnaire. This resulted in the change of some data items on the old questionnaire. As from November 1999 information regarding dwelling-houses was collected according to size of dwelling-house.</p> <p>The Building Statistics Survey questionnaire collects the numbers, square metres and value of building plans passed and buildings completed for the private sector regarding –</p> <ul style="list-style-type: none"> • residential buildings; • non-residential buildings; and • additions and alterations. 	
Re-engineered building statistics statistical release	<p>Prior to March 2001, Stats SA published selected information per province namely, the value of building plans passed and buildings completed regarding residential buildings, non-residential buildings and additions and alterations. Due to users' needs, specifically compilers of National Accounts, Stats SA has overhauled and re-designed the statistical release. In order to provide users with more provincial information Stats SA extended the information per province to include more detailed information regarding residential buildings (e.g. dwelling-houses equal to or larger than 80 square metre; flats and townhouses; and other residential buildings), non-residential buildings (e.g. office and banking space; shopping space; industrial and warehouse space; and other non-residential space) and additions and alterations (e.g. additions to dwelling-houses and other buildings).</p> <p>Furthermore, to monitor the RDP housing program Stats SA publishes information regarding dwelling-houses smaller than 80 square metres and equal to or larger than 80 square metres according to province.</p>	
Changes in the numbering of tables	<p>It should be noted that the numbering of tables has changed as from March 2001 as indicated in table A, pages 11 to 13.</p>	
Estimation of building statistics for July 2001	<p>As from July 2001 Midrand, Southern, Western, Eastern and Northern Metropolitan Local Councils are incorporated into City of Johannesburg Metropolitan Municipality. Due to unforeseen problems, City of Johannesburg Metropolitan Municipality could not furnish Stats SA with information regarding building statistics for July 2001. Therefore, the building statistics for the above-mentioned metropolitan local councils were estimated for July 2001.</p>	

Table A – Title of table according to new and old numbers

New number (as from March 2001)	Title of table	Old number (prior to March 2001)
Table 1	Actual values and percentage change of building plans passed at current prices according to type of building	Table 3
Table 2	Seasonally adjusted values and percentage change of building plans passed at current prices according to type of building	Table 7
Table 3	Actual values and percentage change of building plans passed at constant 1995 prices according to type of building	Table 4
Table 4	Seasonally adjusted values and percentage change of building plans passed at constant 1995 prices according to type of building	Table 7
Table 5	Actual values and percentage change of buildings completed at current prices according to type of building	Table 5
Table 6	Seasonally adjusted values and percentage change of buildings completed at current prices according to type of building	Table 8
Table 7	Actual values and percentage change of buildings completed at constant 1995 prices according to type of building	Table 6
Table 8	Seasonally adjusted values and percentage change of buildings completed at constant 1995 prices according to type of building	Table 8
Table 9	Building plans passed according to type of building: Total RSA	Tables 1 and 9
Table 10	Building plans passed according to type of building and province: Western Cape	Table 1
Table 11	Building plans passed according to type of building and province: Eastern Cape	Table 1
Table 12	Building plans passed according to type of building and province: Northern Cape	Table 1
Table 13	Building plans passed according to type of building and province: Free State	Table 1
Table 14	Building plans passed according to type of building and province: KwaZulu-Natal	Table 1
Table 15	Building plans passed according to type of building and province: North West	Table 1
Table 16	Building plans passed according to type of building and province: Gauteng	Table 1
Table 17	Building plans passed according to type of building and province: Mpumalanga	Table 1

Table A – Title of table according to new and old numbers (continued)

New number (as from March 2001)	Title of table	Old number (prior to March 2001)
Table 18	Building plans passed according to type of building and province: Northern Province	Table 1
Table 19	Buildings completed according to type of building: Total RSA	Tables 2 and 11
Table 20	Buildings completed according to type of building and province: Western Cape	Table 2
Table 21	Buildings completed according to type of building and province: Eastern Cape	Table 2
Table 22	Buildings completed according to type of building and province: Northern Cape	Table 2
Table 23	Buildings completed according to type of building and province: Free State	Table 2
Table 24	Buildings completed according to type of building and province: KwaZulu-Natal	Table 2
Table 25	Buildings completed according to type of building and province: North West	Table 2
Table 26	Buildings completed according to type of building and province: Gauteng	Table 2
Table 27	Buildings completed according to type of building and province: Mpumalanga	Table 2
Table 28	Buildings completed according to type of building and province: Northern Province	Table 2
Table 29	Building plans passed according to type of building and selected urban area: Cape Town	Table 10
Table 30	Building plans passed according to type of building and selected urban area: Port Elizabeth	New
Table 31	Building plans passed according to type of building and selected urban area: Durban	Table 10
Table 32	Building plans passed according to type of building and selected urban area: Witwatersrand	Table 10
Table 33	Building plans passed according to type of building and selected urban area: Pretoria	Table 10
Table 34	Building plans passed according to type of building and selected urban area: Bloemfontein	Table 10
Table 35	Buildings completed according to type of building and selected urban area: Cape Town	Table 12
Table 36	Buildings completed according to type of building and selected urban area: Port Elizabeth	New

Table A – Title of table according to new and old numbers (concluded)

New number (as from March 2001)	Title of table	Old number (prior to March 2001)
Table 37	Buildings completed according to type of building and selected urban area: Durban	Table 12
Table 38	Buildings completed according to type of building and selected urban area: Witwatersrand	Table 12
Table 39	Buildings completed according to type of building and selected urban area: Pretoria	Table 12
Table 40	Buildings completed according to type of building and selected urban area: Bloemfontein	Table 12

Table 1 - Actual values and percentage change of building plans passed at current prices according to type of building

Year ^{1/} and month ^{2/}	Residential buildings		Non-residential buildings		Additions and alterations		Total	
	R'000	Percentage change	R'000	Percentage change	R'000	Percentage change	R'000	Percentage change
1999 Jan	553 051	+ 9,8	237 671	- 45,6	277 444	+ 9,9	1 068 166	- 7,0
Feb	528 673	- 18,9	394 629	- 4,6	355 506	- 2,0	1 278 809	- 7,0
Mar	667 232	- 17,0	1 454 021	+ 219,5	476 726	+ 10,2	2 597 979	+ 59,3
Apr	530 570	- 22,1	374 625	- 23,8	330 044	- 6,9	1 235 239	- 16,0
May	527 616	- 19,3	274 148	- 46,9	403 206	+ 14,2	1 204 970	- 17,9
Jun	837 779	+ 18,8	418 343	- 32,5	403 838	+ 2,5	1 659 959	+ 0,4
Jul	637 414	- 19,6	460 734	- 7,1	420 306	- 15,4	1 518 454	- 12,2
Aug	630 628	- 14,1	388 580	- 14,5	415 686	- 6,2	1 434 895	- 7,7
Sep	599 986	- 14,7	305 439	- 38,8	484 091	+ 9,7	1 389 516	- 13,4
Oct	664 785	- 22,6	329 137	- 38,8	436 746	- 11,1	1 430 668	- 22,7
Nov	710 950	+ 14,0	701 437	+ 44,0	536 870	+ 39,6	1 949 257	+ 33,3
Dec	493 844	+ 16,1	225 184	- 40,9	314 898	- 23,4	1 033 926	- 12,9
Total	7 382 530	- 8,9	5 563 948	- 3,8	4 855 360	+ 0,8	17 801 839	- 1,8
2000 Jan	490 776	- 11,3	163 926	- 31,0	365 596	+ 31,8	1 020 298	- 4,5
Feb	784 023	+ 48,3	474 732	+ 20,3	399 280	+ 12,3	1 658 035	+ 29,7
Mar	747 421	+ 12,0	359 267	- 75,3	515 668	+ 8,2	1 622 356	- 37,6
Apr	627 642	+ 18,3	271 151	- 27,6	382 300	+ 15,8	1 281 093	+ 3,7
May	874 847	+ 65,8	573 853	+ 109,3	473 062	+ 17,3	1 921 762	+ 59,5
Jun	853 154	+ 1,8	336 324	- 19,6	532 278	+ 31,8	1 721 756	+ 3,7
Jul	908 061	+ 42,5	484 669	+ 5,2	549 932	+ 30,8	1 942 662	+ 27,9
Aug	929 836	+ 47,4	353 488	- 9,0	492 627	+ 18,5	1 775 951	+ 23,8
Sep	826 851	+ 37,8	354 456	+ 16,0	465 836	- 3,8	1 647 143	+ 18,5
Oct	916 410	+ 37,9	492 884	+ 49,8	539 561	+ 23,5	1 948 855	+ 36,2
Nov	914 346	+ 28,6	493 166	- 29,7	503 659	- 6,2	1 911 171	- 2,0
Dec	606 148	+ 22,7	704 410	+ 212,8	317 835	+ 0,9	1 628 393	+ 57,5
Total	9 479 515	+ 28,4	5 062 326	- 9,0	5 537 634	+ 14,1	20 079 475	+ 12,8
2001 Jan	719 247	+ 46,6	475 094	+ 189,8	351 676	- 3,8	1 546 017	+ 51,5
Feb	817 492	+ 4,3	299 535	- 36,9	472 567	+ 18,4	1 589 594	- 4,1
Mar	932 343	+ 24,7	307 449	- 14,4	435 650	- 15,5	1 675 442	+ 3,3
Apr	747 870	+ 19,2	210 194	- 22,5	383 265	+ 0,3	1 341 329	+ 4,7
May*	1 015 796	+ 16,1	292 244	- 49,1	507 491	+ 7,3	1 815 531	- 5,5
Jun*	927 122	+ 8,7	321 864	- 4,3	472 052	- 11,3	1 721 038	+ 0,0
Jul	946 628	+ 4,2	383 440	- 20,9	443 391	- 19,4	1 773 459	- 8,7

^{1/} The annual percentage change is the change in the actual values of building plans passed of the relevant year compared with the actual values of building plans passed of the previous year expressed as a percentage.

^{2/} The monthly percentage change is the change in the actual values of building plans passed of the relevant month compared with the actual values of building plans passed of the same month in the previous year expressed as a percentage.

Table 2 - Seasonally adjusted values and percentage change of building plans passed at current prices according to type of building

Year and month ^{1/}	Residential buildings		Non-residential buildings		Additions and alterations		Total	
	R'000	Percentage change	R'000	Percentage change	R'000	Percentage change	R'000	Percentage change
1999 Jan	719 820	+ 19,2	313 069	- 33,8	382 462	- 25,5	1 415 351	- 11,0
Feb	533 736	- 25,9	422 991	+ 35,1	379 701	- 0,7	1 336 428	- 5,6
Mar	621 300	+ 16,4	1 409 817	+ 233,3	439 064	+ 15,6	2 470 181	+ 84,8
Apr	578 342	- 6,9	414 065	- 70,6	380 024	- 13,4	1 372 431	- 44,4
May	506 012	- 12,5	257 521	- 37,8	393 253	+ 3,5	1 156 785	- 15,7
Jun	796 215	+ 57,4	388 591	+ 50,9	383 661	- 2,4	1 568 466	+ 35,6
Jul	571 229	- 28,3	399 405	+ 2,8	372 196	- 3,0	1 342 830	- 14,4
Aug	591 945	+ 3,6	388 152	- 2,8	391 471	+ 5,2	1 371 568	+ 2,1
Sep	589 304	- 0,4	322 111	- 17,0	449 261	+ 14,8	1 360 675	- 0,8
Oct	563 622	- 4,4	284 669	- 11,6	387 049	- 13,8	1 235 340	- 9,2
Nov	663 745	+ 17,8	581 729	+ 104,4	471 990	+ 21,9	1 717 464	+ 39,0
Dec	699 658	+ 5,4	281 675	- 51,6	414 343	- 12,2	1 395 676	- 18,7
2000 Jan	633 500	- 9,5	215 759	- 23,4	494 529	+ 19,4	1 343 788	- 3,7
Feb	803 121	+ 26,8	526 859	+ 144,2	425 279	- 14,0	1 755 259	+ 30,6
Mar	688 518	- 14,3	350 659	- 33,4	470 280	+ 10,6	1 509 457	- 14,0
Apr	699 669	+ 1,6	316 910	- 9,6	447 575	- 4,8	1 464 155	- 3,0
May	825 742	+ 18,0	531 567	+ 67,7	457 326	+ 2,2	1 814 634	+ 23,9
Jun	809 325	- 2,0	310 065	- 41,7	505 493	+ 10,5	1 624 883	- 10,5
Jul	818 233	+ 1,1	395 903	+ 27,7	496 771	- 1,7	1 710 908	+ 5,3
Aug	868 180	+ 6,1	362 663	- 8,4	464 450	- 6,5	1 695 292	- 0,9
Sep	808 520	- 6,9	369 961	+ 2,0	430 987	- 7,2	1 609 469	- 5,1
Oct	783 518	- 3,1	429 386	+ 16,1	476 151	+ 10,5	1 689 055	+ 4,9
Nov	851 343	+ 8,7	414 058	- 3,6	439 377	- 7,7	1 704 779	+ 0,9
Dec	855 919	+ 0,5	865 168	+ 108,9	421 441	- 4,1	2 142 528	+ 25,7
2001 Jan	923 936	+ 7,9	634 239	- 26,7	471 453	+ 11,9	2 029 628	- 5,3
Feb	843 958	- 8,7	338 824	- 46,6	505 778	+ 7,3	1 688 559	- 16,8
Mar	856 807	+ 1,5	297 022	- 12,3	396 159	- 21,7	1 549 988	- 8,2
Apr	845 471	- 1,3	253 800	- 14,6	453 060	+ 14,4	1 552 331	+ 0,2
May	953 416	+ 12,8	265 454	+ 4,6	489 035	+ 7,9	1 707 904	+ 10,0
Jun	875 507	- 8,2	298 965	+ 12,6	446 426	- 8,7	1 620 898	- 5,1
Jul	852 896	- 2,6	303 275	+ 1,4	403 774	- 9,6	1 559 944	- 3,8

^{1/} The percentage change is the change in the seasonally adjusted values of building plans passed of the relevant month compared with the seasonally adjusted values of building plans passed of the previous month expressed as a percentage.

Table 3 - Actual values and percentage change of building plans passed at constant 1995 prices according to type of building

Year ^{1/} and month ^{2/}	Residential buildings		Non-residential buildings		Additions and alterations		Total	
	R'000	Percentage change	R'000	Percentage change	R'000	Percentage change	R'000	Percentage change
1999 Jan	444 933	+ 2,8	191 208	- 45,6	223 205	+ 9,9	859 346	- 13,0
Feb	420 918	- 24,5	314 195	- 4,6	283 046	- 2,0	1 018 159	- 13,4
Mar	530 391	- 22,6	1 155 820	+ 219,5	378 955	+ 10,2	2 065 166	+ 48,5
Apr	419 423	- 27,3	296 146	- 23,8	260 904	- 6,9	976 473	- 21,6
May	416 759	- 24,5	216 546	- 46,9	318 488	+ 14,2	951 793	- 23,2
Jun	659 150	+ 11,2	329 145	- 32,5	317 732	+ 2,5	1 306 027	- 6,1
Jul	499 933	- 24,1	361 360	- 7,1	329 651	- 15,4	1 190 944	- 17,2
Aug	494 610	- 13,8	304 769	- 14,5	326 028	- 6,2	1 125 407	- 11,9
Sep	469 473	- 18,3	238 998	- 38,8	378 788	+ 9,7	1 087 259	- 17,0
Oct	519 363	- 25,5	257 138	- 38,8	341 208	- 11,1	1 117 709	- 25,6
Nov	553 699	+ 9,8	546 290	+ 44,0	418 123	+ 39,6	1 518 112	+ 28,3
Dec	384 016	+ 11,7	175 104	- 40,9	244 866	- 23,4	803 986	- 16,3
Total	5 812 668	- 8,9	4 386 719	- 3,8	3 820 994	+ 0,8	14 020 381	- 7,1
2000 Jan	378 102	- 15,0	126 291	- 34,0	281 661	+ 26,2	786 054	- 8,5
Feb	602 168	+ 43,1	364 618	+ 16,0	306 667	+ 8,3	1 273 453	+ 25,1
Mar	570 115	+ 7,5	274 040	- 76,3	393 339	+ 3,8	1 237 494	- 40,1
Apr	473 692	+ 12,9	204 642	- 30,9	288 528	+ 10,6	966 862	- 1,0
May	655 807	+ 57,4	430 175	+ 98,7	354 619	+ 11,3	1 440 601	+ 51,4
Jun	637 634	- 3,3	251 363	- 23,6	397 816	+ 25,2	1 286 813	- 1,5
Jul	672 638	+ 34,5	359 014	- 0,6	407 357	+ 23,6	1 439 009	+ 20,8
Aug	682 699	+ 38,0	259 536	- 14,8	361 694	+ 10,9	1 303 929	+ 15,9
Sep	606 196	+ 29,1	259 865	+ 8,7	341 522	- 9,8	1 207 583	+ 11,1
Oct	668 425	+ 28,7	359 507	+ 39,8	393 553	+ 15,3	1 421 485	+ 27,2
Nov	664 013	+ 19,9	358 145	- 34,4	365 765	- 12,5	1 387 923	- 8,6
Dec	438 602	+ 14,2	509 703	+ 191,1	229 982	- 6,1	1 178 287	+ 46,6
Total	7 050 091	+ 21,3	3 756 899	- 14,4	4 122 503	+ 7,9	14 929 493	+ 6,5
2001 Jan	514 851	+ 36,2	340 082	+ 169,3	251 737	- 10,6	1 106 670	+ 40,8
Feb	582 259	- 3,3	213 344	- 41,5	336 586	+ 9,8	1 132 189	- 11,1
Mar	659 832	+ 15,7	217 586	- 20,6	308 316	- 21,6	1 185 734	- 4,2
Apr	526 298	+ 11,1	147 920	- 27,7	269 715	- 6,5	943 933	- 2,4
May*	710 844	+ 8,4	204 509	- 52,5	355 137	+ 0,1	1 270 490	- 11,8
Jun*	647 432	+ 1,5	224 765	- 10,6	329 645	- 17,1	1 201 842	- 6,6
Jul	657 381	- 2,3	266 278	- 25,8	307 910	- 24,4	1 231 569	- 14,4

^{1/} The annual percentage change is the change in the actual values of building plans passed of the relevant year compared with the actual values of building plans passed of the previous year expressed as a percentage.

^{2/} The monthly percentage change is the change in the actual values of building plans passed of the relevant month compared with the actual values of building plans passed of the same month in the previous year expressed as a percentage.

Table 4 - Seasonally adjusted values and percentage change of building plans passed at constant 1995 prices according to type of building

Year and month ^{1/}	Residential buildings		Non-residential buildings		Additions and alterations		Total	
	R'000	Percentage change	R'000	Percentage change	R'000	Percentage change	R'000	Percentage change
1999 Jan	579 524	+ 19,2	251 576	- 33,9	307 458	+ 7,8	1 138 559	- 11,1
Feb	424 980	- 26,7	337 415	+ 34,1	303 316	- 1,3	1 065 712	- 6,4
Mar	492 830	+ 16,0	1 119 772	+ 231,9	348 405	+ 14,9	1 961 008	+ 84,0
Apr	457 355	- 7,2	327 416	- 70,8	300 833	- 13,7	1 085 604	- 44,6
May	400 629	- 12,4	203 557	- 37,8	310 044	+ 3,1	914 230	- 15,8
Jun	625 149	+ 56,0	305 225	+ 49,9	301 628	- 2,7	1 232 002	+ 34,8
Jul	448 604	- 28,2	313 339	+ 2,7	292 041	- 3,2	1 053 984	- 14,4
Aug	465 032	+ 3,7	305 194	- 2,6	308 116	+ 5,5	1 078 342	+ 2,3
Sep	461 862	- 0,7	252 553	- 17,2	352 079	+ 14,3	1 066 494	- 1,1
Oct	440 654	- 4,6	222 608	- 11,9	302 674	- 14,0	965 936	- 9,4
Nov	516 255	+ 17,2	452 448	+ 103,2	366 798	+ 21,2	1 335 501	+ 38,3
Dec	541 635	+ 4,9	218 204	- 51,8	320 757	- 12,6	1 080 596	- 19,1
2000 Jan	488 700	- 9,8	166 017	- 23,9	380 653	+ 18,7	1 035 370	- 4,2
Feb	616 462	+ 26,1	405 341	+ 144,2	328 223	- 13,8	1 350 027	+ 30,4
Mar	523 994	- 15,0	267 298	- 34,1	357 429	+ 8,9	1 148 721	- 14,9
Apr	528 113	+ 0,8	239 335	- 10,5	338 201	- 5,4	1 105 648	- 3,7
May	620 520	+ 17,5	398 695	+ 66,6	342 328	+ 1,2	1 361 544	+ 23,1
Jun	603 582	- 2,7	231 268	- 42,0	377 475	+ 10,3	1 212 325	- 11,0
Jul	606 845	+ 0,5	293 138	+ 26,8	368 283	- 2,4	1 268 266	+ 4,6
Aug	639 141	+ 5,3	267 025	- 8,9	342 154	- 7,1	1 248 320	- 1,6
Sep	593 567	- 7,1	271 782	+ 1,8	316 470	- 7,5	1 181 819	- 5,3
Oct	571 882	- 3,7	313 579	+ 15,4	347 681	+ 9,9	1 233 141	+ 4,3
Nov	617 417	+ 8,0	300 396	- 4,2	318 411	- 8,4	1 236 225	+ 0,3
Dec	616 407	- 0,2	623 695	+ 107,6	303 588	- 4,7	1 543 690	+ 24,9
2001 Jan	662 586	+ 7,5	453 578	- 27,3	337 064	+ 11,0	1 453 227	- 5,9
Feb	600 493	- 9,4	241 667	- 46,7	362 095	+ 7,4	1 204 254	- 17,1
Mar	604 922	+ 0,7	210 042	- 13,1	279 251	- 22,9	1 094 215	- 9,1
Apr	594 849	- 1,7	178 743	- 14,9	319 270	+ 14,3	1 092 862	- 0,1
May	669 050	+ 12,5	185 851	+ 4,0	341 817	+ 7,1	1 196 718	+ 9,5
Jun	610 120	- 8,8	208 336	+ 12,1	311 440	- 8,9	1 129 896	- 5,6
Jul	593 077	- 2,8	210 481	+ 1,0	280 718	- 9,9	1 084 275	- 4,0

^{1/} The percentage change is the change in the seasonally adjusted values of building plans passed of the relevant month compared with the seasonally adjusted values of building plans passed of the previous month expressed as a percentage.

Table 5 - Actual values and percentage change of buildings completed at current prices according to type of building

Year ^{1/} and month ^{2/}	Residential buildings		Non-residential buildings		Additions and alterations		Total	
	R'000	Percentage change	R'000	Percentage change	R'000	Percentage change	R'000	Percentage change
1999 Jan	313 975	- 17,7	197 076	- 12,3	193 050	- 3,3	704 102	- 12,6
Feb	396 737	- 2,1	214 816	- 29,4	244 641	+ 26,9	856 194	- 5,1
Mar	432 499	- 38,0	246 125	+ 39,7	230 685	+ 8,8	909 309	- 16,2
Apr	377 800	- 17,0	181 550	- 25,2	200 507	+ 28,2	759 858	- 11,1
May	390 986	- 11,7	195 652	+ 10,4	178 758	- 2,4	765 395	- 4,7
Jun	420 016	- 30,4	208 557	- 38,5	153 702	- 21,1	782 276	- 31,2
Jul	480 991	- 18,3	264 068	+ 0,3	272 372	+ 26,1	1 017 432	- 4,7
Aug	460 657	+ 7,6	204 898	- 24,8	255 878	+ 47,4	921 432	+ 5,4
Sep	493 450	- 11,4	197 152	- 58,4	223 191	+ 10,3	913 793	- 25,9
Oct	419 578	- 15,9	203 652	- 58,9	229 463	+ 12,4	852 693	- 28,8
Nov	461 147	- 8,9	409 997	+ 45,4	210 237	+ 20,2	1 081 381	+ 12,3
Dec	349 510	- 15,3	181 596	- 13,0	146 343	+ 3,3	677 449	- 11,3
Total	4 997 346	- 16,4	2 705 139	- 21,8	2 538 827	+ 12,8	10 241 312	- 12,4
2000 Jan	299 212	- 4,7	195 988	- 0,6	183 959	- 4,7	679 159	- 3,5
Feb	353 141	- 11,0	205 549	- 4,3	221 978	- 9,3	780 668	- 8,8
Mar	419 416	- 3,0	212 379	- 13,7	268 745	+ 16,5	900 540	- 1,0
Apr	364 713	- 3,5	224 048	+ 23,4	188 808	- 5,8	777 569	+ 2,3
May	473 124	+ 21,0	390 533	+ 99,6	293 343	+ 64,1	1 157 000	+ 51,2
Jun	362 558	- 13,7	174 728	- 16,2	170 986	+ 11,2	708 272	- 9,5
Jul	407 406	- 15,3	472 668	+ 79,0	220 828	- 18,9	1 100 902	+ 8,2
Aug	449 691	- 2,4	285 994	+ 39,6	211 008	- 17,5	946 693	+ 2,7
Sep	510 979	+ 3,6	270 539	+ 37,2	199 622	- 10,6	981 140	+ 7,4
Oct	462 270	+ 10,2	195 491	- 4,0	238 257	+ 3,8	896 018	+ 5,1
Nov	555 802	+ 20,5	186 442	- 54,5	255 900	+ 21,7	998 144	- 7,7
Dec	383 114	+ 9,6	316 801	+ 74,5	149 622	+ 2,2	849 537	+ 25,4
Total	5 041 426	+ 0,9	3 131 160	+ 15,7	2 603 056	+ 2,5	10 775 642	+ 5,2
2001 Jan	643 036	+ 114,9	238 434	+ 21,7	200 993	+ 9,3	1 082 463	+ 59,4
Feb	428 998	+ 21,5	285 620	+ 39,0	243 491	+ 9,7	958 109	+ 22,7
Mar	534 418	+ 27,4	150 947	- 28,9	287 215	+ 6,9	972 580	+ 8,0
Apr	373 116	+ 2,3	173 682	- 22,5	184 616	- 2,2	731 414	- 5,9
May	445 694	- 5,8	300 731	- 23,0	295 910	+ 0,9	1 042 335	- 9,9
Jun*	557 531	+ 53,8	368 550	+ 110,9	277 868	+ 62,5	1 203 949	+ 70,0
Jul	426 708	+ 4,7	151 496	- 67,9	233 445	+ 5,7	811 649	- 26,3

^{1/} The annual percentage change is the change in the actual values of buildings completed of the relevant year compared with the actual values of buildings completed of the previous year expressed as a percentage.

^{2/} The monthly percentage change is the change in the actual values of buildings completed of the relevant month compared with the

actual values of buildings completed of the same month in the previous year expressed as a percentage.

Table 6 - Seasonally adjusted values and percentage change of buildings completed at current prices according to type of building

Year and month ^{1/}	Residential buildings		Non-residential buildings		Additions and alterations		Total	
	R'000	Percentage change	R'000	Percentage change	R'000	Percentage change	R'000	Percentage change
1999 Jan	408 847	- 12,3	231 767	+ 15,3	218 884	+ 2,4	859 499	- 2,5
Feb	444 562	+ 8,7	228 979	- 1,2	224 402	+ 2,5	897 943	+ 4,5
Mar	417 091	- 6,2	279 915	+ 22,2	200 350	- 10,7	897 356	- 0,1
Apr	419 993	+ 0,7	208 170	- 25,6	224 140	+ 11,9	852 302	- 5,0
May	385 320	- 8,3	189 693	- 8,9	176 240	- 21,4	751 253	- 11,9
Jun	409 766	+ 6,3	197 702	+ 4,2	147 556	- 16,3	755 023	+ 0,5
Jul	450 278	+ 9,9	246 090	+ 24,5	238 062	+ 61,3	934 429	+ 23,8
Aug	440 504	- 2,2	206 622	- 16,0	257 139	+ 8,0	904 265	- 3,2
Sep	437 679	- 0,6	176 284	- 14,7	223 815	- 13,0	837 778	- 7,4
Oct	397 593	- 9,2	174 815	- 0,8	218 780	- 2,2	791 187	- 5,6
Nov	386 122	- 2,9	421 128	+ 140,9	196 007	- 10,4	1 003 256	+ 26,8
Dec	399 827	+ 3,5	174 550	- 58,6	220 919	+ 12,7	795 296	- 20,7
2000 Jan	388 535	- 2,8	227 825	+ 30,5	207 822	- 5,9	824 182	+ 3,6
Feb	396 035	+ 1,9	212 552	- 6,7	204 984	- 1,4	813 571	- 1,3
Mar	398 412	+ 0,6	257 384	+ 21,1	229 894	+ 12,2	885 690	+ 8,9
Apr	413 954	+ 3,9	269 481	+ 4,7	215 940	- 6,1	899 375	+ 1,5
May	475 335	+ 14,8	364 526	+ 35,3	283 742	+ 31,4	1 123 603	+ 24,9
Jun	346 584	- 27,1	159 905	- 56,1	163 374	- 42,4	669 863	- 40,4
Jul	386 240	+ 11,4	445 084	+ 178,3	194 969	+ 19,3	1 026 293	+ 53,2
Aug	427 719	+ 10,7	280 971	- 36,9	211 931	+ 8,7	920 621	- 10,3
Sep	446 201	+ 4,3	237 047	- 15,6	200 283	- 5,5	883 531	- 4,0
Oct	441 192	- 1,1	167 984	- 29,1	225 711	+ 12,7	834 887	- 5,5
Nov	469 815	+ 6,5	197 651	+ 17,7	241 438	+ 7,0	908 905	+ 8,9
Dec	436 116	- 7,2	311 851	+ 57,8	224 221	- 7,1	972 187	+ 7,0
2001 Jan	840 015	+ 92,6	279 692	- 10,3	226 955	+ 1,2	1 346 663	+ 38,5
Feb	478 609	- 43,0	291 865	+ 4,4	226 074	- 0,4	996 547	- 26,0
Mar	501 332	+ 4,7	186 877	- 36,0	243 444	+ 7,7	931 653	- 6,5
Apr	426 592	- 14,9	214 688	+ 14,9	213 784	- 12,2	855 065	- 8,2
May	451 555	+ 5,9	270 672	+ 26,1	285 376	+ 33,5	1 007 603	+ 17,8
Jun	531 481	+ 17,7	333 428	+ 23,2	264 572	- 7,3	1 129 480	+ 12,1
Jul	408 306	- 23,2	140 785	- 57,8	207 002	- 21,8	756 092	- 33,1

^{1/} The percentage change is the change in the seasonally adjusted values of buildings completed of the relevant month compared with the seasonally adjusted values of buildings completed of the previous month expressed as a percentage.

Table 7 - Actual values and percentage change of buildings completed at constant 1995 prices according to type of building

Year ^{1/} and month ^{2/}	Residential buildings		Non-residential buildings		Additions and alterations		Total	
	R'000	Percentage change	R'000	Percentage change	R'000	Percentage change	R'000	Percentage change
1999 Jan	262 682	- 22,6	172 571	- 18,3	165 993	- 9,2	601 246	- 18,0
Feb	329 271	- 26,3	187 449	- 39,0	209 095	- 4,5	725 815	- 26,1
Mar	356 192	- 57,5	214 208	+ 5,4	196 662	- 12,9	767 062	- 38,1
Apr	311 031	- 34,2	157 322	- 23,5	169 922	+ 18,7	638 275	- 21,4
May	319 828	- 31,9	169 395	+ 5,1	150 851	+ 2,4	640 074	- 15,6
Jun	344 231	- 50,0	180 257	- 44,7	129 270	- 3,4	653 758	- 40,4
Jul	391 124	- 50,0	227 058	- 28,4	226 411	- 12,3	844 593	- 36,0
Aug	369 731	- 48,5	175 126	- 29,7	210 253	+ 9,6	755 110	- 21,4
Sep	396 579	- 28,6	168 075	- 59,5	182 196	- 5,7	746 850	- 44,4
Oct	334 635	- 45,1	172 586	- 61,0	186 252	- 6,2	693 473	- 42,4
Nov	366 364	- 38,2	345 989	- 30,9	170 095	+ 9,6	882 448	- 27,6
Dec	277 236	- 38,9	152 730	- 6,3	118 305	+ 35,6	548 271	- 8,6
Total	4 058 904	- 21,7	2 322 766	- 26,2	2 115 305	+ 6,4	8 496 975	- 17,7
2000 Jan	236 149	- 10,1	162 916	- 5,6	147 996	- 10,8	547 061	- 9,0
Feb	277 982	- 15,6	168 898	- 9,9	176 734	- 15,5	623 614	- 14,1
Mar	329 523	- 7,5	173 371	- 19,1	213 629	+ 8,6	716 523	- 6,6
Apr	285 795	- 8,1	181 857	+ 15,6	149 255	- 12,2	616 907	- 3,3
May	370 120	+ 15,7	315 965	+ 86,5	231 709	+ 53,6	917 794	+ 43,4
Jun	282 549	- 17,9	141 251	- 21,6	134 529	+ 4,1	558 329	- 14,6
Jul	314 890	- 19,5	380 264	+ 67,5	173 198	- 23,5	868 352	+ 2,8
Aug	346 783	- 6,2	227 702	+ 30,0	165 496	- 21,3	739 981	- 2,0
Sep	391 744	- 1,2	215 055	+ 28,0	156 199	- 14,3	762 998	+ 2,2
Oct	352 005	+ 5,2	154 538	- 10,5	186 138	- 0,1	692 681	- 0,1
Nov	420 080	+ 14,7	147 269	- 57,4	199 299	+ 17,2	766 648	- 13,1
Dec	289 205	+ 4,3	249 253	+ 63,2	116 347	- 1,7	654 805	+ 19,4
Total	3 896 825	- 4,0	2 518 339	+ 8,4	2 050 529	- 3,1	8 465 693	- 0,4
2001 Jan	487 405	+ 106,4	187 007	+ 14,8	154 848	+ 4,6	829 260	+ 51,6
Feb	318 383	+ 14,5	224 016	+ 32,6	187 013	+ 5,8	729 412	+ 17,0
Ma	396 489	+ 20,3	118 112	- 31,9	219 081	+ 2,6	733 682	+ 2,4
Apr	274 663	- 3,9	135 689	- 25,4	139 333	- 6,6	549 685	- 10,9
May	324 788	- 12,2	234 214	- 25,9	221 822	- 4,3	780 824	- 14,9
Jun*	406 297	+ 43,8	286 586	+ 102,9	207 674	+ 54,4	900 557	+ 61,3
Jul	307 009	- 2,5	116 715	- 69,3	172 922	- 0,2	596 646	- 31,3

^{1/} The annual percentage change is the change in the actual values of buildings completed of the relevant year compared with the actual values of buildings completed of the previous year expressed as a percentage.

^{2/} The monthly percentage change is the change in the actual values of buildings completed of the relevant month compared with the actual values of buildings completed of the same month in the previous year expressed as a percentage.

Table 8 - Seasonally adjusted values and percentage change of buildings completed at constant 1995 prices according to type of building

Year and month ^{1/}	Residential buildings		Non-residential buildings		Additions and alterations		Total	
	R'000	Percentage change	R'000	Percentage change	R'000	Percentage change	R'000	Percentage change
1999 Jan	341 916	- 13,7	203 160	+ 14,5	187 682	+ 2,0	732 757	- 3,3
Feb	370 413	+ 8,3	200 472	- 1,3	191 975	+ 2,3	762 860	+ 4,1
Mar	343 911	- 7,2	243 862	+ 21,6	170 718	- 11,1	758 490	- 0,6
Apr	344 954	+ 0,3	180 437	- 26,0	189 825	+ 11,2	715 216	- 5,7
May	315 794	- 8,5	163 994	- 9,1	149 384	- 21,3	629 172	- 12,0
Jun	334 095	+ 5,8	170 139	+ 3,7	124 373	- 16,7	628 606	- 0,1
Jul	365 700	+ 9,5	210 597	+ 23,8	197 861	+ 59,1	774 158	+ 23,2
Aug	354 469	- 3,1	176 935	- 16,0	211 477	+ 6,9	742 881	- 4,0
Sep	351 284	- 0,9	150 330	- 15,0	182 912	- 13,5	684 526	- 7,9
Oct	317 421	- 9,6	148 135	- 1,5	177 543	- 2,9	643 098	- 6,1
Nov	307 112	- 3,2	356 412	+ 140,6	158 309	- 10,8	821 832	+ 27,8
Dec	316 506	+ 3,1	146 798	- 58,8	177 725	+ 12,3	641 028	- 22,0
2000 Jan	306 703	- 3,1	189 663	+ 29,2	166 707	- 6,2	663 073	+ 3,4
Feb	312 835	+ 2,0	175 204	- 7,6	163 178	- 2,1	651 217	- 1,8
Mar	313 327	+ 0,2	210 415	+ 20,1	182 565	+ 11,9	706 308	+ 8,5
Apr	324 047	+ 3,4	218 871	+ 4,0	170 680	- 6,5	713 597	+ 1,0
May	372 411	+ 14,9	294 603	+ 34,6	225 210	+ 31,9	892 224	+ 25,0
Jun	268 792	- 27,8	128 905	- 56,2	128 945	- 42,7	526 643	- 41,0
Jul	298 255	+ 11,0	356 300	+ 176,4	152 783	+ 18,5	807 338	+ 53,3
Aug	330 589	+ 10,8	223 985	- 37,1	166 335	+ 8,9	720 908	- 10,7
Sep	341 504	+ 3,3	188 410	- 15,9	156 930	- 5,7	686 844	- 4,7
Oct	336 327	- 1,5	132 747	- 29,5	176 349	+ 12,4	645 423	- 6,0
Nov	355 496	+ 5,7	156 529	+ 17,9	187 726	+ 6,5	699 752	+ 8,4
Dec	328 368	- 7,6	245 281	+ 56,7	173 480	- 7,6	747 129	+ 6,8
2001 Jan	637 476	+ 94,1	219 731	- 10,4	174 334	+ 0,5	1 031 541	+ 38,1
Feb	356 354	- 44,1	229 624	+ 4,5	173 563	- 0,4	759 541	- 26,4
Mar	372 305	+ 4,5	146 512	- 36,2	185 447	+ 6,8	704 264	- 7,3
Apr	313 774	- 15,7	167 866	+ 14,6	161 354	- 13,0	642 994	- 8,7
May	329 396	+ 5,0	210 594	+ 25,5	215 021	+ 33,3	755 010	+ 17,4
Jun	385 461	+ 17,0	258 600	+ 22,8	198 418	- 7,7	842 479	+ 11,6
Jul	293 590	- 23,8	107 921	- 58,3	153 146	- 22,8	554 657	- 34,2

^{1/} The percentage change is the change in the seasonally adjusted values of buildings completed of the relevant month compared with the seasonally adjusted values of buildings completed of the previous month expressed as a percentage.

Table 9 - Building plans passed according to type of building: Total RSA

Type of building	July 2000 *	June 2001 *	July 2001	January 2000 to July 2000	January 2001 to July 2001	Percentage change between January 2000 to July 2000 and January 2001 to July 2001
Residential buildings						
Dwelling-houses smaller than 80 square metres						
Number of dwelling-houses	3 923	2 947	2 953	29 576	24 259	- 18,0
Total square metres	161 145	123 203	120 664	1 143 483	952 505	- 16,7
Total value at current prices (R'000)	128 478	122 525	120 806	834 380	900 401	+ 7,9
Dwelling-houses equal to or larger than 80 square metres						
Number of dwelling-houses	1 938	1 952	2 005	12 129	12 792	+ 5,5
Total square metres	410 716	437 672	437 689	2 444 934	2 765 013	+ 13,1
Total value at current prices (R'000)	570 967	624 640	639 627	3 283 166	3 902 176	+ 18,9
Flats and townhouses						
Number of flats and townhouses	1 097	1 077	1 286	6 482	7 314	+ 12,8
Total square metres	129 311	114 532	127 760	702 184	751 687	+ 7,0
Total value at current prices (R'000)	191 473	167 477	176 828	1 027 378	1 132 255	+ 10,2
Other residential buildings ^{1/}						
Total square metres	13 523	13 282	8 188	102 104	76 887	- 24,7
Total value at current prices (R'000)	17 143	12 480	9 367	141 000	171 666	+ 21,7
Total value of residential buildings at current prices (R'000)	908 061	927 122	946 628	5 285 924	6 106 498	+ 15,5
Non-residential buildings						
Office and banking space						
Total square metres	98 682	78 365	103 294	639 257	508 281	- 20,5
Total value at current prices (R'000)	185 688	142 551	131 164	982 074	859 897	- 12,4
Shopping space						
Total square metres	56 873	38 439	42 348	321 484	296 632	- 7,7
Total value at current prices (R'000)	99 609	52 419	69 832	442 886	424 521	- 4,1
Industrial and warehouse space						
Total square metres	123 010	70 943	100 671	751 059	521 915	- 30,5
Total value at current prices (R'000)	153 564	93 179	129 307	932 274	668 836	- 28,3
Other non-residential space ^{2/}						
Total square metres	35 744	27 158	43 904	269 780	254 897	- 5,5
Total value at current prices (R'000)	45 808	33 715	53 137	306 688	336 566	+ 9,7
Total value of non-residential buildings at current prices (R'000)	484 669	321 864	383 440	2 663 922	2 289 820	- 14,0
Additions and alterations						
Dwelling-houses						
Total square metres	276 494	265 821	258 915	1 734 139	1 693 762	- 2,3
Total value at current prices (R'000)	336 588	345 698	318 674	2 065 648	2 119 312	+ 2,6
Other buildings ^{3/}						
Total square metres	94 590	62 399	73 436	612 454	528 615	- 13,7
Total value at current prices (R'000)	213 344	126 354	124 717	1 152 468	946 780	- 17,8
Total value of additions and alterations at current prices (R'000)	549 932	472 052	443 391	3 218 116	3 066 092	- 4,7
Total value of building plans passed at current prices (R'000)	1 942 662	1 721 038	1 773 459	11 167 962	11 462 410	+ 2,6

1/ Other residential buildings include institutions for the disabled, boarding houses, old people's homes, hostels, hotels, motels, guest houses, holiday chalets, entertainment centres, bed-and-breakfast accommodation and casinos.

2/ Other non-residential space includes churches, sport and recreation clubs, schools, crèches, hospitals and all other non-residential space.

3/ Other buildings include additions and alterations to other residential buildings, non-residential buildings and internal alterations.

Table 10 - Building plans passed according to type of building and province: Western Cape

Type of building	July 2000 *	June 2001 *	July 2001	January 2000 to July 2000	January 2001 to July 2001	Percentage change between January 2000 to July 2000 and January 2001 to July 2001
Residential buildings						
Dwelling-houses smaller than 80 square metres						
Number of dwelling-houses	455	842	506	5 318	4 632	- 12,9
Total square metres	20 055	36 458	24 181	200 127	187 936	- 6,1
Total value at current prices (R'000)	24 633	45 345	29 143	145 441	224 386	+ 54,3
Dwelling-houses equal to or larger than 80 square metres						
Number of dwelling-houses	606	641	659	3 580	3 986	+ 11,3
Total square metres	122 417	131 564	131 610	692 929	835 537	+ 20,6
Total value at current prices (R'000)	179 926	200 499	217 093	984 291	1 250 606	+ 27,1
Flats and townhouses						
Number of flats and townhouses	160	176	220	1 461	1 704	+ 16,6
Total square metres	19 486	16 297	24 447	161 988	162 346	+ 0,2
Total value at current prices (R'000)	29 413	23 499	37 252	263 311	246 923	- 6,2
Other residential buildings ^{1/}						
Total square metres	3 799	4 528	48	54 939	31 325	- 43,0
Total value at current prices (R'000)	6 245	6 332	88	75 044	71 461	- 4,8
Total value of residential buildings at current prices (R'000)	240 217	275 675	283 576	1 468 087	1 793 376	+ 22,2
Non-residential buildings						
Office and banking space						
Total square metres	30 870	16 094	66 800	114 573	163 534	+ 42,7
Total value at current prices (R'000)	66 381	26 025	67 658	222 662	228 867	+ 2,8
Shopping space						
Total square metres	3 790	6 893	15 441	116 529	128 229	+ 10,0
Total value at current prices (R'000)	11 161	7 656	27 459	159 767	171 481	+ 7,3
Industrial and warehouse space						
Total square metres	41 847	20 761	35 574	221 642	149 656	- 32,5
Total value at current prices (R'000)	43 272	19 951	38 738	227 174	147 791	- 34,9
Other non-residential space ^{2/}						
Total square metres	5 814	6 552	9 715	108 817	79 137	- 27,3
Total value at current prices (R'000)	5 976	7 175	7 497	89 978	89 808	- 0,2
Total value of non-residential buildings at current prices (R'000)	126 790	60 807	141 352	699 581	637 947	- 8,8
Additions and alterations						
Dwelling-houses						
Total square metres	85 517	76 156	76 746	528 804	515 861	- 2,4
Total value at current prices (R'000)	107 808	94 710	93 066	636 507	647 824	+ 1,8
Other buildings ^{3/}						
Total square metres	20 541	21 560	19 935	127 708	149 278	+ 16,9
Total value at current prices (R'000)	38 821	44 549	31 109	297 406	254 786	- 14,3
Total value of additions and alterations at current prices (R'000)	146 629	139 259	124 175	933 913	902 610	- 3,4
Total value of building plans passed at current prices (R'000)	513 636	475 741	549 103	3 101 581	3 333 933	+ 7,5

1/ Other residential buildings include institutions for the disabled, boarding houses, old people's homes, hostels, hotels, motels, guest houses, holiday chalets, entertainment centres, bed-and-breakfast accommodation and casinos.

2/ Other non-residential space includes churches, sport and recreation clubs, schools, crèches, hospitals and all other non-residential space.

3/ Other buildings include additions and alterations to other residential buildings, non-residential buildings and internal alterations.

Table 11 - Building plans passed according to type of building and province: Eastern Cape

Type of building	July 2000	June 2001	July 2001	January 2000 to July 2000	January 2001 to July 2001	Percentage change between January 2000 to July 2000 and January 2001 to July 2001
Residential buildings						
Dwelling-houses smaller than 80 square metres						
Number of dwelling-houses	376	267	212	3 098	1 567	-49,4
Total square metres	16 121	12 602	9 686	131 288	71 265	-45,7
Total value at current prices (R'000)	14 934	15 252	12 436	99 054	90 837	-8,3
Dwelling-houses equal to or larger than 80 square metres						
Number of dwelling-houses	123	132	108	828	792	-4,3
Total square metres	21 550	18 692	32 168	133 781	129 220	-3,4
Total value at current prices (R'000)	27 539	24 610	35 347	169 600	163 302	-3,7
Flats and townhouses						
Number of flats and townhouses	8	15	17	439	688	+ 56,7
Total square metres	434	1 365	1 117	31 592	36 731	+ 16,3
Total value at current prices (R'000)	679	1 825	1 597	42 892	44 165	+ 3,0
Other residential buildings ^{1/}						
Total square metres	0	7 144	0	7 482	25 956	+ 246,9
Total value at current prices (R'000)	0	4 028	0	9 946	77 028	+ 674,5
Total value of residential buildings at current prices (R'000)	43 152	45 715	49 380	321 492	375 332	+ 16,7
Non-residential buildings						
Office and banking space						
Total square metres	437	346	196	4 762	3 744	-21,4
Total value at current prices (R'000)	787	520	376	7 105	7 027	-1,1
Shopping space						
Total square metres	342	168	830	12 153	6 017	-50,5
Total value at current prices (R'000)	493	294	1 293	18 397	8 844	-51,9
Industrial and warehouse space						
Total square metres	260	3 338	10 107	88 036	28 487	-67,6
Total value at current prices (R'000)	419	5 153	8 789	85 920	30 081	-65,0
Other non-residential space ^{2/}						
Total square metres	2 752	1 724	502	23 143	6 917	-70,1
Total value at current prices (R'000)	3 657	2 776	816	31 129	11 094	-64,4
Total value of non-residential buildings at current prices (R'000)	5 356	8 743	11 274	142 551	57 046	-60,0
Additions and alterations						
Dwelling-houses						
Total square metres	18 708	23 733	21 064	127 065	129 312	+ 1,8
Total value at current prices (R'000)	23 055	31 450	25 670	157 900	165 997	+ 5,1
Other buildings ^{3/}						
Total square metres	10 404	6 679	3 428	46 987	55 510	+ 18,1
Total value at current prices (R'000)	14 878	8 348	4 940	66 512	81 437	+ 22,4
Total value of additions and alterations at current prices (R'000)	37 933	39 798	30 610	224 412	247 434	+ 10,3
Total value of building plans passed at current prices (R'000)	86 441	94 256	91 264	688 455	679 812	-1,3

1/ Other residential buildings include institutions for the disabled, boarding houses, old people's homes, hostels, hotels, motels, guest houses, holiday chalets, entertainment centres, bed-and-breakfast accommodation and casinos.

2/ Other non-residential space includes churches, sport and recreation clubs, schools, crèches, hospitals and all other non-residential space.

3/ Other buildings include additions and alterations to other residential buildings, non-residential buildings and internal alterations.

Table 12 - Building plans passed according to type of building and province: Northern Cape

Type of building	July 2000	June 2001	July 2001	January 2000 to July 2000	January 2001 to July 2001	Percentage change between January 2000 to July 2000 and January 2001 to July 2001
Residential buildings						
Dwelling-houses smaller than 80 square metres						
Number of dwelling-houses	4	7	8	45	45	+ 0,0
Total square metres	254	446	484	2 636	2 595	- 1,6
Total value at current prices (R'000)	374	726	754	3 794	3 976	+ 4,8
Dwelling-houses equal to or larger than 80 square metres						
Number of dwelling-houses	14	32	23	64	119	+ 85,9
Total square metres	1 893	3 725	4 365	10 276	20 595	+ 100,4
Total value at current prices (R'000)	2 675	5 849	6 747	14 333	27 624	+ 92,7
Flats and townhouses						
Number of flats and townhouses	0	0	1	32	12	- 62,5
Total square metres	0	0	200	4 570	2 085	- 54,4
Total value at current prices (R'000)	0	0	278	7 193	2 834	- 60,6
Other residential buildings ^{1/}						
Total square metres	0	0	0	327	0	..
Total value at current prices (R'000)	0	0	0	266	0	..
Total value of residential buildings at current prices (R'000)	3 049	6 575	7 779	25 586	34 434	+ 34,6
Non-residential buildings						
Office and banking space						
Total square metres	0	0	0	7 715	191	- 97,5
Total value at current prices (R'000)	0	0	0	16 363	124	- 99,2
Shopping space						
Total square metres	0	0	0	911	206	- 77,4
Total value at current prices (R'000)	0	0	0	1 411	226	- 84,0
Industrial and warehouse space						
Total square metres	128	0	1 244	1 781	2 336	+ 31,2
Total value at current prices (R'000)	154	0	1 742	2 632	2 744	+ 4,3
Other non-residential space ^{2/}						
Total square metres	130	113	0	4 223	1 632	- 61,4
Total value at current prices (R'000)	208	181	0	6 325	2 312	- 63,4
Total value of non-residential buildings at current prices (R'000)	362	181	1 742	26 731	5 406	- 79,8
Additions and alterations						
Dwelling-houses						
Total square metres	2 858	2 840	3 058	20 941	16 933	- 19,1
Total value at current prices (R'000)	4 980	4 691	5 110	32 680	27 292	- 16,5
Other buildings ^{3/}						
Total square metres	137	903	1 751	10 508	5 371	- 48,9
Total value at current prices (R'000)	371	1 322	3 166	23 381	11 142	- 52,3
Total value of additions and alterations at current prices (R'000)	5 351	6 013	8 276	56 061	38 434	- 31,4
Total value of building plans passed at current prices (R'000)	8 762	12 769	17 797	108 378	78 274	- 27,8

1/ Other residential buildings include institutions for the disabled, boarding houses, old people's homes, hostels, hotels, motels, guest houses, holiday chalets, entertainment centres, bed-and-breakfast accommodation and casinos.

2/ Other non-residential space includes churches, sport and recreation clubs, schools, crèches, hospitals and all other non-residential space.

3/ Other buildings include additions and alterations to other residential buildings, non-residential buildings and internal alterations.

Table 13 - Building plans passed according to type of building and province: Free State

Type of building	July 2000	June 2001	July 2001	January 2000 to July 2000	January 2001 to July 2001	Percentage change between January 2000 to July 2000 and January 2001 to July 2001
Residential buildings						
Dwelling-houses smaller than 80 square metres						
Number of dwelling-houses	529	325	248	3 189	1 606	-49,6
Total square metres	23 260	14 288	12 140	130 136	73 030	-43,9
Total value at current prices (R'000)	11 135	7 674	8 848	68 107	41 983	-38,4
Dwelling-houses equal to or larger than 80 square metres						
Number of dwelling-houses	67	63	56	458	428	-6,6
Total square metres	11 048	9 923	8 253	70 882	64 498	-9,0
Total value at current prices (R'000)	12 812	9 586	10 033	80 139	69 328	-13,5
Flats and townhouses						
Number of flats and townhouses	14	34	44	268	233	-13,1
Total square metres	1 567	5 547	6 282	20 381	30 075	+ 47,6
Total value at current prices (R'000)	2 179	7 487	8 030	27 481	45 309	+ 64,9
Other residential buildings ^{1/}						
Total square metres	823	0	3 154	1 423	4 406	+ 209,6
Total value at current prices (R'000)	960	0	3 061	2 460	4 912	+ 99,7
Total value of residential buildings at current prices (R'000)	27 086	24 747	29 972	178 187	161 532	-9,3
Non-residential buildings						
Office and banking space						
Total square metres	340	28	0	4 322	13 801	+ 219,3
Total value at current prices (R'000)	543	50	0	6 478	26 600	+ 310,6
Shopping space						
Total square metres	10 288	0	505	13 440	3 501	-74,0
Total value at current prices (R'000)	13 257	0	541	17 632	4 312	-75,5
Industrial and warehouse space						
Total square metres	793	580	1 000	7 524	4 385	-41,7
Total value at current prices (R'000)	520	600	800	5 726	3 326	-41,9
Other non-residential space ^{2/}						
Total square metres	1 158	2 103	1 071	2 828	7 039	+ 148,9
Total value at current prices (R'000)	1 374	1 892	1 600	3 081	9 246	+ 200,1
Total value of non-residential buildings at current prices (R'000)	15 694	2 542	2 941	32 917	43 484	+ 32,1
Additions and alterations						
Dwelling-houses						
Total square metres	9 085	7 572	7 493	57 052	52 573	-7,9
Total value at current prices (R'000)	10 051	7 165	7 846	59 020	55 063	-6,7
Other buildings ^{3/}						
Total square metres	14 367	519	3 486	31 140	11 286	-63,8
Total value at current prices (R'000)	76 093	1 335	5 200	98 406	22 146	-77,5
Total value of additions and alterations at current prices (R'000)	86 144	8 500	13 046	157 426	77 209	-51,0
Total value of building plans passed at current prices (R'000)	128 924	35 789	45 959	368 530	282 225	-23,4

1/ Other residential buildings include institutions for the disabled, boarding houses, old people's homes, hostels, hotels, motels, guest houses, holiday chalets, entertainment centres, bed-and-breakfast accommodation and casinos.

2/ Other non-residential space includes churches, sport and recreation clubs, schools, crèches, hospitals and all other non-residential space.

3/ Other buildings include additions and alterations to other residential buildings, non-residential buildings and internal alterations.

Table 14 - Building plans passed according to type of building and province: KwaZulu-Natal

Type of building	July 2000*	June 2001	July 2001	January 2000 to July 2000	January 2001 to July 2001	Percentage change between January 2000 to July 2000 and January 2001 to July 2001
Residential buildings						
Dwelling-houses smaller than 80 square metres						
Number of dwelling-houses	235	136	119	1 092	1 617	+ 48,1
Total square metres	10 608	6 888	6 043	52 497	71 640	+ 36,5
Total value at current prices (R'000)	10 607	8 025	7 058	57 248	67 237	+ 17,4
Dwelling-houses equal to or larger than 80 square metres						
Number of dwelling-houses	190	130	159	1 089	936	- 14,0
Total square metres	37 243	28 203	35 796	218 155	209 563	- 3,9
Total value at current prices (R'000)	52 190	41 594	51 589	310 693	297 716	- 4,2
Flats and townhouses						
Number of flats and townhouses	138	109	86	433	562	+ 29,8
Total square metres	19 324	15 811	12 060	68 925	77 664	+ 12,7
Total value at current prices (R'000)	34 479	18 184	19 794	113 030	126 853	+ 12,2
Other residential buildings ^{1/}						
Total square metres	0	0	1 135	3 869	1 273	- 67,1
Total value at current prices (R'000)	0	0	901	9 785	1 231	- 87,4
Total value of residential buildings at current prices (R'000)	97 276	67 803	79 342	490 756	493 037	+ 0,5
Non-residential buildings						
Office and banking space						
Total square metres	2 321	6 306	5 711	27 054	87 445	+ 223,2
Total value at current prices (R'000)	5 432	8 333	11 355	52 669	196 537	+ 273,2
Shopping space						
Total square metres	1 455	1 064	12 806	15 125	28 461	+ 88,2
Total value at current prices (R'000)	1 363	1 200	17 723	17 007	36 049	+ 112,0
Industrial and warehouse space						
Total square metres	15 502	10 946	15 006	79 800	82 266	+ 3,1
Total value at current prices (R'000)	16 148	11 256	20 332	109 331	92 048	- 15,8
Other non-residential space ^{2/}						
Total square metres	6 800	5 903	2 501	35 508	32 272	- 9,1
Total value at current prices (R'000)	7 390	7 123	3 325	44 780	38 748	- 13,5
Total value of non-residential buildings at current prices (R'000)	30 333	27 912	52 735	223 787	363 382	+ 62,4
Additions and alterations						
Dwelling-houses						
Total square metres	41 378	35 010	37 700	240 223	228 761	- 4,8
Total value at current prices (R'000)	48 986	39 496	44 208	282 620	273 902	- 3,1
Other buildings ^{3/}						
Total square metres	24 906	9 894	19 659	169 348	96 989	- 42,7
Total value at current prices (R'000)	43 987	31 274	40 390	303 187	205 139	- 32,3
Total value of additions and alterations at current prices (R'000)	92 973	70 770	84 598	585 807	479 041	- 18,2
Total value of building plans passed at current prices (R'000)	220 582	166 485	216 675	1 300 350	1 335 460	+ 2,7

1/ Other residential buildings include institutions for the disabled, boarding houses, old people's homes, hostels, hotels, motels, guest houses, holiday chalets, entertainment centres, bed-and-breakfast accommodation and casinos.

2/ Other non-residential space includes churches, sport and recreation clubs, schools, crèches, hospitals and all other non-residential space.

3/ Other buildings include additions and alterations to other residential buildings, non-residential buildings and internal alterations.

Table 15 - Building plans passed according to type of building and province: North West

Type of building	July 2000*	June 2001	July 2001	January 2000 to July 2000	January 2001 to July 2001	Percentage change between January 2000 to July 2000 and January 2001 to July 2001
Residential buildings						
Dwelling-houses smaller than 80 square metres						
Number of dwelling-houses	80	409	904	1 835	3 127	+ 70,4
Total square metres	4 088	14 252	28 955	61 065	107 127	+ 75,4
Total value at current prices (R'000)	4 603	8 570	12 623	40 659	61 862	+ 52,1
Dwelling-houses equal to or larger than 80 square metres						
Number of dwelling-houses	94	80	77	597	490	- 17,9
Total square metres	15 266	14 850	14 396	88 727	87 405	- 1,5
Total value at current prices (R'000)	17 775	15 335	19 517	97 839	101 427	+ 3,7
Flats and townhouses						
Number of flats and townhouses	24	22	58	133	200	+ 50,4
Total square metres	3 093	2 715	5 412	12 431	23 211	+ 86,7
Total value at current prices (R'000)	4 448	4 300	7 341	14 624	30 630	+ 109,5
Other residential buildings ^{1/}						
Total square metres	425	0	0	4 449	1 989	- 55,3
Total value at current prices (R'000)	594	0	0	5 380	1 664	- 69,1
Total value of residential buildings at current prices (R'000)	27 420	28 205	39 481	158 502	195 583	+ 23,4
Non-residential buildings						
Office and banking space						
Total square metres	0	340	0	1 083	3 644	+ 236,5
Total value at current prices (R'000)	0	374	0	1 065	5 999	+ 463,3
Shopping space						
Total square metres	525	1 373	3 415	7 543	16 708	+ 121,5
Total value at current prices (R'000)	715	1 781	7 132	10 637	23 133	+ 117,5
Industrial and warehouse space						
Total square metres	70	1 372	0	3 986	7 322	+ 83,7
Total value at current prices (R'000)	53	1 200	0	3 865	7 463	+ 93,1
Other non-residential space ^{2/}						
Total square metres	1 224	101	3 226	13 275	5 920	- 55,4
Total value at current prices (R'000)	1 196	96	2 367	16 196	5 301	- 67,3
Total value of non-residential buildings at current prices (R'000)	1 964	3 451	9 499	31 763	41 896	+ 31,9
Additions and alterations						
Dwelling-houses						
Total square metres	5 823	4 804	5 103	45 283	40 095	- 11,5
Total value at current prices (R'000)	6 001	4 902	5 393	44 850	42 588	- 5,0
Other buildings ^{3/}						
Total square metres	2 004	2 263	1 859	16 692	13 305	- 20,3
Total value at current prices (R'000)	2 040	3 199	2 563	34 583	21 578	- 37,6
Total value of additions and alterations at current prices (R'000)	8 041	8 101	7 956	79 433	64 166	- 19,2
Total value of building plans passed at current prices (R'000)	37 425	39 757	56 936	269 698	301 645	+ 11,8

1/ Other residential buildings include institutions for the disabled, boarding houses, old people's homes, hostels, hotels, motels, guest houses, holiday chalets, entertainment centres, bed-and-breakfast accommodation and casinos.

2/ Other non-residential space includes churches, sport and recreation clubs, schools, crèches, hospitals and all other non-residential space.

3/ Other buildings include additions and alterations to other residential buildings, non-residential buildings and internal alterations.

Table 16 - Building plans passed according to type of building and province: Gauteng

Type of building	July 2000 *	June 2001	July 2001	January 2000 to July 2000	January 2001 to July 2001	Percentage change between January 2000 to July 2000 and January 2001 to July 2001
Residential buildings						
Dwelling-houses smaller than 80 square metres						
Number of dwelling-houses	1 593	744	810	12 402	7 420	- 40,2
Total square metres	62 266	28 865	32 911	463 802	285 076	- 38,5
Total value at current prices (R'000)	49 231	30 062	44 882	344 428	314 382	- 8,7
Dwelling-houses equal to or larger than 80 square metres						
Number of dwelling-houses	730	768	784	4 645	5 268	+ 13,4
Total square metres	181 542	210 377	184 656	1 083 759	1 276 825	+ 17,8
Total value at current prices (R'000)	254 567	300 388	264 428	1 450 146	1 808 371	+ 24,7
Flats and townhouses						
Number of flats and townhouses	706	643	346	3 542	3 116	- 12,0
Total square metres	82 562	65 243	39 980	384 743	353 602	- 8,1
Total value at current prices (R'000)	116 493	101 658	54 380	538 383	552 672	+ 2,7
Other residential buildings ^{1/}						
Total square metres	8 476	1 169	2 697	25 752	10 151	- 60,6
Total value at current prices (R'000)	9 344	1 520	3 812	33 157	13 169	- 60,3
Total value of residential buildings at current prices (R'000)	429 635	433 628	367 502	2 366 114	2 688 594	+ 13,6
Non-residential buildings						
Office and banking space						
Total square metres	64 714	52 742	30 587	469 907	231 375	- 50,8
Total value at current prices (R'000)	112 545	103 049	51 775	662 149	387 734	- 41,4
Shopping space						
Total square metres	39 823	23 664	9 202	139 009	99 762	- 28,2
Total value at current prices (R'000)	71 885	33 427	15 526	198 050	159 703	- 19,4
Industrial and warehouse space						
Total square metres	55 326	30 203	34 158	316 348	218 783	- 30,8
Total value at current prices (R'000)	79 089	51 058	55 754	457 290	360 043	- 21,3
Other non-residential space ^{2/}						
Total square metres	16 471	9 710	20 959	73 365	107 409	+ 46,4
Total value at current prices (R'000)	24 440	13 408	31 580	105 515	162 015	+ 53,5
Total value of non-residential buildings at current prices (R'000)	287 959	200 942	154 635	1 423 004	1 069 495	- 24,8
Additions and alterations						
Dwelling-houses						
Total square metres	94 744	101 476	90 800	608 640	613 140	+ 0,7
Total value at current prices (R'000)	117 826	147 627	118 985	744 769	801 940	+ 7,7
Other buildings ^{3/}						
Total square metres	19 176	19 064	20 693	184 984	179 697	- 2,9
Total value at current prices (R'000)	32 801	33 250	32 629	287 069	316 652	+ 10,3
Total value of additions and alterations at current prices (R'000)	150 627	180 877	151 614	1 031 838	1 118 592	+ 8,4
Total value of building plans passed at current prices (R'000)	868 221	815 447	673 751	4 820 956	4 876 681	+ 1,2

1/ Other residential buildings include institutions for the disabled, boarding houses, old people's homes, hostels, hotels, motels, guest houses, holiday chalets, entertainment centres, bed-and-breakfast accommodation and casinos.

2/ Other non-residential space includes churches, sport and recreation clubs, schools, crèches, hospitals and all other non-residential space.

3/ Other buildings include additions and alterations to other residential buildings, non-residential buildings and internal alterations.

Table 17 - Building plans passed according to type of building and province: Mpumalanga

Type of building	July 2000	June 2001	July 2001	January 2000 to July 2000	January 2001 to July 2001	Percentage change between January 2000 to July 2000 and January 2001 to July 2001
Residential buildings						
Dwelling-houses smaller than 80 square metres						
Number of dwelling-houses	373	156	118	1 426	3 962	+ 177,8
Total square metres	12 534	6 109	4 520	50 661	137 139	+ 170,7
Total value at current prices (R'000)	5 984	3 072	2 713	38 387	74 196	+ 93,3
Dwelling-houses equal to or larger than 80 square metres						
Number of dwelling-houses	79	66	92	590	497	- 15,8
Total square metres	13 863	13 251	18 292	99 912	93 462	- 6,5
Total value at current prices (R'000)	15 408	17 221	24 866	113 228	119 200	+ 5,3
Flats and townhouses						
Number of flats and townhouses	31	58	513	120	759	+ 532,5
Total square metres	1 371	5 572	38 174	10 097	60 686	+ 501,0
Total value at current prices (R'000)	2 022	7 846	48 032	11 314	76 024	+ 571,9
Other residential buildings ^{1/}						
Total square metres	0	441	1 154	863	1 595	+ 84,8
Total value at current prices (R'000)	0	600	1 505	1 362	2 105	+ 54,6
Total value of residential buildings at current prices (R'000)	23 414	28 739	77 116	164 291	271 525	+ 65,3
Non-residential buildings						
Office and banking space						
Total square metres	0	2 509	0	8 195	3 671	- 55,2
Total value at current prices (R'000)	0	4 200	0	11 349	5 750	- 49,3
Shopping space						
Total square metres	334	1 206	149	12 543	2 295	- 81,7
Total value at current prices (R'000)	293	1 928	158	15 094	3 660	- 75,8
Industrial and warehouse space						
Total square metres	9 084	2 926	2 819	29 186	26 975	- 7,6
Total value at current prices (R'000)	13 909	2 817	2 542	37 366	23 411	- 37,3
Other non-residential space ^{2/}						
Total square metres	1 360	0	5 930	7 068	11 652	+ 64,9
Total value at current prices (R'000)	1 517	0	5 952	7 910	13 532	+ 71,1
Total value of non-residential buildings at current prices (R'000)	15 719	8 945	8 652	71 719	46 353	- 35,4
Additions and alterations						
Dwelling-houses						
Total square metres	13 076	10 007	12 855	78 197	69 433	- 11,2
Total value at current prices (R'000)	10 700	9 836	13 141	70 762	68 875	- 2,7
Other buildings ^{3/}						
Total square metres	1 138	123	1 177	11 988	9 304	- 22,4
Total value at current prices (R'000)	1 652	609	2 704	17 127	16 038	- 6,4
Total value of additions and alterations at current prices (R'000)	12 352	10 445	15 845	87 889	84 913	- 3,4
Total value of building plans passed at current prices (R'000)	51 485	48 129	101 613	323 899	402 791	+ 24,4

1/ Other residential buildings include institutions for the disabled, boarding houses, old people's homes, hostels, hotels, motels, guest houses, holiday chalets, entertainment centres, bed-and-breakfast accommodation and casinos.

2/ Other non-residential space includes churches, sport and recreation clubs, schools, crèches, hospitals and all other non-residential space.

3/ Other buildings include additions and alterations to other residential buildings, non-residential buildings and internal alterations.

Table 18 - Building plans passed according to type of building and province: Northern Province

Type of building	July 2000*	June 2001	July 2001	January 2000 to July 2000	January 2001 to July 2001	Percentage change between January 2000 to July 2000 and January 2001 to July 2001
Residential buildings						
Dwelling-houses smaller than 80 square metres						
Number of dwelling-houses	278	61	28	1 171	283	-75,8
Total square metres	11 959	3 295	1 744	51 271	16 697	-67,4
Total value at current prices (R'000)	6 977	3 799	2 349	37 262	21 542	-42,2
Dwelling-houses equal to or larger than 80 square metres						
Number of dwelling-houses	35	40	47	278	276	-0,7
Total square metres	5 894	7 087	8 153	46 513	47 908	+ 3,0
Total value at current prices (R'000)	8 075	9 558	10 007	62 897	64 602	+ 2,7
Flats and townhouses						
Number of flats and townhouses	16	20	1	54	40	-25,9
Total square metres	1 474	1 982	88	7 457	5 287	-29,1
Total value at current prices (R'000)	1 760	2 678	124	9 150	6 845	-25,2
Other residential buildings ^{1/}						
Total square metres	0	0	0	3 000	192	-93,6
Total value at current prices (R'000)	0	0	0	3 600	96	-97,3
Total value of residential buildings at current prices (R'000)	16 812	16 035	12 480	112 909	93 085	-17,6
Non-residential buildings						
Office and banking space						
Total square metres	0	0	0	1 646	876	-46,8
Total value at current prices (R'000)	0	0	0	2 234	1 259	-43,6
Shopping space						
Total square metres	316	4 071	0	4 231	11 453	+ 170,7
Total value at current prices (R'000)	442	6 133	0	4 891	17 113	+ 249,9
Industrial and warehouse space						
Total square metres	0	817	763	2 756	1 705	-38,1
Total value at current prices (R'000)	0	1 144	610	2 970	1 929	-35,1
Other non-residential space ^{2/}						
Total square metres	35	952	0	1 553	2 919	+ 88,0
Total value at current prices (R'000)	50	1 064	0	1 774	4 510	+ 154,2
Total value of non-residential buildings at current prices (R'000)	492	8 341	610	11 869	24 811	+ 109,0
Additions and alterations						
Dwelling-houses						
Total square metres	5 305	4 223	4 096	27 934	27 654	-1,0
Total value at current prices (R'000)	7 181	5 821	5 255	36 540	35 831	-1,9
Other buildings ^{3/}						
Total square metres	1 917	1 394	1 448	13 099	7 875	-39,9
Total value at current prices (R'000)	2 701	2 468	2 016	24 797	17 862	-28,0
Total value of additions and alterations at current prices (R'000)	9 882	8 289	7 271	61 337	53 693	-12,5
Total value of building plans passed at current prices (R'000)	27 186	32 665	20 361	186 115	171 589	-7,8

1/ Other residential buildings include institutions for the disabled, boarding houses, old people's homes, hostels, hotels, motels, guest houses, holiday chalets, entertainment centres, bed-and-breakfast accommodation and casinos.

2/ Other non-residential space includes churches, sport and recreation clubs, schools, crèches, hospitals and all other non-residential space.

3/ Other buildings include additions and alterations to other residential buildings, non-residential buildings and internal alterations.

Table 19 - Buildings completed according to type of building: Total RSA

Type of building	July 2000 *	June 2001 *	July 2001	January 2000 to July 2000	January 2001 to July 2001	Percentage change between January 2000 to July 2000 and January 2001 to July 2001
Residential buildings						
Dwelling-houses smaller than 80 square metres						
Number of dwelling-houses	3 318	2 320	2 288	21 266	15 342	- 27,9
Total square metres	128 993	108 886	86 359	771 854	622 628	- 19,3
Total value at current prices (R'000)	92 381	109 415	90 775	573 187	556 163	- 3,0
Dwelling-houses equal to or larger than 80 square metres						
Number of dwelling-houses	928	1 169	1 068	5 846	6 935	+ 18,6
Total square metres	178 765	224 883	198 162	1 132 493	1 364 075	+ 20,4
Total value at current prices (R'000)	241 795	327 321	273 218	1 457 958	1 890 529	+ 29,7
Flats and townhouses						
Number of flats and townhouses	429	786	318	4 270	4 089	- 4,2
Total square metres	51 505	85 938	43 302	436 544	435 811	- 0,2
Total value at current prices (R'000)	68 044	116 666	61 356	595 697	619 140	+ 3,9
Other residential buildings ^{1/}						
Total square metres	3 927	2 742	942	35 340	85 056	+ 140,7
Total value at current prices (R'000)	5 186	4 129	1 359	52 728	343 669	+ 551,8
Total value of residential buildings at current prices (R'000)	407 406	557 531	426 708	2 679 570	3 409 501	+ 27,2
Non-residential buildings						
Office and banking space						
Total square metres	82 064	75 892	23 080	357 866	433 057	+ 21,0
Total value at current prices (R'000)	111 562	101 211	33 374	585 752	649 929	+ 11,0
Shopping space						
Total square metres	68 313	67 649	16 609	341 413	187 593	- 45,1
Total value at current prices (R'000)	280 206	146 603	18 141	673 656	296 318	- 56,0
Industrial and warehouse space						
Total square metres	64 512	63 010	55 920	456 566	454 522	- 0,4
Total value at current prices (R'000)	69 559	88 546	71 624	507 579	553 131	+ 9,0
Other non-residential space ^{2/}						
Total square metres	7 136	25 571	24 260	113 330	140 415	+ 23,9
Total value at current prices (R'000)	11 341	32 190	28 357	108 906	170 082	+ 56,2
Total value of non-residential buildings at current prices (R'000)	472 668	368 550	151 496	1 875 893	1 669 460	- 11,0
Additions and alterations						
Dwelling-houses						
Total square metres	116 128	130 238	121 942	789 900	853 731	+ 8,1
Total value at current prices (R'000)	134 299	154 993	142 668	895 104	995 989	+ 11,3
Other buildings ^{3/}						
Total square metres	51 439	64 905	49 871	344 241	348 891	+ 1,4
Total value at current prices (R'000)	86 529	122 875	90 777	653 543	727 549	+ 11,3
Total value of additions and alterations at current prices (R'000)	220 828	277 868	233 445	1 548 647	1 723 538	+ 11,3
Total value of buildings completed at current prices (R'000)	1 100 902	1 203 949	811 649	6 104 110	6 802 499	+ 11,4

1/ Other residential buildings include institutions for the disabled, boarding houses, old people's homes, hostels, hotels, motels, guest houses, holiday chalets, entertainment centres, bed-and-breakfast accommodation and casinos.

2/ Other non-residential space includes churches, sport and recreation clubs, schools, crèches, hospitals and all other non-residential space.

3/ Other buildings include additions and alterations to other residential buildings, non-residential buildings and internal alterations.

Table 20 - Buildings completed according to type of building and province: Western Cape

Type of building	July 2000 *	June 2001	July 2001	January 2000 to July 2000	January 2001 to July 2001	Percentage change between January 2000 to July 2000 and January 2001 to July 2001
Residential buildings						
Dwelling-houses smaller than 80 square metres						
Number of dwelling-houses	875	573	540	4 992	3 130	- 37,3
Total square metres	29 202	34 445	18 926	156 434	127 328	- 18,6
Total value at current prices (R'000)	14 536	36 583	19 039	94 669	138 757	+ 46,6
Dwelling-houses equal to or larger than 80 square metres						
Number of dwelling-houses	285	359	362	2 053	2 226	+ 8,4
Total square metres	56 789	70 889	66 590	364 918	433 053	+ 18,7
Total value at current prices (R'000)	76 878	106 478	95 395	489 843	644 246	+ 31,5
Flats and townhouses						
Number of flats and townhouses	120	345	132	1 241	995	- 19,8
Total square metres	10 155	44 728	17 531	126 804	114 799	- 9,5
Total value at current prices (R'000)	13 840	51 593	25 006	173 122	147 962	- 14,5
Other residential buildings ^{1/}						
Total square metres	3 414	96	942	19 707	27 907	+ 41,6
Total value at current prices (R'000)	4 186	174	1 359	30 570	31 998	+ 4,7
Total value of residential buildings at current prices (R'000)	109 440	194 828	140 799	788 204	962 963	+ 22,2
Non-residential buildings						
Office and banking space						
Total square metres	13 804	40 099	1 007	69 870	92 200	+ 32,0
Total value at current prices (R'000)	21 861	50 101	1 234	125 454	150 485	+ 20,0
Shopping space						
Total square metres	10 489	4 306	1 367	34 181	29 110	- 14,8
Total value at current prices (R'000)	11 164	4 995	1 149	46 636	36 144	- 22,5
Industrial and warehouse space						
Total square metres	20 205	18 016	7 780	140 451	87 190	- 37,9
Total value at current prices (R'000)	16 953	23 480	6 054	120 637	100 954	- 16,3
Other non-residential space ^{2/}						
Total square metres	1 976	6 767	10 497	59 060	49 896	- 15,5
Total value at current prices (R'000)	1 367	8 052	10 363	43 863	48 148	+ 9,8
Total value of non-residential buildings at current prices (R'000)	51 345	86 628	18 800	336 590	335 731	- 0,3
Additions and alterations						
Dwelling-houses						
Total square metres	46 521	52 691	51 491	306 993	328 964	+ 7,2
Total value at current prices (R'000)	56 666	67 142	62 779	361 299	406 144	+ 12,4
Other buildings ^{3/}						
Total square metres	17 393	28 195	19 317	101 545	109 549	+ 7,9
Total value at current prices (R'000)	25 551	57 945	30 815	163 532	269 122	+ 64,6
Total value of additions and alterations at current prices (R'000)	82 217	125 087	93 594	524 831	675 266	+ 28,7
Total value of buildings completed at current prices (R'000)	243 002	406 543	253 193	1 649 625	1 973 960	19,7

1/ Other residential buildings include institutions for the disabled, boarding houses, old people's homes, hostels, hotels, motels, guest houses, holiday chalets, entertainment centres, bed-and-breakfast accommodation and casinos.

2/ Other non-residential space includes churches, sport and recreation clubs, schools, crèches, hospitals and all other non-residential space.

3/ Other buildings include additions and alterations to other residential buildings, non-residential buildings and internal alterations.

Table 21 - Buildings completed according to type of building and province: Eastern Cape

Type of building	July 2000*	June 2001	July 2001	January 2000 to July 2000	January 2001 to July 2001	Percentage change between January 2000 to July 2000 and January 2001 to July 2001
Residential buildings						
Dwelling-houses smaller than 80 square metres						
Number of dwelling-houses	192	472	194	1 107	2 117	+ 91,2
Total square metres	8 180	20 746	8 461	47 650	91 523	+ 92,1
Total value at current prices (R'000)	7 354	20 362	9 669	53 646	82 220	+ 53,3
Dwelling-houses equal to or larger than 80 square metres						
Number of dwelling-houses	60	178	68	363	634	+ 74,7
Total square metres	8 258	18 369	9 805	60 458	80 964	+ 33,9
Total value at current prices (R'000)	9 907	24 128	12 384	68 743	103 725	+ 50,9
Flats and townhouses						
Number of flats and townhouses	1	5	30	296	165	- 44,3
Total square metres	118	762	3 915	24 891	16 476	- 33,8
Total value at current prices (R'000)	159	841	5 178	29 623	18 415	- 37,8
Other residential buildings ^{1/}						
Total square metres	0	2 646	0	367	6 993	+ 1805,4
Total value at current prices (R'000)	0	3 955	0	440	10 955	+ 2389,8
Total value of residential buildings at current prices (R'000)	17 420	49 286	27 231	152 452	215 315	+ 41,2
Non-residential buildings						
Office and banking space						
Total square metres	0	3 039	2 244	632	25 783	+ 3 979,6
Total value at current prices (R'000)	0	3 185	3 358	916	28 592	+ 3 021,4
Shopping space						
Total square metres	1 975	8 803	5 359	51 900	27 870	- 46,3
Total value at current prices (R'000)	2 050	10 267	6 297	70 119	35 685	- 49,1
Industrial and warehouse space						
Total square metres	6 473	1 506	2 311	28 757	104 074	+ 261,9
Total value at current prices (R'000)	5 180	1 790	2 027	23 655	105 383	+ 345,5
Other non-residential space ^{2/}						
Total square metres	243	70	1 377	4 111	19 514	+ 374,7
Total value at current prices (R'000)	207	98	1 627	4 810	24 938	+ 418,5
Total value of non-residential buildings at current prices (R'000)	7 437	15 340	13 309	99 500	194 598	+ 95,6
Additions and alterations						
Dwelling-houses						
Total square metres	6 580	7 467	13 517	56 299	60 145	+ 6,8
Total value at current prices (R'000)	7 028	10 800	15 165	56 394	71 593	+ 27,0
Other buildings ^{3/}						
Total square metres	3 791	5 652	5 348	23 041	37 796	+ 64,0
Total value at current prices (R'000)	4 479	8 911	5 488	27 446	50 163	+ 82,8
Total value of additions and alterations at current prices (R'000)	11 507	19 711	20 653	83 840	121 756	+ 45,2
Total value of buildings completed at current prices (R'000)	36 364	84 337	61 193	335 792	531 669	+ 58,3

1/ Other residential buildings include institutions for the disabled, boarding houses, old people's homes, hostels, hotels, motels, guest houses, holiday chalets, entertainment centres, bed-and-breakfast accommodation and casinos.

2/ Other non-residential space includes churches, sport and recreation clubs, schools, crèches, hospitals and all other non-residential space.

3/ Other buildings include additions and alterations to other residential buildings, non-residential buildings and internal alterations.

Table 22 - Buildings completed according to type of building and province: Northern Cape

Type of building	July 2000*	June 2001	July 2001	January 2000 to July 2000	January 2001 to July 2001	Percentage change between January 2000 to July 2000 and January 2001 to July 2001
Residential buildings						
Dwelling-houses smaller than 80 square metres						
Number of dwelling-houses	5	5	10	212	79	- 62,7
Total square metres	302	254	630	8 298	3 875	- 53,3
Total value at current prices (R'000)	438	440	1 009	7 528	5 651	- 24,9
Dwelling-houses equal to or larger than 80 square metres						
Number of dwelling-houses	25	16	35	63	95	+ 50,8
Total square metres	3 625	1 980	4 360	9 781	13 728	+ 40,4
Total value at current prices (R'000)	3 658	2 880	7 022	11 081	20 117	+ 81,5
Flats and townhouses						
Number of flats and townhouses	0	2	2	13	19	+ 46,2
Total square metres	0	180	264	1 715	1 901	+ 10,8
Total value at current prices (R'000)	0	252	442	2 305	2 808	+ 21,8
Other residential buildings ^{1/}						
Total square metres	0	0	0	2 758	346	- 87,5
Total value at current prices (R'000)	0	0	0	3 193	277	- 91,3
Total value of residential buildings at current prices (R'000)	4 096	3 572	8 473	24 107	28 853	+ 19,7
Non-residential buildings						
Office and banking space						
Total square metres	0	0	0	0	7 105	..
Total value at current prices (R'000)	0	0	0	0	15 631	..
Shopping space						
Total square metres	0	0	0	8 933	4 775	-46,5
Total value at current prices (R'000)	0	0	0	10 959	7 261	- 33,7
Industrial and warehouse space						
Total square metres	1 367	0	0	3 012	772	- 74,4
Total value at current prices (R'000)	1 641	0	0	3 210	618	- 80,7
Other non-residential space ^{2/}						
Total square metres	0	489	113	769	956	+ 24,3
Total value at current prices (R'000)	0	978	181	1 091	1 725	+ 58,1
Total value of non-residential buildings at current prices (R'000)	1 641	978	181	15 260	25 235	+ 65,4
Additions and alterations						
Dwelling-houses						
Total square metres	1 514	2 131	2 145	10 799	11 857	+ 9,8
Total value at current prices (R'000)	1 754	3 363	3 770	14 393	19 048	+ 32,3
Other buildings ^{3/}						
Total square metres	183	15	781	3 826	2 645	- 30,9
Total value at current prices (R'000)	244	909	1 819	9 598	6 574	- 31,5
Total value of additions and alterations at current prices (R'000)	1 998	4 272	5 589	23 991	25 622	+ 6,8
Total value of buildings completed at current prices (R'000)	7 735	8 822	14 243	63 358	79 710	25,8

1/ Other residential buildings include institutions for the disabled, boarding houses, old people's homes, hostels, hotels, motels, guest houses, holiday chalets, entertainment centres, bed-and-breakfast accommodation and casinos.

2/ Other non-residential space includes churches, sport and recreation clubs, schools, crèches, hospitals and all other non-residential space.

3/ Other buildings include additions and alterations to other residential buildings, non-residential buildings and internal alterations.

Table 23 - Buildings completed according to type of building and province: Free State

Type of building	July 2000*	June 2001	July 2001	January 2000 to July 2000	January 2001 to July 2001	Percentage change between January 2000 to July 2000 and January 2001 to July 2001
Residential buildings						
Dwelling-houses smaller than 80 square metres						
Number of dwelling-houses	140	198	48	1 368	1 093	-20,1
Total square metres	5 910	8 138	2 274	56 813	46 157	-18,8
Total value at current prices (R'000)	3 259	3 779	1 958	31 578	26 269	-16,8
Dwelling-houses equal to or larger than 80 square metres						
Number of dwelling-houses	22	25	26	178	220	+ 23,6
Total square metres	3 662	4 109	4 230	29 972	38 743	+ 29,3
Total value at current prices (R'000)	3 771	4 839	4 901	34 675	45 085	+ 30,0
Flats and townhouses						
Number of flats and townhouses	18	1	6	122	128	+ 4,9
Total square metres	2 567	132	987	13 904	10 828	-22,1
Total value at current prices (R'000)	3 348	200	1 444	17 706	14 816	-16,3
Other residential buildings ^{1/}						
Total square metres	0	0	0	560	464	-17,1
Total value at current prices (R'000)	0	0	0	648	581	-10,3
Total value of residential buildings at current prices (R'000)	10 378	8 818	8 303	84 607	86 751	+ 2,5
Non-residential buildings						
Office and banking space						
Total square metres	200	0	2 745	5 324	14 319	+ 169,0
Total value at current prices (R'000)	218	0	3 300	9 921	25 203	+ 154,0
Shopping space						
Total square metres	256	1 234	1 165	13 628	5 702	-58,2
Total value at current prices (R'000)	999	1 872	1 900	17 329	7 058	-59,3
Industrial and warehouse space						
Total square metres	583	1 702	0	9 628	12 750	+ 32,4
Total value at current prices (R'000)	306	1 734	0	7 291	11 648	+ 59,8
Other non-residential space ^{2/}						
Total square metres	0	2 916	1 367	4 352	11 040	+ 153,7
Total value at current prices (R'000)	0	3 706	2 052	5 324	18 601	+ 249,4
Total value of non-residential buildings at current prices (R'000)	1 523	7 312	7 252	39 865	62 510	+ 56,8
Additions and alterations						
Dwelling-houses						
Total square metres	2 870	3 092	4 646	30 389	36 793	+ 21,1
Total value at current prices (R'000)	2 739	2 947	5 310	28 961	38 273	+ 32,2
Other buildings ^{3/}						
Total square metres	2 977	2 280	1 661	9 581	24 322	+ 153,9
Total value at current prices (R'000)	3 157	2 705	4 533	17 405	97 846	+ 462,2
Total value of additions and alterations at current prices (R'000)	5 896	5 652	9 843	46 366	136 119	+ 193,6
Total value of buildings completed at current prices (R'000)	17 797	21 782	25 398	170 838	285 380	+ 67,0

1/ Other residential buildings include institutions for the disabled, boarding houses, old people's homes, hostels, hotels, motels, guest houses, holiday chalets, entertainment centres, bed-and-breakfast accommodation and casinos.

2/ Other non-residential space includes churches, sport and recreation clubs, schools, crèches, hospitals and all other non-residential space.

3/ Other buildings include additions and alterations to other residential buildings, non-residential buildings and internal alterations.

Table 24 - Buildings completed according to type of building and province: KwaZulu-Natal

Type of building	July 2000*	June 2001	July 2001	January 2000 to July 2000	January 2001 to July 2001	Percentage change between January 2000 to July 2000 and January 2001 to July 2001
Residential buildings						
Dwelling-houses smaller than 80 square metres						
Number of dwelling-houses	108	270	186	1 727	1 445	-16,3
Total square metres	4 804	10 474	7 976	64 922	64 958	+ 0,1
Total value at current prices (R'000)	5 559	13 547	9 643	60 251	64 168	+ 6,5
Dwelling-houses equal to or larger than 80 square metres						
Number of dwelling-houses	104	151	155	765	943	+ 23,3
Total square metres	19 289	39 531	31 217	143 051	198 796	+ 39,0
Total value at current prices (R'000)	25 371	68 125	39 019	171 257	270 938	+ 58,2
Flats and townhouses						
Number of flats and townhouses	44	47	15	413	545	+ 32,0
Total square metres	7 377	6 247	2 767	57 544	64 007	+ 11,2
Total value at current prices (R'000)	11 263	8 627	4 066	86 363	94 078	+ 8,9
Other residential buildings ^{1/}						
Total square metres	0	0	0	1 021	8 450	+ 727,6
Total value at current prices (R'000)	0	0	0	1 146	40 000	+ 3 390,4
Total value of residential buildings at current prices (R'000)	42 193	90 299	52 728	319 017	469 184	+ 47,1
Non-residential buildings						
Office and banking space						
Total square metres	9 261	17 263	87	46 057	37 312	-19,0
Total value at current prices (R'000)	13 076	23 323	87	105 953	60 643	-42,8
Shopping space						
Total square metres	0	1 080	2 747	17 080	21 403	+ 25,3
Total value at current prices (R'000)	0	2 253	2 647	20 780	36 700	+ 76,6
Industrial and warehouse space						
Total square metres	4 295	21 208	19 942	112 829	100 691	-10,8
Total value at current prices (R'000)	4 109	33 697	21 352	118 364	119 348	+ 0,8
Other non-residential space ^{2/}						
Total square metres	1 338	3 599	2 132	15 052	14 071	-6,5
Total value at current prices (R'000)	2 213	4 467	2 342	17 214	16 095	-6,5
Total value of non-residential buildings at current prices (R'000)	19 398	63 740	26 428	262 311	232 786	-11,3
Additions and alterations						
Dwelling-houses						
Total square metres	18 451	34 994	30 289	149 823	209 205	+ 39,6
Total value at current prices (R'000)	19 991	37 315	32 799	167 092	230 284	+ 37,8
Other buildings ^{3/}						
Total square metres	14 568	8 511	6 597	121 281	61 291	-49,5
Total value at current prices (R'000)	36 410	15 762	19 731	246 154	120 355	-51,1
Total value of additions and alterations at current prices (R'000)	56 401	53 077	52 530	413 246	350 639	-15,2
Total value of buildings completed at current prices (R'000)	117 992	207 116	131 686	994 574	1 052 609	+ 5,8

1/ Other residential buildings include institutions for the disabled, boarding houses, old people's homes, hostels, hotels, motels, guest houses, holiday chalets, entertainment centres, bed-and-breakfast accommodation and casinos.

2/ Other non-residential space includes churches, sport and recreation clubs, schools, crèches, hospitals and all other non-residential space.

3/ Other buildings include additions and alterations to other residential buildings, non-residential buildings and internal alterations.

Table 25 - Buildings completed according to type of building and province: North West

Type of building	July 2000*	June 2001	July 2001	January 2000 to July 2000	January 2001 to July 2001	Percentage change between January 2000 to July 2000 and January 2001 to July 2001
Residential buildings						
Dwelling-houses smaller than 80 square metres						
Number of dwelling-houses	71	97	366	625	822	+ 31,5
Total square metres	3 562	4 488	12 356	28 998	34 891	+ 20,3
Total value at current prices (R'000)	4 158	4 747	6 399	26 846	31 177	+ 16,1
Dwelling-houses equal to or larger than 80 square metres						
Number of dwelling-houses	65	61	31	236	295	+ 25,0
Total square metres	9 472	11 863	6 078	40 904	56 673	+ 38,6
Total value at current prices (R'000)	11 096	14 473	8 170	45 318	69 077	+ 52,4
Flats and townhouses						
Number of flats and townhouses	54	6	14	102	84	- 17,6
Total square metres	5 803	794	1 061	12 945	8 650	- 33,2
Total value at current prices (R'000)	5 642	764	2 027	13 571	9 636	- 29,0
Other residential buildings ^{1/}						
Total square metres	0	0	0	748	3 684	+ 392,5
Total value at current prices (R'000)	0	0	0	765	4 162	+ 444,1
Total value of residential buildings at current prices (R'000)	20 896	19 984	16 596	86 500	114 052	+ 31,9
Non-residential buildings						
Office and banking space						
Total square metres	0	0	147	9 442	897	- 90,5
Total value at current prices (R'000)	0	0	150	11 137	1 550	- 86,1
Shopping space						
Total square metres	5 279	479	1 627	23 654	4 372	- 81,5
Total value at current prices (R'000)	6 400	459	1 750	28 975	5 321	- 81,6
Industrial and warehouse space						
Total square metres	1 607	3 190	0	2 146	6 265	+ 191,9
Total value at current prices (R'000)	1 181	3 195	0	1 715	6 405	+ 273,5
Other non-residential space ^{2/}						
Total square metres	2 620	3 319	1 000	8 877	6 636	- 25,2
Total value at current prices (R'000)	6 500	3 983	1 500	11 845	8 032	- 32,2
Total value of non-residential buildings at current prices (R'000)	14 081	7 637	3 400	53 672	21 308	- 60,3
Additions and alterations						
Dwelling-houses						
Total square metres	5 353	4 243	1 499	36 055	22 960	- 36,3
Total value at current prices (R'000)	5 092	4 086	1 874	35 180	20 870	- 40,7
Other buildings ^{3/}						
Total square metres	2 410	3 396	1 181	13 784	15 370	+ 11,5
Total value at current prices (R'000)	2 489	3 937	7 644	12 391	24 706	+ 99,4
Total value of additions and alterations at current prices (R'000)	7 581	8 023	9 518	47 571	45 576	- 4,2
Total value of buildings completed at current prices (R'000)	42 558	35 644	29 514	187 743	180 936	- 3,6

1/ Other residential buildings include institutions for the disabled, boarding houses, old people's homes, hostels, hotels, motels, guest houses, holiday chalets, entertainment centres, bed-and-breakfast accommodation and casinos.

2/ Other non-residential space includes churches, sport and recreation clubs, schools, crèches, hospitals and all other non-residential space.

3/ Other buildings include additions and alterations to other residential buildings, non-residential buildings and internal alterations.

Table 26 - Buildings completed according to type of building and province: Gauteng

Type of building	July 2000*	June 2001*	July 2001	January 2000 to July 2000	January 2001 to July 2001	Percentage change between January 2000 to July 2000 and January 2001 to July 2001
Residential buildings						
Dwelling-houses smaller than 80 square metres						
Number of dwelling-houses	1 683	500	580	9 549	4 153	-56,5
Total square metres	67 563	22 197	22 962	345 834	164 308	-52,5
Total value at current prices (R'000)	48 269	23 314	31 391	244 626	153 657	-37,2
Dwelling-houses equal to or larger than 80 square metres						
Number of dwelling-houses	237	332	357	1 752	2 196	+ 25,3
Total square metres	59 409	71 619	69 191	413 964	486 334	+ 17,5
Total value at current prices (R'000)	85 841	99 913	99 104	552 212	677 080	+ 22,6
Flats and townhouses						
Number of flats and townhouses	181	359	98	2 035	2 026	-0,4
Total square metres	23 403	30 882	12 744	192 956	202 529	+ 5,0
Total value at current prices (R'000)	31 766	51 880	19 944	266 418	315 225	+ 18,3
Other residential buildings ^{1/}						
Total square metres	0	0	0	8 211	34 212	+ 316,7
Total value at current prices (R'000)	0	0	0	12 851	252 096	+ 1 861,7
Total value of residential buildings at current prices (R'000)	165 876	175 107	150 439	1 076 107	1 398 058	+ 29,9
Non-residential buildings						
Office and banking space						
Total square metres	58 799	15 491	16 379	214 809	249 801	+ 16,3
Total value at current prices (R'000)	76 407	24 602	24 945	312 388	360 578	+ 15,4
Shopping space						
Total square metres	49 789	49 239	502	181 233	66 620	-63,2
Total value at current prices (R'000)	259 055	122 911	898	455 051	147 430	-67,6
Industrial and warehouse space						
Total square metres	22 740	16 620	23 885	139 501	139 645	+ 0,1
Total value at current prices (R'000)	33 207	23 574	40 429	212 043	205 777	-3,0
Other non-residential space ^{2/}						
Total square metres	959	7 933	7 761	15 409	34 014	+ 120,7
Total value at current prices (R'000)	1 054	10 376	10 283	17 792	47 286	+ 165,8
Total value of non-residential buildings at current prices (R'000)	369 723	181 463	76 555	997 274	761 071	-23,7
Additions and alterations						
Dwelling-houses						
Total square metres	28 835	20 579	16 693	170 921	151 415	-11,4
Total value at current prices (R'000)	35 266	24 266	19 260	206 606	180 733	-12,5
Other buildings ^{3/}						
Total square metres	8 694	15 560	14 016	65 867	81 081	+ 23,1
Total value at current prices (R'000)	11 921	31 039	19 607	170 137	134 316	-21,1
Total value of additions and alterations at current prices (R'000)	47 187	55 305	38 867	376 743	315 049	-16,4
Total value of buildings completed at current prices (R'000)	582 786	411 875	265 861	2 450 124	2 474 178	+ 1,0

1/ Other residential buildings include institutions for the disabled, boarding houses, old people's homes, hostels, hotels, motels, guest houses, holiday chalets, entertainment centres, bed-and-breakfast accommodation and casinos.

2/ Other non-residential space includes churches, sport and recreation clubs, schools, crèches, hospitals and all other non-residential space.

3/ Other buildings include additions and alterations to other residential buildings, non-residential buildings and internal alterations.

Table 27 - Buildings completed according to type of building and province: Mpumalanga

Type of building	July 2000	June 2001	July 2001	January 2000 to July 2000	January 2001 to July 2001	Percentage change between January 2000 to July 2000 and January 2001 to July 2001
Residential buildings						
Dwelling-houses smaller than 80 square metres						
Number of dwelling-houses	192	159	337	1 336	2 174	+ 62,7
Total square metres	6 572	5 539	11 254	45 158	73 467	+ 62,7
Total value at current prices (R'000)	5 551	3 718	9 497	36 941	39 280	+ 6,3
Dwelling-houses equal to or larger than 80 square metres						
Number of dwelling-houses	102	19	24	290	206	-29,0
Total square metres	14 560	3 007	4 686	49 025	37 005	-24,5
Total value at current prices (R'000)	20 558	2 574	4 646	58 882	35 972	-38,9
Flats and townhouses						
Number of flats and townhouses	5	17	21	27	101	+ 274,1
Total square metres	915	1 927	4 033	2 392	12 003	+ 401,8
Total value at current prices (R'000)	707	2 109	3 249	2 119	10 988	+ 418,5
Other residential buildings ^{1/}						
Total square metres	513	0	0	1 243	0	..
Total value at current prices (R'000)	1 000	0	0	2 100	0	..
Total value of residential buildings at current prices (R'000)	27 816	8 401	17 392	100 042	86 240	-13,8
Non-residential buildings						
Office and banking space						
Total square metres	0	0	0	8 461	4 671	-44,8
Total value at current prices (R'000)	0	0	0	14 916	6 150	-58,8
Shopping space						
Total square metres	0	0	3 842	2 350	24 051	+ 923,4
Total value at current prices (R'000)	0	0	3 500	2 253	14 800	+ 556,9
Industrial and warehouse space						
Total square metres	7 242	0	2 002	16 589	2 367	-85,7
Total value at current prices (R'000)	6 982	0	1 762	16 383	1 922	-88,3
Other non-residential space ^{2/}						
Total square metres	0	306	13	5 321	3 864	-27,4
Total value at current prices (R'000)	0	358	9	6 681	4 531	-32,2
Total value of non-residential buildings at current prices (R'000)	6 982	358	5 271	40 233	27 403	-31,9
Additions and alterations						
Dwelling-houses						
Total square metres	4 099	3 692	1 431	20 500	27 572	+ 34,5
Total value at current prices (R'000)	3 541	3 231	1 402	15 710	23 081	+ 46,9
Other buildings ^{3/}						
Total square metres	1 111	83	970	4 526	13 879	+ 206,7
Total value at current prices (R'000)	1 708	69	1 140	5 394	18 731	+ 247,3
Total value of additions and alterations at current prices (R'000)	5 249	3 300	2 542	21 104	41 812	+ 98,1
Total value of buildings completed at current prices (R'000)	40 047	12 059	25 205	161 379	155 455	-3,7

1/ Other residential buildings include institutions for the disabled, boarding houses, old people's homes, hostels, hotels, motels, guest houses, holiday chalets, entertainment centres, bed-and-breakfast accommodation and casinos.

2/ Other non-residential space includes churches, sport and recreation clubs, schools, crèches, hospitals and all other non-residential space.

3/ Other buildings include additions and alterations to other residential buildings, non-residential buildings and internal alterations.

Table 28 - Buildings completed according to type of building and province: Northern Province

Type of building	July 2000	June 2001	July 2001	January 2000 to July 2000	January 2001 to July 2001	Percentage change between January 2000 to July 2000 and January 2001 to July 2001
Residential buildings						
Dwelling-houses smaller than 80 square metres						
Number of dwelling-houses	52	46	27	350	329	-6,0
Total square metres	2 898	2 605	1 520	17 747	16 121	-9,2
Total value at current prices (R'000)	3 257	2 925	2 170	17 102	14 984	-12,4
Dwelling-houses equal to or larger than 80 square metres						
Number of dwelling-houses	28	28	10	146	120	-17,8
Total square metres	3 701	3 516	2 005	20 420	18 779	-8,0
Total value at current prices (R'000)	4 715	3 911	2 577	25 947	24 289	-6,4
Flats and townhouses						
Number of flats and townhouses	6	4	0	21	26	+ 23,8
Total square metres	1 167	286	0	3 393	4 618	+ 36,1
Total value at current prices (R'000)	1 319	400	0	4 470	5 212	+ 16,6
Other residential buildings ^{1/}						
Total square metres	0	0	0	725	3 000	+ 313,8
Total value at current prices (R'000)	0	0	0	1 015	3 600	+ 254,7
Total value of residential buildings at current prices (R'000)	9 291	7 236	4 747	48 534	48 085	-0,9
Non-residential buildings						
Office and banking space						
Total square metres	0	0	471	3 271	969	-70,4
Total value at current prices (R'000)	0	0	300	5 067	1 097	-78,4
Shopping space						
Total square metres	525	2 508	0	8 454	3 690	-56,4
Total value at current prices (R'000)	538	3 846	0	21 554	5 919	-72,5
Industrial and warehouse space						
Total square metres	0	768	0	3 653	768	-79,0
Total value at current prices (R'000)	0	1 076	0	4 281	1 076	-74,9
Other non-residential space ^{2/}						
Total square metres	0	172	0	379	424	+ 11,9
Total value at current prices (R'000)	0	172	0	286	726	+ 153,8
Total value of non-residential buildings at current prices (R'000)	538	5 094	300	31 188	8 818	-71,7
Additions and alterations						
Dwelling-houses						
Total square metres	1 905	1 349	231	8 121	4 820	-40,6
Total value at current prices (R'000)	2 222	1 843	309	9 469	5 963	-37,0
Other buildings ^{3/}						
Total square metres	312	1 213	0	790	2 958	+ 274,4
Total value at current prices (R'000)	570	1 598	0	1 486	5 736	+ 286,0
Total value of additions and alterations at current prices (R'000)	2 792	3 441	309	10 955	11 699	+ 6,8
Total value of buildings completed at current prices (R'000)	12 621	15 771	5 356	90 677	68 602	-24,3

1/ Other residential buildings include institutions for the disabled, boarding houses, old people's homes, hostels, hotels, motels, guest houses, holiday chalets, entertainment centres, bed-and-breakfast accommodation and casinos.

2/ Other non-residential space includes churches, sport and recreation clubs, schools, crèches, hospitals and all other non-residential space.

3/ Other buildings include additions and alterations to other residential buildings, non-residential buildings and internal alterations.

Table 29 - Building plans passed according to type of building and selected urban area: Cape Town

Type of building	July 2000 *	June 2001*	July 2001	January 2000 to July 2000	January 2001 to July 2001	Percentage change between January 2000 to July 2000 and January 2001 to July 2001
Residential buildings						
Dwelling-houses smaller than 80 square metres						
Number of dwelling-houses	304	666	420	3 789	3 768	- 0,6
Total square metres	13 988	30 792	19 216	150 264	155 167	+ 3,3
Total value at current prices (R'000)	17 596	40 025	23 101	102 213	189 858	+ 85,7
Dwelling-houses equal to or larger than 80 square metres						
Number of dwelling-houses	310	365	343	1 967	2 181	+ 10,9
Total square metres	61 364	70 254	67 253	359 638	456 712	+ 27,0
Total value at current prices (R'000)	90 167	97 520	97 573	512 324	629 146	+ 22,8
Flats and townhouses						
Number of flats and townhouses	75	151	104	992	924	- 6,9
Total square metres	9 018	13 455	11 703	106 761	91 424	- 14,4
Total value at current prices (R'000)	14 429	19 513	17 754	189 086	143 882	- 23,9
Other residential buildings ^{1/}						
Total square metres	1 369	2 933	0	47 355	27 477	- 42,0
Total value at current prices (R'000)	2 670	3 637	0	64 620	65 743	+ 1,7
Total value of residential buildings at current prices (R'000)	124 862	160 695	138 428	868 243	1 028 629	+ 18,5
Non-residential buildings						
Office and banking space						
Total square metres	27 735	15 751	66 640	105 998	150 357	+ 41,8
Total value at current prices (R'000)	62 030	25 315	67 370	210 519	210 030	- 0,2
Shopping space						
Total square metres	2 870	5 103	233	99 027	88 072	- 11,1
Total value at current prices (R'000)	9 764	5 336	240	125 122	108 028	- 13,7
Industrial and warehouse space						
Total square metres	35 869	11 639	32 392	154 984	92 321	- 40,4
Total value at current prices (R'000)	36 194	13 776	35 602	174 547	100 057	- 42,7
Other non-residential space ^{2/}						
Total square metres	798	3 526	2 361	45 295	42 221	- 6,8
Total value at current prices (R'000)	927	4 643	2 505	50 455	59 770	+ 18,5
Total value of non-residential buildings at current prices (R'000)	108 915	49 070	105 717	560 643	477 885	- 14,8
Additions and alterations						
Dwelling-houses						
Total square metres	51 051	52 325	53 180	334 335	342 224	+ 2,4
Total value at current prices (R'000)	61 282	60 424	61 637	386 961	406 988	+ 5,2
Other buildings ^{3/}						
Total square metres	14 477	17 269	12 612	85 134	105 727	+ 24,2
Total value at current prices (R'000)	25 307	38 085	21 790	236 484	191 720	- 18,9
Total value of additions and alterations at current prices (R'000)	86 589	98 509	83 427	623 445	598 708	- 4,0
Total value of building plans passed at current prices (R'000)	320 366	308 274	327 572	2 052 331	2 105 222	+ 2,6

1/ Other residential buildings include institutions for the disabled, boarding houses, old people's homes, hostels, hotels, motels, guest houses, holiday chalets, entertainment centres, bed-and-breakfast accommodation and casinos.

2/ Other non-residential space includes churches, sport and recreation clubs, schools, crèches, hospitals and all other non-residential space.

3/ Other buildings include additions and alterations to other residential buildings, non-residential buildings and internal alterations.

Table 30 - Building plans passed according to type of building and selected urban area: Port Elizabeth

Type of building	July 2000	June 2001	July 2001	January 2000 to July 2000	January 2001 to July 2001	Percentage change between January 2000 to July 2000 and January 2001 to July 2001
Residential buildings						
Dwelling-houses smaller than 80 square metres						
Number of dwelling-houses	186	184	133	1 046	1 115	+ 6,6
Total square metres	7 463	8 613	5 596	44 028	49 809	+ 13,1
Total value at current prices (R'000)	9 383	11 451	7 513	51 962	66 126	+ 27,3
Dwelling-houses equal to or larger than 80 square metres						
Number of dwelling-houses	58	89	44	388	443	+ 14,2
Total square metres	8 785	9 176	12 354	51 392	58 425	+ 13,7
Total value at current prices (R'000)	11 246	12 627	16 081	65 251	78 031	+ 19,6
Flats and townhouses						
Number of flats and townhouses	8	15	17	129	113	- 12,4
Total square metres	434	1 365	1 117	16 510	10 005	- 39,4
Total value at current prices (R'000)	679	1 825	1 597	21 057	14 197	- 32,6
Other residential buildings ^{1/}						
Total square metres	0	2 744	0	7 209	2 744	- 61,9
Total value at current prices (R'000)	0	3 312	0	9 640	3 312	- 65,6
Total value of residential buildings at current prices (R'000)	21 308	29 215	25 191	147 910	161 666	+ 9,3
Non-residential buildings						
Office and banking space						
Total square metres	0	0	0	0	0	..
Total value at current prices (R'000)	0	0	0	0	0	..
Shopping space						
Total square metres	77	0	338	6 961	1 700	- 75,6
Total value at current prices (R'000)	103	0	373	10 642	2 230	- 79,0
Industrial and warehouse space						
Total square metres	260	859	10 107	22 859	17 893	- 21,7
Total value at current prices (R'000)	419	1 325	8 789	25 874	14 860	- 42,6
Other non-residential space ^{2/}						
Total square metres	1 412	1 724	502	15 336	4 727	- 69,2
Total value at current prices (R'000)	1 972	2 776	816	21 434	7 495	- 65,0
Total value of non-residential buildings at current prices (R'000)	2 494	4 101	9 978	57 950	24 585	- 57,6
Additions and alterations						
Dwelling-houses						
Total square metres	9 856	12 998	11 824	70 575	68 421	- 3,1
Total value at current prices (R'000)	11 884	17 576	14 742	87 805	89 260	+ 1,7
Other buildings ^{3/}						
Total square metres	2 532	2 455	1 155	22 249	40 258	+ 80,9
Total value at current prices (R'000)	2 898	2 107	1 450	29 695	55 889	+ 88,2
Total value of additions and alterations at current prices (R'000)	14 782	19 683	16 192	117 500	145 149	+ 23,5
Total value of building plans passed at current prices (R'000)	38 584	52 999	51 361	323 360	331 400	+ 2,5

1/ Other residential buildings include institutions for the disabled, boarding houses, old people's homes, hostels, hotels, motels, guest houses, holiday chalets, entertainment centres, bed-and-breakfast accommodation and casinos.

2/ Other non-residential space includes churches, sport and recreation clubs, schools, crèches, hospitals and all other non-residential space.

3/ Other buildings include additions and alterations to other residential buildings, non-residential buildings and internal alterations.

Table 31 - Building plans passed according to type of building and selected urban area: Durban

Type of building	July 2000	June 2001	July 2001	January 2000 to July 2000	January 2001 to July 2001	Percentage change between January 2000 to July 2000 and January 2001 to July 2001
Residential buildings						
Dwelling-houses smaller than 80 square metres						
Number of dwelling-houses	163	76	66	690	517	-25,1
Total square metres	7 656	3 859	3 272	35 148	26 887	-23,5
Total value at current prices (R'000)	7 518	4 103	3 940	37 314	30 861	-17,3
Dwelling-houses equal to or larger than 80 square metres						
Number of dwelling-houses	103	50	69	530	409	-22,8
Total square metres	14 666	9 542	13 423	85 744	80 897	-5,7
Total value at current prices (R'000)	18 684	12 153	17 179	107 492	94 865	-11,7
Flats and townhouses						
Number of flats and townhouses	27	46	3	115	138	+ 20,0
Total square metres	3 476	7 369	503	18 082	17 694	-2,1
Total value at current prices (R'000)	5 586	3 585	900	24 408	19 410	-20,5
Other residential buildings ^{1/}						
Total square metres	0	0	1 135	0	1 273	..
Total value at current prices (R'000)	0	0	901	0	1 231	..
Total value of residential buildings at current prices (R'000)	31 788	19 841	22 920	169 214	146 367	-13,5
Non-residential buildings						
Office and banking space						
Total square metres	2 100	4 935	2 679	9 078	12 811	+ 41,1
Total value at current prices (R'000)	5 100	6 500	6 000	19 468	25 200	+ 29,4
Shopping space						
Total square metres	952	1 064	400	9 534	11 462	+ 20,2
Total value at current prices (R'000)	1 000	1 200	500	10 935	12 956	+ 18,5
Industrial and warehouse space						
Total square metres	12 554	10 346	12 267	49 895	56 597	+ 13,4
Total value at current prices (R'000)	12 265	10 806	15 453	57 373	64 637	+ 12,7
Other non-residential space ^{2/}						
Total square metres	1 144	1 444	1 206	14 247	21 589	+ 51,5
Total value at current prices (R'000)	1 005	2 057	1 900	19 661	26 123	+ 32,9
Total value of non-residential buildings at current prices (R'000)	19 370	20 563	23 853	107 437	128 916	+ 20,0
Additions and alterations						
Dwelling-houses						
Total square metres	28 725	21 951	26 766	161 258	153 768	-4,6
Total value at current prices (R'000)	33 200	23 297	31 173	182 592	178 061	-2,5
Other buildings ^{3/}						
Total square metres	15 930	7 196	4 545	119 162	63 527	-46,7
Total value at current prices (R'000)	32 577	26 146	11 178	245 433	145 115	-40,9
Total value of additions and alterations at current prices (R'000)	65 777	49 443	42 351	428 025	323 176	-24,5
Total value of building plans passed at current prices (R'000)	116 935	89 847	89 124	704 676	598 459	-15,1

1/ Other residential buildings include institutions for the disabled, boarding houses, old people's homes, hostels, hotels, motels, guest houses, holiday chalets, entertainment centres, bed-and-breakfast accommodation and casinos.

2/ Other non-residential space includes churches, sport and recreation clubs, schools, crèches, hospitals and all other non-residential space.

3/ Other buildings include additions and alterations to other residential buildings, non-residential buildings and internal alterations.

Table 32 - Building plans passed according to type of building and selected urban area: Witwatersrand

Type of building	July 2000	June 2001	July 2001	January 2000 to July 2000	January 2001 to July 2001	Percentage change between January 2000 to July 2000 and January 2001 to July 2001
Residential buildings						
Dwelling-houses smaller than 80 square metres						
Number of dwelling-houses	1 444	621	569	9 082	4 717	- 48,1
Total square metres	55 562	22 607	21 578	349 519	178 353	- 49,0
Total value at current prices (R'000)	42 171	22 052	29 448	262 305	194 761	- 25,8
Dwelling-houses equal to or larger than 80 square metres						
Number of dwelling-houses	395	437	416	2 629	3 113	+ 18,4
Total square metres	96 493	113 971	95 547	601 388	706 845	+ 17,5
Total value at current prices (R'000)	140 645	168 245	138 071	838 951	1 036 565	+ 23,6
Flats and townhouses						
Number of flats and townhouses	169	300	240	1 916	1 923	+ 0,4
Total square metres	24 209	35 730	26 763	187 205	207 872	+ 11,0
Total value at current prices (R'000)	35 361	56 175	38 189	282 280	340 503	+ 20,6
Other residential buildings ^{1/}						
Total square metres	214	1 169	1 169	5 122	3 661	- 28,5
Total value at current prices (R'000)	214	1 520	1 520	7 201	4 791	- 33,5
Total value of residential buildings at current prices (R'000)	218 391	247 992	207 228	1 390 737	1 576 620	+ 13,4
Non-residential buildings						
Office and banking space						
Total square metres	50 900	36 379	12 894	412 311	171 616	- 58,4
Total value at current prices (R'000)	91 361	78 160	20 916	585 784	289 677	- 50,5
Shopping space						
Total square metres	37 632	400	3 718	109 435	57 121	- 47,8
Total value at current prices (R'000)	69 584	360	5 711	165 493	95 730	- 42,2
Industrial and warehouse space						
Total square metres	46 408	20 464	17 819	269 578	164 967	- 38,8
Total value at current prices (R'000)	70 506	36 739	31 825	404 272	283 653	- 29,8
Other non-residential space ^{2/}						
Total square metres	6 008	7 665	7 755	44 258	71 491	+ 61,5
Total value at current prices (R'000)	11 223	10 553	11 516	69 468	108 422	+ 56,1
Total value of non-residential buildings at current prices (R'000)	242 674	125 812	69 968	1 225 017	777 482	- 36,5
Additions and alterations						
Dwelling-houses						
Total square metres	69 845	67 712	58 887	431 749	435 727	+ 0,9
Total value at current prices (R'000)	88 523	89 668	75 724	539 521	563 082	+ 4,4
Other buildings ^{3/}						
Total square metres	13 024	12 437	10 169	141 071	128 433	- 9,0
Total value at current prices (R'000)	22 724	21 936	13 372	217 587	236 433	+ 8,7
Total value of additions and alterations at current prices (R'000)	111 247	111 604	89 096	757 108	799 515	+ 5,6
Total value of building plans passed at current prices (R'000)	572 312	485 408	366 292	3 372 862	3 153 617	- 6,5

1/ Other residential buildings include institutions for the disabled, boarding houses, old people's homes, hostels, hotels, motels, guest houses, holiday chalets, entertainment centres, bed-and-breakfast accommodation and casinos.

2/ Other non-residential space includes churches, sport and recreation clubs, schools, crèches, hospitals and all other non-residential space.

3/ Other buildings include additions and alterations to other residential buildings, non-residential buildings and internal alterations.

Table 33 - Building plans passed according to type of building and selected urban area: Pretoria

Type of building	July 2000*	June 2001	July 2001	January 2000 to July 2000	January 2001 to July 2001	Percentage change between January 2000 to July 2000 and January 2001 to July 2001
Residential buildings						
Dwelling-houses smaller than 80 square metres						
Number of dwelling-houses	96	109	149	2 529	1 417	- 44,0
Total square metres	4 581	5 622	7 428	86 576	63 562	- 26,6
Total value at current prices (R'000)	5 838	7 498	10 285	65 019	75 749	+ 16,5
Dwelling-houses equal to or larger than 80 square metres						
Number of dwelling-houses	274	298	345	1 626	1 875	+ 15,3
Total square metres	72 936	90 010	82 765	409 543	512 983	+ 25,3
Total value at current prices (R'000)	99 562	124 161	117 672	525 462	702 101	+ 33,6
Flats and townhouses						
Number of flats and townhouses	516	338	95	1 603	1 148	- 28,4
Total square metres	55 670	28 931	11 988	194 652	140 328	- 27,9
Total value at current prices (R'000)	77 912	44 752	14 549	252 680	205 235	- 18,8
Other residential buildings ^{1/}						
Total square metres	8 262	0	1 528	15 241	1 946	- 87,2
Total value at current prices (R'000)	9 130	0	2 292	19 090	2 919	- 84,7
Total value of residential buildings at current prices (R'000)	192 442	176 411	144 798	862 251	986 004	+ 14,4
Non-residential buildings						
Office and banking space						
Total square metres	13 814	16 363	17 693	55 813	59 714	+ 7,0
Total value at current prices (R'000)	21 184	24 889	30 859	73 941	97 982	+ 32,5
Shopping space						
Total square metres	756	20 785	111	20 527	33 237	+ 61,9
Total value at current prices (R'000)	930	29 915	144	22 484	49 165	+ 118,7
Industrial and warehouse space						
Total square metres	8 369	9 739	16 339	40 344	49 757	+ 23,3
Total value at current prices (R'000)	8 183	14 319	23 929	46 802	70 968	+ 51,6
Other non-residential space ^{2/}						
Total square metres	8 598	1 691	13 016	19 602	35 143	+ 79,3
Total value at current prices (R'000)	10 971	2 427	19 876	24 821	52 697	+ 112,3
Total value of non-residential buildings at current prices (R'000)	41 268	71 550	74 808	168 048	270 812	+ 61,2
Additions and alterations						
Dwelling-houses						
Total square metres	19 976	30 630	30 206	136 136	149 047	+ 9,5
Total value at current prices (R'000)	24 193	54 419	41 468	162 007	207 305	+ 28,0
Other buildings ^{3/}						
Total square metres	3 297	6 447	9 238	37 281	38 657	+ 3,7
Total value at current prices (R'000)	6 642	10 667	17 546	61 177	66 778	+ 9,2
Total value of additions and alterations at current prices (R'000)	30 835	65 086	59 014	223 184	274 083	+ 22,8
Total value of building plans passed at current prices (R'000)	264 545	313 047	278 620	1 253 483	1 530 899	+ 22,1

1/ Other residential buildings include institutions for the disabled, boarding houses, old people's homes, hostels, hotels, motels, guest houses, holiday chalets, entertainment centres, bed-and-breakfast accommodation and casinos.

2/ Other non-residential space includes churches, sport and recreation clubs, schools, crèches, hospitals and all other non-residential space.

3/ Other buildings include additions and alterations to other residential buildings, non-residential buildings and internal alterations.

Table 34 - Building plans passed according to type of building and selected urban area: Bloemfontein

Type of building	July 2000	June 2001	July 2001	January 2000 to July 2000	January 2001 to July 2001	Percentage change between January 2000 to July 2000 and January 2001 to July 2001
Residential buildings						
Dwelling-houses smaller than 80 square metres						
Number of dwelling-houses	482	270	60	1 344	1 147	-14,7
Total square metres	21 042	11 630	2 637	60 481	50 033	-17,3
Total value at current prices (R'000)	9 272	5 505	1 653	28 746	24 986	-13,1
Dwelling-houses equal to or larger than 80 square metres						
Number of dwelling-houses	33	18	28	165	136	-17,6
Total square metres	5 484	3 170	4 170	29 265	22 736	-22,3
Total value at current prices (R'000)	7 067	3 807	5 201	38 270	28 795	-24,8
Flats and townhouses						
Number of flats and townhouses	0	25	41	204	204	+ 0,0
Total square metres	0	4 575	5 850	14 962	26 740	+ 78,7
Total value at current prices (R'000)	0	6 227	7 550	20 927	41 164	+ 96,7
Other residential buildings ^{1/}						
Total square metres	0	0	1 488	600	1 488	+ 148,0
Total value at current prices (R'000)	0	0	1 461	1 500	1 461	-2,6
Total value of residential buildings at current prices (R'000)	16 339	15 539	15 865	89 443	96 406	+ 7,8
Non-residential buildings						
Office and banking space						
Total square metres	302	0	0	3 623	12 809	+ 253,5
Total value at current prices (R'000)	483	0	0	5 613	25 200	+ 349,0
Shopping space						
Total square metres	0	0	0	672	0	..
Total value at current prices (R'000)	0	0	0	1 242	0	..
Industrial and warehouse space						
Total square metres	0	180	1 000	3 807	1 804	-52,6
Total value at current prices (R'000)	0	200	800	2 348	1 438	-38,8
Other non-residential space ^{2/}						
Total square metres	0	0	0	0	1 534	..
Total value at current prices (R'000)	0	0	0	0	2 868	..
Total value of non-residential buildings at current prices (R'000)	483	200	800	9 203	29 506	+ 220,6
Additions and alterations						
Dwelling-houses						
Total square metres	4 879	3 270	3 510	28 222	20 520	-27,3
Total value at current prices (R'000)	6 187	3 648	3 866	34 387	25 894	-24,7
Other buildings ^{3/}						
Total square metres	13 777	258	2 316	22 728	7 350	-67,7
Total value at current prices (R'000)	75 406	773	3 763	88 796	16 862	-81,0
Total value of additions and alterations at current prices (R'000)	81 593	4 421	7 629	123 183	42 756	-65,3
Total value of building plans passed at current prices (R'000)	98 415	20 160	24 294	221 829	168 668	-24,0

1/ Other residential buildings include institutions for the disabled, boarding houses, old people's homes, hostels, hotels, motels, guest houses, holiday chalets, entertainment centres, bed-and-breakfast accommodation and casinos.

2/ Other non-residential space includes churches, sport and recreation clubs, schools, crèches, hospitals and all other non-residential space.

3/ Other buildings include additions and alterations to other residential buildings, non-residential buildings and internal alterations.

Table 35 - Buildings completed according to type of building and selected urban area: Cape Town

Type of building	July 2000 *	June 2001	July 2001	January 2000 to July 2000	January 2001 to July 2001	Percentage change between January 2000 to July 2000 and January 2001 to July 2001
Residential buildings						
Dwelling-houses smaller than 80 square metres						
Number of dwelling-houses	601	500	166	5 442	3 169	- 41,8
Total square metres	21 941	30 898	7 197	205 521	108 536	- 47,2
Total value at current prices (R'000)	9 493	32 748	8 180	171 990	61 903	- 64,0
Dwelling-houses equal to or larger than 80 square metres						
Number of dwelling-houses	143	170	174	2 025	1 039	- 48,7
Total square metres	28 758	31 656	28 716	368 304	178 151	- 51,6
Total value at current prices (R'000)	37 974	40 906	38 118	491 247	232 254	- 52,7
Flats and townhouses						
Number of flats and townhouses	105	329	86	1 341	525	- 60,9
Total square metres	7 917	39 818	12 406	137 674	45 648	- 66,8
Total value at current prices (R'000)	10 717	44 691	17 565	177 647	61 493	- 65,4
Other residential buildings ^{1/}						
Total square metres	2 298	0	217	31 121	14 286	- 54,1
Total value at current prices (R'000)	2 958	0	323	36 679	23 832	- 35,0
Total value of residential buildings at current prices (R'000)	61 142	118 345	64 186	877 563	379 482	- 56,8
Non-residential buildings						
Office and banking space						
Total square metres	3 684	20 357	1 007	116 729	53 196	- 54,4
Total value at current prices (R'000)	4 025	29 055	1 234	214 688	97 006	- 54,8
Shopping space						
Total square metres	9 785	3 312	795	45 461	24 379	- 46,4
Total value at current prices (R'000)	10 546	3 229	411	61 184	36 139	- 40,9
Industrial and warehouse space						
Total square metres	13 899	7 947	2 262	139 147	95 736	- 31,2
Total value at current prices (R'000)	10 132	7 719	2 472	127 083	78 904	- 37,9
Other non-residential space ^{2/}						
Total square metres	481	5 047	133	24 337	12 185	- 49,9
Total value at current prices (R'000)	439	6 296	92	31 501	14 078	- 55,3
Total value of non-residential buildings at current prices (R'000)	25 142	46 299	4 209	434 456	226 127	- 48,0
Additions and alterations						
Dwelling-houses						
Total square metres	27 867	33 828	29 300	399 946	187 036	- 53,2
Total value at current prices (R'000)	32 777	38 594	31 867	442 813	206 004	- 53,5
Other buildings ^{3/}						
Total square metres	9 423	23 057	12 309	149 797	67 530	- 54,9
Total value at current prices (R'000)	14 982	47 545	21 419	355 112	122 374	- 65,5
Total value of additions and alterations at current prices (R'000)	47 759	86 139	53 286	797 925	328 378	- 58,8
Total value of buildings completed at current prices (R'000)	134 043	250 783	121 681	2 109 944	933 987	- 55,7

1/ Other residential buildings include institutions for the disabled, boarding houses, old people's homes, hostels, hotels, motels, guest houses, holiday chalets, entertainment centres, bed-and-breakfast accommodation and casinos.

2/ Other non-residential space includes churches, sport and recreation clubs, schools, crèches, hospitals and all other non-residential space.

3/ Other buildings include additions and alterations to other residential buildings, non-residential buildings and internal alterations.

Table 36 - Buildings completed according to type of building and selected urban area: Port Elizabeth

Type of building	July 2000	June 2001	July 2001	January 2000 to July 2000	January 2001 to July 2001	Percentage change between January 2000 to July 2000 and January 2001 to July 2001
Residential buildings						
Dwelling-houses smaller than 80 square metres						
Number of dwelling-houses	59	229	138	1 503	607	- 59,6
Total square metres	2 761	10 647	5 788	65 870	27 196	- 58,7
Total value at current prices (R'000)	3 100	14 361	7 434	81 452	31 729	- 61,0
Dwelling-houses equal to or larger than 80 square metres						
Number of dwelling-houses	22	139	31	543	164	- 69,8
Total square metres	2 274	11 707	4 532	62 648	22 324	- 64,4
Total value at current prices (R'000)	2 807	15 441	5 756	77 532	25 081	- 67,7
Flats and townhouses						
Number of flats and townhouses	1	3	28	241	138	- 42,7
Total square metres	118	530	3 583	24 737	15 333	- 38,0
Total value at current prices (R'000)	159	542	4 732	27 679	17 202	- 37,9
Other residential buildings ^{1/}						
Total square metres	0	0	0	4 714	367	- 92,2
Total value at current prices (R'000)	0	0	0	7 440	440	- 94,1
Total value of residential buildings at current prices (R'000)	6 066	30 344	17 922	194 103	74 452	- 61,6
Non-residential buildings						
Office and banking space						
Total square metres	0	1 907	1 682	22 494	0	..
Total value at current prices (R'000)	0	1 660	2 020	23 190	0	..
Shopping space						
Total square metres	1 477	5 819	4 463	46 219	26 465	- 42,7
Total value at current prices (R'000)	1 625	6 117	4 875	61 475	38 158	- 37,9
Industrial and warehouse space						
Total square metres	6 377	0	1 823	48 344	14 728	- 69,5
Total value at current prices (R'000)	5 108	0	1 295	50 887	10 789	-78,8
Other non-residential space ^{2/}						
Total square metres	243	0	588	8 507	4 111	- 51,7
Total value at current prices (R'000)	207	0	514	8 371	4 810	- 42,5
Total value of non-residential buildings at current prices (R'000)	6 940	7 777	8 704	143 923	53 757	- 62,6
Additions and alterations						
Dwelling-houses						
Total square metres	2 390	4 036	9 984	67 289	34 420	- 48,8
Total value at current prices (R'000)	2 587	6 448	10 618	70 221	32 209	- 54,1
Other buildings ^{3/}						
Total square metres	1 642	4 396	5 055	31 923	10 808	- 66,1
Total value at current prices (R'000)	1 368	5 866	4 735	36 635	11 680	- 68,1
Total value of additions and alterations at current prices (R'000)	3 955	12 314	15 353	106 856	43 889	- 58,9
Total value of buildings completed at current prices (R'000)	16 961	50 435	41 979	444 882	172 098	- 61,3

1/ Other residential buildings include institutions for the disabled, boarding houses, old people's homes, hostels, hotels, motels, guest houses, holiday chalets, entertainment centres, bed-and-breakfast accommodation and casinos.

2/ Other non-residential space includes churches, sport and recreation clubs, schools, crèches, hospitals and all other non-residential space.

3/ Other buildings include additions and alterations to other residential buildings, non-residential buildings and internal alterations.

Table 37 - Buildings completed according to type of building and selected urban area: Durban

Type of building	July 2000	June 2001	July 2001	January 2000 to July 2000	January 2001 to July 2001	Percentage change between January 2000 to July 2000 and January 2001 to July 2001
Residential buildings						
Dwelling-houses smaller than 80 square metres						
Number of dwelling-houses	60	118	66	1 003	529	- 47,3
Total square metres	2 639	5 502	3 589	51 213	26 587	- 48,1
Total value at current prices (R'000)	2 769	7 238	4 084	57 839	28 622	- 50,5
Dwelling-houses equal to or larger than 80 square metres						
Number of dwelling-houses	56	109	89	1 100	515	- 53,2
Total square metres	9 289	26 291	16 358	201 848	90 521	- 55,2
Total value at current prices (R'000)	11 271	47 120	19 571	243 424	98 407	- 59,6
Flats and townhouses						
Number of flats and townhouses	32	35	4	637	219	- 65,6
Total square metres	5 371	4 458	1 080	72 234	31 715	- 56,1
Total value at current prices (R'000)	8 556	5 621	1 130	101 475	46 458	- 54,2
Other residential buildings ^{1/}						
Total square metres	0	0	0	0	0	..
Total value at current prices (R'000)	0	0	0	0	0	..
Total value of residential buildings at current prices (R'000)	22 596	59 979	24 785	402 738	173 487	- 56,9
Non-residential buildings						
Office and banking space						
Total square metres	0	13 743	87	48 502	22 443	- 53,7
Total value at current prices (R'000)	0	16 323	87	107 937	66 157	- 38,7
Shopping space						
Total square metres	0	1 080	2 747	30 077	12 093	- 59,8
Total value at current prices (R'000)	0	2 253	2 647	45 049	14 360	- 68,1
Industrial and warehouse space						
Total square metres	2 987	19 857	15 742	163 424	84 357	- 48,4
Total value at current prices (R'000)	2 945	32 549	17 781	197 588	96 763	- 51,0
Other non-residential space ^{2/}						
Total square metres	1 338	2 652	2 117	19 985	10 725	- 46,3
Total value at current prices (R'000)	2 213	3 312	2 302	23 432	12 192	- 48,0
Total value of non-residential buildings at current prices (R'000)	5 158	54 437	22 817	374 006	189 472	- 49,3
Additions and alterations						
Dwelling-houses						
Total square metres	15 090	31 106	27 450	308 893	127 899	- 58,6
Total value at current prices (R'000)	16 109	32 869	29 584	337 762	141 190	- 58,2
Other buildings ^{3/}						
Total square metres	14 374	7 272	6 456	167 747	113 603	- 32,3
Total value at current prices (R'000)	36 097	14 130	19 419	339 156	231 574	- 31,7
Total value of additions and alterations at current prices (R'000)	52 206	46 999	49 003	676 918	372 764	- 44,9
Total value of buildings completed at current prices (R'000)	79 960	161 415	96 605	1 453 662	735 723	- 49,4

1/ Other residential buildings include institutions for the disabled, boarding houses, old people's homes, hostels, hotels, motels, guest houses, holiday chalets, entertainment centres, bed-and-breakfast accommodation and casinos.

2/ Other non-residential space includes churches, sport and recreation clubs, schools, crèches, hospitals and all other non-residential space.

3/ Other buildings include additions and alterations to other residential buildings, non-residential buildings and internal alterations.

Table 38 - Buildings completed according to type of building and selected urban area: Witwatersrand

Type of building	July 2000*	June 2001	July 2001	January 2000 to July 2000	January 2001 to July 2001	Percentage change between January 2000 to July 2000 and January 2001 to July 2001
Residential buildings						
Dwelling-houses smaller than 80 square metres						
Number of dwelling-houses	1 587	362	461	9 983	6 755	-32,3
Total square metres	63 330	15 019	17 864	378 067	253 053	-33,1
Total value at current prices (R'000)	44 490	16 406	24 495	297 964	181 488	-39,1
Dwelling-houses equal to or larger than 80 square metres						
Number of dwelling-houses	146	209	260	2 699	1 173	-56,5
Total square metres	37 188	36 359	46 020	567 043	263 224	-53,6
Total value at current prices (R'000)	59 168	50 428	67 391	804 556	375 239	-53,4
Flats and townhouses						
Number of flats and townhouses	107	346	82	2 604	1 271	-51,2
Total square metres	9 332	28 346	9 809	221 214	89 816	-59,4
Total value at current prices (R'000)	14 984	48 054	15 734	361 159	142 090	-60,7
Other residential buildings ^{1/}						
Total square metres	0	0	0	38 554	5 954	-84,6
Total value at current prices (R'000)	0	0	0	260 340	10 340	-96,0
Total value of residential buildings at current prices (R'000)	118 642	114 888	107 620	1 724 019	709 157	-58,9
Non-residential buildings						
Office and banking space						
Total square metres	54 070	15 491	14 198	449 864	207 387	-53,9
Total value at current prices (R'000)	70 496	24 602	21 673	653 955	303 424	-53,6
Shopping space						
Total square metres	45 461	49 239	350	235 230	175 115	-25,6
Total value at current prices (R'000)	251 726	122 911	700	584 423	445 282	-23,8
Industrial and warehouse space						
Total square metres	18 216	14 566	23 122	253 061	128 670	-49,2
Total value at current prices (R'000)	28 627	21 664	39 399	391 883	200 957	-48,7
Other non-residential space ^{2/}						
Total square metres	387	7 203	7 761	36 412	9 915	-72,8
Total value at current prices (R'000)	482	9 435	10 283	50 147	12 720	-74,6
Total value of non-residential buildings at current prices (R'000)	351 331	178 612	72 055	1 680 408	962 383	-42,7
Additions and alterations						
Dwelling-houses						
Total square metres	22 126	17 808	13 863	278 016	142 946	-48,6
Total value at current prices (R'000)	27 542	21 124	15 756	337 755	176 630	-47,7
Other buildings ^{3/}						
Total square metres	6 084	10 850	12 627	122 826	49 415	-59,8
Total value at current prices (R'000)	9 032	25 016	18 019	275 913	152 458	-44,7
Total value of additions and alterations at current prices (R'000)	36 574	46 140	33 775	613 668	329 088	-46,4
Total value of buildings completed at current prices (R'000)	506 547	339 640	213 450	4 018 095	2 000 628	-50,2

1/ Other residential buildings include institutions for the disabled, boarding houses, old people's homes, hostels, hotels, motels, guest houses, holiday chalets, entertainment centres, bed-and-breakfast accommodation and casinos.

2/ Other non-residential space includes churches, sport and recreation clubs, schools, crèches, hospitals and all other non-residential space.

3/ Other buildings include additions and alterations to other residential buildings, non-residential buildings and internal alterations.

Table 39 - Buildings completed according to type of building and selected urban area: Pretoria

Type of building	July 2000	June 2001*	July 2001	January 2000 to July 2000	January 2001 to July 2001	Percentage change between January 2000 to July 2000 and January 2001 to July 2001
Residential buildings						
Dwelling-houses smaller than 80 square metres						
Number of dwelling-houses	54	111	116	2 871	2 315	- 19,4
Total square metres	2 620	6 161	4 978	102 497	75 899	- 26,0
Total value at current prices (R'000)	2 954	6 462	6 752	82 638	52 702	- 36,2
Dwelling-houses equal to or larger than 80 square metres						
Number of dwelling-houses	81	118	96	1 154	521	- 54,9
Total square metres	19 175	33 425	22 945	312 618	138 677	- 55,6
Total value at current prices (R'000)	23 010	47 366	31 442	400 955	163 147	- 59,3
Flats and townhouses						
Number of flats and townhouses	53	11	12	1 389	741	- 46,7
Total square metres	11 386	2 259	2 294	164 975	99 722	- 39,6
Total value at current prices (R'000)	13 562	3 511	3 441	209 045	120 129	- 42,5
Other residential buildings ^{1/}						
Total square metres	0	0	0	1 851	1 851	+ 0,0
Total value at current prices (R'000)	0	0	0	2 024	2 024	+ 0,0
Total value of residential buildings at current prices (R'000)	39 526	57 339	41 635	694 662	338 002	- 51,3
Non-residential buildings						
Office and banking space						
Total square metres	4 729	0	2 181	14 710	7 386	- 49,8
Total value at current prices (R'000)	5 911	0	3 272	19 001	8 954	- 52,9
Shopping space						
Total square metres	0	0	152	1 796	1 492	- 16,9
Total value at current prices (R'000)	0	0	198	2 482	2 086	- 16,0
Industrial and warehouse space						
Total square metres	4 524	152	763	18 531	9 965	- 46,2
Total value at current prices (R'000)	4 580	198	1 030	18 343	10 536	- 42,6
Other non-residential space ^{2/}						
Total square metres	572	308	0	11 062	5 494	- 50,3
Total value at current prices (R'000)	572	308	0	13 038	5 072	- 61,1
Total value of non-residential buildings at current prices (R'000)	11 063	506	4 500	52 864	26 648	- 49,6
Additions and alterations						
Dwelling-houses						
Total square metres	5 270	1 824	2 049	26 992	16 961	- 37,2
Total value at current prices (R'000)	6 422	2 158	2 712	31 617	18 911	- 40,2
Other buildings ^{3/}						
Total square metres	1 975	2 365	1 299	18 093	13 559	- 25,1
Total value at current prices (R'000)	2 198	3 605	1 492	20 898	14 247	- 31,8
Total value of additions and alterations at current prices (R'000)	8 620	5 763	4 204	52 515	33 158	- 36,9
Total value of buildings completed at current prices (R'000)	59 209	63 608	50 339	800 041	397 808	- 50,3

1/ Other residential buildings include institutions for the disabled, boarding houses, old people's homes, hostels, hotels, motels, guest houses, holiday chalets, entertainment centres, bed-and-breakfast accommodation and casinos.

2/ Other non-residential space includes churches, sport and recreation clubs, schools, crèches, hospitals and all other non-residential space.

3/ Other buildings include additions and alterations to other residential buildings, non-residential buildings and internal alterations.

Table 40 - Buildings completed according to type of building and selected urban area: Bloemfontein

Type of building	July 2000	June 2001	July 2001	January 2000 to July 2000	January 2001 to July 2001	Percentage change between January 2000 to July 2000 and January 2001 to July 2001
Residential buildings						
Dwelling-houses smaller than 80 square metres						
Number of dwelling-houses	56	120	14	788	412	- 47,7
Total square metres	2 256	4 944	741	32 379	16 840	- 48,0
Total value at current prices (R'000)	1 063	2 210	850	19 163	9 225	- 51,9
Dwelling-houses equal to or larger than 80 square metres						
Number of dwelling-houses	3	9	15	181	62	- 65,7
Total square metres	880	1 890	2 792	36 135	13 055	- 63,9
Total value at current prices (R'000)	919	2 472	3 490	45 898	17 829	- 61,2
Flats and townhouses						
Number of flats and townhouses	16	0	3	195	96	- 50,8
Total square metres	2 436	0	718	17 852	10 120	- 43,3
Total value at current prices (R'000)	3 200	0	1 149	24 405	13 211	- 45,9
Other residential buildings ^{1/}						
Total square metres	0	0	0	151	0	..
Total value at current prices (R'000)	0	0	0	211	0	..
Total value of residential buildings at current prices (R'000)	5 182	4 682	5 489	89 677	40 265	- 55,1
Non-residential buildings						
Office and banking space						
Total square metres	132	0	321	16 128	5 025	- 68,8
Total value at current prices (R'000)	185	0	400	31 456	9 573	- 69,6
Shopping space						
Total square metres	0	0	0	3 370	558	- 83,4
Total value at current prices (R'000)	0	0	0	3 676	670	- 81,8
Industrial and warehouse space						
Total square metres	308	80	0	12 485	7 675	- 38,5
Total value at current prices (R'000)	154	112	0	9 251	5 428	- 41,3
Other non-residential space ^{2/}						
Total square metres	0	0	0	8 616	3 097	- 64,1
Total value at current prices (R'000)	0	0	0	14 506	4 336	- 70,1
Total value of non-residential buildings at current prices (R'000)	339	112	400	58 889	20 007	- 66,0
Additions and alterations						
Dwelling-houses						
Total square metres	1 756	1 116	3 337	38 897	15 894	- 59,1
Total value at current prices (R'000)	1 808	1 334	4 153	41 214	16 054	- 61,0
Other buildings ^{3/}						
Total square metres	676	1 227	843	22 126	3 924	- 82,3
Total value at current prices (R'000)	2 070	1 223	3 605	101 586	11 829	- 88,4
Total value of additions and alterations at current prices (R'000)	3 878	2 557	7 758	142 800	27 883	- 80,5
Total value of buildings completed at current prices (R'000)	9 399	7 351	13 647	291 366	88 155	- 69,7

1/ Other residential buildings include institutions for the disabled, boarding houses, old people's homes, hostels, hotels, motels, guest houses, holiday chalets, entertainment centres, bed-and-breakfast accommodation and casinos.

2/ Other non-residential space includes churches, sport and recreation clubs, schools, crèches, hospitals and all other non-residential space.

3/ Other buildings include additions and alterations to other residential buildings, non-residential buildings and internal alterations.

Additional information

Explanatory Notes

Introduction	<ol style="list-style-type: none"> 1 Statistics South Africa (Stats SA) conducts a monthly Building Statistics Survey collecting information regarding building plans approved and buildings completed, financed by the private sector, from a sample of local government institutions in South Africa. This statistical release contains information of building plans passed and buildings completed in respect of residential buildings, non-residential buildings and additions and alterations according to province and selected urban areas. 2 In order to improve timeliness of the publication, some information for the current month have been estimated due to late submission by respondents. These estimates will be revised in the next statistical release(s) as soon as actual information is available. 3 The actual and seasonally adjusted values (at current and at constant 1995 prices) and the percentage change of building plans passed and buildings completed according to type of building are reflected monthly from January 1999 in this statistical release (cf. tables 1 to 8).
Scope of the survey	<ol style="list-style-type: none"> 4 This survey covers local government institutions conducting activities for the private sector regarding - <ul style="list-style-type: none"> • approval of building plans; and • final inspection of completed buildings.
Classification	<ol style="list-style-type: none"> 5 The 1993 edition of the Standard Industrial Classification of all Economic Activities, (SIC) Fifth Edition, Report No. 09-90-02, was used to classify the statistical units. The SIC is based on the 1990 International Standard Industrial Classification of all Economic Activities (ISIC) with suitable adaptations for local conditions. 6 The twelfth and last published edition of the Standard Code List of Areas, Report No. 09-09-03 (1994) was used to classify the statistical units according to province. The cities, towns and non-urban areas listed in this report are codified within magisterial district and province. The code list was compiled by Stats SA in collaboration with other interested bodies and the first edition was distributed in June 1977.
Statistical unit	<ol style="list-style-type: none"> 7 The statistical unit for the collection of information is a local government institution. Local government institutions include municipalities, city councils, metropolitan councils, district councils, transitional councils and development and services boards.
Survey methodology and design	<ol style="list-style-type: none"> 8 The sample for the monthly Building Statistics Survey consists of the largest local government institutions in South Africa, i.e. those that account for approximately 85% of the total rand value of buildings completed by the private sector. 9 The survey is collected by mail each month from a sample of 158 local government institutions.
Constant prices	<ol style="list-style-type: none"> 10 The value of building plans passed and buildings completed at constant prices measure the building activities in terms of ruling prices in a specific base year which is currently 1995. 11 The value of building plans passed at constant prices for each month is obtained by deflating the values at current prices with a price index known as the “lump sum domestic buildings” as published in statistical release P0151 – JBCC Contract Price Adjustment Provisions Work Group Indices. In order to be applicable, these indices (base February 1991=100) are converted to the base year 1995=100.

- 12** The value of buildings completed at constant prices is obtained by deflating the values at current prices with the same price index which is used to calculate building plans passed at constant prices (cf. paragraph 11). The value of buildings completed is reported as at the time the plans were passed. Since the completion of buildings may extend over a few months to a few years, the current value of buildings completed is deflated by price indices as at the time the plans were passed in order to calculate the value of buildings completed at the time the plans were passed. Therefore, the duration of the completion of different types of buildings are taken into account in ascertaining the deflators e.g. the value of dwelling-houses completed at constant prices at January 2000 is obtained by deflating the current value of dwelling-houses completed for January 2000 with the price index of a month six months prior to January 2000. Furthermore, the value of other residential buildings, non-residential buildings and additions and alterations at constant prices is obtained by deflating the current values with price indices of 12 months, 18 months and 12 months prior to the relevant month, respectively.
- Seasonal adjustment**
- 13** Seasonally adjusted estimates of building plans passed and buildings completed are generated each month, using the X-11 Seasonal Adjustment Program developed by US Bureau of the Census Economic Research and Analyses Division, 1968.
- 14** Seasonal adjustment is a means of removing the estimated effects of normal seasonal variation from the series so that the effects of other influences on the series can be more clearly recognised. Seasonal adjustment does not aim to remove irregular or non-seasonal influences which may be present in any particular month. Influences that are volatile or unsystematic can still make it difficult to interpret the movement of the series even after adjustment for seasonal variations. Therefore, the month-to-month movements of seasonally adjusted estimates may not be reliable indicators of trend behaviour.
- Trend cycle**
- 15** The trend is a long-term pattern or movement of a time series. The X-11 Seasonal Adjustment Program is used for smoothing seasonally adjusted data.
- Related publications**
- 16** Users may also wish to refer to the following publications:
- P5041.3 – Building statistics issued annually.
 - P9101.2 – Actual and expected expenditure on construction by the public sector per statistical region issued annually.
 - Bulletin of Statistics issued quarterly.
 - South African Statistics issued annually.
- Unpublished statistics**
- 17** In some cases Stats SA can also make available statistics which are not published. The statistics can be made available in one or more of the following ways: computer printouts, CD and diskette. Generally a charge is made for providing unpublished statistics.
- Rounding-off of figures**
- 18** The figures in the tables have, where necessary, been rounded off to the nearest digit shown. There may, therefore, be slight discrepancies between the sums of the constituent items and the totals shown.
- Pre-release policy**
- 19** Stats SA has adopted the confidential pre-release policy in respect of selected economic indicators and specific government departments. The policy accords with practice among leading statistical agencies. The statistical integrity of the information and strict observance of the release time has been assured by the following procedure:
- 20** In respect of this statistical release, an official representative from the Office of the President, the Department of Trade and Industry (DTI), National Treasury and the South African Reserve Bank (SARB) will receive a copy of the release on a strictly confidential basis two hours in advance of the public issue.
- 21** Stats SA pre-release policy may be inspected at its Website, www.statssa.gov.za

Symbols and abbreviations

..	no meaningful percentage change between two specified periods available since either one or both of the totals are nil
0	nil or figure too small to publish
*	revised
Stats SA	Statistics South Africa
SIC	Standard Industrial Classification of all Economic Activities
ISIC	International Standard Industrial Classification of all Economic Activities
JBCC	Joint Building Contracts Committee
CD	Compact Disc
US	United States
SARB	South African Reserve Bank
DTI	Department of Trade and Industry

Technical notes**Response rate**

The response rate for July 2001 is 96,2%.

Local government institutions covered in the sample survey

Local government institutions according to province

Western Cape	Blaauwberg (includes Milnerton), Brackenfell, Breede River District Council, Cape Town, City of Tygerberg (Bellville, Durbanville, Goodwood, Lingeletu West, Parow and South Administration), Fish Hoek, George (includes Pacaltsdorp, Thembaletu and Herolds Bay), Gordon's Bay, Hangklip-Kleinmond (includes Kleinmond, Betty's Bay and Rooi-Els), Hermanus (includes Onrus River, Zwelihle, Sandbaai, Vermont, Hawston and Fisher Haven), Ikapa, Klein-Karoo District Council, Knysna (includes Khayaletu), Kuils River, Malmesbury, Mossel Bay (includes Boggom's Bay, Kleinbrak, Rheeboek and Tergniet), Oostenberg (Kraaifontein and Melton Rose - Blue Downs), Oudtshoorn, Overberg District Council, Paarl, Plettenberg Bay, Sedgefield, Simon's Town, Somerset West, South Peninsula, Stellenbosch, Strand, Wellington, West Coast District Council, Western Coast Peninsula (previously Vredenburg-Saldanha), Winelands District Council and Worcester.
Eastern Cape	Aliwal-Maletswai (includes Dukathole), Despatch, East London (includes Beacon Bay, Gomo Town, Gonubie and Mdantsane), Grahamstown (includes Rhini Township), Jeffrey's Bay, King William's Town (includes Bisho and Zwelitsha), Port Alfred, Port Elizabeth (includes Ibhayi and Motherwell), Uitenhage (includes KwaNobuhle), Umtata and Western District Council.
Northern Cape	Benede-Oranje District Council, Keimoes, Kimberley (including Galeshewe), Kuruman, Namaqualand District Council and Upington (includes Paballelo).
Free State	Allanridge, Bethlehem (includes Bohlokong), Bloemfontein (includes Bainsvlei, Bloemspruit and Mangaung), Botshabelo, Deneysville (includes Refengkgotso), Harrismith (includes Tsiamé), Kroonstad (includes Maokeng), Ladybrand (includes Manyatseng), Odendaalsrus (includes Kutlwanong), Parys, Phuthaditjhaba, Sasolburg (includes Zamdela), Virginia (includes Meloding) and Welkom (includes Thabong).
KwaZulu-Natal	Development and Services Board - Inland, Development and Services Board – North Coast, Dolphin Coast Borough (includes Ballito, Etete, Shakaskraal, Tinley Manor Beach and Umhlali Beach), Durban, Edendale, Empangeni (includes Ngwelezana), Hilton, Howick, Inner West City Council (includes Clermont, KwaDabeka, KwaNdengezi, New Germany, Pinetown, Queensburgh, Reservoir Hills, Shallcross and Westville), Kokstad, Kwa-Dukuza/Stanger (includes Blythedale Beach, Shakaville and Stanger), KwaMashu, Ladysmith (includes Emnambithi), Margate (includes Uvongo), Mpenjati/Southbroom (includes Southbroom, Marina Beach, San Lameer and Trafalgar), Newcastle (includes Madadeni, Osizweni and Blaauwboschlaagte), North Local Council - Tongaat (includes Canelands and Hambanati), North Local Council - Umhlanga Rocks (includes Mount Edgecombe and Umdloti Beach), North Local Council - Verulam, Outer West Local Council (includes Assagay, Botha's Hill, Cato Ridge, Drummond, Everton, Gillitts, Hillcrest, Inchanga, Kloof, Mpumalanga and Waterfall), Pennington, Pietermaritzburg/Msundini, Port Shepstone, Richards Bay, South Local Council (includes Amanzimtoti, Isipingo, Kingsburgh, KwaMakuta and Umbogintwini), Umlazi and Umtamvuna/Port Edward (includes Munster, Port Edward and Palm Beach).
North West	Bophirima District Council, Brits (includes Lethabile), Ga-Rankuwa, Klerksdorp, Lichtenburg, Mmabatho, Orkney (includes Kanana), Potchefstroom, Rustenburg, Vryburg and Zeerust.

Gauteng

Akasia (includes Elandsdoorn, Klipfontein, Kruisfontein and Soshanguve), Alberton (includes Tokoza), Benoni (includes Daveyton and Wattville), Boksburg (includes Vosloorus), Brakpan (includes Tsakane), Bronkhorst-spruit, Carletonville (includes Khutsong), Centurion, Duduza, Eastern Services Council - Pretoria Area, Edenvale-Modderfontein, Germiston (includes Bedfordview and Katlehong), Greater Johannesburg - Eastern Metropolitan Local Council (includes Alexandra and Sandton), Greater Johannesburg - Northern Metropolitan Local Council (includes Randburg), Greater Johannesburg - Southern Metropolitan Local Council (includes Ennerdale, Lenasia and Johannesburg), Greater Johannesburg - Western Metropolitan Local Council (includes Diepmeadow, Dobsonville and Roodepoort), Heidelberg (includes Ratanda), Kempton Park (includes Tembisa), Krugersdorp (includes Kagiso and Munsieville), Meyerton, Midrand (includes Rabie Ridge and Ivory Park), Nigel, Pretoria (includes Atteridgeville and Mamelodi), Randfontein (includes Mohlakeng), Sebokeng (includes Boipatong, Bophelong and Sharpeville), Soweto, Springs (includes KwaThema), Vanderbijlpark, Vereeniging (includes Evaton), Western Services Council and Westonaria (includes Bekkersdal).

Mpumalanga

Delmas (includes Botleng), Eastvaal District Council, Ermelo (includes Wesselton and Cassim Park), Highveld District Council, Highveldridge Transitional Council (includes Evander, Embalenhle and Secunda), Komatipoort (includes Kamaqhekeza), KwaGuqa, KwaMhlanga, Malelane (includes Hectorspruit and Kamhlushwa), Middelburg (includes Mhluzi), Nelspruit (includes Kanyamazane and Lowveld Escarpment District Council as from January 2001), White River and Witbank.

Northern Province

Bosveld District Council, Giyani, Letaba (includes Nkowakowa and Tzaneen), Messina, Naboomspruit (includes Mookgophong), Nylstroom, Pietersburg-Polokwane (includes Seshego), Potgietersrus and Thabazimbi.

Local government institutions according to selected urban areas**Cape Town**

Blaauwberg (includes Milnerton), Cape Town, City of Tygerberg (Bellville, Durbanville, Goodwood, Lingeletu West, Parow and South Administration), Fish Hoek, Ikapa, Oostenberg (Kraaifontein and Melton Rose - Blue Downs), Simon's Town and South Peninsula.

Port Elizabeth

Despatch, Port Elizabeth (including Ibhayi and Motherwell) and Uitenhage (including KwaNobuhle)

Durban

Durban, Inner West City Council (includes Clermont, KwaDabeka, KwaNdengezi, New Germany, Pinetown, Queenstown, Reservoir Hills, Shallcross and Westville), North Local Council - Verulam, Outer West Local Council (includes Assagay, Botha's Hill, Cato Ridge, Drummond, Everton, Gillitts, Hillcrest, Inchanga, Kloof, Mpumalanga and Waterfall) and South Local Council (includes Amanzimtoti, Isipingo, Kingsburgh, KwaMakuta and Umbogintwini).

Witwatersrand

Alberton (includes Thokoza), Benoni (includes Daveyton and Wattville), Boksburg (includes Vosloorus), Brakpan (includes Tsakane), Carletonville (includes Khutsong), Duduza, Edenvale-Modderfontein, Germiston (includes Bedfordview and Katlehong), Greater Johannesburg - Eastern Metropolitan Local Council (includes Alexandra and Sandton), Greater Johannesburg - Northern Metropolitan Local Council (includes Randburg), Greater Johannesburg - Southern Metropolitan Local Council (includes Ennerdale, Lenasia and Johannesburg), Greater Johannesburg - Western Metropolitan Local Council (includes Diepmeadow, Dobsonville and Roodepoort), Kempton Park (includes Tembisa), Krugersdorp (includes Kagiso and Munsieville), Midrand (includes Rabie Ridge and Ivory Park), Nigel, Randfontein (includes Mohlakeng), Soweto, Springs (includes KwaThema)

and Westonaria (includes Bekkersdal).

Pretoria

Akasia (includes Elandsdoorn, Klipfontein and Soshanguve), Centurion, Eastern Services Council - Pretoria area and Pretoria (includes Atteridgeville and Mamelodi).

Bloemfontein

Bloemfontein (includes Bainsvlei, Bloemspruit and Mangaung).

Glossary

Additions and alterations	Additions and alterations include extensions to existing buildings as well as internal and external alterations of existing buildings.
Blocks of flats	Blocks of flats are regarded as high-density housing consisting of a number of self-contained dwelling-units with at least one living-room together with a kitchen and bathroom conjoined to similar units in one building.
Dwelling-house	A dwelling-house refers to a free-standing, complete structure on a separate stand or a self-contained dwelling-unit, granny flat, on the same premises as an existing residence. Out-buildings and garages are included.
Local government institutions	A local government institution is a generic term referring to any number of institutions involved in the local sphere of government. Local government institutions consist of municipalities, city councils, metropolitan councils, district councils, transitional local councils and development and services boards.
Non-residential buildings	Non-residential buildings comprise factories, commercial, financial and other office buildings, as well as other buildings not used for residential purposes, such as churches, halls, clubs, schools and hospitals.
Other residential buildings	Other residential buildings include institutions for the disabled, boarding houses, old people's homes, hostels, hotels, motels, guest houses, holiday chalets, bed-and-breakfast accommodation, entertainment centres and casinos.
Percentage change	<p>When using monthly actual values, the percentage change is the change in actual values of building activities (building plans passed or buildings completed) of the relevant month compared with the actual values of building activities (building plans passed or buildings completed) of the same month in the previous year expressed as a percentage.</p> <p>When using annual actual values, the percentage change is the change in the actual values of building activities (building plans passed or buildings completed) of the relevant year compared with the actual values of building activities (building plans passed or buildings completed) of the previous year expressed as a percentage.</p> <p>When using seasonally adjusted values, the percentage change is the change in the seasonally adjusted values of building activities (building plans passed or buildings completed) of the relevant month compared with the seasonally adjusted values of building activities (building plans passed or buildings completed) of the previous month expressed as a percentage.</p>
Reference period	Reference period is one calendar month.
Residential buildings	Residential buildings comprise dwelling-houses, flats, townhouses and other residential buildings.
Townhouses	Townhouses are multiple, medium-density dwelling-units and include cluster housing, group housing, simplexes, duplexes, triplexes and other similar dwelling-units which are usually grouped together, with one level of each unit on ground level. This excludes blocks of flats.

For more information

Stats SA publishes approximately 300 different statistical releases each year. It is not economically viable to produce them in more than one of South Africa's eleven official languages. Since the releases are used extensively, not only locally but also by international economic and social-scientific communities, Stats SA releases are published in English only.

Stats SA has copyright on this publication. Users may apply the information as they wish, provided that they acknowledge Stats SA as the source of the basic data wherever they process, apply, utilise, publish or distribute the data and also that they specify that the relevant application and analysis (where applicable) result from their own processing of the data.

Stats SA products

A complete set of Stats SA publications is available at the Stats SA Library and the following libraries:

National Library of South Africa, Pretoria Division
National Library of South Africa, Cape Town Division
Natal Society Library, Pietermaritzburg
Library of Parliament, Cape Town
Bloemfontein Public Library
Johannesburg Public Library
Eastern Cape Library Services, King William's Town
Central Regional Library, Pietersburg
Central Reference Library, Nelspruit
Central Reference Collection, Kimberley
Central Reference Library, Mmabatho

Stats SA also provides a subscription service.

Electronic services

A large range of data are available via on-line services, diskette, CD and computer printouts. For more details about our electronic data services, contact (012) 310 8600.

You can visit us on the Internet at: <http://www.statssa.gov.za>

Enquiries

Telephone number: (012) 310 8095/8390/8351 (user enquiries)
(012) 310 8228/310 8007 (technical enquiries)
(012) 310 8161 (publications)
(012) 310 8490 (library)

Fax number: (012) 310 8182

e-mail: Corrieb@statssa.pwv.gov.za
Gretaz@statssa.pwv.gov.za

Postal address: Private Bag X44, Pretoria, 0001