



**Statistics  
South Africa**

Preferred supplier of quality statistics



# Statistical release

## P5041.1

### Selected building statistics of the private sector as reported by local government institutions

**January 2008  
(Preliminary)**

**Embargoed until:  
19 March 2008  
13:00**

**Enquiries:**

User Information Services  
Tel: (012) 310 8600 / 4892 / 8390

**Forthcoming issue:**

February 2008

**Expected release date**

16 April 2008

Statistics South Africa • Mbalo-mbalo dza Afrika Tshipembe • Tinhlayo-tiko ta Afrika-Dzonga • Dipalopalo tsa Aforika Borwa • Ezezibalo zaseNingizimu Afrika  
Dipalopalo tša Afrika Borwa • Dipalopalo tsa Afrika Borwa • Ubalo lwaseMzantsi Afrika • Telubalo eNingizimu Afrika • iNanimbalo leSewula Afrika • Statistiek Suid-Afrika



## Contents

	Page
<b>SUMMARY OF FINDINGS</b>	<b>3</b>
<b>Tables</b>	
Table 1 Values and percentage change of recorded building plans passed by larger municipalities at current prices by type of building .....	9
Table 2 Seasonally adjusted values and percentage change of recorded building plans passed by larger municipalities at current prices by type of building .....	10
Table 3 Values and percentage change of recorded building plans passed by larger municipalities at constant 2000 prices by type of building .....	11
Table 4 Seasonally adjusted values and percentage change of recorded building plans passed by larger municipalities at constant 2000 prices by type of building .....	12
Table 5 Values and percentage change of buildings reported as completed to larger municipalities at current prices by type of building .....	13
Table 6 Seasonally adjusted values and percentage change of buildings reported as completed to larger municipalities at current prices by type of building .....	14
Table 7 Values and percentage change of buildings reported as completed to larger municipalities at constant 2000 prices by type of building .....	15
Table 8 Seasonally adjusted values and percentage change of buildings reported as completed to larger municipalities at constant 2000 prices by type of building .....	16
Table 9 Recorded building plans passed by larger municipalities at current prices by type of building: South Africa .....	17
Table 10 Recorded building plans passed by larger municipalities at current prices by type of building: Western Cape .....	18
Table 11 Recorded building plans passed by larger municipalities at current prices by type of building: Eastern Cape .....	19
Table 12 Recorded building plans passed by larger municipalities at current prices by type of building: Northern Cape .....	20
Table 13 Recorded building plans passed by larger municipalities at current prices by type of building: Free State .....	21
Table 14 Recorded building plans passed by larger municipalities at current prices by type of building: KwaZulu-Natal .....	22
Table 15 Recorded building plans passed by larger municipalities at current prices by type of building: North West .....	23
Table 16 Recorded building plans passed by larger municipalities at current prices by type of building: Gauteng .....	24
Table 17 Recorded building plans passed by larger municipalities at current prices by type of building: Mpumalanga .....	25
Table 18 Recorded building plans passed by larger municipalities at current prices by type of building: Limpopo .....	26
Table 19 Buildings reported as completed to larger municipalities at current prices by type of building: South Africa .....	27
Table 20 Buildings reported as completed to larger municipalities at current prices by type of building: Western Cape .....	28
Table 21 Buildings reported as completed to larger municipalities at current prices by type of building: Eastern Cape .....	29
Table 22 Buildings reported as completed to larger municipalities at current prices by type of building: Northern Cape .....	30
Table 23 Buildings reported as completed to larger municipalities at current prices by type of building: Free State .....	31
Table 24 Buildings reported as completed to larger municipalities at current prices by type of building: KwaZulu-Natal .....	32



Table 25	Buildings reported as completed to larger municipalities at current prices by type of building: North West .....	33
Table 26	Buildings reported as completed to larger municipalities at current prices by type of building: Gauteng .....	34
Table 27	Buildings reported as completed to larger municipalities at current prices by type of building: Mpumalanga .....	35
Table 28	Buildings reported as completed to larger municipalities at current prices by type of building: Limpopo.....	36
Table 29	Subsidised low-cost dwelling-houses completed or under construction by province .....	37
Table 30	Subsidised low-cost dwelling-houses completed by province .....	37
<b>Explanatory notes</b> .....		38
<b>Glossary</b> .....		41
<b>General information</b> .....		43



## SUMMARY OF FINDINGS

### SELECTED BUILDING STATISTICS OF THE PRIVATE SECTOR REGARDING BUILDING PLANS PASSED AT CURRENT PRICES

**Table A – Selected key figures regarding recorded building plans passed by larger municipalities at current prices: January 2007 versus January 2008**

Estimates at current prices	January 2007	January 2008 1/	Difference in value between January 2007 and January 2008	Percentage change between January 2007 and January 2008
	R'000	R'000	R'000	
<b>Residential buildings</b>	2 741 376	2 758 548	17 172	0,6
-Dwelling-houses	1 886 217	1 641 949	-244 268	-13,0
-Flats and townhouses	826 319	1 050 323	224 004	27,1
-Other residential buildings	28 840	66 276	37 436	129,8
<b>Non-residential buildings</b>	986 049	1 786 618	800 569	81,2
<b>Additions and alterations</b>	1 387 668	2 021 176	633 508	45,7
<b>Total</b>	5 115 093	6 566 342	1 451 249	28,4

1/ Jan. 2008 figures should be regarded as preliminary because of possible backlogs and incomplete reporting by municipalities.

#### Total value of recorded building plans passed at current prices increased

*As indicated in Table A, the value of recorded building plans passed by larger municipalities (at current prices) during January 2008 rose by 28,4% (R1 451,2 million) compared with January 2007.*

All the main categories of buildings contributed positively to the 28,4% year-on-year increase recorded for January 2008, namely non-residential buildings (81,2% or R800,6 million), additions and alterations (45,7% or R633,5 million) and residential buildings (0,6% or R17,2 million) (see Table A).

**Table B – Recorded building plans passed by larger municipalities aggregated to provincial level: January 2007 versus January 2008**

Estimates at current prices	January 2007	January 2008 1/	Percentage contribution to the total value of building plans passed during January 2007	Percentage change between January 2007 and January 2008	Contribution (percentage points) to the percentage change in the value of building plans passed between January 2007 and January 2008 2/	Difference in value between January 2007 and January 2008
	R'000	R'000				R'000
<b>Western Cape</b>	1 135 221	1 174 516	22,2	3,5	0,8	39 295
<b>Eastern Cape</b>	171 288	506 742	3,3	195,8	6,6	335 454
<b>Northern Cape</b>	23 798	40 671	0,5	70,9	0,3	16 873
<b>Free State</b>	172 537	124 736	3,4	-27,7	-0,9	-47 801
<b>KwaZulu-Natal</b>	675 980	1 269 345	13,2	87,8	11,6	593 365
<b>North West</b>	231 222	141 572	4,5	-38,8	-1,8	-89 650
<b>Gauteng</b>	2 304 838	2 658 767	45,1	15,4	6,9	353 929
<b>Mpumalanga</b>	289 590	542 262	5,7	87,3	4,9	252 672
<b>Limpopo</b>	110 619	107 731	2,2	-2,6	-0,1	-2 888
<b>Total</b>	5 115 093	6 566 342	100,0	28,4	28,4	1 451 249

1/ Jan. 2008 figures should be regarded as preliminary because of possible backlogs and incomplete reporting by municipalities.

2/ The contribution (percentage points) is calculated by multiplying the percentage change of each province between Jan. 2007 and Jan. 2008 with the percentage contribution of the corresponding province to the total value of building plans passed during Jan. 2007, divided by 100.

Six provinces reported increases in the value of building plans passed (see Table B). The largest contributor to the increase of 28,4% was KwaZulu-Natal (contributing 11,6 percentage points or R593,4 million), followed by Gauteng (6,9 percentage points or R353,9 million) and Eastern Cape (6,6 percentage points or R335,5 million).



## SELECTED BUILDING STATISTICS OF THE PRIVATE SECTOR REGARDING BUILDING PLANS PASSED AT CONSTANT PRICES

**Table C – Selected key figures regarding recorded building plans passed by larger municipalities at constant 2000 prices: January 2007 versus January 2008**

Estimates at constant 2000 prices	January 2007	January 2008 1/	Difference in value between January 2007 and January 2008	Percentage change between January 2007 and January 2008
	R'000	R'000	R'000	
<b>Residential buildings</b>	1 639 579	1 524 902	-114 677	-7,0
<b>Non-residential buildings</b>	589 742	987 627	397 885	67,5
<b>Additions and alterations</b>	829 945	1 117 289	287 344	34,6
<b>Total</b>	3 059 266	3 629 818	570 552	18,6

1/ Jan. 2008 figures should be regarded as preliminary because of possible backlogs and incomplete reporting by municipalities.

### Total real value of recorded building plans passed increased

The real value of recorded building plans passed by larger municipalities (at constant 2000 prices) during January 2008 increased by 18,6% (R570,6 million) compared with January 2007. Increases were reported for non-residential buildings (67,5% or R397,9 million) and additions and alterations (34,6% or R287,3 million). A decrease was reported for residential buildings (-7,0% or -R114,7 million) for the same period (see Table C).

**Table D – Seasonally adjusted key figures regarding recorded building plans passed by larger municipalities at constant 2000 prices: Current quarter versus previous quarter**

Seasonally adjusted estimates at constant 2000 prices	August to October 2007	November 2007 to January 2008	Percentage change between August to October 2007 and November 2007 to January 2008
	R'000	R'000	
<b>Residential buildings</b>	5 865 496	5 607 508	-4,4
<b>Non-residential buildings</b>	2 401 109	2 626 893	9,4
<b>Additions and alterations</b>	3 207 234	3 340 676	4,2
<b>Total</b>	11 473 839	11 575 077	0,9

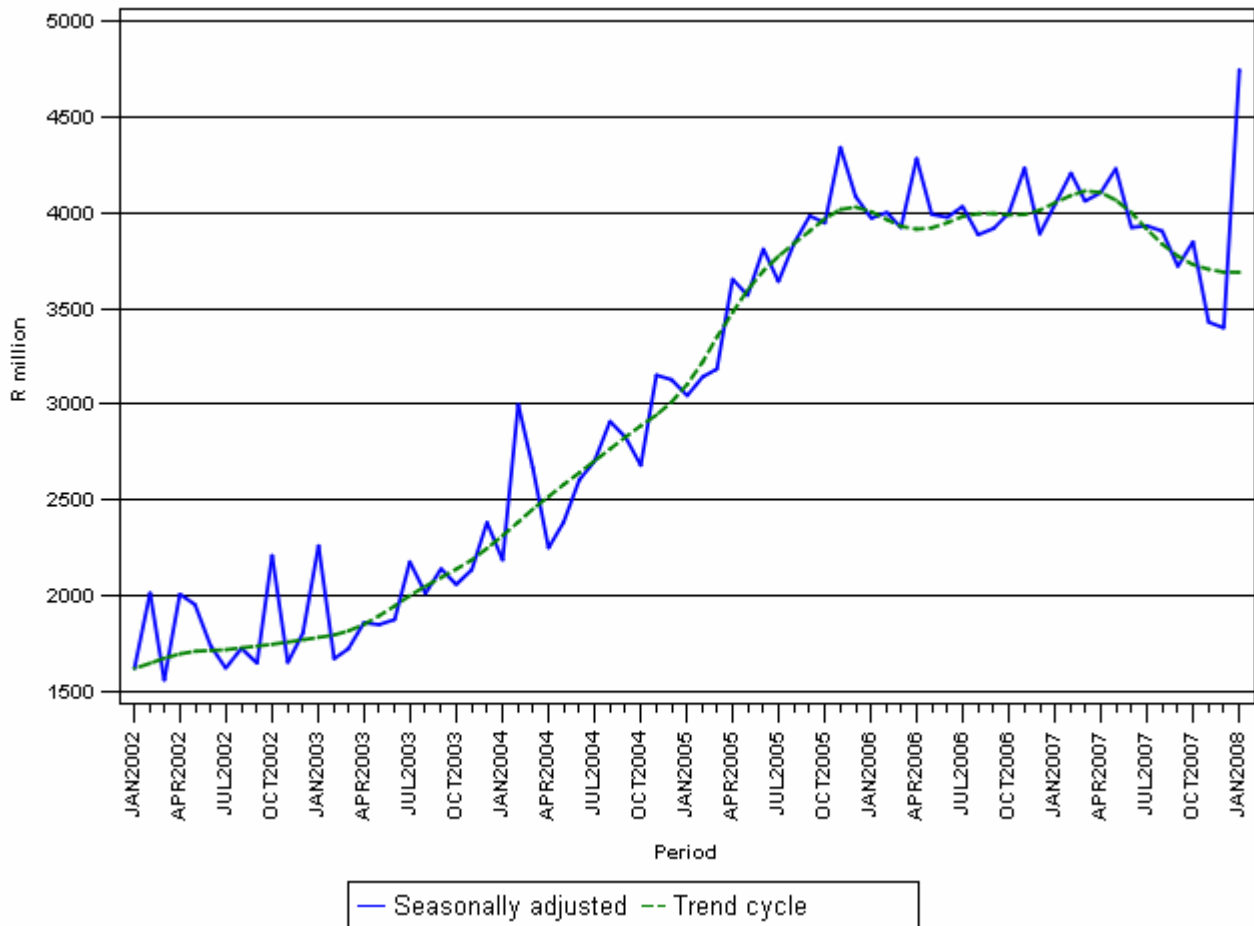
### Seasonally adjusted real value of recorded building plans passed increased

The seasonally adjusted real value of recorded building plans passed by larger municipalities during the quarter ending January 2008 increased by 0,9% compared with the previous quarter. Increases were reported for non-residential buildings (9,4%) and additions and alterations (4,2%). A decrease of 4,4% was reported for residential buildings for the same period (see Table D).



Figure 1 shows both the seasonally adjusted and the trend series for recorded building plans passed at constant 2000 prices between January 2002 and January 2008. The trend series reflects a slight increase in 2002, followed by a steep increase from April 2003 up to the end of 2005. Thereafter the trend levelled off in 2006, followed by a decline since April 2007. The sharp increase in the seasonally adjusted value for January 2008 was mainly due to large projects passed for shopping space and additions to non-residential space.

**Figure 1 – Real value of recorded building plans passed by larger municipalities at constant 2000 prices**





## SELECTED BUILDING STATISTICS OF THE PRIVATE SECTOR REGARDING BUILDINGS COMPLETED AT CURRENT PRICES

**Table E – Selected key figures regarding buildings reported as completed to larger municipalities at current prices: January 2007 versus January 2008**

Estimates at current prices	January 2007	January 2008 1/	Difference in value between January 2007 and January 2008	Percentage change between January 2007 and January 2008
	R'000	R'000	R'000	
<b>Residential buildings</b>	1 640 091	1 657 112	17 021	1,0
-Dwelling-houses	1 030 906	1 070 807	39 901	3,9
-Flats and townhouses	529 523	553 812	24 289	4,6
-Other residential buildings	79 662	32 493	-47 169	-59,2
<b>Non-residential buildings</b>	483 947	611 532	127 585	26,4
<b>Additions and alterations</b>	675 202	561 339	-113 863	-16,9
<b>Total</b>	2 799 240	2 829 983	30 743	1,1

1/ Jan. 2008 figures should be regarded as preliminary because of possible backlogs and incomplete reporting by municipalities.

### Total value of buildings reported as completed at current prices increased

*As indicated in Table E, the value of buildings reported as completed to larger municipalities (at current prices) during January 2008 increased by 1,1% (R30,7 million) compared with January 2007.*

Increases were reported for non-residential buildings (26,4% or R127,6 million) and residential buildings (1,0% or R17,0 million). Additions and alterations showed a decrease of 16,9% (-R113,9 million) between January 2008 and January 2007 (see Table E).

**Table F – Buildings reported as completed to larger municipalities aggregated to provincial level: January 2007 versus January 2008**

Estimates at current prices	January 2007	January 2008 1/	Percentage contribution to the total value of buildings completed during January 2007	Percentage change between January 2007 and January 2008	Contribution (percentage points) to the percentage change in the value of buildings completed between January 2007 and January 2008 2/	Difference in value between January 2007 and January 2008
	R'000	R'000				R'000
<b>Western Cape</b>	818 328	833 829	29,2	1,9	0,6	15 501
<b>Eastern Cape</b>	95 240	175 155	3,4	83,9	2,9	79 915
<b>Northern Cape</b>	14 388	29 493	0,5	105,0	0,5	15 105
<b>Free State</b>	132 861	42 024	4,7	-68,4	-3,2	-90 837
<b>KwaZulu-Natal</b>	345 346	401 689	12,3	16,3	2,0	56 343
<b>North West</b>	91 228	122 992	3,3	34,8	1,1	31 764
<b>Gauteng</b>	1 190 335	1 108 298	42,5	-6,9	-2,9	-82 037
<b>Mpumalanga</b>	77 360	98 145	2,8	26,9	0,7	20 785
<b>Limpopo</b>	34 154	18 358	1,2	-46,2	-0,6	-15 796
<b>Total</b>	2 799 240	2 829 983	100,0	1,1	1,1	30 743

1/ Jan. 2008 figures should be regarded as preliminary because of possible backlogs and incomplete reporting by municipalities.

2/ The contribution (percentage points) is calculated by multiplying the percentage change of each province between Jan. 2007 and Jan. 2008 with the percentage contribution of the corresponding province to the total value of buildings completed during Jan. 2007, divided by 100.

Six provinces reported increases in the value of buildings completed. The largest contributor to the increase of 1,1% was Eastern Cape (2,9 percentage points or R79,9 million), followed by KwaZulu-Natal (2,0 percentage points or R56,3 million) and North West (1,1 percentage points or R31,8 million). These increases were partially counteracted by decreases reported for Free State (-3,2 percentage points or -R90,8 million) and Gauteng (-2,9 percentage points or -R82,0 million) (see Table F).



## SELECTED BUILDING STATISTICS OF THE PRIVATE SECTOR REGARDING BUILDINGS COMPLETED AT CONSTANT PRICES

**Table G – Selected key figures regarding buildings reported as completed to larger municipalities at constant 2000 prices: January 2007 versus January 2008**

Estimates at constant 2000 prices	January 2007	January 2008 1/	Difference in value between January 2007 and January 2008	Percentage change between January 2007 and January 2008
	R'000	R'000	R'000	
<b>Residential buildings</b>	1 058 853	961 155	-97 698	-9,2
<b>Non-residential buildings</b>	332 381	385 581	53 200	16,0
<b>Additions and alterations</b>	453 156	335 729	-117 427	-25,9
<b>Total</b>	1 844 390	1 682 465	-161 925	-8,8

1/ Jan. 2008 figures should be regarded as preliminary because of possible backlogs and incomplete reporting by municipalities.

### Total real value of buildings reported as completed decreased

As indicated in Table G, the real value of buildings reported as completed to larger municipalities (at constant 2000 prices) during January 2008 decreased by 8,8% (-R161,9 million) compared with January 2007. Decreases in the real value of buildings completed were reported for additions and alterations (-25,9% or -R117,4 million) and residential buildings (-9,2% or -R97,7 million). However, an increase of 16,0% (R53,2 million) was reported for non-residential buildings during the above-mentioned period.

**Table H – Seasonally adjusted key figures regarding buildings reported as completed to larger municipalities at constant 2000 prices: Current quarter versus previous quarter**

Seasonally adjusted estimates at constant 2000 prices	August to October 2007	November 2007 to January 2008	Percentage change between August to October 2007 and November 2007 to January 2008
	R'000	R'000	
<b>Residential buildings</b>	4 357 332	4 079 768	-6,4
<b>Non-residential buildings</b>	1 528 303	1 382 393	-9,5
<b>Additions and alterations</b>	1 350 153	1 128 070	-16,4
<b>Total</b>	7 235 788	6 590 231	-8,9

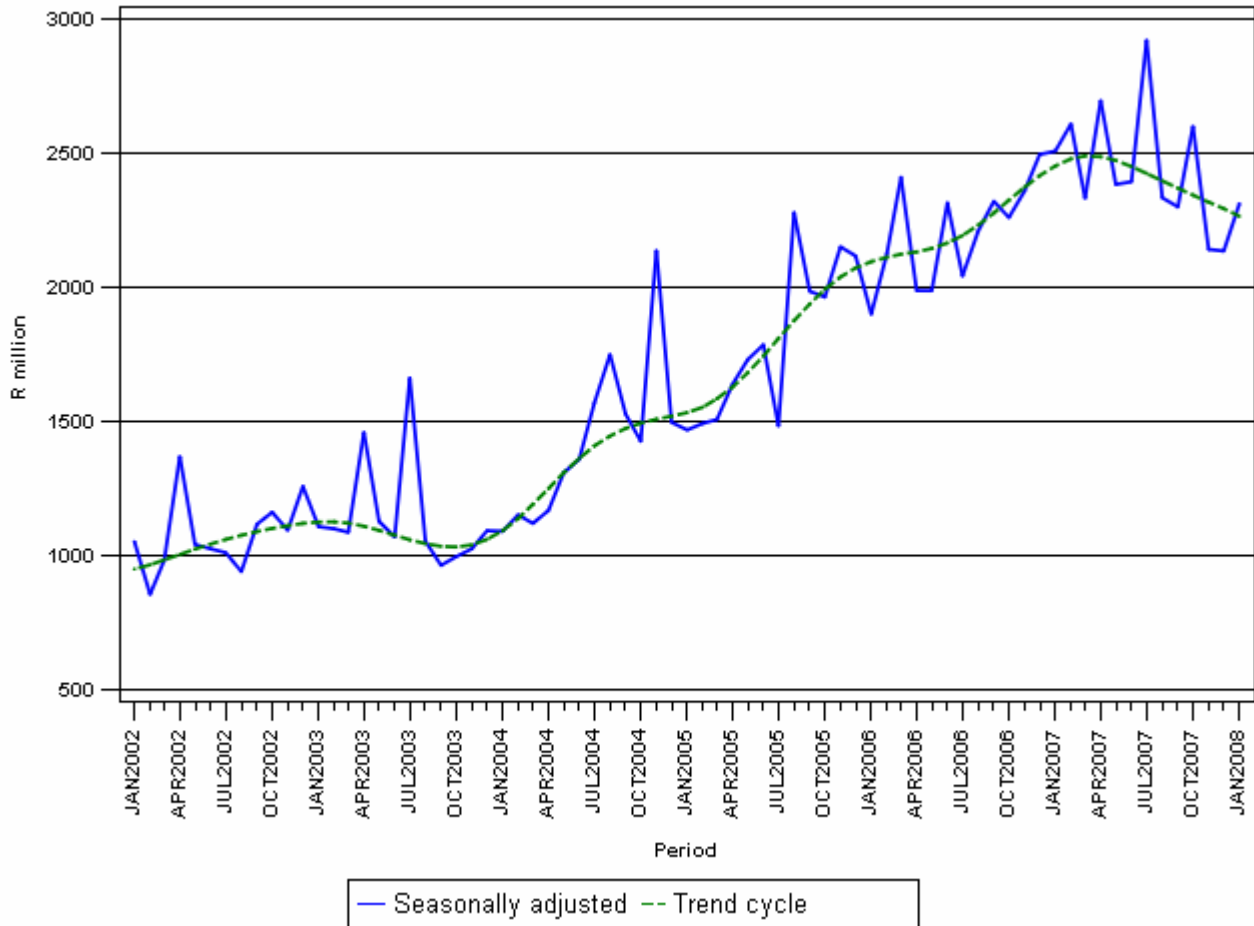
### Seasonally adjusted real value of buildings reported as completed decreased

The seasonally adjusted real value of buildings reported as completed to larger municipalities during the quarter ending January 2008 decreased by 8,9% compared with the previous quarter. The biggest decrease was reported for additions and alterations (-16,4%), followed by non-residential buildings (-9,5%) and residential buildings (-6,4%) (see Table H).



Figure 2 shows both the seasonally adjusted and trend series for buildings reported as completed to municipalities at constant 2000 prices between January 2002 and January 2008. The trend series reflects a slight increase in 2002, slowing again until October 2003. The trend series increased from November 2003 till March 2007, but has been declining since April 2007.

**Figure 2 - Real value of buildings reported as completed to larger municipalities at constant 2000 prices**



**PJ Lehohla**  
**Statistician-General**



**Table 1 - Values and percentage change of recorded building plans passed by larger municipalities at current prices by type of building**

Year and month		Residential buildings		Non-residential buildings		Additions and alterations		Total	
		R'000	% change 1/	R'000	% change 1/	R'000	% change 1/	R'000	% change 1/
2007*	January	2 741 376	7,2	986 049	26,7	1 387 668	27,2	5 115 093	15,5
	February	3 538 610	10,9	1 393 007	47,8	1 623 017	12,4	6 554 634	17,5
	March	3 976 504	32,6	995 325	-19,8	1 575 250	1,1	6 547 079	12,9
	April	3 456 260	25,1	1 186 268	-29,5	1 634 608	17,9	6 277 136	7,6
	May	4 439 626	22,7	1 476 362	17,8	2 120 196	14,9	8 036 184	19,6
	June	3 987 899	4,2	1 412 005	43,6	1 733 808	4,4	7 133 712	10,3
	July	4 149 063	5,9	1 356 879	-6,0	2 233 712	21,0	7 739 654	7,4
	August	3 995 358	-0,6	1 684 148	13,9	2 231 280	32,0	7 910 786	10,0
	September	3 541 548	-5,8	1 494 971	36,5	1 698 593	-3,4	6 735 112	1,9
	October	3 987 584	2,2	1 521 628	-12,7	2 386 871	30,0	7 896 083	5,5
	November	3 500 379	-12,9	993 570	-28,1	1 865 150	1,0	6 359 099	-12,2
	December	2 454 663	-8,8	1 101 612	1,9	1 310 771	-8,9	4 867 046	-6,6
	<b>Total</b>	<b>43 768 870</b>	<b>6,1</b>	<b>15 601 824</b>	<b>3,3</b>	<b>21 800 924</b>	<b>12,4</b>	<b>81 171 618</b>	<b>7,1</b>
2008	January 2/	2 758 548	0,6	1 786 618	81,2	2 021 176	45,7	6 566 342	28,4

1/ The annual/monthly percentage change is the change in the values of recorded building plans passed by municipalities of the relevant year/month compared with the values of recorded building plans passed by municipalities of the comparable period of the previous year expressed as a percentage.

2/ Preliminary figures.

\*Revised.



**Table 2 - Seasonally adjusted values and percentage change of recorded building plans passed by larger municipalities at current prices by type of building**

Year and month		Residential buildings		Non-residential buildings		Additions and alterations		Total	
		R'000	% change 1/	R'000	% change 1/	R'000	% change 1/	R'000	% change 1/
2007	January	3 678 947	5,3	1 225 367	-7,5	1 852 676	10,1	6 756 990	3,9
	February	3 817 702	3,8	1 512 537	23,4	1 748 168	-5,6	7 078 407	4,8
	March	4 264 041	11,7	874 439	-42,2	1 650 951	-5,6	6 789 431	-4,1
	April	3 949 409	-7,4	1 260 003	44,1	1 820 057	10,2	7 029 469	3,5
	May	3 959 257	0,2	1 451 796	15,2	1 917 431	5,4	7 328 484	4,3
	June	3 723 293	-6,0	1 400 810	-3,5	1 711 652	-10,7	6 835 755	-6,7
	July	3 665 387	-1,6	1 216 404	-13,2	1 997 953	16,7	6 879 744	0,6
	August	3 557 405	-2,9	1 314 026	8,0	1 984 262	-0,7	6 855 693	-0,3
	September	3 252 675	-8,6	1 619 117	23,2	1 683 352	-15,2	6 555 144	-4,4
	October	3 546 352	9,0	1 315 899	-18,7	1 987 426	18,1	6 849 677	4,5
	November	3 219 491	-9,2	1 117 188	-15,1	1 785 789	-10,1	6 122 468	-10,6
	December	3 195 878	-0,7	1 392 327	24,6	1 532 645	-14,2	6 120 850	-0,0
2008	January	3 677 820	15,1	2 191 052	57,4	2 688 181	75,4	8 557 053	39,8
	Aug. - Oct.07	10 356 432		4 249 042		5 655 040		20 260 514	
	Nov.07 - Jan.08 2/	10 093 189	-2,5	4 700 567	10,6	6 006 615	6,2	20 800 371	2,7

1/ The percentage change is the change in the seasonally adjusted values of recorded building plans passed by municipalities of the relevant month compared with the seasonally adjusted values of recorded building plans passed by municipalities of the previous month expressed as a percentage.

2/ The percentage change is the change in the seasonally adjusted values of recorded building plans passed by municipalities of the current quarter compared with the seasonally adjusted values of recorded building plans passed by municipalities of the previous quarter expressed as a percentage.



**Table 3 - Values and percentage change of recorded building plans passed by larger municipalities at constant 2000 prices by type of building**

Year and month		Residential buildings		Non-residential buildings		Additions and alterations		Total	
		R'000	% change 1/	R'000	% change 1/	R'000	% change 1/	R'000	% change 1/
<b>2007*</b>	<b>January</b>	1 639 579	-4,5	589 742	12,9	829 945	13,4	3 059 266	3,0
	<b>February</b>	2 120 198	-0,4	834 636	32,7	972 449	0,9	3 927 283	5,5
	<b>March</b>	2 374 032	18,8	594 224	-28,2	940 448	-9,4	3 908 704	1,1
	<b>April</b>	2 028 322	11,2	696 167	-37,3	959 277	4,9	3 683 766	-4,3
	<b>May</b>	2 566 258	9,0	853 388	4,6	1 225 547	2,0	4 645 193	6,2
	<b>June</b>	2 286 639	-6,6	809 636	28,7	994 156	-6,4	4 090 431	-1,2
	<b>July</b>	2 365 486	-4,3	773 591	-15,0	1 273 496	9,4	4 412 573	-2,9
	<b>August</b>	2 258 540	-8,9	952 034	4,4	1 261 323	21,0	4 471 897	0,9
	<b>September</b>	2 002 006	-13,3	845 094	25,6	960 200	-11,1	3 807 300	-6,3
	<b>October</b>	2 238 958	-6,2	854 367	-19,9	1 340 186	19,3	4 433 511	-3,1
	<b>November</b>	1 963 196	-19,3	557 246	-33,4	1 046 074	-6,4	3 566 516	-18,7
	<b>December</b>	1 372 087	-15,3	615 770	-5,4	732 684	-15,4	2 720 541	-13,3
	<b>Total</b>	<b>25 215 301</b>	<b>-3,6</b>	<b>8 975 895</b>	<b>-6,3</b>	<b>12 535 785</b>	<b>1,9</b>	<b>46 726 981</b>	<b>-2,8</b>
<b>2008</b>	<b>January 2/</b>	1 524 902	-7,0	987 627	67,5	1 117 289	34,6	3 629 818	18,6

1/ The annual/monthly percentage change is the change in the values of recorded building plans passed by municipalities of the relevant year/month compared with the values of recorded building plans passed by municipalities of the comparable period of the previous year expressed as a percentage.

2/ Preliminary figures.

\*Revised.



**Table 4 - Seasonally adjusted values and percentage change of recorded building plans passed by larger municipalities at constant 2000 prices by type of building**

Year and month		Residential buildings		Non-residential buildings		Additions and alterations		Total	
		R'000	% change 1/	R'000	% change 1/	R'000	% change 1/	R'000	% change 1/
2007	January	2 195 218	5,0	745 382	-5,6	1 106 359	9,5	4 046 959	4,0
	February	2 266 940	3,3	900 111	20,8	1 040 357	-6,0	4 207 408	4,0
	March	2 568 016	13,3	518 105	-42,4	975 084	-6,3	4 061 205	-3,5
	April	2 297 732	-10,5	743 667	43,5	1 064 205	9,1	4 105 604	1,1
	May	2 287 208	-0,5	837 765	12,7	1 106 145	3,9	4 231 118	3,1
	June	2 136 222	-6,6	804 363	-4,0	982 993	-11,1	3 923 578	-7,3
	July	2 092 790	-2,0	695 759	-13,5	1 144 078	16,4	3 932 627	0,2
	August	2 024 968	-3,2	748 060	7,5	1 131 640	-1,1	3 904 668	-0,7
	September	1 848 810	-8,7	915 750	22,4	956 140	-15,5	3 720 700	-4,7
	October	1 991 718	7,7	737 299	-19,5	1 119 454	17,1	3 848 471	3,4
	November	1 803 826	-9,4	622 375	-15,6	1 002 896	-10,4	3 429 097	-10,9
	December	1 775 222	-1,6	769 633	23,7	854 245	-14,8	3 399 100	-0,9
2008	January	2 028 460	14,3	1 234 885	60,5	1 483 535	73,7	4 746 880	39,7
	Aug. - Oct.07	5 865 496		2 401 109		3 207 234		11 473 839	
	Nov.07 - Jan.08 2/	5 607 508	-4,4	2 626 893	9,4	3 340 676	4,2	11 575 077	0,9

1/ The percentage change is the change in the seasonally adjusted values of recorded building plans passed by municipalities of the relevant month compared with the seasonally adjusted values of recorded building plans passed by municipalities of the previous month expressed as a percentage.

2/ The percentage change is the change in the seasonally adjusted values of recorded building plans passed by municipalities of the current quarter compared with the seasonally adjusted values of recorded building plans passed by municipalities of the previous quarter expressed as a percentage.



**Table 5 - Values and percentage change of buildings reported as completed to larger municipalities at current prices by type of building**

Year and month		Residential buildings		Non-residential buildings		Additions and alterations		Total	
		R'000	% change 1/	R'000	% change 1/	R'000	% change 1/	R'000	% change 1/
<b>2007*</b>	<b>January</b>	1 640 091	30,4	483 947	52,8	675 202	65,9	2 799 240	41,3
	<b>February</b>	2 198 764	24,0	884 085	116,2	565 899	2,3	3 648 748	33,4
	<b>March</b>	2 094 772	-0,9	778 599	18,7	668 881	13,5	3 542 252	5,5
	<b>April</b>	2 342 219	34,0	630 036	134,7	555 370	23,2	3 527 625	43,0
	<b>May</b>	2 665 216	34,0	713 817	40,0	588 024	2,1	3 967 057	29,0
	<b>June</b>	2 576 422	11,5	579 957	19,4	657 975	16,0	3 814 354	13,4
	<b>July</b>	2 786 031	22,8	1 123 723	236,8	721 990	30,2	4 631 744	46,7
	<b>August</b>	2 646 414	11,2	560 927	13,9	785 042	40,8	3 992 383	16,4
	<b>September</b>	2 336 475	-8,0	943 608	133,0	677 039	1,7	3 957 122	9,6
	<b>October</b>	2 782 156	17,3	1 214 718	58,1	845 164	40,1	4 842 038	29,4
	<b>November</b>	2 659 120	0,4	649 683	-0,3	898 512	5,3	4 207 315	1,3
	<b>December</b>	2 513 616	-6,0	622 543	14,8	440 200	-19,3	3 576 359	-5,0
	<b>Total</b>	<b>29 241 296</b>	<b>12,2</b>	<b>9 185 643</b>	<b>57,3</b>	<b>8 079 298</b>	<b>16,7</b>	<b>46 506 237</b>	<b>19,8</b>
<b>2008</b>	<b>January 2/</b>	1 657 112	1,0	611 532	26,4	561 339	-16,9	2 829 983	1,1

1/ The annual/monthly percentage change is the change in the values of buildings reported as completed to municipalities of the relevant year/month compared with the values of buildings reported as completed to municipalities of the comparable period of the previous year expressed as a percentage.

2/ Preliminary figures.

\* Revised.



**Table 6 - Seasonally adjusted values and percentage change of buildings reported as completed to larger municipalities at current prices by type of building**

Year and month		Residential buildings		Non-residential buildings		Additions and alterations		Total	
		R'000	% change 1/	R'000	% change 1/	R'000	% change 1/	R'000	% change 1/
2007	January	2 356 463	-3,9	586 929	-8,9	776 996	23,2	3 720 388	-0,2
	February	2 525 751	7,2	880 914	50,1	584 776	-24,7	3 991 441	7,3
	March	2 279 038	-9,8	659 348	-25,2	670 557	14,7	3 608 943	-9,6
	April	2 630 844	15,4	886 928	34,5	661 672	-1,3	4 179 444	15,8
	May	2 589 291	-1,6	616 205	-30,5	556 599	-15,9	3 762 095	-10,0
	June	2 567 128	-0,9	585 895	-4,9	658 910	18,4	3 811 933	1,3
	July	2 563 130	-0,2	1 371 472	134,1	715 941	8,7	4 650 543	22,0
	August	2 436 343	-4,9	612 372	-55,3	764 495	6,8	3 813 210	-18,0
	September	2 195 071	-9,9	846 393	38,2	658 455	-13,9	3 699 919	-3,0
	October	2 674 933	21,9	842 989	-0,4	768 256	16,7	4 286 178	15,8
	November	2 182 633	-18,4	634 184	-24,8	719 679	-6,3	3 536 496	-17,5
	December	2 287 578	4,8	756 461	19,3	507 338	-29,5	3 551 377	0,4
2008	January	2 394 484	4,7	758 603	0,3	651 292	28,4	3 804 379	7,1
	Aug. - Oct.07	7 306 347		2 301 754		2 191 206		11 799 307	
	Nov.07 - Jan.08 2/	6 864 695	-6,0	2 149 248	-6,6	1 878 309	-14,3	10 892 252	-7,7

1/ The percentage change is the change in the seasonally adjusted values of buildings reported as completed to municipalities of the relevant month compared with the seasonally adjusted values of buildings reported as completed to municipalities of the previous month expressed as a percentage.

2/ The percentage change is the change in the seasonally adjusted values of buildings reported as completed to municipalities of the current quarter compared with the seasonally adjusted values of buildings reported as completed to municipalities of the previous quarter expressed as a percentage.



**Table 7 - Values and percentage change of buildings reported as completed to larger municipalities at constant 2000 prices by type of building**

Year and month		Residential buildings		Non-residential buildings		Additions and alterations		Total	
		R'000	% change 1/	R'000	% change 1/	R'000	% change 1/	R'000	% change 1/
2007*	January	1 058 853	20,9	332 381	43,0	453 156	56,9	1 844 390	32,1
	February	1 398 502	13,9	603 883	102,5	377 770	-3,6	2 380 155	24,1
	March	1 323 598	-9,2	530 381	11,1	445 624	7,5	2 299 603	-2,2
	April	1 481 134	23,3	428 305	120,5	366 581	16,6	2 276 020	33,1
	May	1 658 484	21,9	483 616	31,8	382 828	-4,6	2 524 928	18,6
	June	1 597 499	1,2	392 128	12,3	420 969	6,8	2 410 596	3,8
	July	1 703 863	11,0	754 177	218,5	455 227	19,5	2 913 267	35,4
	August	1 599 435	-0,3	374 451	7,3	483 996	27,1	2 457 882	5,3
	September	1 411 277	-17,4	628 653	120,6	415 872	-8,3	2 455 802	0,4
	October	1 660 415	4,9	801 794	49,6	516 920	26,1	2 979 129	17,8
	November	1 562 954	-10,8	422 971	-6,8	543 893	-5,9	2 529 818	-9,1
	December	1 465 846	-16,3	398 300	5,8	265 021	-28,2	2 129 167	-14,7
	<b>Total</b>	<b>17 921 860</b>	<b>1,6</b>	<b>6 151 040</b>	<b>48,0</b>	<b>5 127 857</b>	<b>7,3</b>	<b>29 200 757</b>	<b>9,9</b>
2008	January 2/	961 155	-9,2	385 581	16,0	335 729	-25,9	1 682 465	-8,8

1/ The annual/monthly percentage change is the change in the values of buildings reported as completed to municipalities of the relevant year/month compared with the values of buildings reported as completed to municipalities of the comparable period of the previous year expressed as a percentage.

2/ Preliminary figures.

\*Revised.



**Table 8 - Seasonally adjusted values and percentage change of buildings reported as completed to larger municipalities at constant 2000 prices by type of building**

Year and month		Residential buildings		Non-residential buildings		Additions and alterations		Total	
		R'000	%change 1/	R'000	% change 1/	R'000	% change 1/	R'000	% change 1/
2007	January	1 582 202	-2,5	406 053	-9,6	520 447	22,8	2 508 702	0,5
	February	1 616 331	2,2	603 317	48,6	389 996	-25,1	2 609 644	4,0
	March	1 439 198	-11,0	449 096	-25,6	444 843	14,1	2 333 137	-10,6
	April	1 658 417	15,2	602 069	34,1	436 205	-1,9	2 696 691	15,6
	May	1 605 697	-3,2	415 783	-30,9	362 863	-16,8	2 384 343	-11,6
	June	1 579 540	-1,6	393 751	-5,3	421 269	16,1	2 394 560	0,4
	July	1 551 174	-1,8	918 231	133,2	452 476	7,4	2 921 881	22,0
	August	1 451 382	-6,4	408 948	-55,5	474 576	4,9	2 334 906	-20,1
	September	1 332 371	-8,2	562 526	37,6	405 593	-14,5	2 300 490	-1,5
	October	1 573 579	18,1	556 829	-1,0	469 984	15,9	2 600 392	13,0
	November	1 292 560	-17,9	413 687	-25,7	435 687	-7,3	2 141 934	-17,6
	December	1 345 946	4,1	486 440	17,6	303 693	-30,3	2 136 079	-0,3
2008	January	1 441 262	7,1	482 266	-0,9	388 690	28,0	2 312 218	8,2
	Aug. - Oct.07	4 357 332		1 528 303		1 350 153		7 235 788	
	Nov.07 - Jan.08 2/	4 079 768	-6,4	1 382 393	-9,5	1 128 070	-16,4	6 590 231	-8,9

1/ The percentage change is the change in the seasonally adjusted values of buildings reported as completed to municipalities of the relevant month compared with the seasonally adjusted values of buildings reported as completed to municipalities of the previous month expressed as a percentage.

2/ The percentage change is the change in the seasonally adjusted values of buildings reported as completed to municipalities of the current quarter compared with the seasonally adjusted values of buildings reported as completed to municipalities of the previous quarter expressed as a percentage.



Table 9 - Recorded building plans passed by larger municipalities at current prices by type of building: South Africa

			Jan. 2007*	Dec. 2007	Jan. 2008	% Change 1/
Category of building	Type of building	Measuring unit				
1. Residential buildings	1. Dwelling-houses < 80 square metres	Number	3 101	3 481	989	-68,1
		square metres	128 410	144 585	49 384	-61,5
		R'000	270 285	222 451	102 138	-62,2
	2. Dwelling-houses >= 80 square metres	Number	2 118	1 698	1 676	-20,9
		square metres	526 026	406 792	428 228	-18,6
		R'000	1 615 932	1 412 561	1 539 811	-4,7
	3. Flats and townhouses	Number	2 094	2 025	1 942	-7,3
		square metres	233 370	208 900	259 178	11,1
		R'000	826 319	750 155	1 050 323	27,1
	4. Other residential buildings 2/	square metres	9 222	18 763	10 880	18,0
		R'000	28 840	69 496	66 276	129,8
	5. Total residential buildings	R'000	2 741 376	2 454 663	2 758 548	0,6
2. Non-residential buildings	1. Office and banking space	square metres	32 661	93 223	45 526	39,4
		R'000	125 061	462 316	201 009	60,7
	2. Shopping space	square metres	68 219	51 111	261 811	283,8
		R'000	263 997	189 642	1 216 940	361,0
	3. Industrial and warehouse space	square metres	191 815	129 509	103 815	-45,9
		R'000	547 574	364 012	330 592	-39,6
	4. Other non-residential buildings 3/	square metres	15 981	18 276	12 274	-23,2
		R'000	49 417	85 642	38 077	-22,9
	5. Total non-residential buildings	R'000	986 049	1 101 612	1 786 618	81,2
3. Additions and alterations	1. Dwelling-houses	square metres	339 673	285 972	312 278	-8,1
		R'000	1 008 133	960 246	1 047 739	3,9
	2. Other buildings 4/	square metres	98 381	78 054	224 071	127,8
		R'000	379 535	350 525	973 437	156,5
	3. Total additions and alterations	R'000	1 387 668	1 310 771	2 021 176	45,7
4. Recorded plans passed	1. Total at current prices	R'000	5 115 093	4 867 046	6 566 342	28,4

1/ The percentage change between January 2007 and January 2008.

2/ Other residential buildings include institutions for the disabled, boarding houses, hostels and tourism accommodation e.g. hotels, motels, guesthouses, holiday chalets, bed-and-breakfast accommodation and casinos.

3/ Other non-residential space includes churches, sport and recreation clubs, schools, crèches, hospitals and all other non-residential space.

4/ Other buildings include other residential buildings, non-residential buildings and internal alterations. No square metres are collected for internal alterations.

\* Revised.



**Table 10 - Recorded building plans passed by larger municipalities at current prices by type of building: Western Cape**

			Jan. 2007	Dec. 2007	Jan. 2008	% Change 1/	
Category of building	Type of building	Measuring unit					
1. Residential buildings	1. Dwelling-houses < 80 square metres	Number	285	287	417	46,3	
		square metres	12 428	12 886	19 427	56,3	
		R'000	21 492	20 467	26 653	24,0	
	2. Dwelling-houses >= 80 square metres	Number	394	452	450	14,2	
		square metres	96 571	92 754	108 637	12,5	
		R'000	306 056	321 708	403 217	31,7	
	3. Flats and townhouses	Number	549	454	375	-31,7	
		square metres	54 667	56 485	42 533	-22,2	
		R'000	200 531	200 418	157 797	-21,3	
	4. Other residential buildings 2/	square metres	1 585	2 005	0		
		R'000	5 907	4 415	0		
	5. Total residential buildings	R'000	533 986	547 008	587 667	10,1	
	2. Non-residential buildings	1. Office and banking space	square metres	2 359	41 027	3 689	56,4
			R'000	5 669	162 169	13 932	145,8
2. Shopping space		square metres	11 970	15 170	0		
		R'000	40 124	58 306	0		
3. Industrial and warehouse space		square metres	38 582	36 496	50 389	30,6	
		R'000	120 205	120 028	173 292	44,2	
4. Other non-residential buildings 3/		square metres	2 495	10 448	3 106	24,5	
		R'000	8 164	58 546	7 720	-5,4	
5. Total non-residential buildings		R'000	174 162	399 049	194 944	11,9	
3. Additions and alterations		1. Dwelling-houses	square metres	101 388	91 316	74 530	-26,5
	R'000		289 541	293 363	241 949	-16,4	
	2. Other buildings 4/	square metres	38 226	19 479	37 440	-2,1	
		R'000	137 532	70 532	149 956	9,0	
	3. Total additions and alterations	R'000	427 073	363 895	391 905	-8,2	
4. Recorded plans passed	1. Total at current prices	R'000	1 135 221	1 309 952	1 174 516	3,5	

1/ The percentage change between January 2007 and January 2008.

2/ Other residential buildings include institutions for the disabled, boarding houses, hostels and tourism accommodation e.g. hotels, motels, guesthouses, holiday chalets, bed-and-breakfast accommodation and casinos.

3/ Other non-residential space includes churches, sport and recreation clubs, schools, crèches, hospitals and all other non-residential space.

4/ Other buildings include other residential buildings, non-residential buildings and internal alterations. No square metres are collected for internal alterations.



**Table 11 - Recorded building plans passed by larger municipalities at current prices by type of building: Eastern Cape**

			Jan. 2007	Dec. 2007	Jan. 2008	% Change 1/
Category of building	Type of building	Measuring unit				
<b>1. Residential buildings</b>	<b>1. Dwelling-houses &lt; 80 square metres</b>	Number	124	7	44	-64,5
		square metres	5 329	329	2 109	-60,4
		R'000	4 747	576	4 200	-11,5
	<b>2. Dwelling-houses &gt;= 80 square metres</b>	Number	118	68	68	-42,4
		square metres	28 348	23 006	20 490	-27,7
		R'000	67 648	79 607	81 999	21,2
	<b>3. Flats and townhouses</b>	Number	23	12	0	
		square metres	2 681	1 567	0	
		R'000	6 780	3 977	0	
	<b>4. Other residential buildings 2/</b>	square metres	0	0	0	
		R'000	0	0	0	
	<b>5. Total residential buildings</b>	R'000	<b>79 175</b>	<b>84 160</b>	<b>86 199</b>	<b>8,9</b>
<b>2. Non-residential buildings</b>	<b>1. Office and banking space</b>	square metres	84	0	0	
		R'000	144	0	0	
	<b>2. Shopping space</b>	square metres	216	2 836	83 563	38 586,6
		R'000	582	6 097	357 772	61 372,9
	<b>3. Industrial and warehouse space</b>	square metres	6 620	2 790	3 349	-49,4
		R'000	17 927	4 887	8 479	-52,7
	<b>4. Other non-residential buildings 3/</b>	square metres	1 157	1 190	385	-66,7
		R'000	3 010	3 347	1 077	-64,2
	<b>5. Total non-residential buildings</b>	R'000	<b>21 663</b>	<b>14 331</b>	<b>367 328</b>	<b>1 595,6</b>
<b>3. Additions and alterations</b>	<b>1. Dwelling-houses</b>	square metres	25 317	13 545	14 796	-41,6
		R'000	63 326	33 422	38 406	-39,4
	<b>2. Other buildings 4/</b>	square metres	1 863	930	5 532	196,9
		R'000	7 124	4 902	14 809	107,9
	<b>3. Total additions and alterations</b>	R'000	<b>70 450</b>	<b>38 324</b>	<b>53 215</b>	<b>-24,5</b>
<b>4. Recorded plans passed</b>	<b>1. Total at current prices</b>	R'000	<b>171 288</b>	<b>136 815</b>	<b>506 742</b>	<b>195,8</b>

1/ The percentage change between January 2007 and January 2008.

2/ Other residential buildings include institutions for the disabled, boarding houses, hostels and tourism accommodation e.g. hotels, motels, guesthouses, holiday chalets, bed-and-breakfast accommodation and casinos.

3/ Other non-residential space includes churches, sport and recreation clubs, schools, crèches, hospitals and all other non-residential space.

4/ Other buildings include other residential buildings, non-residential buildings and internal alterations. No square metres are collected for internal alterations.



Table 12 - Recorded building plans passed by larger municipalities at current prices by type of building: Northern Cape

			Jan. 2007	Dec. 2007	Jan. 2008	% Change 1/
Category of building	Type of building	Measuring unit				
1. Residential buildings	1. Dwelling-houses < 80 square metres	Number	6	20	7	16,7
		square metres	382	1 235	278	-27,2
		R'000	1 302	3 750	469	-64,0
	2. Dwelling-houses >= 80 square metres	Number	34	12	24	-29,4
		square metres	6 490	2 740	4 803	-26,0
		R'000	15 193	8 324	15 706	3,4
	3. Flats and townhouses	Number	0	0	12	
		square metres	0	0	1 885	
		R'000	0	0	5 278	
	4. Other residential buildings 2/	square metres	0	0	1 236	
		R'000	0	0	4 326	
	5. Total residential buildings	R'000	16 495	12 074	25 779	56,3
2. Non-residential buildings	1. Office and banking space	square metres	0	0	563	
		R'000	0	0	1 654	
	2. Shopping space	square metres	1 458	1 187	0	
		R'000	2 624	3 752	0	
	3. Industrial and warehouse space	square metres	0	697	952	
		R'000	0	2 059	2 561	
	4. Other non-residential buildings 3/	square metres	139	153	324	133,1
		R'000	273	600	907	232,2
	5. Total non-residential buildings	R'000	2 897	6 411	5 122	76,8
3. Additions and alterations	1. Dwelling-houses	square metres	1 931	2 186	3 146	62,9
		R'000	3 906	6 284	9 368	139,8
	2. Other buildings 4/	square metres	0	63	72	
		R'000	500	179	402	-19,6
	3. Total additions and alterations	R'000	4 406	6 463	9 770	121,7
4. Recorded plans passed	1. Total at current prices	R'000	23 798	24 948	40 671	70,9

1/ The percentage change between January 2007 and January 2008.

2/ Other residential buildings include institutions for the disabled, boarding houses, hostels and tourism accommodation e.g. hotels, motels, guesthouses, holiday chalets, bed-and-breakfast accommodation and casinos.

3/ Other non-residential space includes churches, sport and recreation clubs, schools, crèches, hospitals and all other non-residential space.

4/ Other buildings include other residential buildings, non-residential buildings and internal alterations. No square metres are collected for internal alterations.



Table 13 - Recorded building plans passed by larger municipalities at current prices by type of building: Free State

			Jan. 2007*	Dec. 2007	Jan. 2008	% Change 1/
Category of building	Type of building	Measuring unit				
1. Residential buildings	1. Dwelling-houses < 80 square metres	Number	10	12	8	-20,0
		square metres	657	783	463	-29,5
		R'000	1 428	1 852	1 170	-18,1
	2. Dwelling-houses >= 80 square metres	Number	149	85	75	-49,7
		square metres	32 052	17 910	19 392	-39,5
		R'000	75 012	44 886	55 065	-26,6
	3. Flats and townhouses	Number	88	61	64	-27,3
		square metres	8 782	8 791	6 548	-25,4
		R'000	23 022	22 048	18 394	-20,1
	4. Other residential buildings 2/	square metres	391	7 134	0	
		R'000	608	25 682	0	
	5. Total residential buildings	R'000	100 070	94 468	74 629	-25,4
2. Non-residential buildings	1. Office and banking space	square metres	5 055	0	0	
		R'000	18 198	0	0	
	2. Shopping space	square metres	0	141	174	
		R'000	0	350	696	
	3. Industrial and warehouse space	square metres	3 039	6 218	0	
		R'000	4 840	12 667	0	
	4. Other non-residential buildings 3/	square metres	792	0	1 466	85,1
		R'000	823	0	5 123	522,5
	5. Total non-residential buildings	R'000	23 861	13 017	5 819	-75,6
	3. Additions and alterations	1. Dwelling-houses	square metres	17 492	10 584	-34,3
			R'000	39 647	27 136	-31,6
		2. Other buildings 4/	square metres	2 310	1 863	-19,4
			R'000	8 959	17 152	91,4
	3. Total additions and alterations	R'000	48 606	73 353	44 288	-8,9
4. Recorded plans passed	1. Total at current prices	R'000	172 537	180 838	124 736	-27,7

1/ The percentage change between January 2007 and January 2008.

2/ Other residential buildings include institutions for the disabled, boarding houses, hostels and tourism accommodation e.g. hotels, motels, guesthouses, holiday chalets, bed-and-breakfast accommodation and casinos.

3/ Other non-residential space includes churches, sport and recreation clubs, schools, crèches, hospitals and all other non-residential space.

4/ Other buildings include other residential buildings, non-residential buildings and internal alterations. No square metres are collected for internal alterations.

\* Revised.



Table 14 - Recorded building plans passed by larger municipalities at current prices by type of building: KwaZulu-Natal

			Jan. 2007*	Dec. 2007	Jan. 2008	% Change 1/
Category of building	Type of building	Measuring unit				
1. Residential buildings	1. Dwelling-houses < 80 square metres	Number	87	72	42	-51,7
		square metres	5 058	3 962	2 212	-56,3
		R'000	16 590	15 002	8 716	-47,5
	2. Dwelling-houses >= 80 square metres	Number	160	170	189	18,1
		square metres	36 324	38 740	55 001	51,4
		R'000	143 643	156 067	248 518	73,0
	3. Flats and townhouses	Number	321	474	243	-24,3
		square metres	38 733	39 593	41 940	8,3
		R'000	138 216	160 785	239 132	73,0
	4. Other residential buildings 2/	square metres	1 092	0	0	
		R'000	3 513	0	0	
	5. Total residential buildings	R'000	301 962	331 854	496 366	64,4
2. Non-residential buildings	1. Office and banking space	square metres	6 335	4 965	7 087	11,9
		R'000	34 952	24 179	26 244	-24,9
	2. Shopping space	square metres	9 262	12 641	85 138	819,2
		R'000	43 510	41 074	461 103	959,8
	3. Industrial and warehouse space	square metres	31 764	9 288	6 673	-79,0
		R'000	90 405	26 673	26 968	-70,2
	4. Other non-residential buildings 3/	square metres	4 829	2 031	591	-87,8
		R'000	16 518	10 175	2 780	-83,2
	5. Total non-residential buildings	R'000	185 385	102 101	517 095	178,9
3. Additions and alterations	1. Dwelling-houses	square metres	39 364	47 971	46 680	18,6
		R'000	134 646	202 278	178 705	32,7
	2. Other buildings 4/	square metres	12 036	20 603	18 755	55,8
		R'000	53 987	104 985	77 179	43,0
	3. Total additions and alterations	R'000	188 633	307 263	255 884	35,7
4. Recorded plans passed	1. Total at current prices	R'000	675 980	741 218	1 269 345	87,8

1/ The percentage change between January 2007 and January 2008.

2/ Other residential buildings include institutions for the disabled, boarding houses, hostels and tourism accommodation e.g. hotels, motels, guesthouses, holiday chalets, bed-and-breakfast accommodation and casinos.

3/ Other non-residential space includes churches, sport and recreation clubs, schools, crèches, hospitals and all other non-residential space.

4/ Other buildings include other residential buildings, non-residential buildings and internal alterations. No square metres are collected for internal alterations.

\* Revised.



Table 15 - Recorded building plans passed by larger municipalities at current prices by type of building: North West

			Jan. 2007*	Dec. 2007	Jan. 2008	% Change 1/
Category of building	Type of building	Measuring unit				
1. Residential buildings	1. Dwelling-houses < 80 square metres	Number	31	551	68	119,4
		square metres	1 765	23 720	4 850	174,8
		R'000	3 886	25 953	7 329	88,6
	2. Dwelling-houses >= 80 square metres	Number	187	136	129	-31,0
		square metres	37 572	27 855	29 116	-22,5
		R'000	95 899	83 163	70 747	-26,2
	3. Flats and townhouses	Number	97	168	125	28,9
		square metres	12 992	12 620	13 452	3,5
		R'000	34 289	39 518	33 146	-3,3
	4. Other residential buildings 2/	square metres	2 280	0	139	-93,9
		R'000	7 980	0	348	-95,6
	5. Total residential buildings	R'000	142 054	148 634	111 570	-21,5
2. Non-residential buildings	1. Office and banking space	square metres	0	821	0	
		R'000	0	2 700	0	
	2. Shopping space	square metres	12 749	1 586	3 302	-74,1
		R'000	40 143	5 592	7 037	-82,5
	3. Industrial and warehouse space	square metres	2 362	4 105	0	
		R'000	3 876	8 877	0	
	4. Other non-residential buildings 3/	square metres	3 695	152	0	
		R'000	12 423	334	0	
	5. Total non-residential buildings	R'000	56 442	17 503	7 037	-87,5
	3. Additions and alterations	1. Dwelling-houses	square metres	11 999	10 938	-8,5
			R'000	24 300	19 668	-19,1
		2. Other buildings 4/	square metres	2 914	1 887	-35,2
			R'000	8 426	3 297	-60,9
	3. Total additions and alterations	R'000	32 726	27 499	22 965	-29,8
4. Recorded plans passed	1. Total at current prices	R'000	231 222	193 636	141 572	-38,8

1/ The percentage change between January 2007 and January 2008.

2/ Other residential buildings include institutions for the disabled, boarding houses, hostels and tourism accommodation e.g. hotels, motels, guesthouses, holiday chalets, bed-and-breakfast accommodation and casinos.

3/ Other non-residential space includes churches, sport and recreation clubs, schools, crèches, hospitals and all other non-residential space.

4/ Other buildings include other residential buildings, non-residential buildings and internal alterations. No square metres are collected for internal alterations.

\* Revised.



Table 16 - Recorded building plans passed by larger municipalities at current prices by type of building: Gauteng

			Jan. 2007*	Dec. 2007	Jan. 2008	% Change 1/
Category of building	Type of building	Measuring unit				
1. Residential buildings	1. Dwelling-houses < 80 square metres	Number	2 166	1 995	360	-83,4
		square metres	88 236	77 005	17 193	-80,5
		R'000	198 155	104 161	45 982	-76,8
	2. Dwelling-houses >= 80 square metres	Number	744	647	577	-22,4
		square metres	215 775	173 737	151 907	-29,6
		R'000	733 776	634 987	541 064	-26,3
	3. Flats and townhouses	Number	753	725	1 070	42,1
		square metres	94 428	73 990	146 478	55,1
		R'000	355 193	284 534	577 011	62,4
	4. Other residential buildings 2/	square metres	63	3 232	9 051	14 266,7
		R'000	148	21 654	60 642	40 874,3
	5. Total residential buildings	R'000	1 287 272	1 045 336	1 224 699	-4,9
2. Non-residential buildings	1. Office and banking space	square metres	13 573	43 525	17 684	30,3
		R'000	52 284	266 005	94 369	80,5
	2. Shopping space	square metres	29 173	10 050	20 458	-29,9
		R'000	127 165	34 471	75 098	-40,9
	3. Industrial and warehouse space	square metres	101 402	53 742	29 665	-70,7
		R'000	286 800	148 514	83 964	-70,7
	4. Other non-residential buildings 3/	square metres	2 874	2 424	994	-65,4
		R'000	8 206	7 757	3 546	-56,8
	5. Total non-residential buildings	R'000	474 455	456 747	256 977	-45,8
3. Additions and alterations	1. Dwelling-houses	square metres	114 763	90 228	133 835	16,6
		R'000	386 565	326 637	478 787	23,9
	2. Other buildings 4/	square metres	38 379	29 820	155 060	304,0
		R'000	156 546	108 831	698 304	346,1
	3. Total additions and alterations	R'000	543 111	435 468	1 177 091	116,7
4. Recorded plans passed	1. Total at current prices	R'000	2 304 838	1 937 551	2 658 767	15,4

1/ The percentage change between January 2007 and January 2008.

2/ Other residential buildings include institutions for the disabled, boarding houses, hostels and tourism accommodation e.g. hotels, motels, guesthouses, holiday chalets, bed-and-breakfast accommodation and casinos.

3/ Other non-residential space includes churches, sport and recreation clubs, schools, crèches, hospitals and all other non-residential space.

4/ Other buildings include other residential buildings, non-residential buildings and internal alterations. No square metres are collected for internal alterations.

\* Revised.



Table 17 - Recorded building plans passed by larger municipalities at current prices by type of building: Mpumalanga

			Jan. 2007*	Dec. 2007	Jan. 2008*	% Change 1/
Category of building	Type of building	Measuring unit				
1. Residential buildings	1. Dwelling-houses < 80 square metres	Number	336	28	25	-92,6
		square metres	11 234	1 553	1 687	-85,0
		R'000	14 157	3 463	5 079	-64,1
	2. Dwelling-houses >= 80 square metres	Number	252	107	110	-56,3
		square metres	56 820	24 964	26 191	-53,9
		R'000	134 913	71 368	83 298	-38,3
	3. Flats and townhouses	Number	203	109	17	-91,6
		square metres	13 773	13 344	2 975	-78,4
		R'000	51 683	31 990	7 780	-84,9
	4. Other residential buildings 2/	square metres	3 811	3 780	0	
		R'000	10 684	10 225	0	
	5. Total residential buildings	R'000	211 437	117 046	96 157	-54,5
	2. Non-residential buildings	1. Office and banking space	square metres	4 504	2 718	16 503
R'000			11 936	6 795	64 810	443,0
2. Shopping space		square metres	894	0	59 170	6 518,6
		R'000	3 378	0	292 843	8 569,1
3. Industrial and warehouse space		square metres	5 323	8 713	12 519	135,2
		R'000	16 713	21 784	34 658	107,4
4. Other non-residential buildings 3/		square metres	0	1 878	1 840	
		R'000	0	4 883	6 780	
5. Total non-residential buildings		R'000	32 027	33 462	399 091	1 146,1
3. Additions and alterations		1. Dwelling-houses	square metres	16 853	15 666	12 641
	R'000		41 436	38 859	37 274	-10,0
	2. Other buildings 4/	square metres	1 681	2 431	2 408	43,2
		R'000	4 690	6 850	9 740	107,7
	3. Total additions and alterations	R'000	46 126	45 709	47 014	1,9
4. Recorded plans passed	1. Total at current prices	R'000	289 590	196 217	542 262	87,3

1/ The percentage change between January 2007 and January 2008.

2/ Other residential buildings include institutions for the disabled, boarding houses, hostels and tourism accommodation e.g. hotels, motels, guesthouses, holiday chalets, bed-and-breakfast accommodation and casinos.

3/ Other non-residential space includes churches, sport and recreation clubs, schools, crèches, hospitals and all other non-residential space.

4/ Other buildings include other residential buildings, non-residential buildings and internal alterations. No square metres are collected for internal alterations.

\* Revised.



**Table 18 - Recorded building plans passed by larger municipalities at current prices by type of building: Limpopo**

			Jan. 2007	Dec. 2007	Jan. 2008	% Change 1/
Category of building	Type of building	Measuring unit				
1. Dwelling-houses < 80 square metres	1. Dwelling-houses < 80 square metres	Number	56	509	18	-67,9
		square metres	3 321	23 112	1 165	-64,9
		R'000	8 528	47 227	2 540	-70,2
	2. Dwelling-houses >= 80 square metres	Number	80	21	54	-32,5
		square metres	16 074	5 086	12 691	-21,0
		R'000	43 792	12 451	40 197	-8,2
	3. Flats and townhouses	Number	60	22	36	-40,0
		square metres	7 314	2 510	3 367	-54,0
		R'000	16 605	6 885	11 785	-29,0
	4. Other residential buildings 2/	square metres	0	2 612	454	
		R'000	0	7 520	960	
	5. Total residential buildings	R'000	68 925	74 083	55 482	-19,5
2. Dwelling-houses >= 80 square metres	1. Office and banking space	square metres	751	167	0	
		R'000	1 878	468	0	
	2. Shopping space	square metres	2 497	7 500	10 006	300,7
		R'000	6 471	40 000	22 391	246,0
	3. Industrial and warehouse space	square metres	2 723	7 460	268	-90,2
		R'000	6 808	18 523	670	-90,2
	4. Other non-residential buildings 3/	square metres	0	0	3 568	
		R'000	0	0	10 144	
	5. Total non-residential buildings	R'000	15 157	58 991	33 205	119,1
	3. Flats and townhouses	1. Dwelling-houses	square metres	10 566	3 538	6 578
R'000			24 766	8 769	16 446	-33,6
2. Other buildings 4/		square metres	972	1 611	1 054	8,4
		R'000	1 771	4 028	2 598	46,7
3. Total additions and alterations		R'000	26 537	12 797	19 044	-28,2
4. Other residential buildings 2/	1. Total at current prices	R'000	110 619	145 871	107 731	-2,6

1/ The percentage change between January 2007 and January 2008.

2/ Other residential buildings include institutions for the disabled, boarding houses, hostels and tourism accommodation e.g. hotels, motels, guesthouses, holiday chalets, bed-and-breakfast accommodation and casinos.

3/ Other non-residential space includes churches, sport and recreation clubs, schools, crèches, hospitals and all other non-residential space.

4/ Other buildings include other residential buildings, non-residential buildings and internal alterations. No square metres are collected for internal alterations.



Table 19 - Buildings reported as completed to larger municipalities at current prices by type of building: South Africa

			Jan. 2007*	Dec. 2007	Jan. 2008	% Change 1/
Category of building	Type of building	Measuring unit				
1. Residential buildings	1. Dwelling-houses < 80 square metres	Number	1 094	2 000	781	-28,6
		square metres	48 875	94 313	38 781	-20,7
		R'000	108 993	230 520	95 901	-12,0
	2. Dwelling-houses >= 80 square metres	Number	1 345	1 729	1 325	-1,5
		square metres	307 459	436 144	298 468	-2,9
		R'000	921 913	1 426 176	974 906	5,7
	3. Flats and townhouses	Number	1 630	2 156	1 293	-20,7
		square metres	160 888	253 150	145 056	-9,8
		R'000	529 523	855 538	553 812	4,6
	4. Other residential buildings 2/	square metres	5 177	359	9 570	84,9
		R'000	79 662	1 382	32 493	-59,2
	5. Total residential buildings	R'000	1 640 091	2 513 616	1 657 112	1,0
2. Non-residential buildings	1. Office and banking space	square metres	43 084	59 632	19 575	-54,6
		R'000	142 577	212 564	88 737	-37,8
	2. Shopping space	square metres	15 716	56 360	78 731	401,0
		R'000	44 185	200 017	302 322	584,2
	3. Industrial and warehouse space	square metres	68 158	56 650	73 931	8,5
		R'000	203 867	174 942	200 134	-1,8
	4. Other non-residential buildings 3/	square metres	25 977	9 964	8 714	-66,5
		R'000	93 318	35 020	20 339	-78,2
	5. Total non-residential buildings	R'000	483 947	622 543	611 532	26,4
3. Additions and alterations	1. Dwelling-houses	square metres	186 284	105 189	144 483	-22,4
		R'000	510 680	304 782	431 373	-15,5
	2. Other buildings 4/	square metres	37 285	31 728	37 861	1,5
		R'000	164 522	135 418	129 966	-21,0
	3. Total additions and alterations	R'000	675 202	440 200	561 339	-16,9
4. Recorded buildings completed	1. Total at current prices	R'000	2 799 240	3 576 359	2 829 983	1,1

1/ The percentage change between January 2007 and January 2008.

2/ Other residential buildings include institutions for the disabled, boarding houses, hostels and tourism accommodation e.g. hotels, motels, guesthouses, holiday chalets, bed-and-breakfast accommodation and casinos.

3/ Other non-residential space includes churches, sport and recreation clubs, schools, crèches, hospitals and all other non-residential space.

4/ Other buildings include other residential buildings, non-residential buildings and internal alterations. No square metres are collected for internal alterations.

\* Revised.



**Table 20 - Buildings reported as completed to larger municipalities at current prices by type of building: Western Cape**

			Jan. 2007	Dec. 2007	Jan. 2008	% Change 1/
Category of building	Type of building	Measuring unit				
<b>1. Residential buildings</b>	<b>1. Dwelling-houses &lt; 80 square metres</b>	Number	105	122	65	-38,1
		square metres	5 782	5 892	3 226	-44,2
		R'000	14 142	13 795	8 580	-39,3
	<b>2. Dwelling-houses &gt;= 80 square metres</b>	Number	395	490	344	-12,9
		square metres	86 508	126 252	90 629	4,8
		R'000	247 446	403 358	301 338	21,8
	<b>3. Flats and townhouses</b>	Number	787	277	179	-77,3
		square metres	66 072	36 674	21 185	-67,9
		R'000	213 642	121 472	73 086	-65,8
	<b>4. Other residential buildings 2/</b>	square metres	0	359	0	
		R'000	0	1 382	0	
	<b>5. Total residential buildings</b>	R'000	<b>475 230</b>	<b>540 007</b>	<b>383 004</b>	<b>-19,4</b>
<b>2. Non-residential buildings</b>	<b>1. Office and banking space</b>	square metres	10 865	27 800	513	-95,3
		R'000	30 863	88 355	1 693	-94,5
	<b>2. Shopping space</b>	square metres	4 848	22 542	29 134	500,9
		R'000	10 807	67 940	105 847	879,4
	<b>3. Industrial and warehouse space</b>	square metres	11 266	39 411	29 327	160,3
		R'000	30 606	123 376	77 705	153,9
	<b>4. Other non-residential buildings 3/</b>	square metres	9 113	207	3 774	-58,6
		R'000	27 101	410	5 641	-79,2
	<b>5. Total non-residential buildings</b>	R'000	<b>99 377</b>	<b>280 081</b>	<b>190 886</b>	<b>92,1</b>
<b>3. Additions and alterations</b>	<b>1. Dwelling-houses</b>	square metres	59 674	47 614	63 403	6,2
		R'000	158 650	127 636	184 113	16,0
	<b>2. Other buildings 4/</b>	square metres	12 636	22 700	23 227	83,8
		R'000	85 071	101 049	75 826	-10,9
	<b>3. Total additions and alterations</b>	R'000	<b>243 721</b>	<b>228 685</b>	<b>259 939</b>	<b>6,7</b>
<b>4. Recorded buildings completed</b>	<b>1. Total at current prices</b>	R'000	<b>818 328</b>	<b>1 048 773</b>	<b>833 829</b>	<b>1,9</b>

1/ The percentage change between January 2007 and January 2008.

2/ Other residential buildings include institutions for the disabled, boarding houses, hostels and tourism accommodation e.g. hotels, motels, guesthouses, holiday chalets, bed-and-breakfast accommodation and casinos.

3/ Other non-residential space includes churches, sport and recreation clubs, schools, crèches, hospitals and all other non-residential space.

4/ Other buildings include other residential buildings, non-residential buildings and internal alterations. No square metres are collected for internal alterations.



Table 21 - Buildings reported as completed to larger municipalities at current prices by type of building: Eastern Cape

			Jan. 2007	Dec. 2007	Jan. 2008	% Change 1/
Category of building						
1. Residential buildings	1. Dwelling-houses < 80 square metres	Number	106	177	62	-41,5
		square metres	4 318	7 609	2 581	-40,2
		R'000	7 288	13 885	3 463	-52,5
	2. Dwelling-houses >= 80 square metres	Number	107	101	86	-19,6
		square metres	16 970	19 049	20 563	21,2
		R'000	43 907	43 383	60 345	37,4
	3. Flats and townhouses	Number	54	29	71	31,5
		square metres	4 883	2 418	6 089	24,7
		R'000	11 988	6 530	17 072	42,4
	4. Other residential buildings 2/	square metres	0	0	0	
		R'000	0	0	0	
	5. Total residential buildings	R'000	63 183	63 798	80 880	28,0
	2. Non-residential buildings	1. Office and banking space	square metres	0	14 217	0
R'000			0	37 774	0	
2. Shopping space		square metres	1 327	10 418	23 359	1 660,3
		R'000	3 211	27 347	77 959	2 327,9
3. Industrial and warehouse space		square metres	1 021	0	958	-6,2
		R'000	1 957	0	1 288	-34,2
4. Other non-residential buildings 3/		square metres	0	1 433	139	
		R'000	0	3 260	338	
5. Total non-residential buildings		R'000	5 168	68 381	79 585	1 440,0
3. Additions and alterations		1. Dwelling-houses	square metres	14 210	4 770	7 169
	R'000		26 428	11 297	13 952	-47,2
	2. Other buildings 4/	square metres	206	541	696	237,9
		R'000	461	1 498	738	60,1
	3. Total additions and alterations	R'000	26 889	12 795	14 690	-45,4
4. Recorded buildings completed	1. Total at current prices	R'000	95 240	144 974	175 155	83,9

1/ The percentage change between January 2007 and January 2008.

2/ Other residential buildings include institutions for the disabled, boarding houses, hostels and tourism accommodation e.g. hotels, motels, guesthouses, holiday chalets, bed-and-breakfast accommodation and casinos.

3/ Other non-residential space includes churches, sport and recreation clubs, schools, crèches, hospitals and all other non-residential space.

4/ Other buildings include other residential buildings, non-residential buildings and internal alterations. No square metres are collected for internal alterations.



Table 22 - Buildings reported as completed to larger municipalities at current prices by type of building: Northern Cape

			Jan. 2007	Dec. 2007	Jan. 2008	% Change 1/
Category of building	Type of building	Measuring unit				
1. Residential buildings	1. Dwelling-houses < 80 square metres	Number	3	55	1	-66,7
		square metres	200	2 266	40	-80,0
		R'000	360	2 880	112	-68,9
	2. Dwelling-houses >= 80 square metres	Number	9	11	20	122,2
		square metres	1 866	3 162	3 024	62,1
		R'000	4 236	8 340	8 531	101,4
	3. Flats and townhouses	Number	7	17	21	200,0
		square metres	1 003	2 168	2 752	174,4
		R'000	1 805	6 703	7 706	326,9
	4. Other residential buildings 2/	square metres	0	0	0	
		R'000	0	0	0	
	5. Total residential buildings	R'000	6 401	17 923	16 349	155,4
2. Non-residential buildings	1. Office and banking space	square metres	0	0	153	
		R'000	0	0	428	
	2. Shopping space	square metres	1 710	0	176	-89,7
		R'000	3 236	0	634	-80,4
	3. Industrial and warehouse space	square metres	0	1 445	302	
		R'000	0	3 961	664	
	4. Other non-residential buildings 3/	square metres	0	0	0	
		R'000	0	0	0	
	5. Total non-residential buildings	R'000	3 236	3 961	1 726	-46,7
	3. Additions and alterations	1. Dwelling-houses	square metres	2 295	1 242	3 135
R'000			4 669	3 655	10 278	120,1
2. Other buildings 4/		square metres	34	13	525	1 444,1
		R'000	82	36	1 140	1 290,2
3. Total additions and alterations		R'000	4 751	3 691	11 418	140,3
4. Recorded buildings completed	1. Total at current prices	R'000	14 388	25 575	29 493	105,0

1/ The percentage change between January 2007 and January 2008.

2/ Other residential buildings include institutions for the disabled, boarding houses, hostels and tourism accommodation e.g. hotels, motels, guesthouses, holiday chalets, bed-and-breakfast accommodation and casinos.

3/ Other non-residential space includes churches, sport and recreation clubs, schools, crèches, hospitals and all other non-residential space.

4/ Other buildings include other residential buildings, non-residential buildings and internal alterations. No square metres are collected for internal alterations.



**Table 23 - Buildings reported as completed to larger municipalities at current prices by type of building: Free State**

			Jan. 2007	Dec. 2007	Jan. 2008	% Change 1/
Category of building	Type of building	Measuring unit				
1. Residential buildings	1. Dwelling-houses < 80 square metres	Number	25	63	9	-64,0
		square metres	1 503	3 394	493	-67,2
		R'000	2 682	7 107	1 041	-61,2
	2. Dwelling-houses >= 80 square metres	Number	85	70	49	-42,4
		square metres	13 059	10 806	8 522	-34,7
		R'000	28 228	26 186	23 307	-17,4
	3. Flats and townhouses	Number	30	16	13	-56,7
		square metres	3 386	1 543	1 786	-47,3
		R'000	12 444	5 500	3 340	-73,2
	4. Other residential buildings 2/	square metres	4 987	0	213	-95,7
		R'000	79 092	0	469	-99,4
	5. Total residential buildings	R'000	122 446	38 793	28 157	-77,0
2. Non-residential buildings	1. Office and banking space	square metres	0	1 182	0	
		R'000	0	4 234	0	
	2. Shopping space	square metres	350	0	0	
		R'000	1 251	0	0	
	3. Industrial and warehouse space	square metres	0	1 133	0	
		R'000	0	2 930	0	
	4. Other non-residential buildings 3/	square metres	0	0	0	
		R'000	0	0	0	
	5. Total non-residential buildings	R'000	1 251	7 164	0	
3. Additions and alterations	1. Dwelling-houses	square metres	4 536	4 474	5 280	16,4
		R'000	8 624	9 925	12 344	43,1
	2. Other buildings 4/	square metres	0	533	197	
		R'000	540	2 404	1 523	182,0
	3. Total additions and alterations	R'000	9 164	12 329	13 867	51,3
4. Recorded buildings completed	1. Total at current prices	R'000	132 861	58 286	42 024	-68,4

1/ The percentage change between January 2007 and January 2008.

2/ Other residential buildings include institutions for the disabled, boarding houses, hostels and tourism accommodation e.g. hotels, motels, guesthouses, holiday chalets, bed-and-breakfast accommodation and casinos.

3/ Other non-residential space includes churches, sport and recreation clubs, schools, crèches, hospitals and all other non-residential space.

4/ Other buildings include other residential buildings, non-residential buildings and internal alterations. No square metres are collected for internal alterations.

\* Revised.



**Table 24 - Buildings reported as completed to larger municipalities at current prices by type of building: KwaZulu-Natal**

			Jan. 2007*	Dec. 2007	Jan. 2008	% Change 1/
Category of building	Type of building	Measuring unit				
1. Residential buildings	1. Dwelling-houses < 80 square metres	Number	102	100	78	-23,5
		square metres	3 852	5 225	4 137	7,4
		R'000	8 600	18 867	16 172	88,0
	2. Dwelling-houses >= 80 square metres	Number	84	99	129	53,6
		square metres	17 498	25 577	27 610	57,8
		R'000	58 509	119 890	119 865	104,9
	3. Flats and townhouses	Number	117	317	134	14,5
		square metres	15 368	56 810	24 608	60,1
		R'000	45 945	202 022	89 959	95,8
	4. Other residential buildings 2/	square metres	0	0	0	
		R'000	0	0	0	
	5. Total residential buildings	R'000	113 054	340 779	225 996	99,9
2. Non-residential buildings	1. Office and banking space	square metres	1 727	6 647	9 522	451,4
		R'000	6 875	33 235	49 271	616,7
	2. Shopping space	square metres	470	10 143	0	
		R'000	2 208	39 821	0	
	3. Industrial and warehouse space	square metres	35 467	2 799	8 643	-75,6
		R'000	114 750	15 092	36 081	-68,6
	4. Other non-residential buildings 3/	square metres	0	2 477	0	
		R'000	0	12 385	0	
	5. Total non-residential buildings	R'000	123 833	100 533	85 352	-31,1
	3. Additions and alterations	1. Dwelling-houses	square metres	18 293	17 542	10,3
			R'000	62 593	71 708	40,3
		2. Other buildings 4/	square metres	16 249	2 164	-95,5
			R'000	45 866	11 331	-94,5
	3. Total additions and alterations	R'000	108 459	83 039	90 341	-16,7
4. Recorded buildings completed	1. Total at current prices	R'000	345 346	524 351	401 689	16,3

1/ The percentage change between January 2007 and January 2008.

2/ Other residential buildings include institutions for the disabled, boarding houses, hostels and tourism accommodation e.g. hotels, motels, guesthouses, holiday chalets, bed-and-breakfast accommodation and casinos.

3/ Other non-residential space includes churches, sport and recreation clubs, schools, crèches, hospitals and all other non-residential space.

4/ Other buildings include other residential buildings, non-residential buildings and internal alterations. No square metres are collected for internal alterations.

\* Revised.



Table 25 - Buildings reported as completed to larger municipalities at current prices by type of building: North West

			Jan. 2007*	Dec. 2007	Jan. 2008	% Change 1/
Category of building	Type of building	Measuring unit				
1. Residential buildings	1. Dwelling-houses < 80 square metres	Number	55	103	46	-16,4
		square metres	1 973	5 396	2 698	36,7
		R'000	2 074	11 998	6 362	206,8
	2. Dwelling-houses >= 80 square metres	Number	80	119	130	62,5
		square metres	18 944	21 124	24 286	28,2
		R'000	52 986	58 171	63 229	19,3
	3. Flats and townhouses	Number	94	73	159	69,1
		square metres	6 433	4 871	12 690	97,3
		R'000	18 033	11 363	42 858	137,7
	4. Other residential buildings 2/	square metres	0	0	0	
		R'000	0	0	0	
	5. Total residential buildings	R'000	73 093	81 532	112 449	53,8
2. Non-residential buildings	1. Office and banking space	square metres	1 286	0	781	-39,3
		R'000	2 829	0	2 126	-24,8
	2. Shopping space	square metres	3 620	249	0	
		R'000	9 490	548	0	
	3. Industrial and warehouse space	square metres	0	0	0	
		R'000	0	0	0	
	4. Other non-residential buildings 3/	square metres	218	0	221	1,4
		R'000	763	0	80	-89,5
	5. Total non-residential buildings	R'000	13 082	548	2 206	-83,1
	3. Additions and alterations	1. Dwelling-houses	square metres	2 641	1 795	5 437
R'000			4 943	4 071	7 495	51,6
2. Other buildings 4/		square metres	0	326	280	
		R'000	110	950	842	665,5
3. Total additions and alterations		R'000	5 053	5 021	8 337	65,0
4. Recorded buildings completed	1. Total at current prices	R'000	91 228	87 101	122 992	34,8

1/ The percentage change between January 2007 and January 2008.

2/ Other residential buildings include institutions for the disabled, boarding houses, hostels and tourism accommodation e.g. hotels, motels, guesthouses, holiday chalets, bed-and-breakfast accommodation and casinos.

3/ Other non-residential space includes churches, sport and recreation clubs, schools, crèches, hospitals and all other non-residential space.

4/ Other buildings include other residential buildings, non-residential buildings and internal alterations. No square metres are collected for internal alterations.

\* Revised.



**Table 26 - Buildings reported as completed to larger municipalities at current prices by type of building: Gauteng**

			Jan. 2007*	Dec. 2007	Jan. 2008	% Change 1/
Category of building	Type of building	Measuring unit				
<b>1. Residential buildings</b>	<b>1. Dwelling-houses &lt; 80 square metres</b>	Number	650	1 348	371	-42,9
		square metres	28 127	62 534	18 020	-35,9
		R'000	65 231	156 408	50 624	-22,4
	<b>2. Dwelling-houses &gt;= 80 square metres</b>	Number	477	714	464	-2,7
		square metres	130 777	195 559	104 227	-20,3
		R'000	429 587	670 408	345 428	-19,6
	<b>3. Flats and townhouses</b>	Number	512	1 405	670	30,9
		square metres	59 291	147 449	69 716	17,6
		R'000	214 815	498 649	300 503	39,9
	<b>4. Other residential buildings 2/</b>	square metres	0	0	9 357	
		R'000	0	0	32 024	
	<b>5. Total residential buildings</b>	R'000	<b>709 633</b>	<b>1 325 465</b>	<b>728 579</b>	<b>2,7</b>
<b>2. Non-residential buildings</b>	<b>1. Office and banking space</b>	square metres	26 589	9 786	8 606	-67,6
		R'000	95 710	48 966	35 219	-63,2
	<b>2. Shopping space</b>	square metres	2 948	13 008	25 270	757,2
		R'000	12 873	64 361	116 140	802,2
	<b>3. Industrial and warehouse space</b>	square metres	17 859	11 264	34 701	94,3
		R'000	50 726	28 645	84 396	66,4
	<b>4. Other non-residential buildings 3/</b>	square metres	15 843	5 847	2 963	-81,3
		R'000	63 237	18 965	9 752	-84,6
	<b>5. Total non-residential buildings</b>	R'000	<b>222 546</b>	<b>160 937</b>	<b>245 507</b>	<b>10,3</b>
<b>3. Additions and alterations</b>	<b>1. Dwelling-houses</b>	square metres	77 232	20 636	30 457	-60,6
		R'000	228 779	62 248	92 488	-59,6
	<b>2. Other buildings 4/</b>	square metres	7 141	3 146	10 555	47,8
		R'000	29 377	9 339	41 724	42,0
	<b>3. Total additions and alterations</b>	R'000	<b>258 156</b>	<b>71 587</b>	<b>134 212</b>	<b>-48,0</b>
<b>4. Recorded buildings completed</b>	<b>1. Total at current prices</b>	R'000	<b>1 190 335</b>	<b>1 557 989</b>	<b>1 108 298</b>	<b>-6,9</b>

1/ The percentage change between January 2007 and January 2008.

2/ Other residential buildings include institutions for the disabled, boarding houses, hostels and tourism accommodation e.g. hotels, motels, guesthouses, holiday chalets, bed-and-breakfast accommodation and casinos.

3/ Other non-residential space includes churches, sport and recreation clubs, schools, crèches, hospitals and all other non-residential space.

4/ Other buildings include other residential buildings, non-residential buildings and internal alterations. No square metres are collected for internal alterations.

\* Revised.



Table 27 - Buildings reported as completed to larger municipalities at current prices by type of building: Mpumalanga

			Jan. 2007*	Dec. 2007	Jan. 2008	% Change 1/
Category of building	Type of building	Measuring unit				
1. Residential buildings	1. Dwelling-houses < 80 square metres	Number	21	13	140	566,7
		square metres	1 424	771	6 963	389,0
		R'000	4 251	2 410	7 884	85,5
	2. Dwelling-houses >= 80 square metres	Number	72	109	85	18,1
		square metres	14 537	30 325	16 441	13,1
		R'000	38 132	80 917	44 127	15,7
	3. Flats and townhouses	Number	16	16	46	187,5
		square metres	2 496	864	6 230	149,6
		R'000	7 499	2 592	19 288	157,2
	4. Other residential buildings 2/	square metres	190	0	0	
		R'000	570	0	0	
	5. Total residential buildings	R'000	50 452	85 919	71 299	41,3
2. Non-residential buildings	1. Office and banking space	square metres	2 617	0	0	
		R'000	6 300	0	0	
	2. Shopping space	square metres	443	0	0	
		R'000	1 109	0	0	
	3. Industrial and warehouse space	square metres	574	374	0	
		R'000	1 492	490	0	
	4. Other non-residential buildings 3/	square metres	803	0	0	
		R'000	2 217	0	0	
	5. Total non-residential buildings	R'000	11 118	490	0	
3. Additions and alterations	1. Dwelling-houses	square metres	6 267	6 530	8 753	39,7
		R'000	13 437	12 759	21 174	57,6
	2. Other buildings 4/	square metres	723	2 305	1 643	127,2
		R'000	2 353	8 811	5 672	141,1
	3. Total additions and alterations	R'000	15 790	21 570	26 846	70,0
4. Recorded buildings completed	1. Total at current prices	R'000	77 360	107 979	98 145	26,9

1/ The percentage change between January 2007 and January 2008.

2/ Other residential buildings include institutions for the disabled, boarding houses, hostels and tourism accommodation e.g. hotels, motels, guesthouses, holiday chalets, bed-and-breakfast accommodation and casinos.

3/ Other non-residential space includes churches, sport and recreation clubs, schools, crèches, hospitals and all other non-residential space.

4/ Other buildings include other residential buildings, non-residential buildings and internal alterations. No square metres are collected for internal alterations.

\* Revised.



Table 28 - Buildings reported as completed to larger municipalities at current prices by type of building: Limpopo

Category of building	Type of building	Measuring unit	Jan. 2007	Dec. 2007	Jan. 2008	% Change 1/
1. Residential buildings	1. Dwelling-houses < 80 square metres	Number	27	19	9	-66,7
		square metres	1 696	1 226	623	-63,3
		R'000	4 365	3 170	1 663	-61,9
	2. Dwelling-houses >= 80 square metres	Number	36	16	18	-50,0
		square metres	7 300	4 290	3 166	-56,6
		R'000	18 882	15 523	8 736	-53,7
	3. Flats and townhouses	Number	13	6	0	
		square metres	1 956	353	0	
		R'000	3 352	707	0	
	4. Other residential buildings 2/	square metres	0	0	0	
		R'000	0	0	0	
	5. Total residential buildings	R'000	26 599	19 400	10 399	-60,9
2. Non-residential buildings	1. Office and banking space	square metres	0	0	0	
		R'000	0	0	0	
	2. Shopping space	square metres	0	0	792	
		R'000	0	0	1 742	
	3. Industrial and warehouse space	square metres	1 971	224	0	
		R'000	4 336	448	0	
	4. Other non-residential buildings 3/	square metres	0	0	1 617	
		R'000	0	0	4 528	
	5. Total non-residential buildings	R'000	4 336	448	6 270	44,6
3. Additions and alterations	1. Dwelling-houses	square metres	1 136	586	669	-41,1
		R'000	2 557	1 483	1 689	-33,9
	2. Other buildings 4/	square metres	296	0	0	
		R'000	662	0	0	
	3. Total additions and alterations	R'000	3 219	1 483	1 689	-47,5
4. Recorded buildings completed	1. Total at current prices	R'000	34 154	21 331	18 358	-46,2

1/ The percentage change between January 2007 and January 2008.

2/ Other residential buildings include institutions for the disabled, boarding houses, hostels and tourism accommodation e.g. hotels, motels, guesthouses, holiday chalets, bed-and-breakfast accommodation and casinos.

3/ Other non-residential space includes churches, sport and recreation clubs, schools, crèches, hospitals and all other non-residential space.

4/ Other buildings include other residential buildings, non-residential buildings and internal alterations. No square metres are collected for internal alterations.



**Table 29 - Subsidised low-cost dwelling-houses completed and in process of completion 1/**

Province	Year	Number	Square metres 2/	Value R'000 2/
Western Cape	2002	19 534	531 116	168 852
	2003	16 926	507 780	247 187
	2004	12 751	382 530	211 424
Eastern Cape	2002	46 700	1 575 675	473 806
	2003	35 005	1 050 150	511 213
	2004	34 923	1 047 690	579 058
Northern Cape	2002	5 189	164 906	68 078
	2003	4 354	130 620	63 586
	2004	3 645	109 350	60 438
Free State	2002	8 617	348 492	154 121
	2003	14 848	445 440	216 840
	2004	16 522	495 660	273 951
KwaZulu-Natal	2002	21 958	831 349	234 041
	2003	31 372	941 160	458 157
	2004	35 968	1 079 040	596 385
North West	2002	21 309	630 115	210 439
	2003	13 809	414 270	201 667
	2004	10 149	304 470	168 281
Gauteng	2002	29 939	991 571	321 943
	2003	42 862	1 285 860	625 957
	2004	33 260	997 800	551 484
Mpumalanga	2002	19 883	660 505	253 931
	2003	21 336	640 080	246 079
	2004	18 808	564 240	311 855
Limpopo	2002	15 382	605 877	183 769
	2003	15 596	467 880	227 764
	2004	16 338	490 140	270 900
<b>South Africa</b>	<b>2002</b>	<b>188 511</b>	<b>6 339 606</b>	<b>2 068 980</b>
	<b>2003</b>	<b>196 108</b>	<b>5 883 240</b>	<b>2 798 450</b>
	<b>2004</b>	<b>182 364</b>	<b>5 470 920</b>	<b>3 023 777</b>

**Table 30 - Subsidised low-cost dwelling-houses completed: 1 April 2005 to 31 March 2006**

Province	Number	Square metres 2/	Value R'000 2/
Western Cape	2 040	61 200	52 877
Eastern Cape	16 874	506 220	437 374
Northern Cape	5 293	158 790	137 195
Free State	17 635	529 050	457 099
KwaZulu-Natal	21 601	648 030	559 898
North West	14 445	433 350	374 414
Gauteng	23 409	702 270	606 761
Mpumalanga	14 389	431 670	372 963
Limpopo	21 973	659 190	569 540
<b>South Africa</b>	<b>137 659</b>	<b>4 129 770</b>	<b>3 568 121</b>

**Table 31 - Subsidised low-cost dwelling-houses completed and in process of completion 1/: 1 April 2006 to 31 March 2007**

Province	Number	Square metres 2/	R'000 2/
Western Cape	34 585	1 037 550	768 200
Eastern Cape	16 526	495 780	637 700
Northern Cape	3 880	116 400	104 800
Free State	19 662	589 860	528 400
KwaZulu-Natal	38 290	1 148 700	1 074 500
North West	46 972	1 409 160	696 500
Gauteng	77 044	2 311 320	1 748 300
Mpumalanga	10 651	319 530	329 900
Limpopo	23 609	708 270	646 700
<b>South Africa</b>	<b>271 219</b>	<b>8 136 570</b>	<b>6 535 000</b>

Source: Housing Subsidy System and Provincial Housing Departments co-ordinated by the National Department of Housing

1/ Includes all top structures completed and sites serviced in respect of the reporting period.

2/ Estimates by the National Department of Housing.



## Explanatory notes

<b>Introduction</b>	1	Statistics South Africa (Stats SA) conducts a monthly building statistics survey collecting information regarding building plans passed and buildings completed, financed by the private sector, from the largest local government institutions in South Africa. According to these institutions, they are not always notified about low-cost housing projects and therefore do not include the bulk of low-cost dwelling-houses. Data regarding subsidised low-cost dwelling-houses, supplied by the Housing Subsidy System and Provincial Housing Departments and co-ordinated by the National Department of Housing, are shown in table 29 to table 31 (page 37).
	2	In order to improve timeliness of the publication, some information for the current month has been estimated due to late submission by respondents. These estimates will be revised in the next statistical release(s) as soon as actual information is available.
<b>Purpose of the survey</b>	3	The monthly survey data are used in monitoring the state of economy and formulation of economic policy. Furthermore, the results are important inputs to estimate the Gross Domestic Product (GDP) and to calculate the Composite Leading Business Cycle Indicator. The data are extensively used by the private sector.
<b>Scope of the survey</b>	4	This survey covers local government institutions conducting activities for the private sector regarding - <ul style="list-style-type: none"> <li>• passing of building plans; and</li> <li>• final inspection of completed buildings.</li> </ul>
<b>Classification</b>	5	Building activities are classified in division 5 according to the 1993 edition of the <i>Standard Industrial Classification of all Economic Activities, (SIC) Fifth Edition, Report No. 09-90-02</i> . The SIC is based on the 1990 <i>International Standard Industrial Classification of all Economic Activities (ISIC)</i> with suitable adaptations for local conditions.
<b>Response rate</b>	6	The preliminary response rate for the survey on building statistics for January 2008 was 96,6%. Improved response rate for December 2007 was 100%.
<b>Statistical unit</b>	7	The statistical unit for the collection of information is a local government institution. Local government institutions include district municipalities, metropolitan municipalities and local municipalities.
<b>Survey methodology and design</b>	8	<p>Stats SA conducts a monthly survey of metropolitan municipalities and large local municipalities on building plans passed and buildings completed. An annual survey of the remaining municipalities is conducted regarding buildings completed. The monthly survey represents approximately 90 percent of the total value of buildings completed. Information regarding building plans passed and buildings completed for the private sector is collected by mail, fax and telephone.</p> <p>According to the municipalities, they are not always notified about low-cost housing projects. Data regarding subsidised low-cost dwelling-houses, supplied by the provincial governments and co-ordinated by the National Department of Housing, are shown in table 29 to table 31 (page 37).</p>
<b>Constant prices</b>	9	The value of building plans passed and buildings completed at constant prices measures building activities in terms of ruling prices in a specific base year, which is currently 2000. The value of building plans passed at constant prices for each month is obtained by deflating the values at current prices with a price index known as the 'lump sum domestic buildings' as published in statistical release P0151: <i>JBCC Contract Price Adjustment Provisions Work Group Indices</i> . In order to be applicable, these indices (base February 1991=100) are converted to the base year 2000=100.



- 10** The value of buildings completed at constant prices is obtained by deflating the values at current prices with the price index which is used to calculate building plans passed at constant prices (see paragraph 8). Since the completion of buildings may extend over a few months to a few years, the current value of buildings completed is deflated by price indices which prevailed at the time the plans were passed. Therefore, the duration of the completion of different types of buildings are taken into account in ascertaining the deflators e.g. the value of dwelling-houses completed at constant prices at January 2007 is obtained by deflating the current value of dwelling-houses completed for January 2007 with the price index of a month six months prior to January 2007. Furthermore, the value of other residential buildings, non-residential buildings and additions and alterations at constant prices is obtained by deflating the current values with price indices of 12 months, 18 months and 12 months prior to the relevant month, respectively.
- Seasonal adjustment**
- 11** Seasonally adjusted estimates of building plans passed and buildings completed are generated each month, using the X-11 Seasonal Adjustment Program developed by US Bureau of the Census Economic Research and Analyses Division, 1968.
- 12** Seasonal adjustment is a means of removing the estimated effects of normal seasonal variation from the series so that the effects of other influences on the series can be more clearly recognised. Seasonal adjustment does not aim to remove irregular or non-seasonal influences which may be present in any particular month. Influences that are volatile or unsystematic can still make it difficult to interpret the movement of the series even after adjustment for seasonal variations. Therefore, the month-to-month movements of seasonally adjusted estimates may not be reliable indicators of trend behaviour.
- Trend cycle**
- 13** The trend is a long-term pattern or movement of a time series. The X-11 Seasonal Adjustment Program is used for smoothing seasonally adjusted data.
- Revised figures**
- 14** Revised figures are due to late submission of data to Stats SA, or to respondents reporting revisions or corrections to their figures. Figures for the latest month are therefore preliminary. Data are edited at municipal level.
- 15** Once a year the annual statistical release P5041.3 is published with the revised and updated information at provincial and municipal level for the previous calendar year. Due to this comprehensive revision, the monthly statistical release P5041.1 reflects provincial revision for 2007 where applicable.
- Related publications**
- 16** Users may also wish to refer to the following publications:
- P5041.3: Selected building statistics of the private sector as reported by local government institutions issued annually.
  - P9101.2: Actual and expected expenditure on construction by the public sector per statistical region issued annually.
  - Bulletin of Statistics issued quarterly.
  - South African Statistics issued annually.
  - Report 50-11-01 issued annually.
- Rounding-off of figures**
- 17** The figures in the tables have, where necessary, been rounded off to the nearest digit shown.
- Pre-release policy**
- 18** Stats SA's pre-release policy may be inspected at its website, [www.statssa.gov.za](http://www.statssa.gov.za)



**Symbols and abbreviations**

<b>19</b>	..	no meaningful percentage change between two specified periods available since either one or both of the totals are nil
	0	nil or figure too small to publish
	*	revised
	Stats SA	Statistics South Africa
	SIC	Standard Industrial Classification of all Economic Activities
	ISIC	International Standard Industrial Classification of all Economic Activities
	JBCC	Joint Building Contracts Committee
	CD	Compact Disc
	US	United States
	SARB	South African Reserve Bank
	DTI	Department of Trade and Industry

**2010 World Cup note**

- 20** Information relating to the 2010 Soccer World Cup new stadia and renovations, as well as other public sector infrastructure spending e.g. Eskom expansions and the Gautrain project, will not be included in the private sector building data series, as these are partially public sector funded.



## Glossary

<b>Additions and alterations</b>	They include extensions to existing buildings as well as internal and external alterations of existing buildings.
<b>Blocks of flats</b>	High-density housing consisting of a number of self-contained dwelling-units, each with at least one living-room together with a kitchen and bathroom, conjoined to similar units in one building.
<b>Dwelling-house</b>	A free-standing, complete structure on a separate stand or a self-contained dwelling-unit, e.g. granny flat, on the same premises as an existing residence. Out-buildings and garages are included.
<b>Local government institutions</b>	Include – <ul style="list-style-type: none"> <li>• District municipalities;</li> <li>• Metropolitan municipalities; and</li> <li>• Local municipalities.</li> </ul>
<b>Municipality</b>	A generic term describing the “unit” of government in the local spheres responsible for local government in a geographically demarcated area and including district, metropolitan and local municipalities. It is an institution consisting of a municipal council (elected political representatives) and municipal administration (appointed officials).
<b>District municipality</b>	Municipality that has municipal executive and legislative authority in an area that includes more than one municipality, and which is described in section 155(1) of the Constitution as a category C municipality (Refer to Local Government: Municipal Structure Act, 1998 (Act No. 117 of 1998)).
<b>Metropolitan municipality</b>	Municipality that has municipal executive and legislative authority in an area that includes more than one municipality, and which is described in section 155(1) of the Constitution as a category A municipality (Refer to Local Government: Municipal Structure Act, 1998 (Act No. 117 of 1998)).
<b>Local municipality</b>	Municipality that shares municipal executive and legislative authority in its area with a district municipality within whose area it falls, that is described in section 155(1) of the constitution as a category B municipality.
<b>Non-residential buildings</b>	Comprise factories, commercial, financial and other office buildings, as well as other buildings not used for residential purposes, such as churches, halls, clubs, schools and hospitals.
<b>Other residential buildings</b>	Institutions for the disabled, boarding houses, old people’s homes, hostels, hotels, motels, guesthouses, holiday chalets, bed-and-breakfast accommodation, entertainment centres and casinos.
<b>Percentage change</b>	<p>When using monthly actual values, the percentage change is the change in actual values of building activities (building plans passed or buildings completed) of the relevant month compared with the actual values of building activities (building plans passed or buildings completed) of the same month in the previous year expressed as a percentage.</p> <p>When using annual actual values, the percentage change is the change in the actual values of building activities (building plans passed or buildings completed) of the relevant year compared with the actual values of building activities (building plans passed or buildings completed) of the previous year expressed as a percentage.</p> <p>When using seasonally adjusted values, the percentage change is the change in the seasonally adjusted values of building activities (building plans passed or buildings completed) of the relevant month compared with the seasonally adjusted values of building activities (building plans passed or buildings completed) of the previous month expressed as a percentage.</p>



<b>Reference period</b>	One calendar month.
<b>Residential buildings</b>	Comprise dwelling-houses, flats, townhouses and other residential buildings.
<b>Townhouses</b>	Multiple, medium-density dwelling-units and include cluster housing, group housing, simplexes, duplexes, triplexes and other similar dwelling-units which are usually grouped together, with one level of each unit on ground level. This excludes blocks of flats.



## General information

Stats SA publishes approximately 300 different statistical releases each year. It is not economically viable to produce them in more than one of South Africa's eleven official languages. Since the releases are used extensively, not only locally but also by international economic and social-scientific communities, Stats SA releases are published in English.

Stats SA has copyright on this publication. Users may apply the information as they wish, provided that they acknowledge Stats SA as the source of the basic data wherever they process, apply, utilise, publish or distribute the data and also that they specify that the relevant application and analysis (where applicable) result from their own processing of the data.

An advance release calendar is disseminated on [www.statssa.gov.za](http://www.statssa.gov.za)

## Stats SA products

A complete set of Stats SA publications is available at the Stats SA Library and the following libraries:

National Library of South Africa, Pretoria Division  
National Library of South Africa, Cape Town Division  
Natal Society Library, Pietermaritzburg  
Library of Parliament, Cape Town  
Bloemfontein Public Library  
Johannesburg Public Library  
Eastern Cape Library Services, King William's Town  
Central Regional Library, Polokwane  
Central Reference Library, Nelspruit  
Central Reference Collection, Kimberley  
Central Reference Library, Mmabatho

Stats SA also provides a subscription service.

## Electronic services

A large range of data are available via on-line services, diskette, CD and computer printouts. For more details about our electronic data services, contact (012) 310 8600/8390/8351/4892/8496/8095.

You can visit us on the Internet at: [www.statssa.gov.za](http://www.statssa.gov.za)

## Enquiries

Telephone number: (012) 310 8600/8390/8351/4892/8496/8095 (user information services)  
(012) 310 8228/310 8007 (technical enquiries)  
(012) 310 8161 (orders)  
(012) 310 4883/4885/8018 (library)

Fax number: (012) 310 8664 (technical enquiries)

Email: [Gretaz@statssa.gov.za](mailto:Gretaz@statssa.gov.za) (technical enquiries)  
[info@statssa.gov.za](mailto:info@statssa.gov.za) (user information services)  
[distribution@statssa.gov.za](mailto:distribution@statssa.gov.za) (orders)

Postal address: Private Bag X44, Pretoria, 0001

*Produced by Stats SA*