



**Statistics
South Africa**

Preferred supplier of quality statistics



Statistical release

P5041.1

Selected building statistics of the private sector as reported by local government institutions

**January 2007
(Preliminary)**

**Embargoed until:
20 March 2007
13:00**

Enquiries:

User Information Services
Tel: (012) 310 8600 / 4892 / 8390

Forthcoming issue:

February 2007

Expected release date

18 April 2007

Statistics South Africa • Mbalo-mbalo ya Afrika Tshipembe • Tshilayiko ta Afrika-Dzonga • Dipalopalo tsa Aforika Borwa • Ezezibalo zaseNingizimu Afrika
Dipalopalo tša Afrika Borwa • Dipalopalo tsa Afrika Borwa • Ubalo lwaseMzantsi Afrika • Telubalo eNingizimu Afrika • iNanimbalo leSewula Afrika • Statistiek Suid-Afrika

email: info@statssa.gov.za
www.statssa.gov.za

170 Andries Street • Private Bag X44, 0001 Pretoria, South Africa
Tel: +27(12) 310 8911, Fax: +27(12) 321 7381

Contents

Page

SUMMARY OF FINDINGS: SELECTED BUILDING STATISTICS OF THE PRIVATE SECTOR

3

Tables

Table 1	Values and percentage change of recorded building plans passed by larger municipalities at current prices by type of building	9
Table 2	Seasonally adjusted values and percentage change of recorded building plans passed by larger municipalities at current prices by type of building	10
Table 3	Values and percentage change of recorded building plans passed by larger municipalities at constant 2000 prices by type of building	11
Table 4	Seasonally adjusted values and percentage change of recorded building plans passed by larger municipalities at constant 2000 prices by type of building	12
Table 5	Values and percentage change of buildings reported as completed to larger municipalities at current prices by type of building	13
Table 6	Seasonally adjusted values and percentage change of buildings reported as completed to larger municipalities at current prices by type of building	14
Table 7	Values and percentage change of buildings reported as completed to larger municipalities at constant 2000 prices by type of building	15
Table 8	Seasonally adjusted values and percentage change of buildings reported as completed to larger municipalities at constant 2000 prices by type of building	16
Table 9	Recorded building plans passed by larger municipalities at current prices by type of building: South Africa	17
Table 10	Recorded building plans passed by larger municipalities at current prices by type of building: Western Cape	18
Table 11	Recorded building plans passed by larger municipalities at current prices by type of building: Eastern Cape	19
Table 12	Recorded building plans passed by larger municipalities at current prices by type of building: Northern Cape	20
Table 13	Recorded building plans passed by larger municipalities at current prices by type of building: Free State	21
Table 14	Recorded building plans passed by larger municipalities at current prices by type of building: KwaZulu-Natal	22
Table 15	Recorded building plans passed by larger municipalities at current prices by type of building: North West	23
Table 16	Recorded building plans passed by larger municipalities at current prices by type of building: Gauteng	24
Table 17	Recorded building plans passed by larger municipalities at current prices by type of building: Mpumalanga	25
Table 18	Recorded building plans passed by larger municipalities at current prices by type of building: Limpopo	26
Table 19	Buildings reported as completed to larger municipalities at current prices by type of building: South Africa	27
Table 20	Buildings reported as completed to larger municipalities at current prices by type of building: Western Cape	28
Table 21	Buildings reported as completed to larger municipalities at current prices by type of building: Eastern Cape	29
Table 22	Buildings reported as completed to larger municipalities at current prices by type of building: Northern Cape	30
Table 23	Buildings reported as completed to larger municipalities at current prices by type of building: Free State	31
Table 24	Buildings reported as completed to larger municipalities at current prices by type of building: KwaZulu-Natal	32

Table 25	Buildings reported as completed to larger municipalities at current prices by type of building: North West	33
Table 26	Buildings reported as completed to larger municipalities at current prices by type of building: Gauteng	34
Table 27	Buildings reported as completed to larger municipalities at current prices by type of building: Mpumalanga	35
Table 28	Buildings reported as completed to larger municipalities at current prices by type of building: Limpopo.....	36
Table 29	Subsidised low-cost dwelling-houses completed or under construction by province	37
Table 30	Subsidised low-cost dwelling-houses completed by province	37
Explanatory notes		38
Glossary		41
General information		43

SUMMARY OF FINDINGS: SELECTED BUILDING STATISTICS OF THE PRIVATE SECTOR

Table A – Selected key figures regarding recorded building plans passed by larger municipalities at current prices for January 2007

Estimates at current prices	January 2006 R'000	January 2007 1/ R'000	Difference in value between January 2006 and January 2007 R'000	Percentage change between January 2006 and January 2007
Residential buildings	2 477 400	2 500 991	+23 591	+ 1,0
Dwelling-houses	1 502 804	1 787 034	+284 230	+ 18,9
Flats and townhouses	952 565	643 117	-309 448	- 32,5
Other residential buildings	22 031	70 840	+48 809	+ 221,5
Non-residential buildings	743 879	1 003 897	+260 018	+ 35,0
Additions and alterations	1 034 019	1 297 222	+263 203	+ 25,5
Total	4 255 298	4 802 110	+546 812	+ 12,9

1/ January 2007 figures should be regarded as preliminary because of possible backlogs and incomplete reporting by municipalities.

Increase in total value of recorded building plans passed slows down

As indicated in Table A, the value of recorded building plans passed by larger municipalities (at current prices) during January 2007 increased by 12,9% (+R546,8 million) compared with January 2006, decreasing from 33,3% for January 2006 compared with January 2005.

The largest percentage increase was reported for non-residential buildings (+35,0% or R260,0 million), followed by additions and alterations (+25,5% or R263,2 million) and residential buildings (1,0% or R23,6 million).

Table B – Recorded building plans passed by larger municipalities aggregated to provincial level for January 2007

Estimates at current prices	January 2006 R'000	January 2007 1/ R'000	Percentage contribution to the total value of building plans passed during January 2006	Percentage change between January 2006 and January 2007	Contribution (percentage points) to the percentage change in the value of buildings plans passed between January 2006 and January 2007 2/ R'000	Difference in value between January 2006 and January 2007 R'000
Western Cape	1 030 199	1 135 221	24,2	+ 10,2	+ 2,5	+ 105 022
Eastern Cape	206 843	204 761	4,9	-1,0	-0,0	-2 082
Northern Cape	44 041	23 798	1,0	-46,0	-0,5	-20 243
Free State	55 298	173 017	1,3	+ 212,9	+ 2,8	+ 117 719
KwaZulu-Natal	533 678	550 574	12,6	+ 3,2	+ 0,4	+ 16 896
North West	163 391	224 514	3,8	+ 37,4	+ 1,4	+ 61 123
Gauteng	1 950 509	2 101 773	45,8	+ 7,8	+ 3,6	+ 151 264
Mpumalanga	187 859	277 833	4,4	+ 47,9	+ 2,1	+ 89 974
Limpopo	83 480	110 619	2,0	+ 32,5	+ 0,6	+ 27 139
Total	4 255 298	4 802 110	100,0	+ 12,9	+ 12,9	+ 546 812

1/ January 2007 figures should be regarded as preliminary because of possible backlogs and incomplete reporting by municipalities.

2/ The contribution (percentage points) is calculated by multiplying the percentage change of each province between January 2006 and January 2007 with the percentage contribution of the corresponding province to the total value of building plans passed during January 2006, divided by 100.

Seven provinces reported increases in the value of recorded building plans passed (see Table B). The largest contributors to the increase of 12,9% were Gauteng (+3,6 percentage points or R151,3 million), the Free State (+2,8 percentage points or R117,7 million) and the Western Cape (+2,5 percentage points or R105,0 million).

Table C – Selected key figures regarding recorded building plans passed by larger municipalities at constant 2000 prices for January 2007

Estimates at constant 2000 prices	January 2006	January 2007	Difference in value between January 2006 and January 2007	Percentage change between January 2006 and January 2007
	R'000	R'000		
Residential buildings	1 662 685	1 495 808	-166 877	-10,0
Non-residential buildings	499 248	600 417	+101 169	+ 20,3
Additions and alterations	693 972	775 850	+81 878	+ 11,8
Total	2 855 905	2 872 075	+16 170	+ 0,6

1/ January 2007 figures should be regarded as preliminary because of possible backlogs and incomplete reporting by municipalities.

Seasonally adjusted estimates at constant 2000 prices	August to October 2006	November 2006 to January 2007	Percentage change between August to October 2006 and November 2006 to January 2007
	R'000	R'000	
Residential buildings	6 137 881	6 052 968	-1,4
Non-residential buildings	2 206 497	2 347 329	+ 6,4
Additions and alterations	2 792 801	3 023 545	+ 8,3
Total	11 137 179	11 423 842	+ 2,6

Total real value of recorded building plans passed increased

As indicated in Table C, the value of recorded building plans passed by larger municipalities (at constant 2000 prices) during January 2007 increased by 0,6% (+R16,2 million) compared with January 2006. The largest percentage increase was reported for non-residential buildings (+20,3% or +R101,2 million), whereas additions and alterations increased by 11,8% (+R81,9 million). Residential buildings showed a decrease of 10,0% or R166,9 million.

The seasonally adjusted real value of recorded building plans passed by larger municipalities during the quarter ending January 2007 increased by 2,6% compared with the previous quarter, mainly due to increases reported in additions and alterations (+8,3%) and non-residential building plans passed (+6,4%) (see table C).

Figure 1 shows both the seasonally adjusted and the trend series for recorded building plans passed at constant 2000 prices between January 2002 and January 2007. The trend series reflects a slight increase in 2002, followed by a steep increase from May 2003 up to the end of 2005. After a short period of downturn in 2006, the trend is currently moving sideways.

Figure 1 – Real value of recorded building plans passed by larger municipalities at constant 2000 prices

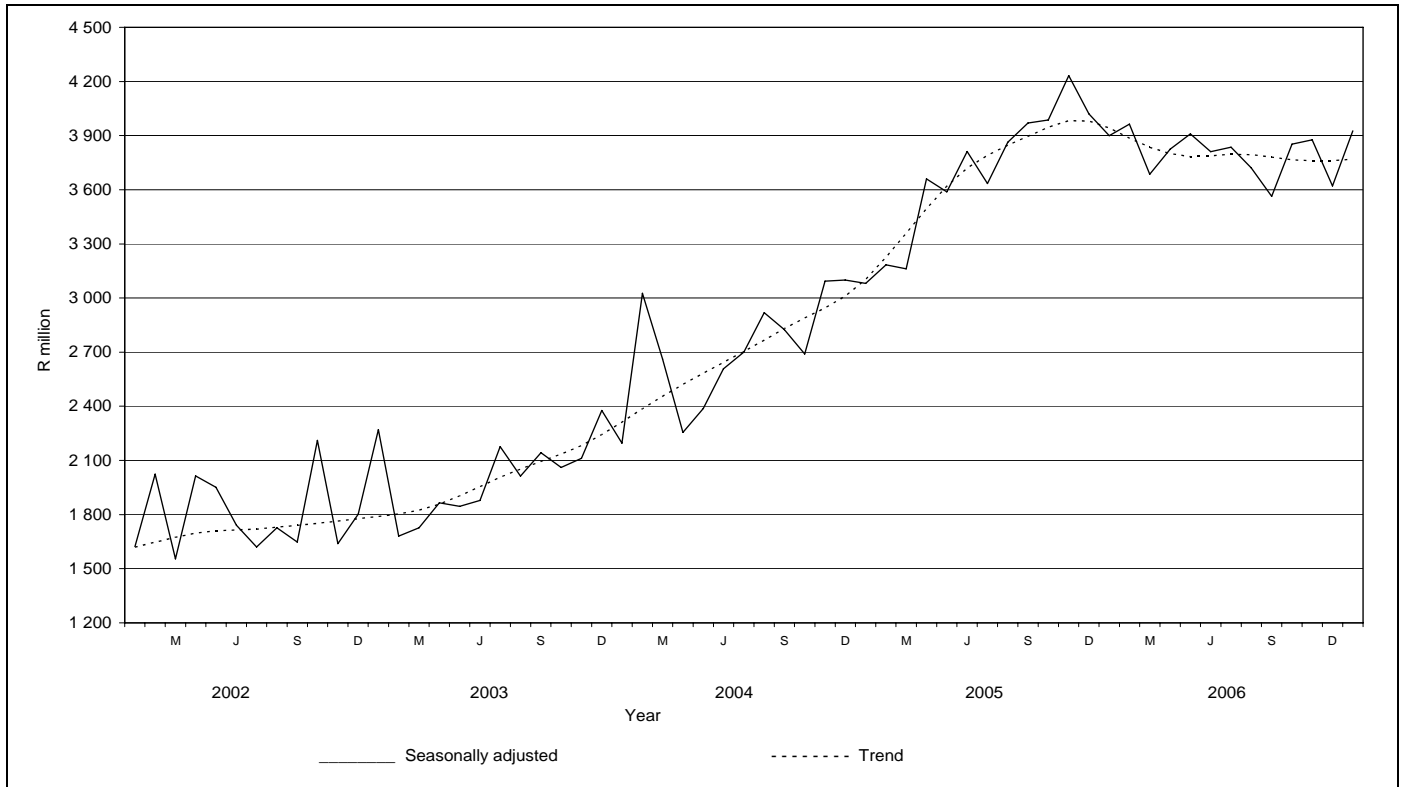


Table D – Selected key figures regarding buildings reported as completed to larger municipalities at current prices for January 2007

Estimates at current prices	January 2006 R'000	January 2007 1/ R'000	Difference in value between January 2006 and January 2007 R'000	Percentage change between January 2006 and January 2007
Residential buildings	1 215 572	1 601 754	+386 182	+ 31,8
Dwelling-houses	730 577	1 003 248	+272 671	+ 37,3
Flats and townhouses	484 235	519 414	+35 179	+ 7,3
Other residential buildings	760	79 092	+78 332	+ 10306,8
Non-residential buildings	314 128	476 596	+162 468	+ 51,7
Additions and alterations	397 047	649 312	+252 265	+ 63,5
Total	1 926 747	2 727 662	+800 915	+ 41,6

1/ January 2007 figures should be regarded as preliminary because of possible backlogs and incomplete reporting by municipalities.

Total value of buildings reported as completed increased

As indicated in Table D, the value of buildings reported as completed to larger municipalities (at current prices) during January 2007 increased by 41,6% (+R800,9 million) compared with January 2006.

The largest percentage increase in the value of buildings completed was reported for additions and alterations (+63,5% or R252,3 million), followed by non-residential buildings (+51,7% or R162,5 million) and residential buildings (+31,8% or R386,2 million). Within the residential buildings, other residential buildings recorded the highest growth rate, mainly as a result of a casino that was reported as complete to the value of R75 million in January 2007.

Table E – Buildings reported as completed to larger municipalities aggregated to provincial level for January 2007

Estimates at current prices	January 2006 R'000	January 2007 1/ R'000	Percentage contribution to the total value of buildings completed during January 2006	Percentage change between January 2006 and January 2007	Contribution (percentage points) to the percentage change in the value of buildings completed between January 2006 and January 2007 2/ R'000	Difference in value between January 2006 and January 2007 R'000
Western Cape	545 851	818 328	28,3	+ 49,9	+ 14,2	+ 272 477
Eastern Cape	91 036	95 240	4,7	+ 4,6	+ 0,2	+ 4 204
Northern Cape	3 686	14 388	0,2	+ 290,3	+ 0,6	+ 10 702
Free State	32 019	132 861	1,7	+ 314,9	+ 5,2	+ 100 842
KwaZulu-Natal	301 498	310 201	15,6	+ 2,9	+ 0,5	+ 8 703
North West	126 522	90 374	6,6	-28,6	-1,9	-36 148
Gauteng	714 442	1 151 030	37,1	+ 61,1	+ 22,7	+ 436 588
Mpumalanga	74 541	81 086	3,9	+ 8,8	+ 0,3	+ 6 545
Limpopo	37 152	34 154	1,9	-8,1	-0,2	-2 998
Total	1 926 747	2 727 662	100,0	+ 41,6	+ 41,6	+ 800 915

1/ January 2007 figures should be regarded as preliminary because of possible backlogs and incomplete reporting by municipalities.

2/ The contribution (percentage points) is calculated by multiplying the percentage change of each province between January 2006 and January 2007 with the percentage contribution of the corresponding province to the total value of buildings completed during January 2006, divided by 100.

Seven provinces reported increases in the value of buildings completed. The largest contributors to the increase of 41,6% were Gauteng (+22,7 percentage points or R436,6 million) the Western Cape (+14,2 percentage points or R272,5 million) and Free State (+5,2 percentage points or R100,8 million) (see Table E).

Table F – Selected key figures regarding buildings reported as completed to larger municipalities at constant 2000 prices for January 2007

Estimates at constant 2000 prices	January 2006	January 2007	Difference in value between January 2006 and January 2007	Percentage change between January 2006 and January 2007
	R'000	R'000		
Residential buildings	845 982	1 034 247	188 265	+ 22,3
Non-residential buildings	230 468	327 332	96 864	+ 42,0
Additions and alterations	281 793	435 780	153 987	+ 54,6
Total	1 358 243	1 797 359	439 116	+ 32,3

1/ January 2007 figures should be regarded as preliminary because of possible backlogs and incomplete reporting by municipalities.

Seasonally adjusted estimates at constant 2000 prices	August to October 2006	November 2006 to January 2007	Percentage change between August to October 2006 and November 2006 to January 2007
	R'000	R'000	
Residential buildings	4 308 960	4 440 494	+ 3,1
Non-residential buildings	919 573	1 229 895	+ 33,7
Additions and alterations	1 103 910	1 399 248	+ 26,8
Total	6 332 443	7 069 637	+ 11,6

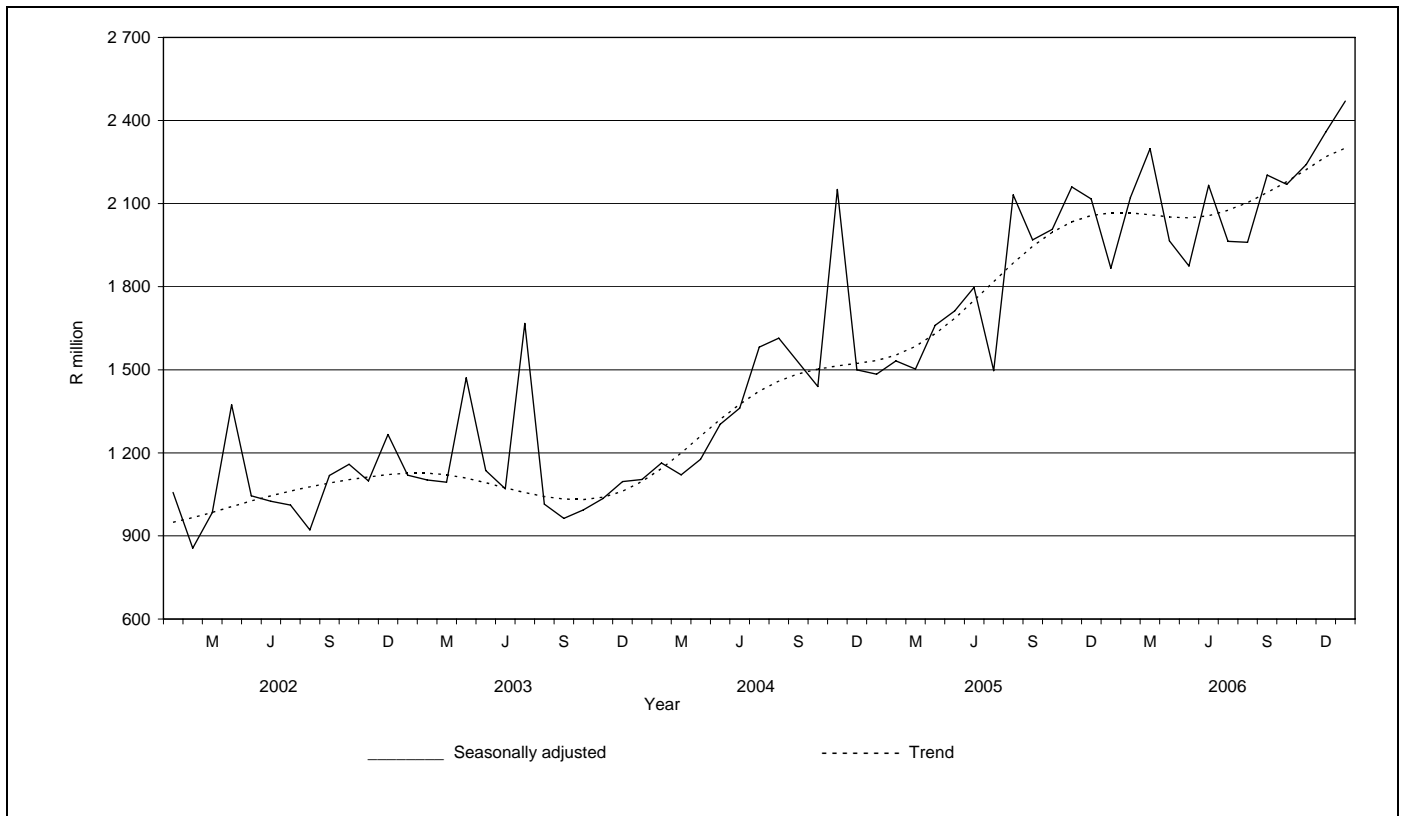
Total real value of buildings reported as completed increased

As indicated in Table F, the value of buildings reported as completed to larger municipalities (at constant 2000 prices) during January 2007 increased by 32,3% (+R439,1 million) compared with January 2006. The largest percentage increase in the real value of buildings completed was reported for additions and alterations (+54,6% or R154,0 million), followed by non-residential buildings (+42,0% or R 96,9 million) and residential buildings (+22,3% or R188,3 million).

Furthermore, the seasonally adjusted real value of buildings reported as completed to larger municipalities during the quarter ending January 2007 increased by 11,6% compared with the previous quarter. Increases in the seasonally adjusted real value of buildings completed were reported for non-residential buildings (+33,7%), additions and alterations (+26,8%) and residential buildings (+3,1%) during the above-mentioned period.

Figure 2 shows both the seasonally adjusted and trend series for buildings reported as completed to municipalities at constant 2000 prices between January 2002 and January 2007. The trend series reflects a slight increase in 2002, slowing again until January 2003. A steep increase is evident from January 2003 to end of 2005, followed by a slight downturn from January 2006. The trend series increased from May 2006.

Figure 2 - Real value of buildings reported as completed to larger municipalities at constant 2000 prices



PJ Lehohla
Statistician-General

Table 1 - Values and percentage change of recorded building plans passed by larger municipalities at current prices by type of building

Year and month		Residential buildings		Non-residential buildings		Additions and alterations		Total	
		R'000	% change 1/	R'000	% change 1/	R'000	% change 1/	R'000	% change 1/
2006	January	2 477 400	+41,3	743 879	+38,1	1 034 019	+14,7	4 255 298	+33,3
	February	3 114 088	+32,7	874 034	+47,5	1 408 647	+22,1	5 396 769	+31,9
	March	2 906 768	+24,1	1 153 382	+19,7	1 493 783	+21,2	5 553 933	+22,4
	April	2 549 416	-1,5	1 311 954	+67,3	1 354 980	+4,0	5 216 350	+11,6
	May*	3 476 618	-0,2	1 224 893	+55,4	1 787 849	+32,3	6 489 360	+15,4
	June	3 626 992	+12,1	970 765	+0,9	1 592 187	+6,4	6 189 944	+8,7
	July	3 764 006	+7,2	1 365 159	+35,0	1 749 837	+19,6	6 879 002	+14,9
	August	3 805 509	+9,0	1 418 691	+15,0	1 609 868	-0,8	6 834 068	+7,6
	September	3 534 304	-8,6	884 098	+27,8	1 640 303	+4,1	6 058 705	-1,2
	October	3 743 458	+0,5	1 618 920	+65,6	1 725 605	-9,9	7 087 983	+7,1
	November	3 847 547	+3,2	1 280 072	-4,4	1 743 551	+7,2	6 871 170	+2,7
	December	2 577 037	-11,0	1 007 032	+56,3	1 381 123	+2,4	4 965 192	+1,6
	Total	39 423 143	+6,7	13 852 879	+31,6	18 521 752	+9,0	71 797 774	+11,3
2007	January 2/	2 500 991	+1,0	1 003 897	+35,0	1 297 222	+25,5	4 802 110	+12,9

1/ The annual/monthly percentage change is the change in the values of recorded building plans passed by municipalities of the relevant year/month compared with the values of recorded building plans passed by municipalities of the comparable period of the previous year expressed as a percentage.

2/ Preliminary figures.

* Revised.

Table 2 - Seasonally adjusted values and percentage change of recorded building plans passed by larger municipalities at current prices by type of building

Year and month		Residential buildings		Non-residential buildings		Additions and alterations		Total	
		R'000	% change 1/	R'000	% change 1/	R'000	% change 1/	R'000	% change 1/
2006	January	3 425 560	-5,2	983 990	+29,7	1 408 386	-11,9	5 817 936	-2,5
	February	3 345 239	-2,3	1 052 259	+6,9	1 536 811	+9,1	5 934 309	+2,0
	March	3 128 588	-6,5	939 646	-10,7	1 510 077	-1,7	5 578 311	-6,0
	April	2 980 326	-4,7	1 312 444	+39,7	1 519 088	+0,6	5 811 858	+4,2
	May	3 172 353	+6,4	1 237 688	-5,7	1 603 788	+5,6	6 013 829	+3,5
	June	3 450 643	+8,8	965 683	-22,0	1 531 728	-4,5	5 948 054	-1,1
	July	3 297 556	-4,4	1 180 604	+22,3	1 582 640	+3,3	6 060 800	+1,9
	August	3 409 697	+3,4	1 130 827	-4,2	1 450 373	-8,4	5 990 897	-1,2
	September	3 190 542	-6,4	1 009 611	-10,7	1 580 843	+9,0	5 780 996	-3,5
	October	3 360 876	+5,3	1 433 324	+42,0	1 503 293	-4,9	6 297 493	+8,9
	November	3 384 568	+0,7	1 373 218	-4,2	1 642 802	+9,3	6 400 588	+1,6
	December	3 231 751	-4,5	1 190 952	-13,3	1 615 904	-1,6	6 038 607	-5,7
2007	January	3 456 610	+7,0	1 337 514	+12,3	1 780 396	+10,2	6 574 520	+8,9
	Aug-Oct 06	9 961 115		3 573 762		4 534 509		18 069 386	
	Nov 06 - Jan 07 2/	10 072 929	+1,1	3 901 684	+9,2	5 039 102	+11,1	19 013 715	+5,2

1/ The percentage change is the change in the seasonally adjusted values of recorded building plans passed by municipalities of the relevant month compared with the seasonally adjusted values of recorded building plans passed by municipalities of the previous month expressed as a percentage.

2/ The percentage change is the change in the seasonally adjusted values of recorded building plans passed by municipalities of the current quarter compared with the seasonally adjusted values of recorded building plans passed by municipalities of the previous quarter expressed as a percentage.

Table 3 - Values and percentage change of recorded building plans passed by larger municipalities at constant 2000 prices by type of building

Year and month		Residential buildings		Non-residential buildings		Additions and alterations		Total	
		R'000	% change 1/	R'000	% change 1/	R'000	% change 1/	R'000	% change 1/
2006	January	1 662 685	+33,6	499 248	+30,6	693 972	+8,5	2 855 905	+26,0
	February	2 078 830	+25,1	583 467	+39,1	940 352	+15,0	3 602 649	+24,3
	March	1 936 554	+17,5	768 409	+13,3	995 192	+14,7	3 700 155	+15,9
	April	1 682 783	-6,8	865 976	+58,2	894 376	-1,6	3 443 135	+5,5
	May	2 263 423	-6,7	797 456	+45,1	1 163 964	+23,6	4 224 843	+7,8
	June	2 320 532	+3,3	621 091	-7,1	1 018 674	-2,0	3 960 297	+0,2
	July	2 373 270	-1,6	860 756	+23,9	1 103 302	+9,8	4 337 328	+5,5
	August	2 346 183	-1,7	874 655	+3,8	992 520	-10,5	4 213 358	-2,9
	September	2 170 948	-17,6	543 058	+15,3	1 007 557	-6,2	3 721 563	-10,9
	October	2 289 577	-9,6	990 165	+49,0	1 055 416	-18,9	4 335 158	-3,6
	November	2 329 024	-7,8	774 862	-14,6	1 055 418	-4,2	4 159 304	-8,2
	December	1 551 497	-20,7	606 281	+39,2	831 501	-8,8	2 989 279	-9,6
	Total	25 005 306	-1,9	8 785 424	+21,0	11 752 244	+0,3	45 542 974	+2,4
2007	January	1 495 808	-10,0	600 417	+20,3	775 850	+11,8	2 872 075	+0,6

1/ The annual/monthly percentage change is the change in the values of recorded building plans passed by municipalities of the relevant year/month compared with the values of recorded building plans passed by municipalities of the comparable period of the previous year expressed as a percentage.

2/ Preliminary figures.

Table 4 - Seasonally adjusted values and percentage change of recorded building plans passed by larger municipalities at constant 2000 prices by type of building

Year and month		Residential buildings		Non-residential buildings		Additions and alterations		Total	
		R'000	% change 1/	R'000	% change 1/	R'000	% change 1/	R'000	% change 1/
2006	January	2 296 660	-5,6	660 063	+29,0	942 560	-12,4	3 899 283	-3,0
	February	2 235 514	-2,7	704 265	+6,7	1 023 634	+8,6	3 963 413	+1,6
	March	2 076 533	-7,1	607 607	-13,7	1 001 801	-2,1	3 685 941	-7,0
	April	1 955 784	-5,8	867 470	+42,8	1 001 522	-0,0	3 824 776	+3,8
	May	2 058 734	+5,3	807 415	-6,9	1 043 697	+4,2	3 909 846	+2,2
	June	2 208 988	+7,3	620 791	-23,1	981 309	-6,0	3 811 088	-2,5
	July	2 085 030	-5,6	749 303	+20,7	1 001 582	+2,1	3 835 915	+0,7
	August	2 116 009	+1,5	704 051	-6,0	901 729	-10,0	3 721 789	-3,0
	September	1 965 645	-7,1	623 478	-11,4	974 059	+8,0	3 563 182	-4,3
	October	2 056 227	+4,6	878 968	+41,0	917 013	-5,9	3 852 208	+8,1
	November	2 049 760	-0,3	832 640	-5,3	993 647	+8,4	3 876 047	+0,6
	December	1 938 011	-5,5	715 029	-14,1	968 100	-2,6	3 621 140	-6,6
2007	January	2 065 197	+6,6	799 660	+11,8	1 061 798	+9,7	3 926 655	+8,4
	Aug-Oct 06	6 137 881		2 206 497		2 792 801		11 137 179	
	Nov 06 - Jan 07 2/	6 052 968	-1,4	2 347 329	+6,4	3 023 545	+8,3	11 423 842	+2,6

1/ The percentage change is the change in the seasonally adjusted values of recorded building plans passed by municipalities of the relevant month compared with the seasonally adjusted values of recorded building plans passed by municipalities of the previous month expressed as a percentage.

2/ The percentage change is the change in the seasonally adjusted values of recorded building plans passed by municipalities of the current quarter compared with the seasonally adjusted values of recorded building plans passed by municipalities of the previous quarter expressed as a percentage.

Table 5 - Values and percentage change of buildings reported as completed to larger municipalities at current prices by type of building

Year and month		Residential buildings		Non-residential buildings		Additions and alterations		Total	
		R'000	% change 1/	R'000	% change 1/	R'000	% change 1/	R'000	% change 1/
2006	January	1 215 572	+40,2	314 128	+9,2	397 047	+25,0	1 926 747	+30,8
	February	1 728 454	+36,2	399 432	+95,3	540 680	+68,2	2 668 566	+48,7
	March	2 042 286	+51,3	599 555	+92,4	569 071	+79,0	3 210 912	+62,2
	April	1 684 803	+20,1	256 817	+30,7	445 112	+33,6	2 386 732	+23,5
	May	1 921 188	+14,0	476 600	+18,1	565 071	+19,6	2 962 859	+15,7
	June	2 218 897	+46,7	374 804	-3,6	538 648	+5,4	3 132 349	+29,8
	July	2 161 280	+37,7	323 492	+33,8	539 489	+52,9	3 024 261	+39,8
	August	2 218 752	-2,6	464 305	-20,8	541 903	+34,0	3 224 960	-1,3
	September	2 425 487	+15,6	397 862	+8,9	643 575	+43,6	3 466 924	+19,1
	October	2 224 328	+12,5	716 444	+35,0	512 364	+1,2	3 453 136	+14,5
	November	2 411 587	-10,5	638 182	+44,9	836 814	+87,4	3 886 583	+8,5
	December	2 534 158	+9,2	516 941	+105,6	501 061	+13,4	3 552 160	+17,8
	Total	24 786 792	+17,9	5 478 562	+30,2	6 630 835	+36,1	36 896 189	+22,5
2007	January 2/	1 601 754	+31,8	476 596	+51,7	649 312	+63,5	2 727 662	+41,6

1/ The annual/monthly percentage change is the change in the values of buildings reported as completed to municipalities of the relevant year/month compared with the values of buildings reported as completed to municipalities of the comparable period of the previous year expressed as a percentage.

2/ Preliminary figures.

Table 6 - Seasonally adjusted values and percentage change of buildings reported as completed to larger municipalities at current prices by type of building

Year and month		Residential buildings		Non-residential buildings		Additions and alterations		Total	
		R'000	% change 1/	R'000	% change 1/	R'000	% change 1/	R'000	% change 1/
2006	January	1 772 125	-18,5	374 541	+31,4	436 204	-15,8	2 582 870	-13,3
	February	1 995 508	+12,6	476 747	+27,3	529 550	+21,4	3 001 805	+16,2
	March	2 147 497	+7,6	535 039	+12,2	588 005	+11,0	3 270 541	+9,0
	April	1 908 489	-11,1	386 482	-27,8	529 539	-9,9	2 824 510	-13,6
	May	1 827 118	-4,3	370 139	-4,2	508 294	-4,0	2 705 551	-4,2
	June	2 229 829	+22,0	422 017	+14,0	521 930	+2,7	3 173 776	+17,3
	July	2 007 473	-10,0	386 299	-8,5	518 298	-0,7	2 912 070	-8,2
	August	2 052 851	+2,3	363 306	-6,0	523 493	+1,0	2 939 650	+0,9
	September	2 266 503	+10,4	368 629	+1,5	618 754	+18,2	3 253 886	+10,7
	October	2 154 408	-4,9	573 348	+55,5	475 931	-23,1	3 203 687	-1,5
	November	1 949 030	-9,5	600 807	+4,8	777 142	+63,3	3 326 979	+3,8
	December	2 351 648	+20,7	602 535	+0,3	587 680	-24,4	3 541 863	+6,5
2007	January	2 377 162	+1,1	565 633	-6,1	715 064	+21,7	3 657 859	+3,3
	Aug-Oct 06	6 473 762		1 305 283		1 618 178		9 397 223	
	Nov 06 - Jan 07 2/	6 677 840	+3,2	1 768 975	+35,5	2 079 886	+28,5	10 526 701	+12,0

1/ The percentage change is the change in the seasonally adjusted values of buildings reported as completed to municipalities of the relevant month compared with the seasonally adjusted values of buildings reported as completed to municipalities of the previous month expressed as a percentage.

2/ The percentage change is the change in the seasonally adjusted values of buildings reported as completed to municipalities of the current quarter compared with the seasonally adjusted values of buildings reported as completed to municipalities of the previous quarter expressed as a percentage.

Table 7 - Values and percentage change of buildings reported as completed to larger municipalities at constant 2000 prices by type of building

Year and month		Residential buildings		Non-residential buildings		Additions and alterations		Total	
		R'000	% change 1/	R'000	% change 1/	R'000	% change 1/	R'000	% change 1/
2006	January	845 982	+31,4	230 468	+3,7	281 793	+15,5	1 358 243	+22,4
	February	1 197 343	+27,4	291 344	+84,6	382 918	+57,2	1 871 605	+39,5
	March	1 409 562	+41,8	436 357	+81,3	400 472	+67,3	2 246 391	+52,4
	April	1 157 477	+12,7	185 830	+22,3	310 615	+24,8	1 653 922	+15,9
	May	1 314 228	+7,3	342 878	+9,8	393 778	+12,3	2 050 884	+8,6
	June	1 516 199	+38,3	269 449	-10,5	374 061	-0,6	2 159 709	+21,7
	July	1 462 064	+29,7	229 590	+23,6	370 528	+43,1	2 062 182	+31,2
	August	1 494 866	-8,5	328 828	-26,0	370 152	+25,5	2 193 846	-7,5
	September	1 630 716	+9,1	279 987	+1,7	438 403	+34,4	2 349 106	+12,1
	October	1 483 527	+6,3	499 961	+26,0	348 310	-4,9	2 331 798	+8,0
	November	1 594 863	-16,2	444 726	+36,1	566 947	+76,5	2 606 536	+2,1
	December	1 659 400	+1,5	358 987	+93,9	338 784	+6,6	2 357 171	+10,3
	Total	16 766 227	+10,9	3 898 405	+21,8	4 576 761	+27,6	25 241 393	+15,2
2007	January 2/	1 034 247	+22,3	327 332	+42,0	435 780	+54,6	1 797 359	+32,3

1/ The annual/monthly percentage change is the change in the values of buildings reported as completed to municipalities of the relevant year/month compared with the values of buildings reported as completed to municipalities of the comparable period of the previous year expressed as a percentage.

2/ Preliminary figures.

Table 8 - Seasonally adjusted values and percentage change of buildings reported as completed to larger municipalities at constant 2000 prices by type of building

Year and month		Residential buildings		Non-residential buildings		Additions and alterations		Total	
		R'000	% change 1/	R'000	% change 1/	R'000	% change 1/	R'000	% change 1/
2006	January	1 281 691	-16,6	275 910	+31,2	309 218	-16,4	1 866 819	-11,8
	February	1 397 280	+9,0	348 201	+26,2	375 823	+21,5	2 121 304	+13,6
	March	1 495 322	+7,0	388 465	+11,6	414 689	+10,3	2 298 476	+8,4
	April	1 315 802	-12,0	278 821	-28,2	371 134	-10,5	1 965 757	-14,5
	May	1 254 361	-4,7	264 805	-5,0	355 390	-4,2	1 874 556	-4,6
	June	1 505 961	+20,1	300 694	+13,6	359 540	+1,2	2 166 195	+15,6
	July	1 333 094	-11,5	273 928	-8,9	356 953	-0,7	1 963 975	-9,3
	August	1 342 952	+0,7	258 094	-5,8	358 901	+0,5	1 959 947	-0,2
	September	1 521 964	+13,3	259 609	+0,6	421 506	+17,4	2 203 079	+12,4
	October	1 444 044	-5,1	401 870	+54,8	323 503	-23,3	2 169 417	-1,5
	November	1 295 497	-10,3	420 104	+4,5	525 312	+62,4	2 240 913	+3,3
	December	1 544 495	+19,2	419 559	-0,1	394 696	-24,9	2 358 750	+5,3
2007	January	1 600 502	+3,6	390 232	-7,0	479 240	+21,4	2 469 974	+4,7
	Aug-Oct 06	4 308 960		919 573		1 103 910		6 332 443	
	Nov 06 - Jan 07 2/	4 440 494	+3,1	1 229 895	+33,7	1 399 248	+26,8	7 069 637	+11,6

1/ The percentage change is the change in the seasonally adjusted values of buildings reported as completed to municipalities of the relevant month compared with the seasonally adjusted values of buildings reported as completed to municipalities of the previous month expressed as a percentage.

2/ The percentage change is the change in the seasonally adjusted values of buildings reported as completed to municipalities of the current quarter compared with the seasonally adjusted values of buildings reported as completed to municipalities of the previous quarter expressed as a percentage.

Table 9 - Recorded building plans passed by larger municipalities at current prices by type of building: South Africa

Category of building	Type of building	Measuring unit	Jan. 2006*	Dec. 2006	Jan. 2007	% Change 1/
1. Residential buildings	1. Dwelling-houses < 80 square metres	Number	2 158	2 326	2 797	+29,6
		square metres	89 924	103 177	119 368	+32,7
		R'000	151 098	192 162	232 168	+53,7
	2. Dwelling-houses >= 80 square metres	Number	2 109	2 234	2 108	-0,0
		square metres	476 724	513 616	523 361	+9,8
		R'000	1 351 706	1 601 880	1 554 866	+15,0
	3. Flats and townhouses	Number	2 119	2 123	2 063	-2,6
		square metres	314 215	247 260	232 005	-26,2
		R'000	952 565	771 244	643 117	-32,5
	4. Other residential buildings 2/	square metres	7 617	4 713	19 722	+158,9
		R'000	22 031	11 751	70 840	+221,5
	5. Total residential buildings	R'000	2 477 400	2 577 037	2 500 991	+1,0
2. Non-residential buildings	1. Office and banking space	square metres	59 496	67 652	32 661	-45,1
		R'000	195 527	233 679	114 672	-41,4
	2. Shopping space	square metres	82 481	75 649	67 487	-18,2
		R'000	227 388	313 835	233 479	+2,7
	3. Industrial and warehouse space	square metres	112 065	166 469	194 965	+74,0
		R'000	289 323	433 534	552 945	+91,1
	4. Other non-residential buildings 3/	square metres	13 616	10 311	31 904	+134,3
		R'000	31 641	25 984	102 801	+224,9
	5. Total non-residential buildings	R'000	743 879	1 007 032	1 003 897	+35,0
3. Additions and alterations	1. Dwelling-houses	square metres	337 178	342 074	341 238	+1,2
		R'000	849 760	957 937	976 913	+15,0
	2. Other buildings 4/	square metres	65 601	113 706	89 501	+36,4
		R'000	184 259	423 186	320 309	+73,8
	3. Total additions and alterations	R'000	1 034 019	1 381 123	1 297 222	+25,5
4. Recorded plans passed	1. Total at current prices	R'000	4 255 298	4 965 192	4 802 110	+12,9

1/ The percentage change between monthly figures for 2006 and 2007.

2/ Other residential buildings include institutions for the disabled, boarding houses, hostels and tourism accommodation e.g. hotels, motels, guesthouses, holiday chalets, bed-and-breakfast accommodation and casinos.

3/ Other non-residential space includes churches, sport and recreation clubs, schools, crèches, hospitals and all other non-residential space.

4/ Other buildings include other residential buildings, non-residential buildings and internal alterations.

* Revised.

Table 10 - Recorded building plans passed by larger municipalities at current prices by type of building: Western Cape

Category of building	Type of building	Measuring unit	Jan. 2006*	Dec. 2006	Jan. 2007	% Change 1/
1. Residential buildings	1. Dwelling-houses < 80 square metres	Number	243	503	285	+17,3
		square metres	10 869	18 011	12 428	+14,3
		R'000	18 283	26 120	21 492	+17,6
	2. Dwelling-houses >= 80 square metres	Number	552	423	394	-28,6
		square metres	123 220	94 588	96 571	-21,6
		R'000	374 250	305 440	306 056	-18,2
	3. Flats and townhouses	Number	214	393	549	+156,5
		square metres	27 135	47 811	54 667	+101,5
		R'000	77 288	146 999	200 531	+159,5
	4. Other residential buildings 2/	square metres	0	255	12 085	..
		R'000	0	821	47 907	..
	5. Total residential buildings	R'000	469 821	479 380	575 986	+22,6
2. Non-residential buildings	1. Office and banking space	square metres	21 211	11 479	2 359	-88,9
		R'000	70 376	38 393	5 669	-91,9
	2. Shopping space	square metres	3 874	1 435	11 970	+209,0
		R'000	13 425	4 766	40 124	+198,9
	3. Industrial and warehouse space	square metres	70 580	22 451	38 582	-45,3
		R'000	192 370	68 506	120 205	-37,5
	4. Other non-residential buildings 3/	square metres	1 087	1 572	2 495	+129,5
		R'000	3 135	4 143	8 164	+160,4
	5. Total non-residential buildings	R'000	279 306	115 808	174 162	-37,6
3. Additions and alterations	1. Dwelling-houses	square metres	88 306	109 476	101 388	+14,8
		R'000	229 501	305 655	289 541	+26,2
	2. Other buildings 4/	square metres	17 275	52 618	27 726	+60,5
		R'000	51 571	181 222	95 532	+85,2
	3. Total additions and alterations	R'000	281 072	486 877	385 073	+37,0
4. Recorded plans passed	1. Total at current prices	R'000	1 030 199	1 082 065	1 135 221	+10,2

1/ The percentage change between monthly figures for 2006 and 2007.

2/ Other residential buildings include institutions for the disabled, boarding houses, hostels and tourism accommodation e.g. hotels, motels, guesthouses, holiday chalets, bed-and-breakfast accommodation and casinos.

3/ Other non-residential space includes churches, sport and recreation clubs, schools, crèches, hospitals and all other non-residential space.

4/ Other buildings include other residential buildings, non-residential buildings and internal alterations.

* Revised.

Table 11 - Recorded building plans passed by larger municipalities at current prices by type of building: Eastern Cape

Category of building	Type of building	Measuring unit	Jan. 2006	Dec. 2006	Jan. 2007	% Change 1/	
1. Residential buildings	1. Dwelling-houses < 80 square metres	Number	51	53	121	+137,3	
		square metres	2 829	2 433	5 231	+84,9	
		R'000	5 417	3 020	4 678	-13,6	
	2. Dwelling-houses >= 80 square metres	Number	155	175	122	-21,3	
		square metres	34 554	38 043	28 905	-16,3	
		R'000	78 855	110 078	68 624	-13,0	
	3. Flats and townhouses	Number	17	116	23	+35,3	
		square metres	3 866	10 910	2 681	-30,7	
		R'000	7 333	32 693	6 780	-7,5	
	4. Other residential buildings 2/	square metres	209	1 032	0	-100,0	
		R'000	383	2 490	0	-100,0	
		5. Total residential buildings	R'000	91 988	148 281	80 082	-12,9
	2. Non-residential buildings	1. Office and banking space	square metres	1 894	1 588	84	-95,6
R'000			4 618	3 094	144	-96,9	
2. Shopping space			square metres	8 871	968	216	-97,6
		R'000	20 179	1 863	582	-97,1	
		3. Industrial and warehouse space	square metres	1 072	24 814	6 620	+517,5
R'000			2 079	50 759	17 927	+762,3	
4. Other non-residential buildings 3/			square metres	831	2 966	1 232	+48,3
		R'000	2 024	5 982	3 074	+51,9	
		5. Total non-residential buildings	R'000	28 900	61 698	21 727	-24,8
3. Additions and alterations		1. Dwelling-houses	square metres	32 367	36 190	25 711	-20,6
			R'000	70 983	95 138	95 828	+35,0
		2. Other buildings 4/	square metres	6 419	1 328	1 863	-71,0
			R'000	14 972	4 088	7 124	-52,4
	3. Total additions and alterations	R'000	85 955	99 226	102 952	+19,8	
4. Recorded plans passed	1. Total at current prices	R'000	206 843	309 205	204 761	-1,0	

1/ The percentage change between monthly figures for 2006 and 2007.

2/ Other residential buildings include institutions for the disabled, boarding houses, hostels and tourism accommodation e.g. hotels, motels, guesthouses, holiday chalets, bed-and-breakfast accommodation and casinos.

3/ Other non-residential space includes churches, sport and recreation clubs, schools, crèches, hospitals and all other non-residential space.

4/ Other buildings include other residential buildings, non-residential buildings and internal alterations.

Table 12 - Recorded building plans passed by larger municipalities at current prices by type of building: Northern Cape

Category of building	Type of building	Measuring unit	Jan. 2006	Dec. 2006	Jan. 2007	% Change 1/
1. Residential buildings	1. Dwelling-houses < 80 square metres	Number	152	2	6	-96,1
		square metres	7 676	112	382	-95,0
		R'000	7 901	339	1 302	-83,5
	2. Dwelling-houses >= 80 square metres	Number	13	35	34	+161,5
		square metres	2 178	5 518	6 490	+198,0
		R'000	3 810	12 583	15 193	+298,8
	3. Flats and townhouses	Number	36	16	0	-100,0
		square metres	4 691	3 000	0	-100,0
		R'000	9 357	5 400	0	-100,0
	4. Other residential buildings 2/	square metres	0	0	0	..
		R'000	0	0	0	..
	5. Total residential buildings	R'000	21 068	18 322	16 495	-21,7
2. Non-residential buildings	1. Office and banking space	square metres	0	0	0	..
		R'000	0	0	0	..
	2. Shopping space	square metres	258	0	1 458	+465,1
		R'000	500	0	2 624	+424,8
	3. Industrial and warehouse space	square metres	4 157	0	0	-100,0
		R'000	14 714	0	0	-100,0
	4. Other non-residential buildings 3/	square metres	171	430	139	-18,7
		R'000	342	800	273	-20,2
	5. Total non-residential buildings	R'000	15 556	800	2 897	-81,4
3. Additions and alterations	1. Dwelling-houses	square metres	3 794	3 010	1 931	-49,1
		R'000	7 377	6 440	3 906	-47,1
	2. Other buildings 4/	square metres	0	853	0	..
		R'000	40	3 388	500	+1 150,0
	3. Total additions and alterations	R'000	7 417	9 828	4 406	-40,6
4. Recorded plans passed	1. Total at current prices	R'000	44 041	28 950	23 798	-46,0

1/ The percentage change between monthly figures for 2006 and 2007.

2/ Other residential buildings include institutions for the disabled, boarding houses, hostels and tourism accommodation e.g. hotels, motels, guesthouses, holiday chalets, bed-and-breakfast accommodation and casinos.

3/ Other non-residential space includes churches, sport and recreation clubs, schools, crèches, hospitals and all other non-residential space.

4/ Other buildings include other residential buildings, non-residential buildings and internal alterations.

Table 13 - Recorded building plans passed by larger municipalities at current prices by type of building: Free State

Category of building	Type of building	Measuring unit	Jan. 2006	Dec. 2006	Jan. 2007	% Change 1/
1. Residential buildings	1. Dwelling-houses < 80 square metres	Number	11	11	10	-9,1
		square metres	600	742	657	+9,5
		R'000	1 082	1 694	1 428	+32,0
	2. Dwelling-houses >= 80 square metres	Number	49	115	149	+204,1
		square metres	8 591	24 690	32 052	+273,1
		R'000	17 735	58 339	75 012	+323,0
	3. Flats and townhouses	Number	12	60	88	+633,3
		square metres	4 398	6 339	8 782	+99,7
		R'000	10 032	19 272	23 022	+129,5
	4. Other residential buildings 2/	square metres	802	0	391	-51,2
		R'000	3 000	0	608	-79,7
	5. Total residential buildings	R'000	31 849	79 305	100 070	+214,2
2. Non-residential buildings	1. Office and banking space	square metres	1 256	1 254	5 055	+302,5
		R'000	3 768	4 514	18 198	+383,0
	2. Shopping space	square metres	1 005	243	0	-100,0
		R'000	1 650	608	0	-100,0
	3. Industrial and warehouse space	square metres	1 171	1 205	3 199	+173,2
		R'000	2 516	3 140	5 320	+111,4
	4. Other non-residential buildings 3/	square metres	154	454	792	+414,3
		R'000	216	1 751	823	+281,0
	5. Total non-residential buildings	R'000	8 150	10 013	24 341	+198,7
3. Additions and alterations	1. Dwelling-houses	square metres	8 636	14 370	17 492	+102,5
		R'000	13 853	31 967	39 647	+186,2
	2. Other buildings 4/	square metres	336	1 387	2 310	+587,5
		R'000	1 446	48 005	8 959	+519,6
	3. Total additions and alterations	R'000	15 299	79 972	48 606	+217,7
4. Recorded plans passed	1. Total at current prices	R'000	55 298	169 290	173 017	+212,9

1/ The percentage change between monthly figures for 2006 and 2007.

2/ Other residential buildings include institutions for the disabled, boarding houses, hostels and tourism accommodation e.g. hotels, motels, guesthouses, holiday chalets, bed-and-breakfast accommodation and casinos.

3/ Other non-residential space includes churches, sport and recreation clubs, schools, crèches, hospitals and all other non-residential space.

4/ Other buildings include other residential buildings, non-residential buildings and internal alterations.

Table 14 - Recorded building plans passed by larger municipalities at current prices by type of building: KwaZulu-Natal

Category of building	Type of building	Measuring unit	Jan. 2006*	Dec. 2006	Jan. 2007	% Change 1/
1. Residential buildings	1. Dwelling-houses < 80 square metres	Number	63	55	87	+38,1
		square metres	3 178	2 816	5 058	+59,2
		R'000	6 031	6 840	12 666	+110,0
	2. Dwelling-houses >= 80 square metres	Number	241	181	160	-33,6
		square metres	48 119	42 060	36 324	-24,5
		R'000	124 025	123 881	127 396	+2,7
	3. Flats and townhouses	Number	318	341	321	+0,9
		square metres	62 503	52 382	38 733	-38,0
		R'000	190 287	183 554	99 823	-47,5
	4. Other residential buildings 2/	square metres	180	0	1 092	+506,7
		R'000	170	0	3 513	+1 966,5
	5. Total residential buildings	R'000	320 513	314 275	243 398	-24,1
2. Non-residential buildings	1. Office and banking space	square metres	899	11 157	6 335	+604,7
		R'000	1 724	32 300	28 768	+1 568,7
	2. Shopping space	square metres	3 121	2 865	9 262	+196,8
		R'000	7 028	21 200	36 000	+412,2
	3. Industrial and warehouse space	square metres	13 870	17 006	31 764	+129,0
		R'000	27 925	44 505	84 836	+203,8
	4. Other non-residential buildings 3/	square metres	2 532	1 604	4 829	+90,7
		R'000	4 844	3 919	13 292	+174,4
	5. Total non-residential buildings	R'000	41 521	101 924	162 896	+292,3
3. Additions and alterations	1. Dwelling-houses	square metres	56 177	47 501	39 364	-29,9
		R'000	124 709	116 964	91 250	-26,8
	2. Other buildings 4/	square metres	18 764	28 877	12 036	-35,9
		R'000	46 935	94 510	53 030	+13,0
	3. Total additions and alterations	R'000	171 644	211 474	144 280	-15,9
4. Recorded plans passed	1. Total at current prices	R'000	533 678	627 673	550 574	+3,2

1/ The percentage change between monthly figures for 2006 and 2007.

2/ Other residential buildings include institutions for the disabled, boarding houses, hostels and tourism accommodation e.g. hotels, motels, guesthouses, holiday chalets, bed-and-breakfast accommodation and casinos.

3/ Other non-residential space includes churches, sport and recreation clubs, schools, crèches, hospitals and all other non-residential space.

4/ Other buildings include other residential buildings, non-residential buildings and internal alterations.

* Revised.

Table 15 - Recorded building plans passed by larger municipalities at current prices by type of building: North West

Category of building	Type of building	Measuring unit	Jan. 2006*	Dec. 2006	Jan. 2007	% Change 1/
1. Residential buildings	1. Dwelling-houses < 80 square metres	Number	58	41	30	-48,3
		square metres	3 366	3 032	1 688	-49,9
		R'000	4 914	6 148	3 656	-25,6
	2. Dwelling-houses >= 80 square metres	Number	150	94	177	+18,0
		square metres	32 241	21 089	35 722	+10,8
		R'000	80 214	59 838	90 866	+13,3
	3. Flats and townhouses	Number	103	94	99	-3,9
		square metres	13 688	6 771	13 428	-1,9
		R'000	39 607	14 896	35 057	-11,5
	4. Other residential buildings 2/	square metres	0	472	2 280	..
		R'000	0	1 418	7 980	..
	5. Total residential buildings	R'000	124 735	82 300	137 559	+10,3
2. Non-residential buildings	1. Office and banking space	square metres	1 156	1 640	0	-100,0
		R'000	3 604	4 596	0	-100,0
	2. Shopping space	square metres	2 897	0	12 911	+345,7
		R'000	5 078	0	41 774	+722,6
	3. Industrial and warehouse space	square metres	2 664	0	5 352	+100,9
		R'000	4 550	0	14 336	+215,1
	4. Other non-residential buildings 3/	square metres	664	813	543	-18,2
		R'000	1 649	2 268	1 663	+0,8
	5. Total non-residential buildings	R'000	14 881	6 864	57 773	+288,2
3. Additions and alterations	1. Dwelling-houses	square metres	8 620	6 940	11 279	+30,8
		R'000	16 778	16 524	22 266	+32,7
	2. Other buildings 4/	square metres	2 224	1 183	2 494	+12,1
		R'000	6 997	3 901	6 916	-1,2
	3. Total additions and alterations	R'000	23 775	20 425	29 182	+22,7
4. Recorded plans passed	1. Total at current prices	R'000	163 391	109 589	224 514	+37,4

1/ The percentage change between monthly figures for 2006 and 2007.

2/ Other residential buildings include institutions for the disabled, boarding houses, hostels and tourism accommodation e.g. hotels, motels, guesthouses, holiday chalets, bed-and-breakfast accommodation and casinos.

3/ Other non-residential space includes churches, sport and recreation clubs, schools, crèches, hospitals and all other non-residential space.

4/ Other buildings include other residential buildings, non-residential buildings and internal alterations.

*Revised.

Table 16 - Recorded building plans passed by larger municipalities at current prices by type of building: Gauteng

Category of building	Type of building	Measuring unit	Jan. 2006*	Dec. 2006	Jan. 2007	% Change 1/
1. Residential buildings	1. Dwelling-houses < 80 square metres	Number	1 499	1 487	2 167	+44,6
		square metres	56 747	67 154	88 313	+55,6
		R'000	97 107	130 244	172 196	+77,3
	2. Dwelling-houses >= 80 square metres	Number	730	846	754	+3,3
		square metres	181 410	223 361	217 449	+19,9
		R'000	557 433	765 700	702 153	+26,0
	3. Flats and townhouses	Number	1 281	1 069	753	-41,2
		square metres	180 730	116 069	94 428	-47,8
		R'000	581 589	357 430	215 020	-63,0
	4. Other residential buildings 2/	square metres	70	2 636	63	-10,0
		R'000	245	6 241	148	-39,6
	5. Total residential buildings	R'000	1 236 374	1 259 615	1 089 517	-11,9
2. Non-residential buildings	1. Office and banking space	square metres	30 306	39 672	13 573	-55,2
		R'000	105 697	148 627	48 079	-54,5
	2. Shopping space	square metres	59 080	65 245	29 173	-50,6
		R'000	172 533	272 848	105 904	-38,6
	3. Industrial and warehouse space	square metres	16 415	95 297	101 402	+517,7
		R'000	40 995	253 242	286 800	+599,6
	4. Other non-residential buildings 3/	square metres	6 740	2 330	18 462	+173,9
		R'000	16 289	6 820	70 282	+331,5
	5. Total non-residential buildings	R'000	335 514	681 537	511 065	+52,3
3. Additions and alterations	1. Dwelling-houses	square metres	112 165	103 886	115 318	+2,8
		R'000	333 515	335 951	364 264	+9,2
	2. Other buildings 4/	square metres	14 339	23 783	38 799	+170,6
		R'000	45 106	77 882	136 927	+203,6
	3. Total additions and alterations	R'000	378 621	413 833	501 191	+32,4
4. Recorded plans passed	1. Total at current prices	R'000	1 950 509	2 354 985	2 101 773	+7,8

1/ The percentage change between monthly figures for 2006 and 2007.

2/ Other residential buildings include institutions for the disabled, boarding houses, hostels and tourism accommodation e.g. hotels, motels, guesthouses, holiday chalets, bed-and-breakfast accommodation and casinos.

3/ Other non-residential space includes churches, sport and recreation clubs, schools, crèches, hospitals and all other non-residential space.

4/ Other buildings include other residential buildings, non-residential buildings and internal alterations.

* Revised.

Table 17 - Recorded building plans passed by larger municipalities at current prices by type of building: Mpumalanga

Category of building	Type of building	Measuring unit	Jan. 2006	Dec. 2006	Jan. 2007	% Change 1/
1. Residential buildings	1. Dwelling-houses < 80 square metres	Number	46	154	35	-23,9
		square metres	2 454	7 593	2 290	-6,7
		R'000	5 003	14 445	6 222	+24,4
	2. Dwelling-houses >= 80 square metres	Number	160	302	238	+48,8
		square metres	33 686	51 576	53 774	+59,6
		R'000	83 863	133 367	125 774	+50,0
	3. Flats and townhouses	Number	79	10	170	+115,2
		square metres	13 273	1 626	11 972	-9,8
		R'000	26 750	4 000	46 279	+73,0
	4. Other residential buildings 2/	square metres	5 889	0	3 811	-35,3
		R'000	16 233	0	10 684	-34,2
	5. Total residential buildings	R'000	131 849	151 812	188 959	+43,3
2. Non-residential buildings	1. Office and banking space	square metres	1 598	0	4 504	+181,9
		R'000	2 800	0	11 936	+326,3
	2. Shopping space	square metres	1 282	4 893	0	-100,0
		R'000	3 647	12 550	0	-100,0
	3. Industrial and warehouse space	square metres	1 518	376	5 323	+250,7
		R'000	2 877	398	16 713	+480,9
	4. Other non-residential buildings 3/	square metres	1 265	19	3 412	+169,7
		R'000	2 542	80	5 230	+105,7
	5. Total non-residential buildings	R'000	11 866	13 028	33 879	+185,5
3. Additions and alterations	1. Dwelling-houses	square metres	17 058	14 056	18 189	+6,6
		R'000	37 390	32 769	45 445	+21,5
	2. Other buildings 4/	square metres	2 582	2 977	3 301	+27,8
		R'000	6 754	9 044	9 550	+41,4
	3. Total additions and alterations	R'000	44 144	41 813	54 995	+24,6
4. Recorded plans passed	1. Total at current prices	R'000	187 859	206 653	277 833	+47,9

1/ The percentage change between monthly figures for 2006 and 2007.

2/ Other residential buildings include institutions for the disabled, boarding houses, hostels and tourism accommodation e.g. hotels, motels, guesthouses, holiday chalets, bed-and-breakfast accommodation and casinos.

3/ Other non-residential space includes churches, sport and recreation clubs, schools, crèches, hospitals and all other non-residential space.

4/ Other buildings include other residential buildings, non-residential buildings and internal alterations.

Table 18 - Recorded building plans passed by larger municipalities at current prices by type of building: Limpopo

Category of building	Type of building	Measuring unit	Jan. 2006*	Dec. 2006	Jan. 2007	% Change 1/
1. Residential buildings	1. Dwelling-houses < 80 square metres	Number	35	20	56	+60,0
		square metres	2 205	1 284	3 321	+50,6
		R'000	5 360	3 312	8 528	+59,1
	2. Dwelling-houses >= 80 square metres	Number	59	63	80	+35,6
		square metres	12 725	12 691	16 074	+26,3
		R'000	31 521	32 654	43 792	+38,9
	3. Flats and townhouses	Number	59	24	60	+1,7
		square metres	3 931	2 352	7 314	+86,1
		R'000	10 322	7 000	16 605	+60,9
	4. Other residential buildings 2/	square metres	467	318	0	-100,0
		R'000	2 000	781	0	-100,0
	5. Total residential buildings	R'000	49 203	43 747	68 925	+40,1
2. Non-residential buildings	1. Office and banking space	square metres	1 176	862	751	-36,1
		R'000	2 940	2 155	1 878	-36,1
	2. Shopping space	square metres	2 093	0	2 497	+19,3
		R'000	3 348	0	6 471	+93,3
	3. Industrial and warehouse space	square metres	618	5 320	2 723	+340,6
		R'000	1 297	12 984	6 808	+424,9
	4. Other non-residential buildings 3/	square metres	172	123	0	-100,0
		R'000	600	221	0	-100,0
	5. Total non-residential buildings	R'000	8 185	15 360	15 157	+85,2
3. Additions and alterations	1. Dwelling-houses	square metres	10 055	6 645	10 566	+5,1
		R'000	15 654	16 529	24 766	+58,2
	2. Other buildings 4/	square metres	3 662	700	972	-73,5
		R'000	10 438	1 146	1 771	-83,0
4. Recorded plans passed	3. Total additions and alterations	R'000	26 092	17 675	26 537	+1,7
	1. Total at current prices	R'000	83 480	76 782	110 619	+32,5

1/ The percentage change between monthly figures for 2006 and 2007.

2/ Other residential buildings include institutions for the disabled, boarding houses, hostels and tourism accommodation e.g. hotels, motels, guesthouses, holiday chalets, bed-and-breakfast accommodation and casinos.

3/ Other non-residential space includes churches, sport and recreation clubs, schools, crèches, hospitals and all other non-residential space.

4/ Other buildings include other residential buildings, non-residential buildings and internal alterations.

*Revised.

Table 19 - Buildings reported as completed to larger municipalities at current prices by type of building: South Africa

Category of building	Type of building	Measuring unit	Jan. 2006*	Dec. 2006	Jan. 2007	% Change 1/
1. Residential buildings	1. Dwelling-houses < 80 square metres	Number	1 334	1 678	1 083	-18,8
		square metres	55 489	75 963	48 133	-13,3
		R'000	102 311	151 961	102 006	-0,3
	2. Dwelling-houses >= 80 square metres	Number	1 057	2 057	1 347	+27,4
		square metres	245 443	450 363	308 189	+25,6
		R'000	628 266	1 334 823	901 242	+43,4
	3. Flats and townhouses	Number	1 264	2 444	1 644	+30,1
		square metres	181 261	317 865	161 812	-10,7
		R'000	484 235	1 045 006	519 414	+7,3
	4. Other residential buildings 2/	square metres	422	1 105	4 987	+1 081,8
		R'000	760	2 368	79 092	+10 306,8
	5. Total residential buildings	R'000	1 215 572	2 534 158	1 601 754	+31,8
2. Non-residential buildings	1. Office and banking space	square metres	12 023	29 598	43 084	+258,3
		R'000	32 561	102 252	140 775	+332,3
	2. Shopping space	square metres	71 104	34 267	15 716	-77,9
		R'000	177 441	111 975	39 896	-77,5
	3. Industrial and warehouse space	square metres	34 145	100 857	68 158	+99,6
		R'000	81 877	289 063	202 607	+147,5
	4. Other non-residential buildings 3/	square metres	9 304	3 210	25 977	+179,2
		R'000	22 249	13 651	93 318	+319,4
	5. Total non-residential buildings	R'000	314 128	516 941	476 596	+51,7
3. Additions and alterations	1. Dwelling-houses	square metres	126 521	129 120	192 468	+52,1
		R'000	304 655	347 810	492 163	+61,5
	2. Other buildings 4/	square metres	34 348	38 169	37 195	+8,3
		R'000	92 392	153 251	157 149	+70,1
	3. Total additions and alterations	R'000	397 047	501 061	649 312	+63,5
4. Recorded buildings completed	1. Total at current prices	R'000	1 926 747	3 552 160	2 727 662	+41,6

1/ The percentage change between monthly figures for 2006 and 2007.

2/ Other residential buildings include institutions for the disabled, boarding houses, hostels and tourism accommodation e.g. hotels, motels, guesthouses, holiday chalets, bed-and-breakfast accommodation and casinos.

3/ Other non-residential space includes churches, sport and recreation clubs, schools, crèches, hospitals and all other non-residential space.

4/ Other buildings include other residential buildings, non-residential buildings and internal alterations.

*Revised.

Table 20 - Buildings reported as completed to larger municipalities at current prices by type of building: Western Cape

Category of building	Type of building	Measuring unit	Jan. 2006*	Dec. 2006	Jan. 2007	% Change 1/
1. Residential buildings	1. Dwelling-houses < 80 square metres	Number	165	376	105	-36,4
		square metres	6 349	16 146	5 782	-8,9
		R'000	8 107	27 470	14 142	+74,4
	2. Dwelling-houses >= 80 square metres	Number	311	561	395	+27,0
		square metres	76 379	107 092	86 508	+13,3
		R'000	202 487	319 870	247 446	+22,2
	3. Flats and townhouses	Number	317	706	787	+148,3
		square metres	32 092	73 980	66 072	+105,9
		R'000	90 790	259 661	213 642	+135,3
	4. Other residential buildings 2/	square metres	0	0	0	..
		R'000	0	0	0	..
	5. Total residential buildings	R'000	301 384	607 001	475 230	+57,7
2. Non-residential buildings	1. Office and banking space	square metres	2 179	7 368	10 865	+398,6
		R'000	5 780	22 707	30 863	+434,0
	2. Shopping space	square metres	1 529	9 095	4 848	+217,1
		R'000	4 281	28 893	10 807	+152,4
	3. Industrial and warehouse space	square metres	14 658	27 430	11 266	-23,1
		R'000	37 601	84 267	30 606	-18,6
	4. Other non-residential buildings 3/	square metres	3 350	996	9 113	+172,0
		R'000	8 043	3 448	27 101	+237,0
	5. Total non-residential buildings	R'000	55 705	139 315	99 377	+78,4
3. Additions and alterations	1. Dwelling-houses	square metres	54 990	48 494	59 674	+8,5
		R'000	140 796	126 205	158 650	+12,7
	2. Other buildings 4/	square metres	15 826	7 264	12 636	-20,2
		R'000	47 966	23 155	85 071	+77,4
	3. Total additions and alterations	R'000	188 762	149 360	243 721	+29,1
4. Recorded buildings completed	1. Total at current prices	R'000	545 851	895 676	818 328	+49,9

1/ The percentage change between monthly figures for 2006 and 2007.

2/ Other residential buildings include institutions for the disabled, boarding houses, hostels and tourism accommodation e.g. hotels, motels, guesthouses, holiday chalets, bed-and-breakfast accommodation and casinos.

3/ Other non-residential space includes churches, sport and recreation clubs, schools, crèches, hospitals and all other non-residential space.

4/ Other buildings include other residential buildings, non-residential buildings and internal alterations.

*Revised.

Table 21 - Buildings reported as completed to larger municipalities at current prices by type of building: Eastern Cape

Category of building	Type of building	Measuring unit	Jan. 2006	Dec. 2006	Jan. 2007	% Change 1/
1. Residential buildings	1. Dwelling-houses < 80 square metres	Number	93	150	106	+14,0
		square metres	4 146	6 144	4 318	+4,1
		R'000	6 898	8 441	7 288	+5,7
	2. Dwelling-houses >= 80 square metres	Number	122	102	107	-12,3
		square metres	24 194	17 868	16 970	-29,9
		R'000	49 274	43 957	43 907	-10,9
	3. Flats and townhouses	Number	32	25	54	+68,8
		square metres	5 025	4 229	4 883	-2,8
		R'000	11 471	9 256	11 988	+4,5
	4. Other residential buildings 2/	square metres	0	271	0	..
		R'000	0	596	0	..
	5. Total residential buildings	R'000	67 643	62 250	63 183	-6,6
2. Non-residential buildings	1. Office and banking space	square metres	0	0	0	..
		R'000	0	0	0	..
	2. Shopping space	square metres	0	0	1 327	..
		R'000	0	0	3 211	..
	3. Industrial and warehouse space	square metres	0	1 497	1 021	..
		R'000	0	2 844	1 957	..
	4. Other non-residential buildings 3/	square metres	1 362	0	0	-100,0
		R'000	3 152	0	0	-100,0
	5. Total non-residential buildings	R'000	3 152	2 844	5 168	+64,0
3. Additions and alterations	1. Dwelling-houses	square metres	7 727	7 319	14 210	+83,9
		R'000	14 253	14 027	26 428	+85,4
	2. Other buildings 4/	square metres	3 544	428	206	-94,2
		R'000	5 988	854	461	-92,3
	3. Total additions and alterations	R'000	20 241	14 881	26 889	+32,8
4. Recorded buildings completed	1. Total at current prices	R'000	91 036	79 975	95 240	+4,6

1/ The percentage change between monthly figures for 2006 and 2007.

2/ Other residential buildings include institutions for the disabled, boarding houses, hostels and tourism accommodation e.g. hotels, motels, guesthouses, holiday chalets, bed-and-breakfast accommodation and casinos.

3/ Other non-residential space includes churches, sport and recreation clubs, schools, crèches, hospitals and all other non-residential space.

4/ Other buildings include other residential buildings, non-residential buildings and internal alterations.

Table 22 - Buildings reported as completed to larger municipalities at current prices by type of building: Northern Cape

Category of building	Type of building	Measuring unit	Jan. 2006	Dec. 2006	Jan. 2007	% Change 1/
1. Residential buildings	1. Dwelling-houses < 80 square metres	Number	0	7	3	..
		square metres	0	429	200	..
		R'000	0	818	360	..
	2. Dwelling-houses >= 80 square metres	Number	5	19	9	+80,0
		square metres	1 007	4 244	1 866	+85,3
		R'000	2 014	8 774	4 236	+110,3
	3. Flats and townhouses	Number	5	10	7	+40,0
		square metres	434	1 576	1 003	+131,1
		R'000	868	3 291	1 805	+107,9
	4. Other residential buildings 2/	square metres	0	0	0	..
		R'000	0	0	0	..
	5. Total residential buildings	R'000	2 882	12 883	6 401	+122,1
2. Non-residential buildings	1. Office and banking space	square metres	0	0	0	..
		R'000	0	0	0	..
	2. Shopping space	square metres	0	0	1 710	..
		R'000	0	0	3 236	..
	3. Industrial and warehouse space	square metres	0	794	0	..
		R'000	0	1 985	0	..
	4. Other non-residential buildings 3/	square metres	0	0	0	..
		R'000	0	0	0	..
	5. Total non-residential buildings	R'000	0	1 985	3 236	..
3. Additions and alterations	1. Dwelling-houses	square metres	401	4 226	2 295	+472,3
		R'000	764	8 650	4 669	+511,1
	2. Other buildings 4/	square metres	0	2 182	34	..
		R'000	40	5 254	82	+105,0
	3. Total additions and alterations	R'000	804	13 904	4 751	+490,9
4. Recorded buildings completed	1. Total at current prices	R'000	3 686	28 772	14 388	+290,3

1/ The percentage change between monthly figures for 2006 and 2007.

2/ Other residential buildings include institutions for the disabled, boarding houses, hostels and tourism accommodation e.g. hotels, motels, guesthouses, holiday chalets, bed-and-breakfast accommodation and casinos.

3/ Other non-residential space includes churches, sport and recreation clubs, schools, crèches, hospitals and all other non-residential space.

4/ Other buildings include other residential buildings, non-residential buildings and internal alterations.

Table 23 - Buildings reported as completed to larger municipalities at current prices by type of building: Free State

Category of building	Type of building	Measuring unit	Jan. 2006	Dec. 2006	Jan. 2007	% Change 1/	
1. Residential buildings	1. Dwelling-houses < 80 square metres	Number	11	21	25	+127,3	
		square metres	606	1 213	1 503	+148,0	
		R'000	1 093	2 593	2 682	+145,4	
	2. Dwelling-houses >= 80 square metres	Number	19	42	85	+347,4	
		square metres	3 968	6 801	13 059	+229,1	
		R'000	7 704	12 936	28 228	+266,4	
	3. Flats and townhouses	Number	33	23	30	-9,1	
		square metres	5 442	5 357	3 386	-37,8	
		R'000	12 180	10 919	12 444	+2,2	
	4. Other residential buildings 2/	square metres	422	0	4 987	+1 081,8	
		R'000	760	0	79 092	+10 306,8	
	5. Total residential buildings		R'000	21 737	26 448	122 446	+463,3
	2. Non-residential buildings	1. Office and banking space	square metres	674	506	0	-100,0
R'000			1 500	1 100	0	-100,0	
2. Shopping space		square metres	660	0	350	-47,0	
		R'000	1 100	0	1 251	+13,7	
3. Industrial and warehouse space		square metres	735	1 236	0	-100,0	
		R'000	1 088	2 472	0	-100,0	
4. Other non-residential buildings 3/		square metres	0	0	0	..	
		R'000	0	0	0	..	
5. Total non-residential buildings		R'000	3 688	3 572	1 251	-66,1	
3. Additions and alterations		1. Dwelling-houses	square metres	2 979	3 020	4 536	+52,3
	R'000		4 885	6 285	8 624	+76,5	
	2. Other buildings 4/	square metres	792	323	0	-100,0	
		R'000	1 709	13 179	540	-68,4	
	3. Total additions and alterations		R'000	6 594	19 464	9 164	+39,0
4. Recorded buildings completed	1. Total at current prices	R'000	32 019	49 484	132 861	+314,9	

1/ The percentage change between monthly figures for 2006 and 2007.

2/ Other residential buildings include institutions for the disabled, boarding houses, hostels and tourism accommodation e.g. hotels, motels, guesthouses, holiday chalets, bed-and-breakfast accommodation and casinos.

3/ Other non-residential space includes churches, sport and recreation clubs, schools, crèches, hospitals and all other non-residential space.

4/ Other buildings include other residential buildings, non-residential buildings and internal alterations.

Table 24 - Buildings reported as completed to larger municipalities at current prices by type of building: KwaZulu-Natal

Category of building	Type of building	Measuring unit	Jan. 2006*	Dec. 2006	Jan. 2007	% Change 1/
1. Residential buildings	1. Dwelling-houses < 80 square metres	Number	105	101	102	-2,9
		square metres	5 210	4 886	3 852	-26,1
		R'000	11 337	10 546	6 475	-42,9
	2. Dwelling-houses >= 80 square metres	Number	129	137	84	-34,9
		square metres	25 363	29 954	17 498	-31,0
		R'000	62 336	82 449	47 202	-24,3
	3. Flats and townhouses	Number	186	384	117	-37,1
		square metres	39 690	75 656	15 368	-61,3
		R'000	102 349	243 592	45 945	-55,1
	4. Other residential buildings 2/	square metres	0	0	0	..
		R'000	0	0	0	..
	5. Total residential buildings	R'000	176 022	336 587	99 622	-43,4
2. Non-residential buildings	1. Office and banking space	square metres	2 612	2 772	1 727	-33,9
		R'000	6 918	10 095	5 073	-26,7
	2. Shopping space	square metres	5 094	5 258	470	-90,8
		R'000	7 490	13 261	1 175	-84,3
	3. Industrial and warehouse space	square metres	13 874	20 547	35 467	+155,6
		R'000	31 800	53 328	113 490	+256,9
	4. Other non-residential buildings 3/	square metres	3 160	542	0	-100,0
		R'000	7 150	1 275	0	-100,0
	5. Total non-residential buildings	R'000	53 358	77 959	119 738	+124,4
3. Additions and alterations	1. Dwelling-houses	square metres	22 742	19 776	18 293	-19,6
		R'000	51 676	49 265	46 587	-9,8
	2. Other buildings 4/	square metres	8 316	5 990	16 249	+95,4
		R'000	20 442	39 212	44 254	+116,5
	3. Total additions and alterations	R'000	72 118	88 477	90 841	+26,0
4. Recorded buildings completed	1. Total at current prices	R'000	301 498	503 023	310 201	+2,9

1/ The percentage change between monthly figures for 2006 and 2007.

2/ Other residential buildings include institutions for the disabled, boarding houses, hostels and tourism accommodation e.g. hotels, motels, guesthouses, holiday chalets, bed-and-breakfast accommodation and casinos.

3/ Other non-residential space includes churches, sport and recreation clubs, schools, crèches, hospitals and all other non-residential space.

4/ Other buildings include other residential buildings, non-residential buildings and internal alterations.

* Revised.

Table 25 - Buildings reported as completed to larger municipalities at current prices by type of building: North West

Category of building	Type of building	Measuring unit	Jan. 2006	Dec. 2006	Jan. 2007	% Change 1/
1. Residential buildings	1. Dwelling-houses < 80 square metres	Number	24	49	55	+129,2
		square metres	1 409	2 869	1 973	+40,0
		R'000	2 206	5 756	2 074	-6,0
	2. Dwelling-houses >= 80 square metres	Number	66	194	79	+19,7
		square metres	14 354	34 579	18 700	+30,3
		R'000	37 651	92 443	52 255	+38,8
	3. Flats and townhouses	Number	59	85	94	+59,3
		square metres	5 697	6 722	6 433	+12,9
		R'000	13 208	20 800	18 033	+36,5
	4. Other residential buildings 2/	square metres	0	0	0	..
		R'000	0	0	0	..
	5. Total residential buildings	R'000	53 065	118 999	72 362	+36,4
2. Non-residential buildings	1. Office and banking space	square metres	0	0	1 286	..
		R'000	0	0	2 829	..
	2. Shopping space	square metres	19 880	6 950	3 620	-81,8
		R'000	52 860	24 288	9 490	-82,0
	3. Industrial and warehouse space	square metres	0	171	0	..
		R'000	0	427	0	..
	4. Other non-residential buildings 3/	square metres	247	1 672	218	-11,7
		R'000	543	8 928	763	+40,5
	5. Total non-residential buildings	R'000	53 403	33 643	13 082	-75,5
3. Additions and alterations	1. Dwelling-houses	square metres	5 245	2 832	2 573	-50,9
		R'000	9 220	6 124	4 820	-47,7
	2. Other buildings 4/	square metres	4 343	2 409	0	-100,0
		R'000	10 834	7 094	110	-99,0
	3. Total additions and alterations	R'000	20 054	13 218	4 930	-75,4
4. Recorded buildings completed	1. Total at current prices	R'000	126 522	165 860	90 374	-28,6

1/ The percentage change between monthly figures for 2006 and 2007.

2/ Other residential buildings include institutions for the disabled, boarding houses, hostels and tourism accommodation e.g. hotels, motels, guesthouses, holiday chalets, bed-and-breakfast accommodation and casinos.

3/ Other non-residential space includes churches, sport and recreation clubs, schools, crèches, hospitals and all other non-residential space.

4/ Other buildings include other residential buildings, non-residential buildings and internal alterations.

Table 26 - Buildings reported as completed to larger municipalities at current prices by type of building: Gauteng

Category of building	Type of building	Measuring unit	Jan. 2006*	Dec. 2006	Jan. 2007	% Change 1/
1. Residential buildings	1. Dwelling-houses < 80 square metres	Number	812	932	650	-20,0
		square metres	33 238	41 548	28 127	-15,4
		R'000	63 719	89 243	62 726	-1,6
	2. Dwelling-houses >= 80 square metres	Number	308	839	478	+55,2
		square metres	83 828	217 765	131 021	+56,3
		R'000	227 362	687 819	417 578	+83,7
	3. Flats and townhouses	Number	448	1 164	512	+14,3
		square metres	73 095	145 006	59 291	-18,9
		R'000	213 529	481 668	201 945	-5,4
	4. Other residential buildings 2/	square metres	0	730	0	..
		R'000	0	1 460	0	..
	5. Total residential buildings	R'000	504 610	1 260 190	682 249	+35,2
2. Non-residential buildings	1. Office and banking space	square metres	4 717	18 952	26 589	+463,7
		R'000	13 505	68 350	95 710	+608,7
	2. Shopping space	square metres	37 897	11 204	2 948	-92,2
		R'000	100 710	39 851	9 617	-90,5
	3. Industrial and warehouse space	square metres	4 878	46 827	17 859	+266,1
		R'000	11 388	136 892	50 726	+345,4
	4. Other non-residential buildings 3/	square metres	914	0	15 843	+1 633,4
		R'000	2 991	0	63 237	+2 014,2
	5. Total non-residential buildings	R'000	128 594	245 093	219 290	+70,5
3. Additions and alterations	1. Dwelling-houses	square metres	28 206	38 522	77 300	+174,1
		R'000	75 923	125 480	225 605	+197,1
	2. Other buildings 4/	square metres	1 525	18 111	7 141	+368,3
		R'000	5 315	60 518	23 886	+349,4
	3. Total additions and alterations	R'000	81 238	185 998	249 491	+207,1
4. Recorded buildings completed	1. Total at current prices	R'000	714 442	1 691 281	1 151 030	+61,1

1/ The percentage change between monthly figures for 2006 and 2007.

2/ Other residential buildings include institutions for the disabled, boarding houses, hostels and tourism accommodation e.g. hotels, motels, guesthouses, holiday chalets, bed-and-breakfast accommodation and casinos.

3/ Other non-residential space includes churches, sport and recreation clubs, schools, crèches, hospitals and all other non-residential space.

4/ Other buildings include other residential buildings, non-residential buildings and internal alterations.

* Revised.

Table 27 - Buildings reported as completed to larger municipalities at current prices by type of building: Mpumalanga

Category of building	Type of building	Measuring unit	Jan. 2006	Dec. 2006	Jan. 2007	% Change 1/
1. Residential buildings	1. Dwelling-houses < 80 square metres	Number	107	7	10	-90,7
		square metres	3 457	484	682	-80,3
		R'000	6 316	1 522	1 894	-70,0
	2. Dwelling-houses >= 80 square metres	Number	72	93	74	+2,8
		square metres	11 660	19 758	15 267	+30,9
		R'000	27 257	54 039	41 508	+52,3
	3. Flats and townhouses	Number	132	47	30	-77,3
		square metres	12 088	5 339	3 420	-71,7
		R'000	20 478	15 819	10 260	-49,9
	4. Other residential buildings 2/	square metres	0	104	0	..
		R'000	0	312	0	..
	5. Total residential buildings	R'000	54 051	71 692	53 662	-0,7
2. Non-residential buildings	1. Office and banking space	square metres	1 416	0	2 617	+84,8
		R'000	3 795	0	6 300	+66,0
	2. Shopping space	square metres	6 044	1 508	443	-92,7
		R'000	11 000	5 278	1 109	-89,9
	3. Industrial and warehouse space	square metres	0	2 355	574	..
		R'000	0	6 848	1 492	..
	4. Other non-residential buildings 3/	square metres	271	0	803	+196,3
		R'000	370	0	2 217	+499,2
	5. Total non-residential buildings	R'000	15 165	12 126	11 118	-26,7
3. Additions and alterations	1. Dwelling-houses	square metres	3 259	3 909	12 451	+282,0
		R'000	5 231	9 378	14 223	+171,9
	2. Other buildings 4/	square metres	0	1 462	633	..
		R'000	94	3 985	2 083	+2 116,0
	3. Total additions and alterations	R'000	5 325	13 363	16 306	+206,2
4. Recorded buildings completed	1. Total at current prices	R'000	74 541	97 181	81 086	+8,8

1/ The percentage change between monthly figures for 2006 and 2007.

2/ Other residential buildings include institutions for the disabled, boarding houses, hostels and tourism accommodation e.g. hotels, motels, guesthouses, holiday chalets, bed-and-breakfast accommodation and casinos.

3/ Other non-residential space includes churches, sport and recreation clubs, schools, crèches, hospitals and all other non-residential space.

4/ Other buildings include other residential buildings, non-residential buildings and internal alterations.

Table 28 - Buildings reported as completed to larger municipalities at current prices by type of building: Limpopo

Category of building	Type of building	Measuring unit	Jan. 2006*	Dec. 2006	Jan. 2007	% Change 1/
1. Residential buildings	1. Dwelling-houses < 80 square metres	Number	17	35	27	+58,8
		square metres	1 074	2 244	1 696	+57,9
		R'000	2 635	5 572	4 365	+65,7
	2. Dwelling-houses >= 80 square metres	Number	25	70	36	+44,0
		square metres	4 690	12 302	7 300	+55,7
		R'000	12 181	32 536	18 882	+55,0
	3. Flats and townhouses	Number	52	0	13	-75,0
		square metres	7 698	0	1 956	-74,6
		R'000	19 362	0	3 352	-82,7
	4. Other residential buildings 2/	square metres	0	0	0	..
		R'000	0	0	0	..
	5. Total residential buildings	R'000	34 178	38 108	26 599	-22,2
2. Non-residential buildings	1. Office and banking space	square metres	425	0	0	-100,0
		R'000	1 063	0	0	-100,0
	2. Shopping space	square metres	0	252	0	..
		R'000	0	404	0	..
	3. Industrial and warehouse space	square metres	0	0	1 971	..
		R'000	0	0	4 336	..
	4. Other non-residential buildings 3/	square metres	0	0	0	..
		R'000	0	0	0	..
	5. Total non-residential buildings	R'000	1 063	404	4 336	+307,9
3. Additions and alterations	1. Dwelling-houses	square metres	972	1 022	1 136	+16,9
		R'000	1 907	2 396	2 557	+34,1
	2. Other buildings 4/	square metres	2	0	296	+14 700,0
		R'000	4	0	662	+16 450,0
	3. Total additions and alterations	R'000	1 911	2 396	3 219	+68,4
4. Recorded buildings completed	1. Total at current prices	R'000	37 152	40 908	34 154	-8,1

1/ The percentage change between monthly figures for 2005 and 2006.

2/ Other residential buildings include institutions for the disabled, boarding houses, hostels and tourism accommodation e.g. hotels, motels, guesthouses, holiday chalets, bed-and-breakfast accommodation and casinos.

3/ Other non-residential space includes churches, sport and recreation clubs, schools, crèches, hospitals and all other non-residential space.

4/ Other buildings include other residential buildings, non-residential buildings and internal alterations.

* Revised.

Table 29 - Subsidised low-cost dwelling-houses completed or under construction by province

Province	Year	Number 1/	Square metres 2/	Value R'000 2/
Western Cape	2002	19 534	531 116	168 852
	2003	16 926	507 780	247 187
	2004	12 751	382 530	211 424
Eastern Cape	2002	46 700	1 575 675	473 806
	2003	35 005	1 050 150	511 213
	2004	34 923	1 047 690	579 058
Northern Cape	2002	5 189	164 906	68 078
	2003	4 354	130 620	63 586
	2004	3 645	109 350	60 438
Free State	2002	8 617	348 492	154 121
	2003	14 848	445 440	216 840
	2004	16 522	495 660	273 951
KwaZulu-Natal	2002	21 958	831 349	234 041
	2003	31 372	941 160	458 157
	2004	35 968	1 079 040	596 385
North West	2002	21 309	630 115	210 439
	2003	13 809	414 270	201 667
	2004	10 149	304 470	168 281
Gauteng	2002	29 939	991 571	321 943
	2003	42 862	1 285 860	625 957
	2004	33 260	997 800	551 484
Mpumalanga	2002	19 883	660 505	253 931
	2003	21 336	640 080	246 079
	2004	18 808	564 240	311 855
Limpopo	2002	15 382	605 877	183 769
	2003	15 596	467 880	227 764
	2004	16 338	490 140	270 900
South Africa	2002	188 511	6 339 606	2 068 980
	2003	196 108	5 883 240	2 798 450
	2004	182 364	5 470 920	3 023 777

Source: Provincial Governments co-ordinated by the National Department of Housing
 1/ As soon as building commences, dwelling-houses are recorded as completed or under construction.
 2/ Estimates by the National Department of Housing.

Table 30 - Subsidised low-cost dwelling-houses completed by province

Completions during financial year: 1 April 2005 to 31 March 2006			
Province	Number	Square metres 1/	Value R'000 1/
Western Cape	2 040	61 200	52 877
Eastern Cape	16 874	506 220	437 374
Northern Cape	5 293	158 790	137 195
Free State	17 635	529 050	457 099
KwaZulu-Natal	21 601	648 030	559 898
North West	14 445	433 350	374 414
Gauteng	23 409	702 270	606 761
Mpumalanga	14 389	431 670	372 963
Limpopo	21 973	659 190	569 540
South Africa	137 659	4 129 770	3 568 121

Source: Provincial Governments co-ordinated by the National Department of Housing
 1/ Estimates by the National Department of Housing.

Explanatory notes

Introduction	1	Statistics South Africa (Stats SA) conducts a monthly building statistics survey collecting information regarding building plans passed and buildings completed, financed by the private sector, from the largest local government institutions in South Africa. According to these institutions, they are not always notified about low-cost housing projects and therefore do not include the bulk of low-cost dwelling-houses. Data regarding subsidised low-cost dwelling-houses, supplied by the provincial governments and co-ordinated by the National Department of Housing, are shown in table 29 and table 30 (page 37).
	2	In order to improve timeliness of the publication, some information for the current month has been estimated due to late submission by respondents. These estimates will be revised in the next statistical release(s) as soon as actual information is available.
Purpose of the survey	3	The monthly survey data are used in monitoring the state of economy and formulation of economic policy. Furthermore, the results are important inputs to estimate the Gross Domestic Product (GDP) and to calculate the Composite Leading Business Cycle Indicator. The data are extensively used by the private sector.
Scope of the survey	4	This survey covers local government institutions conducting activities for the private sector regarding - <ul style="list-style-type: none"> • passing of building plans; and • final inspection of completed buildings.
Classification	5	Building activities is classified in division 5 according to the 1993 edition of the <i>Standard Industrial Classification of all Economic Activities, (SIC) Fifth Edition, Report No. 09-90-02</i> . The SIC is based on the 1990 <i>International Standard Industrial Classification of all Economic Activities (ISIC)</i> with suitable adaptations for local conditions.
Response rate	6	The preliminary response rate for the survey on building statistics for January 2007 was 98%. Improved response rate for December 2006 was 100%.
Statistical unit	7	The statistical unit for the collection of information is a local government institution. Local government institutions include district municipalities, metropolitan municipalities and local municipalities.
Survey methodology and design	8	Stats SA conducts a monthly survey of metropolitan municipalities and large local municipalities on building plans passed and buildings completed. An annual survey of the remaining municipalities is conducted regarding buildings completed. The monthly survey represents approximately 90 percent of the total value of buildings completed. Information regarding building plans passed and buildings completed for the private sector is collected by mail, fax and telephone. According to the municipalities, they are not always notified about low-cost housing projects. Data regarding subsidised low-cost dwelling-houses, supplied by the provincial governments and co-ordinated by the National Department of Housing, are shown in table 29 and table 30 (page 37).
Constant prices	9	The value of building plans passed and buildings completed at constant prices measures building activities in terms of ruling prices in a specific base year, which is currently 2000. The value of building plans passed at constant prices for each month is obtained by deflating the values at current prices with a price index known as the 'lump sum domestic buildings' as published in statistical release P0151: <i>JBCC Contract Price Adjustment Provisions Work Group Indices</i> . In order to be applicable, these indices (base February 1991=100) are converted to the base year 2000=100.

- 10** The value of buildings completed at constant prices is obtained by deflating the values at current prices with the price index which is used to calculate building plans passed at constant prices (see paragraph 8). Since the completion of buildings may extend over a few months to a few years, the current value of buildings completed is deflated by price indices which prevailed at the time the plans were passed. Therefore, the duration of the completion of different types of buildings are taken into account in ascertaining the deflators e.g. the value of dwelling-houses completed at constant prices at January 2007 is obtained by deflating the current value of dwelling-houses completed for January 2007 with the price index of a month six months prior to January 2007. Furthermore, the value of other residential buildings, non-residential buildings and additions and alterations at constant prices is obtained by deflating the current values with price indices of 12 months, 18 months and 12 months prior to the relevant month, respectively.
- Seasonal adjustment**
- 11** Seasonally adjusted estimates of building plans passed and buildings completed are generated each month, using the X-11 Seasonal Adjustment Program developed by US Bureau of the Census Economic Research and Analyses Division, 1968.
- 12** Seasonal adjustment is a means of removing the estimated effects of normal seasonal variation from the series so that the effects of other influences on the series can be more clearly recognised. Seasonal adjustment does not aim to remove irregular or non-seasonal influences which may be present in any particular month. Influences that are volatile or unsystematic can still make it difficult to interpret the movement of the series even after adjustment for seasonal variations. Therefore, the month-to-month movements of seasonally adjusted estimates may not be reliable indicators of trend behaviour.
- Trend cycle**
- 13** The trend is a long-term pattern or movement of a time series. The X-11 Seasonal Adjustment Program is used for smoothing seasonally adjusted data.
- Revised figures**
- 14** Revised figures are due to late submission of data to Stats SA, or to respondents reporting revisions or corrections to their figures. Figures for the latest month are therefore preliminary. Data are edited at municipal level.
- 15** Once a year the annual statistical release P5041.3 is published with the revised and updated information at provincial and municipal level for the previous calendar year. Due to this comprehensive revision, the monthly statistical release P5041.1 reflects provincial revision for 2005 where applicable.
- Related publications**
- 16** Users may also wish to refer to the following publications:
- P5041.3: Selected building statistics of the private sector as reported by local government institutions issued annually.
 - P9101.2: Actual and expected expenditure on construction by the public sector per statistical region issued annually.
 - Bulletin of Statistics issued quarterly.
 - South African Statistics issued annually.
 - Report 50-11-01 issued annually.
- Rounding-off of figures**
- 17** The figures in the tables have, where necessary, been rounded off to the nearest digit shown.
- Pre-release policy**
- 18** Stats SA's pre-release policy may be inspected at its website, www.statssa.gov.za

**Symbols and
abbreviations**

19	..	no meaningful percentage change between two specified periods available since either one or both of the totals are nil
	0	nil or figure too small to publish
	*	revised
	Stats SA	Statistics South Africa
	SIC	Standard Industrial Classification of all Economic Activities
	ISIC	International Standard Industrial Classification of all Economic Activities
	JBCC	Joint Building Contracts Committee
	CD	Compact Disc
	US	United States
	SARB	South African Reserve Bank
	DTI	Department of Trade and Industry

Glossary

Additions and alterations	They include extensions to existing buildings as well as internal and external alterations of existing buildings.
Blocks of flats	High-density housing consisting of a number of self-contained dwelling-units, each with at least one living-room together with a kitchen and bathroom, conjoined to similar units in one building.
Dwelling-house	A free-standing, complete structure on a separate stand or a self-contained dwelling-unit, granny flat, on the same premises as an existing residence. Out-buildings and garages are included.
Local government institutions	Include – <ul style="list-style-type: none"> • District municipalities; • Metropolitan municipalities; and • Local municipalities.
Municipality	A generic term describing the “unit” of government in the local spheres responsible for local government in a geographically demarcated area and including district, metropolitan and local municipalities. It is an institution consisting of a municipal council (elected political representatives) and municipal administration (appointed officials).
District municipality	Municipality that has municipal executive and legislative authority in an area that includes more than one municipality, and which is described in section 155(1) of the Constitution as a category C municipality (Refer to Local Government: Municipal Structure Act, 1998 (Act No. 117 of 1998)).
Metropolitan municipality	Municipality that has municipal executive and legislative authority in an area that includes more than one municipality, and which is described in section 155(1) of the Constitution as a category A municipality (Refer to Local Government: Municipal Structure Act, 1998 (Act No. 117 of 1998)).
Local municipality	Municipality that shares municipal executive and legislative authority in its area with a district municipality within whose area it falls, that is described in section 155(1) of the constitution as a category B municipality.
Non-residential buildings	Comprise factories, commercial, financial and other office buildings, as well as other buildings not used for residential purposes, such as churches, halls, clubs, schools and hospitals.
Other residential buildings	Institutions for the disabled, boarding houses, old people’s homes, hostels, hotels, motels, guesthouses, holiday chalets, bed-and-breakfast accommodation, entertainment centres and casinos.
Percentage change	<p>When using monthly actual values, the percentage change is the change in actual values of building activities (building plans passed or buildings completed) of the relevant month compared with the actual values of building activities (building plans passed or buildings completed) of the same month in the previous year expressed as a percentage.</p> <p>When using annual actual values, the percentage change is the change in the actual values of building activities (building plans passed or buildings completed) of the relevant year compared with the actual values of building activities (building plans passed or buildings completed) of the previous year expressed as a percentage.</p> <p>When using seasonally adjusted values, the percentage change is the change in the seasonally adjusted values of building activities (building plans passed or buildings completed) of the relevant month compared with the seasonally adjusted values of building activities (building plans passed or buildings completed) of the previous month expressed as a percentage.</p>

Reference period	One calendar month.
Residential buildings	Comprise dwelling-houses, flats, townhouses and other residential buildings.
Townhouses	Multiple, medium-density dwelling-units and include cluster housing, group housing, simplexes, duplexes, triplexes and other similar dwelling-units which are usually grouped together, with one level of each unit on ground level. This excludes blocks of flats.

General information

Stats SA publishes approximately 300 different statistical releases each year. It is not economically viable to produce them in more than one of South Africa's eleven official languages. Since the releases are used extensively, not only locally but also by international economic and social-scientific communities, Stats SA releases are published in English.

Stats SA has copyright on this publication. Users may apply the information as they wish, provided that they acknowledge Stats SA as the source of the basic data wherever they process, apply, utilise, publish or distribute the data and also that they specify that the relevant application and analysis (where applicable) result from their own processing of the data.

An advance release calendar is disseminated on www.statssa.gov.za

Stats SA products

A complete set of Stats SA publications is available at the Stats SA Library and the following libraries:

National Library of South Africa, Pretoria Division
National Library of South Africa, Cape Town Division
Natal Society Library, Pietermaritzburg
Library of Parliament, Cape Town
Bloemfontein Public Library
Johannesburg Public Library
Eastern Cape Library Services, King William's Town
Central Regional Library, Polokwane
Central Reference Library, Nelspruit
Central Reference Collection, Kimberley
Central Reference Library, Mmabatho

Stats SA also provides a subscription service.

Electronic services

A large range of data are available via on-line services, diskette, CD and computer printouts. For more details about our electronic data services, contact (012) 310 8600/8390/8351/4892/8496/8095.

You can visit us on the Internet at: www.statssa.gov.za

Enquiries

Telephone number: (012) 310 8600/8390/8351/4892/8496/8095 (user information services)
(012) 310 8228/310 8007 (technical enquiries)
(012) 310 8161 (orders)
(012) 310 4883/4885/8018 (library)

Fax number: (012) 310 8664 (technical enquiries)

Email: Gretaz@statssa.gov.za (technical enquiries)
info@statssa.gov.za (user information services)
distribution@statssa.gov.za (orders)

Postal address: Private Bag X44, Pretoria, 0001

Produced by Stats SA